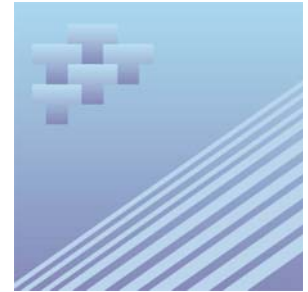




Catalogue no. 51-007-XIE

# Aircraft Movement Statistics: NAV CANADA Towers and Flight Service Stations



May 2007



Statistics  
Canada

Statistique  
Canada

Canada

## How to obtain more information

Specific inquiries about this product and related statistics or services should be directed to: Transportation Division, Statistics Canada, Ottawa, Ontario, K1A 0T6 (telephone: 1-866-500-8400).

For information on the wide range of data available from Statistics Canada, you can contact us by calling one of our toll free numbers. You can also contact us by e-mail or by visiting our website at [www.statcan.ca](http://www.statcan.ca).

National inquiries line **1-800-263-1136**

National telecommunications device for the hearing impaired **1-800-363-7629**

Depository Services Program inquiries **1-800-700-1033**

Fax line for Depository Services Program **1-800-889-9734**

E-mail inquiries [infostats@statcan.ca](mailto:infostats@statcan.ca)

Website [www.statcan.ca](http://www.statcan.ca)

## Information to access the product

This product, catalogue no. 51-007-XIE, is available for free in electronic format. To obtain a single issue, visit our website at [www.statcan.ca](http://www.statcan.ca) and select Publications.

## Standards of service to the public

Statistics Canada is committed to serving its clients in a prompt, reliable and courteous manner. To this end, the Agency has developed *standards of service* which its employees observe in serving its clients.

To obtain a copy of these service standards, please contact Statistics Canada toll free at 1-800-263-1136. The service standards are also published on [www.statcan.ca](http://www.statcan.ca) under About us > Providing services to Canadians.



Statistics Canada  
Transportation Division

# Aircraft Movement Statistics: NAV CANADA Towers and Flight Service Stations

May 2007

Published by authority of the Minister responsible for Statistics Canada

© Minister of Industry, 2007 and the © Minister of Transport, 2007.

All rights reserved. The content of this electronic publication may be reproduced, in whole or in part, and by any means, without further permission from Statistics Canada, subject to the following conditions: that it be done solely for the purposes of private study, research, criticism, review or newspaper summary, and/or for non-commercial purposes; and that Statistics Canada be fully acknowledged as follows: Source (or "Adapted from", if appropriate): Statistics Canada, year of publication, name of product, catalogue number, volume and issue numbers, reference period and page(s). Otherwise, no part of this publication may be reproduced, stored in a retrieval system or transmitted in any form, by any means—electronic, mechanical or photocopy—or for any purposes without prior written permission of Licensing Services, Client Services Division, Statistics Canada, Ottawa, Ontario, Canada K1A 0T6.

June 2007

Catalogue no. 51-007-XIE, Vol. 1, No. 5

ISSN 1911-6314

Frequency: Monthly

Ottawa

La version française de cette publication est disponible sur demande (n° 51-007-XIF au catalogue).

---

#### **Note of appreciation**

*Canada owes the success of its statistical system to a long standing partnership between Statistics Canada, the citizens of Canada, its businesses, governments and other institutions. Accurate and timely statistical information could not be produced without their continued cooperation and goodwill.*

# User information

---

## Symbols

The following standard symbols are used in Statistics Canada publications:

- . not available for any reference period
- .. not available for a specific reference period
- ... not applicable
- 0 true zero or a value rounded to zero
- 0<sup>s</sup> value rounded to 0 (zero) where there is a meaningful distinction between true zero and the value that was rounded
- p preliminary
- r revised
- x suppressed to meet the confidentiality requirements of the *Statistics Act*
- E use with caution
- F too unreliable to be published

## Acknowledgements

This publication was prepared by the Aviation Statistics Centre, of the Transportation Division, Statistics Canada under the general direction of **Gord Baldwin**, Director, Transportation Division. **Kathie Davidson**, **Maureen de Souza**, **Marc Trudel**, **John Scolli** and **Sylvie Savard** contributed to the preparation of this publication.

# Table of contents

---

<b>Highlights</b>	<b>5</b>
<b>Analysis</b>	<b>6</b>
<b>Related products</b>	<b>7</b>
<b>Statistical tables</b>	
1 Total aircraft movements by class of operation	10
1-1 NAV CANADA towers	10
1-2 NAV CANADA flight service stations	11
2 Total aircraft movements, civil and military	12
2-1 NAV CANADA towers	12
2-2 NAV CANADA flight service stations	13
3 Itinerant movements by type of operator	14
3-1 NAV CANADA towers	14
3-2 NAV CANADA flight service stations	15
4 Itinerant movements by I.F.R. (Instrument flight rules) and V.F.R. (Visual flight rules) and runway 88 movements	16
4-1 NAV CANADA towers	16
4-2 NAV CANADA flight service stations	17
5 Itinerant movements by type of power plant	18
5-1 NAV CANADA towers	18
5-2 NAV CANADA flight service stations	19
6 Itinerant movements by aircraft weight group	20
6-1 NAV CANADA towers	20
6-2 NAV CANADA flight service stations	21
7 Itinerant movements, domestic, transborder and international	22
7-1 NAV CANADA towers	22
7-2 NAV CANADA flight service stations	26

## Table of contents – continued

8	Total aircraft movements, peak hour and peak day	31
8-1	NAV CANADA towers	31
8-2	NAV CANADA flight service stations	32
9	Itinerant aircraft movements, peak hour and peak day	33
9-1	NAV CANADA towers	33
9-2	NAV CANADA flight service stations	34
10	Local movements, peak hour and peak day	35
10-1	NAV CANADA towers	35
10-2	NAV CANADA flight service stations	36
11	Local movements - civil, peak hour and peak day	37
11-1	NAV CANADA towers	37
11-2	NAV CANADA flight service stations	38
12	Local movements - military, peak hour and peak day	39
12-1	NAV CANADA towers	39
12-2	NAV CANADA flight service stations	40

## Data quality, concepts and methodology

Methodology	41
Data quality and limitations	43

## Appendix

I	Glossary of terms	44
---	-------------------	----

## Highlights

- For the twelfth consecutive month, aircraft take-offs and landings at Canadian airports with NAV CANADA air traffic control towers and flight service stations increased in year-over-year monthly comparisons. These 96 airports reported 593,331 movements in May 2007 compared with 518,505 movements at 97 airports in May 2006, an increase of 14.4% (+74,826 movements).
- Itinerant movements (flights from one airport to another) increased by 8.8% (+32,409 movements) in May 2007 compared with the same month a year earlier.
- Local movements (flights that remain in the vicinity of the airport) increased by 28.5% (+42,417 movements) in May 2007 compared with May 2006.

**Table 1**  
**Distribution of aircraft movements at NAV CANADA Towers and Flight Service Stations**

	NAV CANADA towers		NAV CANADA Flight Service Stations		Total	
	number	Change from May 2007/ May 2006 percent	number	Change from May 2007/ May 2006 percent	number	Change from May 2007/ May 2006 percent
<b>Grand total</b>	<b>468,802</b>	<b>17.1</b>	<b>124,529</b>	<b>5.5</b>	<b>593,331</b>	<b>14.4</b>
<b>Itinerant movements</b>						
Air carriers	217,372	9.5	62,116	-1.0	279,488	7.0
Other commercial movements	46,401	23.8	7,766	19.2	54,167	23.1
Private movements	38,018	10.0	15,033	11.0	53,051	10.3
Government civil movements	6,111	-3.5	2,787	-8.0	8,898	-5.0
Government military movements	4,705	-4.2	1,859	-11.8	6,564	-6.4
Itinerant total	312,607	10.9	89,561	1.8	402,168	8.8
<b>Local movements</b>						
Civil local movements	154,594	32.0	34,418	16.8	189,012	29.0
Military local movements	1,601	5.4	550	-19.4	2,151	-2.3
Local total	156,195	31.7	34,968	16.0	191,163	28.5

## Analysis

---

For the twelfth consecutive month, aircraft take-offs and landings at Canadian airports with NAV CANADA air traffic control towers and flight service stations increased in year-over-year monthly comparisons. These 96 airports reported 593,331 movements in May 2007 compared with 518,505 movements at 97 airports in May 2006, an increase of 14.4% (+74,826 movements).

Itinerant movements (flights from one airport to another) increased by 8.8% (+32,409 movements) in May 2007 compared with the same month a year earlier.

Local movements (flights that remain in the vicinity of the airport) increased by 28.5% (+42,417 movements) in May 2007 compared with May 2006.

### **Airports with NAV CANADA air traffic control towers**

The 42 Canadian airports with NAV CANADA air traffic control towers reported 468,802 aircraft take-offs and landings in May, up 17.1% compared with May 2006 (400,425 movements). Year-over-year increases in aircraft movements were reported by 34 of the airports in May 2007. The variations ranged from 161.9% at Windsor to -8.0% at St. John's International.

Itinerant movements (flights from one airport to another) increased by 10.9% (+30,785 movements) in May compared with the same month a year earlier. Year-over-year variations in itinerant movements ranged from a 74.2% increase (+2,716 movements) at Moncton/Greater Moncton International to a decline of 32.5% (-846 movements) at Edmonton/Villeneuve.

Local movements (flights that remain in the vicinity of the airport) increased by 31.7% (+37,592 movements) in May compared with May 2006. Year-over-year variations in local movements ranged from a 445.9% increase (+2,274 movements) at Windsor to a decline of 41.4% (-981 movements) at Thunder Bay.

### **Airports with NAV CANADA flight service stations**

The 54 Canadian airports with NAV CANADA flight service stations reported 124,529 aircraft take-offs and landings in May, up 5.5% compared with 55 flight service stations in May 2006 (118,080 movements). Year-over-year increases in aircraft movements were reported by 33 of these airports in May 2007. The variations ranged from 62.3% at Val-d'Or to -34.7% at High Level.

Itinerant movements (flights from one airport to another) increased by 1.8% (2,287 movements) in May compared with the same month a year earlier. Year-over-year variations in itinerant movements ranged from a 47.7% increase (+611 movements) at Val-d'Or to a decline of 36.7% (-411 movements) at Dawson Creek.

Local movements (flights that remain in the vicinity of the airport) increased by 16.0% (+4,825 movements) in May compared with May 2006. Saint John, New Brunswick showed the largest increase in local movements in May 2007 compared with May 2006, increasing by 422 movements (+383.6%) to reach 532 movements.



## Related products

---

### Selected CANSIM tables from Statistics Canada

---

401-0005	Aircraft movements by class of operation, airports with NAV CANADA towers, preliminary, monthly
401-0006	Aircraft movements by class of operation, airports with NAV CANADA towers, preliminary, annual
401-0007	Aircraft movements, by class of operation and peak hour and peak day of movements, airports with NAV CANADA towers, monthly
401-0008	Aircraft movements, by civil and military movements, airports with NAV CANADA towers, monthly
401-0009	Itinerant movements, by type of operation, airports with NAV CANADA towers, monthly
401-0010	Itinerant movements, by instrument flight rules, visual flight rules and runway 88, airports with NAV CANADA towers, monthly
401-0011	Itinerant movements, by type of power plant, airports with NAV CANADA towers, monthly
401-0012	Itinerant movements, by aircraft gross take-off weight, airports with NAV CANADA towers, monthly
401-0013	Domestic and international itinerant movements, by type of operation, airports with NAV CANADA towers, monthly
401-0014	Aircraft movements, by class of operation and peak hour and peak day of movements, airports with NAV CANADA flight service stations, monthly
401-0015	Aircraft movements, by civil and military movements, airports with NAV CANADA flight service stations, monthly
401-0016	Itinerant movements, by type of operation, airports with NAV CANADA flight service stations, monthly
401-0017	Itinerant movements, by instrument flight rules, visual flight rules and runway 88, airports with NAV CANADA flight service stations, monthly
401-0018	Itinerant movements, by type of power plant, airports with NAV CANADA flight service stations, monthly
401-0019	Itinerant movements, by aircraft gross take-off weight, airports with NAV CANADA flight service stations, monthly
401-0020	Domestic and international itinerant movements, by type of operation, airports with NAV CANADA flight service stations, monthly

---

### **Selected surveys from Statistics Canada**

---

2715	Aircraft Movement Statistics
------	------------------------------

---

### **Selected summary tables from Statistics Canada**

---

- *Aircraft movements by class of operation (monthly)*

# Statistical tables

---

---

**Table 1-1**  
**Total aircraft movements by class of operation — NAV CANADA towers**

	Total		Itinerant		Local	
	Rank of movements	Number of movements	Rank of movements	Number of movements	Rank of movements	Number of movements
Abbotsford	7	17,740	13	7,680	3	10,060
Boundary Bay	3	21,105	11	8,578	1	12,527
Calgary International	4	20,974	3	20,720	38	254
Calgary/Springbank	10	16,782	18	6,140	2	10,642
Chicoutimi/St-Honoré	22	8,782	31	3,358	10	5,424
Edmonton City Centre	28	7,585	17	6,307	30	1,278
Edmonton International	16	11,293	7	10,689	35	604
Edmonton/Villeneuve	32	6,897	42	1,759	13	5,138
Gander International	38	4,078	38	2,324	24	1,754
Halifax/Robert L Stanfield International	26	7,928	14	6,990	32	938
Hamilton	27	7,623	27	4,231	21	3,392
Kelowna	21	9,547	20	5,988	19	3,559
Kitchener/Waterloo	17	10,071	25	4,809	12	5,262
Langley	19	9,966	28	3,999	8	5,967
London	20	9,591	22	5,567	17	4,024
Moncton/Greater Moncton International	15	11,383	16	6,378	14	5,005
Montréal/Mirabel International	42	2,572	40	1,998	36	574
Montréal/Pierre Elliott Trudeau International	5	18,968	4	18,968	0	0
Montréal/St-Hubert	8	17,547	12	7,918	5	9,629
Oshawa	24	8,276	32	3,300	15	4,976
Ottawa/Macdonald-Cartier International	9	17,005	6	11,657	11	5,348
Pitt Meadows	12	13,847	26	4,505	6	9,342
Prince George	36	4,537	36	2,859	26	1,678
Québec/Jean Lesage International	14	12,134	10	8,622	20	3,512
Regina International	34	5,530	29	3,852	25	1,678
Saskatoon/John G Diefenbaker International	25	8,109	23	5,531	23	2,578
Sault Ste. Marie	31	6,941	35	2,938	18	4,003
St. John's International	40	3,447	34	3,145	37	302
St-Jean	41	2,796	41	1,946	33	850
Sudbury	37	4,372	30	3,710	34	662
Thunder Bay	29	7,446	19	6,055	29	1,391
Toronto/Buttonville Municipal	6	18,840	9	9,204	4	9,636
Toronto/City Centre	18	9,985	24	5,037	16	4,948
Toronto/Lester B Pearson International	1	36,412	1	36,412	0	0
Vancouver Harbour	33	6,675	15	6,669	39	6
Vancouver International	2	27,927	2	27,927	0	0
Victoria International	11	16,246	8	9,508	7	6,738
Whitehorse International	39	3,625	39	2,187	28	1,438
Windsor	35	5,301	37	2,517	22	2,784
Winnipeg/James Armstrong Richardson International	13	12,999	5	11,875	31	1,124
Winnipeg/St. Andrews	23	8,722	33	3,146	9	5,576
Yellowknife	30	7,198	21	5,604	27	1,594
<b>Total of NAV CANADA towers (42)</b>	.	<b>468,802</b>	.	<b>312,607</b>	.	<b>156,195</b>

**Table 1-2**  
**Total aircraft movements by class of operation — NAV CANADA flight service stations**

	Total		Itinerant		Local	
	Rank of movements	Number of movements	Rank of movements	Number of movements	Rank of movements	Number of movements
Brandon Municipal	41	1,151	45	777	24	374
Campbell River	9	3,804	12	2,184	6	1,620
Castlegar	46	924	48	674	29	250
Charlottetown	21	2,462	26	1,472	12	990
Churchill	43	1,027	41	977	45	50
Cranbrook	42	1,104	42	892	32	212
Dawson Creek	44	1,006	46	710	27	296
Deer Lake	29	1,716	25	1,530	34	186
Fort McMurray	2	6,514	1	5,406	11	1,108
Fort Nelson	33	1,554	27	1,428	39	126
Fort St John	19	2,742	11	2,394	26	348
Fredericton International	22	2,379	14	2,153	30	226
Grande Prairie	10	3,718	6	2,791	14	927
High Level	39	1,167	38	1,089	43	78
Îles-de-la-Madeleine	54	350	54	350	0	0
Inuvik/Mike Zubko	30	1,705	24	1,599	40	106
Iqaluit	32	1,568	29	1,356	31	212
Kamloops	4	5,505	7	2,705	3	2,800
Kenora	36	1,411	34	1,273	37	138
Kingston	12	3,424	16	2,078	9	1,346
Kuujuuaq	45	936	43	846	42	90
Kuujuuarapik	50	592	50	592	0	0
La Grande Rivière	48	699	47	691	47	8
La Ronge	20	2,615	18	1,979	19	636
Lethbridge	18	2,819	17	2,041	17	778
Lloydminster	31	1,654	39	1,020	20	634
Medicine Hat	35	1,430	40	978	23	452
Mont-Joli	52	403	52	401	50	2
Nanaimo	8	3,937	9	2,577	8	1,360
Norman Wells	25	2,225	33	1,275	13	950
North Bay	3	5,633	10	2,447	1	3,186
Ottawa/Gatineau	6	4,058	23	1,620	4	2,438
Peace River	37	1,343	37	1,133	33	210
Penticton	7	4,015	21	1,805	5	2,210
Port Hardy	40	1,165	36	1,139	46	26
Prince Albert	28	1,822	22	1,720	41	102
Prince Rupert	51	586	51	434	36	152
Rankin Inlet	38	1,285	32	1,283	49	2
Red Deer Regional	11	3,555	15	2,083	7	1,472
Rouyn-Noranda	27	1,991	31	1,285	18	706
Saint John	23	2,348	20	1,816	22	532
Sept-Îles	14	3,003	13	2,184	16	819
Sioux Lookout	16	2,943	4	2,813	38	130
Smithers	47	904	44	828	44	76
St Anthony	53	359	53	353	48	6
St Catharines	1	6,672	3	3,712	2	2,960
Terrace	26	2,049	28	1,419	21	630
Thompson	15	2,951	5	2,797	35	154
Timmins	17	2,831	8	2,579	28	252
Val-D'or	13	3,232	19	1,892	10	1,340
Victoria Harbour	5	4,830	2	4,830	0	0
Wabush	49	664	49	664	0	0
Whitecourt	24	2,236	30	1,346	15	890
Williams Lake	34	1,513	35	1,141	25	372
<b>Total of all flight service stations (54)</b>	.	<b>124,529</b>	.	<b>89,561</b>	.	<b>34,968</b>

**Table 2-1**  
**Total aircraft movements, civil and military — NAV CANADA towers**

	Civil movements			Military movements			
	Total	Itinerant		Local	Total	Itinerant	Local
		Commercial	Private and government				
	number						
Abbotsford	17,653	6,185	1,410	10,058	87	85	2
Boundary Bay	21,105	6,888	1,690	12,527	0	0	0
Calgary International	20,869	19,171	1,456	242	105	93	12
Calgary/Springbank	16,768	4,187	1,939	10,642	14	14	0
Chicoutimi/St-Honoré	8,769	3,151	200	5,418	13	7	6
Edmonton City Centre	7,531	4,284	1,971	1,276	54	52	2
Edmonton International	11,125	10,122	441	562	168	126	42
Edmonton/Villeneuve	6,885	1,144	603	5,138	12	12	0
Gander International	3,723	1,524	571	1,628	355	229	126
Halifax/Robert L. Stanfield International	7,669	6,279	516	874	259	195	64
Hamilton	7,616	3,364	860	3,392	7	7	0
Kelowna	9,527	4,871	1,105	3,551	20	12	8
Kitchener/Waterloo	10,023	3,393	1,368	5,262	48	48	0
Langley	9,959	2,546	1,446	5,967	7	7	0
London	9,581	4,098	1,459	4,024	10	10	0
Moncton/Greater Moncton International	11,341	5,886	454	5,001	42	38	4
Montréal/Mirabel International	2,509	1,501	449	559	63	48	15
Montréal/Pierre Elliott Trudeau International	18,944	17,021	1,923	0	24	24	0
Montréal/St-Hubert	17,297	5,712	1,998	9,587	250	208	42
Oshawa	8,272	2,225	1,071	4,976	4	4	0
Ottawa/Macdonald-Cartier International	16,748	9,942	1,504	5,302	257	211	46
Pitt Meadows	13,795	3,079	1,374	9,342	52	52	0
Prince George	4,474	2,083	713	1,678	63	63	0
Québec/Jean Lesage International	11,753	6,645	1,646	3,462	381	331	50
Regina International	5,257	2,955	662	1,640	273	235	38
Saskatoon/John G. Diefenbaker International	7,784	4,421	881	2,482	325	229	96
Sault Ste. Marie	6,918	2,556	363	3,999	23	19	4
St. John's International	3,200	2,620	286	294	247	239	8
St-Jean	2,222	693	679	850	574	574	0
Sudbury	4,260	2,939	659	662	112	112	0
Thunder Bay	7,195	5,147	709	1,339	251	199	52
Toronto/Buttonville Municipal	18,815	6,201	2,982	9,632	25	21	4
Toronto/City Centre	9,885	4,101	842	4,942	100	94	6
Toronto/Lester B. Pearson International	36,390	34,958	1,432	0	22	22	0
Vancouver Harbour	6,668	6,479	183	6	7	7	0
Vancouver International	27,892	26,025	1,867	0	35	35	0
Victoria International	15,663	7,400	1,879	6,384	583	229	354
Whitehorse International	3,620	1,497	685	1,438	5	5	0
Windsor	5,293	2,101	408	2,784	8	8	0
Winnipeg/James Armstrong Richardson International	11,861	10,383	814	664	1,138	678	460
Winnipeg/St. Andrews	8,694	2,804	314	5,576	28	28	0
Yellowknife	6,943	5,192	317	1,434	255	95	160
<b>Total of NAV CANADA towers (42)</b>	<b>462,496</b>	<b>263,773</b>	<b>44,129</b>	<b>154,594</b>	<b>6,306</b>	<b>4,705</b>	<b>1,601</b>

**Table 2-2**  
**Total aircraft movements, civil and military — NAV CANADA flight service stations**

	Civil movements			Military movements				
	Total	Itinerant		Local	Total	Itinerant		Local
		Commercial	Private and government					
	number							
Brandon Municipal	1,063	461	228	374	88	88	0	
Campbell River	3,787	1,462	705	1,620	17	17	0	
Castlegar	910	564	96	250	14	14	0	
Charlottetown	2,422	1,217	223	982	40	32	8	
Churchill	1,024	938	36	50	3	3	0	
Cranbrook	1,097	730	155	212	7	7	0	
Dawson Creek	1,006	528	182	296	0	0	0	
Deer Lake	1,712	1,457	69	186	4	4	0	
Fort McMurray	6,501	4,799	594	1,108	13	13	0	
Fort Nelson	1,554	1,167	261	126	0	0	0	
Fort St John	2,742	2,041	353	348	0	0	0	
Fredericton International	2,132	1,556	400	176	247	197	50	
Grande Prairie	3,661	2,065	669	927	57	57	0	
High Level	1,165	1,018	69	78	2	2	0	
Îles-de-la-Madeleine	344	295	49	0	6	6	0	
Inuvik/Mike Zubko	1,703	1,568	29	106	2	2	0	
Iqaluit	1,532	1,205	115	212	36	36	0	
Kamloops	5,475	2,026	649	2,800	30	30	0	
Kenora	1,351	1,021	192	138	60	60	0	
Kingston	3,360	1,438	582	1,340	64	58	6	
Kuujuaq	932	810	32	90	4	4	0	
Kuujuarapik	592	584	8	0	0	0	0	
La Grande Rivière	699	657	34	8	0	0	0	
La Ronge	2,451	1,386	429	636	164	164	0	
Lethbridge	2,778	1,508	492	778	41	41	0	
Lloydminster	1,644	621	389	634	10	10	0	
Medicine Hat	1,402	749	201	452	28	28	0	
Mont-Joli	385	340	43	2	18	18	0	
Nanaimo	3,440	1,423	1,105	912	497	49	448	
Norman Wells	2,221	1,214	57	950	4	4	0	
North Bay	5,517	1,806	537	3,174	116	104	12	
Ottawa/Gatineau	4,050	741	871	2,438	8	8	0	
Peace River	1,336	980	146	210	7	7	0	
Penticton	3,880	1,227	443	2,210	135	135	0	
Port Hardy	1,155	910	221	24	10	8	2	
Prince Albert	1,749	1,282	365	102	73	73	0	
Prince Rupert	586	330	104	152	0	0	0	
Rankin Inlet	1,280	1,262	16	2	5	5	0	
Red Deer Regional	3,543	1,331	740	1,472	12	12	0	
Rouyn-Noranda	1,950	897	347	706	41	41	0	
Saint John	2,281	1,327	430	524	67	59	8	
Sept-Îles	2,970	1,957	200	813	33	27	6	
Sioux Lookout	2,937	2,700	107	130	6	6	0	
Smithers	904	626	202	76	0	0	0	
St Anthony	355	329	20	6	4	4	0	
St Catharines	6,356	1,137	2,259	2,960	316	316	0	
Terrace	2,049	1,300	119	630	0	0	0	
Thompson	2,933	2,623	166	144	18	8	10	
Timmins	2,773	2,111	410	252	58	58	0	
Val-D'or	3,213	1,512	361	1,340	19	19	0	
Victoria Harbour	4,809	4,072	737	0	21	21	0	
Wabush	664	631	33	0	0	0	0	
Whitecourt	2,234	1,172	172	890	2	2	0	
Williams Lake	1,511	771	368	372	2	2	0	
<b>Total of all flight service stations (54)</b>	<b>122,120</b>	<b>69,882</b>	<b>17,820</b>	<b>34,418</b>	<b>2,409</b>	<b>1,859</b>	<b>550</b>	

**Table 3-1**  
**Itinerant movements by type of operator — NAV CANADA towers**

	Total	Air carrier movements		Other commercial movements	Private movements	Government movements	
		Levels I to III and foreign	Levels IV to VI			Civil	Military
	number						
Abbotsford	7,680	943	2,926	2,316	1,183	227	85
Boundary Bay	8,578	23	1,672	5,193	1,628	62	0
Calgary International	20,720	17,053	1,167	951	1,277	179	93
Calgary/Springbank	6,140	23	1,046	3,118	1,893	46	14
Chicoutimi/St-Honoré	3,358	12	913	2,226	196	4	7
Edmonton City Centre	6,307	1,702	923	1,659	1,518	453	52
Edmonton International	10,689	9,563	426	133	379	62	126
Edmonton/Villeneuve	1,759	9	350	785	599	4	12
Gander International	2,324	410	1,075	39	419	152	229
Halifax/Robert L Stanfield International	6,990	5,702	554	23	383	133	195
Hamilton	4,231	2,022	1,210	132	645	215	7
Kelowna	5,988	2,700	542	1,629	956	149	12
Kitchener/Waterloo	4,809	299	2,048	1,046	1,364	4	48
Langley	3,999	137	322	2,087	1,440	6	7
London	5,567	1,377	774	1,947	1,387	72	10
Moncton/Greater Moncton International	6,378	5,650	76	160	207	247	38
Montréal/Mirabel International	1,998	991	467	43	395	54	48
Montréal/Pierre Elliott Trudeau International	18,968	15,844	774	403	1,666	257	24
Montréal/St-Hubert	7,918	2,364	984	2,364	1,881	117	208
Oshawa	3,300	130	93	2,002	1,066	5	4
Ottawa/Macdonald-Cartier International	11,657	6,921	409	2,612	827	677	211
Pitt Meadows	4,505	59	1,262	1,758	1,364	10	52
Prince George	2,859	1,314	634	135	599	114	63
Québec/Jean Lesage International	8,622	3,884	818	1,943	1,234	412	331
Regina International	3,852	2,059	830	66	481	181	235
Saskatoon/John G Diefenbaker International	5,531	3,046	970	405	543	338	229
Sault Ste. Marie	2,938	891	172	1,493	283	80	19
St. John's International	3,145	1,342	1,193	85	146	140	239
St-Jean	1,946	184	249	260	651	28	574
Sudbury	3,710	1,710	1,081	148	325	334	112
Thunder Bay	6,055	3,084	1,643	420	341	368	199
Toronto/Buttontville Municipal	9,204	595	798	4,808	2,929	53	21
Toronto/City Centre	5,037	1,170	1,190	1,741	818	24	94
Toronto/Lester B Pearson International	36,412	34,273	498	187	1,401	31	22
Vancouver Harbour	6,669	6,042	389	48	182	1	7
Vancouver International	27,927	23,847	1,850	328	1,522	345	35
Victoria International	9,508	3,356	3,259	785	1,815	64	229
Whitehorse International	2,187	759	704	34	643	42	5
Windsor	2,517	710	1,254	137	394	14	8
Winnipeg/James Armstrong Richardson International	11,875	9,506	802	75	516	298	678
Winnipeg/St. Andrews	3,146	559	1,573	672	308	6	28
Yellowknife	5,604	4,307	880	5	214	103	95
<b>Total of NAV CANADA towers (42)</b>	<b>312,607</b>	<b>176,572</b>	<b>40,800</b>	<b>46,401</b>	<b>38,018</b>	<b>6,111</b>	<b>4,705</b>



**Table 3-2**  
**Itinerant movements by type of operator — NAV CANADA flight service stations**

	Total	Air carrier movements		Other commercial movements	Private movements	Government movements	
		Levels I to III and foreign	Levels IV to VI			Civil	Military
number							
Brandon Municipal	777	130	280	51	207	21	88
Campbell River	2,184	763	349	350	687	18	17
Castlegar	674	307	122	135	77	19	14
Charlottetown	1,472	858	19	340	165	58	32
Churchill	977	811	124	3	27	9	3
Cranbrook	892	521	66	143	143	12	7
Dawson Creek	710	277	121	130	165	17	0
Deer Lake	1,530	884	547	26	22	47	4
Fort McMurray	5,406	3,032	1,345	422	566	28	13
Fort Nelson	1,428	348	424	395	241	20	0
Fort St John	2,394	897	985	159	323	30	0
Fredericton International	2,153	1,138	404	14	218	182	197
Grande Prairie	2,791	1,361	667	37	635	34	57
High Level	1,089	550	463	5	55	14	2
Îles-de-la-Madeleine	350	267	16	12	8	41	6
Inuvik/Mike Zubko	1,599	500	1,066	2	11	18	2
Iqaluit	1,356	1,133	36	36	73	42	36
Kamloops	2,705	888	494	644	585	64	30
Kenora	1,273	542	449	30	130	62	60
Kingston	2,078	528	332	578	545	37	58
Kuujuaq	846	745	65	0	14	18	4
Kuujuarapik	592	578	6	0	4	4	0
La Grande Rivière	691	530	116	11	26	8	0
La Ronge	1,979	1,322	59	5	103	326	164
Lethbridge	2,041	615	103	790	456	36	41
Lloydminster	1,020	169	397	55	357	32	10
Medicine Hat	978	585	105	59	191	10	28
Mont-Joli	401	292	22	26	21	22	18
Nanaimo	2,577	499	647	277	1,065	40	49
Norman Wells	1,275	710	502	2	47	10	4
North Bay	2,447	638	427	741	435	102	104
Ottawa/Gatineau	1,620	133	341	267	745	126	8
Peace River	1,133	486	413	81	134	12	7
Penticton	1,805	339	695	193	421	22	135
Port Hardy	1,139	787	103	20	115	106	8
Prince Albert	1,720	1,148	101	33	156	209	73
Prince Rupert	434	217	109	4	60	44	0
Rankin Inlet	1,283	1,098	156	8	6	10	5
Red Deer Regional	2,083	431	740	160	704	36	12
Rouyn-Noranda	1,285	565	160	172	320	27	41
Saint John	1,816	1,038	140	149	418	12	59
Sept-Îles	2,184	1,294	572	91	128	72	27
Sioux Lookout	2,813	1,741	907	52	97	10	6
Smithers	828	486	138	2	188	14	0
St Anthony	353	50	221	58	6	14	4
St Catharines	3,712	36	1,001	100	2,251	8	316
Terrace	1,419	721	578	1	89	30	0
Thompson	2,797	1,988	586	49	42	124	8
Timmins	2,579	1,770	292	49	201	209	58
Val-D'or	1,892	749	242	521	205	156	19
Victoria Harbour	4,830	3,989	83	0	642	95	21
Wabush	664	348	279	4	13	20	0
Whitecourt	1,346	70	889	213	158	14	2
Williams Lake	1,141	405	305	61	332	36	2
<b>Total of all flight service stations (54)</b>	<b>89,561</b>	<b>42,307</b>	<b>19,809</b>	<b>7,766</b>	<b>15,033</b>	<b>2,787</b>	<b>1,859</b>

Table 4-1

Itinerant movements by I.F.R. (Instrument flight rules) and V.F.R. (Visual flight rules) and runway 88 movements  
— NAV CANADA towers

	Itinerant movements				Runway 88 flights number	
	Total of IFR and VFR flights <sup>1</sup>	IFR	IFR flights, as percentage of total flights	VFR		VFR flights, as percentage of total flights
	number		percent	number		percent
Abbotsford	7,680	1,958	25.4	5,722	74.5	1,959
Boundary Bay	8,578	401	4.6	8,177	95.3	758
Calgary International	20,720	18,914	91.2	1,806	8.7	950
Calgary/Springbank	6,140	267	4.3	5,873	95.6	3,288
Chicoutimi/St-Honoré	3,358	253	7.5	3,105	92.4	181
Edmonton City Centre	6,307	2,959	46.9	3,348	53.0	3,208
Edmonton International	10,689	9,985	93.4	704	6.5	1,624
Edmonton/Villeneuve	1,759	13	0.7	1,746	99.2	183
Gander International	2,324	1,381	59.4	943	40.5	158
Halifax/Robert L Stanfield International	6,990	6,290	89.9	700	10.0	885
Hamilton	4,231	2,545	60.1	1,686	39.8	1,164
Kelowna	5,988	3,095	51.6	2,893	48.3	1,185
Kitchener/Waterloo	4,809	796	16.5	4,013	83.4	864
Langley	3,999	55	1.3	3,944	98.6	4,093
London	5,567	1,831	32.8	3,736	67.1	825
Moncton/Greater Moncton International	6,378	2,578	40.4	3,800	59.5	357
Montréal/Mirabel International	1,998	1,162	58.1	836	41.8	1,601
Montréal/Pierre Elliott Trudeau International	18,968	17,925	94.5	1,043	5.4	3,752
Montréal/St-Hubert	7,918	1,608	20.3	6,310	79.6	2,052
Oshawa	3,300	118	3.5	3,182	96.4	715
Ottawa/Macdonald-Cartier International	11,657	7,830	67.1	3,827	32.8	1,522
Pitt Meadows	4,505	23	0.5	4,482	99.4	3,611
Prince George	2,859	1,450	50.7	1,409	49.2	530
Québec/Jean Lesage International	8,622	4,796	55.6	3,826	44.3	767
Regina International	3,852	2,522	65.4	1,330	34.5	131
Saskatoon/John G Diefenbaker International	5,531	3,488	63.0	2,043	36.9	213
Sault Ste. Marie	2,938	1,164	39.6	1,774	60.3	190
St. John's International	3,145	2,894	92.0	251	7.9	267
St-Jean	1,946	303	15.5	1,643	84.4	266
Sudbury	3,710	2,021	54.4	1,689	45.5	530
Thunder Bay	6,055	3,931	64.9	2,124	35.0	354
Toronto/Butterville Municipal	9,204	1,110	12.0	8,094	87.9	1,140
Toronto/City Centre	5,037	1,415	28.0	3,622	71.9	4,145
Toronto/Lester B Pearson International	36,412	36,241	99.5	171	0.4	172
Vancouver Harbour	6,669	45	0.6	6,624	99.3	3,030
Vancouver International	27,927	20,283	72.6	7,644	27.3	12,295
Victoria International	9,508	3,572	37.5	5,936	62.4	10,557
Whitehorse International	2,187	468	21.3	1,719	78.6	442
Windsor	2,517	931	36.9	1,586	63.0	92
Winnipeg/James Armstrong Richardson International	11,875	10,215	86.0	1,660	13.9	1,862
Winnipeg/St. Andrews	3,146	156	4.9	2,990	95.0	233
Yellowknife	5,604	2,431	43.3	3,173	56.6	109
<b>Total of NAV CANADA towers (42)</b>	<b>312,607</b>	<b>181,423</b>	<b>58.0</b>	<b>131,184</b>	<b>42.0</b>	<b>72,260</b>

1. Total excludes runway 88 flights.

Table 4-2

## Itinerant movements by I.F.R. (Instrument flight rules) and V.F.R. (Visual flight rules) and runway 88 movements — NAV CANADA flight service stations

	Itinerant movements				Runway 88 flights number	
	Total of IFR and VFR flights <sup>1</sup>	IFR	IFR flights, as percentage of total flights	VFR		VFR flights, as percentage of total flights
	number		percent	number		percent
Brandon Municipal	777	152	19.5	625	80.4	45
Campbell River	2,184	472	21.6	1,712	78.3	492
Castlegar	674	343	50.8	331	49.1	95
Charlottetown	1,472	785	53.3	687	46.6	28
Churchill	977	806	82.4	171	17.5	19
Cranbrook	892	549	61.5	343	38.4	218
Dawson Creek	710	248	34.9	462	65.0	37
Deer Lake	1,530	1,424	93.0	106	6.9	23
Fort McMurray	5,406	1,948	36.0	3,458	63.9	59
Fort Nelson	1,428	394	27.5	1,034	72.4	159
Fort St John	2,394	828	34.5	1,566	65.4	166
Fredericton International	2,153	987	45.8	1,166	54.1	132
Grande Prairie	2,791	1,556	55.7	1,235	44.2	167
High Level	1,089	291	26.7	798	73.2	428
Îles-de-la-Madeleine	350	323	92.2	27	7.7	14
Inuvik/Mike Zubko	1,599	284	17.7	1,315	82.2	20
Iqaluit	1,356	1,079	79.5	277	20.4	0
Kamloops	2,705	1,111	41.0	1,594	58.9	376
Kenora	1,273	506	39.7	767	60.2	203
Kingston	2,078	703	33.8	1,375	66.1	137
Kuujuuaq	846	369	43.6	477	56.3	2
Kuujuuarapik	592	288	48.6	304	51.3	1
La Grande Rivière	691	536	77.5	155	22.4	457
La Ronge	1,979	779	39.3	1,200	60.6	1,101
Lethbridge	2,041	693	33.9	1,348	66.0	91
Lloydminster	1,020	293	28.7	727	71.2	25
Medicine Hat	978	428	43.7	550	56.2	221
Mont-Joli	401	289	72.0	112	27.9	58
Nanaimo	2,577	563	21.8	2,014	78.1	1,271
Norman Wells	1,275	189	14.8	1,086	85.1	491
North Bay	2,447	860	35.1	1,587	64.8	483
Ottawa/Gatineau	1,620	223	13.7	1,397	86.2	156
Peace River	1,133	390	34.4	743	65.5	135
Penticton	1,805	327	18.1	1,478	81.8	205
Port Hardy	1,139	278	24.4	861	75.5	408
Prince Albert	1,720	1,217	70.7	503	29.2	133
Prince Rupert	434	269	61.9	165	38.0	36
Rankin Inlet	1,283	878	68.4	405	31.5	0
Red Deer Regional	2,083	352	16.8	1,731	83.1	377
Rouyn-Noranda	1,285	747	58.1	538	41.8	208
Saint John	1,816	1,198	65.9	618	34.0	28
Sept-Îles	2,184	1,377	63.0	807	36.9	302
Sioux Lookout	2,813	1,690	60.0	1,123	39.9	1,267
Smithers	828	439	53.0	389	46.9	226
St Anthony	353	235	66.5	118	33.4	2
St Catharines	3,712	122	3.2	3,590	96.7	479
Terrace	1,419	707	49.8	712	50.1	327
Thompson	2,797	1,377	49.2	1,420	50.7	150
Timmins	2,579	1,646	63.8	933	36.1	394
Val-D'or	1,892	750	39.6	1,142	60.3	704
Victoria Harbour	4,830	64	1.3	4,766	98.6	465
Wabush	664	607	91.4	57	8.5	107
Whitecourt	1,346	128	9.5	1,218	90.4	78
Williams Lake	1,141	469	41.1	672	58.8	438
<b>Total of all flight service stations (54)</b>	<b>89,561</b>	<b>35,566</b>	<b>39.7</b>	<b>53,995</b>	<b>60.3</b>	<b>13,644</b>

1. Total excludes runway 88 flights.

**Table 5-1**  
**Itinerant movements by type of power plant — NAV CANADA towers**

	Total	Jet engines	Turbo-propellers	Piston engines	Helicopters	Gliders
	number					
Abbotsford	7,680	722	375	5,254	1,328	1
Boundary Bay	8,578	2	37	7,976	560	3
Calgary International	20,720	13,423	5,375	1,428	494	0
Calgary/Springbank	6,140	20	185	4,982	953	0
Chicoutimi/St-Honoré	3,358	3	39	2,943	365	8
Edmonton City Centre	6,307	519	2,184	2,657	947	0
Edmonton International	10,689	6,622	3,300	681	86	0
Edmonton/Villeneuve	1,759	14	7	1,248	379	111
Gander International	2,324	659	730	652	281	2
Halifax/Robert L Stanfield International	6,990	4,096	1,869	595	430	0
Hamilton	4,231	1,608	887	1,645	91	0
Kelowna	5,988	1,675	1,374	2,225	711	3
Kitchener/Waterloo	4,809	223	375	3,848	363	0
Langley	3,999	0	114	3,080	799	6
London	5,567	482	1,466	3,413	206	0
Moncton/Greater Moncton International	6,378	1,192	920	4,179	85	2
Montréal/Mirabel International	1,998	803	413	692	90	0
Montréal/Pierre Elliott Trudeau International	18,968	12,292	5,420	925	331	0
Montréal/St-Hubert	7,918	174	908	5,871	964	1
Oshawa	3,300	7	96	3,115	81	1
Ottawa/Macdonald-Cartier International	11,657	5,498	2,382	3,371	406	0
Pitt Meadows	4,505	6	37	3,910	528	24
Prince George	2,859	579	1,053	622	579	26
Québec/Jean Lesage International	8,622	1,357	3,103	3,252	866	44
Regina International	3,852	1,479	724	1,553	96	0
Saskatoon/John G Diefenbaker International	5,531	1,583	1,766	2,086	96	0
Sault Ste. Marie	2,938	28	1,073	1,770	67	0
St. John's International	3,145	1,213	1,541	85	306	0
St-Jean	1,946	8	89	1,550	20	279
Sudbury	3,710	38	2,179	799	694	0
Thunder Bay	6,055	933	3,302	872	948	0
Toronto/Buttonville Municipal	9,204	158	649	7,867	530	0
Toronto/City Centre	5,037	4	1,375	3,204	454	0
Toronto/Lester B Pearson International	36,412	30,051	6,255	77	29	0
Vancouver Harbour	6,669	0	3,201	2,350	1,118	0
Vancouver International	27,927	12,449	9,888	4,168	1,421	1
Victoria International	9,508	1,216	2,522	5,487	282	1
Whitehorse International	2,187	244	561	1,079	303	0
Windsor	2,517	180	674	1,641	22	0
Winnipeg/James Armstrong Richardson International	11,875	5,536	4,852	1,307	180	0
Winnipeg/St. Andrews	3,146	2	235	2,678	231	0
Yellowknife	5,604	881	3,331	539	853	0
<b>Total of NAV CANADA towers (42)</b>	<b>312,607</b>	<b>107,979</b>	<b>76,866</b>	<b>107,676</b>	<b>19,573</b>	<b>513</b>

**Table 5-2**  
**Itinerant movements by type of power plant — NAV CANADA flight service stations**

	Total	Jet engines	Turbo-propellers	Piston engines	Helicopters	Gliders
	number					
Brandon Municipal	777	12	188	443	134	0
Campbell River	2,184	46	848	886	404	0
Castlegar	674	22	328	222	102	0
Charlottetown	1,472	291	353	780	46	2
Churchill	977	20	840	45	72	0
Cranbrook	892	20	487	337	47	1
Dawson Creek	710	14	300	293	103	0
Deer Lake	1,530	341	1,076	62	51	0
Fort McMurray	5,406	821	1,698	1,455	1,432	0
Fort Nelson	1,428	28	365	391	644	0
Fort St John	2,394	280	679	366	1,069	0
Fredericton International	2,153	349	555	1,019	230	0
Grande Prairie	2,791	346	1,203	627	569	46
High Level	1,089	10	458	241	380	0
Îles-de-la-Madeleine	350	14	281	55	0	0
Inuvik/Mike Zubko	1,599	117	883	245	354	0
Iqaluit	1,356	377	920	21	38	0
Kamloops	2,705	96	1,090	1,137	382	0
Kenora	1,273	21	593	224	435	0
Kingston	2,078	41	620	1,275	141	1
Kuujuuaq	846	134	631	37	44	0
Kuujuuarapik	592	4	578	2	8	0
La Grande Rivière	691	12	638	29	12	0
La Ronge	1,979	6	1,238	679	56	0
Lethbridge	2,041	68	724	1,205	44	0
Lloydminster	1,020	12	279	620	109	0
Medicine Hat	978	20	438	403	117	0
Mont-Joli	401	21	285	60	35	0
Nanaimo	2,577	29	540	1,894	108	6
Norman Wells	1,275	146	396	371	362	0
North Bay	2,447	72	889	964	479	43
Ottawa/Gatineau	1,620	7	191	1,237	185	0
Peace River	1,133	23	436	230	444	0
Penticton	1,805	21	372	769	639	4
Port Hardy	1,139	14	667	259	199	0
Prince Albert	1,720	10	1,229	415	66	0
Prince Rupert	434	22	246	41	125	0
Rankin Inlet	1,283	155	956	11	161	0
Red Deer Regional	2,083	38	436	1,409	200	0
Rouyn-Noranda	1,285	99	703	433	24	26
Saint John	1,816	451	635	667	61	2
Sept-Îles	2,184	59	1,243	459	423	0
Sioux Lookout	2,813	10	2,460	303	40	0
Smithers	828	18	526	148	136	0
St Anthony	353	2	311	18	22	0
St Catharines	3,712	21	55	2,382	491	763
Terrace	1,419	17	725	48	629	0
Thompson	2,797	19	2,212	368	198	0
Timmins	2,579	18	1,917	421	223	0
Val-D'or	1,892	90	773	723	306	0
Victoria Harbour	4,830	0	3,081	834	915	0
Wabush	664	8	588	39	29	0
Whitecourt	1,346	15	202	195	934	0
Williams Lake	1,141	24	512	412	193	0
<b>Total of all flight service stations (54)</b>	<b>89,561</b>	<b>4,931</b>	<b>40,877</b>	<b>28,209</b>	<b>14,650</b>	<b>894</b>

**Table 6-1**  
**Itinerant movements by aircraft weight group — NAV CANADA towers**

	Gross take-off weight in kilograms									
	2 000 and under	2 001 to 4 000	4 001 to 5 670	5 671 to 9 000	9 001 to 18 000	18 001 to 35 000	35 001 to 70 000	70 001 to 90 000	90 001 to 136 000	136 001 and over
	number									
Abbotsford	5,929	454	298	133	108	255	493	8	0	2
Boundary Bay	8,188	310	72	2	6	0	0	0	0	0
Calgary International	1,298	727	1,844	2,483	902	4,126	6,912	1,437	391	600
Calgary/Springbank	5,701	223	194	12	7	2	1	0	0	0
Chicoutimi/St-Honoré	2,842	473	40	0	0	3	0	0	0	0
Edmonton City Centre	2,971	601	1,689	748	221	72	2	3	0	0
Edmonton International	458	279	658	1,027	398	2,629	4,257	654	182	147
Edmonton/Villeneuve	1,657	43	55	4	0	0	0	0	0	0
Gander International	672	44	207	400	442	313	48	50	67	81
Halifax/Robert L. Stanfield International	288	401	508	819	1,015	1,368	1,921	291	195	184
Hamilton	1,450	476	334	353	234	197	459	6	718	4
Kelowna	2,735	161	255	844	301	823	853	0	16	0
Kitchener/Waterloo	3,970	275	182	88	244	12	36	2	0	0
Langley	3,712	209	71	1	6	0	0	0	0	0
London	3,628	260	330	91	796	286	166	2	0	8
Moncton/Greater Moncton International	4,041	272	417	361	176	640	180	6	283	2
Montréal/Mirabel International	566	280	86	200	103	175	71	11	304	202
Montréal/Pierre Elliott Trudeau International	841	384	668	1,171	3,069	5,772	4,122	1,057	28	1,856
Montréal/St-Hubert	5,969	730	894	119	171	9	12	0	14	0
Oshawa	2,981	219	82	3	11	2	0	2	0	0
Ottawa/Macdonald-Cartier International	3,360	238	1,069	314	742	2,904	1,693	967	200	170
Pitt Meadows	4,366	73	60	0	4	2	0	0	0	0
Prince George	934	218	352	695	22	424	214	0	0	0
Québec/Jean Lesage International	3,214	756	1,082	187	1,343	1,934	44	0	9	53
Regina International	1,195	445	376	414	97	618	613	0	92	2
Saskatoon/John G. Diefenbaker International	1,662	484	728	781	257	813	765	0	41	0
Sault Ste. Marie	1,768	131	590	65	246	136	2	0	0	0
St. John's International	57	37	378	558	768	149	842	266	72	18
St-Jean	1,695	150	95	6	0	0	0	0	0	0
Sudbury	735	702	1,630	123	179	335	4	2	0	0
Thunder Bay	1,133	464	2,901	241	240	821	249	6	0	0
Toronto/Butterville Municipal	7,838	587	589	141	35	12	0	2	0	0
Toronto/City Centre	3,047	382	621	32	4	947	0	4	0	0
Toronto/Lester B. Pearson International	40	333	387	2,694	4,303	8,078	12,322	3,711	556	3,988
Vancouver Harbour	277	4,670	1,685	6	31	0	0	0	0	0
Vancouver International	1,638	4,737	1,191	3,076	3,140	3,814	6,194	1,554	313	2,270
Victoria International	4,761	1,117	273	402	1,422	865	511	107	42	8
Whitehorse International	1,192	227	306	75	40	102	231	0	0	14
Windsor	1,509	203	88	131	421	103	31	6	4	21
Winnipeg/James Armstrong Richardson International	790	653	3,636	366	941	1,477	2,839	350	786	37
Winnipeg/St. Andrews	2,346	562	208	2	22	6	0	0	0	0
Yellowknife	953	782	1,326	259	258	1,113	655	258	0	0
<b>Total of NAV CANADA towers (42)</b>	<b>104,407</b>	<b>24,772</b>	<b>28,455</b>	<b>19,427</b>	<b>22,725</b>	<b>41,337</b>	<b>46,742</b>	<b>10,762</b>	<b>4,313</b>	<b>9,667</b>

**Table 6-2**  
**Itinerant movements by aircraft weight group — NAV CANADA flight service stations**

	Gross take-off weight in kilograms									
	2 000 and under	2 001 to 4 000	4 001 to 5 670	5 671 to 9 000	9 001 to 18 000	18 001 to 35 000	35 001 to 70 000	70 001 to 90 000	90 001 to 136 000	136 001 and over
	number									
Brandon Municipal	446	49	235	23	14	2	0	8	0	0
Campbell River	1,181	122	102	502	264	12	1	0	0	0
Castlegar	303	20	20	96	29	206	0	0	0	0
Charlottetown	644	204	55	26	247	200	94	2	0	0
Churchill	82	78	110	66	309	304	4	22	0	2
Cranbrook	303	66	60	287	49	127	0	0	0	0
Dawson Creek	388	11	64	142	105	0	0	0	0	0
Deer Lake	78	26	148	40	898	173	167	0	0	0
Fort McMurray	2,354	749	598	605	254	505	339	2	0	0
Fort Nelson	900	135	143	149	101	0	0	0	0	0
Fort St John	1,330	103	310	291	109	244	7	0	0	0
Fredericton International	763	315	277	184	88	504	8	14	0	0
Grande Prairie	996	294	539	316	32	476	138	0	0	0
High Level	558	91	204	206	2	6	22	0	0	0
Îles-de-la-Madeleine	2	55	102	4	52	129	6	0	0	0
Inuvik/Mike Zubko	517	46	784	56	27	54	115	0	0	0
Iqaluit	12	17	487	85	58	406	177	21	91	2
Kamloops	1,112	303	275	401	120	494	0	0	0	0
Kenora	359	75	777	14	28	20	0	0	0	0
Kingston	1,298	61	119	486	90	18	0	6	0	0
Kuujuuaq	50	25	493	0	106	56	88	0	28	0
Kuujuuarapik	10	0	312	0	190	80	0	0	0	0
La Grande Rivière	22	31	62	22	130	420	4	0	0	0
La Ronge	124	447	619	107	242	440	0	0	0	0
Lethbridge	1,030	207	263	506	6	29	0	0	0	0
Lloydminster	644	86	160	120	6	4	0	0	0	0
Medicine Hat	445	40	256	209	20	8	0	0	0	0
Mont-Joli	61	18	166	15	121	20	0	0	0	0
Nanaimo	1,630	355	104	119	180	189	0	0	0	0
Norman Wells	589	167	303	14	6	50	142	4	0	0
North Bay	1,311	266	457	101	191	99	6	12	0	4
Ottawa/Gatineau	1,251	162	194	7	2	4	0	0	0	0
Peace River	483	169	322	129	25	5	0	0	0	0
Penticton	1,333	58	61	169	47	135	2	0	0	0
Port Hardy	162	246	426	140	161	4	0	0	0	0
Prince Albert	214	174	284	355	341	352	0	0	0	0
Prince Rupert	46	128	36	38	58	128	0	0	0	0
Rankin Inlet	164	53	257	261	315	70	151	12	0	0
Red Deer Regional	1,432	147	331	119	21	9	24	0	0	0
Rouyn-Noranda	455	32	324	6	236	156	76	0	0	0
Saint John	446	248	219	296	184	359	62	2	0	0
Sept-Îles	500	361	409	189	587	119	0	17	0	2
Sioux Lookout	108	270	1,973	455	4	3	0	0	0	0
Smithers	250	48	114	240	55	121	0	0	0	0
St Anthony	18	21	198	2	114	0	0	0	0	0
St Catharines	3,424	206	47	15	9	3	0	8	0	0
Terrace	578	20	122	241	283	175	0	0	0	0
Thompson	264	576	1,416	16	298	225	0	2	0	0
Timmins	455	303	981	162	429	221	0	28	0	0
Val-D'or	793	168	351	31	289	192	2	2	64	0
Victoria Harbour	142	2,917	1,748	4	19	0	0	0	0	0
Wabush	34	42	55	55	421	57	0	0	0	0
Whitecourt	920	117	201	95	4	4	3	2	0	0
Williams Lake	501	96	97	405	4	0	38	0	0	0
<b>Total of all flight service stations (54)</b>	<b>33,515</b>	<b>11,024</b>	<b>18,770</b>	<b>8,622</b>	<b>7,980</b>	<b>7,617</b>	<b>1,676</b>	<b>164</b>	<b>183</b>	<b>10</b>

**Table 7-1**  
**Itinerant movements, domestic, transborder and international — NAV CANADA towers**

	Total	Air carrier movements		Other commercial movements	Private movements	Government movements	
		Levels I to III and foreign	Levels IV to VI			Civil	Military
number							
<b>Abbotsford</b>							
Domestic	7,571	930	2,908	2,309	1,112	227	85
Transborder	106	10	18	7	71	0	0
Other international	3	3	0	0	0	0	0
<b>Total</b>	<b>7,680</b>	<b>943</b>	<b>2,926</b>	<b>2,316</b>	<b>1,183</b>	<b>227</b>	<b>85</b>
<b>Boundary Bay</b>							
Domestic	8,520	23	1,670	5,166	1,599	62	0
Transborder	58	0	2	27	29	0	0
Other international	0	0	0	0	0	0	0
<b>Total</b>	<b>8,578</b>	<b>23</b>	<b>1,672</b>	<b>5,193</b>	<b>1,628</b>	<b>62</b>	<b>0</b>
<b>Calgary International</b>							
Domestic	16,903	13,644	1,110	929	957	179	84
Transborder	3,363	2,968	55	22	316	0	2
Other international	454	441	2	0	4	0	7
<b>Total</b>	<b>20,720</b>	<b>17,053</b>	<b>1,167</b>	<b>951</b>	<b>1,277</b>	<b>179</b>	<b>93</b>
<b>Calgary/Springbank</b>							
Domestic	6,068	22	1,040	3,113	1,835	46	12
Transborder	68	1	5	5	55	0	2
Other international	4	0	1	0	3	0	0
<b>Total</b>	<b>6,140</b>	<b>23</b>	<b>1,046</b>	<b>3,118</b>	<b>1,893</b>	<b>46</b>	<b>14</b>
<b>Chicoutimi/St-Honoré</b>							
Domestic	3,358	12	913	2,226	196	4	7
Transborder	0	0	0	0	0	0	0
Other international	0	0	0	0	0	0	0
<b>Total</b>	<b>3,358</b>	<b>12</b>	<b>913</b>	<b>2,226</b>	<b>196</b>	<b>4</b>	<b>7</b>
<b>Edmonton City Centre</b>							
Domestic	6,275	1,694	913	1,659	1,504	453	52
Transborder	32	8	10	0	14	0	0
Other international	0	0	0	0	0	0	0
<b>Total</b>	<b>6,307</b>	<b>1,702</b>	<b>923</b>	<b>1,659</b>	<b>1,518</b>	<b>453</b>	<b>52</b>
<b>Edmonton International</b>							
Domestic	9,430	8,380	413	130	331	61	115
Transborder	1,153	1,081	13	3	46	1	9
Other international	106	102	0	0	2	0	2
<b>Total</b>	<b>10,689</b>	<b>9,563</b>	<b>426</b>	<b>133</b>	<b>379</b>	<b>62</b>	<b>126</b>
<b>Edmonton/Villeneuve</b>							
Domestic	1,759	9	350	785	599	4	12
Transborder	0	0	0	0	0	0	0
Other international	0	0	0	0	0	0	0
<b>Total</b>	<b>1,759</b>	<b>9</b>	<b>350</b>	<b>785</b>	<b>599</b>	<b>4</b>	<b>12</b>
<b>Gander International</b>							
Domestic	1,643	207	1,067	13	81	147	128
Transborder	316	97	0	12	164	3	40
Other international	365	106	8	14	174	2	61
<b>Total</b>	<b>2,324</b>	<b>410</b>	<b>1,075</b>	<b>39</b>	<b>419</b>	<b>152</b>	<b>229</b>
<b>Halifax/Robert L Stanfield International</b>							
Domestic	5,448	4,478	372	19	276	130	173
Transborder	1,103	949	48	1	89	1	15
Other international	439	275	134	3	18	2	7
<b>Total</b>	<b>6,990</b>	<b>5,702</b>	<b>554</b>	<b>23</b>	<b>383</b>	<b>133</b>	<b>195</b>
<b>Hamilton</b>							
Domestic	3,603	1,537	1,205	130	510	215	6
Transborder	517	379	5	2	130	0	1
Other international	111	106	0	0	5	0	0
<b>Total</b>	<b>4,231</b>	<b>2,022</b>	<b>1,210</b>	<b>132</b>	<b>645</b>	<b>215</b>	<b>7</b>



Table 7-1 – continued

## Itinerant movements, domestic, transborder and international — NAV CANADA towers

	Total	Air carrier movements		Other commercial movements	Private movements	Government movements	
		Levels I to III and foreign	Levels IV to VI			Civil	Military
	number						
<b>Kelowna</b>							
Domestic	5,641	2,438	528	1,622	892	149	12
Transborder	347	262	14	7	64	0	0
Other international	0	0	0	0	0	0	0
<b>Total</b>	<b>5,988</b>	<b>2,700</b>	<b>542</b>	<b>1,629</b>	<b>956</b>	<b>149</b>	<b>12</b>
<b>Kitchener/Waterloo</b>							
Domestic	4,366	95	1,983	1,038	1,198	4	48
Transborder	443	204	65	8	166	0	0
Other international	0	0	0	0	0	0	0
<b>Total</b>	<b>4,809</b>	<b>299</b>	<b>2,048</b>	<b>1,046</b>	<b>1,364</b>	<b>4</b>	<b>48</b>
<b>Langley</b>							
Domestic	3,977	137	322	2,085	1,420	6	7
Transborder	19	0	0	1	18	0	0
Other international	3	0	0	1	2	0	0
<b>Total</b>	<b>3,999</b>	<b>137</b>	<b>322</b>	<b>2,087</b>	<b>1,440</b>	<b>6</b>	<b>7</b>
<b>London</b>							
Domestic	5,094	1,092	766	1,940	1,215	72	9
Transborder	472	285	8	7	171	0	1
Other international	1	0	0	0	1	0	0
<b>Total</b>	<b>5,567</b>	<b>1,377</b>	<b>774</b>	<b>1,947</b>	<b>1,387</b>	<b>72</b>	<b>10</b>
<b>Moncton/Greater Moncton International</b>							
Domestic	6,265	5,557	76	157	193	245	37
Transborder	94	77	0	2	13	2	0
Other international	19	16	0	1	1	0	1
<b>Total</b>	<b>6,378</b>	<b>5,650</b>	<b>76</b>	<b>160</b>	<b>207</b>	<b>247</b>	<b>38</b>
<b>Montréal/Mirabel International</b>							
Domestic	1,795	790	467	43	393	54	48
Transborder	196	194	0	0	2	0	0
Other international	7	7	0	0	0	0	0
<b>Total</b>	<b>1,998</b>	<b>991</b>	<b>467</b>	<b>43</b>	<b>395</b>	<b>54</b>	<b>48</b>
<b>Montréal/Pierre Elliott Trudeau International</b>							
Domestic	11,184	8,927	711	312	959	256	19
Transborder	6,069	5,380	45	63	579	1	1
Other international	1,715	1,537	18	28	128	0	4
<b>Total</b>	<b>18,968</b>	<b>15,844</b>	<b>774</b>	<b>403</b>	<b>1,666</b>	<b>257</b>	<b>24</b>
<b>Montréal/St-Hubert</b>							
Domestic	7,716	2,337	973	2,358	1,727	114	207
Transborder	199	27	8	6	154	3	1
Other international	3	0	3	0	0	0	0
<b>Total</b>	<b>7,918</b>	<b>2,364</b>	<b>984</b>	<b>2,364</b>	<b>1,881</b>	<b>117</b>	<b>208</b>
<b>Oshawa</b>							
Domestic	3,252	112	93	1,996	1,042	5	4
Transborder	48	18	0	6	24	0	0
Other international	0	0	0	0	0	0	0
<b>Total</b>	<b>3,300</b>	<b>130</b>	<b>93</b>	<b>2,002</b>	<b>1,066</b>	<b>5</b>	<b>4</b>
<b>Ottawa/Macdonald-Cartier International</b>							
Domestic	9,284	4,746	395	2,594	698	659	192
Transborder	2,247	2,083	12	12	122	12	6
Other international	126	92	2	6	7	6	13
<b>Total</b>	<b>11,657</b>	<b>6,921</b>	<b>409</b>	<b>2,612</b>	<b>827</b>	<b>677</b>	<b>211</b>
<b>Pitt Meadows</b>							
Domestic	4,492	59	1,262	1,758	1,351	10	52
Transborder	12	0	0	0	12	0	0
Other international	1	0	0	0	1	0	0
<b>Total</b>	<b>4,505</b>	<b>59</b>	<b>1,262</b>	<b>1,758</b>	<b>1,364</b>	<b>10</b>	<b>52</b>

Table 7-1 – continued

## Itinerant movements, domestic, transborder and international — NAV CANADA towers

	Total	Air carrier movements		Other commercial movements	Private movements	Government movements	
		Levels I to III and foreign	Levels IV to VI			Civil	Military
number							
<b>Prince George</b>							
Domestic	2,822	1,313	634	134	565	114	62
Transborder	37	1	0	1	34	0	1
Other international	0	0	0	0	0	0	0
<b>Total</b>	<b>2,859</b>	<b>1,314</b>	<b>634</b>	<b>135</b>	<b>599</b>	<b>114</b>	<b>63</b>
<b>Québec/Jean Lesage International</b>							
Domestic	8,111	3,460	816	1,935	1,157	412	331
Transborder	479	393	2	8	76	0	0
Other international	32	31	0	0	1	0	0
<b>Total</b>	<b>8,622</b>	<b>3,884</b>	<b>818</b>	<b>1,943</b>	<b>1,234</b>	<b>412</b>	<b>331</b>
<b>Regina International</b>							
Domestic	3,660	1,922	825	65	434	181	233
Transborder	192	137	5	1	47	0	2
Other international	0	0	0	0	0	0	0
<b>Total</b>	<b>3,852</b>	<b>2,059</b>	<b>830</b>	<b>66</b>	<b>481</b>	<b>181</b>	<b>235</b>
<b>Saskatoon/John G Diefenbaker International</b>							
Domestic	5,360	2,909	968	403	513	338	229
Transborder	171	137	2	2	30	0	0
Other international	0	0	0	0	0	0	0
<b>Total</b>	<b>5,531</b>	<b>3,046</b>	<b>970</b>	<b>405</b>	<b>543</b>	<b>338</b>	<b>229</b>
<b>Sault Ste. Marie</b>							
Domestic	2,912	890	170	1,489	265	79	19
Transborder	26	1	2	4	18	1	0
Other international	0	0	0	0	0	0	0
<b>Total</b>	<b>2,938</b>	<b>891</b>	<b>172</b>	<b>1,493</b>	<b>283</b>	<b>80</b>	<b>19</b>
<b>St. John's International</b>							
Domestic	2,669	1,174	1,189	61	53	140	52
Transborder	210	69	0	6	43	0	92
Other international	266	99	4	18	50	0	95
<b>Total</b>	<b>3,145</b>	<b>1,342</b>	<b>1,193</b>	<b>85</b>	<b>146</b>	<b>140</b>	<b>239</b>
<b>St-Jean</b>							
Domestic	1,941	184	249	260	646	28	574
Transborder	5	0	0	0	5	0	0
Other international	0	0	0	0	0	0	0
<b>Total</b>	<b>1,946</b>	<b>184</b>	<b>249</b>	<b>260</b>	<b>651</b>	<b>28</b>	<b>574</b>
<b>Sudbury</b>							
Domestic	3,701	1,709	1,080	148	318	334	112
Transborder	9	1	1	0	7	0	0
Other international	0	0	0	0	0	0	0
<b>Total</b>	<b>3,710</b>	<b>1,710</b>	<b>1,081</b>	<b>148</b>	<b>325</b>	<b>334</b>	<b>112</b>
<b>Thunder Bay</b>							
Domestic	5,885	2,955	1,639	419	305	368	199
Transborder	170	129	4	1	36	0	0
Other international	0	0	0	0	0	0	0
<b>Total</b>	<b>6,055</b>	<b>3,084</b>	<b>1,643</b>	<b>420</b>	<b>341</b>	<b>368</b>	<b>199</b>
<b>Toronto/Buttonville Municipal</b>							
Domestic	8,747	481	749	4,778	2,667	51	21
Transborder	456	114	49	30	261	2	0
Other international	1	0	0	0	1	0	0
<b>Total</b>	<b>9,204</b>	<b>595</b>	<b>798</b>	<b>4,808</b>	<b>2,929</b>	<b>53</b>	<b>21</b>
<b>Toronto/City Centre</b>							
Domestic	4,852	1,157	1,157	1,740	680	24	94
Transborder	185	13	33	1	138	0	0
Other international	0	0	0	0	0	0	0
<b>Total</b>	<b>5,037</b>	<b>1,170</b>	<b>1,190</b>	<b>1,741</b>	<b>818</b>	<b>24</b>	<b>94</b>

Table 7-1 – continued

## Itinerant movements, domestic, transborder and international — NAV CANADA towers

	Total	Air carrier movements		Other commercial movements	Private movements	Government movements	
		Levels I to III and foreign	Levels IV to VI			Civil	Military
	number						
<b>Toronto/Lester B Pearson International</b>							
Domestic	16,676	15,702	355	85	483	31	20
Transborder	16,046	14,951	130	84	880	0	1
Other international	3,690	3,620	13	18	38	0	1
<b>Total</b>	<b>36,412</b>	<b>34,273</b>	<b>498</b>	<b>187</b>	<b>1,401</b>	<b>31</b>	<b>22</b>
<b>Vancouver Harbour</b>							
Domestic	6,535	5,966	362	48	151	1	7
Transborder	134	76	27	0	31	0	0
Other international	0	0	0	0	0	0	0
<b>Total</b>	<b>6,669</b>	<b>6,042</b>	<b>389</b>	<b>48</b>	<b>182</b>	<b>1</b>	<b>7</b>
<b>Vancouver International</b>							
Domestic	21,033	17,467	1,743	308	1,165	336	14
Transborder	5,319	4,929	24	12	342	3	9
Other international	1,575	1,451	83	8	15	6	12
<b>Total</b>	<b>27,927</b>	<b>23,847</b>	<b>1,850</b>	<b>328</b>	<b>1,522</b>	<b>345</b>	<b>35</b>
<b>Victoria International</b>							
Domestic	8,628	2,932	3,190	765	1,469	63	209
Transborder	812	420	52	2	320	0	18
Other international	68	4	17	18	26	1	2
<b>Total</b>	<b>9,508</b>	<b>3,356</b>	<b>3,259</b>	<b>785</b>	<b>1,815</b>	<b>64</b>	<b>229</b>
<b>Whitehorse International</b>							
Domestic	2,016	732	696	33	509	42	4
Transborder	159	17	8	0	133	0	1
Other international	12	10	0	1	1	0	0
<b>Total</b>	<b>2,187</b>	<b>759</b>	<b>704</b>	<b>34</b>	<b>643</b>	<b>42</b>	<b>5</b>
<b>Windsor</b>							
Domestic	2,287	580	1,230	137	323	13	4
Transborder	221	125	23	0	68	1	4
Other international	9	5	1	0	3	0	0
<b>Total</b>	<b>2,517</b>	<b>710</b>	<b>1,254</b>	<b>137</b>	<b>394</b>	<b>14</b>	<b>8</b>
<b>Winnipeg/James Armstrong Richardson International</b>							
Domestic	10,572	8,354	787	71	400	298	662
Transborder	1,277	1,131	14	4	113	0	15
Other international	26	21	1	0	3	0	1
<b>Total</b>	<b>11,875</b>	<b>9,506</b>	<b>802</b>	<b>75</b>	<b>516</b>	<b>298</b>	<b>678</b>
<b>Winnipeg/St. Andrews</b>							
Domestic	3,143	559	1,573	672	305	6	28
Transborder	3	0	0	0	3	0	0
Other international	0	0	0	0	0	0	0
<b>Total</b>	<b>3,146</b>	<b>559</b>	<b>1,573</b>	<b>672</b>	<b>308</b>	<b>6</b>	<b>28</b>
<b>Yellowknife</b>							
Domestic	5,600	4,306	880	5	212	103	94
Transborder	3	0	0	0	2	0	1
Other international	1	1	0	0	0	0	0
<b>Total</b>	<b>5,604</b>	<b>4,307</b>	<b>880</b>	<b>5</b>	<b>214</b>	<b>103</b>	<b>95</b>
<b>Total of NAV CANADA towers (42)</b>							
Domestic	260,794	131,978	39,829	45,938	32,708	6,064	4,277
Transborder	42,776	36,667	684	347	4,826	30	222
Other international	9,037	7,927	287	116	484	17	206
<b>Total</b>	<b>312,607</b>	<b>176,572</b>	<b>40,800</b>	<b>46,401</b>	<b>38,018</b>	<b>6,111</b>	<b>4,705</b>

**Table 7-2**  
**Itinerant movements, domestic, transborder and international — NAV CANADA flight service stations**

	Total	Air carrier movements		Other commercial movements	Private movements	Government movements	
		Levels I to III and foreign	Levels IV to VI			Civil	Military
number							
<b>Brandon Municipal</b>							
Domestic	772	130	280	51	202	21	88
Transborder	5	0	0	0	5	0	0
Other international	0	0	0	0	0	0	0
<b>Total</b>	<b>777</b>	<b>130</b>	<b>280</b>	<b>51</b>	<b>207</b>	<b>21</b>	<b>88</b>
<b>Campbell River</b>							
Domestic	2,094	762	348	350	599	18	17
Transborder	90	1	1	0	88	0	0
Other international	0	0	0	0	0	0	0
<b>Total</b>	<b>2,184</b>	<b>763</b>	<b>349</b>	<b>350</b>	<b>687</b>	<b>18</b>	<b>17</b>
<b>Castlegar</b>							
Domestic	660	307	122	135	63	19	14
Transborder	14	0	0	0	14	0	0
Other international	0	0	0	0	0	0	0
<b>Total</b>	<b>674</b>	<b>307</b>	<b>122</b>	<b>135</b>	<b>77</b>	<b>19</b>	<b>14</b>
<b>Charlottetown</b>							
Domestic	1,460	858	19	339	155	57	32
Transborder	12	0	0	1	10	1	0
Other international	0	0	0	0	0	0	0
<b>Total</b>	<b>1,472</b>	<b>858</b>	<b>19</b>	<b>340</b>	<b>165</b>	<b>58</b>	<b>32</b>
<b>Churchill</b>							
Domestic	973	809	124	3	25	9	3
Transborder	3	1	0	0	2	0	0
Other international	1	1	0	0	0	0	0
<b>Total</b>	<b>977</b>	<b>811</b>	<b>124</b>	<b>3</b>	<b>27</b>	<b>9</b>	<b>3</b>
<b>Cranbrook</b>							
Domestic	873	521	64	143	126	12	7
Transborder	19	0	2	0	17	0	0
Other international	0	0	0	0	0	0	0
<b>Total</b>	<b>892</b>	<b>521</b>	<b>66</b>	<b>143</b>	<b>143</b>	<b>12</b>	<b>7</b>
<b>Dawson Creek</b>							
Domestic	709	277	121	130	164	17	0
Transborder	1	0	0	0	1	0	0
Other international	0	0	0	0	0	0	0
<b>Total</b>	<b>710</b>	<b>277</b>	<b>121</b>	<b>130</b>	<b>165</b>	<b>17</b>	<b>0</b>
<b>Deer Lake</b>							
Domestic	1,528	884	547	24	22	47	4
Transborder	0	0	0	0	0	0	0
Other international	2	0	0	2	0	0	0
<b>Total</b>	<b>1,530</b>	<b>884</b>	<b>547</b>	<b>26</b>	<b>22</b>	<b>47</b>	<b>4</b>
<b>Fort McMurray</b>							
Domestic	5,404	3,032	1,345	422	564	28	13
Transborder	2	0	0	0	2	0	0
Other international	0	0	0	0	0	0	0
<b>Total</b>	<b>5,406</b>	<b>3,032</b>	<b>1,345</b>	<b>422</b>	<b>566</b>	<b>28</b>	<b>13</b>
<b>Fort Nelson</b>							
Domestic	1,427	348	424	395	240	20	0
Transborder	1	0	0	0	1	0	0
Other international	0	0	0	0	0	0	0
<b>Total</b>	<b>1,428</b>	<b>348</b>	<b>424</b>	<b>395</b>	<b>241</b>	<b>20</b>	<b>0</b>
<b>Fort St John</b>							
Domestic	2,391	897	985	159	322	28	0
Transborder	3	0	0	0	1	2	0
Other international	0	0	0	0	0	0	0
<b>Total</b>	<b>2,394</b>	<b>897</b>	<b>985</b>	<b>159</b>	<b>323</b>	<b>30</b>	<b>0</b>

Table 7-2 – continued

## Itinerant movements, domestic, transborder and international — NAV CANADA flight service stations

	Total	Air carrier movements		Other commercial movements	Private movements	Government movements	
		Levels I to III and foreign	Levels IV to VI			Civil	Military
number							
<b>Fredericton International</b>							
Domestic	2,059	1,068	400	14	203	178	196
Transborder	91	67	4	0	15	4	1
Other international	3	3	0	0	0	0	0
<b>Total</b>	<b>2,153</b>	<b>1,138</b>	<b>404</b>	<b>14</b>	<b>218</b>	<b>182</b>	<b>197</b>
<b>Grande Prairie</b>							
Domestic	2,786	1,361	667	37	630	34	57
Transborder	5	0	0	0	5	0	0
Other international	0	0	0	0	0	0	0
<b>Total</b>	<b>2,791</b>	<b>1,361</b>	<b>667</b>	<b>37</b>	<b>635</b>	<b>34</b>	<b>57</b>
<b>High Level</b>							
Domestic	1,089	550	463	5	55	14	2
Transborder	0	0	0	0	0	0	0
Other international	0	0	0	0	0	0	0
<b>Total</b>	<b>1,089</b>	<b>550</b>	<b>463</b>	<b>5</b>	<b>55</b>	<b>14</b>	<b>2</b>
<b>Îles-de-la-Madeleine</b>							
Domestic	348	265	16	12	8	41	6
Transborder	0	0	0	0	0	0	0
Other international	2	2	0	0	0	0	0
<b>Total</b>	<b>350</b>	<b>267</b>	<b>16</b>	<b>12</b>	<b>8</b>	<b>41</b>	<b>6</b>
<b>Inuvik/Mike Zubko</b>							
Domestic	1,599	500	1,066	2	11	18	2
Transborder	0	0	0	0	0	0	0
Other international	0	0	0	0	0	0	0
<b>Total</b>	<b>1,599</b>	<b>500</b>	<b>1,066</b>	<b>2</b>	<b>11</b>	<b>18</b>	<b>2</b>
<b>Iqaluit</b>							
Domestic	1,228	1,074	27	25	32	42	28
Transborder	53	25	7	5	14	0	2
Other international	75	34	2	6	27	0	6
<b>Total</b>	<b>1,356</b>	<b>1,133</b>	<b>36</b>	<b>36</b>	<b>73</b>	<b>42</b>	<b>36</b>
<b>Kamloops</b>							
Domestic	2,684	885	491	644	570	64	30
Transborder	21	3	3	0	15	0	0
Other international	0	0	0	0	0	0	0
<b>Total</b>	<b>2,705</b>	<b>888</b>	<b>494</b>	<b>644</b>	<b>585</b>	<b>64</b>	<b>30</b>
<b>Kenora</b>							
Domestic	1,215	534	449	30	80	62	60
Transborder	58	8	0	0	50	0	0
Other international	0	0	0	0	0	0	0
<b>Total</b>	<b>1,273</b>	<b>542</b>	<b>449</b>	<b>30</b>	<b>130</b>	<b>62</b>	<b>60</b>
<b>Kingston</b>							
Domestic	2,016	522	328	576	495	37	58
Transborder	62	6	4	2	50	0	0
Other international	0	0	0	0	0	0	0
<b>Total</b>	<b>2,078</b>	<b>528</b>	<b>332</b>	<b>578</b>	<b>545</b>	<b>37</b>	<b>58</b>
<b>Kuujuuaq</b>							
Domestic	844	745	65	0	12	18	4
Transborder	0	0	0	0	0	0	0
Other international	2	0	0	0	2	0	0
<b>Total</b>	<b>846</b>	<b>745</b>	<b>65</b>	<b>0</b>	<b>14</b>	<b>18</b>	<b>4</b>
<b>Kuujuarapik</b>							
Domestic	592	578	6	0	4	4	0
Transborder	0	0	0	0	0	0	0
Other international	0	0	0	0	0	0	0
<b>Total</b>	<b>592</b>	<b>578</b>	<b>6</b>	<b>0</b>	<b>4</b>	<b>4</b>	<b>0</b>
<b>La Grande Rivière</b>							
Domestic	691	530	116	11	26	8	0
Transborder	0	0	0	0	0	0	0
Other international	0	0	0	0	0	0	0
<b>Total</b>	<b>691</b>	<b>530</b>	<b>116</b>	<b>11</b>	<b>26</b>	<b>8</b>	<b>0</b>

Table 7-2 – continued

## Itinerant movements, domestic, transborder and international — NAV CANADA flight service stations

	Total	Air carrier movements		Other commercial movements	Private movements	Government movements	
		Levels I to III and foreign	Levels IV to VI			Civil	Military
number							
<b>La Ronge</b>							
Domestic	1,978	1,322	59	5	102	326	164
Transborder	1	0	0	0	1	0	0
Other international	0	0	0	0	0	0	0
<b>Total</b>	<b>1,979</b>	<b>1,322</b>	<b>59</b>	<b>5</b>	<b>103</b>	<b>326</b>	<b>164</b>
<b>Lethbridge</b>							
Domestic	1,964	610	102	788	387	36	41
Transborder	77	5	1	2	69	0	0
Other international	0	0	0	0	0	0	0
<b>Total</b>	<b>2,041</b>	<b>615</b>	<b>103</b>	<b>790</b>	<b>456</b>	<b>36</b>	<b>41</b>
<b>Lloydminster</b>							
Domestic	1,018	169	397	55	355	32	10
Transborder	2	0	0	0	2	0	0
Other international	0	0	0	0	0	0	0
<b>Total</b>	<b>1,020</b>	<b>169</b>	<b>397</b>	<b>55</b>	<b>357</b>	<b>32</b>	<b>10</b>
<b>Medicine Hat</b>							
Domestic	968	581	105	59	188	10	25
Transborder	10	4	0	0	3	0	3
Other international	0	0	0	0	0	0	0
<b>Total</b>	<b>978</b>	<b>585</b>	<b>105</b>	<b>59</b>	<b>191</b>	<b>10</b>	<b>28</b>
<b>Mont-Joli</b>							
Domestic	401	292	22	26	21	22	18
Transborder	0	0	0	0	0	0	0
Other international	0	0	0	0	0	0	0
<b>Total</b>	<b>401</b>	<b>292</b>	<b>22</b>	<b>26</b>	<b>21</b>	<b>22</b>	<b>18</b>
<b>Nanaimo</b>							
Domestic	2,486	495	646	277	981	40	47
Transborder	91	4	1	0	84	0	2
Other international	0	0	0	0	0	0	0
<b>Total</b>	<b>2,577</b>	<b>499</b>	<b>647</b>	<b>277</b>	<b>1,065</b>	<b>40</b>	<b>49</b>
<b>Norman Wells</b>							
Domestic	1,275	710	502	2	47	10	4
Transborder	0	0	0	0	0	0	0
Other international	0	0	0	0	0	0	0
<b>Total</b>	<b>1,275</b>	<b>710</b>	<b>502</b>	<b>2</b>	<b>47</b>	<b>10</b>	<b>4</b>
<b>North Bay</b>							
Domestic	2,410	634	425	740	405	102	104
Transborder	36	3	2	1	30	0	0
Other international	1	1	0	0	0	0	0
<b>Total</b>	<b>2,447</b>	<b>638</b>	<b>427</b>	<b>741</b>	<b>435</b>	<b>102</b>	<b>104</b>
<b>Ottawa/Gatineau</b>							
Domestic	1,611	133	338	267	739	126	8
Transborder	9	0	3	0	6	0	0
Other international	0	0	0	0	0	0	0
<b>Total</b>	<b>1,620</b>	<b>133</b>	<b>341</b>	<b>267</b>	<b>745</b>	<b>126</b>	<b>8</b>
<b>Peace River</b>							
Domestic	1,133	486	413	81	134	12	7
Transborder	0	0	0	0	0	0	0
Other international	0	0	0	0	0	0	0
<b>Total</b>	<b>1,133</b>	<b>486</b>	<b>413</b>	<b>81</b>	<b>134</b>	<b>12</b>	<b>7</b>
<b>Penticton</b>							
Domestic	1,769	338	693	191	390	22	135
Transborder	36	1	2	2	31	0	0
Other international	0	0	0	0	0	0	0
<b>Total</b>	<b>1,805</b>	<b>339</b>	<b>695</b>	<b>193</b>	<b>421</b>	<b>22</b>	<b>135</b>

Table 7-2 – continued

## Itinerant movements, domestic, transborder and international — NAV CANADA flight service stations

	Total	Air carrier movements		Other commercial movements	Private movements	Government movements	
		Levels I to III and foreign	Levels IV to VI			Civil	Military
	number						
<b>Port Hardy</b>							
Domestic	1,108	787	103	20	84	106	8
Transborder	31	0	0	0	31	0	0
Other international	0	0	0	0	0	0	0
<b>Total</b>	<b>1,139</b>	<b>787</b>	<b>103</b>	<b>20</b>	<b>115</b>	<b>106</b>	<b>8</b>
<b>Prince Albert</b>							
Domestic	1,719	1,148	101	33	155	209	73
Transborder	1	0	0	0	1	0	0
Other international	0	0	0	0	0	0	0
<b>Total</b>	<b>1,720</b>	<b>1,148</b>	<b>101</b>	<b>33</b>	<b>156</b>	<b>209</b>	<b>73</b>
<b>Prince Rupert</b>							
Domestic	411	217	109	4	38	43	0
Transborder	23	0	0	0	22	1	0
Other international	0	0	0	0	0	0	0
<b>Total</b>	<b>434</b>	<b>217</b>	<b>109</b>	<b>4</b>	<b>60</b>	<b>44</b>	<b>0</b>
<b>Rankin Inlet</b>							
Domestic	1,283	1,098	156	8	6	10	5
Transborder	0	0	0	0	0	0	0
Other international	0	0	0	0	0	0	0
<b>Total</b>	<b>1,283</b>	<b>1,098</b>	<b>156</b>	<b>8</b>	<b>6</b>	<b>10</b>	<b>5</b>
<b>Red Deer Regional</b>							
Domestic	2,069	426	738	160	697	36	12
Transborder	14	5	2	0	7	0	0
Other international	0	0	0	0	0	0	0
<b>Total</b>	<b>2,083</b>	<b>431</b>	<b>740</b>	<b>160</b>	<b>704</b>	<b>36</b>	<b>12</b>
<b>Rouyn-Noranda</b>							
Domestic	1,285	565	160	172	320	27	41
Transborder	0	0	0	0	0	0	0
Other international	0	0	0	0	0	0	0
<b>Total</b>	<b>1,285</b>	<b>565</b>	<b>160</b>	<b>172</b>	<b>320</b>	<b>27</b>	<b>41</b>
<b>Saint John</b>							
Domestic	1,715	1,029	140	149	327	11	59
Transborder	90	4	0	0	85	1	0
Other international	11	5	0	0	6	0	0
<b>Total</b>	<b>1,816</b>	<b>1,038</b>	<b>140</b>	<b>149</b>	<b>418</b>	<b>12</b>	<b>59</b>
<b>Sept-Îles</b>							
Domestic	2,165	1,290	572	91	114	72	26
Transborder	12	2	0	0	9	0	1
Other international	7	2	0	0	5	0	0
<b>Total</b>	<b>2,184</b>	<b>1,294</b>	<b>572</b>	<b>91</b>	<b>128</b>	<b>72</b>	<b>27</b>
<b>Sioux Lookout</b>							
Domestic	2,781	1,740	907	51	67	10	6
Transborder	32	1	0	1	30	0	0
Other international	0	0	0	0	0	0	0
<b>Total</b>	<b>2,813</b>	<b>1,741</b>	<b>907</b>	<b>52</b>	<b>97</b>	<b>10</b>	<b>6</b>
<b>Smithers</b>							
Domestic	822	486	138	2	182	14	0
Transborder	6	0	0	0	6	0	0
Other international	0	0	0	0	0	0	0
<b>Total</b>	<b>828</b>	<b>486</b>	<b>138</b>	<b>2</b>	<b>188</b>	<b>14</b>	<b>0</b>
<b>St Anthony</b>							
Domestic	351	50	221	58	4	14	4
Transborder	0	0	0	0	0	0	0
Other international	2	0	0	0	2	0	0
<b>Total</b>	<b>353</b>	<b>50</b>	<b>221</b>	<b>58</b>	<b>6</b>	<b>14</b>	<b>4</b>

Table 7-2 – continued

## Itinerant movements, domestic, transborder and international — NAV CANADA flight service stations

	Total	Air carrier movements		Other commercial movements	Private movements	Government movements	
		Levels I to III and foreign	Levels IV to VI			Civil	Military
number							
<b>St Catharines</b>							
Domestic	3,645	31	997	98	2,195	8	316
Transborder	67	5	4	2	56	0	0
Other international	0	0	0	0	0	0	0
<b>Total</b>	<b>3,712</b>	<b>36</b>	<b>1,001</b>	<b>100</b>	<b>2,251</b>	<b>8</b>	<b>316</b>
<b>Terrace</b>							
Domestic	1,413	721	578	1	83	30	0
Transborder	6	0	0	0	6	0	0
Other international	0	0	0	0	0	0	0
<b>Total</b>	<b>1,419</b>	<b>721</b>	<b>578</b>	<b>1</b>	<b>89</b>	<b>30</b>	<b>0</b>
<b>Thompson</b>							
Domestic	2,796	1,987	586	49	42	124	8
Transborder	1	1	0	0	0	0	0
Other international	0	0	0	0	0	0	0
<b>Total</b>	<b>2,797</b>	<b>1,988</b>	<b>586</b>	<b>49</b>	<b>42</b>	<b>124</b>	<b>8</b>
<b>Timmins</b>							
Domestic	2,574	1,770	292	49	196	209	58
Transborder	5	0	0	0	5	0	0
Other international	0	0	0	0	0	0	0
<b>Total</b>	<b>2,579</b>	<b>1,770</b>	<b>292</b>	<b>49</b>	<b>201</b>	<b>209</b>	<b>58</b>
<b>Val-D'or</b>							
Domestic	1,890	748	242	520	205	156	19
Transborder	1	0	0	1	0	0	0
Other international	1	1	0	0	0	0	0
<b>Total</b>	<b>1,892</b>	<b>749</b>	<b>242</b>	<b>521</b>	<b>205</b>	<b>156</b>	<b>19</b>
<b>Victoria Harbour</b>							
Domestic	4,449	3,989	83	0	262	95	20
Transborder	381	0	0	0	380	0	1
Other international	0	0	0	0	0	0	0
<b>Total</b>	<b>4,830</b>	<b>3,989</b>	<b>83</b>	<b>0</b>	<b>642</b>	<b>95</b>	<b>21</b>
<b>Wabush</b>							
Domestic	663	348	279	3	13	20	0
Transborder	0	0	0	0	0	0	0
Other international	1	0	1	0	0	0	0
<b>Total</b>	<b>664</b>	<b>348</b>	<b>279</b>	<b>4</b>	<b>13</b>	<b>20</b>	<b>0</b>
<b>Whitecourt</b>							
Domestic	1,345	70	889	213	157	14	2
Transborder	1	0	0	0	1	0	0
Other international	0	0	0	0	0	0	0
<b>Total</b>	<b>1,346</b>	<b>70</b>	<b>889</b>	<b>213</b>	<b>158</b>	<b>14</b>	<b>2</b>
<b>Williams Lake</b>							
Domestic	1,136	405	305	61	327	36	2
Transborder	5	0	0	0	5	0	0
Other international	0	0	0	0	0	0	0
<b>Total</b>	<b>1,141</b>	<b>405</b>	<b>305</b>	<b>61</b>	<b>332</b>	<b>36</b>	<b>2</b>
<b>Total of all flight service stations (54)</b>							
Domestic	88,075	42,112	19,771	7,740	13,831	2,778	1,843
Transborder	1,378	146	36	17	1,160	9	10
Other international	108	49	2	9	42	0	6
<b>Total</b>	<b>89,561</b>	<b>42,307</b>	<b>19,809</b>	<b>7,766</b>	<b>15,033</b>	<b>2,787</b>	<b>1,859</b>



**Table 8-1**  
**Total aircraft movements, peak hour and peak day — NAV CANADA towers**

	Rank of movements	Number of movements	Peak hour occurrence			Peak day occurrence	
			Day in month	Hour in day	Number of movements	Day in month	Number of movements
Abbotsford	7	17,740	16	15	127	16	807
Boundary Bay	3	21,105	3	11	116	10	961
Calgary International	4	20,974	10	18	74	30	847
Calgary/Springbank	10	16,782	29	13	119	30	1,015
Chicoutimi/St-Honoré	22	8,782	2	9	122	2	611
Edmonton City Centre	28	7,585	10	13	57	30	411
Edmonton International	16	11,293	30	16	46	8	510
Edmonton/Villeneuve	32	6,897	10	11	72	15	400
Gander International	38	4,078	17	13	60	24	334
Halifax/Robert L Stanfield International	26	7,928	14	10	51	7	403
Hamilton	27	7,623	21	11	56	2	384
Kelowna	21	9,547	10	17	67	10	413
Kitchener/Waterloo	17	10,071	30	11	96	30	588
Langley	19	9,966	12	10	92	11	551
London	20	9,591	21	15	83	21	532
Moncton/Greater Moncton International	15	11,383	23	18	61	23	723
Montréal/Mirabel International	42	2,572	9	13	31	1	159
Montréal/Pierre Elliott Trudeau International	5	18,968	3	18	77	3	694
Montréal/St-Hubert	8	17,547	19	10	122	9	1,068
Oshawa	24	8,276	4	16	79	21	504
Ottawa/Macdonald-Cartier International	9	17,005	22	11	77	18	756
Pitt Meadows	12	13,847	9	13	104	9	764
Prince George	36	4,537	2	14	92	3	305
Québec/Jean Lesage International	14	12,134	2	14	82	2	610
Regina International	34	5,530	28	22	46	15	328
Saskatoon/John G Diefenbaker International	25	8,109	1	13	80	16	422
Sault Ste. Marie	31	6,941	3	10	55	29	362
St. John's International	40	3,447	3	15	27	3	157
St-Jean	41	2,796	14	15	227	26	303
Sudbury	37	4,372	7	14	34	28	216
Thunder Bay	29	7,446	18	11	55	18	413
Toronto/Buttonville Municipal	6	18,840	23	10	114	18	1,020
Toronto/City Centre	18	9,985	3	14	74	3	547
Toronto/Lester B Pearson International	1	36,412	13	18	101	17	1,275
Vancouver Harbour	33	6,675	5	18	39	16	294
Vancouver International	2	27,927	25	16	87	25	1,045
Victoria International	11	16,246	23	15	111	9	801
Whitehorse International	39	3,625	30	11	58	29	206
Windsor	35	5,301	5	12	56	8	299
Winnipeg/James Armstrong Richardson International	13	12,999	2	12	58	16	604
Winnipeg/St. Andrews	23	8,722	2	10	88	16	581
Yellowknife	30	7,198	1	9	68	1	432

**Table 8-2**  
**Total aircraft movements, peak hour and peak day — NAV CANADA flight service stations**

	Rank of movements	Number of movements	Peak hour occurrence			Peak day occurrence	
			Day in month	Hour in day	Number of movements	Day in month	Number of movements
Brandon Municipal	41	1,151	8	11	32	7	96
Campbell River	9	3,804	2	13	67	4	266
Castlegar	46	924	1	11	27	8	77
Charlottetown	21	2,462	25	15	37	23	223
Churchill	43	1,027	18	12	53	18	87
Cranbrook	42	1,104	4	12	34	4	65
Dawson Creek	44	1,006	10	12	25	31	84
Deer Lake	29	1,716	7	10	26	18	112
Fort McMurray	2	6,514	24	10	39	25	349
Fort Nelson	33	1,554	17	13	16	28	80
Fort St John	19	2,742	15	19	54	15	236
Fredericton International	22	2,379	26	16	23	23	127
Grande Prairie	10	3,718	8	16	56	15	231
High Level	39	1,167	10	10	18	29	83
Îles-de-la-Madeleine	54	350	1	7	6	25	23
Inuvik/Mike Zubko	30	1,705	16	9	22	21	105
Iqaluit	32	1,568	17	16	15	18	79
Kamloops	4	5,505	27	14	72	20	401
Kenora	36	1,411	5	16	30	8	74
Kingston	12	3,424	6	9	46	6	209
Kuujuuaq	45	936	22	17	16	18	51
Kuujuuarapik	50	592	9	12	6	13	32
La Grande Rivière	48	699	7	10	9	14	36
La Ronge	20	2,615	13	14	35	10	162
Lethbridge	18	2,819	8	9	32	5	161
Lloydminster	31	1,654	30	19	34	30	111
Medicine Hat	35	1,430	5	11	26	17	86
Mont-Joli	52	403	17	18	6	22	26
Nanaimo	8	3,937	16	11	63	16	223
Norman Wells	25	2,225	17	10	22	18	98
North Bay	3	5,633	12	9	57	12	329
Ottawa/Gatineau	6	4,058	19	11	58	19	274
Peace River	37	1,343	3	11	32	3	80
Penticton	7	4,015	18	18	64	16	313
Port Hardy	40	1,165	17	14	13	8	58
Prince Albert	28	1,822	22	17	24	31	97
Prince Rupert	51	586	14	14	17	4	54
Rankin Inlet	38	1,285	22	13	11	28	66
Red Deer Regional	11	3,555	8	10	53	8	285
Rouyn-Noranda	27	1,991	19	14	43	21	352
Saint John	23	2,348	2	10	29	7	125
Sept-Îles	14	3,003	26	19	100	26	218
Sioux Lookout	16	2,943	1	15	23	11	143
Smithers	47	904	1	10	28	24	61
St Anthony	53	359	11	10	7	11	29
St Catharines	1	6,672	6	15	82	5	485
Terrace	26	2,049	2	15	38	2	168
Thompson	15	2,951	15	14	39	15	187
Timmins	17	2,831	4	17	43	4	169
Val-D'or	13	3,232	26	12	100	26	340
Victoria Harbour	5	4,830	1	8	31	25	214
Wabush	49	664	8	11	7	8	31
Whitecourt	24	2,236	29	9	49	29	175
Williams Lake	34	1,513	9	18	47	28	118

**Table 9-1**  
**Itinerant aircraft movements, peak hour and peak day — NAV CANADA towers**

	Rank of movements	Number of movements	Peak hour occurrence			Peak day occurrence	
			Day in month	Hour in day	Number of movements	Day in month	Number of movements
Abbotsford	13	7,680	12	14	49	9	343
Boundary Bay	11	8,578	12	13	45	10	413
Calgary International	3	20,720	2	18	69	30	819
Calgary/Springbank	18	6,140	12	10	45	26	362
Chicoutimi/St-Honoré	31	3,358	12	13	25	9	199
Edmonton City Centre	17	6,307	30	16	34	30	325
Edmonton International	7	10,689	17	8	40	17	422
Edmonton/Villeneuve	42	1,759	20	15	28	20	171
Gander International	38	2,324	23	16	16	24	128
Halifax/Robert L Stanfield International	14	6,990	10	16	28	7	281
Hamilton	27	4,231	18	13	26	18	199
Kelowna	20	5,988	29	11	33	29	256
Kitchener/Waterloo	25	4,809	5	12	29	29	260
Langley	28	3,999	5	15	26	10	185
London	22	5,567	5	11	28	18	268
Moncton/Greater Moncton International	16	6,378	8	19	32	9	387
Montréal/Mirabel International	40	1,998	12	10	20	1	123
Montréal/Pierre Elliott Trudeau International	4	18,968	3	18	77	3	694
Montréal/St-Hubert	12	7,918	26	14	63	26	447
Oshawa	32	3,300	26	10	26	21	190
Ottawa/Macdonald-Cartier International	6	11,657	26	10	64	26	567
Pitt Meadows	26	4,505	9	13	32	12	244
Prince George	36	2,859	2	16	20	15	141
Québec/Jean Lesage International	10	8,622	10	11	43	2	368
Regina International	29	3,852	10	13	23	10	192
Saskatoon/John G Diefenbaker International	23	5,531	31	14	30	31	274
Sault Ste. Marie	35	2,938	30	17	18	3	143
St. John's International	34	3,145	4	17	12	9	123
St-Jean	41	1,946	26	11	34	26	287
Sudbury	30	3,710	24	13	24	24	196
Thunder Bay	19	6,055	17	9	30	18	287
Toronto/Buttonville Municipal	9	9,204	18	18	62	18	534
Toronto/City Centre	24	5,037	26	14	36	26	241
Toronto/Lester B Pearson International	1	36,412	13	18	101	17	1,275
Vancouver Harbour	15	6,669	5	18	39	16	294
Vancouver International	2	27,927	25	16	87	25	1,045
Victoria International	8	9,508	11	16	50	11	403
Whitehorse International	39	2,187	16	15	16	24	108
Windsor	37	2,517	11	15	18	11	135
Winnipeg/James Armstrong Richardson International	5	11,875	2	13	40	2	490
Winnipeg/St. Andrews	33	3,146	9	12	25	16	185
Yellowknife	21	5,604	1	9	28	9	255

**Table 9-2**  
**Itinerant aircraft movements, peak hour and peak day — NAV CANADA flight service stations**

	Rank of movements	Number of movements	Peak hour occurrence			Peak day occurrence	
			Day in month	Hour in day	Number of movements	Day in month	Number of movements
Brandon Municipal	45	777	17	10	10	10	41
Campbell River	12	2,184	25	13	17	25	99
Castlegar	48	674	1	8	9	8	45
Charlottetown	26	1,472	30	18	11	30	85
Churchill	41	977	15	17	8	10	55
Cranbrook	42	892	10	11	7	10	40
Dawson Creek	46	710	17	9	9	10	48
Deer Lake	25	1,530	9	8	11	23	69
Fort McMurray	1	5,406	30	9	26	30	277
Fort Nelson	27	1,428	24	9	12	28	74
Fort St John	11	2,394	24	17	21	29	141
Fredericton International	14	2,153	26	16	23	23	115
Grande Prairie	6	2,791	22	15	24	16	141
High Level	38	1,089	10	12	8	29	83
Îles-de-la-Madeleine	54	350	1	7	6	25	23
Inuvik/Mike Zubko	24	1,599	29	17	11	18	76
Iqaluit	29	1,356	14	14	9	18	61
Kamloops	7	2,705	29	17	27	29	138
Kenora	34	1,273	10	16	11	10	70
Kingston	16	2,078	19	14	15	5	109
Kuujuuaq	43	846	12	18	10	4	43
Kuujuuarapik	50	592	9	12	6	13	32
La Grande Rivière	47	691	7	10	9	1	34
La Ronge	18	1,979	1	16	14	16	96
Lethbridge	17	2,041	11	15	28	7	121
Lloydminster	39	1,020	31	10	12	30	57
Medicine Hat	40	978	17	16	9	7	49
Mont-Joli	52	401	17	18	6	22	24
Nanaimo	9	2,577	12	14	27	24	147
Norman Wells	33	1,275	23	10	11	4	60
North Bay	10	2,447	17	14	25	17	147
Ottawa/Gatineau	23	1,620	4	15	18	6	106
Peace River	37	1,133	7	15	9	15	68
Penticton	21	1,805	10	13	12	16	97
Port Hardy	36	1,139	17	14	13	8	58
Prince Albert	22	1,720	31	14	17	31	91
Prince Rupert	51	434	18	13	7	31	23
Rankin Inlet	32	1,283	22	13	11	28	66
Red Deer Regional	15	2,083	11	11	30	8	129
Rouyn-Noranda	31	1,285	1	15	12	21	84
Saint John	20	1,816	13	11	13	7	99
Sept-Îles	13	2,184	3	11	16	31	103
Sioux Lookout	4	2,813	18	11	20	9	142
Smithers	44	828	20	13	9	22	50
St Anthony	53	353	14	14	7	11	23
St Catharines	3	3,712	5	13	52	19	321
Terrace	28	1,419	2	10	13	2	76
Thompson	5	2,797	8	10	18	8	130
Timmins	8	2,579	4	9	19	23	141
Val-D'or	19	1,892	24	19	16	25	121
Victoria Harbour	2	4,830	1	8	31	25	214
Wabush	49	664	8	11	7	8	31
Whitecourt	30	1,346	10	16	18	15	79
Williams Lake	35	1,141	25	17	12	24	77

**Table 10-1**  
**Local movements, peak hour and peak day — NAV CANADA towers**

	Rank of movements	Number of movements	Peak hour occurrence			Peak day occurrence	
			Day in month	Hour in day	Number of movements	Day in month	Number of movements
Abbotsford	3	10,060	16	15	84	28	544
Boundary Bay	1	12,527	3	11	88	1	677
Calgary International	38	254	16	13	24	18	34
Calgary/Springbank	2	10,642	29	13	96	30	684
Chicoutimi/St-Honoré	10	5,424	25	10	108	2	442
Edmonton City Centre	30	1,278	10	13	36	8	118
Edmonton International	35	604	8	13	22	8	126
Edmonton/Villeneuve	13	5,138	10	11	60	7	326
Gander International	24	1,754	17	13	50	24	206
Halifax/Robert L Stanfield International	32	938	14	10	30	29	126
Hamilton	21	3,392	21	11	46	2	210
Kelowna	19	3,559	4	13	50	3	178
Kitchener/Waterloo	12	5,262	30	11	68	30	388
Langley	8	5,967	28	12	78	11	376
London	17	4,024	30	17	62	21	286
Moncton/Greater Moncton International	14	5,005	10	10	38	23	346
Montréal/Mirabel International	36	574	10	12	24	18	59
Montréal/Pierre Elliott Trudeau International	0	0	0	0	0	0	0
Montréal/St-Hubert	5	9,629	12	12	88	9	670
Oshawa	15	4,976	4	16	54	21	314
Ottawa/Macdonald-Cartier International	11	5,348	1	10	44	29	308
Pitt Meadows	6	9,342	9	15	84	9	562
Prince George	26	1,678	2	14	80	3	188
Québec/Jean Lesage International	20	3,512	2	14	50	2	242
Regina International	25	1,678	28	22	38	15	146
Saskatoon/John G Diefenbaker International	23	2,578	1	13	52	16	184
Sault Ste. Marie	18	4,003	3	10	44	31	232
St. John's International	37	302	3	15	16	3	38
St-Jean	33	850	14	15	221	14	231
Sudbury	34	662	7	14	30	28	84
Thunder Bay	29	1,391	16	16	30	28	160
Toronto/Buttonville Municipal	4	9,636	28	8	84	29	548
Toronto/City Centre	16	4,948	3	14	60	3	334
Toronto/Lester B Pearson International	0	0	0	0	0	0	0
Vancouver Harbour	39	6	4	12	6	4	6
Vancouver International	0	0	0	0	0	0	0
Victoria International	7	6,738	23	15	74	23	430
Whitehorse International	28	1,438	30	11	50	29	132
Windsor	22	2,784	5	12	48	8	180
Winnipeg/James Armstrong Richardson International	31	1,124	1	14	22	16	128
Winnipeg/St. Andrews	9	5,576	2	10	74	16	396
Yellowknife	27	1,594	1	9	40	1	188

**Table 10-2**  
**Local movements, peak hour and peak day — NAV CANADA flight service stations**

	Rank of movements	Number of movements	Peak hour occurrence			Peak day occurrence	
			Day in month	Hour in day	Number of movements	Day in month	Number of movements
Brandon Municipal	24	374	8	11	26	7	60
Campbell River	6	1,620	2	13	60	4	174
Castlegar	29	250	1	11	26	9	38
Charlottetown	12	990	25	15	32	25	144
Churchill	45	50	18	12	48	18	48
Cranbrook	32	212	4	12	28	4	34
Dawson Creek	27	296	10	12	22	31	42
Deer Lake	34	186	7	10	24	18	48
Fort McMurray	11	1,108	24	10	30	25	128
Fort Nelson	39	126	4	7	12	18	20
Fort St John	26	348	15	19	44	15	144
Fredericton International	30	226	9	11	12	6	26
Grande Prairie	14	927	8	16	44	15	114
High Level	43	78	27	12	16	10	22
Îles-de-la-Madeleine	0	0	0	0	0	0	0
Inuvik/Mike Zubko	40	106	16	9	16	21	48
Iqaluit	31	212	17	16	12	1	28
Kamloops	3	2,800	27	14	66	20	314
Kenora	37	138	5	16	28	5	32
Kingston	9	1,346	28	10	40	2	122
Kuujuuaq	42	90	22	17	14	22	16
Kuujuuarapik	0	0	0	0	0	0	0
La Grande Rivière	47	8	2	10	2	2	2
La Ronge	19	636	13	14	32	31	80
Lethbridge	17	778	1	22	24	5	78
Lloydminster	20	634	30	19	28	22	54
Medicine Hat	23	452	8	20	24	20	52
Mont-Joli	50	2	22	14	2	22	2
Nanaimo	8	1,360	16	11	56	16	118
Norman Wells	13	950	17	10	20	12	50
North Bay	1	3,186	12	9	52	12	264
Ottawa/Gatineau	4	2,438	19	11	46	19	196
Peace River	33	210	3	11	28	3	30
Penticton	5	2,210	18	18	54	16	216
Port Hardy	46	26	15	19	6	4	8
Prince Albert	41	102	22	17	18	22	18
Prince Rupert	36	152	14	14	12	4	32
Rankin Inlet	49	2	30	14	2	30	2
Red Deer Regional	7	1,472	8	10	36	8	156
Rouyn-Noranda	18	706	19	14	40	21	268
Saint John	22	532	31	14	20	5	82
Sept-Îles	16	819	26	19	96	26	162
Sioux Lookout	38	130	1	15	20	1	26
Smithers	44	76	1	10	20	1	20
St Anthony	48	6	11	10	4	11	6
St Catharines	2	2,960	29	11	58	29	192
Terrace	21	630	2	15	30	2	92
Thompson	35	154	15	14	30	15	76
Timmins	28	252	4	17	30	18	50
Val-D'or	10	1,340	26	12	86	26	236
Victoria Harbour	0	0	0	0	0	0	0
Wabush	0	0	0	0	0	0	0
Whitecourt	15	890	29	9	42	29	116
Williams Lake	25	372	9	18	40	28	62

**Table 11-1**  
**Local movements - civil, peak hour and peak day — NAV CANADA towers**

	Rank of movements	Number of movements	Peak hour occurrence			Peak day occurrence	
			Day in month	Hour in day	Number of movements	Day in month	Number of movements
Abbotsford	3	10,058	16	15	84	28	544
Boundary Bay	1	12,527	3	11	88	1	677
Calgary International	38	242	1	13	14	18	34
Calgary/Springbank	2	10,642	29	13	96	30	684
Chicoutimi/St-Honoré	10	5,418	25	10	108	2	442
Edmonton City Centre	30	1,276	10	13	36	8	118
Edmonton International	35	562	8	13	22	8	126
Edmonton/Villeneuve	13	5,138	10	11	60	7	326
Gander International	26	1,628	16	22	48	24	204
Halifax/Robert L Stanfield International	31	874	14	10	30	29	126
Hamilton	21	3,392	21	11	46	2	210
Kelowna	19	3,551	4	13	50	3	178
Kitchener/Waterloo	12	5,262	30	11	68	30	388
Langley	8	5,967	28	12	78	11	376
London	17	4,024	30	17	62	21	286
Moncton/Greater Moncton International	14	5,001	10	10	38	23	346
Montréal/Mirabel International	36	559	10	12	24	9	52
Montréal/Pierre Elliott Trudeau International	0	0	0	0	0	0	0
Montréal/St-Hubert	5	9,587	12	12	88	9	654
Oshawa	15	4,976	4	16	54	21	314
Ottawa/Macdonald-Cartier International	11	5,302	1	10	44	29	308
Pitt Meadows	6	9,342	9	15	84	9	562
Prince George	24	1,678	2	14	80	3	188
Québec/Jean Lesage International	20	3,462	2	11	42	2	230
Regina International	25	1,640	28	22	38	15	144
Saskatoon/John G Diefenbaker International	23	2,482	1	13	52	16	184
Sault Ste. Marie	18	3,999	3	10	44	31	232
St. John's International	37	294	3	15	16	3	38
St-Jean	32	850	14	15	221	14	231
Sudbury	34	662	7	14	30	28	84
Thunder Bay	29	1,339	16	16	30	28	152
Toronto/Buttonville Municipal	4	9,632	28	8	84	29	548
Toronto/City Centre	16	4,942	3	14	60	3	334
Toronto/Lester B Pearson International	0	0	0	0	0	0	0
Vancouver Harbour	39	6	4	12	6	4	6
Vancouver International	0	0	0	0	0	0	0
Victoria International	7	6,384	23	15	58	9	400
Whitehorse International	27	1,438	30	11	50	29	132
Windsor	22	2,784	5	12	48	8	180
Winnipeg/James Armstrong Richardson International	33	664	27	15	18	27	74
Winnipeg/St. Andrews	9	5,576	2	10	74	16	396
Yellowknife	28	1,434	1	9	40	1	154

**Table 11-2**  
**Local movements - civil, peak hour and peak day — NAV CANADA flight service stations**

	Rank of movements	Number of movements	Peak hour occurrence			Peak day occurrence	
			Day in month	Hour in day	Number of movements	Day in month	Number of movements
Brandon Municipal	24	374	8	11	26	7	60
Campbell River	6	1,620	2	13	60	4	174
Castlegar	29	250	1	11	26	9	38
Charlottetown	11	982	25	15	32	25	144
Churchill	45	50	18	12	48	18	48
Cranbrook	31	212	4	12	28	4	34
Dawson Creek	27	296	10	12	22	31	42
Deer Lake	33	186	7	10	24	18	48
Fort McMurray	10	1,108	24	10	30	25	128
Fort Nelson	39	126	4	7	12	18	20
Fort St John	26	348	15	19	44	15	144
Fredericton International	34	176	9	11	12	6	26
Grande Prairie	13	927	8	16	44	15	114
High Level	43	78	27	12	16	10	22
Îles-de-la-Madeleine	0	0	0	0	0	0	0
Inuvik/Mike Zubko	40	106	16	9	16	21	48
Iqaluit	30	212	17	16	12	1	28
Kamloops	3	2,800	27	14	66	20	314
Kenora	37	138	5	16	28	5	32
Kingston	8	1,340	28	10	40	2	122
Kuujuuaq	42	90	22	17	14	22	16
Kuujuuarapik	0	0	0	0	0	0	0
La Grande Rivière	47	8	2	10	2	2	2
La Ronge	19	636	13	14	32	31	80
Lethbridge	17	778	1	22	24	5	78
Lloydminster	20	634	30	19	28	22	54
Medicine Hat	23	452	8	20	24	20	52
Mont-Joli	49	2	22	14	2	22	2
Nanaimo	14	912	16	11	56	16	118
Norman Wells	12	950	17	10	20	12	50
North Bay	1	3,174	12	9	52	12	264
Ottawa/Gatineau	4	2,438	19	11	46	19	196
Peace River	32	210	3	11	28	3	30
Penticton	5	2,210	18	18	54	16	216
Port Hardy	46	24	15	19	6	4	8
Prince Albert	41	102	22	17	18	22	18
Prince Rupert	35	152	14	14	12	4	32
Rankin Inlet	50	2	30	14	2	30	2
Red Deer Regional	7	1,472	8	10	36	8	156
Rouyn-Noranda	18	706	19	14	40	21	268
Saint John	22	524	31	14	20	5	82
Sept-Îles	16	813	26	19	96	26	162
Sioux Lookout	38	130	1	15	20	1	26
Smithers	44	76	1	10	20	1	20
St Anthony	48	6	11	10	4	11	6
St Catharines	2	2,960	29	11	58	29	192
Terrace	21	630	2	15	30	2	92
Thompson	36	144	15	14	30	15	76
Timmins	28	252	4	17	30	18	50
Val-D'or	9	1,340	26	12	86	26	236
Victoria Harbour	0	0	0	0	0	0	0
Wabush	0	0	0	0	0	0	0
Whitecourt	15	890	29	9	42	29	116
Williams Lake	25	372	9	18	40	28	62



**Table 12-1**  
**Local movements - military, peak hour and peak day — NAV CANADA towers**

	Rank of movements	Number of movements	Peak hour occurrence			Peak day occurrence	
			Day in month	Hour in day	Number of movements	Day in month	Number of movements
Abbotsford	22	2	3	11	2	3	2
Boundary Bay	0	0	0	0	0	0	0
Calgary International	14	12	16	13	12	16	12
Calgary/Springbank	0	0	0	0	0	0	0
Chicoutimi/St-Honoré	18	6	23	15	6	23	6
Edmonton City Centre	23	2	25	13	2	25	2
Edmonton International	10	42	20	15	6	22	12
Edmonton/Villeneuve	0	0	0	0	0	0	0
Gander International	4	126	16	13	22	16	38
Halifax/Robert L Stanfield International	6	64	16	14	8	10	14
Hamilton	0	0	0	0	0	0	0
Kelowna	15	8	8	10	4	8	4
Kitchener/Waterloo	0	0	0	0	0	0	0
Langley	0	0	0	0	0	0	0
London	0	0	0	0	0	0	0
Moncton/Greater Moncton International	20	4	16	9	2	16	2
Montréal/Mirabel International	13	15	18	12	9	18	9
Montréal/Pierre Elliott Trudeau International	0	0	0	0	0	0	0
Montréal/St-Hubert	11	42	9	11	10	9	16
Oshawa	0	0	0	0	0	0	0
Ottawa/Macdonald-Cartier International	9	46	15	12	8	15	16
Pitt Meadows	0	0	0	0	0	0	0
Prince George	0	0	0	0	0	0	0
Québec/Jean Lesage International	8	50	2	14	12	1	18
Regina International	12	38	25	10	6	25	10
Saskatoon/John G Diefenbaker International	5	96	15	17	12	15	34
Sault Ste. Marie	21	4	17	11	2	17	2
St. John's International	16	8	19	20	8	19	8
St-Jean	0	0	0	0	0	0	0
Sudbury	0	0	0	0	0	0	0
Thunder Bay	7	52	6	10	8	4	8
Toronto/Buttonville Municipal	19	4	3	12	4	3	4
Toronto/City Centre	17	6	19	13	4	19	4
Toronto/Lester B Pearson International	0	0	0	0	0	0	0
Vancouver Harbour	0	0	0	0	0	0	0
Vancouver International	0	0	0	0	0	0	0
Victoria International	2	354	22	22	34	22	76
Whitehorse International	0	0	0	0	0	0	0
Windsor	0	0	0	0	0	0	0
Winnipeg/James Armstrong Richardson International	1	460	2	11	20	16	108
Winnipeg/St. Andrews	0	0	0	0	0	0	0
Yellowknife	3	160	1	14	14	1	34

**Table 12-2**  
**Local movements - military, peak hour and peak day — NAV CANADA flight service stations**

	Rank of movements	Number of movements	Peak hour occurrence			Peak day occurrence	
			Day in month	Hour in day	Number of movements	Day in month	Number of movements
Brandon Municipal	0	0	0	0	0	0	0
Campbell River	0	0	0	0	0	0	0
Castlegar	0	0	0	0	0	0	0
Charlottetown	5	8	1	22	6	1	6
Churchill	0	0	0	0	0	0	0
Cranbrook	0	0	0	0	0	0	0
Dawson Creek	0	0	0	0	0	0	0
Deer Lake	0	0	0	0	0	0	0
Fort McMurray	0	0	0	0	0	0	0
Fort Nelson	0	0	0	0	0	0	0
Fort St John	0	0	0	0	0	0	0
Fredericton International	2	50	29	16	10	29	26
Grande Prairie	0	0	0	0	0	0	0
High Level	0	0	0	0	0	0	0
Îles-de-la-Madeleine	0	0	0	0	0	0	0
Inuvik/Mike Zubko	0	0	0	0	0	0	0
Iqaluit	0	0	0	0	0	0	0
Kamloops	0	0	0	0	0	0	0
Kenora	0	0	0	0	0	0	0
Kingston	7	6	28	16	6	28	6
Kuujuuaq	0	0	0	0	0	0	0
Kuujuuarapik	0	0	0	0	0	0	0
La Grande Rivière	0	0	0	0	0	0	0
La Ronge	0	0	0	0	0	0	0
Lethbridge	0	0	0	0	0	0	0
Lloydminster	0	0	0	0	0	0	0
Medicine Hat	0	0	0	0	0	0	0
Mont-Joli	0	0	0	0	0	0	0
Nanaimo	1	448	21	13	24	21	98
Norman Wells	0	0	0	0	0	0	0
North Bay	3	12	29	11	8	29	8
Ottawa/Gatineau	0	0	0	0	0	0	0
Peace River	0	0	0	0	0	0	0
Penticton	0	0	0	0	0	0	0
Port Hardy	9	2	11	17	2	11	2
Prince Albert	0	0	0	0	0	0	0
Prince Rupert	0	0	0	0	0	0	0
Rankin Inlet	0	0	0	0	0	0	0
Red Deer Regional	0	0	0	0	0	0	0
Rouyn-Noranda	0	0	0	0	0	0	0
Saint John	6	8	29	11	8	29	8
Sept-Îles	8	6	16	11	6	16	6
Sioux Lookout	0	0	0	0	0	0	0
Smithers	0	0	0	0	0	0	0
St Anthony	0	0	0	0	0	0	0
St Catharines	0	0	0	0	0	0	0
Terrace	0	0	0	0	0	0	0
Thompson	4	10	31	11	10	31	10
Timmins	0	0	0	0	0	0	0
Val-D'or	0	0	0	0	0	0	0
Victoria Harbour	0	0	0	0	0	0	0
Wabush	0	0	0	0	0	0	0
Whitecourt	0	0	0	0	0	0	0
Williams Lake	0	0	0	0	0	0	0

# Methodology

---

## Survey universe

### Coverage

The survey covers all aircraft movements at Canadian airports with NAV CANADA air traffic control towers and flight service stations.

## Methodology survey

The Itinerant movement record is designed to capture:

- Aircraft identification
- Aircraft type
- The last station before landing at the reporting airport or the next station after take-off
- Arrival or departure
- Time of movement
- Runway used
- Flight rules (Instrument flight rules or Visual flight rules).

The Local aircraft movement record provides for reports of local movements by:

- Hour
- Single engine aircraft
- Multi-engine aircraft
- Jet aircraft
- Military aircraft
- Date of movement

Processing of aircraft movement statistics involves several stages. Preliminary monthly data by class of operation are released in **Preliminary aircraft movement statistics**, catalogue no. 51F0001P (TP-1496 (NAV CANADA towered airports only)). Data which follow in **Aircraft movement statistics - Monthly** report, catalogue nos. 51-007-X and 51-008-X (TP-141) may contain revisions to the originally released figures. Annual tables, which may reflect further revisions, are released in the publication, **Aircraft movement statistics - Annual** report - TP-577. In particular, data on itinerant movements by type of operation may reflect revisions as various sources of comparative information (data collected from commercial air carriers by the Aviation Statistics Centre, Statistics Canada) become available during the processing cycle. Finally, when revisions are required after the release of TP-577, they are contained in the five year historical summary of subsequent editions of TP-577. These revisions are also reflected in the CANSIM tables, both monthly and annual.

The records are completed daily, based on a twenty-four hour clock running from zero hour to 23:59. The times recorded are Coordinated Universal Time (UTC); however, published statistics are shown in local times. The records are transmitted to the Aviation Statistics Centre.

The Aviation Statistics Centre maintains a data base of parameter files of current information on all registered aircraft. The storage of this information reduces the reporting burden of the survey respondents and limits the element of human error associated with the preparation of source documents.

Other parameter files information includes registered aircraft identifications and their corresponding aircraft types, gross take-off weights, types of power plant (piston, jet or turboprop); whether the aircraft are fixed wing, helicopters or gliders. This information also provides a basis for identifying type of flights (commercial, private and government) and the geographical area in which the flights take place.

The parameter files also include airport environment information against which the airport category is checked; the reported runway is validated and the time difference between UTC and Local is assigned.

## Data quality and limitations

---

Aircraft movement statistics are accumulated from data originating with air traffic control tower units or flight service station personnel. Because staff in these positions are highly trained in factual observation and reporting, the entries in the data bank are of a high quality.

The procedures for reporting aircraft movements on the Daily air traffic records by tower units are described in the NAV CANADA Air traffic control manual of operations (TP 703) Volume 1, Para. 1023 to 1023.5. Definitions for terms used in these paragraphs can be found in the appendix I "Glossary of terms" of this report.

To maintain uniformity in the reporting of source data, ASC issues to air traffic control units an "Air traffic designators" handbook (TP 143) listing the official Transport Canada aircraft type designators and the designators of various domestic and international air carriers. This handbook and another titled "Canada flight supplement" listing various airport codes serve as references to help ensure the reporting of the proper aircraft identity and the point of origin and destination of flights.

The processing system contains editing procedures designed to identify data errors occurring during transcription or during data capture of forms. Identified errors are manually corrected by ASC editing staff.

Errors may occur if an aircraft type code which exists is reported or data captured in error for a flight. For example, the reporting or keying of B727 for a flight actually performed by a B737 may not be detected during the system editing. That the aircraft type information is recorded by highly trained air traffic control tower staff using a common handbook of official aircraft codes will minimize this problem.

Similarly, the breakdown of the data on a geographic basis by use of location codes can be subject to error. For smaller locations, alphanumeric location codes are often used and the sequence of numbers and letters determines the geographic area to which the data are assigned. In some cases, where a sequence error has been introduced into the system either at the reporting unit or at data capture, a domestic movement may be classified as transborder or vice versa. The use of common manuals of location identifiers works to minimize this occurrence.

### Factors influencing the data

Roberval – the Flight Service Station closed in November 2006. As of December 2006, Roberval appears in Volume II – Airports without air traffic control towers.

Harmony Airways ceased its operations on April 9, 2007.

Icelandair began regular service from Halifax, Nova Scotia to Iceland on May 17, 2007.

# Appendix I

---

## Glossary of terms

### Air carrier

Aircraft operators licensed by the Canadian Transportation Agency to transport persons, mail and/or goods by air.

**Levels I to III air carriers (Defn 2000)** – This includes every Canadian air carrier that, in each of the two calendar years immediately preceding the report year, realized annual gross revenues of \$1,000,000 or more for the air services for which the air carrier held a licence. Also includes foreign air carriers.

**Levels IV to VI air carriers (Defn 2000)** – Canadian air carriers not classified in report level I-III that, in each of the two calendar years immediately preceding the report year, realized annual gross revenues of less than \$1,000,000 for the air services for which the air carrier held a licence. Since 2000, levels IV and VI are no longer applicable.

### Aircraft movement

A take off, a landing, or a simulated approach by an aircraft. ATC Manops amendment 8-8-83. NC-703.

### Class of operation

Aircraft movements are classified as either “Itinerant” or “Local”.

### Commercial

Flights by aircraft operators licensed by the Canadian Transportation Agency to perform commercial air services. Commercial operations are divided into two categories: **Air carrier** and **Other commercial**.

### Domestic itinerant movements

Movements, at a Canadian airport, of aircraft departing to or arriving from another point in Canada.

### FSS

Flight service station.

### Government – Civil

Aircraft owned by federal, provincial and municipal bodies as well as foreign states, but excluding those owned by crown corporations, boards and commissions. Such aircraft are coded “3” under “Purpose” in the Canadian civil aircraft register.

### Government – Military

Aircraft of any branch of the armed forces of any nation.

### Gross take-off weight

The maximum weight for which the aircraft is licensed to operate. For operational purposes, all weights are rounded upwards to the next 1,000 kilograms. Thus 3,200 kilograms becomes 4,000 kilograms.

### I.F.R. flight

A flight conducted in accordance with Instrument flight rules.

### International movements

Movements, at a Canadian airport, of aircraft arriving from or departing to a point outside Canada. International movements are subclassified into “transborder” (to or from a point in the United States including Alaska but excluding Hawaii), and “other international” (to or from points in countries other than Canada and the United States).

Since aircraft movements are reported on the basis of place “arrived from” or “departed to”, an arrival at Mirabel airport from London, England would appear under “other international”. If the same aircraft moved on to Toronto, both the departure at Mirabel and the arrival at Toronto would be shown as “domestic”.

### Itinerant movements

At Airports **with** control towers and/or Flight service stations: for the purpose of completing air traffic records, itinerant movements are considered as movements in which aircraft proceed to or arrive from another location; or where aircraft leave the circuit but return without landing at another airport. At Airports **without** control towers: an aircraft movement in which the aircraft arrives from or departs to a point other than the reporting airport; or a movement by an aircraft that leaves the close proximity of an airport and returns without landing at another airport.

### Local movements

At Airports **with** control towers and/or Flight service stations: for the purpose of completing air traffic records, local movements are considered as movements in which the aircraft remains in the circuit. At Airports **without** control towers: an aircraft movement in which the aircraft remains in the close proximity of the airport. Local movements are often carried out during training flights (touch-and-go), equipment tests etc.

### Other commercial

Flights performed by **Commercial** aircraft operators not included in the **Air carrier** categories. Flying schools, agricultural sprayers, water-bombers, aerial photography and survey, etc.

### Power plant

The source of propulsion. For example, piston engines, turbo-propellers and jet engines. “Helicopters”, in this report, include both piston and turboshaft-driven engines.

### Private aircraft

Aircraft used solely for private purposes, not for hire and compensation, which are classified as “Private” or “Private Restricted” in the Canadian civil aircraft register or similar registries of other countries. Owners include individuals, groups and business firms.

### **Runway 88**

Through control zone flights, i.e. flights which communicate with the tower while transiting the tower control zone to another destination without landing at the reporting airport.

Data for these runways are not included in the grand total.

### **Simulated approaches**

Movements that are either missed instrument or practice instrument approaches without landing.

### **TC**

Transport Canada

### **Tower control zone**

A controlled airspace within the proximity of an air traffic control tower, usually within a radius of less than 24 kilometres of the tower.

### **V.F.R. flight**

A flight conducted in accordance with Visual flight rules.

### **Weight group**

The classification of weight classes in groups for statistical purposes.