



Catalogue no. 63-007-XIE

New Motor Vehicle Sales

June 2007



Statistics
Canada

Statistique
Canada

Canada

How to obtain more information

For information about this product or the wide range of services and data available from Statistics Canada, visit our website at www.statcan.ca or contact us by e-mail at infostats@statcan.ca or by phone from 8:30am to 4:30pm Monday to Friday at:

Toll-free telephone (Canada and the United States):

Inquiries line **1-800-263-1136**

National telecommunications device for the hearing impaired **1-800-363-7629**

Fax line **1-877-287-4369**

Depository Services Program inquiries line **1-800-635-7943**

Depository Services Program fax line **1-800-565-7757**

Statistics Canada national contact centre: 1-613-951-8116

Fax line **1-613-951-0581**

Information to access the product

This product, catalogue no. 63-007-XIE, is available for free in electronic format. To obtain a single issue, visit our website at www.statcan.ca and select Publications.

Standards of service to the public

Statistics Canada is committed to serving its clients in a prompt, reliable and courteous manner. To this end, the Agency has developed *standards of service* which its employees observe in serving its clients.

To obtain a copy of these service standards, please contact Statistics Canada toll free at 1-800-263-1136. The service standards are also published on www.statcan.ca under About us > Providing services to Canadians.



Statistics Canada
Distributive Trades Division

New Motor Vehicle Sales

June 2007

Published by authority of the Minister responsible for Statistics Canada

© Minister of Industry, 2007

All rights reserved. The content of this electronic publication may be reproduced, in whole or in part, and by any means, without further permission from Statistics Canada, subject to the following conditions: that it be done solely for the purposes of private study, research, criticism, review or newspaper summary, and/or for non-commercial purposes; and that Statistics Canada be fully acknowledged as follows: Source (or "Adapted from", if appropriate): Statistics Canada, year of publication, name of product, catalogue number, volume and issue numbers, reference period and page(s). Otherwise, no part of this publication may be reproduced, stored in a retrieval system or transmitted in any form, by any means—electronic, mechanical or photocopy—or for any purposes without prior written permission of Licensing Services, Client Services Division, Statistics Canada, Ottawa, Ontario, Canada K1A 0T6.

August 2007

Catalogue no. 63-007-XIE, Vol. 79, No. 6

ISSN 1209-1146

Frequency: Monthly

Ottawa

La version française de cette publication est disponible sur demande (n° 63-007-XIF au catalogue).

Note of appreciation

Canada owes the success of its statistical system to a long standing partnership between Statistics Canada, the citizens of Canada, its businesses, governments and other institutions. Accurate and timely statistical information could not be produced without their continued cooperation and goodwill.

User information

Symbols

The following standard symbols are used in Statistics Canada publications:

- . not available for any reference period
- .. not available for a specific reference period
- ... not applicable
- 0 true zero or a value rounded to zero
- 0^s value rounded to 0 (zero) where there is a meaningful distinction between true zero and the value that was rounded
- p preliminary
- r revised
- x suppressed to meet the confidentiality requirements of the *Statistics Act*
- E use with caution
- F too unreliable to be published

Note

Components may not add to totals due to rounding.

Acknowledgements

This publication was prepared under the direction of:

- **R. Evans**, Director, Distributive Trades Division
- **P. Thomson**, Assistant Director, Distributive Trades Division
- **S. Grenier**, Retail Sub-annuals surveys chief, Distributive Trades Division
- **J. Dunlavy**, Analyst Retail Sub-annuals surveys section, Distributive Trades Division

Table of contents

Highlights	5
Analysis – June 2007	6
Decrease in truck sales overwhelms rebound in car sales	7
Sales in most provinces decrease	7
Related products	9
Statistical tables	
1 Monthly sales of new motor vehicles, by type and origin	11
1-1 in units	11
1-2 in dollars	13
2 Average monthly prices of passenger cars, by origin	15
3 Monthly market share of new passenger car sales (units), by origin, Canada	16
4 Provincial sales of new motor vehicles, by type and origin, in units and dollars, June	17
5 Year to date provincial sales of new motor vehicles, by type and origin	19
5-1 in units, January to June	19
5-2 in dollars, January to June	21
6 Annual sales of new motor vehicles, by type and origin, in units and dollars, Canada	23
7 Canada, monthly sales of new motor vehicles, in units, by type and origin, seasonally adjusted	24
8 Monthly sales of new motor vehicles, in units, by province, seasonally adjusted	25
Data quality, concepts and methodology	
Definitions	27
Appendix	
I Scope of the survey	28
II List of North American motor vehicle manufacturers	31

Table of contents – continued

Charts

1.	New motor vehicle sales, seasonally adjusted, in units, 2004 to 2007	6
2.	Passenger car sales, seasonally adjusted, in units, 2004 to 2007	7
3.	Truck, van and bus sales, seasonally adjusted, in units, 2004 to 2007	8
4.	Monthly distribution of the Canadian motor vehicle market (passenger cars), by origin, 2004 to 2007	8
5.	Cumulative sales of new passenger cars, by origin, in units, 2005 to 2007	8

Highlights

June 2007

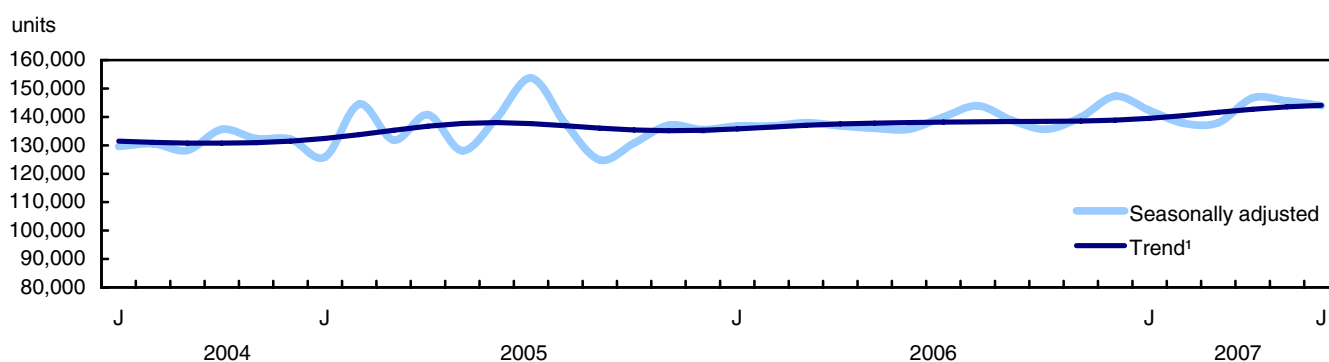
- New motor vehicle sales dipped slightly for a second consecutive month in June, but remained roughly in line with April's and May's high levels.

Analysis – June 2007

New motor vehicle sales dipped slightly for a second consecutive month in June, but remained roughly in line with April's and May's high levels.

There were 143,900 new vehicles sold in June, representing a 1.2% decline from May, according to seasonally adjusted data from the New Motor Vehicle Sales Survey.

Chart 1
New motor vehicle sales, seasonally adjusted, in units, 2004 to 2007



1. Trends represent smoothed seasonally adjusted data

The decrease in June was entirely due to a fall in sales of trucks (which include minivans, sport-utility vehicles, light and heavy trucks, vans and buses). This decline was partially offset by an increase in passenger car sales, which were up as a result of increases in both North American-built and overseas-built models.

Note to readers

All data in this release are seasonally adjusted.

Passenger cars include those used for personal and commercial purposes, such as taxis or rental cars. **Trucks** include minivans, sport-utility vehicles, light and heavy trucks, vans and buses.

North American-built new motor vehicles include vehicles manufactured or assembled in Canada, the United States or Mexico. All other new motor vehicles are considered to have been manufactured overseas.

For reasons of confidentiality, data for Yukon, the Northwest Territories and Nunavut are included with those for British Columbia.

The New Motor Vehicle Sales Survey is compiled on the basis of figures obtained from motor vehicle manufacturers and importers. These results may vary from those obtained directly from auto dealers, due to possible differences in record keeping.

Preliminary industry data indicate that sales of new motor vehicles declined again (-3%) in July.

Despite the modest declines in May and June, new motor vehicle sales were up a healthy 4.4% in the second quarter. This was largely due to a major sales surge in April (+6.3%).

Decrease in truck sales overwhelms rebound in car sales

Sales of new trucks fell by 3.9% in June to 69,179. Despite the decline in June, truck sales were strong in the second quarter (+2.7%) as dealers maintained comparatively high sales levels throughout the three-month period.

New car sales rebounded (+1.4%) after a decrease in May. Car sales rose by just over 1,000 units to 74,720 in June. Sales of passenger cars have experienced various ups and downs recently, but were strong on the whole as sales in the second quarter increased 6.0% over the first quarter.

Sales of both North American-Built and overseas-built cars rose in June by 0.7% and 2.6% respectively. The volatility in new car sales has come mainly from the North American-built component as overseas-built models have grown steadily throughout the year so far, stalling only twice.

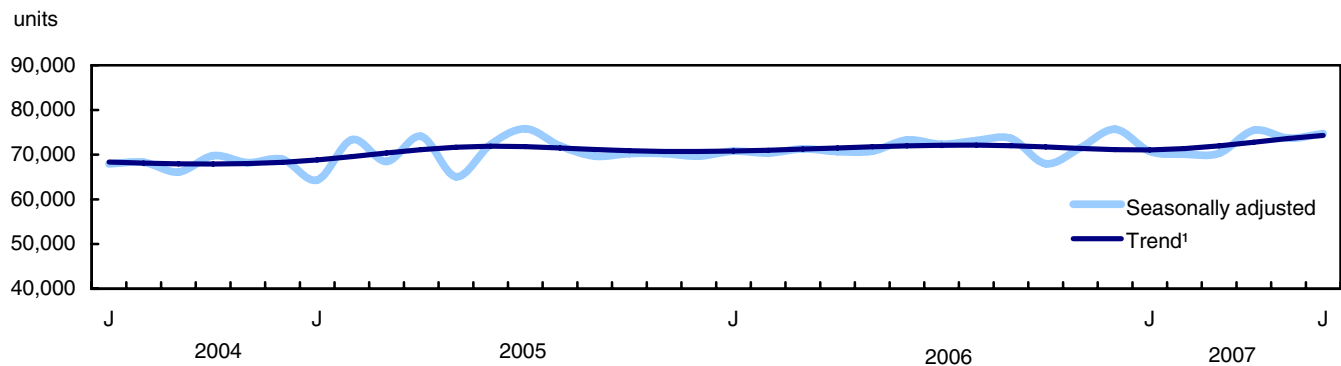
Sales in most provinces decrease

The overall decline in sales of new motor vehicles was spread across most provinces, as only Nova Scotia and Alberta recorded growth in June. Nova Scotia had the highest percentage increase (+9.5%), compensating for some of the declines experienced in May. Gains in the number of sales in Alberta (+3.4%) more than offset decreases in May, but were not enough to overcome declines in April.

Unit sales in every other province were down in June. Quebec (-3.6%) gave back the increase in May, its sales of new motor vehicles settling at a level of 35,825, similar to April. Ontario sales were down (-1.4%) for the second consecutive month. In the East, Prince Edward Island (-6.9%), Newfoundland and Labrador (-3.8%), and New Brunswick (-1.7%) all slipped after recording increases in May. Saskatchewan (-5.1%), British Columbia (-2.0%) and Manitoba (-1.0%) also contributed to the national decline in June.

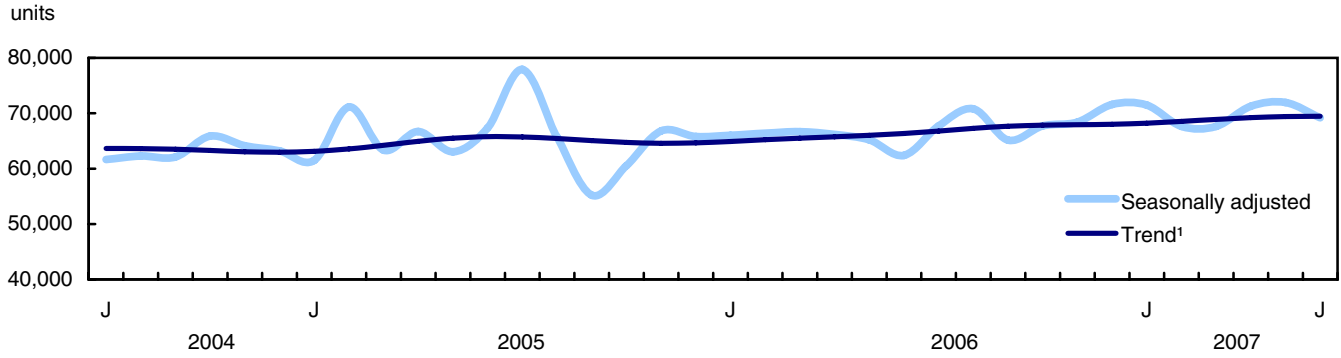
Chart 2

Passenger car sales, seasonally adjusted, in units, 2004 to 2007



1. Trends represent smoothed seasonally adjusted data

Chart 3
Truck, van and bus sales, seasonally adjusted, in units, 2004 to 2007



1. Trends represent smoothed seasonally adjusted data

Chart 4
Monthly distribution of the Canadian motor vehicle market (passenger cars), by origin, 2004 to 2007

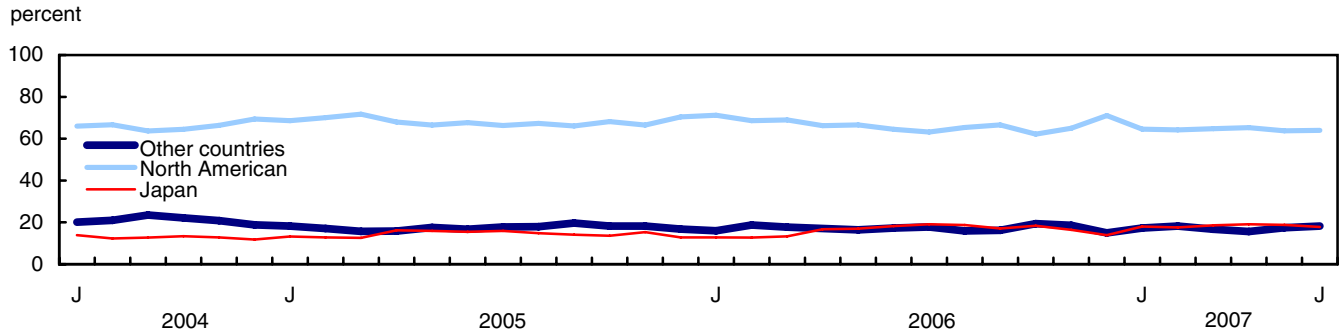
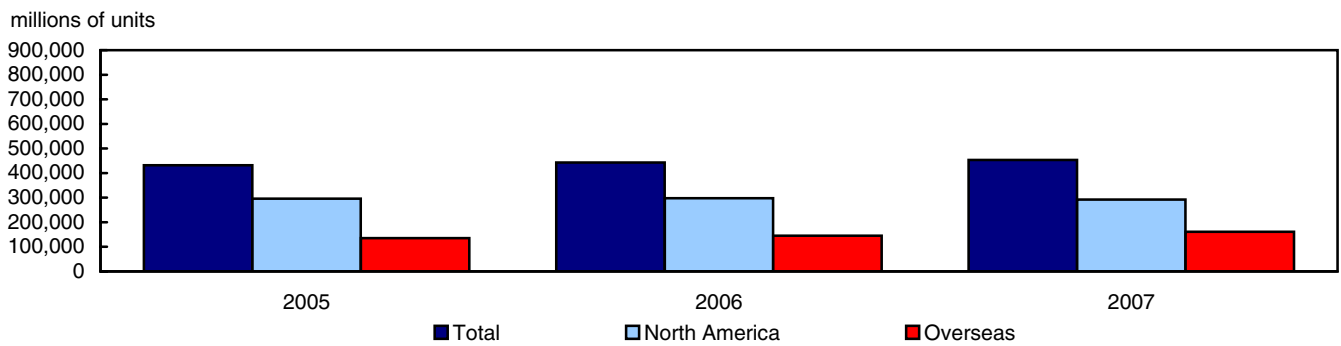


Chart 5
Cumulative sales of new passenger cars, by origin, in units, 2005 to 2007
January to June



Related products

Selected publications from Statistics Canada

63-005-X	Retail Trade
63-210-X	Retail Chain and Department Stores
63-236-X	Wholesaling and Retailing in Canada
63-541-X	Retail Commodity Survey, 1989
63F0006X	New Motor Vehicle Sales Seasonal Factors

Selected CANSIM tables from Statistics Canada

079-0001	New motor vehicle sales, Canada, provinces and territories, monthly
079-0002	Other estimates of new motor vehicle sales, Canada, provinces and territories, monthly

Selected surveys from Statistics Canada

2402	New Motor Vehicle Sales Survey
------	--------------------------------

Selected summary tables from Statistics Canada

- *New motor vehicle sales, by provinces (monthly)*
- *Economic indicators, by province and territory (monthly and quarterly)*
- *New motor vehicle sales*
- *New motor vehicle sales, by provinces*

Statistical tables

Table 1-1
Monthly sales of new motor vehicles, by type and origin in units

	Total new motor vehicles		Passenger cars							
			North America		Japan		Other countries		Total	
	Units	Year/year change	Units	Year/year change	Units	Year/year change	Units	Year/year change	Units	Year/year change
	no.	%	no.	%	no.	%	no.	%	no.	%
2005										
January	82,019	-3.8	27,144	-4.2	5,222	-26.2	7,178	-7.0	39,544	-8.3
February	106,064	11.9	35,421	21.1	6,488	-14.7	8,650	-5.8	50,559	9.8
March	148,296	-0.9	54,630	9.7	9,576	-19.3	11,991	-13.6	76,197	0.9
April	167,441	4.5	62,166	10.2	14,823	5.8	14,406	-11.2	91,395	5.5
May	161,865	-2.6	58,678	-9.3	14,029	4.3	15,550	2.5	88,257	-5.4
June	166,024	7.7	57,953	8.7	13,309	14.7	14,337	-6.4	85,599	6.7
July	158,796	16.3	53,318	11.4	12,749	26.0	14,345	-1.6	80,412	10.8
August	146,862	7.8	53,093	7.7	11,710	28.9	14,139	-9.1	78,942	6.8
September	128,431	-1.7	46,428	9.1	9,927	16.7	13,878	-11.5	70,233	5.3
October	118,993	-3.7	43,844	6.5	8,739	1.9	11,666	-17.4	64,249	0.5
November	124,111	3.2	41,318	2.9	9,508	23.3	11,287	-10.4	62,113	2.7
December	121,408	3.0	40,646	1.8	7,402	8.7	9,674	-10.7	57,722	0.3
Year	1,630,310	3.5	574,639	5.9	123,482	6.1	147,101	-8.6	845,222	3.1
2006										
January	89,422	9.0	31,445	15.8	5,653	8.3	7,086	-1.3	44,184	11.7
February	100,740	-5.0	33,450	-5.6	6,204	-4.4	9,104	5.2	48,758	-3.6
March	155,990	5.2	54,748	0.2	10,553	10.2	14,062	17.3	79,363	4.2
April	159,436	-4.8	57,142	-8.1	14,388	-2.9	14,728	2.2	86,258	-5.6
May	173,291	7.1	64,032	9.1	16,352	16.6	15,791	1.5	96,175	9.0
June	162,029	-2.4	56,827	-1.9	15,991	20.2	15,237	6.3	88,055	2.9
July	145,521	-8.4	48,349	-9.3	14,618	14.7	13,589	-5.3	76,556	-4.8
August	157,868	7.5	53,812	1.4	15,340	31.0	13,092	-7.4	82,244	4.2
September	140,065	9.1	48,497	4.5	12,486	25.8	11,832	-14.7	72,815	3.7
October	123,076	3.4	38,841	-11.4	11,468	31.2	12,139	4.1	62,448	-2.8
November	127,732	2.9	41,464	0.4	10,425	9.6	11,867	5.1	63,756	2.6
December	131,157	8.0	44,495	9.5	8,681	17.3	9,373	-3.1	62,549	8.4
Year	1,666,327	2.2	573,102	-0.3	142,159	15.1	147,900	0.5	863,161	2.1
2007										
January	94,413	5.6	27,594	-12.2	7,704	36.3	7,407	4.5	42,705	-3.3
February	99,877	-0.9	30,361	-9.2	8,299	33.8	8,596	-5.6	47,256	-3.1
March	154,450	-1.0	49,540	-9.5	14,206	34.6	12,741	-9.4	76,487	-3.6
April	172,428	8.1	60,392	5.7	17,649	22.7	14,405	-2.2	92,446	7.2
May	189,076	9.1	65,400	2.1	19,315	18.1	17,849	13.0	102,564	6.6
June p	172,424	6.4	58,700	3.3	16,315	2.0	16,714	9.7	91,729	4.2

See footnotes at the end of the table.

Table 1-1 – continued

Monthly sales of new motor vehicles, by type and origin in units

	Total new motor vehicles		Trucks ¹					
			North America		Overseas		Total	
	Units	Year/year change	Units	Year/year change	Units	Year/year change	Units	Year/year change
	no.	%	no.	%	no.	%	no.	%
2005								
January	82,019	-3.8	36,460	0.9	6,015	1.0	42,475	0.9
February	106,064	11.9	48,151	13.0	7,354	19.9	55,505	13.9
March	148,296	-0.9	62,010	-5.4	10,089	18.4	72,099	-2.6
April	167,441	4.5	65,425	1.3	10,621	18.8	76,046	3.4
May	161,865	-2.6	63,273	-1.2	10,335	17.9	73,608	1.1
June	166,024	7.7	69,913	7.5	10,512	18.7	80,425	8.8
July	158,796	16.3	67,772	24.1	10,612	13.4	78,384	22.5
August	146,862	7.8	56,944	8.5	10,976	12.6	67,920	9.1
September	128,431	-1.7	49,373	-9.1	8,825	-8.4	58,198	-9.0
October	118,993	-3.7	45,897	-10.1	8,847	3.0	54,744	-8.2
November	124,111	3.2	53,478	3.7	8,520	3.3	61,998	3.6
December	121,408	3.0	54,509	5.8	9,177	5.3	63,686	5.7
Year	1,630,310	3.5	673,205	3.0	111,883	10.3	785,088	4.0
2006								
January	89,422	9.0	39,038	7.1	6,200	3.1	45,238	6.5
February	100,740	-5.0	44,353	-7.9	7,629	3.7	51,982	-6.3
March	155,990	5.2	65,037	4.9	11,590	14.9	76,627	6.3
April	159,436	-4.8	61,413	-6.1	11,765	10.8	73,178	-3.8
May	173,291	7.1	65,146	3.0	11,970	15.8	77,116	4.8
June	162,029	-2.4	62,927	-10.0	11,047	5.1	73,974	-8.0
July	145,521	-8.4	57,354	-15.4	11,611	9.4	68,965	-12.0
August	157,868	7.5	62,878	10.4	12,746	16.1	75,624	11.3
September	140,065	9.1	55,604	12.6	11,646	32.0	67,250	15.6
October	123,076	3.4	51,157	11.5	9,471	7.1	60,628	10.7
November	127,732	2.9	55,453	3.7	8,523	0.0	63,976	3.2
December	131,157	8.0	60,884	11.7	7,724	-15.8	68,608	7.7
Year	1,666,327	2.2	681,244	1.2	121,922	9.0	803,166	2.3
2007								
January	94,413	5.6	45,046	15.4	6,662	7.5	51,708	14.3
February	99,877	-0.9	46,119	4.0	6,502	-14.8	52,621	1.2
March	154,450	-1.0	68,305	5.0	9,658	-16.7	77,963	1.7
April	172,428	8.1	69,974	13.9	10,008	-14.9	79,982	9.3
May	189,076	9.1	76,370	17.2	10,142	-15.3	86,512	12.2
June P	172,424	6.4	71,626	13.8	9,069	-17.9	80,695	9.1
Year								

1. Trucks include minivans, sport-utility vehicles, light and heavy trucks, vans and buses.
Note(s): Percentage change are year-over-year changes.

Table 1-2
Monthly sales of new motor vehicles, by type and origin in dollars

	Total new motor vehicles		Passenger cars							
			North America		Japan		Other countries		Total	
	Units	Year/year change	Units	Year/year change	Units	Year/year change	Units	Year/year change	Units	Year/year change
	\$'000	%	\$'000	%	\$'000	%	\$'000	%	\$'000	%
2005										
January	2,687,357	-0.9	666,757	-2.9	119,763	-23.1	198,787	-6.3	985,307	-6.6
February	3,481,340	15.8	874,955	22.2	150,732	-12.0	245,344	-7.5	1,271,031	10.3
March	4,750,643	1.6	1,352,574	11.9	229,750	-16.5	354,295	-11.8	1,936,618	2.7
April	5,287,013	8.1	1,526,182	11.6	347,827	7.3	424,652	-11.5	2,298,661	5.8
May	5,142,342	2.2	1,453,486	-7.1	326,975	5.2	452,678	-1.4	2,233,139	-4.3
June	5,325,761	10.7	1,421,874	9.2	309,365	15.9	421,970	-4.4	2,153,209	7.1
July	4,981,923	17.0	1,282,543	9.4	293,788	24.5	401,275	5.3	1,977,606	10.5
August	4,636,671	9.2	1,270,479	5.9	279,738	32.1	395,205	-3.7	1,945,421	6.8
September	4,107,993	-2.3	1,118,829	6.9	243,568	22.3	389,540	-8.0	1,751,937	5.0
October	3,823,755	-4.7	1,063,921	4.0	219,053	9.0	334,761	-12.8	1,617,735	0.6
November	4,076,656	3.5	1,009,044	2.0	227,258	25.1	332,669	-7.1	1,568,970	2.6
December	4,009,693	4.0	1,011,223	2.5	180,607	11.7	289,343	-8.5	1,481,173	1.1
Year	52,311,147	5.4	14,051,867	6.0	2,928,424	8.7	4,240,519	-6.5	21,220,807	3.6
2006										
January	2,962,427	10.2	783,654	17.5	141,207	17.9	202,686	2.0	1,127,547	14.4
February	3,343,501	-4.0	839,753	-4.0	155,157	2.9	262,755	7.1	1,257,665	-1.1
March	5,094,299	7.2	1,363,846	0.8	264,322	15.0	426,170	20.3	2,054,338	6.1
April	5,082,302	-3.9	1,412,732	-7.4	341,109	-1.9	439,582	3.5	2,193,423	-4.6
May	5,553,032	8.0	1,591,591	9.5	397,061	21.4	470,374	3.9	2,459,025	10.1
June	5,228,955	-1.8	1,417,848	-0.3	384,257	24.2	434,507	3.0	2,236,612	3.9
July	4,630,579	-7.1	1,197,134	-6.7	348,305	18.6	377,516	-5.9	1,922,955	-2.8
August	5,038,722	8.7	1,329,192	4.6	366,042	30.9	361,956	-8.4	2,057,190	5.7
September	4,574,990	11.4	1,185,371	5.9	303,344	24.5	359,256	-7.8	1,847,970	5.5
October	4,129,229	8.0	952,835	-10.4	278,233	27.0	347,059	3.7	1,578,126	-2.4
November	4,249,508	4.2	1,025,403	1.6	263,541	16.0	347,538	4.5	1,636,482	4.3
December	4,450,403	11.0	1,151,510	13.9	226,814	25.6	306,354	5.9	1,684,679	13.7
Year	54,337,947	3.9	14,250,869	1.4	3,469,392	18.5	4,335,753	2.2	22,056,012	3.9
2007										
January	3,136,288	5.9	678,980	-13.4	191,902	35.9	226,609	11.8	1,097,491	-2.7
February	3,347,401	0.1	744,780	-11.3	208,249	34.2	258,630	-1.6	1,211,660	-3.7
March	5,033,457	-1.2	1,211,963	-11.1	348,605	31.9	409,692	-3.9	1,970,260	-4.1
April	5,423,134	6.7	1,478,389	4.6	427,130	25.2	442,061	0.6	2,347,580	7.0
May	5,893,896	6.1	1,604,080	0.8	468,349	18.0	524,103	11.4	2,596,531	5.6
June P	5,386,916	3.0	1,430,134	0.9	392,487	2.1	481,678	10.9	2,304,299	3.0

See footnotes at the end of the table.

Table 1-2 – continued

Monthly sales of new motor vehicles, by type and origin in dollars

	Total new motor vehicles		Trucks ¹					
			North America		Overseas		Total	
	Units	Year/year change	Units	Year/year change	Units	Year/year change	Units	Year/year change
	\$'000	%	\$'000	%	\$'000	%	\$'000	%
2005								
January	2,687,357	-0.9	1,481,819	3.4	220,231	-1.6	1,702,050	2.7
February	3,481,340	15.8	1,950,551	20.8	259,759	9.1	2,210,310	19.3
March	4,750,643	1.6	2,455,779	-0.5	358,245	11.7	2,814,024	0.9
April	5,287,013	8.1	2,609,244	9.2	379,108	15.4	2,988,352	10.0
May	5,142,342	2.2	2,532,694	6.8	376,509	16.5	2,909,203	7.9
June	5,325,761	10.7	2,794,223	12.9	378,329	15.3	3,172,551	13.2
July	4,981,923	17.0	2,629,101	23.3	375,217	11.8	3,004,318	21.8
August	4,636,671	9.2	2,298,120	10.9	393,129	11.1	2,691,249	10.9
September	4,107,993	-2.3	2,036,189	-6.6	319,867	-10.1	2,356,056	-7.1
October	3,823,755	-4.7	1,868,616	-10.2	337,404	4.6	2,206,020	-8.3
November	4,076,656	3.5	2,175,327	3.4	332,359	8.2	2,507,686	4.1
December	4,009,693	4.0	2,199,952	6.5	328,568	0.4	2,528,520	5.7
Year	52,311,147	5.4	27,031,615	6.5	4,058,725	7.8	31,090,339	6.7
2006								
January	2,962,427	10.2	1,608,517	8.6	226,363	2.8	1,834,880	7.8
February	3,343,501	-4.0	1,811,564	-7.1	274,272	5.6	2,085,836	-5.6
March	5,094,299	7.2	2,624,715	6.9	415,246	15.9	3,039,961	8.0
April	5,082,302	-3.9	2,464,753	-5.5	424,125	11.9	2,888,878	-3.3
May	5,553,032	8.0	2,658,736	5.0	435,271	15.6	3,094,006	6.4
June	5,228,955	-1.8	2,593,825	-7.2	398,518	5.3	2,992,343	-5.7
July	4,630,579	-7.1	2,299,237	-12.5	408,387	8.8	2,707,624	-9.9
August	5,038,722	8.7	2,529,344	10.1	452,188	15.0	2,981,532	10.8
September	4,574,990	11.4	2,302,001	13.1	425,018	32.9	2,727,019	15.7
October	4,129,229	8.0	2,192,784	17.3	358,318	6.2	2,551,102	15.6
November	4,249,508	4.2	2,286,072	5.1	326,954	-1.6	2,613,026	4.2
December	4,450,403	11.0	2,466,891	12.1	298,834	-9.0	2,765,724	9.4
Year	54,337,947	3.9	27,838,439	3.0	4,443,494	9.5	32,281,931	3.8
2007								
January	3,136,288	5.9	1,785,216	11.0	253,581	12.0	2,038,797	11.1
February	3,347,401	0.1	1,889,070	4.3	246,671	-10.1	2,135,741	2.4
March	5,033,457	-1.2	2,705,469	3.1	357,729	-13.9	3,063,197	0.8
April	5,423,134	6.7	2,697,877	9.5	377,677	-11.0	3,075,554	6.5
May	5,893,896	6.1	2,914,248	9.6	383,117	-12.0	3,297,366	6.6
June ^p	5,386,916	3.0	2,741,838	5.7	340,779	-14.5	3,082,617	3.0

1. Trucks include minivans, sport-utility vehicles, light and heavy trucks, vans and buses.

Note(s): Percentage change are year-over-year changes.

Table 2
Average monthly prices of passenger cars, by origin

Period	North America		Japan		Other countries	
	Amount	Change	Amount	Change	Amount	Change
	\$	%	\$	%	\$	%
2005						
January	24,564	1.4	22,934	4.2	27,694	0.8
February	24,702	0.9	23,232	3.2	28,363	-1.8
March	24,759	2.0	23,992	3.5	29,547	2.2
April	24,550	1.3	23,465	1.4	29,477	-0.4
May	24,771	2.5	23,307	0.9	29,111	-3.8
June	24,535	0.5	23,245	1.1	29,432	2.1
July	24,055	-1.8	23,044	-1.2	27,973	7.0
August	23,929	-1.6	23,889	2.5	27,951	5.9
September	24,098	-2.0	24,536	4.8	28,069	4.0
October	24,266	-2.3	25,066	7.0	28,695	5.6
November	24,421	-0.9	23,902	1.5	29,474	3.6
December	24,879	0.7	24,400	2.7	29,909	2.4
Year	24,453	0.1	23,715	2.5	28,827	2.3
2006						
January	24,921	1.5	24,979	8.9	28,604	3.3
February	25,105	1.6	25,009	7.6	28,861	1.8
March	24,911	0.6	25,047	4.4	30,306	2.6
April	24,723	0.7	23,708	1.0	29,847	1.3
May	24,856	0.3	24,282	4.2	29,787	2.3
June	24,950	1.7	24,030	3.4	28,517	-3.1
July	24,760	2.9	23,827	3.4	27,781	-0.7
August	24,701	3.2	23,862	-0.1	27,647	-1.1
September	24,442	1.4	24,295	-1.0	30,363	8.2
October	24,532	1.1	24,262	-3.2	28,590	-0.4
November	24,730	1.3	25,280	5.8	29,286	-0.6
December	25,880	4.0	26,128	7.1	32,685	9.3
Year	24,866	1.7	24,405	2.9	29,315	1.7
2007						
January	24,606	-1.3	24,909	-0.3	30,594	7.0
February	24,531	-2.3	25,093	0.3	30,087	4.2
March	24,464	-1.8	24,539	-2.0	32,155	6.1
April	24,480	-1.0	24,201	2.1	30,688	2.8
May	24,527	-1.3	24,248	-0.1	29,363	-1.4
June ^p	24,363	-2.4	24,057	0.1	28,819	1.1
Year						

Note(s): Percentage changes shown are year-to-year changes.

Table 3
Monthly market share of new passenger car sales (units), by origin, Canada

Period	Total		Passenger cars					
			North America		Japan		Other countries	
	Units	Market share	Units	Market share	Units	Market share	Units	Market share
	no.	%	no.	%	no.	%	no.	%
2005								
January	39,544	100.0	27,144	68.6	5,222	13.2	7,178	18.2
February	50,559	100.0	35,421	70.1	6,488	12.8	8,650	17.1
March	76,197	100.0	54,630	71.7	9,576	12.6	11,991	15.7
April	91,395	100.0	62,166	68.0	14,823	16.2	14,406	15.8
May	88,257	100.0	58,678	66.5	14,029	15.9	15,550	17.6
June	85,599	100.0	57,953	67.7	13,309	15.5	14,337	16.7
July	80,412	100.0	53,318	66.3	12,749	15.9	14,345	17.8
August	78,942	100.0	53,093	67.3	11,710	14.8	14,139	17.9
September	70,233	100.0	46,428	66.1	9,927	14.1	13,878	19.8
October	64,249	100.0	43,844	68.2	8,739	13.6	11,666	18.2
November	62,113	100.0	41,318	66.5	9,508	15.3	11,287	18.2
December	57,722	100.0	40,646	70.4	7,402	12.8	9,674	16.8
Year	845,222	100.0	574,639	68.0	123,482	14.6	147,101	17.4
2006								
January	44,184	100.0	31,445	71.2	5,653	12.8	7,086	16.0
February	48,758	100.0	33,450	68.6	6,204	12.7	9,104	18.7
March	79,363	100.0	54,748	69.0	10,553	13.3	14,062	17.7
April	86,258	100.0	57,142	66.2	14,388	16.7	14,728	17.1
May	96,175	100.0	64,032	66.6	16,352	17.0	15,791	16.4
June	88,055	100.0	56,827	64.5	15,991	18.2	15,237	17.3
July	76,556	100.0	48,349	63.2	14,618	19.1	13,589	17.8
August	82,244	100.0	53,812	65.4	15,340	18.7	13,092	15.9
September	72,815	100.0	48,497	66.6	12,486	17.1	11,832	16.2
October	62,448	100.0	38,841	62.2	11,468	18.4	12,139	19.4
November	63,756	100.0	41,464	65.0	10,425	16.4	11,867	18.6
December	62,549	100.0	44,495	71.1	8,681	13.9	9,373	15.0
Year	863,161	100.0	573,102	66.4	142,159	16.5	147,900	17.1
2007								
January	42,705	100.0	27,594	64.6	7,704	18.0	7,407	17.3
February	47,256	100.0	30,361	64.2	8,299	17.6	8,596	18.2
March	76,487	100.0	49,540	64.8	14,206	18.6	12,741	16.7
April	92,446	100.0	60,392	65.3	17,649	19.1	14,405	15.6
May	102,564	100.0	65,400	63.8	19,315	18.8	17,849	17.4
June p	91,729	100.0	58,700	64.0	16,315	17.8	16,714	18.2
Year								

Table 4
Provincial sales of new motor vehicles, by type and origin, in units and dollars, June

Type and origin of vehicles	Canada	Newfoundland and Labrador	Prince Edward Island	Nova Scotia	New Brunswick	Quebec
Total, new motor vehicles						
2005 (no.)	166,024	2,865	553	4,916	3,682	43,267
2006 (no.)	162,029	2,903	561	4,856	3,674	39,043
2007 (no.)	172,424	3,322	593	5,406	4,090	41,679
2007 / 2006 %	6.4	14.4	5.7	11.3	11.3	6.8
2005 (\$'000)	5,325,761	77,228	14,960	137,450	104,747	1,248,809
2006 (\$'000)	5,228,955	76,420	15,247	138,392	107,312	1,127,712
2007 (\$'000)	5,386,916	89,108	14,579	143,208	113,456	1,170,904
2007 / 2006 %	3.0	16.6	-4.4	3.5	5.7	3.8
Passenger cars, manufactured in North America						
2005 (no.)	57,953	1,144	209	2,092	1,509	16,332
2006 (no.)	56,827	1,284	249	2,246	1,583	14,186
2007 (no.)	58,700	1,338	296	2,329	1,648	15,048
2007 / 2006 %	3.3	4.2	18.9	3.7	4.1	6.1
2005 (\$'000)	1,421,874	25,601	4,812	48,623	35,063	384,229
2006 (\$'000)	1,417,848	29,384	5,821	52,858	37,528	342,546
2007 (\$'000)	1,430,134	30,042	6,529	52,786	37,276	346,183
2007 / 2006 %	0.9	2.2	12.2	-0.1	-0.7	1.1
Passenger cars, manufactured in Japan						
2005 (no.)	13,309	x	x	321	x	5,499
2006 (no.)	15,991	x	x	423	x	6,296
2007 (no.)	16,315	x	x	490	x	6,180
2007 / 2006 %	2.0	x	x	15.8	x	-1.8
2005 (\$'000)	309,365	x	x	7,151	x	115,684
2006 (\$'000)	384,257	x	x	9,644	x	136,495
2007 (\$'000)	392,487	x	x	11,087	x	135,296
2007 / 2006 %	2.1	x	x	15.0	x	-0.9
Passenger cars, manufactured in other countries						
2005 (no.)	14,337	x	x	436	x	5,355
2006 (no.)	15,237	x	x	464	x	5,321
2007 (no.)	16,714	x	x	560	x	5,522
2007 / 2006 %	9.7	x	x	20.7	x	3.8
2005 (\$'000)	421,970	x	x	9,864	x	134,984
2006 (\$'000)	434,507	x	x	10,905	x	135,406
2007 (\$'000)	481,678	x	x	12,314	x	143,313
2007 / 2006 %	10.9	x	x	12.9	x	5.8
Trucks ¹, manufactured in North America						
2005 (no.)	69,913	x	x	1,830	1,497	13,272
2006 (no.)	62,927	x	x	1,491	1,313	10,567
2007 (no.)	71,626	x	x	1,805	1,623	12,884
2007 / 2006 %	13.8	x	x	21.1	23.6	21.9
2005 (\$'000)	2,794,223	x	x	64,009	53,721	518,964
2006 (\$'000)	2,593,825	x	x	57,439	52,035	420,812
2007 (\$'000)	2,741,838	x	x	59,511	57,736	470,323
2007 / 2006 %	5.7	x	x	3.6	11.0	11.8
Trucks ¹, manufactured overseas						
2005 (no.)	10,512	x	x	237	171	2,809
2006 (no.)	11,047	x	x	232	172	2,673
2007 (no.)	9,069	x	x	222	168	2,045
2007 / 2006 %	-17.9	x	x	-4.3	-2.3	-23.5
2005 (\$'000)	378,329	x	x	7,802	5,418	94,948
2006 (\$'000)	398,518	x	x	7,546	5,705	92,452
2007 (\$'000)	340,779	x	x	7,509	5,403	75,788
2007 / 2006 %	-14.5	x	x	-0.5	-5.3	-18.0

See footnotes at the end of the table.

Table 4 – continued

Provincial sales of new motor vehicles, by type and origin, in units and dollars, June

Type and origin of vehicles	Canada	Ontario	Manitoba	Saskatchewan	Alberta	British Columbia ²
Total, new motor vehicles						
2005 (no.)	166,024	62,037	4,552	3,784	21,327	19,041
2006 (no.)	162,029	61,376	4,328	3,897	22,356	19,035
2007 (no.)	172,424	62,457	4,498	4,522	25,537	20,320
2007 / 2006 %	6.4	1.8	3.9	16.0	14.2	6.8
2005 (\$'000)	5,325,761	2,072,605	154,659	129,311	744,210	641,782
2006 (\$'000)	5,228,955	2,005,984	139,796	134,062	843,245	640,784
2007 (\$'000)	5,386,916	1,964,845	145,171	151,878	913,191	680,577
2007 / 2006 %	3.0	-2.1	3.8	13.3	8.3	6.2
Passenger cars, manufactured in North America						
2005 (no.)	57,953	21,864	1,499	1,070	5,921	6,313
2006 (no.)	56,827	23,232	1,546	1,077	5,294	6,130
2007 (no.)	58,700	22,588	1,590	1,263	6,679	5,921
2007 / 2006 %	3.3	-2.8	2.8	17.3	26.2	-3.4
2005 (\$'000)	1,421,874	555,879	36,846	26,748	148,887	155,186
2006 (\$'000)	1,417,848	594,818	38,775	27,426	133,798	154,893
2007 (\$'000)	1,430,134	568,871	38,689	30,796	170,312	148,650
2007 / 2006 %	0.9	-4.4	-0.2	12.3	27.3	-4.0
Passenger cars, manufactured in Japan						
2005 (no.)	13,309	4,165	169	120	1,063	1,585
2006 (no.)	15,991	4,753	265	172	1,490	2,162
2007 (no.)	16,315	4,815	227	169	1,545	2,354
2007 / 2006 %	2.0	1.3	-14.3	-1.7	3.7	8.9
2005 (\$'000)	309,365	106,517	3,949	2,886	27,035	38,412
2006 (\$'000)	384,257	126,818	6,162	4,562	38,368	53,260
2007 (\$'000)	392,487	129,101	5,415	4,175	40,416	56,055
2007 / 2006 %	2.1	1.8	-12.1	-8.5	5.3	5.2
Passenger cars, manufactured in other countries						
2005 (no.)	14,337	4,990	270	196	995	1,459
2006 (no.)	15,237	5,234	310	211	1,085	1,882
2007 (no.)	16,714	5,985	348	222	1,326	2,030
2007 / 2006 %	9.7	14.3	12.3	5.2	22.2	7.9
2005 (\$'000)	421,970	168,433	6,766	4,610	30,656	54,024
2006 (\$'000)	434,507	165,392	7,365	5,076	35,855	60,691
2007 (\$'000)	481,678	190,203	8,306	5,223	42,616	65,763
2007 / 2006 %	10.9	15.0	12.8	2.9	18.9	8.4
Trucks¹, manufactured in North America						
2005 (no.)	69,913	26,787	2,394	2,185	12,258	8,361
2006 (no.)	62,927	23,748	1,949	2,199	13,034	7,451
2007 (no.)	71,626	25,644	2,118	2,630	14,634	8,783
2007 / 2006 %	13.8	8.0	8.7	19.6	12.3	17.9
2005 (\$'000)	2,794,223	1,086,153	99,522	87,711	497,052	341,605
2006 (\$'000)	2,593,825	955,793	78,850	88,650	581,507	319,349
2007 (\$'000)	2,741,838	945,507	85,129	103,193	608,677	361,740
2007 / 2006 %	5.7	-1.1	8.0	16.4	4.7	13.3
Trucks¹, manufactured overseas						
2005 (no.)	10,512	4,231	220	213	1,090	1,323
2006 (no.)	11,047	4,409	258	238	1,453	1,410
2007 (no.)	9,069	3,425	215	238	1,353	1,232
2007 / 2006 %	-17.9	-22.3	-16.7	0.0	-6.9	-12.6
2005 (\$'000)	378,329	155,624	7,576	7,356	40,580	52,555
2006 (\$'000)	398,518	163,163	8,644	8,347	53,718	52,590
2007 (\$'000)	340,779	131,162	7,633	8,492	51,169	48,368
2007 / 2006 %	-14.5	-19.6	-11.7	1.7	-4.7	-8.0

1. Trucks include minivans, sport-utility vehicles, light and heavy trucks, vans and buses.

2. For reasons of confidentiality, data for the Yukon, the Northwest Territories and Nunavut have been included with the data for British Columbia.

Table 5-1
Year to date provincial sales of new motor vehicles, by type and origin in units, January to June

Province	Total new motor vehicles		Passenger cars							
			North America		Japan		Other countries		Total	
	Units	Year/year change	Units	Year/year change	Units	Year/year change	Units	Year/year change	Units	Year/year change
	no.	%	no.	%	no.	%	no.	%	no.	%
2005										
Newfoundland and Labrador	13,288	13.0	5,522	25.2	x	x	x	x	7,562	16.2
Prince Edward Island	2,386	2.6	994	4.6	x	x	x	x	1,415	7.4
Nova Scotia	24,635	0.3	10,911	5.6	1,393	-14.0	2,042	-9.8	14,346	0.9
New Brunswick	18,018	-0.7	7,339	5.8	x	x	x	x	9,697	1.5
Quebec	216,909	0.8	82,246	5.7	28,131	-7.3	27,293	-11.1	137,670	-0.9
Ontario	311,346	1.5	113,623	4.6	18,386	-0.4	24,954	-5.4	156,963	2.3
Manitoba	22,931	0.5	7,643	1.1	874	-8.7	1,178	-13.9	9,695	-1.9
Saskatchewan	19,071	1.0	5,312	2.9	556	-12.3	916	-11.8	6,784	-0.8
Alberta	108,465	11.3	30,762	9.3	4,750	13.7	5,006	7.3	40,518	9.6
British Columbia ¹	94,660	2.7	31,640	-0.9	7,562	0.2	7,699	-2.1	46,901	-0.9
Canada	831,709	2.7	295,992	5.0	63,447	-3.3	72,112	-6.9	431,551	1.6
2006										
Newfoundland and Labrador	12,523	-5.8	5,238	-5.1	x	x	x	x	7,141	-5.6
Prince Edward Island	2,435	2.1	1,089	9.6	x	x	x	x	1,529	8.1
Nova Scotia	25,414	3.2	11,412	4.6	1,741	25.0	2,443	19.6	15,596	8.7
New Brunswick	18,089	0.4	7,440	1.4	x	x	x	x	10,182	5.0
Quebec	207,528	-4.3	78,064	-5.1	28,616	1.7	27,889	2.2	134,569	-2.3
Ontario	312,978	0.5	117,887	3.8	20,218	10.0	25,708	3.0	163,813	4.4
Manitoba	22,052	-3.8	7,220	-5.5	1,061	21.4	1,272	8.0	9,553	-1.5
Saskatchewan	18,997	-0.4	5,336	0.5	659	18.5	935	2.1	6,930	2.2
Alberta	123,147	13.5	32,575	5.9	5,768	21.4	5,448	8.8	43,791	8.1
British Columbia ¹	97,745	3.3	31,383	-0.8	9,128	20.7	9,178	19.2	49,689	5.9
Canada	840,908	1.1	297,644	0.6	69,141	9.0	76,008	5.4	442,793	2.6
2007										
Newfoundland and Labrador	15,124	20.8	6,147	17.4	x	x	x	x	8,369	17.2
Prince Edward Island	2,730	12.1	1,161	6.6	x	x	x	x	1,684	10.1
Nova Scotia	25,551	0.5	10,638	-6.8	2,306	32.5	2,397	-1.9	15,341	-1.6
New Brunswick	19,743	9.1	7,584	1.9	x	x	x	x	10,581	3.9
Quebec	223,140	7.5	80,060	2.6	34,118	19.2	27,299	-2.1	141,477	5.1
Ontario	313,329	0.1	110,723	-6.1	24,111	19.3	26,301	2.3	161,135	-1.6
Manitoba	23,452	6.3	7,323	1.4	1,254	18.2	1,403	10.3	9,980	4.5
Saskatchewan	21,996	15.8	5,428	1.7	785	19.1	880	-5.9	7,093	2.4
Alberta	132,856	7.9	32,886	1.0	7,259	25.8	6,333	16.2	46,478	6.1
British Columbia ¹	104,745	7.2	30,037	-4.3	11,019	20.7	9,993	8.9	51,049	2.7
Canada	882,668	5.0	291,987	-1.9	83,488	20.8	77,712	2.2	453,187	2.3

See footnotes at the end of the table.

Table 5-1 – continued

Year to date provincial sales of new motor vehicles, by type and origin in units, January to June

Province	Total new motor vehicles		Trucks ²					
			North America		Overseas		Total	
	Units	Year/year change	Units	Year/year change	Units	Year/year change	Units	Year/year change
	no.	%	no.	%	no.	%	no.	%
2005								
Newfoundland and Labrador	13,288	13.0	x	x	x	x	5,726	8.9
Prince Edward Island	2,386	2.6	x	x	x	x	971	-3.7
Nova Scotia	24,635	0.3	9,084	-1.0	1,205	3.5	10,289	-0.5
New Brunswick	18,018	-0.7	7,468	-5.0	853	15.4	8,321	-3.2
Quebec	216,909	0.8	64,002	-0.3	15,237	26.0	79,239	3.8
Ontario	311,346	1.5	132,769	-1.1	21,614	12.5	154,383	0.6
Manitoba	22,931	0.5	12,102	1.2	1,134	17.1	13,236	2.4
Saskatchewan	19,071	1.0	11,165	0.0	1,122	26.8	12,287	2.0
Alberta	108,465	11.3	62,079	11.6	5,868	21.7	67,947	12.4
British Columbia ¹	94,660	2.7	40,858	6.8	6,901	4.9	47,759	6.5
Canada	831,709	2.7	345,232	2.1	54,926	16.4	400,158	3.9
2006								
Newfoundland and Labrador	12,523	-5.8	x	x	x	x	5,382	-6.0
Prince Edward Island	2,435	2.1	x	x	x	x	906	-6.7
Nova Scotia	25,414	3.2	8,445	-7.0	1,373	13.9	9,818	-4.6
New Brunswick	18,089	0.4	6,852	-8.2	1,055	23.7	7,907	-5.0
Quebec	207,528	-4.3	57,796	-9.7	15,163	-0.5	72,959	-7.9
Ontario	312,978	0.5	125,824	-5.2	23,341	8.0	149,165	-3.4
Manitoba	22,052	-3.8	10,949	-9.5	1,550	36.7	12,499	-5.6
Saskatchewan	18,997	-0.4	10,875	-2.6	1,192	6.2	12,067	-1.8
Alberta	123,147	13.5	71,756	15.6	7,600	29.5	79,356	16.8
British Columbia ¹	97,745	3.3	40,086	-1.9	7,970	15.5	48,056	0.6
Canada	840,908	1.1	337,914	-2.1	60,201	9.6	398,115	-0.5
2007								
Newfoundland and Labrador	15,124	20.8	x	x	x	x	6,755	25.5
Prince Edward Island	2,730	12.1	x	x	x	x	1,046	15.5
Nova Scotia	25,551	0.5	9,112	7.9	1,098	-20.0	10,210	4.0
New Brunswick	19,743	9.1	8,211	19.8	951	-9.9	9,162	15.9
Quebec	223,140	7.5	69,265	19.8	12,398	-18.2	81,663	11.9
Ontario	313,329	0.1	133,210	5.9	18,984	-18.7	152,194	2.0
Manitoba	23,452	6.3	12,163	11.1	1,309	-15.5	13,472	7.8
Saskatchewan	21,996	15.8	13,736	26.3	1,167	-2.1	14,903	23.5
Alberta	132,856	7.9	78,529	9.4	7,849	3.3	86,378	8.8
British Columbia ¹	104,745	7.2	46,307	15.5	7,389	-7.3	53,696	11.7
Canada	882,668	5.0	377,440	11.7	52,041	-13.6	429,481	7.9

1. For reasons of confidentiality, data for the Yukon, the Northwest Territories and Nunavut have been included with the data for British Columbia.

2. Trucks include minivans, sport-utility vehicles, light and heavy trucks, vans and buses.

Note(s): Percentage changes shown are year-to-year changes.

Table 5-2
Year to date provincial sales of new motor vehicles, by type and origin in dollars, January to June

Province	Total new motor vehicles		Passenger cars							
			North America		Japan		Other countries		Total	
	Units	Year/year change	Units	Year/year change	Units	Year/year change	Units	Year/year change	Units	Year/year change
	\$'000	%	\$'000	%	\$'000	%	\$'000	%	\$'000	%
2005										
Newfoundland and Labrador	355,022	12.0	124,570	23.8	x	x	x	x	163,646	15.9
Prince Edward Island	62,752	2.5	22,827	7.1	x	x	x	x	30,574	9.3
Nova Scotia	700,446	0.9	253,536	6.3	30,777	-8.7	46,696	-8.0	331,012	2.5
New Brunswick	517,648	-1.6	171,773	7.6	x	x	x	x	219,774	3.6
Quebec	6,263,394	2.9	1,951,523	5.9	584,141	-6.5	684,009	-11.1	3,219,673	-0.6
Ontario	10,348,371	5.1	2,908,417	6.7	486,770	3.3	830,873	-6.1	4,226,059	3.5
Manitoba	803,867	8.7	189,454	3.0	21,372	-4.9	29,684	-15.7	240,510	-0.4
Saskatchewan	658,659	6.4	134,153	5.5	14,213	-8.8	21,375	-9.1	169,740	2.1
Alberta	3,827,530	17.5	773,664	12.7	123,668	16.1	156,128	5.4	1,053,462	12.0
British Columbia ¹	3,136,765	5.2	765,910	1.1	188,333	-2.4	269,273	-5.2	1,223,515	-0.9
Canada	26,674,456	6.2	7,295,828	6.6	1,484,412	-1.3	2,097,726	-7.2	10,877,965	2.5
2006										
Newfoundland and Labrador	336,960	-5.1	120,632	-3.2	x	x	x	x	158,293	-3.3
Prince Edward Island	63,466	1.1	25,435	11.4	x	x	x	x	33,733	10.3
Nova Scotia	713,929	1.9	268,099	5.7	39,550	28.5	54,402	16.5	362,052	9.4
New Brunswick	520,105	0.5	177,356	3.3	x	x	x	x	232,604	5.8
Quebec	6,099,678	-2.6	1,869,374	-4.2	629,334	7.7	715,304	4.6	3,214,011	-0.2
Ontario	10,282,084	-0.6	3,019,272	3.8	547,139	12.4	863,955	4.0	4,430,367	4.8
Manitoba	755,521	-6.0	180,184	-4.9	25,373	18.7	32,241	8.6	237,799	-1.1
Saskatchewan	663,934	0.8	136,248	1.6	17,291	21.7	22,133	3.5	175,672	3.5
Alberta	4,529,175	18.3	828,467	7.1	153,887	24.4	175,127	12.2	1,157,481	9.9
British Columbia ¹	3,299,662	5.2	784,352	2.4	229,325	21.8	312,916	16.2	1,326,595	8.4
Canada	27,264,516	2.2	7,409,424	1.6	1,683,113	13.4	2,236,074	6.6	11,328,610	4.1
2007										
Newfoundland and Labrador	407,081	20.8	139,077	15.3	x	x	x	x	183,747	16.1
Prince Edward Island	69,678	9.8	26,218	3.1	x	x	x	x	36,370	7.8
Nova Scotia	702,257	-1.6	245,566	-8.4	52,109	31.8	53,208	-2.2	350,885	-3.1
New Brunswick	564,417	8.5	175,121	-1.3	x	x	x	x	236,770	1.8
Quebec	6,397,281	4.9	1,868,744	0.0	751,761	19.5	723,773	1.2	3,344,280	4.1
Ontario	10,132,169	-1.5	2,809,868	-6.9	658,084	20.3	906,401	4.9	4,374,352	-1.3
Manitoba	797,535	5.6	180,278	0.1	31,029	22.3	34,859	8.1	246,164	3.5
Saskatchewan	781,755	17.7	135,258	-0.7	20,448	18.3	22,446	1.4	178,151	1.4
Alberta	4,820,630	6.4	829,253	0.1	192,131	24.9	209,167	19.4	1,230,550	6.3
British Columbia ¹	3,548,141	7.5	738,943	-5.8	276,153	20.4	331,462	5.9	1,346,557	1.5
Canada	28,221,092	3.5	7,148,326	-3.5	2,036,722	21.0	2,342,773	4.8	11,527,821	1.8

See footnotes at the end of the table.

Table 5-2 – continued

Year to date provincial sales of new motor vehicles, by type and origin in dollars, January to June

Province	Total new motor vehicles		Trucks ²					
			North America		Overseas		Total	
	Units	Year/year change	Units	Year/year change	Units	Year/year change	Units	Year/year change
	\$'000	%	\$'000	%	\$'000	%	\$'000	%
2005								
Newfoundland and Labrador	355,022	12.0	x	x	x	x	191,376	8.8
Prince Edward Island	62,752	2.5	x	x	x	x	32,178	-3.1
Nova Scotia	700,446	0.9	330,135	-0.3	39,299	-1.6	369,434	-0.5
New Brunswick	517,648	-1.6	271,599	-6.3	26,275	9.6	297,875	-5.1
Quebec	6,263,394	2.9	2,525,853	4.7	517,868	18.5	3,043,722	6.8
Ontario	10,348,371	5.1	5,314,797	6.0	807,514	8.6	6,122,311	6.3
Manitoba	803,867	8.7	524,640	13.2	38,716	12.5	563,357	13.1
Saskatchewan	658,659	6.4	451,377	7.2	37,540	19.6	488,918	8.0
Alberta	3,827,530	17.5	2,559,956	20.1	214,115	17.0	2,774,071	19.8
British Columbia ¹	3,136,765	5.2	1,651,720	10.2	261,530	5.8	1,913,250	9.6
Canada	26,674,456	6.2	13,824,310	8.4	1,972,181	11.9	15,796,490	8.8
2006								
Newfoundland and Labrador	336,960	-5.1	x	x	x	x	178,667	-6.6
Prince Edward Island	63,466	1.1	x	x	x	x	29,733	-7.6
Nova Scotia	713,929	1.9	306,219	-7.2	45,658	16.2	351,879	-4.8
New Brunswick	520,105	0.5	254,202	-6.4	33,298	26.7	287,500	-3.5
Quebec	6,099,678	-2.6	2,366,980	-6.3	518,687	0.2	2,885,667	-5.2
Ontario	10,282,084	-0.6	4,978,529	-6.3	873,187	8.1	5,851,716	-4.4
Manitoba	755,521	-6.0	464,265	-11.5	53,457	38.1	517,723	-8.1
Saskatchewan	663,934	0.8	446,601	-1.1	41,660	11.0	488,261	-0.1
Alberta	4,529,175	18.3	3,091,285	20.8	280,410	31.0	3,371,694	21.5
British Columbia ¹	3,299,662	5.2	1,674,959	1.4	298,107	14.0	1,973,067	3.1
Canada	27,264,516	2.2	13,762,110	-0.4	2,173,795	10.2	15,935,904	0.9
2007								
Newfoundland and Labrador	407,081	20.8	x	x	x	x	223,334	25.0
Prince Edward Island	69,678	9.8	x	x	x	x	33,307	12.0
Nova Scotia	702,257	-1.6	313,695	2.4	37,679	-17.5	351,376	-0.1
New Brunswick	564,417	8.5	296,460	16.6	31,189	-6.3	327,647	14.0
Quebec	6,397,281	4.9	2,596,879	9.7	456,123	-12.1	3,053,003	5.8
Ontario	10,132,169	-1.5	5,026,585	1.0	731,232	-16.3	5,757,818	-1.6
Manitoba	797,535	5.6	504,200	8.6	47,173	-11.8	551,370	6.5
Saskatchewan	781,755	17.7	561,453	25.7	42,151	1.2	603,605	23.6
Alberta	4,820,630	6.4	3,291,722	6.5	298,356	6.4	3,590,077	6.5
British Columbia ¹	3,548,141	7.5	1,914,239	14.3	287,345	-3.6	2,201,584	11.6
Canada	28,221,092	3.5	14,733,718	7.1	1,959,554	-9.9	16,693,272	4.8

1. For reasons of confidentiality, data for the Yukon, the Northwest Territories and Nunavut have been included with the data for British Columbia.

2. Trucks include minivans, sport-utility vehicles, light and heavy trucks, vans and buses.

Note(s): Percentage changes shown are year-to-year changes.

Table 6
Annual sales of new motor vehicles, by type and origin, in units and dollars, Canada

Year	Total	Passenger cars				Trucks ¹		
		Total	North America	Japan	Other countries	Total	North America	Overseas
no.								
1984	1,283,502	971,210	724,932	171,204	75,074	312,292	273,604	38,688
1985	1,530,410	1,137,216	794,965	199,221	143,030	393,194	344,871	48,323
1986	1,515,920	1,095,313	761,169	203,304	130,840	420,607	368,423	52,184
1987	1,533,637	1,065,093	700,930	243,288	120,875	468,544	417,189	51,355
1988	1,565,501	1,056,310	724,733	243,835	87,742	509,191	459,777	49,414
1989	1,483,875	988,134	675,340	239,548	73,246	495,741	422,398	73,343
1990	1,317,869	884,564	580,397	239,603	64,564	433,305	361,403	71,902
1991	1,287,790	873,184	573,297	237,701	62,186	414,606	347,671	66,935
1992	1,227,419	798,023	503,460	236,675	57,888	429,396	370,422	58,974
1993	1,192,934	739,049	493,759	196,310	48,980	453,885	402,112	51,773
1994	1,260,056	748,666	573,361	129,547	45,759	511,390	475,444	35,946
1995	1,166,535	670,190	553,265	71,493	45,432	496,345	469,590	26,755
1996	1,204,557	660,769	572,581	47,901	40,287	543,788	517,738	26,050
1997	1,424,380	738,550	629,488	66,297	42,765	685,830	628,214	57,616
1998	1,428,932	740,809	590,667	98,275	51,867	688,123	627,256	60,867
1999	1,542,041	806,450	625,292	103,016	78,142	735,591	672,444	63,147
2000	1,587,561	849,171	640,856	106,937	101,378	738,390	669,492	68,898
2001	1,597,964	868,633	619,810	122,998	125,825	729,331	647,987	81,344
2002	1,733,318	934,704	651,305	144,596	138,803	798,614	698,870	99,744
2003	1,626,468	865,475	604,726	126,908	133,841	760,993	654,136	106,857
2004	1,575,195	820,103	542,814	116,426	160,863	755,092	653,637	101,455
2005	1,630,310	845,222	574,639	123,482	147,101	785,088	673,205	111,883
2006	1,666,327	863,161	573,102	142,159	147,900	803,166	681,244	121,922
\$'000								
1984	15,679,760	11,138,931	8,176,591	1,928,031	1,034,309	4,540,829	4,136,482	404,347
1985	19,890,119	13,707,637	9,545,156	2,325,922	1,836,559	6,182,482	5,641,518	540,964
1986	21,841,550	14,669,730	9,856,684	2,811,893	2,001,153	7,171,820	6,441,827	729,993
1987	24,471,752	15,748,410	10,031,338	3,567,223	2,149,849	8,723,342	7,930,138	793,204
1988	26,865,327	16,709,476	11,080,866	3,784,902	1,843,708	10,155,851	9,369,528	786,323
1989	26,959,378	16,541,801	11,034,684	3,887,341	1,619,774	10,417,577	9,059,482	1,358,095
1990	24,888,751	15,245,831	9,784,293	4,015,958	1,445,580	9,642,918	8,210,502	1,432,416
1991	22,855,626	14,103,545	9,038,584	3,789,001	1,275,960	8,752,081	7,503,659	1,248,422
1992	23,484,453	13,691,747	8,450,515	4,053,784	1,187,448	9,792,706	8,613,980	1,178,726
1993	24,630,368	13,278,183	8,620,651	3,560,912	1,096,620	11,352,185	10,227,081	1,125,104
1994	27,893,795	14,182,894	10,595,001	2,346,168	1,241,727	13,710,902	12,846,447	864,453
1995	28,168,806	13,882,004	11,070,368	1,492,451	1,319,184	14,286,804	13,544,980	741,824
1996	31,485,777	14,510,882	12,062,092	1,118,289	1,330,501	16,974,894	16,115,584	859,309
1997	38,986,224	16,836,615	13,809,161	1,519,604	1,507,852	22,149,610	20,341,263	1,808,346
1998	40,255,777	17,054,244	13,101,703	2,110,330	1,842,211	23,201,534	21,165,239	2,036,296
1999	45,317,914	19,017,278	14,138,902	2,246,522	2,631,853	26,300,638	24,055,653	2,244,986
2000	46,930,514	20,790,660	15,089,665	2,431,251	3,269,743	26,139,852	23,745,933	2,393,922
2001	46,886,252	21,168,628	14,575,745	2,882,386	3,710,497	25,717,623	22,958,458	2,759,162
2002	52,227,499	23,191,483	15,521,295	3,501,294	4,168,898	29,036,014	25,633,136	3,402,877
2003	50,493,308	21,685,587	14,565,218	2,988,274	4,132,093	28,807,720	24,845,915	3,961,804
2004	49,639,223	20,489,761	13,261,753	2,694,970	4,533,035	29,149,463	25,384,561	3,764,904
2005	52,311,147	21,220,807	14,051,867	2,928,424	4,240,519	31,090,339	27,031,615	4,058,725
2006	54,337,947	22,056,012	14,250,869	3,469,392	4,335,753	32,281,931	27,838,439	4,443,494

1. Trucks include minivans, sport-utility vehicles, light and heavy trucks, vans and buses.

Table 7
Canada, monthly sales of new motor vehicles, in units, by type and origin, seasonally adjusted

Period	Total new motor vehicles		Passenger cars				Trucks ¹	
			North America		Overseas		Total	
	Units	Month/month change	Units	Month/month change	Units	Month/month change	Units	Month/month change
	no.	%	no.	%	no.	%	no.	%
2005								
January	127,324	-2.5	45,455	-0.2	22,059	-2.7	59,810	-4.1
February	146,009	14.7	52,491	15.5	22,113	0.2	71,405	19.4
March	134,041	-8.2	49,365	-6.0	20,960	-5.2	63,716	-10.8
April	138,377	3.2	49,574	0.4	22,324	6.5	66,479	4.3
May	129,700	-6.3	43,044	-13.2	22,623	1.3	64,033	-3.7
June	141,179	8.9	49,505	15.0	22,421	-0.9	69,253	8.2
July	150,970	6.9	49,718	0.4	24,610	9.8	76,642	10.7
August	135,424	-10.3	47,903	-3.7	22,975	-6.6	64,546	-15.8
September	126,047	-6.9	46,633	-2.7	22,268	-3.1	57,147	-11.5
October	132,813	5.4	49,159	5.4	22,342	0.3	61,312	7.3
November	135,330	1.9	45,426	-7.6	23,418	4.8	66,486	8.4
December	133,096	-1.7	46,367	2.1	22,470	-4.0	64,259	-3.3
2006								
January	138,398	4.0	52,674	13.6	21,906	-2.5	63,818	-0.7
February	138,410	0.0	49,184	-6.6	22,628	3.3	66,599	4.4
March	138,541	0.1	48,318	-1.8	22,906	1.2	67,317	1.1
April	136,947	-1.2	46,880	-3.0	24,184	5.6	65,883	-2.1
May	135,357	-1.2	45,715	-2.5	24,173	0.0	65,470	-0.6
June	134,914	-0.3	47,403	3.7	25,010	3.5	62,501	-4.5
July	138,925	3.0	46,384	-2.1	25,634	2.5	66,907	7.0
August	142,843	2.8	47,891	3.2	24,512	-4.4	70,440	5.3
September	138,563	-3.0	47,747	-0.3	24,399	-0.5	66,418	-5.7
October	136,386	-1.6	43,336	-9.2	24,895	2.0	68,155	2.6
November	139,748	2.5	46,999	8.5	24,678	-0.9	68,071	-0.1
December	147,294	5.4	50,573	7.6	25,133	1.8	71,589	5.2
2007								
January	142,251	-3.4	45,106	-10.8	25,659	2.1	71,485	-0.1
February	137,755	-3.2	44,873	-0.5	25,245	-1.6	67,636	-5.4
March ^r	137,940	0.1	44,277	-1.3	26,045	3.2	67,618	0.0
April ^r	146,695	6.3	49,385	11.5	26,055	0.0	71,255	5.4
May ^r	145,649	-0.7	46,743	-5.3	26,947	3.4	71,959	1.0
June ^p	143,900	-1.2	47,082	0.7	27,638	2.6	69,179	-3.9

1. Trucks include minivans, sport-utility vehicles, light and heavy trucks, vans and buses.

Note(s): Percentage changes shown are month-to-month changes.

Table 8
Monthly sales of new motor vehicles, in units, by province, seasonally adjusted

Period	Canada	Newfoundland and Labrador	Prince Edward Island	Nova Scotia	New Brunswick	Quebec
no.						
2005						
January	127,324	1,863	397	3,604	2,560	34,269
February	146,009	2,226	438	4,153	3,185	36,177
March	134,041	2,153	370	3,659	2,818	34,076
April	138,377	2,192	431	3,993	2,975	34,678
May	129,700	2,129	370	3,805	2,621	32,546
June	141,179	2,031	422	3,859	2,901	36,932
July	150,970	2,419	426	4,226	3,362	35,710
August	135,424	1,759	420	4,003	2,951	32,076
September	126,047	1,822	321	3,720	2,508	29,599
October	132,813	2,087	400	3,688	2,877	34,011
November	135,330	2,257	488	3,648	2,713	35,300
December	133,096	1,961	365	3,796	2,757	32,399
2006						
January	138,398	2,190	396	4,659	2,801	32,995
February	138,410	1,921	435	4,007	2,943	33,013
March	138,541	1,823	405	4,240	2,870	33,402
April	136,947	1,958	395	3,719	2,803	33,289
May	135,357	1,918	409	3,622	2,778	32,867
June	134,914	2,112	396	3,698	2,817	32,399
July	138,925	1,926	415	3,716	2,944	33,489
August	142,843	1,988	431	4,033	2,972	35,479
September	138,563	1,987	391	4,005	2,959	33,707
October	136,386	1,996	394	3,855	2,982	33,388
November	139,748	2,144	436	4,230	3,263	34,019
December	147,294	2,225	429	3,954	3,270	36,150
2007						
January	142,251	2,209	460	3,927	3,194	34,513
February	137,755	2,120	424	3,731	2,908	33,949
March	137,940	2,321	459	3,714	2,962	33,368
April	146,695	2,415	462	4,310	2,960	35,870
May	145,649	2,420	467	3,708	3,260	37,160
June	143,900	2,329	435	4,062	3,206	35,825

Table 8 – continued

Monthly sales of new motor vehicles, in units, by province, seasonally adjusted

Period	Canada	Ontario	Manitoba	Saskatchewan	Alberta	British Columbia and the Territories
	no.					
2005						
January	127,324	48,406	3,576	2,612	16,136	13,902
February	146,009	58,050	4,391	3,283	18,349	15,757
March	134,041	50,508	3,884	3,289	17,538	15,745
April	138,377	51,845	3,923	3,610	18,850	15,879
May	129,700	49,031	3,629	3,219	16,867	15,482
June	141,179	52,344	3,969	3,469	19,136	16,117
July	150,970	58,281	4,703	4,116	21,182	16,545
August	135,424	51,208	4,036	3,351	19,121	16,500
September	126,047	47,342	3,648	3,135	18,634	15,319
October	132,813	49,707	3,560	2,826	18,463	15,194
November	135,330	50,542	3,535	3,193	18,827	14,826
December	133,096	50,450	3,646	3,150	19,258	15,314
2006						
January	138,398	52,660	3,904	2,831	20,098	15,864
February	138,410	52,269	3,666	3,360	20,931	15,866
March	138,541	52,540	3,793	3,304	19,988	16,175
April	136,947	51,595	3,645	3,186	20,143	16,216
May	135,357	50,460	3,620	3,387	20,411	15,885
June	134,914	50,524	3,731	3,337	19,932	15,967
July	138,925	51,948	3,847	3,392	21,281	15,967
August	142,843	52,457	3,773	3,377	21,871	16,462
September	138,563	50,682	3,861	3,411	20,825	16,733
October	136,386	48,980	3,984	3,309	21,156	16,341
November	139,748	52,446	3,957	3,461	19,932	15,861
December	147,294	54,087	4,143	3,560	22,165	17,311
2007						
January	142,251	51,739	3,918	3,600	22,052	16,639
February	137,755	49,531	3,830	3,452	21,042	16,768
March ^r	137,940	48,625	3,972	3,505	22,315	16,698
April ^r	146,695	53,537	4,131	3,761	21,504	17,745
May ^r	145,649	52,107	3,870	3,946	21,421	17,289
June ^p	143,900	51,373	3,833	3,745	22,154	16,936

Definitions

Trucks

Trucks include light and heavy trucks, minivans, sport utility vehicles, vans, coaches and buses, regardless of their intended use.

Passenger car

The term passenger car refers to all vehicles whose primary function is to carry passengers, excluding those vehicles classified as a commercial vehicle (see definition above). Passenger cars also include cars used for commercial purposes, i.e. taxis, auto rentals and other car fleets.

Country of origin

New motor vehicles fall into two categories defined on the basis of origin: those manufactured in North America and those manufactured overseas. The latter are imported in a fully assembled state from countries other than the United States or Mexico. All passenger cars and commercial vehicles assembled in Canada, Mexico and the United States and sold in Canada classified are as North American manufactured vehicles.

Motor vehicle sales - units

The number of new motor vehicles sold in Canada.

Motor vehicle sales - dollars

Net sales refers to the selling price to the consumer, i.e., manufacturer's invoice price plus estimated dealer's markup, including charges for standard and optional accessories. Sales taxes are excluded.

Average price of passenger cars

The average price is obtained by dividing the total dollar sales by the number of units sold. Therefore, changes in the average price reflect variations in the models sold as well as price changes. For example, an increase in the average price for passenger cars may reflect both a shift to more expensive models as well as price increases.

Appendix I

Scope of the survey

The interest in and need for detailed statistics on the automobile industry arose years ago, when the industry began playing a prominent role in the Canadian economy. For over 50 years, Statistics Canada has been collecting and disseminating statistical information on the retail sales of new motor vehicles. Not only are these statistics required to produce estimates of Canadian consumer spending for the national accounts and the gross domestic product, but they have also served and continue to serve as one of the most important, most often requested indicators of the health of Canada's economy.¹

However, estimates of the total retail sales volume of new motor vehicles were not sufficient to meet the incessant demand for more information. There came an increasing need for data on the characteristics of the fleet of new vehicles sold at retail, either to learn more about the preferences of Canadian consumers or to assess the penetration of the Canadian market by major foreign manufacturers. Statistics on new motor vehicle sales were expanded in the early 1970s to provide separate figures for Japanese vehicle sales.

The statistics in this report cover exclusively retail sales of new motor vehicles within Canada's borders. Data are derived from a postal survey (a census - see the methodology section at the end of the report for more details).

Other statistics connected with the automobile industry (sales of new and used car dealers, auto parts and accessories stores and so on) are available on the monthly Retail Trade survey (Catalogue No. 63-005). For further information, please contact the Retail Commodity Section, Distributive Trades Division, Statistics Canada, Ottawa, K1A 0T6, (Telephone: 613-951-3549 or toll free at 1-877-421-3067).

Data quality and methodology

This survey is a census of all motor vehicle manufacturers and importers known to be active in Canada.

The value of sales is reported at selling price to consumer (i.e. the manufacturer's invoice price plus estimated dealer's markup, charges for standard equipment and options, less provincial sales tax and federal goods and services tax (G.S.T.) and harmonized sales tax (H.S.T.)).

The response rate for this survey is generally 100%. Minimal estimation is required so there is little bias resulting from non-response introduced in these data.

All attempts have been made to minimize the non-sampling errors: the questionnaires used in the survey have been carefully designed to minimize different interpretations; detailed acceptance testing has been carried out for the different stages of editing and processing.

1. The new motor vehicle sales series is one of ten statistical series making up the leading indicator developed by Statistics Canada for current economic analysis purposes.

Data confidentiality

Statistics Canada is prohibited by law from publishing any statistics which would divulge information relating to any identifiable business without the previous consent in writing of that business.² The disclosure of data likely to reveal specific information on the activity of a particular company is systematically and rigorously controlled and regulated to prevent the publication or disclosure of any information deemed confidential. The rules regarding confidentiality are therefore applied in such a way that no data are shown for cells (or statistical units). If information is withheld for reasons of confidentiality an "X" will appear in the appropriate cell of this publication.

Another way of preserving data confidentiality without having to enter an "X" is to combine (consolidate) the information **from selected regions** (or selected cells) for the same item. The data in question can be aggregated and published in a less detailed, but still confidential, form. For example, the data for the Northwest Territories, the Yukon and Nunavut are included with the British Columbia data.

Seasonal adjustment

Time series contain the elements essential to the description, explanation and forecasting of the behaviour of an economic phenomenon: "They are statistical records of the evolution of economic processes through time."³In using time series to observe economic activity, economists and statisticians have identified four characteristic behavioural components: the long-term movement or trend, the cycle, the seasonal (variations) and the irregular (fluctuations). These movements are caused by various economic, natural or institutional factors. The **seasonal variations** occur periodically on a more or less regular basis over the course of the year as a result of seasonal changes in weather, statutory holidays and other events which occur at fairly regular intervals and thus have a major impact on the rate of economic activity.

In the interest of accurately interpreting the fundamental evolution of an economic phenomenon and producing forecasts of superior quality, Statistics Canada uses the X-11-ARIMA seasonal adjustment method⁴ to seasonally adjust its time series. The ARIMA part of this method minimizes the impact of seasonal variations on the series and essentially consists of adding one year of estimated data onto each end of the original series before it is seasonally adjusted per se. The estimated data are derived from forecasts and back casts using ARIMA (Autoregressive Integrated Moving Average) models of the Box-Jenkins type.

The X-11 part of the X-11-ARIMA program uses primarily the ratio-to-moving average method to smooth the modified series and obtain a preliminary estimate of the trend-cycle, to calculate the ratios of the original series (fitted) to the estimates of the trend-cycle and to estimate the seasonal factors from these ratios. The final seasonal factors are produced only after these operations have been repeated several times. These procedures, used to determine the seasonal factors necessary to calculate the final seasonally adjusted data, are, since February 1983, executed every month instead of once a year. This permits us to update each month, the reference series from which we derive the final estimations of the seasonal factors employing the most current data available.

While seasonal adjustment permits a better understanding of the underlying trend-cycle of a series, the seasonally-adjusted series still contains an irregular component. Slight month-to-month variations in the seasonally adjusted series may be simple irregular movements; to get a better idea of the underlying trend, users must examine several months of seasonally adjusted series.

To assist the user, the Months of Cyclical Dominance number, MCD, is provided.⁵ The MCD is the shortest monthly span for which a certain ratio becomes and remains less than one, that is, the ratio for which the absolute average percentage change of the trend-cycle of the seasonally adjusted series becomes greater than the absolute average per cent change of the irregular component. The MCD can be interpreted as the number of months over which a change in the seasonally adjusted series must move in a given direction before one can be reasonably certain that

2. See Section 17 of the Statistics Act (Chapter 5-19), entitled «Secrecy».

3. «A Note on the Seasonal adjustment of Economic Time Series,» *Canadian Statistical Review*, August 1974.

4. For further information see the X-11-ARIMA/88 Seasonal Adjustment Method, by Estelle Bee Dagum, Statistics Canada.

5. MCD = 10 for North American passenger cars. MCD = 4 for Overseas passenger cars. MCD = 12 for Commercial vehicles.

the trend-cycle of that series also has moved in the given direction. Clearly small MCD's are desirable and indicative of a smooth series. Applying a moving average to the seasonally adjusted data of MCD length tends to smooth irregular movements which may obscure the underlying trend-cycle. The MCD moving average provides a method of reducing all types of series to approximately the same degree of smoothness, whatever the size of the irregular component in the original series.

Revision procedures

The seasonally adjusted estimates are revised for the three months preceding the reference period. Monthly unadjusted data are revised for the previous month, when new information is made available to Statistics Canada. In addition, unadjusted new motor vehicle sales are revised each year, for the latest year, in the February issue of this publication. At that time, monthly seasonally adjusted estimates for the latest four years of data are revised.

Appendix II

List of North American motor vehicle manufacturers

B.M.W. Canada Inc.
Blue Bird Body Co.
DaimlerChrysler Canada Inc.
Ford Motor Company of Canada Limited
Freightliner of Canada Ltd.
General Motors of Canada Limited
Honda Canada Inc.
Hyundai Auto Canada Inc.
International Truck and Engine Corporation Canada
Kenworth Div., Paccar of Canada Ltd.
Mack Canada Inc.
Mazda Canada Inc.
Mitsubishi Motor Sales of Canada, Inc.
Motor Coach Industries Limited
New Flyer Industries Ltd.
Nissan Canada Inc.
Nova Bus Corp.
Orion Bus Industries Inc.
Peterbilt Div., Paccar of Canada Ltd.
Prévost Car Inc.
Sterling Heavy Duty TrucksSubaru Canada Inc.
Subaru Canada Inc.
Suzuki Canada Inc.
Thomas Built Buses of Canada Ltd.

Toyota Canada Ltd.

Volkswagen Canada Inc.

Volvo Trucks Canada Inc.

Western Star Trucks Inc.

List of importers and distributors of overseas manufactured motor vehicles

Japan

General Motors of Canada Ltd.

Hino Diesel Trucks Canada Ltd.

Honda Canada Inc.

Mazda Canada Inc.

Mitsubishi Motor Sales of Canada, Inc.

Nissan Canada Inc.

Subaru Canada Inc.

Suzuki Canada Inc.

Toyota Canada Inc.

Other Countries

B.M.W. Canada Inc.

Daewoo Auto Canada Inc.

Ford Motor Company of Canada Limited

General Motors Canada Ltd.

Hyundai Auto Canada Inc.

Jaguar Canada Inc.

Kia Canada Inc.

Land Rover group Canada Inc.

Mercedes-Benz Canada Inc.

Porsche Cars of Canada Ltd.

Volkswagen Canada Inc.

Volvo Cars of Canada Ltd.