



Catalogue no. 71-001-XIE

Labour Force Information

Not for release before 7 A.M. E.D.T.

Friday August 10, 2007



July 15 to 21, 2007



Statistics
Canada

Statistique
Canada

Canada

How to obtain more information

For information about this product or the wide range of services and data available from Statistics Canada, visit our website at www.statcan.ca or contact us by e-mail at infostats@statcan.ca or by phone from 8:30am to 4:30pm Monday to Friday at:

Toll-free telephone (Canada and the United States):

Inquiries line **1-800-263-1136**

National telecommunications device for the hearing impaired **1-800-363-7629**

Fax line **1-877-287-4369**

Depository Services Program inquiries line **1-800-635-7943**

Depository Services Program fax line **1-800-565-7757**

Statistics Canada national contact centre: 1-613-951-8116

Fax line **1-613-951-0581**

Information to access the product

This product, catalogue no. 71-001-XIE, is available for free in electronic format. To obtain a single issue, visit our website at www.statcan.ca and select Publications.

Standards of service to the public

Statistics Canada is committed to serving its clients in a prompt, reliable and courteous manner. To this end, the Agency has developed *standards of service* which its employees observe in serving its clients.

To obtain a copy of these service standards, please contact Statistics Canada toll free at 1-800-263-1136. The service standards are also published on www.statcan.ca under About us > Providing services to Canadians.



Statistics Canada
Labour Statistics Division
Labour Force Survey Program

Labour Force Information

Not for release before 7 A.M. E.D.T.

Friday August 10, 2007

July 15 to 21, 2007

Published by authority of the Minister responsible for Statistics Canada

© Minister of Industry, 2007

All rights reserved. The content of this electronic publication may be reproduced, in whole or in part, and by any means, without further permission from Statistics Canada, subject to the following conditions: that it be done solely for the purposes of private study, research, criticism, review or newspaper summary, and/or for non-commercial purposes; and that Statistics Canada be fully acknowledged as follows: Source (or "Adapted from", if appropriate): Statistics Canada, year of publication, name of product, catalogue number, volume and issue numbers, reference period and page(s). Otherwise, no part of this publication may be reproduced, stored in a retrieval system or transmitted in any form, by any means—electronic, mechanical or photocopy—or for any purposes without prior written permission of Licensing Services, Client Services Division, Statistics Canada, Ottawa, Ontario, Canada K1A 0T6.

August 2007

Catalogue no. 71-001-XIE

ISSN 1492-5478

Frequency: Monthly

Ottawa

La version française de cette publication est disponible sur demande (n° 71-001-XIF au catalogue).

Note of appreciation

Canada owes the success of its statistical system to a long standing partnership between Statistics Canada, the citizens of Canada, its businesses, governments and other institutions. Accurate and timely statistical information could not be produced without their continued cooperation and goodwill.

User information

Symbols

The following standard symbols are used in Statistics Canada publications:

- . not available for any reference period
- .. not available for a specific reference period
- ... not applicable
- 0 true zero or a value rounded to zero
- 0^s value rounded to 0 (zero) where there is a meaningful distinction between true zero and the value that was rounded
- p preliminary
- r revised
- x suppressed to meet the confidentiality requirements of the *Statistics Act*
- E use with caution
- F too unreliable to be published

Special requests (\$)

Custom tabulations can be arranged on an ad hoc or regular basis. This service enables you to specify tables and time series to meet your own requirements. The cost varies according to the request. For more information, contact us toll-free at 1-866-873-8788 or e-mail us at labour@statcan.ca.

Schedule of LFS releases

Reference period - Week ending	Release date
January 20, 2007	February 9, 2007
February 17, 2007	March 9, 2007
March 17, 2007	April 5, 2007
April 21, 2007	May 11, 2007
May 19, 2007	June 8, 2007
June 16, 2007	July 6, 2007
July 21, 2007	August 10, 2007
August 18, 2007	September 7, 2007
September 15, 2007	October 5, 2007
October 13, 2007	November 2, 2007
November 10, 2007	December 7, 2007
December 8, 2007	January 11, 2008

Latest LFS release in *The Daily*(free)

Table of contents

Highlights	5
Analysis — July 2007	6
Charts	
1. Employment and unemployment indicators, Canada, seasonally adjusted	8
2. Employment and unemployment indicators, Canada, seasonally adjusted	9
3. Index of employment by industry, Canada, seasonally adjusted, January, 2004=100	10
4. Index of employment by industry, Canada, seasonally adjusted, January 2004 = 100	11
5. Index of employment by industry, Canada, seasonally adjusted, January 2004 = 100	12
6. Index of employment by province, seasonally adjusted, January 2004 = 100	13
7. Index of employment by province, seasonally adjusted, January 2004 = 100	14
Related products	15
Statistical tables	
1 Labour force characteristics by age and sex, Canada, seasonally adjusted	23
2 Employment by class of worker and industry, Canada, seasonally adjusted	24
3 Labour force characteristics by province, seasonally adjusted	25
4 Selected labour force characteristics (seasonally adjusted)	27
4-1 Newfoundland and Labrador	27
4-2 Prince Edward Island	28
4-3 Nova Scotia	29
4-4 New Brunswick	30
4-5 Quebec	31
4-6 Ontario	32
4-7 Manitoba	33
4-8 Saskatchewan	34
4-9 Alberta	35
4-10 British Columbia	36
5 Labour force characteristics by census metropolitan area (seasonally adjusted)	37
5-1 3 month moving average	37
5-2 Monthly	42

Table of contents – continued

6	Labour force characteristics	43
6-1	by province and economic region, unadjusted for seasonality, 3 month moving average ending in July 2006 and July 2007	43
6-2	by territories, unadjusted for seasonality, 3 month moving average ending in July 2006 and July 2007	48
7	Average usual hours and wages of employees by selected characteristics, Canada, unadjusted for seasonality	49
8	Regional unemployment rates used by the Employment Insurance Program, seasonally adjusted, 3 month moving average	50
9	Students and other persons aged 15 to 24 (unadjusted)	52
9-1	by detailed age groups	52
9-2	by province	53
Data quality, concepts and methodology		
	Data quality	55

Highlights

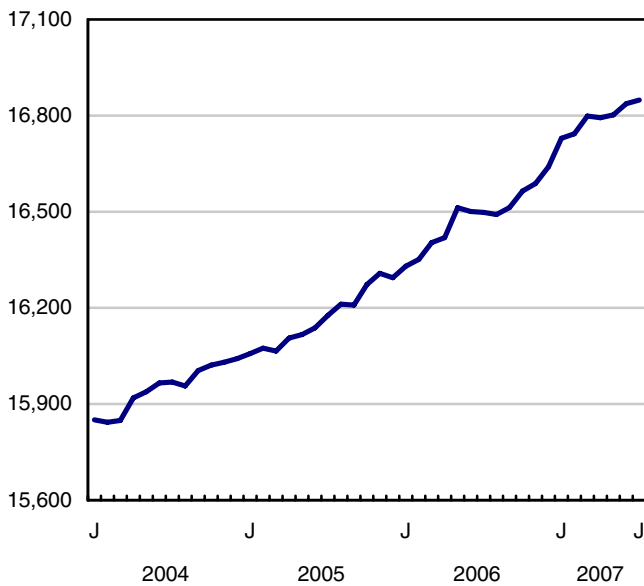
July 2007

Employment was little changed in July, leaving growth so far this year at 1.3%, similar to the growth rate in the first seven months of 2006. The unemployment rate edged down 0.1 percentage points to reach 6.0%, the lowest since 1974.

Chart 1
Employment and unemployment rates, Canada, seasonally adjusted

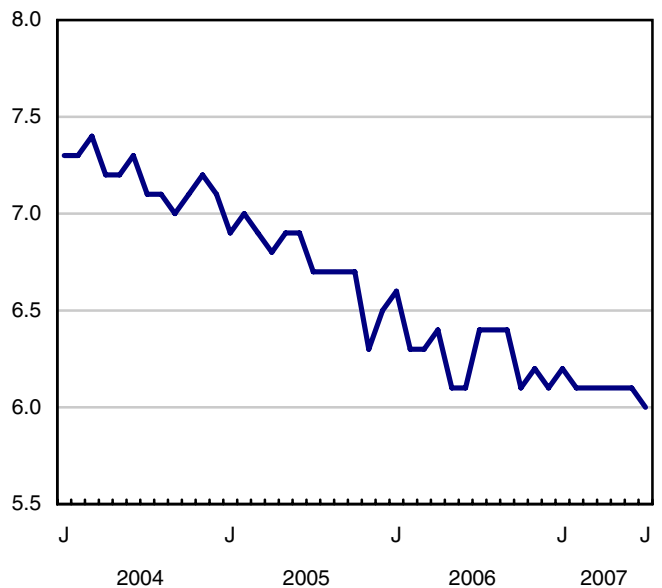
Employment

thousands



Unemployment rate

percentage



Analysis — July 2007

Employment was little changed in July, leaving growth so far this year at 1.3%, similar to the growth rate in the first seven months of 2006. The unemployment rate edged down 0.1 percentage points to reach 6.0%, the lowest since 1974.

Alberta was the only province to show a significant employment increase in July, as an estimated 14,000 more people were working. This pushed Alberta's employment rate back to its record high of 71.6%.

In July, employment gains in professional, scientific and technical services; manufacturing; transportation and warehousing; and utilities offset declines in educational services and finance, insurance, real estate and leasing.

Employment growth continued to be vigorous for students aged 15 to 24, driven primarily by those aged 15 to 19. The employment rate among 15 to 19 year-olds approached the high levels last observed in the early 1990s.

Canadian labour market remains strong

Employment growth so far this year is stronger in Canada than in the United States. Once concepts are adjusted for comparability to US definitions, Canada's employment rate in July was 64.1%, 0.3 percentage points higher than at the beginning of the year. The employment rate in the United States, however, declined during the same period by 0.4 percentage points to 63.0%. While Canada is reaching record high rates of employment, the US is still far from the peak of 64.7% attained in April 2000.

Following slower wage increases in the first quarter of 2007, July marks the third consecutive month with a year-over-year increase above 3%. Canadian employees, on average, made 3.7% more per hour in July than they did a year earlier, running ahead of the most recent year-over-year increase of 2.2% in the Consumer Price Index.

The youth unemployment rate dropped to a low of 10.6% in July, a decline of 1.3 percentage points from a year ago. This is their lowest unemployment rate since September 1989. Unemployment rates for youths have declined in each province in the past year with the exception of Ontario, where the rate remained unchanged from one year ago. So far this year, employment growth for youths (+2.1%) is higher than for both adult women (+1.5%) and adult men (+0.7%).

Employment gains have largely been in professional, scientific and technical services; information, culture and recreation; and trade so far in 2007. This is in contrast to the first seven months of 2006, when gains were mainly in health care and social assistance; finance, insurance, real estate and leasing; and 'other services'. However, manufacturing employment declined by 72,000 during the first seven months of this year, similar to the losses in this industry during the same period of 2006.

Goods sector growth in July

Employment in the goods-producing sector was up in July, mainly in manufacturing (+20,000), and utilities (+6,000). In the service sector, more workers were added in professional, scientific and technical services (+25,000) and transportation and warehousing (+17,000). Total gains, however, were offset by service sector declines in educational services (-57,000) and finance, insurance, real estate and leasing (-13,000).

The large drop in educational services in July was spread across several provinces and was concentrated among teachers and educational assistants in primary and secondary schools. July's decline in education employment follows a two-year upward trend in this industry.

Declines in the public sector (-20,000) partially offset gains among private sector employees (+35,000) in July. In the past twelve months, employment growth has been strongest among the self-employed (+7.8%) followed by private sector employees (+1.3%), while public sector growth was weakest (+0.5%).

Alberta continues to flourish

Alberta's estimated employment increase of 14,000 in July contributed to total gains of 61,000 (+ 3.2%) so far this year, similar to the growth rate over the same period last year. Gains in July were in full-time work, and mainly in health care and social assistance and trade. In the first seven months of 2007, trade; construction; health care and social assistance and information, culture and recreation garnered the bulk of the increases.

Although Ontario's overall employment level was little changed in July, there were a few notable industry movements. Manufacturing employment was up an estimated 27,000 in July, the first significant increase in more than a year, with gains spread across several manufacturing industries. There were also gains in professional, scientific and technical services while employment declined in educational services.

Quebec's employment picture in July was essentially unchanged, leaving total gains since last December at 69,000 (+1.8%). For the second consecutive month in July, the rate of unemployment (6.9%) was at its 33-year low while the employment rate (61.1%) remained at its record high.

In New Brunswick, despite an employment decline of 3,000 in July, growth has been steady since September of 2006, up 3.6% or 13,000. Gains since then have predominantly been in construction; health care and social assistance; and information, culture and recreation.

Employment in Nova Scotia declined by an estimated 3,000 in July, continuing the weakness observed since May of this year. This is a reversal of the strength shown earlier, as employment grew 2.5% from September 2006 to April 2007.

Labour market for students heats up in July

From May to August, the LFS collects labour market information about young people aged 15 to 24 who were attending school full time in March and who intend to return to school in the fall. The published estimates are not seasonally adjusted, therefore comparisons can only be made on a year-over-year basis.

The summer months continued to sizzle for students aged 15 to 24. Their July employment rates were similar to the high levels last attained in the early 1990s, especially for 15 to 16 year-olds (40.2%) and 17 to 19 year-olds (69.2%). Employment rates for students aged 20 to 24 (75.3%) remained on par with levels of last summer. Prince Edward Island (79.0%) and Manitoba (70.9%) had the highest proportion of students aged 15 to 24 working this July.

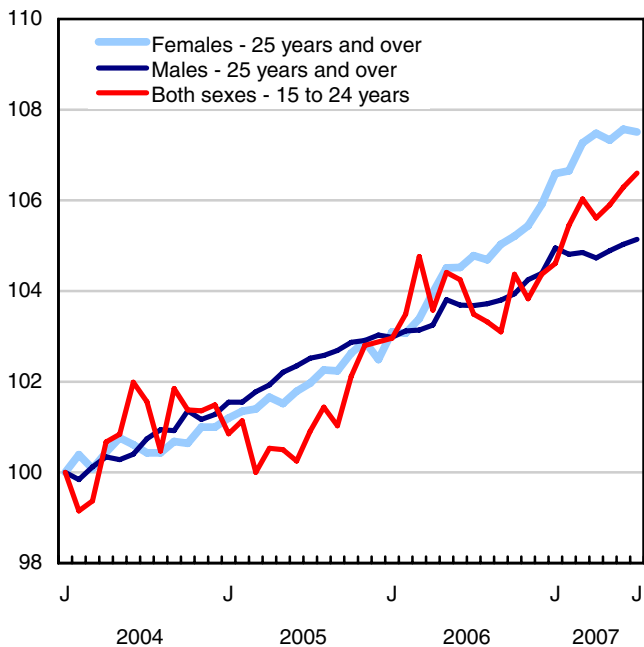
Note to readers

The Labour Force Survey estimates are based on a sample, and are therefore subject to sampling variability. Estimates for smaller geographic areas or industries will have more variability. For an explanation of sampling variability of estimates, and how to use standard errors to assess this variability, consult the Data Quality section in this publication.

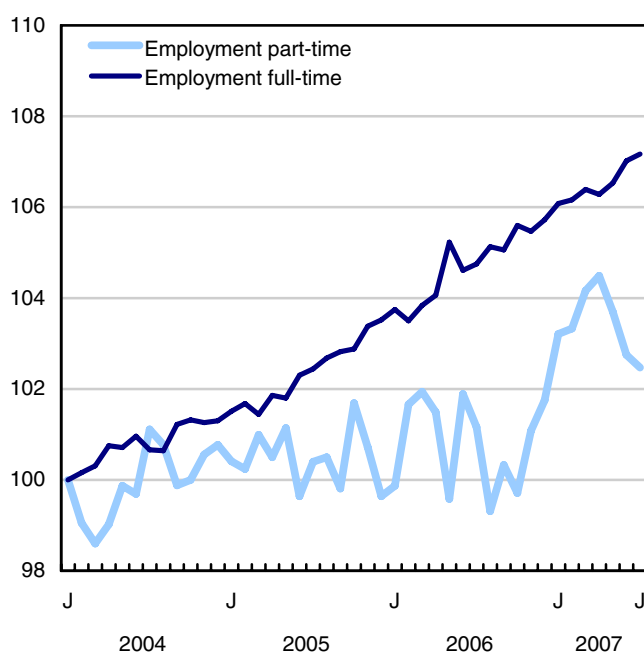
The 2006 Labour Force Historical Review on CD-ROM (71F0004XCB, \$209) is now available.

Chart 1
Employment and unemployment indicators, Canada, seasonally adjusted

Employment index, January 2004=100



Employment index, January 2004=100



Employment index, January 2004=100

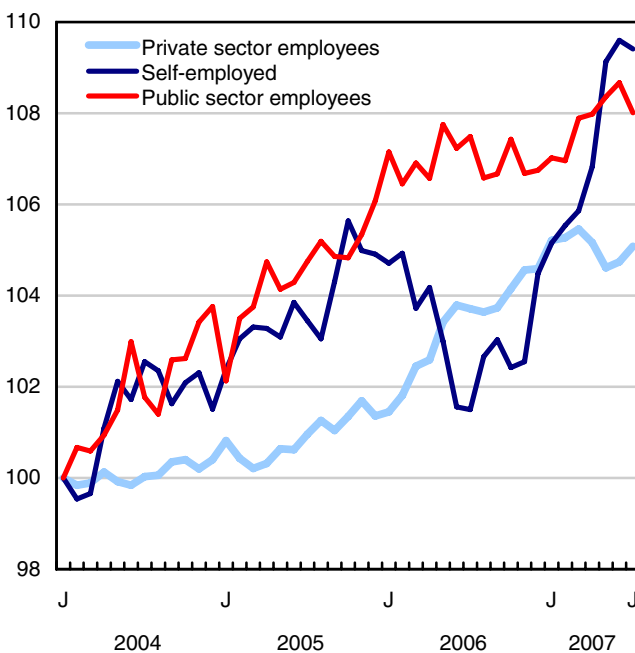
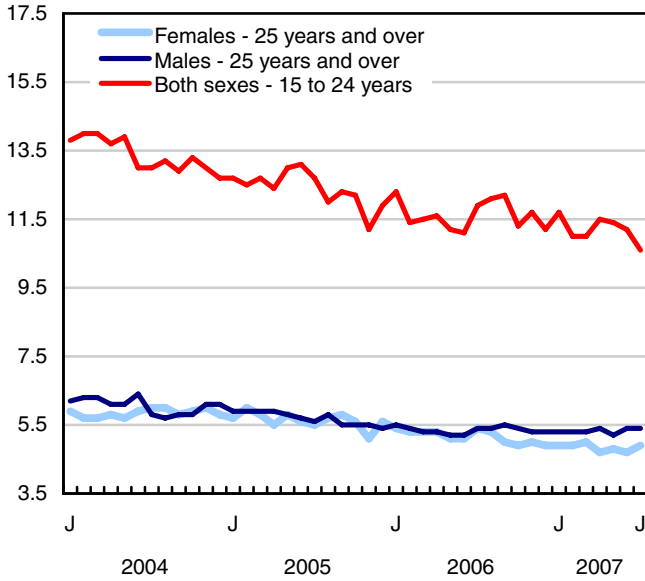
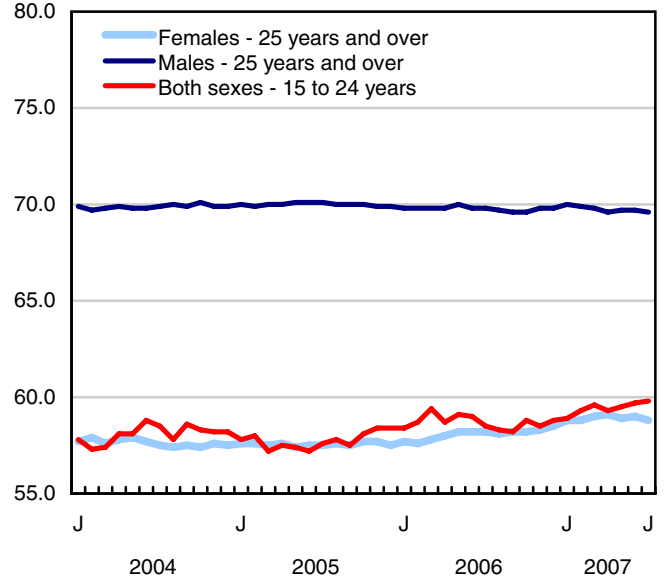


Chart 2
Employment and unemployment indicators, Canada, seasonally adjusted

Unemployment rate (%)



Employment rate (%)



Participation rate (%)

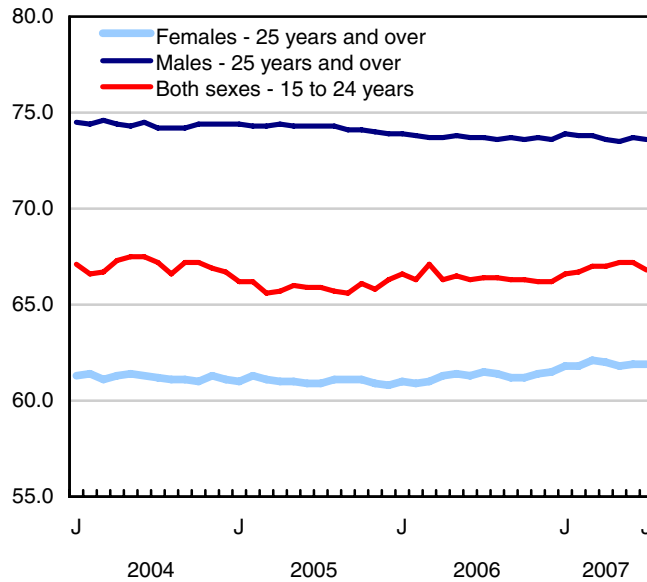


Chart 3
Index of employment by industry, Canada, seasonally adjusted, January, 2004=100

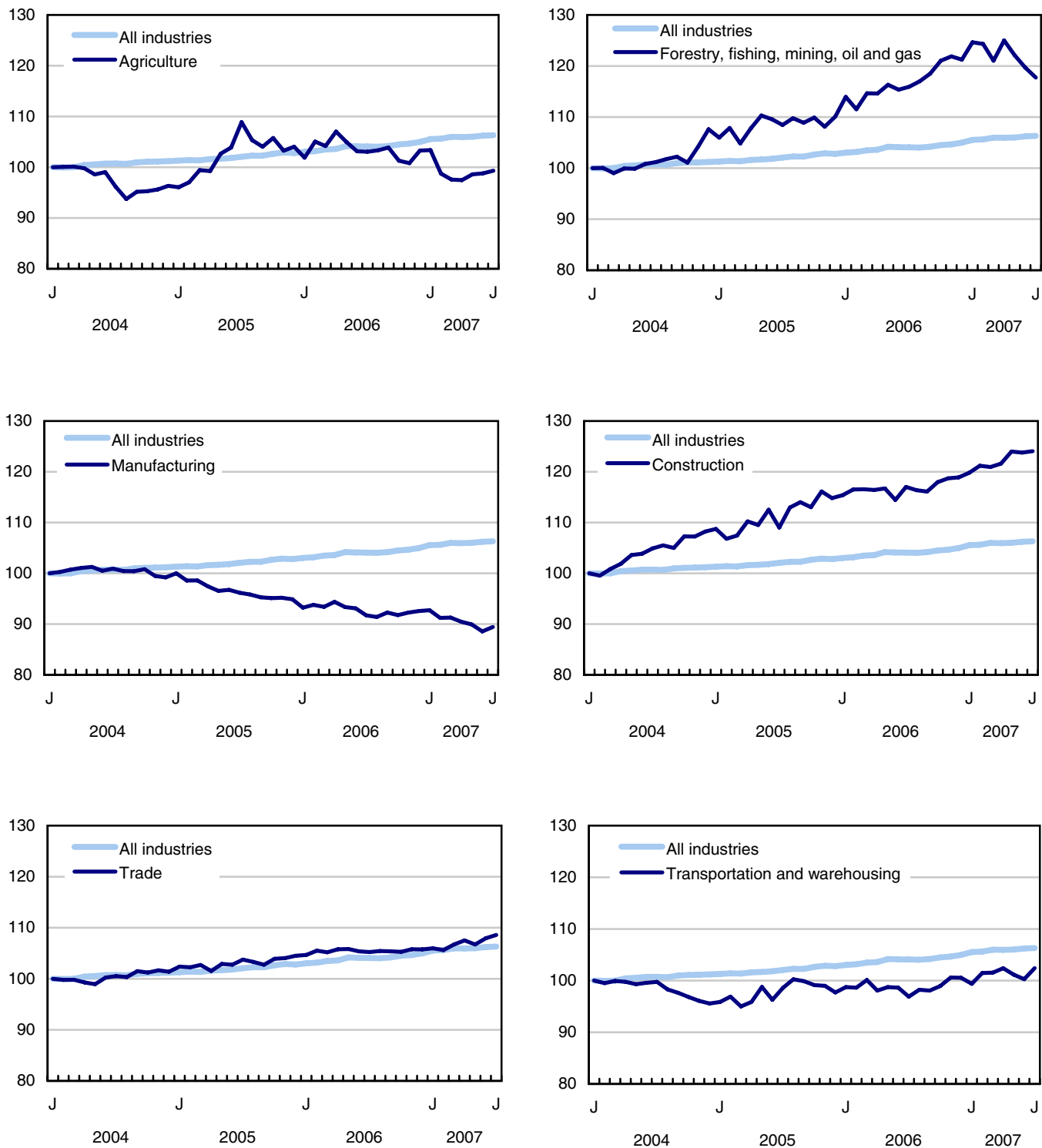


Chart 4
Index of employment by industry, Canada, seasonally adjusted, January 2004 = 100

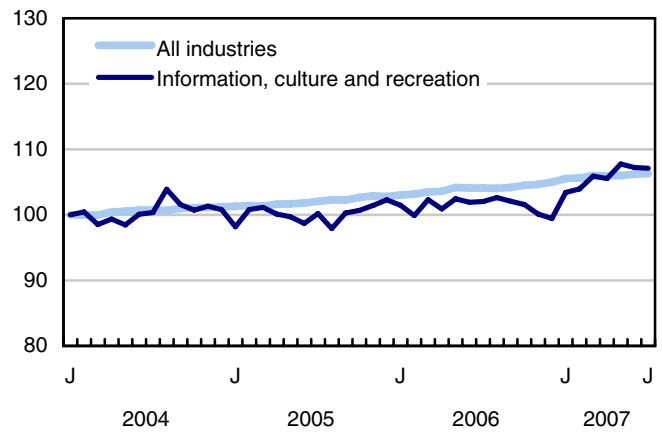
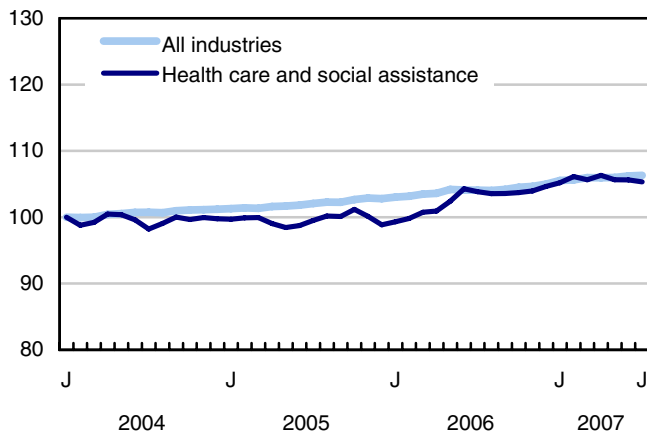
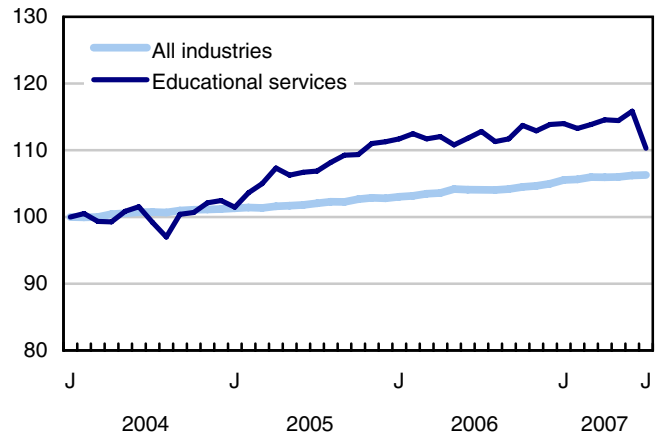
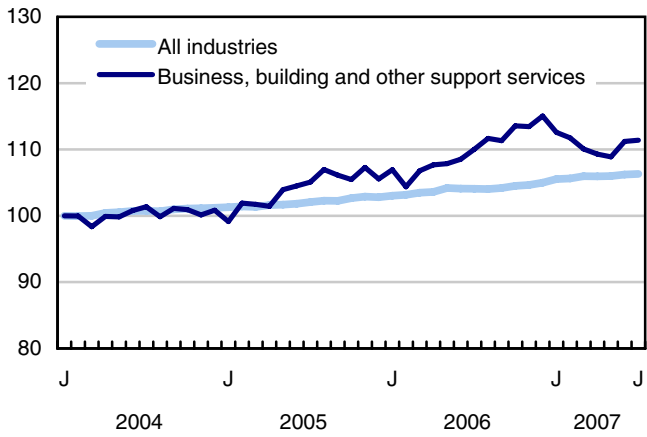
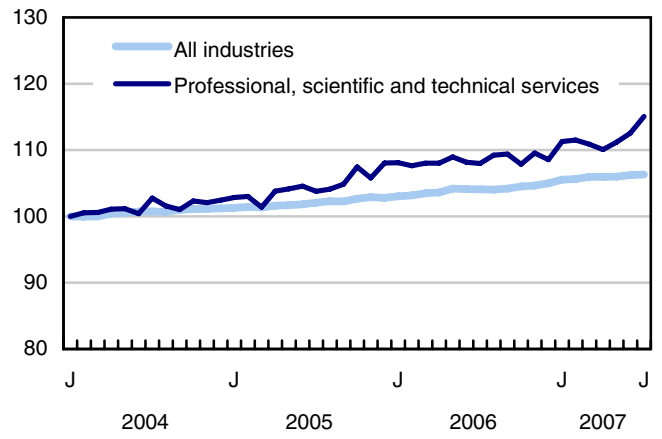
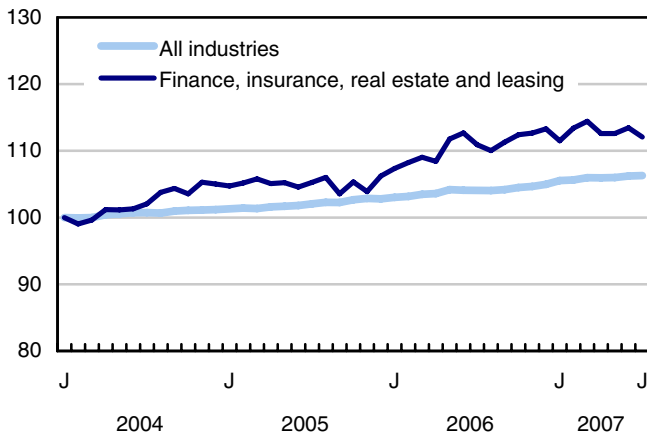


Chart 5
Index of employment by industry, Canada, seasonally adjusted, January 2004 = 100

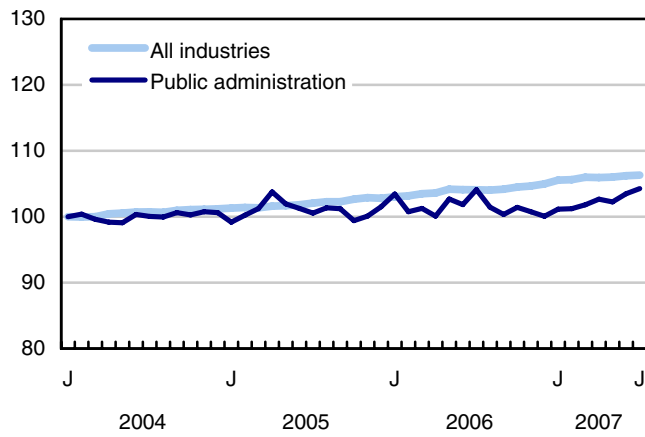
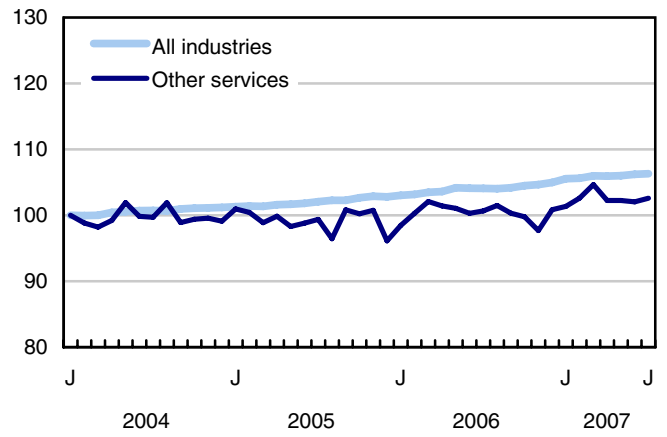
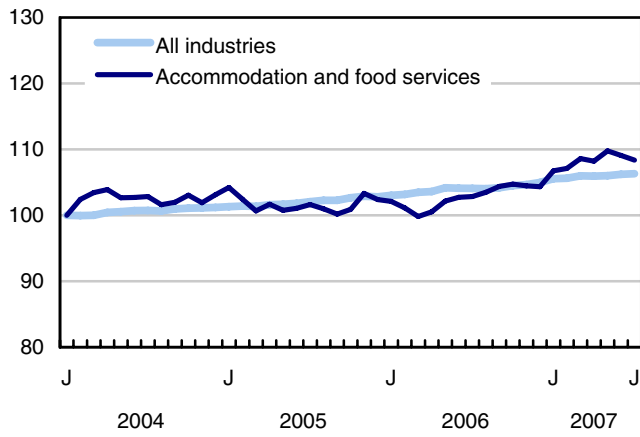


Chart 6
Index of employment by province, seasonally adjusted, January 2004 = 100

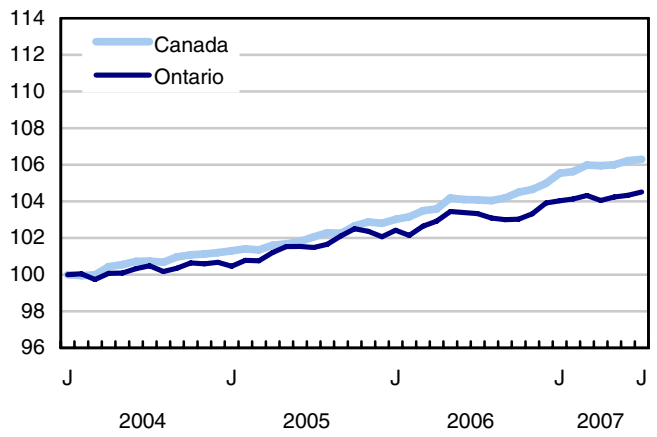
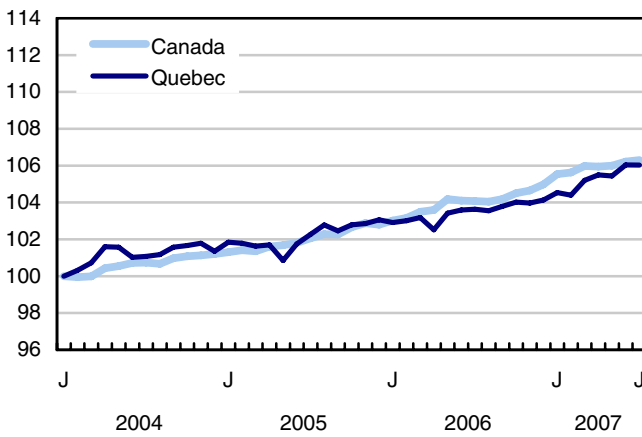
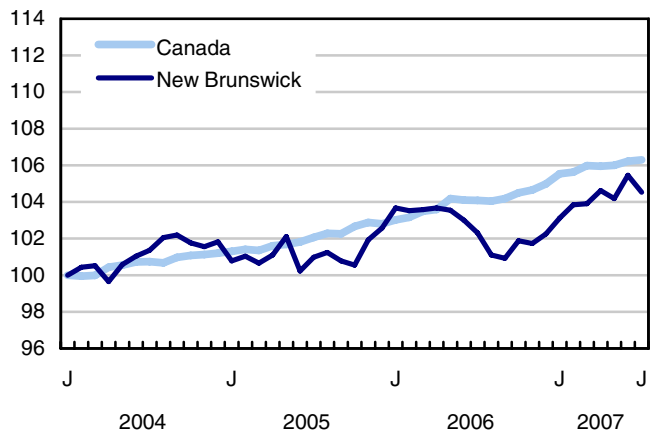
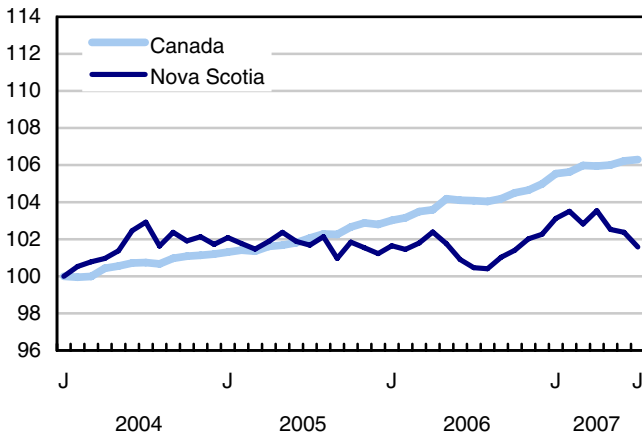
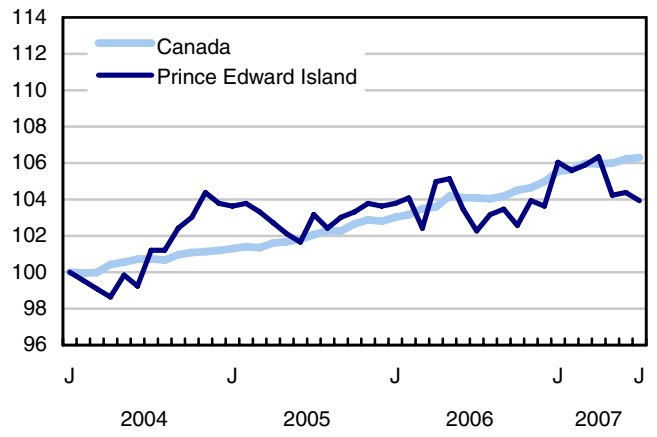
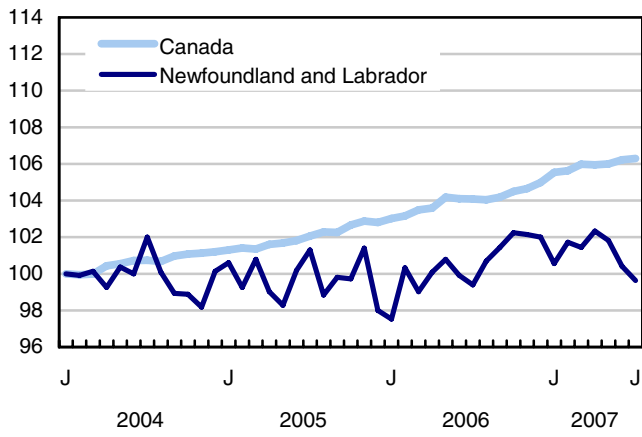
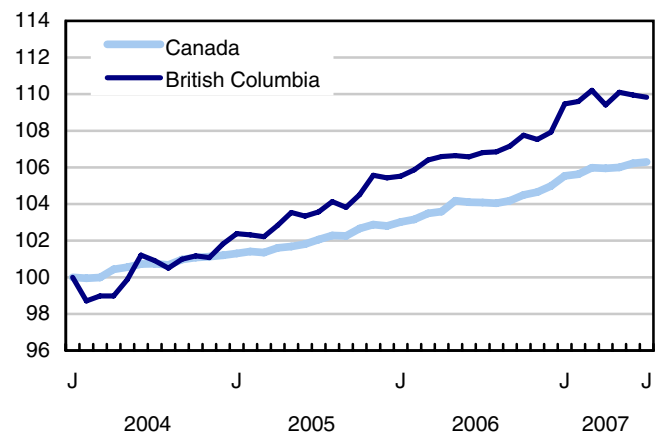
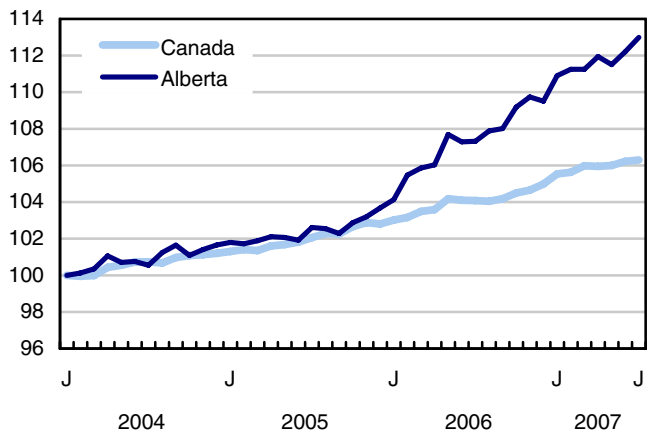
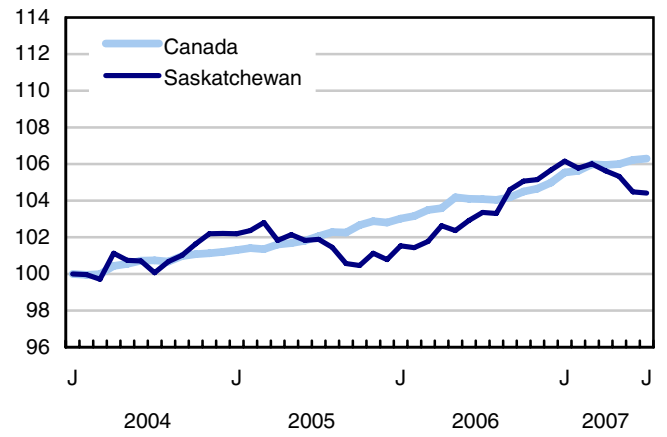
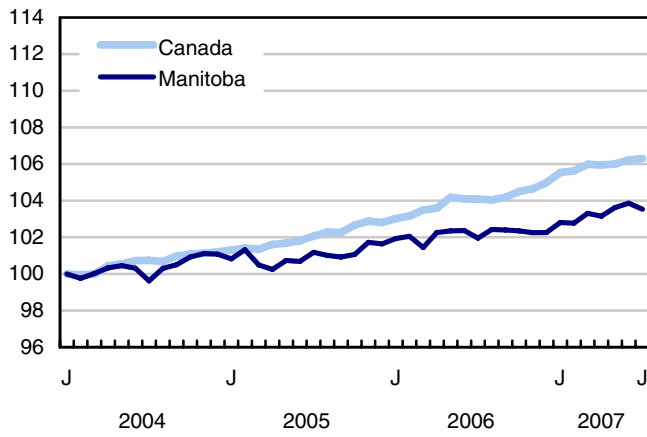


Chart 7
Index of employment by province, seasonally adjusted, January 2004 = 100



Related products

Selected publications from Statistics Canada

71-222-X	The Canadian Labour Market at a Glance
71-526-X	Methodology of the Canadian Labour Force Survey
71-543-G	Guide to the Labour Force Survey
71-544-X	Labour Force Survey Products and Services
71-587-X	Aboriginal Peoples Living Off-reserve in Western Canada: Estimates from the Labour Force Survey
71F0004X	Labour Force Historical Review
71F0031X	Improvements to the Labour Force Survey (LFS)
71M0001X	Labour Force Survey Microdata File
75-001-X	Perspectives on Labour and Income

Selected CANSIM tables from Statistics Canada

282-0001	Labour force survey estimates (LFS), by sex and detailed age group
282-0002	Labour force survey estimates (LFS), by sex and detailed age group
282-0003	Labour force survey estimates (LFS), by educational attainment, sex and age group
282-0004	Labour force survey estimates (LFS), by educational attainment, sex and age group
282-0005	Labour force survey estimates (LFS), by full- and part-time students during school months, sex and age group
282-0006	Labour force survey estimates (LFS), by students during summer months, sex and age group
282-0007	Labour force survey estimates (LFS), by North American Industry Classification System (NAICS), sex and age group
282-0008	Labour force survey estimates (LFS), by North American Industry Classification System (NAICS), sex and age group
282-0009	Labour force survey estimates (LFS), by National Occupational Classification for Statistics (NOC-S) and sex

282-0010	Labour force survey estimates (LFS), by National Occupational Classification for Statistics (NOC-S) and sex
282-0011	Labour force survey estimates (LFS), employment by class of worker, North American Industry Classification System (NAICS) and sex
282-0012	Labour force survey estimates (LFS), employment by class of worker, North American Industry Classification System (NAICS) and sex
282-0013	Labour force survey estimates (LFS), part-time employment by reason for part-time work, sex and age group
282-0014	Labour force survey estimates (LFS), part-time employment by reason for part-time work, sex and age group
282-0015	Labour force survey estimates (LFS), by usual hours worked, main or all jobs, sex and age group
282-0016	Labour force survey estimates (LFS), by usual hours worked, main or all jobs, sex and age group
282-0017	Labour force survey estimates (LFS), by actual hours worked, main or all jobs, sex and age group
282-0018	Labour force survey estimates (LFS), by actual hours worked, main or all jobs, sex and age group
282-0019	Labour force survey estimates (LFS), by usual hours worked, class of worker, North American Industry Classification System (NAICS) and sex
282-0020	Labour force survey estimates (LFS), by usual hours worked, class of worker, North American Industry Classification System (NAICS) and sex
282-0021	Labour force survey estimates (LFS), by actual hours worked, class of worker, North American Industry Classification System (NAICS) and sex
282-0022	Labour force survey estimates (LFS), by actual hours worked, class of worker, North American Industry Classification System (NAICS) and sex
282-0023	Labour force survey estimates (LFS), by usual hours worked, class of worker, National Occupational Classification for Statistics (NOC-S) and sex
282-0024	Labour force survey estimates (LFS), by usual hours worked, class of worker, National Occupational Classification for Statistics (NOC-S) and sex
282-0025	Labour force survey estimates (LFS), by actual hours worked, class of worker, National Occupational Classification for Statistics (NOC-S) and sex
282-0026	Labour force survey estimates (LFS), by actual hours worked, class of worker, National Occupational Classification for Statistics (NOC-S) and sex
282-0027	Labour force survey estimates (LFS), by total and average usual and actual hours worked, main or all jobs, type of work, sex and age group
282-0028	Labour force survey estimates (LFS), by total and average usual and actual hours worked, main or all jobs, type of work, sex and age group

282-0029	Labour force survey estimates (LFS), average days lost for personal reasons per full-time employee by North American Industry Classification System (NAICS), sex and age group
282-0030	Labour force survey estimates (LFS), average days lost for personal reasons per full-time employee by National Occupational Classification for Statistics (NOC-S), sex and age group
282-0031	Labour force survey estimates (LFS), multiple jobholders by North American Industry Classification System (NAICS), sex and age group
282-0032	Labour force survey estimates (LFS), multiple jobholders by North American Industry Classification System (NAICS), sex and age group
282-0033	Labour force survey estimates (LFS), multiple jobholders by National Occupational Classification for Statistics (NOC-S), sex and age group
282-0034	Labour force survey estimates (LFS), multiple jobholders by National Occupational Classification for Statistics (NOC-S), sex and age group
282-0035	Labour force survey estimates (LFS), multiple jobholders by usual hours worked at main and all jobs
282-0036	Labour force survey estimates (LFS), multiple jobholders by usual hours worked at main and all jobs
282-0037	Labour force survey estimates (LFS), job tenure by type of work, sex and age group
282-0038	Labour force survey estimates (LFS), job tenure by type of work, sex and age group
282-0039	Labour force survey estimates (LFS), job tenure by National Occupational Classification for Statistics (NOC-S) and sex
282-0040	Labour force survey estimates (LFS), job tenure by National Occupational Classification for Statistics (NOC-S) and sex
282-0041	Labour force survey estimates (LFS), job tenure by North American Industry Classification System (NAICS) and sex
282-0042	Labour force survey estimates (LFS), job tenure by North American Industry Classification System (NAICS) and sex
282-0047	Labour force survey estimates (LFS), duration of unemployment by sex and age group
282-0048	Labour force survey estimates (LFS), duration of unemployment by sex and age group
282-0049	Labour force survey estimates (LFS), unemployment by type of work sought and search method, sex and age group
282-0050	Labour force survey estimates (LFS), unemployment by type of work sought and search method, sex and age group
282-0051	Labour force survey estimates (LFS), retirement age by class of worker and sex
282-0052	Labour force survey estimates (LFS), by census metropolitan area, sex and age group, 3-month moving average
282-0053	Labour force survey estimates (LFS), by census metropolitan area, sex and age group

282-0054	Labour force survey estimates (LFS), by provinces, territories and economic regions, 3-month moving average
282-0055	Labour force survey estimates (LFS), by provinces, territories and economic regions
282-0056	Labour force survey estimates (LFS), employment by census metropolitan area and North American Industry Classification System (NAICS), 3-month moving average
282-0057	Labour force survey estimates (LFS), employment by census metropolitan area and North American Industry Classification System (NAICS)
282-0058	Labour force survey estimates (LFS), employment by census metropolitan area and National Occupational Classification for Statistics (NOC-S), 3-month moving average
282-0059	Labour force survey estimates (LFS), employment by census metropolitan area and National Occupational Classification for Statistics (NOC-S)
282-0060	Labour force survey estimates (LFS), employment by economic region and North American Industry Classification System (NAICS), 3-month moving average
282-0061	Labour force survey estimates (LFS), employment by economic region and North American Industry Classification System (NAICS)
282-0062	Labour force survey estimates (LFS), employment by economic region and National Occupational Classification for Statistics (NOC-S), 3-month moving average
282-0063	Labour force survey estimates (LFS), employment by economic region and National Occupational Classification for Statistics (NOC-S)
282-0064	Labour force survey estimates (LFS), by selected medium-sized cities
282-0069	Labour force survey estimates (LFS), wages of employees by type of work, National Occupational Classification for Statistics (NOC-S), sex and age group
282-0070	Labour force survey estimates (LFS), wages of employees by type of work, National Occupational Classification for Statistics (NOC-S), sex and age group
282-0071	Labour force survey estimates (LFS), wages of employees by type of work, North American Industry Classification System (NAICS), sex and age group
282-0072	Labour force survey estimates (LFS), wages of employees by type of work, North American Industry Classification System (NAICS), sex and age group
282-0073	Labour force survey estimates (LFS), wages of employees by job permanence, union coverage, sex and age group
282-0074	Labour force survey estimates (LFS), wages of employees by job permanence, union coverage, sex and age group
282-0075	Labour force survey estimates (LFS), employees by establishment size, North American Industry Classification System (NAICS), sex and age group
282-0076	Labour force survey estimates (LFS), employees by establishment size, North American Industry Classification System (NAICS), sex and age group

282-0077	Labour force survey estimates (LFS), employees by union coverage, North American Industry Classification System (NAICS), sex and age group
282-0078	Labour force survey estimates (LFS), employees by union coverage, North American Industry Classification System (NAICS), sex and age group
282-0079	Labour force survey estimates (LFS), employees by job permanency, North American Industry Classification System (NAICS), sex and age group
282-0080	Labour force survey estimates (LFS), employees by job permanency, North American Industry Classification System (NAICS), sex and age group
282-0081	Labour force survey estimates (LFS), employees working overtime (weekly) by National Occupational Classification for Statistics (NOC-S), sex and age group
282-0082	Labour force survey estimates (LFS), employees working overtime (weekly) by National Occupational Classification for Statistics (NOC-S), sex and age group
282-0083	Labour force survey estimates (LFS), employees working overtime (weekly) by North American Industry Classification System (NAICS), sex and age group
282-0084	Labour force survey estimates (LFS), employees working overtime (weekly) by North American Industry Classification System (NAICS), sex and age group
282-0085	Labour force survey estimates (LFS), supplementary unemployment rates by sex and age group
282-0086	Labour force survey estimates (LFS), supplementary unemployment rates by sex and age group
282-0087	Labour force survey estimates (LFS), by sex and age group, seasonally adjusted and unadjusted
282-0088	Labour force survey estimates (LFS), employment by North American Industry Classification System (NAICS), seasonally adjusted and unadjusted
282-0089	Labour force survey estimates (LFS), employment by class of worker and sex, seasonally adjusted and unadjusted
282-0090	Labour force survey estimates (LFS), by census metropolitan area, 3-month moving average, seasonally adjusted and unadjusted
282-0091	Labour force survey estimates (LFS), by Montréal, Toronto and Vancouver census metropolitan areas, seasonally adjusted and unadjusted
282-0092	Labour force survey estimates (LFS), actual hours worked by North American Industry Classification System (NAICS), seasonally adjusted
282-0093	Labour force survey estimates (LFS), employment by National Occupational Classification for Statistics (NOC-S), seasonally adjusted
282-0094	Labour force survey estimates (LFS), by North American Industry Classification System (NAICS), Canada, seasonally adjusted
282-0095	Labour force survey estimates (LFS), by full- and part-time students during school months, sex and age group
282-0096	Labour force survey estimates (LFS), by urban and rural areas based on 2001 census boundaries, sex and age group

282-0097	Labour force survey estimates (LFS), by urban and rural areas based on 2001 census boundaries, sex and age group
282-0098	Labour force survey estimates (LFS), employment by urban and rural areas based on 2001 census boundaries, class of worker and North American Industry Classification System (NAICS)
282-0099	Labour force survey estimates (LFS), employment by urban and rural areas based on 2001 census boundaries, class of worker and North American Industry Classification System (NAICS)

Selected surveys from Statistics Canada

3701	Labour Force Survey
------	---------------------

Selected summary tables from Statistics Canada

- *Labour force characteristics*
- *Employment by industry*
- *Selected economic indicators, Canada and United States (monthly and quarterly)*
- *Days lost per worker due to illness or disability, by sex, by provinces*
- *Economic indicators, by province and territory (monthly and quarterly)*
- *Labour force and participation rates by sex and age group*
- *Labour force, employed and unemployed, numbers and rates, by provinces*
- *Employment by industry and sex*
- *Full-time and part-time employment by sex and age group*
- *Labour force characteristics by age and sex*
- *Distribution of employed people, by industry, by province*
- *Labour force characteristics, population 15 years and older, by census metropolitan area*
- *Labour force characteristics, population 15 years and older, by economic region, by province*
- *Days lost per worker by cause, by provinces*
- *Days lost per worker by industry and sex*
- *People employed, by educational attainment*

- *Reasons for part-time work by sex and age group*
- *Self-employment, historical summary*
- *Employment by age, sex, type of work, class of worker and provinces (monthly)*
- *Employment by major industry groups, seasonally adjusted, by provinces (monthly)*
- *Actual hours worked per week by industry, seasonally adjusted (monthly)*
- *Average hourly wages of employees by selected characteristics and profession, unadjusted data, by provinces (monthly)*
- *Labour force characteristics, seasonally adjusted, by province (monthly)*
- *Labour force characteristics, unadjusted, by province (monthly)*
- *Labour force characteristics, seasonally adjusted, by census metropolitan area (3 month moving average)*
- *Labour force characteristics, unadjusted, by census metropolitan area (3 month moving average)*
- *Labour force characteristics, unadjusted, by economic region (3 month moving average)*

Statistical tables

Table 1
Labour force characteristics by age and sex, Canada, seasonally adjusted

	June 2007	July 2007	S.E. ¹	Change from			Percent change from		
				last month	last December	twelve months ago	last month	last December	twelve months ago
in thousands (except rates)									
Both sexes, 15 years and over									
Population	26,533.9	26,569.9	...	36.0	212.3	373.0	0.1	0.8	1.4
Labour force	17,923.8	17,928.3	27.1	4.5	212.6	295.8	0.0	1.2	1.7
Employment	16,837.3	16,848.6	27.4	11.3	208.2	350.8	0.1	1.3	2.1
Employment full-time	13,804.5	13,824.2	35.2	19.7	187.0	312.0	0.1	1.4	2.3
Employment part-time	3,032.8	3,024.4	32.0	-8.4	21.2	38.8	-0.3	0.7	1.3
Unemployment	1,086.5	1,079.8	23.1	-6.7	4.5	-54.9	-0.6	0.4	-4.8
Participation rate	67.6	67.5	0.1	-0.1	0.3	0.2
Unemployment rate	6.1	6.0	0.1	-0.1	-0.1	-0.4
Employment rate	63.5	63.4	0.1	-0.1	0.3	0.4
Part-time rate	18.0	18.0	0.2	-0.1	-0.1	-0.1
Both sexes, 15 to 24 years									
Population	4,351.1	4,354.0	...	2.9	16.0	33.1	0.1	0.4	0.8
Labour force	2,922.3	2,910.5	16.3	-11.8	40.1	41.8	-0.4	1.4	1.5
Employment	2,595.7	2,603.3	15.7	7.6	54.4	75.8	0.3	2.1	3.0
Employment full-time	1,451.0	1,467.0	17.8	16.0	40.2	54.0	1.1	2.8	3.8
Employment part-time	1,144.7	1,136.3	18.2	-8.4	14.2	21.8	-0.7	1.3	2.0
Unemployment	326.6	307.2	13.7	-19.4	-14.3	-34.0	-5.9	-4.4	-10.0
Participation rate	67.2	66.8	0.4	-0.4	0.6	0.4
Unemployment rate	11.2	10.6	0.4	-0.6	-0.6	-1.3
Employment rate	59.7	59.8	0.4	0.1	1.0	1.3
Part-time rate	44.1	43.6	0.6	-0.5	-0.4	-0.4
Men, 25 years and over									
Population	10,836.0	10,852.4	...	16.4	97.4	169.1	0.2	0.9	1.6
Labour force	7,982.8	7,988.1	13.9	5.3	68.4	113.2	0.1	0.9	1.4
Employment	7,549.9	7,557.8	15.0	7.9	54.1	105.0	0.1	0.7	1.4
Employment full-time	7,068.6	7,057.7	19.1	-10.9	40.2	81.0	-0.2	0.6	1.2
Employment part-time	481.3	500.1	15.1	18.8	13.9	24.1	3.9	2.9	5.1
Unemployment	432.9	430.3	13.3	-2.6	14.2	8.1	-0.6	3.4	1.9
Participation rate	73.7	73.6	0.1	-0.1	0.0	-0.1
Unemployment rate	5.4	5.4	0.2	0.0	0.1	0.0
Employment rate	69.7	69.6	0.1	-0.1	-0.2	-0.2
Part-time rate	6.4	6.6	0.2	0.2	0.1	0.2
Women, 25 years and over									
Population	11,346.7	11,363.5	...	16.8	98.9	170.9	0.1	0.9	1.5
Labour force	7,018.6	7,029.7	15.3	11.1	104.1	140.8	0.2	1.5	2.0
Employment	6,691.7	6,687.4	15.5	-4.3	99.5	169.8	-0.1	1.5	2.6
Employment full-time	5,284.9	5,299.4	22.4	14.5	106.5	176.9	0.3	2.1	3.5
Employment part-time	1,406.8	1,388.0	20.8	-18.8	-6.9	-7.1	-1.3	-0.5	-0.5
Unemployment	326.9	342.3	12.2	15.4	4.6	-29.0	4.7	1.4	-7.8
Participation rate	61.9	61.9	0.1	0.0	0.4	0.4
Unemployment rate	4.7	4.9	0.2	0.2	0.0	-0.5
Employment rate	59.0	58.8	0.1	-0.2	0.3	0.6
Part-time rate	21.0	20.8	0.3	-0.3	-0.4	-0.6
Both sexes, 25 to 54 years									
Population	14,323.6	14,332.8	...	9.2	51.7	96.2	0.1	0.4	0.7
Labour force	12,399.3	12,416.8	20.4	17.5	88.3	136.7	0.1	0.7	1.1
Employment	11,766.7	11,773.0	21.8	6.3	77.2	146.4	0.1	0.7	1.3
Unemployment	632.7	643.8	16.9	11.1	11.1	-9.7	1.8	1.8	-1.5
Participation rate	86.6	86.6	0.1	0.0	0.3	0.3
Unemployment rate	5.1	5.2	0.1	0.1	0.1	-0.1
Employment rate	82.1	82.1	0.2	0.0	0.2	0.4

1. Average standard error of change in two consecutive months (see "Sampling Errors" in Data Quality for further explanations).

Note(s): Related CANSIM table 282-0087

Table 2
Employment by class of worker and industry, Canada, seasonally adjusted

	June 2007	July 2007	S.E. ¹	Change from			Percent change from		
				last month	last December	twelve months ago	last month	last December	twelve months ago
in thousands									
Class of worker									
Employees	14,184.8	14,200.6	31.4	15.8	88.7	159.1	0.1	0.6	1.1
Self-employed ²	2,652.5	2,647.9	20.6	-4.6	119.4	191.6	-0.2	4.7	7.8
Public/private sector employees									
Public sector employees	3,248.7	3,229.2	19.3	-19.5	37.7	15.7	-0.6	1.2	0.5
Private sector employees	10,936.1	10,971.5	32.4	35.4	51.0	143.5	0.3	0.5	1.3
Industry	16,837.3	16,848.6	27.4	11.3	208.2	350.8	0.1	1.3	2.1
Goods-producing sector	3,964.5	3,988.9	22.4	24.4	-26.8	24.9	0.6	-0.7	0.6
Agriculture	330.7	332.5	6.7	1.8	-13.3	-12.5	0.5	-3.8	-3.6
Forestry, fishing, mining, oil and gas	338.0	332.5	6.3	-5.5	-9.9	5.1	-1.6	-2.9	1.6
Utilities	139.9	145.8	3.7	5.9	21.2	20.2	4.2	17.0	16.1
Construction	1,134.0	1,136.6	13.6	2.6	47.3	64.6	0.2	4.3	6.0
Manufacturing	2,021.9	2,041.5	17.4	19.6	-72.1	-52.6	1.0	-3.4	-2.5
Services-producing sector	12,872.8	12,859.7	30.3	-13.1	235.0	325.9	-0.1	1.9	2.6
Trade	2,696.2	2,712.4	19.5	16.2	70.6	83.8	0.6	2.7	3.2
Transportation and warehousing	813.8	831.2	11.4	17.4	15.3	44.9	2.1	1.9	5.7
Finance, insurance, real estate and leasing	1,066.7	1,053.7	12.5	-13.0	-11.5	10.8	-1.2	-1.1	1.0
Professional, scientific and technical services	1,131.3	1,156.5	14.2	25.2	65.6	71.2	2.2	6.0	6.6
Business, building and other support services	699.1	700.2	12.4	1.1	-23.0	8.6	0.2	-3.2	1.2
Educational services	1,196.0	1,138.6	13.0	-57.4	-36.9	-26.0	-4.8	-3.1	-2.2
Health care and social assistance	1,838.5	1,833.2	14.5	-5.3	11.6	25.8	-0.3	0.6	1.4
Information, culture and recreation	787.4	786.7	12.1	-0.7	56.3	37.4	-0.1	7.7	5.0
Accommodation and food services	1,077.6	1,070.6	13.7	-7.0	39.9	54.5	-0.6	3.9	5.4
Other services	712.6	716.4	10.8	3.8	12.2	13.5	0.5	1.7	1.9
Public administration	853.6	860.1	9.6	6.5	34.7	1.4	0.8	4.2	0.2

1. Average standard error of change in two consecutive months (see "Sampling Errors" in Data Quality for further explanations).

2. Includes both incorporated and unincorporated working owners, self-employed persons who do not have a business and persons working in a family business without pay.

Note(s): Related CANSIM tables 282-0088, 282-0089

Table 3
Labour force characteristics by province, seasonally adjusted

	June 2007	July 2007	S.E. ¹	Change from			Percent change from		
				last month	last December	twelve months ago	last month	last December	twelve months ago
in thousands (except rates)									
Newfoundland and Labrador									
Population	423.3	423.1	...	-0.2	-3.3	-4.3	0.0	-0.8	-1.0
Labour force	248.0	247.2	2.2	-0.8	-6.7	-2.1	-0.3	-2.6	-0.8
Employment	215.5	213.8	2.3	-1.7	-5.1	0.5	-0.8	-2.3	0.2
Employment full-time	181.8	185.7	2.6	3.9	1.0	6.6	2.1	0.5	3.7
Employment part-time	33.8	28.1	1.8	-5.7	-6.1	-6.1	-16.9	-17.8	-17.8
Unemployment	32.5	33.5	2.2	1.0	-1.5	-2.5	3.1	-4.3	-6.9
Participation rate	58.6	58.4	0.5	-0.2	-1.1	0.1
Unemployment rate	13.1	13.6	0.8	0.5	-0.2	-0.8
Employment rate	50.9	50.5	0.5	-0.4	-0.8	0.6
Prince Edward Island									
Population	113.2	113.4	...	0.2	0.7	1.0	0.2	0.6	0.9
Labour force	77.2	76.9	0.6	-0.3	-1.4	0.5	-0.4	-1.8	0.7
Employment	69.1	68.8	0.6	-0.3	0.2	1.1	-0.4	0.3	1.6
Employment full-time	57.6	57.9	0.8	0.3	1.3	0.0	0.5	2.3	0.0
Employment part-time	11.5	10.9	0.6	-0.6	-1.1	1.0	-5.2	-9.2	10.1
Unemployment	8.1	8.1	0.6	0.0	-1.6	-0.5	0.0	-16.5	-5.8
Participation rate	68.2	67.8	0.5	-0.4	-1.7	-0.2
Unemployment rate	10.5	10.5	0.7	0.0	-1.9	-0.8
Employment rate	61.0	60.7	0.6	-0.3	-0.2	0.5
Nova Scotia									
Population	764.0	764.2	...	0.2	0.7	1.5	0.0	0.1	0.2
Labour force	485.1	485.0	2.7	-0.1	4.5	8.3	0.0	0.9	1.7
Employment	445.8	442.4	2.9	-3.4	-3.0	4.9	-0.8	-0.7	1.1
Employment full-time	364.5	362.2	3.6	-2.3	-1.8	6.9	-0.6	-0.5	1.9
Employment part-time	81.3	80.2	3.1	-1.1	-1.2	-2.0	-1.4	-1.5	-2.4
Unemployment	39.3	42.6	2.5	3.3	7.5	3.4	8.4	21.4	8.7
Participation rate	63.5	63.5	0.4	0.0	0.6	1.0
Unemployment rate	8.1	8.8	0.5	0.7	1.5	0.6
Employment rate	58.4	57.9	0.4	-0.5	-0.4	0.5
New Brunswick									
Population	612.7	613.1	...	0.4	1.9	1.7	0.1	0.3	0.3
Labour force	392.2	390.4	2.4	-1.8	3.3	1.2	-0.5	0.9	0.3
Employment	365.4	362.2	2.4	-3.2	7.9	7.7	-0.9	2.2	2.2
Employment full-time	304.5	304.2	2.8	-0.3	6.4	5.7	-0.1	2.1	1.9
Employment part-time	60.9	57.9	2.4	-3.0	1.4	1.9	-4.9	2.5	3.4
Unemployment	26.8	28.2	2.1	1.4	-4.6	-6.5	5.2	-14.0	-18.7
Participation rate	64.0	63.7	0.4	-0.3	0.4	0.0
Unemployment rate	6.8	7.2	0.5	0.4	-1.3	-1.7
Employment rate	59.6	59.1	0.4	-0.5	1.1	1.1
Quebec									
Population	6,312.4	6,317.7	...	5.3	34.9	63.7	0.1	0.6	1.0
Labour force	4,145.2	4,143.7	14.2	-1.5	48.0	41.8	0.0	1.2	1.0
Employment	3,858.9	3,858.5	14.8	-0.4	69.1	87.4	0.0	1.8	2.3
Employment full-time	3,164.3	3,151.8	18.9	-12.5	41.3	79.5	-0.4	1.3	2.6
Employment part-time	694.6	706.7	17.5	12.1	27.8	7.8	1.7	4.1	1.1
Unemployment	286.3	285.2	13.2	-1.1	-21.1	-45.6	-0.4	-6.9	-13.8
Participation rate	65.7	65.6	0.2	-0.1	0.4	0.0
Unemployment rate	6.9	6.9	0.3	0.0	-0.6	-1.2
Employment rate	61.1	61.1	0.2	0.0	0.8	0.8

See footnotes at the end of the table.

Table 3 – continued

Labour force characteristics by province, seasonally adjusted

	June 2007	July 2007	S.E. ¹	Change from			Percent change from		
				last month	last December	twelve months ago	last month	last December	twelve months ago
in thousands (except rates)									
Ontario									
Population	10,353.1	10,366.6	...	13.5	75.7	131.0	0.1	0.7	1.3
Labour force	7,033.2	7,049.9	18.5	16.7	81.3	86.4	0.2	1.2	1.2
Employment	6,573.3	6,584.7	18.1	11.4	38.1	74.3	0.2	0.6	1.1
Employment full-time	5,422.2	5,408.5	22.8	-13.7	53.9	45.7	-0.3	1.0	0.9
Employment part-time	1,151.1	1,176.2	20.7	25.1	-15.7	28.6	2.2	-1.3	2.5
Unemployment	459.9	465.2	15.9	5.3	43.2	12.1	1.2	10.2	2.7
Participation rate	67.9	68.0	0.2	0.1	0.3	0.0
Unemployment rate	6.5	6.6	0.2	0.1	0.5	0.1
Employment rate	63.5	63.5	0.2	0.0	-0.1	-0.1
Manitoba									
Population	898.4	899.2	...	0.8	5.4	6.6	0.1	0.6	0.7
Labour force	625.7	621.0	2.9	-4.7	8.4	6.1	-0.8	1.4	1.0
Employment	596.8	594.9	2.8	-1.9	7.3	9.1	-0.3	1.2	1.6
Employment full-time	480.2	481.6	3.8	1.4	9.2	12.0	0.3	1.9	2.6
Employment part-time	116.6	113.4	3.7	-3.2	-1.8	-2.8	-2.7	-1.6	-2.4
Unemployment	28.9	26.1	2.1	-2.8	1.1	-3.0	-9.7	4.4	-10.3
Participation rate	69.6	69.1	0.3	-0.5	0.6	0.2
Unemployment rate	4.6	4.2	0.3	-0.4	0.1	-0.5
Employment rate	66.4	66.2	0.3	-0.2	0.5	0.6
Saskatchewan									
Population	750.0	751.1	...	1.1	4.8	5.2	0.1	0.6	0.7
Labour force	520.1	521.9	2.4	1.8	-2.1	6.3	0.3	-0.4	1.2
Employment	497.1	496.8	2.4	-0.3	-6.0	5.0	-0.1	-1.2	1.0
Employment full-time	403.8	406.5	3.2	2.7	-1.2	3.7	0.7	-0.3	0.9
Employment part-time	93.3	90.3	2.9	-3.0	-4.8	1.3	-3.2	-5.0	1.5
Unemployment	23.0	25.1	1.8	2.1	3.9	1.4	9.1	18.4	5.9
Participation rate	69.3	69.5	0.3	0.2	-0.7	0.4
Unemployment rate	4.4	4.8	0.3	0.4	0.8	0.2
Employment rate	66.3	66.1	0.3	-0.2	-1.3	0.2
Alberta									
Population	2,740.1	2,748.8	...	8.7	56.7	107.5	0.3	2.1	4.1
Labour force	2,032.2	2,037.0	7.7	4.8	62.6	97.6	0.2	3.2	5.0
Employment	1,955.3	1,968.9	8.0	13.6	60.5	98.8	0.7	3.2	5.3
Employment full-time	1,644.0	1,658.4	11.0	14.4	42.9	91.3	0.9	2.7	5.8
Employment part-time	311.3	310.5	9.9	-0.8	17.6	7.5	-0.3	6.0	2.5
Unemployment	76.8	68.1	5.6	-8.7	2.1	-1.3	-11.3	3.2	-1.9
Participation rate	74.2	74.1	0.3	-0.1	0.8	0.7
Unemployment rate	3.8	3.3	0.3	-0.5	0.0	-0.3
Employment rate	71.4	71.6	0.3	0.2	0.7	0.8
British Columbia									
Population	3,566.8	3,572.6	...	5.8	34.6	58.9	0.2	1.0	1.7
Labour force	2,365.0	2,355.3	10.0	-9.7	14.6	49.7	-0.4	0.6	2.2
Employment	2,260.1	2,257.6	10.1	-2.5	39.1	62.0	-0.1	1.8	2.8
Employment full-time	1,782.0	1,807.4	13.5	25.4	34.2	59.7	1.4	1.9	3.4
Employment part-time	478.1	450.2	12.3	-27.9	4.9	2.3	-5.8	1.1	0.5
Unemployment	104.9	97.7	7.2	-7.2	-24.5	-12.3	-6.9	-20.0	-11.2
Participation rate	66.3	65.9	0.3	-0.4	-0.3	0.3
Unemployment rate	4.4	4.1	0.3	-0.3	-1.1	-0.7
Employment rate	63.4	63.2	0.3	-0.2	0.5	0.7

1. Average standard error of change in two consecutive months (see "Sampling Errors" in Data Quality for further explanations).

Note(s): Related CANSIM table 282-0087

Table 4-1
Selected labour force characteristics (seasonally adjusted) — Newfoundland and Labrador

	June 2007	July 2007	S.E. ¹	Change from			Percent change from		
				last month	last December	twelve months ago	last month	last December	twelve months ago
in thousands (except rates)									
Both sexes, 15 years and over									
Population	423.3	423.1	...	-0.2	-3.3	-4.3	0.0	-0.8	-1.0
Labour force	248.0	247.2	2.2	-0.8	-6.7	-2.1	-0.3	-2.6	-0.8
Employment	215.5	213.8	2.3	-1.7	-5.1	0.5	-0.8	-2.3	0.2
Employment full-time	181.8	185.7	2.6	3.9	1.0	6.6	2.1	0.5	3.7
Unemployment	32.5	33.5	2.2	1.0	-1.5	-2.5	3.1	-4.3	-6.9
Participation rate	58.6	58.4	0.5	-0.2	-1.1	0.1
Unemployment rate	13.1	13.6	0.8	0.5	-0.2	-0.8
Employment rate	50.9	50.5	0.5	-0.4	-0.8	0.6
Part-time rate	15.7	13.1	0.8	-2.5	-2.5	-2.9
Both sexes, 15 to 24 years									
Population	63.6	63.3	...	-0.3	-2.1	-3.4	-0.5	-3.2	-5.1
Labour force	34.7	32.8	1.1	-1.9	-3.6	-1.8	-5.5	-9.9	-5.2
Employment	27.6	26.5	1.1	-1.1	-1.9	-0.7	-4.0	-6.7	-2.6
Unemployment	7.1	6.3	1.0	-0.8	-1.6	-1.1	-11.3	-20.3	-14.9
Participation rate	54.6	51.8	1.6	-2.8	-3.9	-0.1
Unemployment rate	20.5	19.2	2.7	-1.3	-2.5	-2.2
Employment rate	43.4	41.9	1.6	-1.5	-1.5	1.1
Part-time rate	46.0	35.5	3.5	-10.5	-6.1	-4.6
Men, 25 years and over									
Population	173.9	174.0	...	0.1	-0.7	-0.6	0.1	-0.4	-0.3
Labour force	112.1	112.8	1.2	0.7	-2.2	1.9	0.6	-1.9	1.7
Employment	97.3	97.6	1.4	0.3	-1.2	3.2	0.3	-1.2	3.4
Unemployment	14.9	15.3	1.4	0.4	-0.9	-1.2	2.7	-5.6	-7.3
Participation rate	64.5	64.8	0.7	0.3	-1.0	1.3
Unemployment rate	13.3	13.6	1.2	0.3	-0.5	-1.3
Employment rate	56.0	56.1	0.8	0.1	-0.5	2.0
Part-time rate	4.5	5.0	0.8	0.5	-0.1	-2.7
Women, 25 years and over									
Population	185.8	185.8	...	0.0	-0.5	-0.3	0.0	-0.3	-0.2
Labour force	101.2	101.6	1.2	0.4	-0.9	-2.2	0.4	-0.9	-2.1
Employment	90.7	89.7	1.2	-1.0	-2.0	-2.0	-1.1	-2.2	-2.2
Unemployment	10.5	11.9	1.2	1.4	1.0	-0.2	13.3	9.2	-1.7
Participation rate	54.5	54.7	0.6	0.2	-0.3	-1.1
Unemployment rate	10.4	11.7	1.1	1.3	1.1	0.0
Employment rate	48.8	48.3	0.7	-0.5	-0.9	-1.0
Part-time rate	18.4	15.3	1.3	-3.1	-3.5	-2.2
Industry									
Industry	215.5	213.8	2.3	-1.7	-5.1	0.5	-0.8	-2.3	0.2
Goods-producing sector									
Agriculture	45.6	47.9	1.8	2.3	-2.5	1.1	5.0	-5.0	2.4
Forestry, fishing, mining, oil and gas	1.3	1.1	0.3	-0.2	-0.6	-0.5	-15.4	-35.3	-31.2
Utilities	13.8	15.4	1.1	1.6	-2.5	-0.3	11.6	-14.0	-1.9
Construction	1.5	1.9	0.2	0.4	0.5	-0.1	26.7	35.7	-5.0
Manufacturing	13.1	13.8	1.0	0.7	0.2	1.0	5.3	1.5	7.8
Manufacturing	15.8	15.8	1.1	0.0	0.0	1.1	0.0	0.0	7.5
Services-producing sector									
Trade	170.0	165.8	2.0	-4.2	-2.7	-0.7	-2.5	-1.6	-0.4
Transportation and warehousing	37.1	36.2	1.2	-0.9	-1.9	-2.7	-2.4	-5.0	-6.9
Finance, insurance, real estate and leasing	9.4	11.0	0.7	1.6	-0.3	-0.4	17.0	-2.7	-3.5
Professional, scientific and technical services	7.3	7.6	0.4	0.3	1.2	2.2	4.1	18.8	40.7
Business, building and other support services	9.2	8.9	0.5	-0.3	3.1	1.7	-3.3	53.4	23.6
Educational services	8.3	8.9	0.7	0.6	-0.4	0.1	7.2	-4.3	1.1
Health care and social assistance	18.3	15.5	0.8	-2.8	-3.1	0.2	-15.3	-16.7	1.3
Information, culture and recreation	31.1	30.6	0.9	-0.5	0.9	1.1	-1.6	3.0	3.7
Accommodation and food services	9.1	8.1	0.7	-1.0	-1.0	-0.9	-11.0	-11.0	-10.0
Other services	14.7	14.5	0.9	-0.2	2.1	0.5	-1.4	16.9	3.6
Public administration	9.2	8.4	0.7	-0.8	-3.0	-3.8	-8.7	-26.3	-31.1
Public administration	16.4	16.3	0.8	-0.1	0.0	1.5	-0.6	0.0	10.1

1. Average standard error of change in two consecutive months (see "Sampling Errors" in Data Quality for further explanations).

Note(s): Related CANSIM tables 282-0087, 282-0088

Table 4-2
Selected labour force characteristics (seasonally adjusted) — Prince Edward Island

	June 2007	July 2007	S.E. ¹	Change from			Percent change from		
				last month	last December	twelve months ago	last month	last December	twelve months ago
in thousands (except rates)									
Both sexes, 15 years and over									
Population	113.2	113.4	...	0.2	0.7	1.0	0.2	0.6	0.9
Labour force	77.2	76.9	0.6	-0.3	-1.4	0.5	-0.4	-1.8	0.7
Employment	69.1	68.8	0.6	-0.3	0.2	1.1	-0.4	0.3	1.6
Employment full-time	57.6	57.9	0.8	0.3	1.3	0.0	0.5	2.3	0.0
Unemployment	8.1	8.1	0.6	0.0	-1.6	-0.5	0.0	-16.5	-5.8
Participation rate	68.2	67.8	0.5	-0.4	-1.7	-0.2
Unemployment rate	10.5	10.5	0.7	0.0	-1.9	-0.8
Employment rate	61.0	60.7	0.6	-0.3	-0.2	0.5
Part-time rate	16.6	15.8	0.9	-0.8	-1.6	1.2
Both sexes, 15 to 24 years									
Population	19.7	19.7	...	0.0	-0.1	-0.2	0.0	-0.5	-1.0
Labour force	14.1	13.5	0.3	-0.6	-0.8	0.0	-4.3	-5.6	0.0
Employment	12.0	11.7	0.3	-0.3	-0.1	0.2	-2.5	-0.8	1.7
Unemployment	2.1	1.7	0.3	-0.4	-0.8	-0.3	-19.0	-32.0	-15.0
Participation rate	71.6	68.5	1.7	-3.1	-3.7	0.7
Unemployment rate	14.9	12.6	2.1	-2.3	-4.9	-2.2
Employment rate	60.9	59.4	1.7	-1.5	-0.2	1.6
Part-time rate	40.8	41.9	3.0	1.0	0.4	5.4
Men, 25 years and over									
Population	44.7	44.8	...	0.1	0.3	0.4	0.2	0.7	0.9
Labour force	32.2	32.4	0.3	0.2	-0.7	0.1	0.6	-2.1	0.3
Employment	28.8	28.8	0.4	0.0	0.1	0.1	0.0	0.3	0.3
Unemployment	3.4	3.6	0.4	0.2	-0.7	0.0	5.9	-16.3	0.0
Participation rate	72.0	72.3	0.8	0.3	-2.1	-0.4
Unemployment rate	10.6	11.1	1.1	0.5	-1.9	0.0
Employment rate	64.4	64.3	0.9	-0.1	-0.2	-0.3
Part-time rate	5.9	5.2	1.0	-0.7	-0.7	1.0
Women, 25 years and over									
Population	48.7	48.9	...	0.2	0.5	0.8	0.4	1.0	1.7
Labour force	30.9	31.1	0.3	0.2	0.1	0.5	0.6	0.3	1.6
Employment	28.3	28.3	0.4	0.0	0.2	0.8	0.0	0.7	2.9
Unemployment	2.6	2.8	0.3	0.2	-0.1	-0.3	7.7	-3.4	-9.7
Participation rate	63.4	63.6	0.7	0.2	-0.4	0.0
Unemployment rate	8.4	9.0	1.0	0.6	-0.4	-1.1
Employment rate	58.1	57.9	0.8	-0.2	-0.2	0.7
Part-time rate	17.3	15.5	1.5	-1.8	-3.7	-0.5
Industry									
Population	69.1	68.8	0.6	-0.3	0.2	1.1	-0.4	0.3	1.6
Goods-producing sector									
Agriculture	3.4	3.5	0.3	0.1	-0.5	-0.4	2.9	-12.5	-10.3
Forestry, fishing, mining, oil and gas	2.5	2.2	0.2	-0.3	0.0	-0.2	-12.0	0.0	-8.3
Utilities	0.2	0.2	0.0	0.0	0.0	-0.1	0.0	0.0	-33.3
Construction	4.9	4.8	0.3	-0.1	-0.9	-1.0	-2.0	-15.8	-17.2
Manufacturing	6.7	6.9	0.3	0.2	0.4	0.2	3.0	6.2	3.0
Services-producing sector									
Trade	10.7	11.2	0.3	0.5	1.4	1.1	4.7	14.3	10.9
Transportation and warehousing	2.1	2.1	0.2	0.0	-0.3	0.2	0.0	-12.5	10.5
Finance, insurance, real estate and leasing	2.8	2.7	0.1	-0.1	0.3	0.5	-3.6	12.5	22.7
Professional, scientific and technical services	2.0	2.2	0.2	0.2	-0.3	-0.7	10.0	-12.0	-24.1
Business, building and other support services	2.9	2.7	0.2	-0.2	0.1	-0.3	-6.9	3.8	-10.0
Educational services	4.7	4.6	0.3	-0.1	-0.2	0.3	-2.1	-4.2	7.0
Health care and social assistance	8.6	8.4	0.3	-0.2	0.5	0.8	-2.3	6.3	10.5
Information, culture and recreation	2.8	2.5	0.2	-0.3	0.0	0.1	-10.7	0.0	4.2
Accommodation and food services	6.0	5.8	0.3	-0.2	0.0	0.6	-3.3	0.0	11.5
Other services	2.5	2.4	0.2	-0.1	-0.2	-0.4	-4.0	-7.7	-14.3
Public administration	6.3	6.5	0.3	0.2	-0.3	0.2	3.2	-4.4	3.2

1. Average standard error of change in two consecutive months (see "Sampling Errors" in Data Quality for further explanations).

Note(s): Related CANSIM tables 282-0087, 282-0088

Table 4-3
Selected labour force characteristics (seasonally adjusted) — Nova Scotia

	June 2007	July 2007	S.E. ¹	Change from			Percent change from		
				last month	last December	twelve months ago	last month	last December	twelve months ago
in thousands (except rates)									
Both sexes, 15 years and over									
Population	764.0	764.2	...	0.2	0.7	1.5	0.0	0.1	0.2
Labour force	485.1	485.0	2.7	-0.1	4.5	8.3	0.0	0.9	1.7
Employment	445.8	442.4	2.9	-3.4	-3.0	4.9	-0.8	-0.7	1.1
Employment full-time	364.5	362.2	3.6	-2.3	-1.8	6.9	-0.6	-0.5	1.9
Unemployment	39.3	42.6	2.5	3.3	7.5	3.4	8.4	21.4	8.7
Participation rate	63.5	63.5	0.4	0.0	0.6	1.0
Unemployment rate	8.1	8.8	0.5	0.7	1.5	0.6
Employment rate	58.4	57.9	0.4	-0.5	-0.4	0.5
Part-time rate	18.2	18.1	0.7	-0.1	-0.1	-0.7
Both sexes, 15 to 24 years									
Population	122.5	122.4	...	-0.1	-0.4	-0.8	-0.1	-0.3	-0.6
Labour force	79.2	80.6	1.6	1.4	-0.4	1.0	1.8	-0.5	1.3
Employment	68.6	70.7	1.6	2.1	-0.3	2.3	3.1	-0.4	3.4
Unemployment	10.6	9.9	1.4	-0.7	-0.1	-1.4	-6.6	-1.0	-12.4
Participation rate	64.7	65.8	1.3	1.1	-0.2	1.2
Unemployment rate	13.4	12.3	1.7	-1.1	0.0	-1.9
Employment rate	56.0	57.8	1.3	1.8	0.0	2.3
Part-time rate	44.2	44.3	2.4	0.1	-1.6	-2.2
Men, 25 years and over									
Population	306.1	306.2	...	0.1	0.4	0.8	0.0	0.1	0.3
Labour force	208.7	208.9	1.5	0.2	2.0	2.5	0.1	1.0	1.2
Employment	191.2	190.5	1.7	-0.7	-0.4	1.0	-0.4	-0.2	0.5
Unemployment	17.5	18.4	1.5	0.9	2.4	1.5	5.1	15.0	8.9
Participation rate	68.2	68.2	0.5	0.0	0.5	0.6
Unemployment rate	8.4	8.8	0.7	0.4	1.1	0.6
Employment rate	62.5	62.2	0.5	-0.3	-0.2	0.2
Part-time rate	7.1	6.9	0.7	-0.2	-0.2	0.8
Women, 25 years and over									
Population	335.4	335.6	...	0.2	0.7	1.5	0.1	0.2	0.4
Labour force	197.2	195.5	1.4	-1.7	2.9	4.8	-0.9	1.5	2.5
Employment	186.0	181.1	1.5	-4.9	-2.5	1.5	-2.6	-1.4	0.8
Unemployment	11.2	14.4	1.2	3.2	5.3	3.3	28.6	58.2	29.7
Participation rate	58.8	58.3	0.4	-0.5	0.8	1.2
Unemployment rate	5.7	7.4	0.6	1.7	2.7	1.6
Employment rate	55.5	54.0	0.4	-1.5	-0.8	0.2
Part-time rate	20.2	19.8	1.1	-0.4	0.5	-1.9
Industry									
Industry	445.8	442.4	2.9	-3.4	-3.0	4.9	-0.8	-0.7	1.1
Goods-producing sector									
Goods-producing sector	86.3	87.3	2.2	1.0	1.0	3.7	1.2	1.2	4.4
Agriculture	6.2	5.6	0.6	-0.6	1.1	1.0	-9.7	24.4	21.7
Forestry, fishing, mining, oil and gas	13.8	11.6	1.0	-2.2	-0.1	-0.5	-15.9	-0.9	-4.1
Utilities	1.4	1.5	0.2	0.1	-0.7	-0.2	7.1	-31.8	-11.8
Construction	26.8	28.5	1.4	1.7	0.6	1.5	6.3	2.2	5.6
Manufacturing	38.1	40.2	1.4	2.1	0.2	2.0	5.5	0.5	5.2
Services-producing sector									
Services-producing sector	359.4	355.1	2.9	-4.3	-4.0	1.2	-1.2	-1.1	0.3
Trade	79.6	77.1	1.9	-2.5	-1.7	0.6	-3.1	-2.2	0.8
Transportation and warehousing	17.6	17.7	1.0	0.1	-0.4	-0.7	0.6	-2.2	-3.8
Finance, insurance, real estate and leasing	23.4	22.5	0.9	-0.9	-2.0	2.1	-3.8	-8.2	10.3
Professional, scientific and technical services	16.1	17.6	1.0	1.5	0.8	-0.6	9.3	4.8	-3.3
Business, building and other support services	25.5	26.5	1.3	1.0	-2.5	-2.2	3.9	-8.6	-7.7
Educational services	39.5	34.4	1.4	-5.1	-0.5	1.1	-12.9	-1.4	3.3
Health care and social assistance	59.6	61.3	1.3	1.7	0.5	2.7	2.9	0.8	4.6
Information, culture and recreation	19.4	20.3	1.0	0.9	4.0	1.3	4.6	24.5	6.8
Accommodation and food services	29.7	30.7	1.4	1.0	-0.8	1.1	3.4	-2.5	3.7
Other services	21.2	20.6	1.1	-0.6	0.6	0.2	-2.8	3.0	1.0
Public administration	27.8	26.5	1.1	-1.3	-2.1	-4.0	-4.7	-7.3	-13.1

1. Average standard error of change in two consecutive months (see "Sampling Errors" in Data Quality for further explanations).

Note(s): Related CANSIM tables 282-0087, 282-0088

Table 4-4
Selected labour force characteristics (seasonally adjusted) — New Brunswick

	June 2007	July 2007	S.E. ¹	Change from			Percent change from		
				last month	last December	twelve months ago	last month	last December	twelve months ago
in thousands (except rates)									
Both sexes, 15 years and over									
Population	612.7	613.1	...	0.4	1.9	1.7	0.1	0.3	0.3
Labour force	392.2	390.4	2.4	-1.8	3.3	1.2	-0.5	0.9	0.3
Employment	365.4	362.2	2.4	-3.2	7.9	7.7	-0.9	2.2	2.2
Employment full-time	304.5	304.2	2.8	-0.3	6.4	5.7	-0.1	2.1	1.9
Unemployment	26.8	28.2	2.1	1.4	-4.6	-6.5	5.2	-14.0	-18.7
Participation rate	64.0	63.7	0.4	-0.3	0.4	0.0
Unemployment rate	6.8	7.2	0.5	0.4	-1.3	-1.7
Employment rate	59.6	59.1	0.4	-0.5	1.1	1.1
Part-time rate	16.7	16.0	0.6	-0.7	0.0	0.2
Both sexes, 15 to 24 years									
Population	94.8	94.8	...	0.0	-0.4	-1.2	0.0	-0.4	-1.2
Labour force	63.2	61.4	1.3	-1.8	0.5	-2.5	-2.8	0.8	-3.9
Employment	57.1	55.3	1.4	-1.8	2.4	0.4	-3.2	4.5	0.7
Unemployment	6.1	6.1	1.1	0.0	-1.9	-2.9	0.0	-23.8	-32.2
Participation rate	66.7	64.8	1.4	-1.9	0.8	-1.8
Unemployment rate	9.7	9.9	1.7	0.2	-3.2	-4.2
Employment rate	60.2	58.3	1.4	-1.9	2.7	1.1
Part-time rate	41.3	39.4	2.3	-1.9	4.1	0.3
Men, 25 years and over									
Population	250.4	250.6	...	0.2	1.1	1.5	0.1	0.4	0.6
Labour force	170.3	171.4	1.3	1.1	1.8	0.6	0.6	1.1	0.4
Employment	157.9	157.5	1.4	-0.4	2.6	2.9	-0.3	1.7	1.9
Unemployment	12.3	13.9	1.4	1.6	-0.8	-2.3	13.0	-5.4	-14.2
Participation rate	68.0	68.4	0.5	0.4	0.4	-0.2
Unemployment rate	7.2	8.1	0.8	0.9	-0.6	-1.4
Employment rate	63.1	62.8	0.6	-0.3	0.7	0.7
Part-time rate	4.8	4.6	0.7	-0.2	-1.2	-0.1
Women, 25 years and over									
Population	267.5	267.7	...	0.2	1.2	1.4	0.1	0.5	0.5
Labour force	158.7	157.5	1.3	-1.2	0.9	3.0	-0.8	0.6	1.9
Employment	150.3	149.3	1.3	-1.0	2.8	4.3	-0.7	1.9	3.0
Unemployment	8.4	8.2	1.1	-0.2	-1.9	-1.2	-2.4	-18.8	-12.8
Participation rate	59.3	58.8	0.5	-0.5	0.0	0.8
Unemployment rate	5.3	5.2	0.7	-0.1	-1.2	-0.9
Employment rate	56.2	55.8	0.5	-0.4	0.8	1.4
Part-time rate	19.7	19.3	1.1	-0.4	-0.2	0.5
Industry									
Goods-producing sector	365.4	362.2	2.4	-3.2	7.9	7.7	-0.9	2.2	2.2
Agriculture	6.4	6.6	0.6	0.2	0.6	1.3	3.1	10.0	24.5
Forestry, fishing, mining, oil and gas	11.6	10.1	0.8	-1.5	0.1	0.3	-12.9	1.0	3.1
Utilities	4.7	4.1	0.3	-0.6	1.0	1.2	-12.8	32.3	41.4
Construction	22.8	25.3	1.2	2.5	2.6	3.8	11.0	11.5	17.7
Manufacturing	37.6	36.7	1.3	-0.9	-1.6	0.6	-2.4	-4.2	1.7
Services-producing sector	282.4	279.4	2.3	-3.0	5.2	0.5	-1.1	1.9	0.2
Trade	58.2	57.2	1.4	-1.0	-0.8	2.4	-1.7	-1.4	4.4
Transportation and warehousing	18.3	18.6	0.8	0.3	-1.6	-0.9	1.6	-7.9	-4.6
Finance, insurance, real estate and leasing	16.8	16.6	0.8	-0.2	-1.1	-0.3	-1.2	-6.2	-1.8
Professional, scientific and technical services	15.4	15.8	0.8	0.4	1.9	0.6	2.6	13.7	3.9
Business, building and other support services	20.1	21.3	1.1	1.2	1.6	-1.5	6.0	8.1	-6.6
Educational services	29.3	26.0	1.0	-3.3	0.0	-1.5	-11.3	0.0	-5.5
Health care and social assistance	47.9	48.7	1.1	0.8	2.5	3.7	1.7	5.4	8.2
Information, culture and recreation	14.4	14.7	0.7	0.3	3.3	3.4	2.1	28.9	30.1
Accommodation and food services	25.3	23.1	1.1	-2.2	-0.1	-2.5	-8.7	-0.4	-9.8
Other services	16.2	16.6	0.9	0.4	-0.8	-0.3	2.5	-4.6	-1.8
Public administration	20.4	20.8	0.8	0.4	0.4	-2.5	2.0	2.0	-10.7

1. Average standard error of change in two consecutive months (see "Sampling Errors" in Data Quality for further explanations).

Note(s): Related CANSIM tables 282-0087, 282-0088

Table 4-5
Selected labour force characteristics (seasonally adjusted) — Quebec

	June 2007	July 2007	S.E. ¹	Change from			Percent change from		
				last month	last December	twelve months ago	last month	last December	twelve months ago
in thousands (except rates)									
Both sexes, 15 years and over									
Population	6,312.4	6,317.7	...	5.3	34.9	63.7	0.1	0.6	1.0
Labour force	4,145.2	4,143.7	14.2	-1.5	48.0	41.8	0.0	1.2	1.0
Employment	3,858.9	3,858.5	14.8	-0.4	69.1	87.4	0.0	1.8	2.3
Employment full-time	3,164.3	3,151.8	18.9	-12.5	41.3	79.5	-0.4	1.3	2.6
Unemployment	286.3	285.2	13.2	-1.1	-21.1	-45.6	-0.4	-6.9	-13.8
Participation rate	65.7	65.6	0.2	-0.1	0.4	0.0
Unemployment rate	6.9	6.9	0.3	0.0	-0.6	-1.2
Employment rate	61.1	61.1	0.2	0.0	0.8	0.8
Part-time rate	18.0	18.3	0.4	0.3	0.4	-0.2
Both sexes, 15 to 24 years									
Population	954.6	955.0	...	0.4	2.7	4.4	0.0	0.3	0.5
Labour force	636.9	628.6	8.4	-8.3	1.6	-0.3	-1.3	0.3	0.0
Employment	561.4	559.0	8.3	-2.4	8.9	18.3	-0.4	1.6	3.4
Unemployment	75.5	69.6	7.6	-5.9	-7.3	-18.6	-7.8	-9.5	-21.1
Participation rate	66.7	65.8	0.9	-0.9	0.0	-0.4
Unemployment rate	11.9	11.1	1.1	-0.8	-1.2	-2.9
Employment rate	58.8	58.5	0.9	-0.3	0.7	1.6
Part-time rate	45.9	45.8	1.6	-0.1	-1.3	-3.3
Men, 25 years and over									
Population	2,617.1	2,619.5	...	2.4	16.3	30.0	0.1	0.6	1.2
Labour force	1,860.3	1,862.0	7.9	1.7	1.8	0.5	0.1	0.1	0.0
Employment	1,741.3	1,737.7	8.5	-3.6	16.5	10.9	-0.2	1.0	0.6
Unemployment	118.9	124.4	8.1	5.5	-14.6	-10.2	4.6	-10.5	-7.6
Participation rate	71.1	71.1	0.3	0.0	-0.4	-0.8
Unemployment rate	6.4	6.7	0.4	0.3	-0.8	-0.5
Employment rate	66.5	66.3	0.3	-0.2	0.2	-0.4
Part-time rate	7.3	7.5	0.5	0.3	0.8	1.0
Women, 25 years and over									
Population	2,740.8	2,743.2	...	2.4	15.9	29.3	0.1	0.6	1.1
Labour force	1,648.0	1,653.1	7.7	5.1	44.6	41.5	0.3	2.8	2.6
Employment	1,556.2	1,561.9	8.1	5.7	43.7	58.3	0.4	2.9	3.9
Unemployment	91.8	91.2	6.8	-0.6	0.9	-16.8	-0.7	1.0	-15.6
Participation rate	60.1	60.3	0.3	0.2	1.3	0.9
Unemployment rate	5.6	5.5	0.4	-0.1	-0.1	-1.2
Employment rate	56.8	56.9	0.3	0.1	1.2	1.5
Part-time rate	19.9	20.5	0.7	0.5	0.5	-0.8
Industry									
	3,858.9	3,858.5	14.8	-0.4	69.1	87.4	0.0	1.8	2.3
Goods-producing sector									
Agriculture	60.2	59.1	3.5	-1.1	-7.4	-7.0	-1.8	-11.1	-10.6
Forestry, fishing, mining, oil and gas	36.2	36.2	2.2	0.0	1.6	-1.7	0.0	4.6	-4.5
Utilities	32.1	35.9	1.8	3.8	10.4	4.2	11.8	40.8	13.2
Construction	195.5	192.4	6.4	-3.1	14.2	2.9	-1.6	8.0	1.5
Manufacturing	536.2	540.3	9.7	4.1	-35.0	-30.3	0.8	-6.1	-5.3
Services-producing sector									
	2,998.8	2,994.7	16.0	-4.1	85.4	119.4	-0.1	2.9	4.2
Trade	656.9	656.2	10.4	-0.7	19.9	24.6	-0.1	3.1	3.9
Transportation and warehousing	169.6	182.4	5.7	12.8	8.5	21.9	7.5	4.9	13.6
Finance, insurance, real estate and leasing	232.7	230.6	6.1	-2.1	-0.3	9.5	-0.9	-0.1	4.3
Professional, scientific and technical services	251.0	257.3	7.5	6.3	2.9	17.5	2.5	1.1	7.3
Business, building and other support services	151.5	142.2	6.3	-9.3	-7.8	3.8	-6.1	-5.2	2.7
Educational services	273.3	251.6	6.8	-21.7	-5.4	-12.7	-7.9	-2.1	-4.8
Health care and social assistance	449.0	455.6	7.9	6.6	1.3	-4.4	1.5	0.3	-1.0
Information, culture and recreation	176.7	184.2	6.4	7.5	23.9	25.1	4.2	14.9	15.8
Accommodation and food services	243.3	238.6	7.2	-4.7	18.5	17.0	-1.9	8.4	7.7
Other services	172.9	174.3	5.6	1.4	15.0	13.0	0.8	9.4	8.1
Public administration	222.0	221.7	5.3	-0.3	9.0	3.9	-0.1	4.2	1.8

1. Average standard error of change in two consecutive months (see "Sampling Errors" in Data Quality for further explanations).

Note(s): Related CANSIM tables 282-0087, 282-0088

Table 4-6
Selected labour force characteristics (seasonally adjusted) — Ontario

	June 2007	July 2007	S.E. ¹	Change from			Percent change from		
				last month	last December	twelve months ago	last month	last December	twelve months ago
in thousands (except rates)									
Both sexes, 15 years and over									
Population	10,353.1	10,366.6	...	13.5	75.7	131.0	0.1	0.7	1.3
Labour force	7,033.2	7,049.9	18.5	16.7	81.3	86.4	0.2	1.2	1.2
Employment	6,573.3	6,584.7	18.1	11.4	38.1	74.3	0.2	0.6	1.1
Employment full-time	5,422.2	5,408.5	22.8	-13.7	53.9	45.7	-0.3	1.0	0.9
Unemployment	459.9	465.2	15.9	5.3	43.2	12.1	1.2	10.2	2.7
Participation rate	67.9	68.0	0.2	0.1	0.3	0.0
Unemployment rate	6.5	6.6	0.2	0.1	0.5	0.1
Employment rate	63.5	63.5	0.2	0.0	-0.1	-0.1
Part-time rate	17.5	17.9	0.3	0.4	-0.3	0.2
Both sexes, 15 to 24 years									
Population	1,719.7	1,721.3	...	1.6	8.8	16.5	0.1	0.5	1.0
Labour force	1,118.7	1,125.5	11.2	6.8	27.5	23.1	0.6	2.5	2.1
Employment	976.5	978.4	10.5	1.9	20.5	20.3	0.2	2.1	2.1
Unemployment	142.1	147.1	9.5	5.0	7.0	2.8	3.5	5.0	1.9
Participation rate	65.1	65.4	0.7	0.3	1.3	0.7
Unemployment rate	12.7	13.1	0.8	0.4	0.3	0.0
Employment rate	56.8	56.8	0.6	0.0	0.9	0.6
Part-time rate	47.5	48.4	1.1	1.0	-1.5	1.5
Men, 25 years and over									
Population	4,198.3	4,203.9	...	5.6	31.0	53.1	0.1	0.7	1.3
Labour force	3,124.8	3,126.3	9.2	1.5	24.6	28.0	0.0	0.8	0.9
Employment	2,941.5	2,952.5	9.8	11.0	0.0	7.4	0.4	0.0	0.3
Unemployment	183.3	173.8	8.8	-9.5	24.5	20.6	-5.2	16.4	13.4
Participation rate	74.4	74.4	0.2	0.0	0.1	-0.2
Unemployment rate	5.9	5.6	0.3	-0.3	0.8	0.7
Employment rate	70.1	70.2	0.2	0.1	-0.6	-0.8
Part-time rate	5.9	6.7	0.3	0.8	0.6	0.3
Women, 25 years and over									
Population	4,435.1	4,441.5	...	6.4	36.0	61.5	0.1	0.8	1.4
Labour force	2,789.8	2,798.0	10.4	8.2	29.1	35.2	0.3	1.1	1.3
Employment	2,655.3	2,653.8	10.3	-1.5	17.5	46.6	-0.1	0.7	1.8
Unemployment	134.4	144.2	8.4	9.8	11.5	-11.4	7.3	8.7	-7.3
Participation rate	62.9	63.0	0.2	0.1	0.1	-0.1
Unemployment rate	4.8	5.2	0.3	0.4	0.4	-0.4
Employment rate	59.9	59.8	0.2	-0.1	0.0	0.3
Part-time rate	19.4	19.0	0.5	-0.4	-1.2	-0.5
Industry									
	6,573.3	6,584.7	18.1	11.4	38.1	74.3	0.2	0.6	1.1
Goods-producing sector									
Agriculture	95.9	96.9	3.8	1.0	-7.9	0.3	1.0	-7.5	0.3
Forestry, fishing, mining, oil and gas	33.8	34.7	2.3	0.9	-8.1	-4.0	2.7	-18.9	-10.3
Utilities	62.3	59.5	2.5	-2.8	6.7	9.5	-4.5	12.7	19.0
Construction	417.0	423.4	9.0	6.4	11.5	23.9	1.5	2.8	6.0
Manufacturing	935.4	962.6	12.2	27.2	-23.1	-42.8	2.9	-2.3	-4.3
Services-producing sector									
	5,028.8	5,007.7	20.2	-21.1	59.1	87.5	-0.4	1.2	1.8
Trade	1,019.7	1,026.9	13.0	7.2	0.3	5.9	0.7	0.0	0.6
Transportation and warehousing	309.9	310.1	7.7	0.2	4.8	16.6	0.1	1.6	5.7
Finance, insurance, real estate and leasing	478.3	464.9	8.9	-13.4	-9.8	-21.0	-2.8	-2.1	-4.3
Professional, scientific and technical services	477.3	492.5	9.6	15.2	42.7	39.8	3.2	9.5	8.8
Business, building and other support services	294.4	296.9	8.7	2.5	-6.8	0.0	0.8	-2.2	0.0
Educational services	459.5	438.7	8.7	-20.8	-11.8	-6.2	-4.5	-2.6	-1.4
Health care and social assistance	675.5	667.5	9.5	-8.0	8.7	23.5	-1.2	1.3	3.6
Information, culture and recreation	328.6	322.0	8.2	-6.6	5.6	-1.6	-2.0	1.8	-0.5
Accommodation and food services	402.7	404.9	8.7	2.2	21.8	29.1	0.5	5.7	7.7
Other services	255.1	262.1	7.2	7.0	-4.6	-3.9	2.7	-1.7	-1.5
Public administration	327.8	321.3	6.3	-6.5	8.2	5.2	-2.0	2.6	1.6

1. Average standard error of change in two consecutive months (see "Sampling Errors" in Data Quality for further explanations).

Note(s): Related CANSIM tables 282-0087, 282-0088

Table 4-7
Selected labour force characteristics (seasonally adjusted) — Manitoba

	June 2007	July 2007	S.E. ¹	Change from			Percent change from		
				last month	last December	twelve months ago	last month	last December	twelve months ago
in thousands (except rates)									
Both sexes, 15 years and over									
Population	898.4	899.2	...	0.8	5.4	6.6	0.1	0.6	0.7
Labour force	625.7	621.0	2.9	-4.7	8.4	6.1	-0.8	1.4	1.0
Employment	596.8	594.9	2.8	-1.9	7.3	9.1	-0.3	1.2	1.6
Employment full-time	480.2	481.6	3.8	1.4	9.2	12.0	0.3	1.9	2.6
Unemployment	28.9	26.1	2.1	-2.8	1.1	-3.0	-9.7	4.4	-10.3
Participation rate	69.6	69.1	0.3	-0.5	0.6	0.2
Unemployment rate	4.6	4.2	0.3	-0.4	0.1	-0.5
Employment rate	66.4	66.2	0.3	-0.2	0.5	0.6
Part-time rate	19.5	19.1	0.6	-0.5	-0.5	-0.8
Both sexes, 15 to 24 years									
Population	156.6	156.7	...	0.1	0.9	0.8	0.1	0.6	0.5
Labour force	114.9	113.9	1.8	-1.0	4.3	3.3	-0.9	3.9	3.0
Employment	104.6	106.0	1.7	1.4	4.6	6.8	1.3	4.5	6.9
Unemployment	10.4	7.9	1.4	-2.5	-0.3	-3.5	-24.0	-3.7	-30.7
Participation rate	73.4	72.7	1.1	-0.7	2.4	1.8
Unemployment rate	9.1	6.9	1.2	-2.2	-0.6	-3.4
Employment rate	66.8	67.6	1.1	0.8	2.5	4.0
Part-time rate	45.7	46.5	1.9	0.8	4.5	1.3
Men, 25 years and over									
Population	362.6	362.9	...	0.3	2.5	3.3	0.1	0.7	0.9
Labour force	274.0	272.2	1.4	-1.8	1.9	2.4	-0.7	0.7	0.9
Employment	263.4	262.1	1.4	-1.3	0.5	1.4	-0.5	0.2	0.5
Unemployment	10.6	10.0	1.2	-0.6	1.4	0.9	-5.7	16.3	9.9
Participation rate	75.6	75.0	0.4	-0.6	0.0	0.0
Unemployment rate	3.9	3.7	0.4	-0.2	0.5	0.3
Employment rate	72.6	72.2	0.4	-0.4	-0.4	-0.3
Part-time rate	6.0	6.1	0.6	0.1	-0.3	-0.2
Women, 25 years and over									
Population	379.2	379.5	...	0.3	1.9	2.4	0.1	0.5	0.6
Labour force	236.7	234.9	1.7	-1.8	2.1	0.4	-0.8	0.9	0.2
Employment	228.8	226.8	1.6	-2.0	2.2	0.9	-0.9	1.0	0.4
Unemployment	8.0	8.1	1.1	0.1	-0.1	-0.6	1.2	-1.2	-6.9
Participation rate	62.4	61.9	0.4	-0.5	0.2	-0.3
Unemployment rate	3.4	3.4	0.5	0.0	-0.1	-0.3
Employment rate	60.3	59.8	0.4	-0.5	0.3	-0.1
Part-time rate	23.2	21.3	1.0	-2.0	-3.6	-3.1
Industry									
Goods-producing sector	596.8	594.9	2.8	-1.9	7.3	9.1	-0.3	1.2	1.6
Agriculture	144.4	140.1	2.4	-4.3	-1.2	2.5	-3.0	-0.8	1.8
Forestry, fishing, mining, oil and gas	30.4	28.4	1.2	-2.0	-1.1	-0.6	-6.6	-3.7	-2.1
Utilities	6.6	5.6	0.6	-1.0	-1.1	-0.4	-15.2	-16.4	-6.7
Construction	5.4	5.3	0.4	-0.1	0.3	-0.8	-1.9	6.0	-13.1
Manufacturing	32.7	32.1	1.4	-0.6	1.6	2.1	-1.8	5.2	7.0
Services-producing sector	69.4	68.7	1.7	-0.7	-0.9	2.2	-1.0	-1.3	3.3
Trade	452.4	454.8	3.2	2.4	8.5	6.6	0.5	1.9	1.5
Transportation and warehousing	91.4	92.0	2.1	0.6	-0.8	-0.1	0.7	-0.9	-0.1
Finance, insurance, real estate and leasing	33.9	34.6	1.2	0.7	-0.5	0.6	2.1	-1.4	1.8
Professional, scientific and technical services	35.2	35.3	1.2	0.1	2.9	-0.4	0.3	9.0	-1.1
Business, building and other support services	25.5	25.8	1.1	0.3	4.7	1.6	1.2	22.3	6.6
Educational services	14.6	14.7	1.1	0.1	-3.8	-3.1	0.7	-20.5	-17.4
Health care and social assistance	45.9	46.4	1.5	0.5	-1.1	3.4	1.1	-2.3	7.9
Information, culture and recreation	81.0	80.0	1.8	-1.0	-2.1	1.2	-1.2	-2.6	1.5
Accommodation and food services	23.9	26.0	1.1	2.1	3.6	2.3	8.8	16.1	9.7
Other services	39.6	37.8	1.5	-1.8	2.8	1.4	-4.5	8.0	3.8
Public administration	25.4	23.6	1.2	-1.8	-1.3	-2.4	-7.1	-5.2	-9.2
	36.1	38.5	1.3	2.4	4.0	2.0	6.6	11.6	5.5

1. Average standard error of change in two consecutive months (see "Sampling Errors" in Data Quality for further explanations).

Note(s): Related CANSIM tables 282-0087, 282-0088

Table 4-8
Selected labour force characteristics (seasonally adjusted) — Saskatchewan

	June 2007	July 2007	S.E. ¹	Change from			Percent change from		
				last month	last December	twelve months ago	last month	last December	twelve months ago
in thousands (except rates)									
Both sexes, 15 years and over									
Population	750.0	751.1	...	1.1	4.8	5.2	0.1	0.6	0.7
Labour force	520.1	521.9	2.4	1.8	-2.1	6.3	0.3	-0.4	1.2
Employment	497.1	496.8	2.4	-0.3	-6.0	5.0	-0.1	-1.2	1.0
Employment full-time	403.8	406.5	3.2	2.7	-1.2	3.7	0.7	-0.3	0.9
Unemployment	23.0	25.1	1.8	2.1	3.9	1.4	9.1	18.4	5.9
Participation rate	69.3	69.5	0.3	0.2	-0.7	0.4
Unemployment rate	4.4	4.8	0.3	0.4	0.8	0.2
Employment rate	66.3	66.1	0.3	-0.2	-1.3	0.2
Part-time rate	18.8	18.2	0.6	-0.6	-0.7	0.1
Both sexes, 15 to 24 years									
Population	137.5	137.6	...	0.1	0.3	-0.3	0.1	0.2	-0.2
Labour force	97.0	96.1	1.5	-0.9	-6.2	-2.9	-0.9	-6.1	-2.9
Employment	89.1	88.6	1.5	-0.5	-5.6	-2.3	-0.6	-5.9	-2.5
Unemployment	7.8	7.5	1.2	-0.3	-0.6	-0.6	-3.8	-7.4	-7.4
Participation rate	70.5	69.8	1.1	-0.7	-4.7	-2.0
Unemployment rate	8.0	7.8	1.1	-0.2	-0.1	-0.4
Employment rate	64.8	64.4	1.1	-0.4	-4.2	-1.5
Part-time rate	37.4	35.7	1.7	-1.7	-1.7	-3.6
Men, 25 years and over									
Population	299.2	299.7	...	0.5	2.5	3.2	0.2	0.8	1.1
Labour force	228.9	230.1	1.1	1.2	2.4	7.1	0.5	1.1	3.2
Employment	220.3	220.1	1.3	-0.2	-0.4	5.9	-0.1	-0.2	2.8
Unemployment	8.6	9.9	1.0	1.3	2.6	1.1	15.1	35.6	12.5
Participation rate	76.5	76.8	0.4	0.3	0.2	1.6
Unemployment rate	3.8	4.3	0.4	0.5	1.1	0.4
Employment rate	73.6	73.4	0.4	-0.2	-0.8	1.2
Part-time rate	6.4	6.0	0.6	-0.4	-0.9	0.7
Women, 25 years and over									
Population	313.3	313.7	...	0.4	1.9	2.2	0.1	0.6	0.7
Labour force	194.2	195.7	1.3	1.5	1.8	2.1	0.8	0.9	1.1
Employment	187.6	188.0	1.3	0.4	-0.1	1.2	0.2	-0.1	0.6
Unemployment	6.6	7.7	0.9	1.1	1.9	0.8	16.7	32.8	11.6
Participation rate	62.0	62.4	0.4	0.4	0.2	0.2
Unemployment rate	3.4	3.9	0.5	0.5	0.9	0.3
Employment rate	59.9	59.9	0.4	0.0	-0.4	-0.1
Part-time rate	24.4	24.1	1.0	-0.3	0.5	1.7
Industry									
Industry	497.1	496.8	2.4	-0.3	-6.0	5.0	-0.1	-1.2	1.0
Goods-producing sector									
Goods-producing sector	131.4	131.2	2.2	-0.2	-2.2	-2.7	-0.2	-1.6	-2.0
Agriculture	43.3	44.6	1.5	1.3	-2.9	-3.3	3.0	-6.1	-6.9
Forestry, fishing, mining, oil and gas	21.9	21.0	1.0	-0.9	-1.5	-0.5	-4.1	-6.7	-2.3
Utilities	3.9	4.3	0.4	0.4	0.3	-0.5	10.3	7.5	-10.4
Construction	31.2	30.6	1.3	-0.6	-0.1	0.7	-1.9	-0.3	2.3
Manufacturing	31.1	30.7	1.1	-0.4	2.1	0.8	-1.3	7.3	2.7
Services-producing sector									
Services-producing sector	365.7	365.6	2.7	-0.1	-3.8	7.6	0.0	-1.0	2.1
Trade	82.1	78.8	1.8	-3.3	-7.1	0.5	-4.0	-8.3	0.6
Transportation and warehousing	23.7	25.2	1.0	1.5	0.0	-0.4	6.3	0.0	-1.6
Finance, insurance, real estate and leasing	25.8	25.7	0.9	-0.1	-1.4	1.2	-0.4	-5.2	4.9
Professional, scientific and technical services	22.2	20.7	0.9	-1.5	0.8	1.8	-6.8	4.0	9.5
Business, building and other support services	11.5	12.0	0.8	0.5	0.2	-1.0	4.3	1.7	-7.7
Educational services	40.2	40.2	1.3	0.0	1.4	3.8	0.0	3.6	10.4
Health care and social assistance	61.7	62.3	1.4	0.6	1.2	-0.2	1.0	2.0	-0.3
Information, culture and recreation	19.9	20.0	0.9	0.1	-0.4	-0.3	0.5	-2.0	-1.5
Accommodation and food services	30.2	30.0	1.2	-0.2	-0.8	0.7	-0.7	-2.6	2.4
Other services	21.7	23.3	1.1	1.6	1.6	1.5	7.4	7.4	6.9
Public administration	26.7	27.4	0.9	0.7	0.7	0.0	2.6	2.6	0.0

1. Average standard error of change in two consecutive months (see "Sampling Errors" in Data Quality for further explanations).

Note(s): Related CANSIM tables 282-0087, 282-0088

Table 4-9
Selected labour force characteristics (seasonally adjusted) — Alberta

	June 2007	July 2007	S.E. ¹	Change from			Percent change from		
				last month	last December	twelve months ago	last month	last December	twelve months ago
in thousands (except rates)									
Both sexes, 15 years and over									
Population	2,740.1	2,748.8	...	8.7	56.7	107.5	0.3	2.1	4.1
Labour force	2,032.2	2,037.0	7.7	4.8	62.6	97.6	0.2	3.2	5.0
Employment	1,955.3	1,968.9	8.0	13.6	60.5	98.8	0.7	3.2	5.3
Employment full-time	1,644.0	1,658.4	11.0	14.4	42.9	91.3	0.9	2.7	5.8
Unemployment	76.8	68.1	5.6	-8.7	2.1	-1.3	-11.3	3.2	-1.9
Participation rate	74.2	74.1	0.3	-0.1	0.8	0.7
Unemployment rate	3.8	3.3	0.3	-0.5	0.0	-0.3
Employment rate	71.4	71.6	0.3	0.2	0.7	0.8
Part-time rate	15.9	15.8	0.5	-0.2	0.4	-0.4
Both sexes, 15 to 24 years									
Population	503.9	504.8	...	0.9	5.3	15.2	0.2	1.1	3.1
Labour force	370.1	366.2	4.9	-3.9	9.9	11.9	-1.1	2.8	3.4
Employment	336.7	341.9	5.0	5.2	8.2	14.5	1.5	2.5	4.4
Unemployment	33.4	24.3	3.8	-9.1	1.7	-2.6	-27.2	7.5	-9.7
Participation rate	73.4	72.5	1.0	-0.9	1.2	0.1
Unemployment rate	9.0	6.6	1.0	-2.4	0.3	-1.0
Employment rate	66.8	67.7	1.0	0.9	0.9	0.8
Part-time rate	32.7	32.6	1.7	-0.2	0.6	-0.4
Men, 25 years and over									
Population	1,122.5	1,126.6	...	4.1	26.8	48.2	0.4	2.4	4.5
Labour force	915.1	917.3	3.5	2.2	24.9	40.9	0.2	2.8	4.7
Employment	891.2	895.6	4.0	4.4	25.2	43.6	0.5	2.9	5.1
Unemployment	23.9	21.7	3.0	-2.2	-0.3	-2.7	-9.2	-1.4	-11.1
Participation rate	81.5	81.4	0.3	-0.1	0.3	0.1
Unemployment rate	2.6	2.4	0.3	-0.2	-0.1	-0.4
Employment rate	79.4	79.5	0.4	0.1	0.4	0.5
Part-time rate	5.2	4.9	0.5	-0.4	0.6	0.1
Women, 25 years and over									
Population	1,113.7	1,117.5	...	3.8	24.7	44.2	0.3	2.3	4.1
Labour force	746.9	753.5	4.6	6.6	27.8	44.7	0.9	3.8	6.3
Employment	727.4	731.4	4.7	4.0	27.0	40.7	0.5	3.8	5.9
Unemployment	19.6	22.1	3.0	2.5	0.7	4.0	12.8	3.3	22.1
Participation rate	67.1	67.4	0.4	0.3	1.0	1.4
Unemployment rate	2.6	2.9	0.4	0.3	0.0	0.3
Employment rate	65.3	65.4	0.4	0.1	0.9	1.0
Part-time rate	21.2	21.3	0.9	0.0	0.1	-1.1
Industry									
1,955.3	1,968.9	8.0	13.6	60.5	98.8	0.7	3.2	5.3	
Goods-producing sector									
553.0	551.3	7.5	-1.7	8.0	33.0	-0.3	1.5	6.4	
Agriculture	45.3	46.4	2.5	1.1	-1.5	-5.7	2.4	-3.1	-10.9
Forestry, fishing, mining, oil and gas	151.7	149.1	4.1	-2.6	5.7	7.3	-1.7	4.0	5.1
Utilities	19.0	21.4	1.4	2.4	0.4	4.6	12.6	1.9	27.4
Construction	191.8	196.2	5.0	4.4	14.5	23.9	2.3	8.0	13.9
Manufacturing	145.2	138.3	4.5	-6.9	-11.1	3.0	-4.8	-7.4	2.2
Services-producing sector									
1,402.3	1,417.6	9.5	15.3	52.5	65.9	1.1	3.8	4.9	
Trade	290.5	298.7	6.2	8.2	27.4	19.9	2.8	10.1	7.1
Transportation and warehousing	104.7	104.6	3.6	-0.1	-1.5	-3.9	-0.1	-1.4	-3.6
Finance, insurance, real estate and leasing	94.6	97.0	3.5	2.4	-7.4	6.1	2.5	-7.1	6.7
Professional, scientific and technical services	145.1	147.3	4.5	2.2	4.7	5.7	1.5	3.3	4.0
Business, building and other support services	81.5	76.7	3.5	-4.8	6.4	17.7	-5.9	9.1	30.0
Educational services	132.0	130.5	3.9	-1.5	-8.4	5.3	-1.1	-6.0	4.2
Health care and social assistance	187.9	195.0	4.4	7.1	14.1	1.9	3.8	7.8	1.0
Information, culture and recreation	76.5	76.7	3.6	0.2	10.0	6.8	0.3	15.0	9.7
Accommodation and food services	114.6	117.5	4.5	2.9	-0.7	3.7	2.5	-0.6	3.3
Other services	101.1	97.1	3.5	-4.0	8.1	8.9	-4.0	9.1	10.1
Public administration	73.8	76.5	3.0	2.7	-0.2	-6.3	3.7	-0.3	-7.6

1. Average standard error of change in two consecutive months (see "Sampling Errors" in Data Quality for further explanations).

Note(s): Related CANSIM tables 282-0087, 282-0088

Table 4-10
Selected labour force characteristics (seasonally adjusted) — British Columbia

	June 2007	July 2007	S.E. ¹	Change from			Percent change from		
				last month	last December	twelve months ago	last month	last December	twelve months ago
in thousands (except rates)									
Both sexes, 15 years and over									
Population	3,566.8	3,572.6	...	5.8	34.6	58.9	0.2	1.0	1.7
Labour force	2,365.0	2,355.3	10.0	-9.7	14.6	49.7	-0.4	0.6	2.2
Employment	2,260.1	2,257.6	10.1	-2.5	39.1	62.0	-0.1	1.8	2.8
Employment full-time	1,782.0	1,807.4	13.5	25.4	34.2	59.7	1.4	1.9	3.4
Unemployment	104.9	97.7	7.2	-7.2	-24.5	-12.3	-6.9	-20.0	-11.2
Participation rate	66.3	65.9	0.3	-0.4	-0.3	0.3
Unemployment rate	4.4	4.1	0.3	-0.3	-1.1	-0.7
Employment rate	63.4	63.2	0.3	-0.2	0.5	0.7
Part-time rate	21.2	19.9	0.5	-1.2	-0.1	-0.5
Both sexes, 15 to 24 years									
Population	578.2	578.3	...	0.1	0.9	1.9	0.0	0.2	0.3
Labour force	393.5	391.9	5.7	-1.6	7.3	9.9	-0.4	1.9	2.6
Employment	362.0	365.2	5.7	3.2	17.6	16.0	0.9	5.1	4.6
Unemployment	31.5	26.7	4.2	-4.8	-10.3	-6.1	-15.2	-27.8	-18.6
Participation rate	68.1	67.8	1.0	-0.3	1.2	1.5
Unemployment rate	8.0	6.8	1.0	-1.2	-2.8	-1.8
Employment rate	62.6	63.2	1.0	0.6	3.0	2.6
Part-time rate	44.2	40.3	1.8	-3.9	2.1	-0.5
Men, 25 years and over									
Population	1,461.4	1,464.3	...	2.9	17.2	29.2	0.2	1.2	2.0
Labour force	1,056.5	1,054.7	5.0	-1.8	11.7	29.1	-0.2	1.1	2.8
Employment	1,017.0	1,015.4	5.4	-1.6	11.0	28.7	-0.2	1.1	2.9
Unemployment	39.5	39.3	4.1	-0.2	0.7	0.4	-0.5	1.8	1.0
Participation rate	72.3	72.0	0.3	-0.3	-0.1	0.5
Unemployment rate	3.7	3.7	0.4	0.0	0.0	-0.1
Employment rate	69.6	69.3	0.4	-0.3	-0.1	0.5
Part-time rate	7.7	7.1	0.6	-0.6	-1.9	-0.8
Women, 25 years and over									
Population	1,527.3	1,530.0	...	2.7	16.5	27.8	0.2	1.1	1.9
Labour force	915.0	908.7	6.0	-6.3	-4.4	10.7	-0.7	-0.5	1.2
Employment	881.1	877.1	5.8	-4.0	10.6	17.4	-0.5	1.2	2.0
Unemployment	33.9	31.7	4.1	-2.2	-14.9	-6.6	-6.5	-32.0	-17.2
Participation rate	59.9	59.4	0.4	-0.5	-0.9	-0.4
Unemployment rate	3.7	3.5	0.4	-0.2	-1.6	-0.8
Employment rate	57.7	57.3	0.4	-0.4	0.0	0.1
Part-time rate	27.2	26.3	0.9	-0.8	0.7	-0.2
Industry									
	2,260.1	2,257.6	10.1	-2.5	39.1	62.0	-0.1	1.8	2.8
Goods-producing sector									
Agriculture	498.7	486.8	8.0	-11.9	3.5	22.6	-2.4	0.7	4.9
Forestry, fishing, mining, oil and gas	34.7	35.6	2.6	0.9	-0.4	1.4	2.6	-1.1	4.1
Utilities	46.0	45.9	2.8	-0.1	-2.3	4.0	-0.2	-4.8	9.5
Construction	9.3	11.8	1.0	2.5	2.5	2.6	26.9	26.9	28.3
Manufacturing	198.7	187.7	5.5	-11.0	1.2	4.0	-5.5	0.6	2.2
	209.9	205.8	5.4	-4.1	2.6	10.7	-2.0	1.3	5.5
Services-producing sector									
	1,761.4	1,770.8	11.2	9.4	35.5	39.4	0.5	2.0	2.3
Trade	365.3	376.1	7.1	10.8	35.7	31.1	3.0	10.5	9.0
Transportation and warehousing	124.3	126.2	4.5	1.9	9.0	11.7	1.5	7.7	10.2
Finance, insurance, real estate and leasing	148.0	150.0	4.6	2.0	2.3	8.3	1.4	1.6	5.9
Professional, scientific and technical services	171.3	175.9	5.3	4.6	11.4	13.6	2.7	6.9	8.4
Business, building and other support services	90.4	93.5	4.5	3.1	-15.0	-5.4	3.4	-13.8	-5.5
Educational services	152.3	141.9	5.0	-10.4	-20.4	-18.6	-6.8	-12.6	-11.6
Health care and social assistance	242.0	239.1	5.4	-2.9	-0.1	-6.3	-1.2	0.0	-2.6
Information, culture and recreation	112.0	112.0	4.6	0.0	6.4	0.0	0.0	6.1	0.0
Accommodation and food services	174.1	169.5	5.6	-4.6	-1.3	3.2	-2.6	-0.8	1.9
Other services	86.2	89.4	4.0	3.2	0.4	-1.2	3.7	0.4	-1.3
Public administration	95.7	97.1	3.3	1.4	7.1	2.9	1.5	7.9	3.1

1. Average standard error of change in two consecutive months (see "Sampling Errors" in Data Quality for further explanations).

Note(s): Related CANSIM tables 282-0087, 282-0088

Table 5-1
Labour force characteristics by census metropolitan area (seasonally adjusted) — 3 month moving average

	June 2007	July 2007	S.E. ¹	Change from			Percent change from		
				last month	last December	twelve months ago	last month	last December	twelve months ago
in thousands (except rates)									
St. John's, Newfoundland and Labrador									
Population	151.7	151.6	...	-0.1	-0.2	0.3	-0.1	-0.1	0.2
Labour force	100.9	102.0	0.7	1.1	-0.3	0.1	1.1	-0.3	0.1
Employment	94.1	95.4	0.7	1.3	0.8	1.4	1.4	0.8	1.5
Unemployment	6.8	6.6	0.4	-0.2	-1.1	-1.3	-2.9	-14.3	-16.5
Participation rate	66.5	67.3	0.5	0.8	-0.1	0.0
Unemployment rate	6.7	6.5	0.4	-0.2	-1.0	-1.3
Employment rate	62.0	62.9	0.5	0.9	0.6	0.8
Halifax, Nova Scotia									
Population	312.9	313.1	...	0.2	1.1	2.0	0.1	0.4	0.6
Labour force	218.3	219.1	1.1	0.8	1.7	2.7	0.4	0.8	1.2
Employment	205.9	205.8	1.1	-0.1	-1.8	0.7	0.0	-0.9	0.3
Unemployment	12.3	13.2	0.6	0.9	3.3	1.9	7.3	33.3	16.8
Participation rate	69.8	70.0	0.4	0.2	0.3	0.4
Unemployment rate	5.6	6.0	0.3	0.4	1.4	0.8
Employment rate	65.8	65.7	0.4	-0.1	-0.8	-0.2
Saint John, New Brunswick									
Population	103.8	103.8	...	0.0	0.4	0.3	0.0	0.4	0.3
Labour force	68.1	69.1	0.7	1.0	3.6	3.6	1.5	5.5	5.5
Employment	64.9	65.9	0.7	1.0	4.1	4.6	1.5	6.6	7.5
Unemployment	3.2	3.3	0.3	0.1	-0.4	-0.9	3.1	-10.8	-21.4
Participation rate	65.6	66.6	0.6	1.0	3.3	3.3
Unemployment rate	4.7	4.8	0.5	0.1	-0.8	-1.6
Employment rate	62.5	63.5	0.6	1.0	3.7	4.3
Saguenay, Quebec									
Population	125.7	125.6	...	-0.1	-0.4	-0.4	-0.1	-0.3	-0.3
Labour force	78.6	78.9	0.7	0.3	4.5	0.3	0.4	6.0	0.4
Employment	71.4	72.2	0.7	0.8	4.3	0.9	1.1	6.3	1.3
Unemployment	7.1	6.7	0.4	-0.4	0.1	-0.6	-5.6	1.5	-8.2
Participation rate	62.5	62.8	0.6	0.3	3.8	0.4
Unemployment rate	9.0	8.5	0.5	-0.5	-0.4	-0.8
Employment rate	56.8	57.5	0.6	0.7	3.6	0.9
Québec, Quebec									
Population	604.9	605.2	...	0.3	3.0	6.3	0.0	0.5	1.1
Labour force	398.2	402.0	3.3	3.8	6.5	4.4	1.0	1.6	1.1
Employment	378.8	383.0	3.4	4.2	11.1	3.8	1.1	3.0	1.0
Unemployment	19.4	19.0	1.4	-0.4	-4.6	0.7	-2.1	-19.5	3.8
Participation rate	65.8	66.4	0.5	0.6	0.7	0.0
Unemployment rate	4.9	4.7	0.4	-0.2	-1.3	0.1
Employment rate	62.6	63.3	0.6	0.7	1.5	0.0
Trois-Rivières, Quebec									
Population	120.4	120.5	...	0.1	0.6	1.2	0.1	0.5	1.0
Labour force	76.2	75.9	0.7	-0.3	3.3	4.3	-0.4	4.5	6.0
Employment	70.4	70.3	0.7	-0.1	2.7	4.4	-0.1	4.0	6.7
Unemployment	5.8	5.6	0.3	-0.2	0.7	-0.1	-3.4	14.3	-1.8
Participation rate	63.3	63.0	0.6	-0.3	2.4	3.0
Unemployment rate	7.6	7.4	0.4	-0.2	0.7	-0.6
Employment rate	58.5	58.3	0.6	-0.2	1.9	3.1

See footnotes at the end of the table.

Table 5-1 – continued

Labour force characteristics by census metropolitan area (seasonally adjusted) — 3 month moving average

	June 2007	July 2007	S.E. ¹	Change from			Percent change from		
				last month	last December	twelve months ago	last month	last December	twelve months ago
in thousands (except rates)									
Sherbrooke, Quebec									
Population	136.6	136.7	...	0.1	0.9	1.6	0.1	0.7	1.2
Labour force	89.2	88.9	0.8	-0.3	0.0	0.6	-0.3	0.0	0.7
Employment	83.8	83.8	0.8	0.0	1.6	2.5	0.0	1.9	3.1
Unemployment	5.4	5.0	0.3	-0.4	-1.7	-2.0	-7.4	-25.4	-28.6
Participation rate	65.3	65.0	0.6	-0.3	-0.5	-0.4
Unemployment rate	6.1	5.6	0.4	-0.5	-1.9	-2.3
Employment rate	61.3	61.3	0.6	0.0	0.8	1.1
Montréal, Quebec									
Population	3,032.7	3,035.0	...	2.3	16.8	32.8	0.1	0.6	1.1
Labour force	2,029.7	2,041.0	7.1	11.3	0.4	19.0	0.6	0.0	0.9
Employment	1,897.3	1,903.8	7.5	6.5	18.4	47.3	0.3	1.0	2.5
Unemployment	132.4	137.2	4.6	4.8	-18.0	-28.3	3.6	-11.6	-17.1
Participation rate	66.9	67.2	0.2	0.3	-0.4	-0.2
Unemployment rate	6.5	6.7	0.2	0.2	-0.9	-1.5
Employment rate	62.6	62.7	0.2	0.1	0.2	0.9
Ottawa-Gatineau, Ontario/Quebec									
Population	950.0	950.8	...	0.8	3.9	7.6	0.1	0.4	0.8
Labour force	682.2	687.9	3.3	5.7	22.0	5.0	0.8	3.3	0.7
Employment	643.6	649.4	3.4	5.8	21.2	-0.1	0.9	3.4	0.0
Unemployment	38.6	38.5	1.6	-0.1	0.8	5.1	-0.3	2.1	15.3
Participation rate	71.8	72.3	0.3	0.5	2.0	-0.1
Unemployment rate	5.7	5.6	0.2	-0.1	-0.1	0.7
Employment rate	67.7	68.3	0.4	0.6	2.0	-0.6
Ottawa-Gatineau, Quebec part, Ontario/Quebec									
Population	239.4	239.8	...	0.4	2.6	4.3	0.2	1.1	1.8
Labour force	171.6	172.0	1.2	0.4	-0.3	5.0	0.2	-0.2	3.0
Employment	162.0	161.3	1.2	-0.7	-0.2	2.9	-0.4	-0.1	1.8
Unemployment	9.7	10.6	0.6	0.9	-0.2	2.0	9.3	-1.9	23.3
Participation rate	71.7	71.7	0.5	0.0	-0.9	0.8
Unemployment rate	5.7	6.2	0.3	0.5	-0.1	1.1
Employment rate	67.7	67.3	0.5	-0.4	-0.8	0.0
Ottawa-Gatineau, Ontario part, Ontario/Quebec									
Population	710.6	711.0	...	0.4	1.4	3.2	0.1	0.2	0.5
Labour force	510.5	515.9	3.0	5.4	22.2	0.0	1.1	4.5	0.0
Employment	481.6	488.1	3.1	6.5	21.4	-3.0	1.3	4.6	-0.6
Unemployment	29.0	27.9	1.5	-1.1	0.9	3.1	-3.8	3.3	12.5
Participation rate	71.8	72.6	0.4	0.8	3.0	-0.3
Unemployment rate	5.7	5.4	0.3	-0.3	-0.1	0.6
Employment rate	67.8	68.6	0.4	0.8	2.8	-0.8
Kingston, Ontario									
Population	125.9	125.9	...	0.0	0.0	0.1	0.0	0.0	0.1
Labour force	83.4	83.6	0.7	0.2	2.6	-0.7	0.2	3.2	-0.8
Employment	78.6	78.4	0.8	-0.2	1.6	0.3	-0.3	2.1	0.4
Unemployment	4.8	5.2	0.3	0.4	1.0	-1.0	8.3	23.8	-16.1
Participation rate	66.2	66.4	0.6	0.2	2.1	-0.6
Unemployment rate	5.8	6.2	0.4	0.4	1.0	-1.2
Employment rate	62.4	62.3	0.6	-0.1	1.3	0.2

See footnotes at the end of the table.

Table 5-1 – continued

Labour force characteristics by census metropolitan area (seasonally adjusted) — 3 month moving average

	June 2007	July 2007	S.E. ¹	Change from			Percent change from		
				last month	last December	twelve months ago	last month	last December	twelve months ago
in thousands (except rates)									
Toronto, Ontario									
Population	4,440.0	4,446.7	...	6.7	41.2	76.2	0.2	0.9	1.7
Labour force	3,064.1	3,065.7	9.1	1.6	42.2	68.5	0.1	1.4	2.3
Employment	2,854.2	2,851.0	9.3	-3.2	28.5	41.7	-0.1	1.0	1.5
Unemployment	209.9	214.6	5.5	4.7	13.6	26.7	2.2	6.8	14.2
Participation rate	69.0	68.9	0.2	-0.1	0.3	0.3
Unemployment rate	6.9	7.0	0.2	0.1	0.4	0.7
Employment rate	64.3	64.1	0.2	-0.2	0.0	-0.2
Hamilton, Ontario									
Population	591.7	592.0	...	0.3	1.9	4.3	0.1	0.3	0.7
Labour force	398.8	401.4	2.8	2.6	12.3	4.2	0.7	3.2	1.1
Employment	374.4	377.8	2.8	3.4	12.4	3.5	0.9	3.4	0.9
Unemployment	24.3	23.6	1.3	-0.7	-0.2	0.7	-2.9	-0.8	3.1
Participation rate	67.4	67.8	0.5	0.4	1.9	0.2
Unemployment rate	6.1	5.9	0.3	-0.2	-0.2	0.1
Employment rate	63.3	63.8	0.5	0.5	1.9	0.1
Kitchener, Ontario									
Population	376.3	376.8	...	0.5	3.2	5.9	0.1	0.9	1.6
Labour force	260.1	260.5	2.0	0.4	-11.5	-0.4	0.2	-4.2	-0.2
Employment	245.1	245.8	2.2	0.7	-11.5	-2.4	0.3	-4.5	-1.0
Unemployment	15.0	14.7	0.9	-0.3	0.0	2.0	-2.0	0.0	15.7
Participation rate	69.1	69.1	0.5	0.0	-3.7	-1.2
Unemployment rate	5.8	5.6	0.3	-0.2	0.2	0.7
Employment rate	65.1	65.2	0.6	0.1	-3.7	-1.7
London, Ontario									
Population	380.8	381.0	...	0.2	1.4	3.0	0.1	0.4	0.8
Labour force	258.8	260.9	1.8	2.1	-6.7	1.0	0.8	-2.5	0.4
Employment	243.5	245.0	1.8	1.5	-6.0	1.0	0.6	-2.4	0.4
Unemployment	15.2	15.9	0.9	0.7	-0.7	-0.1	4.6	-4.2	-0.6
Participation rate	68.0	68.5	0.5	0.5	-2.0	-0.3
Unemployment rate	5.9	6.1	0.3	0.2	-0.1	-0.1
Employment rate	63.9	64.3	0.5	0.4	-1.8	-0.3
Oshawa, Ontario									
Population	281.2	281.8	...	0.6	4.3	7.6	0.2	1.5	2.8
Labour force	193.4	193.9	1.4	0.5	3.8	1.3	0.3	2.0	0.7
Employment	181.7	182.2	1.5	0.5	4.8	2.1	0.3	2.7	1.2
Unemployment	11.7	11.7	0.7	0.0	-1.0	-0.8	0.0	-7.9	-6.4
Participation rate	68.8	68.8	0.5	0.0	0.3	-1.4
Unemployment rate	6.0	6.0	0.4	0.0	-0.7	-0.5
Employment rate	64.6	64.7	0.5	0.1	0.8	-1.0
St. Catharines-Niagara, Ontario									
Population	327.9	328.0	...	0.1	0.4	1.1	0.0	0.1	0.3
Labour force	207.2	204.5	1.7	-2.7	3.6	-1.4	-1.3	1.8	-0.7
Employment	194.7	190.9	1.7	-3.8	2.8	-2.7	-2.0	1.5	-1.4
Unemployment	12.5	13.7	0.7	1.2	1.0	1.4	9.6	7.9	11.4
Participation rate	63.2	62.3	0.5	-0.9	1.0	-0.7
Unemployment rate	6.0	6.7	0.3	0.7	0.4	0.7
Employment rate	59.4	58.2	0.5	-1.2	0.8	-1.0

See footnotes at the end of the table.

Table 5-1 – continued

Labour force characteristics by census metropolitan area (seasonally adjusted) — 3 month moving average

	June 2007	July 2007	S.E. ¹	Change from			Percent change from		
				last month	last December	twelve months ago	last month	last December	twelve months ago
in thousands (except rates)									
Greater Sudbury / Grand Sudbury, Ontario									
Population	132.7	132.8	...	0.1	0.1	0.2	0.1	0.1	0.2
Labour force	86.0	86.7	0.7	0.7	2.4	1.6	0.8	2.8	1.9
Employment	81.1	81.2	0.7	0.1	2.1	1.6	0.1	2.7	2.0
Unemployment	5.0	5.5	0.3	0.5	0.3	0.0	10.0	5.8	0.0
Participation rate	64.8	65.3	0.6	0.5	1.8	1.1
Unemployment rate	5.8	6.3	0.4	0.5	0.1	-0.2
Employment rate	61.1	61.1	0.6	0.0	1.5	1.1
Thunder Bay, Ontario									
Population	104.2	104.1	...	-0.1	-0.2	-0.2	-0.1	-0.2	-0.2
Labour force	67.3	67.5	0.6	0.2	2.2	0.1	0.3	3.4	0.1
Employment	62.9	62.9	0.6	0.0	2.1	0.8	0.0	3.5	1.3
Unemployment	4.4	4.6	0.3	0.2	0.2	-0.6	4.5	4.5	-11.5
Participation rate	64.6	64.8	0.6	0.2	2.2	0.2
Unemployment rate	6.5	6.8	0.4	0.3	0.1	-0.9
Employment rate	60.4	60.4	0.6	0.0	2.1	0.9
Windsor, Ontario									
Population	271.5	271.6	...	0.1	0.4	1.2	0.0	0.1	0.4
Labour force	174.7	173.5	1.5	-1.2	-6.3	-9.6	-0.7	-3.5	-5.2
Employment	158.1	157.4	1.5	-0.7	-6.2	-9.8	-0.4	-3.8	-5.9
Unemployment	16.5	16.1	0.8	-0.4	-0.1	0.2	-2.4	-0.6	1.3
Participation rate	64.3	63.9	0.6	-0.4	-2.4	-3.8
Unemployment rate	9.4	9.3	0.4	-0.1	0.3	0.6
Employment rate	58.2	58.0	0.6	-0.2	-2.3	-3.8
Winnipeg, Manitoba									
Population	575.6	576.2	...	0.6	3.6	4.7	0.1	0.6	0.8
Labour force	410.9	409.9	1.4	-1.0	8.2	9.7	-0.2	2.0	2.4
Employment	389.9	391.0	1.4	1.1	8.4	7.9	0.3	2.2	2.1
Unemployment	21.0	18.9	0.8	-2.1	-0.2	1.9	-10.0	-1.0	11.2
Participation rate	71.4	71.1	0.2	-0.3	0.9	1.1
Unemployment rate	5.1	4.6	0.2	-0.5	-0.2	0.4
Employment rate	67.7	67.9	0.2	0.2	1.1	0.9
Regina, Saskatchewan									
Population	162.5	162.8	...	0.3	1.5	2.0	0.2	0.9	1.2
Labour force	116.0	115.2	0.7	-0.8	-2.2	0.2	-0.7	-1.9	0.2
Employment	110.1	108.3	0.7	-1.8	-3.9	-1.0	-1.6	-3.5	-0.9
Unemployment	5.9	7.0	0.3	1.1	1.8	1.3	18.6	34.6	22.8
Participation rate	71.4	70.8	0.4	-0.6	-2.0	-0.7
Unemployment rate	5.1	6.1	0.3	1.0	1.7	1.1
Employment rate	67.8	66.5	0.4	-1.3	-3.1	-1.5
Saskatoon, Saskatchewan									
Population	190.3	190.6	...	0.3	1.8	2.6	0.2	1.0	1.4
Labour force	140.0	140.2	0.8	0.2	2.0	6.6	0.1	1.4	4.9
Employment	133.6	133.8	0.9	0.2	0.2	6.8	0.1	0.1	5.4
Unemployment	6.4	6.4	0.4	0.0	1.9	-0.1	0.0	42.2	-1.5
Participation rate	73.6	73.6	0.4	0.0	0.4	2.5
Unemployment rate	4.6	4.6	0.3	0.0	1.3	-0.3
Employment rate	70.2	70.2	0.5	0.0	-0.6	2.6

See footnotes at the end of the table.

Table 5-1 – continued

Labour force characteristics by census metropolitan area (seasonally adjusted) — 3 month moving average

	June 2007	July 2007	S.E. ¹	Change from			Percent change from		
				last month	last December	twelve months ago	last month	last December	twelve months ago
in thousands (except rates)									
Calgary, Alberta									
Population	920.3	923.4	...	3.1	21.0	38.3	0.3	2.3	4.3
Labour force	703.4	706.8	3.2	3.4	13.9	32.6	0.5	2.0	4.8
Employment	678.9	682.6	3.3	3.7	7.7	33.0	0.5	1.1	5.1
Unemployment	24.5	24.2	1.4	-0.3	6.2	-0.4	-1.2	34.4	-1.6
Participation rate	76.4	76.5	0.4	0.1	-0.3	0.3
Unemployment rate	3.5	3.4	0.2	-0.1	0.8	-0.2
Employment rate	73.8	73.9	0.4	0.1	-0.9	0.5
Edmonton, Alberta									
Population	864.3	866.6	...	2.3	16.2	30.9	0.3	1.9	3.7
Labour force	616.7	619.3	3.1	2.6	22.4	34.3	0.4	3.8	5.9
Employment	593.3	594.5	3.2	1.2	19.8	32.0	0.2	3.4	5.7
Unemployment	23.3	24.8	1.4	1.5	2.6	2.3	6.4	11.7	10.2
Participation rate	71.4	71.5	0.4	0.1	1.3	1.5
Unemployment rate	3.8	4.0	0.2	0.2	0.3	0.2
Employment rate	68.6	68.6	0.4	0.0	1.0	1.3
Abbotsford, British Columbia									
Population	131.2	131.3	...	0.1	1.7	3.2	0.1	1.3	2.5
Labour force	89.5	89.7	0.7	0.2	1.5	5.1	0.2	1.7	6.0
Employment	85.6	86.0	0.7	0.4	1.7	5.4	0.5	2.0	6.7
Unemployment	3.9	3.7	0.3	-0.2	-0.2	-0.3	-5.1	-5.1	-7.5
Participation rate	68.2	68.3	0.5	0.1	0.2	2.3
Unemployment rate	4.4	4.1	0.3	-0.3	-0.3	-0.6
Employment rate	65.2	65.5	0.5	0.3	0.5	2.6
Vancouver, British Columbia									
Population	1,892.2	1,895.5	...	3.3	20.3	34.5	0.2	1.1	1.9
Labour force	1,267.8	1,269.7	4.8	1.9	10.9	26.4	0.1	0.9	2.1
Employment	1,211.5	1,218.6	4.8	7.1	18.4	26.7	0.6	1.5	2.2
Unemployment	56.3	51.1	2.2	-5.2	-7.5	-0.3	-9.2	-12.8	-0.6
Participation rate	67.0	67.0	0.3	0.0	-0.1	0.2
Unemployment rate	4.4	4.0	0.2	-0.4	-0.7	-0.1
Employment rate	64.0	64.3	0.3	0.3	0.3	0.3
Victoria, British Columbia									
Population	282.6	282.8	...	0.2	2.3	4.7	0.1	0.8	1.7
Labour force	188.4	189.7	1.4	1.3	4.3	8.1	0.7	2.3	4.5
Employment	182.3	183.3	1.5	1.0	4.5	8.1	0.5	2.5	4.6
Unemployment	6.1	6.4	0.5	0.3	-0.2	0.0	4.9	-3.0	0.0
Participation rate	66.7	67.1	0.5	0.4	1.0	1.8
Unemployment rate	3.2	3.4	0.3	0.2	-0.2	-0.1
Employment rate	64.5	64.8	0.5	0.3	1.1	1.8

1. Average standard error of change in two consecutive months (see "Sampling Errors" in Data Quality for further explanations).

Note(s): Related CANSIM table 282-0090

Table 5-2
Labour force characteristics by census metropolitan area (seasonally adjusted) — Monthly

	June 2007	July 2007	S.E. ¹	Change from			Percent change from		
				last month	last December	twelve months ago	last month	last December	twelve months ago
in thousands (except rates)									
Montréal, Quebec									
Population	3,034.8	3,037.5	...	2.7	16.5	32.2	0.1	0.5	1.1
Labour force	2,037.4	2,060.1	14.7	22.7	32.8	26.0	1.1	1.6	1.3
Employment	1,900.5	1,921.1	15.2	20.6	41.3	57.9	1.1	2.2	3.1
Unemployment	136.9	139.0	11.2	2.1	-8.4	-31.8	1.5	-5.7	-18.6
Participation rate	67.1	67.8	0.5	0.7	0.7	0.1
Unemployment rate	6.7	6.7	0.5	0.0	-0.6	-1.7
Employment rate	62.6	63.2	0.5	0.6	1.0	1.2
Toronto, Ontario									
Population	4,446.0	4,454.7	...	8.7	43.0	77.4	0.2	1.0	1.8
Labour force	3,065.4	3,071.5	19.6	6.1	22.3	62.8	0.2	0.7	2.1
Employment	2,856.2	2,847.2	19.2	-9.0	-9.4	34.7	-0.3	-0.3	1.2
Unemployment	209.2	224.3	13.8	15.1	31.7	28.1	7.2	16.5	14.3
Participation rate	68.9	68.9	0.4	0.0	-0.2	0.2
Unemployment rate	6.8	7.3	0.4	0.5	1.0	0.8
Employment rate	64.2	63.9	0.4	-0.3	-0.9	-0.4
Vancouver, British Columbia									
Population	1,895.3	1,899.0	...	3.7	21.3	35.2	0.2	1.1	1.9
Labour force	1,270.8	1,271.0	10.1	0.2	13.7	18.7	0.0	1.1	1.5
Employment	1,216.0	1,225.9	10.1	9.9	33.8	24.7	0.8	2.8	2.1
Unemployment	54.8	45.0	5.7	-9.8	-20.1	-6.1	-17.9	-30.9	-11.9
Participation rate	67.1	66.9	0.5	-0.2	-0.1	-0.3
Unemployment rate	4.3	3.5	0.4	-0.8	-1.7	-0.6
Employment rate	64.2	64.6	0.5	0.4	1.1	0.2

1. Average standard error of change in two consecutive months (see "Sampling Errors" in Data Quality for further explanations).

Note(s): Related CANSIM table 282-0091

Table 6-1

Labour force characteristics by province and economic region¹, unadjusted for seasonality, 3 month moving average ending in July 2006 and July 2007

	Population	Labour force			Participation rate	Unemployment rate	Employment rate
		Labour force	Employment	Unemployment			
in thousands							
Canada ²							
2006	26,167.3	17,895.7	16,795.8	1,099.9	68.4	6.1	64.2
2007	26,536.1	18,209.3	17,124.7	1,084.6	68.6	6.0	64.5
Newfoundland and Labrador							
2006	427.6	265.4	229.3	36.1	62.1	13.6	53.6
2007	423.5	261.4	229.8	31.6	61.7	12.1	54.3
Avalon Peninsula [1010]							
2006	209.7	136.8	122.2	14.6	65.2	10.7	58.3
2007	209.4	137.0	124.8	12.2	65.4	8.9	59.6
South Coast-Burin Peninsula [1020]							
2006	33.7	19.6	15.5	4.2	58.2	21.4	46.0
2007	32.8	17.8	14.3	3.5	54.3	19.7	43.6
West Coast-Northern Peninsula-Labrador [1030]							
2006	88.5	54.8	45.5	9.3	61.9	17.0	51.4
2007	87.4	54.3	47.2	7.1	62.1	13.1	54.0
Notre Dame-Central Bonavista Bay [1040]							
2006	95.7	54.2	46.1	8.1	56.6	14.9	48.2
2007	93.9	52.3	43.5	8.8	55.7	16.8	46.3
Prince Edward Island							
2006	112.2	80.2	73.5	6.7	71.5	8.4	65.5
2007	113.2	79.9	73.3	6.7	70.6	8.4	64.8
Nova Scotia							
2006	762.5	490.8	452.8	38.1	64.4	7.8	59.4
2007	763.9	496.7	457.1	39.7	65.0	8.0	59.8
Cape Breton [1210]							
2006	117.0	65.9	57.5	8.4	56.3	12.7	49.1
2007	116.3	63.8	55.7	8.1	54.9	12.7	47.9
North Shore [1220]							
2006	131.1	82.7	75.8	6.9	63.1	8.3	57.8
2007	130.9	79.4	71.9	7.5	60.7	9.4	54.9
Annapolis Valley [1230]							
2006	99.7	59.8	55.1	4.7	60.0	7.9	55.3
2007	100.1	66.0	61.6	4.5	65.9	6.8	61.5
Southern [1240]							
2006	103.7	62.4	55.8	6.7	60.2	10.7	53.8
2007	103.5	64.5	58.9	5.6	62.3	8.7	56.9
Halifax [1250]							
2006	311.1	220.1	208.7	11.4	70.7	5.2	67.1
2007	313.1	223.0	209.0	14.0	71.2	6.3	66.8
New Brunswick							
2006	611.4	403.7	370.5	33.2	66.0	8.2	60.6
2007	612.8	405.2	376.7	28.5	66.1	7.0	61.5
Campbellton-Miramichi [1310]							
2006	136.8	82.3	72.4	9.9	60.2	12.0	52.9
2007	135.8	85.0	74.7	10.3	62.6	12.1	55.0
Moncton-Richibucto [1320]							
2006	161.5	111.2	103.3	8.0	68.9	7.2	64.0
2007	163.1	109.4	103.4	6.0	67.1	5.5	63.4
Saint John-St. Stephen [1330]							
2006	141.4	92.7	86.2	6.6	65.6	7.1	61.0
2007	141.9	93.2	88.1	5.0	65.7	5.4	62.1

See footnotes at the end of the table.

Table 6-1 – continued

Labour force characteristics by province and economic region¹, unadjusted for seasonality, 3 month moving average ending in July 2006 and July 2007

	Population	Labour force			Participation rate	Unemployment rate	Employment rate
		Labour force	Employment	Unemployment			
in thousands							
Fredericton-Oromocto [1340]							
2006	103.5	72.1	66.9	5.2	69.7	7.2	64.6
2007	104.0	74.9	71.2	3.6	72.0	4.8	68.5
Edmundston-Woodstock [1350]							
2006	68.3	45.4	41.8	3.6	66.5	7.9	61.2
2007	68.1	42.8	39.2	3.6	62.8	8.4	57.6
Quebec							
2006	6,248.3	4,159.6	3,845.6	313.9	66.6	7.5	61.5
2007	6,312.8	4,204.5	3,931.8	272.7	66.6	6.5	62.3
Gaspésie-Îles-de-la-Madeleine [2410]							
2006	80.7	44.9	38.1	6.8	55.6	15.1	47.2
2007	80.9	45.6	38.2	7.5	56.4	16.4	47.2
Bas-Saint-Laurent [2415]							
2006	167.1	104.9	96.5	8.4	62.8	8.0	57.7
2007	167.4	103.5	95.4	8.1	61.8	7.8	57.0
Capitale-Nationale [2420]							
2006	559.4	378.4	362.1	16.2	67.6	4.3	64.7
2007	564.0	381.9	366.5	15.4	67.7	4.0	65.0
Chaudière-Appalaches [2425]							
2006	324.8	225.0	212.4	12.6	69.3	5.6	65.4
2007	327.5	219.9	209.6	10.3	67.1	4.7	64.0
Estrie [2430]							
2006	246.3	162.9	152.0	10.8	66.1	6.6	61.7
2007	248.6	163.4	152.7	10.7	65.7	6.5	61.4
Centre-du-Québec [2433]							
2006	183.7	124.5	115.0	9.5	67.8	7.6	62.6
2007	185.3	122.7	116.3	6.4	66.2	5.2	62.8
Montérégie [2435]							
2006	1,109.4	761.1	708.3	52.7	68.6	6.9	63.8
2007	1,124.5	772.3	732.3	40.0	68.7	5.2	65.1
Montréal [2440]							
2006	1,582.7	1,052.2	946.6	105.6	66.5	10.0	59.8
2007	1,592.3	1,047.8	961.4	86.4	65.8	8.2	60.4
Laval [2445]							
2006	304.3	202.0	191.1	10.9	66.4	5.4	62.8
2007	308.9	214.9	205.7	9.2	69.6	4.3	66.6
Lanaudière [2450]							
2006	343.6	227.5	214.7	12.7	66.2	5.6	62.5
2007	352.5	235.5	220.1	15.4	66.8	6.5	62.4
Laurentides [2455]							
2006	415.6	279.5	260.8	18.6	67.3	6.7	62.8
2007	425.0	292.1	274.7	17.5	68.7	6.0	64.6
Outaouais [2460]							
2006	284.9	196.0	185.9	10.2	68.8	5.2	65.3
2007	289.8	200.7	187.0	13.7	69.3	6.8	64.5
Abitibi-Témiscamingue [2465]							
2006	115.4	73.2	65.8	7.4	63.4	10.1	57.0
2007	115.6	73.8	66.6	7.2	63.8	9.8	57.6
Mauricie [2470]							
2006	216.4	126.3	113.6	12.6	58.4	10.0	52.5
2007	217.4	131.2	120.7	10.5	60.3	8.0	55.5

See footnotes at the end of the table.

Table 6-1 – continued

Labour force characteristics by province and economic region¹, unadjusted for seasonality, 3 month moving average ending in July 2006 and July 2007

	Population	Labour force			Participation rate	Unemployment rate	Employment rate
		Labour force	Employment	Unemployment			
in thousands							
Saguenay-Lac-Saint-Jean [2475]							
2006	224.4	143.5	129.1	14.4	63.9	10.0	57.5
2007	223.8	144.0	132.9	11.1	64.3	7.7	59.4
Côte-Nord and Nord-du-Québec [2480, 2490]							
2006	89.6	57.8	53.4	4.3	64.5	7.4	59.6
2007	89.4	55.3	51.9	3.5	61.9	6.3	58.1
Ontario							
2006	10,223.8	7,055.0	6,605.4	449.5	69.0	6.4	64.6
2007	10,353.9	7,149.6	6,669.4	480.2	69.1	6.7	64.4
Ottawa [3510]							
2006	978.3	697.8	660.8	37.0	71.3	5.3	67.5
2007	984.2	707.5	665.7	41.8	71.9	5.9	67.6
Kingston-Pembroke [3515]							
2006	357.8	224.3	209.1	15.1	62.7	6.7	58.4
2007	358.9	230.2	219.2	11.0	64.1	4.8	61.1
Muskoka-Kawarthas [3520]							
2006	306.0	198.1	187.0	11.2	64.7	5.7	61.1
2007	308.8	199.6	188.3	11.3	64.6	5.7	61.0
Toronto [3530]							
2006	4,605.4	3,213.0	2,993.4	219.7	69.8	6.8	65.0
2007	4,691.7	3,287.2	3,042.3	244.8	70.1	7.4	64.8
Kitchener-Waterloo-Barrie [3540]							
2006	948.7	696.5	661.3	35.2	73.4	5.1	69.7
2007	966.8	696.3	657.6	38.7	72.0	5.6	68.0
Hamilton-Niagara Peninsula [3550]							
2006	1,122.1	756.1	711.6	44.5	67.4	5.9	63.4
2007	1,132.0	765.2	719.3	45.9	67.6	6.0	63.5
London [3560]							
2006	505.9	352.1	332.3	19.9	69.6	5.7	65.7
2007	510.3	355.6	334.3	21.3	69.7	6.0	65.5
Windsor-Sarnia [3570]							
2006	522.7	357.0	326.9	30.0	68.3	8.4	62.5
2007	524.4	342.9	311.3	31.6	65.4	9.2	59.4
Stratford-Bruce Peninsula [3580]							
2006	246.5	168.0	160.5	7.5	68.2	4.5	65.1
2007	247.3	166.0	159.9	6.1	67.1	3.7	64.7
Northeast [3590]							
2006	453.3	277.6	257.5	20.2	61.2	7.3	56.8
2007	453.4	283.6	265.1	18.6	62.5	6.6	58.5
Northwest [3595]							
2006	177.2	114.4	105.0	9.4	64.6	8.2	59.3
2007	176.1	115.4	106.3	9.1	65.5	7.9	60.4
Manitoba							
2006	892.1	620.0	596.3	23.7	69.5	3.8	66.8
2007	898.4	632.6	605.3	27.3	70.4	4.3	67.4
Southeast [4610]							
2006	74.6	53.8	52.1	1.7	72.1	3.2	69.8
2007	76.4	54.4	52.4	1.9	71.2	3.5	68.6
South Central [4620]							
2006	42.4	28.3	27.5	0.8	66.7	2.8	64.9
2007	43.0	30.6	29.6	1.0	71.2	3.3	68.8

See footnotes at the end of the table.

Table 6-1 – continued

Labour force characteristics by province and economic region¹, unadjusted for seasonality, 3 month moving average ending in July 2006 and July 2007

	Population	Labour force			Participation rate	Unemployment rate	Employment rate
		Labour force	Employment	Unemployment			
in thousands							
Southwest [4630]							
2006	81.8	51.2	49.5	1.6	62.6	3.1	60.5
2007	82.0	53.9	51.3	2.6	65.7	4.8	62.6
North Central [4640]							
2006	35.5	23.8	23.2	0.6	67.0	2.5	65.4
2007	35.7	24.2	23.6	0.6	67.8	2.5	66.1
Winnipeg [4650]							
2006	529.0	373.3	357.2	16.0	70.6	4.3	67.5
2007	532.5	381.1	363.7	17.4	71.6	4.6	68.3
Interlake [4660]							
2006	68.6	47.4	46.3	1.0	69.1	2.1	67.5
2007	69.6	47.4	45.2	2.2	68.1	4.6	64.9
Parklands and North [4670, 4680]							
2006	60.2	42.3	40.4	1.9	70.3	4.5	67.1
2007	59.2	41.0	39.5	1.6	69.3	3.9	66.7
Saskatchewan							
2006	745.9	524.4	501.4	22.9	70.3	4.4	67.2
2007	750.1	532.2	509.2	23.1	71.0	4.3	67.9
Regina-Moose Mountain [4710]							
2006	218.9	155.3	149.0	6.3	70.9	4.1	68.1
2007	220.7	155.9	148.2	7.7	70.6	4.9	67.1
Swift Current-Moose Jaw [4720]							
2006	82.5	58.4	55.9	2.5	70.8	4.3	67.8
2007	82.6	57.0	54.6	2.4	69.0	4.2	66.1
Saskatoon-Biggar [4730]							
2006	230.7	167.9	160.6	7.3	72.8	4.3	69.6
2007	233.1	174.1	167.4	6.7	74.7	3.8	71.8
Yorkton-Melville [4740]							
2006	64.6	42.9	41.1	1.8	66.4	4.2	63.6
2007	64.0	44.2	42.9	1.3	69.1	2.9	67.0
Prince Albert and Northern [4750, 4760]							
2006	149.2	99.8	94.8	4.9	66.9	4.9	63.5
2007	149.8	100.9	96.0	4.9	67.4	4.9	64.1
Alberta							
2006	2,634.7	1,969.9	1,901.9	68.0	74.8	3.5	72.2
2007	2,740.4	2,059.1	1,986.5	72.6	75.1	3.5	72.5
Lethbridge-Medicine Hat [4810]							
2006	199.9	145.9	141.9	4.0	73.0	2.7	71.0
2007	206.8	135.6	131.7	3.9	65.6	2.9	63.7
Camrose-Drumheller [4820]							
2006	150.5	116.5	113.9	2.7	77.4	2.3	75.7
2007	154.8	114.7	110.4	4.3	74.1	3.7	71.3
Calgary [4830]							
2006	951.7	733.8	707.9	25.9	77.1	3.5	74.4
2007	994.7	776.3	751.1	25.2	78.0	3.2	75.5
Banff-Jasper-Rocky Mountain House [4840]							
2006	65.9	50.5	49.5	x	76.6	x	75.1
2007	67.8	55.3	53.9	x	81.6	x	79.5
Red Deer [4850]							
2006	135.7	104.3	100.0	4.3	76.9	4.1	73.7
2007	142.2	109.1	105.9	3.2	76.7	2.9	74.5

See footnotes at the end of the table.

Table 6-1 – continued

Labour force characteristics by province and economic region¹, unadjusted for seasonality, 3 month moving average ending in July 2006 and July 2007

	Population	Labour force			Participation rate	Unemployment rate	Employment rate
		Labour force	Employment	Unemployment			
in thousands							
Edmonton [4860]							
2006	867.4	615.8	592.7	23.1	71.0	3.8	68.3
2007	900.0	653.8	627.1	26.8	72.6	4.1	69.7
Athabasca-Grande Prairie-Peace River [4870]							
2006	176.8	137.2	132.5	4.8	77.6	3.5	74.9
2007	183.2	143.6	138.1	5.5	78.4	3.8	75.4
Wood Buffalo-Cold Lake [4880]							
2006	86.8	65.9	63.5	2.4	75.9	3.6	73.2
2007	91.0	70.6	68.3	2.3	77.6	3.3	75.1
British Columbia							
2006	3,508.8	2,326.7	2,219.0	107.7	66.3	4.6	63.2
2007	3,567.1	2,388.1	2,285.7	102.3	66.9	4.3	64.1
Vancouver Island and Coast [5910]							
2006	611.6	389.8	372.6	17.2	63.7	4.4	60.9
2007	622.1	398.5	383.1	15.5	64.1	3.9	61.6
Lower Mainland-Southwest [5920]							
2006	2,117.7	1,421.8	1,358.8	63.0	67.1	4.4	64.2
2007	2,158.2	1,466.3	1,404.2	62.1	67.9	4.2	65.1
Thompson-Okanagan [5930]							
2006	413.4	268.4	255.0	13.4	64.9	5.0	61.7
2007	422.6	272.2	259.7	12.5	64.4	4.6	61.5
Kootenay [5940]							
2006	122.2	75.7	71.1	4.6	61.9	6.1	58.2
2007	122.0	81.1	77.3	3.8	66.5	4.7	63.4
Cariboo [5950]							
2006	125.8	89.6	83.6	6.1	71.2	6.8	66.5
2007	124.8	86.1	82.0	4.1	69.0	4.8	65.7
North Coast and Nechako [5960, 5970]							
2006	67.5	47.3	45.1	2.2	70.1	4.7	66.8
2007	66.1	45.2	41.7	3.5	68.4	7.7	63.1
Northeast [5980]							
2006	50.6	34.2	32.9	x	67.6	x	65.0
2007	51.3	38.6	37.8	x	75.2	x	73.7

1. For geographic descriptions of economic regions, refer to the Guide to the Labour Force Survey (catalogue number 71-543-GIE).

2. Estimates for Canada are a sum of the provincial totals and exclude estimates from Yukon Territory, Northwest Territories and Nunavut.

Note(s): Related CANSIM table 282-0054.

Table 6-2
Labour force characteristics by territories, unadjusted for seasonality, 3 month moving average ending in July 2006 and July 2007

	Population	Labour force			Participation rate	Unemployment rate	Employment rate
		Labour force	Employment	Unemployment			
in thousands							
Yukon Territory ¹							
2006	21.5	17.2	16.3	0.9	80.0	5.2	75.8
2007	21.3	16.0	15.3	0.7	75.1	4.4	71.8
Northwest Territories ²							
2006	30.9	24.7	23.2	1.6	79.9	6.5	75.1
2007	30.8	24.4	22.9	1.6	79.2	6.6	74.4
Nunavut - 10 largest communities ³							
2006	13.8	9.1	8.1	1.1	66.1	11.6	58.4
2007	14.2	10.2	9.2	1.0	71.5	9.7	64.6

1. Since 1992, the Labour force survey has been administered in the Yukon Territory, using an alternative methodology that accommodates some of the operational difficulties inherent to remote locales. These estimates are not included in national totals.
2. Since 2001, the Labour force survey has been administered in the Northwest Territories, using an alternative methodology that accommodates some of the operational difficulties inherent to remote locales. These estimates are not included in national totals.
3. Since 2004, the Labour force survey has been administered in Nunavut, using an alternative methodology that accommodates some of the operational difficulties inherent to remote locales. These estimates are not included in national totals. The 10 largest communities are Iqaluit, Cambridge Bay, Baker Lake, Arviat, Rankin Inlet, Kugluktuk, Pond Inlet, Cape Dorset, Pangnirtung, Igloolik.

Note(s): Related CANSIM table 282-0054.

Table 7
Average usual hours and wages of employees by selected characteristics, Canada, unadjusted for seasonality

	Employees				Full-time			Part-time		
	Number	Average weekly hours	Average weekly wages	Average hourly wages	Number	Average weekly hours	Average weekly wages	Number	Average weekly hours	Average weekly wages
	thousands		dollars		thousands		dollars	thousands		dollars
July 2007										
15 years and over	14,555.2	36.4	754.33	20.20	12,393.6	39.5	837.31	2,161.7	18.8	278.60
15 to 24 years	2,883.1	32.1	393.45	11.74	1,990.8	38.5	492.69	892.3	17.8	172.03
25 years and over	11,672.1	37.5	843.47	22.29	10,402.8	39.7	903.26	1,269.4	19.5	353.51
Men	7,460.4	38.8	864.32	21.93	6,831.7	40.7	920.89	628.7	18.0	249.62
Women	7,094.8	33.9	638.68	18.39	5,561.9	38.0	734.65	1,533.0	19.1	290.48
Union coverage										
Union coverage	4,402.9	36.6	868.28	23.49	3,903.9	38.7	926.87	499.0	20.2	409.86
No union coverage	10,152.4	36.3	704.92	18.77	8,489.7	39.8	796.12	1,662.7	18.3	239.20
Job permanency										
Permanent	12,291.9	37.0	799.77	21.17	10,784.2	39.5	868.99	1,507.7	19.5	304.67
Temporary	2,263.4	32.9	507.55	14.94	1,609.4	39.4	625.01	654.0	17.0	218.49
Occupation										
Management	993.6	40.3	1,289.49	32.16	968.5	40.8	1,309.25	25.1	19.6	528.00
Business, finance and administrative	2,777.1	35.6	699.81	19.33	2,412.9	38.2	761.21	364.1	18.4	292.93
Natural and applied sciences	1,107.8	38.7	1,091.94	28.34	1,078.3	39.2	1,107.38	29.5	19.6	528.70
Health	868.9	33.7	817.67	24.27	664.1	37.6	908.25	204.7	21.2	523.86
Social science, education, government service and religion	1,154.8	35.3	924.30	26.07	982.2	38.3	1,008.09	172.6	18.5	447.50
Art, culture, recreation and sport	381.7	34.3	661.21	19.09	307.0	38.5	753.42	74.7	17.0	282.26
Sales and service	3,757.4	32.6	469.02	13.63	2,619.0	38.6	587.30	1,138.4	18.6	196.89
Trades, transport and equipment operators	2,173.5	40.8	836.84	20.42	2,084.0	41.7	861.24	89.5	18.9	268.74
Occupations unique to primary industry	362.7	41.6	700.44	16.22	327.4	44.2	754.42	35.3	17.6	199.85
Occupations unique to processing, manufacturing and utilities	977.7	39.6	695.12	17.41	950.0	40.2	709.17	27.6	18.8	211.87
July 2006										
15 years and over	14,387.6	36.5	729.45	19.47	12,246.1	39.6	811.08	2,141.5	18.9	262.61
15 to 24 years	2,808.3	32.3	378.13	11.23	1,918.0	38.8	474.69	890.4	18.2	170.13
25 years and over	11,579.2	37.6	814.65	21.47	10,328.1	39.8	873.55	1,251.1	19.4	328.42
Men	7,423.3	38.9	835.44	21.11	6,796.4	40.8	891.14	626.9	18.3	231.61
Women	6,964.3	33.9	616.47	17.73	5,449.6	38.1	711.25	1,514.7	19.1	275.44
Union coverage										
Union coverage	4,430.1	36.5	828.94	22.52	3,903.3	38.7	888.28	526.8	20.3	389.27
No union coverage	9,957.5	36.5	685.18	18.12	8,342.7	40.0	774.97	1,614.8	18.5	221.29
Job permanency										
Permanent	12,103.2	37.1	775.21	20.46	10,608.0	39.6	844.45	1,495.2	19.5	283.95
Temporary	2,284.3	33.5	487.00	14.26	1,638.0	39.8	595.01	646.3	17.6	213.25
Occupation										
Management	996.8	40.6	1,277.59	31.71	971.5	41.1	1,298.32	25.4	19.2	483.75
Business, finance and administrative	2,800.4	35.9	681.80	18.70	2,448.6	38.3	739.95	351.8	18.8	277.03
Natural and applied sciences	1,047.5	38.9	1,068.79	27.51	1,028.5	39.3	1,079.66	19.0	19.6	481.78
Health	889.7	33.9	770.63	22.70	681.7	37.8	863.71	208.0	20.8	465.49
Social science, education, government service and religion	1,156.4	35.2	895.68	25.47	982.4	38.2	975.15	174.0	18.1	447.11
Art, culture, recreation and sport	359.3	35.4	663.00	18.33	303.8	38.8	739.53	55.5	16.9	243.91
Sales and service	3,580.5	32.3	442.49	12.98	2,453.1	38.5	558.76	1,127.4	18.8	189.49
Trades, transport and equipment operators	2,153.7	41.0	793.31	19.29	2,063.4	41.9	816.84	90.3	19.2	255.45
Occupations unique to primary industry	390.9	42.1	641.81	14.89	340.6	45.8	710.24	50.3	17.5	178.74
Occupations unique to processing, manufacturing and utilities	1,012.4	39.5	680.74	17.10	972.5	40.3	698.73	39.9	19.3	242.30

Note(s): Related CANSIM tables 282-0023, 282-0069, 282-0073

Table 8
Regional unemployment rates used by the Employment Insurance Program,¹ seasonally adjusted, 3 month moving average

Region	Effective from August 12, 2007 to September 8, 2007
	Percent
Newfoundland and Labrador	
01. St. John's	6.5
02. Newfoundland and Labrador	18.1
Prince Edward Island	
03. Prince Edward Island	10.5
Nova Scotia	
04. Eastern Nova Scotia	14.6
05. Western Nova Scotia	9.0
06. Halifax	5.9
New Brunswick	
07. Fredericton-Moncton-Saint John	4.6
08. Madawaska-Charlotte ²	9.4
09. Restigouche-Albert	12.9
Quebec	
10. Gaspésie-Îles-de-la-Madeleine	18.0
11. Québec	4.8
12. Trois-Rivières	7.6
13. South Central Quebec	6.1
14. Sherbrooke	5.7
15. Montérégie	6.9
16. Montréal	6.8
17. Central Quebec	8.3
18. Northwestern Quebec	13.0
19. Bas-Saint-Laurent-Côte-Nord ³	11.0
20. Gatineau	6.2
21. Saguenay	8.5
Ontario	
22. Ottawa	5.4
23. Eastern Ontario	6.6
24. Kingston	5.3
25. Central Ontario	5.6
26. Oshawa	6.0
27. Toronto	7.0
28. Hamilton	5.9
29. St. Catharines	6.7
30. London	6.1
31. Niagara	7.3
32. Windsor	9.3
33. Kitchener	5.6
34. Huron	8.9
35. South Central Ontario	5.4
36. Sudbury	6.1
37. Thunder Bay	7.0
38. Northern Ontario	10.3
Manitoba	
39. Winnipeg	4.6
40. Southern Manitoba	5.8
41. Northern Manitoba	26.0
Saskatchewan	
42. Regina	6.1
43. Saskatoon	4.3
44. Southern Saskatchewan	6.1
45. Northern Saskatchewan	14.6

See footnotes at the end of the table.

Table 8 – continued

Regional unemployment rates used by the Employment Insurance Program,¹ seasonally adjusted, 3 month moving average

Region	Effective from August 12, 2007 to September 8, 2007
	Percent
Alberta	
46. Calgary	3.4
47. Edmonton	4.1
48. Northern Alberta	7.3
49. Southern Alberta	4.5
British Columbia	
50. Southern Interior British Columbia	6.2
51. Abbotsford	4.1
52. Vancouver	4.2
53. Victoria	4.2
54. Southern Coastal British Columbia	5.8
55. Northern British Columbia	7.9
Territories	
56. Yukon Territory ⁴	25.0
57. Northwest Territories ⁴	25.0
58. Nunavut ⁴	25.0

1. The boundaries of these regions are determined by Human Resources and Social Development Canada (HRSDC). For geographic descriptions and maps of employment insurance regions, see the HRSDC website: http://www.hrsdc.gc.ca/asp/gateway.asp?hr=en/ei/region/economic_region_information.shtml&hs=eza.
2. This unemployment rate has been determined using a transition formula prescribed in the EI Regulations. For further information, see: http://www.hrsdc.gc.ca/en/cs/comm/news/2000/000913a_e.shtml.
3. This unemployment rate has been determined using a transition formula prescribed in the EI Regulations. For further information, see: http://www.hrsdc.gc.ca/en/cs/comm/news/2000/000913b_e.shtml.
4. This rate is provided by Human Resources and Skills Development Canada.

Table 9-1
Students and other persons aged 15 to 24 (unadjusted) by detailed age groups

	July 2005	July 2006	July 2007	S.E. ¹	Change from		Percent change from	
					last year	two years ago	last year	two years ago
in thousands								
Students 15 to 24 years²								
Population	2,287.7	2,291.9	2,295.9	28.2	4.0	8.2	0.2	0.4
Labour force	1,563.3	1,575.1	1,606.0	29.4	30.9	42.7	2.0	2.7
Employment	1,312.8	1,341.9	1,389.8	28.1	47.9	77.0	3.6	5.9
Full-time employment	660.6	684.6	723.2	20.3	38.6	62.6	5.6	9.5
Part-time employment	652.3	657.3	666.6	22.5	9.3	14.3	1.4	2.2
Unemployment	250.5	233.2	216.2	13.3	-17.0	-34.3	-7.3	-13.7
Participation rate	68.3	68.7	70.0	0.9	1.3	1.7
Unemployment rate	16.0	14.8	13.5	0.9	-1.3	-2.5
Employment rate	57.4	58.5	60.5	1.0	2.0	3.1
Part-time rate	49.7	49.0	48.0	1.3	-1.0	-1.7
Students 15 to 16 years²								
Population	802.1	816.3	818.7	5.4	2.4	16.6	0.3	2.1
Labour force	408.2	418.5	433.1	12.7	14.6	24.9	3.5	6.1
Employment	304.8	304.2	329.3	11.9	25.1	24.5	3.9	8.0
Full-time employment	93.5	93.4	99.0	5.3	5.6	5.5	6.0	5.9
Part-time employment	211.3	210.8	230.3	11.3	19.5	19.0	9.3	9.0
Unemployment	103.4	114.3	103.9	7.8	-10.4	0.5	-9.1	0.5
Participation rate	50.9	51.3	52.9	1.5	1.6	2.0
Unemployment rate	25.3	27.3	24.0	2.1	-3.3	-1.3
Employment rate	38.0	37.3	40.2	1.5	2.9	2.2
Part-time rate	69.3	69.3	69.9	1.8	0.6	0.6
Students 17 to 19 years²								
Population	833.9	836.4	844.9	15.3	8.5	11.0	1.0	1.3
Labour force	637.0	650.8	667.6	16.3	16.8	30.6	2.6	4.8
Employment	532.2	557.3	584.3	15.9	27.0	52.1	4.8	9.8
Full-time employment	252.0	269.7	287.8	11.0	18.1	35.8	6.7	14.2
Part-time employment	280.2	287.6	296.5	14.1	8.9	16.3	3.1	5.8
Unemployment	104.8	93.5	83.3	8.2	-10.2	-21.5	-10.9	-20.5
Participation rate	76.4	77.8	79.0	1.5	1.2	2.6
Unemployment rate	16.5	14.4	12.5	1.4	-1.9	-4.0
Employment rate	63.8	66.6	69.2	1.6	2.6	5.4
Part-time rate	52.6	51.6	50.7	1.9	-0.9	-1.9
Students 20 to 24 years²								
Population	651.8	639.3	632.4	22.2	-6.9	-19.4	-1.1	-3.0
Labour force	518.1	505.9	505.3	20.3	-0.6	-12.8	-0.1	-2.5
Employment	475.8	480.5	476.3	19.6	-4.2	0.5	-0.9	0.1
Full-time employment	315.1	321.5	336.4	15.6	14.9	21.3	4.6	6.8
Part-time employment	160.7	158.9	139.9	13.3	-19.0	-20.8	-12.0	-12.9
Unemployment	42.3	25.4	29.1	6.5	3.7	-13.2	14.6	-31.2
Participation rate	79.5	79.1	79.9	1.8	0.8	0.4
Unemployment rate	8.2	5.0	5.8	1.3	0.8	-2.4
Employment rate	73.0	75.2	75.3	1.9	0.1	2.3
Part-time rate	33.8	33.1	29.4	2.4	-3.7	-4.4
Other persons aged 15 to 24³								
Population	1,993.5	2,029.0	2,058.1	22.4	29.1	64.6	1.4	3.2
Labour force	1,723.0	1,761.5	1,769.1	27.0	7.6	46.1	0.4	2.7
Employment	1,526.5	1,565.6	1,603.9	27.5	38.3	77.4	2.4	5.1
Full-time employment	1,258.4	1,290.1	1,330.1	27.5	40.0	71.7	3.1	5.7
Part-time employment	268.1	275.5	273.9	21.6	-1.6	5.8	-0.6	2.2
Unemployment	196.5	196.0	165.1	16.3	-30.9	-31.4	-15.8	-16.0
Participation rate	86.4	86.8	86.0	0.6	-0.9	-0.5
Unemployment rate	11.4	11.1	9.3	0.6	-1.8	-2.1
Employment rate	76.6	77.2	77.9	0.7	0.8	1.4
Part-time rate	17.6	17.6	17.1	0.9	-0.5	-0.5

1. Average standard error of change over the year (see "Sampling Errors" in Data Quality for further explanations).

2. Students are persons aged 15 to 24 who attended school full-time in March and who are planning to return to school in the fall.

3. Other persons are all other youths aged 15 to 24 who are not included in the student population.

Note(s): Related CANSIM table 282-0006

Table 9-2
Students and other persons aged 15 to 24 (unadjusted) by province

	Population		Labour force				Participation rate	Unemployment rate	Employment rate
	Labour force	Employment	Full-time employment	Part-time employment	Unemployment				
in thousands									
Students¹									
Newfoundland and Labrador									
July 2006	38.2	24.7	20.6	13.0	7.6	4.2	64.7	17.0	53.9
July 2007	36.0	23.7	20.8	13.5	7.3	2.9	65.8	12.2	57.8
Prince Edward Island									
July 2006	9.8	8.3	7.3	5.0	2.3	1.0	84.7	12.0	74.5
July 2007	10.0	8.9	7.9	5.2	2.7	0.9	89.0	10.1	79.0
Nova Scotia									
July 2006	67.4	47.0	39.9	19.9	20.1	7.1	69.7	15.1	59.2
July 2007	66.1	47.4	42.0	22.1	19.9	5.4	71.7	11.4	63.5
New Brunswick									
July 2006	48.0	37.1	31.8	20.0	11.8	5.3	77.3	14.3	66.3
July 2007	47.6	36.3	33.2	20.8	12.4	3.1	76.3	8.5	69.7
Quebec									
July 2006	525.4	375.8	315.5	159.9	155.6	60.2	71.5	16.0	60.0
July 2007	538.4	381.2	335.8	187.2	148.5	45.4	70.8	11.9	62.4
Ontario									
July 2006	967.0	648.2	542.3	269.6	272.7	105.9	67.0	16.3	56.1
July 2007	976.7	677.7	564.6	278.7	285.9	113.0	69.4	16.7	57.8
Manitoba									
July 2006	76.3	55.6	49.7	24.2	25.6	5.9	72.9	10.6	65.1
July 2007	72.4	54.5	51.3	24.2	27.1	3.2	75.3	5.9	70.9
Saskatchewan									
July 2006	63.8	48.6	43.9	21.5	22.4	4.7	76.2	9.7	68.8
July 2007	64.4	46.1	41.4	21.5	19.9	4.6	71.6	10.0	64.3
Alberta									
July 2006	216.7	155.2	140.1	79.7	60.4	15.1	71.6	9.7	64.7
July 2007	214.8	156.6	139.7	82.1	57.6	16.9	72.9	10.8	65.0
British Columbia									
July 2006	279.4	174.5	150.7	71.9	78.8	23.8	62.5	13.6	53.9
July 2007	269.5	173.8	153.0	67.8	85.2	20.8	64.5	12.0	56.8
Other persons aged 15-24²									
Newfoundland and Labrador									
July 2006	28.6	23.1	18.5	15.2	3.3	4.6	80.8	19.9	64.7
July 2007	27.4	20.8	16.4	14.4	2.1	4.3	75.9	20.7	59.9
Prince Edward Island									
July 2006	10.1	9.4	8.2	7.5	0.8	1.3	93.1	13.8	81.2
July 2007	9.7	8.6	7.5	6.7	0.9	1.1	88.7	12.8	77.3
Nova Scotia									
July 2006	55.8	49.3	42.8	34.6	8.3	6.5	88.4	13.2	76.7
July 2007	56.3	49.6	43.5	36.0	7.5	6.0	88.1	12.1	77.3
New Brunswick									
July 2006	48.1	42.7	38.0	31.7	6.3	4.6	88.8	10.8	79.0
July 2007	47.2	40.8	37.2	31.5	5.7	3.7	86.4	9.1	78.8
Quebec									
July 2006	425.2	370.0	323.9	267.4	56.5	46.1	87.0	12.5	76.2
July 2007	416.6	358.3	323.6	272.5	51.0	34.7	86.0	9.7	77.7
Ontario									
July 2006	737.8	638.5	555.9	449.0	106.9	82.6	86.5	12.9	75.3
July 2007	744.6	639.9	558.9	446.6	112.3	80.9	85.9	12.6	75.1
Manitoba									
July 2006	79.6	67.1	61.4	51.1	10.3	5.7	84.3	8.5	77.1
July 2007	84.4	72.6	68.0	54.9	13.2	4.5	86.0	6.2	80.6

See footnotes at the end of the table.

Table 9-2 – continued

Students and other persons aged 15 to 24 (unadjusted) by province

	Population	Labour force					Participation rate	Unemployment rate	Employment rate
		Labour force	Employment	Full-time employment	Part-time employment	Unemployment			
in thousands									
Saskatchewan									
July 2006	74.1	66.2	61.1	51.2	9.9	5.1	89.3	7.7	82.5
July 2007	73.1	65.0	60.8	53.2	7.6	4.2	88.9	6.5	83.2
Alberta									
July 2006	272.9	240.8	223.8	200.0	23.8	17.1	88.2	7.1	82.0
July 2007	290.0	249.5	240.8	211.8	29.0	8.6	86.0	3.4	83.0
British Columbia									
July 2006	297.1	254.2	231.7	182.2	49.5	22.5	85.6	8.9	78.0
July 2007	308.8	264.1	247.1	202.6	44.7	17.0	85.5	6.4	80.0

1. Students are persons aged 15 to 24 who attended school full-time in March and who are planning to return to school in the fall.

2. Other persons are all other youths aged 15 to 24 who are not included in the student population.

Note(s): Related CANSIM table 282-0006

Data quality

About the Labour Force Survey

The statistics contained in this report are based on information obtained through a sample survey of 53,000 representative households across the country. The Labour Force Survey, started in November 1945, was taken at quarterly intervals until November 1952. It has been carried out monthly since then. The information generated by the survey has expanded considerably over the years with a major redesign of the survey content in 1976 and again in 1997, and provides a rich and detailed picture of the Canadian labour market.

The sample used in the Labour Force Survey has been designed to represent all persons in the population 15 years of age and over residing in the provinces of Canada, with the exception of the following: persons living on Indian reserves, full-time members of the armed forces and people living in institutions (for example, inmates of penal institutions and patients in hospitals or nursing homes who have resided in the institution for more than six months). Monthly estimates of employment, unemployment and persons not in the labour force refer to the specific week covered by the survey each month, normally the week containing the 15th day.

Definitions and explanations

The **labour force** is composed of those members of the civilian non-institutional population 15 years of age and over who, during the reference week, were employed or unemployed.

Employed persons are those who, during the reference week:

- (a) did any work at all
- (b) had a job but were not at work

A person is considered to be **full-time** if his/her usual hours at the main job are 30 or more hours per week. When the number of hours worked at the main job is usually less than 30 hours per week then he/she is considered to be **part-time**.

Unemployed persons are those who, during the reference week:

- (a) were without work, had actively looked for work in the past four weeks (ending with reference week), and were available for work;
- (b) had not actively looked for work in the past four weeks but were on temporary layoff and were available for work;
- (c) had not actively looked for work in the past four weeks but had a new job to start in four weeks or less from the reference week, and were available for work.

Persons in the civilian non-institutional population 15 years of age and over who, during the reference week, were neither employed nor unemployed are classified as **not in the labour force**.

The **unemployment rate** represents the number of unemployed persons expressed as a percentage of the labour force. The unemployment rate for a particular group (age, sex, etc.) is the number unemployed in that group expressed as a percentage of the labour force for that group.

The **participation rate** represents the labour force expressed as a percentage of the population 15 years of age and over. The participation rate for a particular group (age, sex, etc.) is the labour force in that group expressed as a percentage of the population for that group.

The **employment rate (formerly the employment/population ratio)** represents the number of persons employed expressed as a percentage of the population 15 years of age and over. The employment rate for a particular group (age, sex, etc.) is the number employed in that group expressed as a percentage of the population for that group.

The **part-time rate** represents the number of persons employed part-time expressed as a percentage of the employed. The part-time rate for a particular group (age, sex, etc.) is the number employed part-time in that group expressed as a percentage of the employed for that group.

All geographic regions are based on the 2001 Census boundaries.

Seasonal adjustment

Fluctuations in economic time series are caused by seasonal, cyclical and irregular movements. A seasonally adjusted series is one from which seasonal movements have been eliminated. Seasonal movements are defined as those which are caused by regular annual events such as climate, holidays, vacation periods and cycles related to crops, production and retail sales associated with Christmas and Easter. The seasonally adjusted series contains irregular as well as longer-term cyclical fluctuations.

The seasonally adjusted series are revised each year to take into account current data and to generate new forecast factors for the next twelve months. The data are therefore subject to slight revisions in future issues of this publication.

Sampling variability of estimates

Estimates in this publication are based on the Labour Force Survey, a monthly survey of approximately 53,000 households across Canada. Because the entire population is not surveyed, the estimates are subject to sampling error. While the published estimate is the best available indicator of the real value, changes in the level of any estimates between two months can be the result of a true change or sampling variability. The sampling error can be estimated by calculating the standard error for the published estimate or statistic. These standard errors have been included in the publication tables, in order to assist users in interpreting the data.

Interpretation based on standard error

Two thirds of the time (68%), a change greater than the sampling error indicates a real change. The larger the change compared to the standard error, the better the chance that we are observing a real change, as opposed to a change due to sampling variability. At the 95% level, in order to ensure that change is real, the change in the estimate must be greater than twice the sampling error.

Movements in estimates that are smaller than the sampling error are less likely to reflect a real change and more likely to be due to sampling variability. While the above is true for monthly movements, one can have more confidence in a series of consecutive movements in the same direction, even though some of the monthly movements may be smaller than the sampling error.

Interpretation based on confidence intervals

Confidence intervals provide another way of looking at the variability inherent in estimates of sample surveys. To illustrate how to calculate the confidence interval, let us say that one month the published estimate for total employment rose by 16,000 to reach 16,500,000. The associated standard error for the movement estimate is 27,200. The standard error used to interpret the movement estimate indicates that:

- There are approximately two chances in three (68%) that the real value of the movement between the two months falls within the range -11,200 to +43,200 (16,000 + or – one standard error).
- There are approximately nine chances in ten (90%) that the real value of the movement between the two months falls within the range -27,520 to +59,520 (16,000 + or – 1.6 times the standard error).
- There are approximately nineteen chances in twenty (95%) that the real value of the movement between the two months falls within the range -38,400 to +70,400 (16,000 + or – two standard errors).

For more detailed explanations on sampling variability of estimates, and in particular for information on how to assess the variability of level estimates, consult the Data quality section of the *Guide to the Labour Force Survey*, (71-543-G) on page 27.

Documentation

For more detailed information about the Labour Force Survey, see the following documents:

- Overview of the Labour Force Survey
- Guide to the Labour Force Survey (71-543-G)
- Data quality statement
- Methodology of the Canadian Labour Force Survey (71-526-X)
- LFS *geographical maps*