



Catalogue no. 71-001-X

Labour Force Information

Not for release before 7 A.M. E.S.T.

Friday, November 2, 2007

October 7 to 13, 2007



Statistics
Canada

Statistique
Canada

Canada

How to obtain more information

Specific inquiries about this product and related statistics or services should be directed to: Labour Force Survey Program, Labour Statistics Division, Statistics Canada, Ottawa, Ontario, K1A 0T6 (telephone: 613-951-4090, toll free number: 1-866-873-8788, fax: 613-951-2869 or by e-mail address: labour@statcan.ca).

For information about this product or the wide range of services and data available from Statistics Canada, visit our website at www.statcan.ca or contact us by e-mail at infostats@statcan.ca or by phone from 8:30am to 4:30pm Monday to Friday at:

Toll-free telephone (Canada and the United States):

Inquiries line **1-800-263-1136**

National telecommunications device for the hearing impaired **1-800-363-7629**

Fax line **1-877-287-4369**

Depository Services Program inquiries line **1-800-635-7943**

Depository Services Program fax line **1-800-565-7757**

Statistics Canada national contact centre: 1-613-951-8116

Fax line **1-613-951-0581**

Information to access the product

This product, catalogue no. 71-001-X, is available for free in electronic format. To obtain a single issue, visit our website at www.statcan.ca and select Publications.

Standards of service to the public

Statistics Canada is committed to serving its clients in a prompt, reliable and courteous manner. To this end, the Agency has developed *standards of service* which its employees observe in serving its clients.

To obtain a copy of these service standards, please contact Statistics Canada toll free at 1-800-263-1136. The service standards are also published on www.statcan.ca under About us > Providing services to Canadians.



Statistics Canada
Labour Statistics Division
Labour Force Survey Program

Labour Force Information

Not for release before 7 A.M. E.S.T.

Friday, November 2, 2007

October 7 to 13, 2007

Published by authority of the Minister responsible for Statistics Canada

© Minister of Industry, 2007

All rights reserved. The content of this electronic publication may be reproduced, in whole or in part, and by any means, without further permission from Statistics Canada, subject to the following conditions: that it be done solely for the purposes of private study, research, criticism, review or newspaper summary, and/or for non-commercial purposes; and that Statistics Canada be fully acknowledged as follows: Source (or "Adapted from", if appropriate): Statistics Canada, year of publication, name of product, catalogue number, volume and issue numbers, reference period and page(s). Otherwise, no part of this publication may be reproduced, stored in a retrieval system or transmitted in any form, by any means—electronic, mechanical or photocopy—or for any purposes without prior written permission of Licensing Services, Client Services Division, Statistics Canada, Ottawa, Ontario, Canada K1A 0T6.

November 2007

Catalogue no. 71-001-X

ISSN 1492-5478

Frequency: Monthly

Ottawa

La version française de cette publication est disponible sur demande (n° 71-001-X au catalogue).

Note of appreciation

Canada owes the success of its statistical system to a long standing partnership between Statistics Canada, the citizens of Canada, its businesses, governments and other institutions. Accurate and timely statistical information could not be produced without their continued cooperation and goodwill.

User information

Symbols

The following standard symbols are used in Statistics Canada publications:

- . not available for any reference period
- .. not available for a specific reference period
- ... not applicable
- 0 true zero or a value rounded to zero
- 0^s value rounded to 0 (zero) where there is a meaningful distinction between true zero and the value that was rounded
- p preliminary
- r revised
- x suppressed to meet the confidentiality requirements of the *Statistics Act*
- E use with caution
- F too unreliable to be published

Special requests (\$)

Custom tabulations can be arranged on an ad hoc or regular basis. This service enables you to specify tables and time series to meet your own requirements. The cost varies according to the request. For more information, contact us toll-free at 1-866-873-8788 or e-mail us at labour@statcan.ca.

Schedule of LFS releases

Reference period - Week ending	Release date
January 20, 2007	February 9, 2007
February 17, 2007	March 9, 2007
March 17, 2007	April 5, 2007
April 21, 2007	May 11, 2007
May 19, 2007	June 8, 2007
June 16, 2007	July 6, 2007
July 21, 2007	August 10, 2007
August 18, 2007	September 7, 2007
September 15, 2007	October 5, 2007
October 13, 2007	November 2, 2007
November 10, 2007	December 7, 2007
December 8, 2007	January 11, 2008

Latest LFS release in *The Daily*(free)

Table of contents

Highlights	5
Analysis — October 2007	6
Charts	
1. Employment and unemployment indicators, Canada, seasonally adjusted	8
2. Employment and unemployment indicators, Canada, seasonally adjusted	9
3. Index of employment by industry, Canada, seasonally adjusted, January, 2004=100	10
4. Index of employment by industry, Canada, seasonally adjusted, January 2004 = 100	11
5. Index of employment by industry, Canada, seasonally adjusted, January 2004 = 100	12
6. Index of employment by province, seasonally adjusted, January 2004 = 100	13
7. Index of employment by province, seasonally adjusted, January 2004 = 100	14
Related products	15
Statistical tables	
1 Labour force characteristics by age and sex, Canada, seasonally adjusted	23
2 Employment by class of worker and industry, Canada, seasonally adjusted	24
3 Labour force characteristics by province, seasonally adjusted	25
4 Selected labour force characteristics (seasonally adjusted)	27
4-1 Newfoundland and Labrador	27
4-2 Prince Edward Island	28
4-3 Nova Scotia	29
4-4 New Brunswick	30
4-5 Quebec	31
4-6 Ontario	32
4-7 Manitoba	33
4-8 Saskatchewan	34
4-9 Alberta	35
4-10 British Columbia	36
5 Labour force characteristics by census metropolitan area (seasonally adjusted)	37
5-1 3 month moving average	37
5-2 Monthly	42

Table of contents – continued

6	Labour force characteristics	43
6-1	by province and economic region, unadjusted for seasonality, 3 month moving average ending in October 2006 and October 2007	43
6-2	by territories, unadjusted for seasonality, 3 month moving average ending in October 2006 and October 2007	48
7	Average usual hours and wages of employees by selected characteristics, Canada, unadjusted for seasonality	49
8	Regional unemployment rates used by the Employment Insurance Program, seasonally adjusted, 3 month moving average	50
Data quality, concepts and methodology		
	Data quality	52

Highlights

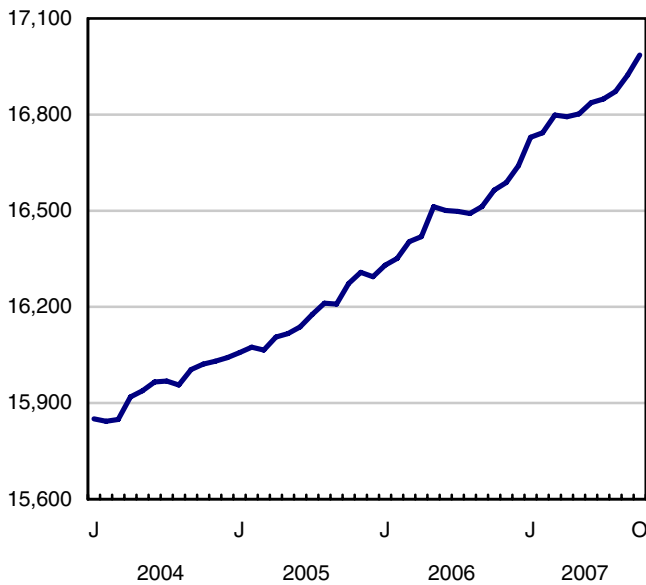
October 2007

Employment continued to rise in October, jumping an estimated 63,000, split between full and part time. At the same time, the unemployment rate fell to a 33-year low of 5.8%, down 0.1 percentage point from September.

Chart 1
Employment and unemployment rates, Canada, seasonally adjusted

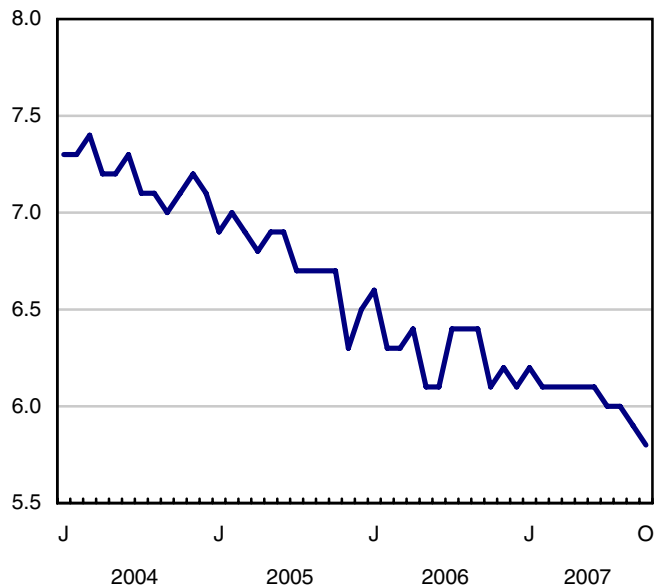
Employment

thousands



Unemployment rate

percentage



Analysis — October 2007

Employment continued to rise in October, jumping an estimated 63,000, split between full and part time. At the same time, the unemployment rate fell to a 33-year low of 5.8%, down 0.1 percentage point from September.

Employment has increased by 2.1% (+346,000) so far this year, the strongest January to October growth in the past five years. October's employment rate reached an all-time high of 63.7%.

In October, women aged 25 and over posted a record employment rate (59.4%), along with the lowest unemployment rate (4.3%) in over 30 years.

Workers aged 55 and over accounted for the majority of the employment gain in October. With these gains, the proportion of persons aged 55 and over who were employed reached its highest level at 32.2%. Employment for older workers has risen 6.9% since the start of 2007, in contrast to 1.2% for those aged 25 to 54.

For the second consecutive month, more than half the increase in employment occurred in Ontario. In October, employment increased by 32,000 in this province, while the unemployment rate declined to 6.0%.

At the national level, October's employment increase was in the service sector, most notably in health care and social assistance, "other services" and public administration. However, this strength was tempered by losses in business, building and other support services, as well as accommodation and food services.

Spurred by the gains in health care and public administration, employment growth in October was concentrated among public sector employees. With stronger growth in recent months, employment in the public sector has increased by 5.6% so far this year.

Wage pressure continued to build in October, with the year-over-year increase in average hourly wages estimated at 4.1%, still well above the most recent year-over-year Consumer Price Index increase of 2.5%. October marks the third consecutive month with a year-over-year increase in employee wages above 4%.

Employment growth continues to be driven by service sector

In October, service sector employment grew by 66,000, boosting its growth in the last 12 months to 3.2%. According to the most recent statistics, the gross domestic product of the service sector grew 3.2% in 12 months, compared to 0.8% for the goods-producing sector.

Of all industries, health care and social assistance posted the strongest estimated employment growth in October (+29,000). There was also an increase in "other services" (+24,000), an industry that covers a variety of activities, such as dry cleaning and laundry services; electronic and precision equipment repair and maintenance; as well as grant-making and giving services. As well, public administration added an estimated 20,000 workers in October, all in Ontario.

In contrast to the growth in the service sector, there has been overall weakness in the goods-producing industries where employment has edged down 0.5% since the start of the year. So far in 2007, significant losses in manufacturing have been almost completely offset by robust gains in construction and utilities. In October, utilities was the only industry in the goods-producing sector to show signs of strength.

Back-to-back gains in Ontario

After slow growth throughout most of the year, employment grew strongly in Ontario for the second consecutive month, up 32,000 in October, mainly in part time. So far in 2007, employment in Ontario has risen by an estimated 1.7%, still below the national average of 2.1%.

October's employment growth in Ontario was mainly in public administration and "other services." The growth in public administration is due, in part, to the provincial election, which coincided with the Labour Force Survey reference week.

Quebec's unemployment rate in October remained at 6.9%, the lowest level in 33 years. So far in 2007, employment has grown 2.2 %, spurred by gains in construction; accommodation and food services and "other services". These gains have pushed the employment rate up, bringing it to a new record high of 61.2% in October.

Strong labour market across the West

In Manitoba, employment grew 0.6% (+3,600) in October, bringing the increase since the start of 2007 to 2.5%. Still in October, Manitoba's employment rate reached an all-time high of 66.8%. Manitoba also had the second lowest unemployment rate in Canada (4.0%).

Although employment in British Columbia showed little change in October, it has grown 2.4% since the start of the year mainly due to strong growth in trade. In October, the unemployment rate stood at 4.4%, among the lowest in Canada.

Alberta's employment was little changed in October. However, the province continues to have the lowest unemployment rate in the country at 3.4%, as well as Canada's highest employment rate (71.5%).

In Nova Scotia, October's employment increase (+5,300) is mainly attributable to full-time work. For the first 10 months of 2007, employment has grown mainly in information, culture and recreation; health care and social assistance and in professional, scientific and technical services.

Older workers lead the way

Employment increased by 32,000 among people 55 and over, with the gains distributed equally between men and women. So far in 2007, employment among this group has grown 6.9%, a much faster pace than that for core-age workers 25 to 54 years of age (+1.2%).

The participation rate in October for Canadians aged 55 and over reached an all-time high of 33.8%. This is due in large part to older women, who in October 2007 had their highest employment and participation rates in at least three decades.

Employment for men and women in the core-age group increased by an estimated 24,000 in October. Since the beginning of the year, 70% of the employment increase for this group can be attributed to women. These gains have brought the unemployment rate for these women down to 4.2% in October, more than one percentage point below that of men (5.4%).

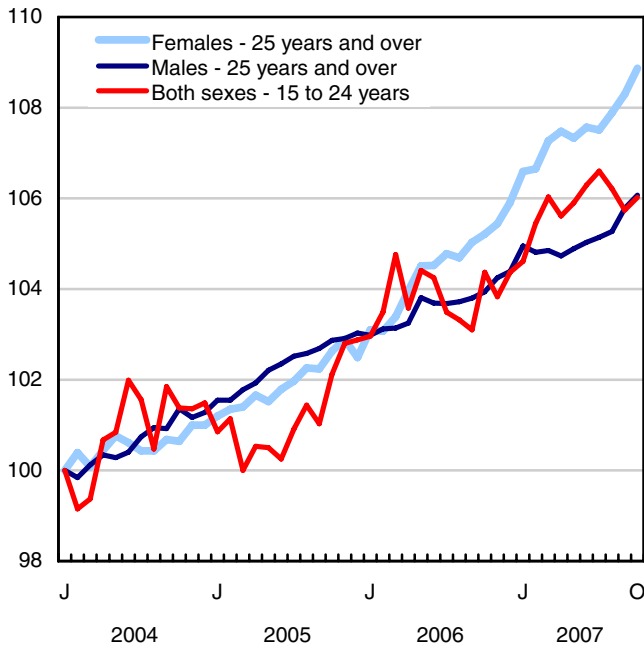
Note to readers

The Labour Force Survey estimates are based on a sample, and are therefore subject to sampling variability. Estimates for smaller geographic areas or industries will have more variability. For an explanation of sampling variability of estimates, and how to use standard errors to assess this variability, consult the Data Quality section in this publication.

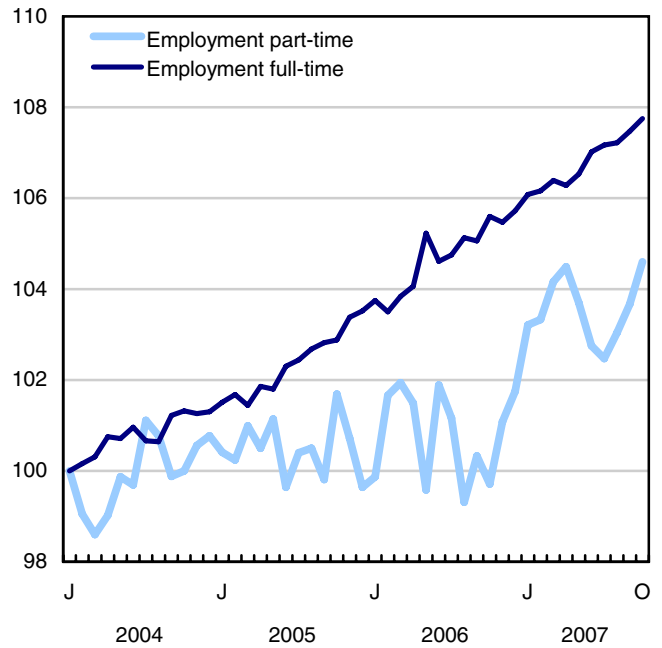
The 2006 Labour Force Historical Review on CD-ROM (71F0004XCB, \$209) is now available.

Chart 1
Employment and unemployment indicators, Canada, seasonally adjusted

Employment index, January 2004=100



Employment index, January 2004=100



Employment index, January 2004=100

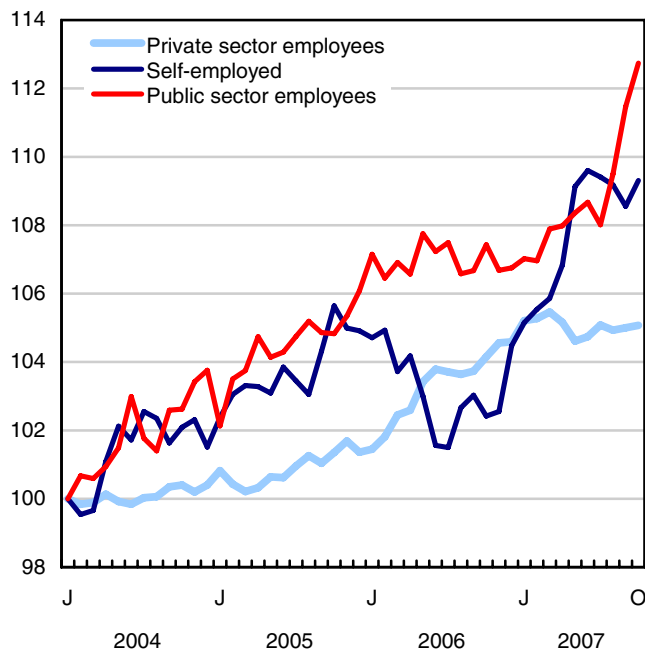
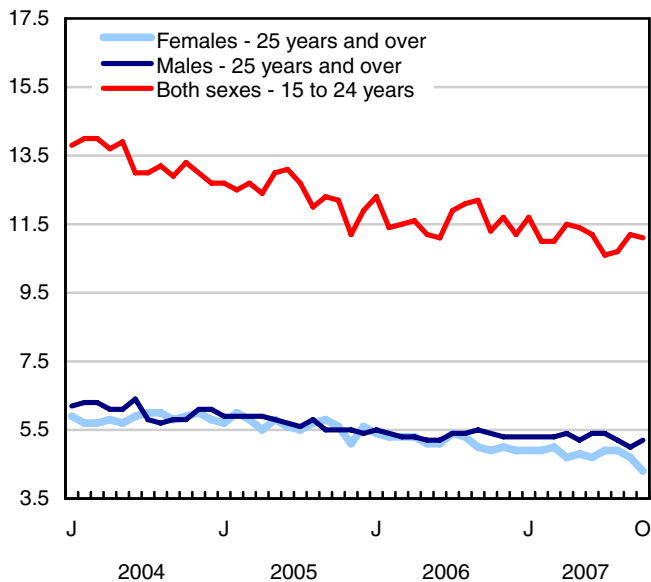
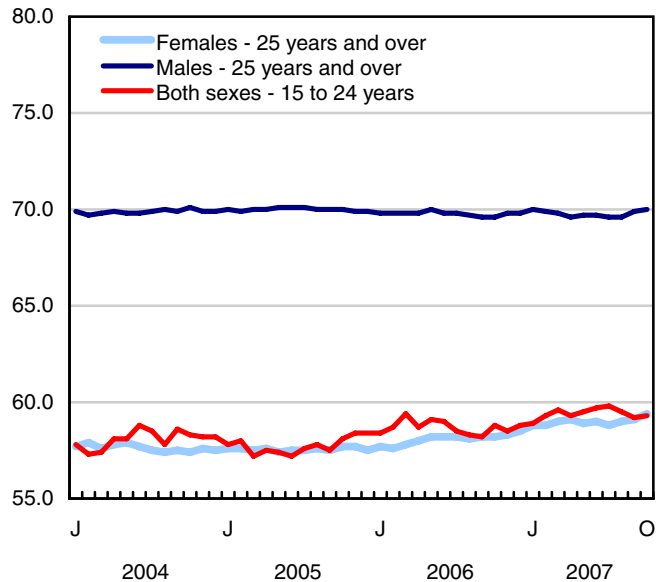


Chart 2
Employment and unemployment indicators, Canada, seasonally adjusted

Unemployment rate (%)



Employment rate (%)



Participation rate (%)

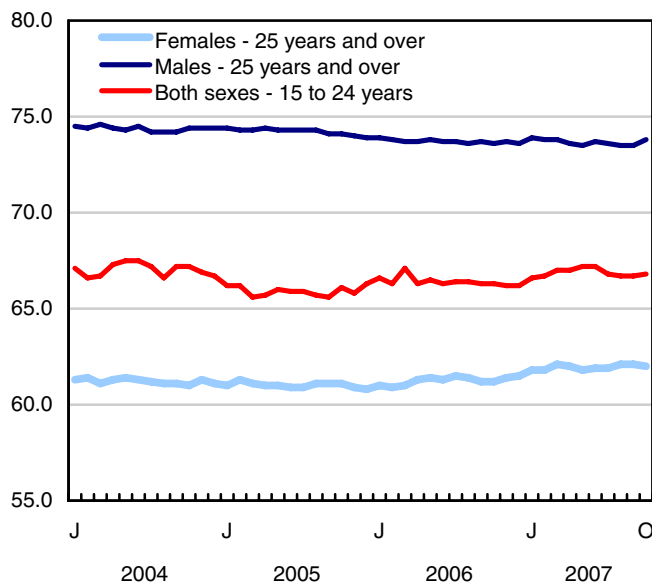


Chart 3
Index of employment by industry, Canada, seasonally adjusted, January, 2004=100

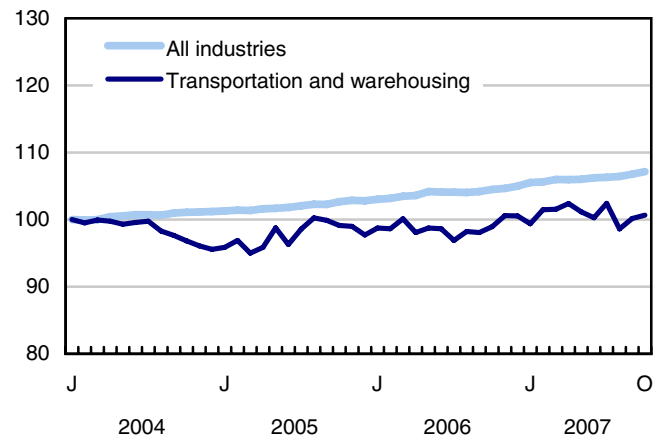
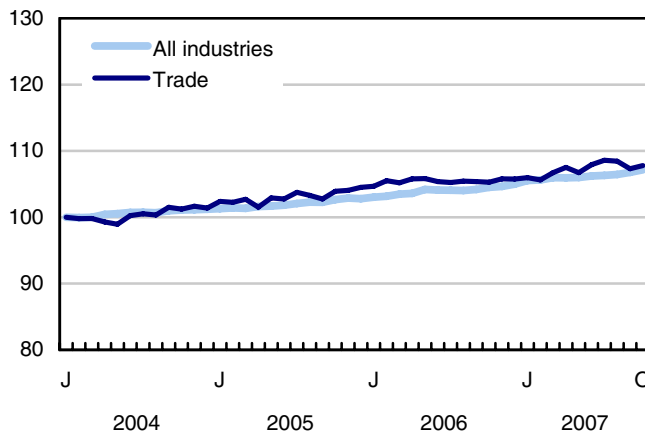
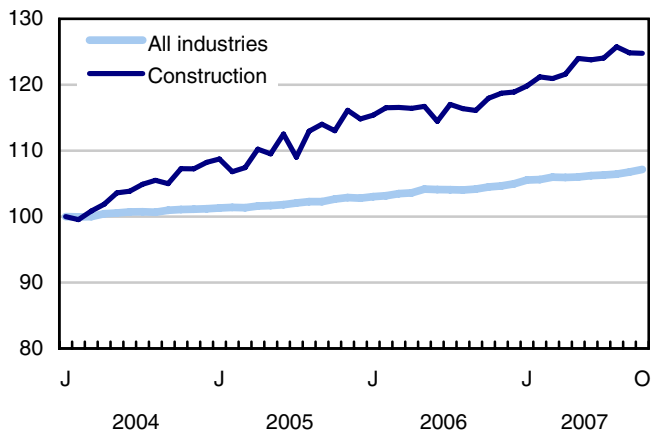
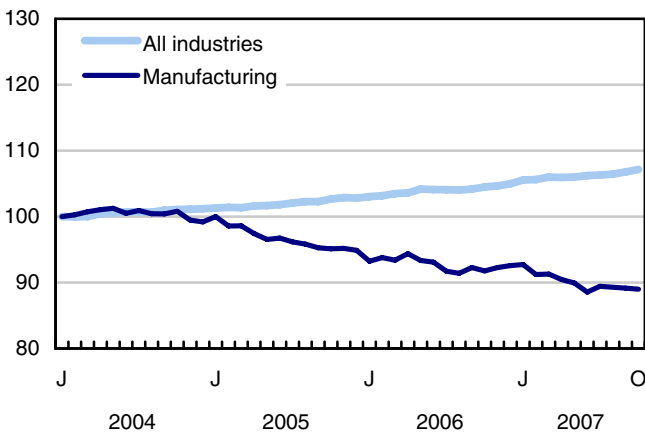
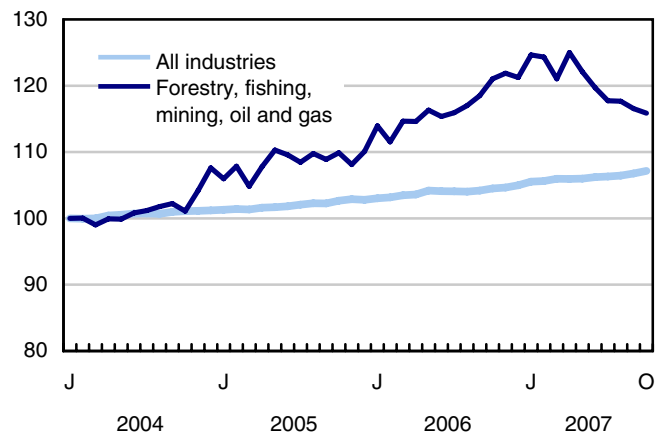
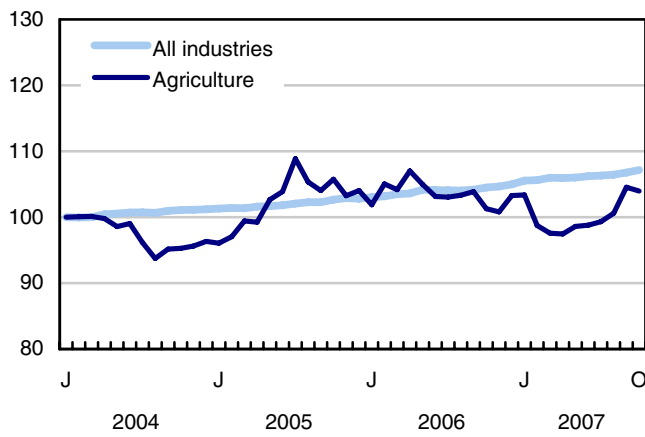


Chart 4
Index of employment by industry, Canada, seasonally adjusted, January 2004 = 100

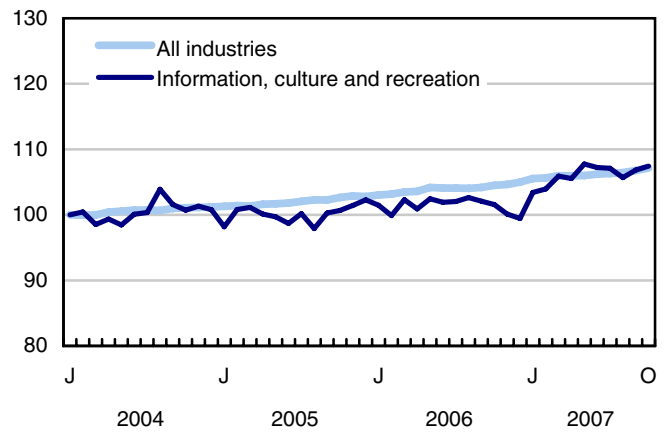
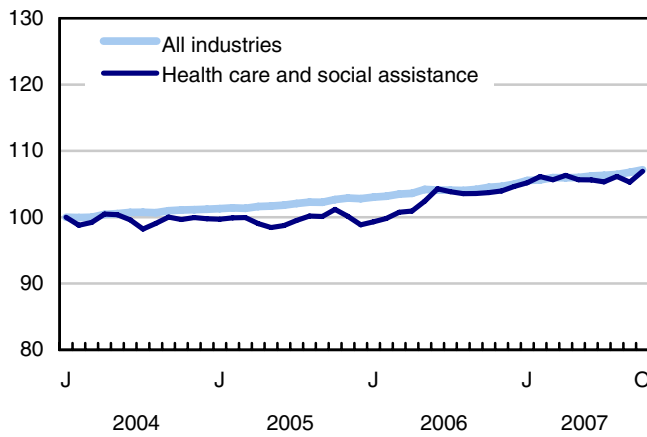
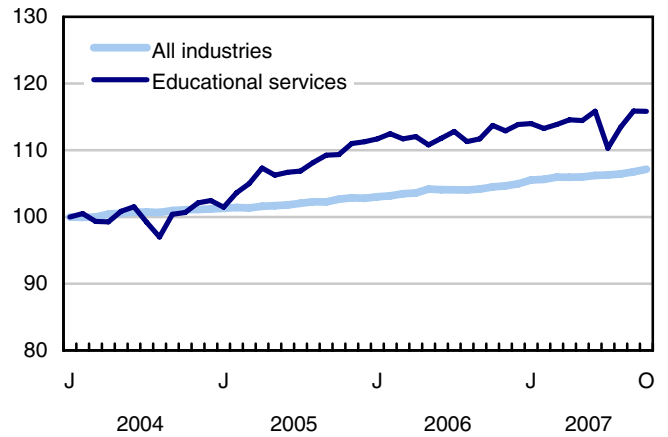
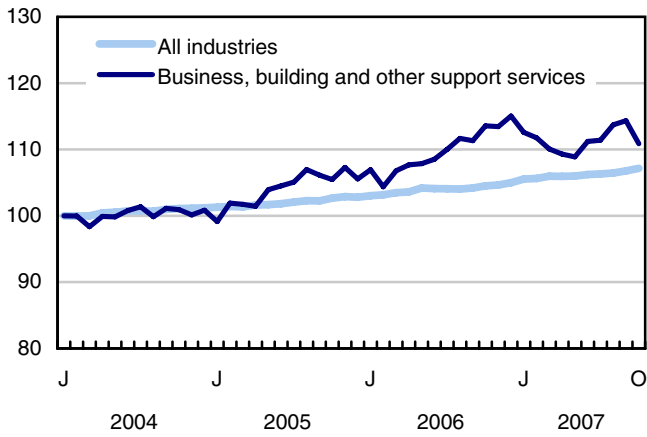
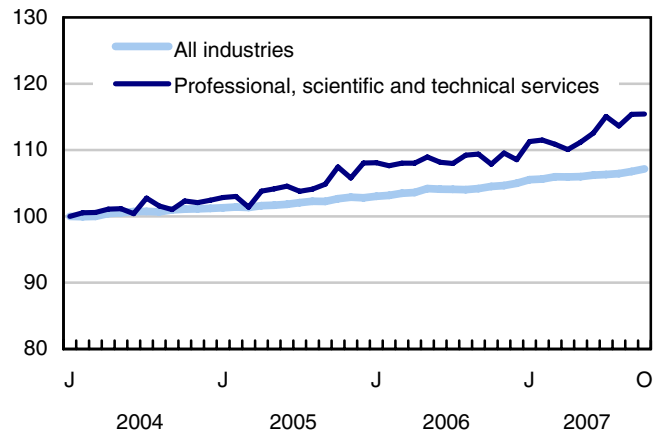
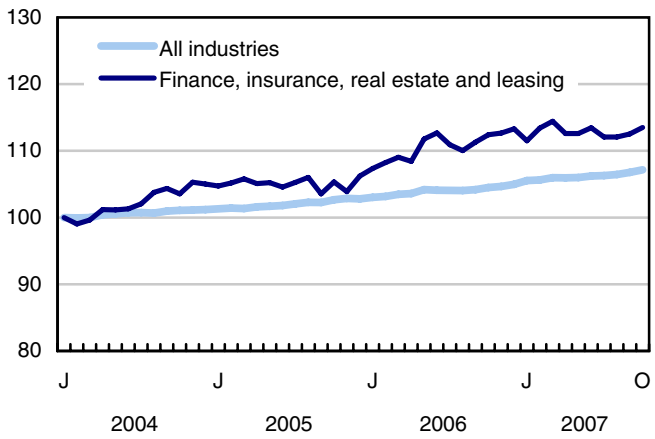


Chart 5
Index of employment by industry, Canada, seasonally adjusted, January 2004 = 100

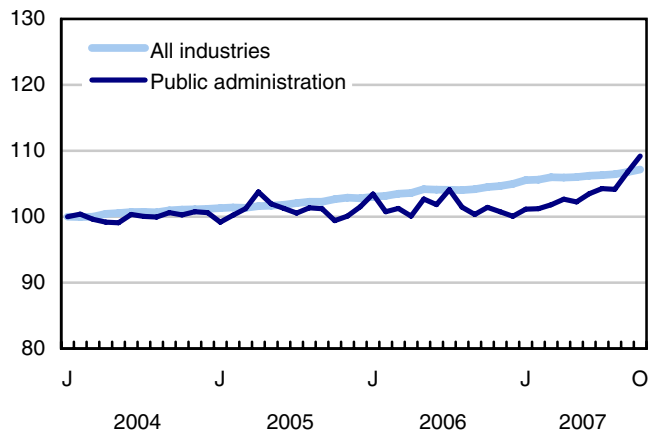
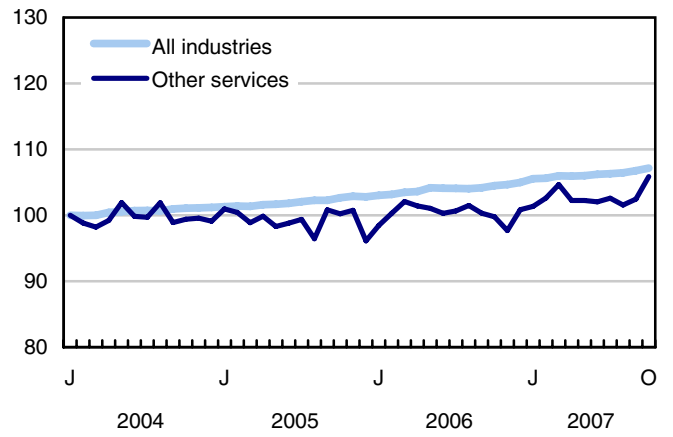
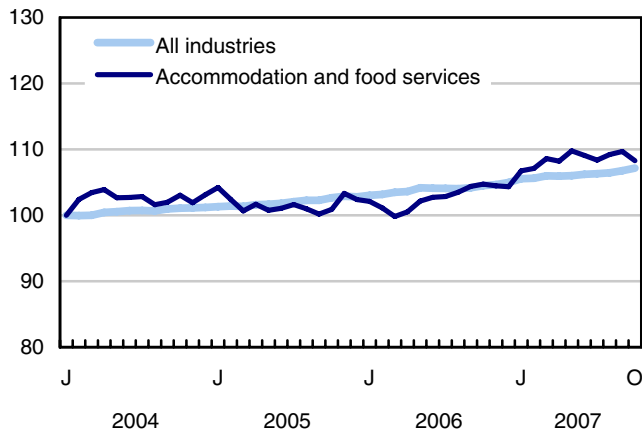


Chart 6
Index of employment by province, seasonally adjusted, January 2004 = 100

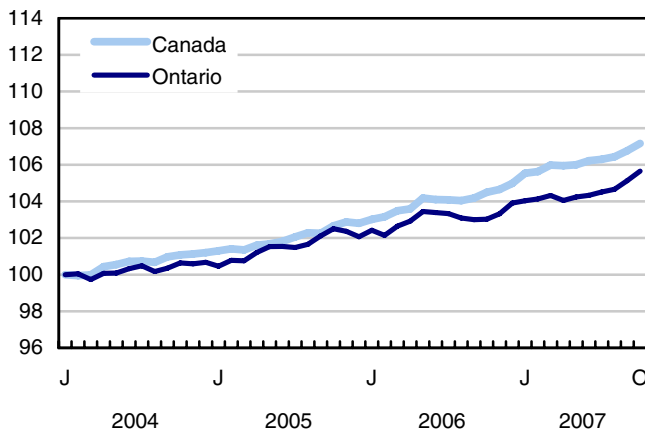
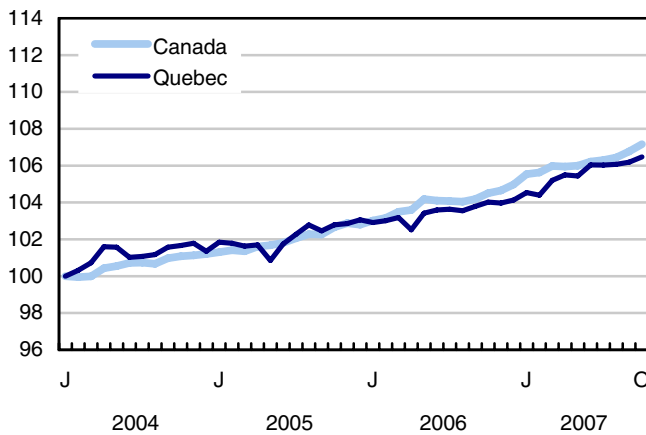
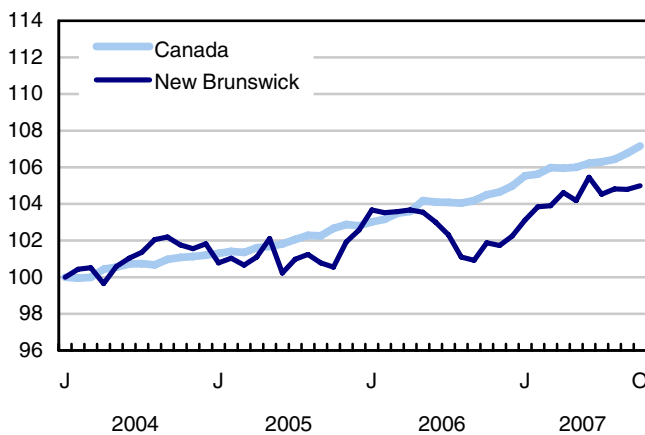
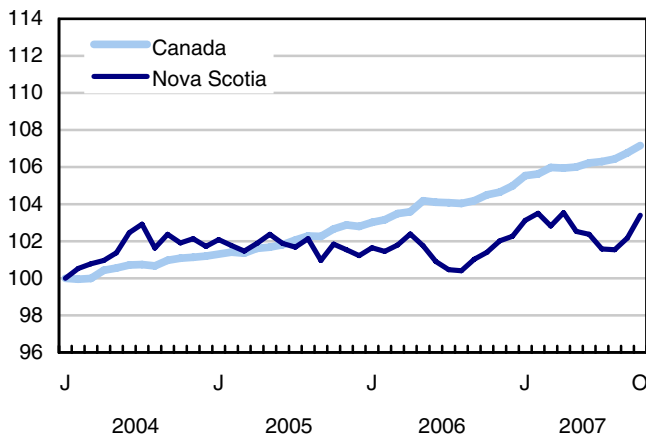
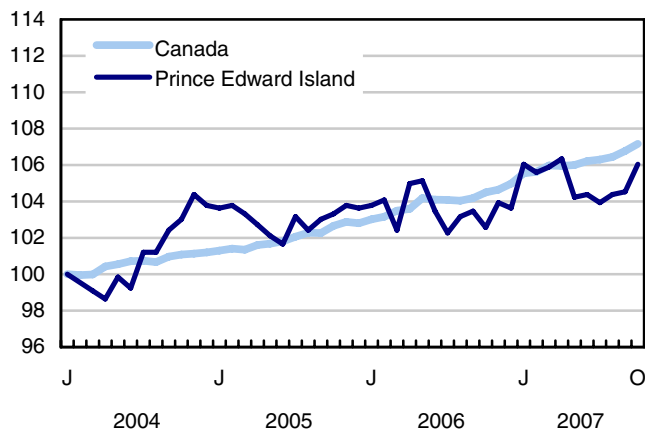
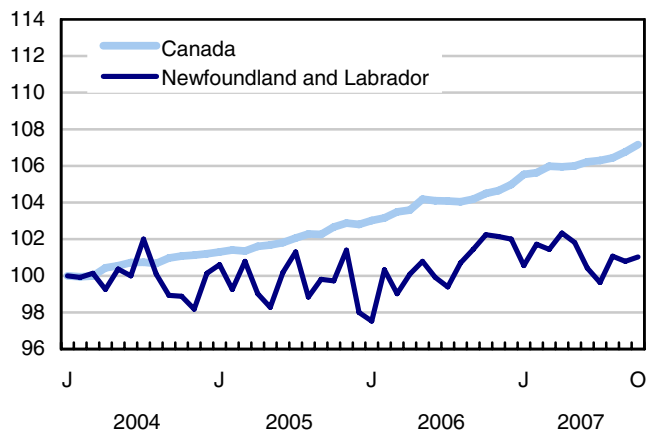
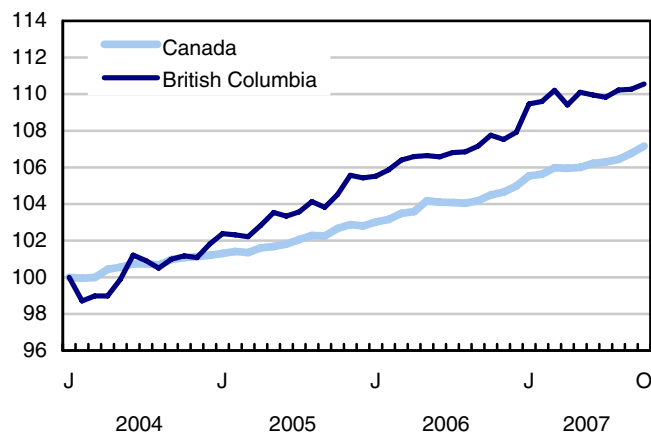
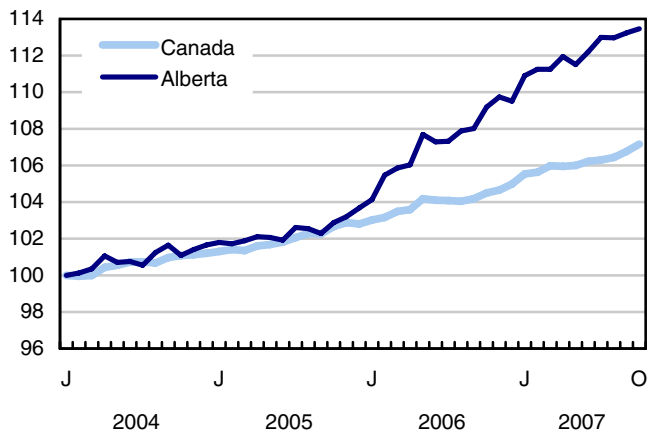
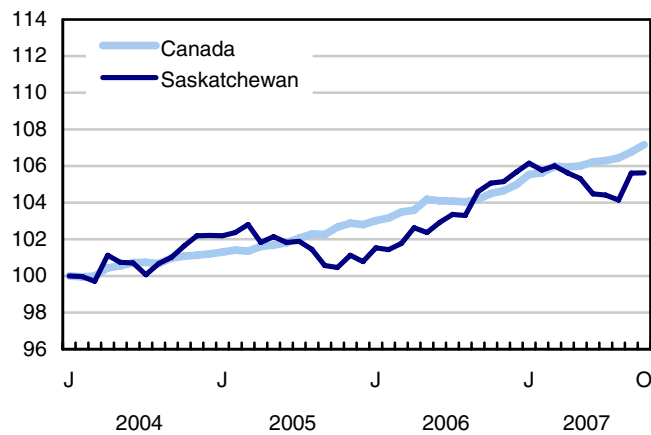
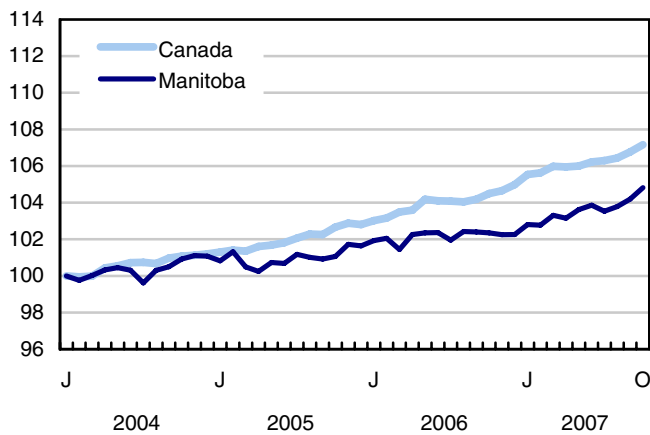


Chart 7
Index of employment by province, seasonally adjusted, January 2004 = 100



Related products

Selected publications from Statistics Canada

71-222-X	The Canadian Labour Market at a Glance
71-526-X	Methodology of the Canadian Labour Force Survey
71-543-G	Guide to the Labour Force Survey
71-544-X	Labour Force Survey Products and Services
71-587-X	Aboriginal Peoples Living Off-reserve in Western Canada: Estimates from the Labour Force Survey
71F0004X	Labour Force Historical Review
71F0031X	Improvements to the Labour Force Survey (LFS)
71M0001X	Labour Force Survey Microdata File
75-001-X	Perspectives on Labour and Income

Selected CANSIM tables from Statistics Canada

282-0001	Labour force survey estimates (LFS), by sex and detailed age group
282-0002	Labour force survey estimates (LFS), by sex and detailed age group
282-0003	Labour force survey estimates (LFS), by educational attainment, sex and age group
282-0004	Labour force survey estimates (LFS), by educational attainment, sex and age group
282-0005	Labour force survey estimates (LFS), by full- and part-time students during school months, sex and age group
282-0006	Labour force survey estimates (LFS), by students during summer months, sex and age group
282-0007	Labour force survey estimates (LFS), by North American Industry Classification System (NAICS), sex and age group
282-0008	Labour force survey estimates (LFS), by North American Industry Classification System (NAICS), sex and age group
282-0009	Labour force survey estimates (LFS), by National Occupational Classification for Statistics (NOC-S) and sex

282-0010	Labour force survey estimates (LFS), by National Occupational Classification for Statistics (NOC-S) and sex
282-0011	Labour force survey estimates (LFS), employment by class of worker, North American Industry Classification System (NAICS) and sex
282-0012	Labour force survey estimates (LFS), employment by class of worker, North American Industry Classification System (NAICS) and sex
282-0013	Labour force survey estimates (LFS), part-time employment by reason for part-time work, sex and age group
282-0014	Labour force survey estimates (LFS), part-time employment by reason for part-time work, sex and age group
282-0015	Labour force survey estimates (LFS), by usual hours worked, main or all jobs, sex and age group
282-0016	Labour force survey estimates (LFS), by usual hours worked, main or all jobs, sex and age group
282-0017	Labour force survey estimates (LFS), by actual hours worked, main or all jobs, sex and age group
282-0018	Labour force survey estimates (LFS), by actual hours worked, main or all jobs, sex and age group
282-0019	Labour force survey estimates (LFS), by usual hours worked, class of worker, North American Industry Classification System (NAICS) and sex
282-0020	Labour force survey estimates (LFS), by usual hours worked, class of worker, North American Industry Classification System (NAICS) and sex
282-0021	Labour force survey estimates (LFS), by actual hours worked, class of worker, North American Industry Classification System (NAICS) and sex
282-0022	Labour force survey estimates (LFS), by actual hours worked, class of worker, North American Industry Classification System (NAICS) and sex
282-0023	Labour force survey estimates (LFS), by usual hours worked, class of worker, National Occupational Classification for Statistics (NOC-S) and sex
282-0024	Labour force survey estimates (LFS), by usual hours worked, class of worker, National Occupational Classification for Statistics (NOC-S) and sex
282-0025	Labour force survey estimates (LFS), by actual hours worked, class of worker, National Occupational Classification for Statistics (NOC-S) and sex
282-0026	Labour force survey estimates (LFS), by actual hours worked, class of worker, National Occupational Classification for Statistics (NOC-S) and sex
282-0027	Labour force survey estimates (LFS), by total and average usual and actual hours worked, main or all jobs, type of work, sex and age group
282-0028	Labour force survey estimates (LFS), by total and average usual and actual hours worked, main or all jobs, type of work, sex and age group

282-0029	Labour force survey estimates (LFS), average days lost for personal reasons per full-time employee by North American Industry Classification System (NAICS), sex and age group
282-0030	Labour force survey estimates (LFS), average days lost for personal reasons per full-time employee by National Occupational Classification for Statistics (NOC-S), sex and age group
282-0031	Labour force survey estimates (LFS), multiple jobholders by North American Industry Classification System (NAICS), sex and age group
282-0032	Labour force survey estimates (LFS), multiple jobholders by North American Industry Classification System (NAICS), sex and age group
282-0033	Labour force survey estimates (LFS), multiple jobholders by National Occupational Classification for Statistics (NOC-S), sex and age group
282-0034	Labour force survey estimates (LFS), multiple jobholders by National Occupational Classification for Statistics (NOC-S), sex and age group
282-0035	Labour force survey estimates (LFS), multiple jobholders by usual hours worked at main and all jobs
282-0036	Labour force survey estimates (LFS), multiple jobholders by usual hours worked at main and all jobs
282-0037	Labour force survey estimates (LFS), job tenure by type of work, sex and age group
282-0038	Labour force survey estimates (LFS), job tenure by type of work, sex and age group
282-0039	Labour force survey estimates (LFS), job tenure by National Occupational Classification for Statistics (NOC-S) and sex
282-0040	Labour force survey estimates (LFS), job tenure by National Occupational Classification for Statistics (NOC-S) and sex
282-0041	Labour force survey estimates (LFS), job tenure by North American Industry Classification System (NAICS) and sex
282-0042	Labour force survey estimates (LFS), job tenure by North American Industry Classification System (NAICS) and sex
282-0047	Labour force survey estimates (LFS), duration of unemployment by sex and age group
282-0048	Labour force survey estimates (LFS), duration of unemployment by sex and age group
282-0049	Labour force survey estimates (LFS), unemployment by type of work sought and search method, sex and age group
282-0050	Labour force survey estimates (LFS), unemployment by type of work sought and search method, sex and age group
282-0051	Labour force survey estimates (LFS), retirement age by class of worker and sex
282-0052	Labour force survey estimates (LFS), by census metropolitan area, sex and age group, 3-month moving average
282-0053	Labour force survey estimates (LFS), by census metropolitan area, sex and age group

282-0054	Labour force survey estimates (LFS), by provinces, territories and economic regions, 3-month moving average
282-0055	Labour force survey estimates (LFS), by provinces, territories and economic regions
282-0056	Labour force survey estimates (LFS), employment by census metropolitan area and North American Industry Classification System (NAICS), 3-month moving average
282-0057	Labour force survey estimates (LFS), employment by census metropolitan area and North American Industry Classification System (NAICS)
282-0058	Labour force survey estimates (LFS), employment by census metropolitan area and National Occupational Classification for Statistics (NOC-S), 3-month moving average
282-0059	Labour force survey estimates (LFS), employment by census metropolitan area and National Occupational Classification for Statistics (NOC-S)
282-0060	Labour force survey estimates (LFS), employment by economic region and North American Industry Classification System (NAICS), 3-month moving average
282-0061	Labour force survey estimates (LFS), employment by economic region and North American Industry Classification System (NAICS)
282-0062	Labour force survey estimates (LFS), employment by economic region and National Occupational Classification for Statistics (NOC-S), 3-month moving average
282-0063	Labour force survey estimates (LFS), employment by economic region and National Occupational Classification for Statistics (NOC-S)
282-0064	Labour force survey estimates (LFS), by selected medium-sized cities
282-0069	Labour force survey estimates (LFS), wages of employees by type of work, National Occupational Classification for Statistics (NOC-S), sex and age group
282-0070	Labour force survey estimates (LFS), wages of employees by type of work, National Occupational Classification for Statistics (NOC-S), sex and age group
282-0071	Labour force survey estimates (LFS), wages of employees by type of work, North American Industry Classification System (NAICS), sex and age group
282-0072	Labour force survey estimates (LFS), wages of employees by type of work, North American Industry Classification System (NAICS), sex and age group
282-0073	Labour force survey estimates (LFS), wages of employees by job permanence, union coverage, sex and age group
282-0074	Labour force survey estimates (LFS), wages of employees by job permanence, union coverage, sex and age group
282-0075	Labour force survey estimates (LFS), employees by establishment size, North American Industry Classification System (NAICS), sex and age group
282-0076	Labour force survey estimates (LFS), employees by establishment size, North American Industry Classification System (NAICS), sex and age group

282-0077	Labour force survey estimates (LFS), employees by union coverage, North American Industry Classification System (NAICS), sex and age group
282-0078	Labour force survey estimates (LFS), employees by union coverage, North American Industry Classification System (NAICS), sex and age group
282-0079	Labour force survey estimates (LFS), employees by job permanency, North American Industry Classification System (NAICS), sex and age group
282-0080	Labour force survey estimates (LFS), employees by job permanency, North American Industry Classification System (NAICS), sex and age group
282-0081	Labour force survey estimates (LFS), employees working overtime (weekly) by National Occupational Classification for Statistics (NOC-S), sex and age group
282-0082	Labour force survey estimates (LFS), employees working overtime (weekly) by National Occupational Classification for Statistics (NOC-S), sex and age group
282-0083	Labour force survey estimates (LFS), employees working overtime (weekly) by North American Industry Classification System (NAICS), sex and age group
282-0084	Labour force survey estimates (LFS), employees working overtime (weekly) by North American Industry Classification System (NAICS), sex and age group
282-0085	Labour force survey estimates (LFS), supplementary unemployment rates by sex and age group
282-0086	Labour force survey estimates (LFS), supplementary unemployment rates by sex and age group
282-0087	Labour force survey estimates (LFS), by sex and age group, seasonally adjusted and unadjusted
282-0088	Labour force survey estimates (LFS), employment by North American Industry Classification System (NAICS), seasonally adjusted and unadjusted
282-0089	Labour force survey estimates (LFS), employment by class of worker and sex, seasonally adjusted and unadjusted
282-0090	Labour force survey estimates (LFS), by census metropolitan area, 3-month moving average, seasonally adjusted and unadjusted
282-0091	Labour force survey estimates (LFS), by Montréal, Toronto and Vancouver census metropolitan areas, seasonally adjusted and unadjusted
282-0092	Labour force survey estimates (LFS), actual hours worked by North American Industry Classification System (NAICS), seasonally adjusted
282-0093	Labour force survey estimates (LFS), employment by National Occupational Classification for Statistics (NOC-S), seasonally adjusted
282-0094	Labour force survey estimates (LFS), by North American Industry Classification System (NAICS), Canada, seasonally adjusted
282-0095	Labour force survey estimates (LFS), by full- and part-time students during school months, sex and age group
282-0096	Labour force survey estimates (LFS), by urban and rural areas based on 2001 census boundaries, sex and age group

282-0097	Labour force survey estimates (LFS), by urban and rural areas based on 2001 census boundaries, sex and age group
282-0098	Labour force survey estimates (LFS), employment by urban and rural areas based on 2001 census boundaries, class of worker and North American Industry Classification System (NAICS)
282-0099	Labour force survey estimates (LFS), employment by urban and rural areas based on 2001 census boundaries, class of worker and North American Industry Classification System (NAICS)

Selected surveys from Statistics Canada

3701	Labour Force Survey
------	---------------------

Selected summary tables from Statistics Canada

- *Labour force characteristics*
- *Employment by industry*
- *Selected economic indicators, Canada and United States (monthly and quarterly)*
- *Days lost per worker due to illness or disability, by sex, by provinces*
- *Economic indicators, by province and territory (monthly and quarterly)*
- *Labour force and participation rates by sex and age group*
- *Labour force, employed and unemployed, numbers and rates, by provinces*
- *Employment by industry and sex*
- *Full-time and part-time employment by sex and age group*
- *Labour force characteristics by age and sex*
- *Distribution of employed people, by industry, by province*
- *Labour force characteristics, population 15 years and older, by census metropolitan area*
- *Labour force characteristics, population 15 years and older, by economic region, by province*
- *Days lost per worker by cause, by provinces*
- *Days lost per worker by industry and sex*
- *People employed, by educational attainment*

- *Reasons for part-time work by sex and age group*
- *Self-employment, historical summary*
- *Employment by age, sex, type of work, class of worker and provinces (monthly)*
- *Employment by major industry groups, seasonally adjusted, by provinces (monthly)*
- *Actual hours worked per week by industry, seasonally adjusted (monthly)*
- *Average hourly wages of employees by selected characteristics and profession, unadjusted data, by provinces (monthly)*
- *Labour force characteristics, seasonally adjusted, by province (monthly)*
- *Labour force characteristics, unadjusted, by province (monthly)*
- *Labour force characteristics, seasonally adjusted, by census metropolitan area (3 month moving average)*
- *Labour force characteristics, unadjusted, by census metropolitan area (3 month moving average)*
- *Labour force characteristics, unadjusted, by economic region (3 month moving average)*

Statistical tables

Table 1
Labour force characteristics by age and sex, Canada, seasonally adjusted

	September 2007	October 2007	S.E. ¹	Change from			Percent change from		
				last month	last December	twelve months ago	last month	last December	twelve months ago
in thousands (except rates)									
Both sexes, 15 years and over									
Population	26,631.8	26,663.2	...	31.4	305.6	364.3	0.1	1.2	1.4
Labour force	17,976.7	18,029.2	27.1	52.5	313.5	380.5	0.3	1.8	2.2
Employment	16,923.0	16,986.0	27.4	63.0	345.6	421.6	0.4	2.1	2.5
Employment full-time	13,863.2	13,898.7	35.2	35.5	261.5	277.2	0.3	1.9	2.0
Employment part-time	3,059.9	3,087.4	32.0	27.5	84.2	144.5	0.9	2.8	4.9
Unemployment	1,053.6	1,043.1	23.1	-10.5	-32.2	-41.2	-1.0	-3.0	-3.8
Participation rate	67.5	67.6	0.1	0.1	0.4	0.5
Unemployment rate	5.9	5.8	0.1	-0.1	-0.3	-0.3
Employment rate	63.5	63.7	0.1	0.2	0.6	0.7
Part-time rate	18.1	18.2	0.2	0.1	0.1	0.4
Both sexes, 15 to 24 years									
Population	4,359.8	4,363.1	...	3.3	25.1	31.0	0.1	0.6	0.7
Labour force	2,907.0	2,912.9	16.3	5.9	42.5	40.7	0.2	1.5	1.4
Employment	2,582.5	2,589.1	15.7	6.6	40.2	40.2	0.3	1.6	1.6
Employment full-time	1,426.2	1,422.8	17.8	-3.4	-4.0	-35.4	-0.2	-0.3	-2.4
Employment part-time	1,156.3	1,166.3	18.2	10.0	44.2	75.6	0.9	3.9	6.9
Unemployment	324.5	323.9	13.7	-0.6	2.4	0.6	-0.2	0.7	0.2
Participation rate	66.7	66.8	0.4	0.1	0.6	0.5
Unemployment rate	11.2	11.1	0.4	-0.1	-0.1	-0.2
Employment rate	59.2	59.3	0.4	0.1	0.5	0.5
Part-time rate	44.8	45.0	0.6	0.3	1.0	2.3
Men, 25 years and over									
Population	10,880.2	10,894.1	...	13.9	139.1	165.4	0.1	1.3	1.5
Labour force	8,000.8	8,041.1	13.9	40.3	121.4	147.8	0.5	1.5	1.9
Employment	7,603.8	7,624.6	15.0	20.8	120.9	153.6	0.3	1.6	2.1
Employment full-time	7,118.7	7,137.6	19.1	18.9	120.1	143.0	0.3	1.7	2.0
Employment part-time	485.2	487.0	15.1	1.8	0.8	10.6	0.4	0.2	2.2
Unemployment	397.0	416.5	13.3	19.5	0.4	-5.9	4.9	0.1	-1.4
Participation rate	73.5	73.8	0.1	0.3	0.2	0.2
Unemployment rate	5.0	5.2	0.2	0.2	-0.1	-0.2
Employment rate	69.9	70.0	0.1	0.1	0.2	0.4
Part-time rate	6.4	6.4	0.2	0.0	-0.1	0.0
Women, 25 years and over									
Population	11,391.9	11,406.0	...	14.1	141.4	167.9	0.1	1.3	1.5
Labour force	7,068.9	7,075.1	15.3	6.2	149.5	191.9	0.1	2.2	2.8
Employment	6,736.7	6,772.3	15.5	35.6	184.4	227.8	0.5	2.8	3.5
Employment full-time	5,318.3	5,338.3	22.4	20.0	145.4	169.6	0.4	2.8	3.3
Employment part-time	1,418.4	1,434.1	20.8	15.7	39.2	58.3	1.1	2.8	4.2
Unemployment	332.1	302.8	12.2	-29.3	-34.9	-35.9	-8.8	-10.3	-10.6
Participation rate	62.1	62.0	0.1	-0.1	0.5	0.8
Unemployment rate	4.7	4.3	0.2	-0.4	-0.6	-0.6
Employment rate	59.1	59.4	0.1	0.3	0.9	1.2
Part-time rate	21.1	21.2	0.3	0.1	0.0	0.2
Both sexes, 25 to 54 years									
Population	14,349.3	14,358.0	...	8.7	76.9	93.4	0.1	0.5	0.7
Labour force	12,422.6	12,430.5	20.4	7.9	102.0	141.8	0.1	0.8	1.2
Employment	11,811.6	11,835.6	21.8	24.0	139.8	183.2	0.2	1.2	1.6
Unemployment	611.0	594.9	16.9	-16.1	-37.8	-41.3	-2.6	-6.0	-6.5
Participation rate	86.6	86.6	0.1	0.0	0.3	0.5
Unemployment rate	4.9	4.8	0.1	-0.1	-0.3	-0.4
Employment rate	82.3	82.4	0.2	0.1	0.5	0.7

1. Average standard error of change in two consecutive months (see "Sampling Errors" in Data Quality for further explanations).

Note(s): Related CANSIM table 282-0087

Table 2
Employment by class of worker and industry, Canada, seasonally adjusted

	September 2007	October 2007	S.E. ¹	Change from			Percent change from		
				last month	last December	twelve months ago	last month	last December	twelve months ago
in thousands									
Class of worker									
Employees	14,295.9	14,340.5	31.4	44.6	228.6	254.8	0.3	1.6	1.8
Self-employed ²	2,627.1	2,645.5	20.6	18.4	117.0	166.8	0.7	4.6	6.7
Public/private sector employees									
Public sector employees	3,332.5	3,370.5	19.3	38.0	179.0	158.9	1.1	5.6	4.9
Private sector employees	10,963.5	10,970.0	32.4	6.5	49.5	95.9	0.1	0.5	0.9
Industry	16,923.0	16,986.0	27.4	63.0	345.6	421.6	0.4	2.1	2.5
Goods-producing sector	3,999.8	3,996.5	22.4	-3.3	-19.2	13.0	-0.1	-0.5	0.3
Agriculture	350.0	348.1	6.7	-1.9	2.3	9.0	-0.5	0.7	2.7
Forestry, fishing, mining, oil and gas	329.1	327.2	6.3	-1.9	-15.2	-14.6	-0.6	-4.4	-4.3
Utilities	141.9	146.6	3.7	4.7	22.0	19.5	3.3	17.7	15.3
Construction	1,143.7	1,143.0	13.6	-0.7	53.7	62.4	-0.1	4.9	5.8
Manufacturing	2,035.1	2,031.6	17.4	-3.5	-82.0	-63.3	-0.2	-3.9	-3.0
Services-producing sector	12,923.3	12,989.5	30.3	66.2	364.8	408.6	0.5	2.9	3.2
Trade	2,680.8	2,692.8	19.5	12.0	51.0	63.0	0.4	1.9	2.4
Transportation and warehousing	812.9	816.9	11.4	4.0	1.0	13.8	0.5	0.1	1.7
Finance, insurance, real estate and leasing	1,057.9	1,067.1	12.5	9.2	1.9	10.1	0.9	0.2	1.0
Professional, scientific and technical services	1,159.8	1,160.3	14.2	0.5	69.4	76.2	0.0	6.4	7.0
Business, building and other support services	718.7	696.9	12.4	-21.8	-26.3	-16.9	-3.0	-3.6	-2.4
Educational services	1,196.2	1,195.7	13.0	-0.5	20.2	21.8	0.0	1.7	1.9
Health care and social assistance	1,832.6	1,861.2	14.5	28.6	39.6	55.8	1.6	2.2	3.1
Information, culture and recreation	784.6	789.0	12.1	4.4	58.6	43.1	0.6	8.0	5.8
Accommodation and food services	1,083.5	1,069.6	13.7	-13.9	38.9	35.1	-1.3	3.8	3.4
Other services	715.5	739.3	10.8	23.8	35.1	42.6	3.3	5.0	6.1
Public administration	880.6	900.8	9.6	20.2	75.4	64.1	2.3	9.1	7.7

1. Average standard error of change in two consecutive months (see "Sampling Errors" in Data Quality for further explanations).

2. Includes both incorporated and unincorporated working owners, self-employed persons who do not have a business and persons working in a family business without pay.

Note(s): Related CANSIM tables 282-0088, 282-0089

Table 3
Labour force characteristics by province, seasonally adjusted

	September 2007	October 2007	S.E. ¹	Change from			Percent change from		
				last month	last December	twelve months ago	last month	last December	twelve months ago
in thousands (except rates)									
Newfoundland and Labrador									
Population	423.3	423.6	...	0.3	-2.8	-3.3	0.1	-0.7	-0.8
Labour force	250.4	250.7	2.2	0.3	-3.2	-4.9	0.1	-1.3	-1.9
Employment	216.3	216.8	2.3	0.5	-2.1	-2.6	0.2	-1.0	-1.2
Employment full-time	187.3	187.5	2.6	0.2	2.8	1.1	0.1	1.5	0.6
Employment part-time	29.0	29.3	1.8	0.3	-4.9	-3.7	1.0	-14.3	-11.2
Unemployment	34.0	33.9	2.2	-0.1	-1.1	-2.3	-0.3	-3.1	-6.4
Participation rate	59.2	59.2	0.5	0.0	-0.3	-0.7
Unemployment rate	13.6	13.5	0.8	-0.1	-0.3	-0.7
Employment rate	51.1	51.2	0.5	0.1	-0.1	-0.2
Prince Edward Island									
Population	113.6	113.7	...	0.1	1.0	1.2	0.1	0.9	1.1
Labour force	77.4	77.0	0.6	-0.4	-1.3	0.6	-0.5	-1.7	0.8
Employment	69.2	70.2	0.6	1.0	1.6	2.3	1.4	2.3	3.4
Employment full-time	57.9	57.9	0.8	0.0	1.3	1.1	0.0	2.3	1.9
Employment part-time	11.3	12.3	0.6	1.0	0.3	1.2	8.8	2.5	10.8
Unemployment	8.1	6.8	0.6	-1.3	-2.9	-1.7	-16.0	-29.9	-20.0
Participation rate	68.1	67.7	0.5	-0.4	-1.8	-0.2
Unemployment rate	10.5	8.8	0.7	-1.7	-3.6	-2.3
Employment rate	60.9	61.7	0.6	0.8	0.8	1.3
Nova Scotia									
Population	764.9	765.0	...	0.1	1.5	1.8	0.0	0.2	0.2
Labour force	483.6	487.5	2.7	3.9	7.0	7.2	0.8	1.5	1.5
Employment	445.0	450.3	2.9	5.3	4.9	8.7	1.2	1.1	2.0
Employment full-time	360.1	364.8	3.6	4.7	0.8	5.9	1.3	0.2	1.6
Employment part-time	84.9	85.5	3.1	0.6	4.1	2.8	0.7	5.0	3.4
Unemployment	38.6	37.2	2.5	-1.4	2.1	-1.5	-3.6	6.0	-3.9
Participation rate	63.2	63.7	0.4	0.5	0.8	0.8
Unemployment rate	8.0	7.6	0.5	-0.4	0.3	-0.5
Employment rate	58.2	58.9	0.4	0.7	0.6	1.0
New Brunswick									
Population	614.0	614.5	...	0.5	3.3	3.5	0.1	0.5	0.6
Labour force	395.7	393.6	2.4	-2.1	6.5	9.5	-0.5	1.7	2.5
Employment	363.1	363.8	2.4	0.7	9.5	10.8	0.2	2.7	3.1
Employment full-time	305.4	307.0	2.8	1.6	9.2	8.8	0.5	3.1	3.0
Employment part-time	57.7	56.9	2.4	-0.8	0.4	2.0	-1.4	0.7	3.6
Unemployment	32.6	29.8	2.1	-2.8	-3.0	-1.3	-8.6	-9.1	-4.2
Participation rate	64.4	64.1	0.4	-0.3	0.8	1.2
Unemployment rate	8.2	7.6	0.5	-0.6	-0.9	-0.5
Employment rate	59.1	59.2	0.4	0.1	1.2	1.4
Quebec									
Population	6,325.8	6,330.3	...	4.5	47.5	57.7	0.1	0.8	0.9
Labour force	4,148.5	4,163.3	14.2	14.8	67.6	61.3	0.4	1.7	1.5
Employment	3,864.2	3,874.3	14.8	10.1	84.9	89.0	0.3	2.2	2.4
Employment full-time	3,131.3	3,158.5	18.9	27.2	48.0	41.9	0.9	1.5	1.3
Employment part-time	732.9	715.8	17.5	-17.1	36.9	47.1	-2.3	5.4	7.0
Unemployment	284.3	289.0	13.2	4.7	-17.3	-27.7	1.7	-5.6	-8.7
Participation rate	65.6	65.8	0.2	0.2	0.6	0.4
Unemployment rate	6.9	6.9	0.3	0.0	-0.6	-0.8
Employment rate	61.1	61.2	0.2	0.1	0.9	0.9

See footnotes at the end of the table.

Table 3 – continued

Labour force characteristics by province, seasonally adjusted

	September 2007	October 2007	S.E. ¹	Change from			Percent change from		
				last month	last December	twelve months ago	last month	last December	twelve months ago
in thousands (except rates)									
Ontario									
Population	10,391.0	10,403.9	...	12.9	113.0	133.2	0.1	1.1	1.3
Labour force	7,058.1	7,082.2	18.5	24.1	113.6	151.9	0.3	1.6	2.2
Employment	6,623.7	6,656.0	18.1	32.3	109.4	164.7	0.5	1.7	2.5
Employment full-time	5,440.8	5,447.2	22.8	6.4	92.6	98.6	0.1	1.7	1.8
Employment part-time	1,182.9	1,208.8	20.7	25.9	16.9	66.1	2.2	1.4	5.8
Unemployment	434.4	426.1	15.9	-8.3	4.1	-12.9	-1.9	1.0	-2.9
Participation rate	67.9	68.1	0.2	0.2	0.4	0.6
Unemployment rate	6.2	6.0	0.2	-0.2	-0.1	-0.3
Employment rate	63.7	64.0	0.2	0.3	0.4	0.8
Manitoba									
Population	900.6	901.5	...	0.9	7.7	8.4	0.1	0.9	0.9
Labour force	624.7	627.7	2.9	3.0	15.1	14.0	0.5	2.5	2.3
Employment	598.7	602.3	2.8	3.6	14.7	14.2	0.6	2.5	2.4
Employment full-time	488.4	486.9	3.8	-1.5	14.5	18.5	-0.3	3.1	3.9
Employment part-time	110.3	115.3	3.7	5.0	0.1	-4.3	4.5	0.1	-3.6
Unemployment	26.0	25.4	2.1	-0.6	0.4	-0.2	-2.3	1.6	-0.8
Participation rate	69.4	69.6	0.3	0.2	1.1	0.9
Unemployment rate	4.2	4.0	0.3	-0.2	-0.1	-0.2
Employment rate	66.5	66.8	0.3	0.3	1.1	1.0
Saskatchewan									
Population	753.6	755.1	...	1.5	8.8	9.0	0.2	1.2	1.2
Labour force	522.6	525.1	2.4	2.5	1.1	5.0	0.5	0.2	1.0
Employment	502.5	502.6	2.4	0.1	-0.2	2.7	0.0	0.0	0.5
Employment full-time	411.6	416.3	3.2	4.7	8.6	9.8	1.1	2.1	2.4
Employment part-time	90.9	86.3	2.9	-4.6	-8.8	-7.1	-5.1	-9.3	-7.6
Unemployment	20.0	22.5	1.8	2.5	1.3	2.4	12.5	6.1	11.9
Participation rate	69.3	69.5	0.3	0.2	-0.7	-0.2
Unemployment rate	3.8	4.3	0.3	0.5	0.3	0.4
Employment rate	66.7	66.6	0.3	-0.1	-0.8	-0.4
Alberta									
Population	2,759.9	2,764.1	...	4.2	72.0	90.2	0.2	2.7	3.4
Labour force	2,046.2	2,045.9	7.7	-0.3	71.5	84.7	0.0	3.6	4.3
Employment	1,973.3	1,977.1	8.0	3.8	68.7	74.4	0.2	3.6	3.9
Employment full-time	1,660.1	1,656.6	11.0	-3.5	41.1	42.0	-0.2	2.5	2.6
Employment part-time	313.2	320.5	9.9	7.3	27.6	32.5	2.3	9.4	11.3
Unemployment	72.9	68.9	5.6	-4.0	2.9	10.4	-5.5	4.4	17.8
Participation rate	74.1	74.0	0.3	-0.1	0.7	0.7
Unemployment rate	3.6	3.4	0.3	-0.2	0.1	0.4
Employment rate	71.5	71.5	0.3	0.0	0.6	0.3
British Columbia									
Population	3,585.2	3,591.4	...	6.2	53.4	62.5	0.2	1.5	1.8
Labour force	2,369.5	2,376.2	10.0	6.7	35.5	51.1	0.3	1.5	2.2
Employment	2,266.8	2,272.6	10.1	5.8	54.1	57.4	0.3	2.4	2.6
Employment full-time	1,820.0	1,816.0	13.5	-4.0	42.8	49.7	-0.2	2.4	2.8
Employment part-time	446.8	456.6	12.3	9.8	11.3	7.6	2.2	2.5	1.7
Unemployment	102.6	103.6	7.2	1.0	-18.6	-6.3	1.0	-15.2	-5.7
Participation rate	66.1	66.2	0.3	0.1	0.0	0.3
Unemployment rate	4.3	4.4	0.3	0.1	-0.8	-0.3
Employment rate	63.2	63.3	0.3	0.1	0.6	0.5

1. Average standard error of change in two consecutive months (see "Sampling Errors" in Data Quality for further explanations).

Note(s): Related CANSIM table 282-0087

Table 4-1
Selected labour force characteristics (seasonally adjusted) — Newfoundland and Labrador

	September 2007	October 2007	S.E. ¹	Change from			Percent change from		
				last month	last December	twelve months ago	last month	last December	twelve months ago
in thousands (except rates)									
Both sexes, 15 years and over									
Population	423.3	423.6	...	0.3	-2.8	-3.3	0.1	-0.7	-0.8
Labour force	250.4	250.7	2.2	0.3	-3.2	-4.9	0.1	-1.3	-1.9
Employment	216.3	216.8	2.3	0.5	-2.1	-2.6	0.2	-1.0	-1.2
Employment full-time	187.3	187.5	2.6	0.2	2.8	1.1	0.1	1.5	0.6
Unemployment	34.0	33.9	2.2	-0.1	-1.1	-2.3	-0.3	-3.1	-6.4
Participation rate	59.2	59.2	0.5	0.0	-0.3	-0.7
Unemployment rate	13.6	13.5	0.8	-0.1	-0.3	-0.7
Employment rate	51.1	51.2	0.5	0.1	-0.1	-0.2
Part-time rate	13.4	13.5	0.8	0.1	-2.1	-1.5
Both sexes, 15 to 24 years									
Population	63.1	63.0	...	-0.1	-2.4	-2.8	-0.2	-3.7	-4.3
Labour force	34.1	34.3	1.1	0.2	-2.1	-1.5	0.6	-5.8	-4.2
Employment	27.3	27.6	1.1	0.3	-0.8	-1.4	1.1	-2.8	-4.8
Unemployment	6.7	6.7	1.0	0.0	-1.2	-0.1	0.0	-15.2	-1.5
Participation rate	54.0	54.4	1.6	0.4	-1.3	0.0
Unemployment rate	19.6	19.5	2.7	-0.1	-2.2	0.5
Employment rate	43.3	43.8	1.6	0.5	0.4	-0.3
Part-time rate	38.1	34.8	3.5	-3.3	-6.8	-5.6
Men, 25 years and over									
Population	174.2	174.4	...	0.2	-0.3	-0.3	0.1	-0.2	-0.2
Labour force	113.2	113.9	1.2	0.7	-1.1	-0.7	0.6	-1.0	-0.6
Employment	98.3	98.5	1.4	0.2	-0.3	0.3	0.2	-0.3	0.3
Unemployment	14.8	15.4	1.4	0.6	-0.8	-1.0	4.1	-4.9	-6.1
Participation rate	65.0	65.3	0.7	0.3	-0.5	-0.3
Unemployment rate	13.1	13.5	1.2	0.4	-0.6	-0.8
Employment rate	56.4	56.5	0.8	0.1	-0.1	0.3
Part-time rate	4.3	4.8	0.8	0.5	-0.4	0.2
Women, 25 years and over									
Population	186.0	186.2	...	0.2	-0.1	-0.1	0.1	-0.1	-0.1
Labour force	103.1	102.5	1.2	-0.6	0.0	-2.7	-0.6	0.0	-2.6
Employment	90.7	90.7	1.2	0.0	-1.0	-1.5	0.0	-1.1	-1.6
Unemployment	12.5	11.7	1.2	-0.8	0.8	-1.3	-6.4	7.3	-10.0
Participation rate	55.4	55.0	0.6	-0.4	0.0	-1.5
Unemployment rate	12.1	11.4	1.1	-0.7	0.8	-1.0
Employment rate	48.8	48.7	0.7	-0.1	-0.5	-0.8
Part-time rate	15.9	16.5	1.3	0.7	-2.2	-1.6
Industry									
Goods-producing sector	216.3	216.8	2.3	0.5	-2.1	-2.6	0.2	-1.0	-1.2
Agriculture	48.9	49.1	1.8	0.2	-1.3	-1.6	0.4	-2.6	-3.2
Forestry, fishing, mining, oil and gas	0.9	0.9	0.3	0.0	-0.8	-0.8	0.0	-47.1	-47.1
Utilities	14.7	16.2	1.1	1.5	-1.7	-1.4	10.2	-9.5	-8.0
Construction	1.6	2.2	0.2	0.6	0.8	0.5	37.5	57.1	29.4
Manufacturing	14.6	13.4	1.0	-1.2	-0.2	-0.3	-8.2	-1.5	-2.2
Manufacturing	17.1	16.4	1.1	-0.7	0.6	0.5	-4.1	3.8	3.1
Services-producing sector	167.4	167.7	2.0	0.3	-0.8	-1.0	0.2	-0.5	-0.6
Trade	34.5	34.5	1.2	0.0	-3.6	-3.3	0.0	-9.4	-8.7
Transportation and warehousing	10.0	9.6	0.7	-0.4	-1.7	-1.7	-4.0	-15.0	-15.0
Finance, insurance, real estate and leasing	7.2	7.3	0.4	0.1	0.9	1.3	1.4	14.1	21.7
Professional, scientific and technical services	8.7	8.1	0.5	-0.6	2.3	1.6	-6.9	39.7	24.6
Business, building and other support services	9.6	9.4	0.7	-0.2	0.1	-0.2	-2.1	1.1	-2.1
Educational services	15.8	15.5	0.8	-0.3	-3.1	-2.2	-1.9	-16.7	-12.4
Health care and social assistance	33.0	33.3	0.9	0.3	3.6	3.6	0.9	12.1	12.1
Information, culture and recreation	7.3	7.7	0.7	0.4	-1.4	-2.1	5.5	-15.4	-21.4
Accommodation and food services	15.7	15.9	0.9	0.2	3.5	2.5	1.3	28.2	18.7
Other services	8.3	9.2	0.7	0.9	-2.2	-1.9	10.8	-19.3	-17.1
Public administration	17.3	17.4	0.8	0.1	1.1	1.7	0.6	6.7	10.8

1. Average standard error of change in two consecutive months (see "Sampling Errors" in Data Quality for further explanations).

Note(s): Related CANSIM tables 282-0087, 282-0088

Table 4-2
Selected labour force characteristics (seasonally adjusted) — Prince Edward Island

	September 2007	October 2007	S.E. ¹	Change from			Percent change from		
				last month	last December	twelve months ago	last month	last December	twelve months ago
in thousands (except rates)									
Both sexes, 15 years and over									
Population	113.6	113.7	...	0.1	1.0	1.2	0.1	0.9	1.1
Labour force	77.4	77.0	0.6	-0.4	-1.3	0.6	-0.5	-1.7	0.8
Employment	69.2	70.2	0.6	1.0	1.6	2.3	1.4	2.3	3.4
Employment full-time	57.9	57.9	0.8	0.0	1.3	1.1	0.0	2.3	1.9
Unemployment	8.1	6.8	0.6	-1.3	-2.9	-1.7	-16.0	-29.9	-20.0
Participation rate	68.1	67.7	0.5	-0.4	-1.8	-0.2
Unemployment rate	10.5	8.8	0.7	-1.7	-3.6	-2.3
Employment rate	60.9	61.7	0.6	0.8	0.8	1.3
Part-time rate	16.3	17.5	0.9	1.2	0.0	1.2
Both sexes, 15 to 24 years									
Population	19.7	19.6	...	-0.1	-0.2	-0.3	-0.5	-1.0	-1.5
Labour force	13.7	14.1	0.3	0.4	-0.2	0.5	2.9	-1.4	3.7
Employment	11.7	12.4	0.3	0.7	0.6	0.7	6.0	5.1	6.0
Unemployment	2.0	1.7	0.3	-0.3	-0.8	-0.2	-15.0	-32.0	-10.5
Participation rate	69.5	71.9	1.7	2.4	-0.3	3.6
Unemployment rate	14.6	12.1	2.1	-2.5	-5.4	-1.9
Employment rate	59.4	63.3	1.7	3.9	3.7	4.5
Part-time rate	41.0	45.2	3.0	4.1	3.6	6.7
Men, 25 years and over									
Population	44.9	44.9	...	0.0	0.4	0.4	0.0	0.9	0.9
Labour force	32.1	31.6	0.3	-0.5	-1.5	-0.6	-1.6	-4.5	-1.9
Employment	28.9	29.2	0.4	0.3	0.5	0.5	1.0	1.7	1.7
Unemployment	3.2	2.4	0.4	-0.8	-1.9	-1.1	-25.0	-44.2	-31.4
Participation rate	71.5	70.4	0.8	-1.1	-4.0	-2.0
Unemployment rate	10.0	7.6	1.1	-2.4	-5.4	-3.3
Employment rate	64.4	65.0	0.9	0.6	0.5	0.5
Part-time rate	6.2	6.2	1.0	-0.1	0.2	0.9
Women, 25 years and over									
Population	49.0	49.1	...	0.1	0.7	0.9	0.2	1.4	1.9
Labour force	31.5	31.3	0.3	-0.2	0.3	0.7	-0.6	1.0	2.3
Employment	28.6	28.6	0.4	0.0	0.5	1.2	0.0	1.8	4.4
Unemployment	2.9	2.7	0.3	-0.2	-0.2	-0.5	-6.9	-6.9	-15.6
Participation rate	64.3	63.7	0.7	-0.6	-0.3	0.2
Unemployment rate	9.2	8.6	1.0	-0.6	-0.8	-1.9
Employment rate	58.4	58.2	0.8	-0.2	0.1	1.4
Part-time rate	16.8	16.8	1.5	0.0	-2.4	-1.5
Industry									
Goods-producing sector	69.2	70.2	0.6	1.0	1.6	2.3	1.4	2.3	3.4
Agriculture	17.6	17.9	0.6	0.3	-0.6	-0.7	1.7	-3.2	-3.8
Forestry, fishing, mining, oil and gas	3.4	3.4	0.3	0.0	-0.6	-0.4	0.0	-15.0	-10.5
Utilities	2.4	2.7	0.2	0.3	0.5	0.2	12.5	22.7	8.0
Construction	0.3	0.2	0.0	-0.1	0.0	-0.1	-33.3	0.0	-33.3
Manufacturing	4.8	4.9	0.3	0.1	-0.8	-0.6	2.1	-14.0	-10.9
Manufacturing	6.7	6.7	0.3	0.0	0.2	0.2	0.0	3.1	3.1
Services-producing sector	51.6	52.3	0.6	0.7	2.2	3.1	1.4	4.4	6.3
Trade	9.9	10.7	0.3	0.8	0.9	1.0	8.1	9.2	10.3
Transportation and warehousing	2.5	2.5	0.2	0.0	0.1	0.0	0.0	4.2	0.0
Finance, insurance, real estate and leasing	2.8	3.0	0.1	0.2	0.6	0.7	7.1	25.0	30.4
Professional, scientific and technical services	2.2	2.3	0.2	0.1	-0.2	-0.1	4.5	-8.0	-4.2
Business, building and other support services	2.8	2.7	0.2	-0.1	0.1	-0.1	-3.6	3.8	-3.6
Educational services	4.9	5.0	0.3	0.1	0.2	0.5	2.0	4.2	11.1
Health care and social assistance	8.5	8.2	0.3	-0.3	0.3	0.4	-3.5	3.8	5.1
Information, culture and recreation	2.6	2.6	0.2	0.0	0.1	0.1	0.0	4.0	4.0
Accommodation and food services	6.1	5.6	0.3	-0.5	-0.2	-0.1	-8.2	-3.4	-1.8
Other services	3.0	3.2	0.2	0.2	0.6	0.5	6.7	23.1	18.5
Public administration	6.4	6.5	0.3	0.1	-0.3	0.3	1.6	-4.4	4.8

1. Average standard error of change in two consecutive months (see "Sampling Errors" in Data Quality for further explanations).

Note(s): Related CANSIM tables 282-0087, 282-0088

Table 4-3
Selected labour force characteristics (seasonally adjusted) — Nova Scotia

	September 2007	October 2007	S.E. ¹	Change from			Percent change from		
				last month	last December	twelve months ago	last month	last December	twelve months ago
in thousands (except rates)									
Both sexes, 15 years and over									
Population	764.9	765.0	...	0.1	1.5	1.8	0.0	0.2	0.2
Labour force	483.6	487.5	2.7	3.9	7.0	7.2	0.8	1.5	1.5
Employment	445.0	450.3	2.9	5.3	4.9	8.7	1.2	1.1	2.0
Employment full-time	360.1	364.8	3.6	4.7	0.8	5.9	1.3	0.2	1.6
Unemployment	38.6	37.2	2.5	-1.4	2.1	-1.5	-3.6	6.0	-3.9
Participation rate	63.2	63.7	0.4	0.5	0.8	0.8
Unemployment rate	8.0	7.6	0.5	-0.4	0.3	-0.5
Employment rate	58.2	58.9	0.4	0.7	0.6	1.0
Part-time rate	19.1	19.0	0.7	-0.1	0.7	0.3
Both sexes, 15 to 24 years									
Population	122.3	122.2	...	-0.1	-0.6	-0.7	-0.1	-0.5	-0.6
Labour force	79.6	82.8	1.6	3.2	1.8	0.9	4.0	2.2	1.1
Employment	71.6	74.2	1.6	2.6	3.2	4.5	3.6	4.5	6.5
Unemployment	8.0	8.7	1.4	0.7	-1.3	-3.5	8.8	-13.0	-28.7
Participation rate	65.1	67.8	1.3	2.7	1.8	1.2
Unemployment rate	10.1	10.5	1.7	0.4	-1.8	-4.4
Employment rate	58.5	60.7	1.3	2.2	2.9	4.0
Part-time rate	47.8	46.4	2.4	-1.4	0.4	1.2
Men, 25 years and over									
Population	306.7	306.7	...	0.0	0.9	1.0	0.0	0.3	0.3
Labour force	209.2	209.9	1.5	0.7	3.0	3.4	0.3	1.4	1.6
Employment	192.1	193.7	1.7	1.6	2.8	3.3	0.8	1.5	1.7
Unemployment	17.1	16.2	1.5	-0.9	0.2	0.1	-5.3	1.2	0.6
Participation rate	68.2	68.4	0.5	0.2	0.7	0.9
Unemployment rate	8.2	7.7	0.7	-0.5	0.0	-0.1
Employment rate	62.6	63.2	0.5	0.6	0.8	0.9
Part-time rate	6.4	7.1	0.7	0.7	0.1	-0.1
Women, 25 years and over									
Population	336.0	336.1	...	0.1	1.2	1.5	0.0	0.4	0.4
Labour force	194.9	194.7	1.4	-0.2	2.1	2.9	-0.1	1.1	1.5
Employment	181.4	182.5	1.5	1.1	-1.1	1.0	0.6	-0.6	0.6
Unemployment	13.5	12.3	1.2	-1.2	3.2	2.0	-8.9	35.2	19.4
Participation rate	58.0	57.9	0.4	-0.1	0.4	0.6
Unemployment rate	6.9	6.3	0.6	-0.6	1.6	0.9
Employment rate	54.0	54.3	0.4	0.3	-0.5	0.1
Part-time rate	21.1	20.4	1.1	-0.7	1.2	-0.2
Industry									
Industry	445.0	450.3	2.9	5.3	4.9	8.7	1.2	1.1	2.0
Goods-producing sector									
Agriculture	5.6	5.3	0.6	-0.3	0.8	0.6	-5.4	17.8	12.8
Forestry, fishing, mining, oil and gas	10.1	10.4	1.0	0.3	-1.3	-1.8	3.0	-11.1	-14.8
Utilities	1.9	2.1	0.2	0.2	-0.1	0.0	10.5	-4.5	0.0
Construction	28.9	28.4	1.4	-0.5	0.5	0.1	-1.7	1.8	0.4
Manufacturing	43.6	41.5	1.4	-2.1	1.5	3.3	-4.8	3.8	8.6
Services-producing sector									
Trade	75.4	76.9	1.9	1.5	-1.9	1.3	2.0	-2.4	1.7
Transportation and warehousing	17.9	19.1	1.0	1.2	1.0	0.9	6.7	5.5	4.9
Finance, insurance, real estate and leasing	23.4	22.8	0.9	-0.6	-1.7	-0.7	-2.6	-6.9	-3.0
Professional, scientific and technical services	17.7	18.2	1.0	0.5	1.4	0.9	2.8	8.3	5.2
Business, building and other support services	25.1	28.7	1.3	3.6	-0.3	-1.0	14.3	-1.0	-3.4
Educational services	36.7	35.4	1.4	-1.3	0.5	0.7	-3.5	1.4	2.0
Health care and social assistance	60.8	63.5	1.3	2.7	2.7	3.7	4.4	4.4	6.2
Information, culture and recreation	19.9	21.0	1.0	1.1	4.7	5.7	5.5	28.8	37.3
Accommodation and food services	28.4	28.8	1.4	0.4	-2.7	-3.8	1.4	-8.6	-11.7
Other services	20.1	20.1	1.1	0.0	0.1	-0.4	0.0	0.5	-2.0
Public administration	29.5	28.0	1.1	-1.5	-0.6	-0.8	-5.1	-2.1	-2.8

1. Average standard error of change in two consecutive months (see "Sampling Errors" in Data Quality for further explanations).

Note(s): Related CANSIM tables 282-0087, 282-0088

Table 4-4
Selected labour force characteristics (seasonally adjusted) — New Brunswick

	September 2007	October 2007	S.E. ¹	Change from			Percent change from		
				last month	last December	twelve months ago	last month	last December	twelve months ago
in thousands (except rates)									
Both sexes, 15 years and over									
Population	614.0	614.5	...	0.5	3.3	3.5	0.1	0.5	0.6
Labour force	395.7	393.6	2.4	-2.1	6.5	9.5	-0.5	1.7	2.5
Employment	363.1	363.8	2.4	0.7	9.5	10.8	0.2	2.7	3.1
Employment full-time	305.4	307.0	2.8	1.6	9.2	8.8	0.5	3.1	3.0
Unemployment	32.6	29.8	2.1	-2.8	-3.0	-1.3	-8.6	-9.1	-4.2
Participation rate	64.4	64.1	0.4	-0.3	0.8	1.2
Unemployment rate	8.2	7.6	0.5	-0.6	-0.9	-0.5
Employment rate	59.1	59.2	0.4	0.1	1.2	1.4
Part-time rate	15.9	15.6	0.6	-0.3	-0.3	0.1
Both sexes, 15 to 24 years									
Population	94.8	94.8	...	0.0	-0.4	-0.6	0.0	-0.4	-0.6
Labour force	65.0	63.5	1.3	-1.5	2.6	3.3	-2.3	4.3	5.5
Employment	55.2	54.9	1.4	-0.3	2.0	2.3	-0.5	3.8	4.4
Unemployment	9.7	8.6	1.1	-1.1	0.6	1.0	-11.3	7.5	13.2
Participation rate	68.6	67.0	1.4	-1.6	3.0	3.9
Unemployment rate	14.9	13.5	1.7	-1.4	0.4	0.9
Employment rate	58.2	57.9	1.4	-0.3	2.3	2.8
Part-time rate	41.5	39.9	2.3	-1.6	4.5	4.9
Men, 25 years and over									
Population	250.9	251.2	...	0.3	1.7	1.9	0.1	0.7	0.8
Labour force	171.5	171.6	1.3	0.1	2.0	1.2	0.1	1.2	0.7
Employment	157.4	158.5	1.4	1.1	3.6	3.0	0.7	2.3	1.9
Unemployment	14.1	13.2	1.4	-0.9	-1.5	-1.7	-6.4	-10.2	-11.4
Participation rate	68.4	68.3	0.5	-0.1	0.3	-0.1
Unemployment rate	8.2	7.7	0.8	-0.5	-1.0	-1.0
Employment rate	62.7	63.1	0.6	0.4	1.0	0.7
Part-time rate	5.0	4.9	0.7	-0.1	-1.0	-0.9
Women, 25 years and over									
Population	268.3	268.4	...	0.1	1.9	2.1	0.0	0.7	0.8
Labour force	159.3	158.5	1.3	-0.8	1.9	5.0	-0.5	1.2	3.3
Employment	150.4	150.5	1.3	0.1	4.0	5.6	0.1	2.7	3.9
Unemployment	8.8	8.0	1.1	-0.8	-2.1	-0.6	-9.1	-20.8	-7.0
Participation rate	59.4	59.1	0.5	-0.3	0.3	1.5
Unemployment rate	5.5	5.0	0.7	-0.5	-1.4	-0.6
Employment rate	56.1	56.1	0.5	0.0	1.1	1.7
Part-time rate	18.0	18.1	1.1	0.1	-1.4	-1.0
Industry									
Goods-producing sector	363.1	363.8	2.4	0.7	9.5	10.8	0.2	2.7	3.1
Agriculture	81.5	82.0	1.8	0.5	1.9	2.3	0.6	2.4	2.9
Forestry, fishing, mining, oil and gas	5.4	5.7	0.6	0.3	-0.3	-0.7	5.6	-5.0	-10.9
Utilities	10.8	11.3	0.8	0.5	1.3	2.2	4.6	13.0	24.2
Construction	4.0	3.8	0.3	-0.2	0.7	0.8	-5.0	22.6	26.7
Manufacturing	24.5	24.3	1.2	-0.2	1.6	2.8	-0.8	7.0	13.0
Manufacturing	36.8	36.8	1.3	0.0	-1.5	-2.8	0.0	-3.9	-7.1
Services-producing sector	281.6	281.8	2.3	0.2	7.6	8.4	0.1	2.8	3.1
Trade	58.0	58.6	1.4	0.6	0.6	3.4	1.0	1.0	6.2
Transportation and warehousing	19.6	18.7	0.8	-0.9	-1.5	-0.9	-4.6	-7.4	-4.6
Finance, insurance, real estate and leasing	15.3	16.0	0.8	0.7	-1.7	-1.1	4.6	-9.6	-6.4
Professional, scientific and technical services	16.6	16.3	0.8	-0.3	2.4	1.3	-1.8	17.3	8.7
Business, building and other support services	21.0	20.5	1.1	-0.5	0.8	-1.7	-2.4	4.1	-7.7
Educational services	26.9	25.8	1.0	-1.1	-0.2	0.0	-4.1	-0.8	0.0
Health care and social assistance	47.2	49.0	1.1	1.8	2.8	4.5	3.8	6.1	10.1
Information, culture and recreation	13.7	14.4	0.7	0.7	3.0	2.6	5.1	26.3	22.0
Accommodation and food services	23.8	21.9	1.1	-1.9	-1.3	-2.1	-8.0	-5.6	-8.8
Other services	17.5	18.9	0.9	1.4	1.5	1.8	8.0	8.6	10.5
Public administration	21.9	21.7	0.8	-0.2	1.3	0.6	-0.9	6.4	2.8

1. Average standard error of change in two consecutive months (see "Sampling Errors" in Data Quality for further explanations).

Note(s): Related CANSIM tables 282-0087, 282-0088

Table 4-5
Selected labour force characteristics (seasonally adjusted) — Quebec

	September 2007	October 2007	S.E. ¹	Change from			Percent change from		
				last month	last December	twelve months ago	last month	last December	twelve months ago
in thousands (except rates)									
Both sexes, 15 years and over									
Population	6,325.8	6,330.3	...	4.5	47.5	57.7	0.1	0.8	0.9
Labour force	4,148.5	4,163.3	14.2	14.8	67.6	61.3	0.4	1.7	1.5
Employment	3,864.2	3,874.3	14.8	10.1	84.9	89.0	0.3	2.2	2.4
Employment full-time	3,131.3	3,158.5	18.9	27.2	48.0	41.9	0.9	1.5	1.3
Unemployment	284.3	289.0	13.2	4.7	-17.3	-27.7	1.7	-5.6	-8.7
Participation rate	65.6	65.8	0.2	0.2	0.6	0.4
Unemployment rate	6.9	6.9	0.3	0.0	-0.6	-0.8
Employment rate	61.1	61.2	0.2	0.1	0.9	0.9
Part-time rate	19.0	18.5	0.4	-0.5	0.6	0.8
Both sexes, 15 to 24 years									
Population	955.3	955.8	...	0.5	3.5	4.3	0.1	0.4	0.5
Labour force	632.6	636.3	8.4	3.7	9.3	10.3	0.6	1.5	1.6
Employment	549.9	553.1	8.3	3.2	3.0	2.0	0.6	0.5	0.4
Unemployment	82.7	83.2	7.6	0.5	6.3	8.2	0.6	8.2	10.9
Participation rate	66.2	66.6	0.9	0.4	0.8	0.8
Unemployment rate	13.1	13.1	1.1	0.0	0.8	1.1
Employment rate	57.6	57.9	0.9	0.3	0.1	0.0
Part-time rate	48.9	49.6	1.6	0.8	2.5	4.7
Men, 25 years and over									
Population	2,623.4	2,625.5	...	2.1	22.3	27.0	0.1	0.9	1.0
Labour force	1,852.3	1,866.1	7.9	13.8	5.9	3.9	0.7	0.3	0.2
Employment	1,737.0	1,741.1	8.5	4.1	19.9	19.1	0.2	1.2	1.1
Unemployment	115.4	125.0	8.1	9.6	-14.0	-15.2	8.3	-10.1	-10.8
Participation rate	70.6	71.1	0.3	0.5	-0.4	-0.6
Unemployment rate	6.2	6.7	0.4	0.5	-0.8	-0.8
Employment rate	66.2	66.3	0.3	0.1	0.2	0.0
Part-time rate	7.1	6.7	0.5	-0.4	0.0	0.0
Women, 25 years and over									
Population	2,747.1	2,749.1	...	2.0	21.8	26.5	0.1	0.8	1.0
Labour force	1,663.5	1,660.8	7.7	-2.7	52.3	47.0	-0.2	3.3	2.9
Employment	1,577.3	1,580.0	8.1	2.7	61.8	67.8	0.2	4.1	4.5
Unemployment	86.2	80.8	6.8	-5.4	-9.5	-20.8	-6.3	-10.5	-20.5
Participation rate	60.6	60.4	0.3	-0.2	1.4	1.1
Unemployment rate	5.2	4.9	0.4	-0.3	-0.7	-1.4
Employment rate	57.4	57.5	0.3	0.1	1.8	2.0
Part-time rate	21.6	20.5	0.7	-1.1	0.5	0.4
Industry									
	3,864.2	3,874.3	14.8	10.1	84.9	89.0	0.3	2.2	2.4
Goods-producing sector									
Agriculture	70.3	70.9	3.5	0.6	4.4	6.7	0.9	6.6	10.4
Forestry, fishing, mining, oil and gas	34.2	34.4	2.2	0.2	-0.2	-3.4	0.6	-0.6	-9.0
Utilities	36.1	36.6	1.8	0.5	11.1	5.9	1.4	43.5	19.2
Construction	195.9	201.3	6.4	5.4	23.1	19.6	2.8	13.0	10.8
Manufacturing	539.8	537.2	9.7	-2.6	-38.1	-35.2	-0.5	-6.6	-6.1
Services-producing sector									
	2,988.0	2,993.7	16.0	5.7	84.4	95.1	0.2	2.9	3.3
Trade	650.4	640.8	10.4	-9.6	4.5	14.4	-1.5	0.7	2.3
Transportation and warehousing	180.0	183.1	5.7	3.1	9.2	13.0	1.7	5.3	7.6
Finance, insurance, real estate and leasing	227.9	236.1	6.1	8.2	5.2	10.9	3.6	2.3	4.8
Professional, scientific and technical services	265.5	259.3	7.5	-6.2	4.9	15.1	-2.3	1.9	6.2
Business, building and other support services	139.8	138.9	6.3	-0.9	-11.1	-9.9	-0.6	-7.4	-6.7
Educational services	252.2	254.9	6.8	2.7	-2.1	-10.7	1.1	-0.8	-4.0
Health care and social assistance	448.4	454.1	7.9	5.7	-0.2	-3.4	1.3	0.0	-0.7
Information, culture and recreation	168.8	167.5	6.4	-1.3	7.2	0.4	-0.8	4.5	0.2
Accommodation and food services	244.8	243.4	7.2	-1.4	23.3	25.3	-0.6	10.6	11.6
Other services	186.7	188.4	5.6	1.7	29.1	28.5	0.9	18.3	17.8
Public administration	223.6	227.2	5.3	3.6	14.5	11.5	1.6	6.8	5.3

1. Average standard error of change in two consecutive months (see "Sampling Errors" in Data Quality for further explanations).

Note(s): Related CANSIM tables 282-0087, 282-0088

Table 4-6
Selected labour force characteristics (seasonally adjusted) — Ontario

	September 2007	October 2007	S.E. ¹	Change from			Percent change from		
				last month	last December	twelve months ago	last month	last December	twelve months ago
in thousands (except rates)									
Both sexes, 15 years and over									
Population	10,391.0	10,403.9	...	12.9	113.0	133.2	0.1	1.1	1.3
Labour force	7,058.1	7,082.2	18.5	24.1	113.6	151.9	0.3	1.6	2.2
Employment	6,623.7	6,656.0	18.1	32.3	109.4	164.7	0.5	1.7	2.5
Employment full-time	5,440.8	5,447.2	22.8	6.4	92.6	98.6	0.1	1.7	1.8
Unemployment	434.4	426.1	15.9	-8.3	4.1	-12.9	-1.9	1.0	-2.9
Participation rate	67.9	68.1	0.2	0.2	0.4	0.6
Unemployment rate	6.2	6.0	0.2	-0.2	-0.1	-0.3
Employment rate	63.7	64.0	0.2	0.3	0.4	0.8
Part-time rate	17.9	18.2	0.3	0.3	0.0	0.6
Both sexes, 15 to 24 years									
Population	1,724.6	1,726.4	...	1.8	13.9	16.8	0.1	0.8	1.0
Labour force	1,113.4	1,116.3	11.2	2.9	18.3	11.5	0.3	1.7	1.0
Employment	971.0	973.4	10.5	2.4	15.5	17.6	0.2	1.6	1.8
Unemployment	142.4	142.9	9.5	0.5	2.8	-6.0	0.4	2.0	-4.0
Participation rate	64.6	64.7	0.7	0.1	0.6	0.1
Unemployment rate	12.8	12.8	0.8	0.0	0.0	-0.7
Employment rate	56.3	56.4	0.6	0.1	0.5	0.5
Part-time rate	49.1	49.8	1.1	0.8	0.0	2.6
Men, 25 years and over									
Population	4,213.8	4,219.0	...	5.2	46.1	54.2	0.1	1.1	1.3
Labour force	3,134.3	3,143.5	9.2	9.2	41.8	58.2	0.3	1.3	1.9
Employment	2,974.9	2,981.6	9.8	6.7	29.1	54.0	0.2	1.0	1.8
Unemployment	159.4	161.9	8.8	2.5	12.6	4.1	1.6	8.4	2.6
Participation rate	74.4	74.5	0.2	0.1	0.2	0.4
Unemployment rate	5.1	5.2	0.3	0.1	0.4	0.1
Employment rate	70.6	70.7	0.2	0.1	-0.1	0.4
Part-time rate	6.2	6.3	0.3	0.1	0.2	0.4
Women, 25 years and over									
Population	4,452.7	4,458.5	...	5.8	53.0	62.2	0.1	1.2	1.4
Labour force	2,810.4	2,822.4	10.4	12.0	53.5	82.2	0.4	1.9	3.0
Employment	2,677.8	2,701.1	10.3	23.3	64.8	93.2	0.9	2.5	3.6
Unemployment	132.6	121.3	8.4	-11.3	-11.4	-11.0	-8.5	-8.6	-8.3
Participation rate	63.1	63.3	0.2	0.2	0.4	1.0
Unemployment rate	4.7	4.3	0.3	-0.4	-0.5	-0.5
Employment rate	60.1	60.6	0.2	0.5	0.8	1.3
Part-time rate	19.4	19.8	0.5	0.4	-0.4	0.0
Industry									
	6,623.7	6,656.0	18.1	32.3	109.4	164.7	0.5	1.7	2.5
Goods-producing sector									
	1,539.1	1,538.3	14.7	-0.8	-59.7	-50.3	-0.1	-3.7	-3.2
Agriculture	95.3	94.9	3.8	-0.4	-9.9	-6.3	-0.4	-9.4	-6.2
Forestry, fishing, mining, oil and gas	31.5	31.4	2.3	-0.1	-11.4	-12.6	-0.3	-26.6	-28.6
Utilities	57.3	57.2	2.5	-0.1	4.4	5.6	-0.2	8.3	10.9
Construction	413.2	412.6	9.0	-0.6	0.7	6.4	-0.1	0.2	1.6
Manufacturing	941.7	942.3	12.2	0.6	-43.4	-43.3	0.1	-4.4	-4.4
Services-producing sector									
	5,084.7	5,117.8	20.2	33.1	169.2	215.1	0.7	3.4	4.4
Trade	1,019.2	1,028.0	13.0	8.8	1.4	2.3	0.9	0.1	0.2
Transportation and warehousing	297.4	297.0	7.7	-0.4	-8.3	-4.9	-0.1	-2.7	-1.6
Finance, insurance, real estate and leasing	471.0	476.7	8.9	5.7	2.0	-7.4	1.2	0.4	-1.5
Professional, scientific and technical services	491.6	496.0	9.6	4.4	46.2	52.7	0.9	10.3	11.9
Business, building and other support services	309.6	288.7	8.7	-20.9	-15.0	-4.3	-6.8	-4.9	-1.5
Educational services	487.8	491.2	8.7	3.4	40.7	51.2	0.7	9.0	11.6
Health care and social assistance	669.3	673.2	9.5	3.9	14.4	24.7	0.6	2.2	3.8
Information, culture and recreation	335.5	342.6	8.2	7.1	26.2	29.8	2.1	8.3	9.5
Accommodation and food services	411.8	396.8	8.7	-15.0	13.7	19.5	-3.6	3.6	5.2
Other services	254.6	269.6	7.2	15.0	2.9	13.0	5.9	1.1	5.1
Public administration	336.7	358.1	6.3	21.4	45.0	38.6	6.4	14.4	12.1

1. Average standard error of change in two consecutive months (see "Sampling Errors" in Data Quality for further explanations).

Note(s): Related CANSIM tables 282-0087, 282-0088

Table 4-7
Selected labour force characteristics (seasonally adjusted) — Manitoba

	September 2007	October 2007	S.E. ¹	Change from			Percent change from		
				last month	last December	twelve months ago	last month	last December	twelve months ago
in thousands (except rates)									
Both sexes, 15 years and over									
Population	900.6	901.5	...	0.9	7.7	8.4	0.1	0.9	0.9
Labour force	624.7	627.7	2.9	3.0	15.1	14.0	0.5	2.5	2.3
Employment	598.7	602.3	2.8	3.6	14.7	14.2	0.6	2.5	2.4
Employment full-time	488.4	486.9	3.8	-1.5	14.5	18.5	-0.3	3.1	3.9
Unemployment	26.0	25.4	2.1	-0.6	0.4	-0.2	-2.3	1.6	-0.8
Participation rate	69.4	69.6	0.3	0.2	1.1	0.9
Unemployment rate	4.2	4.0	0.3	-0.2	-0.1	-0.2
Employment rate	66.5	66.8	0.3	0.3	1.1	1.0
Part-time rate	18.4	19.1	0.6	0.7	-0.5	-1.2
Both sexes, 15 to 24 years									
Population	157.0	157.2	...	0.2	1.4	1.4	0.1	0.9	0.9
Labour force	114.6	115.7	1.8	1.1	6.1	4.1	1.0	5.6	3.7
Employment	103.9	104.7	1.7	0.8	3.3	3.1	0.8	3.3	3.1
Unemployment	10.8	11.0	1.4	0.2	2.8	1.0	1.9	34.1	10.0
Participation rate	73.0	73.6	1.1	0.6	3.3	2.0
Unemployment rate	9.4	9.5	1.2	0.1	2.0	0.5
Employment rate	66.2	66.6	1.1	0.4	1.5	1.4
Part-time rate	42.7	44.9	1.9	2.2	2.9	-0.9
Men, 25 years and over									
Population	363.6	364.0	...	0.4	3.6	4.0	0.1	1.0	1.1
Labour force	273.5	275.9	1.4	2.4	5.6	6.7	0.9	2.1	2.5
Employment	266.6	268.5	1.4	1.9	6.9	8.0	0.7	2.6	3.1
Unemployment	6.9	7.4	1.2	0.5	-1.2	-1.3	7.2	-14.0	-14.9
Participation rate	75.2	75.8	0.4	0.6	0.8	1.0
Unemployment rate	2.5	2.7	0.4	0.2	-0.5	-0.5
Employment rate	73.3	73.8	0.4	0.5	1.2	1.4
Part-time rate	6.2	6.7	0.6	0.4	0.3	0.4
Women, 25 years and over									
Population	380.0	380.4	...	0.4	2.8	3.1	0.1	0.7	0.8
Labour force	236.6	236.1	1.7	-0.5	3.3	3.2	-0.2	1.4	1.4
Employment	228.2	229.1	1.6	0.9	4.5	3.1	0.4	2.0	1.4
Unemployment	8.4	7.0	1.1	-1.4	-1.2	0.1	-16.7	-14.6	1.4
Participation rate	62.3	62.1	0.4	-0.2	0.4	0.4
Unemployment rate	3.6	3.0	0.5	-0.6	-0.5	0.0
Employment rate	60.1	60.2	0.4	0.1	0.7	0.3
Part-time rate	21.6	22.0	1.0	0.4	-2.8	-3.2
Industry									
Industry	598.7	602.3	2.8	3.6	14.7	14.2	0.6	2.5	2.4
Goods-producing sector									
Goods-producing sector	145.4	144.4	2.4	-1.0	3.1	7.6	-0.7	2.2	5.6
Agriculture	28.8	27.1	1.2	-1.7	-2.4	-2.2	-5.9	-8.1	-7.5
Forestry, fishing, mining, oil and gas	5.9	6.1	0.6	0.2	-0.6	-1.3	3.4	-9.0	-17.6
Utilities	5.8	5.4	0.4	-0.4	0.4	0.4	-6.9	8.0	8.0
Construction	35.0	35.2	1.4	0.2	4.7	7.1	0.6	15.4	25.3
Manufacturing	69.9	70.7	1.7	0.8	1.1	3.7	1.1	1.6	5.5
Services-producing sector									
Services-producing sector	453.3	457.9	3.2	4.6	11.6	6.7	1.0	2.6	1.5
Trade	87.3	87.7	2.1	0.4	-5.1	-7.0	0.5	-5.5	-7.4
Transportation and warehousing	35.0	34.6	1.2	-0.4	-0.5	-1.1	-1.1	-1.4	-3.1
Finance, insurance, real estate and leasing	36.0	37.3	1.2	1.3	4.9	3.1	3.6	15.1	9.1
Professional, scientific and technical services	26.3	27.3	1.1	1.0	6.2	4.9	3.8	29.4	21.9
Business, building and other support services	18.0	19.2	1.1	1.2	0.7	1.0	6.7	3.8	5.5
Educational services	46.6	45.9	1.5	-0.7	-1.6	-0.6	-1.5	-3.4	-1.3
Health care and social assistance	79.7	78.8	1.8	-0.9	-3.3	-3.5	-1.1	-4.0	-4.3
Information, culture and recreation	24.3	24.6	1.1	0.3	2.2	0.3	1.2	9.8	1.2
Accommodation and food services	37.3	40.2	1.5	2.9	5.2	6.0	7.8	14.9	17.5
Other services	24.3	24.5	1.2	0.2	-0.4	0.1	0.8	-1.6	0.4
Public administration	38.6	37.7	1.3	-0.9	3.2	3.2	-2.3	9.3	9.3

1. Average standard error of change in two consecutive months (see "Sampling Errors" in Data Quality for further explanations).

Note(s): Related CANSIM tables 282-0087, 282-0088

Table 4-8
Selected labour force characteristics (seasonally adjusted) — Saskatchewan

	September 2007	October 2007	S.E. ¹	Change from			Percent change from		
				last month	last December	twelve months ago	last month	last December	twelve months ago
in thousands (except rates)									
Both sexes, 15 years and over									
Population	753.6	755.1	...	1.5	8.8	9.0	0.2	1.2	1.2
Labour force	522.6	525.1	2.4	2.5	1.1	5.0	0.5	0.2	1.0
Employment	502.5	502.6	2.4	0.1	-0.2	2.7	0.0	0.0	0.5
Employment full-time	411.6	416.3	3.2	4.7	8.6	9.8	1.1	2.1	2.4
Unemployment	20.0	22.5	1.8	2.5	1.3	2.4	12.5	6.1	11.9
Participation rate	69.3	69.5	0.3	0.2	-0.7	-0.2
Unemployment rate	3.8	4.3	0.3	0.5	0.3	0.4
Employment rate	66.7	66.6	0.3	-0.1	-0.8	-0.4
Part-time rate	18.1	17.2	0.6	-0.9	-1.7	-1.5
Both sexes, 15 to 24 years									
Population	138.0	138.3	...	0.3	1.0	0.8	0.2	0.7	0.6
Labour force	95.6	98.1	1.5	2.5	-4.2	-1.6	2.6	-4.1	-1.6
Employment	89.3	89.8	1.5	0.5	-4.4	-2.7	0.6	-4.7	-2.9
Unemployment	6.2	8.3	1.2	2.1	0.2	1.1	33.9	2.5	15.3
Participation rate	69.3	70.9	1.1	1.6	-3.6	-1.6
Unemployment rate	6.5	8.5	1.1	2.0	0.6	1.3
Employment rate	64.7	64.9	1.1	0.2	-3.7	-2.4
Part-time rate	38.2	36.2	1.7	-2.0	-1.2	-2.4
Men, 25 years and over									
Population	300.9	301.5	...	0.6	4.3	4.6	0.2	1.4	1.5
Labour force	230.9	231.5	1.1	0.6	3.8	5.7	0.3	1.7	2.5
Employment	223.0	223.4	1.3	0.4	2.9	5.1	0.2	1.3	2.3
Unemployment	8.0	8.2	1.0	0.2	0.9	0.7	2.5	12.3	9.3
Participation rate	76.7	76.8	0.4	0.1	0.2	0.7
Unemployment rate	3.5	3.5	0.4	0.0	0.3	0.2
Employment rate	74.1	74.1	0.4	0.0	-0.1	0.6
Part-time rate	6.6	6.0	0.6	-0.5	-0.9	-0.6
Women, 25 years and over									
Population	314.7	315.3	...	0.6	3.5	3.6	0.2	1.1	1.2
Labour force	196.1	195.5	1.3	-0.6	1.6	1.0	-0.3	0.8	0.5
Employment	190.3	189.4	1.3	-0.9	1.3	0.3	-0.5	0.7	0.2
Unemployment	5.8	6.0	0.9	0.2	0.2	0.6	3.4	3.4	11.1
Participation rate	62.3	62.0	0.4	-0.3	-0.2	-0.4
Unemployment rate	3.0	3.1	0.5	0.1	0.1	0.3
Employment rate	60.5	60.1	0.4	-0.4	-0.2	-0.6
Part-time rate	22.1	21.3	1.0	-0.8	-2.3	-1.6
Industry									
Industry	502.5	502.6	2.4	0.1	-0.2	2.7	0.0	0.0	0.5
Goods-producing sector									
Goods-producing sector	135.4	134.7	2.2	-0.7	1.3	0.9	-0.5	1.0	0.7
Agriculture	44.3	42.4	1.5	-1.9	-5.1	-4.5	-4.3	-10.7	-9.6
Forestry, fishing, mining, oil and gas	21.1	22.7	1.0	1.6	0.2	0.1	7.6	0.9	0.4
Utilities	4.4	4.9	0.4	0.5	0.9	0.3	11.4	22.5	6.5
Construction	34.9	33.9	1.3	-1.0	3.2	3.0	-2.9	10.4	9.7
Manufacturing	30.7	30.8	1.1	0.1	2.2	2.0	0.3	7.7	6.9
Services-producing sector									
Services-producing sector	367.1	368.0	2.7	0.9	-1.4	1.9	0.2	-0.4	0.5
Trade	81.8	82.1	1.8	0.3	-3.8	1.0	0.4	-4.4	1.2
Transportation and warehousing	24.4	23.7	1.0	-0.7	-1.5	-2.6	-2.9	-6.0	-9.9
Finance, insurance, real estate and leasing	27.3	27.7	0.9	0.4	0.6	1.2	1.5	2.2	4.5
Professional, scientific and technical services	21.6	21.7	0.9	0.1	1.8	1.8	0.5	9.0	9.0
Business, building and other support services	11.8	11.8	0.8	0.0	0.0	-0.8	0.0	0.0	-6.3
Educational services	39.6	40.9	1.3	1.3	2.1	1.8	3.3	5.4	4.6
Health care and social assistance	59.5	60.1	1.4	0.6	-1.0	1.3	1.0	-1.6	2.2
Information, culture and recreation	20.3	19.6	0.9	-0.7	-0.8	-0.6	-3.4	-3.9	-3.0
Accommodation and food services	31.4	31.0	1.2	-0.4	0.2	-1.2	-1.3	0.6	-3.7
Other services	21.7	21.6	1.1	-0.1	-0.1	-0.4	-0.5	-0.5	-1.8
Public administration	27.8	27.9	0.9	0.1	1.2	0.5	0.4	4.5	1.8

1. Average standard error of change in two consecutive months (see "Sampling Errors" in Data Quality for further explanations).

Note(s): Related CANSIM tables 282-0087, 282-0088

Table 4-9
Selected labour force characteristics (seasonally adjusted) — Alberta

	September 2007	October 2007	S.E. ¹	Change from			Percent change from		
				last month	last December	twelve months ago	last month	last December	twelve months ago
in thousands (except rates)									
Both sexes, 15 years and over									
Population	2,759.9	2,764.1	...	4.2	72.0	90.2	0.2	2.7	3.4
Labour force	2,046.2	2,045.9	7.7	-0.3	71.5	84.7	0.0	3.6	4.3
Employment	1,973.3	1,977.1	8.0	3.8	68.7	74.4	0.2	3.6	3.9
Employment full-time	1,660.1	1,656.6	11.0	-3.5	41.1	42.0	-0.2	2.5	2.6
Unemployment	72.9	68.9	5.6	-4.0	2.9	10.4	-5.5	4.4	17.8
Participation rate	74.1	74.0	0.3	-0.1	0.7	0.7
Unemployment rate	3.6	3.4	0.3	-0.2	0.1	0.4
Employment rate	71.5	71.5	0.3	0.0	0.6	0.3
Part-time rate	15.9	16.2	0.5	0.3	0.9	1.1
Both sexes, 15 to 24 years									
Population	505.6	505.7	...	0.1	6.2	9.0	0.0	1.2	1.8
Labour force	358.7	359.6	4.9	0.9	3.3	3.5	0.3	0.9	1.0
Employment	335.0	336.0	5.0	1.0	2.3	1.1	0.3	0.7	0.3
Unemployment	23.7	23.6	3.8	-0.1	1.0	2.4	-0.4	4.4	11.3
Participation rate	70.9	71.1	1.0	0.2	-0.2	-0.6
Unemployment rate	6.6	6.6	1.0	0.0	0.3	0.6
Employment rate	66.3	66.4	1.0	0.1	-0.4	-1.0
Part-time rate	32.1	32.3	1.7	0.3	0.3	-0.2
Men, 25 years and over									
Population	1,131.9	1,134.0	...	2.1	34.2	42.3	0.2	3.1	3.9
Labour force	928.5	928.6	3.5	0.1	36.2	41.4	0.0	4.1	4.7
Employment	902.7	900.7	4.0	-2.0	30.3	29.7	-0.2	3.5	3.4
Unemployment	25.8	27.9	3.0	2.1	5.9	11.8	8.1	26.8	73.3
Participation rate	82.0	81.9	0.3	-0.1	0.8	0.6
Unemployment rate	2.8	3.0	0.3	0.2	0.5	1.2
Employment rate	79.8	79.4	0.4	-0.4	0.3	-0.4
Part-time rate	5.3	5.0	0.5	-0.3	0.7	0.7
Women, 25 years and over									
Population	1,122.3	1,124.3	...	2.0	31.5	38.9	0.2	2.9	3.6
Labour force	759.0	757.7	4.6	-1.3	32.0	39.7	-0.2	4.4	5.5
Employment	735.6	740.3	4.7	4.7	35.9	43.6	0.6	5.1	6.3
Unemployment	23.4	17.4	3.0	-6.0	-4.0	-3.8	-25.6	-18.7	-17.9
Participation rate	67.6	67.4	0.4	-0.2	1.0	1.2
Unemployment rate	3.1	2.3	0.4	-0.8	-0.6	-0.7
Employment rate	65.5	65.8	0.4	0.3	1.3	1.6
Part-time rate	21.4	22.5	0.9	1.1	1.4	2.2
Industry									
Goods-producing sector	1,973.3	1,977.1	8.0	3.8	68.7	74.4	0.2	3.6	3.9
Agriculture	565.5	564.3	7.5	-1.2	21.0	28.5	-0.2	3.9	5.3
Forestry, fishing, mining, oil and gas	58.9	58.6	2.5	-0.3	10.7	11.2	-0.5	22.3	23.6
Utilities	153.9	145.6	4.1	-8.3	2.2	1.8	-5.4	1.5	1.3
Construction	19.9	21.3	1.4	1.4	0.3	3.2	7.0	1.4	17.7
Manufacturing	192.1	195.6	5.0	3.5	13.9	11.4	1.8	7.6	6.2
Manufacturing	140.7	143.1	4.5	2.4	-6.3	0.8	1.7	-4.2	0.6
Services-producing sector	1,407.7	1,412.8	9.5	5.1	47.7	45.9	0.4	3.5	3.4
Trade	294.5	301.3	6.2	6.8	30.0	22.4	2.3	11.1	8.0
Transportation and warehousing	107.3	107.8	3.6	0.5	1.7	2.6	0.5	1.6	2.5
Finance, insurance, real estate and leasing	100.8	98.6	3.5	-2.2	-5.8	1.5	-2.2	-5.6	1.5
Professional, scientific and technical services	140.3	145.7	4.5	5.4	3.1	3.4	3.8	2.2	2.4
Business, building and other support services	75.8	76.5	3.5	0.7	6.2	8.1	0.9	8.8	11.8
Educational services	123.7	123.0	3.9	-0.7	-15.9	-18.4	-0.6	-11.4	-13.0
Health care and social assistance	193.7	193.0	4.4	-0.7	12.1	23.7	-0.4	6.7	14.0
Information, culture and recreation	78.7	75.5	3.6	-3.2	8.8	4.1	-4.1	13.2	5.7
Accommodation and food services	113.1	114.0	4.5	0.9	-4.2	-6.2	0.8	-3.6	-5.2
Other services	97.5	93.2	3.5	-4.3	4.2	0.3	-4.4	4.7	0.3
Public administration	82.3	84.3	3.0	2.0	7.6	4.4	2.4	9.9	5.5

1. Average standard error of change in two consecutive months (see "Sampling Errors" in Data Quality for further explanations).

Note(s): Related CANSIM tables 282-0087, 282-0088

Table 4-10
Selected labour force characteristics (seasonally adjusted) — British Columbia

	September 2007	October 2007	S.E. ¹	Change from			Percent change from		
				last month	last December	twelve months ago	last month	last December	twelve months ago
in thousands (except rates)									
Both sexes, 15 years and over									
Population	3,585.2	3,591.4	...	6.2	53.4	62.5	0.2	1.5	1.8
Labour force	2,369.5	2,376.2	10.0	6.7	35.5	51.1	0.3	1.5	2.2
Employment	2,266.8	2,272.6	10.1	5.8	54.1	57.4	0.3	2.4	2.6
Employment full-time	1,820.0	1,816.0	13.5	-4.0	42.8	49.7	-0.2	2.4	2.8
Unemployment	102.6	103.6	7.2	1.0	-18.6	-6.3	1.0	-15.2	-5.7
Participation rate	66.1	66.2	0.3	0.1	0.0	0.3
Unemployment rate	4.3	4.4	0.3	0.1	-0.8	-0.3
Employment rate	63.2	63.3	0.3	0.1	0.6	0.5
Part-time rate	19.7	20.1	0.5	0.4	0.0	-0.2
Both sexes, 15 to 24 years									
Population	579.4	580.1	...	0.7	2.7	3.0	0.1	0.5	0.5
Labour force	399.8	392.2	5.7	-7.6	7.6	9.8	-1.9	2.0	2.6
Employment	367.6	363.0	5.7	-4.6	15.4	13.0	-1.3	4.4	3.7
Unemployment	32.2	29.3	4.2	-2.9	-7.7	-3.1	-9.0	-20.8	-9.6
Participation rate	69.0	67.6	1.0	-1.4	1.0	1.3
Unemployment rate	8.1	7.5	1.0	-0.6	-2.1	-1.0
Employment rate	63.4	62.6	1.0	-0.8	2.4	2.0
Part-time rate	41.5	40.4	1.8	-1.1	2.3	2.2
Men, 25 years and over									
Population	1,470.0	1,472.8	...	2.8	25.7	30.3	0.2	1.8	2.1
Labour force	1,055.3	1,068.4	5.0	13.1	25.4	28.5	1.2	2.4	2.7
Employment	1,023.0	1,029.4	5.4	6.4	25.0	30.6	0.6	2.5	3.1
Unemployment	32.3	38.9	4.1	6.6	0.3	-2.3	20.4	0.8	-5.6
Participation rate	71.8	72.5	0.3	0.7	0.4	0.4
Unemployment rate	3.1	3.6	0.4	0.5	-0.1	-0.4
Employment rate	69.6	69.9	0.4	0.3	0.5	0.7
Part-time rate	6.9	7.4	0.6	0.5	-1.6	-1.6
Women, 25 years and over									
Population	1,535.8	1,538.5	...	2.7	25.0	29.2	0.2	1.7	1.9
Labour force	914.4	915.6	6.0	1.2	2.5	12.9	0.1	0.3	1.4
Employment	876.3	880.2	5.8	3.9	13.7	13.7	0.4	1.6	1.6
Unemployment	38.1	35.4	4.1	-2.7	-11.2	-0.9	-7.1	-24.0	-2.5
Participation rate	59.5	59.5	0.4	0.0	-0.8	-0.3
Unemployment rate	4.2	3.9	0.4	-0.3	-1.2	-0.1
Employment rate	57.1	57.2	0.4	0.1	-0.1	-0.2
Part-time rate	25.5	26.5	0.9	1.0	0.9	0.5
Industry									
	2,266.8	2,272.6	10.1	5.8	54.1	57.4	0.3	2.4	2.6
Goods-producing sector									
Agriculture	37.9	40.7	2.6	2.8	4.7	6.9	7.4	13.1	20.4
Forestry, fishing, mining, oil and gas	45.0	46.8	2.8	1.8	-1.4	-0.2	4.0	-2.9	-0.4
Utilities	10.6	12.7	1.0	2.1	3.4	2.7	19.8	36.6	27.0
Construction	199.6	194.6	5.5	-5.0	8.1	13.0	-2.5	4.3	7.2
Manufacturing	209.6	204.7	5.4	-4.9	1.5	8.3	-2.3	0.7	4.2
Services-producing sector									
	1,764.2	1,772.9	11.2	8.7	37.6	26.5	0.5	2.2	1.5
Trade	366.3	373.6	7.1	7.3	33.2	28.9	2.0	9.8	8.4
Transportation and warehousing	120.8	122.3	4.5	1.5	5.1	8.3	1.2	4.4	7.3
Finance, insurance, real estate and leasing	143.8	142.6	4.6	-1.2	-5.1	-0.8	-0.8	-3.5	-0.6
Professional, scientific and technical services	162.7	161.8	5.3	-0.9	-2.7	-8.7	-0.6	-1.6	-5.1
Business, building and other support services	103.2	100.1	4.5	-3.1	-8.4	-8.9	-3.0	-7.7	-8.2
Educational services	159.3	157.9	5.0	-1.4	-4.4	-2.1	-0.9	-2.7	-1.3
Health care and social assistance	236.5	243.7	5.4	7.2	4.5	4.8	3.0	1.9	2.0
Information, culture and recreation	113.5	112.2	4.6	-1.3	6.6	2.8	-1.1	6.2	2.6
Accommodation and food services	172.8	171.6	5.6	-1.2	0.8	-4.7	-0.7	0.5	-2.7
Other services	88.5	90.3	4.0	1.8	1.3	0.4	2.0	1.5	0.4
Public administration	96.9	96.6	3.3	-0.3	6.6	6.1	-0.3	7.3	6.7

1. Average standard error of change in two consecutive months (see "Sampling Errors" in Data Quality for further explanations).

Note(s): Related CANSIM tables 282-0087, 282-0088

Table 5-1
Labour force characteristics by census metropolitan area (seasonally adjusted) — 3 month moving average

	September 2007	October 2007	S.E. ¹	Change from			Percent change from		
				last month	last December	twelve months ago	last month	last December	twelve months ago
in thousands (except rates)									
St. John's, Newfoundland and Labrador									
Population	151.8	151.9	...	0.1	0.1	0.3	0.1	0.1	0.2
Labour force	103.3	103.4	0.7	0.1	1.1	-0.4	0.1	1.1	-0.4
Employment	96.6	96.7	0.7	0.1	2.1	1.1	0.1	2.2	1.2
Unemployment	6.7	6.7	0.4	0.0	-1.0	-1.5	0.0	-13.0	-18.3
Participation rate	68.1	68.1	0.5	0.0	0.7	-0.4
Unemployment rate	6.5	6.5	0.4	0.0	-1.0	-1.4
Employment rate	63.6	63.7	0.5	0.1	1.4	0.6
Halifax, Nova Scotia									
Population	313.6	313.8	...	0.2	1.8	2.0	0.1	0.6	0.6
Labour force	222.1	222.4	1.1	0.3	5.0	6.7	0.1	2.3	3.1
Employment	208.2	210.1	1.1	1.9	2.5	5.4	0.9	1.2	2.6
Unemployment	13.8	12.3	0.6	-1.5	2.4	1.3	-10.9	24.2	11.8
Participation rate	70.8	70.9	0.4	0.1	1.2	1.7
Unemployment rate	6.2	5.5	0.3	-0.7	0.9	0.4
Employment rate	66.4	67.0	0.4	0.6	0.5	1.3
Saint John, New Brunswick									
Population	103.9	104.0	...	0.1	0.6	0.6	0.1	0.6	0.6
Labour force	71.1	71.8	0.7	0.7	6.3	6.7	1.0	9.6	10.3
Employment	67.7	68.1	0.7	0.4	6.3	7.0	0.6	10.2	11.5
Unemployment	3.4	3.7	0.3	0.3	0.0	-0.3	8.8	0.0	-7.5
Participation rate	68.4	69.0	0.6	0.6	5.7	6.0
Unemployment rate	4.8	5.2	0.5	0.4	-0.4	-0.9
Employment rate	65.2	65.5	0.6	0.3	5.7	6.4
Saguenay, Quebec									
Population	125.5	125.4	...	-0.1	-0.6	-0.7	-0.1	-0.5	-0.6
Labour force	76.9	76.1	0.7	-0.8	1.7	1.2	-1.0	2.3	1.6
Employment	70.4	69.7	0.7	-0.7	1.8	1.4	-1.0	2.7	2.0
Unemployment	6.5	6.4	0.4	-0.1	-0.2	-0.2	-1.5	-3.0	-3.0
Participation rate	61.3	60.7	0.6	-0.6	1.7	1.3
Unemployment rate	8.5	8.4	0.5	-0.1	-0.5	-0.4
Employment rate	56.1	55.6	0.6	-0.5	1.7	1.4
Québec, Quebec									
Population	605.9	606.3	...	0.4	4.1	5.2	0.1	0.7	0.9
Labour force	412.2	414.6	3.3	2.4	19.1	17.5	0.6	4.8	4.4
Employment	392.7	393.7	3.4	1.0	21.8	19.8	0.3	5.9	5.3
Unemployment	19.5	21.0	1.4	1.5	-2.6	-2.1	7.7	-11.0	-9.1
Participation rate	68.0	68.4	0.5	0.4	2.7	2.3
Unemployment rate	4.7	5.1	0.4	0.4	-0.9	-0.7
Employment rate	64.8	64.9	0.6	0.1	3.1	2.7
Trois-Rivières, Quebec									
Population	120.7	120.7	...	0.0	0.8	1.0	0.0	0.7	0.8
Labour force	76.9	78.0	0.7	1.1	5.4	5.6	1.4	7.4	7.7
Employment	70.7	72.2	0.7	1.5	4.6	5.6	2.1	6.8	8.4
Unemployment	6.3	5.7	0.3	-0.6	0.8	-0.1	-9.5	16.3	-1.7
Participation rate	63.7	64.6	0.6	0.9	4.0	4.1
Unemployment rate	8.2	7.3	0.4	-0.9	0.6	-0.7
Employment rate	58.6	59.8	0.6	1.2	3.4	4.2

See footnotes at the end of the table.

Table 5-1 – continued

Labour force characteristics by census metropolitan area (seasonally adjusted) — 3 month moving average

	September 2007	October 2007	S.E. ¹	Change from			Percent change from		
				last month	last December	twelve months ago	last month	last December	twelve months ago
in thousands (except rates)									
Sherbrooke, Quebec									
Population	137.0	137.1	...	0.1	1.3	1.6	0.1	1.0	1.2
Labour force	88.7	89.9	0.8	1.2	1.0	1.9	1.4	1.1	2.2
Employment	83.3	84.5	0.8	1.2	2.3	3.5	1.4	2.8	4.3
Unemployment	5.4	5.3	0.3	-0.1	-1.4	-1.7	-1.9	-20.9	-24.3
Participation rate	64.7	65.6	0.6	0.9	0.1	0.7
Unemployment rate	6.1	5.9	0.4	-0.2	-1.6	-2.1
Employment rate	60.8	61.6	0.6	0.8	1.1	1.8
Montréal, Quebec									
Population	3,039.8	3,042.1	...	2.3	23.9	30.1	0.1	0.8	1.0
Labour force	2,061.5	2,056.6	7.1	-4.9	16.0	18.7	-0.2	0.8	0.9
Employment	1,915.9	1,909.5	7.5	-6.4	24.1	32.7	-0.3	1.3	1.7
Unemployment	145.6	147.1	4.6	1.5	-8.1	-14.0	1.0	-5.2	-8.7
Participation rate	67.8	67.6	0.2	-0.2	0.0	-0.1
Unemployment rate	7.1	7.2	0.2	0.1	-0.4	-0.7
Employment rate	63.0	62.8	0.2	-0.2	0.3	0.5
Ottawa-Gatineau, Ontario/Quebec									
Population	952.4	953.2	...	0.8	6.3	7.8	0.1	0.7	0.8
Labour force	695.0	697.3	3.3	2.3	31.4	25.3	0.3	4.7	3.8
Employment	658.6	662.4	3.4	3.8	34.2	25.1	0.6	5.4	3.9
Unemployment	36.5	34.9	1.6	-1.6	-2.8	0.2	-4.4	-7.4	0.6
Participation rate	73.0	73.2	0.3	0.2	2.9	2.1
Unemployment rate	5.3	5.0	0.2	-0.3	-0.7	-0.2
Employment rate	69.2	69.5	0.4	0.3	3.2	2.1
Ottawa-Gatineau, Quebec part, Ontario/Quebec									
Population	240.6	241.0	...	0.4	3.8	4.4	0.2	1.6	1.9
Labour force	170.4	172.2	1.2	1.8	-0.1	3.4	1.1	-0.1	2.0
Employment	160.8	163.0	1.2	2.2	1.5	2.7	1.4	0.9	1.7
Unemployment	9.7	9.1	0.6	-0.6	-1.7	0.6	-6.2	-15.7	7.1
Participation rate	70.8	71.5	0.5	0.7	-1.1	0.2
Unemployment rate	5.7	5.3	0.3	-0.4	-1.0	0.3
Employment rate	66.8	67.6	0.5	0.8	-0.5	-0.2
Ottawa-Gatineau, Ontario part, Ontario/Quebec									
Population	711.7	712.2	...	0.5	2.6	3.4	0.1	0.4	0.5
Labour force	524.6	525.2	3.0	0.6	31.5	22.0	0.1	6.4	4.4
Employment	497.8	499.4	3.1	1.6	32.7	22.4	0.3	7.0	4.7
Unemployment	26.8	25.8	1.5	-1.0	-1.2	-0.4	-3.7	-4.4	-1.5
Participation rate	73.7	73.7	0.4	0.0	4.1	2.7
Unemployment rate	5.1	4.9	0.3	-0.2	-0.6	-0.3
Employment rate	69.9	70.1	0.4	0.2	4.3	2.8
Kingston, Ontario									
Population	126.0	126.0	...	0.0	0.1	0.1	0.0	0.1	0.1
Labour force	82.7	81.6	0.7	-1.1	0.6	0.4	-1.3	0.7	0.5
Employment	77.5	76.8	0.8	-0.7	0.0	0.2	-0.9	0.0	0.3
Unemployment	5.2	4.9	0.3	-0.3	0.7	0.3	-5.8	16.7	6.5
Participation rate	65.6	64.8	0.6	-0.8	0.5	0.3
Unemployment rate	6.3	6.0	0.4	-0.3	0.8	0.3
Employment rate	61.5	61.0	0.6	-0.5	0.0	0.2

See footnotes at the end of the table.

Table 5-1 – continued

Labour force characteristics by census metropolitan area (seasonally adjusted) — 3 month moving average

	September 2007	October 2007	S.E. ¹	Change from			Percent change from		
				last month	last December	twelve months ago	last month	last December	twelve months ago
in thousands (except rates)									
Toronto, Ontario									
Population	4,462.1	4,469.7	...	7.6	64.2	77.5	0.2	1.5	1.8
Labour force	3,068.1	3,073.9	9.1	5.8	50.4	70.6	0.2	1.7	2.4
Employment	2,856.1	2,870.3	9.3	14.2	47.8	67.9	0.5	1.7	2.4
Unemployment	212.0	203.6	5.5	-8.4	2.6	2.7	-4.0	1.3	1.3
Participation rate	68.8	68.8	0.2	0.0	0.2	0.4
Unemployment rate	6.9	6.6	0.2	-0.3	0.0	-0.1
Employment rate	64.0	64.2	0.2	0.2	0.1	0.4
Hamilton, Ontario									
Population	592.8	593.3	...	0.5	3.2	4.1	0.1	0.5	0.7
Labour force	401.0	399.4	2.8	-1.6	10.3	6.7	-0.4	2.6	1.7
Employment	379.1	376.9	2.8	-2.2	11.5	9.5	-0.6	3.1	2.6
Unemployment	21.9	22.5	1.3	0.6	-1.3	-2.9	2.7	-5.5	-11.4
Participation rate	67.6	67.3	0.5	-0.3	1.4	0.7
Unemployment rate	5.5	5.6	0.3	0.1	-0.5	-0.9
Employment rate	64.0	63.5	0.5	-0.5	1.6	1.1
Kitchener, Ontario									
Population	377.8	378.3	...	0.5	4.7	5.7	0.1	1.3	1.5
Labour force	262.7	264.1	2.0	1.4	-7.9	-2.1	0.5	-2.9	-0.8
Employment	248.3	249.4	2.2	1.1	-7.9	-2.8	0.4	-3.1	-1.1
Unemployment	14.5	14.6	0.9	0.1	-0.1	0.6	0.7	-0.7	4.3
Participation rate	69.5	69.8	0.5	0.3	-3.0	-1.6
Unemployment rate	5.5	5.5	0.3	0.0	0.1	0.2
Employment rate	65.7	65.9	0.6	0.2	-3.0	-1.8
London, Ontario									
Population	381.6	381.9	...	0.3	2.3	2.9	0.1	0.6	0.8
Labour force	266.2	266.9	1.8	0.7	-0.7	2.8	0.3	-0.3	1.1
Employment	250.0	250.9	1.8	0.9	-0.1	4.5	0.4	0.0	1.8
Unemployment	16.2	16.0	0.9	-0.2	-0.6	-1.7	-1.2	-3.6	-9.6
Participation rate	69.8	69.9	0.5	0.1	-0.6	0.2
Unemployment rate	6.1	6.0	0.3	-0.1	-0.2	-0.7
Employment rate	65.5	65.7	0.5	0.2	-0.4	0.7
Oshawa, Ontario									
Population	282.9	283.5	...	0.6	6.0	7.2	0.2	2.2	2.6
Labour force	194.1	194.7	1.4	0.6	4.6	3.7	0.3	2.4	1.9
Employment	181.4	182.1	1.5	0.7	4.7	4.1	0.4	2.6	2.3
Unemployment	12.8	12.6	0.7	-0.2	-0.1	-0.4	-1.6	-0.8	-3.1
Participation rate	68.6	68.7	0.5	0.1	0.2	-0.4
Unemployment rate	6.6	6.5	0.4	-0.1	-0.2	-0.3
Employment rate	64.1	64.2	0.5	0.1	0.3	-0.2
St. Catharines-Niagara, Ontario									
Population	328.3	328.4	...	0.1	0.8	1.0	0.0	0.2	0.3
Labour force	207.0	210.4	1.7	3.4	9.5	3.7	1.6	4.7	1.8
Employment	190.2	193.7	1.7	3.5	5.6	0.5	1.8	3.0	0.3
Unemployment	16.8	16.7	0.7	-0.1	4.0	3.2	-0.6	31.5	23.7
Participation rate	63.1	64.1	0.5	1.0	2.8	1.0
Unemployment rate	8.1	7.9	0.3	-0.2	1.6	1.4
Employment rate	57.9	59.0	0.5	1.1	1.6	0.0

See footnotes at the end of the table.

Table 5-1 – continued

Labour force characteristics by census metropolitan area (seasonally adjusted) — 3 month moving average

	September 2007	October 2007	S.E. ¹	Change from			Percent change from		
				last month	last December	twelve months ago	last month	last December	twelve months ago
in thousands (except rates)									
Greater Sudbury / Grand Sudbury, Ontario									
Population	132.9	133.0	...	0.1	0.3	0.4	0.1	0.2	0.3
Labour force	87.9	87.1	0.7	-0.8	2.8	2.0	-0.9	3.3	2.4
Employment	82.2	82.1	0.7	-0.1	3.0	3.6	-0.1	3.8	4.6
Unemployment	5.6	4.9	0.3	-0.7	-0.3	-1.7	-12.5	-5.8	-25.8
Participation rate	66.1	65.5	0.6	-0.6	2.0	1.3
Unemployment rate	6.4	5.6	0.4	-0.8	-0.6	-2.2
Employment rate	61.9	61.7	0.6	-0.2	2.1	2.5
Thunder Bay, Ontario									
Population	104.1	104.1	...	0.0	-0.2	-0.2	0.0	-0.2	-0.2
Labour force	68.1	68.5	0.6	0.4	3.2	2.1	0.6	4.9	3.2
Employment	63.6	63.7	0.6	0.1	2.9	2.5	0.2	4.8	4.1
Unemployment	4.5	4.8	0.3	0.3	0.4	-0.5	6.7	9.1	-9.4
Participation rate	65.4	65.8	0.6	0.4	3.2	2.1
Unemployment rate	6.6	7.0	0.4	0.4	0.3	-1.0
Employment rate	61.1	61.2	0.6	0.1	2.9	2.5
Windsor, Ontario									
Population	271.9	272.0	...	0.1	0.8	1.1	0.0	0.3	0.4
Labour force	173.2	175.3	1.5	2.1	-4.5	-8.4	1.2	-2.5	-4.6
Employment	156.2	158.5	1.5	2.3	-5.1	-8.9	1.5	-3.1	-5.3
Unemployment	17.1	16.8	0.8	-0.3	0.6	0.5	-1.8	3.7	3.1
Participation rate	63.7	64.4	0.6	0.7	-1.9	-3.4
Unemployment rate	9.9	9.6	0.4	-0.3	0.6	0.7
Employment rate	57.4	58.3	0.6	0.9	-2.0	-3.5
Winnipeg, Manitoba									
Population	577.2	577.7	...	0.5	5.1	5.5	0.1	0.9	1.0
Labour force	407.7	409.0	1.4	1.3	7.3	6.4	0.3	1.8	1.6
Employment	390.9	391.2	1.4	0.3	8.6	6.4	0.1	2.2	1.7
Unemployment	16.7	17.8	0.8	1.1	-1.3	0.0	6.6	-6.8	0.0
Participation rate	70.6	70.8	0.2	0.2	0.6	0.4
Unemployment rate	4.1	4.4	0.2	0.3	-0.4	0.0
Employment rate	67.7	67.7	0.2	0.0	0.9	0.5
Regina, Saskatchewan									
Population	163.5	163.8	...	0.3	2.5	2.6	0.2	1.5	1.6
Labour force	113.8	114.0	0.7	0.2	-3.4	-3.8	0.2	-2.9	-3.2
Employment	107.0	108.1	0.7	1.1	-4.1	-4.0	1.0	-3.7	-3.6
Unemployment	6.8	5.9	0.3	-0.9	0.7	0.2	-13.2	13.5	3.5
Participation rate	69.6	69.6	0.4	0.0	-3.2	-3.5
Unemployment rate	6.0	5.2	0.3	-0.8	0.8	0.4
Employment rate	65.4	66.0	0.4	0.6	-3.6	-3.5
Saskatoon, Saskatchewan									
Population	191.4	191.8	...	0.4	3.0	3.3	0.2	1.6	1.8
Labour force	141.2	142.1	0.8	0.9	3.9	7.8	0.6	2.8	5.8
Employment	135.2	136.3	0.9	1.1	2.7	7.0	0.8	2.0	5.4
Unemployment	6.0	5.8	0.4	-0.2	1.3	0.8	-3.3	28.9	16.0
Participation rate	73.8	74.1	0.4	0.3	0.9	2.9
Unemployment rate	4.2	4.1	0.3	-0.1	0.8	0.4
Employment rate	70.6	71.1	0.5	0.5	0.3	2.5

See footnotes at the end of the table.

Table 5-1 – continued

Labour force characteristics by census metropolitan area (seasonally adjusted) — 3 month moving average

	September 2007	October 2007	S.E. ¹	Change from			Percent change from		
				last month	last December	twelve months ago	last month	last December	twelve months ago
in thousands (except rates)									
Calgary, Alberta									
Population	929.0	931.1	...	2.1	28.7	36.2	0.2	3.2	4.0
Labour force	708.9	708.2	3.2	-0.7	15.3	19.5	-0.1	2.2	2.8
Employment	686.9	686.6	3.3	-0.3	11.7	19.4	0.0	1.7	2.9
Unemployment	22.0	21.6	1.4	-0.4	3.6	0.1	-1.8	20.0	0.5
Participation rate	76.3	76.1	0.4	-0.2	-0.7	-0.9
Unemployment rate	3.1	3.0	0.2	-0.1	0.4	-0.1
Employment rate	73.9	73.7	0.4	-0.2	-1.1	-0.9
Edmonton, Alberta									
Population	870.6	872.1	...	1.5	21.7	28.0	0.2	2.6	3.3
Labour force	623.5	625.8	3.1	2.3	28.9	35.4	0.4	4.8	6.0
Employment	598.0	599.1	3.2	1.1	24.4	32.6	0.2	4.2	5.8
Unemployment	25.6	26.7	1.4	1.1	4.5	2.9	4.3	20.3	12.2
Participation rate	71.6	71.8	0.4	0.2	1.6	1.9
Unemployment rate	4.1	4.3	0.2	0.2	0.6	0.3
Employment rate	68.7	68.7	0.4	0.0	1.1	1.6
Abbotsford, British Columbia									
Population	131.7	131.9	...	0.2	2.3	2.9	0.2	1.8	2.2
Labour force	88.6	88.0	0.7	-0.6	-0.2	1.7	-0.7	-0.2	2.0
Employment	84.7	83.9	0.7	-0.8	-0.4	1.2	-0.9	-0.5	1.5
Unemployment	3.9	4.1	0.3	0.2	0.2	0.4	5.1	5.1	10.8
Participation rate	67.3	66.7	0.5	-0.6	-1.4	-0.2
Unemployment rate	4.4	4.7	0.3	0.3	0.3	0.4
Employment rate	64.3	63.6	0.5	-0.7	-1.4	-0.5
Vancouver, British Columbia									
Population	1,902.8	1,906.6	...	3.8	31.4	36.9	0.2	1.7	2.0
Labour force	1,267.8	1,269.2	4.8	1.4	10.4	12.2	0.1	0.8	1.0
Employment	1,220.4	1,217.7	4.8	-2.7	17.5	13.2	-0.2	1.5	1.1
Unemployment	47.3	51.5	2.2	4.2	-7.1	-1.1	8.9	-12.1	-2.1
Participation rate	66.6	66.6	0.3	0.0	-0.5	-0.6
Unemployment rate	3.7	4.1	0.2	0.4	-0.6	-0.1
Employment rate	64.1	63.9	0.3	-0.2	-0.1	-0.5
Victoria, British Columbia									
Population	283.5	283.8	...	0.3	3.3	4.2	0.1	1.2	1.5
Labour force	190.7	192.5	1.4	1.8	7.1	10.2	0.9	3.8	5.6
Employment	183.4	186.3	1.5	2.9	7.5	11.2	1.6	4.2	6.4
Unemployment	7.3	6.2	0.5	-1.1	-0.4	-1.0	-15.1	-6.1	-13.9
Participation rate	67.3	67.8	0.5	0.5	1.7	2.6
Unemployment rate	3.8	3.2	0.3	-0.6	-0.4	-0.7
Employment rate	64.7	65.6	0.5	0.9	1.9	3.0

1. Average standard error of change in two consecutive months (see "Sampling Errors" in Data Quality for further explanations).

Note(s): Related CANSIM table 282-0090

Table 5-2
Labour force characteristics by census metropolitan area (seasonally adjusted) — Monthly

	September 2007	October 2007	S.E. ¹	Change from			Percent change from		
				last month	last December	twelve months ago	last month	last December	twelve months ago
in thousands (except rates)									
Montréal, Quebec									
Population	3,042.1	3,044.6	...	2.5	23.6	29.2	0.1	0.8	1.0
Labour force	2,062.6	2,045.6	14.7	-17.0	18.3	-1.8	-0.8	0.9	-0.1
Employment	1,917.2	1,902.1	15.2	-15.1	22.3	12.5	-0.8	1.2	0.7
Unemployment	145.5	143.5	11.2	-2.0	-3.9	-14.3	-1.4	-2.6	-9.1
Participation rate	67.8	67.2	0.5	-0.6	0.1	-0.7
Unemployment rate	7.1	7.0	0.5	-0.1	-0.3	-0.7
Employment rate	63.0	62.5	0.5	-0.5	0.3	-0.2
Toronto, Ontario									
Population	4,469.8	4,477.6	...	7.8	65.9	78.5	0.2	1.5	1.8
Labour force	3,053.0	3,088.9	19.6	35.9	39.7	77.1	1.2	1.3	2.6
Employment	2,852.8	2,889.7	19.2	36.9	33.1	79.5	1.3	1.2	2.8
Unemployment	200.2	199.2	13.8	-1.0	6.6	-2.5	-0.5	3.4	-1.2
Participation rate	68.3	69.0	0.4	0.7	-0.1	0.5
Unemployment rate	6.6	6.4	0.4	-0.2	0.1	-0.3
Employment rate	63.8	64.5	0.4	0.7	-0.3	0.6
Vancouver, British Columbia									
Population	1,906.7	1,910.4	...	3.7	32.7	37.9	0.2	1.7	2.0
Labour force	1,265.6	1,275.3	10.1	9.7	18.0	10.6	0.8	1.4	0.8
Employment	1,212.3	1,217.8	10.1	5.5	25.7	4.9	0.5	2.2	0.4
Unemployment	53.4	57.5	5.7	4.1	-7.6	5.7	7.7	-11.7	11.0
Participation rate	66.4	66.8	0.5	0.4	-0.2	-0.7
Unemployment rate	4.2	4.5	0.4	0.3	-0.7	0.4
Employment rate	63.6	63.7	0.5	0.1	0.2	-1.1

1. Average standard error of change in two consecutive months (see "Sampling Errors" in Data Quality for further explanations).

Note(s): Related CANSIM table 282-0091

Table 6-1

Labour force characteristics by province and economic region¹, unadjusted for seasonality, 3 month moving average ending in October 2006 and October 2007

	Population	Labour force			Participation rate	Unemployment rate	Employment rate
		Labour force	Employment	Unemployment			
	in thousands						
Canada ²							
2006	26,265.6	17,746.9	16,660.4	1,086.5	67.6	6.1	63.4
2007	26,631.6	18,095.4	17,063.5	1,031.8	67.9	5.7	64.1
Newfoundland and Labrador							
2006	427.1	258.8	225.7	33.1	60.6	12.8	52.8
2007	423.4	256.2	225.0	31.1	60.5	12.1	53.1
Avalon Peninsula [1010]							
2006	210.0	135.3	120.9	14.4	64.4	10.6	57.6
2007	209.6	133.7	121.8	11.9	63.8	8.9	58.1
South Coast-Burin Peninsula [1020]							
2006	33.5	18.7	15.1	3.6	55.8	19.3	45.1
2007	32.7	16.1	13.1	3.0	49.2	18.6	40.1
West Coast-Northern Peninsula-Labrador [1030]							
2006	88.3	55.2	47.7	7.6	62.5	13.8	54.0
2007	87.4	53.6	46.3	7.3	61.3	13.6	53.0
Notre Dame-Central Bonavista Bay [1040]							
2006	95.3	49.6	42.0	7.6	52.0	15.3	44.1
2007	93.7	52.7	43.8	8.9	56.2	16.9	46.7
Prince Edward Island							
2006	112.5	78.2	71.6	6.6	69.5	8.4	63.6
2007	113.6	78.9	72.8	6.1	69.5	7.7	64.1
Nova Scotia							
2006	763.1	483.0	447.4	35.6	63.3	7.4	58.6
2007	764.8	489.7	452.9	36.8	64.0	7.5	59.2
Cape Breton [1210]							
2006	116.8	64.6	56.5	8.1	55.3	12.5	48.4
2007	116.1	61.2	54.1	7.1	52.7	11.6	46.6
North Shore [1220]							
2006	131.0	80.4	73.2	7.2	61.4	9.0	55.9
2007	131.0	80.4	72.7	7.7	61.4	9.6	55.5
Annapolis Valley [1230]							
2006	99.8	60.6	56.2	4.4	60.7	7.3	56.3
2007	100.4	63.2	58.1	5.1	62.9	8.1	57.9
Southern [1240]							
2006	103.7	61.5	55.7	5.8	59.3	9.4	53.7
2007	103.5	61.4	56.1	5.3	59.3	8.6	54.2
Halifax [1250]							
2006	311.8	216.0	205.8	10.2	69.3	4.7	66.0
2007	313.8	223.4	211.9	11.5	71.2	5.1	67.5
New Brunswick							
2006	611.2	390.2	359.8	30.3	63.8	7.8	58.9
2007	614.0	400.6	371.3	29.3	65.2	7.3	60.5
Campbellton-Miramichi [1310]							
2006	136.3	79.8	70.5	9.3	58.5	11.7	51.7
2007	135.8	79.4	70.5	8.9	58.5	11.2	51.9
Moncton-Richibucto [1320]							
2006	161.7	106.2	98.7	7.5	65.7	7.1	61.0
2007	163.6	109.9	103.7	6.2	67.2	5.6	63.4
Saint John-St. Stephen [1330]							
2006	141.4	88.3	82.8	5.4	62.4	6.1	58.6
2007	142.2	95.8	89.9	5.9	67.4	6.2	63.2

See footnotes at the end of the table.

Table 6-1 – continued

Labour force characteristics by province and economic region¹, unadjusted for seasonality, 3 month moving average ending in October 2006 and October 2007

	Population	Labour force			Participation rate	Unemployment rate	Employment rate
		Labour force	Employment	Unemployment			
in thousands							
Fredericton-Oromocto [1340]							
2006	103.7	71.0	66.1	4.9	68.5	6.9	63.7
2007	104.3	72.8	67.5	5.3	69.8	7.3	64.7
Edmundston-Woodstock [1350]							
2006	68.1	44.9	41.7	3.2	65.9	7.1	61.2
2007	68.1	42.8	39.7	3.0	62.8	7.0	58.3
Quebec							
2006	6,266.5	4,124.1	3,819.6	304.5	65.8	7.4	61.0
2007	6,325.9	4,185.7	3,910.5	275.2	66.2	6.6	61.8
Gaspésie-Îles-de-la-Madeleine [2410]							
2006	80.8	42.6	36.2	6.4	52.7	15.0	44.8
2007	80.9	42.4	36.7	5.7	52.4	13.4	45.4
Bas-Saint-Laurent [2415]							
2006	167.2	103.7	96.3	7.4	62.0	7.1	57.6
2007	167.4	99.8	93.3	6.4	59.6	6.4	55.7
Capitale-Nationale [2420]							
2006	561.0	360.9	341.3	19.6	64.3	5.4	60.8
2007	564.8	378.4	362.3	16.1	67.0	4.3	64.1
Chaudière-Appalaches [2425]							
2006	325.6	219.4	208.3	11.2	67.4	5.1	64.0
2007	328.0	220.2	210.3	9.9	67.1	4.5	64.1
Estrie [2430]							
2006	246.9	157.8	144.1	13.7	63.9	8.7	58.4
2007	249.2	159.5	150.6	9.0	64.0	5.6	60.4
Centre-du-Québec [2433]							
2006	184.2	125.3	118.4	7.0	68.0	5.6	64.3
2007	185.5	119.8	113.7	6.1	64.6	5.1	61.3
Montérégie [2435]							
2006	1,112.9	757.7	701.9	55.8	68.1	7.4	63.1
2007	1,128.2	761.5	714.1	47.4	67.5	6.2	63.3
Montréal [2440]							
2006	1,586.4	1,057.4	959.5	97.9	66.7	9.3	60.5
2007	1,592.2	1,055.8	968.6	87.1	66.3	8.2	60.8
Laval [2445]							
2006	305.5	207.7	195.0	12.7	68.0	6.1	63.8
2007	310.1	218.7	210.2	8.6	70.5	3.9	67.8
Lanaudière [2450]							
2006	345.7	230.8	220.2	10.6	66.8	4.6	63.7
2007	355.1	236.8	216.9	19.9	66.7	8.4	61.1
Laurentides [2455]							
2006	417.9	267.2	250.0	17.2	63.9	6.4	59.8
2007	427.5	301.1	283.2	17.9	70.4	5.9	66.2
Outaouais [2460]							
2006	286.2	198.2	188.3	9.9	69.3	5.0	65.8
2007	291.1	202.3	190.8	11.5	69.5	5.7	65.5
Abitibi-Témiscamingue [2465]							
2006	115.5	75.0	68.8	6.2	64.9	8.3	59.6
2007	115.6	72.9	66.9	6.0	63.1	8.2	57.9
Mauricie [2470]							
2006	216.7	127.6	116.5	11.1	58.9	8.7	53.8
2007	217.5	126.0	115.8	10.2	57.9	8.1	53.2

See footnotes at the end of the table.

Table 6-1 – continued

Labour force characteristics by province and economic region¹, unadjusted for seasonality, 3 month moving average ending in October 2006 and October 2007

	Population	Labour force			Participation rate	Unemployment rate	Employment rate
		Labour force	Employment	Unemployment			
in thousands							
Saguenay-Lac-Saint-Jean [2475]							
2006	224.4	135.8	121.5	14.3	60.5	10.5	54.1
2007	223.6	137.8	127.9	9.8	61.6	7.1	57.2
Côte-Nord and Nord-du-Québec [2480, 2490]							
2006	89.6	56.9	53.4	3.5	63.5	6.2	59.6
2007	89.3	52.7	49.1	3.6	59.0	6.8	55.0
Ontario							
2006	10,259.7	6,974.3	6,525.4	448.9	68.0	6.4	63.6
2007	10,391.1	7,095.9	6,661.4	434.5	68.3	6.1	64.1
Ottawa [3510]							
2006	979.9	671.0	632.4	38.6	68.5	5.8	64.5
2007	986.1	704.9	666.1	38.8	71.5	5.5	67.5
Kingston-Pembroke [3515]							
2006	358.1	215.5	202.0	13.5	60.2	6.3	56.4
2007	359.4	235.3	224.3	11.0	65.5	4.7	62.4
Muskoka-Kawarthas [3520]							
2006	306.8	196.3	185.1	11.1	64.0	5.7	60.3
2007	309.6	191.8	182.0	9.8	62.0	5.1	58.8
Toronto [3530]							
2006	4,628.2	3,167.5	2,948.3	219.2	68.4	6.9	63.7
2007	4,715.9	3,248.0	3,030.2	217.8	68.9	6.7	64.3
Kitchener-Waterloo-Barrie [3540]							
2006	953.8	698.8	663.4	35.3	73.3	5.1	69.6
2007	971.5	697.4	660.5	36.9	71.8	5.3	68.0
Hamilton-Niagara Peninsula [3550]							
2006	1,125.0	746.0	699.7	46.3	66.3	6.2	62.2
2007	1,134.8	761.4	715.7	45.7	67.1	6.0	63.1
London [3560]							
2006	507.2	356.2	334.9	21.3	70.2	6.0	66.0
2007	511.6	359.9	338.5	21.3	70.3	5.9	66.2
Windsor-Sarnia [3570]							
2006	523.3	358.4	331.7	26.7	68.5	7.4	63.4
2007	525.1	344.9	321.3	23.6	65.7	6.8	61.2
Stratford-Bruce Peninsula [3580]							
2006	246.8	172.0	163.9	8.1	69.7	4.7	66.4
2007	247.5	163.0	157.0	6.0	65.9	3.7	63.4
Northeast [3590]							
2006	453.5	278.7	257.4	21.3	61.5	7.6	56.8
2007	453.8	277.0	261.7	15.3	61.0	5.5	57.7
Northwest [3595]							
2006	177.1	113.9	106.5	7.4	64.3	6.5	60.1
2007	175.9	112.4	103.9	8.5	63.9	7.6	59.1
Manitoba							
2006	893.0	618.6	591.8	26.9	69.3	4.3	66.3
2007	900.7	628.2	602.3	25.8	69.7	4.1	66.9
Southeast [4610]							
2006	75.0	53.6	51.7	2.0	71.5	3.7	68.9
2007	76.9	53.9	52.5	1.4	70.1	2.6	68.3
South Central [4620]							
2006	42.5	28.2	27.1	1.0	66.4	3.5	63.8
2007	43.2	29.7	29.0	0.7	68.7	2.4	67.1

See footnotes at the end of the table.

Table 6-1 – continued

Labour force characteristics by province and economic region¹, unadjusted for seasonality, 3 month moving average ending in October 2006 and October 2007

	Population	Labour force			Participation rate	Unemployment rate	Employment rate
		Labour force	Employment	Unemployment			
in thousands							
Southwest [4630]							
2006	81.8	52.3	50.5	1.9	63.9	3.6	61.7
2007	82.3	52.7	50.9	1.9	64.0	3.6	61.8
North Central [4640]							
2006	35.5	22.8	22.3	x	64.2	x	62.8
2007	35.7	23.7	22.9	0.8	66.4	3.4	64.1
Winnipeg [4650]							
2006	529.5	373.6	355.4	18.2	70.6	4.9	67.1
2007	533.8	379.1	361.3	17.8	71.0	4.7	67.7
Interlake [4660]							
2006	68.8	46.5	45.4	1.1	67.6	2.4	66.0
2007	69.9	47.5	46.0	1.5	68.0	3.2	65.8
Parklands and North [4670, 4680]							
2006	59.9	41.6	39.3	2.3	69.4	5.5	65.6
2007	59.1	41.5	39.8	1.7	70.2	4.1	67.3
Saskatchewan							
2006	746.1	523.5	500.8	22.7	70.2	4.3	67.1
2007	753.6	526.7	504.5	22.3	69.9	4.2	66.9
Regina-Moose Mountain [4710]							
2006	219.1	158.0	151.4	6.7	72.1	4.2	69.1
2007	221.9	155.3	148.3	7.0	70.0	4.5	66.8
Swift Current-Moose Jaw [4720]							
2006	82.4	58.0	55.4	2.7	70.4	4.7	67.2
2007	82.8	56.7	54.6	2.0	68.5	3.5	65.9
Saskatoon-Biggar [4730]							
2006	231.0	164.5	158.3	6.2	71.2	3.8	68.5
2007	234.4	172.4	166.2	6.2	73.5	3.6	70.9
Yorkton-Melville [4740]							
2006	64.4	42.2	40.6	1.7	65.5	4.0	63.0
2007	64.1	44.1	42.3	1.9	68.8	4.3	66.0
Prince Albert and Northern [4750, 4760]							
2006	149.1	100.6	95.2	5.4	67.5	5.4	63.8
2007	150.4	98.2	93.1	5.1	65.3	5.2	61.9
Alberta							
2006	2,662.4	1,967.5	1,898.0	69.4	73.9	3.5	71.3
2007	2,759.5	2,051.8	1,980.3	71.6	74.4	3.5	71.8
Lethbridge-Medicine Hat [4810]							
2006	201.8	143.3	138.9	4.4	71.0	3.1	68.8
2007	207.8	142.0	136.4	5.6	68.3	3.9	65.6
Camrose-Drumheller [4820]							
2006	151.7	112.2	108.5	3.8	74.0	3.4	71.5
2007	155.4	115.7	113.0	2.8	74.5	2.4	72.7
Calgary [4830]							
2006	962.6	742.2	717.7	24.6	77.1	3.3	74.6
2007	1,003.2	764.8	740.7	24.0	76.2	3.1	73.8
Banff-Jasper-Rocky Mountain House [4840]							
2006	66.4	51.6	50.0	1.6	77.7	3.1	75.3
2007	68.1	53.9	52.8	x	79.1	x	77.5
Red Deer [4850]							
2006	137.3	102.4	99.2	3.2	74.6	3.1	72.3
2007	143.4	109.9	106.7	3.1	76.6	2.8	74.4

See footnotes at the end of the table.

Table 6-1 – continued

Labour force characteristics by province and economic region¹, unadjusted for seasonality, 3 month moving average ending in October 2006 and October 2007

	Population	Labour force			Participation rate	Unemployment rate	Employment rate
		Labour force	Employment	Unemployment			
in thousands							
Edmonton [4860]							
2006	876.2	617.3	593.5	23.8	70.5	3.9	67.7
2007	905.6	653.7	626.7	27.0	72.2	4.1	69.2
Athabasca-Grande Prairie-Peace River [4870]							
2006	178.5	133.6	128.7	4.9	74.8	3.7	72.1
2007	184.3	138.7	133.9	4.8	75.3	3.5	72.7
Wood Buffalo-Cold Lake [4880]							
2006	88.0	64.9	61.6	3.3	73.8	5.1	70.0
2007	91.7	73.3	70.1	3.2	79.9	4.4	76.4
British Columbia							
2006	3,524.0	2,328.8	2,220.5	108.3	66.1	4.7	63.0
2007	3,585.0	2,381.6	2,282.5	99.1	66.4	4.2	63.7
Vancouver Island and Coast [5910]							
2006	614.5	390.5	370.2	20.2	63.5	5.2	60.2
2007	625.0	402.0	386.5	15.5	64.3	3.9	61.8
Lower Mainland-Southwest [5920]							
2006	2,128.1	1,423.5	1,362.1	61.4	66.9	4.3	64.0
2007	2,170.6	1,451.6	1,390.9	60.7	66.9	4.2	64.1
Thompson-Okanagan [5930]							
2006	416.0	271.3	258.5	12.8	65.2	4.7	62.1
2007	424.7	270.4	260.4	9.9	63.7	3.7	61.3
Kootenay [5940]							
2006	122.1	74.4	70.3	4.1	60.9	5.5	57.6
2007	122.2	84.3	79.5	4.9	69.0	5.8	65.1
Cariboo [5950]							
2006	125.5	87.0	82.4	4.6	69.3	5.3	65.7
2007	125.2	90.9	86.6	4.3	72.6	4.7	69.2
North Coast and Nechako [5960, 5970]							
2006	67.1	45.7	42.4	3.3	68.1	7.2	63.2
2007	65.9	45.5	42.3	3.3	69.0	7.3	64.2
Northeast [5980]							
2006	50.8	36.4	34.6	1.9	71.7	5.2	68.1
2007	51.4	36.9	36.3	x	71.8	x	70.6

1. For geographic descriptions of economic regions, refer to the Guide to the Labour Force Survey (catalogue number 71-543-GIE).

2. Estimates for Canada are a sum of the provincial totals and exclude estimates from Yukon Territory, Northwest Territories and Nunavut.

Note(s): Related CANSIM table 282-0054.

Table 6-2
Labour force characteristics by territories, unadjusted for seasonality, 3 month moving average ending in October 2006 and October 2007

	Population	Labour force			Participation rate	Unemployment rate	Employment rate
		Labour force	Employment	Unemployment			
in thousands							
Yukon Territory ¹							
2006	21.5	16.0	15.4	0.6	74.4	3.8	71.6
2007	21.3	16.1	15.3	0.8	75.6	5.0	71.8
Northwest Territories ²							
2006	30.9	23.7	22.6	1.1	76.7	4.6	73.1
2007	30.8	24.1	22.7	1.3	78.2	5.4	73.7
Nunavut - 10 largest communities ³							
2006	13.9	9.7	8.5	1.2	69.7	12.0	61.3
2007	14.2	10.0	9.2	0.8	69.9	8.0	64.3

1. Since 1992, the Labour force survey has been administered in the Yukon Territory, using an alternative methodology that accommodates some of the operational difficulties inherent to remote locales. These estimates are not included in national totals.
2. Since 2001, the Labour force survey has been administered in the Northwest Territories, using an alternative methodology that accommodates some of the operational difficulties inherent to remote locales. These estimates are not included in national totals.
3. Since 2004, the Labour force survey has been administered in Nunavut, using an alternative methodology that accommodates some of the operational difficulties inherent to remote locales. These estimates are not included in national totals. The 10 largest communities are Iqaluit, Cambridge Bay, Baker Lake, Arviat, Rankin Inlet, Kugluktuk, Pond Inlet, Cape Dorset, Pangnirtung, Igloolik.

Note(s): Related CANSIM table 282-0054.

Table 7
Average usual hours and wages of employees by selected characteristics, Canada, unadjusted for seasonality

	Employees				Full-time			Part-time		
	Number	Average weekly hours	Average weekly wages	Average hourly wages	Number	Average weekly hours	Average weekly wages	Number	Average weekly hours	Average weekly wages
	thousands		dollars		thousands		dollars	thousands		dollars
October 2007										
15 years and over	14,410.6	35.5	763.91	20.74	11,775.2	39.6	877.16	2,635.5	17.2	257.90
15 to 24 years	2,443.6	27.5	356.43	12.07	1,251.7	39.3	551.69	1,191.9	15.0	151.38
25 years and over	11,967.0	37.2	847.11	22.51	10,523.5	39.7	915.87	1,443.6	18.9	345.85
Men	7,287.9	38.2	880.88	22.49	6,483.3	40.9	962.03	804.5	16.3	226.94
Women	7,122.8	32.8	644.22	18.95	5,291.9	38.1	773.18	1,830.9	17.5	271.50
Union coverage										
Union coverage	4,567.2	35.9	863.33	23.76	3,901.7	38.8	945.02	665.5	18.9	384.38
No union coverage	9,843.5	35.4	717.77	19.34	7,873.5	40.1	843.53	1,970.0	16.6	215.17
Job permanency										
Permanent	12,562.1	36.5	802.68	21.40	10,730.3	39.6	891.83	1,831.8	18.2	280.44
Temporary	1,848.6	28.9	500.44	16.28	1,044.9	39.8	726.50	803.7	14.7	206.53
Occupation										
Management	1,035.6	40.1	1,284.31	32.18	1,004.9	40.7	1,308.33	30.7	19.8	497.85
Business, finance and administrative	2,809.8	35.1	705.06	19.65	2,366.5	38.3	783.59	443.3	17.7	285.89
Natural and applied sciences	1,058.7	38.5	1,109.92	28.81	1,020.1	39.3	1,136.12	38.5	17.1	416.60
Health	861.5	33.6	833.01	24.65	657.0	37.8	941.66	204.5	20.1	483.84
Social science, education, government service and religion	1,304.7	34.2	919.70	26.67	1,047.0	38.4	1,042.93	257.8	16.9	419.15
Art, culture, recreation and sport	352.5	30.3	694.81	21.21	236.1	38.9	925.53	116.4	13.0	226.80
Sales and service	3,668.2	30.8	464.21	13.98	2,320.2	38.9	628.89	1,348.0	16.9	180.77
Trades, transport and equipment operators	2,125.4	40.5	842.60	20.59	2,000.6	41.9	879.59	124.8	17.9	249.66
Occupations unique to primary industry	301.1	41.5	776.03	17.88	265.4	45.2	859.30	35.7	13.6	157.19
Occupations unique to processing, manufacturing and utilities	893.2	39.4	708.02	17.84	857.5	40.3	728.44	35.7	16.5	217.86
October 2006										
15 years and over	14,145.3	35.6	733.76	19.92	11,611.8	39.6	839.30	2,533.5	17.3	250.08
15 to 24 years	2,406.4	28.1	348.29	11.56	1,294.4	39.2	521.21	1,112.0	15.1	147.00
25 years and over	11,739.0	37.1	812.78	21.64	10,317.4	39.6	879.20	1,421.5	19.0	330.71
Men	7,200.6	38.3	844.73	21.54	6,455.2	40.8	917.27	745.3	16.4	216.44
Women	6,944.8	32.8	618.71	18.24	5,156.6	38.0	741.68	1,788.2	17.7	264.10
Union coverage										
Union coverage	4,472.0	35.9	836.40	23.02	3,836.2	38.7	913.23	635.9	18.9	372.91
No union coverage	9,673.3	35.4	686.32	18.49	7,775.7	40.0	802.82	1,897.6	16.7	208.92
Job permanency										
Permanent	12,366.9	36.5	769.65	20.53	10,586.1	39.6	853.91	1,780.8	18.2	268.76
Temporary	1,778.5	29.4	484.25	15.71	1,025.8	39.9	688.52	752.7	15.0	205.87
Occupation										
Management	1,015.7	40.2	1,260.54	31.33	984.3	40.9	1,287.30	31.4	19.1	422.31
Business, finance and administrative	2,753.3	35.2	686.42	19.05	2,339.1	38.3	760.13	414.2	17.8	270.10
Natural and applied sciences	1,002.7	38.7	1,085.01	27.98	967.7	39.4	1,109.52	35.0	19.1	407.43
Health	854.0	33.0	771.57	23.31	625.5	37.7	886.23	228.5	20.1	457.68
Social science, education, government service and religion	1,277.3	33.7	871.09	25.77	1,010.6	38.2	994.89	266.6	16.8	401.84
Art, culture, recreation and sport	295.1	31.0	710.40	21.24	207.6	38.7	926.60	87.6	12.7	198.02
Sales and service	3,603.1	30.9	441.64	13.32	2,326.2	38.6	588.20	1,276.9	17.0	174.66
Trades, transport and equipment operators	2,053.8	40.6	809.92	19.79	1,940.8	41.9	843.06	113.1	17.8	241.16
Occupations unique to primary industry	309.6	43.1	723.52	16.40	276.2	46.7	791.82	33.4	14.0	159.10
Occupations unique to processing, manufacturing and utilities	980.8	39.1	674.24	17.05	933.9	40.2	697.87	46.8	17.2	203.06

Note(s): Related CANSIM tables 282-0023, 282-0069, 282-0073

Table 8
Regional unemployment rates used by the Employment Insurance Program,¹ seasonally adjusted, 3 month moving average

Region	Effective from November 4, 2007 to December 8, 2007
	Percent
Newfoundland and Labrador	
01. St. John's	6.4
02. Newfoundland and Labrador	19.0
Prince Edward Island	
03. Prince Edward Island	10.1
Nova Scotia	
04. Eastern Nova Scotia	13.5
05. Western Nova Scotia	9.8
06. Halifax	5.5
New Brunswick	
07. Fredericton-Moncton-Saint John	5.5
08. Madawaska-Charlotte ²	10.3
09. Restigouche-Albert	13.9
Quebec	
10. Gaspésie-Îles-de-la-Madeleine	16.7
11. Québec	5.2
12. Trois-Rivières	7.5
13. South Central Quebec	5.1
14. Sherbrooke	6.0
15. Montérégie	7.6
16. Montréal	7.3
17. Central Quebec	7.3
18. Northwestern Quebec	11.6
19. Bas-Saint-Laurent-Côte-Nord ³	10.9
20. Gatineau	5.3
21. Saguenay	8.4
Ontario	
22. Ottawa	5.0
23. Eastern Ontario	7.2
24. Kingston	6.2
25. Central Ontario	5.1
26. Oshawa	6.5
27. Toronto	6.6
28. Hamilton	5.7
29. St. Catharines	7.9
30. London	5.9
31. Niagara	7.3
32. Windsor	9.2
33. Kitchener	5.5
34. Huron	5.7
35. South Central Ontario	5.0
36. Sudbury	5.4
37. Thunder Bay	7.0
38. Northern Ontario	9.9
Manitoba	
39. Winnipeg	4.5
40. Southern Manitoba	4.7
41. Northern Manitoba	25.4
Saskatchewan	
42. Regina	5.1
43. Saskatoon	4.1
44. Southern Saskatchewan	6.1
45. Northern Saskatchewan	14.6

See footnotes at the end of the table.

Table 8 – continued

Regional unemployment rates used by the Employment Insurance Program,¹ seasonally adjusted, 3 month moving average

Region	Effective from November 4, 2007 to December 8, 2007
	Percent
Alberta	
46. Calgary	3.1
47. Edmonton	4.4
48. Northern Alberta	7.3
49. Southern Alberta	4.3
British Columbia	
50. Southern Interior British Columbia	6.0
51. Abbotsford	4.7
52. Vancouver	4.2
53. Victoria	3.8
54. Southern Coastal British Columbia	5.4
55. Northern British Columbia	8.4
Territories	
56. Yukon Territory ⁴	25.0
57. Northwest Territories ⁴	25.0
58. Nunavut ⁴	25.0

1. The boundaries of these regions are determined by Human Resources and Social Development Canada (HRSDC). For geographic descriptions and maps of employment insurance regions, see the HRSDC website: http://www.hrsdc.gc.ca/asp/gateway.asp?hr=en/ei/region/economic_region_information.shtml&hs=eza.
2. This unemployment rate has been determined using a transition formula prescribed in the EI Regulations. For further information, see: http://www.hrsdc.gc.ca/en/cs/comm/news/2000/000913a_e.shtml.
3. This unemployment rate has been determined using a transition formula prescribed in the EI Regulations. For further information, see: http://www.hrsdc.gc.ca/en/cs/comm/news/2000/000913b_e.shtml.
4. This rate is provided by Human Resources and Skills Development Canada.

Data quality

About the Labour Force Survey

The statistics contained in this report are based on information obtained through a sample survey of 53,000 representative households across the country. The Labour Force Survey, started in November 1945, was taken at quarterly intervals until November 1952. It has been carried out monthly since then. The information generated by the survey has expanded considerably over the years with a major redesign of the survey content in 1976 and again in 1997, and provides a rich and detailed picture of the Canadian labour market.

The sample used in the Labour Force Survey has been designed to represent all persons in the population 15 years of age and over residing in the provinces of Canada, with the exception of the following: persons living on Indian reserves, full-time members of the armed forces and people living in institutions (for example, inmates of penal institutions and patients in hospitals or nursing homes who have resided in the institution for more than six months). Monthly estimates of employment, unemployment and persons not in the labour force refer to the specific week covered by the survey each month, normally the week containing the 15th day.

Definitions and explanations

The **labour force** is composed of those members of the civilian non-institutional population 15 years of age and over who, during the reference week, were employed or unemployed.

Employed persons are those who, during the reference week:

- (a) did any work at all
- (b) had a job but were not at work

A person is considered to be **full-time** if his/her usual hours at the main job are 30 or more hours per week. When the number of hours worked at the main job is usually less than 30 hours per week then he/she is considered to be **part-time**.

Unemployed persons are those who, during the reference week:

- (a) were without work, had actively looked for work in the past four weeks (ending with reference week), and were available for work;
- (b) had not actively looked for work in the past four weeks but were on temporary layoff and were available for work;
- (c) had not actively looked for work in the past four weeks but had a new job to start in four weeks or less from the reference week, and were available for work.

Persons in the civilian non-institutional population 15 years of age and over who, during the reference week, were neither employed nor unemployed are classified as **not in the labour force**.

The **unemployment rate** represents the number of unemployed persons expressed as a percentage of the labour force. The unemployment rate for a particular group (age, sex, etc.) is the number unemployed in that group expressed as a percentage of the labour force for that group.

The **participation rate** represents the labour force expressed as a percentage of the population 15 years of age and over. The participation rate for a particular group (age, sex, etc.) is the labour force in that group expressed as a percentage of the population for that group.

The **employment rate (formerly the employment/population ratio)** represents the number of persons employed expressed as a percentage of the population 15 years of age and over. The employment rate for a particular group (age, sex, etc.) is the number employed in that group expressed as a percentage of the population for that group.

The **part-time rate** represents the number of persons employed part-time expressed as a percentage of the employed. The part-time rate for a particular group (age, sex, etc.) is the number employed part-time in that group expressed as a percentage of the employed for that group.

All geographic regions are based on the 2001 Census boundaries.

Seasonal adjustment

Fluctuations in economic time series are caused by seasonal, cyclical and irregular movements. A seasonally adjusted series is one from which seasonal movements have been eliminated. Seasonal movements are defined as those which are caused by regular annual events such as climate, holidays, vacation periods and cycles related to crops, production and retail sales associated with Christmas and Easter. The seasonally adjusted series contains irregular as well as longer-term cyclical fluctuations.

The seasonally adjusted series are revised each year to take into account current data and to generate new forecast factors for the next twelve months. The data are therefore subject to slight revisions in future issues of this publication.

Sampling variability of estimates

Estimates in this publication are based on the Labour Force Survey, a monthly survey of approximately 53,000 households across Canada. Because the entire population is not surveyed, the estimates are subject to sampling error. While the published estimate is the best available indicator of the real value, changes in the level of any estimates between two months can be the result of a true change or sampling variability. The sampling error can be estimated by calculating the standard error for the published estimate or statistic. These standard errors have been included in the publication tables, in order to assist users in interpreting the data.

Interpretation based on standard error

Two thirds of the time (68%), a change greater than the sampling error indicates a real change. The larger the change compared to the standard error, the better the chance that we are observing a real change, as opposed to a change due to sampling variability. At the 95% level, in order to ensure that change is real, the change in the estimate must be greater than twice the sampling error.

Movements in estimates that are smaller than the sampling error are less likely to reflect a real change and more likely to be due to sampling variability. While the above is true for monthly movements, one can have more confidence in a series of consecutive movements in the same direction, even though some of the monthly movements may be smaller than the sampling error.

Interpretation based on confidence intervals

Confidence intervals provide another way of looking at the variability inherent in estimates of sample surveys. To illustrate how to calculate the confidence interval, let us say that one month the published estimate for total employment rose by 16,000 to reach 16,500,000. The associated standard error for the movement estimate is 27,200. The standard error used to interpret the movement estimate indicates that:

- There are approximately two chances in three (68%) that the real value of the movement between the two months falls within the range -11,200 to +43,200 (16,000 + or – one standard error).
- There are approximately nine chances in ten (90%) that the real value of the movement between the two months falls within the range -27,520 to +59,520 (16,000 + or – 1.6 times the standard error).
- There are approximately nineteen chances in twenty (95%) that the real value of the movement between the two months falls within the range -38,400 to +70,400 (16,000 + or – two standard errors).

For more detailed explanations on sampling variability of estimates, and in particular for information on how to assess the variability of level estimates, consult the Data quality section of the *Guide to the Labour Force Survey*, (71-543-G) on page 27.

Documentation

For more detailed information about the Labour Force Survey, see the following documents:

- Overview of the Labour Force Survey
- Guide to the Labour Force Survey (71-543-G)
- Data quality statement
- Methodology of the Canadian Labour Force Survey (71-526-X)
- LFS *geographical maps*