

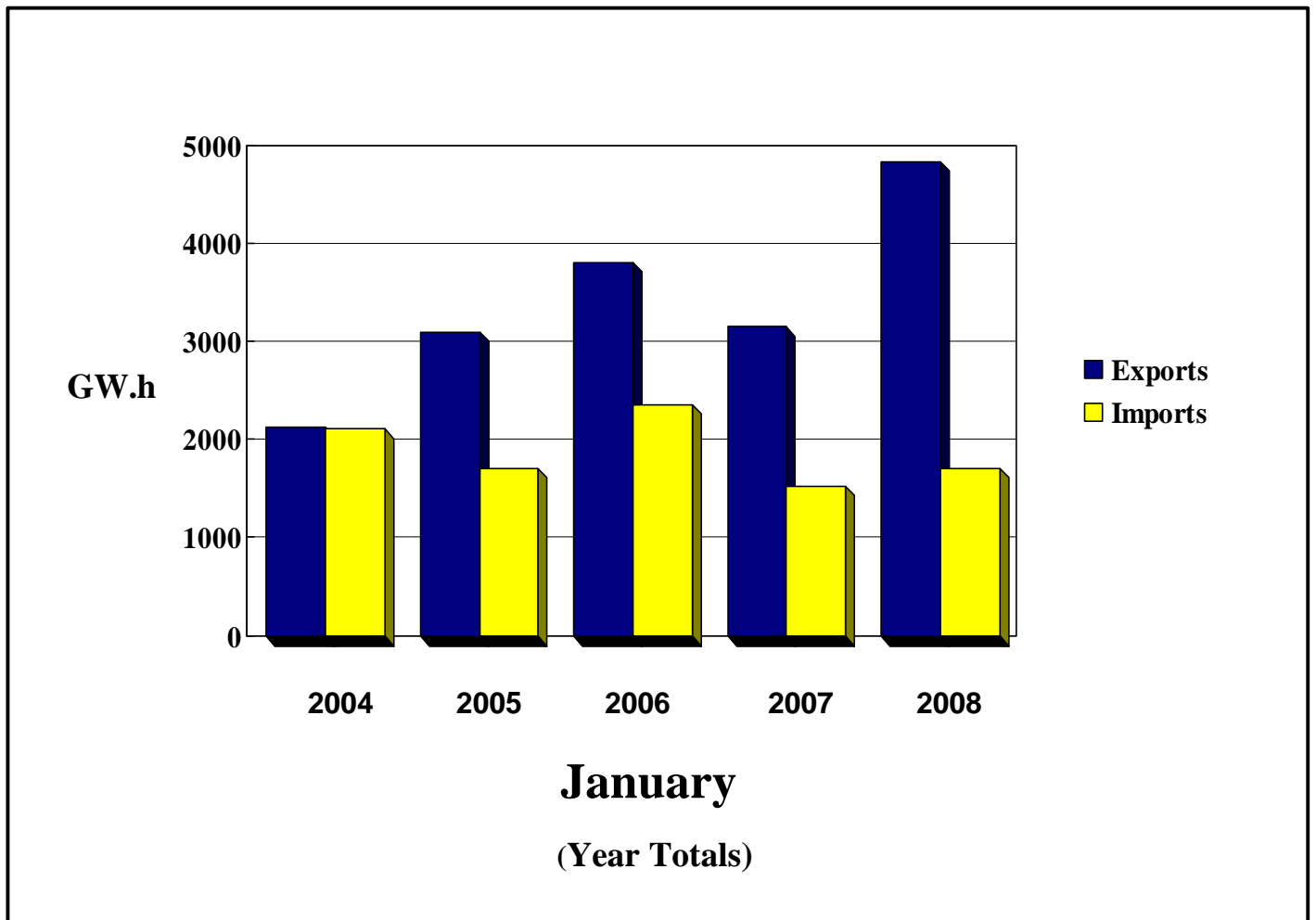


Electricity Exports and Imports

Monthly Statistics for

January 2008

Exports: 4837 GW.h
Imports: 1718 GW.h





National Energy Board
Office national de l'énergie

TABLE 1

Exports and Imports of Electricity

Summary: Canada

JANUARY 2008

Page 1
08/03/10

	Exchange Type	Energy (MW.h)		Revenue (CAN\$) ¹		CAN\$/MW.h ²	
		JAN08	JAN08 - JAN08	JAN08	JAN08 - JAN08	JAN08	L12M
Exports of Electric Energy	Firm	1 440 846	1 440 846	80 322 415	80 322 415	50.95	53.47
	Interruptible	3 395 895	3 395 895	233 872 155	233 872 155	68.33	61.73
	Non-Revenue/Inadvertant	- 421 733	- 421 733	0	0	0.00	0.00
	Service	51 540	51 540	2 887 856	2 887 856	56.03	55.06
Total Exports		4 466 548	4 466 548	317 082 426	317 082 426	69.04	69.44
Total Sales - Firm and Interruptible		4 836 741	4 836 741	314 194 570	314 194 570	63.15	59.59
Imports of Electric Energy	Non-Revenue/Inadvertant	- 396 439	- 396 439	0	0	0.00	0.00
	Purchase	1 717 560	1 717 560	105 551 037	105 551 037	60.41	53.71
	Service	16 777	16 777	586 561	586 561	34.96	16.31
Total Imports		1 337 898	1 337 898	106 137 599	106 137 599	78.00	73.88
Excess of Exports Over Imports		3 128 650	3 128 650	210 944 827	210 944 827		
Number of Export Licences:		7					
Number of Export Permits/Orders:		180					
		187					

For further information, contact:

Mary-Jane Sam
Statistical Research Officer,
Commodities Business Unit
National Energy Board
(403) 299-3706

Footnotes:

1. Includes capacity and energy charges.
2. Average value for the month and the last 12 months (excludes capacity charge).

F - Firm Sales
I - Interruptible Sales
P - Purchase (Import)
N - Non-Revenue (Non-Revenue or Inadvertent)
S - Service (Spinning Reserve, Storage, Unit Rental, Transmission, etc.)



TABLE 2A

Export Summary Report

by Source, Authorization and Exchange Type

Source	Authorization	Exchange Type	Energy (MW.h)		Revenue (CAN\$) ¹		CAN\$/MW.h ²	
			JAN08	JAN08 - JAN08	JAN08	JAN08 - JAN08	JAN08	L12M
Alberta								
Enmax Marketing	Permit 278	I	675	675	43 218	43 218	64.03	48.45
EPCOR Merchant	Permit 186	I	11 193	11 193	647 072	647 072	57.81	49.99
Northpoint	Permit 282	I	12 803	12 803	842 605	842 605	65.81	59.69
Powerex Corp.	Permit 116	I	380	380	25 711	25 711	67.66	75.98
TransAlta Ener	Permit 168	F	2 933	2 933	194 616	194 616	66.35	50.84
TransCan ULC	Permit 271	I	6 619	6 619	381 387	381 387	57.62	50.82
Subtotal Firm and Interruptible Exports: Alberta			34 603	34 603	2 134 608	2 134 608	61.69	52.44
British Columbia								
BC Hydro	Permit 127	N	- 501 847	- 501 847	0	0	0.00	0.00
		S	7 155	7 155	0	0	0.00	0.00
	Permit 192	N	744	744	0	0	0.00	0.00
	Permit 298	F	138	138	9 861	9 861	71.58	71.73
	Treaty	N	24 940	24 940	0	0	0.00	0.00
Powerex Corp.	Permit 118	I	434 572	434 572	28 903 941	28 903 941	66.51	61.01

Footnotes:

1. Includes capacity and energy charges.
2. Average value for the month and the last 12 months (excludes capacity charge).

- F - Firm Sales
- I - Interruptible Sales
- P - Purchase (Import)
- N - Non-Revenue (Non-Revenue or Inadvertent)
- S - Service (Spinning Reserve, Storage, Unit Rental, Transmission, etc.)



TABLE 2A

Export Summary Report

by Source, Authorization and Exchange Type

Source	Authorization	Exchange Type	Energy (MW.h)		Revenue (CAN\$) ¹		CAN\$/MW.h ²	
			JAN08	JAN08 - JAN08	JAN08	JAN08 - JAN08	JAN08	L12M
Powerex Corp.	Permit 119	F	35 350	35 350	2 544 038	2 544 038	71.97	73.97
Teck Cominco	Permit 244	F	38 800	38 800	2 798 548	2 798 548	72.13	56.52
Subtotal Firm and Interruptible Exports: British Columbia			508 860	508 860	34 256 388	34 256 388	67.32	61.25
Manitoba								
Detroit Edison	Permit 205	F	32	32	1 449	1 449	45.29	47.21
Manitoba Hydro	Permit 144	F	18 235	18 235	1 363 734	1 363 734	74.79	80.00
	Permit 155	F	22 080	22 080	1 102 153	1 102 153	49.92	52.93
	Permit 224	F	177 612	177 612	9 084 440	9 084 440	51.15	54.11
	Permit 259	F	1 069	1 069	57 760	57 760	54.04	59.21
	Permit 269	I	385 238	385 238	20 047 811	20 047 811	52.04	46.24
Subtotal Firm and Interruptible Exports: Manitoba			604 266	604 266	31 657 347	31 657 347	52.39	48.68
New Brunswick								
Emera Energy	Permit 216	S	26 878	26 878	2 210 724	2 210 724	82.25	72.61
	Permit 217	F	34 086	34 086	2 626 315	2 626 315	77.05	62.85
Fraser Inc.	Permit 225	F	24 600	24 600	736 569	736 569	29.94	82.86

Footnotes:

1. Includes capacity and energy charges.
2. Average value for the month and the last 12 months (excludes capacity charge).

- F - Firm Sales
- I - Interruptible Sales
- P - Purchase (Import)
- N - Non-Revenue (Non-Revenue or Inadvertent)
- S - Service (Spinning Reserve, Storage, Unit Rental, Transmission, etc.)



TABLE 2A

Export Summary Report by Source, Authorization and Exchange Type

Source	Authorization	Exchange Type	Energy (MW.h)		Revenue (CAN\$) ¹		CAN\$/MW.h ²	
			JAN08	JAN08 - JAN08	JAN08	JAN08 - JAN08	JAN08	L12M
NB Power	Permit 295	I	49 791	49 791	4 548 549	4 548 549	84.43	67.41
WPS Power Dev.	Licence 177	F	2 697	2 697	178 373	178 373	66.15	47.14
Subtotal Firm and Interruptible Exports: New Brunswick			111 174	111 174	8 089 807	8 089 807	69.67	67.40
Ontario								
2001 RBCP	Permit 315	F	84 148	84 148	3 936 258	3 936 258	46.78	49.56
Allete, Inc.	Permit 261	F	1 628	1 628	61 322	61 322	37.67	58.29
Brookfield EMI	Permit 303	F	108 480	108 480	5 544 883	5 544 883	51.11	54.67
Bruce Power	Permit 299	F	33 679	33 679	1 867 930	1 867 930	55.46	59.44
Cargill Trading	Permit 204	F	452	452	25 406	25 406	56.21	61.54
CITIGROUP	Permit 308	I	100	100	5 233	5 233	52.33	76.67
Conectiv Energy	Permit 212	I	3 125	3 125	99 743	99 743	31.92	50.68
Constell ECG	Permit 138	I	324 447	324 447	15 274 955	15 274 955	47.08	46.13
Constell NE	Permit 264	F	18 362	18 362	949 602	949 602	51.72	55.51
Direct EM Inc.	Permit 200	F	20 398	20 398	749 867	749 867	36.76	54.09

Footnotes:

1. Includes capacity and energy charges.
2. Average value for the month and the last 12 months (excludes capacity charge).

- F - Firm Sales
- I - Interruptible Sales
- P - Purchase (Import)
- N - Non-Revenue (Non-Revenue or Inadvertent)
- S - Service (Spinning Reserve, Storage, Unit Rental, Transmission, etc.)



TABLE 2A

Export Summary Report by Source, Authorization and Exchange Type

Source	Authorization	Exchange Type	Energy (MW.h)		Revenue (CAN\$) ¹		CAN\$/MW.h ²	
			JAN08	JAN08 - JAN08	JAN08	JAN08 - JAN08	JAN08	L12M
DTE Energy Trad	Permit 206	F	29 665	29 665	1 375 099	1 375 099	46.35	51.96
EPCOR Merchant	Permit 187	F	12 509	12 509	558 003	558 003	44.61	58.65
FB Energy	Permit 309	F	132 213	132 213	6 741 402	6 741 402	50.99	54.66
Ind Elc Mark Op	Permit 22	N	54 430	54 430	0	0	0.00	0.00
Integrlys	Permit 250	I	9 735	9 735	451 812	451 812	46.41	44.06
MAG Energy Sol.	Permit 255	I	38 606	38 606	2 177 402	2 177 402	56.40	53.54
Merrill-Lynch	Permit 227	F	891	891	11 015	11 015	12.36	52.14
Morgan Stanley	Permit 180	I	90 784	90 784	4 595 500	4 595 500	50.62	54.34
Northpoint	Permit 282	I	44 794	44 794	2 606 387	2 606 387	58.19	54.77
Ont Power Gen	Permit 24	F	19	19	761	761	41.07	20.84
OPGI/OHIM	Permit 284	I	378 151	378 151	19 064 737	19 064 737	46.49	51.28
		S	17 507	17 507	677 132	677 132	38.68	46.78
Powerex Corp.	Permit 116	I	76 816	76 816	4 072 592	4 072 592	53.02	55.50
Rainbow	Permit 263	I	35 123	35 123	1 041 413	1 041 413	29.65	43.52
Saracen Merchan	Permit 276	I	2 182	2 182	232 106	232 106	106.37	76.42

Footnotes:

1. Includes capacity and energy charges.
2. Average value for the month and the last 12 months (excludes capacity charge).

- F - Firm Sales
- I - Interruptible Sales
- P - Purchase (Import)
- N - Non-Revenue (Non-Revenue or Inadvertent)
- S - Service (Spinning Reserve, Storage, Unit Rental, Transmission, etc.)



TABLE 2A

Export Summary Report

by Source, Authorization and Exchange Type

Source	Authorization	Exchange Type	Energy (MW.h)		Revenue (CAN\$) ¹		CAN\$/MW.h ²	
			JAN08	JAN08 - JAN08	JAN08	JAN08 - JAN08	JAN08	L12M
Sempra LLC	Permit 157	F	2 954	2 954	152 431	152 431	51.60	43.61
SESCO	Permit 249	F	5 731	5 731	197 464	197 464	34.46	45.00
SIG-H LLC	Permit 291	F	11 038	11 038	479 808	479 808	43.47	43.47
Silverhill	Permit 279	F	7 431	7 431	448 631	448 631	60.37	64.86
TransAlta Ener	Permit 168	F	295 451	295 451	13 908 105	13 908 105	47.07	52.40
Subtotal Firm and Interruptible Exports: Ontario			1 768 911	1 768 911	86 629 867	86 629 867	48.13	52.88
Quebec								
Brookfield EMI	Permit 303	F	121 475	121 475	10 128 568	10 128 568	78.18	69.83
Hydro-Quebec	Licence 180	F	111 692	111 692	7 189 243	7 189 243	31.60	32.55
	Licence 181	F	18 659	18 659	1 102 181	1 102 181	31.60	32.53
	Licence 182	F	16 983	16 983	997 964	997 964	31.60	32.54
	Licence 183	F	30 212	30 212	1 930 862	1 930 862	31.60	32.57
	Licence 184	F	19 146	19 146	1 267 755	1 267 755	31.60	32.55
	Permit 64	I	1 293 620	1 293 620	112 438 132	112 438 132	86.92	79.78
MEHQ	Permit 129	I	185 969	185 969	15 769 652	15 769 652	84.80	55.64
Subtotal Firm and Interruptible Exports: Quebec			1 797 756	1 797 756	150 824 355	150 824 355	80.06	70.58

Footnotes:

1. Includes capacity and energy charges.
2. Average value for the month and the last 12 months (excludes capacity charge).

- F - Firm Sales
- I - Interruptible Sales
- P - Purchase (Import)
- N - Non-Revenue (Non-Revenue or Inadvertent)
- S - Service (Spinning Reserve, Storage, Unit Rental, Transmission, etc.)



TABLE 2A

Export Summary Report by Source, Authorization and Exchange Type

Source	Authorization	Exchange Type	Energy (MW.h)		Revenue (CAN\$) ¹		CAN\$/MW.h ²	
			JAN08	JAN08 - JAN08	JAN08	JAN08 - JAN08	JAN08	L12M
Saskatchewan								
Northpoint	Permit 282	I	11 172	11 172	602 199	602 199	53.90	60.69
Subtotal Firm and Interruptible Exports: Saskatchewan			11 172	11 172	602 199	602 199	53.90	60.69
Total Firm and Interruptible Exports:			4 836 741	4 836 741	314 194 570	314 194 570	63.15	59.59

Footnotes:

1. Includes capacity and energy charges.
2. Average value for the month and the last 12 months (excludes capacity charge).

- F - Firm Sales
- I - Interruptible Sales
- P - Purchase (Import)
- N - Non-Revenue (Non-Revenue or Inadvertent)
- S - Service (Spinning Reserve, Storage, Unit Rental, Transmission, etc.)



TABLE 2B

Import Summary Report

by Destination, Authorization and Exchange Type

Destination	Authorization	Exchange Type	Energy (MW.h)		Revenue (CAN\$) ¹		CAN\$/MW.h ²	
			JAN08	JAN08 - JAN08	JAN08	JAN08 - JAN08	JAN08	L12M
Alberta								
Candela Energy	-	P	355	355	48 275	48 275	135.98	105.79
Cargill Trading		P	5 328	5 328	725 772	725 772	136.22	103.87
CITIGROUP		P	1 663	1 663	135 021	135 021	81.19	74.73
Enmax Marketing		P	1 294	1 294	89 777	89 777	69.38	66.52
EPCOR Merchant		P	5 945	5 945	471 910	471 910	79.38	58.16
Northpoint		P	24 189	24 189	1 488 854	1 488 854	61.55	60.55
Powerex Corp.		P	2 051	2 051	75 921	75 921	37.02	31.10
TransAlta Ener		P	651	651	46 427	46 427	71.32	55.53
TransCan ULC		P	4 849	4 849	454 069	454 069	93.64	78.82
Subtotal Purchased Imports: Alberta			46 325	46 325	3 536 026	3 536 026	76.33	61.74
British Columbia								
BC Hydro		N	- 364 639	- 364 639	0	0	0.00	0.00
		S	7 155	7 155	0	0	0.00	0.00

Footnotes:

1. Includes capacity and energy charges.
2. Average value for the month and the last 12 months (excludes capacity charge).

- F - Firm Sales
- I - Interruptible Sales
- P - Purchase (Import)
- N - Non-Revenue (Non-Revenue or Inadvertent)
- S - Service (Spinning Reserve, Storage, Unit Rental, Transmission, etc.)



TABLE 2B

Import Summary Report

by Destination, Authorization and Exchange Type

Destination	Authorization	Exchange Type	Energy (MW.h)		Revenue (CAN\$) ¹		CAN\$/MW.h ²	
			JAN08	JAN08 - JAN08	JAN08	JAN08 - JAN08	JAN08	L12M
FortisBC	-	P	65	65	6 905	6 905	106.23	49.85
Powerex Corp.		P	588 572	588 572	40 375 109	40 375 109	68.60	52.89
Teck Cominco		P	1 300	1 300	88 545	88 545	68.11	68.11
Subtotal Purchased Imports: British Columbia			589 937	589 937	40 470 559	40 470 559	68.60	52.89
Manitoba								
Detroit Edison		P	11	11	1 019	1 019	92.61	56.10
Manitoba Hydro		N	4 632	4 632	0	0	0.00	0.00
		P	6 128	6 128	381 771	381 771	62.30	47.23
Subtotal Purchased Imports: Manitoba			6 139	6 139	382 790	382 790	62.35	47.24
New Brunswick								
Emera Energy		P	34 837	34 837	2 852 544	2 852 544	81.88	70.43
NB Power		P	8 962	8 962	554 434	554 434	61.87	86.17
WPS Power Dev.		P	669	669	44 239	44 239	66.15	48.40
Subtotal Purchased Imports: New Brunswick			44 468	44 468	3 451 218	3 451 218	77.61	72.28

Footnotes:

1. Includes capacity and energy charges.
2. Average value for the month and the last 12 months (excludes capacity charge).

- F - Firm Sales
- I - Interruptible Sales
- P - Purchase (Import)
- N - Non-Revenue (Non-Revenue or Inadvertent)
- S - Service (Spinning Reserve, Storage, Unit Rental, Transmission, etc.)



TABLE 2B

Import Summary Report

by Destination, Authorization and Exchange Type

Destination	Authorization	Exchange Type	Energy (MW.h)		Revenue (CAN\$) ¹		CAN\$/MW.h ²	
			JAN08	JAN08 - JAN08	JAN08	JAN08 - JAN08	JAN08	L12M
Nova Scotia								
Brookfield EMI	-	P	1 680	1 680	130 089	130 089	77.43	77.43
NS Power Inc.		P	16 113	16 113	1 499 288	1 499 288	93.05	87.70
Subtotal Purchased Imports: Nova Scotia			17 793	17 793	1 629 377	1 629 377	91.57	87.46
Ontario								
2001 RBCP		P	37 623	37 623	1 359 928	1 359 928	36.15	35.46
Allete, Inc.		P	983	983	67 845	67 845	69.01	58.95
Brookfield EMI		P	6 013	6 013	142 044	142 044	23.62	48.13
Cargill Trading		P	1 525	1 525	81 044	81 044	53.14	56.61
CITIGROUP		P	75	75	4 514	4 514	60.19	68.65
Conectiv Energy		P	293	293	8 116	8 116	27.70	27.70
Constell ECG		P	452 764	452 764	21 565 682	21 565 682	47.63	49.62
Constell NE		P	10 246	10 246	404 994	404 994	39.53	49.39

Footnotes:

1. Includes capacity and energy charges.
2. Average value for the month and the last 12 months (excludes capacity charge).

- F - Firm Sales
- I - Interruptible Sales
- P - Purchase (Import)
- N - Non-Revenue (Non-Revenue or Inadvertent)
- S - Service (Spinning Reserve, Storage, Unit Rental, Transmission, etc.)



TABLE 2B

Import Summary Report by Destination, Authorization and Exchange Type

Destination	Authorization	Exchange Type	Energy (MW.h)		Revenue (CAN\$) ¹		CAN\$/MW.h ²	
			JAN08	JAN08 - JAN08	JAN08	JAN08 - JAN08	JAN08	L12M
DTE Energy Trad	-	P	3 951	3 951	233 947	233 947	59.21	53.88
EPCOR Merchant		P	32 649	32 649	1 792 907	1 792 907	54.91	56.40
FB Energy		P	1 550	1 550	84 518	84 518	54.53	73.37
Ind Elc Mark Op		N	-36 432	-36 432	0	0	0.00	0.00
Integritys		P	12 515	12 515	538 695	538 695	43.04	48.67
MAG Energy Sol.		P	29 680	29 680	1 716 431	1 716 431	57.83	71.76
Manitoba Hydro		P	161 502	161 502	9 362 472	9 362 472	57.97	49.72
Merrill-Lynch		P	1 286	1 286	34 942	34 942	27.17	60.08
Northpoint		P	8 335	8 335	428 830	428 830	51.45	50.56
OPGI/OHIM		P	12 755	12 755	384 484	384 484	30.14	39.67
		S	9 622	9 622	586 561	586 561	60.96	57.52
Powerex Corp.		P	33 676	33 676	681 865	681 865	20.25	51.69
Sempra LLC		P	280	280	19 611	19 611	70.04	60.57
SESCO		P	1 562	1 562	70 225	70 225	44.96	73.76
Silverhill		P	22 639	22 639	1 302 508	1 302 508	57.53	56.63

Footnotes:

1. Includes capacity and energy charges.
2. Average value for the month and the last 12 months (excludes capacity charge).

- F - Firm Sales
- I - Interruptible Sales
- P - Purchase (Import)
- N - Non-Revenue (Non-Revenue or Inadvertent)
- S - Service (Spinning Reserve, Storage, Unit Rental, Transmission, etc.)



TABLE 2B

Import Summary Report

by Destination, Authorization and Exchange Type

Destination	Authorization	Exchange Type	Energy (MW.h)		Revenue (CAN\$) ¹		CAN\$/MW.h ²	
			JAN08	JAN08 - JAN08	JAN08	JAN08 - JAN08	JAN08	L12M
TransAlta Ener	-	P	12 130	12 130	694 921	694 921	57.29	54.51
Subtotal Purchased Imports: Ontario			844 032	844 032	40 980 522	40 980 522	48.55	52.23
Quebec								
Brookfield EMI		P	31	31	345 019	345 019	39.82	37.17
Hydro-Quebec		P	130 371	130 371	13 186 053	13 186 053	90.07	55.86
MEHQ		P	12 379	12 379	471 986	471 986	38.13	43.92
Powerex Corp.		P	41	41	2 666	2 666	65.02	51.16
Subtotal Purchased Imports: Quebec			142 822	142 822	14 005 724	14 005 724	85.55	55.42
Saskatchewan								
Northpoint		P	26 044	26 044	1 094 823	1 094 823	42.04	35.79
Subtotal Purchased Imports: Saskatchewan			26 044	26 044	1 094 823	1 094 823	42.04	35.79
Total Purchased Imports:			1 717 560	1 717 560	105 551 037	105 551 037	60.41	53.71

Footnotes:

1. Includes capacity and energy charges.
2. Average value for the month and the last 12 months (excludes capacity charge).

- F - Firm Sales
- I - Interruptible Sales
- P - Purchase (Import)
- N - Non-Revenue (Non-Revenue or Inadvertent)
- S - Service (Spinning Reserve, Storage, Unit Rental, Transmission, etc.)



National Energy Board
Office national de l'énergie

TABLE 3A

Export Sales Summary Report by Destination and Source

Page 1
08/03/10

Destination	Source	Energy (MW.h)		Revenue (CAN\$) ¹		CAN\$/MW.h ²	
		JAN08	JAN08 - JAN08	JAN08	JAN08 - JAN08	JAN08	L12M
Alaska	British Columbia	138	138	9 861	9 861	71.58	71.73
Subtotal Exports: Alaska		138	138	9 861	9 861	71.58	71.73
Arizona	British Columbia	11 298	11 298	1 107 143	1 107 143	97.99	77.21
Subtotal Exports: Arizona		11 298	11 298	1 107 143	1 107 143	97.99	77.21
California	British Columbia	191 982	191 982	13 357 929	13 357 929	69.58	64.18
Subtotal Exports: California		191 982	191 982	13 357 929	13 357 929	69.58	64.18
Colorado	British Columbia	162	162	15 105	15 105	93.24	88.40
Subtotal Exports: Colorado		162	162	15 105	15 105	93.24	88.40
Idaho	British Columbia	3 530	3 530	253 815	253 815	71.90	74.74
Subtotal Exports: Idaho		3 530	3 530	253 815	253 815	71.90	74.74
Illinois	Ontario	18 068	18 068	542 131	542 131	30.01	40.90
Subtotal Exports: Illinois		18 068	18 068	542 131	542 131	30.01	40.90
Indiana	Alberta	380	380	25 711	25 711	67.66	75.98
	Ontario	2 495	2 495	113 529	113 529	45.50	61.68
Subtotal Exports: Indiana		2 875	2 875	139 239	139 239	48.43	63.77
Maine	New Brunswick	111 174	111 174	8 089 807	8 089 807	69.67	67.40
Subtotal Exports: Maine		111 174	111 174	8 089 807	8 089 807	69.67	67.40
Massachusetts	Ontario	1 570	1 570	111 223	111 223	70.84	72.53
Subtotal Exports: Massachusetts		1 570	1 570	111 223	111 223	70.84	72.53
Michigan	Manitoba	32	32	1 449	1 449	45.29	47.21

Footnotes:

1. Includes capacity and energy charges.
2. Average value for the month and the last 12 months (excludes capacity charge).



National Energy Board
Office national de l'énergie

TABLE 3A

Export Sales Summary Report by Destination and Source

Page 2
08/03/10

Destination	Source	Energy (MW.h)		Revenue (CAN\$) ¹		CAN\$/MW.h ²	
		JAN08	JAN08 - JAN08	JAN08	JAN08 - JAN08	JAN08	L12M
Michigan	Ontario	310 252	310 252	14 994 685	14 994 685	48.33	55.80
	Quebec	7 615	7 615	522 908	522 908	68.67	68.67
Subtotal Exports: Michigan		317 899	317 899	15 519 043	15 519 043	48.82	55.85
Minnesota	Manitoba	80 751	80 751	5 087 328	5 087 328	63.00	54.11
	Ontario	10 750	10 750	568 646	568 646	47.38	54.61
Subtotal Exports: Minnesota		91 501	91 501	5 655 973	5 655 973	61.17	54.16
Montana	British Columbia	30 721	30 721	2 215 010	2 215 010	72.10	60.70
Subtotal Exports: Montana		30 721	30 721	2 215 010	2 215 010	72.10	60.70
ND/Minn	Manitoba	523 483	523 483	26 568 570	26 568 570	50.75	47.96
Subtotal Exports: ND/Minn		523 483	523 483	26 568 570	26 568 570	50.75	47.96
Nevada	British Columbia	2 065	2 065	177 371	177 371	85.89	81.69
Subtotal Exports: Nevada		2 065	2 065	177 371	177 371	85.89	81.69
New England	Quebec	971 177	971 177	87 174 822	87 174 822	89.51	83.89
Subtotal Exports: New England		971 177	971 177	87 174 822	87 174 822	89.51	83.89
New Mexico	British Columbia	6 487	6 487	645 844	645 844	99.56	85.62
Subtotal Exports: New Mexico		6 487	6 487	645 844	645 844	99.56	85.62
New York	Ontario	1 246 187	1 246 187	61 129 936	61 129 936	47.91	52.03
	Quebec	620 271	620 271	50 405 808	50 405 808	80.64	70.40
Subtotal Exports: New York		1 866 458	1 866 458	111 535 744	111 535 744	58.79	59.87
North Dakota	Alberta	1 350	1 350	112 748	112 748	83.52	61.26
	Saskatchewan	11 172	11 172	602 199	602 199	53.90	60.69
Subtotal Exports: North Dakota		12 522	12 522	714 946	714 946	57.10	60.70

Footnotes:

1. Includes capacity and energy charges.
2. Average value for the month and the last 12 months (excludes capacity charge).



National Energy Board
Office national de l'énergie

TABLE 3A

Export Sales Summary Report by Destination and Source

Page 3
08/03/10

Destination	Source	Energy (MW.h)		Revenue (CAN\$) ¹		CAN\$/MW.h ²	
		JAN08	JAN08 - JAN08	JAN08	JAN08 - JAN08	JAN08	L12M
Oregon	British Columbia	81 278	81 278	5 673 572	5 673 572	69.80	65.87
Subtotal Exports: Oregon		81 278	81 278	5 673 572	5 673 572	69.80	65.87
Pennsylvania	Ontario	47 377	47 377	2 428 316	2 428 316	51.26	57.83
Subtotal Exports: Pennsylvania		47 377	47 377	2 428 316	2 428 316	51.26	57.83
Texas	Ontario	132 213	132 213	6 741 402	6 741 402	50.99	54.66
Subtotal Exports: Texas		132 213	132 213	6 741 402	6 741 402	50.99	54.66
Utah	British Columbia	1 136	1 136	114 051	114 051	100.40	80.70
Subtotal Exports: Utah		1 136	1 136	114 051	114 051	100.40	80.70
Vermont	Quebec	198 693	198 693	12 720 816	12 720 816	32.45	33.73
Subtotal Exports: Vermont		198 693	198 693	12 720 816	12 720 816	32.45	33.73
Washington	Alberta	32 873	32 873	1 996 149	1 996 149	60.72	51.21
	British Columbia	177 738	177 738	10 449 254	10 449 254	58.79	52.26
Subtotal Exports: Washington		210 611	210 611	12 445 403	12 445 403	59.09	52.20
Wyoming	British Columbia	2 325	2 325	237 433	237 433	102.12	87.53
Subtotal Exports: Wyoming		2 325	2 325	237 433	237 433	102.12	87.53
Total Exports		4 836 741	4 836 741	314 194 570	314 194 570	63.15	59.59

Footnotes:

1. Includes capacity and energy charges.
2. Average value for the month and the last 12 months (excludes capacity charge).



National Energy Board
Office national de l'énergie

TABLE 3B

Import Purchases Summary Report by Source and Destination

Page 4
08/03/10

Source	Destination	Energy (MW.h)		Revenue (CAN\$) ¹		CAN\$/MW.h ²	
		JAN08	JAN08 - JAN08	JAN08	JAN08 - JAN08	JAN08	L12M
Arizona	British Columbia	19 195	19 195	906 495	906 495	47.23	36.14
Subtotal Imports: Arizona		19 195	19 195	906 495	906 495	47.23	36.14
California	British Columbia	64 502	64 502	4 811 715	4 811 715	74.60	62.96
Subtotal Imports: California		64 502	64 502	4 811 715	4 811 715	74.60	62.96
Colorado	British Columbia	300	300	12 134	12 134	40.45	40.45
Subtotal Imports: Colorado		300	300	12 134	12 134	40.45	40.45
Idaho	British Columbia	5 528	5 528	241 880	241 880	43.76	30.79
Subtotal Imports: Idaho		5 528	5 528	241 880	241 880	43.76	30.79
Indiana	Alberta	2 051	2 051	75 921	75 921	37.02	31.10
	British Columbia	656	656	22 654	22 654	34.53	25.88
	Ontario	6 010	6 010	294 036	294 036	48.92	47.93
Subtotal Imports: Indiana		8 717	8 717	392 611	392 611	45.04	43.10
Maine	New Brunswick	44 468	44 468	3 451 218	3 451 218	77.61	72.28
Subtotal Imports: Maine		44 468	44 468	3 451 218	3 451 218	77.61	72.28
Massachusetts	Ontario	1 308	1 308	119 036	119 036	91.01	77.51
	Quebec	4	4	185	185	46.34	74.76
Subtotal Imports: Massachusetts		1 312	1 312	119 222	119 222	90.87	77.49
Michigan	Manitoba	11	11	1 019	1 019	92.61	56.10
	Ontario	134 115	134 115	7 520 562	7 520 562	56.08	48.41
Subtotal Imports: Michigan		134 126	134 126	7 521 581	7 521 581	56.08	48.41
Minnesota	Alberta	5 328	5 328	725 772	725 772	136.22	103.87

Footnotes:

1. Includes capacity and energy charges.
2. Average value for the month and the last 12 months (excludes capacity charge).



National Energy Board
Office national de l'énergie

TABLE 3B

Import Purchases Summary Report by Source and Destination

Page 5
08/03/10

Source	Destination	Energy (MW.h)		Revenue (CAN\$) ¹		CAN\$/MW.h ²	
		JAN08	JAN08 - JAN08	JAN08	JAN08 - JAN08	JAN08	L12M
Minnesota	Ontario	86 192	86 192	5 441 311	5 441 311	63.13	55.20
Subtotal Imports: Minnesota		91 520	91 520	6 167 083	6 167 083	67.39	55.59
Montana	British Columbia	23 920	23 920	1 389 255	1 389 255	58.08	48.18
Subtotal Imports: Montana		23 920	23 920	1 389 255	1 389 255	58.08	48.18
ND/Minn	Manitoba	6 128	6 128	381 771	381 771	62.30	47.23
Subtotal Imports: ND/Minn		6 128	6 128	381 771	381 771	62.30	47.23
Nebraska	British Columbia	21	21	0	0	0.00	0.00
Subtotal Imports: Nebraska		21	21	0	0	0.00	0.00
Nevada	British Columbia	3 533	3 533	168 512	168 512	47.70	33.31
Subtotal Imports: Nevada		3 533	3 533	168 512	168 512	47.70	33.31
New England	Quebec	3 562	3 562	164 303	164 303	46.13	54.34
Subtotal Imports: New England		3 562	3 562	164 303	164 303	46.13	54.34
New Mexico	British Columbia	11 635	11 635	494 653	494 653	42.51	31.23
Subtotal Imports: New Mexico		11 635	11 635	494 653	494 653	42.51	31.23
New York	Nova Scotia	1 680	1 680	130 089	130 089	77.43	77.43
	Ontario	611 384	611 384	27 283 313	27 283 313	44.63	53.24
	Quebec	139 256	139 256	13 841 235	13 841 235	86.56	56.01
Subtotal Imports: New York		752 320	752 320	41 254 637	41 254 637	52.46	54.83
North Dakota	Alberta	2 095	2 095	114 451	114 451	54.63	52.90
	Saskatchewan	26 044	26 044	1 094 823	1 094 823	42.04	35.79
Subtotal Imports: North Dakota		28 139	28 139	1 209 274	1 209 274	42.98	36.12

Footnotes:

1. Includes capacity and energy charges.
2. Average value for the month and the last 12 months (excludes capacity charge).



National Energy Board
Office national de l'énergie

TABLE 3B

Import Purchases Summary Report by Source and Destination

Page 6
08/03/10

Source	Destination	Energy (MW.h)		Revenue (CAN\$) ¹		CAN\$/MW.h ²	
		JAN08	JAN08 - JAN08	JAN08	JAN08 - JAN08	JAN08	L12M
Oregon	British Columbia	9 416	9 416	544 689	544 689	57.85	42.59
Subtotal Imports: Oregon		9 416	9 416	544 689	544 689	57.85	42.59
Pennsylvania	Nova Scotia	16 113	16 113	1 499 288	1 499 288	93.05	87.70
	Ontario	3 473	3 473	237 747	237 747	68.46	61.28
Subtotal Imports: Pennsylvania		19 586	19 586	1 737 035	1 737 035	88.69	82.19
Texas	Ontario	1 550	1 550	84 518	84 518	54.53	73.37
Subtotal Imports: Texas		1 550	1 550	84 518	84 518	54.53	73.37
Utah	British Columbia	394	394	15 305	15 305	38.84	40.37
Subtotal Imports: Utah		394	394	15 305	15 305	38.84	40.37
Washington	Alberta	36 851	36 851	2 619 881	2 619 881	71.09	60.98
	British Columbia	443 908	443 908	31 622 068	31 622 068	71.24	54.36
Subtotal Imports: Washington		480 759	480 759	34 241 949	34 241 949	71.22	54.76
Wyoming	British Columbia	6 929	6 929	241 199	241 199	34.81	27.32
Subtotal Imports: Wyoming		6 929	6 929	241 199	241 199	34.81	27.32
Total Imports		1 717 560	1 717 560	105 551 037	105 551 037	60.41	53.71

Footnotes:

1. Includes capacity and energy charges.
2. Average value for the month and the last 12 months (excludes capacity charge).



National Energy Board
Office national de l'énergie

TABLE 4 Source of Production Report Canadian Exports

Page 1
08/03/10

Fuel Type	JAN08		
	Energy (MW.h)	Revenue (CAN\$) ¹	CAN\$/MW.h ¹
Canadian Coal	1 621	129 647	79.97
Hydraulic	2 159 759	155 027 255	71.78
Imported Coal	13 592	940 245	69.18
Imported Oil	22 814	2 084 166	91.35
Natural Gas	333	16 874	50.75
Other	1 521 506	87 427 985	57.46
Total	3 719 624	245 626 171	66.04

Footnotes:

1. Revenue figures are for illustrative purposes only and are strictly allocatable by energy source.



TABLE 5 Source of Production Report by Exporter

Exporter	Fuel Type	Authorization	JAN08		
			Energy (MW.h)	Revenue (CAN\$) ¹	CAN\$/MW.h ¹
2001 RBCP	Other	Permit 315	84 148	3 936 258	46.78
		Subtotal	84 148	3 936 258	46.78
		Subtotal	84 148	3 936 258	46.78
Allete, Inc.	Other	Permit 261	1 628	61 322	37.67
		Subtotal	1 628	61 322	37.67
		Subtotal	1 628	61 322	37.67
BC Hydro	Hydraulic	Permit 192	744	0	0.00
		Permit 298	138	9 861	71.58
		Treaty 0	24 940	0	0.00
		Subtotal	25 822	9 861	0.38
		Subtotal	25 822	9 861	0.38
Brookfield EMI	Hydraulic	Permit 303	55 842	4 956 618	88.76
		Subtotal	55 842	4 956 618	88.76
	Other	Permit 303	174 113	10 716 832	61.55
		Subtotal	174 113	10 716 832	61.55
		Subtotal	229 955	15 673 450	68.16
Bruce Power	Other	Permit 299	33 679	1 867 930	55.46
		Subtotal	33 679	1 867 930	55.46
		Subtotal	33 679	1 867 930	55.46

Footnotes:

1. Revenue figures are for illustrative purposes only and are strictly allocatable by energy source.



TABLE 5 Source of Production Report by Exporter

Exporter	Fuel Type	Authorization	JAN08		
			Energy (MW.h)	Revenue (CAN\$) ¹	CAN\$/MW.h ¹
Cargill Trading	Other	Permit 204	452	25 406	56.21
		Subtotal	452	25 406	56.21
	Subtotal		452	25 406	56.21
CITIGROUP	Other	Permit 308	100	5 233	52.33
		Subtotal	100	5 233	52.33
	Subtotal		100	5 233	52.33
Conectiv Energy	Other	Permit 212	3 125	99 743	31.92
		Subtotal	3 125	99 743	31.92
	Subtotal		3 125	99 743	31.92
Direct EM Inc.	Other	Permit 200	20 398	749 867	36.76
		Subtotal	20 398	749 867	36.76
	Subtotal		20 398	749 867	36.76
DTE Energy Trad	Other	Permit 206	29 665	1 375 099	46.35
		Subtotal	29 665	1 375 099	46.35
	Subtotal		29 665	1 375 099	46.35
Emera Energy	Other	Permit 216	26 878	2 210 724	82.25
		Permit 217	34 086	2 626 315	77.05
		Subtotal	60 964	4 837 039	79.34
	Subtotal		60 964	4 837 039	79.34

Footnotes:

1. Revenue figures are for illustrative purposes only and are strictly allocatable by energy source.



TABLE 5 Source of Production Report by Exporter

Exporter	Fuel Type	Authorization	JAN08		
			Energy (MW.h)	Revenue (CAN\$) ¹	CAN\$/MW.h ¹
ENMAX Energy Ma	Canadian Coal	Permit 278	675	43 218	64.03
		Subtotal	675	43 218	64.03
	Subtotal		675	43 218	64.03
Hydro-Quebec	Hydraulic	Licence 180	111 692	3 529 118	31.60
		Licence 181	18 659	589 566	31.60
		Licence 182	16 983	536 610	31.60
		Licence 183	30 212	954 605	31.60
		Licence 184	19 146	604 954	31.60
		Permit 64	1 293 620	112 438 132	86.92
		Subtotal	1 490 312	118 652 984	79.62
Subtotal		1 490 312	118 652 984	79.62	
Integrys	Other	Permit 250	9 735	451 812	46.41
		Subtotal	9 735	451 812	46.41
	Subtotal		9 735	451 812	46.41
MAG Energy Sol.	Other	Permit 255	38 606	2 177 402	56.40
		Subtotal	38 606	2 177 402	56.40
	Subtotal		38 606	2 177 402	56.40
Manitoba Hydro	Hydraulic	Permit 144	17 928	1 340 812	74.79
		Permit 155	21 709	1 083 627	49.92
		Permit 224	174 627	8 931 745	51.15
		Permit 269	299 369	14 709 021	49.13
		Subtotal	513 633	26 065 206	50.75

Footnotes:

1. Revenue figures are for illustrative purposes only and are strictly allocatable by energy source.



TABLE 5 Source of Production Report by Exporter

Exporter	Fuel Type	Authorization	JAN08		
			Energy (MW.h)	Revenue (CAN\$) ¹	CAN\$/MW.h ¹
Manitoba Hydro	Imported Coal	Permit 144	259	19 377	74.79
		Permit 155	314	15 660	49.92
		Permit 224	2 524	129 076	51.15
		Permit 269	4 326	212 565	49.13
		Subtotal	7 423	376 678	50.75
	Natural Gas	Permit 144	12	868	74.79
		Permit 155	14	702	49.92
		Permit 224	113	5 782	51.15
		Permit 269	194	9 522	49.13
		Subtotal	333	16 874	50.75
	Other	Permit 144	36	2 678	74.79
		Permit 155	43	2 164	49.92
		Permit 224	349	17 837	51.15
		Permit 269	598	29 374	49.13
		Subtotal	1 026	52 053	50.75
	Subtotal		522 414	26 510 810	50.75
Merrill-Lynch	Other	Permit 227	891	11 015	12.36
		Subtotal	891	11 015	12.36
	Subtotal		891	11 015	12.36
Morgan Stanley	Other	Permit 180	90 784	4 595 500	50.62
		Subtotal	90 784	4 595 500	50.62
	Subtotal		90 784	4 595 500	50.62

Footnotes:

1. Revenue figures are for illustrative purposes only and are strictly allocatable by energy source.



TABLE 5 Source of Production Report by Exporter

Exporter	Fuel Type	Authorization	JAN08		
			Energy (MW.h)	Revenue (CAN\$) ¹	CAN\$/MW.h ¹
NB Power Gen.	Canadian Coal	Permit 295	946	86 429	91.35
		Subtotal	946	86 429	91.35
	Imported Coal	Permit 295	6 169	563 567	91.35
		Subtotal	6 169	563 567	91.35
	Imported Oil	Permit 295	22 814	2 084 166	91.35
		Subtotal	22 814	2 084 166	91.35
	Other	Permit 295	19 861	1 814 387	91.35
		Subtotal	19 861	1 814 387	91.35
		Subtotal	49 791	4 548 549	91.35
	Ont Power Gen	Other	Permit 24	19	761
Subtotal			19	761	41.06
Subtotal		19	761	41.06	
OPG/OETIC	Other	Permit 284	378 151	19 064 737	50.42
		Subtotal	378 151	19 064 737	50.42
	Subtotal	378 151	19 064 737	50.42	
Powerex Corp.	Hydraulic	Permit 119	35 350	2 544 038	71.97
		Subtotal	35 350	2 544 038	71.97
	Other	Permit 116	77 196	4 098 302	53.09
		Permit 118	434 572	28 903 941	66.51
		Subtotal	511 768	33 002 243	64.49
	Subtotal	547 118	35 546 281	64.97	

Footnotes:

1. Revenue figures are for illustrative purposes only and are strictly allocatable by energy source.



TABLE 5 Source of Production Report by Exporter

Exporter	Fuel Type	Authorization	JAN08		
			Energy (MW.h)	Revenue (CAN\$) ¹	CAN\$/MW.h ¹
Rainbow	Other	Permit 263	35 123	1 041 413	29.65
		Subtotal	35 123	1 041 413	29.65
	Subtotal		35 123	1 041 413	29.65
Saracen Merchan	Other	Permit 276	2 182	232 106	106.37
		Subtotal	2 182	232 106	106.37
	Subtotal		2 182	232 106	106.37
SIG-H LLC	Other	Permit 291	11 038	479 808	43.47
		Subtotal	11 038	479 808	43.47
	Subtotal		11 038	479 808	43.47
Silverhill	Other	Permit 279	7 431	448 631	60.37
		Subtotal	7 431	448 631	60.37
	Subtotal		7 431	448 631	60.37
Teck Cominco	Hydraulic	Permit 244	38 800	2 798 548	72.13
		Subtotal	38 800	2 798 548	72.13
	Subtotal		38 800	2 798 548	72.13
TransCan ULC	Other	Permit 271	6 619	381 387	57.62
		Subtotal	6 619	381 387	57.62
	Subtotal		6 619	381 387	57.62
Total All Exporters			3 719 624	245 626 171	66.04

Footnotes:

1. Revenue figures are for illustrative purposes only and are strictly allocatable by energy source.