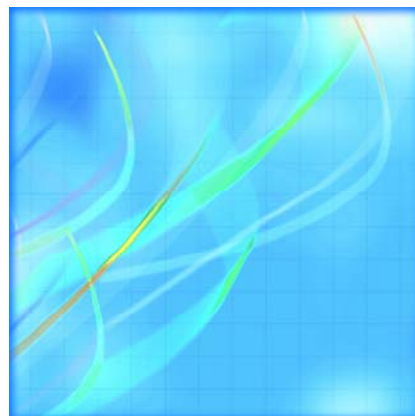




Catalogue no. 23-012-X

Cattle Statistics

2008



Statistics
Canada

Statistique
Canada

Canada

How to obtain more information

For information about this product or the wide range of services and data available from Statistics Canada, visit our website at www.statcan.ca or contact us by e-mail at infostats@statcan.ca or by phone from 8:30am to 4:30pm Monday to Friday at:

Toll-free telephone (Canada and the United States):

Inquiries line **1-800-263-1136**

National telecommunications device for the hearing impaired **1-800-363-7629**

Fax line **1-877-287-4369**

Depository Services Program inquiries line **1-800-635-7943**

Depository Services Program fax line **1-800-565-7757**

Statistics Canada national contact centre: 1-613-951-8116

Fax line **1-613-951-0581**

Information to access the product

This product, catalogue no. 23-012-X, is available for free in electronic format. To obtain a single issue, visit our website at www.statcan.ca and select Publications.

Standards of service to the public

Statistics Canada is committed to serving its clients in a prompt, reliable and courteous manner. To this end, the Agency has developed *standards of service* which its employees observe in serving its clients.

To obtain a copy of these service standards, please contact Statistics Canada toll free at 1-800-263-1136. The service standards are also published on www.statcan.ca under About us > Providing services to Canadians.



Statistics Canada
Agriculture Division

Cattle Statistics

2008

Published by authority of the Minister responsible for Statistics Canada

© Minister of Industry, 2008

All rights reserved. The content of this electronic publication may be reproduced, in whole or in part, and by any means, without further permission from Statistics Canada, subject to the following conditions: that it be done solely for the purposes of private study, research, criticism, review or newspaper summary, and/or for non-commercial purposes; and that Statistics Canada be fully acknowledged as follows: Source (or "Adapted from", if appropriate): Statistics Canada, year of publication, name of product, catalogue number, volume and issue numbers, reference period and page(s). Otherwise, no part of this publication may be reproduced, stored in a retrieval system or transmitted in any form, by any means—electronic, mechanical or photocopy—or for any purposes without prior written permission of Licensing Services, Client Services Division, Statistics Canada, Ottawa, Ontario, Canada K1A 0T6.

February 2008

Catalogue no. 23-012-X, vol. 7, no. 1

ISSN 1705-1320

Frequency: Semi-Annual

Ottawa

La version française de cette publication est disponible sur demande (n° 23-012-X au catalogue).

Note of appreciation

Canada owes the success of its statistical system to a long standing partnership between Statistics Canada, the citizens of Canada, its businesses, governments and other institutions. Accurate and timely statistical information could not be produced without their continued cooperation and goodwill.

User information

Symbols

The following standard symbols are used in Statistics Canada publications:

- . not available for any reference period
- .. not available for a specific reference period
- ... not applicable
- 0 true zero or a value rounded to zero
- 0s value rounded to 0 (zero) where there is a meaningful distinction between true zero and the value that was rounded
- p preliminary
- r revised
- x suppressed to meet the confidentiality requirements of the *Statistics Act*
- E use with caution
- F too unreliable to be published

This publication was prepared under the direction of:

- **Mark Elward, Chief**, Livestock and animal products section
- **Debbie Dupuis, Chief**, Agriculture production survey section
- **Robert Plourde, Unit Head**, Livestock and animal products section
- **Donald Cutts, Statistical Officer**, Livestock and animal products section

Table of contents

Highlights	6
Analysis	7
Cattle estimates as of January 1, 2008	7
Decline in cattle largest for feeding operations	8
Exports of live cattle bullish	8
Lower prices and higher costs pressure cattle producers	9
Related products	10
Statistical tables	
1 Cattle on farms	13
1-1 Canada	13
1-2 Newfoundland and Labrador	14
1-3 Prince Edward Island	14
1-4 Nova Scotia	15
1-5 New Brunswick	15
1-6 Atlantic	16
1-7 Quebec	16
1-8 Ontario	17
1-9 East	17
1-10 Manitoba	18
1-11 Saskatchewan	18
1-12 Alberta	19
1-13 British Columbia	19
1-14 West	20
2 Cull cows at January 1, 2008	21
3 Feeder cattle by weight category, at January 1, 2008	22
4 Cattle, supply and demand	24
5 Cattle production - Canada	33
6 Calves production - Canada	34

Table of contents – continued

7	Cattle by farm type	35
7-1	Canada	35
7-2	Atlantic Provinces	37
7-3	Quebec	39
7-4	Ontario	41
7-5	Eastern Provinces	43
7-6	Manitoba	45
7-7	Saskatchewan	47
7-8	Alberta	49
7-9	British Columbia	51
7-10	Western Provinces	53
8	Feeder cattle by weight category, by farm type at January 1, 2008	55
8-1	Canada	55
8-2	East	56
8-3	Atlantic	57
8-4	Quebec	58
8-5	Ontario	59
8-6	Manitoba	60
8-7	Saskatchewan	61
8-8	Alberta	62
8-9	British Columbia	63
8-10	West	64
9	Prices	65
9-1	Toronto A1 to A2 steers	65
9-2	Alberta steers	66
10	Cattle and calves: Number by class and calf crop	66
10-1	Canada and United States, January 1	66
10-2	United States, January 1	67
10-3	Canada, January 1	67
11	Supply and disposition of red meat, Canada	68
11-1	Beef	68
11-2	Veal	68
11-3	Beef and veal total	69
11-4	Pork	69
11-5	Mutton and lamb	70
11-6	Offal	70
11-7	Total red meat	71

Table of contents – continued**Data quality, concepts and methodology**

Concepts and methods	72
----------------------	----

Charts

1. Canadian inventories drop	8
2. World exports of Canadian Cattle & Beef	9

Highlights

- As of January 1, 2008, cattlemen reported 13.9 million heads on their farms, down by 210,000 heads, or 1.5%, from the previous year, according to the annual January Livestock Survey of 10,000 producers.
- Cattle numbers fell in all beef producing provinces with the western provinces accounting for almost three-quarters of the drop. The western herd combined, fell by 155 thousand heads.
- Exports of live cattle to the United States rose rapidly once the border was reopened in July 2005. During 2007, it is estimated that exports will reach 1.4 million heads, up 35% from 2006.
- Profits for cattle producers are being squeezed between a strong dollar and high feed costs. The stronger Canadian dollar essentially puts downward pressure on cattle prices in this country because the prices here largely follow US prices.
- At the same time, costs for feed grains have risen to challenge livestock producers. For example, Canadian Western barley prices were about 60% higher in September 2007 than they were during the same month in 2006. Meanwhile, corn prices in Ontario were up over 50%.

Analysis

Cattle estimates as of January 1, 2008

Canada's national cattle herd continued to decline during 2007, as exports to the United States accelerated. Last year marked the second full year that the border has been open to Canadian cattle shipments since 2002.

As of January 1, 2008, cattlemen reported 13.9 million heads on their farms, down by 210,000 heads, or 1.5%, from the previous year, according to the annual January Livestock Survey of 10,000 producers.

In January 2005, a record year, there were almost 1 million more cattle held on Canadian farms as closed borders forced producers to keep much of their farm stock off the market. Despite the decline, the January 1, 2008 inventory remains 479,000 heads above the level as of January 1, 2003, prior to the border closure.

The American border, closed after May 20, 2003 following the disclosure of a case of bovine spongiform encephalopathy (BSE), was reopened to live cattle under 30 months of age on July 18, 2005. On November 19, 2007, it was opened to cattle born after 1999. Even with an open border, farmers continue to face different but rigorous challenges.

In general, inventories in the West rose during the early 1990s as farmers increased production in response to expanding export markets. With the closure of the US markets, thousands of cattle were held back on Canadian farms.

The livestock survey also showed declines in both hog and sheep inventories during the year. Hog producers indicated they had 14.0 million head as of January 1, 2008. Farmers reported 825,300 sheep on their farms, down 6.1%.

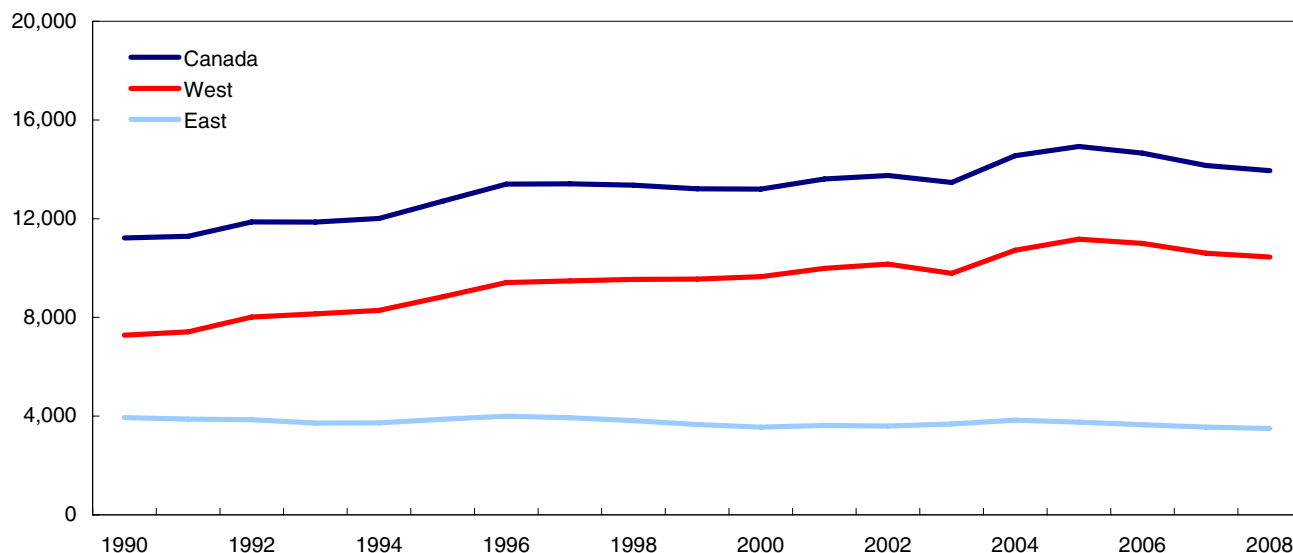
Text table 1
Livestock inventories at January 1

	Cattle		Hogs		Sheep	
	2007	2008	2007	2008	2007	2008
	thousands of heads					
Canada	14,155	13,945	14,907	14,010	879	825
Atlantic	287	272	324	263	31	30
Quebec	1,365	1,345	4,174	3,990	248	245
Ontario	1,904	1,884	3,924	3,695	235	230
Manitoba	1,375	1,355	2,960	2,900	64	62
Saskatchewan	2,930	2,920	1,349	1,210	95	88
Alberta	5,680	5,560	2,045	1,830	152	125
British Columbia	615	610	131	122	54	45

Note(s): Figures may not add up to totals because of rounding.

Chart 1
Canadian inventories drop

thousands of heads



Decline in cattle largest for feeding operations

Much of the decline in the number of cattle held on farms was experienced by feeding operations, where cattle are normally finished for slaughter by being fed rations high in feed grains.

The number of cattle on feeding operations as of January 1, 2008 dropped 8.6% to 1,435,000 heads. The number of cattle on cow-calf operations decreased 1% to stand at 8,581,000.

Cattle numbers fell in all beef producing provinces with the western provinces accounting for almost three-quarters of the drop. The western herd combined, fell by 155 thousands heads.

Alberta's herd, the largest of any province, declined 2.1%, Saskatchewan's edged down, and Manitoba's was off by 1.5%. In British Columbia, the herd dropped marginally. In central Canada, Quebec's cattle count slipped 1.5%, while Ontario's was 1.1% lower.

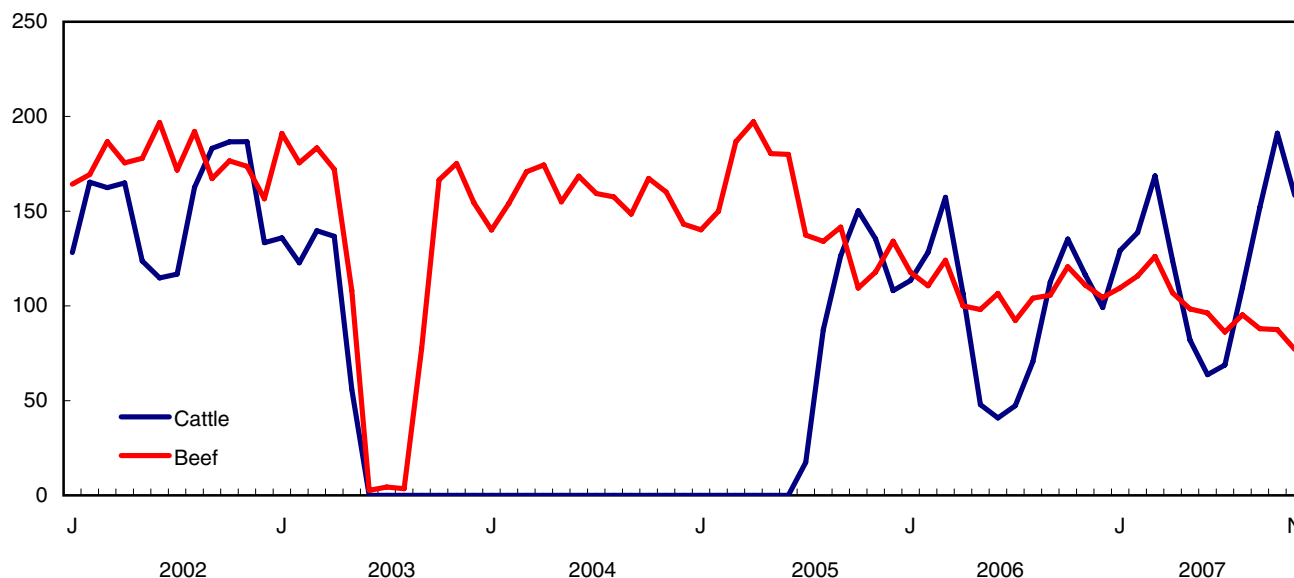
Exports of live cattle bullish

Exports of live cattle to the United States rose rapidly once the border was reopened in July 2005. During 2007, it is estimated that exports will reach 1.4 million heads, up 35% from 2006.

Despite the increase, the numbers remained well below the comparable figure of 1,688,100 animals exported in 2002, before borders were closed to live cattle shipments.

Chart 2
World exports of Canadian Cattle & Beef

millions of CAN\$



Slaughter levels have also been a key factor in the cattle business. During 2004 and the first half of 2005, levels hit record highs. They were fuelled by increased slaughter capacity, domestic demand, strong international demand for Canadian beef and lower levels of beef imports.

However, levels have tapered off because of lower exports of beef meat now that the border is open to live cattle and supplies in the United States have increased. At 3.7 million heads, slaughter in 2007 was down 6.0% from the previous 12 months.

Lower prices and higher costs pressure cattle producers

Profits for cattle producers are being squeezed between a strong dollar and high feed costs. The stronger Canadian dollar essentially puts downward pressure on cattle prices in this country because the prices here largely follow US prices.

The weaker American dollar simply buys fewer dollars north of the border. Prices for slaughter cattle in the second half of 2007 were 5.7 % below the comparable period in 2006.

At the same time, costs for feed grains have risen to challenge livestock producers. For example, Canadian Western barley prices were about 60% higher in September 2007 than they were during the same month in 2006. Meanwhile, corn prices in Ontario were up over 50%.

Not only do higher grain prices increase the cost of feeding cattle but they also put downward pressure on the price that feedlots pay cattle producers for feeder cattle. And, it doesn't help that meat packing costs are higher in Canada than in the United States, partially the result of regulations requiring the removal of risk material.

Related products

Selected publications from Statistics Canada

21-020-X	Food Statistics
21-206-X	Statistics on Income of Farm Operators
21-207-X	Statistics on Income of Farm Families
21-208-X	Statistics on Revenues and Expenses of Farms
23-014-X	Dairy Statistics
23-015-X	Poultry and Egg Statistics
23-501-X	Livestock Feed Requirements Study

Selected CANSIM tables from Statistics Canada

003-0004	Livestock surveys, pigs, at end of quarter, quarterly
003-0016	Shorn wool statistics, annual
003-0026	Cattle and calves, farm and meat production, annual
003-0028	Hogs, sheep and lambs statistics, annual
003-0030	Number of calves born, semi-annual
003-0031	Number of sheep and lambs on farms, annual
003-0032	Number of cattle, by class and farm type, annual
003-0035	Per capita disappearance of meats and output of meats and offal, annual
003-0036	Animals slaughtered, supply and disappearance in Canada, annual
003-0037	Meat production, supply and disappearance in Canada, annual
003-0083	Cattle statistics, supply and demand of cattle, annual
003-0084	Cattle prices, steers, monthly

003-0085	Cattle and calves, number by class and calf crop, United States, annual
003-0086	Cattle, weighted average prices, steers, annual

Selected surveys from Statistics Canada

3460	Livestock Survey
------	------------------

Selected summary tables from Statistics Canada

- *Cattle inventories, by province*
- *Pig inventories, by province (quarterly)*
- *Sheep inventories, by province*

Statistical tables

Table 1-1
Cattle on farms — Canada

	Bulls, 1 year and over	Beef cows	Dairy cows	Heifers			Steers, 1 year and over	Calves, under 1 year	Total
				Heifers, dairy replacement	Heifers, beef replacement	Heifers, slaughter			
thousands of heads									
At January 1									
2002	237.0	4,636.0	1,083.9	507.5	653.7	864.6	1,195.1	4,573.7	13,751.5
2003	239.4	4,752.2	1,065.5	512.3	648.3	805.0	1,173.6	4,269.7	13,466.0
2004	269.5	5,019.4	1,054.9	504.3	687.7	870.5	1,203.3	4,945.4	14,555.0
2005	272.6	5,283.6	1,041.4	517.8	637.8	945.0	1,159.5	5,067.3	14,925.0
2006	264.0	5,247.2	1,019.1	495.1	628.3	986.8	1,146.8	4,867.7	14,655.0
2007	244.6	5,010.1	1,004.8	480.1	587.1	963.5	1,145.2	4,719.6	14,155.0
2008	246.8	4,981.9	988.5	471.1	595.0	982.9	1,101.6	4,577.2	13,945.0
At July 1									
2002	259.5	4,821.8	1,072.5	513.0	828.0	1,116.8	1,591.6	5,217.7	15,420.9
2003	273.5	4,924.2	1,055.4	504.8	863.8	1,124.5	1,598.2	5,325.6	15,670.0
2004	284.7	5,334.7	1,053.1	522.8	805.4	1,252.6	1,705.2	5,651.5	16,610.0
2005	291.1	5,436.2	1,025.1	507.4	840.9	1,305.8	1,657.9	5,815.6	16,880.0
2006	267.6	5,164.6	1,000.4	506.5	690.8	1,247.4	1,655.3	5,467.4	16,000.0
2007	263.4	5,112.6	979.1	479.7	668.1	1,289.4	1,790.2	5,302.5	15,885.0
2008

	Bulls, 1 year and over	Beef cows	Dairy cows	Heifers			Steers, 1 year and over	Calves, under 1 year	Total
				Heifers, dairy replacement	Heifers, beef replacement	Heifers, slaughter			
percentage change from previous year									
At January 1									
2002	-1.0	0.7	-0.7	2.0	-3.0	7.9	-2.2	2.1	1.1
2003	1.0	2.5	-1.7	0.9	-0.8	-6.9	-1.8	-6.6	-2.1
2004	12.6	5.6	-1.0	-1.6	6.1	8.1	2.5	15.8	8.1
2005	1.2	5.3	-1.3	2.7	-7.3	8.6	-3.6	2.5	2.5
2006	-3.2	-0.7	-2.1	-4.4	-1.5	4.4	-1.1	-3.9	-1.8
2007	-7.3	-4.5	-1.4	-3.0	-6.6	-2.4	-0.1	-3.0	-3.4
2008	0.9	-0.6	-1.6	-1.9	1.3	2.0	-3.8	-3.0	-1.5
At July 1									
2002	-2.1	0.5	0 ^s	-0.8	-3.6	5.4	-4.0	0.5	0 ^s
2003	5.4	2.1	-1.6	-1.6	4.3	0.7	0.4	2.1	1.6
2004	4.1	8.3	-0.2	3.6	-6.8	11.4	6.7	6.1	6.0
2005	2.2	1.9	-2.7	-2.9	4.4	4.2	-2.8	2.9	1.6
2006	-8.1	-5.0	-2.4	-0.2	-17.8	-4.5	-0.2	-6.0	-5.2
2007	-1.6	-1.0	-2.1	-5.3	-3.3	3.4	8.1	-3.0	-0.7
2008

Table 1-2
Cattle on farms — Newfoundland and Labrador

	Bulls, 1 year and over	Beef cows	Dairy cows	Heifers			Steers, 1 year and over	Calves, under 1 year	Total
				Heifers, dairy replacement	Heifers, beef replacement	Heifers, slaughter			
thousands of heads									
At January 1									
2002	0.1	0.7	4.7	1.4	0.3	0.1	0.2	2.0	9.5
2003	0.1	0.7	4.8	1.6	0.2	0.1	0.2	2.0	9.7
2004	0.1	0.7	5.2	1.9	0.2	0.1	0.2	2.0	10.4
2005	0.1	0.7	5.9	2.0	0.1	0.1	0.1	2.0	11.0
2006	0.1	0.8	6.2	2.0	0.1	0.1	0.1	2.3	11.7
2007	0.1	0.8	6.4	1.9	0.1	0.2	0.1	2.4	12.0
2008	0.1	0.7	6.7	2.1	0.1	0.1	0.1	2.6	12.5
At July 1									
2002	0.1	0.7	4.7	1.5	0.2	0.1	0.2	1.9	9.4
2003	0.1	0.7	4.9	1.9	0.2	0.1	0.2	2.0	10.1
2004	0.1	0.7	5.6	2.0	0.1	0.1	0.1	2.0	10.7
2005	0.1	0.7	6.1	1.9	0.1	0.2	0.1	2.2	11.4
2006	0.1	0.8	6.3	2.0	0.1	0.2	0.1	2.3	11.9
2007	0.1	0.6	6.8	2.3	0.1	0.1	0.1	2.4	12.5
2008

Table 1-3
Cattle on farms — Prince Edward Island

	Bulls, 1 year and over	Beef cows	Dairy cows	Heifers			Steers, 1 year and over	Calves, under 1 year	Total
				Heifers, dairy replacement	Heifers, beef replacement	Heifers, slaughter			
thousands of heads									
At January 1									
2002	0.8	13.4	14.5	6.9	3.1	9.0	16.4	20.9	85.0
2003	0.7	13.2	14.7	7.0	2.9	9.2	16.0	20.3	84.0
2004	0.8	13.2	14.0	7.2	3.0	9.6	16.0	20.2	84.0
2005	0.8	14.6	13.5	7.4	2.8	8.9	15.5	20.0	83.5
2006	0.8	15.9	13.2	7.4	2.0	10.3	15.5	20.4	85.5
2007	0.8	16.1	13.2	7.3	1.7	10.2	15.2	20.5	85.0
2008	0.7	13.0	13.0	7.1	1.5	9.4	12.5	19.8	77.0
At July 1									
2002	0.8	13.2	14.5	6.8	3.0	9.3	17.0	20.4	85.0
2003	0.8	13.2	14.5	6.8	3.0	9.4	17.4	20.4	85.5
2004	0.9	14.2	14.0	7.3	3.0	9.5	16.0	21.1	86.0
2005	0.8	15.2	13.4	7.5	2.0	10.3	16.0	21.3	86.5
2006	0.8	16.2	13.1	7.2	1.8	10.8	15.8	21.3	87.0
2007	0.8	16.3	13.5	7.6	1.8	10.4	15.8	21.3	87.5
2008

Table 1-4
Cattle on farms — Nova Scotia

	Bulls, 1 year and over	Beef cows	Dairy cows	Heifers			Steers, 1 year and over	Calves, under 1 year	Total
				Heifers, dairy replacement	Heifers, beef replacement	Heifers, slaughter			
thousands of heads									
At January 1									
2002	1.5	25.9	24.0	11.3	5.0	3.4	5.4	30.0	106.5
2003	1.4	25.8	24.2	10.9	4.8	3.7	5.4	29.3	105.5
2004	1.4	26.1	24.0	10.7	5.0	3.6	5.1	29.6	105.5
2005	1.5	25.8	22.9	11.4	3.8	4.0	5.1	29.5	104.0
2006	1.5	25.3	22.3	11.7	3.4	4.3	5.0	28.5	102.0
2007	1.5	25.7	22.2	11.9	3.3	4.3	4.9	27.7	101.5
2008	1.5	22.0	23.5	12.5	3.4	4.9	5.9	27.3	101.0
At July 1									
2002	1.4	26.2	23.9	11.3	5.0	3.2	5.5	30.5	107.0
2003	1.4	26.1	24.0	11.5	4.8	3.6	5.5	30.1	107.0
2004	1.5	26.5	23.0	11.7	4.5	3.6	5.3	29.9	106.0
2005	1.5	26.2	22.6	12.0	3.8	4.3	5.6	29.5	105.5
2006	1.5	25.9	22.0	12.2	3.6	4.5	5.6	28.7	104.0
2007	1.4	24.7	22.7	12.5	3.3	3.9	5.0	28.5	102.0
2008

Table 1-5
Cattle on farms — New Brunswick

	Bulls, 1 year and over	Beef cows	Dairy cows	Heifers			Steers, 1 year and over	Calves, under 1 year	Total
				Heifers, dairy replacement	Heifers, beef replacement	Heifers, slaughter			
thousands of heads									
At January 1									
2002	1.3	20.5	19.2	9.4	4.3	4.1	6.4	25.8	91.0
2003	1.2	20.0	19.3	9.8	3.9	4.0	6.0	25.8	90.0
2004	1.2	19.4	19.2	10.0	4.0	4.2	6.5	25.5	90.0
2005	1.2	19.5	19.3	10.0	4.1	4.5	6.2	25.2	90.0
2006	1.2	21.2	18.9	9.5	3.3	4.1	5.4	25.4	89.0
2007	1.2	21.5	19.0	9.5	3.0	3.8	5.0	25.0	88.0
2008	1.0	18.7	18.8	9.4	2.5	3.0	4.1	23.5	81.0
At July 1									
2002	1.2	20.2	18.9	9.4	4.8	4.2	6.4	25.9	91.0
2003	1.2	20.2	19.0	9.6	4.8	4.4	6.6	25.7	91.5
2004	1.2	20.3	19.0	9.8	4.8	4.4	6.3	26.2	92.0
2005	1.2	20.6	19.5	9.5	4.0	4.5	6.4	26.3	92.0
2006	1.2	22.2	19.0	9.6	2.8	3.9	5.2	25.6	89.5
2007	1.1	22.0	19.1	9.3	2.9	3.0	4.3	25.3	87.0
2008

Table 1-6
Cattle on farms — Atlantic

	Bulls, 1 year and over	Beef cows	Dairy cows	Heifers			Steers, 1 year and over	Calves, under 1 year	Total
				Heifers, dairy replacement	Heifers, beef replacement	Heifers, slaughter			
thousands of heads									
At January 1									
2002	3.7	60.5	62.4	29.0	12.7	16.6	28.4	78.7	292.0
2003	3.4	59.7	63.0	29.3	11.8	17.0	27.6	77.4	289.2
2004	3.5	59.4	62.4	29.8	12.2	17.5	27.8	77.3	289.9
2005	3.6	60.6	61.6	30.8	10.8	17.5	26.9	76.7	288.5
2006	3.6	63.2	60.6	30.6	8.8	18.8	26.0	76.6	288.2
2007	3.6	64.1	60.8	30.6	8.1	18.5	25.2	75.6	286.5
2008	3.3	54.4	62.0	31.1	7.5	17.4	22.6	73.2	271.5
At July 1									
2002	3.5	60.3	62.0	29.0	13.0	16.8	29.1	78.7	292.4
2003	3.5	60.2	62.4	29.8	12.8	17.5	29.7	78.2	294.1
2004	3.7	61.7	61.6	30.8	12.4	17.6	27.7	79.2	294.7
2005	3.6	62.7	61.6	30.9	9.9	19.3	28.1	79.3	295.4
2006	3.6	65.1	60.4	31.0	8.3	19.4	26.7	77.9	292.4
2007	3.4	63.6	62.1	31.7	8.1	17.4	25.2	77.5	289.0
2008

Table 1-7
Cattle on farms — Quebec

	Bulls, 1 year and over	Beef cows	Dairy cows	Heifers			Steers, 1 year and over	Calves, under 1 year	Total
				Heifers, dairy replacement	Heifers, beef replacement	Heifers, slaughter			
thousands of heads									
At January 1									
2002	14.8	207.5	418.0	176.0	32.0	20.0	71.7	346.0	1,286.0
2003	14.5	218.0	403.0	172.0	32.5	19.0	63.0	381.0	1,303.0
2004	16.0	231.0	397.0	169.0	30.0	27.0	79.0	471.0	1,420.0
2005	15.5	238.0	399.0	178.0	26.0	27.0	100.0	431.5	1,415.0
2006	14.4	225.0	390.0	182.0	21.0	29.0	98.0	425.6	1,385.0
2007	13.0	214.0	394.0	176.0	20.0	31.0	109.0	408.0	1,365.0
2008	13.5	224.0	375.0	163.0	24.0	26.0	96.0	423.5	1,345.0
At July 1									
2002	15.0	213.5	408.0	176.5	33.0	23.0	89.0	412.0	1,370.0
2003	15.5	222.0	395.0	167.0	33.0	25.0	92.0	470.5	1,420.0
2004	16.0	236.0	410.0	181.0	34.0	28.0	112.0	498.0	1,515.0
2005	16.0	233.0	382.0	176.0	30.5	31.0	108.5	478.0	1,455.0
2006	13.5	226.5	382.5	180.0	25.0	30.0	110.0	457.5	1,425.0
2007	14.0	235.0	367.0	158.0	25.0	37.0	111.0	448.0	1,395.0
2008

Table 1-8
Cattle on farms — Ontario

	Bulls, 1 year and over	Beef cows	Dairy cows	Heifers			Steers, 1 year and over	Calves, under 1 year	Total
				Heifers, dairy replacement	Heifers, beef replacement	Heifers, slaughter			
thousands of heads									
At January 1									
2002	23.5	376.0	367.0	200.0	75.0	137.0	178.0	659.5	2,016.0
2003	25.0	392.0	364.0	205.0	70.0	138.0	258.0	635.8	2,087.8
2004	26.0	415.0	355.5	198.0	65.0	149.0	256.5	660.1	2,125.1
2005	25.0	405.0	344.8	205.0	53.0	153.5	256.6	608.6	2,051.5
2006	25.5	389.0	334.0	185.0	58.5	170.0	234.8	585.0	1,981.8
2007	20.0	364.0	327.0	176.0	44.0	146.0	220.0	606.5	1,903.5
2008	21.5	370.0	325.0	174.0	48.5	135.0	253.0	556.5	1,883.5
At July 1									
2002	25.0	373.0	367.0	199.5	74.5	167.0	324.0	595.0	2,125.0
2003	26.0	402.0	360.0	200.0	72.0	177.0	337.0	586.9	2,160.9
2004	26.0	410.0	348.5	200.0	70.0	173.0	360.5	592.3	2,180.3
2005	26.5	400.0	346.0	194.0	60.0	165.0	352.8	610.3	2,154.6
2006	24.5	380.0	330.0	189.5	50.0	180.0	330.6	548.0	2,032.6
2007	23.5	369.0	320.5	181.0	49.0	165.0	327.0	521.0	1,956.0
2008

Table 1-9
Cattle on farms — East

	Bulls, 1 year and over	Beef cows	Dairy cows	Heifers			Steers, 1 year and over	Calves, under 1 year	Total
				Heifers, dairy replacement	Heifers, beef replacement	Heifers, slaughter			
thousands of heads									
At January 1									
2002	42.0	644.0	847.4	405.0	119.7	173.6	278.1	1,084.2	3,594.0
2003	42.9	669.7	830.0	406.3	114.3	174.0	348.6	1,094.2	3,680.0
2004	45.5	705.4	814.9	396.8	107.2	193.5	363.3	1,208.4	3,835.0
2005	44.1	703.6	805.4	413.8	89.8	198.0	383.5	1,116.8	3,755.0
2006	43.5	677.2	784.6	397.6	88.3	217.8	358.8	1,087.2	3,655.0
2007	36.6	642.1	781.8	382.6	72.1	195.5	354.2	1,090.1	3,555.0
2008	38.3	648.4	762.0	368.1	80.0	178.4	371.6	1,053.2	3,500.0
At July 1									
2002	43.5	646.8	837.0	405.0	120.5	206.8	442.1	1,085.7	3,787.4
2003	45.0	684.2	817.4	396.8	117.8	219.5	458.7	1,135.6	3,875.0
2004	45.7	707.7	820.1	411.8	116.4	218.6	500.2	1,169.5	3,990.0
2005	46.1	695.7	789.6	400.9	100.4	215.3	489.4	1,167.6	3,905.0
2006	41.6	671.6	772.9	400.5	83.3	229.4	467.3	1,083.4	3,750.0
2007	40.9	667.6	749.6	370.7	82.1	219.4	463.2	1,046.5	3,640.0
2008

Table 1-10
Cattle on farms — Manitoba

	Bulls, 1 year and over	Beef cows	Dairy cows	Heifers			Steers, 1 year and over	Calves, under 1 year	Total
				Heifers, dairy replacement	Heifers, beef replacement	Heifers, slaughter			
thousands of heads									
At January 1									
2002	25.0	528.0	42.0	18.5	73.0	47.0	54.0	457.5	1,245.0
2003	26.0	553.5	40.5	18.0	78.0	44.0	37.0	453.0	1,250.0
2004	30.0	638.0	42.0	20.0	80.0	54.0	77.0	509.0	1,450.0
2005	31.5	650.0	44.0	18.0	80.0	55.0	70.0	541.5	1,490.0
2006	30.5	673.0	45.0	19.0	77.0	60.0	60.0	525.5	1,490.0
2007	28.0	623.0	44.5	18.5	62.0	47.0	45.0	507.0	1,375.0
2008	27.0	614.5	44.0	19.5	62.0	52.0	49.0	487.0	1,355.0
At July 1									
2002	27.0	574.0	41.5	20.0	92.0	74.0	112.0	529.5	1,470.0
2003	31.0	622.0	42.0	21.0	100.0	92.0	124.0	558.0	1,590.0
2004	33.0	650.0	42.0	23.0	96.0	107.0	155.0	624.0	1,730.0
2005	33.0	676.0	43.5	22.5	95.0	108.5	110.5	646.0	1,735.0
2006	32.0	680.0	44.0	20.0	80.0	90.0	100.0	634.0	1,680.0
2007	28.5	612.0	45.0	20.5	72.0	105.0	95.0	562.0	1,540.0
2008

Table 1-11
Cattle on farms — Saskatchewan

	Bulls, 1 year and over	Beef cows	Dairy cows	Heifers			Steers, 1 year and over	Calves, under 1 year	Total
				Heifers, dairy replacement	Heifers, beef replacement	Heifers, slaughter			
thousands of heads									
At January 1									
2002	57.0	1,220.0	28.0	14.0	165.0	23.0	33.0	877.5	2,417.5
2003	58.0	1,318.0	32.0	15.0	160.0	47.0	57.0	856.0	2,543.0
2004	68.0	1,426.0	31.5	14.5	185.0	51.0	75.0	1,004.0	2,855.0
2005	70.0	1,535.0	31.0	14.0	176.0	49.0	71.0	1,094.0	3,040.0
2006	69.0	1,560.0	29.0	12.0	183.0	47.0	73.0	977.0	2,950.0
2007	64.0	1,484.5	28.5	12.0	170.0	52.0	79.0	1,040.0	2,930.0
2008	65.5	1,480.0	29.0	12.5	176.0	48.0	83.0	1,026.0	2,920.0
At July 1									
2002	61.0	1,270.0	29.0	13.5	213.0	64.0	122.5	1,167.0	2,940.0
2003	70.0	1,335.0	34.0	15.0	240.0	105.0	150.0	1,271.0	3,220.0
2004	74.0	1,500.0	31.0	14.0	222.0	130.0	197.0	1,372.0	3,540.0
2005	75.0	1,545.0	29.5	13.5	245.0	122.0	165.0	1,430.0	3,625.0
2006	72.0	1,508.0	28.5	12.5	206.0	90.0	145.0	1,388.0	3,450.0
2007	70.0	1,480.0	30.0	14.0	190.0	105.0	175.0	1,366.0	3,430.0
2008

Table 1-12
Cattle on farms — Alberta

	Bulls, 1 year and over	Beef cows	Dairy cows	Heifers			Steers, 1 year and over	Calves, under 1 year	Total
				Heifers, dairy replacement	Heifers, beef replacement	Heifers, slaughter			
thousands of heads									
At January 1									
2002	98.0	1,959.0	92.0	36.0	250.0	610.0	800.0	1,980.0	5,825.0
2003	96.0	1,915.0	87.0	35.0	250.0	530.0	700.0	1,697.0	5,310.0
2004	110.0	1,960.0	86.5	35.0	270.5	558.0	635.0	2,020.0	5,675.0
2005	110.0	2,090.0	83.0	36.0	255.0	630.0	595.0	2,131.0	5,930.0
2006	105.0	2,052.0	85.5	36.5	245.0	647.0	625.0	2,104.0	5,900.0
2007	101.5	2,000.0	79.5	35.0	253.0	657.0	637.0	1,917.0	5,680.0
2008	101.5	1,990.0	83.5	36.0	245.0	690.0	575.0	1,839.0	5,560.0
At July 1									
2002	110.0	2,040.0	90.0	38.0	345.0	750.0	868.0	2,146.0	6,387.0
2003	109.0	1,990.0	85.0	38.0	350.0	680.0	798.0	2,050.0	6,100.0
2004	113.0	2,150.0	82.0	39.0	320.0	765.0	780.0	2,151.0	6,400.0
2005	119.0	2,200.0	85.0	38.0	352.0	825.0	830.0	2,251.0	6,700.0
2006	105.0	2,025.0	82.0	38.0	278.0	812.0	888.0	2,072.0	6,300.0
2007	108.0	2,076.0	83.0	38.0	284.0	835.0	1,000.0	2,046.0	6,470.0
2008

Table 1-13
Cattle on farms — British Columbia

	Bulls, 1 year and over	Beef cows	Dairy cows	Heifers			Steers, 1 year and over	Calves, under 1 year	Total
				Heifers, dairy replacement	Heifers, beef replacement	Heifers, slaughter			
thousands of heads									
At January 1									
2002	15.0	285.0	74.5	34.0	46.0	11.0	30.0	174.5	670.0
2003	16.5	296.0	76.0	38.0	46.0	10.0	31.0	169.5	683.0
2004	16.0	290.0	80.0	38.0	45.0	14.0	53.0	204.0	740.0
2005	17.0	305.0	78.0	36.0	37.0	13.0	40.0	184.0	710.0
2006	16.0	285.0	75.0	30.0	35.0	15.0	30.0	174.0	660.0
2007	14.5	260.5	70.5	32.0	30.0	12.0	30.0	165.5	615.0
2008	14.5	249.0	70.0	35.0	32.0	14.5	23.0	172.0	610.0
At July 1									
2002	18.0	291.0	75.0	36.5	57.5	22.0	47.0	289.5	836.5
2003	18.5	293.0	77.0	34.0	56.0	28.0	67.5	311.0	885.0
2004	19.0	327.0	78.0	35.0	51.0	32.0	73.0	335.0	950.0
2005	18.0	319.5	77.5	32.5	48.5	35.0	63.0	321.0	915.0
2006	17.0	280.0	73.0	35.5	43.5	26.0	55.0	290.0	820.0
2007	16.0	277.0	71.5	36.5	40.0	25.0	57.0	282.0	805.0
2008

Table 1-14
Cattle on farms — West

	Bulls, 1 year and over	Beef cows	Dairy cows	Heifers			Steers, 1 year and over	Calves, under 1 year	Total
				Heifers, dairy replacement	Heifers, beef replacement	Heifers, slaughter			
thousands of heads									
At January 1									
2002	195.0	3,992.0	236.5	102.5	534.0	691.0	917.0	3,489.5	10,157.5
2003	196.5	4,082.5	235.5	106.0	534.0	631.0	825.0	3,175.5	9,786.0
2004	224.0	4,314.0	240.0	107.5	580.5	677.0	840.0	3,737.0	10,720.0
2005	228.5	4,580.0	236.0	104.0	548.0	747.0	776.0	3,950.5	11,170.0
2006	220.5	4,570.0	234.5	97.5	540.0	769.0	788.0	3,780.5	11,000.0
2007	208.0	4,368.0	223.0	97.5	515.0	768.0	791.0	3,629.5	10,600.0
2008	208.5	4,333.5	226.5	103.0	515.0	804.5	730.0	3,524.0	10,445.0
At July 1									
2002	216.0	4,175.0	235.5	108.0	707.5	910.0	1,149.5	4,132.0	11,633.5
2003	228.5	4,240.0	238.0	108.0	746.0	905.0	1,139.5	4,190.0	11,795.0
2004	239.0	4,627.0	233.0	111.0	689.0	1,034.0	1,205.0	4,482.0	12,620.0
2005	245.0	4,740.5	235.5	106.5	740.5	1,090.5	1,168.5	4,648.0	12,975.0
2006	226.0	4,493.0	227.5	106.0	607.5	1,018.0	1,188.0	4,384.0	12,250.0
2007	222.5	4,445.0	229.5	109.0	586.0	1,070.0	1,327.0	4,256.0	12,245.0
2008

Table 2
Cull cows at January 1, 2008¹

	Newfoundland and Labrador	Prince Edward Island	Nova Scotia	New Brunswick	Atlantic Provinces	Quebec	Ontario	Eastern Provinces
thousands of heads								
Total cows	7.4	26.0	45.5	37.5	116.4	599.0	695.0	1,410.4
Cull cows on farms	0.5	2.5	5.6	4.8	13.4	67.4	82.1	162.9
Expected to calve
8 years and over	0.3	3.7	6.1	5.3	15.4	96.5	128.0	239.9
Dairy cows	6.7	13.0	23.5	18.8	62.0	375.0	325.0	762.0
Cull cows, dairy	0.4	1.0	1.5	1.7	4.6	45.0	37.7	87.3
Expected to calve
8 years and over	0.2	0.8	1.0	1.1	3.1	33.8	24.4	61.3
Beef cows	0.7	13.0	22.0	18.7	54.4	224.0	370.0	648.4
Cull cows, beef	0.1	1.5	4.1	3.1	8.8	22.4	44.4	75.6
Expected to calve
8 years and over	0.1	2.9	5.1	4.2	12.3	62.7	103.6	178.6
	Manitoba	Saskat- chewan	Alberta	British Columbia	Western Provinces	Canada		
thousands of heads								
Total cows	658.5	1,509.0	2,073.5	319.0	4,560.0	5,970.4		
Cull cows on farms	79.0	157.9	208.7	31.2	476.8	639.7		
Expected to calve		
8 years and over	164.2	365.2	500.1	65.9	1,095.4	1,335.3		
Dairy cows	44.0	29.0	83.5	70.0	226.5	988.5		
Cull cows, dairy	5.3	2.9	9.7	8.8	26.7	114.0		
Expected to calve		
8 years and over	4.4	2.6	6.7	4.9	18.6	79.9		
Beef cows	614.5	1,480.0	1,990.0	249.0	4,333.5	4,981.9		
Cull cows, beef	73.7	155.0	199.0	22.4	450.1	525.7		
Expected to calve		
8 years and over	159.8	362.6	493.4	61.0	1,076.8	1,255.4		
	Newfoundland and Labrador	Prince Edward Island	Nova Scotia	New Brunswick	Atlantic Provinces	Quebec	Ontario	Eastern Provinces
percent								
Total cows	100.0	100.0	100.0	100.0	100.0	100.0	100.0	100.0
Cull cows on farms	6.8	9.6	12.3	12.8	11.5	11.3	11.8	11.5
Expected to calve
8 years and over	4.1	14.2	13.4	14.1	13.2	16.1	18.4	17.0
Dairy cows	100.0	100.0	100.0	100.0	100.0	100.0	100.0	100.0
Cull cows, dairy	6.0	7.7	6.4	9.0	7.4	12.0	11.6	11.5
Expected to calve
8 years and over	3.0	6.2	4.3	5.9	5.0	9.0	7.5	8.0
Beef cows	100.0	100.0	100.0	100.0	100.0	100.0	100.0	100.0
Cull cows, beef	14.3	11.5	18.6	16.6	16.2	10.0	12.0	11.7
Expected to calve
8 years and over	14.3	22.3	23.2	22.5	22.6	28.0	28.0	27.5
	Manitoba	Saskat- chewan	Alberta	British Columbia	Western Provinces	Canada		
percent								
Total cows	100.0	100.0	100.0	100.0	100.0	100.0	100.0	100.0
Cull cows on farms	12.0	10.5	10.1	9.8	10.5	10.5	10.7	10.7
Expected to calve
8 years and over	24.9	24.2	24.1	20.7	24.0	24.0	22.4	22.4
Dairy cows	100.0	100.0	100.0	100.0	100.0	100.0	100.0	100.0
Cull cows, dairy	12.0	10.0	11.6	12.6	11.8	11.5	11.5	11.5
Expected to calve
8 years and over	10.0	9.0	8.0	7.0	8.2	8.1	8.1	8.1
Beef cows	100.0	100.0	100.0	100.0	100.0	100.0	100.0	100.0
Cull cows, beef	12.0	10.5	10.0	9.0	10.4	10.6	10.6	10.6
Expected to calve
8 years and over	26.0	24.5	24.8	24.8	24.5	24.8	24.8	25.2

1. Cows that would be sent for slaughter because they are no longer productive.

Table 3
Feeder cattle by weight category, at January 1, 2008

	Newfoundland and Labrador	Prince Edward Island	Nova Scotia	New Brunswick	Atlantic Provinces	Quebec	Ontario	Eastern Provinces
thousands of heads								
Total feeders	0.2	21.9	10.8	7.1	40.0	122.0	388.0	550.0
Total heavy weight	0.0	6.9	1.4	3.5	11.8	52.9	175.4	240.1
Total medium weight	0.0	8.1	3.5	2.0	13.6	35.6	97.9	147.1
Total light weight	0.2	6.9	5.9	1.6	14.6	33.5	114.7	162.8
Total feeder heifers	0.1	9.4	4.9	3.0	17.4	26.0	135.0	178.4
Feeder heifers 1100 pounds (500 kilograms) and over	0.0	3.2	0.7	1.6	5.5	10.7	54.0	70.2
Feeder heifers 900 to 1100 pounds (409 to 500 kilograms)	0.0	3.8	1.7	1.1	6.6	6.8	47.3	60.7
Feeder heifers 900 pounds (409 kilograms) or less	0.1	2.4	2.5	0.3	5.3	8.5	33.7	47.5
Total steers	0.1	12.5	5.9	4.1	22.6	96.0	253.0	371.6
Steers 1250 pounds (568 kilograms) and over	0.0	3.7	0.7	1.9	6.3	42.2	121.4	169.9
Steers 1000 to 1250 pounds (455 to 568 kilograms)	0.0	4.3	1.8	0.9	7.0	28.8	50.6	86.4
Steers 1000 pounds (455 kilograms) or less	0.1	4.5	3.4	1.3	9.3	25.0	81.0	115.3
Feeders on finishing ration	0.0	13.6	4.4	3.3	21.3	84.2	229.7	335.2
Feeders under 21 months
	Manitoba	Saskat- chewan	Alberta	British Columbia	Western Provinces	Canada		
thousands of heads								
Total feeders	101.0	131.0	1,265.0	37.5	1,534.5	2,084.5		
Total heavy weight	33.1	43.8	456.6	6.2	539.7	779.8		
Total medium weight	22.8	24.8	452.0	12.6	512.2	659.3		
Total light weight	45.1	62.4	356.4	18.7	482.6	645.4		
Total feeder heifers	52.0	48.0	690.0	14.5	804.5	982.9		
Feeder heifers 1100 pounds (500 kilograms) and over	21.8	19.7	289.8	4.4	335.7	405.9		
Feeder heifers 900 to 1100 pounds (409 to 500 kilograms)	13.0	8.2	227.7	5.7	254.6	315.3		
Feeder heifers 900 pounds (409 kilograms) or less	17.2	20.1	172.5	4.4	214.2	261.7		
Total steers	49.0	83.0	575.0	23.0	730.0	1,101.6		
Steers 1250 pounds (568 kilograms) and over	11.3	24.1	166.8	1.8	204.0	373.9		
Steers 1000 to 1250 pounds (455 to 568 kilograms)	9.8	16.6	224.3	6.9	257.6	344.0		
Steers 1000 pounds (455 kilograms) or less	27.9	42.3	183.9	14.3	268.4	383.7		
Feeders on finishing ration	58.6	83.8	936.1	15.0	1,093.5	1,428.7		
Feeders under 21 months		

Table 3 – continued

Feeder cattle by weight category, at January 1, 2008

	Newfoundland and Labrador	Prince Edward Island	Nova Scotia	New Brunswick	Atlantic Provinces	Quebec	Ontario	Eastern Provinces
	percent							
Total feeders	100.0	100.0	100.0	100.0	100.0	100.0	100.0	100.0
Total heavy weight	0.0	31.5	13.0	49.3	29.5	43.4	45.2	43.7
Total medium weight	0.0	37.0	32.4	28.2	34.0	29.2	25.2	26.7
Total light weight	100.0	31.5	54.6	22.5	36.5	27.5	29.6	29.6
Total feeder heifers	100.0	100.0	100.0	100.0	100.0	100.0	100.0	100.0
Feeder heifers 1100 pounds (500 kilograms) and over	0.0	34.0	14.3	53.3	31.6	41.2	40.0	39.3
Feeder heifers 900 to 1100 pounds (409 to 500 kilograms)	0.0	40.4	34.7	36.7	37.9	26.2	35.0	34.0
Feeder heifers 900 pounds (409 kilograms) or less	100.0	25.5	51.0	10.0	30.5	32.7	25.0	26.6
Total steers	100.0	100.0	100.0	100.0	100.0	100.0	100.0	100.0
Steers 1250 pounds (568 kilograms) and over	0.0	29.6	11.9	46.3	27.9	44.0	48.0	45.7
Steers 1000 to 1250 pounds (455 to 568 kilograms)	0.0	34.4	30.5	22.0	31.0	30.0	20.0	23.3
Steers 1000 pounds (455 kilograms) or less	100.0	36.0	57.6	31.7	41.2	26.0	32.0	31.0
Feeders on finishing ration	0.0	62.1	40.7	46.5	53.3	69.0	59.2	60.9
Feeders under 21 months
	Manitoba	Saskat- chewan	Alberta	British Columbia	Western Provinces	Canada		
	percent							
Total feeders	100.0	100.0	100.0	100.0	100.0	100.0	100.0	
Total heavy weight	32.8	33.4	36.1	16.5	35.2	37.4		
Total medium weight	22.6	18.9	35.7	33.6	33.4	31.6		
Total light weight	44.7	47.6	28.2	49.9	31.4	31.0		
Total feeder heifers	100.0	100.0	100.0	100.0	100.0	100.0	100.0	
Feeder heifers 1100 pounds (500 kilograms) and over	41.9	41.0	42.0	30.3	41.7	41.3		
Feeder heifers 900 to 1100 pounds (409 to 500 kilograms)	25.0	17.1	33.0	39.3	31.6	32.1		
Feeder heifers 900 pounds (409 kilograms) or less	33.1	41.9	25.0	30.3	26.6	26.6		
Total steers	100.0	100.0	100.0	100.0	100.0	100.0	100.0	
Steers 1250 pounds (568 kilograms) and over	23.1	29.0	29.0	7.8	27.9	33.9		
Steers 1000 to 1250 pounds (455 to 568 kilograms)	20.0	20.0	39.0	30.0	35.3	31.2		
Steers 1000 pounds (455 kilograms) or less	56.9	51.0	32.0	62.2	36.8	34.8		
Feeders on finishing ration	58.0	64.0	74.0	40.0	71.3	68.5		
Feeders under 21 months		

Table 4
Cattle, supply and demand

	Newfoundland and Labrador	Prince Edward Island	Nova Scotia	New Brunswick	Atlantic Provinces	Canada
thousands of heads						
January to June 2002						
Total supply	11.0	100.2	130.5	114.3	356.0	19,208.0
Beginning inventory ¹	9.5	85.0	106.5	91.0	292.0	13,751.5
Calves born	1.5	15.1	24.0	23.1	63.7	4,684.6
Interprovincial imports	0.0	0.1	0.0	0.2	0.3	698.8
International imports	0.0	0.0	0.0	0.0	0.0	73.1
Total demand ¹	11.0	100.2	130.5	114.3	356.0	19,208.0
Slaughter	1.2	12.8	11.4	9.7	35.1	1,910.9
Interprovincial exports	0.0	0.0	8.6	9.7	18.3	698.8
International exports	0.0	0.2	0.3	1.4	1.9	735.8
Deaths and condemnations	0.4	2.2	3.2	2.5	8.3	441.6
Ending inventory ¹	9.4	85.0	107.0	91.0	292.4	15,420.9
July to December 2002						
Total supply	11.2	98.9	124.3	106.9	341.3	17,471.3
Beginning inventory ¹	9.4	85.0	107.0	91.0	292.4	15,420.9
Calves born	1.8	12.0	17.3	15.7	46.8	1,020.1
Interprovincial imports	0.0	1.9	0.0	0.2	2.1	980.3
International imports	0.0	0.0	0.0	0.0	0.0	50.0
Total demand ¹	11.2	98.9	124.3	106.9	341.3	17,471.3
Slaughter	1.1	11.5	12.5	8.3	33.4	1,911.9
Interprovincial exports	0.0	0.0	3.0	4.1	7.1	980.3
International exports	0.0	1.4	0.1	1.8	3.3	952.3
Deaths and condemnations	0.4	2.0	3.2	2.7	8.3	160.8
Ending inventory ¹	9.7	84.0	105.5	90.0	289.2	13,466.0
January to June 2003						
Total supply	11.4	102.4	128.5	114.2	356.5	18,926.8
Beginning inventory ¹	9.7	84.0	105.5	90.0	289.2	13,466.0
Calves born	1.7	17.7	23.0	24.2	66.6	4,807.6
Interprovincial imports	0.0	0.7	0.0	0.0	0.7	607.8
International imports	0.0	0.0	0.0	0.0	0.0	45.4
Total demand ¹	11.4	102.4	128.5	114.2	356.5	18,926.8
Slaughter	0.9	10.7	10.2	8.6	30.4	1,686.0
Interprovincial exports	0.0	0.0	8.0	10.1	18.1	607.8
International exports	0.0	4.0	0.1	1.5	5.6	505.6
Deaths and condemnations	0.4	2.2	3.2	2.5	8.3	457.4
Ending inventory ¹	10.1	85.5	107.0	91.5	294.1	15,670.0
July to December 2003						
Total supply	12.1	97.8	122.8	105.4	338.1	17,377.6
Beginning inventory ¹	10.1	85.5	107.0	91.5	294.1	15,670.0
Calves born	2.0	10.4	15.8	13.8	42.0	863.6
Interprovincial imports	0.0	1.9	0.0	0.1	2.0	834.8
International imports	0.0	0.0	0.0	0.0	0.0	9.2
Total demand ¹	12.1	97.8	122.8	105.4	338.1	17,377.6
Slaughter	1.3	11.6	12.7	9.9	35.5	1,823.8
Interprovincial exports	0.0	0.0	1.3	2.3	3.6	834.8
International exports	0.0	0.0	0.0	0.0	0.0	0.0
Deaths and condemnations	0.4	2.2	3.3	3.2	9.1	164.0
Ending inventory ¹	10.4	84.0	105.5	90.0	289.9	14,555.0
January to June 2004						
Total supply	12.1	101.7	129.5	115.2	358.5	19,833.8
Beginning inventory ¹	10.4	84.0	105.5	90.0	289.9	14,555.0
Calves born	1.7	17.3	24.0	25.2	68.2	4,619.7
Interprovincial imports	0.0	0.4	0.0	0.0	0.4	649.8
International imports	0.0	0.0	0.0	0.0	0.0	9.3
Total demand ¹	12.1	101.7	129.5	115.2	358.5	19,833.8
Slaughter	1.0	13.5	11.4	9.3	35.2	2,138.4
Interprovincial exports	0.0	0.0	8.6	11.9	20.5	649.8
International exports	0.0	0.0	0.0	0.0	0.0	0.0
Deaths and condemnations	0.4	2.2	3.5	2.0	8.1	435.6
Ending inventory ¹	10.7	86.0	106.0	92.0	294.7	16,610.0

See footnotes at the end of the table.

Table 4 – continued

Cattle, supply and demand

	Newfoundland and Labrador	Prince Edward Island	Nova Scotia	New Brunswick	Atlantic Provinces	Canada
thousands of heads						
July to December 2004						
Total supply	12.7	99.3	122.3	105.6	339.9	18,543.8
Beginning inventory ¹	10.7	86.0	106.0	92.0	294.7	16,610.0
Calves born	2.0	12.1	16.3	13.6	44.0	807.7
Interprovincial imports	0.0	1.2	0.0	0.0	1.2	1,116.7
International imports	0.0	0.0	0.0	0.0	0.0	9.4
Total demand ¹	12.7	99.3	122.3	105.6	339.9	18,543.8
Slaughter	1.3	13.9	13.9	10.6	39.7	2,294.8
Interprovincial exports	0.0	0.0	1.1	2.1	3.2	1,116.7
International exports	0.0	0.0	0.0	0.0	0.0	0.0
Deaths and condemnations	0.4	1.9	3.3	2.9	8.5	207.3
Ending inventory ¹	11.0	83.5	104.0	90.0	288.5	14,925.0
January to June 2005						
Total supply	12.9	103.7	128.3	116.2	361.1	20,361.3
Beginning inventory ¹	11.0	83.5	104.0	90.0	288.5	14,925.0
Calves born	1.9	18.0	24.3	26.0	70.2	4,677.3
Interprovincial imports	0.0	2.2	0.0	0.2	2.4	745.9
International imports	0.0	0.0	0.0	0.0	0.0	13.1
Total demand ¹	12.9	103.7	128.3	116.2	361.1	20,361.3
Slaughter	1.1	15.4	11.4	10.1	38.0	2,277.5
Interprovincial exports	0.0	0.0	8.6	11.9	20.5	745.9
International exports	0.0	0.0	0.0	0.0	0.0	0.0
Deaths and condemnations	0.4	1.8	2.8	2.2	7.2	457.9
Ending inventory ¹	11.4	86.5	105.5	92.0	295.4	16,880.0
July to December 2005						
Total supply	13.5	100.5	121.0	105.1	340.1	18,753.1
Beginning inventory ¹	11.4	86.5	105.5	92.0	295.4	16,880.0
Calves born	2.1	12.5	15.5	13.0	43.1	823.8
Interprovincial imports	0.0	1.5	0.0	0.1	1.6	1,041.3
International imports	0.0	0.0	0.0	0.0	0.0	8.0
Total demand ¹	13.5	100.5	121.0	105.1	340.1	18,753.1
Slaughter	1.4	13.2	14.2	10.1	38.9	2,105.9
Interprovincial exports	0.0	0.0	1.1	2.9	4.0	1,041.3
International exports	0.0	0.0	0.0	0.2	0.2	558.9
Deaths and condemnations	0.4	1.8	3.7	2.9	8.8	392.0
Ending inventory ¹	11.7	85.5	102.0	89.0	288.2	14,655.0
January to June 2006						
Total supply	13.4	103.5	126.8	113.8	357.5	19,783.8
Beginning inventory ¹	11.7	85.5	102.0	89.0	288.2	14,655.0
Calves born	1.7	17.7	24.8	24.8	69.0	4,436.3
Interprovincial imports	0.0	0.3	0.0	0.0	0.3	671.8
International imports	0.0	0.0	0.0	0.0	0.0	20.7
Total demand ¹	13.4	103.5	126.8	113.8	357.5	19,783.8
Slaughter	1.1	14.1	11.0	9.8	36.0	2,018.1
Interprovincial exports	0.0	0.0	8.9	12.4	21.3	671.8
International exports	0.0	0.0	0.0	0.0	0.0	528.0
Deaths and condemnations	0.4	2.4	2.9	2.1	7.8	565.9
Ending inventory ¹	11.9	87.0	104.0	89.5	292.4	16,000.0
July to December 2006						
Total supply	13.8	99.1	119.4	102.4	334.7	17,996.2
Beginning inventory ¹	11.9	87.0	104.0	89.5	292.4	16,000.0
Calves born	1.9	11.2	15.4	12.9	41.4	902.7
Interprovincial imports	0.0	0.9	0.0	0.0	0.9	1,076.2
International imports	0.0	0.0	0.0	0.0	0.0	17.3
Total demand ¹	13.8	99.1	119.4	102.4	334.7	17,996.2
Slaughter	1.4	12.3	13.3	9.3	36.3	1,946.2
Interprovincial exports	0.0	0.0	1.1	2.5	3.6	1,076.2
International exports	0.0	0.0	0.0	0.0	0.0	503.8
Deaths and condemnations	0.4	1.8	3.5	2.6	8.3	315.0
Ending inventory ¹	12.0	85.0	101.5	88.0	286.5	14,155.0

See footnotes at the end of the table.

Table 4 – continued

Cattle, supply and demand

	Newfoundland and Labrador	Prince Edward Island	Nova Scotia	New Brunswick	Atlantic Provinces	Canada
thousands of heads						
January to June 2007						
Total supply	14.0	103.3	125.8	111.5	354.6	19,504.3
Beginning inventory ¹	12.0	85.0	101.5	88.0	286.5	14,155.0
Calves born	2.0	16.2	24.3	23.5	66.0	4,634.7
Interprovincial imports	0.0	2.1	0.0	0.0	2.1	684.2
International imports	0.0	0.0	0.0	0.0	0.0	30.4
Total demand ¹	14.0	103.3	125.8	111.5	354.6	19,504.3
Slaughter	1.1	12.2	10.7	9.2	33.2	1,913.9
Interprovincial exports	0.0	1.1	9.7	12.8	23.6	684.2
International exports	0.0	0.0	0.0	0.1	0.1	612.5
Deaths and condemnations	0.4	2.5	3.4	2.4	8.7	408.7
Ending inventory ¹	12.5	87.5	102.0	87.0	289.0	15,885.0
July to December 2007						
Total supply	14.5	96.5	116.5	98.0	325.5	17,630.2
Beginning inventory ¹	12.5	87.5	102.0	87.0	289.0	15,885.0
Calves born	2.0	9.0	14.5	11.0	36.5	841.1
Interprovincial imports	0.0	0.0	0.0	0.0	0.0	879.5
International imports	0.0	0.0	0.0	0.0	0.0	24.6
Total demand ¹	14.5	96.5	116.5	98.0	325.5	17,630.2
Slaughter	1.5	11.0	11.9	8.4	32.8	1,812.7
Interprovincial exports	0.0	6.0	0.2	5.2	11.4	879.5
International exports	0.0	0.0	0.0	0.4	0.4	780.0
Deaths and condemnations	0.5	2.5	3.4	3.0	9.4	213.0
Ending inventory ¹	12.5	77.0	101.0	81.0	271.5	13,945.0

See footnotes at the end of the table.

Table 4 – continued

Cattle, supply and demand

	Quebec	Ontario	Eastern Provinces	Canada
thousands of heads				
January to June 2002				
Total supply	1,728.4	2,640.5	4,724.9	19,208.0
Beginning inventory ¹	1,286.0	2,016.0	3,594.0	13,751.5
Calves born	365.0	417.5	846.2	4,684.6
Interprovincial imports	37.1	185.7	223.1	698.8
International imports	40.3	21.3	61.6	73.1
Total demand ¹	1,728.4	2,640.5	4,724.9	19,208.0
Slaughter	229.9	332.6	597.6	1,910.9
Interprovincial exports	27.2	18.0	63.5	698.8
International exports	54.1	113.1	169.1	735.8
Deaths and condemnations	47.2	51.8	107.3	441.6
Ending inventory ¹	1,370.0	2,125.0	3,787.4	15,420.9
July to December 2002				
Total supply	1,657.0	2,585.4	4,583.7	17,471.3
Beginning inventory ¹	1,370.0	2,125.0	3,787.4	15,420.9
Calves born	199.8	253.2	499.8	1,020.1
Interprovincial imports	54.6	198.5	255.2	980.3
International imports	32.6	8.7	41.3	50.0
Total demand ¹	1,657.0	2,585.4	4,583.7	17,471.3
Slaughter	236.3	315.1	584.8	1,911.9
Interprovincial exports	35.2	30.2	72.5	980.3
International exports	56.0	115.6	174.9	952.3
Deaths and condemnations	26.5	36.7	71.5	160.8
Ending inventory ¹	1,303.0	2,087.8	3,680.0	13,466.0
January to June 2003				
Total supply	1,775.7	2,657.1	4,789.3	18,926.8
Beginning inventory ¹	1,303.0	2,087.8	3,680.0	13,466.0
Calves born	382.2	437.0	885.8	4,807.6
Interprovincial imports	61.5	123.8	186.0	607.8
International imports	29.0	8.5	37.5	45.4
Total demand ¹	1,775.7	2,657.1	4,789.3	18,926.8
Slaughter	232.4	296.6	559.4	1,686.0
Interprovincial exports	28.4	34.7	81.2	607.8
International exports	36.2	111.3	153.1	505.6
Deaths and condemnations	58.7	53.6	120.6	457.4
Ending inventory ¹	1,420.0	2,160.9	3,875.0	15,670.0
July to December 2003				
Total supply	1,707.1	2,500.1	4,545.3	17,377.6
Beginning inventory ¹	1,420.0	2,160.9	3,875.0	15,670.0
Calves born	218.3	206.8	467.1	863.6
Interprovincial imports	60.1	132.0	194.1	834.8
International imports	8.7	0.4	9.1	9.2
Total demand ¹	1,707.1	2,500.1	4,545.3	17,377.6
Slaughter	248.9	337.1	621.5	1,823.8
Interprovincial exports	10.8	0.1	14.5	834.8
International exports	0.0	0.0	0.0	0.0
Deaths and condemnations	27.4	37.8	74.3	164.0
Ending inventory ¹	1,420.0	2,125.1	3,835.0	14,555.0
January to June 2004				
Total supply	1,845.7	2,641.2	4,845.4	19,833.8
Beginning inventory ¹	1,420.0	2,125.1	3,835.0	14,555.0
Calves born	342.9	370.7	781.8	4,619.7
Interprovincial imports	76.8	142.1	219.3	649.8
International imports	6.0	3.3	9.3	9.3
Total demand ¹	1,845.7	2,641.2	4,845.4	19,833.8
Slaughter	257.0	385.4	677.6	2,138.4
Interprovincial exports	29.3	21.8	71.6	649.8
International exports	0.0	0.0	0.0	0.0
Deaths and condemnations	44.4	53.7	106.2	435.6
Ending inventory ¹	1,515.0	2,180.3	3,990.0	16,610.0
July to December 2004				
Total supply	1,776.6	2,494.2	4,610.7	18,543.8
Beginning inventory ¹	1,515.0	2,180.3	3,990.0	16,610.0
Calves born	198.7	162.5	405.2	807.7
Interprovincial imports	58.0	146.9	206.1	1,116.7
International imports	4.9	4.5	9.4	9.4

See footnotes at the end of the table.

Table 4 – continued

Cattle, supply and demand

	Quebec	Ontario	Eastern Provinces	Canada
thousands of heads				
Total demand ¹	1,776.6	2,494.2	4,610.7	18,543.8
Slaughter	293.6	403.4	736.7	2,294.8
Interprovincial exports	30.1	0.1	33.4	1,116.7
International exports	0.0	0.0	0.0	0.0
Deaths and condemnations	37.9	39.2	85.6	207.3
Ending inventory ¹	1,415.0	2,051.5	3,755.0	14,925.0
January to June 2005				
Total supply	1,808.3	2,619.7	4,789.1	20,361.3
Beginning inventory ¹	1,415.0	2,051.5	3,755.0	14,925.0
Calves born	314.7	432.5	817.4	4,677.3
Interprovincial imports	68.6	132.7	203.7	745.9
International imports	10.0	3.0	13.0	13.1
Total demand ¹	1,808.3	2,619.7	4,789.1	20,361.3
Slaughter	280.9	406.8	725.7	2,277.5
Interprovincial exports	28.0	5.5	54.0	745.9
International exports	0.0	0.0	0.0	0.0
Deaths and condemnations	44.4	52.8	104.4	457.9
Ending inventory ¹	1,455.0	2,154.6	3,905.0	16,880.0
July to December 2005				
Total supply	1,741.8	2,488.0	4,569.9	18,753.1
Beginning inventory ¹	1,455.0	2,154.6	3,905.0	16,880.0
Calves born	198.4	150.8	392.3	823.8
Interprovincial imports	82.2	180.8	264.6	1,041.3
International imports	6.2	1.8	8.0	8.0
Total demand ¹	1,741.8	2,488.0	4,569.9	18,753.1
Slaughter	272.3	385.3	696.5	2,105.9
Interprovincial exports	31.5	25.5	61.0	1,041.3
International exports	15.3	35.2	50.7	558.9
Deaths and condemnations	37.7	60.2	106.7	392.0
Ending inventory ¹	1,385.0	1,981.8	3,655.0	14,655.0
January to June 2006				
Total supply	1,774.4	2,534.0	4,665.9	19,783.8
Beginning inventory ¹	1,385.0	1,981.8	3,655.0	14,655.0
Calves born	318.4	408.9	796.3	4,436.3
Interprovincial imports	63.6	132.6	196.5	671.8
International imports	7.4	10.7	18.1	20.7
Total demand ¹	1,774.4	2,534.0	4,665.9	19,783.8
Slaughter	276.9	390.5	703.4	2,018.1
Interprovincial exports	23.2	23.8	68.3	671.8
International exports	10.0	28.3	38.3	528.0
Deaths and condemnations	39.3	58.8	105.9	565.9
Ending inventory ¹	1,425.0	2,032.6	3,750.0	16,000.0
July to December 2006				
Total supply	1,724.6	2,345.2	4,404.5	17,996.2
Beginning inventory ¹	1,425.0	2,032.6	3,750.0	16,000.0
Calves born	211.3	144.0	396.7	902.7
Interprovincial imports	77.6	162.3	240.8	1,076.2
International imports	10.7	6.3	17.0	17.3
Total demand ¹	1,724.6	2,345.2	4,404.5	17,996.2
Slaughter	269.8	366.3	672.4	1,946.2
Interprovincial exports	36.2	4.8	44.6	1,076.2
International exports	15.8	23.2	39.0	503.8
Deaths and condemnations	37.8	47.4	93.5	315.0
Ending inventory ¹	1,365.0	1,903.5	3,555.0	14,155.0
January to June 2007				
Total supply	1,748.2	2,406.0	4,508.8	19,504.3
Beginning inventory ¹	1,365.0	1,903.5	3,555.0	14,155.0
Calves born	332.0	411.7	809.7	4,634.7
Interprovincial imports	39.4	72.8	114.3	684.2
International imports	11.8	18.0	29.8	30.4
Total demand ¹	1,748.2	2,406.0	4,508.8	19,504.3
Slaughter	270.4	342.6	646.2	1,913.9
Interprovincial exports	17.1	24.5	65.2	684.2
International exports	26.7	37.2	64.0	612.5
Deaths and condemnations	39.0	45.7	93.4	408.7
Ending inventory ¹	1,395.0	1,956.0	3,640.0	15,885.0

See footnotes at the end of the table.

Table 4 – continued

Cattle, supply and demand

	Quebec	Ontario	Eastern Provinces	Canada
thousands of heads				
July to December 2007				
Total supply	1,703.8	2,258.5	4,287.8	17,630.2
Beginning inventory ¹	1,395.0	1,956.0	3,640.0	15,885.0
Calves born	218.5	168.4	423.4	841.1
Interprovincial imports	90.3	110.1	200.4	879.5
International imports	0.0	24.0	24.0	24.6
Total demand ¹	1,703.8	2,258.5	4,287.8	17,630.2
Slaughter	241.0	295.3	569.1	1,812.7
Interprovincial exports	35.8	2.9	50.1	879.5
International exports	50.5	45.0	95.9	780.0
Deaths and condemnations	31.5	31.8	72.7	213.0
Ending inventory ¹	1,345.0	1,883.5	3,500.0	13,945.0

See footnotes at the end of the table.

Table 4 – continued

Cattle, supply and demand

	Manitoba	Saskat- chewan	Alberta	British Columbia	Western Provinces	Canada
	thousands of heads					
January to June 2002						
Total supply	1,801.1	3,606.1	8,036.8	1,039.1	14,483.1	19,208.0
Beginning inventory ¹	1,245.0	2,417.5	5,825.0	670.0	10,157.5	13,751.5
Calves born	518.9	1,133.5	1,853.4	332.6	3,838.4	4,684.6
Interprovincial imports	37.2	54.6	349.8	34.1	475.7	698.8
International imports	0.0	0.5	8.6	2.4	11.5	73.1
Total demand ¹	1,801.1	3,606.1	8,036.8	1,039.1	14,483.1	19,208.0
Slaughter	22.6	134.0	1,130.9	25.8	1,313.3	1,910.9
Interprovincial exports	143.9	284.2	116.6	90.6	635.3	698.8
International exports	117.0	161.6	233.9	54.2	566.7	735.8
Deaths and condemnations	47.6	86.3	168.4	32.0	334.3	441.6
Ending inventory ¹	1,470.0	2,940.0	6,387.0	836.5	11,633.5	15,420.9
July to December 2002						
Total supply	1,609.9	3,340.0	7,017.2	920.5	12,887.6	17,471.3
Beginning inventory ¹	1,470.0	2,940.0	6,387.0	836.5	11,633.5	15,420.9
Calves born	82.9	232.2	168.5	36.7	520.3	1,020.1
Interprovincial imports	56.9	167.8	459.4	41.0	725.1	980.3
International imports	0.1	0.0	2.3	6.3	8.7	50.0
Total demand ¹	1,609.9	3,340.0	7,017.2	920.5	12,887.6	17,471.3
Slaughter	21.3	137.3	1,141.3	27.2	1,327.1	1,911.9
Interprovincial exports	181.5	361.1	243.2	122.0	907.8	980.3
International exports	145.9	277.0	278.0	76.5	777.4	952.3
Deaths and condemnations	11.2	21.6	44.7	11.8	89.3	160.8
Ending inventory ¹	1,250.0	2,543.0	5,310.0	683.0	9,786.0	13,466.0
January to June 2003						
Total supply	1,859.2	3,798.7	7,442.2	1,037.4	14,137.5	18,926.8
Beginning inventory ¹	1,250.0	2,543.0	5,310.0	683.0	9,786.0	13,466.0
Calves born	588.5	1,216.6	1,793.0	323.7	3,921.8	4,807.6
Interprovincial imports	20.5	39.0	337.2	25.1	421.8	607.8
International imports	0.2	0.1	2.0	5.6	7.9	45.4
Total demand ¹	1,859.2	3,798.7	7,442.2	1,037.4	14,137.5	18,926.8
Slaughter	20.6	118.1	963.7	24.2	1,126.6	1,686.0
Interprovincial exports	98.7	293.3	79.0	55.6	526.6	607.8
International exports	97.0	74.2	139.7	41.6	352.5	505.6
Deaths and condemnations	52.9	93.1	159.8	31.0	336.8	457.4
Ending inventory ¹	1,590.0	3,220.0	6,100.0	885.0	11,795.0	15,670.0
July to December 2003						
Total supply	1,688.5	3,408.8	6,787.1	947.9	12,832.3	17,377.6
Beginning inventory ¹	1,590.0	3,220.0	6,100.0	885.0	11,795.0	15,670.0
Calves born	59.0	131.4	156.7	49.4	396.5	863.6
Interprovincial imports	39.4	57.4	530.4	13.5	640.7	834.8
International imports	0.1	0.0	0.0	0.0	0.1	9.2
Total demand ¹	1,688.5	3,408.8	6,787.1	947.9	12,832.3	17,377.6
Slaughter	18.8	146.5	1,012.9	24.1	1,202.3	1,823.8
Interprovincial exports	206.5	386.8	55.0	172.0	820.3	834.8
International exports	0.0	0.0	0.0	0.0	0.0	0.0
Deaths and condemnations	13.2	20.5	44.2	11.8	89.7	164.0
Ending inventory ¹	1,450.0	2,855.0	5,675.0	740.0	10,720.0	14,555.0
January to June 2004						
Total supply	1,943.4	4,122.3	7,843.5	1,079.2	14,988.4	19,833.8
Beginning inventory ¹	1,450.0	2,855.0	5,675.0	740.0	10,720.0	14,555.0
Calves born	469.3	1,248.1	1,808.8	311.7	3,837.9	4,619.7
Interprovincial imports	24.1	19.2	359.7	27.5	430.5	649.8
International imports	0.0	0.0	0.0	0.0	0.0	9.3
Total demand ¹	1,943.4	4,122.3	7,843.5	1,079.2	14,988.4	19,833.8
Slaughter	33.8	168.5	1,226.9	31.6	1,460.8	2,138.4
Interprovincial exports	134.4	320.5	55.7	67.6	578.2	649.8
International exports	0.0	0.0	0.0	0.0	0.0	0.0
Deaths and condemnations	45.2	93.3	160.9	30.0	329.4	435.6
Ending inventory ¹	1,730.0	3,540.0	6,400.0	950.0	12,620.0	16,610.0
July to December 2004						
Total supply	1,814.1	3,783.5	7,323.6	1,011.9	13,933.1	18,543.8
Beginning inventory ¹	1,730.0	3,540.0	6,400.0	950.0	12,620.0	16,610.0
Calves born	50.8	184.4	132.4	34.9	402.5	807.7
Interprovincial imports	33.3	59.1	791.2	27.0	910.6	1,116.7
International imports	0.0	0.0	0.0	0.0	0.0	9.4

See footnotes at the end of the table.

Table 4 – continued

Cattle, supply and demand

	Manitoba	Saskatchewan	Alberta	British Columbia	Western Provinces	Canada
thousands of heads						
Total demand ¹	1,814.1	3,783.5	7,323.6	1,011.9	13,933.1	18,543.8
Slaughter	26.6	223.0	1,274.7	33.8	1,558.1	2,294.8
Interprovincial exports	282.7	491.4	58.9	250.3	1,083.3	1,116.7
International exports	0.0	0.0	0.0	0.0	0.0	0.0
Deaths and condemnations	14.8	29.1	60.0	17.8	121.7	207.3
Ending inventory ¹	1,490.0	3,040.0	5,930.0	710.0	11,170.0	14,925.0
January to June 2005						
Total supply	2,035.0	4,274.2	8,216.8	1,046.2	15,572.2	20,361.3
Beginning inventory ¹	1,490.0	3,040.0	5,930.0	710.0	11,170.0	14,925.0
Calves born	522.7	1,204.8	1,839.1	293.3	3,859.9	4,677.3
Interprovincial imports	22.2	29.4	447.7	42.9	542.2	745.9
International imports	0.1	0.0	0.0	0.0	0.1	13.1
Total demand ¹	2,035.0	4,274.2	8,216.8	1,046.2	15,572.2	20,361.3
Slaughter	39.0	204.9	1,264.6	43.3	1,551.8	2,277.5
Interprovincial exports	209.1	344.7	80.3	57.8	691.9	745.9
International exports	0.0	0.0	0.0	0.0	0.0	0.0
Deaths and condemnations	51.9	99.6	171.9	30.1	353.5	457.9
Ending inventory ¹	1,735.0	3,625.0	6,700.0	915.0	12,975.0	16,880.0
July to December 2005						
Total supply	1,845.3	3,901.7	7,463.8	972.4	14,183.2	18,753.1
Beginning inventory ¹	1,735.0	3,625.0	6,700.0	915.0	12,975.0	16,880.0
Calves born	70.4	206.8	122.5	31.8	431.5	823.8
Interprovincial imports	39.9	69.9	641.3	25.6	776.7	1,041.3
International imports	0.0	0.0	0.0	0.0	0.0	8.0
Total demand ¹	1,845.3	3,901.7	7,463.8	972.4	14,183.2	18,753.1
Slaughter	34.8	205.4	1,126.0	43.2	1,409.4	2,105.9
Interprovincial exports	175.2	492.5	68.2	244.4	980.3	1,041.3
International exports	110.5	177.4	213.4	6.9	508.2	558.9
Deaths and condemnations	34.8	76.4	156.2	17.9	285.3	392.0
Ending inventory ¹	1,490.0	2,950.0	5,900.0	660.0	11,000.0	14,655.0
January to June 2006						
Total supply	2,012.3	4,223.7	7,917.3	964.6	15,117.9	19,783.8
Beginning inventory ¹	1,490.0	2,950.0	5,900.0	660.0	11,000.0	14,655.0
Calves born	498.8	1,189.3	1,689.2	262.7	3,640.0	4,436.3
Interprovincial imports	23.5	84.4	328.1	39.3	475.3	671.8
International imports	0.0	0.0	0.0	2.6	2.6	20.7
Total demand ¹	2,012.3	4,223.7	7,917.3	964.6	15,117.9	19,783.8
Slaughter	38.1	221.9	1,012.3	42.4	1,314.7	2,018.1
Interprovincial exports	147.8	334.8	87.5	33.4	603.5	671.8
International exports	80.5	86.2	284.8	38.2	489.7	528.0
Deaths and condemnations	65.9	130.8	232.7	30.6	460.0	565.9
Ending inventory ¹	1,680.0	3,450.0	6,300.0	820.0	12,250.0	16,000.0
July to December 2006						
Total supply	1,795.5	3,749.2	7,174.9	872.1	13,591.7	17,996.2
Beginning inventory ¹	1,680.0	3,450.0	6,300.0	820.0	12,250.0	16,000.0
Calves born	69.0	228.9	179.7	28.4	506.0	902.7
Interprovincial imports	46.4	70.2	695.2	23.6	835.4	1,076.2
International imports	0.1	0.1	0.0	0.1	0.3	17.3
Total demand ¹	1,795.5	3,749.2	7,174.9	872.1	13,591.7	17,996.2
Slaughter	25.4	197.8	1,018.4	32.2	1,273.8	1,946.2
Interprovincial exports	280.0	484.4	78.6	188.6	1,031.6	1,076.2
International exports	88.8	75.9	278.1	22.0	464.8	503.8
Deaths and condemnations	26.3	61.1	119.8	14.3	221.5	315.0
Ending inventory ¹	1,375.0	2,930.0	5,680.0	615.0	10,600.0	14,155.0
January to June 2007						
Total supply	1,871.8	4,182.4	8,007.7	933.6	14,995.5	19,504.3
Beginning inventory ¹	1,375.0	2,930.0	5,680.0	615.0	10,600.0	14,155.0
Calves born	469.3	1,208.3	1,863.7	283.7	3,825.0	4,634.7
Interprovincial imports	27.4	43.9	463.8	34.8	569.9	684.2
International imports	0.1	0.2	0.2	0.1	0.6	30.4
Total demand ¹	1,871.8	4,182.4	8,007.7	933.6	14,995.5	19,504.3
Slaughter	28.0	181.5	1,027.1	31.1	1,267.7	1,913.9
Interprovincial exports	149.9	350.0	83.5	35.6	619.0	684.2
International exports	113.7	122.9	272.1	39.8	548.5	612.5
Deaths and condemnations	40.2	98.0	155.0	22.1	315.3	408.7
Ending inventory ¹	1,540.0	3,430.0	6,470.0	805.0	12,245.0	15,885.0

See footnotes at the end of the table.

Table 4 – continued

Cattle, supply and demand

	Manitoba	Saskat- chewan	Alberta	British Columbia	Western Provinces	Canada
thousands of heads						
July to December 2007						
Total supply	1,678.1	3,678.2	7,107.6	878.5	13,342.4	17,630.2
Beginning inventory ¹	1,540.0	3,430.0	6,470.0	805.0	12,245.0	15,885.0
Calves born	81.0	166.4	125.0	45.3	417.7	841.1
Interprovincial imports	57.0	81.5	512.6	28.0	679.1	879.5
International imports	0.1	0.3	0.0	0.2	0.6	24.6
Total demand ¹	1,678.1	3,678.2	7,107.6	878.5	13,342.4	17,630.2
Slaughter	20.7	149.4	1,047.6	25.9	1,243.6	1,812.7
Interprovincial exports	128.9	391.6	103.3	205.6	829.4	879.5
International exports	160.0	178.1	321.0	25.0	684.1	780.0
Deaths and condemnations	13.5	39.1	75.7	12.0	140.3	213.0
Ending inventory ¹	1,355.0	2,920.0	5,560.0	610.0	10,445.0	13,945.0

1. For the January to June period, the beginning inventory is dated January 1 and the ending inventory is dated July 1. For the July to December period, the beginning inventory is dated July 1 and the ending inventory is dated January 1.

Table 5
Cattle production - Canada

	Farm production				Meat production			
	Total slaughter ¹	Exported alive	Imported alive	Farm production	Total slaughter ¹	Average cold dressed weight ²	Total cold dressed weight ²	Edible offal
	thousands of heads				kilograms			
						thousands of tonnes	tonnes	
1977	4,374.7	288.0	33.4	4,629.3	4,374.7	249.7	1,092.12	41,045
1978	3,992.5	286.3	47.6	4,231.2	3,992.5	256.5	1,023.97	37,456
1979	3,433.8	199.8	19.9	3,613.7	3,433.8	267.3	917.85	32,219
1980	3,525.7	209.8	22.8	3,712.7	3,525.7	266.3	938.78	33,108
1981	3,691.3	184.6	80.3	3,795.6	3,691.3	265.0	978.15	34,657
1982	3,788.1	317.3	71.5	4,033.9	3,788.1	260.4	986.49	35,579
1983	3,708.8	265.9	77.5	3,897.2	3,708.8	267.7	992.75	34,851
1984	3,565.9	294.2	29.9	3,830.2	3,565.9	266.0	948.41	33,508
1985	3,603.0	334.8	51.5	3,886.3	3,603.0	273.5	985.25	33,867
1986	3,511.4	221.0	60.9	3,671.5	3,511.4	280.6	985.15	33,047
1987	3,194.5	234.0	66.0	3,362.5	3,194.5	285.8	912.97	30,108
1988	3,086.3	461.1	31.8	3,515.6	3,086.3	293.8	906.87	29,079
1989	3,121.0	444.9	39.6	3,526.3	3,121.0	291.1	908.40	29,421
1990	2,892.0	822.5	13.4	3,701.1	2,892.0	296.7	857.93	27,236
1991	2,726.1	840.9	43.2	3,523.8	2,726.1	301.8	822.78	25,657
1992	2,834.8	1,240.4	33.2	4,042.0	2,834.8	302.2	856.66	26,717
1993	2,685.0	1,188.1	48.0	3,825.1	2,685.0	306.3	822.31	25,310
1994	2,727.4	982.6	95.1	3,614.9	2,727.4	316.0	861.86	26,860
1995	2,791.3	1,108.8	78.6	3,821.5	2,791.3	318.1	887.91	28,741
1996	3,143.2	1,481.1	46.8	4,577.5	3,143.2	310.5	976.11	33,102
1997	3,257.7	1,331.8	34.7	4,554.8	3,257.7	321.5	1,047.34	35,103
1998	3,405.5	1,288.7	62.4	4,631.8	3,405.5	334.9	1,140.49	36,710
1999	3,587.9	957.5	182.0	4,363.4	3,587.9	340.7	1,222.42	38,721
2000	3,496.8	938.1	260.1	4,174.8	3,496.8	349.6	1,222.63	39,215
2001	3,452.9	1,251.4	223.3	4,481.0	3,452.9	352.8	1,221.01	38,795
2002	3,506.8	1,542.7	60.6	4,988.9	3,506.8	356.8	1,256.16	39,519
2003	3,164.2	479.2	22.6	3,620.8	3,164.2	360.4	1,143.16	25,674
2004	4,056.0	0.0	7.8	4,048.2	4,056.0	357.7	1,453.17	32,850
2005	4,026.7	545.0	4.9	4,566.8	4,026.7	353.7	1,456.67	33,211
2006	3,633.7	1,012.1	19.9	4,625.9	3,633.7	354.6	1,353.14	30,706

1. Commercial slaughter, federally and provincially inspected slaughter and other commercial slaughter.

2. Not including edible offal.

Table 6
Calves production - Canada

	Farm production				Meat production			
	Total slaughter ¹	Exported alive	Imported alive	Farm production	Total slaughter ¹	Average cold dressed weight ²	Total cold dressed weight ²	Edible offal
	thousands of heads				kilograms		thousands of tonnes	tonnes
1977	976.8	147.6	17.4	1,107.0	976.8	51.2	49.97	1,994
1978	771.5	182.3	8.2	945.6	771.5	50.7	39.13	1,575
1979	533.3	169.3	5.6	697.0	533.3	55.5	29.61	1,089
1980	531.3	148.8	4.3	675.8	531.3	60.1	31.93	1,085
1981	561.7	166.7	20.2	708.2	561.7	63.2	35.51	1,147
1982	597.7	187.6	14.9	770.4	597.7	64.7	38.66	1,220
1983	618.8	117.2	12.4	723.6	618.8	64.2	39.71	1,263
1984	651.9	112.7	17.7	746.9	651.9	64.9	42.31	1,331
1985	631.8	46.4	6.1	672.1	631.8	68.9	43.54	1,290
1986	591.6	26.9	10.4	608.1	591.6	72.9	43.09	1,208
1987	509.8	33.4	9.3	533.9	509.8	79.3	40.42	1,041
1988	491.4	46.5	4.9	533.0	491.4	82.4	40.51	1,003
1989	502.9	53.9	1.1	555.7	502.9	86.6	43.53	1,027
1990	462.3	61.1	0.6	522.8	462.3	91.2	42.17	944
1991	426.5	88.3	0.3	514.5	426.5	101.2	43.18	870
1992	397.1	67.0	3.4	460.7	397.1	106.1	42.14	811
1993	347.5	47.3	12.6	382.2	347.5	107.4	37.32	709
1994	336.9	34.5	22.1	349.3	336.9	111.6	37.60	726
1995	354.8	26.8	7.9	373.7	354.8	113.6	40.30	764
1996	363.0	31.9	13.3	381.6	363.0	111.3	40.39	823
1997	373.1	49.0	9.2	412.9	373.1	112.9	42.14	846
1998	349.7	26.7	26.7	349.7	349.7	118.5	41.43	793
1999	347.4	28.6	52.8	323.2	347.4	118.3	41.11	788
2000	339.3	26.7	57.4	308.6	339.3	120.3	40.81	770
2001	343.4	55.8	85.3	313.9	343.4	118.3	40.60	779
2002	316.0	145.4	62.5	398.9	316.0	118.8	37.53	717
2003	345.6	26.4	32.0	340.0	345.6	118.7	40.96	783
2004	377.2	0.0	10.9	366.3	377.2	115.2	43.29	852
2005	356.7	13.9	16.2	354.4	356.7	112.4	39.96	807
2006	328.6	19.8	18.1	330.3	328.6	112.3	38.03	768

1. Commercial slaughter, federally and provincially inspected slaughter and other commercial slaughter.

2. Not including edible offal.

Table 7-1
Cattle by farm type — Canada

	On all cattle operations								Total
	Bulls, 1 year and over	Beef cows	Dairy cows	Heifers			Steers, 1 year and over	Calves, under 1 year	
				Heifers, dairy replacement	Heifers, beef replacement	Heifers, slaughter			
thousands of heads									
At January 1									
2002	237.0	4,636.0	1,083.9	507.5	653.7	864.6	1,195.1	4,573.7	13,751.5
2003	239.4	4,752.2	1,065.5	512.3	648.3	805.0	1,173.6	4,269.7	13,466.0
2004	269.5	5,019.4	1,054.9	504.3	687.7	870.5	1,203.3	4,945.4	14,555.0
2005	272.6	5,283.6	1,041.4	517.8	637.8	945.0	1,159.5	5,067.3	14,925.0
2006	264.0	5,247.2	1,019.1	495.1	628.3	986.8	1,146.8	4,867.7	14,655.0
2007	244.6	5,010.1	1,004.8	480.1	587.1	963.5	1,145.2	4,719.6	14,155.0
2008	246.8	4,981.9	988.5	471.1	595.0	982.9	1,101.6	4,577.2	13,945.0
At July 1									
2002	259.5	4,821.8	1,072.5	513.0	828.0	1,116.8	1,591.6	5,217.7	15,420.9
2003	273.5	4,924.2	1,055.4	504.8	863.8	1,124.5	1,598.2	5,325.6	15,670.0
2004	284.7	5,334.7	1,053.1	522.8	805.4	1,252.6	1,705.2	5,651.5	16,610.0
2005	291.1	5,436.2	1,025.1	507.4	840.9	1,305.8	1,657.9	5,815.6	16,880.0
2006	267.6	5,164.6	1,000.4	506.5	690.8	1,247.4	1,655.3	5,467.4	16,000.0
2007	263.4	5,112.6	979.1	479.7	668.1	1,289.4	1,790.2	5,302.5	15,885.0
2008
On dairy operations									
	Bulls, 1 year and over	Beef cows	Dairy cows	Heifers			Steers, 1 year and over	Calves, under 1 year	Total
				Heifers, dairy replacement	Heifers, beef replacement	Heifers, slaughter			
thousands of heads									
At January 1									
2002	12.9	0.0	1,083.9	507.5	0.0	11.3	39.9	552.7	2,208.2
2003	12.5	0.0	1,065.5	512.3	0.0	12.5	38.3	519.5	2,160.6
2004	14.2	0.0	1,054.9	504.3	0.0	16.8	53.1	570.1	2,213.4
2005	11.8	0.0	1,041.4	517.8	0.0	9.8	41.8	561.6	2,184.2
2006	9.5	0.0	1,019.1	495.1	0.0	12.1	39.3	519.5	2,094.6
2007	8.6	0.0	1,004.8	480.1	0.0	12.9	37.5	512.7	2,056.6
2008	9.3	0.0	988.5	471.1	0.0	18.6	43.1	499.4	2,030.0
At July 1									
2002	13.1	0.0	1,072.5	513.0	0.0	17.8	45.5	513.9	2,175.8
2003	13.8	0.0	1,055.4	504.8	0.0	19.1	49.5	524.8	2,167.4
2004	13.1	0.0	1,053.1	522.8	0.0	15.4	44.4	563.3	2,212.1
2005	12.2	0.0	1,025.1	507.4	0.0	18.6	54.4	524.0	2,141.7
2006	9.8	0.0	1,000.4	506.5	0.0	16.7	41.8	486.2	2,061.4
2007	9.2	0.0	979.1	479.7	0.0	12.4	45.0	468.4	1,993.8
2008
On beef operations ¹									
	Bulls, 1 year and over	Beef cows	Dairy cows	Heifers			Steers, 1 year and over	Calves, under 1 year	Total
				Heifers, dairy replacement	Heifers, beef replacement	Heifers, slaughter			
thousands of heads									
At January 1									
2002	224.1	4,636.0	0.0	0.0	653.7	853.5	1,155.4	4,021.3	11,544.0
2003	226.9	4,752.2	0.0	0.0	648.3	792.5	1,135.7	3,750.3	11,305.9
2004	255.3	5,019.4	0.0	0.0	687.7	853.8	1,150.1	4,375.7	12,342.0
2005	260.8	5,283.6	0.0	0.0	637.8	935.4	1,117.8	4,505.7	12,741.1
2006	254.5	5,247.2	0.0	0.0	628.3	974.8	1,107.6	4,348.4	12,560.8
2007	236.0	5,010.1	0.0	0.0	587.1	950.6	1,107.9	4,206.9	12,098.6
2008	237.5	4,981.9	0.0	0.0	595.0	964.3	1,058.7	4,077.7	11,915.1
At July 1									
2002	246.4	4,821.8	0.0	0.0	828.0	1,099.0	1,546.3	4,703.8	13,245.3
2003	259.7	4,924.2	0.0	0.0	863.8	1,105.6	1,548.7	4,801.2	13,503.2
2004	271.6	5,334.7	0.0	0.0	805.4	1,237.2	1,660.9	5,088.3	14,398.1
2005	278.9	5,436.2	0.0	0.0	840.9	1,287.2	1,603.7	5,291.8	14,738.7
2006	257.8	5,164.6	0.0	0.0	690.8	1,230.7	1,613.3	4,981.0	13,938.2
2007	254.2	5,112.6	0.0	0.0	668.1	1,277.3	1,745.2	4,834.7	13,892.1
2008

See footnotes at the end of the table.

Table 7-1 – continued

Cattle by farm type — Canada

	On cow calf operations								
	Bulls, 1 year and over	Beef cows	Dairy cows	Heifers			Steers, 1 year and over	Calves, under 1 year	Total
				Heifers, dairy replacement	Heifers, beef replacement	Heifers, slaughter			
	thousands of heads								
At January 1									
2002	210.3	4,347.5	0.0	0.0	591.6	49.9	58.3	3,019.1	8,276.7
2003	211.0	4,424.1	0.0	0.0	584.5	68.1	83.1	2,719.8	8,090.6
2004	238.9	4,680.8	0.0	0.0	618.7	86.0	91.6	3,237.3	8,953.3
2005	241.9	4,916.0	0.0	0.0	584.9	96.5	108.6	3,459.2	9,407.2
2006	236.5	4,888.7	0.0	0.0	573.6	90.5	96.9	3,183.8	9,070.0
2007	219.1	4,661.9	0.0	0.0	538.3	73.5	72.3	3,100.0	8,665.1
2008	220.1	4,619.7	0.0	0.0	541.3	94.3	96.6	3,008.8	8,580.8
At July 1									
2002	217.9	4,266.8	0.0	0.0	700.7	52.3	83.4	4,021.8	9,342.9
2003	226.8	4,277.9	0.0	0.0	708.0	89.2	122.2	4,023.9	9,448.0
2004	223.1	4,405.9	0.0	0.0	645.4	120.0	152.9	4,108.1	9,655.4
2005	231.1	4,529.1	0.0	0.0	689.9	126.2	166.5	4,233.1	9,975.9
2006	218.3	4,396.0	0.0	0.0	572.6	90.0	114.3	4,039.7	9,430.9
2007	212.6	4,293.2	0.0	0.0	539.7	94.3	114.2	3,877.8	9,131.8
2008
	On feeder and stocker operations ²								
	Bulls, 1 year and over	Beef cows	Dairy cows	Heifers			Steers, 1 year and over	Calves, under 1 year	Total
				Heifers, dairy replacement	Heifers, beef replacement	Heifers, slaughter			
	thousands of heads								
At January 1									
2002	13.8	288.5	0.0	0.0	62.1	276.0	269.0	726.6	1,636.0
2003	15.9	328.1	0.0	0.0	63.8	282.8	325.0	711.6	1,727.2
2004	16.4	338.6	0.0	0.0	69.0	350.2	283.9	817.4	1,877.4
2005	18.9	367.6	0.0	0.0	52.9	356.8	274.6	752.9	1,823.7
2006	18.0	358.5	0.0	0.0	54.7	356.2	287.1	848.0	1,922.5
2007	16.9	348.2	0.0	0.0	48.8	373.0	327.5	748.8	1,863.2
2008	17.4	362.2	0.0	0.0	53.7	406.7	272.6	786.7	1,899.3
At July 1									
2002	28.5	555.0	0.0	0.0	127.3	463.8	587.1	641.4	2,403.1
2003	32.9	646.3	0.0	0.0	155.8	513.9	545.0	701.3	2,595.2
2004	48.5	928.8	0.0	0.0	160.0	551.2	616.5	900.2	3,205.2
2005	47.8	907.1	0.0	0.0	151.0	568.5	609.2	948.7	3,232.3
2006	39.5	768.6	0.0	0.0	118.2	539.7	573.0	827.1	2,866.1
2007	41.6	819.4	0.0	0.0	128.4	560.0	646.0	847.9	3,043.3
2008
	On feeding operations ³								
	Bulls, 1 year and over	Beef cows	Dairy cows	Heifers			Steers, 1 year and over	Calves, under 1 year	Total
				Heifers, dairy replacement	Heifers, beef replacement	Heifers, slaughter			
	thousands of heads								
At January 1									
2002	0.0	0.0	0.0	0.0	0.0	527.6	828.1	275.6	1,631.3
2003	0.0	0.0	0.0	0.0	0.0	441.6	727.6	318.9	1,488.1
2004	0.0	0.0	0.0	0.0	0.0	417.6	774.6	319.1	1,511.3
2005	0.0	0.0	0.0	0.0	0.0	482.1	734.6	293.6	1,510.3
2006	0.0	0.0	0.0	0.0	0.0	528.1	723.6	316.6	1,568.3
2007	0.0	0.0	0.0	0.0	0.0	504.1	708.1	358.1	1,570.3
2008	0.0	0.0	0.0	0.0	0.0	463.3	689.5	282.2	1,435.0
At July 1									
2002	0.0	0.0	0.0	0.0	0.0	582.9	875.8	40.6	1,499.3
2003	0.0	0.0	0.0	0.0	0.0	502.5	881.5	76.0	1,460.0
2004	0.0	0.0	0.0	0.0	0.0	566.0	891.5	80.0	1,537.5
2005	0.0	0.0	0.0	0.0	0.0	592.5	828.0	110.0	1,530.5
2006	0.0	0.0	0.0	0.0	0.0	601.0	926.0	114.2	1,641.2
2007	0.0	0.0	0.0	0.0	0.0	623.0	985.0	109.0	1,717.0
2008

1. Excluding small numbers of heifers for slaughter and steers on dairy operations.

2. Farms where cattle are fed on a low energy ration such as hay or pasture.

3. Farms where cattle are fed a high energy ration such as grain as they are fattened for market.

Table 7-2
Cattle by farm type — Atlantic Provinces

	On all cattle operations								Total
	Bulls, 1 year and over	Beef cows	Dairy cows	Heifers			Steers, 1 year and over	Calves, under 1 year	
				Heifers, dairy replacement	Heifers, beef replacement	Heifers, slaughter			
thousands of heads									
At January 1									
2002	3.7	60.5	62.4	29.0	12.7	16.6	28.4	78.7	292.0
2003	3.4	59.7	63.0	29.3	11.8	17.0	27.6	77.4	289.2
2004	3.5	59.4	62.4	29.8	12.2	17.5	27.8	77.3	289.9
2005	3.6	60.6	61.6	30.8	10.8	17.5	26.9	76.7	288.5
2006	3.6	63.2	60.6	30.6	8.8	18.8	26.0	76.6	288.2
2007	3.6	64.1	60.8	30.6	8.1	18.5	25.2	75.6	286.5
2008	3.3	54.4	62.0	31.1	7.5	17.4	22.6	73.2	271.5
At July 1									
2002	3.5	60.3	62.0	29.0	13.0	16.8	29.1	78.7	292.4
2003	3.5	60.2	62.4	29.8	12.8	17.5	29.7	78.2	294.1
2004	3.7	61.7	61.6	30.8	12.4	17.6	27.7	79.2	294.7
2005	3.6	62.7	61.6	30.9	9.9	19.3	28.1	79.3	295.4
2006	3.6	65.1	60.4	31.0	8.3	19.4	26.7	77.9	292.4
2007	3.4	63.6	62.1	31.7	8.1	17.4	25.2	77.5	289.0
2008
On dairy operations									
	Bulls, 1 year and over	Beef cows	Dairy cows	Heifers			Steers, 1 year and over	Calves, under 1 year	Total
				Heifers, dairy replacement	Heifers, beef replacement	Heifers, slaughter			
thousands of heads									
At January 1									
2002	0.7	0.0	62.4	29.0	0.0	2.4	4.0	25.0	123.5
2003	0.7	0.0	63.0	29.3	0.0	2.5	3.7	24.6	123.8
2004	0.7	0.0	62.4	29.8	0.0	2.6	3.8	24.6	123.9
2005	0.7	0.0	61.6	30.8	0.0	2.6	3.5	24.3	123.5
2006	0.7	0.0	60.6	30.6	0.0	2.9	3.1	24.3	122.2
2007	0.7	0.0	60.8	30.6	0.0	2.9	2.9	24.0	121.9
2008	0.6	0.0	62.0	31.1	0.0	2.6	3.6	23.1	123.0
At July 1									
2002	0.7	0.0	62.0	29.0	0.0	0.9	1.7	23.2	117.5
2003	0.7	0.0	62.4	29.8	0.0	1.0	1.8	22.9	118.6
2004	0.7	0.0	61.6	30.8	0.0	1.0	1.5	23.3	118.9
2005	0.7	0.0	61.6	30.9	0.0	0.6	1.5	21.2	116.5
2006	0.7	0.0	60.4	31.0	0.0	0.6	1.4	20.6	114.7
2007	0.7	0.0	62.1	31.7	0.0	0.5	1.1	21.3	117.4
2008
On beef operations ¹									
	Bulls, 1 year and over	Beef cows	Dairy cows	Heifers			Steers, 1 year and over	Calves, under 1 year	Total
				Heifers, dairy replacement	Heifers, beef replacement	Heifers, slaughter			
thousands of heads									
At January 1									
2002	3.0	60.5	0.0	0.0	12.7	14.2	24.5	53.8	168.7
2003	2.7	59.7	0.0	0.0	11.8	14.4	24.0	52.9	165.5
2004	2.8	59.4	0.0	0.0	12.2	14.9	24.1	52.9	166.3
2005	2.9	60.6	0.0	0.0	10.8	14.9	23.4	52.4	165.0
2006	2.9	63.2	0.0	0.0	8.8	15.9	22.9	52.3	166.0
2007	2.9	64.1	0.0	0.0	8.1	15.6	22.3	51.7	164.7
2008	2.7	54.4	0.0	0.0	7.5	14.8	19.0	50.2	148.6
At July 1									
2002	2.8	60.3	0.0	0.0	13.0	15.9	27.4	55.5	174.9
2003	2.8	60.2	0.0	0.0	12.8	16.6	27.9	55.4	175.7
2004	3.0	61.7	0.0	0.0	12.4	16.6	26.1	55.9	175.7
2005	2.9	62.7	0.0	0.0	9.9	18.7	26.6	58.1	178.9
2006	2.9	65.1	0.0	0.0	8.3	18.8	25.2	57.3	177.6
2007	2.7	63.6	0.0	0.0	8.1	16.9	24.2	56.2	171.7
2008

See footnotes at the end of the table.

Table 7-2 – continued

Cattle by farm type — Atlantic Provinces

	On cow calf operations								
	Bulls, 1 year and over	Beef cows	Dairy cows	Heifers			Steers, 1 year and over	Calves, under 1 year	Total
				Heifers, dairy replacement	Heifers, beef replacement	Heifers, slaughter			
	thousands of heads								
At January 1									
2002	2.3	46.6	0.0	0.0	10.3	1.3	1.2	34.8	96.5
2003	2.0	46.0	0.0	0.0	9.4	1.8	2.0	34.2	95.4
2004	2.1	45.7	0.0	0.0	9.8	2.0	2.0	34.2	95.8
2005	2.2	46.7	0.0	0.0	8.4	2.0	1.8	33.9	95.0
2006	2.1	48.7	0.0	0.0	6.3	2.2	1.7	33.8	94.8
2007	2.1	49.4	0.0	0.0	5.5	2.2	1.5	33.4	94.1
2008	2.2	44.6	0.0	0.0	5.8	2.0	1.8	32.9	89.3
At July 1									
2002	1.8	41.0	0.0	0.0	8.5	1.3	1.6	44.3	98.5
2003	1.8	40.9	0.0	0.0	8.3	1.6	2.1	43.9	98.6
2004	2.0	42.0	0.0	0.0	7.8	1.6	1.8	44.3	99.5
2005	1.8	42.6	0.0	0.0	5.2	2.9	4.6	45.1	102.2
2006	1.8	44.3	0.0	0.0	3.4	3.0	4.2	44.5	101.2
2007	1.6	43.2	0.0	0.0	3.3	2.8	3.2	45.2	99.3
2008
On feeder and stocker operations 2									
	Bulls, 1 year and over	Beef cows	Dairy cows	Heifers			Steers, 1 year and over	Calves, under 1 year	Total
				Heifers, dairy replacement	Heifers, beef replacement	Heifers, slaughter			
	thousands of heads								
At January 1									
2002	0.7	13.9	0.0	0.0	2.4	6.3	6.7	16.9	46.9
2003	0.7	13.7	0.0	0.0	2.4	6.0	5.4	16.6	44.8
2004	0.7	13.7	0.0	0.0	2.4	6.3	5.5	16.6	45.2
2005	0.7	13.9	0.0	0.0	2.4	6.3	5.0	16.4	44.7
2006	0.8	14.5	0.0	0.0	2.5	7.1	4.6	16.4	45.9
2007	0.8	14.7	0.0	0.0	2.6	6.8	4.2	16.2	45.3
2008	0.5	9.8	0.0	0.0	1.7	6.3	5.2	15.8	39.3
At July 1									
2002	1.0	19.3	0.0	0.0	4.5	7.2	10.0	10.1	52.1
2003	1.0	19.3	0.0	0.0	4.5	7.5	10.3	10.0	52.6
2004	1.0	19.7	0.0	0.0	4.6	7.5	8.8	10.1	51.7
2005	1.1	20.1	0.0	0.0	4.7	8.3	13.0	9.5	56.7
2006	1.1	20.8	0.0	0.0	4.9	8.3	12.0	9.3	56.4
2007	1.1	20.4	0.0	0.0	4.8	7.6	9.0	9.5	52.4
2008
On feeding operations 3									
	Bulls, 1 year and over	Beef cows	Dairy cows	Heifers			Steers, 1 year and over	Calves, under 1 year	Total
				Heifers, dairy replacement	Heifers, beef replacement	Heifers, slaughter			
	thousands of heads								
At January 1									
2002	0.0	0.0	0.0	0.0	0.0	6.6	16.6	2.1	25.3
2003	0.0	0.0	0.0	0.0	0.0	6.6	16.6	2.1	25.3
2004	0.0	0.0	0.0	0.0	0.0	6.6	16.6	2.1	25.3
2005	0.0	0.0	0.0	0.0	0.0	6.6	16.6	2.1	25.3
2006	0.0	0.0	0.0	0.0	0.0	6.6	16.6	2.1	25.3
2007	0.0	0.0	0.0	0.0	0.0	6.6	16.6	2.1	25.3
2008	0.0	0.0	0.0	0.0	0.0	6.5	12.0	1.5	20.0
At July 1									
2002	0.0	0.0	0.0	0.0	0.0	7.4	15.8	1.1	24.3
2003	0.0	0.0	0.0	0.0	0.0	7.5	15.5	1.5	24.5
2004	0.0	0.0	0.0	0.0	0.0	7.5	15.5	1.5	24.5
2005	0.0	0.0	0.0	0.0	0.0	7.5	9.0	3.5	20.0
2006	0.0	0.0	0.0	0.0	0.0	7.5	9.0	3.5	20.0
2007	0.0	0.0	0.0	0.0	0.0	6.5	12.0	1.5	20.0
2008

1. Excluding small numbers of heifers for slaughter and steers on dairy operations.

2. Farms where cattle are fed on a low energy ration such as hay or pasture.

3. Farms where cattle are fed a high energy ration such as grain as they are fattened for market.

Table 7-3
Cattle by farm type — Quebec

	On all cattle operations								Total
	Bulls, 1 year and over	Beef cows	Dairy cows	Heifers			Steers, 1 year and over	Calves, under 1 year	
				Heifers, dairy replacement	Heifers, beef replacement	Heifers, slaughter			
thousands of heads									
At January 1									
2002	14.8	207.5	418.0	176.0	32.0	20.0	71.7	346.0	1,286.0
2003	14.5	218.0	403.0	172.0	32.5	19.0	63.0	381.0	1,303.0
2004	16.0	231.0	397.0	169.0	30.0	27.0	79.0	471.0	1,420.0
2005	15.5	238.0	399.0	178.0	26.0	27.0	100.0	431.5	1,415.0
2006	14.4	225.0	390.0	182.0	21.0	29.0	98.0	425.6	1,385.0
2007	13.0	214.0	394.0	176.0	20.0	31.0	109.0	408.0	1,365.0
2008	13.5	224.0	375.0	163.0	24.0	26.0	96.0	423.5	1,345.0
At July 1									
2002	15.0	213.5	408.0	176.5	33.0	23.0	89.0	412.0	1,370.0
2003	15.5	222.0	395.0	167.0	33.0	25.0	92.0	470.5	1,420.0
2004	16.0	236.0	410.0	181.0	34.0	28.0	112.0	498.0	1,515.0
2005	16.0	233.0	382.0	176.0	30.5	31.0	108.5	478.0	1,455.0
2006	13.5	226.5	382.5	180.0	25.0	30.0	110.0	457.5	1,425.0
2007	14.0	235.0	367.0	158.0	25.0	37.0	111.0	448.0	1,395.0
2008
On dairy operations									
	Bulls, 1 year and over	Beef cows	Dairy cows	Heifers			Steers, 1 year and over	Calves, under 1 year	Total
				Heifers, dairy replacement	Heifers, beef replacement	Heifers, slaughter			
thousands of heads									
At January 1									
2002	4.6	0.0	418.0	176.0	0.0	1.3	6.3	203.6	809.8
2003	4.4	0.0	403.0	172.0	0.0	1.2	1.6	210.5	792.7
2004	5.6	0.0	397.0	169.0	0.0	2.9	4.4	230.1	809.0
2005	4.2	0.0	399.0	178.0	0.0	1.2	9.2	229.3	820.9
2006	2.9	0.0	390.0	182.0	0.0	2.9	6.3	225.2	809.3
2007	2.7	0.0	394.0	176.0	0.0	2.3	12.0	208.1	795.1
2008	3.4	0.0	375.0	163.0	0.0	2.8	5.7	211.0	760.9
At July 1									
2002	4.3	0.0	408.0	176.5	0.0	2.9	4.4	200.1	796.2
2003	5.0	0.0	395.0	167.0	0.0	4.0	9.9	219.0	799.9
2004	4.8	0.0	410.0	181.0	0.0	1.7	8.4	229.6	835.5
2005	4.0	0.0	382.0	176.0	0.0	2.5	11.6	214.9	791.0
2006	2.8	0.0	382.5	180.0	0.0	4.4	9.7	209.3	788.7
2007	2.9	0.0	367.0	158.0	0.0	1.3	6.7	197.6	733.5
2008
On beef operations ¹									
	Bulls, 1 year and over	Beef cows	Dairy cows	Heifers			Steers, 1 year and over	Calves, under 1 year	Total
				Heifers, dairy replacement	Heifers, beef replacement	Heifers, slaughter			
thousands of heads									
At January 1									
2002	10.2	207.5	0.0	0.0	32.0	18.7	65.4	142.4	476.2
2003	10.1	218.0	0.0	0.0	32.5	17.8	61.4	170.5	510.3
2004	10.4	231.0	0.0	0.0	30.0	24.1	74.6	241.0	611.1
2005	11.3	238.0	0.0	0.0	26.0	25.9	90.8	202.2	594.2
2006	11.5	225.0	0.0	0.0	21.0	26.2	91.7	200.4	575.8
2007	10.3	214.0	0.0	0.0	20.0	28.7	97.1	199.9	570.0
2008	10.1	224.0	0.0	0.0	24.0	23.2	90.4	212.4	584.1
At July 1									
2002	10.7	213.5	0.0	0.0	33.0	20.1	84.7	212.0	574.0
2003	10.5	222.0	0.0	0.0	33.0	21.0	82.1	251.6	620.2
2004	11.2	236.0	0.0	0.0	34.0	26.2	103.6	268.5	679.5
2005	12.0	233.0	0.0	0.0	30.5	28.5	96.9	263.1	664.0
2006	10.7	226.5	0.0	0.0	25.0	25.6	100.3	248.1	636.2
2007	11.1	235.0	0.0	0.0	25.0	35.7	104.2	250.5	661.5
2008

See footnotes at the end of the table.

Table 7-3 – continued

Cattle by farm type — Quebec

	On cow calf operations								Total
	Bulls, 1 year and over	Beef cows	Dairy cows	Heifers			Steers, 1 year and over	Calves, under 1 year	
				Heifers, dairy replacement	Heifers, beef replacement	Heifers, slaughter			
thousands of heads									
At January 1									
2002	9.4	191.7	0.0	0.0	29.0	2.3	3.8	122.1	358.3
2003	9.4	203.8	0.0	0.0	29.8	3.1	4.8	147.1	398.0
2004	9.7	214.8	0.0	0.0	26.5	3.8	4.2	207.1	466.1
2005	10.0	210.4	0.0	0.0	22.7	5.1	7.4	171.5	427.1
2006	10.5	205.6	0.0	0.0	18.7	6.5	9.6	169.7	420.6
2007	9.3	192.0	0.0	0.0	16.9	5.5	5.3	164.5	393.5
2008	9.3	204.3	0.0	0.0	21.2	5.2	6.3	177.3	423.6
At July 1									
2002	9.5	189.6	0.0	0.0	28.0	2.9	3.5	190.7	424.2
2003	9.4	199.8	0.0	0.0	27.2	3.0	5.9	217.0	462.3
2004	9.8	207.2	0.0	0.0	27.8	5.1	13.9	234.6	498.4
2005	10.5	204.1	0.0	0.0	24.2	5.8	11.7	228.3	484.6
2006	9.6	203.8	0.0	0.0	20.9	5.5	9.4	224.0	473.2
2007	9.7	205.9	0.0	0.0	20.1	5.2	6.3	221.9	469.1
2008
On feeder and stocker operations ²									
	Bulls, 1 year and over	Beef cows	Dairy cows	Heifers			Steers, 1 year and over	Calves, under 1 year	Total
				Heifers, dairy replacement	Heifers, beef replacement	Heifers, slaughter			
thousands of heads									
At January 1									
2002	0.8	15.8	0.0	0.0	3.0	4.9	13.1	15.3	52.9
2003	0.7	14.2	0.0	0.0	2.7	3.7	13.1	14.9	49.3
2004	0.7	16.2	0.0	0.0	3.5	5.3	8.4	15.9	50.0
2005	1.3	27.6	0.0	0.0	3.3	14.8	28.4	16.7	92.1
2006	1.0	19.4	0.0	0.0	2.3	9.7	29.1	18.2	79.7
2007	1.0	22.0	0.0	0.0	3.1	12.7	30.8	11.9	81.5
2008	0.8	19.7	0.0	0.0	2.8	10.7	27.1	12.4	73.5
At July 1									
2002	1.2	23.9	0.0	0.0	5.0	10.2	21.2	16.3	77.8
2003	1.1	22.2	0.0	0.0	5.8	10.5	17.2	19.6	76.4
2004	1.4	28.8	0.0	0.0	6.2	10.1	19.7	21.9	88.1
2005	1.5	28.9	0.0	0.0	6.3	14.7	27.7	23.3	102.4
2006	1.1	22.7	0.0	0.0	4.1	12.1	24.9	13.4	78.3
2007	1.4	29.1	0.0	0.0	4.9	19.5	34.9	22.1	111.9
2008
On feeding operations ³									
	Bulls, 1 year and over	Beef cows	Dairy cows	Heifers			Steers, 1 year and over	Calves, under 1 year	Total
				Heifers, dairy replacement	Heifers, beef replacement	Heifers, slaughter			
thousands of heads									
At January 1									
2002	0.0	0.0	0.0	0.0	0.0	11.5	48.5	5.0	65.0
2003	0.0	0.0	0.0	0.0	0.0	11.0	43.5	8.5	63.0
2004	0.0	0.0	0.0	0.0	0.0	15.0	62.0	18.0	95.0
2005	0.0	0.0	0.0	0.0	0.0	6.0	55.0	14.0	75.0
2006	0.0	0.0	0.0	0.0	0.0	10.0	53.0	12.5	75.5
2007	0.0	0.0	0.0	0.0	0.0	10.5	61.0	23.5	95.0
2008	0.0	0.0	0.0	0.0	0.0	7.3	57.0	22.7	87.0
At July 1									
2002	0.0	0.0	0.0	0.0	0.0	7.0	60.0	5.0	72.0
2003	0.0	0.0	0.0	0.0	0.0	7.5	59.0	15.0	81.5
2004	0.0	0.0	0.0	0.0	0.0	11.0	70.0	12.0	93.0
2005	0.0	0.0	0.0	0.0	0.0	8.0	57.5	11.5	77.0
2006	0.0	0.0	0.0	0.0	0.0	8.0	66.0	10.7	84.7
2007	0.0	0.0	0.0	0.0	0.0	11.0	63.0	6.5	80.5
2008

1. Excluding small numbers of heifers for slaughter and steers on dairy operations.

2. Farms where cattle are fed on a low energy ration such as hay or pasture.

3. Farms where cattle are fed a high energy ration such as grain as they are fattened for market.

Table 7-4
Cattle by farm type — Ontario

	On all cattle operations								Total
	Bulls, 1 year and over	Beef cows	Dairy cows	Heifers			Steers, 1 year and over	Calves, under 1 year	
				Heifers, dairy replacement	Heifers, beef replacement	Heifers, slaughter			
thousands of heads									
At January 1									
2002	23.5	376.0	367.0	200.0	75.0	137.0	178.0	659.5	2,016.0
2003	25.0	392.0	364.0	205.0	70.0	138.0	258.0	635.8	2,087.8
2004	26.0	415.0	355.5	198.0	65.0	149.0	256.5	660.1	2,125.1
2005	25.0	405.0	344.8	205.0	53.0	153.5	256.6	608.6	2,051.5
2006	25.5	389.0	334.0	185.0	58.5	170.0	234.8	585.0	1,981.8
2007	20.0	364.0	327.0	176.0	44.0	146.0	220.0	606.5	1,903.5
2008	21.5	370.0	325.0	174.0	48.5	135.0	253.0	556.5	1,883.5
At July 1									
2002	25.0	373.0	367.0	199.5	74.5	167.0	324.0	595.0	2,125.0
2003	26.0	402.0	360.0	200.0	72.0	177.0	337.0	586.9	2,160.9
2004	26.0	410.0	348.5	200.0	70.0	173.0	360.5	592.3	2,180.3
2005	26.5	400.0	346.0	194.0	60.0	165.0	352.8	610.3	2,154.6
2006	24.5	380.0	330.0	189.5	50.0	180.0	330.6	548.0	2,032.6
2007	23.5	369.0	320.5	181.0	49.0	165.0	327.0	521.0	1,956.0
2008
On dairy operations									
	Bulls, 1 year and over	Beef cows	Dairy cows	Heifers			Steers, 1 year and over	Calves, under 1 year	Total
				Heifers, dairy replacement	Heifers, beef replacement	Heifers, slaughter			
thousands of heads									
At January 1									
2002	3.8	0.0	367.0	200.0	0.0	4.9	21.1	215.2	812.0
2003	3.9	0.0	364.0	205.0	0.0	6.1	23.8	178.1	780.9
2004	4.0	0.0	355.5	198.0	0.0	7.8	33.5	192.0	790.8
2005	3.9	0.0	344.8	205.0	0.0	2.6	21.8	184.6	762.7
2006	3.6	0.0	334.0	185.0	0.0	2.8	23.4	164.0	712.8
2007	3.0	0.0	327.0	176.0	0.0	2.2	16.7	177.8	702.7
2008	2.6	0.0	325.0	174.0	0.0	8.1	24.8	166.6	701.1
At July 1									
2002	3.9	0.0	367.0	199.5	0.0	5.7	31.5	194.6	802.2
2003	4.0	0.0	360.0	200.0	0.0	6.0	25.4	183.2	778.6
2004	4.0	0.0	348.5	200.0	0.0	4.6	24.3	194.2	775.6
2005	3.7	0.0	346.0	194.0	0.0	6.9	32.1	185.1	767.8
2006	3.4	0.0	330.0	189.5	0.0	3.6	24.0	171.5	722.0
2007	2.9	0.0	320.5	181.0	0.0	3.8	27.8	161.0	697.0
2008
On beef operations ¹									
	Bulls, 1 year and over	Beef cows	Dairy cows	Heifers			Steers, 1 year and over	Calves, under 1 year	Total
				Heifers, dairy replacement	Heifers, beef replacement	Heifers, slaughter			
thousands of heads									
At January 1									
2002	19.7	376.0	0.0	0.0	75.0	132.1	156.9	444.4	1,204.1
2003	21.1	392.0	0.0	0.0	70.0	132.0	234.3	457.6	1,307.0
2004	22.0	415.0	0.0	0.0	65.0	141.2	222.9	468.1	1,334.2
2005	21.1	405.0	0.0	0.0	53.0	150.9	234.9	424.0	1,288.9
2006	21.9	389.0	0.0	0.0	58.5	167.3	211.4	421.0	1,269.1
2007	17.0	364.0	0.0	0.0	44.0	143.8	203.2	428.7	1,200.7
2008	18.9	370.0	0.0	0.0	48.5	126.9	228.3	390.0	1,182.6
At July 1									
2002	21.1	373.0	0.0	0.0	74.5	161.2	292.5	400.4	1,322.7
2003	22.0	402.0	0.0	0.0	72.0	171.0	311.6	403.6	1,382.2
2004	22.0	410.0	0.0	0.0	70.0	168.5	336.2	398.1	1,404.8
2005	22.8	400.0	0.0	0.0	60.0	158.1	320.7	425.3	1,386.9
2006	21.1	380.0	0.0	0.0	50.0	176.4	306.5	376.5	1,310.5
2007	20.6	369.0	0.0	0.0	49.0	161.3	299.1	360.1	1,259.1
2008

See footnotes at the end of the table.

Table 7-4 – continued

Cattle by farm type — Ontario

	On cow calf operations								Total
	Bulls, 1 year and over	Beef cows	Dairy cows	Heifers			Steers, 1 year and over	Calves, under 1 year	
				Heifers, dairy replacement	Heifers, beef replacement	Heifers, slaughter			
thousands of heads									
At January 1									
2002	16.0	298.9	0.0	0.0	57.7	4.3	7.1	297.1	681.1
2003	18.3	333.2	0.0	0.0	56.8	25.9	31.7	277.2	743.1
2004	19.1	356.9	0.0	0.0	51.9	27.0	31.4	302.5	788.8
2005	17.3	337.0	0.0	0.0	43.8	21.8	28.4	268.5	716.8
2006	18.1	322.1	0.0	0.0	45.1	19.6	24.6	257.2	686.7
2007	14.5	314.5	0.0	0.0	38.3	17.0	18.2	255.8	658.3
2008	16.3	323.4	0.0	0.0	40.3	26.0	27.7	241.0	674.7
At July 1									
2002	16.3	280.5	0.0	0.0	56.5	6.8	12.1	299.7	671.9
2003	16.8	302.3	0.0	0.0	52.6	15.3	20.4	292.1	699.5
2004	15.7	293.1	0.0	0.0	50.1	14.5	22.1	277.1	672.6
2005	16.3	281.6	0.0	0.0	43.0	13.1	22.3	281.6	657.9
2006	15.3	280.4	0.0	0.0	36.6	11.7	17.9	260.0	621.9
2007	15.5	280.4	0.0	0.0	39.7	9.8	16.1	258.3	619.8
2008
On feeder and stocker operations ²									
	Bulls, 1 year and over	Beef cows	Dairy cows	Heifers			Steers, 1 year and over	Calves, under 1 year	Total
				Heifers, dairy replacement	Heifers, beef replacement	Heifers, slaughter			
thousands of heads									
At January 1									
2002	3.7	77.1	0.0	0.0	17.3	31.8	39.8	116.3	286.0
2003	2.8	58.8	0.0	0.0	13.2	23.1	32.6	103.4	233.9
2004	2.9	58.1	0.0	0.0	13.1	23.2	41.5	108.6	247.4
2005	3.8	68.0	0.0	0.0	9.2	22.1	44.5	99.5	247.1
2006	3.8	66.9	0.0	0.0	13.4	27.7	32.8	125.8	270.4
2007	2.5	49.5	0.0	0.0	5.7	17.8	27.0	113.9	216.4
2008	2.6	46.6	0.0	0.0	8.2	19.9	22.6	100.0	199.9
At July 1									
2002	4.8	92.5	0.0	0.0	18.0	39.4	61.4	90.7	306.8
2003	5.2	99.7	0.0	0.0	19.4	49.7	67.2	90.5	331.7
2004	6.3	116.9	0.0	0.0	19.9	51.0	83.1	100.0	377.2
2005	6.5	118.4	0.0	0.0	17.0	47.0	79.9	116.7	385.5
2006	5.8	99.6	0.0	0.0	13.4	44.7	58.6	91.5	313.6
2007	5.1	88.6	0.0	0.0	9.3	36.5	63.0	79.8	282.3
2008
On feeding operations ³									
	Bulls, 1 year and over	Beef cows	Dairy cows	Heifers			Steers, 1 year and over	Calves, under 1 year	Total
				Heifers, dairy replacement	Heifers, beef replacement	Heifers, slaughter			
thousands of heads									
At January 1									
2002	0.0	0.0	0.0	0.0	0.0	96.0	110.0	31.0	237.0
2003	0.0	0.0	0.0	0.0	0.0	83.0	170.0	77.0	330.0
2004	0.0	0.0	0.0	0.0	0.0	91.0	150.0	57.0	298.0
2005	0.0	0.0	0.0	0.0	0.0	107.0	162.0	56.0	325.0
2006	0.0	0.0	0.0	0.0	0.0	120.0	154.0	38.0	312.0
2007	0.0	0.0	0.0	0.0	0.0	109.0	158.0	59.0	326.0
2008	0.0	0.0	0.0	0.0	0.0	81.0	178.0	49.0	308.0
At July 1									
2002	0.0	0.0	0.0	0.0	0.0	115.0	219.0	10.0	344.0
2003	0.0	0.0	0.0	0.0	0.0	106.0	224.0	21.0	351.0
2004	0.0	0.0	0.0	0.0	0.0	103.0	231.0	21.0	355.0
2005	0.0	0.0	0.0	0.0	0.0	98.0	218.5	27.0	343.5
2006	0.0	0.0	0.0	0.0	0.0	120.0	230.0	25.0	375.0
2007	0.0	0.0	0.0	0.0	0.0	115.0	220.0	22.0	357.0
2008

1. Excluding small numbers of heifers for slaughter and steers on dairy operations.

2. Farms where cattle are fed on a low energy ration such as hay or pasture.

3. Farms where cattle are fed a high energy ration such as grain as they are fattened for market.

Table 7-5
Cattle by farm type — Eastern Provinces

	On all cattle operations								Total
	Bulls, 1 year and over	Beef cows	Dairy cows	Heifers			Steers, 1 year and over	Calves, under 1 year	
				Heifers, dairy replacement	Heifers, beef replacement	Heifers, slaughter			
	thousands of heads								
At January 1									
2002	42.0	644.0	847.4	405.0	119.7	173.6	278.1	1,084.2	3,594.0
2003	42.9	669.7	830.0	406.3	114.3	174.0	348.6	1,094.2	3,680.0
2004	45.5	705.4	814.9	396.8	107.2	193.5	363.3	1,208.4	3,835.0
2005	44.1	703.6	805.4	413.8	89.8	198.0	383.5	1,116.8	3,755.0
2006	43.5	677.2	784.6	397.6	88.3	217.8	358.8	1,087.2	3,655.0
2007	36.6	642.1	781.8	382.6	72.1	195.5	354.2	1,090.1	3,555.0
2008	38.3	648.4	762.0	368.1	80.0	178.4	371.6	1,053.2	3,500.0
At July 1									
2002	43.5	646.8	837.0	405.0	120.5	206.8	442.1	1,085.7	3,787.4
2003	45.0	684.2	817.4	396.8	117.8	219.5	458.7	1,135.6	3,875.0
2004	45.7	707.7	820.1	411.8	116.4	218.6	500.2	1,169.5	3,990.0
2005	46.1	695.7	789.6	400.9	100.4	215.3	489.4	1,167.6	3,905.0
2006	41.6	671.6	772.9	400.5	83.3	229.4	467.3	1,083.4	3,750.0
2007	40.9	667.6	749.6	370.7	82.1	219.4	463.2	1,046.5	3,640.0
2008
	On dairy operations								Total
	Bulls, 1 year and over	Beef cows	Dairy cows	Heifers			Steers, 1 year and over	Calves, under 1 year	
				Heifers, dairy replacement	Heifers, beef replacement	Heifers, slaughter			
	thousands of heads								
At January 1									
2002	9.1	0.0	847.4	405.0	0.0	8.6	31.4	443.8	1,745.3
2003	9.0	0.0	830.0	406.3	0.0	9.8	29.1	413.2	1,697.4
2004	10.3	0.0	814.9	396.8	0.0	13.3	41.7	446.7	1,723.7
2005	8.8	0.0	805.4	413.8	0.0	6.4	34.5	438.2	1,707.1
2006	7.2	0.0	784.6	397.6	0.0	8.6	32.8	413.5	1,644.3
2007	6.4	0.0	781.8	382.6	0.0	7.4	31.6	409.9	1,619.7
2008	6.6	0.0	762.0	368.1	0.0	13.5	34.1	400.7	1,585.0
At July 1									
2002	8.9	0.0	837.0	405.0	0.0	9.5	37.6	417.9	1,715.9
2003	9.7	0.0	817.4	396.8	0.0	11.0	37.1	425.1	1,697.1
2004	9.5	0.0	820.1	411.8	0.0	7.3	34.2	447.1	1,730.0
2005	8.4	0.0	789.6	400.9	0.0	10.0	45.2	421.2	1,675.3
2006	6.9	0.0	772.9	400.5	0.0	8.6	35.1	401.4	1,625.4
2007	6.5	0.0	749.6	370.7	0.0	5.6	35.6	379.9	1,547.9
2008
	On beef operations ¹								Total
	Bulls, 1 year and over	Beef cows	Dairy cows	Heifers			Steers, 1 year and over	Calves, under 1 year	
				Heifers, dairy replacement	Heifers, beef replacement	Heifers, slaughter			
	thousands of heads								
At January 1									
2002	32.9	644.0	0.0	0.0	119.7	165.0	246.8	640.6	1,849.0
2003	33.9	669.7	0.0	0.0	114.3	164.2	319.7	681.0	1,982.8
2004	35.2	705.4	0.0	0.0	107.2	180.2	321.6	762.0	2,111.6
2005	35.3	703.6	0.0	0.0	89.8	191.7	349.1	678.6	2,048.1
2006	36.3	677.2	0.0	0.0	88.3	209.4	326.0	673.7	2,010.9
2007	30.2	642.1	0.0	0.0	72.1	188.1	322.6	680.3	1,935.4
2008	31.7	648.4	0.0	0.0	80.0	164.9	337.7	652.6	1,915.3
At July 1									
2002	34.6	646.8	0.0	0.0	120.5	197.2	404.6	667.9	2,071.6
2003	35.3	684.2	0.0	0.0	117.8	208.6	421.6	710.6	2,178.1
2004	36.2	707.7	0.0	0.0	116.4	211.3	465.9	722.5	2,260.0
2005	37.7	695.7	0.0	0.0	100.4	205.3	444.2	746.5	2,229.8
2006	34.7	671.6	0.0	0.0	83.3	220.8	432.0	681.9	2,124.3
2007	34.4	667.6	0.0	0.0	82.1	213.9	427.5	666.8	2,092.3
2008

See footnotes at the end of the table.

Table 7-5 – continued

Cattle by farm type — Eastern Provinces

	On cow calf operations								Total
	Bulls, 1 year and over	Beef cows	Dairy cows	Heifers			Steers, 1 year and over	Calves, under 1 year	
				Heifers, dairy replacement	Heifers, beef replacement	Heifers, slaughter			
thousands of heads									
At January 1									
2002	27.7	537.2	0.0	0.0	97.0	7.9	12.1	454.0	1,135.9
2003	29.7	583.0	0.0	0.0	96.0	30.8	38.5	458.5	1,236.5
2004	30.9	617.4	0.0	0.0	88.2	32.8	37.6	543.8	1,350.7
2005	29.5	594.1	0.0	0.0	74.9	28.9	37.6	473.9	1,238.9
2006	30.7	576.4	0.0	0.0	70.1	28.3	35.9	460.7	1,202.1
2007	25.9	555.9	0.0	0.0	60.7	24.7	25.0	453.7	1,145.9
2008	27.8	572.3	0.0	0.0	67.3	33.2	35.8	451.2	1,187.6
At July 1									
2002	27.6	511.1	0.0	0.0	93.0	11.0	17.2	534.7	1,194.6
2003	28.0	543.0	0.0	0.0	88.1	19.9	28.4	553.0	1,260.4
2004	27.5	542.3	0.0	0.0	85.7	21.2	37.8	556.0	1,270.5
2005	28.6	528.3	0.0	0.0	72.4	21.8	38.6	555.0	1,244.7
2006	26.7	528.5	0.0	0.0	60.9	20.2	31.5	528.5	1,196.3
2007	26.8	529.5	0.0	0.0	63.1	17.8	25.6	525.4	1,188.2
2008
On feeder and stocker operations ²									
	Bulls, 1 year and over	Beef cows	Dairy cows	Heifers			Steers, 1 year and over	Calves, under 1 year	Total
				Heifers, dairy replacement	Heifers, beef replacement	Heifers, slaughter			
thousands of heads									
At January 1									
2002	5.2	106.8	0.0	0.0	22.7	43.0	59.6	148.5	385.8
2003	4.2	86.7	0.0	0.0	18.3	32.8	51.1	134.9	328.0
2004	4.3	88.0	0.0	0.0	19.0	34.8	55.4	141.1	342.6
2005	5.8	109.5	0.0	0.0	14.9	43.2	77.9	132.6	383.9
2006	5.6	100.8	0.0	0.0	18.2	44.5	66.5	160.4	396.0
2007	4.3	86.2	0.0	0.0	11.4	37.3	62.0	142.0	343.2
2008	3.9	76.1	0.0	0.0	12.7	36.9	54.9	128.2	312.7
At July 1									
2002	7.0	135.7	0.0	0.0	27.5	56.8	92.6	117.1	436.7
2003	7.3	141.2	0.0	0.0	29.7	67.7	94.7	120.1	460.7
2004	8.7	165.4	0.0	0.0	30.7	68.6	111.6	132.0	517.0
2005	9.1	167.4	0.0	0.0	28.0	70.0	120.6	149.5	544.6
2006	8.0	143.1	0.0	0.0	22.4	65.1	95.5	114.2	448.3
2007	7.6	138.1	0.0	0.0	19.0	63.6	106.9	111.4	446.6
2008
On feeding operations ³									
	Bulls, 1 year and over	Beef cows	Dairy cows	Heifers			Steers, 1 year and over	Calves, under 1 year	Total
				Heifers, dairy replacement	Heifers, beef replacement	Heifers, slaughter			
thousands of heads									
At January 1									
2002	0.0	0.0	0.0	0.0	0.0	114.1	175.1	38.1	327.3
2003	0.0	0.0	0.0	0.0	0.0	100.6	230.1	87.6	418.3
2004	0.0	0.0	0.0	0.0	0.0	112.6	228.6	77.1	418.3
2005	0.0	0.0	0.0	0.0	0.0	119.6	233.6	72.1	425.3
2006	0.0	0.0	0.0	0.0	0.0	136.6	223.6	52.6	412.8
2007	0.0	0.0	0.0	0.0	0.0	126.1	235.6	84.6	446.3
2008	0.0	0.0	0.0	0.0	0.0	94.8	247.0	73.2	415.0
At July 1									
2002	0.0	0.0	0.0	0.0	0.0	129.4	294.8	16.1	440.3
2003	0.0	0.0	0.0	0.0	0.0	121.0	298.5	37.5	457.0
2004	0.0	0.0	0.0	0.0	0.0	121.5	316.5	34.5	472.5
2005	0.0	0.0	0.0	0.0	0.0	113.5	285.0	42.0	440.5
2006	0.0	0.0	0.0	0.0	0.0	135.5	305.0	39.2	479.7
2007	0.0	0.0	0.0	0.0	0.0	132.5	295.0	30.0	457.5
2008

1. Excluding small numbers of heifers for slaughter and steers on dairy operations.

2. Farms where cattle are fed on a low energy ration such as hay or pasture.

3. Farms where cattle are fed a high energy ration such as grain as they are fattened for market.

Table 7-6
Cattle by farm type — Manitoba

	On all cattle operations								Total
	Bulls, 1 year and over	Beef cows	Dairy cows	Heifers			Steers, 1 year and over	Calves, under 1 year	
				Heifers, dairy replacement	Heifers, beef replacement	Heifers, slaughter			
thousands of heads									
At January 1									
2002	25.0	528.0	42.0	18.5	73.0	47.0	54.0	457.5	1,245.0
2003	26.0	553.5	40.5	18.0	78.0	44.0	37.0	453.0	1,250.0
2004	30.0	638.0	42.0	20.0	80.0	54.0	77.0	509.0	1,450.0
2005	31.5	650.0	44.0	18.0	80.0	55.0	70.0	541.5	1,490.0
2006	30.5	673.0	45.0	19.0	77.0	60.0	60.0	525.5	1,490.0
2007	28.0	623.0	44.5	18.5	62.0	47.0	45.0	507.0	1,375.0
2008	27.0	614.5	44.0	19.5	62.0	52.0	49.0	487.0	1,355.0
At July 1									
2002	27.0	574.0	41.5	20.0	92.0	74.0	112.0	529.5	1,470.0
2003	31.0	622.0	42.0	21.0	100.0	92.0	124.0	558.0	1,590.0
2004	33.0	650.0	42.0	23.0	96.0	107.0	155.0	624.0	1,730.0
2005	33.0	676.0	43.5	22.5	95.0	108.5	110.5	646.0	1,735.0
2006	32.0	680.0	44.0	20.0	80.0	90.0	100.0	634.0	1,680.0
2007	28.5	612.0	45.0	20.5	72.0	105.0	95.0	562.0	1,540.0
2008
On dairy operations									
	Bulls, 1 year and over	Beef cows	Dairy cows	Heifers			Steers, 1 year and over	Calves, under 1 year	Total
				Heifers, dairy replacement	Heifers, beef replacement	Heifers, slaughter			
thousands of heads									
At January 1									
2002	0.7	0.0	42.0	18.5	0.0	0.1	0.9	20.5	82.7
2003	0.5	0.0	40.5	18.0	0.0	0.2	1.0	19.3	79.5
2004	0.5	0.0	42.0	20.0	0.0	0.2	1.6	24.3	88.6
2005	0.4	0.0	44.0	18.0	0.0	0.2	1.8	22.3	86.7
2006	0.4	0.0	45.0	19.0	0.0	0.2	1.8	18.2	84.6
2007	0.4	0.0	44.5	18.5	0.0	0.2	1.5	19.0	84.1
2008	0.4	0.0	44.0	19.5	0.0	0.3	1.0	18.1	83.3
At July 1									
2002	0.7	0.0	41.5	20.0	0.0	0.3	1.7	17.2	81.4
2003	0.6	0.0	42.0	21.0	0.0	0.5	2.3	16.8	83.2
2004	0.6	0.0	42.0	23.0	0.0	0.5	2.8	24.1	93.0
2005	0.6	0.0	43.5	22.5	0.0	0.5	2.1	21.1	90.3
2006	0.5	0.0	44.0	20.0	0.0	0.6	1.7	17.1	83.9
2007	0.5	0.0	45.0	20.5	0.0	0.1	1.7	18.8	86.6
2008
On beef operations ¹									
	Bulls, 1 year and over	Beef cows	Dairy cows	Heifers			Steers, 1 year and over	Calves, under 1 year	Total
				Heifers, dairy replacement	Heifers, beef replacement	Heifers, slaughter			
thousands of heads									
At January 1									
2002	24.3	528.0	0.0	0.0	73.0	46.9	53.1	437.1	1,162.4
2003	25.5	553.5	0.0	0.0	78.0	43.9	36.0	433.7	1,170.6
2004	29.5	638.0	0.0	0.0	80.0	53.8	75.4	484.6	1,361.3
2005	31.1	650.0	0.0	0.0	80.0	54.8	68.3	519.2	1,403.4
2006	30.1	673.0	0.0	0.0	77.0	59.7	58.2	507.3	1,405.3
2007	27.6	623.0	0.0	0.0	62.0	46.8	43.6	487.9	1,290.9
2008	26.6	614.5	0.0	0.0	62.0	51.7	48.0	468.8	1,271.6
At July 1									
2002	26.3	574.0	0.0	0.0	92.0	73.7	110.4	512.3	1,388.7
2003	30.4	622.0	0.0	0.0	100.0	91.6	121.7	541.2	1,506.9
2004	32.4	650.0	0.0	0.0	96.0	106.5	152.3	599.9	1,637.1
2005	32.4	676.0	0.0	0.0	95.0	107.9	108.5	624.9	1,644.7
2006	31.5	680.0	0.0	0.0	80.0	89.3	98.3	616.9	1,596.0
2007	28.0	612.0	0.0	0.0	72.0	105.0	93.3	543.3	1,453.6
2008

See footnotes at the end of the table.

Table 7-6 – continued

Cattle by farm type — Manitoba

	On cow calf operations								
	Bulls, 1 year and over	Beef cows	Dairy cows	Heifers			Steers, 1 year and over	Calves, under 1 year	Total
				Heifers, dairy replacement	Heifers, beef replacement	Heifers, slaughter			
	thousands of heads								
At January 1									
2002	22.8	494.7	0.0	0.0	68.2	7.6	5.4	366.3	965.0
2003	23.9	518.6	0.0	0.0	73.7	6.5	6.2	363.1	992.0
2004	27.8	601.7	0.0	0.0	74.8	10.7	13.8	392.7	1,121.5
2005	28.9	604.5	0.0	0.0	72.1	11.2	16.4	401.5	1,134.6
2006	27.7	619.1	0.0	0.0	70.7	10.0	12.3	413.0	1,152.8
2007	25.9	583.8	0.0	0.0	57.9	8.7	11.0	401.8	1,089.1
2008	24.3	561.1	0.0	0.0	56.1	6.6	12.4	375.2	1,035.7
At July 1									
2002	23.2	505.7	0.0	0.0	78.2	8.7	12.8	434.8	1,063.4
2003	26.1	531.8	0.0	0.0	81.0	11.2	19.3	453.9	1,123.3
2004	25.1	500.5	0.0	0.0	73.6	13.0	21.3	453.7	1,087.2
2005	25.6	537.4	0.0	0.0	76.3	14.5	19.1	489.8	1,162.7
2006	27.0	582.8	0.0	0.0	67.8	10.0	15.1	519.9	1,222.6
2007	23.7	517.7	0.0	0.0	59.5	7.9	13.0	449.7	1,071.5
2008
	On feeder and stocker operations ²								
	Bulls, 1 year and over	Beef cows	Dairy cows	Heifers			Steers, 1 year and over	Calves, under 1 year	Total
				Heifers, dairy replacement	Heifers, beef replacement	Heifers, slaughter			
	thousands of heads								
At January 1									
2002	1.5	33.3	0.0	0.0	4.8	15.3	11.7	57.8	124.4
2003	1.6	34.9	0.0	0.0	4.3	23.4	12.8	57.1	134.1
2004	1.7	36.3	0.0	0.0	5.2	26.1	16.6	58.4	144.3
2005	2.2	45.5	0.0	0.0	7.9	23.6	17.9	73.7	170.8
2006	2.4	53.9	0.0	0.0	6.3	29.7	21.9	77.3	191.5
2007	1.7	39.2	0.0	0.0	4.1	25.1	16.6	80.1	166.8
2008	2.3	53.4	0.0	0.0	5.9	34.6	21.1	88.6	205.9
At July 1									
2002	3.1	68.3	0.0	0.0	13.8	36.5	40.6	73.0	235.3
2003	4.3	90.2	0.0	0.0	19.0	53.4	55.4	81.8	304.1
2004	7.3	149.5	0.0	0.0	22.4	62.5	69.0	142.7	453.4
2005	6.8	138.6	0.0	0.0	18.7	62.9	47.4	132.6	407.0
2006	4.5	97.2	0.0	0.0	12.2	47.3	39.2	94.0	294.4
2007	4.3	94.3	0.0	0.0	12.5	57.1	41.3	92.6	302.1
2008
	On feeding operations ³								
	Bulls, 1 year and over	Beef cows	Dairy cows	Heifers			Steers, 1 year and over	Calves, under 1 year	Total
				Heifers, dairy replacement	Heifers, beef replacement	Heifers, slaughter			
	thousands of heads								
At January 1									
2002	0.0	0.0	0.0	0.0	0.0	24.0	36.0	13.0	73.0
2003	0.0	0.0	0.0	0.0	0.0	14.0	17.0	13.5	44.5
2004	0.0	0.0	0.0	0.0	0.0	17.0	45.0	33.5	95.5
2005	0.0	0.0	0.0	0.0	0.0	20.0	34.0	44.0	98.0
2006	0.0	0.0	0.0	0.0	0.0	20.0	24.0	17.0	61.0
2007	0.0	0.0	0.0	0.0	0.0	13.0	16.0	6.0	35.0
2008	0.0	0.0	0.0	0.0	0.0	10.5	14.5	5.0	30.0
At July 1									
2002	0.0	0.0	0.0	0.0	0.0	28.5	57.0	4.5	90.0
2003	0.0	0.0	0.0	0.0	0.0	27.0	47.0	5.5	79.5
2004	0.0	0.0	0.0	0.0	0.0	31.0	62.0	3.5	96.5
2005	0.0	0.0	0.0	0.0	0.0	30.5	42.0	2.5	75.0
2006	0.0	0.0	0.0	0.0	0.0	32.0	44.0	3.0	79.0
2007	0.0	0.0	0.0	0.0	0.0	40.0	39.0	1.0	80.0
2008

1. Excluding small numbers of heifers for slaughter and steers on dairy operations.

2. Farms where cattle are fed on a low energy ration such as hay or pasture.

3. Farms where cattle are fed a high energy ration such as grain as they are fattened for market.

Table 7-7
Cattle by farm type — Saskatchewan

	On all cattle operations								Total
	Bulls, 1 year and over	Beef cows	Dairy cows	Heifers			Steers, 1 year and over	Calves, under 1 year	
				Heifers, dairy replacement	Heifers, beef replacement	Heifers, slaughter			
thousands of heads									
At January 1									
2002	57.0	1,220.0	28.0	14.0	165.0	23.0	33.0	877.5	2,417.5
2003	58.0	1,318.0	32.0	15.0	160.0	47.0	57.0	856.0	2,543.0
2004	68.0	1,426.0	31.5	14.5	185.0	51.0	75.0	1,004.0	2,855.0
2005	70.0	1,535.0	31.0	14.0	176.0	49.0	71.0	1,094.0	3,040.0
2006	69.0	1,560.0	29.0	12.0	183.0	47.0	73.0	977.0	2,950.0
2007	64.0	1,484.5	28.5	12.0	170.0	52.0	79.0	1,040.0	2,930.0
2008	65.5	1,480.0	29.0	12.5	176.0	48.0	83.0	1,026.0	2,920.0
At July 1									
2002	61.0	1,270.0	29.0	13.5	213.0	64.0	122.5	1,167.0	2,940.0
2003	70.0	1,335.0	34.0	15.0	240.0	105.0	150.0	1,271.0	3,220.0
2004	74.0	1,500.0	31.0	14.0	222.0	130.0	197.0	1,372.0	3,540.0
2005	75.0	1,545.0	29.5	13.5	245.0	122.0	165.0	1,430.0	3,625.0
2006	72.0	1,508.0	28.5	12.5	206.0	90.0	145.0	1,388.0	3,450.0
2007	70.0	1,480.0	30.0	14.0	190.0	105.0	175.0	1,366.0	3,430.0
2008
On dairy operations									
	Bulls, 1 year and over	Beef cows	Dairy cows	Heifers			Steers, 1 year and over	Calves, under 1 year	Total
				Heifers, dairy replacement	Heifers, beef replacement	Heifers, slaughter			
thousands of heads									
At January 1									
2002	0.5	0.0	28.0	14.0	0.0	0.1	0.3	10.4	53.3
2003	0.5	0.0	32.0	15.0	0.0	0.1	0.6	13.6	61.8
2004	0.3	0.0	31.5	14.5	0.0	0.1	2.0	14.7	63.1
2005	0.4	0.0	31.0	14.0	0.0	0.1	1.3	14.5	61.3
2006	0.4	0.0	29.0	12.0	0.0	0.1	0.6	14.7	56.8
2007	0.4	0.0	28.5	12.0	0.0	0.3	0.9	12.0	54.1
2008	0.3	0.0	29.0	12.5	0.0	0.1	0.6	9.1	51.6
At July 1									
2002	0.5	0.0	29.0	13.5	0.0	0.4	1.0	12.1	56.5
2003	0.5	0.0	34.0	15.0	0.0	0.3	3.1	12.8	65.7
2004	0.3	0.0	31.0	14.0	0.0	0.2	1.5	12.0	59.0
2005	0.4	0.0	29.5	13.5	0.0	0.2	1.3	11.8	56.7
2006	0.4	0.0	28.5	12.5	0.0	0.2	1.1	10.3	53.0
2007	0.4	0.0	30.0	14.0	0.0	0.1	0.9	10.7	56.1
2008
On beef operations ¹									
	Bulls, 1 year and over	Beef cows	Dairy cows	Heifers			Steers, 1 year and over	Calves, under 1 year	Total
				Heifers, dairy replacement	Heifers, beef replacement	Heifers, slaughter			
thousands of heads									
At January 1									
2002	56.5	1,220.0	0.0	0.0	165.0	22.9	32.7	867.1	2,364.2
2003	57.5	1,318.0	0.0	0.0	160.0	46.8	56.4	842.4	2,481.1
2004	67.7	1,426.0	0.0	0.0	185.0	50.9	73.0	989.3	2,791.9
2005	69.6	1,535.0	0.0	0.0	176.0	48.9	69.7	1,079.5	2,978.7
2006	68.6	1,560.0	0.0	0.0	183.0	46.9	72.5	962.4	2,893.4
2007	63.6	1,484.5	0.0	0.0	170.0	51.7	78.1	1,027.9	2,875.8
2008	65.2	1,480.0	0.0	0.0	176.0	47.9	82.4	1,016.9	2,868.4
At July 1									
2002	60.5	1,270.0	0.0	0.0	213.0	63.6	121.4	1,154.9	2,883.4
2003	69.5	1,335.0	0.0	0.0	240.0	104.8	146.8	1,258.3	3,154.4
2004	73.7	1,500.0	0.0	0.0	222.0	129.8	195.5	1,359.9	3,480.9
2005	74.6	1,545.0	0.0	0.0	245.0	121.8	163.8	1,418.2	3,568.4
2006	71.6	1,508.0	0.0	0.0	206.0	89.8	143.9	1,377.7	3,397.0
2007	69.6	1,480.0	0.0	0.0	190.0	105.0	174.1	1,355.5	3,374.2
2008

See footnotes at the end of the table.

Table 7-7 – continued

Cattle by farm type — Saskatchewan

	On cow calf operations								Total
	Bulls, 1 year and over	Beef cows	Dairy cows	Heifers			Steers, 1 year and over	Calves, under 1 year	
				Heifers, dairy replacement	Heifers, beef replacement	Heifers, slaughter			
thousands of heads									
At January 1									
2002	54.9	1,184.6	0.0	0.0	160.4	4.0	5.0	792.7	2,201.6
2003	55.2	1,270.5	0.0	0.0	148.2	10.3	12.4	739.3	2,235.9
2004	65.0	1,370.3	0.0	0.0	169.8	12.4	13.6	851.4	2,482.5
2005	66.5	1,469.0	0.0	0.0	164.9	18.6	20.9	956.1	2,696.0
2006	65.9	1,500.7	0.0	0.0	168.7	13.2	15.9	828.5	2,592.9
2007	61.4	1,434.0	0.0	0.0	161.3	12.6	13.1	904.5	2,586.9
2008	62.3	1,413.4	0.0	0.0	166.4	13.9	21.9	856.0	2,533.9
At July 1									
2002	56.7	1,191.2	0.0	0.0	195.7	10.8	17.8	1,065.6	2,537.8
2003	63.7	1,221.5	0.0	0.0	208.9	17.9	27.1	1,135.5	2,674.6
2004	64.0	1,309.5	0.0	0.0	184.8	24.4	28.9	1,168.5	2,780.1
2005	65.7	1,372.0	0.0	0.0	214.1	25.2	33.0	1,233.8	2,943.8
2006	63.8	1,346.7	0.0	0.0	180.5	13.7	23.2	1,198.1	2,826.0
2007	61.2	1,303.9	0.0	0.0	161.9	18.8	25.9	1,157.2	2,728.9
2008
On feeder and stocker operations ²									
	Bulls, 1 year and over	Beef cows	Dairy cows	Heifers			Steers, 1 year and over	Calves, under 1 year	Total
				Heifers, dairy replacement	Heifers, beef replacement	Heifers, slaughter			
thousands of heads									
At January 1									
2002	1.6	35.4	0.0	0.0	4.6	12.9	10.7	61.4	126.6
2003	2.3	47.5	0.0	0.0	11.8	26.5	19.0	68.1	175.2
2004	2.7	55.7	0.0	0.0	15.2	27.5	34.4	104.9	240.4
2005	3.1	66.0	0.0	0.0	11.1	22.3	23.8	84.4	210.7
2006	2.7	59.3	0.0	0.0	14.3	21.7	26.6	77.4	202.0
2007	2.2	50.5	0.0	0.0	8.7	26.1	30.5	77.9	195.9
2008	2.9	66.6	0.0	0.0	9.6	23.0	35.5	106.9	244.5
At July 1									
2002	3.8	78.8	0.0	0.0	17.3	37.8	48.6	82.3	268.6
2003	5.8	113.5	0.0	0.0	31.1	56.9	63.7	110.8	381.8
2004	9.7	190.5	0.0	0.0	37.2	75.4	92.6	181.4	586.8
2005	8.9	173.0	0.0	0.0	30.9	66.6	80.8	156.4	516.6
2006	7.8	161.3	0.0	0.0	25.5	67.1	72.7	146.6	481.0
2007	8.4	176.1	0.0	0.0	28.1	68.2	81.2	165.3	527.3
2008
On feeding operations ³									
	Bulls, 1 year and over	Beef cows	Dairy cows	Heifers			Steers, 1 year and over	Calves, under 1 year	Total
				Heifers, dairy replacement	Heifers, beef replacement	Heifers, slaughter			
thousands of heads									
At January 1									
2002	0.0	0.0	0.0	0.0	0.0	6.0	17.0	13.0	36.0
2003	0.0	0.0	0.0	0.0	0.0	10.0	25.0	35.0	70.0
2004	0.0	0.0	0.0	0.0	0.0	11.0	25.0	33.0	69.0
2005	0.0	0.0	0.0	0.0	0.0	8.0	25.0	39.0	72.0
2006	0.0	0.0	0.0	0.0	0.0	12.0	30.0	56.5	98.5
2007	0.0	0.0	0.0	0.0	0.0	13.0	34.5	45.5	93.0
2008	0.0	0.0	0.0	0.0	0.0	11.0	25.0	54.0	90.0
At July 1									
2002	0.0	0.0	0.0	0.0	0.0	15.0	55.0	7.0	77.0
2003	0.0	0.0	0.0	0.0	0.0	30.0	56.0	12.0	98.0
2004	0.0	0.0	0.0	0.0	0.0	30.0	74.0	10.0	114.0
2005	0.0	0.0	0.0	0.0	0.0	30.0	50.0	28.0	108.0
2006	0.0	0.0	0.0	0.0	0.0	9.0	48.0	33.0	90.0
2007	0.0	0.0	0.0	0.0	0.0	18.0	67.0	33.0	118.0
2008

1. Excluding small numbers of heifers for slaughter and steers on dairy operations.

2. Farms where cattle are fed on a low energy ration such as hay or pasture.

3. Farms where cattle are fed a high energy ration such as grain as they are fattened for market.

Table 7-8
Cattle by farm type — Alberta

	On all cattle operations								Total
	Bulls, 1 year and over	Beef cows	Dairy cows	Heifers			Steers, 1 year and over	Calves, under 1 year	
				Heifers, dairy replacement	Heifers, beef replacement	Heifers, slaughter			
thousands of heads									
At January 1									
2002	98.0	1,959.0	92.0	36.0	250.0	610.0	800.0	1,980.0	5,825.0
2003	96.0	1,915.0	87.0	35.0	250.0	530.0	700.0	1,697.0	5,310.0
2004	110.0	1,960.0	86.5	35.0	270.5	558.0	635.0	2,020.0	5,675.0
2005	110.0	2,090.0	83.0	36.0	255.0	630.0	595.0	2,131.0	5,930.0
2006	105.0	2,052.0	85.5	36.5	245.0	647.0	625.0	2,104.0	5,900.0
2007	101.5	2,000.0	79.5	35.0	253.0	657.0	637.0	1,917.0	5,680.0
2008	101.5	1,990.0	83.5	36.0	245.0	690.0	575.0	1,839.0	5,560.0
At July 1									
2002	110.0	2,040.0	90.0	38.0	345.0	750.0	868.0	2,146.0	6,387.0
2003	109.0	1,990.0	85.0	38.0	350.0	680.0	798.0	2,050.0	6,100.0
2004	113.0	2,150.0	82.0	39.0	320.0	765.0	780.0	2,151.0	6,400.0
2005	119.0	2,200.0	85.0	38.0	352.0	825.0	830.0	2,251.0	6,700.0
2006	105.0	2,025.0	82.0	38.0	278.0	812.0	888.0	2,072.0	6,300.0
2007	108.0	2,076.0	83.0	38.0	284.0	835.0	1,000.0	2,046.0	6,470.0
2008
On dairy operations									
	Bulls, 1 year and over	Beef cows	Dairy cows	Heifers			Steers, 1 year and over	Calves, under 1 year	Total
				Heifers, dairy replacement	Heifers, beef replacement	Heifers, slaughter			
thousands of heads									
At January 1									
2002	1.5	0.0	92.0	36.0	0.0	2.3	6.3	48.3	186.4
2003	1.4	0.0	87.0	35.0	0.0	2.2	5.0	44.7	175.3
2004	2.2	0.0	86.5	35.0	0.0	2.8	6.5	50.3	183.3
2005	1.4	0.0	83.0	36.0	0.0	3.0	3.8	57.3	184.5
2006	0.9	0.0	85.5	36.5	0.0	2.9	3.5	46.1	175.4
2007	0.7	0.0	79.5	35.0	0.0	4.6	2.3	43.3	165.4
2008	1.3	0.0	83.5	36.0	0.0	4.5	6.4	41.6	173.3
At July 1									
2002	1.7	0.0	90.0	38.0	0.0	6.9	4.5	37.5	178.6
2003	1.9	0.0	85.0	38.0	0.0	7.2	5.1	39.3	176.5
2004	1.7	0.0	82.0	39.0	0.0	7.3	5.1	50.1	185.2
2005	2.1	0.0	85.0	38.0	0.0	7.4	5.1	40.8	178.4
2006	1.3	0.0	82.0	38.0	0.0	7.1	1.9	31.7	162.0
2007	1.0	0.0	83.0	38.0	0.0	5.7	2.2	29.6	159.5
2008
On beef operations ¹									
	Bulls, 1 year and over	Beef cows	Dairy cows	Heifers			Steers, 1 year and over	Calves, under 1 year	Total
				Heifers, dairy replacement	Heifers, beef replacement	Heifers, slaughter			
thousands of heads									
At January 1									
2002	96.5	1,959.0	0.0	0.0	250.0	607.8	793.8	1,931.7	5,638.8
2003	94.6	1,915.0	0.0	0.0	250.0	527.8	695.1	1,652.3	5,134.8
2004	107.8	1,960.0	0.0	0.0	270.5	555.3	628.5	1,969.8	5,491.9
2005	108.6	2,090.0	0.0	0.0	255.0	627.1	591.1	2,073.7	5,745.5
2006	104.1	2,052.0	0.0	0.0	245.0	644.1	621.5	2,058.0	5,724.7
2007	100.8	2,000.0	0.0	0.0	253.0	652.4	634.8	1,873.8	5,514.8
2008	100.2	1,990.0	0.0	0.0	245.0	685.5	568.5	1,797.4	5,386.6
At July 1									
2002	108.3	2,040.0	0.0	0.0	345.0	743.2	863.6	2,108.4	6,208.5
2003	107.1	1,990.0	0.0	0.0	350.0	672.7	793.0	2,010.8	5,923.6
2004	111.3	2,150.0	0.0	0.0	320.0	757.7	774.9	2,101.0	6,214.9
2005	116.9	2,200.0	0.0	0.0	352.0	817.7	824.9	2,210.3	6,521.8
2006	103.7	2,025.0	0.0	0.0	278.0	804.9	886.1	2,040.3	6,138.0
2007	107.0	2,076.0	0.0	0.0	284.0	829.4	997.9	2,016.5	6,310.8
2008

See footnotes at the end of the table.

Table 7-8 – continued

Cattle by farm type — Alberta

	On cow calf operations								
	Bulls, 1 year and over	Beef cows	Dairy cows	Heifers			Steers, 1 year and over	Calves, under 1 year	Total
				Heifers, dairy replacement	Heifers, beef replacement	Heifers, slaughter			
	thousands of heads								
At January 1									
2002	92.2	1,868.8	0.0	0.0	223.9	28.8	30.5	1,282.7	3,526.9
2003	87.8	1,775.2	0.0	0.0	224.1	16.3	18.3	1,040.0	3,161.7
2004	101.1	1,818.9	0.0	0.0	244.0	24.7	18.6	1,305.8	3,513.1
2005	101.8	1,961.7	0.0	0.0	238.2	31.3	24.2	1,493.6	3,850.8
2006	97.8	1,926.0	0.0	0.0	231.3	33.9	25.5	1,359.0	3,673.5
2007	93.2	1,848.0	0.0	0.0	232.2	23.7	16.9	1,232.0	3,446.0
2008	92.6	1,836.8	0.0	0.0	221.8	36.2	20.7	1,205.4	3,413.5
At July 1									
2002	95.7	1,801.3	0.0	0.0	286.1	19.0	28.4	1,763.5	3,994.0
2003	93.9	1,727.3	0.0	0.0	283.2	33.1	29.8	1,645.7	3,813.0
2004	92.3	1,788.8	0.0	0.0	261.3	53.1	51.1	1,691.2	3,937.8
2005	97.7	1,834.8	0.0	0.0	287.5	55.4	60.5	1,723.2	4,059.1
2006	87.4	1,707.0	0.0	0.0	229.1	40.4	35.2	1,583.6	3,682.7
2007	88.5	1,712.7	0.0	0.0	224.4	42.1	40.5	1,542.8	3,651.0
2008
	On feeder and stocker operations ²								
	Bulls, 1 year and over	Beef cows	Dairy cows	Heifers			Steers, 1 year and over	Calves, under 1 year	Total
				Heifers, dairy replacement	Heifers, beef replacement	Heifers, slaughter			
	thousands of heads								
At January 1									
2002	4.3	90.2	0.0	0.0	26.1	199.0	173.3	439.0	931.9
2003	6.8	139.8	0.0	0.0	25.9	196.5	226.8	432.3	1,028.1
2004	6.7	141.1	0.0	0.0	26.5	255.6	164.9	494.0	1,088.8
2005	6.8	128.3	0.0	0.0	16.8	263.8	143.9	445.1	1,004.7
2006	6.3	126.0	0.0	0.0	13.7	253.2	163.0	514.5	1,076.7
2007	7.6	152.0	0.0	0.0	20.8	279.7	205.9	422.8	1,088.8
2008	7.6	153.2	0.0	0.0	23.2	307.3	151.8	445.0	1,088.1
At July 1									
2002	12.6	238.7	0.0	0.0	58.9	318.2	378.2	332.9	1,339.5
2003	13.2	262.7	0.0	0.0	66.8	319.6	303.2	350.1	1,315.6
2004	19.0	361.2	0.0	0.0	58.7	324.6	308.8	384.8	1,457.1
2005	19.2	365.2	0.0	0.0	64.5	347.3	329.4	452.1	1,577.7
2006	16.3	318.0	0.0	0.0	48.9	344.5	340.9	421.7	1,490.3
2007	18.5	363.3	0.0	0.0	59.6	360.3	392.4	430.7	1,624.8
2008
	On feeding operations ³								
	Bulls, 1 year and over	Beef cows	Dairy cows	Heifers			Steers, 1 year and over	Calves, under 1 year	Total
				Heifers, dairy replacement	Heifers, beef replacement	Heifers, slaughter			
	thousands of heads								
At January 1									
2002	0.0	0.0	0.0	0.0	0.0	380.0	590.0	210.0	1,180.0
2003	0.0	0.0	0.0	0.0	0.0	315.0	450.0	180.0	945.0
2004	0.0	0.0	0.0	0.0	0.0	275.0	445.0	170.0	890.0
2005	0.0	0.0	0.0	0.0	0.0	332.0	423.0	135.0	890.0
2006	0.0	0.0	0.0	0.0	0.0	357.0	433.0	184.5	974.5
2007	0.0	0.0	0.0	0.0	0.0	349.0	412.0	219.0	980.0
2008	0.0	0.0	0.0	0.0	0.0	342.0	396.0	147.0	885.0
At July 1									
2002	0.0	0.0	0.0	0.0	0.0	406.0	457.0	12.0	875.0
2003	0.0	0.0	0.0	0.0	0.0	320.0	460.0	15.0	795.0
2004	0.0	0.0	0.0	0.0	0.0	380.0	415.0	25.0	820.0
2005	0.0	0.0	0.0	0.0	0.0	415.0	435.0	35.0	885.0
2006	0.0	0.0	0.0	0.0	0.0	420.0	510.0	35.0	965.0
2007	0.0	0.0	0.0	0.0	0.0	427.0	565.0	43.0	1,035.0
2008

1. Excluding small numbers of heifers for slaughter and steers on dairy operations.

2. Farms where cattle are fed on a low energy ration such as hay or pasture.

3. Farms where cattle are fed a high energy ration such as grain as they are fattened for market.

Table 7-9
Cattle by farm type — British Columbia

	On all cattle operations								Total
	Bulls, 1 year and over	Beef cows	Dairy cows	Heifers			Steers, 1 year and over	Calves, under 1 year	
				Heifers, dairy replacement	Heifers, beef replacement	Heifers, slaughter			
thousands of heads									
At January 1									
2002	15.0	285.0	74.5	34.0	46.0	11.0	30.0	174.5	670.0
2003	16.5	296.0	76.0	38.0	46.0	10.0	31.0	169.5	683.0
2004	16.0	290.0	80.0	38.0	45.0	14.0	53.0	204.0	740.0
2005	17.0	305.0	78.0	36.0	37.0	13.0	40.0	184.0	710.0
2006	16.0	285.0	75.0	30.0	35.0	15.0	30.0	174.0	660.0
2007	14.5	260.5	70.5	32.0	30.0	12.0	30.0	165.5	615.0
2008	14.5	249.0	70.0	35.0	32.0	14.5	23.0	172.0	610.0
At July 1									
2002	18.0	291.0	75.0	36.5	57.5	22.0	47.0	289.5	836.5
2003	18.5	293.0	77.0	34.0	56.0	28.0	67.5	311.0	885.0
2004	19.0	327.0	78.0	35.0	51.0	32.0	73.0	335.0	950.0
2005	18.0	319.5	77.5	32.5	48.5	35.0	63.0	321.0	915.0
2006	17.0	280.0	73.0	35.5	43.5	26.0	55.0	290.0	820.0
2007	16.0	277.0	71.5	36.5	40.0	25.0	57.0	282.0	805.0
2008
On dairy operations									
	Bulls, 1 year and over	Beef cows	Dairy cows	Heifers			Steers, 1 year and over	Calves, under 1 year	Total
				Heifers, dairy replacement	Heifers, beef replacement	Heifers, slaughter			
thousands of heads									
At January 1									
2002	1.1	0.0	74.5	34.0	0.0	0.2	1.0	29.7	140.5
2003	1.1	0.0	76.0	38.0	0.0	0.2	2.6	28.7	146.6
2004	0.9	0.0	80.0	38.0	0.0	0.4	1.3	34.1	154.7
2005	0.8	0.0	78.0	36.0	0.0	0.1	0.4	29.3	144.6
2006	0.6	0.0	75.0	30.0	0.0	0.3	0.6	27.0	133.5
2007	0.7	0.0	70.5	32.0	0.0	0.4	1.2	28.5	133.3
2008	0.7	0.0	70.0	35.0	0.0	0.2	1.0	29.9	136.8
At July 1									
2002	1.3	0.0	75.0	36.5	0.0	0.7	0.7	29.2	143.4
2003	1.1	0.0	77.0	34.0	0.0	0.1	1.9	30.8	144.9
2004	1.0	0.0	78.0	35.0	0.0	0.1	0.8	30.0	144.9
2005	0.7	0.0	77.5	32.5	0.0	0.5	0.7	29.1	141.0
2006	0.7	0.0	73.0	35.5	0.0	0.2	2.0	25.7	137.1
2007	0.8	0.0	71.5	36.5	0.0	0.9	4.6	29.4	143.7
2008
On beef operations ¹									
	Bulls, 1 year and over	Beef cows	Dairy cows	Heifers			Steers, 1 year and over	Calves, under 1 year	Total
				Heifers, dairy replacement	Heifers, beef replacement	Heifers, slaughter			
thousands of heads									
At January 1									
2002	13.9	285.0	0.0	0.0	46.0	10.9	29.0	144.8	529.6
2003	15.4	296.0	0.0	0.0	46.0	9.8	28.5	140.9	536.6
2004	15.1	290.0	0.0	0.0	45.0	13.6	51.6	170.0	585.3
2005	16.2	305.0	0.0	0.0	37.0	12.9	39.6	154.7	565.4
2006	15.4	285.0	0.0	0.0	35.0	14.7	29.4	147.0	526.5
2007	13.8	260.5	0.0	0.0	30.0	11.6	28.8	137.0	481.7
2008	13.8	249.0	0.0	0.0	32.0	14.3	22.1	142.0	473.2
At July 1									
2002	16.7	291.0	0.0	0.0	57.5	21.3	46.3	260.3	693.1
2003	17.4	293.0	0.0	0.0	56.0	27.9	65.6	280.3	740.2
2004	18.0	327.0	0.0	0.0	51.0	31.9	72.3	305.0	805.2
2005	17.3	319.5	0.0	0.0	48.5	34.5	62.3	291.9	774.0
2006	16.3	280.0	0.0	0.0	43.5	25.9	53.0	264.2	682.9
2007	15.2	277.0	0.0	0.0	40.0	24.0	52.4	252.6	661.2
2008

See footnotes at the end of the table.

Table 7-9 – continued

Cattle by farm type — British Columbia

	On cow calf operations								Total
	Bulls, 1 year and over	Beef cows	Dairy cows	Heifers			Steers, 1 year and over	Calves, under 1 year	
				Heifers, dairy replacement	Heifers, beef replacement	Heifers, slaughter			
thousands of heads									
At January 1									
2002	12.7	262.2	0.0	0.0	42.1	1.6	5.3	123.4	447.3
2003	14.4	276.8	0.0	0.0	42.5	4.2	7.7	118.9	464.5
2004	14.1	272.5	0.0	0.0	41.9	5.4	8.0	143.6	485.5
2005	15.2	286.7	0.0	0.0	34.8	6.5	9.5	134.1	486.8
2006	14.4	266.5	0.0	0.0	32.8	5.1	7.3	122.6	448.7
2007	12.7	240.2	0.0	0.0	26.2	3.8	6.3	108.0	397.2
2008	13.1	236.1	0.0	0.0	29.7	4.4	5.8	121.0	410.1
At July 1									
2002	14.7	257.5	0.0	0.0	47.7	2.8	7.2	223.2	553.1
2003	15.1	254.3	0.0	0.0	46.8	7.1	17.6	235.8	576.7
2004	14.2	264.8	0.0	0.0	40.0	8.3	13.8	238.7	579.8
2005	13.5	256.6	0.0	0.0	39.6	9.3	15.3	231.3	565.6
2006	13.4	231.0	0.0	0.0	34.3	5.7	9.3	209.6	503.3
2007	12.4	229.4	0.0	0.0	30.8	7.7	9.2	202.7	492.2
2008
On feeder and stocker operations ²									
	Bulls, 1 year and over	Beef cows	Dairy cows	Heifers			Steers, 1 year and over	Calves, under 1 year	Total
				Heifers, dairy replacement	Heifers, beef replacement	Heifers, slaughter			
thousands of heads									
At January 1									
2002	1.2	22.8	0.0	0.0	3.9	5.8	13.7	19.9	67.3
2003	1.0	19.2	0.0	0.0	3.5	3.6	15.3	19.2	61.8
2004	1.0	17.5	0.0	0.0	3.1	6.2	12.6	20.9	61.3
2005	1.0	18.3	0.0	0.0	2.2	3.9	11.1	17.1	53.6
2006	1.0	18.5	0.0	0.0	2.2	7.1	9.1	18.4	56.3
2007	1.1	20.3	0.0	0.0	3.8	4.8	12.5	26.0	68.5
2008	0.7	12.9	0.0	0.0	2.3	4.9	9.3	18.0	48.1
At July 1									
2002	2.0	33.5	0.0	0.0	9.8	14.5	27.1	36.1	123.0
2003	2.3	38.7	0.0	0.0	9.2	16.3	28.0	38.5	133.0
2004	3.8	62.2	0.0	0.0	11.0	20.1	34.5	59.3	190.9
2005	3.8	62.9	0.0	0.0	8.9	21.7	31.0	58.1	186.4
2006	2.9	49.0	0.0	0.0	9.2	15.7	24.7	50.6	152.1
2007	2.8	47.6	0.0	0.0	9.2	10.8	24.2	47.9	142.5
2008
On feeding operations ³									
	Bulls, 1 year and over	Beef cows	Dairy cows	Heifers			Steers, 1 year and over	Calves, under 1 year	Total
				Heifers, dairy replacement	Heifers, beef replacement	Heifers, slaughter			
thousands of heads									
At January 1									
2002	0.0	0.0	0.0	0.0	0.0	3.5	10.0	1.5	15.0
2003	0.0	0.0	0.0	0.0	0.0	2.0	5.5	2.8	10.3
2004	0.0	0.0	0.0	0.0	0.0	2.0	31.0	5.5	38.5
2005	0.0	0.0	0.0	0.0	0.0	2.5	19.0	3.5	25.0
2006	0.0	0.0	0.0	0.0	0.0	2.5	13.0	6.0	21.5
2007	0.0	0.0	0.0	0.0	0.0	3.0	10.0	3.0	16.0
2008	0.0	0.0	0.0	0.0	0.0	5.0	7.0	3.0	15.0
At July 1									
2002	0.0	0.0	0.0	0.0	0.0	4.0	12.0	1.0	17.0
2003	0.0	0.0	0.0	0.0	0.0	4.5	20.0	6.0	30.5
2004	0.0	0.0	0.0	0.0	0.0	3.5	24.0	7.0	34.5
2005	0.0	0.0	0.0	0.0	0.0	3.5	16.0	2.5	22.0
2006	0.0	0.0	0.0	0.0	0.0	4.5	19.0	4.0	27.5
2007	0.0	0.0	0.0	0.0	0.0	5.5	19.0	2.0	26.5
2008

1. Excluding small numbers of heifers for slaughter and steers on dairy operations.

2. Farms where cattle are fed on a low energy ration such as hay or pasture.

3. Farms where cattle are fed a high energy ration such as grain as they are fattened for market.

Table 7-10
Cattle by farm type — Western Provinces

	On all cattle operations								Total
	Bulls, 1 year and over	Beef cows	Dairy cows	Heifers			Steers, 1 year and over	Calves, under 1 year	
				Heifers, dairy replacement	Heifers, beef replacement	Heifers, slaughter			
	thousands of heads								
At January 1									
2002	195.0	3,992.0	236.5	102.5	534.0	691.0	917.0	3,489.5	10,157.5
2003	196.5	4,082.5	235.5	106.0	534.0	631.0	825.0	3,175.5	9,786.0
2004	224.0	4,314.0	240.0	107.5	580.5	677.0	840.0	3,737.0	10,720.0
2005	228.5	4,580.0	236.0	104.0	548.0	747.0	776.0	3,950.5	11,170.0
2006	220.5	4,570.0	234.5	97.5	540.0	769.0	788.0	3,780.5	11,000.0
2007	208.0	4,368.0	223.0	97.5	515.0	768.0	791.0	3,629.5	10,600.0
2008	208.5	4,333.5	226.5	103.0	515.0	804.5	730.0	3,524.0	10,445.0
At July 1									
2002	216.0	4,175.0	235.5	108.0	707.5	910.0	1,149.5	4,132.0	11,633.5
2003	228.5	4,240.0	238.0	108.0	746.0	905.0	1,139.5	4,190.0	11,795.0
2004	239.0	4,627.0	233.0	111.0	689.0	1,034.0	1,205.0	4,482.0	12,620.0
2005	245.0	4,740.5	235.5	106.5	740.5	1,090.5	1,168.5	4,648.0	12,975.0
2006	226.0	4,493.0	227.5	106.0	607.5	1,018.0	1,188.0	4,384.0	12,250.0
2007	222.5	4,445.0	229.5	109.0	586.0	1,070.0	1,327.0	4,256.0	12,245.0
2008
	On dairy operations								
	Bulls, 1 year and over	Beef cows	Dairy cows	Heifers			Steers, 1 year and over	Calves, under 1 year	Total
				Heifers, dairy replacement	Heifers, beef replacement	Heifers, slaughter			
	thousands of heads								
At January 1									
2002	3.8	0.0	236.5	102.5	0.0	2.7	8.5	108.9	462.9
2003	3.5	0.0	235.5	106.0	0.0	2.7	9.2	106.3	463.2
2004	3.9	0.0	240.0	107.5	0.0	3.5	11.4	123.4	489.7
2005	3.0	0.0	236.0	104.0	0.0	3.4	7.3	123.4	477.1
2006	2.3	0.0	234.5	97.5	0.0	3.5	6.5	106.0	450.3
2007	2.2	0.0	223.0	97.5	0.0	5.5	5.9	102.8	436.9
2008	2.7	0.0	226.5	103.0	0.0	5.1	9.0	98.7	445.0
At July 1									
2002	4.2	0.0	235.5	108.0	0.0	8.3	7.9	96.0	459.9
2003	4.1	0.0	238.0	108.0	0.0	8.1	12.4	99.7	470.3
2004	3.6	0.0	233.0	111.0	0.0	8.1	10.2	116.2	482.1
2005	3.8	0.0	235.5	106.5	0.0	8.6	9.2	102.8	466.4
2006	2.9	0.0	227.5	106.0	0.0	8.1	6.7	84.8	436.0
2007	2.7	0.0	229.5	109.0	0.0	6.8	9.4	88.5	445.9
2008
	On beef operations ¹								
	Bulls, 1 year and over	Beef cows	Dairy cows	Heifers			Steers, 1 year and over	Calves, under 1 year	Total
				Heifers, dairy replacement	Heifers, beef replacement	Heifers, slaughter			
	thousands of heads								
At January 1									
2002	191.2	3,992.0	0.0	0.0	534.0	688.5	908.6	3,380.7	9,695.0
2003	193.0	4,082.5	0.0	0.0	534.0	628.3	816.0	3,069.3	9,323.1
2004	220.1	4,314.0	0.0	0.0	580.5	673.6	828.5	3,613.7	10,230.4
2005	225.5	4,580.0	0.0	0.0	548.0	743.7	768.7	3,827.1	10,693.0
2006	218.2	4,570.0	0.0	0.0	540.0	765.4	781.6	3,674.7	10,549.9
2007	205.8	4,368.0	0.0	0.0	515.0	762.5	785.3	3,526.6	10,163.2
2008	205.8	4,333.5	0.0	0.0	515.0	799.4	721.0	3,425.1	9,999.8
At July 1									
2002	211.8	4,175.0	0.0	0.0	707.5	901.8	1,141.7	4,035.9	11,173.7
2003	224.4	4,240.0	0.0	0.0	746.0	897.0	1,127.1	4,090.6	11,325.1
2004	235.4	4,627.0	0.0	0.0	689.0	1,025.9	1,195.0	4,365.8	12,138.1
2005	241.2	4,740.5	0.0	0.0	740.5	1,081.9	1,159.5	4,545.3	12,508.9
2006	223.1	4,493.0	0.0	0.0	607.5	1,009.9	1,181.3	4,299.1	11,813.9
2007	219.8	4,445.0	0.0	0.0	586.0	1,063.4	1,317.7	4,167.9	11,799.8
2008

See footnotes at the end of the table.

Table 7-10 – continued

Cattle by farm type — Western Provinces

	On cow calf operations								
	Bulls, 1 year and over	Beef cows	Dairy cows	Heifers			Steers, 1 year and over	Calves, under 1 year	Total
				Heifers, dairy replacement	Heifers, beef replacement	Heifers, slaughter			
	thousands of heads								
At January 1									
2002	182.6	3,810.3	0.0	0.0	494.6	42.0	46.2	2,565.1	7,140.8
2003	181.3	3,841.1	0.0	0.0	488.5	37.3	44.6	2,261.3	6,854.1
2004	208.0	4,063.4	0.0	0.0	530.5	53.2	54.0	2,693.5	7,602.6
2005	212.4	4,321.9	0.0	0.0	510.0	67.6	71.0	2,985.3	8,168.2
2006	205.8	4,312.3	0.0	0.0	503.5	62.2	61.0	2,723.1	7,867.9
2007	193.2	4,106.0	0.0	0.0	477.6	48.8	47.3	2,646.3	7,519.2
2008	192.3	4,047.4	0.0	0.0	474.0	61.1	60.8	2,557.6	7,393.2
At July 1									
2002	190.3	3,755.7	0.0	0.0	607.7	41.3	66.2	3,487.1	8,148.3
2003	198.8	3,734.9	0.0	0.0	619.9	69.3	93.8	3,470.9	8,187.6
2004	195.6	3,863.6	0.0	0.0	559.7	98.8	115.1	3,552.1	8,384.9
2005	202.5	4,000.8	0.0	0.0	617.5	104.4	127.9	3,678.1	8,731.2
2006	191.6	3,867.5	0.0	0.0	511.7	69.8	82.8	3,511.2	8,234.6
2007	185.8	3,763.7	0.0	0.0	476.6	76.5	88.6	3,352.4	7,943.6
2008
	On feeder and stocker operations ²								
	Bulls, 1 year and over	Beef cows	Dairy cows	Heifers			Steers, 1 year and over	Calves, under 1 year	Total
				Heifers, dairy replacement	Heifers, beef replacement	Heifers, slaughter			
	thousands of heads								
At January 1									
2002	8.6	181.7	0.0	0.0	39.4	233.0	209.4	578.1	1,250.2
2003	11.7	241.4	0.0	0.0	45.5	250.0	273.9	576.7	1,399.2
2004	12.1	250.6	0.0	0.0	50.0	315.4	228.5	678.2	1,534.8
2005	13.1	258.1	0.0	0.0	38.0	313.6	196.7	620.3	1,439.8
2006	12.4	257.7	0.0	0.0	36.5	311.7	220.6	687.6	1,526.5
2007	12.6	262.0	0.0	0.0	37.4	335.7	265.5	606.8	1,520.0
2008	13.5	286.1	0.0	0.0	41.0	369.8	217.7	658.5	1,586.6
At July 1									
2002	21.5	419.3	0.0	0.0	99.8	407.0	494.5	524.3	1,966.4
2003	25.6	505.1	0.0	0.0	126.1	446.2	450.3	581.2	2,134.5
2004	39.8	763.4	0.0	0.0	129.3	482.6	504.9	768.2	2,688.2
2005	38.7	739.7	0.0	0.0	123.0	498.5	488.6	799.2	2,687.7
2006	31.5	625.5	0.0	0.0	95.8	474.6	477.5	712.9	2,417.8
2007	34.0	681.3	0.0	0.0	109.4	496.4	539.1	736.5	2,596.7
2008
	On feeding operations ³								
	Bulls, 1 year and over	Beef cows	Dairy cows	Heifers			Steers, 1 year and over	Calves, under 1 year	Total
				Heifers, dairy replacement	Heifers, beef replacement	Heifers, slaughter			
	thousands of heads								
At January 1									
2002	0.0	0.0	0.0	0.0	0.0	413.5	653.0	237.5	1,304.0
2003	0.0	0.0	0.0	0.0	0.0	341.0	497.5	231.3	1,069.8
2004	0.0	0.0	0.0	0.0	0.0	305.0	546.0	242.0	1,093.0
2005	0.0	0.0	0.0	0.0	0.0	362.5	501.0	221.5	1,085.0
2006	0.0	0.0	0.0	0.0	0.0	391.5	500.0	264.0	1,155.5
2007	0.0	0.0	0.0	0.0	0.0	378.0	472.5	273.5	1,124.0
2008	0.0	0.0	0.0	0.0	0.0	368.5	442.5	209.0	1,020.0
At July 1									
2002	0.0	0.0	0.0	0.0	0.0	453.5	581.0	24.5	1,059.0
2003	0.0	0.0	0.0	0.0	0.0	381.5	583.0	38.5	1,003.0
2004	0.0	0.0	0.0	0.0	0.0	444.5	575.0	45.5	1,065.0
2005	0.0	0.0	0.0	0.0	0.0	479.0	543.0	68.0	1,090.0
2006	0.0	0.0	0.0	0.0	0.0	465.5	621.0	75.0	1,161.5
2007	0.0	0.0	0.0	0.0	0.0	490.5	690.0	79.0	1,259.5
2008

1. Excluding small numbers of heifers for slaughter and steers on dairy operations.

2. Farms where cattle are fed on a low energy ration such as hay or pasture.

3. Farms where cattle are fed a high energy ration such as grain as they are fattened for market.

Table 8-1
Feeder cattle by weight category, by farm type at January 1, 2008 — Canada

	Total	Heavy	Medium	Light
	thousands of heads			
On all cattle operations				
Feeder heifers	982.9	405.9	315.3	261.7
Steers	1,101.6	373.9	344.0	383.7
Total	2,084.5	779.8	659.3	645.4
On dairy operations				
Feeder heifers	18.6	8.2	6.6	3.8
Steers	43.1	18.1	8.5	16.5
Total	61.7	26.3	15.1	20.3
On beef operations ¹				
Feeder heifers	964.3	397.7	308.7	257.9
Steers	1,058.7	355.8	335.5	367.4
Total	2,023.0	753.5	644.2	625.3
On cow calf operations				
Feeder heifers	94.3	25.4	32.0	36.9
Steers	96.6	19.8	17.7	59.1
Total	190.9	45.2	49.7	96.0
On feeder and stocker operations ²				
Feeder heifers	406.7	179.6	115.8	111.3
Steers	272.6	87.4	77.3	107.9
Total	679.3	267.0	193.1	219.2
On feeding operations ³				
Feeder heifers	463.3	192.7	160.9	109.7
Steers	689.5	248.6	240.5	200.4
Total	1,152.8	441.3	401.4	310.1

1. Excluding small amounts of heifers for slaughter and steers on dairy operations.
2. Farms where cattle are fed on a low energy ration such as hay or pasture.
3. Farms where cattle are fed a high energy ration such as grain as they are fattened for market.

Table 8-2

Feeder cattle by weight category, by farm type at January 1, 2008 — East

	Total	Heavy	Medium	Light
	thousands of heads			
On all cattle operations				
Feeder heifers	178.4	70.2	60.7	47.5
Steers	371.6	169.9	86.4	115.3
Total	550.0	240.1	147.1	162.8
On dairy operations				
Feeder heifers	13.5	5.0	5.0	3.5
Steers	34.1	16.2	6.7	11.2
Total	47.6	21.2	11.7	14.7
On beef operations ¹				
Feeder heifers	164.9	65.2	55.7	44.0
Steers	337.7	153.7	79.7	104.3
Total	502.6	218.9	135.4	148.3
On cow calf operations				
Feeder heifers	33.2	7.5	12.1	13.6
Steers	35.8	8.3	7.9	19.6
Total	69.0	15.8	20.0	33.2
On feeder and stocker operations ²				
Feeder heifers	36.9	14.5	13.6	8.8
Steers	54.9	21.2	15.1	18.6
Total	91.8	35.7	28.7	27.4
On feeding operations ³				
Feeder heifers	94.8	43.2	30.0	21.6
Steers	247.0	124.2	56.7	66.1
Total	341.8	167.4	86.7	87.7

1. Excluding small amounts of heifers for slaughter and steers on dairy operations.

2. Farms where cattle are fed on a low energy ration such as hay or pasture.

3. Farms where cattle are fed a high energy ration such as grain as they are fattened for market.

Table 8-3
Feeder cattle by weight category, by farm type at January 1, 2008 — Atlantic

	Total	Heavy	Medium	Light
	thousands of heads			
On all cattle operations				
Feeder heifers	17.4	5.5	6.6	5.3
Steers	22.6	6.3	7.0	9.3
Total	40.0	11.8	13.6	14.6
On dairy operations				
Feeder heifers	2.6	1.3	0.5	0.8
Steers	3.6	1.2	1.4	1.0
Total	6.2	2.5	1.9	1.8
On beef operations ¹				
Feeder heifers	14.8	4.2	6.1	4.5
Steers	19.0	5.1	5.6	8.3
Total	33.8	9.3	11.7	12.8
On cow calf operations				
Feeder heifers	2.0	0.2	0.8	1.0
Steers	1.8	0.2	0.8	0.8
Total	3.8	0.4	1.6	1.8
On feeder and stocker operations ²				
Feeder heifers	6.3	1.4	2.5	2.4
Steers	5.2	0.7	0.6	3.9
Total	11.5	2.1	3.1	6.3
On feeding operations ³				
Feeder heifers	6.5	2.6	2.8	1.1
Steers	12.0	4.2	4.2	3.6
Total	18.5	6.8	7.0	4.7

1. Excluding small amounts of heifers for slaughter and steers on dairy operations.

2. Farms where cattle are fed on a low energy ration such as hay or pasture.

3. Farms where cattle are fed a high energy ration such as grain as they are fattened for market.

Table 8-4
Feeder cattle by weight category, by farm type at January 1, 2008 — Quebec

	Total	Heavy	Medium	Light
	thousands of heads			
On all cattle operations				
Feeder heifers	26.0	10.7	6.8	8.5
Steers	96.0	42.2	28.8	25.0
Total	122.0	52.9	35.6	33.5
On dairy operations				
Feeder heifers	2.8	1.6	0.4	0.8
Steers	5.7	3.8	1.1	0.8
Total	8.5	5.4	1.5	1.6
On beef operations ¹				
Feeder heifers	23.2	9.1	6.4	7.7
Steers	90.4	38.4	27.7	24.3
Total	113.6	47.5	34.1	32.0
On cow calf operations				
Feeder heifers	5.2	0.9	1.2	3.1
Steers	6.3	1.7	1.4	3.2
Total	11.5	2.6	2.6	6.3
On feeder and stocker operations ²				
Feeder heifers	10.7	4.6	3.5	2.6
Steers	27.1	11.2	7.3	8.6
Total	37.8	15.8	10.8	11.2
On feeding operations ³				
Feeder heifers	7.3	3.6	1.7	2.0
Steers	57.0	25.5	19.0	12.5
Total	64.3	29.1	20.7	14.5

1. Excluding small amounts of heifers for slaughter and steers on dairy operations.

2. Farms where cattle are fed on a low energy ration such as hay or pasture.

3. Farms where cattle are fed a high energy ration such as grain as they are fattened for market.

Table 8-5

Feeder cattle by weight category, by farm type at January 1, 2008 — Ontario

	Total	Heavy	Medium	Light
	thousands of heads			
On all cattle operations				
Feeder heifers	135.0	54.0	47.3	33.7
Steers	253.0	121.4	50.6	81.0
Total	388.0	175.4	97.9	114.7
On dairy operations				
Feeder heifers	8.1	2.1	4.1	1.9
Steers	24.8	11.2	4.2	9.4
Total	32.9	13.3	8.3	11.3
On beef operations ¹				
Feeder heifers	126.9	51.9	43.2	31.8
Steers	228.3	110.2	46.4	71.7
Total	355.2	162.1	89.6	103.5
On cow calf operations				
Feeder heifers	26.0	6.4	10.1	9.5
Steers	27.7	6.4	5.7	15.6
Total	53.7	12.8	15.8	25.1
On feeder and stocker operations ²				
Feeder heifers	19.9	8.5	7.6	3.8
Steers	22.6	9.3	7.2	6.1
Total	42.5	17.8	14.8	9.9
On feeding operations ³				
Feeder heifers	81.0	37.0	25.5	18.5
Steers	178.0	94.5	33.5	50.0
Total	259.0	131.5	59.0	68.5

1. Excluding small amounts of heifers for slaughter and steers on dairy operations.

2. Farms where cattle are fed on a low energy ration such as hay or pasture.

3. Farms where cattle are fed a high energy ration such as grain as they are fattened for market.

Table 8-6

Feeder cattle by weight category, by farm type at January 1, 2008 — Manitoba

	Total	Heavy	Medium	Light
	thousands of heads			
On all cattle operations				
Feeder heifers	52.0	21.8	13.0	17.2
Steers	49.0	11.3	9.8	27.9
Total	101.0	33.1	22.8	45.1
On dairy operations				
Feeder heifers	0.3	0.2	0.1	0.0
Steers	1.0	0.1	0.0	0.9
Total	1.3	0.3	0.1	0.9
On beef operations ¹				
Feeder heifers	51.7	21.6	12.9	17.2
Steers	48.0	11.2	9.8	27.0
Total	99.7	32.8	22.7	44.2
On cow calf operations				
Feeder heifers	6.6	2.2	1.9	2.5
Steers	12.4	2.7	1.8	7.9
Total	19.0	4.9	3.7	10.4
On feeder and stocker operations ²				
Feeder heifers	34.6	14.7	8.6	11.3
Steers	21.1	6.7	4.0	10.4
Total	55.7	21.4	12.6	21.7
On feeding operations ³				
Feeder heifers	10.5	4.7	2.4	3.4
Steers	14.5	1.8	4.0	8.7
Total	25.0	6.5	6.4	12.1

1. Excluding small amounts of heifers for slaughter and steers on dairy operations.

2. Farms where cattle are fed on a low energy ration such as hay or pasture.

3. Farms where cattle are fed a high energy ration such as grain as they are fattened for market.

Table 8-7

Feeder cattle by weight category, by farm type at January 1, 2008 — Saskatchewan

	Total	Heavy	Medium	Light
	thousands of heads			
On all cattle operations				
Feeder heifers	48.0	19.7	8.2	20.1
Steers	83.0	24.1	16.6	42.3
Total	131.0	43.8	24.8	62.4
On dairy operations				
Feeder heifers	0.1	0.1	0.0	0.0
Steers	0.6	0.1	0.2	0.3
Total	0.7	0.2	0.2	0.3
On beef operations ¹				
Feeder heifers	47.9	19.6	8.2	20.1
Steers	82.4	24.0	16.4	42.0
Total	130.3	43.6	24.6	62.1
On cow calf operations				
Feeder heifers	13.9	4.1	3.2	6.6
Steers	21.9	3.9	3.1	14.9
Total	35.8	8.0	6.3	21.5
On feeder and stocker operations ²				
Feeder heifers	23.0	7.2	4.2	11.6
Steers	35.5	8.6	7.3	19.6
Total	58.5	15.8	11.5	31.2
On feeding operations ³				
Feeder heifers	11.0	8.3	0.8	1.9
Steers	25.0	11.5	6.0	7.5
Total	36.0	19.8	6.8	9.4

1. Excluding small amounts of heifers for slaughter and steers on dairy operations.

2. Farms where cattle are fed on a low energy ration such as hay or pasture.

3. Farms where cattle are fed a high energy ration such as grain as they are fattened for market.

Table 8-8

Feeder cattle by weight category, by farm type at January 1, 2008 — Alberta

	Total	Heavy	Medium	Light
	thousands of heads			
On all cattle operations				
Feeder heifers	690.0	289.8	227.7	172.5
Steers	575.0	166.8	224.3	183.9
Total	1,265.0	456.6	452.0	356.4
On dairy operations				
Feeder heifers	4.5	2.9	1.5	0.1
Steers	6.4	1.6	1.5	3.3
Total	10.9	4.5	3.0	3.4
On beef operations ¹				
Feeder heifers	685.5	286.9	226.2	172.4
Steers	568.5	165.2	222.8	180.5
Total	1,254.0	452.1	449.0	352.9
On cow calf operations				
Feeder heifers	36.2	11.2	12.4	12.6
Steers	20.7	4.6	4.1	12.0
Total	56.9	15.8	16.5	24.6
On feeder and stocker operations ²				
Feeder heifers	307.3	141.7	88.3	77.3
Steers	151.8	50.6	46.7	54.5
Total	459.1	192.3	135.0	131.8
On feeding operations ³				
Feeder heifers	342.0	134.0	125.5	82.5
Steers	396.0	110.0	172.0	114.0
Total	738.0	244.0	297.5	196.5

1. Excluding small amounts of heifers for slaughter and steers on dairy operations.

2. Farms where cattle are fed on a low energy ration such as hay or pasture.

3. Farms where cattle are fed a high energy ration such as grain as they are fattened for market.

Table 8-9

Feeder cattle by weight category, by farm type at January 1, 2008 — British Columbia

	Total	Heavy	Medium	Light
	thousands of heads			
On all cattle operations				
Feeder heifers	14.5	4.4	5.7	4.4
Steers	23.0	1.8	6.9	14.3
Total	37.5	6.2	12.6	18.7
On dairy operations				
Feeder heifers	0.2	0.0	0.0	0.2
Steers	1.0	0.1	0.1	0.8
Total	1.2	0.1	0.1	1.0
On beef operations ¹				
Feeder heifers	14.3	4.4	5.7	4.2
Steers	22.1	1.7	6.8	13.6
Total	36.4	6.1	12.5	17.8
On cow calf operations				
Feeder heifers	4.4	0.4	2.4	1.6
Steers	5.8	0.3	0.8	4.7
Total	10.2	0.7	3.2	6.3
On feeder and stocker operations ²				
Feeder heifers	4.9	1.5	1.1	2.3
Steers	9.3	0.3	4.2	4.8
Total	14.2	1.8	5.3	7.1
On feeding operations ³				
Feeder heifers	5.0	2.5	2.2	0.3
Steers	7.0	1.1	1.8	4.1
Total	12.0	3.6	4.0	4.4

1. Excluding small amounts of heifers for slaughter and steers on dairy operations.

2. Farms where cattle are fed on a low energy ration such as hay or pasture.

3. Farms where cattle are fed a high energy ration such as grain as they are fattened for market.

Table 8-10

Feeder cattle by weight category, by farm type at January 1, 2008 — West

	Total	Heavy	Medium	Light
	thousands of heads			
On all cattle operations				
Feeder heifers	804.5	335.7	254.6	214.2
Steers	730.0	204.0	257.6	268.4
Total	1,534.5	539.7	512.2	482.6
On dairy operations				
Feeder heifers	5.1	3.2	1.6	0.3
Steers	9.0	1.9	1.8	5.3
Total	14.1	5.1	3.4	5.6
On beef operations ¹				
Feeder heifers	799.4	332.5	253.0	213.9
Steers	721.0	202.1	255.8	263.1
Total	1,520.4	534.6	508.8	477.0
On cow calf operations				
Feeder heifers	61.1	17.9	19.9	23.3
Steers	60.8	11.5	9.8	39.5
Total	121.9	29.4	29.7	62.8
On feeder and stocker operations ²				
Feeder heifers	369.8	165.1	102.2	102.5
Steers	217.7	66.2	62.2	89.3
Total	587.5	231.3	164.4	191.8
On feeding operations ³				
Feeder heifers	368.5	149.5	130.9	88.1
Steers	442.5	124.4	183.8	134.3
Total	811.0	273.9	314.7	222.4

1. Excluding small amounts of heifers for slaughter and steers on dairy operations.

2. Farms where cattle are fed on a low energy ration such as hay or pasture.

3. Farms where cattle are fed a high energy ration such as grain as they are fattened for market.

Table 9-1
Prices — Toronto A1 to A2 steers 1, 2, 3

	January	February	March	April	May	June	July	August	September	October	November	December	Annual
	dollars per hundred weight												
1978	49.32	49.76	52.88	59.67	66.16	67.18	64.52	64.77	65.11	67.54	66.93	67.86	62.07
1979	74.50	80.79	83.97	84.14	83.62	83.05	78.14	75.04	78.28	78.38	78.51	81.92	81.92
1980	82.99	82.36	78.83	75.45	76.57	76.08	81.20	84.14	83.88	83.91	83.85	83.42	80.74
1981	82.79	79.36	78.93	78.73	81.34	83.03	83.32	81.69	80.14	78.99	76.43	74.90	80.00
1982	74.12	75.75	77.21	82.07	90.58	90.30	84.34	81.75	79.51	74.55	75.70	74.91	80.54
1983	76.59	78.12	79.19	84.55	83.31	82.59	78.22	76.15	73.91	74.12	76.62	82.25	78.98
1984	85.14	82.74	84.99	86.79	86.63	84.23	86.89	85.87	83.21	82.47	85.90	88.47	85.30
1985	89.04	86.99	86.01	83.24	82.77	81.07	76.31	72.30	73.16	78.89	82.04	86.27	81.63
1986	84.85	82.76	81.09	79.53	79.73	77.92	81.49	83.22	84.08	84.30	88.22	89.45	82.66
1987	85.31	84.38	84.07	87.87	94.98	92.89	89.73	89.48	91.18	88.99	88.57	87.04	88.89
1988	86.84	87.95	89.77	93.54	93.74	90.18	84.18	82.42	83.16	84.16	85.34	85.55	87.35
1989	87.37	89.26	91.37	90.81	91.58	88.09	88.34	87.40	86.27	86.06	88.31	89.92	88.82
1990	88.92	88.42	86.85	87.72	88.88	88.62	88.31	88.36	87.91	88.53	92.65	93.58	88.89
1991	92.23	90.07	89.37	90.71	90.22	88.77	86.03	83.28	79.68	77.18	72.18	74.48	84.56
1992	80.19	83.12	84.82	87.02	88.53	87.32	87.52	86.98	86.79	87.94	91.36	98.25	87.38
1993	98.92	96.98	97.89	99.34	103.48	99.07	95.41	95.83	95.22	90.24	93.08	95.32	97.23
1994	95.70	95.48	96.73	99.19	94.95	91.33	92.07	92.99	87.54	83.45	89.47	90.89	92.58
1995	96.39	96.10	92.56	88.25	85.40	88.34	86.90	85.89	83.66	82.86	83.88	86.85	88.12
1996	82.10	78.64	78.04	75.27	76.62	79.99	83.05	88.23	88.47	87.28	90.42	86.53	82.89
1997	85.42	84.63	87.75	89.35	90.52	88.80	83.00	83.55	80.19	84.00	87.20	85.81	85.85
1998	87.90	87.61	88.96	89.56	91.31	91.29	88.29	87.77	85.81	86.27	86.70	87.67	88.26
1999	89.49	90.96	92.53	93.83	91.78	92.29	89.40	90.38	89.92	91.94	96.91	102.21	92.64
2000	101.66	100.82	104.42	111.04	108.25	104.67	103.38	101.04	98.02	96.83	99.32	104.82	102.86
2001	111.37	114.74	119.56	122.00	119.09	116.34	115.13	108.72	104.33	96.72	100.62	102.23	110.90
2002	106.48	112.93	112.60	106.77	104.42	100.31	98.63	99.32	95.87	95.49	100.29	105.44	103.21
2003	113.45	108.70	103.40	109.27	101.42	80.74	43.34	47.95	67.67	72.95	83.49	84.27	84.72
2004	82.70	74.60	81.46	83.03	81.65	75.15	74.59	69.91	75.77	74.16	73.91	77.04	77.00
2005	88.03	90.96	86.26	86.54	86.66	87.33	92.52	92.19	91.84	91.08	95.34	101.65	90.87
2006	101.73	96.05	93.79	92.52	94.19	95.97	93.86	93.18	92.00	90.36	88.66	87.24	93.30
2007	90.12	95.78	104.35	105.93	107.95	99.22	95.55	89.19	86.81	76.58	73.92	77.88	91.94

1. 1976 to 1989, cattle weight 1000 pounds and over; 1990 to 1993, 1051 pounds and over.
2. 1994 onward, cattle weight 1251 pounds and over. Prices in Ontario includes 13 markets and Ontario Public Stockyards.
3. Source: Canfax Research Services, 1996 onward, all slaughter steers.

Table 9-2
Prices — Alberta steers ¹

	January	February	March	April	May	June	July	August	September	October	November	December	Annual
	dollars per hundred weight												
1978	44.36	44.89	50.14	57.55	64.74	66.75	62.53	61.86	63.32	65.20	62.37	63.68	58.80
1979	69.78	76.97	80.01	80.71	79.84	80.17	75.36	72.75	76.42	72.99	75.53	79.56	76.86
1980	80.00	77.76	74.19	71.12	73.12	71.75	75.71	77.54	78.35	78.82	81.09	82.24	76.81
1981	79.86	74.79	74.23	78.33	79.98	79.22	77.18	75.46	73.40	72.59	70.80	67.99	75.14
1982	65.68	68.34	71.42	78.90	86.98	82.98	78.13	74.89	73.89	71.98	71.92	67.63	73.98
1983	68.26	70.28	73.52	79.65	77.77	75.20	70.87	70.18	69.47	71.92	72.12	74.32	72.69
1984	77.32	77.25	79.70	80.89	78.96	75.83	77.44	75.04	73.88	76.28	79.45	80.65	77.74
1985	81.02	76.98	78.65	78.10	79.01	75.66	69.06	66.91	70.42	76.70	79.82	79.65	75.58
1986	74.51	72.60	73.02	72.24	72.55	70.57	74.89	76.08	79.07	81.26	82.13	79.42	75.60
1987	77.95	78.34	80.62	86.57	89.21	85.32	80.41	84.25	85.84	83.80	83.16	78.88	83.38
1988	78.37	82.17	84.62	86.25	84.53	78.68	76.14	77.05	78.58	82.29	81.04	78.00	80.63
1989	83.54	86.12	87.36	83.45	81.31	77.98	78.59	80.11	79.06	81.92	83.38	83.85	81.54
1990	85.13	86.43	85.66	85.00	82.88	81.80	81.76	82.42	82.55	86.65	88.10	87.02	84.30
1991	86.19	86.08	87.67	87.11	82.14	79.99	77.94	73.79	73.26	73.12	70.16	70.74	78.31
1992	74.53	80.47	82.84	82.66	82.02	79.18	81.03	81.03	81.45	83.96	85.06	89.18	82.22
1993	95.00	96.74	97.53	96.21	94.70	87.98	87.64	91.07	89.85	89.95	91.29	88.96	91.90
1994	91.25	91.01	95.50	93.82	85.95	81.07	83.80	84.73	80.84	81.02	87.83	88.06	86.17
1995	94.53	94.00	89.60	84.29	80.59	81.25	80.00	78.78	77.06	79.24	83.45	81.64	82.91
1996	78.64	75.31	75.94	71.97	72.28	73.60	77.90	83.59	86.61	87.61	86.11	78.16	78.42
1997	79.71	84.12	87.15	86.30	84.69	82.31	83.00	83.55	80.19	84.00	87.20	85.81	84.00
1998	84.69	82.56	83.45	86.74	86.33	83.44	79.81	80.95	78.35	84.06	88.67	86.81	83.56
1999	90.08	88.36	90.85	88.58	88.03	86.37	84.94	87.42	87.26	89.93	95.09	99.11	89.30
2000	94.90	92.46	98.55	100.25	96.59	92.73	89.52	91.71	88.54	91.98	98.99	107.09	95.00
2001	107.66	113.81	118.07	111.75	105.24	99.81	98.41	97.95	94.25	94.82	96.88	99.07	102.82
2002	105.08	107.10	109.62	98.19	94.77	90.73	90.11	92.43	94.57	97.23	101.69	105.05	98.88
2003	114.17	115.13	110.29	108.55	106.31	65.44	37.80	39.02	73.09	79.07	80.45	82.06	84.28
2004	82.36	80.03	85.81	84.25	80.03	71.73	70.64	66.69	78.39	79.12	79.18	85.32	78.40
2005	85.26	88.68	83.19	80.14	79.54	80.42	84.77	85.03	85.19	86.57	91.98	96.42	85.62
2006	95.39	89.32	87.51	85.22	85.03	86.92	85.84	85.23	86.01	85.69	84.97	85.68	86.90
2007	87.60	90.19	97.59	101.87	99.67	88.21	84.39	86.52	84.36	78.55	79.46	84.33	88.56

1. Source: Canfax Research Services, 1996 onward, all slaughter steers.

Table 10-1
Cattle and calves: Number by class and calf crop — Canada and United States, January 1 ¹

	2002	2003	2004	2005	2006	2007	2008	2008 as percentage of 2007
	thousands of heads							percent
Cattle and calves	110,475	109,566	109,443	110,363	111,357	111,158	110,614	100
Cows and heifers that have calved	47,959	47,943	47,925	48,245	48,322	48,038	47,747	99
Beef cows	37,770	37,735	37,880	38,199	38,241	37,901	37,535	99
Dairy cows	10,190	10,208	10,045	10,046	10,082	10,137	10,213	101
All other cattle	62,516	61,624	61,518	62,117	63,034	63,119	62,868	100
Calf crop ²	43,929	43,574	42,932	43,076	42,858	42,837

1. Figures may not add up to totals because of rounding.

2. January to December calf crop.

Source(s): National Agriculture Statistics Service and Livestock and Animal Products Section, Statistics Canada

Table 10-2
Cattle and calves: Number by class and calf crop — United States, January 1¹

	2002	2003	2004	2005	2006	2007	2008	2008 as percentage of 2007
	thousands of heads							percent
Cattle and calves	96,723	96,100	94,888	95,438	96,702	97,003	96,669	100
Cows and heifers that have calved	42,239	42,125	41,851	41,920	42,056	42,023	41,777	99
Beef cows	33,134	32,983	32,861	32,915	32,994	32,891	32,553	99
Milk cows	9,106	9,142	8,990	9,005	9,063	9,132	9,224	101
Heifers 500 pounds and over	19,683	19,628	19,345	19,573	19,984	20,086	20,003	100
For beef cow replacement	5,571	5,624	5,518	5,691	5,904	5,877	5,670	96
For milk cow replacement	4,055	4,114	4,020	4,118	4,275	4,310	4,457	103
Other heifers	10,057	9,891	9,806	9,763	9,805	9,899	9,876	100
Steers 500 pounds and over	16,804	16,554	16,277	16,476	16,933	17,222	17,305	100
Bulls 500 pounds and over	2,244	2,248	2,206	2,219	2,263	2,215	2,207	100
Calves under 500 pounds	15,753	15,545	15,210	15,250	15,465	15,456	15,378	99
Calf crop ²	38,224	37,903	37,505	37,575	37,519	37,361

1. Figures may not add up to totals because of rounding.

2. January to December calf crop.

Source: National Agricultural Statistics Service

Table 10-3
Cattle and calves: Number by class and calf crop — Canada, January 1¹

	2002	2003	2004	2005	2006	2007	2008	2008 as percentage of 2007
	thousands of heads							percent
Cattle and calves	13,752	13,466	14,555	14,925	14,655	14,155	13,945	99
Cows and heifers that have calved	5,720	5,818	6,074	6,325	6,266	6,015	5,970	99
Beef cows	4,636	4,752	5,019	5,284	5,247	5,010	4,982	99
Dairy cows	1,084	1,066	1,055	1,041	1,019	1,005	989	98
Heifers, 1 year and over	2,026	1,966	2,063	2,101	2,110	2,031	2,049	101
Heifers for beef replacement	654	648	688	638	628	587	595	101
Heifers for dairy replacement	508	512	504	518	495	480	471	98
Other heifers	865	805	871	945	987	964	983	102
Steers, 1 year and over	1,195	1,174	1,203	1,160	1,147	1,145	1,102	96
Bulls, 1 year and over	237	239	270	273	264	245	247	101
Calves, under 1 year	4,574	4,270	4,945	5,067	4,868	4,720	4,577	97
Calf crop ²	5,705	5,671	5,427	5,501	5,339	5,476

1. Figures may not add up to totals because of rounding.

2. January to December calf crop.

3. For current year, January to June calf crop only.

Source(s): Livestock and Animal Products Section, Statistics Canada

Table 11-1
Supply and disposition of red meat, Canada — Beef

	Beginning stocks	Production	Imports	Total supply	Exports	Ending stocks	Net supply	Available per person			Adjusted ¹ for loss
								Retail	Carcass	Boneless	
thousands of tonnes								weight per year in kilogram			
1992	15.02	856.66	217.84	1,089.52	156.10	14.67	918.75	23.64	32.39	21.47	13.58
1993	14.67	822.31	265.75	1,102.73	187.98	23.31	891.44	22.69	31.08	20.61	13.03
1994	23.31	861.86	280.71	1,165.88	216.59	30.09	919.20	23.14	31.70	20.95	13.25
1995	30.09	887.91	252.20	1,170.20	215.48	24.02	930.70	23.19	31.76	21.12	13.36
1996	24.02	976.11	234.82	1,234.95	282.08	21.55	931.32	22.96	31.45	21.04	13.31
1997	21.55	1,047.34	250.06	1,318.95	356.16	22.07	940.72	22.96	31.45	21.04	13.31
1998	22.07	1,140.49	236.72	1,399.28	410.80	25.37	963.10	23.31	31.94	21.37	13.51
1999	25.37	1,222.42	257.99	1,505.78	482.39	32.33	991.06	23.80	32.60	21.81	13.79
2000	32.33	1,222.63	266.46	1,521.42	513.30	25.64	982.48	23.40	32.01	21.42	13.54
2001	25.64	1,221.01	307.81	1,554.45	568.77	31.87	953.82	22.41	30.75	20.57	13.01
2002	31.87	1,256.16	311.32	1,599.34	612.63	31.14	955.57	22.23	30.46	20.38	12.89
2003	31.14	1,143.16	273.83	1,448.13	396.42	45.49	1,006.22	23.19	31.77	21.26	13.44
2004	45.49	1,453.17	112.43	1,611.10	590.02	40.13	980.95	22.39	30.66	20.51	12.97
2005	40.13	1,456.67	126.42	1,623.22	580.53	38.80	1,003.89	22.69	31.08	20.79	13.15
2006	38.80	1,353.14	147.64	1,539.58	456.82	47.44	1,035.32	23.17	31.74	21.23	13.43

1. Available data adjusted on boneless basis for retail, household, cooking and plate loss.

Table 11-2
Supply and disposition of red meat, Canada — Veal

	Beginning stocks	Production	Imports	Total supply	Exports	Ending stocks	Net supply	Available per person			Adjusted ¹ for loss
								Retail	Carcass	Boneless	
thousands of tonnes								weight per year in kilogram			
1992	0.40	42.14	3.24	45.78	3.04	0.64	42.10	1.23	1.48	1.02	0.61
1993	0.64	37.32	3.80	41.76	2.50	0.65	38.61	1.12	1.35	0.92	0.56
1994	0.65	37.60	5.25	43.50	3.82	1.28	38.40	1.10	1.32	0.91	0.55
1995	1.28	40.30	3.58	45.16	4.11	0.63	40.42	1.14	1.38	0.94	0.57
1996	0.63	40.39	2.52	43.54	4.25	0.68	38.61	1.08	1.30	0.89	0.54
1997	0.68	42.14	3.07	45.89	4.21	0.63	41.05	1.14	1.37	0.94	0.57
1998	0.63	41.43	2.69	44.75	4.48	0.68	39.60	1.09	1.31	0.90	0.54
1999	0.68	41.11	3.16	44.95	5.14	0.59	39.23	1.07	1.29	0.88	0.53
2000	0.59	40.81	3.55	44.95	3.81	0.63	40.51	1.10	1.32	0.90	0.55
2001	0.63	40.60	2.44	43.67	3.89	1.04	38.74	1.04	1.25	0.86	0.52
2002	1.04	37.53	4.17	42.74	2.42	1.37	38.95	1.03	1.24	0.85	0.51
2003	1.37	40.96	2.72	45.05	3.54	3.13	38.38	1.01	1.21	0.83	0.50
2004	3.13	43.29	1.08	47.50	9.04	1.69	36.77	0.95	1.15	0.79	0.48
2005	1.69	39.96	2.41	44.05	8.59	1.71	33.74	0.87	1.04	0.72	0.43
2006	1.71	38.03	4.31	44.06	7.14	2.10	34.82	0.89	1.07	0.73	0.44

1. Available data adjusted on boneless basis for retail, household, cooking and plate loss.

Table 11-3
Supply and disposition of red meat, Canada — Beef and veal total

	Beginning stocks	Production	Imports	Total supply	Exports	Ending stocks	Net supply	Available per person			Adjusted ¹ for loss
								Retail	Carcass	Boneless	
	thousands of tonnes							weight per year in kilogram			
1992	15.42	898.80	221.08	1,135.30	159.14	15.31	960.85	24.88	33.87	22.49	14.19
1993	15.31	859.63	269.55	1,144.49	190.48	23.96	930.05	23.81	32.43	21.53	13.59
1994	23.96	899.46	285.96	1,209.38	220.41	31.37	957.60	24.24	33.02	21.86	13.80
1995	31.37	928.21	255.78	1,215.36	219.59	24.65	971.12	24.33	33.14	22.07	13.93
1996	24.65	1,016.50	237.34	1,278.49	286.33	22.23	969.93	24.04	32.76	21.93	13.85
1997	22.23	1,089.48	253.13	1,364.84	360.37	22.70	981.77	24.10	32.83	21.98	13.88
1998	22.70	1,181.92	239.41	1,444.03	415.28	26.05	1,002.70	24.40	33.25	22.26	14.06
1999	26.05	1,263.53	261.14	1,550.73	487.53	32.92	1,030.29	24.87	33.89	22.69	14.33
2000	32.92	1,263.44	270.01	1,566.36	517.11	26.26	1,022.99	24.50	33.33	22.32	14.09
2001	26.26	1,261.61	310.25	1,598.12	572.65	32.91	992.56	23.45	32.00	21.43	13.53
2002	32.91	1,293.69	315.49	1,642.08	615.05	32.51	994.52	23.27	31.70	21.23	13.40
2003	32.51	1,184.12	276.55	1,493.18	399.96	48.62	1,044.60	24.20	32.98	22.09	13.94
2004	48.62	1,496.46	113.51	1,658.59	599.06	41.82	1,017.72	23.34	31.81	21.30	13.45
2005	41.82	1,496.63	128.82	1,667.27	589.13	40.51	1,037.63	23.56	32.13	21.51	13.58
2006	40.51	1,391.17	151.95	1,583.63	463.96	49.54	1,070.13	24.05	32.80	21.96	13.87

1. Available data adjusted on boneless basis for retail, household, cooking and plate loss.

Table 11-4
Supply and disposition of red meat, Canada — Pork

	Beginning stocks	Production	Imports	Total supply	Exports	Manufacturing	Waste	Ending stocks	Net supply	Available per person			Adjusted ¹ for loss
										Retail	Carcass	Boneless	
	thousands of tonnes								weight per year in kilogram				
1992	14.12	1,207.70	15.81	1,237.63	295.63	27.78	96.62	12.77	804.83	21.56	28.37	20.68	11.73
1993	12.77	1,194.32	22.14	1,229.23	302.95	27.47	95.55	10.83	792.43	21.00	27.63	20.14	11.43
1994	10.83	1,229.38	27.25	1,267.46	301.42	28.28	98.35	15.47	823.94	21.59	28.41	20.71	11.75
1995	15.47	1,275.76	27.19	1,318.42	357.04	29.34	102.06	15.20	814.78	21.13	27.81	20.27	11.50
1996	15.20	1,227.76	38.58	1,281.54	372.22	28.24	98.22	13.17	769.69	19.76	25.99	18.95	10.75
1997	13.17	1,256.70	59.63	1,329.50	420.19	28.90	100.54	19.68	760.19	19.32	25.42	18.53	10.51
1998	19.68	1,393.61	63.47	1,476.76	433.79	32.05	111.49	33.93	865.50	21.81	28.70	20.92	11.87
1999	33.93	1,563.87	64.61	1,662.41	553.71	35.97	125.11	32.78	914.84	22.87	30.09	21.94	12.44
2000	32.78	1,639.98	65.65	1,738.41	656.18	37.72	131.20	32.85	880.46	21.80	28.69	20.91	11.86
2001	32.85	1,731.29	89.38	1,853.53	732.57	39.82	138.50	44.82	897.81	22.05	28.94	21.10	11.97
2002	44.82	1,858.35	91.59	1,994.76	876.15	42.74	148.67	54.26	872.94	21.15	27.83	20.28	11.51
2003	54.26	1,882.30	89.61	2,026.16	988.59	43.29	150.58	48.20	795.51	19.09	25.12	18.31	10.39
2004	48.20	1,936.32	100.40	2,084.91	983.56	44.54	154.91	49.72	852.19	20.25	26.64	19.42	11.02
2005	49.72	1,920.06	134.38	2,104.16	1,102.98	44.16	153.61	59.33	744.08	17.51	23.04	16.79	9.53
2006	59.33	1,898.30	141.88	2,099.51	1,093.11	43.66	151.86	49.81	761.06	17.73	23.33	17.01	9.65

1. Available data adjusted on boneless basis for retail, household, cooking and plate loss.

Table 11-5
Supply and disposition of red meat, Canada — Mutton and lamb

	Beginning stocks	Production	Imports	Total supply	Exports	Ending stocks	Net supply	Available per person			Adjusted ¹ for loss
								Retail	Carcass	Boneless	
	thousands of tonnes							weight per year in kilogram			
1992	2.43	11.26	12.21	25.90	0.02	2.00	23.88	0.75	0.84	0.55	0.33
1993	2.00	10.84	13.52	26.36	0.08	1.76	24.52	0.76	0.85	0.56	0.33
1994	1.76	10.49	14.48	26.73	0.10	2.80	23.83	0.73	0.82	0.54	0.32
1995	2.80	10.23	12.97	26.00	0.08	2.17	23.75	0.72	0.81	0.53	0.32
1996	2.17	10.62	11.26	24.05	0.08	1.64	22.33	0.67	0.75	0.50	0.30
1997	1.64	10.18	12.42	24.24	0.23	1.88	22.13	0.66	0.74	0.49	0.29
1998	1.88	10.61	14.15	26.64	0.24	1.39	25.01	0.74	0.83	0.55	0.32
1999	1.39	11.42	15.04	27.84	0.27	1.52	26.06	0.76	0.86	0.56	0.34
2000	1.52	12.54	16.76	30.82	0.29	1.58	28.94	0.84	0.94	0.62	0.37
2001	1.58	14.25	18.14	33.97	0.30	1.58	32.09	0.92	1.03	0.68	0.41
2002	1.58	14.75	17.51	33.84	0.28	1.19	32.38	0.92	1.03	0.68	0.40
2003	1.19	15.79	18.45	35.43	0.09	1.11	34.24	0.96	1.08	0.71	0.42
2004	1.11	17.63	18.45	37.19	0.31	1.40	35.48	0.99	1.11	0.73	0.43
2005	1.40	17.86	19.30	38.55	0.26	1.96	36.33	1.00	1.12	0.74	0.44
2006	1.96	16.98	22.77	41.71	0.23	2.03	39.45	1.08	1.21	0.80	0.46

1. Available data adjusted on boneless basis for retail, household, cooking and plate loss.

Table 11-6
Supply and disposition of red meat, Canada — Offal

	Beginning stocks	Production	Imports	Total supply	Exports	Ending stocks	Net supply	Available per person			Adjusted ¹ for loss
								Retail	Carcass	Boneless	
	thousands of tonnes							weight per year in kilogram			
1992	3.97	63.04	15.61	82.62	37.38	3.34	41.90	1.48	1.48	1.48	0.84
1993	3.34	60.90	17.61	81.85	47.21	3.10	31.54	1.10	1.10	1.10	0.62
1994	3.10	84.14	21.62	108.86	60.63	4.30	43.93	1.51	1.51	1.51	0.86
1995	4.30	97.85	17.25	119.40	75.99	3.73	39.68	1.35	1.35	1.35	0.77
1996	3.73	110.06	16.59	130.38	86.16	4.82	39.40	1.33	1.33	1.33	0.75
1997	4.82	116.57	19.59	140.98	101.42	4.72	34.84	1.16	1.16	1.16	0.66
1998	4.72	123.75	21.53	150.00	103.64	5.36	41.01	1.36	1.36	1.36	0.77
1999	5.36	135.83	25.00	166.18	106.23	8.36	51.59	1.70	1.70	1.70	0.96
2000	8.36	147.60	21.76	177.72	138.61	7.15	31.96	1.04	1.04	1.04	0.59
2001	7.15	171.57	30.35	209.07	173.58	8.98	26.51	0.85	0.85	0.85	0.48
2002	8.98	181.46	34.31	224.75	180.88	11.13	32.73	1.04	1.04	1.04	0.59
2003	11.13	164.57	46.19	221.90	167.87	10.33	43.70	1.38	1.38	1.38	0.78
2004	10.33	174.48	35.68	220.49	160.98	11.49	48.03	1.50	1.50	1.50	0.85
2005	11.49	171.45	30.02	212.95	178.27	12.77	..	1.00	1.00	1.00	0.57
2006	12.77	165.53	37.10	215.40	170.61	7.45	37.34	1.14	1.14	1.14	0.65

1. Available data adjusted on boneless basis for retail, household, cooking and plate loss.

Table 11-7
Supply and disposition of red meat, Canada — Total red meat

	Beginning stocks	Production	Imports	Total supply	Exports	Manufacturing	Waste	Ending stocks	Net supply	Available per person			Adjusted ¹ for loss
										Retail	Carcass	Boneless	
	thousands of tonnes								weight per year in kilogram				
1992	35.94	2,180.80	264.71	2,481.45	492.17	27.78	96.62	33.42	1,831.46	48.66	64.56	45.20	27.09
1993	33.42	2,125.69	322.82	2,481.93	540.72	27.47	95.55	39.65	1,778.54	46.67	62.01	43.33	25.97
1994	39.65	2,223.47	349.31	2,612.43	582.56	28.28	98.35	53.94	1,849.30	48.07	63.76	44.62	26.73
1995	53.94	2,312.05	313.19	2,679.18	652.70	29.34	102.06	45.75	1,849.33	47.53	63.11	44.21	26.52
1996	45.75	2,364.94	303.77	2,714.46	744.79	28.24	98.22	41.86	1,801.35	45.80	60.82	42.71	25.65
1997	41.86	2,472.93	344.77	2,859.56	882.21	28.90	100.54	48.98	1,798.93	45.24	60.14	42.16	25.34
1998	48.98	2,709.89	338.56	3,097.43	952.95	32.05	111.49	66.73	1,934.22	48.31	64.14	45.10	27.02
1999	66.73	2,974.65	365.80	3,407.16	1,147.74	35.97	125.11	75.58	2,022.78	50.20	66.54	46.89	28.07
2000	75.58	3,063.56	374.18	3,513.32	1,312.19	37.72	131.20	67.85	1,964.35	48.18	64.00	44.89	26.91
2001	67.85	3,178.72	448.12	3,694.69	1,479.11	39.82	138.50	88.29	1,948.97	47.27	62.82	44.06	26.39
2002	88.29	3,348.25	458.90	3,895.43	1,672.36	42.74	148.67	99.09	1,932.57	46.37	61.60	43.23	25.90
2003	99.09	3,246.78	430.80	3,776.67	1,556.51	43.29	150.58	108.26	1,918.05	45.63	60.56	42.49	25.53
2004	108.26	3,624.89	268.04	4,001.19	1,743.91	44.54	154.91	104.43	1,953.42	46.08	61.06	42.95	25.75
2005	104.43	3,606.00	312.53	4,022.93	1,870.63	44.16	153.61	114.57	..	43.07	57.28	40.04	24.12
2006	114.57	3,471.98	353.70	3,940.26	1,727.91	43.66	151.86	108.83	1,907.99	44.01	58.49	40.91	24.63

1. Available data adjusted on boneless basis for retail, household, cooking and plate loss.

Concepts and methods

Concepts

Inventory levels of the various types of livestock intended for sale in Canada are measured at specific times throughout the year. Surveyed operations are requested to include all animals located on the farming operation, regardless of ownership. They are also asked to include animals owned but pastured on a community pasture, grazing co-op or public land. Producers are asked to exclude animals owned but kept on a farm, ranch or feedlot operated by someone else. Inventory levels are estimated for cattle, calves, pigs, sheep and lambs. Estimates are also produced for certain categories of animals on the basis of age, sex, weight and/or purpose i.e. breeding or slaughter.

Current information on livestock inventories and related statistics such as supply and disposition enable those active in the agricultural sector to observe and assess changes in the industry, measure performance and keep the agricultural community and general public informed of developments. The primary data users are federal and provincial governments, producer boards, farmers and farm organizations, private business, academic research institutions and students. Livestock data assists governments in formulating agricultural policies and developing programs. Farming organizations use statistics in developing recommendations for producers and governments. Farmers make increasing use of prices, production, and marketing statistics in planning their operations. In addition, these livestock statistics are used in the calculation of farm incomes and in the Canadian System of National Accounts for indicators such as gross domestic product.

Methods

To produce livestock estimates, there are actually 6 different survey occasions. All of the survey occasions collect data primarily using Computer Assisted Telephone Interviews (CATI) although there are special procedures in place for the very large or complex operations.

Two of the occasions are the January livestock survey and the July livestock survey. These are large-scale general livestock surveys collecting data on cattle, hogs, sheep and other livestock, referring to inventories at the 1st of the month. The probability samples include about 10,000 operations at January 1, and about 18,000 operations at July 1. These surveys collect data during a three-week period in the western provinces, Ontario and Quebec. Regardless of when operators respond, they are asked to report inventories as of January 1 or July 1. The livestock survey results are released, following processing and analysis, approximately seven weeks after the reference date.

Hog inventories are the focus of two other survey occasions collecting estimates of pig numbers at April 1 and October 1. This survey was initiated in 1998 as estimates from 1978 to 1997 were based solely on analytical tools. For the hog surveys, a sub-sample of the prior livestock survey is used. The probability samples are 2,500 at April 1 and October 1 and, similar to the livestock surveys, these CATI surveys cover the western provinces, Ontario and Quebec. Producers are requested to report their inventories as of the reference date, although the data are collected during a 7-day period near or before that date. The hog survey results are normally released three to four weeks after the reference date.

The June and November Atlantic surveys are used to produce estimates for that region. These surveys are multi-purpose collecting data, primarily inventories, on livestock including cattle, hogs and sheep in addition to collecting data related to the area, yield and production of the principal field crops. The probability samples are 1,300 in June and 2,200 in November with the data collected by telephone. The results are released at the same time as the livestock results. For reference points where surveys do not exist for the Atlantic region, analytical tools are used to produce the estimates.

Recently a new piece of information has been added to the cattle statistics allowing users a better understanding of the cattle industry. In essence, the total inventories are distributed, on the basis of survey results and sector level balance sheets, to a specific farm type. The two major categories are dairy and beef. The beef sector is then broken down to beef cattle on cow/calf and mixed beef and dairy operations; beef cattle on feeder, stocker/finish operations; and, beef cattle on feeding operations, which include feedlots.

To summarize, the livestock statistics are survey-based estimates. The survey relies on a list frame that is established every five years by the Census of Agriculture and updated to include new entrants, particularly large hog operations. The probability sample surveys are conducted by telephone. The survey results are analysed and corrected before the data are used to analyse the industry and fine-tune the estimates. The survey data are reviewed in a board environment before the commodity analyst works with the data primarily using supplydisposition analysis. The results of the industry analysis are reviewed by the board before being sent to the individual provinces. Once the data are finalised they are released to the public and published. The principal data released include inventories and summarized supply-disposition tables. The data also flow, via farm income estimates, to the Canadian system of national accounts. In addition the data are used in the calculation of net farm income projections, produced by Agriculture and Agri-Food Canada in co-operation with Statistics Canada and the provinces.