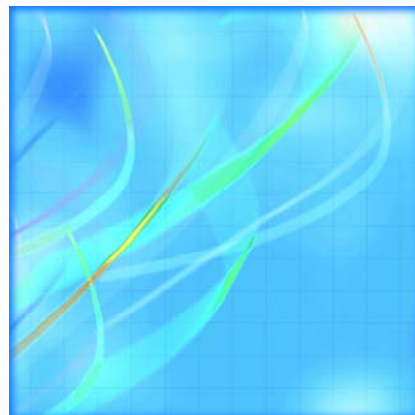


Catalogue no. 23-012-X

Cattle Statistics

2008



Statistics
Canada

Statistique
Canada

Canada

How to obtain more information

For information about this product or the wide range of services and data available from Statistics Canada, visit our website at www.statcan.ca, e-mail us at infostats@statcan.ca, or telephone us, Monday to Friday from 8:30 a.m. to 4:30 p.m., at the following numbers:

Statistics Canada's National Contact Centre

Toll-free telephone (Canada and the United States):

Inquiries line	1-800-263-1136
National telecommunications device for the hearing impaired	1-800-363-7629
Fax line	1-877-287-4369

Local or international calls:

Inquiries line	1-613-951-8116
Fax line	1-613-951-0581

Depository Services Program

Inquiries line	1-800-635-7943
Fax line	1-800-565-7757

To access this product

This product, Catalogue no. 23-012-X, is available free in electronic format. To obtain a single issue, visit our website at www.statcan.ca and select "Publications" > "Free Internet publications."

Standards of service to the public

Statistics Canada is committed to serving its clients in a prompt, reliable and courteous manner. To this end, Statistics Canada has developed *standards of service* that its employees observe. To obtain a copy of these service standards, please contact Statistics Canada toll-free at 1-800-263-1136. The service standards are also published on www.statcan.ca under "About us" > "Providing services to Canadians."

Cattle Statistics

2008

Published by authority of the Minister responsible for Statistics Canada

© Minister of Industry, 2008

All rights reserved. The content of this electronic publication may be reproduced, in whole or in part, and by any means, without further permission from Statistics Canada, subject to the following conditions: that it be done solely for the purposes of private study, research, criticism, review or newspaper summary, and/or for non-commercial purposes; and that Statistics Canada be fully acknowledged as follows: Source (or "Adapted from", if appropriate): Statistics Canada, year of publication, name of product, catalogue number, volume and issue numbers, reference period and page(s). Otherwise, no part of this publication may be reproduced, stored in a retrieval system or transmitted in any form, by any means—electronic, mechanical or photocopy—or for any purposes without prior written permission of Licensing Services, Client Services Division, Statistics Canada, Ottawa, Ontario, Canada K1A 0T6.

August 2008

Catalogue no. 23-012-X, vol. 7, no. 2

ISSN 1705-1320

Frequency: Semi-Annual

Ottawa

La version française de cette publication est disponible sur demande (n° 23-012-X au catalogue).

Note of appreciation

Canada owes the success of its statistical system to a long standing partnership between Statistics Canada, the citizens of Canada, its businesses, governments and other institutions. Accurate and timely statistical information could not be produced without their continued cooperation and goodwill.

User information

Symbols

The following standard symbols are used in Statistics Canada publications:

- . not available for any reference period
- .. not available for a specific reference period
- ... not applicable
- 0 true zero or a value rounded to zero
- 0s value rounded to 0 (zero) where there is a meaningful distinction between true zero and the value that was rounded
- p preliminary
- r revised
- x suppressed to meet the confidentiality requirements of the *Statistics Act*
- E use with caution
- F too unreliable to be published

This publication was prepared under the direction of:

- **Gabriella Martello, Chief**, Livestock and Food Section
- **Robert Plourde, Unit Head**, Livestock and Food Section
- **Donald Cutts, Statistical Officer**, Livestock and Food Section

Table of contents

Highlights	6
Analysis	7
Cattle herd contracts	7
Related products	9
Statistical tables	
1 Cattle on farms	12
1-1 Canada	12
1-2 Newfoundland and Labrador	13
1-3 Prince Edward Island	13
1-4 Nova Scotia	14
1-5 New Brunswick	14
1-6 Atlantic	15
1-7 Quebec	15
1-8 Ontario	16
1-9 East	16
1-10 Manitoba	17
1-11 Saskatchewan	17
1-12 Alberta	18
1-13 British Columbia	18
1-14 West	19
2 Cull cows at July 1, 2008	20
3 Feeder cattle by weight category, at July 1, 2008	21
4 Cattle, supply and demand	23
5 Cattle production - Canada	30
6 Calves production - Canada	31
7 Cattle by farm type	32
7-1 Canada	32
7-2 Atlantic Provinces	34
7-3 Quebec	36
7-4 Ontario	38
7-5 Eastern Provinces	40

Table of contents – continued

7-6	Manitoba	42
7-7	Saskatchewan	44
7-8	Alberta	46
7-9	British Columbia	48
7-10	Western Provinces	50
8	Feeder cattle by weight category, by farm type at July 1, 2008	52
8-1	Canada	52
8-2	East	53
8-3	Atlantic	54
8-4	Quebec	55
8-5	Ontario	56
8-6	Manitoba	57
8-7	Saskatchewan	58
8-8	Alberta	59
8-9	British Columbia	60
8-10	West	61
9	Prices	62
9-1	Toronto A1 to A2 steers	62
9-2	Alberta steers	63
10	Cattle and calves: Number by class and calf crop	63
10-1	Canada and United States, July 1	63
10-2	United States, July 1	64
10-3	Canada, July 1	64
11	Supply and disposition of red meat, Canada	65
11-1	Beef	65
11-2	Veal	65
11-3	Beef and veal total	66
11-4	Pork	66
11-5	Mutton and lamb	67
11-6	Offal	67
11-7	Total red meat	68
Data quality, concepts and methodology		
Concepts and methods		69

Table of contents – continued**Charts**

1. Cattle inventories drop	8
2. Canada's Cattle and Calves Exports, per Year, per Region	8

Highlights

- Canadian farmers reported a cattle and calf inventory of 15.2 million head, a decline of 4.3% from last year.
- The beef cow inventory is down 4.7% and calves born decreased 4.8% from a year ago despite an improving calving rate since the Bovine Spongiform Encephalopathy (BSE) crisis in 2003.
- With the increase in coarse grain prices, the number of cattle on feeding operations have declined 12.3% since last summer.
- Over the past two years, the number of farms reporting cattle and calves has stabilized around 107,000 operations following a loss of 8,500 cattle farms during the previous three years.
- There are no signs of herd rebuilding as beef heifers for breeding and replacement are down 2% from the same time last year.

Analysis

Cattle herd contracts

Canadian farmers reported a cattle and calf inventory at 15.2 million head, a decline of 4.3% from last year continuing the downward trend that started in 2006. The beef herd and the dairy herd declined 4.8% and 1.2% respectively.

The beef cow inventory is down 4.7% and calves born decreased 4.8% from a year ago despite an improving calving rate since the Bovine Spongiform Encephalopathy (BSE) crisis in 2003.

Text table 1
Livestock inventories at July 1

	Cattle		Hogs		Sheep	
	2007	2008	2007	2008	2007	2008
	thousands of head					
Canada	15,885	15,195	14,690	12,985	1,096	1,062
Atlantic	289	280	299	181	43	41
Quebec	1,395	1,375	4,120	4,000	295	290
Ontario	1,956	1,880	3,887	3,239	305	295
Manitoba	1,540	1,515	2,965	2,725	70	66
Saskatchewan	3,430	3,385	1,320	1,070	120	125
Alberta	6,470	6,010	1,970	1,650	205	185
British Columbia	805	750	129	120	58	60

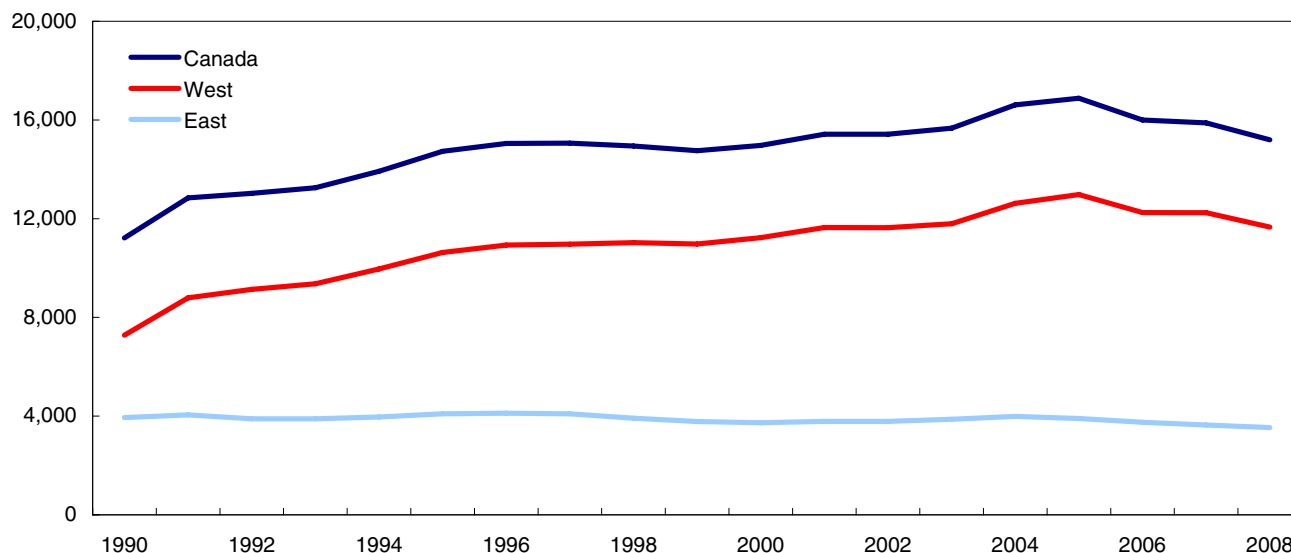
Note(s): Figures may not add up to totals because of rounding.

With the increase in coarse grain prices, the number of cattle on feeding operations have declined 12.3% since last summer. Over the past two years, the number of farms reporting cattle and calves has stabilized around 107,000 operations following a loss of 8,500 cattle farms during the previous three years. Though the number of cattle farms is stable, the average farm size is down 2.7% over the last three years.

There are no signs of herd rebuilding as beef heifers for breeding replacement are down 2% from the same time last year. Regionally, beef heifers in the western provinces are down 3.3% whereas those in the eastern provinces are up 7.3%. This increase is more for herd replacement of older cows rather than herd rebuilding.

Chart 1
Cattle inventories drop

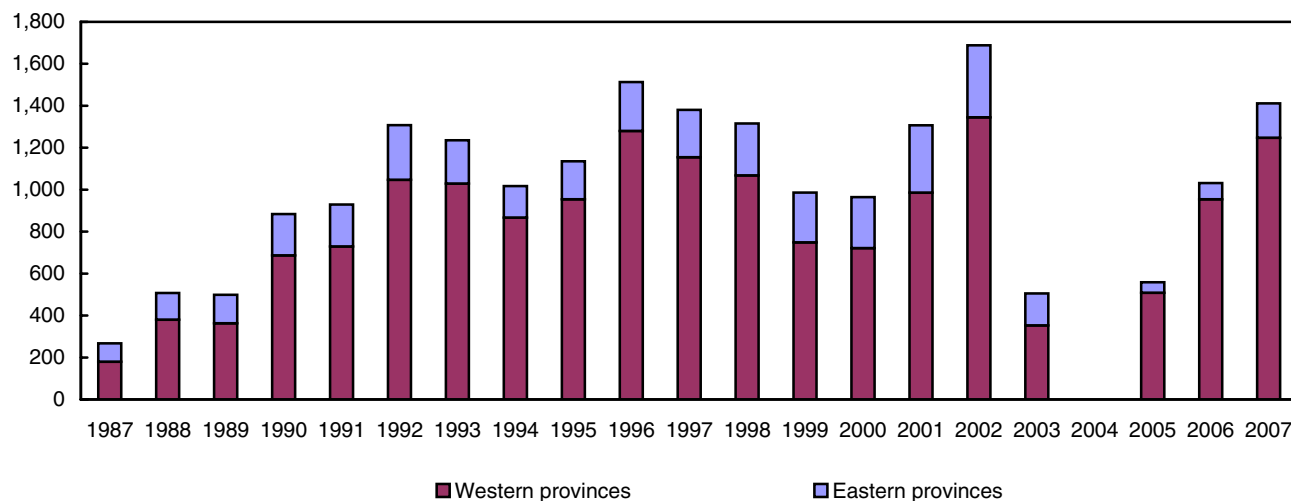
thousands of head



International shipments of cattle and calves from January to June 2008 are up 41.3% compared to the same period in 2007. The increase in exports is attributed to several factors, notably higher feed costs and the reopening of the border to live animal exports over thirty months of age. The Country of Origin Labeling (COOL) regulations in the US Farm Bill, though not yet law, may have had some impact with cattle being imported onto US feedlots. Animals which were in the U.S. as of July 15, 2008 are considered to be American for purposes of country of origin.

Chart 2
Canada's Cattle and Calves Exports, per Year, per Region

thousands of head



Although beef consumption is still strong in Canada, the number of cattle and calves slaughtered domestically from January to June 2008 is down 4.2% from the same period in 2007. While domestic slaughter has been decreasing for the last two years, meat imports have been increasing to fulfill the demands of Canadian consumers.

Related products

Selected publications from Statistics Canada

21-020-X	Food Statistics
21-206-X	Statistics on Income of Farm Operators
21-207-X	Statistics on Income of Farm Families
21-208-X	Statistics on Revenues and Expenses of Farms
23-014-X	Dairy Statistics
23-015-X	Poultry and Egg Statistics
23-501-X	Livestock Feed Requirements Study

Selected CANSIM tables from Statistics Canada

003-0004	Livestock surveys, pigs, at end of quarter, quarterly
003-0016	Shorn wool statistics, annual
003-0026	Cattle and calves, farm and meat production, annual
003-0028	Hogs, sheep and lambs statistics, annual
003-0030	Number of calves born, semi-annual
003-0031	Number of sheep and lambs on farms, annual
003-0032	Number of cattle, by class and farm type, annual
003-0035	Per capita disappearance of meats and output of meats and offal, annual
003-0036	Animals slaughtered, supply and disappearance in Canada, annual
003-0037	Meat production, supply and disappearance in Canada, annual
003-0083	Cattle statistics, supply and demand of cattle, annual
003-0084	Cattle prices, steers, monthly
003-0085	Cattle and calves, number by class and calf crop, United States, annual
003-0086	Cattle, weighted average prices, steers, annual

Selected surveys from Statistics Canada

3460	Livestock Survey
------	------------------

Selected summary tables from Statistics Canada

- *Cattle inventories, by province*
- *Pig inventories, by province (quarterly)*
- *Sheep inventories, by province*

Statistical tables

Table 1-1
Cattle on farms — Canada

	Bulls, 1 year and over	Beef cows	Dairy cows	Heifers			Steers, 1 year and over	Calves, under 1 year	Total
				Heifers, dairy replacement	Heifers, beef replacement	Heifers, slaughter			
thousands of head									
At January 1									
2002	237.0	4,636.0	1,083.9	507.5	653.7	864.6	1,195.1	4,573.7	13,751.5
2003	239.4	4,752.2	1,065.5	512.3	648.3	805.0	1,173.6	4,269.7	13,466.0
2004	269.5	5,019.4	1,054.9	504.3	687.7	870.5	1,203.3	4,945.4	14,555.0
2005	272.6	5,283.6	1,041.4	517.8	637.8	945.0	1,159.5	5,067.3	14,925.0
2006	264.0	5,247.2	1,019.1	495.1	628.3	986.8	1,146.8	4,867.7	14,655.0
2007	244.6	5,020.1	994.8	480.1	587.1	963.5	1,145.2	4,719.6	14,155.0
2008	246.8	4,981.9	984.5	471.1	595.0	982.9	1,101.6	4,531.2	13,895.0
At July 1									
2002	259.5	4,821.8	1,072.5	513.0	828.0	1,116.8	1,591.6	5,217.7	15,420.9
2003	273.5	4,924.2	1,055.4	504.8	863.8	1,124.5	1,598.2	5,325.6	15,670.0
2004	284.7	5,334.7	1,053.1	522.8	805.4	1,252.6	1,705.2	5,651.5	16,610.0
2005	291.1	5,436.2	1,025.1	507.4	840.9	1,305.8	1,657.9	5,815.6	16,880.0
2006	267.6	5,164.6	1,000.4	506.5	690.8	1,247.4	1,655.3	5,467.4	16,000.0
2007	263.4	5,104.6	979.1	487.7	668.1	1,289.4	1,790.2	5,302.5	15,885.0
2008	261.2	4,862.4	981.8	476.5	654.6	1,175.5	1,576.4	5,206.6	15,195.0

	Bulls, 1 year and over	Beef cows	Dairy cows	Heifers			Steers, 1 year and over	Calves, under 1 year	Total
				Heifers, dairy replacement	Heifers, beef replacement	Heifers, slaughter			
percentage change from previous year									
At January 1									
2002	-1.0	0.7	-0.7	2.0	-3.0	7.9	-2.2	2.1	1.1
2003	1.0	2.5	-1.7	0.9	-0.8	-6.9	-1.8	-6.6	-2.1
2004	12.6	5.6	-1.0	-1.6	6.1	8.1	2.5	15.8	8.1
2005	1.2	5.3	-1.3	2.7	-7.3	8.6	-3.6	2.5	2.5
2006	-3.2	-0.7	-2.1	-4.4	-1.5	4.4	-1.1	-3.9	-1.8
2007	-7.3	-4.3	-2.4	-3.0	-6.6	-2.4	-0.1	-3.0	-3.4
2008	0.9	-0.8	-1.0	-1.9	1.3	2.0	-3.8	-4.0	-1.8
At July 1									
2002	-2.1	0.5	0 ^s	-0.8	-3.6	5.4	-4.0	0.5	0 ^s
2003	5.4	2.1	-1.6	-1.6	4.3	0.7	0.4	2.1	1.6
2004	4.1	8.3	-0.2	3.6	-6.8	11.4	6.7	6.1	6.0
2005	2.2	1.9	-2.7	-2.9	4.4	4.2	-2.8	2.9	1.6
2006	-8.1	-5.0	-2.4	-0.2	-17.8	-4.5	-0.2	-6.0	-5.2
2007	-1.6	-1.2	-2.1	-3.7	-3.3	3.4	8.1	-3.0	-0.7
2008	-0.8	-4.7	0.3	-2.3	-2.0	-8.8	-11.9	-1.8	-4.3

Table 1-2
Cattle on farms — Newfoundland and Labrador

	Bulls, 1 year and over	Beef cows	Dairy cows	Heifers			Steers, 1 year and over	Calves, under 1 year	Total
				Heifers, dairy replacement	Heifers, beef replacement	Heifers, slaughter			
thousands of head									
At January 1									
2002	0.1	0.7	4.7	1.4	0.3	0.1	0.2	2.0	9.5
2003	0.1	0.7	4.8	1.6	0.2	0.1	0.2	2.0	9.7
2004	0.1	0.7	5.2	1.9	0.2	0.1	0.2	2.0	10.4
2005	0.1	0.7	5.9	2.0	0.1	0.1	0.1	2.0	11.0
2006	0.1	0.8	6.2	2.0	0.1	0.1	0.1	2.3	11.7
2007	0.1	0.8	6.4	1.9	0.1	0.2	0.1	2.4	12.0
2008	0.1	0.7	6.7	2.1	0.1	0.1	0.1	2.6	12.5
At July 1									
2002	0.1	0.7	4.7	1.5	0.2	0.1	0.2	1.9	9.4
2003	0.1	0.7	4.9	1.9	0.2	0.1	0.2	2.0	10.1
2004	0.1	0.7	5.6	2.0	0.1	0.1	0.1	2.0	10.7
2005	0.1	0.7	6.1	1.9	0.1	0.2	0.1	2.2	11.4
2006	0.1	0.8	6.3	2.0	0.1	0.2	0.1	2.3	11.9
2007	0.1	0.6	6.8	2.3	0.1	0.1	0.1	2.4	12.5
2008	0.1	0.6	6.5	2.2	0.1	0.1	0.1	2.6	12.3

Table 1-3
Cattle on farms — Prince Edward Island

	Bulls, 1 year and over	Beef cows	Dairy cows	Heifers			Steers, 1 year and over	Calves, under 1 year	Total
				Heifers, dairy replacement	Heifers, beef replacement	Heifers, slaughter			
thousands of head									
At January 1									
2002	0.8	13.4	14.5	6.9	3.1	9.0	16.4	20.9	85.0
2003	0.7	13.2	14.7	7.0	2.9	9.2	16.0	20.3	84.0
2004	0.8	13.2	14.0	7.2	3.0	9.6	16.0	20.2	84.0
2005	0.8	14.6	13.5	7.4	2.8	8.9	15.5	20.0	83.5
2006	0.8	15.9	13.2	7.4	2.0	10.3	15.5	20.4	85.5
2007	0.8	16.1	13.2	7.3	1.7	10.2	15.2	20.5	85.0
2008	0.7	13.0	13.0	7.1	1.5	9.4	12.5	19.8	77.0
At July 1									
2002	0.8	13.2	14.5	6.8	3.0	9.3	17.0	20.4	85.0
2003	0.8	13.2	14.5	6.8	3.0	9.4	17.4	20.4	85.5
2004	0.9	14.2	14.0	7.3	3.0	9.5	16.0	21.1	86.0
2005	0.8	15.2	13.4	7.5	2.0	10.3	16.0	21.3	86.5
2006	0.8	16.2	13.1	7.2	1.8	10.8	15.8	21.3	87.0
2007	0.8	16.3	13.5	7.6	1.8	10.4	15.8	21.3	87.5
2008	0.7	14.0	13.5	7.6	1.7	10.0	13.2	19.3	80.0

Table 1-4
Cattle on farms — Nova Scotia

	Bulls, 1 year and over	Beef cows	Dairy cows	Heifers			Steers, 1 year and over	Calves, under 1 year	Total
				Heifers, dairy replacement	Heifers, beef replacement	Heifers, slaughter			
thousands of head									
At January 1									
2002	1.5	25.9	24.0	11.3	5.0	3.4	5.4	30.0	106.5
2003	1.4	25.8	24.2	10.9	4.8	3.7	5.4	29.3	105.5
2004	1.4	26.1	24.0	10.7	5.0	3.6	5.1	29.6	105.5
2005	1.5	25.8	22.9	11.4	3.8	4.0	5.1	29.5	104.0
2006	1.5	25.3	22.3	11.7	3.4	4.3	5.0	28.5	102.0
2007	1.5	25.7	22.2	11.9	3.3	4.3	4.9	27.7	101.5
2008	1.5	22.0	23.5	12.5	3.4	4.9	5.9	27.3	101.0
At July 1									
2002	1.4	26.2	23.9	11.3	5.0	3.2	5.5	30.5	107.0
2003	1.4	26.1	24.0	11.5	4.8	3.6	5.5	30.1	107.0
2004	1.5	26.5	23.0	11.7	4.5	3.6	5.3	29.9	106.0
2005	1.5	26.2	22.6	12.0	3.8	4.3	5.6	29.5	105.5
2006	1.5	25.9	22.0	12.2	3.6	4.5	5.6	28.7	104.0
2007	1.4	24.7	22.7	12.5	3.3	3.9	5.0	28.5	102.0
2008	1.4	25.0	22.8	12.4	3.5	4.2	5.1	28.6	103.0

Table 1-5
Cattle on farms — New Brunswick

	Bulls, 1 year and over	Beef cows	Dairy cows	Heifers			Steers, 1 year and over	Calves, under 1 year	Total
				Heifers, dairy replacement	Heifers, beef replacement	Heifers, slaughter			
thousands of head									
At January 1									
2002	1.3	20.5	19.2	9.4	4.3	4.1	6.4	25.8	91.0
2003	1.2	20.0	19.3	9.8	3.9	4.0	6.0	25.8	90.0
2004	1.2	19.4	19.2	10.0	4.0	4.2	6.5	25.5	90.0
2005	1.2	19.5	19.3	10.0	4.1	4.5	6.2	25.2	90.0
2006	1.2	21.2	18.9	9.5	3.3	4.1	5.4	25.4	89.0
2007	1.2	21.5	19.0	9.5	3.0	3.8	5.0	25.0	88.0
2008	1.0	18.7	18.8	9.4	2.5	3.0	4.1	23.5	81.0
At July 1									
2002	1.2	20.2	18.9	9.4	4.8	4.2	6.4	25.9	91.0
2003	1.2	20.2	19.0	9.6	4.8	4.4	6.6	25.7	91.5
2004	1.2	20.3	19.0	9.8	4.8	4.4	6.3	26.2	92.0
2005	1.2	20.6	19.5	9.5	4.0	4.5	6.4	26.3	92.0
2006	1.2	22.2	19.0	9.6	2.8	3.9	5.2	25.6	89.5
2007	1.1	22.0	19.1	9.3	2.9	3.0	4.3	25.3	87.0
2008	1.0	20.8	19.0	9.3	2.8	3.2	4.5	23.9	84.5

Table 1-6
Cattle on farms — Atlantic

	Bulls, 1 year and over	Beef cows	Dairy cows	Heifers			Steers, 1 year and over	Calves, under 1 year	Total
				Heifers, dairy replacement	Heifers, beef replacement	Heifers, slaughter			
thousands of head									
At January 1									
2002	3.7	60.5	62.4	29.0	12.7	16.6	28.4	78.7	292.0
2003	3.4	59.7	63.0	29.3	11.8	17.0	27.6	77.4	289.2
2004	3.5	59.4	62.4	29.8	12.2	17.5	27.8	77.3	289.9
2005	3.6	60.6	61.6	30.8	10.8	17.5	26.9	76.7	288.5
2006	3.6	63.2	60.6	30.6	8.8	18.8	26.0	76.6	288.2
2007	3.6	64.1	60.8	30.6	8.1	18.5	25.2	75.6	286.5
2008	3.3	54.4	62.0	31.1	7.5	17.4	22.6	73.2	271.5
At July 1									
2002	3.5	60.3	62.0	29.0	13.0	16.8	29.1	78.7	292.4
2003	3.5	60.2	62.4	29.8	12.8	17.5	29.7	78.2	294.1
2004	3.7	61.7	61.6	30.8	12.4	17.6	27.7	79.2	294.7
2005	3.6	62.7	61.6	30.9	9.9	19.3	28.1	79.3	295.4
2006	3.6	65.1	60.4	31.0	8.3	19.4	26.7	77.9	292.4
2007	3.4	63.6	62.1	31.7	8.1	17.4	25.2	77.5	289.0
2008	3.2	60.4	61.8	31.5	8.1	17.5	22.9	74.4	279.8

Table 1-7
Cattle on farms — Quebec

	Bulls, 1 year and over	Beef cows	Dairy cows	Heifers			Steers, 1 year and over	Calves, under 1 year	Total
				Heifers, dairy replacement	Heifers, beef replacement	Heifers, slaughter			
thousands of head									
At January 1									
2002	14.8	207.5	418.0	176.0	32.0	20.0	71.7	346.0	1,286.0
2003	14.5	218.0	403.0	172.0	32.5	19.0	63.0	381.0	1,303.0
2004	16.0	231.0	397.0	169.0	30.0	27.0	79.0	471.0	1,420.0
2005	15.5	238.0	399.0	178.0	26.0	27.0	100.0	431.5	1,415.0
2006	14.4	225.0	390.0	182.0	21.0	29.0	98.0	425.6	1,385.0
2007	13.0	224.0	384.0	176.0	20.0	31.0	109.0	408.0	1,365.0
2008	13.5	224.0	376.0	163.0	24.0	26.0	96.0	422.5	1,345.0
At July 1									
2002	15.0	213.5	408.0	176.5	33.0	23.0	89.0	412.0	1,370.0
2003	15.5	222.0	395.0	167.0	33.0	25.0	92.0	470.5	1,420.0
2004	16.0	236.0	410.0	181.0	34.0	28.0	112.0	498.0	1,515.0
2005	16.0	233.0	382.0	176.0	30.5	31.0	108.5	478.0	1,455.0
2006	13.5	226.5	382.5	180.0	25.0	30.0	110.0	457.5	1,425.0
2007	14.0	227.0	367.0	166.0	25.0	37.0	111.0	448.0	1,395.0
2008	13.5	225.0	367.0	157.0	27.0	33.5	111.0	441.0	1,375.0

Table 1-8
Cattle on farms — Ontario

	Bulls, 1 year and over	Beef cows	Dairy cows	Heifers			Steers, 1 year and over	Calves, under 1 year	Total
				Heifers, dairy replacement	Heifers, beef replacement	Heifers, slaughter			
thousands of head									
At January 1									
2002	23.5	376.0	367.0	200.0	75.0	137.0	178.0	659.5	2,016.0
2003	25.0	392.0	364.0	205.0	70.0	138.0	258.0	635.8	2,087.8
2004	26.0	415.0	355.5	198.0	65.0	149.0	256.5	660.1	2,125.1
2005	25.0	405.0	344.8	205.0	53.0	153.5	256.6	608.6	2,051.5
2006	25.5	389.0	334.0	185.0	58.5	170.0	234.8	585.0	1,981.8
2007	20.0	364.0	327.0	176.0	44.0	146.0	220.0	606.5	1,903.5
2008	21.5	370.0	320.0	174.0	48.5	135.0	253.0	561.5	1,883.5
At July 1									
2002	25.0	373.0	367.0	199.5	74.5	167.0	324.0	595.0	2,125.0
2003	26.0	402.0	360.0	200.0	72.0	177.0	337.0	586.9	2,160.9
2004	26.0	410.0	348.5	200.0	70.0	173.0	360.5	592.3	2,180.3
2005	26.5	400.0	346.0	194.0	60.0	165.0	352.8	610.3	2,154.6
2006	24.5	380.0	330.0	189.5	50.0	180.0	330.6	548.0	2,032.6
2007	23.5	369.0	320.5	181.0	49.0	165.0	327.0	521.0	1,956.0
2008	22.0	357.0	320.0	179.0	53.0	145.0	306.0	498.2	1,880.2

Table 1-9
Cattle on farms — East

	Bulls, 1 year and over	Beef cows	Dairy cows	Heifers			Steers, 1 year and over	Calves, under 1 year	Total
				Heifers, dairy replacement	Heifers, beef replacement	Heifers, slaughter			
thousands of head									
At January 1									
2002	42.0	644.0	847.4	405.0	119.7	173.6	278.1	1,084.2	3,594.0
2003	42.9	669.7	830.0	406.3	114.3	174.0	348.6	1,094.2	3,680.0
2004	45.5	705.4	814.9	396.8	107.2	193.5	363.3	1,208.4	3,835.0
2005	44.1	703.6	805.4	413.8	89.8	198.0	383.5	1,116.8	3,755.0
2006	43.5	677.2	784.6	397.6	88.3	217.8	358.8	1,087.2	3,655.0
2007	36.6	652.1	771.8	382.6	72.1	195.5	354.2	1,090.1	3,555.0
2008	38.3	648.4	758.0	368.1	80.0	178.4	371.6	1,057.2	3,500.0
At July 1									
2002	43.5	646.8	837.0	405.0	120.5	206.8	442.1	1,085.7	3,787.4
2003	45.0	684.2	817.4	396.8	117.8	219.5	458.7	1,135.6	3,875.0
2004	45.7	707.7	820.1	411.8	116.4	218.6	500.2	1,169.5	3,990.0
2005	46.1	695.7	789.6	400.9	100.4	215.3	489.4	1,167.6	3,905.0
2006	41.6	671.6	772.9	400.5	83.3	229.4	467.3	1,083.4	3,750.0
2007	40.9	659.6	749.6	378.7	82.1	219.4	463.2	1,046.5	3,640.0
2008	38.7	642.4	748.8	367.5	88.1	196.0	439.9	1,013.6	3,535.0

Table 1-10
Cattle on farms — Manitoba

	Bulls, 1 year and over	Beef cows	Dairy cows	Heifers			Steers, 1 year and over	Calves, under 1 year	Total
				Heifers, dairy replacement	Heifers, beef replacement	Heifers, slaughter			
thousands of head									
At January 1									
2002	25.0	528.0	42.0	18.5	73.0	47.0	54.0	457.5	1,245.0
2003	26.0	553.5	40.5	18.0	78.0	44.0	37.0	453.0	1,250.0
2004	30.0	638.0	42.0	20.0	80.0	54.0	77.0	509.0	1,450.0
2005	31.5	650.0	44.0	18.0	80.0	55.0	70.0	541.5	1,490.0
2006	30.5	673.0	45.0	19.0	77.0	60.0	60.0	525.5	1,490.0
2007	28.0	623.0	44.5	18.5	62.0	47.0	45.0	507.0	1,375.0
2008	27.0	614.5	44.0	19.5	62.0	52.0	49.0	487.0	1,355.0
At July 1									
2002	27.0	574.0	41.5	20.0	92.0	74.0	112.0	529.5	1,470.0
2003	31.0	622.0	42.0	21.0	100.0	92.0	124.0	558.0	1,590.0
2004	33.0	650.0	42.0	23.0	96.0	107.0	155.0	624.0	1,730.0
2005	33.0	676.0	43.5	22.5	95.0	108.5	110.5	646.0	1,735.0
2006	32.0	680.0	44.0	20.0	80.0	90.0	100.0	634.0	1,680.0
2007	28.5	612.0	45.0	20.5	72.0	105.0	95.0	562.0	1,540.0
2008	29.0	601.0	46.0	21.0	78.0	74.5	90.5	575.0	1,515.0

Table 1-11
Cattle on farms — Saskatchewan

	Bulls, 1 year and over	Beef cows	Dairy cows	Heifers			Steers, 1 year and over	Calves, under 1 year	Total
				Heifers, dairy replacement	Heifers, beef replacement	Heifers, slaughter			
thousands of head									
At January 1									
2002	57.0	1,220.0	28.0	14.0	165.0	23.0	33.0	877.5	2,417.5
2003	58.0	1,318.0	32.0	15.0	160.0	47.0	57.0	856.0	2,543.0
2004	68.0	1,426.0	31.5	14.5	185.0	51.0	75.0	1,004.0	2,855.0
2005	70.0	1,535.0	31.0	14.0	176.0	49.0	71.0	1,094.0	3,040.0
2006	69.0	1,560.0	29.0	12.0	183.0	47.0	73.0	977.0	2,950.0
2007	64.0	1,484.5	28.5	12.0	170.0	52.0	79.0	1,040.0	2,930.0
2008	65.5	1,480.0	29.0	12.5	176.0	48.0	83.0	976.0	2,870.0
At July 1									
2002	61.0	1,270.0	29.0	13.5	213.0	64.0	122.5	1,167.0	2,940.0
2003	70.0	1,335.0	34.0	15.0	240.0	105.0	150.0	1,271.0	3,220.0
2004	74.0	1,500.0	31.0	14.0	222.0	130.0	197.0	1,372.0	3,540.0
2005	75.0	1,545.0	29.5	13.5	245.0	122.0	165.0	1,430.0	3,625.0
2006	72.0	1,508.0	28.5	12.5	206.0	90.0	145.0	1,388.0	3,450.0
2007	70.0	1,480.0	30.0	14.0	190.0	105.0	175.0	1,366.0	3,430.0
2008	72.0	1,420.0	30.0	15.0	185.0	130.0	187.0	1,346.0	3,385.0

Table 1-12
Cattle on farms — Alberta

	Bulls, 1 year and over	Beef cows	Dairy cows	Heifers			Steers, 1 year and over	Calves, under 1 year	Total
				Heifers, dairy replacement	Heifers, beef replacement	Heifers, slaughter			
thousands of head									
At January 1									
2002	98.0	1,959.0	92.0	36.0	250.0	610.0	800.0	1,980.0	5,825.0
2003	96.0	1,915.0	87.0	35.0	250.0	530.0	700.0	1,697.0	5,310.0
2004	110.0	1,960.0	86.5	35.0	270.5	558.0	635.0	2,020.0	5,675.0
2005	110.0	2,090.0	83.0	36.0	255.0	630.0	595.0	2,131.0	5,930.0
2006	105.0	2,052.0	85.5	36.5	245.0	647.0	625.0	2,104.0	5,900.0
2007	101.5	2,000.0	79.5	35.0	253.0	657.0	637.0	1,917.0	5,680.0
2008	101.5	1,990.0	83.5	36.0	245.0	690.0	575.0	1,839.0	5,560.0
At July 1									
2002	110.0	2,040.0	90.0	38.0	345.0	750.0	868.0	2,146.0	6,387.0
2003	109.0	1,990.0	85.0	38.0	350.0	680.0	798.0	2,050.0	6,100.0
2004	113.0	2,150.0	82.0	39.0	320.0	765.0	780.0	2,151.0	6,400.0
2005	119.0	2,200.0	85.0	38.0	352.0	825.0	830.0	2,251.0	6,700.0
2006	105.0	2,025.0	82.0	38.0	278.0	812.0	888.0	2,072.0	6,300.0
2007	108.0	2,076.0	83.0	38.0	284.0	835.0	1,000.0	2,046.0	6,470.0
2008	105.0	1,955.0	86.0	40.0	267.0	750.0	805.0	2,002.0	6,010.0

Table 1-13
Cattle on farms — British Columbia

	Bulls, 1 year and over	Beef cows	Dairy cows	Heifers			Steers, 1 year and over	Calves, under 1 year	Total
				Heifers, dairy replacement	Heifers, beef replacement	Heifers, slaughter			
thousands of head									
At January 1									
2002	15.0	285.0	74.5	34.0	46.0	11.0	30.0	174.5	670.0
2003	16.5	296.0	76.0	38.0	46.0	10.0	31.0	169.5	683.0
2004	16.0	290.0	80.0	38.0	45.0	14.0	53.0	204.0	740.0
2005	17.0	305.0	78.0	36.0	37.0	13.0	40.0	184.0	710.0
2006	16.0	285.0	75.0	30.0	35.0	15.0	30.0	174.0	660.0
2007	14.5	260.5	70.5	32.0	30.0	12.0	30.0	165.5	615.0
2008	14.5	249.0	70.0	35.0	32.0	14.5	23.0	172.0	610.0
At July 1									
2002	18.0	291.0	75.0	36.5	57.5	22.0	47.0	289.5	836.5
2003	18.5	293.0	77.0	34.0	56.0	28.0	67.5	311.0	885.0
2004	19.0	327.0	78.0	35.0	51.0	32.0	73.0	335.0	950.0
2005	18.0	319.5	77.5	32.5	48.5	35.0	63.0	321.0	915.0
2006	17.0	280.0	73.0	35.5	43.5	26.0	55.0	290.0	820.0
2007	16.0	277.0	71.5	36.5	40.0	25.0	57.0	282.0	805.0
2008	16.5	244.0	71.0	33.0	36.5	25.0	54.0	270.0	750.0

Table 1-14
Cattle on farms — West

	Bulls, 1 year and over	Beef cows	Dairy cows	Heifers			Steers, 1 year and over	Calves, under 1 year	Total
				Heifers, dairy replacement	Heifers, beef replacement	Heifers, slaughter			
thousands of head									
At January 1									
2002	195.0	3,992.0	236.5	102.5	534.0	691.0	917.0	3,489.5	10,157.5
2003	196.5	4,082.5	235.5	106.0	534.0	631.0	825.0	3,175.5	9,786.0
2004	224.0	4,314.0	240.0	107.5	580.5	677.0	840.0	3,737.0	10,720.0
2005	228.5	4,580.0	236.0	104.0	548.0	747.0	776.0	3,950.5	11,170.0
2006	220.5	4,570.0	234.5	97.5	540.0	769.0	788.0	3,780.5	11,000.0
2007	208.0	4,368.0	223.0	97.5	515.0	768.0	791.0	3,629.5	10,600.0
2008	208.5	4,333.5	226.5	103.0	515.0	804.5	730.0	3,474.0	10,395.0
At July 1									
2002	216.0	4,175.0	235.5	108.0	707.5	910.0	1,149.5	4,132.0	11,633.5
2003	228.5	4,240.0	238.0	108.0	746.0	905.0	1,139.5	4,190.0	11,795.0
2004	239.0	4,627.0	233.0	111.0	689.0	1,034.0	1,205.0	4,482.0	12,620.0
2005	245.0	4,740.5	235.5	106.5	740.5	1,090.5	1,168.5	4,648.0	12,975.0
2006	226.0	4,493.0	227.5	106.0	607.5	1,018.0	1,188.0	4,384.0	12,250.0
2007	222.5	4,445.0	229.5	109.0	586.0	1,070.0	1,327.0	4,256.0	12,245.0
2008	222.5	4,220.0	233.0	109.0	566.5	979.5	1,136.5	4,193.0	11,660.0

Table 2
Cull cows at July 1, 2008 ¹

	Newfoundland and Labrador	Prince Edward Island	Nova Scotia	New Brunswick	Atlantic Provinces	Quebec	Ontario	Eastern Provinces
thousands of head								
Total cows	7.1	27.5	47.8	39.8	122.2	592.0	677.0	1,391.2
Cull cows on farms	0.0	0.0	0.0	0.0	0.0	0.0	0.0	0.0
Expected to calve
Born prior to 1999	0.2	3.5	7.1	5.7	16.5	61.2	82.6	160.3
Dairy cows	6.5	13.5	22.8	19.0	61.8	367.0	320.0	748.8
Cull cows, dairy	0.0	0.0	0.0	0.0	0.0	0.0	0.0	0.0
Expected to calve
Born prior to 1999	0.1	0.7	0.8	0.9	2.5	18.0	11.2	31.7
Beef cows	0.6	14.0	25.0	20.8	60.4	225.0	357.0	642.4
Cull cows, beef	0.0	0.0	0.0	0.0	0.0	0.0	0.0	0.0
Expected to calve
Born prior to 1999	0.1	2.8	6.3	4.8	14.0	43.2	71.4	128.6
	Manitoba	Saskat- chewan	Alberta	British Columbia	Western Provinces	Canada		
thousands of head								
Total cows	647.0	1,450.0	2,041.0	315.0	4,453.0	5,844.2		
Cull cows on farms	0.0	0.0	0.0	0.0	0.0	0.0		
Expected to calve		
Born prior to 1999	122.5	255.2	344.9	40.1	762.7	923.0		
Dairy cows	46.0	30.0	86.0	71.0	233.0	981.8		
Cull cows, dairy	0.0	0.0	0.0	0.0	0.0	0.0		
Expected to calve		
Born prior to 1999	2.3	1.0	2.8	2.3	8.4	40.1		
Beef cows	601.0	1,420.0	1,955.0	244.0	4,220.0	4,862.4		
Cull cows, beef	0.0	0.0	0.0	0.0	0.0	0.0		
Expected to calve		
Born prior to 1999	120.2	254.2	342.1	37.8	754.3	882.9		
	Newfoundland and Labrador	Prince Edward Island	Nova Scotia	New Brunswick	Atlantic Provinces	Quebec	Ontario	Eastern Provinces
percent								
Total cows	100.0	100.0	100.0	100.0	100.0	100.0	100.0	100.0
Cull cows on farms	0.0	0.0	0.0	0.0	0.0	0.0	0.0	0.0
Expected to calve
Born prior to 1999	2.8	12.7	14.9	14.3	13.5	10.3	12.2	11.5
Dairy cows	100.0	100.0	100.0	100.0	100.0	100.0	100.0	100.0
Cull cows, dairy	0.0	0.0	0.0	0.0	0.0	0.0	0.0	0.0
Expected to calve
Born prior to 1999	1.5	5.2	3.5	4.7	4.0	4.9	3.5	4.2
Beef cows	100.0	100.0	100.0	100.0	100.0	100.0	100.0	100.0
Cull cows, beef	0.0	0.0	0.0	0.0	0.0	0.0	0.0	0.0
Expected to calve
Born prior to 1999	16.7	20.0	25.2	23.1	23.2	19.2	20.0	20.0
	Manitoba	Saskat- chewan	Alberta	British Columbia	Western Provinces	Canada		
percent								
Total cows	100.0	100.0	100.0	100.0	100.0	100.0	100.0	100.0
Cull cows on farms	0.0	0.0	0.0	0.0	0.0	0.0	0.0	0.0
Expected to calve
Born prior to 1999	18.9	17.6	16.9	12.7	17.1	15.8		
Dairy cows	100.0	100.0	100.0	100.0	100.0	100.0	100.0	100.0
Cull cows, dairy	0.0	0.0	0.0	0.0	0.0	0.0	0.0	0.0
Expected to calve
Born prior to 1999	5.0	3.3	3.3	3.2	3.6	4.1		
Beef cows	100.0	100.0	100.0	100.0	100.0	100.0	100.0	100.0
Cull cows, beef	0.0	0.0	0.0	0.0	0.0	0.0	0.0	0.0
Expected to calve
Born prior to 1999	20.0	17.9	17.5	15.5	17.9	18.2		

1. Cows that would be sent for slaughter because they are no longer productive.

Table 3
Feeder cattle by weight category, at July 1, 2008

	Newfoundland and Labrador	Prince Edward Island	Nova Scotia	New Brunswick	Atlantic Provinces	Quebec	Ontario	Eastern Provinces
thousands of head								
Total feeders	0.2	23.2	9.3	7.7	40.4	144.5	451.0	635.9
Total heavy weight	0.0	8.8	1.8	1.1	11.7	58.4	117.2	187.3
Total medium weight	0.0	7.7	2.5	2.9	13.1	41.1	120.9	175.1
Total light weight	0.2	6.7	5.0	3.7	15.6	45.0	212.9	273.5
Total feeder heifers	0.1	10.0	4.2	3.2	17.5	33.5	145.0	196.0
Feeder heifers 1100 pounds (500 kilograms) and over	0.0	3.9	0.6	0.6	5.1	10.7	39.2	55.0
Feeder heifers 900 to 1100 pounds (409 to 500 kilograms)	0.0	3.6	1.0	1.3	5.9	11.1	41.3	58.3
Feeder heifers 900 pounds (409 kilograms) or less	0.1	2.5	2.6	1.3	6.5	11.7	64.5	82.7
Total steers	0.1	13.2	5.1	4.5	22.9	111.0	306.0	439.9
Steers 1250 pounds (568 kilograms) and over	0.0	4.9	1.2	0.5	6.6	47.7	78.0	132.3
Steers 1000 to 1250 pounds (455 to 568 kilograms)	0.0	4.1	1.5	1.6	7.2	30.0	79.6	116.8
Steers 1000 pounds (455 kilograms) or less	0.1	4.2	2.4	2.4	9.1	33.3	148.4	190.8
Feeders on finishing ration	0.0	12.5	2.2	3.5	18.2	100.4	203.0	321.6
Feeders under 21 months
	Manitoba	Saskat- chewan	Alberta	British Columbia	Western Provinces	Canada		
thousands of head								
Total feeders	165.0	317.0	1,555.0	79.0	2,116.0	2,751.9		
Total heavy weight	21.0	36.7	368.6	4.3	430.6	617.9		
Total medium weight	25.4	46.4	480.6	10.0	562.4	737.5		
Total light weight	118.6	233.9	705.8	64.7	1,123.0	1,396.5		
Total feeder heifers	74.5	130.0	750.0	25.0	979.5	1,175.5		
Feeder heifers 1100 pounds (500 kilograms) and over	8.8	13.3	199.5	2.7	224.3	279.3		
Feeder heifers 900 to 1100 pounds (409 to 500 kilograms)	12.7	20.2	198.8	5.9	237.6	295.9		
Feeder heifers 900 pounds (409 kilograms) or less	53.0	96.5	351.7	16.4	517.6	600.3		
Total steers	90.5	187.0	805.0	54.0	1,136.5	1,576.4		
Steers 1250 pounds (568 kilograms) and over	12.2	23.4	169.1	1.6	206.3	338.6		
Steers 1000 to 1250 pounds (455 to 568 kilograms)	12.7	26.2	281.8	4.1	324.8	441.6		
Steers 1000 pounds (455 kilograms) or less	65.6	137.4	354.1	48.3	605.4	796.2		
Feeders on finishing ration	39.6	85.6	762.0	6.3	893.5	1,215.1		
Feeders under 21 months		

Table 3 – continued

Feeder cattle by weight category, at July 1, 2008

	Newfoundland and Labrador	Prince Edward Island	Nova Scotia	New Brunswick	Atlantic Provinces	Quebec	Ontario	Eastern Provinces
	percent							
Total feeders	100.0	100.0	100.0	100.0	100.0	100.0	100.0	100.0
Total heavy weight	0.0	37.9	19.4	14.3	29.0	40.4	26.0	29.5
Total medium weight	0.0	33.2	26.9	37.7	32.4	28.4	26.8	27.5
Total light weight	100.0	28.9	53.8	48.1	38.6	31.1	47.2	43.0
Total feeder heifers	100.0	100.0	100.0	100.0	100.0	100.0	100.0	100.0
Feeder heifers 1100 pounds (500 kilograms) and over	0.0	39.0	14.3	18.8	29.1	31.9	27.0	28.1
Feeder heifers 900 to 1100 pounds (409 to 500 kilograms)	0.0	36.0	23.8	40.6	33.7	33.1	28.5	29.7
Feeder heifers 900 pounds (409 kilograms) or less	100.0	25.0	61.9	40.6	37.1	34.9	44.5	42.2
Total steers	100.0	100.0	100.0	100.0	100.0	100.0	100.0	100.0
Steers 1250 pounds (568 kilograms) and over	0.0	37.1	23.5	11.1	28.8	43.0	25.5	30.1
Steers 1000 to 1250 pounds (455 to 568 kilograms)	0.0	31.1	29.4	35.6	31.4	27.0	26.0	26.6
Steers 1000 pounds (455 kilograms) or less	100.0	31.8	47.1	53.3	39.7	30.0	48.5	43.4
Feeders on finishing ration	0.0	53.9	23.7	45.5	45.0	69.5	45.0	50.6
Feeders under 21 months
	Manitoba	Saskat- chewan	Alberta	British Columbia	Western Provinces	Canada		
	percent							
Total feeders	100.0	100.0	100.0	100.0	100.0	100.0	100.0	
Total heavy weight	12.7	11.6	23.7	5.4	20.3	22.5		
Total medium weight	15.4	14.6	30.9	12.7	26.6	26.8		
Total light weight	71.9	73.8	45.4	81.9	53.1	50.7		
Total feeder heifers	100.0	100.0	100.0	100.0	100.0	100.0	100.0	
Feeder heifers 1100 pounds (500 kilograms) and over	11.8	10.2	26.6	10.8	22.9	23.8		
Feeder heifers 900 to 1100 pounds (409 to 500 kilograms)	17.0	15.5	26.5	23.6	24.3	25.2		
Feeder heifers 900 pounds (409 kilograms) or less	71.1	74.2	46.9	65.6	52.8	51.1		
Total steers	100.0	100.0	100.0	100.0	100.0	100.0	100.0	
Steers 1250 pounds (568 kilograms) and over	13.5	12.5	21.0	3.0	18.2	21.5		
Steers 1000 to 1250 pounds (455 to 568 kilograms)	14.0	14.0	35.0	7.6	28.6	28.0		
Steers 1000 pounds (455 kilograms) or less	72.5	73.5	44.0	89.4	53.3	50.5		
Feeders on finishing ration	24.0	27.0	49.0	8.0	42.2	44.2		
Feeders under 21 months		

Table 4
Cattle, supply and demand

	Newfoundland and Labrador	Prince Edward Island	Nova Scotia	New Brunswick	Atlantic Provinces	Canada
thousands of head						
January to June 2003						
Total supply	11.4	102.5	128.5	114.2	356.6	18,933.9
Beginning inventory ¹	9.7	84.0	105.5	90.0	289.2	13,466.0
Calves born	1.7	17.8	23.0	24.2	66.7	4,814.7
Interprovincial imports	0.0	0.7	0.0	0.0	0.7	607.8
International imports	0.0	0.0	0.0	0.0	0.0	45.4
Total demand ¹	11.4	102.5	128.5	114.2	356.6	18,933.9
Slaughter	0.9	10.8	10.2	8.6	30.5	1,693.1
Interprovincial exports	0.0	0.0	8.0	10.1	18.1	607.8
International exports	0.0	4.0	0.1	1.5	5.6	505.6
Deaths and condemnations	0.4	2.2	3.2	2.5	8.3	457.4
Ending inventory ¹	10.1	85.5	107.0	91.5	294.1	15,670.0
July to December 2003						
Total supply	12.1	98.1	122.9	105.4	338.5	17,435.2
Beginning inventory ¹	10.1	85.5	107.0	91.5	294.1	15,670.0
Calves born	2.0	10.7	15.9	13.8	42.4	921.2
Interprovincial imports	0.0	1.9	0.0	0.1	2.0	834.8
International imports	0.0	0.0	0.0	0.0	0.0	9.2
Total demand ¹	12.1	98.1	122.9	105.4	338.5	17,435.2
Slaughter	1.3	11.9	12.8	9.9	35.9	1,881.1
Interprovincial exports	0.0	0.0	1.3	2.3	3.6	834.8
International exports	0.0	0.0	0.0	0.0	0.0	0.0
Deaths and condemnations	0.4	2.2	3.3	3.2	9.1	164.3
Ending inventory ¹	10.4	84.0	105.5	90.0	289.9	14,555.0
January to June 2004						
Total supply	12.1	101.8	129.5	115.2	358.6	19,841.7
Beginning inventory ¹	10.4	84.0	105.5	90.0	289.9	14,555.0
Calves born	1.7	17.4	24.0	25.2	68.3	4,627.6
Interprovincial imports	0.0	0.4	0.0	0.0	0.4	649.8
International imports	0.0	0.0	0.0	0.0	0.0	9.3
Total demand ¹	12.1	101.8	129.5	115.2	358.6	19,841.7
Slaughter	1.0	13.6	11.4	9.3	35.3	2,146.3
Interprovincial exports	0.0	0.0	8.6	11.9	20.5	649.8
International exports	0.0	0.0	0.0	0.0	0.0	0.0
Deaths and condemnations	0.4	2.2	3.5	2.0	8.1	435.6
Ending inventory ¹	10.7	86.0	106.0	92.0	294.7	16,610.0
July to December 2004						
Total supply	12.7	99.4	122.3	105.6	340.0	18,552.4
Beginning inventory ¹	10.7	86.0	106.0	92.0	294.7	16,610.0
Calves born	2.0	12.2	16.3	13.6	44.1	816.3
Interprovincial imports	0.0	1.2	0.0	0.0	1.2	1,116.7
International imports	0.0	0.0	0.0	0.0	0.0	9.4
Total demand ¹	12.7	99.4	122.3	105.6	340.0	18,552.4
Slaughter	1.3	14.0	13.9	10.6	39.8	2,303.4
Interprovincial exports	0.0	0.0	1.1	2.1	3.2	1,116.7
International exports	0.0	0.0	0.0	0.0	0.0	0.0
Deaths and condemnations	0.4	1.9	3.3	2.9	8.5	207.3
Ending inventory ¹	11.0	83.5	104.0	90.0	288.5	14,925.0
January to June 2005						
Total supply	12.9	103.8	128.3	116.2	361.2	20,369.9
Beginning inventory ¹	11.0	83.5	104.0	90.0	288.5	14,925.0
Calves born	1.9	18.1	24.3	26.0	70.3	4,685.9
Interprovincial imports	0.0	2.2	0.0	0.2	2.4	745.9
International imports	0.0	0.0	0.0	0.0	0.0	13.1
Total demand ¹	12.9	103.8	128.3	116.2	361.2	20,369.9
Slaughter	1.1	15.5	11.4	10.1	38.1	2,286.1
Interprovincial exports	0.0	0.0	8.6	11.9	20.5	745.9
International exports	0.0	0.0	0.0	0.0	0.0	0.0
Deaths and condemnations	0.4	1.8	2.8	2.2	7.2	457.9
Ending inventory ¹	11.4	86.5	105.5	92.0	295.4	16,880.0

See footnotes at the end of the table.

Table 4 – continued

Cattle, supply and demand

	Newfoundland and Labrador	Prince Edward Island	Nova Scotia	New Brunswick	Atlantic Provinces	Canada
thousands of head						
July to December 2005						
Total supply	13.5	100.6	121.0	105.1	340.2	18,760.9
Beginning inventory ¹	11.4	86.5	105.5	92.0	295.4	16,880.0
Calves born	2.1	12.6	15.5	13.0	43.2	831.6
Interprovincial imports	0.0	1.5	0.0	0.1	1.6	1,041.3
International imports	0.0	0.0	0.0	0.0	0.0	8.0
Total demand ¹	13.5	100.6	121.0	105.1	340.2	18,760.9
Slaughter	1.4	13.3	14.2	10.1	39.0	2,113.7
Interprovincial exports	0.0	0.0	1.1	2.9	4.0	1,041.3
International exports	0.0	0.0	0.0	0.2	0.2	558.9
Deaths and condemnations	0.4	1.8	3.7	2.9	8.8	392.0
Ending inventory ¹	11.7	85.5	102.0	89.0	288.2	14,655.0
January to June 2006						
Total supply	13.4	103.6	126.8	113.8	357.6	19,791.4
Beginning inventory ¹	11.7	85.5	102.0	89.0	288.2	14,655.0
Calves born	1.7	17.8	24.8	24.8	69.1	4,443.9
Interprovincial imports	0.0	0.3	0.0	0.0	0.3	671.8
International imports	0.0	0.0	0.0	0.0	0.0	20.7
Total demand ¹	13.4	103.6	126.8	113.8	357.6	19,791.4
Slaughter	1.1	14.2	11.0	9.8	36.1	2,025.6
Interprovincial exports	0.0	0.0	8.9	12.4	21.3	671.8
International exports	0.0	0.0	0.0	0.0	0.0	528.0
Deaths and condemnations	0.4	2.4	2.9	2.1	7.8	566.0
Ending inventory ¹	11.9	87.0	104.0	89.5	292.4	16,000.0
July to December 2006						
Total supply	13.8	99.2	119.4	102.4	334.8	17,996.3
Beginning inventory ¹	11.9	87.0	104.0	89.5	292.4	16,000.0
Calves born	1.9	11.3	15.4	12.9	41.5	902.8
Interprovincial imports	0.0	0.9	0.0	0.0	0.9	1,076.2
International imports	0.0	0.0	0.0	0.0	0.0	17.3
Total demand ¹	13.8	99.2	119.4	102.4	334.8	17,996.3
Slaughter	1.4	12.4	13.3	9.3	36.4	1,946.3
Interprovincial exports	0.0	0.0	1.1	2.5	3.6	1,076.2
International exports	0.0	0.0	0.0	0.0	0.0	503.8
Deaths and condemnations	0.4	1.8	3.5	2.6	8.3	315.0
Ending inventory ¹	12.0	85.0	101.5	88.0	286.5	14,155.0
January to June 2007						
Total supply	14.0	104.3	126.3	112.0	356.6	19,547.6
Beginning inventory ¹	12.0	85.0	101.5	88.0	286.5	14,155.0
Calves born	2.0	17.2	24.8	24.0	68.0	4,673.9
Interprovincial imports	0.0	2.1	0.0	0.0	2.1	688.3
International imports	0.0	0.0	0.0	0.0	0.0	30.4
Total demand ¹	14.0	104.3	126.3	112.0	356.6	19,547.6
Slaughter	1.1	13.2	11.2	9.7	35.2	1,953.1
Interprovincial exports	0.0	1.1	9.7	12.8	23.6	688.3
International exports	0.0	0.0	0.0	0.1	0.1	612.5
Deaths and condemnations	0.4	2.5	3.4	2.4	8.7	408.7
Ending inventory ¹	12.5	87.5	102.0	87.0	289.0	15,885.0
July to December 2007						
Total supply	14.5	96.0	116.2	98.0	324.7	17,649.7
Beginning inventory ¹	12.5	87.5	102.0	87.0	289.0	15,885.0
Calves born	2.0	8.5	14.2	11.0	35.7	867.3
Interprovincial imports	0.0	0.0	0.0	0.0	0.0	874.4
International imports	0.0	0.0	0.0	0.0	0.0	23.0
Total demand ¹	14.5	96.0	116.2	98.0	324.7	17,649.7
Slaughter	1.5	10.5	11.6	8.3	31.9	1,868.3
Interprovincial exports	0.0	6.0	0.2	5.2	11.4	874.4
International exports	0.0	0.0	0.0	0.5	0.5	799.0
Deaths and condemnations	0.5	2.5	3.4	3.0	9.4	213.0
Ending inventory ¹	12.5	77.0	101.0	81.0	271.5	13,895.0

See footnotes at the end of the table.

Table 4 – continued

Cattle, supply and demand

	Newfoundland and Labrador	Prince Edward Island	Nova Scotia	New Brunswick	Atlantic Provinces	Canada
thousands of head						
January to June 2008						
Total supply	14.3	94.4	125.3	105.4	339.4	18,905.4
Beginning inventory ¹	12.5	77.0	101.0	81.0	271.5	13,895.0
Calves born	1.8	14.1	24.3	24.4	64.6	4,449.1
Interprovincial imports	0.0	3.3	0.0	0.0	3.3	532.5
International imports	0.0	0.0	0.0	0.0	0.0	28.8
Total demand ¹	14.3	94.4	125.3	105.4	339.4	18,905.4
Slaughter	1.4	10.3	10.2	8.1	30.0	1,871.0
Interprovincial exports	0.0	1.3	8.5	9.9	19.7	532.5
International exports	0.0	0.3	0.1	0.5	0.9	865.5
Deaths and condemnations	0.6	2.5	3.5	2.4	9.0	441.4
Ending inventory ¹	12.3	80.0	103.0	84.5	279.8	15,195.0
thousands of head						
January to June 2003						
Total supply	1,775.7	2,657.3	4,789.6	18,933.9		
Beginning inventory ¹	1,303.0	2,087.8	3,680.0	13,466.0		
Calves born	382.2	437.2	886.1	4,814.7		
Interprovincial imports	61.5	123.8	186.0	607.8		
International imports	29.0	8.5	37.5	45.4		
Total demand ¹	1,775.7	2,657.3	4,789.6	18,933.9		
Slaughter	232.4	296.8	559.7	1,693.1		
Interprovincial exports	28.4	34.7	81.2	607.8		
International exports	36.2	111.3	153.1	505.6		
Deaths and condemnations	58.7	53.6	120.6	457.4		
Ending inventory ¹	1,420.0	2,160.9	3,875.0	15,670.0		
July to December 2003						
Total supply	1,707.1	2,513.3	4,558.9	17,435.2		
Beginning inventory ¹	1,420.0	2,160.9	3,875.0	15,670.0		
Calves born	218.3	220.0	480.7	921.2		
Interprovincial imports	60.1	132.0	194.1	834.8		
International imports	8.7	0.4	9.1	9.2		
Total demand ¹	1,707.1	2,513.3	4,558.9	17,435.2		
Slaughter	248.9	350.3	635.1	1,881.1		
Interprovincial exports	10.8	0.1	14.5	834.8		
International exports	0.0	0.0	0.0	0.0		
Deaths and condemnations	27.4	37.8	74.3	164.3		
Ending inventory ¹	1,420.0	2,125.1	3,835.0	14,555.0		
January to June 2004						
Total supply	1,845.7	2,642.8	4,847.1	19,841.7		
Beginning inventory ¹	1,420.0	2,125.1	3,835.0	14,555.0		
Calves born	342.9	372.3	783.5	4,627.6		
Interprovincial imports	76.8	142.1	219.3	649.8		
International imports	6.0	3.3	9.3	9.3		
Total demand ¹	1,845.7	2,642.8	4,847.1	19,841.7		
Slaughter	257.0	387.0	679.3	2,146.3		
Interprovincial exports	29.3	21.8	71.6	649.8		
International exports	0.0	0.0	0.0	0.0		
Deaths and condemnations	44.4	53.7	106.2	435.6		
Ending inventory ¹	1,515.0	2,180.3	3,990.0	16,610.0		

See footnotes at the end of the table.

Table 4 – continued

Cattle, supply and demand

	Quebec	Ontario	Eastern Provinces	Canada
thousands of head				
July to December 2004				
Total supply	1,776.6	2,496.2	4,612.8	18,552.4
Beginning inventory ¹	1,515.0	2,180.3	3,990.0	16,610.0
Calves born	198.7	164.5	407.3	816.3
Interprovincial imports	58.0	146.9	206.1	1,116.7
International imports	4.9	4.5	9.4	9.4
Total demand ¹	1,776.6	2,496.2	4,612.8	18,552.4
Slaughter	293.6	405.4	738.8	2,303.4
Interprovincial exports	30.1	0.1	33.4	1,116.7
International exports	0.0	0.0	0.0	0.0
Deaths and condemnations	37.9	39.2	85.6	207.3
Ending inventory ¹	1,415.0	2,051.5	3,755.0	14,925.0
January to June 2005				
Total supply	1,808.3	2,621.6	4,791.1	20,369.9
Beginning inventory ¹	1,415.0	2,051.5	3,755.0	14,925.0
Calves born	314.7	434.4	819.4	4,685.9
Interprovincial imports	68.6	132.7	203.7	745.9
International imports	10.0	3.0	13.0	13.1
Total demand ¹	1,808.3	2,621.6	4,791.1	20,369.9
Slaughter	280.9	408.7	727.7	2,286.1
Interprovincial exports	28.0	5.5	54.0	745.9
International exports	0.0	0.0	0.0	0.0
Deaths and condemnations	44.4	52.8	104.4	457.9
Ending inventory ¹	1,455.0	2,154.6	3,905.0	16,880.0
July to December 2005				
Total supply	1,741.8	2,489.7	4,571.7	18,760.9
Beginning inventory ¹	1,455.0	2,154.6	3,905.0	16,880.0
Calves born	198.4	152.5	394.1	831.6
Interprovincial imports	82.2	180.8	264.6	1,041.3
International imports	6.2	1.8	8.0	8.0
Total demand ¹	1,741.8	2,489.7	4,571.7	18,760.9
Slaughter	272.3	387.0	698.3	2,113.7
Interprovincial exports	31.5	25.5	61.0	1,041.3
International exports	15.3	35.2	50.7	558.9
Deaths and condemnations	37.7	60.2	106.7	392.0
Ending inventory ¹	1,385.0	1,981.8	3,655.0	14,655.0
January to June 2006				
Total supply	1,774.4	2,535.8	4,667.8	19,791.4
Beginning inventory ¹	1,385.0	1,981.8	3,655.0	14,655.0
Calves born	318.4	410.7	798.2	4,443.9
Interprovincial imports	63.6	132.6	196.5	671.8
International imports	7.4	10.7	18.1	20.7
Total demand ¹	1,774.4	2,535.8	4,667.8	19,791.4
Slaughter	276.9	392.3	705.3	2,025.6
Interprovincial exports	23.2	23.8	68.3	671.8
International exports	10.0	28.3	38.3	528.0
Deaths and condemnations	39.3	58.8	105.9	566.0
Ending inventory ¹	1,425.0	2,032.6	3,750.0	16,000.0
July to December 2006				
Total supply	1,724.6	2,345.9	4,405.3	17,996.3
Beginning inventory ¹	1,425.0	2,032.6	3,750.0	16,000.0
Calves born	210.5	145.5	397.5	902.8
Interprovincial imports	77.6	162.3	240.8	1,076.2
International imports	11.5	5.5	17.0	17.3
Total demand ¹	1,724.6	2,345.9	4,405.3	17,996.3
Slaughter	269.8	366.3	672.5	1,946.3
Interprovincial exports	36.2	4.8	44.6	1,076.2
International exports	15.8	23.9	39.7	503.8
Deaths and condemnations	37.8	47.4	93.5	315.0
Ending inventory ¹	1,365.0	1,903.5	3,555.0	14,155.0

See footnotes at the end of the table.

Table 4 – continued

Cattle, supply and demand

	Quebec	Ontario	Eastern Provinces	Canada
thousands of head				
January to June 2007				
Total supply	1,735.1	2,442.7	4,534.4	19,547.6
Beginning inventory ¹	1,365.0	1,903.5	3,555.0	14,155.0
Calves born	318.9	448.4	835.3	4,673.9
Interprovincial imports	39.4	72.8	114.3	688.3
International imports	11.8	18.0	29.8	30.4
Total demand ¹	1,735.1	2,442.7	4,534.4	19,547.6
Slaughter	257.3	379.3	671.8	1,953.1
Interprovincial exports	17.1	24.5	65.2	688.3
International exports	26.7	37.2	64.0	612.5
Deaths and condemnations	39.0	45.7	93.4	408.7
Ending inventory ¹	1,395.0	1,956.0	3,640.0	15,885.0
July to December 2007				
Total supply	1,703.1	2,298.6	4,326.4	17,649.7
Beginning inventory ¹	1,395.0	1,956.0	3,640.0	15,885.0
Calves born	206.8	195.3	437.8	867.3
Interprovincial imports	90.3	135.7	226.0	874.4
International imports	11.0	11.6	22.6	23.0
Total demand ¹	1,703.1	2,298.6	4,326.4	17,649.7
Slaughter	240.3	325.3	597.5	1,868.3
Interprovincial exports	35.8	8.5	55.7	874.4
International exports	50.5	49.5	100.5	799.0
Deaths and condemnations	31.5	31.8	72.7	213.0
Ending inventory ¹	1,345.0	1,883.5	3,500.0	13,895.0
January to June 2008				
Total supply	1,720.7	2,386.0	4,446.1	18,905.4
Beginning inventory ¹	1,345.0	1,883.5	3,500.0	13,895.0
Calves born	314.3	433.8	812.7	4,449.1
Interprovincial imports	49.4	54.6	107.3	532.5
International imports	12.0	14.1	26.1	28.8
Total demand ¹	1,720.7	2,386.0	4,446.1	18,905.4
Slaughter	227.9	318.3	576.2	1,871.0
Interprovincial exports	17.1	24.5	61.3	532.5
International exports	61.5	118.1	180.5	865.5
Deaths and condemnations	39.2	44.9	93.1	441.4
Ending inventory ¹	1,375.0	1,880.2	3,535.0	15,195.0

	Manitoba	Saskat- chewan	Alberta	British Columbia	Western Provinces	Canada
thousands of head						
January to June 2003						
Total supply	1,859.2	3,799.4	7,448.1	1,037.6	14,144.3	18,933.9
Beginning inventory ¹	1,250.0	2,543.0	5,310.0	683.0	9,786.0	13,466.0
Calves born	588.5	1,217.3	1,798.9	323.9	3,928.6	4,814.7
Interprovincial imports	20.5	39.0	337.2	25.1	421.8	607.8
International imports	0.2	0.1	2.0	5.6	7.9	45.4
Total demand ¹	1,859.2	3,799.4	7,448.1	1,037.6	14,144.3	18,933.9
Slaughter	20.6	118.8	969.6	24.4	1,133.4	1,693.1
Interprovincial exports	98.7	293.3	79.0	55.6	526.6	607.8
International exports	97.0	74.2	139.7	41.6	352.5	505.6
Deaths and condemnations	52.9	93.1	159.8	31.0	336.8	457.4
Ending inventory ¹	1,590.0	3,220.0	6,100.0	885.0	11,795.0	15,670.0
July to December 2003						
Total supply	1,689.3	3,413.2	6,825.0	948.8	12,876.3	17,435.2
Beginning inventory ¹	1,590.0	3,220.0	6,100.0	885.0	11,795.0	15,670.0
Calves born	59.8	135.8	194.6	50.3	440.5	921.2
Interprovincial imports	39.4	57.4	530.4	13.5	640.7	834.8
International imports	0.1	0.0	0.0	0.0	0.1	9.2
Total demand ¹	1,689.3	3,413.2	6,825.0	948.8	12,876.3	17,435.2
Slaughter	19.6	150.9	1,050.5	25.0	1,246.0	1,881.1
Interprovincial exports	206.5	386.8	55.0	172.0	820.3	834.8
International exports	0.0	0.0	0.0	0.0	0.0	0.0
Deaths and condemnations	13.2	20.5	44.5	11.8	90.0	164.3
Ending inventory ¹	1,450.0	2,855.0	5,675.0	740.0	10,720.0	14,555.0

See footnotes at the end of the table.

Table 4 – continued

Cattle, supply and demand

	Manitoba	Saskat- chewan	Alberta	British Columbia	Western Provinces	Canada
	thousands of head					
January to June 2004						
Total supply	1,943.6	4,123.1	7,848.6	1,079.3	14,994.6	19,841.7
Beginning inventory ¹	1,450.0	2,855.0	5,675.0	740.0	10,720.0	14,555.0
Calves born	469.5	1,248.9	1,813.9	311.8	3,844.1	4,627.6
Interprovincial imports	24.1	19.2	359.7	27.5	430.5	649.8
International imports	0.0	0.0	0.0	0.0	0.0	9.3
Total demand ¹	1,943.6	4,123.1	7,848.6	1,079.3	14,994.6	19,841.7
Slaughter	34.0	169.3	1,232.0	31.7	1,467.0	2,146.3
Interprovincial exports	134.4	320.5	55.7	67.6	578.2	649.8
International exports	0.0	0.0	0.0	0.0	0.0	0.0
Deaths and condemnations	45.2	93.3	160.9	30.0	329.4	435.6
Ending inventory ¹	1,730.0	3,540.0	6,400.0	950.0	12,620.0	16,610.0
July to December 2004						
Total supply	1,814.3	3,784.2	7,329.1	1,012.0	13,939.6	18,552.4
Beginning inventory ¹	1,730.0	3,540.0	6,400.0	950.0	12,620.0	16,610.0
Calves born	51.0	185.1	137.9	35.0	409.0	816.3
Interprovincial imports	33.3	59.1	791.2	27.0	910.6	1,116.7
International imports	0.0	0.0	0.0	0.0	0.0	9.4
Total demand ¹	1,814.3	3,784.2	7,329.1	1,012.0	13,939.6	18,552.4
Slaughter	26.8	223.7	1,280.2	33.9	1,564.6	2,303.4
Interprovincial exports	282.7	491.4	58.9	250.3	1,083.3	1,116.7
International exports	0.0	0.0	0.0	0.0	0.0	0.0
Deaths and condemnations	14.8	29.1	60.0	17.8	121.7	207.3
Ending inventory ¹	1,490.0	3,040.0	5,930.0	710.0	11,170.0	14,925.0
January to June 2005						
Total supply	2,035.2	4,275.3	8,221.9	1,046.4	15,578.8	20,369.9
Beginning inventory ¹	1,490.0	3,040.0	5,930.0	710.0	11,170.0	14,925.0
Calves born	522.9	1,205.9	1,844.2	293.5	3,866.5	4,685.9
Interprovincial imports	22.2	29.4	447.7	42.9	542.2	745.9
International imports	0.1	0.0	0.0	0.0	0.1	13.1
Total demand ¹	2,035.2	4,275.3	8,221.9	1,046.4	15,578.8	20,369.9
Slaughter	39.2	206.0	1,269.7	43.5	1,558.4	2,286.1
Interprovincial exports	209.1	344.7	80.3	57.8	691.9	745.9
International exports	0.0	0.0	0.0	0.0	0.0	0.0
Deaths and condemnations	51.9	99.6	171.9	30.1	353.5	457.9
Ending inventory ¹	1,735.0	3,625.0	6,700.0	915.0	12,975.0	16,880.0
July to December 2005						
Total supply	1,845.5	3,902.7	7,468.4	972.6	14,189.2	18,760.9
Beginning inventory ¹	1,735.0	3,625.0	6,700.0	915.0	12,975.0	16,880.0
Calves born	70.6	207.8	127.1	32.0	437.5	831.6
Interprovincial imports	39.9	69.9	641.3	25.6	776.7	1,041.3
International imports	0.0	0.0	0.0	0.0	0.0	8.0
Total demand ¹	1,845.5	3,902.7	7,468.4	972.6	14,189.2	18,760.9
Slaughter	35.0	206.4	1,130.6	43.4	1,415.4	2,113.7
Interprovincial exports	175.2	492.5	68.2	244.4	980.3	1,041.3
International exports	110.5	177.4	213.4	6.9	508.2	558.9
Deaths and condemnations	34.8	76.4	156.2	17.9	285.3	392.0
Ending inventory ¹	1,490.0	2,950.0	5,900.0	660.0	11,000.0	14,655.0
January to June 2006						
Total supply	2,012.5	4,224.8	7,921.5	964.8	15,123.6	19,791.4
Beginning inventory ¹	1,490.0	2,950.0	5,900.0	660.0	11,000.0	14,655.0
Calves born	499.0	1,190.4	1,693.4	262.9	3,645.7	4,443.9
Interprovincial imports	23.5	84.4	328.1	39.3	475.3	671.8
International imports	0.0	0.0	0.0	2.6	2.6	20.7
Total demand ¹	2,012.5	4,224.8	7,921.5	964.8	15,123.6	19,791.4
Slaughter	38.3	223.0	1,016.4	42.6	1,320.3	2,025.6
Interprovincial exports	147.8	334.8	87.5	33.4	603.5	671.8
International exports	80.5	86.2	284.8	38.2	489.7	528.0
Deaths and condemnations	65.9	130.8	232.8	30.6	460.1	566.0
Ending inventory ¹	1,680.0	3,450.0	6,300.0	820.0	12,250.0	16,000.0

See footnotes at the end of the table.

Table 4 – continued

Cattle, supply and demand

	Manitoba	Saskatchewan	Alberta	British Columbia	Western Provinces	Canada
thousands of head						
July to December 2006						
Total supply	1,795.5	3,749.2	7,174.2	872.1	13,591.0	17,996.3
Beginning inventory ¹	1,680.0	3,450.0	6,300.0	820.0	12,250.0	16,000.0
Calves born	69.0	228.9	179.0	28.4	505.3	902.8
Interprovincial imports	46.4	70.2	695.2	23.6	835.4	1,076.2
International imports	0.1	0.1	0.0	0.1	0.3	17.3
Total demand ¹	1,795.5	3,749.2	7,174.2	872.1	13,591.0	17,996.3
Slaughter	25.4	197.8	1,018.4	32.2	1,273.8	1,946.3
Interprovincial exports	280.0	484.4	78.6	188.6	1,031.6	1,076.2
International exports	88.8	75.9	277.4	22.0	464.1	503.8
Deaths and condemnations	26.3	61.1	119.8	14.3	221.5	315.0
Ending inventory ¹	1,375.0	2,930.0	5,680.0	615.0	10,600.0	14,155.0
January to June 2007						
Total supply	1,877.0	4,193.2	8,008.0	935.0	15,013.2	19,547.6
Beginning inventory ¹	1,375.0	2,930.0	5,680.0	615.0	10,600.0	14,155.0
Calves born	474.5	1,215.0	1,864.0	285.1	3,838.6	4,673.9
Interprovincial imports	27.4	48.0	463.8	34.8	574.0	688.3
International imports	0.1	0.2	0.2	0.1	0.6	30.4
Total demand ¹	1,877.0	4,193.2	8,008.0	935.0	15,013.2	19,547.6
Slaughter	29.1	192.3	1,027.4	32.5	1,281.3	1,953.1
Interprovincial exports	154.0	350.0	83.5	35.6	623.1	688.3
International exports	113.7	122.9	272.1	39.8	548.5	612.5
Deaths and condemnations	40.2	98.0	155.0	22.1	315.3	408.7
Ending inventory ¹	1,540.0	3,430.0	6,470.0	805.0	12,245.0	15,885.0
July to December 2007						
Total supply	1,683.2	3,668.8	7,094.0	877.3	13,323.3	17,649.7
Beginning inventory ¹	1,540.0	3,430.0	6,470.0	805.0	12,245.0	15,885.0
Calves born	81.0	187.4	117.0	44.1	429.5	867.3
Interprovincial imports	62.2	51.3	506.9	28.0	648.4	874.4
International imports	0.0	0.1	0.1	0.2	0.4	23.0
Total demand ¹	1,683.2	3,668.8	7,094.0	877.3	13,323.3	17,649.7
Slaughter	23.3	183.5	1,035.9	28.1	1,270.8	1,868.3
Interprovincial exports	124.2	391.3	103.3	199.9	818.7	874.4
International exports	167.2	184.9	319.1	27.3	698.5	799.0
Deaths and condemnations	13.5	39.1	75.7	12.0	140.3	213.0
Ending inventory ¹	1,355.0	2,870.0	5,560.0	610.0	10,395.0	13,895.0
January to June 2008						
Total supply	1,883.5	4,079.7	7,601.6	894.5	14,459.3	18,905.4
Beginning inventory ¹	1,355.0	2,870.0	5,560.0	610.0	10,395.0	13,895.0
Calves born	503.2	1,167.6	1,707.7	257.9	3,636.4	4,449.1
Interprovincial imports	23.0	42.0	333.7	26.5	425.2	532.5
International imports	2.3	0.1	0.2	0.1	2.7	28.8
Total demand ¹	1,883.5	4,079.7	7,601.6	894.5	14,459.3	18,905.4
Slaughter	27.4	171.9	1,065.1	30.4	1,294.8	1,871.0
Interprovincial exports	129.1	241.5	76.0	24.6	471.2	532.5
International exports	171.9	183.7	262.0	67.4	685.0	865.5
Deaths and condemnations	40.1	97.6	188.5	22.1	348.3	441.4
Ending inventory ¹	1,515.0	3,385.0	6,010.0	750.0	11,660.0	15,195.0

1. For the January to June period, the beginning inventory is dated January 1 and the ending inventory is dated July 1. For the July to December period, the beginning inventory is dated July 1 and the ending inventory is dated January 1.

Table 5
Cattle production - Canada

	Farm production				Meat production			
	Total slaughter ¹	Exported alive	Imported alive	Farm production	Total slaughter ¹	Average cold dressed weight ²	Total cold dressed weight ²	Edible offal
	thousands of head				kilograms	thousands of tonnes	tonnes	
1978	3,992.5	286.3	47.6	4,231.2	3,992.5	256.5	1,023.97	37,456
1979	3,433.8	199.8	19.9	3,613.7	3,433.8	267.3	917.85	32,219
1980	3,525.7	209.8	22.8	3,712.7	3,525.7	266.3	938.78	33,108
1981	3,691.3	184.6	80.3	3,795.6	3,691.3	265.0	978.15	34,657
1982	3,788.1	317.3	71.5	4,033.9	3,788.1	260.4	986.49	35,579
1983	3,708.8	265.9	77.5	3,897.2	3,708.8	267.7	992.75	34,851
1984	3,565.9	294.2	29.9	3,830.2	3,565.9	266.0	948.41	33,508
1985	3,603.0	334.8	51.5	3,886.3	3,603.0	273.5	985.25	33,867
1986	3,511.4	221.0	60.9	3,671.5	3,511.4	280.6	985.15	33,047
1987	3,194.5	234.0	66.0	3,362.5	3,194.5	285.8	912.97	30,108
1988	3,086.3	461.1	31.8	3,515.6	3,086.3	293.8	906.87	29,079
1989	3,121.0	444.9	39.6	3,526.3	3,121.0	291.1	908.40	29,421
1990	2,892.0	822.5	13.4	3,701.1	2,892.0	296.7	857.93	27,236
1991	2,726.1	840.9	43.2	3,523.8	2,726.1	301.8	822.78	25,657
1992	2,834.8	1,240.4	33.2	4,042.0	2,834.8	302.2	856.66	26,717
1993	2,685.0	1,188.1	48.0	3,825.1	2,685.0	306.3	822.31	25,310
1994	2,727.4	982.6	95.1	3,614.9	2,727.4	316.0	861.86	26,860
1995	2,791.3	1,108.8	78.6	3,821.5	2,791.3	318.1	887.91	28,741
1996	3,143.2	1,481.1	46.8	4,577.5	3,143.2	310.5	976.11	33,102
1997	3,257.7	1,331.8	34.7	4,554.8	3,257.7	321.5	1,047.34	35,103
1998	3,405.5	1,288.7	62.4	4,631.8	3,405.5	334.9	1,140.49	36,710
1999	3,587.9	957.5	182.0	4,363.4	3,587.9	340.7	1,222.42	38,721
2000	3,496.8	938.1	260.1	4,174.8	3,496.8	349.6	1,222.63	39,215
2001	3,461.2	1,251.4	223.3	4,489.3	3,461.2	352.8	1,221.01	38,795
2002	3,529.9	1,542.7	60.6	5,012.0	3,529.9	356.8	1,256.62	39,531
2003	3,224.9	479.2	22.6	3,681.5	3,224.9	360.4	1,162.22	26,058
2004	4,072.5	0.0	7.8	4,064.7	4,072.5	357.7	1,460.08	32,990
2005	4,043.1	545.0	4.9	4,583.2	4,043.1	353.7	1,424.38	44,162
2006	3,643.2	1,012.7	19.1	4,636.8	3,643.2	354.6	1,290.28	32,429
2007	3,491.2	1,401.3	30.6	4,861.9	3,491.2	355.0	1,239.75	37,992

1. Commercial slaughter, federally and provincially inspected slaughter and other commercial slaughter.

2. Not including edible offal.

Table 6
Calves production - Canada

	Farm production				Meat production			
	Total slaughter ¹	Exported alive	Imported alive	Farm production	Total slaughter ¹	Average cold dressed weight ²	Total cold dressed weight ²	Edible offal
	thousands of head				kilograms	thousands of tonnes	tonnes	
1978	771.5	182.3	8.2	945.6	771.5	50.7	39.13	1,575
1979	533.3	169.3	5.6	697.0	533.3	55.5	29.61	1,089
1980	531.3	148.8	4.3	675.8	531.3	60.1	31.93	1,085
1981	561.7	166.7	20.2	708.2	561.7	63.2	35.51	1,147
1982	597.7	187.6	14.9	770.4	597.7	64.7	38.66	1,220
1983	618.8	117.2	12.4	723.6	618.8	64.2	39.71	1,263
1984	651.9	112.7	17.7	746.9	651.9	64.9	42.31	1,331
1985	631.8	46.4	6.1	672.1	631.8	68.9	43.54	1,290
1986	591.6	26.9	10.4	608.1	591.6	72.9	43.09	1,208
1987	509.8	33.4	9.3	533.9	509.8	79.3	40.42	1,041
1988	491.4	46.5	4.9	533.0	491.4	82.4	40.51	1,003
1989	502.9	53.9	1.1	555.7	502.9	86.6	43.53	1,027
1990	462.3	61.1	0.6	522.8	462.3	91.2	42.17	944
1991	426.5	88.3	0.3	514.5	426.5	101.2	43.18	870
1992	397.1	67.0	3.4	460.7	397.1	106.1	42.14	811
1993	347.5	47.3	12.6	382.2	347.5	107.4	37.32	709
1994	336.9	34.5	22.1	349.3	336.9	111.6	37.60	726
1995	354.8	26.8	7.9	373.7	354.8	113.6	40.30	764
1996	363.0	31.9	13.3	381.6	363.0	111.3	40.39	823
1997	373.1	49.0	9.2	412.9	373.1	112.9	42.14	846
1998	349.7	26.7	26.7	349.7	349.7	118.5	41.43	793
1999	347.4	28.6	52.8	323.2	347.4	118.3	41.11	788
2000	339.3	26.7	57.4	308.6	339.3	120.3	40.81	770
2001	343.4	55.8	85.3	313.9	343.4	118.3	40.60	779
2002	320.7	145.4	62.5	403.6	320.7	118.8	38.10	728
2003	349.3	26.4	32.0	343.7	349.3	118.7	41.02	784
2004	377.2	0.0	10.9	366.3	377.2	115.2	43.46	856
2005	356.7	13.9	16.2	354.4	356.7	112.4	40.08	809
2006	328.7	19.1	18.9	328.9	328.7	112.3	36.92	746
2007	330.2	10.2	22.8	317.6	330.2	117.7	38.83	748

1. Commercial slaughter, federally and provincially inspected slaughter and other commercial slaughter.

2. Not including edible offal.

Table 7-1
Cattle by farm type — Canada

	On all cattle operations								Total
	Bulls, 1 year and over	Beef cows	Dairy cows	Heifers			Steers, 1 year and over	Calves, under 1 year	
				Heifers, dairy replacement	Heifers, beef replacement	Heifers, slaughter			
thousands of head									
At January 1									
2002	237.0	4,636.0	1,083.9	507.5	653.7	864.6	1,195.1	4,573.7	13,751.5
2003	239.4	4,752.2	1,065.5	512.3	648.3	805.0	1,173.6	4,269.7	13,466.0
2004	269.5	5,019.4	1,054.9	504.3	687.7	870.5	1,203.3	4,945.4	14,555.0
2005	272.6	5,283.6	1,041.4	517.8	637.8	945.0	1,159.5	5,067.3	14,925.0
2006	264.0	5,247.2	1,019.1	495.1	628.3	986.8	1,146.8	4,867.7	14,655.0
2007	244.6	5,020.1	994.8	480.1	587.1	963.5	1,145.2	4,719.6	14,155.0
2008	246.8	4,981.9	984.5	471.1	595.0	982.9	1,101.6	4,531.2	13,895.0
At July 1									
2002	259.5	4,821.8	1,072.5	513.0	828.0	1,116.8	1,591.6	5,217.7	15,420.9
2003	273.5	4,924.2	1,055.4	504.8	863.8	1,124.5	1,598.2	5,325.6	15,670.0
2004	284.7	5,334.7	1,053.1	522.8	805.4	1,252.6	1,705.2	5,651.5	16,610.0
2005	291.1	5,436.2	1,025.1	507.4	840.9	1,305.8	1,657.9	5,815.6	16,880.0
2006	267.6	5,164.6	1,000.4	506.5	690.8	1,247.4	1,655.3	5,467.4	16,000.0
2007	263.4	5,104.6	979.1	487.7	668.1	1,289.4	1,790.2	5,302.5	15,885.0
2008	261.2	4,862.4	981.8	476.5	654.6	1,175.5	1,576.4	5,206.6	15,195.0

	On dairy operations								Total
	Bulls, 1 year and over	Beef cows	Dairy cows	Heifers			Steers, 1 year and over	Calves, under 1 year	
				Heifers, dairy replacement	Heifers, beef replacement	Heifers, slaughter			
thousands of head									
At January 1									
2002	12.9	0.0	1,083.9	507.5	0.0	11.3	39.9	552.7	2,208.2
2003	12.5	0.0	1,065.5	512.3	0.0	12.5	38.3	519.5	2,160.6
2004	14.2	0.0	1,054.9	504.3	0.0	16.8	53.1	570.1	2,213.4
2005	11.8	0.0	1,041.4	517.8	0.0	9.8	41.8	561.6	2,184.2
2006	9.5	0.0	1,019.1	495.1	0.0	12.1	39.3	519.5	2,094.6
2007	8.6	0.0	994.8	480.1	0.0	12.9	37.5	510.6	2,044.5
2008	9.3	0.0	984.5	471.1	0.0	18.7	42.4	496.5	2,022.5
At July 1									
2002	13.1	0.0	1,072.5	513.0	0.0	17.8	45.5	513.9	2,175.8
2003	13.8	0.0	1,055.4	504.8	0.0	19.1	49.5	524.8	2,167.4
2004	13.1	0.0	1,053.1	522.8	0.0	15.4	44.4	563.3	2,212.1
2005	12.2	0.0	1,025.1	507.4	0.0	18.6	54.4	524.0	2,141.7
2006	9.8	0.0	1,000.4	506.5	0.0	16.7	41.8	486.2	2,061.4
2007	9.2	0.0	979.1	487.7	0.0	12.4	45.0	464.2	1,997.6
2008	9.7	0.0	981.8	476.5	0.0	11.7	42.0	452.7	1,974.4

	On beef operations ¹								Total
	Bulls, 1 year and over	Beef cows	Dairy cows	Heifers			Steers, 1 year and over	Calves, under 1 year	
				Heifers, dairy replacement	Heifers, beef replacement	Heifers, slaughter			
thousands of head									
At January 1									
2002	224.1	4,636.0	0.0	0.0	653.7	853.5	1,155.4	4,021.3	11,544.0
2003	226.9	4,752.2	0.0	0.0	648.3	792.5	1,135.7	3,750.3	11,305.9
2004	255.3	5,019.4	0.0	0.0	687.7	853.8	1,150.1	4,375.7	12,342.0
2005	260.8	5,283.6	0.0	0.0	637.8	935.4	1,117.8	4,505.7	12,741.1
2006	254.5	5,247.2	0.0	0.0	628.3	974.8	1,107.6	4,348.4	12,560.8
2007	236.0	5,020.1	0.0	0.0	587.1	950.6	1,107.9	4,209.0	12,110.7
2008	237.5	4,981.9	0.0	0.0	595.0	964.1	1,059.4	4,034.7	11,872.6
At July 1									
2002	246.4	4,821.8	0.0	0.0	828.0	1,099.0	1,546.3	4,703.8	13,245.3
2003	259.7	4,924.2	0.0	0.0	863.8	1,105.6	1,548.7	4,801.2	13,503.2
2004	271.6	5,334.7	0.0	0.0	805.4	1,237.2	1,660.9	5,088.3	14,398.1
2005	278.9	5,436.2	0.0	0.0	840.9	1,287.2	1,603.7	5,291.8	14,738.7
2006	257.8	5,164.6	0.0	0.0	690.8	1,230.7	1,613.3	4,981.0	13,938.2
2007	254.2	5,104.6	0.0	0.0	668.1	1,277.3	1,745.2	4,838.9	13,888.3
2008	251.5	4,862.4	0.0	0.0	654.6	1,164.0	1,534.3	4,754.0	13,220.8

See footnotes at the end of the table.

Table 7-1 – continued

Cattle by farm type — Canada

	On cow calf operations								
	Bulls, 1 year and over	Beef cows	Dairy cows	Heifers			Steers, 1 year and over	Calves, under 1 year	Total
				Heifers, dairy replacement	Heifers, beef replacement	Heifers, slaughter			
	thousands of head								
At January 1									
2002	210.3	4,347.5	0.0	0.0	591.6	49.9	58.3	3,019.1	8,276.7
2003	211.0	4,424.1	0.0	0.0	584.5	68.1	83.1	2,719.8	8,090.6
2004	238.9	4,680.8	0.0	0.0	618.7	86.0	91.6	3,237.3	8,953.3
2005	241.9	4,916.0	0.0	0.0	584.9	96.5	108.6	3,459.2	9,407.1
2006	236.5	4,888.7	0.0	0.0	573.6	90.5	96.9	3,183.8	9,070.0
2007	219.1	4,670.8	0.0	0.0	538.2	73.5	72.3	3,100.0	8,673.9
2008	220.1	4,619.7	0.0	0.0	541.3	94.3	96.3	2,965.9	8,537.6
At July 1									
2002	217.9	4,266.8	0.0	0.0	700.7	52.3	83.4	4,021.8	9,342.9
2003	226.8	4,277.9	0.0	0.0	708.0	89.2	122.2	4,023.9	9,448.0
2004	223.1	4,405.9	0.0	0.0	645.4	120.0	152.9	4,108.1	9,655.4
2005	231.1	4,529.1	0.0	0.0	689.9	126.2	166.5	4,233.1	9,975.9
2006	218.3	4,396.0	0.0	0.0	572.6	90.0	114.3	4,039.7	9,430.9
2007	212.7	4,286.2	0.0	0.0	539.8	94.3	114.2	3,877.8	9,125.0
2008	208.0	4,038.3	0.0	0.0	517.3	94.0	110.9	3,767.6	8,736.1
On feeder and stocker operations 2									
	Bulls, 1 year and over	Beef cows	Dairy cows	Heifers			Steers, 1 year and over	Calves, under 1 year	Total
				Heifers, dairy replacement	Heifers, beef replacement	Heifers, slaughter			
	thousands of head								
At January 1									
2002	13.8	288.5	0.0	0.0	62.1	276.0	269.0	726.6	1,636.0
2003	15.9	328.1	0.0	0.0	63.8	282.8	325.0	711.6	1,727.2
2004	16.4	338.6	0.0	0.0	69.0	350.2	283.9	819.3	1,877.4
2005	18.9	367.6	0.0	0.0	52.9	356.8	274.6	752.9	1,823.7
2006	18.0	358.5	0.0	0.0	54.7	356.2	287.1	848.0	1,922.5
2007	16.9	349.3	0.0	0.0	48.9	373.0	327.5	750.9	1,866.5
2008	17.4	362.2	0.0	0.0	53.7	407.0	271.6	785.6	1,897.5
At July 1									
2002	28.5	555.0	0.0	0.0	127.3	463.8	587.1	641.4	2,403.1
2003	32.9	646.3	0.0	0.0	155.8	513.9	545.0	701.3	2,595.2
2004	48.5	928.8	0.0	0.0	160.0	551.2	616.5	900.2	3,205.2
2005	47.8	907.1	0.0	0.0	151.0	568.5	609.2	948.7	3,232.3
2006	39.5	768.6	0.0	0.0	118.2	539.7	573.0	827.1	2,866.1
2007	41.5	818.4	0.0	0.0	128.3	560.0	646.0	852.1	3,046.3
2008	43.5	824.1	0.0	0.0	137.3	544.7	610.4	818.7	2,978.7
On feeding operations 3									
	Bulls, 1 year and over	Beef cows	Dairy cows	Heifers			Steers, 1 year and over	Calves, under 1 year	Total
				Heifers, dairy replacement	Heifers, beef replacement	Heifers, slaughter			
	thousands of head								
At January 1									
2002	0.0	0.0	0.0	0.0	0.0	527.6	828.1	275.6	1,631.3
2003	0.0	0.0	0.0	0.0	0.0	441.6	727.6	318.9	1,488.1
2004	0.0	0.0	0.0	0.0	0.0	417.6	774.6	319.1	1,511.3
2005	0.0	0.0	0.0	0.0	0.0	482.1	734.6	293.6	1,510.3
2006	0.0	0.0	0.0	0.0	0.0	528.1	723.6	316.6	1,568.3
2007	0.0	0.0	0.0	0.0	0.0	504.1	708.1	358.1	1,570.3
2008	0.0	0.0	0.0	0.0	0.0	462.8	691.5	283.2	1,437.5
At July 1									
2002	0.0	0.0	0.0	0.0	0.0	582.9	875.8	40.6	1,499.3
2003	0.0	0.0	0.0	0.0	0.0	502.5	881.5	76.0	1,460.0
2004	0.0	0.0	0.0	0.0	0.0	566.0	891.5	80.0	1,537.5
2005	0.0	0.0	0.0	0.0	0.0	592.5	828.0	110.0	1,530.5
2006	0.0	0.0	0.0	0.0	0.0	601.0	926.0	114.2	1,641.2
2007	0.0	0.0	0.0	0.0	0.0	623.0	985.0	109.0	1,717.0
2008	0.0	0.0	0.0	0.0	0.0	525.3	813.0	167.7	1,506.0

1. Excluding small numbers of heifers for slaughter and steers on dairy operations.

2. Farms where cattle are fed on a low energy ration such as hay or pasture.

3. Farms where cattle are fed a high energy ration such as grain as they are fattened for market.

Table 7-2
Cattle by farm type — Atlantic Provinces

	On all cattle operations								Total
	Bulls, 1 year and over	Beef cows	Dairy cows	Heifers			Steers, 1 year and over	Calves, under 1 year	
				Heifers, dairy replacement	Heifers, beef replacement	Heifers, slaughter			
	thousands of head								
At January 1									
2002	3.7	60.5	62.4	29.0	12.7	16.6	28.4	78.7	292.0
2003	3.4	59.7	63.0	29.3	11.8	17.0	27.6	77.4	289.2
2004	3.5	59.4	62.4	29.8	12.2	17.5	27.8	77.3	289.9
2005	3.6	60.6	61.6	30.8	10.8	17.5	26.9	76.7	288.5
2006	3.6	63.2	60.6	30.6	8.8	18.8	26.0	76.6	288.2
2007	3.6	64.1	60.8	30.6	8.1	18.5	25.2	75.6	286.5
2008	3.3	54.4	62.0	31.1	7.5	17.4	22.6	73.2	271.5
At July 1									
2002	3.5	60.3	62.0	29.0	13.0	16.8	29.1	78.7	292.4
2003	3.5	60.2	62.4	29.8	12.8	17.5	29.7	78.2	294.1
2004	3.7	61.7	61.6	30.8	12.4	17.6	27.7	79.2	294.7
2005	3.6	62.7	61.6	30.9	9.9	19.3	28.1	79.3	295.4
2006	3.6	65.1	60.4	31.0	8.3	19.4	26.7	77.9	292.4
2007	3.4	63.6	62.1	31.7	8.1	17.4	25.2	77.5	289.0
2008	3.2	60.4	61.8	31.5	8.1	17.5	22.9	74.4	279.8

	On dairy operations								Total
	Bulls, 1 year and over	Beef cows	Dairy cows	Heifers			Steers, 1 year and over	Calves, under 1 year	
				Heifers, dairy replacement	Heifers, beef replacement	Heifers, slaughter			
	thousands of head								
At January 1									
2002	0.7	0.0	62.4	29.0	0.0	2.4	4.0	25.0	123.5
2003	0.7	0.0	63.0	29.3	0.0	2.5	3.7	24.6	123.8
2004	0.7	0.0	62.4	29.8	0.0	2.6	3.8	24.6	123.9
2005	0.7	0.0	61.6	30.8	0.0	2.6	3.5	24.3	123.5
2006	0.7	0.0	60.6	30.6	0.0	2.9	3.1	24.3	122.2
2007	0.7	0.0	60.8	30.6	0.0	2.9	2.9	24.0	121.9
2008	0.6	0.0	62.0	31.1	0.0	2.7	2.9	22.7	122.0
At July 1									
2002	0.7	0.0	62.0	29.0	0.0	0.9	1.7	23.2	117.5
2003	0.7	0.0	62.4	29.8	0.0	1.0	1.8	22.9	118.6
2004	0.7	0.0	61.6	30.8	0.0	1.0	1.5	23.3	118.9
2005	0.7	0.0	61.6	30.9	0.0	0.6	1.5	21.2	116.5
2006	0.7	0.0	60.4	31.0	0.0	0.6	1.4	20.6	114.7
2007	0.7	0.0	62.1	31.7	0.0	0.5	1.1	21.3	117.4
2008	0.6	0.0	61.8	31.5	0.0	0.6	1.0	19.7	115.2

	On beef operations ¹								Total
	Bulls, 1 year and over	Beef cows	Dairy cows	Heifers			Steers, 1 year and over	Calves, under 1 year	
				Heifers, dairy replacement	Heifers, beef replacement	Heifers, slaughter			
	thousands of head								
At January 1									
2002	3.0	60.5	0.0	0.0	12.7	14.2	24.5	53.8	168.7
2003	2.7	59.7	0.0	0.0	11.8	14.4	24.0	52.9	165.5
2004	2.8	59.4	0.0	0.0	12.2	14.9	24.1	52.9	166.3
2005	2.9	60.6	0.0	0.0	10.8	14.9	23.4	52.4	165.0
2006	2.9	63.2	0.0	0.0	8.8	15.9	22.9	52.3	166.0
2007	2.9	64.1	0.0	0.0	8.1	15.6	22.3	51.7	164.7
2008	2.7	54.4	0.0	0.0	7.5	14.6	19.7	50.5	149.4
At July 1									
2002	2.8	60.3	0.0	0.0	13.0	15.9	27.4	55.5	174.9
2003	2.8	60.2	0.0	0.0	12.8	16.6	27.9	55.4	175.7
2004	3.0	61.7	0.0	0.0	12.4	16.6	26.1	55.9	175.7
2005	2.9	62.7	0.0	0.0	9.9	18.7	26.6	58.1	178.9
2006	2.9	65.1	0.0	0.0	8.3	18.8	25.2	57.3	177.6
2007	2.7	63.6	0.0	0.0	8.1	16.9	24.2	56.2	171.7
2008	2.6	60.4	0.0	0.0	8.1	17.0	21.9	54.7	164.7

See footnotes at the end of the table.

Table 7-2 – continued

Cattle by farm type — Atlantic Provinces

	On cow calf operations								Total
	Bulls, 1 year and over	Beef cows	Dairy cows	Heifers			Steers, 1 year and over	Calves, under 1 year	
				Heifers, dairy replacement	Heifers, beef replacement	Heifers, slaughter			
thousands of head									
At January 1									
2002	2.3	46.6	0.0	0.0	10.3	1.3	1.2	34.8	96.5
2003	2.0	46.0	0.0	0.0	9.4	1.8	2.0	34.2	95.4
2004	2.1	45.7	0.0	0.0	9.8	2.0	2.0	34.2	95.8
2005	2.2	46.7	0.0	0.0	8.4	2.0	1.8	33.9	95.0
2006	2.1	48.7	0.0	0.0	6.3	2.2	1.7	33.8	94.8
2007	2.1	49.4	0.0	0.0	5.5	2.2	1.5	33.4	94.1
2008	2.2	44.6	0.0	0.0	5.8	2.0	1.5	32.4	88.5
At July 1									
2002	1.8	41.0	0.0	0.0	8.5	1.3	1.6	44.3	98.5
2003	1.8	40.9	0.0	0.0	8.3	1.6	2.1	43.9	98.6
2004	2.0	42.0	0.0	0.0	7.8	1.6	1.8	44.3	99.5
2005	1.8	42.6	0.0	0.0	5.2	2.9	4.6	45.1	102.2
2006	1.8	44.3	0.0	0.0	3.4	3.0	4.2	44.5	101.2
2007	1.6	43.2	0.0	0.0	3.3	2.8	3.2	45.2	99.3
2008	1.6	41.1	0.0	0.0	3.6	2.8	3.1	43.2	95.4
	On feeder and stocker operations 2								Total
	Bulls, 1 year and over	Beef cows	Dairy cows	Heifers			Steers, 1 year and over	Calves, under 1 year	
				Heifers, dairy replacement	Heifers, beef replacement	Heifers, slaughter			
thousands of head									
At January 1									
2002	0.7	13.9	0.0	0.0	2.4	6.3	6.7	16.9	46.9
2003	0.7	13.7	0.0	0.0	2.4	6.0	5.4	16.6	44.8
2004	0.7	13.7	0.0	0.0	2.4	6.3	5.5	16.6	45.2
2005	0.7	13.9	0.0	0.0	2.4	6.3	5.0	16.4	44.7
2006	0.8	14.5	0.0	0.0	2.5	7.1	4.6	16.4	45.9
2007	0.8	14.7	0.0	0.0	2.6	6.8	4.2	16.2	45.3
2008	0.5	9.8	0.0	0.0	1.7	6.6	4.2	15.6	38.4
At July 1									
2002	1.0	19.3	0.0	0.0	4.5	7.2	10.0	10.1	52.1
2003	1.0	19.3	0.0	0.0	4.5	7.5	10.3	10.0	52.6
2004	1.0	19.7	0.0	0.0	4.6	7.5	8.8	10.1	51.7
2005	1.1	20.1	0.0	0.0	4.7	8.3	13.0	9.5	56.7
2006	1.1	20.8	0.0	0.0	4.9	8.3	12.0	9.3	56.4
2007	1.1	20.4	0.0	0.0	4.8	7.6	9.0	9.5	52.4
2008	1.0	19.3	0.0	0.0	4.5	7.7	8.8	9.0	50.3
	On feeding operations 3								Total
	Bulls, 1 year and over	Beef cows	Dairy cows	Heifers			Steers, 1 year and over	Calves, under 1 year	
				Heifers, dairy replacement	Heifers, beef replacement	Heifers, slaughter			
thousands of head									
At January 1									
2002	0.0	0.0	0.0	0.0	0.0	6.6	16.6	2.1	25.3
2003	0.0	0.0	0.0	0.0	0.0	6.6	16.6	2.1	25.3
2004	0.0	0.0	0.0	0.0	0.0	6.6	16.6	2.1	25.3
2005	0.0	0.0	0.0	0.0	0.0	6.6	16.6	2.1	25.3
2006	0.0	0.0	0.0	0.0	0.0	6.6	16.6	2.1	25.3
2007	0.0	0.0	0.0	0.0	0.0	6.6	16.6	2.1	25.3
2008	0.0	0.0	0.0	0.0	0.0	6.0	14.0	2.5	22.5
At July 1									
2002	0.0	0.0	0.0	0.0	0.0	7.4	15.8	1.1	24.3
2003	0.0	0.0	0.0	0.0	0.0	7.5	15.5	1.5	24.5
2004	0.0	0.0	0.0	0.0	0.0	7.5	15.5	1.5	24.5
2005	0.0	0.0	0.0	0.0	0.0	7.5	9.0	3.5	20.0
2006	0.0	0.0	0.0	0.0	0.0	7.5	9.0	3.5	20.0
2007	0.0	0.0	0.0	0.0	0.0	6.5	12.0	1.5	20.0
2008	0.0	0.0	0.0	0.0	0.0	6.5	10.0	2.5	19.0

1. Excluding small numbers of heifers for slaughter and steers on dairy operations.

2. Farms where cattle are fed on a low energy ration such as hay or pasture.

3. Farms where cattle are fed a high energy ration such as grain as they are fattened for market.

Table 7-3
Cattle by farm type — Quebec

	On all cattle operations								Total
	Bulls, 1 year and over	Beef cows	Dairy cows	Heifers			Steers, 1 year and over	Calves, under 1 year	
				Heifers, dairy replacement	Heifers, beef replacement	Heifers, slaughter			
thousands of head									
At January 1									
2002	14.8	207.5	418.0	176.0	32.0	20.0	71.7	346.0	1,286.0
2003	14.5	218.0	403.0	172.0	32.5	19.0	63.0	381.0	1,303.0
2004	16.0	231.0	397.0	169.0	30.0	27.0	79.0	471.0	1,420.0
2005	15.5	238.0	399.0	178.0	26.0	27.0	100.0	431.5	1,415.0
2006	14.4	225.0	390.0	182.0	21.0	29.0	98.0	425.6	1,385.0
2007	13.0	224.0	384.0	176.0	20.0	31.0	109.0	408.0	1,365.0
2008	13.5	224.0	376.0	163.0	24.0	26.0	96.0	422.5	1,345.0
At July 1									
2002	15.0	213.5	408.0	176.5	33.0	23.0	89.0	412.0	1,370.0
2003	15.5	222.0	395.0	167.0	33.0	25.0	92.0	470.5	1,420.0
2004	16.0	236.0	410.0	181.0	34.0	28.0	112.0	498.0	1,515.0
2005	16.0	233.0	382.0	176.0	30.5	31.0	108.5	478.0	1,455.0
2006	13.5	226.5	382.5	180.0	25.0	30.0	110.0	457.5	1,425.0
2007	14.0	227.0	367.0	166.0	25.0	37.0	111.0	448.0	1,395.0
2008	13.5	225.0	367.0	157.0	27.0	33.5	111.0	441.0	1,375.0

	On dairy operations								Total
	Bulls, 1 year and over	Beef cows	Dairy cows	Heifers			Steers, 1 year and over	Calves, under 1 year	
				Heifers, dairy replacement	Heifers, beef replacement	Heifers, slaughter			
thousands of head									
At January 1									
2002	4.6	0.0	418.0	176.0	0.0	1.3	6.3	203.6	809.8
2003	4.4	0.0	403.0	172.0	0.0	1.2	1.6	210.5	792.7
2004	5.6	0.0	397.0	169.0	0.0	2.9	4.4	230.1	809.0
2005	4.2	0.0	399.0	178.0	0.0	1.2	9.2	229.3	820.9
2006	2.9	0.0	390.0	182.0	0.0	2.9	6.3	225.2	809.3
2007	2.7	0.0	384.0	176.0	0.0	2.3	12.0	208.1	785.1
2008	3.4	0.0	376.0	163.0	0.0	2.8	5.7	210.5	761.4
At July 1									
2002	4.3	0.0	408.0	176.5	0.0	2.9	4.4	200.1	796.2
2003	5.0	0.0	395.0	167.0	0.0	4.0	9.9	219.0	799.9
2004	4.8	0.0	410.0	181.0	0.0	1.7	8.4	229.6	835.5
2005	4.0	0.0	382.0	176.0	0.0	2.5	11.6	214.9	791.0
2006	2.8	0.0	382.5	180.0	0.0	4.4	9.7	209.3	788.7
2007	2.9	0.0	367.0	166.0	0.0	1.3	6.7	197.6	741.5
2008	3.0	0.0	367.0	157.0	0.0	2.8	6.5	186.9	723.2

	On beef operations ¹								Total
	Bulls, 1 year and over	Beef cows	Dairy cows	Heifers			Steers, 1 year and over	Calves, under 1 year	
				Heifers, dairy replacement	Heifers, beef replacement	Heifers, slaughter			
thousands of head									
At January 1									
2002	10.2	207.5	0.0	0.0	32.0	18.7	65.4	142.4	476.2
2003	10.1	218.0	0.0	0.0	32.5	17.8	61.4	170.5	510.3
2004	10.4	231.0	0.0	0.0	30.0	24.1	74.6	241.0	611.1
2005	11.3	238.0	0.0	0.0	26.0	25.9	90.8	202.2	594.2
2006	11.5	225.0	0.0	0.0	21.0	26.2	91.7	200.4	575.8
2007	10.3	224.0	0.0	0.0	20.0	28.7	97.1	199.9	580.0
2008	10.1	224.0	0.0	0.0	24.0	23.2	90.4	212.0	583.7
At July 1									
2002	10.7	213.5	0.0	0.0	33.0	20.1	84.7	212.0	574.0
2003	10.5	222.0	0.0	0.0	33.0	21.0	82.1	251.6	620.2
2004	11.2	236.0	0.0	0.0	34.0	26.2	103.6	268.5	679.5
2005	12.0	233.0	0.0	0.0	30.5	28.5	96.9	263.1	664.0
2006	10.7	226.5	0.0	0.0	25.0	25.6	100.3	248.1	636.2
2007	11.1	227.0	0.0	0.0	25.0	35.7	104.2	250.5	653.5
2008	10.5	225.0	0.0	0.0	27.0	30.6	104.5	254.0	651.6

See footnotes at the end of the table.

Table 7-3 – continued

Cattle by farm type — Quebec

	On cow calf operations								Total
	Bulls, 1 year and over	Beef cows	Dairy cows	Heifers			Steers, 1 year and over	Calves, under 1 year	
				Heifers, dairy replacement	Heifers, beef replacement	Heifers, slaughter			
thousands of head									
At January 1									
2002	9.4	191.7	0.0	0.0	29.0	2.3	3.8	122.1	358.3
2003	9.4	203.8	0.0	0.0	29.8	3.1	4.8	147.1	398.0
2004	9.7	214.8	0.0	0.0	26.5	3.8	4.2	207.1	466.1
2005	10.0	210.4	0.0	0.0	22.7	5.1	7.4	171.5	427.1
2006	10.5	205.6	0.0	0.0	18.7	6.5	9.6	169.7	420.6
2007	9.3	200.9	0.0	0.0	16.8	5.5	5.3	164.5	402.3
2008	9.3	204.3	0.0	0.0	21.2	5.2	6.3	176.9	423.2
At July 1									
2002	9.5	189.6	0.0	0.0	28.0	2.9	3.5	190.7	424.2
2003	9.4	199.8	0.0	0.0	27.2	3.0	5.9	217.0	462.3
2004	9.8	207.2	0.0	0.0	27.8	5.1	13.9	234.6	498.4
2005	10.5	204.1	0.0	0.0	24.2	5.8	11.7	228.3	484.6
2006	9.6	203.8	0.0	0.0	20.9	5.5	9.4	224.0	473.2
2007	9.8	198.9	0.0	0.0	20.2	5.2	6.3	221.9	462.3
2008	9.1	197.3	0.0	0.0	22.6	5.1	7.4	224.5	466.0
On feeder and stocker operations 2									
	Bulls, 1 year and over	Beef cows	Dairy cows	Heifers			Steers, 1 year and over	Calves, under 1 year	Total
				Heifers, dairy replacement	Heifers, beef replacement	Heifers, slaughter			
	thousands of head								
At January 1									
2002	0.8	15.8	0.0	0.0	3.0	4.9	13.1	15.3	52.9
2003	0.7	14.2	0.0	0.0	2.7	3.7	13.1	14.9	49.3
2004	0.7	16.2	0.0	0.0	3.5	5.3	8.4	15.9	50.0
2005	1.3	27.6	0.0	0.0	3.3	14.8	28.4	16.7	92.1
2006	1.0	19.4	0.0	0.0	2.3	9.7	29.1	18.2	79.7
2007	1.0	23.1	0.0	0.0	3.2	12.7	30.8	11.9	82.7
2008	0.8	19.7	0.0	0.0	2.8	10.7	27.1	12.4	73.5
At July 1									
2002	1.2	23.9	0.0	0.0	5.0	10.2	21.2	16.3	77.8
2003	1.1	22.2	0.0	0.0	5.8	10.5	17.2	19.6	76.4
2004	1.4	28.8	0.0	0.0	6.2	10.1	19.7	21.9	88.1
2005	1.5	28.9	0.0	0.0	6.3	14.7	27.7	23.3	102.4
2006	1.1	22.7	0.0	0.0	4.1	12.1	24.9	13.4	78.3
2007	1.3	28.1	0.0	0.0	4.8	19.5	34.9	22.1	110.7
2008	1.4	27.7	0.0	0.0	4.4	17.7	31.1	20.3	102.6
On feeding operations 3									
	Bulls, 1 year and over	Beef cows	Dairy cows	Heifers			Steers, 1 year and over	Calves, under 1 year	Total
				Heifers, dairy replacement	Heifers, beef replacement	Heifers, slaughter			
	thousands of head								
At January 1									
2002	0.0	0.0	0.0	0.0	0.0	11.5	48.5	5.0	65.0
2003	0.0	0.0	0.0	0.0	0.0	11.0	43.5	8.5	63.0
2004	0.0	0.0	0.0	0.0	0.0	15.0	62.0	18.0	95.0
2005	0.0	0.0	0.0	0.0	0.0	6.0	55.0	14.0	75.0
2006	0.0	0.0	0.0	0.0	0.0	10.0	53.0	12.5	75.5
2007	0.0	0.0	0.0	0.0	0.0	10.5	61.0	23.5	95.0
2008	0.0	0.0	0.0	0.0	0.0	7.3	57.0	22.7	87.0
At July 1									
2002	0.0	0.0	0.0	0.0	0.0	7.0	60.0	5.0	72.0
2003	0.0	0.0	0.0	0.0	0.0	7.5	59.0	15.0	81.5
2004	0.0	0.0	0.0	0.0	0.0	11.0	70.0	12.0	93.0
2005	0.0	0.0	0.0	0.0	0.0	8.0	57.5	11.5	77.0
2006	0.0	0.0	0.0	0.0	0.0	8.0	66.0	10.7	84.7
2007	0.0	0.0	0.0	0.0	0.0	11.0	63.0	6.5	80.5
2008	0.0	0.0	0.0	0.0	0.0	7.8	66.0	9.2	83.0

1. Excluding small numbers of heifers for slaughter and steers on dairy operations.

2. Farms where cattle are fed on a low energy ration such as hay or pasture.

3. Farms where cattle are fed a high energy ration such as grain as they are fattened for market.

Table 7-4
Cattle by farm type — Ontario

	On all cattle operations								Total
	Bulls, 1 year and over	Beef cows	Dairy cows	Heifers			Steers, 1 year and over	Calves, under 1 year	
				Heifers, dairy replacement	Heifers, beef replacement	Heifers, slaughter			
	thousands of head								
At January 1									
2002	23.5	376.0	367.0	200.0	75.0	137.0	178.0	659.5	2,016.0
2003	25.0	392.0	364.0	205.0	70.0	138.0	258.0	635.8	2,087.8
2004	26.0	415.0	355.5	198.0	65.0	149.0	256.5	660.1	2,125.1
2005	25.0	405.0	344.8	205.0	53.0	153.5	256.6	608.6	2,051.5
2006	25.5	389.0	334.0	185.0	58.5	170.0	234.8	585.0	1,981.8
2007	20.0	364.0	327.0	176.0	44.0	146.0	220.0	606.5	1,903.5
2008	21.5	370.0	320.0	174.0	48.5	135.0	253.0	561.5	1,883.5
At July 1									
2002	25.0	373.0	367.0	199.5	74.5	167.0	324.0	595.0	2,125.0
2003	26.0	402.0	360.0	200.0	72.0	177.0	337.0	586.9	2,160.9
2004	26.0	410.0	348.5	200.0	70.0	173.0	360.5	592.3	2,180.3
2005	26.5	400.0	346.0	194.0	60.0	165.0	352.8	610.3	2,154.6
2006	24.5	380.0	330.0	189.5	50.0	180.0	330.6	548.0	2,032.6
2007	23.5	369.0	320.5	181.0	49.0	165.0	327.0	521.0	1,956.0
2008	22.0	357.0	320.0	179.0	53.0	145.0	306.0	498.2	1,880.2

	On dairy operations								Total
	Bulls, 1 year and over	Beef cows	Dairy cows	Heifers			Steers, 1 year and over	Calves, under 1 year	
				Heifers, dairy replacement	Heifers, beef replacement	Heifers, slaughter			
	thousands of head								
At January 1									
2002	3.8	0.0	367.0	200.0	0.0	4.9	21.1	215.2	812.0
2003	3.9	0.0	364.0	205.0	0.0	6.1	23.8	178.1	780.9
2004	4.0	0.0	355.5	198.0	0.0	7.8	33.5	192.0	790.8
2005	3.9	0.0	344.8	205.0	0.0	2.6	21.8	184.6	762.7
2006	3.6	0.0	334.0	185.0	0.0	2.8	23.4	164.0	712.8
2007	3.0	0.0	327.0	176.0	0.0	2.2	16.7	177.8	702.7
2008	2.6	0.0	320.0	174.0	0.0	8.1	24.8	168.4	697.9
At July 1									
2002	3.9	0.0	367.0	199.5	0.0	5.7	31.5	194.6	802.2
2003	4.0	0.0	360.0	200.0	0.0	6.0	25.4	183.2	778.6
2004	4.0	0.0	348.5	200.0	0.0	4.6	24.3	194.2	775.6
2005	3.7	0.0	346.0	194.0	0.0	6.9	32.1	185.1	767.8
2006	3.4	0.0	330.0	189.5	0.0	3.6	24.0	171.5	722.0
2007	2.9	0.0	320.5	181.0	0.0	3.8	27.8	161.0	697.0
2008	2.8	0.0	320.0	179.0	0.0	3.6	25.8	161.1	692.3

	On beef operations ¹								Total
	Bulls, 1 year and over	Beef cows	Dairy cows	Heifers			Steers, 1 year and over	Calves, under 1 year	
				Heifers, dairy replacement	Heifers, beef replacement	Heifers, slaughter			
	thousands of head								
At January 1									
2002	19.7	376.0	0.0	0.0	75.0	132.1	156.9	444.4	1,204.1
2003	21.1	392.0	0.0	0.0	70.0	132.0	234.3	457.6	1,307.0
2004	22.0	415.0	0.0	0.0	65.0	141.2	222.9	468.1	1,334.2
2005	21.1	405.0	0.0	0.0	53.0	150.9	234.9	424.0	1,288.9
2006	21.9	389.0	0.0	0.0	58.5	167.3	211.4	421.0	1,269.1
2007	17.0	364.0	0.0	0.0	44.0	143.8	203.2	428.7	1,200.7
2008	18.9	370.0	0.0	0.0	48.5	126.9	228.3	393.3	1,185.9
At July 1									
2002	21.1	373.0	0.0	0.0	74.5	161.2	292.5	400.4	1,322.7
2003	22.0	402.0	0.0	0.0	72.0	171.0	311.6	403.6	1,382.2
2004	22.0	410.0	0.0	0.0	70.0	168.5	336.2	398.1	1,404.8
2005	22.8	400.0	0.0	0.0	60.0	158.1	320.7	425.3	1,386.9
2006	21.1	380.0	0.0	0.0	50.0	176.4	306.5	376.5	1,310.5
2007	20.6	369.0	0.0	0.0	49.0	161.3	299.1	360.1	1,259.1
2008	19.2	357.0	0.0	0.0	53.0	141.5	280.2	337.3	1,188.2

See footnotes at the end of the table.

Table 7-4 – continued

Cattle by farm type — Ontario

	On cow calf operations								Total
	Bulls, 1 year and over	Beef cows	Dairy cows	Heifers			Steers, 1 year and over	Calves, under 1 year	
				Heifers, dairy replacement	Heifers, beef replacement	Heifers, slaughter			
thousands of head									
At January 1									
2002	16.0	298.9	0.0	0.0	57.7	4.3	7.1	297.1	681.1
2003	18.3	333.2	0.0	0.0	56.8	25.9	31.7	277.2	743.1
2004	19.1	356.9	0.0	0.0	51.9	27.0	31.4	302.5	788.8
2005	17.3	337.0	0.0	0.0	43.8	21.8	28.4	268.5	716.8
2006	18.1	322.1	0.0	0.0	45.1	19.6	24.6	257.2	686.7
2007	14.5	314.5	0.0	0.0	38.3	17.0	18.2	255.8	658.3
2008	16.3	323.4	0.0	0.0	40.3	26.0	27.7	243.3	677.0
At July 1									
2002	16.3	280.5	0.0	0.0	56.5	6.8	12.1	299.7	671.9
2003	16.8	302.3	0.0	0.0	52.6	15.3	20.4	292.1	699.5
2004	15.7	293.1	0.0	0.0	50.1	14.5	22.1	277.1	672.6
2005	16.3	281.6	0.0	0.0	43.0	13.1	22.3	281.6	657.9
2006	15.3	280.4	0.0	0.0	36.6	11.7	17.9	260.0	621.9
2007	15.5	280.4	0.0	0.0	39.7	9.8	16.1	258.3	619.8
2008	14.3	271.3	0.0	0.0	40.1	12.6	17.1	235.9	591.3
On feeder and stocker operations 2									
	Bulls, 1 year and over	Beef cows	Dairy cows	Heifers			Steers, 1 year and over	Calves, under 1 year	Total
				Heifers, dairy replacement	Heifers, beef replacement	Heifers, slaughter			
	thousands of head								
At January 1									
2002	3.7	77.1	0.0	0.0	17.3	31.8	39.8	116.3	286.0
2003	2.8	58.8	0.0	0.0	13.2	23.1	32.6	103.4	233.9
2004	2.9	58.1	0.0	0.0	13.1	23.2	41.5	108.6	247.4
2005	3.8	68.0	0.0	0.0	9.2	22.1	44.5	99.5	247.1
2006	3.8	66.9	0.0	0.0	13.4	27.7	32.8	125.8	270.4
2007	2.5	49.5	0.0	0.0	5.7	17.8	27.0	113.9	216.4
2008	2.6	46.6	0.0	0.0	8.2	19.9	22.6	101.0	200.9
At July 1									
2002	4.8	92.5	0.0	0.0	18.0	39.4	61.4	90.7	306.8
2003	5.2	99.7	0.0	0.0	19.4	49.7	67.2	90.5	331.7
2004	6.3	116.9	0.0	0.0	19.9	51.0	83.1	100.0	377.2
2005	6.5	118.4	0.0	0.0	17.0	47.0	79.9	116.7	385.5
2006	5.8	99.6	0.0	0.0	13.4	44.7	58.6	91.5	313.6
2007	5.1	88.6	0.0	0.0	9.3	36.5	63.0	79.8	282.3
2008	4.9	85.7	0.0	0.0	12.9	31.4	63.1	81.9	279.9
On feeding operations 3									
	Bulls, 1 year and over	Beef cows	Dairy cows	Heifers			Steers, 1 year and over	Calves, under 1 year	Total
				Heifers, dairy replacement	Heifers, beef replacement	Heifers, slaughter			
	thousands of head								
At January 1									
2002	0.0	0.0	0.0	0.0	0.0	96.0	110.0	31.0	237.0
2003	0.0	0.0	0.0	0.0	0.0	83.0	170.0	77.0	330.0
2004	0.0	0.0	0.0	0.0	0.0	91.0	150.0	57.0	298.0
2005	0.0	0.0	0.0	0.0	0.0	107.0	162.0	56.0	325.0
2006	0.0	0.0	0.0	0.0	0.0	120.0	154.0	38.0	312.0
2007	0.0	0.0	0.0	0.0	0.0	109.0	158.0	59.0	326.0
2008	0.0	0.0	0.0	0.0	0.0	81.0	178.0	49.0	308.0
At July 1									
2002	0.0	0.0	0.0	0.0	0.0	115.0	219.0	10.0	344.0
2003	0.0	0.0	0.0	0.0	0.0	106.0	224.0	21.0	351.0
2004	0.0	0.0	0.0	0.0	0.0	103.0	231.0	21.0	355.0
2005	0.0	0.0	0.0	0.0	0.0	98.0	218.5	27.0	343.5
2006	0.0	0.0	0.0	0.0	0.0	120.0	230.0	25.0	375.0
2007	0.0	0.0	0.0	0.0	0.0	115.0	220.0	22.0	357.0
2008	0.0	0.0	0.0	0.0	0.0	97.5	200.0	19.5	317.0

1. Excluding small numbers of heifers for slaughter and steers on dairy operations.

2. Farms where cattle are fed on a low energy ration such as hay or pasture.

3. Farms where cattle are fed a high energy ration such as grain as they are fattened for market.

Table 7-5
Cattle by farm type — Eastern Provinces

	On all cattle operations								Total
	Bulls, 1 year and over	Beef cows	Dairy cows	Heifers			Steers, 1 year and over	Calves, under 1 year	
				Heifers, dairy replacement	Heifers, beef replacement	Heifers, slaughter			
thousands of head									
At January 1									
2002	42.0	644.0	847.4	405.0	119.7	173.6	278.1	1,084.2	3,594.0
2003	42.9	669.7	830.0	406.3	114.3	174.0	348.6	1,094.2	3,680.0
2004	45.5	705.4	814.9	396.8	107.2	193.5	363.3	1,208.4	3,835.0
2005	44.1	703.6	805.4	413.8	89.8	198.0	383.5	1,116.8	3,755.0
2006	43.5	677.2	784.6	397.6	88.3	217.8	358.8	1,087.2	3,655.0
2007	36.6	652.1	771.8	382.6	72.1	195.5	354.2	1,090.1	3,555.0
2008	38.3	648.4	758.0	368.1	80.0	178.4	371.6	1,057.2	3,500.0
At July 1									
2002	43.5	646.8	837.0	405.0	120.5	206.8	442.1	1,085.7	3,787.4
2003	45.0	684.2	817.4	396.8	117.8	219.5	458.7	1,135.6	3,875.0
2004	45.7	707.7	820.1	411.8	116.4	218.6	500.2	1,169.5	3,990.0
2005	46.1	695.7	789.6	400.9	100.4	215.3	489.4	1,167.6	3,905.0
2006	41.6	671.6	772.9	400.5	83.3	229.4	467.3	1,083.4	3,750.0
2007	40.9	659.6	749.6	378.7	82.1	219.4	463.2	1,046.5	3,640.0
2008	38.7	642.4	748.8	367.5	88.1	196.0	439.9	1,013.6	3,535.0

	On dairy operations								Total
	Bulls, 1 year and over	Beef cows	Dairy cows	Heifers			Steers, 1 year and over	Calves, under 1 year	
				Heifers, dairy replacement	Heifers, beef replacement	Heifers, slaughter			
thousands of head									
At January 1									
2002	9.1	0.0	847.4	405.0	0.0	8.6	31.4	443.8	1,745.3
2003	9.0	0.0	830.0	406.3	0.0	9.8	29.1	413.2	1,697.4
2004	10.3	0.0	814.9	396.8	0.0	13.3	41.7	446.7	1,723.7
2005	8.8	0.0	805.4	413.8	0.0	6.4	34.5	438.2	1,707.1
2006	7.2	0.0	784.6	397.6	0.0	8.6	32.8	413.5	1,644.3
2007	6.4	0.0	771.8	382.6	0.0	7.4	31.6	409.9	1,609.7
2008	6.6	0.0	758.0	368.1	0.0	13.6	33.4	401.6	1,581.3
At July 1									
2002	8.9	0.0	837.0	405.0	0.0	9.5	37.6	417.9	1,715.9
2003	9.7	0.0	817.4	396.8	0.0	11.0	37.1	425.1	1,697.1
2004	9.5	0.0	820.1	411.8	0.0	7.3	34.2	447.1	1,730.0
2005	8.4	0.0	789.6	400.9	0.0	10.0	45.2	421.2	1,675.3
2006	6.9	0.0	772.9	400.5	0.0	8.6	35.1	401.4	1,625.4
2007	6.5	0.0	749.6	378.7	0.0	5.6	35.6	379.9	1,555.9
2008	6.4	0.0	748.8	367.5	0.0	7.0	33.3	367.7	1,530.7

	On beef operations ¹								Total
	Bulls, 1 year and over	Beef cows	Dairy cows	Heifers			Steers, 1 year and over	Calves, under 1 year	
				Heifers, dairy replacement	Heifers, beef replacement	Heifers, slaughter			
thousands of head									
At January 1									
2002	32.9	644.0	0.0	0.0	119.7	165.0	246.8	640.6	1,849.0
2003	33.9	669.7	0.0	0.0	114.3	164.2	319.7	681.0	1,982.8
2004	35.2	705.4	0.0	0.0	107.2	180.2	321.6	762.0	2,111.6
2005	35.3	703.6	0.0	0.0	89.8	191.7	349.1	678.6	2,048.1
2006	36.3	677.2	0.0	0.0	88.3	209.4	326.0	673.7	2,010.9
2007	30.2	652.1	0.0	0.0	72.1	188.1	322.6	680.3	1,945.4
2008	31.7	648.4	0.0	0.0	80.0	164.7	338.4	655.8	1,919.0
At July 1									
2002	34.6	646.8	0.0	0.0	120.5	197.2	404.6	667.9	2,071.6
2003	35.3	684.2	0.0	0.0	117.8	208.6	421.6	710.6	2,178.1
2004	36.2	707.7	0.0	0.0	116.4	211.3	465.9	722.5	2,260.0
2005	37.7	695.7	0.0	0.0	100.4	205.3	444.2	746.5	2,229.8
2006	34.7	671.6	0.0	0.0	83.3	220.8	432.0	681.9	2,124.3
2007	34.4	659.6	0.0	0.0	82.1	213.9	427.5	666.8	2,084.3
2008	32.3	642.4	0.0	0.0	88.1	189.1	406.6	646.0	2,004.5

See footnotes at the end of the table.

Table 7-5 – continued

Cattle by farm type — Eastern Provinces

	On cow calf operations								
	Bulls, 1 year and over	Beef cows	Dairy cows	Heifers			Steers, 1 year and over	Calves, under 1 year	Total
				Heifers, dairy replacement	Heifers, beef replacement	Heifers, slaughter			
	thousands of head								
At January 1									
2002	27.7	537.2	0.0	0.0	97.0	7.9	12.1	454.0	1,135.9
2003	29.7	583.0	0.0	0.0	96.0	30.8	38.5	458.5	1,236.5
2004	30.9	617.4	0.0	0.0	88.2	32.8	37.6	543.8	1,350.7
2005	29.5	594.1	0.0	0.0	74.9	28.9	37.6	473.9	1,238.9
2006	30.7	576.4	0.0	0.0	70.1	28.3	35.9	460.7	1,202.1
2007	25.9	564.8	0.0	0.0	60.6	24.7	25.0	453.7	1,154.7
2008	27.8	572.3	0.0	0.0	67.3	33.2	35.5	452.6	1,188.7
At July 1									
2002	27.6	511.1	0.0	0.0	93.0	11.0	17.2	534.7	1,194.6
2003	28.0	543.0	0.0	0.0	88.1	19.9	28.4	553.0	1,260.4
2004	27.5	542.3	0.0	0.0	85.7	21.2	37.8	556.0	1,270.5
2005	28.6	528.3	0.0	0.0	72.4	21.8	38.6	555.0	1,244.7
2006	26.7	528.5	0.0	0.0	60.9	20.2	31.5	528.5	1,196.3
2007	26.9	522.5	0.0	0.0	63.2	17.8	25.6	525.4	1,181.4
2008	25.0	509.7	0.0	0.0	66.3	20.5	27.6	503.6	1,152.7
	On feeder and stocker operations 2								
	Bulls, 1 year and over	Beef cows	Dairy cows	Heifers			Steers, 1 year and over	Calves, under 1 year	Total
				Heifers, dairy replacement	Heifers, beef replacement	Heifers, slaughter			
	thousands of head								
At January 1									
2002	5.2	106.8	0.0	0.0	22.7	43.0	59.6	148.5	385.8
2003	4.2	86.7	0.0	0.0	18.3	32.8	51.1	134.9	328.0
2004	4.3	88.0	0.0	0.0	19.0	34.8	55.4	141.1	342.6
2005	5.8	109.5	0.0	0.0	14.9	43.2	77.9	132.6	383.9
2006	5.6	100.8	0.0	0.0	18.2	44.5	66.5	160.4	396.0
2007	4.3	87.3	0.0	0.0	11.5	37.3	62.0	142.0	344.4
2008	3.9	76.1	0.0	0.0	12.7	37.2	53.9	129.0	312.8
At July 1									
2002	7.0	135.7	0.0	0.0	27.5	56.8	92.6	117.1	436.7
2003	7.3	141.2	0.0	0.0	29.7	67.7	94.7	120.1	460.7
2004	8.7	165.4	0.0	0.0	30.7	68.6	111.6	132.0	517.0
2005	9.1	167.4	0.0	0.0	28.0	70.0	120.6	149.5	544.6
2006	8.0	143.1	0.0	0.0	22.4	65.1	95.5	114.2	448.3
2007	7.5	137.1	0.0	0.0	18.9	63.6	106.9	111.4	445.4
2008	7.3	132.7	0.0	0.0	21.8	56.8	103.0	111.2	432.8
	On feeding operations 3								
	Bulls, 1 year and over	Beef cows	Dairy cows	Heifers			Steers, 1 year and over	Calves, under 1 year	Total
				Heifers, dairy replacement	Heifers, beef replacement	Heifers, slaughter			
	thousands of head								
At January 1									
2002	0.0	0.0	0.0	0.0	0.0	114.1	175.1	38.1	327.3
2003	0.0	0.0	0.0	0.0	0.0	100.6	230.1	87.6	418.3
2004	0.0	0.0	0.0	0.0	0.0	112.6	228.6	77.1	418.3
2005	0.0	0.0	0.0	0.0	0.0	119.6	233.6	72.1	425.3
2006	0.0	0.0	0.0	0.0	0.0	136.6	223.6	52.6	412.8
2007	0.0	0.0	0.0	0.0	0.0	126.1	235.6	84.6	446.3
2008	0.0	0.0	0.0	0.0	0.0	94.3	249.0	74.2	417.5
At July 1									
2002	0.0	0.0	0.0	0.0	0.0	129.4	294.8	16.1	440.3
2003	0.0	0.0	0.0	0.0	0.0	121.0	298.5	37.5	457.0
2004	0.0	0.0	0.0	0.0	0.0	121.5	316.5	34.5	472.5
2005	0.0	0.0	0.0	0.0	0.0	113.5	285.0	42.0	440.5
2006	0.0	0.0	0.0	0.0	0.0	135.5	305.0	39.2	479.7
2007	0.0	0.0	0.0	0.0	0.0	132.5	295.0	30.0	457.5
2008	0.0	0.0	0.0	0.0	0.0	111.8	276.0	31.2	419.0

1. Excluding small numbers of heifers for slaughter and steers on dairy operations.

2. Farms where cattle are fed on a low energy ration such as hay or pasture.

3. Farms where cattle are fed a high energy ration such as grain as they are fattened for market.

Table 7-6
Cattle by farm type — Manitoba

	On all cattle operations								Total
	Bulls, 1 year and over	Beef cows	Dairy cows	Heifers			Steers, 1 year and over	Calves, under 1 year	
				Heifers, dairy replacement	Heifers, beef replacement	Heifers, slaughter			
thousands of head									
At January 1									
2002	25.0	528.0	42.0	18.5	73.0	47.0	54.0	457.5	1,245.0
2003	26.0	553.5	40.5	18.0	78.0	44.0	37.0	453.0	1,250.0
2004	30.0	638.0	42.0	20.0	80.0	54.0	77.0	509.0	1,450.0
2005	31.5	650.0	44.0	18.0	80.0	55.0	70.0	541.5	1,490.0
2006	30.5	673.0	45.0	19.0	77.0	60.0	60.0	525.5	1,490.0
2007	28.0	623.0	44.5	18.5	62.0	47.0	45.0	507.0	1,375.0
2008	27.0	614.5	44.0	19.5	62.0	52.0	49.0	487.0	1,355.0
At July 1									
2002	27.0	574.0	41.5	20.0	92.0	74.0	112.0	529.5	1,470.0
2003	31.0	622.0	42.0	21.0	100.0	92.0	124.0	558.0	1,590.0
2004	33.0	650.0	42.0	23.0	96.0	107.0	155.0	624.0	1,730.0
2005	33.0	676.0	43.5	22.5	95.0	108.5	110.5	646.0	1,735.0
2006	32.0	680.0	44.0	20.0	80.0	90.0	100.0	634.0	1,680.0
2007	28.5	612.0	45.0	20.5	72.0	105.0	95.0	562.0	1,540.0
2008	29.0	601.0	46.0	21.0	78.0	74.5	90.5	575.0	1,515.0

	On dairy operations								Total
	Bulls, 1 year and over	Beef cows	Dairy cows	Heifers			Steers, 1 year and over	Calves, under 1 year	
				Heifers, dairy replacement	Heifers, beef replacement	Heifers, slaughter			
thousands of head									
At January 1									
2002	0.7	0.0	42.0	18.5	0.0	0.1	0.9	20.5	82.7
2003	0.5	0.0	40.5	18.0	0.0	0.2	1.0	19.3	79.5
2004	0.5	0.0	42.0	20.0	0.0	0.2	1.6	24.3	88.6
2005	0.4	0.0	44.0	18.0	0.0	0.2	1.8	22.3	86.7
2006	0.4	0.0	45.0	19.0	0.0	0.2	1.8	18.2	84.6
2007	0.4	0.0	44.5	18.5	0.0	0.2	1.5	19.0	84.1
2008	0.4	0.0	44.0	19.5	0.0	0.3	1.0	18.1	83.3
At July 1									
2002	0.7	0.0	41.5	20.0	0.0	0.3	1.7	17.2	81.4
2003	0.6	0.0	42.0	21.0	0.0	0.5	2.3	16.8	83.2
2004	0.6	0.0	42.0	23.0	0.0	0.5	2.8	24.1	93.0
2005	0.6	0.0	43.5	22.5	0.0	0.5	2.1	21.1	90.3
2006	0.5	0.0	44.0	20.0	0.0	0.6	1.7	17.1	83.9
2007	0.5	0.0	45.0	20.5	0.0	0.1	1.7	18.8	86.6
2008	0.5	0.0	46.0	21.0	0.0	0.8	1.7	16.6	86.6

	On beef operations ¹								Total
	Bulls, 1 year and over	Beef cows	Dairy cows	Heifers			Steers, 1 year and over	Calves, under 1 year	
				Heifers, dairy replacement	Heifers, beef replacement	Heifers, slaughter			
thousands of head									
At January 1									
2002	24.3	528.0	0.0	0.0	73.0	46.9	53.1	437.1	1,162.4
2003	25.5	553.5	0.0	0.0	78.0	43.9	36.0	433.7	1,170.6
2004	29.5	638.0	0.0	0.0	80.0	53.8	75.4	484.6	1,361.3
2005	31.1	650.0	0.0	0.0	80.0	54.8	68.3	519.2	1,403.4
2006	30.1	673.0	0.0	0.0	77.0	59.7	58.2	507.3	1,405.3
2007	27.6	623.0	0.0	0.0	62.0	46.8	43.6	487.9	1,290.9
2008	26.6	614.5	0.0	0.0	62.0	51.7	48.0	468.8	1,271.6
At July 1									
2002	26.3	574.0	0.0	0.0	92.0	73.7	110.4	512.3	1,388.7
2003	30.4	622.0	0.0	0.0	100.0	91.6	121.7	541.2	1,506.9
2004	32.4	650.0	0.0	0.0	96.0	106.5	152.3	599.9	1,637.1
2005	32.4	676.0	0.0	0.0	95.0	107.9	108.5	624.9	1,644.7
2006	31.5	680.0	0.0	0.0	80.0	89.3	98.3	616.9	1,596.0
2007	28.0	612.0	0.0	0.0	72.0	105.0	93.3	543.3	1,453.6
2008	28.5	601.0	0.0	0.0	78.0	73.7	88.8	558.5	1,428.5

See footnotes at the end of the table.

Table 7-6 – continued

Cattle by farm type — Manitoba

On cow calf operations									
	Bulls, 1 year and over	Beef cows	Dairy cows	Heifers			Steers, 1 year and over	Calves, under 1 year	Total
				Heifers, dairy replacement	Heifers, beef replacement	Heifers, slaughter			
thousands of head									
At January 1									
2002	22.8	494.7	0.0	0.0	68.2	7.6	5.4	366.3	965.0
2003	23.9	518.6	0.0	0.0	73.7	6.5	6.2	363.1	992.0
2004	27.8	601.7	0.0	0.0	74.8	10.7	13.8	392.7	1,121.5
2005	28.9	604.5	0.0	0.0	72.1	11.2	16.4	401.5	1,134.6
2006	27.7	619.1	0.0	0.0	70.7	10.0	12.3	413.0	1,152.8
2007	25.9	583.8	0.0	0.0	57.9	8.7	11.0	401.8	1,089.1
2008	24.3	561.1	0.0	0.0	56.1	6.6	12.4	375.2	1,035.7
At July 1									
2002	23.2	505.7	0.0	0.0	78.2	8.7	12.8	434.8	1,063.4
2003	26.1	531.8	0.0	0.0	81.0	11.2	19.3	453.9	1,123.3
2004	25.1	500.5	0.0	0.0	73.6	13.0	21.3	453.7	1,087.2
2005	25.6	537.4	0.0	0.0	76.3	14.5	19.1	489.8	1,162.7
2006	27.0	582.8	0.0	0.0	67.8	10.0	15.1	519.9	1,222.6
2007	23.7	517.7	0.0	0.0	59.5	7.9	13.0	449.7	1,071.5
2008	24.0	509.6	0.0	0.0	61.0	9.9	14.2	463.7	1,082.4
On feeder and stocker operations 2									
	Bulls, 1 year and over	Beef cows	Dairy cows	Heifers			Steers, 1 year and over	Calves, under 1 year	Total
				Heifers, dairy replacement	Heifers, beef replacement	Heifers, slaughter			
thousands of head									
At January 1									
2002	1.5	33.3	0.0	0.0	4.8	15.3	11.7	57.8	124.4
2003	1.6	34.9	0.0	0.0	4.3	23.4	12.8	57.1	134.1
2004	1.7	36.3	0.0	0.0	5.2	26.1	16.6	58.4	144.3
2005	2.2	45.5	0.0	0.0	7.9	23.6	17.9	73.7	170.8
2006	2.4	53.9	0.0	0.0	6.3	29.7	21.9	77.3	191.5
2007	1.7	39.2	0.0	0.0	4.1	25.1	16.6	80.1	166.8
2008	2.3	53.4	0.0	0.0	5.9	34.6	21.1	88.6	205.9
At July 1									
2002	3.1	68.3	0.0	0.0	13.8	36.5	40.6	73.0	235.3
2003	4.3	90.2	0.0	0.0	19.0	53.4	55.4	81.8	304.1
2004	7.3	149.5	0.0	0.0	22.4	62.5	69.0	142.7	453.4
2005	6.8	138.6	0.0	0.0	18.7	62.9	47.4	132.6	407.0
2006	4.5	97.2	0.0	0.0	12.2	47.3	39.2	94.0	294.4
2007	4.3	94.3	0.0	0.0	12.5	57.1	41.3	92.6	302.1
2008	4.5	91.4	0.0	0.0	17.0	47.3	39.1	90.8	290.1
On feeding operations 3									
	Bulls, 1 year and over	Beef cows	Dairy cows	Heifers			Steers, 1 year and over	Calves, under 1 year	Total
				Heifers, dairy replacement	Heifers, beef replacement	Heifers, slaughter			
thousands of head									
At January 1									
2002	0.0	0.0	0.0	0.0	0.0	24.0	36.0	13.0	73.0
2003	0.0	0.0	0.0	0.0	0.0	14.0	17.0	13.5	44.5
2004	0.0	0.0	0.0	0.0	0.0	17.0	45.0	33.5	95.5
2005	0.0	0.0	0.0	0.0	0.0	20.0	34.0	44.0	98.0
2006	0.0	0.0	0.0	0.0	0.0	20.0	24.0	17.0	61.0
2007	0.0	0.0	0.0	0.0	0.0	13.0	16.0	6.0	35.0
2008	0.0	0.0	0.0	0.0	0.0	10.5	14.5	5.0	30.0
At July 1									
2002	0.0	0.0	0.0	0.0	0.0	28.5	57.0	4.5	90.0
2003	0.0	0.0	0.0	0.0	0.0	27.0	47.0	5.5	79.5
2004	0.0	0.0	0.0	0.0	0.0	31.0	62.0	3.5	96.5
2005	0.0	0.0	0.0	0.0	0.0	30.5	42.0	2.5	75.0
2006	0.0	0.0	0.0	0.0	0.0	32.0	44.0	3.0	79.0
2007	0.0	0.0	0.0	0.0	0.0	40.0	39.0	1.0	80.0
2008	0.0	0.0	0.0	0.0	0.0	16.5	35.5	4.0	56.0

1. Excluding small numbers of heifers for slaughter and steers on dairy operations.

2. Farms where cattle are fed on a low energy ration such as hay or pasture.

3. Farms where cattle are fed a high energy ration such as grain as they are fattened for market.

Table 7-7
Cattle by farm type — Saskatchewan

	On all cattle operations								
	Bulls, 1 year and over	Beef cows	Dairy cows	Heifers			Steers, 1 year and over	Calves, under 1 year	Total
				Heifers, dairy replacement	Heifers, beef replacement	Heifers, slaughter			
	thousands of head								
At January 1									
2002	57.0	1,220.0	28.0	14.0	165.0	23.0	33.0	877.5	2,417.5
2003	58.0	1,318.0	32.0	15.0	160.0	47.0	57.0	856.0	2,543.0
2004	68.0	1,426.0	31.5	14.5	185.0	51.0	75.0	1,004.0	2,855.0
2005	70.0	1,535.0	31.0	14.0	176.0	49.0	71.0	1,094.0	3,040.0
2006	69.0	1,560.0	29.0	12.0	183.0	47.0	73.0	977.0	2,950.0
2007	64.0	1,484.5	28.5	12.0	170.0	52.0	79.0	1,040.0	2,930.0
2008	65.5	1,480.0	29.0	12.5	176.0	48.0	83.0	976.0	2,870.0
At July 1									
2002	61.0	1,270.0	29.0	13.5	213.0	64.0	122.5	1,167.0	2,940.0
2003	70.0	1,335.0	34.0	15.0	240.0	105.0	150.0	1,271.0	3,220.0
2004	74.0	1,500.0	31.0	14.0	222.0	130.0	197.0	1,372.0	3,540.0
2005	75.0	1,545.0	29.5	13.5	245.0	122.0	165.0	1,430.0	3,625.0
2006	72.0	1,508.0	28.5	12.5	206.0	90.0	145.0	1,388.0	3,450.0
2007	70.0	1,480.0	30.0	14.0	190.0	105.0	175.0	1,366.0	3,430.0
2008	72.0	1,420.0	30.0	15.0	185.0	130.0	187.0	1,346.0	3,385.0
	On dairy operations								
	Bulls, 1 year and over	Beef cows	Dairy cows	Heifers			Steers, 1 year and over	Calves, under 1 year	Total
				Heifers, dairy replacement	Heifers, beef replacement	Heifers, slaughter			
	thousands of head								
At January 1									
2002	0.5	0.0	28.0	14.0	0.0	0.1	0.3	10.4	53.3
2003	0.5	0.0	32.0	15.0	0.0	0.1	0.6	13.6	61.8
2004	0.3	0.0	31.5	14.5	0.0	0.1	2.0	14.7	63.1
2005	0.4	0.0	31.0	14.0	0.0	0.1	1.3	14.5	61.3
2006	0.4	0.0	29.0	12.0	0.0	0.1	0.6	14.7	56.8
2007	0.4	0.0	28.5	12.0	0.0	0.3	0.9	12.0	54.1
2008	0.3	0.0	29.0	12.5	0.0	0.1	0.6	8.2	50.7
At July 1									
2002	0.5	0.0	29.0	13.5	0.0	0.4	1.0	12.1	56.5
2003	0.5	0.0	34.0	15.0	0.0	0.3	3.1	12.8	65.7
2004	0.3	0.0	31.0	14.0	0.0	0.2	1.5	12.0	59.0
2005	0.4	0.0	29.5	13.5	0.0	0.2	1.3	11.8	56.7
2006	0.4	0.0	28.5	12.5	0.0	0.2	1.1	10.3	53.0
2007	0.4	0.0	30.0	14.0	0.0	0.1	0.9	10.7	56.1
2008	0.4	0.0	30.0	15.0	0.0	0.3	2.6	10.0	58.3
	On beef operations ¹								
	Bulls, 1 year and over	Beef cows	Dairy cows	Heifers			Steers, 1 year and over	Calves, under 1 year	Total
				Heifers, dairy replacement	Heifers, beef replacement	Heifers, slaughter			
	thousands of head								
At January 1									
2002	56.5	1,220.0	0.0	0.0	165.0	22.9	32.7	867.1	2,364.2
2003	57.5	1,318.0	0.0	0.0	160.0	46.8	56.4	842.4	2,481.1
2004	67.7	1,426.0	0.0	0.0	185.0	50.9	73.0	989.3	2,791.9
2005	69.6	1,535.0	0.0	0.0	176.0	48.9	69.7	1,079.5	2,978.7
2006	68.6	1,560.0	0.0	0.0	183.0	46.9	72.5	962.4	2,893.4
2007	63.6	1,484.5	0.0	0.0	170.0	51.7	78.1	1,027.9	2,875.8
2008	65.2	1,480.0	0.0	0.0	176.0	47.9	82.4	967.7	2,819.2
At July 1									
2002	60.5	1,270.0	0.0	0.0	213.0	63.6	121.4	1,154.9	2,883.4
2003	69.5	1,335.0	0.0	0.0	240.0	104.8	146.8	1,258.3	3,154.4
2004	73.7	1,500.0	0.0	0.0	222.0	129.8	195.5	1,359.9	3,480.9
2005	74.6	1,545.0	0.0	0.0	245.0	121.8	163.8	1,418.2	3,568.4
2006	71.6	1,508.0	0.0	0.0	206.0	89.8	143.9	1,377.7	3,397.0
2007	69.6	1,480.0	0.0	0.0	190.0	105.0	174.1	1,355.5	3,374.2
2008	71.6	1,420.0	0.0	0.0	185.0	129.8	184.3	1,336.0	3,326.7

See footnotes at the end of the table.

Table 7-7 – continued

Cattle by farm type — Saskatchewan

	On cow calf operations								Total
	Bulls, 1 year and over	Beef cows	Dairy cows	Heifers			Steers, 1 year and over	Calves, under 1 year	
				Heifers, dairy replacement	Heifers, beef replacement	Heifers, slaughter			
thousands of head									
At January 1									
2002	54.9	1,184.6	0.0	0.0	160.4	4.0	5.0	792.7	2,201.6
2003	55.2	1,270.5	0.0	0.0	148.2	10.3	12.4	739.3	2,235.9
2004	65.0	1,370.3	0.0	0.0	169.8	12.4	13.6	851.4	2,482.5
2005	66.5	1,469.0	0.0	0.0	164.9	18.6	20.9	956.1	2,696.0
2006	65.9	1,500.7	0.0	0.0	168.7	13.2	15.9	828.5	2,592.9
2007	61.4	1,434.0	0.0	0.0	161.3	12.6	13.1	904.5	2,586.9
2008	62.3	1,413.4	0.0	0.0	166.4	13.9	21.9	812.3	2,490.2
At July 1									
2002	56.7	1,191.2	0.0	0.0	195.7	10.8	17.8	1,065.6	2,537.8
2003	63.7	1,221.5	0.0	0.0	208.9	17.9	27.1	1,135.5	2,674.6
2004	64.0	1,309.5	0.0	0.0	184.8	24.4	28.9	1,168.5	2,780.1
2005	65.7	1,372.0	0.0	0.0	214.1	25.2	33.0	1,233.8	2,943.8
2006	63.8	1,346.7	0.0	0.0	180.5	13.7	23.2	1,198.1	2,826.0
2007	61.2	1,303.9	0.0	0.0	161.9	18.8	25.9	1,157.2	2,728.9
2008	62.5	1,236.8	0.0	0.0	156.0	23.3	26.2	1,136.1	2,640.9
On feeder and stocker operations ²									
	Bulls, 1 year and over	Beef cows	Dairy cows	Heifers			Steers, 1 year and over	Calves, under 1 year	Total
				Heifers, dairy replacement	Heifers, beef replacement	Heifers, slaughter			
	thousands of head								
At January 1									
2002	1.6	35.4	0.0	0.0	4.6	12.9	10.7	61.4	126.6
2003	2.3	47.5	0.0	0.0	11.8	26.5	19.0	68.1	175.2
2004	2.7	55.7	0.0	0.0	15.2	27.5	34.4	104.9	240.4
2005	3.1	66.0	0.0	0.0	11.1	22.3	23.8	84.4	210.7
2006	2.7	59.3	0.0	0.0	14.3	21.7	26.6	77.4	202.0
2007	2.2	50.5	0.0	0.0	8.7	26.1	30.5	77.9	195.9
2008	2.9	66.6	0.0	0.0	9.6	23.0	35.5	101.4	239.0
At July 1									
2002	3.8	78.8	0.0	0.0	17.3	37.8	48.6	82.3	268.6
2003	5.8	113.5	0.0	0.0	31.1	56.9	63.7	110.8	381.8
2004	9.7	190.5	0.0	0.0	37.2	75.4	92.6	181.4	586.8
2005	8.9	173.0	0.0	0.0	30.9	66.6	80.8	156.4	516.6
2006	7.8	161.3	0.0	0.0	25.5	67.1	72.7	146.6	481.0
2007	8.4	176.1	0.0	0.0	28.1	68.2	81.2	165.3	527.3
2008	9.1	183.2	0.0	0.0	29.0	80.5	110.1	178.9	590.8
On feeding operations ³									
	Bulls, 1 year and over	Beef cows	Dairy cows	Heifers			Steers, 1 year and over	Calves, under 1 year	Total
				Heifers, dairy replacement	Heifers, beef replacement	Heifers, slaughter			
	thousands of head								
At January 1									
2002	0.0	0.0	0.0	0.0	0.0	6.0	17.0	13.0	36.0
2003	0.0	0.0	0.0	0.0	0.0	10.0	25.0	35.0	70.0
2004	0.0	0.0	0.0	0.0	0.0	11.0	25.0	33.0	69.0
2005	0.0	0.0	0.0	0.0	0.0	8.0	25.0	39.0	72.0
2006	0.0	0.0	0.0	0.0	0.0	12.0	30.0	56.5	98.5
2007	0.0	0.0	0.0	0.0	0.0	13.0	34.5	45.5	93.0
2008	0.0	0.0	0.0	0.0	0.0	11.0	25.0	54.0	90.0
At July 1									
2002	0.0	0.0	0.0	0.0	0.0	15.0	55.0	7.0	77.0
2003	0.0	0.0	0.0	0.0	0.0	30.0	56.0	12.0	98.0
2004	0.0	0.0	0.0	0.0	0.0	30.0	74.0	10.0	114.0
2005	0.0	0.0	0.0	0.0	0.0	30.0	50.0	28.0	108.0
2006	0.0	0.0	0.0	0.0	0.0	9.0	48.0	33.0	90.0
2007	0.0	0.0	0.0	0.0	0.0	18.0	67.0	33.0	118.0
2008	0.0	0.0	0.0	0.0	0.0	26.0	48.0	21.0	95.0

1. Excluding small numbers of heifers for slaughter and steers on dairy operations.

2. Farms where cattle are fed on a low energy ration such as hay or pasture.

3. Farms where cattle are fed a high energy ration such as grain as they are fattened for market.

Table 7-8
Cattle by farm type — Alberta

	On all cattle operations								Total
	Bulls, 1 year and over	Beef cows	Dairy cows	Heifers			Steers, 1 year and over	Calves, under 1 year	
				Heifers, dairy replacement	Heifers, beef replacement	Heifers, slaughter			
	thousands of head								
At January 1									
2002	98.0	1,959.0	92.0	36.0	250.0	610.0	800.0	1,980.0	5,825.0
2003	96.0	1,915.0	87.0	35.0	250.0	530.0	700.0	1,697.0	5,310.0
2004	110.0	1,960.0	86.5	35.0	270.5	558.0	635.0	2,020.0	5,675.0
2005	110.0	2,090.0	83.0	36.0	255.0	630.0	595.0	2,131.0	5,930.0
2006	105.0	2,052.0	85.5	36.5	245.0	647.0	625.0	2,104.0	5,900.0
2007	101.5	2,000.0	79.5	35.0	253.0	657.0	637.0	1,917.0	5,680.0
2008	101.5	1,990.0	83.5	36.0	245.0	690.0	575.0	1,839.0	5,560.0
At July 1									
2002	110.0	2,040.0	90.0	38.0	345.0	750.0	868.0	2,146.0	6,387.0
2003	109.0	1,990.0	85.0	38.0	350.0	680.0	798.0	2,050.0	6,100.0
2004	113.0	2,150.0	82.0	39.0	320.0	765.0	780.0	2,151.0	6,400.0
2005	119.0	2,200.0	85.0	38.0	352.0	825.0	830.0	2,251.0	6,700.0
2006	105.0	2,025.0	82.0	38.0	278.0	812.0	888.0	2,072.0	6,300.0
2007	108.0	2,076.0	83.0	38.0	284.0	835.0	1,000.0	2,046.0	6,470.0
2008	105.0	1,955.0	86.0	40.0	267.0	750.0	805.0	2,002.0	6,010.0

	On dairy operations								Total
	Bulls, 1 year and over	Beef cows	Dairy cows	Heifers			Steers, 1 year and over	Calves, under 1 year	
				Heifers, dairy replacement	Heifers, beef replacement	Heifers, slaughter			
	thousands of head								
At January 1									
2002	1.5	0.0	92.0	36.0	0.0	2.3	6.3	48.3	186.4
2003	1.4	0.0	87.0	35.0	0.0	2.2	5.0	44.7	175.3
2004	2.2	0.0	86.5	35.0	0.0	2.8	6.5	50.3	183.3
2005	1.4	0.0	83.0	36.0	0.0	3.0	3.8	57.3	184.5
2006	0.9	0.0	85.5	36.5	0.0	2.9	3.5	46.1	175.4
2007	0.7	0.0	79.5	35.0	0.0	4.6	2.3	43.3	165.4
2008	1.3	0.0	83.5	36.0	0.0	4.5	6.4	41.6	173.3
At July 1									
2002	1.7	0.0	90.0	38.0	0.0	6.9	4.5	37.5	178.6
2003	1.9	0.0	85.0	38.0	0.0	7.2	5.1	39.3	176.5
2004	1.7	0.0	82.0	39.0	0.0	7.3	5.1	50.1	185.2
2005	2.1	0.0	85.0	38.0	0.0	7.4	5.1	40.8	178.4
2006	1.3	0.0	82.0	38.0	0.0	7.1	1.9	31.7	162.0
2007	1.0	0.0	83.0	38.0	0.0	5.7	2.2	29.6	159.5
2008	1.5	0.0	86.0	40.0	0.0	3.5	2.6	33.8	167.4

	On beef operations ¹								Total
	Bulls, 1 year and over	Beef cows	Dairy cows	Heifers			Steers, 1 year and over	Calves, under 1 year	
				Heifers, dairy replacement	Heifers, beef replacement	Heifers, slaughter			
	thousands of head								
At January 1									
2002	96.5	1,959.0	0.0	0.0	250.0	607.8	793.8	1,931.7	5,638.8
2003	94.6	1,915.0	0.0	0.0	250.0	527.8	695.1	1,652.3	5,134.8
2004	107.8	1,960.0	0.0	0.0	270.5	555.3	628.5	1,969.8	5,491.9
2005	108.6	2,090.0	0.0	0.0	255.0	627.1	591.1	2,073.7	5,745.5
2006	104.1	2,052.0	0.0	0.0	245.0	644.1	621.5	2,058.0	5,724.7
2007	100.8	2,000.0	0.0	0.0	253.0	652.4	634.8	1,873.8	5,514.8
2008	100.2	1,990.0	0.0	0.0	245.0	685.5	568.5	1,797.4	5,386.6
At July 1									
2002	108.3	2,040.0	0.0	0.0	345.0	743.2	863.6	2,108.4	6,208.5
2003	107.1	1,990.0	0.0	0.0	350.0	672.7	793.0	2,010.8	5,923.6
2004	111.3	2,150.0	0.0	0.0	320.0	757.7	774.9	2,101.0	6,214.9
2005	116.9	2,200.0	0.0	0.0	352.0	817.7	824.9	2,210.3	6,521.8
2006	103.7	2,025.0	0.0	0.0	278.0	804.9	886.1	2,040.3	6,138.0
2007	107.0	2,076.0	0.0	0.0	284.0	829.4	997.9	2,016.5	6,310.8
2008	103.5	1,955.0	0.0	0.0	267.0	746.6	802.4	1,968.1	5,842.6

See footnotes at the end of the table.

Table 7-8 – continued

Cattle by farm type — Alberta

	On cow calf operations								
	Bulls, 1 year and over	Beef cows	Dairy cows	Heifers			Steers, 1 year and over	Calves, under 1 year	Total
				Heifers, dairy replacement	Heifers, beef replacement	Heifers, slaughter			
	thousands of head								
At January 1									
2002	92.2	1,868.8	0.0	0.0	223.9	28.8	30.5	1,282.7	3,526.9
2003	87.8	1,775.2	0.0	0.0	224.1	16.3	18.3	1,040.0	3,161.7
2004	101.1	1,818.9	0.0	0.0	244.0	24.7	18.6	1,305.8	3,513.1
2005	101.8	1,961.7	0.0	0.0	238.2	31.3	24.2	1,493.6	3,850.8
2006	97.8	1,926.0	0.0	0.0	231.3	33.9	25.5	1,359.0	3,673.5
2007	93.2	1,848.0	0.0	0.0	232.2	23.7	16.9	1,232.0	3,446.0
2008	92.6	1,836.8	0.0	0.0	221.8	36.2	20.7	1,205.4	3,413.5
At July 1									
2002	95.7	1,801.3	0.0	0.0	286.1	19.0	28.4	1,763.5	3,994.0
2003	93.9	1,727.3	0.0	0.0	283.2	33.1	29.8	1,645.7	3,813.0
2004	92.3	1,788.8	0.0	0.0	261.3	53.1	51.1	1,691.2	3,937.8
2005	97.7	1,834.8	0.0	0.0	287.5	55.4	60.5	1,723.2	4,059.1
2006	87.4	1,707.0	0.0	0.0	229.1	40.4	35.2	1,583.6	3,682.7
2007	88.5	1,712.7	0.0	0.0	224.4	42.1	40.5	1,542.8	3,651.0
2008	83.2	1,575.7	0.0	0.0	203.6	33.9	32.9	1,462.7	3,392.0
	On feeder and stocker operations ²								
	Bulls, 1 year and over	Beef cows	Dairy cows	Heifers			Steers, 1 year and over	Calves, under 1 year	Total
				Heifers, dairy replacement	Heifers, beef replacement	Heifers, slaughter			
	thousands of head								
At January 1									
2002	4.3	90.2	0.0	0.0	26.1	199.0	173.3	439.0	931.9
2003	6.8	139.8	0.0	0.0	25.9	196.5	226.8	432.3	1,028.1
2004	6.7	141.1	0.0	0.0	26.5	255.6	164.9	494.0	1,088.8
2005	6.8	128.3	0.0	0.0	16.8	263.8	143.9	445.1	1,004.7
2006	6.3	126.0	0.0	0.0	13.7	253.2	163.0	514.5	1,076.7
2007	7.6	152.0	0.0	0.0	20.8	279.7	205.9	422.8	1,088.8
2008	7.6	153.2	0.0	0.0	23.2	307.3	151.8	445.0	1,088.1
At July 1									
2002	12.6	238.7	0.0	0.0	58.9	318.2	378.2	332.9	1,339.5
2003	13.2	262.7	0.0	0.0	66.8	319.6	303.2	350.1	1,315.6
2004	19.0	361.2	0.0	0.0	58.7	324.6	308.8	384.8	1,457.1
2005	19.2	365.2	0.0	0.0	64.5	347.3	329.4	452.1	1,577.7
2006	16.3	318.0	0.0	0.0	48.9	344.5	340.9	421.7	1,490.3
2007	18.5	363.3	0.0	0.0	59.6	360.3	392.4	430.7	1,624.8
2008	20.3	379.3	0.0	0.0	63.4	347.7	334.5	395.4	1,540.6
	On feeding operations ³								
	Bulls, 1 year and over	Beef cows	Dairy cows	Heifers			Steers, 1 year and over	Calves, under 1 year	Total
				Heifers, dairy replacement	Heifers, beef replacement	Heifers, slaughter			
	thousands of head								
At January 1									
2002	0.0	0.0	0.0	0.0	0.0	380.0	590.0	210.0	1,180.0
2003	0.0	0.0	0.0	0.0	0.0	315.0	450.0	180.0	945.0
2004	0.0	0.0	0.0	0.0	0.0	275.0	445.0	170.0	890.0
2005	0.0	0.0	0.0	0.0	0.0	332.0	423.0	135.0	890.0
2006	0.0	0.0	0.0	0.0	0.0	357.0	433.0	184.5	974.5
2007	0.0	0.0	0.0	0.0	0.0	349.0	412.0	219.0	980.0
2008	0.0	0.0	0.0	0.0	0.0	342.0	396.0	147.0	885.0
At July 1									
2002	0.0	0.0	0.0	0.0	0.0	406.0	457.0	12.0	875.0
2003	0.0	0.0	0.0	0.0	0.0	320.0	460.0	15.0	795.0
2004	0.0	0.0	0.0	0.0	0.0	380.0	415.0	25.0	820.0
2005	0.0	0.0	0.0	0.0	0.0	415.0	435.0	35.0	885.0
2006	0.0	0.0	0.0	0.0	0.0	420.0	510.0	35.0	965.0
2007	0.0	0.0	0.0	0.0	0.0	427.0	565.0	43.0	1,035.0
2008	0.0	0.0	0.0	0.0	0.0	365.0	435.0	110.0	910.0

1. Excluding small numbers of heifers for slaughter and steers on dairy operations.

2. Farms where cattle are fed on a low energy ration such as hay or pasture.

3. Farms where cattle are fed a high energy ration such as grain as they are fattened for market.

Table 7-9
Cattle by farm type — British Columbia

	On all cattle operations								Total
	Bulls, 1 year and over	Beef cows	Dairy cows	Heifers			Steers, 1 year and over	Calves, under 1 year	
				Heifers, dairy replacement	Heifers, beef replacement	Heifers, slaughter			
thousands of head									
At January 1									
2002	15.0	285.0	74.5	34.0	46.0	11.0	30.0	174.5	670.0
2003	16.5	296.0	76.0	38.0	46.0	10.0	31.0	169.5	683.0
2004	16.0	290.0	80.0	38.0	45.0	14.0	53.0	204.0	740.0
2005	17.0	305.0	78.0	36.0	37.0	13.0	40.0	184.0	710.0
2006	16.0	285.0	75.0	30.0	35.0	15.0	30.0	174.0	660.0
2007	14.5	260.5	70.5	32.0	30.0	12.0	30.0	165.5	615.0
2008	14.5	249.0	70.0	35.0	32.0	14.5	23.0	172.0	610.0
At July 1									
2002	18.0	291.0	75.0	36.5	57.5	22.0	47.0	289.5	836.5
2003	18.5	293.0	77.0	34.0	56.0	28.0	67.5	311.0	885.0
2004	19.0	327.0	78.0	35.0	51.0	32.0	73.0	335.0	950.0
2005	18.0	319.5	77.5	32.5	48.5	35.0	63.0	321.0	915.0
2006	17.0	280.0	73.0	35.5	43.5	26.0	55.0	290.0	820.0
2007	16.0	277.0	71.5	36.5	40.0	25.0	57.0	282.0	805.0
2008	16.5	244.0	71.0	33.0	36.5	25.0	54.0	270.0	750.0
On dairy operations									
	Bulls, 1 year and over	Beef cows	Dairy cows	Heifers			Steers, 1 year and over	Calves, under 1 year	Total
				Heifers, dairy replacement	Heifers, beef replacement	Heifers, slaughter			
thousands of head									
At January 1									
2002	1.1	0.0	74.5	34.0	0.0	0.2	1.0	29.7	140.5
2003	1.1	0.0	76.0	38.0	0.0	0.2	2.6	28.7	146.6
2004	0.9	0.0	80.0	38.0	0.0	0.4	1.3	34.1	154.7
2005	0.8	0.0	78.0	36.0	0.0	0.1	0.4	29.3	144.6
2006	0.6	0.0	75.0	30.0	0.0	0.3	0.6	27.0	133.5
2007	0.7	0.0	70.5	32.0	0.0	0.4	1.2	26.4	131.2
2008	0.7	0.0	70.0	35.0	0.0	0.2	1.0	27.0	133.9
At July 1									
2002	1.3	0.0	75.0	36.5	0.0	0.7	0.7	29.2	143.4
2003	1.1	0.0	77.0	34.0	0.0	0.1	1.9	30.8	144.9
2004	1.0	0.0	78.0	35.0	0.0	0.1	0.8	30.0	144.9
2005	0.7	0.0	77.5	32.5	0.0	0.5	0.7	29.1	141.0
2006	0.7	0.0	73.0	35.5	0.0	0.2	2.0	25.7	137.1
2007	0.8	0.0	71.5	36.5	0.0	0.9	4.6	25.2	139.5
2008	0.9	0.0	71.0	33.0	0.0	0.1	1.8	24.6	131.4
On beef operations ¹									
	Bulls, 1 year and over	Beef cows	Dairy cows	Heifers			Steers, 1 year and over	Calves, under 1 year	Total
				Heifers, dairy replacement	Heifers, beef replacement	Heifers, slaughter			
thousands of head									
At January 1									
2002	13.9	285.0	0.0	0.0	46.0	10.9	29.0	144.8	529.6
2003	15.4	296.0	0.0	0.0	46.0	9.8	28.5	140.9	536.6
2004	15.1	290.0	0.0	0.0	45.0	13.6	51.6	170.0	585.3
2005	16.2	305.0	0.0	0.0	37.0	12.9	39.6	154.7	565.4
2006	15.4	285.0	0.0	0.0	35.0	14.7	29.4	147.0	526.5
2007	13.8	260.5	0.0	0.0	30.0	11.6	28.8	139.1	483.8
2008	13.8	249.0	0.0	0.0	32.0	14.3	22.1	145.0	476.2
At July 1									
2002	16.7	291.0	0.0	0.0	57.5	21.3	46.3	260.3	693.1
2003	17.4	293.0	0.0	0.0	56.0	27.9	65.6	280.3	740.2
2004	18.0	327.0	0.0	0.0	51.0	31.9	72.3	305.0	805.2
2005	17.3	319.5	0.0	0.0	48.5	34.5	62.3	291.9	774.0
2006	16.3	280.0	0.0	0.0	43.5	25.9	53.0	264.2	682.9
2007	15.2	277.0	0.0	0.0	40.0	24.0	52.4	256.8	665.4
2008	15.6	244.0	0.0	0.0	36.5	24.8	52.2	245.4	618.5

See footnotes at the end of the table.

Table 7-9 – continued

Cattle by farm type — British Columbia

	On cow calf operations								Total
	Bulls, 1 year and over	Beef cows	Dairy cows	Heifers			Steers, 1 year and over	Calves, under 1 year	
				Heifers, dairy replacement	Heifers, beef replacement	Heifers, slaughter			
thousands of head									
At January 1									
2002	12.7	262.2	0.0	0.0	42.1	1.6	5.3	123.4	447.3
2003	14.4	276.8	0.0	0.0	42.5	4.2	7.7	118.9	464.5
2004	14.1	272.5	0.0	0.0	41.9	5.4	8.0	143.6	485.5
2005	15.2	286.7	0.0	0.0	34.8	6.5	9.5	134.1	486.8
2006	14.4	266.5	0.0	0.0	32.8	5.1	7.3	122.6	448.7
2007	12.7	240.2	0.0	0.0	26.2	3.8	6.3	108.0	397.2
2008	13.1	236.1	0.0	0.0	29.7	4.4	5.8	120.4	409.5
At July 1									
2002	14.7	257.5	0.0	0.0	47.7	2.8	7.2	223.2	553.1
2003	15.1	254.3	0.0	0.0	46.8	7.1	17.6	235.8	576.7
2004	14.2	264.8	0.0	0.0	40.0	8.3	13.8	238.7	579.8
2005	13.5	256.6	0.0	0.0	39.6	9.3	15.3	231.3	565.6
2006	13.4	231.0	0.0	0.0	34.3	5.7	9.3	209.6	503.3
2007	12.4	229.4	0.0	0.0	30.8	7.7	9.2	202.7	492.2
2008	13.3	206.5	0.0	0.0	30.4	6.4	10.0	201.5	468.1
On feeder and stocker operations 2									
	Bulls, 1 year and over	Beef cows	Dairy cows	Heifers			Steers, 1 year and over	Calves, under 1 year	Total
				Heifers, dairy replacement	Heifers, beef replacement	Heifers, slaughter			
thousands of head									
At January 1									
2002	1.2	22.8	0.0	0.0	3.9	5.8	13.7	19.9	67.3
2003	1.0	19.2	0.0	0.0	3.5	3.6	15.3	19.2	61.8
2004	1.0	17.5	0.0	0.0	3.1	6.2	12.6	20.9	61.3
2005	1.0	18.3	0.0	0.0	2.2	3.9	11.1	17.1	53.6
2006	1.0	18.5	0.0	0.0	2.2	7.1	9.1	18.4	56.3
2007	1.1	20.3	0.0	0.0	3.8	4.8	12.5	28.1	70.6
2008	0.7	12.9	0.0	0.0	2.3	4.9	9.3	21.6	51.7
At July 1									
2002	2.0	33.5	0.0	0.0	9.8	14.5	27.1	36.1	123.0
2003	2.3	38.7	0.0	0.0	9.2	16.3	28.0	38.5	133.0
2004	3.8	62.2	0.0	0.0	11.0	20.1	34.5	59.3	190.9
2005	3.8	62.9	0.0	0.0	8.9	21.7	31.0	58.1	186.4
2006	2.9	49.0	0.0	0.0	9.2	15.7	24.7	50.6	152.1
2007	2.8	47.6	0.0	0.0	9.2	10.8	24.2	52.1	146.7
2008	2.3	37.5	0.0	0.0	6.1	12.4	23.7	42.4	124.4
On feeding operations 3									
	Bulls, 1 year and over	Beef cows	Dairy cows	Heifers			Steers, 1 year and over	Calves, under 1 year	Total
				Heifers, dairy replacement	Heifers, beef replacement	Heifers, slaughter			
thousands of head									
At January 1									
2002	0.0	0.0	0.0	0.0	0.0	3.5	10.0	1.5	15.0
2003	0.0	0.0	0.0	0.0	0.0	2.0	5.5	2.8	10.3
2004	0.0	0.0	0.0	0.0	0.0	2.0	31.0	5.5	38.5
2005	0.0	0.0	0.0	0.0	0.0	2.5	19.0	3.5	25.0
2006	0.0	0.0	0.0	0.0	0.0	2.5	13.0	6.0	21.5
2007	0.0	0.0	0.0	0.0	0.0	3.0	10.0	3.0	16.0
2008	0.0	0.0	0.0	0.0	0.0	5.0	7.0	3.0	15.0
At July 1									
2002	0.0	0.0	0.0	0.0	0.0	4.0	12.0	1.0	17.0
2003	0.0	0.0	0.0	0.0	0.0	4.5	20.0	6.0	30.5
2004	0.0	0.0	0.0	0.0	0.0	3.5	24.0	7.0	34.5
2005	0.0	0.0	0.0	0.0	0.0	3.5	16.0	2.5	22.0
2006	0.0	0.0	0.0	0.0	0.0	4.5	19.0	4.0	27.5
2007	0.0	0.0	0.0	0.0	0.0	5.5	19.0	2.0	26.5
2008	0.0	0.0	0.0	0.0	0.0	6.0	18.5	1.5	26.0

1. Excluding small numbers of heifers for slaughter and steers on dairy operations.

2. Farms where cattle are fed on a low energy ration such as hay or pasture.

3. Farms where cattle are fed a high energy ration such as grain as they are fattened for market.

Table 7-10
Cattle by farm type — Western Provinces

	On all cattle operations								Total
	Bulls, 1 year and over	Beef cows	Dairy cows	Heifers			Steers, 1 year and over	Calves, under 1 year	
				Heifers, dairy replacement	Heifers, beef replacement	Heifers, slaughter			
	thousands of head								
At January 1									
2002	195.0	3,992.0	236.5	102.5	534.0	691.0	917.0	3,489.5	10,157.5
2003	196.5	4,082.5	235.5	106.0	534.0	631.0	825.0	3,175.5	9,786.0
2004	224.0	4,314.0	240.0	107.5	580.5	677.0	840.0	3,737.0	10,720.0
2005	228.5	4,580.0	236.0	104.0	548.0	747.0	776.0	3,950.5	11,170.0
2006	220.5	4,570.0	234.5	97.5	540.0	769.0	788.0	3,780.5	11,000.0
2007	208.0	4,368.0	223.0	97.5	515.0	768.0	791.0	3,629.5	10,600.0
2008	208.5	4,333.5	226.5	103.0	515.0	804.5	730.0	3,474.0	10,395.0
At July 1									
2002	216.0	4,175.0	235.5	108.0	707.5	910.0	1,149.5	4,132.0	11,633.5
2003	228.5	4,240.0	238.0	108.0	746.0	905.0	1,139.5	4,190.0	11,795.0
2004	239.0	4,627.0	233.0	111.0	689.0	1,034.0	1,205.0	4,482.0	12,620.0
2005	245.0	4,740.5	235.5	106.5	740.5	1,090.5	1,168.5	4,648.0	12,975.0
2006	226.0	4,493.0	227.5	106.0	607.5	1,018.0	1,188.0	4,384.0	12,250.0
2007	222.5	4,445.0	229.5	109.0	586.0	1,070.0	1,327.0	4,256.0	12,245.0
2008	222.5	4,220.0	233.0	109.0	566.5	979.5	1,136.5	4,193.0	11,660.0

	On dairy operations								Total
	Bulls, 1 year and over	Beef cows	Dairy cows	Heifers			Steers, 1 year and over	Calves, under 1 year	
				Heifers, dairy replacement	Heifers, beef replacement	Heifers, slaughter			
	thousands of head								
At January 1									
2002	3.8	0.0	236.5	102.5	0.0	2.7	8.5	108.9	462.9
2003	3.5	0.0	235.5	106.0	0.0	2.7	9.2	106.3	463.2
2004	3.9	0.0	240.0	107.5	0.0	3.5	11.4	123.4	489.7
2005	3.0	0.0	236.0	104.0	0.0	3.4	7.3	123.4	477.1
2006	2.3	0.0	234.5	97.5	0.0	3.5	6.5	106.0	450.3
2007	2.2	0.0	223.0	97.5	0.0	5.5	5.9	100.7	434.8
2008	2.7	0.0	226.5	103.0	0.0	5.1	9.0	94.9	441.2
At July 1									
2002	4.2	0.0	235.5	108.0	0.0	8.3	7.9	96.0	459.9
2003	4.1	0.0	238.0	108.0	0.0	8.1	12.4	99.7	470.3
2004	3.6	0.0	233.0	111.0	0.0	8.1	10.2	116.2	482.1
2005	3.8	0.0	235.5	106.5	0.0	8.6	9.2	102.8	466.4
2006	2.9	0.0	227.5	106.0	0.0	8.1	6.7	84.8	436.0
2007	2.7	0.0	229.5	109.0	0.0	6.8	9.4	84.3	441.7
2008	3.3	0.0	233.0	109.0	0.0	4.7	8.7	85.0	443.7

	On beef operations ¹								Total
	Bulls, 1 year and over	Beef cows	Dairy cows	Heifers			Steers, 1 year and over	Calves, under 1 year	
				Heifers, dairy replacement	Heifers, beef replacement	Heifers, slaughter			
	thousands of head								
At January 1									
2002	191.2	3,992.0	0.0	0.0	534.0	688.5	908.6	3,380.7	9,695.0
2003	193.0	4,082.5	0.0	0.0	534.0	628.3	816.0	3,069.3	9,323.1
2004	220.1	4,314.0	0.0	0.0	580.5	673.6	828.5	3,613.7	10,230.4
2005	225.5	4,580.0	0.0	0.0	548.0	743.7	768.7	3,827.1	10,693.0
2006	218.2	4,570.0	0.0	0.0	540.0	765.4	781.6	3,674.7	10,549.9
2007	205.8	4,368.0	0.0	0.0	515.0	762.5	785.3	3,528.7	10,165.3
2008	205.8	4,333.5	0.0	0.0	515.0	799.4	721.0	3,378.9	9,953.6
At July 1									
2002	211.8	4,175.0	0.0	0.0	707.5	901.8	1,141.7	4,035.9	11,173.7
2003	224.4	4,240.0	0.0	0.0	746.0	897.0	1,127.1	4,090.6	11,325.1
2004	235.4	4,627.0	0.0	0.0	689.0	1,025.9	1,195.0	4,365.8	12,138.1
2005	241.2	4,740.5	0.0	0.0	740.5	1,081.9	1,159.5	4,545.3	12,508.9
2006	223.1	4,493.0	0.0	0.0	607.5	1,009.9	1,181.3	4,299.1	11,813.9
2007	219.8	4,445.0	0.0	0.0	586.0	1,063.4	1,317.7	4,172.1	11,804.0
2008	219.2	4,220.0	0.0	0.0	566.5	974.9	1,127.7	4,108.0	11,216.3

See footnotes at the end of the table.

Table 7-10 – continued

Cattle by farm type — Western Provinces

	On cow calf operations								Total
	Bulls, 1 year and over	Beef cows	Dairy cows	Heifers			Steers, 1 year and over	Calves, under 1 year	
				Heifers, dairy replacement	Heifers, beef replacement	Heifers, slaughter			
thousands of head									
At January 1									
2002	182.6	3,810.3	0.0	0.0	494.6	42.0	46.2	2,565.1	7,140.8
2003	181.3	3,841.1	0.0	0.0	488.5	37.3	44.6	2,261.3	6,854.1
2004	208.0	4,063.4	0.0	0.0	530.5	53.2	54.0	2,693.5	7,602.6
2005	212.4	4,321.9	0.0	0.0	510.0	67.6	71.0	2,985.3	8,168.2
2006	205.8	4,312.3	0.0	0.0	503.5	62.2	61.0	2,723.1	7,867.9
2007	193.2	4,106.0	0.0	0.0	477.6	48.8	47.3	2,646.3	7,519.2
2008	192.3	4,047.4	0.0	0.0	474.0	61.1	60.8	2,513.3	7,348.9
At July 1									
2002	190.3	3,755.7	0.0	0.0	607.7	41.3	66.2	3,487.1	8,148.3
2003	198.8	3,734.9	0.0	0.0	619.9	69.3	93.8	3,470.9	8,187.6
2004	195.6	3,863.6	0.0	0.0	559.7	98.8	115.1	3,552.1	8,384.9
2005	202.5	4,000.8	0.0	0.0	617.5	104.4	127.9	3,678.1	8,731.2
2006	191.6	3,867.5	0.0	0.0	511.7	69.8	82.8	3,511.2	8,234.6
2007	185.8	3,763.7	0.0	0.0	476.6	76.5	88.6	3,352.4	7,943.6
2008	183.0	3,528.6	0.0	0.0	451.0	73.5	83.3	3,264.0	7,583.4
On feeder and stocker operations 2									
	Bulls, 1 year and over	Beef cows	Dairy cows	Heifers			Steers, 1 year and over	Calves, under 1 year	Total
				Heifers, dairy replacement	Heifers, beef replacement	Heifers, slaughter			
	thousands of head								
At January 1									
2002	8.6	181.7	0.0	0.0	39.4	233.0	209.4	578.1	1,250.2
2003	11.7	241.4	0.0	0.0	45.5	250.0	273.9	576.7	1,399.2
2004	12.1	250.6	0.0	0.0	50.0	315.4	228.5	678.2	1,534.8
2005	13.1	258.1	0.0	0.0	38.0	313.6	196.7	620.3	1,439.8
2006	12.4	257.7	0.0	0.0	36.5	311.7	220.6	687.6	1,526.5
2007	12.6	262.0	0.0	0.0	37.4	335.7	265.5	608.9	1,522.1
2008	13.5	286.1	0.0	0.0	41.0	369.8	217.7	656.6	1,584.7
At July 1									
2002	21.5	419.3	0.0	0.0	99.8	407.0	494.5	524.3	1,966.4
2003	25.6	505.1	0.0	0.0	126.1	446.2	450.3	581.2	2,134.5
2004	39.8	763.4	0.0	0.0	129.3	482.6	504.9	768.2	2,688.2
2005	38.7	739.7	0.0	0.0	123.0	498.5	488.6	799.2	2,687.7
2006	31.5	625.5	0.0	0.0	95.8	474.6	477.5	712.9	2,417.8
2007	34.0	681.3	0.0	0.0	109.4	496.4	539.1	740.7	2,600.9
2008	36.2	691.4	0.0	0.0	115.5	487.9	507.4	707.5	2,545.9
On feeding operations 3									
	Bulls, 1 year and over	Beef cows	Dairy cows	Heifers			Steers, 1 year and over	Calves, under 1 year	Total
				Heifers, dairy replacement	Heifers, beef replacement	Heifers, slaughter			
	thousands of head								
At January 1									
2002	0.0	0.0	0.0	0.0	0.0	413.5	653.0	237.5	1,304.0
2003	0.0	0.0	0.0	0.0	0.0	341.0	497.5	231.3	1,069.8
2004	0.0	0.0	0.0	0.0	0.0	305.0	546.0	242.0	1,093.0
2005	0.0	0.0	0.0	0.0	0.0	362.5	501.0	221.5	1,085.0
2006	0.0	0.0	0.0	0.0	0.0	391.5	500.0	264.0	1,155.5
2007	0.0	0.0	0.0	0.0	0.0	378.0	472.5	273.5	1,124.0
2008	0.0	0.0	0.0	0.0	0.0	368.5	442.5	209.0	1,020.0
At July 1									
2002	0.0	0.0	0.0	0.0	0.0	453.5	581.0	24.5	1,059.0
2003	0.0	0.0	0.0	0.0	0.0	381.5	583.0	38.5	1,003.0
2004	0.0	0.0	0.0	0.0	0.0	444.5	575.0	45.5	1,065.0
2005	0.0	0.0	0.0	0.0	0.0	479.0	543.0	68.0	1,090.0
2006	0.0	0.0	0.0	0.0	0.0	465.5	621.0	75.0	1,161.5
2007	0.0	0.0	0.0	0.0	0.0	490.5	690.0	79.0	1,259.5
2008	0.0	0.0	0.0	0.0	0.0	413.5	537.0	136.5	1,087.0

1. Excluding small numbers of heifers for slaughter and steers on dairy operations.

2. Farms where cattle are fed on a low energy ration such as hay or pasture.

3. Farms where cattle are fed a high energy ration such as grain as they are fattened for market.

Table 8-1
Feeder cattle by weight category, by farm type at July 1, 2008 — Canada

	Total	Heavy	Medium	Light
	thousands of head			
On all cattle operations				
Feeder heifers	1,175.5	279.3	295.9	600.3
Steers	1,576.4	338.6	441.6	796.2
Total	2,751.9	617.9	737.5	1,396.5
On dairy operations				
Feeder heifers	11.7	3.2	3.4	5.1
Steers	42.0	10.8	10.8	20.4
Total	53.7	14.0	14.2	25.5
On beef operations ¹				
Feeder heifers	1,163.9	276.1	292.5	595.3
Steers	1,534.3	327.8	430.8	775.7
Total	2,698.2	603.9	723.3	1,371.0
On cow calf operations				
Feeder heifers	94.0	9.0	14.6	70.4
Steers	110.9	12.6	15.2	83.1
Total	204.9	21.6	29.8	153.5
On feeder and stocker operations ²				
Feeder heifers	544.6	93.3	118.8	332.5
Steers	610.4	95.4	124.5	390.5
Total	1,155.0	188.7	243.3	723.0
On feeding operations ³				
Feeder heifers	525.3	173.8	159.1	192.4
Steers	813.0	219.8	291.1	302.1
Total	1,338.3	393.6	450.2	494.5

1. Excluding small amounts of heifers for slaughter and steers on dairy operations.

2. Farms where cattle are fed on a low energy ration such as hay or pasture.

3. Farms where cattle are fed a high energy ration such as grain as they are fattened for market.

Table 8-2
Feeder cattle by weight category, by farm type at July 1, 2008 — East

	Total	Heavy	Medium	Light
	thousands of head			
On all cattle operations				
Feeder heifers	196.0	55.0	58.3	82.7
Steers	439.9	132.3	116.8	190.8
Total	635.9	187.3	175.1	273.5
On dairy operations				
Feeder heifers	7.0	1.7	2.9	2.4
Steers	33.3	9.6	9.8	13.9
Total	40.3	11.3	12.7	16.3
On beef operations ¹				
Feeder heifers	189.0	53.3	55.4	80.3
Steers	406.6	122.7	107.0	176.9
Total	595.6	176.0	162.4	257.2
On cow calf operations				
Feeder heifers	20.5	4.7	5.7	10.1
Steers	27.6	5.5	5.2	16.9
Total	48.1	10.2	10.9	27.0
On feeder and stocker operations ²				
Feeder heifers	56.7	11.5	16.6	28.6
Steers	103.0	22.2	25.1	55.7
Total	159.7	33.7	41.7	84.3
On feeding operations ³				
Feeder heifers	111.8	37.1	33.1	41.6
Steers	276.0	95.0	76.7	104.3
Total	387.8	132.1	109.8	145.9

1. Excluding small amounts of heifers for slaughter and steers on dairy operations.

2. Farms where cattle are fed on a low energy ration such as hay or pasture.

3. Farms where cattle are fed a high energy ration such as grain as they are fattened for market.

Table 8-3

Feeder cattle by weight category, by farm type at July 1, 2008 — Atlantic

	Total	Heavy	Medium	Light
	thousands of head			
On all cattle operations				
Feeder heifers	17.5	5.1	5.9	6.5
Steers	22.9	6.6	7.2	9.1
Total	40.4	11.7	13.1	15.6
On dairy operations				
Feeder heifers	0.6	0.2	0.3	0.1
Steers	1.0	0.3	0.3	0.4
Total	1.6	0.5	0.6	0.5
On beef operations ¹				
Feeder heifers	16.9	4.9	5.6	6.4
Steers	21.9	6.3	6.9	8.7
Total	38.8	11.2	12.5	15.1
On cow calf operations				
Feeder heifers	2.8	0.7	0.8	1.3
Steers	3.1	0.6	0.7	1.8
Total	5.9	1.3	1.5	3.1
On feeder and stocker operations ²				
Feeder heifers	7.6	2.0	3.0	2.6
Steers	8.8	2.7	3.5	2.6
Total	16.4	4.7	6.5	5.2
On feeding operations ³				
Feeder heifers	6.5	2.2	1.8	2.5
Steers	10.0	3.0	2.7	4.3
Total	16.5	5.2	4.5	6.8

1. Excluding small amounts of heifers for slaughter and steers on dairy operations.

2. Farms where cattle are fed on a low energy ration such as hay or pasture.

3. Farms where cattle are fed a high energy ration such as grain as they are fattened for market.

Table 8-4

Feeder cattle by weight category, by farm type at July 1, 2008 — Quebec

	Total	Heavy	Medium	Light
	thousands of head			
On all cattle operations				
Feeder heifers	33.5	10.7	11.1	11.7
Steers	111.0	47.7	30.0	33.3
Total	144.5	58.4	41.1	45.0
On dairy operations				
Feeder heifers	2.8	0.5	1.1	1.2
Steers	6.5	1.7	1.8	3.0
Total	9.3	2.2	2.9	4.2
On beef operations ¹				
Feeder heifers	30.7	10.2	10.0	10.5
Steers	104.5	46.0	28.2	30.3
Total	135.2	56.2	38.2	40.8
On cow calf operations				
Feeder heifers	5.1	1.0	1.5	2.6
Steers	7.4	1.8	1.0	4.6
Total	12.5	2.8	2.5	7.2
On feeder and stocker operations ²				
Feeder heifers	17.8	5.8	5.2	6.8
Steers	31.1	13.2	9.2	8.7
Total	48.9	19.0	14.4	15.5
On feeding operations ³				
Feeder heifers	7.8	3.4	3.3	1.1
Steers	66.0	31.0	18.0	17.0
Total	73.8	34.4	21.3	18.1

1. Excluding small amounts of heifers for slaughter and steers on dairy operations.

2. Farms where cattle are fed on a low energy ration such as hay or pasture.

3. Farms where cattle are fed a high energy ration such as grain as they are fattened for market.

Table 8-5
Feeder cattle by weight category, by farm type at July 1, 2008 — Ontario

	Total	Heavy	Medium	Light
	thousands of head			
On all cattle operations				
Feeder heifers	145.0	39.2	41.3	64.5
Steers	306.0	78.0	79.6	148.4
Total	451.0	117.2	120.9	212.9
On dairy operations				
Feeder heifers	3.6	1.0	1.5	1.1
Steers	25.8	7.6	7.7	10.5
Total	29.4	8.6	9.2	11.6
On beef operations ¹				
Feeder heifers	141.4	38.2	39.8	63.4
Steers	280.2	70.4	71.9	137.9
Total	421.6	108.6	111.7	201.3
On cow calf operations				
Feeder heifers	12.6	3.0	3.4	6.2
Steers	17.1	3.1	3.5	10.5
Total	29.7	6.1	6.9	16.7
On feeder and stocker operations ²				
Feeder heifers	31.3	3.7	8.4	19.2
Steers	63.1	6.3	12.4	44.4
Total	94.4	10.0	20.8	63.6
On feeding operations ³				
Feeder heifers	97.5	31.5	28.0	38.0
Steers	200.0	61.0	56.0	83.0
Total	297.5	92.5	84.0	121.0

1. Excluding small amounts of heifers for slaughter and steers on dairy operations.

2. Farms where cattle are fed on a low energy ration such as hay or pasture.

3. Farms where cattle are fed a high energy ration such as grain as they are fattened for market.

Table 8-6

Feeder cattle by weight category, by farm type at July 1, 2008 — Manitoba

	Total	Heavy	Medium	Light
	thousands of head			
On all cattle operations				
Feeder heifers	74.5	8.8	12.7	53.0
Steers	90.5	12.2	12.7	65.6
Total	165.0	21.0	25.4	118.6
On dairy operations				
Feeder heifers	0.8	0.1	0.1	0.6
Steers	1.7	0.7	0.1	0.9
Total	2.5	0.8	0.2	1.5
On beef operations ¹				
Feeder heifers	73.7	8.7	12.6	52.4
Steers	88.8	11.5	12.6	64.7
Total	162.5	20.2	25.2	117.1
On cow calf operations				
Feeder heifers	9.9	1.3	1.2	7.4
Steers	14.2	1.1	1.5	11.6
Total	24.1	2.4	2.7	19.0
On feeder and stocker operations ²				
Feeder heifers	47.3	6.1	8.4	32.8
Steers	39.1	1.4	8.9	28.8
Total	86.4	7.5	17.3	61.6
On feeding operations ³				
Feeder heifers	16.5	1.3	3.0	12.2
Steers	35.5	9.0	2.2	24.3
Total	52.0	10.3	5.2	36.5

1. Excluding small amounts of heifers for slaughter and steers on dairy operations.

2. Farms where cattle are fed on a low energy ration such as hay or pasture.

3. Farms where cattle are fed a high energy ration such as grain as they are fattened for market.

Table 8-7

Feeder cattle by weight category, by farm type at July 1, 2008 — Saskatchewan

	Total	Heavy	Medium	Light
	thousands of head			
On all cattle operations				
Feeder heifers	130.0	13.3	20.2	96.5
Steers	187.0	23.4	26.2	137.4
Total	317.0	36.7	46.4	233.9
On dairy operations				
Feeder heifers	0.3	0.0	0.1	0.2
Steers	2.6	0.3	0.2	2.1
Total	2.9	0.3	0.3	2.3
On beef operations ¹				
Feeder heifers	129.8	13.3	20.1	96.4
Steers	184.3	23.1	26.0	135.2
Total	314.1	36.4	46.1	231.6
On cow calf operations				
Feeder heifers	23.3	1.3	2.6	19.4
Steers	26.2	2.4	4.0	19.8
Total	49.5	3.7	6.6	39.2
On feeder and stocker operations ²				
Feeder heifers	80.5	4.4	11.2	64.9
Steers	110.1	10.9	17.2	82.0
Total	190.6	15.3	28.4	146.9
On feeding operations ³				
Feeder heifers	26.0	7.6	6.3	12.1
Steers	48.0	9.8	4.8	33.4
Total	74.0	17.4	11.1	45.5

1. Excluding small amounts of heifers for slaughter and steers on dairy operations.

2. Farms where cattle are fed on a low energy ration such as hay or pasture.

3. Farms where cattle are fed a high energy ration such as grain as they are fattened for market.

Table 8-8
Feeder cattle by weight category, by farm type at July 1, 2008 — Alberta

	Total	Heavy	Medium	Light
	thousands of head			
On all cattle operations				
Feeder heifers	750.0	199.5	198.8	351.7
Steers	805.0	169.1	281.8	354.1
Total	1,555.0	368.6	480.6	705.8
On dairy operations				
Feeder heifers	3.5	1.4	0.3	1.8
Steers	2.6	0.2	0.7	1.7
Total	6.1	1.6	1.0	3.5
On beef operations ¹				
Feeder heifers	746.5	198.1	198.5	349.9
Steers	802.4	168.9	281.1	352.4
Total	1,548.9	367.0	479.6	702.3
On cow calf operations				
Feeder heifers	33.9	1.4	4.2	28.3
Steers	32.9	3.3	3.3	26.3
Total	66.8	4.7	7.5	54.6
On feeder and stocker operations ²				
Feeder heifers	347.6	70.7	81.3	195.6
Steers	334.5	60.6	72.8	201.1
Total	682.1	131.3	154.1	396.7
On feeding operations ³				
Feeder heifers	365.0	126.0	113.0	126.0
Steers	435.0	105.0	205.0	125.0
Total	800.0	231.0	318.0	251.0

1. Excluding small amounts of heifers for slaughter and steers on dairy operations.

2. Farms where cattle are fed on a low energy ration such as hay or pasture.

3. Farms where cattle are fed a high energy ration such as grain as they are fattened for market.

Table 8-9

Feeder cattle by weight category, by farm type at July 1, 2008 — British Columbia

	Total	Heavy	Medium	Light
	thousands of head			
On all cattle operations				
Feeder heifers	25.0	2.7	5.9	16.4
Steers	54.0	1.6	4.1	48.3
Total	79.0	4.3	10.0	64.7
On dairy operations				
Feeder heifers	0.1	0.0	0.0	0.1
Steers	1.8	0.0	0.0	1.8
Total	1.9	0.0	0.0	1.9
On beef operations ¹				
Feeder heifers	24.9	2.7	5.9	16.3
Steers	52.2	1.6	4.1	46.5
Total	77.1	4.3	10.0	62.8
On cow calf operations				
Feeder heifers	6.4	0.3	0.9	5.2
Steers	10.0	0.3	1.2	8.5
Total	16.4	0.6	2.1	13.7
On feeder and stocker operations ²				
Feeder heifers	12.5	0.6	1.3	10.6
Steers	23.7	0.3	0.5	22.9
Total	36.2	0.9	1.8	33.5
On feeding operations ³				
Feeder heifers	6.0	1.8	3.7	0.5
Steers	18.5	1.0	2.4	15.1
Total	24.5	2.8	6.1	15.6

1. Excluding small amounts of heifers for slaughter and steers on dairy operations.

2. Farms where cattle are fed on a low energy ration such as hay or pasture.

3. Farms where cattle are fed a high energy ration such as grain as they are fattened for market.

Table 8-10
Feeder cattle by weight category, by farm type at July 1, 2008 — West

	Total	Heavy	Medium	Light
	thousands of head			
On all cattle operations				
Feeder heifers	979.5	224.3	237.6	517.6
Steers	1,136.5	206.3	324.8	605.4
Total	2,116.0	430.6	562.4	1,123.0
On dairy operations				
Feeder heifers	4.7	1.5	0.5	2.7
Steers	8.7	1.2	1.0	6.5
Total	13.4	2.7	1.5	9.2
On beef operations ¹				
Feeder heifers	974.9	222.8	237.1	515.0
Steers	1,127.7	205.1	323.8	598.8
Total	2,102.6	427.9	560.9	1,113.8
On cow calf operations				
Feeder heifers	73.5	4.3	8.9	60.3
Steers	83.3	7.1	10.0	66.2
Total	156.8	11.4	18.9	126.5
On feeder and stocker operations ²				
Feeder heifers	487.9	81.8	102.2	303.9
Steers	507.4	73.2	99.4	334.8
Total	995.3	155.0	201.6	638.7
On feeding operations ³				
Feeder heifers	413.5	136.7	126.0	150.8
Steers	537.0	124.8	214.4	197.8
Total	950.5	261.5	340.4	348.6

1. Excluding small amounts of heifers for slaughter and steers on dairy operations.

2. Farms where cattle are fed on a low energy ration such as hay or pasture.

3. Farms where cattle are fed a high energy ration such as grain as they are fattened for market.

Table 9-1
Prices — Toronto A1 to A2 steers ^{1, 2, 3}

	January	February	March	April	May	June	July	August	September	October	November	December	Annual
	dollars per hundred weight												
1979	74.50	80.79	83.97	84.14	83.62	83.05	78.14	75.04	78.28	78.38	78.51	81.92	81.92
1980	82.99	82.36	78.83	75.45	76.57	76.08	81.20	84.14	83.88	83.91	83.85	83.42	80.74
1981	82.79	79.36	78.93	78.73	81.34	83.03	83.32	81.69	80.14	78.99	76.43	74.90	80.00
1982	74.12	75.75	77.21	82.07	90.58	90.30	84.34	81.75	79.51	74.55	75.70	74.91	80.54
1983	76.59	78.12	79.19	84.55	83.31	82.59	78.22	76.15	73.91	74.12	76.62	82.25	78.98
1984	85.14	82.74	84.99	86.79	86.63	84.23	86.89	85.87	83.21	82.47	85.90	88.47	85.30
1985	89.04	86.99	86.01	83.24	82.77	81.07	76.31	72.30	73.16	78.89	82.04	86.27	81.63
1986	84.85	82.76	81.09	79.53	79.73	77.92	81.49	83.22	84.08	84.30	88.22	89.45	82.66
1987	85.31	84.38	84.07	87.87	94.98	92.89	89.73	89.48	91.18	88.99	88.57	87.04	88.89
1988	86.84	87.95	89.77	93.54	93.74	90.18	84.18	82.42	83.16	84.16	85.34	85.55	87.35
1989	87.37	89.26	91.37	90.81	91.58	88.09	88.34	87.40	86.27	86.06	88.31	89.92	88.82
1990	88.92	88.42	86.85	87.72	88.88	88.62	88.31	88.36	87.91	88.53	92.65	93.58	88.89
1991	92.23	90.07	89.37	90.71	90.22	88.77	86.03	83.28	79.68	77.18	72.18	74.48	84.56
1992	80.19	83.12	84.82	87.02	88.53	87.32	87.52	86.98	86.79	87.94	91.36	98.25	87.38
1993	98.92	96.98	97.89	99.34	103.48	99.07	95.41	95.83	95.22	90.24	93.08	95.32	97.23
1994	95.70	95.48	96.73	99.19	94.95	91.33	92.07	92.99	87.54	83.45	89.47	90.89	92.58
1995	96.39	96.10	92.56	88.25	85.40	88.34	86.90	85.89	83.66	82.86	83.88	86.85	88.12
1996	82.10	78.64	78.04	75.27	76.62	79.99	83.05	88.23	88.47	87.28	90.42	86.53	82.89
1997	85.42	84.63	87.75	89.35	90.52	88.80	83.00	83.55	80.19	84.00	87.20	85.81	85.85
1998	87.90	87.61	88.96	89.56	91.31	91.29	88.29	87.77	85.81	86.27	86.70	87.67	88.26
1999	89.49	90.96	92.53	93.83	91.78	92.29	89.40	90.38	89.92	91.94	96.91	102.21	92.64
2000	101.66	100.82	104.42	111.04	108.25	104.67	103.38	101.04	98.02	96.83	99.32	104.82	102.86
2001	111.37	114.74	119.56	122.00	119.09	116.34	115.13	108.72	104.33	96.72	100.62	102.23	110.90
2002	106.48	112.93	112.60	106.77	104.42	100.31	98.63	99.32	95.87	95.49	100.29	105.44	103.21
2003	113.45	108.70	103.40	109.27	101.42	80.74	43.34	47.95	67.67	72.95	83.49	84.27	84.72
2004	82.70	74.60	81.46	83.03	81.65	75.15	74.59	69.91	75.77	74.16	73.91	77.04	77.00
2005	88.03	90.96	86.26	86.54	86.66	87.33	92.52	92.19	91.84	91.08	95.34	101.65	90.87
2006	101.73	96.05	93.79	92.52	94.19	95.97	93.86	93.18	92.00	90.36	88.66	87.24	93.30
2007	90.12	95.78	104.35	105.93	107.95	99.22	95.55	89.19	86.81	76.58	73.92	77.88	91.94
2008	78.47	82.56	82.78	84.25	86.65	92.79

1. 1976 to 1989, cattle weight 1000 pounds and over; 1990 to 1993, 1051 pounds and over.

2. 1994 onward, cattle weight 1251 pounds and over. Prices in Ontario includes 13 markets and Ontario Public Stockyards.

3. Source: Canfax Research Services, 1996 onward, all slaughter steers.

Table 9-2
Prices — Alberta steers ¹

	January	February	March	April	May	June	July	August	September	October	November	December	Annual
	dollars per hundred weight												
1979	69.78	76.97	80.01	80.71	79.84	80.17	75.36	72.75	76.42	72.99	75.53	79.56	76.86
1980	80.00	77.76	74.19	71.12	73.12	71.75	75.71	77.54	78.35	78.82	81.09	82.24	76.81
1981	79.86	74.79	74.23	78.33	79.98	79.22	77.18	75.46	73.40	72.59	70.80	67.99	75.14
1982	65.68	68.34	71.42	78.90	86.98	82.98	78.13	74.89	73.89	71.98	71.92	67.63	73.98
1983	68.26	70.28	73.52	79.65	77.77	75.20	70.87	70.18	69.47	71.92	72.12	74.32	72.69
1984	77.32	77.25	79.70	80.89	78.96	75.83	77.44	75.04	73.88	76.28	79.45	80.65	77.74
1985	81.02	76.98	78.65	78.10	79.01	75.66	69.06	66.91	70.42	76.70	79.82	79.65	75.58
1986	74.51	72.60	73.02	72.24	72.55	70.57	74.89	76.08	79.07	81.26	82.13	79.42	75.60
1987	77.95	78.34	80.62	86.57	89.21	85.32	80.41	84.25	85.84	83.80	83.16	78.88	83.38
1988	78.37	82.17	84.62	86.25	84.53	78.68	76.14	77.05	78.58	82.29	81.04	78.00	80.63
1989	83.54	86.12	87.36	83.45	81.31	77.98	78.59	80.11	79.06	81.92	83.38	83.85	81.54
1990	85.13	86.43	85.66	85.00	82.88	81.80	81.76	82.42	82.55	86.65	88.10	87.02	84.30
1991	86.19	86.08	87.67	87.11	82.14	79.99	77.94	73.79	73.26	73.12	70.16	70.74	78.31
1992	74.53	80.47	82.84	82.66	82.02	79.18	81.03	81.03	81.45	83.96	85.06	89.18	82.22
1993	95.00	96.74	97.53	96.21	94.70	87.98	87.64	91.07	89.85	89.95	91.29	88.96	91.90
1994	91.25	91.01	95.50	93.82	85.95	81.07	83.80	84.73	80.84	81.02	87.83	88.06	86.17
1995	94.53	94.00	89.60	84.29	80.59	81.25	80.00	78.78	77.06	79.24	83.45	81.64	82.91
1996	78.64	75.31	75.94	71.97	72.28	73.60	77.90	83.59	86.61	87.61	86.11	78.16	78.42
1997	79.71	84.12	87.15	86.30	84.69	82.31	83.00	83.55	80.19	84.00	87.20	85.81	84.00
1998	84.69	82.56	83.45	86.74	86.33	83.44	79.81	80.95	78.35	84.06	88.67	86.81	83.56
1999	90.08	88.36	90.85	88.58	88.03	86.37	84.94	87.42	87.26	89.93	95.09	99.11	89.30
2000	94.90	92.46	98.55	100.25	96.59	92.73	89.52	91.71	88.54	91.98	98.99	107.09	95.00
2001	107.66	113.81	118.07	111.75	105.24	99.81	98.41	97.95	94.25	94.82	96.88	99.07	102.82
2002	105.08	107.10	109.62	98.19	94.77	90.73	90.11	92.43	94.57	97.23	101.69	105.05	98.88
2003	114.17	115.13	110.29	108.55	106.31	65.44	37.80	39.02	73.09	79.07	80.45	82.06	84.28
2004	82.36	80.03	85.81	84.25	80.03	71.73	70.64	66.69	78.39	79.12	79.18	85.32	78.40
2005	85.26	88.68	83.19	80.14	79.54	80.42	84.77	85.03	85.19	86.57	91.98	96.42	85.62
2006	95.39	89.32	87.51	85.22	85.03	86.92	85.84	85.23	86.01	85.69	84.97	85.68	86.90
2007	87.60	90.19	97.59	101.87	99.67	88.21	84.39	86.52	84.36	78.55	79.46	84.33	88.56
2008	81.27	83.42	85.29	87.93	90.86	90.18

1. Source: Canfax Research Services, 1996 onward, all slaughter steers.

Table 10-1
Cattle and calves: Number by class and calf crop — Canada and United States, July 1 ¹

	2002	2003	2004	2005	2006	2007	2008	2008 as percentage of 2007
	thousands of head							percent
Cattle and calves	120,520.9	119,570.0	120,010.0	121,080.0	121,200.0	120,685.0	119,495.0	99.0
Cows and heifers that have calved	48,794.3	48,679.6	48,787.8	48,961.3	48,765.0	48,583.7	48,244.2	99.3
Beef cows	38,571.8	38,524.2	38,734.7	38,886.2	38,614.6	38,454.6	38,012.4	98.9
Dairy cows	10,222.5	10,155.4	10,053.1	10,075.1	10,150.4	10,129.1	10,231.8	101.0
All other cattle	71,726.6	70,890.4	71,222.2	72,118.7	72,435.0	72,101.3	71,250.8	98.8
Calf crop ²	43,955.7	43,638.9	42,948.9	43,092.5	42,865.7	42,902.2

1. Figures may not add up to totals because of rounding.

2. January to December calf crop.

Source(s): National Agriculture Statistics Service and Livestock and Animal Products Section, Statistics Canada

Table 10-2**Cattle and calves: Number by class and calf crop — United States, July 1 ¹**

	2002	2003	2004	2005	2006	2007	2008	2008 as percentage of 2007
	thousands of head							percent
Cattle and calves	105,100.0	103,900.0	103,400.0	104,200.0	105,200.0	104,800.0	104,300.0	99.5
Cows and heifers that have calved	42,900.0	42,700.0	42,400.0	42,500.0	42,600.0	42,500.0	42,400.0	99.8
Beef cows	33,750.0	33,600.0	33,400.0	33,450.0	33,450.0	33,350.0	33,150.0	99.4
Milk cows	9,150.0	9,100.0	9,000.0	9,050.0	9,150.0	9,150.0	9,250.0	101.1
Heifers 500 pounds and over	16,200.0	15,900.0	15,950.0	16,200.0	16,600.0	16,600.0	16,500.0	99.4
For beef cow replacement	4,600.0	4,600.0	4,800.0	5,000.0	5,000.0	4,700.0	4,600.0	97.9
For milk cow replacement	3,700.0	3,600.0	3,600.0	3,700.0	3,800.0	3,900.0	3,900.0	100.0
Other heifers	7,900.0	7,700.0	7,550.0	7,500.0	7,800.0	8,000.0	8,000.0	100.0
Steers 500 pounds and over	14,500.0	14,200.0	14,200.0	14,500.0	15,000.0	14,900.0	14,700.0	98.7
Bulls 500 pounds and over	2,100.0	2,100.0	2,050.0	2,100.0	2,100.0	2,100.0	2,100.0	100.0
Calves under 500 pounds	29,400.0	29,000.0	28,800.0	28,900.0	28,900.0	28,700.0	28,600.0	99.7
Calf crop ²	38,224.0	37,903.0	37,505.0	37,575.0	37,519.0	37,361.0	37,250.0	99.7

1. Figures may not add up to totals because of rounding.

2. January to December calf crop.

Source: National Agricultural Statistics Service

Table 10-3**Cattle and calves: Number by class and calf crop — Canada, July 1 ¹**

	2002	2003	2004	2005	2006	2007	2008	2008 as percentage of 2007
	thousands of head							percent
Cattle and calves	15,420.9	15,670.0	16,610.0	16,880.0	16,000.0	15,885.0	15,195.0	95.7
Cows and heifers that have calved	5,894.3	5,979.6	6,387.8	6,461.3	6,165.0	6,083.7	5,844.2	96.1
Beef cows	4,821.8	4,924.2	5,334.7	5,436.2	5,164.6	5,104.6	4,862.4	95.3
Dairy cows	1,072.5	1,055.4	1,053.1	1,025.1	1,000.4	979.1	981.8	100.3
Heifers, 1 year and over	2,457.8	2,493.1	2,580.8	2,654.1	2,444.7	2,445.2	2,306.6	94.3
Heifers for beef replacement	828.0	863.8	805.4	840.9	690.8	668.1	654.6	98.0
Heifers for dairy replacement	513.0	504.8	522.8	507.4	506.5	487.7	476.5	97.7
Other heifers	1,116.8	1,124.5	1,252.6	1,305.8	1,247.4	1,289.4	1,175.5	91.2
Steers, 1 year and over	1,591.6	1,598.2	1,705.2	1,657.9	1,655.3	1,790.2	1,576.4	88.1
Bulls, 1 year and over	259.5	273.5	284.7	291.1	267.6	263.4	261.2	99.2
Calves, under 1 year	5,217.7	5,325.6	5,651.5	5,815.6	5,467.4	5,302.5	5,206.6	98.2
Calf crop ²	5,731.7	5,735.9	5,443.9	5,517.5	5,346.7	5,541.2	4,449.1 ³	..

1. Figures may not add up to totals because of rounding.

2. January to December calf crop.

3. For current year, January to June calf crop only.

Source(s): Livestock and Animal Products Section, Statistics Canada

Table 11-1
Supply and disposition of red meat, Canada — Beef

	Beginning stocks	Production	Imports	Total supply	Exports	Ending stocks	Net supply	Available per person			Adjusted ¹ for loss
								Retail	Carcass	Boneless	
thousands of tonne								weight per year in kilogram			
1993	14.67	822.31	265.75	1,102.73	187.98	23.31	891.44	22.69	31.08	20.61	13.03
1994	23.31	861.86	280.71	1,165.88	216.59	30.09	919.20	23.14	31.70	20.95	13.25
1995	30.09	887.91	252.20	1,170.20	215.48	24.02	930.70	23.19	31.76	21.12	13.36
1996	24.02	976.11	234.82	1,234.95	282.08	21.55	931.32	22.96	31.45	21.04	13.31
1997	21.55	1,047.34	250.06	1,318.95	356.16	22.07	940.72	22.96	31.45	21.04	13.31
1998	22.07	1,140.49	236.72	1,399.28	410.80	25.37	963.10	23.31	31.94	21.37	13.51
1999	25.37	1,222.42	257.99	1,505.78	482.39	32.33	991.06	23.80	32.60	21.81	13.79
2000	32.33	1,222.63	266.46	1,521.42	513.30	25.64	982.47	23.40	32.01	21.42	13.54
2001	25.64	1,221.01	307.81	1,554.45	568.77	31.87	953.82	22.41	30.75	20.57	13.01
2002	31.87	1,256.62	311.32	1,599.81	612.63	31.14	956.04	22.25	30.47	20.39	12.89
2003	31.14	1,162.22	273.83	1,467.19	396.42	45.49	1,025.28	23.63	32.37	21.65	13.69
2004	45.49	1,460.08	112.43	1,618.00	590.02	40.13	987.85	22.54	30.88	20.66	13.06
2005	40.13	1,424.38	126.42	1,590.93	580.51	38.80	971.62	21.95	30.07	20.12	12.72
2006	38.80	1,290.28	147.45	1,476.52	456.86	47.61	972.06	21.73	29.77	19.92	12.60
2007	47.61	1,239.75	202.36	1,489.72	437.73	42.49	1,009.51	22.35	30.61	20.48	12.95

1. Available data adjusted on boneless basis for retail, household, cooking and plate loss.

Table 11-2
Supply and disposition of red meat, Canada — Veal

	Beginning stocks	Production	Imports	Total supply	Exports	Ending stocks	Net supply	Available per person			Adjusted ¹ for loss
								Retail	Carcass	Boneless	
thousands of tonne								weight per year in kilogram			
1993	0.64	37.32	3.80	41.76	2.50	0.65	38.61	1.12	1.35	0.92	0.56
1994	0.65	37.60	5.25	43.50	3.82	1.28	38.40	1.10	1.32	0.91	0.55
1995	1.28	40.30	3.58	45.16	4.11	0.63	40.42	1.14	1.38	0.94	0.57
1996	0.63	40.39	2.52	43.54	4.25	0.68	38.61	1.08	1.30	0.89	0.54
1997	0.68	42.14	3.07	45.89	4.21	0.63	41.05	1.14	1.37	0.94	0.57
1998	0.63	41.43	2.69	44.75	4.48	0.68	39.60	1.09	1.31	0.90	0.54
1999	0.68	41.11	3.16	44.95	5.14	0.59	39.23	1.07	1.29	0.88	0.53
2000	0.59	40.81	3.55	44.95	3.81	0.63	40.51	1.10	1.32	0.90	0.55
2001	0.63	40.60	2.44	43.67	3.89	1.04	38.74	1.04	1.25	0.86	0.52
2002	1.04	38.10	4.17	43.31	2.42	1.37	39.52	1.05	1.26	0.86	0.52
2003	1.37	41.02	2.72	45.11	3.54	3.13	38.44	1.01	1.21	0.83	0.50
2004	3.13	43.46	1.08	47.67	9.04	1.69	36.94	0.96	1.15	0.79	0.48
2005	1.69	40.08	2.41	44.17	8.59	1.71	33.87	0.87	1.05	0.72	0.43
2006	1.71	36.92	4.33	42.96	7.14	1.94	33.88	0.86	1.04	0.71	0.43
2007	1.94	38.83	3.08	43.84	6.26	2.37	35.21	0.89	1.07	0.73	0.44

1. Available data adjusted on boneless basis for retail, household, cooking and plate loss.

Table 11-3
Supply and disposition of red meat, Canada — Beef and veal total

	Beginning stocks	Production	Imports	Total supply	Exports	Ending stocks	Net supply	Available per person			Adjusted ¹ for loss
								Retail	Carcass	Boneless	
thousands of tonne							weight per year in kilogram				
1993	15.31	859.63	269.55	1,144.49	190.48	23.96	930.05	23.81	32.43	21.53	13.59
1994	23.96	899.46	285.96	1,209.38	220.41	31.37	957.60	24.24	33.02	21.86	13.80
1995	31.37	928.21	255.78	1,215.36	219.59	24.65	971.12	24.33	33.14	22.07	13.93
1996	24.65	1,016.50	237.34	1,278.49	286.33	22.23	969.93	24.04	32.76	21.93	13.85
1997	22.23	1,089.48	253.13	1,364.84	360.37	22.70	981.77	24.10	32.83	21.98	13.88
1998	22.70	1,181.92	239.41	1,444.03	415.28	26.05	1,002.70	24.40	33.25	22.26	14.06
1999	26.05	1,263.53	261.14	1,550.73	487.53	32.92	1,030.29	24.87	33.89	22.69	14.33
2000	32.92	1,263.44	270.01	1,566.36	517.11	26.26	1,022.99	24.50	33.33	22.32	14.09
2001	26.26	1,261.61	310.25	1,598.12	572.65	32.91	992.56	23.45	32.00	21.43	13.53
2002	32.91	1,294.72	315.49	1,643.11	615.05	32.51	995.56	23.29	31.73	21.25	13.41
2003	32.51	1,203.24	276.54	1,512.29	399.96	48.62	1,063.72	24.64	33.58	22.49	14.20
2004	48.62	1,503.54	113.51	1,665.67	599.06	41.82	1,024.79	23.50	32.03	21.45	13.54
2005	41.82	1,464.46	128.82	1,635.10	589.10	40.51	1,005.49	22.82	31.12	20.83	13.16
2006	40.51	1,327.20	151.78	1,519.49	464.00	49.55	1,005.94	22.60	30.81	20.63	13.03
2007	49.55	1,278.58	205.44	1,533.57	443.99	44.86	1,044.72	23.23	31.68	21.21	13.39

1. Available data adjusted on boneless basis for retail, household, cooking and plate loss.

Table 11-4
Supply and disposition of red meat, Canada — Pork

	Beginning stocks	Production	Imports	Total supply	Exports	Manufacturing	Waste	Ending stocks	Net supply	Available per person			Adjusted ¹ for loss
										Retail	Carcass	Boneless	
	thousands of tonne							weight per year in kilogram					
1993	12.77	1,194.32	22.14	1,229.23	302.95	27.47	95.55	10.83	792.43	21.00	27.63	20.14	11.43
1994	10.83	1,229.38	27.25	1,267.46	301.42	28.28	98.35	15.47	823.94	21.59	28.41	20.71	11.75
1995	15.47	1,275.76	27.19	1,318.42	357.04	29.34	102.06	15.20	814.78	21.13	27.81	20.27	11.50
1996	15.20	1,227.76	38.58	1,281.54	372.22	28.24	98.22	13.17	769.69	19.76	25.99	18.95	10.75
1997	13.17	1,256.70	59.63	1,329.50	420.19	28.90	100.54	19.68	760.19	19.32	25.42	18.53	10.51
1998	19.68	1,393.61	63.47	1,476.76	433.79	32.05	111.49	33.93	865.50	21.81	28.70	20.92	11.87
1999	33.93	1,563.87	64.61	1,662.41	553.71	35.97	125.11	32.78	914.84	22.87	30.09	21.94	12.44
2000	32.78	1,639.98	65.65	1,738.41	656.18	37.72	131.20	32.85	880.46	21.80	28.69	20.91	11.86
2001	32.85	1,731.13	89.38	1,853.36	732.57	39.82	138.49	44.82	897.66	22.05	28.94	21.10	11.97
2002	44.82	1,857.18	91.59	1,993.59	876.15	42.72	148.57	54.26	871.89	21.12	27.79	20.26	11.49
2003	54.26	1,880.74	89.63	2,024.63	988.59	43.26	150.46	48.20	794.13	19.05	25.07	18.28	10.37
2004	48.20	1,934.74	100.48	2,083.41	983.43	44.50	154.78	49.72	850.97	20.21	26.60	19.39	11.00
2005	49.72	1,918.46	134.30	2,102.48	1,102.95	44.13	153.48	59.33	742.60	17.47	22.98	16.75	9.50
2006	59.33	1,897.84	141.80	2,098.97	1,093.83	43.65	151.83	48.05	761.61	17.73	23.33	17.01	9.65
2007	48.05	1,894.38	168.50	2,110.93	1,044.59	43.57	151.55	57.22	814.00	18.76	24.68	18.00	10.21

1. Available data adjusted on boneless basis for retail, household, cooking and plate loss.

Table 11-5
Supply and disposition of red meat, Canada — Mutton and lamb

	Beginning stocks	Production	Imports	Total supply	Exports	Ending stocks	Net supply	Available per person			Adjusted ¹ for loss
								Retail	Carcass	Boneless	
	thousands of tonne							weight per year in kilogram			
1993	2.00	10.84	13.52	26.36	0.08	1.76	24.52	0.76	0.85	0.56	0.33
1994	1.76	10.49	14.48	26.73	0.10	2.80	23.83	0.73	0.82	0.54	0.32
1995	2.80	10.23	12.97	26.00	0.08	2.17	23.75	0.72	0.81	0.53	0.32
1996	2.17	10.62	11.26	24.05	0.08	1.64	22.33	0.67	0.75	0.50	0.30
1997	1.64	10.18	12.42	24.24	0.23	1.88	22.13	0.66	0.74	0.49	0.29
1998	1.88	10.61	14.15	26.64	0.24	1.39	25.01	0.74	0.83	0.55	0.32
1999	1.39	11.42	15.04	27.84	0.27	1.52	26.06	0.76	0.86	0.56	0.34
2000	1.52	12.54	16.76	30.82	0.29	1.58	28.94	0.84	0.94	0.62	0.37
2001	1.58	14.25	18.14	33.97	0.30	1.58	32.09	0.92	1.03	0.68	0.41
2002	1.58	14.75	17.51	33.84	0.28	1.19	32.38	0.92	1.03	0.68	0.40
2003	1.19	15.76	18.45	35.40	0.09	1.11	34.21	0.96	1.08	0.71	0.42
2004	1.11	17.47	18.45	37.03	0.31	1.40	35.32	0.98	1.10	0.73	0.43
2005	1.40	17.55	19.30	38.24	0.26	1.96	36.02	0.99	1.11	0.73	0.44
2006	1.96	17.01	22.77	41.74	0.23	2.03	39.48	1.08	1.21	0.80	0.46
2007	2.03	17.59	23.88	43.49	0.42	2.25	40.83	1.10	1.24	0.81	0.48

1. Available data adjusted on boneless basis for retail, household, cooking and plate loss.

Table 11-6
Supply and disposition of red meat, Canada — Offal

	Beginning stocks	Production	Imports	Total supply	Exports	Ending stocks	Net supply	Available per person			Adjusted ¹ for loss
								Retail	Carcass	Boneless	
thousands of tonne								weight per year in kilogram			
1993	3.34	60.90	17.61	81.85	47.21	3.10	31.54	1.10	1.10	1.10	0.62
1994	3.10	84.14	21.62	108.86	60.63	4.30	43.93	1.51	1.51	1.51	0.86
1995	4.30	97.85	17.25	119.40	75.99	3.73	39.68	1.35	1.35	1.35	0.77
1996	3.73	110.06	16.59	130.38	86.16	4.82	39.40	1.33	1.33	1.33	0.75
1997	4.82	116.57	19.59	140.98	101.42	4.72	34.84	1.16	1.16	1.16	0.66
1998	4.72	123.75	21.53	150.00	103.64	5.36	41.01	1.36	1.36	1.36	0.77
1999	5.36	135.83	25.00	166.18	106.23	8.36	51.59	1.70	1.70	1.70	0.96
2000	8.36	147.60	21.76	177.72	138.61	7.15	31.96	1.04	1.04	1.04	0.59
2001	7.15	171.56	30.34	209.05	173.58	8.98	26.50	0.85	0.85	0.85	0.48
2002	8.98	181.39	34.31	224.68	180.88	11.13	32.67	1.04	1.04	1.04	0.59
2003	11.13	164.84	46.18	222.15	167.87	10.33	43.95	1.39	1.39	1.39	0.79
2004	10.33	174.50	35.68	220.51	160.98	11.49	48.05	1.50	1.50	1.50	0.85
2005	11.49	182.27	30.02	223.78	178.27	12.77	32.74	1.01	1.01	1.01	0.57
2006	12.77	167.20	37.07	217.03	170.72	7.46	38.85	1.19	1.19	1.19	0.68
2007	7.46	169.50	33.66	210.62	177.57	9.28	23.77	0.72	0.72	0.72	0.41

1. Available data adjusted on boneless basis for retail, household, cooking and plate loss.

Table 11-7
Supply and disposition of red meat, Canada — Total red meat

	Beginning stocks	Production	Imports	Total supply	Exports	Manufacturing	Waste	Ending stocks	Net supply	Available per person			Adjusted for loss
										Retail	Carcass	Boneless	
	thousands of tonne								weight per year in kilogram				
1993	33.42	2,125.69	322.82	2,481.93	540.72	27.47	95.55	39.65	1,778.54	46.67	62.01	43.33	25.97
1994	39.65	2,223.47	349.31	2,612.43	582.56	28.28	98.35	53.94	1,849.30	48.07	63.76	44.62	26.73
1995	53.94	2,312.05	313.19	2,679.18	652.70	29.34	102.06	45.75	1,849.33	47.53	63.11	44.21	26.52
1996	45.75	2,364.94	303.77	2,714.46	744.79	28.24	98.22	41.86	1,801.35	45.80	60.82	42.71	25.65
1997	41.86	2,472.93	344.77	2,859.56	882.21	28.90	100.54	48.98	1,798.93	45.24	60.14	42.16	25.34
1998	48.98	2,709.89	338.56	3,097.43	952.95	32.05	111.49	66.73	1,934.22	48.31	64.14	45.10	27.02
1999	66.73	2,974.65	365.80	3,407.16	1,147.74	35.97	125.11	75.58	2,022.78	50.20	66.54	46.89	28.07
2000	75.58	3,063.56	374.18	3,513.32	1,312.19	37.72	131.20	67.85	1,964.34	48.18	64.00	44.89	26.91
2001	67.85	3,178.55	448.11	3,694.50	1,479.11	39.82	138.49	88.29	1,948.81	47.27	62.82	44.06	26.39
2002	88.29	3,348.04	458.90	3,895.23	1,672.36	42.72	148.57	99.09	1,932.50	46.38	61.59	43.23	25.89
2003	99.09	3,264.58	430.81	3,794.48	1,556.51	43.26	150.46	108.26	1,936.01	46.04	61.12	42.86	25.78
2004	108.26	3,630.25	268.12	4,006.62	1,743.78	44.50	154.78	104.43	1,959.13	46.19	61.23	43.07	25.82
2005	104.43	3,582.74	312.45	3,999.60	1,870.58	44.13	153.48	114.57	..	42.29	56.22	39.33	23.67
2006	114.57	3,409.25	353.42	3,877.22	1,728.78	43.65	151.83	107.09	1,845.88	42.59	56.54	39.63	23.82
2007	107.09	3,360.05	431.48	3,898.60	1,666.57	43.57	151.55	113.61	1,923.32	43.82	58.32	40.74	24.49

1. Available data adjusted on boneless basis for retail, household, cooking and plate loss.

Concepts and methods

Concepts

Inventory levels of the various types of livestock intended for sale in Canada are measured at specific times throughout the year. Surveyed operations are requested to include all animals located on the farming operation, regardless of ownership. They are also asked to include animals owned but pastured on a community pasture, grazing co-op or public land. Producers are asked to exclude animals owned but kept on a farm, ranch or feedlot operated by someone else. Inventory levels are estimated for cattle, calves, pigs, sheep and lambs. Estimates are also produced for certain categories of animals on the basis of age, sex, weight and/or purpose i.e. breeding or slaughter.

Current information on livestock inventories and related statistics such as supply and disposition enable those active in the agricultural sector to observe and assess changes in the industry, measure performance and keep the agricultural community and general public informed of developments. The primary data users are federal and provincial governments, producer boards, farmers and farm organizations, private business, academic research institutions and students. Livestock data assists governments in formulating agricultural policies and developing programs. Farming organizations use statistics in developing recommendations for producers and governments. Farmers make increasing use of prices, production, and marketing statistics in planning their operations. In addition, these livestock statistics are used in the calculation of farm incomes and in the Canadian System of National Accounts for indicators such as gross domestic product.

Methods

To produce livestock estimates, there are actually 6 different survey occasions. All of the survey occasions collect data primarily using Computer Assisted Telephone Interviews (CATI) although there are special procedures in place for the very large or complex operations.

Two of the occasions are the January Livestock Survey and the July Livestock Survey. These are large-scale general livestock surveys collecting data on cattle, hogs, sheep and other livestock, referring to inventories at the 1st of the month. The probability samples include about 10,250 operations at January 1, and about 16,250 operations at July 1. These surveys collect data during a three-week period in the western provinces, Ontario and Quebec. Regardless of when operators respond, they are asked to report inventories as of January 1 or July 1. The livestock survey results are released, following processing and analysis, approximately seven weeks after the reference date.

Hog inventories are the focus of two other survey occasions collecting estimates of pig numbers at April 1 and October 1. This survey was initiated in 1998 as estimates from 1978 to 1997 were based solely on analytical tools. For the hog surveys, a sub-sample of the prior livestock survey is used. The probability samples are approximately 2,100 and 2,500, respectively, at April 1 and October 1 and, similar to the livestock surveys, these CATI surveys cover the western provinces, Ontario and Quebec. Producers are requested to report their inventories as of the reference date, although the data are collected during a 7-day period near or before that date. The hog survey results are normally released three to four weeks after the reference date.

The June and November Atlantic Surveys are used to produce estimates for that region. These surveys are multi-purpose collecting data, primarily inventories, on livestock including cattle, hogs and sheep in addition to collecting data related to the area, yield and production of the principal field crops. The probability samples are about 1,000 in June and 1,100 in November. The results are released at the same time as the livestock results. For reference points where surveys do not exist for the Atlantic region, analytical tools are used to produce the estimates.

The total inventories are now distributed to a specific farm type, on the basis of survey results and sector level balance sheets. The two major categories are dairy and beef. The beef sector is then broken down to beef cattle on cow/calf and mixed beef and dairy operations; beef cattle on feeder, stocker/finish operations; and, beef cattle on feeding operations, which include feedlots.

Canadian exports to the United States are obtained from U.S. import custom documents and are officially released by the International Trade Division of Statistics Canada. These data try to register the province of origin of the commodity, but when unknown, will reflect the province of entry into the United States. Information from secondary sources is used by Agriculture Division of Statistics Canada to better estimate the province in which the commodity was raised/grown. Administrative data from the provinces are used to adjust the export numbers by province to better reflect provincial production. Though this methodology will result in different exports by province, the Canadian export totals will equal those released by International Trade Division.

To summarize, the livestock statistics are survey-based estimates. The survey relies on a list frame that is established every five years by the Census of Agriculture and updated to include new entrants, particularly large hog operations. The probability sample surveys are conducted by telephone. The survey results are analysed and corrected before the data are used to analyse the industry and fine-tune the estimates. The survey data are reviewed in a board environment before the commodity analyst works with the data primarily using supply-disposition analysis. The results of the industry analysis are reviewed by the board before being sent to the individual provinces. Once the data are finalised they are released to the public and published. The principal data released include inventories and summarized supply-disposition tables. The data also flow, via farm income estimates, to the Canadian System of National Accounts. In addition the data are used in the calculation of net farm income projections, produced by Agriculture and Agri-Food Canada in co-operation with Statistics Canada and the provinces.