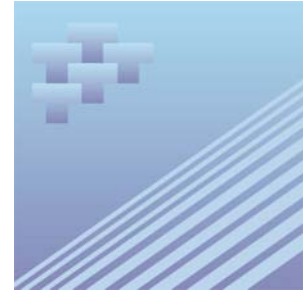




Catalogue no. 51-007-X

# **Aircraft Movement Statistics: NAV CANADA Towers and Flight Service Stations**



January 2008



Statistics  
Canada    Statistique  
Canada

Canada

## How to obtain more information

For information about this product or the wide range of services and data available from Statistics Canada, visit our website at [www.statcan.ca](http://www.statcan.ca) or contact us by e-mail at [infostats@statcan.ca](mailto:infostats@statcan.ca) or by phone from 8:30am to 4:30pm Monday to Friday at:

### **Toll-free telephone (Canada and the United States):**

Inquiries line **1-800-263-1136**

National telecommunications device for the hearing impaired **1-800-363-7629**

Fax line **1-877-287-4369**

Depository Services Program inquiries line **1-800-635-7943**

Depository Services Program fax line **1-800-565-7757**

**Statistics Canada national contact centre: 1-613-951-8116**

Fax line **1-613-951-0581**

## Information to access the product

This product, catalogue no. 51-007-X, is available for free in electronic format. To obtain a single issue, visit our website at [www.statcan.ca](http://www.statcan.ca) and select Publications.

## Standards of service to the public

Statistics Canada is committed to serving its clients in a prompt, reliable and courteous manner. To this end, the Agency has developed *standards of service* which its employees observe in serving its clients.

To obtain a copy of these service standards, please contact Statistics Canada toll free at 1-800-263-1136. The service standards are also published on [www.statcan.ca](http://www.statcan.ca) under About us > Providing services to Canadians.



Statistics Canada  
Transportation Division

# Aircraft Movement

## Statistics: NAV CANADA Towers and Flight Service Stations

January 2008

Published by authority of the Minister responsible for Statistics Canada

© Minister of Industry, 2007 and the © Minister of Transport, 2007.

All rights reserved. The content of this electronic publication may be reproduced, in whole or in part, and by any means, without further permission from Statistics Canada, subject to the following conditions: that it be done solely for the purposes of private study, research, criticism, review or newspaper summary, and/or for non-commercial purposes; and that Statistics Canada be fully acknowledged as follows: Source (or "Adapted from", if appropriate): Statistics Canada, year of publication, name of product, catalogue number, volume and issue numbers, reference period and page(s). Otherwise, no part of this publication may be reproduced, stored in a retrieval system or transmitted in any form, by any means—electronic, mechanical or photocopy—or for any purposes without prior written permission of Licensing Services, Client Services Division, Statistics Canada, Ottawa, Ontario, Canada K1A 0T6.

February 2008

Catalogue no. 51-007-X

ISSN 1911-6314

Frequency: Monthly

Ottawa

La version française de cette publication est disponible sur demande (n° 51-007-X au catalogue).

---

### **Note of appreciation**

*Canada owes the success of its statistical system to a long standing partnership between Statistics Canada, the citizens of Canada, its businesses, governments and other institutions. Accurate and timely statistical information could not be produced without their continued cooperation and goodwill.*

# User information

---

## Symbols

The following standard symbols are used in Statistics Canada publications:

- . not available for any reference period
- .. not available for a specific reference period
- ... not applicable
- 0 true zero or a value rounded to zero
- 0<sup>s</sup> value rounded to 0 (zero) where there is a meaningful distinction between true zero and the value that was rounded
- p preliminary
- r revised
- x suppressed to meet the confidentiality requirements of the *Statistics Act*
- E use with caution
- F too unreliable to be published

## Acknowledgements

This publication was prepared by the Aviation Statistics Centre, of the Transportation Division, Statistics Canada under the general direction of **Gord Baldwin**, Director, Transportation Division and **Norah Hillary**, Chief, Aviation Statistics Centre. **Kathie Davidson**, **Maureen de Souza**, **John Scolli**, **Sylvie Savard**, **Jim Charinos** and **Daniel Osabu-Kle** contributed to the preparation of this publication.

# Table of contents

---

<b>Highlights</b>	<b>5</b>
<b>Analysis</b>	<b>6</b>
<b>Related products</b>	<b>7</b>
<b>Statistical tables</b>	
1 Total aircraft movements by class of operation	10
1-1 NAV CANADA towers	10
1-2 NAV CANADA flight service stations	11
2 Total aircraft movements, civil and military	12
2-1 NAV CANADA towers	12
2-2 NAV CANADA flight service stations	13
3 Itinerant movements by type of operator	14
3-1 NAV CANADA towers	14
3-2 NAV CANADA flight service stations	15
4 Itinerant movements by I.F.R. (Instrument flight rules) and V.F.R. (Visual flight rules) and runway 88 movements	16
4-1 NAV CANADA towers	16
4-2 NAV CANADA flight service stations	17
5 Itinerant movements by type of power plant	18
5-1 NAV CANADA towers	18
5-2 NAV CANADA flight service stations	19
6 Itinerant movements by aircraft weight group	20
6-1 NAV CANADA towers	20
6-2 NAV CANADA flight service stations	21
7 Itinerant movements, domestic, transborder and international	22
7-1 NAV CANADA towers	22
7-2 NAV CANADA flight service stations	26

## Table of contents – continued

8	Total aircraft movements, peak hour and peak day	31
8-1	NAV CANADA towers	31
8-2	NAV CANADA flight service stations	32
9	Itinerant aircraft movements, peak hour and peak day	33
9-1	NAV CANADA towers	33
9-2	NAV CANADA flight service stations	34
10	Local movements, peak hour and peak day	35
10-1	NAV CANADA towers	35
10-2	NAV CANADA flight service stations	36
11	Local movements - civil, peak hour and peak day	37
11-1	NAV CANADA towers	37
11-2	NAV CANADA flight service stations	38
12	Local movements - military, peak hour and peak day	39
12-1	NAV CANADA towers	39
12-2	NAV CANADA flight service stations	40

## Data quality, concepts and methodology

Methodology	41
Data quality and limitations	43

## Appendix

I	Factors influencing the data	44
II	Glossary of terms	45

## Highlights

- Aircraft take-offs and landings at Canadian airports with NAV CANADA air traffic control towers and flight service stations increased in January 2008 compared to January 2007. These 95 airports reported 416,026 movements in January 2008 compared with 394,874 movements at 95 airports in January 2007, an increase of 5.4% (+21,152 movements).
- Itinerant movements (flights from one airport to another) increased by 3.7% (+10,759 movements) in January 2008 compared with the same month a year earlier.
- Local movements (flights that remain in the vicinity of the airport) increased by 9.9% (+10,393 movements) in January 2008 compared with January 2007.

**Table 1**  
**Distribution of aircraft movements at NAV CANADA Towers and Flight Service Stations**

	NAV CANADA towers		NAV CANADA Flight Service Stations		Total	
	number	Change from January 2008/ January 2007	number	Change from January 2008/ January 2007	number	Change from January 2008/ January 2007
<b>Grand total</b>	<b>336,931</b>	<b>6.7</b>	<b>79,095</b>	<b>-0.1</b>	<b>416,026</b>	<b>5.4</b>
<b>Itinerant movements</b>						
Air carriers	193,257	4.0	46,641	1.8	239,898	3.6
Other commercial movements	24,342	15.8	3,596	7.2	27,938	14.7
Private movements	18,229	-2.5	5,609	-3.5	23,838	-2.7
Government civil movements	3,981	-7.1	1,610	-1.5	5,591	-5.5
Government military movements	2,618	-1.5	773	-9.1	3,391	-3.3
Itinerant total	242,427	4.3	58,229	1.4	300,656	3.7
<b>Local movements</b>						
Civil local movements	93,243	13.8	20,702	-3.8	113,945	10.1
Military local movements	1,261	-5.6	164	-10.9	1,425	-6.2
Local total	94,504	13.5	20,866	-3.9	115,370	9.9

## Analysis

---

Aircraft take-offs and landings at Canadian airports with NAV CANADA air traffic control towers and flight service stations increased in January 2008 compared to January 2007. These 95 airports reported 416,026 movements in January 2008 compared with 394,874 movements at 95 airports in January 2007, an increase of 5.4% (+21,152 movements).

Itinerant movements (flights from one airport to another) increased by 3.7% (+10,759 movements) in January 2008 compared with the same month a year earlier.

Local movements (flights that remain in the vicinity of the airport) increased by 9.9% (+10,393 movements) in January 2008 compared with January 2007.

### **Airports with NAV CANADA air traffic control towers**

The 42 Canadian airports with NAV CANADA air traffic control towers reported 336,931 aircraft take-offs and landings in January, up 6.7% compared with January 2007 (315,722 movements). Year-over-year increases in aircraft movements were reported by 28 of these airports in January 2008. The variations ranged from an increase of 118.5% at Chicoutimi/St-Honoré, Quebec to a decline of -24.3% at Oshawa.

Itinerant movements (flights from one airport to another) increased by 4.3% (+9,975 movements) in January compared with the same month a year earlier. Year-over-year variations in itinerant movements ranged from a 43.0% increase (+657 movements) at Langley, British Columbia to a decline of -22.4% (-289 movements) at Edmonton/Villeneuve.

Local movements (flights that remain in the vicinity of the airport) increased by 13.5% (+11,234 movements) in January compared with January 2007. Year-over-year variations in local movements ranged from a 239.1% increase (+1,664 movements) at Gander International to a decline of 47.4% (-1,560 movements) at Thunder Bay.

### **Airports with NAV CANADA flight service stations**

The 53 Canadian airports with NAV CANADA flight service stations reported 79,095 aircraft take-offs and landings in January, no change compared with January 2007 (79,152 movements). Year-over-year increases in aircraft movements were reported by 26 of these airports in January 2008. The variations ranged from a 112.4% increase (+2,328 movements) at Fredericton International to a decline of 67.2% (-3,351 movements) at Whitecourt, Alberta.

Itinerant movements (flights from one airport to another) increased by 1.4% (+784 movements) in January compared with the same month a year earlier. Year-over-year variations in itinerant movements ranged from a 52.6% increase (+865 movements) at Fredericton International to a decline of 40.7% (-287 movements) at High Level, Alberta.

Local movements (flights that remain in the vicinity of the airport) recorded in January 2008 decreased by 3.9% (-841 movements) compared with the same month a year earlier. Fredericton International recorded the largest gain in local movements, increasing by 1,463 movements (+341.8%) compared with January 2007.



## Related products

---

### Selected CANSIM tables from Statistics Canada

---

401-0005	Aircraft movements by class of operation, airports with NAV CANADA towers, preliminary, monthly
401-0006	Aircraft movements by class of operation, airports with NAV CANADA towers, preliminary, annual
401-0007	Aircraft movements, by class of operation and peak hour and peak day of movements, airports with NAV CANADA towers, monthly
401-0008	Aircraft movements, by civil and military movements, airports with NAV CANADA towers, monthly
401-0009	Itinerant movements, by type of operation, airports with NAV CANADA towers, monthly
401-0010	Itinerant movements, by instrument flight rules, visual flight rules and runway 88, airports with NAV CANADA towers, monthly
401-0011	Itinerant movements, by type of power plant, airports with NAV CANADA towers, monthly
401-0012	Itinerant movements, by aircraft gross take-off weight, airports with NAV CANADA towers, monthly
401-0013	Domestic and international itinerant movements, by type of operation, airports with NAV CANADA towers, monthly
401-0014	Aircraft movements, by class of operation and peak hour and peak day of movements, airports with NAV CANADA flight service stations, monthly
401-0015	Aircraft movements, by civil and military movements, airports with NAV CANADA flight service stations, monthly
401-0016	Itinerant movements, by type of operation, airports with NAV CANADA flight service stations, monthly
401-0017	Itinerant movements, by instrument flight rules, visual flight rules and runway 88, airports with NAV CANADA flight service stations, monthly
401-0018	Itinerant movements, by type of power plant, airports with NAV CANADA flight service stations, monthly
401-0019	Itinerant movements, by aircraft gross take-off weight, airports with NAV CANADA flight service stations, monthly
401-0020	Domestic and international itinerant movements, by type of operation, airports with NAV CANADA flight service stations, monthly

---

## **Selected surveys from Statistics Canada**

---

2715	Aircraft Movement Statistics
------	------------------------------

---

## **Selected summary tables from Statistics Canada**

---

- *Aircraft movements by class of operation (monthly)*

# Statistical tables

---

---

**Table 1-1**  
**Total aircraft movements by class of operation — NAV CANADA towers**

	Total		Itinerant		Local	
	Rank of movements	Number of movements	Rank of movements	Number of movements	Rank of movements	Number of movements
Abbotsford	7	12,477	14	4,784	2	7,693
Boundary Bay	14	8,502	22	3,602	5	4,900
Calgary International	3	20,085	3	19,949	38	136
Calgary/Springbank	5	15,736	11	5,259	1	10,477
Chicoutimi/St-Honoré	40	2,012	41	601	24	1,411
Edmonton City Centre	20	6,267	13	4,833	23	1,434
Edmonton International	9	11,367	5	10,999	34	368
Edmonton/Villeneuve	28	4,760	39	1,000	10	3,760
Gander International	29	4,466	31	2,106	17	2,360
Halifax/Robert L Stanfield International	19	6,782	9	6,310	31	472
Hamilton	30	4,426	25	3,073	25	1,353
Kelowna	24	5,813	20	3,817	18	1,996
Kitchener/Waterloo	23	5,828	29	2,440	12	3,388
Langley	21	6,248	30	2,184	7	4,064
London	17	6,926	21	3,708	13	3,218
Moncton/Greater Moncton International	12	9,092	12	5,240	9	3,852
Montréal/Mirabel International	39	2,023	36	1,570	32	453
Montréal/Pierre Elliott Trudeau International	4	18,014	4	18,014	0	0
Montréal/St-Hubert	11	9,767	17	4,168	3	5,599
Oshawa	34	3,196	38	1,316	19	1,880
Ottawa/Macdonald-Cartier International	6	12,701	7	10,266	14	2,435
Pitt Meadows	25	5,584	32	2,056	11	3,528
Prince George	36	2,434	33	2,011	33	423
Québec/Jean Lesage International	15	7,251	10	5,647	22	1,604
Regina International	31	4,299	24	3,308	26	991
Saskatoon/John G Diefenbaker International	16	7,055	15	4,628	15	2,427
Sault Ste. Marie	37	2,281	37	1,389	28	892
St. John's International	35	3,058	26	2,830	37	228
St-Jean	42	727	42	489	36	238
Sudbury	38	2,186	34	1,860	35	326
Thunder Bay	22	6,092	16	4,358	20	1,734
Toronto/Buttonville Municipal	13	8,960	18	4,086	6	4,874
Toronto/City Centre	26	5,148	28	2,736	16	2,412
Toronto/Lester B Pearson International	1	36,236	1	36,236	0	0
Vancouver Harbour	32	3,539	23	3,515	39	24
Vancouver International	2	25,421	2	25,421	0	0
Victoria International	8	12,270	8	6,680	4	5,590
Whitehorse International	41	1,350	40	820	30	530
Windsor	33	3,424	35	1,760	21	1,664
Winnipeg/James Armstrong Richardson International	10	11,327	6	10,527	29	800
Winnipeg/St. Andrews	18	6,793	27	2,771	8	4,022
Yellowknife	27	5,008	19	4,060	27	948
<b>Total of NAV CANADA towers (42)</b>	.	<b>336,931</b>	.	<b>242,427</b>	.	<b>94,504</b>

**Table 1-2**  
**Total aircraft movements by class of operation — NAV CANADA flight service stations**

	Total		Itinerant		Local	
	Rank of movements	Number of movements	Rank of movements	Number of movements	Rank of movements	Number of movements
Brandon Municipal	21	1,525	28	809	9	716
Campbell River	4	3,551	12	1,503	2	2,048
Castlegar	47	536	51	340	21	196
Charlottetown	16	1,841	22	1,171	10	670
Churchill	45	565	43	547	39	18
Cranbrook	39	691	36	683	45	8
Deer Lake	17	1,793	16	1,350	15	443
Fort McMurray	3	4,148	1	3,580	13	568
Fort Nelson	35	779	32	773	47	6
Fort St John	22	1,422	15	1,360	29	62
Fredericton International	2	4,399	3	2,508	3	1,891
Grande Prairie	6	2,673	5	2,221	14	452
High Level	48	437	47	419	40	18
Îles-de-la-Madeleine	49	403	48	393	43	10
Inuvik/Mike Zubko	31	901	27	815	26	86
Iqaluit	28	1,126	23	1,066	32	60
Kamloops	12	2,294	7	1,892	17	402
Kenora	29	1,103	31	779	20	324
Kingston	8	2,657	11	1,567	6	1,090
Kuujuuaq	37	769	35	707	30	62
Kuujuuarapik	50	388	49	382	49	6
La Grande Rivière	41	681	38	669	42	12
La Ronge	26	1,262	21	1,180	27	82
Lethbridge	14	1,950	17	1,322	11	628
Lloydminster	32	821	46	477	19	344
Medicine Hat	24	1,411	24	1,005	16	406
Mont-Joli	53	285	53	283	50	2
Nanaimo	18	1,750	14	1,366	18	384
Norman Wells	38	757	33	713	34	44
North Bay	1	4,648	9	1,628	1	3,020
Ottawa/Gatineau	9	2,647	26	847	4	1,800
Peace River	40	686	39	646	35	40
Penticton	5	2,699	20	1,220	5	1,479
Port Hardy	46	554	44	545	44	9
Prince Albert	25	1,326	18	1,306	38	20
Prince Rupert	51	367	52	305	31	62
Rankin Inlet	43	628	40	622	48	6
Red Deer Regional	7	2,662	10	1,574	7	1,088
Rouyn-Noranda	34	800	29	788	41	12
Saint John	23	1,414	19	1,292	24	122
Sept-Îles	20	1,547	13	1,501	33	46
Sioux Lookout	13	2,161	6	2,155	46	6
Smithers	42	631	42	607	37	24
St Anthony	52	350	50	350	0	0
St Catharines	30	1,096	45	504	12	592
Terrace	27	1,152	25	958	22	194
Thompson	11	2,509	4	2,371	23	138
Timmins	15	1,927	8	1,825	25	102
Val-D'or	33	818	30	784	36	34
Victoria Harbour	10	2,532	2	2,532	0	0
Wabush	44	608	41	608	0	0
Whitecourt	19	1,636	37	670	8	966
Williams Lake	36	779	34	711	28	68
<b>Total of all flight service stations (53)</b>	.	<b>79,095</b>	.	<b>58,229</b>	.	<b>20,866</b>

**Table 2-1**  
**Total aircraft movements, civil and military — NAV CANADA towers**

	Civil movements			Military movements				
	Total	Itinerant		Local	Total	Itinerant		Local
		Commercial	Private and government					
	number							
Abbotsford	12,441	3,937	819	7,685	36	28	8	
Boundary Bay	8,502	2,924	678	4,900	0	0	0	
Calgary International	20,008	18,742	1,130	136	77	77	0	
Calgary/Springbank	15,715	3,895	1,348	10,472	21	16	5	
Chicoutimi/St-Honoré	2,012	561	40	1,411	0	0	0	
Edmonton City Centre	6,149	3,264	1,467	1,418	118	102	16	
Edmonton International	11,243	10,590	317	336	124	92	32	
Edmonton/Villeneuve	4,760	787	213	3,760	0	0	0	
Gander International	4,009	1,612	257	2,140	457	237	220	
Halifax/Robert L. Stanfield International	6,527	5,825	326	376	255	159	96	
Hamilton	4,420	2,630	437	1,353	6	6	0	
Kelowna	5,803	3,439	368	1,996	10	10	0	
Kitchener/Waterloo	5,814	2,092	340	3,382	14	8	6	
Langley	6,247	1,367	816	4,064	1	1	0	
London	6,924	3,021	685	3,218	2	2	0	
Moncton/Greater Moncton International	9,064	4,899	319	3,846	28	22	6	
Montréal/Mirabel International	1,923	1,164	356	403	100	50	50	
Montréal/Pierre Elliott Trudeau International	18,001	16,695	1,306	0	13	13	0	
Montréal/St-Hubert	9,676	3,121	964	5,591	91	83	8	
Oshawa	3,190	975	335	1,880	6	6	0	
Ottawa/Macdonald-Cartier International	12,451	9,244	834	2,373	250	188	62	
Pitt Meadows	5,584	1,329	727	3,528	0	0	0	
Prince George	2,426	1,822	181	423	8	8	0	
Québec/Jean Lesage International	7,126	4,785	737	1,604	125	125	0	
Regina International	4,025	2,743	343	939	274	222	52	
Saskatoon/John G. Diefenbaker International	6,798	3,959	478	2,361	257	191	66	
Sault Ste. Marie	2,271	1,289	90	892	10	10	0	
St. John's International	2,895	2,452	215	228	163	163	0	
St-Jean	713	328	147	238	14	14	0	
Sudbury	2,175	1,665	184	326	11	11	0	
Thunder Bay	6,065	4,016	317	1,732	27	25	2	
Toronto/Buttonville Municipal	8,959	3,088	997	4,874	1	1	0	
Toronto/City Centre	5,148	2,443	293	2,412	0	0	0	
Toronto/Lester B. Pearson International	36,227	34,906	1,321	0	9	9	0	
Vancouver Harbour	3,537	3,468	45	24	2	2	0	
Vancouver International	25,403	24,586	817	0	18	18	0	
Victoria International	11,935	5,798	807	5,330	335	75	260	
Whitehorse International	1,340	679	131	530	10	10	0	
Windsor	3,388	1,553	193	1,642	36	14	22	
Winnipeg/James Armstrong Richardson International	10,498	9,467	533	498	829	527	302	
Winnipeg/St. Andrews	6,761	2,543	202	4,016	32	26	6	
Yellowknife	4,899	3,896	97	906	109	67	42	
<b>Total of NAV CANADA towers (42)</b>	<b>333,052</b>	<b>217,599</b>	<b>22,210</b>	<b>93,243</b>	<b>3,879</b>	<b>2,618</b>	<b>1,261</b>	

**Table 2-2**  
**Total aircraft movements, civil and military — NAV CANADA flight service stations**

	Civil movements				Military movements		
	Total	Itinerant		Local	Total	Itinerant	Local
		Commercial	Private and government				
	number						
Brandon Municipal	1,305	491	144	670	220	174	46
Campbell River	3,539	1,104	387	2,048	12	12	0
Castlegar	534	328	10	196	2	2	0
Charlottetown	1,829	1,026	133	670	12	12	0
Churchill	565	535	12	18	0	0	0
Cranbrook	677	602	67	8	14	14	0
Deer Lake	1,793	1,319	31	443	0	0	0
Fort McMurray	4,132	3,136	428	568	16	16	0
Fort Nelson	777	737	34	6	2	2	0
Fort St John	1,420	1,244	114	62	2	2	0
Fredericton International	4,256	2,008	379	1,869	143	121	22
Grande Prairie	2,673	1,955	266	452	0	0	0
High Level	437	367	52	18	0	0	0
Îles-de-la-Madeleine	403	351	42	10	0	0	0
Inuvik/Mike Zubko	895	786	23	86	6	6	0
Iqaluit	1,126	981	85	60	0	0	0
Kamloops	2,248	1,600	274	374	46	18	28
Kenora	1,069	704	53	312	34	22	12
Kingston	2,613	1,279	258	1,076	44	30	14
Kuujuuaq	757	679	16	62	12	12	0
Kuujuuarapik	388	378	4	6	0	0	0
La Grande Rivière	681	643	26	12	0	0	0
La Ronge	1,262	1,100	80	82	0	0	0
Lethbridge	1,942	1,071	243	628	8	8	0
Lloydminster	817	342	131	344	4	4	0
Medicine Hat	1,403	869	128	406	8	8	0
Mont-Joli	282	257	23	2	3	3	0
Nanaimo	1,716	918	440	358	34	8	26
Norman Wells	753	697	12	44	4	4	0
North Bay	4,599	1,297	298	3,004	49	33	16
Ottawa/Gatineau	2,641	370	471	1,800	6	6	0
Peace River	684	607	37	40	2	2	0
Penticton	2,651	1,030	142	1,479	48	48	0
Port Hardy	542	437	96	9	12	12	0
Prince Albert	1,304	1,109	175	20	22	22	0
Prince Rupert	367	295	10	62	0	0	0
Rankin Inlet	628	622	0	6	0	0	0
Red Deer Regional	2,642	1,139	415	1,088	20	20	0
Rouyn-Noranda	798	661	125	12	2	2	0
Saint John	1,362	1,006	234	122	52	52	0
Sept-Îles	1,535	1,381	108	46	12	12	0
Sioux Lookout	2,161	2,106	49	6	0	0	0
Smithers	631	544	63	24	0	0	0
St Anthony	350	332	18	0	0	0	0
St Catharines	1,037	283	162	592	59	59	0
Terrace	1,150	913	43	194	2	2	0
Thompson	2,509	2,167	204	138	0	0	0
Timmins	1,927	1,704	121	102	0	0	0
Val-D'or	814	647	133	34	4	4	0
Victoria Harbour	2,525	2,250	275	0	7	7	0
Wabush	598	570	28	0	10	10	0
Whitecourt	1,634	604	64	966	2	2	0
Williams Lake	777	656	53	68	2	2	0
<b>Total of all flight service stations (53)</b>	<b>78,158</b>	<b>50,237</b>	<b>7,219</b>	<b>20,702</b>	<b>937</b>	<b>773</b>	<b>164</b>

**Table 3-1**  
**Itinerant movements by type of operator — NAV CANADA towers**

	Total	Air carrier movements		Other commercial movements	Private movements	Government movements	
		Levels I to III and foreign	Levels IV to VI			Civil	Military
	number						
Abbotsford	4,784	528	2,382	1,027	710	109	28
Boundary Bay	3,602	16	899	2,009	641	37	0
Calgary International	19,949	16,896	1,107	739	1,004	126	77
Calgary/Springbank	5,259	12	798	3,085	1,328	20	16
Chicoutimi/St-Honoré	601	8	221	332	40	0	0
Edmonton City Centre	4,833	1,590	507	1,167	1,115	352	102
Edmonton International	10,999	10,055	459	76	283	34	92
Edmonton/Villeneuve	1,000	7	234	546	172	41	0
Gander International	2,106	525	1,058	29	233	24	237
Halifax/Robert L Stanfield International	6,310	5,338	447	40	282	44	159
Hamilton	3,073	1,855	717	58	297	140	6
Kelowna	3,817	2,524	266	649	284	84	10
Kitchener/Waterloo	2,440	459	1,210	423	336	4	8
Langley	2,184	108	142	1,117	810	6	1
London	3,708	1,252	797	972	621	64	2
Moncton/Greater Moncton International	5,240	1,697	3,034	168	160	159	22
Montréal/Mirabel International	1,570	836	236	92	334	22	50
Montréal/Pierre Elliott Trudeau International	18,014	15,812	527	356	1,153	153	13
Montréal/St-Hubert	4,168	1,594	453	1,074	911	53	83
Oshawa	1,316	120	113	742	329	6	6
Ottawa/Macdonald-Cartier International	10,266	7,300	340	1,604	341	493	188
Pitt Meadows	2,056	49	624	656	721	6	0
Prince George	2,011	1,376	310	136	153	28	8
Québec/Jean Lesage International	5,647	3,458	559	768	391	346	125
Regina International	3,308	2,202	486	55	175	168	222
Saskatoon/John G Diefenbaker International	4,628	3,083	670	206	200	278	191
Sault Ste. Marie	1,389	748	161	380	53	37	10
St. John's International	2,830	1,821	557	74	115	100	163
St-Jean	489	110	54	164	141	6	14
Sudbury	1,860	1,233	394	38	133	51	11
Thunder Bay	4,358	2,921	569	526	111	206	25
Toronto/Buttonville Municipal	4,086	327	687	2,074	956	41	1
Toronto/City Centre	2,736	1,000	528	915	284	9	0
Toronto/Lester B Pearson International	36,236	34,277	437	192	1,262	59	9
Vancouver Harbour	3,515	3,232	63	173	45	0	2
Vancouver International	25,421	23,060	1,156	370	630	187	18
Victoria International	6,680	3,007	2,158	633	773	34	75
Whitehorse International	820	540	131	8	93	38	10
Windsor	1,760	552	986	15	175	18	14
Winnipeg/James Armstrong Richardson International	10,527	8,758	652	57	226	307	527
Winnipeg/St. Andrews	2,771	372	1,595	576	199	3	26
Yellowknife	4,060	3,215	660	21	9	88	67
<b>Total of NAV CANADA towers (42)</b>	<b>242,427</b>	<b>163,873</b>	<b>29,384</b>	<b>24,342</b>	<b>18,229</b>	<b>3,981</b>	<b>2,618</b>



**Table 3-2**  
**Itinerant movements by type of operator — NAV CANADA flight service stations**

	Total	Air carrier movements		Other commercial movements	Private movements	Government movements	
		Levels I to III and foreign	Levels IV to VI			Civil	Military
	number						
Brandon Municipal	809	133	313	45	132	12	174
Campbell River	1,503	650	354	100	372	15	12
Castlegar	340	227	34	67	8	2	2
Charlottetown	1,171	551	126	349	79	54	12
Churchill	547	523	6	6	4	8	0
Cranbrook	683	532	62	8	63	4	14
Deer Lake	1,350	1,142	165	12	9	22	0
Fort McMurray	3,580	2,432	430	274	389	39	16
Fort Nelson	773	441	201	95	30	4	2
Fort St John	1,360	913	275	56	112	2	2
Fredericton International	2,508	719	1,262	27	307	72	121
Grande Prairie	2,221	1,288	641	26	246	20	0
High Level	419	196	166	5	36	16	0
Îles-de-la-Madeleine	393	243	100	8	6	36	0
Inuvik/Mike Zubko	815	223	563	0	3	20	6
Iqaluit	1,066	866	29	86	49	36	0
Kamloops	1,892	1,172	262	166	235	39	18
Kenora	779	428	272	4	33	20	22
Kingston	1,567	547	308	424	229	29	30
Kuujuaq	707	675	4	0	6	10	12
Kuujuarapik	382	368	10	0	0	4	0
La Grande Rivière	669	472	165	6	14	12	0
La Ronge	1,180	1,093	4	3	20	60	0
Lethbridge	1,322	483	98	490	229	14	8
Lloydminster	477	140	154	48	113	18	4
Medicine Hat	1,005	692	113	64	122	6	8
Mont-Joli	283	244	3	10	7	16	3
Nanaimo	1,366	437	383	98	402	38	8
Norman Wells	713	594	103	0	8	4	4
North Bay	1,628	453	504	340	234	64	33
Ottawa/Gatineau	847	138	119	113	348	123	6
Peace River	646	522	61	24	29	8	2
Penticton	1,220	527	476	27	119	23	48
Port Hardy	545	376	59	2	43	53	12
Prince Albert	1,306	1,039	56	14	80	95	22
Prince Rupert	305	232	57	6	0	10	0
Rankin Inlet	622	622	0	0	0	0	0
Red Deer Regional	1,574	334	623	182	368	47	20
Rouyn-Noranda	788	521	140	0	97	28	2
Saint John	1,292	712	240	54	224	10	52
Sept-Îles	1,501	1,182	190	9	34	74	12
Sioux Lookout	2,155	1,822	270	14	15	34	0
Smithers	607	460	59	25	63	0	0
St Anthony	350	273	0	59	0	18	0
St Catharines	504	0	269	14	132	30	59
Terrace	958	670	219	24	39	4	2
Thompson	2,371	1,974	185	8	26	178	0
Timmins	1,825	1,517	183	4	83	38	0
Val-D'or	784	604	34	9	101	32	4
Victoria Harbour	2,532	2,239	7	4	193	82	7
Wabush	608	522	42	6	12	16	10
Whitecourt	670	90	373	141	53	11	2
Williams Lake	711	421	195	40	53	0	2
<b>Total of all flight service stations (53)</b>	<b>58,229</b>	<b>35,674</b>	<b>10,967</b>	<b>3,596</b>	<b>5,609</b>	<b>1,610</b>	<b>773</b>

Table 4-1

**Itinerant movements by I.F.R. (Instrument flight rules) and V.F.R. (Visual flight rules) and runway 88 movements  
— NAV CANADA towers**

	Itinerant movements				Runway 88 flights number	
	Total of IFR and VFR flights <sup>1</sup>	IFR	IFR flights, as percentage of total flights	VFR		VFR flights, as percentage of total flights
	number		percent	number		percent
Abbotsford	4,784	1,196	25.0	3,588	75.0	1,288
Boundary Bay	3,602	297	8.2	3,305	91.7	235
Calgary International	19,949	18,877	94.6	1,072	5.3	626
Calgary/Springbank	5,259	203	3.8	5,056	96.1	3,142
Chicoutimi/St-Honoré	601	57	9.4	544	90.5	11
Edmonton City Centre	4,833	2,644	54.7	2,189	45.2	2,702
Edmonton International	10,999	10,562	96.0	437	3.9	1,042
Edmonton/Villeneuve	1,000	13	1.3	987	98.7	136
Gander International	2,106	1,131	53.7	975	46.2	35
Halifax/Robert L Stanfield International	6,310	5,868	92.9	442	7.0	299
Hamilton	3,073	2,378	77.3	695	22.6	406
Kelowna	3,817	2,700	70.7	1,117	29.2	270
Kitchener/Waterloo	2,440	809	33.1	1,631	66.8	242
Langley	2,184	14	0.6	2,170	99.3	1,944
London	3,708	1,532	41.3	2,176	58.6	156
Moncton/Greater Moncton International	5,240	2,323	44.3	2,917	55.6	24
Montréal/Mirabel International	1,570	1,028	65.4	542	34.5	507
Montréal/Pierre Elliott Trudeau International	18,014	17,588	97.6	426	2.3	1,671
Montréal/St-Hubert	4,168	1,199	28.7	2,969	71.2	1,015
Oshawa	1,316	76	5.7	1,240	94.2	402
Ottawa/Macdonald-Cartier International	10,266	7,949	77.4	2,317	22.5	417
Pitt Meadows	2,056	2	0.0	2,054	99.9	2,035
Prince George	2,011	1,479	73.5	532	26.4	315
Québec/Jean Lesage International	5,647	4,090	72.4	1,557	27.5	353
Regina International	3,308	2,526	76.3	782	23.6	57
Saskatoon/John G Diefenbaker International	4,628	3,501	75.6	1,127	24.3	58
Sault Ste. Marie	1,389	950	68.3	439	31.6	57
St. John's International	2,830	2,644	93.4	186	6.5	54
St-Jean	489	208	42.5	281	57.4	116
Sudbury	1,860	1,517	81.5	343	18.4	91
Thunder Bay	4,358	3,341	76.6	1,017	23.3	201
Toronto/Buttonville Municipal	4,086	680	16.6	3,406	83.3	308
Toronto/City Centre	2,736	1,182	43.2	1,554	56.7	1,611
Toronto/Lester B Pearson International	36,236	36,127	99.6	109	0.3	50
Vancouver Harbour	3,515	23	0.6	3,492	99.3	1,203
Vancouver International	25,421	21,395	84.1	4,026	15.8	6,456
Victoria International	6,680	3,405	50.9	3,275	49.0	6,265
Whitehorse International	820	429	52.3	391	47.6	95
Windsor	1,760	812	46.1	948	53.8	30
Winnipeg/James Armstrong Richardson International	10,527	9,414	89.4	1,113	10.5	503
Winnipeg/St. Andrews	2,771	44	1.5	2,727	98.4	74
Yellowknife	4,060	2,545	62.6	1,515	37.3	383
<b>Total of NAV CANADA towers (42)</b>	<b>242,427</b>	<b>174,758</b>	<b>72.1</b>	<b>67,669</b>	<b>27.9</b>	<b>36,885</b>

1. Total excludes runway 88 flights.

Table 4-2

## Itinerant movements by I.F.R. (Instrument flight rules) and V.F.R. (Visual flight rules) and runway 88 movements — NAV CANADA flight service stations

	Itinerant movements				Runway 88 flights number	
	Total of IFR and VFR flights <sup>1</sup>	IFR	IFR flights, as percentage of total flights	VFR		VFR flights, as percentage of total flights
	number		percent	number		percent
Brandon Municipal	809	195	24.1	614	75.8	30
Campbell River	1,503	540	35.9	963	64.0	165
Castlegar	340	241	70.8	99	29.1	30
Charlottetown	1,171	594	50.7	577	49.2	15
Churchill	547	520	95.0	27	4.9	0
Cranbrook	683	605	88.5	78	11.4	132
Deer Lake	1,350	1,298	96.1	52	3.8	20
Fort McMurray	3,580	2,423	67.6	1,157	32.3	10
Fort Nelson	773	502	64.9	271	35.0	53
Fort St John	1,360	915	67.2	445	32.7	52
Fredericton International	2,508	852	33.9	1,656	66.0	32
Grande Prairie	2,221	1,496	67.3	725	32.6	148
High Level	419	293	69.9	126	30.0	75
Îles-de-la-Madeleine	393	284	72.2	109	27.7	99
Inuvik/Mike Zubko	815	265	32.5	550	67.4	0
Iqaluit	1,066	808	75.7	258	24.2	0
Kamloops	1,892	1,409	74.4	483	25.5	152
Kenora	779	458	58.7	321	41.2	63
Kingston	1,567	703	44.8	864	55.1	57
Kuujuuaq	707	309	43.7	398	56.2	2
Kuujuuarapik	382	249	65.1	133	34.8	0
La Grande Rivière	669	492	73.5	177	26.4	143
La Ronge	1,180	711	60.2	469	39.7	184
Lethbridge	1,322	536	40.5	786	59.4	8
Lloydminster	477	227	47.5	250	52.4	22
Medicine Hat	1,005	504	50.1	501	49.8	178
Mont-Joli	283	258	91.1	25	8.8	12
Nanaimo	1,366	559	40.9	807	59.0	616
Norman Wells	713	186	26.0	527	73.9	3
North Bay	1,628	677	41.5	951	58.4	208
Ottawa/Gatineau	847	136	16.0	711	83.9	46
Peace River	646	458	70.8	188	29.1	39
Penticton	1,220	497	40.7	723	59.2	50
Port Hardy	545	202	37.0	343	62.9	199
Prince Albert	1,306	1,156	88.5	150	11.4	34
Prince Rupert	305	230	75.4	75	24.5	7
Rankin Inlet	622	510	81.9	112	18.0	5
Red Deer Regional	1,574	436	27.7	1,138	72.2	236
Rouyn-Noranda	788	711	90.2	77	9.7	8
Saint John	1,292	919	71.1	373	28.8	38
Sept-Îles	1,501	1,245	82.9	256	17.0	139
Sioux Lookout	2,155	1,449	67.2	706	32.7	131
Smithers	607	485	79.9	122	20.0	72
St Anthony	350	234	66.8	116	33.1	0
St Catharines	504	44	8.7	460	91.2	114
Terrace	958	713	74.4	245	25.5	98
Thompson	2,371	1,403	59.1	968	40.8	13
Timmins	1,825	1,608	88.1	217	11.8	94
Val-D'or	784	637	81.2	147	18.7	63
Victoria Harbour	2,532	42	1.6	2,490	98.3	422
Wabush	608	559	91.9	49	8.0	63
Whitecourt	670	127	18.9	543	81.0	26
Williams Lake	711	492	69.1	219	30.8	177
<b>Total of all flight service stations (53)</b>	<b>58,229</b>	<b>33,402</b>	<b>57.4</b>	<b>24,827</b>	<b>42.6</b>	<b>4,583</b>

1. Total excludes runway 88 flights.

**Table 5-1**  
**Itinerant movements by type of power plant — NAV CANADA towers**

	Total	Jet engines	Turbo-propellers	Piston engines	Helicopters	Gliders
	number					
Abbotsford	4,784	435	214	2,630	1,505	0
Boundary Bay	3,602	6	30	3,367	198	1
Calgary International	19,949	13,374	5,282	903	390	0
Calgary/Springbank	5,259	26	87	4,358	788	0
Chicoutimi/St-Honoré	601	0	25	333	243	0
Edmonton City Centre	4,833	387	2,104	1,725	617	0
Edmonton International	10,999	6,547	4,011	390	51	0
Edmonton/Villeneuve	1,000	13	21	701	265	0
Gander International	2,106	596	492	836	182	0
Halifax/Robert L Stanfield International	6,310	3,880	1,753	417	260	0
Hamilton	3,073	1,477	809	723	64	0
Kelowna	3,817	1,445	1,317	574	481	0
Kitchener/Waterloo	2,440	212	448	1,532	248	0
Langley	2,184	0	87	1,577	520	0
London	3,708	347	1,302	1,948	111	0
Moncton/Greater Moncton International	5,240	1,044	823	3,346	27	0
Montréal/Mirabel International	1,570	840	273	316	141	0
Montréal/Pierre Elliott Trudeau International	18,014	12,771	4,703	413	127	0
Montréal/St-Hubert	4,168	254	676	2,850	386	2
Oshawa	1,316	8	64	1,146	98	0
Ottawa/Macdonald-Cartier International	10,266	5,835	2,182	1,867	382	0
Pitt Meadows	2,056	0	2	1,773	281	0
Prince George	2,011	499	1,048	212	252	0
Québec/Jean Lesage International	5,647	1,327	2,556	967	788	9
Regina International	3,308	1,664	696	905	43	0
Saskatoon/John G Diefenbaker International	4,628	1,730	1,653	1,213	32	0
Sault Ste. Marie	1,389	18	924	428	19	0
St. John's International	2,830	1,120	1,414	50	246	0
St-Jean	489	0	82	378	24	5
Sudbury	1,860	40	1,443	203	174	0
Thunder Bay	4,358	841	2,626	674	217	0
Toronto/Buttonville Municipal	4,086	107	417	2,979	583	0
Toronto/City Centre	2,736	2	1,145	1,333	256	0
Toronto/Lester B Pearson International	36,236	30,713	5,426	79	18	0
Vancouver Harbour	3,515	0	1,653	1,030	832	0
Vancouver International	25,421	12,509	9,483	2,585	844	0
Victoria International	6,680	980	2,267	3,045	388	0
Whitehorse International	820	280	298	210	32	0
Windsor	1,760	111	760	869	20	0
Winnipeg/James Armstrong Richardson International	10,527	5,448	4,114	811	154	0
Winnipeg/St. Andrews	2,771	5	290	2,349	126	1
Yellowknife	4,060	788	2,593	223	456	0
<b>Total of NAV CANADA towers (42)</b>	<b>242,427</b>	<b>107,679</b>	<b>67,593</b>	<b>54,268</b>	<b>12,869</b>	<b>18</b>

**Table 5-2**  
**Itinerant movements by type of power plant — NAV CANADA flight service stations**

	Total	Jet engines	Turbo-propellers	Piston engines	Helicopters	Gliders
	number					
Brandon Municipal	809	18	249	474	68	0
Campbell River	1,503	4	691	288	520	0
Castlegar	340	2	237	49	52	0
Charlottetown	1,171	188	327	597	59	0
Churchill	547	14	523	4	6	0
Cranbrook	683	47	532	96	8	0
Deer Lake	1,350	237	1,060	11	42	0
Fort McMurray	3,580	891	1,772	609	308	0
Fort Nelson	773	35	479	104	155	0
Fort St John	1,360	270	706	145	239	0
Fredericton International	2,508	284	482	1,616	126	0
Grande Prairie	2,221	213	1,218	369	421	0
High Level	419	2	302	56	59	0
Îles-de-la-Madeleine	393	18	237	138	0	0
Inuvik/Mike Zubko	815	119	545	22	129	0
Iqaluit	1,066	314	720	3	29	0
Kamloops	1,892	71	1,223	434	164	0
Kenora	779	8	507	133	131	0
Kingston	1,567	23	657	799	88	0
Kuujuuaq	707	116	573	6	12	0
Kuujuuarapik	382	4	372	0	6	0
La Grande Rivière	669	6	652	10	1	0
La Ronge	1,180	2	993	168	17	0
Lethbridge	1,322	33	571	698	20	0
Lloydminster	477	4	214	241	18	0
Medicine Hat	1,005	28	513	381	83	0
Mont-Joli	283	10	244	20	9	0
Nanaimo	1,366	13	454	844	55	0
Norman Wells	713	138	394	126	55	0
North Bay	1,628	52	667	381	528	0
Ottawa/Gatineau	847	6	154	523	164	0
Peace River	646	4	450	137	55	0
Penticton	1,220	6	557	316	341	0
Port Hardy	545	6	362	61	116	0
Prince Albert	1,306	18	1,119	155	14	0
Prince Rupert	305	10	236	0	59	0
Rankin Inlet	622	118	504	0	0	0
Red Deer Regional	1,574	55	406	1,053	60	0
Rouyn-Noranda	788	90	667	25	6	0
Saint John	1,292	304	516	434	38	0
Sept-Îles	1,501	44	1,156	187	114	0
Sioux Lookout	2,155	0	1,883	212	60	0
Smithers	607	12	529	11	55	0
St Anthony	350	0	330	10	10	0
St Catharines	504	26	22	389	67	0
Terrace	958	28	706	0	224	0
Thompson	2,371	120	1,877	275	99	0
Timmins	1,825	10	1,597	166	52	0
Val-D'or	784	107	543	98	36	0
Victoria Harbour	2,532	0	1,566	189	777	0
Wabush	608	10	544	16	38	0
Whitecourt	670	10	137	95	428	0
Williams Lake	711	24	431	159	97	0
<b>Total of all flight service stations (53)</b>	<b>58,229</b>	<b>4,172</b>	<b>34,406</b>	<b>13,333</b>	<b>6,318</b>	<b>0</b>

**Table 6-1**  
**Itinerant movements by aircraft weight group — NAV CANADA towers**

	Gross take-off weight in kilograms									
	2 000	2 001	4 001	5 671	9 001	18 001	35 001	70 001	90 001	136 001
	and under	to 4 000	to 5 670	to 9 000	to 18 000	to 35 000	to 70 000	to 90 000	to 136 000	and over
	number									
Abbotsford	3,605	426	239	26	31	32	410	13	0	2
Boundary Bay	3,311	234	48	2	0	7	0	0	0	0
Calgary International	833	545	1,697	2,305	961	3,772	7,836	716	678	606
Calgary/Springbank	4,912	243	86	18	0	0	0	0	0	0
Chicoutimi/St-Honoré	483	75	41	2	0	0	0	0	0	0
Edmonton City Centre	1,869	384	1,635	744	191	9	0	1	0	0
Edmonton International	249	299	903	1,246	571	2,474	4,465	332	260	200
Edmonton/Villeneuve	909	31	60	0	0	0	0	0	0	0
Gander International	853	11	163	233	366	251	42	60	48	79
Halifax/Robert L. Stanfield International	197	238	391	905	801	1,443	1,808	189	230	108
Hamilton	670	278	309	315	234	180	385	5	652	45
Kelowna	941	107	145	769	61	784	997	3	10	0
Kitchener/Waterloo	1,668	137	246	47	208	29	61	44	0	0
Langley	2,022	149	6	0	7	0	0	0	0	0
London	2,061	227	234	117	707	173	181	8	0	0
Moncton/Greater Moncton International	3,230	183	373	281	163	506	242	5	257	0
Montréal/Mirabel International	323	153	38	116	67	249	148	1	313	162
Montréal/Pierre Elliott Trudeau International	325	207	513	886	2,783	5,594	4,151	1,616	85	1,854
Montréal/St-Hubert	2,744	420	635	116	180	18	25	6	24	0
Oshawa	1,163	68	81	0	0	4	0	0	0	0
Ottawa/Macdonald-Cartier International	1,884	121	1,045	239	773	2,804	2,337	627	337	99
Pitt Meadows	1,997	33	20	0	6	0	0	0	0	0
Prince George	263	186	213	677	37	443	190	2	0	0
Québec/Jean Lesage International	1,364	313	728	192	1,332	1,179	335	10	30	164
Regina International	656	288	314	415	64	514	813	0	230	14
Saskatoon/John G. Diefenbaker International	936	355	602	662	224	798	858	6	177	10
Sault Ste. Marie	419	116	455	57	196	142	0	4	0	0
St. John's International	32	26	455	426	717	115	799	170	72	18
St-Jean	323	72	88	0	6	0	0	0	0	0
Sudbury	227	223	977	91	111	211	18	2	0	0
Thunder Bay	737	199	2,117	265	192	536	308	0	4	0
Toronto/Buttonville Municipal	3,234	340	314	68	69	47	14	0	0	0
Toronto/City Centre	1,320	101	455	26	6	828	0	0	0	0
Toronto/Lester B. Pearson International	49	295	346	2,285	3,497	7,951	13,029	4,622	440	3,722
Vancouver Harbour	62	2,253	1,095	4	98	0	0	3	0	0
Vancouver International	622	3,282	943	2,816	2,675	4,676	6,160	1,051	754	2,442
Victoria International	2,639	905	140	424	1,216	726	571	15	44	0
Whitehorse International	210	48	137	38	6	222	157	2	0	0
Windsor	811	295	68	145	354	57	16	12	0	2
Winnipeg/James Armstrong Richardson International	573	434	2,862	486	840	1,327	2,711	351	849	94
Winnipeg/St. Andrews	2,121	561	74	0	7	4	0	4	0	0
Yellowknife	465	422	893	220	298	929	606	225	2	0
<b>Total of NAV CANADA towers (42)</b>	<b>53,312</b>	<b>15,283</b>	<b>22,184</b>	<b>17,664</b>	<b>20,055</b>	<b>39,034</b>	<b>49,673</b>	<b>10,105</b>	<b>5,496</b>	<b>9,621</b>

**Table 6-2**  
**Itinerant movements by aircraft weight group — NAV CANADA flight service stations**

	Gross take-off weight in kilograms									
	2 000 and under	2 001 to 4 000	4 001 to 5 670	5 671 to 9 000	9 001 to 18 000	18 001 to 35 000	35 001 to 70 000	70 001 to 90 000	90 001 to 136 000	136 001 and over
	number									
Brandon Municipal	504	32	172	23	28	2	0	48	0	0
Campbell River	683	58	30	430	274	26	2	0	0	0
Castlegar	89	10	12	61	29	139	0	0	0	0
Charlottetown	507	188	46	100	142	144	44	0	0	0
Churchill	6	4	103	70	89	271	0	0	4	0
Cranbrook	76	28	79	270	114	113	1	2	0	0
Deer Lake	41	12	124	126	818	132	97	0	0	0
Fort McMurray	598	569	550	577	271	655	354	4	2	0
Fort Nelson	176	107	201	171	118	0	0	0	0	0
Fort St John	321	93	311	279	137	219	0	0	0	0
Fredericton International	1,504	134	208	57	188	405	8	4	0	0
Grande Prairie	564	217	558	359	20	381	122	0	0	0
High Level	79	48	158	132	2	0	0	0	0	0
Îles-de-la-Madeleine	2	136	52	8	170	25	0	0	0	0
Inuvik/Mike Zubko	43	20	477	60	68	31	114	2	0	0
Iqaluit	1	2	351	114	51	313	143	8	81	2
Kamloops	389	190	110	288	311	602	2	0	0	0
Kenora	135	38	591	3	4	4	0	4	0	0
Kingston	799	74	100	457	111	10	0	16	0	0
Kuujuuaq	6	0	474	2	91	26	50	0	58	0
Kuujuuarapik	6	2	147	2	154	71	0	0	0	0
La Grande Rivière	9	80	79	10	141	350	0	0	0	0
La Ronge	57	191	410	91	255	176	0	0	0	0
Lethbridge	640	74	213	256	25	114	0	0	0	0
Lloydminster	216	51	100	108	2	0	0	0	0	0
Medicine Hat	400	60	252	230	63	0	0	0	0	0
Mont-Joli	11	15	128	2	113	14	0	0	0	0
Nanaimo	625	308	37	58	43	295	0	0	0	0
Norman Wells	131	146	244	12	6	36	138	0	0	0
North Bay	876	144	246	84	169	68	18	23	0	0
Ottawa/Gatineau	602	76	97	70	0	0	0	0	2	0
Peace River	94	116	368	66	2	0	0	0	0	0
Penticton	637	16	34	342	89	100	2	0	0	0
Port Hardy	68	60	171	93	145	6	2	0	0	0
Prince Albert	95	74	150	298	294	395	0	0	0	0
Prince Rupert	8	55	20	46	58	118	0	0	0	0
Rankin Inlet	0	58	156	67	84	139	117	0	1	0
Red Deer Regional	930	177	252	151	58	2	0	4	0	0
Rouyn-Noranda	29	6	283	17	221	166	64	2	0	0
Saint John	293	154	124	274	131	261	37	18	0	0
Sept-Îles	114	183	413	128	608	49	0	6	0	0
Sioux Lookout	150	130	1,375	500	0	0	0	0	0	0
Smithers	52	24	119	224	70	118	0	0	0	0
St Anthony	0	36	223	49	42	0	0	0	0	0
St Catharines	423	27	26	20	0	6	0	2	0	0
Terrace	217	4	45	246	253	193	0	0	0	0
Thompson	133	418	1,173	21	260	266	100	0	0	0
Timmins	116	238	790	68	482	131	0	0	0	0
Val-D'or	120	18	192	24	286	79	0	0	65	0
Victoria Harbour	14	1,327	1,043	4	144	0	0	0	0	0
Wabush	34	16	87	25	434	6	0	6	0	0
Whitecourt	494	61	85	30	0	0	0	0	0	0
Williams Lake	176	72	26	409	26	0	2	0	0	0
<b>Total of all flight service stations (53)</b>	<b>14,293</b>	<b>6,377</b>	<b>13,815</b>	<b>7,612</b>	<b>7,694</b>	<b>6,657</b>	<b>1,417</b>	<b>149</b>	<b>213</b>	<b>2</b>

**Table 7-1**  
**Itinerant movements, domestic, transborder and international — NAV CANADA towers**

	Total	Air carrier movements		Other commercial movements	Private movements	Government movements	
		Levels I to III and foreign	Levels IV to VI			Civil	Military
number							
<b>Abbotsford</b>							
Domestic	4,732	511	2,374	1,025	688	109	25
Transborder	44	9	8	2	22	0	3
Other international	8	8	0	0	0	0	0
<b>Total</b>	<b>4,784</b>	<b>528</b>	<b>2,382</b>	<b>1,027</b>	<b>710</b>	<b>109</b>	<b>28</b>
<b>Boundary Bay</b>							
Domestic	3,585	16	898	1,997	637	37	0
Transborder	17	0	1	12	4	0	0
Other international	0	0	0	0	0	0	0
<b>Total</b>	<b>3,602</b>	<b>16</b>	<b>899</b>	<b>2,009</b>	<b>641</b>	<b>37</b>	<b>0</b>
<b>Calgary International</b>							
Domestic	15,974	13,407	1,009	664	695	126	73
Transborder	3,406	2,934	96	73	303	0	0
Other international	569	555	2	2	6	0	4
<b>Total</b>	<b>19,949</b>	<b>16,896</b>	<b>1,107</b>	<b>739</b>	<b>1,004</b>	<b>126</b>	<b>77</b>
<b>Calgary/Springbank</b>							
Domestic	5,213	11	797	3,082	1,287	20	16
Transborder	45	1	1	3	40	0	0
Other international	1	0	0	0	1	0	0
<b>Total</b>	<b>5,259</b>	<b>12</b>	<b>798</b>	<b>3,085</b>	<b>1,328</b>	<b>20</b>	<b>16</b>
<b>Chicoutimi/St-Honoré</b>							
Domestic	601	8	221	332	40	0	0
Transborder	0	0	0	0	0	0	0
Other international	0	0	0	0	0	0	0
<b>Total</b>	<b>601</b>	<b>8</b>	<b>221</b>	<b>332</b>	<b>40</b>	<b>0</b>	<b>0</b>
<b>Edmonton City Centre</b>							
Domestic	4,802	1,585	504	1,164	1,095	352	102
Transborder	30	5	2	3	20	0	0
Other international	1	0	1	0	0	0	0
<b>Total</b>	<b>4,833</b>	<b>1,590</b>	<b>507</b>	<b>1,167</b>	<b>1,115</b>	<b>352</b>	<b>102</b>
<b>Edmonton International</b>							
Domestic	9,507	8,651	432	72	226	34	92
Transborder	1,189	1,108	27	4	50	0	0
Other international	303	296	0	0	7	0	0
<b>Total</b>	<b>10,999</b>	<b>10,055</b>	<b>459</b>	<b>76</b>	<b>283</b>	<b>34</b>	<b>92</b>
<b>Edmonton/Villeneuve</b>							
Domestic	996	7	234	546	168	41	0
Transborder	4	0	0	0	4	0	0
Other international	0	0	0	0	0	0	0
<b>Total</b>	<b>1,000</b>	<b>7</b>	<b>234</b>	<b>546</b>	<b>172</b>	<b>41</b>	<b>0</b>
<b>Gander International</b>							
Domestic	1,606	343	1,052	14	43	22	132
Transborder	232	75	2	7	94	1	53
Other international	268	107	4	8	96	1	52
<b>Total</b>	<b>2,106</b>	<b>525</b>	<b>1,058</b>	<b>29</b>	<b>233</b>	<b>24</b>	<b>237</b>
<b>Halifax/Robert L Stanfield International</b>							
Domestic	4,995	4,308	302	33	165	44	143
Transborder	908	762	46	4	90	0	6
Other international	407	268	99	3	27	0	10
<b>Total</b>	<b>6,310</b>	<b>5,338</b>	<b>447</b>	<b>40</b>	<b>282</b>	<b>44</b>	<b>159</b>
<b>Hamilton</b>							
Domestic	2,509	1,440	707	54	166	136	6
Transborder	515	367	10	3	131	4	0
Other international	49	48	0	1	0	0	0
<b>Total</b>	<b>3,073</b>	<b>1,855</b>	<b>717</b>	<b>58</b>	<b>297</b>	<b>140</b>	<b>6</b>



Table 7-1 – continued

## Itinerant movements, domestic, transborder and international — NAV CANADA towers

	Total	Air carrier movements		Other commercial movements	Private movements	Government movements	
		Levels I to III and foreign	Levels IV to VI			Civil	Military
	number						
<b>Kelowna</b>							
Domestic	3,459	2,228	261	646	230	84	10
Transborder	327	267	5	3	52	0	0
Other international	31	29	0	0	2	0	0
<b>Total</b>	<b>3,817</b>	<b>2,524</b>	<b>266</b>	<b>649</b>	<b>284</b>	<b>84</b>	<b>10</b>
<b>Kitchener/Waterloo</b>							
Domestic	2,072	221	1,172	412	256	4	7
Transborder	329	203	37	11	77	0	1
Other international	39	35	1	0	3	0	0
<b>Total</b>	<b>2,440</b>	<b>459</b>	<b>1,210</b>	<b>423</b>	<b>336</b>	<b>4</b>	<b>8</b>
<b>Langley</b>							
Domestic	2,181	108	142	1,117	807	6	1
Transborder	3	0	0	0	3	0	0
Other international	0	0	0	0	0	0	0
<b>Total</b>	<b>2,184</b>	<b>108</b>	<b>142</b>	<b>1,117</b>	<b>810</b>	<b>6</b>	<b>1</b>
<b>London</b>							
Domestic	3,316	969	794	969	518	64	2
Transborder	358	250	3	2	103	0	0
Other international	34	33	0	1	0	0	0
<b>Total</b>	<b>3,708</b>	<b>1,252</b>	<b>797</b>	<b>972</b>	<b>621</b>	<b>64</b>	<b>2</b>
<b>Moncton/Greater Moncton International</b>							
Domestic	5,173	1,646	3,032	168	147	158	22
Transborder	58	44	2	0	12	0	0
Other international	9	7	0	0	1	1	0
<b>Total</b>	<b>5,240</b>	<b>1,697</b>	<b>3,034</b>	<b>168</b>	<b>160</b>	<b>159</b>	<b>22</b>
<b>Montréal/Mirabel International</b>							
Domestic	1,364	635	236	92	329	22	50
Transborder	205	200	0	0	5	0	0
Other international	1	1	0	0	0	0	0
<b>Total</b>	<b>1,570</b>	<b>836</b>	<b>236</b>	<b>92</b>	<b>334</b>	<b>22</b>	<b>50</b>
<b>Montréal/Pierre Elliott Trudeau International</b>							
Domestic	9,593	8,094	435	252	655	153	4
Transborder	6,176	5,548	82	77	461	0	8
Other international	2,245	2,170	10	27	37	0	1
<b>Total</b>	<b>18,014</b>	<b>15,812</b>	<b>527</b>	<b>356</b>	<b>1,153</b>	<b>153</b>	<b>13</b>
<b>Montréal/St-Hubert</b>							
Domestic	4,006	1,564	450	1,071	785	53	83
Transborder	158	28	2	3	125	0	0
Other international	4	2	1	0	1	0	0
<b>Total</b>	<b>4,168</b>	<b>1,594</b>	<b>453</b>	<b>1,074</b>	<b>911</b>	<b>53</b>	<b>83</b>
<b>Oshawa</b>							
Domestic	1,292	115	110	740	315	6	6
Transborder	24	5	3	2	14	0	0
Other international	0	0	0	0	0	0	0
<b>Total</b>	<b>1,316</b>	<b>120</b>	<b>113</b>	<b>742</b>	<b>329</b>	<b>6</b>	<b>6</b>
<b>Ottawa/Macdonald-Cartier International</b>							
Domestic	7,793	4,947	324	1,599	258	490	175
Transborder	2,169	2,064	15	4	80	2	4
Other international	304	289	1	1	3	1	9
<b>Total</b>	<b>10,266</b>	<b>7,300</b>	<b>340</b>	<b>1,604</b>	<b>341</b>	<b>493</b>	<b>188</b>
<b>Pitt Meadows</b>							
Domestic	2,050	49	623	654	718	6	0
Transborder	6	0	1	2	3	0	0
Other international	0	0	0	0	0	0	0
<b>Total</b>	<b>2,056</b>	<b>49</b>	<b>624</b>	<b>656</b>	<b>721</b>	<b>6</b>	<b>0</b>

Table 7-1 – continued

## Itinerant movements, domestic, transborder and international — NAV CANADA towers

	Total	Air carrier movements		Other commercial movements	Private movements	Government movements	
		Levels I to III and foreign	Levels IV to VI			Civil	Military
	number						
<b>Prince George</b>							
Domestic	1,991	1,365	310	136	145	28	7
Transborder	11	2	0	0	8	0	1
Other international	9	9	0	0	0	0	0
<b>Total</b>	<b>2,011</b>	<b>1,376</b>	<b>310</b>	<b>136</b>	<b>153</b>	<b>28</b>	<b>8</b>
<b>Québec/Jean Lesage International</b>							
Domestic	5,096	2,968	558	762	352	345	111
Transborder	325	266	1	6	39	1	12
Other international	226	224	0	0	0	0	2
<b>Total</b>	<b>5,647</b>	<b>3,458</b>	<b>559</b>	<b>768</b>	<b>391</b>	<b>346</b>	<b>125</b>
<b>Regina International</b>							
Domestic	3,042	1,974	485	52	144	166	221
Transborder	162	124	1	3	31	2	1
Other international	104	104	0	0	0	0	0
<b>Total</b>	<b>3,308</b>	<b>2,202</b>	<b>486</b>	<b>55</b>	<b>175</b>	<b>168</b>	<b>222</b>
<b>Saskatoon/John G Diefenbaker International</b>							
Domestic	4,439	2,930	666	201	173	278	191
Transborder	108	72	4	5	27	0	0
Other international	81	81	0	0	0	0	0
<b>Total</b>	<b>4,628</b>	<b>3,083</b>	<b>670</b>	<b>206</b>	<b>200</b>	<b>278</b>	<b>191</b>
<b>Sault Ste. Marie</b>							
Domestic	1,365	748	160	377	34	37	9
Transborder	24	0	1	3	19	0	1
Other international	0	0	0	0	0	0	0
<b>Total</b>	<b>1,389</b>	<b>748</b>	<b>161</b>	<b>380</b>	<b>53</b>	<b>37</b>	<b>10</b>
<b>St. John's International</b>							
Domestic	2,484	1,697	555	53	53	97	29
Transborder	156	56	0	7	26	0	67
Other international	190	68	2	14	36	3	67
<b>Total</b>	<b>2,830</b>	<b>1,821</b>	<b>557</b>	<b>74</b>	<b>115</b>	<b>100</b>	<b>163</b>
<b>St-Jean</b>							
Domestic	489	110	54	164	141	6	14
Transborder	0	0	0	0	0	0	0
Other international	0	0	0	0	0	0	0
<b>Total</b>	<b>489</b>	<b>110</b>	<b>54</b>	<b>164</b>	<b>141</b>	<b>6</b>	<b>14</b>
<b>Sudbury</b>							
Domestic	1,850	1,227	391	38	132	51	11
Transborder	9	5	3	0	1	0	0
Other international	1	1	0	0	0	0	0
<b>Total</b>	<b>1,860</b>	<b>1,233</b>	<b>394</b>	<b>38</b>	<b>133</b>	<b>51</b>	<b>11</b>
<b>Thunder Bay</b>							
Domestic	4,194	2,793	565	524	81	206	25
Transborder	156	120	4	2	30	0	0
Other international	8	8	0	0	0	0	0
<b>Total</b>	<b>4,358</b>	<b>2,921</b>	<b>569</b>	<b>526</b>	<b>111</b>	<b>206</b>	<b>25</b>
<b>Toronto/Buttontown Municipal</b>							
Domestic	3,876	269	665	2,067	838	36	1
Transborder	208	58	22	7	116	5	0
Other international	2	0	0	0	2	0	0
<b>Total</b>	<b>4,086</b>	<b>327</b>	<b>687</b>	<b>2,074</b>	<b>956</b>	<b>41</b>	<b>1</b>
<b>Toronto/City Centre</b>							
Domestic	2,633	998	510	912	204	9	0
Transborder	103	2	18	3	80	0	0
Other international	0	0	0	0	0	0	0
<b>Total</b>	<b>2,736</b>	<b>1,000</b>	<b>528</b>	<b>915</b>	<b>284</b>	<b>9</b>	<b>0</b>

Table 7-1 – continued

## Itinerant movements, domestic, transborder and international — NAV CANADA towers

	Total	Air carrier movements		Other commercial movements	Private movements	Government movements	
		Levels I to III and foreign	Levels IV to VI			Civil	Military
number							
<b>Toronto/Lester B Pearson International</b>							
Domestic	15,225	14,392	300	86	391	51	5
Transborder	16,023	14,970	119	89	835	6	4
Other international	4,988	4,915	18	17	36	2	0
<b>Total</b>	<b>36,236</b>	<b>34,277</b>	<b>437</b>	<b>192</b>	<b>1,262</b>	<b>59</b>	<b>9</b>
<b>Vancouver Harbour</b>							
Domestic	3,474	3,194	63	173	42	0	2
Transborder	41	38	0	0	3	0	0
Other international	0	0	0	0	0	0	0
<b>Total</b>	<b>3,515</b>	<b>3,232</b>	<b>63</b>	<b>173</b>	<b>45</b>	<b>0</b>	<b>2</b>
<b>Vancouver International</b>							
Domestic	18,651	16,742	1,060	356	297	184	12
Transborder	5,042	4,687	26	8	320	0	1
Other international	1,728	1,631	70	6	13	3	5
<b>Total</b>	<b>25,421</b>	<b>23,060</b>	<b>1,156</b>	<b>370</b>	<b>630</b>	<b>187</b>	<b>18</b>
<b>Victoria International</b>							
Domestic	6,041	2,604	2,114	617	600	34	72
Transborder	558	379	15	6	156	0	2
Other international	81	24	29	10	17	0	1
<b>Total</b>	<b>6,680</b>	<b>3,007</b>	<b>2,158</b>	<b>633</b>	<b>773</b>	<b>34</b>	<b>75</b>
<b>Whitehorse International</b>							
Domestic	808	540	130	7	86	38	7
Transborder	11	0	1	0	7	0	3
Other international	1	0	0	1	0	0	0
<b>Total</b>	<b>820</b>	<b>540</b>	<b>131</b>	<b>8</b>	<b>93</b>	<b>38</b>	<b>10</b>
<b>Windsor</b>							
Domestic	1,650	521	958	14	131	18	8
Transborder	104	29	27	1	41	0	6
Other international	6	2	1	0	3	0	0
<b>Total</b>	<b>1,760</b>	<b>552</b>	<b>986</b>	<b>15</b>	<b>175</b>	<b>18</b>	<b>14</b>
<b>Winnipeg/James Armstrong Richardson International</b>							
Domestic	9,187	7,514	634	45	173	305	516
Transborder	1,137	1,050	16	9	51	2	9
Other international	203	194	2	3	2	0	2
<b>Total</b>	<b>10,527</b>	<b>8,758</b>	<b>652</b>	<b>57</b>	<b>226</b>	<b>307</b>	<b>527</b>
<b>Winnipeg/St. Andrews</b>							
Domestic	2,771	372	1,595	576	199	3	26
Transborder	0	0	0	0	0	0	0
Other international	0	0	0	0	0	0	0
<b>Total</b>	<b>2,771</b>	<b>372</b>	<b>1,595</b>	<b>576</b>	<b>199</b>	<b>3</b>	<b>26</b>
<b>Yellowknife</b>							
Domestic	4,058	3,213	660	21	9	88	67
Transborder	2	2	0	0	0	0	0
Other international	0	0	0	0	0	0	0
<b>Total</b>	<b>4,060</b>	<b>3,215</b>	<b>660</b>	<b>21</b>	<b>9</b>	<b>88</b>	<b>67</b>
<b>Total of NAV CANADA towers (42)</b>							
Domestic	190,143	117,034	28,542	23,884	14,453	3,947	2,283
Transborder	40,383	35,730	601	364	3,483	23	182
Other international	11,901	11,109	241	94	293	11	153
<b>Total</b>	<b>242,427</b>	<b>163,873</b>	<b>29,384</b>	<b>24,342</b>	<b>18,229</b>	<b>3,981</b>	<b>2,618</b>

**Table 7-2**  
**Itinerant movements, domestic, transborder and international — NAV CANADA flight service stations**

	Total	Air carrier movements		Other commercial movements	Private movements	Government movements	
		Levels I to III and foreign	Levels IV to VI			Civil	Military
number							
<b>Brandon Municipal</b>							
Domestic	800	133	313	43	125	12	174
Transborder	9	0	0	2	7	0	0
Other international	0	0	0	0	0	0	0
<b>Total</b>	<b>809</b>	<b>133</b>	<b>313</b>	<b>45</b>	<b>132</b>	<b>12</b>	<b>174</b>
<b>Campbell River</b>							
Domestic	1,485	650	354	100	354	15	12
Transborder	18	0	0	0	18	0	0
Other international	0	0	0	0	0	0	0
<b>Total</b>	<b>1,503</b>	<b>650</b>	<b>354</b>	<b>100</b>	<b>372</b>	<b>15</b>	<b>12</b>
<b>Castlegar</b>							
Domestic	339	227	34	67	7	2	2
Transborder	1	0	0	0	1	0	0
Other international	0	0	0	0	0	0	0
<b>Total</b>	<b>340</b>	<b>227</b>	<b>34</b>	<b>67</b>	<b>8</b>	<b>2</b>	<b>2</b>
<b>Charlottetown</b>							
Domestic	1,164	551	126	349	72	54	12
Transborder	7	0	0	0	7	0	0
Other international	0	0	0	0	0	0	0
<b>Total</b>	<b>1,171</b>	<b>551</b>	<b>126</b>	<b>349</b>	<b>79</b>	<b>54</b>	<b>12</b>
<b>Churchill</b>							
Domestic	546	523	6	5	4	8	0
Transborder	1	0	0	1	0	0	0
Other international	0	0	0	0	0	0	0
<b>Total</b>	<b>547</b>	<b>523</b>	<b>6</b>	<b>6</b>	<b>4</b>	<b>8</b>	<b>0</b>
<b>Cranbrook</b>							
Domestic	660	526	60	7	49	4	14
Transborder	23	6	2	1	14	0	0
Other international	0	0	0	0	0	0	0
<b>Total</b>	<b>683</b>	<b>532</b>	<b>62</b>	<b>8</b>	<b>63</b>	<b>4</b>	<b>14</b>
<b>Deer Lake</b>							
Domestic	1,343	1,135	165	12	9	22	0
Transborder	1	1	0	0	0	0	0
Other international	6	6	0	0	0	0	0
<b>Total</b>	<b>1,350</b>	<b>1,142</b>	<b>165</b>	<b>12</b>	<b>9</b>	<b>22</b>	<b>0</b>
<b>Fort McMurray</b>							
Domestic	3,579	2,432	430	274	388	39	16
Transborder	1	0	0	0	1	0	0
Other international	0	0	0	0	0	0	0
<b>Total</b>	<b>3,580</b>	<b>2,432</b>	<b>430</b>	<b>274</b>	<b>389</b>	<b>39</b>	<b>16</b>
<b>Fort Nelson</b>							
Domestic	773	441	201	95	30	4	2
Transborder	0	0	0	0	0	0	0
Other international	0	0	0	0	0	0	0
<b>Total</b>	<b>773</b>	<b>441</b>	<b>201</b>	<b>95</b>	<b>30</b>	<b>4</b>	<b>2</b>
<b>Fort St John</b>							
Domestic	1,359	913	275	56	111	2	2
Transborder	1	0	0	0	1	0	0
Other international	0	0	0	0	0	0	0
<b>Total</b>	<b>1,360</b>	<b>913</b>	<b>275</b>	<b>56</b>	<b>112</b>	<b>2</b>	<b>2</b>
<b>Fredericton International</b>							
Domestic	2,495	719	1,260	27	298	72	119
Transborder	13	0	2	0	9	0	2
Other international	0	0	0	0	0	0	0
<b>Total</b>	<b>2,508</b>	<b>719</b>	<b>1,262</b>	<b>27</b>	<b>307</b>	<b>72</b>	<b>121</b>

Table 7-2 – continued

## Itinerant movements, domestic, transborder and international — NAV CANADA flight service stations

	Total	Air carrier movements		Other commercial movements	Private movements	Government movements	
		Levels I to III and foreign	Levels IV to VI			Civil	Military
number							
<b>Grande Prairie</b>							
Domestic	2,220	1,288	641	26	245	20	0
Transborder	1	0	0	0	1	0	0
Other international	0	0	0	0	0	0	0
<b>Total</b>	<b>2,221</b>	<b>1,288</b>	<b>641</b>	<b>26</b>	<b>246</b>	<b>20</b>	<b>0</b>
<b>High Level</b>							
Domestic	419	196	166	5	36	16	0
Transborder	0	0	0	0	0	0	0
Other international	0	0	0	0	0	0	0
<b>Total</b>	<b>419</b>	<b>196</b>	<b>166</b>	<b>5</b>	<b>36</b>	<b>16</b>	<b>0</b>
<b>Îles-de-la-Madeleine</b>							
Domestic	393	243	100	8	6	36	0
Transborder	0	0	0	0	0	0	0
Other international	0	0	0	0	0	0	0
<b>Total</b>	<b>393</b>	<b>243</b>	<b>100</b>	<b>8</b>	<b>6</b>	<b>36</b>	<b>0</b>
<b>Inuvik/Mike Zubko</b>							
Domestic	815	223	563	0	3	20	6
Transborder	0	0	0	0	0	0	0
Other international	0	0	0	0	0	0	0
<b>Total</b>	<b>815</b>	<b>223</b>	<b>563</b>	<b>0</b>	<b>3</b>	<b>20</b>	<b>6</b>
<b>Iqaluit</b>							
Domestic	1,001	844	26	78	17	36	0
Transborder	18	6	3	0	9	0	0
Other international	47	16	0	8	23	0	0
<b>Total</b>	<b>1,066</b>	<b>866</b>	<b>29</b>	<b>86</b>	<b>49</b>	<b>36</b>	<b>0</b>
<b>Kamloops</b>							
Domestic	1,767	1,103	262	166	182	39	15
Transborder	125	69	0	0	53	0	3
Other international	0	0	0	0	0	0	0
<b>Total</b>	<b>1,892</b>	<b>1,172</b>	<b>262</b>	<b>166</b>	<b>235</b>	<b>39</b>	<b>18</b>
<b>Kenora</b>							
Domestic	776	428	270	4	32	20	22
Transborder	3	0	2	0	1	0	0
Other international	0	0	0	0	0	0	0
<b>Total</b>	<b>779</b>	<b>428</b>	<b>272</b>	<b>4</b>	<b>33</b>	<b>20</b>	<b>22</b>
<b>Kingston</b>							
Domestic	1,546	545	306	424	212	29	30
Transborder	21	2	2	0	17	0	0
Other international	0	0	0	0	0	0	0
<b>Total</b>	<b>1,567</b>	<b>547</b>	<b>308</b>	<b>424</b>	<b>229</b>	<b>29</b>	<b>30</b>
<b>Kuujuuaq</b>							
Domestic	705	675	4	0	4	10	12
Transborder	0	0	0	0	0	0	0
Other international	2	0	0	0	2	0	0
<b>Total</b>	<b>707</b>	<b>675</b>	<b>4</b>	<b>0</b>	<b>6</b>	<b>10</b>	<b>12</b>
<b>Kuujuuarapik</b>							
Domestic	382	368	10	0	0	4	0
Transborder	0	0	0	0	0	0	0
Other international	0	0	0	0	0	0	0
<b>Total</b>	<b>382</b>	<b>368</b>	<b>10</b>	<b>0</b>	<b>0</b>	<b>4</b>	<b>0</b>
<b>La Grande Rivière</b>							
Domestic	669	472	165	6	14	12	0
Transborder	0	0	0	0	0	0	0
Other international	0	0	0	0	0	0	0
<b>Total</b>	<b>669</b>	<b>472</b>	<b>165</b>	<b>6</b>	<b>14</b>	<b>12</b>	<b>0</b>
<b>La Ronge</b>							
Domestic	1,180	1,093	4	3	20	60	0
Transborder	0	0	0	0	0	0	0
Other international	0	0	0	0	0	0	0
<b>Total</b>	<b>1,180</b>	<b>1,093</b>	<b>4</b>	<b>3</b>	<b>20</b>	<b>60</b>	<b>0</b>

Table 7-2 – continued

## Itinerant movements, domestic, transborder and international — NAV CANADA flight service stations

	Total	Air carrier movements		Other commercial movements	Private movements	Government movements	
		Levels I to III and foreign	Levels IV to VI			Civil	Military
number							
<b>Lethbridge</b>							
Domestic	1,282	481	98	488	194	14	7
Transborder	40	2	0	2	35	0	1
Other international	0	0	0	0	0	0	0
<b>Total</b>	<b>1,322</b>	<b>483</b>	<b>98</b>	<b>490</b>	<b>229</b>	<b>14</b>	<b>8</b>
<b>Lloydminster</b>							
Domestic	476	140	153	48	113	18	4
Transborder	1	0	1	0	0	0	0
Other international	0	0	0	0	0	0	0
<b>Total</b>	<b>477</b>	<b>140</b>	<b>154</b>	<b>48</b>	<b>113</b>	<b>18</b>	<b>4</b>
<b>Medicine Hat</b>							
Domestic	1,002	692	113	64	119	6	8
Transborder	3	0	0	0	3	0	0
Other international	0	0	0	0	0	0	0
<b>Total</b>	<b>1,005</b>	<b>692</b>	<b>113</b>	<b>64</b>	<b>122</b>	<b>6</b>	<b>8</b>
<b>Mont-Joli</b>							
Domestic	283	244	3	10	7	16	3
Transborder	0	0	0	0	0	0	0
Other international	0	0	0	0	0	0	0
<b>Total</b>	<b>283</b>	<b>244</b>	<b>3</b>	<b>10</b>	<b>7</b>	<b>16</b>	<b>3</b>
<b>Nanaimo</b>							
Domestic	1,330	435	381	98	370	38	8
Transborder	36	2	2	0	32	0	0
Other international	0	0	0	0	0	0	0
<b>Total</b>	<b>1,366</b>	<b>437</b>	<b>383</b>	<b>98</b>	<b>402</b>	<b>38</b>	<b>8</b>
<b>Norman Wells</b>							
Domestic	713	594	103	0	8	4	4
Transborder	0	0	0	0	0	0	0
Other international	0	0	0	0	0	0	0
<b>Total</b>	<b>713</b>	<b>594</b>	<b>103</b>	<b>0</b>	<b>8</b>	<b>4</b>	<b>4</b>
<b>North Bay</b>							
Domestic	1,624	453	504	340	230	64	33
Transborder	4	0	0	0	4	0	0
Other international	0	0	0	0	0	0	0
<b>Total</b>	<b>1,628</b>	<b>453</b>	<b>504</b>	<b>340</b>	<b>234</b>	<b>64</b>	<b>33</b>
<b>Ottawa/Gatineau</b>							
Domestic	845	138	119	113	346	123	6
Transborder	2	0	0	0	2	0	0
Other international	0	0	0	0	0	0	0
<b>Total</b>	<b>847</b>	<b>138</b>	<b>119</b>	<b>113</b>	<b>348</b>	<b>123</b>	<b>6</b>
<b>Peace River</b>							
Domestic	646	522	61	24	29	8	2
Transborder	0	0	0	0	0	0	0
Other international	0	0	0	0	0	0	0
<b>Total</b>	<b>646</b>	<b>522</b>	<b>61</b>	<b>24</b>	<b>29</b>	<b>8</b>	<b>2</b>
<b>Penticton</b>							
Domestic	1,214	527	476	27	114	23	47
Transborder	6	0	0	0	5	0	1
Other international	0	0	0	0	0	0	0
<b>Total</b>	<b>1,220</b>	<b>527</b>	<b>476</b>	<b>27</b>	<b>119</b>	<b>23</b>	<b>48</b>
<b>Port Hardy</b>							
Domestic	545	376	59	2	43	53	12
Transborder	0	0	0	0	0	0	0
Other international	0	0	0	0	0	0	0
<b>Total</b>	<b>545</b>	<b>376</b>	<b>59</b>	<b>2</b>	<b>43</b>	<b>53</b>	<b>12</b>

Table 7-2 – continued

## Itinerant movements, domestic, transborder and international — NAV CANADA flight service stations

	Total	Air carrier movements		Other commercial movements	Private movements	Government movements	
		Levels I to III and foreign	Levels IV to VI			Civil	Military
number							
<b>Prince Albert</b>							
Domestic	1,306	1,039	56	14	80	95	22
Transborder	0	0	0	0	0	0	0
Other international	0	0	0	0	0	0	0
<b>Total</b>	<b>1,306</b>	<b>1,039</b>	<b>56</b>	<b>14</b>	<b>80</b>	<b>95</b>	<b>22</b>
<b>Prince Rupert</b>							
Domestic	305	232	57	6	0	10	0
Transborder	0	0	0	0	0	0	0
Other international	0	0	0	0	0	0	0
<b>Total</b>	<b>305</b>	<b>232</b>	<b>57</b>	<b>6</b>	<b>0</b>	<b>10</b>	<b>0</b>
<b>Rankin Inlet</b>							
Domestic	622	622	0	0	0	0	0
Transborder	0	0	0	0	0	0	0
Other international	0	0	0	0	0	0	0
<b>Total</b>	<b>622</b>	<b>622</b>	<b>0</b>	<b>0</b>	<b>0</b>	<b>0</b>	<b>0</b>
<b>Red Deer Regional</b>							
Domestic	1,563	333	623	182	358	47	20
Transborder	11	1	0	0	10	0	0
Other international	0	0	0	0	0	0	0
<b>Total</b>	<b>1,574</b>	<b>334</b>	<b>623</b>	<b>182</b>	<b>368</b>	<b>47</b>	<b>20</b>
<b>Rouyn-Noranda</b>							
Domestic	788	521	140	0	97	28	2
Transborder	0	0	0	0	0	0	0
Other international	0	0	0	0	0	0	0
<b>Total</b>	<b>788</b>	<b>521</b>	<b>140</b>	<b>0</b>	<b>97</b>	<b>28</b>	<b>2</b>
<b>Saint John</b>							
Domestic	1,228	710	239	53	165	10	51
Transborder	59	2	1	1	54	0	1
Other international	5	0	0	0	5	0	0
<b>Total</b>	<b>1,292</b>	<b>712</b>	<b>240</b>	<b>54</b>	<b>224</b>	<b>10</b>	<b>52</b>
<b>Sept-Îles</b>							
Domestic	1,498	1,182	190	9	31	74	12
Transborder	2	0	0	0	2	0	0
Other international	1	0	0	0	1	0	0
<b>Total</b>	<b>1,501</b>	<b>1,182</b>	<b>190</b>	<b>9</b>	<b>34</b>	<b>74</b>	<b>12</b>
<b>Sioux Lookout</b>							
Domestic	2,154	1,822	269	14	15	34	0
Transborder	1	0	1	0	0	0	0
Other international	0	0	0	0	0	0	0
<b>Total</b>	<b>2,155</b>	<b>1,822</b>	<b>270</b>	<b>14</b>	<b>15</b>	<b>34</b>	<b>0</b>
<b>Smithers</b>							
Domestic	604	459	59	25	61	0	0
Transborder	3	1	0	0	2	0	0
Other international	0	0	0	0	0	0	0
<b>Total</b>	<b>607</b>	<b>460</b>	<b>59</b>	<b>25</b>	<b>63</b>	<b>0</b>	<b>0</b>
<b>St Anthony</b>							
Domestic	349	272	0	59	0	18	0
Transborder	0	0	0	0	0	0	0
Other international	1	1	0	0	0	0	0
<b>Total</b>	<b>350</b>	<b>273</b>	<b>0</b>	<b>59</b>	<b>0</b>	<b>18</b>	<b>0</b>
<b>St Catharines</b>							
Domestic	472	0	264	13	106	30	59
Transborder	32	0	5	1	26	0	0
Other international	0	0	0	0	0	0	0
<b>Total</b>	<b>504</b>	<b>0</b>	<b>269</b>	<b>14</b>	<b>132</b>	<b>30</b>	<b>59</b>

Table 7-2 – continued

## Itinerant movements, domestic, transborder and international — NAV CANADA flight service stations

	Total	Air carrier movements		Other commercial movements	Private movements	Government movements	
		Levels I to III and foreign	Levels IV to VI			Civil	Military
	number						
<b>Terrace</b>							
Domestic	957	670	219	24	38	4	2
Transborder	1	0	0	0	1	0	0
Other international	0	0	0	0	0	0	0
<b>Total</b>	<b>958</b>	<b>670</b>	<b>219</b>	<b>24</b>	<b>39</b>	<b>4</b>	<b>2</b>
<b>Thompson</b>							
Domestic	2,366	1,974	185	8	21	178	0
Transborder	5	0	0	0	5	0	0
Other international	0	0	0	0	0	0	0
<b>Total</b>	<b>2,371</b>	<b>1,974</b>	<b>185</b>	<b>8</b>	<b>26</b>	<b>178</b>	<b>0</b>
<b>Timmins</b>							
Domestic	1,820	1,517	183	4	78	38	0
Transborder	5	0	0	0	5	0	0
Other international	0	0	0	0	0	0	0
<b>Total</b>	<b>1,825</b>	<b>1,517</b>	<b>183</b>	<b>4</b>	<b>83</b>	<b>38</b>	<b>0</b>
<b>Val-D'or</b>							
Domestic	784	604	34	9	101	32	4
Transborder	0	0	0	0	0	0	0
Other international	0	0	0	0	0	0	0
<b>Total</b>	<b>784</b>	<b>604</b>	<b>34</b>	<b>9</b>	<b>101</b>	<b>32</b>	<b>4</b>
<b>Victoria Harbour</b>							
Domestic	2,343	2,239	7	4	4	82	7
Transborder	189	0	0	0	189	0	0
Other international	0	0	0	0	0	0	0
<b>Total</b>	<b>2,532</b>	<b>2,239</b>	<b>7</b>	<b>4</b>	<b>193</b>	<b>82</b>	<b>7</b>
<b>Wabush</b>							
Domestic	608	522	42	6	12	16	10
Transborder	0	0	0	0	0	0	0
Other international	0	0	0	0	0	0	0
<b>Total</b>	<b>608</b>	<b>522</b>	<b>42</b>	<b>6</b>	<b>12</b>	<b>16</b>	<b>10</b>
<b>Whitecourt</b>							
Domestic	670	90	373	141	53	11	2
Transborder	0	0	0	0	0	0	0
Other international	0	0	0	0	0	0	0
<b>Total</b>	<b>670</b>	<b>90</b>	<b>373</b>	<b>141</b>	<b>53</b>	<b>11</b>	<b>2</b>
<b>Williams Lake</b>							
Domestic	710	421	195	40	52	0	2
Transborder	1	0	0	0	1	0	0
Other international	0	0	0	0	0	0	0
<b>Total</b>	<b>711</b>	<b>421</b>	<b>195</b>	<b>40</b>	<b>53</b>	<b>0</b>	<b>2</b>
<b>Total of all flight service stations (53)</b>							
Domestic	57,523	35,559	10,946	3,580	5,063	1,610	765
Transborder	644	92	21	8	515	0	8
Other international	62	23	0	8	31	0	0
<b>Total</b>	<b>58,229</b>	<b>35,674</b>	<b>10,967</b>	<b>3,596</b>	<b>5,609</b>	<b>1,610</b>	<b>773</b>



**Table 8-1**  
**Total aircraft movements, peak hour and peak day — NAV CANADA towers**

	Rank of movements	Number of movements	Peak hour occurrence			Peak day occurrence	
			Day in month	Hour in day	Number of movements	Day in month	Number of movements
Abbotsford	7	12,477	28	15	120	21	857
Boundary Bay	14	8,502	22	15	121	22	677
Calgary International	3	20,085	16	18	62	16	783
Calgary/Springbank	5	15,736	9	15	147	31	1,017
Chicoutimi/St-Honoré	40	2,012	28	15	61	28	231
Edmonton City Centre	20	6,267	15	13	44	11	380
Edmonton International	9	11,367	23	13	57	23	531
Edmonton/Villeneuve	28	4,760	15	10	80	18	368
Gander International	29	4,466	18	7	60	18	416
Halifax/Robert L Stanfield International	19	6,782	23	16	41	10	301
Hamilton	30	4,426	31	14	75	31	339
Kelowna	24	5,813	5	14	55	16	277
Kitchener/Waterloo	23	5,828	31	15	89	31	587
Langley	21	6,248	15	14	100	24	402
London	17	6,926	28	16	98	16	667
Moncton/Greater Moncton International	12	9,092	11	11	62	24	714
Montréal/Mirabel International	39	2,023	10	12	29	10	174
Montréal/Pierre Elliott Trudeau International	4	18,014	31	18	60	31	690
Montréal/St-Hubert	11	9,767	27	14	153	10	983
Oshawa	34	3,196	17	13	61	16	389
Ottawa/Macdonald-Cartier International	6	12,701	16	16	89	10	675
Pitt Meadows	25	5,584	25	13	94	22	498
Prince George	36	2,434	24	11	43	24	136
Québec/Jean Lesage International	15	7,251	13	15	66	10	389
Regina International	31	4,299	11	13	35	19	243
Saskatoon/John G Diefenbaker International	16	7,055	12	16	72	14	447
Sault Ste. Marie	37	2,281	16	19	56	16	249
St. John's International	35	3,058	4	15	34	4	172
St-Jean	42	727	26	12	30	26	85
Sudbury	38	2,186	19	13	38	31	175
Thunder Bay	22	6,092	25	19	74	27	450
Toronto/Buttonville Municipal	13	8,960	17	15	106	16	812
Toronto/City Centre	26	5,148	12	12	61	31	466
Toronto/Lester B Pearson International	1	36,236	25	16	102	31	1,321
Vancouver Harbour	32	3,539	24	8	32	24	193
Vancouver International	2	25,421	21	8	79	24	940
Victoria International	8	12,270	25	15	96	21	647
Whitehorse International	41	1,350	2	16	26	18	104
Windsor	33	3,424	12	15	47	24	313
Winnipeg/James Armstrong Richardson International	10	11,327	7	14	49	9	482
Winnipeg/St. Andrews	18	6,793	7	11	86	26	439
Yellowknife	27	5,008	27	10	46	9	236

**Table 8-2**  
**Total aircraft movements, peak hour and peak day — NAV CANADA flight service stations**

	Rank of movements	Number of movements	Peak hour occurrence			Peak day occurrence	
			Day in month	Hour in day	Number of movements	Day in month	Number of movements
Brandon Municipal	21	1,525	22	12	36	3	149
Campbell River	4	3,551	20	14	79	20	467
Castlegar	47	536	26	9	38	30	64
Charlottetown	16	1,841	25	10	40	17	208
Churchill	45	565	17	11	14	9	32
Cranbrook	39	691	2	16	10	30	35
Deer Lake	17	1,793	23	10	45	7	110
Fort McMurray	3	4,148	13	12	39	10	211
Fort Nelson	35	779	17	11	10	10	46
Fort St John	22	1,422	21	15	16	23	83
Fredericton International	2	4,399	5	15	49	6	323
Grande Prairie	6	2,673	3	17	57	3	169
High Level	48	437	9	10	10	9	42
Îles-de-la-Madeleine	49	403	18	9	11	18	28
Inuvik/Mike Zubko	31	901	31	11	24	31	75
Iqaluit	28	1,126	9	14	11	11	55
Kamloops	12	2,294	11	8	36	11	157
Kenora	29	1,103	14	15	30	14	71
Kingston	8	2,657	3	11	49	3	206
Kuujuaq	37	769	29	10	15	29	53
Kuujuarapik	50	388	8	11	8	18	22
La Grande Rivière	41	681	10	14	8	4	37
La Ronge	26	1,262	16	12	28	16	110
Lethbridge	14	1,950	18	14	53	18	184
Lloydminster	32	821	13	12	48	16	86
Medicine Hat	24	1,411	12	15	34	24	103
Mont-Joli	53	285	14	8	5	31	18
Nanaimo	18	1,750	24	14	45	24	166
Norman Wells	38	757	24	16	21	30	51
North Bay	1	4,648	10	14	84	24	460
Ottawa/Gatineau	9	2,647	16	14	82	16	354
Peace River	40	686	17	11	12	23	59
Penticton	5	2,699	30	10	55	30	204
Port Hardy	46	554	15	13	9	30	35
Prince Albert	25	1,326	4	16	14	21	76
Prince Rupert	51	367	27	17	15	27	41
Rankin Inlet	43	628	23	14	10	28	51
Red Deer Regional	7	2,662	24	9	37	5	198
Rouyn-Noranda	34	800	23	13	11	15	46
Saint John	23	1,414	21	14	28	21	117
Sept-Îles	20	1,547	8	18	26	8	94
Sioux Lookout	13	2,161	10	8	16	7	115
Smithers	42	631	31	15	16	31	40
St Anthony	52	350	8	17	5	14	23
St Catharines	30	1,096	21	13	31	13	143
Terrace	27	1,152	24	15	33	21	86
Thompson	11	2,509	13	11	29	17	121
Timmins	15	1,927	5	11	49	31	121
Val-D'or	33	818	26	13	18	26	59
Victoria Harbour	10	2,532	24	8	21	24	123
Wabush	44	608	18	11	7	17	30
Whitecourt	19	1,636	23	11	67	18	179
Williams Lake	36	779	6	14	31	6	68

**Table 9-1**  
**Itinerant aircraft movements, peak hour and peak day — NAV CANADA towers**

	Rank of movements	Number of movements	Peak hour occurrence			Peak day occurrence	
			Day in month	Hour in day	Number of movements	Day in month	Number of movements
Abbotsford	14	4,784	15	15	49	16	333
Boundary Bay	22	3,602	22	15	49	22	333
Calgary International	3	19,949	16	18	62	16	781
Calgary/Springbank	11	5,259	23	13	46	31	327
Chicoutimi/St-Honoré	41	601	19	16	13	28	57
Edmonton City Centre	13	4,833	23	15	28	23	275
Edmonton International	5	10,999	10	8	46	24	458
Edmonton/Villeneuve	39	1,000	8	13	12	18	74
Gander International	31	2,106	18	14	19	18	168
Halifax/Robert L Stanfield International	9	6,310	27	13	28	10	261
Hamilton	25	3,073	31	13	17	31	201
Kelowna	20	3,817	11	10	19	15	162
Kitchener/Waterloo	29	2,440	31	14	30	31	243
Langley	30	2,184	15	13	32	15	156
London	21	3,708	28	15	37	31	283
Moncton/Greater Moncton International	12	5,240	24	11	29	24	371
Montréal/Mirabel International	36	1,570	12	16	22	10	114
Montréal/Pierre Elliott Trudeau International	4	18,014	31	18	60	31	690
Montréal/St-Hubert	17	4,168	13	12	48	10	335
Oshawa	38	1,316	10	14	22	31	169
Ottawa/Macdonald-Cartier International	7	10,266	16	14	51	10	499
Pitt Meadows	32	2,056	15	15	35	22	188
Prince George	33	2,011	4	12	15	23	95
Québec/Jean Lesage International	10	5,647	13	15	34	16	303
Regina International	24	3,308	25	15	21	16	155
Saskatoon/John G Diefenbaker International	15	4,628	17	14	25	23	253
Sault Ste. Marie	37	1,389	28	12	14	10	94
St. John's International	26	2,830	18	17	13	3	127
St-Jean	42	489	13	14	16	13	57
Sudbury	34	1,860	10	17	14	31	117
Thunder Bay	16	4,358	24	15	29	28	216
Toronto/Buttonville Municipal	18	4,086	16	16	42	31	403
Toronto/City Centre	28	2,736	12	13	24	31	204
Toronto/Lester B Pearson International	1	36,236	25	16	102	31	1,321
Vancouver Harbour	23	3,515	24	8	32	24	193
Vancouver International	2	25,421	21	8	79	24	940
Victoria International	8	6,680	23	14	41	22	325
Whitehorse International	40	820	6	15	8	23	45
Windsor	35	1,760	12	13	18	9	103
Winnipeg/James Armstrong Richardson International	6	10,527	31	16	37	16	427
Winnipeg/St. Andrews	27	2,771	26	15	25	7	152
Yellowknife	19	4,060	15	14	27	9	190

**Table 9-2**  
**Itinerant aircraft movements, peak hour and peak day — NAV CANADA flight service stations**

	Rank of movements	Number of movements	Peak hour occurrence			Peak day occurrence	
			Day in month	Hour in day	Number of movements	Day in month	Number of movements
Brandon Municipal	28	809	7	12	17	7	60
Campbell River	12	1,503	20	13	17	20	125
Castlegar	51	340	9	11	6	9	28
Charlottetown	22	1,171	5	16	11	24	77
Churchill	43	547	23	11	9	9	32
Cranbrook	36	683	20	11	6	30	35
Deer Lake	16	1,350	2	8	11	7	66
Fort McMurray	1	3,580	15	16	19	24	176
Fort Nelson	32	773	17	11	10	10	46
Fort St John	15	1,360	23	10	15	23	83
Fredericton International	3	2,508	17	11	21	17	168
Grande Prairie	5	2,221	11	16	19	11	118
High Level	47	419	24	10	10	9	38
Îles-de-la-Madeleine	48	393	16	9	5	16	22
Inuvik/Mike Zubko	27	815	2	14	9	30	48
Iqaluit	23	1,066	14	14	8	23	51
Kamloops	7	1,892	15	13	15	25	85
Kenora	31	779	18	16	7	23	44
Kingston	11	1,567	24	15	20	31	109
Kuujuuaq	35	707	25	9	9	11	38
Kuujuuarapik	49	382	8	11	8	18	22
La Grande Rivière	38	669	10	14	8	4	37
La Ronge	21	1,180	9	10	12	9	75
Lethbridge	17	1,322	31	13	15	11	82
Lloydminster	46	477	13	12	12	3	40
Medicine Hat	24	1,005	16	13	10	24	57
Mont-Joli	53	283	14	8	5	31	18
Nanaimo	14	1,366	23	13	17	22	114
Norman Wells	33	713	7	12	11	30	51
North Bay	9	1,628	23	12	21	31	161
Ottawa/Gatineau	26	847	28	11	15	28	66
Peace River	39	646	17	11	12	17	47
Penticton	20	1,220	21	9	12	23	75
Port Hardy	44	545	15	13	9	30	35
Prince Albert	18	1,306	16	8	11	21	74
Prince Rupert	52	305	30	14	7	30	24
Rankin Inlet	40	622	23	14	10	28	51
Red Deer Regional	10	1,574	5	11	17	5	116
Rouyn-Noranda	29	788	29	10	8	15	44
Saint John	19	1,292	21	14	14	21	83
Sept-Îles	13	1,501	10	11	12	17	76
Sioux Lookout	6	2,155	10	8	16	7	115
Smithers	42	607	2	9	8	10	32
St Anthony	50	350	8	17	5	14	23
St Catharines	45	504	31	14	15	31	71
Terrace	25	958	30	10	11	30	50
Thompson	4	2,371	8	9	17	17	121
Timmins	8	1,825	4	10	12	31	121
Val-D'or	30	784	26	12	8	10	49
Victoria Harbour	2	2,532	24	8	21	24	123
Wabush	41	608	18	11	7	17	30
Whitecourt	37	670	9	14	9	23	38
Williams Lake	34	711	20	12	10	22	42

**Table 10-1**  
**Local movements, peak hour and peak day — NAV CANADA towers**

	Rank of movements	Number of movements	Peak hour occurrence			Peak day occurrence	
			Day in month	Hour in day	Number of movements	Day in month	Number of movements
Abbotsford	2	7,693	28	15	100	21	548
Boundary Bay	5	4,900	3	13	76	23	364
Calgary International	38	136	5	11	10	8	28
Calgary/Springbank	1	10,477	9	15	110	31	690
Chicoutimi/St-Honoré	24	1,411	17	15	48	31	178
Edmonton City Centre	23	1,434	15	13	28	11	162
Edmonton International	34	368	23	15	28	23	98
Edmonton/Villeneuve	10	3,760	15	10	76	18	294
Gander International	17	2,360	28	13	52	18	248
Halifax/Robert L Stanfield International	31	472	5	15	18	26	58
Hamilton	25	1,353	31	14	60	31	138
Kelowna	18	1,996	5	14	40	16	118
Kitchener/Waterloo	12	3,388	4	11	62	31	344
Langley	7	4,064	15	14	74	24	260
London	13	3,218	17	15	70	16	442
Moncton/Greater Moncton International	9	3,852	19	21	44	24	343
Montréal/Mirabel International	32	453	17	11	20	17	63
Montréal/Pierre Elliott Trudeau International	0	0	0	0	0	0	0
Montréal/St-Hubert	3	5,599	27	14	130	10	648
Oshawa	19	1,880	16	18	48	16	258
Ottawa/Macdonald-Cartier International	14	2,435	19	12	56	26	210
Pitt Meadows	11	3,528	15	11	66	25	316
Prince George	33	423	5	16	34	6	61
Québec/Jean Lesage International	22	1,604	12	11	34	12	148
Regina International	26	991	11	13	32	19	109
Saskatoon/John G Diefenbaker International	15	2,427	12	16	58	14	230
Sault Ste. Marie	28	892	10	19	50	16	178
St. John's International	37	228	4	15	30	4	62
St-Jean	36	238	26	12	26	26	50
Sudbury	35	326	19	13	30	31	58
Thunder Bay	20	1,734	25	19	66	27	244
Toronto/Buttonville Municipal	6	4,874	17	15	78	16	454
Toronto/City Centre	16	2,412	5	11	46	31	262
Toronto/Lester B Pearson International	0	0	0	0	0	0	0
Vancouver Harbour	39	24	15	13	6	15	6
Vancouver International	0	0	0	0	0	0	0
Victoria International	4	5,590	25	15	68	21	330
Whitehorse International	30	530	2	16	22	18	64
Windsor	21	1,664	12	15	38	24	220
Winnipeg/James Armstrong Richardson International	29	800	2	14	22	7	78
Winnipeg/St. Andrews	8	4,022	21	18	70	26	292
Yellowknife	27	948	27	10	36	27	92

**Table 10-2**  
**Local movements, peak hour and peak day — NAV CANADA flight service stations**

	Rank of movements	Number of movements	Peak hour occurrence			Peak day occurrence	
			Day in month	Hour in day	Number of movements	Day in month	Number of movements
Brandon Municipal	9	716	16	10	32	3	92
Campbell River	2	2,048	20	14	66	20	342
Castlegar	21	196	26	9	34	26	52
Charlottetown	10	670	17	13	34	17	148
Churchill	39	18	17	11	14	17	18
Cranbrook	45	8	2	16	6	2	6
Deer Lake	15	443	23	10	42	17	56
Fort McMurray	13	568	13	12	32	13	62
Fort Nelson	47	6	23	12	4	23	4
Fort St John	29	62	21	15	12	22	18
Fredericton International	3	1,891	5	15	40	6	222
Grande Prairie	14	452	3	17	46	3	80
High Level	40	18	31	18	8	31	8
Îles-de-la-Madeleine	43	10	18	9	8	18	10
Inuvik/Mike Zubko	26	86	31	11	20	31	30
Iqaluit	32	60	10	10	8	11	12
Kamloops	17	402	11	8	30	11	76
Kenora	20	324	14	15	28	14	42
Kingston	6	1,090	23	18	40	27	124
Kuujuuaq	30	62	29	10	12	29	22
Kuujuuarapik	49	6	12	12	4	12	6
La Grande Rivière	42	12	18	22	4	18	4
La Ronge	27	82	16	12	24	16	46
Lethbridge	11	628	14	18	40	18	110
Lloydminster	19	344	13	12	36	16	60
Medicine Hat	16	406	12	15	28	12	54
Mont-Joli	50	2	23	11	2	23	2
Nanaimo	18	384	25	14	36	24	78
Norman Wells	34	44	24	16	18	24	22
North Bay	1	3,020	10	14	64	24	324
Ottawa/Gatineau	4	1,800	16	14	72	16	290
Peace River	35	40	23	22	10	23	16
Penticton	5	1,479	30	10	48	30	160
Port Hardy	44	9	24	20	6	24	6
Prince Albert	38	20	1	17	4	4	6
Prince Rupert	31	62	27	17	14	27	32
Rankin Inlet	48	6	24	14	6	24	6
Red Deer Regional	7	1,088	24	9	34	4	100
Rouyn-Noranda	41	12	26	13	6	26	6
Saint John	24	122	23	15	24	21	34
Sept-Îles	33	46	8	18	22	8	30
Sioux Lookout	46	6	31	14	4	31	4
Smithers	37	24	31	15	8	3	10
St Anthony	0	0	0	0	0	0	0
St Catharines	12	592	21	13	28	13	98
Terrace	22	194	24	15	26	24	46
Thompson	23	138	13	11	26	13	40
Timmins	25	102	5	11	48	5	48
Val-D'or	36	34	26	13	10	26	18
Victoria Harbour	0	0	0	0	0	0	0
Wabush	0	0	0	0	0	0	0
Whitecourt	8	966	23	11	60	18	146
Williams Lake	28	68	6	14	26	6	32

**Table 11-1**  
**Local movements - civil, peak hour and peak day — NAV CANADA towers**

	Rank of movements	Number of movements	Peak hour occurrence			Peak day occurrence	
			Day in month	Hour in day	Number of movements	Day in month	Number of movements
Abbotsford	2	7,685	28	15	100	21	548
Boundary Bay	5	4,900	3	13	76	23	364
Calgary International	38	136	5	11	10	8	28
Calgary/Springbank	1	10,472	9	15	110	31	690
Chicoutimi/St-Honoré	24	1,411	17	15	48	31	178
Edmonton City Centre	23	1,418	15	13	28	11	162
Edmonton International	34	336	23	15	28	23	92
Edmonton/Villeneuve	10	3,760	15	10	76	18	294
Gander International	17	2,140	28	13	52	18	246
Halifax/Robert L Stanfield International	33	376	5	15	18	26	42
Hamilton	25	1,353	31	14	60	31	138
Kelowna	18	1,996	5	14	40	16	118
Kitchener/Waterloo	12	3,382	4	11	62	31	344
Langley	7	4,064	15	14	74	24	260
London	13	3,218	17	15	70	16	442
Moncton/Greater Moncton International	9	3,846	19	21	44	24	343
Montréal/Mirabel International	32	403	2	9	18	10	60
Montréal/Pierre Elliott Trudeau International	0	0	0	0	0	0	0
Montréal/St-Hubert	3	5,591	27	14	130	10	648
Oshawa	19	1,880	16	18	48	16	258
Ottawa/Macdonald-Cartier International	15	2,373	19	12	56	26	210
Pitt Meadows	11	3,528	15	11	66	25	316
Prince George	31	423	5	16	34	6	61
Québec/Jean Lesage International	22	1,604	12	11	34	12	148
Regina International	26	939	11	13	32	19	101
Saskatoon/John G Diefenbaker International	16	2,361	12	16	58	14	226
Sault Ste. Marie	28	892	10	19	50	16	178
St. John's International	37	228	4	15	30	4	62
St-Jean	36	238	26	12	26	26	50
Sudbury	35	326	19	13	30	31	58
Thunder Bay	20	1,732	25	19	66	27	244
Toronto/Buttonville Municipal	6	4,874	17	15	78	16	454
Toronto/City Centre	14	2,412	5	11	46	31	262
Toronto/Lester B Pearson International	0	0	0	0	0	0	0
Vancouver Harbour	39	24	15	13	6	15	6
Vancouver International	0	0	0	0	0	0	0
Victoria International	4	5,330	25	15	68	16	316
Whitehorse International	29	530	2	16	22	18	64
Windsor	21	1,642	12	15	38	24	220
Winnipeg/James Armstrong Richardson International	30	498	2	14	22	21	42
Winnipeg/St. Andrews	8	4,016	21	18	70	26	292
Yellowknife	27	906	27	10	36	27	92

**Table 11-2**  
**Local movements - civil, peak hour and peak day — NAV CANADA flight service stations**

	Rank of movements	Number of movements	Peak hour occurrence			Peak day occurrence	
			Day in month	Hour in day	Number of movements	Day in month	Number of movements
Brandon Municipal	9	670	22	12	32	3	92
Campbell River	2	2,048	20	14	66	20	342
Castlegar	21	196	26	9	34	26	52
Charlottetown	10	670	17	13	34	17	148
Churchill	40	18	17	11	14	17	18
Cranbrook	45	8	2	16	6	2	6
Deer Lake	15	443	23	10	42	17	56
Fort McMurray	13	568	13	12	32	13	62
Fort Nelson	46	6	23	12	4	23	4
Fort St John	29	62	21	15	12	22	18
Fredericton International	3	1,869	5	15	40	6	222
Grande Prairie	14	452	3	17	46	3	80
High Level	39	18	31	18	8	31	8
Îles-de-la-Madeleine	43	10	18	9	8	18	10
Inuvik/Mike Zubko	26	86	31	11	20	31	30
Iqaluit	32	60	10	10	8	11	12
Kamloops	17	374	11	8	30	11	76
Kenora	20	312	14	15	28	14	42
Kingston	7	1,076	23	18	40	27	124
Kuujuuaq	30	62	29	10	12	29	22
Kuujuuarapik	49	6	12	12	4	12	6
La Grande Rivière	41	12	18	22	4	18	4
La Ronge	27	82	16	12	24	16	46
Lethbridge	11	628	14	18	40	18	110
Lloydminster	19	344	13	12	36	16	60
Medicine Hat	16	406	12	15	28	12	54
Mont-Joli	50	2	23	11	2	23	2
Nanaimo	18	358	25	14	36	24	78
Norman Wells	34	44	24	16	18	24	22
North Bay	1	3,004	15	16	60	24	324
Ottawa/Gatineau	4	1,800	16	14	72	16	290
Peace River	35	40	23	22	10	23	16
Penticton	5	1,479	30	10	48	30	160
Port Hardy	44	9	24	20	6	24	6
Prince Albert	38	20	1	17	4	4	6
Prince Rupert	31	62	27	17	14	27	32
Rankin Inlet	48	6	24	14	6	24	6
Red Deer Regional	6	1,088	24	9	34	4	100
Rouyn-Noranda	42	12	26	13	6	26	6
Saint John	24	122	23	15	24	21	34
Sept-Îles	33	46	8	18	22	8	30
Sioux Lookout	47	6	31	14	4	31	4
Smithers	37	24	31	15	8	3	10
St Anthony	0	0	0	0	0	0	0
St Catharines	12	592	21	13	28	13	98
Terrace	22	194	24	15	26	24	46
Thompson	23	138	13	11	26	13	40
Timmins	25	102	5	11	48	5	48
Val-D'or	36	34	26	13	10	26	18
Victoria Harbour	0	0	0	0	0	0	0
Wabush	0	0	0	0	0	0	0
Whitecourt	8	966	23	11	60	18	146
Williams Lake	28	68	6	14	26	6	32



**Table 12-1**  
**Local movements - military, peak hour and peak day — NAV CANADA towers**

	Rank of movements	Number of movements	Peak hour occurrence			Peak day occurrence	
			Day in month	Hour in day	Number of movements	Day in month	Number of movements
Abbotsford	13	8	18	17	4	18	4
Boundary Bay	0	0	0	0	0	0	0
Calgary International	0	0	0	0	0	0	0
Calgary/Springbank	18	5	10	14	2	10	4
Chicoutimi/St-Honoré	0	0	0	0	0	0	0
Edmonton City Centre	12	16	18	11	4	8	4
Edmonton International	10	32	25	19	4	23	6
Edmonton/Villeneuve	0	0	0	0	0	0	0
Gander International	3	220	11	13	24	11	34
Halifax/Robert L Stanfield International	4	96	10	14	14	10	26
Hamilton	0	0	0	0	0	0	0
Kelowna	0	0	0	0	0	0	0
Kitchener/Waterloo	16	6	25	14	4	25	6
Langley	0	0	0	0	0	0	0
London	0	0	0	0	0	0	0
Moncton/Greater Moncton International	15	6	10	14	2	10	4
Montréal/Mirabel International	8	50	17	11	18	17	18
Montréal/Pierre Elliott Trudeau International	0	0	0	0	0	0	0
Montréal/St-Hubert	14	8	18	15	4	18	4
Oshawa	0	0	0	0	0	0	0
Ottawa/Macdonald-Cartier International	6	62	10	15	12	31	19
Pitt Meadows	0	0	0	0	0	0	0
Prince George	0	0	0	0	0	0	0
Québec/Jean Lesage International	0	0	0	0	0	0	0
Regina International	7	52	20	12	8	20	22
Saskatoon/John G Diefenbaker International	5	66	19	13	12	19	24
Sault Ste. Marie	0	0	0	0	0	0	0
St. John's International	0	0	0	0	0	0	0
St-Jean	0	0	0	0	0	0	0
Sudbury	0	0	0	0	0	0	0
Thunder Bay	19	2	9	17	2	9	2
Toronto/Buttonville Municipal	0	0	0	0	0	0	0
Toronto/City Centre	0	0	0	0	0	0	0
Toronto/Lester B Pearson International	0	0	0	0	0	0	0
Vancouver Harbour	0	0	0	0	0	0	0
Vancouver International	0	0	0	0	0	0	0
Victoria International	2	260	22	18	42	22	92
Whitehorse International	0	0	0	0	0	0	0
Windsor	11	22	9	15	12	9	22
Winnipeg/James Armstrong Richardson International	1	302	7	11	20	7	68
Winnipeg/St. Andrews	17	6	7	10	2	7	2
Yellowknife	9	42	10	8	14	10	22

**Table 12-2**  
**Local movements - military, peak hour and peak day — NAV CANADA flight service stations**

	Rank of movements	Number of movements	Peak hour occurrence			Peak day occurrence	
			Day in month	Hour in day	Number of movements	Day in month	Number of movements
Brandon Municipal	1	46	16	18	14	16	24
Campbell River	0	0	0	0	0	0	0
Castlegar	0	0	0	0	0	0	0
Charlottetown	0	0	0	0	0	0	0
Churchill	0	0	0	0	0	0	0
Cranbrook	0	0	0	0	0	0	0
Deer Lake	0	0	0	0	0	0	0
Fort McMurray	0	0	0	0	0	0	0
Fort Nelson	0	0	0	0	0	0	0
Fort St John	0	0	0	0	0	0	0
Fredericton International	4	22	21	14	14	21	20
Grande Prairie	0	0	0	0	0	0	0
High Level	0	0	0	0	0	0	0
Îles-de-la-Madeleine	0	0	0	0	0	0	0
Inuvik/Mike Zubko	0	0	0	0	0	0	0
Iqaluit	0	0	0	0	0	0	0
Kamloops	2	28	10	14	12	10	20
Kenora	7	12	28	10	8	28	12
Kingston	6	14	8	14	14	8	14
Kuujuaq	0	0	0	0	0	0	0
Kuujuarapik	0	0	0	0	0	0	0
La Grande Rivière	0	0	0	0	0	0	0
La Ronge	0	0	0	0	0	0	0
Lethbridge	0	0	0	0	0	0	0
Lloydminster	0	0	0	0	0	0	0
Medicine Hat	0	0	0	0	0	0	0
Mont-Joli	0	0	0	0	0	0	0
Nanaimo	3	26	17	14	14	17	14
Norman Wells	0	0	0	0	0	0	0
North Bay	5	16	10	14	10	10	16
Ottawa/Gatineau	0	0	0	0	0	0	0
Peace River	0	0	0	0	0	0	0
Penticton	0	0	0	0	0	0	0
Port Hardy	0	0	0	0	0	0	0
Prince Albert	0	0	0	0	0	0	0
Prince Rupert	0	0	0	0	0	0	0
Rankin Inlet	0	0	0	0	0	0	0
Red Deer Regional	0	0	0	0	0	0	0
Rouyn-Noranda	0	0	0	0	0	0	0
Saint John	0	0	0	0	0	0	0
Sept-Îles	0	0	0	0	0	0	0
Sioux Lookout	0	0	0	0	0	0	0
Smithers	0	0	0	0	0	0	0
St Anthony	0	0	0	0	0	0	0
St Catharines	0	0	0	0	0	0	0
Terrace	0	0	0	0	0	0	0
Thompson	0	0	0	0	0	0	0
Timmins	0	0	0	0	0	0	0
Val-D'or	0	0	0	0	0	0	0
Victoria Harbour	0	0	0	0	0	0	0
Wabush	0	0	0	0	0	0	0
Whitecourt	0	0	0	0	0	0	0
Williams Lake	0	0	0	0	0	0	0

# Methodology

---

## Survey universe

### Coverage

The survey covers all aircraft movements at Canadian airports with NAV CANADA air traffic control towers and flight service stations.

## Methodology survey

The Itinerant movement record is designed to capture:

- Aircraft identification
- Aircraft type
- The last station before landing at the reporting airport or the next station after take-off
- Arrival or departure
- Time of movement
- Runway used
- Flight rules (Instrument flight rules or Visual flight rules).

The Local aircraft movement record provides for reports of local movements by:

- Hour
- Single engine aircraft
- Multi-engine aircraft
- Jet aircraft
- Military aircraft
- Date of movement

Processing of aircraft movement statistics involves several stages. Preliminary monthly data by class of operation are released in **Preliminary aircraft movement statistics**, catalogue no. 51F0001P (TP-1496 (NAV CANADA towered airports only)). Data which follow in **Aircraft movement statistics - Monthly** report, catalogue nos. 51-007-X and 51-008-X (TP-141) may contain revisions to the originally released figures. Annual tables, which may reflect further revisions, are released in the publication, **Aircraft movement statistics - Annual** report - TP-577. In particular, data on itinerant movements by type of operation may reflect revisions as various sources of comparative information (data collected from commercial air carriers by the Aviation Statistics Centre, Statistics Canada) become available during the processing cycle. Finally, when revisions are required after the release of TP-577, they are contained in the five year historical summary of subsequent editions of TP-577. These revisions are also reflected in the CANSIM tables, both monthly and annual.

The records are completed daily, based on a twenty-four hour clock running from zero hour to 23:59. The times recorded are Coordinated Universal Time (UTC); however, published statistics are shown in local times. The records are transmitted to the Aviation Statistics Centre.

The Aviation Statistics Centre maintains a data base of parameter files of current information on all registered aircraft. The storage of this information reduces the reporting burden of the survey respondents and limits the element of human error associated with the preparation of source documents.

Other parameter files information includes registered aircraft identifications and their corresponding aircraft types, gross take-off weights, types of power plant (piston, jet or turboprop); whether the aircraft are fixed wing, helicopters or gliders. This information also provides a basis for identifying type of flights (commercial, private and government) and the geographical area in which the flights take place.

The parameter files also include airport environment information against which the airport category is checked; the reported runway is validated and the time difference between UTC and Local is assigned.

## Data quality and limitations

---

Aircraft movement statistics are accumulated from data originating with air traffic control tower units or flight service station personnel. Because staff in these positions are highly trained in factual observation and reporting, the entries in the data bank are of a high quality.

The procedures for reporting aircraft movements on the Daily air traffic records by tower units are described in the NAV CANADA Air traffic control manual of operations (TP 703) Volume 1, Para. 1023 to 1023.5. Definitions for terms used in these paragraphs can be found in the appendix II "Glossary of terms" of this report.

To maintain uniformity in the reporting of source data, ASC issues to air traffic control units an "Air traffic designators" handbook (TP 143) listing the official Transport Canada aircraft type designators and the designators of various domestic and international air carriers. This handbook and another titled "Canada flight supplement" listing various airport codes serve as references to help ensure the reporting of the proper aircraft identity and the point of origin and destination of flights.

The processing system contains editing procedures designed to identify data errors occurring during transcription or during data capture of forms. Identified errors are manually corrected by ASC editing staff.

Errors may occur if an aircraft type code which exists is reported or data captured in error for a flight. For example, the reporting or keying of B727 for a flight actually performed by a B737 may not be detected during the system editing. That the aircraft type information is recorded by highly trained air traffic control tower staff using a common handbook of official aircraft codes will minimize this problem.

Similarly, the breakdown of the data on a geographic basis by use of location codes can be subject to error. For smaller locations, alphanumeric location codes are often used and the sequence of numbers and letters determines the geographic area to which the data are assigned. In some cases, where a sequence error has been introduced into the system either at the reporting unit or at data capture, a domestic movement may be classified as transborder or vice versa. The use of common manuals of location identifiers works to minimize this occurrence.

# Appendix I

---

## Factors influencing the data

There were no major factors influencing the January 2008 data.

## Appendix II

---

### Glossary of terms

#### Air carrier

Aircraft operators licensed by the Canadian Transportation Agency to transport persons, mail and/or goods by air.

**Levels I to III air carriers (Defn 2000)**– This includes every Canadian air carrier that, in each of the two calendar years immediately preceding the report year, realized annual gross revenues of \$1,000,000 or more for the air services for which the air carrier held a licence. Also includes foreign air carriers.

**Levels IV to VI air carriers (Defn 2000)**– Canadian air carriers not classified in report level I-III that, in each of the two calendar years immediately preceding the report year, realized annual gross revenues of less than \$1,000,000 for the air services for which the air carrier held a licence. Since 2000, levels IV and VI are no longer applicable.

#### Aircraft movement

A take off, a landing, or a simulated approach by an aircraft. ATC Manops amendment 8-8-83. NC-703.

#### Class of operation

Aircraft movements are classified as either “Itinerant” or “Local”.

#### Commercial

Flights by aircraft operators licensed by the Canadian Transportation Agency to perform commercial air services. Commercial operations are divided into two categories: **Air carrier** and **Other commercial**.

#### Domestic itinerant movements

Movements, at a Canadian airport, of aircraft departing to or arriving from another point in Canada.

#### FSS

Flight service station.

#### Government – Civil

Aircraft owned by federal, provincial and municipal bodies as well as foreign states, but excluding those owned by crown corporations, boards and commissions. Such aircraft are coded “3” under “Purpose” in the Canadian civil aircraft register.

#### Government – Military

Aircraft of any branch of the armed forces of any nation.

### Gross take-off weight

The maximum weight for which the aircraft is licensed to operate. For operational purposes, all weights are rounded upwards to the next 1,000 kilograms. Thus 3,200 kilograms becomes 4,000 kilograms.

### I.F.R. flight

A flight conducted in accordance with Instrument flight rules.

### International movements

Movements, at a Canadian airport, of aircraft arriving from or departing to a point outside Canada. International movements are subclassified into “transborder” (to or from a point in the United States including Alaska but excluding Hawaii), and “other international” (to or from points in countries other than Canada and the United States).

Since aircraft movements are reported on the basis of place “arrived from” or “departed to”, an arrival at Mirabel airport from London, England would appear under “other international”. If the same aircraft moved on to Toronto, both the departure at Mirabel and the arrival at Toronto would be shown as “domestic”.

### Itinerant movements

At Airports **with** control towers and/or Flight service stations: for the purpose of completing air traffic records, itinerant movements are considered as movements in which aircraft proceed to or arrive from another location; or where aircraft leave the circuit but return without landing at another airport. At Airports **without** control towers: an aircraft movement in which the aircraft arrives from or departs to a point other than the reporting airport; or a movement by an aircraft that leaves the close proximity of an airport and returns without landing at another airport.

### Local movements

At Airports **with** control towers and/or Flight service stations: for the purpose of completing air traffic records, local movements are considered as movements in which the aircraft remains in the circuit. At Airports **without** control towers: an aircraft movement in which the aircraft remains in the close proximity of the airport. Local movements are often carried out during training flights (touch-and-go), equipment tests etc.

### Other commercial

Flights performed by **Commercial** aircraft operators not included in the **Air carrier** categories. Flying schools, agricultural sprayers, water-bombers, aerial photography and survey, etc.

### Power plant

The source of propulsion. For example, piston engines, turbo-propellers and jet engines. “Helicopters”, in this report, include both piston and turboshaft-driven engines.

### Private aircraft

Aircraft used solely for private purposes, not for hire and compensation, which are classified as “Private” or “Private Restricted” in the Canadian civil aircraft register or similar registries of other countries. Owners include individuals, groups and business firms.



### **Runway 88**

Through control zone flights, i.e. flights which communicate with the tower while transiting the tower control zone to another destination without landing at the reporting airport.

Data for these runways are not included in the grand total.

### **Simulated approaches**

Movements that are either missed instrument or practice instrument approaches without landing.

### **TC**

Transport Canada

### **Tower control zone**

A controlled airspace within the proximity of an air traffic control tower, usually within a radius of less than 24 kilometres of the tower.

### **V.F.R. flight**

A flight conducted in accordance with Visual flight rules.

### **Weight group**

The classification of weight classes in groups for statistical purposes.