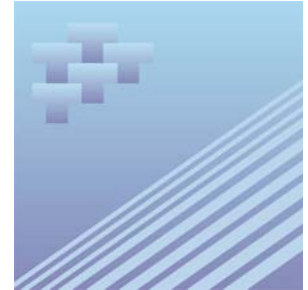




Catalogue no. 51-007-X — TP 141

# **Aircraft Movement Statistics: NAV CANADA Towers and Flight Service Stations**



February 2008



Statistics  
Canada

Statistique  
Canada

Canada

## How to obtain more information

For information about this product or the wide range of services and data available from Statistics Canada, visit our website at [www.statcan.ca](http://www.statcan.ca) or contact us by e-mail at [infostats@statcan.ca](mailto:infostats@statcan.ca) or by phone from 8:30am to 4:30pm Monday to Friday at:

### **Toll-free telephone (Canada and the United States):**

Inquiries line **1-800-263-1136**

National telecommunications device for the hearing impaired **1-800-363-7629**

Fax line **1-877-287-4369**

Depository Services Program inquiries line **1-800-635-7943**

Depository Services Program fax line **1-800-565-7757**

**Statistics Canada national contact centre: 1-613-951-8116**

Fax line **1-613-951-0581**

## Information to access the product

This product, catalogue no. 51-007-X, is available for free in electronic format. To obtain a single issue, visit our website at [www.statcan.ca](http://www.statcan.ca) and select Publications.

## Standards of service to the public

Statistics Canada is committed to serving its clients in a prompt, reliable and courteous manner. To this end, the Agency has developed *standards of service* which its employees observe in serving its clients.

To obtain a copy of these service standards, please contact Statistics Canada toll free at 1-800-263-1136. The service standards are also published on [www.statcan.ca](http://www.statcan.ca) under About us > Providing services to Canadians.



Statistics Canada  
Transportation Division

# Aircraft Movement Statistics: NAV CANADA Towers and Flight Service Stations

February 2008

Published by authority of the Minister responsible for Statistics Canada © Minister of Industry, 2008 and the © Minister of Transport, 2008.

All rights reserved. The content of this electronic publication may be reproduced, in whole or in part, and by any means, without further permission from Statistics Canada, subject to the following conditions: that it be done solely for the purposes of private study, research, criticism, review or newspaper summary, and/or for non-commercial purposes; and that Statistics Canada be fully acknowledged as follows: Source (or "Adapted from", if appropriate): Statistics Canada, year of publication, name of product, catalogue number, volume and issue numbers, reference period and page(s). Otherwise, no part of this publication may be reproduced, stored in a retrieval system or transmitted in any form, by any means—electronic, mechanical or photocopy—or for any purposes without prior written permission of Licensing Services, Client Services Division, Statistics Canada, Ottawa, Ontario, Canada K1A 0T6.

March 2008

Catalogue no. 51-007-X

ISSN 1911-6314

Frequency: Monthly

Ottawa

La version française de cette publication est disponible sur demande (n° 51-007-X au catalogue).

---

#### **Note of appreciation**

*Canada owes the success of its statistical system to a long standing partnership between Statistics Canada, the citizens of Canada, its businesses, governments and other institutions. Accurate and timely statistical information could not be produced without their continued cooperation and goodwill.*

# User information

---

## Symbols

The following standard symbols are used in Statistics Canada publications:

- . not available for any reference period
- .. not available for a specific reference period
- ... not applicable
- 0 true zero or a value rounded to zero
- 0<sup>s</sup> value rounded to 0 (zero) where there is a meaningful distinction between true zero and the value that was rounded
- p preliminary
- r revised
- x suppressed to meet the confidentiality requirements of the *Statistics Act*
- E use with caution
- F too unreliable to be published

## Acknowledgements

This publication was prepared by the Aviation Statistics Centre, of the Transportation Division, Statistics Canada under the general direction of **Gord Baldwin**, Director, Transportation Division and **Norah Hillary**, Chief, Aviation Statistics Centre. **Kathie Davidson**, **Maureen de Souza**, **John Scolli**, **Sylvie Savard**, **Jim Charinos** and **Daniel Osabu-Kle** contributed to the preparation of this publication.

# Table of contents

---

<b>Highlights</b>	<b>5</b>
<b>Analysis</b>	<b>6</b>
<b>Related products</b>	<b>7</b>
<b>Statistical tables</b>	
1 Total aircraft movements by class of operation	10
1-1 NAV CANADA towers	10
1-2 NAV CANADA flight service stations	11
2 Total aircraft movements, civil and military	12
2-1 NAV CANADA towers	12
2-2 NAV CANADA flight service stations	13
3 Itinerant movements by type of operator	14
3-1 NAV CANADA towers	14
3-2 NAV CANADA flight service stations	15
4 Itinerant movements by I.F.R. (Instrument flight rules) and V.F.R. (Visual flight rules) and runway 88 movements	16
4-1 NAV CANADA towers	16
4-2 NAV CANADA flight service stations	17
5 Itinerant movements by type of power plant	18
5-1 NAV CANADA towers	18
5-2 NAV CANADA flight service stations	19
6 Itinerant movements by aircraft weight group	20
6-1 NAV CANADA towers	20
6-2 NAV CANADA flight service stations	21
7 Itinerant movements, domestic, transborder and international	22
7-1 NAV CANADA towers	22
7-2 NAV CANADA flight service stations	26

## Table of contents – continued

8	Total aircraft movements, peak hour and peak day	31
8-1	NAV CANADA towers	31
8-2	NAV CANADA flight service stations	32
9	Itinerant aircraft movements, peak hour and peak day	33
9-1	NAV CANADA towers	33
9-2	NAV CANADA flight service stations	34
10	Local movements, peak hour and peak day	35
10-1	NAV CANADA towers	35
10-2	NAV CANADA flight service stations	36
11	Local movements - civil, peak hour and peak day	37
11-1	NAV CANADA towers	37
11-2	NAV CANADA flight service stations	38
12	Local movements - military, peak hour and peak day	39
12-1	NAV CANADA towers	39
12-2	NAV CANADA flight service stations	40

## Data quality, concepts and methodology

Methodology	41
Data quality and limitations	43

## Appendix

I	Factors influencing the data	44
II	Glossary of terms	45

## Highlights

- Aircraft take-offs and landings at Canadian airports with NAV CANADA air traffic control towers and flight service stations increased in February 2008 compared to February 2007. These 95 airports reported 435,425 movements in February 2008 compared with 382,982 movements at 95 airports in February 2007, an increase of 13.7% (+52,443 movements).
- Itinerant movements (flights from one airport to another) increased by 10.6% (+29,386 movements) in February 2008 compared with the same month a year earlier.
- Local movements (flights that remain in the vicinity of the airport) increased by 21.9% (+23,057 movements) in February 2008 compared with February 2007.

**Table 1**  
**Distribution of aircraft movements at NAV CANADA Towers and Flight Service Stations**

	NAV CANADA towers		NAV CANADA Flight Service Stations		Total	
	number	Change from February 2008/February 2007 percent	number	Change from February 2008/February 2007 percent	number	Change from February 2008/February 2007 percent
<b>Grand total</b>	<b>346,978</b>	<b>11.7</b>	<b>88,447</b>	<b>22.3</b>	<b>435,425</b>	<b>13.7</b>
<b>Itinerant movements</b>						
Air carriers	187,499	7.4	49,984	12.8	237,483	8.5
Other commercial movements	29,584	26.3	4,254	30.5	33,838	26.8
Private movements	20,085	12.7	6,164	20.0	26,249	14.3
Government civil movements	4,272	5.2	1,740	13.1	6,012	7.3
Government military movements	2,675	0.3	967	-0.7	3,642	0.0
Itinerant total	244,115	9.7	63,109	14.3	307,224	10.6
<b>Local movements</b>						
Civil local movements	101,669	17.5	25,228	50.0	126,897	22.8
Military local movements	1,194	-21.4	110	-61.3	1,304	-27.7
Local total	102,863	16.8	25,338	48.2	128,201	21.9

## Analysis

---

Aircraft take-offs and landings at Canadian airports with NAV CANADA air traffic control towers and flight service stations increased in February 2008 compared to February 2007. These 95 airports reported 435,425 movements in February 2008 compared with 382,982 movements at 95 airports in February 2007, an increase of 13.7% (+52,443 movements).

Itinerant movements (flights from one airport to another) increased by 10.6% (+29,386 movements) in February 2008 compared with the same month a year earlier.

Local movements (flights that remain in the vicinity of the airport) increased by 21.9% (+23,057 movements) in February 2008 compared with February 2007.

### **Airports with NAV CANADA air traffic control towers**

The 42 Canadian airports with NAV CANADA air traffic control towers reported 346,978 aircraft take-offs and landings in February, up 11.7% compared with February 2007 (310,665 movements). Year-over-year increases in aircraft movements were reported by 35 of these airports in February 2008. The variations ranged from an increase of 90.8% at Calgary/Springbank, Alberta to a decline of 13.4% at Oshawa, Ontario.

Itinerant movements (flights from one airport to another) increased by 9.7% (+21,496 movements) in February compared with the same month a year earlier. Year-over-year variations in itinerant movements ranged from an 81.6% increase (+2,950 movements) at Calgary/Springbank, Alberta to a decline of 27.1% (-162 movements) at St-Jean, Quebec.

Local movements (flights that remain in the vicinity of the airport) increased by 16.8% (+14,817 movements) in February compared with February 2007. Year-over-year variations in local movements ranged from a 150.5% increase (+1,400 movements) at Chicoutimi/St-Honoré, Quebec to a decline of 48.9% (-460 movements) at Winnipeg/James Armstrong Richardson International, Manitoba.

### **Airports with NAV CANADA flight service stations**

The 53 Canadian airports with NAV CANADA flight service stations reported 88,447 aircraft take-offs and landings in February, up 22.3% compared with February 2007 (72,317 movements). Year-over-year increases in aircraft movements were reported by 41 of these airports in February 2008. The variations ranged from a 120.6% increase (+2,385 movements) at Fredericton International to a decline of 26.5% (-181 movements) at High Level, Alberta.

Itinerant movements (flights from one airport to another) increased by 14.3% (+7,890 movements) in February compared with the same month a year earlier. Year-over-year variations in itinerant movements ranged from an 80.6% increase (+1,251 movements) at Fredericton International to a decline of 28.3% (-190 movements) at High Level, Alberta.

Local movements (flights that remain in the vicinity of the airport) recorded in February 2008 decreased by 48.2% (-8,240 movements) compared with the same month a year earlier. Penticton, British Columbia recorded the largest gain in local movements, increasing by 1,176 movements (+89.2%) compared with February 2007.



## Related products

---

### Selected CANSIM tables from Statistics Canada

---

401-0005	Aircraft movements by class of operation, airports with NAV CANADA towers, preliminary, monthly
401-0006	Aircraft movements by class of operation, airports with NAV CANADA towers, preliminary, annual
401-0007	Aircraft movements, by class of operation and peak hour and peak day of movements, airports with NAV CANADA towers, monthly
401-0008	Aircraft movements, by civil and military movements, airports with NAV CANADA towers, monthly
401-0009	Itinerant movements, by type of operation, airports with NAV CANADA towers, monthly
401-0010	Itinerant movements, by instrument flight rules, visual flight rules and runway 88, airports with NAV CANADA towers, monthly
401-0011	Itinerant movements, by type of power plant, airports with NAV CANADA towers, monthly
401-0012	Itinerant movements, by aircraft gross take-off weight, airports with NAV CANADA towers, monthly
401-0013	Domestic and international itinerant movements, by type of operation, airports with NAV CANADA towers, monthly
401-0014	Aircraft movements, by class of operation and peak hour and peak day of movements, airports with NAV CANADA flight service stations, monthly
401-0015	Aircraft movements, by civil and military movements, airports with NAV CANADA flight service stations, monthly
401-0016	Itinerant movements, by type of operation, airports with NAV CANADA flight service stations, monthly
401-0017	Itinerant movements, by instrument flight rules, visual flight rules and runway 88, airports with NAV CANADA flight service stations, monthly
401-0018	Itinerant movements, by type of power plant, airports with NAV CANADA flight service stations, monthly
401-0019	Itinerant movements, by aircraft gross take-off weight, airports with NAV CANADA flight service stations, monthly
401-0020	Domestic and international itinerant movements, by type of operation, airports with NAV CANADA flight service stations, monthly

---

### **Selected surveys from Statistics Canada**

---

2715	Aircraft Movement Statistics
------	------------------------------

---

### **Selected summary tables from Statistics Canada**

---

- *Aircraft movements by class of operation (monthly)*

# Statistical tables

---

---

**Table 1-1**  
**Total aircraft movements by class of operation — NAV CANADA towers**

	Total		Itinerant		Local	
	Rank of movements	Number of movements	Rank of movements	Number of movements	Rank of movements	Number of movements
Abbotsford	6	13,889	13	5,293	2	8,596
Boundary Bay	8	12,029	15	4,921	3	7,108
Calgary International	3	19,473	3	19,359	38	114
Calgary/Springbank	4	18,048	9	6,565	1	11,483
Chicoutimi/St-Honoré	34	3,659	39	1,329	16	2,330
Edmonton City Centre	20	6,978	12	5,400	26	1,578
Edmonton International	10	10,954	5	10,561	35	393
Edmonton/Villeneuve	25	5,709	38	1,365	8	4,344
Gander International	31	4,267	32	2,243	19	2,024
Halifax/Robert L Stanfield International	22	6,484	11	6,060	32	424
Hamilton	30	4,572	25	3,056	27	1,516
Kelowna	27	5,109	22	3,867	28	1,242
Kitchener/Waterloo	26	5,442	28	2,733	14	2,709
Langley	21	6,887	26	2,889	10	3,998
London	17	7,749	20	4,001	12	3,748
Moncton/Greater Moncton International	12	9,345	14	5,289	9	4,056
Montréal/Mirabel International	40	1,819	37	1,425	34	394
Montréal/Pierre Elliott Trudeau International	5	17,360	4	17,360	0	0
Montréal/St-Hubert	13	9,036	18	4,091	4	4,945
Oshawa	36	3,075	40	1,199	20	1,876
Ottawa/Macdonald-Cartier International	9	11,567	7	9,766	22	1,801
Pitt Meadows	23	6,284	31	2,292	11	3,992
Prince George	38	2,788	35	2,048	29	740
Québec/Jean Lesage International	16	8,225	10	6,351	21	1,874
Regina International	28	5,055	24	3,341	23	1,714
Saskatoon/John G Diefenbaker International	19	7,444	17	4,748	15	2,696
Sault Ste. Marie	33	3,678	34	2,048	24	1,630
St. John's International	37	2,944	27	2,738	37	206
St-Jean	42	844	42	436	33	408
Sudbury	39	2,489	33	2,191	36	298
Thunder Bay	14	8,480	16	4,776	13	3,704
Toronto/Buttonville Municipal	15	8,409	21	3,900	7	4,509
Toronto/City Centre	29	4,739	30	2,591	17	2,148
Toronto/Lester B Pearson International	1	32,583	1	32,583	0	0
Vancouver Harbour	32	4,083	19	4,073	39	10
Vancouver International	2	24,755	2	24,755	0	0
Victoria International	7	12,063	8	7,365	6	4,698
Whitehorse International	41	1,515	41	953	30	562
Windsor	35	3,147	36	1,535	25	1,612
Winnipeg/James Armstrong Richardson International	11	10,681	6	10,201	31	480
Winnipeg/St. Andrews	18	7,550	29	2,724	5	4,826
Yellowknife	24	5,771	23	3,694	18	2,077
<b>Total of NAV CANADA towers (42)</b>	.	<b>346,978</b>	.	<b>244,115</b>	.	<b>102,863</b>

**Table 1-2**  
**Total aircraft movements by class of operation — NAV CANADA flight service stations**

	Total		Itinerant		Local	
	Rank of movements	Number of movements	Rank of movements	Number of movements	Rank of movements	Number of movements
Brandon Municipal	28	1,157	42	611	16	546
Campbell River	9	2,858	14	1,440	7	1,418
Castlegar	47	517	49	409	26	108
Charlottetown	16	2,292	19	1,300	9	992
Churchill	44	695	39	695	0	0
Cranbrook	40	800	36	774	43	26
Deer Lake	24	1,468	21	1,290	21	178
Fort McMurray	3	4,296	1	3,770	17	526
Fort Nelson	32	998	29	954	41	44
Fort St John	12	2,465	11	1,638	11	827
Fredericton International	2	4,363	3	2,804	6	1,559
Grande Prairie	8	2,956	6	2,222	12	734
High Level	48	501	47	481	44	20
Îles-de-la-Madeleine	49	447	48	443	48	4
Inuvik/Mike Zubko	41	798	38	742	38	56
Iqaluit	27	1,285	23	1,237	40	48
Kamloops	7	3,013	7	1,995	8	1,018
Kenora	36	897	35	791	27	106
Kingston	13	2,369	15	1,436	10	933
Kuujuuaq	31	1,014	32	866	22	148
Kuujuuarapik	50	411	50	407	49	4
La Grande Rivière	35	913	31	897	47	16
La Ronge	26	1,378	20	1,294	32	84
Lethbridge	18	2,026	16	1,390	13	636
Lloydminster	38	875	45	553	20	322
Medicine Hat	21	1,624	26	1,066	15	558
Mont-Joli	53	387	52	321	37	66
Nanaimo	19	1,957	12	1,569	19	388
Norman Wells	33	994	27	962	42	32
North Bay	1	4,765	10	1,909	1	2,856
Ottawa/Gatineau	11	2,624	33	820	5	1,804
Peace River	43	699	41	649	39	50
Penticton	5	3,859	18	1,365	3	2,494
Port Hardy	42	765	40	649	25	116
Prince Albert	23	1,482	17	1,378	28	104
Prince Rupert	51	401	53	305	31	96
Rankin Inlet	29	1,106	24	1,088	46	18
Red Deer Regional	4	4,061	8	1,977	4	2,084
Rouyn-Noranda	39	873	34	801	36	72
Saint John	25	1,401	22	1,275	23	126
Sept-Îles	20	1,626	13	1,530	30	96
Sioux Lookout	15	2,317	4	2,241	35	76
Smithers	45	593	44	574	45	19
St Anthony	52	387	51	387	0	0
St Catharines	30	1,057	46	497	14	560
Terrace	22	1,532	25	1,074	18	458
Thompson	14	2,338	5	2,238	29	100
Timmins	17	2,057	9	1,975	33	82
Val-d'Or	34	987	30	907	34	80
Victoria Harbour	10	2,812	2	2,810	50	2
Wabush	46	582	43	582	0	0
Whitecourt	6	3,486	28	958	2	2,528
Williams Lake	37	883	37	763	24	120
<b>Total of all flight service stations (53)</b>	.	<b>88,447</b>	.	<b>63,109</b>	.	<b>25,338</b>

**Table 2-1**  
**Total aircraft movements, civil and military — NAV CANADA towers**

	Civil movements			Military movements			
	Total	Itinerant		Civil	Total	Itinerant	Military
		Commercial	Private and government				
	number						
Abbotsford	13,844	4,305	975	8,564	45	13	32
Boundary Bay	12,027	3,930	989	7,108	2	2	0
Calgary International	19,387	18,068	1,205	114	86	86	0
Calgary/Springbank	18,033	4,883	1,669	11,481	15	13	2
Chicoutimi/St-Honoré	3,655	1,289	36	2,330	4	4	0
Edmonton City Centre	6,909	3,871	1,468	1,570	69	61	8
Edmonton International	10,802	10,167	262	373	152	132	20
Edmonton/Villeneuve	5,709	1,141	224	4,344	0	0	0
Gander International	3,964	1,772	258	1,934	303	213	90
Halifax/Robert L. Stanfield International	6,185	5,548	285	352	299	227	72
Hamilton	4,571	2,589	466	1,516	1	1	0
Kelowna	5,088	3,285	561	1,242	21	21	0
Kitchener/Waterloo	5,398	2,273	426	2,699	44	34	10
Langley	6,887	1,795	1,094	3,998	0	0	0
London	7,748	3,071	929	3,748	1	1	0
Moncton/Greater Moncton International	9,273	4,923	298	4,052	72	68	4
Montréal/Mirabel International	1,736	1,078	282	376	83	65	18
Montréal/Pierre Elliott Trudeau International	17,341	16,105	1,236	0	19	19	0
Montréal/St-Hubert	8,933	3,175	817	4,941	103	99	4
Oshawa	3,067	925	266	1,876	8	8	0
Ottawa/Macdonald-Cartier International	11,347	8,806	776	1,765	220	184	36
Pitt Meadows	6,282	1,403	887	3,992	2	2	0
Prince George	2,780	1,807	233	740	8	8	0
Québec/Jean Lesage International	8,086	5,319	893	1,874	139	139	0
Regina International	4,652	2,729	417	1,506	403	195	208
Saskatoon/John G. Diefenbaker International	7,340	4,080	590	2,670	104	78	26
Sault Ste. Marie	3,676	1,876	170	1,630	2	2	0
St. John's International	2,755	2,342	207	206	189	189	0
St-Jean	833	327	98	408	11	11	0
Sudbury	2,481	1,961	222	298	8	8	0
Thunder Bay	8,406	4,454	282	3,670	74	40	34
Toronto/Buttonville Municipal	8,409	3,052	848	4,509	0	0	0
Toronto/City Centre	4,737	2,338	251	2,148	2	2	0
Toronto/Lester B. Pearson International	32,563	31,360	1,203	0	20	20	0
Vancouver Harbour	4,077	4,011	56	10	6	6	0
Vancouver International	24,747	23,574	1,173	0	8	8	0
Victoria International	11,804	6,081	1,211	4,512	259	73	186
Whitehorse International	1,407	768	131	508	108	54	54
Windsor	3,147	1,353	182	1,612	0	0	0
Winnipeg/James Armstrong Richardson International	10,055	9,176	531	348	626	494	132
Winnipeg/St. Andrews	7,498	2,555	153	4,790	52	16	36
Yellowknife	5,470	3,518	97	1,855	301	79	222
<b>Total of NAV CANADA towers (42)</b>	<b>343,109</b>	<b>217,083</b>	<b>24,357</b>	<b>101,669</b>	<b>3,869</b>	<b>2,675</b>	<b>1,194</b>

**Table 2-2**  
**Total aircraft movements, civil and military — NAV CANADA flight service stations**

	Civil movements			Military movements			
	Total	Itinerant		Civil	Total	Itinerant	Military
		Commercial	Private and government				
	number						
Brandon Municipal	1,028	431	71	526	129	109	20
Campbell River	2,851	980	453	1,418	7	7	0
Castlegar	511	381	22	108	6	6	0
Charlottetown	2,236	1,122	138	976	56	40	16
Churchill	695	680	15	0	0	0	0
Cranbrook	784	679	79	26	16	16	0
Deer Lake	1,468	1,280	10	178	0	0	0
Fort McMurray	4,285	3,350	409	526	11	11	0
Fort Nelson	976	885	47	44	22	22	0
Fort St John	2,445	1,458	160	827	20	20	0
Fredericton International	4,177	2,421	205	1,551	186	178	8
Grande Prairie	2,950	1,863	353	734	6	6	0
High Level	501	429	52	20	0	0	0
Îles-de-la-Madeleine	443	405	34	4	4	4	0
Inuvik/Mike Zubko	781	698	27	56	17	17	0
Iqaluit	1,263	1,108	107	48	22	22	0
Kamloops	2,999	1,623	362	1,014	14	10	4
Kenora	875	724	45	106	22	22	0
Kingston	2,316	1,178	205	933	53	53	0
Kuujuaq	1,000	809	43	148	14	14	0
Kuujuarapik	405	397	8	0	6	2	4
La Grande Rivière	913	861	36	16	0	0	0
La Ronge	1,378	1,207	87	84	0	0	0
Lethbridge	1,989	1,025	328	636	37	37	0
Lloydminster	859	350	187	322	16	16	0
Medicine Hat	1,558	878	158	522	66	30	36
Mont-Joli	375	287	22	66	12	12	0
Nanaimo	1,957	977	592	388	0	0	0
Norman Wells	982	917	33	32	12	12	0
North Bay	4,705	1,542	307	2,856	60	60	0
Ottawa/Gatineau	2,620	399	417	1,804	4	4	0
Peace River	699	599	50	50	0	0	0
Penticton	3,855	1,140	221	2,494	4	4	0
Port Hardy	743	527	100	116	22	22	0
Prince Albert	1,482	1,174	204	104	0	0	0
Prince Rupert	397	266	35	96	4	4	0
Rankin Inlet	1,106	1,070	18	18	0	0	0
Red Deer Regional	4,036	1,485	467	2,084	25	25	0
Rouyn-Noranda	873	694	107	72	0	0	0
Saint John	1,291	928	259	104	110	88	22
Sept-Îles	1,608	1,379	133	96	18	18	0
Sioux Lookout	2,315	2,195	44	76	2	2	0
Smithers	593	513	61	19	0	0	0
St Anthony	387	383	4	0	0	0	0
St Catharines	1,005	333	112	560	52	52	0
Terrace	1,532	1,043	31	458	0	0	0
Thompson	2,338	2,033	205	100	0	0	0
Timmins	2,049	1,805	162	82	8	8	0
Val-d'Or	987	703	204	80	0	0	0
Victoria Harbour	2,808	2,532	274	2	4	4	0
Wabush	582	550	32	0	0	0	0
Whitecourt	3,476	880	68	2,528	10	10	0
Williams Lake	883	662	101	120	0	0	0
<b>Total of all flight service stations (53)</b>	<b>87,370</b>	<b>54,238</b>	<b>7,904</b>	<b>25,228</b>	<b>1,077</b>	<b>967</b>	<b>110</b>

**Table 3-1**  
**Itinerant movements by type of operator — NAV CANADA towers**

	Total	Air carrier movements		Other commercial	Private	Government movements	
		Level I-III and Foreign	Level IV-VI			Civil	Military
	number						
Abbotsford	5,293	482	2,774	1,049	788	187	13
Boundary Bay	4,921	4	990	2,936	917	72	2
Calgary International	19,359	16,039	1,182	847	1,099	106	86
Calgary/Springbank	6,565	11	914	3,958	1,648	21	13
Chicoutimi/St-Honoré	1,329	12	436	841	36	0	4
Edmonton City Centre	5,400	1,641	717	1,513	1,149	319	61
Edmonton International	10,561	9,562	512	93	233	29	132
Edmonton/Villeneuve	1,365	2	344	795	219	5	0
Gander International	2,243	507	1,204	61	222	36	213
Halifax/Robert L. Stanfield International	6,060	5,111	383	54	243	42	227
Hamilton	3,056	1,797	741	51	316	150	1
Kelowna	3,867	2,355	202	728	391	170	21
Kitchener/Waterloo	2,733	446	1,409	418	419	7	34
Langley	2,889	100	207	1,488	1,080	14	0
London	4,001	1,089	812	1,170	877	52	1
Moncton/Greater Moncton International	5,289	1,733	2,944	246	131	167	68
Montréal/Mirabel International	1,425	803	246	29	248	34	65
Montréal/Pierre Elliott Trudeau International	17,360	15,220	532	353	1,066	170	19
Montréal/St-Hubert	4,091	1,794	399	982	734	83	99
Oshawa	1,199	99	68	758	264	2	8
Ottawa/Macdonald-Cartier International	9,766	7,123	362	1,321	306	470	184
Pitt Meadows	2,292	27	611	765	877	10	2
Prince George	2,048	1,253	377	177	203	30	8
Québec/Jean Lesage International	6,351	3,526	690	1,103	513	380	139
Regina International	3,341	2,119	575	35	232	185	195
Saskatoon/John G. Diefenbaker International	4,748	2,840	987	253	261	329	78
Sault Ste. Marie	2,048	740	196	940	104	66	2
St. John's International	2,738	1,694	582	66	135	72	189
St-Jean	436	86	85	156	90	8	11
Sudbury	2,191	1,374	490	97	161	61	8
Thunder Bay	4,776	2,751	676	1,027	147	135	40
Toronto/Buttonville Municipal	3,900	358	640	2,054	824	24	0
Toronto/City Centre	2,591	999	521	818	230	21	2
Toronto/Lester B. Pearson International	32,583	30,760	390	210	1,180	23	20
Vancouver Harbour	4,073	3,618	196	197	54	2	6
Vancouver International	24,755	22,056	1,079	439	867	306	8
Victoria International	7,365	2,908	2,487	686	1,139	72	73
Whitehorse International	953	515	224	29	102	29	54
Windsor	1,535	470	858	25	176	6	0
Winnipeg/James Armstrong Richardson International	10,201	8,373	739	64	248	283	494
Winnipeg/St. Andrews	2,724	372	1,484	699	137	16	16
Yellowknife	3,694	2,843	622	53	19	78	79
<b>Total of NAV CANADA towers (42)</b>	<b>244,115</b>	<b>155,612</b>	<b>31,887</b>	<b>29,584</b>	<b>20,085</b>	<b>4,272</b>	<b>2,675</b>



**Table 3-2**  
**Itinerant movements by type of operator — NAV CANADA flight service stations**

	Total	Air carrier movements		Other commercial	Private	Government movements	
		Level I-III and Foreign	Level IV-VI			Civil	Military
number							
Brandon Municipal	611	107	294	30	49	22	109
Campbell River	1,440	624	222	134	425	28	7
Castlegar	409	248	52	81	18	4	6
Charlottetown	1,300	509	134	479	74	64	40
Churchill	695	665	15	0	2	13	0
Cranbrook	774	605	68	6	75	4	16
Deer Lake	1,290	1,114	160	6	4	6	0
Fort McMurray	3,770	2,302	723	325	379	30	11
Fort Nelson	954	439	308	138	47	0	22
Fort St John	1,638	872	423	163	158	2	20
Fredericton International	2,804	689	1,704	28	136	69	178
Grande Prairie	2,222	1,144	709	10	331	22	6
High Level	481	210	219	0	32	20	0
Îles-de-la-Madeleine	443	281	120	4	0	34	4
Inuvik/Mike Zubko	742	215	483	0	3	24	17
Iqaluit	1,237	1,023	17	68	61	46	22
Kamloops	1,995	1,160	288	175	280	82	10
Kenora	791	359	355	10	31	14	22
Kingston	1,436	537	265	376	177	28	53
Kuujuaq	866	784	17	8	11	32	14
Kuujuarapik	407	393	4	0	4	4	2
La Grande Rivière	897	621	237	3	22	14	0
La Ronge	1,294	1,180	23	4	7	80	0
Lethbridge	1,390	526	29	470	299	29	37
Lloydminster	553	112	174	64	161	26	16
Medicine Hat	1,066	715	97	66	146	12	30
Mont-Joli	321	275	8	4	8	14	12
Nanaimo	1,569	452	410	115	526	66	0
Norman Wells	962	778	137	2	10	23	12
North Bay	1,909	514	518	510	257	50	60
Ottawa/Gatineau	820	135	140	124	323	94	4
Peace River	649	504	81	14	30	20	0
Penticton	1,365	481	613	46	201	20	4
Port Hardy	649	440	65	22	49	51	22
Prince Albert	1,378	1,077	87	10	91	113	0
Prince Rupert	305	193	71	2	2	33	4
Rankin Inlet	1,088	1,068	2	0	4	14	0
Red Deer Regional	1,977	285	895	305	438	29	25
Rouyn-Noranda	801	551	133	10	87	20	0
Saint John	1,275	695	193	40	244	15	88
Sept-Îles	1,530	1,110	251	18	56	77	18
Sioux Lookout	2,241	1,843	346	6	16	28	2
Smithers	574	437	56	20	55	6	0
St Anthony	387	311	4	68	2	2	0
St Catharines	497	4	304	25	86	26	52
Terrace	1,074	650	369	24	19	12	0
Thompson	2,238	1,842	191	0	52	153	0
Timmins	1,975	1,613	189	3	132	30	8
Val-d'Or	907	647	37	19	168	36	0
Victoria Harbour	2,810	2,489	39	4	193	81	4
Wabush	582	522	26	2	26	6	0
Whitecourt	958	57	644	179	64	4	10
Williams Lake	763	414	214	34	93	8	0
<b>Total of all flight service stations (53)</b>	<b>63,109</b>	<b>36,821</b>	<b>13,163</b>	<b>4,254</b>	<b>6,164</b>	<b>1,740</b>	<b>967</b>

Table 4-1

**Itinerant movements by I.F.R. (Instrument flight rules) and V.F.R. (Visual flight rules) and runway 88 movements  
— NAV CANADA towers**

	Itinerant movements					Runway 88 number
	Total of IFR and VFR flights <sup>1</sup>	Instrument flight rules	Percentage instrument flight rules	Visual flight rules	Percentage visual flight rules	
	number		percent	number	percent	
Abbotsford	5,293	1,543	29.1	3,750	70.8	1,472
Boundary Bay	4,921	420	8.5	4,501	91.4	359
Calgary International	19,359	18,070	93.3	1,289	6.6	686
Calgary/Springbank	6,565	274	4.1	6,291	95.8	4,019
Chicoutimi/St-Honoré	1,329	201	15.1	1,128	84.8	32
Edmonton City Centre	5,400	2,759	51.0	2,641	48.9	2,866
Edmonton International	10,561	10,023	94.9	538	5.0	1,063
Edmonton/Villeneuve	1,365	14	1.0	1,351	98.9	100
Gander International	2,243	1,110	49.4	1,133	50.5	34
Halifax/Robert L Stanfield International	6,060	5,613	92.6	447	7.3	300
Hamilton	3,056	2,325	76.0	731	23.9	402
Kelowna	3,867	2,604	67.3	1,263	32.6	313
Kitchener/Waterloo	2,733	853	31.2	1,880	68.7	306
Langley	2,889	11	0.3	2,878	99.6	1,984
London	4,001	1,379	34.4	2,622	65.5	245
Moncton/Greater Moncton International	5,289	2,211	41.8	3,078	58.1	48
Montréal/Mirabel International	1,425	948	66.5	477	33.4	465
Montréal/Pierre Elliott Trudeau International	17,360	16,912	97.4	448	2.5	1,689
Montréal/St-Hubert	4,091	1,138	27.8	2,953	72.1	1,004
Oshawa	1,199	71	5.9	1,128	94.0	491
Ottawa/Macdonald-Cartier International	9,766	7,852	80.4	1,914	19.5	435
Pitt Meadows	2,292	13	0.5	2,279	99.4	2,540
Prince George	2,048	1,431	69.8	617	30.1	315
Québec/Jean Lesage International	6,351	4,428	69.7	1,923	30.2	426
Regina International	3,341	2,448	73.2	893	26.7	31
Saskatoon/John G Diefenbaker International	4,748	3,346	70.4	1,402	29.5	79
Sault Ste. Marie	2,048	985	48.0	1,063	51.9	75
St. John's International	2,738	2,484	90.7	254	9.2	70
St-Jean	436	132	30.2	304	69.7	106
Sudbury	2,191	1,750	79.8	441	20.1	124
Thunder Bay	4,776	3,235	67.7	1,541	32.2	184
Toronto/Butterville Municipal	3,900	691	17.7	3,209	82.2	251
Toronto/City Centre	2,591	1,189	45.8	1,402	54.1	1,578
Toronto/Lester B Pearson International	32,583	32,466	99.6	117	0.3	38
Vancouver Harbour	4,073	56	1.3	4,017	98.6	1,467
Vancouver International	24,755	20,403	82.4	4,352	17.5	6,769
Victoria International	7,365	3,273	44.4	4,092	55.5	6,325
Whitehorse International	953	496	52.0	457	47.9	119
Windsor	1,535	653	42.5	882	57.4	34
Winnipeg/James Armstrong Richardson International	10,201	9,070	88.9	1,131	11.0	492
Winnipeg/St. Andrews	2,724	96	3.5	2,628	96.4	63
Yellowknife	3,694	2,218	60.0	1,476	39.9	574
<b>Total of NAV CANADA towers (42)</b>	<b>244,115</b>	<b>167,194</b>	<b>68.5</b>	<b>76,921</b>	<b>31.5</b>	<b>39,973</b>

1. Total excludes runway 88 flights.

Table 4-2

## Itinerant movements by I.F.R. (Instrument flight rules) and V.F.R. (Visual flight rules) and runway 88 movements — NAV CANADA flight service stations

	Itinerant movements				Runway 88	
	Total of IFR and VFR flights <sup>1</sup>	Instrument flight rules	Percentage instrument flight rules	Visual flight rules		Percentage visual flight rules
	number		percent	number		percent
Brandon Municipal	611	190	31.0	421	68.9	21
Campbell River	1,440	541	37.5	899	62.4	209
Castlegar	409	267	65.2	142	34.7	55
Charlottetown	1,300	586	45.0	714	54.9	16
Churchill	695	639	91.9	56	8.0	9
Cranbrook	774	675	87.2	99	12.7	139
Deer Lake	1,290	1,236	95.8	54	4.1	22
Fort McMurray	3,770	2,451	65.0	1,319	34.9	19
Fort Nelson	954	465	48.7	489	51.2	80
Fort St John	1,638	895	54.6	743	45.3	90
Fredericton International	2,804	875	31.2	1,929	68.7	71
Grande Prairie	2,222	1,334	60.0	888	39.9	146
High Level	481	273	56.7	208	43.2	67
Îles-de-la-Madeleine	443	292	65.9	151	34.0	155
Inuvik/Mike Zubko	742	242	32.6	500	67.3	9
Iqaluit	1,237	957	77.3	280	22.6	0
Kamloops	1,995	1,382	69.2	613	30.7	156
Kenora	791	399	50.4	392	49.5	56
Kingston	1,436	641	44.6	795	55.3	54
Kuujuaq	866	383	44.2	483	55.7	25
Kuujuarapik	407	259	63.6	148	36.3	0
La Grande Rivière	897	521	58.0	376	41.9	130
La Ronge	1,294	717	55.4	577	44.5	220
Lethbridge	1,390	634	45.6	756	54.3	20
Lloydminster	553	243	43.9	310	56.0	22
Medicine Hat	1,066	531	49.8	535	50.1	263
Mont-Joli	321	281	87.5	40	12.4	10
Nanaimo	1,569	588	37.4	981	62.5	631
Norman Wells	962	236	24.5	726	75.4	5
North Bay	1,909	722	37.8	1,187	62.1	238
Ottawa/Gatineau	820	163	19.8	657	80.1	63
Peace River	649	457	70.4	192	29.5	54
Penticton	1,365	479	35.0	886	64.9	100
Port Hardy	649	203	31.2	446	68.7	175
Prince Albert	1,378	1,155	83.8	223	16.1	22
Prince Rupert	305	205	67.2	100	32.7	8
Rankin Inlet	1,088	870	79.9	218	20.0	2
Red Deer Regional	1,977	457	23.1	1,520	76.8	314
Rouyn-Noranda	801	688	85.8	113	14.1	40
Saint John	1,275	940	73.7	335	26.2	36
Sept-Îles	1,530	1,179	77.0	351	22.9	162
Sioux Lookout	2,241	1,369	61.0	872	38.9	143
Smithers	574	466	81.1	108	18.8	112
St Anthony	387	205	52.9	182	47.0	0
St Catharines	497	65	13.0	432	86.9	103
Terrace	1,074	682	63.5	392	36.4	161
Thompson	2,238	1,247	55.7	991	44.2	21
Timmins	1,975	1,617	81.8	358	18.1	205
Val-d'Or	907	661	72.8	246	27.1	97
Victoria Harbour	2,810	72	2.5	2,738	97.4	486
Wabush	582	561	96.3	21	3.6	56
Whitecourt	958	105	10.9	853	89.0	47
Williams Lake	763	470	61.5	293	38.4	239
<b>Total of all flight service stations (53)</b>	<b>63,109</b>	<b>33,771</b>	<b>53.5</b>	<b>29,338</b>	<b>46.5</b>	<b>5,584</b>

1. Total excludes runway 88 flights.

**Table 5-1**  
**Itinerant movements by type of power plant — NAV CANADA towers**

	Total	Jet	Turboprop	Piston	Helicopters	Gliders
	number					
Abbotsford	5,293	400	326	2,985	1,579	3
Boundary Bay	4,921	0	57	4,595	268	1
Calgary International	19,359	12,637	5,186	1,136	400	0
Calgary/Springbank	6,565	27	89	5,471	978	0
Chicoutimi/St-Honoré	1,329	6	33	1,056	233	1
Edmonton City Centre	5,400	389	2,198	2,150	663	0
Edmonton International	10,561	6,136	3,924	440	61	0
Edmonton/Villeneuve	1,365	9	22	978	356	0
Gander International	2,243	612	442	1,020	169	0
Halifax/Robert L. Stanfield International	6,060	3,777	1,661	356	266	0
Hamilton	3,056	1,403	786	777	90	0
Kelowna	3,867	1,346	1,365	804	352	0
Kitchener/Waterloo	2,733	222	442	1,806	263	0
Langley	2,889	1	84	2,175	629	0
London	4,001	377	1,107	2,378	139	0
Moncton/Greater Moncton International	5,289	1,066	801	3,324	98	0
Montréal/Mirabel International	1,425	703	332	268	122	0
Montréal/Pierre Elliott Trudeau International	17,360	12,029	4,775	362	194	0
Montréal/St-Hubert	4,091	245	679	2,758	409	0
Oshawa	1,199	4	69	1,070	56	0
Ottawa/Macdonald-Cartier International	9,766	5,604	2,352	1,526	284	0
Pitt Meadows	2,292	0	17	2,064	211	0
Prince George	2,048	462	1,017	223	346	0
Québec/Jean Lesage International	6,351	1,340	2,654	1,416	916	25
Regina International	3,341	1,566	775	974	26	0
Saskatoon/John G. Diefenbaker International	4,748	1,577	1,656	1,499	16	0
Sault Ste. Marie	2,048	21	953	1,030	44	0
St. John's International	2,738	999	1,376	36	327	0
St-Jean	436	0	70	346	18	2
Sudbury	2,191	37	1,678	289	187	0
Thunder Bay	4,776	773	2,521	1,202	280	0
Toronto/Buttonville Municipal	3,900	97	414	2,901	488	0
Toronto/City Centre	2,591	2	1,148	1,209	232	0
Toronto/Lester B. Pearson International	32,583	27,722	4,755	91	15	0
Vancouver Harbour	4,073	0	1,924	1,191	958	0
Vancouver International	24,755	11,938	9,263	2,593	961	0
Victoria International	7,365	941	2,298	3,729	395	2
Whitehorse International	953	279	298	273	103	0
Windsor	1,535	83	612	834	6	0
Winnipeg/James Armstrong Richardson International	10,201	5,142	4,018	929	112	0
Winnipeg/St. Andrews	2,724	0	281	2,321	122	0
Yellowknife	3,694	767	2,263	223	440	1
<b>Total of NAV CANADA towers (42)</b>	<b>244,115</b>	<b>100,739</b>	<b>66,721</b>	<b>62,808</b>	<b>13,812</b>	<b>35</b>

**Table 5-2**  
**Itinerant movements by type of power plant — NAV CANADA flight service stations**

	Total	Jet	Turboprop	Piston	Helicopters	Gliders
	number					
Brandon Municipal	611	23	193	375	20	0
Campbell River	1,440	24	673	347	396	0
Castlegar	409	14	262	71	62	0
Charlottetown	1,300	175	292	754	79	0
Churchill	695	4	674	3	14	0
Cranbrook	774	41	607	120	6	0
Deer Lake	1,290	198	1,047	17	28	0
Fort McMurray	3,770	924	1,692	569	585	0
Fort Nelson	954	40	465	228	221	0
Fort St John	1,638	265	661	252	460	0
Fredericton International	2,804	233	488	1,869	214	0
Grande Prairie	2,222	195	1,049	554	424	0
High Level	481	13	284	84	100	0
Îles-de-la-Madeleine	443	4	248	183	8	0
Inuvik/Mike Zubko	742	119	526	12	85	0
Iqaluit	1,237	374	840	8	15	0
Kamloops	1,995	43	1,214	562	176	0
Kenora	791	10	507	132	142	0
Kingston	1,436	19	615	704	98	0
Kuujuuaq	866	128	710	10	18	0
Kuujuuarapik	407	4	395	4	4	0
La Grande Rivière	897	18	832	42	5	0
La Ronge	1,294	0	1,034	216	44	0
Lethbridge	1,390	73	548	727	42	0
Lloydminster	553	12	200	303	38	0
Medicine Hat	1,066	25	565	429	47	0
Mont-Joli	321	16	257	34	14	0
Nanaimo	1,569	24	473	967	105	0
Norman Wells	962	132	574	159	97	0
North Bay	1,909	92	704	583	530	0
Ottawa/Gatineau	820	11	165	498	146	0
Peace River	649	4	427	127	91	0
Penticton	1,365	10	519	467	369	0
Port Hardy	649	6	416	95	132	0
Prince Albert	1,378	6	1,130	203	39	0
Prince Rupert	305	10	211	3	81	0
Rankin Inlet	1,088	147	937	2	2	0
Red Deer Regional	1,977	32	461	1,348	136	0
Rouyn-Noranda	801	64	674	55	8	0
Saint John	1,275	300	490	386	99	0
Sept-Îles	1,530	18	1,070	290	152	0
Sioux Lookout	2,241	0	1,910	280	51	0
Smithers	574	10	492	18	54	0
St Anthony	387	0	358	25	4	0
St Catharines	497	22	18	368	89	0
Terrace	1,074	28	672	2	372	0
Thompson	2,238	128	1,809	199	102	0
Timmins	1,975	20	1,709	189	57	0
Val-d'Or	907	110	576	174	47	0
Victoria Harbour	2,810	0	1,762	216	832	0
Wabush	582	6	528	34	14	0
Whitecourt	958	10	106	159	683	0
Williams Lake	763	18	441	141	163	0
<b>Total of all flight service stations (53)</b>	<b>63,109</b>	<b>4,202</b>	<b>35,510</b>	<b>15,597</b>	<b>7,800</b>	<b>0</b>

**Table 6-1**  
**Itinerant movements by aircraft weight group — NAV CANADA towers**

	Gross take-off weight in kilograms									
	2 000 and under	2 001 to 4 000	4 001 to 5 670	5 671 to 9 000	9 001 to 18 000	18 001 to 35 000	35 001 to 70 000	70 001 to 90 000	90 001 to 136 000	136 001 and over
	number									
Abbotsford	3,928	515	364	79	10	9	384	4	0	0
Boundary Bay	4,588	269	64	0	0	0	0	0	0	0
Calgary International	997	646	1,693	2,365	995	3,526	7,094	833	628	582
Calgary/Springbank	6,010	402	133	18	2	0	0	0	0	0
Chicoutimi/St-Honoré	978	297	48	2	0	4	0	0	0	0
Edmonton City Centre	2,190	584	1,705	754	162	2	2	1	0	0
Edmonton International	233	393	906	1,178	605	2,307	4,106	353	254	226
Edmonton/Villeneuve	1,208	64	93	0	0	0	0	0	0	0
Gander International	1,038	22	135	233	330	267	44	67	21	86
Halifax/Robert L. Stanfield International	141	227	375	862	827	1,299	1,769	206	205	149
Hamilton	736	287	298	321	192	164	387	1	623	47
Kelowna	1,012	156	237	681	46	786	936	0	13	0
Kitchener/Waterloo	1,913	149	288	65	200	22	62	34	0	0
Langley	2,752	115	13	0	1	8	0	0	0	0
London	2,525	175	228	97	652	142	168	14	0	0
Moncton/Greater Moncton International	3,192	236	411	276	141	551	224	1	253	4
Montréal/Mirabel International	264	147	95	131	54	226	87	2	282	137
Montréal/Pierre Elliott Trudeau International	350	167	659	944	2,722	5,246	3,932	1,550	135	1,655
Montréal/St-Hubert	2,669	406	719	99	147	18	18	4	11	0
Oshawa	1,059	64	65	4	3	2	0	2	0	0
Ottawa/Macdonald-Cartier International	1,558	133	1,020	304	762	2,735	2,128	665	336	125
Pitt Meadows	2,247	24	17	2	0	2	0	0	0	0
Prince George	389	195	232	618	26	416	172	0	0	0
Québec/Jean Lesage International	1,722	545	846	214	1,349	1,127	358	34	4	152
Regina International	760	266	412	376	44	490	774	2	201	16
Saskatoon/John G. Diefenbaker International	1,276	304	646	606	205	737	789	0	171	14
Sault Ste. Marie	1,020	131	514	57	186	138	2	0	0	0
St. John's International	39	40	429	433	761	98	716	131	73	18
St-Jean	340	22	72	0	2	0	0	0	0	0
Sudbury	316	251	1,208	105	86	215	10	0	0	0
Thunder Bay	1,211	251	2,084	259	183	501	285	2	0	0
Toronto/Buttonville Municipal	3,078	329	351	72	49	21	0	0	0	0
Toronto/City Centre	1,189	114	413	10	0	865	0	0	0	0
Toronto/Lester B. Pearson International	52	242	324	2,006	3,040	7,238	11,731	4,022	456	3,472
Vancouver Harbour	205	2,514	1,248	0	104	2	0	0	0	0
Vancouver International	780	3,204	1,061	2,846	2,564	4,556	5,814	1,035	631	2,264
Victoria International	3,275	968	226	512	1,084	720	519	19	42	0
Whitehorse International	329	78	119	44	11	213	141	18	0	0
Windsor	778	234	37	117	296	65	8	0	0	0
Winnipeg/James Armstrong Richardson International	591	521	2,810	512	792	1,286	2,484	306	799	100
Winnipeg/St. Andrews	2,036	567	117	4	0	0	0	0	0	0
Yellowknife	402	455	788	194	319	838	573	119	6	0
<b>Total of NAV CANADA towers (42)</b>	<b>61,376</b>	<b>16,709</b>	<b>23,503</b>	<b>17,400</b>	<b>18,952</b>	<b>36,842</b>	<b>45,717</b>	<b>9,425</b>	<b>5,144</b>	<b>9,047</b>

**Table 6-2**  
**Itinerant movements by aircraft weight group — NAV CANADA flight service stations**

	Gross take-off weight in kilograms									
	2 000 and under	2 001 to 4 000	4 001 to 5 670	5 671 to 9 000	9 001 to 18 000	18 001 to 35 000	35 001 to 70 000	70 001 to 90 000	90 001 to 136 000	136 001 and over
	number									
Brandon Municipal	368	27	164	20	8	0	0	24	0	0
Campbell River	701	49	40	429	217	0	4	0	0	0
Castlegar	125	8	20	78	23	155	0	0	0	0
Charlottetown	632	221	38	90	128	137	54	0	0	0
Churchill	14	3	114	86	134	340	0	4	0	0
Cranbrook	95	35	72	292	128	147	5	0	0	0
Deer Lake	41	10	116	114	813	109	87	0	0	0
Fort McMurray	830	531	549	611	268	628	341	0	12	0
Fort Nelson	315	164	205	172	98	0	0	0	0	0
Fort St John	628	122	292	277	103	216	0	0	0	0
Fredericton International	1,750	161	281	56	183	359	12	0	0	2
Grande Prairie	706	280	498	251	10	362	115	0	0	0
High Level	149	53	142	137	0	0	0	0	0	0
Îles-de-la-Madeleine	0	191	67	2	170	9	4	0	0	0
Inuvik/Mike Zubko	67	31	427	57	4	41	112	3	0	0
Iqaluit	7	5	416	128	35	366	161	17	102	0
Kamloops	539	196	97	326	262	573	2	0	0	0
Kenora	156	17	598	8	10	2	0	0	0	0
Kingston	687	63	149	442	83	8	0	4	0	0
Kuujuuaq	11	7	571	0	113	50	1	4	109	0
Kuujuuarapik	8	0	152	1	174	70	0	2	0	0
La Grande Rivière	12	153	83	8	132	480	4	25	0	0
La Ronge	102	246	389	85	274	198	0	0	0	0
Lethbridge	633	126	202	407	16	6	0	0	0	0
Lloydminster	282	63	108	94	4	2	0	0	0	0
Medicine Hat	431	43	258	266	67	1	0	0	0	0
Mont-Joli	2	34	152	6	112	15	0	0	0	0
Nanaimo	770	331	78	76	20	294	0	0	0	0
Norman Wells	171	179	432	12	4	34	130	0	0	0
North Bay	1,045	169	317	118	147	96	13	2	0	2
Ottawa/Gatineau	609	41	69	99	0	0	0	2	0	0
Peace River	103	123	353	68	2	0	0	0	0	0
Penticton	779	51	38	311	70	116	0	0	0	0
Port Hardy	92	106	222	78	135	10	6	0	0	0
Prince Albert	126	115	189	251	312	385	0	0	0	0
Prince Rupert	10	75	23	26	60	111	0	0	0	0
Rankin Inlet	2	137	275	119	144	207	147	57	0	0
Red Deer Regional	1,285	195	278	199	12	0	6	2	0	0
Rouyn-Noranda	51	12	331	10	205	146	46	0	0	0
Saint John	227	193	163	264	126	253	43	6	0	0
Sept-Îles	164	265	380	92	583	40	2	4	0	0
Sioux Lookout	175	160	1,367	537	0	2	0	0	0	0
Smithers	66	15	98	210	60	125	0	0	0	0
St Anthony	4	68	238	26	51	0	0	0	0	0
St Catharines	412	45	18	12	0	10	0	0	0	0
Terrace	324	10	90	236	239	175	0	0	0	0
Thompson	116	423	1,114	30	261	198	96	0	0	0
Timmins	152	207	863	114	452	175	8	4	0	0
Val-d'Or	196	28	225	33	281	70	6	0	68	0
Victoria Harbour	14	1,408	1,227	0	161	0	0	0	0	0
Wabush	10	36	82	28	423	3	0	0	0	0
Whitecourt	777	86	74	19	0	2	0	0	0	0
Williams Lake	243	57	46	385	26	6	0	0	0	0
<b>Total of all flight service stations (53)</b>	<b>17,214</b>	<b>7,374</b>	<b>14,790</b>	<b>7,796</b>	<b>7,343</b>	<b>6,732</b>	<b>1,405</b>	<b>160</b>	<b>291</b>	<b>4</b>

**Table 7-1**  
**Itinerant movements, domestic, transborder and international — NAV CANADA towers**

	Total	Air carrier movements		Other commercial	Private	Government movements	
		Level I-III and Foreign	Level IV-VI			Civil	Military
number							
<b>Abbotsford</b>							
Domestic	5,234	466	2,757	1,048	764	187	12
Transborder	51	8	17	1	24	0	1
Other international	8	8	0	0	0	0	0
<b>Total</b>	<b>5,293</b>	<b>482</b>	<b>2,774</b>	<b>1,049</b>	<b>788</b>	<b>187</b>	<b>13</b>
<b>Boundary Bay</b>							
Domestic	4,884	4	988	2,915	903	72	2
Transborder	37	0	2	21	14	0	0
Other international	0	0	0	0	0	0	0
<b>Total</b>	<b>4,921</b>	<b>4</b>	<b>990</b>	<b>2,936</b>	<b>917</b>	<b>72</b>	<b>2</b>
<b>Calgary International</b>							
Domestic	15,566	12,744	1,050	759	828	106	79
Transborder	3,258	2,772	132	86	265	0	3
Other international	535	523	0	2	6	0	4
<b>Total</b>	<b>19,359</b>	<b>16,039</b>	<b>1,182</b>	<b>847</b>	<b>1,099</b>	<b>106</b>	<b>86</b>
<b>Calgary/Springbank</b>							
Domestic	6,515	9	906	3,952	1,614	21	13
Transborder	50	2	8	6	34	0	0
Other international	0	0	0	0	0	0	0
<b>Total</b>	<b>6,565</b>	<b>11</b>	<b>914</b>	<b>3,958</b>	<b>1,648</b>	<b>21</b>	<b>13</b>
<b>Chicoutimi/St-Honoré</b>							
Domestic	1,329	12	436	841	36	0	4
Transborder	0	0	0	0	0	0	0
Other international	0	0	0	0	0	0	0
<b>Total</b>	<b>1,329</b>	<b>12</b>	<b>436</b>	<b>841</b>	<b>36</b>	<b>0</b>	<b>4</b>
<b>Edmonton City Centre</b>							
Domestic	5,371	1,641	713	1,510	1,127	319	61
Transborder	29	0	4	3	22	0	0
Other international	0	0	0	0	0	0	0
<b>Total</b>	<b>5,400</b>	<b>1,641</b>	<b>717</b>	<b>1,513</b>	<b>1,149</b>	<b>319</b>	<b>61</b>
<b>Edmonton International</b>							
Domestic	9,166	8,230	494	88	197	29	128
Transborder	1,112	1,054	18	5	35	0	0
Other international	283	278	0	0	1	0	4
<b>Total</b>	<b>10,561</b>	<b>9,562</b>	<b>512</b>	<b>93</b>	<b>233</b>	<b>29</b>	<b>132</b>
<b>Edmonton/Villeneuve</b>							
Domestic	1,363	2	344	794	218	5	0
Transborder	2	0	0	1	1	0	0
Other international	0	0	0	0	0	0	0
<b>Total</b>	<b>1,365</b>	<b>2</b>	<b>344</b>	<b>795</b>	<b>219</b>	<b>5</b>	<b>0</b>
<b>Gander International</b>							
Domestic	1,721	338	1,199	33	27	32	92
Transborder	237	73	1	13	95	2	53
Other international	285	96	4	15	100	2	68
<b>Total</b>	<b>2,243</b>	<b>507</b>	<b>1,204</b>	<b>61</b>	<b>222</b>	<b>36</b>	<b>213</b>
<b>Halifax/Robert L Stanfield International</b>							
Domestic	4,657	3,980	251	43	145	41	197
Transborder	889	735	46	8	79	0	21
Other international	514	396	86	3	19	1	9
<b>Total</b>	<b>6,060</b>	<b>5,111</b>	<b>383</b>	<b>54</b>	<b>243</b>	<b>42</b>	<b>227</b>
<b>Hamilton</b>							
Domestic	2,501	1,380	737	49	190	144	1
Transborder	514	381	4	1	122	6	0
Other international	41	36	0	1	4	0	0
<b>Total</b>	<b>3,056</b>	<b>1,797</b>	<b>741</b>	<b>51</b>	<b>316</b>	<b>150</b>	<b>1</b>



Table 7-1 – continued

## Itinerant movements, domestic, transborder and international — NAV CANADA towers

	Total	Air carrier movements		Other commercial	Private	Government movements	
		Level I-III and Foreign	Level IV-VI			Civil	Military
number							
<b>Kelowna</b>							
Domestic	3,484	2,058	199	722	316	168	21
Transborder	349	264	3	6	74	2	0
Other international	34	33	0	0	1	0	0
<b>Total</b>	<b>3,867</b>	<b>2,355</b>	<b>202</b>	<b>728</b>	<b>391</b>	<b>170</b>	<b>21</b>
<b>Kitchener/Waterloo</b>							
Domestic	2,357	221	1,374	405	321	7	29
Transborder	348	198	35	13	97	0	5
Other international	28	27	0	0	1	0	0
<b>Total</b>	<b>2,733</b>	<b>446</b>	<b>1,409</b>	<b>418</b>	<b>419</b>	<b>7</b>	<b>34</b>
<b>Langley</b>							
Domestic	2,886	100	205	1,488	1,079	14	0
Transborder	3	0	2	0	1	0	0
Other international	0	0	0	0	0	0	0
<b>Total</b>	<b>2,889</b>	<b>100</b>	<b>207</b>	<b>1,488</b>	<b>1,080</b>	<b>14</b>	<b>0</b>
<b>London</b>							
Domestic	3,597	813	807	1,162	763	52	0
Transborder	367	239	5	8	114	0	1
Other international	37	37	0	0	0	0	0
<b>Total</b>	<b>4,001</b>	<b>1,089</b>	<b>812</b>	<b>1,170</b>	<b>877</b>	<b>52</b>	<b>1</b>
<b>Moncton/Greater Moncton International</b>							
Domestic	5,192	1,650	2,943	246	121	165	67
Transborder	76	64	1	0	10	1	0
Other international	21	19	0	0	0	1	1
<b>Total</b>	<b>5,289</b>	<b>1,733</b>	<b>2,944</b>	<b>246</b>	<b>131</b>	<b>167</b>	<b>68</b>
<b>Montréal/Mirabel International</b>							
Domestic	1,235	616	246	28	246	34	65
Transborder	189	187	0	0	2	0	0
Other international	1	0	0	1	0	0	0
<b>Total</b>	<b>1,425</b>	<b>803</b>	<b>246</b>	<b>29</b>	<b>248</b>	<b>34</b>	<b>65</b>
<b>Montréal/Pierre Elliott Trudeau International</b>							
Domestic	9,390	7,888	424	249	647	170	12
Transborder	5,810	5,272	77	82	375	0	4
Other international	2,160	2,060	31	22	44	0	3
<b>Total</b>	<b>17,360</b>	<b>15,220</b>	<b>532</b>	<b>353</b>	<b>1,066</b>	<b>170</b>	<b>19</b>
<b>Montréal/St-Hubert</b>							
Domestic	3,941	1,775	392	975	617	83	99
Transborder	142	18	3	6	115	0	0
Other international	8	1	4	1	2	0	0
<b>Total</b>	<b>4,091</b>	<b>1,794</b>	<b>399</b>	<b>982</b>	<b>734</b>	<b>83</b>	<b>99</b>
<b>Oshawa</b>							
Domestic	1,182	97	65	755	255	2	8
Transborder	16	2	2	3	9	0	0
Other international	1	0	1	0	0	0	0
<b>Total</b>	<b>1,199</b>	<b>99</b>	<b>68</b>	<b>758</b>	<b>264</b>	<b>2</b>	<b>8</b>
<b>Ottawa/Macdonald-Cartier International</b>							
Domestic	7,295	4,818	337	1,312	209	454	165
Transborder	2,147	2,003	21	8	88	14	13
Other international	324	302	4	1	9	2	6
<b>Total</b>	<b>9,766</b>	<b>7,123</b>	<b>362</b>	<b>1,321</b>	<b>306</b>	<b>470</b>	<b>184</b>
<b>Pitt Meadows</b>							
Domestic	2,287	27	611	764	873	10	2
Transborder	4	0	0	0	4	0	0
Other international	1	0	0	1	0	0	0
<b>Total</b>	<b>2,292</b>	<b>27</b>	<b>611</b>	<b>765</b>	<b>877</b>	<b>10</b>	<b>2</b>

Table 7-1 – continued

## Itinerant movements, domestic, transborder and international — NAV CANADA towers

	Total	Air carrier movements		Other commercial	Private	Government movements	
		Level I-III and Foreign	Level IV-VI			Civil	Military
number							
<b>Prince George</b>							
Domestic	2,023	1,244	376	177	190	30	6
Transborder	16	1	1	0	12	0	2
Other international	9	8	0	0	1	0	0
<b>Total</b>	<b>2,048</b>	<b>1,253</b>	<b>377</b>	<b>177</b>	<b>203</b>	<b>30</b>	<b>8</b>
<b>Québec/Jean Lesage International</b>							
Domestic	5,700	2,970	690	1,097	441	380	122
Transborder	395	314	0	5	72	0	4
Other international	256	242	0	1	0	0	13
<b>Total</b>	<b>6,351</b>	<b>3,526</b>	<b>690</b>	<b>1,103</b>	<b>513</b>	<b>380</b>	<b>139</b>
<b>Regina International</b>							
Domestic	3,096	1,899	575	34	212	184	192
Transborder	145	120	0	1	20	1	3
Other international	100	100	0	0	0	0	0
<b>Total</b>	<b>3,341</b>	<b>2,119</b>	<b>575</b>	<b>35</b>	<b>232</b>	<b>185</b>	<b>195</b>
<b>Saskatoon/John G Diefenbaker International</b>							
Domestic	4,569	2,695	983	251	234	328	78
Transborder	98	65	4	2	26	1	0
Other international	81	80	0	0	1	0	0
<b>Total</b>	<b>4,748</b>	<b>2,840</b>	<b>987</b>	<b>253</b>	<b>261</b>	<b>329</b>	<b>78</b>
<b>Sault Ste. Marie</b>							
Domestic	2,029	740	196	938	87	66	2
Transborder	19	0	0	2	17	0	0
Other international	0	0	0	0	0	0	0
<b>Total</b>	<b>2,048</b>	<b>740</b>	<b>196</b>	<b>940</b>	<b>104</b>	<b>66</b>	<b>2</b>
<b>St. John's International</b>							
Domestic	2,455	1,593	582	46	65	71	98
Transborder	133	42	0	9	33	1	48
Other international	150	59	0	11	37	0	43
<b>Total</b>	<b>2,738</b>	<b>1,694</b>	<b>582</b>	<b>66</b>	<b>135</b>	<b>72</b>	<b>189</b>
<b>St-Jean</b>							
Domestic	435	86	85	156	89	8	11
Transborder	1	0	0	0	1	0	0
Other international	0	0	0	0	0	0	0
<b>Total</b>	<b>436</b>	<b>86</b>	<b>85</b>	<b>156</b>	<b>90</b>	<b>8</b>	<b>11</b>
<b>Sudbury</b>							
Domestic	2,178	1,373	485	96	155	61	8
Transborder	13	1	5	1	6	0	0
Other international	0	0	0	0	0	0	0
<b>Total</b>	<b>2,191</b>	<b>1,374</b>	<b>490</b>	<b>97</b>	<b>161</b>	<b>61</b>	<b>8</b>
<b>Thunder Bay</b>							
Domestic	4,617	2,624	670	1,027	123	135	38
Transborder	152	120	6	0	24	0	2
Other international	7	7	0	0	0	0	0
<b>Total</b>	<b>4,776</b>	<b>2,751</b>	<b>676</b>	<b>1,027</b>	<b>147</b>	<b>135</b>	<b>40</b>
<b>Toronto/Buttonville Municipal</b>							
Domestic	3,699	290	614	2,047	724	24	0
Transborder	200	68	26	7	99	0	0
Other international	1	0	0	0	1	0	0
<b>Total</b>	<b>3,900</b>	<b>358</b>	<b>640</b>	<b>2,054</b>	<b>824</b>	<b>24</b>	<b>0</b>
<b>Toronto/City Centre</b>							
Domestic	2,525	995	509	815	183	21	2
Transborder	66	4	12	3	47	0	0
Other international	0	0	0	0	0	0	0
<b>Total</b>	<b>2,591</b>	<b>999</b>	<b>521</b>	<b>818</b>	<b>230</b>	<b>21</b>	<b>2</b>

Table 7-1 – continued

## Itinerant movements, domestic, transborder and international — NAV CANADA towers

	Total	Air carrier movements		Other commercial	Private	Government movements	
		Level I-III and Foreign	Level IV-VI			Civil	Military
number							
<b>Toronto/Lester B Pearson International</b>							
Domestic	13,779	12,969	261	78	430	23	18
Transborder	14,116	13,185	116	106	708	0	1
Other international	4,688	4,606	13	26	42	0	1
<b>Total</b>	<b>32,583</b>	<b>30,760</b>	<b>390</b>	<b>210</b>	<b>1,180</b>	<b>23</b>	<b>20</b>
<b>Vancouver Harbour</b>							
Domestic	4,036	3,587	196	194	51	2	6
Transborder	37	31	0	3	3	0	0
Other international	0	0	0	0	0	0	0
<b>Total</b>	<b>4,073</b>	<b>3,618</b>	<b>196</b>	<b>197</b>	<b>54</b>	<b>2</b>	<b>6</b>
<b>Vancouver International</b>							
Domestic	18,325	16,089	1,052	381	495	304	4
Transborder	4,807	4,422	13	8	363	1	0
Other international	1,623	1,545	14	50	9	1	4
<b>Total</b>	<b>24,755</b>	<b>22,056</b>	<b>1,079</b>	<b>439</b>	<b>867</b>	<b>306</b>	<b>8</b>
<b>Victoria International</b>							
Domestic	6,710	2,529	2,435	662	942	72	70
Transborder	558	354	21	7	173	0	3
Other international	97	25	31	17	24	0	0
<b>Total</b>	<b>7,365</b>	<b>2,908</b>	<b>2,487</b>	<b>686</b>	<b>1,139</b>	<b>72</b>	<b>73</b>
<b>Whitehorse International</b>							
Domestic	917	502	223	26	90	29	47
Transborder	35	13	1	2	12	0	7
Other international	1	0	0	1	0	0	0
<b>Total</b>	<b>953</b>	<b>515</b>	<b>224</b>	<b>29</b>	<b>102</b>	<b>29</b>	<b>54</b>
<b>Windsor</b>							
Domestic	1,457	444	844	25	140	4	0
Transborder	73	26	11	0	34	2	0
Other international	5	0	3	0	2	0	0
<b>Total</b>	<b>1,535</b>	<b>470</b>	<b>858</b>	<b>25</b>	<b>176</b>	<b>6</b>	<b>0</b>
<b>Winnipeg/James Armstrong Richardson International</b>							
Domestic	8,940	7,238	720	51	176	281	474
Transborder	1,064	946	19	13	72	2	12
Other international	197	189	0	0	0	0	8
<b>Total</b>	<b>10,201</b>	<b>8,373</b>	<b>739</b>	<b>64</b>	<b>248</b>	<b>283</b>	<b>494</b>
<b>Winnipeg/St. Andrews</b>							
Domestic	2,722	372	1,484	699	135	16	16
Transborder	2	0	0	0	2	0	0
Other international	0	0	0	0	0	0	0
<b>Total</b>	<b>2,724</b>	<b>372</b>	<b>1,484</b>	<b>699</b>	<b>137</b>	<b>16</b>	<b>16</b>
<b>Yellowknife</b>							
Domestic	3,691	2,842	622	53	17	78	79
Transborder	2	1	0	0	1	0	0
Other international	1	0	0	0	1	0	0
<b>Total</b>	<b>3,694</b>	<b>2,843</b>	<b>622</b>	<b>53</b>	<b>19</b>	<b>78</b>	<b>79</b>
<b>Total of NAV CANADA towers (42)</b>							
Domestic	195,056	111,950	31,080	28,991	16,475	4,232	2,328
Transborder	37,562	32,985	616	440	3,305	33	183
Other international	11,497	10,677	191	153	305	7	164
<b>Total</b>	<b>244,115</b>	<b>155,612</b>	<b>31,887</b>	<b>29,584</b>	<b>20,085</b>	<b>4,272</b>	<b>2,675</b>

**Table 7-2**  
**Itinerant movements, domestic, transborder and international — NAV CANADA flight service stations**

	Total	Air carrier movements		Other commercial	Private	Government movements	
		Level I-III and Foreign	Level IV-VI			Civil	Military
number							
<b>Brandon Municipal</b>							
Domestic	608	107	294	30	46	22	109
Transborder	3	0	0	0	3	0	0
Other international	0	0	0	0	0	0	0
<b>Total</b>	<b>611</b>	<b>107</b>	<b>294</b>	<b>30</b>	<b>49</b>	<b>22</b>	<b>109</b>
<b>Campbell River</b>							
Domestic	1,422	623	222	134	408	28	7
Transborder	18	1	0	0	17	0	0
Other international	0	0	0	0	0	0	0
<b>Total</b>	<b>1,440</b>	<b>624</b>	<b>222</b>	<b>134</b>	<b>425</b>	<b>28</b>	<b>7</b>
<b>Castlegar</b>							
Domestic	402	247	50	81	14	4	6
Transborder	7	1	2	0	4	0	0
Other international	0	0	0	0	0	0	0
<b>Total</b>	<b>409</b>	<b>248</b>	<b>52</b>	<b>81</b>	<b>18</b>	<b>4</b>	<b>6</b>
<b>Charlottetown</b>							
Domestic	1,297	509	134	479	71	64	40
Transborder	3	0	0	0	3	0	0
Other international	0	0	0	0	0	0	0
<b>Total</b>	<b>1,300</b>	<b>509</b>	<b>134</b>	<b>479</b>	<b>74</b>	<b>64</b>	<b>40</b>
<b>Churchill</b>							
Domestic	695	665	15	0	2	13	0
Transborder	0	0	0	0	0	0	0
Other international	0	0	0	0	0	0	0
<b>Total</b>	<b>695</b>	<b>665</b>	<b>15</b>	<b>0</b>	<b>2</b>	<b>13</b>	<b>0</b>
<b>Cranbrook</b>							
Domestic	758	604	68	6	62	4	14
Transborder	15	0	0	0	13	0	2
Other international	1	1	0	0	0	0	0
<b>Total</b>	<b>774</b>	<b>605</b>	<b>68</b>	<b>6</b>	<b>75</b>	<b>4</b>	<b>16</b>
<b>Deer Lake</b>							
Domestic	1,283	1,107	160	6	4	6	0
Transborder	0	0	0	0	0	0	0
Other international	7	7	0	0	0	0	0
<b>Total</b>	<b>1,290</b>	<b>1,114</b>	<b>160</b>	<b>6</b>	<b>4</b>	<b>6</b>	<b>0</b>
<b>Fort McMurray</b>							
Domestic	3,768	2,302	723	325	377	30	11
Transborder	2	0	0	0	2	0	0
Other international	0	0	0	0	0	0	0
<b>Total</b>	<b>3,770</b>	<b>2,302</b>	<b>723</b>	<b>325</b>	<b>379</b>	<b>30</b>	<b>11</b>
<b>Fort Nelson</b>							
Domestic	954	439	308	138	47	0	22
Transborder	0	0	0	0	0	0	0
Other international	0	0	0	0	0	0	0
<b>Total</b>	<b>954</b>	<b>439</b>	<b>308</b>	<b>138</b>	<b>47</b>	<b>0</b>	<b>22</b>
<b>Fort St John</b>							
Domestic	1,637	871	423	163	158	2	20
Transborder	1	1	0	0	0	0	0
Other international	0	0	0	0	0	0	0
<b>Total</b>	<b>1,638</b>	<b>872</b>	<b>423</b>	<b>163</b>	<b>158</b>	<b>2</b>	<b>20</b>
<b>Fredericton International</b>							
Domestic	2,777	682	1,702	26	129	60	178
Transborder	21	1	2	2	7	9	0
Other international	6	6	0	0	0	0	0
<b>Total</b>	<b>2,804</b>	<b>689</b>	<b>1,704</b>	<b>28</b>	<b>136</b>	<b>69</b>	<b>178</b>

Table 7-2 – continued

## Itinerant movements, domestic, transborder and international — NAV CANADA flight service stations

	Total	Air carrier movements		Other commercial	Private	Government movements	
		Level I-III and Foreign	Level IV-VI			Civil	Military
number							
<b>Grande Prairie</b>							
Domestic	2,220	1,143	709	10	330	22	6
Transborder	2	1	0	0	1	0	0
Other international	0	0	0	0	0	0	0
<b>Total</b>	<b>2,222</b>	<b>1,144</b>	<b>709</b>	<b>10</b>	<b>331</b>	<b>22</b>	<b>6</b>
<b>High Level</b>							
Domestic	481	210	219	0	32	20	0
Transborder	0	0	0	0	0	0	0
Other international	0	0	0	0	0	0	0
<b>Total</b>	<b>481</b>	<b>210</b>	<b>219</b>	<b>0</b>	<b>32</b>	<b>20</b>	<b>0</b>
<b>Îles-de-la-Madeleine</b>							
Domestic	443	281	120	4	0	34	4
Transborder	0	0	0	0	0	0	0
Other international	0	0	0	0	0	0	0
<b>Total</b>	<b>443</b>	<b>281</b>	<b>120</b>	<b>4</b>	<b>0</b>	<b>34</b>	<b>4</b>
<b>Inuvik/Mike Zubko</b>							
Domestic	737	211	482	0	3	24	17
Transborder	5	4	1	0	0	0	0
Other international	0	0	0	0	0	0	0
<b>Total</b>	<b>742</b>	<b>215</b>	<b>483</b>	<b>0</b>	<b>3</b>	<b>24</b>	<b>17</b>
<b>Iqaluit</b>							
Domestic	1,156	979	13	65	31	46	22
Transborder	19	10	3	0	6	0	0
Other international	62	34	1	3	24	0	0
<b>Total</b>	<b>1,237</b>	<b>1,023</b>	<b>17</b>	<b>68</b>	<b>61</b>	<b>46</b>	<b>22</b>
<b>Kamloops</b>							
Domestic	1,904	1,100	286	175	251	82	10
Transborder	91	60	2	0	29	0	0
Other international	0	0	0	0	0	0	0
<b>Total</b>	<b>1,995</b>	<b>1,160</b>	<b>288</b>	<b>175</b>	<b>280</b>	<b>82</b>	<b>10</b>
<b>Kenora</b>							
Domestic	790	359	354	10	31	14	22
Transborder	0	0	0	0	0	0	0
Other international	1	0	1	0	0	0	0
<b>Total</b>	<b>791</b>	<b>359</b>	<b>355</b>	<b>10</b>	<b>31</b>	<b>14</b>	<b>22</b>
<b>Kingston</b>							
Domestic	1,419	535	264	373	166	28	53
Transborder	17	2	1	3	11	0	0
Other international	0	0	0	0	0	0	0
<b>Total</b>	<b>1,436</b>	<b>537</b>	<b>265</b>	<b>376</b>	<b>177</b>	<b>28</b>	<b>53</b>
<b>Kuujuuaq</b>							
Domestic	866	784	17	8	11	32	14
Transborder	0	0	0	0	0	0	0
Other international	0	0	0	0	0	0	0
<b>Total</b>	<b>866</b>	<b>784</b>	<b>17</b>	<b>8</b>	<b>11</b>	<b>32</b>	<b>14</b>
<b>Kuujuarapik</b>							
Domestic	407	393	4	0	4	4	2
Transborder	0	0	0	0	0	0	0
Other international	0	0	0	0	0	0	0
<b>Total</b>	<b>407</b>	<b>393</b>	<b>4</b>	<b>0</b>	<b>4</b>	<b>4</b>	<b>2</b>
<b>La Grande Rivière</b>							
Domestic	897	621	237	3	22	14	0
Transborder	0	0	0	0	0	0	0
Other international	0	0	0	0	0	0	0
<b>Total</b>	<b>897</b>	<b>621</b>	<b>237</b>	<b>3</b>	<b>22</b>	<b>14</b>	<b>0</b>
<b>La Ronge</b>							
Domestic	1,294	1,180	23	4	7	80	0
Transborder	0	0	0	0	0	0	0
Other international	0	0	0	0	0	0	0
<b>Total</b>	<b>1,294</b>	<b>1,180</b>	<b>23</b>	<b>4</b>	<b>7</b>	<b>80</b>	<b>0</b>

Table 7-2 – continued

## Itinerant movements, domestic, transborder and international — NAV CANADA flight service stations

	Total	Air carrier movements		Other commercial	Private	Government movements	
		Level I-III and Foreign	Level IV-VI			Civil	Military
number							
<b>Lethbridge</b>							
Domestic	1,328	524	26	469	250	29	30
Transborder	62	2	3	1	49	0	7
Other international	0	0	0	0	0	0	0
<b>Total</b>	<b>1,390</b>	<b>526</b>	<b>29</b>	<b>470</b>	<b>299</b>	<b>29</b>	<b>37</b>
<b>Lloydminster</b>							
Domestic	551	112	174	64	159	26	16
Transborder	2	0	0	0	2	0	0
Other international	0	0	0	0	0	0	0
<b>Total</b>	<b>553</b>	<b>112</b>	<b>174</b>	<b>64</b>	<b>161</b>	<b>26</b>	<b>16</b>
<b>Medicine Hat</b>							
Domestic	1,064	715	97	66	144	12	30
Transborder	2	0	0	0	2	0	0
Other international	0	0	0	0	0	0	0
<b>Total</b>	<b>1,066</b>	<b>715</b>	<b>97</b>	<b>66</b>	<b>146</b>	<b>12</b>	<b>30</b>
<b>Mont-Joli</b>							
Domestic	321	275	8	4	8	14	12
Transborder	0	0	0	0	0	0	0
Other international	0	0	0	0	0	0	0
<b>Total</b>	<b>321</b>	<b>275</b>	<b>8</b>	<b>4</b>	<b>8</b>	<b>14</b>	<b>12</b>
<b>Nanaimo</b>							
Domestic	1,528	452	408	114	488	66	0
Transborder	41	0	2	1	38	0	0
Other international	0	0	0	0	0	0	0
<b>Total</b>	<b>1,569</b>	<b>452</b>	<b>410</b>	<b>115</b>	<b>526</b>	<b>66</b>	<b>0</b>
<b>Norman Wells</b>							
Domestic	962	778	137	2	10	23	12
Transborder	0	0	0	0	0	0	0
Other international	0	0	0	0	0	0	0
<b>Total</b>	<b>962</b>	<b>778</b>	<b>137</b>	<b>2</b>	<b>10</b>	<b>23</b>	<b>12</b>
<b>North Bay</b>							
Domestic	1,894	513	518	507	246	50	60
Transborder	15	1	0	3	11	0	0
Other international	0	0	0	0	0	0	0
<b>Total</b>	<b>1,909</b>	<b>514</b>	<b>518</b>	<b>510</b>	<b>257</b>	<b>50</b>	<b>60</b>
<b>Ottawa/Gatineau</b>							
Domestic	818	135	140	124	321	94	4
Transborder	2	0	0	0	2	0	0
Other international	0	0	0	0	0	0	0
<b>Total</b>	<b>820</b>	<b>135</b>	<b>140</b>	<b>124</b>	<b>323</b>	<b>94</b>	<b>4</b>
<b>Peace River</b>							
Domestic	649	504	81	14	30	20	0
Transborder	0	0	0	0	0	0	0
Other international	0	0	0	0	0	0	0
<b>Total</b>	<b>649</b>	<b>504</b>	<b>81</b>	<b>14</b>	<b>30</b>	<b>20</b>	<b>0</b>
<b>Penticton</b>							
Domestic	1,352	481	610	46	191	20	4
Transborder	13	0	3	0	10	0	0
Other international	0	0	0	0	0	0	0
<b>Total</b>	<b>1,365</b>	<b>481</b>	<b>613</b>	<b>46</b>	<b>201</b>	<b>20</b>	<b>4</b>
<b>Port Hardy</b>							
Domestic	640	440	65	22	40	51	22
Transborder	9	0	0	0	9	0	0
Other international	0	0	0	0	0	0	0
<b>Total</b>	<b>649</b>	<b>440</b>	<b>65</b>	<b>22</b>	<b>49</b>	<b>51</b>	<b>22</b>

Table 7-2 – continued

## Itinerant movements, domestic, transborder and international — NAV CANADA flight service stations

	Total	Air carrier movements		Other commercial	Private	Government movements	
		Level I-III and Foreign	Level IV-VI			Civil	Military
number							
<b>Prince Albert</b>							
Domestic	1,376	1,075	87	10	91	113	0
Transborder	2	2	0	0	0	0	0
Other international	0	0	0	0	0	0	0
<b>Total</b>	<b>1,378</b>	<b>1,077</b>	<b>87</b>	<b>10</b>	<b>91</b>	<b>113</b>	<b>0</b>
<b>Prince Rupert</b>							
Domestic	303	193	70	2	1	33	4
Transborder	2	0	1	0	1	0	0
Other international	0	0	0	0	0	0	0
<b>Total</b>	<b>305</b>	<b>193</b>	<b>71</b>	<b>2</b>	<b>2</b>	<b>33</b>	<b>4</b>
<b>Rankin Inlet</b>							
Domestic	1,088	1,068	2	0	4	14	0
Transborder	0	0	0	0	0	0	0
Other international	0	0	0	0	0	0	0
<b>Total</b>	<b>1,088</b>	<b>1,068</b>	<b>2</b>	<b>0</b>	<b>4</b>	<b>14</b>	<b>0</b>
<b>Red Deer Regional</b>							
Domestic	1,968	285	893	304	432	29	25
Transborder	9	0	2	1	6	0	0
Other international	0	0	0	0	0	0	0
<b>Total</b>	<b>1,977</b>	<b>285</b>	<b>895</b>	<b>305</b>	<b>438</b>	<b>29</b>	<b>25</b>
<b>Rouyn-Noranda</b>							
Domestic	801	551	133	10	87	20	0
Transborder	0	0	0	0	0	0	0
Other international	0	0	0	0	0	0	0
<b>Total</b>	<b>801</b>	<b>551</b>	<b>133</b>	<b>10</b>	<b>87</b>	<b>20</b>	<b>0</b>
<b>Saint John</b>							
Domestic	1,196	692	193	40	169	15	87
Transborder	77	3	0	0	73	0	1
Other international	2	0	0	0	2	0	0
<b>Total</b>	<b>1,275</b>	<b>695</b>	<b>193</b>	<b>40</b>	<b>244</b>	<b>15</b>	<b>88</b>
<b>Sept-Îles</b>							
Domestic	1,524	1,109	251	17	52	77	18
Transborder	5	1	0	1	3	0	0
Other international	1	0	0	0	1	0	0
<b>Total</b>	<b>1,530</b>	<b>1,110</b>	<b>251</b>	<b>18</b>	<b>56</b>	<b>77</b>	<b>18</b>
<b>Sioux Lookout</b>							
Domestic	2,241	1,843	346	6	16	28	2
Transborder	0	0	0	0	0	0	0
Other international	0	0	0	0	0	0	0
<b>Total</b>	<b>2,241</b>	<b>1,843</b>	<b>346</b>	<b>6</b>	<b>16</b>	<b>28</b>	<b>2</b>
<b>Smithers</b>							
Domestic	573	437	56	20	54	6	0
Transborder	1	0	0	0	1	0	0
Other international	0	0	0	0	0	0	0
<b>Total</b>	<b>574</b>	<b>437</b>	<b>56</b>	<b>20</b>	<b>55</b>	<b>6</b>	<b>0</b>
<b>St Anthony</b>							
Domestic	387	311	4	68	2	2	0
Transborder	0	0	0	0	0	0	0
Other international	0	0	0	0	0	0	0
<b>Total</b>	<b>387</b>	<b>311</b>	<b>4</b>	<b>68</b>	<b>2</b>	<b>2</b>	<b>0</b>
<b>St Catharines</b>							
Domestic	475	4	299	25	69	26	52
Transborder	22	0	5	0	17	0	0
Other international	0	0	0	0	0	0	0
<b>Total</b>	<b>497</b>	<b>4</b>	<b>304</b>	<b>25</b>	<b>86</b>	<b>26</b>	<b>52</b>

Table 7-2 – continued

## Itinerant movements, domestic, transborder and international — NAV CANADA flight service stations

	Total	Air carrier movements		Other commercial	Private	Government movements	
		Level I-III and Foreign	Level IV-VI			Civil	Military
number							
<b>Terrace</b>							
Domestic	1,073	650	369	24	18	12	0
Transborder	1	0	0	0	1	0	0
Other international	0	0	0	0	0	0	0
<b>Total</b>	<b>1,074</b>	<b>650</b>	<b>369</b>	<b>24</b>	<b>19</b>	<b>12</b>	<b>0</b>
<b>Thompson</b>							
Domestic	2,237	1,842	191	0	51	153	0
Transborder	1	0	0	0	1	0	0
Other international	0	0	0	0	0	0	0
<b>Total</b>	<b>2,238</b>	<b>1,842</b>	<b>191</b>	<b>0</b>	<b>52</b>	<b>153</b>	<b>0</b>
<b>Timmins</b>							
Domestic	1,965	1,610	189	3	125	30	8
Transborder	10	3	0	0	7	0	0
Other international	0	0	0	0	0	0	0
<b>Total</b>	<b>1,975</b>	<b>1,613</b>	<b>189</b>	<b>3</b>	<b>132</b>	<b>30</b>	<b>8</b>
<b>Val-d'Or</b>							
Domestic	907	647	37	19	168	36	0
Transborder	0	0	0	0	0	0	0
Other international	0	0	0	0	0	0	0
<b>Total</b>	<b>907</b>	<b>647</b>	<b>37</b>	<b>19</b>	<b>168</b>	<b>36</b>	<b>0</b>
<b>Victoria Harbour</b>							
Domestic	2,630	2,489	39	4	13	81	4
Transborder	180	0	0	0	180	0	0
Other international	0	0	0	0	0	0	0
<b>Total</b>	<b>2,810</b>	<b>2,489</b>	<b>39</b>	<b>4</b>	<b>193</b>	<b>81</b>	<b>4</b>
<b>Wabush</b>							
Domestic	582	522	26	2	26	6	0
Transborder	0	0	0	0	0	0	0
Other international	0	0	0	0	0	0	0
<b>Total</b>	<b>582</b>	<b>522</b>	<b>26</b>	<b>2</b>	<b>26</b>	<b>6</b>	<b>0</b>
<b>Whitecourt</b>							
Domestic	958	57	644	179	64	4	10
Transborder	0	0	0	0	0	0	0
Other international	0	0	0	0	0	0	0
<b>Total</b>	<b>958</b>	<b>57</b>	<b>644</b>	<b>179</b>	<b>64</b>	<b>4</b>	<b>10</b>
<b>Williams Lake</b>							
Domestic	760	414	214	33	91	8	0
Transborder	3	0	0	1	2	0	0
Other international	0	0	0	0	0	0	0
<b>Total</b>	<b>763</b>	<b>414</b>	<b>214</b>	<b>34</b>	<b>93</b>	<b>8</b>	<b>0</b>
<b>Total of all flight service stations (53)</b>							
Domestic	62,366	36,680	13,134	4,238	5,626	1,731	957
Transborder	663	93	27	13	511	9	10
Other international	80	48	2	3	27	0	0
<b>Total</b>	<b>63,109</b>	<b>36,821</b>	<b>13,163</b>	<b>4,254</b>	<b>6,164</b>	<b>1,740</b>	<b>967</b>



**Table 8-1**  
**Total aircraft movements, peak hour and peak day — NAV CANADA towers**

	Rank of movements	Number of movements	Peak hour occurrence			Peak day occurrence	
			Day in month	Hour in day	Number of movements	Day in month	Number of movements
Abbotsford	6	13,889	13	12	150	13	822
Boundary Bay	8	12,029	20	14	119	21	756
Calgary International	3	19,473	28	18	66	7	804
Calgary/Springbank	4	18,048	1	14	143	7	1,001
Chicoutimi/St-Honoré	34	3,659	6	12	187	19	409
Edmonton City Centre	20	6,978	29	17	58	29	426
Edmonton International	10	10,954	22	11	47	21	478
Edmonton/Villeneuve	25	5,709	21	15	113	21	385
Gander International	31	4,267	15	16	62	26	388
Halifax/Robert L Stanfield International	22	6,484	20	16	45	29	321
Hamilton	30	4,572	15	16	52	21	317
Kelowna	27	5,109	8	10	53	22	270
Kitchener/Waterloo	26	5,442	23	11	75	16	469
Langley	21	6,887	2	15	84	21	428
London	17	7,749	24	13	87	22	658
Moncton/Greater Moncton International	12	9,345	22	16	64	1	615
Montréal/Mirabel International	40	1,819	16	12	36	20	140
Montréal/Pierre Elliott Trudeau International	5	17,360	14	18	69	28	712
Montréal/St-Hubert	13	9,036	14	12	133	14	930
Oshawa	36	3,075	13	19	56	16	307
Ottawa/Macdonald-Cartier International	9	11,567	21	12	78	21	610
Pitt Meadows	23	6,284	25	15	93	17	571
Prince George	38	2,788	12	13	74	12	332
Québec/Jean Lesage International	16	8,225	4	11	77	28	501
Regina International	28	5,055	14	20	63	14	354
Saskatoon/John G Diefenbaker International	19	7,444	22	16	68	29	427
Sault Ste. Marie	33	3,678	7	20	67	7	343
St. John's International	37	2,944	22	9	22	22	157
St-Jean	42	844	23	12	50	24	148
Sudbury	39	2,489	20	19	29	7	164
Thunder Bay	14	8,480	19	19	93	25	526
Toronto/Buttonville Municipal	15	8,409	15	15	101	16	780
Toronto/City Centre	29	4,739	7	16	68	24	372
Toronto/Lester B Pearson International	1	32,583	27	18	98	8	1,297
Vancouver Harbour	32	4,083	20	8	34	26	217
Vancouver International	2	24,755	22	12	85	22	978
Victoria International	7	12,063	21	11	110	13	653
Whitehorse International	41	1,515	22	15	44	22	111
Windsor	35	3,147	21	11	50	23	278
Winnipeg/James Armstrong Richardson International	11	10,681	23	15	48	7	476
Winnipeg/St. Andrews	18	7,550	27	19	104	7	704
Yellowknife	24	5,771	15	14	62	11	288

**Table 8-2**  
**Total aircraft movements, peak hour and peak day — NAV CANADA flight service stations**

	Rank of movements	Number of movements	Peak hour occurrence			Peak day occurrence	
			Day in month	Hour in day	Number of movements	Day in month	Number of movements
Brandon Municipal	28	1,157	18	15	32	27	135
Campbell River	9	2,858	25	16	59	16	282
Castlegar	47	517	22	13	34	1	59
Charlottetown	16	2,292	5	15	34	29	229
Churchill	44	695	21	17	8	8	34
Cranbrook	40	800	1	14	13	21	53
Deer Lake	24	1,468	7	11	26	7	118
Fort McMurray	3	4,296	15	14	39	5	242
Fort Nelson	32	998	16	14	16	20	71
Fort St John	12	2,465	20	15	45	14	219
Fredericton International	2	4,363	12	19	54	9	291
Grande Prairie	8	2,956	29	15	48	28	204
High Level	48	501	11	11	11	20	33
Îles-de-la-Madeleine	49	447	12	14	7	12	35
Inuvik/Mike Zubko	41	798	28	14	13	27	62
Iqaluit	27	1,285	19	11	16	25	68
Kamloops	7	3,013	28	15	46	19	215
Kenora	36	897	25	10	18	25	74
Kingston	13	2,369	27	20	47	21	199
Kuujuuaq	31	1,014	29	11	17	11	73
Kuujuuarapik	50	411	28	13	8	4	26
La Grande Rivière	35	913	11	10	11	11	49
La Ronge	26	1,378	25	16	32	25	102
Lethbridge	18	2,026	23	15	22	12	140
Lloydminster	38	875	11	18	25	21	83
Medicine Hat	21	1,624	27	17	39	20	131
Mont-Joli	53	387	26	16	14	29	38
Nanaimo	19	1,957	13	10	60	13	236
Norman Wells	33	994	16	16	13	15	56
North Bay	1	4,765	11	14	63	13	378
Ottawa/Gatineau	11	2,624	13	14	55	14	326
Peace River	43	699	22	11	13	19	66
Penticton	5	3,859	6	15	90	6	283
Port Hardy	42	765	8	14	19	8	51
Prince Albert	23	1,482	21	16	41	21	116
Prince Rupert	51	401	10	13	21	3	44
Rankin Inlet	29	1,106	27	13	13	4	58
Red Deer Regional	4	4,061	23	14	58	28	280
Rouyn-Noranda	39	873	21	14	27	21	66
Saint John	25	1,401	22	14	22	22	85
Sept-Îles	20	1,626	7	10	21	4	99
Sioux Lookout	15	2,317	8	17	24	13	130
Smithers	45	593	27	14	16	27	45
St Anthony	52	387	8	12	6	8	30
St Catharines	30	1,057	24	16	79	24	248
Terrace	22	1,532	1	15	29	13	132
Thompson	14	2,338	13	14	27	20	115
Timmins	17	2,057	21	11	26	21	136
Val-d'Or	34	987	23	13	17	23	75
Victoria Harbour	10	2,812	5	8	26	25	143
Wabush	46	582	1	11	8	15	29
Whitecourt	6	3,486	15	11	78	21	289
Williams Lake	37	883	17	16	22	18	63

**Table 9-1**  
**Itinerant aircraft movements, peak hour and peak day — NAV CANADA towers**

	Rank of movements	Number of movements	Peak hour occurrence			Peak day occurrence	
			Day in month	Hour in day	Number of movements	Day in month	Number of movements
Abbotsford	13	5,293	3	15	41	19	314
Boundary Bay	15	4,921	17	11	59	17	404
Calgary International	3	19,359	28	18	64	7	804
Calgary/Springbank	9	6,565	29	13	49	18	379
Chicoutimi/St-Honoré	39	1,329	14	14	18	26	113
Edmonton City Centre	12	5,400	27	16	31	29	290
Edmonton International	5	10,561	28	9	41	28	473
Edmonton/Villeneuve	38	1,365	29	14	18	29	99
Gander International	32	2,243	8	15	19	26	152
Halifax/Robert L Stanfield International	11	6,060	20	16	25	29	281
Hamilton	25	3,056	21	16	16	21	183
Kelowna	22	3,867	22	15	22	22	196
Kitchener/Waterloo	28	2,733	21	15	35	24	262
Langley	26	2,889	17	14	33	13	194
London	20	4,001	21	14	39	28	295
Moncton/Greater Moncton International	14	5,289	12	11	27	21	357
Montréal/Mirabel International	37	1,425	20	12	16	20	92
Montréal/Pierre Elliott Trudeau International	4	17,360	14	18	69	28	712
Montréal/St-Hubert	18	4,091	14	15	40	14	374
Oshawa	40	1,199	21	14	25	16	153
Ottawa/Macdonald-Cartier International	7	9,766	29	14	44	21	452
Pitt Meadows	31	2,292	17	16	47	17	267
Prince George	35	2,048	12	16	18	13	111
Québec/Jean Lesage International	10	6,351	14	15	38	14	332
Regina International	24	3,341	7	11	20	29	169
Saskatoon/John G Diefenbaker International	17	4,748	7	14	27	20	240
Sault Ste. Marie	34	2,048	27	18	17	7	127
St. John's International	27	2,738	22	12	18	15	139
St-Jean	42	436	24	14	13	24	66
Sudbury	33	2,191	7	19	16	7	120
Thunder Bay	16	4,776	7	15	27	7	256
Toronto/Buttonville Municipal	21	3,900	16	13	58	16	380
Toronto/City Centre	30	2,591	16	16	21	21	189
Toronto/Lester B Pearson International	1	32,583	27	18	98	8	1,297
Vancouver Harbour	19	4,073	20	8	34	26	217
Vancouver International	2	24,755	22	12	85	22	978
Victoria International	8	7,365	17	14	44	13	361
Whitehorse International	41	953	22	15	12	22	59
Windsor	36	1,535	21	10	16	23	112
Winnipeg/James Armstrong Richardson International	6	10,201	26	13	41	26	437
Winnipeg/St. Andrews	29	2,724	20	13	26	7	188
Yellowknife	23	3,694	27	10	23	27	166

**Table 9-2**  
**Itinerant aircraft movements, peak hour and peak day — NAV CANADA flight service stations**

	Rank of movements	Number of movements	Peak hour occurrence			Peak day occurrence	
			Day in month	Hour in day	Number of movements	Day in month	Number of movements
Brandon Municipal	42	611	1	14	9	27	51
Campbell River	14	1,440	25	12	22	25	106
Castlegar	49	409	23	11	11	23	28
Charlottetown	19	1,300	21	18	11	29	87
Churchill	39	695	21	17	8	8	34
Cranbrook	36	774	12	12	8	21	53
Deer Lake	21	1,290	13	8	12	8	58
Fort McMurray	1	3,770	20	12	22	20	192
Fort Nelson	29	954	21	9	15	22	65
Fort St John	11	1,638	22	15	19	22	113
Fredericton International	3	2,804	21	19	19	21	206
Grande Prairie	6	2,222	13	9	20	28	124
High Level	47	481	20	12	9	20	33
Îles-de-la-Madeleine	48	443	29	7	5	29	35
Inuvik/Mike Zubko	38	742	15	13	8	15	49
Iqaluit	23	1,237	18	13	9	15	60
Kamloops	7	1,995	24	13	16	19	105
Kenora	35	791	1	8	7	13	46
Kingston	15	1,436	16	14	19	24	117
Kuujuaq	32	866	8	13	8	11	47
Kuujuarapik	50	407	13	12	6	4	26
La Grande Rivière	31	897	11	10	11	11	45
La Ronge	20	1,294	8	15	14	20	77
Lethbridge	16	1,390	14	14	17	12	78
Lloydminster	45	553	26	11	13	18	41
Medicine Hat	26	1,066	26	8	11	28	60
Mont-Joli	52	321	4	10	8	28	22
Nanaimo	12	1,569	17	15	18	17	112
Norman Wells	27	962	19	14	11	15	50
North Bay	10	1,909	7	15	26	28	134
Ottawa/Gatineau	33	820	23	13	21	23	101
Peace River	41	649	6	15	8	19	42
Penticton	18	1,365	8	13	12	19	74
Port Hardy	40	649	27	13	11	27	44
Prince Albert	17	1,378	21	16	19	21	88
Prince Rupert	53	305	10	10	6	10	18
Rankin Inlet	24	1,088	25	15	11	4	58
Red Deer Regional	8	1,977	11	12	20	26	120
Rouyn-Noranda	34	801	11	16	7	28	51
Saint John	22	1,275	19	12	12	20	69
Sept-Îles	13	1,530	1	8	14	26	79
Sioux Lookout	4	2,241	13	8	18	13	130
Smithers	44	574	27	15	8	25	33
St Anthony	51	387	8	12	6	8	30
St Catharines	46	497	16	14	13	16	83
Terrace	25	1,074	18	10	12	13	64
Thompson	5	2,238	1	10	16	20	111
Timmins	9	1,975	20	16	14	21	106
Val-d'Or	30	907	2	14	10	23	51
Victoria Harbour	2	2,810	5	8	26	25	141
Wabush	43	582	1	11	8	15	29
Whitecourt	28	958	5	11	15	5	67
Williams Lake	37	763	7	8	9	21	47

**Table 10-1**  
**Local movements, peak hour and peak day — NAV CANADA towers**

	Rank of movements	Number of movements	Peak hour occurrence			Peak day occurrence	
			Day in month	Hour in day	Number of movements	Day in month	Number of movements
Abbotsford	2	8,596	13	13	122	13	546
Boundary Bay	3	7,108	20	14	100	16	480
Calgary International	38	114	29	12	8	29	30
Calgary/Springbank	1	11,483	1	13	102	7	660
Chicoutimi/St-Honoré	16	2,330	6	12	179	19	304
Edmonton City Centre	26	1,578	28	16	28	29	136
Edmonton International	35	393	22	11	26	11	48
Edmonton/Villeneuve	8	4,344	21	15	96	26	318
Gander International	19	2,024	2	7	52	26	236
Halifax/Robert L Stanfield International	32	424	22	12	24	22	68
Hamilton	27	1,516	15	16	42	16	146
Kelowna	28	1,242	8	10	40	19	84
Kitchener/Waterloo	14	2,709	23	11	54	23	247
Langley	10	3,998	2	15	60	14	266
London	12	3,748	22	13	62	22	434
Moncton/Greater Moncton International	9	4,056	22	16	50	17	308
Montréal/Mirabel International	34	394	16	12	28	20	48
Montréal/Pierre Elliott Trudeau International	0	0	0	0	0	0	0
Montréal/St-Hubert	4	4,945	22	9	98	14	556
Oshawa	20	1,876	13	19	44	20	200
Ottawa/Macdonald-Cartier International	22	1,801	21	12	54	16	178
Pitt Meadows	11	3,992	16	14	80	21	390
Prince George	29	740	12	13	62	12	222
Québec/Jean Lesage International	21	1,874	3	11	56	28	172
Regina International	23	1,714	14	20	56	14	198
Saskatoon/John G Diefenbaker International	15	2,696	22	19	50	23	266
Sault Ste. Marie	24	1,630	7	20	60	7	216
St. John's International	37	206	22	10	16	18	40
St-Jean	33	408	23	12	42	23	92
Sudbury	36	298	20	19	18	6	52
Thunder Bay	13	3,704	19	19	86	25	322
Toronto/Buttonville Municipal	7	4,509	15	15	68	21	410
Toronto/City Centre	17	2,148	7	16	50	24	202
Toronto/Lester B Pearson International	0	0	0	0	0	0	0
Vancouver Harbour	39	10	17	8	6	17	6
Vancouver International	0	0	0	0	0	0	0
Victoria International	6	4,698	21	11	80	13	292
Whitehorse International	30	562	22	15	32	26	54
Windsor	25	1,612	21	11	40	23	166
Winnipeg/James Armstrong Richardson International	31	480	23	15	24	7	48
Winnipeg/St. Andrews	5	4,826	27	19	94	7	516
Yellowknife	18	2,077	10	15	48	11	138

**Table 10-2**  
**Local movements, peak hour and peak day — NAV CANADA flight service stations**

	Rank of movements	Number of movements	Peak hour occurrence			Peak day occurrence	
			Day in month	Hour in day	Number of movements	Day in month	Number of movements
Brandon Municipal	16	546	18	15	30	27	84
Campbell River	7	1,418	14	14	48	16	198
Castlegar	26	108	22	13	28	1	38
Charlottetown	9	992	5	15	30	29	142
Churchill	0	0	0	0	0	0	0
Cranbrook	43	26	1	14	12	1	12
Deer Lake	21	178	7	11	24	7	74
Fort McMurray	17	526	5	10	20	5	80
Fort Nelson	41	44	16	14	14	16	14
Fort St John	11	827	15	13	40	14	131
Fredericton International	6	1,559	12	19	40	7	156
Grande Prairie	12	734	29	15	36	14	86
High Level	44	20	11	11	6	11	6
Îles-de-la-Madeleine	48	4	12	14	4	12	4
Inuvik/Mike Zubko	38	56	27	18	8	27	20
Iqaluit	40	48	19	11	12	25	20
Kamloops	8	1,018	28	15	36	19	110
Kenora	27	106	2	20	16	25	38
Kingston	10	933	27	20	40	23	92
Kuujuaq	22	148	29	11	12	11	26
Kuujuarapik	49	4	28	13	4	28	4
La Grande Rivière	47	16	11	18	4	11	4
La Ronge	32	84	25	16	30	25	48
Lethbridge	13	636	25	21	20	12	62
Lloydminster	20	322	11	18	20	29	44
Medicine Hat	15	558	27	17	36	20	74
Mont-Joli	37	66	26	16	14	29	28
Nanaimo	19	388	13	10	52	13	128
Norman Wells	42	32	16	16	10	16	10
North Bay	1	2,856	11	14	50	13	264
Ottawa/Gatineau	5	1,804	13	14	52	14	262
Peace River	39	50	22	11	12	19	24
Penticton	3	2,494	6	15	82	7	234
Port Hardy	25	116	8	14	14	8	22
Prince Albert	28	104	21	16	22	21	28
Prince Rupert	31	96	10	13	20	3	28
Rankin Inlet	46	18	5	17	8	5	10
Red Deer Regional	4	2,084	23	15	46	28	182
Rouyn-Noranda	36	72	21	14	24	21	28
Saint John	23	126	22	14	18	28	22
Sept-Îles	30	96	7	10	14	7	24
Sioux Lookout	35	76	8	17	18	8	20
Smithers	45	19	27	14	15	27	15
St Anthony	0	0	0	0	0	0	0
St Catharines	14	560	24	16	68	24	180
Terrace	18	458	1	15	24	13	68
Thompson	29	100	13	14	14	24	20
Timmins	33	82	19	18	20	21	30
Val-d'Or	34	80	22	15	10	22	30
Victoria Harbour	50	2	25	13	2	25	2
Wabush	0	0	0	0	0	0	0
Whitecourt	2	2,528	15	11	70	21	238
Williams Lake	24	120	17	16	18	18	26

**Table 11-1**  
**Local movements - civil, peak hour and peak day — NAV CANADA towers**

	Rank of movements	Number of movements	Peak hour occurrence			Peak day occurrence	
			Day in month	Hour in day	Number of movements	Day in month	Number of movements
Abbotsford	2	8,564	13	13	122	13	546
Boundary Bay	3	7,108	20	14	100	16	480
Calgary International	38	114	29	12	8	29	30
Calgary/Springbank	1	11,481	1	13	102	7	660
Chicoutimi/St-Honoré	16	2,330	6	12	179	19	304
Edmonton City Centre	25	1,570	28	16	28	29	136
Edmonton International	33	373	22	11	26	11	48
Edmonton/Villeneuve	8	4,344	21	15	96	26	318
Gander International	18	1,934	2	7	52	26	228
Halifax/Robert L Stanfield International	34	352	22	12	24	3	62
Hamilton	26	1,516	15	16	42	16	146
Kelowna	28	1,242	8	10	40	19	84
Kitchener/Waterloo	14	2,699	23	11	54	23	247
Langley	10	3,998	2	15	60	14	266
London	12	3,748	22	13	62	22	434
Moncton/Greater Moncton International	9	4,052	22	16	50	17	308
Montréal/Mirabel International	32	376	16	12	28	20	48
Montréal/Pierre Elliott Trudeau International	0	0	0	0	0	0	0
Montréal/St-Hubert	4	4,941	22	9	98	14	556
Oshawa	19	1,876	13	19	44	20	200
Ottawa/Macdonald-Cartier International	22	1,765	21	12	54	16	176
Pitt Meadows	11	3,992	16	14	80	21	390
Prince George	29	740	12	13	62	12	222
Québec/Jean Lesage International	20	1,874	3	11	56	28	172
Regina International	27	1,506	4	19	30	7	144
Saskatoon/John G Diefenbaker International	15	2,670	22	19	50	23	266
Sault Ste. Marie	23	1,630	7	20	60	7	216
St. John's International	37	206	22	10	16	18	40
St-Jean	31	408	23	12	42	23	92
Sudbury	36	298	20	19	18	6	52
Thunder Bay	13	3,670	19	19	86	25	322
Toronto/Buttonville Municipal	7	4,509	15	15	68	21	410
Toronto/City Centre	17	2,148	7	16	50	24	202
Toronto/Lester B Pearson International	0	0	0	0	0	0	0
Vancouver Harbour	39	10	17	8	6	17	6
Vancouver International	0	0	0	0	0	0	0
Victoria International	6	4,512	21	11	80	13	266
Whitehorse International	30	508	29	14	22	26	54
Windsor	24	1,612	21	11	40	23	166
Winnipeg/James Armstrong Richardson International	35	348	18	19	18	18	36
Winnipeg/St. Andrews	5	4,790	27	19	94	7	516
Yellowknife	21	1,855	10	15	48	16	136

**Table 11-2**  
**Local movements - civil, peak hour and peak day — NAV CANADA flight service stations**

	Rank of movements	Number of movements	Peak hour occurrence			Peak day occurrence	
			Day in month	Hour in day	Number of movements	Day in month	Number of movements
Brandon Municipal	15	526	18	15	30	27	84
Campbell River	7	1,418	14	14	48	16	198
Castlegar	25	108	22	13	28	1	38
Charlottetown	9	976	21	15	30	29	142
Churchill	0	0	0	0	0	0	0
Cranbrook	43	26	1	14	12	1	12
Deer Lake	21	178	7	11	24	7	74
Fort McMurray	16	526	5	10	20	5	80
Fort Nelson	41	44	16	14	14	16	14
Fort St John	11	827	15	13	40	14	131
Fredericton International	6	1,551	12	19	40	7	156
Grande Prairie	12	734	29	15	36	14	86
High Level	44	20	11	11	6	11	6
Îles-de-la-Madeleine	48	4	12	14	4	12	4
Inuvik/Mike Zubko	38	56	27	18	8	27	20
Iqaluit	40	48	19	11	12	25	20
Kamloops	8	1,014	28	15	36	19	110
Kenora	26	106	2	20	16	25	38
Kingston	10	933	27	20	40	23	92
Kuujuaq	22	148	29	11	12	11	26
Kuujuarapik	0	0	0	0	0	0	0
La Grande Rivière	47	16	11	18	4	11	4
La Ronge	32	84	25	16	30	25	48
Lethbridge	13	636	25	21	20	12	62
Lloydminster	20	322	11	18	20	29	44
Medicine Hat	17	522	27	17	36	20	74
Mont-Joli	37	66	26	16	14	29	28
Nanaimo	19	388	13	10	52	13	128
Norman Wells	42	32	16	16	10	16	10
North Bay	1	2,856	11	14	50	13	264
Ottawa/Gatineau	5	1,804	13	14	52	14	262
Peace River	39	50	22	11	12	19	24
Penticton	3	2,494	6	15	82	7	234
Port Hardy	24	116	8	14	14	8	22
Prince Albert	28	104	21	16	22	21	28
Prince Rupert	31	96	10	13	20	3	28
Rankin Inlet	46	18	5	17	8	5	10
Red Deer Regional	4	2,084	23	15	46	28	182
Rouyn-Noranda	36	72	21	14	24	21	28
Saint John	27	104	22	14	18	22	20
Sept-Îles	30	96	7	10	14	7	24
Sioux Lookout	35	76	8	17	18	8	20
Smithers	45	19	27	14	15	27	15
St Anthony	0	0	0	0	0	0	0
St Catharines	14	560	24	16	68	24	180
Terrace	18	458	1	15	24	13	68
Thompson	29	100	13	14	14	24	20
Timmins	33	82	19	18	20	21	30
Val-d'Or	34	80	22	15	10	22	30
Victoria Harbour	49	2	25	13	2	25	2
Wabush	0	0	0	0	0	0	0
Whitecourt	2	2,528	15	11	70	21	238
Williams Lake	23	120	17	16	18	18	26



**Table 12-1**  
**Local movements - military, peak hour and peak day — NAV CANADA towers**

	Rank of movements	Number of movements	Peak hour occurrence			Peak day occurrence	
			Day in month	Hour in day	Number of movements	Day in month	Number of movements
Abbotsford	11	32	19	12	22	19	32
Boundary Bay	0	0	0	0	0	0	0
Calgary International	0	0	0	0	0	0	0
Calgary/Springbank	19	2	28	14	1	28	2
Chicoutimi/St-Honoré	0	0	0	0	0	0	0
Edmonton City Centre	16	8	4	18	2	7	4
Edmonton International	13	20	22	9	6	22	12
Edmonton/Villeneuve	0	0	0	0	0	0	0
Gander International	5	90	12	19	10	12	12
Halifax/Robert L Stanfield International	6	72	4	10	6	22	16
Hamilton	0	0	0	0	0	0	0
Kelowna	0	0	0	0	0	0	0
Kitchener/Waterloo	15	10	20	11	6	20	6
Langley	0	0	0	0	0	0	0
London	0	0	0	0	0	0	0
Moncton/Greater Moncton International	17	4	5	8	2	5	2
Montréal/Mirabel International	14	18	12	15	10	12	10
Montréal/Pierre Elliott Trudeau International	0	0	0	0	0	0	0
Montréal/St-Hubert	18	4	25	11	2	25	2
Oshawa	0	0	0	0	0	0	0
Ottawa/Macdonald-Cartier International	8	36	20	11	6	27	12
Pitt Meadows	0	0	0	0	0	0	0
Prince George	0	0	0	0	0	0	0
Québec/Jean Lesage International	0	0	0	0	0	0	0
Regina International	2	208	14	20	56	14	124
Saskatoon/John G Diefenbaker International	12	26	5	11	12	5	12
Sault Ste. Marie	0	0	0	0	0	0	0
St. John's International	0	0	0	0	0	0	0
St-Jean	0	0	0	0	0	0	0
Sudbury	0	0	0	0	0	0	0
Thunder Bay	10	34	22	12	12	22	12
Toronto/Buttonville Municipal	0	0	0	0	0	0	0
Toronto/City Centre	0	0	0	0	0	0	0
Toronto/Lester B Pearson International	0	0	0	0	0	0	0
Vancouver Harbour	0	0	0	0	0	0	0
Vancouver International	0	0	0	0	0	0	0
Victoria International	3	186	7	12	24	7	64
Whitehorse International	7	54	22	15	32	22	36
Windsor	0	0	0	0	0	0	0
Winnipeg/James Armstrong Richardson International	4	132	7	10	16	27	26
Winnipeg/St. Andrews	9	36	25	19	36	25	36
Yellowknife	1	222	28	13	18	25	36

**Table 12-2**  
**Local movements - military, peak hour and peak day — NAV CANADA flight service stations**

	Rank of movements	Number of movements	Peak hour occurrence			Peak day occurrence	
			Day in month	Hour in day	Number of movements	Day in month	Number of movements
Brandon Municipal	3	20	26	19	16	26	20
Campbell River	0	0	0	0	0	0	0
Castlegar	0	0	0	0	0	0	0
Charlottetown	4	16	5	15	16	5	16
Churchill	0	0	0	0	0	0	0
Cranbrook	0	0	0	0	0	0	0
Deer Lake	0	0	0	0	0	0	0
Fort McMurray	0	0	0	0	0	0	0
Fort Nelson	0	0	0	0	0	0	0
Fort St John	0	0	0	0	0	0	0
Fredericton International	5	8	1	10	4	1	4
Grande Prairie	0	0	0	0	0	0	0
High Level	0	0	0	0	0	0	0
Îles-de-la-Madeleine	0	0	0	0	0	0	0
Inuvik/Mike Zubko	0	0	0	0	0	0	0
Iqaluit	0	0	0	0	0	0	0
Kamloops	6	4	16	11	4	16	4
Kenora	0	0	0	0	0	0	0
Kingston	0	0	0	0	0	0	0
Kuujuaq	0	0	0	0	0	0	0
Kuujuarapik	7	4	28	13	4	28	4
La Grande Rivière	0	0	0	0	0	0	0
La Ronge	0	0	0	0	0	0	0
Lethbridge	0	0	0	0	0	0	0
Lloydminster	0	0	0	0	0	0	0
Medicine Hat	1	36	17	18	16	17	36
Mont-Joli	0	0	0	0	0	0	0
Nanaimo	0	0	0	0	0	0	0
Norman Wells	0	0	0	0	0	0	0
North Bay	0	0	0	0	0	0	0
Ottawa/Gatineau	0	0	0	0	0	0	0
Peace River	0	0	0	0	0	0	0
Penticton	0	0	0	0	0	0	0
Port Hardy	0	0	0	0	0	0	0
Prince Albert	0	0	0	0	0	0	0
Prince Rupert	0	0	0	0	0	0	0
Rankin Inlet	0	0	0	0	0	0	0
Red Deer Regional	0	0	0	0	0	0	0
Rouyn-Noranda	0	0	0	0	0	0	0
Saint John	2	22	28	10	12	28	22
Sept-Îles	0	0	0	0	0	0	0
Sioux Lookout	0	0	0	0	0	0	0
Smithers	0	0	0	0	0	0	0
St Anthony	0	0	0	0	0	0	0
St Catharines	0	0	0	0	0	0	0
Terrace	0	0	0	0	0	0	0
Thompson	0	0	0	0	0	0	0
Timmins	0	0	0	0	0	0	0
Val-d'Or	0	0	0	0	0	0	0
Victoria Harbour	0	0	0	0	0	0	0
Wabush	0	0	0	0	0	0	0
Whitecourt	0	0	0	0	0	0	0
Williams Lake	0	0	0	0	0	0	0

# Methodology

---

## Survey universe

### Coverage

The survey covers all aircraft movements at Canadian airports with NAV CANADA air traffic control towers and flight service stations.

## Methodology survey

The Itinerant movement record is designed to capture:

- Aircraft identification
- Aircraft type
- The last station before landing at the reporting airport or the next station after take-off
- Arrival or departure
- Time of movement
- Runway used
- Flight rules (Instrument flight rules or Visual flight rules).

The Local aircraft movement record provides for reports of local movements by:

- Hour
- Single engine aircraft
- Multi-engine aircraft
- Jet aircraft
- Military aircraft
- Date of movement

Processing of aircraft movement statistics involves several stages. Preliminary monthly data by class of operation are released in **Preliminary aircraft movement statistics**, catalogue no. 51F0001P (TP-1496 (NAV CANADA towered airports only)). Data which follow in **Aircraft movement statistics - Monthly** report, catalogue nos. 51-007-X and 51-008-X (TP-141) may contain revisions to the originally released figures. Annual tables, which may reflect further revisions, are released in the publication, **Aircraft movement statistics - Annual** report - TP-577. In particular, data on itinerant movements by type of operation may reflect revisions as various sources of comparative information (data collected from commercial air carriers by the Aviation Statistics Centre, Statistics Canada) become available during the processing cycle. Finally, when revisions are required after the release of TP-577, they are contained in the five year historical summary of subsequent editions of TP-577. These revisions are also reflected in the CANSIM tables, both monthly and annual.

The records are completed daily, based on a twenty-four hour clock running from zero hour to 23:59. The times recorded are Coordinated Universal Time (UTC); however, published statistics are shown in local times. The records are transmitted to the Aviation Statistics Centre.

The Aviation Statistics Centre maintains a data base of parameter files of current information on all registered aircraft. The storage of this information reduces the reporting burden of the survey respondents and limits the element of human error associated with the preparation of source documents.

Other parameter files information includes registered aircraft identifications and their corresponding aircraft types, gross take-off weights, types of power plant (piston, jet or turboprop); whether the aircraft are fixed wing, helicopters or gliders. This information also provides a basis for identifying type of flights (commercial, private and government) and the geographical area in which the flights take place.

The parameter files also include airport environment information against which the airport category is checked; the reported runway is validated and the time difference between UTC and Local is assigned.

## Data quality and limitations

---

Aircraft movement statistics are accumulated from data originating with air traffic control tower units or flight service station personnel. Because staff in these positions are highly trained in factual observation and reporting, the entries in the data bank are of a high quality.

The procedures for reporting aircraft movements on the Daily air traffic records by tower units are described in the NAV CANADA Air traffic control manual of operations (TP 703) Volume 1, Para. 1023 to 1023.5. Definitions for terms used in these paragraphs can be found in the appendix II "Glossary of terms" of this report.

To maintain uniformity in the reporting of source data, ASC issues to air traffic control units an "Air traffic designators" handbook (TP 143) listing the official Transport Canada aircraft type designators and the designators of various domestic and international air carriers. This handbook and another titled "Canada flight supplement" listing various airport codes serve as references to help ensure the reporting of the proper aircraft identity and the point of origin and destination of flights.

The processing system contains editing procedures designed to identify data errors occurring during transcription or during data capture of forms. Identified errors are manually corrected by ASC editing staff.

Errors may occur if an aircraft type code which exists is reported or data captured in error for a flight. For example, the reporting or keying of B727 for a flight actually performed by a B737 may not be detected during the system editing. That the aircraft type information is recorded by highly trained air traffic control tower staff using a common handbook of official aircraft codes will minimize this problem.

Similarly, the breakdown of the data on a geographic basis by use of location codes can be subject to error. For smaller locations, alphanumeric location codes are often used and the sequence of numbers and letters determines the geographic area to which the data are assigned. In some cases, where a sequence error has been introduced into the system either at the reporting unit or at data capture, a domestic movement may be classified as transborder or vice versa. The use of common manuals of location identifiers works to minimize this occurrence.

# Appendix I

---

## Factors influencing the data

Significant winter storms struck central and eastern Canada in February forcing flight delays and cancellations.

## Appendix II

---

### Glossary of terms

#### Air carrier

Aircraft operators licensed by the Canadian Transportation Agency to transport persons, mail and/or goods by air.

**Levels I to III air carriers (Defn 2000)**– This includes every Canadian air carrier that, in each of the two calendar years immediately preceding the report year, realized annual gross revenues of \$1,000,000 or more for the air services for which the air carrier held a licence. Also includes foreign air carriers.

**Levels IV to VI air carriers (Defn 2000)**– Canadian air carriers not classified in report level I-III that, in each of the two calendar years immediately preceding the report year, realized annual gross revenues of less than \$1,000,000 for the air services for which the air carrier held a licence. Since 2000, levels IV and VI are no longer applicable.

#### Aircraft movement

A take off, a landing, or a simulated approach by an aircraft. ATC Manops amendment 8-8-83. NC-703.

#### Class of operation

Aircraft movements are classified as either “Itinerant” or “Local”.

#### Commercial

Flights by aircraft operators licensed by the Canadian Transportation Agency to perform commercial air services. Commercial operations are divided into two categories: **Air carrier** and **Other commercial**.

#### Domestic itinerant movements

Movements, at a Canadian airport, of aircraft departing to or arriving from another point in Canada.

#### FSS

Flight service station.

#### Government – Civil

Aircraft owned by federal, provincial and municipal bodies as well as foreign states, but excluding those owned by crown corporations, boards and commissions. Such aircraft are coded “3” under “Purpose” in the Canadian civil aircraft register.

#### Government – Military

Aircraft of any branch of the armed forces of any nation.

### Gross take-off weight

The maximum weight for which the aircraft is licensed to operate. For operational purposes, all weights are rounded upwards to the next 1,000 kilograms. Thus 3,200 kilograms becomes 4,000 kilograms.

### I.F.R. flight

A flight conducted in accordance with Instrument flight rules.

### International movements

Movements, at a Canadian airport, of aircraft arriving from or departing to a point outside Canada. International movements are subclassified into “transborder” (to or from a point in the United States including Alaska but excluding Hawaii), and “other international” (to or from points in countries other than Canada and the United States).

Since aircraft movements are reported on the basis of place “arrived from” or “departed to”, an arrival at Mirabel airport from London, England would appear under “other international”. If the same aircraft moved on to Toronto, both the departure at Mirabel and the arrival at Toronto would be shown as “domestic”.

### Itinerant movements

At Airports **with** control towers and/or Flight service stations: for the purpose of completing air traffic records, itinerant movements are considered as movements in which aircraft proceed to or arrive from another location; or where aircraft leave the circuit but return without landing at another airport. At Airports **without** control towers: an aircraft movement in which the aircraft arrives from or departs to a point other than the reporting airport; or a movement by an aircraft that leaves the close proximity of an airport and returns without landing at another airport.

### Local movements

At Airports **with** control towers and/or Flight service stations: for the purpose of completing air traffic records, local movements are considered as movements in which the aircraft remains in the circuit. At Airports **without** control towers: an aircraft movement in which the aircraft remains in the close proximity of the airport. Local movements are often carried out during training flights (touch-and-go), equipment tests etc.

### Other commercial

Flights performed by **Commercial** aircraft operators not included in the **Air carrier** categories. Flying schools, agricultural sprayers, water-bombers, aerial photography and survey, etc.

### Power plant

The source of propulsion. For example, piston engines, turbo-propellers and jet engines. “Helicopters”, in this report, include both piston and turboshaft-driven engines.

### Private aircraft

Aircraft used solely for private purposes, not for hire and compensation, which are classified as “Private” or “Private Restricted” in the Canadian civil aircraft register or similar registries of other countries. Owners include individuals, groups and business firms.



### **Runway 88**

Through control zone flights, i.e. flights which communicate with the tower while transiting the tower control zone to another destination without landing at the reporting airport.

Data for these runways are not included in the grand total.

### **Simulated approaches**

Movements that are either missed instrument or practice instrument approaches without landing.

### **TC**

Transport Canada

### **Tower control zone**

A controlled airspace within the proximity of an air traffic control tower, usually within a radius of less than 24 kilometres of the tower.

### **V.F.R. flight**

A flight conducted in accordance with Visual flight rules.

### **Weight group**

The classification of weight classes in groups for statistical purposes.