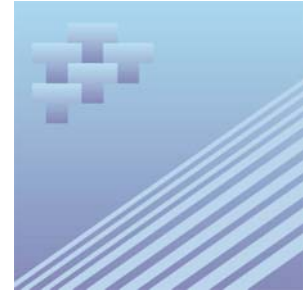




Catalogue no. 51-007-X

Aircraft Movement Statistics: NAV CANADA Towers and Flight Service Stations (TP 141)



April 2008



Statistics
Canada

Statistique
Canada

Canada

How to obtain more information

For information about this product or the wide range of services and data available from Statistics Canada, visit our website at www.statcan.ca, e-mail us at infostats@statcan.ca, or telephone us, Monday to Friday from 8:30 a.m. to 4:30 p.m., at the following numbers:

Statistics Canada's National Contact Centre

Toll-free telephone (Canada and the United States):

Inquiries line	1-800-263-1136
National telecommunications device for the hearing impaired	1-800-363-7629
Fax line	1-877-287-4369

Local or international calls:

Inquiries line	1-613-951-8116
Fax line	1-613-951-0581

Depository Services Program

Inquiries line	1-800-635-7943
Fax line	1-800-565-7757

To access this product

This product, Catalogue no. 51-007-X, is available free in electronic format. To obtain a single issue, visit our website at www.statcan.ca and select "Publications" > "Free Internet publications."

Standards of service to the public

Statistics Canada is committed to serving its clients in a prompt, reliable and courteous manner. To this end, Statistics Canada has developed *standards of service* that its employees observe. To obtain a copy of these service standards, please contact Statistics Canada toll-free at 1-800-263-1136. The service standards are also published on www.statcan.ca under "About us" > "Providing services to Canadians."



Statistics Canada
Transportation Division

Aircraft Movement Statistics: NAV CANADA Towers and Flight Service Stations (TP 141)

April 2008

Published by authority of the Minister responsible for Statistics Canada © Minister of Industry, 2008 and the © Minister of Transport, 2008.

All rights reserved. The content of this electronic publication may be reproduced, in whole or in part, and by any means, without further permission from Statistics Canada, subject to the following conditions: that it be done solely for the purposes of private study, research, criticism, review or newspaper summary, and/or for non-commercial purposes; and that Statistics Canada be fully acknowledged as follows: Source (or "Adapted from", if appropriate): Statistics Canada, year of publication, name of product, catalogue number, volume and issue numbers, reference period and page(s). Otherwise, no part of this publication may be reproduced, stored in a retrieval system or transmitted in any form, by any means—electronic, mechanical or photocopy—or for any purposes without prior written permission of Licensing Services, Client Services Division, Statistics Canada, Ottawa, Ontario, Canada K1A 0T6.

May 2008

Catalogue no. 51-007-X

ISSN 1911-6314

Frequency: Monthly

Ottawa

La version française de cette publication est disponible sur demande (n° 51-007-X au catalogue).

Note of appreciation

Canada owes the success of its statistical system to a long standing partnership between Statistics Canada, the citizens of Canada, its businesses, governments and other institutions. Accurate and timely statistical information could not be produced without their continued cooperation and goodwill.

User information

Symbols

The following standard symbols are used in Statistics Canada publications:

- . not available for any reference period
- .. not available for a specific reference period
- ... not applicable
- 0 true zero or a value rounded to zero
- 0^s value rounded to 0 (zero) where there is a meaningful distinction between true zero and the value that was rounded
- p preliminary
- r revised
- x suppressed to meet the confidentiality requirements of the *Statistics Act*
- E use with caution
- F too unreliable to be published

Acknowledgements

This publication was prepared by the Aviation Statistics Centre, of the Transportation Division, Statistics Canada under the general direction of **Gord Baldwin**, Director, Transportation Division and **Norah Hillary**, Chief, Aviation Statistics Centre. **Kathie Davidson**, **Rose Krakower**, **John Scolli**, **Sylvie Savard** and **Jim Charinos** contributed to the preparation of this publication.

Table of contents

Highlights	5
Analysis	6
Related products	7
Statistical tables	
1 Total aircraft movements by class of operation	10
1-1 NAV CANADA towers	10
1-2 NAV CANADA flight service stations	11
2 Total aircraft movements, civil and military	12
2-1 NAV CANADA towers	12
2-2 NAV CANADA flight service stations	13
3 Itinerant movements by type of operator	14
3-1 NAV CANADA towers	14
3-2 NAV CANADA flight service stations	15
4 Itinerant movements by I.F.R. (Instrument flight rules) and V.F.R. (Visual flight rules) and runway 88 movements	16
4-1 NAV CANADA towers	16
4-2 NAV CANADA flight service stations	17
5 Itinerant movements by type of power plant	18
5-1 NAV CANADA towers	18
5-2 NAV CANADA flight service stations	19
6 Itinerant movements by aircraft weight group	20
6-1 NAV CANADA towers	20
6-2 NAV CANADA flight service stations	21
7 Itinerant movements, domestic, transborder and international	22
7-1 NAV CANADA towers	22
7-2 NAV CANADA flight service stations	26

Table of contents – continued

8	Total aircraft movements, peak hour and peak day	31
8-1	NAV CANADA towers	31
8-2	NAV CANADA flight service stations	32
9	Itinerant aircraft movements, peak hour and peak day	33
9-1	NAV CANADA towers	33
9-2	NAV CANADA flight service stations	34
10	Local movements, peak hour and peak day	35
10-1	NAV CANADA towers	35
10-2	NAV CANADA flight service stations	36
11	Local movements - civil, peak hour and peak day	37
11-1	NAV CANADA towers	37
11-2	NAV CANADA flight service stations	38
12	Local movements - military, peak hour and peak day	39
12-1	NAV CANADA towers	39
12-2	NAV CANADA flight service stations	40

Data quality, concepts and methodology

Methodology	41
Data quality and limitations	43

Appendix

I	Factors influencing the data	44
II	Glossary of terms	45

Highlights

Aircraft take-offs and landings at Canadian airports with NAV CANADA air traffic control towers and flight service stations increased in April 2008 compared to April 2007. These 95 airports reported 553,855 movements in April 2008 compared with 504,640 movements at 95 airports in April 2007, an increase of 9.8% (+49,215 movements).

Itinerant movements (flights from one airport to another) increased by 9.4% (+31,913 movements) in April 2008 compared with the same month a year earlier.

Local movements (flights that remain in the vicinity of the airport) increased by 10.5% (+17,302 movements) in April 2008 compared with April 2007.

Table 1
Distribution of aircraft movements at NAV CANADA Towers and Flight Service Stations

	NAV CANADA towers		NAV CANADA Flight Service Stations		Total	
	number	Change from April 2008/ April 2007 percent	number	Change from April 2008/ April 2007 percent	number	Change from April 2008/ April 2007 percent
Grand total	441,152	10.3	112,703	7.8	553,855	9.8
Itinerant movements						
Air carriers	211,140	7.8	58,324	11.8	269,464	8.7
Other commercial movements	43,283	25.2	6,291	11.2	49,574	23.3
Private movements	30,242	9.7	8,885	-9.6	39,127	4.6
Government civil movements	5,395	-5.2	2,153	0.6	7,548	-3.6
Government military movements	3,573	5.0	1,307	-29.6	4,880	-7.2
Itinerant total	293,633	10.0	76,960	7.4	370,593	9.4
Local movements						
Civil local movements	145,906	11.2	34,995	8.8	180,901	10.7
Military local movements	1,613	-10.9	748	4.8	2,361	-6.5
Local total	147,519	10.9	35,743	8.7	183,262	10.5

Analysis

Aircraft take-offs and landings at Canadian airports with NAV CANADA air traffic control towers and flight service stations increased in April 2008 compared to April 2007. These 95 airports reported 553,855 movements in April 2008 compared with 504,640 movements at 95 airports in April 2007, an increase of 9.8% (+49,215 movements).

Itinerant movements (flights from one airport to another) increased by 9.4% (+31,913 movements) in April 2008 compared with the same month a year earlier.

Local movements (flights that remain in the vicinity of the airport) increased by 10.5% (+17,302 movements) in April 2008 compared with April 2007.

Airports with NAV CANADA air traffic control towers

The 42 Canadian airports with NAV CANADA air traffic control towers reported 441,152 aircraft take-offs and landings in April, up 10.3% (+41,036 movements) compared with April 2007. Year-over-year increases in aircraft movements were reported by 26 of these airports in April 2008. The variations ranged from an increase of 182.5% at London, Ontario to a decline of 20.3% at Kelowna, British Columbia.

Itinerant movements (flights from one airport to another) increased by 10.0% (+26,607 movements) in April compared with the same month a year earlier. Year-over-year variations in itinerant movements ranged from a 72.5% increase (+1,278 movements) at London, Ontario to a decline of 11.6% (-174 movements) at Edmonton/Villeneuve, Alberta.

Local movements (flights that remain in the vicinity of the airport) increased by 10.9% (+14,429 movements) in April compared with April 2007. London, Ontario recorded the largest gain in local movements, increasing by 8,232 movements (+391.3%) while Thunder Bay, Ontario reported 1,856 fewer movements (-40.3%) compared with April 2007.

Airports with NAV CANADA flight service stations

The 53 Canadian airports with NAV CANADA flight service stations reported 112,703 aircraft take-offs and landings in April, up 7.8% (8,179 movements) compared with April 2007. Year-over-year increases in aircraft movements were reported by 30 of these airports in April 2008. The variations ranged from a 287.9% increase (+4,834 movements) at Fredericton International, New Brunswick to a decline of -44.3% (-598 movements) at High Level, Alberta

Itinerant movements (flights from one airport to another) increased by 7.4% (+5,306 movements) in April compared with the same month a year earlier. Year-over-year variations in itinerant movements ranged from a 134.0% increase (+1,982 movements) at Fredericton International, New Brunswick to a decline of 29.6% (-283 movements) at Ottawa/Gatineau, Quebec.

Local movements (flights that remain in the vicinity of the airport) recorded in April 2008 increased by 8.7% (+2,873 movements) compared with the same month a year earlier. Fredericton International, New Brunswick recorded the largest gain in local movements, increasing by 2,852 movements (+1,426.0%) compared with April 2007.

Related products

Selected CANSIM tables from Statistics Canada

401-0005	Aircraft movements by class of operation, airports with NAV CANADA towers, preliminary, monthly
401-0006	Aircraft movements by class of operation, airports with NAV CANADA towers, preliminary, annual
401-0007	Aircraft movements, by class of operation and peak hour and peak day of movements, airports with NAV CANADA towers, monthly
401-0008	Aircraft movements, by civil and military movements, airports with NAV CANADA towers, monthly
401-0009	Itinerant movements, by type of operation, airports with NAV CANADA towers, monthly
401-0010	Itinerant movements, by instrument flight rules, visual flight rules and runway 88, airports with NAV CANADA towers, monthly
401-0011	Itinerant movements, by type of power plant, airports with NAV CANADA towers, monthly
401-0012	Itinerant movements, by aircraft gross take-off weight, airports with NAV CANADA towers, monthly
401-0013	Domestic and international itinerant movements, by type of operation, airports with NAV CANADA towers, monthly
401-0014	Aircraft movements, by class of operation and peak hour and peak day of movements, airports with NAV CANADA flight service stations, monthly
401-0015	Aircraft movements, by civil and military movements, airports with NAV CANADA flight service stations, monthly
401-0016	Itinerant movements, by type of operation, airports with NAV CANADA flight service stations, monthly
401-0017	Itinerant movements, by instrument flight rules, visual flight rules and runway 88, airports with NAV CANADA flight service stations, monthly
401-0018	Itinerant movements, by type of power plant, airports with NAV CANADA flight service stations, monthly
401-0019	Itinerant movements, by aircraft gross take-off weight, airports with NAV CANADA flight service stations, monthly
401-0020	Domestic and international itinerant movements, by type of operation, airports with NAV CANADA flight service stations, monthly

Selected surveys from Statistics Canada

2715 Aircraft Movement Statistics

Selected summary tables from Statistics Canada

- *Aircraft movements by class of operation (monthly)*

Statistical tables

Table 1-1
Total aircraft movements by class of operation — NAV CANADA towers

	Total		Itinerant		Local	
	Rank of movements	Number of movements	Rank of movements	Number of movements	Rank of movements	Number of movements
Abbotsford	8	16,304	14	6,748	4	9,556
Boundary Bay	6	17,911	12	7,317	2	10,594
Calgary International	3	19,732	3	19,612	38	120
Calgary/Springbank	12	12,705	19	5,459	6	7,246
Chicoutimi/St-Honoré	23	8,376	32	3,007	13	5,369
Edmonton City Centre	27	6,421	20	5,329	30	1,092
Edmonton International	17	10,664	7	10,380	37	284
Edmonton/Villeneuve	34	5,253	41	1,327	14	3,926
Gander International	33	5,695	33	2,707	21	2,988
Halifax/Robert L Stanfield International	26	7,349	15	6,684	35	665
Hamilton	32	5,711	27	3,797	25	1,914
Kelowna	25	7,646	24	4,636	20	3,010
Kitchener/Waterloo	16	11,412	22	4,906	8	6,506
Langley	20	9,158	28	3,732	12	5,426
London	7	17,219	13	6,883	3	10,336
Moncton/Greater Moncton International	14	12,493	16	6,389	10	6,104
Montréal/Mirabel International	41	2,680	38	1,920	33	760
Montréal/Pierre Elliott Trudeau International	4	19,237	4	19,237	0	0
Montréal/St-Hubert	5	18,783	11	7,743	1	11,040
Oshawa	28	6,184	36	2,504	17	3,680
Ottawa/Macdonald-Cartier International	11	13,730	6	11,092	23	2,638
Pitt Meadows	18	10,425	29	3,547	7	6,878
Prince George	36	4,687	37	2,411	24	2,276
Québec/Jean Lesage International	15	12,109	9	8,366	16	3,743
Regina International	35	4,729	30	3,515	29	1,214
Saskatoon/John G Diefenbaker International	21	8,763	18	5,653	19	3,110
Sault Ste. Marie	29	6,009	34	2,651	18	3,358
St. John's International	37	3,445	31	3,057	36	388
St-Jean	42	2,237	42	1,319	32	918
Sudbury	39	3,293	35	2,627	34	666
Thunder Bay	24	7,924	21	5,175	22	2,749
Toronto/Buttonville Municipal	9	15,847	10	8,191	5	7,656
Toronto/City Centre	22	8,603	23	4,823	15	3,780
Toronto/Lester B Pearson International	1	35,948	1	35,948	0	0
Vancouver Harbour	31	5,903	17	5,903	0	0
Vancouver International	2	26,609	2	26,609	0	0
Victoria International	10	15,420	8	8,993	9	6,427
Whitehorse International	40	2,830	40	1,510	28	1,320
Windsor	38	3,430	39	1,866	26	1,564
Winnipeg/James Armstrong Richardson International	13	12,661	5	11,651	31	1,010
Winnipeg/St. Andrews	19	9,667	26	3,937	11	5,730
Yellowknife	30	5,950	25	4,472	27	1,478
Total of NAV CANADA towers (42)	.	441,152	.	293,633	.	147,519

Table 1-2
Total aircraft movements by class of operation — NAV CANADA flight service stations

	Total		Itinerant		Local	
	Rank of movements	Number of movements	Rank of movements	Number of movements	Rank of movements	Number of movements
Brandon Municipal	28	1,756	30	1,110	16	646
Campbell River	16	2,424	14	1,848	19	576
Castlegar	37	1,160	46	670	22	490
Charlottetown	11	3,335	19	1,621	8	1,714
Churchill	44	943	36	931	47	12
Cranbrook	43	965	40	889	39	76
Deer Lake	27	1,799	22	1,501	26	298
Fort McMurray	3	5,010	1	4,053	14	957
Fort Nelson	31	1,373	27	1,151	29	222
Fort St John	14	2,943	6	2,435	21	508
Fredericton International	2	6,513	3	3,461	2	3,052
Grande Prairie	5	4,095	7	2,336	7	1,759
High Level	46	753	47	659	36	94
Îles-de-la-Madeleine	50	493	50	493	0	0
Inuvik/Mike Zubko	39	1,109	31	1,093	45	16
Iqaluit	25	1,843	18	1,629	30	214
Kamloops	13	3,211	9	2,149	12	1,062
Kenora	34	1,346	39	902	24	444
Kingston	12	3,247	13	1,909	9	1,338
Kuujuuaq	36	1,187	34	1,059	34	128
Kuujuuarapik	49	564	49	564	0	0
La Grande Rivière	42	1,025	35	1,021	48	4
La Ronge	26	1,811	20	1,585	28	226
Lethbridge	18	2,394	24	1,442	15	952
Lloydminster	35	1,339	43	743	17	596
Medicine Hat	30	1,405	37	924	23	481
Mont-Joli	53	389	52	363	44	26
Nanaimo	10	3,413	8	2,151	10	1,262
Norman Wells	29	1,410	26	1,320	37	90
North Bay	1	7,279	5	2,469	1	4,810
Ottawa/Gatineau	9	3,477	25	1,351	4	2,126
Peace River	40	1,082	45	672	25	410
Penticton	4	4,203	16	1,783	3	2,420
Port Hardy	41	1,043	38	917	35	126
Prince Albert	24	1,877	17	1,691	32	186
Prince Rupert	52	414	53	354	42	60
Rankin Inlet	38	1,131	29	1,131	0	0
Red Deer Regional	7	4,008	12	2,014	6	1,994
Rouyn-Noranda	32	1,358	33	1,070	27	288
Saint John	20	2,144	21	1,580	20	564
Sept-Îles	17	2,396	15	1,812	18	584
Sioux Lookout	19	2,172	10	2,109	41	63
Smithers	48	643	48	613	43	30
St Anthony	51	468	51	468	0	0
St Catharines	8	3,563	23	1,479	5	2,084
Terrace	33	1,350	28	1,146	31	204
Thompson	15	2,925	4	2,795	33	130
Timmins	22	2,124	11	2,060	40	64
Val-d'Or	21	2,133	32	1,086	13	1,047
Victoria Harbour	6	4,020	2	4,006	46	14
Wabush	47	681	44	681	0	0
Whitecourt	23	2,086	41	876	11	1,210
Williams Lake	45	871	42	785	38	86
Total of all flight service stations (53)	.	112,703	.	76,960	.	35,743

Table 2-1
Total aircraft movements, civil and military — NAV CANADA towers

	Civil movements			Military movements			
	Total	Itinerant		Civil	Total	Itinerant	Military
		Commercial	Private and government				
	number						
Abbotsford	16,263	5,643	1,068	9,552	41	37	4
Boundary Bay	17,893	5,705	1,594	10,594	18	18	0
Calgary International	19,637	18,271	1,248	118	95	93	2
Calgary/Springbank	12,665	3,831	1,597	7,237	40	31	9
Chicoutimi/St-Honoré	8,376	2,832	175	5,369	0	0	0
Edmonton City Centre	6,358	3,734	1,546	1,078	63	49	14
Edmonton International	10,597	9,892	426	279	67	62	5
Edmonton/Villeneuve	5,187	984	277	3,926	66	66	0
Gander International	5,119	2,146	303	2,670	576	258	318
Halifax/Robert L. Stanfield International	7,124	6,141	394	589	225	149	76
Hamilton	5,699	3,020	771	1,908	12	6	6
Kelowna	7,568	3,938	660	2,970	78	38	40
Kitchener/Waterloo	11,351	3,882	965	6,504	61	59	2
Langley	9,150	2,515	1,209	5,426	8	8	0
London	17,203	4,876	2,001	10,326	16	6	10
Moncton/Greater Moncton International	12,475	6,014	357	6,104	18	18	0
Montréal/Mirabel International	2,543	1,332	495	716	137	93	44
Montréal/Pierre Elliott Trudeau International	19,218	17,399	1,819	0	19	19	0
Montréal/St-Hubert	18,571	6,047	1,496	11,028	212	200	12
Oshawa	6,182	1,749	753	3,680	2	2	0
Ottawa/Macdonald-Cartier International	13,500	9,845	1,044	2,611	230	203	27
Pitt Meadows	10,341	2,334	1,129	6,878	84	84	0
Prince George	4,680	2,132	272	2,276	7	7	0
Québec/Jean Lesage International	11,894	6,665	1,489	3,740	215	212	3
Regina International	4,322	2,658	528	1,136	407	329	78
Saskatoon/John G. Diefenbaker International	8,570	4,657	857	3,056	193	139	54
Sault Ste. Marie	5,987	2,293	336	3,358	22	22	0
St. John's International	3,257	2,651	218	388	188	188	0
St-Jean	1,958	523	517	918	279	279	0
Sudbury	3,263	2,127	470	666	30	30	0
Thunder Bay	7,881	4,696	438	2,747	43	41	2
Toronto/Buttonville Municipal	15,842	6,013	2,173	7,656	5	5	0
Toronto/City Centre	8,537	4,115	642	3,780	66	66	0
Toronto/Lester B. Pearson International	35,930	34,434	1,496	0	18	18	0
Vancouver Harbour	5,903	5,861	42	0	0	0	0
Vancouver International	26,598	25,414	1,184	0	11	11	0
Victoria International	14,876	7,405	1,467	6,004	544	121	423
Whitehorse International	2,788	1,158	328	1,302	42	24	18
Windsor	3,421	1,522	339	1,560	9	5	4
Winnipeg/James Armstrong Richardson International	11,774	10,186	930	658	887	535	352
Winnipeg/St. Andrews	9,655	3,505	420	5,730	12	12	0
Yellowknife	5,810	4,278	164	1,368	140	30	110
Total of NAV CANADA towers (42)	435,966	254,423	35,637	145,906	5,186	3,573	1,613

Table 2-2
Total aircraft movements, civil and military — NAV CANADA flight service stations

	Civil movements				Military movements		
	Total	Itinerant		Civil	Total	Itinerant	Military
		Commercial	Private and government				
	number						
Brandon Municipal	1,495	585	316	594	261	209	52
Campbell River	2,410	1,328	506	576	14	14	0
Castlegar	1,150	599	61	490	10	10	0
Charlottetown	3,323	1,448	161	1,714	12	12	0
Churchill	941	914	15	12	2	2	0
Cranbrook	858	613	185	60	107	91	16
Deer Lake	1,797	1,460	39	298	2	2	0
Fort McMurray	5,006	3,653	396	957	4	4	0
Fort Nelson	1,373	990	161	222	0	0	0
Fort St John	2,943	2,218	217	508	0	0	0
Fredericton International	6,348	3,061	259	3,028	165	141	24
Grande Prairie	4,095	2,027	309	1,759	0	0	0
High Level	753	593	66	94	0	0	0
Îles-de-la-Madeleine	487	436	51	0	6	6	0
Inuvik/Mike Zubko	1,097	995	86	16	12	12	0
Iqaluit	1,825	1,470	141	214	18	18	0
Kamloops	3,194	1,738	394	1,062	17	17	0
Kenora	1,288	752	92	444	58	58	0
Kingston	3,134	1,373	473	1,288	113	63	50
Kuujuaq	1,187	1,011	48	128	0	0	0
Kuujuarapik	564	556	8	0	0	0	0
La Grande Rivière	1,023	993	26	4	2	2	0
La Ronge	1,736	1,301	209	226	75	75	0
Lethbridge	2,324	1,103	313	908	70	26	44
Lloydminster	1,327	487	244	596	12	12	0
Medicine Hat	1,383	728	176	479	22	20	2
Mont-Joli	386	324	38	24	3	1	2
Nanaimo	2,856	1,272	826	758	557	53	504
Norman Wells	1,410	1,278	42	90	0	0	0
North Bay	7,204	1,847	553	4,804	75	69	6
Ottawa/Gatineau	3,465	672	667	2,126	12	12	0
Peace River	1,082	635	37	410	0	0	0
Penticton	4,159	1,484	291	2,384	44	8	36
Port Hardy	1,025	737	162	126	18	18	0
Prince Albert	1,834	1,295	353	186	43	43	0
Prince Rupert	406	310	36	60	8	8	0
Rankin Inlet	1,129	1,117	12	0	2	2	0
Red Deer Regional	4,006	1,456	556	1,994	2	2	0
Rouyn-Noranda	1,354	895	171	288	4	4	0
Saint John	2,112	1,195	355	562	32	30	2
Sept-Îles	2,390	1,661	145	584	6	6	0
Sioux Lookout	2,169	2,078	30	61	3	1	2
Smithers	639	559	50	30	4	4	0
St Anthony	464	436	28	0	4	4	0
St Catharines	3,359	840	443	2,076	204	196	8
Terrace	1,344	1,085	55	204	6	6	0
Thompson	2,923	2,636	157	130	2	2	0
Timmins	2,096	1,827	205	64	28	28	0
Val-d'Or	2,133	858	228	1,047	0	0	0
Victoria Harbour	4,014	3,594	406	14	6	6	0
Wabush	677	648	29	0	4	4	0
Whitecourt	2,084	786	88	1,210	2	2	0
Williams Lake	867	658	123	86	4	4	0
Total of all flight service stations (53)	110,648	64,615	11,038	34,995	2,055	1,307	748

Table 3-1
Itinerant movements by type of operator — NAV CANADA towers

	Total	Air carrier movements		Other commercial	Private	Government movements	
		Level I-III and Foreign	Level IV-VI			Civil	Military
number							
Abbotsford	6,748	568	3,893	1,182	906	162	37
Boundary Bay	7,317	9	1,333	4,363	1,526	68	18
Calgary International	19,612	16,652	1,059	560	1,104	144	93
Calgary/Springbank	5,459	54	934	2,843	1,566	31	31
Chicoutimi/St-Honoré	3,007	10	732	2,090	173	2	0
Edmonton City Centre	5,329	1,505	866	1,363	1,156	390	49
Edmonton International	10,380	9,386	402	104	343	83	62
Edmonton/Villeneuve	1,327	8	405	571	271	6	66
Gander International	2,707	573	1,506	67	239	64	258
Halifax/Robert L Stanfield International	6,684	5,599	364	178	332	62	149
Hamilton	3,797	1,941	919	160	569	202	6
Kelowna	4,636	2,405	261	1,272	569	91	38
Kitchener/Waterloo	4,906	495	2,634	753	947	18	59
Langley	3,732	116	208	2,191	1,195	14	8
London	6,883	1,290	1,269	2,317	1,952	49	6
Moncton/Greater Moncton International	6,389	1,847	3,942	225	148	209	18
Montréal/Mirabel International	1,920	785	476	71	463	32	93
Montréal/Pierre Elliott Trudeau International	19,237	16,113	817	469	1,628	191	19
Montréal/St-Hubert	7,743	3,039	735	2,273	1,357	139	200
Oshawa	2,504	160	122	1,467	747	6	2
Ottawa/Macdonald-Cartier International	11,092	7,228	402	2,215	556	488	203
Pitt Meadows	3,547	39	912	1,383	1,100	29	84
Prince George	2,411	1,266	695	171	239	33	7
Québec/Jean Lesage International	8,366	3,813	862	1,990	923	566	212
Regina International	3,515	2,017	593	48	306	222	329
Saskatoon/John G Diefenbaker International	5,653	2,840	1,383	434	517	340	139
Sault Ste. Marie	2,651	854	202	1,237	215	121	22
St. John's International	3,057	1,971	617	63	170	48	188
St-Jean	1,319	129	149	245	477	40	279
Sudbury	2,627	1,443	605	79	304	166	30
Thunder Bay	5,175	2,992	702	1,002	263	175	41
Toronto/Buttonville Municipal	8,191	340	853	4,820	2,114	59	5
Toronto/City Centre	4,823	1,517	995	1,603	620	22	66
Toronto/Lester B Pearson International	35,948	33,774	446	214	1,458	38	18
Vancouver Harbour	5,903	5,274	252	335	38	4	0
Vancouver International	26,609	23,433	1,501	480	887	297	11
Victoria International	8,993	3,235	3,116	1,054	1,400	67	121
Whitehorse International	1,510	685	465	8	284	44	24
Windsor	1,866	541	887	94	317	22	5
Winnipeg/James Armstrong Richardson International	11,651	9,135	956	95	365	565	535
Winnipeg/St. Andrews	3,937	520	1,928	1,057	416	4	12
Yellowknife	4,472	3,447	694	137	82	82	30
Total of NAV CANADA towers (42)	293,633	169,048	42,092	43,283	30,242	5,395	3,573

Table 3-2
Itinerant movements by type of operator — NAV CANADA flight service stations

	Total	Air carrier movements		Other commercial	Private	Government movements	
		Level I-III and Foreign	Level IV-VI			Civil	Military
	number						
Brandon Municipal	1,110	110	420	55	271	45	209
Campbell River	1,848	717	224	387	494	12	14
Castlegar	670	289	50	260	59	2	10
Charlottetown	1,621	629	218	601	113	48	12
Churchill	931	861	51	2	4	11	2
Cranbrook	889	502	78	33	176	9	91
Deer Lake	1,501	1,220	233	7	12	27	2
Fort McMurray	4,053	2,579	730	344	346	50	4
Fort Nelson	1,151	322	369	299	157	4	0
Fort St John	2,435	725	1,402	91	207	10	0
Fredericton International	3,461	741	2,278	42	111	148	141
Grande Prairie	2,336	1,033	826	168	299	10	0
High Level	659	156	425	12	48	18	0
Îles-de-la-Madeleine	493	310	122	4	2	49	6
Inuvik/Mike Zubko	1,093	252	743	0	17	69	12
Iqaluit	1,629	1,160	229	81	67	74	18
Kamloops	2,149	1,014	374	350	331	63	17
Kenora	902	363	369	20	66	26	58
Kingston	1,909	594	316	463	381	92	63
Kuujuuaq	1,059	865	144	2	22	26	0
Kuujuuarapik	564	554	2	0	6	2	0
La Grande Rivière	1,021	700	290	3	12	14	2
La Ronge	1,585	1,233	63	5	29	180	75
Lethbridge	1,442	476	26	601	297	16	26
Lloydminster	743	138	297	52	190	54	12
Medicine Hat	924	580	81	67	168	8	20
Mont-Joli	363	288	14	22	14	24	1
Nanaimo	2,151	498	571	203	791	35	53
Norman Wells	1,320	982	294	2	26	16	0
North Bay	2,469	537	889	421	490	63	69
Ottawa/Gatineau	1,351	200	205	267	554	113	12
Peace River	672	322	229	84	31	6	0
Penticton	1,783	516	813	155	279	12	8
Port Hardy	917	624	71	42	96	66	18
Prince Albert	1,691	1,152	118	25	156	197	43
Prince Rupert	354	245	47	18	13	23	8
Rankin Inlet	1,131	1,105	10	2	7	5	2
Red Deer Regional	2,014	283	953	220	490	66	2
Rouyn-Noranda	1,070	624	146	125	149	22	4
Saint John	1,580	815	264	116	344	11	30
Sept-Îles	1,812	1,231	362	68	94	51	6
Sioux Lookout	2,109	1,755	316	7	18	12	1
Smithers	613	448	99	12	50	0	4
St Anthony	468	338	26	72	0	28	4
St Catharines	1,479	13	701	126	424	19	196
Terrace	1,146	597	442	46	31	24	6
Thompson	2,795	2,193	443	0	29	128	2
Timmins	2,060	1,601	214	12	164	41	28
Val-d'Or	1,086	674	117	67	201	27	0
Victoria Harbour	4,006	3,565	27	2	339	67	6
Wabush	681	556	90	2	27	2	4
Whitecourt	876	55	553	178	60	28	2
Williams Lake	785	419	191	48	123	0	4
Total of all flight service stations (53)	76,960	39,759	18,565	6,291	8,885	2,153	1,307

Table 4-1
Itinerant movements by I.F.R. (Instrument flight rules) and V.F.R. (Visual flight rules) and runway 88 movements
— NAV CANADA towers

	Itinerant movements					Runway 88 number
	Total of IFR and VFR flights ¹	Instrument flight rules	Percentage instrument flight rules	Visual flight rules	Percentage visual flight rules	
	number		percent	number	percent	
Abbotsford	6,748	1,795	26.6	4,953	73.3	1,269
Boundary Bay	7,317	498	6.8	6,819	93.1	412
Calgary International	19,612	18,564	94.6	1,048	5.3	650
Calgary/Springbank	5,459	312	5.7	5,147	94.2	2,142
Chicoutimi/St-Honoré	3,007	250	8.3	2,757	91.6	42
Edmonton City Centre	5,329	2,746	51.5	2,583	48.4	2,449
Edmonton International	10,380	9,963	95.9	417	4.0	885
Edmonton/Villeneuve	1,327	21	1.5	1,306	98.4	201
Gander International	2,707	1,231	45.4	1,476	54.5	223
Halifax/Robert L Stanfield International	6,684	6,074	90.8	610	9.1	246
Hamilton	3,797	2,572	67.7	1,225	32.2	705
Kelowna	4,636	2,587	55.8	2,049	44.1	523
Kitchener/Waterloo	4,906	976	19.8	3,930	80.1	488
Langley	3,732	52	1.3	3,680	98.6	1,857
London	6,883	1,564	22.7	5,319	77.2	499
Moncton/Greater Moncton International	6,389	2,348	36.7	4,041	63.2	135
Montréal/Mirabel International	1,920	1,026	53.4	894	46.5	862
Montréal/Pierre Elliott Trudeau International	19,237	18,305	95.1	932	4.8	1,505
Montréal/St-Hubert	7,743	1,549	20.0	6,194	79.9	1,627
Oshawa	2,504	110	4.3	2,394	95.6	673
Ottawa/Macdonald-Cartier International	11,092	8,033	72.4	3,059	27.5	949
Pitt Meadows	3,547	17	0.4	3,530	99.5	2,802
Prince George	2,411	1,413	58.6	998	41.3	569
Québec/Jean Lesage International	8,366	4,711	56.3	3,655	43.6	865
Regina International	3,515	2,536	72.1	979	27.8	114
Saskatoon/John G Diefenbaker International	5,653	3,383	59.8	2,270	40.1	204
Sault Ste. Marie	2,651	1,107	41.7	1,544	58.2	117
St. John's International	3,057	2,743	89.7	314	10.2	123
St-Jean	1,319	251	19.0	1,068	80.9	252
Sudbury	2,627	1,789	68.1	838	31.8	225
Thunder Bay	5,175	3,406	65.8	1,769	34.1	177
Toronto/Butterville Municipal	8,191	771	9.4	7,420	90.5	532
Toronto/City Centre	4,823	1,860	38.5	2,963	61.4	1,557
Toronto/Lester B Pearson International	35,948	35,845	99.7	103	0.2	92
Vancouver Harbour	5,903	25	0.4	5,878	99.5	1,585
Vancouver International	26,609	20,559	77.2	6,050	22.7	15,843
Victoria International	8,993	3,233	35.9	5,760	64.0	10,856
Whitehorse International	1,510	479	31.7	1,031	68.2	415
Windsor	1,866	670	35.9	1,196	64.0	81
Winnipeg/James Armstrong Richardson International	11,651	9,592	82.3	2,059	17.6	618
Winnipeg/St. Andrews	3,937	59	1.4	3,878	98.5	126
Yellowknife	4,472	2,196	49.1	2,276	50.8	573
Total of NAV CANADA towers (42)	293,633	177,221	60.4	116,412	39.6	56,068

1. Total excludes runway 88 flights.

Table 4-2

Itinerant movements by I.F.R. (Instrument flight rules) and V.F.R. (Visual flight rules) and runway 88 movements — NAV CANADA flight service stations

	Itinerant movements				Runway 88 number	
	Total of IFR and VFR flights ¹	Instrument flight rules	Percentage instrument flight rules	Visual flight rules		Percentage visual flight rules
	number		percent	number		percent
Brandon Municipal	1,110	167	15.0	943	84.9	10
Campbell River	1,848	425	22.9	1,423	77.0	348
Castlegar	670	310	46.2	360	53.7	80
Charlottetown	1,621	694	42.8	927	57.1	23
Churchill	931	807	86.6	124	13.3	78
Cranbrook	889	581	65.3	308	34.6	113
Deer Lake	1,501	1,353	90.1	148	9.8	2
Fort McMurray	4,053	2,166	53.4	1,887	46.5	23
Fort Nelson	1,151	359	31.1	792	68.8	105
Fort St John	2,435	738	30.3	1,697	69.6	109
Fredericton International	3,461	845	24.4	2,616	75.5	101
Grande Prairie	2,336	1,224	52.3	1,112	47.6	100
High Level	659	230	34.9	429	65.0	203
Îles-de-la-Madeleine	493	341	69.1	152	30.8	121
Inuvik/Mike Zubko	1,093	357	32.6	736	67.3	12
Iqaluit	1,629	1,292	79.3	337	20.6	2
Kamloops	2,149	1,248	58.0	901	41.9	230
Kenora	902	415	46.0	487	53.9	58
Kingston	1,909	755	39.5	1,154	60.4	84
Kuujuuaq	1,059	419	39.5	640	60.4	0
Kuujuuarapik	564	234	41.4	330	58.5	0
La Grande Rivière	1,021	678	66.4	343	33.5	290
La Ronge	1,585	816	51.4	769	48.5	356
Lethbridge	1,442	533	36.9	909	63.0	65
Lloydminster	743	289	38.8	454	61.1	11
Medicine Hat	924	349	37.7	575	62.2	142
Mont-Joli	363	288	79.3	75	20.6	14
Nanaimo	2,151	578	26.8	1,573	73.1	964
Norman Wells	1,320	192	14.5	1,128	85.4	12
North Bay	2,469	756	30.6	1,713	69.3	326
Ottawa/Gatineau	1,351	197	14.5	1,154	85.4	82
Peace River	672	283	42.1	389	57.8	210
Penticton	1,783	481	26.9	1,302	73.0	135
Port Hardy	917	230	25.0	687	74.9	213
Prince Albert	1,691	1,299	76.8	392	23.1	36
Prince Rupert	354	286	80.7	68	19.2	16
Rankin Inlet	1,131	866	76.5	265	23.4	2
Red Deer Regional	2,014	408	20.2	1,606	79.7	299
Rouyn-Noranda	1,070	756	70.6	314	29.3	58
Saint John	1,580	1,022	64.6	558	35.3	40
Sept-Îles	1,812	1,347	74.3	465	25.6	229
Sioux Lookout	2,109	1,570	74.4	539	25.5	83
Smithers	613	451	73.5	162	26.4	175
St Anthony	468	286	61.1	182	38.8	2
St Catharines	1,479	95	6.4	1,384	93.5	288
Terrace	1,146	631	55.0	515	44.9	178
Thompson	2,795	1,380	49.3	1,415	50.6	24
Timmins	2,060	1,634	79.3	426	20.6	96
Val-d'Or	1,086	633	58.2	453	41.7	211
Victoria Harbour	4,006	22	0.5	3,984	99.4	599
Wabush	681	579	85.0	102	14.9	64
Whitecourt	876	95	10.8	781	89.1	48
Williams Lake	785	481	61.2	304	38.7	158
Total of all flight service stations (53)	76,960	34,471	44.8	42,489	55.2	7,228

1. Total excludes runway 88 flights.

Table 5-1
Itinerant movements by type of power plant — NAV CANADA towers

	Total	Jet	Turboprop	Piston	Helicopters	Gliders
	number					
Abbotsford	6,748	407	843	4,025	1,470	3
Boundary Bay	7,317	2	119	6,842	354	0
Calgary International	19,612	13,351	5,019	809	433	0
Calgary/Springbank	5,459	28	123	4,250	1,058	0
Chicoutimi/St-Honoré	3,007	6	47	2,482	459	13
Edmonton City Centre	5,329	451	2,045	2,002	831	0
Edmonton International	10,380	6,543	3,307	480	50	0
Edmonton/Villeneuve	1,327	15	14	802	436	60
Gander International	2,707	680	465	1,381	179	2
Halifax/Robert L. Stanfield International	6,684	4,099	1,819	464	302	0
Hamilton	3,797	1,554	838	1,300	105	0
Kelowna	4,636	1,367	1,317	1,529	423	0
Kitchener/Waterloo	4,906	238	504	3,791	373	0
Langley	3,732	0	112	3,030	588	2
London	6,883	364	1,257	5,051	210	1
Moncton/Greater Moncton International	6,389	1,179	825	4,296	89	0
Montréal/Mirabel International	1,920	823	369	526	202	0
Montréal/Pierre Elliott Trudeau International	19,237	12,903	5,291	758	285	0
Montréal/St-Hubert	7,743	295	753	5,960	733	2
Oshawa	2,504	7	80	2,289	126	2
Ottawa/Macdonald-Cartier International	11,092	5,747	2,342	2,686	317	0
Pitt Meadows	3,547	3	6	3,150	370	18
Prince George	2,411	471	984	235	720	1
Québec/Jean Lesage International	8,366	1,367	2,970	2,918	1,100	11
Regina International	3,515	1,404	848	1,229	33	1
Saskatoon/John G. Diefenbaker International	5,653	1,513	1,748	2,336	56	0
Sault Ste. Marie	2,651	26	1,107	1,459	59	0
St. John's International	3,057	1,174	1,519	60	304	0
St-Jean	1,319	2	100	992	30	195
Sudbury	2,627	46	1,748	513	320	0
Thunder Bay	5,175	852	2,782	1,243	298	0
Toronto/Buttonville Municipal	8,191	104	357	7,048	680	2
Toronto/City Centre	4,823	0	1,791	2,637	395	0
Toronto/Lester B. Pearson International	35,948	29,923	5,866	136	23	0
Vancouver Harbour	5,903	0	3,109	1,726	1,068	0
Vancouver International	26,609	12,116	10,030	3,379	1,084	0
Victoria International	8,993	1,059	2,611	4,941	382	0
Whitehorse International	1,510	298	390	549	273	0
Windsor	1,866	76	559	1,193	38	0
Winnipeg/James Armstrong Richardson International	11,651	5,326	4,591	1,570	164	0
Winnipeg/St. Andrews	3,937	1	408	3,355	172	1
Yellowknife	4,472	818	2,671	396	587	0
Total of NAV CANADA towers (42)	293,633	106,638	73,684	95,818	17,179	314

Table 5-2
Itinerant movements by type of power plant — NAV CANADA flight service stations

	Total	Jet	Turboprop	Piston	Helicopters	Gliders
	number					
Brandon Municipal	1,110	36	193	772	43	66
Campbell River	1,848	79	763	663	343	0
Castlegar	670	10	309	304	47	0
Charlottetown	1,621	237	336	996	52	0
Churchill	931	6	863	14	48	0
Cranbrook	889	40	524	226	99	0
Deer Lake	1,501	245	1,114	70	72	0
Fort McMurray	4,053	873	1,571	894	715	0
Fort Nelson	1,151	33	339	289	490	0
Fort St John	2,435	253	521	252	1,409	0
Fredericton International	3,461	284	561	2,463	153	0
Grande Prairie	2,336	187	976	572	601	0
High Level	659	6	292	214	147	0
Îles-de-la-Madeleine	493	8	312	162	11	0
Inuvik/Mike Zubko	1,093	131	669	62	231	0
Iqaluit	1,629	400	1,138	20	71	0
Kamloops	2,149	33	1,107	754	255	0
Kenora	902	12	507	172	211	0
Kingston	1,909	34	737	975	163	0
Kuujuuaq	1,059	130	771	82	76	0
Kuujuuarapik	564	2	560	2	0	0
La Grande Rivière	1,021	20	913	79	9	0
La Ronge	1,585	0	1,230	289	66	0
Lethbridge	1,442	61	490	857	34	0
Lloydminster	743	10	265	415	53	0
Medicine Hat	924	10	396	476	42	0
Mont-Joli	363	10	289	59	5	0
Nanaimo	2,151	27	520	1,432	168	4
Norman Wells	1,320	140	536	513	131	0
North Bay	2,469	67	799	773	813	17
Ottawa/Gatineau	1,351	16	213	927	193	2
Peace River	672	4	256	197	215	0
Penticton	1,783	5	557	671	550	0
Port Hardy	917	20	532	195	170	0
Prince Albert	1,691	6	1,280	349	56	0
Prince Rupert	354	17	275	13	49	0
Rankin Inlet	1,131	149	973	5	4	0
Red Deer Regional	2,014	64	396	1,268	277	9
Rouyn-Noranda	1,070	79	758	205	28	0
Saint John	1,580	356	604	560	60	0
Sept-Îles	1,812	35	1,149	403	225	0
Sioux Lookout	2,109	4	1,802	278	25	0
Smithers	613	22	477	46	68	0
St Anthony	468	0	404	14	50	0
St Catharines	1,479	47	20	1,144	266	2
Terrace	1,146	20	651	41	434	0
Thompson	2,795	137	1,988	387	283	0
Timmins	2,060	12	1,723	218	107	0
Val-d'Or	1,086	103	611	239	132	1
Victoria Harbour	4,006	0	2,828	302	876	0
Wabush	681	12	549	31	89	0
Whitecourt	876	10	95	98	673	0
Williams Lake	785	21	430	235	99	0
Total of all flight service stations (53)	76,960	4,523	38,172	22,677	11,487	101

Table 6-1
Itinerant movements by aircraft weight group — NAV CANADA towers

	Gross take-off weight in kilograms									
	2 000 and under	2 001 to 4 000	4 001 to 5 670	5 671 to 9 000	9 001 to 18 000	18 001 to 35 000	35 001 to 70 000	70 001 to 90 000	90 001 to 136 000	136 001 and over
	number									
Abbotsford	4,521	723	280	301	97	424	391	11	0	0
Boundary Bay	6,746	426	136	4	1	3	1	0	0	0
Calgary International	797	561	1,644	2,076	1,096	3,780	7,412	1,023	651	572
Calgary/Springbank	4,886	365	183	22	0	0	3	0	0	0
Chicoutimi/St-Honoré	2,528	415	58	6	0	0	0	0	0	0
Edmonton City Centre	2,314	581	1,531	681	182	34	6	0	0	0
Edmonton International	255	217	494	1,065	480	2,517	4,589	344	228	191
Edmonton/Villeneuve	1,193	57	77	0	0	0	0	0	0	0
Gander International	1,306	37	134	219	389	311	64	96	27	124
Halifax/Robert L. Stanfield International	247	238	487	847	858	1,335	1,990	316	159	207
Hamilton	1,159	404	321	361	235	175	442	8	649	43
Kelowna	1,807	146	267	670	143	647	941	0	15	0
Kitchener/Waterloo	3,934	237	316	71	250	27	68	3	0	0
Langley	3,478	188	61	0	1	0	4	0	0	0
London	5,088	277	264	121	804	182	140	6	1	0
Moncton/Greater Moncton International	4,193	240	384	262	158	551	313	2	282	4
Montréal/Mirabel International	628	131	58	139	52	308	154	1	297	152
Montréal/Pierre Elliott Trudeau International	788	226	795	1,033	3,008	5,960	4,143	1,483	98	1,703
Montréal/St-Hubert	5,757	776	834	146	186	19	11	0	14	0
Oshawa	2,197	173	62	2	61	7	0	2	0	0
Ottawa/Macdonald-Cartier International	2,680	166	1,052	253	804	2,783	2,291	694	242	127
Pitt Meadows	3,479	52	11	2	2	0	1	0	0	0
Prince George	584	264	343	606	10	426	178	0	0	0
Québec/Jean Lesage International	2,930	898	897	239	1,413	1,380	476	7	0	126
Regina International	838	461	400	425	51	471	778	0	89	2
Saskatoon/John G. Diefenbaker International	2,030	408	642	690	242	761	837	2	39	2
Sault Ste. Marie	1,469	162	566	60	180	212	0	2	0	0
St. John's International	96	35	448	451	774	125	806	200	90	32
St-Jean	1,099	98	120	0	0	0	0	0	0	2
Sudbury	475	447	1,220	100	123	252	10	0	0	0
Thunder Bay	1,339	197	2,344	263	159	521	348	4	0	0
Toronto/Buttonville Municipal	7,150	585	296	100	44	11	5	0	0	0
Toronto/City Centre	2,452	366	684	21	0	1,292	0	8	0	0
Toronto/Lester B. Pearson International	88	356	358	2,636	3,711	7,944	12,769	3,928	494	3,664
Vancouver Harbour	193	3,990	1,629	2	89	0	0	0	0	0
Vancouver International	997	4,187	1,199	2,837	2,705	4,625	5,692	1,380	747	2,240
Victoria International	4,278	1,180	316	515	1,313	749	492	106	44	0
Whitehorse International	713	177	156	51	0	261	152	0	0	0
Windsor	1,127	154	41	106	337	93	8	0	0	0
Winnipeg/James Armstrong Richardson International	895	655	3,204	544	922	1,612	2,639	356	787	37
Winnipeg/St. Andrews	3,062	708	156	0	11	0	0	0	0	0
Yellowknife	602	571	923	304	280	954	612	174	52	0
Total of NAV CANADA towers (42)	92,398	22,535	25,391	18,231	21,171	40,752	48,766	10,156	5,005	9,228

Table 6-2
Itinerant movements by aircraft weight group — NAV CANADA flight service stations

	Gross take-off weight in kilograms									
	2 000 and under	2 001 to 4 000	4 001 to 5 670	5 671 to 9 000	9 001 to 18 000	18 001 to 35 000	35 001 to 70 000	70 001 to 90 000	90 001 to 136 000	136 001 and over
	number									
Brandon Municipal	835	41	158	45	14	0	0	17	0	0
Campbell River	935	77	23	484	245	78	6	0	0	0
Castlegar	343	8	22	82	7	208	0	0	0	0
Charlottetown	844	241	42	112	144	176	62	0	0	0
Churchill	45	27	167	109	134	420	25	4	0	0
Cranbrook	222	78	143	214	111	121	0	0	0	0
Deer Lake	116	22	110	132	877	123	120	0	1	0
Fort McMurray	1,253	481	550	640	223	570	334	2	0	0
Fort Nelson	623	144	147	133	104	0	0	0	0	0
Fort St John	1,534	47	300	231	105	218	0	0	0	0
Fredericton International	2,348	156	211	123	167	420	28	6	0	2
Grande Prairie	963	245	400	175	23	407	123	0	0	0
High Level	340	54	135	130	0	0	0	0	0	0
Îles-de-la-Madeleine	2	160	106	9	189	23	4	0	0	0
Inuvik/Mike Zubko	224	26	583	96	6	35	119	4	0	0
Iqaluit	48	12	419	166	242	425	175	18	120	4
Kamloops	745	257	140	288	258	455	6	0	0	0
Kenora	223	18	609	4	28	18	0	2	0	0
Kingston	1,026	79	165	513	91	21	0	14	0	0
Kuujuuaq	94	64	621	8	94	62	25	4	87	0
Kuujuuarapik	0	2	318	2	176	66	0	0	0	0
La Grande Rivière	11	188	153	14	135	469	6	45	0	0
La Ronge	142	232	497	135	291	288	0	0	0	0
Lethbridge	741	148	153	240	122	18	14	4	2	0
Lloydminster	404	88	149	100	2	0	0	0	0	0
Medicine Hat	472	53	175	221	1	0	0	2	0	0
Mont-Joli	45	16	157	3	126	16	0	0	0	0
Nanaimo	1,181	381	78	101	35	372	3	0	0	0
Norman Wells	484	189	444	14	8	37	134	10	0	0
North Bay	1,513	174	363	106	188	111	4	10	0	0
Ottawa/Gatineau	1,006	112	118	101	2	8	0	4	0	0
Peace River	197	152	279	42	2	0	0	0	0	0
Penticton	1,124	88	60	324	80	106	1	0	0	0
Port Hardy	128	206	317	80	160	20	6	0	0	0
Prince Albert	232	123	227	313	385	411	0	0	0	0
Prince Rupert	16	40	41	20	80	157	0	0	0	0
Rankin Inlet	9	139	288	89	255	202	139	2	8	0
Red Deer Regional	1,278	163	289	108	17	95	64	0	0	0
Rouyn-Noranda	219	10	365	13	233	173	57	0	0	0
Saint John	420	205	171	270	158	280	76	0	0	0
Sept-Îles	267	353	455	83	614	38	0	0	0	2
Sioux Lookout	169	155	1,332	443	0	10	0	0	0	0
Smithers	112	27	65	227	65	117	0	0	0	0
St Anthony	20	52	247	56	93	0	0	0	0	0
St Catharines	1,298	110	33	19	12	4	1	2	0	0
Terrace	419	30	94	236	202	165	0	0	0	0
Thompson	322	591	1,196	35	288	262	101	0	0	0
Timmins	215	217	886	113	518	105	0	6	0	0
Val-d'Or	332	29	260	22	298	63	2	0	80	0
Victoria Harbour	14	2,269	1,615	0	108	0	0	0	0	0
Wabush	71	37	118	11	440	2	2	0	0	0
Whitecourt	669	58	117	28	0	0	4	0	0	0
Williams Lake	258	80	34	383	20	0	10	0	0	0
Total of all flight service stations (53)	26,551	8,954	16,145	7,646	8,176	7,375	1,651	156	298	8

Table 7-1
Itinerant movements, domestic, transborder and international — NAV CANADA towers

	Total	Air carrier movements		Other commercial	Private	Government movements	
		Level I-III and Foreign	Level IV-VI			Civil	Military
number							
Abbotsford							
Domestic	6,677	560	3,865	1,179	874	162	37
Transborder	70	8	28	3	31	0	0
Other international	1	0	0	0	1	0	0
Total	6,748	568	3,893	1,182	906	162	37
Boundary Bay							
Domestic	7,248	9	1,322	4,335	1,496	68	18
Transborder	69	0	11	28	30	0	0
Other international	0	0	0	0	0	0	0
Total	7,317	9	1,333	4,363	1,526	68	18
Calgary International							
Domestic	15,616	13,108	968	503	807	142	88
Transborder	3,436	2,992	91	57	290	2	4
Other international	560	552	0	0	7	0	1
Total	19,612	16,652	1,059	560	1,104	144	93
Calgary/Springbank							
Domestic	5,394	54	934	2,835	1,509	31	31
Transborder	65	0	0	8	57	0	0
Other international	0	0	0	0	0	0	0
Total	5,459	54	934	2,843	1,566	31	31
Chicoutimi/St-Honoré							
Domestic	3,004	10	732	2,090	170	2	0
Transborder	3	0	0	0	3	0	0
Other international	0	0	0	0	0	0	0
Total	3,007	10	732	2,090	173	2	0
Edmonton City Centre							
Domestic	5,290	1,505	859	1,362	1,126	389	49
Transborder	39	0	7	1	30	1	0
Other international	0	0	0	0	0	0	0
Total	5,329	1,505	866	1,363	1,156	390	49
Edmonton International							
Domestic	8,904	8,022	376	102	269	83	52
Transborder	1,246	1,138	26	2	71	0	9
Other international	230	226	0	0	3	0	1
Total	10,380	9,386	402	104	343	83	62
Edmonton/Villeneuve							
Domestic	1,326	8	405	571	270	6	66
Transborder	1	0	0	0	1	0	0
Other international	0	0	0	0	0	0	0
Total	1,327	8	405	571	271	6	66
Gander International							
Domestic	2,144	382	1,505	30	31	63	133
Transborder	228	48	0	15	105	1	59
Other international	335	143	1	22	103	0	66
Total	2,707	573	1,506	67	239	64	258
Halifax/Robert L Stanfield International							
Domestic	5,088	4,277	321	78	238	62	112
Transborder	971	851	31	6	65	0	18
Other international	625	471	12	94	29	0	19
Total	6,684	5,599	364	178	332	62	149
Hamilton							
Domestic	3,154	1,481	910	159	398	200	6
Transborder	620	440	9	1	168	2	0
Other international	23	20	0	0	3	0	0
Total	3,797	1,941	919	160	569	202	6

Table 7-1 – continued

Itinerant movements, domestic, transborder and international — NAV CANADA towers

	Total	Air carrier movements		Other commercial	Private	Government movements	
		Level I-III and Foreign	Level IV-VI			Civil	Military
number							
Kelowna							
Domestic	4,318	2,141	257	1,268	526	89	37
Transborder	316	263	4	4	42	2	1
Other international	2	1	0	0	1	0	0
Total	4,636	2,405	261	1,272	569	91	38
Kitchener/Waterloo							
Domestic	4,505	289	2,589	742	812	18	55
Transborder	398	204	45	10	135	0	4
Other international	3	2	0	1	0	0	0
Total	4,906	495	2,634	753	947	18	59
Langley							
Domestic	3,727	116	208	2,189	1,192	14	8
Transborder	5	0	0	2	3	0	0
Other international	0	0	0	0	0	0	0
Total	3,732	116	208	2,191	1,195	14	8
London							
Domestic	6,492	1,028	1,262	2,310	1,838	49	5
Transborder	387	260	7	6	113	0	1
Other international	4	2	0	1	1	0	0
Total	6,883	1,290	1,269	2,317	1,952	49	6
Moncton/Greater Moncton International							
Domestic	6,247	1,720	3,941	225	137	209	15
Transborder	102	90	1	0	10	0	1
Other international	40	37	0	0	1	0	2
Total	6,389	1,847	3,942	225	148	209	18
Montréal/Mirabel International							
Domestic	1,723	594	476	71	458	32	92
Transborder	196	190	0	0	5	0	1
Other international	1	1	0	0	0	0	0
Total	1,920	785	476	71	463	32	93
Montréal/Pierre Elliott Trudeau International							
Domestic	10,748	8,543	710	345	950	190	10
Transborder	6,550	5,750	90	90	616	1	3
Other international	1,939	1,820	17	34	62	0	6
Total	19,237	16,113	817	469	1,628	191	19
Montréal/St-Hubert							
Domestic	7,536	3,011	732	2,265	1,192	138	198
Transborder	202	28	3	6	162	1	2
Other international	5	0	0	2	3	0	0
Total	7,743	3,039	735	2,273	1,357	139	200
Oshawa							
Domestic	2,461	156	121	1,464	712	6	2
Transborder	43	4	1	3	35	0	0
Other international	0	0	0	0	0	0	0
Total	2,504	160	122	1,467	747	6	2
Ottawa/Macdonald-Cartier International							
Domestic	8,717	5,056	384	2,205	410	479	183
Transborder	2,227	2,045	15	9	135	9	14
Other international	148	127	3	1	11	0	6
Total	11,092	7,228	402	2,215	556	488	203
Pitt Meadows							
Domestic	3,538	39	912	1,383	1,091	29	84
Transborder	9	0	0	0	9	0	0
Other international	0	0	0	0	0	0	0
Total	3,547	39	912	1,383	1,100	29	84

Table 7-1 – continued

Itinerant movements, domestic, transborder and international — NAV CANADA towers

	Total	Air carrier movements		Other commercial	Private	Government movements	
		Level I-III and Foreign	Level IV-VI			Civil	Military
number							
Prince George							
Domestic	2,408	1,266	695	171	236	33	7
Transborder	3	0	0	0	3	0	0
Other international	0	0	0	0	0	0	0
Total	2,411	1,266	695	171	239	33	7
Québec/Jean Lesage International							
Domestic	7,752	3,295	850	1,976	859	566	206
Transborder	374	300	3	9	58	0	4
Other international	240	218	9	5	6	0	2
Total	8,366	3,813	862	1,990	923	566	212
Regina International							
Domestic	3,353	1,888	591	47	281	220	326
Transborder	160	127	2	1	25	2	3
Other international	2	2	0	0	0	0	0
Total	3,515	2,017	593	48	306	222	329
Saskatoon/John G Diefenbaker International							
Domestic	5,537	2,766	1,380	427	487	338	139
Transborder	114	72	3	7	30	2	0
Other international	2	2	0	0	0	0	0
Total	5,653	2,840	1,383	434	517	340	139
Sault Ste. Marie							
Domestic	2,627	854	198	1,234	198	121	22
Transborder	24	0	4	3	17	0	0
Other international	0	0	0	0	0	0	0
Total	2,651	854	202	1,237	215	121	22
St. John's International							
Domestic	2,627	1,781	617	41	95	46	47
Transborder	197	74	0	9	37	0	77
Other international	233	116	0	13	38	2	64
Total	3,057	1,971	617	63	170	48	188
St-Jean							
Domestic	1,317	129	149	245	475	40	279
Transborder	2	0	0	0	2	0	0
Other international	0	0	0	0	0	0	0
Total	1,319	129	149	245	477	40	279
Sudbury							
Domestic	2,613	1,440	602	79	297	165	30
Transborder	13	2	3	0	7	1	0
Other international	1	1	0	0	0	0	0
Total	2,627	1,443	605	79	304	166	30
Thunder Bay							
Domestic	5,028	2,873	697	1,000	243	175	40
Transborder	147	119	5	2	20	0	1
Other international	0	0	0	0	0	0	0
Total	5,175	2,992	702	1,002	263	175	41
Toronto/Buttonville Municipal							
Domestic	7,873	284	816	4,787	1,922	59	5
Transborder	313	52	37	33	191	0	0
Other international	5	4	0	0	1	0	0
Total	8,191	340	853	4,820	2,114	59	5
Toronto/City Centre							
Domestic	4,314	1,170	955	1,599	502	22	66
Transborder	509	347	40	4	118	0	0
Other international	0	0	0	0	0	0	0
Total	4,823	1,517	995	1,603	620	22	66

Table 7-1 – continued

Itinerant movements, domestic, transborder and international — NAV CANADA towers

	Total	Air carrier movements		Other commercial	Private	Government movements	
		Level I-III and Foreign	Level IV-VI			Civil	Military
number							
Toronto/Lester B Pearson International							
Domestic	15,703	14,727	314	95	515	38	14
Transborder	15,929	14,796	121	97	911	0	4
Other international	4,316	4,251	11	22	32	0	0
Total	35,948	33,774	446	214	1,458	38	18
Vancouver Harbour							
Domestic	5,819	5,201	251	331	32	4	0
Transborder	84	73	1	4	6	0	0
Other international	0	0	0	0	0	0	0
Total	5,903	5,274	252	335	38	4	0
Vancouver International							
Domestic	19,961	17,281	1,386	453	541	289	11
Transborder	4,938	4,576	22	12	326	2	0
Other international	1,710	1,576	93	15	20	6	0
Total	26,609	23,433	1,501	480	887	297	11
Victoria International							
Domestic	8,348	2,863	3,079	1,040	1,188	67	111
Transborder	605	370	21	4	201	0	9
Other international	40	2	16	10	11	0	1
Total	8,993	3,235	3,116	1,054	1,400	67	121
Whitehorse International							
Domestic	1,447	671	465	8	248	43	12
Transborder	62	14	0	0	35	1	12
Other international	1	0	0	0	1	0	0
Total	1,510	685	465	8	284	44	24
Windsor							
Domestic	1,765	530	869	93	250	22	1
Transborder	96	11	17	1	63	0	4
Other international	5	0	1	0	4	0	0
Total	1,866	541	887	94	317	22	5
Winnipeg/James Armstrong Richardson International							
Domestic	10,418	8,082	926	81	247	563	519
Transborder	1,161	994	30	14	111	2	10
Other international	72	59	0	0	7	0	6
Total	11,651	9,135	956	95	365	565	535
Winnipeg/St. Andrews							
Domestic	3,929	519	1,927	1,056	411	4	12
Transborder	8	1	1	1	5	0	0
Other international	0	0	0	0	0	0	0
Total	3,937	520	1,928	1,057	416	4	12
Yellowknife							
Domestic	4,467	3,446	694	136	81	82	28
Transborder	3	1	0	1	1	0	0
Other international	2	0	0	0	0	0	2
Total	4,472	3,447	694	137	82	82	30
Total of NAV CANADA towers (42)							
Domestic	241,163	123,175	41,250	42,610	25,614	5,358	3,156
Transborder	41,925	36,240	679	453	4,283	29	241
Other international	10,545	9,633	163	220	345	8	176
Total	293,633	169,048	42,092	43,283	30,242	5,395	3,573

Table 7-2
Itinerant movements, domestic, transborder and international — NAV CANADA flight service stations

	Total	Air carrier movements		Other commercial	Private	Government movements	
		Level I-III and Foreign	Level IV-VI			Civil	Military
number							
Brandon Municipal							
Domestic	1,096	110	418	53	262	45	208
Transborder	14	0	2	2	9	0	1
Other international	0	0	0	0	0	0	0
Total	1,110	110	420	55	271	45	209
Campbell River							
Domestic	1,826	717	223	387	473	12	14
Transborder	22	0	1	0	21	0	0
Other international	0	0	0	0	0	0	0
Total	1,848	717	224	387	494	12	14
Castlegar							
Domestic	663	289	48	260	54	2	10
Transborder	7	0	2	0	5	0	0
Other international	0	0	0	0	0	0	0
Total	670	289	50	260	59	2	10
Charlottetown							
Domestic	1,606	622	218	600	106	48	12
Transborder	10	2	0	1	7	0	0
Other international	5	5	0	0	0	0	0
Total	1,621	629	218	601	113	48	12
Churchill							
Domestic	931	861	51	2	4	11	2
Transborder	0	0	0	0	0	0	0
Other international	0	0	0	0	0	0	0
Total	931	861	51	2	4	11	2
Cranbrook							
Domestic	869	500	77	33	161	9	89
Transborder	20	2	1	0	15	0	2
Other international	0	0	0	0	0	0	0
Total	889	502	78	33	176	9	91
Deer Lake							
Domestic	1,497	1,216	233	7	12	27	2
Transborder	0	0	0	0	0	0	0
Other international	4	4	0	0	0	0	0
Total	1,501	1,220	233	7	12	27	2
Fort McMurray							
Domestic	4,052	2,579	730	344	345	50	4
Transborder	1	0	0	0	1	0	0
Other international	0	0	0	0	0	0	0
Total	4,053	2,579	730	344	346	50	4
Fort Nelson							
Domestic	1,151	322	369	299	157	4	0
Transborder	0	0	0	0	0	0	0
Other international	0	0	0	0	0	0	0
Total	1,151	322	369	299	157	4	0
Fort St John							
Domestic	2,433	725	1,402	91	205	10	0
Transborder	2	0	0	0	2	0	0
Other international	0	0	0	0	0	0	0
Total	2,435	725	1,402	91	207	10	0
Fredericton International							
Domestic	3,438	729	2,278	42	103	146	140
Transborder	11	0	0	0	8	2	1
Other international	12	12	0	0	0	0	0
Total	3,461	741	2,278	42	111	148	141

Table 7-2 – continued

Itinerant movements, domestic, transborder and international — NAV CANADA flight service stations

	Total	Air carrier movements		Other commercial	Private	Government movements	
		Level I-III and Foreign	Level IV-VI			Civil	Military
number							
Grande Prairie							
Domestic	2,332	1,032	826	168	296	10	0
Transborder	4	1	0	0	3	0	0
Other international	0	0	0	0	0	0	0
Total	2,336	1,033	826	168	299	10	0
High Level							
Domestic	659	156	425	12	48	18	0
Transborder	0	0	0	0	0	0	0
Other international	0	0	0	0	0	0	0
Total	659	156	425	12	48	18	0
Îles-de-la-Madeleine							
Domestic	491	308	122	4	2	49	6
Transborder	0	0	0	0	0	0	0
Other international	2	2	0	0	0	0	0
Total	493	310	122	4	2	49	6
Inuvik/Mike Zubko							
Domestic	1,090	252	741	0	16	69	12
Transborder	3	0	2	0	1	0	0
Other international	0	0	0	0	0	0	0
Total	1,093	252	743	0	17	69	12
Iqaluit							
Domestic	1,533	1,128	222	66	28	74	15
Transborder	30	7	7	3	13	0	0
Other international	66	25	0	12	26	0	3
Total	1,629	1,160	229	81	67	74	18
Kamloops							
Domestic	2,127	1,014	370	349	314	63	17
Transborder	22	0	4	1	17	0	0
Other international	0	0	0	0	0	0	0
Total	2,149	1,014	374	350	331	63	17
Kenora							
Domestic	896	363	369	20	62	26	56
Transborder	6	0	0	0	4	0	2
Other international	0	0	0	0	0	0	0
Total	902	363	369	20	66	26	58
Kingston							
Domestic	1,885	589	315	463	363	92	63
Transborder	24	5	1	0	18	0	0
Other international	0	0	0	0	0	0	0
Total	1,909	594	316	463	381	92	63
Kuujuuaq							
Domestic	1,057	863	144	2	22	26	0
Transborder	1	1	0	0	0	0	0
Other international	1	1	0	0	0	0	0
Total	1,059	865	144	2	22	26	0
Kuujuarapik							
Domestic	564	554	2	0	6	2	0
Transborder	0	0	0	0	0	0	0
Other international	0	0	0	0	0	0	0
Total	564	554	2	0	6	2	0
La Grande Rivière							
Domestic	1,021	700	290	3	12	14	2
Transborder	0	0	0	0	0	0	0
Other international	0	0	0	0	0	0	0
Total	1,021	700	290	3	12	14	2
La Ronge							
Domestic	1,585	1,233	63	5	29	180	75
Transborder	0	0	0	0	0	0	0
Other international	0	0	0	0	0	0	0
Total	1,585	1,233	63	5	29	180	75

Table 7-2 – continued

Itinerant movements, domestic, transborder and international — NAV CANADA flight service stations

	Total	Air carrier movements		Other commercial	Private	Government movements	
		Level I-III and Foreign	Level IV-VI			Civil	Military
number							
Lethbridge							
Domestic	1,368	471	25	599	235	16	22
Transborder	73	4	1	2	62	0	4
Other international	1	1	0	0	0	0	0
Total	1,442	476	26	601	297	16	26
Lloydminster							
Domestic	742	138	297	52	189	54	12
Transborder	1	0	0	0	1	0	0
Other international	0	0	0	0	0	0	0
Total	743	138	297	52	190	54	12
Medicine Hat							
Domestic	921	580	81	66	166	8	20
Transborder	3	0	0	1	2	0	0
Other international	0	0	0	0	0	0	0
Total	924	580	81	67	168	8	20
Mont-Joli							
Domestic	363	288	14	22	14	24	1
Transborder	0	0	0	0	0	0	0
Other international	0	0	0	0	0	0	0
Total	363	288	14	22	14	24	1
Nanaimo							
Domestic	2,105	493	569	203	752	35	53
Transborder	46	5	2	0	39	0	0
Other international	0	0	0	0	0	0	0
Total	2,151	498	571	203	791	35	53
Norman Wells							
Domestic	1,320	982	294	2	26	16	0
Transborder	0	0	0	0	0	0	0
Other international	0	0	0	0	0	0	0
Total	1,320	982	294	2	26	16	0
North Bay							
Domestic	2,444	535	889	419	472	61	68
Transborder	25	2	0	2	18	2	1
Other international	0	0	0	0	0	0	0
Total	2,469	537	889	421	490	63	69
Ottawa/Gatineau							
Domestic	1,348	200	205	267	551	113	12
Transborder	3	0	0	0	3	0	0
Other international	0	0	0	0	0	0	0
Total	1,351	200	205	267	554	113	12
Peace River							
Domestic	672	322	229	84	31	6	0
Transborder	0	0	0	0	0	0	0
Other international	0	0	0	0	0	0	0
Total	672	322	229	84	31	6	0
Penticton							
Domestic	1,767	513	813	155	267	12	7
Transborder	16	3	0	0	12	0	1
Other international	0	0	0	0	0	0	0
Total	1,783	516	813	155	279	12	8
Port Hardy							
Domestic	907	624	71	42	86	66	18
Transborder	10	0	0	0	10	0	0
Other international	0	0	0	0	0	0	0
Total	917	624	71	42	96	66	18

Table 7-2 – continued

Itinerant movements, domestic, transborder and international — NAV CANADA flight service stations

	Total	Air carrier movements		Other commercial	Private	Government movements	
		Level I-III and Foreign	Level IV-VI			Civil	Military
number							
Prince Albert							
Domestic	1,691	1,152	118	25	156	197	43
Transborder	0	0	0	0	0	0	0
Other international	0	0	0	0	0	0	0
Total	1,691	1,152	118	25	156	197	43
Prince Rupert							
Domestic	350	245	46	18	10	23	8
Transborder	4	0	1	0	3	0	0
Other international	0	0	0	0	0	0	0
Total	354	245	47	18	13	23	8
Rankin Inlet							
Domestic	1,131	1,105	10	2	7	5	2
Transborder	0	0	0	0	0	0	0
Other international	0	0	0	0	0	0	0
Total	1,131	1,105	10	2	7	5	2
Red Deer Regional							
Domestic	2,002	283	952	220	479	66	2
Transborder	12	0	1	0	11	0	0
Other international	0	0	0	0	0	0	0
Total	2,014	283	953	220	490	66	2
Rouyn-Noranda							
Domestic	1,070	624	146	125	149	22	4
Transborder	0	0	0	0	0	0	0
Other international	0	0	0	0	0	0	0
Total	1,070	624	146	125	149	22	4
Saint John							
Domestic	1,492	807	263	115	266	11	30
Transborder	80	3	1	1	75	0	0
Other international	8	5	0	0	3	0	0
Total	1,580	815	264	116	344	11	30
Sept-Îles							
Domestic	1,799	1,231	362	67	83	51	5
Transborder	12	0	0	1	10	0	1
Other international	1	0	0	0	1	0	0
Total	1,812	1,231	362	68	94	51	6
Sioux Lookout							
Domestic	2,109	1,755	316	7	18	12	1
Transborder	0	0	0	0	0	0	0
Other international	0	0	0	0	0	0	0
Total	2,109	1,755	316	7	18	12	1
Smithers							
Domestic	608	448	99	12	45	0	4
Transborder	5	0	0	0	5	0	0
Other international	0	0	0	0	0	0	0
Total	613	448	99	12	50	0	4
St Anthony							
Domestic	468	338	26	72	0	28	4
Transborder	0	0	0	0	0	0	0
Other international	0	0	0	0	0	0	0
Total	468	338	26	72	0	28	4
St Catharines							
Domestic	1,426	10	694	125	382	19	196
Transborder	52	3	7	1	41	0	0
Other international	1	0	0	0	1	0	0
Total	1,479	13	701	126	424	19	196

Table 7-2 – continued

Itinerant movements, domestic, transborder and international — NAV CANADA flight service stations

	Total	Air carrier movements		Other commercial	Private	Government movements	
		Level I-III and Foreign	Level IV-VI			Civil	Military
number							
Terrace							
Domestic	1,146	597	442	46	31	24	6
Transborder	0	0	0	0	0	0	0
Other international	0	0	0	0	0	0	0
Total	1,146	597	442	46	31	24	6
Thompson							
Domestic	2,794	2,192	443	0	29	128	2
Transborder	1	1	0	0	0	0	0
Other international	0	0	0	0	0	0	0
Total	2,795	2,193	443	0	29	128	2
Timmins							
Domestic	2,057	1,601	214	12	161	41	28
Transborder	3	0	0	0	3	0	0
Other international	0	0	0	0	0	0	0
Total	2,060	1,601	214	12	164	41	28
Val-d'Or							
Domestic	1,085	674	117	67	200	27	0
Transborder	1	0	0	0	1	0	0
Other international	0	0	0	0	0	0	0
Total	1,086	674	117	67	201	27	0
Victoria Harbour							
Domestic	3,683	3,565	26	2	17	67	6
Transborder	323	0	1	0	322	0	0
Other international	0	0	0	0	0	0	0
Total	4,006	3,565	27	2	339	67	6
Wabush							
Domestic	680	556	90	2	26	2	4
Transborder	1	0	0	0	1	0	0
Other international	0	0	0	0	0	0	0
Total	681	556	90	2	27	2	4
Whitecourt							
Domestic	876	55	553	178	60	28	2
Transborder	0	0	0	0	0	0	0
Other international	0	0	0	0	0	0	0
Total	876	55	553	178	60	28	2
Williams Lake							
Domestic	784	419	191	48	122	0	4
Transborder	1	0	0	0	1	0	0
Other international	0	0	0	0	0	0	0
Total	785	419	191	48	123	0	4
Total of all flight service stations (53)							
Domestic	76,010	39,665	18,531	6,264	8,110	2,149	1,291
Transborder	849	39	34	15	744	4	13
Other international	101	55	0	12	31	0	3
Total	76,960	39,759	18,565	6,291	8,885	2,153	1,307

Table 8-1
Total aircraft movements, peak hour and peak day — NAV CANADA towers

	Rank of movements	Number of movements	Peak hour occurrence			Peak day occurrence	
			Day in month	Hour in day	Number of movements	Day in month	Number of movements
Abbotsford	8	16,304	24	14	149	2	870
Boundary Bay	6	17,911	13	16	119	3	824
Calgary International	3	19,732	15	18	61	15	778
Calgary/Springbank	12	12,705	9	9	112	2	808
Chicoutimi/St-Honoré	23	8,376	14	16	95	9	615
Edmonton City Centre	27	6,421	13	11	55	11	339
Edmonton International	17	10,664	24	15	41	16	440
Edmonton/Villeneuve	34	5,253	27	15	81	27	470
Gander International	33	5,695	23	10	66	5	409
Halifax/Robert L Stanfield International	26	7,349	25	14	48	15	371
Hamilton	32	5,711	27	15	50	24	291
Kelowna	25	7,646	7	12	74	16	411
Kitchener/Waterloo	16	11,412	8	14	80	17	660
Langley	20	9,158	3	10	86	3	526
London	7	17,219	18	14	123	8	1,107
Moncton/Greater Moncton International	14	12,493	28	16	72	21	783
Montréal/Mirabel International	41	2,680	29	19	53	29	172
Montréal/Pierre Elliott Trudeau International	4	19,237	3	18	66	3	777
Montréal/St-Hubert	5	18,783	17	10	142	18	1,215
Oshawa	28	6,184	15	11	74	2	422
Ottawa/Macdonald-Cartier International	11	13,730	24	13	75	24	636
Pitt Meadows	18	10,425	3	15	120	26	853
Prince George	36	4,687	1	16	89	24	426
Québec/Jean Lesage International	15	12,109	21	14	90	17	616
Regina International	35	4,729	4	11	37	23	243
Saskatoon/John G Diefenbaker International	21	8,763	24	15	64	17	514
Sault Ste. Marie	29	6,009	16	11	66	17	354
St. John's International	37	3,445	5	15	45	1	183
St-Jean	42	2,237	8	18	244	8	292
Sudbury	39	3,293	10	21	30	10	219
Thunder Bay	24	7,924	18	15	90	16	445
Toronto/Buttonville Municipal	9	15,847	30	10	109	10	878
Toronto/City Centre	22	8,603	24	13	213	24	578
Toronto/Lester B Pearson International	1	35,948	16	18	107	3	1,302
Vancouver Harbour	31	5,903	2	16	39	10	258
Vancouver International	2	26,609	1	16	85	4	995
Victoria International	10	15,420	26	12	104	2	707
Whitehorse International	40	2,830	18	11	45	19	252
Windsor	38	3,430	21	16	47	29	217
Winnipeg/James Armstrong Richardson International	13	12,661	10	13	55	10	567
Winnipeg/St. Andrews	19	9,667	1	13	105	30	569
Yellowknife	30	5,950	2	16	56	30	302

Table 8-2
Total aircraft movements, peak hour and peak day — NAV CANADA flight service stations

	Rank of movements	Number of movements	Peak hour occurrence			Peak day occurrence	
			Day in month	Hour in day	Number of movements	Day in month	Number of movements
Brandon Municipal	28	1,756	3	14	55	27	145
Campbell River	16	2,424	1	17	41	1	167
Castlegar	37	1,160	14	8	46	11	140
Charlottetown	11	3,335	11	17	48	21	342
Churchill	44	943	5	18	9	15	51
Cranbrook	43	965	24	11	28	24	73
Deer Lake	27	1,799	9	14	27	10	115
Fort McMurray	3	5,010	3	16	42	11	247
Fort Nelson	31	1,373	19	16	39	10	85
Fort St John	14	2,943	4	14	45	3	235
Fredericton International	2	6,513	4	11	47	15	427
Grande Prairie	5	4,095	24	11	58	24	296
High Level	46	753	2	17	30	2	53
Îles-de-la-Madeleine	50	493	9	15	6	2	28
Inuvik/Mike Zubko	39	1,109	28	12	11	18	62
Iqaluit	25	1,843	24	15	21	22	104
Kamloops	13	3,211	12	10	49	30	219
Kenora	34	1,346	29	9	30	29	119
Kingston	12	3,247	6	10	48	27	216
Kuujuaq	36	1,187	23	18	18	28	67
Kuujuarapik	49	564	26	16	6	25	34
La Grande Rivière	42	1,025	14	10	11	8	58
La Ronge	26	1,811	27	11	21	28	112
Lethbridge	18	2,394	27	16	31	22	160
Lloydminster	35	1,339	13	16	31	13	106
Medicine Hat	30	1,405	1	14	69	12	98
Mont-Joli	53	389	16	10	10	16	33
Nanaimo	10	3,413	12	12	66	12	345
Norman Wells	29	1,410	8	17	19	28	76
North Bay	1	7,279	2	12	88	2	643
Ottawa/Gatineau	9	3,477	22	15	53	8	281
Peace River	40	1,082	2	10	47	2	109
Penticton	4	4,203	1	14	89	22	343
Port Hardy	41	1,043	17	10	24	17	111
Prince Albert	24	1,877	11	18	21	25	110
Prince Rupert	52	414	22	12	33	22	60
Rankin Inlet	38	1,131	11	12	11	18	71
Red Deer Regional	7	4,008	11	15	58	11	384
Rouyn-Noranda	32	1,358	2	17	26	2	80
Saint John	20	2,144	15	11	50	30	206
Sept-Îles	17	2,396	23	10	55	23	200
Sioux Lookout	19	2,172	30	12	23	30	119
Smithers	48	643	24	11	21	24	42
St Anthony	51	468	7	10	7	7	32
St Catharines	8	3,563	30	14	72	29	247
Terrace	33	1,350	1	8	28	26	108
Thompson	15	2,925	5	11	25	25	131
Timmins	22	2,124	26	7	21	24	116
Val-d'Or	21	2,133	11	14	80	24	198
Victoria Harbour	6	4,020	3	8	29	30	181
Wabush	47	681	29	13	8	24	39
Whitecourt	23	2,086	10	16	55	10	272
Williams Lake	45	871	6	15	18	6	53

Table 9-1
Itinerant aircraft movements, peak hour and peak day — NAV CANADA towers

	Rank of movements	Number of movements	Peak hour occurrence			Peak day occurrence	
			Day in month	Hour in day	Number of movements	Day in month	Number of movements
Abbotsford	14	6,748	3	11	52	3	373
Boundary Bay	12	7,317	2	17	46	2	423
Calgary International	3	19,612	15	18	61	15	774
Calgary/Springbank	19	5,459	11	14	49	11	389
Chicoutimi/St-Honoré	32	3,007	7	16	29	7	191
Edmonton City Centre	20	5,329	28	17	31	28	288
Edmonton International	7	10,380	3	8	37	23	425
Edmonton/Villeneuve	41	1,327	13	11	31	13	167
Gander International	33	2,707	24	15	19	16	185
Halifax/Robert L Stanfield International	15	6,684	25	14	34	15	277
Hamilton	27	3,797	10	12	20	24	191
Kelowna	24	4,636	26	15	27	26	213
Kitchener/Waterloo	22	4,906	5	16	36	5	295
Langley	28	3,732	12	11	32	12	247
London	13	6,883	14	15	42	2	356
Moncton/Greater Moncton International	16	6,389	15	12	34	15	420
Montréal/Mirabel International	38	1,920	24	14	19	24	120
Montréal/Pierre Elliott Trudeau International	4	19,237	3	18	66	3	777
Montréal/St-Hubert	11	7,743	22	15	46	25	419
Oshawa	36	2,504	15	14	22	5	161
Ottawa/Macdonald-Cartier International	6	11,092	5	12	45	24	484
Pitt Meadows	29	3,547	12	15	40	12	325
Prince George	37	2,411	23	12	20	23	149
Québec/Jean Lesage International	9	8,366	25	13	42	25	428
Regina International	30	3,515	2	10	19	29	174
Saskatoon/John G Diefenbaker International	18	5,653	17	14	29	17	290
Sault Ste. Marie	34	2,651	16	11	20	16	156
St. John's International	31	3,057	4	17	14	16	138
St-Jean	42	1,319	19	12	37	27	207
Sudbury	35	2,627	18	13	19	10	131
Thunder Bay	21	5,175	16	15	32	16	273
Toronto/Buttonville Municipal	10	8,191	10	16	54	10	426
Toronto/City Centre	23	4,823	25	11	27	10	225
Toronto/Lester B Pearson International	1	35,948	16	18	107	3	1,302
Vancouver Harbour	17	5,903	2	16	39	10	258
Vancouver International	2	26,609	1	16	85	4	995
Victoria International	8	8,993	25	15	44	3	408
Whitehorse International	40	1,510	11	13	13	11	81
Windsor	39	1,866	27	11	16	2	98
Winnipeg/James Armstrong Richardson International	5	11,651	10	11	42	10	505
Winnipeg/St. Andrews	26	3,937	19	12	27	7	205
Yellowknife	25	4,472	9	16	25	30	210

Table 9-2
Itinerant aircraft movements, peak hour and peak day — NAV CANADA flight service stations

	Rank of movements	Number of movements	Peak hour occurrence			Peak day occurrence	
			Day in month	Hour in day	Number of movements	Day in month	Number of movements
Brandon Municipal	30	1,110	27	11	29	27	129
Campbell River	14	1,848	16	10	25	16	117
Castlegar	46	670	3	9	8	3	46
Charlottetown	19	1,621	7	13	13	16	99
Churchill	36	931	15	10	8	15	51
Cranbrook	40	889	24	11	16	24	57
Deer Lake	22	1,501	11	18	13	9	66
Fort McMurray	1	4,053	2	8	22	30	192
Fort Nelson	27	1,151	16	9	14	29	65
Fort St John	6	2,435	1	8	26	15	132
Fredericton International	3	3,461	9	11	20	17	211
Grande Prairie	7	2,336	2	15	17	24	138
High Level	47	659	3	17	11	16	42
Îles-de-la-Madeleine	50	493	9	15	6	2	28
Inuvik/Mike Zubko	31	1,093	28	12	11	18	62
Iqaluit	18	1,629	19	11	11	18	83
Kamloops	9	2,149	2	13	15	30	99
Kenora	39	902	18	13	9	18	48
Kingston	13	1,909	20	11	16	20	91
Kuujuaq	34	1,059	30	10	9	28	61
Kuujuarapik	49	564	26	16	6	25	34
La Grande Rivière	35	1,021	14	10	11	14	57
La Ronge	20	1,585	2	15	12	30	85
Lethbridge	24	1,442	11	10	17	12	90
Lloydminster	43	743	13	15	12	13	46
Medicine Hat	37	924	14	14	15	12	60
Mont-Joli	52	363	4	7	4	16	19
Nanaimo	8	2,151	12	12	24	12	147
Norman Wells	26	1,320	22	14	12	11	65
North Bay	5	2,469	2	13	19	14	146
Ottawa/Gatineau	25	1,351	5	15	20	5	104
Peace River	45	672	11	14	11	29	47
Penticton	16	1,783	2	10	14	16	94
Port Hardy	38	917	22	14	11	10	57
Prince Albert	17	1,691	2	14	15	2	94
Prince Rupert	53	354	2	19	6	18	20
Rankin Inlet	29	1,131	11	12	11	18	71
Red Deer Regional	12	2,014	11	15	24	11	150
Rouyn-Noranda	33	1,070	22	16	9	7	53
Saint John	21	1,580	21	17	13	18	85
Sept-Îles	15	1,812	3	11	13	3	90
Sioux Lookout	10	2,109	18	17	17	28	106
Smithers	48	613	28	11	7	28	35
St Anthony	51	468	7	10	7	7	32
St Catharines	23	1,479	3	17	18	19	109
Terrace	28	1,146	25	15	11	21	67
Thompson	4	2,795	8	14	18	8	130
Timmins	11	2,060	12	15	12	24	106
Val-d'Or	32	1,086	23	16	16	24	80
Victoria Harbour	2	4,006	3	8	29	30	181
Wabush	44	681	29	13	8	24	39
Whitecourt	41	876	15	11	10	15	56
Williams Lake	42	785	22	9	9	22	46

Table 10-1
Local movements, peak hour and peak day — NAV CANADA towers

	Rank of movements	Number of movements	Peak hour occurrence			Peak day occurrence	
			Day in month	Hour in day	Number of movements	Day in month	Number of movements
Abbotsford	4	9,556	24	14	118	15	594
Boundary Bay	2	10,594	16	11	98	8	610
Calgary International	38	120	12	9	10	26	20
Calgary/Springbank	6	7,246	9	9	82	2	466
Chicoutimi/St-Honoré	13	5,369	10	15	76	9	448
Edmonton City Centre	30	1,092	13	11	34	26	82
Edmonton International	37	284	12	15	16	16	42
Edmonton/Villeneuve	14	3,926	27	15	72	27	386
Gander International	21	2,988	23	10	60	5	266
Halifax/Robert L Stanfield International	35	665	23	16	28	15	94
Hamilton	25	1,914	27	15	38	14	134
Kelowna	20	3,010	7	12	56	16	218
Kitchener/Waterloo	8	6,506	18	9	64	17	434
Langley	12	5,426	3	10	62	3	322
London	3	10,336	18	14	90	8	762
Moncton/Greater Moncton International	10	6,104	23	11	56	21	478
Montréal/Mirabel International	33	760	29	19	44	29	100
Montréal/Pierre Elliott Trudeau International	0	0	0	0	0	0	0
Montréal/St-Hubert	1	11,040	17	10	114	18	816
Oshawa	17	3,680	15	11	60	2	298
Ottawa/Macdonald-Cartier International	23	2,638	27	10	44	8	206
Pitt Meadows	7	6,878	3	15	96	26	590
Prince George	24	2,276	1	16	74	24	304
Québec/Jean Lesage International	16	3,743	21	14	58	17	290
Regina International	29	1,214	8	20	26	1	92
Saskatoon/John G Diefenbaker International	19	3,110	24	15	44	17	224
Sault Ste. Marie	18	3,358	13	13	56	13	248
St. John's International	36	388	5	15	40	5	74
St-Jean	32	918	8	18	244	8	254
Sudbury	34	666	15	15	24	10	88
Thunder Bay	22	2,749	18	15	62	19	192
Toronto/Buttonville Municipal	5	7,656	30	10	76	10	452
Toronto/City Centre	15	3,780	24	13	197	24	365
Toronto/Lester B Pearson International	0	0	0	0	0	0	0
Vancouver Harbour	0	0	0	0	0	0	0
Vancouver International	0	0	0	0	0	0	0
Victoria International	9	6,427	21	21	76	7	408
Whitehorse International	28	1,320	17	14	38	19	174
Windsor	26	1,564	21	16	40	21	136
Winnipeg/James Armstrong Richardson International	31	1,010	3	20	22	28	80
Winnipeg/St. Andrews	11	5,730	8	21	88	8	388
Yellowknife	27	1,478	10	14	38	29	110

Table 10-2
Local movements, peak hour and peak day — NAV CANADA flight service stations

	Rank of movements	Number of movements	Peak hour occurrence			Peak day occurrence	
			Day in month	Hour in day	Number of movements	Day in month	Number of movements
Brandon Municipal	16	646	3	14	52	11	68
Campbell River	19	576	26	10	24	1	78
Castlegar	22	490	11	11	42	11	100
Charlottetown	8	1,714	11	17	42	21	256
Churchill	47	12	5	18	6	5	12
Cranbrook	39	76	11	17	12	24	16
Deer Lake	26	298	9	14	24	10	58
Fort McMurray	14	957	25	22	36	19	110
Fort Nelson	29	222	19	16	36	19	36
Fort St John	21	508	4	14	32	3	116
Fredericton International	2	3,052	4	11	34	15	230
Grande Prairie	7	1,759	24	11	42	25	167
High Level	36	94	2	17	28	1	34
Îles-de-la-Madeleine	0	0	0	0	0	0	0
Inuvik/Mike Zubko	45	16	1	12	6	1	6
Iqaluit	30	214	2	9	16	24	36
Kamloops	12	1,062	12	10	40	30	120
Kenora	24	444	17	20	26	17	76
Kingston	9	1,338	22	15	42	27	136
Kuujuaq	34	128	23	18	14	15	18
Kuujuarapik	0	0	0	0	0	0	0
La Grande Rivière	48	4	8	18	2	8	2
La Ronge	28	226	28	15	16	28	42
Lethbridge	15	952	30	10	26	22	110
Lloydminster	17	596	13	16	24	13	60
Medicine Hat	23	481	1	14	65	1	69
Mont-Joli	44	26	16	10	6	16	14
Nanaimo	10	1,262	12	12	42	12	198
Norman Wells	37	90	8	17	16	28	24
North Bay	1	4,810	2	12	74	2	514
Ottawa/Gatineau	4	2,126	22	15	50	8	218
Peace River	25	410	2	10	44	2	74
Penticton	3	2,420	1	14	82	22	256
Port Hardy	35	126	17	10	20	17	70
Prince Albert	32	186	26	21	16	25	44
Prince Rupert	42	60	22	12	32	22	46
Rankin Inlet	0	0	0	0	0	0	0
Red Deer Regional	6	1,994	11	10	42	11	234
Rouyn-Noranda	27	288	2	17	24	11	40
Saint John	20	564	15	11	42	30	144
Sept-Îles	18	584	23	10	46	23	130
Sioux Lookout	41	63	30	12	14	30	17
Smithers	43	30	24	11	18	24	18
St Anthony	0	0	0	0	0	0	0
St Catharines	5	2,084	30	14	62	29	186
Terrace	31	204	1	8	24	26	64
Thompson	33	130	5	11	20	5	22
Timmins	40	64	26	7	20	26	20
Val-d'Or	13	1,047	11	14	76	16	134
Victoria Harbour	46	14	3	9	6	3	6
Wabush	0	0	0	0	0	0	0
Whitecourt	11	1,210	30	18	54	10	218
Williams Lake	38	86	6	15	14	6	30

Table 11-1
Local movements - civil, peak hour and peak day — NAV CANADA towers

	Rank of movements	Number of movements	Peak hour occurrence			Peak day occurrence	
			Day in month	Hour in day	Number of movements	Day in month	Number of movements
Abbotsford	4	9,552	24	14	118	15	594
Boundary Bay	2	10,594	16	11	98	8	610
Calgary International	38	118	12	9	10	26	20
Calgary/Springbank	6	7,237	9	9	82	2	466
Chicoutimi/St-Honoré	13	5,369	10	15	76	9	448
Edmonton City Centre	30	1,078	13	11	34	26	82
Edmonton International	37	279	12	15	16	16	42
Edmonton/Villeneuve	14	3,926	27	15	72	27	386
Gander International	22	2,670	5	7	50	5	250
Halifax/Robert L Stanfield International	35	589	23	16	28	15	78
Hamilton	25	1,908	27	15	38	14	134
Kelowna	20	2,970	29	11	56	16	218
Kitchener/Waterloo	8	6,504	18	9	64	17	434
Langley	12	5,426	3	10	62	3	322
London	3	10,326	18	14	90	8	762
Moncton/Greater Moncton International	9	6,104	23	11	56	21	478
Montréal/Mirabel International	32	716	29	19	44	29	100
Montréal/Pierre Elliott Trudeau International	0	0	0	0	0	0	0
Montréal/St-Hubert	1	11,028	17	10	114	18	816
Oshawa	17	3,680	15	11	60	2	298
Ottawa/Macdonald-Cartier International	23	2,611	27	10	44	8	206
Pitt Meadows	7	6,878	3	15	96	26	590
Prince George	24	2,276	1	16	74	24	304
Québec/Jean Lesage International	16	3,740	21	14	58	17	290
Regina International	29	1,136	8	20	26	1	90
Saskatoon/John G Diefenbaker International	19	3,056	24	15	44	17	220
Sault Ste. Marie	18	3,358	13	13	56	13	248
St. John's International	36	388	5	15	40	5	74
St-Jean	31	918	8	18	244	8	254
Sudbury	33	666	15	15	24	10	88
Thunder Bay	21	2,747	18	15	62	19	192
Toronto/Buttonville Municipal	5	7,656	30	10	76	10	452
Toronto/City Centre	15	3,780	24	13	197	24	365
Toronto/Lester B Pearson International	0	0	0	0	0	0	0
Vancouver Harbour	0	0	0	0	0	0	0
Vancouver International	0	0	0	0	0	0	0
Victoria International	10	6,004	21	21	76	9	366
Whitehorse International	28	1,302	17	14	38	19	166
Windsor	26	1,560	21	16	40	21	136
Winnipeg/James Armstrong Richardson International	34	658	3	20	22	3	50
Winnipeg/St. Andrews	11	5,730	8	21	88	8	388
Yellowknife	27	1,368	10	14	38	6	98

Table 11-2
Local movements - civil, peak hour and peak day — NAV CANADA flight service stations

	Rank of movements	Number of movements	Peak hour occurrence			Peak day occurrence	
			Day in month	Hour in day	Number of movements	Day in month	Number of movements
Brandon Municipal	17	594	3	14	28	11	68
Campbell River	19	576	26	10	24	1	78
Castlegar	22	490	11	11	42	11	100
Charlottetown	8	1,714	11	17	42	21	256
Churchill	47	12	5	18	6	5	12
Cranbrook	41	60	11	17	12	27	14
Deer Lake	26	298	9	14	24	10	58
Fort McMurray	13	957	25	22	36	19	110
Fort Nelson	29	222	19	16	36	19	36
Fort St John	21	508	4	14	32	3	116
Fredericton International	2	3,028	4	11	34	15	230
Grande Prairie	7	1,759	24	11	42	25	167
High Level	36	94	2	17	28	1	34
Îles-de-la-Madeleine	0	0	0	0	0	0	0
Inuvik/Mike Zubko	45	16	1	12	6	1	6
Iqaluit	30	214	2	9	16	24	36
Kamloops	11	1,062	12	10	40	30	120
Kenora	24	444	17	20	26	17	76
Kingston	9	1,288	22	15	42	27	136
Kuujuaq	34	128	23	18	14	15	18
Kuujuarapik	0	0	0	0	0	0	0
La Grande Rivière	48	4	8	18	2	8	2
La Ronge	28	226	28	15	16	28	42
Lethbridge	14	908	30	10	26	22	74
Lloydminster	16	596	13	16	24	13	60
Medicine Hat	23	479	1	14	65	1	69
Mont-Joli	44	24	16	10	6	16	14
Nanaimo	15	758	1	12	32	1	66
Norman Wells	37	90	8	17	16	28	24
North Bay	1	4,804	2	12	74	2	514
Ottawa/Gatineau	4	2,126	22	15	50	8	218
Peace River	25	410	2	10	44	2	74
Penticton	3	2,384	1	14	82	22	256
Port Hardy	35	126	17	10	20	17	70
Prince Albert	32	186	26	21	16	25	44
Prince Rupert	42	60	22	12	32	22	46
Rankin Inlet	0	0	0	0	0	0	0
Red Deer Regional	6	1,994	11	10	42	11	234
Rouyn-Noranda	27	288	2	17	24	11	40
Saint John	20	562	15	11	42	30	144
Sept-Îles	18	584	23	10	46	23	130
Sioux Lookout	40	61	30	12	14	30	17
Smithers	43	30	24	11	18	24	18
St Anthony	0	0	0	0	0	0	0
St Catharines	5	2,076	30	14	62	29	186
Terrace	31	204	1	8	24	26	64
Thompson	33	130	5	11	20	5	22
Timmins	39	64	26	7	20	26	20
Val-d'Or	12	1,047	11	14	76	16	134
Victoria Harbour	46	14	3	9	6	3	6
Wabush	0	0	0	0	0	0	0
Whitecourt	10	1,210	30	18	54	10	218
Williams Lake	38	86	6	15	14	6	30

Table 12-1
Local movements - military, peak hour and peak day — NAV CANADA towers

	Rank of movements	Number of movements	Peak hour occurrence			Peak day occurrence	
			Day in month	Hour in day	Number of movements	Day in month	Number of movements
Abbotsford	18	4	21	14	4	21	4
Boundary Bay	0	0	0	0	0	0	0
Calgary International	21	2	5	16	1	5	1
Calgary/Springbank	15	9	5	13	2	5	2
Chicoutimi/St-Honoré	0	0	0	0	0	0	0
Edmonton City Centre	12	14	2	11	4	2	4
Edmonton International	17	5	29	20	4	29	4
Edmonton/Villeneuve	0	0	0	0	0	0	0
Gander International	3	318	23	10	24	24	38
Halifax/Robert L Stanfield International	6	76	14	11	10	8	16
Hamilton	16	6	7	10	6	7	6
Kelowna	9	40	7	12	36	7	40
Kitchener/Waterloo	23	2	6	16	2	6	2
Langley	0	0	0	0	0	0	0
London	14	10	3	18	10	3	10
Moncton/Greater Moncton International	0	0	0	0	0	0	0
Montréal/Mirabel International	8	44	8	13	8	2	9
Montréal/Pierre Elliott Trudeau International	0	0	0	0	0	0	0
Montréal/St-Hubert	13	12	8	12	12	8	12
Oshawa	0	0	0	0	0	0	0
Ottawa/Macdonald-Cartier International	10	27	3	13	10	3	10
Pitt Meadows	0	0	0	0	0	0	0
Prince George	0	0	0	0	0	0	0
Québec/Jean Lesage International	20	3	24	20	2	24	2
Regina International	5	78	23	21	16	14	16
Saskatoon/John G Diefenbaker International	7	54	1	17	10	1	22
Sault Ste. Marie	0	0	0	0	0	0	0
St. John's International	0	0	0	0	0	0	0
St-Jean	0	0	0	0	0	0	0
Sudbury	0	0	0	0	0	0	0
Thunder Bay	22	2	16	13	2	16	2
Toronto/Buttonville Municipal	0	0	0	0	0	0	0
Toronto/City Centre	0	0	0	0	0	0	0
Toronto/Lester B Pearson International	0	0	0	0	0	0	0
Vancouver Harbour	0	0	0	0	0	0	0
Vancouver International	0	0	0	0	0	0	0
Victoria International	1	423	7	21	26	7	88
Whitehorse International	11	18	19	12	8	19	8
Windsor	19	4	11	15	2	11	2
Winnipeg/James Armstrong Richardson International	2	352	28	10	20	28	68
Winnipeg/St. Andrews	0	0	0	0	0	0	0
Yellowknife	4	110	29	14	14	29	52

Table 12-2
Local movements - military, peak hour and peak day — NAV CANADA flight service stations

	Rank of movements	Number of movements	Peak hour occurrence			Peak day occurrence	
			Day in month	Hour in day	Number of movements	Day in month	Number of movements
Brandon Municipal	2	52	3	14	24	3	24
Campbell River	0	0	0	0	0	0	0
Castlegar	0	0	0	0	0	0	0
Charlottetown	0	0	0	0	0	0	0
Churchill	0	0	0	0	0	0	0
Cranbrook	7	16	24	11	12	24	16
Deer Lake	0	0	0	0	0	0	0
Fort McMurray	0	0	0	0	0	0	0
Fort Nelson	0	0	0	0	0	0	0
Fort St John	0	0	0	0	0	0	0
Fredericton International	6	24	3	13	18	3	18
Grande Prairie	0	0	0	0	0	0	0
High Level	0	0	0	0	0	0	0
Îles-de-la-Madeleine	0	0	0	0	0	0	0
Inuvik/Mike Zubko	0	0	0	0	0	0	0
Iqaluit	0	0	0	0	0	0	0
Kamloops	0	0	0	0	0	0	0
Kenora	0	0	0	0	0	0	0
Kingston	3	50	17	9	18	17	20
Kuujuuaq	0	0	0	0	0	0	0
Kuujuuarapik	0	0	0	0	0	0	0
La Grande Rivière	0	0	0	0	0	0	0
La Ronge	0	0	0	0	0	0	0
Lethbridge	4	44	22	22	14	22	36
Lloydminster	0	0	0	0	0	0	0
Medicine Hat	11	2	15	15	2	15	2
Mont-Joli	10	2	7	13	2	7	2
Nanaimo	1	504	26	14	28	12	134
Norman Wells	0	0	0	0	0	0	0
North Bay	9	6	15	16	6	15	6
Ottawa/Gatineau	0	0	0	0	0	0	0
Peace River	0	0	0	0	0	0	0
Penticton	5	36	30	12	16	30	22
Port Hardy	0	0	0	0	0	0	0
Prince Albert	0	0	0	0	0	0	0
Prince Rupert	0	0	0	0	0	0	0
Rankin Inlet	0	0	0	0	0	0	0
Red Deer Regional	0	0	0	0	0	0	0
Rouyn-Noranda	0	0	0	0	0	0	0
Saint John	13	2	9	17	2	9	2
Sept-Îles	0	0	0	0	0	0	0
Sioux Lookout	12	2	18	11	2	18	2
Smithers	0	0	0	0	0	0	0
St Anthony	0	0	0	0	0	0	0
St Catharines	8	8	5	16	8	5	8
Terrace	0	0	0	0	0	0	0
Thompson	0	0	0	0	0	0	0
Timmins	0	0	0	0	0	0	0
Val-d'Or	0	0	0	0	0	0	0
Victoria Harbour	0	0	0	0	0	0	0
Wabush	0	0	0	0	0	0	0
Whitecourt	0	0	0	0	0	0	0
Williams Lake	0	0	0	0	0	0	0

Methodology

Survey universe

Coverage

The survey covers all aircraft movements at Canadian airports with NAV CANADA air traffic control towers and flight service stations.

Methodology survey

The Itinerant movement record is designed to capture:

- Aircraft identification
- Aircraft type
- The last station before landing at the reporting airport or the next station after take-off
- Arrival or departure
- Time of movement
- Runway used
- Flight rules (Instrument flight rules or Visual flight rules).

The Local aircraft movement record provides for reports of local movements by:

- Hour
- Single engine aircraft
- Multi-engine aircraft
- Jet aircraft
- Military aircraft
- Date of movement

Processing of aircraft movement statistics involves several stages. Preliminary monthly data by class of operation are released in **Preliminary aircraft movement statistics**, catalogue no. 51F0001P (TP-1496 (NAV CANADA towered airports only)). Data which follow in **Aircraft movement statistics - Monthly** report, catalogue nos. 51-007-X and 51-008-X (TP-141) may contain revisions to the originally released figures. Annual tables, which may reflect further revisions, are released in the publication, **Aircraft movement statistics - Annual** report - TP-577. In particular, data on itinerant movements by type of operation may reflect revisions as various sources of comparative information (data collected from commercial air carriers by the Aviation Statistics Centre, Statistics Canada) become available during the processing cycle. Finally, when revisions are required after the release of TP-577, they are contained in the five year historical summary of subsequent editions of TP-577. These revisions are also reflected in the CANSIM tables, both monthly and annual.

The records are completed daily, based on a twenty-four hour clock running from zero hour to 23:59. The times recorded are Coordinated Universal Time (UTC); however, published statistics are shown in local times. The records are transmitted to the Aviation Statistics Centre.

The Aviation Statistics Centre maintains a data base of parameter files of current information on all registered aircraft. The storage of this information reduces the reporting burden of the survey respondents and limits the element of human error associated with the preparation of source documents.

Other parameter files information includes registered aircraft identifications and their corresponding aircraft types, gross take-off weights, types of power plant (piston, jet or turboprop); whether the aircraft are fixed wing, helicopters or gliders. This information also provides a basis for identifying type of flights (commercial, private and government) and the geographical area in which the flights take place.

The parameter files also include airport environment information against which the airport category is checked; the reported runway is validated and the time difference between UTC and Local is assigned.

Data quality and limitations

Aircraft movement statistics are accumulated from data originating with air traffic control tower units or flight service station personnel. Because staff in these positions are highly trained in factual observation and reporting, the entries in the data bank are of a high quality.

The procedures for reporting aircraft movements on the Daily air traffic records by tower units are described in the NAV CANADA Air traffic control manual of operations (TP 703) Volume 1, Para. 1023 to 1023.5. Definitions for terms used in these paragraphs can be found in the appendix II "Glossary of terms" of this report.

To maintain uniformity in the reporting of source data, ASC issues to air traffic control units an "Air traffic designators" handbook (TP 143) listing the official Transport Canada aircraft type designators and the designators of various domestic and international air carriers. This handbook and another titled "Canada flight supplement" listing various airport codes serve as references to help ensure the reporting of the proper aircraft identity and the point of origin and destination of flights.

The processing system contains editing procedures designed to identify data errors occurring during transcription or during data capture of forms. Identified errors are manually corrected by ASC editing staff.

Errors may occur if an aircraft type code which exists is reported or data captured in error for a flight. For example, the reporting or keying of B727 for a flight actually performed by a B737 may not be detected during the system editing. That the aircraft type information is recorded by highly trained air traffic control tower staff using a common handbook of official aircraft codes will minimize this problem.

Similarly, the breakdown of the data on a geographic basis by use of location codes can be subject to error. For smaller locations, alphanumeric location codes are often used and the sequence of numbers and letters determines the geographic area to which the data are assigned. In some cases, where a sequence error has been introduced into the system either at the reporting unit or at data capture, a domestic movement may be classified as transborder or vice versa. The use of common manuals of location identifiers works to minimize this occurrence.

Appendix I

Factors influencing the data

Porter Airlines Inc. began to offer 7 daily flights from Toronto City Centre to Newark, NJ on March 31, 2008.

Lufthansa's new daily non-stop service from Frankfurt to Calgary began on April 15, 2008.

To ensure compliance with a Federal Aviation Administration safety directive on wiring inspections for MD-80 aircraft, numerous American Airline flights had to be cancelled.

Appendix II

Glossary of terms

Air carrier

Aircraft operators licensed by the Canadian Transportation Agency to transport persons, mail and/or goods by air.

Levels I to III air carriers (Defn 2000)– This includes every Canadian air carrier that, in each of the two calendar years immediately preceding the report year, realized annual gross revenues of \$1,000,000 or more for the air services for which the air carrier held a licence. Also includes foreign air carriers.

Levels IV to VI air carriers (Defn 2000)– Canadian air carriers not classified in report level I-III that, in each of the two calendar years immediately preceding the report year, realized annual gross revenues of less than \$1,000,000 for the air services for which the air carrier held a licence. Since 2000, levels IV and VI are no longer applicable.

Aircraft movement

A take off, a landing, or a simulated approach by an aircraft. ATC Manops amendment 8-8-83. NC-703.

Class of operation

Aircraft movements are classified as either “Itinerant” or “Local”.

Commercial

Flights by aircraft operators licensed by the Canadian Transportation Agency to perform commercial air services. Commercial operations are divided into two categories: **Air carrier** and **Other commercial**.

Domestic itinerant movements

Movements, at a Canadian airport, of aircraft departing to or arriving from another point in Canada.

FSS

Flight service station.

Government – Civil

Aircraft owned by federal, provincial and municipal bodies as well as foreign states, but excluding those owned by crown corporations, boards and commissions. Such aircraft are coded “3” under “Purpose” in the Canadian civil aircraft register.

Government – Military

Aircraft of any branch of the armed forces of any nation.

Gross take-off weight

The maximum weight for which the aircraft is licensed to operate. For operational purposes, all weights are rounded upwards to the next 1,000 kilograms. Thus 3,200 kilograms becomes 4,000 kilograms.

I.F.R. flight

A flight conducted in accordance with Instrument flight rules.

International movements

Movements, at a Canadian airport, of aircraft arriving from or departing to a point outside Canada. International movements are subclassified into “transborder” (to or from a point in the United States including Alaska but excluding Hawaii), and “other international” (to or from points in countries other than Canada and the United States).

Since aircraft movements are reported on the basis of place “arrived from” or “departed to”, an arrival at Mirabel airport from London, England would appear under “other international”. If the same aircraft moved on to Toronto, both the departure at Mirabel and the arrival at Toronto would be shown as “domestic”.

Itinerant movements

At Airports **with** control towers and/or Flight service stations: for the purpose of completing air traffic records, itinerant movements are considered as movements in which aircraft proceed to or arrive from another location; or where aircraft leave the circuit but return without landing at another airport. At Airports **without** control towers: an aircraft movement in which the aircraft arrives from or departs to a point other than the reporting airport; or a movement by an aircraft that leaves the close proximity of an airport and returns without landing at another airport.

Local movements

At Airports **with** control towers and/or Flight service stations: for the purpose of completing air traffic records, local movements are considered as movements in which the aircraft remains in the circuit. At Airports **without** control towers: an aircraft movement in which the aircraft remains in the close proximity of the airport. Local movements are often carried out during training flights (touch-and-go), equipment tests etc.

Other commercial

Flights performed by **Commercial** aircraft operators not included in the **Air carrier** categories. Flying schools, agricultural sprayers, water-bombers, aerial photography and survey, etc.

Power plant

The source of propulsion. For example, piston engines, turbo-propellers and jet engines. “Helicopters”, in this report, include both piston and turboshaft-driven engines.

Private aircraft

Aircraft used solely for private purposes, not for hire and compensation, which are classified as “Private” or “Private Restricted” in the Canadian civil aircraft register or similar registries of other countries. Owners include individuals, groups and business firms.

Runway 88

Through control zone flights, i.e. flights which communicate with the tower while transiting the tower control zone to another destination without landing at the reporting airport.

Data for these runways are not included in the grand total.

Simulated approaches

Movements that are either missed instrument or practice instrument approaches without landing.

TC

Transport Canada

Tower control zone

A controlled airspace within the proximity of an air traffic control tower, usually within a radius of less than 24 kilometres of the tower.

V.F.R. flight

A flight conducted in accordance with Visual flight rules.

Weight group

The classification of weight classes in groups for statistical purposes.