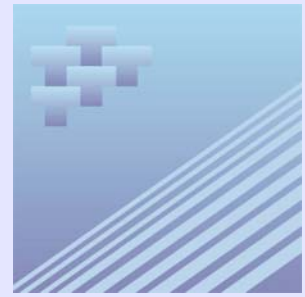




Service Bulletin

Monthly Railway Carloadings

March 2008



Highlights

- The Canadian railway industry continued to push full steam ahead in the first three months of 2008, particularly during the month of March. These positive results were achieved despite being up against one of the worst winters in years.
- During both the month and quarter, the industry faced unusually cold weather, high winds and record snow falls that led to delays, derailments, and even outright stoppages.
- Railways loaded 22.9 million metric tonnes of freight in March, a 6.8% gain over February's loadings.
- Non-intermodal loadings of coal, potash, wheat, colza seeds (canola), and sulphur accounted for the vast majority of the increase as a result of their rising demand inside and outside of Canada. The strength of these commodities caused overall non-intermodal loadings to climb 7.3% to 20.6 million metric tonnes.
- Intermodal loadings also rose in March, rising 2.5% to 2.3 million metric tonnes. The rise was almost entirely attributable to increased containerized cargo shipments.
- Rail freight traffic coming from the United States increased as well for the month, rising 6.2% to about 2.9 million metric tonnes.
- On a year-over-year basis, March's non-intermodal loadings are down slightly, while intermodal loadings are down 7.8%. Traffic received from the United States increased 5.5%, an all-time high for the month of March.
- On a quarterly basis, loadings in the first quarter of 2008 slid down 5.9% to about 67.1 million metric tonnes compared to loadings from the fourth quarter of 2007. This decline is typical for the time period. Compared to the first quarter of 2007, however, loadings in the first quarter of 2008 are up almost one percent.
- Among the factors behind the decline between the first and fourth quarters are reduced loadings within the agriculture, forestry and manufacturing sectors.

Statistical tables

Table 1

Railway carloading statistics for non-intermodal traffic by commodity in Canada — Total

	March 2008		March 2007	
	Number of rail cars	Metric tonnes	Number of rail cars	Metric tonnes
Wheat	15,954	1,463,786	20,670	1,877,051
Other cereal grains	4,320	347,002	3,956	313,436
Fresh, chilled or dried vegetables	2,057	185,521	2,027	180,318
Fresh, chilled or dried fruit and nuts	0	0	0	0
Colza seeds (canola)	8,068	658,826	5,778	464,908
Other oil seeds and nuts, other agricultural product	415	34,403	488	39,905
Animal feed and products	2,647	204,890	1,882	155,380
Meat, fish, seafood and preparations	0	0	6	384
Milled grain production and preparations, bakery products	1,152	89,501	1,106	86,396
Animal or vegetable fats, oils and flours	2,795	223,566	2,323	188,237
Sugar	335	28,968	411	35,794
Prepared food stuffs, not elsewhere classified	276	18,866	272	19,586
Alcoholic and non-alcoholic beverages	142	10,938	121	9,763
Sand, gravel and crushed stone	2,089	185,407	2,572	226,474
Salt	682	60,961	926	81,670
Phosphate rock	518	46,696	342	30,803
Sulphur	7,026	674,228	6,054	582,726
Gypsum	x	x	x	x
Other non-metallic minerals ¹	3,209	262,232	5,088	445,304
Iron ores and concentrates	27,831	2,463,613	19,701	1,786,767
Copper ores and concentrates	1,022	89,259	1,245	109,892
Nickel ores and concentrates	2,747	205,921	2,154	165,069
Lead ores and concentrates	256	19,683	194	14,959
Zinc ores and concentrates	654	54,116	675	57,121
Other metallic ores and concentrates	4,997	476,682	5,313	507,275
Coal	31,648	3,249,316	27,372	2,773,133
Gasoline and aviation turbine fuel	2,567	195,185	2,478	191,035
Fuel oils and crude petroleum	5,214	419,208	6,043	490,036
Gaseous hydrocarbons, including liquid petroleum gas (LPG's)	5,743	363,500	5,981	381,645
Coal coke and petroleum coke	2,000	134,750	1,719	120,886
Other refined petroleum and coal products	2,414	187,128	2,554	198,677
Sulphuric acid	2,814	254,020	2,707	243,625
Alumina	2,718	248,578	3,068	282,081
Other basic chemicals	7,055	615,844	7,004	611,995
Potash	18,149	1,776,735	16,619	1,601,635
Fertilizers (excluding potash)	4,701	397,212	5,063	424,950
Other chemical products and preparations	997	85,161	759	64,055
Plastic and rubber	4,044	349,614	4,380	379,991
Logs and other wood in the rough	1,450	82,307	2,287	130,109
Wood chips	3,808	227,716	5,726	344,545
Lumber	10,445	877,321	16,256	1,366,711
Other wood products (plywood, veneer)	3,443	278,004	6,733	532,080
Wood pulp	9,989	816,518	10,141	821,370
Newsprint	5,006	331,669	5,225	340,065
Paper and paperboard, except printed products	3,766	262,654	5,400	376,730
Cement	1,916	180,327	2,288	214,880
Other non-metallic mineral products	262	23,144	375	31,906
Iron and steel, primary or semi-finished	6,080	496,596	5,692	472,409
Copper, primary or semi-finished	363	30,402	487	39,968
Aluminum, primary or semi-finished	3,050	253,002	3,006	247,935
Other non-ferrous metal, primary or semi-finished	686	55,635	844	67,191
Articles of base metal	1,351	98,403	1,541	112,783
Machinery	70	3,782	87	2,516
Automobiles and mini-vans	8,339	138,809	9,616	162,792
Freight motor vehicles	6,316	117,616	8,822	155,604
Other vehicles	14	150	97	3,797
Parts and accessories for motor vehicles	873	25,719	2,500	68,536
Other transportation equipment	1,703	28,964	1,377	40,594
Metallic waste and scrap	2,683	209,048	3,131	238,879
Non-metallic waste and scrap	635	39,127	566	31,272
Other manufactured and miscellaneous goods	107	5,975	152	9,640
Pool car traffic of freight forwarder and ship associated	166	7,099	375	18,566
Mixed loads or unidentified freight	350	10,337	299	10,050
Less than carload shipments	...	72	...	8
Total non-intermodal traffic loaded ²	252,127	20,681,711	262,074	20,983,898

1. Includes loadings of gypsum.

2. Excludes goods transported in containers or trailers on flat cars.

Table 2
Railway carloading statistics for non-intermodal traffic by commodity in Canada — Eastern Division

	March 2008		March 2007	
	Number of rail cars	Metric tonnes	Number of rail cars	Metric tonnes
Wheat	300	26,465	405	36,247
Other cereal grains	313	26,405	318	25,721
Fresh, chilled or dried vegetables	13	1,065	36	2,935
Fresh, chilled or dried fruit and nuts	0	0	0	0
Colza seeds (canola)	3	239	0	0
Other oil seeds and nuts, other agricultural product	18	1,493	82	6,612
Animal feed and products	766	60,875	790	63,011
Meat, fish, seafood and preparations	0	0	0	0
Milled grain production and preparations, bakery products	42	3,170	38	3,096
Animal or vegetable fats, oils and flours	299	23,590	295	22,982
Sugar	281	24,836	378	33,395
Prepared food stuffs, not elsewhere classified	63	3,834	45	3,867
Alcoholic and non-alcoholic beverages	87	6,458	56	4,472
Sand, gravel and crushed stone	584	51,658	736	65,804
Salt	293	25,591	525	46,548
Phosphate rock	518	46,696	342	30,803
Sulphur	153	13,670	89	7,912
Gypsum	x	x	x	x
Other non-metallic minerals ¹	2,879	232,395	4,682	409,005
Iron ores and concentrates	27,831	2,463,613	19,701	1,786,767
Copper ores and concentrates	494	42,455	570	49,953
Nickel ores and concentrates	2,739	205,185	2,141	163,897
Lead ores and concentrates	256	19,683	194	14,959
Zinc ores and concentrates	595	49,395	622	52,839
Other metallic ores and concentrates	4,971	474,401	5,284	504,712
Coal	2,624	228,463	2,026	176,021
Gasoline and aviation turbine fuel	1,906	144,877	1,777	137,513
Fuel oils and crude petroleum	2,912	232,948	2,857	226,933
Gaseous hydrocarbons, including liquid petroleum gas (LPG's)	2,833	180,491	2,889	187,289
Coal coke and petroleum coke	1,070	60,303	867	52,812
Other refined petroleum and coal products	1,136	85,047	1,046	77,945
Sulphuric acid	2,503	226,355	2,416	217,722
Alumina	2,718	248,578	3,068	282,081
Other basic chemicals	2,894	248,994	3,046	262,038
Potash	684	62,403	902	82,746
Fertilizers (excluding potash)	136	11,780	122	10,481
Other chemical products and preparations	951	81,428	706	59,775
Plastic and rubber	1,841	154,301	1,887	158,109
Logs and other wood in the rough	978	51,566	1,757	96,141
Wood chips	1,142	72,092	1,737	107,324
Lumber	2,213	184,167	4,040	336,988
Other wood products (plywood, veneer)	733	55,198	2,090	154,440
Wood pulp	2,982	231,096	3,256	250,689
Newsprint	4,420	292,292	4,379	282,172
Paper and paperboard, except printed products	2,729	186,376	4,158	289,238
Cement	786	73,345	1,116	104,374
Other non-metallic mineral products	114	10,841	189	16,464
Iron and steel, primary or semi-finished	5,535	450,013	5,044	418,599
Copper, primary or semi-finished	292	24,992	384	32,120
Aluminum, primary or semi-finished	3,012	249,645	2,983	246,108
Other non-ferrous metal, primary or semi-finished	244	20,224	358	30,509
Articles of base metal	353	26,614	385	28,402
Machinery	53	2,963	84	2,286
Automobiles and mini-vans	6,120	106,664	7,315	129,250
Freight motor vehicles	5,756	109,705	8,455	149,660
Other vehicles	14	150	93	3,611
Parts and accessories for motor vehicles	872	25,703	2,500	68,536
Other transportation equipment	1,024	16,606	1,132	32,528
Metallic waste and scrap	1,297	102,306	1,922	149,826
Non-metallic waste and scrap	327	26,336	265	18,467
Other manufactured and miscellaneous goods	42	2,455	68	5,045
Pool car traffic of freight forwarder and ship associated	163	7,024	373	18,516
Mixed loads or unidentified freight	349	10,309	294	9,726
Less than carload shipments	...	72	...	8
Total non-intermodal traffic loaded ²	109,256	8,107,891	115,315	8,248,029

1. Includes loadings of gypsum.

2. Excludes goods transported in containers or trailers on flat cars.

Table 3
Railway carloading statistics for non-intermodal traffic by commodity in Canada — Western Division

	March 2008		March 2007	
	Number of rail cars	Metric tonnes	Number of rail cars	Metric tonnes
Wheat	15,654	1,437,321	20,265	1,840,804
Other cereal grains	4,007	320,597	3,638	287,715
Fresh, chilled or dried vegetables	2,044	184,456	1,991	177,383
Fresh, chilled or dried fruit and nuts	0	0	0	0
Colza seeds (canola)	8,065	658,587	5,778	464,908
Other oil seeds and nuts, other agricultural product	397	32,910	406	33,293
Animal feed and products	1,881	144,015	1,092	92,369
Meat, fish, seafood and preparations	0	0	6	384
Milled grain production and preparations, bakery products	1,110	86,331	1,068	83,300
Animal or vegetable fats, oils and flours	2,496	199,976	2,028	165,255
Sugar	54	4,132	33	2,399
Prepared food stuffs, not elsewhere classified	213	15,032	227	15,719
Alcoholic and non-alcoholic beverages	55	4,480	65	5,291
Sand, gravel and crushed stone	1,505	133,749	1,836	160,670
Salt	389	35,370	401	35,122
Phosphate rock	0	0	0	0
Sulphur	6,873	660,558	5,965	574,814
Gypsum	x	x	x	x
Other non-metallic minerals ¹	330	29,837	406	36,299
Iron ores and concentrates	0	0	0	0
Copper ores and concentrates	528	46,804	675	59,939
Nickel ores and concentrates	8	736	13	1,172
Lead ores and concentrates	0	0	0	0
Zinc ores and concentrates	59	4,721	53	4,282
Other metallic ores and concentrates	26	2,281	29	2,563
Coal	29,024	3,020,853	25,346	2,597,112
Gasoline and aviation turbine fuel	661	50,308	701	53,522
Fuel oils and crude petroleum	2,302	186,260	3,186	263,103
Gaseous hydrocarbons, including liquid petroleum gas (LPG's)	2,910	183,009	3,092	194,356
Coal coke and petroleum coke	930	74,447	852	68,074
Other refined petroleum and coal products	1,278	102,081	1,508	120,732
Sulphuric acid	311	27,665	291	25,903
Alumina	0	0	0	0
Other basic chemicals	4,161	366,850	3,958	349,957
Potash	17,465	1,714,332	15,717	1,518,889
Fertilizers (excluding potash)	4,565	385,432	4,941	414,469
Other chemical products and preparations	46	3,733	53	4,280
Plastic and rubber	2,203	195,313	2,493	221,882
Logs and other wood in the rough	472	30,741	530	33,968
Wood chips	2,666	155,624	3,989	237,221
Lumber	8,232	693,154	12,216	1,029,723
Other wood products (plywood, veneer)	2,710	222,806	4,643	377,640
Wood pulp	7,007	585,422	6,885	570,681
Newsprint	586	39,377	846	57,893
Paper and paperboard, except printed products	1,037	76,278	1,242	87,492
Cement	1,130	106,982	1,172	110,506
Other non-metallic mineral products	148	12,303	186	15,442
Iron and steel, primary or semi-finished	545	46,583	648	53,810
Copper, primary or semi-finished	71	5,410	103	7,848
Aluminum, primary or semi-finished	38	3,357	23	1,827
Other non-ferrous metal, primary or semi-finished	442	35,411	486	36,682
Articles of base metal	998	71,789	1,156	84,381
Machinery	17	819	3	230
Automobiles and mini-vans	2,219	32,145	2,301	33,542
Freight motor vehicles	560	7,911	367	5,944
Other vehicles	0	0	4	186
Parts and accessories for motor vehicles	1	16	0	0
Other transportation equipment	679	12,358	245	8,066
Metallic waste and scrap	1,386	106,742	1,209	89,053
Non-metallic waste and scrap	308	12,791	301	12,805
Other manufactured and miscellaneous goods	65	3,520	84	4,595
Pool car traffic of freight forwarder and ship associated	3	75	2	50
Mixed loads or unidentified freight	1	28	5	324
Less than carload shipments	...	0	...	0
Total non-intermodal traffic loaded ²	142,871	12,573,820	146,759	12,735,869

1. Includes loadings of gypsum.

2. Excludes goods transported in containers or trailers on flat cars.

Table 4
Railway carloading statistics for non-intermodal traffic by commodity in Canada (year to date) — Total

	January 2008 to March 2008		January 2007 to March 2007	
	Number of rail cars	Metric tonnes	Number of rail cars	Metric tonnes
Wheat	44,720	4,105,126	54,214	4,940,176
Other cereal grains	15,917	1,268,956	11,705	931,943
Fresh, chilled or dried vegetables	6,497	582,953	5,722	507,651
Fresh, chilled or dried fruit and nuts	0	0	0	0
Colza seeds (canola)	20,921	1,708,831	16,113	1,295,172
Other oil seeds and nuts, other agricultural product	1,458	120,962	1,468	118,584
Animal feed and products	7,398	576,960	5,643	465,269
Meat, fish, seafood and preparations	8	516	15	960
Milled grain production and preparations, bakery products	3,381	262,787	3,115	242,852
Animal or vegetable fats, oils and flours	8,250	660,521	6,818	551,904
Sugar	1,005	86,513	1,100	95,810
Prepared food stuffs, not elsewhere classified	827	59,426	794	56,076
Alcoholic and non-alcoholic beverages	475	36,135	370	29,596
Sand, gravel and crushed stone	6,157	544,101	6,949	614,578
Salt	2,507	223,763	2,981	261,909
Phosphate rock	1,761	158,814	1,087	97,908
Sulphur	19,122	1,836,667	17,354	1,675,199
Gypsum	x	x	x	x
Other non-metallic minerals ¹	10,088	847,895	13,496	1,165,029
Iron ores and concentrates	84,805	7,468,969	76,548	6,908,440
Copper ores and concentrates	3,128	273,799	3,434	301,263
Nickel ores and concentrates	8,279	626,025	6,268	481,663
Lead ores and concentrates	589	45,361	695	53,591
Zinc ores and concentrates	1,943	163,030	1,918	161,246
Other metallic ores and concentrates	15,283	1,457,336	14,872	1,418,379
Coal	84,247	8,641,691	72,241	7,315,868
Gasoline and aviation turbine fuel	7,786	589,232	7,103	546,342
Fuel oils and crude petroleum	16,996	1,372,684	17,872	1,451,900
Gaseous hydrocarbons, including liquid petroleum gas (LPG's)	20,902	1,319,330	20,779	1,315,623
Coal coke and petroleum coke	5,751	375,853	5,314	356,901
Other refined petroleum and coal products	7,962	616,631	8,027	624,880
Sulphuric acid	8,147	735,052	7,752	696,926
Alumina	8,517	780,686	8,335	762,046
Other basic chemicals	20,772	1,813,841	20,470	1,790,353
Potash	49,122	4,789,483	42,141	4,076,890
Fertilizers (excluding potash)	13,579	1,139,587	13,724	1,138,139
Other chemical products and preparations	2,974	255,057	2,007	168,786
Plastic and rubber	11,490	994,659	12,038	1,044,317
Logs and other wood in the rough	4,501	253,077	7,095	391,169
Wood chips	12,108	729,843	15,880	966,933
Lumber	29,085	2,446,133	41,767	3,513,413
Other wood products (plywood, veneer)	10,555	855,739	17,766	1,399,807
Wood pulp	29,273	2,398,618	28,864	2,338,736
Newsprint	14,810	982,231	15,840	1,039,963
Paper and paperboard, except printed products	12,098	843,496	15,653	1,087,704
Cement	5,053	473,576	5,740	536,504
Other non-metallic mineral products	707	62,228	975	81,005
Iron and steel, primary or semi-finished	19,215	1,568,341	16,691	1,383,417
Copper, primary or semi-finished	1,252	104,813	1,380	114,264
Aluminum, primary or semi-finished	9,187	762,661	8,481	698,244
Other non-ferrous metal, primary or semi-finished	2,070	167,042	2,253	179,168
Articles of base metal	3,950	288,064	4,121	306,444
Machinery	195	11,136	550	20,116
Automobiles and mini-vans	22,937	382,144	25,459	437,914
Freight motor vehicles	17,849	324,828	22,929	410,409
Other vehicles	122	3,123	373	18,027
Parts and accessories for motor vehicles	4,531	130,740	6,770	185,527
Other transportation equipment	5,719	97,364	3,710	105,798
Metallic waste and scrap	8,435	648,094	8,650	654,693
Non-metallic waste and scrap	1,881	109,786	1,744	96,635
Other manufactured and miscellaneous goods	341	19,356	439	27,208
Pool car traffic of freight forwarder and ship associated	569	24,557	920	45,657
Mixed loads or unidentified freight	876	26,903	1,143	32,749
Less than carload shipments	...	372	...	30
Total non-intermodal traffic loaded ²	740,083	60,253,490	745,675	59,735,703

1. Includes loadings of gypsum.

2. Excludes goods transported in containers or trailers on flat cars.

Table 5
Railway carloading statistics for non-intermodal traffic by commodity in Canada (year to date) — Eastern Division

	January 2008 to March 2008		January 2007 to March 2007	
	Number of rail cars	Metric tonnes	Number of rail cars	Metric tonnes
Wheat	863	75,652	948	85,236
Other cereal grains	699	58,633	770	62,424
Fresh, chilled or dried vegetables	65	5,323	80	6,367
Fresh, chilled or dried fruit and nuts	0	0	0	0
Colza seeds (canola)	7	557	0	0
Other oil seeds and nuts, other agricultural product	172	13,765	269	20,253
Animal feed and products	2,437	191,356	2,268	179,804
Meat, fish, seafood and preparations	1	68	0	0
Milled grain production and preparations, bakery products	166	12,326	92	7,514
Animal or vegetable fats, oils and flours	1,077	84,209	838	65,174
Sugar	847	74,015	1,006	88,758
Prepared food stuffs, not elsewhere classified	157	12,007	101	8,728
Alcoholic and non-alcoholic beverages	314	22,955	204	16,089
Sand, gravel and crushed stone	1,821	159,764	1,985	177,968
Salt	911	78,720	1,436	127,096
Phosphate rock	1,761	158,814	1,087	97,908
Sulphur	460	40,993	278	24,868
Gypsum	x	x	x	x
Other non-metallic minerals ¹	9,188	767,316	12,399	1,067,586
Iron ores and concentrates	84,804	7,468,910	76,548	6,908,440
Copper ores and concentrates	1,554	134,540	1,635	141,771
Nickel ores and concentrates	8,239	622,470	6,225	478,053
Lead ores and concentrates	589	45,361	695	53,591
Zinc ores and concentrates	1,736	146,606	1,753	148,318
Other metallic ores and concentrates	15,212	1,451,207	14,805	1,412,522
Coal	5,698	496,704	5,550	465,070
Gasoline and aviation turbine fuel	6,052	456,887	5,098	394,068
Fuel oils and crude petroleum	9,382	753,679	9,053	722,355
Gaseous hydrocarbons, including liquid petroleum gas (LPG's)	10,076	647,372	9,934	638,166
Coal coke and petroleum coke	3,400	189,273	2,846	158,644
Other refined petroleum and coal products	3,620	270,054	3,568	268,365
Sulphuric acid	7,296	659,103	6,915	622,308
Alumina	8,516	780,596	8,335	762,046
Other basic chemicals	8,402	722,553	8,832	759,984
Potash	2,019	183,902	2,242	205,987
Fertilizers (excluding potash)	406	34,876	302	25,611
Other chemical products and preparations	2,848	244,818	1,860	157,109
Plastic and rubber	5,015	420,802	5,377	452,466
Logs and other wood in the rough	3,066	160,298	5,674	299,445
Wood chips	3,976	251,414	5,323	337,153
Lumber	6,120	509,027	10,251	856,976
Other wood products (plywood, veneer)	2,545	193,372	5,343	393,359
Wood pulp	8,943	695,302	8,806	677,801
Newsprint	12,960	859,263	13,610	886,894
Paper and paperboard, except printed products	8,608	588,108	12,063	836,200
Cement	2,124	197,023	3,029	283,015
Other non-metallic mineral products	343	31,524	487	41,370
Iron and steel, primary or semi-finished	17,414	1,414,295	14,683	1,213,302
Copper, primary or semi-finished	1,017	86,909	1,125	94,833
Aluminum, primary or semi-finished	9,123	757,199	8,430	694,277
Other non-ferrous metal, primary or semi-finished	737	60,393	899	76,793
Articles of base metal	1,176	88,515	1,372	101,226
Machinery	137	6,449	484	18,074
Automobiles and mini-vans	17,059	297,020	20,059	357,767
Freight motor vehicles	16,493	305,512	21,774	391,687
Other vehicles	84	1,894	331	16,497
Parts and accessories for motor vehicles	4,530	130,724	6,770	185,527
Other transportation equipment	3,729	62,019	2,866	79,204
Metallic waste and scrap	4,596	362,567	4,790	374,486
Non-metallic waste and scrap	884	68,673	727	51,388
Other manufactured and miscellaneous goods	133	8,289	206	14,434
Pool car traffic of freight forwarder and ship associated	561	24,386	911	45,405
Mixed loads or unidentified freight	861	26,453	1,058	30,922
Less than carload shipments	...	372	...	30
Total non-intermodal traffic loaded ²	333,029	24,673,176	346,405	25,168,712

1. Includes loadings of gypsum.

2. Excludes goods transported in containers or trailers on flat cars.

Table 6

Railway carloading statistics for non-intermodal traffic by commodity in Canada (year to date) — Western Division

	January 2008 to March 2008		January 2007 to March 2007	
	Number of rail cars	Metric tonnes	Number of rail cars	Metric tonnes
Wheat	43,857	4,029,474	53,266	4,854,940
Other cereal grains	15,218	1,210,323	10,935	869,519
Fresh, chilled or dried vegetables	6,432	577,630	5,642	501,284
Fresh, chilled or dried fruit and nuts	0	0	0	0
Colza seeds (canola)	20,914	1,708,274	16,113	1,295,172
Other oil seeds and nuts, other agricultural product	1,286	107,197	1,199	98,331
Animal feed and products	4,961	385,604	3,375	285,465
Meat, fish, seafood and preparations	7	448	15	960
Milled grain production and preparations, bakery products	3,215	250,461	3,023	235,338
Animal or vegetable fats, oils and flours	7,173	576,312	5,980	486,730
Sugar	158	12,498	94	7,052
Prepared food stuffs, not elsewhere classified	670	47,419	693	47,348
Alcoholic and non-alcoholic beverages	161	13,180	166	13,507
Sand, gravel and crushed stone	4,336	384,337	4,964	436,610
Salt	1,596	145,043	1,545	134,813
Phosphate rock	0	0	0	0
Sulphur	18,662	1,795,674	17,076	1,650,331
Gypsum	x	x	x	x
Other non-metallic minerals ¹	900	80,579	1,097	97,443
Iron ores and concentrates	1	59	0	0
Copper ores and concentrates	1,574	139,259	1,799	159,492
Nickel ores and concentrates	40	3,555	43	3,610
Lead ores and concentrates	0	0	0	0
Zinc ores and concentrates	207	16,424	165	12,928
Other metallic ores and concentrates	71	6,129	67	5,857
Coal	78,549	8,144,987	66,691	6,850,798
Gasoline and aviation turbine fuel	1,734	132,345	2,005	152,274
Fuel oils and crude petroleum	7,614	619,005	8,819	729,545
Gaseous hydrocarbons, including liquid petroleum gas (LPG's)	10,826	671,958	10,845	677,457
Coal coke and petroleum coke	2,351	186,580	2,468	198,257
Other refined petroleum and coal products	4,342	346,577	4,459	356,515
Sulphuric acid	851	75,949	837	74,618
Alumina	1	90	0	0
Other basic chemicals	12,370	1,091,288	11,638	1,030,369
Potash	47,103	4,605,581	39,899	3,870,903
Fertilizers (excluding potash)	13,173	1,104,711	13,422	1,112,528
Other chemical products and preparations	126	10,239	147	11,677
Plastic and rubber	6,475	573,857	6,661	591,851
Logs and other wood in the rough	1,435	92,779	1,421	91,724
Wood chips	8,132	478,429	10,557	629,780
Lumber	22,965	1,937,106	31,516	2,656,437
Other wood products (plywood, veneer)	8,010	662,367	12,423	1,006,448
Wood pulp	20,330	1,703,316	20,058	1,660,935
Newsprint	1,850	122,968	2,230	153,069
Paper and paperboard, except printed products	3,490	255,388	3,590	251,504
Cement	2,929	276,553	2,711	253,489
Other non-metallic mineral products	364	30,704	488	39,635
Iron and steel, primary or semi-finished	1,801	154,046	2,008	170,115
Copper, primary or semi-finished	235	17,904	255	19,431
Aluminum, primary or semi-finished	64	5,462	51	3,967
Other non-ferrous metal, primary or semi-finished	1,333	106,649	1,354	102,375
Articles of base metal	2,774	199,549	2,749	205,218
Machinery	58	4,687	66	2,042
Automobiles and mini-vans	5,878	85,124	5,400	80,147
Freight motor vehicles	1,356	19,316	1,155	18,722
Other vehicles	38	1,229	42	1,530
Parts and accessories for motor vehicles	1	16	0	0
Other transportation equipment	1,990	35,345	844	26,594
Metallic waste and scrap	3,839	285,527	3,860	280,207
Non-metallic waste and scrap	997	41,113	1,017	45,247
Other manufactured and miscellaneous goods	208	11,067	233	12,774
Pool car traffic of freight forwarder and ship associated	8	171	9	252
Mixed loads or unidentified freight	15	450	85	1,827
Less than carload shipments	...	0	...	0
Total non-intermodal traffic loaded ²	407,054	35,580,314	399,270	34,566,991

1. Includes loadings of gypsum.

2. Excludes goods transported in containers or trailers on flat cars.

Table 7
Railway carloading statistics for intermodal and non-intermodal traffic in Canada — Total

	March 2008			March 2007		
	Units	TEUs ¹	Metric tonnes	Units	TEUs ¹	Metric tonnes
Total non-intermodal traffic loaded	.	.	20,681,711	.	.	20,983,898
Container-on-flat-car	141,446	248,933	2,196,738	153,409	267,400	2,391,932
Trailer-on-flat-car	6,186	.	82,066	6,476	.	80,963
Traffic received from United States connections	.	.	2,878,015	.	.	2,726,812
Total traffic carried	.	.	25,838,530	.	.	26,183,605
Container-on-flat-car included in receipts from United States connections	22,275	37,988	307,426	20,204	34,870	268,586
Trailer-on-flat-car included in receipts from United States connections	2,065	.	30,562	1,570	.	22,856
Traffic received from Canadian connections	.	.	2,974,747	.	.	3,768,779

1. Estimated numbers.

Note(s): Unit of measure "TEUs" means: twenty-foot equivalent units.

Table 8
Railway carloading statistics for intermodal and non-intermodal traffic in Canada — Eastern Division

	March 2008			March 2007		
	Units	TEUs ¹	Metric tonnes	Units	TEUs ¹	Metric tonnes
Total non-intermodal traffic loaded	.	.	8,107,891	.	.	8,248,029
Container-on-flat-car	75,253	133,319	1,205,491	81,875	144,139	1,301,521
Trailer-on-flat-car	5,776	.	73,961	5,982	.	71,625
Traffic received from United States connections	.	.	683,166	.	.	782,593
Total traffic carried	.	.	10,070,509	.	.	10,403,768
Container-on-flat-car included in receipts from United States connections	4,352	8,601	57,091	5,593	11,096	66,764
Trailer-on-flat-car included in receipts from United States connections	152	.	3,017	250	.	3,699
Traffic received from Canadian connections	.	.	2,436,590	.	.	3,219,037

1. Estimated numbers.

Note(s): Unit of measure "TEUs" means: twenty-foot equivalent units.

Table 9
Railway carloading statistics for intermodal and non-intermodal traffic in Canada — Western Division

	March 2008			March 2007		
	Units	TEUs ¹	Metric tonnes	Units	TEUs ¹	Metric tonnes
Total non-intermodal traffic loaded	.	.	12,573,820	.	.	12,735,869
Container-on-flat-car	66,193	115,614	991,247	71,534	123,261	1,090,411
Trailer-on-flat-car	410	.	8,105	494	.	9,338
Traffic received from United States connections	.	.	2,194,849	.	.	1,944,219
Total traffic carried	.	.	15,768,021	.	.	15,779,837
Container-on-flat-car included in receipts from						
United States connections	17,923	29,387	250,335	14,611	23,774	201,822
Trailer-on-flat-car included in receipts from						
United States connections	1,913	.	27,545	1,320	.	19,157
Traffic received from Canadian connections	.	.	538,157	.	.	549,742

1. Estimated numbers.

Note(s): Unit of measure "TEUs" means: twenty-foot equivalent units.

Table 10
Railway carloading statistics for intermodal and non-intermodal traffic in Canada (year to date) — Total

	January 2008 to March 2008			January 2007 to March 2007		
	Units	TEUs ¹	Metric tonnes	Units	TEUs ¹	Metric tonnes
Total non-intermodal traffic loaded	.	.	60,253,490	.	.	59,735,703
Container-on-flat-car	426,776	752,190	6,618,241	418,076	726,342	6,546,413
Trailer-on-flat-car	18,104	.	235,044	17,452	.	230,286
Traffic received from United States connections	.	.	8,363,326	.	.	7,476,274
Total traffic carried	.	.	75,470,101	.	.	73,988,676
Container-on-flat-car included in receipts from						
United States connections	67,617	115,044	945,021	56,180	97,382	749,616
Trailer-on-flat-car included in receipts from						
United States connections	5,606	.	82,774	4,145	.	61,026
Traffic received from Canadian connections	.	.	8,871,329	.	.	10,436,496

1. Estimated numbers.

Note(s): Unit of measure "TEUs" means: twenty-foot equivalent units.

Table 11
Railway carloading statistics for intermodal and non-intermodal traffic in Canada (year to date) — Eastern Division

	January 2008 to March 2008			January 2007 to March 2007		
	Units	TEUs ¹	Metric tonnes	Units	TEUs ¹	Metric tonnes
Total non-intermodal traffic loaded	.	.	24,673,176	.	.	25,168,712
Container-on-flat-car	218,166	385,965	3,553,415	219,839	383,720	3,531,318
Trailer-on-flat-car	16,777	.	209,373	16,112	.	202,952
Traffic received from United States connections	.	.	2,032,469	.	.	2,049,275
Total traffic carried	.	.	30,468,433	.	.	30,952,257
Container-on-flat-car included in receipts from United States connections	14,240	27,915	184,762	14,978	29,894	178,563
Trailer-on-flat-car included in receipts from United States connections	483	.	9,303	449	.	7,137
Traffic received from Canadian connections	.	.	7,430,100	.	.	8,983,604

1. Estimated numbers.

Note(s): Unit of measure "TEUs" means: twenty-foot equivalent units.

Table 12
Railway carloading statistics for intermodal and non-intermodal traffic in Canada (year to date) — Western Division

	January 2008 to March 2008			January 2007 to March 2007		
	Units	TEUs ¹	Metric tonnes	Units	TEUs ¹	Metric tonnes
Total non-intermodal traffic loaded	.	.	35,580,314	.	.	34,566,991
Container-on-flat-car	208,610	366,225	3,064,826	198,237	342,622	3,015,095
Trailer-on-flat-car	1,327	.	25,671	1,340	.	27,334
Traffic received from United States connections	.	.	6,330,857	.	.	5,426,999
Total traffic carried	.	.	45,001,668	.	.	43,036,419
Container-on-flat-car included in receipts from United States connections	53,377	87,129	760,259	41,202	67,488	571,053
Trailer-on-flat-car included in receipts from United States connections	5,123	.	73,471	3,696	.	53,889
Traffic received from Canadian connections	.	.	1,441,229	.	.	1,452,892

1. Estimated numbers.

Note(s): Unit of measure "TEUs" means: twenty-foot equivalent units.

Methodology and concepts

The **Railway Carloadings (Monthly)** publication presents essential data for timely analysis of the Rail Transport Industry and its contribution to the Canadian economy. Approximately 40 rail carriers report each month on their total intermodal¹ and non-intermodal² traffic. For non-intermodal traffic, the carriers report the number of cars and tonnes by commodity of revenue-generating freight that they have loaded in Canada. For intermodal freight, the carriers report the number of units and tonnes for containers-on-flat-cars (C.O.F.C.) and trailers-on-flat-cars (T.O.F.C.), with no commodity detail. The carriers also report the total tonnage of revenue freight received from United States connections.

The total quantity of freight carried in Canada is the sum of the non-intermodal and intermodal freight loaded and the traffic received from U.S. connections. Additional information provided includes the number of units and tonnes of C.O.F.C. and T.O.F.C. received from U.S. connections and the total tonnes of cargo that the carriers received from other Canadian connections. This freight that is exchanged among Canadian based carriers is counted only once in the total quantity of freight moved as it is counted only when loaded. For intermodal freight, twenty-foot equivalent units (TEUs) are derived from the dimensions of the freight-laden containers. Empty containers are not included in these statistics.

The data are collected via questionnaires and electronic reports that are filed with Statistics Canada eight working days after the reference month. These questionnaires are captured and edited and the data are then aggregated to produce tables for all of Canada and the Eastern and Western divisions of Canada.³ Tables show the data for the reference month and the year-to-date. These year-to-date figures include revisions of data from previous months.

Users of **Railway Carloadings (Monthly)** current and historical data should be aware of a break in the continuity of these data. Starting with the January 1999 reference period, the commodities presented in the **Railway Carloadings (Monthly)** publication were modified to conform to the Standard Classification of Transported Goods (SCTG) and the number of carriers surveyed more than doubled from the eighteen carriers surveyed prior to 1999.

The additional carriers were primarily shortline carriers whose data were previously included with the data of mainline carriers. The change in commodity classes has had negligible impact on the reporting of bulk commodities (e.g., wheat, potash and coal) which represent the majority of the total number of cars and tonnes. However, the reporting of manufactured and miscellaneous goods has changed significantly.

Details of the commodities included in each SCTG class presented in **Railway Carloadings (Monthly)** are available upon request. For further information, please contact Transportation Statistics, Statistics Canada, Ottawa, Ontario, K1A 0T6 (tel.: 1-866-500-8400, Internet: TransportationStatistics@statcan.ca.)

1. Intermodal traffic is freight carried in containers or truck trailers that are loaded onto flat cars.

2. Non-Intermodal traffic is freight carried in bulk or loaded in box cars.

3. The Eastern and Western Divisions, for statistical purposes, are separated by an imaginary line running from Thunder Bay to Armstrong, Ontario. Freight loaded at Thunder Bay is included in the Western Division while loadings at Armstrong are reported in the Eastern Division.

Release date: May 2008

Symbols

The following standard symbols are used in Statistics Canada publications:

.	not available for any reference period
..	not available for a specific reference period
...	not applicable
0	true zero or a value rounded to zero
0 ^s	value rounded to 0 (zero) where there is a meaningful distinction between true zero and the value that was rounded
p	preliminary
r	revised
x	suppressed to meet the confidentiality requirements of the <i>Statistics Act</i>
E	use with caution
F	too unreliable to be published

To access this product

This product, Catalogue no. 52-001-X, is available free in electronic format. To obtain a single issue, visit our website at www.statcan.ca and select "Publications" > "Free Internet publications."

Frequency: Monthly / ISSN 1496-8592

For information on the wide range of data available from Statistics Canada, please call our national inquiries line at 1-800-263-1136.

La version française de cette publication est disponible sur demande (n° 52-001-X au catalogue).

Published by authority of the Minister responsible for Statistics Canada. © Minister of Industry, 2008. All rights reserved. The content of this electronic publication may be reproduced, in whole or in part, and by any means, without further permission from Statistics Canada, subject to the following conditions: that it be done solely for the purposes of private study, research, criticism, review or newspaper summary, and/or for non-commercial purposes; and that Statistics Canada be fully acknowledged as follows: Source (or "Adapted from", if appropriate): Statistics Canada, year of publication, name of product, catalogue number, volume and issue numbers, reference period and page(s). Otherwise, no part of this publication may be reproduced, stored in a retrieval system or transmitted in any form, by any means—electronic, mechanical or photocopy—or for any purposes without prior written permission of Licensing Services, Client Services Division, Statistics Canada, Ottawa, Ontario, Canada K1A 0T6.

Standards of service to the public

Statistics Canada is committed to serving its clients in a prompt, reliable and courteous manner. To this end, Statistics Canada has developed *standards of service* that its employees observe.

To obtain a copy of these service standards, please contact Statistics Canada toll-free at 1-800-263-1136. The service standards are also published on www.statcan.ca under "About us" > "Providing services to Canadians."

Note of appreciation

Canada owes the success of its statistical system to a long standing partnership between Statistics Canada, the citizens of Canada, its businesses, governments and other institutions. Accurate and timely statistical information could not be produced without their continued cooperation and goodwill.