

Catalogue no. 63-007-X

# New Motor Vehicle Sales

May 2008



Statistics  
Canada

Statistique  
Canada

Canada

## How to obtain more information

For information about this product or the wide range of services and data available from Statistics Canada, visit our website at [www.statcan.ca](http://www.statcan.ca), e-mail us at [infostats@statcan.ca](mailto:infostats@statcan.ca), or telephone us, Monday to Friday from 8:30 a.m. to 4:30 p.m., at the following numbers:

### Statistics Canada's National Contact Centre

Toll-free telephone (Canada and the United States):

Inquiries line	1-800-263-1136
National telecommunications device for the hearing impaired	1-800-363-7629
Fax line	1-877-287-4369

Local or international calls:

Inquiries line	1-613-951-8116
Fax line	1-613-951-0581

### Depository Services Program

Inquiries line	1-800-635-7943
Fax line	1-800-565-7757

## To access this product

This product, Catalogue no. 63-007-X, is available free in electronic format. To obtain a single issue, visit our website at [www.statcan.ca](http://www.statcan.ca) and select "Publications" > "Free Internet publications."

## Standards of service to the public

Statistics Canada is committed to serving its clients in a prompt, reliable and courteous manner. To this end, Statistics Canada has developed *standards of service* that its employees observe. To obtain a copy of these service standards, please contact Statistics Canada toll-free at 1-800-263-1136. The service standards are also published on [www.statcan.ca](http://www.statcan.ca) under "About us" > "Providing services to Canadians."

# New Motor Vehicle Sales

May 2008

Published by authority of the Minister responsible for Statistics Canada

© Minister of Industry, 2008

All rights reserved. The content of this electronic publication may be reproduced, in whole or in part, and by any means, without further permission from Statistics Canada, subject to the following conditions: that it be done solely for the purposes of private study, research, criticism, review or newspaper summary, and/or for non-commercial purposes; and that Statistics Canada be fully acknowledged as follows: Source (or "Adapted from", if appropriate): Statistics Canada, year of publication, name of product, catalogue number, volume and issue numbers, reference period and page(s). Otherwise, no part of this publication may be reproduced, stored in a retrieval system or transmitted in any form, by any means—electronic, mechanical or photocopy—or for any purposes without prior written permission of Licensing Services, Client Services Division, Statistics Canada, Ottawa, Ontario, Canada K1A 0T6.

July 2008

Catalogue no. 63-007-X, vol. 80, no. 5

ISSN 1209-1146

Frequency: Monthly

Ottawa

La version française de cette publication est disponible sur demande (n° 63-007-X au catalogue).

---

#### **Note of appreciation**

*Canada owes the success of its statistical system to a long standing partnership between Statistics Canada, the citizens of Canada, its businesses, governments and other institutions. Accurate and timely statistical information could not be produced without their continued cooperation and goodwill.*

# User information

---

## Symbols

The following standard symbols are used in Statistics Canada publications:

- . not available for any reference period
- .. not available for a specific reference period
- ... not applicable
- 0 true zero or a value rounded to zero
- 0<sup>s</sup> value rounded to 0 (zero) where there is a meaningful distinction between true zero and the value that was rounded
- p preliminary
- r revised
- x suppressed to meet the confidentiality requirements of the *Statistics Act*
- E use with caution
- F too unreliable to be published

## Note to users

Figures may not add up to totals because of rounding.

## Acknowledgements

This publication was prepared under the direction of:

- **Mary Beth Garneau**, Director, Distributive Trades Division
- **R. Boudreau**, Assistant Director, Distributive Trades Division
- **S. Grenier**, Retail Sub-annuals surveys chief, Distributive Trades Division
- **M. Switzer**, Analyst Retail Sub-annuals surveys section, Distributive Trades Division

# Table of contents

---

<b>Highlights</b>	<b>5</b>
<b>Analysis – May 2008</b>	<b>6</b>
Passenger car sales rebound	6
Sales up in six provinces	6
<b>Related products</b>	<b>9</b>
<b>Statistical tables</b>	
1 Monthly sales of new motor vehicles, by type and origin	11
1-1 in units	11
1-2 in dollars	13
2 Average monthly prices of passenger cars, by origin	15
3 Monthly market share of new passenger car sales (units), by origin, Canada	16
4 Provincial sales of new motor vehicles, by type and origin, in units and dollars, May	17
5 Year to date provincial sales of new motor vehicles, by type and origin	19
5-1 in units, January to May	19
5-2 in dollars, January to May	21
6 Annual sales of new motor vehicles, by type and origin, in units and dollars, Canada	23
7 Canada, monthly sales of new motor vehicles, in units, by type and origin, seasonally adjusted	24
8 Monthly sales of new motor vehicles, in units, by province, seasonally adjusted	25
<b>Data quality, concepts and methodology</b>	
Definitions	27
<b>Appendix</b>	
I Scope of the survey	28
II List of North American motor vehicle manufacturers	31

## Table of contents – continued

### Charts

1.	New motor vehicle sales, seasonally adjusted, in units, 2005 to 2008	6
2.	Passenger car sales, seasonally adjusted, in units, 2005 to 2008	7
3.	Truck, van and bus sales, seasonally adjusted, in units, 2005 to 2008	7
4.	Monthly distribution of the Canadian motor vehicle market (passenger cars), by origin, 2005 to 2008	8
5.	Cumulative sales of new passenger cars, by origin, in units, 2005 to 2007	8

## Highlights

---

### May 2008

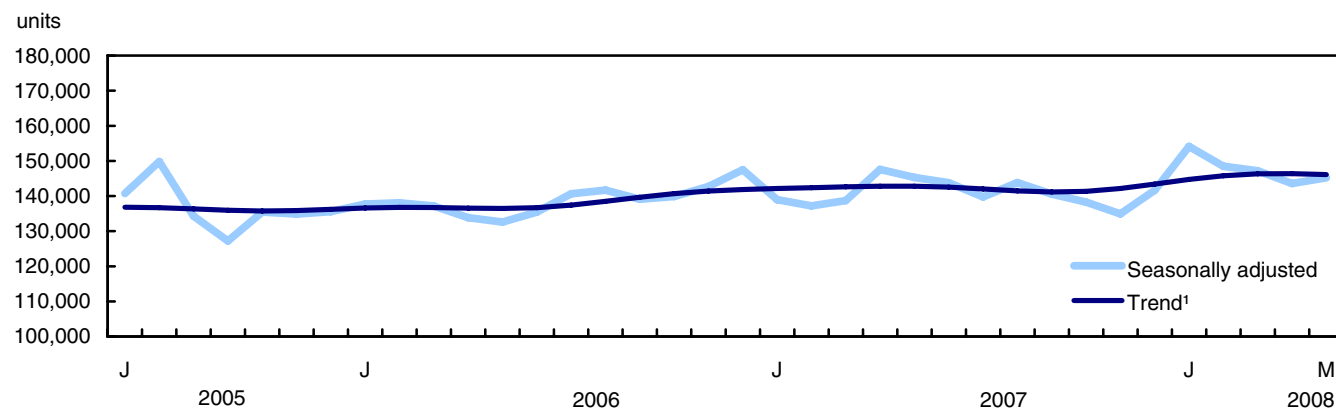
- After three consecutive months of declines, new motor vehicle sales rose slightly in May.

## Analysis – May 2008

---

After three consecutive months of declines, new motor vehicle sales rose slightly in May.

**Chart 1**  
New motor vehicle sales, seasonally adjusted, in units, 2005 to 2008



1. Trends represent smoothed seasonally adjusted data.

Consumers purchased 145,224 new vehicles in May, an increase of 1.1% from April. Shifting consumer preferences away from trucks to passenger cars has been the main factor in determining the direction of new motor vehicle sales in Canada so far this year.

Preliminary industry data for June suggests that the number of new motor vehicles sold will remain relatively unchanged.

### Passenger car sales rebound

Following three months of declines, sales of passenger cars rose 4.3% in May to 78,988 units. This growth was spread evenly between North American-built and overseas-built passenger cars. However, despite May's result, the trend for North American-built passenger cars remained flat while overseas-built cars continued to follow an upward trend.

#### Note to readers

All data in this release are seasonally adjusted.

Sales of new trucks (which include minivans, sport-utility vehicles, light and heavy trucks, vans and buses) declined 2.3% to 66,236 units. The share of trucks sold was at its lowest point since October 2005.

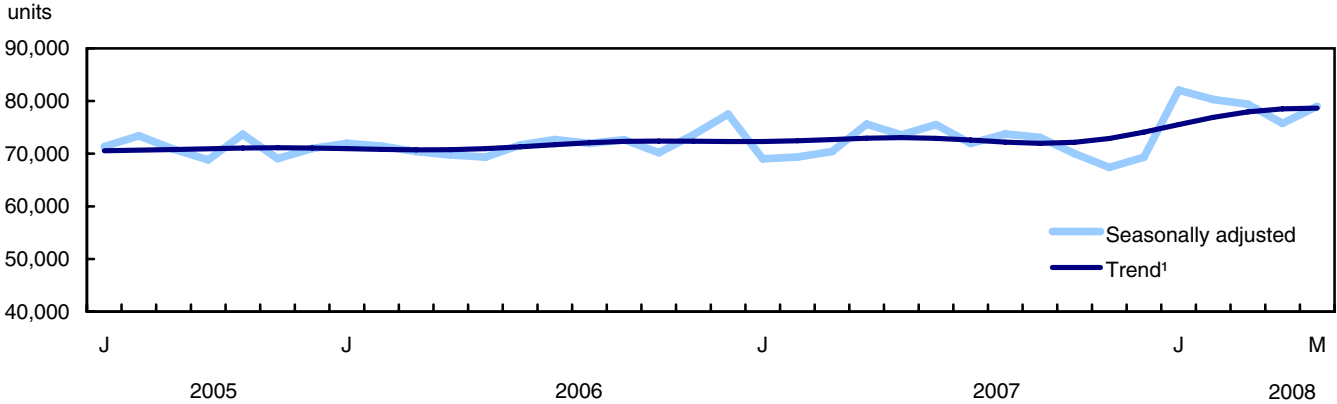
### Sales up in six provinces

Sales were up in six provinces in May. The largest increase occurred in Nova Scotia, where the gains almost offset the large decline in April. More modest increases were observed in Alberta, Prince Edward Island, Quebec, British Columbia and Manitoba.



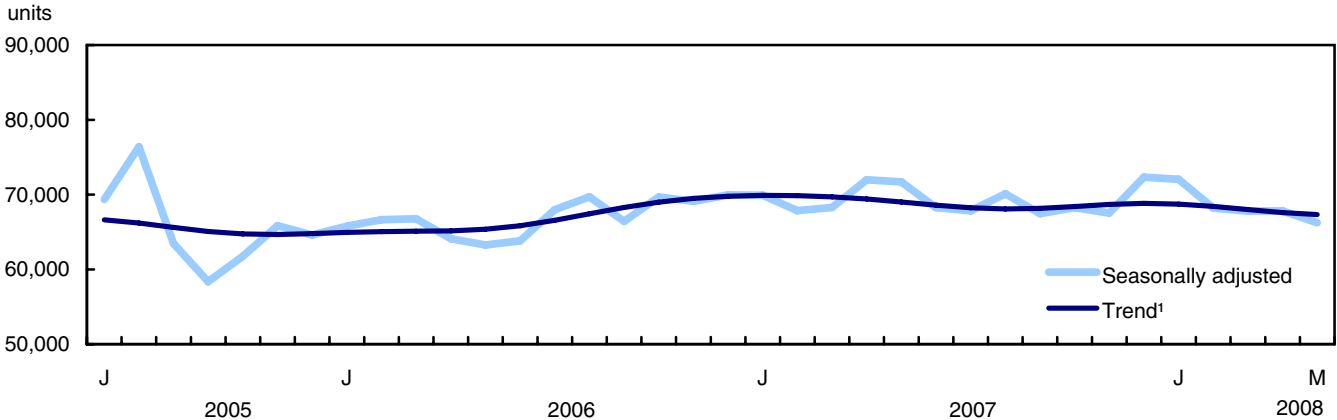
Lower sales were registered in New Brunswick, Saskatchewan, Ontario, and Newfoundland and Labrador. In Saskatchewan, sales have started to level off after two years of strong growth.

**Chart 2**  
**Passenger car sales, seasonally adjusted, in units, 2005 to 2008**



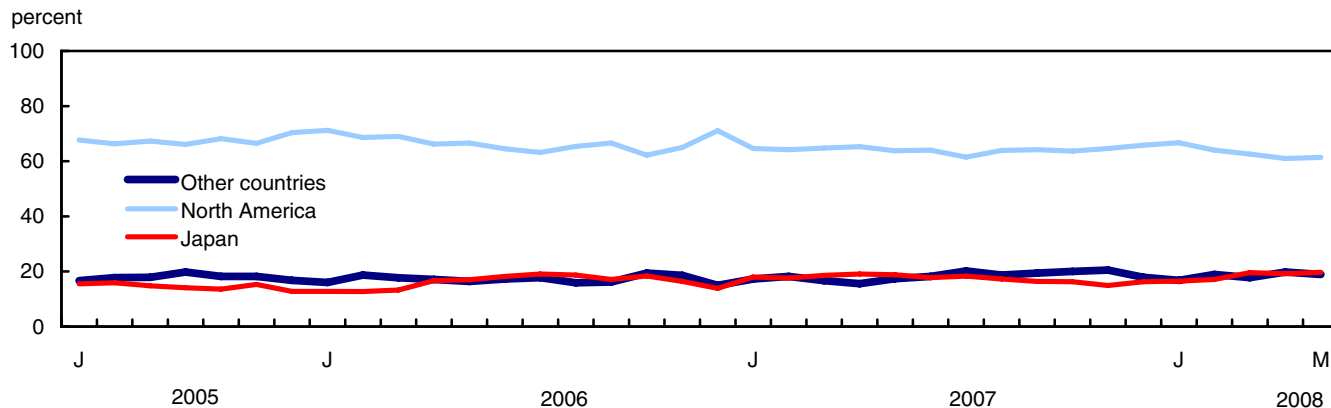
1. Trends represent smoothed seasonally adjusted data.

**Chart 3**  
**Truck, van and bus sales, seasonally adjusted, in units, 2005 to 2008**

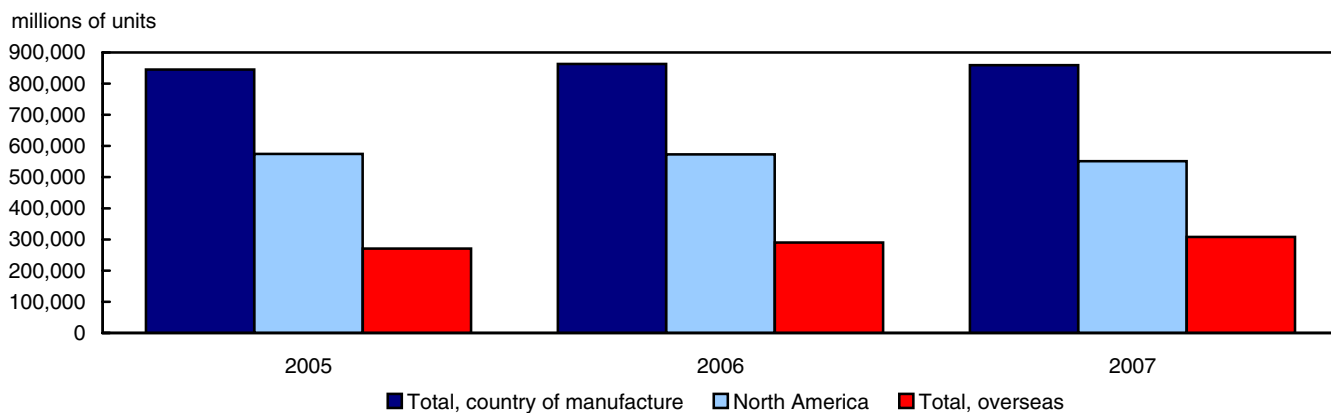


1. Trends represent smoothed seasonally adjusted data.

**Chart 4**  
**Monthly distribution of the Canadian motor vehicle market (passenger cars), by origin, 2005 to 2008**



**Chart 5**  
**Cumulative sales of new passenger cars, by origin, in units, 2005 to 2007**  
**January to December**



## Related products

---

### Selected publications from Statistics Canada

---

63-005-X	Retail Trade
63-210-X	Retail Chain and Department Stores
63-236-X	Wholesaling and Retailing in Canada
63-541-X	Retail Commodity Survey, 1989
63F0006X	New Motor Vehicle Sales Seasonal Factors

---

### Selected CANSIM tables from Statistics Canada

---

079-0003	New motor vehicle sales, Canada, provinces and territories, monthly
----------	---

---

### Selected surveys from Statistics Canada

---

2402	New Motor Vehicle Sales Survey
------	--------------------------------

---

### Selected summary tables from Statistics Canada

---

- *New motor vehicle sales, by province (monthly)*
- *Economic indicators, by province and territory (monthly and quarterly)*
- *New motor vehicle sales*
- *New motor vehicle sales, by province*

# Statistical tables

---

---

**Table 1-1**  
**Monthly sales of new motor vehicles, by type and origin in units**

	Total new motor vehicles		Passenger cars							
			North America		Japan		Other countries		Total	
	Units	Year/year change	Units	Year/year change	Units	Year/year change	Units	Year/year change	Units	Year/year change
	no.	%	no.	%	no.	%	no.	%	no.	%
<b>2006</b>										
January	89,422	9.0	31,445	15.8	5,653	8.3	7,086	-1.3	44,184	11.7
February	100,740	-5.0	33,450	-5.6	6,204	-4.4	9,104	5.2	48,758	-3.6
March	155,990	5.2	54,748	0.2	10,553	10.2	14,062	17.3	79,363	4.2
April	159,436	-4.8	57,142	-8.1	14,388	-2.9	14,728	2.2	86,258	-5.6
May	173,291	7.1	64,032	9.1	16,352	16.6	15,791	1.5	96,175	9.0
June	162,029	-2.4	56,827	-1.9	15,991	20.2	15,237	6.3	88,055	2.9
July	145,521	-8.4	48,349	-9.3	14,618	14.7	13,589	-5.3	76,556	-4.8
August	157,868	7.5	53,812	1.4	15,340	31.0	13,092	-7.4	82,244	4.2
September	140,065	9.1	48,497	4.5	12,486	25.8	11,832	-14.7	72,815	3.7
October	123,076	3.4	38,841	-11.4	11,468	31.2	12,139	4.1	62,448	-2.8
November	127,732	2.9	41,464	0.4	10,425	9.6	11,867	5.1	63,756	2.6
December	131,157	8.0	44,495	9.5	8,681	17.3	9,373	-3.1	62,549	8.4
<b>Year</b>	1,666,327	2.2	573,102	-0.3	142,159	15.1	147,900	0.5	863,161	2.1
<b>2007</b>										
January	94,413	5.6	27,594	-12.2	7,704	36.3	7,407	4.5	42,705	-3.3
February	99,877	-0.9	30,361	-9.2	8,299	33.8	8,596	-5.6	47,256	-3.1
March	154,450	-1.0	49,540	-9.5	14,206	34.6	12,741	-9.4	76,487	-3.6
April	172,428	8.1	60,392	5.7	17,649	22.7	14,405	-2.2	92,446	7.2
May	189,076	9.1	65,400	2.1	19,315	18.1	17,849	13.0	102,564	6.6
June	172,487	6.5	58,700	3.3	16,315	2.0	16,714	9.7	91,729	4.2
July	145,370	-0.1	47,819	-1.1	14,232	-2.6	15,671	15.3	77,722	1.5
August	160,883	1.9	53,749	-0.1	14,567	-5.0	15,751	20.3	84,067	2.2
September	134,516	-4.0	45,513	-6.2	11,602	-7.1	13,740	16.1	70,855	-2.7
October	124,072	0.8	39,486	1.7	10,098	-11.9	12,421	2.3	62,005	-0.7
November	120,012	-6.0	37,583	-9.4	8,689	-16.7	11,916	0.4	58,188	-8.7
December	122,954	-6.3	34,864	-21.6	8,622	-0.7	9,493	1.3	52,979	-15.3
<b>Year</b>	1,690,538	1.5	551,001	-3.9	151,298	6.4	156,704	6.0	859,003	-0.5
<b>2008</b>										
January	105,546	11.8	34,557	25.2	8,571	11.3	8,719	17.7	51,847	21.4
February	113,877	14.0	37,369	23.1	9,992	20.4	11,002	28.0	58,363	23.5
March	153,505	-0.6	50,287	1.5	15,780	11.1	14,298	12.2	80,365	5.1
April	179,270	4.0	60,162	-0.4	18,939	7.3	19,542	35.7	98,643	6.7
May	188,135	-0.5	67,352	3.0	21,616	11.9	20,741	16.2	109,709	7.0

See footnotes at the end of the table.

Table 1-1 – continued

Monthly sales of new motor vehicles, by type and origin in units

	Total new motor vehicles		Trucks <sup>1</sup>					
			North America		Overseas		Total	
	Units	Year/year change	Units	Year/year change	Units	Year/year change	Units	Year/year change
	no.	%	no.	%	no.	%	no.	%
<b>2006</b>								
January	89,422	9.0	39,038	7.1	6,200	3.1	45,238	6.5
February	100,740	-5.0	44,353	-7.9	7,629	3.7	51,982	-6.3
March	155,990	5.2	65,037	4.9	11,590	14.9	76,627	6.3
April	159,436	-4.8	61,413	-6.1	11,765	10.8	73,178	-3.8
May	173,291	7.1	65,146	3.0	11,970	15.8	77,116	4.8
June	162,029	-2.4	62,927	-10.0	11,047	5.1	73,974	-8.0
July	145,521	-8.4	57,354	-15.4	11,611	9.4	68,965	-12.0
August	157,868	7.5	62,878	10.4	12,746	16.1	75,624	11.3
September	140,065	9.1	55,604	12.6	11,646	32.0	67,250	15.6
October	123,076	3.4	51,157	11.5	9,471	7.1	60,628	10.7
November	127,732	2.9	55,453	3.7	8,523	0.0	63,976	3.2
December	131,157	8.0	60,884	11.7	7,724	-15.8	68,608	7.7
<b>Year</b>	1,666,327	2.2	681,244	1.2	121,922	9.0	803,166	2.3
<b>2007</b>								
January	94,413	5.6	45,046	15.4	6,662	7.5	51,708	14.3
February	99,877	-0.9	46,119	4.0	6,502	-14.8	52,621	1.2
March	154,450	-1.0	68,305	5.0	9,658	-16.7	77,963	1.7
April	172,428	8.1	69,974	13.9	10,008	-14.9	79,982	9.3
May	189,076	9.1	76,370	17.2	10,142	-15.3	86,512	12.2
June	172,487	6.5	71,689	13.9	9,069	-17.9	80,758	9.2
July	145,370	-0.1	59,044	2.9	8,604	-25.9	67,648	-1.9
August	160,883	1.9	67,582	7.5	9,234	-27.6	76,816	1.6
September	134,516	-4.0	55,095	-0.9	8,566	-26.4	63,661	-5.3
October	124,072	0.8	54,266	6.1	7,801	-17.6	62,067	2.4
November	120,012	-6.0	54,374	-1.9	7,450	-12.6	61,824	-3.4
December	122,954	-6.3	60,045	-1.4	9,930	28.6	69,975	2.0
<b>Year</b>	1,690,538	1.5	727,909	6.8	103,626	-15.0	831,535	3.5
<b>2008</b>								
January	105,546	11.8	46,838	4.0	6,861	3.0	53,699	3.9
February	113,877	14.0	48,315	4.8	7,199	10.7	55,514	5.5
March	153,505	-0.6	62,765	-8.1	10,375	7.4	73,140	-6.2
April	179,270	4.0	69,099	-1.3	11,528	15.2	80,627	0.8
May	188,135	-0.5	67,292	-11.9	11,134	9.8	78,426	-9.3

1. {FN,790002,5}

Note(s): Percentage change are year-over-year changes.

**Table 1-2**  
**Monthly sales of new motor vehicles, by type and origin in dollars**

	Total new motor vehicles		Passenger cars							
			North America		Japan		Other countries		Total	
	Units	Year/year change	Units	Year/year change	Units	Year/year change	Units	Year/year change	Units	Year/year change
	\$'000	%	\$'000	%	\$'000	%	\$'000	%	\$'000	%
<b>2006</b>										
January	2,943,630	9.5	783,654	17.5	141,207	17.9	203,457	2.3	1,128,317	14.5
February	3,315,853	-4.8	839,753	-4.0	155,157	2.9	263,647	7.5	1,258,557	-1.0
March	5,042,821	6.2	1,363,846	0.8	264,322	15.0	428,915	21.1	2,057,083	6.2
April	5,047,812	-4.5	1,412,732	-7.4	341,109	-1.9	442,874	4.3	2,196,715	-4.4
May	5,505,594	7.1	1,591,591	9.5	397,061	21.4	472,704	4.4	2,461,355	10.2
June	5,190,119	-2.5	1,417,848	-0.3	384,257	24.2	436,503	3.4	2,238,608	4.0
July	4,593,190	-7.8	1,197,134	-6.7	348,305	18.6	380,303	-5.2	1,925,742	-2.6
August	5,003,098	7.9	1,329,192	4.6	366,042	30.9	363,741	-8.0	2,058,975	5.8
September	4,551,778	10.8	1,185,371	5.9	303,344	24.5	360,700	-7.4	1,849,414	5.6
October	4,117,566	7.7	952,835	-10.4	278,233	27.0	348,268	4.0	1,579,335	-2.4
November	4,230,872	3.8	1,025,403	1.6	263,541	16.0	348,557	4.8	1,637,501	4.4
December	4,423,928	10.3	1,151,510	13.9	226,814	25.6	307,576	6.3	1,685,900	13.8
<b>Year</b>	53,966,261	3.2	14,250,869	1.4	3,469,392	18.5	4,357,245	2.8	22,077,502	4.0
<b>2007</b>										
January	3,119,488	6.0	678,980	-13.4	191,902	35.9	227,357	11.7	1,098,239	-2.7
February	3,331,750	0.5	744,780	-11.3	208,249	34.2	259,453	-1.6	1,212,483	-3.7
March	5,012,381	-0.6	1,211,963	-11.1	348,605	31.9	410,805	-4.2	1,971,373	-4.2
April	5,396,290	6.9	1,478,389	4.6	427,130	25.2	444,341	0.3	2,349,860	7.0
May	5,865,532	6.5	1,604,080	0.8	468,349	18.0	526,054	11.3	2,598,482	5.6
June	5,364,300	3.4	1,423,743	0.4	392,487	2.1	483,196	10.7	2,299,426	2.7
July	4,456,441	-3.0	1,150,075	-3.9	340,890	-2.1	425,667	11.9	1,916,632	-0.5
August	4,886,861	-2.3	1,283,780	-3.4	352,457	-3.7	431,219	18.6	2,067,456	0.4
September	4,171,174	-8.4	1,112,749	-6.1	284,723	-6.1	392,779	8.9	1,790,251	-3.2
October	3,966,157	-3.7	967,433	1.5	252,753	-9.2	358,920	3.1	1,579,105	0.0
November	3,900,293	-7.8	956,515	-6.7	219,328	-16.8	343,356	-1.5	1,519,199	-7.2
December	4,157,710	-6.0	877,276	-23.8	220,947	-2.6	306,270	-0.4	1,404,493	-16.7
<b>Year</b>	53,628,377	-0.6	13,489,763	-5.3	3,707,820	6.9	4,609,417	5.8	21,806,999	-1.2
<b>2008</b>										
January	3,385,689	8.5	860,657	26.8	208,430	8.6	250,349	10.1	1,319,435	20.1
February	3,561,129	6.9	914,534	22.8	232,795	11.8	298,502	15.1	1,445,831	19.2
March	4,777,452	-4.7	1,210,134	-0.2	378,411	8.6	406,385	-1.1	1,994,930	1.2
April <sup>r</sup>	5,493,309	1.8	1,442,925	-2.4	464,601	8.8	570,437	28.4	2,477,963	5.5
May <sup>p</sup>	5,611,770	-4.3	1,560,258	-2.7	515,700	10.1	625,133	18.8	2,701,091	3.9

See footnotes at the end of the table.

Table 1-2 – continued

Monthly sales of new motor vehicles, by type and origin in dollars

	Total new motor vehicles		Trucks <sup>1</sup>					
			North America		Overseas		Total	
	Units	Year/year change	Units	Year/year change	Units	Year/year change	Units	Year/year change
	\$'000	%	\$'000	%	\$'000	%	\$'000	%
<b>2006</b>								
January	2,943,630	9.5	1,588,951	7.2	226,363	2.8	1,815,313	6.7
February	3,315,853	-4.8	1,783,024	-8.6	274,272	5.6	2,057,296	-6.9
March	5,042,821	6.2	2,570,492	4.7	415,246	15.9	2,985,738	6.1
April	5,047,812	-4.5	2,426,972	-7.0	424,125	11.9	2,851,097	-4.6
May	5,505,594	7.1	2,608,968	3.0	435,271	15.6	3,044,238	4.6
June	5,190,119	-2.5	2,552,993	-8.6	398,518	5.3	2,951,511	-7.0
July	4,593,190	-7.8	2,259,061	-14.1	408,387	8.8	2,667,448	-11.2
August	5,003,098	7.9	2,491,935	8.4	452,188	15.0	2,944,123	9.4
September	4,551,778	10.8	2,277,346	11.8	425,018	32.9	2,702,364	14.7
October	4,117,566	7.7	2,179,913	16.7	358,318	6.2	2,538,231	15.1
November	4,230,872	3.8	2,266,418	4.2	326,954	-1.6	2,593,371	3.4
December	4,423,928	10.3	2,439,194	10.9	298,834	-9.0	2,738,027	8.3
<b>Year</b>	<b>53,966,261</b>	<b>3.2</b>	<b>27,445,267</b>	<b>1.5</b>	<b>4,443,494</b>	<b>9.5</b>	<b>31,888,757</b>	<b>2.6</b>
<b>2007</b>								
January	3,119,488	6.0	1,767,669	11.2	253,581	12.0	2,021,249	11.3
February	3,331,750	0.5	1,872,596	5.0	246,671	-10.1	2,119,267	3.0
March	5,012,381	-0.6	2,683,279	4.4	357,729	-13.9	3,041,008	1.9
April	5,396,290	6.9	2,668,753	10.0	377,677	-11.0	3,046,430	6.9
May	5,865,532	6.5	2,883,932	10.5	383,117	-12.0	3,267,049	7.3
June	5,364,300	3.4	2,724,096	6.7	340,779	-14.5	3,064,874	3.8
July	4,456,441	-3.0	2,214,178	-2.0	325,631	-20.3	2,539,809	-4.8
August	4,886,861	-2.3	2,468,915	-0.9	350,490	-22.5	2,819,404	-4.2
September	4,171,174	-8.4	2,047,493	-10.1	333,431	-21.5	2,380,923	-11.9
October	3,966,157	-3.7	2,085,611	-4.3	301,440	-15.9	2,387,052	-6.0
November	3,900,293	-7.8	2,094,594	-7.6	286,499	-12.4	2,381,093	-8.2
December	4,157,710	-6.0	2,364,695	-3.1	388,522	30.0	2,753,217	0.6
<b>Year</b>	<b>53,628,377</b>	<b>-0.6</b>	<b>27,875,811</b>	<b>1.6</b>	<b>3,945,567</b>	<b>-11.2</b>	<b>31,821,375</b>	<b>-0.2</b>
<b>2008</b>								
January	3,385,689	8.5	1,801,221	1.9	265,033	4.5	2,066,253	2.2
February	3,561,129	6.9	1,841,178	-1.7	274,119	11.1	2,115,297	-0.2
March	4,777,452	-4.7	2,399,236	-10.6	383,286	7.1	2,782,522	-8.5
April	5,493,309	1.8	2,596,793	-2.7	418,553	10.8	3,015,346	-1.0
May	5,611,770	-4.3	2,504,558	-13.2	406,121	6.0	2,910,680	-10.9

1. {FN,790002,5}

Note(s): Percentage change are year-over-year changes.



**Table 2**  
**Average monthly prices of passenger cars, by origin**

Period	Total, country of manufacture		North America		Total, overseas		Japan		Other countries	
	Amount	Change	Amount	Change	Amount	Change	Amount	Change	Amount	Change
	\$	%	\$	%	\$	%	\$	%	\$	%
<b>2006</b>										
January	25,537	2.5	24,921	1.5	27,056	5.3	24,979	8.9	28,713	3.7
February	25,812	2.7	25,105	1.6	27,359	4.6	25,009	7.6	28,959	2.1
March	25,920	2.0	24,911	0.6	28,163	4.0	25,047	4.4	30,502	3.2
April	25,467	1.3	24,723	0.7	26,926	1.9	23,708	1.0	30,070	2.0
May	25,592	1.1	24,856	0.3	27,059	2.7	24,282	4.2	29,935	2.8
June	25,423	1.1	24,950	1.7	26,283	-0.6	24,030	3.4	28,648	-2.7
July	25,155	2.3	24,760	2.9	25,831	0.7	23,827	3.4	27,986	0.0
August	25,035	1.6	24,701	3.2	25,668	-1.7	23,862	-0.1	27,783	-0.6
September	25,399	1.8	24,442	1.4	27,307	2.7	24,295	-1.0	30,485	8.6
October	25,290	0.4	24,532	1.1	26,539	-2.2	24,262	-3.2	28,690	0.0
November	25,684	1.7	24,730	1.3	27,458	2.0	25,280	5.8	29,372	-0.3
December	26,953	5.0	25,880	4.0	29,600	7.6	26,128	7.1	32,815	9.7
<b>Year</b>	25,578	1.9	24,866	1.7	26,983	1.8	24,405	2.9	29,461	2.2
<b>2007</b>										
January	25,717	0.7	24,606	-1.3	27,745	2.5	24,909	-0.3	30,695	6.9
February	25,658	-0.6	24,531	-2.3	27,683	1.2	25,093	0.3	30,183	4.2
March	25,774	-0.6	24,464	-1.8	28,182	0.1	24,539	-2.0	32,243	5.7
April	25,419	-0.2	24,480	-1.0	27,188	1.0	24,201	2.1	30,846	2.6
May	25,335	-1.0	24,527	-1.3	26,757	-1.1	24,248	-0.1	29,472	-1.5
June	25,068	-1.4	24,255	-2.8	26,513	0.9	24,057	0.1	28,910	0.9
July	24,660	-2.0	24,051	-2.9	25,635	-0.8	23,952	0.5	27,163	-2.9
August	24,593	-1.8	23,885	-3.3	25,849	0.7	24,196	1.4	27,377	-1.5
September	25,266	-0.5	24,449	0.0	26,734	-2.1	24,541	1.0	28,587	-6.2
October	25,467	0.7	24,501	-0.1	27,162	2.4	25,030	3.2	28,896	0.7
November	26,108	1.7	25,451	2.9	27,308	-0.5	25,242	-0.1	28,815	-1.9
December	26,510	-1.6	25,163	-2.8	29,104	-1.7	25,626	-1.9	32,263	-1.7
<b>Year</b>	25,386	-0.7	24,482	-1.5	27,004	0.1	24,507	0.4	29,415	-0.2
<b>2008</b>										
January	25,449	-1.0	24,905	1.2	26,534	-4.4	24,318	-2.4	28,713	-6.5
February	24,773	-3.4	24,473	-0.2	25,307	-8.6	23,298	-7.2	27,132	-10.1
March	24,823	-3.7	24,065	-1.6	26,092	-7.4	23,980	-2.3	28,423	-11.8
April <sup>r</sup>	25,121 <sup>r</sup>	-1.2 <sup>r</sup>	23,984 <sup>r</sup>	-2.0 <sup>r</sup>	26,897	-1.1	24,531	1.4	29,190	-5.4
May <sup>p</sup>	24,621	-2.8	23,166	-5.6	26,934	0.7	23,857	-1.6	30,140	2.3

**Note(s):** Percentage changes shown are year-to-year changes.

**Table 3**  
**Monthly market share of new passenger car sales (units), by origin, Canada**

Period	Total		Passenger cars					
			North America		Japan		Other countries	
	Units	Market share	Units	Market share	Units	Market share	Units	Market share
	no.	%	no.	%	no.	%	no.	%
<b>2006</b>								
January	44,184	100.0	31,445	71.2	5,653	12.8	7,086	16.0
February	48,758	100.0	33,450	68.6	6,204	12.7	9,104	18.7
March	79,363	100.0	54,748	69.0	10,553	13.3	14,062	17.7
April	86,258	100.0	57,142	66.2	14,388	16.7	14,728	17.1
May	96,175	100.0	64,032	66.6	16,352	17.0	15,791	16.4
June	88,055	100.0	56,827	64.5	15,991	18.2	15,237	17.3
July	76,556	100.0	48,349	63.2	14,618	19.1	13,589	17.8
August	82,244	100.0	53,812	65.4	15,340	18.7	13,092	15.9
September	72,815	100.0	48,497	66.6	12,486	17.1	11,832	16.2
October	62,448	100.0	38,841	62.2	11,468	18.4	12,139	19.4
November	63,756	100.0	41,464	65.0	10,425	16.4	11,867	18.6
December	62,549	100.0	44,495	71.1	8,681	13.9	9,373	15.0
<b>Year</b>	<b>863,161</b>	<b>100.0</b>	<b>573,102</b>	<b>66.4</b>	<b>142,159</b>	<b>16.5</b>	<b>147,900</b>	<b>17.1</b>
<b>2007</b>								
January	42,705	100.0	27,594	64.6	7,704	18.0	7,407	17.3
February	47,256	100.0	30,361	64.2	8,299	17.6	8,596	18.2
March	76,487	100.0	49,540	64.8	14,206	18.6	12,741	16.7
April	92,446	100.0	60,392	65.3	17,649	19.1	14,405	15.6
May	102,564	100.0	65,400	63.8	19,315	18.8	17,849	17.4
June	91,729	100.0	58,700	64.0	16,315	17.8	16,714	18.2
July	77,722	100.0	47,819	61.5	14,232	18.3	15,671	20.2
August	84,067	100.0	53,749	63.9	14,567	17.3	15,751	18.7
September	70,855	100.0	45,513	64.2	11,602	16.4	13,740	19.4
October	62,005	100.0	39,486	63.7	10,098	16.3	12,421	20.0
November	58,188	100.0	37,583	64.6	8,689	14.9	11,916	20.5
December	52,979	100.0	34,864	65.8	8,622	16.3	9,493	17.9
<b>Year</b>	<b>859,003</b>	<b>100.0</b>	<b>551,001</b>	<b>64.1</b>	<b>151,298</b>	<b>17.6</b>	<b>156,704</b>	<b>18.2</b>
<b>2008</b>								
January	51,847	100.0	34,557	66.7	8,571	16.5	8,719	16.8
February	58,363	100.0	37,369	64.0	9,992	17.1	11,002	18.9
March	80,365	100.0	50,287	62.6	15,780	19.6	14,298	17.8
April	98,643	100.0	60,162	61.0	18,939	19.2	19,542	19.8
May	109,709	100.0	67,352	61.4	21,616	19.7	20,741	18.9

**Table 4**  
**Provincial sales of new motor vehicles, by type and origin, in units and dollars, May**

Type and origin of vehicles	Canada	Newfoundland and Labrador	Prince Edward Island	Nova Scotia	New Brunswick	Quebec
<b>Total, new motor vehicles</b>						
2006 (no.)	173,291	2,839	540	5,332	3,729	44,269
2007 (no.)	189,076	3,684	638	5,353	4,538	52,144
2008 (no.)	188,135	3,717	662	6,288	4,605	53,361
2008 / 2007 %	-0.5	0.9	3.8	17.5	1.5	2.3
2006 (\$'000)	5,505,594	75,687	13,780	151,626	111,676	1,281,506
2007 (\$'000)	5,865,532	96,416	15,424	145,549	126,133	1,453,716
2008 (\$'000)	5,611,770	94,942	16,404	158,690	121,750	1,447,742
2008 / 2007 %	-4.3	-1.5	6.4	9.0	-3.5	-0.4
<b>Passenger cars, manufactured in North America</b>						
2006 (no.)	64,032	1,276	262	2,559	1,605	16,734
2007 (no.)	65,400	1,634	279	2,230	1,830	19,258
2008 (no.)	67,352	1,582	303	2,857	1,832	19,636
2008 / 2007 %	3.0	-3.2	8.6	28.1	0.1	2.0
2006 (\$'000)	1,591,591	29,803	6,206	61,547	39,691	401,694
2007 (\$'000)	1,604,080	37,270	6,265	52,292	42,918	452,043
2008 (\$'000)	1,560,258	35,832	6,462	61,439	41,797	443,632
2008 / 2007 %	-2.7	-3.9	3.1	17.5	-2.6	-1.9
<b>Passenger cars, manufactured in Japan</b>						
2006 (no.)	16,352	x	x	416	x	7,088
2007 (no.)	19,315	x	x	569	x	8,350
2008 (no.)	21,616	x	x	651	x	9,306
2008 / 2007 %	11.9	x	x	14.4	x	11.4
2006 (\$'000)	397,061	x	x	9,294	x	156,602
2007 (\$'000)	468,349	x	x	12,446	x	183,824
2008 (\$'000)	515,700	x	x	14,082	x	201,133
2008 / 2007 %	10.1	x	x	13.1	x	9.4
<b>Passenger cars, manufactured in other countries</b>						
2006 (no.)	15,791	x	x	501	x	5,854
2007 (no.)	17,849	x	x	593	x	6,696
2008 (no.)	20,741	x	x	754	x	7,531
2008 / 2007 %	16.2	x	x	27.2	x	12.5
2006 (\$'000)	472,704	x	x	12,005	x	153,750
2007 (\$'000)	526,054	x	x	13,127	x	175,003
2008 (\$'000)	625,133	x	x	16,485	x	202,409
2008 / 2007 %	18.8	x	x	25.6	x	15.7
<b>Trucks <sup>1</sup>, manufactured in North America</b>						
2006 (no.)	65,146	x	x	1,604	1,308	11,372
2007 (no.)	76,370	x	x	1,750	1,735	15,338
2008 (no.)	67,292	x	x	1,777	1,561	13,862
2008 / 2007 %	-11.9	x	x	1.5	-10.0	-9.6
2006 (\$'000)	2,608,968	x	x	60,045	53,331	456,256
2007 (\$'000)	2,883,932	x	x	60,499	61,026	549,301
2008 (\$'000)	2,504,558	x	x	58,100	52,377	493,652
2008 / 2007 %	-13.2	x	x	-4.0	-14.2	-10.1
<b>Trucks <sup>1</sup>, manufactured overseas</b>						
2006 (no.)	11,970	x	x	252	199	3,221
2007 (no.)	10,142	x	x	211	214	2,502
2008 (no.)	11,134	x	x	249	217	3,026
2008 / 2007 %	9.8	x	x	18.0	1.4	20.9
2006 (\$'000)	435,271	x	x	8,735	6,133	113,204
2007 (\$'000)	383,117	x	x	7,186	6,936	93,545
2008 (\$'000)	406,121	x	x	8,584	7,019	106,915
2008 / 2007 %	6.0	x	x	19.5	1.2	14.3

See footnotes at the end of the table.

Table 4 – continued

## Provincial sales of new motor vehicles, by type and origin, in units and dollars, May

Type and origin of vehicles	Canada	Ontario	Manitoba	Saskatchewan	Alberta	British Columbia and the Territories
<b>Total, new motor vehicles</b>						
2006 (no.)	173,291	63,276	4,479	3,849	25,907	19,071
2007 (no.)	189,076	65,220	4,702	4,630	26,960	21,207
2008 (no.)	188,135	64,584	4,875	4,723	25,461	19,859
2008 / 2007 %	-0.5	-1.0	3.7	2.0	-5.6	-6.4
2006 (\$'000)	5,505,594	2,062,484	154,131	129,563	898,588	626,553
2007 (\$'000)	5,865,532	2,074,767	154,396	161,814	938,932	698,385
2008 (\$'000)	5,611,770	2,001,170	157,588	159,997	843,882	609,092
2008 / 2007 %	-4.3	-3.5	2.1	-1.1	-10.1	-12.8
<b>Passenger cars, manufactured in North America</b>						
2006 (no.)	64,032	24,929	1,585	1,273	7,475	6,334
2007 (no.)	65,400	23,782	1,495	1,228	7,276	6,388
2008 (no.)	67,352	23,981	1,690	1,364	7,485	6,622
2008 / 2007 %	3.0	0.8	13.0	11.1	2.9	3.7
2006 (\$'000)	1,591,591	634,816	39,383	32,148	186,794	159,510
2007 (\$'000)	1,604,080	605,750	37,493	30,987	182,980	156,081
2008 (\$'000)	1,560,258	572,914	40,455	32,483	179,745	145,499
2008 / 2007 %	-2.7	-5.4	7.9	4.8	-1.8	-6.8
<b>Passenger cars, manufactured in Japan</b>						
2006 (no.)	16,352	4,561	223	157	1,261	2,128
2007 (no.)	19,315	5,526	285	209	1,516	2,208
2008 (no.)	21,616	6,005	469	286	1,646	2,456
2008 / 2007 %	11.9	8.7	64.6	36.8	8.6	11.2
2006 (\$'000)	397,061	123,708	5,440	3,822	33,247	54,016
2007 (\$'000)	468,349	150,073	6,941	5,221	40,140	56,122
2008 (\$'000)	515,700	159,547	11,517	7,248	44,021	61,516
2008 / 2007 %	10.1	6.3	65.9	38.8	9.7	9.6
<b>Passenger cars, manufactured in other countries</b>						
2006 (no.)	15,791	5,353	306	225	1,212	1,666
2007 (no.)	17,849	5,603	336	198	1,462	2,132
2008 (no.)	20,741	6,764	360	308	1,616	2,346
2008 / 2007 %	16.2	20.7	7.1	55.6	10.5	10.0
2006 (\$'000)	472,704	181,833	7,805	5,375	39,903	58,940
2007 (\$'000)	526,054	190,186	7,990	4,630	48,939	70,495
2008 (\$'000)	625,133	233,274	9,015	7,400	54,050	81,237
2008 / 2007 %	18.8	22.7	12.8	59.8	10.4	15.2
<b>Trucks 1, manufactured in North America</b>						
2006 (no.)	65,146	23,952	2,056	1,964	14,443	7,369
2007 (no.)	76,370	26,520	2,319	2,783	15,263	9,164
2008 (no.)	67,292	23,645	2,072	2,498	13,187	7,294
2008 / 2007 %	-11.9	-10.8	-10.7	-10.2	-13.6	-20.4
2006 (\$'000)	2,608,968	952,047	90,992	80,200	583,598	296,399
2007 (\$'000)	2,883,932	982,010	92,347	113,283	612,213	364,817
2008 (\$'000)	2,504,558	879,225	86,798	103,499	509,274	276,532
2008 / 2007 %	-13.2	-10.5	-6.0	-8.6	-16.8	-24.2
<b>Trucks 1, manufactured overseas</b>						
2006 (no.)	11,970	4,481	309	230	1,516	1,574
2007 (no.)	10,142	3,789	267	212	1,443	1,315
2008 (no.)	11,134	4,189	284	267	1,527	1,141
2008 / 2007 %	9.8	10.6	6.4	25.9	5.8	-13.2
2006 (\$'000)	435,271	170,079	10,512	8,018	55,046	57,687
2007 (\$'000)	383,117	146,749	9,626	7,692	54,659	50,870
2008 (\$'000)	406,121	156,210	9,803	9,368	56,792	44,308
2008 / 2007 %	6.0	6.4	1.8	21.8	3.9	-12.9

1. {FN,790002,5}

2. For reasons of confidentiality, data for the Yukon, the Northwest Territories and Nunavut have been included with the data for British Columbia.

**Table 5-1**  
**Year to date provincial sales of new motor vehicles, by type and origin in units, January to May**

Province	Total new motor vehicles		Passenger cars							
			North America		Japan		Other countries		Total	
	Units	Year/year change	Units	Year/year change	Units	Year/year change	Units	Year/year change	Units	Year/year change
	no.	%	no.	%	no.	%	no.	%	no.	%
<b>2006</b>										
Newfoundland and Labrador	9,620	-7.7	3,954	-9.7	x	x	x	x	5,414	-9.9
Prince Edward Island	1,874	2.2	840	7.0	x	x	x	x	1,169	6.5
Nova Scotia	20,558	4.3	9,166	3.9	1,318	22.9	1,979	23.2	12,463	8.4
New Brunswick	14,415	0.6	5,857	0.5	x	x	x	x	7,993	4.0
Quebec	168,485	-3.0	63,878	-3.1	22,320	-1.4	22,568	2.9	108,766	-1.6
Ontario	251,602	0.9	94,655	3.2	15,465	8.7	20,474	2.6	130,594	3.7
Manitoba	17,724	-3.6	5,674	-7.6	796	12.9	962	5.9	7,432	-4.2
Saskatchewan	15,100	-1.2	4,259	0.4	487	11.7	724	0.6	5,470	1.3
Alberta	100,791	15.7	27,281	9.8	4,278	16.0	4,363	8.8	35,922	10.4
British Columbia and the Territories <sup>1</sup>	78,710	4.1	25,253	-0.3	6,966	16.5	7,296	16.9	39,515	5.2
<b>Canada</b>	678,879	2.0	240,817	1.2	53,150	6.0	60,771	5.2	354,738	2.5
<b>2007</b>										
Newfoundland and Labrador	11,802	22.7	4,809	21.6	x	x	x	x	6,531	20.6
Prince Edward Island	2,137	14.0	865	3.0	x	x	x	x	1,283	9.8
Nova Scotia	20,145	-2.0	8,309	-9.3	1,816	37.8	1,837	-7.2	11,962	-4.0
New Brunswick	15,653	8.6	5,936	1.3	x	x	x	x	8,282	3.6
Quebec	181,461	7.7	65,012	1.8	27,938	25.2	21,777	-3.5	114,727	5.5
Ontario	250,872	-0.3	88,135	-6.9	19,296	24.8	20,316	-0.8	127,747	-2.2
Manitoba	18,954	6.9	5,733	1.0	1,027	29.0	1,055	9.7	7,815	5.2
Saskatchewan	17,474	15.7	4,165	-2.2	616	26.5	658	-9.1	5,439	-0.6
Alberta	107,319	6.5	26,207	-3.9	5,714	33.6	5,007	14.8	36,928	2.8
British Columbia and the Territories <sup>1</sup>	84,427	7.3	24,116	-4.5	8,665	24.4	7,963	9.1	40,744	3.1
<b>Canada</b>	710,244	4.6	233,287	-3.1	67,173	26.4	60,998	0.4	361,458	1.9
<b>2008</b>										
Newfoundland and Labrador	13,555	14.9	5,231	8.8	x	x	x	x	7,493	14.7
Prince Edward Island	2,328	8.9	1,029	19.0	x	x	x	x	1,449	12.9
Nova Scotia	23,588	17.1	9,833	18.3	2,130	17.3	2,783	51.5	14,746	23.3
New Brunswick	17,301	10.5	6,656	12.1	x	x	x	x	9,777	18.1
Quebec	200,227	10.3	72,542	11.6	30,357	8.7	27,912	28.2	130,811	14.0
Ontario	256,138	2.1	91,456	3.8	21,489	11.4	23,806	17.2	136,751	7.0
Manitoba	20,232	6.7	6,562	14.5	1,479	44.0	1,282	21.5	9,323	19.3
Saskatchewan	20,269	16.0	5,283	26.8	947	53.7	1,048	59.3	7,278	33.8
Alberta	104,457	-2.7	27,404	4.6	6,429	12.5	5,610	12.0	39,443	6.8
British Columbia and the Territories <sup>1</sup>	82,238	-2.6	23,731	-1.6	9,708	12.0	8,417	5.7	41,856	2.7
<b>Canada</b>	740,333	4.2	249,727	7.0	74,898	11.5	74,302	21.8	398,927	10.4

See footnotes at the end of the table.

Table 5-1 – continued

Year to date provincial sales of new motor vehicles, by type and origin in units, January to May

Province	Total new motor vehicles		Trucks <sup>2</sup>					
			North America		Overseas		Total	
	Units	Year/year change	Units	Year/year change	Units	Year/year change	Units	Year/year change
	no.	%	no.	%	no.	%	no.	%
<b>2006</b>								
Newfoundland and Labrador	9,620	-7.7	x	x	x	x	4,206	-4.7
Prince Edward Island	1,874	2.2	x	x	x	x	705	-4.1
Nova Scotia	20,558	4.3	6,954	-4.1	1,141	17.9	8,095	-1.5
New Brunswick	14,415	0.6	5,539	-7.2	883	29.5	6,422	-3.5
Quebec	168,485	-3.0	47,229	-6.9	12,490	0.5	59,719	-5.4
Ontario	251,602	0.9	102,076	-3.7	18,932	8.9	121,008	-1.9
Manitoba	17,724	-3.6	9,000	-7.3	1,292	41.4	10,292	-3.1
Saskatchewan	15,100	-1.2	8,676	-3.4	954	5.0	9,630	-2.6
Alberta	100,791	15.7	58,722	17.9	6,147	28.7	64,869	18.8
British Columbia and the Territories <sup>1</sup>	78,710	4.1	32,635	0.4	6,560	17.6	39,195	2.9
<b>Canada</b>	<b>678,879</b>	<b>2.0</b>	<b>274,987</b>	<b>-0.1</b>	<b>49,154</b>	<b>10.7</b>	<b>324,141</b>	<b>1.4</b>
<b>2007</b>								
Newfoundland and Labrador	11,802	22.7	x	x	x	x	5,271	25.3
Prince Edward Island	2,137	14.0	x	x	x	x	854	21.1
Nova Scotia	20,145	-2.0	7,307	5.1	876	-23.2	8,183	1.1
New Brunswick	15,653	8.6	6,588	18.9	783	-11.3	7,371	14.8
Quebec	181,461	7.7	56,381	19.4	10,353	-17.1	66,734	11.7
Ontario	250,872	-0.3	107,566	5.4	15,559	-17.8	123,125	1.7
Manitoba	18,954	6.9	10,045	11.6	1,094	-15.3	11,139	8.2
Saskatchewan	17,474	15.7	11,106	28.0	929	-2.6	12,035	25.0
Alberta	107,319	6.5	63,895	8.8	6,496	5.7	70,391	8.5
British Columbia and the Territories <sup>1</sup>	84,427	7.3	37,526	15.0	6,157	-6.1	43,683	11.5
<b>Canada</b>	<b>710,244</b>	<b>4.6</b>	<b>305,814</b>	<b>11.2</b>	<b>42,972</b>	<b>-12.6</b>	<b>348,786</b>	<b>7.6</b>
<b>2008</b>								
Newfoundland and Labrador	13,555	14.9	x	x	x	x	6,062	15.0
Prince Edward Island	2,328	8.9	x	x	x	x	879	2.9
Nova Scotia	23,588	17.1	7,815	7.0	1,027	17.2	8,842	8.1
New Brunswick	17,301	10.5	6,696	1.6	828	5.7	7,524	2.1
Quebec	200,227	10.3	57,248	1.5	12,168	17.5	69,416	4.0
Ontario	256,138	2.1	101,708	-5.4	17,679	13.6	119,387	-3.0
Manitoba	20,232	6.7	9,736	-3.1	1,173	7.2	10,909	-2.1
Saskatchewan	20,269	16.0	11,874	6.9	1,117	20.2	12,991	7.9
Alberta	104,457	-2.7	58,299	-8.8	6,715	3.4	65,014	-7.6
British Columbia and the Territories <sup>1</sup>	82,238	-2.6	34,835	-7.2	5,547	-9.9	40,382	-7.6
<b>Canada</b>	<b>740,333</b>	<b>4.2</b>	<b>294,309</b>	<b>-3.8</b>	<b>47,097</b>	<b>9.6</b>	<b>341,406</b>	<b>-2.1</b>

1. For reasons of confidentiality, data for the Yukon, the Northwest Territories and Nunavut have been included with the data for British Columbia.  
 2. {FN,790002,5}

**Note(s):** Percentage changes shown are year-to-year changes.

**Table 5-2**  
**Year to date provincial sales of new motor vehicles, by type and origin in dollars, January to May**

Province	Total new motor vehicles		Passenger cars							
			North America		Japan		Other countries		Total	
	Units	Year/year change	Units	Year/year change	Units	Year/year change	Units	Year/year change	Units	Year/year change
	\$'000	%	\$'000	%	\$'000	%	\$'000	%	\$'000	%
<b>2006</b>										
Newfoundland and Labrador	260,736	-6.1	91,248	-7.8	x	x	x	x	120,293	-7.6
Prince Edward Island	48,245	0.9	19,614	8.9	x	x	x	x	25,809	8.6
Nova Scotia	577,572	2.6	215,241	5.0	29,906	26.6	43,583	18.3	288,732	8.8
New Brunswick	426,884	3.4	139,828	2.3	x	x	x	x	183,032	5.1
Quebec	4,906,191	-2.2	1,526,828	-2.6	492,839	5.2	581,927	6.0	2,601,593	0.7
Ontario	8,258,619	-0.2	2,424,454	3.1	420,321	10.5	704,174	6.3	3,548,949	4.5
Manitoba	615,712	-5.2	141,409	-7.3	19,211	10.3	25,117	9.6	185,739	-3.7
Saskatchewan	526,502	-0.5	108,822	1.3	12,729	12.4	17,057	1.7	138,607	2.3
Alberta	3,612,026	17.1	694,669	11.2	115,519	19.5	139,945	11.5	950,135	12.2
British Columbia and the Territories <sup>1</sup>	2,623,227	5.1	629,459	3.1	176,065	17.4	253,611	17.8	1,059,136	8.5
<b>Canada</b>	<b>21,855,710</b>	<b>2.4</b>	<b>5,991,576</b>	<b>2.0</b>	<b>1,298,856</b>	<b>10.5</b>	<b>1,811,597</b>	<b>8.1</b>	<b>9,102,027</b>	<b>4.3</b>
<b>2007</b>										
Newfoundland and Labrador	318,412	22.1	109,035	19.5	x	x	x	x	143,865	19.6
Prince Edward Island	55,154	14.3	19,689	0.4	x	x	x	x	27,841	7.9
Nova Scotia	561,913	-2.7	192,780	-10.4	41,022	37.2	40,833	-6.3	274,634	-4.9
New Brunswick	452,064	5.9	137,845	-1.4	x	x	x	x	186,453	1.9
Quebec	5,179,700	5.6	1,522,561	-0.3	616,465	25.1	581,853	0.0	2,720,878	4.6
Ontario	8,185,227	-0.9	2,240,997	-7.6	528,983	25.9	719,825	2.2	3,489,805	-1.7
Manitoba	655,273	6.4	141,589	0.1	25,614	33.3	26,696	6.3	193,899	4.4
Saskatchewan	629,794	19.6	104,462	-4.0	16,273	27.8	17,223	1.0	137,958	-0.5
Alberta	3,842,167	6.4	658,941	-5.1	151,715	31.3	167,139	19.4	977,795	2.9
British Columbia and the Territories <sup>1</sup>	2,845,743	8.5	590,293	-6.2	220,098	25.0	266,922	5.2	1,077,313	1.7
<b>Canada</b>	<b>22,725,441</b>	<b>4.0</b>	<b>5,718,192</b>	<b>-4.6</b>	<b>1,644,235</b>	<b>26.6</b>	<b>1,868,010</b>	<b>3.1</b>	<b>9,230,437</b>	<b>1.4</b>
<b>2008</b>										
Newfoundland and Labrador	367,255	15.3	119,515	9.6	x	x	x	x	164,171	14.1
Prince Edward Island	59,812	8.4	22,941	16.5	x	x	x	x	30,990	11.3
Nova Scotia	642,465	14.3	228,450	18.5	46,588	13.6	58,076	42.2	333,114	21.3
New Brunswick	489,598	8.3	155,177	12.6	x	x	x	x	218,269	17.1
Quebec	5,584,615	7.8	1,661,838	9.1	660,771	7.2	707,898	21.7	3,030,506	11.4
Ontario	8,125,932	-0.7	2,252,786	0.5	569,745	7.7	802,978	11.6	3,625,509	3.9
Manitoba	654,056	-0.2	158,600	12.0	35,688	39.3	31,129	16.6	225,416	16.3
Saskatchewan	694,100	10.2	127,344	21.9	24,497	50.5	25,815	49.9	177,652	28.8
Alberta	3,554,839	-7.5	689,539	4.6	170,760	12.6	176,462	5.6	1,036,761	6.0
British Columbia and the Territories <sup>1</sup>	2,656,161	-6.7	572,320	-3.0	242,803	10.3	281,738	5.6	1,096,862	1.8
<b>Canada</b>	<b>22,829,349</b>	<b>0.5</b>	<b>5,988,508</b>	<b>4.7</b>	<b>1,799,937</b>	<b>9.5</b>	<b>2,150,806</b>	<b>15.1</b>	<b>9,939,250</b>	<b>7.7</b>

See footnotes at the end of the table.

Table 5-2 – continued

Year to date provincial sales of new motor vehicles, by type and origin in dollars, January to May

Province	Total new motor vehicles		Trucks <sup>2</sup>					
			North America		Overseas		Total	
	Units	Year/year change	Units	Year/year change	Units	Year/year change	Units	Year/year change
	\$'000	%	\$'000	%	\$'000	%	\$'000	%
<b>2006</b>								
Newfoundland and Labrador	260,736	-6.1	x	x	x	x	140,443	-4.8
Prince Edward Island	48,245	0.9	x	x	x	x	22,435	-6.7
Nova Scotia	577,572	2.6	250,727	-5.8	38,112	21.0	288,839	-3.0
New Brunswick	426,884	3.4	216,257	-0.7	27,593	32.3	243,851	2.1
Quebec	4,906,191	-2.2	1,878,363	-6.4	426,235	0.8	2,304,598	-5.2
Ontario	8,258,619	-0.2	3,999,646	-5.4	710,024	8.9	4,709,669	-3.5
Manitoba	615,712	-5.2	385,158	-9.4	44,813	43.9	429,972	-5.8
Saskatchewan	526,502	-0.5	354,581	-2.5	33,313	10.4	387,895	-1.5
Alberta	3,612,026	17.1	2,435,200	18.0	226,692	30.6	2,661,890	19.0
British Columbia and the Territories <sup>1</sup>	2,623,227	5.1	1,318,573	0.6	245,517	17.5	1,564,092	3.0
<b>Canada</b>	<b>21,855,710</b>	<b>2.4</b>	<b>10,978,407</b>	<b>-0.5</b>	<b>1,775,277</b>	<b>11.4</b>	<b>12,753,682</b>	<b>1.0</b>
<b>2007</b>								
Newfoundland and Labrador	318,412	22.1	x	x	x	x	174,545	24.3
Prince Edward Island	55,154	14.3	x	x	x	x	27,313	21.7
Nova Scotia	561,913	-2.7	257,108	2.5	30,170	-20.8	287,277	-0.5
New Brunswick	452,064	5.9	239,827	10.9	25,786	-6.5	265,613	8.9
Quebec	5,179,700	5.6	2,078,487	10.7	380,335	-10.8	2,458,823	6.7
Ontario	8,185,227	-0.9	4,095,353	2.4	600,070	-15.5	4,695,423	-0.3
Manitoba	655,273	6.4	421,835	9.5	39,540	-11.8	461,374	7.3
Saskatchewan	629,794	19.6	458,177	29.2	33,659	1.0	491,835	26.8
Alberta	3,842,167	6.4	2,617,185	7.5	247,187	9.0	2,864,373	7.6
British Columbia and the Territories <sup>1</sup>	2,845,743	8.5	1,529,453	16.0	238,977	-2.7	1,768,429	13.1
<b>Canada</b>	<b>22,725,441</b>	<b>4.0</b>	<b>11,876,229</b>	<b>8.2</b>	<b>1,618,775</b>	<b>-8.8</b>	<b>13,495,003</b>	<b>5.8</b>
<b>2008</b>								
Newfoundland and Labrador	367,255	15.3	x	x	x	x	203,085	16.4
Prince Edward Island	59,812	8.4	x	x	x	x	28,823	5.5
Nova Scotia	642,465	14.3	274,083	6.6	35,267	16.9	309,349	7.7
New Brunswick	489,598	8.3	244,645	2.0	26,683	3.5	271,329	2.2
Quebec	5,584,615	7.8	2,121,743	2.1	432,362	13.7	2,554,107	3.9
Ontario	8,125,932	-0.7	3,827,732	-6.5	672,691	12.1	4,500,422	-4.2
Manitoba	654,056	-0.2	387,711	-8.1	40,930	3.5	428,641	-7.1
Saskatchewan	694,100	10.2	476,879	4.1	39,570	17.6	516,449	5.0
Alberta	3,554,839	-7.5	2,264,275	-13.5	253,804	2.7	2,518,078	-12.1
British Columbia and the Territories <sup>1</sup>	2,656,161	-6.7	1,339,395	-12.4	219,905	-8.0	1,559,300	-11.8
<b>Canada</b>	<b>22,829,349</b>	<b>0.5</b>	<b>11,142,986</b>	<b>-6.2</b>	<b>1,747,112</b>	<b>7.9</b>	<b>12,890,098</b>	<b>-4.5</b>

1. For reasons of confidentiality, data for the Yukon, the Northwest Territories and Nunavut have been included with the data for British Columbia.  
 2. {FN,790002,5}

**Note(s):** Percentage changes shown are year-to-year changes.



**Table 6**  
**Annual sales of new motor vehicles, by type and origin, in units and dollars, Canada**

Year	Total	Passenger cars				Trucks <sup>1</sup>		
		Total	North America	Japan	Other countries	Total	North America	Overseas
number								
1985	1,530,410	1,137,216	794,965	199,221	143,030	393,194	344,871	48,323
1986	1,515,920	1,095,313	761,169	203,304	130,840	420,607	368,423	52,184
1987	1,533,637	1,065,093	700,930	243,288	120,875	468,544	417,189	51,355
1988	1,565,501	1,056,310	724,733	243,835	87,742	509,191	459,777	49,414
1989	1,483,875	988,134	675,340	239,548	73,246	495,741	422,398	73,343
1990	1,317,869	884,564	580,397	239,603	64,564	433,305	361,403	71,902
1991	1,287,790	873,184	573,297	237,701	62,186	414,606	347,671	66,935
1992	1,227,419	798,023	503,460	236,675	57,888	429,396	370,422	58,974
1993	1,192,934	739,049	493,759	196,310	48,980	453,885	402,112	51,773
1994	1,260,056	748,666	573,361	129,547	45,758	511,390	475,444	35,946
1995	1,166,535	670,190	553,265	71,493	45,432	496,345	469,590	26,755
1996	1,204,557	660,769	572,581	47,901	40,287	543,788	517,738	26,050
1997	1,424,380	738,550	629,488	66,297	42,765	685,830	628,214	57,616
1998	1,428,932	740,809	590,667	98,275	51,867	688,123	627,256	60,867
1999	1,542,041	806,450	625,292	103,016	78,142	735,591	672,444	63,147
2000	1,587,561	849,171	640,856	106,937	101,378	738,390	669,492	68,898
2001	1,597,964	868,633	619,810	122,998	125,825	729,331	647,987	81,344
2002	1,733,318	934,704	651,305	144,596	138,803	798,614	698,870	99,744
2003	1,626,468	865,475	604,726	126,908	133,841	760,993	654,136	106,857
2004	1,575,195	820,103	542,814	116,426	160,863	755,092	653,637	101,455
2005	1,630,310	845,222	574,639	123,482	147,101	785,088	673,205	111,883
2006	1,666,327	863,161	573,102	142,159	147,900	803,166	681,244	121,922
2007	1,690,538	859,003	551,001	151,298	156,704	831,535	727,909	103,626
\$'000								
1985	19,890,119	13,707,637	9,545,156	2,325,922	1,836,559	6,182,482	5,641,518	540,964
1986	21,841,550	14,669,730	9,856,684	2,811,893	2,001,153	7,171,820	6,441,827	729,993
1987	24,471,752	15,748,410	10,031,338	3,567,223	2,149,849	8,723,342	7,930,138	793,204
1988	26,865,327	16,709,476	11,080,866	3,784,902	1,843,708	10,155,851	9,369,528	786,323
1989	26,959,378	16,541,801	11,034,684	3,887,341	1,619,774	10,417,577	9,059,482	1,358,095
1990	24,888,751	15,245,831	9,784,293	4,015,958	1,445,580	9,642,918	8,210,502	1,432,416
1991	22,855,626	14,103,545	9,038,584	3,789,001	1,275,960	8,752,081	7,503,659	1,248,422
1992	23,484,455	13,691,746	8,450,516	4,053,782	1,187,451	9,792,709	8,613,984	1,178,725
1993	24,630,359	13,278,180	8,620,649	3,560,913	1,096,620	11,352,180	10,227,082	1,125,101
1994	27,893,795	14,182,894	10,595,001	2,346,168	1,241,727	13,710,902	12,846,447	864,453
1995	28,168,806	13,882,004	11,070,368	1,492,451	1,319,184	14,286,804	13,544,980	741,824
1996	31,485,777	14,510,882	12,062,092	1,118,289	1,330,501	16,974,894	16,115,584	859,309
1997	38,986,224	16,836,615	13,809,161	1,519,604	1,507,852	22,149,610	20,341,263	1,808,346
1998	40,255,777	17,054,244	13,101,703	2,110,330	1,842,211	23,201,534	21,165,239	2,036,296
1999	45,317,914	19,017,278	14,138,902	2,246,522	2,631,853	26,300,638	24,055,653	2,244,986
2000	46,930,514	20,790,660	15,089,665	2,431,251	3,269,743	26,139,852	23,745,933	2,393,922
2001	46,886,252	21,168,628	14,575,745	2,882,386	3,710,497	25,717,623	22,958,458	2,759,162
2002	52,227,499	23,191,483	15,521,295	3,501,294	4,168,898	29,036,014	25,633,136	3,402,877
2003	50,493,308	21,685,587	14,565,218	2,988,274	4,132,093	28,807,720	24,845,915	3,961,804
2004	49,639,223	20,489,761	13,261,753	2,694,970	4,533,035	29,149,463	25,384,561	3,764,904
2005	52,311,147	21,220,807	14,051,867	2,928,424	4,240,519	31,090,339	27,031,615	4,058,725
2006	53,966,261	22,077,502	14,250,869	3,469,392	4,357,245	31,888,757	27,445,267	4,443,494
2007	53,628,377	21,806,999	13,489,763	3,707,820	4,609,417	31,821,375	27,875,811	3,945,567

1. {FN,790002,5}

**Table 7**  
**Canada, monthly sales of new motor vehicles, in units, by type and origin, seasonally adjusted**

Period	Total new motor vehicles		Passenger cars				Trucks <sup>1</sup>	
			North America		Overseas		Total	
	Units	Month/month change	Units	Month/month change	Units	Month/month change	Units	Month/month change
	no.	%	no.	%	no.	%	no.	%
<b>2006</b>								
January	137,734	1.6	50,055	4.2	21,910	-4.5	65,769	1.8
February	138,067	0.2	48,176	-3.8	23,243	6.1	66,648	1.3
March	137,174	-0.6	47,940	-0.5	22,476	-3.3	66,758	0.2
April	133,836	-2.4	45,729	-4.6	24,020	6.9	64,087	-4.0
May	132,611	-0.9	45,503	-0.5	23,836	-0.8	63,272	-1.3
June	135,448	2.1	46,732	2.7	24,912	4.5	63,804	0.8
July	140,666	3.9	47,122	0.8	25,569	2.6	67,975	6.5
August	141,667	0.7	47,512	0.8	24,465	-4.3	69,690	2.5
September	139,081	-1.8	48,537	2.2	24,122	-1.4	66,422	-4.7
October	139,856	0.6	44,705	-7.9	25,480	5.6	69,671	4.9
November	142,711	2.0	48,499	8.5	25,108	-1.5	69,104	-0.8
December	147,474	3.3	52,592	8.4	24,917	-0.8	69,965	1.2
<b>2007</b>								
January	138,958	-5.8	43,359	-17.6	25,678	3.1	69,921	-0.1
February	137,186	-1.3	43,752	0.9	25,585	-0.4	67,849	-3.0
March	138,706	1.1	44,627	2.0	25,799	0.8	68,280	0.6
April	147,587	6.4	49,452	10.8	26,155	1.4	71,980	5.4
May	145,277	-1.6	47,069	-4.8	26,517	1.4	71,691	-0.4
June	143,778	-1.0	48,423	2.9	27,091	2.2	68,264	-4.8
July	139,758	-2.8	45,942	-5.1	25,984	-4.1	67,832	-0.6
August	143,840	2.9	47,909	4.3	25,835	-0.6	70,096	3.3
September	140,541	-2.3	47,301	-1.3	25,787	-0.2	67,453	-3.8
October	138,276	-1.6	45,907	-2.9	24,112	-6.5	68,257	1.2
November	134,927	-2.4	44,066	-4.0	23,330	-3.2	67,531	-1.1
December	141,649	5.0	43,062	-2.3	26,270	12.6	72,317	7.1
<b>2008</b>								
January	154,105	8.8	53,587	24.4	28,474	8.4	72,044	-0.4
February <sup>r</sup>	148,493	-3.6	50,208	-6.3	30,075	5.6	68,210	-5.3
March <sup>r</sup>	147,195	-0.9	47,570	-5.3	31,835	5.9	67,790	-0.6
April <sup>r</sup>	143,574	-2.5	46,467	-2.3	29,286	-8.0	67,821	0.0
May <sup>p</sup>	145,224	1.1	48,406	4.2	30,582	4.4	66,236	-2.3

1. {FN,790002,5}

**Note(s):** Percentage changes shown are month-to-month changes.

**Table 8**  
**Monthly sales of new motor vehicles, in units, by province, seasonally adjusted**

Period	Canada	Newfoundland and Labrador	Prince Edward Island	Nova Scotia	New Brunswick	Quebec
number						
<b>2006</b>						
January	137,734	2,112	389	4,506	2,805	33,468
February	138,067	1,936	432	3,897	2,837	32,887
March	137,174	1,830	403	4,227	2,878	32,450
April	133,836	1,884	384	3,690	2,799	32,581
May	132,611	1,873	387	3,670	2,675	31,870
June	135,448	2,086	415	3,706	2,837	32,370
July	140,666	1,928	425	3,795	2,971	34,151
August	141,667	1,980	423	4,006	2,945	35,211
September	139,081	2,004	402	4,001	2,981	33,177
October	139,856	2,002	391	3,813	2,930	34,561
November	142,711	2,282	442	4,436	3,466	34,216
December	147,474	2,271	440	3,991	3,279	37,255
<b>2007</b>						
January	138,958	2,214	428	3,788	3,151	33,730
February	137,186	2,147	420	3,691	2,811	33,467
March	138,706	2,355	478	3,866	3,013	32,982
April	147,587	2,480	464	4,273	2,988	36,898
May	145,277	2,391	474	3,709	3,265	37,809
June	143,778	2,382	440	4,215	3,225	35,166
July	139,758	2,355	416	4,160	3,158	33,549
August	143,840	2,501	482	4,293	3,257	34,712
September	140,541	2,301	430	4,306	3,139	35,250
October	138,276	2,354	484	4,239	3,242	34,010
November	134,927	2,351	324	4,437	2,958	31,956
December	141,649	2,412	463	4,203	3,082	33,888
<b>2008</b>						
January	154,105	3,069	510	4,746	3,299	40,002
February <sup>r</sup>	148,493	3,216	484	4,663	3,348	40,392
March <sup>r</sup>	147,195	2,513	497	4,781	3,288	37,768
April <sup>r</sup>	143,574	2,524	475	4,076	3,536	37,160
May <sup>P</sup>	145,224	2,494	487	4,582	3,376	38,013

Table 8 – continued

Monthly sales of new motor vehicles, in units, by province, seasonally adjusted

Period	Canada	Ontario	Manitoba	Saskatchewan	Alberta	British Columbia and the Territories
	number					
<b>2006</b>						
January	137,734	52,150	3,814	2,881	19,855	15,754
February	138,067	52,048	3,598	3,381	20,993	16,058
March	137,174	52,227	3,755	3,237	19,804	16,363
April	133,836	49,839	3,564	3,155	20,229	15,711
May	132,611	49,585	3,632	3,154	20,160	15,605
June	135,448	50,813	3,751	3,372	20,010	16,088
July	140,666	52,848	3,987	3,439	21,143	15,979
August	141,667	51,793	3,767	3,332	21,807	16,403
September	139,081	51,764	3,837	3,455	20,893	16,567
October	139,856	50,607	3,958	3,410	21,555	16,629
November	142,711	53,530	4,053	3,597	20,383	16,306
December	147,474	53,444	4,208	3,502	21,899	17,185
<b>2007</b>						
January	138,958	50,632	3,814	3,547	21,396	16,258
February	137,186	49,158	3,764	3,451	21,292	16,985
March	138,706	49,213	3,960	3,554	22,519	16,766
April	147,587	53,545	4,077	3,810	21,271	17,781
May	145,277	51,783	3,880	3,802	21,172	16,992
June	143,778	51,717	3,866	3,817	21,975	16,975
July	139,758	49,844	3,764	3,797	21,918	16,797
August	143,840	52,212	4,001	3,906	21,730	16,746
September	140,541	50,051	3,990	3,766	20,593	16,715
October	138,276	48,994	4,022	3,989	20,625	16,317
November	134,927	47,533	3,945	3,895	21,048	16,480
December	141,649	51,004	4,052	4,220	21,484	16,841
<b>2008</b>						
January	154,105	54,618	4,361	4,327	21,988	17,185
February <sup>r</sup>	148,493	50,848	4,172	4,225	20,965	16,180
March <sup>r</sup>	147,195	51,109	4,220	4,467	21,470	17,082
April <sup>r</sup>	143,574	52,194	4,015	4,120	19,547	15,927
May <sup>p</sup>	145,224	51,566	4,054	4,035	20,409	16,208

# Definitions

---

## Trucks

Trucks include light and heavy trucks, minivans, sport utility vehicles, vans, coaches and buses, regardless of their intended use.

## Passenger car

The term passenger car refers to all vehicles whose primary function is to carry passengers, excluding those vehicles classified as a commercial vehicle (see definition above). Passenger cars also include cars used for commercial purposes, i.e. taxis, auto rentals and other car fleets.

## Country of origin

New motor vehicles fall into two categories defined on the basis of origin: those manufactured in North America and those manufactured overseas. The latter are imported in a fully assembled state from countries other than the United States or Mexico. All passenger cars and commercial vehicles assembled in Canada, Mexico and the United States and sold in Canada classified are as North American manufactured vehicles.

## Motor vehicle sales - units

The number of new motor vehicles sold in Canada.

## Motor vehicle sales - dollars

Net sales refers to the selling price to the consumer, i.e., manufacturer's invoice price plus estimated dealer's markup, including charges for standard and optional accessories. Sales taxes are excluded.

## Average price of passenger cars

The average price is obtained by dividing the total dollar sales by the number of units sold. Therefore, changes in the average price reflect variations in the models sold as well as price changes. For example, an increase in the average price for passenger cars may reflect both a shift to more expensive models as well as price increases.

# Appendix I

---

## Scope of the survey

The interest in and need for detailed statistics on the automobile industry arose years ago, when the industry began playing a prominent role in the Canadian economy. For over 50 years, Statistics Canada has been collecting and disseminating statistical information on the retail sales of new motor vehicles. Not only are these statistics required to produce estimates of Canadian consumer spending for the national accounts and the gross domestic product, but they have also served and continue to serve as one of the most important, most often requested indicators of the health of Canada's economy.<sup>1</sup>

However, estimates of the total retail sales volume of new motor vehicles were not sufficient to meet the incessant demand for more information. There came an increasing need for data on the characteristics of the fleet of new vehicles sold at retail, either to learn more about the preferences of Canadian consumers or to assess the penetration of the Canadian market by major foreign manufacturers. Statistics on new motor vehicle sales were expanded in the early 1970s to provide separate figures for Japanese vehicle sales.

The statistics in this report cover exclusively retail sales of new motor vehicles within Canada's borders. Data are derived from a postal survey (a census - see the methodology section at the end of the report for more details).

Other statistics connected with the automobile industry (sales of new and used car dealers, auto parts and accessories stores and so on) are available on the monthly Retail Trade survey (Catalogue No. 63-005). For further information, please contact the Retail Commodity Section, Distributive Trades Division, Statistics Canada, Ottawa, K1A 0T6, (Telephone: 613-951-3549 or toll free at 1-877-421-3067).

## Data quality and methodology

This survey is a census of all motor vehicle manufacturers and importers known to be active in Canada.

The value of sales is reported at selling price to consumer (i.e. the manufacturer's invoice price plus estimated dealer's markup, charges for standard equipment and options, less provincial sales tax and federal goods and services tax (G.S.T.) and harmonized sales tax (H.S.T.)).

The response rate for this survey is generally 100%. Minimal estimation is required so there is little bias resulting from non-response introduced in these data.

All attempts have been made to minimize the non-sampling errors: the questionnaires used in the survey have been carefully designed to minimize different interpretations; detailed acceptance testing has been carried out for the different stages of editing and processing.

## Data confidentiality

Statistics Canada is prohibited by law from publishing any statistics which would divulge information relating to any identifiable business without the previous consent in writing of that business.<sup>2</sup> The disclosure of data likely to reveal specific information on the activity of a particular company is systematically and rigorously controlled and regulated to prevent the publication or disclosure of any information deemed confidential. The rules regarding confidentiality

---

1. The new motor vehicle sales series is one of ten statistical series making up the leading indicator developed by Statistics Canada for current economic analysis purposes.

2. See Section 17 of the Statistics Act (Chapter 5-19), entitled «Secrecy».

are therefore applied in such a way that no data are shown for cells (or statistical units). If information is withheld for reasons of confidentiality an "X" will appear in the appropriate cell of this publication.

Another way of preserving data confidentiality without having to enter an "X" is to combine (consolidate) the information **from selected regions** (or selected cells) for the same item. The data in question can be aggregated and published in a less detailed, but still confidential, form. For example, the data for the Northwest Territories, the Yukon and Nunavut are included with the British Columbia data.

## Seasonal adjustment

Time series contain the elements essential to the description, explanation and forecasting of the behaviour of an economic phenomenon: "They are statistical records of the evolution of economic processes through time."<sup>3</sup> Economic time series such as the New Motor Vehicles Sales Survey can be broken down into five main components: the trend-cycle, seasonality, the trading-day effect, the Easter holiday effect and the irregular component.

The trend represents the long-term change in the series, whereas the cycle represents a smooth, quasi-periodical movement about the trend, showing a succession of growth and decline phases (e.g., the business cycle). These two components—the trend and the cycle—are estimated together, and the trend-cycle reflects the fundamental evolution of the series. The other components reflect short-term transient movements.

The seasonal component represents sub-annual, monthly or quarterly fluctuations that recur more or less regularly from one year to the next. Seasonal variations are caused by the direct and indirect effects of the climatic seasons and institutional factors (attributable to social conventions or administrative rules; e.g., Christmas).

The trading-day component originates from the fact that the relative importance of the days varies systematically within the week and that the number of each day of the week in a given month varies from year to year. This effect is present when activity varies with the day of the week. For instance, Sunday is typically less active than the other days, and the number of Sundays, Mondays, etc., in a given month changes from year to year.

The Easter holiday effect is the variation due to the shift of part of April's activity to March when Easter falls in March rather than April.

Lastly, the irregular component includes all other more or less erratic fluctuations not taken into account in the preceding components. It is a residual that includes errors of measurement on the variable itself as well as unusual events (e.g., strikes, drought, floods, major power blackout or other unexpected events causing variations in respondents' activities).

Thus, the latter four components—seasonal, irregular, trading-day and Easter holiday effect—all conceal the fundamental trend-cycle component of the series. Seasonal adjustment (correction of seasonal variation) consists in removing the seasonal, trading-day and Easter holiday effect components from the series, and it thus helps reveal the trend-cycle. While seasonal adjustment permits a better understanding of the underlying trend-cycle of a series, the seasonally adjusted series still contains an irregular component. Slight month-to-month variations in the seasonally adjusted series may be simple irregular movements. To get a better idea of the underlying trend, users should examine several months of the seasonally adjusted series.

Since April 2008, New Motor Vehicle Sales Survey data are seasonally adjusted using the X-12-ARIMA<sup>4</sup> software. The technique that is used essentially consists of first correcting the initial series for all sorts of undesirable effects, such as the trading-day and the Easter holiday effects, by a module called regARIMA. These effects are estimated using regression models with ARIMA errors (auto-regressive integrated moving average models). The series can also be extrapolated for at least one year by using the model. Subsequently, the raw series—pre-adjusted and extrapolated if applicable—is seasonally adjusted by the X-11 method.

3. «A Note on the Seasonal adjustment of Economic Time Series», Canadian Statistical Review, August 1974.

4. For more information, see X-12-ARIMA Reference Manual Version 0.3 (2007), U.S. Census Bureau.

The X-11 method is used for analysing monthly and quarterly series. It is based on an iterative principle applied in estimating the different components, with estimation being done at each stage using adequate moving averages.<sup>5</sup> The moving averages used to estimate the main components—the trend and seasonality—are primarily smoothing tools designed to eliminate an undesirable component from the series. Since moving averages react poorly to the presence of atypical values, the X-11 method includes a tool for detecting and correcting atypical points. This tool is used to clean up the series during the seasonal adjustment. Outlying data points can also be detected and corrected in advance, within the regARIMA module.

Lastly, the annual totals of the seasonally adjusted series are forced to the annual totals of the original series.

Unfortunately, seasonal adjustment removes the sub-annual additivity of a system of series; small discrepancies can be observed between the sum of seasonally adjusted series and the *direct* seasonal adjustment of their total. To insure or restore additivity in a system of series, a reconciliation process is applied or *indirect* seasonal adjustment is used, i.e. the seasonal adjustment of a total is derived by the summation of the individually seasonally adjusted series.

To assist the user, the Months of Cyclical Dominance number, MCD, is provided.<sup>6</sup> The MCD is the shortest monthly span for which a certain ratio becomes and remains less than one, that is, the ratio for which the absolute average percentage change of the trend-cycle of the seasonally adjusted series becomes greater than the absolute average per cent change of the irregular component. The MCD can be interpreted as the number of months over which a change in the seasonally adjusted series must move in a given direction before one can be reasonably certain that the trend-cycle of that series also has moved in the given direction. Clearly small MCD's are desirable and indicative of a smooth series. Applying a moving average to the seasonally adjusted data of MCD length tends to smooth irregular movements which may obscure the underlying trend-cycle. The MCD moving average provides a method of reducing all types of series to approximately the same degree of smoothness, whatever the size of the irregular component in the original series.

## Revision procedures

The seasonally adjusted estimates are revised for the three months preceding the reference period. Monthly unadjusted data are revised for the previous month, when new information is made available to Statistics Canada. In addition, unadjusted new motor vehicle sales are revised each year, for the latest year, in the February issue of this publication. At that time, monthly seasonally adjusted estimates for the latest four years of data are revised.

---

5. Ladiray, D. and Quenneville, B. (2001). Seasonal Adjustment with the X-11 Method. New York: Springer-Verlag, Lecture Notes in Statistics #158.

6. MCD = 12 for North American passenger cars. MCD = 3 for Overseas passenger cars. MCD = 12 for Commercial vehicles.



## Appendix II

---

### List of North American motor vehicle manufacturers

B.M.W. Canada Inc.  
Blue Bird Body Co.  
DaimlerChrysler Canada Inc.  
Ford Motor Company of Canada Limited  
Freightliner of Canada Ltd.  
General Motors of Canada Limited  
Honda Canada Inc.  
Hyundai Auto Canada Inc.  
International Truck and Engine Corporation Canada  
Kenworth Div., Paccar of Canada Ltd.  
Mack Canada Inc.  
Mazda Canada Inc.  
Mitsubishi Motor Sales of Canada, Inc.  
Motor Coach Industries Limited  
New Flyer Industries Ltd.  
Nissan Canada Inc.  
Nova Bus Corp.  
Orion Bus Industries Inc.  
Peterbilt Div., Paccar of Canada Ltd.  
Prévost Car Inc.  
Sterling Heavy Duty TrucksSubaru Canada Inc.  
Subaru Canada Inc.  
Suzuki Canada Inc.  
Thomas Built Buses of Canada Ltd.

Toyota Canada Ltd.

Volkswagen Canada Inc.

Volvo Trucks Canada Inc.

Western Star Trucks Inc.

## **List of importers and distributors of overseas manufactured motor vehicles**

### **Japan**

General Motors of Canada Ltd.

Hino Diesel Trucks Canada Ltd.

Honda Canada Inc.

Mazda Canada Inc.

Mitsubishi Motor Sales of Canada, Inc.

Nissan Canada Inc.

Subaru Canada Inc.

Suzuki Canada Inc.

Toyota Canada Inc.

### **Other Countries**

B.M.W. Canada Inc.

Daewoo Auto Canada Inc.

Ford Motor Company of Canada Limited

General Motors Canada Ltd.

Hyundai Auto Canada Inc.

Jaguar Canada Inc.

Kia Canada Inc.

Land Rover group Canada Inc.

Mercedes-Benz Canada Inc.

Porsche Cars of Canada Ltd.

Volkswagen Canada Inc.

Volvo Cars of Canada Ltd.