



Catalogue no. 71-001-X

# Labour Force Information

Not for release before 7 A.M. E.S.T.

Friday, April 4, 2008

March 9 to 15, 2008



Statistics  
Canada    Statistique  
Canada

Canada

## How to obtain more information

Specific inquiries about this product and related statistics or services should be directed to: Labour Force Survey Program, Labour Statistics Division, Statistics Canada, Ottawa, Ontario, K1A 0T6 (telephone: 613-951-4090, toll free number: 1-866-873-8788, fax: 613-951-2869 or by e-mail address: [labour@statcan.ca](mailto:labour@statcan.ca)).

For information about this product or the wide range of services and data available from Statistics Canada, visit our website at [www.statcan.ca](http://www.statcan.ca) or contact us by e-mail at [infostats@statcan.ca](mailto:infostats@statcan.ca) or by phone from 8:30am to 4:30pm Monday to Friday at:

### **Toll-free telephone (Canada and the United States):**

Inquiries line **1-800-263-1136**

National telecommunications device for the hearing impaired **1-800-363-7629**

Fax line **1-877-287-4369**

Depository Services Program inquiries line **1-800-635-7943**

Depository Services Program fax line **1-800-565-7757**

**Statistics Canada national contact centre: 1-613-951-8116**

Fax line **1-613-951-0581**

## Information to access the product

This product, catalogue no. 71-001-X, is available for free in electronic format. To obtain a single issue, visit our website at [www.statcan.ca](http://www.statcan.ca) and select Publications.

## Standards of service to the public

Statistics Canada is committed to serving its clients in a prompt, reliable and courteous manner. To this end, the Agency has developed *standards of service* which its employees observe in serving its clients.

To obtain a copy of these service standards, please contact Statistics Canada toll free at 1-800-263-1136. The service standards are also published on [www.statcan.ca](http://www.statcan.ca) under About us > Providing services to Canadians.



Statistics Canada  
Labour Statistics Division  
Labour Force Survey Program

# Labour Force Information

Not for release before 7 A.M. E.S.T.

Friday, April 4, 2008

March 9 to 15, 2008

Published by authority of the Minister responsible for Statistics Canada

© Minister of Industry, 2008

All rights reserved. The content of this electronic publication may be reproduced, in whole or in part, and by any means, without further permission from Statistics Canada, subject to the following conditions: that it be done solely for the purposes of private study, research, criticism, review or newspaper summary, and/or for non-commercial purposes; and that Statistics Canada be fully acknowledged as follows: Source (or "Adapted from", if appropriate): Statistics Canada, year of publication, name of product, catalogue number, volume and issue numbers, reference period and page(s). Otherwise, no part of this publication may be reproduced, stored in a retrieval system or transmitted in any form, by any means—electronic, mechanical or photocopy—or for any purposes without prior written permission of Licensing Services, Client Services Division, Statistics Canada, Ottawa, Ontario, Canada K1A 0T6.

April 2008

Catalogue no. 71-001-X

ISSN 1492-5478

Frequency: Monthly

Ottawa

La version française de cette publication est disponible sur demande (n° 71-001-X au catalogue).

---

## **Note of appreciation**

*Canada owes the success of its statistical system to a long standing partnership between Statistics Canada, the citizens of Canada, its businesses, governments and other institutions. Accurate and timely statistical information could not be produced without their continued cooperation and goodwill.*

# User information

---

## Symbols

The following standard symbols are used in Statistics Canada publications:

- . not available for any reference period
- .. not available for a specific reference period
- ... not applicable
- 0 true zero or a value rounded to zero
- 0<sup>s</sup> value rounded to 0 (zero) where there is a meaningful distinction between true zero and the value that was rounded
- p preliminary
- r revised
- x suppressed to meet the confidentiality requirements of the *Statistics Act*
- E use with caution
- F too unreliable to be published

## Special requests (\$)

Custom tabulations can be arranged on an ad hoc or regular basis. This service enables you to specify tables and time series to meet your own requirements. The cost varies according to the request. For more information, contact us toll-free at 1-866-873-8788 or e-mail us at [labour@statcan.ca](mailto:labour@statcan.ca).

## Schedule of LFS releases

Reference period - Week ending	Release date
January 19, 2008	February 8, 2008
February 16, 2008	March 7, 2008
March 15, 2008	April 4, 2008
April 19, 2008	May 9 2008
May 17, 2008	June 6, 2008
June 21, 2008	July 11, 2008
July 19, 2008	August 8, 2008
August 16, 2008	September 5, 2008
September 20, 2008	October 10, 2008
October 18, 2008	November 7, 2008
November 15, 2008	December 5, 2008
December 13, 2008	January 9, 2009

## Latest LFS release in *The Daily* (free)

# Table of contents

---

<b>Highlights</b>	<b>5</b>
<b>Analysis — March 2008</b>	<b>6</b>
<b>Charts</b>	
1. Employment and unemployment indicators, Canada, seasonally adjusted	9
2. Employment and unemployment indicators, Canada, seasonally adjusted	10
3. Index of employment by industry, Canada, seasonally adjusted, January, 2005=100	11
4. Index of employment by industry, Canada, seasonally adjusted, January 2005=100	12
5. Index of employment by industry, Canada, seasonally adjusted, January 2005=100	13
6. Index of employment by province, seasonally adjusted, January 2005=100	14
7. Index of employment by province, seasonally adjusted, January 2005=100	15
<b>Related products</b>	<b>16</b>
<b>Statistical tables</b>	
1 Labour force characteristics by age and sex, Canada, seasonally adjusted	24
2 Employment by class of worker and industry, Canada, seasonally adjusted	25
3 Labour force characteristics by province, seasonally adjusted	26
4 Selected labour force characteristics (seasonally adjusted)	28
4-1 Newfoundland and Labrador	28
4-2 Prince Edward Island	29
4-3 Nova Scotia	30
4-4 New Brunswick	31
4-5 Quebec	32
4-6 Ontario	33
4-7 Manitoba	34
4-8 Saskatchewan	35
4-9 Alberta	36
4-10 British Columbia	37
5 Labour force characteristics by census metropolitan area (seasonally adjusted)	38
5-1 3 month moving average	38
5-2 Monthly	43

**Table of contents – continued**

6	Labour force characteristics	44
6-1	by province and economic region, unadjusted for seasonality, 3 month moving average ending in March 2007 and March 2008	44
6-2	by territories, unadjusted for seasonality, 3 month moving average ending in March 2007 and March 2008	49
7	Average usual hours and wages of employees by selected characteristics, Canada, unadjusted for seasonality	50
8	Regional unemployment rates used by the Employment Insurance Program, seasonally adjusted, 3 month moving average	51
<b>Data quality, concepts and methodology</b>		
	Data quality	53

# Highlights

---

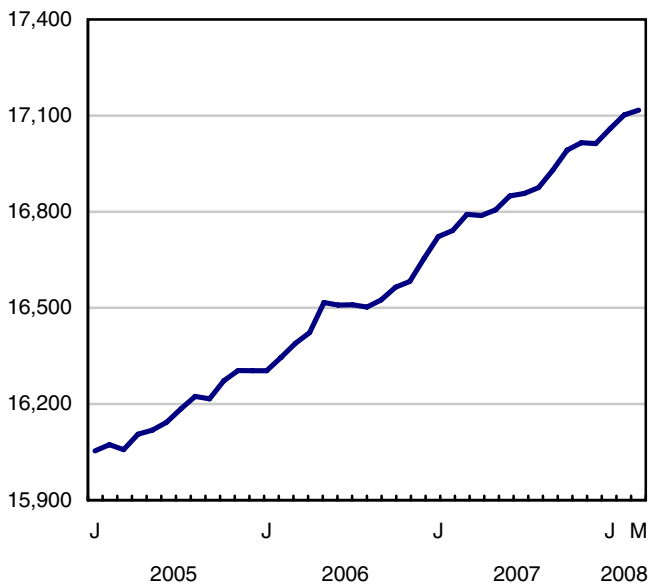
## March 2008

Following two months of large gains, employment edged up slightly in March (+15,000). A surge of entrants into the labour market caused the unemployment rate to move up 0.2 percentage points to 6.0%. Canada's participation rate reached a new record high in March of 68.0%.

**Chart 1**  
Employment and unemployment rates, Canada, seasonally adjusted

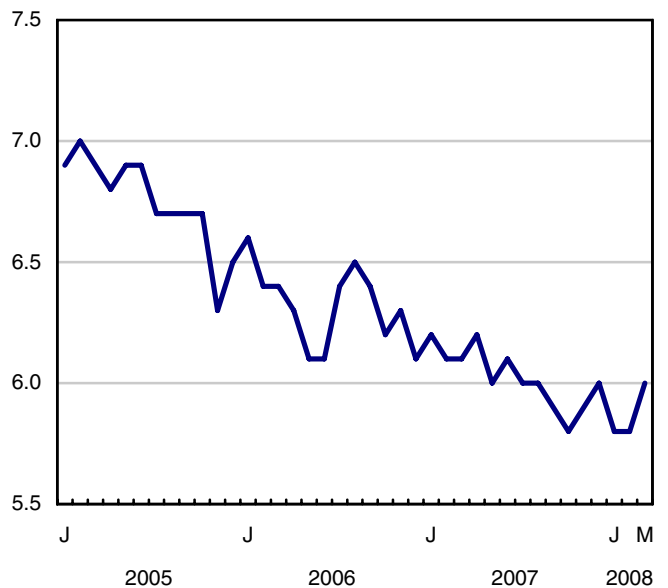
### Employment

thousands



### Unemployment rate

percentage



## Analysis — March 2008

---

Following two months of large gains, employment edged up slightly in March (+15,000). A surge of entrants into the labour market caused the unemployment rate to move up 0.2 percentage points to 6.0%. Canada's participation rate reached a new record high in March of 68.0%.

Over the past 12 months, employment grew by an estimated 325,000 (+1.9%).

Part-time employment was up in March (+34,000), the largest increase in part-time since November 2006. Over the past twelve months, full-time employment has grown at almost twice the pace (+2.1%) of part-time work (+1.1%).

Private sector employees led overall growth in the first quarter of 2008, following a strong year for the public sector in 2007.

Alberta and British Columbia were the only provinces with notable employment gains in March. These provinces also set new records, as British Columbia's employment rate reached a high of 64.0%, and Alberta's participation rate hit 74.7%, the highest of any province.

In March, employment gains were posted in transportation and warehousing and natural resources, with losses in information, culture and recreation.

Year-over-year growth in average hourly wages remained high at 4.7% in March, well above the most recent increase of 1.8% in the Consumer Price Index.

There was a decrease in the estimated number of actual hours worked (-0.9%) in March, which can be attributed to a number of factors including inclement weather in central and eastern Canada, a larger than usual number of people reporting absence from work due to vacation, as well as a shift from full-time to part-time employment in a number of industries. The estimate of actual hours produces a snapshot of hours worked during the reference week for the survey (March 9 to 15) not the entire month.

### **Transportation and warehousing and natural resources increased in March**

Employment in the transportation and warehousing industry rose by an estimated 20,000 in March, offset by losses in information, culture and recreation (-24,000). Over the past twelve months, employment in transportation and warehousing has risen 5.1% (+42,000) with gains mostly in Ontario and Quebec.

Employment edged up in natural resources in March (+7,000), after a dip over the previous two months, leaving this industry unchanged from one year ago.

Over the March 2007 to March 2008 period, employment in the goods-producing sector was little changed, as gains in the construction industry were offset by manufacturing losses. At the same time, service sector employment grew by 2.4%, with public administration; professional scientific and technical services; health care and social assistance as well as transportation and warehousing adding the most workers.

### **Private sector leads quarterly employment growth**

Over the first quarter of 2008, employment growth among private sector employees (+1.2%) was stronger than that of the public sector (+0.3%). The growth among private sector employees was driven by gains in professional, scientific and technical services and construction. Self-employment fell (-1.3%) in the first quarter of 2008.



## Employment gains in the West

British Columbia led employment gains in March with an estimated increase of 15,000 (+0.6%), pushing the employment rate to a new record high of 64.0%. Employment gains were widespread across several industries. With higher participation, the province's unemployment rate edged up 0.2 percentage points to 4.3% in March. Over the last 12 months, employment in British Columbia was up 55,000 (+2.4%), with half of the gains in construction.

In March, Alberta added 10,000 workers (+0.5%), pushing the province's employment level above the two million mark for the first time. Alberta leads the country's 12 month employment growth (+3.4%), with strength in both the goods (+2.8%) and the service sector (+3.6%). The March unemployment rate of 3.4% remains the lowest in Canada.

## Employment paused in Ontario following a strong February

Following a strong February, Ontario's employment was unchanged in March as gains in part-time employment (+23,000) offset losses in full-time work (-25,000). The province's unemployment rate edged up 0.3 percentage points to 6.4% in March, the result of a boost in the labour force. Over the past year, employment has risen by 1.8% (+119,000), driven by gains in educational services; public administration and business, building and other support services.

Employment in Quebec was also little changed in March, while the unemployment rate increased by 0.3 percentage points to 7.3%. Over the last year, employment has risen 1.5% (+58,000) in the province, with the largest gains in construction and professional, scientific and technical services industries.

## Strongest growth among older workers

In March, employment among older workers (55 years and older) increased by 24,000, building on the strong gains of the past year. Older workers have shown the fastest employment increase of all age groups over the past 12 months, with an annual growth rate of 7.8%, well above the 0.9% for core-aged (25 to 54 years) workers.

## Quarterly update on Territories and Aboriginal people living off-reserve in the western provinces

The Labour Force Survey also collects labour market information about the Territories, and Aboriginal people living off-reserve in the four western provinces. This information is not seasonally adjusted and is produced monthly in the form of three-month moving averages. Comparisons should only be made on a year-over-year basis.

### The Territories

The Yukon's strong labour market pushed the employment rate to 71.1% in the first quarter of 2008, up an estimated 3.6 percentage points over the same period last year.

In contrast, the employment rate in the Northwest Territories fell 4.9 percentage points over the last year to 70.1% for the first quarter of 2008.

In the ten largest communities of Nunavut, the employment rate stood at 62.7% in the first quarter of 2008, little changed from the same period a year ago.

### Aboriginal people

The employment rate of Aboriginal people living off-reserve in the four western provinces was 61.2% in the first quarter of 2008, up 1.1 percentage points from a year earlier. Over the same period, the employment rate of the non-Aboriginal population edged up 0.4 percentage points to 66.7%.

Between the first quarters of 2007 and 2008, the employment rate of Aboriginal people living off-reserve in Alberta increased 2.0 percentage points to 67.5%. Similarly, in British Columbia the employment rate was up 2.9 percentage points to 61.0%. While there was little change in Manitoba (58.6%), Saskatchewan's employment rate among Aboriginal people living off-reserve fell 2.4 percentage points over this period to 54.4%.

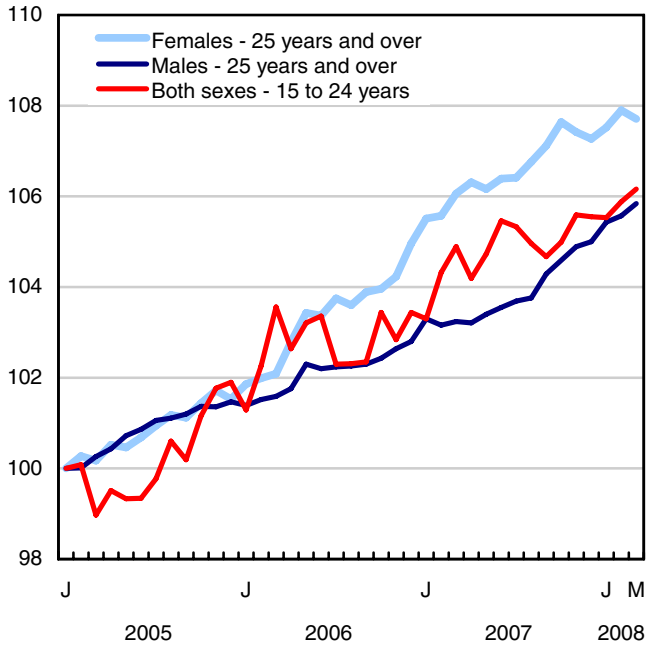
**Note to readers**

The Labour Force Survey estimates are based on a sample, and are therefore subject to sampling variability. Estimates for smaller geographic areas or industries will have more variability. For an explanation of sampling variability of estimates, and how to use standard errors to assess this variability, consult the Data Quality section in this publication.

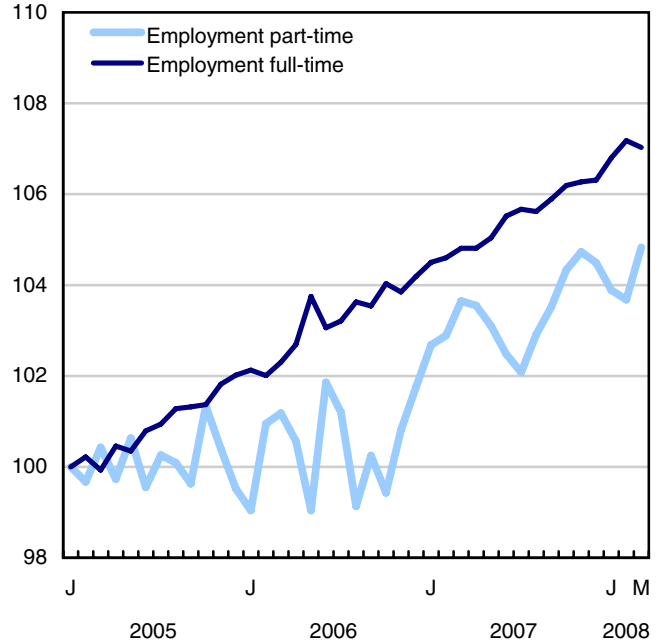
The 2007 Labour Force Historical Review on CD-ROM (71F0004XCB, \$209) is now available.

**Chart 1**  
**Employment and unemployment indicators, Canada, seasonally adjusted**

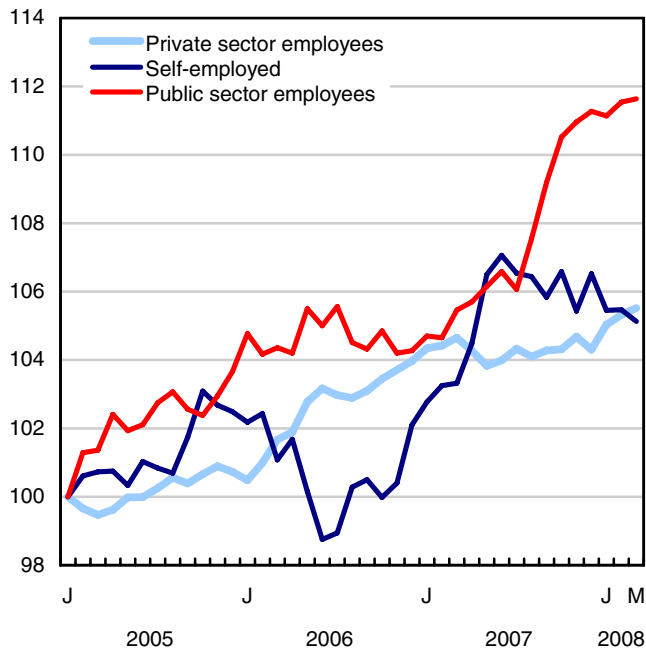
**Employment index, January 2005=100**



**Employment index, January 2005=100**

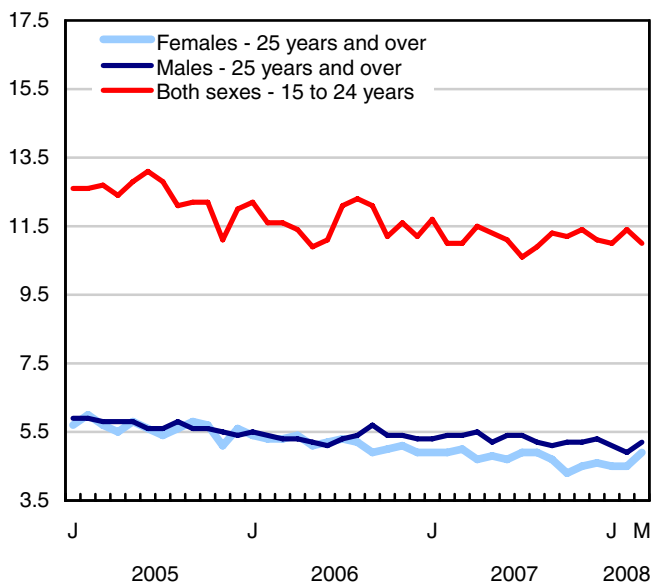


**Employment index, January 2005=100**

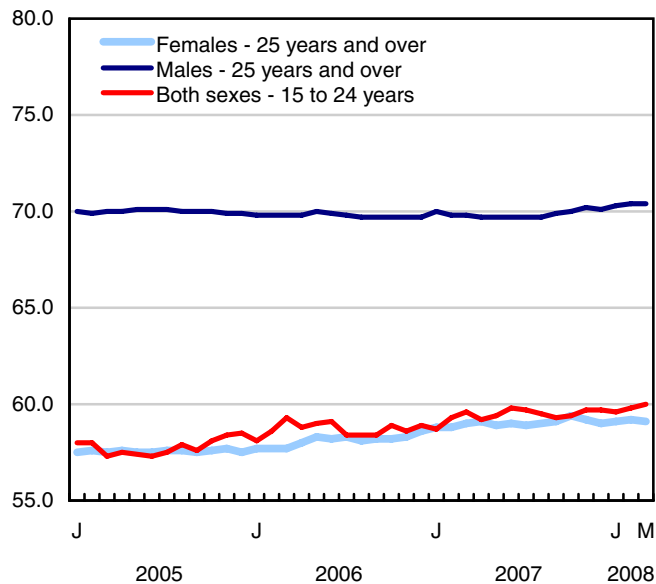


**Chart 2**  
**Employment and unemployment indicators, Canada, seasonally adjusted**

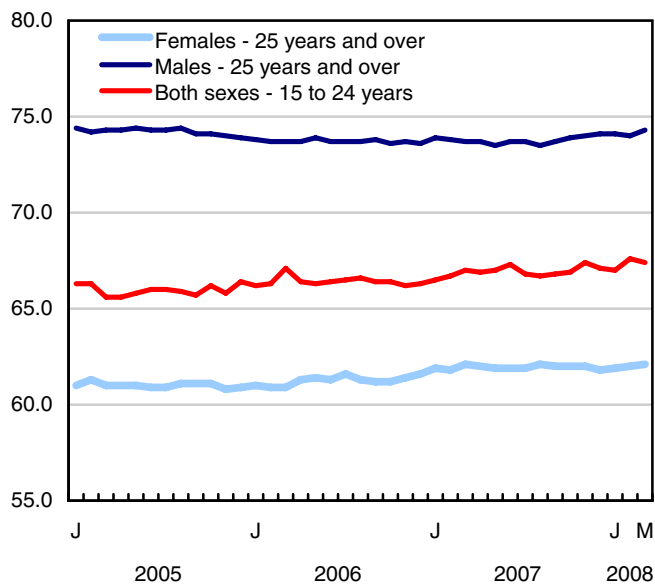
**Unemployment rate (%)**



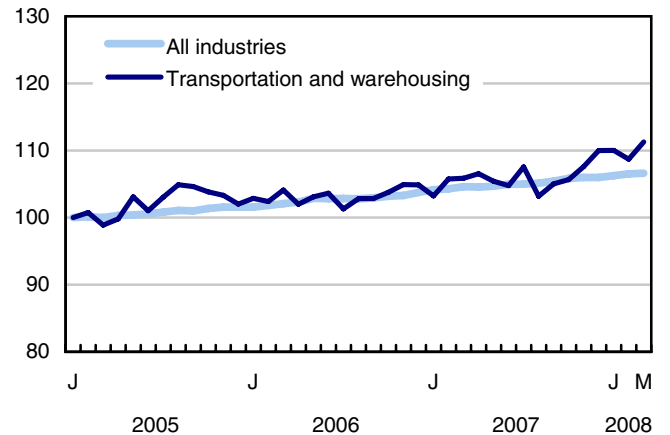
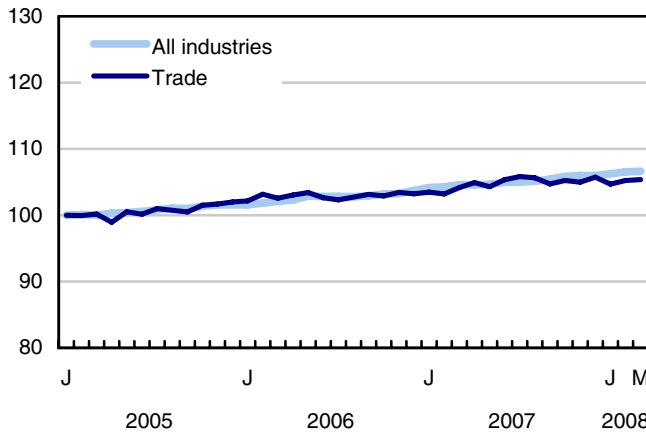
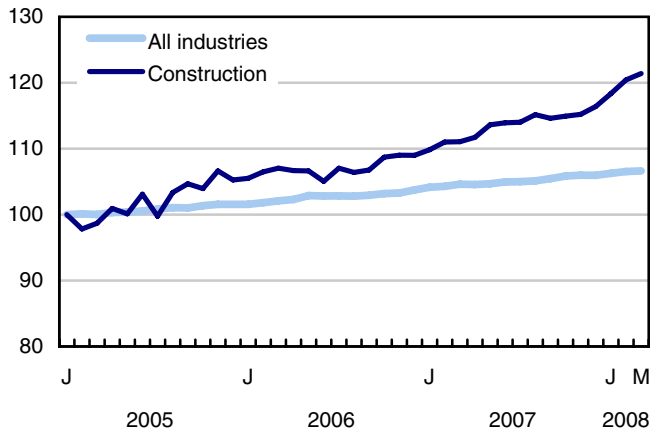
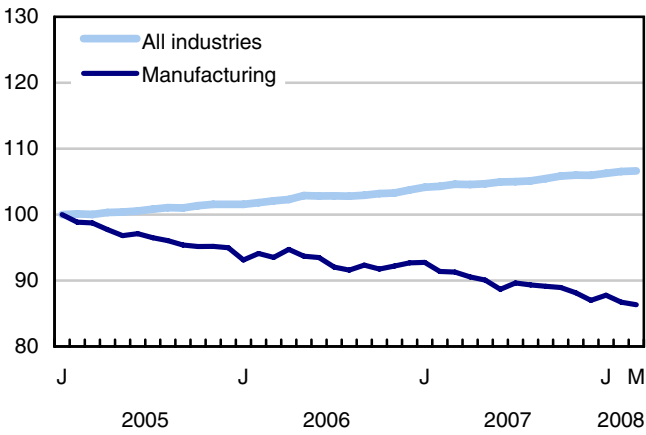
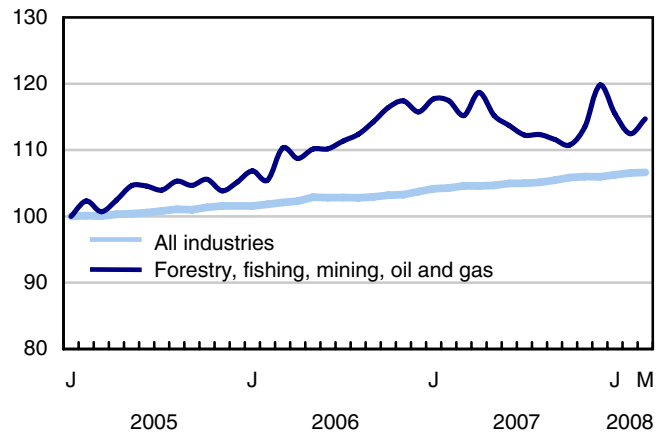
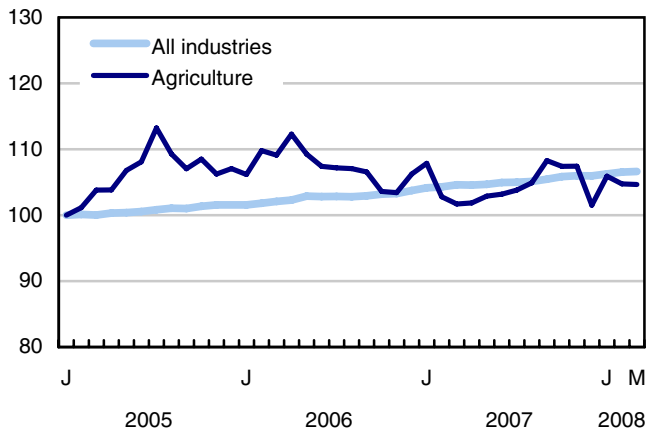
**Employment rate (%)**



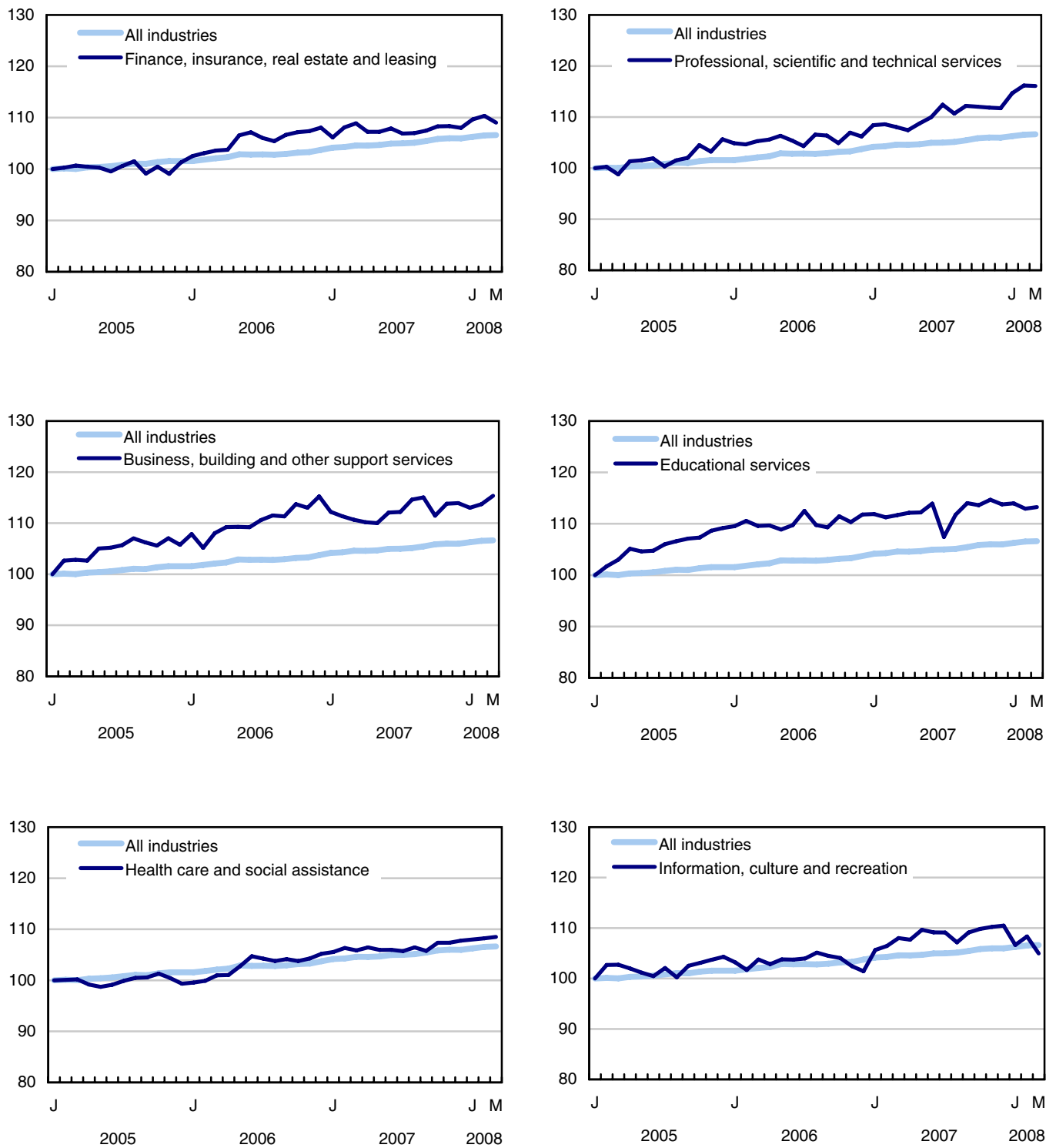
**Participation rate (%)**



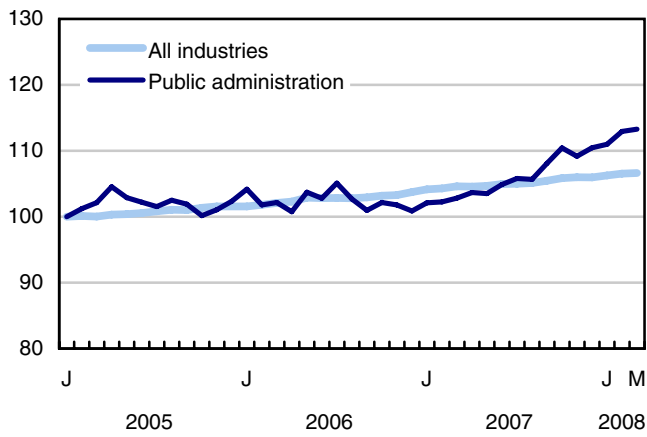
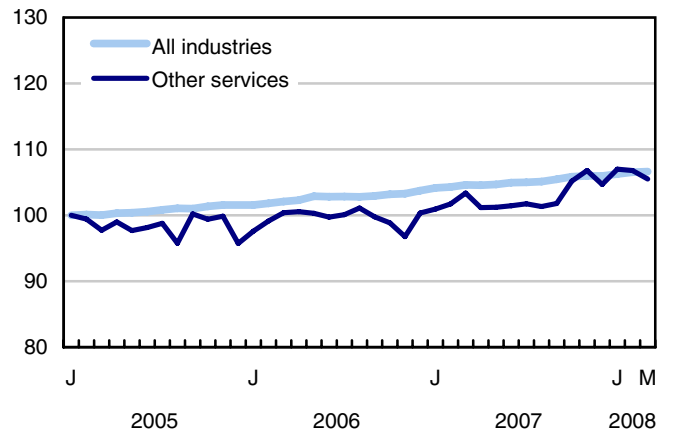
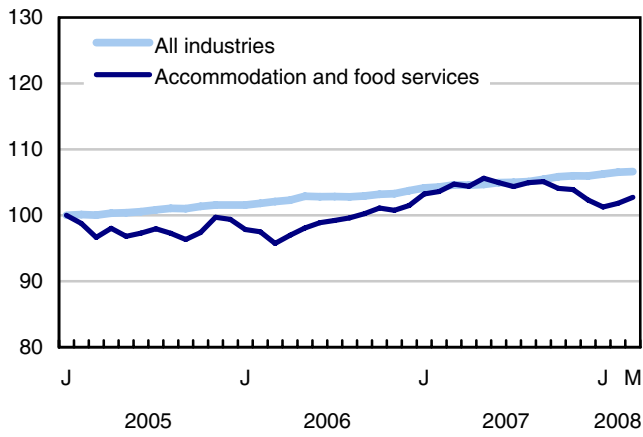
**Chart 3**  
**Index of employment by industry, Canada, seasonally adjusted, January, 2005=100**



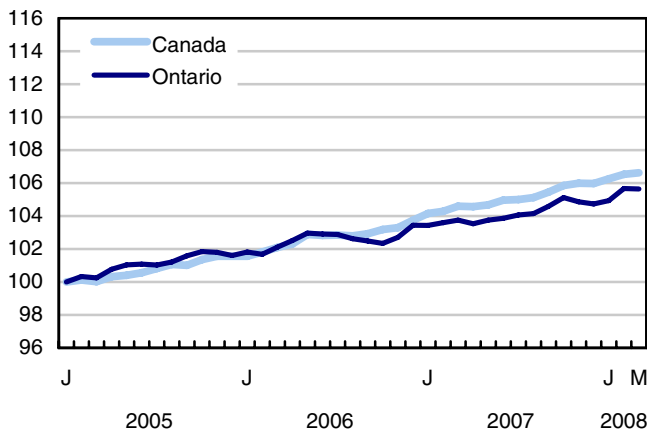
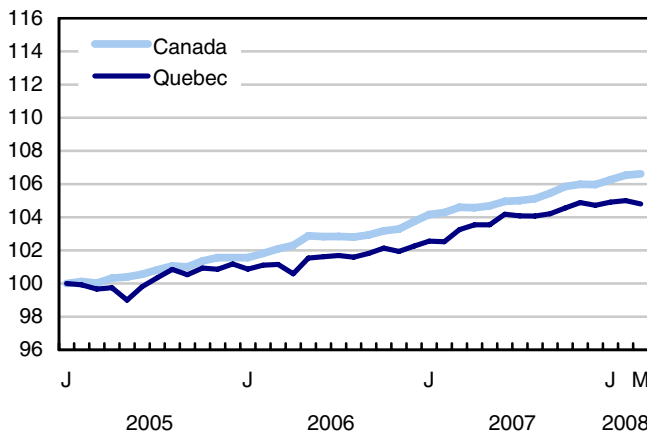
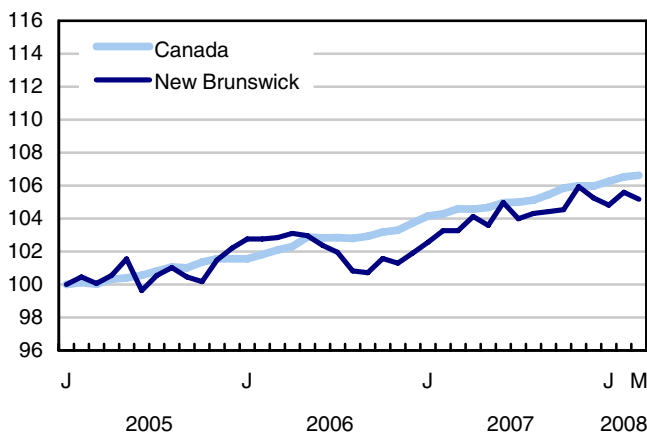
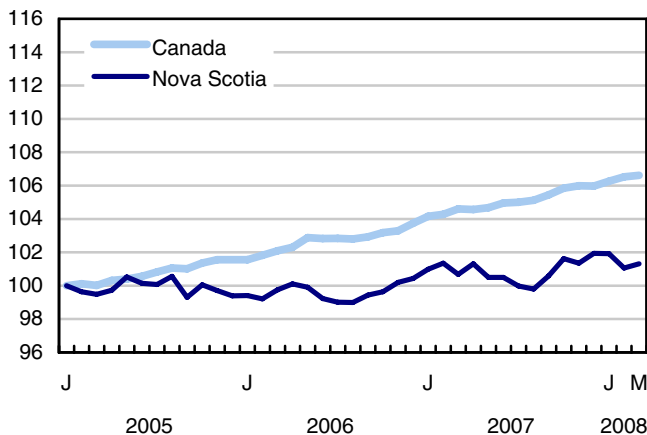
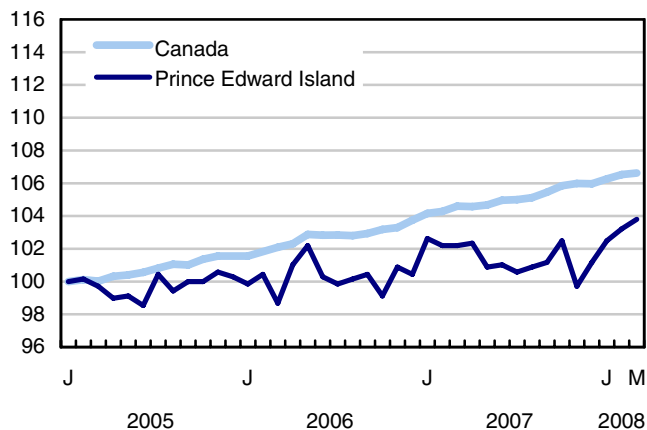
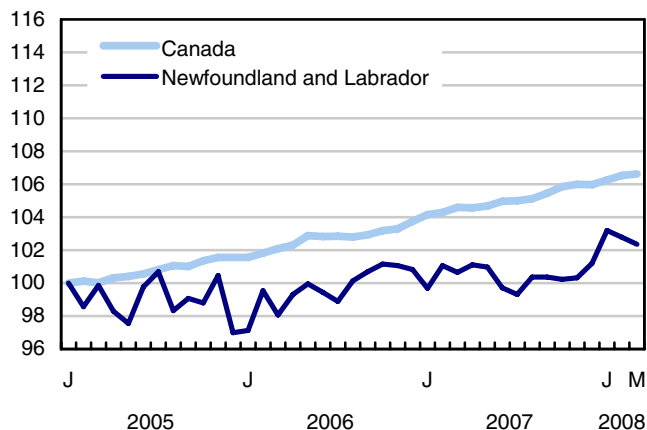
**Chart 4**  
**Index of employment by industry, Canada, seasonally adjusted, January 2005=100**



**Chart 5**  
**Index of employment by industry, Canada, seasonally adjusted, January 2005=100**

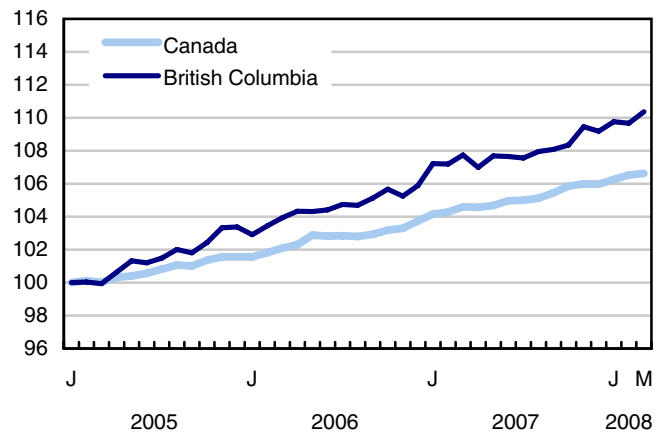
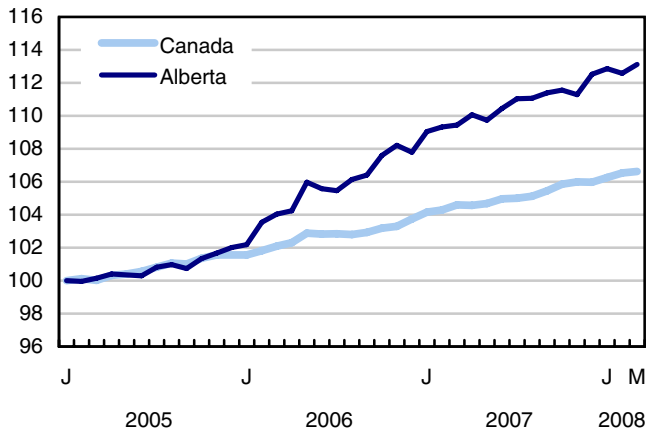
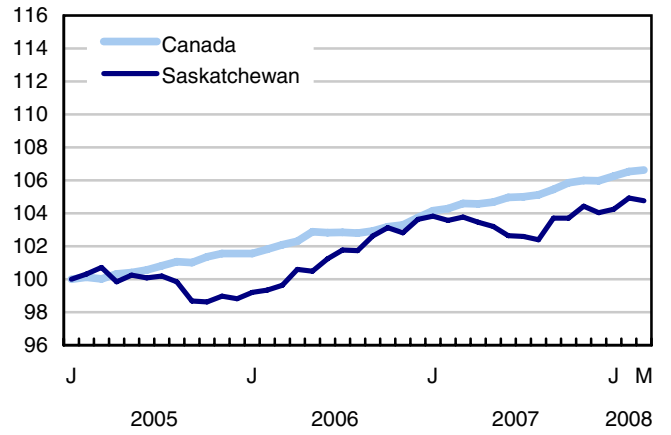
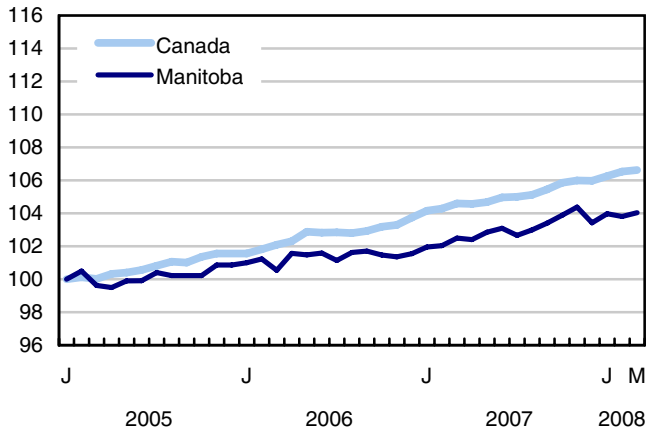


**Chart 6**  
**Index of employment by province, seasonally adjusted, January 2005=100**





**Chart 7**  
**Index of employment by province, seasonally adjusted, January 2005=100**



## Related products

---

### Selected publications from Statistics Canada

---

71-222-X	The Canadian Labour Market at a Glance
71-526-X	Methodology of the Canadian Labour Force Survey
71-543-G	Guide to the Labour Force Survey
71-544-X	Labour Force Survey Products and Services
71-587-X	Aboriginal Peoples Living Off-reserve in Western Canada: Estimates from the Labour Force Survey
71-606-X	The Immigrant Labour Force Analysis Series
71F0004X	Labour Force Historical Review
71F0031X	Improvements to the Labour Force Survey (LFS)
71M0001X	Labour Force Survey Microdata File
75-001-X	Perspectives on Labour and Income

---

### Selected CANSIM tables from Statistics Canada

---

282-0001	Labour force survey estimates (LFS), by sex and detailed age group
282-0002	Labour force survey estimates (LFS), by sex and detailed age group
282-0003	Labour force survey estimates (LFS), by educational attainment, sex and age group
282-0004	Labour force survey estimates (LFS), by educational attainment, sex and age group
282-0005	Labour force survey estimates (LFS), by full- and part-time students during school months, sex and age group
282-0006	Labour force survey estimates (LFS), by students during summer months, sex and age group
282-0007	Labour force survey estimates (LFS), by North American Industry Classification System (NAICS), sex and age group
282-0008	Labour force survey estimates (LFS), by North American Industry Classification System (NAICS), sex and age group
282-0009	Labour force survey estimates (LFS), by National Occupational Classification for Statistics (NOC-S) and sex

---

---

282-0010	Labour force survey estimates (LFS), by National Occupational Classification for Statistics (NOC-S) and sex
282-0011	Labour force survey estimates (LFS), employment by class of worker, North American Industry Classification System (NAICS) and sex
282-0012	Labour force survey estimates (LFS), employment by class of worker, North American Industry Classification System (NAICS) and sex
282-0013	Labour force survey estimates (LFS), part-time employment by reason for part-time work, sex and age group
282-0014	Labour force survey estimates (LFS), part-time employment by reason for part-time work, sex and age group
282-0015	Labour force survey estimates (LFS), by usual hours worked, main or all jobs, sex and age group
282-0016	Labour force survey estimates (LFS), by usual hours worked, main or all jobs, sex and age group
282-0017	Labour force survey estimates (LFS), by actual hours worked, main or all jobs, sex and age group
282-0018	Labour force survey estimates (LFS), by actual hours worked, main or all jobs, sex and age group
282-0019	Labour force survey estimates (LFS), by usual hours worked, class of worker, North American Industry Classification System (NAICS) and sex
282-0020	Labour force survey estimates (LFS), by usual hours worked, class of worker, North American Industry Classification System (NAICS) and sex
282-0021	Labour force survey estimates (LFS), by actual hours worked, class of worker, North American Industry Classification System (NAICS) and sex
282-0022	Labour force survey estimates (LFS), by actual hours worked, class of worker, North American Industry Classification System (NAICS) and sex
282-0023	Labour force survey estimates (LFS), by usual hours worked, class of worker, National Occupational Classification for Statistics (NOC-S) and sex
282-0024	Labour force survey estimates (LFS), by usual hours worked, class of worker, National Occupational Classification for Statistics (NOC-S) and sex
282-0025	Labour force survey estimates (LFS), by actual hours worked, class of worker, National Occupational Classification for Statistics (NOC-S) and sex
282-0026	Labour force survey estimates (LFS), by actual hours worked, class of worker, National Occupational Classification for Statistics (NOC-S) and sex
282-0027	Labour force survey estimates (LFS), by total and average usual and actual hours worked, main or all jobs, type of work, sex and age group
282-0028	Labour force survey estimates (LFS), by total and average usual and actual hours worked, main or all jobs, type of work, sex and age group

282-0029	Labour force survey estimates (LFS), average days lost for personal reasons per full-time employee by North American Industry Classification System (NAICS), sex and age group
282-0030	Labour force survey estimates (LFS), average days lost for personal reasons per full-time employee by National Occupational Classification for Statistics (NOC-S), sex and age group
282-0031	Labour force survey estimates (LFS), multiple jobholders by North American Industry Classification System (NAICS), sex and age group
282-0032	Labour force survey estimates (LFS), multiple jobholders by North American Industry Classification System (NAICS), sex and age group
282-0033	Labour force survey estimates (LFS), multiple jobholders by National Occupational Classification for Statistics (NOC-S), sex and age group
282-0034	Labour force survey estimates (LFS), multiple jobholders by National Occupational Classification for Statistics (NOC-S), sex and age group
282-0035	Labour force survey estimates (LFS), multiple jobholders by usual hours worked at main and all jobs
282-0036	Labour force survey estimates (LFS), multiple jobholders by usual hours worked at main and all jobs
282-0037	Labour force survey estimates (LFS), job tenure by type of work, sex and age group
282-0038	Labour force survey estimates (LFS), job tenure by type of work, sex and age group
282-0039	Labour force survey estimates (LFS), job tenure by National Occupational Classification for Statistics (NOC-S) and sex
282-0040	Labour force survey estimates (LFS), job tenure by National Occupational Classification for Statistics (NOC-S) and sex
282-0041	Labour force survey estimates (LFS), job tenure by North American Industry Classification System (NAICS) and sex
282-0042	Labour force survey estimates (LFS), job tenure by North American Industry Classification System (NAICS) and sex
282-0047	Labour force survey estimates (LFS), duration of unemployment by sex and age group
282-0048	Labour force survey estimates (LFS), duration of unemployment by sex and age group
282-0049	Labour force survey estimates (LFS), unemployment by type of work sought and search method, sex and age group
282-0050	Labour force survey estimates (LFS), unemployment by type of work sought and search method, sex and age group
282-0051	Labour force survey estimates (LFS), retirement age by class of worker and sex
282-0052	Labour force survey estimates (LFS), by census metropolitan area, sex and age group, 3-month moving average
282-0053	Labour force survey estimates (LFS), by census metropolitan area, sex and age group

---

282-0054	Labour force survey estimates (LFS), by provinces, territories and economic regions, 3-month moving average
282-0055	Labour force survey estimates (LFS), by provinces, territories and economic regions
282-0056	Labour force survey estimates (LFS), employment by census metropolitan area and North American Industry Classification System (NAICS), 3-month moving average
282-0057	Labour force survey estimates (LFS), employment by census metropolitan area and North American Industry Classification System (NAICS)
282-0058	Labour force survey estimates (LFS), employment by census metropolitan area and National Occupational Classification for Statistics (NOC-S), 3-month moving average
282-0059	Labour force survey estimates (LFS), employment by census metropolitan area and National Occupational Classification for Statistics (NOC-S)
282-0060	Labour force survey estimates (LFS), employment by economic region and North American Industry Classification System (NAICS), 3-month moving average
282-0061	Labour force survey estimates (LFS), employment by economic region and North American Industry Classification System (NAICS)
282-0062	Labour force survey estimates (LFS), employment by economic region and National Occupational Classification for Statistics (NOC-S), 3-month moving average
282-0063	Labour force survey estimates (LFS), employment by economic region and National Occupational Classification for Statistics (NOC-S)
282-0064	Labour force survey estimates (LFS), by selected medium-sized cities
282-0069	Labour force survey estimates (LFS), wages of employees by type of work, National Occupational Classification for Statistics (NOC-S), sex and age group
282-0070	Labour force survey estimates (LFS), wages of employees by type of work, National Occupational Classification for Statistics (NOC-S), sex and age group
282-0071	Labour force survey estimates (LFS), wages of employees by type of work, North American Industry Classification System (NAICS), sex and age group
282-0072	Labour force survey estimates (LFS), wages of employees by type of work, North American Industry Classification System (NAICS), sex and age group
282-0073	Labour force survey estimates (LFS), wages of employees by job permanence, union coverage, sex and age group
282-0074	Labour force survey estimates (LFS), wages of employees by job permanence, union coverage, sex and age group
282-0075	Labour force survey estimates (LFS), employees by establishment size, North American Industry Classification System (NAICS), sex and age group
282-0076	Labour force survey estimates (LFS), employees by establishment size, North American Industry Classification System (NAICS), sex and age group

282-0077	Labour force survey estimates (LFS), employees by union coverage, North American Industry Classification System (NAICS), sex and age group
282-0078	Labour force survey estimates (LFS), employees by union coverage, North American Industry Classification System (NAICS), sex and age group
282-0079	Labour force survey estimates (LFS), employees by job permanency, North American Industry Classification System (NAICS), sex and age group
282-0080	Labour force survey estimates (LFS), employees by job permanency, North American Industry Classification System (NAICS), sex and age group
282-0081	Labour force survey estimates (LFS), employees working overtime (weekly) by National Occupational Classification for Statistics (NOC-S), sex and age group
282-0082	Labour force survey estimates (LFS), employees working overtime (weekly) by National Occupational Classification for Statistics (NOC-S), sex and age group
282-0083	Labour force survey estimates (LFS), employees working overtime (weekly) by North American Industry Classification System (NAICS), sex and age group
282-0084	Labour force survey estimates (LFS), employees working overtime (weekly) by North American Industry Classification System (NAICS), sex and age group
282-0085	Labour force survey estimates (LFS), supplementary unemployment rates by sex and age group
282-0086	Labour force survey estimates (LFS), supplementary unemployment rates by sex and age group
282-0087	Labour force survey estimates (LFS), by sex and age group, seasonally adjusted and unadjusted
282-0088	Labour force survey estimates (LFS), employment by North American Industry Classification System (NAICS), seasonally adjusted and unadjusted
282-0089	Labour force survey estimates (LFS), employment by class of worker and sex, seasonally adjusted and unadjusted
282-0090	Labour force survey estimates (LFS), by census metropolitan area, 3-month moving average, seasonally adjusted and unadjusted
282-0091	Labour force survey estimates (LFS), by Montréal, Toronto and Vancouver census metropolitan areas, seasonally adjusted and unadjusted
282-0092	Labour force survey estimates (LFS), actual hours worked by North American Industry Classification System (NAICS), seasonally adjusted
282-0093	Labour force survey estimates (LFS), employment by National Occupational Classification for Statistics (NOC-S), seasonally adjusted
282-0094	Labour force survey estimates (LFS), by North American Industry Classification System (NAICS), Canada, seasonally adjusted
282-0095	Labour force survey estimates (LFS), by full- and part-time students during school months, sex and age group
282-0096	Labour force survey estimates (LFS), by urban and rural areas based on 2001 census boundaries, sex and age group

282-0097	Labour force survey estimates (LFS), by urban and rural areas based on 2001 census boundaries, sex and age group
282-0098	Labour force survey estimates (LFS), employment by urban and rural areas based on 2001 census boundaries, class of worker and North American Industry Classification System (NAICS)
282-0099	Labour force survey estimates (LFS), employment by urban and rural areas based on 2001 census boundaries, class of worker and North American Industry Classification System (NAICS)

---

### **Selected surveys from Statistics Canada**

---

3701	Labour Force Survey
------	---------------------

---

### **Selected summary tables from Statistics Canada**

---

- *Labour force characteristics*
- *Employment by industry*
- *Selected economic indicators, Canada and United States (monthly and quarterly)*
- *Days lost per worker due to illness or disability, by sex, by provinces*
- *Economic indicators, by province and territory (monthly and quarterly)*
- *Labour force and participation rates by sex and age group*
- *Labour force, employed and unemployed, numbers and rates, by provinces*
- *Employment by industry and sex*
- *Full-time and part-time employment by sex and age group*
- *Labour force characteristics by age and sex*
- *Distribution of employed people, by industry, by province*
- *Labour force characteristics, population 15 years and older, by census metropolitan area*
- *Labour force characteristics, population 15 years and older, by economic region, by province*
- *Days lost per worker by cause, by provinces*
- *Days lost per worker by industry and sex*
- *People employed, by educational attainment*

- *Reasons for part-time work by sex and age group*
- *Self-employment, historical summary*
- *Employment by age, sex, type of work, class of worker and provinces (monthly)*
- *Employment by major industry groups, seasonally adjusted, by provinces (monthly)*
- *Actual hours worked per week by industry, seasonally adjusted (monthly)*
- *Average hourly wages of employees by selected characteristics and profession, unadjusted data, by provinces (monthly)*
- *Labour force characteristics, seasonally adjusted, by province (monthly)*
- *Labour force characteristics, unadjusted, by province (monthly)*
- *Labour force characteristics, seasonally adjusted, by census metropolitan area (3 month moving average)*
- *Labour force characteristics, unadjusted, by census metropolitan area (3 month moving average)*
- *Labour force characteristics, unadjusted, by economic region (3 month moving average)*



# Statistical tables

---

---

**Table 1**  
**Labour force characteristics by age and sex, Canada, seasonally adjusted**

	February 2008	March 2008	S.E. <sup>1</sup>	Change from			Percent change from		
				last month	last December	twelve months ago	last month	last December	twelve months ago
in thousands (except rates)									
<b>Both sexes, 15 years and over</b>									
Population	26,774.8	<b>26,803.4</b>	...	<b>28.6</b>	83.9	361.9	<b>0.1</b>	0.3	1.4
Labour force	18,158.9	<b>18,216.0</b>	27.0	<b>57.1</b>	125.8	326.9	<b>0.3</b>	0.7	1.8
Employment	17,102.2	<b>17,116.8</b>	27.4	<b>14.6</b>	104.3	325.0	<b>0.1</b>	0.6	1.9
Employment full-time	14,028.4	<b>14,008.8</b>	35.7	<b>-19.6</b>	94.2	289.9	<b>-0.1</b>	0.7	2.1
Employment part-time	3,073.8	<b>3,108.0</b>	32.4	<b>34.2</b>	10.1	35.1	<b>1.1</b>	0.3	1.1
Unemployment	1,056.6	<b>1,099.2</b>	22.8	<b>42.6</b>	21.6	2.0	<b>4.0</b>	2.0	0.2
Participation rate	67.8	<b>68.0</b>	0.1	<b>0.2</b>	0.3	0.3	...	...	...
Unemployment rate	5.8	<b>6.0</b>	0.1	<b>0.2</b>	0.0	-0.1	...	...	...
Employment rate	63.9	<b>63.9</b>	0.1	<b>0.0</b>	0.2	0.4	...	...	...
Part-time rate	18.0	<b>18.2</b>	0.2	<b>0.2</b>	-0.1	-0.1	...	...	...
<b>Both sexes, 15 to 24 years</b>									
Population	4,368.3	<b>4,369.8</b>	...	<b>1.5</b>	3.0	25.3	<b>0.0</b>	0.1	0.6
Labour force	2,951.3	<b>2,943.7</b>	16.2	<b>-7.6</b>	12.1	33.4	<b>-0.3</b>	0.4	1.1
Employment	2,613.7	<b>2,620.7</b>	15.8	<b>7.0</b>	15.2	31.5	<b>0.3</b>	0.6	1.2
Employment full-time	1,468.1	<b>1,443.9</b>	17.9	<b>-24.2</b>	22.0	13.2	<b>-1.6</b>	1.5	0.9
Employment part-time	1,145.7	<b>1,176.8</b>	18.5	<b>31.1</b>	-6.9	18.3	<b>2.7</b>	-0.6	1.6
Unemployment	337.5	<b>323.0</b>	13.5	<b>-14.5</b>	-3.0	2.0	<b>-4.3</b>	-0.9	0.6
Participation rate	67.6	<b>67.4</b>	0.4	<b>-0.2</b>	0.3	0.4	...	...	...
Unemployment rate	11.4	<b>11.0</b>	0.4	<b>-0.4</b>	-0.1	0.0	...	...	...
Employment rate	59.8	<b>60.0</b>	0.4	<b>0.2</b>	0.3	0.4	...	...	...
Part-time rate	43.8	<b>44.9</b>	0.6	<b>1.1</b>	-0.5	0.2	...	...	...
<b>Men, 25 years and over</b>									
Population	10,947.8	<b>10,961.5</b>	...	<b>13.7</b>	40.8	168.2	<b>0.1</b>	0.4	1.6
Labour force	8,098.3	<b>8,149.4</b>	13.9	<b>51.1</b>	61.3	190.0	<b>0.6</b>	0.8	2.4
Employment	7,702.3	<b>7,721.8</b>	15.0	<b>19.5</b>	61.6	189.9	<b>0.3</b>	0.8	2.5
Employment full-time	7,219.0	<b>7,227.6</b>	19.2	<b>8.6</b>	62.3	193.6	<b>0.1</b>	0.9	2.8
Employment part-time	483.2	<b>494.2</b>	15.1	<b>11.0</b>	-0.7	-3.6	<b>2.3</b>	-0.1	-0.7
Unemployment	396.0	<b>427.7</b>	13.4	<b>31.7</b>	-0.2	0.2	<b>8.0</b>	0.0	0.0
Participation rate	74.0	<b>74.3</b>	0.1	<b>0.3</b>	0.2	0.6	...	...	...
Unemployment rate	4.9	<b>5.2</b>	0.2	<b>0.3</b>	-0.1	-0.2	...	...	...
Employment rate	70.4	<b>70.4</b>	0.1	<b>0.0</b>	0.3	0.6	...	...	...
Part-time rate	6.3	<b>6.4</b>	0.2	<b>0.1</b>	-0.1	-0.2	...	...	...
<b>Women, 25 years and over</b>									
Population	11,458.6	<b>11,472.1</b>	...	<b>13.5</b>	40.1	168.4	<b>0.1</b>	0.4	1.5
Labour force	7,109.3	<b>7,122.9</b>	15.5	<b>13.6</b>	52.4	103.4	<b>0.2</b>	0.7	1.5
Employment	6,786.2	<b>6,774.3</b>	15.5	<b>-11.9</b>	27.5	103.6	<b>-0.2</b>	0.4	1.6
Employment full-time	5,341.3	<b>5,337.4</b>	23.0	<b>-3.9</b>	10.0	83.2	<b>-0.1</b>	0.2	1.6
Employment part-time	1,444.9	<b>1,437.0</b>	21.1	<b>-7.9</b>	17.6	20.4	<b>-0.5</b>	1.2	1.4
Unemployment	323.1	<b>348.6</b>	12.1	<b>25.5</b>	24.9	-0.1	<b>7.9</b>	7.7	0.0
Participation rate	62.0	<b>62.1</b>	0.1	<b>0.1</b>	0.3	0.0	...	...	...
Unemployment rate	4.5	<b>4.9</b>	0.2	<b>0.4</b>	0.3	-0.1	...	...	...
Employment rate	59.2	<b>59.1</b>	0.1	<b>-0.1</b>	0.1	0.1	...	...	...
Part-time rate	21.3	<b>21.2</b>	0.3	<b>-0.1</b>	0.2	0.0	...	...	...
<b>Both sexes, 25 to 54 years</b>									
Population	14,381.4	<b>14,389.9</b>	...	<b>8.5</b>	18.2	91.1	<b>0.1</b>	0.1	0.6
Labour force	12,469.7	<b>12,497.0</b>	20.4	<b>27.3</b>	44.8	98.1	<b>0.2</b>	0.4	0.8
Employment	11,874.9	<b>11,858.1</b>	21.9	<b>-16.8</b>	31.0	102.1	<b>-0.1</b>	0.3	0.9
Unemployment	594.9	<b>638.9</b>	16.9	<b>44.0</b>	13.8	-4.0	<b>7.4</b>	2.2	-0.6
Participation rate	86.7	<b>86.8</b>	0.1	<b>0.1</b>	0.2	0.1	...	...	...
Unemployment rate	4.8	<b>5.1</b>	0.1	<b>0.3</b>	0.1	-0.1	...	...	...
Employment rate	82.6	<b>82.4</b>	0.2	<b>-0.2</b>	0.1	0.2	...	...	...

1. Average standard error of change in two consecutive months (see "Sampling Errors" in Data Quality for further explanations).

**Note(s):** Related CANSIM table 282-0087

**Table 2**  
**Employment by class of worker and industry, Canada, seasonally adjusted**

	February 2008	March 2008	S.E. <sup>1</sup>	Change from			Percent change from		
				last month	last December	twelve months ago	last month	last December	twelve months ago
in thousands									
<b>Class of worker</b>									
Employees	14,485.4	<b>14,508.6</b>	32.1	<b>23.2</b>	138.8	280.1	<b>0.2</b>	1.0	2.0
Self-employed <sup>2</sup>	2,616.8	<b>2,608.2</b>	21.1	<b>-8.6</b>	-34.5	44.9	<b>-0.3</b>	-1.3	1.8
<b>Public/private sector employees</b>									
Public sector employees	3,408.8	<b>3,411.7</b>	20.3	<b>2.9</b>	11.2	188.6	<b>0.1</b>	0.3	5.9
Private sector employees	11,076.7	<b>11,097.0</b>	33.1	<b>20.3</b>	127.7	91.6	<b>0.2</b>	1.2	0.8
<b>Industry</b>	17,102.2	<b>17,116.8</b>	27.4	<b>14.6</b>	104.3	325.0	<b>0.1</b>	0.6	1.9
<b>Goods-producing sector</b>	4,000.3	<b>4,008.1</b>	23.3	<b>7.8</b>	39.4	17.8	<b>0.2</b>	1.0	0.4
Agriculture	338.0	<b>337.7</b>	6.9	<b>-0.3</b>	10.1	9.5	<b>-0.1</b>	3.1	2.9
Forestry, fishing, mining, oil and gas	332.7	<b>339.3</b>	6.5	<b>6.6</b>	-15.1	-1.5	<b>2.0</b>	-4.3	-0.4
Utilities	149.7	<b>150.9</b>	4.1	<b>1.2</b>	10.1	19.8	<b>0.8</b>	7.2	15.1
Construction	1,203.7	<b>1,213.3</b>	14.3	<b>9.6</b>	49.9	103.3	<b>0.8</b>	4.3	9.3
Manufacturing	1,976.3	<b>1,966.9</b>	17.9	<b>-9.4</b>	-15.6	-113.3	<b>-0.5</b>	-0.8	-5.4
<b>Services-producing sector</b>	13,101.9	<b>13,108.7</b>	31.1	<b>6.8</b>	64.9	307.2	<b>0.1</b>	0.5	2.4
Trade	2,694.0	<b>2,697.0</b>	20.4	<b>3.0</b>	-9.4	30.6	<b>0.1</b>	-0.3	1.1
Transportation and warehousing	844.9	<b>864.8</b>	11.8	<b>19.9</b>	9.9	42.0	<b>2.4</b>	1.2	5.1
Finance, insurance, real estate and leasing	1,087.2	<b>1,074.3</b>	13.0	<b>-12.9</b>	10.0	1.3	<b>-1.2</b>	0.9	0.1
Professional, scientific and technical services	1,199.1	<b>1,198.3</b>	14.8	<b>-0.8</b>	45.0	83.2	<b>-0.1</b>	3.9	7.5
Business, building and other support services	710.9	<b>721.1</b>	12.7	<b>10.2</b>	8.9	29.3	<b>1.4</b>	1.2	4.2
Educational services	1,187.4	<b>1,190.8</b>	13.8	<b>3.4</b>	-5.5	16.6	<b>0.3</b>	-0.5	1.4
Health care and social assistance	1,878.3	<b>1,883.1</b>	15.0	<b>4.8</b>	12.5	45.8	<b>0.3</b>	0.7	2.5
Information, culture and recreation	780.5	<b>756.2</b>	12.5	<b>-24.3</b>	-39.7	-21.9	<b>-3.1</b>	-5.0	-2.8
Accommodation and food services	1,044.2	<b>1,053.7</b>	14.3	<b>9.5</b>	4.3	-20.4	<b>0.9</b>	0.4	-1.9
Other services	752.1	<b>743.1</b>	11.0	<b>-9.0</b>	5.8	15.1	<b>-1.2</b>	0.8	2.1
Public administration	923.4	<b>926.3</b>	10.2	<b>2.9</b>	23.1	85.5	<b>0.3</b>	2.6	10.2

1. Average standard error of change in two consecutive months (see "Sampling Errors" in Data Quality for further explanations).

2. Includes both incorporated and unincorporated working owners, self-employed persons who do not have a business and persons working in a family business without pay.

**Note(s):** Related CANSIM tables 282-0088, 282-0089

**Table 3**  
**Labour force characteristics by province, seasonally adjusted**

	February 2008	March 2008	S.E. <sup>1</sup>	Change from			Percent change from		
				last month	last December	twelve months ago	last month	last December	twelve months ago
in thousands (except rates)									
<b>Newfoundland and Labrador</b>									
Population	425.2	<b>425.4</b>	...	<b>0.2</b>	0.9	-0.3	<b>0.0</b>	0.2	-0.1
Labour force	255.7	<b>253.1</b>	2.2	<b>-2.6</b>	2.9	-0.3	<b>-1.0</b>	1.2	-0.1
Employment	222.2	<b>221.3</b>	2.2	<b>-0.9</b>	2.5	3.7	<b>-0.4</b>	1.1	1.7
Employment full-time	188.2	<b>187.4</b>	2.6	<b>-0.8</b>	-1.2	-0.3	<b>-0.4</b>	-0.6	-0.2
Employment part-time	34.0	<b>34.0</b>	1.8	<b>0.0</b>	3.8	4.1	<b>0.0</b>	12.6	13.7
Unemployment	33.5	<b>31.8</b>	2.1	<b>-1.7</b>	0.4	-4.0	<b>-5.1</b>	1.3	-11.2
Participation rate	60.1	<b>59.5</b>	0.5	<b>-0.6</b>	0.6	0.0	...	...	...
Unemployment rate	13.1	<b>12.6</b>	0.8	<b>-0.5</b>	0.1	-1.5	...	...	...
Employment rate	52.3	<b>52.0</b>	0.5	<b>-0.3</b>	0.5	0.9	...	...	...
<b>Prince Edward Island</b>									
Population	113.9	<b>113.8</b>	...	<b>-0.1</b>	0.0	1.0	<b>-0.1</b>	0.0	0.9
Labour force	78.3	<b>79.1</b>	0.6	<b>0.8</b>	1.6	1.1	<b>1.0</b>	2.1	1.4
Employment	70.6	<b>71.0</b>	0.7	<b>0.4</b>	1.8	1.1	<b>0.6</b>	2.6	1.6
Employment full-time	59.7	<b>58.8</b>	0.8	<b>-0.9</b>	0.9	1.8	<b>-1.5</b>	1.6	3.2
Employment part-time	10.9	<b>12.1</b>	0.6	<b>1.2</b>	0.8	-0.7	<b>11.0</b>	7.1	-5.5
Unemployment	7.8	<b>8.2</b>	0.6	<b>0.4</b>	-0.1	0.1	<b>5.1</b>	-1.2	1.2
Participation rate	68.7	<b>69.5</b>	0.5	<b>0.8</b>	1.4	0.4	...	...	...
Unemployment rate	10.0	<b>10.4</b>	0.8	<b>0.4</b>	-0.3	0.0	...	...	...
Employment rate	62.0	<b>62.4</b>	0.6	<b>0.4</b>	1.6	0.4	...	...	...
<b>Nova Scotia</b>									
Population	766.6	<b>767.0</b>	...	<b>0.4</b>	1.2	3.3	<b>0.1</b>	0.2	0.4
Labour force	485.6	<b>487.7</b>	2.8	<b>2.1</b>	-2.5	2.0	<b>0.4</b>	-0.5	0.4
Employment	448.4	<b>449.5</b>	2.9	<b>1.1</b>	-2.8	2.8	<b>0.2</b>	-0.6	0.6
Employment full-time	364.1	<b>365.3</b>	3.6	<b>1.2</b>	-1.4	1.3	<b>0.3</b>	-0.4	0.4
Employment part-time	84.3	<b>84.1</b>	3.1	<b>-0.2</b>	-1.5	1.3	<b>-0.2</b>	-1.8	1.6
Unemployment	37.3	<b>38.3</b>	2.6	<b>1.0</b>	0.3	-0.7	<b>2.7</b>	0.8	-1.8
Participation rate	63.3	<b>63.6</b>	0.4	<b>0.3</b>	-0.4	0.0	...	...	...
Unemployment rate	7.7	<b>7.9</b>	0.5	<b>0.2</b>	0.1	-0.1	...	...	...
Employment rate	58.5	<b>58.6</b>	0.4	<b>0.1</b>	-0.5	0.1	...	...	...
<b>New Brunswick</b>									
Population	616.1	<b>616.6</b>	...	<b>0.5</b>	1.3	4.5	<b>0.1</b>	0.2	0.7
Labour force	400.3	<b>400.2</b>	2.3	<b>-0.1</b>	2.4	11.4	<b>0.0</b>	0.6	2.9
Employment	367.8	<b>366.3</b>	2.4	<b>-1.5</b>	-0.3	6.6	<b>-0.4</b>	-0.1	1.8
Employment full-time	313.7	<b>310.3</b>	2.8	<b>-3.4</b>	-0.8	8.0	<b>-1.1</b>	-0.3	2.6
Employment part-time	54.1	<b>56.1</b>	2.4	<b>2.0</b>	0.6	-1.4	<b>3.7</b>	1.1	-2.4
Unemployment	32.5	<b>33.9</b>	2.1	<b>1.4</b>	2.7	4.8	<b>4.3</b>	8.7	16.5
Participation rate	65.0	<b>64.9</b>	0.4	<b>-0.1</b>	0.2	1.4	...	...	...
Unemployment rate	8.1	<b>8.5</b>	0.5	<b>0.4</b>	0.7	1.0	...	...	...
Employment rate	59.7	<b>59.4</b>	0.4	<b>-0.3</b>	-0.2	0.6	...	...	...
<b>Quebec</b>									
Population	6,348.9	<b>6,353.5</b>	...	<b>4.6</b>	13.3	56.2	<b>0.1</b>	0.2	0.9
Labour force	4,186.2	<b>4,191.4</b>	14.2	<b>5.2</b>	16.6	49.6	<b>0.1</b>	0.4	1.2
Employment	3,894.8	<b>3,887.3</b>	14.5	<b>-7.5</b>	3.0	57.7	<b>-0.2</b>	0.1	1.5
Employment full-time	3,186.3	<b>3,164.0</b>	19.1	<b>-22.3</b>	14.8	45.6	<b>-0.7</b>	0.5	1.5
Employment part-time	708.5	<b>723.3</b>	17.5	<b>14.8</b>	-11.8	12.1	<b>2.1</b>	-1.6	1.7
Unemployment	291.4	<b>304.1</b>	12.7	<b>12.7</b>	13.6	-8.1	<b>4.4</b>	4.7	-2.6
Participation rate	65.9	<b>66.0</b>	0.2	<b>0.1</b>	0.2	0.2	...	...	...
Unemployment rate	7.0	<b>7.3</b>	0.3	<b>0.3</b>	0.3	-0.2	...	...	...
Employment rate	61.3	<b>61.2</b>	0.2	<b>-0.1</b>	-0.1	0.4	...	...	...

See footnotes at the end of the table.

Table 3 – continued

## Labour force characteristics by province, seasonally adjusted

	February 2008	March 2008	S.E. <sup>1</sup>	Change from			Percent change from		
				last month	last December	twelve months ago	last month	last December	twelve months ago
in thousands (except rates)									
<b>Ontario</b>									
Population	10,448.3	<b>10,459.9</b>	...	<b>11.6</b>	33.5	141.3	<b>0.1</b>	0.3	1.4
Labour force	7,124.4	<b>7,146.3</b>	18.4	<b>21.9</b>	51.1	116.1	<b>0.3</b>	0.7	1.7
Employment	6,690.0	<b>6,688.2</b>	18.5	<b>-1.8</b>	57.3	119.2	<b>0.0</b>	0.9	1.8
Employment full-time	5,495.1	<b>5,470.6</b>	23.4	<b>-24.5</b>	25.0	81.4	<b>-0.4</b>	0.5	1.5
Employment part-time	1,194.9	<b>1,217.6</b>	20.9	<b>22.7</b>	32.3	37.8	<b>1.9</b>	2.7	3.2
Unemployment	434.4	<b>458.0</b>	15.9	<b>23.6</b>	-6.3	-3.2	<b>5.4</b>	-1.4	-0.7
Participation rate	68.2	<b>68.3</b>	0.2	<b>0.1</b>	0.2	0.2	...	...	...
Unemployment rate	6.1	<b>6.4</b>	0.2	<b>0.3</b>	-0.1	-0.2	...	...	...
Employment rate	64.0	<b>63.9</b>	0.2	<b>-0.1</b>	0.3	0.2	...	...	...
<b>Manitoba</b>									
Population	905.1	<b>905.9</b>	...	<b>0.8</b>	2.7	10.3	<b>0.1</b>	0.3	1.2
Labour force	627.8	<b>630.1</b>	2.7	<b>2.3</b>	4.8	9.5	<b>0.4</b>	0.8	1.5
Employment	601.4	<b>602.7</b>	2.7	<b>1.3</b>	3.6	8.9	<b>0.2</b>	0.6	1.5
Employment full-time	489.1	<b>494.0</b>	3.9	<b>4.9</b>	6.0	21.4	<b>1.0</b>	1.2	4.5
Employment part-time	112.3	<b>108.7</b>	3.6	<b>-3.6</b>	-2.4	-12.5	<b>-3.2</b>	-2.2	-10.3
Unemployment	26.4	<b>27.4</b>	2.1	<b>1.0</b>	1.2	0.7	<b>3.8</b>	4.6	2.6
Participation rate	69.4	<b>69.6</b>	0.3	<b>0.2</b>	0.4	0.3	...	...	...
Unemployment rate	4.2	<b>4.3</b>	0.3	<b>0.1</b>	0.1	0.0	...	...	...
Employment rate	66.4	<b>66.5</b>	0.3	<b>0.1</b>	0.2	0.2	...	...	...
<b>Saskatchewan</b>									
Population	760.7	<b>762.2</b>	...	<b>1.5</b>	4.2	14.0	<b>0.2</b>	0.6	1.9
Labour force	530.6	<b>529.9</b>	2.3	<b>-0.7</b>	4.0	6.1	<b>-0.1</b>	0.8	1.2
Employment	509.0	<b>508.2</b>	2.4	<b>-0.8</b>	3.5	4.8	<b>-0.2</b>	0.7	1.0
Employment full-time	418.4	<b>418.4</b>	3.1	<b>0.0</b>	5.7	13.4	<b>0.0</b>	1.4	3.3
Employment part-time	90.6	<b>89.8</b>	2.9	<b>-0.8</b>	-2.1	-8.6	<b>-0.9</b>	-2.3	-8.7
Unemployment	21.6	<b>21.8</b>	1.8	<b>0.2</b>	0.6	1.4	<b>0.9</b>	2.8	6.9
Participation rate	69.8	<b>69.5</b>	0.3	<b>-0.3</b>	0.1	-0.5	...	...	...
Unemployment rate	4.1	<b>4.1</b>	0.3	<b>0.0</b>	0.1	0.2	...	...	...
Employment rate	66.9	<b>66.7</b>	0.3	<b>-0.2</b>	0.1	-0.6	...	...	...
<b>Alberta</b>									
Population	2,775.8	<b>2,779.2</b>	...	<b>3.4</b>	9.7	63.3	<b>0.1</b>	0.4	2.3
Labour force	2,067.5	<b>2,075.9</b>	7.9	<b>8.4</b>	16.1	64.3	<b>0.4</b>	0.8	3.2
Employment	1,994.9	<b>2,004.5</b>	8.2	<b>9.6</b>	10.7	65.2	<b>0.5</b>	0.5	3.4
Employment full-time	1,677.8	<b>1,695.7</b>	11.2	<b>17.9</b>	17.8	64.3	<b>1.1</b>	1.1	3.9
Employment part-time	317.1	<b>308.8</b>	10.0	<b>-8.3</b>	-7.1	0.9	<b>-2.6</b>	-2.2	0.3
Unemployment	72.6	<b>71.4</b>	5.8	<b>-1.2</b>	5.4	-0.9	<b>-1.7</b>	8.2	-1.2
Participation rate	74.5	<b>74.7</b>	0.3	<b>0.2</b>	0.3	0.6	...	...	...
Unemployment rate	3.5	<b>3.4</b>	0.3	<b>-0.1</b>	0.2	-0.2	...	...	...
Employment rate	71.9	<b>72.1</b>	0.3	<b>0.2</b>	0.1	0.7	...	...	...
<b>British Columbia</b>									
Population	3,614.1	<b>3,619.9</b>	...	<b>5.8</b>	17.2	68.2	<b>0.2</b>	0.5	1.9
Labour force	2,402.5	<b>2,422.2</b>	9.8	<b>19.7</b>	28.7	67.1	<b>0.8</b>	1.2	2.8
Employment	2,303.2	<b>2,317.9</b>	9.8	<b>14.7</b>	25.0	55.2	<b>0.6</b>	1.1	2.4
Employment full-time	1,835.0	<b>1,843.7</b>	13.5	<b>8.7</b>	27.2	52.3	<b>0.5</b>	1.5	2.9
Employment part-time	468.2	<b>474.2</b>	12.7	<b>6.0</b>	-2.3	2.9	<b>1.3</b>	-0.5	0.6
Unemployment	99.3	<b>104.4</b>	7.0	<b>5.1</b>	3.8	12.0	<b>5.1</b>	3.8	13.0
Participation rate	66.5	<b>66.9</b>	0.3	<b>0.4</b>	0.5	0.6	...	...	...
Unemployment rate	4.1	<b>4.3</b>	0.3	<b>0.2</b>	0.1	0.4	...	...	...
Employment rate	63.7	<b>64.0</b>	0.3	<b>0.3</b>	0.4	0.3	...	...	...

1. Average standard error of change in two consecutive months (see "Sampling Errors" in Data Quality for further explanations).

Note(s): Related CANSIM table 282-0087

**Table 4-1**  
**Selected labour force characteristics (seasonally adjusted) — Newfoundland and Labrador**

	February 2008	March 2008	S.E. <sup>1</sup>	Change from			Percent change from		
				last month	last December	twelve months ago	last month	last December	twelve months ago
in thousands (except rates)									
<b>Both sexes, 15 years and over</b>									
Population	425.2	<b>425.4</b>	...	<b>0.2</b>	0.9	-0.3	<b>0.0</b>	0.2	-0.1
Labour force	255.7	<b>253.1</b>	2.2	<b>-2.6</b>	2.9	-0.3	<b>-1.0</b>	1.2	-0.1
Employment	222.2	<b>221.3</b>	2.2	<b>-0.9</b>	2.5	3.7	<b>-0.4</b>	1.1	1.7
Employment full-time	188.2	<b>187.4</b>	2.6	<b>-0.8</b>	-1.2	-0.3	<b>-0.4</b>	-0.6	-0.2
Unemployment	33.5	<b>31.8</b>	2.1	<b>-1.7</b>	0.4	-4.0	<b>-5.1</b>	1.3	-11.2
Participation rate	60.1	<b>59.5</b>	0.5	<b>-0.6</b>	0.6	0.0	...	...	...
Unemployment rate	13.1	<b>12.6</b>	0.8	<b>-0.5</b>	0.1	-1.5	...	...	...
Employment rate	52.3	<b>52.0</b>	0.5	<b>-0.3</b>	0.5	0.9	...	...	...
Part-time rate	15.3	<b>15.4</b>	0.8	<b>0.1</b>	1.6	1.6	...	...	...
<b>Both sexes, 15 to 24 years</b>									
Population	62.9	<b>62.9</b>	...	<b>0.0</b>	0.0	-1.9	<b>0.0</b>	0.0	-2.9
Labour force	34.2	<b>33.5</b>	1.1	<b>-0.7</b>	0.1	-1.9	<b>-2.0</b>	0.3	-5.4
Employment	27.7	<b>27.6</b>	1.1	<b>-0.1</b>	0.4	-0.9	<b>-0.4</b>	1.5	-3.2
Unemployment	6.6	<b>5.9</b>	1.0	<b>-0.7</b>	-0.3	-1.0	<b>-10.6</b>	-4.8	-14.5
Participation rate	54.4	<b>53.3</b>	1.7	<b>-1.1</b>	0.2	-1.3	...	...	...
Unemployment rate	19.3	<b>17.6</b>	2.7	<b>-1.7</b>	-1.0	-1.9	...	...	...
Employment rate	44.0	<b>43.9</b>	1.7	<b>-0.1</b>	0.7	-0.1	...	...	...
Part-time rate	44.8	<b>43.8</b>	3.5	<b>-0.9</b>	4.1	2.1	...	...	...
<b>Men, 25 years and over</b>									
Population	175.1	<b>175.2</b>	...	<b>0.1</b>	0.4	0.7	<b>0.1</b>	0.2	0.4
Labour force	118.0	<b>117.4</b>	1.3	<b>-0.6</b>	3.0	3.3	<b>-0.5</b>	2.6	2.9
Employment	102.8	<b>100.9</b>	1.4	<b>-1.9</b>	-0.6	4.0	<b>-1.8</b>	-0.6	4.1
Unemployment	15.2	<b>16.5</b>	1.3	<b>1.3</b>	3.6	-0.6	<b>8.6</b>	27.9	-3.5
Participation rate	67.4	<b>67.0</b>	0.7	<b>-0.4</b>	1.6	1.6	...	...	...
Unemployment rate	12.9	<b>14.1</b>	1.1	<b>1.2</b>	2.8	-0.9	...	...	...
Employment rate	58.7	<b>57.6</b>	0.8	<b>-1.1</b>	-0.5	2.1	...	...	...
Part-time rate	4.5	<b>4.8</b>	0.9	<b>0.3</b>	0.4	-0.2	...	...	...
<b>Women, 25 years and over</b>									
Population	187.2	<b>187.4</b>	...	<b>0.2</b>	0.7	1.1	<b>0.1</b>	0.4	0.6
Labour force	103.4	<b>102.2</b>	1.2	<b>-1.2</b>	-0.2	-1.7	<b>-1.2</b>	-0.2	-1.6
Employment	91.7	<b>92.8</b>	1.2	<b>1.1</b>	2.7	0.7	<b>1.2</b>	3.0	0.8
Unemployment	11.7	<b>9.4</b>	1.2	<b>-2.3</b>	-2.9	-2.3	<b>-19.7</b>	-23.6	-19.7
Participation rate	55.2	<b>54.5</b>	0.6	<b>-0.7</b>	-0.3	-1.3	...	...	...
Unemployment rate	11.3	<b>9.2</b>	1.1	<b>-2.1</b>	-2.8	-2.1	...	...	...
Employment rate	49.0	<b>49.5</b>	0.6	<b>0.5</b>	1.2	0.1	...	...	...
Part-time rate	18.5	<b>18.4</b>	1.3	<b>-0.1</b>	1.8	4.1	...	...	...
<b>Industry</b>									
<b>Goods-producing sector</b>	222.2	<b>221.3</b>	2.2	<b>-0.9</b>	2.5	3.7	<b>-0.4</b>	1.1	1.7
Agriculture	50.9	<b>49.5</b>	1.8	<b>-1.4</b>	-0.1	1.6	<b>-2.8</b>	-0.2	3.3
Forestry, fishing, mining, oil and gas	1.5	<b>1.6</b>	0.3	<b>0.1</b>	0.2	0.4	<b>6.7</b>	14.3	33.3
Utilities	16.1	<b>15.7</b>	1.0	<b>-0.4</b>	-1.3	-0.8	<b>-2.5</b>	-7.6	-4.8
Construction	1.4	<b>1.4</b>	0.2	<b>0.0</b>	-0.5	-0.2	<b>0.0</b>	-26.3	-12.5
Manufacturing	16.3	<b>15.9</b>	1.0	<b>-0.4</b>	1.7	2.8	<b>-2.5</b>	12.0	21.4
Manufacturing	15.7	<b>14.9</b>	1.1	<b>-0.8</b>	-0.3	-0.5	<b>-5.1</b>	-2.0	-3.2
<b>Services-producing sector</b>	171.3	<b>171.8</b>	2.0	<b>0.5</b>	2.6	2.1	<b>0.3</b>	1.5	1.2
Trade	38.7	<b>37.9</b>	1.2	<b>-0.8</b>	1.4	-0.7	<b>-2.1</b>	3.8	-1.8
Transportation and warehousing	10.7	<b>11.4</b>	0.8	<b>0.7</b>	1.3	0.8	<b>6.5</b>	12.9	7.5
Finance, insurance, real estate and leasing	8.1	<b>7.5</b>	0.5	<b>-0.6</b>	-0.8	0.3	<b>-7.4</b>	-9.6	4.2
Professional, scientific and technical services	8.6	<b>8.4</b>	0.6	<b>-0.2</b>	0.5	0.8	<b>-2.3</b>	6.3	10.5
Business, building and other support services	8.7	<b>8.6</b>	0.8	<b>-0.1</b>	-0.4	0.0	<b>-1.1</b>	-4.4	0.0
Educational services	15.6	<b>15.7</b>	0.8	<b>0.1</b>	0.4	-2.6	<b>0.6</b>	2.6	-14.2
Health care and social assistance	31.2	<b>31.5</b>	1.0	<b>0.3</b>	-0.9	1.2	<b>1.0</b>	-2.8	4.0
Information, culture and recreation	8.2	<b>7.7</b>	0.7	<b>-0.5</b>	-1.6	-0.4	<b>-6.1</b>	-17.2	-4.9
Accommodation and food services	13.3	<b>13.4</b>	0.9	<b>0.1</b>	-1.8	-0.5	<b>0.8</b>	-11.8	-3.6
Other services	10.5	<b>10.4</b>	0.7	<b>-0.1</b>	1.5	0.4	<b>-1.0</b>	16.9	4.0
Public administration	17.6	<b>19.3</b>	0.9	<b>1.7</b>	3.1	2.8	<b>9.7</b>	19.1	17.0

1. Average standard error of change in two consecutive months (see "Sampling Errors" in Data Quality for further explanations).

**Note(s):** Related CANSIM tables 282-0087, 282-0088

**Table 4-2**  
**Selected labour force characteristics (seasonally adjusted) — Prince Edward Island**

	February 2008	March 2008	S.E. <sup>1</sup>	Change from			Percent change from		
				last month	last December	twelve months ago	last month	last December	twelve months ago
in thousands (except rates)									
<b>Both sexes, 15 years and over</b>									
Population	113.9	<b>113.8</b>	...	<b>-0.1</b>	0.0	1.0	<b>-0.1</b>	0.0	0.9
Labour force	78.3	<b>79.1</b>	0.6	<b>0.8</b>	1.6	1.1	<b>1.0</b>	2.1	1.4
Employment	70.6	<b>71.0</b>	0.7	<b>0.4</b>	1.8	1.1	<b>0.6</b>	2.6	1.6
Employment full-time	59.7	<b>58.8</b>	0.8	<b>-0.9</b>	0.9	1.8	<b>-1.5</b>	1.6	3.2
Unemployment	7.8	<b>8.2</b>	0.6	<b>0.4</b>	-0.1	0.1	<b>5.1</b>	-1.2	1.2
Participation rate	68.7	<b>69.5</b>	0.5	<b>0.8</b>	1.4	0.4	...	...	...
Unemployment rate	10.0	<b>10.4</b>	0.8	<b>0.4</b>	-0.3	0.0	...	...	...
Employment rate	62.0	<b>62.4</b>	0.6	<b>0.4</b>	1.6	0.4	...	...	...
Part-time rate	15.4	<b>17.0</b>	0.9	<b>1.6</b>	0.7	-1.3	...	...	...
<b>Both sexes, 15 to 24 years</b>									
Population	19.6	<b>19.6</b>	...	<b>0.0</b>	0.0	-0.2	<b>0.0</b>	0.0	-1.0
Labour force	13.8	<b>14.2</b>	0.3	<b>0.4</b>	0.2	0.0	<b>2.9</b>	1.4	0.0
Employment	11.4	<b>11.9</b>	0.4	<b>0.5</b>	0.3	-0.7	<b>4.4</b>	2.6	-5.6
Unemployment	2.4	<b>2.3</b>	0.3	<b>-0.1</b>	-0.1	0.6	<b>-4.2</b>	-4.2	35.3
Participation rate	70.4	<b>72.4</b>	1.8	<b>2.0</b>	1.0	0.7	...	...	...
Unemployment rate	17.4	<b>16.2</b>	2.2	<b>-1.2</b>	-0.9	4.2	...	...	...
Employment rate	58.2	<b>60.7</b>	1.8	<b>2.5</b>	1.5	-2.9	...	...	...
Part-time rate	37.7	<b>43.7</b>	3.2	<b>6.0</b>	3.2	1.6	...	...	...
<b>Men, 25 years and over</b>									
Population	45.2	<b>45.2</b>	...	<b>0.0</b>	0.1	0.6	<b>0.0</b>	0.2	1.3
Labour force	32.7	<b>33.0</b>	0.3	<b>0.3</b>	0.8	0.1	<b>0.9</b>	2.5	0.3
Employment	30.0	<b>30.1</b>	0.4	<b>0.1</b>	1.0	0.8	<b>0.3</b>	3.4	2.7
Unemployment	2.6	<b>2.9</b>	0.4	<b>0.3</b>	-0.2	-0.7	<b>11.5</b>	-6.5	-19.4
Participation rate	72.3	<b>73.0</b>	0.7	<b>0.7</b>	1.6	-0.8	...	...	...
Unemployment rate	8.0	<b>8.8</b>	1.1	<b>0.8</b>	-0.8	-2.1	...	...	...
Employment rate	66.4	<b>66.6</b>	0.8	<b>0.2</b>	2.1	0.9	...	...	...
Part-time rate	6.3	<b>6.6</b>	1.0	<b>0.3</b>	0.8	0.5	...	...	...
<b>Women, 25 years and over</b>									
Population	49.1	<b>49.0</b>	...	<b>-0.1</b>	-0.1	0.5	<b>-0.2</b>	-0.2	1.0
Labour force	31.8	<b>31.9</b>	0.3	<b>0.1</b>	0.6	1.0	<b>0.3</b>	1.9	3.2
Employment	29.2	<b>28.9</b>	0.4	<b>-0.3</b>	0.4	0.8	<b>-1.0</b>	1.4	2.8
Unemployment	2.7	<b>3.0</b>	0.3	<b>0.3</b>	0.2	0.2	<b>11.1</b>	7.1	7.1
Participation rate	64.8	<b>65.1</b>	0.7	<b>0.3</b>	1.4	1.4	...	...	...
Unemployment rate	8.5	<b>9.4</b>	1.1	<b>0.9</b>	0.5	0.3	...	...	...
Employment rate	59.5	<b>59.0</b>	0.8	<b>-0.5</b>	1.0	1.1	...	...	...
Part-time rate	16.1	<b>17.3</b>	1.4	<b>1.2</b>	0.5	-3.0	...	...	...
<b>Industry</b>									
Population	70.6	<b>71.0</b>	0.7	<b>0.4</b>	1.8	1.1	<b>0.6</b>	2.6	1.6
<b>Goods-producing sector</b>									
Agriculture	3.5	<b>3.3</b>	0.3	<b>-0.2</b>	0.0	-0.7	<b>-5.7</b>	0.0	-17.5
Forestry, fishing, mining, oil and gas	2.5	<b>2.8</b>	0.3	<b>0.3</b>	0.4	0.4	<b>12.0</b>	16.7	16.7
Utilities	0.3	<b>0.2</b>	0.1	<b>-0.1</b>	-0.1	0.0	<b>-33.3</b>	-33.3	0.0
Construction	5.7	<b>5.4</b>	0.3	<b>-0.3</b>	0.8	-0.1	<b>-5.3</b>	17.4	-1.8
Manufacturing	6.6	<b>6.7</b>	0.3	<b>0.1</b>	0.0	0.0	<b>1.5</b>	0.0	0.0
<b>Services-producing sector</b>									
Trade	10.6	<b>10.4</b>	0.4	<b>-0.2</b>	-0.3	0.1	<b>-1.9</b>	-2.8	1.0
Transportation and warehousing	2.9	<b>2.8</b>	0.2	<b>-0.1</b>	0.4	0.6	<b>-3.4</b>	16.7	27.3
Finance, insurance, real estate and leasing	2.9	<b>3.0</b>	0.2	<b>0.1</b>	0.1	0.6	<b>3.4</b>	3.4	25.0
Professional, scientific and technical services	2.5	<b>2.7</b>	0.2	<b>0.2</b>	0.4	0.4	<b>8.0</b>	17.4	17.4
Business, building and other support services	3.0	<b>2.9</b>	0.2	<b>-0.1</b>	0.1	-0.1	<b>-3.3</b>	3.6	-3.3
Educational services	4.9	<b>5.2</b>	0.3	<b>0.3</b>	0.5	0.4	<b>6.1</b>	10.6	8.3
Health care and social assistance	7.8	<b>7.9</b>	0.3	<b>0.1</b>	-0.3	-0.4	<b>1.3</b>	-3.7	-4.8
Information, culture and recreation	2.0	<b>2.0</b>	0.2	<b>0.0</b>	-0.6	-0.8	<b>0.0</b>	-23.1	-28.6
Accommodation and food services	5.4	<b>5.6</b>	0.3	<b>0.2</b>	0.2	-0.4	<b>3.7</b>	3.7	-6.7
Other services	3.2	<b>2.9</b>	0.2	<b>-0.3</b>	-0.1	0.3	<b>-9.4</b>	-3.3	11.5
Public administration	6.8	<b>7.1</b>	0.3	<b>0.3</b>	0.1	0.6	<b>4.4</b>	1.4	9.2

1. Average standard error of change in two consecutive months (see "Sampling Errors" in Data Quality for further explanations).

**Note(s):** Related CANSIM tables 282-0087, 282-0088

**Table 4-3**  
**Selected labour force characteristics (seasonally adjusted) — Nova Scotia**

	February 2008	March 2008	S.E. <sup>1</sup>	Change from			Percent change from		
				last month	last December	twelve months ago	last month	last December	twelve months ago
in thousands (except rates)									
<b>Both sexes, 15 years and over</b>									
Population	766.6	<b>767.0</b>	...	<b>0.4</b>	1.2	3.3	<b>0.1</b>	0.2	0.4
Labour force	485.6	<b>487.7</b>	2.8	<b>2.1</b>	-2.5	2.0	<b>0.4</b>	-0.5	0.4
Employment	448.4	<b>449.5</b>	2.9	<b>1.1</b>	-2.8	2.8	<b>0.2</b>	-0.6	0.6
Employment full-time	364.1	<b>365.3</b>	3.6	<b>1.2</b>	-1.4	1.3	<b>0.3</b>	-0.4	0.4
Unemployment	37.3	<b>38.3</b>	2.6	<b>1.0</b>	0.3	-0.7	<b>2.7</b>	0.8	-1.8
Participation rate	63.3	<b>63.6</b>	0.4	<b>0.3</b>	-0.4	0.0	...	...	...
Unemployment rate	7.7	<b>7.9</b>	0.5	<b>0.2</b>	0.1	-0.1	...	...	...
Employment rate	58.5	<b>58.6</b>	0.4	<b>0.1</b>	-0.5	0.1	...	...	...
Part-time rate	18.8	<b>18.7</b>	0.7	<b>-0.1</b>	-0.2	0.2	...	...	...
<b>Both sexes, 15 to 24 years</b>									
Population	121.8	<b>121.8</b>	...	<b>0.0</b>	-0.2	-0.8	<b>0.0</b>	-0.2	-0.7
Labour force	81.0	<b>79.7</b>	1.6	<b>-1.3</b>	-3.6	-0.5	<b>-1.6</b>	-4.3	-0.6
Employment	69.2	<b>68.8</b>	1.6	<b>-0.4</b>	-2.1	-0.7	<b>-0.6</b>	-3.0	-1.0
Unemployment	11.8	<b>10.9</b>	1.5	<b>-0.9</b>	-1.5	0.2	<b>-7.6</b>	-12.1	1.9
Participation rate	66.5	<b>65.4</b>	1.3	<b>-1.1</b>	-2.9	0.0	...	...	...
Unemployment rate	14.6	<b>13.7</b>	1.7	<b>-0.9</b>	-1.2	0.4	...	...	...
Employment rate	56.8	<b>56.5</b>	1.3	<b>-0.3</b>	-1.6	-0.2	...	...	...
Part-time rate	46.1	<b>45.8</b>	2.4	<b>-0.3</b>	0.4	0.5	...	...	...
<b>Men, 25 years and over</b>									
Population	307.6	<b>307.7</b>	...	<b>0.1</b>	0.5	1.7	<b>0.0</b>	0.2	0.6
Labour force	209.8	<b>211.1</b>	1.5	<b>1.3</b>	0.4	1.6	<b>0.6</b>	0.2	0.8
Employment	193.5	<b>194.5</b>	1.7	<b>1.0</b>	-1.5	2.2	<b>0.5</b>	-0.8	1.1
Unemployment	16.3	<b>16.6</b>	1.6	<b>0.3</b>	1.9	-0.6	<b>1.8</b>	12.9	-3.5
Participation rate	68.2	<b>68.6</b>	0.5	<b>0.4</b>	0.0	0.1	...	...	...
Unemployment rate	7.8	<b>7.9</b>	0.7	<b>0.1</b>	0.9	-0.3	...	...	...
Employment rate	62.9	<b>63.2</b>	0.6	<b>0.3</b>	-0.6	0.4	...	...	...
Part-time rate	5.6	<b>6.4</b>	0.7	<b>0.8</b>	-0.9	-1.3	...	...	...
<b>Women, 25 years and over</b>									
Population	337.2	<b>337.5</b>	...	<b>0.3</b>	0.8	2.4	<b>0.1</b>	0.2	0.7
Labour force	194.9	<b>196.9</b>	1.5	<b>2.0</b>	0.7	0.9	<b>1.0</b>	0.4	0.5
Employment	185.7	<b>186.2</b>	1.5	<b>0.5</b>	0.8	1.3	<b>0.3</b>	0.4	0.7
Unemployment	9.2	<b>10.7</b>	1.3	<b>1.5</b>	-0.2	-0.4	<b>16.3</b>	-1.8	-3.6
Participation rate	57.8	<b>58.3</b>	0.4	<b>0.5</b>	0.0	-0.2	...	...	...
Unemployment rate	4.7	<b>5.4</b>	0.6	<b>0.7</b>	-0.2	-0.3	...	...	...
Employment rate	55.1	<b>55.2</b>	0.4	<b>0.1</b>	0.1	0.0	...	...	...
Part-time rate	22.4	<b>21.6</b>	1.0	<b>-0.8</b>	0.6	1.8	...	...	...
<b>Industry</b>									
Industry	448.4	<b>449.5</b>	2.9	<b>1.1</b>	-2.8	2.8	<b>0.2</b>	-0.6	0.6
<b>Goods-producing sector</b>									
Agriculture	6.0	<b>5.8</b>	0.7	<b>-0.2</b>	0.1	0.3	<b>-3.3</b>	1.8	5.5
Forestry, fishing, mining, oil and gas	12.5	<b>12.5</b>	1.0	<b>0.0</b>	-1.2	-0.3	<b>0.0</b>	-8.8	-2.3
Utilities	2.9	<b>3.0</b>	0.3	<b>0.1</b>	0.4	1.4	<b>3.4</b>	15.4	87.5
Construction	29.3	<b>30.7</b>	1.4	<b>1.4</b>	2.7	5.0	<b>4.8</b>	9.6	19.5
Manufacturing	41.3	<b>38.7</b>	1.5	<b>-2.6</b>	-3.3	-2.8	<b>-6.3</b>	-7.9	-6.7
<b>Services-producing sector</b>									
Trade	77.7	<b>79.5</b>	1.9	<b>1.8</b>	4.6	0.1	<b>2.3</b>	6.1	0.1
Transportation and warehousing	19.0	<b>18.9</b>	0.9	<b>-0.1</b>	-0.5	0.5	<b>-0.5</b>	-2.6	2.7
Finance, insurance, real estate and leasing	22.1	<b>22.1</b>	1.0	<b>0.0</b>	0.6	-1.9	<b>0.0</b>	2.8	-7.9
Professional, scientific and technical services	19.6	<b>19.3</b>	1.0	<b>-0.3</b>	0.5	3.6	<b>-1.5</b>	2.7	22.9
Business, building and other support services	27.9	<b>28.6</b>	1.4	<b>0.7</b>	-2.5	3.9	<b>2.5</b>	-8.0	15.8
Educational services	33.6	<b>33.3</b>	1.3	<b>-0.3</b>	-1.1	-2.1	<b>-0.9</b>	-3.2	-5.9
Health care and social assistance	59.2	<b>59.0</b>	1.5	<b>-0.2</b>	-2.4	-3.7	<b>-0.3</b>	-3.9	-5.9
Information, culture and recreation	19.8	<b>19.3</b>	1.0	<b>-0.5</b>	-1.9	1.2	<b>-2.5</b>	-9.0	6.6
Accommodation and food services	29.0	<b>29.2</b>	1.5	<b>0.2</b>	0.3	-2.6	<b>0.7</b>	1.0	-8.2
Other services	19.2	<b>19.7</b>	1.1	<b>0.5</b>	0.6	-1.6	<b>2.6</b>	3.1	-7.5
Public administration	29.3	<b>29.8</b>	1.1	<b>0.5</b>	0.1	1.7	<b>1.7</b>	0.3	6.0

1. Average standard error of change in two consecutive months (see "Sampling Errors" in Data Quality for further explanations).

**Note(s):** Related CANSIM tables 282-0087, 282-0088



**Table 4-4**  
**Selected labour force characteristics (seasonally adjusted) — New Brunswick**

	February 2008	March 2008	S.E. <sup>1</sup>	Change from			Percent change from		
				last month	last December	twelve months ago	last month	last December	twelve months ago
in thousands (except rates)									
<b>Both sexes, 15 years and over</b>									
Population	616.1	<b>616.6</b>	...	<b>0.5</b>	1.3	4.5	<b>0.1</b>	0.2	0.7
Labour force	400.3	<b>400.2</b>	2.3	<b>-0.1</b>	2.4	11.4	<b>0.0</b>	0.6	2.9
Employment	367.8	<b>366.3</b>	2.4	<b>-1.5</b>	-0.3	6.6	<b>-0.4</b>	-0.1	1.8
Employment full-time	313.7	<b>310.3</b>	2.8	<b>-3.4</b>	-0.8	8.0	<b>-1.1</b>	-0.3	2.6
Unemployment	32.5	<b>33.9</b>	2.1	<b>1.4</b>	2.7	4.8	<b>4.3</b>	8.7	16.5
Participation rate	65.0	<b>64.9</b>	0.4	<b>-0.1</b>	0.2	1.4	...	...	...
Unemployment rate	8.1	<b>8.5</b>	0.5	<b>0.4</b>	0.7	1.0	...	...	...
Employment rate	59.7	<b>59.4</b>	0.4	<b>-0.3</b>	-0.2	0.6	...	...	...
Part-time rate	14.7	<b>15.3</b>	0.6	<b>0.6</b>	0.2	-0.7	...	...	...
<b>Both sexes, 15 to 24 years</b>									
Population	94.9	<b>94.9</b>	...	<b>0.0</b>	0.1	-0.2	<b>0.0</b>	0.1	-0.2
Labour force	63.5	<b>63.3</b>	1.3	<b>-0.2</b>	0.8	1.3	<b>-0.3</b>	1.3	2.1
Employment	54.8	<b>54.1</b>	1.3	<b>-0.7</b>	-1.0	-0.8	<b>-1.3</b>	-1.8	-1.5
Unemployment	8.7	<b>9.1</b>	1.1	<b>0.4</b>	1.7	2.1	<b>4.6</b>	23.0	30.0
Participation rate	66.9	<b>66.7</b>	1.4	<b>-0.2</b>	0.8	1.5	...	...	...
Unemployment rate	13.7	<b>14.4</b>	1.7	<b>0.7</b>	2.6	3.1	...	...	...
Employment rate	57.7	<b>57.0</b>	1.4	<b>-0.7</b>	-1.1	-0.7	...	...	...
Part-time rate	38.7	<b>41.6</b>	2.4	<b>2.9</b>	1.7	1.9	...	...	...
<b>Men, 25 years and over</b>									
Population	251.9	<b>252.0</b>	...	<b>0.1</b>	0.4	2.0	<b>0.0</b>	0.2	0.8
Labour force	175.2	<b>175.4</b>	1.3	<b>0.2</b>	-0.8	3.7	<b>0.1</b>	-0.5	2.2
Employment	160.8	<b>159.8</b>	1.4	<b>-1.0</b>	-1.5	2.3	<b>-0.6</b>	-0.9	1.5
Unemployment	14.4	<b>15.6</b>	1.4	<b>1.2</b>	0.7	1.4	<b>8.3</b>	4.7	9.9
Participation rate	69.6	<b>69.6</b>	0.5	<b>0.0</b>	-0.4	0.9	...	...	...
Unemployment rate	8.2	<b>8.9</b>	0.8	<b>0.7</b>	0.4	0.6	...	...	...
Employment rate	63.8	<b>63.4</b>	0.6	<b>-0.4</b>	-0.7	0.4	...	...	...
Part-time rate	4.3	<b>4.1</b>	0.7	<b>-0.2</b>	-0.6	-0.9	...	...	...
<b>Women, 25 years and over</b>									
Population	269.4	<b>269.6</b>	...	<b>0.2</b>	0.7	2.6	<b>0.1</b>	0.3	1.0
Labour force	161.6	<b>161.5</b>	1.3	<b>-0.1</b>	2.5	6.4	<b>-0.1</b>	1.6	4.1
Employment	152.2	<b>152.4</b>	1.3	<b>0.2</b>	2.2	5.1	<b>0.1</b>	1.5	3.5
Unemployment	9.4	<b>9.1</b>	1.1	<b>-0.3</b>	0.2	1.3	<b>-3.2</b>	2.2	16.7
Participation rate	60.0	<b>59.9</b>	0.5	<b>-0.1</b>	0.8	1.8	...	...	...
Unemployment rate	5.8	<b>5.6</b>	0.7	<b>-0.2</b>	0.0	0.6	...	...	...
Employment rate	56.5	<b>56.5</b>	0.5	<b>0.0</b>	0.6	1.3	...	...	...
Part-time rate	17.1	<b>17.7</b>	1.0	<b>0.5</b>	0.5	-1.2	...	...	...
<b>Industry</b>									
Goods-producing sector	367.8	<b>366.3</b>	2.4	<b>-1.5</b>	-0.3	6.6	<b>-0.4</b>	-0.1	1.8
Agriculture	82.9	<b>80.0</b>	1.9	<b>-2.9</b>	-3.7	-4.9	<b>-3.5</b>	-4.4	-5.8
Forestry, fishing, mining, oil and gas	5.5	<b>7.4</b>	0.6	<b>1.9</b>	1.3	0.6	<b>34.5</b>	21.3	8.8
Utilities	11.4	<b>11.7</b>	0.8	<b>0.3</b>	0.1	0.5	<b>2.6</b>	0.9	4.5
Construction	4.1	<b>4.1</b>	0.4	<b>0.0</b>	0.1	0.1	<b>0.0</b>	2.5	2.5
Manufacturing	25.9	<b>23.5</b>	1.1	<b>-2.4</b>	-1.8	-0.2	<b>-9.3</b>	-7.1	-0.8
Services-producing sector	36.0	<b>33.3</b>	1.3	<b>-2.7</b>	-3.4	-5.9	<b>-7.5</b>	-9.3	-15.1
Trade	284.8	<b>286.3</b>	2.4	<b>1.5</b>	3.4	11.5	<b>0.5</b>	1.2	4.2
Transportation and warehousing	57.1	<b>57.1</b>	1.5	<b>0.0</b>	0.2	0.8	<b>0.0</b>	0.4	1.4
Finance, insurance, real estate and leasing	20.6	<b>19.9</b>	0.9	<b>-0.7</b>	-0.1	0.6	<b>-3.4</b>	-0.5	3.1
Professional, scientific and technical services	15.5	<b>16.4</b>	0.8	<b>0.9</b>	-0.7	0.2	<b>5.8</b>	-4.1	1.2
Business, building and other support services	18.6	<b>18.6</b>	0.8	<b>0.0</b>	0.5	5.2	<b>0.0</b>	2.8	38.8
Educational services	18.9	<b>19.5</b>	1.2	<b>0.6</b>	0.1	-0.3	<b>3.2</b>	0.5	-1.5
Health care and social assistance	26.2	<b>25.7</b>	1.1	<b>-0.5</b>	0.0	-1.1	<b>-1.9</b>	0.0	-4.1
Information, culture and recreation	50.0	<b>49.5</b>	1.2	<b>-0.5</b>	-0.3	2.2	<b>-1.0</b>	-0.6	4.7
Accommodation and food services	12.6	<b>12.8</b>	0.8	<b>0.2</b>	0.8	-0.1	<b>1.6</b>	6.7	-0.8
Other services	25.2	<b>26.0</b>	1.1	<b>0.8</b>	2.8	0.1	<b>3.2</b>	12.1	0.4
Public administration	16.7	<b>16.2</b>	0.9	<b>-0.5</b>	-1.4	0.0	<b>-3.0</b>	-8.0	0.0
	23.3	<b>24.6</b>	0.9	<b>1.3</b>	1.3	3.9	<b>5.6</b>	5.6	18.8

1. Average standard error of change in two consecutive months (see "Sampling Errors" in Data Quality for further explanations).

**Note(s):** Related CANSIM tables 282-0087, 282-0088

**Table 4-5**  
**Selected labour force characteristics (seasonally adjusted) — Quebec**

	February 2008	March 2008	S.E. <sup>1</sup>	Change from			Percent change from		
				last month	last December	twelve months ago	last month	last December	twelve months ago
in thousands (except rates)									
<b>Both sexes, 15 years and over</b>									
Population	6,348.9	<b>6,353.5</b>	...	<b>4.6</b>	13.3	56.2	<b>0.1</b>	0.2	0.9
Labour force	4,186.2	<b>4,191.4</b>	14.2	<b>5.2</b>	16.6	49.6	<b>0.1</b>	0.4	1.2
Employment	3,894.8	<b>3,887.3</b>	14.5	<b>-7.5</b>	3.0	57.7	<b>-0.2</b>	0.1	1.5
Employment full-time	3,186.3	<b>3,164.0</b>	19.1	<b>-22.3</b>	14.8	45.6	<b>-0.7</b>	0.5	1.5
Unemployment	291.4	<b>304.1</b>	12.7	<b>12.7</b>	13.6	-8.1	<b>4.4</b>	4.7	-2.6
Participation rate	65.9	<b>66.0</b>	0.2	<b>0.1</b>	0.2	0.2	...	...	...
Unemployment rate	7.0	<b>7.3</b>	0.3	<b>0.3</b>	0.3	-0.2	...	...	...
Employment rate	61.3	<b>61.2</b>	0.2	<b>-0.1</b>	-0.1	0.4	...	...	...
Part-time rate	18.2	<b>18.6</b>	0.4	<b>0.4</b>	-0.3	0.0	...	...	...
<b>Both sexes, 15 to 24 years</b>									
Population	957.7	<b>958.2</b>	...	<b>0.5</b>	1.3	4.8	<b>0.1</b>	0.1	0.5
Labour force	648.7	<b>652.6</b>	8.3	<b>3.9</b>	12.6	16.0	<b>0.6</b>	2.0	2.5
Employment	571.6	<b>576.2</b>	8.2	<b>4.6</b>	11.4	16.1	<b>0.8</b>	2.0	2.9
Unemployment	77.1	<b>76.4</b>	7.3	<b>-0.7</b>	1.2	-0.1	<b>-0.9</b>	1.6	-0.1
Participation rate	67.7	<b>68.1</b>	0.9	<b>0.4</b>	1.2	1.3	...	...	...
Unemployment rate	11.9	<b>11.7</b>	1.1	<b>-0.2</b>	-0.1	-0.3	...	...	...
Employment rate	59.7	<b>60.1</b>	0.9	<b>0.4</b>	1.1	1.4	...	...	...
Part-time rate	45.4	<b>47.3</b>	1.5	<b>1.9</b>	-0.7	-0.9	...	...	...
<b>Men, 25 years and over</b>									
Population	2,633.8	<b>2,635.8</b>	...	<b>2.0</b>	6.0	25.8	<b>0.1</b>	0.2	1.0
Labour force	1,880.6	<b>1,882.5</b>	7.9	<b>1.9</b>	-0.2	19.1	<b>0.1</b>	0.0	1.0
Employment	1,752.7	<b>1,748.4</b>	8.2	<b>-4.3</b>	-1.3	22.7	<b>-0.2</b>	-0.1	1.3
Unemployment	127.9	<b>134.2</b>	7.9	<b>6.3</b>	1.2	-3.5	<b>4.9</b>	0.9	-2.5
Participation rate	71.4	<b>71.4</b>	0.3	<b>0.0</b>	-0.2	0.0	...	...	...
Unemployment rate	6.8	<b>7.1</b>	0.4	<b>0.3</b>	0.0	-0.3	...	...	...
Employment rate	66.5	<b>66.3</b>	0.3	<b>-0.2</b>	-0.2	0.2	...	...	...
Part-time rate	6.8	<b>7.0</b>	0.5	<b>0.2</b>	-0.2	-0.3	...	...	...
<b>Women, 25 years and over</b>									
Population	2,757.5	<b>2,759.4</b>	...	<b>1.9</b>	5.9	25.5	<b>0.1</b>	0.2	0.9
Labour force	1,657.0	<b>1,656.3</b>	7.9	<b>-0.7</b>	4.2	14.5	<b>0.0</b>	0.3	0.9
Employment	1,570.5	<b>1,562.7</b>	8.1	<b>-7.8</b>	-7.1	18.9	<b>-0.5</b>	-0.5	1.2
Unemployment	86.5	<b>93.6</b>	6.5	<b>7.1</b>	11.3	-4.4	<b>8.2</b>	13.7	-4.5
Participation rate	60.1	<b>60.0</b>	0.3	<b>-0.1</b>	0.0	-0.1	...	...	...
Unemployment rate	5.2	<b>5.7</b>	0.4	<b>0.5</b>	0.7	-0.3	...	...	...
Employment rate	57.0	<b>56.6</b>	0.3	<b>-0.4</b>	-0.4	0.1	...	...	...
Part-time rate	21.0	<b>21.1</b>	0.7	<b>0.0</b>	-0.6	0.5	...	...	...
<b>Industry</b>									
	3,894.8	<b>3,887.3</b>	14.5	<b>-7.5</b>	3.0	57.7	<b>-0.2</b>	0.1	1.5
<b>Goods-producing sector</b>									
Agriculture	71.8	<b>75.2</b>	3.4	<b>3.4</b>	4.3	15.0	<b>4.7</b>	6.1	24.9
Forestry, fishing, mining, oil and gas	32.3	<b>32.2</b>	2.2	<b>-0.1</b>	-2.8	-4.7	<b>-0.3</b>	-8.0	-12.7
Utilities	35.9	<b>34.2</b>	2.0	<b>-1.7</b>	2.5	3.7	<b>-4.7</b>	7.9	12.1
Construction	212.9	<b>210.2</b>	6.5	<b>-2.7</b>	0.6	24.2	<b>-1.3</b>	0.3	13.0
Manufacturing	528.3	<b>529.0</b>	9.8	<b>0.7</b>	-3.3	-22.3	<b>0.1</b>	-0.6	-4.0
<b>Services-producing sector</b>									
	3,013.5	<b>3,006.5</b>	16.1	<b>-7.0</b>	1.8	41.8	<b>-0.2</b>	0.1	1.4
Trade	642.8	<b>629.3</b>	10.9	<b>-13.5</b>	-12.1	-16.4	<b>-2.1</b>	-1.9	-2.5
Transportation and warehousing	189.7	<b>191.9</b>	6.0	<b>2.2</b>	3.3	19.6	<b>1.2</b>	1.7	11.4
Finance, insurance, real estate and leasing	229.9	<b>236.5</b>	6.3	<b>6.6</b>	3.0	0.9	<b>2.9</b>	1.3	0.4
Professional, scientific and technical services	271.8	<b>275.8</b>	7.6	<b>4.0</b>	8.9	23.4	<b>1.5</b>	3.3	9.3
Business, building and other support services	130.8	<b>134.6</b>	6.3	<b>3.8</b>	-0.3	-25.1	<b>2.9</b>	-0.2	-15.7
Educational services	266.5	<b>261.0</b>	6.8	<b>-5.5</b>	-1.7	3.0	<b>-2.1</b>	-0.6	1.2
Health care and social assistance	461.7	<b>464.5</b>	7.9	<b>2.8</b>	3.5	7.7	<b>0.6</b>	0.8	1.7
Information, culture and recreation	167.7	<b>168.3</b>	6.6	<b>0.6</b>	3.7	-4.2	<b>0.4</b>	2.2	-2.4
Accommodation and food services	241.1	<b>240.8</b>	7.5	<b>-0.3</b>	-5.2	13.4	<b>-0.1</b>	-2.1	5.9
Other services	187.7	<b>180.9</b>	5.8	<b>-6.8</b>	-1.6	12.6	<b>-3.6</b>	-0.9	7.5
Public administration	223.6	<b>222.9</b>	5.5	<b>-0.7</b>	0.4	6.9	<b>-0.3</b>	0.2	3.2

1. Average standard error of change in two consecutive months (see "Sampling Errors" in Data Quality for further explanations).

**Note(s):** Related CANSIM tables 282-0087, 282-0088

**Table 4-6**  
**Selected labour force characteristics (seasonally adjusted) — Ontario**

	February 2008	March 2008	S.E. <sup>1</sup>	Change from			Percent change from		
				last month	last December	twelve months ago	last month	last December	twelve months ago
in thousands (except rates)									
<b>Both sexes, 15 years and over</b>									
Population	10,448.3	<b>10,459.9</b>	...	<b>11.6</b>	33.5	141.3	<b>0.1</b>	0.3	1.4
Labour force	7,124.4	<b>7,146.3</b>	18.4	<b>21.9</b>	51.1	116.1	<b>0.3</b>	0.7	1.7
Employment	6,690.0	<b>6,688.2</b>	18.5	<b>-1.8</b>	57.3	119.2	<b>0.0</b>	0.9	1.8
Employment full-time	5,495.1	<b>5,470.6</b>	23.4	<b>-24.5</b>	25.0	81.4	<b>-0.4</b>	0.5	1.5
Unemployment	434.4	<b>458.0</b>	15.9	<b>23.6</b>	-6.3	-3.2	<b>5.4</b>	-1.4	-0.7
Participation rate	68.2	<b>68.3</b>	0.2	<b>0.1</b>	0.2	0.2	...	...	...
Unemployment rate	6.1	<b>6.4</b>	0.2	<b>0.3</b>	-0.1	-0.2	...	...	...
Employment rate	64.0	<b>63.9</b>	0.2	<b>-0.1</b>	0.3	0.2	...	...	...
Part-time rate	17.9	<b>18.2</b>	0.3	<b>0.3</b>	0.3	0.2	...	...	...
<b>Both sexes, 15 to 24 years</b>									
Population	1,729.1	<b>1,729.7</b>	...	<b>0.6</b>	1.5	14.1	<b>0.0</b>	0.1	0.8
Labour force	1,128.5	<b>1,113.2</b>	11.3	<b>-15.3</b>	-8.4	-9.3	<b>-1.4</b>	-0.7	-0.8
Employment	973.0	<b>965.6</b>	10.8	<b>-7.4</b>	-3.9	-12.5	<b>-0.8</b>	-0.4	-1.3
Unemployment	155.5	<b>147.6</b>	9.5	<b>-7.9</b>	-4.5	3.2	<b>-5.1</b>	-3.0	2.2
Participation rate	65.3	<b>64.4</b>	0.7	<b>-0.9</b>	-0.5	-1.0	...	...	...
Unemployment rate	13.8	<b>13.3</b>	0.8	<b>-0.5</b>	-0.3	0.4	...	...	...
Employment rate	56.3	<b>55.8</b>	0.6	<b>-0.5</b>	-0.3	-1.2	...	...	...
Part-time rate	48.3	<b>50.1</b>	1.1	<b>1.8</b>	0.1	1.4	...	...	...
<b>Men, 25 years and over</b>									
Population	4,238.5	<b>4,243.5</b>	...	<b>5.0</b>	14.8	59.5	<b>0.1</b>	0.3	1.4
Labour force	3,153.6	<b>3,179.8</b>	9.1	<b>26.2</b>	32.0	75.2	<b>0.8</b>	1.0	2.4
Employment	3,011.2	<b>3,018.3</b>	9.9	<b>7.1</b>	42.8	80.6	<b>0.2</b>	1.4	2.7
Unemployment	142.4	<b>161.5</b>	9.0	<b>19.1</b>	-10.8	-5.4	<b>13.4</b>	-6.3	-3.2
Participation rate	74.4	<b>74.9</b>	0.2	<b>0.5</b>	0.5	0.7	...	...	...
Unemployment rate	4.5	<b>5.1</b>	0.3	<b>0.6</b>	-0.4	-0.3	...	...	...
Employment rate	71.0	<b>71.1</b>	0.2	<b>0.1</b>	0.7	0.9	...	...	...
Part-time rate	6.1	<b>6.3</b>	0.3	<b>0.2</b>	0.1	0.1	...	...	...
<b>Women, 25 years and over</b>									
Population	4,480.8	<b>4,486.7</b>	...	<b>5.9</b>	17.2	67.7	<b>0.1</b>	0.4	1.5
Labour force	2,842.3	<b>2,853.3</b>	10.5	<b>11.0</b>	27.5	50.2	<b>0.4</b>	1.0	1.8
Employment	2,705.8	<b>2,704.4</b>	10.3	<b>-1.4</b>	18.4	51.2	<b>-0.1</b>	0.7	1.9
Unemployment	136.5	<b>148.9</b>	8.4	<b>12.4</b>	9.1	-1.1	<b>9.1</b>	6.5	-0.7
Participation rate	63.4	<b>63.6</b>	0.2	<b>0.2</b>	0.4	0.2	...	...	...
Unemployment rate	4.8	<b>5.2</b>	0.3	<b>0.4</b>	0.3	-0.2	...	...	...
Employment rate	60.4	<b>60.3</b>	0.2	<b>-0.1</b>	0.2	0.3	...	...	...
Part-time rate	20.0	<b>20.1</b>	0.5	<b>0.1</b>	0.8	0.4	...	...	...
<b>Industry</b>									
	6,690.0	<b>6,688.2</b>	18.5	<b>-1.8</b>	57.3	119.2	<b>0.0</b>	0.9	1.8
<b>Goods-producing sector</b>									
Agriculture	87.6	<b>78.1</b>	4.0	<b>-9.5</b>	-9.9	-22.6	<b>-10.8</b>	-11.2	-22.4
Forestry, fishing, mining, oil and gas	35.5	<b>38.5</b>	2.2	<b>3.0</b>	3.9	4.1	<b>8.5</b>	11.3	11.9
Utilities	63.1	<b>64.9</b>	2.7	<b>1.8</b>	5.2	7.5	<b>2.9</b>	8.7	13.1
Construction	440.6	<b>434.3</b>	9.5	<b>-6.3</b>	29.1	23.6	<b>-1.4</b>	7.2	5.7
Manufacturing	913.6	<b>915.1</b>	12.6	<b>1.5</b>	-5.4	-51.0	<b>0.2</b>	-0.6	-5.3
<b>Services-producing sector</b>									
	5,149.5	<b>5,157.2</b>	21.0	<b>7.7</b>	34.3	157.6	<b>0.1</b>	0.7	3.2
Trade	1,029.6	<b>1,032.7</b>	13.4	<b>3.1</b>	-7.8	7.7	<b>0.3</b>	-0.7	0.8
Transportation and warehousing	309.3	<b>322.0</b>	7.7	<b>12.7</b>	15.1	11.9	<b>4.1</b>	4.9	3.8
Finance, insurance, real estate and leasing	475.0	<b>466.7</b>	9.2	<b>-8.3</b>	-3.9	-18.6	<b>-1.7</b>	-0.8	-3.8
Professional, scientific and technical services	499.5	<b>486.2</b>	10.2	<b>-13.3</b>	6.0	17.3	<b>-2.7</b>	1.2	3.7
Business, building and other support services	318.2	<b>321.2</b>	9.0	<b>3.0</b>	18.1	42.9	<b>0.9</b>	6.0	15.4
Educational services	482.2	<b>491.4</b>	9.5	<b>9.2</b>	-3.2	46.3	<b>1.9</b>	-0.6	10.4
Health care and social assistance	691.3	<b>698.3</b>	9.8	<b>7.0</b>	15.7	40.1	<b>1.0</b>	2.3	6.1
Information, culture and recreation	321.6	<b>314.3</b>	8.4	<b>-7.3</b>	-24.8	-7.2	<b>-2.3</b>	-7.3	-2.2
Accommodation and food services	374.0	<b>381.2</b>	9.1	<b>7.2</b>	2.6	-23.0	<b>1.9</b>	0.7	-5.7
Other services	282.9	<b>276.3</b>	7.2	<b>-6.6</b>	-1.0	-6.1	<b>-2.3</b>	-0.4	-2.2
Public administration	366.0	<b>366.8</b>	6.8	<b>0.8</b>	17.4	46.1	<b>0.2</b>	5.0	14.4

1. Average standard error of change in two consecutive months (see "Sampling Errors" in Data Quality for further explanations).

**Note(s):** Related CANSIM tables 282-0087, 282-0088

**Table 4-7**  
**Selected labour force characteristics (seasonally adjusted) — Manitoba**

	February 2008	March 2008	S.E. <sup>1</sup>	Change from			Percent change from		
				last month	last December	twelve months ago	last month	last December	twelve months ago
in thousands (except rates)									
<b>Both sexes, 15 years and over</b>									
Population	905.1	<b>905.9</b>	...	<b>0.8</b>	2.7	10.3	<b>0.1</b>	0.3	1.2
Labour force	627.8	<b>630.1</b>	2.7	<b>2.3</b>	4.8	9.5	<b>0.4</b>	0.8	1.5
Employment	601.4	<b>602.7</b>	2.7	<b>1.3</b>	3.6	8.9	<b>0.2</b>	0.6	1.5
Employment full-time	489.1	<b>494.0</b>	3.9	<b>4.9</b>	6.0	21.4	<b>1.0</b>	1.2	4.5
Unemployment	26.4	<b>27.4</b>	2.1	<b>1.0</b>	1.2	0.7	<b>3.8</b>	4.6	2.6
Participation rate	69.4	<b>69.6</b>	0.3	<b>0.2</b>	0.4	0.3	...	...	...
Unemployment rate	4.2	<b>4.3</b>	0.3	<b>0.1</b>	0.1	0.0	...	...	...
Employment rate	66.4	<b>66.5</b>	0.3	<b>0.1</b>	0.2	0.2	...	...	...
Part-time rate	18.7	<b>18.0</b>	0.6	<b>-0.6</b>	-0.5	-2.4	...	...	...
<b>Both sexes, 15 to 24 years</b>									
Population	157.8	<b>157.9</b>	...	<b>0.1</b>	0.4	1.7	<b>0.1</b>	0.3	1.1
Labour force	112.0	<b>114.2</b>	1.7	<b>2.2</b>	0.4	1.9	<b>2.0</b>	0.4	1.7
Employment	100.9	<b>103.8</b>	1.6	<b>2.9</b>	0.6	0.4	<b>2.9</b>	0.6	0.4
Unemployment	11.0	<b>10.4</b>	1.4	<b>-0.6</b>	-0.1	1.5	<b>-5.5</b>	-1.0	16.9
Participation rate	71.0	<b>72.3</b>	1.1	<b>1.3</b>	0.0	0.4	...	...	...
Unemployment rate	9.8	<b>9.1</b>	1.2	<b>-0.7</b>	-0.1	1.2	...	...	...
Employment rate	63.9	<b>65.7</b>	1.0	<b>1.8</b>	0.2	-0.5	...	...	...
Part-time rate	43.2	<b>41.1</b>	2.0	<b>-2.1</b>	-1.4	-4.7	...	...	...
<b>Men, 25 years and over</b>									
Population	365.4	<b>365.7</b>	...	<b>0.3</b>	1.1	4.5	<b>0.1</b>	0.3	1.2
Labour force	279.5	<b>279.8</b>	1.4	<b>0.3</b>	4.2	6.2	<b>0.1</b>	1.5	2.3
Employment	271.5	<b>270.0</b>	1.5	<b>-1.5</b>	2.1	6.3	<b>-0.6</b>	0.8	2.4
Unemployment	8.0	<b>9.8</b>	1.1	<b>1.8</b>	2.1	0.0	<b>22.5</b>	27.3	0.0
Participation rate	76.5	<b>76.5</b>	0.4	<b>0.0</b>	0.9	0.8	...	...	...
Unemployment rate	2.9	<b>3.5</b>	0.4	<b>0.6</b>	0.7	-0.1	...	...	...
Employment rate	74.3	<b>73.8</b>	0.4	<b>-0.5</b>	0.3	0.8	...	...	...
Part-time rate	6.0	<b>5.4</b>	0.6	<b>-0.6</b>	0.3	-1.0	...	...	...
<b>Women, 25 years and over</b>									
Population	382.0	<b>382.3</b>	...	<b>0.3</b>	1.2	4.1	<b>0.1</b>	0.3	1.1
Labour force	236.2	<b>236.1</b>	1.6	<b>-0.1</b>	0.2	1.4	<b>0.0</b>	0.1	0.6
Employment	228.9	<b>229.0</b>	1.6	<b>0.1</b>	1.1	2.3	<b>0.0</b>	0.5	1.0
Unemployment	7.3	<b>7.2</b>	1.2	<b>-0.1</b>	-0.7	-0.8	<b>-1.4</b>	-8.9	-10.0
Participation rate	61.8	<b>61.8</b>	0.4	<b>0.0</b>	-0.1	-0.3	...	...	...
Unemployment rate	3.1	<b>3.0</b>	0.5	<b>-0.1</b>	-0.3	-0.4	...	...	...
Employment rate	59.9	<b>59.9</b>	0.4	<b>0.0</b>	0.1	0.0	...	...	...
Part-time rate	22.9	<b>22.4</b>	1.0	<b>-0.5</b>	-1.0	-2.8	...	...	...
<b>Industry</b>									
Population	601.4	<b>602.7</b>	2.7	<b>1.3</b>	3.6	8.9	<b>0.2</b>	0.6	1.5
<b>Goods-producing sector</b>									
Agriculture	26.9	<b>27.7</b>	1.2	<b>0.8</b>	1.2	-2.0	<b>3.0</b>	4.5	-6.7
Forestry, fishing, mining, oil and gas	6.1	<b>6.4</b>	0.5	<b>0.3</b>	-0.3	-0.2	<b>4.9</b>	-4.5	-3.0
Utilities	5.5	<b>6.1</b>	0.5	<b>0.6</b>	1.0	-0.5	<b>10.9</b>	19.6	-7.6
Construction	35.3	<b>36.0</b>	1.5	<b>0.7</b>	-0.2	3.8	<b>2.0</b>	-0.6	11.8
Manufacturing	71.8	<b>70.6</b>	1.8	<b>-1.2</b>	-2.0	0.1	<b>-1.7</b>	-2.8	0.1
<b>Services-producing sector</b>									
Trade	86.8	<b>90.3</b>	2.1	<b>3.5</b>	2.6	0.7	<b>4.0</b>	3.0	0.8
Transportation and warehousing	35.9	<b>37.9</b>	1.2	<b>2.0</b>	3.4	3.9	<b>5.6</b>	9.9	11.5
Finance, insurance, real estate and leasing	38.1	<b>37.7</b>	1.3	<b>-0.4</b>	-1.2	6.5	<b>-1.0</b>	-3.1	20.8
Professional, scientific and technical services	28.2	<b>27.3</b>	1.2	<b>-0.9</b>	1.4	3.9	<b>-3.2</b>	5.4	16.7
Business, building and other support services	18.7	<b>18.5</b>	1.1	<b>-0.2</b>	-0.7	1.9	<b>-1.1</b>	-3.6	11.4
Educational services	44.5	<b>47.2</b>	1.5	<b>2.7</b>	1.7	0.9	<b>6.1</b>	3.7	1.9
Health care and social assistance	75.3	<b>77.1</b>	1.9	<b>1.8</b>	1.5	-6.5	<b>2.4</b>	2.0	-7.8
Information, culture and recreation	25.7	<b>22.3</b>	1.2	<b>-3.4</b>	-2.1	-1.2	<b>-13.2</b>	-8.6	-5.1
Accommodation and food services	38.4	<b>37.9</b>	1.6	<b>-0.5</b>	-0.7	-0.9	<b>-1.3</b>	-1.8	-2.3
Other services	26.7	<b>25.2</b>	1.2	<b>-1.5</b>	-0.3	1.1	<b>-5.6</b>	-1.2	4.6
Public administration	37.3	<b>34.6</b>	1.3	<b>-2.7</b>	-1.6	-2.6	<b>-7.2</b>	-4.4	-7.0

1. Average standard error of change in two consecutive months (see "Sampling Errors" in Data Quality for further explanations).

**Note(s):** Related CANSIM tables 282-0087, 282-0088

**Table 4-8**  
**Selected labour force characteristics (seasonally adjusted) — Saskatchewan**

	February 2008	March 2008	S.E. <sup>1</sup>	Change from			Percent change from		
				last month	last December	twelve months ago	last month	last December	twelve months ago
in thousands (except rates)									
<b>Both sexes, 15 years and over</b>									
Population	760.7	<b>762.2</b>	...	<b>1.5</b>	4.2	14.0	<b>0.2</b>	0.6	1.9
Labour force	530.6	<b>529.9</b>	2.3	<b>-0.7</b>	4.0	6.1	<b>-0.1</b>	0.8	1.2
Employment	509.0	<b>508.2</b>	2.4	<b>-0.8</b>	3.5	4.8	<b>-0.2</b>	0.7	1.0
Employment full-time	418.4	<b>418.4</b>	3.1	<b>0.0</b>	5.7	13.4	<b>0.0</b>	1.4	3.3
Unemployment	21.6	<b>21.8</b>	1.8	<b>0.2</b>	0.6	1.4	<b>0.9</b>	2.8	6.9
Participation rate	69.8	<b>69.5</b>	0.3	<b>-0.3</b>	0.1	-0.5	...	...	...
Unemployment rate	4.1	<b>4.1</b>	0.3	<b>0.0</b>	0.1	0.2	...	...	...
Employment rate	66.9	<b>66.7</b>	0.3	<b>-0.2</b>	0.1	-0.6	...	...	...
Part-time rate	17.8	<b>17.7</b>	0.6	<b>-0.1</b>	-0.5	-1.9	...	...	...
<b>Both sexes, 15 to 24 years</b>									
Population	138.9	<b>139.1</b>	...	<b>0.2</b>	0.5	1.7	<b>0.1</b>	0.4	1.2
Labour force	100.7	<b>99.9</b>	1.4	<b>-0.8</b>	1.3	-0.8	<b>-0.8</b>	1.3	-0.8
Employment	94.3	<b>93.0</b>	1.5	<b>-1.3</b>	2.1	-1.0	<b>-1.4</b>	2.3	-1.1
Unemployment	6.4	<b>7.0</b>	1.2	<b>0.6</b>	-0.7	0.3	<b>9.4</b>	-9.1	4.5
Participation rate	72.5	<b>71.8</b>	1.0	<b>-0.7</b>	0.7	-1.5	...	...	...
Unemployment rate	6.4	<b>7.0</b>	1.2	<b>0.6</b>	-0.8	0.3	...	...	...
Employment rate	67.9	<b>66.9</b>	1.1	<b>-1.0</b>	1.3	-1.5	...	...	...
Part-time rate	36.2	<b>36.3</b>	1.7	<b>0.2</b>	-3.0	-3.8	...	...	...
<b>Men, 25 years and over</b>									
Population	303.9	<b>304.5</b>	...	<b>0.6</b>	1.7	6.3	<b>0.2</b>	0.6	2.1
Labour force	234.8	<b>233.3</b>	1.1	<b>-1.5</b>	1.8	5.6	<b>-0.6</b>	0.8	2.5
Employment	226.7	<b>225.6</b>	1.2	<b>-1.1</b>	1.5	5.5	<b>-0.5</b>	0.7	2.5
Unemployment	8.2	<b>7.6</b>	1.0	<b>-0.6</b>	0.1	0.0	<b>-7.3</b>	1.3	0.0
Participation rate	77.3	<b>76.6</b>	0.4	<b>-0.7</b>	0.1	0.2	...	...	...
Unemployment rate	3.5	<b>3.3</b>	0.4	<b>-0.2</b>	0.1	0.0	...	...	...
Employment rate	74.6	<b>74.1</b>	0.4	<b>-0.5</b>	0.1	0.3	...	...	...
Part-time rate	6.4	<b>6.3</b>	0.6	<b>-0.1</b>	0.0	-0.1	...	...	...
<b>Women, 25 years and over</b>									
Population	317.9	<b>318.6</b>	...	<b>0.7</b>	2.0	6.0	<b>0.2</b>	0.6	1.9
Labour force	195.1	<b>196.7</b>	1.3	<b>1.6</b>	1.0	1.3	<b>0.8</b>	0.5	0.7
Employment	188.1	<b>189.6</b>	1.4	<b>1.5</b>	0.0	0.3	<b>0.8</b>	0.0	0.2
Unemployment	7.0	<b>7.2</b>	0.9	<b>0.2</b>	1.1	1.1	<b>2.9</b>	18.0	18.0
Participation rate	61.4	<b>61.7</b>	0.4	<b>0.3</b>	-0.1	-0.8	...	...	...
Unemployment rate	3.6	<b>3.7</b>	0.5	<b>0.1</b>	0.6	0.6	...	...	...
Employment rate	59.2	<b>59.5</b>	0.4	<b>0.3</b>	-0.4	-1.1	...	...	...
Part-time rate	22.3	<b>22.0</b>	1.0	<b>-0.2</b>	-0.2	-2.7	...	...	...
<b>Industry</b>									
Industry	509.0	<b>508.2</b>	2.4	<b>-0.8</b>	3.5	4.8	<b>-0.2</b>	0.7	1.0
<b>Goods-producing sector</b>									
Goods-producing sector	135.4	<b>133.8</b>	2.2	<b>-1.6</b>	1.5	2.6	<b>-1.2</b>	1.1	2.0
Agriculture	40.4	<b>38.6</b>	1.5	<b>-1.8</b>	-2.6	-4.5	<b>-4.5</b>	-6.3	-10.4
Forestry, fishing, mining, oil and gas	23.9	<b>24.6</b>	1.0	<b>0.7</b>	2.0	2.0	<b>2.9</b>	8.8	8.8
Utilities	4.8	<b>5.1</b>	0.4	<b>0.3</b>	0.0	1.4	<b>6.2</b>	0.0	37.8
Construction	34.9	<b>34.8</b>	1.3	<b>-0.1</b>	2.4	3.0	<b>-0.3</b>	7.4	9.4
Manufacturing	31.5	<b>30.7</b>	1.2	<b>-0.8</b>	-0.3	0.7	<b>-2.5</b>	-1.0	2.3
<b>Services-producing sector</b>									
Services-producing sector	373.6	<b>374.4</b>	2.8	<b>0.8</b>	2.0	2.2	<b>0.2</b>	0.5	0.6
Trade	83.6	<b>84.8</b>	1.9	<b>1.2</b>	1.4	-1.3	<b>1.4</b>	1.7	-1.5
Transportation and warehousing	26.6	<b>25.5</b>	1.0	<b>-1.1</b>	0.5	0.8	<b>-4.1</b>	2.0	3.2
Finance, insurance, real estate and leasing	26.6	<b>28.0</b>	1.0	<b>1.4</b>	0.5	2.2	<b>5.3</b>	1.8	8.5
Professional, scientific and technical services	19.6	<b>21.4</b>	0.9	<b>1.8</b>	0.1	1.0	<b>9.2</b>	0.5	4.9
Business, building and other support services	11.4	<b>11.7</b>	0.8	<b>0.3</b>	0.4	1.1	<b>2.6</b>	3.5	10.4
Educational services	39.0	<b>37.7</b>	1.3	<b>-1.3</b>	-1.6	-5.4	<b>-3.3</b>	-4.1	-12.5
Health care and social assistance	60.8	<b>61.7</b>	1.4	<b>0.9</b>	-0.2	1.1	<b>1.5</b>	-0.3	1.8
Information, culture and recreation	21.6	<b>21.2</b>	1.0	<b>-0.4</b>	0.1	1.4	<b>-1.9</b>	0.5	7.1
Accommodation and food services	32.9	<b>31.7</b>	1.3	<b>-1.2</b>	0.8	0.9	<b>-3.6</b>	2.6	2.9
Other services	22.8	<b>22.2</b>	1.0	<b>-0.6</b>	0.3	-0.6	<b>-2.6</b>	1.4	-2.6
Public administration	28.6	<b>28.5</b>	1.0	<b>-0.1</b>	-0.2	1.0	<b>-0.3</b>	-0.7	3.6

1. Average standard error of change in two consecutive months (see "Sampling Errors" in Data Quality for further explanations).

**Note(s):** Related CANSIM tables 282-0087, 282-0088

**Table 4-9**  
**Selected labour force characteristics (seasonally adjusted) — Alberta**

	February 2008	March 2008	S.E. <sup>1</sup>	Change from			Percent change from		
				last month	last December	twelve months ago	last month	last December	twelve months ago
in thousands (except rates)									
<b>Both sexes, 15 years and over</b>									
Population	2,775.8	<b>2,779.2</b>	...	<b>3.4</b>	9.7	63.3	<b>0.1</b>	0.4	2.3
Labour force	2,067.5	<b>2,075.9</b>	7.9	<b>8.4</b>	16.1	64.3	<b>0.4</b>	0.8	3.2
Employment	1,994.9	<b>2,004.5</b>	8.2	<b>9.6</b>	10.7	65.2	<b>0.5</b>	0.5	3.4
Employment full-time	1,677.8	<b>1,695.7</b>	11.2	<b>17.9</b>	17.8	64.3	<b>1.1</b>	1.1	3.9
Unemployment	72.6	<b>71.4</b>	5.8	<b>-1.2</b>	5.4	-0.9	<b>-1.7</b>	8.2	-1.2
Participation rate	74.5	<b>74.7</b>	0.3	<b>0.2</b>	0.3	0.6	...	...	...
Unemployment rate	3.5	<b>3.4</b>	0.3	<b>-0.1</b>	0.2	-0.2	...	...	...
Employment rate	71.9	<b>72.1</b>	0.3	<b>0.2</b>	0.1	0.7	...	...	...
Part-time rate	15.9	<b>15.4</b>	0.5	<b>-0.5</b>	-0.4	-0.5	...	...	...
<b>Both sexes, 15 to 24 years</b>									
Population	504.1	<b>503.7</b>	...	<b>-0.4</b>	-1.6	1.9	<b>-0.1</b>	-0.3	0.4
Labour force	368.6	<b>372.1</b>	4.9	<b>3.5</b>	5.6	13.7	<b>0.9</b>	1.5	3.8
Employment	342.1	<b>346.1</b>	5.0	<b>4.0</b>	0.4	17.4	<b>1.2</b>	0.1	5.3
Unemployment	26.5	<b>26.0</b>	3.7	<b>-0.5</b>	5.2	-3.7	<b>-1.9</b>	25.0	-12.5
Participation rate	73.1	<b>73.9</b>	1.0	<b>0.8</b>	1.4	2.5	...	...	...
Unemployment rate	7.2	<b>7.0</b>	1.0	<b>-0.2</b>	1.3	-1.3	...	...	...
Employment rate	67.9	<b>68.7</b>	1.0	<b>0.8</b>	0.3	3.2	...	...	...
Part-time rate	32.3	<b>31.2</b>	1.6	<b>-1.1</b>	-1.2	-0.4	...	...	...
<b>Men, 25 years and over</b>									
Population	1,143.1	<b>1,145.6</b>	...	<b>2.5</b>	7.6	34.6	<b>0.2</b>	0.7	3.1
Labour force	939.8	<b>947.4</b>	3.8	<b>7.6</b>	7.7	34.4	<b>0.8</b>	0.8	3.8
Employment	914.9	<b>924.9</b>	4.3	<b>10.0</b>	8.6	31.6	<b>1.1</b>	0.9	3.5
Unemployment	24.9	<b>22.5</b>	3.3	<b>-2.4</b>	-0.9	2.8	<b>-9.6</b>	-3.8	14.2
Participation rate	82.2	<b>82.7</b>	0.3	<b>0.5</b>	0.1	0.5	...	...	...
Unemployment rate	2.6	<b>2.4</b>	0.4	<b>-0.2</b>	-0.1	0.2	...	...	...
Employment rate	80.0	<b>80.7</b>	0.4	<b>0.7</b>	0.2	0.3	...	...	...
Part-time rate	5.0	<b>5.3</b>	0.5	<b>0.3</b>	0.1	-0.2	...	...	...
<b>Women, 25 years and over</b>									
Population	1,128.6	<b>1,129.9</b>	...	<b>1.3</b>	3.7	26.8	<b>0.1</b>	0.3	2.4
Labour force	759.1	<b>756.4</b>	4.6	<b>-2.7</b>	2.8	16.2	<b>-0.4</b>	0.4	2.2
Employment	737.9	<b>733.5</b>	4.8	<b>-4.4</b>	1.8	16.1	<b>-0.6</b>	0.2	2.2
Unemployment	21.2	<b>22.9</b>	3.1	<b>1.7</b>	1.0	0.1	<b>8.0</b>	4.6	0.4
Participation rate	67.3	<b>66.9</b>	0.4	<b>-0.4</b>	0.0	-0.2	...	...	...
Unemployment rate	2.8	<b>3.0</b>	0.4	<b>0.2</b>	0.1	-0.1	...	...	...
Employment rate	65.4	<b>64.9</b>	0.4	<b>-0.5</b>	-0.1	-0.1	...	...	...
Part-time rate	21.8	<b>20.7</b>	0.9	<b>-1.1</b>	-0.7	-0.9	...	...	...
<b>Industry</b>									
Population	1,994.9	<b>2,004.5</b>	8.2	<b>9.6</b>	10.7	65.2	<b>0.5</b>	0.5	3.4
<b>Goods-producing sector</b>									
Agriculture	57.5	<b>60.8</b>	2.8	<b>3.3</b>	8.8	16.2	<b>5.7</b>	16.9	36.3
Forestry, fishing, mining, oil and gas	144.2	<b>148.7</b>	4.5	<b>4.5</b>	-7.4	-0.6	<b>3.1</b>	-4.7	-0.4
Utilities	17.2	<b>16.2</b>	1.7	<b>-1.0</b>	-1.0	-1.1	<b>-5.8</b>	-5.8	-6.4
Construction	195.8	<b>203.6</b>	5.3	<b>7.8</b>	5.0	13.5	<b>4.0</b>	2.5	7.1
Manufacturing	142.4	<b>134.0</b>	4.8	<b>-8.4</b>	-0.4	-12.8	<b>-5.9</b>	-0.3	-8.7
<b>Services-producing sector</b>									
Trade	311.2	<b>312.4</b>	6.6	<b>1.2</b>	2.3	31.3	<b>0.4</b>	0.7	11.1
Transportation and warehousing	104.0	<b>105.1</b>	3.8	<b>1.1</b>	-5.2	-0.3	<b>1.1</b>	-4.7	-0.3
Finance, insurance, real estate and leasing	116.7	<b>117.9</b>	3.9	<b>1.2</b>	13.9	20.9	<b>1.0</b>	13.4	21.5
Professional, scientific and technical services	161.5	<b>161.1</b>	4.7	<b>-0.4</b>	15.5	15.3	<b>-0.2</b>	10.6	10.5
Business, building and other support services	70.2	<b>70.1</b>	3.8	<b>-0.1</b>	-6.2	-2.7	<b>-0.1</b>	-8.1	-3.7
Educational services	120.5	<b>122.7</b>	4.2	<b>2.2</b>	0.8	-14.7	<b>1.8</b>	0.7	-10.7
Health care and social assistance	190.9	<b>188.9</b>	4.8	<b>-2.0</b>	-7.1	7.0	<b>-1.0</b>	-3.6	3.8
Information, culture and recreation	76.5	<b>73.5</b>	3.6	<b>-3.0</b>	-6.1	-2.8	<b>-3.9</b>	-7.7	-3.7
Accommodation and food services	106.3	<b>107.5</b>	4.7	<b>1.2</b>	-4.7	-12.6	<b>1.1</b>	-4.2	-10.5
Other services	89.9	<b>92.5</b>	3.9	<b>2.6</b>	2.0	-5.1	<b>2.9</b>	2.2	-5.2
Public administration	90.2	<b>89.6</b>	3.2	<b>-0.6</b>	0.6	13.6	<b>-0.7</b>	0.7	17.9

1. Average standard error of change in two consecutive months (see "Sampling Errors" in Data Quality for further explanations).

**Note(s):** Related CANSIM tables 282-0087, 282-0088



**Table 4-10**  
**Selected labour force characteristics (seasonally adjusted) — British Columbia**

	February 2008	March 2008	S.E. <sup>1</sup>	Change from			Percent change from		
				last month	last December	twelve months ago	last month	last December	twelve months ago
in thousands (except rates)									
<b>Both sexes, 15 years and over</b>									
Population	3,614.1	<b>3,619.9</b>	...	<b>5.8</b>	17.2	68.2	<b>0.2</b>	0.5	1.9
Labour force	2,402.5	<b>2,422.2</b>	9.8	<b>19.7</b>	28.7	67.1	<b>0.8</b>	1.2	2.8
Employment	2,303.2	<b>2,317.9</b>	9.8	<b>14.7</b>	25.0	55.2	<b>0.6</b>	1.1	2.4
Employment full-time	1,835.0	<b>1,843.7</b>	13.5	<b>8.7</b>	27.2	52.3	<b>0.5</b>	1.5	2.9
Unemployment	99.3	<b>104.4</b>	7.0	<b>5.1</b>	3.8	12.0	<b>5.1</b>	3.8	13.0
Participation rate	66.5	<b>66.9</b>	0.3	<b>0.4</b>	0.5	0.6	...	...	...
Unemployment rate	4.1	<b>4.3</b>	0.3	<b>0.2</b>	0.1	0.4	...	...	...
Employment rate	63.7	<b>64.0</b>	0.3	<b>0.3</b>	0.4	0.3	...	...	...
Part-time rate	20.3	<b>20.5</b>	0.5	<b>0.1</b>	-0.3	-0.4	...	...	...
<b>Both sexes, 15 to 24 years</b>									
Population	581.6	<b>582.0</b>	...	<b>0.4</b>	1.0	4.1	<b>0.1</b>	0.2	0.7
Labour force	400.4	<b>401.0</b>	5.7	<b>0.6</b>	3.1	13.2	<b>0.1</b>	0.8	3.4
Employment	368.8	<b>373.7</b>	5.6	<b>4.9</b>	7.2	14.3	<b>1.3</b>	2.0	4.0
Unemployment	31.5	<b>27.3</b>	4.1	<b>-4.2</b>	-4.1	-1.1	<b>-13.3</b>	-13.1	-3.9
Participation rate	68.8	<b>68.9</b>	1.0	<b>0.1</b>	0.4	1.8	...	...	...
Unemployment rate	7.9	<b>6.8</b>	1.0	<b>-1.1</b>	-1.1	-0.5	...	...	...
Employment rate	63.4	<b>64.2</b>	1.0	<b>0.8</b>	1.1	2.0	...	...	...
Part-time rate	43.2	<b>44.3</b>	1.8	<b>1.0</b>	-1.3	1.6	...	...	...
<b>Men, 25 years and over</b>									
Population	1,483.6	<b>1,486.3</b>	...	<b>2.7</b>	8.2	32.5	<b>0.2</b>	0.6	2.2
Labour force	1,074.2	<b>1,089.6</b>	5.0	<b>15.4</b>	12.5	40.6	<b>1.4</b>	1.2	3.9
Employment	1,038.2	<b>1,049.3</b>	5.2	<b>11.1</b>	10.5	33.9	<b>1.1</b>	1.0	3.3
Unemployment	36.0	<b>40.4</b>	3.8	<b>4.4</b>	2.0	6.8	<b>12.2</b>	5.2	20.2
Participation rate	72.4	<b>73.3</b>	0.3	<b>0.9</b>	0.4	1.1	...	...	...
Unemployment rate	3.4	<b>3.7</b>	0.4	<b>0.3</b>	0.1	0.5	...	...	...
Employment rate	70.0	<b>70.6</b>	0.4	<b>0.6</b>	0.3	0.8	...	...	...
Part-time rate	7.6	<b>7.4</b>	0.6	<b>-0.2</b>	-0.6	-0.6	...	...	...
<b>Women, 25 years and over</b>									
Population	1,548.9	<b>1,551.7</b>	...	<b>2.8</b>	8.1	31.7	<b>0.2</b>	0.5	2.1
Labour force	927.9	<b>931.6</b>	6.0	<b>3.7</b>	13.2	13.3	<b>0.4</b>	1.4	1.4
Employment	896.2	<b>894.9</b>	5.9	<b>-1.3</b>	7.3	7.1	<b>-0.1</b>	0.8	0.8
Unemployment	31.7	<b>36.7</b>	4.0	<b>5.0</b>	5.9	6.2	<b>15.8</b>	19.2	20.3
Participation rate	59.9	<b>60.0</b>	0.4	<b>0.1</b>	0.5	-0.4	...	...	...
Unemployment rate	3.4	<b>3.9</b>	0.4	<b>0.5</b>	0.5	0.6	...	...	...
Employment rate	57.9	<b>57.7</b>	0.4	<b>-0.2</b>	0.2	-0.7	...	...	...
Part-time rate	25.6	<b>25.8</b>	0.9	<b>0.2</b>	0.2	-0.8	...	...	...
<b>Industry</b>									
	2,303.2	<b>2,317.9</b>	9.8	<b>14.7</b>	25.0	55.2	<b>0.6</b>	1.1	2.4
<b>Goods-producing sector</b>									
Agriculture	38.4	<b>38.7</b>	2.6	<b>0.3</b>	-1.0	5.1	<b>0.8</b>	-2.5	15.2
Forestry, fishing, mining, oil and gas	46.7	<b>46.9</b>	2.7	<b>0.2</b>	-3.7	1.5	<b>0.4</b>	-7.3	3.3
Utilities	14.4	<b>15.7</b>	1.2	<b>1.3</b>	2.5	7.5	<b>9.0</b>	18.9	91.5
Construction	214.5	<b>219.4</b>	5.9	<b>4.9</b>	9.4	27.9	<b>2.3</b>	4.5	14.6
Manufacturing	185.2	<b>190.8</b>	5.9	<b>5.6</b>	0.6	-21.9	<b>3.0</b>	0.3	-10.3
<b>Services-producing sector</b>									
	1,804.0	<b>1,806.3</b>	11.5	<b>2.3</b>	16.9	35.1	<b>0.1</b>	0.9	2.0
Trade	359.9	<b>364.4</b>	7.5	<b>4.5</b>	-1.3	7.3	<b>1.3</b>	-0.4	2.0
Transportation and warehousing	128.4	<b>130.2</b>	4.8	<b>1.8</b>	-5.8	5.2	<b>1.4</b>	-4.3	4.2
Finance, insurance, real estate and leasing	147.9	<b>134.1</b>	4.8	<b>-13.8</b>	-7.8	-15.1	<b>-9.3</b>	-5.5	-10.1
Professional, scientific and technical services	175.0	<b>174.1</b>	5.4	<b>-0.9</b>	14.0	13.0	<b>-0.5</b>	8.7	8.1
Business, building and other support services	102.2	<b>106.0</b>	4.5	<b>3.8</b>	0.2	10.7	<b>3.7</b>	0.2	11.2
Educational services	156.7	<b>154.8</b>	5.3	<b>-1.9</b>	-4.6	-7.0	<b>-1.2</b>	-2.9	-4.3
Health care and social assistance	240.9	<b>240.6</b>	5.6	<b>-0.3</b>	4.7	-7.9	<b>-0.1</b>	2.0	-3.2
Information, culture and recreation	122.4	<b>118.0</b>	4.8	<b>-4.4</b>	-5.7	-4.7	<b>-3.6</b>	-4.6	-3.8
Accommodation and food services	176.8	<b>178.9</b>	5.8	<b>2.1</b>	9.7	5.9	<b>1.2</b>	5.7	3.4
Other services	91.9	<b>100.9</b>	4.0	<b>9.0</b>	12.7	15.8	<b>9.8</b>	14.4	18.6
Public administration	101.8	<b>104.1</b>	3.4	<b>2.3</b>	0.6	11.6	<b>2.3</b>	0.6	12.5

1. Average standard error of change in two consecutive months (see "Sampling Errors" in Data Quality for further explanations).

**Note(s):** Related CANSIM tables 282-0087, 282-0088

**Table 5-1**  
**Labour force characteristics by census metropolitan area (seasonally adjusted) — 3 month moving average**

	February 2008	March 2008	S.E. <sup>1</sup>	Change from			Percent change from		
				last month	last December	twelve months ago	last month	last December	twelve months ago
in thousands (except rates)									
<b>St. John's, Newfoundland and Labrador</b>									
Population	153.0	<b>153.3</b>	...	<b>0.3</b>	0.9	1.3	<b>0.2</b>	0.6	0.9
Labour force	103.4	<b>104.1</b>	0.7	<b>0.7</b>	1.7	4.7	<b>0.7</b>	1.7	4.7
Employment	95.5	<b>95.7</b>	0.7	<b>0.2</b>	0.4	3.9	<b>0.2</b>	0.4	4.2
Unemployment	7.9	<b>8.4</b>	0.4	<b>0.5</b>	1.3	0.9	<b>6.3</b>	18.3	12.0
Participation rate	67.6	<b>67.9</b>	0.5	<b>0.3</b>	0.7	2.5	...	...	...
Unemployment rate	7.6	<b>8.1</b>	0.4	<b>0.5</b>	1.2	0.6	...	...	...
Employment rate	62.4	<b>62.4</b>	0.5	<b>0.0</b>	-0.1	2.0	...	...	...
<b>Halifax, Nova Scotia</b>									
Population	314.9	<b>315.3</b>	...	<b>0.4</b>	1.0	2.8	<b>0.1</b>	0.3	0.9
Labour force	220.1	<b>219.5</b>	1.1	<b>-0.6</b>	-1.7	1.8	<b>-0.3</b>	-0.8	0.8
Employment	210.4	<b>208.9</b>	1.2	<b>-1.5</b>	-2.4	1.3	<b>-0.7</b>	-1.1	0.6
Unemployment	9.7	<b>10.6</b>	0.6	<b>0.9</b>	0.7	0.5	<b>9.3</b>	7.1	5.0
Participation rate	69.9	<b>69.6</b>	0.3	<b>-0.3</b>	-0.8	-0.1	...	...	...
Unemployment rate	4.4	<b>4.8</b>	0.3	<b>0.4</b>	0.3	0.2	...	...	...
Employment rate	66.8	<b>66.3</b>	0.4	<b>-0.5</b>	-0.9	-0.1	...	...	...
<b>Saint John, New Brunswick</b>									
Population	104.3	<b>104.4</b>	...	<b>0.1</b>	0.3	0.8	<b>0.1</b>	0.3	0.8
Labour force	69.6	<b>69.2</b>	0.7	<b>-0.4</b>	-2.0	2.6	<b>-0.6</b>	-2.8	3.9
Employment	66.2	<b>65.4</b>	0.7	<b>-0.8</b>	-2.3	2.1	<b>-1.2</b>	-3.4	3.3
Unemployment	3.5	<b>3.8</b>	0.3	<b>0.3</b>	0.3	0.5	<b>8.6</b>	8.6	15.2
Participation rate	66.7	<b>66.3</b>	0.6	<b>-0.4</b>	-2.1	2.0	...	...	...
Unemployment rate	5.0	<b>5.5</b>	0.4	<b>0.5</b>	0.6	0.5	...	...	...
Employment rate	63.5	<b>62.6</b>	0.6	<b>-0.9</b>	-2.4	1.5	...	...	...
<b>Saguenay, Quebec</b>									
Population	125.2	<b>125.2</b>	...	<b>0.0</b>	-0.1	-0.6	<b>0.0</b>	-0.1	-0.5
Labour force	75.0	<b>75.2</b>	0.8	<b>0.2</b>	-0.7	-1.8	<b>0.3</b>	-0.9	-2.3
Employment	68.2	<b>68.1</b>	0.8	<b>-0.1</b>	-1.8	-1.2	<b>-0.1</b>	-2.6	-1.7
Unemployment	6.8	<b>7.1</b>	0.4	<b>0.3</b>	1.1	-0.6	<b>4.4</b>	18.3	-7.8
Participation rate	59.9	<b>60.1</b>	0.6	<b>0.2</b>	-0.5	-1.1	...	...	...
Unemployment rate	9.1	<b>9.4</b>	0.5	<b>0.3</b>	1.5	-0.6	...	...	...
Employment rate	54.5	<b>54.4</b>	0.6	<b>-0.1</b>	-1.4	-0.7	...	...	...
<b>Québec, Quebec</b>									
Population	607.9	<b>608.3</b>	...	<b>0.4</b>	1.3	4.5	<b>0.1</b>	0.2	0.7
Labour force	410.2	<b>407.8</b>	3.4	<b>-2.4</b>	-7.5	12.4	<b>-0.6</b>	-1.8	3.1
Employment	390.4	<b>388.2</b>	3.4	<b>-2.2</b>	-4.4	11.7	<b>-0.6</b>	-1.1	3.1
Unemployment	19.9	<b>19.6</b>	1.4	<b>-0.3</b>	-3.2	0.7	<b>-1.5</b>	-14.0	3.7
Participation rate	67.5	<b>67.0</b>	0.6	<b>-0.5</b>	-1.4	1.5	...	...	...
Unemployment rate	4.9	<b>4.8</b>	0.4	<b>-0.1</b>	-0.7	0.0	...	...	...
Employment rate	64.2	<b>63.8</b>	0.6	<b>-0.4</b>	-0.9	1.4	...	...	...
<b>Trois-Rivières, Quebec</b>									
Population	121.0	<b>121.1</b>	...	<b>0.1</b>	0.2	0.9	<b>0.1</b>	0.2	0.7
Labour force	78.4	<b>78.5</b>	0.7	<b>0.1</b>	0.9	1.8	<b>0.1</b>	1.2	2.3
Employment	71.7	<b>71.2</b>	0.7	<b>-0.5</b>	-0.9	1.1	<b>-0.7</b>	-1.2	1.6
Unemployment	6.7	<b>7.3</b>	0.3	<b>0.6</b>	1.9	0.8	<b>9.0</b>	35.2	12.3
Participation rate	64.8	<b>64.8</b>	0.6	<b>0.0</b>	0.6	1.0	...	...	...
Unemployment rate	8.5	<b>9.3</b>	0.4	<b>0.8</b>	2.3	0.8	...	...	...
Employment rate	59.3	<b>58.8</b>	0.6	<b>-0.5</b>	-0.8	0.5	...	...	...

See footnotes at the end of the table.



Table 5-1 – continued

## Labour force characteristics by census metropolitan area (seasonally adjusted) — 3 month moving average

	February 2008	March 2008	S.E. <sup>1</sup>	Change from			Percent change from		
				last month	last December	twelve months ago	last month	last December	twelve months ago
in thousands (except rates)									
<b>Sherbrooke, Quebec</b>									
Population	137.7	<b>137.8</b>	...	<b>0.1</b>	0.4	1.6	<b>0.1</b>	0.3	1.2
Labour force	90.3	<b>89.6</b>	0.8	<b>-0.7</b>	-1.9	0.8	<b>-0.8</b>	-2.1	0.9
Employment	85.0	<b>84.3</b>	0.8	<b>-0.7</b>	-1.3	1.3	<b>-0.8</b>	-1.5	1.6
Unemployment	5.3	<b>5.3</b>	0.3	<b>0.0</b>	-0.7	-0.5	<b>0.0</b>	-11.7	-8.6
Participation rate	65.6	<b>65.0</b>	0.6	<b>-0.6</b>	-1.6	-0.2	...	...	...
Unemployment rate	5.9	<b>5.9</b>	0.4	<b>0.0</b>	-0.7	-0.6	...	...	...
Employment rate	61.7	<b>61.2</b>	0.6	<b>-0.5</b>	-1.1	0.3	...	...	...
<b>Montréal, Quebec</b>									
Population	3,052.1	<b>3,054.5</b>	...	<b>2.4</b>	7.3	28.2	<b>0.1</b>	0.2	0.9
Labour force	2,061.4	<b>2,059.7</b>	7.2	<b>-1.7</b>	0.7	29.4	<b>-0.1</b>	0.0	1.4
Employment	1,914.9	<b>1,911.7</b>	7.5	<b>-3.2</b>	-4.2	30.6	<b>-0.2</b>	-0.2	1.6
Unemployment	146.5	<b>148.0</b>	4.5	<b>1.5</b>	4.9	-1.2	<b>1.0</b>	3.4	-0.8
Participation rate	67.5	<b>67.4</b>	0.2	<b>-0.1</b>	-0.2	0.3	...	...	...
Unemployment rate	7.1	<b>7.2</b>	0.2	<b>0.1</b>	0.3	-0.1	...	...	...
Employment rate	62.7	<b>62.6</b>	0.2	<b>-0.1</b>	-0.3	0.4	...	...	...
<b>Ottawa-Gatineau, Ontario/Quebec</b>									
Population	957.0	<b>957.9</b>	...	<b>0.9</b>	2.8	9.4	<b>0.1</b>	0.3	1.0
Labour force	695.9	<b>696.1</b>	3.4	<b>0.2</b>	-1.2	23.4	<b>0.0</b>	-0.2	3.5
Employment	664.4	<b>664.4</b>	3.5	<b>0.0</b>	-1.7	28.8	<b>0.0</b>	-0.3	4.5
Unemployment	31.6	<b>31.7</b>	1.7	<b>0.1</b>	0.5	-5.3	<b>0.3</b>	1.6	-14.3
Participation rate	72.7	<b>72.7</b>	0.4	<b>0.0</b>	-0.3	1.8	...	...	...
Unemployment rate	4.5	<b>4.6</b>	0.2	<b>0.1</b>	0.1	-0.9	...	...	...
Employment rate	69.4	<b>69.4</b>	0.4	<b>0.0</b>	-0.3	2.4	...	...	...
<b>Ottawa-Gatineau, Quebec part, Ontario/Quebec</b>									
Population	242.5	<b>242.8</b>	...	<b>0.3</b>	1.0	4.5	<b>0.1</b>	0.4	1.9
Labour force	177.8	<b>179.0</b>	1.2	<b>1.2</b>	3.5	5.6	<b>0.7</b>	2.0	3.2
Employment	170.2	<b>171.3</b>	1.2	<b>1.1</b>	3.6	8.9	<b>0.6</b>	2.1	5.5
Unemployment	7.6	<b>7.7</b>	0.6	<b>0.1</b>	-0.1	-3.3	<b>1.3</b>	-1.3	-30.0
Participation rate	73.3	<b>73.7</b>	0.5	<b>0.4</b>	1.1	0.9	...	...	...
Unemployment rate	4.3	<b>4.3</b>	0.3	<b>0.0</b>	-0.1	-2.0	...	...	...
Employment rate	70.2	<b>70.6</b>	0.5	<b>0.4</b>	1.2	2.5	...	...	...
<b>Ottawa-Gatineau, Ontario part, Ontario/Quebec</b>									
Population	714.5	<b>715.2</b>	...	<b>0.7</b>	1.9	5.0	<b>0.1</b>	0.3	0.7
Labour force	518.1	<b>517.1</b>	3.2	<b>-1.0</b>	-4.6	17.8	<b>-0.2</b>	-0.9	3.6
Employment	494.1	<b>493.2</b>	3.2	<b>-0.9</b>	-5.1	20.0	<b>-0.2</b>	-1.0	4.2
Unemployment	24.0	<b>24.0</b>	1.6	<b>0.0</b>	0.6	-2.0	<b>0.0</b>	2.6	-7.7
Participation rate	72.5	<b>72.3</b>	0.5	<b>-0.2</b>	-0.8	2.0	...	...	...
Unemployment rate	4.6	<b>4.6</b>	0.3	<b>0.0</b>	0.1	-0.6	...	...	...
Employment rate	69.2	<b>69.0</b>	0.5	<b>-0.2</b>	-0.9	2.4	...	...	...
<b>Kingston, Ontario</b>									
Population	125.9	<b>125.9</b>	...	<b>0.0</b>	0.0	0.0	<b>0.0</b>	0.0	0.0
Labour force	82.1	<b>83.4</b>	0.8	<b>1.3</b>	2.5	-0.9	<b>1.6</b>	3.1	-1.1
Employment	77.7	<b>78.7</b>	0.8	<b>1.0</b>	1.9	-2.0	<b>1.3</b>	2.5	-2.5
Unemployment	4.4	<b>4.7</b>	0.3	<b>0.3</b>	0.6	1.0	<b>6.8</b>	14.6	27.0
Participation rate	65.2	<b>66.2</b>	0.6	<b>1.0</b>	1.9	-0.8	...	...	...
Unemployment rate	5.4	<b>5.6</b>	0.4	<b>0.2</b>	0.5	1.2	...	...	...
Employment rate	61.7	<b>62.5</b>	0.6	<b>0.8</b>	1.5	-1.6	...	...	...

See footnotes at the end of the table.

Table 5-1 – continued

## Labour force characteristics by census metropolitan area (seasonally adjusted) — 3 month moving average

	February 2008	March 2008	S.E. <sup>1</sup>	Change from			Percent change from		
				last month	last December	twelve months ago	last month	last December	twelve months ago
in thousands (except rates)									
<b>Toronto, Ontario</b>									
Population	4,500.7	<b>4,509.0</b>	...	<b>8.3</b>	24.1	85.0	<b>0.2</b>	0.5	1.9
Labour force	3,106.8	<b>3,122.6</b>	9.2	<b>15.8</b>	29.6	51.0	<b>0.5</b>	1.0	1.7
Employment	2,903.9	<b>2,920.9</b>	9.5	<b>17.0</b>	35.7	57.1	<b>0.6</b>	1.2	2.0
Unemployment	202.8	<b>201.8</b>	5.6	<b>-1.0</b>	-6.0	-6.0	<b>-0.5</b>	-2.9	-2.9
Participation rate	69.0	<b>69.3</b>	0.2	<b>0.3</b>	0.3	-0.1	...	...	...
Unemployment rate	6.5	<b>6.5</b>	0.2	<b>0.0</b>	-0.2	-0.3	...	...	...
Employment rate	64.5	<b>64.8</b>	0.2	<b>0.3</b>	0.5	0.1	...	...	...
<b>Hamilton, Ontario</b>									
Population	594.8	<b>595.1</b>	...	<b>0.3</b>	0.9	4.0	<b>0.1</b>	0.2	0.7
Labour force	397.8	<b>400.4</b>	2.9	<b>2.6</b>	3.9	4.8	<b>0.7</b>	1.0	1.2
Employment	374.1	<b>375.7</b>	2.9	<b>1.6</b>	2.7	5.9	<b>0.4</b>	0.7	1.6
Unemployment	23.6	<b>24.7</b>	1.4	<b>1.1</b>	1.3	-1.1	<b>4.7</b>	5.6	-4.3
Participation rate	66.9	<b>67.3</b>	0.5	<b>0.4</b>	0.6	0.4	...	...	...
Unemployment rate	5.9	<b>6.2</b>	0.3	<b>0.3</b>	0.3	-0.3	...	...	...
Employment rate	62.9	<b>63.1</b>	0.5	<b>0.2</b>	0.3	0.5	...	...	...
<b>Kitchener, Ontario</b>									
Population	380.3	<b>380.7</b>	...	<b>0.4</b>	1.3	5.7	<b>0.1</b>	0.3	1.5
Labour force	268.5	<b>266.7</b>	2.2	<b>-1.8</b>	-3.1	0.7	<b>-0.7</b>	-1.1	0.3
Employment	254.6	<b>252.9</b>	2.2	<b>-1.7</b>	-2.5	2.0	<b>-0.7</b>	-1.0	0.8
Unemployment	13.9	<b>13.7</b>	0.9	<b>-0.2</b>	-0.6	-1.4	<b>-1.4</b>	-4.2	-9.3
Participation rate	70.6	<b>70.1</b>	0.6	<b>-0.5</b>	-1.0	-0.8	...	...	...
Unemployment rate	5.2	<b>5.1</b>	0.3	<b>-0.1</b>	-0.2	-0.6	...	...	...
Employment rate	66.9	<b>66.4</b>	0.6	<b>-0.5</b>	-0.9	-0.5	...	...	...
<b>London, Ontario</b>									
Population	383.1	<b>383.4</b>	...	<b>0.3</b>	0.9	3.1	<b>0.1</b>	0.2	0.8
Labour force	261.5	<b>261.3</b>	1.9	<b>-0.2</b>	-2.7	-3.1	<b>-0.1</b>	-1.0	-1.2
Employment	243.8	<b>244.3</b>	1.9	<b>0.5</b>	-2.5	-4.6	<b>0.2</b>	-1.0	-1.8
Unemployment	17.7	<b>17.0</b>	0.9	<b>-0.7</b>	-0.2	1.5	<b>-4.0</b>	-1.2	9.7
Participation rate	68.3	<b>68.2</b>	0.5	<b>-0.1</b>	-0.8	-1.3	...	...	...
Unemployment rate	6.8	<b>6.5</b>	0.3	<b>-0.3</b>	0.0	0.6	...	...	...
Employment rate	63.6	<b>63.7</b>	0.5	<b>0.1</b>	-0.8	-1.7	...	...	...
<b>Oshawa, Ontario</b>									
Population	285.6	<b>286.0</b>	...	<b>0.4</b>	1.4	6.5	<b>0.1</b>	0.5	2.3
Labour force	196.4	<b>195.6</b>	1.4	<b>-0.8</b>	-0.4	5.7	<b>-0.4</b>	-0.2	3.0
Employment	184.1	<b>183.0</b>	1.5	<b>-1.1</b>	-1.2	4.7	<b>-0.6</b>	-0.7	2.6
Unemployment	12.3	<b>12.6</b>	0.7	<b>0.3</b>	0.9	1.1	<b>2.4</b>	7.7	9.6
Participation rate	68.8	<b>68.4</b>	0.5	<b>-0.4</b>	-0.5	0.5	...	...	...
Unemployment rate	6.3	<b>6.4</b>	0.3	<b>0.1</b>	0.4	0.3	...	...	...
Employment rate	64.5	<b>64.0</b>	0.5	<b>-0.5</b>	-0.7	0.2	...	...	...
<b>St. Catharines-Niagara, Ontario</b>									
Population	328.7	<b>328.8</b>	...	<b>0.1</b>	0.2	1.0	<b>0.0</b>	0.1	0.3
Labour force	213.7	<b>214.6</b>	1.6	<b>0.9</b>	2.9	11.0	<b>0.4</b>	1.4	5.4
Employment	200.3	<b>201.3</b>	1.6	<b>1.0</b>	3.3	10.5	<b>0.5</b>	1.7	5.5
Unemployment	13.4	<b>13.3</b>	0.8	<b>-0.1</b>	-0.5	0.5	<b>-0.7</b>	-3.6	3.9
Participation rate	65.0	<b>65.3</b>	0.5	<b>0.3</b>	0.9	3.2	...	...	...
Unemployment rate	6.3	<b>6.2</b>	0.4	<b>-0.1</b>	-0.3	-0.1	...	...	...
Employment rate	60.9	<b>61.2</b>	0.5	<b>0.3</b>	0.9	3.0	...	...	...

See footnotes at the end of the table.

Table 5-1 – continued

## Labour force characteristics by census metropolitan area (seasonally adjusted) — 3 month moving average

	February 2008	March 2008	S.E. <sup>1</sup>	Change from			Percent change from		
				last month	last December	twelve months ago	last month	last December	twelve months ago
in thousands (except rates)									
<b>Greater Sudbury / Grand Sudbury, Ontario</b>									
Population	133.2	<b>133.2</b>	...	<b>0.0</b>	0.1	0.5	<b>0.0</b>	0.1	0.4
Labour force	85.1	<b>85.2</b>	0.7	<b>0.1</b>	0.4	0.4	<b>0.1</b>	0.5	0.5
Employment	80.5	<b>80.4</b>	0.7	<b>-0.1</b>	-0.4	0.5	<b>-0.1</b>	-0.5	0.6
Unemployment	4.6	<b>4.9</b>	0.3	<b>0.3</b>	0.9	0.0	<b>6.5</b>	22.5	0.0
Participation rate	63.9	<b>64.0</b>	0.6	<b>0.1</b>	0.3	0.1	...	...	...
Unemployment rate	5.4	<b>5.8</b>	0.4	<b>0.4</b>	1.1	0.0	...	...	...
Employment rate	60.4	<b>60.4</b>	0.6	<b>0.0</b>	-0.3	0.2	...	...	...
<b>Thunder Bay, Ontario</b>									
Population	104.0	<b>103.9</b>	...	<b>-0.1</b>	-0.2	-0.3	<b>-0.1</b>	-0.2	-0.3
Labour force	67.7	<b>67.9</b>	0.6	<b>0.2</b>	-1.1	1.7	<b>0.3</b>	-1.6	2.6
Employment	64.1	<b>64.3</b>	0.6	<b>0.2</b>	0.0	2.6	<b>0.3</b>	0.0	4.2
Unemployment	3.6	<b>3.6</b>	0.3	<b>0.0</b>	-1.1	-1.0	<b>0.0</b>	-23.4	-21.7
Participation rate	65.1	<b>65.4</b>	0.6	<b>0.3</b>	-0.9	1.9	...	...	...
Unemployment rate	5.3	<b>5.3</b>	0.4	<b>0.0</b>	-1.5	-1.6	...	...	...
Employment rate	61.6	<b>61.9</b>	0.6	<b>0.3</b>	0.1	2.7	...	...	...
<b>Windsor, Ontario</b>									
Population	272.3	<b>272.3</b>	...	<b>0.0</b>	0.0	0.9	<b>0.0</b>	0.0	0.3
Labour force	178.8	<b>179.4</b>	1.5	<b>0.6</b>	2.2	5.8	<b>0.3</b>	1.2	3.3
Employment	163.2	<b>163.8</b>	1.6	<b>0.6</b>	1.8	7.0	<b>0.4</b>	1.1	4.5
Unemployment	15.6	<b>15.7</b>	0.8	<b>0.1</b>	0.4	-1.1	<b>0.6</b>	2.6	-6.5
Participation rate	65.7	<b>65.9</b>	0.6	<b>0.2</b>	0.8	1.9	...	...	...
Unemployment rate	8.7	<b>8.8</b>	0.5	<b>0.1</b>	0.2	-0.9	...	...	...
Employment rate	59.9	<b>60.2</b>	0.6	<b>0.3</b>	0.7	2.4	...	...	...
<b>Winnipeg, Manitoba</b>									
Population	580.1	<b>580.8</b>	...	<b>0.7</b>	1.9	7.0	<b>0.1</b>	0.3	1.2
Labour force	412.7	<b>412.9</b>	1.4	<b>0.2</b>	-0.6	6.4	<b>0.0</b>	-0.1	1.6
Employment	394.7	<b>395.8</b>	1.4	<b>1.1</b>	1.8	8.6	<b>0.3</b>	0.5	2.2
Unemployment	18.0	<b>17.1</b>	0.8	<b>-0.9</b>	-2.4	-2.2	<b>-5.0</b>	-12.3	-11.4
Participation rate	71.1	<b>71.1</b>	0.2	<b>0.0</b>	-0.3	0.3	...	...	...
Unemployment rate	4.4	<b>4.1</b>	0.2	<b>-0.3</b>	-0.6	-0.6	...	...	...
Employment rate	68.0	<b>68.1</b>	0.2	<b>0.1</b>	0.0	0.6	...	...	...
<b>Regina, Saskatchewan</b>									
Population	165.4	<b>165.8</b>	...	<b>0.4</b>	1.2	3.9	<b>0.2</b>	0.7	2.4
Labour force	116.3	<b>117.2</b>	0.7	<b>0.9</b>	2.0	0.4	<b>0.8</b>	1.7	0.3
Employment	111.7	<b>112.2</b>	0.7	<b>0.5</b>	2.1	0.3	<b>0.4</b>	1.9	0.3
Unemployment	4.6	<b>5.0</b>	0.3	<b>0.4</b>	0.0	0.1	<b>8.7</b>	0.0	2.0
Participation rate	70.3	<b>70.7</b>	0.4	<b>0.4</b>	0.7	-1.4	...	...	...
Unemployment rate	4.0	<b>4.3</b>	0.3	<b>0.3</b>	0.0	0.1	...	...	...
Employment rate	67.5	<b>67.7</b>	0.4	<b>0.2</b>	0.8	-1.4	...	...	...
<b>Saskatoon, Saskatchewan</b>									
Population	193.9	<b>194.5</b>	...	<b>0.6</b>	1.7	5.0	<b>0.3</b>	0.9	2.6
Labour force	142.8	<b>142.6</b>	0.8	<b>-0.2</b>	-0.8	2.8	<b>-0.1</b>	-0.6	2.0
Employment	138.1	<b>138.0</b>	0.9	<b>-0.1</b>	0.0	3.4	<b>-0.1</b>	0.0	2.5
Unemployment	4.7	<b>4.6</b>	0.4	<b>-0.1</b>	-0.8	-0.5	<b>-2.1</b>	-14.8	-9.8
Participation rate	73.6	<b>73.3</b>	0.4	<b>-0.3</b>	-1.1	-0.5	...	...	...
Unemployment rate	3.3	<b>3.2</b>	0.3	<b>-0.1</b>	-0.6	-0.4	...	...	...
Employment rate	71.2	<b>71.0</b>	0.4	<b>-0.2</b>	-0.6	0.0	...	...	...

See footnotes at the end of the table.

Table 5-1 – continued

## Labour force characteristics by census metropolitan area (seasonally adjusted) — 3 month moving average

	February 2008	March 2008	S.E. <sup>1</sup>	Change from			Percent change from		
				last month	last December	twelve months ago	last month	last December	twelve months ago
in thousands (except rates)									
<b>Calgary, Alberta</b>									
Population	937.2	<b>938.4</b>	...	<b>1.2</b>	3.9	26.4	<b>0.1</b>	0.4	2.9
Labour force	708.7	<b>710.5</b>	3.1	<b>1.8</b>	5.3	14.9	<b>0.3</b>	0.8	2.1
Employment	689.0	<b>689.5</b>	3.3	<b>0.5</b>	5.0	17.6	<b>0.1</b>	0.7	2.6
Unemployment	19.7	<b>21.0</b>	1.4	<b>1.3</b>	0.2	-2.7	<b>6.6</b>	1.0	-11.4
Participation rate	75.6	<b>75.7</b>	0.3	<b>0.1</b>	0.2	-0.6	...	...	...
Unemployment rate	2.8	<b>3.0</b>	0.2	<b>0.2</b>	0.1	-0.4	...	...	...
Employment rate	73.5	<b>73.5</b>	0.4	<b>0.0</b>	0.3	-0.2	...	...	...
<b>Edmonton, Alberta</b>									
Population	875.8	<b>876.8</b>	...	<b>1.0</b>	2.8	18.8	<b>0.1</b>	0.3	2.2
Labour force	646.2	<b>647.9</b>	3.1	<b>1.7</b>	10.5	34.8	<b>0.3</b>	1.6	5.7
Employment	622.5	<b>623.2</b>	3.1	<b>0.7</b>	10.1	31.9	<b>0.1</b>	1.6	5.4
Unemployment	23.7	<b>24.7</b>	1.4	<b>1.0</b>	0.4	2.9	<b>4.2</b>	1.6	13.3
Participation rate	73.8	<b>73.9</b>	0.4	<b>0.1</b>	1.0	2.4	...	...	...
Unemployment rate	3.7	<b>3.8</b>	0.2	<b>0.1</b>	0.0	0.2	...	...	...
Employment rate	71.1	<b>71.1</b>	0.4	<b>0.0</b>	1.0	2.2	...	...	...
<b>Abbotsford, British Columbia</b>									
Population	132.7	<b>132.9</b>	...	<b>0.2</b>	0.6	2.3	<b>0.2</b>	0.5	1.8
Labour force	89.1	<b>90.0</b>	0.7	<b>0.9</b>	1.8	2.2	<b>1.0</b>	2.0	2.5
Employment	85.0	<b>85.4</b>	0.7	<b>0.4</b>	0.5	1.5	<b>0.5</b>	0.6	1.8
Unemployment	4.0	<b>4.5</b>	0.3	<b>0.5</b>	1.2	0.6	<b>12.5</b>	36.4	15.4
Participation rate	67.1	<b>67.7</b>	0.5	<b>0.6</b>	1.0	0.5	...	...	...
Unemployment rate	4.5	<b>5.0</b>	0.3	<b>0.5</b>	1.3	0.6	...	...	...
Employment rate	64.1	<b>64.3</b>	0.5	<b>0.2</b>	0.1	0.1	...	...	...
<b>Vancouver, British Columbia</b>									
Population	1,921.6	<b>1,925.4</b>	...	<b>3.8</b>	11.3	42.0	<b>0.2</b>	0.6	2.2
Labour force	1,296.1	<b>1,297.3</b>	4.7	<b>1.2</b>	3.5	32.1	<b>0.1</b>	0.3	2.5
Employment	1,246.3	<b>1,248.8</b>	4.7	<b>2.5</b>	9.6	28.6	<b>0.2</b>	0.8	2.3
Unemployment	49.8	<b>48.6</b>	2.2	<b>-1.2</b>	-6.0	3.6	<b>-2.4</b>	-11.0	8.0
Participation rate	67.4	<b>67.4</b>	0.2	<b>0.0</b>	-0.2	0.2	...	...	...
Unemployment rate	3.8	<b>3.7</b>	0.2	<b>-0.1</b>	-0.5	0.1	...	...	...
Employment rate	64.9	<b>64.9</b>	0.2	<b>0.0</b>	0.2	0.1	...	...	...
<b>Victoria, British Columbia</b>									
Population	285.0	<b>285.3</b>	...	<b>0.3</b>	0.8	3.5	<b>0.1</b>	0.3	1.2
Labour force	194.5	<b>196.0</b>	1.5	<b>1.5</b>	2.7	12.8	<b>0.8</b>	1.4	7.0
Employment	187.8	<b>189.7</b>	1.5	<b>1.9</b>	2.0	12.4	<b>1.0</b>	1.1	7.0
Unemployment	6.7	<b>6.4</b>	0.5	<b>-0.3</b>	0.8	0.5	<b>-4.5</b>	14.3	8.5
Participation rate	68.2	<b>68.7</b>	0.5	<b>0.5</b>	0.8	3.7	...	...	...
Unemployment rate	3.4	<b>3.3</b>	0.3	<b>-0.1</b>	0.4	0.1	...	...	...
Employment rate	65.9	<b>66.5</b>	0.5	<b>0.6</b>	0.5	3.6	...	...	...

1. Average standard error of change in two consecutive months (see "Sampling Errors" in Data Quality for further explanations).

Note(s): Related CANSIM table 282-0090

**Table 5-2**  
**Labour force characteristics by census metropolitan area (seasonally adjusted) — Monthly**

	February 2008	March 2008	S.E. <sup>1</sup>	Change from			Percent change from		
				last month	last December	twelve months ago	last month	last December	twelve months ago
in thousands (except rates)									
<b>Montréal, Quebec</b>									
Population	3,054.3	<b>3,056.8</b>	...	<b>2.5</b>	7.1	28.5	<b>0.1</b>	0.2	0.9
Labour force	2,074.5	<b>2,058.4</b>	14.7	<b>-16.1</b>	-4.9	21.9	<b>-0.8</b>	-0.2	1.1
Employment	1,921.7	<b>1,905.8</b>	15.0	<b>-15.9</b>	-9.6	14.5	<b>-0.8</b>	-0.5	0.8
Unemployment	152.8	<b>152.6</b>	10.9	<b>-0.2</b>	4.7	7.4	<b>-0.1</b>	3.2	5.1
Participation rate	67.9	<b>67.3</b>	0.5	<b>-0.6</b>	-0.4	0.1	...	...	...
Unemployment rate	7.4	<b>7.4</b>	0.5	<b>0.0</b>	0.2	0.3	...	...	...
Employment rate	62.9	<b>62.3</b>	0.5	<b>-0.6</b>	-0.5	-0.2	...	...	...
<b>Toronto, Ontario</b>									
Population	4,508.6	<b>4,516.7</b>	...	<b>8.1</b>	24.9	88.2	<b>0.2</b>	0.6	2.0
Labour force	3,122.9	<b>3,148.5</b>	19.2	<b>25.6</b>	47.7	78.4	<b>0.8</b>	1.5	2.6
Employment	2,927.3	<b>2,941.1</b>	19.4	<b>13.8</b>	50.8	88.8	<b>0.5</b>	1.8	3.1
Unemployment	195.6	<b>207.4</b>	13.7	<b>11.8</b>	-3.2	-10.5	<b>6.0</b>	-1.5	-4.8
Participation rate	69.3	<b>69.7</b>	0.4	<b>0.4</b>	0.7	0.4	...	...	...
Unemployment rate	6.3	<b>6.6</b>	0.4	<b>0.3</b>	-0.2	-0.5	...	...	...
Employment rate	64.9	<b>65.1</b>	0.4	<b>0.2</b>	0.8	0.7	...	...	...
<b>Vancouver, British Columbia</b>									
Population	1,925.1	<b>1,928.9</b>	...	<b>3.8</b>	11.4	43.1	<b>0.2</b>	0.6	2.3
Labour force	1,292.7	<b>1,296.8</b>	10.0	<b>4.1</b>	3.8	31.3	<b>0.3</b>	0.3	2.5
Employment	1,247.2	<b>1,246.1</b>	9.7	<b>-1.1</b>	7.4	22.8	<b>-0.1</b>	0.6	1.9
Unemployment	45.6	<b>50.7</b>	5.6	<b>5.1</b>	-3.7	8.5	<b>11.2</b>	-6.8	20.1
Participation rate	67.1	<b>67.2</b>	0.5	<b>0.1</b>	-0.2	0.1	...	...	...
Unemployment rate	3.5	<b>3.9</b>	0.4	<b>0.4</b>	-0.3	0.6	...	...	...
Employment rate	64.8	<b>64.6</b>	0.5	<b>-0.2</b>	0.0	-0.3	...	...	...

1. Average standard error of change in two consecutive months (see "Sampling Errors" in Data Quality for further explanations).

**Note(s):** Related CANSIM table 282-0091

Table 6-1

Labour force characteristics by province and economic region<sup>1</sup>, unadjusted for seasonality, 3 month moving average ending in March 2007 and March 2008

	Population	Labour force			Participation rate	Unemployment rate	Employment rate
		Labour force	Employment	Unemployment			
in thousands							
<b>Canada</b> <sup>2</sup>							
2007	26,416.2	17,595.0	16,438.9	1,156.0	66.6	6.6	62.2
2008	26,776.7	17,914.3	16,788.8	1,125.5	66.9	6.3	62.7
<b>Newfoundland and Labrador</b>							
2007	425.9	242.2	201.8	40.4	56.9	16.7	47.4
2008	425.2	242.4	207.2	35.2	57.0	14.5	48.7
<i>Avalon Peninsula [1010]</i>							
2007	210.1	126.8	110.2	16.6	60.4	13.1	52.5
2008	211.1	131.4	116.7	14.7	62.2	11.2	55.3
<i>South Coast-Burin Peninsula [1020]</i>							
2007	33.2	16.8	12.4	4.4	50.6	26.2	37.3
2008	32.6	16.1	12.8	3.2	49.4	19.9	39.3
<i>West Coast-Northern Peninsula-Labrador [1030]</i>							
2007	87.8	50.3	40.6	9.7	57.3	19.3	46.2
2008	87.7	47.3	39.1	8.2	53.9	17.3	44.6
<i>Notre Dame-Central Bonavista Bay [1040]</i>							
2007	94.7	48.3	38.6	9.7	51.0	20.1	40.8
2008	93.7	47.7	38.6	9.1	50.9	19.1	41.2
<b>Prince Edward Island</b>							
2007	112.8	74.9	65.0	9.9	66.4	13.2	57.6
2008	113.8	75.5	65.8	9.7	66.3	12.8	57.8
<b>Nova Scotia</b>							
2007	763.6	475.0	433.1	42.0	62.2	8.8	56.7
2008	766.6	475.8	435.0	40.8	62.1	8.6	56.7
<i>Cape Breton [1210]</i>							
2007	116.6	62.4	52.3	10.1	53.5	16.2	44.9
2008	115.8	64.1	54.5	9.6	55.4	15.0	47.1
<i>North Shore [1220]</i>							
2007	130.9	76.3	67.4	8.9	58.3	11.7	51.5
2008	131.2	75.4	68.2	7.3	57.5	9.7	52.0
<i>Annapolis Valley [1230]</i>							
2007	100.0	62.9	57.7	5.2	62.9	8.3	57.7
2008	100.7	60.0	53.0	7.0	59.6	11.7	52.6
<i>Southern [1240]</i>							
2007	103.6	59.2	52.0	7.2	57.1	12.2	50.2
2008	103.5	60.8	54.7	6.0	58.7	9.9	52.9
<i>Halifax [1250]</i>							
2007	312.5	214.3	203.7	10.6	68.6	4.9	65.2
2008	315.3	215.6	204.6	11.0	68.4	5.1	64.9
<b>New Brunswick</b>							
2007	611.8	374.7	344.1	30.6	61.2	8.2	56.2
2008	616.1	387.7	352.0	35.7	62.9	9.2	57.1
<i>Campbellton-Miramichi [1310]</i>							
2007	135.8	75.6	65.7	9.9	55.7	13.1	48.4
2008	135.8	77.5	65.4	12.1	57.1	15.6	48.2
<i>Moncton-Richibucto [1320]</i>							
2007	162.3	100.0	91.3	8.8	61.6	8.8	56.3
2008	164.7	107.5	98.8	8.7	65.3	8.1	60.0
<i>Saint John-St. Stephen [1330]</i>							
2007	141.6	86.3	81.6	4.7	60.9	5.4	57.6
2008	142.6	93.6	87.0	6.6	65.6	7.1	61.0

See footnotes at the end of the table.

Table 6-1 – continued

Labour force characteristics by province and economic region<sup>1</sup>, unadjusted for seasonality, 3 month moving average ending in March 2007 and March 2008

	Population	Labour force			Participation rate	Unemployment rate	Employment rate
		Labour force	Employment	Unemployment			
in thousands							
Fredericton-Oromocto [1340]							
2007	104.0	69.8	65.9	3.8	67.1	5.4	63.4
2008	104.8	68.9	64.5	4.4	65.7	6.4	61.5
Edmundston-Woodstock [1350]							
2007	68.0	43.0	39.6	3.4	63.2	7.9	58.2
2008	68.2	40.2	36.2	4.0	58.9	10.0	53.1
<b>Quebec</b>							
2007	6,293.1	4,073.1	3,725.0	348.1	64.7	8.5	59.2
2008	6,349.3	4,126.1	3,803.0	323.2	65.0	7.8	59.9
Gaspésie-Îles-de-la-Madeleine [2410]							
2007	80.9	40.3	31.9	8.4	49.8	20.8	39.4
2008	80.8	37.5	29.8	7.7	46.4	20.5	36.9
Bas-Saint-Laurent [2415]							
2007	167.3	96.3	85.1	11.2	57.6	11.6	50.9
2008	167.4	98.0	88.4	9.5	58.5	9.7	52.8
Capitale-Nationale [2420]							
2007	562.9	356.0	332.6	23.4	63.2	6.6	59.1
2008	566.2	368.5	348.6	19.8	65.1	5.4	61.6
Chaudière-Appalaches [2425]							
2007	326.7	222.5	204.6	17.8	68.1	8.0	62.6
2008	328.9	216.2	202.6	13.7	65.7	6.3	61.6
Estrie [2430]							
2007	247.8	159.6	145.4	14.2	64.4	8.9	58.7
2008	250.2	158.0	148.5	9.5	63.1	6.0	59.4
Centre-du-Québec [2433]							
2007	184.8	131.4	118.8	12.5	71.1	9.5	64.3
2008	186.0	125.1	113.7	11.4	67.3	9.1	61.1
Montérégie [2435]							
2007	1,118.8	743.4	692.9	50.5	66.4	6.8	61.9
2008	1,135.6	738.6	693.0	45.6	65.0	6.2	61.0
Montréal [2440]							
2007	1,591.5	1,014.3	919.6	94.7	63.7	9.3	57.8
2008	1,591.8	1,038.8	940.4	98.4	65.3	9.5	59.1
Laval [2445]							
2007	307.3	206.4	191.8	14.6	67.2	7.1	62.4
2008	312.1	215.2	198.7	16.4	69.0	7.6	63.7
Lanaudière [2450]							
2007	349.1	235.0	220.9	14.1	67.3	6.0	63.3
2008	359.5	243.0	221.6	21.4	67.6	8.8	61.6
Laurentides [2455]							
2007	421.7	278.3	252.0	26.3	66.0	9.5	59.8
2008	431.6	297.6	275.1	22.5	69.0	7.6	63.7
Outaouais [2460]							
2007	288.1	196.8	180.9	15.9	68.3	8.1	62.8
2008	293.1	205.1	193.5	11.6	70.0	5.7	66.0
Abitibi-Témiscamingue [2465]							
2007	115.5	75.2	68.1	7.1	65.1	9.4	59.0
2008	115.6	70.8	65.1	5.7	61.2	8.1	56.3
Mauricie [2470]							
2007	217.1	128.8	114.2	14.7	59.3	11.4	52.6
2008	217.8	125.6	115.2	10.4	57.7	8.3	52.9

See footnotes at the end of the table.

Table 6-1 – continued

Labour force characteristics by province and economic region<sup>1</sup>, unadjusted for seasonality, 3 month moving average ending in March 2007 and March 2008

	Population	Labour force			Participation rate	Unemployment rate	Employment rate
		Labour force	Employment	Unemployment			
in thousands							
Saguenay-Lac-Saint-Jean [2475]							
2007	224.2	136.2	119.5	16.7	60.7	12.3	53.3
2008	223.3	134.5	121.3	13.2	60.2	9.8	54.3
Côte-Nord and Nord-du-Québec [2480, 2490]							
2007	89.5	52.5	46.5	5.9	58.7	11.2	52.0
2008	89.1	53.6	47.4	6.3	60.2	11.8	53.2
<b>Ontario</b>							
2007	10,309.8	6,914.4	6,453.7	460.8	67.1	6.7	62.6
2008	10,449.2	7,026.2	6,572.0	454.3	67.2	6.5	62.9
Ottawa [3510]							
2007	981.9	666.6	627.1	39.5	67.9	5.9	63.9
2008	989.7	695.9	663.6	32.3	70.3	4.6	67.1
Kingston-Pembroke [3515]							
2007	358.5	213.8	201.8	11.9	59.6	5.6	56.3
2008	359.6	223.8	208.5	15.4	62.2	6.9	58.0
Muskoka-Kawarthas [3520]							
2007	307.9	192.3	176.2	16.1	62.5	8.4	57.2
2008	310.5	189.4	171.7	17.8	61.0	9.4	55.3
Toronto [3530]							
2007	4,662.4	3,189.5	2,975.7	213.9	68.4	6.7	63.8
2008	4,756.4	3,255.6	3,044.5	211.2	68.4	6.5	64.0
Kitchener-Waterloo-Barrie [3540]							
2007	960.7	686.4	649.2	37.1	71.4	5.4	67.6
2008	978.3	681.7	644.7	36.9	69.7	5.4	65.9
Hamilton-Niagara Peninsula [3550]							
2007	1,128.9	727.3	675.9	51.4	64.4	7.1	59.9
2008	1,138.6	747.8	694.5	53.3	65.7	7.1	61.0
London [3560]							
2007	508.8	350.7	330.0	20.7	68.9	5.9	64.9
2008	513.6	348.9	326.2	22.7	67.9	6.5	63.5
Windsor-Sarnia [3570]							
2007	523.8	335.9	303.6	32.3	64.1	9.6	58.0
2008	525.6	340.8	311.4	29.3	64.8	8.6	59.2
Stratford-Bruce Peninsula [3580]							
2007	247.2	157.6	150.1	7.5	63.8	4.8	60.7
2008	247.7	157.5	149.8	7.6	63.6	4.8	60.5
Northeast [3590]							
2007	453.2	277.3	256.2	21.0	61.2	7.6	56.5
2008	454.0	274.5	255.6	18.9	60.5	6.9	56.3
Northwest [3595]							
2007	176.5	117.2	107.8	9.3	66.4	7.9	61.1
2008	175.2	110.4	101.5	8.9	63.0	8.1	57.9
<b>Manitoba</b>							
2007	894.9	611.9	582.7	29.1	68.4	4.8	65.1
2008	905.1	620.4	593.0	27.4	68.5	4.4	65.5
Southeast [4610]							
2007	75.7	49.2	46.4	2.8	65.0	5.7	61.3
2008	77.8	50.9	48.3	2.6	65.4	5.1	62.1
South Central [4620]							
2007	42.7	28.4	27.1	1.3	66.5	4.6	63.5
2008	43.6	29.5	28.6	0.9	67.7	3.1	65.6

See footnotes at the end of the table.



Table 6-1 – continued

Labour force characteristics by province and economic region<sup>1</sup>, unadjusted for seasonality, 3 month moving average ending in March 2007 and March 2008

	Population	Labour force			Participation rate	Unemployment rate	Employment rate
		Labour force	Employment	Unemployment			
in thousands							
<b>Southwest [4630]</b>							
2007	81.8	54.7	52.6	2.1	66.9	3.8	64.3
2008	82.5	54.9	52.8	2.1	66.5	3.8	64.0
<b>North Central [4640]</b>							
2007	35.6	22.4	21.7	0.7	62.9	3.1	61.0
2008	35.7	24.3	22.8	1.4	68.1	5.8	63.9
<b>Winnipeg [4650]</b>							
2007	530.6	371.0	352.5	18.5	69.9	5.0	66.4
2008	536.3	375.9	359.5	16.4	70.1	4.4	67.0
<b>Interlake [4660]</b>							
2007	69.1	45.7	44.3	1.4	66.1	3.1	64.1
2008	70.4	45.5	43.2	2.3	64.6	5.1	61.4
<b>Parklands and North [4670, 4680]</b>							
2007	59.4	40.4	38.2	2.2	68.0	5.4	64.3
2008	58.9	39.5	37.9	1.6	67.1	4.1	64.3
<b>Saskatchewan</b>							
2007	747.5	516.0	493.5	22.5	69.0	4.4	66.0
2008	760.9	521.5	498.6	22.9	68.5	4.4	65.5
<b>Regina-Moose Mountain [4710]</b>							
2007	219.7	155.7	149.3	6.4	70.9	4.1	68.0
2008	224.3	158.2	151.9	6.3	70.5	4.0	67.7
<b>Swift Current-Moose Jaw [4720]</b>							
2007	82.4	56.6	54.4	2.2	68.7	3.9	66.0
2008	83.3	53.6	51.1	2.5	64.3	4.7	61.3
<b>Saskatoon-Biggar [4730]</b>							
2007	231.9	166.4	160.2	6.2	71.8	3.7	69.1
2008	237.3	167.7	161.9	5.9	70.7	3.5	68.2
<b>Yorkton-Melville [4740]</b>							
2007	64.1	41.8	39.4	2.4	65.2	5.7	61.5
2008	64.3	41.6	39.8	1.7	64.7	4.1	61.9
<b>Prince Albert and Northern [4750, 4760]</b>							
2007	149.3	95.6	90.4	5.2	64.0	5.4	60.5
2008	151.8	100.5	93.8	6.6	66.2	6.6	61.8
<b>Alberta</b>							
2007	2,709.4	1,984.1	1,913.3	70.8	73.2	3.6	70.6
2008	2,776.0	2,048.7	1,977.3	71.4	73.8	3.5	71.2
<b>Lethbridge-Medicine Hat [4810]</b>							
2007	204.9	140.1	133.5	6.6	68.4	4.7	65.2
2008	208.2	144.9	137.7	7.2	69.6	5.0	66.1
<b>Camrose-Drumheller [4820]</b>							
2007	153.7	110.7	106.8	3.8	72.0	3.4	69.5
2008	155.4	113.9	110.6	3.3	73.3	2.9	71.2
<b>Calgary [4830]</b>							
2007	981.5	744.2	719.0	25.2	75.8	3.4	73.3
2008	1,011.7	756.5	733.6	22.9	74.8	3.0	72.5
<b>Banff-Jasper-Rocky Mountain House [4840]</b>							
2007	67.3	54.7	53.0	1.7	81.3	3.1	78.8
2008	68.2	53.6	52.0	1.6	78.6	3.0	76.2
<b>Red Deer [4850]</b>							
2007	140.1	104.2	101.0	3.2	74.4	3.1	72.1
2008	144.8	105.6	101.9	3.7	72.9	3.5	70.4

See footnotes at the end of the table.

Table 6-1 – continued

Labour force characteristics by province and economic region<sup>1</sup>, unadjusted for seasonality, 3 month moving average ending in March 2007 and March 2008

	Population	Labour force			Participation rate	Unemployment rate	Employment rate
		Labour force	Employment	Unemployment			
in thousands							
Edmonton [4860]							
2007	890.6	626.8	604.2	22.6	70.4	3.6	67.8
2008	910.5	665.2	640.2	25.0	73.1	3.8	70.3
Athabasca-Grande Prairie-Peace River [4870]							
2007	181.4	135.7	130.8	4.9	74.8	3.6	72.1
2008	185.1	135.9	130.2	5.6	73.4	4.1	70.3
Wood Buffalo-Cold Lake [4880]							
2007	89.9	67.7	64.9	2.8	75.3	4.1	72.2
2008	92.2	73.2	71.1	2.2	79.4	3.0	77.1
<b>British Columbia</b>							
2007	3,547.6	2,328.7	2,226.8	101.9	65.6	4.4	62.8
2008	3,614.5	2,389.9	2,284.9	105.0	66.1	4.4	63.2
Vancouver Island and Coast [5910]							
2007	619.0	388.7	367.7	21.0	62.8	5.4	59.4
2008	629.3	401.2	380.4	20.7	63.8	5.2	60.4
Lower Mainland-Southwest [5920]							
2007	2,144.4	1,426.2	1,372.6	53.6	66.5	3.8	64.0
2008	2,191.5	1,467.7	1,412.7	55.0	67.0	3.7	64.5
Thompson-Okanagan [5930]							
2007	420.0	266.2	252.9	13.3	63.4	5.0	60.2
2008	428.0	273.5	257.6	16.0	63.9	5.9	60.2
Kootenay [5940]							
2007	121.9	80.7	75.9	4.8	66.2	5.9	62.3
2008	122.5	73.6	71.2	2.5	60.1	3.4	58.1
Cariboo [5950]							
2007	124.8	85.3	80.9	4.4	68.3	5.2	64.8
2008	125.7	90.2	84.0	6.1	71.8	6.8	66.8
North Coast and Nechako [5960, 5970]							
2007	66.4	44.7	41.1	3.7	67.3	8.3	61.9
2008	65.7	46.7	43.3	3.3	71.1	7.1	65.9
Northeast [5980]							
2007	51.1	37.0	35.8	x	72.4	x	70.1
2008	51.8	37.0	35.6	x	71.4	x	68.7

1. For geographic descriptions of economic regions, refer to the Guide to the Labour Force Survey (catalogue number 71-543-GIE).

2. Estimates for Canada are a sum of the provincial totals and exclude estimates from Yukon Territory, Northwest Territories and Nunavut.

**Note(s):** Related CANSIM table 282-0054.

**Table 6-2**  
**Labour force characteristics by territories, unadjusted for seasonality, 3 month moving average ending in March 2007 and March 2008**

	Population	Labour force			Participation rate	Unemployment rate	Employment rate
		Labour force	Employment	Unemployment			
in thousands							
<b>Yukon Territory</b> <sup>1</sup>							
2007	23.4	16.5	15.8	0.7	70.5	4.2	67.5
2008	23.5	17.5	16.7	0.8	74.5	4.6	71.1
<b>Northwest Territories</b> <sup>2</sup>							
2007	30.8	24.1	23.1	1.0	78.2	4.1	75.0
2008	31.1	23.2	21.8	1.5	74.6	6.5	70.1
<b>Nunavut - 10 largest communities</b> <sup>3</sup>							
2007	14.0	9.7	8.9	0.8	69.5	8.0	63.9
2008	14.3	9.8	9.0	0.8	68.5	8.5	62.7

1. Since 1992, the Labour Force Survey (LFS) has been conducted in the Yukon Territory, using an alternative methodology that accommodates some of the operational difficulties inherent to remote locales. These estimates are not included in the national totals. In 1995, the LFS in the Yukon underwent a sample redesign. One result of the redesign was that the covered population increased from 85% to 92%, which is reflected by the sharp increase in the three month moving averages estimates of January, February and March of 1995 for all the level estimates. Users are therefore warned to be cautious when comparing estimates before January 1995 to estimates for January 1995 and forward.
  2. Since 2001, the Labour force survey has been administered in the Northwest Territories, using an alternative methodology that accommodates some of the operational difficulties inherent to remote locales. These estimates are not included in national totals.
  3. Since 2004, the Labour force survey has been administered in Nunavut, using an alternative methodology that accommodates some of the operational difficulties inherent to remote locales. These estimates are not included in national totals. The 10 largest communities are Iqaluit, Cambridge Bay, Baker Lake, Arviat, Rankin Inlet, Kugluktuk, Pond Inlet, Cape Dorset, Pangnirtung, Igloolik.
- Note(s):** Related CANSIM table 282-0054.

**Table 7**  
**Average usual hours and wages of employees by selected characteristics, Canada, unadjusted for seasonality**

	Employees				Full-time			Part-time		
	Number	Average weekly hours	Average weekly wages	Average hourly wages	Number	Average weekly hours	Average weekly wages	Number	Average weekly hours	Average weekly wages
	thousands		dollars		thousands		dollars	thousands		dollars
<b>March 2008</b>										
15 years and over	14,253.0	35.0	767.70	21.08	11,510.3	39.4	888.89	2,742.7	16.9	259.09
15 to 24 years	2,387.1	26.4	345.86	12.12	1,161.2	38.8	552.50	1,225.9	14.6	150.11
25 years and over	11,865.9	36.8	852.56	22.89	10,349.0	39.4	926.63	1,516.8	18.7	347.17
Men	7,117.9	37.6	888.62	22.99	6,263.1	40.5	978.83	854.8	16.0	227.61
Women	7,135.2	32.5	647.06	19.19	5,247.2	38.0	781.53	1,888.0	17.3	273.34
<b>Union coverage</b>										
Union coverage	4,503.4	35.7	877.86	24.26	3,848.8	38.6	960.05	654.6	18.8	394.68
No union coverage	9,749.6	34.7	716.81	19.62	7,661.5	39.7	853.14	2,088.1	16.3	216.58
<b>Job permanency</b>										
Permanent	12,680.9	36.0	800.76	21.58	10,679.7	39.4	898.97	2,001.2	17.8	276.63
Temporary	1,572.1	27.5	501.03	17.08	830.6	39.2	759.27	741.5	14.3	211.76
<b>Occupation</b>										
Management	1,008.0	39.8	1,278.64	32.17	973.2	40.5	1,306.17	34.8	20.5	508.38
Business, finance and administrative	2,808.9	35.0	718.37	20.11	2,362.0	38.2	798.91	446.9	17.7	292.67
Natural and applied sciences	1,056.7	38.5	1,147.39	29.69	1,017.0	39.3	1,177.30	39.7	18.0	381.72
Health	878.2	33.5	806.67	23.99	674.2	37.7	911.43	204.0	19.5	460.54
Social science, education, government service and religion	1,357.5	33.8	926.06	27.24	1,077.9	38.2	1,051.38	279.6	17.2	442.87
Art, culture, recreation and sport	339.6	30.5	708.59	21.53	237.0	38.5	930.02	102.6	12.0	196.81
Sales and service	3,666.9	29.9	454.00	14.08	2,235.7	38.5	629.50	1,431.2	16.3	179.84
Trades, transport and equipment operators	2,057.0	40.0	851.05	21.04	1,923.0	41.5	891.33	134.0	18.1	273.19
Occupations unique to primary industry	222.0	41.8	822.47	19.19	193.9	45.9	915.52	28.2	14.0	182.79
Occupations unique to processing, manufacturing and utilities	858.2	39.0	720.92	18.27	816.4	40.1	745.69	41.7	18.1	236.25
<b>March 2007</b>										
15 years and over	13,961.4	35.1	735.11	20.14	11,274.6	39.5	850.55	2,686.8	17.1	250.65
15 to 24 years	2,334.1	26.6	333.25	11.58	1,149.4	38.8	526.19	1,184.7	14.8	146.06
25 years and over	11,627.2	36.9	815.78	21.86	10,125.2	39.5	887.37	1,502.1	18.8	333.14
Men	6,937.9	37.8	850.91	21.91	6,113.7	40.7	935.68	824.3	16.2	222.18
Women	7,023.4	32.6	620.71	18.39	5,160.9	38.0	749.71	1,862.5	17.4	263.24
<b>Union coverage</b>										
Union coverage	4,491.8	35.8	837.18	23.11	3,831.2	38.7	916.41	660.6	18.9	377.65
No union coverage	9,469.5	34.8	686.69	18.73	7,443.4	39.9	816.65	2,026.1	16.4	209.24
<b>Job permanency</b>										
Permanent	12,336.9	36.1	767.87	20.62	10,405.9	39.5	860.66	1,930.9	18.1	267.83
Temporary	1,624.5	27.7	486.27	16.48	868.7	39.2	729.48	755.8	14.5	206.75
<b>Occupation</b>										
Management	977.4	39.8	1,250.23	31.46	956.1	40.3	1,269.61	21.3	18.2	379.48
Business, finance and administrative	2,696.2	35.3	692.26	19.15	2,289.3	38.4	767.30	406.9	17.9	270.03
Natural and applied sciences	1,019.0	38.6	1,092.82	28.29	985.9	39.3	1,112.66	33.0	18.1	500.68
Health	870.1	33.4	798.39	23.93	654.8	37.8	904.44	215.3	20.0	475.90
Social science, education, government service and religion	1,292.2	33.6	880.58	25.98	1,012.5	38.2	1,008.06	279.7	16.7	419.15
Art, culture, recreation and sport	301.8	30.0	643.44	20.23	202.6	38.5	859.62	99.2	12.6	202.15
Sales and service	3,687.7	30.3	434.73	13.36	2,256.5	38.8	597.97	1,431.2	16.8	177.37
Trades, transport and equipment operators	1,950.1	40.0	815.91	20.20	1,820.9	41.6	856.91	129.3	17.1	238.39
Occupations unique to primary industry	224.2	41.0	817.79	18.75	190.2	45.7	932.68	34.0	14.4	175.63
Occupations unique to processing, manufacturing and utilities	942.6	39.3	696.62	17.60	905.9	40.2	715.47	36.7	16.9	231.60

**Note(s):** Related CANSIM tables 282-0023, 282-0069, 282-0073

**Table 8**  
**Regional unemployment rates used by the Employment Insurance Program,<sup>1</sup> seasonally adjusted, 3 month moving average**

Region	Effective from April 6, 2008 to May 10, 2008
	Percent
<b>Newfoundland and Labrador</b>	
01. St. John's	8.0
02. Newfoundland and Labrador	15.8
<b>Prince Edward Island</b>	
03. Prince Edward Island	10.2
<b>Nova Scotia</b>	
04. Eastern Nova Scotia	13.5
05. Western Nova Scotia	8.8
06. Halifax	4.8
<b>New Brunswick</b>	
07. Fredericton-Moncton-Saint John	5.8
08. Madawaska-Charlotte <sup>2</sup>	10.0
09. Restigouche-Albert	13.4
<b>Quebec</b>	
10. Gaspésie-Îles-de-la-Madeleine	17.5
11. Québec	4.9
12. Trois-Rivières	8.4
13. South Central Quebec	5.0
14. Sherbrooke	5.9
15. Montérégie	6.4
16. Montréal	7.3
17. Central Quebec	7.8
18. Northwestern Quebec	10.1
19. Bas-Saint-Laurent-Côte-Nord <sup>3</sup>	10.5
20. Gatineau	4.3
21. Saguenay	9.4
<b>Ontario</b>	
22. Ottawa	4.6
23. Eastern Ontario	5.8
24. Kingston	5.8
25. Central Ontario	7.1
26. Oshawa	6.5
27. Toronto	6.5
28. Hamilton	6.2
29. St. Catharines	6.2
30. London	6.4
31. Niagara	9.5
32. Windsor	8.4
33. Kitchener	5.1
34. Huron	7.6
35. South Central Ontario	4.9
36. Sudbury	5.7
37. Thunder Bay	5.3
38. Northern Ontario	10.7
<b>Manitoba</b>	
39. Winnipeg	4.2
40. Southern Manitoba	5.4
41. Northern Manitoba	25.2
<b>Saskatchewan</b>	
42. Regina	4.2
43. Saskatoon	3.4
44. Southern Saskatchewan	5.9
45. Northern Saskatchewan	15.1

See footnotes at the end of the table.

Table 8 – continued

**Regional unemployment rates used by the Employment Insurance Program,<sup>1</sup> seasonally adjusted, 3 month moving average**

Region	Effective from April 6, 2008 to May 10, 2008
	Percent
<b>Alberta</b>	
46. Calgary	3.0
47. Edmonton	3.9
48. Northern Alberta	7.2
49. Southern Alberta	4.8
<b>British Columbia</b>	
50. Southern Interior British Columbia	6.1
51. Abbotsford	5.0
52. Vancouver	3.9
53. Victoria	4.0
54. Southern Coastal British Columbia	5.1
55. Northern British Columbia	8.6
<b>Territories</b>	
56. Yukon Territory <sup>4</sup>	25.0
57. Northwest Territories <sup>4</sup>	25.0
58. Nunavut <sup>4</sup>	25.0

1. The boundaries of these regions are determined by Human Resources and Social Development Canada (HRSDC). For geographic descriptions and maps of employment insurance regions, see the HRSDC website: [http://www.hrsdc.gc.ca/asp/gateway.asp?hr=en/ei/region/economic\\_region\\_information.shtml&hs=eza](http://www.hrsdc.gc.ca/asp/gateway.asp?hr=en/ei/region/economic_region_information.shtml&hs=eza).
2. This unemployment rate has been determined using a transition formula prescribed in the EI Regulations. For further information, see: [http://www.hrsdc.gc.ca/en/cs/comm/news/2000/000913a\\_e.shtml](http://www.hrsdc.gc.ca/en/cs/comm/news/2000/000913a_e.shtml).
3. This unemployment rate has been determined using a transition formula prescribed in the EI Regulations. For further information, see: [http://www.hrsdc.gc.ca/en/cs/comm/news/2000/000913b\\_e.shtml](http://www.hrsdc.gc.ca/en/cs/comm/news/2000/000913b_e.shtml).
4. This rate is provided by Human Resources and Skills Development Canada.

# Data quality

---

## About the Labour Force Survey

The statistics contained in this report are based on information obtained through a sample survey of 53,000 representative households across the country. The Labour Force Survey, started in November 1945, was taken at quarterly intervals until November 1952. It has been carried out monthly since then. The information generated by the survey has expanded considerably over the years with a major redesign of the survey content in 1976 and again in 1997, and provides a rich and detailed picture of the Canadian labour market.

The sample used in the Labour Force Survey has been designed to represent all persons in the population 15 years of age and over residing in the provinces of Canada, with the exception of the following: persons living on Indian reserves, full-time members of the armed forces and people living in institutions (for example, inmates of penal institutions and patients in hospitals or nursing homes who have resided in the institution for more than six months). Monthly estimates of employment, unemployment and persons not in the labour force refer to the specific week covered by the survey each month, normally the week containing the 15th day.

## Definitions and explanations

The **labour force** is composed of those members of the civilian non-institutional population 15 years of age and over who, during the reference week, were employed or unemployed.

Employed persons are those who, during the reference week:

- (a) did any work at all
- (b) had a job but were not at work

A person is considered to be **full-time** if his/her usual hours at the main job are 30 or more hours per week. When the number of hours worked at the main job is usually less than 30 hours per week then he/she is considered to be **part-time**.

**Unemployed** persons are those who, during the reference week:

- (a) were without work, had actively looked for work in the past four weeks (ending with reference week), and were available for work;
- (b) had not actively looked for work in the past four weeks but were on temporary layoff and were available for work;
- (c) had not actively looked for work in the past four weeks but had a new job to start in four weeks or less from the reference week, and were available for work.

Persons in the civilian non-institutional population 15 years of age and over who, during the reference week, were neither employed nor unemployed are classified as **not in the labour force**.

The **unemployment rate** represents the number of unemployed persons expressed as a percentage of the labour force. The unemployment rate for a particular group (age, sex, etc.) is the number unemployed in that group expressed as a percentage of the labour force for that group.

The **participation rate** represents the labour force expressed as a percentage of the population 15 years of age and over. The participation rate for a particular group (age, sex, etc.) is the labour force in that group expressed as a percentage of the population for that group.

The **employment rate (formerly the employment/population ratio)** represents the number of persons employed expressed as a percentage of the population 15 years of age and over. The employment rate for a particular group (age, sex, etc.) is the number employed in that group expressed as a percentage of the population for that group.

The **part-time rate** represents the number of persons employed part-time expressed as a percentage of the employed. The part-time rate for a particular group (age, sex, etc.) is the number employed part-time in that group expressed as a percentage of the employed for that group.

All geographic regions are based on the 2001 Census boundaries.

## Seasonal adjustment

Fluctuations in economic time series are caused by seasonal, cyclical and irregular movements. A seasonally adjusted series is one from which seasonal movements have been eliminated. Seasonal movements are defined as those which are caused by regular annual events such as climate, holidays, vacation periods and cycles related to crops, production and retail sales associated with Christmas and Easter. The seasonally adjusted series contains irregular as well as longer-term cyclical fluctuations.

The seasonally adjusted series are revised each year to take into account current data and to generate new forecast factors for the next twelve months. The data are therefore subject to slight revisions in future issues of this publication.

## Sampling variability of estimates

Estimates in this publication are based on the Labour Force Survey, a monthly survey of approximately 53,000 households across Canada. Because the entire population is not surveyed, the estimates are subject to sampling error. While the published estimate is the best available indicator of the real value, changes in the level of any estimates between two months can be the result of a true change or sampling variability. The sampling error can be estimated by calculating the standard error for the published estimate or statistic. These standard errors have been included in the publication tables, in order to assist users in interpreting the data.

## Interpretation based on standard error

Two thirds of the time (68%), a change greater than the sampling error indicates a real change. The larger the change compared to the standard error, the better the chance that we are observing a real change, as opposed to a change due to sampling variability. At the 95% level, in order to ensure that change is real, the change in the estimate must be greater than twice the sampling error.

Movements in estimates that are smaller than the sampling error are less likely to reflect a real change and more likely to be due to sampling variability. While the above is true for monthly movements, one can have more confidence in a series of consecutive movements in the same direction, even though some of the monthly movements may be smaller than the sampling error.



### Interpretation based on confidence intervals

Confidence intervals provide another way of looking at the variability inherent in estimates of sample surveys. To illustrate how to calculate the confidence interval, let us say that one month the published estimate for total employment rose by 16,000 to reach 16,500,000. The associated standard error for the movement estimate is 27,200. The standard error used to interpret the movement estimate indicates that:

- There are approximately two chances in three (68%) that the real value of the movement between the two months falls within the range -11,200 to +43,200 (16,000 + or – one standard error).
- There are approximately nine chances in ten (90%) that the real value of the movement between the two months falls within the range -27,520 to +59,520 (16,000 + or – 1.6 times the standard error).
- There are approximately nineteen chances in twenty (95%) that the real value of the movement between the two months falls within the range -38,400 to +70,400 (16,000 + or – two standard errors).

For more detailed explanations on sampling variability of estimates, and in particular for information on how to assess the variability of level estimates, consult the Data quality section of the *Guide to the Labour Force Survey*, (71-543-G) on page 27.

### Documentation

For more detailed information about the Labour Force Survey, see the following documents:

- Overview of the Labour Force Survey
- Guide to the Labour Force Survey (71-543-G)
- Data quality statement
- Methodology of the Canadian Labour Force Survey (71-526-X)
- LFS *geographical maps*