

Research Paper

Culture, Tourism and the Centre for Education Statistics

Summary Public School Indicators for the Provinces and Territories, 1999/2000 to 2005/2006

by Patric Blouin

Culture, Tourism and the Centre for Education Statistics Division
Main Building, Room 2001, Ottawa, K1A 0T6

Telephone: 1-800-307-3382 Fax: 1-613-951-9040



Statistics
Canada

Statistique
Canada

Canada

How to obtain more information

For information about this product or the wide range of services and data available from Statistics Canada, visit our website at www.statcan.ca, e-mail us at infostats@statcan.ca, or telephone us, Monday to Friday from 8:30 a.m. to 4:30 p.m., at the following numbers:

Statistics Canada's National Contact Centre

Toll-free telephone (Canada and United States):

Inquiries line	1-800-263-1136
National telecommunications device for the hearing impaired	1-800-363-7629
Fax line	1-877-287-4369

Local or international calls:

Inquiries line	1-613-951-8116
Fax line	1-613-951-0581

Depository Services Program

Inquiries line	1-800-635-7943
Fax line	1-800-565-7757

To access this product

This product, Catalogue no. 81-595-M, is available free in electronic format. To obtain a single issue, visit our website at www.statcan.ca and select "Publications" > "Free Internet publications."

Standards of service to the public

Statistics Canada is committed to serving its clients in a prompt, reliable and courteous manner. To this end, Statistics Canada has developed standards of service that its employees observe. To obtain a copy of these service standards, please contact Statistics Canada toll-free at 1-800-263-1136. The service standards are also published on www.statcan.ca under "About us" > "Providing services to Canadians."

**Culture, Tourism and the Centre for Education Statistics
Research papers**

Summary Public School Indicators for the Provinces and Territories, 1999/2000 to 2005/2006

Patric Blouin
Statistics Canada

Published by authority of the Minister responsible for Statistics Canada

© Minister of Industry, 2008

All rights reserved. The content of this electronic publication may be reproduced, in whole or in part, and by any means, without further permission from Statistics Canada, subject to the following conditions: that it be done solely for the purposes of private study, research, criticism, review or newspaper summary, and/or for non-commercial purposes; and that Statistics Canada be fully acknowledged as follows: Source (or "Adapted from", if appropriate): Statistics Canada, year of publication, name of product, catalogue number, volume and issue numbers, reference period and page(s). Otherwise, no part of this publication may be reproduced, stored in a retrieval system or transmitted in any form, by any means—electronic, mechanical or photocopy—or for any purposes without prior written permission of Licensing Services, Client Services Division, Statistics Canada, Ottawa, Ontario, Canada K1A 0T6.

July 2008

Catalogue no. 81-595-M No. 067

Frequency: Occasional

ISSN 1711-831X

ISBN 978-1-100-10310-5

Ottawa

Cette publication est disponible en français (n° 81-595-M N° 67 au catalogue)

Statistics Canada

Acknowledgements

The Centre for Education Statistics wishes to thank the Departments of Education from each province and territory for their commitment and prompt response to this new survey. It would also like to thank Danielle Baum for her dedication in preparing reports for dissemination.

Note of appreciation

Canada owes the success of its statistical system to a long-standing partnership between Statistics Canada, the citizens of Canada, its businesses, governments and other institutions. Accurate and timely statistical information could not be produced without their continued cooperation and goodwill.

Table of contents

Acknowledgements	4
Enrolments	6
Graduates	8
Graduation rates	10
Educators	11
Student-educator ratio	13
Spending	14
Total expenditures per student	16
Average remuneration of educators	17
Note to readers	19
Endnotes	19
Appendix 1: Tables	20
Appendix 2: Definitions	55
Cumulative index	59

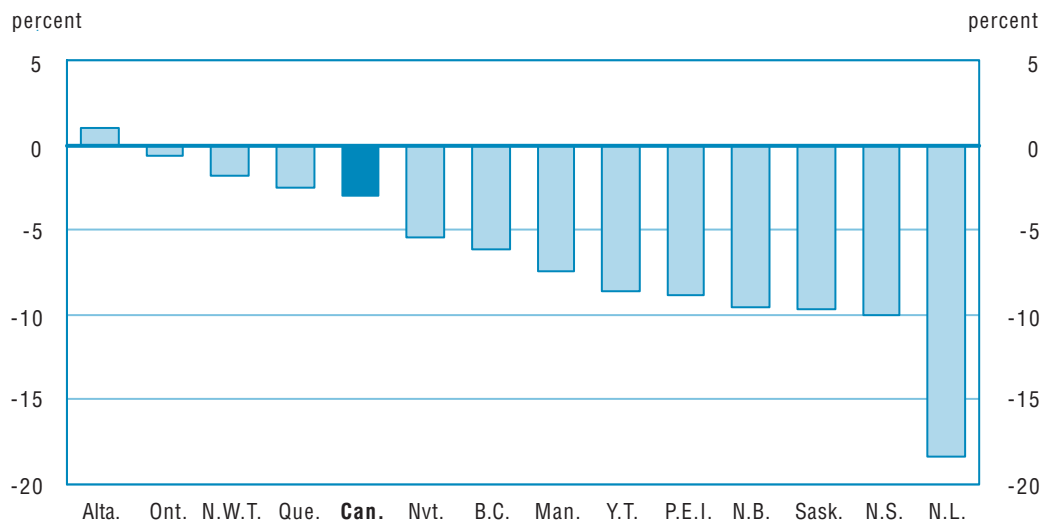
Enrolments

Enrolment in Canadian public elementary and secondary schools has dropped slightly since 1999/2000. Just over 5.2 million children were enrolled in public schools in the academic year 2005/2006, a decrease of 3% from 1999/2000.

Alberta was the only province that bucked this overall trend of declining enrolments, recording an increase between 1999/2000 and 2005/2006. There were a total of 552,000 enrolments in Alberta in 2005/2006, up 1% from 1999/2000.

Chart 1

Percent change in enrolments (headcounts) between 1999/2000 to 2005/2006, Canada, provinces and territories



All other provinces and territories have reported a drop in elementary/secondary school enrolment. The largest decline in student enrolment occurred in Newfoundland and Labrador where the number of students has fallen 18.4% since 1999/2000 (Chart 1 and Table A.1). This is consistent with population estimates data which show that the school-age population in Newfoundland and Labrador declined 17.7% over this time period (Table A.28). This decrease is due in large part to continued migration to other parts of Canada.

The number of students declined in all other provinces and territories, ranging from a drop of 10.1% in Nova Scotia to 0.6% in Ontario. The decline in enrolments across the country can be attributed to an aging population, as the children of the baby boomers are now starting their post-secondary education, contributing to the increased post-secondary enrolment which has been observed in recent years.

There were slightly more males than females enrolled in Canadian public schools in 2005/2006, with 51.5% of enrolments consisting of males. This ratio was generally constant over the 1999/2000 to 2005/2006 time period, across all provinces and territories in Canada, and is also consistent with population estimates of the school-age population.

Graduates

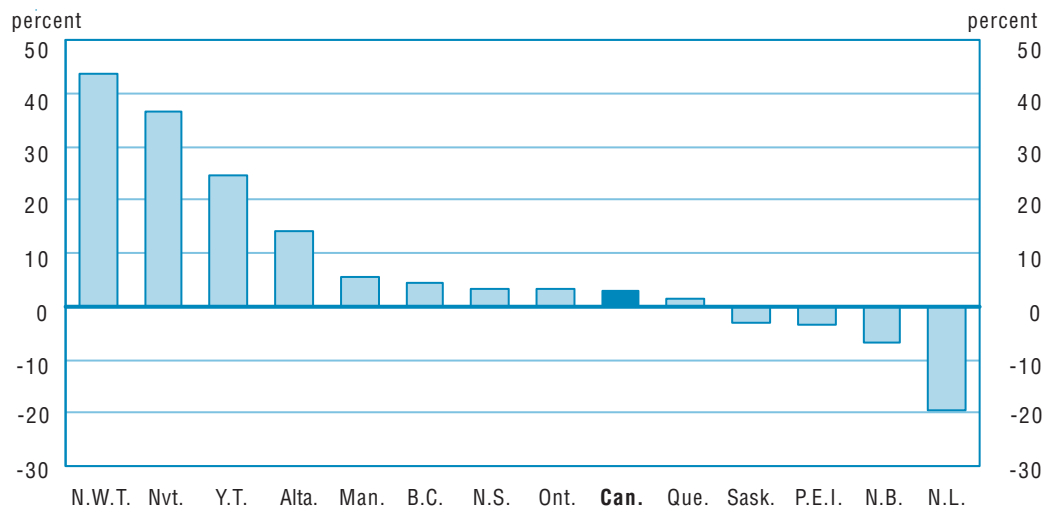
Nearly 314,000 people graduated from public secondary schools in the academic year 2005/2006. The number of graduates is up 3% from 1999/2000. However, variations in the number of graduates were observed over this period in several provinces and territories.

The increase in the number of graduates due to the elimination of Grade 13 (OAC) in 2002/2003 in Ontario appears to have dropped back down to normal levels in 2005/2006. Compared to 2000/2001, the number of graduates shot up 7.9% in Ontario in 2001/2002, one year before the double cohort occurred. This early increase could be a result of students that were on the verge of graduating deciding to take extra credits to graduate early, in order to start their post-secondary education before the anticipated rush brought on by the elimination of Grade 13 the following year. In 2002/2003, the year the double cohort occurred, the number of graduates spiked 23.9% compared to 2000/2001. In 2004/2005, two years after the occurrence of the double cohort, the number of graduates was still above the norm, with the number of graduates up 8.0% over 2000/2001. This may be due to some students deciding to stay longer in school to avoid the rush and to increase their marks to better compete when entering at the post secondary level. In 2005/2006, the number of graduates decreased back down to 2.2% over 2000/2001 levels, two years before the double cohort occurred.

A total of 32,400 people graduated in Alberta in 2005/2006, up 14.2% from 1999/2000. Notable increases in the number of graduates also occurred in the Northwest Territories (43.7%), Nunavut (36.6%) and the Yukon (24.4%).

Chart 2

Percentage change in the number of graduates between 1999/2000 and 2005/2006, Canada, provinces and territories



In contrast, the largest declines in the number of graduates over the 1999/2000 to 2005/2006 period occurred in Newfoundland and Labrador (19.4%) and New Brunswick (6.9%) (Chart 2 and Table A.7). The decline in Newfoundland and Labrador was due in large part to a drop in school enrolment, the result of out-migration to other provinces or territories (Chart 1 and Table A.1). A portion of this decline is likely due to the introduction of provincial examinations in 2000/2001.

Graduation rates

In 2005/2006, nearly three-quarters of youth graduated with a high school diploma, unchanged from 1999/2000.

Graduation rates¹ have remained relatively stable during the six-year period in all provinces and territories, exclusive of Ontario, Yukon and the Northwest Territories.

The highest graduation rates were in the Atlantic provinces and Saskatchewan. The lowest were in Alberta and the three territories (Chart 3 and Table A.8).

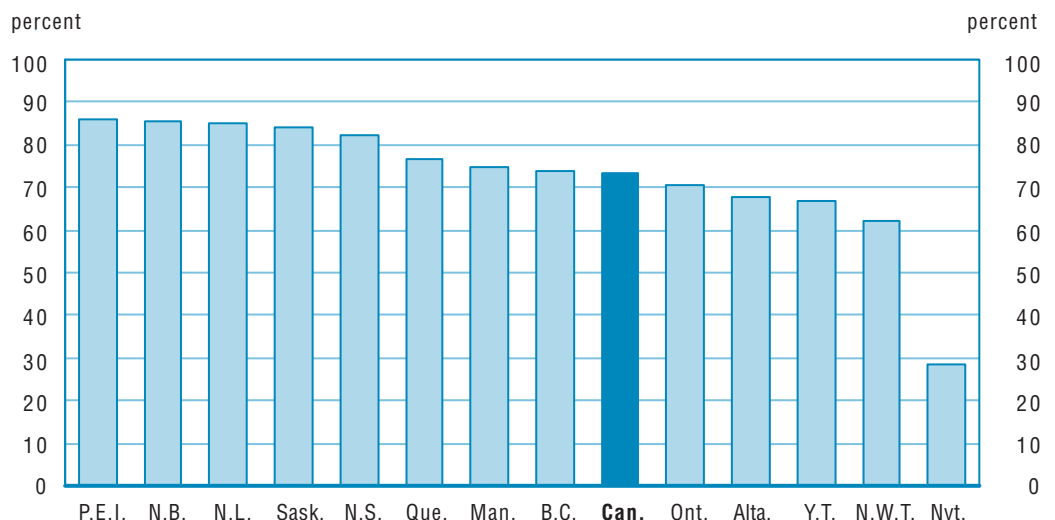
Among the provinces, the lowest graduation rate occurred in Alberta where slightly over two-thirds of youth graduated from high school in 2005/2006.

Between 1999/2000 and 2005/2006, the largest increase in graduation rates occurred in the Northwest Territories, Yukon, Alberta and Quebec. In that period, the graduation rate in the Northwest Territories jumped from 46% to 62%. The only places where a decline took place were in Ontario, Prince Edward Island, New Brunswick and Newfoundland and Labrador.

The graduation rate for Canada was higher for women in 2005/2006. Some 77% of young women received a high school diploma, compared with just 70% for their male counterparts. The proportion of women and men receiving a high school diploma has not changed since 1999/2000. In 2005/2006, graduation rates among young women were higher than average in the Northwest Territories, Nunavut and Quebec.

Chart 3

Secondary graduation rate, 2005/2006, Canada, provinces and territories



Educators

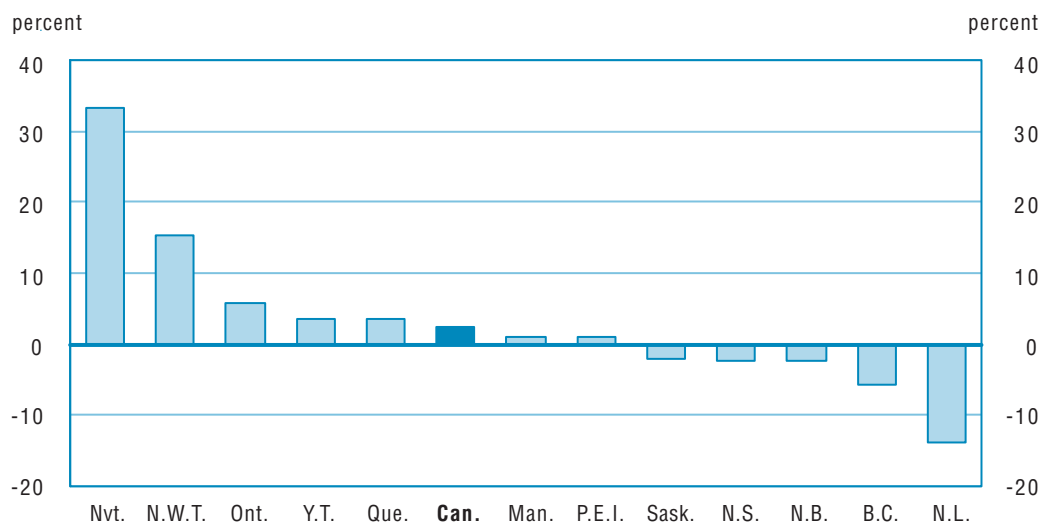
There were slightly over 329,000 educators² in Canadian public schools in 2005/2006, an increase of 2.5% from six years earlier.

Full-time-equivalent educator data is available for all jurisdictions and all years, except for Alberta data prior to 2004/2005. Full-time-equivalent educator data in Alberta represent generally about 11% of all Full-time-equivalent educators in Canada. Compared with 1999/2000, a total of eight jurisdictions had an increase in educators since 1999/2000 versus five that had a decrease. This figure fluctuated widely during this six year period (Table A.10).

Between 1999/2000 and 2005/2006, the number of educators based on full-time equivalents varied by less than 6% in all jurisdictions, except three – The Northwest Territories, Nunavut and Newfoundland and Labrador (Chart 4 and Table A.10). The number of educators increased by 33.1% in Nunavut (since 1999/2000), by 15.4% in Northwest Territories and fell by 13.9% in Newfoundland and Labrador.

Chart 4

Percentage change in the number of educators (full-time equivalent) between 1999/2000 and 2005/2006, Canada, provinces and territories, excluding Alberta



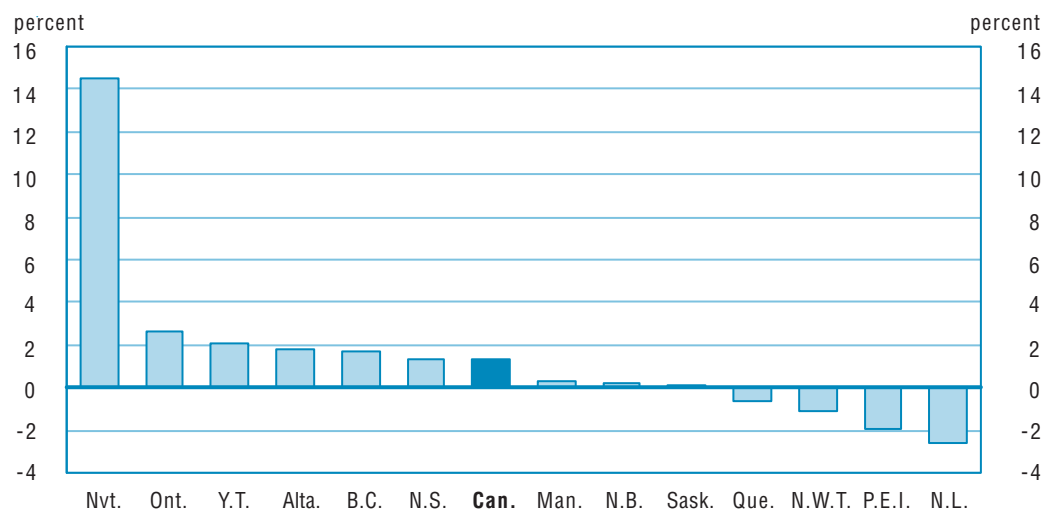
Newfoundland and Labrador is the only jurisdiction where the number of educators has not increased in any year since 1999/2000. In New Brunswick, the number of educators has been increasing since 2001/2002. The numbers of educators in Manitoba have been increasing since 2002/2003 (Table A.10).

Between 2004/2005 and 2005/2006, the number of educators, based on full-time equivalents, varied by 1% or less in six jurisdictions. A slightly more significant variation was observed in seven jurisdictions; Newfoundland and Labrador, Prince Edward Island, British Columbia, Alberta, Yukon, Ontario and Nunavut.

The number of educators decreased by 2.6% in Newfoundland and Labrador, 2% in Prince Edward Island, increased by 1.7% in British Columbia, 1.8% in Alberta, 2.1% in the Yukon, 2.6% in Ontario and 14.5% in Nunavut (Chart 5, Table A.10).

The educator occupational group, based on headcounts, was female-dominated in Canadian public schools in 2005/2006, with 71% of educators being women. The proportion of women in this occupational group has increased steadily over the 1999/2000 to 2005/2006 period. In 1999/2000, the proportion of educators was 67% female. This upward trend in the proportion of female educators was also observed across all provinces.

Chart 5
Percentage change in the number of educators (full-time equivalent) between 2004/2005 and 2005/2006, Canada, provinces and territories



Student-educator ratio

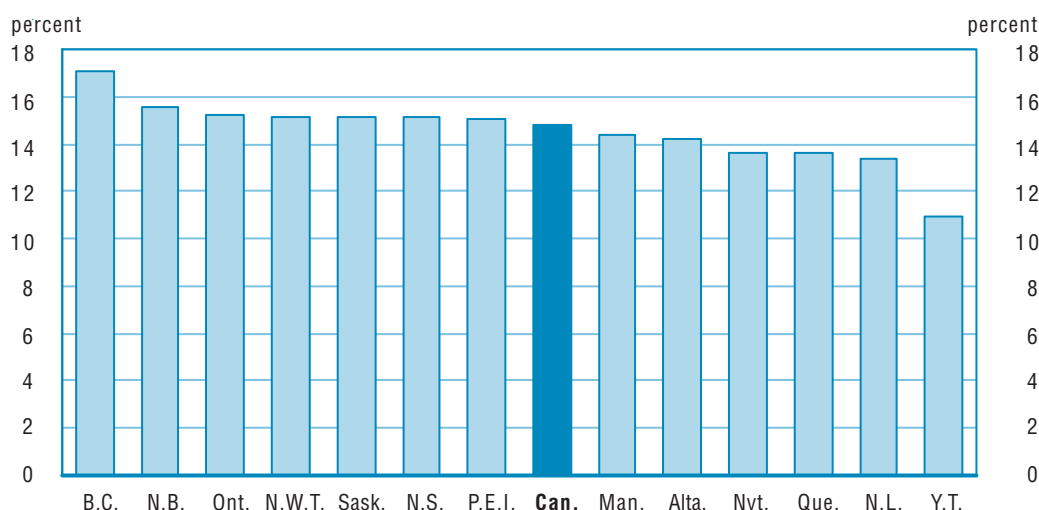
The Student-Educator ratio data for Alberta were not available for this release for the years prior to 2004/2005. Between 1999/2000 and 2005/2006, the number of educators increased more than enrolments – or decreased less – in every jurisdiction.

The national student-educator ratio has declined each year over the last six, decreasing 6.0% since 1999/2000 (Table A.11).

The student-educator ratio declined in all jurisdictions (Table A.11). A decline in the student-educator ratio means fewer students per educator.

Chart 6

Student-educator ratio, Canada, provinces and territories, 2005/2006



The student-educator ratio must not be confused with class size. The former is much smaller because it accounts for the personnel outside the class (principals, counsellors or specialists) and teachers' time outside the classroom (for preparation and marking).

At the national level, in 2005/2006, there were 14.8 students for each educator.

This ratio was the highest in British Columbia (17 students) and New Brunswick (15.5 students).

The ratio was the lowest in the Yukon (11 students) and Newfoundland and Labrador (13.4) (Chart 6 and Table A.11).

Spending

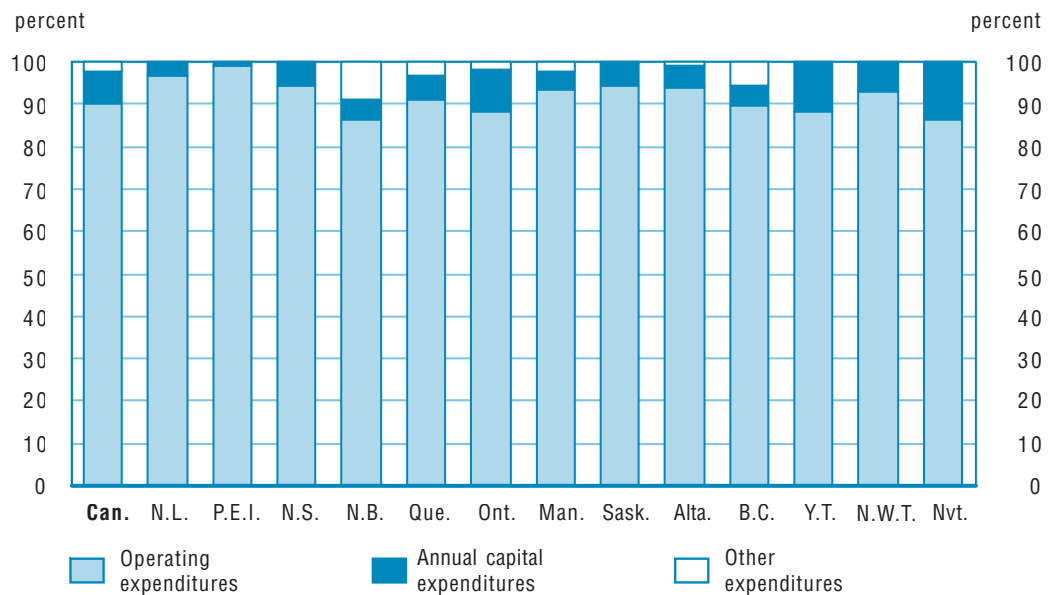
Total spending increased at a faster rate than inflation, as measured by the Consumer Price Index.

The total expenditures of public elementary and secondary schools in Canada rose by 27.6% in the past seven years, from \$37.2 billion in 1999/2000 to \$47.4 billion in 2005/2006 (Table A.16). In comparison, inflation went up 15.2% during the same time frame (Table A.33).

Nationwide in 2005/2006, operational expenses represented 90.3% of total expenditures, compared to 7.2% for annual capital expenditures. The other expenditures are mainly from interest on debt services (Chart 7 and Tables A.14, A.15 and A.16).

Chart 7

Breakdown by type of expenditures, Canada, provinces and territories, 2005/2006



Note: Operating expenditures include salaries, wages and allowances, fringe benefits, teachers' pension plans and other operating expenditures. However, differences in the type of teachers' pension systems may affect the comparability between jurisdictions. In general, other expenditures include interest on debt services.

Operational expenses

In 1999/2000, operational expenses in the nation were \$33.2 billion (Table A.14). Six years later, they reached \$42.8 billion, a 29% increase, compared to an inflation rate of 15.2% for the same period. It should be noted that approximately half of operational expenses are directly linked to educators' salary expenses (Tables A.13 and A.14).

From 1999/2000 to 2005/2006, the operational expenses of all jurisdictions except for Newfoundland and Labrador, Nova Scotia, New Brunswick and Nunavut grew in each year.

Alberta had the highest increase in operational expenses between 1999/2000 and 2005/2006 at nearly 52%, compared to Newfoundland and Labrador, whose increase was a little over 15%.

Annual capital expenditures

Nationwide in 1999/2000, annual capital expenditures amounted to \$2.8 billion, compared to \$3.4 billion in 2005/2006, an increase of nearly 23% (Table A.15). In 2005/2006, annual capital expenditures reached a high. It should be noted that annual capital expenditures can vary upward or downward, depending on the types of investments made, as demonstrated by Nova Scotia (380%) in 2000/2001 and Saskatchewan (380%) in 2002/2003.

However, annual capital expenditures represented between 7% and 8% of total expenditures nationally, over the seven fiscal years examined by the study.

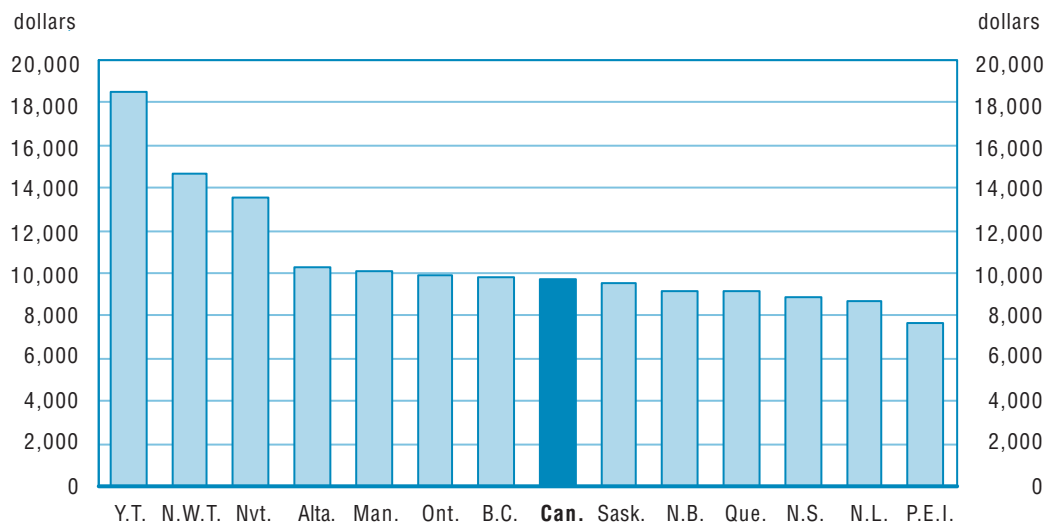
Total expenditures per student

Nationally in 1999/2000, total expenditures per student in public elementary and secondary schools amounted to \$7,357, in current dollars. Six years later, they reached \$9,704, representing an increase of 31.9% (Table A.17.1). In comparison, inflation went up 15.2% during the same time frame.

In 2005/2006, spending per student was about \$18,500 in the Yukon and more than \$13,500 in the Northwest Territories and Nunavut (in current dollars). In the provinces, spending per student amounted to a maximum of more than \$10,000 in Alberta and Manitoba, and a minimum of about \$7,650 in Prince Edward Island (Chart 8 and Table A.17.1).

Chart 8

Total expenditures per student, 2005/2006 (in current dollars), Canada, provinces and territories



Note: Comparisons between jurisdictions should be made with care. Factors that influence total spending per student on education, such as the size of the school-age population, need to be taken into account.

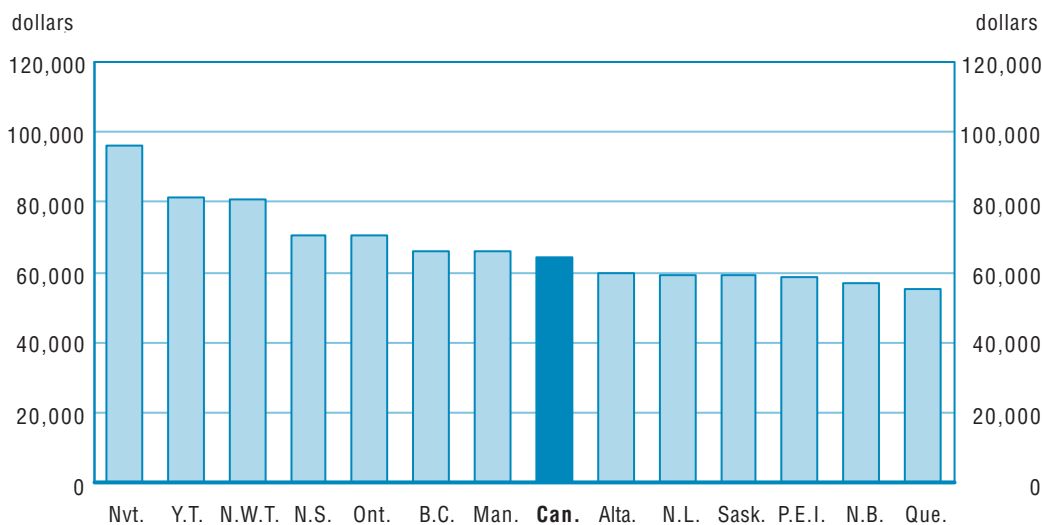
From 1999/2000 to 2005/2006, in the majority of the provinces and territories, the total expenditures per student (in current dollars) rose more than twice as quickly as inflation. Quebec, Prince Edward Island and Nova Scotia had the smallest differences between the total expenditures per student and inflation, at only 9%, 11% and 11%, respectively (Tables A.17.1 and A.33).

Average remuneration of educators

Average remuneration of educators data for Alberta were not available for this release for the years prior to 2004/2005. Between 1999/2000 and 2005/2006, average remuneration of educators (in current dollars) rose in all provinces and territories in Canada, except in Newfoundland and Labrador (-4.4%), Prince Edward Island (-5.9%), Ontario (-1.1%) and British Columbia (-2.1%) in 1999/2000, New Brunswick (-0.8%) and in the Yukon (-1.7%) in 2000/2001, the Yukon (-1.4%) and Nunavut (-8.7%) in 2004/2005, Nova Scotia (-5.1%) and in Nunavut (-9.8%) in 2005/2006 (Table A.12).

In 2005/2006, Alberta had the smallest gap between the average remuneration per full-time educators and full-year, full-time workers. The average remuneration for Alberta educators was \$59,800, compared to \$54,700 for full-year, full-time workers, a difference of only \$5,100. Manitoba was the jurisdiction with the largest gap between the average remuneration per full-time educator (\$65,800) and full-year, full-time workers (\$42,500). In all the other provinces, the average remuneration of educators exceeded the income of full-year, full-time workers by more than \$11,400 (Chart 9 and Tables A.12 and A.31).

Chart 9
Average remuneration per educator (in current dollars), Canada, provinces and territories, 2005/2006



Note: Due to differences in methodology, comparisons between jurisdictions should be made with care.

In 2005/2006, in Ontario, educators earned around \$70,500 on average, (in current dollars) and they were responsible for a little over 15 students. In contrast, in Quebec, educators earned around \$55,000 and were responsible for under 14 students (Chart 9 and Tables A.11 and A.12).

In 2005/2006, educators in the three Territories earned the highest average remuneration, with Nunavut topping out at slightly over \$96,000. Educators in Nunavut were responsible for slightly less than 14 students (Chart 9 and Tables A.11 and A.12).

Note to readers

The data in this report were provided by provincial and territorial departments of education in accordance with definitions detailed in Appendix 2.

The data are for regular programs (for youth), adult programs and vocational programs (for youth and adults) offered by public schools in Canada.

Public schools in Canada generally represent about 93% of all students in Canada.

Reference tables are available starting at table 27 (Table A.27 to Table A.33).

Endnotes

1. The number of graduates is as of the end of a school year while the population estimates are as of July 1 of the corresponding school year. Late graduates are included in the calculations while graduates from private schools, are not. For this reason, this methodology underestimates the “final” graduation rate and should not be used to infer dropout rate.
2. The term “educator” refers not only to teachers, but to all employees in the public school system who are required to have teaching certification as a condition of their employment. This definition generally includes principals, vice-principals and professional non-teaching staff such as education consultants, guidance counsellors and religious and pastoral counsellors.

Appendix 1: Tables

Table A.1

Headcount enrolments¹ in public elementary and secondary schools, Canada, provinces and territories, 1999/2000 to 2005/2006

	Canada	N.L.	P.E.I.	N.S. ²	N.B.	Que. ³	Ont. ⁶	Man. ⁵	Sask. ⁴	Alta.	B.C. ⁴	Y.T.	N.W.T.	Nvt.
1999/2000	5,372,733	94,118	24,089	158,205	127,003	1,247,757	2,131,626	197,067	192,885	546,402	628,269	5,975	9,753	9,584
Percentage change	0.3	-3.5	-0.2	-1.1	-1.6	-0.2	0.9	2.3	-1.0	0.6	-0.2	-2.1
2000/2001	5,356,161	90,287	23,153	155,873	124,942	1,237,981	2,143,599	189,912	190,711	549,633	625,076	5,764	9,672	9,558
Percentage change	-0.3	-4.1	-3.9	-1.5	-1.6	-0.8	0.6	-3.6	-1.1	0.6	-0.5	-3.5	-0.8	-0.3
2001/2002	5,365,150	87,019	22,843	153,450	122,792	1,244,689	2,163,108	188,907	186,518	548,122	622,839	5,608	9,707	9,548
Percentage change	0.2	-3.6	-1.3	-1.6	-1.7	0.5	0.9	-0.5	-2.2	-0.3	-0.4	-2.7	0.4	-0.1
2002/2003	5,347,402	84,397	22,615	150,599	120,600	1,245,339	2,164,940	186,892	182,687	551,375	613,237	5,610	9,747	9,364
Percentage change	-0.3	-3.0	-1.0	-1.9	-1.8	0.1	0.1	-1.1	-2.1	0.6	-1.5	0.0	0.4	-1.9
2003/2004	5,286,949	81,545	22,239	148,514	118,869	1,241,143	2,129,742	186,287	178,932	549,533	605,545	5,520	9,718	9,362
Percentage change	-1.1	-3.4	-1.7	-1.4	-1.4	-0.3	-1.6	-0.3	-2.1	-0.3	-1.3	-1.6	-0.3	0.0
2004/2005	5,253,442	79,508	22,393	145,396	117,145	1,233,100	2,123,904	184,352	176,069	550,983	596,172	5,459	9,607	9,354
Percentage change	-0.6	-2.5	0.7	-2.1	-1.5	-0.6	-0.3	-1.0	-1.6	0.3	-1.5	-1.1	-1.1	-0.1
2005/2006	5,212,533	76,827	21,948	142,304	114,820	1,216,293	2,118,544	182,371	174,206	551,740	589,388	5,459	9,571	9,062
Percentage change	-0.8	-3.4	-2.0	-2.1	-2.0	-1.4	-0.3	-1.1	-1.1	0.1	-1.1	0.0	-0.4	-3.1

... not applicable

1. See appendix for definitions. Certain jurisdictions include all students whether they are funded or not while others include only funded students.
2. Includes enrolments in vocational programs for youth and adults.
3. Includes enrolments in adult programs and vocational programs for youth and adults.
4. Includes enrolments in adult programs.
5. Until 2000/2001, includes enrolments in adult programs and professional training under the authority of the school boards or districts.
6. Data exclude publicly funded hospital and provincial schools, care, treatment and correctional facilities.

Chart A.1.1
Percentage change between 2004/2005 and 2005/2006

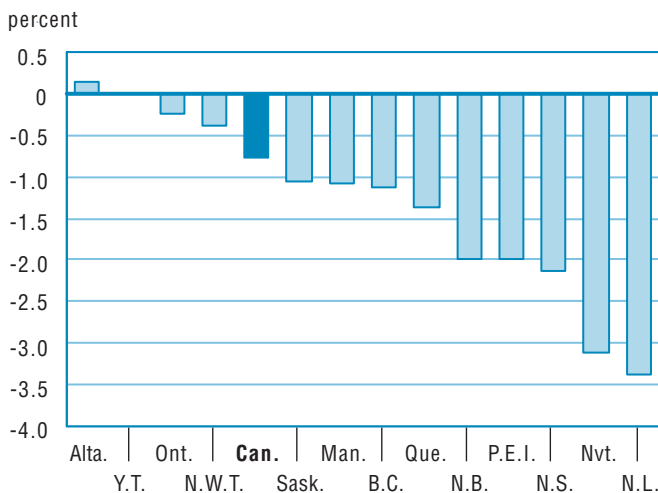


Chart A.1.2
Percentage change between 1999/2000 and 2005/2006

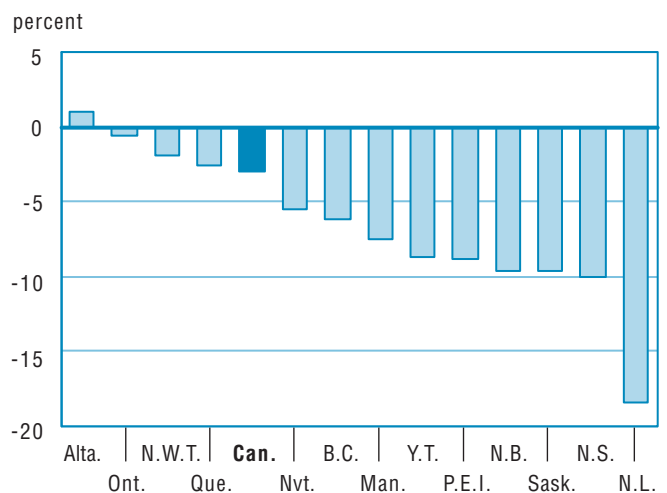


Table A.2

Full-time equivalent enrolments¹ in public elementary and secondary schools, Canada, provinces and territories, 1999/2000 to 2005/2006

	Canada	N.L.	P.E.I.	N.S. ²	N.B.	Que. ³	Ont. ⁶	Man. ⁵	Sask. ⁴	Alta.	B.C. ⁴	Y.T.	N.W.T.	Nvt.
1999/2000	5,050,441	91,203	24,089	158,205	127,003	1,100,453	2,011,430	190,185	186,355	528,099	609,078	5,766	9,381	9,196
Percentage change	0.0	-3.6	-0.2	-0.8	-1.6	-1.4	0.8	2.4	-0.9	0.6	-0.2	-1.8
2000/2001	5,039,961	87,550	23,153	155,873	124,942	1,093,155	2,026,039	183,141	184,316	531,165	606,590	5,577	9,291	9,171
Percentage change	-0.2	-4.0	-3.9	-1.5	-1.6	-0.7	0.7	-3.7	-1.1	0.6	-0.4	-3.3	-1.0	-0.3
2001/2002	5,040,245	84,284	22,843	153,450	122,792	1,088,869	2,046,333	182,448	180,485	529,758	605,057	5,397	9,337	9,194
Percentage change	0.0	-3.7	-1.3	-1.6	-1.7	-0.4	1.0	-0.4	-2.1	-0.3	-0.3	-3.2	0.5	0.3
2002/2003	5,019,045	81,767	22,615	150,599	120,600	1,083,082	2,049,535	180,723	176,700	533,127	596,443	5,412	9,422	9,021
Percentage change	-0.4	-3.0	-1.0	-1.9	-1.8	-0.5	0.2	-0.9	-2.1	0.6	-1.4	0.3	0.9	-1.9
2003/2004	4,956,837	79,001	22,239	148,514	118,869	1,075,140	2,015,627	180,132	173,231	530,901	589,469	5,327	9,346	9,041
Percentage change	-1.2	-3.4	-1.7	-1.4	-1.4	-0.7	-1.7	-0.3	-2.0	-0.4	-1.2	-1.6	-0.8	0.2
2004/2005	4,924,094	76,928	22,393	145,396	117,145	1,065,214	2,012,093	178,256	170,514	532,063	580,596	5,272	9,220	9,005
Percentage change	-0.7	-2.6	0.7	-2.1	-1.5	-0.9	-0.2	-1.0	-1.6	0.2	-1.5	-1.0	-1.3	-0.4
2005/2006	4,887,232	74,349	21,948	142,304	114,820	1,053,074	2,006,732	176,350	167,388	532,876	574,434	5,148	9,090	8,720
Percentage change	-0.7	-3.4	-2.0	-2.1	-2.0	-1.1	-0.3	-1.1	-1.8	0.2	-1.1	-2.4	-1.4	-3.2

... not applicable

1. See appendix for definitions. Certain jurisdictions include all students whether they are funded or not while others include only funded students.
2. Includes enrolments in vocational programs for youth and adults.
3. Includes enrolments in adult programs and vocational programs for youth and adults.
4. Includes enrolments in adult programs.
5. Until 2000/2001, includes enrolments in adult programs and professional training under the authority of the school boards or districts.
6. Data exclude publicly funded hospital and provincial schools, care, treatment and correctional facilities.

Chart A.2.1
Percentage change between 2004/2005 and 2005/2006

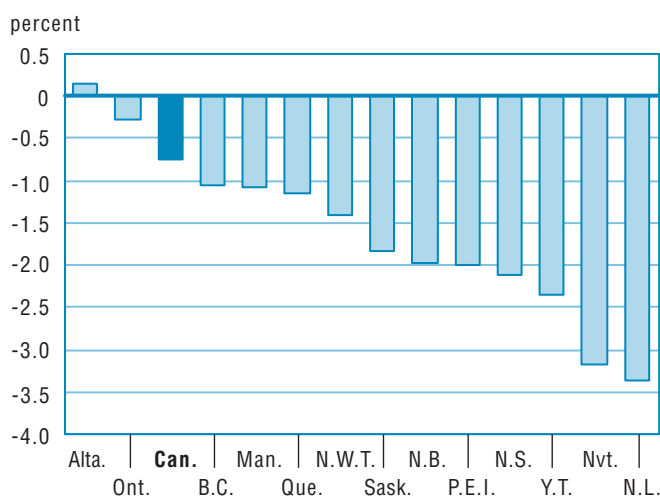


Chart A.2.2
Percentage change between 1999/2000 and 2005/2006

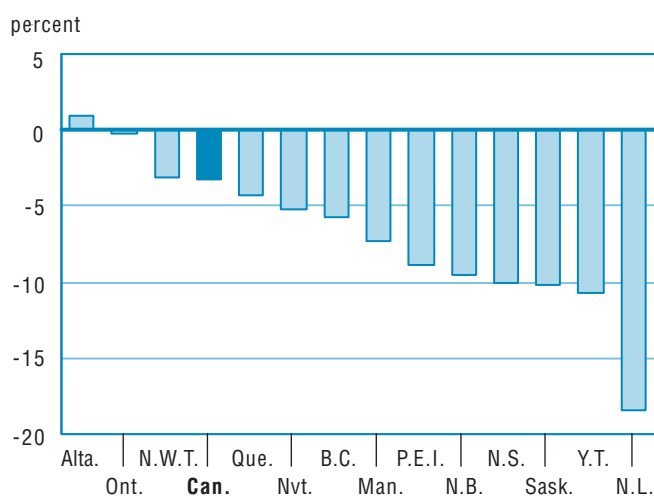


Table A.3

Enrolments in public elementary and secondary schools as a percentage of total population, Canada, provinces and territories, 1999/2000 to 2005/2006

	Canada	N.L.	P.E.I.	N.S.	N.B.	Que.	Ont.	Man.	Sask.	Alta.	B.C.	Y.T.	N.W.T.	Nvt.
1999/2000	17.7	17.6	17.7	16.9	16.9	17.0	18.5	17.2	19.0	18.5	15.7	19.4	24.0	35.7
Percentage change	-0.5	-2.3	-0.6	-1.3	-1.7	-0.6	-0.3	1.9	-0.7	-1.3	-0.9	-0.9
2000/2001	17.5	17.1	17.0	16.7	16.6	16.8	18.3	16.6	18.9	18.3	15.5	18.9	23.9	34.8
Percentage change	-1.2	-3.1	-4.0	-1.5	-1.6	-1.2	-1.0	-4.0	-0.4	-1.1	-1.2	-2.4	-0.5	-2.7
2001/2002	17.3	16.7	16.7	16.5	16.4	16.8	18.2	16.4	18.6	17.9	15.3	18.6	23.8	34.0
Percentage change	-0.9	-2.5	-1.5	-1.4	-1.6	0.0	-0.9	-0.9	-1.5	-2.0	-1.3	-1.8	-0.4	-2.3
2002/2003	17.0	16.2	16.5	16.1	16.1	16.7	17.9	16.2	18.3	17.7	14.9	18.6	23.5	32.6
Percentage change	-1.4	-2.5	-1.2	-2.1	-1.8	-0.6	-1.6	-1.4	-1.6	-1.3	-2.4	0.0	-1.2	-4.0
2003/2004	16.7	15.7	16.2	15.9	15.8	16.6	17.4	16.0	18.0	17.4	14.6	18.1	23.0	32.1
Percentage change	-2.1	-3.2	-1.9	-1.6	-1.6	-1.0	-2.9	-0.9	-1.9	-1.8	-2.2	-3.0	-2.0	-1.5
2004/2005	16.4	15.4	16.2	15.5	15.6	16.3	17.1	15.7	17.7	17.2	14.2	17.7	22.4	31.6
Percentage change	-1.6	-2.3	0.3	-2.3	-1.6	-1.4	-1.5	-1.8	-1.6	-1.2	-2.7	-2.1	-2.5	-1.7
2005/2006	16.1	14.9	15.9	15.2	15.3	16.0	16.9	15.5	17.6	16.8	13.8	17.6	22.4	30.2
Percentage change	-1.8	-2.8	-2.2	-1.9	-1.9	-2.0	-1.4	-1.4	-0.6	-2.1	-2.4	-0.6	-0.1	-4.4

... not applicable

Note: Table A.1 divided by Table A.27.

Chart A.3.1
Enrolments as a percentage of total population, 2005-2006

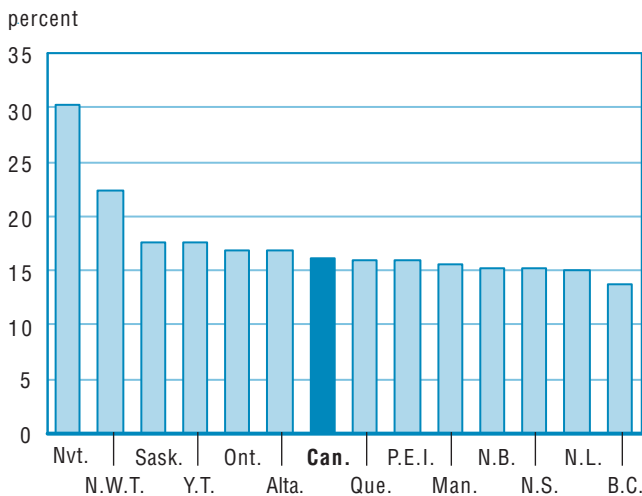


Chart A.3.2
Percentage change between 1999/2000 and 2005/2006

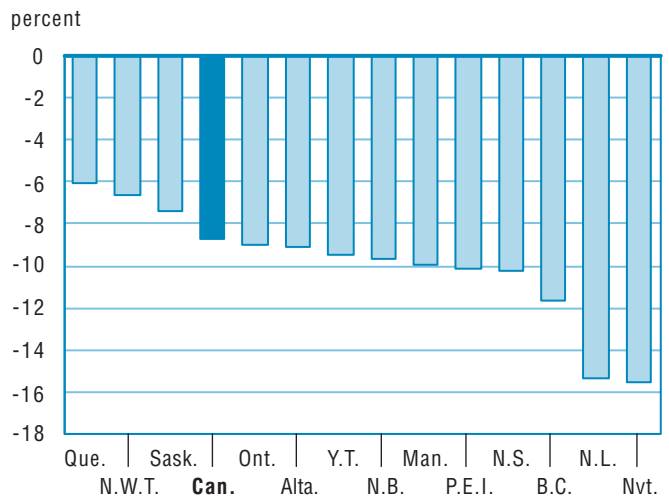


Table A.4

Regular second language program enrolments in public elementary and secondary schools, Canada, provinces and territories, 1999/2000 to 2005/2006¹

	Canada	N.L.	P.E.I.	N.S.	N.B.	Que.	Ont.	Man.	Sask.	Alta.	B.C.	Y.T.	N.W.T.	Nvt.
1999/2000	2,283,882	49,192	10,559	76,786	50,418	657,368	917,371	72,152	84,631	118,776	243,734	.	2,895	.
Percentage change	1.4	-2.2	-2.7	-2.4	-1.4	14.3	-5.7	-1.5	-3.0	17.4	-1.9	.	-5.8	...
2000/2001	2,260,060	46,881	10,607	74,179	49,415	656,275	907,914	72,038	80,052	118,263	241,625	.	2,811	.
Percentage change	-1.0	-4.7	0.5	-3.4	-2.0	-0.2	-1.0	-0.2	-5.4	-0.4	-0.9	.	-2.9	.
2001/2002	2,211,562	45,124	10,385	71,734	47,494	651,838	882,596	71,737	75,056	114,376	238,426	.	2,796	.
Percentage change	-2.1	-3.7	-2.1	-3.3	-3.9	-0.7	-2.8	-0.4	-6.2	-3.3	-1.3	.	-0.5	.
2002/2003	2,180,613	43,445	10,546	69,358	46,367	651,632	871,280	70,853	71,943	109,593	232,814	.	2,782	.
Percentage change	-1.4	-3.7	1.6	-3.3	-2.4	0.0	-1.3	-1.2	-4.1	-4.2	-2.4	.	-0.5	.
2003/2004	2,153,686	43,352	10,020	67,269	46,672	650,170	861,251	70,852	66,545	110,459	224,676	.	2,420	.
Percentage change	-1.2	-0.2	-5.0	-3.0	0.7	-0.2	-1.2	0.0	-7.5	0.8	-3.5	.	-13.0	.
2004/2005	2,127,809	41,917	9,943	64,001	45,021	647,778	852,723	69,647	59,814	111,497	223,065	.	2,403	.
Percentage change	-1.2	-3.3	-0.8	-4.9	-3.5	-0.4	-1.0	-1.7	-10.1	0.9	-0.7	.	-0.7	.
2005/2006	2,111,231	40,451	9,460	61,001	44,686	641,950	841,033	69,693	66,516	118,646	215,827	.	1,968	.
Percentage change	-0.8	-3.5	-4.9	-4.7	-0.7	-0.9	-1.4	0.1	11.2	6.4	-3.2	.	-18.1	.

. not available for any reference period

... not applicable

1. All jurisdictions, 1999/2000 to 2005/2006. Data is available for English second language programs for Québec. Data is available for French second language programs for the other provinces.

Chart A.4.1
Percentage change between 2004/2005 and 2005/2006

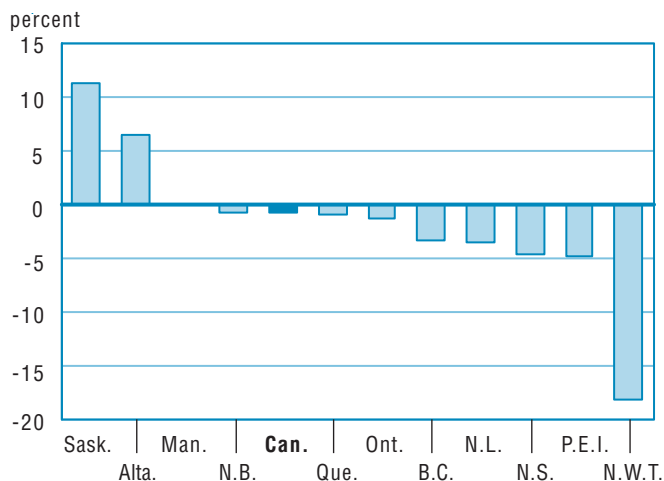


Chart A.4.2
Percentage change between 1999/2000 and 2005/2006

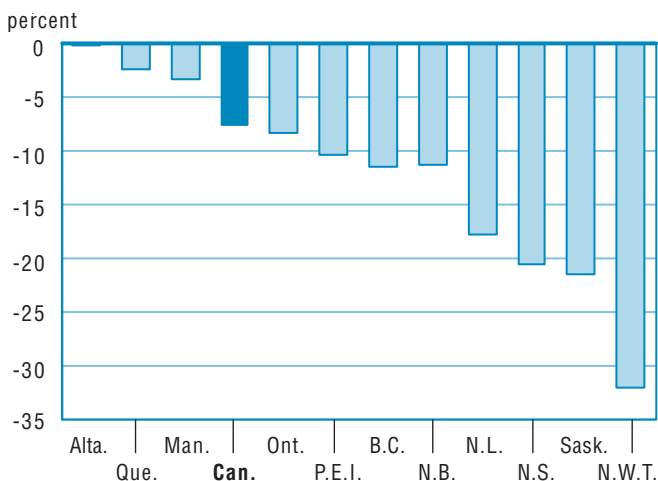


Table A.5
Second language immersion program enrolments in public elementary and secondary schools, Canada, provinces and territories, 1999/2000 to 2005/2006¹

	Canada	N.L.	P.E.I.	N.S.	N.B.	Que.	Ont. ²	Man.	Sask.	Alta.	B.C.	Y.T.	N.W.T.	Nvt.
1999/2000	277,170	4,783	3,800	10,503	22,109	...	152,480	17,361	9,075	26,108	29,979	366	606	...
Percentage change	-2.0	1.4	1.0	7.9	2.6	...	-4.6	-1.5	-4.0	1.1	1.9	-8.0	8.8	...
2000/2001	277,842	4,956	3,781	11,463	22,664	...	151,044	17,195	8,842	26,491	30,422	361	623	...
Percentage change	0.2	3.6	-0.5	9.1	2.5	...	-0.9	-1.0	-2.6	1.5	1.5	-1.4	2.8	...
2001/2002	278,690	5,395	3,792	12,308	22,831	...	148,977	17,159	8,667	27,475	31,135	343	608	...
Percentage change	0.3	8.9	0.3	7.4	0.7	...	-1.4	-0.2	-2.0	3.7	2.3	-5.0	-2.4	...
2002/2003	280,218	5,690	3,972	13,154	22,639	...	147,792	17,174	9,172	27,653	31,989	371	612	...
Percentage change	0.5	5.5	4.7	6.9	-0.8	...	-0.8	0.1	5.8	0.6	2.7	8.2	0.7	...
2003/2004	282,839	6,068	4,223	13,753	22,145	...	148,512	17,249	8,288	28,197	33,407	385	612	...
Percentage change	0.9	6.6	6.3	4.6	-2.2	...	0.5	0.4	-9.6	2.0	4.4	3.8	0.0	...
2004/2005	288,970	6,477	3,923	14,181	21,868	...	150,477	17,429	8,650	29,414	35,519	410	622	...
Percentage change	2.2	6.7	-7.1	3.1	-1.3	...	1.3	1.0	4.4	4.3	6.3	6.5	1.6	...
2005/2006	295,199	6,823	4,164	14,341	21,526	...	152,723	17,604	8,472	30,452	38,004	444	646	...
Percentage change	2.2	5.3	6.1	1.1	-1.6	...	1.5	1.0	-2.1	3.5	7.0	8.3	3.9	...

... not applicable

1. All jurisdictions, 1999/2000 to 2005/2006. Data is available for French immersion.

2. Ontario, 1999/2000 to 2005/2006. Includes French Immersion and Extended French programs.

Chart A.5.1
Percentage change between 2004/2005 and 2005/2006

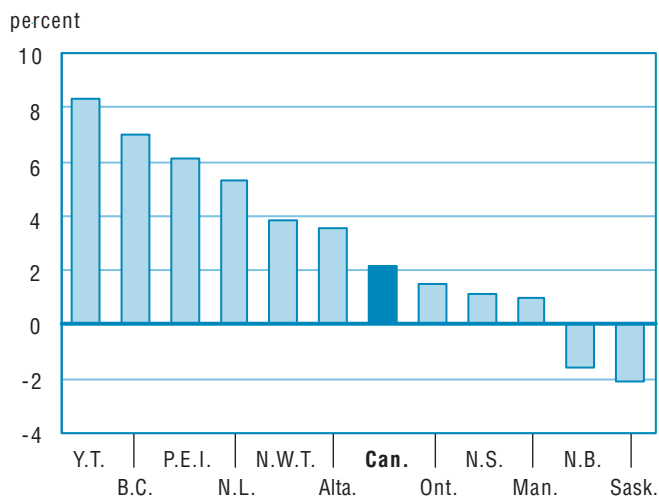


Chart A.5.2
Percentage change between 1999/2000 and 2005/2006

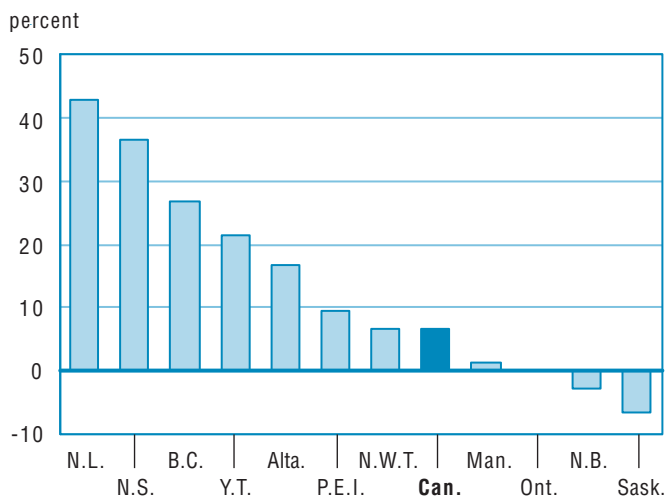


Table A.6
Minority language program enrolments in public elementary and secondary schools, Canada, provinces and territories, 1999/2000 to 2005/2006¹

	Canada	N.L.	P.E.I.	N.S.	N.B.	Que.	Ont.	Man.	Sask.	Alta.	B.C.	Y.T.	N.W.T.	Nvt.
1999/2000	255,510	258	609	4,169	39,510	103,975	93,850	5,382	976	3,704	2,870	108	99	..
Percentage change	0.1	-3.7	-1.0	-1.9	-3.3	1.4	0.0	0.8	3.8	3.2	1.3	2.9	3.1	...
2000/2001	255,383	256	603	4,109	38,387	105,591	93,335	5,367	1,004	3,745	2,771	113	102	..
Percentage change	0.0	-0.8	-1.0	-1.4	-2.8	1.6	-0.5	-0.3	2.9	1.1	-3.4	4.6	3.0	..
2001/2002	254,541	248	670	4,029	37,103	106,902	92,838	5,309	1,025	3,280	2,873	131	133	..
Percentage change	-0.3	-3.1	11.1	-1.9	-3.3	1.2	-0.5	-1.1	2.1	-12.4	3.7	15.9	30.4	..
2002/2003	254,275	230	690	4,059	36,025	107,932	92,351	5,274	1,026	3,474	2,930	115	129	40
Percentage change	-0.1	-7.3	3.0	0.7	-2.9	1.0	-0.5	-0.7	0.1	5.9	2.0	-12.2	-3.0	..
2003/2004	251,808	210	724	4,153	35,070	108,160	90,138	5,242	1,060	3,619	3,147	119	128	38
Percentage change	-1.0	-8.7	4.9	2.3	-2.7	0.2	-2.4	-0.6	3.3	4.2	7.4	3.5	-0.8	-5.0
2004/2005	250,781	193	673	4,121	34,326	107,742	89,839	5,207	1,054	3,871	3,455	116	137	47
Percentage change	-0.4	-8.1	-7.0	-0.8	-2.1	-0.4	-0.3	-0.7	-0.6	7.0	9.8	-2.5	7.0	23.7
2005/2006	249,423	203	697	4,153	33,460	106,394	90,075	5,250	1,124	4,138	3,632	110	143	44
Percentage change	-0.5	5.2	3.6	0.8	-2.5	-1.3	0.3	0.8	6.6	6.9	5.1	-5.2	4.4	-6.4

.. not available for a specific reference period

... not applicable

1. All jurisdictions, 1999/2000 to 2005/2006. Data is available for English minority language programs—for Québec. Data is available for French minority language programs for the other provinces.

Chart A.6.1
Percentage change between 2004/2005 and 2005/2006

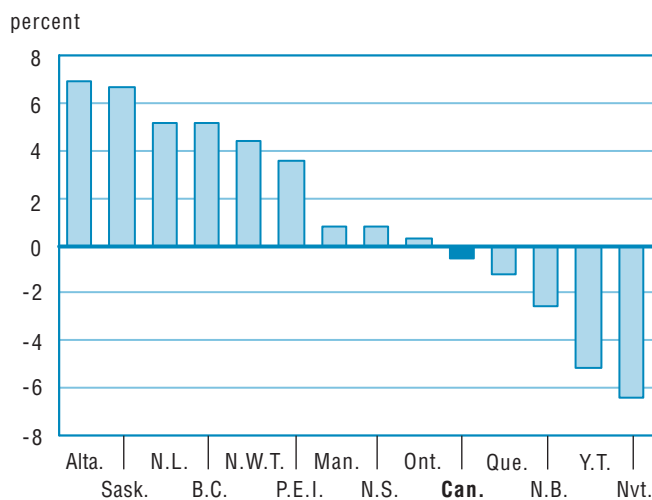


Chart A.6.2
Percentage change between 1999/2000 and 2005/2006

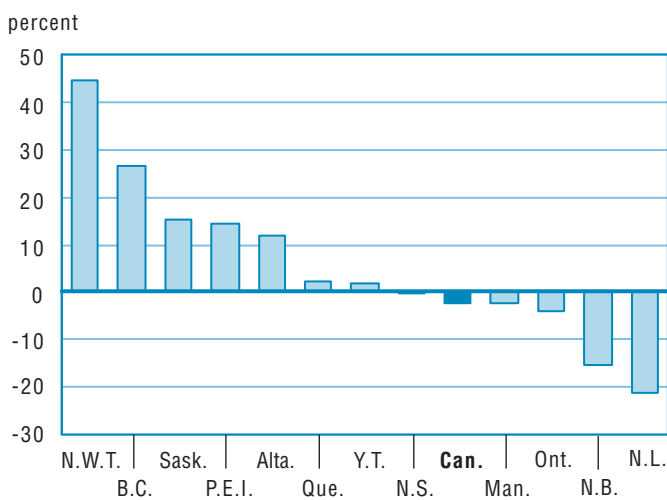


Table A.7
Number of graduates, Canada, provinces and territories, 1999/2000 to 2005/2006

	Canada	N.L.	P.E.I.	N.S.	N.B.	Que.	Ont. ¹	Man. ³	Sask.	Alta.	B.C. ²	Y.T.	N.W.T.	Nvt.
1999/2000	304,472	6,810	1,798	9,914	8,912	69,000	114,404	11,807	13,105	28,321	39,716	258	293	134
Percentage change	..	-1.2	10.4	-2.3	1.5	-0.2	2.3	6.6	5.2	-11.0	-7.0	4.7
2000/2001	305,175	6,109	1,717	10,064	8,552	67,710	115,599	11,723	12,957	29,303	40,703	283	327	128
Percentage change	0.2	-10.3	-4.5	1.5	-4.0	-1.9	1.0	-0.7	-1.1	3.5	2.5	9.7	11.6	-4.5
2001/2002	314,462	6,079	1,667	10,124	8,574	66,276	124,783	11,685	12,739	29,877	41,967	280	275	136
Percentage change	3.0	-0.5	-2.9	0.6	0.3	-2.1	7.9	-0.3	-1.7	2.0	3.1	-1.1	-15.9	6.3
2002/2003	333,733	5,947	1,753	10,387	8,291	64,988	143,187	12,282	12,367	31,155	42,635	282	320	139
Percentage change	6.1	-2.2	5.2	2.6	-3.3	-1.9	14.7	5.1	-2.9	4.3	1.6	0.7	16.4	2.2
2003/2004	315,301	5,637	1,734	10,445	7,996	67,896	123,238	12,598	11,957	32,159	40,816	332	363	130
Percentage change	-5.5	-5.2	-1.1	0.6	-3.6	4.5	-13.9	2.6	-3.3	3.2	-4.3	17.7	13.4	-6.5
2004/2005	318,595	5,505	1,695	10,360	8,200	68,538	124,902	12,422	12,625	31,782	41,673	336	384	173
Percentage change	1.0	-2.3	-2.2	-0.8	2.6	0.9	1.4	-1.4	5.6	-1.2	2.1	1.2	5.8	33.1
2005/2006	313,580	5,262	1,736	10,241	8,299	69,984	118,099	12,446	12,698	32,356	41,534	321	421	183
Percentage change	-1.6	-4.4	2.4	-1.1	1.2	2.1	-5.4	0.2	0.6	1.8	-0.3	-4.5	9.6	5.8

.. not available for a specific reference period

1. Data exclude publicly funded hospital and provincial schools, care, treatment and correctional facilities.
2. The number of graduates in the final year is understated by 2 - 3% because some schools have not submitted course information before the data collection cutoff for this report.
3. Historical revisions have been made to this table to exclude students that graduated from Adult Learning Centres registered under the *Adult Learning Centres Act*, effective July 2001.

Chart A.7.1
Percentage change between 2004/2005 and 2005/2006

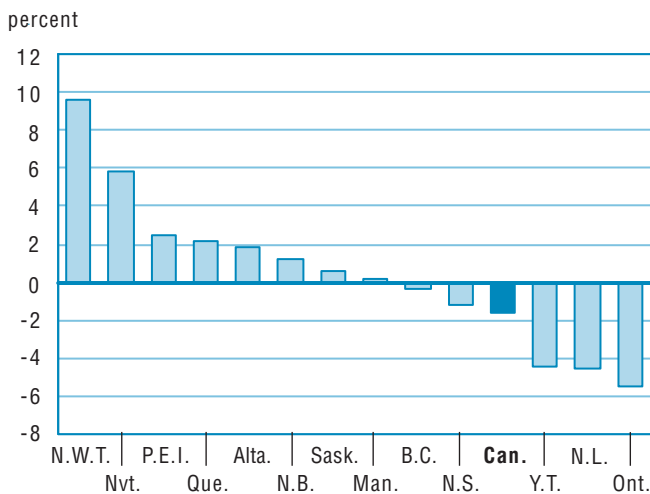


Chart A.7.2
Percentage change between 1999/2000 and 2005/2006

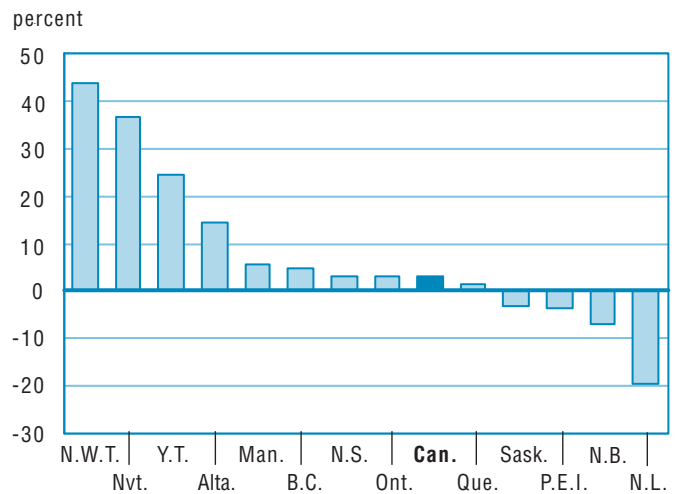


Table A.8
Graduation rate¹, Canada, provinces and territories, 1999/2000 to 2005/2006

	Canada	N.L.	P.E.I.	N.S.	N.B.	Que.	Ont. ²	Man. ⁴	Sask.	Alta.	B.C.	Y.T.	N.W.T.	Nvt.
1999/2000	73.0	82.8	88.1	79.8	86.0	72.5	73.5	72.8	82.8	63.6	72.3	53.8	45.6	27.5
Percentage change	-9.5	0.5	9.2	-1.9	1.8	-0.7	1.7	-5.8	2.5	-16.2	-7.9	-0.4
2000/2001	72.0	74.7	85.4	79.8	82.3	72.2	72.0	71.3	80.6	64.3	71.7	58.5	50.0	25.0
Percentage change	-1.4	-9.7	-3.0	0.1	-4.3	-0.3	-2.1	-2.1	-2.6	1.1	-0.8	8.9	9.5	-9.2
2001/2002	73.3	76.9	81.0	79.1	82.8	71.1	75.8	69.8	79.3	64.6	73.1	55.7	41.6	25.2
Percentage change	1.8	2.9	-5.2	-0.9	0.7	-1.6	5.4	-2.1	-1.7	0.4	2.0	-4.8	-16.8	1.0
2002/2003	77.6	78.6	81.9	80.9	81.0	70.5	85.9	72.7	77.4	66.5	75.0	55.3	48.4	24.3
Percentage change	5.9	2.2	1.1	2.3	-2.2	-0.8	13.2	4.2	-2.4	3.0	2.5	-0.8	16.5	-3.4
2003/2004	74.0	78.8	81.6	82.1	80.1	74.8	74.2	74.5	76.3	68.7	73.0	67.9	53.1	22.5
Percentage change	-4.6	0.2	-0.3	1.5	-1.1	6.2	-13.6	2.5	-1.4	3.3	-2.6	22.8	9.5	-7.7
2004/2005	75.6	80.9	83.2	82.9	84.2	76.5	75.6	74.7	83.7	68.1	75.2	68.1	55.1	28.6
Percentage change	2.1	2.7	2.0	1.0	5.2	2.3	1.9	0.2	9.7	-0.9	3.0	0.3	3.9	27.2
2005/2006	72.1	79.4	86.0	82.3	85.7	76.4	70.4	74.6	83.9	67.9	73.9 ³	66.8	62.2	28.4
Percentage change	-4.6	-1.8	3.4	-0.8	1.7	-0.2	-6.9	-0.2	0.2	-0.3	-1.7	-1.9	12.9	-0.7

.. not available for a specific reference period

1. The number of graduates is as of the end of a school year while the population estimates are as of July 1 of the corresponding school year. Late graduates are included in the calculations while graduates from private schools, are not. For this reason, this methodology underestimates the "final" graduation rate and should not be used to infer dropout rate.
2. Data exclude publicly funded hospital and provincial schools, care, treatment and correctional facilities.
3. The graduation rate in the final year is slightly understated because some schools have not submitted course information before the data collection cutoff for this report.
4. Historical revisions have been made to this table to exclude students that graduated from Adult Learning Centres registered under the *Adult Learning Centres Act*, effective July 2001.

Chart A.8.1
Secondary graduation rate, 2005/2006

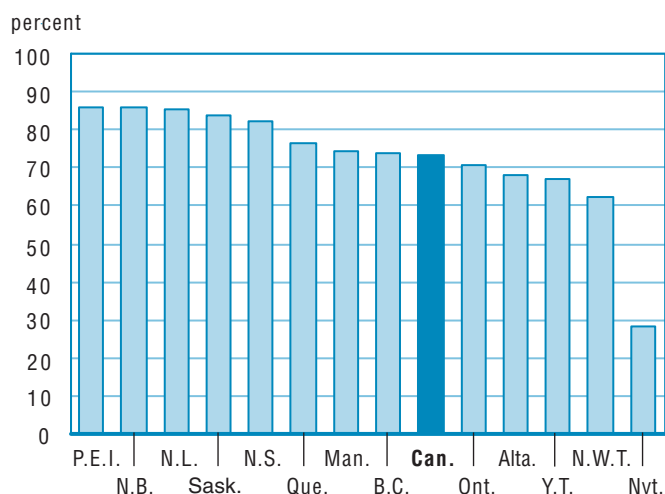


Chart A.8.2
Percentage change between 1999/2000 and 2005/2006

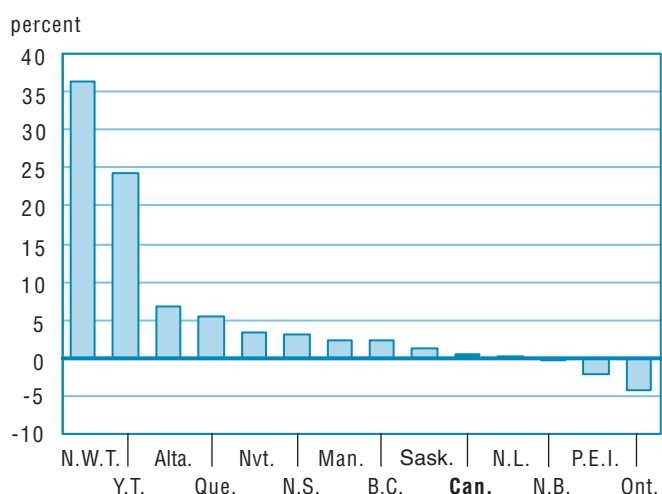


Table A.9

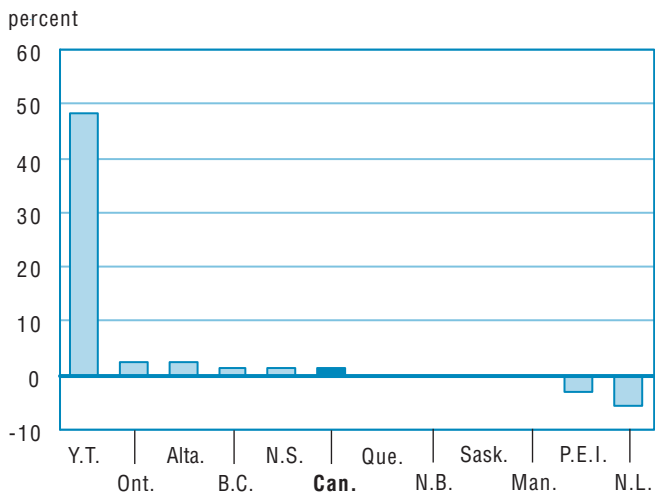
Educators headcount¹ in public elementary and secondary schools, Canada, provinces and territories, 1999/2000 to 2005/2006

	Canada	N.L.	P.E.I.	N.S.	N.B.	Que.	Ont. ²	Man.	Sask. ⁴	Alta. ⁴	B.C.	Y.T.	N.W.T.	Nvt.
1999/2000	344,565	8,272	1,645	9,926	7,725	88,825	129,197 ^e	13,114	11,983	33,851 ³	39,506	518	.	.
Percentage change	4.7	..	10.5	0.1	0.0	1.1	...	1.5	1.0	..	1.3	0.6	.	..
2000/2001	349,032	8,200	1,546	9,752	7,616	90,040	131,974 ^e	13,092	11,685	34,386 ³	40,228	510	.	.
Percentage change	1.3	-0.9	-6.0	-1.8	-1.4	1.4	2.1	-0.2	-2.5	1.6	1.8	-1.5	.	..
2001/2002	350,165	8,106	1,531	9,634	7,396	91,359	131,556 ^e	13,070	11,916	35,423 ³	39,681	490	.	.
Percentage change	0.3	-1.1	-1.0	-1.2	-2.9	1.5	-0.3	-0.2	2.0	3.0	-1.4	-3.9	.	..
2002/2003	350,451	8,035	1,539	9,592	7,417	93,083	132,450	13,025	11,845	35,284 ³	37,150	491	.	537
Percentage change	0.1	-0.9	0.5	-0.4	0.3	1.9	0.7	-0.3	-0.6	-0.4	-6.4	0.2	.	..
2003/2004	350,933	7,822	1,552	9,613	7,473	93,360	131,671	13,117	11,835	37,435 ³	36,562	490	.	.
Percentage change	0.1	-2.7	0.8	0.2	0.8	0.3	-0.6	0.7	-0.1	6.1	-1.6	-0.2	.	..
2004/2005	355,169	7,652	1,551	9,581	7,509	93,201	134,637	13,130	11,687	39,392	36,331	498	.	.
Percentage change	1.2	-2.2	-0.1	-0.3	0.5	-0.2	2.3	0.1	-1.3	5.2	-0.6	1.6	.	..
2005/2006	359,813	7,230	1,505	9,708	7,510	93,260	137,889	13,106	11,683	40,298	36,886	738	.	.
Percentage change	1.3	-5.5	-3.0	1.3	0.0	0.1	2.4	-0.2	0.0	2.3	1.5	48.2	.	..

. not available for any reference period
 .. not available for a specific reference period
 ... not applicable
^e estimate

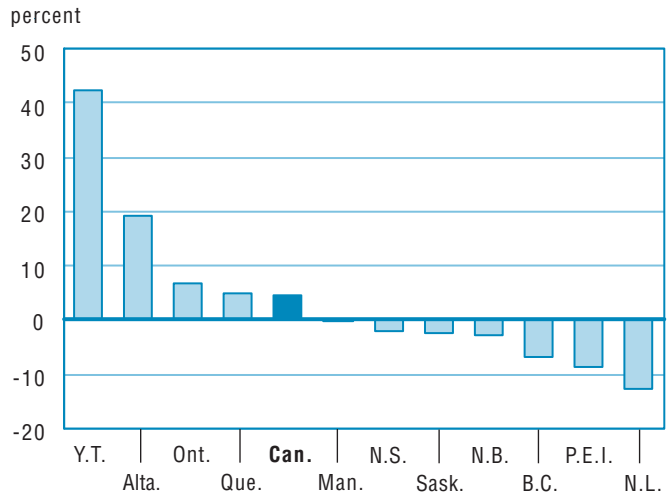
1. See appendix for definitions.
2. Data exclude publicly funded hospital and provincial schools, care, treatment and correctional facilities.
3. Alberta data prior to 2004/2005 not comparable to more recent data due to change in methodology.
4. All educators in Lloydminster are included in Saskatchewan's counts and none of them are captured in the counts for Alberta.

Chart A.9.1
Percentage change between 2004/2005 and 2005/2006



Note: Can. excludes N.W.T and Nvt.

Chart A.9.2
Percentage change between 1999/2000 and 2005/2006



Note: Can. excludes N.W.T and Nvt.

Table A.10

Full-time equivalent educators¹ in public elementary and secondary schools, Canada, provinces and territories, 1999/2000 to 2005/2006

	Canada	N.L.	P.E.I.	N.S.	N.B.	Que.	Ont. ²	Man.	Sask. ⁴	Alta. ⁴	B.C.	Y.T.	N.W.T.	Nvt.
1999/2000	315,554	6,451	1,444	9,611	7,571	74,415	124,712 ^e	12,147	11,263	30,797 ³	35,687	453	519	479
Percentage change	3.1	-0.6	0.0	-0.1	0.0	0.0	...	0.9	1.0	..	0.6	0.1
2000/2001	316,123	6,374	1,457	9,444	7,468	74,708	126,763 ^e	12,224	10,971	29,106 ³	36,113	463	553	477
Percentage change	0.2	-1.2	0.9	-1.7	-1.4	0.4	1.6	0.6	-2.6	-5.5	1.2	2.3	6.5	-0.6
2001/2002	316,396	6,355	1,467	9,304	7,262	74,925	126,283 ^e	12,147	11,244	29,967 ³	35,930	452	577	479 ^e
Percentage change	0.1	-0.3	0.7	-1.5	-2.8	0.3	-0.4	-0.6	2.5	3.0	-0.5	-2.4	4.4	0.5
2002/2003	315,635	6,155	1,479	9,276	7,285	76,025	126,888	12,129	11,162	29,828 ³	33,901	446	578	481
Percentage change	-0.2	-3.1	0.8	-0.3	0.3	1.5	0.5	-0.1	-0.7	-0.5	-5.6	-1.3	0.1	0.5
2003/2004	313,932	5,953	1,485	9,306	7,330	76,077	125,967	12,169	11,153	29,620 ³	33,345	444	609	473
Percentage change	-0.5	-3.3	0.4	0.3	0.6	0.1	-0.7	0.3	-0.1	-0.7	-1.6	-0.4	5.4	-1.7
2004/2005	325,080	5,702	1,486	9,268	7,371	77,598	128,712	12,245	11,017	36,911	33,146	460	606	557
Percentage change	3.6	-4.2	0.1	-0.4	0.6	2.0	2.2	0.6	-1.2	..	-0.6	3.6	-0.5	17.8
2005/2006	329,315	5,556	1,457	9,394	7,385	77,129	132,106	12,278	11,031	37,570	33,701	470	599	638
Percentage change	1.3	-2.6	-2.0	1.4	0.2	-0.6	2.6	0.3	0.1	1.8	1.7	2.1	-1.1	14.5

.. not available for a specific reference period

... not applicable

^e estimate

1. See appendix for definitions.

2. Data exclude publicly funded hospital and provincial schools, care, treatment and correctional facilities.

3. Alberta data prior to 2004/2005 not comparable to more recent data due to change in methodology.

4. All educators in Lloydminster are included in Saskatchewan's counts and none of them are captured in the counts for Alberta.

Chart A.10.1
Percentage change between 2004/2005 and 2005/2006

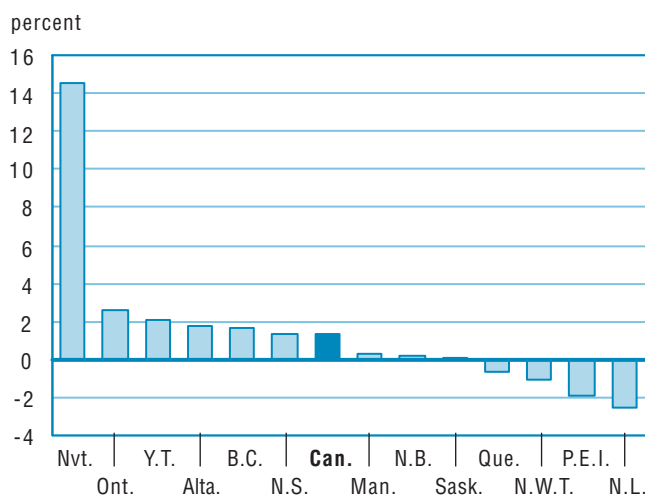
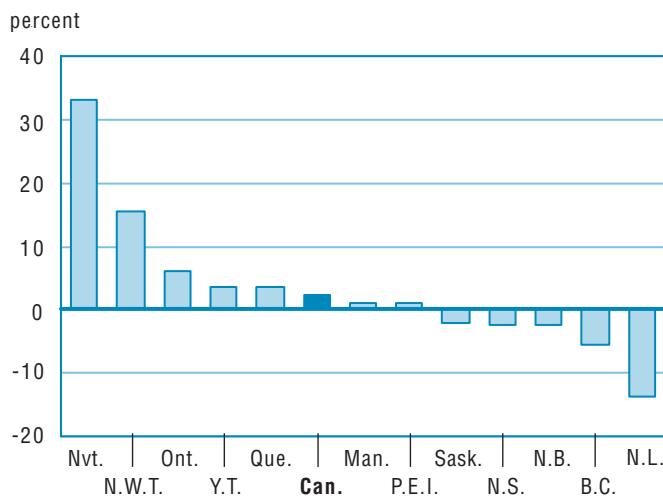


Chart A.10.2
Percentage change between 1999/2000 and 2005/2006



Note: Can. excludes Alta.

Table A.11
Student-educator ratio¹ in public elementary and secondary schools, Canada, provinces and territories, 1999/2000 to 2005/2006

	Canada	N.L.	P.E.I.	N.S.	N.B.	Que.	Ont.	Man.	Sask.	Alta.	B.C.	Y.T.	N.W.T. ²	Nvt.
1999/2000	16.0	14.1	16.7	16.5	16.8	14.8	16.1 ^e	15.7	16.5	17.1 ²	17.1	12.7	18.1	19.2
Percentage change	-3.0	-3.0	-0.2	-0.7	-1.7	-1.4	-4.3	1.5	-1.8	..	-0.8	-1.9
2000/2001	15.9	13.7	15.9	16.5	16.7	14.6	16.0 ^e	15.0	16.8	18.2 ²	16.8	12.0	16.8	19.2
Percentage change	-0.4	-2.8	-4.7	0.3	-0.3	-1.1	-0.9	-4.3	1.5	6.4	-1.6	-5.4	-7.0	0.3
2001/2002	15.9	13.3	15.6	16.5	16.9	14.5	16.2 ^e	15.0	16.1	17.7 ²	16.8	11.9	16.2	19.2
Percentage change	-0.1	-3.4	-2.0	-0.1	1.1	-0.7	1.4	0.3	-4.5	-3.1	0.3	-0.9	-3.8	-0.2
2002/2003	15.9	13.3	15.3	16.2	16.6	14.2	16.2	14.9	15.8	17.9 ²	17.6	12.1	16.3	18.8
Percentage change	-0.2	0.2	-1.8	-1.6	-2.1	-2.0	-0.3	-0.8	-1.4	1.1	4.5	1.7	0.9	-2.3
2003/2004	15.8	13.3	15.0	16.0	16.2	14.1	16.0	14.8	15.5	17.9 ²	17.7	12.0	15.4	19.1
Percentage change	-0.7	-0.1	-2.1	-1.7	-2.0	-0.8	-0.9	-0.6	-1.9	0.3	0.5	-1.1	-5.9	1.9
2004/2005	15.1	13.5	15.1	15.7	15.9	13.7	15.6	14.6	15.5	14.4	17.5	11.5	15.2	16.2
Percentage change	-4.1	1.7	0.6	-1.7	-2.0	-2.9	-2.3	-1.7	-0.4	..	-0.9	-4.4	-0.9	-15.4
2005/2006	14.8	13.4	15.1	15.1	15.5	13.7	15.2	14.4	15.2	14.2	17.0	11.0	15.2	13.7
Percentage change	-2.0	-0.8	0.0	-3.4	-2.2	-0.5	-2.8	-1.3	-2.0	-1.6	-2.7	-4.4	-0.3	-15.5

.. not available for a specific reference period

... not applicable

e estimate

1. See appendix for definitions.

2. Alberta data prior to 2004/2005 not comparable to more recent data due to change in methodology.

Note: Table A.2 divided by Table A.10.

Chart A.11.1
Student-educator ratio, 2005/2006

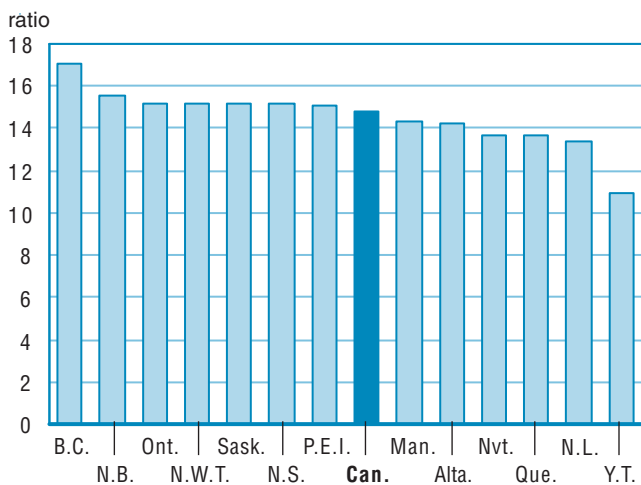


Chart A.11.2
Percentage change between 1999/2000 and 2005/2006

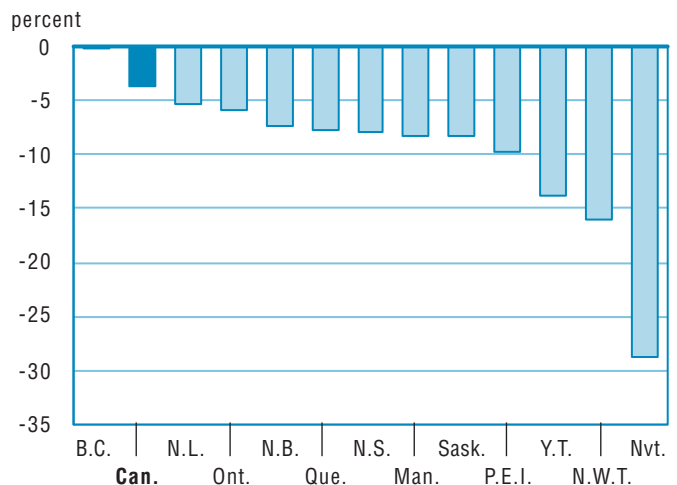


Table A.12

Average remuneration per educator in public elementary and secondary schools, Canada, provinces and territories, 1999/2000 to 2005/2006 (in current dollars)¹

	Canada	N.L.	P.E.I.	N.S. ²	N.B.	Que.	Ont.	Man.	Sask.	Alta.	B.C.	Y.T.	N.W.T.	Nvt.
1999/2000	53,696	47,640	46,537	50,975	50,117	47,457	58,878	54,577	45,924	52,743 ⁴	54,794	70,339	65,185	..
Percentage change	0.2	-4.4	-5.9	3.7	4.5	6.0	-1.1	1.6	4.8	..	-2.1	1.4
2000/2001	55,443	48,228	50,789	51,878	49,728	49,479	59,599	55,981	48,204	59,521 ⁴	55,905	69,125	65,277	..
Percentage change	3.3	1.2	9.1	1.8	-0.8	4.3	1.2	2.6	5.0	12.9	2.0	-1.7	0.1	..
2001/2002	57,146	50,814	53,238	56,239	52,870	50,414	61,235	57,420	49,558	61,105 ⁴	57,211	74,437	67,604	100,340
Percentage change	3.1	5.4	4.8	8.4	6.3	1.9	2.7	2.6	2.8	2.7	2.3	7.7	3.6	..
2002/2003	59,556	54,046	54,970	62,104	54,298	51,030	63,067	59,705	52,914	66,766 ⁴	61,903	77,457	68,478	107,019
Percentage change	4.2	6.4	3.3	10.4	2.7	1.2	3.0	4.0	6.8	9.3	8.2	4.1	1.3	6.7
2003/2004	61,963	58,220	55,758	64,087	54,783	52,717	66,302	61,982	55,208	68,656 ⁴	63,732	79,096	71,597	116,842
Percentage change	4.0	7.7	1.4	3.2	0.9	3.3	5.1	3.8	4.3	2.8	3.0	2.1	4.6	9.2
2004/2005	62,588	59,372	57,126	67,410	56,244	53,582	69,101	63,395	56,637	58,837	63,904	77,964	75,756	106,676
Percentage change	1.0	2.0	2.5	5.2	2.7	1.6	4.2	2.3	2.6	-14.3	0.3	-1.4	5.8	-8.7
2005/2006	64,015	59,350	58,483	63,979	56,890	55,130	70,523	65,804	58,964 ³	59,838	65,924	81,546	80,818	96,271
Percentage change	2.3	0.0	2.4	-5.1	1.1	2.9	2.1	3.8	4.1	1.7	3.2	4.6	6.7	-9.8

.. not available for a specific reference period

... not applicable

1. Due to differences in methodology, comparisons between jurisdictions should be made with care.

2. Nova Scotia data prior to 2005/2006 not comparable to more recent data due to change in methodology.

3. Figure has been adjusted to reflect the change in school year reporting period.

4. Alberta data prior to 2004/2005 not comparable to more recent data due to change in methodology.

Note: Table A.13 divided by Table A.10.

Chart A.12.1

Average remuneration per educator, 2005/2006

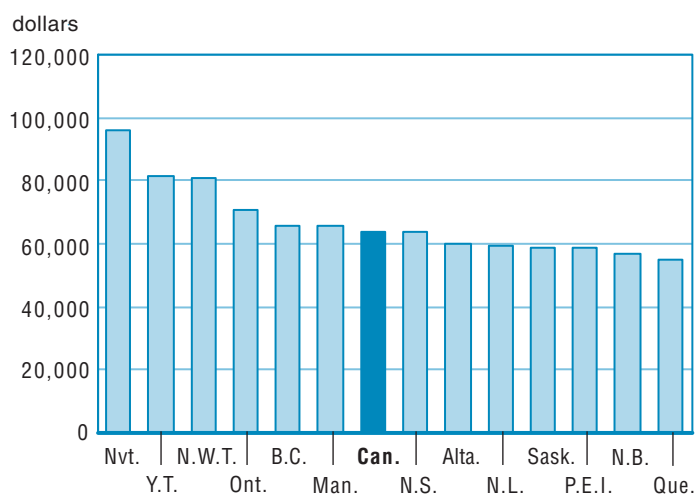
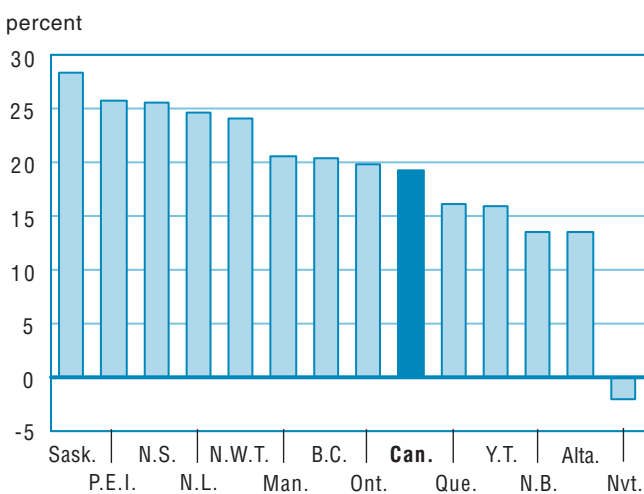


Chart A.12.2

Percentage change between 1999/2000 and 2005/2006



Note: Nvt. 2001/2002 to 2005/2006.

Table A.13

Educator remuneration in public elementary and secondary schools, Canada, provinces and territories, 1999/2000 to 2005/2006 (in millions of current dollars)¹

	Canada	N.L. ²	P.E.I.	N.S.	N.B.	Que.	Ont.	Man. ⁴	Sask.	Alta.	B.C.	Y.T.	N.W.T.	Nvt. ³
1999/2000	16,943.9	307.3	67.2	489.9	379.4	3,531.5	7,342.8	662.9	517.3	1,624.3	1,955.5	31.9	33.8	..
Percentage change	3.4	-5.0	-5.9	3.6	4.5	6.0	0.9	2.5	5.8	3.4	-1.5	1.5
2000/2001	17,526.7	307.4	74.0	489.9	371.4	3,696.5	7,555.0	684.3	528.8	1,732.4	2,018.9	32.0	36.1	..
Percentage change	3.4	0.0	10.1	0.0	-2.1	4.7	2.9	3.2	2.2	6.7	3.2	0.5	6.7	..
2001/2002	18,080.7	322.9	78.1	523.2	383.9	3,777.3	7,733.0	697.5	557.2	1,831.1	2,055.6	33.7	39.0	48.0
Percentage change	3.2	5.1	5.5	6.8	3.4	2.2	2.4	1.9	5.4	5.7	1.8	5.1	8.2	..
2002/2003	18,798.1	332.7	81.3	576.1	395.6	3,879.5	8,002.4	724.2	590.6	1,991.5	2,098.5	34.6	39.6	51.5
Percentage change	4.0	3.0	4.1	10.1	3.0	2.7	3.5	3.8	6.0	8.8	2.1	2.7	1.3	7.2
2003/2004	19,452.3	346.6	82.8	596.4	401.5	4,010.5	8,351.8	754.2	615.8	2,033.6	2,125.1	35.1	43.6	55.3
Percentage change	3.5	4.2	1.8	3.5	1.5	3.4	4.4	4.1	4.3	2.1	1.3	1.7	10.2	7.4
2004/2005	20,346.2	338.5	84.9	624.7	414.6	4,157.8	8,894.2	776.3	624.0	2,171.7	2,118.2	35.9	45.9	59.4
Percentage change	4.6	-2.3	2.5	4.8	3.3	3.7	6.5	2.9	1.3	6.8	-0.3	2.1	5.3	7.5
2005/2006	21,081.0	329.7	85.2	601.0	420.2	4,252.1	9,316.5	807.9	650.4 ⁵	2,248.1	2,221.7	38.3	48.4	61.4
Percentage change	3.6	-2.6	0.4	-3.8	1.3	2.3	4.7	4.1	4.2	3.5	4.9	6.8	5.5	3.4

.. not available for a specific reference period

... not applicable

1. Educator remuneration includes educators' salaries, wages and allowances, but excludes fringe benefits and teachers' superannuation pension funds.

2. In N.L., the educator remuneration increased in 2001/2002 and 2002/2003, following contract negotiations. Please note that in 2002/2003, the school year was increased by a week.

3. Starting in 2001/2002, data for Nunavut are available.

4. Data exclude adult upgrading programs.

5. Figure has been adjusted to reflect the change in school year reporting period.

Chart A.13.1
Percentage change between 2004/2005 and 2005/2006

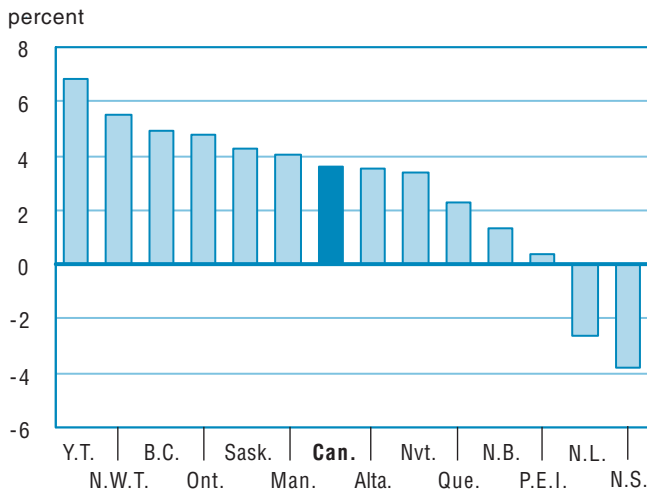
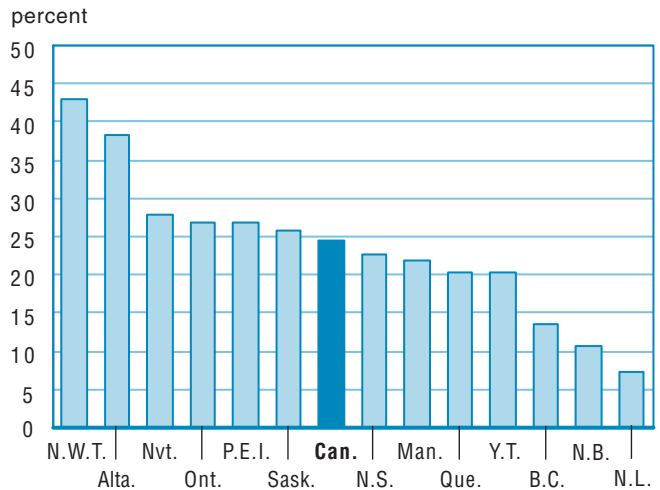


Chart A.13.2
Percentage change between 1999/2000 and 2005/2006



Note: Nvt. 2001/2002 to 2005/2006.

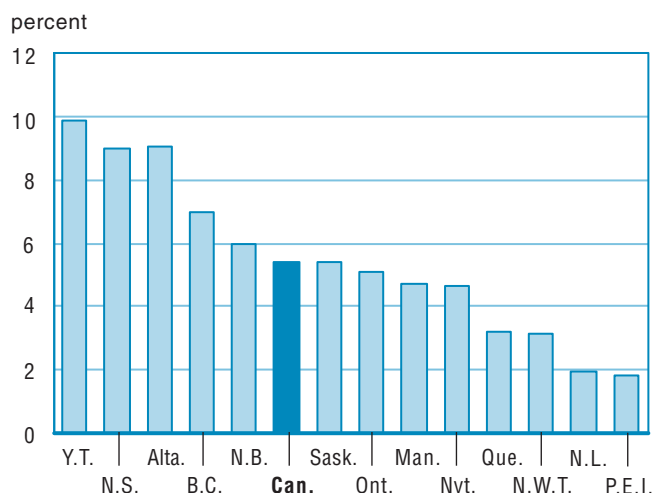
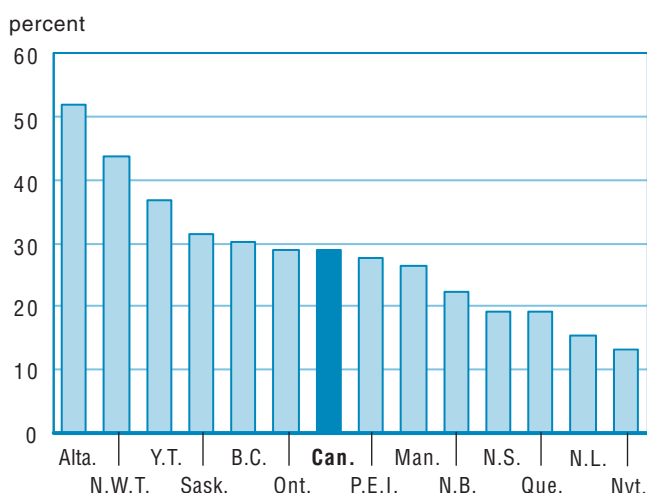
Table A.14
Operating expenditures¹ in public elementary and secondary schools, Canada, provinces and territories, 1999/2000 to 2005/2006 (in millions of current dollars)

	Canada	N.L.	P.E.I.	N.S.	N.B.	Que.	Ont.	Man. ³	Sask.	Alta.	B.C.	Y.T.	N.W.T.	Nvt. ²
1999/2000	33,187.3	539.3	130.3	992.5	746.0	7,356.7	13,536.0	1,308.0	1,152.0	3,398.4	3,880.6	61.5	86.1	..
Percentage change	3.5	0.3	6.3	16.5	4.7	11.3	-1.6	4.9	2.8	6.1	1.2	1.4
2000/2001	34,365.7	541.3	138.1	995.0	700.4	7,566.4	13,990.9	1,357.8	1,182.1	3,687.0	4,045.3	66.0	95.3	..
Percentage change	3.6	0.4	6.0	0.2	-6.1	2.9	3.4	3.8	2.6	8.5	4.2	7.2	10.8	..
2001/2002	35,658.7	571.4	145.3	1,044.6	729.7	7,835.9	14,328.1	1,403.5	1,260.2	3,901.6	4,184.3	68.5	102.7	82.9
Percentage change	3.8	5.6	5.2	5.0	4.2	3.6	2.4	3.4	6.6	5.8	3.4	3.9	7.7	..
2002/2003	37,323.3	598.0	149.7	1,022.3	750.9	8,157.1	14,919.0	1,460.7	1,333.7	4,224.1	4,439.2	70.2	110.5	87.7
Percentage change	4.7	4.7	3.0	-2.1	2.9	4.1	4.1	4.1	5.8	8.3	6.1	2.4	7.7	5.8
2003/2004	38,828.1	616.8	156.4	1,063.4	834.7	8,374.4	15,665.5	1,530.9	1,394.7	4,405.0	4,503.9	72.8	115.8	93.8
Percentage change	4.0	3.1	4.5	4.0	11.2	2.7	5.0	4.8	4.6	4.3	1.5	3.7	4.7	6.9
2004/2005	40,599.3	609.8	163.5	1,086.4	861.5	8,489.7	16,622.6	1,578.9	1,435.8	4,732.9	4,724.4	76.6	119.9	97.4
Percentage change	4.6	-1.1	4.5	2.2	3.2	1.4	6.1	3.1	2.9	7.4	4.9	5.2	3.6	3.9
2005/2006	42,805.0	621.6	166.5	1,183.8	912.7	8,763.0	17,466.3	1,653.0	1,513.7 ⁴	5,159.9	5,054.7	84.2	123.7	101.9
Percentage change	5.4	1.9	1.8	9.0	5.9	3.2	5.1	4.7	5.4	9.0	7.0	9.9	3.1	4.6

.. not available for a specific reference period

... not applicable

1. Operating expenditures include educators salaries, wages and allowances, fringe benefits, teachers' pension funds and other operating expenditures. Please note that the type of pension systems may affect the comparability of the expenditures.
2. Starting in 2001/2002, data for Nunavut are available.
3. Data exclude adult upgrading programs.
4. Figure has been adjusted to reflect the change in school year reporting period.

Chart A.14.1
Percentage change between 2004/2005 and 2005/2006

Chart A.14.2
Percentage change between 1999/2000 and 2005/2006


Note: Nvt. 2001/2002 to 2005/2006.

Table A.15

Annual capital expenditures in public elementary and secondary schools, Canada, provinces and territories, 1999/2000 to 2005/2006 (in millions of current dollars)

	Canada	N.L.	P.E.I.	N.S. ¹	N.B.	Que.	Ont.	Man. ³	Sask.	Alta.	B.C.	Y.T.	N.W.T.	Nvt. ²
1999/2000	2,786.4	19.8	10.3	63.6	45.5	448.7	1,415.9	65.7	10.9	179.1	499.5	11.5	15.8	..
Percentage change	11.7	76.4	3.0	236.3	74.6	0.1	13.0	36.9	30.9	-7.1	13.9	25.6	-48.0	...
2000/2001	3,149.7	9.7	8.7	305.0	40.6	504.6	1,503.7	72.4	12.8	233.0	442.5	8.1	8.5	..
Percentage change	13.0	-50.8	-15.5	379.6	-10.7	12.5	6.2	10.3	17.0	30.1	-11.4	-30.1	-46.2	..
2001/2002	2,910.7	21.7	6.8	113.9	47.3	499.1	1,418.2	64.3	14.2	315.3	358.5	11.5	9.5	30.2
Percentage change	-7.6	122.7	-21.8	-62.7	16.5	-1.1	-5.7	-11.2	11.1	35.3	-19.0	42.6	11.7	..
2002/2003	2,847.4	8.8	13.1	93.4	34.3	582.2	1,279.3	65.2	68.3	343.2	328.0	7.3	5.3	19.1
Percentage change	-2.2	-59.3	92.6	-18.0	-27.5	16.6	-9.8	1.4	380.1	8.8	-8.5	-36.0	-44.9	-36.7
2003/2004	2,842.6	8.0	11.1	88.1	41.6	461.9	1,542.4	73.0	74.2	302.0	207.7	7.2	3.8	21.6
Percentage change	-0.2	-9.3	-15.3	-5.6	21.3	-20.7	20.6	11.9	8.7	-12.0	-36.7	-1.7	-28.5	12.9
2004/2005	3,077.7	10.6	5.5	65.6	59.0	485.2	1,799.3	58.9	81.0	266.8	206.9	6.9	12.1	20.0
Percentage change	8.3	32.7	-50.3	-25.6	41.7	5.0	16.6	-19.3	9.2	-11.6	-0.4	-4.5	221.5	-7.3
2005/2006	3,424.6	22.1	1.5	69.7	49.4	545.0	2,000.3	80.8	83.8	281.9	253.5	11.2	9.4	15.9
Percentage change	11.3	108.2	-72.0	6.3	-16.3	12.3	11.2	37.3	3.5	5.6	22.5	63.2	-22.0	-20.7

.. not available for a specific reference period

... not applicable

1. In N.S., annual capital expenditures in 2000/2001 include the result of the completion of 24 schools under Public Private Partnership (P3) agreements totaled \$241.2M.

2. Starting in 2001/2002, data for Nunavut are available.

3. Data exclude adult upgrading programs.

Chart A.15.1
Percentage change between 2004/2005 and 2005/2006

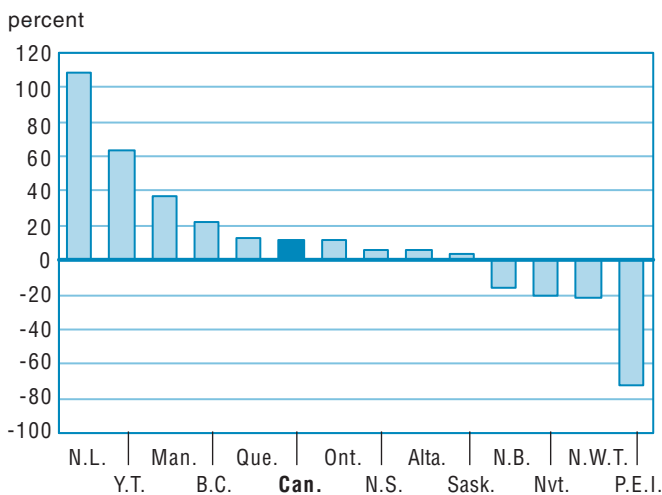
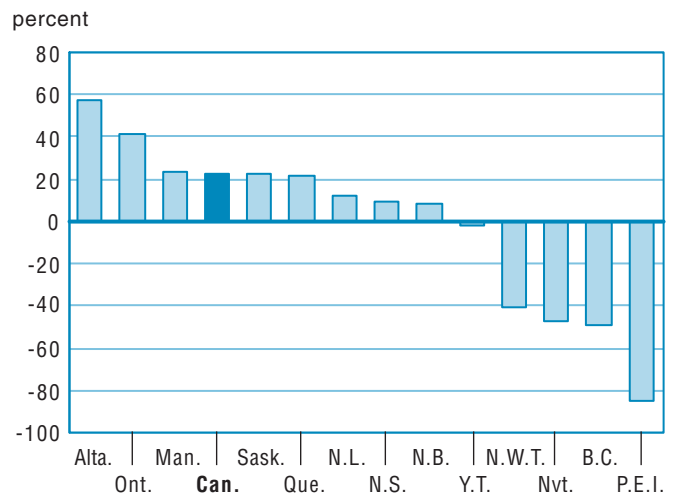


Chart A.15.2
Percentage change between 1999/2000 and 2005/2006



Note: Nvt. 2001/2002 to 2005/2006 and Sask. 2002/2003 to 2005/2006.

Table A.16
Total expenditures¹ in public elementary and secondary schools, Canada, provinces and territories, 1999/2000 to 2005/2006 (in millions of current dollars)

	Canada	N.L.	P.E.I.	N.S.	N.B.	Que.	Ont.	Man. ²	Sask.	Alta.	B.C.	Y.T.	N.W.T.	Nvt.
1999/2000	37,155.7	559.5	140.6	1,084.0	894.2	8,186.9	15,148.4	1,410.0	1,190.0	3,674.9	4,692.2	73.1	101.9	..
Percentage change	3.9	1.9	6.0	19.6	6.6	9.9	-0.4	5.9	2.4	4.8	3.3	4.6
2000/2001	38,701.3	551.6	146.8	1,318.2	841.2	8,459.8	15,708.8	1,467.5	1,216.0	4,006.4	4,807.2	74.1	103.9	..
Percentage change	4.2	-1.4	4.4	21.6	-5.9	3.3	3.7	4.1	2.2	9.0	2.4	1.4	1.9	..
2001/2002	39,725.5	593.5	152.1	1,168.2	877.6	8,700.2	15,972.4	1,505.4	1,289.8	4,292.5	4,868.4	80.0	112.2	113.1
Percentage change	2.6	7.6	3.6	-11.4	4.3	2.8	1.7	2.6	6.1	7.1	1.3	8.1	8.0	..
2002/2003	41,342.3	607.3	162.8	1,125.4	886.1	9,096.6	16,453.4	1,564.1	1,421.4	4,633.5	5,091.7	77.5	115.8	106.8
Percentage change	4.1	2.3	7.0	-3.7	1.0	4.6	3.0	3.9	10.2	7.9	4.6	-3.1	3.2	-5.6
2003/2004	42,912.6	625.2	167.5	1,158.8	972.3	9,190.5	17,550.6	1,642.4	1,489.0	4,764.0	5,037.3	80.0	119.5	115.4
Percentage change	3.8	3.0	2.9	3.0	9.7	1.0	6.7	5.0	4.8	2.8	-1.1	3.2	3.2	8.0
2004/2005	44,896.6	621.2	169.0	1,156.4	1,013.6	9,320.3	18,765.1	1,676.6	1,539.9	5,048.7	5,252.9	83.5	132.0	117.4
Percentage change	4.6	-0.7	0.9	-0.2	4.2	1.4	6.9	2.1	3.4	6.0	4.3	4.3	10.5	1.8
2005/2006	47,425.4	644.2	168.0	1,257.2	1,055.6	9,639.7	19,830.3	1,771.9	1,601.9 ³	5,485.0	5,628.3	95.4	133.1	117.8
Percentage change	5.6	3.7	-0.6	8.7	4.1	3.4	5.7	5.7	4.0	8.6	7.1	14.3	0.8	0.3

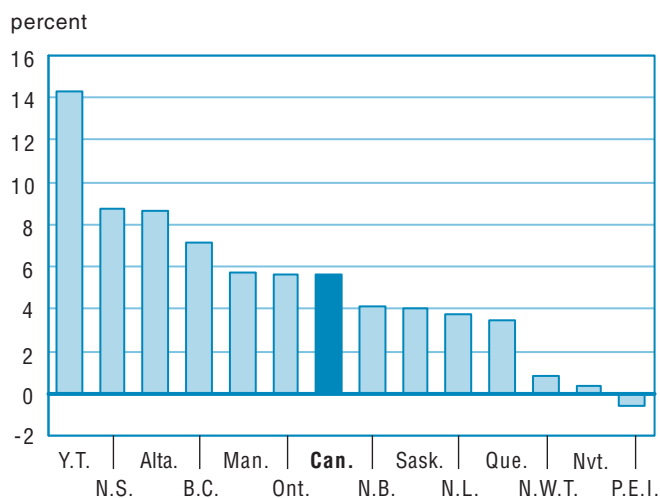
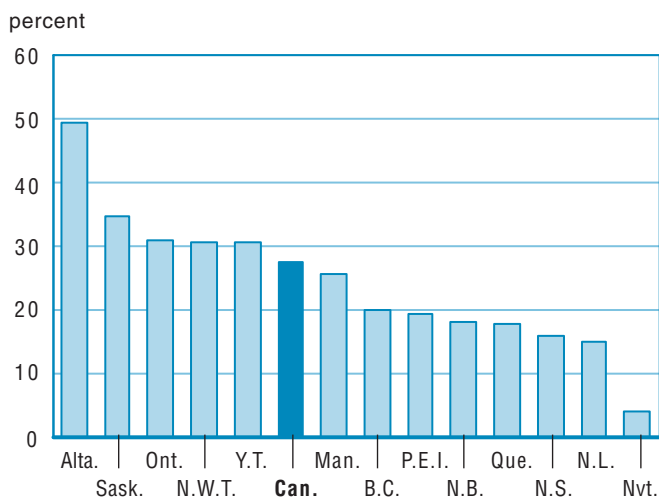
.. not available for a specific reference period

... not applicable

1. Total expenditures include: operating expenditures, annual capital expenditures and interest on debt services.

2. Data exclude adult upgrading programs.

3. Figure has been adjusted to reflect the change in school year reporting period.

Chart A.16.1
Percentage change between 2004/2005 and 2005/2006

Chart A.16.2
Percentage change between 1999/2000 and 2005/2006


Note: Nvt. 2001/2002 to 2005/2006.

Table A.17.1

Total expenditures per student in public elementary and secondary schools, Canada, provinces and territories, 1999/2000 to 2005/2006 (in current dollars)¹

	Canada	N.L.	P.E.I.	N.S.	N.B.	Que.	Ont.	Man.	Sask.	Alta.	B.C.	Y.T.	N.W.T.	Nvt.
1999/2000	7,357	6,135	5,837	6,852	7,040	7,440	7,531	7,414	6,386	6,959	7,704	12,673	10,862	..
Percentage change	4.0	5.7	6.3	20.6	8.4	11.5	-0.4	3.3	3.3	4.2	3.5	6.5	3.9	...
2000/2001	7,679	6,300	6,340	8,457	6,733	7,739	7,753	8,013	6,598	7,543	7,925	13,279	11,177	..
Percentage change	4.4	2.7	8.6	23.4	-4.4	4.0	3.0	8.1	3.3	8.4	2.9	4.8	2.9	..
2001/2002	7,882	7,042	6,658	7,613	7,147	7,990	7,805	8,251	7,146	8,103	8,046	14,831	12,015	12,301
Percentage change	2.6	11.8	5.0	-10.0	6.2	3.2	0.7	3.0	8.3	7.4	1.5	11.7	7.5	..
2002/2003	8,237	7,427	7,199	7,473	7,347	8,399	8,028	8,655	8,044	8,691	8,537	14,326	12,289	11,839
Percentage change	4.5	5.5	8.1	-1.8	2.8	5.1	2.8	4.9	12.6	7.3	6.1	-3.4	2.3	-3.8
2003/2004	8,657	7,914	7,532	7,803	8,180	8,548	8,707	9,118	8,596	8,973	8,546	15,021	12,787	12,760
Percentage change	5.1	6.6	4.6	4.4	11.3	1.8	8.5	5.4	6.9	3.2	0.1	4.8	4.1	7.8
2004/2005	9,118	8,075	7,546	7,953	8,653	8,750	9,326	9,406	9,031	9,489	9,047	15,837	14,318	13,040
Percentage change	5.1	6.6	4.6	4.4	11.3	1.8	8.5	5.4	6.9	3.2	0.1	4.8	4.1	7.8
2005/2006	9,704	8,665	7,655	8,835	9,193	9,154	9,882	10,048	9,570	10,293	9,798	18,533	14,647	13,509
Percentage change	6.4	7.3	1.4	11.1	6.2	4.6	6.0	6.8	6.0	8.5	8.3	17.0	2.3	3.6

.. not available for a specific reference period

... not applicable

1. Comparisons between jurisdictions should be made with care. Factors that influence spending on education, such as the size of the school-age population, need to be taken into account.

Note: Table A.16 divided by Table A.2.

Chart A.17.1.1
Total expenditures per student, 2005/2006 (in current dollars)

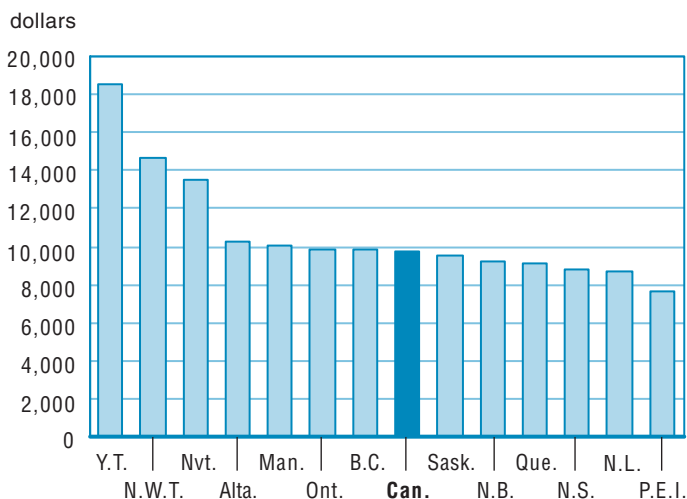
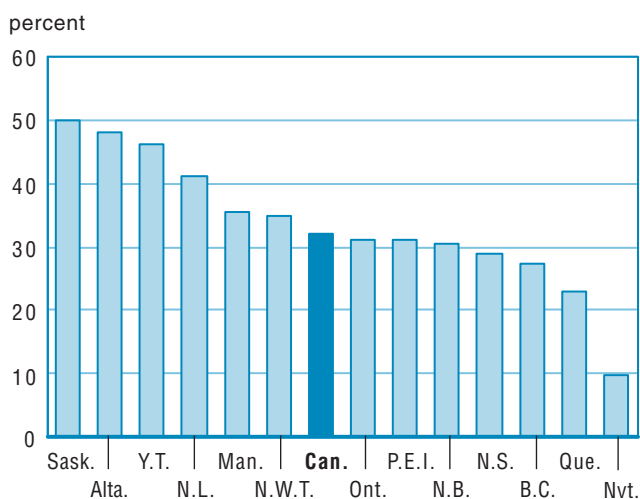


Chart A.17.1.2
Percentage change between 1999/2000 and 2005/2006



Note: Nvt. 2001/2002 to 2005/2006.

Table A.17.2
Total expenditures per student in public elementary and secondary schools, Canada, provinces and territories, 1999/2000 to 2005/2006 (in 1992 constant dollars)¹

	Canada	N.L.	P.E.I.	N.S.	N.B.	Que.	Ont.	Man.	Sask.	Alta.	B.C.	Y.T.	N.W.T.	Nvt.
1999/2000	6,658	5,577	5,440	6,212	6,447	6,889	6,785	6,435	5,616	6,137	6,928	11,305	9,938	..
Percentage change	2.2	4.2	5.0	18.6	6.7	9.9	-2.3	1.4	1.6	1.8	2.4	5.5	2.8	...
2000/2001	6,766	5,560	5,676	7,405	5,969	6,997	6,789	6,785	5,653	6,425	6,995	11,587	10,052	..
Percentage change	1.6	-0.3	4.4	19.2	-7.4	1.6	0.1	5.4	0.7	4.7	1.0	2.5	1.1	..
2001/2002	6,771	6,150	5,810	6,546	6,231	7,058	6,632	6,808	5,940	6,747	6,985	12,687	10,633	..
Percentage change	0.1	10.6	2.4	-11.6	4.4	0.9	-2.3	0.3	5.1	5.0	-0.1	9.5	5.8	..
2002/2003	6,922	6,331	6,116	6,238	6,195	7,272	6,684	7,031	6,503	6,998	7,241	12,172	10,567	..
Percentage change	2.2	3.0	5.3	-4.7	-0.6	3.0	0.8	3.3	9.5	3.7	3.7	-4.1	-0.6	..
2003/2004	7,079	6,557	6,179	6,297	6,672	7,220	7,062	7,277	6,795	6,919	7,098	12,528	10,737	12,735
Percentage change	2.3	3.6	1.0	1.0	7.7	-0.7	5.6	3.5	4.5	-1.1	-2.0	2.9	1.6	..
2004/2005	7,318	6,570	6,061	6,307	6,955	7,249	7,425	7,360	6,985	7,216	7,368	13,078	11,853	12,885
Percentage change	3.4	0.2	-1.9	0.2	4.3	0.4	5.1	1.1	2.8	4.3	3.8	4.4	10.4	1.2
2005/2006	7,623	6,871	5,957	6,817	7,216	7,412	7,696	7,658	7,239	7,664	7,820	14,970	11,850	13,128
Percentage change	4.2	4.6	-1.7	8.1	3.7	2.2	3.6	4.1	3.6	6.2	6.1	14.5	0.0	1.9

.. not available for a specific reference period

... not applicable

1. Comparisons between jurisdictions should be made with care. Factors that influence total spending per student on education, such as the size of the school-age population, need to be taken into account.

Note: Table A.16 divided by Table A.2 divided by Table A.33.

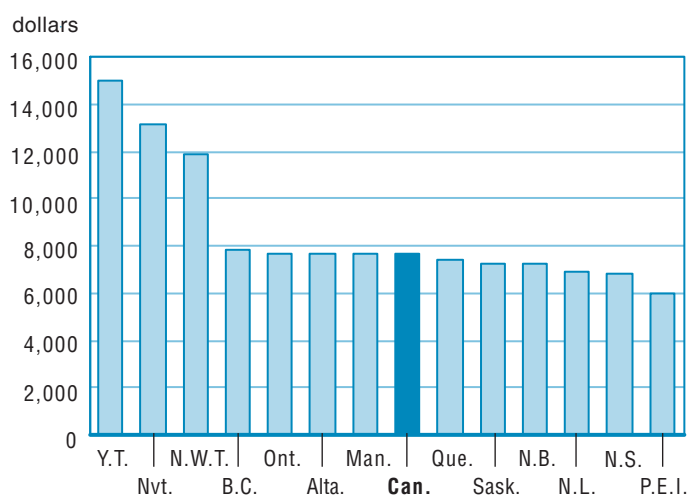
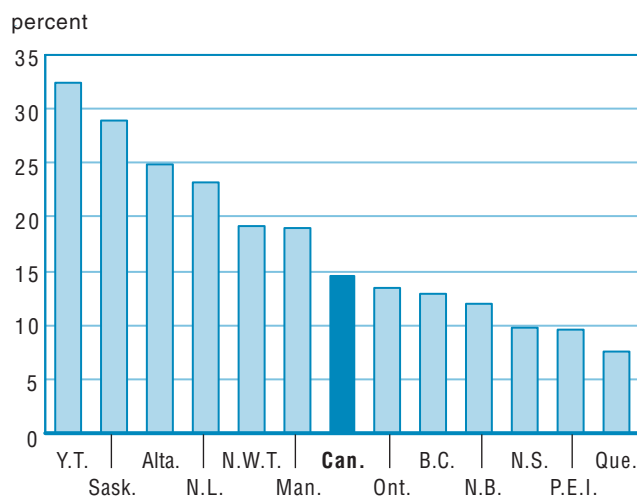
Chart A.17.2.1
Total expenditures per student, 2005/2006
(in 1992 constant dollars)

Chart A.17.2.2
Percentage change between 1999/2000 and 2005/2006


Table A.18

Educator remuneration per student in public elementary and secondary schools, Canada, provinces and territories, 1999/2000 to 2005/2006 (in current dollars)²

	Canada	N.L.	P.E.I.	N.S.	N.B.	Que.	Ont.	Man.	Sask.	Alta.	B.C.	Y.T.	N.W.T.	Nvt.
1999/2000	3,355	3,370	2,790	3,097	2,988	3,209	3,651	3,486	2,776	3,076	3,211	5,527	3,607	..
Percentage change	3.4	-1.5	-5.7	4.4	6.3	7.5	3.3	0.1	6.7	2.9	-1.3	3.4	5.6	...
2000/2001	3,478	3,511	3,196	3,143	2,972	3,382	3,729	3,737	2,869	3,262	3,328	5,742	3,884	..
Percentage change	3.7	4.2	14.6	1.5	-0.5	5.4	2.1	7.2	3.4	6.0	3.7	3.9	7.7	..
2001/2002	3,587	3,832	3,419	3,410	3,127	3,469	3,779	3,823	3,087	3,457	3,397	6,237	4,180	5,225
Percentage change	3.2	9.1	7.0	8.5	5.2	2.6	1.3	2.3	7.6	6.0	2.1	8.6	7.6	..
2002/2003	3,745	4,068	3,595	3,825	3,280	3,582	3,905	4,007	3,343	3,736	3,518	6,385	4,198	5,706
Percentage change	4.4	6.2	5.1	12.2	4.9	3.3	3.3	4.8	8.3	8.1	3.6	2.4	0.4	9.2
2003/2004	3,924	4,387	3,723	4,016	3,378	3,730	4,144	4,187	3,555	3,830	3,605	6,596	4,662	6,113
Percentage change	4.8	7.8	3.6	5.0	3.0	4.1	6.1	4.5	6.3	2.5	2.5	3.3	11.1	7.1
2004/2005	4,132	4,401	3,791	4,297	3,539	3,903	4,420	4,355	3,659	4,082	3,648	6,803	4,976	6,598
Percentage change	5.3	0.3	1.8	7.0	4.8	4.6	6.7	4.0	3.0	6.6	1.2	3.1	6.7	7.9
2005/2006	4,313	4,435	3,882	4,223	3,659	4,038	4,643	4,581	3,886 ¹	4,219	3,868	7,441	5,326	7,044
Percentage change	4.4	0.8	2.4	-1.7	3.4	3.4	5.0	5.2	6.2	3.4	6.0	9.4	7.0	6.7

.. not available for a specific reference period

... not applicable

1. Figure has been adjusted to reflect the change in school year reporting period.

2. Due to differences in methodology, comparisons between jurisdictions should be made with care.

Note: Table A.13 divided by Table A.2.

Chart A.18.1
Educator remuneration per student, 2005/2006 (in current dollars)

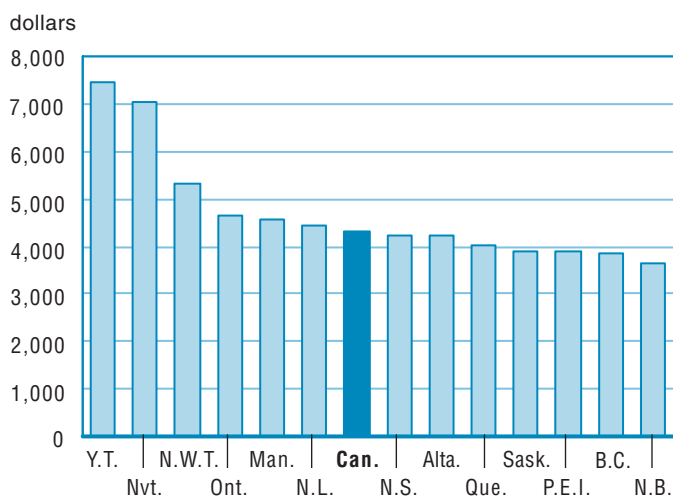
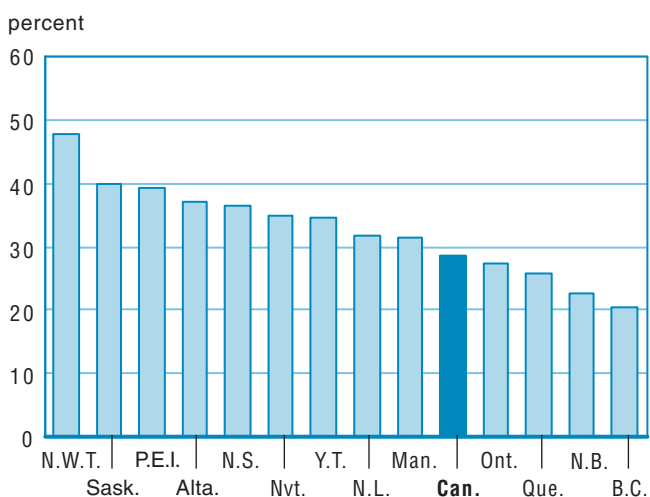


Chart A.18.2
Percentage change between 1999/2000 and 2005/2006



Note: Nvt. 2001/2002 to 2005/2006.

Table A.19
Operating expenditures per student in public elementary and secondary schools, Canada, provinces and territories, 1999/2000 to 2005/2006 (in current dollars)

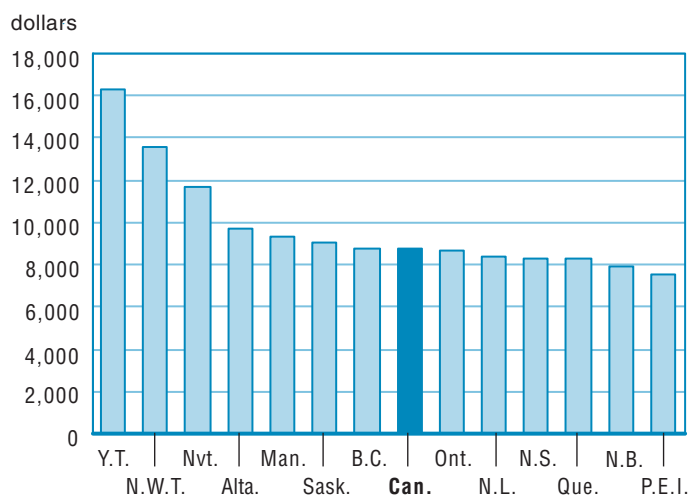
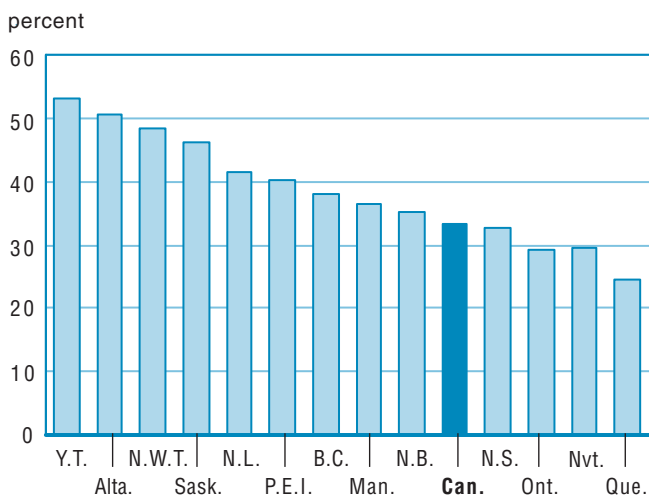
	Canada	N.L.	P.E.I.	N.S.	N.B.	Que.	Ont.	Man.	Sask.	Alta.	B.C.	Y.T.	N.W.T.	Nvt.
1999/2000	6,571	5,913	5,409	6,274	5,874	6,685	6,730	6,878	6,182	6,435	6,371	10,674	9,174	..
Percentage change	3.5	4.1	6.5	17.4	6.5	12.9	-1.5	2.4	3.7	5.5	1.4	3.3	5.3	...
2000/2001	6,819	6,183	5,965	6,383	5,606	6,922	6,906	7,414	6,414	6,941	6,669	11,834	10,259	..
Percentage change	3.8	4.6	10.3	1.7	-4.6	3.5	2.6	7.8	3.8	7.9	4.7	10.9	11.8	..
2001/2002	7,075	6,780	6,361	6,807	5,943	7,196	7,002	7,693	6,982	7,365	6,916	12,703	10,994	9,016
Percentage change	3.8	9.7	6.6	6.6	6.0	4.0	1.4	3.8	8.9	6.1	3.7	7.3	7.2	..
2002/2003	7,436	7,314	6,620	6,788	6,227	7,531	7,279	8,083	7,548	7,923	7,443	12,969	11,732	9,720
Percentage change	5.1	7.9	4.1	-0.3	4.8	4.7	4.0	5.1	8.1	7.6	7.6	2.1	6.7	7.8
2003/2004	7,833	7,808	7,033	7,160	7,022	7,789	7,772	8,499	8,051	8,297	7,641	13,665	12,385	10,372
Percentage change	5.3	6.8	6.2	5.5	12.8	3.4	6.8	5.1	6.7	4.7	2.7	5.4	5.6	6.7
2004/2005	8,245	7,927	7,300	7,472	7,354	7,970	8,261	8,857	8,420	8,895	8,137	14,530	13,008	10,818
Percentage change	5.3	1.5	3.8	4.3	4.7	2.3	6.3	4.2	4.6	7.2	6.5	6.3	5.0	4.3
2005/2006	8,759	8,361	7,585	8,319	7,949	8,321	8,704	9,374	9,043 ¹	9,683	8,799	16,348	13,609	11,689
Percentage change	6.2	5.5	3.9	11.3	8.1	4.4	5.4	5.8	7.4	8.9	8.1	12.5	4.6	8.1

.. not available for a specific reference period

... not applicable

1. Figure has been adjusted to reflect the change in school year reporting period.

Note: Table A.14 divided by Table A.2.

Chart A.19.1
Operating expenditures per student, 2005/2006
(in current dollars)

Chart A.19.2
Percentage change between 1999/2000 and 2005/2006


Note: Nvt. 2001/2002 to 2005/2006.

Table A.20

Annual capital expenditures per student in public elementary and secondary schools, Canada, provinces and territories, 1999/2000 to 2005/2006 (in current dollars)

	Canada	N.L.	P.E.I.	N.S.	N.B.	Que.	Ont.	Man.	Sask.	Alta.	B.C.	Y.T.	N.W.T.	Nvt.
1999/2000	552	217	428	402	358	408	704	345	59	339	820	1,999	1,689	..
Percentage change	11.7	83.1	3.2	238.9	77.5	1.5	12.1	33.6	32.1	-7.6	14.1	27.9
2000/2001	625	111	376	1,957	325	462	742	395	69	439	729	1,444	918	..
Percentage change	13.3	-48.7	-12.1	386.8	-9.2	13.2	5.4	14.6	18.3	29.4	-11.1	-27.7	-45.6	..
2001/2002	577	257	298	742	385	458	693	352	79	595	593	2,129	1,021	3,286
Percentage change	-7.6	131.3	-20.8	-62.1	18.5	-0.7	-6.6	-10.9	13.5	35.7	-18.8	47.4	11.2	..
2002/2003	567	108	579	620	284	538	624	361	386	644	550	1,358	558	2,119
Percentage change	-1.8	-58.0	94.6	-16.5	-26.2	17.3	-9.9	2.3	390.4	8.1	-7.2	-36.2	-45.4	-35.5
2003/2004	573	101	499	594	350	430	765	405	428	569	352	1,355	402	2,388
Percentage change	1.1	-6.1	-13.8	-4.3	23.1	-20.1	22.6	12.3	10.8	-11.6	-35.9	-0.2	-27.9	12.7
2004/2005	625	138	246	451	504	455	894	330	475	501	356	1,307	1,311	2,222
Percentage change	9.0	36.3	-50.6	-24.0	43.8	6.0	16.9	-18.5	10.9	-11.8	1.1	-3.5	225.9	-6.9
2005/2006	701	298	70	490	430	518	997	458	501	529	441	2,184	1,037	1,820
Percentage change	12.1	115.4	-71.5	8.6	-14.6	13.6	11.5	38.8	5.4	5.5	23.8	67.1	-20.8	-18.1

.. not available for a specific reference period

... not applicable

Note: Table A.15 divided by Table A.2.

Chart A.20.1
Annual capital expenditures per student, 2005/2006 (in current dollars)

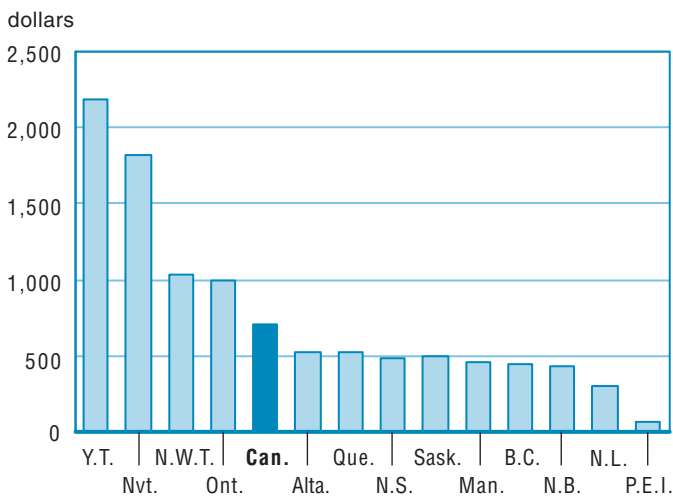
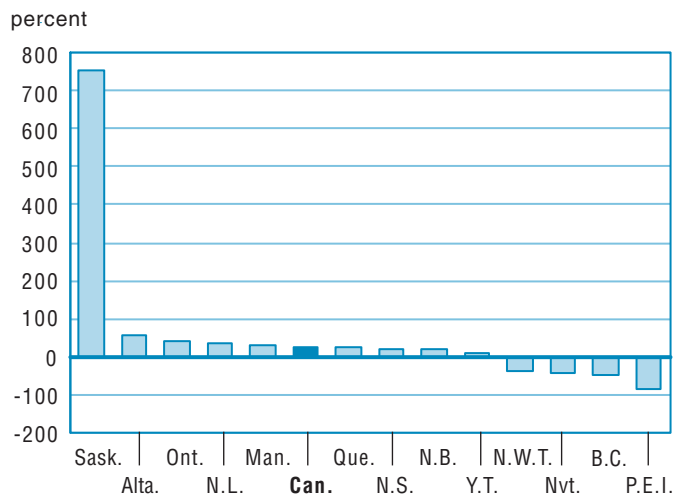


Chart A.20.2
Percentage change between 1999/2000 and 2005/2006



Note: Nvt. 2001/2002 to 2005/2006.

Table A.21
Educator remuneration as a percentage of total expenditures in public elementary and secondary schools, Canada, provinces and territories, 1999/2000 to 2005/2006

	Canada	N.L.	P.E.I.	N.S.	N.B.	Que.	Ont.	Man.	Sask.	Alta.	B.C.	Y.T.	N.W.T. ¹	Nvt.
1999/2000	45.6	54.9	47.8	45.2	42.4	43.1	48.5	47.0	43.5	44.2	41.7	43.6	33.2	..
Percentage change	-0.6	-6.8	-11.2	-13.4	-2.0	-3.6	3.7	-3.1	3.3	-1.3	-4.6	-3.0
2000/2001	45.3	55.7	50.4	37.2	44.1	43.7	48.1	46.6	43.5	43.2	42.0	43.2	34.7	..
Percentage change	-0.7	1.5	5.5	-17.8	4.0	1.3	-0.8	-0.8	0.0	-2.2	0.8	-0.8	4.7	..
2001/2002	45.5	54.4	51.3	44.8	43.7	43.4	48.4	46.3	43.2	42.7	42.2	42.1	34.8	42.5
Percentage change	0.5	-2.4	1.9	20.5	-0.9	-0.6	0.7	-0.6	-0.7	-1.3	0.5	-2.8	0.1	..
2002/2003	45.5	54.8	49.9	51.2	44.6	42.6	48.6	46.3	41.6	43.0	41.2	44.6	34.2	48.2
Percentage change	-0.1	0.7	-2.7	14.3	2.0	-1.8	0.5	-0.1	-3.8	0.8	-2.4	6.0	-1.8	13.5
2003/2004	45.3	55.4	49.4	51.5	41.3	43.6	47.6	45.9	41.4	42.7	42.2	43.9	36.5	47.9
Percentage change	-0.3	1.2	-1.0	0.5	-7.5	2.3	-2.2	-0.8	-0.5	-0.7	2.4	-1.5	6.7	-0.6
2004/2005	45.3	54.5	50.2	54.0	40.9	44.6	47.4	46.3	40.5	43.0	40.3	43.0	34.8	50.6
Percentage change	0.0	-1.7	1.6	5.0	-1.0	2.2	-0.4	0.8	-2.0	0.8	-4.4	-2.2	-4.7	5.6
2005/2006	44.5	51.2	50.7	47.8	39.8	44.1	47.0	45.6	40.6 ¹	41.0	39.5	40.2	36.4	52.1
Percentage change	-1.9	-6.1	1.0	-11.5	-2.7	-1.1	-0.9	-1.5	0.2	-4.7	-2.1	-6.5	4.6	3.0

.. not available for a specific reference period

... not applicable

1. Figure has been adjusted to reflect the change in school year reporting period.

Note: Table A.13 divided by Table A.16.

Chart A.21.1
Educator remuneration as a percentage of total expenditures, 2005/2006

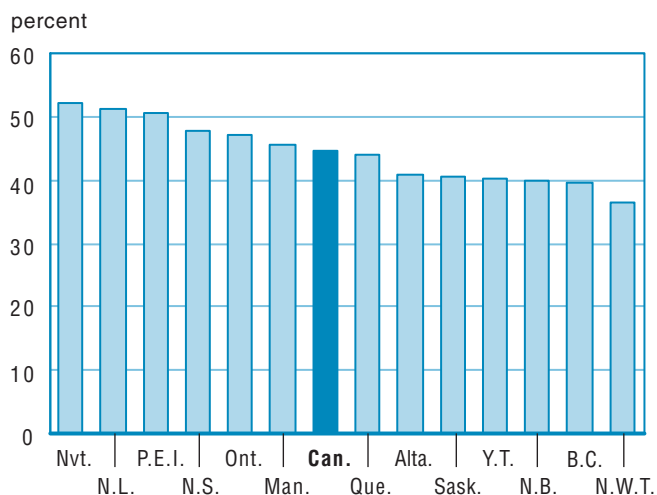
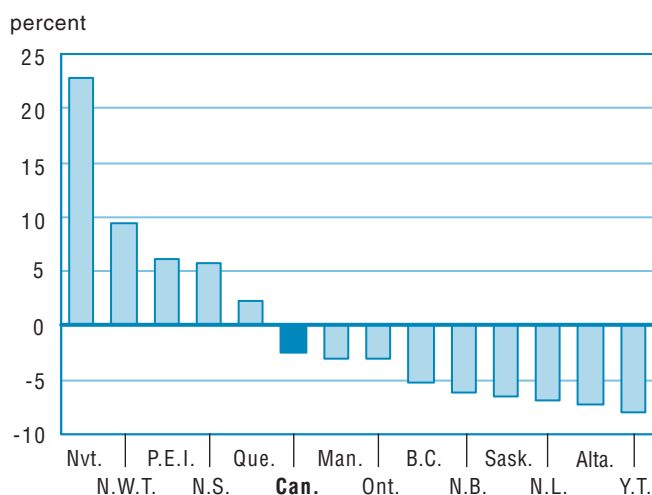


Chart A.21.2
Percentage change between 1999/2000 and 2005/2006



Note: Nvt. 2001/2002 to 2005/2006.

Table A.22

Educator remuneration as a percentage of operating expenditures in public elementary and secondary schools, Canada, provinces and territories, 1999/2000 to 2005/2006

	Canada	N.L.	P.E.I.	N.S.	N.B.	Que.	Ont.	Man.	Sask.	Alta.	B.C.	Y.T.	N.W.T. ¹	Nvt.
1999/2000	51.1	57.0	51.6	49.4	50.9	48.0	54.2	50.7	44.9	47.8	50.4	51.8	39.3	.
Percentage change	-0.1	-5.3	-11.4	-11.1	-0.2	-4.8	4.9	-2.2	2.9	-2.5	-2.7	0.1
2000/2001	51.0	56.8	53.6	49.2	53.0	48.9	54.0	50.4	44.7	47.0	49.9	48.5	37.9	.
Percentage change	-0.1	-0.3	3.9	-0.2	4.2	1.8	-0.5	-0.6	-0.4	-1.7	-1.0	-6.3	-3.7	.
2001/2002	50.7	56.5	53.8	50.1	52.6	48.2	54.0	49.7	44.2	46.9	49.1	49.1	38.0	.
Percentage change	-0.6	-0.5	0.3	1.7	-0.8	-1.3	-0.1	-1.4	-1.2	-0.1	-1.6	1.2	0.4	.
2002/2003	50.4	55.6	54.3	56.3	52.7	47.6	53.6	49.6	44.3	47.1	47.3	49.2	35.8	.
Percentage change	-0.7	-1.6	1.0	12.5	0.1	-1.3	-0.6	-0.2	0.1	0.5	-3.8	0.3	-5.9	.
2003/2004	50.1	56.2	52.9	56.1	48.1	47.9	53.3	49.3	44.1	46.2	47.2	48.3	37.6	.
Percentage change	-0.5	1.0	-2.5	-0.5	-8.7	0.7	-0.6	-0.6	-0.3	-2.1	-0.2	-2.0	5.2	.
2004/2005	50.1	55.5	51.9	57.5	48.1	49.0	53.5	49.2	43.5	45.9	44.8	46.8	38.3	.
Percentage change	0.0	-1.2	-1.9	2.5	0.0	2.3	0.4	-0.2	-1.6	-0.6	-5.0	-3.0	1.6	.
2005/2006	49.2	53.0	51.2	50.8	46.0	48.5	53.3	48.9	43.0 ¹	43.6	44.0	45.5	39.1	.
Percentage change	-1.7	-4.4	-1.4	-11.7	-4.3	-0.9	-0.3	-0.6	-1.1	-5.0	-2.0	-2.8	2.3	.

. not available for any reference period

... not applicable

1. Figure has been adjusted to reflect the change in school year reporting period.

Note: Table A.13 divided by Table A.14.

Chart A.22.1
Educator remuneration as a percentage of operating expenditures, 2005/2006

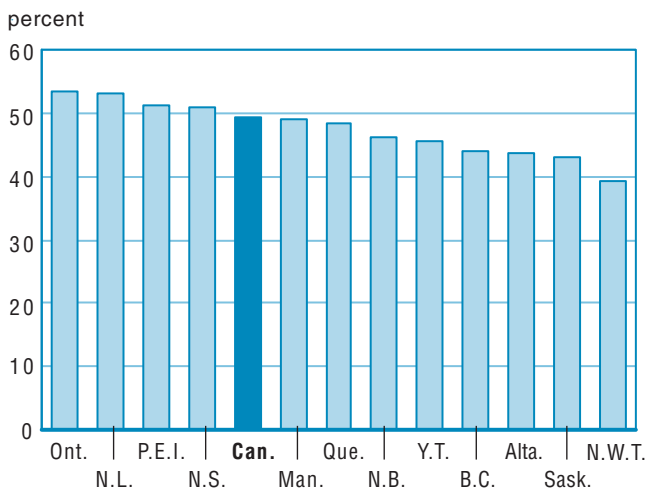


Chart A.22.2
Percentage change between 1999/2000 and 2005/2006

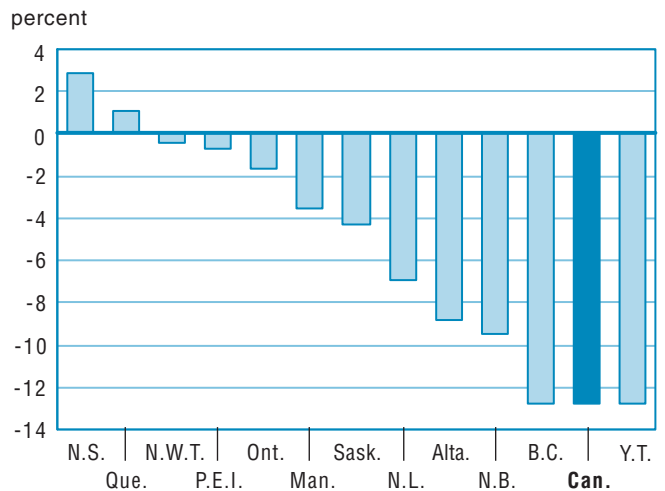


Table A.23.1
Total expenditures in public elementary and secondary schools per capita, Canada, provinces and territories, 1999/2000 to 2005/2006 (in current dollars)

	Canada	N.L.	P.E.I.	N.S.	N.B.	Que.	Ont.	Man.	Sask.	Alta.	B.C.	Y.T.	N.W.T.	Nvt.
1999/2000	1,222	1,049	1,032	1,161	1,191	1,118	1,317	1,234	1,173	1,244	1,170	2,374	2,506	.
Percentage change	3.1	3.1	5.7	19.4	6.6	9.5	-0.8	5.4	2.7	2.9	2.6	5.9
2000/2001	1,261	1,045	1,076	1,411	1,121	1,150	1,344	1,279	1,207	1,333	1,190	2,434	2,564	.
Percentage change	3.2	-0.4	4.3	21.6	-5.9	2.9	2.1	3.6	2.9	7.1	1.7	2.5	2.3	.
2001/2002	1,281	1,137	1,113	1,253	1,170	1,176	1,342	1,308	1,290	1,404	1,194	2,657	2,748	.
Percentage change	1.5	8.9	3.5	-11.2	4.4	2.3	-0.1	2.2	6.9	5.3	0.3	9.1	7.2	.
2002/2003	1,318	1,169	1,189	1,204	1,181	1,222	1,360	1,354	1,427	1,487	1,237	2,573	2,791	.
Percentage change	2.9	2.8	6.8	-3.9	0.9	3.9	1.3	3.5	10.7	5.9	3.6	-3.2	1.6	.
2003/2004	1,355	1,206	1,220	1,237	1,294	1,226	1,431	1,414	1,497	1,507	1,212	2,617	2,830	.
Percentage change	2.8	3.2	2.6	2.7	9.6	0.4	5.3	4.4	4.9	1.4	-2.0	1.7	1.4	.
2004/2005	1,403	1,201	1,226	1,233	1,348	1,235	1,511	1,432	1,548	1,574	1,250	2,704	3,083	.
Percentage change	3.6	-0.4	0.5	-0.4	4.1	0.7	5.6	1.3	3.4	4.4	3.1	3.3	8.9	.
2005/2006	1,468	1,253	1,216	1,343	1,405	1,269	1,578	1,509	1,618 ¹	1,672	1,321	3,072	3,116	.
Percentage change	4.6	4.3	-0.8	8.9	4.2	2.8	4.5	5.4	4.5	6.2	5.7	13.6	1.1	.

. not available for any reference period

... not applicable

1. Figure has been adjusted to reflect the change in school year reporting period.

Note: Table A.16 divided by Table A.27.

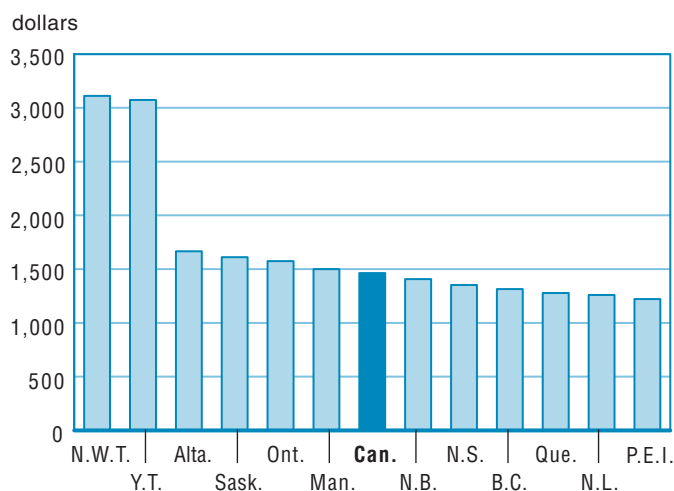
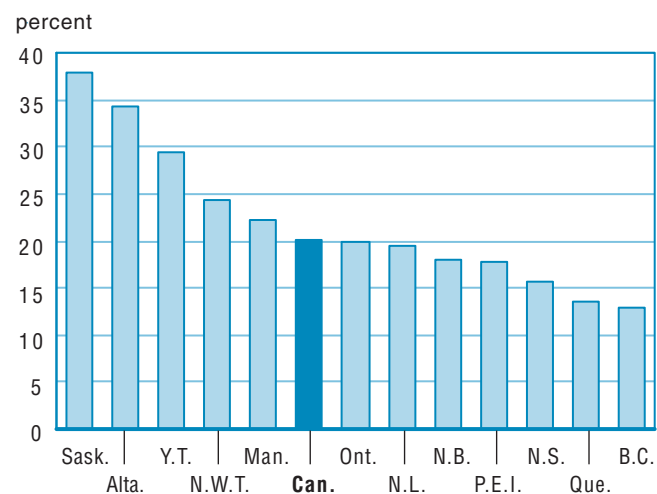
Chart A.23.1.1
Total expenditures per capita, 2005/2006 (in current dollars)

Chart A.23.1.2
Percentage change between 1999/2000 and 2005/2006


Table A.23.2

Total expenditures in public elementary and secondary schools per capita, Canada, provinces and territories, 1999/2000 to 2005/2006 (in 1992 constant dollars)

	Canada	N.L.	P.E.I.	N.S.	N.B.	Que.	Ont.	Man.	Sask.	Alta.	B.C.	Y.T.	N.W.T. ¹	Nvt.
1999/2000	1,106	954	961	1,052	1,091	1,035	1,186	1,071	1,031	1,097	1,052	2,118	2,293	..
Percentage change	1.3	1.6	4.4	17.5	4.9	7.9	-2.6	3.4	1.0	0.5	1.5	4.8
2000/2001	1,111	922	963	1,236	994	1,040	1,177	1,083	1,034	1,136	1,050	2,124	2,306	..
Percentage change	0.5	-3.3	0.2	17.4	-8.9	0.4	-0.8	1.1	0.2	3.5	-0.1	0.3	0.6	..
2001/2002	1,100	993	971	1,077	1,020	1,039	1,141	1,079	1,072	1,169	1,036	2,272	2,432	..
Percentage change	-1.0	7.7	0.9	-12.8	2.7	-0.1	-3.1	-0.4	3.7	3.0	-1.4	7.0	5.5	..
2002/2003	1,107	997	1,010	1,005	996	1,058	1,132	1,100	1,154	1,197	1,049	2,186	2,400	..
Percentage change	0.7	0.4	4.0	-6.7	-2.4	1.8	-0.8	1.9	7.6	2.4	1.3	-3.8	-1.3	..
2003/2004	1,108	999	1,001	999	1,056	1,036	1,161	1,128	1,183	1,162	1,007	2,183	2,376	3,948
Percentage change	0.0	0.3	-0.9	-0.7	6.0	-2.1	2.5	2.6	2.6	-2.9	-4.1	-0.1	-1.0	..
2004/2005	1,126	977	985	978	1,083	1,023	1,203	1,121	1,197	1,197	1,018	2,233	2,552	3,916
Percentage change	1.7	-2.2	-1.6	-2.1	2.6	-1.2	3.6	-0.7	1.2	3.0	1.1	2.3	7.4	-0.8
2005/2006	1,153	994	946	1,036	1,103	1,027	1,229	1,150	1,224 ¹	1,245	1,054	2,482	2,521	3,814
Percentage change	2.4	1.7	-3.9	6.0	1.8	0.4	2.2	2.6	2.2	4.0	3.6	11.1	-1.2	-2.6

.. not available for a specific reference period

... not applicable

1. Figure has been adjusted to reflect the change in school year reporting period.

Note: Table A.16 divided by Table A.27 divided by Table A.33.

Chart A.23.2.1
Total expenditures per capita, 2005/2006 (in 1992 constant dollars)

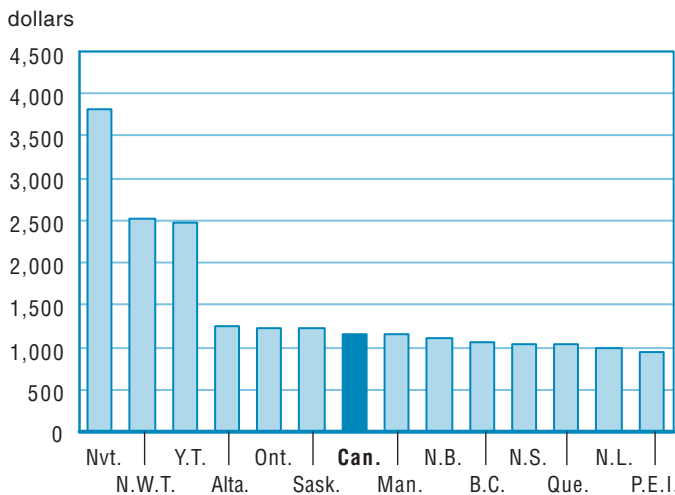


Chart A.23.2.2
Percentage change between 1999/2000 and 2005/2006

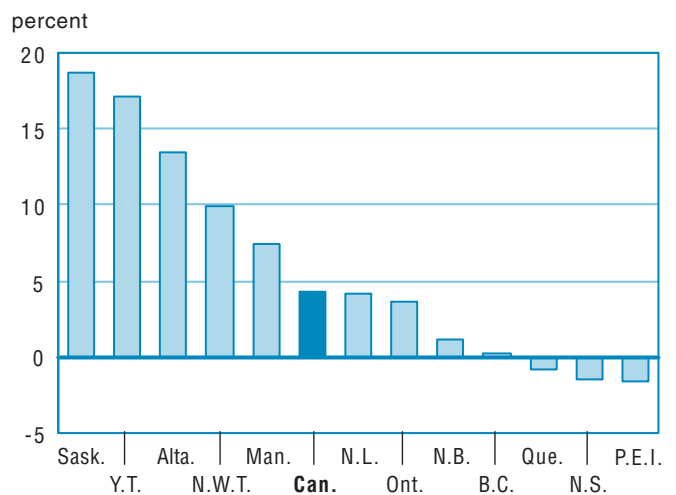


Table A.24
Total expenditures in public elementary and secondary schools as a percentage of GDP, Canada, provinces and territories, 1999/2000 to 2005/2006

	Canada	N.L.	P.E.I.	N.S.	N.B.	Que.	Ont.	Man.	Sask.	Alta.	B.C.	Y.T.	N.W.T.	Nvt.
1999/2000	3.6	4.3	4.3	4.5	4.6	3.8	3.6	4.3	3.7	2.8	3.7	6.4	4.2	.
Percentage change	-4.2	-8.8	-0.2	11.5	-0.1	2.7	-7.0	0.9	-4.4	-10.1	-3.1	-0.1
2000/2001	3.5	3.9	4.3	5.2	4.1	3.7	3.5	4.2	3.6	2.7	3.6	6.0	3.8	.
Percentage change	-1.8	-8.4	0.2	14.7	-9.7	-1.4	-1.5	-0.7	-1.4	-3.6	-2.4	-5.8	-10.7	.
2001/2002	3.5	3.9	4.3	4.4	4.2	3.7	3.4	4.2	3.8	2.8	3.6	6.4	3.7	.
Percentage change	-0.8	-1.3	-1.3	-15.4	1.6	-0.7	-2.4	-1.0	5.3	5.1	-1.3	5.3	-1.3	.
2002/2003	3.5	3.5	4.3	4.0	4.1	3.7	3.4	4.2	4.0	2.9	3.6	6.1	3.4	.
Percentage change	-0.6	-9.3	1.8	-8.7	-2.9	0.5	-1.2	0.7	4.7	1.6	0.1	-4.4	-7.8	.
2003/2004	3.4	3.3	4.3	3.9	4.2	3.6	3.5	4.2	3.9	2.6	3.3	6.0	3.0	.
Percentage change	-1.9	-4.9	-1.0	-2.2	4.1	-3.2	2.5	0.5	-3.5	-8.3	-7.3	-1.3	-13.4	.
2004/2005	3.4	3.0	4.2	3.8	4.2	3.5	3.6	4.1	3.7	2.5	3.2	5.9	3.1	.
Percentage change	-1.7	-8.9	-3.1	-4.6	0.3	-2.7	2.5	-3.2	-5.3	-7.4	-3.3	-2.5	4.8	.
2005/2006	3.4	2.7	4.0	4.0	4.3	3.5	3.6	4.1	3.6	2.4	3.2	6.3	3.2	.
Percentage change	-0.2	-10.2	-4.2	5.3	0.3	-0.3	1.7	-0.4	-2.4	-3.2	0.1	7.5	2.9	.

. not available for any reference period

... not applicable

Note: Table A.16 divided by Table A.29.

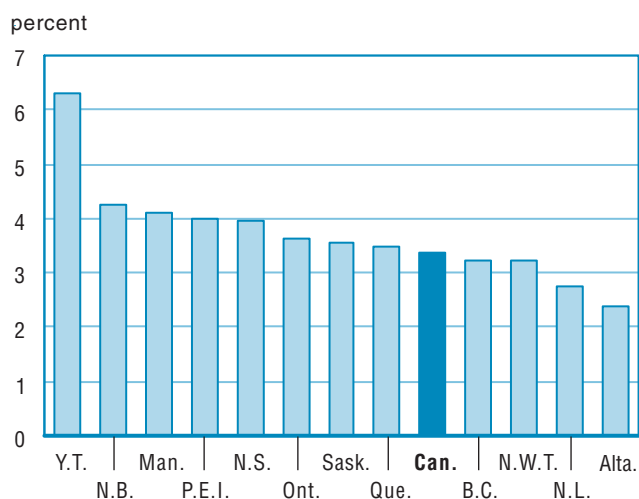
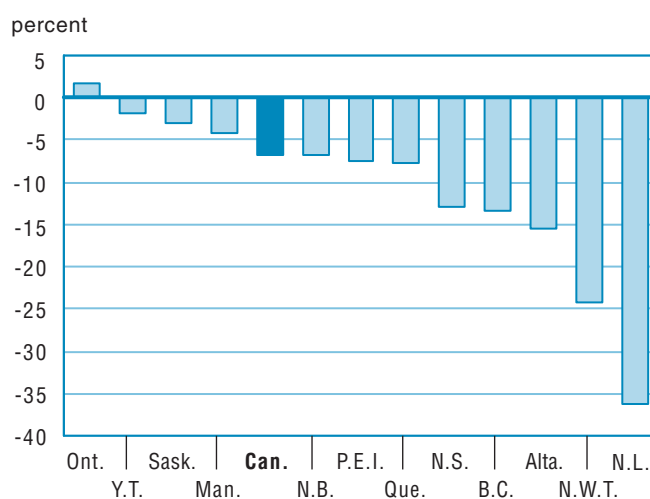
Chart A.24.1
Total expenditures as a percentage of GDP, 2005/2006

Chart A.24.2
Percentage change between 1999/2000 and 2005/2006


Table A.25

Total expenditures per student in public elementary and secondary schools as a percentage of GDP per capita, Canada, provinces and territories, 1999/2000 to 2005/2006

	Canada	N.L.	P.E.I.	N.S.	N.B.	Que.	Ont.	Man.	Sask.	Alta.	B.C.	Y.T.	N.W.T.	Nvt.
1999/2000	21.7	25.1	24.4	26.8	27.0	25.0	20.4	25.7	20.1	15.7	24.5	34.3	18.4	.
Percentage change	-3.4	-6.6	0.4	12.6	1.6	4.6	-6.6	-1.1	-3.8	-9.0	-2.2	0.5
2000/2001	21.6	23.7	25.5	31.2	24.8	24.9	20.3	26.6	19.9	15.3	24.2	33.0	16.5	.
Percentage change	-0.7	-5.6	4.4	16.5	-8.2	-0.3	-0.7	3.5	-1.0	-2.5	-1.3	-3.8	-10.2	.
2001/2002	21.6	24.0	25.5	26.8	25.6	25.0	19.9	26.5	21.2	16.4	24.2	35.6	16.3	.
Percentage change	0.2	1.3	0.2	-14.2	3.3	0.2	-1.6	-0.3	6.7	7.2	-0.1	7.8	-1.0	.
2002/2003	21.8	22.3	26.3	25.0	25.3	25.4	20.0	27.0	22.6	16.9	24.8	33.9	15.2	.
Percentage change	1.0	-7.0	3.0	-6.8	-1.1	1.7	0.4	2.0	6.5	2.9	2.5	-4.6	-7.2	.
2003/2004	21.9	21.9	26.5	24.8	26.8	24.9	21.1	27.4	22.2	15.8	23.4	34.5	13.5	.
Percentage change	0.3	-1.7	1.0	-0.6	5.7	-1.8	5.7	1.4	-1.7	-6.6	-5.3	1.7	-11.1	.
2004/2005	21.9	20.5	25.7	24.2	27.3	24.7	22.0	27.0	21.3	14.8	23.3	34.3	14.5	.
Percentage change	-0.1	-6.6	-3.4	-2.4	1.8	-1.1	4.0	-1.5	-3.8	-6.3	-0.7	-0.5	7.7	.
2005/2006	22.2	18.9	25.1	26.0	27.9	25.0	22.7	27.3	21.1	14.6	23.9	38.0	15.1	.
Percentage change	1.6	-7.6	-2.1	7.4	2.3	1.5	3.2	1.0	-1.0	-1.2	2.5	10.8	4.2	.

. not available for any reference period

... not applicable

Note: Table A.17.1 divided by Table A.30.

Chart A.25.1

Total expenditures per student as a percentage of GDP per capita, 2005/2006

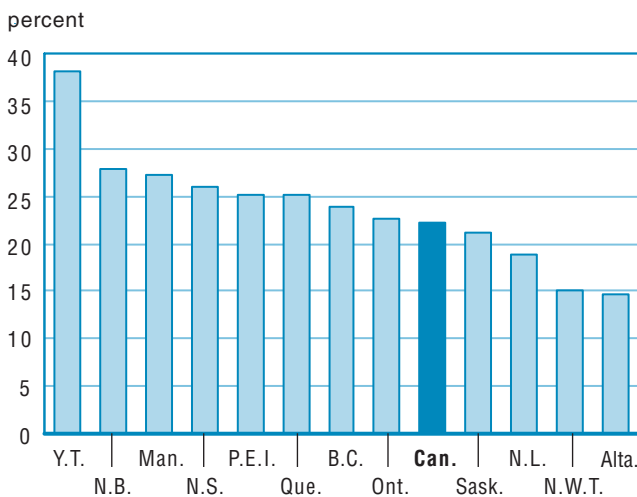


Chart A.25.2

Percentage change between 1999/2000 and 2005/2006

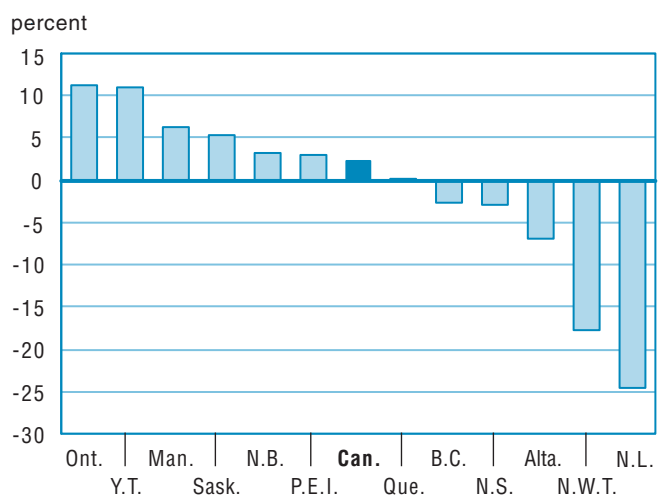


Table A.26

Total expenditures in public elementary and secondary schools as a percentage total expenditures by provincial and local governments, Canada, provinces and territories, 1999/2000 to 2005/2006

	Canada	N.L.	P.E.I.	N.S.	N.B.	Que.	Ont.	Man.	Sask.	Alta.	B.C.	Y.T.	N.W.T.	Nvt.
1999/2000	14.5	12.0	12.7	15.0	14.0	12.3	16.3	13.9	13.0	15.7	13.9	13.6	10.3	.
Percentage change	-0.4	-6.1	-0.8	14.5	-1.3	5.1	-3.8	-2.8	-4.6	-1.3	5.1	-3.0
2000/2001	14.2	11.2	12.5	18.1	13.6	12.1	16.0	14.1	13.4	14.7	13.9	13.1	10.7	.
Percentage change	-1.4	-6.1	-1.7	20.8	-2.7	-2.1	-2.3	1.6	3.6	-6.5	-0.4	-4.0	3.5	.
2001/2002	13.9	11.6	12.4	15.2	13.7	11.7	15.8	14.0	12.8	14.3	13.4	13.4	10.0	.
Percentage change	-2.4	3.5	-0.6	-16.1	0.6	-3.3	-1.0	-0.6	-4.5	-3.0	-3.3	2.6	-6.8	.
2002/2003	13.8	11.9	12.6	14.0	13.3	11.7	15.1	14.3	12.9	15.5	13.8	12.4	9.7	.
Percentage change	-0.7	2.1	1.7	-7.8	-2.4	0.1	-4.7	2.5	0.7	9.1	3.1	-7.6	-2.3	.
2003/2004	13.6	11.6	11.9	13.8	13.9	11.1	15.1	14.4	14.0	15.4	13.3	11.6	9.8	.
Percentage change	-1.3	-2.5	-5.6	-1.6	4.3	-4.9	0.3	0.2	8.7	-1.2	-3.8	-6.8	0.6	.
2004/2005	13.7	11.8	12.6	13.0	13.8	11.0	15.4	14.1	13.8	15.4	13.6	11.0	10.3	.
Percentage change	0.9	1.7	5.7	-5.2	-0.5	-0.7	2.0	-1.9	-1.5	0.6	2.0	-5.1	5.5	.
2005/2006	13.5	8.4	12.2	12.7	14.0	10.6	15.5	13.9	14.0	15.2	13.5	11.1	9.9	.
Percentage change	-1.8	-28.4	-3.0	-2.4	1.3	-4.1	0.3	-1.5	0.9	-1.8	-0.7	1.2	-3.7	.

. not available for any reference period

... not applicable

Note: Table A.16 divided by Table A.32.

Chart A.26.1

Total expenditures in public elementary and secondary schools as a percentage of total public expenditures by provincial and local governments, 2005/2006

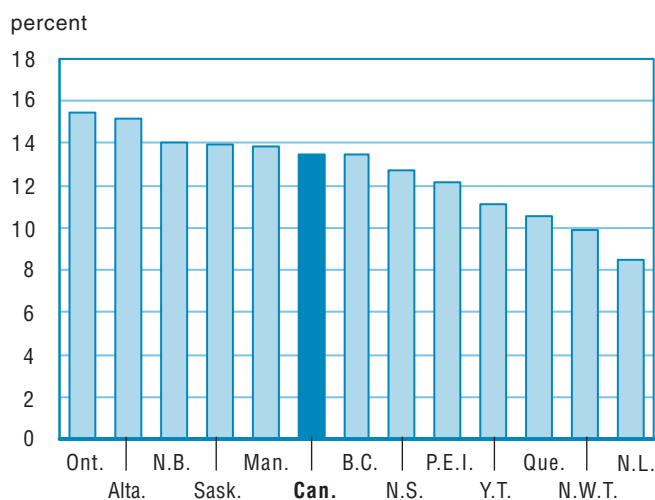


Chart A.26.2

Percentage change between 1999/2000 and 2005/2006

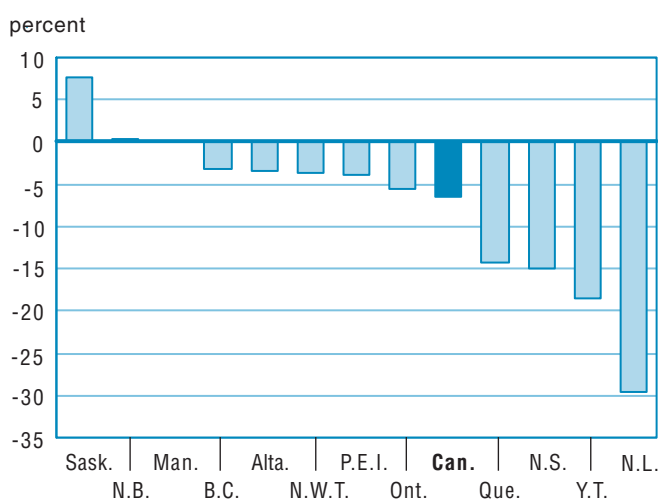


Table A.27
Total population estimates, Canada, provinces and territories, July 1st, 1999 to 2005

	Canada	N.L.	P.E.I.	N.S.	N.B.	Que.	Ont.	Man.	Sask.	Alta.	B.C.	Y.T.	N.W.T.	Nvt.
1999/2000	30,403,878	533,409	136,296	933,847	750,611	7,323,308	11,506,359	1,142,491	1,014,707	2,953,255	4,011,342	30,777	40,654	26,822
Percentage change	0.8	-1.2	0.4	0.2	0.0	0.4	1.2	0.4	-0.3	1.9	0.7	-1.2	-39.5	...
2000/2001	30,689,035	528,043	136,486	933,881	750,518	7,357,029	11,685,380	1,147,373	1,007,767	3,004,940	4,039,198	30,421	40,499	27,500
Percentage change	0.9	-1.0	0.1	0.0	0.0	0.5	1.6	0.4	-0.7	1.8	0.7	-1.2	-0.4	2.5
2001/2002	31,021,251	521,986	136,672	932,389	749,890	7,396,990	11,897,647	1,151,285	1,000,134	3,056,739	4,078,447	30,129	40,822	28,121
Percentage change	1.1	-1.1	0.1	-0.2	-0.1	0.5	1.8	0.3	-0.8	1.7	1.0	-1.0	0.8	2.3
2002/2003	31,372,587	519,449	136,934	934,507	750,327	7,445,745	12,102,045	1,155,584	995,886	3,116,332	4,115,413	30,137	41,489	28,739
Percentage change	1.1	-0.5	0.2	0.2	0.1	0.7	1.7	0.4	-0.4	1.9	0.9	0.0	1.6	2.2
2003/2004	31,676,077	518,428	137,325	936,513	751,222	7,494,690	12,262,560	1,161,896	994,732	3,161,371	4,155,370	30,574	42,231	29,165
Percentage change	1.0	-0.2	0.3	0.2	0.1	0.7	1.3	0.5	-0.1	1.4	1.0	1.5	1.8	1.5
2004/2005	31,995,199	517,303	137,862	937,960	752,040	7,548,984	12,420,289	1,170,555	994,898	3,208,173	4,203,807	30,875	42,822	29,631
Percentage change	1.0	-0.2	0.4	0.2	0.1	0.7	1.3	0.7	0.0	1.5	1.2	1.0	1.4	1.6
2005/2006	32,312,077	514,144	138,188	935,990	751,319	7,598,034	12,565,446	1,174,150	990,044	3,280,728	4,260,246	31,051	42,724	30,013
Percentage change	1.0	-0.6	0.2	-0.2	-0.1	0.6	1.2	0.3	-0.5	2.3	1.3	0.6	-0.2	1.3

... not applicable

Source: CANSIM, Statistics Canada, Table 051-0001 Demography Division: Estimates of Population by Age and Sex for Canada, Provinces and Territories.

Chart A.27.1
Percentage change between 2004/2005 and 2005/2006

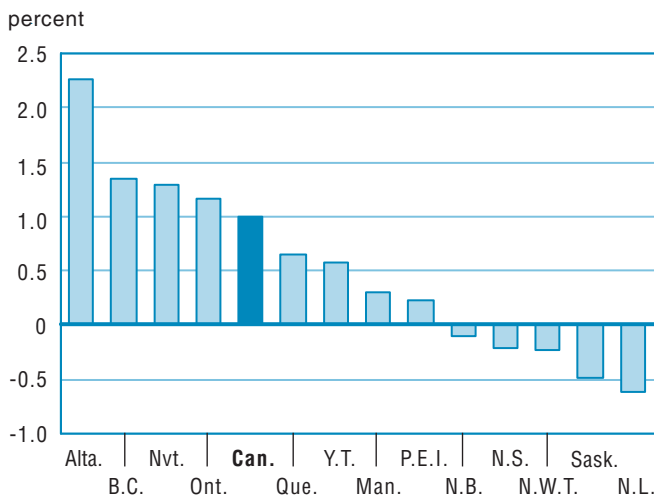


Chart A.27.2
Percentage change between 1999/2000 and 2005/2006

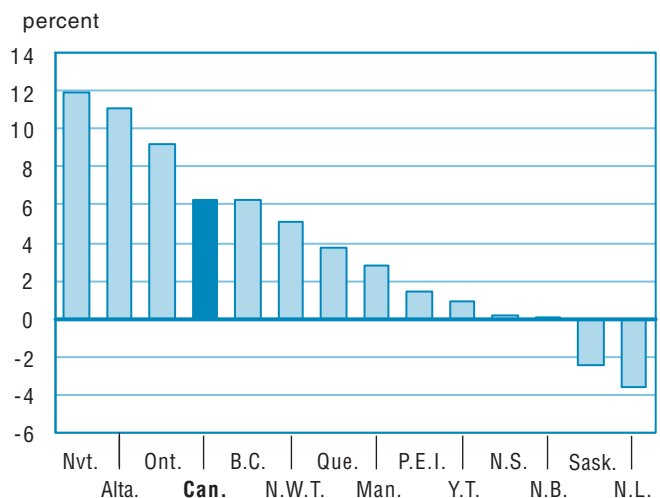


Table A.28

School age population estimates (5 to 17 years), Canada, provinces and territories, July 1st, 1999 to 2005

	Canada	N.L.	P.E.I.	N.S.	N.B.	Que.	Ont.	Man.	Sask.	Alta.	B.C.	Y.T.	N.W.T.	Nvt.
1999/2000	5,328,959	94,393	25,772	159,665	127,743	1,206,742	2,026,766	214,600	203,456	567,223	678,780	6,255	9,489	8,075
Percentage change	0.2	-3.5	-0.7	-0.8	-1.2	-0.7	1.2	0.4	-1.1	0.6	0.1	-1.6
2000/2001	5,346,600	91,122	25,490	158,105	125,896	1,201,275	2,056,858	215,221	200,143	570,176	678,555	6,093	9,409	8,257
Percentage change	0.3	-3.5	-1.1	-1.0	-1.4	-0.5	1.5	0.3	-1.6	0.5	0.0	-2.6	-0.8	2.3
2001/2002	5,362,756	87,821	25,324	156,320	123,851	1,199,043	2,085,517	215,349	195,967	572,171	677,666	5,911	9,421	8,395
Percentage change	0.3	-3.6	-0.7	-1.1	-1.6	-0.2	1.4	0.1	-2.1	0.3	-0.1	-3.0	0.1	1.7
2002/2003	5,359,471	84,861	25,034	153,903	121,703	1,193,789	2,105,107	214,666	192,228	572,814	671,601	5,796	9,450	8,519
Percentage change	-0.1	-3.4	-1.1	-1.5	-1.7	-0.4	0.9	-0.3	-1.9	0.1	-0.9	-1.9	0.3	1.5
2003/2004	5,329,763	82,174	24,520	151,355	119,463	1,184,735	2,107,842	213,689	188,274	569,684	664,257	5,745	9,433	8,592
Percentage change	-0.6	-3.2	-2.1	-1.7	-1.8	-0.8	0.1	-0.5	-2.1	-0.5	-1.1	-0.9	-0.2	0.9
2004/2005	5,299,055	79,756	24,042	148,451	117,206	1,174,565	2,108,315	213,028	184,529	566,565	658,960	5,649	9,383	8,606
Percentage change	-0.6	-2.9	-1.9	-1.9	-1.9	-0.9	0.0	-0.3	-2.0	-0.5	-0.8	-1.7	-0.5	0.2
2005/2006	5,278,541	77,716	23,648	145,426	115,132	1,165,693	2,110,934	211,658	180,681	568,408	655,750	5,549	9,241	8,705
Percentage change	-0.4	-2.6	-1.6	-2.0	-1.8	-0.8	0.1	-0.6	-2.1	0.3	-0.5	-1.8	-1.5	1.2

.. not available for a specific reference period

... not applicable

Source: CANSIM, Statistics Canada, Table 051-0001: Estimates of Population by Age and Sex for Canada, Provinces and Territories.

Chart A.28.1
Percentage change between 2004/2005 and 2005/2006

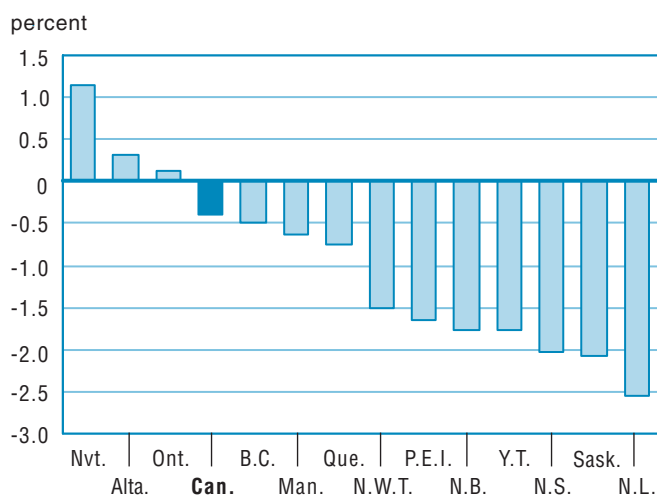


Chart A.28.2
Percentage change between 1999/2000 and 2005/2006

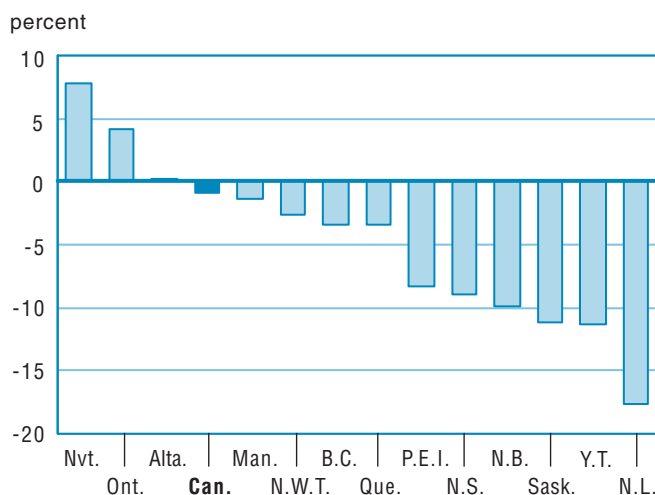


Table A.29

**Gross domestic product, Canada, provinces and territories, 1999/2000 to 2005/2006
(in millions of current dollars)**

	Canada ¹	N.L.	P.E.I.	N.S.	N.B.	Que.	Ont.	Man.	Sask.	Alta.	B.C.	Y.T.	N.W.T.	Nvt.
1999/2000	1,029,509	13,053	3,263	23,859	19,563	217,869	424,890	33,012	32,303	130,935	126,127	1,138	2,404	791
Percentage change	8.5	11.8	6.3	7.3	6.7	7.0	8.0	4.9	7.1	16.6	6.6	4.7
2000/2001	1,092,313	14,051	3,399	25,284	20,385	228,276	447,230	34,607	33,478	148,032	132,424	1,225	2,744	855
Percentage change	6.1	7.6	4.2	6.0	4.2	4.8	5.3	4.8	3.6	13.1	5.0	7.6	14.1	8.2
2001/2002	1,130,477	15,318	3,566	26,496	20,927	236,536	465,732	35,858	33,735	150,934	135,854	1,257	3,003	914
Percentage change	3.5	9.0	4.9	4.8	2.7	3.6	4.1	3.6	0.8	2.0	2.6	2.6	9.4	6.8
2002/2003	1,183,040	17,288	3,750	27,967	21,768	246,100	485,422	37,005	35,498	160,354	141,918	1,273	3,363	971
Percentage change	4.6	12.9	5.1	5.6	4.0	4.0	4.2	3.2	5.2	6.2	4.5	1.3	12.0	6.3
2003/2004	1,252,002	18,711	3,896	29,433	22,950	256,821	504,937	38,655	38,535	179,817	151,504	1,332	4,007	1,032
Percentage change	5.8	8.2	3.9	5.2	5.4	4.4	4.0	4.5	8.6	12.1	6.8	4.6	19.2	6.3
2004/2005	1,332,954	20,399	4,056	30,795	23,862	267,781	526,850	40,771	42,095	205,840	163,385	1,425	4,225	1,088
Percentage change	6.5	9.0	4.1	4.6	4.0	4.3	4.3	5.5	9.2	14.5	7.8	7.0	5.4	5.4
2005/2006	1,410,694	23,552	4,211	31,786	24,768	277,757	547,346	43,267	44,848	231,092	174,866	1,514	4,139	1,144
Percentage change	5.8	15.5	3.8	3.2	3.8	3.7	3.9	6.1	6.5	12.3	7.0	6.2	-2.0	5.1

... not applicable

1. Data may not add to the total due to rounding.

Source: CANSIM, Statistics Canada, Table: 384-0013 (converted to school (July-June) year): Gross Domestic Product.

Chart A.29.1
Percentage change between 2004/2005 and 2005/2006

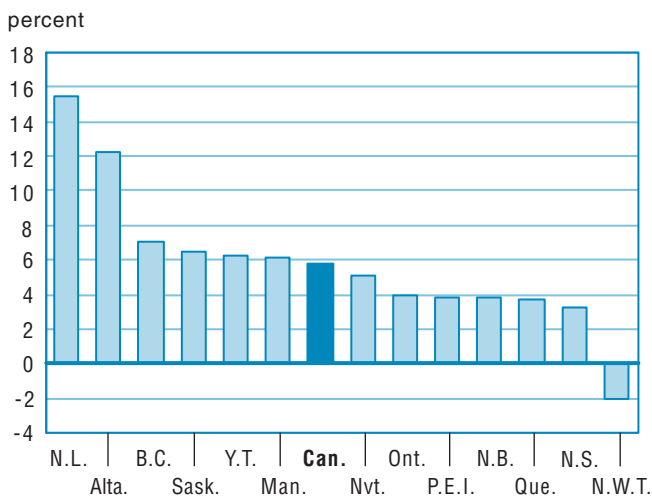


Chart A.29.2
Percentage change between 1999/2000 and 2005/2006

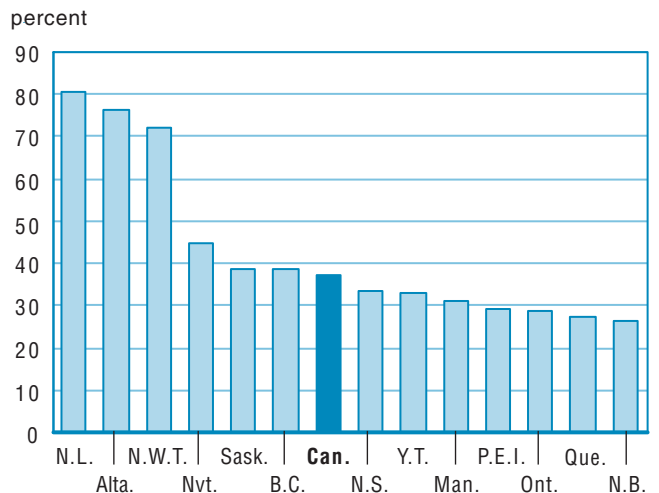


Table A.30
**Gross domestic product per capita, Canada, provinces and territories, 1999/2000 to 2005/2006
(in current dollars)**

	Canada	N.L.	P.E.I.	N.S.	N.B.	Que.	Ont.	Man.	Sask.	Alta.	B.C.	Y.T.	N.W.T.	Nvt.
1999/2000	33,861	24,471	23,937	25,549	26,063	29,750	36,926	28,894	31,835	44,336	31,443	36,959	59,121	29,472
Percentage change	7.6	13.1	5.9	7.1	6.7	6.6	6.7	4.4	7.4	14.5	5.9	6.0
2000/2001	35,593	26,609	24,900	27,074	27,161	31,028	38,273	30,162	33,219	49,263	32,785	40,252	67,742	31,091
Percentage change	5.1	8.7	4.0	6.0	4.2	4.3	3.6	4.4	4.3	11.1	4.3	8.9	14.6	5.5
2001/2002	36,442	29,346	26,092	28,417	27,906	31,977	39,145	31,146	33,730	49,377	33,310	41,704	73,551	32,485
Percentage change	2.4	10.3	4.8	5.0	2.7	3.1	2.3	3.3	1.5	0.2	1.6	3.6	8.6	4.5
2002/2003	37,709	33,281	27,382	29,926	29,011	33,052	40,111	32,023	35,645	51,456	34,484	42,240	81,046	33,787
Percentage change	3.5	13.4	4.9	5.3	4.0	3.4	2.5	2.8	5.7	4.2	3.5	1.3	10.2	4.0
2003/2004	39,525	36,091	28,371	31,428	30,550	34,267	41,177	33,269	38,739	56,879	36,460	43,550	94,883	35,385
Percentage change	4.8	8.4	3.6	5.0	5.3	3.7	2.7	3.9	8.7	10.5	5.7	3.1	17.1	4.7
2004/2005	41,661	39,433	29,421	32,831	31,730	35,472	42,418	34,830	42,311	64,161	38,866	46,138	98,664	36,718
Percentage change	5.4	9.3	3.7	4.5	3.9	3.5	3.0	4.7	9.2	12.8	6.6	5.9	4.0	3.8
2005/2006	43,658	45,808	30,473	33,960	32,966	36,556	43,560	36,849	45,298	70,439	41,046	48,742	96,878	38,100
Percentage change	4.8	16.2	3.6	3.4	3.9	3.1	2.7	5.8	7.1	9.8	5.6	5.6	-1.8	3.8

... not applicable

Note: Table A.29 divided by Table A.27.

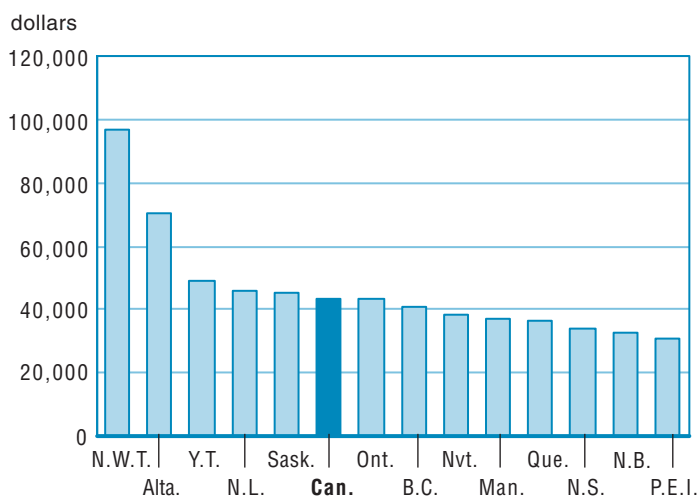
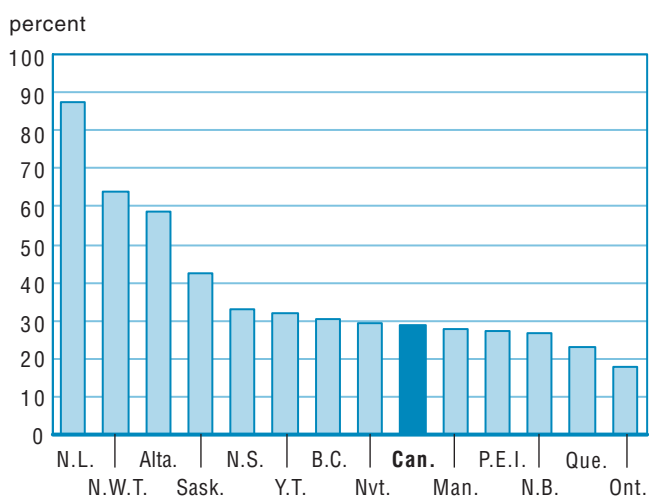
Chart A.30.1
Gross domestic product per capita, 2005/2006

Chart A.30.2
Percentage change between 1999/2000 and 2005/2006


Table A.31

**Average earnings of full-year full-time workers, Canada and provinces, 1999 to 2005
(in constant 2005 dollars)**

	Canada	N.L.	P.E.I.	N.S.	N.B.	Que.	Ont.	Man.	Sask.	Alta.	B.C.	Y.T.	N.W.T.	Nvt.
1999/2000	46,500	40,100	34,700	41,800	39,000	41,900	52,000	38,200	38,100	46,800	46,500
Percentage change	-0.9	5.8	-2.5	5.0	0.8	-1.6	0.2	-4.7	-1.6	-2.3	-1.7
2000/2001	47,000	39,900	33,700	40,200	37,900	43,600	52,500	38,600	38,400	46,600	45,300
Percentage change	1.1	-0.5	-2.9	-3.8	-2.8	4.1	1.0	1.0	0.8	-0.4	-2.6
2001/2002	47,800	37,300	32,100	41,000	38,900	44,300	52,800	38,700	40,100	50,600	45,300
Percentage change	1.7	-6.5	-4.7	2.0	2.6	1.6	0.6	0.3	4.4	8.6	0.0
2002/2003	47,900	37,300	34,900	41,900	38,700	43,900	52,700	40,300	41,200	50,600	46,900
Percentage change	0.2	0.0	8.7	2.2	-0.5	-0.9	-0.2	4.1	2.7	0.0	3.5
2003/2004	47,600	37,400	34,400	41,200	38,700	43,400	51,900	40,000	40,500	51,500	47,000
Percentage change	-0.6	0.3	-1.4	-1.7	0.0	-1.1	-1.5	-0.7	-1.7	1.8	0.2
2004/2005	49,200	38,700	34,700	39,900	38,300	44,300	55,200	40,400	39,700	53,500	47,000
Percentage change	3.4	3.5	0.9	-3.2	-1.0	2.1	6.4	1.0	-2.0	3.9	0.0
2005/2006	48,700	39,200	36,100	41,000	38,300	43,700	53,500	42,500	43,000	54,700	46,500
Percentage change	-1.0	1.3	4.0	2.8	0.0	-1.4	-3.1	5.2	8.3	2.2	-1.1

. not available for any reference period

... not applicable

Source: CANSIM, Statistics Canada, Table 202-0101: Distribution of earnings, by sex.

Chart A.31.1

Average earnings of full-year full-time workers, 2005

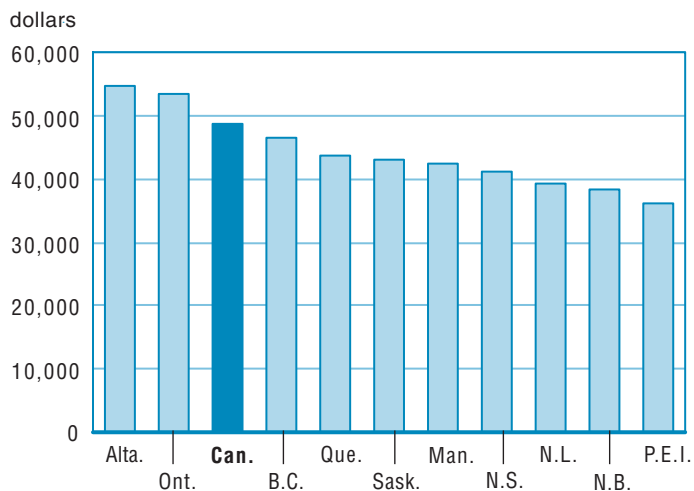


Chart A.31.2

Percentage change between 1999 and 2005

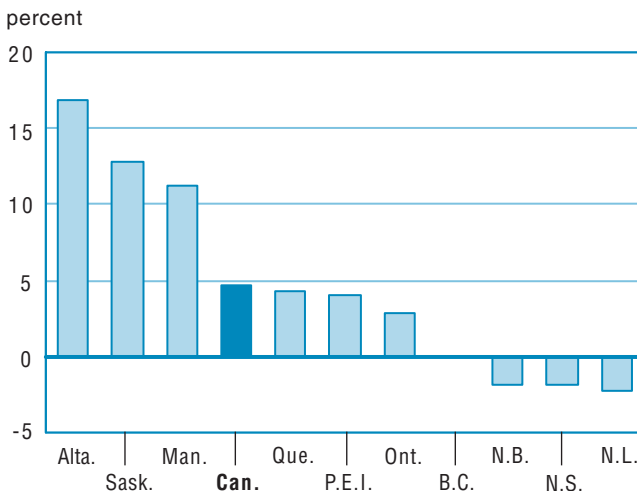


Table A.32
Total expenditures by provincial and local governments¹, Canada, provinces and territories, 1999/2000 to 2005/2006 (in millions of current dollars)

	Canada ²	N.L.	P.E.I.	N.S.	N.B.	Que.	Ont.	Man.	Sask.	Alta.	B.C.	Y.T.	N.W.T.	Nvt.
1999/2000	257,078	4,675	1,110	7,249	6,407	66,490	92,653	10,177	9,178	23,384	33,649	536	987	887
Percentage change	4.3	8.5	6.9	4.5	8.0	4.6	4.5	8.9	7.4	6.2	-1.7	7.8
2000/2001	271,590	4,906	1,179	7,295	6,192	70,193	98,327	10,429	9,051	27,277	34,607	566	972	870
Percentage change	5.6	4.9	6.2	0.6	-3.4	5.6	6.1	2.5	-1.4	16.6	2.8	5.6	-1.5	-1.9
2001/2002	285,681	5,100	1,229	7,702	6,424	74,624	101,026	10,760	10,056	30,119	36,252	596	1,127	942
Percentage change	5.2	4.0	4.2	5.6	3.7	6.3	2.7	3.2	11.1	10.4	4.8	5.3	15.9	8.3
2002/2003	299,372	5,113	1,293	8,050	6,644	77,924	109,149	10,910	11,004	29,805	36,764	625	1,190	1,016
Percentage change	4.8	0.3	5.2	4.5	3.4	4.4	8.0	1.4	9.4	-1.0	1.4	4.9	5.6	7.9
2003/2004	314,919	5,397	1,409	8,427	6,992	82,810	116,099	11,435	10,607	31,026	37,799	692	1,221	1,105
Percentage change	5.2	5.6	9.0	4.7	5.2	6.3	6.4	4.8	-3.6	4.1	2.8	10.7	2.6	8.8
2004/2005	326,657	5,271	1,345	8,869	7,325	84,593	121,723	11,899	11,136	32,678	38,658	761	1,279	1,221
Percentage change	3.7	-2.3	-4.5	5.2	4.8	2.2	4.8	4.1	5.0	5.3	2.3	10.0	4.8	10.5
2005/2006	351,268	7,636	1,379	9,882	7,530	91,226	128,271	12,770	11,476	36,140	41,700	859	1,340	1,173
Percentage change	7.5	44.9	2.5	11.4	2.8	7.8	5.4	7.3	3.1	10.6	7.9	12.9	4.8	-3.9

... not applicable

1. Includes municipalities and school boards.

2. Data may not add to the total due to rounding.

Source: CANSIM, Statistics Canada, Table: 385-0001: Consolidated provincial, territorial and local government expenditures, for fiscal year ending March 31.

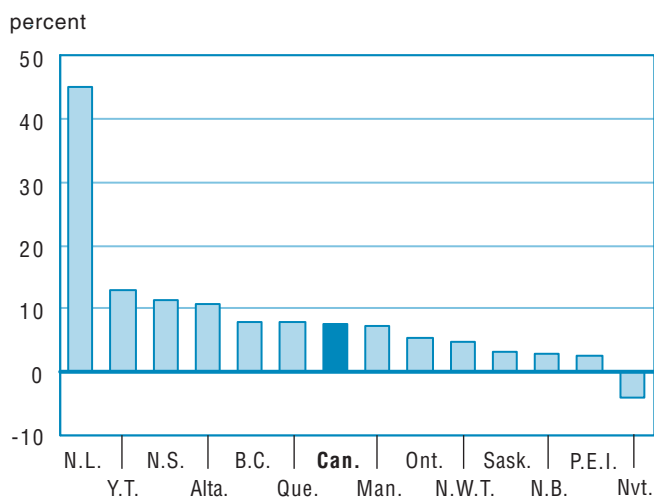
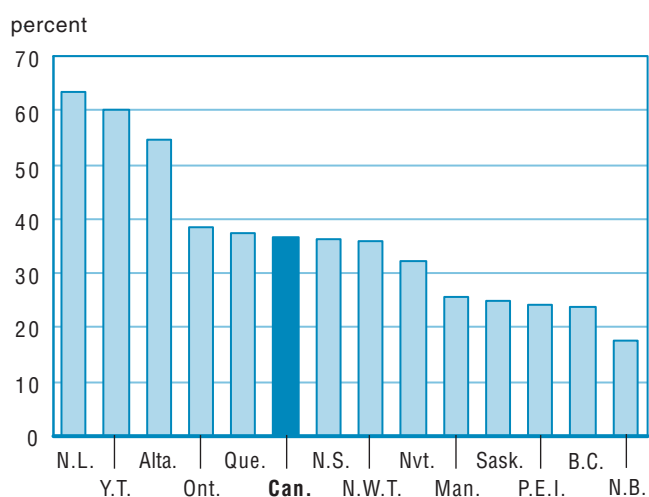
Chart A.32.1
Percentage change between 2004/2005 and 2005/2006

Chart A.32.2
Percentage change between 1999/2000 and 2005/2006


Table A.33
Consumer price index, Canada, provinces and territories, 1999 to 2005

	Canada	N.L.	P.E.I.	N.S.	N.B.	Que.	Ont.	Man.	Sask.	Alta.	B.C.	Y.T.	N.W.T.	Nvt.
1999/2000	1.105	1.100	1.073	1.103	1.092	1.080	1.110	1.152	1.137	1.134	1.112	1.121	1.093	...
Percentage change	1.7	1.5	1.2	1.7	1.6	1.5	1.9	1.9	1.7	2.4	1.1	1.0
2000/2001	1.135	1.133	1.117	1.142	1.128	1.106	1.142	1.181	1.167	1.174	1.133	1.146	1.112	...
Percentage change	2.7	3.0	4.1	3.5	3.3	2.4	2.9	2.5	2.6	3.5	1.9	2.2	1.7	...
2001/2002	1.164	1.145	1.146	1.163	1.147	1.132	1.177	1.212	1.203	1.201	1.152	1.169	1.130	...
Percentage change	2.6	1.1	2.6	1.8	1.7	2.4	3.1	2.6	3.1	2.3	1.7	2.0	1.6	...
2002/2003	1.190	1.173	1.177	1.198	1.186	1.155	1.201	1.231	1.237	1.242	1.179	1.177	1.163	...
Percentage change	2.2	2.4	2.7	3.0	3.4	2.0	2.0	1.6	2.8	3.4	2.3	0.7	2.9	...
2003/2004	1.223	1.207	1.219	1.239	1.226	1.184	1.233	1.253	1.265	1.297	1.204	1.199	1.191	1.002
Percentage change	2.8	2.9	3.6	3.4	3.4	2.5	2.7	1.8	2.3	4.4	2.1	1.9	2.4	...
2004/2005	1.246	1.229	1.245	1.261	1.244	1.207	1.256	1.278	1.293	1.315	1.228	1.211	1.208	1.012
Percentage change	1.9	1.8	2.1	1.8	1.5	1.9	1.9	2.0	2.2	1.4	2.0	1.0	1.4	1.0
2005/2006	1.273	1.261	1.285	1.296	1.274	1.235	1.284	1.312	1.322	1.343	1.253	1.238	1.236	1.029
Percentage change	2.2	2.6	3.2	2.8	2.4	2.3	2.2	2.7	2.2	2.1	2.0	2.2	2.3	1.7

.. not available for a specific reference period

... not applicable

Source: CANSIM, Statistics Canada, Table 326-0002: Consumer price index, 2001 basket content; All-items (Index, 1992=100).

Chart A.33.1
Percentage change between 2004/2005 and 2005/2006

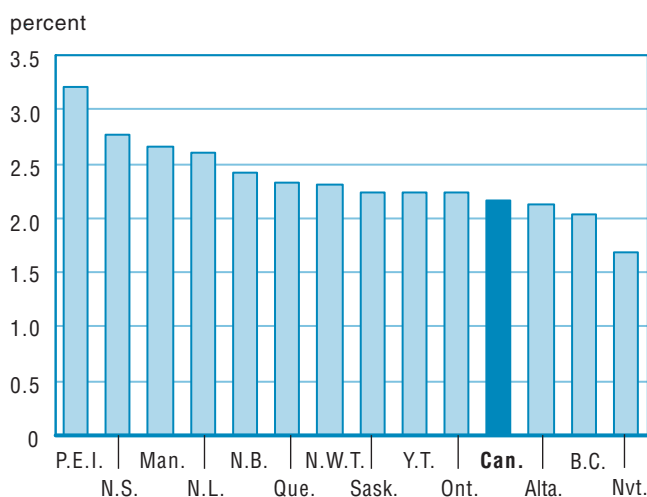
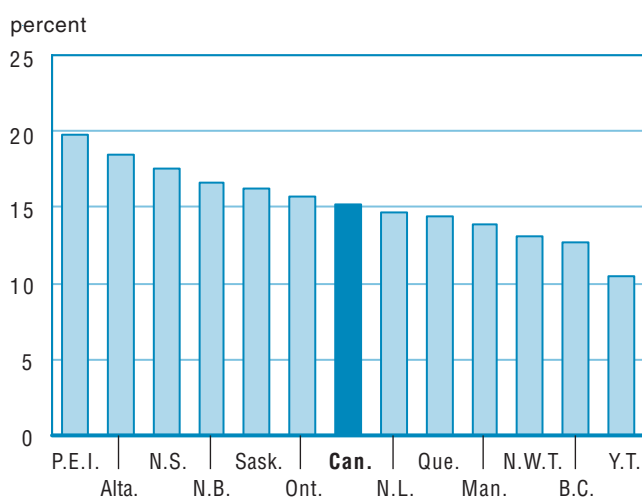


Chart A.33.2
Percentage change between 1999/2000 and 2005/2006



Appendix 2

Definitions

Enrolments

Number of students enrolled in public schools operated by school boards or the province in September (or as close as possible thereafter) of the school year. It includes all students in regular public schools (graded and ungraded), provincial reformatory or custodial schools, and other students recognized and funded by a province or territory. It excludes correspondence or distance education enrolments, private school students, independent school students or students in schools financed by federal departments (e.g. the Department of National Defense and the Department of Indian and Northern Affairs).

Includes other non-standard enrolment including students receiving educational services (if recognized by the province) and for schools and/or school districts that receive funding in a unique manner. They may be non-graduates who are taking only a few courses required to complete graduation. For example, a student who is enrolled in only 25% of a 'regular' course load and for whom the school or school district receives only 25% of the usual funding. This category may not apply to some provinces or territories.

Headcount enrolment

Defined as the number of students enrolled in September (or as close as possible thereafter) of the school year.

Full Time Equivalent (FTE) enrolment

Defined as the number of full-time students enrolled in September (or as close as possible thereafter) of the school year, plus the sum of part-time students according to the time fraction spent in the classroom and for which students are funded. For example, junior kindergarten and kindergarten students taking a half-time program and where a half-time program is being funded, the FTE enrolment would be the headcount enrolment divided by two, which is 0.5. If a student is only taking a quarter of the usual course load and is funded on that basis, the FTE enrolment would be the headcount enrolment divided by four, which is 0.25.

Minority and Second Language Programs

Regular Second Language Programs

Enrolments in programs where French is taught to Anglophone students or English is taught to Francophone students as a “subject” in the regular course offerings. One or more additional subjects can also be taught in the student’s second official language but second language instruction must total less than 25% of all instruction time.

Second Language Immersion Programs

Enrolments in programs where French is the language of instruction for Anglophone students or English is the language of instruction for Francophone students. Instruction time in the student’s second official language is more than 25% of all instruction time.

Minority Language Programs

Enrolments in programs for students from the official language linguistic minority in the relevant province or territory (French outside Québec, English in Québec). These programs allow children in the linguistic minority to pursue their education in their first official language.

Graduates

Graduates of general training programs offered to similarly aged young students. Includes first time graduates only.

Includes graduates in General Education Development (GED), Adult Basic Education (ABE) and other equivalency programs. Excludes any graduates of upgrading programs offered at the postsecondary level.

Includes graduates in all professional and technical training programs. Excludes any graduates of vocational programs offered at the postsecondary level.

Graduation rate

The number of graduates is as of the end of a school year while the population estimates are as of July 1 of the corresponding school year. Late graduates are included in the calculations while graduates from private schools, are not. For this reason, this methodology underestimates the “final” graduation rate and should not be used to infer dropout rate.

The graduation rate is calculated by dividing the number of graduates with the average of the 17 and 18 year-old population:

Graduation Rate = Total number of secondary graduates / [(17 year old population + 18 year-old population)/2]

Educators

Includes all employees in the public school system (either school-based or school district-based) who belong to one of the three following categories: teachers, school administrators and pedagogical support.

It includes all educators in regular public schools, provincial reformatory or custodial schools, and other students recognized and funded by a province or territory. It excludes correspondence or distance programs, private schools or independent schools financed by federal departments (e.g. the Department of National Defense and the Department of Indian and Northern Affairs).

Please note that all teachers in regular programs for youth, adult upgrading programs and vocational programs for youth and adults are also included. Any programs offered at the postsecondary level are excluded.

Teachers

This category includes personnel involved in direct student instruction in a group or one-on-one basis. Chairpersons of departments who spend the majority of their time teaching are also reported in this category. Personnel temporarily not at work (e.g. for reasons of illness or injury, maternity or parental leave, holiday or vacation) are also included.

Includes:

- Classroom teachers
- Special education teachers
- Specialists (music, physical education)
- Other teachers who work with students as a whole class in a classroom, in small groups in a resource room, or one-on-one inside or outside a regular classroom

Excludes:

- Teacher aides, student teachers
- Other personnel who do not get paid for their employment.

School Administrators

This category includes all personnel who support the administration and management of the school (e.g. principals, vice-principals and other management staff with similar responsibilities), only if they do not spend the majority of their time teaching.

Excludes:

- Higher level management
- Receptionists, secretaries, clerks and other staff who support the administrative activities of the school

Pedagogical support

This category covers professional non-teaching which provides services to students to support their instruction program. It includes guidance counselors, librarians and educational media specialists.

Excludes:

- Health and social support

Headcount educator

Defined as the number of educators on September the 30th (or as close as possible thereafter) of the school year who are responsible for providing services to the headcount enrolment students.

Full Time Equivalent (FTE) educator

Defined as the number of full-time educators on September the 30th (or as close as possible thereafter) of the school year, plus the sum of part-time educators according to their percentage of a full-time employment allocation (determined by the province or territory). For example, if a normal full-time work allocation is ten months per year, an educator who works for six months of the year would be counted as 0.6 of a Full Time Equivalent (FTE) or an employee who works part time for ten months at 60% of full time would be 0.6 of an FTE.

Culture, Tourism and the Centre for Education Statistics

Research Papers

Cumulative index

Statistics Canada's **Division of Culture, Tourism and the Centre for Education Statistics** develops surveys, provides statistics and conducts research and analysis relevant to current issues in its three areas of responsibility.

The **Culture Statistics Program** creates and disseminates timely and comprehensive information on the culture sector in Canada. The program manages a dozen regular census surveys and databanks to produce data that support policy decision and program management requirements. Issues include the economic impact of culture, the consumption of culture goods and services, government, personal and corporate spending on culture, the culture labour market, and international trade of culture goods and services. Analysis is also published in *Focus on Culture* (87-004-XIE, free, <http://www.statcan.ca/bsolc/english/bsolc?catno=87-004-X>).

The **Tourism Statistics Program** provides information on domestic and international tourism. The program covers the Canadian Travel Survey and the International Travel Survey. Together, these surveys shed light on the volume and characteristics of trips and travellers to, from and within Canada.

The **Centre for Education Statistics** develops and delivers a comprehensive program of pan-Canadian education statistics and analysis in order to support policy decisions and program management, and to ensure that accurate and relevant information concerning education is available to the Canadian public and to other educational stakeholders. The Centre conducts fifteen institutional and over ten household education surveys. Analysis is also published in *Education Matters* (81-004-XIE, free, <http://www.statcan.ca/bsolc/english/bsolc?catno=81-004-X>), and in the *Analytical Studies Branch research paper series* (11F0019MIE, free, <http://www.statcan.ca/bsolc/english/bsolc?catno=11F0019M>).

Following is a cumulative index of Culture, Tourism and the Centre for Education Statistics research papers published to date

Research papers

- 81-595-M no. 001 Understanding the rural-urban reading gap
- 81-595-M no. 002 Canadian education and training services abroad: the role of contracts funded by international financial institution
- 81-595-M No. 003 Finding their way: a profile of young Canadian graduates
- 81-595-M No. 004 Learning, earning and leaving – The relationship between working while in high school and dropping out
- 81-595-M No. 005 Linking provincial student assessments with national and international assessments
- 81-595-M No. 006 Who goes to post-secondary education and when: Pathways chosen by 20 year-olds
- 81-595-M No. 007 Access, persistence and financing: First results from the Postsecondary Education Participation Survey (PEPS)
- 81-595-M No. 008 The labour market impacts of adult education and training in Canada
- 81-595-M No. 009 Issues in the design of Canada’s Adult Education and Training Survey
- 81-595-M No. 010 Planning and preparation: First results from the Survey of Approaches to Educational Planning (SAEP) 2002
- 81-595-M No. 011 A new understanding of postsecondary education in Canada: A discussion paper
- 81-595-M No. 012 Variation in literacy skills among Canadian provinces: Findings from the OECD PISA
- 81-595-M No. 013 Salaries and salary scales of full-time teaching staff at Canadian universities, 2001-2002: final report
- 81-595-M No. 014 In and out of high school: First results from the second cycle of the Youth in Transition Survey, 2002
- 81-595-M No. 015 Working and Training: First Results of the 2003 Adult Education and Training Survey
- 81-595-M No. 016 Class of 2000: Profile of Postsecondary Graduates and Student Debt
- 81-595-M No. 017 Connectivity and ICT integration in Canadian elementary and secondary schools: First results from the Information and Communications Technologies in Schools Survey, 2003-2004
- 81-595-M No. 018 Education and Labour Market Pathways of Young Canadians Between age 20 and 22: an Overview

Following is a cumulative index of Culture, Tourism and the Centre for Education Statistics research papers published to date

Research papers

- 81-595-M No. 019 Salaries and salary scales of full-time teaching staff at Canadian universities, 2003-2004
- 81-595-M No. 020 Culture Goods Trade Estimates: Methodology and Technical Notes
- 81-595-M No. 021 Canadian Framework for Culture Statistics
- 81-595-M No. 022 Summary public school indicators for the provinces and territories, 1996-1997 to 2002-2003
- 81-595-M No. 023 Economic Contribution of Culture in Canada
- 81-595-M No. 024 Economic Contributions of the Culture Sector in Ontario
- 81-595-M No. 025 Economic Contribution of the Culture Sector in Canada – A Provincial Perspective
- 81-595-M No. 026 Who pursues postsecondary education, who leaves and why: Results from the Youth in Transition Survey
- 81-595-M No. 027 Salaries and salary scales of full-time teaching staff at Canadian universities, 2002-2003: final report
- 81-595-M No. 028 Canadian School Libraries and Teacher-Librarians: Results from the 2003/04 Information and Communications Technologies in Schools Survey
- 81-595-M No. 029 Manitoba Postsecondary Graduates from the Class of 2000: How Did They Fare?
- 81-595-M No. 030 Salaries and Salary Scales of Full-time teaching Staff at Canadian Universities, 2004-2005: Preliminary Report
- 81-595-M No. 031 Salaries and salary scales of full-time teaching staff at Canadian universities, 2003-2004: final report
- 81-595-M No. 032 Survey of Earned Doctorates: A Profile of Doctoral Degree Recipients
- 81-595-M No. 033 The Education Services Industry in Canada
- 81-595-M No. 034 Connectivity and ICT Integration in First Nations Schools: Results from the Information and Communications Technologies in Schools Survey, 2003/04
- 81-595-M No. 035 Registered Apprentices: A Class Ten Years Later
- 81-595-M No. 036 Participation in Postsecondary Education: Evidence from the Survey of Labour Income Dynamics
- 81-595-M No. 037 Economic Contribution of the Culture sector to Canada's Provinces
- 81-595-M No. 038 Profile of Selected Culture Industries in Ontario

Following is a cumulative index of Culture, Tourism and the Centre for Education Statistics research papers published to date

Research papers

- 81-595-M No. 039 Factors Affecting the Repayment of Student Loans
- 81-595-M No. 040 Culture Goods Trade Data User Guide
- 81-595-M No. 041 Health Human Resources and Education: Outlining Information Needs
- 81-595-M No. 042 How Students Fund Their Postsecondary Education: Findings from the Postsecondary Education Participation Survey
- 81-595-M No. 043 Educational Outcomes at Age 19 Associated with Reading Ability at Age 15
- 81-595-M No. 044 Summary Public School Indicators for the Provinces and Territories, 1997-1998 to 2003-2004
- 81-595-M No. 045 Follow-up on Education and Labour Market Pathways of Young Canadians Aged 18 to 20 – Results from YITS Cycle 3
- 81-595-M No. 046 Salaries and Salary Scales of Full-time Teaching Staff at Canadian Universities, 2005/2006: Preliminary Report
- 81-595-M No. 047 Canada Student Loans Repayment Assistance: Who Does and Does Not Use Interest Relief?
- 81-595-M No. 048 Salaries and Salary Scales of Full-time Teaching Staff at Canadian Universities, 2004/2005: Final Report
- 81-595-M No. 049 Educating Health Workers: A Statistical Portrait
- 81-595-M No. 050 Summary Public School Indicators for the Provinces and Territories, 1997-1998 to 2003-2004
- 81-595-M No. 051 Culture Employment in a North American Context
- 81-595-M No. 052 Salaries and Salary Scales of Full-time Teaching Staff at Canadian Universities, 2006/2007: Preliminary Report
- 81-595-M No. 053 Towards a Geography of Culture: Culture Occupations Across the Canadian Urban-Rural Divide
- 81-595-M No. 054 Education-to-Labour Market Pathways of Canadian Youth: Findings from the Youth in Transition Survey
- 81-595-M No. 055 High School Dropouts Returning to School
- 81-595-M No. 056 Trade in Culture Services A Handbook of Concepts and Methods
- 81-595-M No. 057 Educational Outcomes at Age 19 by Gender and Parental Income: A First Look at Provincial differences
- 81-595-M No. 058 Postsecondary Enrolment Trends to 2031: Three Scenarios

**Following is a cumulative index of Culture, Tourism and the Centre for Education
Statistics research papers published to date**

Research papers

- 81-595-M No. 059 Participation in Postsecondary Education: Graduates, Continuers and Drop Outs, Results from YITS Cycle 4
- 81-595-M No. 060 Sport Participation in Canada, 2005
- 81-595-M No. 061 Salaries and Salary Scales of Full-time Teaching Staff at Canadian Universities, 2005/2006: Final Report
- 81-595-M No. 062 Salaries and Salary Scales of Full-time Teaching Staff at Canadian Universities, 2007/2008: Preliminary Report
- 81-595-M No. 063 Registered Apprentices: The Cohort of 1993, a Decade Later, Comparisons with the 1992 Cohort
- 81-595-M No. 064 Creative Input: The Role of Culture Occupations in the Economy During the 1990s
- 81-595-M No. 065 Doctoral Graduates in Canada: Findings from the Survey of Earned Doctorates, 2004/2005
- 81-595-M No. 066 Understanding Culture Consumption in Canada
- 81-595-M No. 067 Summary Public School Indicators for the Provinces and Territories, 1999/2000 to 2005/2006