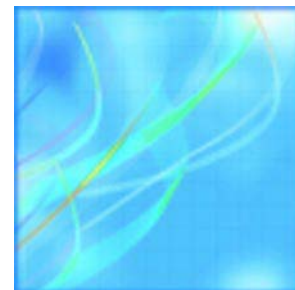


Catalogue no. 85-225-X

Police Resources in Canada

2008



Statistics
Canada

Statistique
Canada

Canada

How to obtain more information

For information about this product or the wide range of services and data available from Statistics Canada, visit our website at www.statcan.gc.ca, e-mail us at infostats@statcan.gc.ca, or telephone us, Monday to Friday from 8:30 a.m. to 4:30 p.m., at the following numbers:

Statistics Canada's National Contact Centre

Toll-free telephone (Canada and the United States):

Inquiries line	1-800-263-1136
National telecommunications device for the hearing impaired	1-800-363-7629
Fax line	1-877-287-4369

Local or international calls:

Inquiries line	1-613-951-8116
Fax line	1-613-951-0581

Depository Services Program

Inquiries line	1-800-635-7943
Fax line	1-800-565-7757

To access this product

This product, Catalogue no. 85-225-X, is available free in electronic format. To obtain a single issue, visit our website at www.statcan.gc.ca and select "Publications" > "Free Internet publications."

Standards of service to the public

Statistics Canada is committed to serving its clients in a prompt, reliable and courteous manner. To this end, Statistics Canada has developed *standards of service* that its employees observe. To obtain a copy of these service standards, please contact Statistics Canada toll-free at 1-800-263-1136. The service standards are also published on www.statcan.gc.ca under "About us" > "Providing services to Canadians."

Police Resources in Canada

2008

Published by authority of the Minister responsible for Statistics Canada

© Minister of Industry, 2008

All rights reserved. The content of this electronic publication may be reproduced, in whole or in part, and by any means, without further permission from Statistics Canada, subject to the following conditions: that it be done solely for the purposes of private study, research, criticism, review or newspaper summary, and/or for non-commercial purposes; and that Statistics Canada be fully acknowledged as follows: Source (or "Adapted from", if appropriate): Statistics Canada, year of publication, name of product, catalogue number, volume and issue numbers, reference period and page(s). Otherwise, no part of this publication may be reproduced, stored in a retrieval system or transmitted in any form, by any means—electronic, mechanical or photocopy—or for any purposes without prior written permission of Licensing Services, Client Services Division, Statistics Canada, Ottawa, Ontario, Canada K1A 0T6.

December 2008

Catalogue no. 85-225-X

ISSN 1488-867X

Frequency: Annual

Ottawa

La version française de cette publication est disponible sur demande (n° 85-225-X au catalogue).

Note of appreciation

Canada owes the success of its statistical system to a long standing partnership between Statistics Canada, the citizens of Canada, its businesses, governments and other institutions. Accurate and timely statistical information could not be produced without their continued cooperation and goodwill.

User information

Symbols

The following standard symbols are used in Statistics Canada publications:

- . not available for any reference period
- .. not available for a specific reference period
- ... not applicable
- 0 true zero or a value rounded to zero
- 0s value rounded to 0 (zero) where there is a meaningful distinction between true zero and the value that was rounded
- p preliminary
- r revised
- x suppressed to meet the confidentiality requirements of the *Statistics Act*
- E use with caution
- F too unreliable to be published

Table of contents

Police Resources in Canada, 2008	5
Police personnel and expenditures	5
Overview of policing in Canada	7
 Statistical tables	
1 Trends in police personnel and expenditures, Canada, 1962 to 2008	10
2 Police officers by level of policing, 2008	11
3 Police officers and crime rates	12
3-1 in census metropolitan areas	12
3-2 in the 30 largest municipal police services	13
4 Police officers by sex, Canada, selected years	14
5 Male and female police officers within the ranks, Canada, 1986 to 2008	14
6 Police officers by sex, provinces and territories, 2008	15
7 Current and constant dollar expenditures on policing, Canada, 1985 to 2007	15
8 Total expenditures on policing, 2007	16
9 Police personnel in municipal police services	17
9-1 Newfoundland and Labrador, 2008	17
9-2 Prince Edward Island, 2008	17
9-3 Nova Scotia, 2008	18
9-4 New Brunswick, 2008	19
9-5 Quebec, 2008	20
9-6 Ontario, 2008	22
9-7 Manitoba, 2008	26
9-8 Saskatchewan, 2008	27
9-9 Alberta, 2008	28
9-10 British Columbia, 2008	30
10 Police operating expenditures in municipal police services	32
10-1 Newfoundland and Labrador, 2007	32
10-2 Prince Edward Island, 2007	32
10-3 Nova Scotia, 2007	33
10-4 New Brunswick, 2007	34
10-5 Quebec, 2007	35
10-6 Ontario, 2007	37

Table of contents – continued

10-7	Manitoba, 2007	41
10-8	Saskatchewan, 2007	42
10-9	Alberta, 2007	43
10-10	British Columbia, 2007	45

Data quality, concepts and methodology

Data quality, concepts and methodology	47
--	----

Appendix

I	Census metropolitan area reference list	52
---	---	----

Charts

1.	Rates of police officers and civilian personnel, 1963 to 2008	5
2.	Police officer strength among the provinces, 2008	6

Police Resources in Canada, 2008

Police personnel and expenditures

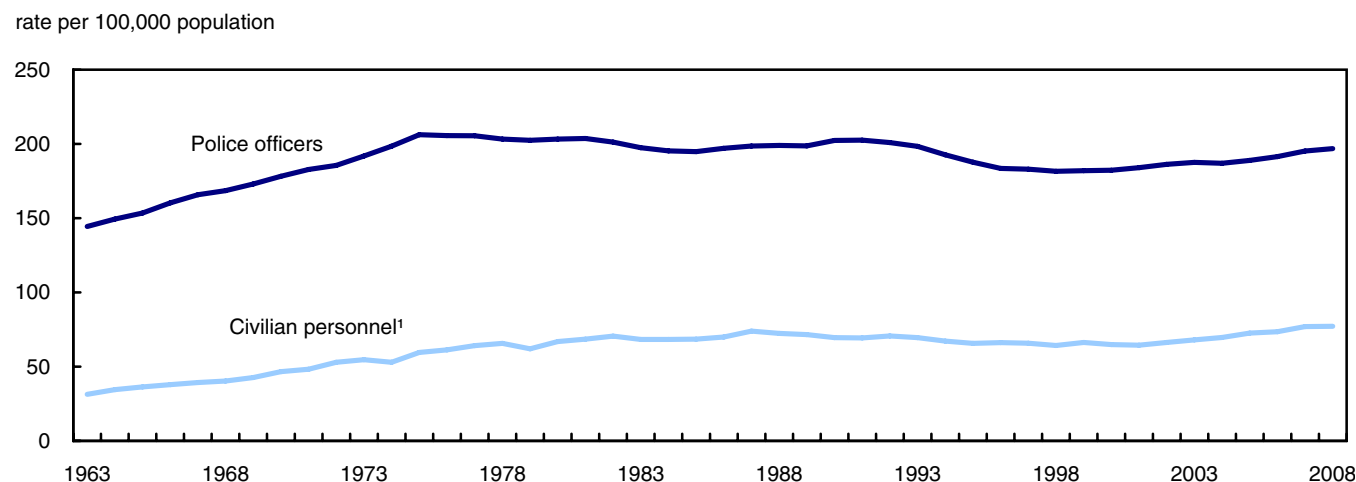
Following a period of decline throughout the 1990's, police strength in Canada has increased over the past decade. At 196 officers per 100,000 population, the 2008 rate was 8% higher than in 1998, although 5% lower than its peak in 1975.

While police officer strength has been increasing, Canada's police reported crime rate has been decreasing. The 2007 crime rate was at its lowest point in over 30 years. At the same time, the proportion of crime solved by police reached a 30 year high.

There were over 65,000 "active" police officers on May 15, 2008, two-thirds of which were employed by municipal police services. However, there were an additional 13,234 "authorized" positions that were not staffed for a number of reasons, including difficulty in replacing officers who had retired or otherwise left the police service, were on maternity/paternity leave or were on long-term medical leave.

Civilian personnel, such as clerks, dispatch officers and by-law enforcement officers, has increased over the past 10 years at a rate more than twice that of police officers. In 2008, there were over 25,000 civilian personnel accounting for 28% of all policing personnel or 1 civilian per 2.5 police officers.

Chart 1
Rates of police officers and civilian personnel, 1963 to 2008



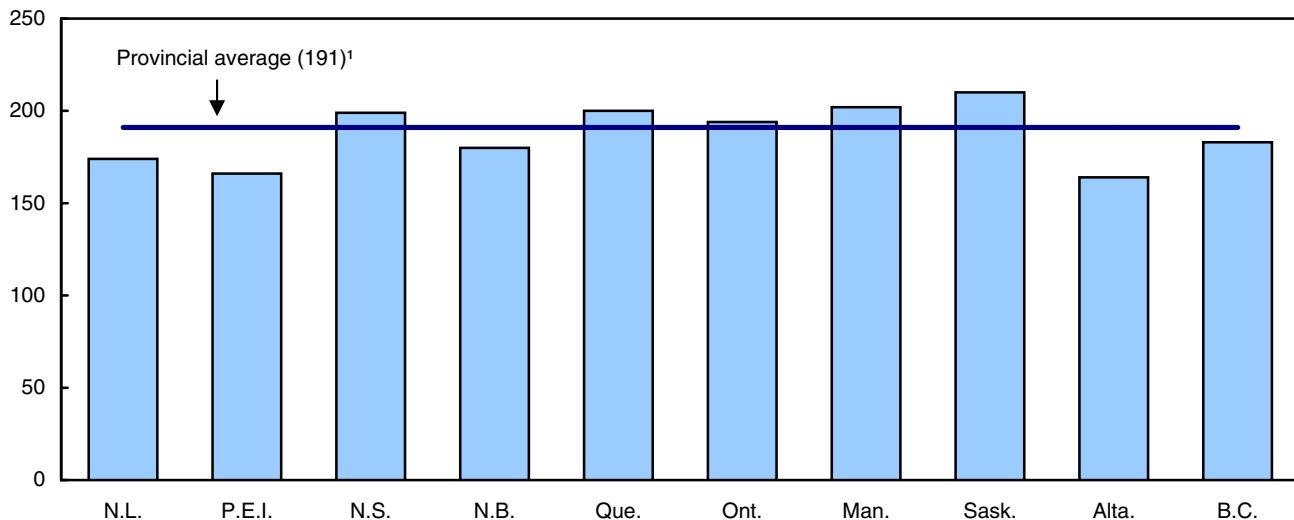
1. Includes: special constables, native special constables, security officers/guards, by-law enforcement, parking control officers, cadets/trainees, communications dispatch, management/professionals, clerical support, school crossing guards, and other civilians.

Source(s): Statistics Canada, Canadian Centre for Justice Statistics, Police Administration Survey.

Over the past 10 years, all provinces and territories, except the Yukon, recorded increases in the rate of police officer strength. The largest provincial increases were in Newfoundland and Labrador (up 21%) and Nova Scotia (up 17%).

Chart 2
Police officer strength among the provinces, 2008

rate per 100,000 population



1. The provincial average excludes the territories and Royal Canadian Mounted Police Headquarters and Training Academy. The territories are not shown on this graph as their sparse populations result in considerably higher police strengths than the rest of Canada.

Source(s): Statistics Canada, Canadian Centre for Justice Statistics, Police Administration Survey.

As is historically the case, police per capita in 2008 was highest in the territories, where crime rates are well above the rest of the country.

Among the provinces, Saskatchewan reported the highest rate of police officers for the eighth year in a row, while Alberta and Prince Edward Island reported the lowest.

Over the past decade, all 27 census metropolitan areas recorded increases in police officer strength, with the exception of Victoria. The largest gains since 1998 occurred in Sherbrooke, St.Catharine-Niagara and London, all up by more than 20%.

In 2008, Thunder Bay had the highest rate of police officers, followed by Saint John and Regina.

Among Canada's nine largest metropolitan areas, the rate of police officers was highest in Montréal and Winnipeg. The rate of police strength in Toronto, where crime rates were among the lowest, was also above average compared to the other large cities. Québec reported the lowest rate of officers as well as one of the lowest rates of crime.

Female officers grew at a faster pace than male officers in 2008, continuing the rise in female recruitment that began in the mid-1970s.

In 2008, females accounted for almost one in five officers in Canada compared to approximately one in eight a decade ago. In 2008, Quebec and British Columbia reported the highest proportion of female officers among the provinces. The lowest proportion was found in Prince Edward Island.

After adjusting for inflation, police expenditures rose for the 11th consecutive year, reaching \$10.5 billion in 2007 or \$320 per Canadian. Total spending was 4% higher than in 2006 and 43% higher than in 1997.

Generally, about one in every three police-reported crimes is cleared, either by a charge being laid or by other means. In 2007, the proportion of crime solved by police went up for the third consecutive year, reaching a 30 year high of 37%. Police strength, the volume and type of crimes and the complexity of police investigations are among the many factors which affect clearance rates.

Overview of policing in Canada

Policing in Canada is the responsibility of all three levels of government: federal, provincial/territorial and municipal. While the federal government is responsible for criminal law, under the *Constitution Act*, each province and territory assumes responsibility for its own policing at the provincial, territorial and municipal levels. Further, many First Nations communities also administer their own police service.

Federal policing

The federal government, through the Royal Canadian Mounted Police (RCMP), is responsible for the enforcement of federal statutes in each province and territory, and for providing services such as forensic laboratories, identification services, the Canadian Police Information Centre (CPIC), and the Canadian Police College.

Provincial and territorial policing

Provincial policing involves enforcement of the *Criminal Code* and provincial statutes within areas of a province not served by a municipal police service (i.e., rural areas and small towns). In some cases, police boundaries may overlap. For example, in some areas provincial police perform traffic duties on major provincial thoroughfares that pass through municipal jurisdictions.

Newfoundland and Labrador, Yukon, the Northwest Territories and Nunavut are the only areas in Canada without municipal police services. In Newfoundland and Labrador the Royal Newfoundland Constabulary, which is a provincial police service, provides policing to the three largest municipalities (St. John's, Corner Brook, and Labrador City) as well as to Churchill Falls. Newfoundland and Labrador contracts the RCMP to provide policing to the remaining municipalities and the rural areas.

The RCMP provides provincial/territorial policing and community policing services in all provinces and territories except Quebec and Ontario, which maintain their own provincial police services: the Sûreté du Québec and the Ontario Provincial Police (OPP), respectively. In Ontario and Quebec, the RCMP only provides policing at the federal level. Where a provincial policing contract is granted to the RCMP, the RCMP automatically assumes the provincial policing powers. In the provinces and territories where the RCMP are contracted to provide provincial level policing, the provinces are billed 70% of total contract costs in most cases. The remaining funds come from the federal government.

Municipal policing

Municipal policing consists of enforcement of the *Criminal Code*, provincial statutes, and municipal by-laws within the boundaries of a municipality or several adjoining municipalities that comprise a region (e.g., Durham Regional Police in Ontario) or a metropolitan area (e.g., Montréal Urban Community). Municipalities have three options when providing municipal policing services: to form their own police force, to join an existing municipal police force, or to enter into an agreement with a provincial police force or the RCMP. In cases where the RCMP is granted a policing contract to police a municipality, under the billing agreement, municipalities with a population under 15,000 are billed 70% of total expenditures, and municipalities of 15,000 and over are billed 90% of total costs.

First Nations policing

In addition to federal, provincial/territorial and municipal policing, there are also various types of First Nations policing agreements for Aboriginal communities in place across Canada. The First Nations Policing Policy (FNPP),¹ announced in June 1991 by the federal government, was introduced in order to provide First Nations

1. Public Safety and Emergency Preparedness Canada. *First Nations Policing Policy*. Aboriginal Policing. www.psepc-sppcc.gc.ca

across Canada (with the exception of Northwest Territories and Nunavut) with access to police services that are professional, effective, culturally appropriate, and accountable to the communities they serve.

The FNPP is implemented across Canada through tripartite agreements negotiated among the federal government, provincial or territorial governments and First Nations. The agreements are cost-shared 52% by the Government of Canada and 48% by the province involved. Depending on the resources available, the First Nation may develop and administer its own police service, as is the case in most of Québec and Ontario, or it may enter into a Community Tripartite Agreement (CTA). Like self-administered agreements, CTAs are negotiated between the Federal government, the province or territory in which the First Nation is located, and the governing body of the First Nation. Under such agreements, the First Nation has its own dedicated contingent of officers from an existing police service (usually the RCMP). Best efforts are made for these police services to be staffed by Aboriginal police officers.

Statistical tables

Table 1
Trends in police personnel and expenditures, Canada, 1962 to 2008

	Police officers			Civilian personnel			Total personnel	Police to civilian ratio	Total expenditures	<i>Criminal Code</i> incidents ¹	Clearance rate - total <i>Criminal Code</i> ¹	Incidents per officer
	Total	Per 100,000 population	Percentage change in rate	Total	Per 100,000 population	Percentage change in rate						
	number	rate	percent	number	rate	percent	number	percent	dollars	number	rate	number
1962	26,129	140.6	..	5,699	30.7	..	31,828	4.6	..	514,986	..	19.7
1963	27,333	144.4	2.7	5,935	31.4	2.2	33,268	4.6	..	572,105	..	20.9
1964	28,823	149.4	3.5	6,655	34.5	10.0	35,478	4.3	..	626,038	..	21.7
1965	30,146	153.5	2.7	7,133	36.3	5.3	37,279	4.2	..	628,418	..	20.8
1966	32,086	160.3	4.5	7,583	37.9	4.3	39,669	4.2	..	702,809	..	21.9
1967	33,792	165.8	3.4	8,018	39.3	3.9	41,810	4.2	..	784,568	..	23.2
1968	34,887	168.5	1.6	8,351	40.3	2.5	43,238	4.2	..	897,530	..	25.7
1969	36,342	173.0	2.7	8,963	42.7	5.8	45,305	4.1	..	994,790	..	27.4
1970	37,949	178.2	3.0	9,936	46.7	9.3	47,885	3.8	..	1,110,066	..	29.3
1971	40,148	182.8	2.6	10,597	48.3	3.4	50,745	3.8	..	1,166,458	..	29.1
1972	41,214	185.5	1.5	11,762	52.9	9.7	52,976	3.5	..	1,189,805	..	28.9
1973	43,142	191.8	3.4	12,297	54.7	3.3	55,439	3.5	..	1,298,551	..	30.1
1974	45,276	198.5	3.5	12,085	53.0	-3.1	57,361	3.7	..	1,456,885	..	32.2
1975	47,713	206.2	3.9	13,794	59.6	12.5	61,507	3.5	..	1,585,805	..	33.2
1976	48,213	205.6	-0.3	14,377	61.3	2.9	62,590	3.4	..	1,637,704	..	34.0
1977	48,764	205.5	0.0	15,231	64.2	4.7	63,995	3.2	..	1,654,024	35.3	33.9
1978	48,705	203.2	-1.1	15,749	65.7	2.4	64,454	3.1	..	1,714,300	35.5	35.2
1979	48,990	202.4	-0.4	15,001	62.0	-5.7	63,991	3.3	..	1,855,271	34.5	37.9
1980	49,841	203.3	0.4	16,410	66.9	8.0	66,251	3.0	..	2,045,398	33.7	41.0
1981	50,563	203.7	0.2	16,999	68.5	2.3	67,562	3.0	..	2,168,202	33.3	42.9
1982	50,539	201.2	-1.2	17,738	70.6	3.1	68,277	2.8	..	2,203,665	32.5	43.6
1983	50,081	197.4	-1.9	17,342	68.4	-3.2	67,423	2.9	..	2,148,633	34.7	42.9
1984	50,010	195.3	-1.1	17,503	68.4	0.0	67,513	2.9	..	2,147,656	34.5	42.9
1985	50,351	194.8	-0.2	17,702	68.5	0.2	68,053	2.8	3,542,240	2,174,175	35.0	43.2
1986	51,425	197.0	1.1	18,273	70.0	2.2	69,698	2.8	3,771,205	2,277,749	35.3	44.3
1987	52,510	198.5	0.8	19,558	73.9	5.6	72,068	2.7	4,027,809	2,368,958	35.6	45.1
1988	53,312	199.0	0.2	19,407	72.4	-2.1	72,719	2.7	4,389,414	2,390,008	36.3	44.8
1989	54,211	198.7	-0.1	19,526	71.6	-1.2	73,737	2.8	4,684,760	2,425,936	36.8	44.7
1990	56,034	202.3	1.8	19,259	69.5	-2.8	75,293	2.9	5,247,646	2,627,197	35.3	46.9
1991	56,768	202.5	0.1	19,440	69.4	-0.3	76,208	2.9	5,426,887	2,898,989	34.6	51.1
1992	56,992	200.9	-0.8	20,059	70.7	2.0	77,051	2.8	5,716,833	2,847,981	34.2	50.0
1993	56,901	198.4	-1.3	19,956	69.6	-1.6	76,857	2.9	5,790,165	2,735,623	35.0	48.1
1994	55,859	192.6	-2.9	19,492	67.2	-3.4	75,351	2.9	5,783,656	2,646,209	34.6	47.4
1995	55,008	187.7	-2.5	19,259	65.7	-2.2	74,267	2.9	5,808,607	2,639,654	34.5	48.0
1996	54,323	183.5	-2.3	19,603	66.2	0.7	73,926	2.8	5,856,055	2,644,893	34.2	48.7
1997	54,719	183.0	-0.3	19,679	65.8	-0.6	74,398	2.8	5,989,022	2,534,766	34.5	46.3
1998	54,763	181.6	-0.7	19,383	64.3	-2.3	74,146	2.8	6,209,756	2,461,156	35.7	44.9
1999	55,321	182.0	0.2	20,168	66.3	3.2	75,489	2.7	6,395,380	2,356,831	36.6	42.6
2000	55,954	182.3	0.2	19,907	64.9	-2.2	75,861	2.8	6,798,531	2,352,768	36.3	42.0
2001	57,076	184.0	0.9	19,982	64.4	-0.7	77,058	2.9	7,269,977	2,374,811	35.2	41.6
2002	58,422	186.2	1.2	20,732	66.1	2.6	79,154	2.8	7,827,195	2,417,444	34.4	41.4
2003	59,412	187.6	0.7	21,476	67.8	2.6	80,888	2.8	8,324,176	2,579,172	32.6	43.4
2004	59,800	186.9	-0.4	22,212	69.4	2.4	82,012	2.7	8,758,213	2,610,971	31.8	43.7
2005	61,026	188.9	1.0	23,391	72.4	4.3	84,417	2.6	9,281,879	2,510,461	33.4	41.1
2006	62,461	191.3	1.3	23,911	73.2	1.2	86,372	2.6	9,877,071	2,462,641	35.6	39.4
2007	64,134	194.5	1.7	25,295	76.7	4.7	89,429	2.5	10,543,530	2,302,900	37.2	35.9
2008	65,283	196.5	1.0	25,626	77.1	0.6	90,909	2.5

1. Data extracted from the Uniform Crime Reporting Survey, Canadian Centre for Justice Statistics. Excludes *Criminal Code* traffic incidents.

Note(s): A new version of the Police Administration Survey was implemented in 1986. To maintain historical continuity, figures prior to 1986 have been adjusted.

Source(s): Statistics Canada, Canadian Centre for Justice Statistics, Police Administration Survey.

Table 2
Police officers by level of policing, 2008

	2008 population ¹	Police services ²		Royal Canadian Mounted Police				Total police officers	Police officers per 100,000 population	Percentage change in rate	
		Municipal	Provincial	Municipal	Provincial	Federal	Other ³			2007 to 2008	1998 to 2008
		number							rate	percent	
Newfoundland and Labrador ⁴	508,270	...	369	...	403	83	29	884	174	5.2	21.0
Prince Edward Island	139,407	90	...	8	100	22	11	231	166	1.0	10.9
Nova Scotia	935,962	875	...	62	704	181	42	1,864	199	5.8	16.8
New Brunswick	751,527	458	...	211	525	129	32	1,355	180	1.8	5.5
Quebec	7,744,530	9,111	5,277	976	39	15,403	199	0.3	6.4
Ontario ⁵	12,891,787	19,564	4,046	1,282	53	24,945	194	1.3	7.8
Manitoba	1,196,291	1,462	...	178	570	175	34	2,419	202	-0.7	3.3
Saskatchewan ⁶	1,010,146	948	...	217	670	234	55	2,124	210	2.0	12.8
Alberta	3,512,368	3,317	...	801	1,248	317	51	5,734	163	-1.1	5.9
British Columbia	4,428,356	2,392	...	2,974	1,795	802	171	8,134	184	-0.7	6.6
Yukon ⁷	31,530	83	27	7	117	371	-3.9	-2.1
Northwest Territories ^{7, 8}	42,514	159	10	9	178	419	1.2	9.1
Nunavut ^{7, 8}	31,152	101	11	7	119	382	-4.4	23.4
Provincial and territorial total	33,223,840	38,217	9,692	4,451	6,358	4,249	540	63,507	191	0.6	7.4
Royal Canadian Mounted Police Headquarters and Training Academy	1,776	1,776
Canada	33,223,840	38,217	9,692	4,451	6,358	4,249	2,316	65,283	196	0.7	8.2

1. Preliminary postcensal estimates for 2008, Statistics Canada, Demography Division.

2. Excluding the Royal Canadian Mounted Police.

3. Includes National Police Services and Departmental and Divisional Administration.

4. Newfoundland and Labrador does not have any municipal police forces. The Royal Newfoundland Constabulary (a provincial police force) provides policing to the larger municipalities.

5. Excludes personnel from Royal Canadian Mounted Police Headquarters. The Ontario Provincial Police deploy 1,672 officers to provide municipal policing services under contract and these are included as municipal, not provincial policing.

6. Excludes personnel from Royal Canadian Mounted Police Training Academy.

7. Yukon, Northwest Territories and Nunavut do not have any municipal police forces. The Royal Canadian Mounted Police is responsible for providing policing to the territories.

8. The percent change in the rate of police officers per 100,000 is calculated from 1999 to 2008, due to the creation of Nunavut in 1999.

Note(s): Represents actual police officer strength as of May 15, 2008.

Source(s): Statistics Canada, Canadian Centre for Justice Statistics, Police Administration Survey.

Table 3-1
Police officers and crime rates in census metropolitan areas

	2007 population ¹	2008 number of police officers ²	2008 police officers per 100,000 population ³	Percentage change in rate of officers 1998 to 2008	2008 population per officer ³	2007 crime rate ⁴
	number		rate	percent	rate	
500,000 and over population						
Montréal	3,729,820	6,997	188	7.2	533	5,958
Winnipeg ⁵	732,048	1,364	186	1.3	537	9,644
Toronto	5,510,424	9,585	174	2.9	575	4,461
Hamilton	707,333	1,081	153	8.4	654	5,511
Edmonton	1,095,968	1,667	152	5.6	657	9,572
Ottawa ⁶	890,013	1,350	152	9.1	659	5,457
Calgary	1,145,924	1,711	149	13.1	670	6,202
Vancouver ⁵	2,286,517	3,410	149	3.8	678	9,136
Québec	732,452	1,019	139	3.1	719	4,524
100,000 to less than 500,000 population						
Thunder Bay	122,540	266	217	16.1	461	8,819
Saint John ⁷	101,429	208	205	16.5	488	8,292
Regina	203,453	386	190	9.7	527	11,827
Windsor	332,710	603	181	9.8	552	6,138
Saskatoon	250,269	449	179	18.8	557	11,560
Halifax ⁵	385,457	679	176	14.4	568	7,954
St. Catharines-Niagara	433,946	727	168	23.2	597	5,711
St. John's	182,605	303	166	11.4	603	7,325
Trois-Rivières	146,740	227	155	19.0	646	4,478
Greater Sudbury	162,438	249	153	10.3	652	5,627
Victoria	338,747	511	151	-1.7	656	9,335
Sherbrooke	149,875	227	151	26.2	660	4,831
Kitchener	496,370	743	150	18.8	668	4,906
Gatineau ⁸	292,720	431	147	0.8	679	5,718
London	476,640	693	145	21.2	688	7,296
Abbotsford ⁹	169,084	242	143	17.2	699	10,341
Kingston ⁹	152,833	218	143	12.7	701	5,970
Saguenay	144,924	179	124	17.6	810	4,398

1. Populations are based on July 1st preliminary postcensal populations for 2007 (based on the 2001 Census in 2006 Census boundaries), Demography Division, Statistics Canada. Populations are adjusted to follow policing boundaries. Census metropolitan area populations for 2008 are not yet available.

2. Represents actual police officer strength as of May 15th, 2008.

3. Based on the number of police officers in 2008 and census metropolitan area populations for 2007. Census metropolitan area populations for 2008 are not yet available.

4. Crime rate represents the number of *Criminal Code* incidents (excluding traffic) per 100,000 population. Crime data for 2008 are not yet available.

5. Police officer counts include officers deployed to contract positions (e.g. airport, port, United Nations Mission).

6. Represents the Ontario portion of the Ottawa-Gatineau census metropolitan area.

7. Since 2005, the Hampton Police service is no longer included in the census metropolitan area population for Saint John, resulting in a higher rate of police strength than in past years.

8. Represents the Quebec portion of the Ottawa-Gatineau census metropolitan area.

9. Percentage change in rate from 2001 to 2008.

Note(s): The numbers in table 3-1 do not agree with those in table 3-2 (which report data at the level of individual police services) because most census metropolitan areas comprise more than one police service. The census metropolitan area of Oshawa is not included due to incongruities between policing jurisdiction and census metropolitan area boundaries. Crimes investigated by Royal Canadian Mounted Police federal personnel within census metropolitan areas are included; however police officer counts do not include Royal Canadian Mounted Police federal police officers. While Table 3-1 may be used to compare major metropolitan areas, table 3-2 may be used to compare major police services in Canada.

Source(s): Statistics Canada, Canadian Centre for Justice Statistics, Police Administration Survey and Uniform Crime Reporting Survey.

Table 3-2
Police officers and crime rates in the 30 largest municipal police services

	2007 population ¹	2008 authorized strength ²	Actual strength ³			2007 crime rate ⁵
			2008 number of police officers	2008 police officers per 100,000 population ⁴	2008 population per officer ⁴	
	number		rate			
Toronto census metropolitan area police services ⁶						
Toronto Police	2,651,717	5,510	5,535	209	479	5,557
Peel Regional Police	1,222,639	1,829	1,700	139	719	3,697
York Regional Police	975,501	1,364	1,318	135	740	2,909
Montréal census metropolitan area police services ⁶						
Montréal Police	1,871,846	4,538	4,481	239	418	7,430
Longueuil Police	395,168	547	542	137	729	5,550
Laval Police	381,651	520	500	131	763	4,384
Vancouver census metropolitan area police services ⁶						
Vancouver Police ⁷	609,785	1,235	1,351	222	451	9,722
Surrey, Royal Canadian Mounted Police	425,428	588	546	128	779	11,013
Burnaby, Royal Canadian Mounted Police	221,856	265	272	123	816	9,000
Richmond, Royal Canadian Mounted Police ⁷	193,164	206	206	107	938	6,778
Other large police services						
Calgary Police	1,038,481	1,670	1,620	156	641	6,097
Ottawa Police	846,169	1,301	1,273	150	665	5,559
Edmonton Police	763,732	1,375	1,345	176	568	10,193
Winnipeg Police ⁷	653,733	1,318	1,311	201	499	10,283
Durham Regional Police ⁸	595,354	831	827	139	720	4,430
Québec Police	535,321	745	741	138	722	4,953
Hamilton Regional Police	519,741	747	794	153	655	6,248
Waterloo Regional Police	496,370	712	712	143	697	4,889
Halton Regional Police ⁸	468,980	582	586	125	800	3,423
Niagara Regional Police	433,946	648	693	160	626	5,695
London Police	362,561	578	568	157	638	8,230
Gatineau - Metro Police	251,274	348	348	138	722	6,016
Windsor Police	220,569	474	475	215	464	7,862
Halifax Regional Police	215,830	505	505	234	427	10,589
Saskatoon Police	206,365	399	406	197	508	13,274
Regina Police	183,540	365	362	197	507	12,577
St. John's, Royal Newfoundland Constabulary	182,605	303	303	166	603	7,325
Richelieu-Saint-Laurent Police	180,520	213	213	118	848	3,366
Greater Sudbury Police	162,438	255	249	153	652	5,627
Sherbrooke Regional Police	149,875	200	200	133	749	4,831

1. Populations are based on July 1st preliminary postcensal populations for 2007 (based on the 2001 Census in 2006 Census boundaries), Demography Division, Statistics Canada. Populations are adjusted to follow policing boundaries. Populations for 2008 are not yet available.
 2. Represents the number of fully-sworn police officers the police department was allowed to employ during the calendar or fiscal year.
 3. Represents actual police officer strength as of May 15th, 2008.
 4. Based on the number of police officers in 2008 and census metropolitan area populations for 2007. Census metropolitan area populations for 2008 are not yet available.
 5. Crime rate represents the number of *Criminal Code* incidents (excluding traffic) per 100,000 population. Crime data for 2008 are not yet available.
 6. The police services listed under the Toronto, Montréal and Vancouver census metropolitan areas do not represent all the police services in the census metropolitan area.
 7. Police officer counts include officers deployed to contract positions (e.g. airport, port, United Nation mission).
 8. Note that 60% of the crime handled by Halton Regional Police, and 36% of the crime handled by Durham Regional Police fall within Toronto census metropolitan area boundaries.
- Note(s):** The numbers in table 3-1 do not agree with those in table 3-2 (which report data at the level of individual police services) because most census metropolitan areas comprise more than one police service. The census metropolitan area of Oshawa is not included due to incongruities between policing jurisdiction and census metropolitan area boundaries. Crimes investigated by Royal Canadian Mounted Police federal personnel within census metropolitan areas are included; however police officer counts do not include Royal Canadian Mounted Police federal police officers. While Table 3-1 may be used to compare major metropolitan areas, table 3-2 may be used to compare major police services in Canada.
- Source(s):** Statistics Canada, Canadian Centre for Justice Statistics, Police Administration Survey and Uniform Crime Reporting Survey.

Table 4
Police officers by sex, Canada, selected years

	Male		Female		Total
	number	percent	number	percent	number
1988	50,604	94.9	2,708	5.1	53,312
1993	52,340	92.0	4,561	8.0	56,901
1998	48,076	87.8	6,687	12.2	54,763
2003	50,060	84.3	9,352	15.7	59,412
2008	53,076	81.3	12,207	18.7	65,283

Source(s): Statistics Canada, Canadian Centre for Justice Statistics, Police Administration Survey.

Table 5
Male and female police officers within the ranks, Canada, 1986 to 2008

	Senior officers		Non-commissioned officers		Constables	
	Male	Female	Male	Female	Male	Female
	percent					
1986	99.8	0.2	99.5	0.5	94.6	5.4
1987	99.8	0.2	99.4	0.6	93.9	6.1
1988	99.8	0.2	99.2	0.8	93.0	7.0
1989	99.7	0.3	98.9	1.1	92.1	7.9
1990	99.6	0.4	98.7	1.3	91.4	8.6
1991	99.6	0.4	98.6	1.4	90.5	9.5
1992	99.3	0.7	98.4	1.6	89.8	10.2
1993	98.8	1.2	98.2	1.8	89.2	10.8
1994	98.7	1.3	97.8	2.2	88.0	12.0
1995	98.4	1.6	97.3	2.7	87.2	12.8
1996	98.3	1.7	97.0	3.0	86.5	13.5
1997	97.9	2.1	96.6	3.4	85.7	14.3
1998	97.8	2.2	96.1	3.9	84.5	15.5
1999	97.2	2.8	95.3	4.7	83.8	16.2
2000	96.9	3.1	94.5	5.5	83.0	17.0
2001	96.5	3.5	93.7	6.3	82.2	17.8
2002	96.0	4.0	92.9	7.1	81.4	18.6
2003	95.3	4.7	92.3	7.7	80.9	19.1
2004	94.8	5.2	91.1	8.9	80.2	19.8
2005	94.5	5.5	90.3	9.7	79.3	20.7
2006	93.9	6.1	89.2	10.8	78.9	21.1
2007	92.8	7.2	88.0	12.0	78.6	21.4
2008	92.3	7.7	86.7	13.3	78.8	21.2

Source(s): Statistics Canada, Canadian Centre for Justice Statistics, Police Administration Survey.

Table 6
Police officers by sex, provinces and territories, 2008

	Male		Female		Total
	number	percent	number	percent	number
Newfoundland and Labrador	727	82.2	157	17.8	884
Prince Edward Island	202	87.4	29	12.6	231
Nova Scotia	1,587	85.1	277	14.9	1,864
New Brunswick	1,148	84.7	207	15.3	1,355
Quebec	12,050	78.2	3,353	21.8	15,403
Ontario	20,571	82.5	4,374	17.5	24,945
Manitoba	2,060	85.2	359	14.8	2,419
Saskatchewan	1,749	82.3	375	17.7	2,124
Alberta	4,791	83.6	943	16.4	5,734
British Columbia	6,405	78.7	1,729	21.3	8,134
Yukon	101	86.3	16	13.7	117
Northwest Territories	146	82.0	32	18.0	178
Nunavut	107	89.9	12	10.1	119
Royal Canadian Mounted Police Headquarters and Training Academy	1,432	80.6	344	19.4	1,776
Canada	53,076	81.3	12,207	18.7	65,283

Source(s): Statistics Canada, Canadian Centre for Justice Statistics, Police Administration Survey.

Table 7
Current and constant dollar expenditures on policing, Canada, 1985 to 2007

	Current dollars ¹			Constant dollars ²		
	Total expenditures	Percentage change from previous year	Per capita cost	Total expenditures	Percentage change from previous year	Per capita cost
	thousands of dollars	percent	dollars	thousands of dollars	percent	dollars
1985	3,542,240	...	137	6,269,203	...	243
1986	3,771,205	6.5	144	6,409,899	2.2	246
1987	4,027,809	6.8	152	6,556,214	2.3	248
1988	4,389,414	9.0	164	6,873,872	4.8	257
1989	4,684,760	6.7	172	6,983,299	1.6	256
1990	5,247,646	12.0	189	7,463,170	6.9	269
1991	5,426,887	3.4	194	7,307,946	-2.1	261
1992	5,716,833	5.3	202	7,588,415	3.8	268
1993	5,790,165	1.3	202	7,542,096	-0.6	263
1994	5,783,656	-0.1	199	7,524,826	-0.2	259
1995	5,808,607	0.4	198	7,393,376	-1.7	252
1996	5,856,055	0.8	198	7,344,770	-0.7	248
1997	5,989,022	2.3	200	7,386,902	0.6	247
1998	6,209,756	3.7	206	7,583,656	2.7	251
1999	6,395,380	3.0	210	7,675,832	1.2	252
2000	6,798,531	6.3	222	7,945,873	3.5	259
2001	7,269,977	6.9	234	8,288,368	4.3	267
2002	7,827,195	7.7	249	8,727,323	5.3	278
2003	8,324,176	6.3	263	9,028,654	3.5	285
2004	8,758,213	5.2	274	9,327,036	3.3	292
2005	9,281,879	6.0	287	9,672,238	3.7	299
2006	9,877,071	6.4	303	10,094,348	4.4	309
2007	10,543,530	6.7	320	10,543,530	4.4	320

1. Dollars which express the cost of items in terms of the year in which the expenditure occurs.

2. Dollars of a particular base year, which are not adjusted (by inflation or deflation) to show changes in the purchasing power of the dollar. The Consumer Price Index was used to calculate constant dollars over a base year of 2007 (2007=100). Note that historical constant dollar data are revised each year as the base year for calculation changes annually.

Source(s): Statistics Canada, Canadian Centre for Justice Statistics, Police Administration Survey.

Table 8
Total expenditures on policing, 2007

	2007 Population ¹	Municipal ²	Provincial ²	Municipal and provincial total	Per capita cost ³	Federal ⁴	Expenditures total ⁵
	number	thousands of dollars			dollars	thousands of dollars	
Newfoundland and Labrador ⁶	506,275	...	97,051	97,051	192	21,744	118,795
Prince Edward Island	138,627	10,130	11,600	21,730	157	5,280	27,010
Nova Scotia	934,147	108,051	80,141	188,192	201	36,354	224,546
New Brunswick	749,782	74,824	58,671	133,494	178	27,021	160,516
Quebec	7,700,807	1,202,712	790,142	1,992,854	259	...	1,992,854
Ontario ⁷	12,803,861	2,938,939	662,212	3,601,151	281	...	3,601,151
Manitoba	1,186,679	192,935	78,077	271,012	228	40,010	311,022
Saskatchewan ⁸	996,869	127,010	97,290	224,300	225	44,645	268,945
Alberta	3,473,984	605,244	159,325	764,569	220	85,276	849,845
British Columbia	4,380,256	687,658	275,445	963,104	220	165,405	1,128,508
Yukon	30,989	...	13,706	13,706	442	5,874	19,580
Northwest Territories	42,637	...	27,210	27,210	638	11,662	38,872
Nunavut	31,113	...	21,398	21,398	688	9,171	30,569
Provincial and territorial total	32,976,026	5,947,503	2,372,268	8,319,771	252	452,442	8,772,213
Other Royal Canadian Mounted Police expenditures ⁹	1,771,317	1,771,317
Canada total¹⁰	32,976,026	5,947,503	2,372,268	8,319,771	320	2,223,759	10,543,530

1. Updated postcensal estimates for 2007. Statistics Canada, Demography Division.

2. Figures include the amount billed to the province, territory or municipality for Royal Canadian Mounted Police contract policing and not the total cost of the contract. In some provinces, provincial policing is paid for by the municipalities.

3. Per capita cost calculation for provinces and territories excludes the federal portion of Royal Canadian Mounted Police expenditures as these are not paid for by the municipality or the province and territory. The per capita cost for Canada includes municipal, provincial and territorial and federal expenditures.

4. Federal expenditures include all other Royal Canadian Mounted Police contract expenditures which are not paid for by the municipality or the province and territory for those provinces and territories with contracts with the Royal Canadian Mounted Police (see footnote 9).

5. Includes municipal, provincial and territorial, federal and other Royal Canadian Mounted Police expenditures (see footnote 9).

6. Provincial policing figures include both the Royal Newfoundland Constabulary and the Royal Canadian Mounted Police.

7. Excludes Royal Canadian Mounted Police Headquarters.

8. Excludes Royal Canadian Mounted Police Training Academy.

9. Includes headquarters and divisional administration and costs associated with providing national police services such as: forensic laboratory services; the Canadian Police College; informatics support for management and operation of the Canadian Police Information Centre, an automated national computer information system that is available to all police services; telecommunications services for data and radio transmissions to ensure all detachments receive current information; criminal intelligence and participation in United Nations peacekeeping services.

10. Per capita costs are based on total expenditures for Canada, including federal policing.

Note(s): Totals may not add up due to rounding. Expenditure figures represent gross operating expenditures and include costs that are paid from police department budgets and benefits paid from other sources. Revenues, recoveries and capital expenditures are excluded.

Source(s): Statistics Canada, Canadian Centre for Justice Statistics, Police Administration Survey.

Table 9-1
Police personnel in municipal police services — Newfoundland and Labrador, 2008

	Population ¹	Population density	Actual strength					Authorized strength		
			Police officers			Other personnel	Population per police officer	Police officers per 100,000 population	Total police	Police officers per 100,000 population
			Male	Female	Total					
	number	persons per km ²	number				rate		number	rate
Population 100,000 and over										
St. John's, Royal Newfoundland Constabulary	182,605	241	250	53	303	125	603	166	303	166
Population 15,000 to 49,999										
Corner Brook, Royal Newfoundland Constabulary	20,380	137	38	7	45	8	453	221	45	221
Population 5,000 to 14,999										
Labrador City, Royal Newfoundland Constabulary ²	9,762	1.1	16	5	21	6	465	215	21	215

1. Populations are based on July 1st preliminary postcensal populations for 2007 (based on the 2001 Census in 2006 Census boundaries), Demography Division, Statistics Canada. Populations are adjusted to follow policing boundaries. Populations for 2008 are not yet available.

2. The area previously covered by Churchill Falls is excluded from the population density calculations.

Note(s): There are no municipal police forces in Newfoundland. The Royal Newfoundland Constabulary, a provincial police force, is responsible for providing policing to the three largest municipalities and, for the purposes of this report, they have been included above.

Table 9-2
Police personnel in municipal police services — Prince Edward Island, 2008

	Population ¹	Population density	Actual strength					Authorized strength		
			Police officers			Other personnel	Population per police officer	Police officers per 100,000 population	Total police	Police officers per 100,000 population
			Male	Female	Total					
	number	persons per km ²	number				rate		number	rate
Population 15,000 to 49,999										
Charlottetown	32,664	737	52	6	58	25	563	178	59	181
Summerside	15,062	531	23	2	25	9	602	166	24	159
Population 5,000 to 14,999										
Stratford, Royal Canadian Mounted Police	7,062	314	3	2	5	0	1,412	71	5	71
Population less than 5,000										
Borden-Carleton	775	59	3	0	3	0	258	387	3	387
Kensington	1,414	626	3	1	4	4	354	283	4	283
Montague, Royal Canadian Mounted Police	1,855	610	1	2	3	0	618	162	3	162

1. Populations are based on July 1st preliminary postcensal populations for 2007 (based on the 2001 Census in 2006 Census boundaries), Demography Division, Statistics Canada. Populations are adjusted to follow policing boundaries. Populations for 2008 are not yet available.

Note(s): Use caution in comparing forces: The number of officers may not reflect the number available for general community policing because some officers in certain communities are restricted to specific locations (e.g. ports, airports). For the Royal Canadian Mounted Police municipal contracts: Civilian employees provided by the municipality are not included under "Other personnel".

Table 9-3
Police personnel in municipal police services — Nova Scotia, 2008

	Population ¹		Actual strength					Authorized strength		
	number	persons per km ²	Police officers		Total	Other personnel	Population per police officer	Police officers per 100,000 population	Total police	Police officers per 100,000 population
			Male	Female						
			number				rate		number	rate
Population 100,000 and over										
Cape Breton Regional Police	103,418	42	195	9	204	112	507	197	204	197
Halifax Regional Police	215,830	70	421	84	505	295	427	234	505	234
Population 5,000 to 14,999										
Amherst	9,560	795	22	1	23	10	416	241	23	241
Bridgewater	8,048	592	18	4	22	11	366	273	23	286
Kentville	5,923	341	21	1	22	4	269	371	22	371
New Glasgow	9,325	939	23	3	26	9	359	279	26	279
Truro	11,305	300	29	6	35	22	323	310	35	310
Yarmouth, Royal Canadian Mounted Police	7,757	735	15	4	19	0	408	245	18	232
Population less than 5,000										
Annapolis Royal	524	257	4	0	4	1	131	763	4	763
Springhill	4,106	368	10	0	10	7	411	244	12	292
Stellarton	4,791	533	9	1	10	10	479	209	10	209
Trenton	2,714	452	6	1	7	7	388	258	7	258
Westville	3,902	271	7	0	7	4	557	179	7	179
Royal Canadian Mounted Police										
Antigonish	4,744	922	7	2	9	0	527	190	9	190
Digby	2,060	657	4	1	5	0	412	243	5	243
Oxford	1,355	126	3	0	3	0	452	221	3	221
Parrsboro	1,482	100	3	0	3	0	494	202	3	202
Pictou	3,842	484	5	1	6	0	640	156	7	182
Port Hawkesbury	3,625	447	3	2	5	0	725	138	5	138
Shelburne	1,925	214	4	0	4	0	481	208	4	208
Windsor	3,875	428	5	3	8	0	484	206	8	206

1. Populations are based on July 1st preliminary postcensal populations for 2007 (based on the 2001 Census in 2006 Census boundaries), Demography Division, Statistics Canada. Populations are adjusted to follow policing boundaries. Populations for 2008 are not yet available.

Note(s): Use caution in comparing forces: The number of officers may not reflect the number available for general community policing because some officers in certain communities are restricted to specific locations (e.g. ports, airports). For the Royal Canadian Mounted Police municipal contracts: Civilian employees provided by the municipality are not included under "Other personnel".

Table 9-4
Police personnel in municipal police services — New Brunswick, 2008

	Population ¹	Population density	Actual strength					Authorized strength		
			Police officers		Total	Other personnel	Population per police officer	Police officers per 100,000 population	Total police	Police officers per 100,000 population
			Male	Female						
	number	persons per km ²	number				rate		number	rate
Population 100,000 and over										
Codiac Regional, Royal Canadian Mounted Police	104,650	463	127	20	147	1	712	140	144	138
Population 50,000 to 99,999										
Fredericton	52,339	392	89	23	112	30	467	214	112	214
Saint John	69,357	220	149	21	170	24	408	245	167	241
Population 15,000 to 49,999										
Edmundston	17,027	159	28	5	33	29	516	194	27	159
Miramichi Police Force	17,805	99	31	4	35	21	509	197	35	197
Rothsay Regional Police	27,864	281	25	8	33	12	844	118	33	118
Population 5,000 to 14,999										
B.N.P.P. Regional Police	8,686	101	15	1	16	2	543	184	16	184
Bathurst	12,268	134	25	5	30	13	409	245	30	245
Grand Falls	5,714	316	13	3	16	3	357	280	16	280
Woodstock	5,369	400	12	1	13	3	413	242	13	242
Royal Canadian Mounted Police										
Campbellton	7,289	391	16	1	17	0	429	233	18	247
Oromocto	8,633	386	9	4	13	0	664	151	14	162
Sackville	5,635	76	6	5	11	1	512	195	11	195
Population less than 5,000										
Royal Canadian Mounted Police										
Buctouche	2,434	133	2	0	2	0	1,217	82	3	123
Cap Pele	2,426	102	3	1	4	0	607	165	3	124
Hampton	4,208	200	5	0	5	0	842	119	5	119
Mcadam	1,532	106	2	1	3	0	511	196	3	196
Richibucto	1,283	108	3	0	3	0	428	234	3	234
Saint Quentin	2,165	503	3	0	3	0	722	139	3	139
St. Andrews	2,019	242	3	0	3	0	673	149	3	149

1. Populations are based on July 1st preliminary postcensal populations for 2007 (based on the 2001 Census in 2006 Census boundaries), Demography Division, Statistics Canada. Populations are adjusted to follow policing boundaries. Populations for 2008 are not yet available.

Note(s): Use caution in comparing forces: The number of officers may not reflect the number available for general community policing because some officers in certain communities are restricted to specific locations (e.g. ports, airports). For the Royal Canadian Mounted Police municipal contracts: Civilian employees provided by the municipality are not included under "Other personnel".

Table 9-5
Police personnel in municipal police services — Quebec, 2008

	Population ¹		Actual strength					Authorized strength		
	Population density		Police officers			Other personnel	Population per police officer	Police officers per 100,000 population	Total police	Police officers per 100,000 population
			Male	Female	Total					
	number	persons per km²	number			rate		number	rate	
Population 100,000 and over										
Gatineau	251,274	734	271	77	348	73	722	138	348	138
Laval	381,651	1,545	361	139	500	178	763	131	520	136
Lévis	133,470	297	114	27	141	58	947	106	142	106
Longueuil	395,168	1,399	398	144	542	207	729	137	547	138
Montréal	1,871,846	3,750	3,160	1,321	4,481	1,353	418	239	4,538	242
Québec	535,321	977	566	175	741	150	722	138	745	139
Richelieu/St. Laurent	180,520	245	171	42	213	40	848	118	213	118
Saguenay	144,924	120	153	26	179	71	810	124	179	124
Sherbrooke	149,875	424	165	35	200	51	749	133	200	133
Terrebonne	121,845	484	101	26	127	57	959	104	127	104
Trois-Rivières	127,190	440	137	25	162	59	785	127	164	129
Population 50,000 to 99,999										
Châteauguay	69,899	327	78	17	95	25	736	136	84	120
Granby	60,902	399	65	6	71	29	858	117	71	117
St-Jérôme Métro	67,600	747	86	16	102	18	663	151	104	154
Repentigny	86,644	1,356	71	11	82	28	1,057	95	107	123
Roussillon, Régie intermunicipal	95,717	419	77	16	93	28	1,029	97	93	97
Saint-Jean-sur-Richelieu	88,803	393	71	21	92	29	965	104	94	106
Thérèse-de-Blainville	80,080	1,474	80	15	95	33	843	119	95	119
Population 15,000 to 49,999										
Blainville	45,934	834	51	10	61	36	753	133	62	135
Deux-Montagnes Régional	41,065	668	42	7	49	21	838	119	50	122
L'Assomption	20,730	151	24	9	33	13	628	159	35	169
Mascouche	35,822	336	36	8	44	22	814	123	44	123
Memphremagog	31,142	71	39	6	45	18	692	144	40	128
Mirabel	48,232	83	36	5	41	26	1,176	85	33	68
MRC des Collines de L'Outaouais	41,446	20	39	10	49	12	846	118	49	118
Rivière-du-Loup	18,927	225	26	2	28	8	676	148	28	148
St-Eustache	43,788	631	47	12	59	24	742	135	59	135
Saint-Georges	30,105	152	26	2	28	10	1,075	93	28	93
Thetford Mines	25,740	113	29	4	33	15	780	128	29	113
Population 5,000 to 14,999										
Bromont	5,925	52	12	6	18	6	329	304	24	405
Kahnawake Police Autochtone	9,920	197	21	4	25	16	397	252	25	252
Kativik Regional ²	11,269	..	50	4	54	6	209	479	54	479
Mont-Tremblant	10,152	40	27	7	34	13	299	335	34	335
Rivière-du-Nord Régie	12,590	74	17	4	21	7	600	167	22	175
Ste-Adèle	10,385	87	18	4	22	8	472	212	22	212
Ste-Marie	11,898	111	12	2	14	7	850	118	14	118
Population less than 5,000										
Amérindienne de Bestiamites ³	2,768	11
Amérindienne de la Romaine ³	1,106	1,402
Amérindienne de Manawan	2,068	264	13	0	13	1	159	629	11	532
Amérindienne de Mingan ³	352	21
Amérindienne de Wemotaci ²	1,329	43	5	2	7	2	190	527	7	527
Amérindienne d'Odanak	461	81	2	0	2	0	231	434	2	434
Barriere Lake ^{3, 4}	333	318
Chisasibi ³	3,869	3
D'Essipit	265	241	2	1	3	0	88	1,132	3	1,132
Eagle Village ²	297	1,501	2	0	2	1	149	673	2	673
Eastmain	760	2	1	0	1	8	760	132	5	658
Gesgapegiac Amerindian ²	576	306	3	0	3	5	192	521	6	1,042
Kitigan Zibi Anishinabeg	1,306	8	10	0	10	1	131	766	8	613
Lac Simon ⁵	1,179	364	0	0	0	12	8	679
Long Point ³	159	329
Listuguj	1,719	42	12	1	13	1	132	756	13	756
Mashteuiatsh	2,074	143	10	1	11	1	189	530	11	530
Mistissini ³	3,050	2
Montagnaise de Natashquan ³	948	1,459

See footnotes at the end of the table.

Table 9-5 – continued

Police personnel in municipal police services — Quebec, 2008

	Population ¹ Population density		Actual strength					Authorized strength		
	number	persons per km ²	Police officers		Total	Other personnel	Population per police officer	Police officers per 100,000 population	Total police	Police officers per 100,000 population
			Male	Female						
	number	persons per km ²	number				rate		number	rate
Montagnais de Pakua Shipi ³	214	55	2	0	2	1	107	935	2	935
Montagnais de Shefferville ³	3	0	3	0	3	..
Naskapi ²	638	21	3	1	4	2	160	627	4	627
Nemaska ³	702	5
Obedjiwan ³	1,957	226	13	664
Oujé-Bougoumou ³	680	268
Pikogan	454	454	2	1	3	2	151	661	3	661
Timiskaming	633	35	5	0	5	2	127	790	4	632
Uashat-Maliotenam ²	2,894	463	12	3	15	6	193	518	15	518
Waskaganish ³	1,962	3
Waswanipi	1,562	2	2	2	4	11	391	256	13	832
Wemindji ³	1,242	2
Wendake	1,772	1,217	14	0	14	2	127	790	14	790
Wôlinak ²	154	313	2	0	2	0	77	1,299	2	1,299

1. Populations are based on July 1st preliminary postcensal populations for 2007 (based on the 2001 Census in 2006 Census boundaries), Demography Division, Statistics Canada. Populations are adjusted to follow policing boundaries. Populations for 2008 are not yet available.

2. Personnel data for 2008 were not available; therefore 2007 personnel data were substituted.

3. Non-respondent.

4. This police force opened in 2006. Data is included in Sûreté du Québec.

5. This police force employs Native Special Constables. Native Special Constables are personnel with limited law enforcement authority. They provide a restrictive policing role within Aboriginal communities and act as liaison between fully-sworn police officers and Aboriginal members of the community.

Note(s): Use caution in comparing forces: The number of officers may not reflect the number available for general community policing because some officers in certain communities are restricted to specific locations (e.g. ports, airports).

Table 9-6
Police personnel in municipal police services — Ontario, 2008

	Population ¹ Population density		Actual strength					Authorized strength		
	number	persons per km ²	Police officers			Other personnel	Population per police officer	Police officers per 100,000 population	Total police	Police officers per 100,000 population
			Male	Female	Total					
	number	persons per km ²	number				rate		number	rate
Population 100,000 and over										
Barrie	139,298	1,809	170	32	202	84	690	145	205	147
Chatham-Kent	109,123	44	151	16	167	71	653	153	170	156
Durham Regional Police	595,354	236	673	154	827	313	720	139	831	140
Greater Sudbury Police	162,438	51	203	46	249	120	652	153	255	157
Guelph	120,254	1,387	154	28	182	86	661	151	190	158
Halton Regional Police	468,980	485	458	128	586	228	800	125	582	124
Hamilton Regional Police	519,741	465	648	146	794	276	655	153	747	144
Kingston	119,423	265	149	35	184	46	649	154	188	157
London	362,561	862	473	95	568	215	638	157	578	159
Niagara Regional Police	433,946	234	607	86	693	307	626	160	648	149
Ottawa	846,169	305	987	286	1,273	493	665	150	1,301	154
Peel Regional Police	1,222,639	2,202	1,433	267	1,700	768	719	139	1,829	150
Thunder Bay	114,286	168	188	35	223	98	512	195	222	194
Toronto	2,651,717	4,208	4,593	942	5,535	2,830	479	209	5,510	208
Waterloo Regional Police	496,370	363	586	126	712	259	697	143	712	143
Windsor	220,569	1,501	406	69	475	152	464	215	474	215
York Regional Police	975,501	558	1,090	228	1,318	479	740	135	1,364	140
Population 50,000 to 99,999										
Brantford	93,156	1,285	134	18	152	92	613	163	152	163
North Bay	56,716	136	77	11	88	51	645	155	92	162
Oxford Community	62,221	56	69	15	84	29	741	135	85	137
Peterborough Lakefield	76,368	1,240	103	19	122	47	626	160	123	161
Sarnia	74,253	419	98	12	110	44	675	148	111	149
Sault Ste. Marie	76,136	249	114	23	137	50	556	180	138	181
South Simcoe Police	57,584	119	67	9	76	37	758	132	76	132
Ontario Provincial Police										
Caledon	73,877	108	46	19	65	5	1,137	88	65	88
Lambton Group	52,661	20	67	0	67	6	786	127	67	127
Nottawasaga	54,122	64	40	14	54	8	1,002	100	54	100
Norfolk	63,864	40	76	15	91	9	702	142	91	142
Stormont/Dundas/Glengarry	67,113	21	68	14	82	11	818	122	82	122
Wellington County	88,944	35	81	22	103	8	864	116	103	116
Population 15,000 to 49,999										
Amherstburg	21,510	116	27	4	31	4	694	144	31	144
Belleville	49,234	200	71	15	86	34	572	175	86	175
Brockville	22,113	1,066	35	6	41	23	539	185	41	185
Cobourg	19,125	855	27	2	29	29	659	152	31	162
Cornwall Community Police	45,773	744	77	12	89	46	514	194	89	194
Essex	20,719	75	28	4	32	4	647	154	31	150
Kawartha Lakes Police	23,870 ^r	24	28	7	35	22	682	147	38	159
Lasalle	32,105	492	28	6	34	16	944	106	34	106
Leamington	29,131	111	37	4	41	21	711	141	41	141
Midland	15,655	538	23	3	26	15	602	166	26	166
Nishnawbe-Aski	18,304	7	106	19	125	34	146	683	132	721
Orangeville	29,337	1,884	34	4	38	22	772	130	38	130
Owen Sound	22,422	926	35	5	40	36	561	178	40	178
St. Thomas	38,202	1,077	55	10	65	22	588	170	65	170
Stratford	31,203	1,234	50	5	55	18	567	176	55	176
Strathroy	21,460	78	28	1	29	11	740	135	30	140
Timmins	42,123	14	76	8	84	33	501	199	84	199
Ontario Provincial Police										
Brant County	35,941	43	40	8	48	5	749	134	48	134
Collingwood	16,177	484	23	8	31	11	522	192	31	192
Elgin County	44,741	24	33	9	42	3	1,065	94	42	94
Greater Napanee	16,315	35	15	8	23	3	709	141	23	141
Haldimand	47,820	38	49	9	58	5	824	121	58	121
Kingsville	21,010	85	20	4	24	3	875	114	24	114
Lakeshore	31,961	60	26	6	32	3	999	100	32	100
Loyalist	15,556	46	12	6	18	2	864	116	18	116
Orillia	29,950	1,047	34	12	46	14	651	154	46	154

See footnotes at the end of the table.

Table 9-6 – continued

Police personnel in municipal police services — Ontario, 2008

	Population ¹	Population density	Actual strength					Authorized strength		
			Police officers		Total	Other personnel	Population per police officer	Police officers per 100,000 population	Total police	Police officers per 100,000 population
			Male	Female						
	number	persons per km ²	number				rate		number	rate
Prince Edward County	26,232	25	26	7	33	3	795	126	33	126
Quinte West	44,128	89	44	12	56	12	788	127	56	127
Smith/Ennismore	17,263	55	12	2	14	1	1,233	81	14	81
South Frontenac	17,854	19	14	2	16	2	1,116	90	16	90
Tecumseh	26,565	280	26	5	31	3	857	117	31	117
Tillsonburg	15,826	709	17	5	22	3	719	139	22	139
Kemptville	15,625	45	15	5	20	2	781	128	20	128
Population 5,000 to 14,999										
Anishinabek ²	7,168	12
Aylmer	7,815	1,256	11	2	13	3	601	166	13	166
Dryden	8,085	124	15	5	20	12	404	247	20	247
Espanola	5,193	63	10	1	11	6	472	212	11	212
Gananoque	5,402	770	12	2	14	12	386	259	15	278
Hanover	7,045	718	13	1	14	11	503	199	14	199
Kenora	9,743 ^r	72	29	6	35	24	278	359	35	359
Pembroke	13,453	937	27	2	29	36	464	216	29	216
Perth	6,276	606	13	2	15	8	418	239	15	239
Port Hope	12,284 ^r	59	22	3	25	21	491	204	25	204
Saugeen Shores	11,610	68	17	3	20	3	581	172	20	172
Six Nations Police	7,385	39	25	2	27	12	274	366	27	366
Smiths Falls	9,368	1,143	22	2	24	10	390	256	24	256
Stirling-Rawdon	5,237	19	8	0	8	1	655	153	8	153
Treaty Three Communities	5,971	8	65	18	83	15	72	1,390	83	1,390
West Grey	12,560	14	16	2	18	4	698	143	18	143
West Nipissing	13,283	7	18	2	20	6	664	151	20	151
Ontario Provincial Police										
Alnwick-Haldimand	6,851	17	6	1	7	1	979	102	7	102
Augusta	8,087	26	5	2	7	0	1,155	87	7	87
Beckwith	6,982	29	2	1	3	0	2,327	43	3	43
Brighton Municipal	10,354	47	9	3	12	1	863	116	12	116
Brockton	9,929	18	14	3	17	1	584	171	17	171
Carleton Place	10,076	1,141	14	3	17	1	593	169	17	169
Cavan/Millbrook/North Monaghan	9,019	29	8	2	10	1	902	111	10	111
City of Kenora	5,697 ^r	0.5	9	3	12	0	475	211	12	211
Cramahe Township	6,236	31	6	2	8	1	780	128	8	128
Douro-Dummer	6,858	15	4	1	5	0	1,372	73	5	73
Drummond-North Elmsley	7,469	20	4	1	5	0	1,494	67	5	67
Elliot Lake	11,262	16	15	4	19	5	593	169	19	169
Fort Frances	8,079	301	17	3	20	1	404	248	20	248
Georgian Bluffs	10,440	17	6	1	7	0	1,491	67	7	67
Goderich	7,962	1,007	11	2	13	1	612	163	13	163
Grey County Chatsworth	6,553	11	4	0	4	0	1,638	61	4	61
Grey Highlands	10,375	12	8	2	10	2	1,038	96	10	96
Hawkesbury	11,196	1,184	19	3	22	6	509	196	22	196
Hearst	5,935	60	8	4	12	1	495	202	12	202
Ingersoll Town	12,083	937	15	4	19	2	636	157	19	157
Kapuskasing	8,936	106	9	2	11	1	812	123	11	123
Kincardine	11,011	20	14	2	16	1	688	145	16	145
Kirkland Lake	7,898	30	17	2	19	2	416	241	19	241
Lanark Highlands	5,126	5	2	1	3	0	1,709	59	3	59
Meaford	10,688	18	11	2	13	1	822	122	13	122
Mississippi Mills	12,674	25	7	2	9	2	1,408	71	9	71
Mono	7,111	26	7	1	8	1	889	113	8	113
Municipality of South Huron	10,147	24	10	1	11	1	922	108	11	108
North Perth	12,616	26	14	3	17	0	742	135	17	135
Hamilton Township	12,276	48	7	2	9	1	1,364	73	9	73
Otonabee/South Monaghan	7,029	20	5	1	6	0	1,172	85	6	85
Penetanguishene	8,615	340	13	6	19	1	453	221	19	221
Petawawa	14,020	85	9	4	13	1	1,078	93	13	93
Renfrew	8,192	641	11	2	13	3	630	159	13	159
Rideau Lakes	10,419	15	9	2	11	1	947	106	11	106

See footnotes at the end of the table.

Table 9-6 – continued

Police personnel in municipal police services — Ontario, 2008

	Population ¹	Population density	Actual strength				Authorized strength			
			Police officers		Total	Other personnel	Population per police officer	Police officers per 100,000 population	Total police	Police officers per 100,000 population
			Male	Female						
	number	persons per km ²	number				rate		number	rate
Southgate	7,814	12	5	0	5	0	1,563	64	5	64
St. Marys	6,871	551	6	0	6	1	1,145	87	6	87
Stone Mills	7,956	12	3	2	5	0	1,591	63	5	63
Tay Valley Township	5,914	11	2	1	3	0	1,971	51	3	51
Town of the Blue Mountains	6,998	24	13	3	16	1	437	229	16	229
Trent Hills	13,227	26	15	4	19	3	696	144	19	144
West Perth	9,601	17	10	2	12	1	800	125	12	125
Warton	8,889	17	12	3	15	1	593	169	15	169
Population less than 5,000										
Akwesasne Mohawk	4,671	127	24	4	28	9	167	599	30	642
Deep River	3,976	78	8	0	8	3	497	201	8	201
Lac Seul	707	3	6	2	8	8	88	1,132	8	1,132
Michipicoten, Township ³	3,463	8	8	3	11	1	315	318	11	318
Mnjikaning ²	670	63
Shelburne	4,477	695	10	1	11	3	407	246	11	246
Tyendinaga	1,599	23	5	1	6	1	267	375	12	750
U.C.C.M. Anishnaabe Police	1,774	13	13	3	16	5	111	902	16	902
Wikwemikong	2,864	7	14	3	17	13	168	594	17	594
Wingham	2,921 ^r	28	7	0	7	2	417	240	7	240
Ontario Provincial Police										
Admaston-Bromley	2,973	6	1	1	2	0	1,487	67	2	67
Amaranth	3,994	15	2	0	2	0	1,997	50	2	50
Asphodel-Norwood	4,020	25	4	1	5	0	804	124	5	124
Atikokan	3,314	10	9	2	11	2	301	332	11	332
Blind River	3,904	4	7	2	9	0	434	231	9	231
Bonfield	2,606	13	1	0	1	0	2,606	38	1	38
Cochrane	4,598 ^r	11	9	1	10	2	460	217	10	217
Deseronto ⁴	1,913	759
Dymond	4,626	61	2	0	2	0	2,313	43	2	43
East Luther-Grand Valley	2,810	18	2	0	2	0	1,405	71	2	71
East Ferris	4,690	31	1	1	2	0	2,345	43	2	43
East Garafraxa	2,292	14	1	1	2	0	1,146	87	2	87
Harvey/Galaway/Cavendish	4,515	5	7	1	8	0	564	177	8	177
Havelock/Belmont/Methuen	4,850	9	5	0	5	0	970	103	5	103
Hope	4,095 ^r	15	3	1	4	0	1,024	98	4	98
Ignace	1,625	22	3	1	4	0	406	246	4	246
Laird	1,056	10	1	0	1	0	1,056	95	1	95
Laurentian Hills	2,868	4	2	0	2	0	1,434	70	2	70
Macdonald Meredith et al.	1,506	9	1	0	1	0	1,506	66	1	66
Marathon	4,911	0.4	7	1	8	1	614	163	8	163
Mattawa Group of Four	4,240	5	6	1	7	0	606	165	7	165
Melancthon	2,863	9	2	0	2	0	1,432	70	2	70
Merrickville	3,230	15	2	1	3	0	1,077	93	3	93
Montague	3,595	13	2	1	3	0	1,198	83	3	83
Mulmur	3,226	11	4	0	4	0	807	124	4	124
New Liskeard	861	61	7	2	9	0	96	1,045	9	1,045
North Kawartha	2,279	3	3	1	4	0	570	176	4	176
North Shore	459	2	1	0	1	0	459	218	1	218
Point Edward	2,061	631	6	0	6	1	344	291	6	291
Powassan	3,454	16	2	0	2	0	1,727	58	2	58
Prescott	4,170	842	9	3	12	1	348	288	12	288
Red Lake	3,653	6	14	1	15	1	244	411	15	411
Red Rock	1,257	20	2	0	2	0	629	159	2	159
Town of Bruce Mines	657	107	1	0	1	0	657	152	1	152
Town of Spanish	797	8	1	0	1	0	797	125	1	125
Township of Johnson	638	5	1	0	1	0	638	157	1	157
Shuniah	2,737	5	3	1	4	0	684	146	4	146
Sioux Narrows Nestor	385 ^r	0.3	2	0	2	0	193	519	2	519
Smooth Rock Falls	1,776	9	2	0	2	0	888	113	2	113
Temagami	790	0.4	2	1	3	0	263	380	3	380
Terrace Bay	1,650	11	2	0	2	0	825	121	2	121

See footnotes at the end of the table.

Table 9-6 – continued

Police personnel in municipal police services — Ontario, 2008

	Population ¹ number	Population density persons per km ²	Actual strength					Authorized strength		
			Police officers		Total	Other personnel	Population per police officer	Police officers per 100,000 population	Total police	Police officers per 100,000 population
			Male	Female						
	number	persons per km ²	number				rate		number	rate
Thessalon	1,400	320	2	1	3	0	467	214	3	214
Highway 407	31	7	38	3	38	...

1. Populations are based on July 1st preliminary postcensal populations for 2007 (based on the 2001 Census in 2006 Census boundaries), Demography Division, Statistics Canada. Populations are adjusted to follow policing boundaries. Populations for 2008 are not yet available.

2. Non-respondent.

3. Personnel data for 2008 were not available; therefore 2007 personnel data were substituted.

4. Deseronto ceased being an Ontario Provincial Police contract on June 1, 2007.

Note(s): Use caution in comparing forces: The number of officers may not reflect the number available for general community policing because some officers in certain communities are restricted to specific locations (e.g. ports, airports).

Table 9-7
Police personnel in municipal police services — Manitoba, 2008

	Population ¹	Population density	Actual strength					Authorized strength		
			Police officers		Total	Other personnel	Population per police officer	Police officers per 100,000 population	Total police	Police officers per 100,000 population
			Male	Female						
	number	persons per km ²	number				rate		number	rate
Population 100,000 and over										
Winnipeg	653,733	1,409	1,120	191	1,311	349	499	201	1,318	202
Population 15,000 to 49,999										
Brandon	42,641	555	69	10	79	30	540	185	78	183
Population 5,000 to 14,999										
Dakota Ojibway	5,347	33	21	3	24	10	223	449	24	449
East St. Paul	9,474	225	8	1	9	2	1,053	95	11	116
Morden	7,400	452	11	0	11	3	673	149	12	162
Winkler	9,713	571	15	0	15	2	648	154	15	154
Royal Canadian Mounted Police										
Dauphin	8,075	638	11	4	15	0	538	186	15	186
Flin Flon	5,644	347	9	1	10	0	564	177	10	177
Portage La Prairie	13,044	529	20	6	26	0	502	199	26	199
Selkirk	9,570	385	15	3	18	0	532	188	18	188
Steinbach	11,478	449	10	1	11	1	1,043	96	13	113
The Pas	5,630	118	14	0	14	0	402	249	15	266
Thompson	13,289	774	29	9	38	0	350	286	38	286
Population less than 5,000										
Altona	3,920	418	7	0	7	1	560	179	7	179
Rivers	1,187	149	3	0	3	4	396	253	3	253
Ste. Anne ²	1,707	407	2	1	3	0	569	176	3	176
Royal Canadian Mounted Police										
Beausejour	2,959	553	2	1	3	0	986	101	3	101
Boissevain	1,474	532	2	0	2	0	737	136	2	136
Carman	3,287	797	2	1	3	0	1,096	91	3	91
Gillam	877	0.4	4	0	4	0	219	456	4	456
Killarney	2,291	459	3	0	3	0	764	131	3	131
Minnedosa	2,443	160	2	1	3	0	814	123	4	164
Neepawa	3,405	194	4	0	4	0	851	117	4	117
Pinawa	1,350	11	2	0	2	0	675	148	2	148
Roblin	1,704	449	2	0	2	0	852	117	2	117
Russell	1,539	489	2	0	2	0	770	130	2	130
Souris	1,911	525	2	0	2	0	956	105	2	105
Stonewall	4,595	764	3	1	4	0	1,149	87	4	87
Swan River	4,063	600	7	0	7	0	580	172	7	172
Virden	3,110	363	4	1	5	0	622	161	5	161

1. Populations are based on July 1st preliminary postcensal populations for 2007 (based on the 2001 Census in 2006 Census boundaries), Demography Division, Statistics Canada. Populations are adjusted to follow policing boundaries. Populations for 2008 are not yet available.

2. Personnel data for 2008 were not available; therefore 2007 personnel data were substituted.

Note(s): Use caution in comparing forces: The number of officers may not reflect the number available for general community policing because some officers in certain communities are restricted to specific locations (e.g. ports, airports). Note for the Royal Canadian Mounted Police municipal contracts: Civilian employees provided by the municipality are not included under "Other personnel".

Table 9-8
Police personnel in municipal police services — Saskatchewan, 2008

	Population ¹ Population density		Actual strength					Authorized strength		
	number	persons per km ²	Police officers		Total	Other personnel	Population per police officer	Police officers per 100,000 population	Total police	Police officers per 100,000 population
			Male	Female						
	number	persons per km ²	number				rate		number	rate
Population 100,000 and over										
Regina ²	183,540	1,544	287	75	362	139	507	197	365	199
Saskatoon	206,365	1,208	319	87	406	164	508	197	399	193
Population 15,000 to 49,999										
Moose Jaw	32,435	693	44	4	48	22	676	148	52	160
Prince Albert	34,065	519	67	10	77	35	442	226	79	232
Royal Canadian Mounted Police										
Lloydminster	24,748	596	24	7	31	0	798	125	35	141
Yorkton	15,280	622	17	6	23	0	664	151	23	151
Population 5,000 to 14,999										
Estevan	10,132	577	18	3	21	17	482	207	21	207
Weyburn	9,393	595	14	3	17	6	553	181	17	181
Royal Canadian Mounted Police										
Humboldt	5,337	455	5	0	5	0	1,067	94	5	94
Martinsville	5,905	1,236	3	3	6	0	984	102	5	85
Melfort	5,134	347	5	2	7	0	733	136	7	136
North Battleford	13,226	394	23	8	31	0	427	234	31	234
Swift Current	14,799	616	14	3	17	0	871	115	18	122
Warman	5,809	623	3	1	4	0	1,452	69	5	86
Population less than 5,000										
Caronport	965	509	1	0	1	0	965	104	1	104
Corman Park Police	4	1	5	1
Dalmeny	1,856	819	2	1	3	0	619	162	3	162
File Hills First Nations	1,908	4	4	2	6	2	318	314	7	367
Luseland	580	379	1	0	1	1	580	172	1	172
Stoughton	753	353	1	0	1	0	753	133	1	133
Royal Canadian Mounted Police										
Assiniboia	2,319	614	3	0	3	0	773	129	3	129
Battleford	3,610	155	5	0	5	0	722	139	5	139
Biggar	2,084	132	3	0	3	0	695	144	3	144
Canora	2,218	304	1	0	1	0	2,218	45	3	135
Creighton	1,431	99	2	1	3	0	477	210	3	210
Esterhazy	2,137	450	2	1	3	0	712	140	3	140
Fort Qu'Appelle	1,980	375	5	0	5	0	396	253	5	253
Hudson Bay	1,616	93	3	0	3	0	539	186	3	186
Indian Head	1,758	554	2	0	2	0	879	114	2	114
Kamsack	1,774	303	6	1	7	0	253	395	7	395
Kindersley	4,373	349	5	1	6	0	729	137	6	137
La Ronge	2,526	213	6	2	8	0	316	317	8	317
Lanigan	1,240	149	1	0	1	0	1,240	81	2	161
Maple Creek	2,233	505	3	0	3	0	744	134	3	134
Meadow Lake	4,359	548	8	1	9	0	484	206	11	252
Melville	4,350	294	4	1	5	0	870	115	5	115
Moosomin	2,356	395	1	2	3	0	785	127	3	127
Outlook	2,222	284	3	0	3	0	741	135	2	90
Rosetown	2,397	226	3	0	3	0	799	125	3	125
Shaunavon	1,688	331	2	0	2	0	844	118	2	118
Tisdale	3,082	667	3	1	4	0	771	130	4	130
Unity	2,297	235	1	0	1	0	2,297	44	3	131
Wadena	1,329	457	1	1	2	0	665	150	2	150
Watrous	1,808	162	1	1	2	0	904	111	2	111
Wilkie	1,193	126	2	1	3	2	398	251	2	168
Wynyard	1,862	352	2	1	3	0	621	161	3	161

1. Populations are based on July 1st preliminary postcensal populations for 2007 (based on the 2001 Census in 2006 Census boundaries), Demography Division, Statistics Canada. Populations are adjusted to follow policing boundaries. Populations for 2008 are not yet available.

2. Number of personnel includes 51.3 federally or provincially funded officers and civilian personnel.

Note(s): Use caution in comparing forces: The number of officers may not reflect the number available for general community policing because some officers in certain communities are restricted to specific locations (e.g. ports, airports). Note for the Royal Canadian Mounted Police municipal contracts: Civilian employees provided by the municipality are not included under "Other personnel".

Table 9-9
Police personnel in municipal police services — Alberta, 2008

	Population ¹		Actual strength					Authorized strength		
	number	persons per km ²	Police officers		Total	Other personnel	Population per police officer	Police officers per 100,000 population	Total police	Police officers per 100,000 population
			Male	Female						
	number	persons per km ²	number				rate		number	rate
Population 100,000 and over										
Calgary	1,038,481	1,429	1,398	222	1,620	581	641	156	1,670	161
Edmonton	763,732	1,116	1,107	238	1,345	505	568	176	1,375	180
Population 50,000 to 99,999										
Lethbridge	82,146	632	134	14	148	64	555	180	145	177
Medicine Hat	60,246	538	96	13	109	35	553	181	109	181
Royal Canadian Mounted Police										
Red Deer	97,038	31	83	28	111	0	874	114	125	129
St. Albert	64,535	1,842	33	8	41	0	1,574	64	46	71
Fort McMurray	54,813	1	79	24	103	1	532	188	131	239
Sherwood Park	51,940	73	48	16	64	0	812	123	70	135
Population 15,000 to 49,999										
Camrose	17,281	555	21	3	24	15	720	139	27	156
Royal Canadian Mounted Police										
Airdrie	27,628	835	18	7	25	0	1,105	90	28	101
Brooks	21,484	3	13	4	17	0	1,264	79	21	98
Cochrane	21,576	16	7	6	13	0	1,660	60	14	65
Grande Prairie	49,900	817	59	12	71	0	703	142	78	156
Leduc	26,729	13	10	7	17	0	1,572	64	19	71
Okotoks	17,188	927	10	3	13	0	1,322	76	16	93
Spruce Grove	19,155	725	13	3	16	0	1,197	84	16	84
Population 5,000 to 14,999										
Blood Tribe Police	3,444	2	27	1	28	20	123	813	31	900
Lacombe	11,403	625	11	2	13	7	877	114	13	114
Taber	8,575	568	13	1	14	13	613	163	14	163
Royal Canadian Mounted Police										
Banff	7,885	1,626	13	4	17	0	464	216	18	228
Beaumont	9,152	871	5	3	8	0	1,144	87	8	87
Bonnyville	12,256	4	8	1	9	0	1,362	73	9	73
Canmore	14,289	9	13	4	17	0	841	119	18	126
Chestermere	7,466	838	7	2	9	0	830	121	9	121
Cold Lake	11,699	197	8	1	9	0	1,300	77	11	94
Devon	8,006	617	5	1	6	0	1,334	75	6	75
Drayton Valley	10,587	11	8	2	10	0	1,059	94	10	94
Drumheller	7,268	8	6	3	9	0	808	124	9	124
Edson	8,576	290	10	4	14	0	613	163	16	187
Fort Saskatchewan	18,104	14	11	9	20	0	905	110	20	110
High River	12,665	212	11	1	12	2	1,055	95	14	111
Hinton	9,631	374	9	5	14	0	688	145	18	187
Innisfail	8,492 ^r	5	5	2	7	0	1,213	82	7	82
Morinville	7,566	78	6	3	9	0	841	119	8	106
Olds	7,779 ^r	704	3	3	6	0	1,297	77	8	103
Peace River	6,554 ^r	264	9	0	9	0	728	137	11	168
Ponoka	7,868	33	10	1	11	0	715	140	11	140
Rocky Mountain House	6,854	551	9	3	12	0	571	175	12	175
Slave Lake	6,721	474	12	0	12	0	560	179	12	179
St. Paul	5,558	810	6	1	7	0	794	126	9	162
Stettler	5,460	575	6	1	7	0	780	128	7	128
Stony Plain	12,049	338	11	0	11	0	1,095	91	12	100
Strathmore	11,506	738	6	4	10	0	1,151	87	11	96
Sylvan Lake	12,263	1,132	11	1	12	0	1,022	98	13	106
Vegreville	5,757	427	6	1	7	0	822	122	7	122
Wainwright	5,412	633	6	1	7	0	773	129	7	129
Wetaskiwin	11,980	709	13	6	19	0	631	159	20	167
Whitecourt	9,447	361	8	2	10	0	945	106	14	148

See footnotes at the end of the table.

Table 9-9 – continued

Police personnel in municipal police services — Alberta, 2008

	Population ¹ number	Population density persons per km ²	Actual strength				Authorized strength			
			Police officers		Total	Other personnel	Population per police officer	Police officers per 100,000 population	Total police	Police officers per 100,000 population
			Male	Female						
	number	persons per km ²	number				rate		number	rate
Population less than 5,000										
Louis Bull ²	998	32	6	0	6	4	166	601	6	601
North Peace Tribal ³	1,334	8
Tsuu T'ina Nation	2,781	10	9	1	10	3	278	360	11	396

1. Populations are based on July 1st preliminary postcensal populations for 2007 (based on the 2001 Census in 2006 Census boundaries), Demography Division, Statistics Canada. Populations are adjusted to follow policing boundaries. Populations for 2008 are not yet available.

2. According to the Department of Indian and Northern Affairs, the 2007 registered band population for Louis Bull Tribe is 1,777.

3. This police service opened in 2005 and has always been a non-respondent.

Note(s): Use caution in comparing forces: The number of officers may not reflect the number available for general community policing because some officers in certain communities are restricted to specific locations (e.g. ports, airports). Note for the Royal Canadian Mounted Police municipal contracts: Civilian employees provided by the municipality are not included under "Other personnel".

Table 9-10
Police personnel in municipal police services — British Columbia, 2008

	Population ¹		Actual strength					Authorized strength ²		
	Population density	persons per km ²	Police officers			Other personnel	Population per police officer	Police officers per 100,000 population	Total police	Police officers per 100,000 population
			Male	Female	Total					
	number		number				rate		number	rate
Population 100,000 and over										
Abbotsford	135,253	375	159	35	194	75	697	143	199	147
Delta	103,323	561	125	38	163	61	634	158	160	155
Saanich	112,335	1,086	120	29	149	48	754	133	147	131
Vancouver	609,785	5,230	1,059	292	1,351	352	451	222	1,235	203
Royal Canadian Mounted Police										
Burnaby	221,856	2,489	189	83	272	0	816	123	265	119
Coquitlam	133,218	1,095	92	38	130	1	1,025	98	140	105
Kelowna	113,109	534	107	35	141	0	802	125	141	125
Langley Township	100,591	325	79	32	111	1	906	110	129	128
Richmond ³	193,164	750	159	47	206	1	938	107	206	107
Surrey	425,428	1,341	414	132	546	7	779	128	588	138
Population 50,000 to 99,999										
New Westminster	64,161	4,164	90	16	106	44	605	165	109	170
Victoria	95,477	3,572	171	54	225	79	424	236	222	233
Royal Canadian Mounted Police										
Chilliwack	72,491	267	58	27	85	1	853	117	94	130
Kamloops	83,527	281	81	28	109	0	766	130	120	144
Maple Ridge	76,267	285	65	18	83	0	919	109	86	113
Nanaimo	83,648	934	89	29	118	0	709	141	118	141
North Vancouver District	90,864	560	54	30	84	0	1,082	92	91	100
North Vancouver	50,191	4,144	48	24	72	0	697	143	64	128
Port Coquitlam	59,732	2,017	48	8	56	0	1,067	94	63	105
Prince George	73,911	234	91	27	118	1	626	160	128	173
Population 15,000 to 49,999										
Central Saanich	17,245	416	19	4	23	7	750	133	21	122
Oak Bay	18,819	1,812	24	2	26	2	724	138	24	128
Port Moody	29,122	1,137	37	7	44	18	662	151	45	155
West Vancouver	46,654	525	64	16	80	23	583	171	80	171
Royal Canadian Mounted Police										
Campbell River	31,074	217	32	8	40	0	777	129	43	138
Courtenay	22,650	849	19	7	26	5	871	115	26	115
Cranbrook	19,253	766	17	7	24	0	802	125	24	125
Fort St. John	19,109	840	20	8	28	0	682	147	29	152
Langford	21,661	548	14	7	21	0	1,031	97	25	115
Langley	26,110	2,554	33	11	44	0	593	169	47	180
Mission	33,831	150	37	11	48	0	705	142	48	142
North Cowichan	29,692	153	16	7	23	0	1,291	77	28	94
Penticton	33,168	789	38	5	43	0	771	130	45	136
Pitt Meadows	17,023	199	14	7	21	0	811	123	20	117
Port Alberni	18,147	911	27	6	33	0	550	182	34	187
Salmon Arm	17,201	111	14	3	17	0	1,012	99	18	105
Vernon	38,481	409	38	12	50	0	770	130	53	138
White Rock	20,516	3,974	18	4	22	0	933	107	23	112
Population 5,000 to 14,999										
Nelson	9,436	805	16	1	17	6	555	180	20	212
Royal Canadian Mounted Police										
Castlegar	7,937	401	8	3	11	0	722	139	11	139
Coldstream District Municipal	10,153	151	6	1	7	0	1,450	69	7	69
Colwood	14,366	809	9	2	11	0	1,306	77	16	111
Comox	12,919	852	7	4	11	3	1,174	85	11	85
Dawson Creek	11,407	511	17	5	22	0	519	193	23	202
Hope	6,439	155	9	4	13	0	495	202	13	202
Kimberley	6,397	110	7	1	8	0	800	125	9	141
Kitimat	9,513	39	14	1	15	0	634	158	15	158
Ladysmith	7,601	624	6	2	8	2	950	105	7	92
Lake Country	10,341	85	8	3	11	0	940	106	10	97
Mackenzie ⁴
Merritt	6,919	277	12	1	13	0	532	188	13	188
North Saanich	11,119	299	8	5	13	0	855	117	11	99
Parksville	12,502	856	13	1	14	2	893	112	15	120

See footnotes at the end of the table.

Table 9-10 – continued

Police personnel in municipal police services — British Columbia, 2008

	Population ¹		Actual strength					Authorized strength ²		
	number	persons per km ²	Police officers			Other personnel	Population per police officer	Police officers per 100,000 population	Total police	Police officers per 100,000 population
			Male	Female	Total					
	number	persons per km ²	number				rate		number	rate
Powell River	13,353	449	16	1	17	0	785	127	18	135
Prince Rupert	13,654	249	25	4	29	0	471	212	36	264
Qualicum Beach	8,979	499	5	2	7	2	1,283	78	7	78
Quesnel	9,818	278	18	2	20	0	491	204	21	214
Revelstoke	7,431	233	10	2	12	0	619	161	11	148
Sechelt	9,171	231	4	3	7	0	1,310	76	10	109
Sidney	11,891	2,358	10	4	14	0	849	118	14	118
Smithers	5,195	331	6	3	9	0	577	173	9	173
Sooke	9,620	192	6	3	9	0	1,069	94	10	104
Squamish	14,357	134	17	10	27	0	532	188	25	174
Summerland	11,696	158	5	3	8	0	1,462	68	9	77
Terrace	11,509	277	20	2	22	0	523	191	25	217
Trail	7,731	222	11	3	14	0	552	181	14	181
View Royal	8,866	612	4	2	6	0	1,478	68	8	90
Whistler	10,966	68	16	5	21	0	522	192	23	210
Williams Lake	11,427	345	21	3	24	0	476	210	24	210
Population less than 5,000⁵										
Kitasoo/Xaixais Public Safety ⁶	281	89	2	0	2	0	141	712	2	712
Stl'at'imx Tribal Police	2,454	27	6	2	8	5	307	326	10	407

1. Populations are based on July 1st preliminary postcensal populations for 2007 (based on the 2001 Census in 2006 Census boundaries), Demography Division, Statistics Canada. Populations are adjusted to follow policing boundaries. Populations for 2008 are not yet available.

2. Authorized strength represents data as of December 31, 2007.

3. Authorized police strength for Richmond does not include 27 positions in 2007 for Vancouver Airport protective security. These positions are administered through Richmond Royal Canadian Mounted Police detachment but the Vancouver Airport Authority reimburses 100% of the cost to the City of Richmond.

4. As of April 1 2008, Mackenzie reverted to a provincial force jurisdiction and therefore actual and strength data is not listed.

5. All municipalities under 5,000 and unincorporated areas are policed by the Royal Canadian Mounted Police provincial force. The two police forces listed in the publication in this category are First Nations Administered Police Services.

6. Personnel data for 2008 were not available; therefore 2007 personnel data were substituted.

Note(s): Use caution in comparing forces: The number of officers may not reflect the number available for general community policing because some officers in certain communities are restricted to specific locations (e.g. ports, airports). Note for the Royal Canadian Mounted Police municipal contracts: Civilian employees provided by the municipality are not included under "Other personnel".

Table 10-1
Police operating expenditures in municipal police services — Newfoundland and Labrador, 2007

	Operating expenditures							2007 crime - total <i>Criminal Code</i>		
	Total operating expenditures	Per capita costs	Included in police service operational budget					Rate per 100,000 population	Percentage change in crime rate 2006 to 2007	Clearance rate
			Vehicle purchases	Vehicle leasing	Computer services	Accommodations	Emergency 911 service			
	dollars							rate	percent	
Population 100,000 and over										
St. John's, Royal Newfoundland Constabulary	38,589,700	211	no	no	no	no	no	7,325	9	23
Population 15,000 to 49,999										
Corner Brook, Royal Newfoundland Constabulary	4,667,400	229	no	no	no	no	no	5,780	14	36
Population 5,000 to 14,999										
Labrador City, Royal Newfoundland Constabulary	3,058,300	313	no	no	no	no	no	4,241	21	26

Note(s): There are no municipal police forces in Newfoundland. The Royal Newfoundland Constabulary, a provincial police force, is responsible for providing policing to the three largest municipalities and, for the purposes of this report, they have been included above. Use caution in comparing clearance rates among police services. See "Clearance rate (percent)" under the "Important notes" section.

Table 10-2
Police operating expenditures in municipal police services — Prince Edward Island, 2007

	Operating expenditures							2007 crime - total <i>Criminal Code</i>		
	Total operating expenditures	Per capita costs	Included in police service operational budget					Rate per 100,000 population	Percentage change in crime rate 2006 to 2007	Clearance rate
			Vehicle purchases	Vehicle leasing	Computer services	Accommodations	Emergency 911 service			
	dollars							rate	percent	
Population 15,000 to 49,999										
Charlottetown	6,217,019	190	no	yes	yes	no	yes	8,820	-24	31
Summerside	2,593,391	172	no	yes	yes	yes	yes	11,373	4	32
Population 5,000 to 14,999										
Stratford, Royal Canadian Mounted Police	439,430	62	3,752	-16	29
Population less than 5,000										
Borden-Carleton	167,773	216	no	yes	yes	yes	no	5,806	-19	29
Kensington	432,326	306	yes	yes	yes	yes	no	4,880	-24	55
Montague, Royal Canadian Mounted Police	279,832	151	14,340	-21	57

Note(s): Use caution in comparing forces: Operational expenditures may vary considerably between police services for many reasons. See "Total operating expenditures" under the "Important notes" section. Use caution in comparing clearance rates among police services. See "Clearance rate (percent)" under the "Important notes" section. For the Royal Canadian Mounted Police municipal contracts: Expenditures include only the cost billed to the municipality and not the total cost of the contract, nor any additional policing costs.

Table 10-3
Police operating expenditures in municipal police services — Nova Scotia, 2007

	Operating expenditures							2007 crime - total <i>Criminal Code</i>		
	Total operating expenditures	Per capita costs	Included in police service operational budget					Rate per 100,000 population	Percentage change in crime rate 2006 to 2007	Clearance rate
			Vehicle purchases	Vehicle leasing	Computer services	Accommodations	Emergency 911 service			
	dollars							rate	percent	
Population 100,000 and over										
Cape Breton Regional Police	19,488,259	188	yes	yes	yes	no	no	8,029	5	43
Halifax Regional Police	65,174,978	302	no	yes	no	yes	yes	10,589	-10	36
Population 5,000 to 14,999										
Amherst	2,624,366	275	no	yes	yes	yes	yes	16,318	-8	50
Bridgewater	2,993,685	372	no	yes	yes	yes	no	8,412	-18	52
Kentville	1,752,800	296	yes	yes	yes	no	yes	6,888	-28	58
New Glasgow	2,833,366	304	no	yes	yes	no	no	15,260	-10	51
Truro	3,535,600	313	no	yes	yes	yes	yes	19,345	-6	53
Yarmouth, Royal Canadian Mounted Police	1,570,227	202	15,070	-22	51
Population less than 5,000										
Annapolis Royal	188,355	359	no	no	yes	no	no	12,214	-15	48
Springhill	1,051,905	256	no	no	no	no	no	8,281	-24	51
Stellarton	1,231,465	257	no	no	no	yes	yes	9,831	152	55
Trenton	946,010	349	no	yes	no	no	no	7,074	-20	35
Westville	843,407	216	no	yes	yes	yes	yes	6,638	-26	36
Royal Canadian Mounted Police										
Antigonish	788,896	166	10,750	-9	50
Digby	451,903	219	16,845	5	61
Oxford	294,995	218	17,343	-28	60
Parrsboro	151,392	102	9,312	-7	33
Pictou	534,937	139	9,943	-5	37
Port Hawkesbury	490,423	135	9,297	-9	54
Shelburne	366,475	190	18,078	-22	45
Windsor	737,567	190	13,910	-1	58

Note(s): Use caution in comparing forces: Operational expenditures may vary considerably between police services for many reasons. See "Total operating expenditures" under the "Important notes" section. Use caution in comparing clearance rates among police services. See "Clearance rate (percent)" under the "Important notes" section. For the Royal Canadian Mounted Police municipal contracts: Expenditures include only the cost billed to the municipality and not the total cost of the contract, nor any additional policing costs.

Table 10-4
Police operating expenditures in municipal police services — New Brunswick, 2007

	Operating expenditures							2007 crime - total <i>Criminal Code</i>		
	Total operating expenditures	Per capita costs	Included in police service operational budget					Rate per 100,000 population	Percentage change in crime rate 2006 to 2007	Clearance rate
			Vehicle purchases	Vehicle leasing	Computer services	Accommodations	Emergency 911 service			
	dollars							rate	percent	
Population 100,000 and over										
Codiac Regional, Royal Canadian Mounted Police ¹	18,277,616	175	7,370	-16	41
Population 50,000 to 99,999										
Fredericton	10,975,598	210	no	yes	yes	no	no	7,102	-10	34
Saint John	18,880,320	272	yes	yes	yes	yes	no	10,704	10	35
Population 15,000 to 49,999										
Edmundston	3,997,778	235	no	yes	yes	yes	yes	5,344	1	40
Miramichi Police Force	4,910,493	276	no	yes	yes	yes	yes	6,891	-17	57
Rothsay Regional Police	3,641,180	131	yes	yes	yes	yes	yes	2,878	-8	69
Population 5,000 to 14,999										
B.N.P.P. Regional Police	1,791,225	206	no	yes	yes	yes	yes	3,811	-28	43
Bathurst	3,369,370	275	no	yes	yes	no	yes	10,792	17	52
Grand Falls	2,177,157	381	no	no	no	yes	yes	7,928	4	33
Woodstock	1,290,881	240	no	no	yes	yes	yes	9,685	-10	29
Royal Canadian Mounted Police										
Campbellton	1,400,285	192	9,453	-4	57
Oromocto	1,109,794	129	5,270	-39	38
Sackville	1,133,364	201	5,732	-27	33
Population less than 5,000										
Royal Canadian Mounted Police										
Buctouche	240,796	99	9,655	5	48
Cap Pele	257,106	106	907	-66	27
Hampton	415,900	99	4,373	-17	55
McAdam	260,725	170	4,047	13	44
Richibucto	245,658	191	10,055	-36	49
Saint Quentin	175,427	81	4,157	-49	58
St. Andrews	272,969	135	3,863	-23	44

1. The expenditures include 100% of the Royal Canadian Mounted Police contract cost.

Note(s): Use caution in comparing forces: Operational expenditures may vary considerably between police services for many reasons. See "Total operating expenditures" under the "Important notes" section. Use caution in comparing clearance rates among police services. See "Clearance rate (percent)" under the "Important notes" section. For the Royal Canadian Mounted Police municipal contracts: Expenditures include only the cost billed to the municipality and not the total cost of the contract, nor any additional policing costs.

Table 10-5
Police operating expenditures in municipal police services — Quebec, 2007

	Operating expenditures							2007 crime - total <i>Criminal Code</i>		
	Total operating expenditures	Per capita costs	Included in police service operational budget					Rate per 100,000 population	Percentage change in crime rate 2006 to 2007	Clearance rate
			Vehicle purchases	Vehicle leasing	Computer services	Accommodations	Emergency 911 service			
	dollars							rate	percent	
Population 100,000 and over										
Gatineau	42,858,221	171	no	yes	no	no	yes	6,016	1	42
Laval	80,244,774	210	no	yes	yes	no	yes	4,384	-16	36
Lévis	22,070,190	165	no	yes	no	no	yes	3,581	-5	32
Longueuil	79,732,482	202	no	yes	no	no	yes	5,550	-10	31
Montréal	553,156,131	296	yes	yes	yes	yes	yes	7,430	-15	28
Québec	98,510,029	184	no	yes	no	yes	yes	4,953	-8	30
Richelieu/St. Laurent	26,607,780	147	no	no	no	yes	yes	3,366	-5	28
Saguenay	25,860,451	178	no	yes	yes	no	yes	4,398	8	43
Sherbrooke	25,186,551	168	no	yes	yes	no	yes	4,831	-10	40
Terrebonne	18,233,298	150	yes	yes	yes	yes	yes	4,623	-13	38
Trois-Rivières	26,724,362	210	no	yes	no	yes	yes	4,676	-7	47
Population 50,000 to 99,999										
Châteauguay	10,519,149	150	no	yes	no	no	yes	4,355	-15	43
Granby	10,168,391	167	no	yes	no	yes	yes	5,047	-1	38
Joliette, Régie intermunicipal ¹	7,379,180	123	no	no	no	yes	yes	6,223	-16	30
Repentigny	12,887,207	149	no	yes	yes	no	yes	3,556	-9	38
Roussillon, Régie intermunicipal	13,676,523	143	no	yes	yes	no	yes	3,118	-18	28
Saint-Jean-sur-Richelieu	14,719,226	166	yes	yes	yes	yes	yes	5,494	-19	41
St-Jérôme Métro	12,252,459	181	no	yes	no	yes	yes	7,308	-0.4	43
Thérèse-de-Blainville	14,724,899	184	yes	yes	yes	yes	yes	5,564	-5	47
Population 15,000 to 49,999										
Blainville	7,613,318	166	no	yes	yes	yes	yes	3,686	-8	34
Deux-Montagnes Régional	6,580,808	160	no	yes	yes	no	yes	3,660	1	40
L'Assomption	4,023,181	194	no	yes	yes	no	yes	3,459	-5	38
Mascouche	6,108,793	171	no	yes	no	yes	yes	3,989	-6	39
Memphremagog	6,230,334	200	no	yes	yes	yes	yes	4,724	-4	51
Mirabel	6,294,226	130	no	no	yes	yes	yes	2,745	-11	35
MRC des Collines de L'Outaouais	7,439,945	180	yes	yes	yes	yes	yes	3,911	6	48
Rivière-du-Loup	3,785,588	200	no	yes	yes	yes	yes	4,972	-10	58
Saint-Georges	4,207,378	140	no	yes	yes	yes	yes	4,016	-7	46
St-Eustache	7,415,152	169	no	yes	no	no	yes	6,406	-8	36
Thetford Mines	3,248,010	126	no	no	yes	yes	yes	3,858	1	48
Population 5,000 to 14,999										
Bromont	2,064,534	348	no	yes	yes	no	yes	7,139	-3	30
Kahnawake Police Autochtone	3,247,851	327	yes	no	yes	no	no	3,589	-29	15
Kativik Regional ²	2,875	-41	23
Mont-Tremblant	4,069,444	401	no	yes	no	yes	yes	10,835	2	45
Rivière-du-Nord, Régie	3,438,052	273	yes	yes	yes	yes	yes	4,122	-2	34
Ste-Adèle	3,348,508	322	no	no	yes	yes	yes	7,819	-14	44
Ste-Marie	1,988,241	167	no	yes	yes	yes	yes	3,328	29	35
Population less than 5,000										
Amérindienne de Bestamites ²	7,262	-24	65
Amérindienne de la Romaine ²	12,568	-2	92
Amérindienne de Manawan	984,454	476	yes	yes	no	yes	no	7,930	8	..
Amérindienne de Mingan ²	19,034	2	69
Amérindienne de Wemotaci ¹	728,280	548	yes	no	yes	no	no	15,576	-2	78
Amérindienne d'Odanak	225,810	490	no	no	yes	no	no
Barrière Lake ³	30,330	-2	6
Chisasibi ²	23,365	-2	43
D'Essipit	248,737	939	no	no	yes	yes	yes	9,434	-27	60
Eagle Village ¹	298,345	1,005	yes	yes	yes	yes	no	19,865	-3	97
Eastmain	719,000	946	yes	no	yes	yes	no
Gesgapegiac Amerindian ¹	442,210	768	no	no	no	no	no	20,486	35	43
Kitigan Zibi Anishinabeg	924,312	708	yes	no	yes	yes	no	10,107	-2	27
Lac Simon	827,132	702	yes	no	yes	yes	no	21,968	11	46
Listuguj	1,228,109	714	no	no	yes	yes	yes	16,347	-0.2	56
Mashteuiatsh	1,192,770	575	yes	yes	yes	yes	yes	20,347	38	56
Mistissini ²	17,639	10	73

See footnotes at the end of the table.

Table 10-5 – continued

Police operating expenditures in municipal police services — Quebec, 2007

	Operating expenditures							2007 crime - total <i>Criminal Code</i>		
	Total operating expenditures	Per capita costs	Included in police service operational budget					Rate per 100,000 population	Percentage change in crime rate 2006 to 2007	Clearance rate
			Vehicle purchases	Vehicle leasing	Computer services	Accommodations	Emergency 911 service			
	dollars							rate	percent	
Montagnaise de Natashquan ²	9,810	-3	90
Montagnais de Pakua Shipi	375,175	1,753	yes	yes	yes	yes	yes	37,383	9	83
Montagnais de Shefferville ¹	388,350	..	no	yes	yes	yes	no	73
Naskapi ¹	512,321	803	yes	no	yes	yes	no	17,085	-1	9
Nemaska ²	5,271	-3	73
Obedjiwan ²	10,220	-20	42
Oujé-Bougoumou ²	15,000	-5	46
Pikogan	322,524	710	no	no	no	no	no	11,674	-1	98
Timiskaming	480,000	758	no	no	no	no	no	8,689	-5	22
Uashat-Maliotenam ¹	1,530,000	529	yes	yes	yes	yes	no	24,464	-3	77
Waskaganish ²	32,926	-19	70
Waswanipi	1,189,678	762	yes	no	yes	no	no	22,855	-6	71
Wemindji ²	5,233	23	39
Wendake	800,000	451	yes	no	yes	yes	no	5,756	21	14
Wôlinak ¹	175,900	1,142	no	yes	no	yes	no	4,545	-37	57

1. Expenditures for 2007 were not available therefore 2006 expenditures were substituted.

2. Non-respondent.

3. This police force opened in 2006. Data is included in Sûreté du Québec.

Note(s): Use caution in comparing forces: Operational expenditures may vary considerably between police services for many reasons. See "Total operating expenditures" under the "Important notes" section. Use caution in comparing clearance rates among police services. See "Clearance rate (percent)" under the "Important notes" section.

Table 10-6
Police operating expenditures in municipal police services — Ontario, 2007

	Operating expenditures							2007 crime - total <i>Criminal Code</i>		
	Total operating expenditures	Per capita costs	Included in police service operational budget					Rate per 100,000 population	Percentage change in crime rate 2006 to 2007	Clearance rate
			Vehicle purchases	Vehicle leasing	Computer services	Accommodations	Emergency 911 service			
	dollars							rate	percent	
Population 100,000 and over										
Barrie	30,453,232	219	yes	yes	yes	yes	no	6,735	-13	40
Chatham-Kent	23,278,533	213	yes	yes	yes	yes	yes	7,382	3	40
Durham Regional Police	129,951,965	218	yes	yes	yes	yes	no	4,430	-10	42
Greater Sudbury Police	40,566,295	250	yes	yes	yes	yes	yes	5,627	-9	44
Guelph	29,028,430	241	no	yes	yes	yes	yes	4,929	5	39
Halton Regional Police	86,990,917	185	yes	yes	yes	yes	yes	3,423	-5	42
Hamilton Regional Police	118,715,351	228	yes	no	yes	yes	yes	6,248	-1	32
Kingston	27,125,120	227	no	yes	yes	yes	yes	6,670	-12	35
London	76,124,834	210	no	yes	yes	yes	yes	8,230	-10	41
Niagara Regional Police	121,547,994	280	no	yes	yes	yes	yes	5,695	-5	32
Ottawa	197,365,521	233	no	yes	yes	yes	yes	5,559	-6	31
Peel Regional Police	269,357,590	220	no	yes	yes	yes	no	3,697	-8	42
Thunder Bay	31,633,059	277	no	yes	yes	yes	yes	9,036	-2	48
Toronto	885,877,791	334	yes	yes	yes	no	yes	5,557	-12	34
Waterloo Regional Police	101,295,237	204	yes	yes	yes	yes	yes	4,889	-17	43
Windsor	67,883,517	308	yes	no	yes	no	yes	7,862	-9	39
York Regional Police	198,290,034	203	no	yes	yes	yes	no	2,909	-8	41
Population 50,000 to 99,999										
Brantford	20,043,145	215	no	yes	yes	yes	yes	9,493	-4	40
North Bay	14,218,521	251	no	no	yes	yes	yes	5,750	-6	44
Oxford Community	12,996,789	209	yes	yes	yes	yes	no	5,913	-9	30
Peterborough Lakefield	16,604,420	217	no	yes	no	yes	yes	6,797	-21	46
Sarnia	17,174,854	231	yes	yes	yes	yes	yes	7,570	-1	40
Sault Ste. Marie	19,901,374	261	no	yes	yes	yes	yes	7,514	-10	47
South Simcoe Police	12,295,009	214	no	yes	yes	yes	no	3,952	-11	32
Ontario Provincial Police										
Caledon	6,549,309	89	no	no	no	no	no	1,704	-20	35
Lambton Group	7,938,933	151	no	no	no	no	no	3,551	-11	43
Nottawasaga	6,135,453	113	no	no	no	no	no	4,239	8	33
Norfolk	10,189,605	160	no	no	no	no	no	5,116	-12	39
Stormont/Dundas/Glengarry	9,677,807	144	no	no	no	no	no	3,126	-7	41
Wellington County	10,670,655	120	no	no	no	no	no	2,948	-3	34
Population 15,000 to 49,999										
Amherstburg	4,318,456	201	no	no	yes	yes	yes	3,124	-10	45
Belleville	11,588,986	235	yes	yes	yes	yes	no	10,003	-9	45
Brockville	6,502,486	294	no	no	yes	no	no	9,085	2	57
Cobourg	5,955,532	311	no	no	yes	no	yes	7,529	7	41
Cornwall Community Police	13,458,211	294	yes	yes	yes	yes	yes	8,802	-9	55
Essex	4,168,433	201	no	no	yes	yes	no	3,456	13	40
Kawartha Lakes Police	6,087,205	255	no	no	yes	no	yes	16,200 ^r	-12	48
Lasalle	4,924,126	153	yes	no	yes	yes	no	2,324	13	46
Leamington	5,826,814	200	no	yes	yes	yes	yes	4,888	-4	35
Midland	4,269,168	273	no	no	no	yes	no	11,274	-1	43
Nishnawbe-Aski	21,113,434	1,153	no	no	yes	yes	no	13,259	-2	48
Orangeville	5,677,323	194	no	yes	yes	yes	yes	5,195	-15	39
Owen Sound	5,815,779	259	yes	yes	yes	yes	yes	6,543	-11	52
St. Thomas	8,237,844	216	yes	no	yes	no	no	6,091	-10	38
Stratford	7,833,632	251	no	yes	yes	yes	no	6,890	-8	35
Strathroy	4,201,506	196	no	no	yes	yes	yes	4,343	-15	30
Timmins	10,829,144	257	no	yes	yes	yes	yes	7,075	2	45
Ontario Provincial Police										
Brant County	5,257,747	146	no	no	no	no	no	3,831	-15	27
Collingwood	3,504,329	217	no	no	no	no	no	11,003	5	38
Elgin County	4,434,015	99	no	no	no	no	no	3,174	-0.2	38
Greater Napanee	2,611,575	160	no	no	no	no	no	8,495	-3	60
Haldimand	5,886,058	123	no	no	no	no	no	4,670	-7	34
Kingsville	2,460,080	117	no	no	no	no	no	2,661	-13	46
Lakeshore	3,288,292	103	no	no	no	no	no	2,944	-10	49
Loyalist	2,098,465	135	no	no	no	no	no	3,973	-12	50
Orillia	4,697,935	157	no	no	no	no	no	10,511	-4	41

See footnotes at the end of the table.

Table 10-6 – continued

Police operating expenditures in municipal police services — Ontario, 2007

	Operating expenditures							2007 crime - total <i>Criminal Code</i>		
	Total operating expenditures	Per capita costs	Included in police service operational budget					Rate per 100,000 population	Percentage change in crime rate 2006 to 2007	Clearance rate
			Vehicle purchases	Vehicle leasing	Computer services	Accommodations	Emergency 911 service			
	dollars							rate	percent	
Prince Edward County	3,495,567	133	no	no	no	no	no	3,675	-13	39
Quinte West	6,502,903	147	no	no	no	no	no	5,072	-16	34
Smith/Ennismore	1,409,188	82	no	no	no	no	no	1,663	-43	30
South Frontenac	1,725,801	97	no	no	no	no	no	2,341	7	37
Tecumseh	3,336,781	126	no	no	no	no	no	2,718	-16	37
Tillsonburg	2,272,017	144	no	no	no	no	no	5,807	-15	41
Kemptville	2,133,332	137	no	no	no	no	no	3,597	18	42
Population 5,000 to 14,999										
Anishinabek 1	2,288	24	79
Aylmer	1,849,425	237	no	yes	yes	yes	yes	4,325	-2	43
Dryden	3,227,579	399	no	yes	no	yes	yes	9,647	-3	48
Espanola	1,657,964	319	no	yes	yes	yes	yes	8,473	1	46
Gananoque	1,944,420	360	no	no	yes	no	yes	7,479	-8	40
Hanover	2,249,793	319	no	yes	yes	yes	yes	8,659	-21	44
Kenora	4,649,564	477	no	no	no	yes	yes	22,149 ^r	8	53
Pembroke	4,307,056	320	no	yes	yes	yes	no	8,504	-10	42
Perth	2,273,128	362	yes	no	yes	yes	yes	9,066	-9	52
Port Hope	3,322,500	270	no	no	yes	yes	yes	4,811 ^r	-20	46
Saugeen Shores	2,504,807	216	yes	yes	yes	yes	yes	4,694	-28	43
Six Nations Police	3,578,244	485	yes	yes	yes	no	no	13,324	-11	32
Smiths Falls	3,258,843	348	no	yes	yes	yes	yes	12,617	-15	59
Stirling-Rawdon	1,124,854	215	yes	no	yes	yes	no	2,922	-43	31
Treaty Three Communities	10,469,554	1,753	yes	yes	yes	yes	no	30,012	1	78
West Grey	2,031,431	162	yes	no	yes	yes	no	4,164	-4	49
West Nipissing	2,667,554	201	yes	no	yes	yes	yes	5,368	2	44
Ontario Provincial Police										
Alnwick-Haldimand	838,423	122	no	no	no	no	no	2,948	13	29
Augusta	645,326	80	no	no	no	no	no	2,349	-5	32
Beckwith	408,846	59	no	no	no	no	no	2,034	24	28
Brighton Municipal	1,277,626	123	no	no	no	no	no	3,187	-13	40
Brockton	1,830,147	184	no	no	no	no	no	4,230	-17	45
Carleton Place	1,912,770	190	no	no	no	no	no	6,659	-10	34
Cavan/Millbrook/North Monaghan	1,022,585	113	no	no	no	no	no	2,838	-25	33
City of Kenora	1,284,910	226	no	no	no	no	no	4,458 ^r	49	57
Cramahe Township	843,623	135	no	no	no	no	no	4,394	30	27
Douro-Dummer	525,421	77	no	no	no	no	no	1,910	37	20
Drummond-North Elmsley	530,246	71	no	no	no	no	no	2,557	-22	38
Elliot Lake	2,186,735	194	no	no	no	no	no	5,958	-9	47
Fort Frances	2,268,239	281	no	no	no	no	no	9,989	-6	62
Georgian Bluffs	720,697	69	no	no	no	no	no	1,887	-14	52
Goderich	1,419,757	178	no	no	no	no	no	6,330	-15	47
Grey County Chatsworth	440,286	67	no	no	no	no	no	2,381	19	44
Grey Highlands	1,136,109	110	no	no	no	no	no	3,460	-10	54
Hamilton Township	1,076,661	88	no	no	no	no	no	1,849	-9	33
Hawkesbury	2,786,924	249	no	no	no	no	no	9,396	4	46
Hearst	1,358,579	229	no	no	no	no	no	5,307	12	52
Ingersoll Town	2,072,118	171	no	no	no	no	no	6,339	-11	33
Kapuskasing	1,383,576	155	no	no	no	no	no	5,248	-0.4	56
Kincardine	1,826,500	166	no	no	no	no	no	4,577	-0.2	45
Kirkland Lake	2,167,287	274	no	no	no	no	no	10,496	11	68
Lanark Highlands	432,924	84	no	no	no	no	no	2,614	-24	28
Meaford	1,545,808	145	no	no	no	no	no	3,172	-11	53
Mississippi Mills	1,064,694	84	no	no	no	no	no	2,462	-25	31
Mono	870,832	122	no	no	no	no	no	2,391	-8	40
Municipal of South Huron	1,292,557	127	no	no	no	no	no	5,815	4	41
North Perth	1,758,995	139	no	no	no	no	no	4,280	-13	37
Otonabee/South Monaghan	678,753	97	no	no	no	no	no	2,646	6	28
Penetanguishene	1,847,202	214	no	no	no	no	no	8,543	-13	64
Petawawa	1,307,986	93	no	no	no	no	no	2,254	8	45
Renfrew	1,559,101	190	no	no	no	no	no	7,935	-7	47
Rideau Lakes	1,187,925	114	no	no	no	no	no	2,764	0.2	32

See footnotes at the end of the table.

Table 10-6 – continued

Police operating expenditures in municipal police services — Ontario, 2007

	Operating expenditures							2007 crime - total <i>Criminal Code</i>		
	Total operating expenditures	Per capita costs	Included in police service operational budget					Rate per 100,000 population	Percentage change in crime rate 2006 to 2007	Clearance rate
			Vehicle purchases	Vehicle leasing	Computer services	Accommodations	Emergency 911 service			
	dollars							rate	percent	
Southgate	574,363	74	no	no	no	no	no	2,931	-8	42
St. Marys	1,028,412	150	no	no	no	no	no	5,443	12	25
Stone Mills	617,558	78	no	no	no	no	no	2,212	-7	41
Tay Valley Township	405,123	69	no	no	no	no	no	1,928	-25	33
Town of the Blue Mountains	1,935,295	277	no	no	no	no	no	7,188	13	23
Trent Hills	2,291,364	173	no	no	no	no	no	3,916	-1	39
West Perth	1,290,167	134	no	no	no	no	no	3,562	-16	28
Warton	1,642,409	185	no	no	no	no	no	4,095	-28	39
Population less than 5,000										
Akwesasne Mohawk	4,325,279	926	yes	yes	yes	yes	no	9,869	-25	79
Deep River	989,841	249	no	no	yes	yes	yes	4,829	-5	35
Lac Seul	1,154,010	1,632	no	no	no	no	no	53,465	38	93
Michipicoten Township ²	1,271,415	367	yes	no	yes	yes	no	11,753	16	46
Mnjikaning ¹	75,970	-35	37
Shelburne	1,234,577	276	no	no	no	no	no	8,823	21	57
Tyendinaga	430,000	269	no	no	no	no	no	12,070	-2	33
U.C.C.M. Anishnaabe Police	2,634,027	1,485	yes	no	yes	yes	no	32,244	5	72
Wikwemikong	2,593,789	906	no	yes	yes	yes	no	34,008	6	81
Wingham	958,578	328	no	no	yes	yes	yes	6,470 ^r	-30	61
Ontario Provincial Police										
Admaston-Bromley	246,974	83	no	no	no	no	no	1,951	24	43
Amaranth	275,691	69	no	no	no	no	no	1,302	-11	40
Asphodel-Norwood	548,090	136	no	no	no	no	no	2,388	-22	51
Atikokan	1,249,743	377	no	no	no	no	no	4,225	-62	56
Blind River	964,460	247	no	no	no	no	no	6,455	-14	51
Bonfield	186,529	72	no	no	no	no	no	3,108	29	49
Cochrane	1,047,193	228	no	no	no	no	no	8,830 ^r	-19	65
Deseronto ³	201,062	105	no	no	no	no	no	8,991	-15	38
Dymond	311,393	67	no	no	no	no	no	6,442	61	43
East Luther-Grand Valley	191,237	68	no	no	no	no	no	3,310	9	31
East Ferris	176,369	38	no	no	no	no	no	938	-14	57
East Garafraxa	139,696	61	no	no	no	no	no	1,876	18	44
Harvey/Galaway/Cavendish	593,975	132	no	no	no	no	no	3,278	-21	14
Havelock/Belmont/Methuen	602,390	124	no	no	no	no	no	3,753	7	25
Hope	570,424	139	no	no	no	no	no	2,686 ^r	-35	37
Ignace	416,564	256	no	no	no	no	no	8,985	2	53
Laird	94,515	90	no	no	no	no	no	2,367	-4	40
Laurentian Hills	274,914	96	no	no	no	no	no	1,848	..	66
Macdonald Meredith et al.	137,854	92	no	no	no	no	no	2,722	24	20
Marathon	889,560	181	no	no	no	no	no	3,604	-23	61
Mattawa Group of Four	811,813	191	no	no	no	no	no	6,226	11	55
Melancthon	257,519	90	no	no	no	no	no	2,375	27	38
Merrickville	378,628	117	no	no	no	no	no	2,477	3	39
Montague	377,312	105	no	no	no	no	no	9,124	..	10
Mulmur	313,546	97	no	no	no	no	no	2,232	4	40
New Liskeard	261,915	320	no	no	no	no	no	14,286	..	52
North Kawartha	435,236	191	no	no	no	no	no	4,476	23	16
North Shore	113,592	247	no	no	no	no	no	2,614	-17	17
Point Edward	721,823	350	no	no	no	no	no	4,367	-37	50
Powassan	282,529	82	no	no	no	no	no	3,880	25	52
Prescott	1,220,312	293	no	no	no	no	no	11,727	16	41
Red Lake	1,591,482	436	no	no	no	no	no	12,729	10	71
Red Rock	299,419	238	no	no	no	no	no	4,216	34	60
Town of Bruce Mines	177,664	270	no	no	no	no	no	3,957	30	39
Town of Spanish	168,050	211	no	no	no	no	no	4,517	-34	36
Township of Johnson	117,009	183	no	no	no	no	no	2,508	-54	44
Shuniah	452,057	165	no	no	no	no	no	3,544	-6	45
Sioux Narrows Nestor	215,172	559	no	no	no	no	no	9,610 ^r	-35	49

See footnotes at the end of the table.

Table 10-6 – continued

Police operating expenditures in municipal police services — Ontario, 2007

	Operating expenditures							2007 crime - total <i>Criminal Code</i>		
	Total operating expenditures	Per capita costs	Included in police service operational budget					Rate per 100,000 population	Percentage change in crime rate 2006 to 2007	Clearance rate
			Vehicle purchases	Vehicle leasing	Computer services	Accommodations	Emergency 911 service			
	dollars							rate	percent	
Smooth Rock Falls	231,370	130	no	no	no	no	no	3,547	10	75
Temagami	374,719	474	no	no	no	no	no	11,519	22	15
Terrace Bay	306,005	185	no	no	no	no	no	4,909	22	49
Thessalon	333,532	238	no	no	no	no	no	4,857	-21	47
Highway 407	3,648,441	...	no	no	no	no	no	69

1. Non-respondent.

2. Expenditure data for 2007 were not available; therefore 2006 expenditure data were substituted.

3. Deseronto ceased being an Ontario Provincial Police contract on June 1, 2007 therefore expenditures from January 1, 2007 to June 1, 2007 have been included.

Note(s): Use caution in comparing forces: Operational expenditures may vary considerably between police services for many reasons. See "Total operating expenditures" under the "Important notes" section. Use caution in comparing clearance rates among police services. See "Clearance rate (percent)" under the "Important notes" section.

Table 10-7
Police operating expenditures in municipal police services — Manitoba, 2007

	Operating expenditures							2007 crime - total <i>Criminal Code</i>		
	Total operating expenditures	Per capita costs	Included in police service operational budget					Rate per 100,000 population	Percentage change in crime rate 2006 to 2007	Clearance rate
			Vehicle purchases	Vehicle leasing	Computer services	Accommodations	Emergency 911 service			
	dollars							rate	percent	
Population 100,000 and over										
Winnipeg	160,756,267	246	yes	yes	yes	yes	yes	10,283	-13	21
Population 15,000 to 49,999										
Brandon	8,631,128	202	no	yes	no	yes	no	10,741	-4	36
Population 5,000 to 14,999										
Dakota Ojibway	3,855,662	721	no	no	yes	yes	no	13,877	-55	53
East St. Paul	997,148	105	no	no	yes	yes	yes	3,483	22	28
Morden	890,609	120	no	no	yes	yes	yes	9,770	5	51
Winkler	1,394,815	144	no	no	yes	yes	yes	6,558	-12	63
Royal Canadian Mounted Police										
Dauphin	1,251,394	155	22,068	-8	39
Flin Flon	847,601	150	11,782	-15	61
Portage La Prairie	2,175,091	167	24,962	3	40
Selkirk	1,583,820	165	17,461	-3	38
Steinbach	906,803	79	9,200	33	38
The Pas	1,287,237	229	53,250	20	70
Thompson	3,282,935	247	44,902	-0.3	57
Population less than 5,000										
Altona	677,122	173	yes	yes	yes	yes	yes	6,837	26	50
Rivers	198,715	167	no	no	no	no	no	11,794	-24	44
Sainte Anne ¹	253,640	149	no	yes	yes	yes	no	6,444	-6	40
Royal Canadian Mounted Police										
Beausejour	268,113	91	11,152	6	39
Boissevan	181,149	123	9,566	15	45
Carman	269,191	82	4,533	2	43
Gillam	332,265	379	23,603	3	86
Killarney	254,553	111	6,722	12	34
Minnedosa	266,748	109	7,777	56	59
Neepawa	355,189	104	8,047	13	42
Pinawa	154,068	114	4,889	13	24
Roblin	166,921	98	9,859	8	61
Russell	165,579	108	11,761	-3	46
Souris	179,920	94	4,762	-20	46
Stonewall	328,439	71	6,268	23	33
Swan River	627,074	154	21,585	-3	52
Virden	395,570	127	5,016	-38	62

1. Expenditure data for 2007 were not available; therefore 2006 expenditure data were substituted.

Note(s): Use caution in comparing forces: Operational expenditures may vary considerably between police services for many reasons. See "Total operating expenditures" under the "Important notes" section. Use caution in comparing clearance rates among police services. See "Clearance rate (percent)" under the "Important notes" section. For the Royal Canadian Mounted Police municipal contracts: Expenditures include only the cost billed to the municipality and not the total cost of the contract, nor any additional policing costs.

Table 10-8
Police operating expenditures in municipal police services — Saskatchewan, 2007

	Operating expenditures							2007 crime - total <i>Criminal Code</i>		
	Total operating expenditures	Per capita costs	Included in police service operational budget					Rate per 100,000 population	Percentage change in crime rate 2006 to 2007	Clearance rate
			Vehicle purchases	Vehicle leasing	Computer services	Accommodations	Emergency 911 service			
	dollars							rate	percent	
Population 100,000 and over										
Regina	45,063,122	246	yes	yes	yes	yes	no	12,577	-5	43
Saskatoon	48,831,776	237	no	yes	yes	yes	no	13,274	-5	42
Population 15,000 to 49,999										
Moose Jaw	6,578,104	203	yes	no	yes	yes	no	13,766	5	34
Prince Albert	8,890,152	261	no	no	yes	yes	no	18,139	1	55
Royal Canadian Mounted Police										
Lloydminster	3,366,351	136	16,955	-11	45
Yorkton	2,435,061	159	19,882	7	49
Population 5,000 to 14,999										
Estevan	2,802,138	277	yes	yes	yes	yes	yes	10,916	19	51
Weyburn	1,840,851	196	no	no	yes	yes	no	11,477	-1	44
Royal Canadian Mounted Police										
Humboldt	446,588	84	4,928	-22	48
Martensville	348,246	59	4,047	1	38
Melfort	620,403	121	13,206	-7	54
North Battleford	2,489,899	188	45,947	-2	56
Swift Current	1,473,020	100	9,751	0.4	50
Warman	2,737	-48	38
Population less than 5,000										
Caronport	57,296	59	no	no	yes	no	no	4,663	46	38
Dalmeny	155,345	84	no	yes	yes	yes	no	4,741	-18	24
File Hills First Nations	968,200	507	no	no	no	no	no	17,505	6	67
Corman Park Police	490,068	..	no	no	yes	yes	yes
Luseland	73,152	126	no	no	yes	yes	no	8,621	28	50
Stoughton	80,500	107	no	no	yes	no	no	6,507	34	47
Royal Canadian Mounted Police ¹										
Assiniboia	7,417	-1	54
Battleford	5,512	-25	54
Biggar	8,253	1	56
Canora	8,431	-11	39
Creighton	18,449	10	71
Esterhazy	6,458	-4	44
Fort Qu'Appelle	36,768	-27	64
Hudson Bay	9,963	-15	73
Indian Head	10,182	-8	57
Kamsack	23,675	-14	67
Kindersley	8,301	-1	55
La Ronge	54,751	-14	74
Lanigan	5,645	34	20
Maple Creek	18,585	19	51
Meadow Lake	30,099	-14	69
Melville	9,471	12	50
Moosomin	4,796	6	54
Outlook	4,320	-18	53
Rosetown	7,843	37	53
Shaunavon	8,531	-7	44
Tisdale	7,365	8	69
Unity	5,877	-30	64
Wadena	7,374	-18	59
Watrous	3,208	-7	52
Wilkie	9,723	33	42
Wynyard	9,667	2	52

1. Royal Canadian Mounted Police Saskatchewan municipalities are covered under the Saskatchewan Royal Canadian Mounted Police Cost Redistribution Program, which seeks to reduce disparities in policing costs among urban and rural municipalities. This agreement sets out per capita rates that urban and rural municipalities with populations of less than 5,000 are charged by the province for Royal Canadian Mounted Police policing services (\$52.45 per capita in 2006 for these municipalities). As a result, actual operating expenditures at the individual police service level are not available.

Note(s): Use caution in comparing forces: Operational expenditures may vary considerably between police services for many reasons. See "Total operating expenditures" under the "Important notes" section. Use caution in comparing clearance rates among police services. See "Clearance rate (percent)" under the "Important notes" section. For the Royal Canadian Mounted Police municipal contracts: Expenditures include only the cost billed to the municipality and not the total cost of the contract, nor any additional policing costs.

Table 10-9
Police operating expenditures in municipal police services — Alberta, 2007

	Operating expenditures							2007 crime - total <i>Criminal Code</i>		
	Total operating expenditures	Per capita costs	Included in police service operational budget					Rate per 100,000 population	Percentage change in crime rate 2006 to 2007	Clearance rate
			Vehicle purchases	Vehicle leasing	Computer services	Accommodations	Emergency 911 service			
	dollars							rate	percent	
Population 100,000 and over										
Calgary	259,384,668	250	no	yes	yes	yes	no	6,097	-9	31
Edmonton	218,524,593	286	yes	yes	yes	yes	yes	10,193	-8	32
Population 50,000 to 99,999										
Lethbridge	19,649,400	239	no	yes	yes	yes	yes	10,772	1	52
Medicine Hat	17,258,726	286	no	yes	yes	yes	no	7,536	2	48
Royal Canadian Mounted Police										
Red Deer	11,454,195	118	10,920	-20	48
St. Albert	4,605,105	71	5,733	-4	34
Fort McMurray	10,858,200	198	16,064	-4	46
Population 15,000 to 49,999										
Camrose	3,964,398	229	no	yes	yes	yes	yes	11,880	-4	46
Royal Canadian Mounted Police										
Airdrie	2,575,571	93	8,546	-2	32
Brooks	1,382,382	64	11,073	-36	53
Cochrane	1,150,993	53	7,388	35	48
Grande Prairie	7,311,512	147	14,898	-21	35
Leduc	1,822,208	68	10,663	-31	35
Okotoks	1,394,273	81	8,244	-20	34
Spruce Grove	1,650,449	86	15,510	7	40
Sherwood Park	6,210,583	120	7,936	14	33
Population 5,000 to 14,999										
Blood Tribe Police	4,638,130	1,347	yes	no	yes	no	no	131,301	-7	60
Lacombe	1,697,690	149	no	no	yes	yes	yes	8,340	-26	46
Taber	1,952,830	228	no	no	yes	yes	yes	12,327	-2	57
Royal Canadian Mounted Police										
Banff	1,544,072	196	14,838	1	50
Beaumont	611,765	67	9,069	43	33
Bonnyville	802,262	65	9,040	-45	48
Canmore	1,463,245	102	7,579	-15	43
Chestermere	620,330	83	12,336	16	50
Cold Lake	874,270	75	17,198	11	47
Devon	511,245	64	6,033	-6	44
Drayton Valley	855,217	81	12,468	-35	38
Drumheller	739,801	102	9,961	-22	37
Edson	1,368,124	160	15,567	-17	36
Fort Saskatchewan	1,438,906	79	13,014	6	46
High River	1,059,155	84	7,714	0.5	38
Hinton	1,144,445	119	10,663	4	43
Innisfail	619,760	73	7,937 ^r	-3	45
Morinville	700,534	93	7,335	-14	42
Olds	566,226	73	11,814 ^r	8	54
Peace River	756,732	115	22,475 ^r	11	61
Ponoka	817,724	104	14,807	-19	57
Rocky Mountain House	1,043,048	152	24,876	-15	50
Slave Lake	984,394	146	22,214	-9	65
St. Paul	793,481	143	29,759	6	64
Stettler	604,892	111	16,484	49	32
Stony Plain	891,358	74	8,988	-3	32
Strathmore	735,873	64	14,957	4	46
Sylvan Lake	879,323	72	10,935	-2	39
Vegreville	614,998	107	16,276	23	57
Wainwright	552,863	102	8,906	-4	47
Wetaskiwin	1,459,996	122	27,095	4	51
Whitecourt	1,013,334	107	16,111	-13	39

See footnotes at the end of the table.

Table 10-9 – continued

Police operating expenditures in municipal police services — Alberta, 2007

	Operating expenditures							2007 crime - total <i>Criminal Code</i>		
	Total operating expenditures	Per capita costs	Included in police service operational budget					Rate per 100,000 population	Percentage change in crime rate 2006 to 2007	Clearance rate
			Vehicle purchases	Vehicle leasing	Computer services	Accommodations	Emergency 911 service			
	dollars							rate	percent	
Population less than 5,000										
Louis Bull ¹	828,039	830	yes	no	yes	yes	no	28,257	-10	60
North Peace Tribal ²
Tsuu T'ina Nation	862,648	310	yes	no	yes	yes	yes	47,860	-33	43

1. According to the Department of Indian and Northern Affairs, the 2007 registered band membership population for Louis Bull Tribe is 1,777.

2. This service police opened in 2005 and has always been a non-respondent.

Note(s): Use caution in comparing forces: Operational expenditures may vary considerably between police services for many reasons. See "Total operating expenditures" under the "Important notes" section. Use caution in comparing clearance rates among police services. See "Clearance rate (percent)" under the "Important notes" section. For the Royal Canadian Mounted Police municipal contracts: Expenditures include only the cost billed to the municipality and not the total cost of the contract, nor any additional policing costs.

Table 10-10
Police operating expenditures in municipal police services — British Columbia, 2007

	Operating expenditures							2007 crime - total <i>Criminal Code</i>		
	Total operating expenditures	Per capita costs	Included in police service operational budget					Rate per 100,000 population	Percentage change in crime rate 2006 to 2007	Clearance rate
			Vehicle purchases	Vehicle leasing	Computer services	Accommodations	Emergency 911 service			
	dollars							rate	percent	
Population 100,000 and over										
Abbotsford	33,302,300	246	no	yes	yes	no	yes	9,323	-8	22
Delta	23,969,415	232	no	yes	yes	yes	yes	6,404	-10	20
Saanich	20,786,642	185	no	no	yes	no	yes	5,328	-7	27
Vancouver	201,456,478	330	yes	yes	yes	yes	yes	9,722	-14	25
Royal Canadian Mounted Police										
Burnaby ¹	28,273,418	127	9,000	-18	14
Coquitlam ¹	15,132,586	114	7,257	-17	14
Kelowna	15,376,508	136	13,239	-7	34
Langley Township ¹	13,895,173	138	9,780	-7	13
Richmond ^{1, 2}	25,926,632	134	6,778	-12	12
Surrey ¹	62,021,600	146	11,013	-6	18
Population 50,000 to 99,999										
New Westminster	17,296,504	270	no	yes	yes	yes	yes	11,435	-12	23
Victoria	32,989,533	346	no	yes	yes	yes	yes	16,355	-10	29
Royal Canadian Mounted Police										
Chilliwack ¹	10,864,069	150	15,278	-4	17
Kamloops	12,028,130	144	15,617	-4	26
Maple Ridge ¹	8,906,096	117	12,371	6	11
Nanaimo	12,127,533	145	15,221	-11	25
North Vancouver District ¹	10,263,721	113	4,902	-13	13
North Vancouver City ¹	7,568,033	151	8,673	-9	19
Port Coquitlam ¹	6,750,455	113	8,327	-17	13
Prince George	13,391,256	181	19,153	-7	36
Population 15,000 to 49,999										
Central Saanich	3,751,315	218	no	no	yes	no	yes	4,836	12	26
Oak Bay	3,633,462	193	yes	yes	yes	yes	yes	4,830	-2	14
Port Moody	6,529,001	224	no	yes	yes	yes	yes	5,333	-18	26
West Vancouver	11,891,825	255	no	yes	yes	yes	yes	5,361	-10	16
Royal Canadian Mounted Police										
Campbell River	4,691,088	151	15,505	-12	21
Courtenay	3,126,848	138	16,406	5	26
Cranbrook	2,702,797	140	13,499	9	20
Fort St. John	3,251,497	170	16,924	-18	32
Langford	2,649,506	122	13,347	-5	23
Langley ¹	5,157,145	198	13,887	-19	17
Mission ¹	5,538,347	164	14,413	-9	15
North Cowichan	2,974,826	100	8,895	-6	25
Penticton	4,715,722	142	14,125	-11	34
Pitt Meadows ¹	2,075,408	122	11,590	25	11
Port Alberni	3,419,283	188	19,408	-12	36
Salmon Arm	1,839,155	107	12,162	7	23
Vernon	5,256,404	137	13,230	-12	19
White Rock ¹	2,732,346	133	6,761	-26	21
Population 5,000 to 14,999										
Nelson	2,436,640	258	no	yes	yes	yes	yes	11,520	-7	32
Royal Canadian Mounted Police										
Castlegar	916,922	116	15,245	-3	16
Coldstream District Municipal	429,716	42	3,684	4	14
Colwood	1,111,964	77	9,084	-9	14
Comox	905,184	70	6,432	43	21
Dawson Creek	1,830,870	161	20,303	-0.1	32
Hope	1,284,874	200	23,296	27	19
Kimberley	768,811	120	7,425	-8	21
Kitimat	1,147,045	121	10,186	30	46
Ladysmith	600,889	79	7,341	-4	25
Lake Country	802,312	78	7,833	14	18
Mackenzie	650,366	139	9,173	3	63
Merritt	1,168,992	169	26,695	2	31
North Saanich	1,030,485	93	3,750	-1	19

See footnotes at the end of the table.

Table 10-10 – continued

Police operating expenditures in municipal police services — British Columbia, 2007

	Operating expenditures							2007 crime - total <i>Criminal Code</i>		
	Total operating expenditures	Per capita costs	Included in police service operational budget					Rate per 100,000 population	Percentage change in crime rate 2006 to 2007	Clearance rate
			Vehicle purchases	Vehicle leasing	Computer services	Accommodations	Emergency 911 service			
	dollars							rate	percent	
Parksville	1,327,327	106	14,062	6	16
Powell River	1,400,518	105	12,087	7	27
Prince Rupert	2,415,558	177	25,289	13	48
Qualicum Beach	598,384	67	8,464	2	13
Quesnel	1,676,036	171	24,944	-3	44
Revelstoke	894,307	120	10,335	1	21
Sechelt	790,491	86	9,628	-1	26
Sidney	1,132,405	95	5,643	-9	24
Smithers	887,160	171	25,467	3	40
Sooke	911,484	95	11,746	3	21
Squamish	2,155,132	150	17,664	-13	23
Summerland	762,397	65	6,498	1	25
Terrace	1,953,096	170	21,427	1	50
Trail	1,004,124	130	12,029	-19	39
View Royal	709,381	80	7,918	-13	21
Whistler	1,948,417	178	21,567	-4	18
Williams Lake	2,291,142	201	30,830	10	32
Population less than 5,000 ³										
Kitasoo/Xaixais Public Safety ⁴	224,235	798	yes	yes	yes	yes	yes	44,840	74	52
Stl'at'imx Tribal Police	1,229,504	501	yes	yes	yes	yes	yes	23,798	4	43

1. Includes expenditures for Integrated Homicide Investigation Team.

2. Operational expenses for Richmond includes expenditures for Vancouver Airport protective security. These positions are administered through Richmond Royal Canadian Mounted Police detachment but the Vancouver Airport Authority reimburses 100% of the cost to the City of Richmond.

3. All municipalities under 5,000 and unincorporated areas are policed by the Royal Canadian Mounted Police provincial force. The two police forces listed in the publication in this category are First Nations Administered Police Services.

4. Expenditures for 2007 were not available; therefore 2006 data were substituted.

Note(s): Use caution in comparing forces: Operational expenditures may vary considerably between police services for many reasons. See "Total operating expenditures" under the "Important notes" section. Use caution in comparing clearance rates among police services. See "Clearance rate (percent)" under the "Important notes" section. For the Royal Canadian Mounted Police municipal contracts: Expenditures include only the cost billed to the municipality and not the total cost of the contract, nor any additional policing costs.

Data quality, concepts and methodology

Survey definitions and coverage

This report is based upon data collected through the Police Administration Survey conducted by the Canadian Centre for Justice Statistics. This survey collects data on police personnel and expenditures from each municipal, provincial and federal (Royal Canadian Mounted Police [RCMP]) police service in Canada. With the exception of “independent” First Nations police services, all First Nations police personnel and expenditures falling under the jurisdiction of the RCMP are reported under RCMP federal policing. The RCMP provides local police service to over 630 communities in 11 provinces and territories.

The following federal policing and security agencies are excluded from the survey: the Canadian Security Intelligence Service, railway and military police. Federal and provincial government departments deploying personnel to enforce specific statutes in the areas of income tax, customs and excise, immigration, fisheries and wildlife are also excluded. As well, private security guards and private investigators are not included in this survey.

Data presented in this report represent police personnel as of May 15 2008, final expenditures for the year 2007 (or 2007/2008 for those services operating on a fiscal year). Most municipal police services operate on a calendar year while the provincial services and the RCMP operate on a fiscal year. Policing expenditures will be referred to as calendar year (i.e., 2007) throughout this report.

Personnel counts are based on permanent, full-time equivalents; part-time employees are converted to full-time equivalents (e.g., 4 employees working 10 hours per week would equal 1 full-time employee working a 40-hour week). Police officers include the actual number of sworn police officers available for active duty as of May 15, 2008. Other employees include all other non-police personnel (civilians and special constables) (e.g., clerical, dispatch, management, cadets, special constables, security officers, school crossing guards, by-law enforcement officers). Temporary police officers, auxiliary police and other volunteer personnel are not included in this report.

Counts for temporary officers are not included in any of the police officer counts, as only permanent, full-time officers (and full-time equivalents) are included. Temporary police officers are hired to fill in, as needed, for permanent police officers. The province of Quebec employs more temporary police officers than any other jurisdiction. Of the 977 temporary officers reported in 2008, 872 or 89% were employed in Quebec.

Police expenditures are actual operating expenditures and include: salaries and wages, benefits, and other operating expenses such as accommodation costs, fuel, maintenance, etc. Capital expenditures, funding from external sources, revenues and recoveries are not included.

Population figures used in this report are provided by the Demography Division of Statistics Canada and represent postcensal or intercensal estimates. Population data are regularly updated and, as such, rates published in this report may differ slightly from rates published in earlier reports. Text and headings indicate the population figures used.

Data from the Uniform Crime Reporting (UCR) Survey are also included in this report to provide appropriate caseload context for the police in terms of the volume of criminal incidents coming to their attention. The UCR Survey collects crime and traffic offences reported by all police services in Canada, dating back to 1962.

Major survey revisions

1986 revision

The Police Administration Survey was revised in 1986 to collect police department expenditures (beginning in 1985) as well as more detailed information on police personnel and functions. As both the old and revised surveys were run simultaneously in 1986, it was possible to examine the effects of the revised survey. An analysis of the data revealed that there were some minor differences in the distribution of police personnel between the two surveys. In order to correct for these methodological differences, the data presented in Table 1 prior to 1986 have been adjusted at the national level.

1996 revision

In 1996, changes were made to the effective date for collecting personnel strength, moving from September 30 to June 15. School crossing guards were added to the survey in 1996 as their numbers warranted a separate category. Prior to 1996, they were captured under the "other" category. Adjustments were made to civilian personnel to account for this change, back to 1986.

Also, expenses associated with the purchasing and leasing of vehicles were now to be included only if they were part of the operational budget of the police service. Prior to 1995, all expenses related to the purchase and lease of vehicles were included, regardless of the type of budget. Benefits were expanded to include those paid by other government sources. The removal of expenses due to the capital purchases of vehicles and the addition of expenses due to the inclusion of benefits paid by other government sources were examined in detail. It was estimated that these revisions accounted for an overall change of less than 1% in reported expenses.

2006 revision

In 2006, changes were made to the effective date for collecting personnel strength, moving from June 15 to May 15. This date change should not have any impact on the continuity of 2006 data with previous years.

Municipal police service data tables

Municipal police services employ 65% of all police officers in Canada and provide policing services to almost 25 million Canadians (75% of the Canadian population). Summary information on Canada's municipal police services is presented in this report. Municipal policing includes all police services that are paid for by the municipalities including contract policing provided to municipalities by provincial police services and the RCMP. It also includes self-administered First Nations police services. It should be noted that offences investigated by federal RCMP personnel within a municipal policing jurisdiction are included in the crime statistics for that municipal police service; however, personnel and expenditures associated with the federal RCMP are not included.

Within each province, municipal police services are grouped into one of five population ranges and the municipalities within each group are listed alphabetically. Within these groupings, municipalities that are policed by the RCMP or OPP under municipal contracts are separated by a blank line from the other municipal police services.

Table 9 and Table 10 include only personnel and operating expenditures from municipal police services that existed on May 15, 2008. Municipal police services that ceased to exist and/or were amalgamated by other new police services on or before May 15, 2008 are not included.) Crime data and expenditure data for 2008 are not yet available, therefore data presented in Table 10 of the report are for the year 2007.

Important notes

Population

Municipal populations are derived from postcensal estimates for July 1 (based on the 2001 Census in 2006 Census sub-division boundaries) as provided by Demography Division, Statistics Canada. The population estimates are based on usual place of residence. Population data are updated regularly and figures published in this report may differ slightly from figures published in earlier reports.

Some Aboriginal police services may police larger populations comprising both band and non-band members. Hence the actual population policed by some forces may be higher than indicated in this report. **Comparisons should be made with caution.**

Municipalities are grouped according to the following population ranges:

- 100,000 and over
- 50,000 to 99,999
- 15,000 to 49,999
- 5,000 to 14,999
- Less than 5,000

Population density

In order to provide context for the relative urban or rural composition of a municipality, a population density figure is provided. Population density refers to the number of persons per square kilometre. The calculation for population density is total population divided by land area.

Land area is the area in square kilometres of the land-based portions of the census geographic area, in this case the census subdivision (municipality). The land area measurements for the census subdivision reflect the boundaries in effect on January 1, 2006 (the geographic reference date for the 2006 Census of Canada). Since the population density is a summary calculation of **total** municipal population divided by **total** municipal land area, it will not reflect the distribution of urban and rural segments within a municipality. However, it can be descriptive of the general urban or rural structure; for example, a highly centralized city such as Vancouver, British Columbia has a population density of 4,888 persons/km² whereas an expansive city such as Greater Sudbury, Ontario has a population density of 48 persons/km².

Police officers

Actual strength

Counts represent the “actual” number (full-time equivalents) of permanent sworn police officers of all ranks as of May 15, 2008 data. This number also includes officers who are deployed to contract positions (e.g. airport policing, U.N. missions) and who are not available for general policing duties in their community. Police officers on long-term leave (e.g. secondment-out, disability, education leave) who are not being paid by the police service’s annual budget are excluded.

Authorized strength

“Authorized police officer strength” represents the number of fully-sworn police officers the police department was allowed to employ during calendar or fiscal year.

Population per police officer

Counts represent the population of the area serviced by the police service divided by the number of police officers. For some services, particularly those patrolling cottage or tourist areas, the population policed can fluctuate dramatically throughout the year, usually peaking during the summer months. Correspondingly, the number of police officers assigned to these services may also fluctuate to accommodate these peak periods. Because the personnel data are collected for a specific point in time (May 15, 2008) and the population estimates are based on usual place of residence only, these aspects are not captured.

Police officers per 100,000 population

Figures represent the total number of police officers per 100,000 population. This is simply an alternative way of presenting the population per police officer.

Other personnel

Counts include civilian and other personnel (e.g., clerical, dispatch, management, cadets, special constables, security officers, school crossing guards, by-law enforcement officers) on the police department's payroll as of May 15, 2008. There are no "other personnel" included in the counts for the RCMP municipal policing contracts. The municipality may hire other personnel, but they are not included in this report.

Total operating expenditures

Figures include salaries, wages, benefits, and other operating expenses that are paid from the police service budget, as well as benefits paid from other government sources. They have been rounded to the nearest thousand. Revenues, recoveries, and those costs that fall under a police service's capital expenditures are excluded.

Under the RCMP billing agreement, most municipalities with a population under 15,000 are billed 70% of total expenditures, and those with a population of 15,000 and over are billed 90% (in most cases) of total costs. The costing formula takes into consideration the costs of providing federal and other RCMP policing duties while also performing municipal policing duties. First Nations Policing Program (FNPP) agreements are cost-shared 52% by the Government of Canada and 48% by the relevant province or territory.

As operational situations may vary considerably between police services, so will the operational costs that result. For example, some costs (accommodation, by-law enforcement, court security) and some services (computing, personnel, and financial services) may be included within the police service's operational budget for certain municipalities, but in other municipalities they may be paid for by other departments or through the police service's capital budget (which is excluded). In some police services, there may be police officers who are funded by external agencies (e.g. an airport authority or a community organisation). While these officers are included in this report, the expenditure of these funds is not. Conversely, some police forces provide cost-recovery services (e.g. 911 call-takers and dispatchers). Revenues and recoveries from such services are excluded from this report. **Therefore comparisons should be made with caution.**

Per capita cost

Figures represent expenditures divided by the population of the area serviced by the police service (rounded to the nearest dollar). For the reasons described above, **comparisons should be made with caution.**

Major expenditure categories

This section examines five major expenditure categories which may, or may not, be part of the police service's operational budget. The purpose of this section is to highlight differences in costs between forces due to different accounting policies and practices.

Rate, total *Criminal Code*

Figures represent the total number of incidents per 100,000 population. This rate reflects both violent and property crimes, as well as other *Criminal Code* offences (e.g., damage to property, prostitution). *Criminal Code* traffic incidents are excluded.

Percentage change in *Criminal Code* rate

This figure represents the year-over-year percent change in the rate of total *Criminal Code* incidents (excluding traffic) per 100,000 population.

Clearance rate (percent)

When a police investigation leads to the identification of a suspect against whom a charge could be laid, then that incident can be cleared. Criminal incidents can either be "cleared by charge" or "cleared otherwise". When an information is laid against the suspect (i.e., the person is formally charged), then from a statistical point of view the related actual incident can be cleared by charge. In cases where the police do not lay an information, even though they have identified a suspect and have enough evidence to support the laying of such, the incident is cleared otherwise. Examples include instances where extrajudicial sanctions or alternative measures are recommended by the police, where police issue a warning or caution, where the complainant declines to proceed with charges or cases where the alleged offender dies before he or she can be formally charged.

The clearance rate reflects the total number of incidents cleared (by charge, or otherwise) during the year divided by the total number of incidents during the year. Since the process of solving crime is often time-consuming, a criminal incident may be solved months or even years after it was reported to police and recorded by the UCR Survey. Therefore, it is possible for the number of incidents cleared in a year to be greater than the total number of "actual" incidents that year, and thus for the clearance rate to exceed 100%.

Any comparison of clearance rates among police services should be made with caution. The reporting practices of some agencies could result in high levels of citizen reporting, including minor offences, to help track neighbourhood crime trends. These minor, generally less-serious offences (e.g. mischief, minor thefts) tend to be high-volume and, by their very nature, tend to have low clearance rates. Police services reporting higher levels of these minor offences will tend to have lower than average overall clearance rates.

Note

For more information regarding the UCR Survey and crime statistics, please refer to *Canadian Crime Statistics* (Catalogue no. 85-205-X).

Appendix I

Census metropolitan area reference list

Police services included in CMA's 2007

Abbotsford

Abbotsford

Mission (RCMP Municipal)

Calgary

Airdrie (RCMP Rural)

Airdrie (RCMP Municipal)

Beiseker (RCMP Rural)

Calgary

Chestermere (RCMP Municipal)

Cochrane (RCMP Rural)

Cochrane (RCMP Municipal)

Tsuu T'ina Nation Police

Edmonton

Beaumont (RCMP Municipal)

Devon (RCMP Municipal)

Edmonton

Fort Saskatchewan (RCMP Municipal)

Leduc (RCMP Rural)

Leduc (RCMP Municipal)

Morinville (RCMP Rural)

Morinville (RCMP Municipal)

Redwater (RCMP Rural)

Spruce Grove (RCMP Municipal)

St. Albert (RCMP Municipal)

Stony Plain (RCMP Rural)

Stony Plain (RCMP Municipal)

Strathcona County (RCMP Rural)

Thorsby (RCMP Rural)

Strathcona (RCMP Municipal)

Greater Sudbury

Greater Sudbury

Halifax

Halifax County (RCMP Rural)

Halifax Regional Police

Hamilton

Burlington (OPP District)

Halton Regional Police (40%)¹

Hamilton Regional Police

Kingston

Kingston

Loyalist (OPP Municipal)

South Frontenac (OPP Municipal)

Kitchener

Cambridge (OPP Rural)

Waterloo Regional Police

London

London

Middlesex (OPP Rural)

St. Thomas

Strathroy-Caradoc

Montréal

Beloeil

Blainville

Châteauguay

1. Includes the City of Burlington.

Deux-Montagnes MRC (Sûreté du Québec)

Deux-Montagnes Regional

Kahnawake Police Autochtone

Kanesatake Mohawk

L'Assomption

Laval

Longueuil

Mascouche

Mirabel

Montréal

Repentigny

Roussillon (Régie)

St-Eustache

Thérèse-de-Blainville

St-Jérôme Métro

Terrebonne

Vaudreuil-Soulange MRC (Sûreté du Québec)

Ottawa-Gatineau (Ontario portion)

Ottawa Police Service

Ottawa (OPP Rural) - Traffic

Russel County (OPP Rural)

Ottawa-Gatineau (Québec portion)

Gatineau-Métro

MRC des Collines de l'Outaouais

Québec

Côte-de-Beaupré MRC (Sûreté du Québec)

Jacques Cartier MRC (Sûreté du Québec)

Lévis

L'Île-d'Orléans MRC (Sûreté du Québec)

Québec

Wendake

Regina

Lumsden (RCMP Rural)

Regina

Regina (RCMP Rural)

Saguenay

Saguenay

Saint John

Hampton (RCMP Municipal)

Rothesay Regional Police

Saint John

Saskatoon

Dalmeny

Saskatoon

Martensville (RCMP Municipal)

Saskatoon (RCMP Rural)

Warman (RCMP Rural)

Warman (RCMP Municipal)

Sherbrooke

Sherbrooke

Sherbrooke (Sûreté du Québec)

St. Catharines-Niagara

Niagara Falls (OPP Rural)

Niagara Regional

St. John's

Royal Newfoundland Constabulary (St. John's)

Thunder Bay

Shuniah (OPP Municipal)

Thunder Bay

Thunder Bay (OPP District)

Toronto

Aurora (OPP District)
Caledon (OPP Municipal)
Durham regional police (40%)²
Halton Regional Police (60%)³
Mono (OPP Municipal)
Nottawasaga (OPP Municipal)
Orangeville
Peel Regional Police
Port Credit (OPP Rural)
Toronto
Toronto (OPP Rural)
York Regional
Whitby (OPP Rural)

Trois-Rivières

Bécancour MRC (Sûreté du Québec)
Trois-Rivières
Wôlinak

Vancouver

Bowen Island (RCMP Rural)
Burnaby (RCMP Municipal)
Coquitlam (RCMP Municipal)
Coquitlam (RCMP Rural)
Delta
Langley Township (RCMP Municipal)
Langley City (RCMP Municipal)
Maple Ridge (RCMP Municipal)
New Westminster
North Vancouver City (RCMP Municipal)
North Vancouver District (RCMP Municipal)
North Vancouver (RCMP Rural)

2. Includes the towns of Pickering and Ajax and the township of Uxbridge.

3. Includes the towns of Milton, Halton Hills and Oakville.

Pitt Meadows (RCMP Municipal)
Port Coquitlam (RCMP Municipal)
Port Moody
Richmond (RCMP Municipal)
Squamish (RCMP Rural)
Surrey (RCMP Municipal)
Surrey (RCMP Rural)
University (RCMP Rural)
Vancouver
West Vancouver
White Rock (RCMP Municipal)

Victoria

Central Saanich
Colwood (RCMP Municipal)
Langford (RCMP Municipal)
North Saanich (RCMP Municipal)
Oak Bay
Saanich
Sidney (RCMP Municipal)
Sidney/North Saanich (RCMP Rural)
Sooke (RCMP Municipal)
Sooke (RCMP Rural)
Victoria
View Royal (RCMP Municipal)
West Shore (RCMP Rural)

Windsor

Amherstburg
Lakeshore (OPP Municipal)
LaSalle
Tecumseh (OPP Municipal)
Windsor

Winnipeg

East St. Paul

Oakbank (RCMP Rural)

Selkirk (RCMP Rural)

St. Pierre-Jolys (RCMP Rural)

Winnipeg