



Transport
Canada

Transports
Canada

TP 3322
(12/2007)

Canadian Motor Vehicle Traffic Collision Statistics

Collected in cooperation
with the Canadian Council of
Motor Transport Administrators

2007



Canada 

Collisions and Casualties ⁶ • 1987-2006

	COLLISIONS		VICTIMS		
	Fatal ¹	Personal Injury ²	Fatalities ³	Serious Injuries ⁴	Injuries ⁵ (Total)
1987	3,729	193,237	4,283	28,000	280,605
1988	3,610	190,094	4,154	28,031	278,820
1989	3,651	192,595	4,238	27,422	285,178
1990	3,445	178,515	3,963	25,183	262,680
1991	3,228	170,693	3,690	26,035	249,217
1992	3,073	169,640	3,501	25,521	249,823
1993	3,121	168,106	3,615	23,902	247,593
1994	2,869	166,780	3,263	22,830	245,110
1995	2,854	164,190	3,351	21,494	241,935
1996	2,679	153,966	3,062	18,737	227,320
1997	2,617	147,538	3,033	17,294	217,403
1998	2,576	145,612	2,911	16,409	213,304
1999	2,635	148,660	2,984	16,186	218,437
2000	2,569	153,273	2,927	15,579	222,830
2001*	2,432	148,961	2,776	15,282	216,441
2002	2,594	153,850	2,932	15,906	222,706
2003	2,486	150,474	2,768	15,104	216,089
2004	2,430	145,256	2,722	15,605	206,232
2005	2,558	145,604	2,905	15,812	204,751
2006	2,604	144,756	2,889	15,281	199,337

- ¹ "Fatal collisions" include all reportable motor vehicle crashes which resulted in at least one fatality, where death occurred within 30 days of collision, except in Quebec (8 days).
- ² "Personal Injury" collisions include all reportable motor vehicle crashes which resulted in at least one injury but not death within the timeframes set out in "Fatal collisions".
- ³ "Fatalities" include all those who died as a result of involvement in a reportable traffic collision within 30 days of its occurrence, except in Quebec (8 days).
- ⁴ "Serious Injuries" include persons admitted to hospital for treatment or observation. Serious injuries for British Columbia were estimated from 1987 to 2003 and for January, February and March 2004.
- ⁵ "Total Injuries" include minimal, minor, moderate, serious and unspecified severities.
- ⁶ Collisions and casualties were revised for the period 1996 to 2005 based on submissions by one of the jurisdictions.
- * Data for Nunavut are not reported for 2001 except for fatalities.

Fatalities and Injuries by Age Group

Age Group (yrs)	Fatalities	Serious Injuries	Injuries (Total)
0 - 4	26	147	2,284
5 - 14	69	679	10,029
15 - 19	353	2,059	24,594
20 - 24	360	2,173	26,730
25 - 34	460	2,659	35,164
35 - 44	407	2,406	32,648
45 - 54	411	2,053	28,643
55 - 64	298	1,315	17,191
65 +	462	1,415	15,545
Not stated	43	375	6,509
Total	2,889	15,281	199,337

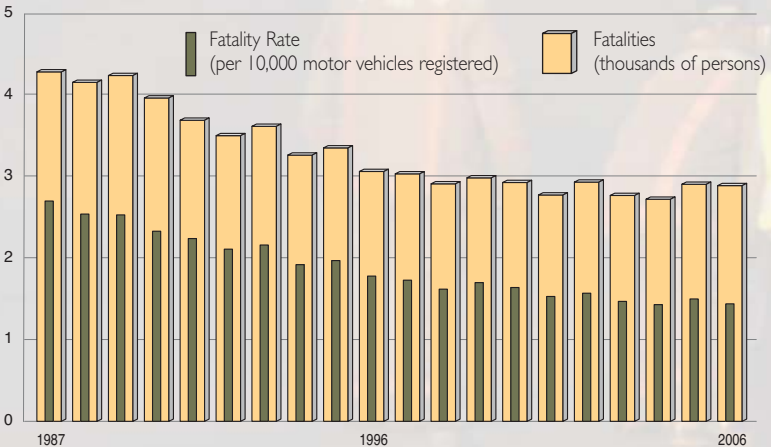
Fatalities by Road User Class • 2002-2006

Road User Class		2002	2003	2004	2005	2006
Drivers	#	1,516 ^r	1,428 ^r	1,389 ^r	1,507 ^r	1,546
	%	51.7	51.6	51.0 ^r	51.9 ^r	53.5
Passengers	#	712	649	636	661	617
	%	24.3	23.4 ^r	23.4 ^r	22.8 ^r	21.4
Pedestrians	#	369 ^r	379	363 ^r	344	374
	%	12.6	13.7	13.3 ^r	11.8	12.9
Bicyclists	#	63	45	56	52	73
	%	2.1	1.6	2.1 ^r	1.8	2.5
Motorcyclists *	#	172	177	198	229	218
	%	5.9	6.4	7.3	7.9 ^r	7.6
Not stated / Other	#	100	90	80	112	61
	%	3.4	3.3 ^r	2.9 ^r	3.8 ^r	2.1
Total	#	2,932 ^r	2,768 ^r	2,722 ^r	2,905 ^r	2,889
	%	100.0	100.0	100.0	100.0	100.0

* Includes moped riders ^r Revised



Fatalities • 1987-2006

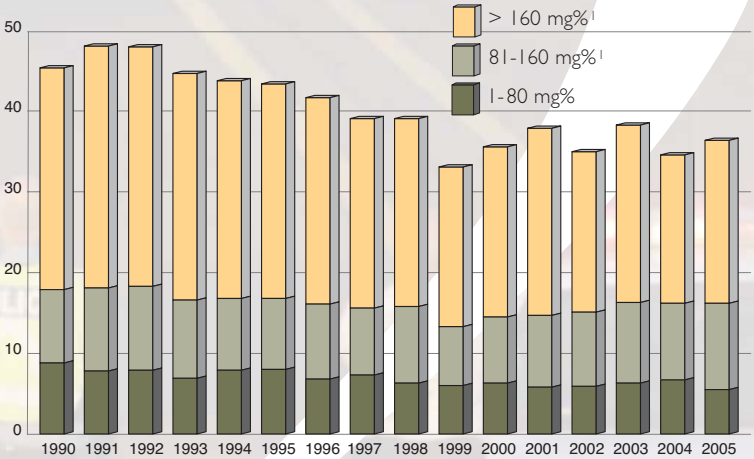


Casualty Rates

	PER 100,000 POPULATION		PER BILLION VEHICLE-KILOMETRES*		PER 100,000 LICENSED DRIVERS	
	Fatalities	Injuries	Fatalities	Injuries	Fatalities	Injuries
Canada	8.9	604.0	8.9	604.2	13.0	884.5
N.L.	7.3	428.7	8.5	501.3	10.8	638.9
P.E.I.	18.8	604.2	25.0	803.6	26.8	863.9
N.S.	9.2	513.4	8.4	470.8	13.0	726.8
N.B.	14.1	519.1	12.3	452.3	19.9	729.5
Que.	9.4	649.9	10.3	711.1	14.8	1,027.1
Ont.	6.2	539.8	6.0	525.2	8.8	772.3
Man.	10.1	741.2	9.9	729.1	16.4	1,202.9
Sask.	13.9	686.6	12.2	604.4	20.2	999.8
Alta.	13.4	769.1	10.0	570.7	17.9	1,027.8
B.C.	9.6	586.0	12.9	789.5	14.0	855.3
Y.T.	41.6	746.1	24.2	434.5	55.3	991.1
N.W.T.	4.8	267.6	5.3	294.3	6.3	355.4
Nvt.	0.0	214.4	n.a.	n.a.	n.a.	n.a.

* Statistics Canada, "Canadian Vehicle Survey", Catalogue No. 53-223-XIE.
 Note: Data for Ontario and Saskatchewan are preliminary for 2006.
 n.a.: Data are not available.

Percentage of Fatally Injured Drivers Tested and Found to Have Been Drinking (BAC* > 0 mg%)



*BAC: Blood Alcohol Concentration.

mg%: Weight of alcohol in the bloodstream stated as milligrams in 100 millilitres of blood.

¹ Prior to 2001 BAC categories were reported as 81-150 mg% and >150 mg%.

Note: 2006 data were not available at the time of publication.

Source: Traffic Injury Research Foundation.

Percentage of Driver and Passenger Fatalities and Serious Injuries Where Victims Were Not Using Seat Belts • 2002-2006

	2002	2003	2004	2005	2006
Drivers					
Fatalities	38.5	38.8	40.2	34.9	36.9
Serious Injuries	14.2	15.5	16.3	14.3	16.2
Passengers					
Fatalities	35.9	39.4	39.6	35.4	38.7
Serious Injuries	20.4	20.9	23.4	19.9	24.6

Note: "Serious Injuries" include victims admitted to hospital for treatment or observation. "Serious Injuries" prior to 2004 do not include British Columbia. The percentage of "Serious Injuries" for British Columbia was estimated for January, February and March 2004.

Number of Collisions by Location

Location	Fatal	Personal Injury
Urban ¹	954	102,134
Rural ²	1,625	40,909
Not stated	25	1,713
Total	2,604	144,756

¹ Urban includes: a) metropolitan roads and streets and other urban areas, or b) a speed limit at the collision site of 60 km/h or less.

² Rural includes: a) primary or secondary highways, as well as local roads, or b) a speed limit at the collision site exceeding 60 km/h.

Note: In Alberta and Saskatchewan, "Urban" includes any area within the boundaries of a city, town, village or hamlet. "Rural" includes any area outside of what is defined as "Urban".



Source: Ontario Provincial Police

Percentage of Fatalities and Serious Injuries by Road User Class

Road User Class	Fatalities	Serious Injuries
Drivers	53.5	48.4
Passengers	21.4	25.8
Pedestrians	12.9	12.0
Bicyclists	2.5	3.3
Motorcyclists	7.6	8.7
Not stated/Other	2.1	1.8
Total	100.0	100.0

Percentage of Driver and Passenger Fatalities and Serious Injuries by Age Group

Age Group (yrs)	Fatalities		Serious Injuries	
	Drivers	Passengers	Drivers	Passengers
0 - 4	0.0	3.3	0.0	2.7
5 - 14	0.2	5.9	0.5	8.8
15 - 19	10.0	19.5	10.6	20.0
20 - 24	13.3	13.9	14.7	15.6
25 - 34	18.7	12.8	19.9	14.6
35 - 44	15.8	11.2	19.4	10.5
45 - 54	16.6	8.2	16.0	8.6
55 - 64	11.8	7.6	9.9	5.7
65 +	13.3	16.2	8.6	9.1
Not stated	0.3	1.4	0.4	4.4
Total	100.0	100.0	100.0	100.0



Source: Ontario Provincial Police

Number of Licensed Drivers by Gender and by Age

Age Group (yrs)	Males	Females	Total
< 16	28,165	18,339	46,504
16 - 19	559,475	492,815	1,052,290
20 - 24	929,825	856,188	1,786,013
25 - 34	1,967,825	1,883,528	3,851,353
35 - 44	2,356,256	2,225,476	4,581,732
45 - 54	2,410,613	2,265,163	4,675,776
55 - 64	1,753,876	1,580,013	3,333,889
65 +	1,627,315	1,323,380	2,950,695
Total	11,633,350	10,644,902	22,278,252

Licensed Drivers and Motor Vehicle Registrations by Type of Vehicle • 1987-2006 (in thousands)

	Licensed Drivers ¹	Light-Duty Vehicles ²	Commercial Vehicles ³	Motorcycles ⁴
1987	16,927	11,686	3,659	448
1988	17,155	12,086	3,850	400
1989	17,592	12,380	3,962	378
1990	17,718	12,622	4,000	359
1991	18,090	12,578	3,516	350
1992	18,465	12,781	3,461	339
1993	18,843	12,925	3,455	337
1994	19,243	13,131	3,510	330
1995	19,327	13,192	3,535	320
1996	19,964	13,251	3,620	312
1997	20,148	13,515	3,684	319
1998	20,744 ^e	13,887	3,767	334
1999	20,934	16,538	722	274
2000	20,593	16,832	739	311
2001	20,879	17,055	729	318
2002	21,163	17,543	724	350
2003	21,436	17,755	740	373
2004	21,673	17,920	752	409
2005	21,937	18,124	786	443
2006	22,278	18,739	841	485

¹ Excludes temporary permits prior to 1999.

² Pre-1999, these registrations include passenger automobiles. From 1999, light-duty vehicles include passenger type vehicles (automobiles, passenger vans), light trucks and vans (less than 4 500 kg).

³ Pre-1999, these registrations include trucks, buses and other commercial vehicles, such as vans. From 1999, these registrations include commercial vehicles (trucks and buses) greater than 4 500 kg.

⁴ Includes mopeds. ^e Estimated.

Source: 1987 to 1998: Statistics Canada, Catalogue No. 53-219, "Road Motor Vehicles - Registrations". From 1999, motor vehicle registration data are from Statistics Canada, CANSIM, Table 405-0004. From 1999, licensed driver data were provided by each jurisdiction.

The decline in police reporting in British Columbia in the years 1996 through 2004 has affected the British Columbia totals and, to a lesser extent, national totals reported in this publication.

To find out more about national road safety programs or initiatives, call Transport Canada toll free at 1-800-333-0371 or e-mail us at roadsafetywebmail@tc.gc.ca. You can also visit our website at www.tc.gc.ca/roadsafety or the Canadian Council of Motor Transport Administrators' website at www.ccmta.ca.

© Her Majesty the Queen in Right of Canada, represented by the Minister of Transport, 2007.

Printed December 2007
Catalogue No. T45-3/2006
ISBN 978-0-662-05229-6

This publication may be reproduced without permission provided that its use falls within the scope of **fair dealing** under the Copyright Act, and is solely for the purposes of private study, research, criticism, review or newspaper summary. The source must be fully acknowledged. However, reproduction of this publication in whole or in part for purposes of resale or redistribution requires prior written permission from the Minister of Public Works and Government Services. Contact Crown Copyright and Licensing at (613) 996-6886 or by e-mail at copyright.droitdauteur@pwgsc.gc.ca.