

Catalogue no. 63-007-X

New Motor Vehicle Sales

December 2008



Statistics
Canada

Statistique
Canada

Canada

How to obtain more information

For information about this product or the wide range of services and data available from Statistics Canada, visit our website at www.statcan.gc.ca, e-mail us at infostats@statcan.gc.ca, or telephone us, Monday to Friday from 8:30 a.m. to 4:30 p.m., at the following numbers:

Statistics Canada's National Contact Centre

Toll-free telephone (Canada and the United States):

Inquiries line	1-800-263-1136
National telecommunications device for the hearing impaired	1-800-363-7629
Fax line	1-877-287-4369

Local or international calls:

Inquiries line	1-613-951-8116
Fax line	1-613-951-0581

Depository Services Program

Inquiries line	1-800-635-7943
Fax line	1-800-565-7757

To access this product

This product, Catalogue no. 63-007-X, is available free in electronic format. To obtain a single issue, visit our website at www.statcan.gc.ca and select "Publications" > "Free Internet publications."

Standards of service to the public

Statistics Canada is committed to serving its clients in a prompt, reliable and courteous manner. To this end, Statistics Canada has developed *standards of service* that its employees observe. To obtain a copy of these service standards, please contact Statistics Canada toll-free at 1-800-263-1136. The service standards are also published on www.statcan.gc.ca under "About us" > "Providing services to Canadians."

New Motor Vehicle Sales

December 2008

Published by authority of the Minister responsible for Statistics Canada

© Minister of Industry, 2009

All rights reserved. The content of this electronic publication may be reproduced, in whole or in part, and by any means, without further permission from Statistics Canada, subject to the following conditions: that it be done solely for the purposes of private study, research, criticism, review or newspaper summary, and/or for non-commercial purposes; and that Statistics Canada be fully acknowledged as follows: Source (or "Adapted from", if appropriate): Statistics Canada, year of publication, name of product, catalogue number, volume and issue numbers, reference period and page(s). Otherwise, no part of this publication may be reproduced, stored in a retrieval system or transmitted in any form, by any means—electronic, mechanical or photocopy—or for any purposes without prior written permission of Licensing Services, Client Services Division, Statistics Canada, Ottawa, Ontario, Canada K1A 0T6.

February 2009

Catalogue no. 63-007-X, vol. 80, no. 12

ISSN 1209-1146

Frequency: Monthly

Ottawa

La version française de cette publication est disponible sur demande (n° 63-007-X au catalogue).

Note of appreciation

Canada owes the success of its statistical system to a long standing partnership between Statistics Canada, the citizens of Canada, its businesses, governments and other institutions. Accurate and timely statistical information could not be produced without their continued cooperation and goodwill.

User information

Symbols

The following standard symbols are used in Statistics Canada publications:

- . not available for any reference period
- .. not available for a specific reference period
- ... not applicable
- 0 true zero or a value rounded to zero
- 0^s value rounded to 0 (zero) where there is a meaningful distinction between true zero and the value that was rounded
- p preliminary
- r revised
- x suppressed to meet the confidentiality requirements of the *Statistics Act*
- E use with caution
- F too unreliable to be published

Note to users

Figures may not add up to totals because of rounding.

Acknowledgements

This publication was prepared under the direction of:

- **Mary Beth Garneau**, Director, Distributive Trades Division
- **R. Boudreau**, Assistant Director, Distributive Trades Division
- **S. Grenier**, Retail Sub-annuals surveys chief, Distributive Trades Division
- **M. Switzer**, Analyst Retail Sub-annuals surveys section, Distributive Trades Division

Table of contents

Highlights	5
Analysis – December 2008	6
Passenger car and truck sales both drop in December	6
Sales down in all provinces	6
Related products	9
Statistical tables	
1 Monthly sales of new motor vehicles, by type and origin	11
1-1 in units	11
1-2 in dollars	13
2 Average monthly prices of passenger cars, by origin	15
3 Monthly market share of new passenger car sales (units), by origin, Canada	16
4 Provincial sales of new motor vehicles, by type and origin, in units and dollars, December	17
5 Year to date provincial sales of new motor vehicles, by type and origin	19
5-1 in units, January to December	19
5-2 in dollars, January to December	21
6 Annual sales of new motor vehicles, by type and origin, in units and dollars, Canada	23
7 Canada, monthly sales of new motor vehicles, in units, by type and origin, seasonally adjusted	24
8 Monthly sales of new motor vehicles, in units, by province, seasonally adjusted	25
Data quality, concepts and methodology	
Definitions	27
Appendix	
I Scope of the survey	28
II List of North American motor vehicle manufacturers	31

Table of contents – continued

Charts

1.	New motor vehicle sales, seasonally adjusted, in units, 2005 to 2008	6
2.	Passenger car sales, seasonally adjusted, in units, 2005 to 2008	7
3.	Truck, van and bus sales, seasonally adjusted, in units, 2005 to 2008	7
4.	Monthly distribution of the Canadian motor vehicle market (passenger cars), by origin, 2005 to 2008	7
5.	Cumulative sales of new passenger cars, by origin, in units, 2006 to 2008	8

Highlights

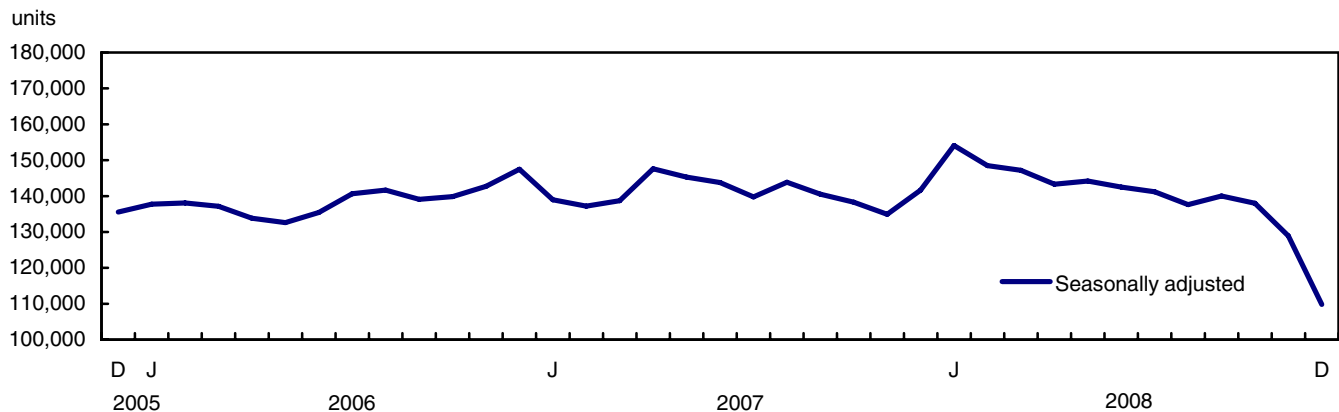
December 2008

- Sales of new motor vehicles fell 14.8% in December to 109,831 units. This was the largest monthly decline and lowest sales level since January 1998, when an ice storm crippled parts of the country.

Analysis – December 2008

Sales of new motor vehicles fell 14.8% in December to 109,831 units. This was the largest monthly decline and lowest sales level since January 1998, when an ice storm crippled parts of the country.

Chart 1
New motor vehicle sales, seasonally adjusted, in units, 2005 to 2008



After sharp declines in November and December, preliminary industry data indicate that the number of new motor vehicles sold rose by about 6% in January.

Passenger car and truck sales both drop in December

Sales of new trucks (which include minivans, sport-utility vehicles, light and heavy trucks, vans and buses) fell 20.4% to 50,997 units. This was the largest decrease for this vehicle type since January 1998.

Sales of passenger cars declined 9.2% to 58,834 units in December. This decline reflects lower sales of North American built passenger cars, which fell 14.8%. This was the largest decline by passenger cars of this origin since January 2007. Sales of overseas-built passenger cars were flat.

Sales down in all provinces

New motor vehicle sales were down in all provinces in December. The largest drops were in Saskatchewan, British Columbia and Ontario, with sales declines of over 15% each.

Chart 2
Passenger car sales, seasonally adjusted, in units, 2005 to 2008

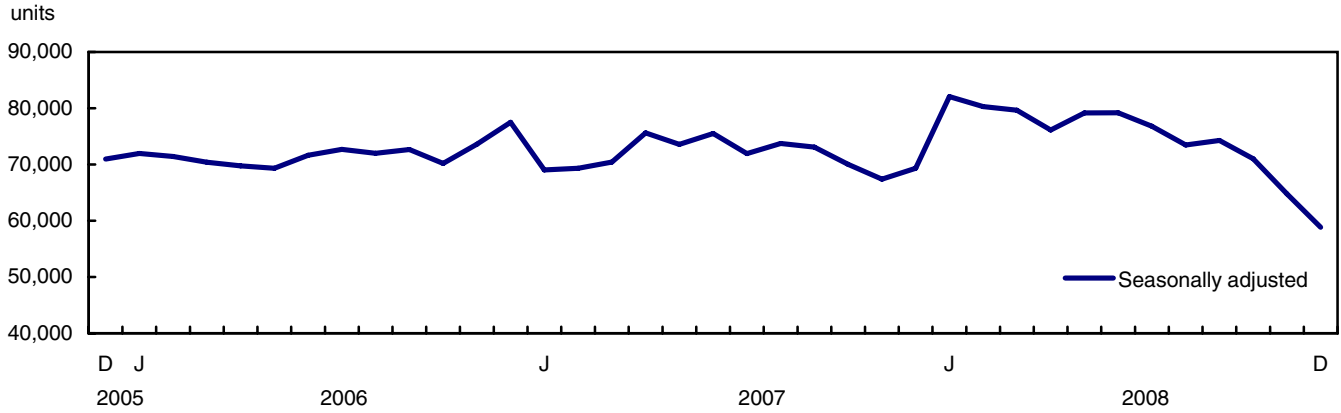


Chart 3
Truck, van and bus sales, seasonally adjusted, in units, 2005 to 2008

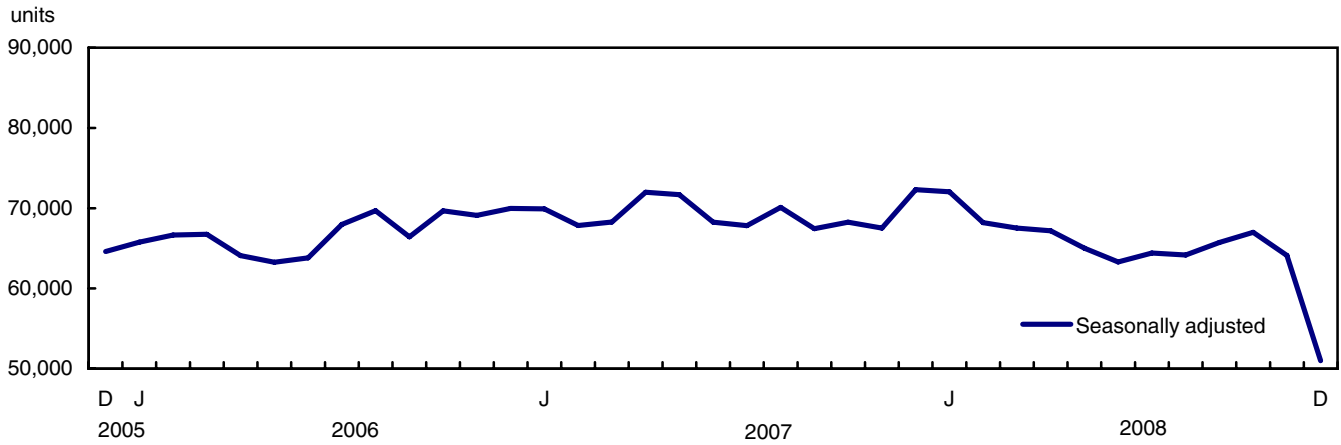


Chart 4
Monthly distribution of the Canadian motor vehicle market (passenger cars), by origin, 2005 to 2008

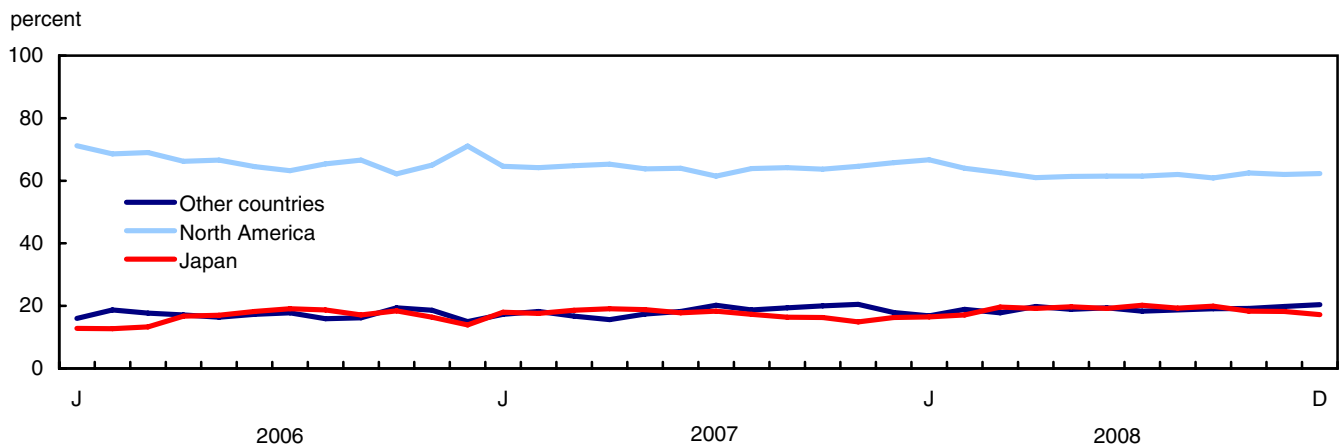
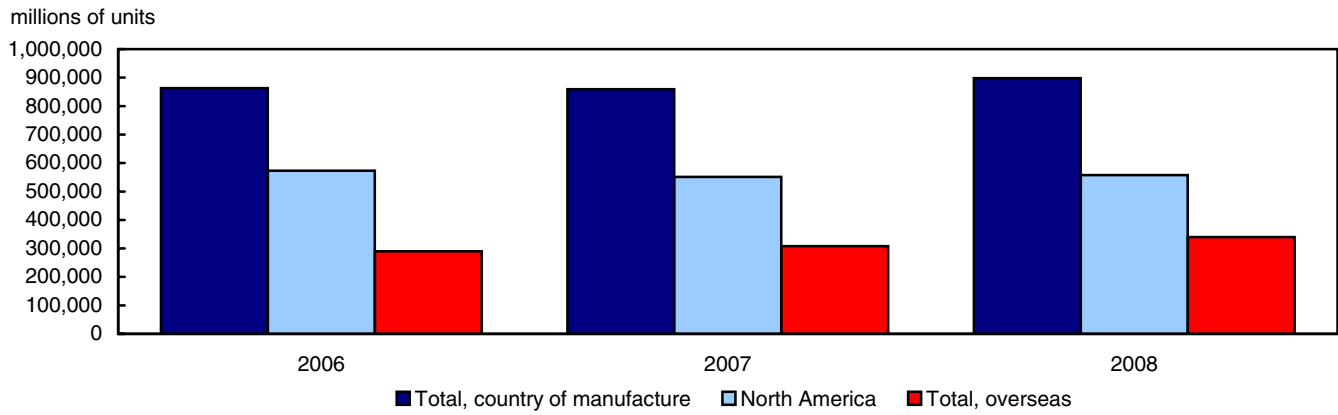


Chart 5
Cumulative sales of new passenger cars, by origin, in units, 2006 to 2008
January to December



Related products

Selected publications from Statistics Canada

63-005-X	Retail Trade
63-210-X	Retail Chain and Department Stores
63-236-X	Wholesaling and Retailing in Canada
63-541-X	Retail Commodity Survey, 1989
63F0006X	New Motor Vehicle Sales Seasonal Factors

Selected CANSIM tables from Statistics Canada

079-0003	New motor vehicle sales, Canada, provinces and territories, monthly
----------	---

Selected surveys from Statistics Canada

2402	New Motor Vehicle Sales Survey
------	--------------------------------

Selected summary tables from Statistics Canada

- *New motor vehicle sales, by province (monthly)*
- *Economic indicators, by province and territory (monthly and quarterly)*
- *New motor vehicle sales*
- *New motor vehicle sales, by province*

Statistical tables

Table 1-1
Monthly sales of new motor vehicles, by type and origin in units

	Total new motor vehicles		Passenger cars							
			North America		Japan		Other countries		Total	
	Units	Year/year change	Units	Year/year change	Units	Year/year change	Units	Year/year change	Units	Year/year change
	no.	%	no.	%	no.	%	no.	%	no.	%
2006										
January	89,422	9.0	31,445	15.8	5,653	8.3	7,086	-1.3	44,184	11.7
February	100,740	-5.0	33,450	-5.6	6,204	-4.4	9,104	5.2	48,758	-3.6
March	155,990	5.2	54,748	0.2	10,553	10.2	14,062	17.3	79,363	4.2
April	159,436	-4.8	57,142	-8.1	14,388	-2.9	14,728	2.2	86,258	-5.6
May	173,291	7.1	64,032	9.1	16,352	16.6	15,791	1.5	96,175	9.0
June	162,029	-2.4	56,827	-1.9	15,991	20.2	15,237	6.3	88,055	2.9
July	145,521	-8.4	48,349	-9.3	14,618	14.7	13,589	-5.3	76,556	-4.8
August	157,868	7.5	53,812	1.4	15,340	31.0	13,092	-7.4	82,244	4.2
September	140,065	9.1	48,497	4.5	12,486	25.8	11,832	-14.7	72,815	3.7
October	123,076	3.4	38,841	-11.4	11,468	31.2	12,139	4.1	62,448	-2.8
November	127,732	2.9	41,464	0.4	10,425	9.6	11,867	5.1	63,756	2.6
December	131,157	8.0	44,495	9.5	8,681	17.3	9,373	-3.1	62,549	8.4
Year	1,666,327	2.2	573,102	-0.3	142,159	15.1	147,900	0.5	863,161	2.1
2007										
January	94,413	5.6	27,594	-12.2	7,704	36.3	7,407	4.5	42,705	-3.3
February	99,877	-0.9	30,361	-9.2	8,299	33.8	8,596	-5.6	47,256	-3.1
March	154,450	-1.0	49,540	-9.5	14,206	34.6	12,741	-9.4	76,487	-3.6
April	172,428	8.1	60,392	5.7	17,649	22.7	14,405	-2.2	92,446	7.2
May	189,076	9.1	65,400	2.1	19,315	18.1	17,849	13.0	102,564	6.6
June	172,487	6.5	58,700	3.3	16,315	2.0	16,714	9.7	91,729	4.2
July	145,370	-0.1	47,819	-1.1	14,232	-2.6	15,671	15.3	77,722	1.5
August	160,883	1.9	53,749	-0.1	14,567	-5.0	15,751	20.3	84,067	2.2
September	134,516	-4.0	45,513	-6.2	11,602	-7.1	13,740	16.1	70,855	-2.7
October	124,072	0.8	39,486	1.7	10,098	-11.9	12,421	2.3	62,005	-0.7
November	120,012	-6.0	37,583	-9.4	8,689	-16.7	11,916	0.4	58,188	-8.7
December	122,954	-6.3	34,864	-21.6	8,622	-0.7	9,493	1.3	52,979	-15.3
Year	1,690,538	1.5	551,001	-3.9	151,298	6.4	156,704	6.0	859,003	-0.5
2008										
January	105,546	11.8	34,557	25.2	8,571	11.3	8,719	17.7	51,847	21.4
February	113,877	14.0	37,369	23.1	9,992	20.4	11,002	28.0	58,363	23.5
March	153,505	-0.6	50,287	1.5	15,780	11.1	14,298	12.2	80,365	5.1
April	179,270	4.0	60,137	-0.4	18,939	7.3	19,542	35.7	98,618	6.7
May	188,137	-0.5	67,352	3.0	21,619	11.9	20,741	16.2	109,712	7.0
June	163,062	-5.5	59,160	0.8	18,450	13.1	18,663	11.7	96,273	5.0
July	152,704	5.0	52,973	10.8	17,413	22.4	15,724	0.3	86,110	10.8
August	149,612	-7.0	50,357	-6.3	15,678	7.6	15,152	-3.8	81,187	-3.4
September	137,538	2.2	45,558	0.1	14,898	28.4	14,303	4.1	74,759	5.5
October	126,495	2.0	40,155	1.7	11,765	16.5	12,343	-0.6	64,263	3.6
November	107,709	-10.3	31,930	-15.0	9,354	7.7	10,192	-14.5	51,476	-11.5
December ^p	97,164	-21.0	28,021	-19.6	7,757	-10.0	9,196	-3.1	44,974	-15.1
Year	1,674,619	-0.9	557,856	1.2	170,216	12.5	169,875	8.4	897,947	4.5

See footnotes at the end of the table.

Table 1-1 – continued

Monthly sales of new motor vehicles, by type and origin in units

	Total new motor vehicles		Trucks ¹					
			North America		Overseas		Total	
	Units	Year/year change	Units	Year/year change	Units	Year/year change	Units	Year/year change
	no.	%	no.	%	no.	%	no.	%
2006								
January	89,422	9.0	39,038	7.1	6,200	3.1	45,238	6.5
February	100,740	-5.0	44,353	-7.9	7,629	3.7	51,982	-6.3
March	155,990	5.2	65,037	4.9	11,590	14.9	76,627	6.3
April	159,436	-4.8	61,413	-6.1	11,765	10.8	73,178	-3.8
May	173,291	7.1	65,146	3.0	11,970	15.8	77,116	4.8
June	162,029	-2.4	62,927	-10.0	11,047	5.1	73,974	-8.0
July	145,521	-8.4	57,354	-15.4	11,611	9.4	68,965	-12.0
August	157,868	7.5	62,878	10.4	12,746	16.1	75,624	11.3
September	140,065	9.1	55,604	12.6	11,646	32.0	67,250	15.6
October	123,076	3.4	51,157	11.5	9,471	7.1	60,628	10.7
November	127,732	2.9	55,453	3.7	8,523	0.0	63,976	3.2
December	131,157	8.0	60,884	11.7	7,724	-15.8	68,608	7.7
Year	1,666,327	2.2	681,244	1.2	121,922	9.0	803,166	2.3
2007								
January	94,413	5.6	45,046	15.4	6,662	7.5	51,708	14.3
February	99,877	-0.9	46,119	4.0	6,502	-14.8	52,621	1.2
March	154,450	-1.0	68,305	5.0	9,658	-16.7	77,963	1.7
April	172,428	8.1	69,974	13.9	10,008	-14.9	79,982	9.3
May	189,076	9.1	76,370	17.2	10,142	-15.3	86,512	12.2
June	172,487	6.5	71,689	13.9	9,069	-17.9	80,758	9.2
July	145,370	-0.1	59,044	2.9	8,604	-25.9	67,648	-1.9
August	160,883	1.9	67,582	7.5	9,234	-27.6	76,816	1.6
September	134,516	-4.0	55,095	-0.9	8,566	-26.4	63,661	-5.3
October	124,072	0.8	54,266	6.1	7,801	-17.6	62,067	2.4
November	120,012	-6.0	54,374	-1.9	7,450	-12.6	61,824	-3.4
December	122,954	-6.3	60,045	-1.4	9,930	28.6	69,975	2.0
Year	1,690,538	1.5	727,909	6.8	103,626	-15.0	831,535	3.5
2008								
January	105,546	11.8	46,838	4.0	6,861	3.0	53,699	3.9
February	113,877	14.0	48,315	4.8	7,199	10.7	55,514	5.5
March	153,505	-0.6	62,765	-8.1	10,375	7.4	73,140	-6.2
April	179,270	4.0	69,124	-1.2	11,528	15.2	80,652	0.8
May	188,137	-0.5	67,291	-11.9	11,134	9.8	78,425	-9.3
June	163,062	-5.5	57,435	-19.9	9,354	3.1	66,789	-17.3
July	152,704	5.0	57,309	-2.9	9,285	7.9	66,594	-1.6
August	149,612	-7.0	58,778	-13.0	9,647	4.5	68,425	-10.9
September	137,538	2.2	53,375	-3.1	9,404	9.8	62,779	-1.4
October	126,495	2.0	52,095	-4.0	10,137	29.9	62,232	0.3
November	107,709	-10.3	48,081	-11.6	8,152	9.4	56,233	-9.0
December ^p	97,164	-21.0	45,066	-24.9	7,124	-28.3	52,190	-25.4
Year	1,674,619	-0.9	666,472	-8.4	110,200	6.3	776,672	-6.6

1. Trucks include minivans, sport-utility vehicles, light and heavy trucks, vans and buses.
Note(s): Percentage change are year-over-year changes.

Table 1-2
Monthly sales of new motor vehicles, by type and origin in dollars

	Total new motor vehicles		Passenger cars							
			North America		Japan		Other countries		Total	
	Units	Year/year change	Units	Year/year change	Units	Year/year change	Units	Year/year change	Units	Year/year change
	\$'000	%	\$'000	%	\$'000	%	\$'000	%	\$'000	%
2006										
January	2,943,630	9.5	783,654	17.5	141,207	17.9	203,457	2.3	1,128,317	14.5
February	3,315,853	-4.8	839,753	-4.0	155,157	2.9	263,647	7.5	1,258,557	-1.0
March	5,042,821	6.2	1,363,846	0.8	264,322	15.0	428,915	21.1	2,057,083	6.2
April	5,047,812	-4.5	1,412,732	-7.4	341,109	-1.9	442,874	4.3	2,196,715	-4.4
May	5,505,594	7.1	1,591,591	9.5	397,061	21.4	472,704	4.4	2,461,355	10.2
June	5,190,119	-2.5	1,417,848	-0.3	384,257	24.2	436,503	3.4	2,238,608	4.0
July	4,593,190	-7.8	1,197,134	-6.7	348,305	18.6	380,303	-5.2	1,925,742	-2.6
August	5,003,098	7.9	1,329,192	4.6	366,042	30.9	363,741	-8.0	2,058,975	5.8
September	4,551,778	10.8	1,185,371	5.9	303,344	24.5	360,700	-7.4	1,849,414	5.6
October	4,117,566	7.7	952,835	-10.4	278,233	27.0	348,268	4.0	1,579,335	-2.4
November	4,230,872	3.8	1,025,403	1.6	263,541	16.0	348,557	4.8	1,637,501	4.4
December	4,423,928	10.3	1,151,510	13.9	226,814	25.6	307,576	6.3	1,685,900	13.8
Year	53,966,261	3.2	14,250,869	1.4	3,469,392	18.5	4,357,245	2.8	22,077,502	4.0
2007										
January	3,119,488	6.0	678,980	-13.4	191,902	35.9	227,357	11.7	1,098,239	-2.7
February	3,331,750	0.5	744,780	-11.3	208,249	34.2	259,453	-1.6	1,212,483	-3.7
March	5,012,381	-0.6	1,211,963	-11.1	348,605	31.9	410,805	-4.2	1,971,373	-4.2
April	5,396,290	6.9	1,478,389	4.6	427,130	25.2	444,341	0.3	2,349,860	7.0
May	5,865,532	6.5	1,604,080	0.8	468,349	18.0	526,054	11.3	2,598,482	5.6
June	5,364,300	3.4	1,423,743	0.4	392,487	2.1	483,196	10.7	2,299,426	2.7
July	4,456,441	-3.0	1,150,075	-3.9	340,890	-2.1	425,667	11.9	1,916,632	-0.5
August	4,886,861	-2.3	1,283,780	-3.4	352,457	-3.7	431,219	18.6	2,067,456	0.4
September	4,171,174	-8.4	1,112,749	-6.1	284,723	-6.1	392,779	8.9	1,790,251	-3.2
October	3,966,157	-3.7	967,433	1.5	252,753	-9.2	358,920	3.1	1,579,105	0.0
November	3,900,293	-7.8	956,515	-6.7	219,328	-16.8	343,356	-1.5	1,519,199	-7.2
December	4,157,710	-6.0	877,276	-23.8	220,947	-2.6	306,270	-0.4	1,404,493	-16.7
Year	53,628,377	-0.6	13,489,763	-5.3	3,707,820	6.9	4,609,417	5.8	21,806,999	-1.2
2008										
January	3,385,689	8.5	860,657	26.8	208,430	8.6	250,349	10.1	1,319,435	20.1
February	3,561,129	6.9	914,534	22.8	232,795	11.8	298,502	15.1	1,445,831	19.2
March	4,777,452	-4.7	1,210,134	-0.2	378,411	8.6	406,385	-1.1	1,994,930	1.2
April	5,501,335	1.9	1,441,472	-2.5	464,601	8.8	570,437	28.4	2,476,510	5.4
May	5,626,058	-4.1	1,620,824	1.0	514,427	9.8	625,133	18.8	2,760,384	6.2
June	4,977,768	-7.2	1,437,383	1.0	440,735	12.3	593,066	22.7	2,471,184	7.5
July	4,635,113	4.0	1,255,951	9.2	411,274	20.6	482,775	13.4	2,149,999	12.2
August	4,517,720	-7.6	1,192,788	-7.1	365,697	3.8	446,676	3.6	2,005,160	-3.0
September	4,194,215	0.6	1,089,944	-2.0	344,403	21.0	423,648	7.9	1,857,994	3.8
October	3,994,269	0.7	936,697	-3.2	287,213	13.6	403,297	12.4	1,627,207	3.0
November	3,395,129	-13.0	765,637	-20.0	225,589	2.9	341,112	-0.7	1,332,339	-12.3
December ^p	3,168,904	-23.8	685,881	-21.8	185,745	-15.9	312,196	1.9	1,183,822	-15.7
Year	51,734,781	-3.5	13,411,902	-0.6	4,059,320	9.5	5,153,576	11.8	22,624,795	3.8

See footnotes at the end of the table.

Table 1-2 – continued

Monthly sales of new motor vehicles, by type and origin in dollars

	Total new motor vehicles		Trucks ¹					
			North America		Overseas		Total	
	Units	Year/year change	Units	Year/year change	Units	Year/year change	Units	Year/year change
	\$'000	%	\$'000	%	\$'000	%	\$'000	%
2006								
January	2,943,630	9.5	1,588,951	7.2	226,363	2.8	1,815,313	6.7
February	3,315,853	-4.8	1,783,024	-8.6	274,272	5.6	2,057,296	-6.9
March	5,042,821	6.2	2,570,492	4.7	415,246	15.9	2,985,738	6.1
April	5,047,812	-4.5	2,426,972	-7.0	424,125	11.9	2,851,097	-4.6
May	5,505,594	7.1	2,608,968	3.0	435,271	15.6	3,044,238	4.6
June	5,190,119	-2.5	2,552,993	-8.6	398,518	5.3	2,951,511	-7.0
July	4,593,190	-7.8	2,259,061	-14.1	408,387	8.8	2,667,448	-11.2
August	5,003,098	7.9	2,491,935	8.4	452,188	15.0	2,944,123	9.4
September	4,551,778	10.8	2,277,346	11.8	425,018	32.9	2,702,364	14.7
October	4,117,566	7.7	2,179,913	16.7	358,318	6.2	2,538,231	15.1
November	4,230,872	3.8	2,266,418	4.2	326,954	-1.6	2,593,371	3.4
December	4,423,928	10.3	2,439,194	10.9	298,834	-9.0	2,738,027	8.3
Year	53,966,261	3.2	27,445,267	1.5	4,443,494	9.5	31,888,757	2.6
2007								
January	3,119,488	6.0	1,767,669	11.2	253,581	12.0	2,021,249	11.3
February	3,331,750	0.5	1,872,596	5.0	246,671	-10.1	2,119,267	3.0
March	5,012,381	-0.6	2,683,279	4.4	357,729	-13.9	3,041,008	1.9
April	5,396,290	6.9	2,668,753	10.0	377,677	-11.0	3,046,430	6.9
May	5,865,532	6.5	2,883,932	10.5	383,117	-12.0	3,267,049	7.3
June	5,364,300	3.4	2,724,096	6.7	340,779	-14.5	3,064,874	3.8
July	4,456,441	-3.0	2,214,178	-2.0	325,631	-20.3	2,539,809	-4.8
August	4,886,861	-2.3	2,468,915	-0.9	350,490	-22.5	2,819,404	-4.2
September	4,171,174	-8.4	2,047,493	-10.1	333,431	-21.5	2,380,923	-11.9
October	3,966,157	-3.7	2,085,611	-4.3	301,440	-15.9	2,387,052	-6.0
November	3,900,293	-7.8	2,094,594	-7.6	286,499	-12.4	2,381,093	-8.2
December	4,157,710	-6.0	2,364,695	-3.1	388,522	30.0	2,753,217	0.6
Year	53,628,377	-0.6	27,875,811	1.6	3,945,567	-11.2	31,821,375	-0.2
2008								
January	3,385,689	8.5	1,801,221	1.9	265,033	4.5	2,066,253	2.2
February	3,561,129	6.9	1,841,178	-1.7	274,119	11.1	2,115,297	-0.2
March	4,777,452	-4.7	2,399,236	-10.6	383,286	7.1	2,782,522	-8.5
April	5,501,335	1.9	2,598,246	-2.6	426,579	12.9	3,024,824	-0.7
May	5,626,058	-4.1	2,459,508	-14.7	406,165	6.0	2,865,674	-12.3
June	4,977,768	-7.2	2,152,061	-21.0	354,523	4.0	2,506,584	-18.2
July	4,635,113	4.0	2,149,660	-2.9	335,454	3.0	2,485,114	-2.2
August	4,517,720	-7.6	2,158,673	-12.6	353,887	1.0	2,512,560	-10.9
September	4,194,215	0.6	1,987,665	-2.9	348,556	4.5	2,336,221	-1.9
October	3,994,269	0.7	1,987,227	-4.7	379,835	26.0	2,367,062	-0.8
November	3,395,129	-13.0	1,756,129	-16.2	306,661	7.0	2,062,791	-13.4
December ^p	3,168,904	-23.8	1,714,936	-27.5	270,145	-30.5	1,985,081	-27.9
Year	51,734,781	-3.5	25,005,740	-10.3	4,104,243	4.0	29,109,983	-8.5

1. Trucks include minivans, sport-utility vehicles, light and heavy trucks, vans and buses.

Note(s): Percentage change are year-over-year changes.

Table 2
Average monthly prices of passenger cars, by origin

Period	Total, country of manufacture		North America		Total, overseas		Japan		Other countries	
	Amount	Change	Amount	Change	Amount	Change	Amount	Change	Amount	Change
	\$	%	\$	%	\$	%	\$	%	\$	%
2006										
January	25,537	2.5	24,921	1.5	27,056	5.3	24,979	8.9	28,713	3.7
February	25,812	2.7	25,105	1.6	27,359	4.6	25,009	7.6	28,959	2.1
March	25,920	2.0	24,911	0.6	28,163	4.0	25,047	4.4	30,502	3.2
April	25,467	1.3	24,723	0.7	26,926	1.9	23,708	1.0	30,070	2.0
May	25,592	1.1	24,856	0.3	27,059	2.7	24,282	4.2	29,935	2.8
June	25,423	1.1	24,950	1.7	26,283	-0.6	24,030	3.4	28,648	-2.7
July	25,155	2.3	24,760	2.9	25,831	0.7	23,827	3.4	27,986	0.0
August	25,035	1.6	24,701	3.2	25,668	-1.7	23,862	-0.1	27,783	-0.6
September	25,399	1.8	24,442	1.4	27,307	2.7	24,295	-1.0	30,485	8.6
October	25,290	0.4	24,532	1.1	26,539	-2.2	24,262	-3.2	28,690	0.0
November	25,684	1.7	24,730	1.3	27,458	2.0	25,280	5.8	29,372	-0.3
December	26,953	5.0	25,880	4.0	29,600	7.6	26,128	7.1	32,815	9.7
Year	25,578	1.9	24,866	1.7	26,983	1.8	24,405	2.9	29,461	2.2
2007										
January	25,717	0.7	24,606	-1.3	27,745	2.5	24,909	-0.3	30,695	6.9
February	25,658	-0.6	24,531	-2.3	27,683	1.2	25,093	0.3	30,183	4.2
March	25,774	-0.6	24,464	-1.8	28,182	0.1	24,539	-2.0	32,243	5.7
April	25,419	-0.2	24,480	-1.0	27,188	1.0	24,201	2.1	30,846	2.6
May	25,335	-1.0	24,527	-1.3	26,757	-1.1	24,248	-0.1	29,472	-1.5
June	25,068	-1.4	24,255	-2.8	26,513	0.9	24,057	0.1	28,910	0.9
July	24,660	-2.0	24,051	-2.9	25,635	-0.8	23,952	0.5	27,163	-2.9
August	24,593	-1.8	23,885	-3.3	25,849	0.7	24,196	1.4	27,377	-1.5
September	25,266	-0.5	24,449	0.0	26,734	-2.1	24,541	1.0	28,587	-6.2
October	25,467	0.7	24,501	-0.1	27,162	2.4	25,030	3.2	28,896	0.7
November	26,108	1.7	25,451	2.9	27,308	-0.5	25,242	-0.1	28,815	-1.9
December	26,510	-1.6	25,163	-2.8	29,104	-1.7	25,626	-1.9	32,263	-1.7
Year	25,386	-0.7	24,482	-1.5	27,004	0.1	24,507	0.4	29,415	-0.2
2008										
January	25,449	-1.0	24,905	1.2	26,534	-4.4	24,318	-2.4	28,713	-6.5
February	24,773	-3.4	24,473	-0.2	25,307	-8.6	23,298	-7.2	27,132	-10.1
March	24,823	-3.7	24,065	-1.6	26,092	-7.4	23,980	-2.3	28,423	-11.8
April	25,112	-1.2	23,970	-2.1	26,897	-1.1	24,531	1.4	29,190	-5.4
May	25,160	-0.7	24,065	-1.9	26,902	0.5	23,795	-1.9	30,140	2.3
June	25,669	2.4	24,297	0.2	27,855	5.1	23,888	-0.7	31,778	9.9
July	24,968	1.2	23,709	-1.4	26,980	5.2	23,619	-1.4	30,703	13.0
August	24,698	0.4	23,687	-0.8	26,350	1.9	23,325	-3.6	29,480	7.7
September	24,853	-1.6	23,924	-2.1	26,302	-1.6	23,117	-5.8	29,620	3.6
October	25,321	-0.6	23,327	-4.8	28,642	5.4	24,412	-2.5	32,674	13.1
November	25,883	-0.9	23,979	-5.8	28,993	6.2	24,117	-4.5	33,469	16.2
December ^P	26,322	-0.7	24,477	-2.7	29,372	0.9	23,945	-6.6	33,949	5.2
Year	25,196	-0.7	24,042	-1.8	27,089	0.3	23,848	-2.7	30,337	3.1

Note(s): Percentage changes shown are year-to-year changes.

Table 3
Monthly market share of new passenger car sales (units), by origin, Canada

Period	Total		Passenger cars					
			North America		Japan		Other countries	
	Units	Market share	Units	Market share	Units	Market share	Units	Market share
	no.	%	no.	%	no.	%	no.	%
2006								
January	44,184	100.0	31,445	71.2	5,653	12.8	7,086	16.0
February	48,758	100.0	33,450	68.6	6,204	12.7	9,104	18.7
March	79,363	100.0	54,748	69.0	10,553	13.3	14,062	17.7
April	86,258	100.0	57,142	66.2	14,388	16.7	14,728	17.1
May	96,175	100.0	64,032	66.6	16,352	17.0	15,791	16.4
June	88,055	100.0	56,827	64.5	15,991	18.2	15,237	17.3
July	76,556	100.0	48,349	63.2	14,618	19.1	13,589	17.8
August	82,244	100.0	53,812	65.4	15,340	18.7	13,092	15.9
September	72,815	100.0	48,497	66.6	12,486	17.1	11,832	16.2
October	62,448	100.0	38,841	62.2	11,468	18.4	12,139	19.4
November	63,756	100.0	41,464	65.0	10,425	16.4	11,867	18.6
December	62,549	100.0	44,495	71.1	8,681	13.9	9,373	15.0
Year	863,161	100.0	573,102	66.4	142,159	16.5	147,900	17.1
2007								
January	42,705	100.0	27,594	64.6	7,704	18.0	7,407	17.3
February	47,256	100.0	30,361	64.2	8,299	17.6	8,596	18.2
March	76,487	100.0	49,540	64.8	14,206	18.6	12,741	16.7
April	92,446	100.0	60,392	65.3	17,649	19.1	14,405	15.6
May	102,564	100.0	65,400	63.8	19,315	18.8	17,849	17.4
June	91,729	100.0	58,700	64.0	16,315	17.8	16,714	18.2
July	77,722	100.0	47,819	61.5	14,232	18.3	15,671	20.2
August	84,067	100.0	53,749	63.9	14,567	17.3	15,751	18.7
September	70,855	100.0	45,513	64.2	11,602	16.4	13,740	19.4
October	62,005	100.0	39,486	63.7	10,098	16.3	12,421	20.0
November	58,188	100.0	37,583	64.6	8,689	14.9	11,916	20.5
December	52,979	100.0	34,864	65.8	8,622	16.3	9,493	17.9
Year	859,003	100.0	551,001	64.1	151,298	17.6	156,704	18.2
2008								
January	51,847	100.0	34,557	66.7	8,571	16.5	8,719	16.8
February	58,363	100.0	37,369	64.0	9,992	17.1	11,002	18.9
March	80,365	100.0	50,287	62.6	15,780	19.6	14,298	17.8
April	98,618	100.0	60,137	61.0	18,939	19.2	19,542	19.8
May	109,712	100.0	67,352	61.4	21,619	19.7	20,741	18.9
June	96,273	100.0	59,160	61.5	18,450	19.2	18,663	19.4
July	86,110	100.0	52,973	61.5	17,413	20.2	15,724	18.3
August	81,187	100.0	50,357	62.0	15,678	19.3	15,152	18.7
September	74,759	100.0	45,558	60.9	14,898	19.9	14,303	19.1
October	64,263	100.0	40,155	62.5	11,765	18.3	12,343	19.2
November	51,476	100.0	31,930	62.0	9,354	18.2	10,192	19.8
December	44,974	100.0	28,021	62.3	7,757	17.2	9,196	20.4
Year	897,947	100.0	557,856	62.1	170,216	19.0	169,875	18.9

Table 4
Provincial sales of new motor vehicles, by type and origin, in units and dollars, December

Type and origin of vehicles	Canada	Newfoundland and Labrador	Prince Edward Island	Nova Scotia	New Brunswick	Quebec
Total, new motor vehicles						
2006 (no.)	131,157	1,566	348	3,383	2,695	26,812
2007 (no.)	122,954	1,577	334	3,269	2,425	23,786
2008 (no.)	97,164	1,404	297	2,783	2,153	21,582
2008 / 2007 %	-21.0	-11.0	-11.1	-14.9	-11.2	-9.3
2006 (\$'000)	4,423,928	45,233	9,390	102,115	83,291	824,923
2007 (\$'000)	4,157,710	48,619	9,851	99,098	79,567	714,254
2008 (\$'000)	3,168,904	40,782	7,767	86,560	72,686	650,137
2008 / 2007 %	-23.8	-16.1	-21.2	-12.7	-8.6	-9.0
Passenger cars, manufactured in North America						
2006 (no.)	44,495	462	144	1,435	974	9,978
2007 (no.)	34,864	511	131	1,142	750	8,020
2008 (no.)	28,021	474	125	996	709	6,602
2008 / 2007 %	-19.6	-7.2	-4.6	-12.8	-5.5	-17.7
2006 (\$'000)	1,151,510	11,265	3,308	34,726	23,746	244,828
2007 (\$'000)	877,276	11,544	3,155	27,342	18,275	188,212
2008 (\$'000)	685,881	11,737	3,052	25,234	17,832	157,485
2008 / 2007 %	-21.8	1.7	-3.3	-7.7	-2.4	-16.3
Passenger cars, manufactured in Japan						
2006 (no.)	8,681	x	x	211	x	2,862
2007 (no.)	8,622	x	x	223	x	2,496
2008 (no.)	7,757	x	x	212	x	2,559
2008 / 2007 %	-10.0	x	x	-4.9	x	2.5
2006 (\$'000)	226,814	x	x	5,285	x	67,222
2007 (\$'000)	220,947	x	x	5,305	x	56,856
2008 (\$'000)	185,745	x	x	4,654	x	55,689
2008 / 2007 %	-15.9	x	x	-12.3	x	-2.1
Passenger cars, manufactured in other countries						
2006 (no.)	9,373	x	x	195	x	2,715
2007 (no.)	9,493	x	x	278	x	2,488
2008 (no.)	9,196	x	x	243	x	2,956
2008 / 2007 %	-3.1	x	x	-12.6	x	18.8
2006 (\$'000)	307,576	x	x	5,074	x	79,927
2007 (\$'000)	306,270	x	x	6,504	x	70,680
2008 (\$'000)	312,196	x	x	6,053	x	88,030
2008 / 2007 %	1.9	x	x	-6.9	x	24.5
Trucks ¹, manufactured in North America						
2006 (no.)	60,884	x	x	1,389	1,288	9,620
2007 (no.)	60,045	x	x	1,429	1,231	8,939
2008 (no.)	45,066	x	x	1,159	1,002	7,882
2008 / 2007 %	-24.9	x	x	-18.9	-18.6	-11.8
2006 (\$'000)	2,439,194	x	x	51,613	48,668	370,976
2007 (\$'000)	2,364,695	x	x	52,428	49,968	329,854
2008 (\$'000)	1,714,936	x	x	44,317	43,235	290,239
2008 / 2007 %	-27.5	x	x	-15.5	-13.5	-12.0
Trucks ¹, manufactured overseas						
2006 (no.)	7,724	x	x	153	136	1,637
2007 (no.)	9,930	x	x	197	144	1,843
2008 (no.)	7,124	x	x	173	137	1,583
2008 / 2007 %	-28.3	x	x	-12.2	-4.9	-14.1
2006 (\$'000)	298,834	x	x	5,417	4,483	61,971
2007 (\$'000)	388,522	x	x	7,519	4,916	68,652
2008 (\$'000)	270,145	x	x	6,301	4,438	58,694
2008 / 2007 %	-30.5	x	x	-16.2	-9.7	-14.5

See footnotes at the end of the table.

Table 4 – continued

Provincial sales of new motor vehicles, by type and origin, in units and dollars, December

Type and origin of vehicles	Canada	Ontario	Manitoba	Saskatchewan	Alberta	British Columbia and the Territories ²
Total, new motor vehicles						
2006 (no.)	131,157	49,781	4,039	3,607	21,587	17,339
2007 (no.)	122,954	47,060	3,785	4,078	20,240	16,400
2008 (no.)	97,164	35,481	3,317	3,432	15,526	11,189
2008 / 2007 %	-21.0	-24.6	-12.4	-15.8	-23.3	-31.8
2006 (\$'000)	4,423,928	1,668,903	144,544	132,327	807,343	605,857
2007 (\$'000)	4,157,710	1,601,874	124,623	147,961	741,283	590,581
2008 (\$'000)	3,168,904	1,160,566	105,687	121,166	538,930	384,623
2008 / 2007 %	-23.8	-27.5	-15.2	-18.1	-27.3	-34.9
Passenger cars, manufactured in North America						
2006 (no.)	44,495	19,198	1,227	778	5,063	5,236
2007 (no.)	34,864	14,827	1,021	826	3,676	3,960
2008 (no.)	28,021	11,398	1,010	798	3,157	2,752
2008 / 2007 %	-19.6	-23.1	-1.1	-3.4	-14.1	-30.5
2006 (\$'000)	1,151,510	509,816	32,116	21,102	132,842	137,761
2007 (\$'000)	877,276	383,041	25,871	21,073	96,881	101,883
2008 (\$'000)	685,881	273,023	25,337	20,229	82,109	69,843
2008 / 2007 %	-21.8	-28.7	-2.1	-4.0	-15.2	-31.4
Passenger cars, manufactured in Japan						
2006 (no.)	8,681	2,845	128	92	848	1,474
2007 (no.)	8,622	2,948	172	120	982	1,504
2008 (no.)	7,757	2,598	136	106	816	1,088
2008 / 2007 %	-10.0	-11.9	-20.9	-11.7	-16.9	-27.7
2006 (\$'000)	226,814	81,683	3,460	2,722	23,199	38,485
2007 (\$'000)	220,947	82,851	4,275	3,190	26,048	38,545
2008 (\$'000)	185,745	67,697	3,361	2,654	20,636	26,135
2008 / 2007 %	-15.9	-18.3	-21.4	-16.8	-20.8	-32.2
Passenger cars, manufactured in other countries						
2006 (no.)	9,373	3,461	221	96	731	1,660
2007 (no.)	9,493	3,755	188	142	864	1,448
2008 (no.)	9,196	3,548	145	117	865	1,023
2008 / 2007 %	-3.1	-5.5	-22.9	-17.6	0.1	-29.4
2006 (\$'000)	307,576	127,234	5,150	2,866	25,375	55,806
2007 (\$'000)	306,270	133,328	4,773	3,756	26,671	53,592
2008 (\$'000)	312,196	132,130	3,687	3,054	31,661	40,286
2008 / 2007 %	1.9	-0.9	-22.8	-18.7	18.7	-24.8
Trucks¹, manufactured in North America						
2006 (no.)	60,884	21,488	2,303	2,436	13,688	7,702
2007 (no.)	60,045	21,636	2,140	2,695	12,997	8,035
2008 (no.)	45,066	15,288	1,793	2,230	9,583	5,389
2008 / 2007 %	-24.9	-29.3	-16.2	-17.3	-26.3	-32.9
2006 (\$'000)	2,439,194	839,966	97,935	98,032	575,992	324,328
2007 (\$'000)	2,364,695	846,420	80,096	108,785	523,055	338,733
2008 (\$'000)	1,714,936	585,070	64,951	88,754	362,057	211,491
2008 / 2007 %	-27.5	-30.9	-18.9	-18.4	-30.8	-37.6
Trucks¹, manufactured overseas						
2006 (no.)	7,724	2,789	160	205	1,257	1,267
2007 (no.)	9,930	3,894	264	295	1,721	1,453
2008 (no.)	7,124	2,649	233	181	1,105	937
2008 / 2007 %	-28.3	-32.0	-11.7	-38.6	-35.8	-35.5
2006 (\$'000)	298,834	110,205	5,883	7,606	49,936	49,477
2007 (\$'000)	388,522	156,234	9,607	11,159	68,628	57,828
2008 (\$'000)	270,145	102,646	8,351	6,476	42,467	36,867
2008 / 2007 %	-30.5	-34.3	-13.1	-42.0	-38.1	-36.2

1. Trucks include minivans, sport-utility vehicles, light and heavy trucks, vans and buses.

2. For reasons of confidentiality, data for the Yukon, the Northwest Territories and Nunavut have been included with the data for British Columbia.

Table 5-1
Year to date provincial sales of new motor vehicles, by type and origin in units, January to December

Province	Total new motor vehicles		Passenger cars							
			North America		Japan		Other countries		Total	
	Units	Year/year change	Units	Year/year change	Units	Year/year change	Units	Year/year change	Units	Year/year change
	no.	%	no.	%	no.	%	no.	%	no.	%
2006										
Newfoundland and Labrador	24,188	-2.9	9,159	-6.3	x	x	x	x	12,947	-4.4
Prince Edward Island	4,933	1.8	2,148	4.3	x	x	x	x	3,034	4.3
Nova Scotia	47,738	3.4	20,178	4.0	3,576	30.8	4,622	12.2	28,376	8.1
New Brunswick	35,403	3.4	14,129	3.3	x	x	x	x	19,406	5.6
Quebec	404,198	-0.9	150,593	-3.5	56,420	5.9	52,959	-1.5	259,972	-1.2
Ontario	620,649	0.5	229,243	1.5	42,712	17.4	50,617	-1.5	322,572	2.9
Manitoba	45,924	-1.2	14,950	-6.3	2,239	31.9	2,547	-1.7	19,736	-2.6
Saskatchewan	39,915	1.7	10,689	-2.7	1,452	32.1	1,821	-12.0	13,962	-1.4
Alberta	248,731	11.9	62,403	3.5	12,521	31.1	11,035	1.3	85,959	6.5
British Columbia and the Territories ¹	194,648	4.3	59,610	-1.8	19,270	25.6	18,317	11.6	97,197	5.2
Canada	1,666,327	2.2	573,102	-0.3	142,159	15.1	147,900	0.5	863,161	2.1
2007										
Newfoundland and Labrador	28,260	16.8	10,828	18.2	x	x	x	x	14,979	15.7
Prince Edward Island	5,303	7.5	2,321	8.1	x	x	x	x	3,238	6.7
Nova Scotia	49,187	3.0	19,557	-3.1	4,048	13.2	5,189	12.3	28,794	1.5
New Brunswick	37,293	5.3	14,148	0.1	x	x	x	x	19,767	1.9
Quebec	413,405	2.3	148,561	-1.3	58,807	4.2	53,226	0.5	260,594	0.2
Ontario	605,799	-2.4	212,514	-7.3	45,273	6.0	54,127	6.9	311,914	-3.3
Manitoba	47,099	2.6	14,755	-1.3	2,449	9.4	2,981	17.0	20,185	2.3
Saskatchewan	45,546	14.1	11,374	6.4	1,636	12.7	1,981	8.8	14,991	7.4
Alberta	257,050	3.3	61,121	-2.1	13,761	9.9	12,828	16.2	87,710	2.0
British Columbia and the Territories ¹	201,596	3.6	55,822	-6.4	20,890	8.4	20,119	9.8	96,831	-0.4
Canada	1,690,538	1.5	551,001	-3.9	151,298	6.4	156,704	6.0	859,003	-0.5
2008										
Newfoundland and Labrador	31,450	11.3	11,506	6.3	x	x	x	x	16,827	12.3
Prince Edward Island	5,505	3.8	2,455	5.8	x	x	x	x	3,470	7.2
Nova Scotia	52,461	6.7	21,518	10.0	4,874	20.4	6,045	16.5	32,437	12.7
New Brunswick	39,532	6.0	14,754	4.3	x	x	x	x	22,035	11.5
Quebec	435,338	5.3	155,614	4.7	67,264	14.4	60,156	13.0	283,034	8.6
Ontario	592,157	-2.3	211,635	-0.4	50,129	10.7	56,937	5.2	318,701	2.2
Manitoba	48,048	2.0	15,626	5.9	3,106	26.8	2,977	-0.1	21,709	7.6
Saskatchewan	49,479	8.6	13,300	16.9	2,192	34.0	2,377	20.0	17,869	19.2
Alberta	238,534	-7.2	59,825	-2.1	15,075	9.5	13,975	8.9	88,875	1.3
British Columbia and the Territories ¹	182,115	-9.7	51,623	-7.5	21,787	4.3	19,580	-2.7	92,990	-4.0
Canada	1,674,619	-0.9	557,856	1.2	170,216	12.5	169,875	8.4	897,947	4.5

See footnotes at the end of the table.

Table 5-1 – continued

Year to date provincial sales of new motor vehicles, by type and origin in units, January to December

Province	Total new motor vehicles		Trucks ²					
			North America		Overseas		Total	
	Units	Year/year change	Units	Year/year change	Units	Year/year change	Units	Year/year change
	no.	%	no.	%	no.	%	no.	%
2006								
Newfoundland and Labrador	24,188	-2.9	x	x	x	x	11,241	-1.0
Prince Edward Island	4,933	1.8	x	x	x	x	1,899	-2.0
Nova Scotia	47,738	3.4	16,659	-3.8	2,703	4.9	19,362	-2.7
New Brunswick	35,403	3.4	13,861	-1.8	2,136	23.0	15,997	0.9
Quebec	404,198	-0.9	114,071	-1.7	30,155	5.1	144,226	-0.3
Ontario	620,649	0.5	251,630	-3.0	46,447	3.7	298,077	-2.0
Manitoba	45,924	-1.2	23,123	-2.9	3,065	25.4	26,188	-0.2
Saskatchewan	39,915	1.7	23,448	3.2	2,505	5.8	25,953	3.4
Alberta	248,731	11.9	146,242	13.3	16,530	31.3	162,772	14.9
British Columbia and the Territories ¹	194,648	4.3	81,030	2.1	16,421	11.2	97,451	3.5
Canada	1,666,327	2.2	681,244	1.2	121,922	9.0	803,166	2.3
2007								
Newfoundland and Labrador	28,260	16.8	x	x	x	x	13,281	18.1
Prince Edward Island	5,303	7.5	x	x	x	x	2,065	8.7
Nova Scotia	49,187	3.0	18,217	9.4	2,176	-19.5	20,393	5.3
New Brunswick	37,293	5.3	15,625	12.7	1,901	-11.0	17,526	9.6
Quebec	413,405	2.3	128,853	13.0	23,958	-20.6	152,811	6.0
Ontario	605,799	-2.4	255,910	1.7	37,975	-18.2	293,885	-1.4
Manitoba	47,099	2.6	24,286	5.0	2,628	-14.3	26,914	2.8
Saskatchewan	45,546	14.1	27,981	19.3	2,574	2.8	30,555	17.7
Alberta	257,050	3.3	153,185	4.7	16,155	-2.3	169,340	4.0
British Columbia and the Territories ¹	201,596	3.6	90,302	11.4	14,463	-11.9	104,765	7.5
Canada	1,690,538	1.5	727,909	6.8	103,626	-15.0	831,535	3.5
2008								
Newfoundland and Labrador	31,450	11.3	x	x	x	x	14,623	10.1
Prince Edward Island	5,505	3.8	x	x	x	x	2,035	-1.5
Nova Scotia	52,461	6.7	17,705	-2.8	2,319	6.6	20,024	-1.8
New Brunswick	39,532	6.0	15,496	-0.8	2,001	5.3	17,497	-0.2
Quebec	435,338	5.3	124,090	-3.7	28,214	17.8	152,304	-0.3
Ontario	592,157	-2.3	232,489	-9.2	40,967	7.9	273,456	-7.0
Manitoba	48,048	2.0	23,508	-3.2	2,831	7.7	26,339	-2.1
Saskatchewan	49,479	8.6	28,858	3.1	2,752	6.9	31,610	3.5
Alberta	238,534	-7.2	133,367	-12.9	16,292	0.8	149,659	-11.6
British Columbia and the Territories ¹	182,115	-9.7	76,329	-15.5	12,796	-11.5	89,125	-14.9
Canada	1,674,619	-0.9	666,472	-8.4	110,200	6.3	776,672	-6.6

1. For reasons of confidentiality, data for the Yukon, the Northwest Territories and Nunavut have been included with the data for British Columbia.

2. Trucks include minivans, sport-utility vehicles, light and heavy trucks, vans and buses.

Note(s): Percentage changes shown are year-to-year changes.

Table 5-2
Year to date provincial sales of new motor vehicles, by type and origin in dollars, January to December

Province	Total new motor vehicles		Passenger cars							
			North America		Japan		Other countries		Total	
	Units	Year/year change	Units	Year/year change	Units	Year/year change	Units	Year/year change	Units	Year/year change
	\$'000	%	\$'000	%	\$'000	%	\$'000	%	\$'000	%
2006										
Newfoundland and Labrador	659,818	-1.6	211,465	-3.9	x	x	x	x	286,364	-2.2
Prince Edward Island	130,027	2.9	49,743	6.9	x	x	x	x	66,868	7.3
Nova Scotia	1,351,520	2.8	473,990	5.4	82,040	34.5	102,520	9.3	658,550	9.0
New Brunswick	1,053,390	7.3	335,008	5.4	x	x	x	x	442,357	7.1
Quebec	11,718,328	-0.4	3,598,678	-1.9	1,239,695	11.2	1,359,486	1.9	6,197,857	1.3
Ontario	20,468,652	0.5	5,859,066	2.4	1,153,863	18.3	1,703,785	1.1	8,716,714	4.0
Manitoba	1,592,020	-0.6	373,677	-4.7	54,653	30.8	63,585	-1.8	491,918	-1.4
Saskatchewan	1,394,890	3.1	273,444	-0.8	37,997	30.8	44,048	-6.9	355,488	1.0
Alberta	9,009,894	13.4	1,587,264	6.0	330,500	32.3	351,301	4.4	2,269,068	8.9
British Columbia and the Territories ¹	6,587,723	6.4	1,488,528	1.9	487,033	25.2	616,757	9.7	2,592,320	7.5
Canada	53,966,261	3.2	14,250,869	1.4	3,469,392	18.5	4,357,245	2.8	22,077,502	4.0
2007										
Newfoundland and Labrador	782,446	18.6	245,524	16.1	x	x	x	x	329,077	14.9
Prince Edward Island	140,348	7.9	52,993	6.5	x	x	x	x	70,863	6.0
Nova Scotia	1,389,927	2.8	457,457	-3.5	91,856	12.0	112,451	9.7	661,762	0.5
New Brunswick	1,093,487	3.8	330,707	-1.3	x	x	x	x	445,161	0.6
Quebec	11,795,984	0.7	3,475,715	-3.4	1,302,577	5.1	1,373,203	1.0	6,151,495	-0.7
Ontario	19,369,702	-5.4	5,358,364	-8.5	1,231,314	6.7	1,811,019	6.3	8,400,695	-3.6
Manitoba	1,566,489	-1.6	363,803	-2.6	60,014	9.8	71,737	12.8	495,554	0.7
Saskatchewan	1,578,698	13.2	282,759	3.4	42,361	11.5	48,240	9.5	373,358	5.0
Alberta	9,086,122	0.8	1,543,990	-2.7	362,059	9.5	408,160	16.2	2,314,210	2.0
British Columbia and the Territories ¹	6,825,179	3.6	1,378,453	-7.4	525,103	7.8	661,274	7.2	2,564,829	-1.1
Canada	53,628,377	-0.6	13,489,763	-5.3	3,707,820	6.9	4,609,417	5.8	21,806,999	-1.2
2008										
Newfoundland and Labrador	873,809	11.7	264,024	7.5	x	x	x	x	370,742	12.7
Prince Edward Island	141,106	0.5	55,737	5.2	x	x	x	x	75,188	6.1
Nova Scotia	1,448,006	4.2	513,453	12.2	108,304	17.9	131,258	16.7	753,015	13.8
New Brunswick	1,165,847	6.6	347,827	5.2	x	x	x	x	498,061	11.9
Quebec	12,230,844	3.7	3,571,161	2.7	1,457,496	11.9	1,602,863	16.7	6,631,520	7.8
Ontario	18,689,639	-3.5	5,182,009	-3.3	1,313,674	6.7	1,987,955	9.8	8,483,637	1.0
Manitoba	1,523,952	-2.7	375,382	3.2	74,840	24.7	74,390	3.7	524,612	5.9
Saskatchewan	1,650,209	4.5	323,528	14.4	55,458	30.9	60,254	24.9	439,236	17.6
Alberta	8,070,981	-11.2	1,514,533	-1.9	394,755	9.0	456,307	11.8	2,365,594	2.2
British Columbia and the Territories ¹	5,927,089	-13.2	1,264,249	-8.3	535,715	2.0	683,229	3.3	2,483,194	-3.2
Canada	51,734,781	-3.5	13,411,902	-0.6	4,059,320	9.5	5,153,576	11.8	22,624,795	3.8

See footnotes at the end of the table.

Table 5-2 – continued

Year to date provincial sales of new motor vehicles, by type and origin in dollars, January to December

Province	Total new motor vehicles		Trucks ²					
			North America		Overseas		Total	
	Units	Year/year change	Units	Year/year change	Units	Year/year change	Units	Year/year change
	\$'000	%	\$'000	%	\$'000	%	\$'000	%
2006								
Newfoundland and Labrador	659,818	-1.6	x	x	x	x	373,455	-1.1
Prince Edward Island	130,027	2.9	x	x	x	x	63,156	-1.4
Nova Scotia	1,351,520	2.8	601,787	-3.7	91,180	7.3	692,969	-2.4
New Brunswick	1,053,390	7.3	542,828	5.4	68,204	27.5	611,033	7.4
Quebec	11,718,328	-0.4	4,469,579	-4.0	1,050,891	6.5	5,520,471	-2.2
Ontario	20,468,652	0.5	10,006,792	-2.8	1,745,149	3.7	11,751,937	-1.9
Manitoba	1,592,020	-0.6	993,340	-2.5	106,762	28.5	1,100,104	-0.2
Saskatchewan	1,394,890	3.1	951,357	3.3	88,043	10.3	1,039,401	3.9
Alberta	9,009,894	13.4	6,125,368	13.5	615,462	32.5	6,740,825	15.0
British Columbia and the Territories ¹	6,587,723	6.4	3,378,629	5.1	616,776	9.2	3,995,407	5.7
Canada	53,966,261	3.2	27,445,267	1.5	4,443,494	9.5	31,888,757	2.6
2007								
Newfoundland and Labrador	782,446	18.6	x	x	x	x	453,366	21.4
Prince Edward Island	140,348	7.9	x	x	x	x	69,485	10.0
Nova Scotia	1,389,927	2.8	652,580	8.4	75,583	-17.1	728,163	5.1
New Brunswick	1,093,487	3.8	584,773	7.7	63,558	-6.8	648,328	6.1
Quebec	11,795,984	0.7	4,759,510	6.5	884,980	-15.8	5,644,491	2.2
Ontario	19,369,702	-5.4	9,484,244	-5.2	1,484,763	-14.9	10,969,005	-6.7
Manitoba	1,566,489	-1.6	977,186	-1.6	93,751	-12.2	1,070,936	-2.7
Saskatchewan	1,578,698	13.2	1,110,519	16.7	94,824	7.7	1,205,341	16.0
Alberta	9,086,122	0.8	6,150,303	0.4	621,611	1.0	6,771,915	0.5
British Columbia and the Territories ¹	6,825,179	3.6	3,690,896	9.2	569,454	-7.7	4,260,349	6.6
Canada	53,628,377	-0.6	27,875,811	1.6	3,945,567	-11.2	31,821,375	-0.2
2008								
Newfoundland and Labrador	873,809	11.7	x	x	x	x	503,068	11.0
Prince Edward Island	141,106	0.5	x	x	x	x	65,920	-5.1
Nova Scotia	1,448,006	4.2	614,854	-5.8	80,136	6.0	694,991	-4.6
New Brunswick	1,165,847	6.6	602,909	3.1	64,876	2.1	667,786	3.0
Quebec	12,230,844	3.7	4,585,982	-3.6	1,013,343	14.5	5,599,326	-0.8
Ontario	18,689,639	-3.5	8,636,979	-8.9	1,569,020	5.7	10,205,999	-7.0
Manitoba	1,523,952	-2.7	900,541	-7.8	98,802	5.4	999,341	-6.7
Saskatchewan	1,650,209	4.5	1,112,450	0.2	98,525	3.9	1,210,974	0.5
Alberta	8,070,981	-11.2	5,091,929	-17.2	613,457	-1.3	5,705,388	-15.7
British Columbia and the Territories ¹	5,927,089	-13.2	2,940,456	-20.3	503,439	-11.6	3,443,894	-19.2
Canada	51,734,781	-3.5	25,005,740	-10.3	4,104,243	4.0	29,109,983	-8.5

1. For reasons of confidentiality, data for the Yukon, the Northwest Territories and Nunavut have been included with the data for British Columbia.

2. Trucks include minivans, sport-utility vehicles, light and heavy trucks, vans and buses.

Note(s): Percentage changes shown are year-to-year changes.

Table 6
Annual sales of new motor vehicles, by type and origin, in units and dollars, Canada

Year	Total	Passenger cars				Trucks ¹		
		Total	North America	Japan	Other countries	Total	North America	Overseas
number								
1986	1,515,920	1,095,313	761,169	203,304	130,840	420,607	368,423	52,184
1987	1,533,637	1,065,093	700,930	243,288	120,875	468,544	417,189	51,355
1988	1,565,501	1,056,310	724,733	243,835	87,742	509,191	459,777	49,414
1989	1,483,875	988,134	675,340	239,548	73,246	495,741	422,398	73,343
1990	1,317,869	884,564	580,397	239,603	64,564	433,305	361,403	71,902
1991	1,287,790	873,184	573,297	237,701	62,186	414,606	347,671	66,935
1992	1,227,419	798,023	503,460	236,675	57,888	429,396	370,422	58,974
1993	1,192,934	739,049	493,759	196,310	48,980	453,885	402,112	51,773
1994	1,260,056	748,666	573,361	129,547	45,758	511,390	475,444	35,946
1995	1,166,535	670,190	553,265	71,493	45,432	496,345	469,590	26,755
1996	1,204,557	660,769	572,581	47,901	40,287	543,788	517,738	26,050
1997	1,424,380	738,550	629,488	66,297	42,765	685,830	628,214	57,616
1998	1,428,932	740,809	590,667	98,275	51,867	688,123	627,256	60,867
1999	1,542,041	806,450	625,292	103,016	78,142	735,591	672,444	63,147
2000	1,587,561	849,171	640,856	106,937	101,378	738,390	669,492	68,898
2001	1,597,964	868,633	619,810	122,998	125,825	729,331	647,987	81,344
2002	1,733,318	934,704	651,305	144,596	138,803	798,614	698,870	99,744
2003	1,626,468	865,475	604,726	126,908	133,841	760,993	654,136	106,857
2004	1,575,195	820,103	542,814	116,426	160,863	755,092	653,637	101,455
2005	1,630,310	845,222	574,639	123,482	147,101	785,088	673,205	111,883
2006	1,666,327	863,161	573,102	142,159	147,900	803,166	681,244	121,922
2007	1,690,538	859,003	551,001	151,298	156,704	831,535	727,909	103,626
2008	1,674,619	897,947	557,856	170,216	169,875	776,672	666,472	110,200
\$'000								
1986	21,841,550	14,669,730	9,856,684	2,811,893	2,001,153	7,171,820	6,441,827	729,993
1987	24,471,752	15,748,410	10,031,338	3,567,223	2,149,849	8,723,342	7,930,138	793,204
1988	26,865,327	16,709,476	11,080,866	3,784,902	1,843,708	10,155,851	9,369,528	786,323
1989	26,959,378	16,541,801	11,034,684	3,887,341	1,619,774	10,417,577	9,059,482	1,358,095
1990	24,888,751	15,245,831	9,784,293	4,015,958	1,445,580	9,642,918	8,210,502	1,432,416
1991	22,855,626	14,103,545	9,038,584	3,789,001	1,275,960	8,752,081	7,503,659	1,248,422
1992	23,484,455	13,691,746	8,450,516	4,053,782	1,187,451	9,792,709	8,613,984	1,178,725
1993	24,630,359	13,278,180	8,620,649	3,560,913	1,096,620	11,352,180	10,227,082	1,125,101
1994	27,893,795	14,182,894	10,595,001	2,346,168	1,241,727	13,710,902	12,846,447	864,453
1995	28,168,806	13,882,004	11,070,368	1,492,451	1,319,184	14,286,804	13,544,980	741,824
1996	31,485,777	14,510,882	12,062,092	1,118,289	1,330,501	16,974,894	16,115,584	859,309
1997	38,986,224	16,836,615	13,809,161	1,519,604	1,507,852	22,149,610	20,341,263	1,808,346
1998	40,255,777	17,054,244	13,101,703	2,110,330	1,842,211	23,201,534	21,165,239	2,036,296
1999	45,317,914	19,017,278	14,138,902	2,246,522	2,631,853	26,300,638	24,055,653	2,244,986
2000	46,930,514	20,790,660	15,089,665	2,431,251	3,269,743	26,139,852	23,745,933	2,393,922
2001	46,886,252	21,168,628	14,575,745	2,882,386	3,710,497	25,717,623	22,958,458	2,759,162
2002	52,227,499	23,191,483	15,521,295	3,501,294	4,168,898	29,036,014	25,633,136	3,402,877
2003	50,493,308	21,685,587	14,565,218	2,988,274	4,132,093	28,807,720	24,845,915	3,961,804
2004	49,639,223	20,489,761	13,261,753	2,694,970	4,533,035	29,149,463	25,384,561	3,764,904
2005	52,311,147	21,220,807	14,051,867	2,928,424	4,240,519	31,090,339	27,031,615	4,058,725
2006	53,966,261	22,077,502	14,250,869	3,469,392	4,357,245	31,888,757	27,445,267	4,443,494
2007	53,628,377	21,806,999	13,489,763	3,707,820	4,609,417	31,821,375	27,875,811	3,945,567
2008	51,734,781	22,624,795	13,411,902	4,059,320	5,153,576	29,109,983	25,005,740	4,104,243

1. Trucks include minivans, sport-utility vehicles, light and heavy trucks, vans and buses.

Table 7
Canada, monthly sales of new motor vehicles, in units, by type and origin, seasonally adjusted

Period	Total new motor vehicles		Passenger cars				Trucks ¹	
			North America		Overseas		Total	
	Units	Month/month change	Units	Month/month change	Units	Month/month change	Units	Month/month change
	no.	%	no.	%	no.	%	no.	%
2006								
January	137,734	1.6	50,055	4.2	21,910	-4.5	65,769	1.8
February	138,067	0.2	48,176	-3.8	23,243	6.1	66,648	1.3
March	137,174	-0.6	47,940	-0.5	22,476	-3.3	66,758	0.2
April	133,836	-2.4	45,729	-4.6	24,020	6.9	64,087	-4.0
May	132,611	-0.9	45,503	-0.5	23,836	-0.8	63,272	-1.3
June	135,448	2.1	46,732	2.7	24,912	4.5	63,804	0.8
July	140,666	3.9	47,122	0.8	25,569	2.6	67,975	6.5
August	141,667	0.7	47,512	0.8	24,465	-4.3	69,690	2.5
September	139,081	-1.8	48,537	2.2	24,122	-1.4	66,422	-4.7
October	139,856	0.6	44,705	-7.9	25,480	5.6	69,671	4.9
November	142,711	2.0	48,499	8.5	25,108	-1.5	69,104	-0.8
December	147,474	3.3	52,592	8.4	24,917	-0.8	69,965	1.2
2007								
January	138,958	-5.8	43,359	-17.6	25,678	3.1	69,921	-0.1
February	137,186	-1.3	43,752	0.9	25,585	-0.4	67,849	-3.0
March	138,706	1.1	44,627	2.0	25,799	0.8	68,280	0.6
April	147,587	6.4	49,452	10.8	26,155	1.4	71,980	5.4
May	145,277	-1.6	47,069	-4.8	26,517	1.4	71,691	-0.4
June	143,778	-1.0	48,423	2.9	27,091	2.2	68,264	-4.8
July	139,758	-2.8	45,942	-5.1	25,984	-4.1	67,832	-0.6
August	143,840	2.9	47,909	4.3	25,835	-0.6	70,096	3.3
September	140,541	-2.3	47,301	-1.3	25,787	-0.2	67,453	-3.8
October	138,276	-1.6	45,907	-2.9	24,112	-6.5	68,257	1.2
November	134,927	-2.4	44,066	-4.0	23,330	-3.2	67,531	-1.1
December	141,649	5.0	43,062	-2.3	26,270	12.6	72,317	7.1
2008								
January	154,105	8.8	53,587	24.4	28,474	8.4	72,044	-0.4
February	148,493	-3.6	50,208	-6.3	30,075	5.6	68,210	-5.3
March	147,171	-0.9	47,736	-4.9	31,907	6.1	67,528	-1.0
April	143,318	-2.6	46,997	-1.5	29,130	-8.7	67,191	-0.5
May	144,180	0.6	48,807	3.9	30,361	4.2	65,012	-3.2
June	142,490	-1.2	49,130	0.7	30,053	-1.0	63,307	-2.6
July	141,211	-0.9	48,859	-0.6	27,940	-7.0	64,412	1.7
August	137,626	-2.5	45,483	-6.9	27,980	0.1	64,163	-0.4
September ^r	140,011	1.7	45,562	0.2	28,714	2.6	65,735	2.5
October ^r	138,019	-1.4	45,495	-0.1	25,529	-11.1	66,995	1.9
November ^r	128,882	-6.6	39,898	-12.3	24,879	-2.5	64,105	-4.3
December ^p	109,831	-14.8	33,996	-14.8	24,838	-0.2	50,997	-20.4

1. Trucks include minivans, sport-utility vehicles, light and heavy trucks, vans and buses.
Note(s): Percentage changes shown are month-to-month changes.

Table 8
Monthly sales of new motor vehicles, in units, by province, seasonally adjusted

Period	Canada	Newfoundland and Labrador	Prince Edward Island	Nova Scotia	New Brunswick	Quebec
number						
2006						
January	137,734	2,112	389	4,506	2,805	33,468
February	138,067	1,936	432	3,897	2,837	32,887
March	137,174	1,830	403	4,227	2,878	32,450
April	133,836	1,884	384	3,690	2,799	32,581
May	132,611	1,873	387	3,670	2,675	31,870
June	135,448	2,086	415	3,706	2,837	32,370
July	140,666	1,928	425	3,795	2,971	34,151
August	141,667	1,980	423	4,006	2,945	35,211
September	139,081	2,004	402	4,001	2,981	33,177
October	139,856	2,002	391	3,813	2,930	34,561
November	142,711	2,282	442	4,436	3,466	34,216
December	147,474	2,271	440	3,991	3,279	37,255
2007						
January	138,958	2,214	428	3,788	3,151	33,730
February	137,186	2,147	420	3,691	2,811	33,467
March	138,706	2,355	478	3,866	3,013	32,982
April	147,587	2,480	464	4,273	2,988	36,898
May	145,277	2,391	474	3,709	3,265	37,809
June	143,778	2,382	440	4,215	3,225	35,166
July	139,758	2,355	416	4,160	3,158	33,549
August	143,840	2,501	482	4,293	3,257	34,712
September	140,541	2,301	430	4,306	3,139	35,250
October	138,276	2,354	484	4,239	3,242	34,010
November	134,927	2,351	324	4,437	2,958	31,956
December	141,649	2,412	463	4,203	3,082	33,888
2008						
January	154,105	3,069	510	4,746	3,299	40,002
February	148,493	3,216	484	4,663	3,348	40,392
March	147,171	2,508	497	4,808	3,288	37,696
April	143,318	2,512	471	4,069	3,535	37,083
May	144,180	2,535	497	4,575	3,377	37,646
June	142,490	2,434	452	4,521	3,342	36,231
July	141,211	2,666	447	4,367	3,523	36,349
August	137,626	2,691	434	4,168	3,403	35,899
September ^r	140,011	2,709	480	4,597	3,362	36,255
October ^r	138,019	2,657	431	4,363	3,253	35,132
November ^r	128,882	2,206	439	4,010	2,954	32,755
December ^p	109,831	2,042	385	3,487	2,715	30,388

Table 8 – continued

Monthly sales of new motor vehicles, in units, by province, seasonally adjusted

Period	Canada	Ontario	Manitoba	Saskatchewan	Alberta	British Columbia and the Territories
	number					
2006						
January	137,734	52,150	3,814	2,881	19,855	15,754
February	138,067	52,048	3,598	3,381	20,993	16,058
March	137,174	52,227	3,755	3,237	19,804	16,363
April	133,836	49,839	3,564	3,155	20,229	15,711
May	132,611	49,585	3,632	3,154	20,160	15,605
June	135,448	50,813	3,751	3,372	20,010	16,088
July	140,666	52,848	3,987	3,439	21,143	15,979
August	141,667	51,793	3,767	3,332	21,807	16,403
September	139,081	51,764	3,837	3,455	20,893	16,567
October	139,856	50,607	3,958	3,410	21,555	16,629
November	142,711	53,530	4,053	3,597	20,383	16,306
December	147,474	53,444	4,208	3,502	21,899	17,185
2007						
January	138,958	50,632	3,814	3,547	21,396	16,258
February	137,186	49,158	3,764	3,451	21,292	16,985
March	138,706	49,213	3,960	3,554	22,519	16,766
April	147,587	53,545	4,077	3,810	21,271	17,781
May	145,277	51,783	3,880	3,802	21,172	16,992
June	143,778	51,717	3,866	3,817	21,975	16,975
July	139,758	49,844	3,764	3,797	21,918	16,797
August	143,840	52,212	4,001	3,906	21,730	16,746
September	140,541	50,051	3,990	3,766	20,593	16,715
October	138,276	48,994	4,022	3,989	20,625	16,317
November	134,927	47,533	3,945	3,895	21,048	16,480
December	141,649	51,004	4,052	4,220	21,484	16,841
2008						
January	154,105	54,618	4,361	4,327	21,988	17,185
February	148,493	50,848	4,172	4,225	20,965	16,180
March	147,171	51,132	4,225	4,442	21,484	17,091
April	143,318	52,027	4,028	4,087	19,563	15,943
May	144,180	51,110	4,031	3,985	20,311	16,113
June	142,490	51,128	4,068	3,966	20,422	15,926
July	141,211	50,651	4,092	4,173	20,061	14,882
August	137,626	49,155	3,894	4,218	19,330	14,434
September ^r	140,011	49,746	3,914	4,161	20,042	14,745
October ^r	138,019	49,461	3,972	4,386	19,656	14,708
November ^r	128,882	45,384	3,847	4,382	18,761	14,144
December ^p	109,831	36,785	3,470	3,235	16,110	11,214

Definitions

Trucks

Trucks include light and heavy trucks, minivans, sport utility vehicles, vans, coaches and buses, regardless of their intended use.

Passenger car

The term passenger car refers to all vehicles whose primary function is to carry passengers, excluding those vehicles classified as a commercial vehicle (see definition above). Passenger cars also include cars used for commercial purposes, i.e. taxis, auto rentals and other car fleets.

Country of origin

New motor vehicles fall into two categories defined on the basis of origin: those manufactured in North America and those manufactured overseas. The latter are imported in a fully assembled state from countries other than the United States or Mexico. All passenger cars and commercial vehicles assembled in Canada, Mexico and the United States and sold in Canada classified are as North American manufactured vehicles.

Motor vehicle sales - units

The number of new motor vehicles sold in Canada.

Motor vehicle sales - dollars

Net sales refers to the selling price to the consumer, i.e., manufacturer's invoice price plus estimated dealer's markup, including charges for standard and optional accessories. Sales taxes are excluded.

Average price of passenger cars

The average price is obtained by dividing the total dollar sales by the number of units sold. Therefore, changes in the average price reflect variations in the models sold as well as price changes. For example, an increase in the average price for passenger cars may reflect both a shift to more expensive models as well as price increases.

Appendix I

Scope of the survey

The interest in and need for detailed statistics on the automobile industry arose years ago, when the industry began playing a prominent role in the Canadian economy. For over 50 years, Statistics Canada has been collecting and disseminating statistical information on the retail sales of new motor vehicles. Not only are these statistics required to produce estimates of Canadian consumer spending for the national accounts and the gross domestic product, but they have also served and continue to serve as one of the most important, most often requested indicators of the health of Canada's economy.¹

However, estimates of the total retail sales volume of new motor vehicles were not sufficient to meet the incessant demand for more information. There came an increasing need for data on the characteristics of the fleet of new vehicles sold at retail, either to learn more about the preferences of Canadian consumers or to assess the penetration of the Canadian market by major foreign manufacturers. Statistics on new motor vehicle sales were expanded in the early 1970s to provide separate figures for Japanese vehicle sales.

The statistics in this report cover exclusively retail sales of new motor vehicles within Canada's borders. Data are derived from a postal survey (a census - see the methodology section at the end of the report for more details).

Other statistics connected with the automobile industry (sales of new and used car dealers, auto parts and accessories stores and so on) are available on the monthly Retail Trade survey (Catalogue No. 63-005). For further information, please contact the Retail Commodity Section, Distributive Trades Division, Statistics Canada, Ottawa, K1A 0T6, (Telephone: 613-951-3549 or toll free at 1-877-421-3067).

Data quality and methodology

This survey is a census of all motor vehicle manufacturers and importers known to be active in Canada.

The value of sales is reported at selling price to consumer (i.e. the manufacturer's invoice price plus estimated dealer's markup, charges for standard equipment and options, less provincial sales tax and federal goods and services tax (G.S.T.) and harmonized sales tax (H.S.T.)).

The response rate for this survey is generally 100%. Minimal estimation is required so there is little bias resulting from non-response introduced in these data.

All attempts have been made to minimize the non-sampling errors: the questionnaires used in the survey have been carefully designed to minimize different interpretations; detailed acceptance testing has been carried out for the different stages of editing and processing.

1. The new motor vehicle sales series is one of ten statistical series making up the leading indicator developed by Statistics Canada for current economic analysis purposes.

Data confidentiality

Statistics Canada is prohibited by law from publishing any statistics which would divulge information relating to any identifiable business without the previous consent in writing of that business.² The disclosure of data likely to reveal specific information on the activity of a particular company is systematically and rigorously controlled and regulated to prevent the publication or disclosure of any information deemed confidential. The rules regarding confidentiality are therefore applied in such a way that no data are shown for cells (or statistical units). If information is withheld for reasons of confidentiality an "X" will appear in the appropriate cell of this publication.

Another way of preserving data confidentiality without having to enter an "X" is to combine (consolidate) the information **from selected regions** (or selected cells) for the same item. The data in question can be aggregated and published in a less detailed, but still confidential, form. For example, the data for the Northwest Territories, the Yukon and Nunavut are included with the British Columbia data.

Seasonal adjustment

Time series contain the elements essential to the description, explanation and forecasting of the behaviour of an economic phenomenon: "They are statistical records of the evolution of economic processes through time."³ Economic time series such as the New Motor Vehicles Sales Survey can be broken down into five main components: the trend-cycle, seasonality, the trading-day effect, the Easter holiday effect and the irregular component.

The trend represents the long-term change in the series, whereas the cycle represents a smooth, quasi-periodical movement about the trend, showing a succession of growth and decline phases (e.g., the business cycle). These two components—the trend and the cycle—are estimated together, and the trend-cycle reflects the fundamental evolution of the series. The other components reflect short-term transient movements.

The seasonal component represents sub-annual, monthly or quarterly fluctuations that recur more or less regularly from one year to the next. Seasonal variations are caused by the direct and indirect effects of the climatic seasons and institutional factors (attributable to social conventions or administrative rules; e.g., Christmas).

The trading-day component originates from the fact that the relative importance of the days varies systematically within the week and that the number of each day of the week in a given month varies from year to year. This effect is present when activity varies with the day of the week. For instance, Sunday is typically less active than the other days, and the number of Sundays, Mondays, etc., in a given month changes from year to year.

The Easter holiday effect is the variation due to the shift of part of April's activity to March when Easter falls in March rather than April.

Lastly, the irregular component includes all other more or less erratic fluctuations not taken into account in the preceding components. It is a residual that includes errors of measurement on the variable itself as well as unusual events (e.g., strikes, drought, floods, major power blackout or other unexpected events causing variations in respondents' activities).

Thus, the latter four components—seasonal, irregular, trading-day and Easter holiday effect—all conceal the fundamental trend-cycle component of the series. Seasonal adjustment (correction of seasonal variation) consists in removing the seasonal, trading-day and Easter holiday effect components from the series, and it thus helps reveal the trend-cycle. While seasonal adjustment permits a better understanding of the underlying trend-cycle of a series, the seasonally adjusted series still contains an irregular component. Slight month-to-month variations in the seasonally adjusted series may be simple irregular movements. To get a better idea of the underlying trend, users should examine several months of the seasonally adjusted series.

2. See Section 17 of the Statistics Act (Chapter 5-19), entitled «Secrecy».

3. «A Note on the Seasonal adjustment of Economic Time Series», Canadian Statistical Review, August 1974.

Since April 2008, New Motor Vehicle Sales Survey data are seasonally adjusted using the X-12-ARIMA⁴ software. The technique that is used essentially consists of first correcting the initial series for all sorts of undesirable effects, such as the trading-day and the Easter holiday effects, by a module called regARIMA. These effects are estimated using regression models with ARIMA errors (auto-regressive integrated moving average models). The series can also be extrapolated for at least one year by using the model. Subsequently, the raw series—pre-adjusted and extrapolated if applicable—is seasonally adjusted by the X-11 method.

The X-11 method is used for analysing monthly and quarterly series. It is based on an iterative principle applied in estimating the different components, with estimation being done at each stage using adequate moving averages.⁵ The moving averages used to estimate the main components—the trend and seasonality—are primarily smoothing tools designed to eliminate an undesirable component from the series. Since moving averages react poorly to the presence of atypical values, the X-11 method includes a tool for detecting and correcting atypical points. This tool is used to clean up the series during the seasonal adjustment. Outlying data points can also be detected and corrected in advance, within the regARIMA module.

Lastly, the annual totals of the seasonally adjusted series are forced to the annual totals of the original series.

Unfortunately, seasonal adjustment removes the sub-annual additivity of a system of series; small discrepancies can be observed between the sum of seasonally adjusted series and the *direct* seasonal adjustment of their total. To insure or restore additivity in a system of series, a reconciliation process is applied or *indirect* seasonal adjustment is used, i.e. the seasonal adjustment of a total is derived by the summation of the individually seasonally adjusted series.

To assist the user, the Months of Cyclical Dominance number, MCD, is provided.⁶ The MCD is the shortest monthly span for which a certain ratio becomes and remains less than one, that is, the ratio for which the absolute average percentage change of the trend-cycle of the seasonally adjusted series becomes greater than the absolute average per cent change of the irregular component. The MCD can be interpreted as the number of months over which a change in the seasonally adjusted series must move in a given direction before one can be reasonably certain that the trend-cycle of that series also has moved in the given direction. Clearly small MCD's are desirable and indicative of a smooth series. Applying a moving average to the seasonally adjusted data of MCD length tends to smooth irregular movements which may obscure the underlying trend-cycle. The MCD moving average provides a method of reducing all types of series to approximately the same degree of smoothness, whatever the size of the irregular component in the original series.

Revision procedures

The seasonally adjusted estimates are revised for the three months preceding the reference period. Monthly unadjusted data are revised for the previous month, when new information is made available to Statistics Canada. In addition, unadjusted new motor vehicle sales are revised each year, for the latest year, in the February issue of this publication. At that time, monthly seasonally adjusted estimates for the latest four years of data are revised.

4. For more information, see X-12-ARIMA Reference Manual Version 0.3 (2007), U.S. Census Bureau.

5. Ladiray, D. and Quenneville, B. (2001). Seasonal Adjustment with the X-11 Method. New York: Springer-Verlag, Lecture Notes in Statistics #158.

6. MCD = 12 for North American passenger cars. MCD = 3 for Overseas passenger cars. MCD = 12 for Commercial vehicles.

Appendix II

List of North American motor vehicle manufacturers

B.M.W. Canada Inc.
Blue Bird Body Co.
DaimlerChrysler Canada Inc.
Ford Motor Company of Canada Limited
Freightliner of Canada Ltd.
General Motors of Canada Limited
Honda Canada Inc.
Hyundai Auto Canada Inc.
International Truck and Engine Corporation Canada
Kenworth Div., Paccar of Canada Ltd.
Mack Canada Inc.
Mazda Canada Inc.
Mitsubishi Motor Sales of Canada, Inc.
Motor Coach Industries Limited
New Flyer Industries Ltd.
Nissan Canada Inc.
Nova Bus Corp.
Orion Bus Industries Inc.
Peterbilt Div., Paccar of Canada Ltd.
Prévost Car Inc.
Sterling Heavy Duty TrucksSubaru Canada Inc.
Subaru Canada Inc.
Suzuki Canada Inc.
Thomas Built Buses of Canada Ltd.

Toyota Canada Ltd.

Volkswagen Canada Inc.

Volvo Trucks Canada Inc.

Western Star Trucks Inc.

List of importers and distributors of overseas manufactured motor vehicles

Japan

General Motors of Canada Ltd.

Hino Diesel Trucks Canada Ltd.

Honda Canada Inc.

Mazda Canada Inc.

Mitsubishi Motor Sales of Canada, Inc.

Nissan Canada Inc.

Subaru Canada Inc.

Suzuki Canada Inc.

Toyota Canada Inc.

Other Countries

B.M.W. Canada Inc.

Daewoo Auto Canada Inc.

Ford Motor Company of Canada Limited

General Motors Canada Ltd.

Hyundai Auto Canada Inc.

Jaguar Canada Inc.

Kia Canada Inc.

Land Rover group Canada Inc.

Mercedes-Benz Canada Inc.

Porsche Cars of Canada Ltd.

Volkswagen Canada Inc.

Volvo Cars of Canada Ltd.