

Catalogue no. 63-007-X

# New Motor Vehicle Sales

February 2009



Statistics  
Canada

Statistique  
Canada

Canada

## How to obtain more information

For information about this product or the wide range of services and data available from Statistics Canada, visit our website at [www.statcan.gc.ca](http://www.statcan.gc.ca), e-mail us at [infostats@statcan.gc.ca](mailto:infostats@statcan.gc.ca), or telephone us, Monday to Friday from 8:30 a.m. to 4:30 p.m., at the following numbers:

### Statistics Canada's National Contact Centre

Toll-free telephone (Canada and the United States):

|   |                |
|---|----------------|
| Inquiries line  | 1-800-263-1136 |
| National telecommunications device for the hearing impaired | 1-800-363-7629 |
| Fax line  | 1-877-287-4369 |

Local or international calls:

|                |                |
|----------------|----------------|
| Inquiries line | 1-613-951-8116 |
| Fax line       | 1-613-951-0581 |

### Depository Services Program

|                |                |
|----------------|----------------|
| Inquiries line | 1-800-635-7943 |
| Fax line       | 1-800-565-7757 |

## To access this product

This product, Catalogue no. 63-007-X, is available free in electronic format. To obtain a single issue, visit our website at [www.statcan.gc.ca](http://www.statcan.gc.ca) and select "Publications."

## Standards of service to the public

Statistics Canada is committed to serving its clients in a prompt, reliable and courteous manner. To this end, Statistics Canada has developed *standards of service* that its employees observe. To obtain a copy of these service standards, please contact Statistics Canada toll-free at 1-800-263-1136. The service standards are also published on [www.statcan.gc.ca](http://www.statcan.gc.ca) under "About us" > "Providing services to Canadians."

Statistics Canada  
Distributive Trades Division

# New Motor Vehicle Sales

February 2009

Published by authority of the Minister responsible for Statistics Canada

© Minister of Industry, 2009

All rights reserved. The content of this electronic publication may be reproduced, in whole or in part, and by any means, without further permission from Statistics Canada, subject to the following conditions: that it be done solely for the purposes of private study, research, criticism, review or newspaper summary, and/or for non-commercial purposes; and that Statistics Canada be fully acknowledged as follows: Source (or "Adapted from", if appropriate): Statistics Canada, year of publication, name of product, catalogue number, volume and issue numbers, reference period and page(s). Otherwise, no part of this publication may be reproduced, stored in a retrieval system or transmitted in any form, by any means—electronic, mechanical or photocopy—or for any purposes without prior written permission of Licensing Services, Client Services Division, Statistics Canada, Ottawa, Ontario, Canada K1A 0T6.

April 2009

Catalogue no. 63-007-X, vol. 81, no. 2

ISSN 1209-1146

Frequency: Monthly

Ottawa

La version française de cette publication est disponible sur demande (n° 63-007-X au catalogue).

---

#### **Note of appreciation**

*Canada owes the success of its statistical system to a long standing partnership between Statistics Canada, the citizens of Canada, its businesses, governments and other institutions. Accurate and timely statistical information could not be produced without their continued cooperation and goodwill.*

# User information

---

## Symbols

The following standard symbols are used in Statistics Canada publications:

- . not available for any reference period
- .. not available for a specific reference period
- ... not applicable
- 0 true zero or a value rounded to zero
- 0<sup>s</sup> value rounded to 0 (zero) where there is a meaningful distinction between true zero and the value that was rounded
- p preliminary
- r revised
- x suppressed to meet the confidentiality requirements of the *Statistics Act*
- E use with caution
- F too unreliable to be published

## Note to users

Figures may not add up to totals because of rounding.

## Acknowledgements

This publication was prepared under the direction of:

- **Mary Beth Garneau**, Director, Distributive Trades Division
- **R. Boudreau**, Assistant Director, Distributive Trades Division
- **S. Grenier**, Retail Sub-annuals surveys chief, Distributive Trades Division
- **M. Switzer**, Analyst Retail Sub-annuals surveys section, Distributive Trades Division

# Table of contents

---

|  |          |
|--|----------|
| <b>Highlights</b>  | <b>5</b> |
| <b>Analysis – February 2009</b>  | <b>6</b> |
| Truck sales drive decline  | 6        |
| Sales down in seven provinces  | 6        |
| <b>Related products</b>  | <b>9</b> |
| <b>Statistical tables</b>  |          |
| 1 Monthly sales of new motor vehicles, by type and origin  | 11       |
| 1-1 in units   | 11       |
| 1-2 in dollars   | 13       |
| 2 Average monthly prices of passenger cars, by origin  | 15       |
| 3 Monthly market share of new passenger car sales (units), by origin, Canada                     | 16       |
| 4 Provincial sales of new motor vehicles, by type and origin, in units and dollars, February     | 17       |
| 5 Year to date provincial sales of new motor vehicles, by type and origin                        | 19       |
| 5-1 in units, January to February  | 19       |
| 5-2 in dollars, January to February  | 21       |
| 6 Annual sales of new motor vehicles, by type and origin, in units and dollars, Canada           | 23       |
| 7 Canada, monthly sales of new motor vehicles, in units, by type and origin, seasonally adjusted | 24       |
| 8 Monthly sales of new motor vehicles, in units, by province, seasonally adjusted                | 25       |
| <b>Data quality, concepts and methodology</b>  |          |
| Definitions  | 27       |
| <b>Appendix</b>  |          |
| I Scope of the survey  | 28       |
| II List of North American motor vehicle manufacturers  | 31       |

## Table of contents – continued

### Charts

|    |   |   |
|----|---|---|
| 1. | New motor vehicle sales, seasonally adjusted, in units, 2006 to 2009                                | 6 |
| 2. | Passenger car sales, seasonally adjusted, in units, 2006 to 2009                                    | 7 |
| 3. | Truck, van and bus sales, seasonally adjusted, in units, 2006 to 2009                               | 7 |
| 4. | Monthly distribution of the Canadian motor vehicle market (passenger cars), by origin, 2006 to 2009 | 8 |
| 5. | Cumulative sales of new passenger cars, by origin, in units, 2006 to 2008                           | 8 |

# Highlights

---

## February 2009

- Sales of new motor vehicles fell 2.2% to 115,187 units in February. The decline was entirely a result of falling truck sales.

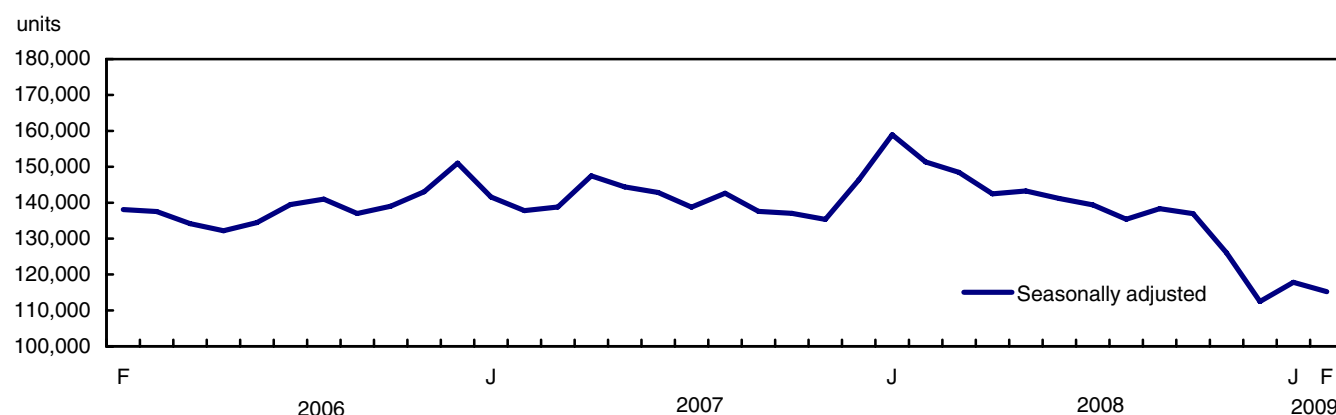
## Analysis – February 2009

---

Sales of new motor vehicles fell 2.2% to 115,187 units in February. The decline was entirely a result of falling truck sales.

Monthly sales have averaged around 115,000 units since December 2008, whereas the average over the previous three years was almost 140,000 units.

**Chart 1**  
**New motor vehicle sales, seasonally adjusted, in units, 2006 to 2009**



Preliminary data obtained from the industry indicate that the number of new motor vehicles sold rose about 6% in March.

### Truck sales drive decline

Sales of new trucks (which include minivans, sport-utility vehicles, light and heavy trucks, vans and buses) were down 5.0% to 54,834 units in February. This decline did not offset the increase in truck sales in January.

#### Note to readers

Seasonally adjusted estimates of new motor vehicle sales have been revised for 2005 to 2008. The annual sum of seasonally adjusted figures corresponds to the annual sum of unadjusted estimates.

The unadjusted estimates of new motor vehicle sales have been revised back to January 2007.

Sales of passenger cars rose 0.4% to 60,353 units. There was a 6.1% gain in sales of overseas-built passenger cars, their largest increase since March 2008. Offsetting this increase was a 3.5% sales decline for North American-built passenger cars.

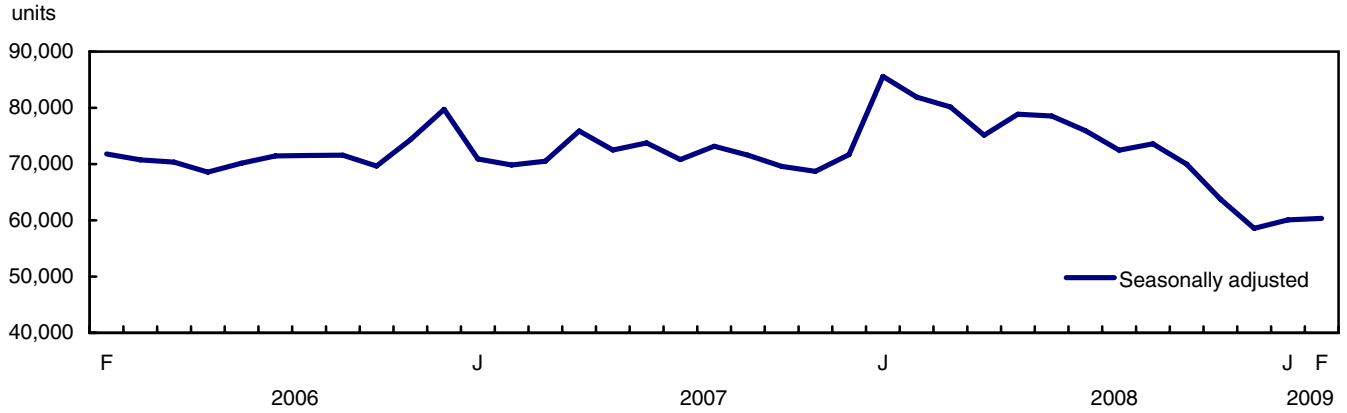
### Sales down in seven provinces

The number of new motor vehicles sold declined in seven provinces in February. The main contributors to the decline at the national level were declines in Alberta (-12.5%) and British Columbia (-11.6%).

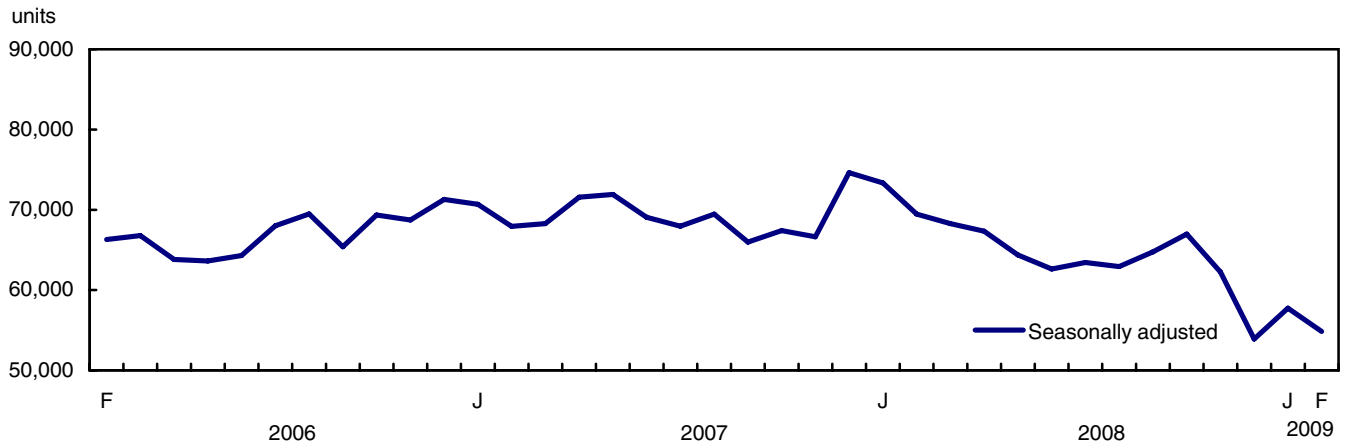


Sales in Ontario increased for the second consecutive month. The other provinces to register higher sales were Quebec and Nova Scotia.

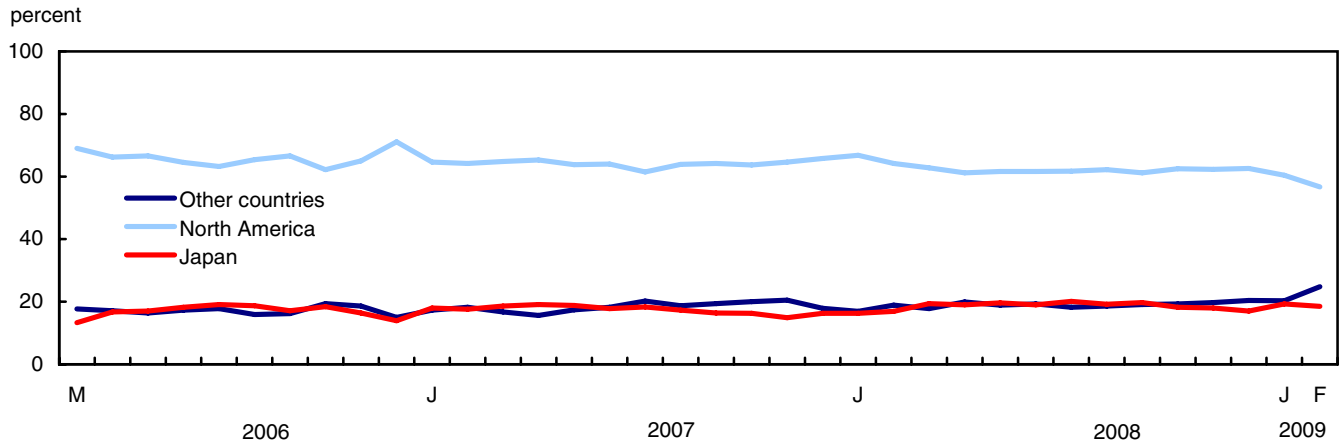
**Chart 2**  
**Passenger car sales, seasonally adjusted, in units, 2006 to 2009**



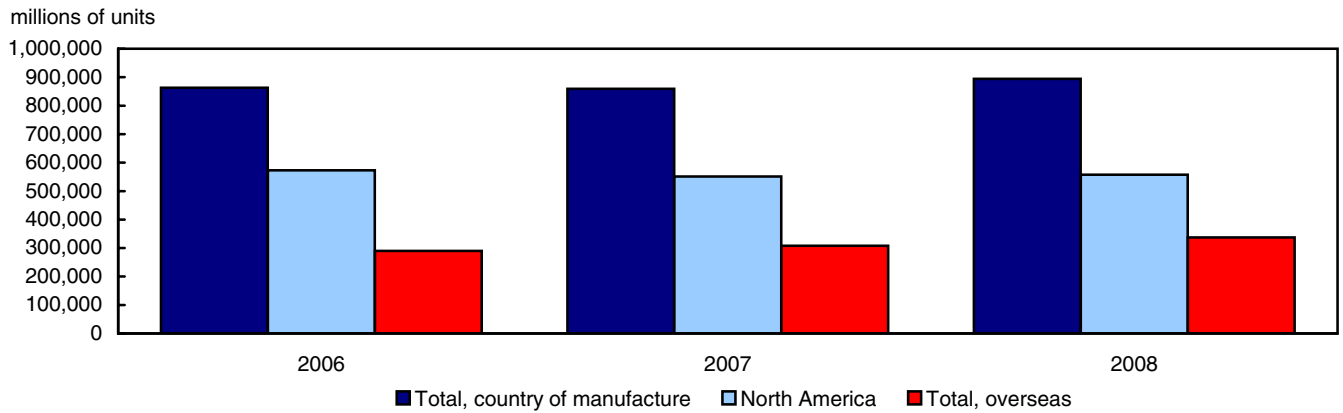
**Chart 3**  
**Truck, van and bus sales, seasonally adjusted, in units, 2006 to 2009**



**Chart 4**  
**Monthly distribution of the Canadian motor vehicle market (passenger cars), by origin, 2006 to 2009**



**Chart 5**  
**Cumulative sales of new passenger cars, by origin, in units, 2006 to 2008**  
**January to December**



## Related products

---

### Selected publications from Statistics Canada

---

|          |  |
|----------|--|
| 63-005-X | Retail Trade                             |
| 63-210-X | Retail Chain and Department Stores       |
| 63-236-X | Wholesaling and Retailing in Canada      |
| 63-541-X | Retail Commodity Survey, 1989            |
| 63F0006X | New Motor Vehicle Sales Seasonal Factors |

---

### Selected CANSIM tables from Statistics Canada

---

|          |   |
|----------|---|
| 079-0003 | New motor vehicle sales, Canada, provinces and territories, monthly |
|----------|---|

---

### Selected surveys from Statistics Canada

---

|      |                                |
|------|--------------------------------|
| 2402 | New Motor Vehicle Sales Survey |
|------|--------------------------------|

---

### Selected summary tables from Statistics Canada

---

- *New motor vehicle sales, by province (monthly)*
- *Economic indicators, by province and territory (monthly and quarterly)*
- *New motor vehicle sales*
- *New motor vehicle sales, by province*

# Statistical tables

---

---

**Table 1-1**  
**Monthly sales of new motor vehicles, by type and origin in units**

|                       | Total new motor vehicles |                  | Passenger cars |                  |         |                  |                 |                  |         |                  |
|-----------------------|--------------------------|------------------|----------------|------------------|---------|------------------|-----------------|------------------|---------|------------------|
|                       |                          |                  | North America  |                  | Japan   |                  | Other countries |                  | Total   |                  |
|                       | Units                    | Year/year change | Units          | Year/year change | Units   | Year/year change | Units           | Year/year change | Units   | Year/year change |
|                       | no.                      | %                | no.            | %                | no.     | %                | no.             | %                | no.     | %                |
| <b>2007</b>           |                          |                  |                |                  |         |                  |                 |                  |         |                  |
| January               | 94,413                   | 5.6              | 27,594         | -12.2            | 7,704   | 36.3             | 7,407           | 4.5              | 42,705  | -3.3             |
| February              | 99,877                   | -0.9             | 30,361         | -9.2             | 8,299   | 33.8             | 8,596           | -5.6             | 47,256  | -3.1             |
| March                 | 154,450                  | -1.0             | 49,540         | -9.5             | 14,206  | 34.6             | 12,741          | -9.4             | 76,487  | -3.6             |
| April                 | 172,428                  | 8.1              | 60,392         | 5.7              | 17,649  | 22.7             | 14,405          | -2.2             | 92,446  | 7.2              |
| May                   | 189,076                  | 9.1              | 65,400         | 2.1              | 19,315  | 18.1             | 17,849          | 13.0             | 102,564 | 6.6              |
| June                  | 172,487                  | 6.5              | 58,700         | 3.3              | 16,315  | 2.0              | 16,714          | 9.7              | 91,729  | 4.2              |
| July                  | 145,370                  | -0.1             | 47,819         | -1.1             | 14,232  | -2.6             | 15,671          | 15.3             | 77,722  | 1.5              |
| August                | 160,883                  | 1.9              | 53,749         | -0.1             | 14,567  | -5.0             | 15,751          | 20.3             | 84,067  | 2.2              |
| September             | 134,516                  | -4.0             | 45,513         | -6.2             | 11,602  | -7.1             | 13,740          | 16.1             | 70,855  | -2.7             |
| October               | 124,072                  | 0.8              | 39,486         | 1.7              | 10,098  | -11.9            | 12,421          | 2.3              | 62,005  | -0.7             |
| November              | 120,012                  | -6.0             | 37,583         | -9.4             | 8,689   | -16.7            | 11,916          | 0.4              | 58,188  | -8.7             |
| December              | 122,954                  | -6.3             | 34,864         | -21.6            | 8,622   | -0.7             | 9,493           | 1.3              | 52,979  | -15.3            |
| <b>Year</b>           | 1,690,538                | 1.5              | 551,001        | -3.9             | 151,298 | 6.4              | 156,704         | 6.0              | 859,003 | -0.5             |
| <b>2008</b>           |                          |                  |                |                  |         |                  |                 |                  |         |                  |
| January               | 105,546                  | 11.8             | 34,557         | 25.2             | 8,443   | 9.6              | 8,719           | 17.7             | 51,719  | 21.1             |
| February              | 113,877                  | 14.0             | 37,369         | 23.1             | 9,839   | 18.6             | 11,002          | 28.0             | 58,210  | 23.2             |
| March                 | 153,505                  | -0.6             | 50,287         | 1.5              | 15,539  | 9.4              | 14,298          | 12.2             | 80,124  | 4.8              |
| April                 | 179,289                  | 4.0              | 60,137         | -0.4             | 18,654  | 5.7              | 19,542          | 35.7             | 98,333  | 6.4              |
| May                   | 188,137                  | -0.5             | 67,352         | 3.0              | 21,388  | 10.7             | 20,647          | 15.7             | 109,387 | 6.7              |
| June                  | 163,064                  | -5.5             | 59,162         | 0.8              | 18,272  | 12.0             | 18,557          | 11.0             | 95,991  | 4.6              |
| July                  | 152,704                  | 5.0              | 52,973         | 10.8             | 17,249  | 21.2             | 15,604          | -0.4             | 85,826  | 10.4             |
| August                | 149,607                  | -7.0             | 50,352         | -6.3             | 15,499  | 6.4              | 15,072          | -4.3             | 80,923  | -3.7             |
| September             | 137,479                  | 2.2              | 45,558         | 0.1              | 14,681  | 26.5             | 14,244          | 3.7              | 74,483  | 5.1              |
| October               | 126,064                  | 1.6              | 39,724         | 0.6              | 11,545  | 14.3             | 12,249          | -1.4             | 63,518  | 2.4              |
| November              | 107,709                  | -10.3            | 31,930         | -15.0            | 9,211   | 6.0              | 10,112          | -15.1            | 51,253  | -11.9            |
| December              | 97,164                   | -21.0            | 28,021         | -19.6            | 7,596   | -11.9            | 9,122           | -3.9             | 44,739  | -15.6            |
| <b>Year</b>           | 1,674,145                | -1.0             | 557,422        | 1.2              | 167,916 | 11.0             | 169,168         | 8.0              | 894,506 | 4.1              |
| <b>2009</b>           |                          |                  |                |                  |         |                  |                 |                  |         |                  |
| January <sup>f</sup>  | 78,817                   | -25.3            | 21,581         | -37.5            | 6,907   | -18.2            | 7,255           | -16.8            | 35,743  | -30.9            |
| February <sup>p</sup> | 82,039                   | -28.0            | 23,129         | -38.1            | 7,559   | -23.2            | 10,098          | -8.2             | 40,786  | -29.9            |

See footnotes at the end of the table.

Table 1-1 – continued

Monthly sales of new motor vehicles, by type and origin in units

|             | Total new motor vehicles |                  | Trucks <sup>1</sup> |                  |          |                  |         |                  |
|-------------|--------------------------|------------------|---------------------|------------------|----------|------------------|---------|------------------|
|             |                          |                  | North America       |                  | Overseas |                  | Total   |                  |
|             | Units                    | Year/year change | Units               | Year/year change | Units    | Year/year change | Units   | Year/year change |
|             | no.                      | %                | no.                 | %                | no.      | %                | no.     | %                |
| <b>2007</b> |                          |                  |                     |                  |          |                  |         |                  |
| January     | 94,413                   | 5.6              | 45,046              | 15.4             | 6,662    | 7.5              | 51,708  | 14.3             |
| February    | 99,877                   | -0.9             | 46,119              | 4.0              | 6,502    | -14.8            | 52,621  | 1.2              |
| March       | 154,450                  | -1.0             | 68,305              | 5.0              | 9,658    | -16.7            | 77,963  | 1.7              |
| April       | 172,428                  | 8.1              | 69,974              | 13.9             | 10,008   | -14.9            | 79,982  | 9.3              |
| May         | 189,076                  | 9.1              | 76,370              | 17.2             | 10,142   | -15.3            | 86,512  | 12.2             |
| June        | 172,487                  | 6.5              | 71,689              | 13.9             | 9,069    | -17.9            | 80,758  | 9.2              |
| July        | 145,370                  | -0.1             | 59,044              | 2.9              | 8,604    | -25.9            | 67,648  | -1.9             |
| August      | 160,883                  | 1.9              | 67,582              | 7.5              | 9,234    | -27.6            | 76,816  | 1.6              |
| September   | 134,516                  | -4.0             | 55,095              | -0.9             | 8,566    | -26.4            | 63,661  | -5.3             |
| October     | 124,072                  | 0.8              | 54,266              | 6.1              | 7,801    | -17.6            | 62,067  | 2.4              |
| November    | 120,012                  | -6.0             | 54,374              | -1.9             | 7,450    | -12.6            | 61,824  | -3.4             |
| December    | 122,954                  | -6.3             | 60,045              | -1.4             | 9,930    | 28.6             | 69,975  | 2.0              |
| <b>Year</b> | 1,690,538                | 1.5              | 727,909             | 6.8              | 103,626  | -15.0            | 831,535 | 3.5              |
| <b>2008</b> |                          |                  |                     |                  |          |                  |         |                  |
| January     | 105,546                  | 11.8             | 46,838              | 4.0              | 6,989    | 4.9              | 53,827  | 4.1              |
| February    | 113,877                  | 14.0             | 48,315              | 4.8              | 7,352    | 13.1             | 55,667  | 5.8              |
| March       | 153,505                  | -0.6             | 62,765              | -8.1             | 10,616   | 9.9              | 73,381  | -5.9             |
| April       | 179,289                  | 4.0              | 69,143              | -1.2             | 11,813   | 18.0             | 80,956  | 1.2              |
| May         | 188,137                  | -0.5             | 67,385              | -11.8            | 11,365   | 12.1             | 78,750  | -9.0             |
| June        | 163,064                  | -5.5             | 57,541              | -19.7            | 9,532    | 5.1              | 67,073  | -16.9            |
| July        | 152,704                  | 5.0              | 57,429              | -2.7             | 9,449    | 9.8              | 66,878  | -1.1             |
| August      | 149,607                  | -7.0             | 58,858              | -12.9            | 9,826    | 6.4              | 68,684  | -10.6            |
| September   | 137,479                  | 2.2              | 53,375              | -3.1             | 9,621    | 12.3             | 62,996  | -1.0             |
| October     | 126,064                  | 1.6              | 52,189              | -3.8             | 10,357   | 32.8             | 62,546  | 0.8              |
| November    | 107,709                  | -10.3            | 48,161              | -11.4            | 8,295    | 11.3             | 56,456  | -8.7             |
| December    | 97,164                   | -21.0            | 45,140              | -24.8            | 7,285    | -26.6            | 52,425  | -25.1            |
| <b>Year</b> | 1,674,145                | -1.0             | 667,139             | -8.3             | 112,500  | 8.6              | 779,639 | -6.2             |
| <b>2009</b> |                          |                  |                     |                  |          |                  |         |                  |
| January P   | 78,817                   | -25.3            | 36,985              | -21.0            | 6,089    | -12.9            | 43,074  | -20.0            |
| February P  | 82,039                   | -28.0            | 34,939              | -27.7            | 6,314    | -14.1            | 41,253  | -25.9            |

1. Trucks include minivans, sport-utility vehicles, light and heavy trucks, vans and buses.

Note(s): Percentage change are year-over-year changes.

**Table 1-2**  
**Monthly sales of new motor vehicles, by type and origin in dollars**

|                       | Total new motor vehicles |                  | Passenger cars    |                  |                  |                  |                  |                  |                   |                  |
|-----------------------|--------------------------|------------------|-------------------|------------------|------------------|------------------|------------------|------------------|-------------------|------------------|
|                       |                          |                  | North America     |                  | Japan            |                  | Other countries  |                  | Total             |                  |
|                       | Units                    | Year/year change | Units             | Year/year change | Units            | Year/year change | Units            | Year/year change | Units             | Year/year change |
|                       | \$'000                   | %                | \$'000            | %                | \$'000           | %                | \$'000           | %                | \$'000            | %                |
| <b>2007</b>           |                          |                  |                   |                  |                  |                  |                  |                  |                   |                  |
| January               | 3,143,460                | 6.8              | 702,950           | -10.3            | 191,902          | 35.9             | 227,357          | 11.7             | 1,122,209         | -0.5             |
| February              | 3,320,383                | 0.1              | 770,050           | -8.3             | 208,249          | 34.2             | 259,453          | -1.6             | 1,237,753         | -1.7             |
| March                 | 5,033,603                | -0.2             | 1,254,979         | -8.0             | 348,605          | 31.9             | 410,805          | -4.2             | 2,014,390         | -2.1             |
| April                 | 5,398,710                | 7.0              | 1,508,905         | 6.8              | 427,130          | 25.2             | 444,341          | 0.3              | 2,380,377         | 8.4              |
| May                   | 5,868,466                | 6.6              | 1,631,541         | 2.5              | 468,349          | 18.0             | 526,054          | 11.3             | 2,625,944         | 6.7              |
| June                  | 5,361,019                | 3.3              | 1,457,667         | 2.8              | 392,487          | 2.1              | 483,196          | 10.7             | 2,333,351         | 4.2              |
| July                  | 4,471,395                | -2.7             | 1,177,232         | -1.7             | 340,890          | -2.1             | 425,667          | 11.9             | 1,943,789         | 0.9              |
| August                | 4,916,369                | -1.7             | 1,329,335         | 0.0              | 352,457          | -3.7             | 431,219          | 18.6             | 2,113,011         | 2.6              |
| September             | 4,199,361                | -7.7             | 1,136,759         | -4.1             | 284,723          | -6.1             | 392,779          | 8.9              | 1,814,261         | -1.9             |
| October               | 3,997,236                | -2.9             | 1,002,688         | 5.2              | 252,753          | -9.2             | 358,920          | 3.1              | 1,614,360         | 2.2              |
| November              | 3,920,855                | -7.3             | 991,526           | -3.3             | 219,328          | -16.8            | 343,356          | -1.5             | 1,554,210         | -5.1             |
| December              | 4,173,876                | -5.7             | 910,406           | -20.9            | 220,947          | -2.6             | 306,270          | -0.4             | 1,437,623         | -14.7            |
| <b>Year</b>           | <b>53,804,733</b>        | <b>-0.3</b>      | <b>13,874,038</b> | <b>-2.6</b>      | <b>3,707,820</b> | <b>6.9</b>       | <b>4,609,417</b> | <b>5.8</b>       | <b>22,191,278</b> | <b>0.5</b>       |
| <b>2008</b>           |                          |                  |                   |                  |                  |                  |                  |                  |                   |                  |
| January               | 3,408,878                | 8.4              | 890,298           | 26.7             | 203,258          | 5.9              | 250,349          | 10.1             | 1,343,906         | 19.8             |
| February              | 3,568,459                | 7.5              | 931,202           | 20.9             | 226,614          | 8.8              | 298,502          | 15.1             | 1,456,318         | 17.7             |
| March                 | 4,788,804                | -4.9             | 1,245,199         | -0.8             | 368,675          | 5.8              | 406,385          | -1.1             | 2,020,258         | 0.3              |
| April                 | 5,517,193                | 2.2              | 1,478,350         | -2.0             | 453,087          | 6.1              | 570,437          | 28.4             | 2,501,874         | 5.1              |
| May                   | 5,581,187                | -4.9             | 1,618,033         | -0.8             | 505,095          | 7.8              | 618,347          | 17.5             | 2,741,475         | 4.4              |
| June                  | 4,937,505                | -7.9             | 1,435,211         | -1.5             | 433,544          | 10.5             | 585,413          | 21.2             | 2,454,168         | 5.2              |
| July                  | 4,612,415                | 3.2              | 1,268,766         | 7.8              | 404,648          | 18.7             | 474,076          | 11.4             | 2,147,490         | 10.5             |
| August                | 4,491,046                | -8.7             | 1,212,320         | -8.8             | 358,465          | 1.7              | 440,900          | 2.2              | 2,011,685         | -4.8             |
| September             | 4,198,130                | 0.0              | 1,094,265         | -3.7             | 335,636          | 17.9             | 419,388          | 6.8              | 1,849,289         | 1.9              |
| October               | 3,956,327                | -1.0             | 955,015           | -4.8             | 278,325          | 10.1             | 396,511          | 10.5             | 1,629,851         | 1.0              |
| November              | 3,414,250                | -12.9            | 790,471           | -20.3            | 219,812          | 0.2              | 335,337          | -2.3             | 1,345,620         | -13.4            |
| December              | 3,196,938                | -23.4            | 698,686           | -23.3            | 179,241          | -18.9            | 306,854          | 0.2              | 1,184,781         | -17.6            |
| <b>Year</b>           | <b>51,671,132</b>        | <b>-4.0</b>      | <b>13,617,816</b> | <b>-1.8</b>      | <b>3,966,400</b> | <b>7.0</b>       | <b>5,102,499</b> | <b>10.7</b>      | <b>22,686,715</b> | <b>2.2</b>       |
| <b>2009</b>           |                          |                  |                   |                  |                  |                  |                  |                  |                   |                  |
| January <sup>f</sup>  | 2,474,417                | -27.4            | 507,228           | -43.0            | 165,705          | -18.5            | 211,478          | -15.5            | 884,410           | -34.2            |
| February <sup>p</sup> | 2,555,416                | -28.4            | 551,107           | -40.8            | 180,252          | -20.5            | 292,192          | -2.1             | 1,023,552         | -29.7            |

See footnotes at the end of the table.

Table 1-2 – continued

Monthly sales of new motor vehicles, by type and origin in dollars

|             | Total new motor vehicles |                  | Trucks <sup>1</sup> |                  |           |                  |            |                  |
|-------------|--------------------------|------------------|---------------------|------------------|-----------|------------------|------------|------------------|
|             |                          |                  | North America       |                  | Overseas  |                  | Total      |                  |
|             | Units                    | Year/year change | Units               | Year/year change | Units     | Year/year change | Units      | Year/year change |
|             | \$'000                   | %                | \$'000              | %                | \$'000    | %                | \$'000     | %                |
| <b>2007</b> |                          |                  |                     |                  |           |                  |            |                  |
| January     | 3,143,460                | 6.8              | 1,767,670           | 11.2             | 253,581   | 12.0             | 2,021,251  | 11.3             |
| February    | 3,320,383                | 0.1              | 1,835,959           | 3.0              | 246,671   | -10.1            | 2,082,630  | 1.2              |
| March       | 5,033,603                | -0.2             | 2,661,485           | 3.5              | 357,729   | -13.9            | 3,019,214  | 1.1              |
| April       | 5,398,710                | 7.0              | 2,640,656           | 8.8              | 377,677   | -11.0            | 3,018,334  | 5.9              |
| May         | 5,868,466                | 6.6              | 2,859,405           | 9.6              | 383,117   | -12.0            | 3,242,522  | 6.5              |
| June        | 5,361,019                | 3.3              | 2,686,889           | 5.2              | 340,779   | -14.5            | 3,027,668  | 2.6              |
| July        | 4,471,395                | -2.7             | 2,201,975           | -2.5             | 325,631   | -20.3            | 2,527,606  | -5.2             |
| August      | 4,916,369                | -1.7             | 2,452,869           | -1.6             | 350,490   | -22.5            | 2,803,358  | -4.8             |
| September   | 4,199,361                | -7.7             | 2,051,669           | -9.9             | 333,431   | -21.5            | 2,385,099  | -11.7            |
| October     | 3,997,236                | -2.9             | 2,081,436           | -4.5             | 301,440   | -15.9            | 2,382,876  | -6.1             |
| November    | 3,920,855                | -7.3             | 2,080,145           | -8.2             | 286,499   | -12.4            | 2,366,644  | -8.7             |
| December    | 4,173,876                | -5.7             | 2,347,732           | -3.7             | 388,522   | 30.0             | 2,736,254  | -0.1             |
| <b>Year</b> | 53,804,733               | -0.3             | 27,667,890          | 0.8              | 3,945,567 | -11.2            | 31,613,456 | -0.9             |
| <b>2008</b> |                          |                  |                     |                  |           |                  |            |                  |
| January     | 3,408,878                | 8.4              | 1,794,768           | 1.5              | 270,204   | 6.6              | 2,064,972  | 2.2              |
| February    | 3,568,459                | 7.5              | 1,831,840           | -0.2             | 280,301   | 13.6             | 2,112,141  | 1.4              |
| March       | 4,788,804                | -4.9             | 2,375,522           | -10.7            | 393,023   | 9.9              | 2,768,545  | -8.3             |
| April       | 5,517,193                | 2.2              | 2,577,227           | -2.4             | 438,093   | 16.0             | 3,015,319  | -0.1             |
| May         | 5,581,187                | -4.9             | 2,424,215           | -15.2            | 415,498   | 8.5              | 2,839,712  | -12.4            |
| June        | 4,937,505                | -7.9             | 2,121,624           | -21.0            | 361,714   | 6.1              | 2,483,338  | -18.0            |
| July        | 4,612,415                | 3.2              | 2,122,845           | -3.6             | 342,080   | 5.1              | 2,464,925  | -2.5             |
| August      | 4,491,046                | -8.7             | 2,118,241           | -13.6            | 361,119   | 3.0              | 2,479,360  | -11.6            |
| September   | 4,198,130                | 0.0              | 1,991,518           | -2.9             | 357,323   | 7.2              | 2,348,841  | -1.5             |
| October     | 3,956,327                | -1.0             | 1,937,753           | -6.9             | 388,723   | 29.0             | 2,326,476  | -2.4             |
| November    | 3,414,250                | -12.9            | 1,756,191           | -15.6            | 312,438   | 9.1              | 2,068,630  | -12.6            |
| December    | 3,196,938                | -23.4            | 1,735,507           | -26.1            | 276,650   | -28.8            | 2,012,157  | -26.5            |
| <b>Year</b> | 51,671,132               | -4.0             | 24,787,251          | -10.4            | 4,197,166 | 6.4              | 28,984,416 | -8.3             |
| <b>2009</b> |                          |                  |                     |                  |           |                  |            |                  |
| January P   | 2,474,417                | -27.4            | 1,354,960           | -24.5            | 235,048   | -13.0            | 1,590,007  | -23.0            |
| February P  | 2,555,416                | -28.4            | 1,287,928           | -29.7            | 243,936   | -13.0            | 1,531,864  | -27.5            |

1. Trucks include minivans, sport-utility vehicles, light and heavy trucks, vans and buses.

Note(s): Percentage change are year-over-year changes.



**Table 2**  
**Average monthly prices of passenger cars, by origin**

| Period                | Total, country of manufacture |                   | North America       |                   | Total, overseas     |                  | Japan               |                   | Other countries     |                  |
|-----------------------|-------------------------------|-------------------|---------------------|-------------------|---------------------|------------------|---------------------|-------------------|---------------------|------------------|
|                       | Amount                        | Change            | Amount              | Change            | Amount              | Change           | Amount              | Change            | Amount              | Change           |
|                       | \$                            | %                 | \$                  | %                 | \$                  | %                | \$                  | %                 | \$                  | %                |
| <b>2007</b>           |                               |                   |                     |                   |                     |                  |                     |                   |                     |                  |
| January               | 26,278                        | 2.9               | 25,475              | 2.2               | 27,745              | 2.5              | 24,909              | -0.3              | 30,695              | 6.9              |
| February              | 26,193                        | 1.5               | 25,363              | 1.0               | 27,683              | 1.2              | 25,093              | 0.3               | 30,183              | 4.2              |
| March                 | 26,336                        | 1.6               | 25,333              | 1.7               | 28,182              | 0.1              | 24,539              | -2.0              | 32,243              | 5.7              |
| April                 | 25,749                        | 1.1               | 24,985              | 1.1               | 27,188              | 1.0              | 24,201              | 2.1               | 30,846              | 2.6              |
| May                   | 25,603                        | 0.0               | 24,947              | 0.4               | 26,757              | -1.1             | 24,248              | -0.1              | 29,472              | -1.5             |
| June                  | 25,437                        | 0.1               | 24,832              | -0.5              | 26,513              | 0.9              | 24,057              | 0.1               | 28,910              | 0.9              |
| July                  | 25,010                        | -0.6              | 24,618              | -0.6              | 25,635              | -0.8             | 23,952              | 0.5               | 27,163              | -2.9             |
| August                | 25,135                        | 0.4               | 24,732              | 0.1               | 25,849              | 0.7              | 24,196              | 1.4               | 27,377              | -1.5             |
| September             | 25,605                        | 0.8               | 24,977              | 2.2               | 26,734              | -2.1             | 24,541              | 1.0               | 28,587              | -6.2             |
| October               | 26,036                        | 2.9               | 25,394              | 3.5               | 27,162              | 2.4              | 25,030              | 3.2               | 28,896              | 0.7              |
| November              | 26,710                        | 4.0               | 26,382              | 6.7               | 27,308              | -0.5             | 25,242              | -0.1              | 28,815              | -1.9             |
| December              | 27,136                        | 0.7               | 26,113              | 0.9               | 29,104              | -1.7             | 25,626              | -1.9              | 32,263              | -1.7             |
| <b>Year</b>           | 25,834                        | 1.0               | 25,180              | 1.3               | 27,004              | 0.1              | 24,507              | 0.4               | 29,415              | -0.2             |
| <b>2008</b>           |                               |                   |                     |                   |                     |                  |                     |                   |                     |                  |
| January               | 25,985                        | -1.1              | 25,763              | 1.1               | 26,431              | -4.7             | 24,074              | -3.4              | 28,713              | -6.5             |
| February              | 25,018                        | -4.5              | 24,919              | -1.8              | 25,196              | -9.0             | 23,032              | -8.2              | 27,132              | -10.1            |
| March                 | 25,214                        | -4.3              | 24,762              | -2.3              | 25,976              | -7.8             | 23,726              | -3.3              | 28,423              | -11.8            |
| April                 | 25,443                        | -1.2              | 24,583              | -1.6              | 26,797              | -1.4             | 24,289              | 0.4               | 29,190              | -5.4             |
| May                   | 25,062                        | -2.1              | 24,024              | -3.7              | 26,726              | -0.1             | 23,616              | -2.6              | 29,949              | 1.6              |
| June                  | 25,567                        | 0.5               | 24,259              | -2.3              | 27,667              | 4.4              | 23,727              | -1.4              | 31,547              | 9.1              |
| July                  | 25,021                        | 0.0               | 23,951              | -2.7              | 26,747              | 4.3              | 23,459              | -2.1              | 30,382              | 11.9             |
| August                | 24,859                        | -1.1              | 24,077              | -2.6              | 26,148              | 1.2              | 23,128              | -4.4              | 29,253              | 6.9              |
| September             | 24,828                        | -3.0              | 24,019              | -3.8              | 26,103              | -2.4             | 22,862              | -6.8              | 29,443              | 3.0              |
| October               | 25,660                        | -1.4              | 24,041              | -5.3              | 28,362              | 4.4              | 24,108              | -3.7              | 32,371              | 12.0             |
| November              | 26,254                        | -1.7              | 24,756              | -6.2              | 28,730              | 5.2              | 23,864              | -5.5              | 33,162              | 15.1             |
| December              | 26,482                        | -2.4              | 24,934              | -4.5              | 29,076              | -0.1             | 23,597              | -7.9              | 33,639              | 4.3              |
| <b>Year</b>           | 25,362                        | -1.8              | 24,430              | -3.0              | 26,904              | -0.4             | 23,621              | -3.6              | 30,162              | 2.5              |
| <b>2009</b>           |                               |                   |                     |                   |                     |                  |                     |                   |                     |                  |
| January <sup>r</sup>  | 24,744 <sup>r</sup>           | -4.8 <sup>r</sup> | 23,503 <sup>r</sup> | -8.8 <sup>r</sup> | 26,633 <sup>r</sup> | 0.8 <sup>r</sup> | 23,991 <sup>r</sup> | -0.3 <sup>r</sup> | 29,149 <sup>r</sup> | 1.5 <sup>r</sup> |
| February <sup>p</sup> | 25,096                        | 0.3               | 23,828              | -4.4              | 26,757              | 6.2              | 23,846              | 3.5               | 28,936              | 6.6              |

**Note(s):** Percentage changes shown are year-to-year changes.

**Table 3**  
**Monthly market share of new passenger car sales (units), by origin, Canada**

| Period      | Total          |              | Passenger cars |              |                |              |                 |              |
|-------------|----------------|--------------|----------------|--------------|----------------|--------------|-----------------|--------------|
|             |                |              | North America  |              | Japan          |              | Other countries |              |
|             | Units          | Market share | Units          | Market share | Units          | Market share | Units           | Market share |
|             | no.            | %            | no.            | %            | no.            | %            | no.             | %            |
| <b>2007</b> |                |              |                |              |                |              |                 |              |
| January     | 42,705         | 100.0        | 27,594         | 64.6         | 7,704          | 18.0         | 7,407           | 17.3         |
| February    | 47,256         | 100.0        | 30,361         | 64.2         | 8,299          | 17.6         | 8,596           | 18.2         |
| March       | 76,487         | 100.0        | 49,540         | 64.8         | 14,206         | 18.6         | 12,741          | 16.7         |
| April       | 92,446         | 100.0        | 60,392         | 65.3         | 17,649         | 19.1         | 14,405          | 15.6         |
| May         | 102,564        | 100.0        | 65,400         | 63.8         | 19,315         | 18.8         | 17,849          | 17.4         |
| June        | 91,729         | 100.0        | 58,700         | 64.0         | 16,315         | 17.8         | 16,714          | 18.2         |
| July        | 77,722         | 100.0        | 47,819         | 61.5         | 14,232         | 18.3         | 15,671          | 20.2         |
| August      | 84,067         | 100.0        | 53,749         | 63.9         | 14,567         | 17.3         | 15,751          | 18.7         |
| September   | 70,855         | 100.0        | 45,513         | 64.2         | 11,602         | 16.4         | 13,740          | 19.4         |
| October     | 62,005         | 100.0        | 39,486         | 63.7         | 10,098         | 16.3         | 12,421          | 20.0         |
| November    | 58,188         | 100.0        | 37,583         | 64.6         | 8,689          | 14.9         | 11,916          | 20.5         |
| December    | 52,979         | 100.0        | 34,864         | 65.8         | 8,622          | 16.3         | 9,493           | 17.9         |
| <b>Year</b> | <b>859,003</b> | <b>100.0</b> | <b>551,001</b> | <b>64.1</b>  | <b>151,298</b> | <b>17.6</b>  | <b>156,704</b>  | <b>18.2</b>  |
| <b>2008</b> |                |              |                |              |                |              |                 |              |
| January     | 51,719         | 100.0        | 34,557         | 66.8         | 8,443          | 16.3         | 8,719           | 16.9         |
| February    | 58,210         | 100.0        | 37,369         | 64.2         | 9,839          | 16.9         | 11,002          | 18.9         |
| March       | 80,124         | 100.0        | 50,287         | 62.8         | 15,539         | 19.4         | 14,298          | 17.8         |
| April       | 98,333         | 100.0        | 60,137         | 61.2         | 18,654         | 19.0         | 19,542          | 19.9         |
| May         | 109,387        | 100.0        | 67,352         | 61.6         | 21,388         | 19.6         | 20,647          | 18.9         |
| June        | 95,991         | 100.0        | 59,162         | 61.6         | 18,272         | 19.0         | 18,557          | 19.3         |
| July        | 85,826         | 100.0        | 52,973         | 61.7         | 17,249         | 20.1         | 15,604          | 18.2         |
| August      | 80,923         | 100.0        | 50,352         | 62.2         | 15,499         | 19.2         | 15,072          | 18.6         |
| September   | 74,483         | 100.0        | 45,558         | 61.2         | 14,681         | 19.7         | 14,244          | 19.1         |
| October     | 63,518         | 100.0        | 39,724         | 62.5         | 11,545         | 18.2         | 12,249          | 19.3         |
| November    | 51,253         | 100.0        | 31,930         | 62.3         | 9,211          | 18.0         | 10,112          | 19.7         |
| December    | 44,739         | 100.0        | 28,021         | 62.6         | 7,596          | 17.0         | 9,122           | 20.4         |
| <b>Year</b> | <b>894,506</b> | <b>100.0</b> | <b>557,422</b> | <b>62.3</b>  | <b>167,916</b> | <b>18.8</b>  | <b>169,168</b>  | <b>18.9</b>  |
| <b>2009</b> |                |              |                |              |                |              |                 |              |
| January r   | 35,743         | 100.0        | 21,581         | 60.4         | 6,907          | 19.3         | 7,255           | 20.3         |
| February p  | 40,786         | 100.0        | 23,129         | 56.7         | 7,559          | 18.5         | 10,098          | 24.8         |

**Table 4**  
**Provincial sales of new motor vehicles, by type and origin, in units and dollars, February**

| Type and origin of vehicles                               | Canada    | Newfoundland and Labrador | Prince Edward Island | Nova Scotia | New Brunswick | Quebec  |
|---|-----------|---------------------------|----------------------|-------------|---------------|---------|
| <b>Total, new motor vehicles</b>                          |           |                           |                      |             |               |         |
| 2007 (no.)  | 99,877    | 1,253                     | 278                  | 2,606       | 2,019         | 23,310  |
| 2008 (no.)  | 113,877   | 2,013                     | 355                  | 3,516       | 2,527         | 29,755  |
| 2009 (no.)  | 82,039    | 1,188                     | 239                  | 2,445       | 1,717         | 21,501  |
| 2009 / 2008 %   | -28.0     | -41.0                     | -32.7                | -30.5       | -32.1         | -27.7   |
| 2007 (\$'000)   | 3,320,383 | 36,687                    | 7,378                | 74,659      | 63,225        | 690,127 |
| 2008 (\$'000)   | 3,568,459 | 54,123                    | 9,096                | 94,867      | 70,692        | 831,281 |
| 2009 (\$'000)   | 2,555,416 | 32,916                    | 6,308                | 67,915      | 50,105        | 634,187 |
| 2009 / 2008 %   | -28.4     | -39.2                     | -30.7                | -28.4       | -29.1         | -23.7   |
| <b>Passenger cars, manufactured in North America</b>      |           |                           |                      |             |               |         |
| 2007 (no.)  | 30,361    | 402                       | 115                  | 929         | 692           | 8,070   |
| 2008 (no.)  | 37,369    | 777                       | 144                  | 1,393       | 977           | 10,625  |
| 2009 (no.)  | 23,129    | 355                       | 67                   | 825         | 487           | 6,259   |
| 2009 / 2008 %   | -38.1     | -54.3                     | -53.5                | -40.8       | -50.2         | -41.1   |
| 2007 (\$'000)   | 770,050   | 9,138                     | 2,631                | 21,861      | 16,073        | 188,171 |
| 2008 (\$'000)   | 931,202   | 18,084                    | 3,256                | 32,541      | 22,227        | 241,308 |
| 2009 (\$'000)   | 551,107   | 7,969                     | 1,472                | 19,179      | 11,014        | 141,586 |
| 2009 / 2008 %   | -40.8     | -55.9                     | -54.8                | -41.1       | -50.4         | -41.3   |
| <b>Passenger cars, manufactured in Japan</b>              |           |                           |                      |             |               |         |
| 2007 (no.)  | 8,299     | x                         | x                    | 226         | x             | 3,132   |
| 2008 (no.)  | 9,839     | x                         | x                    | 288         | x             | 3,798   |
| 2009 (no.)  | 7,559     | x                         | x                    | 181         | x             | 3,168   |
| 2009 / 2008 %   | -23.2     | x                         | x                    | -37.2       | x             | -16.6   |
| 2007 (\$'000)   | 208,249   | x                         | x                    | 5,175       | x             | 70,259  |
| 2008 (\$'000)   | 226,614   | x                         | x                    | 6,203       | x             | 80,997  |
| 2009 (\$'000)   | 180,252   | x                         | x                    | 4,062       | x             | 69,365  |
| 2009 / 2008 %   | -20.5     | x                         | x                    | -34.5       | x             | -14.4   |
| <b>Passenger cars, manufactured in other countries</b>    |           |                           |                      |             |               |         |
| 2007 (no.)  | 8,596     | x                         | x                    | 247         | x             | 2,904   |
| 2008 (no.)  | 11,002    | x                         | x                    | 412         | x             | 4,517   |
| 2009 (no.)  | 10,098    | x                         | x                    | 344         | x             | 3,798   |
| 2009 / 2008 %   | -8.2      | x                         | x                    | -16.5       | x             | -15.9   |
| 2007 (\$'000)   | 259,453   | x                         | x                    | 5,461       | x             | 75,269  |
| 2008 (\$'000)   | 298,502   | x                         | x                    | 8,957       | x             | 104,955 |
| 2009 (\$'000)   | 292,192   | x                         | x                    | 7,177       | x             | 93,742  |
| 2009 / 2008 %   | -2.1      | x                         | x                    | -19.9       | x             | -10.7   |
| <b>Trucks <sup>1</sup>, manufactured in North America</b> |           |                           |                      |             |               |         |
| 2007 (no.)  | 46,119    | x                         | x                    | 1,063       | 946           | 7,670   |
| 2008 (no.)  | 48,315    | x                         | x                    | 1,263       | 1,021         | 8,957   |
| 2009 (no.)  | 34,939    | x                         | x                    | 945         | 827           | 6,606   |
| 2009 / 2008 %   | -27.7     | x                         | x                    | -25.2       | -19.0         | -26.2   |
| 2007 (\$'000)   | 1,835,959 | x                         | x                    | 37,081      | 37,491        | 299,598 |
| 2008 (\$'000)   | 1,831,840 | x                         | x                    | 41,636      | 36,302        | 338,041 |
| 2009 (\$'000)   | 1,287,928 | x                         | x                    | 32,444      | 29,205        | 266,551 |
| 2009 / 2008 %   | -29.7     | x                         | x                    | -22.1       | -19.5         | -21.1   |
| <b>Trucks <sup>1</sup>, manufactured overseas</b>         |           |                           |                      |             |               |         |
| 2007 (no.)  | 6,502     | x                         | x                    | 141         | 108           | 1,534   |
| 2008 (no.)  | 7,352     | x                         | x                    | 160         | 126           | 1,858   |
| 2009 (no.)  | 6,314     | x                         | x                    | 150         | 117           | 1,670   |
| 2009 / 2008 %   | -14.1     | x                         | x                    | -6.2        | -7.1          | -10.1   |
| 2007 (\$'000)   | 246,671   | x                         | x                    | 5,082       | 3,782         | 56,830  |
| 2008 (\$'000)   | 280,301   | x                         | x                    | 5,529       | 4,006         | 65,981  |
| 2009 (\$'000)   | 243,936   | x                         | x                    | 5,053       | 3,823         | 62,943  |
| 2009 / 2008 %   | -13.0     | x                         | x                    | -8.6        | -4.6          | -4.6    |

See footnotes at the end of the table.

Table 4 – continued

## Provincial sales of new motor vehicles, by type and origin, in units and dollars, February

| Type and origin of vehicles                              | Canada    | Ontario   | Manitoba | Saskatchewan | Alberta | British Columbia and the Territories <sup>2</sup> |
|--|-----------|-----------|----------|--------------|---------|---|
| <b>Total, new motor vehicles</b>                         |           |           |          |              |         |   |
| 2007 (no.)   | 99,877    | 35,347    | 2,652    | 2,429        | 16,333  | 13,650  |
| 2008 (no.)   | 113,877   | 38,614    | 3,087    | 3,207        | 17,182  | 13,621  |
| 2009 (no.)   | 82,039    | 30,303    | 2,287    | 2,386        | 11,102  | 8,871   |
| 2009 / 2008 %  | -28.0     | -21.5     | -25.9    | -25.6        | -35.4   | -34.9   |
| 2007 (\$'000)  | 3,320,383 | 1,154,616 | 93,693   | 91,164       | 608,831 | 500,002   |
| 2008 (\$'000)  | 3,568,459 | 1,216,695 | 100,964  | 116,329      | 599,604 | 474,809   |
| 2009 (\$'000)  | 2,555,416 | 954,388   | 74,726   | 78,252       | 369,903 | 286,717   |
| 2009 / 2008 %  | -28.4     | -21.6     | -26.0    | -32.7        | -38.3   | -39.6   |
| <b>Passenger cars, manufactured in North America</b>     |           |           |          |              |         |   |
| 2007 (no.)   | 30,361    | 11,566    | 744      | 523          | 3,555   | 3,765   |
| 2008 (no.)   | 37,369    | 13,754    | 981      | 873          | 4,105   | 3,740   |
| 2009 (no.)   | 23,129    | 9,431     | 553      | 520          | 2,411   | 2,221   |
| 2009 / 2008 %  | -38.1     | -31.4     | -43.6    | -40.4        | -41.3   | -40.6   |
| 2007 (\$'000)  | 770,050   | 293,413   | 18,317   | 12,911       | 89,474  | 118,060   |
| 2008 (\$'000)  | 931,202   | 344,897   | 23,933   | 21,607       | 104,866 | 118,483   |
| 2009 (\$'000)  | 551,107   | 230,230   | 13,016   | 12,585       | 60,022  | 54,034  |
| 2009 / 2008 %  | -40.8     | -33.2     | -45.6    | -41.8        | -42.8   | -54.4   |
| <b>Passenger cars, manufactured in Japan</b>             |           |           |          |              |         |   |
| 2007 (no.)   | 8,299     | 2,473     | 140      | 70           | 705     | 1,343   |
| 2008 (no.)   | 9,839     | 2,810     | 175      | 117          | 967     | 1,436   |
| 2009 (no.)   | 7,559     | 2,156     | 129      | 110          | 531     | 1,077   |
| 2009 / 2008 %  | -23.2     | -23.3     | -26.3    | -6.0         | -45.1   | -25.0   |
| 2007 (\$'000)  | 208,249   | 67,668    | 3,608    | 2,054        | 19,459  | 35,436  |
| 2008 (\$'000)  | 226,614   | 69,613    | 3,745    | 2,999        | 23,947  | 34,116  |
| 2009 (\$'000)  | 180,252   | 57,151    | 3,104    | 2,690        | 14,200  | 25,416  |
| 2009 / 2008 %  | -20.5     | -17.9     | -17.1    | -10.3        | -40.7   | -25.5   |
| <b>Passenger cars, manufactured in other countries</b>   |           |           |          |              |         |   |
| 2007 (no.)   | 8,596     | 2,925     | 124      | 87           | 773     | 1,285   |
| 2008 (no.)   | 11,002    | 3,155     | 200      | 125          | 771     | 1,310   |
| 2009 (no.)   | 10,098    | 3,436     | 162      | 117          | 795     | 1,092   |
| 2009 / 2008 %  | -8.2      | 8.9       | -19.0    | -6.4         | 3.1     | -16.6   |
| 2007 (\$'000)  | 259,453   | 102,516   | 3,111    | 2,426        | 23,745  | 41,680  |
| 2008 (\$'000)  | 298,502   | 103,007   | 5,007    | 3,017        | 21,925  | 41,724  |
| 2009 (\$'000)  | 292,192   | 114,776   | 3,869    | 2,720        | 23,631  | 39,078  |
| 2009 / 2008 %  | -2.1      | 11.4      | -22.7    | -9.8         | 7.8     | -6.3  |
| <b>Trucks<sup>1</sup>, manufactured in North America</b> |           |           |          |              |         |   |
| 2007 (no.)   | 46,119    | 16,078    | 1,476    | 1,624        | 10,436  | 6,095   |
| 2008 (no.)   | 48,315    | 16,306    | 1,535    | 1,951        | 10,236  | 6,086   |
| 2009 (no.)   | 34,939    | 12,878    | 1,297    | 1,487        | 6,589   | 3,667   |
| 2009 / 2008 %  | -27.7     | -21.0     | -15.5    | -23.8        | -35.6   | -39.7   |
| 2007 (\$'000)  | 1,835,959 | 601,242   | 62,523   | 69,349       | 442,930 | 260,572   |
| 2008 (\$'000)  | 1,831,840 | 595,704   | 61,250   | 83,645       | 407,046 | 237,124   |
| 2009 (\$'000)  | 1,287,928 | 457,161   | 49,708   | 54,594       | 242,115 | 134,804   |
| 2009 / 2008 %  | -29.7     | -23.3     | -18.8    | -34.7        | -40.5   | -43.2   |
| <b>Trucks<sup>1</sup>, manufactured overseas</b>         |           |           |          |              |         |   |
| 2007 (no.)   | 6,502     | 2,305     | 168      | 125          | 864     | 1,162   |
| 2008 (no.)   | 7,352     | 2,589     | 196      | 141          | 1,103   | 1,049   |
| 2009 (no.)   | 6,314     | 2,402     | 146      | 152          | 776     | 814   |
| 2009 / 2008 %  | -14.1     | -7.2      | -25.5    | 7.8          | -29.6   | -22.4   |
| 2007 (\$'000)  | 246,671   | 89,778    | 6,135    | 4,425        | 33,223  | 44,254  |
| 2008 (\$'000)  | 280,301   | 103,474   | 7,028    | 5,060        | 41,820  | 43,362  |
| 2009 (\$'000)  | 243,936   | 95,069    | 5,029    | 5,663        | 29,935  | 33,384  |
| 2009 / 2008 %  | -13.0     | -8.1      | -28.4    | 11.9         | -28.4   | -23.0   |

1. Trucks include minivans, sport-utility vehicles, light and heavy trucks, vans and buses.

2. For reasons of confidentiality, data for the Yukon, the Northwest Territories and Nunavut have been included with the data for British Columbia.

**Table 5-1**  
**Year to date provincial sales of new motor vehicles, by type and origin in units, January to February**

| Province  | Total new motor vehicles |                  | Passenger cars |                  |        |                  |                 |                  |         |                  |  |
|---|--------------------------|------------------|----------------|------------------|--------|------------------|-----------------|------------------|---------|------------------|--|
|   |                          |                  | North America  |                  | Japan  |                  | Other countries |                  | Total   |                  |  |
|   | Units                    | Year/year change | Units          | Year/year change | Units  | Year/year change | Units           | Year/year change | Units   | Year/year change |  |
|   | no.                      | %                | no.            | %                | no.    | %                | no.             | %                | no.     | %                |  |
| <b>2007</b>                                       |                          |                  |                |                  |        |                  |                 |                  |         |                  |  |
| Newfoundland and Labrador                         | 2,417                    | 9.2              | 768            | -3.4             | x      | x                | x               | x                | 1,069   | -4.2             |  |
| Prince Edward Island                              | 521                      | 5.7              | 219            | 2.8              | x      | x                | x               | x                | 291     | 9.0              |  |
| Nova Scotia                                       | 5,043                    | -9.0             | 1,730          | -21.6            | 406    | 36.2             | 461             | -23.9            | 2,597   | -16.5            |  |
| New Brunswick                                     | 4,039                    | 6.7              | 1,418          | 1.5              | x      | x                | x               | x                | 1,960   | 3.3              |  |
| Quebec  | 43,993                   | 3.9              | 14,826         | -3.9             | 5,905  | 29.1             | 5,276           | -3.4             | 26,007  | 2.2              |  |
| Ontario   | 69,746                   | -2.7             | 22,602         | -13.6            | 4,947  | 40.9             | 5,481           | -4.9             | 33,030  | -6.8             |  |
| Manitoba  | 5,182                    | 4.9              | 1,465          | -0.5             | 237    | 26.1             | 259             | 8.8              | 1,961   | 3.3              |  |
| Saskatchewan                                      | 4,868                    | 13.7             | 1,030          | -6.5             | 134    | 24.1             | 169             | -13.3            | 1,333   | -5.1             |  |
| Alberta   | 32,723                   | 7.3              | 6,937          | -16.8            | 1,458  | 34.1             | 1,413           | 15.5             | 9,808   | -7.9             |  |
| British Columbia and the Territories <sup>1</sup> | 25,758                   | 5.8              | 6,960          | -10.7            | 2,510  | 40.4             | 2,435           | 14.4             | 11,905  | 1.7              |  |
| <b>Canada</b>                                     | 194,290                  | 2.2              | 57,955         | -10.7            | 16,003 | 35.0             | 16,003          | -1.2             | 89,961  | -3.2             |  |
| <b>2008</b>                                       |                          |                  |                |                  |        |                  |                 |                  |         |                  |  |
| Newfoundland and Labrador                         | 3,723                    | 54.0             | 1,410          | 83.6             | x      | x                | x               | x                | 1,941   | 81.6             |  |
| Prince Edward Island                              | 643                      | 23.4             | 254            | 16.0             | x      | x                | x               | x                | 347     | 19.2             |  |
| Nova Scotia                                       | 6,631                    | 31.5             | 2,549          | 47.3             | 510    | 25.6             | 739             | 60.3             | 3,798   | 46.2             |  |
| New Brunswick                                     | 4,665                    | 15.5             | 1,764          | 24.4             | x      | x                | x               | x                | 2,449   | 24.9             |  |
| Quebec  | 54,796                   | 24.6             | 19,874         | 34.0             | 6,665  | 12.9             | 7,394           | 40.1             | 33,933  | 30.5             |  |
| Ontario   | 75,902                   | 8.8              | 26,853         | 18.8             | 5,488  | 10.9             | 6,125           | 11.7             | 38,466  | 16.5             |  |
| Manitoba  | 6,036                    | 16.5             | 2,002          | 36.7             | 343    | 44.7             | 347             | 34.0             | 2,692   | 37.3             |  |
| Saskatchewan                                      | 6,165                    | 26.6             | 1,529          | 48.4             | 219    | 63.4             | 240             | 42.0             | 1,988   | 49.1             |  |
| Alberta   | 34,150                   | 4.4              | 8,548          | 23.2             | 1,803  | 23.7             | 1,520           | 7.6              | 11,871  | 21.0             |  |
| British Columbia and the Territories <sup>1</sup> | 26,712                   | 3.7              | 7,143          | 2.6              | 2,812  | 12.0             | 2,489           | 2.2              | 12,444  | 4.5              |  |
| <b>Canada</b>                                     | 219,423                  | 12.9             | 71,926         | 24.1             | 18,282 | 14.2             | 19,721          | 23.2             | 109,929 | 22.2             |  |
| <b>2009</b>                                       |                          |                  |                |                  |        |                  |                 |                  |         |                  |  |
| Newfoundland and Labrador                         | 2,313                    | -37.9            | 644            | -54.3            | x      | x                | x               | x                | 1,081   | -44.3            |  |
| Prince Edward Island                              | 489                      | -24.0            | 165            | -35.0            | x      | x                | x               | x                | 288     | -22.8            |  |
| Nova Scotia                                       | 4,593                    | -30.7            | 1,500          | -41.2            | 371    | -27.3            | 587             | -20.6            | 2,458   | -35.3            |  |
| New Brunswick                                     | 3,496                    | -25.1            | 964            | -45.4            | x      | x                | x               | x                | 1,515   | -38.1            |  |
| Quebec  | 39,137                   | -28.6            | 11,440         | -42.4            | 5,631  | -15.5            | 6,327           | -14.4            | 23,398  | -31.0            |  |
| Ontario   | 58,035                   | -23.5            | 17,911         | -33.3            | 4,265  | -22.3            | 5,830           | -4.8             | 28,006  | -27.2            |  |
| Manitoba  | 4,717                    | -21.9            | 1,167          | -41.7            | 265    | -22.7            | 320             | -7.8             | 1,752   | -34.9            |  |
| Saskatchewan                                      | 5,122                    | -16.9            | 1,128          | -26.2            | 200    | -8.7             | 204             | -15.0            | 1,532   | -22.9            |  |
| Alberta   | 24,253                   | -29.0            | 5,088          | -40.5            | 1,162  | -35.6            | 1,463           | -3.8             | 7,713   | -35.0            |  |
| British Columbia and the Territories <sup>1</sup> | 18,701                   | -30.0            | 4,703          | -34.2            | 2,144  | -23.8            | 1,959           | -21.3            | 8,806   | -29.2            |  |
| <b>Canada</b>                                     | 160,856                  | -26.7            | 44,710         | -37.8            | 14,466 | -20.9            | 17,353          | -12.0            | 76,529  | -30.4            |  |

See footnotes at the end of the table.

Table 5-1 – continued

Year to date provincial sales of new motor vehicles, by type and origin in units, January to February

| Province  | Total new motor vehicles |                  | Trucks <sup>2</sup> |                  |          |                  |         |                  |
|---|--------------------------|------------------|---------------------|------------------|----------|------------------|---------|------------------|
|   |                          |                  | North America       |                  | Overseas |                  | Total   |                  |
|   | Units                    | Year/year change | Units               | Year/year change | Units    | Year/year change | Units   | Year/year change |
|   | no.                      | %                | no.                 | %                | no.      | %                | no.     | %                |
| <b>2007</b>                                       |                          |                  |                     |                  |          |                  |         |                  |
| Newfoundland and Labrador                         | 2,417                    | 9.2              | x                   | x                | x        | x                | 1,348   | 22.8             |
| Prince Edward Island                              | 521                      | 5.7              | x                   | x                | x        | x                | 230     | 1.8              |
| Nova Scotia                                       | 5,043                    | -9.0             | 2,152               | 4.8              | 294      | -21.6            | 2,446   | 0.7              |
| New Brunswick                                     | 4,039                    | 6.7              | 1,847               | 14.9             | 232      | -16.8            | 2,079   | 10.2             |
| Quebec  | 43,993                   | 3.9              | 14,995              | 10.5             | 2,991    | -10.1            | 17,986  | 6.5              |
| Ontario   | 69,746                   | -2.7             | 32,014              | 3.9              | 4,702    | -13.8            | 36,716  | 1.2              |
| Manitoba  | 5,182                    | 4.9              | 2,906               | 6.4              | 315      | 0.6              | 3,221   | 5.8              |
| Saskatchewan                                      | 4,868                    | 13.7             | 3,262               | 24.6             | 273      | 5.4              | 3,535   | 22.9             |
| Alberta   | 32,723                   | 7.3              | 20,984              | 15.3             | 1,931    | 16.8             | 22,915  | 15.4             |
| British Columbia and the Territories <sup>1</sup> | 25,758                   | 5.8              | 11,625              | 8.8              | 2,228    | 14.0             | 13,853  | 9.6              |
| <b>Canada</b>                                     | 194,290                  | 2.2              | 91,165              | 9.3              | 13,164   | -4.8             | 104,329 | 7.3              |
| <b>2008</b>                                       |                          |                  |                     |                  |          |                  |         |                  |
| Newfoundland and Labrador                         | 3,723                    | 54.0             | x                   | x                | x        | x                | 1,782   | 32.2             |
| Prince Edward Island                              | 643                      | 23.4             | x                   | x                | x        | x                | 296     | 28.7             |
| Nova Scotia                                       | 6,631                    | 31.5             | 2,513               | 16.8             | 320      | 8.8              | 2,833   | 15.8             |
| New Brunswick                                     | 4,665                    | 15.5             | 1,973               | 6.8              | 243      | 4.7              | 2,216   | 6.6              |
| Quebec  | 54,796                   | 24.6             | 17,405              | 16.1             | 3,458    | 15.6             | 20,863  | 16.0             |
| Ontario   | 75,902                   | 8.8              | 32,133              | 0.4              | 5,303    | 12.8             | 37,436  | 2.0              |
| Manitoba  | 6,036                    | 16.5             | 2,994               | 3.0              | 350      | 11.1             | 3,344   | 3.8              |
| Saskatchewan                                      | 6,165                    | 26.6             | 3,871               | 18.7             | 306      | 12.1             | 4,177   | 18.2             |
| Alberta   | 34,150                   | 4.4              | 20,161              | -3.9             | 2,118    | 9.7              | 22,279  | -2.8             |
| British Columbia and the Territories <sup>1</sup> | 26,712                   | 3.7              | 12,251              | 5.4              | 2,017    | -9.5             | 14,268  | 3.0              |
| <b>Canada</b>                                     | 219,423                  | 12.9             | 95,153              | 4.4              | 14,341   | 8.9              | 109,494 | 5.0              |
| <b>2009</b>                                       |                          |                  |                     |                  |          |                  |         |                  |
| Newfoundland and Labrador                         | 2,313                    | -37.9            | x                   | x                | x        | x                | 1,232   | -30.9            |
| Prince Edward Island                              | 489                      | -24.0            | x                   | x                | x        | x                | 221     | -25.3            |
| Nova Scotia                                       | 4,593                    | -30.7            | 1,841               | -26.7            | 294      | -8.1             | 2,135   | -24.6            |
| New Brunswick                                     | 3,496                    | -25.1            | 1,752               | -11.2            | 229      | -5.8             | 1,981   | -10.6            |
| Quebec  | 39,137                   | -28.6            | 12,726              | -26.9            | 3,013    | -12.9            | 15,739  | -24.6            |
| Ontario   | 58,035                   | -23.5            | 25,315              | -21.2            | 4,714    | -11.1            | 30,029  | -19.8            |
| Manitoba  | 4,717                    | -21.9            | 2,663               | -11.1            | 302      | -13.7            | 2,965   | -11.3            |
| Saskatchewan                                      | 5,122                    | -16.9            | 3,279               | -15.3            | 311      | 1.6              | 3,590   | -14.1            |
| Alberta   | 24,253                   | -29.0            | 14,890              | -26.1            | 1,650    | -22.1            | 16,540  | -25.8            |
| British Columbia and the Territories <sup>1</sup> | 18,701                   | -30.0            | 8,195               | -33.1            | 1,700    | -15.7            | 9,895   | -30.6            |
| <b>Canada</b>                                     | 160,856                  | -26.7            | 71,924              | -24.4            | 12,403   | -13.5            | 84,327  | -23.0            |

1. For reasons of confidentiality, data for the Yukon, the Northwest Territories and Nunavut have been included with the data for British Columbia.

2. Trucks include minivans, sport-utility vehicles, light and heavy trucks, vans and buses.

Note(s): Percentage changes shown are year-to-year changes.

**Table 5-2**  
**Year to date provincial sales of new motor vehicles, by type and origin in dollars, January to February**

| Province  | Total new motor vehicles |                  | Passenger cars   |                  |                |                  |                 |                  |                  |                  |
|---|--------------------------|------------------|------------------|------------------|----------------|------------------|-----------------|------------------|------------------|------------------|
|   |                          |                  | North America    |                  | Japan          |                  | Other countries |                  | Total            |                  |
|   | Units                    | Year/year change | Units            | Year/year change | Units          | Year/year change | Units           | Year/year change | Units            | Year/year change |
|   | \$'000                   | %                | \$'000           | %                | \$'000         | %                | \$'000          | %                | \$'000           | %                |
| <b>2007</b>                                       |                          |                  |                  |                  |                |                  |                 |                  |                  |                  |
| Newfoundland and Labrador                         | 69,707                   | 12.3             | 17,576           | -3.6             | x              | x                | x               | x                | 23,695           | -3.8             |
| Prince Edward Island                              | 13,785                   | 5.7              | 5,079            | 3.8              | x              | x                | x               | x                | 6,556            | 10.8             |
| Nova Scotia                                       | 153,558                  | -0.3             | 41,033           | -20.2            | 9,715          | 45.3             | 9,843           | -22.1            | 60,590           | -14.4            |
| New Brunswick                                     | 125,613                  | 10.5             | 33,218           | 1.0              | x              | x                | x               | x                | 44,764           | 4.8              |
| Quebec  | 1,303,333                | 3.7              | 347,351          | -5.6             | 130,165        | 29.3             | 135,373         | 1.6              | 612,889          | 1.8              |
| Ontario   | 2,291,262                | -3.8             | 571,859          | -15.0            | 136,637        | 41.1             | 193,298         | 2.3              | 901,794          | -5.9             |
| Manitoba  | 188,064                  | 8.2              | 35,816           | -2.6             | 6,125          | 32.3             | 6,587           | 6.8              | 48,528           | 2.0              |
| Saskatchewan                                      | 178,857                  | 13.9             | 25,775           | -9.0             | 3,757          | 13.5             | 4,281           | -4.9             | 33,811           | -6.4             |
| Alberta   | 1,194,975                | 6.5              | 175,075          | -19.4            | 40,414         | 33.5             | 44,892          | 21.9             | 260,381          | -8.4             |
| British Columbia and the Territories <sup>1</sup> | 944,688                  | 14.6             | 220,219          | 14.1             | 64,745         | 36.1             | 81,989          | 11.0             | 366,953          | 16.7             |
| <b>Canada</b>                                     | <b>6,463,843</b>         | <b>3.3</b>       | <b>1,473,000</b> | <b>-9.3</b>      | <b>400,151</b> | <b>35.0</b>      | <b>486,810</b>  | <b>4.2</b>       | <b>2,359,962</b> | <b>-1.1</b>      |
| <b>2008</b>                                       |                          |                  |                  |                  |                |                  |                 |                  |                  |                  |
| Newfoundland and Labrador                         | 101,930                  | 46.2             | 32,743           | 86.3             | x              | x                | x               | x                | 42,956           | 81.3             |
| Prince Edward Island                              | 16,788                   | 21.8             | 5,705            | 12.3             | x              | x                | x               | x                | 7,532            | 14.9             |
| Nova Scotia                                       | 182,916                  | 19.1             | 60,791           | 48.2             | 11,081         | 14.1             | 15,552          | 58.0             | 87,423           | 44.3             |
| New Brunswick                                     | 135,177                  | 7.6              | 40,473           | 21.8             | x              | x                | x               | x                | 54,177           | 21.0             |
| Quebec  | 1,544,128                | 18.5             | 457,780          | 31.8             | 142,805        | 9.7              | 174,126         | 28.6             | 774,710          | 26.4             |
| Ontario   | 2,420,531                | 5.6              | 682,359          | 19.3             | 139,657        | 2.2              | 202,888         | 5.0              | 1,024,904        | 13.7             |
| Manitoba  | 201,632                  | 7.2              | 50,044           | 39.7             | 7,864          | 28.4             | 8,392           | 27.4             | 66,299           | 36.6             |
| Saskatchewan                                      | 222,012                  | 24.1             | 38,129           | 47.9             | 5,713          | 52.1             | 5,734           | 33.9             | 49,576           | 46.6             |
| Alberta   | 1,203,562                | 0.7              | 221,278          | 26.4             | 45,150         | 11.7             | 44,525          | -0.8             | 310,953          | 19.4             |
| British Columbia and the Territories <sup>1</sup> | 948,662                  | 0.4              | 232,200          | 5.4              | 68,554         | 5.9              | 80,939          | -1.3             | 381,693          | 4.0              |
| <b>Canada</b>                                     | <b>6,977,337</b>         | <b>7.9</b>       | <b>1,821,500</b> | <b>23.7</b>      | <b>429,872</b> | <b>7.4</b>       | <b>548,851</b>  | <b>12.7</b>      | <b>2,800,224</b> | <b>18.7</b>      |
| <b>2009</b>                                       |                          |                  |                  |                  |                |                  |                 |                  |                  |                  |
| Newfoundland and Labrador                         | 63,221                   | -38.0            | 14,262           | -56.4            | x              | x                | x               | x                | 23,029           | -46.4            |
| Prince Edward Island                              | 12,487                   | -25.6            | 3,572            | -37.4            | x              | x                | x               | x                | 5,527            | -26.6            |
| Nova Scotia                                       | 129,003                  | -29.5            | 34,516           | -43.2            | 8,301          | -25.1            | 12,587          | -19.1            | 55,405           | -36.6            |
| New Brunswick                                     | 104,883                  | -22.4            | 21,984           | -45.7            | x              | x                | x               | x                | 33,670           | -37.9            |
| Quebec  | 1,155,466                | -25.2            | 257,956          | -43.7            | 123,610        | -13.4            | 156,188         | -10.3            | 537,753          | -30.6            |
| Ontario   | 1,826,520                | -24.5            | 430,154          | -37.0            | 112,696        | -19.3            | 196,752         | -3.0             | 739,602          | -27.8            |
| Manitoba  | 149,224                  | -26.0            | 27,351           | -45.3            | 6,254          | -20.5            | 7,517           | -10.4            | 41,120           | -38.0            |
| Saskatchewan                                      | 168,384                  | -24.2            | 27,263           | -28.5            | 4,874          | -14.7            | 4,860           | -15.2            | 36,997           | -25.4            |
| Alberta   | 811,293                  | -32.6            | 126,652          | -42.8            | 30,385         | -32.7            | 44,147          | -0.8             | 201,184          | -35.3            |
| British Columbia and the Territories <sup>1</sup> | 609,353                  | -35.8            | 114,626          | -50.6            | 50,948         | -25.7            | 68,101          | -15.9            | 233,674          | -38.8            |
| <b>Canada</b>                                     | <b>5,029,833</b>         | <b>-27.9</b>     | <b>1,058,335</b> | <b>-41.9</b>     | <b>345,957</b> | <b>-19.5</b>     | <b>503,670</b>  | <b>-8.2</b>      | <b>1,907,962</b> | <b>-31.9</b>     |

See footnotes at the end of the table.

Table 5-2 – continued

Year to date provincial sales of new motor vehicles, by type and origin in dollars, January to February

| Province  | Total new motor vehicles |                  | Trucks <sup>2</sup> |                  |                |                  |                  |                  |
|---|--------------------------|------------------|---------------------|------------------|----------------|------------------|------------------|------------------|
|   |                          |                  | North America       |                  | Overseas       |                  | Total            |                  |
|   | Units                    | Year/year change | Units               | Year/year change | Units          | Year/year change | Units            | Year/year change |
|   | \$'000                   | %                | \$'000              | %                | \$'000         | %                | \$'000           | %                |
| <b>2007</b>                                       |                          |                  |                     |                  |                |                  |                  |                  |
| Newfoundland and Labrador                         | 69,707                   | 12.3             | x                   | x                | x              | x                | 46,012           | 22.9             |
| Prince Edward Island                              | 13,785                   | 5.7              | x                   | x                | x              | x                | 7,227            | 1.4              |
| Nova Scotia                                       | 153,558                  | -0.3             | 82,849              | 16.7             | 10,119         | -17.4            | 92,967           | 11.7             |
| New Brunswick                                     | 125,613                  | 10.5             | 72,827              | 17.1             | 8,023          | -8.2             | 80,850           | 14.0             |
| Quebec  | 1,303,333                | 3.7              | 580,722             | 6.8              | 109,722        | -1.8             | 690,444          | 5.4              |
| Ontario   | 2,291,262                | -3.8             | 1,205,603           | -1.0             | 183,866        | -10.6            | 1,389,468        | -2.4             |
| Manitoba  | 188,064                  | 8.2              | 128,127             | 10.8             | 11,411         | 7.7              | 139,536          | 10.6             |
| Saskatchewan                                      | 178,857                  | 13.9             | 135,026             | 20.9             | 10,020         | 8.7              | 145,046          | 20.0             |
| Alberta   | 1,194,975                | 6.5              | 860,041             | 10.9             | 74,554         | 20.5             | 934,594          | 11.6             |
| British Columbia and the Territories <sup>1</sup> | 944,688                  | 14.6             | 491,780             | 12.8             | 85,955         | 15.8             | 577,734          | 13.3             |
| <b>Canada</b>                                     | <b>6,463,843</b>         | <b>3.3</b>       | <b>3,603,629</b>    | <b>6.9</b>       | <b>500,252</b> | <b>-0.1</b>      | <b>4,103,881</b> | <b>6.0</b>       |
| <b>2008</b>                                       |                          |                  |                     |                  |                |                  |                  |                  |
| Newfoundland and Labrador                         | 101,930                  | 46.2             | x                   | x                | x              | x                | 58,973           | 28.2             |
| Prince Edward Island                              | 16,788                   | 21.8             | x                   | x                | x              | x                | 9,256            | 28.1             |
| Nova Scotia                                       | 182,916                  | 19.1             | 84,285              | 1.7              | 11,206         | 10.7             | 95,493           | 2.7              |
| New Brunswick                                     | 135,177                  | 7.6              | 73,068              | 0.3              | 7,932          | -1.1             | 80,999           | 0.2              |
| Quebec  | 1,544,128                | 18.5             | 645,242             | 11.1             | 124,177        | 13.2             | 769,418          | 11.4             |
| Ontario   | 2,420,531                | 5.6              | 1,183,537           | -1.8             | 212,091        | 15.4             | 1,395,628        | 0.4              |
| Manitoba  | 201,632                  | 7.2              | 122,774             | -4.2             | 12,558         | 10.1             | 135,333          | -3.0             |
| Saskatchewan                                      | 222,012                  | 24.1             | 161,488             | 19.6             | 10,947         | 9.3              | 172,436          | 18.9             |
| Alberta   | 1,203,562                | 0.7              | 810,720             | -5.7             | 81,889         | 9.8              | 892,609          | -4.5             |
| British Columbia and the Territories <sup>1</sup> | 948,662                  | 0.4              | 484,265             | -1.5             | 82,703         | -3.8             | 566,969          | -1.9             |
| <b>Canada</b>                                     | <b>6,977,337</b>         | <b>7.9</b>       | <b>3,626,608</b>    | <b>0.6</b>       | <b>550,505</b> | <b>10.0</b>      | <b>4,177,113</b> | <b>1.8</b>       |
| <b>2009</b>                                       |                          |                  |                     |                  |                |                  |                  |                  |
| Newfoundland and Labrador                         | 63,221                   | -38.0            | x                   | x                | x              | x                | 40,192           | -31.8            |
| Prince Edward Island                              | 12,487                   | -25.6            | x                   | x                | x              | x                | 6,961            | -24.8            |
| Nova Scotia                                       | 129,003                  | -29.5            | 63,557              | -24.6            | 10,041         | -10.4            | 73,598           | -22.9            |
| New Brunswick                                     | 104,883                  | -22.4            | 63,791              | -12.7            | 7,423          | -6.4             | 71,213           | -12.1            |
| Quebec  | 1,155,466                | -25.2            | 505,213             | -21.7            | 112,499        | -9.4             | 617,712          | -19.7            |
| Ontario   | 1,826,520                | -24.5            | 899,706             | -24.0            | 187,211        | -11.7            | 1,086,918        | -22.1            |
| Manitoba  | 149,224                  | -26.0            | 97,823              | -20.3            | 10,280         | -18.1            | 108,103          | -20.1            |
| Saskatchewan                                      | 168,384                  | -24.2            | 120,018             | -25.7            | 11,369         | 3.9              | 131,387          | -23.8            |
| Alberta   | 811,293                  | -32.6            | 545,995             | -32.7            | 64,115         | -21.7            | 610,110          | -31.6            |
| British Columbia and the Territories <sup>1</sup> | 609,353                  | -35.8            | 305,845             | -36.8            | 69,833         | -15.6            | 375,678          | -33.7            |
| <b>Canada</b>                                     | <b>5,029,833</b>         | <b>-27.9</b>     | <b>2,642,888</b>    | <b>-27.1</b>     | <b>478,984</b> | <b>-13.0</b>     | <b>3,121,871</b> | <b>-25.3</b>     |

1. For reasons of confidentiality, data for the Yukon, the Northwest Territories and Nunavut have been included with the data for British Columbia.

2. Trucks include minivans, sport-utility vehicles, light and heavy trucks, vans and buses.

Note(s): Percentage changes shown are year-to-year changes.



**Table 6**  
**Annual sales of new motor vehicles, by type and origin, in units and dollars, Canada**

| Year   | Total      | Passenger cars |               |           |                 | Trucks <sup>1</sup> |               |           |
|--------|------------|----------------|---------------|-----------|-----------------|---------------------|---------------|-----------|
|        |            | Total          | North America | Japan     | Other countries | Total               | North America | Overseas  |
| number |            |                |               |           |                 |                     |               |           |
| 1986   | 1,515,920  | 1,095,313      | 761,169       | 203,304   | 130,840         | 420,607             | 368,423       | 52,184    |
| 1987   | 1,533,637  | 1,065,093      | 700,930       | 243,288   | 120,875         | 468,544             | 417,189       | 51,355    |
| 1988   | 1,565,501  | 1,056,310      | 724,733       | 243,835   | 87,742          | 509,191             | 459,777       | 49,414    |
| 1989   | 1,483,875  | 988,134        | 675,340       | 239,548   | 73,246          | 495,741             | 422,398       | 73,343    |
| 1990   | 1,317,869  | 884,564        | 580,397       | 239,603   | 64,564          | 433,305             | 361,403       | 71,902    |
| 1991   | 1,287,790  | 873,184        | 573,297       | 237,701   | 62,186          | 414,606             | 347,671       | 66,935    |
| 1992   | 1,227,419  | 798,023        | 503,460       | 236,675   | 57,888          | 429,396             | 370,422       | 58,974    |
| 1993   | 1,192,934  | 739,049        | 493,759       | 196,310   | 48,980          | 453,885             | 402,112       | 51,773    |
| 1994   | 1,260,056  | 748,666        | 573,361       | 129,547   | 45,758          | 511,390             | 475,444       | 35,946    |
| 1995   | 1,166,535  | 670,190        | 553,265       | 71,493    | 45,432          | 496,345             | 469,590       | 26,755    |
| 1996   | 1,204,557  | 660,769        | 572,581       | 47,901    | 40,287          | 543,788             | 517,738       | 26,050    |
| 1997   | 1,424,380  | 738,550        | 629,488       | 66,297    | 42,765          | 685,830             | 628,214       | 57,616    |
| 1998   | 1,428,932  | 740,809        | 590,667       | 98,275    | 51,867          | 688,123             | 627,256       | 60,867    |
| 1999   | 1,542,041  | 806,450        | 625,292       | 103,016   | 78,142          | 735,591             | 672,444       | 63,147    |
| 2000   | 1,587,561  | 849,171        | 640,856       | 106,937   | 101,378         | 738,390             | 669,492       | 68,898    |
| 2001   | 1,597,964  | 868,633        | 619,810       | 122,998   | 125,825         | 729,331             | 647,987       | 81,344    |
| 2002   | 1,733,318  | 934,704        | 651,305       | 144,596   | 138,803         | 798,614             | 698,870       | 99,744    |
| 2003   | 1,626,468  | 865,475        | 604,726       | 126,908   | 133,841         | 760,993             | 654,136       | 106,857   |
| 2004   | 1,575,195  | 820,103        | 542,814       | 116,426   | 160,863         | 755,092             | 653,637       | 101,455   |
| 2005   | 1,630,310  | 845,222        | 574,639       | 123,482   | 147,101         | 785,088             | 673,205       | 111,883   |
| 2006   | 1,666,327  | 863,161        | 573,102       | 142,159   | 147,900         | 803,166             | 681,244       | 121,922   |
| 2007   | 1,690,538  | 859,003        | 551,001       | 151,298   | 156,704         | 831,535             | 727,909       | 103,626   |
| 2008   | 1,674,145  | 894,506        | 557,422       | 167,916   | 169,168         | 779,639             | 667,139       | 112,500   |
| \$'000 |            |                |               |           |                 |                     |               |           |
| 1986   | 21,841,550 | 14,669,730     | 9,856,684     | 2,811,893 | 2,001,153       | 7,171,820           | 6,441,827     | 729,993   |
| 1987   | 24,471,752 | 15,748,410     | 10,031,338    | 3,567,223 | 2,149,849       | 8,723,342           | 7,930,138     | 793,204   |
| 1988   | 26,865,327 | 16,709,476     | 11,080,866    | 3,784,902 | 1,843,708       | 10,155,851          | 9,369,528     | 786,323   |
| 1989   | 26,959,378 | 16,541,801     | 11,034,684    | 3,887,341 | 1,619,774       | 10,417,577          | 9,059,482     | 1,358,095 |
| 1990   | 24,888,751 | 15,245,831     | 9,784,293     | 4,015,958 | 1,445,580       | 9,642,918           | 8,210,502     | 1,432,416 |
| 1991   | 22,855,626 | 14,103,545     | 9,038,584     | 3,789,001 | 1,275,960       | 8,752,081           | 7,503,659     | 1,248,422 |
| 1992   | 23,484,455 | 13,691,746     | 8,450,516     | 4,053,782 | 1,187,451       | 9,792,709           | 8,613,984     | 1,178,725 |
| 1993   | 24,630,359 | 13,278,180     | 8,620,649     | 3,560,913 | 1,096,620       | 11,352,180          | 10,227,082    | 1,125,101 |
| 1994   | 27,893,795 | 14,182,894     | 10,595,001    | 2,346,168 | 1,241,727       | 13,710,902          | 12,846,447    | 864,453   |
| 1995   | 28,168,806 | 13,882,004     | 11,070,368    | 1,492,451 | 1,319,184       | 14,286,804          | 13,544,980    | 741,824   |
| 1996   | 31,485,777 | 14,510,882     | 12,062,092    | 1,118,289 | 1,330,501       | 16,974,894          | 16,115,584    | 859,309   |
| 1997   | 38,986,224 | 16,836,615     | 13,809,161    | 1,519,604 | 1,507,852       | 22,149,610          | 20,341,263    | 1,808,346 |
| 1998   | 40,255,777 | 17,054,244     | 13,101,703    | 2,110,330 | 1,842,211       | 23,201,534          | 21,165,239    | 2,036,296 |
| 1999   | 45,317,914 | 19,017,278     | 14,138,902    | 2,246,522 | 2,631,853       | 26,300,638          | 24,055,653    | 2,244,986 |
| 2000   | 46,930,514 | 20,790,660     | 15,089,665    | 2,431,251 | 3,269,743       | 26,139,852          | 23,745,933    | 2,393,922 |
| 2001   | 46,886,252 | 21,168,628     | 14,575,745    | 2,882,386 | 3,710,497       | 25,717,623          | 22,958,458    | 2,759,162 |
| 2002   | 52,227,499 | 23,191,483     | 15,521,295    | 3,501,294 | 4,168,898       | 29,036,014          | 25,633,136    | 3,402,877 |
| 2003   | 50,493,308 | 21,685,587     | 14,565,218    | 2,988,274 | 4,132,093       | 28,807,720          | 24,845,915    | 3,961,804 |
| 2004   | 49,639,223 | 20,489,761     | 13,261,753    | 2,694,970 | 4,533,035       | 29,149,463          | 25,384,561    | 3,764,904 |
| 2005   | 52,311,147 | 21,220,807     | 14,051,867    | 2,928,424 | 4,240,519       | 31,090,339          | 27,031,615    | 4,058,725 |
| 2006   | 53,966,261 | 22,077,502     | 14,250,869    | 3,469,392 | 4,357,245       | 31,888,757          | 27,445,267    | 4,443,494 |
| 2007   | 53,804,733 | 22,191,278     | 13,874,038    | 3,707,820 | 4,609,417       | 31,613,456          | 27,667,890    | 3,945,567 |
| 2008   | 51,671,132 | 22,686,715     | 13,617,816    | 3,966,400 | 5,102,499       | 28,984,416          | 24,787,251    | 4,197,166 |

1. Trucks include minivans, sport-utility vehicles, light and heavy trucks, vans and buses.

**Table 7**  
**Canada, monthly sales of new motor vehicles, in units, by type and origin, seasonally adjusted**

| Period                | Total new motor vehicles |                    | Passenger cars |                    |          |                    | Trucks <sup>1</sup> |                    |
|-----------------------|--------------------------|--------------------|----------------|--------------------|----------|--------------------|---------------------|--------------------|
|                       |                          |                    | North America  |                    | Overseas |                    | Total               |                    |
|                       | Units                    | Month/month change | Units          | Month/month change | Units    | Month/month change | Units               | Month/month change |
|                       | no.                      | %                  | no.            | %                  | no.      | %                  | no.                 | %                  |
| <b>2007</b>           |                          |                    |                |                    |          |                    |                     |                    |
| January               | 141,588                  | -6.2               | 44,837         | -17.1              | 26,068   | 1.6                | 70,683              | -0.8               |
| February              | 137,783                  | -2.7               | 44,810         | -0.1               | 25,040   | -3.9               | 67,933              | -3.9               |
| March                 | 138,792                  | 0.7                | 45,277         | 1.0                | 25,237   | 0.8                | 68,278              | 0.5                |
| April                 | 147,479                  | 6.3                | 50,037         | 10.5               | 25,860   | 2.5                | 71,582              | 4.8                |
| May                   | 144,419                  | -2.1               | 46,478         | -7.1               | 26,020   | 0.6                | 71,921              | 0.5                |
| June                  | 142,826                  | -1.1               | 47,441         | 2.1                | 26,325   | 1.2                | 69,060              | -4.0               |
| July                  | 138,756                  | -2.8               | 44,813         | -5.5               | 25,988   | -1.3               | 67,955              | -1.6               |
| August                | 142,624                  | 2.8                | 47,309         | 5.6                | 25,853   | -0.5               | 69,462              | 2.2                |
| September             | 137,578                  | -3.5               | 45,970         | -2.8               | 25,624   | -0.9               | 65,984              | -5.0               |
| October               | 137,018                  | -0.4               | 44,804         | -2.5               | 24,806   | -3.2               | 67,408              | 2.2                |
| November              | 135,345                  | -1.2               | 44,506         | -0.7               | 24,202   | -2.4               | 66,637              | -1.1               |
| December              | 146,330                  | 8.1                | 44,719         | 0.5                | 26,978   | 11.5               | 74,633              | 12.0               |
| <b>2008</b>           |                          |                    |                |                    |          |                    |                     |                    |
| January               | 158,919                  | 8.6                | 56,335         | 26.0               | 29,245   | 8.4                | 73,339              | -1.7               |
| February              | 151,359                  | -4.8               | 52,472         | -6.9               | 29,427   | 0.6                | 69,460              | -5.3               |
| March                 | 148,437                  | -1.9               | 48,885         | -6.8               | 31,276   | 6.3                | 68,276              | -1.7               |
| April                 | 142,464                  | -4.0               | 46,609         | -4.7               | 28,515   | -8.8               | 67,340              | -1.4               |
| May                   | 143,247                  | 0.5                | 48,713         | 4.5                | 30,163   | 5.8                | 64,371              | -4.4               |
| June                  | 141,178                  | -1.4               | 48,812         | 0.2                | 29,746   | -1.4               | 62,620              | -2.7               |
| July                  | 139,372                  | -1.3               | 48,280         | -1.1               | 27,650   | -7.0               | 63,442              | 1.3                |
| August                | 135,399                  | -2.9               | 44,715         | -7.4               | 27,762   | 0.4                | 62,922              | -0.8               |
| September             | 138,335                  | 2.2                | 44,834         | 0.3                | 28,757   | 3.6                | 64,744              | 2.9                |
| October               | 136,950                  | -1.0               | 44,228         | -1.4               | 25,742   | -10.5              | 66,980              | 3.5                |
| November <sup>r</sup> | 126,018                  | -8.0               | 39,088         | -11.6              | 24,687   | -4.1               | 62,243              | -7.1               |
| December <sup>r</sup> | 112,465                  | -10.8              | 34,451         | -11.9              | 24,113   | -2.3               | 53,901              | -13.4              |
| <b>2009</b>           |                          |                    |                |                    |          |                    |                     |                    |
| January <sup>r</sup>  | 117,835                  | 4.8                | 35,527         | 3.1                | 24,565   | 1.9                | 57,743              | 7.1                |
| February <sup>p</sup> | 115,187                  | -2.2               | 34,291         | -3.5               | 26,062   | 6.1                | 54,834              | -5.0               |

1. Trucks include minivans, sport-utility vehicles, light and heavy trucks, vans and buses.

**Note(s):** Percentage changes shown are month-to-month changes.

**Table 8**  
**Monthly sales of new motor vehicles, in units, by province, seasonally adjusted**

| Period                | Canada  | Newfoundland<br>and<br>Labrador | Prince<br>Edward<br>Island | Nova<br>Scotia | New<br>Brunswick | Quebec |
|-----------------------|---------|---------------------------------|----------------------------|----------------|------------------|--------|
| number                |         |                                 |                            |                |                  |        |
| <b>2007</b>           |         |                                 |                            |                |                  |        |
| January               | 141,588 | 2,252                           | 430                        | 3,901          | 3,185            | 34,701 |
| February              | 137,783 | 2,174                           | 422                        | 3,718          | 2,918            | 33,702 |
| March                 | 138,792 | 2,408                           | 465                        | 3,748          | 3,037            | 33,054 |
| April                 | 147,479 | 2,525                           | 467                        | 4,209          | 2,972            | 36,433 |
| May                   | 144,419 | 2,404                           | 462                        | 3,757          | 3,274            | 36,315 |
| June                  | 142,826 | 2,401                           | 441                        | 4,176          | 3,204            | 34,900 |
| July                  | 138,756 | 2,301                           | 424                        | 4,146          | 3,062            | 33,118 |
| August                | 142,624 | 2,389                           | 489                        | 4,308          | 3,172            | 33,932 |
| September             | 137,578 | 2,228                           | 403                        | 4,274          | 3,044            | 34,405 |
| October               | 137,018 | 2,317                           | 491                        | 4,172          | 3,161            | 33,700 |
| November              | 135,345 | 2,363                           | 328                        | 4,399          | 3,044            | 33,064 |
| December              | 146,330 | 2,498                           | 481                        | 4,379          | 3,220            | 36,081 |
| <b>2008</b>           |         |                                 |                            |                |                  |        |
| January               | 158,919 | 3,185                           | 514                        | 4,974          | 3,354            | 42,099 |
| February              | 151,359 | 3,327                           | 494                        | 4,761          | 3,522            | 41,313 |
| March                 | 148,437 | 2,552                           | 498                        | 4,844          | 3,363            | 37,883 |
| April                 | 142,464 | 2,516                           | 468                        | 3,980          | 3,555            | 36,662 |
| May                   | 143,247 | 2,527                           | 496                        | 4,580          | 3,369            | 37,281 |
| June                  | 141,178 | 2,405                           | 450                        | 4,481          | 3,334            | 35,754 |
| July                  | 139,372 | 2,632                           | 443                        | 4,316          | 3,482            | 35,764 |
| August                | 135,399 | 2,636                           | 426                        | 4,088          | 3,356            | 35,280 |
| September             | 138,335 | 2,697                           | 460                        | 4,646          | 3,323            | 35,619 |
| October               | 136,950 | 2,686                           | 430                        | 4,295          | 3,226            | 34,686 |
| November              | 126,018 | 2,188                           | 426                        | 3,908          | 2,913            | 31,932 |
| December              | 112,465 | 2,097                           | 399                        | 3,553          | 2,725            | 30,881 |
| <b>2009</b>           |         |                                 |                            |                |                  |        |
| January <sup>r</sup>  | 117,835 | 2,140                           | 432                        | 3,484          | 2,789            | 30,040 |
| February <sup>p</sup> | 115,187 | 2,063                           | 371                        | 3,585          | 2,541            | 31,417 |

Table 8 – continued

Monthly sales of new motor vehicles, in units, by province, seasonally adjusted

| Period                | Canada  | Ontario | Manitoba | Saskatchewan | Alberta | British Columbia and the Territories |
|-----------------------|---------|---------|----------|--------------|---------|--------------------------------------|
|                       | number  |         |          |              |         |                                      |
| <b>2007</b>           |         |         |          |              |         |                                      |
| January               | 141,588 | 51,912  | 3,846    | 3,576        | 21,497  | 16,288                               |
| February              | 137,783 | 49,324  | 3,808    | 3,479        | 21,269  | 16,969                               |
| March                 | 138,792 | 49,764  | 3,932    | 3,426        | 22,372  | 16,586                               |
| April                 | 147,479 | 53,163  | 4,148    | 3,903        | 21,720  | 17,939                               |
| May                   | 144,419 | 51,833  | 3,887    | 3,965        | 21,461  | 17,061                               |
| June                  | 142,826 | 51,315  | 3,818    | 3,891        | 21,907  | 16,773                               |
| July                  | 138,756 | 49,331  | 3,677    | 3,809        | 21,886  | 17,002                               |
| August                | 142,624 | 51,587  | 3,980    | 3,885        | 21,968  | 16,914                               |
| September             | 137,578 | 48,852  | 3,929    | 3,735        | 20,239  | 16,469                               |
| October               | 137,018 | 48,870  | 3,939    | 3,881        | 20,284  | 16,203                               |
| November              | 135,345 | 47,536  | 3,899    | 3,695        | 20,728  | 16,289                               |
| December              | 146,330 | 52,312  | 4,236    | 4,301        | 21,719  | 17,103                               |
| <b>2008</b>           |         |         |          |              |         |                                      |
| January               | 158,919 | 56,605  | 4,466    | 4,320        | 22,162  | 17,240                               |
| February              | 151,359 | 51,483  | 4,268    | 4,351        | 21,390  | 16,450                               |
| March                 | 148,437 | 51,574  | 4,289    | 4,444        | 21,764  | 17,226                               |
| April                 | 142,464 | 51,776  | 3,985    | 4,103        | 19,616  | 15,803                               |
| May                   | 143,247 | 50,775  | 3,980    | 3,979        | 20,262  | 15,998                               |
| June                  | 141,178 | 50,572  | 4,013    | 3,967        | 20,376  | 15,826                               |
| July                  | 139,372 | 49,875  | 4,015    | 4,157        | 19,895  | 14,793                               |
| August                | 135,399 | 48,467  | 3,827    | 4,161        | 18,873  | 14,285                               |
| September             | 138,335 | 49,062  | 3,868    | 4,123        | 19,874  | 14,663                               |
| October               | 136,950 | 49,355  | 3,943    | 4,311        | 19,614  | 14,404                               |
| November <sup>r</sup> | 126,018 | 44,456  | 3,816    | 4,138        | 18,539  | 13,702                               |
| December <sup>r</sup> | 112,465 | 38,087  | 3,559    | 3,426        | 16,048  | 11,690                               |
| <b>2009</b>           |         |         |          |              |         |                                      |
| January <sup>r</sup>  | 117,835 | 41,867  | 3,655    | 3,898        | 16,824  | 12,706                               |
| February <sup>p</sup> | 115,187 | 42,391  | 3,357    | 3,504        | 14,727  | 11,231                               |

# Definitions

---

## Trucks

Trucks include light and heavy trucks, minivans, sport utility vehicles, vans, coaches and buses, regardless of their intended use.

## Passenger car

The term passenger car refers to all vehicles whose primary function is to carry passengers, excluding those vehicles classified as a commercial vehicle (see definition above). Passenger cars also include cars used for commercial purposes, i.e. taxis, auto rentals and other car fleets.

## Country of origin

New motor vehicles fall into two categories defined on the basis of origin: those manufactured in North America and those manufactured overseas. The latter are imported in a fully assembled state from countries other than the United States or Mexico. All passenger cars and commercial vehicles assembled in Canada, Mexico and the United States and sold in Canada classified are as North American manufactured vehicles.

## Motor vehicle sales - units

The number of new motor vehicles sold in Canada.

## Motor vehicle sales - dollars

Net sales refers to the selling price to the consumer, i.e., manufacturer's invoice price plus estimated dealer's markup, including charges for standard and optional accessories. Sales taxes are excluded.

## Average price of passenger cars

The average price is obtained by dividing the total dollar sales by the number of units sold. Therefore, changes in the average price reflect variations in the models sold as well as price changes. For example, an increase in the average price for passenger cars may reflect both a shift to more expensive models as well as price increases.

# Appendix I

---

## Scope of the survey

The interest in and need for detailed statistics on the automobile industry arose years ago, when the industry began playing a prominent role in the Canadian economy. For over 50 years, Statistics Canada has been collecting and disseminating statistical information on the retail sales of new motor vehicles. Not only are these statistics required to produce estimates of Canadian consumer spending for the national accounts and the gross domestic product, but they have also served and continue to serve as one of the most important, most often requested indicators of the health of Canada's economy.<sup>1</sup>

However, estimates of the total retail sales volume of new motor vehicles were not sufficient to meet the incessant demand for more information. There came an increasing need for data on the characteristics of the fleet of new vehicles sold at retail, either to learn more about the preferences of Canadian consumers or to assess the penetration of the Canadian market by major foreign manufacturers. Statistics on new motor vehicle sales were expanded in the early 1970s to provide separate figures for Japanese vehicle sales.

The statistics in this report cover exclusively retail sales of new motor vehicles within Canada's borders. Data are derived from a postal survey (a census - see the methodology section at the end of the report for more details).

Other statistics connected with the automobile industry (sales of new and used car dealers, auto parts and accessories stores and so on) are available on the monthly Retail Trade survey (Catalogue No. 63-005). For further information, please contact the Retail Commodity Section, Distributive Trades Division, Statistics Canada, Ottawa, K1A 0T6, (Telephone: 613-951-3549 or toll free at 1-877-421-3067).

## Data quality and methodology

This survey is a census of all motor vehicle manufacturers and importers known to be active in Canada.

The value of sales is reported at selling price to consumer (i.e. the manufacturer's invoice price plus estimated dealer's markup, charges for standard equipment and options, less provincial sales tax and federal goods and services tax (G.S.T.) and harmonized sales tax (H.S.T.)).

The response rate for this survey is generally 100%. Minimal estimation is required so there is little bias resulting from non-response introduced in these data.

All attempts have been made to minimize the non-sampling errors: the questionnaires used in the survey have been carefully designed to minimize different interpretations; detailed acceptance testing has been carried out for the different stages of editing and processing.

## Data confidentiality

Statistics Canada is prohibited by law from publishing any statistics which would divulge information relating to any identifiable business without the previous consent in writing of that business.<sup>2</sup> The disclosure of data likely to reveal specific information on the activity of a particular company is systematically and rigorously controlled and regulated to prevent the publication or disclosure of any information deemed confidential. The rules regarding confidentiality

---

1. The new motor vehicle sales series is one of ten statistical series making up the leading indicator developed by Statistics Canada for current economic analysis purposes.

2. See Section 17 of the Statistics Act (Chapter 5-19), entitled «Secrecy».

are therefore applied in such a way that no data are shown for cells (or statistical units). If information is withheld for reasons of confidentiality an "X" will appear in the appropriate cell of this publication.

Another way of preserving data confidentiality without having to enter an "X" is to combine (consolidate) the information **from selected regions** (or selected cells) for the same item. The data in question can be aggregated and published in a less detailed, but still confidential, form. For example, the data for the Northwest Territories, the Yukon and Nunavut are included with the British Columbia data.

## Seasonal adjustment

Time series contain the elements essential to the description, explanation and forecasting of the behaviour of an economic phenomenon: "They are statistical records of the evolution of economic processes through time."<sup>3</sup> Economic time series such as the New Motor Vehicles Sales Survey can be broken down into five main components: the trend-cycle, seasonality, the trading-day effect, the Easter holiday effect and the irregular component.

The trend represents the long-term change in the series, whereas the cycle represents a smooth, quasi-periodical movement about the trend, showing a succession of growth and decline phases (e.g., the business cycle). These two components—the trend and the cycle—are estimated together, and the trend-cycle reflects the fundamental evolution of the series. The other components reflect short-term transient movements.

The seasonal component represents sub-annual, monthly or quarterly fluctuations that recur more or less regularly from one year to the next. Seasonal variations are caused by the direct and indirect effects of the climatic seasons and institutional factors (attributable to social conventions or administrative rules; e.g., Christmas).

The trading-day component originates from the fact that the relative importance of the days varies systematically within the week and that the number of each day of the week in a given month varies from year to year. This effect is present when activity varies with the day of the week. For instance, Sunday is typically less active than the other days, and the number of Sundays, Mondays, etc., in a given month changes from year to year.

The Easter holiday effect is the variation due to the shift of part of April's activity to March when Easter falls in March rather than April.

Lastly, the irregular component includes all other more or less erratic fluctuations not taken into account in the preceding components. It is a residual that includes errors of measurement on the variable itself as well as unusual events (e.g., strikes, drought, floods, major power blackout or other unexpected events causing variations in respondents' activities).

Thus, the latter four components—seasonal, irregular, trading-day and Easter holiday effect—all conceal the fundamental trend-cycle component of the series. Seasonal adjustment (correction of seasonal variation) consists in removing the seasonal, trading-day and Easter holiday effect components from the series, and it thus helps reveal the trend-cycle. While seasonal adjustment permits a better understanding of the underlying trend-cycle of a series, the seasonally adjusted series still contains an irregular component. Slight month-to-month variations in the seasonally adjusted series may be simple irregular movements. To get a better idea of the underlying trend, users should examine several months of the seasonally adjusted series.

Since April 2008, New Motor Vehicle Sales Survey data are seasonally adjusted using the X-12-ARIMA<sup>4</sup> software. The technique that is used essentially consists of first correcting the initial series for all sorts of undesirable effects, such as the trading-day and the Easter holiday effects, by a module called regARIMA. These effects are estimated using regression models with ARIMA errors (auto-regressive integrated moving average models). The series can also be extrapolated for at least one year by using the model. Subsequently, the raw series—pre-adjusted and extrapolated if applicable—is seasonally adjusted by the X-11 method.

---

3. «A Note on the Seasonal adjustment of Economic Time Series», Canadian Statistical Review, August 1974.

4. For more information, see X-12-ARIMA Reference Manual Version 0.3 (2007), U.S. Census Bureau.

The X-11 method is used for analysing monthly and quarterly series. It is based on an iterative principle applied in estimating the different components, with estimation being done at each stage using adequate moving averages.<sup>5</sup> The moving averages used to estimate the main components—the trend and seasonality—are primarily smoothing tools designed to eliminate an undesirable component from the series. Since moving averages react poorly to the presence of atypical values, the X-11 method includes a tool for detecting and correcting atypical points. This tool is used to clean up the series during the seasonal adjustment. Outlying data points can also be detected and corrected in advance, within the regARIMA module.

Lastly, the annual totals of the seasonally adjusted series are forced to the annual totals of the original series.

Unfortunately, seasonal adjustment removes the sub-annual additivity of a system of series; small discrepancies can be observed between the sum of seasonally adjusted series and the *direct* seasonal adjustment of their total. To insure or restore additivity in a system of series, a reconciliation process is applied or *indirect* seasonal adjustment is used, i.e. the seasonal adjustment of a total is derived by the summation of the individually seasonally adjusted series.

To assist the user, the Months of Cyclical Dominance number, MCD, is provided.<sup>6</sup> The MCD is the shortest monthly span for which a certain ratio becomes and remains less than one, that is, the ratio for which the absolute average percentage change of the trend-cycle of the seasonally adjusted series becomes greater than the absolute average per cent change of the irregular component. The MCD can be interpreted as the number of months over which a change in the seasonally adjusted series must move in a given direction before one can be reasonably certain that the trend-cycle of that series also has moved in the given direction. Clearly small MCD's are desirable and indicative of a smooth series. Applying a moving average to the seasonally adjusted data of MCD length tends to smooth irregular movements which may obscure the underlying trend-cycle. The MCD moving average provides a method of reducing all types of series to approximately the same degree of smoothness, whatever the size of the irregular component in the original series.

## Revision procedures

The seasonally adjusted estimates are revised for the three months preceding the reference period. Monthly unadjusted data are revised for the previous month, when new information is made available to Statistics Canada. In addition, unadjusted new motor vehicle sales are revised each year, for the latest year, in the February issue of this publication. At that time, monthly seasonally adjusted estimates for the latest four years of data are revised.

---

5. Ladiray, D. and Quenneville, B. (2001). Seasonal Adjustment with the X-11 Method. New York: Springer-Verlag, Lecture Notes in Statistics #158.

6. MCD = 12 for North American passenger cars. MCD = 3 for Overseas passenger cars. MCD = 12 for Commercial vehicles.



## Appendix II

---

### List of North American motor vehicle manufacturers

B.M.W. Canada Inc.  
Blue Bird Body Co.  
DaimlerChrysler Canada Inc.  
Ford Motor Company of Canada Limited  
Freightliner of Canada Ltd.  
General Motors of Canada Limited  
Honda Canada Inc.  
Hyundai Auto Canada Inc.  
International Truck and Engine Corporation Canada  
Kenworth Div., Paccar of Canada Ltd.  
Mack Canada Inc.  
Mazda Canada Inc.  
Mitsubishi Motor Sales of Canada, Inc.  
Motor Coach Industries Limited  
New Flyer Industries Ltd.  
Nissan Canada Inc.  
Nova Bus Corp.  
Orion Bus Industries Inc.  
Peterbilt Div., Paccar of Canada Ltd.  
Prévost Car Inc.  
Sterling Heavy Duty TrucksSubaru Canada Inc.  
Subaru Canada Inc.  
Suzuki Canada Inc.  
Thomas Built Buses of Canada Ltd.

Toyota Canada Ltd.

Volkswagen Canada Inc.

Volvo Trucks Canada Inc.

Western Star Trucks Inc.

## **List of importers and distributors of overseas manufactured motor vehicles**

### **Japan**

General Motors of Canada Ltd.

Hino Diesel Trucks Canada Ltd.

Honda Canada Inc.

Mazda Canada Inc.

Mitsubishi Motor Sales of Canada, Inc.

Nissan Canada Inc.

Subaru Canada Inc.

Suzuki Canada Inc.

Toyota Canada Inc.

### **Other Countries**

B.M.W. Canada Inc.

Daewoo Auto Canada Inc.

Ford Motor Company of Canada Limited

General Motors Canada Ltd.

Hyundai Auto Canada Inc.

Jaguar Canada Inc.

Kia Canada Inc.

Land Rover group Canada Inc.

Mercedes-Benz Canada Inc.

Porsche Cars of Canada Ltd.

Volkswagen Canada Inc.

Volvo Cars of Canada Ltd.