

Catalogue no. 63-007-X

New Motor Vehicle Sales

June 2009



Statistics
Canada

Statistique
Canada

Canada

How to obtain more information

For information about this product or the wide range of services and data available from Statistics Canada, visit our website at www.statcan.gc.ca, e-mail us at infostats@statcan.gc.ca, or telephone us, Monday to Friday from 8:30 a.m. to 4:30 p.m., at the following numbers:

Statistics Canada's National Contact Centre

Toll-free telephone (Canada and the United States):

Inquiries line	1-800-263-1136
National telecommunications device for the hearing impaired	1-800-363-7629
Fax line	1-877-287-4369

Local or international calls:

Inquiries line	1-613-951-8116
Fax line	1-613-951-0581

Depository Services Program

Inquiries line	1-800-635-7943
Fax line	1-800-565-7757

To access this product

This product, Catalogue no. 63-007-X, is available free in electronic format. To obtain a single issue, visit our website at www.statcan.gc.ca and select "Publications."

Standards of service to the public

Statistics Canada is committed to serving its clients in a prompt, reliable and courteous manner. To this end, Statistics Canada has developed *standards of service* that its employees observe. To obtain a copy of these service standards, please contact Statistics Canada toll-free at 1-800-263-1136. The service standards are also published on www.statcan.gc.ca under "About us" > "Providing services to Canadians."

New Motor Vehicle Sales

June 2009

Published by authority of the Minister responsible for Statistics Canada

© Minister of Industry, 2009

All rights reserved. The content of this electronic publication may be reproduced, in whole or in part, and by any means, without further permission from Statistics Canada, subject to the following conditions: that it be done solely for the purposes of private study, research, criticism, review or newspaper summary, and/or for non-commercial purposes; and that Statistics Canada be fully acknowledged as follows: Source (or "Adapted from", if appropriate): Statistics Canada, year of publication, name of product, catalogue number, volume and issue numbers, reference period and page(s). Otherwise, no part of this publication may be reproduced, stored in a retrieval system or transmitted in any form, by any means—electronic, mechanical or photocopy—or for any purposes without prior written permission of Licensing Services, Client Services Division, Statistics Canada, Ottawa, Ontario, Canada K1A 0T6.

August 2009

Catalogue no. 63-007-X, vol. 81, no. 6

ISSN 1209-1146

Frequency: Monthly

Ottawa

Cette publication est également disponible en français.

Note of appreciation

Canada owes the success of its statistical system to a long standing partnership between Statistics Canada, the citizens of Canada, its businesses, governments and other institutions. Accurate and timely statistical information could not be produced without their continued cooperation and goodwill.

User information

Symbols

The following standard symbols are used in Statistics Canada publications:

- . not available for any reference period
- .. not available for a specific reference period
- ... not applicable
- 0 true zero or a value rounded to zero
- 0^s value rounded to 0 (zero) where there is a meaningful distinction between true zero and the value that was rounded
- p preliminary
- r revised
- x suppressed to meet the confidentiality requirements of the *Statistics Act*
- E use with caution
- F too unreliable to be published

Note to users

Figures may not add up to totals because of rounding.

Acknowledgements

This publication was prepared under the direction of:

- **Mary Beth Garneau**, Director, Distributive Trades Division
- **R. Boudreau**, Assistant Director, Distributive Trades Division
- **S. Grenier**, Retail Sub-annuals surveys chief, Distributive Trades Division
- **M. Switzer**, Analyst Retail Sub-annuals surveys section, Distributive Trades Division

Table of contents

Highlights	5
Analysis – June 2009	6
Truck sales continue to outpace passenger car sales	6
Sales down in five provinces	7
Related products	9
Statistical tables	
1 Monthly sales of new motor vehicles, by type and origin	11
1-1 in units	11
1-2 in dollars	13
2 Average monthly prices of passenger cars, by origin	15
3 Monthly market share of new passenger car sales (units), by origin, Canada	16
4 Provincial sales of new motor vehicles, by type and origin, in units and dollars, June	17
5 Year to date provincial sales of new motor vehicles, by type and origin	19
5-1 in units, January to June	19
5-2 in dollars, January to June	21
6 Annual sales of new motor vehicles, by type and origin, in units and dollars, Canada	23
7 Canada, monthly sales of new motor vehicles, in units, by type and origin, seasonally adjusted	24
8 Monthly sales of new motor vehicles, in units, by province, seasonally adjusted	25
Data quality, concepts and methodology	
Definitions	27
Appendix	
I Scope of the survey	28
II List of North American motor vehicle manufacturers	31

Table of contents – continued

Charts

1.	New motor vehicle sales, seasonally adjusted, in units, 2006 to 2009	6
2.	Passenger car sales, seasonally adjusted, in units, 2006 to 2009	7
3.	Truck, van and bus sales, seasonally adjusted, in units, 2006 to 2009	7
4.	Monthly distribution of the Canadian motor vehicle market (passenger cars), by origin, 2006 to 2009	8
5.	Cumulative sales of new passenger cars, by origin, in units, 2006 to 2008	8

Highlights

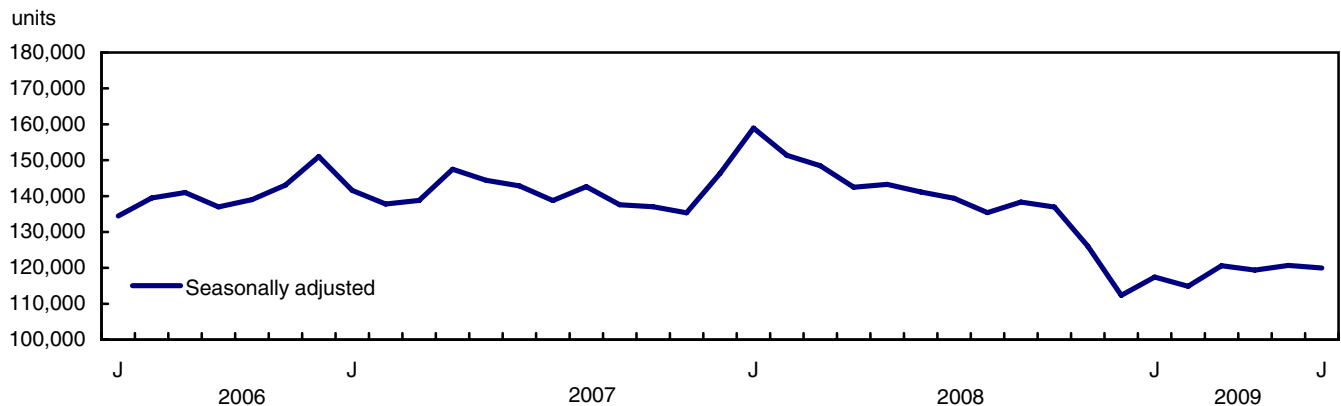
June 2009

New motor vehicles sales edged down 0.6% to 119,961 units in June. Most of this decrease was attributable to lower sales of passenger cars.

Analysis – June 2009

New motor vehicles sales edged down 0.6% to 119,961 units in June. Most of this decrease was attributable to lower sales of passenger cars.

Chart 1
New motor vehicle sales, seasonally adjusted, in units, 2006 to 2009



Sales of new motor vehicles have generally been rising since the beginning of 2009 after a sharp decline in the latter part of 2008. Despite this recent upward trend, sales levels have been well below those of recent years. Average monthly unit sales in the first six months of 2009 were nearly 119,000 compared with about 148,000 in the same period in 2008.

Note to readers

All data in this release are seasonally adjusted. Seasonally adjusting data makes it much easier to determine shifts in demand by allowing data to be compared from one month to the next. For example, the seasonal adjustment process takes into account variations in trading days, such as the number of times each day of the week occurs in a specific month. It also removes seasonal patterns from a data series, such as the impact of higher vehicle sales in spring compared with winter. Thus, seasonal adjustment permits a better understanding of the underlying trend of a series.

For more information, consult the document "*New Motor Vehicle Sales Survey: Seasonal Adjustment.*"

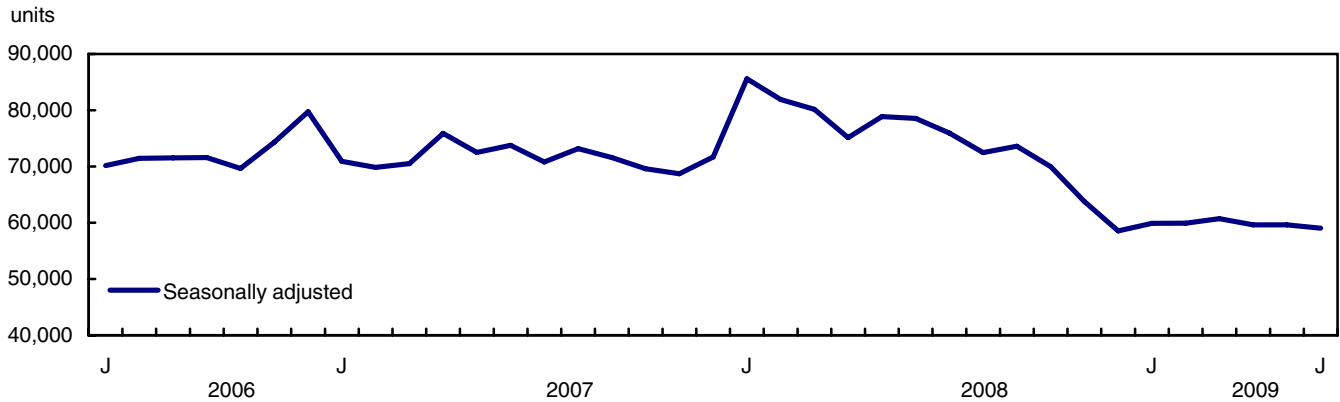
Preliminary industry data indicate that the number of new motor vehicles sold increased by about 5% in July.

Truck sales continue to outpace passenger car sales

The number of new passenger cars sold in June was down 1.0% to 59,038 vehicles. Sales of North American-built passenger cars declined 0.9%. Since December 2008, sales have been at near historic lows for this segment of the market. Overseas-built passenger cars sales fell 1.1% from May.

Sales of new trucks (which include minivans, sport-utility vehicles, light and heavy trucks, vans and buses) edged down 0.2% to 60,923 units in June. Truck sales exceeded passenger car sales in June for the third consecutive month.

Chart 2
Passenger car sales, seasonally adjusted, in units, 2006 to 2009



Sales down in five provinces

Sales were lower in five provinces in June. The main contributor to the overall decrease was a 2.3% decline in Ontario, which offset May’s gain.

A 6.7% sales drop in New Brunswick was the highest percentage decline among all provinces. Sales in Newfoundland and Labrador decreased 2.9% after three months of advances.

The largest increase was a 3.1% rise in Alberta, which more than offset lower sales in May. Sales in Alberta were 24.3% lower compared with 12 months earlier, the highest year-over-year decline among all provinces.

Sales in Quebec advanced 1.4% following two months of declines. Nova Scotia registered a 0.4% sales increase, its fifth consecutive monthly advance.

Chart 3
Truck, van and bus sales, seasonally adjusted, in units, 2006 to 2009

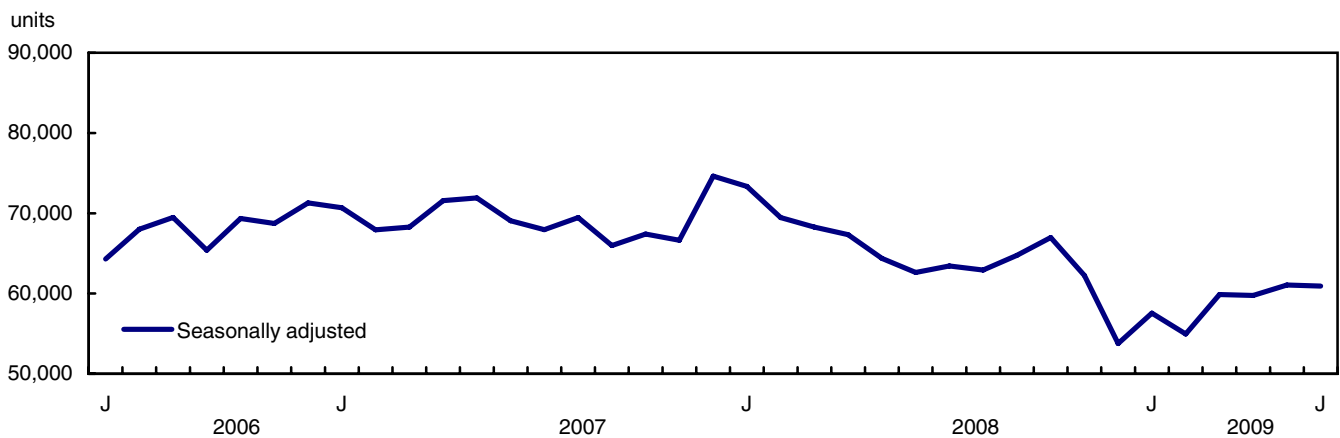


Chart 4
Monthly distribution of the Canadian motor vehicle market (passenger cars), by origin, 2006 to 2009

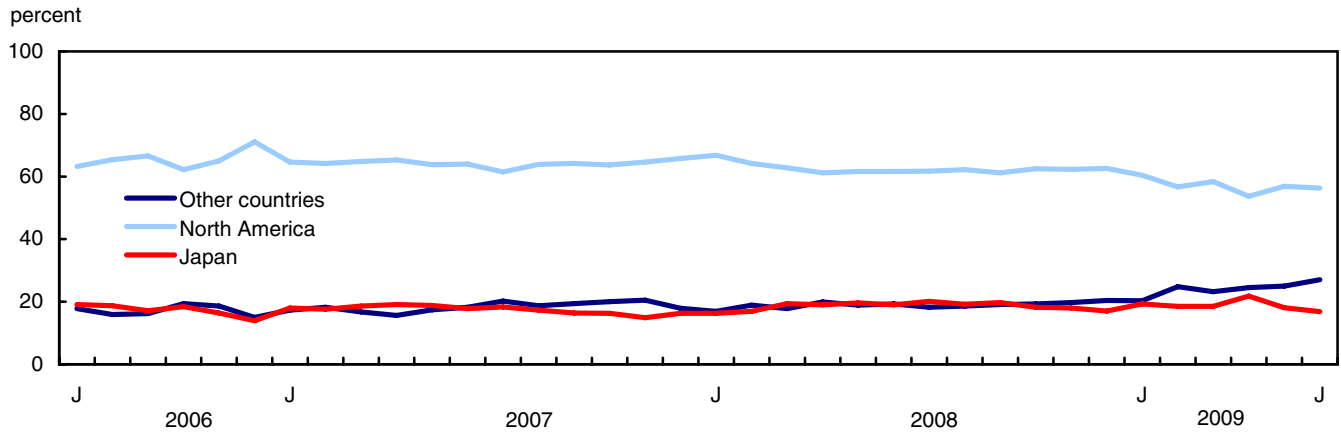
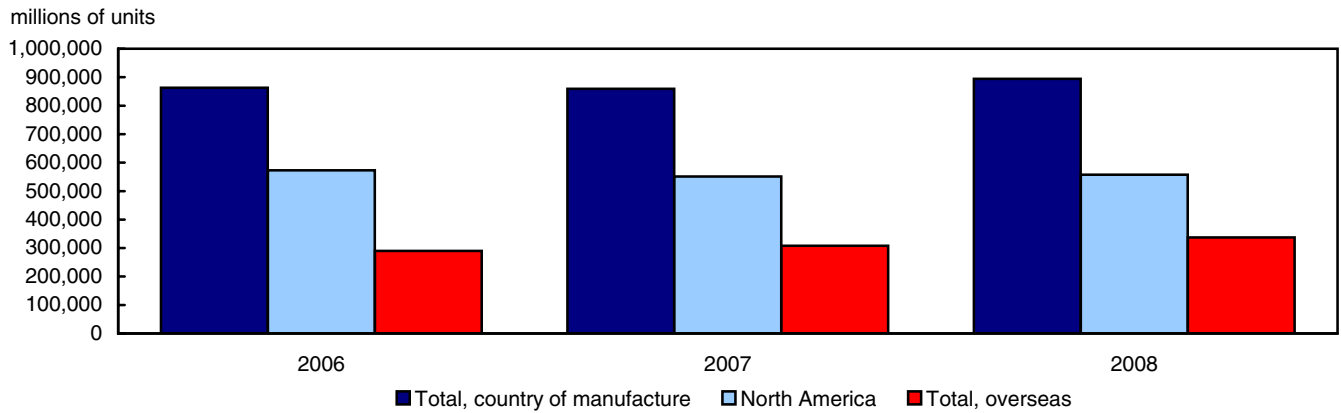


Chart 5
Cumulative sales of new passenger cars, by origin, in units, 2006 to 2008
January to December



Related products

Selected publications from Statistics Canada

63-005-X	Retail Trade
63-210-X	Retail Chain and Department Stores
63-236-X	Wholesaling and Retailing in Canada
63-541-X	Retail Commodity Survey, 1989
63F0006X	New Motor Vehicle Sales Seasonal Factors

Selected CANSIM tables from Statistics Canada

079-0003	New motor vehicle sales, Canada, provinces and territories, monthly
----------	---

Selected surveys from Statistics Canada

2402	New Motor Vehicle Sales Survey
------	--------------------------------

Selected summary tables from Statistics Canada

- *New motor vehicle sales, by province (monthly)*
- *Economic indicators, by province and territory (monthly and quarterly)*
- *New motor vehicle sales*
- *New motor vehicle sales, by province*

Statistical tables

Table 1-1
Monthly sales of new motor vehicles, by type and origin in units

	Total new motor vehicles		Passenger cars							
			North America		Japan		Other countries		Total	
	Units	Year/year change	Units	Year/year change	Units	Year/year change	Units	Year/year change	Units	Year/year change
	no.	%	no.	%	no.	%	no.	%	no.	%
2007										
January	94,413	5.6	27,594	-12.2	7,704	36.3	7,407	4.5	42,705	-3.3
February	99,877	-0.9	30,361	-9.2	8,299	33.8	8,596	-5.6	47,256	-3.1
March	154,450	-1.0	49,540	-9.5	14,206	34.6	12,741	-9.4	76,487	-3.6
April	172,428	8.1	60,392	5.7	17,649	22.7	14,405	-2.2	92,446	7.2
May	189,076	9.1	65,400	2.1	19,315	18.1	17,849	13.0	102,564	6.6
June	172,487	6.5	58,700	3.3	16,315	2.0	16,714	9.7	91,729	4.2
July	145,370	-0.1	47,819	-1.1	14,232	-2.6	15,671	15.3	77,722	1.5
August	160,883	1.9	53,749	-0.1	14,567	-5.0	15,751	20.3	84,067	2.2
September	134,516	-4.0	45,513	-6.2	11,602	-7.1	13,740	16.1	70,855	-2.7
October	124,072	0.8	39,486	1.7	10,098	-11.9	12,421	2.3	62,005	-0.7
November	120,012	-6.0	37,583	-9.4	8,689	-16.7	11,916	0.4	58,188	-8.7
December	122,954	-6.3	34,864	-21.6	8,622	-0.7	9,493	1.3	52,979	-15.3
Year	1,690,538	1.5	551,001	-3.9	151,298	6.4	156,704	6.0	859,003	-0.5
2008										
January	105,546	11.8	34,557	25.2	8,443	9.6	8,719	17.7	51,719	21.1
February	113,877	14.0	37,369	23.1	9,839	18.6	11,002	28.0	58,210	23.2
March	153,505	-0.6	50,287	1.5	15,539	9.4	14,298	12.2	80,124	4.8
April	179,289	4.0	60,137	-0.4	18,654	5.7	19,542	35.7	98,333	6.4
May	188,137	-0.5	67,352	3.0	21,388	10.7	20,647	15.7	109,387	6.7
June	163,064	-5.5	59,162	0.8	18,272	12.0	18,557	11.0	95,991	4.6
July	152,704	5.0	52,973	10.8	17,249	21.2	15,604	-0.4	85,626	10.4
August	149,607	-7.0	50,352	-6.3	15,499	6.4	15,072	-4.3	80,923	-3.7
September	137,479	2.2	45,558	0.1	14,681	26.5	14,244	3.7	74,483	5.1
October	126,064	1.6	39,724	0.6	11,545	14.3	12,249	-1.4	63,518	2.4
November	107,709	-10.3	31,930	-15.0	9,211	6.0	10,112	-15.1	51,253	-11.9
December	97,164	-21.0	28,021	-19.6	7,596	-11.9	9,122	-3.9	44,739	-15.6
Year	1,674,145	-1.0	557,422	1.2	167,916	11.0	169,168	8.0	894,506	4.1
2009										
January	78,817	-25.3	21,581	-37.5	6,907	-18.2	7,255	-16.8	35,743	-30.9
February	82,039	-28.0	23,129	-38.1	7,559	-23.2	10,098	-8.2	40,786	-29.9
March	129,831	-15.4	38,347	-23.7	12,138	-21.9	15,210	6.4	65,695	-18.0
April	146,026	-18.6	40,460	-32.7	16,423	-12.0	18,449	-5.6	75,332	-23.4
May	156,025	-17.1	47,369	-29.7	15,020	-29.8	20,792	0.7	83,181	-24.0
June	140,445	-13.9	41,654	-29.6	12,407	-32.1	19,967	7.6	74,028	-22.9

See notes at the end of the table.

Table 1-1 – continued

Monthly sales of new motor vehicles, by type and origin in units

	Total new motor vehicles		Trucks ¹					
			North America		Overseas		Total	
	Units	Year/year change	Units	Year/year change	Units	Year/year change	Units	Year/year change
	no.	%	no.	%	no.	%	no.	%
2007								
January	94,413	5.6	45,046	15.4	6,662	7.5	51,708	14.3
February	99,877	-0.9	46,119	4.0	6,502	-14.8	52,621	1.2
March	154,450	-1.0	68,305	5.0	9,658	-16.7	77,963	1.7
April	172,428	8.1	69,974	13.9	10,008	-14.9	79,982	9.3
May	189,076	9.1	76,370	17.2	10,142	-15.3	86,512	12.2
June	172,487	6.5	71,689	13.9	9,069	-17.9	80,758	9.2
July	145,370	-0.1	59,044	2.9	8,604	-25.9	67,648	-1.9
August	160,883	1.9	67,582	7.5	9,234	-27.6	76,816	1.6
September	134,516	-4.0	55,095	-0.9	8,566	-26.4	63,661	-5.3
October	124,072	0.8	54,266	6.1	7,801	-17.6	62,067	2.4
November	120,012	-6.0	54,374	-1.9	7,450	-12.6	61,824	-3.4
December	122,954	-6.3	60,045	-1.4	9,930	28.6	69,975	2.0
Year	1,690,538	1.5	727,909	6.8	103,626	-15.0	831,535	3.5
2008								
January	105,546	11.8	46,838	4.0	6,989	4.9	53,827	4.1
February	113,877	14.0	48,315	4.8	7,352	13.1	55,667	5.8
March	153,505	-0.6	62,765	-8.1	10,616	9.9	73,381	-5.9
April	179,289	4.0	69,143	-1.2	11,813	18.0	80,956	1.2
May	188,137	-0.5	67,385	-11.8	11,365	12.1	78,750	-9.0
June	163,064	-5.5	57,541	-19.7	9,532	5.1	67,073	-16.9
July	152,704	5.0	57,429	-2.7	9,449	9.8	66,878	-1.1
August	149,607	-7.0	58,858	-12.9	9,826	6.4	68,684	-10.6
September	137,479	2.2	53,375	-3.1	9,621	12.3	62,996	-1.0
October	126,064	1.6	52,189	-3.8	10,357	32.8	62,546	0.8
November	107,709	-10.3	48,161	-11.4	8,295	11.3	56,456	-8.7
December	97,164	-21.0	45,140	-24.8	7,285	-26.6	52,425	-25.1
Year	1,674,145	-1.0	667,139	-8.3	112,500	8.6	779,639	-6.2
2009								
January	78,817	-25.3	36,985	-21.0	6,089	-12.9	43,074	-20.0
February	82,039	-28.0	34,939	-27.7	6,314	-14.1	41,253	-25.9
March	129,831	-15.4	56,103	-10.6	8,033	-24.3	64,136	-12.6
April	146,026	-18.6	61,884	-10.5	8,810	-25.4	70,694	-12.7
May	156,025	-17.1	63,116	-6.3	9,728	-14.4	72,844	-7.5
June P	140,445	-13.9	57,063	-0.8	9,354	-1.9	66,417	-1.0

1. Trucks include minivans, sport-utility vehicles, light and heavy trucks, vans and buses.

Note(s): Percentage change are year-over-year changes.

Table 1-2
Monthly sales of new motor vehicles, by type and origin in dollars

	Total new motor vehicles		Passenger cars							
			North America		Japan		Other countries		Total	
	Units	Year/year change	Units	Year/year change	Units	Year/year change	Units	Year/year change	Units	Year/year change
	\$'000	%	\$'000	%	\$'000	%	\$'000	%	\$'000	%
2007										
January	3,133,627	6.5	678,959	-13.4	191,902	35.9	227,357	11.7	1,098,218	-2.7
February	3,315,696	0.0	745,083	-11.3	208,249	34.2	259,453	-1.6	1,212,786	-3.6
March	5,011,240	-0.6	1,207,684	-11.5	348,605	31.9	410,805	-4.2	1,967,094	-4.4
April	5,386,679	6.7	1,464,851	3.7	427,130	25.2	444,341	0.3	2,336,322	6.4
May	5,854,394	6.3	1,586,398	-0.3	468,349	18.0	526,054	11.3	2,580,801	4.9
June	5,348,247	3.0	1,411,335	-0.5	392,487	2.1	483,196	10.7	2,287,018	2.2
July	4,471,995	-2.6	1,150,234	-3.9	340,890	-2.1	425,667	11.9	1,916,791	-0.5
August	4,906,210	-1.9	1,287,028	-3.2	352,457	-3.7	431,219	18.6	2,070,704	0.6
September	4,192,666	-7.9	1,111,996	-6.2	284,723	-6.1	392,779	8.9	1,789,498	-3.2
October	3,989,014	-3.1	972,401	2.1	252,753	-9.2	358,920	3.1	1,584,073	0.3
November	3,907,470	-7.6	959,721	-6.4	219,328	-16.8	343,356	-1.5	1,522,405	-7.0
December	4,159,628	-6.0	877,188	-23.8	220,947	-2.6	306,270	-0.4	1,404,404	-16.7
Year	53,676,866	-0.5	13,452,878	-5.6	3,707,820	6.9	4,609,417	5.8	21,770,114	-1.4
2008										
January	3,386,322	8.1	851,241	25.4	203,258	5.9	250,349	10.1	1,304,849	18.8
February	3,560,284	7.4	905,278	21.5	226,614	8.8	298,502	15.1	1,430,394	17.9
March	4,775,620	-4.7	1,206,511	-0.1	368,675	5.8	406,385	-1.1	1,981,570	0.7
April	5,502,356	2.1	1,438,647	-1.8	453,087	6.1	570,437	28.4	2,462,171	5.4
May	5,583,623	-4.6	1,594,777	0.5	505,095	7.8	618,347	17.5	2,718,218	5.3
June	4,935,721	-7.7	1,409,908	-0.1	433,544	10.5	585,413	21.2	2,428,865	6.2
July	4,603,855	2.9	1,242,564	8.0	404,648	18.7	474,076	11.4	2,121,288	10.7
August	4,484,657	-8.6	1,179,815	-8.3	358,465	1.7	440,900	2.2	1,979,181	-4.4
September	4,196,301	0.1	1,077,053	-3.1	335,636	17.9	419,388	6.8	1,832,077	2.4
October	3,955,760	-0.8	935,139	-3.8	278,325	10.1	396,511	10.5	1,609,975	1.6
November	3,392,779	-13.2	750,802	-21.8	219,812	0.2	335,337	-2.3	1,305,952	-14.2
December	3,188,261	-23.4	671,318	-23.5	179,241	-18.9	306,854	0.2	1,157,412	-17.6
Year	51,565,539	-3.9	13,263,053	-1.4	3,966,400	7.0	5,102,499	10.7	22,331,952	2.6
2009										
January	2,474,417	-26.9	507,228	-40.4	165,705	-18.5	211,478	-15.5	884,410	-32.2
February	2,555,416	-28.2	551,107	-39.1	180,252	-20.5	292,192	-2.1	1,023,552	-28.4
March	4,023,591	-15.7	925,045	-23.3	286,613	-22.3	470,337	15.7	1,681,996	-15.1
April	4,414,203	-19.8	976,849	-32.1	367,461	-18.9	527,386	-7.5	1,871,697	-24.0
May	4,824,893	-13.6	1,155,227	-27.6	358,324	-29.1	613,272	-0.8	2,126,824	-21.8
June P	4,736,835	-4.0	1,047,116	-25.7	303,416	-30.0	616,397	5.3	1,966,929	-19.0

See notes at the end of the table.

Table 1-2 – continued

Monthly sales of new motor vehicles, by type and origin in dollars

	Total new motor vehicles		Trucks ¹					
			North America		Overseas		Total	
	Units	Year/year change	Units	Year/year change	Units	Year/year change	Units	Year/year change
	\$'000	%	\$'000	%	\$'000	%	\$'000	%
2007								
January	3,133,627	6.5	1,781,828	12.1	253,581	12.0	2,035,409	12.1
February	3,315,696	0.0	1,856,239	4.1	246,671	-10.1	2,102,910	2.2
March	5,011,240	-0.6	2,686,417	4.5	357,729	-13.9	3,044,146	2.0
April	5,386,679	6.7	2,672,679	10.1	377,677	-11.0	3,050,357	7.0
May	5,854,394	6.3	2,890,475	10.8	383,117	-12.0	3,273,592	7.5
June	5,348,247	3.0	2,720,450	6.6	340,779	-14.5	3,061,229	3.7
July	4,471,995	-2.6	2,229,574	-1.3	325,631	-20.3	2,555,204	-4.2
August	4,906,210	-1.9	2,485,017	-0.3	350,490	-22.5	2,835,506	-3.7
September	4,192,666	-7.9	2,069,737	-9.1	333,431	-21.5	2,403,168	-11.1
October	3,989,014	-3.1	2,103,501	-3.5	301,440	-15.9	2,404,941	-5.3
November	3,907,470	-7.6	2,098,567	-7.4	286,499	-12.4	2,385,066	-8.0
December	4,159,628	-6.0	2,366,702	-3.0	388,522	30.0	2,755,224	0.6
Year	53,676,866	-0.5	27,961,186	1.9	3,945,567	-11.2	31,906,752	0.1
2008								
January	3,386,322	8.1	1,811,270	1.7	270,204	6.6	2,081,474	2.3
February	3,560,284	7.4	1,849,589	-0.4	280,301	13.6	2,129,889	1.3
March	4,775,620	-4.7	2,401,028	-10.6	393,023	9.9	2,794,050	-8.2
April	5,502,356	2.1	2,602,092	-2.6	438,093	16.0	3,040,185	-0.3
May	5,583,623	-4.6	2,449,907	-15.2	415,498	8.5	2,865,404	-12.5
June	4,935,721	-7.7	2,145,142	-21.1	361,714	6.1	2,506,856	-18.1
July	4,603,855	2.9	2,140,487	-4.0	342,080	5.1	2,482,567	-2.8
August	4,484,657	-8.6	2,144,357	-13.7	361,119	3.0	2,505,476	-11.6
September	4,196,301	0.1	2,006,901	-3.0	357,323	7.2	2,364,224	-1.6
October	3,955,760	-0.8	1,957,062	-7.0	388,723	29.0	2,345,785	-2.5
November	3,392,779	-13.2	1,774,389	-15.4	312,438	9.1	2,086,828	-12.5
December	3,188,261	-23.4	1,754,198	-25.9	276,650	-28.8	2,030,848	-26.3
Year	51,565,539	-3.9	25,036,422	-10.5	4,197,166	6.4	29,233,586	-8.4
2009								
January	2,474,417	-26.9	1,354,960	-25.2	235,048	-13.0	1,590,007	-23.6
February	2,555,416	-28.2	1,287,928	-30.4	243,936	-13.0	1,531,864	-28.1
March	4,023,591	-15.7	2,027,588	-15.6	314,007	-20.1	2,341,595	-16.2
April	4,414,203	-19.8	2,195,008	-15.6	347,498	-20.7	2,542,506	-16.4
May	4,824,893	-13.6	2,315,522	-5.5	382,547	-7.9	2,698,069	-5.8
June ^p	4,736,835	-4.0	2,398,166	11.8	371,740	2.8	2,769,905	10.5

1. Trucks include minivans, sport-utility vehicles, light and heavy trucks, vans and buses.

Note(s): Percentage change are year-over-year changes.

Table 2
Average monthly prices of passenger cars, by origin

Period	Total, country of manufacture		North America		Total, overseas		Japan		Other countries	
	Amount	Change	Amount	Change	Amount	Change	Amount	Change	Amount	Change
	\$	%	\$	%	\$	%	\$	%	\$	%
2007										
January	25,716	0.7	24,605	-1.3	27,745	2.5	24,909	-0.3	30,695	6.9
February	25,664	-0.6	24,541	-2.2	27,683	1.2	25,093	0.3	30,183	4.2
March	25,718	-0.8	24,378	-2.1	28,182	0.1	24,539	-2.0	32,243	5.7
April	25,272	-0.8	24,256	-1.9	27,188	1.0	24,201	2.1	30,846	2.6
May	25,163	-1.7	24,257	-2.4	26,757	-1.1	24,248	-0.1	29,472	-1.5
June	24,932	-1.9	24,043	-3.6	26,513	0.9	24,057	0.1	28,910	0.9
July	24,662	-2.0	24,054	-2.9	25,635	-0.8	23,952	0.5	27,163	-2.9
August	24,632	-1.6	23,945	-3.1	25,849	0.7	24,196	1.4	27,377	-1.5
September	25,256	-0.6	24,432	0.0	26,734	-2.1	24,541	1.0	28,587	-6.2
October	25,548	1.0	24,626	0.4	27,162	2.4	25,030	3.2	28,896	0.7
November	26,164	1.9	25,536	3.3	27,308	-0.5	25,242	-0.1	28,815	-1.9
December	26,509	-1.6	25,160	-2.8	29,104	-1.7	25,626	-1.9	32,263	-1.7
Year	25,343	-0.9	24,415	-1.8	27,004	0.1	24,507	0.4	29,415	-0.2
2008										
January	25,230	-1.9	24,633	0.1	26,431	-4.7	24,074	-3.4	28,713	-6.5
February	24,573	-4.3	24,225	-1.3	25,196	-9.0	23,032	-8.2	27,132	-10.1
March	24,731	-3.8	23,993	-1.6	25,976	-7.8	23,726	-3.3	28,423	-11.8
April	25,039	-0.9	23,923	-1.4	26,797	-1.4	24,289	0.4	29,190	-5.4
May	24,850	-1.2	23,678	-2.4	26,726	-0.1	23,616	-2.6	29,949	1.6
June	25,303	1.5	23,831	-0.9	27,667	4.4	23,727	-1.4	31,547	9.1
July	24,716	0.2	23,457	-2.5	26,747	4.3	23,459	-2.1	30,382	11.9
August	24,458	-0.7	23,431	-2.1	26,148	1.2	23,128	-4.4	29,253	6.9
September	24,597	-2.6	23,641	-3.2	26,103	-2.4	22,862	-6.8	29,443	3.0
October	25,347	-0.8	23,541	-4.4	28,362	4.4	24,108	-3.7	32,371	12.0
November	25,480	-2.6	23,514	-7.9	28,730	5.2	23,864	-5.5	33,162	15.1
December	25,870	-2.4	23,958	-4.8	29,076	-0.1	23,597	-7.9	33,639	4.3
Year	24,966	-1.5	23,794	-2.5	26,904	-0.4	23,621	-3.6	30,162	2.5
2009										
January	24,744	-1.9	23,503	-4.6	26,633	0.8	23,991	-0.3	29,149	1.5
February	25,096	2.1	23,828	-1.6	26,757	6.2	23,846	3.5	28,936	6.6
March	25,603	3.5	24,123	0.5	27,678	6.6	23,613	-0.5	30,923	8.8
April	24,846	-0.8	24,144	0.9	25,661	-4.2	22,375	-7.9	28,586	-2.1
May	25,569	2.9	24,388	3.0	27,130	1.5	23,856	1.0	29,496	-1.5
June P	26,570	5.0	25,138	5.5	28,412	2.7	24,455	3.1	30,871	-2.1

Note(s): Percentage changes shown are year-to-year changes.

Table 3
Monthly market share of new passenger car sales (units), by origin, Canada

Period	Total		Passenger cars					
			North America		Japan		Other countries	
	Units	Market share	Units	Market share	Units	Market share	Units	Market share
	no.	%	no.	%	no.	%	no.	%
2007								
January	42,705	100.0	27,594	64.6	7,704	18.0	7,407	17.3
February	47,256	100.0	30,361	64.2	8,299	17.6	8,596	18.2
March	76,487	100.0	49,540	64.8	14,206	18.6	12,741	16.7
April	92,446	100.0	60,392	65.3	17,649	19.1	14,405	15.6
May	102,564	100.0	65,400	63.8	19,315	18.8	17,849	17.4
June	91,729	100.0	58,700	64.0	16,315	17.8	16,714	18.2
July	77,722	100.0	47,819	61.5	14,232	18.3	15,671	20.2
August	84,067	100.0	53,749	63.9	14,567	17.3	15,751	18.7
September	70,855	100.0	45,513	64.2	11,602	16.4	13,740	19.4
October	62,005	100.0	39,486	63.7	10,098	16.3	12,421	20.0
November	58,188	100.0	37,583	64.6	8,689	14.9	11,916	20.5
December	52,979	100.0	34,864	65.8	8,622	16.3	9,493	17.9
Year	859,003	100.0	551,001	64.1	151,298	17.6	156,704	18.2
2008								
January	51,719	100.0	34,557	66.8	8,443	16.3	8,719	16.9
February	58,210	100.0	37,369	64.2	9,839	16.9	11,002	18.9
March	80,124	100.0	50,287	62.8	15,539	19.4	14,298	17.8
April	98,333	100.0	60,137	61.2	18,654	19.0	19,542	19.9
May	109,387	100.0	67,352	61.6	21,388	19.6	20,647	18.9
June	95,991	100.0	59,162	61.6	18,272	19.0	18,557	19.3
July	85,826	100.0	52,973	61.7	17,249	20.1	15,604	18.2
August	80,923	100.0	50,352	62.2	15,499	19.2	15,072	18.6
September	74,483	100.0	45,558	61.2	14,681	19.7	14,244	19.1
October	63,518	100.0	39,724	62.5	11,545	18.2	12,249	19.3
November	51,253	100.0	31,930	62.3	9,211	18.0	10,112	19.7
December	44,739	100.0	28,021	62.6	7,596	17.0	9,122	20.4
Year	894,506	100.0	557,422	62.3	167,916	18.8	169,168	18.9
2009								
January	35,743	100.0	21,581	60.4	6,907	19.3	7,255	20.3
February	40,786	100.0	23,129	56.7	7,559	18.5	10,098	24.8
March	65,695	100.0	38,347	58.4	12,138	18.5	15,210	23.2
April	75,332	100.0	40,460	53.7	16,423	21.8	18,449	24.5
May	83,181	100.0	47,369	56.9	15,020	18.1	20,792	25.0
June p	74,028	100.0	41,654	56.3	12,407	16.8	19,967	27.0

Table 4
Provincial sales of new motor vehicles, by type and origin, in units and dollars, June

Type and origin of vehicles	Canada	Newfoundland and Labrador	Prince Edward Island	Nova Scotia	New Brunswick	Quebec
Total, new motor vehicles						
2007 (no.)	172,487	3,322	593	5,404	4,090	41,663
2008 (no.)	163,064	3,159	560	5,645	4,060	40,574
2009 (no.)	140,445	3,142	520	5,239	3,301	37,066
2009 / 2008 (%)	-13.9	-0.5	-7.1	-7.2	-18.7	-8.6
2007 (\$'000)	5,348,247	89,759	14,671	144,140	114,404	1,158,643
2008 (\$'000)	4,935,721	81,049	13,590	144,643	112,413	1,113,064
2009 (\$'000)	4,736,835	100,893	16,171	152,742	109,023	1,091,406
2009 / 2008 (%)	-4.0	24.5	19.0	5.6	-3.0	-1.9
Passenger cars, manufactured in North America						
2007 (no.)	58,700	1,338	296	2,329	1,648	15,048
2008 (no.)	59,162	1,256	268	2,689	1,616	15,354
2009 (no.)	41,654	1,064	170	2,079	1,058	11,164
2009 / 2008 (%)	-29.6	-15.3	-36.6	-22.7	-34.5	-27.3
2007 (\$'000)	1,411,335	29,932	6,514	52,603	37,119	343,589
2008 (\$'000)	1,409,908	28,556	5,868	61,305	35,826	349,512
2009 (\$'000)	1,047,116	27,091	3,750	54,053	28,979	264,639
2009 / 2008 (%)	-25.7	-5.1	-36.1	-11.8	-19.1	-24.3
Passenger cars, manufactured in Japan						
2007 (no.)	16,315	x	x	490	x	6,180
2008 (no.)	18,272	x	x	618	x	6,795
2009 (no.)	12,407	x	x	333	x	4,741
2009 / 2008 (%)	-32.1	x	x	-46.1	x	-30.2
2007 (\$'000)	392,487	x	x	11,087	x	135,296
2008 (\$'000)	433,544	x	x	13,516	x	148,855
2009 (\$'000)	303,416	x	x	7,843	x	106,830
2009 / 2008 (%)	-30.0	x	x	-42.0	x	-28.2
Passenger cars, manufactured in other countries						
2007 (no.)	16,714	x	x	560	x	5,522
2008 (no.)	18,557	x	x	714	x	5,744
2009 (no.)	19,967	x	x	769	x	7,719
2009 / 2008 (%)	7.6	x	x	7.7	x	34.4
2007 (\$'000)	483,196	x	x	12,348	x	143,662
2008 (\$'000)	585,413	x	x	15,815	x	164,152
2009 (\$'000)	616,397	x	x	18,329	x	218,814
2009 / 2008 (%)	5.3	x	x	15.9	x	33.3
Trucks ¹, manufactured in North America						
2007 (no.)	71,689	x	x	1,803	1,623	12,868
2008 (no.)	57,541	x	x	1,418	1,429	10,425
2009 (no.)	57,063	x	x	1,853	1,373	10,727
2009 / 2008 (%)	-0.8	x	x	30.7	-3.9	2.9
2007 (\$'000)	2,720,450	x	x	60,592	58,841	460,308
2008 (\$'000)	2,145,142	x	x	46,550	53,311	367,119
2009 (\$'000)	2,398,166	x	x	65,187	58,911	397,966
2009 / 2008 (%)	11.8	x	x	40.0	10.5	8.4
Trucks ¹, manufactured overseas						
2007 (no.)	9,069	x	x	222	168	2,045
2008 (no.)	9,532	x	x	206	186	2,256
2009 (no.)	9,354	x	x	205	136	2,715
2009 / 2008 (%)	-1.9	x	x	-0.5	-26.9	20.3
2007 (\$'000)	340,779	x	x	7,509	5,403	75,788
2008 (\$'000)	361,714	x	x	7,456	6,054	83,426
2009 (\$'000)	371,740	x	x	7,330	4,644	103,156
2009 / 2008 (%)	2.8	x	x	-1.7	-23.3	23.6

See notes at the end of the table.

Table 4 – continued

Provincial sales of new motor vehicles, by type and origin, in units and dollars, June

Type and origin of vehicles	Canada	Ontario	Manitoba	Saskatchewan	Alberta	British Columbia and the Territories ²
Total, new motor vehicles						
2007 (no.)	172,487	62,442	4,481	4,524	25,463	20,505
2008 (no.)	163,064	59,760	4,454	4,233	22,132	18,487
2009 (no.)	140,445	51,218	4,022	3,933	17,306	14,698
2009 / 2008 (%)	-13.9	-14.3	-9.7	-7.1	-21.8	-20.5
2007 (\$'000)	5,348,247	1,951,394	143,331	151,536	896,745	683,624
2008 (\$'000)	4,935,721	1,880,814	143,335	137,870	739,195	569,748
2009 (\$'000)	4,736,835	1,762,957	150,283	156,895	665,433	531,033
2009 / 2008 (%)	-4.0	-6.3	4.8	13.8	-10.0	-6.8
Passenger cars, manufactured in North America						
2007 (no.)	58,700	22,588	1,590	1,263	6,653	5,947
2008 (no.)	59,162	22,693	1,552	1,210	6,515	6,009
2009 (no.)	41,654	16,347	1,154	983	3,998	3,637
2009 / 2008 (%)	-29.6	-28.0	-25.6	-18.8	-38.6	-39.5
2007 (\$'000)	1,411,335	559,551	38,629	30,679	168,879	143,839
2008 (\$'000)	1,409,908	557,565	36,699	29,711	164,881	139,985
2009 (\$'000)	1,047,116	394,415	29,639	27,517	117,179	99,854
2009 / 2008 (%)	-25.7	-29.3	-19.2	-7.4	-28.9	-28.7
Passenger cars, manufactured in Japan						
2007 (no.)	16,315	4,815	227	169	1,545	2,354
2008 (no.)	18,272	5,499	312	277	1,706	2,321
2009 (no.)	12,407	3,794	247	147	1,114	1,551
2009 / 2008 (%)	-32.1	-31.0	-20.8	-46.9	-34.7	-33.2
2007 (\$'000)	392,487	129,101	5,415	4,175	40,416	56,055
2008 (\$'000)	433,544	141,216	7,446	6,605	43,388	57,082
2009 (\$'000)	303,416	100,719	6,059	3,968	28,872	38,810
2009 / 2008 (%)	-30.0	-28.7	-18.6	-39.9	-33.5	-32.0
Passenger cars, manufactured in other countries						
2007 (no.)	16,714	5,985	348	222	1,326	2,030
2008 (no.)	18,557	6,851	354	273	1,626	2,150
2009 (no.)	19,967	6,743	363	216	1,219	1,958
2009 / 2008 (%)	7.6	-1.6	2.5	-20.9	-25.0	-8.9
2007 (\$'000)	483,196	191,000	8,293	5,223	42,729	66,003
2008 (\$'000)	585,413	240,446	8,723	6,416	56,775	75,985
2009 (\$'000)	616,397	232,162	9,355	6,114	41,003	69,071
2009 / 2008 (%)	5.3	-3.4	7.2	-4.7	-27.8	-9.1
Trucks¹, manufactured in North America						
2007 (no.)	71,689	25,629	2,101	2,632	14,586	8,942
2008 (no.)	57,541	21,110	1,994	2,243	10,811	6,853
2009 (no.)	57,063	20,933	2,040	2,386	9,890	6,399
2009 / 2008 (%)	-0.8	-0.8	2.3	6.4	-8.5	-6.6
2007 (\$'000)	2,720,450	940,579	83,362	102,967	593,553	369,359
2008 (\$'000)	2,145,142	800,539	82,138	86,802	418,570	250,731
2009 (\$'000)	2,398,166	895,451	97,137	111,670	434,263	274,633
2009 / 2008 (%)	11.8	11.9	18.3	28.6	3.7	9.5
Trucks¹, manufactured overseas						
2007 (no.)	9,069	3,425	215	238	1,353	1,232
2008 (no.)	9,532	3,607	242	230	1,474	1,154
2009 (no.)	9,354	3,401	218	201	1,085	1,153
2009 / 2008 (%)	-1.9	-5.7	-9.9	-12.6	-26.4	-0.1
2007 (\$'000)	340,779	131,162	7,633	8,492	51,169	48,368
2008 (\$'000)	361,714	141,049	8,329	8,336	55,580	45,965
2009 (\$'000)	371,740	140,210	8,092	7,626	44,117	48,664
2009 / 2008 (%)	2.8	-0.6	-2.8	-8.5	-20.6	5.9

1. Trucks include minivans, sport-utility vehicles, light and heavy trucks, vans and buses.

2. For reasons of confidentiality, data for the Yukon, the Northwest Territories and Nunavut have been included with the data for British Columbia.

Table 5-1
Year to date provincial sales of new motor vehicles, by type and origin in units, January to June

Province	Total new motor vehicles		Passenger cars								
			North America		Japan		Other countries		Total		
	Units	Year/year change	Units	Year/year change	Units	Year/year change	Units	Year/year change	Units	Year/year change	
	no.	%	no.	%	no.	%	no.	%	no.	%	
2007											
Newfoundland and Labrador	15,124	20.8	6,147	17.4	x	x	x	x	8,369	17.2	
Prince Edward Island	2,730	12.1	1,161	6.6	x	x	x	x	1,684	10.1	
Nova Scotia	25,549	0.5	10,638	-6.8	2,306	32.5	2,397	-1.9	15,341	-1.6	
New Brunswick	19,743	9.1	7,584	1.9	x	x	x	x	10,581	3.9	
Quebec	223,124	7.5	80,060	2.6	34,118	19.2	27,299	-2.1	141,477	5.1	
Ontario	313,314	0.1	110,723	-6.1	24,111	19.3	26,301	2.3	161,135	-1.6	
Manitoba	23,435	6.3	7,323	1.4	1,254	18.2	1,403	10.3	9,980	4.5	
Saskatchewan	21,998	15.8	5,428	1.7	785	19.1	880	-5.9	7,093	2.4	
Alberta	132,782	7.8	32,860	0.9	7,259	25.8	6,333	16.2	46,452	6.1	
British Columbia and the Territories ¹	104,932	7.4	30,063	-4.2	11,019	20.7	9,993	8.9	51,075	2.8	
Canada	882,731	5.0	291,987	-1.9	83,488	20.8	77,712	2.2	453,187	2.3	
2008											
Newfoundland and Labrador	16,822	11.2	6,570	6.9	x	x	x	x	9,493	13.4	
Prince Edward Island	2,933	7.4	1,315	13.3	x	x	x	x	1,872	11.2	
Nova Scotia	29,276	14.6	12,606	18.5	2,722	18.0	3,496	45.8	18,824	22.7	
New Brunswick	21,343	8.1	8,280	9.2	x	x	x	x	12,232	15.6	
Quebec	240,853	7.9	87,967	9.9	36,829	7.9	33,644	23.2	158,440	12.0	
Ontario	315,465	0.7	113,941	-2.9	26,470	9.8	30,616	16.4	171,027	6.1	
Manitoba	24,636	5.1	8,057	10.0	1,787	42.5	1,636	16.6	11,480	15.0	
Saskatchewan	24,471	11.2	6,481	19.4	1,199	52.7	1,319	49.9	8,999	26.9	
Alberta	126,643	-4.6	33,915	3.2	8,030	10.6	7,217	14.0	49,162	5.8	
British Columbia and the Territories ¹	100,976	-3.8	29,732	-1.1	11,955	8.5	10,548	5.6	52,235	2.3	
Canada	903,418	2.3	308,864	5.8	92,135	10.4	92,765	19.4	493,764	9.0	
2009											
Newfoundland and Labrador	14,573	-13.4	4,477	-31.9	x	x	x	x	7,349	-22.6	
Prince Edward Island	2,566	-12.5	921	-30.0	x	x	x	x	1,490	-20.4	
Nova Scotia	24,554	-16.1	8,816	-30.1	1,881	-30.9	3,316	-5.1	14,013	-25.6	
New Brunswick	17,370	-18.6	5,311	-35.9	x	x	x	x	8,672	-29.1	
Quebec	202,413	-16.0	60,889	-30.8	30,194	-18.0	37,317	10.9	128,400	-19.0	
Ontario	262,583	-16.8	82,573	-27.5	19,872	-24.9	29,154	-4.8	131,599	-23.1	
Manitoba	21,172	-14.1	5,509	-31.6	1,204	-32.6	1,590	-2.8	8,303	-27.7	
Saskatchewan	21,425	-12.4	4,975	-23.2	885	-26.2	1,141	-13.5	7,001	-22.2	
Alberta	92,210	-27.2	20,261	-40.3	5,348	-33.4	6,042	-16.3	31,651	-35.6	
British Columbia and the Territories ¹	74,317	-26.4	18,808	-36.7	8,436	-29.4	9,043	-14.3	36,287	-30.5	
Canada	733,183	-18.8	212,540	-31.2	70,454	-23.5	91,771	-1.1	374,765	-24.1	

See notes at the end of the table.

Table 5-1 – continued

Year to date provincial sales of new motor vehicles, by type and origin in units, January to June

Province	Total new motor vehicles		Trucks ²					
			North America		Overseas		Total	
	Units	Year/year change	Units	Year/year change	Units	Year/year change	Units	Year/year change
	no.	%	no.	%	no.	%	no.	%
2007								
Newfoundland and Labrador	15,124	20.8	x	x	x	x	6,755	25.5
Prince Edward Island	2,730	12.1	x	x	x	x	1,046	15.5
Nova Scotia	25,549	0.5	9,110	7.9	1,098	-20.0	10,208	4.0
New Brunswick	19,743	9.1	8,211	19.8	951	-9.9	9,162	15.9
Quebec	223,124	7.5	69,249	19.8	12,398	-18.2	81,647	11.9
Ontario	313,314	0.1	133,195	5.9	18,984	-18.7	152,179	2.0
Manitoba	23,435	6.3	12,146	10.9	1,309	-15.5	13,455	7.6
Saskatchewan	21,998	15.8	13,738	26.3	1,167	-2.1	14,905	23.5
Alberta	132,782	7.8	78,481	9.4	7,849	3.3	86,330	8.8
British Columbia and the Territories ¹	104,932	7.4	46,468	15.9	7,389	-7.3	53,857	12.1
Canada	882,731	5.0	377,503	11.7	52,041	-13.6	429,544	7.9
2008								
Newfoundland and Labrador	16,822	11.2	x	x	x	x	7,329	8.5
Prince Edward Island	2,933	7.4	x	x	x	x	1,061	1.4
Nova Scotia	29,276	14.6	9,218	1.2	1,234	12.4	10,452	2.4
New Brunswick	21,343	8.1	8,106	-1.3	1,005	5.7	9,111	-0.6
Quebec	240,853	7.9	67,715	-2.2	14,698	18.6	82,413	0.9
Ontario	315,465	0.7	122,825	-7.8	21,613	13.8	144,438	-5.1
Manitoba	24,636	5.1	11,732	-3.4	1,424	8.8	13,156	-2.2
Saskatchewan	24,471	11.2	14,103	2.7	1,369	17.3	15,472	3.8
Alberta	126,643	-4.6	69,079	-12.0	8,402	7.0	77,481	-10.3
British Columbia and the Territories ¹	100,976	-3.8	41,824	-10.0	6,917	-6.4	48,741	-9.5
Canada	903,418	2.3	351,987	-6.8	57,667	10.8	409,654	-4.6
2009								
Newfoundland and Labrador	14,573	-13.4	x	x	x	x	7,224	-1.4
Prince Edward Island	2,566	-12.5	x	x	x	x	1,076	1.4
Nova Scotia	24,554	-16.1	9,457	2.6	1,084	-12.2	10,541	0.9
New Brunswick	17,370	-18.6	7,859	-3.0	839	-16.5	8,698	-4.5
Quebec	202,413	-16.0	60,273	-11.0	13,740	-6.5	74,013	-10.2
Ontario	262,583	-16.8	113,358	-7.7	17,626	-18.4	130,984	-9.3
Manitoba	21,172	-14.1	11,693	-0.3	1,176	-17.4	12,869	-2.2
Saskatchewan	21,425	-12.4	13,401	-5.0	1,023	-25.3	14,424	-6.8
Alberta	92,210	-27.2	54,593	-21.0	5,966	-29.0	60,559	-21.8
British Columbia and the Territories ¹	74,317	-26.4	32,113	-23.2	5,917	-14.5	38,030	-22.0
Canada	733,183	-18.8	310,090	-11.9	48,328	-16.2	358,418	-12.5

1. For reasons of confidentiality, data for the Yukon, the Northwest Territories and Nunavut have been included with the data for British Columbia.

2. Trucks include minivans, sport-utility vehicles, light and heavy trucks, vans and buses.

Note(s): Percentage changes shown are year-to-year changes.

Table 5-2
Year to date provincial sales of new motor vehicles, by type and origin in dollars, January to June

Province	Total new motor vehicles		Passenger cars							
			North America		Japan		Other countries		Total	
	Units	Year/year change	Units	Year/year change	Units	Year/year change	Units	Year/year change	Units	Year/year change
	\$'000	%	\$'000	%	\$'000	%	\$'000	%	\$'000	%
2007										
Newfoundland and Labrador	409,680	21.5	138,904	15.1	x	x	x	x	183,575	16.0
Prince Edward Island	70,151	10.6	26,266	3.3	x	x	x	x	36,418	8.0
Nova Scotia	708,526	-1.1	245,749	-8.3	52,109	31.8	53,181	-2.7	351,038	-3.1
New Brunswick	568,335	6.4	174,974	-1.3	x	x	x	x	236,622	1.7
Quebec	6,341,399	5.3	1,860,891	-0.5	751,761	19.5	725,515	1.1	3,338,168	3.8
Ontario	10,118,671	-1.4	2,781,826	-7.9	658,084	20.3	910,825	4.6	4,350,734	-1.9
Manitoba	798,370	5.8	180,152	0.0	31,029	22.3	34,989	7.8	246,170	3.4
Saskatchewan	779,966	18.1	134,934	-1.0	20,448	18.3	22,446	1.4	177,826	1.2
Alberta	4,730,392	6.5	826,718	-0.2	192,131	24.9	209,868	19.1	1,228,717	6.1
British Columbia and the Territories ¹	3,524,390	8.2	723,896	-7.7	276,153	20.4	332,925	5.9	1,332,972	0.4
Canada	28,049,883	3.7	7,094,310	-4.3	2,036,722	21.0	2,351,206	4.6	11,482,239	1.2
2008										
Newfoundland and Labrador	441,104	7.7	148,756	7.1	x	x	x	x	206,736	12.6
Prince Edward Island	72,723	3.7	28,827	9.8	x	x	x	x	39,502	8.5
Nova Scotia	773,434	9.2	290,399	18.2	59,651	14.5	73,819	38.8	423,869	20.7
New Brunswick	578,966	1.9	184,604	5.5	x	x	x	x	264,905	12.0
Quebec	6,636,193	4.6	2,008,337	7.9	798,325	6.2	871,184	20.1	3,677,845	10.2
Ontario	10,071,098	-0.5	2,828,050	1.7	689,013	4.7	1,040,464	14.2	4,557,528	4.8
Manitoba	798,388	0.0	193,375	7.3	42,761	37.8	39,852	13.9	275,988	12.1
Saskatchewan	836,143	7.2	158,526	17.5	30,254	48.0	32,086	42.9	220,868	24.2
Alberta	4,328,398	-8.5	865,161	4.7	209,206	8.9	231,865	10.5	1,306,233	6.3
British Columbia and the Territories ¹	3,207,479	-9.0	700,328	-3.3	295,915	7.2	356,351	7.0	1,352,594	1.5
Canada	27,743,926	-1.1	7,406,362	4.4	2,190,273	7.5	2,729,433	16.1	12,326,067	7.3
2009										
Newfoundland and Labrador	422,770	-4.2	106,564	-28.4	x	x	x	x	166,358	-19.5
Prince Edward Island	70,488	-3.1	20,662	-28.3	x	x	x	x	32,141	-18.6
Nova Scotia	720,385	-6.9	216,433	-25.5	41,959	-29.7	77,613	5.1	336,006	-20.7
New Brunswick	522,730	-9.7	128,660	-30.3	x	x	x	x	202,804	-23.4
Quebec	5,865,779	-11.6	1,414,355	-29.6	655,452	-17.9	1,007,563	15.7	3,077,368	-16.3
Ontario	8,341,403	-17.2	2,005,639	-29.1	516,192	-25.1	979,919	-5.8	3,501,749	-23.2
Manitoba	707,596	-11.4	134,702	-30.3	29,126	-31.9	41,779	4.8	205,607	-25.5
Saskatchewan	734,747	-12.1	124,792	-21.3	22,449	-25.8	30,960	-3.5	178,199	-19.3
Alberta	3,177,084	-26.6	535,337	-38.1	139,969	-33.1	194,522	-16.1	869,829	-33.4
British Columbia and the Territories ¹	2,466,375	-23.1	475,429	-32.1	202,007	-31.7	307,911	-13.6	985,347	-27.2
Canada	23,029,355	-17.0	5,162,572	-30.3	1,661,771	-24.1	2,731,062	0.1	9,555,408	-22.5

See notes at the end of the table.

Table 5-2 – continued

Year to date provincial sales of new motor vehicles, by type and origin in dollars, January to June

Province	Total new motor vehicles		Trucks ²					
			North America		Overseas		Total	
	Units	Year/year change	Units	Year/year change	Units	Year/year change	Units	Year/year change
	\$'000	%	\$'000	%	\$'000	%	\$'000	%
2007								
Newfoundland and Labrador	409,680	21.5	x	x	x	x	226,106	26.4
Prince Edward Island	70,151	10.6	x	x	x	x	33,733	13.5
Nova Scotia	708,526	-1.1	319,809	3.7	37,679	-17.5	357,487	1.0
New Brunswick	568,335	6.4	300,527	12.1	31,189	-6.3	331,714	10.0
Quebec	6,341,399	5.3	2,547,109	11.4	456,123	-12.1	3,003,231	7.1
Ontario	10,118,671	-1.4	5,036,705	1.7	731,232	-16.3	5,767,938	-1.0
Manitoba	798,370	5.8	505,029	9.0	47,173	-11.8	552,200	6.8
Saskatchewan	779,966	18.1	559,989	26.4	42,151	1.2	602,140	24.3
Alberta	4,730,392	6.5	3,203,321	6.7	298,356	6.4	3,501,677	6.7
British Columbia and the Territories ¹	3,524,390	8.2	1,904,073	16.7	287,345	-3.6	2,191,417	13.6
Canada	28,049,883	3.7	14,608,088	8.0	1,959,554	-9.9	16,567,643	5.5
2008								
Newfoundland and Labrador	441,104	7.7	x	x	x	x	234,367	3.7
Prince Edward Island	72,723	3.7	x	x	x	x	33,222	-1.5
Nova Scotia	773,434	9.2	306,822	-4.1	42,743	13.4	349,566	-2.2
New Brunswick	578,966	1.9	281,451	-6.3	32,609	4.6	314,060	-5.3
Quebec	6,636,193	4.6	2,429,870	-4.6	528,481	15.9	2,958,349	-1.5
Ontario	10,071,098	-0.5	4,682,177	-7.0	831,393	13.7	5,513,571	-4.4
Manitoba	798,388	0.0	472,503	-6.4	49,897	5.8	522,399	-5.4
Saskatchewan	836,143	7.2	566,530	1.2	48,745	15.6	615,276	2.2
Alberta	4,328,398	-8.5	2,703,484	-15.6	318,680	6.8	3,022,165	-13.7
British Columbia and the Territories ¹	3,207,479	-9.0	1,579,676	-17.0	275,209	-4.2	1,854,884	-15.4
Canada	27,743,926	-1.1	13,259,028	-9.2	2,158,833	10.2	15,417,858	-6.9
2009								
Newfoundland and Labrador	422,770	-4.2	x	x	x	x	256,412	9.4
Prince Edward Island	70,488	-3.1	x	x	x	x	38,348	15.4
Nova Scotia	720,385	-6.9	345,724	12.7	38,656	-9.6	384,379	10.0
New Brunswick	522,730	-9.7	292,043	3.8	27,884	-14.5	319,926	1.9
Quebec	5,865,779	-11.6	2,274,339	-6.4	514,070	-2.7	2,788,409	-5.7
Ontario	8,341,403	-17.2	4,118,803	-12.0	720,848	-13.3	4,839,652	-12.2
Manitoba	707,596	-11.4	459,768	-2.7	42,219	-15.4	501,988	-3.9
Saskatchewan	734,747	-12.1	518,037	-8.6	38,509	-21.0	556,548	-9.5
Alberta	3,177,084	-26.6	2,070,962	-23.4	236,296	-25.9	2,307,256	-23.7
British Columbia and the Territories ¹	2,466,375	-23.1	1,235,742	-21.8	245,284	-10.9	1,481,027	-20.2
Canada	23,029,355	-17.0	11,579,172	-12.7	1,894,776	-12.2	13,473,946	-12.6

1. For reasons of confidentiality, data for the Yukon, the Northwest Territories and Nunavut have been included with the data for British Columbia.

2. Trucks include minivans, sport-utility vehicles, light and heavy trucks, vans and buses.

Note(s): Percentage changes shown are year-to-year changes.

Table 6
Annual sales of new motor vehicles, by type and origin, in units and dollars, Canada

Year	Total	Passenger cars				Trucks ¹		
		Total	North America	Japan	Other countries	Total	North America	Overseas
number								
1986	1,515,920	1,095,313	761,169	203,304	130,840	420,607	368,423	52,184
1987	1,533,637	1,065,093	700,930	243,288	120,875	468,544	417,189	51,355
1988	1,565,501	1,056,310	724,733	243,835	87,742	509,191	459,777	49,414
1989	1,483,875	988,134	675,340	239,548	73,246	495,741	422,398	73,343
1990	1,317,869	884,564	580,397	239,603	64,564	433,305	361,403	71,902
1991	1,287,790	873,184	573,297	237,701	62,186	414,606	347,671	66,935
1992	1,227,419	798,023	503,460	236,675	57,888	429,396	370,422	58,974
1993	1,192,934	739,049	493,759	196,310	48,980	453,885	402,112	51,773
1994	1,260,056	748,666	573,361	129,547	45,758	511,390	475,444	35,946
1995	1,166,535	670,190	553,265	71,493	45,432	496,345	469,590	26,755
1996	1,204,557	660,769	572,581	47,901	40,287	543,788	517,738	26,050
1997	1,424,380	738,550	629,488	66,297	42,765	685,830	628,214	57,616
1998	1,428,932	740,809	590,667	98,275	51,867	688,123	627,256	60,867
1999	1,542,041	806,450	625,292	103,016	78,142	735,591	672,444	63,147
2000	1,587,561	849,171	640,856	106,937	101,378	738,390	669,492	68,898
2001	1,597,964	868,633	619,810	122,998	125,825	729,331	647,987	81,344
2002	1,733,318	934,704	651,305	144,596	138,803	798,614	698,870	99,744
2003	1,626,468	865,475	604,726	126,908	133,841	760,993	654,136	106,857
2004	1,575,195	820,103	542,814	116,426	160,863	755,092	653,637	101,455
2005	1,630,310	845,222	574,639	123,482	147,101	785,088	673,205	111,883
2006	1,666,327	863,161	573,102	142,159	147,900	803,166	681,244	121,922
2007	1,690,538	859,003	551,001	151,298	156,704	831,535	727,909	103,626
2008	1,674,145	894,506	557,422	167,916	169,168	779,639	667,139	112,500
\$'000								
1986	21,841,550	14,669,730	9,856,684	2,811,893	2,001,153	7,171,820	6,441,827	729,993
1987	24,471,752	15,748,410	10,031,338	3,567,223	2,149,849	8,723,342	7,930,138	793,204
1988	26,865,327	16,709,476	11,080,866	3,784,902	1,843,708	10,155,851	9,369,528	786,323
1989	26,959,378	16,541,801	11,034,684	3,887,341	1,619,774	10,417,577	9,059,482	1,358,095
1990	24,888,751	15,245,831	9,784,293	4,015,958	1,445,580	9,642,918	8,210,502	1,432,416
1991	22,855,626	14,103,545	9,038,584	3,789,001	1,275,960	8,752,081	7,503,659	1,248,422
1992	23,484,455	13,691,746	8,450,516	4,053,782	1,187,451	9,792,709	8,613,984	1,178,725
1993	24,630,359	13,278,180	8,620,649	3,560,913	1,096,620	11,352,180	10,227,082	1,125,101
1994	27,893,795	14,182,894	10,595,001	2,346,168	1,241,727	13,710,902	12,846,447	864,453
1995	28,168,806	13,882,004	11,070,368	1,492,451	1,319,184	14,286,804	13,544,980	741,824
1996	31,485,777	14,510,882	12,062,092	1,118,289	1,330,501	16,974,894	16,115,584	859,309
1997	38,986,224	16,836,615	13,809,161	1,519,604	1,507,852	22,149,610	20,341,263	1,808,346
1998	40,255,777	17,054,244	13,101,703	2,110,330	1,842,211	23,201,534	21,165,239	2,036,296
1999	45,317,914	19,017,278	14,138,902	2,246,522	2,631,853	26,300,638	24,055,653	2,244,986
2000	46,930,514	20,790,660	15,089,665	2,431,251	3,269,743	26,139,852	23,745,933	2,393,922
2001	46,886,252	21,168,628	14,575,745	2,882,386	3,710,497	25,717,623	22,958,458	2,759,162
2002	52,227,499	23,191,483	15,521,295	3,501,294	4,168,898	29,036,014	25,633,136	3,402,877
2003	50,493,308	21,685,587	14,565,218	2,988,274	4,132,093	28,807,720	24,845,915	3,961,804
2004	49,639,223	20,489,761	13,261,753	2,694,970	4,533,035	29,149,463	25,384,561	3,764,904
2005	52,311,147	21,220,807	14,051,867	2,928,424	4,240,519	31,090,339	27,031,615	4,058,725
2006	53,966,261	22,077,502	14,250,869	3,469,392	4,357,245	31,888,757	27,445,267	4,443,494
2007	53,676,866	21,770,114	13,452,878	3,707,820	4,609,417	31,906,752	27,961,186	3,945,567
2008	51,565,539	22,331,952	13,263,053	3,966,400	5,102,499	29,233,586	25,036,422	4,197,166

1. Trucks include minivans, sport-utility vehicles, light and heavy trucks, vans and buses.

Table 7
Canada, monthly sales of new motor vehicles, in units, by type and origin, seasonally adjusted

Period	Total new motor vehicles		Passenger cars				Trucks ¹	
			North America		Overseas		Total	
	Units	Month/month change	Units	Month/month change	Units	Month/month change	Units	Month/month change
	no.	%	no.	%	no.	%	no.	%
2007								
January	141,588	-6.2	44,837	-17.1	26,068	1.6	70,683	-0.8
February	137,783	-2.7	44,810	-0.1	25,040	-3.9	67,933	-3.9
March	138,792	0.7	45,277	1.0	25,237	0.8	68,278	0.5
April	147,479	6.3	50,037	10.5	25,860	2.5	71,582	4.8
May	144,419	-2.1	46,478	-7.1	26,020	0.6	71,921	0.5
June	142,826	-1.1	47,441	2.1	26,325	1.2	69,060	-4.0
July	138,756	-2.8	44,813	-5.5	25,988	-1.3	67,955	-1.6
August	142,624	2.8	47,309	5.6	25,853	-0.5	69,462	2.2
September	137,578	-3.5	45,970	-2.8	25,624	-0.9	65,984	-5.0
October	137,018	-0.4	44,804	-2.5	24,806	-3.2	67,408	2.2
November	135,345	-1.2	44,506	-0.7	24,202	-2.4	66,637	-1.1
December	146,330	8.1	44,719	0.5	26,978	11.5	74,633	12.0
2008								
January	158,919	8.6	56,335	26.0	29,245	8.4	73,339	-1.7
February	151,359	-4.8	52,472	-6.9	29,427	0.6	69,460	-5.3
March	148,437	-1.9	48,885	-6.8	31,276	6.3	68,276	-1.7
April	142,464	-4.0	46,609	-4.7	28,515	-8.8	67,340	-1.4
May	143,247	0.5	48,713	4.5	30,163	5.8	64,371	-4.4
June	141,178	-1.4	48,812	0.2	29,746	-1.4	62,620	-2.7
July	139,372	-1.3	48,280	-1.1	27,650	-7.0	63,442	1.3
August	135,399	-2.9	44,715	-7.4	27,762	0.4	62,922	-0.8
September	138,335	2.2	44,834	0.3	28,757	3.6	64,744	2.9
October	136,950	-1.0	44,228	-1.4	25,742	-10.5	66,980	3.5
November	126,018	-8.0	39,088	-11.6	24,687	-4.1	62,243	-7.1
December	112,334	-10.9	34,438	-11.9	24,119	-2.3	53,777	-13.6
2009								
January	117,443	4.5	35,328	2.6	24,553	1.8	57,562	7.0
February	114,861	-2.2	33,974	-3.8	25,932	5.6	54,955	-4.5
March ^r	120,593	5.0	34,954	2.9	25,771	-0.6	59,868	8.9
April ^r	119,385	-1.0	33,046	-5.5	26,573	3.1	59,766	-0.2
May ^r	120,687	1.1	33,694	2.0	25,932	-2.4	61,061	2.2
June ^p	119,961	-0.6	33,397	-0.9	25,641	-1.1	60,923	-0.2

1. Trucks include minivans, sport-utility vehicles, light and heavy trucks, vans and buses.

Note(s): Percentage changes shown are month-to-month changes.

Table 8
Monthly sales of new motor vehicles, in units, by province, seasonally adjusted

Period	Canada	Newfoundland and Labrador	Prince Edward Island	Nova Scotia	New Brunswick	Quebec
number						
2007						
January	141,588	2,252	430	3,901	3,185	34,701
February	137,783	2,174	422	3,718	2,918	33,702
March	138,792	2,408	465	3,748	3,037	33,054
April	147,479	2,525	467	4,209	2,972	36,433
May	144,419	2,404	462	3,757	3,274	36,315
June	142,826	2,401	441	4,176	3,204	34,900
July	138,756	2,301	424	4,146	3,062	33,118
August	142,624	2,389	489	4,308	3,172	33,932
September	137,578	2,228	403	4,274	3,044	34,405
October	137,018	2,317	491	4,172	3,161	33,700
November	135,345	2,363	328	4,399	3,044	33,064
December	146,330	2,498	481	4,379	3,220	36,081
2008						
January	158,919	3,185	514	4,974	3,354	42,099
February	151,359	3,327	494	4,761	3,522	41,313
March	148,437	2,552	498	4,844	3,363	37,883
April	142,464	2,516	468	3,980	3,555	36,662
May	143,247	2,527	496	4,580	3,369	37,281
June	141,178	2,405	450	4,481	3,334	35,754
July	139,372	2,632	443	4,316	3,482	35,764
August	135,399	2,636	426	4,088	3,356	35,280
September	138,335	2,697	460	4,646	3,323	35,619
October	136,950	2,686	430	4,295	3,226	34,686
November	126,018	2,188	426	3,908	2,913	31,932
December	112,334	2,094	400	3,546	2,723	30,873
2009						
January	117,443	2,144	434	3,464	2,791	29,780
February	114,861	2,069	366	3,566	2,554	31,123
March ^r	120,593	2,200	430	3,680	2,745	33,844
April ^r	119,385	2,330	461	3,753	2,810	32,237
May ^r	120,687	2,454	414	4,063	2,912	31,835
June ^p	119,961	2,382	421	4,081	2,716	32,275

Table 8 – continued

Monthly sales of new motor vehicles, in units, by province, seasonally adjusted

Period	Canada	Ontario	Manitoba	Saskatchewan	Alberta	British Columbia and the Territories
	number					
2007						
January	141,588	51,912	3,846	3,576	21,497	16,288
February	137,783	49,324	3,808	3,479	21,269	16,969
March	138,792	49,764	3,932	3,426	22,372	16,586
April	147,479	53,163	4,148	3,903	21,720	17,939
May	144,419	51,833	3,887	3,965	21,461	17,061
June	142,826	51,315	3,818	3,891	21,907	16,773
July	138,756	49,331	3,677	3,809	21,886	17,002
August	142,624	51,587	3,980	3,885	21,968	16,914
September	137,578	48,852	3,929	3,735	20,239	16,469
October	137,018	48,870	3,939	3,881	20,284	16,203
November	135,345	47,536	3,899	3,695	20,728	16,289
December	146,330	52,312	4,236	4,301	21,719	17,103
2008						
January	158,919	56,605	4,466	4,320	22,162	17,240
February	151,359	51,483	4,268	4,351	21,390	16,450
March	148,437	51,574	4,289	4,444	21,764	17,226
April	142,464	51,776	3,985	4,103	19,616	15,803
May	143,247	50,775	3,980	3,979	20,262	15,998
June	141,178	50,572	4,013	3,967	20,376	15,826
July	139,372	49,875	4,015	4,157	19,895	14,793
August	135,399	48,467	3,827	4,161	18,873	14,285
September	138,335	49,062	3,868	4,123	19,874	14,663
October	136,950	49,355	3,943	4,311	19,614	14,404
November	126,018	44,456	3,816	4,138	18,539	13,702
December	112,334	38,133	3,536	3,412	15,967	11,650
2009						
January	117,443	42,034	3,598	3,859	16,663	12,676
February	114,861	42,464	3,337	3,484	14,672	11,226
March ^r	120,593	44,180	3,449	3,621	14,814	11,630
April ^r	119,385	43,072	3,649	3,645	15,257	12,171
May ^r	120,687	44,014	3,833	3,798	14,971	12,393
June ^p	119,961	43,017	3,634	3,602	15,433	12,400

Definitions

Trucks

Trucks include light and heavy trucks, minivans, sport utility vehicles, vans, coaches and buses, regardless of their intended use.

Passenger car

The term passenger car refers to all vehicles whose primary function is to carry passengers, excluding those vehicles classified as a commercial vehicle (see definition above). Passenger cars also include cars used for commercial purposes, i.e. taxis, auto rentals and other car fleets.

Country of origin

New motor vehicles fall into two categories defined on the basis of origin: those manufactured in North America and those manufactured overseas. The latter are imported in a fully assembled state from countries other than the United States or Mexico. All passenger cars and commercial vehicles assembled in Canada, Mexico and the United States and sold in Canada classified are as North American manufactured vehicles.

Motor vehicle sales - units

The number of new motor vehicles sold in Canada.

Motor vehicle sales - dollars

Net sales refers to the selling price to the consumer, i.e., manufacturer's invoice price plus estimated dealer's markup, including charges for standard and optional accessories. Sales taxes are excluded.

Average price of passenger cars

The average price is obtained by dividing the total dollar sales by the number of units sold. Therefore, changes in the average price reflect variations in the models sold as well as price changes. For example, an increase in the average price for passenger cars may reflect both a shift to more expensive models as well as price increases.

Appendix I

Scope of the survey

The interest in and need for detailed statistics on the automobile industry arose years ago, when the industry began playing a prominent role in the Canadian economy. For over 50 years, Statistics Canada has been collecting and disseminating statistical information on the retail sales of new motor vehicles. Not only are these statistics required to produce estimates of Canadian consumer spending for the national accounts and the gross domestic product, but they have also served and continue to serve as one of the most important, most often requested indicators of the health of Canada's economy.¹

However, estimates of the total retail sales volume of new motor vehicles were not sufficient to meet the incessant demand for more information. There came an increasing need for data on the characteristics of the fleet of new vehicles sold at retail, either to learn more about the preferences of Canadian consumers or to assess the penetration of the Canadian market by major foreign manufacturers. Statistics on new motor vehicle sales were expanded in the early 1970s to provide separate figures for Japanese vehicle sales.

The statistics in this report cover exclusively retail sales of new motor vehicles within Canada's borders. Data are derived from a postal survey (a census - see the methodology section at the end of the report for more details).

Other statistics connected with the automobile industry (sales of new and used car dealers, auto parts and accessories stores and so on) are available on the monthly Retail Trade survey (Catalogue No. 63-005). For further information, please contact the Retail Commodity Section, Distributive Trades Division, Statistics Canada, Ottawa, K1A 0T6, (Telephone: 613-951-3549 or toll free at 1-877-421-3067).

Data quality and methodology

This survey is a census of all motor vehicle manufacturers and importers known to be active in Canada.

The value of sales is reported at selling price to consumer (i.e. the manufacturer's invoice price plus estimated dealer's markup, charges for standard equipment and options, less provincial sales tax and federal goods and services tax (G.S.T.) and harmonized sales tax (H.S.T.)).

The response rate for this survey is generally 100%. Minimal estimation is required so there is little bias resulting from non-response introduced in these data.

All attempts have been made to minimize the non-sampling errors: the questionnaires used in the survey have been carefully designed to minimize different interpretations; detailed acceptance testing has been carried out for the different stages of editing and processing.

1. The new motor vehicle sales series is one of ten statistical series making up the leading indicator developed by Statistics Canada for current economic analysis purposes.

Data confidentiality

Statistics Canada is prohibited by law from publishing any statistics which would divulge information relating to any identifiable business without the previous consent in writing of that business.² The disclosure of data likely to reveal specific information on the activity of a particular company is systematically and rigorously controlled and regulated to prevent the publication or disclosure of any information deemed confidential. The rules regarding confidentiality are therefore applied in such a way that no data are shown for cells (or statistical units). If information is withheld for reasons of confidentiality an "X" will appear in the appropriate cell of this publication.

Another way of preserving data confidentiality without having to enter an "X" is to combine (consolidate) the information **from selected regions** (or selected cells) for the same item. The data in question can be aggregated and published in a less detailed, but still confidential, form. For example, the data for the Northwest Territories, the Yukon and Nunavut are included with the British Columbia data.

Seasonal adjustment

Time series contain the elements essential to the description, explanation and forecasting of the behaviour of an economic phenomenon: "They are statistical records of the evolution of economic processes through time."³ Economic time series such as the New Motor Vehicles Sales Survey can be broken down into five main components: the trend-cycle, seasonality, the trading-day effect, the Easter holiday effect and the irregular component.

The trend represents the long-term change in the series, whereas the cycle represents a smooth, quasi-periodical movement about the trend, showing a succession of growth and decline phases (e.g., the business cycle). These two components—the trend and the cycle—are estimated together, and the trend-cycle reflects the fundamental evolution of the series. The other components reflect short-term transient movements.

The seasonal component represents sub-annual, monthly or quarterly fluctuations that recur more or less regularly from one year to the next. Seasonal variations are caused by the direct and indirect effects of the climatic seasons and institutional factors (attributable to social conventions or administrative rules; e.g., Christmas).

The trading-day component originates from the fact that the relative importance of the days varies systematically within the week and that the number of each day of the week in a given month varies from year to year. This effect is present when activity varies with the day of the week. For instance, Sunday is typically less active than the other days, and the number of Sundays, Mondays, etc., in a given month changes from year to year.

The Easter holiday effect is the variation due to the shift of part of April's activity to March when Easter falls in March rather than April.

Lastly, the irregular component includes all other more or less erratic fluctuations not taken into account in the preceding components. It is a residual that includes errors of measurement on the variable itself as well as unusual events (e.g., strikes, drought, floods, major power blackout or other unexpected events causing variations in respondents' activities).

Thus, the latter four components—seasonal, irregular, trading-day and Easter holiday effect—all conceal the fundamental trend-cycle component of the series. Seasonal adjustment (correction of seasonal variation) consists in removing the seasonal, trading-day and Easter holiday effect components from the series, and it thus helps reveal the trend-cycle. While seasonal adjustment permits a better understanding of the underlying trend-cycle of a series, the seasonally adjusted series still contains an irregular component. Slight month-to-month variations in the seasonally adjusted series may be simple irregular movements. To get a better idea of the underlying trend, users should examine several months of the seasonally adjusted series.

2. See Section 17 of the Statistics Act (Chapter 5-19), entitled «Secrecy».

3. «A Note on the Seasonal adjustment of Economic Time Series», Canadian Statistical Review, August 1974.

Since April 2008, New Motor Vehicle Sales Survey data are seasonally adjusted using the X-12-ARIMA⁴ software. The technique that is used essentially consists of first correcting the initial series for all sorts of undesirable effects, such as the trading-day and the Easter holiday effects, by a module called regARIMA. These effects are estimated using regression models with ARIMA errors (auto-regressive integrated moving average models). The series can also be extrapolated for at least one year by using the model. Subsequently, the raw series—pre-adjusted and extrapolated if applicable—is seasonally adjusted by the X-11 method.

The X-11 method is used for analysing monthly and quarterly series. It is based on an iterative principle applied in estimating the different components, with estimation being done at each stage using adequate moving averages.⁵ The moving averages used to estimate the main components—the trend and seasonality—are primarily smoothing tools designed to eliminate an undesirable component from the series. Since moving averages react poorly to the presence of atypical values, the X-11 method includes a tool for detecting and correcting atypical points. This tool is used to clean up the series during the seasonal adjustment. Outlying data points can also be detected and corrected in advance, within the regARIMA module.

Lastly, the annual totals of the seasonally adjusted series are forced to the annual totals of the original series.

Unfortunately, seasonal adjustment removes the sub-annual additivity of a system of series; small discrepancies can be observed between the sum of seasonally adjusted series and the *direct* seasonal adjustment of their total. To insure or restore additivity in a system of series, a reconciliation process is applied or *indirect* seasonal adjustment is used, i.e. the seasonal adjustment of a total is derived by the summation of the individually seasonally adjusted series.

To assist the user, the Months of Cyclical Dominance number, MCD, is provided.⁶ The MCD is the shortest monthly span for which a certain ratio becomes and remains less than one, that is, the ratio for which the absolute average percentage change of the trend-cycle of the seasonally adjusted series becomes greater than the absolute average per cent change of the irregular component. The MCD can be interpreted as the number of months over which a change in the seasonally adjusted series must move in a given direction before one can be reasonably certain that the trend-cycle of that series also has moved in the given direction. Clearly small MCD's are desirable and indicative of a smooth series. Applying a moving average to the seasonally adjusted data of MCD length tends to smooth irregular movements which may obscure the underlying trend-cycle. The MCD moving average provides a method of reducing all types of series to approximately the same degree of smoothness, whatever the size of the irregular component in the original series.

Revision procedures

The seasonally adjusted estimates are revised for the three months preceding the reference period. Monthly unadjusted data are revised for the previous month, when new information is made available to Statistics Canada. In addition, unadjusted new motor vehicle sales are revised each year, for the latest year, in the February issue of this publication. At that time, monthly seasonally adjusted estimates for the latest four years of data are revised.

4. For more information, see X-12-ARIMA Reference Manual Version 0.3 (2007), U.S. Census Bureau.

5. Ladiray, D. and Quenneville, B. (2001). Seasonal Adjustment with the X-11 Method. New York: Springer-Verlag, Lecture Notes in Statistics #158.

6. MCD = 8 for North American passenger cars. MCD = 3 for Overseas passenger cars. MCD = 12 for Commercial vehicles.

Appendix II

List of North American motor vehicle manufacturers

B.M.W. Canada Inc.
Blue Bird Body Co.
DaimlerChrysler Canada Inc.
Ford Motor Company of Canada Limited
Freightliner of Canada Ltd.
General Motors of Canada Limited
Honda Canada Inc.
Hyundai Auto Canada Inc.
International Truck and Engine Corporation Canada
Kenworth Div., Paccar of Canada Ltd.
Mack Canada Inc.
Mazda Canada Inc.
Mitsubishi Motor Sales of Canada, Inc.
Motor Coach Industries Limited
New Flyer Industries Ltd.
Nissan Canada Inc.
Nova Bus Corp.
Orion Bus Industries Inc.
Peterbilt Div., Paccar of Canada Ltd.
Prévost Car Inc.
Sterling Heavy Duty TrucksSubaru Canada Inc.
Subaru Canada Inc.
Suzuki Canada Inc.
Thomas Built Buses of Canada Ltd.

Toyota Canada Ltd.

Volkswagen Canada Inc.

Volvo Trucks Canada Inc.

Western Star Trucks Inc.

List of importers and distributors of overseas manufactured motor vehicles

Japan

General Motors of Canada Ltd.

Hino Diesel Trucks Canada Ltd.

Honda Canada Inc.

Mazda Canada Inc.

Mitsubishi Motor Sales of Canada, Inc.

Nissan Canada Inc.

Subaru Canada Inc.

Suzuki Canada Inc.

Toyota Canada Inc.

Other Countries

B.M.W. Canada Inc.

Daewoo Auto Canada Inc.

Ford Motor Company of Canada Limited

General Motors Canada Ltd.

Hyundai Auto Canada Inc.

Jaguar Canada Inc.

Kia Canada Inc.

Land Rover group Canada Inc.

Mercedes-Benz Canada Inc.

Porsche Cars of Canada Ltd.

Volkswagen Canada Inc.

Volvo Cars of Canada Ltd.