

Catalogue no. 65-001-X

# Canadian International Merchandise Trade

December 2008



Statistics  
Canada

Statistique  
Canada

Canada

## How to obtain more information

For information about this product or the wide range of services and data available from Statistics Canada, visit our website at [www.statcan.gc.ca](http://www.statcan.gc.ca), e-mail us at [infostats@statcan.gc.ca](mailto:infostats@statcan.gc.ca), or telephone us, Monday to Friday from 8:30 a.m. to 4:30 p.m., at the following numbers:

### Statistics Canada's National Contact Centre

Toll-free telephone (Canada and the United States):

Inquiries line	1-800-263-1136
National telecommunications device for the hearing impaired	1-800-363-7629
Fax line	1-877-287-4369

Local or international calls:

Inquiries line	1-613-951-8116
Fax line	1-613-951-0581

### Depository Services Program

Inquiries line	1-800-635-7943
Fax line	1-800-565-7757

## To access this product

This product, Catalogue no. 65-001-X, is available free in electronic format. To obtain a single issue, visit our website at [www.statcan.gc.ca](http://www.statcan.gc.ca) and select "Publications" > "Free Internet publications."

## Standards of service to the public

Statistics Canada is committed to serving its clients in a prompt, reliable and courteous manner. To this end, Statistics Canada has developed *standards of service* that its employees observe. To obtain a copy of these service standards, please contact Statistics Canada toll-free at 1-800-263-1136. The service standards are also published on [www.statcan.gc.ca](http://www.statcan.gc.ca) under "About us" > "Providing services to Canadians."

# Canadian International Merchandise Trade

December 2008

Published by authority of the Minister responsible for Statistics Canada

© Minister of Industry, 2009

All rights reserved. The content of this electronic publication may be reproduced, in whole or in part, and by any means, without further permission from Statistics Canada, subject to the following conditions: that it be done solely for the purposes of private study, research, criticism, review or newspaper summary, and/or for non-commercial purposes; and that Statistics Canada be fully acknowledged as follows: Source (or "Adapted from", if appropriate): Statistics Canada, year of publication, name of product, catalogue number, volume and issue numbers, reference period and page(s). Otherwise, no part of this publication may be reproduced, stored in a retrieval system or transmitted in any form, by any means—electronic, mechanical or photocopy—or for any purposes without prior written permission of Licensing Services, Client Services Division, Statistics Canada, Ottawa, Ontario, Canada K1A 0T6.

February 2009

Catalogue no. 65-001-X, vol. 62, no. 12

ISSN 1480-8781

Frequency: Monthly

Ottawa

La version française de cette publication est disponible sur demande (n° 65-001-X au catalogue).

---

## ***Note of appreciation***

*Canada owes the success of its statistical system to a long standing partnership between Statistics Canada, the citizens of Canada, its businesses, governments and other institutions. Accurate and timely statistical information could not be produced without their continued cooperation and goodwill.*

# User information

---

## Symbols

The following standard symbols are used in Statistics Canada publications:

- . not available for any reference period
- .. not available for a specific reference period
- ... not applicable
- 0 true zero or a value rounded to zero
- 0s value rounded to 0 (zero) where there is a meaningful distinction between true zero and the value that was rounded
- p preliminary
- r revised
- x suppressed to meet the confidentiality requirements of the *Statistics Act*
- E use with caution
- F too unreliable to be published

## Note to Users

All totals are calculated from full figures and rounded independently; consequently, totals may not equal the sum of their components.

# Table of contents

---

<b>Highlights</b>	<b>5</b>
<b>Analysis</b>	<b>7</b>
<b>Statistical tables</b>	
1 Merchandise trade of Canada, balance of payments basis, seasonally adjusted	12
1-1 Current dollars	12
1-2 Constant dollars, 2002	13
1-3 Price indices (Laspeyres)	14
2 Exports by commodity groupings, balance of payments basis, seasonally adjusted	15
2-1 Current dollars	15
2-2 Constant dollars, 2002	17
3 Domestic exports to selected countries, customs basis, not seasonally adjusted	19
3-1 December	19
3-2 Year to date, January to December	20
4 Domestic exports by country, customs basis, not seasonally adjusted	21
5 Exports by province of origin, customs basis, not seasonally adjusted	25
5-1 December	25
5-2 Year to date, January to December	26
6 Imports by commodity groupings, balance of payments basis, seasonally adjusted	27
6-1 Current dollars	27
6-2 Constant dollars, 2002	29
7 Imports from selected countries, customs basis, not seasonally adjusted	31
7-1 December	31
7-2 Year to date, January to December	32
8 Imports by country, customs basis, not seasonally adjusted	33
9 Imports by province of clearance, customs basis, not seasonally adjusted	37
9-1 December	37
9-2 Year to date, January to December	38

## **Table of contents – continued**

### **Data quality, concepts and methodology**

Technical notes	39
-----------------	----

# Highlights

---

## December 2008

Exports and imports dropped in December amid a global economic downturn with exports falling at a faster pace than imports. This resulted in a trade deficit of \$458 million compared to a trade surplus of \$1.2 billion in November. This was the first trade deficit registered since March 1976.

Exports dropped 9.7% to \$35.3 billion as both prices and volumes declined. This marked the largest month-over-month percentage decrease since October 1982. The declines were widespread across most sectors. Overall, exports have been trending downwards since July 2008.

Imports also declined, falling 5.7% to \$35.8 billion. The decrease, reflecting mostly volume reductions, was largely attributable to machinery and equipment; automotive products and industrial goods and materials.

Although exports and imports have been declining in recent months, trade in agricultural and fishing products as well as machinery and equipment have generally been on the rise through out 2008.

Exports to the United States dropped 10.0% to \$25.9 billion. The slump in exports, led by crude petroleum, outpaced an 8.4% fall in imports. As a result, Canada's trade balance with the United States fell from \$4.6 billion in November to \$3.8 billion in December, its lowest level since December 1998.

Canada's trade deficit with countries other than the United States grew to \$4.2 billion in December from \$3.4 billion in November, as exports diminished 9.0% while imports fell 1.0%.

### Note to readers

Merchandise trade is one component of the current account of Canada's balance of payments, which also includes trade in services, investment income and transfers.

International merchandise trade data by country are available on both a balance of payments and a customs basis for the United States, Japan and the United Kingdom. Trade data for all other individual countries are available on a customs basis only. Balance of payments data are derived from customs data by making adjustments for characteristics such as valuation, coverage, timing and residency. These adjustments are made to conform to the concepts and definitions of the Canadian System of National Accounts.

Constant dollars referred to in the text are calculated using the Laspeyres volume formula which is current dollars divided by Paasche indexes.

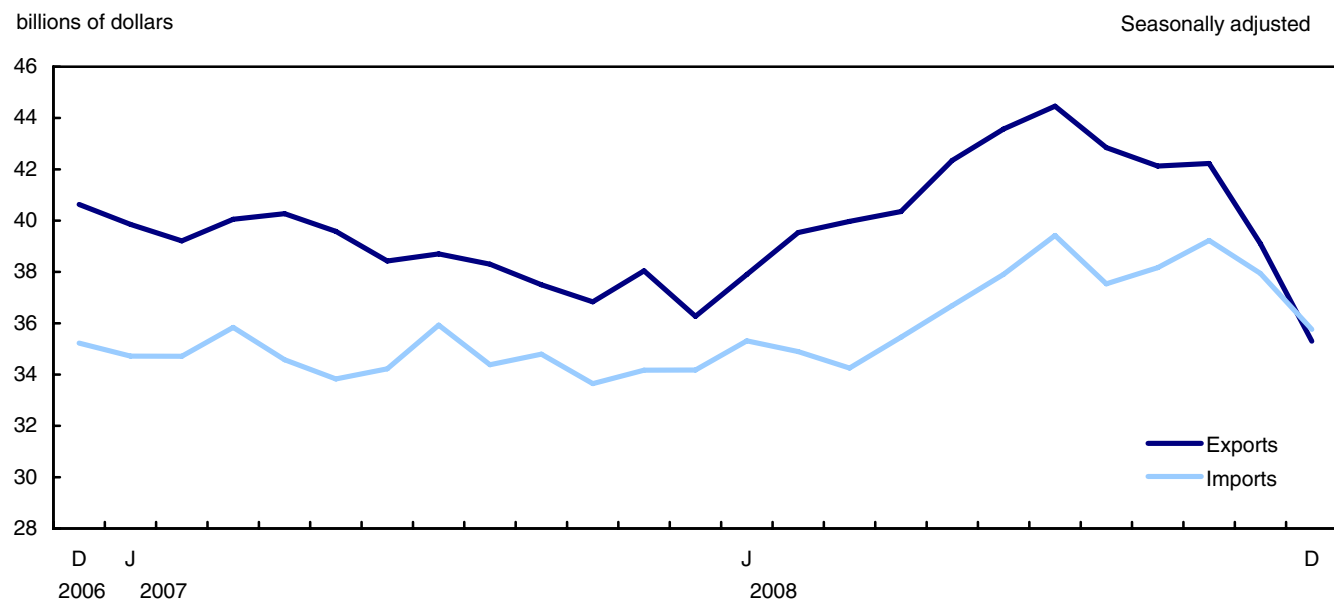
## Revisions

In general, merchandise trade data are revised on an ongoing basis for each month of the current year. Current year revisions are reflected in both the customs and balance of payments based data. Revisions to customs based data for the previous year are released on a quarterly basis. Annual revisions to 2005, 2006 and 2007 data, on a customs basis, are released today.

Factors influencing revisions include late receipt of import and export documentation, incorrect information on customs forms, replacement of estimates with actual figures, changes in classification of merchandise based on more current information, and changes to seasonal adjustment factors.

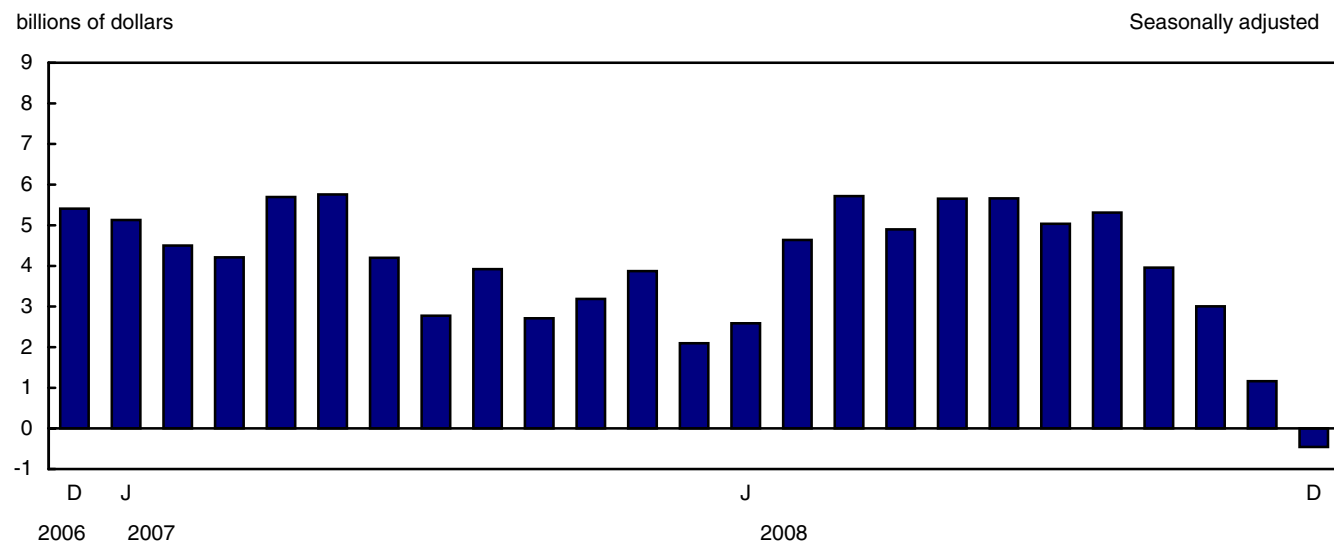
Revised data are available in the appropriate CANSIM tables.

**Chart 1**  
**Exports and imports**



**Note(s):** On a balance of payments basis.

**Chart 2**  
**Trade balance**



**Note(s):** On a balance of payments basis.

# Analysis

---

## Energy products and industrial goods continue to lead the downturn in exports

Exports of energy products dropped 19.4% to \$6.8 billion. This reflected slumping exports of crude petroleum which continued to plummet, falling a further 29.1% to \$2.8 billion, the lowest level since March 2006. The decrease in crude petroleum was mostly due to a 25.0% drop in prices.

Exports of industrial goods and materials fell 17.1% to \$7.4 billion largely due to a drop in volume. The sector has been on a downward trend since July 2008. Fertilizer exports dropped 36.8%, erasing two consecutive months of increases. In addition, exports of aluminium alloys decreased 26.7% in December as demand from the automotive sector has waned with cut-backs in production.

Agricultural and fishing products exports dropped 7.0% to \$3.4 billion in December. The sector has been trending upward since June 2006. Decreases in exports of wheat, meat and meat preparations, and canola mostly accounted for the sector's decrease following two monthly gains.

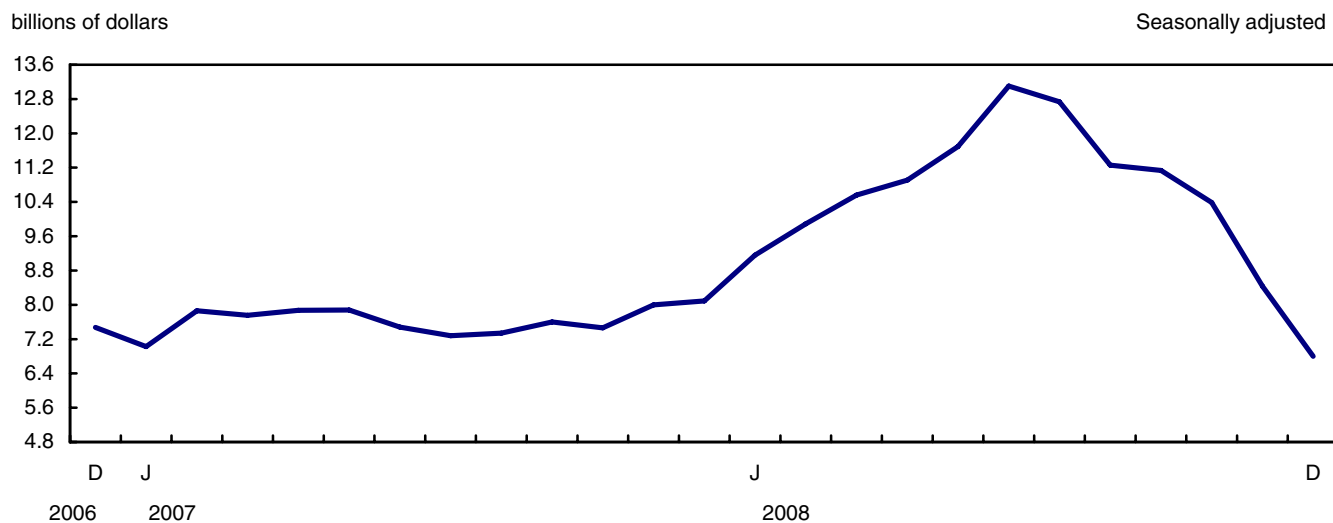
## Broad-based contraction in imports

After three consecutive monthly increases, imports of machinery and equipment fell 5.7% to \$10.6 billion, leading the decline in imports for December. This decrease was due to a combination of rising price and falling volume. Aircraft imports rose 26.7%, softening the sector's overall drop.

Imports of automotive products declined for the third consecutive month, dropping 9.8% to \$5.2 billion as the industry continued to struggle with decreased sales. The latest decline is the result of a 10.6% fall in volume overshadowing a small rise in price. The main contributor was motor vehicle parts which lost 17.0% as manufacturers continued to scale back production. Imports of passenger autos, on a downward trend since July, fell 6.8% to \$1.8 billion.

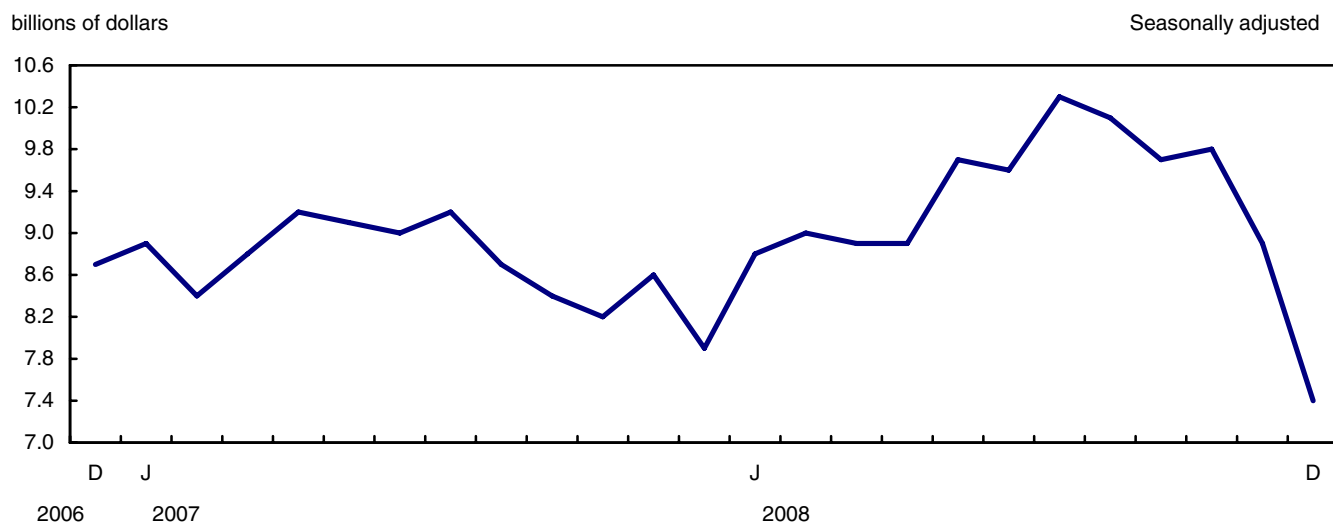
Imports of industrial goods and materials fell 5.8% to \$7.4 billion. This was the lowest level since April 2008 reflecting the decline in both price and volume. Leading the decrease was imports of chemicals and plastics which dropped 11.9% as a result of lower motor vehicle production and construction activity. Mitigating the drop, iron and steel products rose 19.8% largely due to increased imports of drilling pipes.

**Chart 1**  
**Exports of energy products**



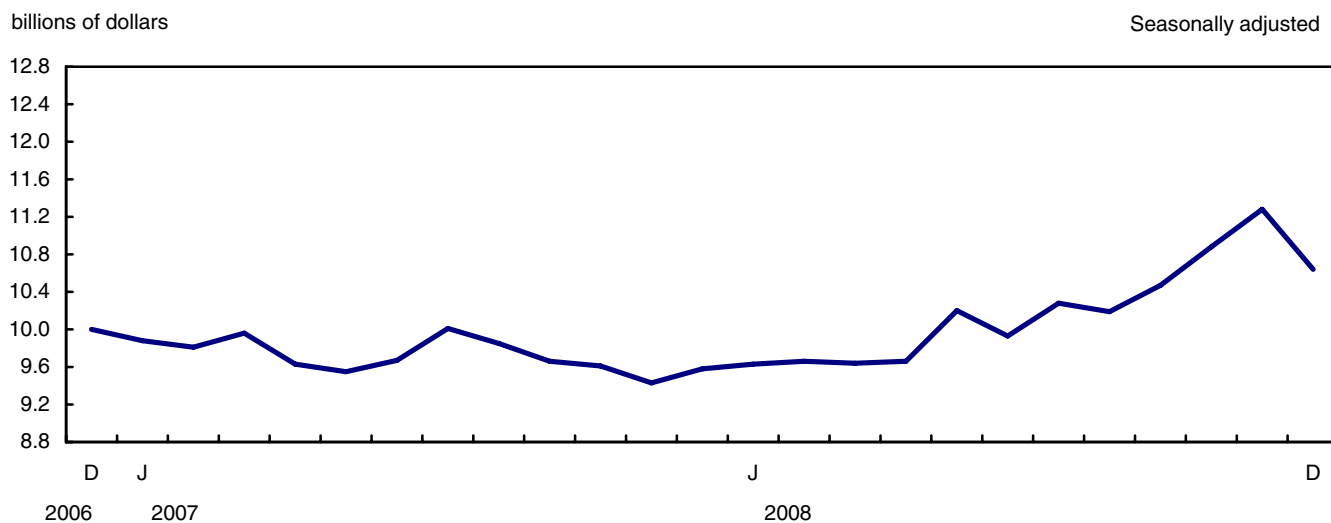
**Note(s):** On a balance of payments basis.

**Chart 2**  
**Exports of industrial goods and materials**



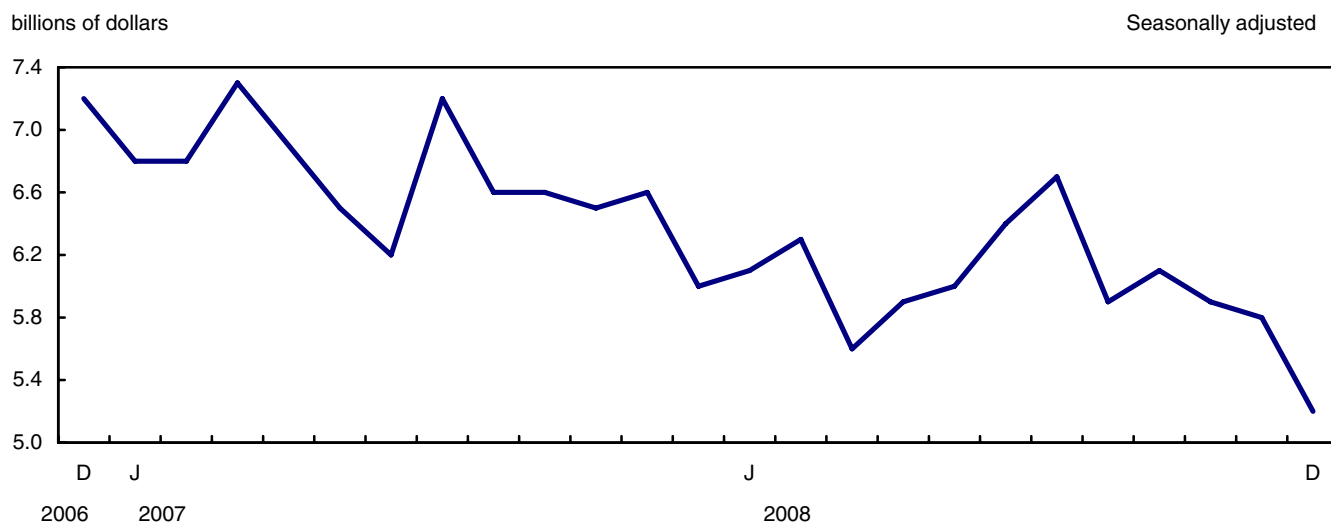
**Note(s):** On a balance of payments basis.

**Chart 3**  
**Imports of machinery and equipment**



**Note(s):** On a balance of payments basis.

**Chart 4**  
**Imports of automotive products**



**Note(s):** On a balance of payments basis.

Text table 1

## Merchandise trade by principal trading area, balance of payments basis, seasonally adjusted

	November 2008	December 2008	Change		Year to date		Year to date change	December 2008/2007
					2007	2008		
	millions of dollars			percent	millions of dollars			percent
<b>Export to:</b>								
United States	28,808	25,935	-2,873	-10.0	356,094	369,759	13,665	3.8
Japan	1,143	991	-152	-13.3	9,989	11,874	1,885	18.9
European Union <sup>1</sup>	3,085	3,651	566	18.3	38,342	39,650	1,308	3.4
Other Organization for Economic Co-operation and Development <sup>2</sup>	2,046	1,268	-778	-38.0	19,690	21,079	1,388	7.0
Other countries	4,023	3,459	-564	-14.0	38,936	47,379	8,443	21.7
<b>Total</b>	<b>39,104</b>	<b>35,304</b>	<b>-3,801</b>	<b>-9.7</b>	<b>463,051</b>	<b>489,740</b>	<b>26,689</b>	<b>5.8</b>
<b>Imports from:</b>								
United States	24,205	22,169	-2,036	-8.4	269,752	280,590	10,838	4.0
Japan	1,092	783	-310	-28.4	11,972	11,615	-357	-3.0
European Union <sup>1</sup>	3,713	4,091	378	10.2	42,297	46,519	4,222	10.0
Other Organization for Economic Co-operation and Development <sup>2</sup>	2,484	2,324	-160	-6.5	25,034	27,605	2,570	10.3
Other countries	6,447	6,395	-52	-0.8	65,949	76,238	10,289	15.6
<b>Total</b>	<b>37,942</b>	<b>35,762</b>	<b>-2,180</b>	<b>-5.7</b>	<b>415,006</b>	<b>442,567</b>	<b>27,561</b>	<b>6.6</b>
<b>Balance:</b>								
United States	4,603	3,766	-837	...	86,342	89,169	2,827	...
Japan	50	208	158	...	-1,983	259	2,243	...
European Union <sup>1</sup>	-628	-440	188	...	-3,955	-6,869	-2,914	...
Other Organization for Economic Co-operation and Development <sup>2</sup>	-438	-1,056	-618	...	-5,344	-6,526	-1,182	...
Other countries	-2,424	-2,936	-512	...	-27,014	-28,859	-1,846	...
<b>Total</b>	<b>1,163</b>	<b>-458</b>	<b>-1,621</b>	<b>...</b>	<b>48,046</b>	<b>47,174</b>	<b>-872</b>	<b>...</b>

1. European Union includes: Austria, Belgium, Bulgaria, Cyprus, Czech Republic, Denmark, Estonia, Finland, France, Germany, Greece, Hungary, Ireland, Italy, Latvia, Lithuania, Luxembourg, Malta, Netherlands, Poland, Portugal, Romania, Slovakia, Slovenia, Spain, Sweden and United Kingdom.
2. Other Organization for Economic Co-operation and Development includes: Australia, Canada, Iceland, Mexico, New Zealand, Norway, South Korea, Switzerland and Turkey.

Text table 2

## Reconciliation of customs and balance of payments trade data, not seasonally adjusted

	2008						2007
	December	November	October	September	August	July	Annual
	millions of dollars						
<b>Exports</b>							
<b>Customs basis</b>	<b>33,783</b>	<b>38,121</b>	<b>44,406</b>	<b>41,957</b>	<b>42,280</b>	<b>43,546</b>	<b>450,699</b>
<b>Balance of payments adjustments</b>	<b>-107</b>	<b>125</b>	<b>-871</b>	<b>253</b>	<b>631</b>	<b>-64</b>	<b>12,352</b>
Valuation and residency							
Inland freight	528	623	654	633	592	597	6,846
Other valuation and residency	-1,852	-2,498	-2,656	-1,837	-1,515	-1,200	-10,939
Timing	156	-20	-6	16	16	-25	-72
Coverage	1,061	2,020	1,137	1,441	1,538	564	16,517
<b>Balance of payments basis</b>	<b>33,676</b>	<b>38,246</b>	<b>43,535</b>	<b>42,210</b>	<b>42,911</b>	<b>43,482</b>	<b>463,051</b>
<b>Imports</b>							
<b>Customs basis</b>	<b>33,430</b>	<b>35,979</b>	<b>41,248</b>	<b>38,164</b>	<b>35,896</b>	<b>37,283</b>	<b>406,988</b>
<b>Balance of payments adjustments</b>	<b>688</b>	<b>734</b>	<b>459</b>	<b>738</b>	<b>1013</b>	<b>683</b>	<b>8,018</b>
Valuation and residency							
Inland freight	651	711	844	796	768	775	8,147
Other valuation and residency	-52	-70	-59	-37	-83	-73	-974
Timing	0	0	0	0	0	0	0
Coverage	89	93	-326	-21	328	-19	845
<b>Balance of payments basis</b>	<b>34,118</b>	<b>36,713</b>	<b>41,707</b>	<b>38,902</b>	<b>36,909</b>	<b>37,966</b>	<b>415,006</b>

# Statistical tables

---

Table 1-1

## Merchandise trade of Canada, balance of payments basis, seasonally adjusted — Current dollars

	Exports	Imports	Balance	Period to period change		
				Exports	Imports	Balance
	millions of dollars			percent		millions of dollars
2004	429,006	363,158	65,848	0.0	0.0	0
2005	450,150	387,804	62,346	4.9	6.8	-3,502
2006	453,732	404,253	49,480	0.8	4.2	-12,866
2007	463,051	415,006	48,046	2.1	2.7	-1,434
<b>2006</b>						
First quarter	112,971	97,885	15,086	-5.6	-1.5	-5,220
Second quarter	111,376	100,203	11,172	-1.4	2.4	-3,913
Third quarter	113,905	102,705	11,200	2.3	2.5	28
Fourth quarter	115,481	103,459	12,021	1.4	0.7	821
<b>2007</b>						
First quarter	119,112	105,273	13,839	3.1	1.8	1,818
Second quarter	118,279	102,629	15,650	-0.7	-2.5	1,811
Third quarter	114,509	105,108	9,401	-3.2	2.4	-6,249
Fourth quarter	111,151	101,996	9,155	-2.9	-3.0	-246
<b>2008</b>						
First quarter	117,403	104,460	12,943	5.6	2.4	3,788
Second quarter	126,269	110,054	16,216	7.6	5.4	3,273
Third quarter	129,431	115,125	14,306	2.5	4.6	-1,910
Fourth quarter	116,637	112,928	3,709	-9.9	-1.9	-10,596
<b>2007</b>						
January	39,850	34,720	5,131	-1.9	-1.4	-277
February	39,211	34,712	4,499	-1.6	0.0	-632
March	40,051	35,841	4,210	2.1	3.3	-289
April	40,270	34,576	5,694	0.5	-3.5	1,484
May	39,584	33,826	5,757	-1.7	-2.2	63
June	38,425	34,226	4,199	-2.9	1.2	-1,558
July	38,703	35,930	2,773	0.7	5.0	-1,426
August	38,304	34,385	3,918	-1.0	-4.3	1,145
September	37,502	34,793	2,710	-2.1	1.2	-1,208
October	36,835	33,649	3,187	-1.8	-3.3	477
November	38,044	34,172	3,872	3.3	1.6	685
December	36,272	34,175	2,097	-4.7	0.0	-1,775
<b>2008</b>						
January	37,901	35,312	2,588	4.5	3.3	491
February	39,532	34,894	4,638	4.3	-1.2	2,050
March	39,970	34,253	5,717	1.1	-1.8	1,079
April	40,356	35,456	4,901	1.0	3.5	-816
May	42,342	36,689	5,653	4.9	3.5	753
June	43,571	37,909	5,662	2.9	3.3	9
July	44,459	39,420	5,038	2.0	4.0	-624
August	42,848	37,536	5,311	-3.6	-4.8	273
September	42,125	38,169	3,956	-1.7	1.7	-1,355
October	42,229	39,225	3,004	0.2	2.8	-952
November	39,104	37,942	1,163	-7.4	-3.3	-1,841
December	35,304	35,762	-458	-9.7	-5.7	-1,621

**Note(s):** Due to rounding, monthly data may not add up to quarterly data and quarterly data may not add up to annual data.

**Table 1-2**  
**Merchandise trade of Canada, balance of payments basis, seasonally adjusted — Constant dollars, 2002**

	Exports	Imports	Balance	Period to period change	
				Exports	Imports
	millions of dollars			percent	
2004	429,497	400,558	28,940	0.0	0.0
2005	439,300	431,787	7,513	2.3	7.8
2006	443,301	456,702	-13,401	0.9	5.8
2007	449,825	483,340	-33,516	1.5	5.8
<b>2006</b>					
First quarter	111,623	111,033	590	-1.7	-0.3
Second quarter	109,737	113,858	-4,121	-1.7	2.5
Third quarter	110,143	115,604	-5,461	0.4	1.5
Fourth quarter	111,798	116,206	-4,408	1.5	0.5
<b>2007</b>					
First quarter	112,963	116,645	-3,682	1.0	0.4
Second quarter	113,281	117,536	-4,255	0.3	0.8
Third quarter	112,887	123,814	-10,927	-0.3	5.3
Fourth quarter	110,694	125,345	-14,651	-1.9	1.2
<b>2008</b>					
First quarter	107,126	122,554	-15,428	-3.2	-2.2
Second quarter	105,776	123,857	-18,081	-1.3	1.1
Third quarter	104,684	124,174	-19,490	-1.0	0.3
Fourth quarter	97,503	113,705	-16,202	-6.9	-8.4
<b>2007</b>					
January	38,206	38,445	-239	-2.0	-2.3
February	36,908	38,633	-1,725	-3.4	0.5
March	37,849	39,568	-1,719	2.6	2.4
April	38,233	38,962	-728	1.0	-1.5
May	37,995	38,709	-714	-0.6	-0.6
June	37,053	39,866	-2,813	-2.5	3.0
July	37,948	41,999	-4,051	2.4	5.3
August	37,672	40,412	-2,739	-0.7	-3.8
September	37,267	41,403	-4,136	-1.1	2.5
October	37,238	41,996	-4,757	-0.1	1.4
November	38,059	42,406	-4,346	2.2	1.0
December	35,396	40,944	-5,548	-7.0	-3.4
<b>2008</b>					
January	35,091	41,270	-6,178	-0.9	0.8
February	36,512	41,156	-4,644	4.0	-0.3
March	35,522	40,128	-4,605	-2.7	-2.5
April	34,912	40,336	-5,424	-1.7	0.5
May	35,641	41,913	-6,271	2.1	3.9
June	35,223	41,608	-6,386	-1.2	-0.7
July	35,588	42,908	-7,320	1.0	3.1
August	34,763	40,445	-5,681	-2.3	-5.7
September	34,333	40,822	-6,488	-1.2	0.9
October	33,329	39,173	-5,844	-2.9	-4.0
November	32,813	38,352	-5,538	-1.5	-2.1
December	31,361	36,180	-4,820	-4.4	-5.7

**Note(s):** Due to rounding, monthly data may not add up to quarterly data and quarterly data may not add up to annual data.

**Table 1-3**  
**Merchandise trade of Canada, balance of payments basis, seasonally adjusted — Price indices (Laspeyres)**

	2002=100			Period to period change		
	Exports	Imports	Terms of trade	Exports	Imports	Terms of trade
	millions of dollars			percent		
2004	101.9	92.2	110.6	0.0	0.0	0.0
2005	104.6	92.2	113.5	2.6	0.0	2.6
2006	104.6	92.8	112.8	0.0	0.7	-0.6
2007	106.9	91.5	116.8	2.2	-1.3	3.5
<b>2006</b>						
First quarter	102.2	91.9	111.1	-6.0	-0.2	-5.8
Second quarter	104.4	92.1	113.4	2.1	0.1	2.0
Third quarter	105.7	93.5	113.1	1.3	1.5	-0.3
Fourth quarter	106.3	93.5	113.7	0.6	0.0	0.6
<b>2007</b>						
First quarter	108.5	95.2	114.0	2.0	1.8	0.2
Second quarter	109.0	92.9	117.3	0.5	-2.4	2.9
Third quarter	105.4	90.3	116.6	-3.3	-2.7	-0.6
Fourth quarter	104.9	87.8	119.5	-0.4	-2.8	2.4
<b>2008</b>						
First quarter	110.7	90.4	122.4	5.5	3.0	2.5
Second quarter	118.2	95.1	124.2	6.8	5.2	1.6
Third quarter	122.1	101.1	120.7	3.3	6.3	-3.0
Fourth quarter	114.6	104.5	109.7	-6.1	3.4	-9.4
<b>2007</b>						
January	107.2	95.1	112.8	-1.1	1.0	-2.1
February	109.3	95.1	115	1.9	0.0	1.9
March	109.9	95.3	115.4	0.5	0.2	0.3
April	109.5	94.6	115.8	-0.3	-0.7	0.4
May	108.5	92.6	117.3	-0.9	-2.1	1.2
June	107.6	91.6	117.5	-0.9	-1.0	0.2
July	106.5	90.7	117.4	-1.0	-0.9	-0.1
August	105.8	90.6	116.8	-0.7	-0.2	-0.5
September	104.2	89.7	116.2	-1.5	-1.0	-0.5
October	103.4	88.5	116.9	-0.7	-1.3	0.5
November	104.7	86.5	120.9	1.2	-2.2	3.4
December	106.3	88.4	120.2	1.6	2.2	-0.6
<b>2008</b>						
January	109.5	90.1	121.6	3.0	1.9	1.2
February	109.1	90.0	121.2	-0.4	0.0	-0.3
March	113.7	91.1	124.8	4.2	1.2	3.0
April	116.0	93.2	124.4	2.0	2.3	-0.3
May	118.3	94.5	125.2	2.0	1.3	0.7
June	121.3	97.8	124.0	2.5	3.5	-1.0
July	123.8	99.6	124.4	2.1	1.8	0.3
August	121.5	102.0	119.1	-1.8	2.5	-4.3
September	119.6	101.8	117.5	-1.6	-0.2	-1.4
October	122.1	105.5	115.7	2.0	3.6	-1.6
November	116.3	104.9	110.9	-4.7	-0.6	-4.1
December	111.6	103.2	108.1	-4.0	-1.6	-2.5

**Note(s):** Due to rounding, monthly data may not add up to quarterly data and quarterly data may not add up to annual data.

Table 2-1

## Exports by commodity groupings, balance of payments basis, seasonally adjusted — Current dollars

	November 2008	December 2008	Change		Year to date		Year to date change		December 2008/2007
					2007	2008			
	millions of dollars		percent		millions of dollars		percent		
<b>Total</b>	<b>39,104</b>	<b>35,304</b>	<b>-3,801</b>	<b>-9.7</b>	<b>463,051</b>	<b>489,740</b>	<b>26,689</b>	<b>5.8</b>	<b>-2.7</b>
<b>Agricultural and fishing products</b>	<b>3,663</b>	<b>3,405</b>	<b>-258</b>	<b>-7.0</b>	<b>34,370</b>	<b>40,904</b>	<b>6,534</b>	<b>19.0</b>	<b>18.8</b>
Wheat	654	519	-135	-20.6	4,637	6,905	2,267	48.9	18.4
Other agricultural and fishing products	3,009	2,886	-123	-4.1	29,733	34,000	4,267	14.4	18.8
Live animals	175	164	-10	-6.0	2,428	2,327	-101	-4.2	-24.6
Fish and fish preparations	360	350	-9	-2.6	4,293	4,254	-38	-0.9	6.8
Barley	54	38	-16	-29.9	485	691	206	42.5	-56
Wheat flour	6	6	1	9.9	76	100	25	32.4	2.6
Other cereals unmilled	65	63	-2	-3.0	606	889	283	46.6	2.0
Other cereal preparations	279	260	-19	-6.9	2,537	2,906	370	14.6	25.6
Meat and meat preparations	450	403	-47	-10.5	4,143	4,639	497	12.0	27.0
Alcoholic beverages	80	78	-2	-2.5	871	859	-12	-1.4	12.0
Other food, feed, beverages and tobacco	970	970	1	0.1	10,083	11,081	999	9.9	22.6
Rapeseed	330	305	-25	-7.6	2,259	3,871	1,612	71.3	59.9
Other crude vegetable products	240	247	7	3.1	1,952	2,381	428	21.9	62.8
<b>Energy products</b>	<b>8,434</b>	<b>6,799</b>	<b>-1,635</b>	<b>-19.4</b>	<b>91,647</b>	<b>126,066</b>	<b>34,419</b>	<b>37.6</b>	<b>-15.9</b>
Crude petroleum	3,894	2,761	-1,133	-29.1	40,998	60,976	19,978	48.7	-29.0
Natural gas	2,186	2,060	-126	-5.8	28,378	33,296	4,918	17.3	-10.2
Other energy products	2,354	1,978	-376	-16.0	22,272	31,795	9,523	42.8	3.8
Coal and other bituminous substances	644	548	-96	-14.9	2,731	5,852	3,121	114.3	163.6
Petroleum and coal products	1,460	1,216	-244	-16.7	16,397	22,126	5,729	34.9	-16.2
Electricity	250	215	-35	-14.1	3,144	3,816	673	21.4	-13.2
<b>Forestry products</b>	<b>2,151</b>	<b>2,051</b>	<b>-100</b>	<b>-4.7</b>	<b>29,263</b>	<b>25,668</b>	<b>-3,595</b>	<b>-12.3</b>	<b>-3.2</b>
Lumber and sawmill products	776	683	-93	-12.0	12,613	9,173	-3,441	-27.3	-17.3
Other crude wood products	51	67	16	31.8	764	647	-117	-15.3	66.0
Lumber	458	397	-62	-13.4	7,385	5,353	-2,032	-27.5	-17.2
Other wood fabricated materials	267	219	-48	-17.8	4,465	3,173	-1,292	-28.9	-28.4
Wood pulp and other wood products	457	436	-21	-4.5	6,685	6,389	-296	-4.4	-19.7
Newsprint and other paper and paperboard	918	931	13	1.4	9,965	10,107	142	1.4	24.1
Newsprint paper	517	548	32	6.1	5,211	5,469	258	5.0	44.9
Other paper and paperboard	401	383	-18	-4.6	4,754	4,638	-116	-2.4	3.0
<b>Industrial goods and materials</b>	<b>8,904</b>	<b>7,384</b>	<b>-1,520</b>	<b>-17.1</b>	<b>104,421</b>	<b>111,166</b>	<b>6,745</b>	<b>6.5</b>	<b>-7.0</b>
Metal ores	932	885	-47	-5.1	14,405	14,878	473	3.3	-11.7
Iron ores, concentrates and scrap	295	339	44	15.1	3,312	4,810	1,499	45.3	39.3
Copper ores, concentrates and scrap	162	120	-42	-25.9	2,196	2,310	114	5.2	-14.8
Nickel ores, concentrates and scrap	163	151	-12	-7.2	5,092	3,770	-1,322	-26.0	-53.7
Zinc ores, concentrates and scrap	38	9	-30	-77.7	387	360	-28	-7.1	-74.3
Other ores, concentrates and scrap	274	266	-8	-2.9	3,419	3,628	210	6.1	3.0
Chemicals, plastics and fertilizers	3,399	2,627	-772	-22.7	33,191	35,912	2,721	8.2	-3.1
Inorganic chemicals	483	424	-60	-12.3	6,465	5,498	-968	-15	5.1
Organic chemicals	540	384	-157	-29.0	7,003	6,928	-76	-1.1	-39.8
Fertilizers and fertilizer materials	1,063	672	-391	-36.8	4,018	7,533	3,514	87.5	89.7
Synthetic rubber and plastics	998	868	-130	-13.0	12,458	12,519	61	0.5	-17.7
Other chemical products	314	280	-34	-10.9	3,246	3,435	189	5.8	7.3
Metals and alloys	2,813	2,404	-409	-14.5	38,226	39,738	1,512	4.0	-14.8
Primary iron and steel	47	58	10	21.2	662	1,280	618	93.3	-2.7
Steel bars, rods, plates, sheets	409	318	-91	-22.2	3,905	5,100	1,195	30.6	-9.4
Other iron and steel and alloys	314	264	-50	-15.9	3,465	3,895	430	12.4	-12.5
Aluminum including alloys	787	576	-210	-26.7	10,079	9,055	-1,025	-10.2	-23.7
Copper and alloys	146	145	-1	-0.6	4,174	4,129	-45	-1.1	-46.1
Nickel and alloys	198	226	28	14.2	5,599	3,695	-1,904	-34.0	-30.8
Precious metals and alloys	734	682	-52	-7.1	6,884	9,733	2,849	41.4	41.9
Zinc and alloys	79	69	-10	-12.6	2,172	1,409	-762	-35.1	-54.9
Other non-ferrous metals and alloys	99	66	-34	-33.9	1,286	1,442	157	12.2	-46.8

Table 2-1 – continued

## Exports by commodity groupings, balance of payments basis, seasonally adjusted — Current dollars

	November 2008	December 2008	Change		Year to date		Year to date change	December 2008/2007	
					2007	2008			
	millions of dollars		percent		millions of dollars		percent		
Other industrial goods and materials	1,760	1,468	-292	-16.6	18,599	20,638	2,039	11.0	4.4
Asbestos unmanufactured	6	6	1	9.5	55	68	13	23.8	22.5
Other crude animal products	60	62	2	3.4	826	844	18	2.2	-3.2
Other crude non-metallic minerals	429	249	-180	-42	2,791	4,927	2,136	76.5	55.2
Other crude materials, inedible	39	41	3	6.6	570	575	5	0.9	-4.1
Metal fabricated basic products	466	438	-27	-5.9	5,792	5,463	-329	-5.7	-1.4
Textile fabricated materials	203	189	-13	-6.6	2,816	2,428	-388	-13.8	-10.5
Non-metallic mineral basic products	205	200	-5	-2.5	2,482	2,403	-79	-3.2	1.1
Other fabricated materials	354	283	-72	-20.2	3,266	3,930	664	20.3	0.7
<b>Machinery and equipment</b>	<b>8,377</b>	<b>8,207</b>	<b>-170</b>	<b>-2.0</b>	<b>93,428</b>	<b>92,835</b>	<b>-593</b>	<b>-0.6</b>	<b>15.3</b>
Industrial and agricultural machinery	2,076	1,937	-139	-6.7	22,329	23,392	1,063	4.8	8.5
Industrial machinery	1,882	1,761	-121	-6.4	20,526	21,221	695	3.4	7.9
Agricultural machinery includ. tractors	194	176	-18	-9.2	1,803	2,171	368	20.4	14.9
Aircraft and other transportation equipment	1,845	2,074	229	12.4	20,897	20,278	-620	-3.0	29.3
Aircraft, engines, parts	1,418	1,691	273	19.2	15,686	15,329	-357	-2.3	35.4
Other transportation equipment	427	383	-43	-10.2	5,211	4,949	-262	-5.0	7.9
Other machinery and equipment	4,456	4,195	-260	-5.8	50,202	49,166	-1,036	-2.1	12.5
Television, telecommunication equipment	940	752	-187	-19.9	10,338	9,597	-741	-7.2	20.5
Office machines and equipment	512	491	-21	-4.1	7,205	6,065	-1,140	-15.8	-5.5
Other equipment and tools	2,024	1,997	-27	-1.3	22,493	23,162	669	3.0	11.7
Other end products, inedible	981	955	-26	-2.6	10,166	10,342	176	1.7	20.0
<b>Automotive products</b>	<b>4,855</b>	<b>4,695</b>	<b>-160</b>	<b>-3.3</b>	<b>77,304</b>	<b>61,061</b>	<b>-16,244</b>	<b>-21.0</b>	<b>-17.0</b>
Passenger autos and chassis	2,728	2,671	-57	-2.1	39,996	34,069	-5,927	-14.8	-7.6
Trucks and other motor vehicles	534	515	-18	-3.4	13,021	7,250	-5,771	-44.3	-44.8
Motor vehicle parts	1,593	1,509	-84	-5.3	24,287	19,742	-4,546	-18.7	-17.5
<b>Other consumer goods</b>	<b>1,456</b>	<b>1,635</b>	<b>179</b>	<b>12.3</b>	<b>18,737</b>	<b>18,216</b>	<b>-521</b>	<b>-2.8</b>	<b>14.9</b>
<b>Special transactions trade</b>	<b>724</b>	<b>674</b>	<b>-50</b>	<b>-6.9</b>	<b>8,176</b>	<b>8,188</b>	<b>12</b>	<b>0.1</b>	<b>4.8</b>
<b>Unallocated balance of payments adjustments</b>	<b>540</b>	<b>454</b>	<b>-86</b>	<b>-16.0</b>	<b>5,704</b>	<b>5,636</b>	<b>-68</b>	<b>-1.2</b>	<b>8.3</b>

Table 2-2

Exports by commodity groupings, balance of payments basis, seasonally adjusted — Constant dollars, 2002

	November 2008	December 2008	Change		Year to date		Year to date change		December 2008/2007
					2007	2008			
	millions of dollars		percent		millions of dollars		percent		
<b>Total</b>	<b>32,813</b>	<b>31,361</b>	<b>-1,453</b>	<b>-4.4</b>	<b>449,825</b>	<b>415,089</b>	<b>-34,736</b>	<b>-7.7</b>	<b>-11.4</b>
<b>Agricultural and fishing products</b>	<b>3,141</b>	<b>3,068</b>	<b>-73</b>	<b>-2.3</b>	<b>36,594</b>	<b>36,848</b>	<b>253</b>	<b>0.7</b>	<b>2.4</b>
Wheat	428	366	-61	-14.3	4,487	4,206	-281	-6.3	9.3
Other agricultural and fishing products	2,714	2,701	-12	-0.4	32,107	32,641	534	1.7	1.5
Live animals	186	182	-4	-2.1	2,781	2,645	-136	-4.9	-33.7
Fish and fish preparations	398	430	33	8.2	4,868	4,871	2	0.1	11.7
Barley	34	21	-13	-37.9	425	461	37	8.6	-66.8
Wheat flour	5	6	1	10.1	71	82	11	15.1	2.7
Other cereals unmilled	44	47	3	5.8	662	729	67	10.1	-28.6
Other cereal preparations	212	201	-10	-4.9	2,591	2,553	-38	-1.5	-5.9
Meat and meat preparations	445	416	-29	-6.5	4,838	5,113	275	5.7	0.3
Alcoholic beverages	123	126	4	2.9	1,362	1,382	20	1.5	-3.0
Other food, feed, beverages and tobacco	842	827	-14	-1.7	10,506	10,312	-194	-1.8	0.8
Rapeseed	243	247	4	1.5	2,084	2,640	556	26.7	62.7
Other crude vegetable products	182	197	15	8.3	1,918	1,853	-65	-3.4	46.6
<b>Energy products</b>	<b>4,631</b>	<b>4,381</b>	<b>-250</b>	<b>-5.4</b>	<b>54,544</b>	<b>55,229</b>	<b>685</b>	<b>1.3</b>	<b>-2.7</b>
Crude petroleum	2,025	1,913	-112	-5.5	22,679	23,447	768	3.4	10.1
Natural gas	1,552	1,421	-131	-8.4	18,687	17,718	-969	-5.2	-15.3
Other energy products	1,054	1,047	-7	-0.7	13,178	14,064	886	6.7	-3.8
Coal and other bituminous substances	124	113	-10	-8.3	1,588	1,824	236	14.9	-14.8
Petroleum and coal products	700	733	32	4.6	9,003	9,384	381	4.2	-0.2
Electricity	230	200	-29	-12.8	2,588	2,857	269	10.4	-9.1
<b>Forestry products</b>	<b>2,323</b>	<b>2,225</b>	<b>-99</b>	<b>-4.2</b>	<b>34,900</b>	<b>29,914</b>	<b>-4,986</b>	<b>-14.3</b>	<b>-16.4</b>
Lumber and sawmill products	937	844	-93	-10.0	15,292	11,607	-3,684	-24.1	-22.0
Other crude wood products	51	80	28	55.3	925	823	-103	-11.1	42.3
Lumber	621	547	-74	-11.9	9,365	7,349	-2,016	-21.5	-20.1
Other wood fabricated materials	265	217	-47	-17.9	5,002	3,436	-1,566	-31.3	-36.4
Wood pulp and other wood products	553	544	-9	-1.6	8,230	7,549	-681	-8.3	-19.0
Newsprint and other paper and paperboard	834	837	4	0.4	11,378	10,757	-621	-5.5	-7.9
Newsprint paper	445	470	25	5.6	5,921	5,659	-261	-4.4	1.8
Other paper and paperboard	389	367	-21	-5.5	5,458	5,098	-360	-6.6	-17.9
<b>Industrial goods and materials</b>	<b>5,944</b>	<b>5,144</b>	<b>-800</b>	<b>-13.5</b>	<b>75,673</b>	<b>74,343</b>	<b>-1,330</b>	<b>-1.8</b>	<b>-15.3</b>
Metal ores	547	531	-16	-2.9	6,551	7,210	658	10.1	-10.3
Iron ores, concentrates and scrap	106	122	16	14.8	2,102	2,147	45	2.2	-29.5
Copper ores, concentrates and scrap	87	76	-11	-12.5	738	834	96	13.1	40.6
Nickel ores, concentrates and scrap	127	120	-7	-5.2	1,465	1,828	363	24.8	-6.8
Zinc ores, concentrates and scrap	30	7	-23	-76.1	135	220	85	62.7	-56.1
Other ores, concentrates and scrap	197	206	9	4.5	2,111	2,181	69	3.3	-6.3
Chemicals, plastics and fertilizers	2,043	1,724	-319	-15.6	25,146	24,645	-501	-2.0	-16.4
Inorganic chemicals	231	197	-34	-14.7	2,080	2,645	565	27.1	9.4
Organic chemicals	310	257	-54	-17.3	4,217	3,709	-508	-12.0	-22.8
Fertilizers and fertilizer materials	344	226	-118	-34.3	2,997	3,265	268	8.9	-12.8
Synthetic rubber and plastics	809	740	-69	-8.5	11,862	10,965	-898	-7.6	-24
Other chemical products	348	303	-45	-12.9	3,990	4,062	72	1.8	-4.1
Metals and alloys	1,882	1,694	-188	-10.0	24,427	24,624	197	0.8	-14.4
Primary iron and steel	20	24	5	22.9	485	689	204	42.0	-43.9
Steel bars, rods, plates, sheets	260	225	-35	-13.5	3,488	3,708	220	6.3	-31.5
Other iron and steel and alloys	185	163	-22	-11.7	3,041	2,765	-276	-9.1	-42.5
Aluminum including alloys	736	636	-100	-13.6	8,777	8,004	-773	-8.8	-11.7
Copper and alloys	68	83	15	22.0	1,471	1,402	-69	-4.7	-15.0
Nickel and alloys	118	142	24	20.2	1,476	1,672	196	13.3	30.5
Precious metals and alloys	392	321	-71	-18.0	4,337	5,003	667	15.4	13.8
Zinc and alloys	62	59	-3	-4.8	771	860	89	11.6	-17.4
Other non-ferrous metals and alloys	41	40	-1	-2.6	582	522	-61	-10.4	-7.8

Table 2-2 – continued

## Exports by commodity groupings, balance of payments basis, seasonally adjusted — Constant dollars, 2002

	November 2008	December 2008	Change		Year to date		Year to date change		December 2008/2007
					2007	2008			
	millions of dollars		percent		millions of dollars		percent		
Other industrial goods and materials	1,473	1,196	-277	-18.8	19,549	17,864	-1,685	-8.6	-17.0
Asbestos unmanufactured	6	7	1	9.7	63	77	14	22.1	20.8
Other crude animal products	58	73	14	24.4	889	892	3	0.3	-0.1
Other crude non-metallic minerals	407	195	-212	-52.1	4,790	4,522	-268	-5.6	-25.8
Other crude materials, inedible	39	41	2	6.1	582	567	-14	-2.5	-3.2
Metal fabricated basic products	362	339	-22	-6.1	4,987	4,401	-586	-11.8	-11.3
Textile fabricated materials	182	175	-7	-3.9	2,947	2,498	-449	-15.2	-25.9
Non-metallic mineral basic products	169	157	-11	-6.8	2,213	2,031	-182	-8.2	-11.5
Other fabricated materials	250	209	-42	-16.6	3,077	2,876	-201	-6.5	-20.0
<b>Machinery and equipment</b>	<b>8,785</b>	<b>8,594</b>	<b>-191</b>	<b>-2.2</b>	<b>106,720</b>	<b>104,522</b>	<b>-2,198</b>	<b>-2.1</b>	<b>3.8</b>
Industrial and agricultural machinery	1,889	1,772	-117	-6.2	21,934	22,280	346	1.6	0.7
Industrial machinery	1,708	1,607	-101	-5.9	20,140	20,161	21	0.1	0.1
Agricultural machinery includ. tractors	181	165	-15	-8.6	1,794	2,119	326	18.2	7.2
Aircraft and other transportation equipment	2,136	2,389	253	11.8	26,139	25,422	-717	-2.7	15.8
Aircraft, engines, parts	1,719	2,025	306	17.8	20,836	20,360	-477	-2.3	17.8
Other transportation equipment	417	364	-54	-12.9	5,302	5,062	-240	-4.5	5.8
Other machinery and equipment	4,760	4,433	-327	-6.9	58,648	56,820	-1,828	-3.1	-0.6
Television, telecommunication equipment	1,099	868	-231	-21.0	12,853	12,029	-824	-6.4	7.3
Office machines and equipment	1,000	948	-52	-5.2	14,570	13,551	-1,018	-7.0	-16.7
Other equipment and tools	1,883	1,852	-31	-1.7	21,857	22,157	300	1.4	5.1
Other end products, inedible	777	765	-13	-1.6	9,368	9,082	-286	-3.0	2.1
<b>Automotive products</b>	<b>5,533</b>	<b>5,372</b>	<b>-161</b>	<b>-2.9</b>	<b>103,352</b>	<b>79,836</b>	<b>-23,516</b>	<b>-22.8</b>	<b>-31.7</b>
Passenger autos and chassis	3,336	3,284	-51	-1.5	58,461	49,247	-9,215	-15.8	-26.3
Trucks and other motor vehicles	557	542	-15	-2.7	17,828	8,990	-8,838	-49.6	-59.5
Motor vehicle parts	1,641	1,546	-94	-5.7	27,062	21,600	-5,463	-20.2	-25.1
<b>Other consumer goods</b>	<b>1,418</b>	<b>1,581</b>	<b>163</b>	<b>11.5</b>	<b>18,390</b>	<b>17,823</b>	<b>-567</b>	<b>-3.1</b>	<b>13.3</b>
<b>Special transactions trade</b>	<b>582</b>	<b>583</b>	<b>1</b>	<b>0.2</b>	<b>7,777</b>	<b>6,711</b>	<b>-1,066</b>	<b>-13.7</b>	<b>-5.1</b>
<b>Unallocated balance of payments adjustments</b>	<b>456</b>	<b>412</b>	<b>-44</b>	<b>-9.7</b>	<b>11,874</b>	<b>9,864</b>	<b>-2,010</b>	<b>-16.9</b>	<b>-59.1</b>

Table 3-1

## Domestic exports to selected countries, customs basis, not seasonally adjusted — December

	Agricultural and fishing products	Energy products	Forestry products	Industrial goods	Machinery and equipment	Automotive products	Consumer goods	Special transactions	Total
millions of dollars									
<b>United States</b>									
2007	1,374.5	8,431.5	1,328.1	4,383.9	3,901.1	4,473.8	876.1	555.5	25,324.7
2008	1,608.5	7,246.5	1,290.7	3,967.9	4,516.3	3,789.0	1,009.5	593.1	24,021.4
<b>Mexico</b>									
2007	112.3	4.6	11.8	69.8	58.0	58.2	3.4	0.5	318.6
2008	99.6	9.0	10.8	61.6	80.6	78.2	4.4	0.2	344.4
<b>Japan</b>									
2007	215.4	73.3	113.7	213.4	40.9	2.7	10.5	0.5	670.4
2008	227.4	242.8	118.8	130.5	80.6	2.6	7.2	0.3	810.2
<b>European Union</b>									
Germany									
2007	12.4	5.4	19.3	113.3	85.7	5.2	11.8	1.0	254.2
2008	18.2	0.1	13.3	125.6	182.7	3.3	10.1	2.5	355.9
France									
2007	14.0	0.1	14.8	30.5	97.6	3.9	20.8	0.9	182.6
2008	15.9	17.8	21.3	54.2	126.2	3.3	17.7	2.2	258.7
United Kingdom									
2007	55.3	7.8	31.8	472.9	163.1	7.0	17.8	5.2	761.0
2008	45.4	47.6	31.6	611.1	180.9	3.1	105.2	3.4	1,028.3
Italy									
2007	34.0	39.6	35.5	21.4	58.6	1.1	4.9	0.2	195.3
2008	42.5	41.8	29.5	27.2	36.3	1.2	9.1	0.1	187.6
Other European Union									
2007	179.4	37.2	39.7	264.8	195.5	20.2	37.8	2.8	777.3
2008	148.7	76.2	37.8	218.6	387.2	12.6	65.4	3.3	949.8
<b>Total</b>									
2007	295.1	90.1	141.0	902.9	600.7	37.4	93.1	10.0	2,170.3
2008	270.7	183.5	133.5	1,036.8	913.3	23.5	207.5	11.5	2,780.3
<b>Newly industrialized countries</b>									
South Korea									
2007	24.3	28.1	48.1	98.4	23.4	0.7	8.1	3.4	234.4
2008	22.2	160.9	16.7	86.5	48.5	0.9	5.1	0.5	341.1
Hong Kong									
2007	53.3	0.0	4.3	50.4	21.7	0.4	3.4	1.2	134.8
2008	45.3	0.1	13.0	51.9	24.6	0.1	5.5	0.5	141.0
Taiwan									
2007	14.7	20.4	26.5	65.3	11.2	0.1	3.3	0.3	141.7
2008	12.8	0.0	15.6	20.5	11.0	0.1	3.5	0.1	63.6
Singapore									
2007	8.4	0.5	1.3	10.7	21.7	0.6	2.0	1.3	46.5
2008	3.4	0.2	0.3	6.1	21.4	1.6	1.8	0.2	35.0
<b>Total</b>									
2007	100.7	49.0	80.2	224.8	77.9	1.7	16.8	6.3	557.4
2008	83.6	161.2	45.5	165.0	105.6	2.6	15.9	1.2	580.7
<b>Other countries</b>									
2007	581.5	45.9	308.3	930.6	703.7	64.9	68.8	21.4	2,725.1
2008	877.9	129.5	351.9	656.7	807.3	63.2	80.0	16.9	2,983.4
<b>Total</b>									
2007	2,679.6	8,694.4	1,983.2	6,725.4	5,382.3	4,638.7	1,068.7	594.2	31,766.6
2008	3,167.7	7,972.5	1,951.3	6,018.5	6,503.7	3,959.1	1,324.8	623.2	31,520.7

Table 3-2

Domestic exports to selected countries, customs basis, not seasonally adjusted — Year to date, January to December

	Agricultural and fishing products	Energy products	Forestry products	Industrial goods	Machinery and equipment	Automotive products	Consumer goods	Special transactions	Total
millions of dollars									
<b>United States</b>									
2007	18,496.6	88,436.3	21,086.2	61,685.2	54,186.7	70,428.0	11,875.5	7,062.3	333,256.8
2008	20,511.9	122,390.9	17,832.8	66,372.5	53,068.3	54,760.5	10,993.7	7,423.8	353,354.3
<b>Mexico</b>									
2007	1,256.1	29.4	179.0	983.7	757.4	999.5	78.8	18.9	4,302.9
2008	1,526.9	164.5	181.7	1,255.2	998.1	956.5	67.1	5.8	5,155.7
<b>Japan</b>									
2007	2,956.9	983.5	1,496.0	2,575.6	742.8	54.2	111.2	20.3	8,940.4
2008	3,835.5	2,308.8	1,419.6	2,531.4	623.3	39.0	124.8	5.0	10,887.5
<b>European Union</b>									
Germany									
2007	187.1	189.2	254.9	1,290.2	1,286.3	67.7	159.8	25.9	3,461.0
2008	234.6	323.4	174.2	1,673.3	1,453.2	47.5	161.1	14.5	4,081.8
France									
2007	178.6	105.6	257.8	715.4	1,197.0	55.8	242.7	22.7	2,775.5
2008	194.3	396.2	256.3	486.8	1,260.4	49.1	326.2	20.4	2,989.6
United Kingdom									
2007	466.8	147.9	521.6	7,712.8	2,091.6	83.5	280.2	82.6	11,387.0
2008	488.2	422.7	373.9	8,549.8	2,069.3	70.3	294.0	47.8	12,316.0
Italy									
2007	334.0	130.2	394.7	800.1	716.8	19.6	61.3	7.3	2,463.9
2008	354.8	333.9	384.6	614.7	481.2	11.8	68.9	4.6	2,254.4
Other European Union									
2007	1,211.7	390.7	565.4	5,507.2	2,780.4	311.3	520.3	73.0	11,359.9
2008	1,397.2	1,838.7	465.3	4,543.6	2,973.5	269.7	670.4	49.8	12,208.2
<b>Total</b>									
2007	2,378.3	963.5	1,994.3	16,025.6	8,072.1	537.9	1,264.2	211.4	31,447.3
2008	2,669.0	3,314.9	1,654.4	15,868.1	8,237.6	448.4	1,520.6	137.0	33,850.0
<b>Newly industrialized countries</b>									
South Korea									
2007	301.2	557.0	553.0	1,046.1	326.6	15.0	80.9	21.1	2,900.8
2008	346.1	1,267.2	491.7	1,096.5	441.8	11.7	58.7	9.1	3,722.7
Hong Kong									
2007	273.3	0.2	52.5	665.4	267.0	4.7	47.2	14.1	1,324.4
2008	353.1	0.4	114.7	782.4	263.0	6.2	48.4	10.9	1,579.1
Taiwan									
2007	116.1	119.7	344.5	726.0	132.8	1.2	36.3	6.9	1,483.5
2008	156.5	251.8	320.1	601.6	140.2	1.6	33.5	2.3	1,507.8
Singapore									
2007	59.0	107.3	9.8	179.3	310.5	8.5	34.4	9.2	717.8
2008	44.2	35.4	13.8	185.4	350.1	15.7	36.1	3.5	684.0
<b>Total</b>									
2007	749.6	784.2	959.7	2,616.8	1,036.8	29.5	198.7	51.2	6,426.5
2008	899.9	1,554.8	940.3	2,666.0	1,195.2	35.2	176.6	25.8	7,493.6
<b>Other countries</b>									
2007	7,295.6	935.2	3,816.6	13,452.1	7,923.8	1,001.6	1,199.2	274.8	35,898.9
2008	10,377.7	2,002.7	4,217.5	16,083.3	9,453.1	798.0	1,226.6	200.3	44,359.1
<b>Total</b>									
2007	33,133.1	92,132.1	29,532.0	97,339.0	72,720.4	73,050.7	14,728.7	7,638.9	420,274.9
2008	39,821.0	131,736.5	26,246.6	104,776.5	73,576.4	57,037.5	14,110.1	7,797.7	455,102.3

**Table 4**  
**Domestic exports by country, customs basis, not seasonally adjusted**

	December		January to December		Variation
	2007	2008	2007	2008	January to December 2008/2007
millions of dollars					
<b>North America</b>					
Greenland	0.4	0.4	15.3	15.5	1.3
High Seas	0.0	0.0	0.0	0.0	0.0
Mexico	318.6	344.4	4,302.9	5,155.7	19.8
Saint Pierre and Miquelon	0.9	1.0	12.8	14.0	9.4
United States	25,324.7	24,021.4	333,256.8	353,354.3	6.0
<b>Total</b>	<b>25,644.7</b>	<b>24,367.1</b>	<b>337,587.8</b>	<b>358,539.5</b>	<b>6.2</b>
<b>Western Europe</b>					
Andorra	0.0	0.0	0.2	0.2	0.0
Austria	20.9	101.7	339.0	459.0	35.4
Belgium	186.3	195.1	2,895.1	3,165.9	9.4
Denmark	27.7	53.9	342.4	397.2	16.0
Faeroe Islands	0.0	0.2	1.8	1.9	5.6
Finland	16.6	56.8	645.6	956.5	48.2
France	182.6	258.7	2,775.5	2,989.6	7.7
Germany	254.2	355.9	3,461.0	4,081.8	17.9
Gibraltar	0.0	0.0	43.1	596.7	...
Greece	10.2	11.4	143.6	134.4	-6.4
Iceland	4.1	1.8	87.4	48.3	-44.7
Italy	195.3	187.6	2,463.9	2,254.4	-8.5
Luxembourg	21.6	30.9	231.2	172.6	-25.3
Malta	0.4	0.6	9.9	16.7	68.7
Netherlands	267.3	185.5	3,593.4	3,439.4	-4.3
Norway	188.0	60.6	3,654.0	2,802.8	-23.3
Portugal	13.1	12.5	159.7	204.6	28.1
Republic of Ireland (Eire)	27.8	44.5	324.2	438.5	35.3
Spain	75.1	75.8	1,159.9	1,093.6	-5.7
Sweden	31.8	52.3	496.2	529.5	6.7
Switzerland	32.5	37.6	1,295.8	1,241.5	-4.2
United Kingdom	761.0	1,028.3	11,387.0	12,316.0	8.2
<b>Total</b>	<b>2,316.5</b>	<b>2,751.8</b>	<b>35,510.0</b>	<b>37,340.9</b>	<b>5.2</b>
<b>Other Europe</b>					
Albania	0.4	0.7	12.1	34.0	181.0
Armenia	0.6	0.7	8.7	20.8	139.1
Azerbaijan	0.5	0.8	14.2	16.2	14.1
Belarus	1.1	0.2	5.8	4.1	-29.3
Bosnia and Herzegovina	0.4	0.2	4.5	6.0	33.3
Bulgaria	2.8	37.3	28.6	76.0	165.7
Croatia	1.9	2.2	23.2	65.1	180.6
Czech Republic	16.6	11.2	228.8	218.7	-4.4
Estonia	3.1	0.6	30.7	22.3	-27.4
Georgia	1.7	2.9	14.8	23.1	56.1
Hungary	7.3	16.6	82.0	135.7	65.5
Kazakhstan	16.0	13.0	156.1	224.8	44.0
Kyrgyzstan	0.6	0.1	6.1	6.3	3.3
Latvia	3.2	1.8	36.4	45.8	25.8
Lithuania	2.2	2.4	36.0	44.9	24.7
Macedonia (Former Yugoslav Republic of Macedonia)	1.0	0.5	15.8	11.4	-27.8
Montenegro	0.1	0.9	1.5	7.5	400.0
Poland	17.3	19.4	246.3	316.5	28.5
Republic of Moldova	0.1	0.3	1.2	10.0	733.3
Romania	16.7	25.2	133.8	226.5	69.3
Russian Federation	77.3	80.9	1,055.4	1,405.0	33.1
Serbia	0.6	1.9	10.4	14.7	41.3
Slovakia	7.1	12.2	89.6	57.4	-35.9
Slovenia	1.2	1.0	90.8	40.6	-55.3
Tajikistan	0.3	0.4	2.2	4.6	109.1
Turkmenistan	0.0	11.0	6.9	13.5	95.7
Ukraine	10.2	7.3	114.2	221.0	93.5
Uzbekistan	0.1	4.2	7.8	16.0	105.1
<b>Total</b>	<b>190.5</b>	<b>256.0</b>	<b>2,464.3</b>	<b>3,288.5</b>	<b>33.4</b>

Table 4 – continued

## Domestic exports by country, customs basis, not seasonally adjusted

	December		January to December		Variation
	2007	2008	2007	2008	January to December 2008/2007
millions of dollars					
<b>Middle East</b>					
Bahrain	1.2	2.1	38.2	49.6	29.8
Cyprus	1.0	0.9	16.5	16.1	-2.4
Egypt	38.2	38.8	318.5	608.1	90.9
Eritrea	0.0	0.0	0.6	0.8	33.3
Ethiopia	0.2	1.4	15.0	69.1	360.7
Iran	10.2	188.3	261.0	693.0	165.5
Iraq	2.1	2.3	245.1	180.3	-26.4
Israel	37.5	37.4	375.3	543.6	44.8
Jordan	3.5	5.4	56.4	71.8	27.3
Kuwait	5.4	10.4	101.4	145.4	43.4
Lebanon	4.0	8.7	54.2	74.2	36.9
Libya	45.4	6.0	181.9	109.6	-39.7
Oman	5.3	15.8	112.6	103.6	-8.0
Qatar	6.7	6.1	84.4	78.6	-6.9
Saudi Arabia	64.5	72.1	649.4	969.4	49.3
Somalia	0.0	1.4	1.8	4.8	166.7
Sudan	10.7	6.1	207.7	220.7	6.3
Syria	3.3	3.8	62.2	63.2	1.6
Turkey	68.3	32.7	652.2	1,212.7	85.9
United Arab Emirates	100.3	125.7	999.1	1,332.6	33.4
Yemen	1.8	32.4	22.3	82.1	268.2
<b>Total</b>	<b>409.3</b>	<b>597.9</b>	<b>4,455.8</b>	<b>6,629.4</b>	<b>48.8</b>
<b>Other Africa</b>					
Algeria	19.1	67.6	485.1	874.6	80.3
Angola	5.8	7.4	58.6	122.6	109.2
Antarctica	0.4	0.0	0.9	3.3	266.7
Benin	0.3	1.4	6.8	12.2	79.4
Botswana	0.6	0.7	11.3	9.5	-15.9
Bouvet Island	0.0	0.0	0.0	0.0	...
Burkina Faso	0.7	1.1	7.7	6.3	-18.2
Burundi	0.1	0.1	1.8	1.5	-16.7
Cameroon	0.7	4.9	18.0	21.8	21.1
Cape Verde	0.1	0.1	0.1	1.0	900.0
Central African Republic	0.0	0.2	0.4	0.3	-25.0
Chad	0.5	0.5	13.6	5.8	-57.4
Comoros	0.0	0.0	0.4	0.5	25.0
Congo	1.4	3.4	18.5	28.9	56.2
Democratic Republic of the Congo	1.5	0.8	36.0	21.8	-39.4
Djibouti	0.0	0.0	1.1	2.2	100.0
Equatorial Guinea	0.3	0.8	2.4	12.6	425.0
French Southern Territories	0.0	0.0	0.2	0.1	-50.0
Gabon	3.4	3.1	17.3	27.2	57.2
Gambia	0.0	0.0	0.5	0.7	40.0
Ghana	13.4	7.8	148.4	174.1	17.3
Guinea	1.1	0.9	8.3	16.5	98.8
Guinea-Bissau	0.0	0.0	0.1	0.7	600.0
Ivory Coast	0.6	1.7	12.1	24.5	102.5
Kenya	2.9	8.6	66.3	75.4	13.7
Lesotho	0.0	0.0	0.3	0.0	0.0
Liberia	0.5	1.9	7.4	10.5	41.9
Madagascar	0.5	0.7	7.7	10.7	39.0
Malawi	0.3	0.6	4.8	5.6	16.7
Mali	0.5	1.0	6.1	8.2	34.4
Mauritania	0.3	0.2	8.6	4.4	-48.8
Mauritius	0.3	1.1	4.5	6.4	42.2
Morocco	18.8	15.7	235.1	303.9	29.3
Mozambique	0.4	0.3	17.1	10.6	-38.0
Namibia	0.1	0.1	4.9	8.1	65.3
Niger	0.2	0.2	3.8	3.6	-5.3
Nigeria	3.8	7.2	159.9	100.1	-37.4
Rwanda	0.0	0.1	1.6	4.0	150.0
Saint Helena	0.0	0.0	0.5	0.4	-20.0
Sao Tome and Principe	0.0	0.0	0.1	0.0	0.0
Senegal	7.3	0.5	32.9	27.8	-15.5
Seychelles	0.4	0.1	1.2	1.7	41.7

Table 4 – continued

## Domestic exports by country, customs basis, not seasonally adjusted

	December		January to December		Variation
	2007	2008	2007	2008	January to December 2008/2007
millions of dollars					
Sierra Leone	2.5	0.2	9.6	9.1	-5.2
South Africa	41.1	48.8	642.0	837.0	30.4
Swaziland	0.1	0.6	4.9	6.0	22.4
Togo	0.2	2.6	12.2	18.1	48.4
Tunisia	5.9	15.9	104.4	86.7	-17.0
Uganda	0.7	4.1	11.3	19.4	71.7
United Republic of Tanzania	2.7	2.4	42.5	54.4	28.0
Western Sahara	0.0	0.0	0.0	0.0	...
Zambia	1.7	1.2	65.8	23.1	-64.9
Zimbabwe	0.5	1.0	6.3	5.0	-20.6
<b>Total</b>	<b>141.8</b>	<b>217.8</b>	<b>2,311.8</b>	<b>3,009.1</b>	<b>30.2</b>
<b>Other Asia</b>					
Afghanistan	0.8	1.7	10.0	22.2	122.0
Bangladesh	32.9	24.6	366.8	306.6	-16.4
Bhutan	0.1	0.0	0.3	0.0	0.0
British Indian Ocean Territory	0.0	0.0	0.9	0.9	0.0
Brunei Darussalam	0.1	0.4	2.8	2.4	-14.3
Cambodia	0.2	0.2	5.6	3.0	-46.4
China	726.1	702.9	9,016.1	9,996.0	10.9
Hong Kong	134.8	141.0	1,324.4	1,579.1	19.2
India	121.6	211.9	1,712.4	2,320.7	35.5
Indonesia	112.2	69.7	972.6	1,423.2	46.3
Japan	670.4	810.2	8,940.4	10,887.5	21.8
Laos	0.0	0.0	0.7	17.6	...
Macao	4.2	2.6	41.2	43.1	4.6
Malaysia	37.6	47.5	531.4	768.7	44.7
Maldives	0.3	0.4	6.4	5.1	-20.3
Mongolia	0.4	0.8	8.9	8.7	-2.2
Myanmar	0.0	0.0	1.3	0.1	-92.3
Nepal	0.1	0.0	10.4	2.9	-72.1
North Korea	1.0	3.5	19.3	22.1	14.5
Pakistan	60.0	14.6	445.9	542.0	21.6
Philippines	52.5	24.0	428.8	524.2	22.2
Singapore	46.5	35.0	717.8	684.0	-4.7
South Korea	234.4	341.1	2,900.8	3,722.7	28.3
Sri Lanka	30.4	32.1	246.1	392.1	59.3
Taiwan	141.7	63.6	1,483.5	1,507.8	1.6
Thailand	32.8	54.0	541.5	661.0	22.1
Timor-Leste	0.0	0.0	0.3	0.3	0.0
Viet Nam	23.2	14.0	273.5	300.2	9.8
<b>Total</b>	<b>2,464.4</b>	<b>2,595.8</b>	<b>30,009.8</b>	<b>35,744.2</b>	<b>19.1</b>
<b>Oceania</b>					
American Samoa	0.0	0.0	1.3	0.8	-38.5
Australia	154.5	115.0	1,596.5	1,959.3	22.7
Christmas Island	0.0	0.0	0.1	0.3	200.0
Cocos (Keeling) Islands	0.0	0.0	0.1	6.2	...
Cook Islands	0.0	0.0	0.5	0.9	80.0
Fiji	0.3	0.5	4.7	3.9	-17.0
French Polynesia	2.1	1.6	15.3	17.8	16.3
Guam	0.1	0.1	2.6	2.6	0.0
Heard Island and McDonald Islands	0.0	0.0	0.0	0.0	0.0
Kiribati	0.0	0.0	0.2	0.0	0.0
Nauru	0.0	0.0	0.0	0.2	...
New Caledonia	0.2	3.7	23.4	29.9	27.8
New Zealand	21.6	19.6	375.0	429.8	14.6
Niue	0.0	0.0	0.0	0.0	0.0
Norfolk Island	0.0	0.0	0.1	0.1	0.0
Papua New Guinea	0.2	0.4	3.2	11.1	246.9
Pitcairn	0.0	0.0	0.1	0.3	200.0
Samoa	0.0	0.0	0.2	0.4	100.0
Solomon Islands	0.0	0.0	0.2	0.1	-50.0
Tonga	0.0	0.1	0.6	0.5	-16.7

Table 4 – continued

## Domestic exports by country, customs basis, not seasonally adjusted

	December		January to December		Variation
	2007	2008	2007	2008	January to December 2008/2007
millions of dollars					
United States Minor Outlying Islands	0.1	0.8	11.5	15.8	37.4
Vanuatu	0.0	0.0	0.2	0.5	150.0
Wallis and Futuna	0.0	0.0	0.0	0.0	...
<b>Total</b>	<b>179.3</b>	<b>141.8</b>	<b>2,035.9</b>	<b>2,480.5</b>	<b>21.8</b>
<b>South America</b>					
Argentina	13.2	15.0	223.2	236.6	6.0
Bolivia	1.0	6.1	12.2	42.2	245.9
Brazil	98.4	169.6	1,400.8	2,498.9	78.4
Chile	25.8	46.1	658.7	674.7	2.4
Colombia	41.8	29.3	564.6	642.5	13.8
Ecuador	27.4	14.6	226.6	236.2	4.2
Falkland Islands (Malvinas)	0.0	0.0	0.0	0.1	0.0
Guyana	1.1	1.0	25.7	20.6	-19.8
Paraguay	1.1	2.7	7.1	15.5	118.3
Peru	23.9	25.6	290.7	365.3	25.7
Suriname	0.9	0.7	9.0	9.8	8.9
Uruguay	2.6	32.9	21.0	207.6	888.6
Venezuela	41.4	62.1	659.1	808.0	22.6
<b>Total</b>	<b>278.6</b>	<b>405.9</b>	<b>4,098.8</b>	<b>5,758.1</b>	<b>40.5</b>
<b>Central America Antilles</b>					
Anguilla	0.1	0.3	1.4	2.6	85.7
Antigua and Barbuda	2.9	1.8	17.2	21.2	23.3
Aruba	0.2	0.7	11.5	6.3	-45.2
Bahamas	6.1	48.2	91.2	226.4	148.2
Barbados	4.8	3.7	55.2	45.4	-17.8
Belize	0.6	0.8	6.4	6.6	3.1
Bermuda	3.3	4.4	59.0	61.7	4.6
British Virgin Islands	0.2	0.8	2.1	8.7	314.3
Cayman Islands	1.2	0.8	55.1	14.0	-74.6
Costa Rica	6.8	6.5	75.9	102.6	35.2
Cuba	34.6	29.1	403.8	614.4	52.2
Dominica	0.3	0.1	4.5	5.6	24.4
Dominican Republic	18.8	25.2	179.8	205.8	14.5
El Salvador	4.0	3.3	46.0	47.1	2.4
Grenada	0.3	0.1	5.9	5.7	-3.4
Guatemala	5.7	14.1	123.3	147.5	19.6
Haiti	2.2	2.1	26.4	48.6	84.1
Honduras	2.0	6.8	43.5	80.0	83.9
Jamaica	15.4	7.3	190.2	187.3	-1.5
Montserrat	0.0	0.0	0.3	0.4	33.3
Netherlands Antilles	5.6	1.2	52.4	41.2	-21.4
Nicaragua	0.8	1.3	19.8	25.6	29.3
Panama	5.1	10.2	74.5	109.8	47.4
Saint Kitts and Nevis	0.6	0.2	8.8	7.9	-10.2
Saint Lucia	1.0	1.9	15.1	12.3	-18.5
Saint Vincent and the Grenadines	1.2	0.6	9.8	7.7	-21.4
Trinidad and Tobago	15.9	14.4	210.2	262.6	24.9
Turks and Caicos Islands	1.8	0.4	11.6	7.0	-39.7
<b>Total</b>	<b>141.5</b>	<b>186.6</b>	<b>1,800.7</b>	<b>2,312.0</b>	<b>28.4</b>
<b>All countries</b>	<b>31,766.6</b>	<b>31,520.7</b>	<b>420,274.9</b>	<b>455,102.3</b>	<b>8.3</b>

Table 5-1

## Exports by province of origin, customs basis, not seasonally adjusted — December

	Agricultural and fishing products	Energy products	Forestry products	Industrial goods	Machinery and equipment	Automotive products	Consumer goods	Special transactions	Total
	millions of dollars								
<b>Domestic exports</b>									
Newfoundland Labrador									
2007	36.1	623.9	29.5	98.5	4.3	0.1	0.1	4.6	797.0
2008	34.2	483.8	47.3	138.5	6.0	0.0	0.3	4.7	714.7
Prince Edward Island									
2007	37.7	0.0	0.3	0.7	11.6	1.2	0.8	3.7	56.0
2008	51.0	0.0	0.0	1.9	12.0	0.4	2.2	7.9	75.5
Nova Scotia									
2007	118.0	151.6	62.2	43.9	88.7	10.8	5.7	7.3	488.2
2008	96.8	101.5	67.5	40.3	102.2	6.7	5.9	7.5	428.4
New Brunswick									
2007	86.7	634.5	89.6	90.3	28.4	1.7	6.8	7.9	945.9
2008	101.8	335.0	91.8	96.7	25.9	1.4	11.8	8.2	672.5
Quebec									
2007	306.0	193.4	541.0	1,618.5	1,851.6	182.3	364.0	117.1	5,174.0
2008	410.1	167.5	599.6	1,405.9	2,294.1	190.3	397.4	141.7	5,606.5
Ontario									
2007	576.0	293.2	279.7	2,755.2	2,566.7	4,320.2	598.3	313.4	11,702.8
2008	743.5	320.5	281.5	2,469.4	3,061.9	3,619.1	809.6	310.5	11,616.1
Manitoba									
2007	297.7	73.3	28.6	261.8	142.0	52.9	26.3	20.5	903.2
2008	323.1	90.8	32.3	232.1	163.2	64.7	30.7	31.6	968.4
Saskatchewan									
2007	600.3	656.1	18.7	319.3	55.6	3.8	1.8	11.4	1,667.1
2008	689.8	609.9	17.6	583.1	71.0	3.2	0.7	11.5	1,986.8
Alberta									
2007	472.7	5,504.0	141.4	1,079.0	359.4	43.5	17.7	59.2	7,676.9
2008	551.9	5,067.7	155.9	697.8	467.0	52.2	23.4	53.5	7,069.3
British Columbia									
2007	148.2	564.3	792.2	436.0	273.5	22.1	47.3	48.9	2,332.5
2008	165.6	795.7	657.8	350.3	300.2	21.3	42.8	46.1	2,379.8
Yukon, Northwest Territories and Nunavut <sup>1</sup>									
2007	0.2	0.0	0.1	22.2	0.4	0.0	0.0	0.1	23.0
2008	0.0	0.0	0.0	2.5	0.2	0.0	0.0	0.0	2.7
<b>Total</b>									
2007	2,679.6	8,694.4	1,983.2	6,725.4	5,382.3	4,638.7	1,068.7	594.2	31,766.6
2008	3,167.7	7,972.5	1,951.3	6,018.5	6,503.7	3,959.1	1,324.8	623.2	31,520.7
<b>Re-exports</b>									
2007	41.4	30.1	7.0	242.2	878.5	103.6	144.3	580.7	2,027.8
2008	48.4	48.8	5.3	202.5	948.3	80.7	194.2	734.6	2,262.7
<b>Total exports</b>									
2007	2,720.9	8,724.5	1,990.2	6,967.6	6,260.8	4,742.3	1,213.0	1,174.9	33,794.4
2008	3,216.0	8,021.3	1,956.6	6,220.9	7,452.0	4,039.8	1,519.0	1,357.8	33,783.4

1. Data for the most current month do not include some exports of Chapter 71 "Natural/cultured pearls, precious stones and metals, coins etc" for reasons relating to timing.

Table 5-2

Exports by province of origin, customs basis, not seasonally adjusted — Year to date, January to December

	Agricultural and fishing products	Energy products	Forestry products	Industrial goods	Machinery and equipment	Automotive products	Consumer goods	Special transactions	Total
millions of dollars									
<b>Domestic exports</b>									
Newfoundland Labrador									
2007	796.1	8,476.5	346.8	1,731.5	104.1	2.8	0.9	71.5	11,530.2
2008	807.4	11,174.3	339.8	2,173.0	58.2	1.4	1.8	77.2	14,633.1
Prince Edward Island									
2007	512.9	0.1	6.1	14.1	120.7	3.2	26.3	83.8	767.1
2008	521.2	0.0	1.7	18.4	191.5	2.0	27.4	86.5	848.7
Nova Scotia									
2007	1,186.7	1,257.1	873.2	542.5	1,183.4	132.1	81.2	92.2	5,348.3
2008	1,037.7	1,646.4	916.2	581.2	1,258.8	115.1	77.1	98.7	5,731.4
New Brunswick									
2007	1,107.4	6,658.2	1,615.7	1,095.6	471.2	39.9	80.8	113.8	11,182.6
2008	1,250.8	8,367.5	1,252.1	1,303.7	335.0	21.0	113.9	122.4	12,766.4
Quebec									
2007	4,118.5	2,520.1	8,002.0	22,435.5	22,375.0	2,293.6	3,891.4	1,619.3	67,255.5
2008	4,774.8	3,924.4	7,695.9	22,650.8	22,757.9	2,208.9	3,646.2	1,587.5	69,246.4
Ontario									
2007	7,835.5	3,044.2	4,183.5	43,301.1	37,057.0	68,804.3	9,146.4	4,015.0	177,387.0
2008	8,247.7	4,516.3	3,827.2	44,005.7	36,665.8	53,138.5	9,011.4	4,096.6	163,509.1
Manitoba									
2007	3,496.7	897.6	449.1	3,825.4	1,970.9	702.5	579.9	269.6	12,191.6
2008	4,289.3	1,300.2	382.7	3,402.3	2,168.8	613.3	354.3	323.4	12,834.3
Saskatchewan									
2007	6,086.5	7,115.5	331.6	4,852.2	695.4	59.0	25.9	120.7	19,286.7
2008	9,165.4	12,339.6	251.2	8,290.7	850.5	44.6	20.8	130.6	31,093.4
Alberta									
2007	5,745.3	55,965.4	2,101.8	11,781.8	4,774.5	645.1	206.9	652.2	81,873.0
2008	7,386.7	78,844.9	2,066.6	13,745.7	5,487.2	588.5	229.1	689.9	109,038.6
British Columbia									
2007	2,246.4	6,197.3	11,621.4	5,878.6	3,961.4	368.0	688.3	599.1	31,560.5
2008	2,338.5	9,622.9	9,512.9	6,340.3	3,794.8	304.0	626.9	583.1	33,123.4
Yukon, Northwest Territories and Nunavut <sup>1</sup>									
2007	1.3	0.0	0.7	1,880.6	6.9	0.3	0.7	1.7	1,892.3
2008	1.5	0.0	0.4	2,264.6	7.8	0.2	1.3	1.8	2,277.5
<b>Total</b>									
2007	33,133.1	92,132.1	29,532.0	97,339.0	72,720.4	73,050.7	14,728.7	7,638.9	420,274.9
2008	39,821.0	131,736.5	26,246.6	104,776.5	73,576.4	57,037.5	14,110.1	7,797.7	455,102.3
<b>Re-exports</b>									
2007	449.9	680.5	123.5	3,637.5	12,551.0	1,611.4	2,177.3	9,193.2	30,424.3
2008	510.4	843.4	81.9	2,788.2	11,318.9	1,402.0	2,289.9	8,985.5	28,220.3
<b>Total exports</b>									
2007	33,583.0	92,812.5	29,655.5	100,976.5	85,271.4	74,662.2	16,906.0	16,832.1	450,699.2
2008	40,331.4	132,580.0	26,328.5	107,564.6	84,895.3	58,439.6	16,400.0	16,783.2	483,322.5

1. Data for the most current month do not include some exports of Chapter 71 "Natural/cultured pearls, precious stones and metals, coins etc" for reasons relating to timing.

Table 6-1

## Imports by commodity groupings, balance of payments basis, seasonally adjusted — Current dollars

	November 2008	December 2008	Change		Year to date		Year to date change		December 2008/2007
					2007	2008			
	millions of dollars		percent		millions of dollars		percent		
<b>Total</b>	<b>37,942</b>	<b>35,762</b>	<b>-2,180</b>	<b>-5.7</b>	<b>415,006</b>	<b>442,567</b>	<b>27,561</b>	<b>6.6</b>	<b>4.6</b>
<b>Agricultural and fishing products</b>	<b>2,563</b>	<b>2,537</b>	<b>-26</b>	<b>-1.0</b>	<b>25,496</b>	<b>28,515</b>	<b>3,019</b>	<b>11.8</b>	<b>17.3</b>
Fruits and vegetables	715	734	19	2.7	7,241	7,879	637	8.8	21.4
Fresh fruits and berries	244	250	6	2.6	2,501	2,764	263	10.5	19.3
Dried fruits, fruits and fruit preparations	137	136	-1	-0.4	1,350	1,490	140	10.4	21.8
Fresh vegetables	184	184	-1	-0.3	1,922	1,993	72	3.7	15.2
Other vegetables and vegetable preparations	150	164	14	9.6	1,469	1,632	163	11.1	32.6
Other agricultural and fishing products	1,848	1,802	-46	-2.5	18,255	20,637	2,382	13.0	15.8
Live animals	16	16	0	-1.6	181	191	10	5.4	3.6
Meat and meat preparations	184	178	-6	-3.2	1,934	2,050	116	6.0	11.4
Fish and marine animals	166	166	0	-0.2	1,890	1,909	19	1.0	5.5
Cocoa, coffee, tea and other food preparations	447	454	8	1.7	4,063	4,653	590	14.5	41.1
Dairy produce, eggs and honey	54	55	1	1.8	625	634	9	1.4	18.0
Corn (maize) shelled	45	58	13	29.4	548	705	157	28.7	-10.9
Other cereals and cereal preparations	198	196	-2	-1.2	1,726	2,104	378	21.9	33.8
Sugar and sugar preparations	145	148	2	1.5	1,327	1,544	217	16.4	9.0
Fodder, feed, excluding unmilled cereal	127	123	-4	-3.3	1,130	1,460	330	29.2	15.9
Beverages	299	254	-45	-15.1	3,197	3,500	303	9.5	-5.4
Tobacco	36	26	-10	-28.5	395	377	-18	-4.4	-20.2
Crude vegetable products	127	126	-1	-0.9	1,199	1,495	296	24.7	26.2
Cotton	2	2	0	-9.7	39	14	-25	-64.1	59.3
<b>Energy products</b>	<b>3,663</b>	<b>3,283</b>	<b>-380</b>	<b>-10.4</b>	<b>36,569</b>	<b>52,826</b>	<b>16,257</b>	<b>44.5</b>	<b>-6.9</b>
Crude petroleum	1,947	2,011	64	3.3	23,671	33,993	10,322	43.6	-5.7
Other energy products	1,715	1,272	-444	-25.9	12,898	18,833	5,935	46.0	-8.8
Coal and other related products	680	404	-276	-40.5	4,306	5,953	1,647	38.2	9.0
Petroleum and coal products	1,035	867	-168	-16.2	8,593	12,881	4,288	49.9	-15.2
<b>Forestry products</b>	<b>246</b>	<b>214</b>	<b>-33</b>	<b>-13.2</b>	<b>2,995</b>	<b>2,872</b>	<b>-123</b>	<b>-4.1</b>	<b>-13.6</b>
Forestry products	246	214	-33	-13.2	2,995	2,872	-123	-4.1	-13.6
Crude wood products	47	42	-5	-10.0	530	479	-51	-9.6	-4.9
Wood fabricated materials	199	171	-28	-14.0	2,465	2,393	-72	-2.9	-15.5
<b>Industrial goods and materials</b>	<b>7,891</b>	<b>7,435</b>	<b>-456</b>	<b>-5.8</b>	<b>85,132</b>	<b>91,558</b>	<b>6,425</b>	<b>7.5</b>	<b>5.8</b>
Metals and metal ores	2,484	2,575	91	3.7	28,761	32,573	3,811	13.3	5.8
Metals in ores, concentrates and scrap	549	566	18	3.2	7,676	8,368	692	9.0	-13.8
Steel bars, rods, plates, sheets	589	573	-17	-2.9	7,033	7,513	481	6.8	10.7
Other iron and steel products	542	650	107	19.8	3,934	5,426	1,492	37.9	112.2
Precious metals including alloys	372	422	50	13.3	4,198	5,481	1,283	30.5	-16.0
Other non-ferrous metals and alloys	431	365	-67	-15.5	5,921	5,785	-136	-2.3	-19.1
Chemicals and plastics	2,865	2,525	-340	-11.9	30,185	31,432	1,247	4.1	0.7
Organic chemicals	749	616	-133	-17.7	8,593	8,020	-573	-6.7	-15.7
Plastic materials	940	794	-146	-15.5	10,307	10,669	361	3.5	-2.6
Other chemicals and related products	1,176	1,114	-61	-5.2	11,285	12,743	1,458	12.9	15.9
Other industrial goods and materials	2,541	2,334	-207	-8.1	26,186	27,553	1,367	5.2	12.1
Crude animal products	22	18	-4	-17.2	316	302	-14	-4.3	-25.7
Wool and man-made fibres	22	19	-3	-14.3	279	254	-25	-9.1	-7.8
Crude non-metallic minerals	102	77	-25	-24.2	979	1,054	75	7.7	4.8
Textile fabricated materials	235	224	-11	-4.5	2,768	2,624	-143	-5.2	9.0
Metal fabricated basic products	1,010	922	-88	-8.8	10,316	10,765	449	4.4	14.7
Rubber fabricated materials	99	86	-13	-12.8	1,135	1,047	-87	-7.7	1.5
Oils, fats, animal and vegetable	123	114	-9	-7.4	1,031	1,257	226	21.9	29.0
Non-metallic minerals	360	333	-27	-7.4	3,425	3,836	411	12.0	20.4
Other fabricated materials	568	540	-28	-4.9	5,938	6,413	475	8.0	7.1

Table 6-1 – continued

## Imports by commodity groupings, balance of payments basis, seasonally adjusted — Current dollars

	November 2008	December 2008	Change		Year to date		Year to date change	December 2008/2007	
					2007	2008			
	millions of dollars		percent		millions of dollars		percent		
<b>Machinery and equipment</b>	<b>11,277</b>	<b>10,636</b>	<b>-640</b>	<b>-5.7</b>	<b>116,632</b>	<b>122,463</b>	<b>5,831</b>	<b>5.0</b>	<b>11.0</b>
Industrial and agricultural machinery	3,202	2,935	-268	-8.4	31,556	34,236	2,680	8.5	10.9
Engines, turbines and electric motors	395	433	37	9.4	3,373	4,133	760	22.5	70.6
Drilling mining machinery	207	185	-22	-10.7	1,643	1,874	231	14.0	53.4
Excavating machinery	293	242	-50	-17.2	3,175	3,507	332	10.5	-13.4
Metal working machinery	197	181	-16	-8.0	2,446	2,419	-26	-1.1	-14.5
Other industrial machinery	1,694	1,527	-166	-9.8	17,351	18,171	819	4.7	4.9
Agricultural machinery including tractors	417	367	-50	-12.0	3,568	4,132	564	15.8	13.1
Aircraft and other transportation equipment	1,437	1,538	100	7.0	16,581	17,422	840	5.1	9.2
Aircraft, engines, parts	860	1,090	230	26.7	10,865	11,194	329	3.0	21.6
Other transportation equipment and parts	577	448	-129	-22.4	5,716	6,227	511	8.9	-12.4
Office machines and equipment	1,285	1,168	-117	-9.1	15,029	14,381	-649	-4.3	1.2
Other machinery and equipment	5,352	4,996	-356	-6.6	53,466	56,425	2,959	5.5	14.3
Other communication and related equipment	1,898	1,796	-102	-5.4	18,144	19,651	1,506	8.3	17.6
Other equipment and tools	3,454	3,200	-254	-7.3	35,321	36,774	1,453	4.1	12.5
<b>Automotive products</b>	<b>5,806</b>	<b>5,238</b>	<b>-569</b>	<b>-9.8</b>	<b>80,002</b>	<b>71,929</b>	<b>-8,073</b>	<b>-10.1</b>	<b>-12.0</b>
Passenger autos and chassis	1,931	1,800	-131	-6.8	26,274	25,939	-335	-1.3	-16.4
Trucks and other motor vehicles	1,174	1,194	20	1.7	17,497	15,133	-2,364	-13.5	-12.8
Motor vehicle parts	2,702	2,244	-458	-17	36,231	30,857	-5,374	-14.8	-7.7
<b>Other consumer goods</b>	<b>5,260</b>	<b>5,182</b>	<b>-78</b>	<b>-1.5</b>	<b>54,794</b>	<b>57,495</b>	<b>2,701</b>	<b>4.9</b>	<b>14.2</b>
Apparel and footwear	1,080	1,136	56	5.2	10,591	11,374	782	7.4	32.1
Apparel and apparel accessories	907	958	51	5.6	8,796	9,513	718	8.2	33.6
Footwear	173	178	5	2.9	1,795	1,860	65	3.6	24.8
Miscellaneous consumer goods	4,180	4,046	-135	-3.2	44,203	46,121	1,918	4.3	10.0
Television, radios, phonographs	156	130	-26	-16.8	1,736	1,701	-35	-2.0	-2.7
Printed matter	331	337	6	1.8	3,634	3,735	102	2.8	15.6
Watches, sporting goods and toys	569	582	13	2.3	6,004	6,418	414	6.9	18.2
House furnishings	819	781	-37	-4.6	8,232	8,689	458	5.6	14.9
Photographic goods	271	253	-19	-6.9	2,770	2,894	124	4.5	6.4
Miscellaneous end products	2,034	1,963	-71	-3.5	21,827	22,684	857	3.9	6.5
<b>Special transactions trade</b>	<b>477</b>	<b>540</b>	<b>63</b>	<b>13.2</b>	<b>5,192</b>	<b>6,106</b>	<b>914</b>	<b>17.6</b>	<b>25.8</b>
<b>Unallocated balance of payments adjustments</b>	<b>759</b>	<b>698</b>	<b>-61</b>	<b>-8.0</b>	<b>8,193</b>	<b>8,803</b>	<b>610</b>	<b>7.5</b>	<b>-2.4</b>

Table 6-2

Imports by commodity groupings, balance of payments basis, seasonally adjusted — Constant dollars, 2002

	November 2008	December 2008	Change		Year to date		Year to date change	December 2008/2007	
					2007	2008			
	millions of dollars		percent		millions of dollars		percent		
<b>Total</b>	<b>38,352</b>	<b>36,180</b>	<b>-2,172</b>	<b>-5.7</b>	<b>483,340</b>	<b>484,290</b>	<b>949</b>	<b>0.2</b>	<b>-11.6</b>
<b>Agricultural and fishing products</b>	<b>2,301</b>	<b>2,246</b>	<b>-55</b>	<b>-2.4</b>	<b>27,592</b>	<b>28,129</b>	<b>537</b>	<b>1.9</b>	<b>-6.8</b>
Fruits and vegetables	634	701	67	10.6	7,223	7,613	391	5.4	12.4
Fresh fruits and berries	231	241	10	4.4	2,611	2,714	102	3.9	7.7
Dried fruits, fruits and fruit preparations	124	129	5	3.8	1,206	1,430	224	18.5	19.4
Fresh vegetables	159	199	40	25.3	1,950	1,977	27	1.4	19.1
Other vegetables and vegetable preparations	120	132	12	9.9	1,455	1,493	37	2.6	5.6
Other agricultural and fishing products	1,667	1,545	-122	-7.3	20,369	20,516	147	0.7	-13.5
Live animals	15	15	0	-1.1	193	194	1	0.4	-17.3
Meat and meat preparations	189	176	-14	-7.2	1,965	2,119	153	7.8	-7.9
Fish and marine animals	213	194	-19	-9.0	2,643	2,486	-158	-6.0	-15.6
Cocoa, coffee, tea and other food preparations	355	338	-18	-5.0	4,554	4,233	-320	-7.0	-6.5
Dairy produce, eggs and honey	40	40	0	-0.7	649	532	-117	-18.1	-5.1
Corn (maize) shelled	31	44	13	41.8	501	503	2	0.3	-21.4
Other cereals and cereal preparations	167	155	-12	-7.2	1,819	2,051	231	12.7	-3.2
Sugar and sugar preparations	141	139	-2	-1.4	1,454	1,687	233	16.0	-15.7
Fodder, feed, excluding unmilled cereal	89	87	-2	-2.6	1,236	1,175	-60	-4.9	-17.2
Beverages	267	210	-58	-21.7	3,351	3,433	82	2.4	-28.2
Tobacco	41	29	-12	-29.4	538	497	-41	-7.6	-37.3
Crude vegetable products	116	117	2	1.7	1,400	1,587	187	13.4	-1.5
Cotton	3	2	0	-11.0	66	20	-46	-70.1	21.7
<b>Energy products</b>	<b>1,746</b>	<b>1,824</b>	<b>78</b>	<b>4.4</b>	<b>19,991</b>	<b>22,253</b>	<b>2,263</b>	<b>11.3</b>	<b>7.3</b>
Crude petroleum	807	999	192	23.8	11,849	11,954	105	0.9	12.8
Other energy products	939	825	-114	-12.2	8,142	10,300	2,158	26.5	1.2
Coal and other related products	364	256	-108	-29.7	2,966	3,570	604	20.4	-3.6
Petroleum and coal products	575	569	-6	-1.0	5,176	6,730	1,554	30.0	3.5
<b>Forestry products</b>	<b>291</b>	<b>243</b>	<b>-47</b>	<b>-16.3</b>	<b>3,695</b>	<b>3,671</b>	<b>-24</b>	<b>-0.7</b>	<b>-26.6</b>
Forestry products	291	243	-47	-16.3	3,695	3,671	-24	-0.7	-26.6
Crude wood products	55	50	-6	-10.1	621	607	-14	-2.3	-12.6
Wood fabricated materials	236	194	-42	-17.8	3,074	3,064	-10	-0.3	-29.5
<b>Industrial goods and materials</b>	<b>6,168</b>	<b>5,968</b>	<b>-200</b>	<b>-3.2</b>	<b>82,050</b>	<b>80,069</b>	<b>-1,981</b>	<b>-2.4</b>	<b>-14.9</b>
Metals and metal ores	1,548	1,632	84	5.5	21,342	21,473	131	0.6	-15.7
Metals in ores, concentrates and scrap	355	413	58	16.3	4,121	4,701	580	14.1	10.7
Steel bars, rods, plates, sheets	340	341	1	0.3	5,636	4,889	-746	-13.2	-21.7
Other iron and steel products	292	352	60	20.6	3,145	3,447	302	9.6	37.7
Precious metals including alloys	206	216	10	4.9	2,904	3,185	281	9.7	-46.2
Other non-ferrous metals and alloys	355	310	-45	-12.6	5,536	5,251	-285	-5.2	-34.1
Chemicals and plastics	2,191	2,079	-112	-5.1	30,242	28,050	-2,192	-7.2	-18.4
Organic chemicals	502	484	-17	-3.5	7,263	5,686	-1,577	-21.7	-18.8
Plastic materials	806	721	-86	-10.6	11,059	10,593	-466	-4.2	-19.5
Other chemicals and related products	883	874	-9	-1.0	11,920	11,771	-149	-1.3	-17.2
Other industrial goods and materials	2,429	2,256	-173	-7.1	30,466	30,546	81	0.3	-10.9
Crude animal products	18	19	1	4.2	312	301	-11	-3.5	-9.6
Wool and man-made fibres	25	21	-4	-14.8	364	314	-50	-13.7	-27.2
Crude non-metallic minerals	81	65	-16	-19.7	956	886	-70	-7.3	-0.8
Textile fabricated materials	264	252	-12	-4.4	3,739	3,433	-306	-8.2	-13.7
Metal fabricated basic products	917	833	-84	-9.1	11,530	11,289	-241	-2.1	-12.3
Rubber fabricated materials	101	89	-12	-12.2	1,488	1,303	-185	-12.4	-24.5
Oils, fats, animal and vegetable	89	90	1	1.4	1,037	985	-52	-5.0	7.6
Non-metallic minerals	381	344	-37	-9.7	4,227	4,570	343	8.1	-4.2
Other fabricated materials	554	543	-11	-2.0	6,813	7,465	652	9.6	-11.6

Table 6-2 – continued

## Imports by commodity groupings, balance of payments basis, seasonally adjusted — Constant dollars, 2002

	November 2008	December 2008	Change		Year to date		Year to date change	December 2008/2007	
					2007	2008			
	millions of dollars			percent	millions of dollars			percent	
<b>Machinery and equipment</b>	<b>14,130</b>	<b>13,063</b>	<b>-1,066</b>	<b>-7.5</b>	<b>166,632</b>	<b>173,094</b>	<b>6,463</b>	<b>3.9</b>	<b>-9.2</b>
Industrial and agricultural machinery	3,387	3,077	-310	-9.1	40,251	42,449	2,198	5.5	-13.5
Engines, turbines and electric motors	432	471	39	9.0	4,365	5,226	861	19.7	35.2
Drilling mining machinery	197	172	-24	-12.4	1,924	2,082	158	8.2	15.5
Excavating machinery	303	249	-54	-17.7	4,023	4,343	320	8.0	-33.2
Metal working machinery	213	197	-17	-7.8	3,195	3,085	-110	-3.4	-32.5
Other industrial machinery	1,771	1,576	-195	-11.0	22,064	22,295	231	1.0	-19.2
Agricultural machinery including tractors	471	411	-59	-12.6	4,679	5,417	738	15.8	-7.9
Aircraft and other transportation equipment	1,489	1,546	57	3.8	20,497	20,842	345	1.7	-14.9
Aircraft, engines, parts	924	1,103	179	19.4	13,541	13,598	58	0.4	-5.2
Other transportation equipment and parts	565	443	-122	-21.5	6,956	7,243	287	4.1	-32.0
Office machines and equipment	2,716	2,317	-400	-14.7	29,185	29,849	663	2.3	-0.7
Other machinery and equipment	6,537	6,123	-414	-6.3	76,699	79,955	3,256	4.2	-8.2
Other communication and related equipment	2,621	2,544	-76	-2.9	29,105	31,584	2,479	8.5	-2.9
Other equipment and tools	3,916	3,578	-338	-8.6	47,593	48,370	777	1.6	-11.7
<b>Automotive products</b>	<b>6,662</b>	<b>5,956</b>	<b>-706</b>	<b>-10.6</b>	<b>98,646</b>	<b>88,963</b>	<b>-9,683</b>	<b>-9.8</b>	<b>-22.3</b>
Passenger autos and chassis	2,309	2,159	-150	-6.5	29,671	30,171	500	1.7	-13.9
Trucks and other motor vehicles	1,250	1,265	15	1.2	20,775	17,777	-2,998	-14.4	-25.7
Motor vehicle parts	3,103	2,532	-571	-18.4	48,200	41,015	-7,185	-14.9	-26.8
<b>Other consumer goods</b>	<b>6,024</b>	<b>5,832</b>	<b>-193</b>	<b>-3.2</b>	<b>73,844</b>	<b>75,624</b>	<b>1,780</b>	<b>2.4</b>	<b>-9.6</b>
Apparel and footwear	1,305	1,359	54	4.1	15,060	15,933	873	5.8	4.9
Apparel and apparel accessories	1,093	1,144	51	4.7	12,502	13,326	824	6.6	5.9
Footwear	212	215	3	1.2	2,558	2,607	49	1.9	-0.1
Miscellaneous consumer goods	4,719	4,473	-247	-5.2	58,785	59,691	906	1.5	-13.2
Television, radios, phonographs	215	175	-40	-18.7	2,846	2,713	-132	-4.7	-25.1
Printed matter	379	380	1	0.4	4,882	4,939	57	1.2	-8.2
Watches, sporting goods and toys	687	691	4	0.5	8,690	8,937	247	2.8	-7.5
House furnishings	894	848	-47	-5.2	10,722	11,062	340	3.2	-9.8
Photographic goods	436	379	-57	-13.1	4,735	5,080	345	7.3	-14.0
Miscellaneous end products	2,108	2,000	-107	-5.1	26,911	26,960	50	0.2	-16.0
<b>Special transactions trade</b>	<b>488</b>	<b>551</b>	<b>62</b>	<b>12.7</b>	<b>6,123</b>	<b>6,722</b>	<b>599</b>	<b>9.8</b>	<b>5.3</b>
<b>Unallocated balance of payments adjustments</b>	<b>541</b>	<b>497</b>	<b>-43</b>	<b>-8.0</b>	<b>4,768</b>	<b>5,764</b>	<b>996</b>	<b>20.9</b>	<b>7.4</b>

Table 7-1

## Imports from selected countries, customs basis, not seasonally adjusted — December

	Agricultural and fishing products	Energy products	Forestry products	Industrial goods	Machinery and equipment	Automotive products	Consumer goods	Special transactions	Total
millions of dollars									
<b>United States</b>									
2007	1,177.6	1,098.3	152.7	3,689.0	4,153.0	3,842.2	1,652.3	544.3	16,309.5
2008	1,410.1	1,152.9	129.4	3,623.8	4,853.2	3,188.8	1,893.7	562.8	16,814.7
<b>Mexico</b>									
2007	115.5	46.2	0.4	89.5	623.2	370.9	71.8	4.7	1,322.1
2008	120.0	49.0	0.5	101.0	679.9	491.9	88.1	2.3	1,532.6
<b>Japan</b>									
2007	6.9	9.6	0.2	81.6	501.6	526.4	84.3	0.4	1,210.9
2008	8.8	0.4	0.2	103.0	445.4	373.8	81.5	0.2	1,013.1
<b>European Union</b>									
Germany									
2007	13.3	0.8	1.1	177.9	415.3	210.1	139.6	0.4	958.4
2008	22.1	0.7	1.1	172.2	403.2	283.0	158.0	8.6	1,048.9
France									
2007	46.6	9.8	0.3	69.8	153.6	2.5	110.4	0.8	393.8
2008	48.8	24.5	0.4	164.1	196.6	3.8	107.2	61.0	606.5
United Kingdom									
2007	23.4	438.4	0.1	176.6	218.0	42.4	100.9	0.8	1,000.5
2008	35.5	473.7	0.0	102.8	350.9	24.8	109.8	10.5	1,108.1
Italy									
2007	45.1	0.0	1.3	78.2	134.3	13.0	76.6	0.7	349.2
2008	47.1	0.0	1.1	106.2	191.5	12.9	83.0	9.2	451.0
Other European Union									
2007	82.1	164.6	3.4	225.6	325.4	78.5	240.2	1.9	1,121.6
2008	96.1	131.2	3.4	276.0	484.4	70.4	272.2	49.7	1,383.4
<b>Total</b>									
2007	210.5	613.7	6.2	728.0	1,246.5	346.5	667.7	4.5	3,823.6
2008	249.6	630.2	6.0	821.4	1,626.6	395.0	730.1	139.0	4,597.9
<b>Newly industrialized countries</b>									
South Korea									
2007	3.8	2.0	0.0	64.1	177.0	136.1	19.8	0.1	402.9
2008	4.5	1.6	0.0	94.2	242.6	119.5	24.9	0.1	487.3
Hong Kong									
2007	2.7	0.0	0.0	2.1	13.8	0.1	16.3	0.0	35.0
2008	2.9	0.0	0.1	2.4	18.6	0.2	14.0	0.0	38.2
Taiwan									
2007	4.6	0.0	0.4	61.8	194.4	10.2	37.1	0.1	308.6
2008	6.7	0.1	0.4	72.3	217.4	13.2	34.0	0.1	344.2
Singapore									
2007	1.6	0.0	0.2	54.2	48.1	0.2	11.8	0.2	116.2
2008	4.8	0.0	0.2	3.9	68.5	0.2	28.0	0.3	106.0
<b>Total</b>									
2007	12.7	2.0	0.7	182.1	433.3	146.6	85.0	0.4	862.8
2008	18.9	1.6	0.7	172.8	547.1	133.1	101.0	0.5	975.7
<b>Other countries</b>									
2007	520.0	1,641.3	49.6	1,321.8	2,199.5	150.6	1,324.0	49.0	7,255.9
2008	681.9	1,453.1	52.1	1,824.6	2,421.0	146.4	1,803.1	113.5	8,495.8
<b>Total</b>									
2007	2,043.3	3,411.0	209.8	6,092.0	9,157.1	5,383.2	3,885.1	603.4	30,784.8
2008	2,489.3	3,287.1	188.9	6,646.6	10,573.2	4,729.1	4,697.5	818.3	33,429.9

Table 7-2

Imports from selected countries, customs basis, not seasonally adjusted — Year to date, January to December

	Agricultural and fishing products	Energy products	Forestry products	Industrial goods	Machinery and equipment	Automotive products	Consumer goods	Special transactions	Total
millions of dollars									
<b>United States</b>									
2007	14,476.7	9,983.1	2,157.6	52,964.4	55,641.5	58,549.0	22,105.7	4,634.2	220,512.3
2008	16,578.6	16,006.9	2,075.5	57,061.5	57,683.1	50,487.8	22,660.2	4,535.9	227,089.4
<b>Mexico</b>									
2007	1,192.4	764.4	6.4	1,164.7	6,909.5	5,965.5	1,138.7	34.8	17,176.5
2008	1,203.5	994.4	4.7	1,401.9	7,460.0	5,705.2	1,080.0	42.5	17,892.2
<b>Japan</b>									
2007	66.4	167.4	2.1	1,194.6	6,125.2	6,717.5	1,180.6	3.9	15,457.7
2008	68.0	51.0	1.9	1,343.3	6,203.8	6,518.9	1,044.2	4.5	15,235.5
<b>European Union</b>									
Germany									
2007	230.4	53.6	22.1	2,362.2	4,395.7	2,732.5	1,727.7	8.8	11,532.9
2008	273.9	25.4	16.4	2,479.8	4,861.7	2,991.1	1,971.8	86.9	12,707.0
France									
2007	704.2	93.5	4.6	1,002.9	1,727.6	50.8	1,490.8	18.0	5,092.5
2008	775.2	211.1	3.5	956.6	1,941.9	71.5	1,590.0	384.1	5,934.1
United Kingdom									
2007	397.0	4,487.1	4.0	1,398.4	3,077.1	557.7	1,516.7	31.0	11,469.0
2008	417.7	5,546.9	2.0	1,234.6	3,366.6	531.2	1,399.4	49.0	12,547.4
Italy									
2007	588.6	189.3	20.2	1,150.7	1,764.6	214.7	1,116.0	8.0	5,052.1
2008	664.0	117.3	17.5	1,181.7	1,734.5	238.5	1,098.8	64.5	5,116.8
Other European Union									
2007	1,179.6	2,409.5	58.5	3,475.8	4,377.9	1,083.6	3,581.2	14.9	16,180.9
2008	1,235.0	2,552.9	51.6	3,200.8	5,344.5	1,228.9	3,894.4	192.5	17,700.7
<b>Total</b>									
2007	3,099.6	7,233.0	109.4	9,389.9	15,342.9	4,639.4	9,432.4	80.6	49,327.3
2008	3,365.8	8,453.6	91.0	9,053.6	17,249.3	5,061.4	9,954.3	777.0	54,006.0
<b>Newly industrialized countries</b>									
South Korea									
2007	41.9	52.3	0.3	909.9	2,410.6	1,677.2	255.8	16.2	5,364.3
2008	49.4	195.6	0.5	964.7	2,813.8	1,723.6	254.7	1.2	6,003.4
Hong Kong									
2007	29.3	0.1	2.0	78.4	203.6	2.3	215.6	0.6	531.9
2008	33.1	0.1	1.1	38.0	199.3	1.9	193.8	0.6	468.0
Taiwan									
2007	54.8	0.5	10.7	862.4	2,355.6	162.2	449.1	1.7	3,897.0
2008	59.5	74.2	9.8	879.4	2,326.1	178.5	441.0	1.3	3,969.8
Singapore									
2007	20.0	0.0	1.2	619.7	669.3	5.0	174.9	2.5	1,492.6
2008	36.6	83.3	1.2	268.0	623.3	3.0	224.4	4.2	1,244.1
<b>Total</b>									
2007	146.0	53.0	14.1	2,470.5	5,639.2	1,846.8	1,095.4	20.9	11,285.8
2008	178.7	353.1	12.6	2,150.2	5,962.5	1,907.0	1,113.9	7.4	11,685.3
<b>Other countries</b>									
2007	6,542.9	19,002.5	704.8	17,218.5	27,264.0	2,229.8	19,828.6	434.1	93,225.3
2008	7,119.6	27,075.9	686.5	19,650.1	28,054.2	2,248.9	21,642.3	858.4	107,335.8
<b>Total</b>									
2007	25,526.3	37,203.4	2,994.5	84,402.6	116,922.9	79,948.0	54,781.4	5,208.7	406,987.6
2008	28,515.2	52,934.8	2,872.3	90,660.7	122,612.9	71,929.1	57,494.9	6,225.8	433,245.7

**Table 8**  
**Imports by country, customs basis, not seasonally adjusted**

	December		January to December		Variation
	2007	2008	2007	2008	January to December 2008/2007
millions of dollars					
<b>North America</b>					
Canada	273.7	300.1	3,717.0	3,724.3	0.2
Greenland	3.2	3.3	46.2	35.1	-24.0
Mexico	1,322.1	1,532.6	17,176.5	17,892.2	4.2
Saint Pierre and Miquelon	0.0	0.0	0.9	0.5	-44.4
United States	16,309.5	16,814.7	220,512.3	227,089.4	3.0
<b>Total</b>	<b>17,908.5</b>	<b>18,650.7</b>	<b>241,452.8</b>	<b>248,741.5</b>	<b>3.0</b>
<b>Western Europe</b>					
Andorra	0.0	0.0	0.1	0.2	100.0
Austria	105.8	100.0	1,435.1	1,505.4	4.9
Belgium	168.1	182.9	2,353.4	2,207.6	-6.2
Denmark	65.0	166.1	1,317.5	1,745.8	32.5
Faeroe Islands	0.0	0.0	2.8	1.3	-53.6
Finland	75.5	82.3	858.2	854.2	-0.5
France	393.8	606.5	5,092.5	5,934.1	16.5
Germany	958.4	1,048.9	11,532.9	12,707.0	10.2
Gibraltar	0.0	0.0	0.0	0.1	0.0
Greece	9.7	12.3	134.6	138.6	3.0
Iceland	2.8	2.4	29.1	34.3	17.9
Italy	349.2	451.0	5,052.1	5,116.8	1.3
Luxembourg	12.9	4.8	106.8	98.6	-7.7
Malta	1.7	1.6	25.4	22.3	-12.2
Netherlands	133.2	140.9	1,764.8	2,170.3	23.0
Norway	299.0	327.1	5,366.5	6,218.8	15.9
Portugal	20.5	35.8	350.6	439.0	25.2
Republic of Ireland (Eire)	113.9	125.2	2,460.8	1,998.8	-18.8
Spain	84.8	144.7	1,267.2	1,719.0	35.7
Sweden	149.7	169.3	2,101.5	2,247.3	6.9
Switzerland	190.0	243.0	2,280.6	2,686.0	17.8
United Kingdom	1,000.5	1,108.1	11,469.0	12,547.4	9.4
<b>Total</b>	<b>4,134.7</b>	<b>4,952.8</b>	<b>55,001.6</b>	<b>60,392.9</b>	<b>9.8</b>
<b>Other Europe</b>					
Albania	0.1	0.2	2.1	3.0	42.9
Armenia	0.1	1.7	2.1	7.0	233.3
Azerbaijan	0.0	0.0	218.6	1,168.3	434.4
Belarus	26.0	1.7	50.4	35.7	-29.2
Bosnia and Herzegovina	0.3	0.6	5.3	6.1	15.1
Bulgaria	11.3	6.2	120.4	117.0	-2.8
Croatia	2.6	1.9	37.5	50.5	34.7
Czech Republic	25.2	41.6	318.1	374.4	17.7
Estonia	27.3	2.4	57.5	41.8	-27.3
Georgia	6.6	9.1	70.3	127.2	80.9
Hungary	29.7	44.2	320.9	393.2	22.5
Kazakhstan	0.1	14.5	30.5	95.3	212.5
Kyrgyzstan	0.0	0.0	0.0	1.0	0.0
Latvia	0.7	1.5	13.6	32.4	138.2
Lithuania	3.5	3.2	152.7	335.1	119.4
Macedonia (Former Yugoslav Republic of Macedonia)	0.3	0.5	8.7	8.0	-8.0
Montenegro	0.1	0.2	0.9	0.9	0.0
Poland	53.0	79.1	606.0	845.3	39.5
Republic of Moldova	0.1	0.1	2.5	2.4	-4.0
Romania	9.2	17.2	161.6	153.0	-5.3
Russian Federation	144.7	142.2	1,499.8	2,082.6	38.9
Serbia	0.8	1.2	13.8	12.9	-6.5
Slovakia	14.5	15.7	170.3	180.7	6.1
Slovenia	6.2	6.2	80.8	78.0	-3.5
Tajikistan	0.0	0.0	0.1	0.0	0.0
Turkmenistan	0.0	0.0	1.0	0.9	-10.0
Ukraine	2.9	14.9	117.8	201.7	71.2
Uzbekistan	32.8	0.4	33.2	1.4	-95.8
<b>Total</b>	<b>398.2</b>	<b>406.5</b>	<b>4,096.3</b>	<b>6,355.7</b>	<b>55.2</b>

Table 8 – continued

## Imports by country, customs basis, not seasonally adjusted

	December		January to December		Variation
	2007	2008	2007	2008	January to December 2008/2007
millions of dollars					
<b>Middle East</b>					
Bahrain	0.4	0.4	8.4	3.9	-53.6
Cyprus	0.2	0.3	3.1	2.9	-6.5
Egypt	8.8	22.1	161.3	138.9	-13.9
Eritrea	0.0	0.0	0.0	0.0	0.0
Ethiopia	0.5	1.2	8.5	12.7	49.4
Iran	2.4	2.0	44.7	39.9	-10.7
Iraq	165.7	247.9	1,516.8	2,259.6	49.0
Israel	80.0	98.3	959.3	1,222.1	27.4
Jordan	1.0	1.5	16.0	15.4	-3.8
Kuwait	0.0	7.6	1.7	15.3	800.0
Lebanon	1.2	1.9	15.6	16.5	5.8
Libya	0.0	0.0	0.0	0.0	0.0
Oman	0.2	0.4	3.3	4.5	36.4
Qatar	0.0	0.1	0.3	1.4	366.7
Saudi Arabia	167.8	144.6	1,871.3	2,344.1	25.3
Somalia	0.0	0.0	0.0	0.1	0.0
Sudan	8.3	6.8	64.7	68.0	5.1
Syria	27.4	0.7	80.4	56.2	-30.1
Turkey	53.0	123.3	562.3	711.4	26.5
United Arab Emirates	1.6	2.7	30.5	330.2	982.6
Yemen	0.0	0.0	0.2	0.2	0.0
<b>Total</b>	<b>518.6</b>	<b>661.7</b>	<b>5,348.4</b>	<b>7,243.3</b>	<b>35.4</b>
<b>Other Africa</b>					
Algeria	451.7	320.7	5,070.9	7,698.6	51.8
Angola	233.1	270.3	1,196.0	2,773.6	131.9
Antarctica	0.0	0.0	0.0	0.0	0.0
Benin	0.0	0.0	0.2	0.0	0.0
Botswana	0.0	0.1	68.8	13.0	-81.1
Bouvet Island	0.0	0.0	0.0	0.2	0.0
Burkina Faso	0.0	0.0	0.3	0.1	-66.7
Burundi	0.0	0.0	0.1	0.5	400.0
Cameroon	0.4	0.3	7.2	4.6	-36.1
Cape Verde	0.0	0.0	0.0	0.0	0.0
Central African Republic	0.1	0.1	0.2	0.1	-50.0
Chad	0.0	0.0	0.0	0.2	0.0
Comoros	0.0	0.0	0.0	0.1	0.0
Congo	0.9	0.7	3.9	2.9	-25.6
Democratic Republic of the Congo	0.1	0.1	0.5	0.8	60.0
Djibouti	0.0	0.0	0.0	0.0	0.0
Equatorial Guinea	82.2	0.0	232.9	81.1	-65.2
French Southern Territories	0.0	0.0	0.0	0.0	0.0
Gabon	0.1	0.2	1.7	1.3	-23.5
Gambia	0.0	0.0	0.1	0.1	0.0
Ghana	2.9	2.1	21.5	34.1	58.6
Guinea	4.2	6.9	37.5	69.7	85.9
Guinea-Bissau	0.0	0.0	0.0	0.0	0.0
Ivory Coast	4.9	26.7	283.4	133.2	-53.0
Kenya	0.6	1.3	16.7	15.3	-8.4
Lesotho	0.4	0.6	7.8	6.6	-15.4
Liberia	1.4	1.0	19.8	22.2	12.1
Madagascar	0.7	1.1	18.3	20.3	10.9
Malawi	0.0	0.1	1.7	2.6	52.9
Mali	0.1	0.0	0.5	0.4	-20.0
Mauritania	0.0	0.0	0.8	0.2	-75.0
Mauritius	0.6	0.7	11.5	7.3	-36.5
Morocco	43.3	27.1	218.0	147.0	-32.6
Mozambique	0.0	1.3	0.3	2.4	700.0
Namibia	0.1	0.0	135.5	245.9	81.5
Niger	0.1	0.0	1.0	0.8	-20.0
Nigeria	1.0	2.2	290.0	924.0	218.6
Rwanda	0.1	0.1	0.3	0.5	66.7
Saint Helena	0.2	0.0	0.2	0.1	-50.0
Sao Tome and Principe	0.0	0.0	0.0	0.1	0.0
Senegal	0.0	0.0	1.2	1.2	0.0
Seychelles	0.1	0.0	3.9	1.4	-64.1

Table 8 – continued

## Imports by country, customs basis, not seasonally adjusted

	December		January to December		Variation
	2007	2008	2007	2008	January to December 2008/2007
millions of dollars					
Sierra Leone	0.0	0.1	11.8	1.5	-87.3
South Africa	44.3	51.2	1,082.6	844.6	-22.0
Swaziland	0.1	0.2	2.5	2.5	0.0
Togo	0.1	0.7	2.4	6.8	183.3
Tunisia	2.0	3.0	49.8	41.2	-17.3
Uganda	0.1	0.3	2.6	2.4	-7.7
United Republic of Tanzania	0.2	0.3	2.1	2.2	4.8
Western Sahara	0.0	0.0	0.0	0.0	0.0
Zambia	0.0	0.0	0.4	0.6	50.0
Zimbabwe	0.2	0.1	3.1	3.9	25.8
<b>Total</b>	<b>876.3</b>	<b>719.7</b>	<b>8,810.0</b>	<b>13,118.5</b>	<b>48.9</b>
<b>Other Asia</b>					
Afghanistan	0.1	0.1	0.8	1.2	50.0
Bangladesh	32.2	51.8	542.3	648.3	19.5
Bhutan	0.0	0.0	0.0	0.0	0.0
British Indian Ocean Territory	0.0	0.0	0.0	0.0	0.0
Brunei Darussalam	0.2	0.3	2.1	2.5	19.0
Cambodia	12.4	24.9	202.6	268.0	32.3
China	2,733.9	3,783.0	38,305.5	42,613.9	11.2
Hong Kong	35.0	38.2	531.9	468.0	-12.0
India	143.8	195.3	1,980.0	2,201.6	11.2
Indonesia	67.4	94.9	993.6	1,078.1	8.5
Japan	1,210.9	1,013.1	15,457.7	15,235.5	-1.4
Laos	0.2	0.3	6.6	5.0	-24.2
Macao	2.3	2.1	33.5	29.5	-11.9
Malaysia	240.0	265.7	2,916.6	2,923.9	0.3
Maldives	0.1	0.1	0.6	0.3	-50.0
Mongolia	18.8	26.5	192.7	189.5	-1.7
Myanmar	0.5	0.0	7.9	0.7	-91.1
Nepal	1.0	1.3	14.1	15.5	9.9
North Korea	0.0	0.0	0.2	0.1	-50.0
Pakistan	16.4	22.8	242.8	245.8	1.2
Philippines	59.3	68.6	766.2	822.5	7.3
Singapore	116.2	106.0	1,492.6	1,244.1	-16.6
South Korea	402.9	487.3	5,364.3	6,003.4	11.9
Sri Lanka	11.3	10.9	111.3	119.6	7.5
Taiwan	308.6	344.2	3,897.0	3,969.8	1.9
Thailand	189.8	231.0	2,297.8	2,490.9	8.4
Timor-Leste	0.4	1.0	1.3	6.9	430.8
Viet Nam	52.2	87.7	758.2	954.0	25.8
<b>Total</b>	<b>5,655.9</b>	<b>6,857.2</b>	<b>76,120.3</b>	<b>81,538.8</b>	<b>7.1</b>
<b>Oceania</b>					
American Samoa	0.0	0.0	1.9	0.2	-89.5
Australia	149.7	116.2	1,780.5	1,652.2	-7.2
Christmas Island	0.0	0.1	0.0	0.1	0.0
Cocos (Keeling) Islands	0.0	0.0	0.0	0.0	0.0
Cook Islands	0.0	0.1	0.0	0.2	0.0
Fiji	0.2	0.3	7.5	8.0	6.7
French Polynesia	0.1	0.0	2.1	1.2	-42.9
Guam	0.1	0.0	0.2	0.8	300.0
Heard Island and McDonald Islands	0.0	0.0	0.0	0.0	0.0
Kiribati	0.0	0.0	0.1	0.0	0.0
Nauru	0.0	0.0	0.1	0.1	0.0
New Caledonia	0.1	0.0	0.2	0.3	50.0
New Zealand	35.7	35.4	509.7	478.8	-6.1
Niue	0.0	0.0	0.0	0.0	0.0
Norfolk Island	0.0	0.0	0.0	0.0	0.0
Papua New Guinea	0.4	0.3	3.3	2.0	-39.4
Pitcairn	0.0	0.1	0.0	0.1	0.0
Samoa	0.0	0.0	0.3	0.0	0.0
Solomon Islands	0.0	0.0	0.2	0.1	-50.0
Tonga	0.0	0.0	0.1	0.1	0.0

Table 8 – continued

## Imports by country, customs basis, not seasonally adjusted

	December		January to December		Variation
	2007	2008	2007	2008	January to December 2008/2007
millions of dollars					
United States Minor Outlying Islands	0.8	0.5	9.4	5.5	-41.5
Vanuatu	0.0	0.0	118.6	0.1	-99.9
Wallis and Futuna	0.0	0.0	0.1	0.0	0.0
<b>Total</b>	<b>187.1</b>	<b>153.0</b>	<b>2,434.3</b>	<b>2,150.0</b>	<b>-11.7</b>
<b>South America</b>					
Argentina	55.6	100.1	472.5	640.5	35.6
Bolivia	2.9	4.4	105.6	77.0	-27.1
Brazil	304.0	218.0	3,359.5	2,691.9	-19.9
Chile	185.8	113.9	1,686.2	1,793.8	6.4
Colombia	29.9	54.5	473.3	643.7	36.0
Ecuador	11.4	17.5	218.4	177.0	-19.0
Falkland Islands (Malvinas)	0.0	0.0	0.0	0.1	0.0
Guyana	17.4	23.1	161.5	225.0	39.3
Paraguay	1.0	1.6	16.0	17.3	8.1
Peru	225.7	204.4	2,132.9	2,458.2	15.3
Suriname	32.8	45.8	402.8	607.1	50.7
Uruguay	5.2	2.7	95.6	34.6	-63.8
Venezuela	27.0	28.1	1,498.7	1,366.2	-8.8
<b>Total</b>	<b>898.8</b>	<b>814.1</b>	<b>10,623.3</b>	<b>10,732.4</b>	<b>1.0</b>
<b>Central America Antilles</b>					
Anguilla	0.0	0.0	0.1	0.2	100.0
Antigua and Barbuda	0.1	0.1	0.6	5.5	816.7
Aruba	0.0	0.0	123.3	152.1	23.4
Bahamas	1.4	0.4	63.3	73.1	15.5
Barbados	0.7	0.4	8.1	8.5	4.9
Belize	0.5	0.8	11.0	10.8	-1.8
Bermuda	0.1	0.2	3.2	2.0	-37.5
British Virgin Islands	0.1	0.4	2.0	13.4	570.0
Cayman Islands	0.0	0.0	0.3	0.2	-33.3
Costa Rica	29.6	30.4	368.3	376.7	2.3
Cuba	37.6	48.4	1,057.1	895.4	-15.3
Dominica	0.0	0.1	0.4	0.3	-25.0
Dominican Republic	8.9	14.2	113.4	129.8	14.5
El Salvador	2.3	3.7	43.4	69.4	59.9
Grenada	0.0	0.3	0.7	0.9	28.6
Guatemala	13.1	29.8	228.2	264.6	16.0
Haiti	2.5	1.2	22.1	19.3	-12.7
Honduras	9.0	9.8	124.4	151.5	21.8
Jamaica	32.4	51.5	370.9	327.6	-11.7
Montserrat	0.0	0.0	0.2	0.1	-50.0
Netherlands Antilles	0.0	0.1	18.8	2.7	-85.6
Nicaragua	12.2	5.6	88.5	98.6	11.4
Panama	19.3	0.8	28.7	21.3	-25.8
Saint Kitts and Nevis	0.4	0.5	4.3	5.2	20.9
Saint Lucia	0.0	0.0	0.3	0.2	-33.3
Saint Vincent and the Grenadines	0.0	0.0	0.6	0.1	-83.3
Trinidad and Tobago	36.3	15.5	413.5	341.4	-17.4
Turks and Caicos Islands	0.1	0.0	5.1	1.9	-62.7
<b>Total</b>	<b>206.7</b>	<b>214.1</b>	<b>3,100.8</b>	<b>2,972.7</b>	<b>-4.1</b>
<b>All countries</b>	<b>30,784.8</b>	<b>33,429.9</b>	<b>406,987.6</b>	<b>433,245.7</b>	<b>6.5</b>

**Table 9-1**  
**Imports by province of clearance, customs basis, not seasonally adjusted — December**

	Agricultural and fishing products	Energy products	Forestry products	Industrial goods	Machinery and equipment	Automotive products	Consumer goods	Special transactions	Total
millions of dollars									
Newfoundland Labrador									
2007	3.1	339.7	0.0	5.1	7.3	0.1	0.5	0.0	355.9
2008	2.8	253.1	0.0	4.7	72.8	0.0	0.7	1.0	335.1
Prince Edward Island									
2007	0.3	0.0	0.0	0.1	0.1	0.6	2.6	0.0	3.7
2008	0.2	0.0	0.0	0.0	0.1	0.0	0.0	0.0	0.4
Nova Scotia									
2007	26.1	146.9	1.4	91.1	79.2	185.4	11.3	3.8	545.1
2008	27.3	111.3	1.7	82.3	201.8	296.6	18.3	4.3	743.7
New Brunswick									
2007	30.8	368.1	9.9	59.7	52.4	26.7	11.2	3.5	562.4
2008	28.6	339.8	7.8	68.3	52.1	14.5	13.5	1.7	526.4
Quebec									
2007	304.6	1,642.0	56.5	1,277.9	1,564.3	166.6	593.1	92.3	5,697.4
2008	391.3	1,452.6	54.6	1,271.0	1,795.2	129.8	816.5	196.4	6,107.5
Ontario									
2007	1,123.7	452.8	77.7	3,373.0	5,162.1	4,292.1	2,581.5	438.7	17,501.6
2008	1,400.8	613.8	71.4	3,443.0	5,897.1	3,655.8	2,961.5	572.6	18,616.0
Manitoba									
2007	70.5	9.4	5.3	233.6	428.7	144.9	109.0	10.5	1,011.9
2008	78.3	8.0	6.0	284.5	552.1	168.3	141.4	10.6	1,249.1
Saskatchewan									
2007	23.5	25.8	1.4	150.2	250.2	94.8	17.5	0.3	563.7
2008	28.8	43.3	1.5	203.6	262.8	61.2	20.9	0.9	623.0
Alberta									
2007	149.6	280.4	8.9	367.4	599.2	104.0	86.1	25.1	1,620.6
2008	143.0	230.1	5.8	534.2	720.4	77.1	114.7	16.4	1,841.7
British Columbia									
2007	310.1	144.9	48.7	534.0	1,008.9	367.8	472.2	29.2	2,915.8
2008	387.7	234.5	40.2	754.8	999.5	325.8	610.0	13.8	3,366.3
Yukon, Northwest Territories and Nunavut									
2007	0.9	1.1	0.0	0.1	4.7	0.0	0.0	0.0	6.7
2008	0.5	0.6	0.0	0.1	19.1	0.0	0.1	0.5	20.8
<b>Total</b>									
<b>2007</b>	<b>2,043.3</b>	<b>3,411.0</b>	<b>209.8</b>	<b>6,092.0</b>	<b>9,157.1</b>	<b>5,383.2</b>	<b>3,885.1</b>	<b>603.4</b>	<b>30,784.8</b>
<b>2008</b>	<b>2,489.3</b>	<b>3,287.1</b>	<b>188.9</b>	<b>6,646.6</b>	<b>10,573.2</b>	<b>4,729.1</b>	<b>4,697.5</b>	<b>818.3</b>	<b>33,429.9</b>

Table 9-2

Imports by province of clearance, customs basis, not seasonally adjusted — Year to date, January to December

	Agricultural and fishing products	Energy products	Forestry products	Industrial goods	Machinery and equipment	Automotive products	Consumer goods	Special transactions	Total
millions of dollars									
Newfoundland Labrador									
2007	32.8	2,806.4	0.0	111.8	235.0	3.7	7.3	15.9	3,213.0
2008	42.1	3,869.9	0.1	94.8	215.9	1.3	15.2	8.8	4,248.0
Prince Edward Island									
2007	4.1	0.0	0.0	16.5	27.0	0.7	5.8	0.2	54.4
2008	3.4	0.0	0.1	13.2	83.3	0.1	18.1	0.4	118.5
Nova Scotia									
2007	380.2	1,850.8	17.8	1,447.6	812.4	2,774.2	151.6	31.4	7,466.0
2008	367.1	2,003.6	20.3	1,404.3	1,288.8	3,169.7	159.1	22.4	8,435.2
New Brunswick									
2007	452.5	4,996.9	138.1	798.3	602.0	275.4	185.4	20.8	7,469.5
2008	464.2	7,907.8	127.7	987.2	840.6	358.8	178.3	24.2	10,888.9
Quebec									
2007	3,850.2	17,992.4	797.3	16,180.7	19,484.3	2,215.7	9,851.9	700.6	71,072.9
2008	4,350.3	22,144.4	730.6	17,084.9	20,314.9	2,398.2	10,103.4	1,252.2	78,378.9
Ontario									
2007	14,056.8	5,661.7	1,146.2	48,354.4	66,939.5	65,108.2	35,047.9	3,943.9	240,258.7
2008	15,606.6	8,997.2	1,094.4	50,222.3	68,946.5	56,188.0	36,388.1	4,377.6	241,820.7
Manitoba									
2007	790.1	112.9	84.3	3,156.7	5,747.8	1,649.3	1,508.6	101.3	13,150.9
2008	980.4	343.0	96.1	3,812.0	6,333.1	1,899.3	1,720.7	100.4	15,285.0
Saskatchewan									
2007	249.1	232.5	23.1	1,855.7	3,158.7	1,147.3	269.6	25.2	6,961.1
2008	352.1	544.2	28.8	2,678.4	3,858.7	1,237.7	301.3	20.4	9,021.7
Alberta									
2007	1,653.4	1,720.6	126.3	4,488.6	7,945.2	1,334.3	1,070.4	179.2	18,518.1
2008	1,891.4	3,476.9	109.0	5,672.9	8,075.2	1,307.8	1,246.0	163.5	21,942.7
British Columbia									
2007	4,002.8	1,807.5	661.2	7,991.3	11,932.7	5,438.1	6,681.5	190.0	38,705.2
2008	4,401.4	3,614.0	665.4	8,688.7	12,612.4	5,367.0	7,363.7	254.8	42,967.3
Yukon, Northwest Territories and Nunavut									
2007	54.2	21.7	0.0	1.0	38.4	1.0	1.3	0.1	117.8
2008	56.1	33.9	0.0	2.0	43.5	1.1	1.0	1.2	138.8
<b>Total</b>									
<b>2007</b>	<b>25,526.3</b>	<b>37,203.4</b>	<b>2,994.5</b>	<b>84,402.6</b>	<b>116,922.9</b>	<b>79,948.0</b>	<b>54,781.4</b>	<b>5,208.7</b>	<b>406,987.6</b>
<b>2008</b>	<b>28,515.2</b>	<b>52,934.8</b>	<b>2,872.3</b>	<b>90,660.7</b>	<b>122,612.9</b>	<b>71,929.1</b>	<b>57,494.9</b>	<b>6,225.8</b>	<b>433,245.7</b>

# Technical notes

---

## The Canadian international merchandise trade statistical program

### I Introduction

The objective of this text is to provide a general overview of the Canadian International Merchandise Trade Statistical Program with special reference to concepts and definitions. The text is intended for the general user and simplicity is emphasized. More technical details can be obtained from the International Trade Division upon request.

### II Conceptual framework

**1. Objectives and coverage:** The primary objective of the Canadian International Merchandise Trade Statistical Program is to measure the change in the stock of material resources of the country resulting from the movement of merchandise into or out of Canada. Information on imports and exports are inputs into the System of National Accounts particularly in the Balance of Payments and Gross Domestic Product, and are used in the formulation of trade and budgetary policies. Governments, importers, exporters, manufacturers and shipping companies use trade statistics to:

- monitor import penetration and export performance;
- monitor commodity price and volume changes;
- examine transport implications.

**2. Trade statistics - Customs basis/Balance of Payments basis:** Merchandise trade statistics are reported and presented on two different bases: Customs basis and Balance of Payment basis. (B.O.P.)

When goods are imported into or exported from Canada, declarations must be filed with Customs giving such information as description and value of the goods, origin and port of clearance of commodities and the mode of transport. Most of this information is required for the purposes of Customs Administration. Statistics developed from administrative records of Customs are commonly referred to as Customs based trade statistics.

Customs based trade statistics are more accurate at measuring imports than they are at measuring exports. This is the case because Customs are typically more vigilant with respect to goods entering the country than they are with goods leaving the country.

Customs based export statistics may understate and/or incorrectly portray the destination of exports. Export statistics are understated when the proper documentation is not filed with Customs. Exports are incorrectly portrayed when the country of final destination is inaccurately reported on the customs documentation - this occurs most frequently when goods are routed through an intermediary country before continuing on to their final destination.

Statistics Canada does not have a measure of undercoverage but periodically conducts reconciliation exercises with its major trading partners, excluding the United States.

On January 1st, 1990, Canada entered into a Memorandum of Understanding (MOU) with the United States concerning the exchange of import data. As a consequence, each administration is using the other's import data to replace its own export data. Canada's international merchandise trade statistics are, therefore, no longer derived exclusively from the administrative records of Canada Border Services Agency, but from United States Customs records as well.

Customs based information is adjusted to conform with the National Accounts concepts and definitions. The adjustments to derive Balance of Payments based trade data include trade definition, valuation and timing related adjustments. The principal difference between the two trade concepts is that Customs based merchandise trade statistics cover the physical movement of goods as they are reflected on customs documents, while Balance of Payments adjusted data are intended to cover all economic transactions between residents and non-residents which involve merchandise trade. This section describes the concepts and processes pertaining to the Customs based trade statistics only. (For further information on Balance of Payments adjusted data see the publication *"Canada's Balance of International Payments" Catalogue no. 67-001-XPB*).

**3. System of trade:** Canadian trade statistics are compiled according to the "General" system of trade as defined by the United Nations Statistical Office. Under this system, imports include all goods which have crossed Canada's territorial boundary, whether for immediate consumption in Canada or stored in bonded Customs warehouses. Domestic exports include goods grown, extracted or manufactured in Canada, including goods of foreign origin which have been materially transformed in Canada. Re-exports are exports of goods of foreign origin which have not been materially transformed in Canada, including foreign goods withdrawn for export from bonded customs warehouses. Total exports are the sum of Domestic exports and Re-exports. Thus the general trade system, in principal, presents all goods entering the country (imports) and all goods leaving the country (exports). It differs from the "Special" system of trade in the treatment of imported goods into Customs bonded warehouses. Under the "Special" system, these goods are counted only if and when they are withdrawn from Customs warehouses for home consumption. They are not counted in export statistics unless they have first cleared Customs.

Conceptually, under the "General" system, the statistical frontier coincides with the geographical boundary, while under the "Special" system, it coincides with the Customs boundary.

**4. Valuation:** For Customs purposes, imports are recorded at values established according to the provisions of the Customs Act, which, since January 1st, 1985, reflects valuation methods based on the General Agreement on Tariffs and Trade (GATT) Valuation Code System. It generally requires the value for duty of imported goods be equivalent to the transaction value or the price actually paid.

To determine the transaction value of imported goods, all transportation and associated costs arising in respect of the goods being appraised prior to and at the place of direct shipment to Canada, are to be added to the price of the goods. Therefore, Canadian imports are valued F.O.B. (Free on Board), place of direct shipment to Canada. It excludes freight and insurance costs in bringing the goods to Canada from the point of direct shipment.

To countries other than the United States, exports are, in principal, valued or recorded at the values declared on export documents which usually reflect the transaction value, i.e. actual selling price, or in the case of a non-arm's length transaction, the transfer price used for company accounting purposes. Canadian exports to overseas countries are valued at F.O.B. port of exit, including domestic freight charges to that point but net of discounts and allowances. As of January, 1990, Canadian exports to the U.S. are valued F.O.B. point of exit from Canada. Prior to 1990, they were valued F.O.B. place of lading net of freight charges, discounts and allowances.

**5. Statistical period:** The reference period is the calendar month and the calendar year. The closing of the statistical month for imports and Canadian exports to the United States is defined as the last calendar day of the month, based as closely as practicable on the date of clearance from Customs.

The closing of the statistical month for exports, to countries other than the United States, is also defined as the last calendar day of the month. Those export documents which are received too late for incorporation in the current month are assigned to the month the transaction took place. If a monthly summary report from a high volume exporter is not received on time, the data are imputed for the current month and revised with the trade value in the following statistical month.

**6. Trading partner attribution (Country of origin/destination):** Exports are attributed to the country, which is the last known destination of the goods at the time of export. Exports to the United States are attributed to the state of destination.

Imports are attributed to their country of origin, that is, the country in which the goods were grown, extracted or manufactured in accordance to the rules of origin administered by Canada Border Services Agency. Imports from

the United States are attributed to the state of origin. Prior to 1988, most imports were attributed to the country of export/consignment with the exception of imports from Central and South America.

**7. Principal trading areas:** The “principal trading areas” are country groupings defined as follows:

**United States:** (includes trade with Puerto Rico and the U.S. Virgin Islands).

**Japan:**

**E.U. (European Union):** Austria, Belgium, Bulgaria, Cyprus, Czech Republic, Denmark, Estonia, Finland, France, Germany, Greece, Hungary, Ireland, Italy, Latvia, Lithuania, Luxembourg, Malta, Netherlands, Poland, Portugal, Romania, Slovakia, Slovenia, Spain, Sweden and United Kingdom.

**Other O.E.C.D.:** Australia, Canada, Iceland, Mexico, New Zealand, Norway, South Korea, Switzerland, and Turkey. (The E.U. countries, United States, and Japan are also members of O.E.C.D. - the Organization for Economic Co-operation and Development).

**Other countries:** This group includes all countries and territories other than the United States, Japan, E.U. and other O.E.C.D.

**8. Legal framework:** Import and export statistics with countries other than the United States are derived from information contained on administrative records collected by the Canada Border Services Agency under the Customs Act. Copies of these documents (or information therefrom) are sent to Statistics Canada in accordance with Section 25 of the Statistics Act. It follows that the disclosure of trade statistics is governed by both the Customs Act and the Statistics Act and is subject to the provisions of Section 17.(2)(a) of the latter. Disclosure of export statistics to the United States is now governed by a Memorandum of Understanding which provides for an exchange of detailed import statistics between Canada and the United States.

Questions concerning details of methods not covered by these notes should be addressed to the Marketing and Client Services Section, International Trade Division, Statistics Canada, Ottawa, Ontario, K1A 0T6.

**Telephone:** 1-800-294-5583 or within the area code 613-951-9647

**Facsimile:** 1-800-664-0055 or within the area code 613-951-0117

**Internet:** *trade@statcan.gc.ca*