

Catalogue no. 65-001-X

# Canadian International Merchandise Trade

January 2009



Statistics  
Canada

Statistique  
Canada

Canada

## How to obtain more information

For information about this product or the wide range of services and data available from Statistics Canada, visit our website at [www.statcan.gc.ca](http://www.statcan.gc.ca), e-mail us at [infostats@statcan.gc.ca](mailto:infostats@statcan.gc.ca), or telephone us, Monday to Friday from 8:30 a.m. to 4:30 p.m., at the following numbers:

### Statistics Canada's National Contact Centre

Toll-free telephone (Canada and the United States):

Inquiries line	1-800-263-1136
National telecommunications device for the hearing impaired	1-800-363-7629
Fax line	1-877-287-4369

Local or international calls:

Inquiries line	1-613-951-8116
Fax line	1-613-951-0581

### Depository Services Program

Inquiries line	1-800-635-7943
Fax line	1-800-565-7757

## To access this product

This product, Catalogue no. 65-001-X, is available free in electronic format. To obtain a single issue, visit our website at [www.statcan.gc.ca](http://www.statcan.gc.ca) and select "Publications."

## Standards of service to the public

Statistics Canada is committed to serving its clients in a prompt, reliable and courteous manner. To this end, Statistics Canada has developed *standards of service* that its employees observe. To obtain a copy of these service standards, please contact Statistics Canada toll-free at 1-800-263-1136. The service standards are also published on [www.statcan.gc.ca](http://www.statcan.gc.ca) under "About us" > "Providing services to Canadians."

Statistics Canada  
International Trade Division

# Canadian International Merchandise Trade

January 2009

Published by authority of the Minister responsible for Statistics Canada

© Minister of Industry, 2009

All rights reserved. The content of this electronic publication may be reproduced, in whole or in part, and by any means, without further permission from Statistics Canada, subject to the following conditions: that it be done solely for the purposes of private study, research, criticism, review or newspaper summary, and/or for non-commercial purposes; and that Statistics Canada be fully acknowledged as follows: Source (or "Adapted from", if appropriate): Statistics Canada, year of publication, name of product, catalogue number, volume and issue numbers, reference period and page(s). Otherwise, no part of this publication may be reproduced, stored in a retrieval system or transmitted in any form, by any means—electronic, mechanical or photocopy—or for any purposes without prior written permission of Licensing Services, Client Services Division, Statistics Canada, Ottawa, Ontario, Canada K1A 0T6.

March 2009

Catalogue no. 65-001-X, vol. 63, no. 1

ISSN 1480-8781

Frequency: Monthly

Ottawa

La version française de cette publication est disponible sur demande (n° 65-001-X au catalogue).

---

## **Note of appreciation**

*Canada owes the success of its statistical system to a long standing partnership between Statistics Canada, the citizens of Canada, its businesses, governments and other institutions. Accurate and timely statistical information could not be produced without their continued cooperation and goodwill.*

# User information

---

## Symbols

The following standard symbols are used in Statistics Canada publications:

- . not available for any reference period
- .. not available for a specific reference period
- ... not applicable
- 0 true zero or a value rounded to zero
- 0s value rounded to 0 (zero) where there is a meaningful distinction between true zero and the value that was rounded
- p preliminary
- r revised
- x suppressed to meet the confidentiality requirements of the *Statistics Act*
- E use with caution
- F too unreliable to be published

## Note to Users

All totals are calculated from full figures and rounded independently; consequently, totals may not equal the sum of their components.

# Table of contents

---

<b>Highlights</b>	<b>5</b>
<b>Analysis</b>	<b>7</b>
<b>Statistical tables</b>	
1 Merchandise trade of Canada, balance of payments basis, seasonally adjusted	12
1-1 Current dollars	12
1-2 Constant dollars, 2002	13
1-3 Price indices (Laspeyres)	14
2 Exports by commodity groupings, balance of payments basis, seasonally adjusted	15
2-1 Current dollars	15
2-2 Constant dollars, 2002	17
3 Domestic exports to selected countries, customs basis, not seasonally adjusted	19
3-1 January	19
3-2 Year to date	20
4 Domestic exports by country, customs basis, not seasonally adjusted	21
5 Exports by province of origin, customs basis, not seasonally adjusted	25
5-1 January	25
5-2 Year to date	26
6 Imports by commodity groupings, balance of payments basis, seasonally adjusted	27
6-1 Current dollars	27
6-2 Constant dollars, 2002	29
7 Imports from selected countries, customs basis, not seasonally adjusted	31
7-1 January	31
7-2 Year to date	32
8 Imports by country, customs basis, not seasonally adjusted	33

## **Table of contents – continued**

9	Imports by province of clearance, customs basis, not seasonally adjusted	37
9-1	January	37
9-2	Year to date	38

## **Data quality, concepts and methodology**

Technical notes	39
-----------------	----

# Highlights

---

## January 2009

Canada's trade deficit with the world widened to \$993 million in January 2009 from \$652 million in December 2008 as both exports and imports fell led by a sharp decline in automotive products trade. Overall exports fell 9.0% to \$31.7 billion while imports fell 7.9% to \$32.7 billion.

Although January's decline in exports was widespread, nearly half was due to automotive products, which fell for a sixth consecutive month. The decrease in overall exports reflected mostly declining volumes. Since July 2008, exports have fallen 28.4% in current dollars, while volumes dropped 19.6% during the same period.

Imports fell in January due to a combination of volume and price reductions. Lower imports of automotive products and machinery and equipment accounted for nearly three quarters of the monthly decline in January. Since October 2008, imports have fallen 16.1% in current dollars, while volumes have dropped 14.6% during the same period.

Exports to the United States fell 8.9% to \$23.3 billion, largely reflecting drops in automotive products and crude petroleum. This outpaced an 8.4% decrease in imports. As a result the trade surplus with the United States shrank to \$3.0 billion in January 2009 from \$3.4 billion in December 2008.

Exports to countries other than the United States dropped 9.3% while imports decreased 7.0%. Consequently, Canada's trade deficit with this group of countries totaled \$4.0 billion, virtually unchanged from December.

### Note to readers

Merchandise trade is one component of the current account of Canada's balance of payments, which also includes trade in services, investment income and transfers.

International merchandise trade data by country are available on both a balance of payments and a customs basis for the United States, Japan and the United Kingdom. Trade data for all other individual countries are available on a customs basis only. Balance of payments data are derived from customs data by making adjustments for characteristics such as valuation, coverage, timing and residency. These adjustments are made to conform to the concepts and definitions of the Canadian System of National Accounts.

Constant dollars referred to in the text are calculated using the Laspeyres volume formula which is current dollars divided by Paasche indexes.

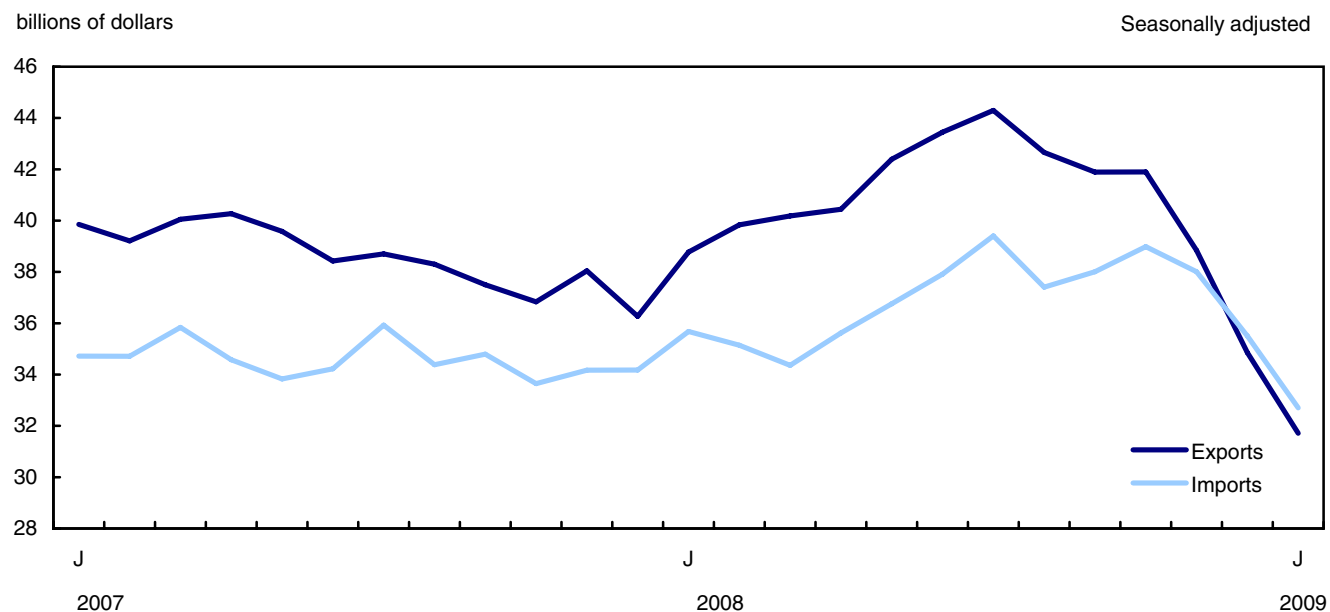
## Revisions

In general, merchandise trade data are revised on an ongoing basis for each month of the current year. Current and previous year revisions are reflected in both the customs and balance of payments based data. Revisions to customs based data for the previous year are also released on a quarterly basis.

Factors influencing revisions include late receipt of import and export documentation, incorrect information on customs forms, replacement of estimates with actual figures, changes in classification of merchandise based on more current information, and changes to seasonal adjustment factors.

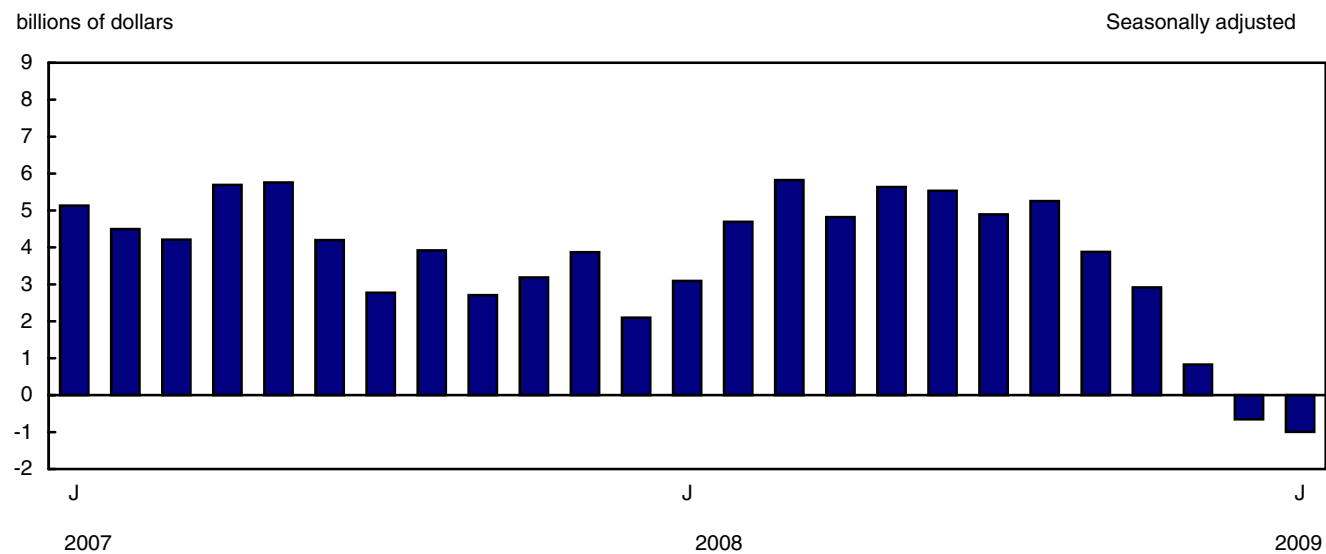
Revised data are available in the appropriate CANSIM tables.

**Chart 1**  
**Exports and imports**



**Note(s):** On a balance of payments basis.

**Chart 2**  
**Trade balance**



**Note(s):** On a balance of payments basis.

# Analysis

---

## **Automotive products lead the decline in exports**

Falling to their lowest level since January 1992, exports of automotive products dropped 34.5% to \$3.0 billion as passenger autos, motor vehicle parts, trucks and other motor vehicles all declined. Passenger autos, the largest contributor, shrank 44.1% to \$1.4 billion as new vehicle sales in the United States fell in January to their lowest level since 1982. The decline in automotive products was the result of a 35.0% drop in volumes. The sector has been on a downward trend since December 2006.

Exports of machinery and equipment fell 6.8% to \$7.5 billion mainly due to volume reductions. Leading the decrease were exports of aircraft and other transportation equipment, which fell 21.6% following two months of growth. Mitigating the drop of the sector, exports of industrial machinery increased 4.0%.

Exports of industrial goods and materials contracted 6.1% to \$6.9 billion, largely the result of a decline in prices. Although there was weakness throughout the sector, metal ores posted the largest decrease, in particular, copper dropped 67.6%. Metal and alloys declined 6.1% to \$2.2 billion.

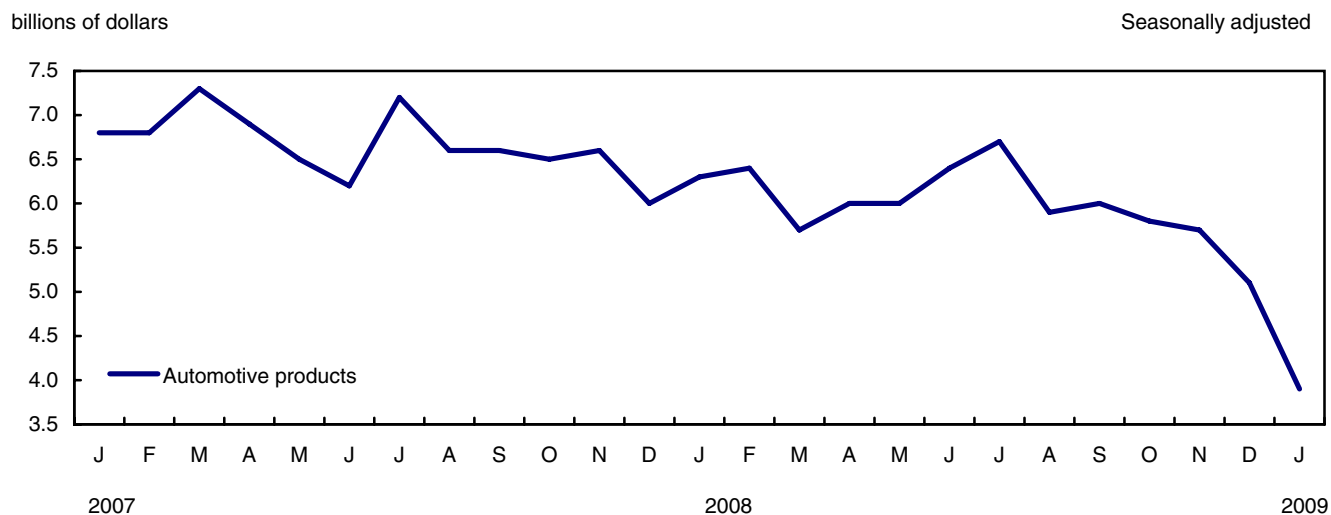
## **Contraction in imports continues**

Automotive products dropped 22.6% to \$3.9 billion as sales remained weak and manufacturers cut back production. Passenger cars declined for the fourth month in a row, falling 30.1% to \$1.2 billion, while motor vehicles parts dropped 20.6% to \$1.7 billion. The contraction in the automotive sector imports was due to a 23.0% fall in volumes.

Machinery and equipment imports declined 8.9% to \$9.7 billion as both prices and volumes decreased. This marked the second consecutive monthly decline of the sector following a rising trend that started in December 2007. Weak consumer demand impacted the imports of flat panel televisions resulting in a decrease of 7.5% in other machinery and equipment. Imports of aircrafts, engines and parts fell by 34.4% more than offsetting the December gains.

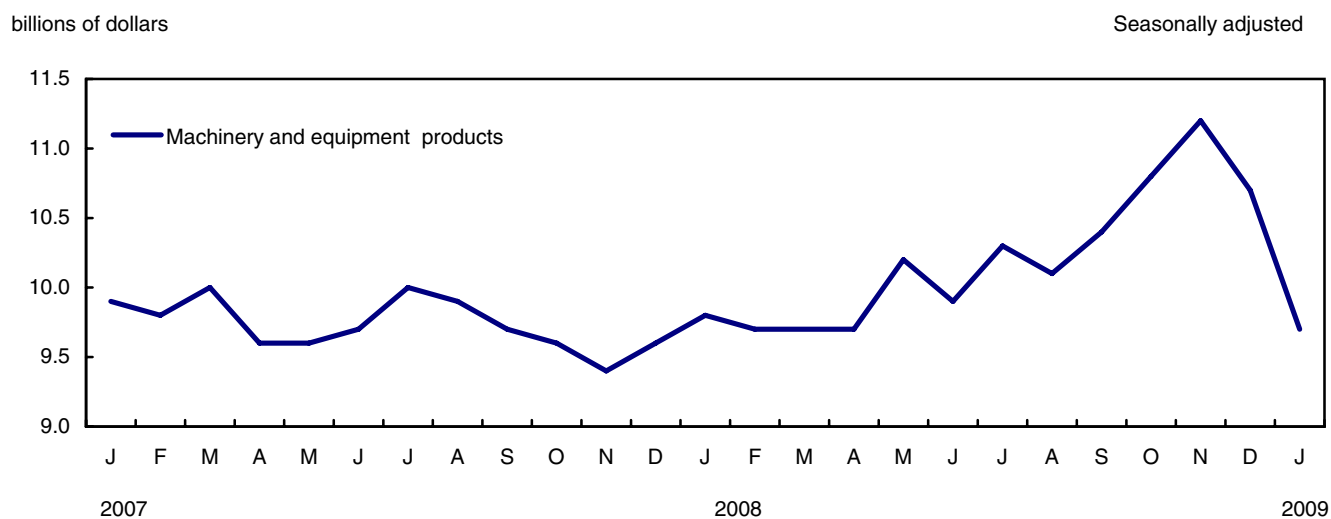
Industrial goods and material decreased 9.0% to \$6.8 billion due to prices and volumes reductions. Metals and metal ores and chemicals and plastics led the decline. The fall in metals imports was softened by the growth in imports of precious metals. Imports of chemicals and plastics contracted 9.5% to \$2.4 billion, the third consecutive monthly decline.

**Chart 1**  
**Imports of automobile products**



**Note(s):** On a balance of payments basis.

**Chart 2**  
**Imports of machinery and equipment**

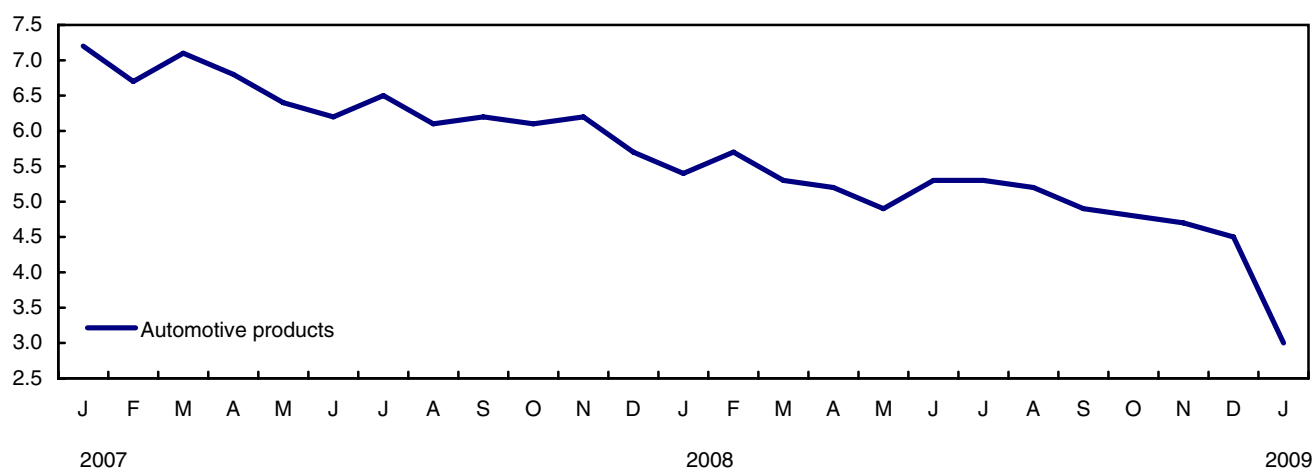


**Note(s):** On a balance of payments basis.

**Chart 3**  
**Exports of automobile products**

billions of dollars

Seasonally adjusted

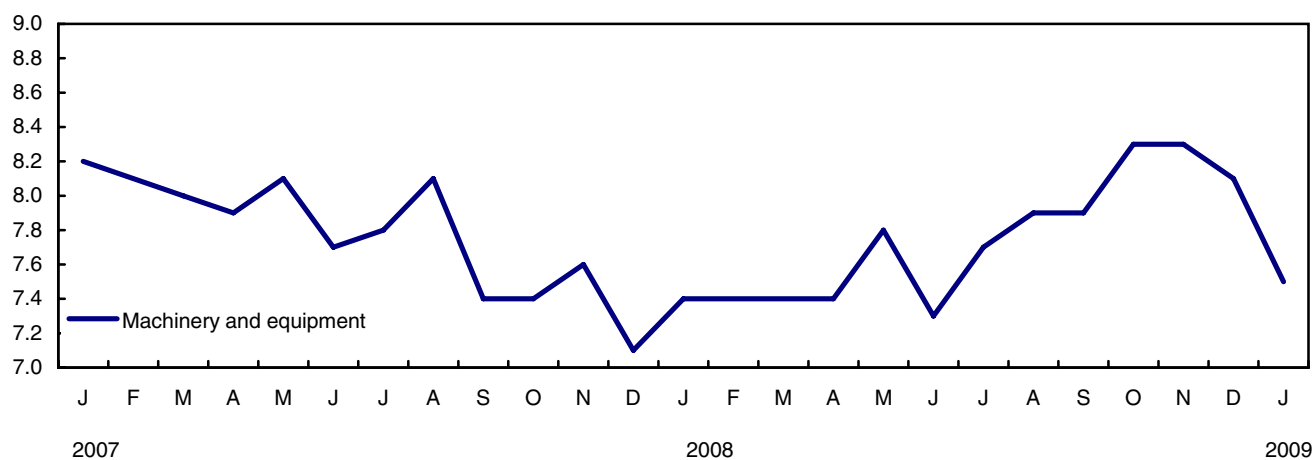


**Note(s):** On a balance of payments basis.

**Chart 4**  
**Exports of machinery and equipment**

billions of dollars

Seasonally adjusted



**Note(s):** On a balance of payments basis.

Text table 1

**Merchandise trade by principal trading area, balance of payments basis, seasonally adjusted**

	December 2008	January 2009	Change		Year to date		Year to date change	January 2009/2008
					2008	2009		
	millions of dollars		percent		millions of dollars		percent	
<b>Export to:</b>								
United States	25,597	23,315	-2,282	-8.9	29,608	23,315	-6,293	-21.3
Japan	962	931	-32	-3.3	814	931	116	14.3
European Union <sup>1</sup>	3,571	2,928	-643	-18	3,085	2,928	-157	-5.1
Other Organization for Economic Co-operation and Development <sup>2</sup>	1,242	1,279	37	3	1,458	1,279	-179	-12.3
Other countries	3,481	3,258	-223	-6.4	3,810	3,258	-552	-14.5
<b>Total</b>	<b>34,853</b>	<b>31,711</b>	<b>-3,142</b>	<b>-9.0</b>	<b>38,775</b>	<b>31,711</b>	<b>-7,065</b>	<b>-18.2</b>
<b>Imports from:</b>								
United States	22,210	20,338	-1,872	-8.4	22,954	20,338	-2,616	-11.4
Japan	828	1,023	195	23.6	982	1,023	41	4.2
European Union <sup>1</sup>	3,835	3,159	-676	-17.6	3,560	3,159	-402	-11.3
Other Organization for Economic Co-operation and Development <sup>2</sup>	2,199	2,282	83	3.8	2,077	2,282	205	9.9
Other countries	6,432	5,902	-531	-8.2	6,108	5,902	-206	-3.4
<b>Total</b>	<b>35,505</b>	<b>32,704</b>	<b>-2,801</b>	<b>-7.9</b>	<b>35,682</b>	<b>32,704</b>	<b>-2,978</b>	<b>-8.3</b>
<b>Balance:</b>								
United States	3,387	2,977	-409	...	6,654	2,977	-3,677	...
Japan	134	-93	-227	...	-168	-93	76	...
European Union <sup>1</sup>	-264	-231	33	...	-476	-231	245	...
Other Organization for Economic Co-operation and Development <sup>2</sup>	-957	-1,003	-46	...	-619	-1,003	-384	...
Other countries	-2,952	-2,644	308	...	-2,298	-2,644	-346	...
<b>Total</b>	<b>-652</b>	<b>-993</b>	<b>-341</b>	<b>...</b>	<b>3,093</b>	<b>-993</b>	<b>-4,087</b>	<b>...</b>

1. European Union includes: Austria, Belgium, Bulgaria, Cyprus, Czech Republic, Denmark, Estonia, Finland, France, Germany, Greece, Hungary, Ireland, Italy, Latvia, Lithuania, Luxembourg, Malta, Netherlands, Poland, Portugal, Romania, Slovakia, Slovenia, Spain, Sweden and United Kingdom.
2. Other Organization for Economic Co-operation and Development includes: Australia, Canada, Iceland, Mexico, New Zealand, Norway, South Korea, Switzerland and Turkey.

Text table 2

**Reconciliation of customs and balance of payments trade data, not seasonally adjusted**

	2009	2008					2008
	January	December	November	October	September	August	Annual
	millions of dollars						
Exports							
Customs basis	29,105	33,742	38,605	44,416	41,962	42,285	483,773
Balance of payments adjustments	552	-258	-252	-963	244	617	5,736
Valuation and residency							
Inland freight	477	530	631	655	637	593	7,063
Other valuation and residency	-1,261	-1,975	-2,642	-2,708	-1,814	-1,530	-17,154
Timing	156	-20	-6	16	16	-25	-72
Coverage	1,181	1,179	1,799	1,100	1,405	1,538	16,016
Balance of payments basis	29,657	33,484	38,353	43,453	42,206	42,902	489,509
Imports							
Customs basis	29,207	33,562	35,981	41,233	38,163	35,895	433,269
Balance of payments adjustments	704	523	1,063	464	742	1,018	9,525
Valuation and residency							
Inland freight	622	650	711	844	796	768	8,908
Other valuation and residency	-39	-53	-69	-59	-37	-83	-566
Timing	0	0	0	0	0	0	0
Coverage	121	-74	421	-321	-17	333	1,183
Balance of payments basis	29,911	34,085	37,044	41,697	38,905	36,913	442,794

# Statistical tables

---

Table 1-1

## Merchandise trade of Canada, balance of payments basis, seasonally adjusted — Current dollars

	Exports	Imports	Balance	Period to period change		
				Exports	Imports	Balance
	millions of dollars			percent		millions of dollars
2005	450,150	387,804	62,346	0.0	0.0	0
2006	453,732	404,253	49,480	0.8	4.2	-12,866
2007	463,051	415,006	48,046	2.1	2.7	-1,434
2008	489,509	442,794	46,714	5.7	6.7	-1,331
<b>2006</b>						
First quarter	112,971	97,885	15,086	-5.6	-1.5	-5,220
Second quarter	111,376	100,203	11,172	-1.4	2.4	-3,913
Third quarter	113,905	102,705	11,200	2.3	2.5	28
Fourth quarter	115,481	103,459	12,021	1.4	0.7	821
<b>2007</b>						
First quarter	119,112	105,273	13,839	3.1	1.8	1,818
Second quarter	118,279	102,629	15,650	-0.7	-2.5	1,811
Third quarter	114,509	105,108	9,401	-3.2	2.4	-6,249
Fourth quarter	111,151	101,996	9,155	-2.9	-3.0	-246
<b>2008</b>						
First quarter	118,794	105,188	13,606	6.9	3.1	4,451
Second quarter	126,280	110,291	15,989	6.3	4.9	2,383
Third quarter	128,843	114,816	14,027	2.0	4.1	-1,962
Fourth quarter	115,592	112,500	3,092	-10.3	-2.0	-10,936
<b>2008</b>						
January	38,775	35,682	3,093	6.9	4.4	996
February	39,835	35,143	4,692	2.7	-1.5	1,599
March	40,184	34,362	5,822	0.9	-2.2	1,130
April	40,440	35,618	4,822	0.6	3.7	-1,000
May	42,393	36,757	5,636	4.8	3.2	814
June	43,447	37,916	5,531	2.5	3.2	-105
July	44,297	39,402	4,895	2.0	3.9	-636
August	42,657	37,405	5,252	-3.7	-5.1	358
September	41,889	38,009	3,880	-1.8	1.6	-1,372
October	41,900	38,985	2,915	0.0	2.6	-965
November	38,839	38,010	829	-7.3	-2.5	-2,085
December	34,853	35,505	-652	-10.3	-6.6	-1,482
<b>2009</b>						
January	31,711	32,704	-993	-9.0	-7.9	-341

**Note(s):** Due to rounding, monthly data may not add up to quarterly data and quarterly data may not add up to annual data.

**Table 1-2**  
**Merchandise trade of Canada, balance of payments basis, seasonally adjusted — Constant dollars, 2002**

	Exports	Imports	Balance	Period to period change	
				Exports	Imports
	millions of dollars			percent	
2005	439,300	431,787	7,513	0.0	0.0
2006	443,301	456,702	-13,401	0.9	5.8
2007	449,825	483,340	-33,516	1.5	5.8
2008	414,920	485,249	-70,329	-7.8	0.4
<b>2006</b>					
First quarter	111,623	111,033	590	-1.7	-0.3
Second quarter	109,737	113,858	-4,121	-1.7	2.5
Third quarter	110,143	115,604	-5,461	0.4	1.5
Fourth quarter	111,798	116,206	-4,408	1.5	0.5
<b>2007</b>					
First quarter	112,963	116,645	-3,682	1.0	0.4
Second quarter	113,281	117,536	-4,255	0.3	0.8
Third quarter	112,887	123,814	-10,927	-0.3	5.3
Fourth quarter	110,694	125,345	-14,651	-1.9	1.2
<b>2008</b>					
First quarter	108,536	123,463	-14,927	-1.9	-1.5
Second quarter	105,851	124,034	-18,183	-2.5	0.5
Third quarter	103,948	123,899	-19,950	-1.8	-0.1
Fourth quarter	96,584	113,853	-17,269	-7.1	-8.1
<b>2008</b>					
January	35,991	41,779	-5,788	1.7	2.0
February	36,828	41,460	-4,632	2.3	-0.8
March	35,718	40,225	-4,507	-3.0	-3.0
April	34,989	40,460	-5,471	-2.0	0.6
May	35,717	41,961	-6,244	2.1	3.7
June	35,145	41,612	-6,468	-1.6	-0.8
July	35,390	42,920	-7,530	0.7	3.1
August	34,517	40,336	-5,818	-2.5	-6.0
September	34,041	40,643	-6,602	-1.4	0.8
October	33,155	39,353	-6,198	-2.6	-3.2
November	32,449	38,408	-5,960	-2.1	-2.4
December	30,981	36,092	-5,111	-4.5	-6.0
<b>2009</b>					
January	28,454	33,627	-5,173	-8.2	-6.8

**Note(s):** Due to rounding, monthly data may not add up to quarterly data and quarterly data may not add up to annual data.

**Table 1-3**  
**Merchandise trade of Canada, balance of payments basis, seasonally adjusted — Price indices (Laspeyres)**

	2002=100			Period to period change		
	Exports	Imports	Terms of trade	Exports	Imports	Terms of trade
	millions of dollars			percent		
2005	104.6	92.2	113.5	0.0	0.0	0.0
2006	104.6	92.8	112.8	0.0	0.7	-0.6
2007	106.9	91.5	116.8	2.2	-1.3	3.5
2008	116.3	97.7	119.1	8.8	6.7	2.1
<b>2006</b>						
First quarter	102.2	91.9	111.1	-6.0	-0.2	-5.8
Second quarter	104.4	92.1	113.4	2.1	0.1	2.0
Third quarter	105.7	93.5	113.1	1.3	1.5	-0.3
Fourth quarter	106.3	93.5	113.7	0.6	0.0	0.6
<b>2007</b>						
First quarter	108.5	95.2	114.0	2.0	1.8	0.2
Second quarter	109.0	92.9	117.3	0.5	-2.4	2.9
Third quarter	105.4	90.3	116.6	-3.3	-2.7	-0.6
Fourth quarter	104.9	87.8	119.5	-0.4	-2.8	2.4
<b>2008</b>						
First quarter	110.8	90.5	122.4	5.6	3.1	2.5
Second quarter	118.3	95.2	124.2	6.8	5.2	1.6
Third quarter	122.3	101.1	121.0	3.4	6.2	-2.7
Fourth quarter	114.2	103.8	110.0	-6.6	2.7	-9.3
<b>2008</b>						
January	110.1	89.9	122.4	3.5	1.7	1.8
February	110.0	90.2	121.9	-0.1	0.3	-0.4
March	113.1	91.3	123.9	2.8	1.2	1.6
April	116.2	93.3	124.5	2.7	2.2	0.5
May	118.3	94.6	125.0	1.8	1.4	0.4
June	120.8	97.8	123.5	2.1	3.3	-1.2
July	123.7	99.5	124.3	2.4	1.8	0.6
August	121.6	101.9	119.4	-1.7	2.4	-4.1
September	120.0	101.8	117.9	-1.3	-0.1	-1.2
October	121.7	104.8	116.2	1.4	2.9	-1.5
November	116.1	104.2	111.4	-4.6	-0.6	-4.1
December	111.2	102.6	108.4	-4.2	-1.6	-2.6
<b>2009</b>						
January	109.8	100.7	109.1	-1.3	-1.8	0.6

**Note(s):** Due to rounding, monthly data may not add up to quarterly data and quarterly data may not add up to annual data.

Table 2-1

## Exports by commodity groupings, balance of payments basis, seasonally adjusted — Current dollars

	December 2008	January 2009	Change		Year to date		Year to date change		January 2009/2008
	millions of dollars		percent		millions of dollars		percent		
<b>Total</b>	<b>34,853</b>	<b>31,711</b>	<b>-3,142</b>	<b>-9.0</b>	<b>38,775</b>	<b>31,711</b>	<b>-7,065</b>	<b>-18.2</b>	<b>-18.2</b>
<b>Agricultural and fishing products</b>	<b>3,373</b>	<b>3,388</b>	<b>15</b>	<b>0.4</b>	<b>3,187</b>	<b>3,388</b>	<b>201</b>	<b>6.3</b>	<b>6.3</b>
Wheat	520	569	49	9.3	507	569	62	12.3	12.3
Other agricultural and fishing products	2,853	2,819	-34	-1.2	2,680	2,819	139	5.2	5.2
Live animals	163	162	-1	-0.5	214	162	-52	-24.3	-24.3
Fish and fish preparations	347	350	3	0.8	326	350	23	7.2	7.2
Barley	38	49	11	30.2	90	49	-40	-45.1	-45.1
Wheat flour	6	7	1	8.3	7	7	-1	-7.8	-7.8
Other cereals unmilled	63	63	0	0.4	54	63	9	16.8	16.8
Other cereal preparations	257	248	-9	-3.3	216	248	32	14.7	14.7
Meat and meat preparations	399	415	16	4.0	318	415	97	30.7	30.7
Alcoholic beverages	76	62	-14	-18.0	73	62	-10	-14.4	-14.4
Other food, feed, beverages and tobacco	962	967	5	0.5	875	967	93	10.6	10.6
Rapeseed	300	265	-35	-11.7	341	265	-76	-22.4	-22.4
Other crude vegetable products	242	230	-12	-4.9	166	230	64	38.7	38.7
<b>Energy products</b>	<b>6,797</b>	<b>6,543</b>	<b>-254</b>	<b>-3.7</b>	<b>9,338</b>	<b>6,543</b>	<b>-2,795</b>	<b>-29.9</b>	<b>-29.9</b>
Crude petroleum	2,729	2,695	-34	-1.2	4,602	2,695	-1,906	-41.4	-41.4
Natural gas	2,067	1,986	-81	-3.9	2,514	1,986	-528	-21.0	-21.0
Other energy products	2,002	1,862	-140	-7.0	2,222	1,862	-360	-16.2	-16.2
Coal and other bituminous substances	538	365	-173	-32.1	203	365	162	79.9	79.9
Petroleum and coal products	1,228	1,252	24	1.9	1,707	1,252	-456	-26.7	-26.7
Electricity	236	245	9	3.9	312	245	-67	-21.5	-21.5
<b>Forestry products</b>	<b>2,012</b>	<b>1,767</b>	<b>-245</b>	<b>-12.2</b>	<b>2,091</b>	<b>1,767</b>	<b>-325</b>	<b>-15.5</b>	<b>-15.5</b>
Lumber and sawmill products	675	569	-105	-15.6	779	569	-210	-26.9	-26.9
Other crude wood products	66	42	-25	-37.0	53	42	-11	-20.6	-20.6
Lumber	390	325	-65	-16.7	450	325	-125	-27.8	-27.8
Other wood fabricated materials	218	202	-16	-7.2	276	202	-74	-26.7	-26.7
Wood pulp and other wood products	428	444	16	3.7	536	444	-92	-17.1	-17.1
Newsprint and other paper and paperboard	908	753	-155	-17.1	776	753	-23	-3.0	-3.0
Newsprint paper	533	423	-110	-20.7	398	423	25	6.2	6.2
Other paper and paperboard	375	330	-45	-11.9	378	330	-48	-12.7	-12.7
<b>Industrial goods and materials</b>	<b>7,297</b>	<b>6,852</b>	<b>-446</b>	<b>-6.1</b>	<b>8,936</b>	<b>6,852</b>	<b>-2,084</b>	<b>-23.3</b>	<b>-23.3</b>
Metal ores	856	706	-150	-17.6	1,063	706	-357	-33.6	-33.6
Iron ores, concentrates and scrap	328	339	10	3.2	323	339	16	4.9	4.9
Copper ores, concentrates and scrap	117	38	-79	-67.6	103	38	-65	-63.4	-63.4
Nickel ores, concentrates and scrap	149	136	-13	-8.7	291	136	-155	-53.1	-53.1
Zinc ores, concentrates and scrap	8	11	3	34.8	55	11	-44	-79.7	-79.7
Other ores, concentrates and scrap	254	182	-72	-28.3	291	182	-109	-37.4	-37.4
Chemicals, plastics and fertilizers	2,635	2,543	-91	-3.5	2,823	2,543	-279	-9.9	-9.9
Inorganic chemicals	422	440	19	4.4	494	440	-54	-10.9	-10.9
Organic chemicals	380	425	44	11.6	623	425	-198	-31.8	-31.8
Fertilizers and fertilizer materials	690	566	-124	-18.0	420	566	146	34.8	34.8
Synthetic rubber and plastics	863	872	9	1.0	1,013	872	-142	-14.0	-14.0
Other chemical products	279	241	-38	-13.8	272	241	-32	-11.7	-11.7
Metals and alloys	2,356	2,212	-145	-6.1	3,327	2,212	-1,115	-33.5	-33.5
Primary iron and steel	56	14	-42	-74.2	83	14	-69	-82.7	-82.7
Steel bars, rods, plates, sheets	325	272	-53	-16.4	378	272	-106	-28.1	-28.1
Other iron and steel and alloys	268	230	-37	-13.9	294	230	-63	-21.5	-21.5
Aluminum including alloys	573	613	40	7.0	707	613	-94	-13.3	-13.3
Copper and alloys	147	179	31	21.3	366	179	-187	-51.2	-51.2
Nickel and alloys	219	193	-26	-11.9	420	193	-227	-54.1	-54.1
Precious metals and alloys	635	565	-70	-10.9	807	565	-242	-30.0	-30.0
Zinc and alloys	69	81	12	18.1	150	81	-69	-45.8	-45.8
Other non-ferrous metals and alloys	65	63	-1	-1.7	122	63	-58	-47.8	-47.8

Table 2-1 – continued

## Exports by commodity groupings, balance of payments basis, seasonally adjusted — Current dollars

	December 2008	January 2009	Change		Year to date		Year to date change		January 2009/2008
					2008	2009			
	millions of dollars		percent		millions of dollars		percent		
Other industrial goods and materials	1,450	1,391	-59	-4.1	1,723	1,391	-333	-19.3	-19.3
Asbestos unmanufactured	6	5	-1	-20.7	4	5	1	20.0	20.0
Other crude animal products	60	62	2	3.1	65	62	-3	-4.6	-4.6
Other crude non-metallic minerals	243	283	40	16.5	427	283	-144	-33.7	-33.7
Other crude materials, inedible	40	45	5	11.5	47	45	-3	-5.4	-5.4
Metal fabricated basic products	434	389	-44	-10.2	445	389	-56	-12.5	-12.5
Textile fabricated materials	187	175	-11	-6.0	206	175	-31	-14.9	-14.9
Non-metallic mineral basic products	197	176	-21	-10.5	198	176	-22	-11.1	-11.1
Other fabricated materials	283	255	-28	-10.0	330	255	-75	-22.8	-22.8
<b>Machinery and equipment</b>	<b>8,085</b>	<b>7,538</b>	<b>-548</b>	<b>-6.8</b>	<b>7,408</b>	<b>7,538</b>	<b>130</b>	<b>1.8</b>	<b>1.8</b>
Industrial and agricultural machinery	1,927	1,998	70	3.6	1,812	1,998	185	10.2	10.2
Industrial machinery	1,747	1,818	70	4.0	1,661	1,818	156	9.4	9.4
Agricultural machinery includ. tractors	180	180	0	0.1	151	180	29	19.1	19.1
Aircraft and other transportation equipment	2,019	1,584	-435	-21.6	1,625	1,584	-41	-2.5	-2.5
Aircraft, engines, parts	1,662	1,300	-362	-21.8	1,204	1,300	96	8.0	8.0
Other transportation equipment	357	284	-73	-20.5	421	284	-137	-32.5	-32.5
Other machinery and equipment	4,139	3,956	-183	-4.4	3,971	3,956	-15	-0.4	-0.4
Television, telecommunication equipment	750	887	137	18.3	783	887	105	13.4	13.4
Office machines and equipment	487	476	-11	-2.3	517	476	-41	-7.9	-7.9
Other equipment and tools	1,955	1,736	-220	-11.2	1,860	1,736	-125	-6.7	-6.7
Other end products, inedible	946	857	-89	-9.4	811	857	46	5.7	5.7
<b>Automotive products</b>	<b>4,527</b>	<b>2,966</b>	<b>-1,560</b>	<b>-34.5</b>	<b>5,398</b>	<b>2,966</b>	<b>-2,432</b>	<b>-45.0</b>	<b>-45.0</b>
Passenger autos and chassis	2,580	1,443	-1,137	-44.1	2,862	1,443	-1,419	-49.6	-49.6
Trucks and other motor vehicles	506	469	-37	-7.4	706	469	-237	-33.6	-33.6
Motor vehicle parts	1,440	1,054	-386	-26.8	1,830	1,054	-776	-42.4	-42.4
<b>Other consumer goods</b>	<b>1,633</b>	<b>1,589</b>	<b>-43</b>	<b>-2.7</b>	<b>1,378</b>	<b>1,589</b>	<b>211</b>	<b>15.3</b>	<b>15.3</b>
<b>Special transactions trade</b>	<b>676</b>	<b>612</b>	<b>-65</b>	<b>-9.6</b>	<b>601</b>	<b>612</b>	<b>11</b>	<b>1.8</b>	<b>1.8</b>
<b>Unallocated balance of payments adjustments</b>	<b>453</b>	<b>456</b>	<b>4</b>	<b>0.9</b>	<b>439</b>	<b>456</b>	<b>18</b>	<b>4.0</b>	<b>4.0</b>

Table 2-2

Exports by commodity groupings, balance of payments basis, seasonally adjusted — Constant dollars, 2002

	December 2008	January 2009	Change		Year to date		Year to date change		January 2009/2008
	millions of dollars		percent		millions of dollars		percent		
<b>Total</b>	<b>30,981</b>	<b>28,454</b>	<b>-2,527</b>	<b>-8.2</b>	<b>35,991</b>	<b>28,454</b>	<b>-7,537</b>	<b>-20.9</b>	<b>-20.9</b>
<b>Agricultural and fishing products</b>	<b>3,037</b>	<b>3,060</b>	<b>23</b>	<b>0.8</b>	<b>3,138</b>	<b>3,060</b>	<b>-78</b>	<b>-2.5</b>	<b>-2.5</b>
Wheat	372	430	58	15.7	337	430	93	27.5	27.5
Other agricultural and fishing products	2,665	2,630	-35	-1.3	2,801	2,630	-171	-6.1	-6.1
Live animals	180	183	3	1.4	276	183	-93	-33.6	-33.6
Fish and fish preparations	421	382	-39	-9.3	377	382	5	1.5	1.5
Barley	21	34	12	57.7	67	34	-33	-49.4	-49.4
Wheat flour	6	6	0	7.5	6	6	0	2.4	2.4
Other cereals unmilled	46	47	1	1.1	56	47	-10	-16.9	-16.9
Other cereal preparations	199	199	0	-0.2	213	199	-15	-6.9	-6.9
Meat and meat preparations	413	426	13	3.3	410	426	16	4.0	4.0
Alcoholic beverages	123	105	-18	-14.9	121	105	-16	-13.3	-13.3
Other food, feed, beverages and tobacco	820	827	7	0.9	877	827	-50	-5.7	-5.7
Rapeseed	243	234	-8	-3.4	256	234	-21	-8.3	-8.3
Other crude vegetable products	193	187	-6	-3	143	187	44	30.8	30.8
<b>Energy products</b>	<b>4,461</b>	<b>4,476</b>	<b>15</b>	<b>0.3</b>	<b>4,609</b>	<b>4,476</b>	<b>-132</b>	<b>-2.9</b>	<b>-2.9</b>
Crude petroleum	1,953	1,881	-71	-3.7	1,833	1,881	49	2.7	2.7
Natural gas	1,438	1,550	112	7.8	1,589	1,550	-39	-2.5	-2.5
Other energy products	1,071	1,045	-26	-2.4	1,186	1,045	-142	-11.9	-11.9
Coal and other bituminous substances	111	86	-26	-23	125	86	-39	-31.3	-31.3
Petroleum and coal products	739	774	35	4.7	821	774	-47	-5.7	-5.7
Electricity	220	185	-35	-16.1	241	185	-56	-23.2	-23.2
<b>Forestry products</b>	<b>2,184</b>	<b>2,002</b>	<b>-182</b>	<b>-8.3</b>	<b>2,587</b>	<b>2,002</b>	<b>-585</b>	<b>-22.6</b>	<b>-22.6</b>
Lumber and sawmill products	834	732	-102	-12.2	1,012	732	-280	-27.6	-27.6
Other crude wood products	79	58	-20	-25.8	62	58	-4	-6.1	-6.1
Lumber	538	459	-79	-14.7	638	459	-179	-28.1	-28.1
Other wood fabricated materials	217	215	-3	-1.2	311	215	-96	-31	-31
Wood pulp and other wood products	534	577	43	8	648	577	-71	-10.9	-10.9
Newsprint and other paper and paperboard	816	693	-123	-15.1	927	693	-235	-25.3	-25.3
Newsprint paper	456	372	-84	-18.4	476	372	-104	-21.8	-21.8
Other paper and paperboard	360	320	-39	-10.9	451	320	-131	-29	-29
<b>Industrial goods and materials</b>	<b>5,094</b>	<b>5,079</b>	<b>-15</b>	<b>-0.3</b>	<b>6,572</b>	<b>5,079</b>	<b>-1,492</b>	<b>-22.7</b>	<b>-22.7</b>
Metal ores	514	437	-77	-15	576	437	-140	-24.2	-24.2
Iron ores, concentrates and scrap	118	139	21	18	203	139	-64	-31.5	-31.5
Copper ores, concentrates and scrap	74	22	-52	-70.1	37	22	-15	-40.4	-40.4
Nickel ores, concentrates and scrap	119	105	-14	-11.6	120	105	-16	-12.9	-12.9
Zinc ores, concentrates and scrap	7	9	2	25.7	27	9	-18	-67.4	-67.4
Other ores, concentrates and scrap	197	162	-35	-17.7	189	162	-27	-14.3	-14.3
Chemicals, plastics and fertilizers	1,722	1,772	50	2.9	2,066	1,772	-294	-14.2	-14.2
Inorganic chemicals	196	202	5	2.7	209	202	-7	-3.3	-3.3
Organic chemicals	254	359	104	41	319	359	39	12.3	12.3
Fertilizers and fertilizer materials	232	186	-47	-20.1	272	186	-87	-31.9	-31.9
Synthetic rubber and plastics	736	754	18	2.4	936	754	-182	-19.4	-19.4
Other chemical products	303	272	-31	-10.2	330	272	-58	-17.6	-17.6
Metals and alloys	1,671	1,694	23	1.4	2,161	1,694	-467	-21.6	-21.6
Primary iron and steel	24	9	-15	-62.7	61	9	-52	-85.6	-85.6
Steel bars, rods, plates, sheets	229	199	-30	-12.9	349	199	-150	-42.9	-42.9
Other iron and steel and alloys	165	159	-6	-3.4	266	159	-106	-40.1	-40.1
Aluminum including alloys	633	706	74	11.6	662	706	44	6.6	6.6
Copper and alloys	84	117	33	38.9	132	117	-16	-11.8	-11.8
Nickel and alloys	141	134	-6	-4.5	147	134	-13	-8.9	-8.9
Precious metals and alloys	299	259	-40	-13.3	425	259	-166	-39.1	-39.1
Zinc and alloys	59	72	14	23.4	78	72	-6	-7.2	-7.2
Other non-ferrous metals and alloys	39	39	-1	-1.5	40	39	-2	-4.2	-4.2

Table 2-2 – continued

## Exports by commodity groupings, balance of payments basis, seasonally adjusted — Constant dollars, 2002

	December 2008	January 2009	Change		Year to date		Year to date change		January 2009/2008
					2008	2009			
	millions of dollars		percent		millions of dollars		percent		
Other industrial goods and materials	1,187	1,177	-11	-0.9	1,768	1,177	-592	-33.5	-33.5
Asbestos unmanufactured	7	5	-2	-29.8	4	5	0	2.8	2.8
Other crude animal products	71	69	-2	-2.5	71	69	-1	-2.0	-2.0
Other crude non-metallic minerals	198	258	60	30.1	573	258	-315	-55.0	-55.0
Other crude materials, inedible	40	43	3	8.7	46	43	-3	-5.7	-5.7
Metal fabricated basic products	336	300	-36	-10.7	381	300	-81	-21.2	-21.2
Textile fabricated materials	172	158	-14	-8.2	226	158	-68	-30.1	-30.1
Non-metallic mineral basic products	154	143	-11	-7.3	177	143	-34	-19.0	-19.0
Other fabricated materials	209	201	-9	-4.2	291	201	-90	-31.1	-31.1
<b>Machinery and equipment</b>	<b>8,461</b>	<b>7,980</b>	<b>-481</b>	<b>-5.7</b>	<b>8,691</b>	<b>7,980</b>	<b>-711</b>	<b>-8.2</b>	<b>-8.2</b>
Industrial and agricultural machinery	1,767	1,866	100	5.6	1,785	1,866	81	4.6	4.6
Industrial machinery	1,599	1,700	101	6.3	1,630	1,700	70	4.3	4.3
Agricultural machinery includ. tractors	168	166	-2	-1.2	155	166	11	7.1	7.1
Aircraft and other transportation equipment	2,328	1,834	-494	-21.2	2,091	1,834	-257	-12.3	-12.3
Aircraft, engines, parts	1,990	1,560	-429	-21.6	1,635	1,560	-75	-4.6	-4.6
Other transportation equipment	339	274	-65	-19.1	456	274	-182	-40.0	-40.0
Other machinery and equipment	4,366	4,280	-86	-2.0	4,815	4,280	-535	-11.1	-11.1
Television, telecommunication equipment	866	1,027	161	18.6	1,002	1,027	25	2.5	2.5
Office machines and equipment	933	961	28	3	1,242	961	-281	-22.6	-22.6
Other equipment and tools	1,809	1,593	-216	-12	1,833	1,593	-240	-13.1	-13.1
Other end products, inedible	757	699	-59	-7.8	737	699	-38	-5.2	-5.2
<b>Automotive products</b>	<b>5,185</b>	<b>3,370</b>	<b>-1,816</b>	<b>-35.0</b>	<b>7,419</b>	<b>3,370</b>	<b>-4,049</b>	<b>-54.6</b>	<b>-54.6</b>
Passenger autos and chassis	3,175	1,773	-1,401	-44.1	4,406	1,773	-2,633	-59.8	-59.8
Trucks and other motor vehicles	535	514	-21	-4	945	514	-431	-45.6	-45.6
Motor vehicle parts	1,475	1,082	-393	-26.6	2,068	1,082	-985	-47.7	-47.7
<b>Other consumer goods</b>	<b>1,579</b>	<b>1,542</b>	<b>-37</b>	<b>-2.4</b>	<b>1,361</b>	<b>1,542</b>	<b>181</b>	<b>13.3</b>	<b>13.3</b>
<b>Special transactions trade</b>	<b>585</b>	<b>538</b>	<b>-47</b>	<b>-8.0</b>	<b>534</b>	<b>538</b>	<b>4</b>	<b>0.7</b>	<b>0.7</b>
<b>Unallocated balance of payments adjustments</b>	<b>394</b>	<b>406</b>	<b>12</b>	<b>3.0</b>	<b>1,081</b>	<b>406</b>	<b>-674</b>	<b>-62.4</b>	<b>-62.4</b>

Table 3-1

## Domestic exports to selected countries, customs basis, not seasonally adjusted — January

	Agricultural and fishing products	Energy products	Forestry products	Industrial goods	Machinery and equipment	Automotive products	Consumer goods	Special transactions	Total
millions of dollars									
<b>United States</b>									
2008	1,448.1	9,421.0	1,429.6	5,228.0	4,245.3	4,171.4	755.0	506.4	27,204.8
2009	1,587.7	6,567.3	1,220.9	4,020.5	4,060.8	2,075.2	847.7	524.8	20,905.0
<b>Mexico</b>									
2008	98.7	4.2	20.3	94.5	57.7	59.6	4.5	0.3	339.7
2009	87.3	0.9	12.7	55.0	55.0	48.6	3.6	0.1	263.3
<b>Japan</b>									
2008	279.8	67.5	86.6	153.2	42.2	3.1	7.9	0.4	640.8
2009	289.3	114.2	86.3	91.4	65.1	2.9	6.7	0.6	656.5
<b>European Union</b>									
Germany									
2008	14.7	4.5	12.3	77.0	74.8	3.2	12.8	0.7	200.0
2009	14.7	31.4	9.6	43.3	172.3	3.8	13.4	0.4	288.9
France									
2008	10.8	41.0	27.8	17.1	95.8	3.8	18.0	0.7	215.1
2009	10.9	59.8	7.6	25.6	94.2	2.0	28.2	1.8	230.1
United Kingdom									
2008	27.0	12.7	29.2	846.8	224.8	5.0	13.7	5.7	1,165.0
2009	25.2	0.5	17.5	543.4	193.4	2.6	18.8	2.2	803.5
Italy									
2008	50.7	13.3	43.5	40.9	42.7	1.0	5.7	0.5	198.3
2009	22.5	0.0	27.9	13.8	34.0	0.6	4.6	0.4	103.7
Other European Union									
2008	70.1	5.6	38.5	401.1	218.9	21.3	35.9	2.9	794.4
2009	64.9	75.8	27.2	177.4	300.7	14.5	55.8	2.4	718.9
<b>Total</b>									
2008	173.4	77.2	151.3	1,383.0	657.1	34.4	86.1	10.4	2,572.7
2009	138.3	167.5	89.8	803.5	794.6	23.4	120.9	7.2	2,145.2
<b>Newly industrialized countries</b>									
South Korea									
2008	29.3	61.1	39.5	94.1	39.4	0.9	3.9	1.0	269.4
2009	18.2	88.4	25.3	70.6	18.7	0.6	2.0	0.2	223.9
Hong Kong									
2008	24.0	0.0	3.9	15.8	19.8	0.4	3.1	1.6	68.7
2009	37.5	0.0	8.5	25.0	57.9	0.5	3.2	0.5	133.1
Taiwan									
2008	11.0	11.6	24.0	85.1	7.4	0.1	2.7	0.4	142.4
2009	15.5	0.2	14.4	19.5	6.5	0.1	2.6	0.0	58.8
Singapore									
2008	3.2	22.2	2.0	17.5	23.5	1.0	2.0	0.7	72.0
2009	2.6	0.9	0.4	6.4	21.1	1.3	2.5	0.2	35.4
<b>Total</b>									
2008	67.6	94.9	69.4	212.6	90.0	2.4	11.8	3.7	552.5
2009	73.8	89.4	48.6	121.5	104.3	2.5	10.3	0.9	451.3
<b>Other countries</b>									
2008	815.4	95.5	283.1	1,070.5	717.3	53.3	98.7	12.5	3,146.3
2009	616.4	48.1	256.4	668.8	725.7	43.7	93.7	14.9	2,467.8
<b>Total</b>									
2008	2,882.9	9,760.3	2,040.4	8,141.8	5,809.6	4,324.2	964.0	533.7	34,456.9
2009	2,792.8	6,987.5	1,714.7	5,760.6	5,805.5	2,196.4	1,083.4	548.6	26,889.5

Table 3-2

## Domestic exports to selected countries, customs basis, not seasonally adjusted — Year to date

	Agricultural and fishing products	Energy products	Forestry products	Industrial goods	Machinery and equipment	Automotive products	Consumer goods	Special transactions	Total
millions of dollars									
<b>United States</b>									
2008	1,448.1	9,421.0	1,429.6	5,228.0	4,245.3	4,171.4	755.0	506.4	27,204.8
2009	1,587.7	6,567.3	1,220.9	4,020.5	4,060.8	2,075.2	847.7	524.8	20,905.0
<b>Mexico</b>									
2008	98.7	4.2	20.3	94.5	57.7	59.6	4.5	0.3	339.7
2009	87.3	0.9	12.7	55.0	55.0	48.6	3.6	0.1	263.3
<b>Japan</b>									
2008	279.8	67.5	86.6	153.2	42.2	3.1	7.9	0.4	640.8
2009	289.3	114.2	86.3	91.4	65.1	2.9	6.7	0.6	656.5
<b>European Union</b>									
Germany									
2008	14.7	4.5	12.3	77.0	74.8	3.2	12.8	0.7	200.0
2009	14.7	31.4	9.6	43.3	172.3	3.8	13.4	0.4	288.9
France									
2008	10.8	41.0	27.8	17.1	95.8	3.8	18.0	0.7	215.1
2009	10.9	59.8	7.6	25.6	94.2	2.0	28.2	1.8	230.1
United Kingdom									
2008	27.0	12.7	29.2	846.8	224.8	5.0	13.7	5.7	1,165.0
2009	25.2	0.5	17.5	543.4	193.4	2.6	18.8	2.2	803.5
Italy									
2008	50.7	13.3	43.5	40.9	42.7	1.0	5.7	0.5	198.3
2009	22.5	0.0	27.9	13.8	34.0	0.6	4.6	0.4	103.7
Other European Union									
2008	70.1	5.6	38.5	401.1	218.9	21.3	35.9	2.9	794.4
2009	64.9	75.8	27.2	177.4	300.7	14.5	55.8	2.4	718.9
<b>Total</b>									
2008	173.4	77.2	151.3	1,383.0	657.1	34.4	86.1	10.4	2,572.7
2009	138.3	167.5	89.8	803.5	794.6	23.4	120.9	7.2	2,145.2
<b>Newly industrialized countries</b>									
South Korea									
2008	29.3	61.1	39.5	94.1	39.4	0.9	3.9	1.0	269.4
2009	18.2	88.4	25.3	70.6	18.7	0.6	2.0	0.2	223.9
Hong Kong									
2008	24.0	0.0	3.9	15.8	19.8	0.4	3.1	1.6	68.7
2009	37.5	0.0	8.5	25.0	57.9	0.5	3.2	0.5	133.1
Taiwan									
2008	11.0	11.6	24.0	85.1	7.4	0.1	2.7	0.4	142.4
2009	15.5	0.2	14.4	19.5	6.5	0.1	2.6	0.0	58.8
Singapore									
2008	3.2	22.2	2.0	17.5	23.5	1.0	2.0	0.7	72.0
2009	2.6	0.9	0.4	6.4	21.1	1.3	2.5	0.2	35.4
<b>Total</b>									
2008	67.6	94.9	69.4	212.6	90.0	2.4	11.8	3.7	552.5
2009	73.8	89.4	48.6	121.5	104.3	2.5	10.3	0.9	451.3
<b>Other countries</b>									
2008	815.4	95.5	283.1	1,070.5	717.3	53.3	98.7	12.5	3,146.3
2009	616.4	48.1	256.4	668.8	725.7	43.7	93.7	14.9	2,467.8
<b>Total</b>									
2008	2,882.9	9,760.3	2,040.4	8,141.8	5,809.6	4,324.2	964.0	533.7	34,456.9
2009	2,792.8	6,987.5	1,714.7	5,760.6	5,805.5	2,196.4	1,083.4	548.6	26,889.5

**Table 4**  
**Domestic exports by country, customs basis, not seasonally adjusted**

	January		January to January		Variation
	2008	2009	2008	2009	January to January 2009/2008
millions of dollars					
<b>North America</b>					
Greenland	1.0	1.1	1.0	1.1	10.0
Mexico	339.7	263.3	339.7	263.3	-22.5
Saint Pierre and Miquelon	1.0	0.9	1.0	0.9	-10.0
United States	27,204.8	20,905.0	27,204.8	20,905.0	-23.2
<b>Total</b>	<b>27,546.6</b>	<b>21,170.3</b>	<b>27,546.6</b>	<b>21,170.3</b>	<b>-23.1</b>
<b>Western Europe</b>					
Andorra	0.0	0.0	0.0	0.0	0.0
Austria	65.2	47.2	65.2	47.2	-27.6
Belgium	282.1	105.2	282.1	105.2	-62.7
Denmark	25.9	49.1	25.9	49.1	89.6
Faeroe Islands	0.1	0.5	0.1	0.5	400.0
Finland	13.6	70.0	13.6	70.0	414.7
France	215.1	230.1	215.1	230.1	7.0
Germany	200.0	288.9	200.0	288.9	44.5
Gibraltar	29.4	0.0	29.4	0.0	0.0
Greece	7.3	7.2	7.3	7.2	-1.4
Iceland	3.8	1.0	3.8	1.0	-73.7
Italy	198.3	103.7	198.3	103.7	-47.7
Luxembourg	4.0	3.2	4.0	3.2	-20.0
Malta	0.5	0.7	0.5	0.7	40.0
Netherlands	193.9	199.8	193.9	199.8	3.0
Norway	241.1	141.2	241.1	141.2	-41.4
Portugal	8.1	5.7	8.1	5.7	-29.6
Republic of Ireland (Eire)	21.7	42.5	21.7	42.5	95.9
Spain	53.1	85.1	53.1	85.1	60.3
Sweden	26.2	18.4	26.2	18.4	-29.8
Switzerland	58.0	73.3	58.0	73.3	26.4
United Kingdom	1,165.0	803.5	1,165.0	803.5	-31.0
<b>Total</b>	<b>2,812.4</b>	<b>2,276.4</b>	<b>2,812.4</b>	<b>2,276.4</b>	<b>-19.1</b>
<b>Other Europe</b>					
Albania	0.4	0.1	0.4	0.1	-75.0
Armenia	0.5	0.3	0.5	0.3	-40.0
Azerbaijan	2.9	1.7	2.9	1.7	-41.4
Belarus	0.2	0.0	0.2	0.0	0.0
Bosnia and Herzegovina	0.2	0.4	0.2	0.4	100.0
Bulgaria	2.2	0.7	2.2	0.7	-68.2
Croatia	1.1	1.5	1.1	1.5	36.4
Czech Republic	20.6	10.8	20.6	10.8	-47.6
Estonia	1.0	0.8	1.0	0.8	-20.0
Georgia	0.6	0.4	0.6	0.4	-33.3
Hungary	15.2	8.3	15.2	8.3	-45.4
Kazakhstan	49.8	14.6	49.8	14.6	-70.7
Kyrgyzstan	1.7	0.3	1.7	0.3	-82.4
Latvia	2.8	1.8	2.8	1.8	-35.7
Lithuania	2.7	1.5	2.7	1.5	-44.4
Macedonia (Former Yugoslav Republic of Macedonia)	1.7	0.8	1.7	0.8	-52.9
Montenegro	0.1	0.1	0.1	0.1	0.0
Poland	31.2	24.0	31.2	24.0	-23.1
Republic of Moldova	0.0	0.0	0.0	0.0	0.0
Romania	4.3	2.7	4.3	2.7	-37.2
Russian Federation	102.0	65.1	102.0	65.1	-36.2
Serbia	0.7	1.5	0.7	1.5	114.3
Slovakia	2.2	1.1	2.2	1.1	-50.0
Slovenia	9.7	31.9	9.7	31.9	228.9
Tajikistan	0.4	0.1	0.4	0.1	-75.0
Turkmenistan	0.5	0.2	0.5	0.2	-60.0
Ukraine	12.7	4.8	12.7	4.8	-62.2
Uzbekistan	0.3	4.1	0.3	4.1	...
<b>Total</b>	<b>267.8</b>	<b>179.8</b>	<b>267.8</b>	<b>179.8</b>	<b>-32.9</b>

Table 4 – continued

## Domestic exports by country, customs basis, not seasonally adjusted

	January		January to January		Variation
	2008	2009	2008	2009	January to January 2009/2008
millions of dollars					
<b>Middle East</b>					
Bahrain	2.9	1.8	2.9	1.8	-37.9
Cyprus	0.8	1.2	0.8	1.2	50.0
Egypt	25.2	27.2	25.2	27.2	7.9
Ethiopia	3.8	0.5	3.8	0.5	-86.8
Iran	37.5	21.0	37.5	21.0	-44.0
Iraq	20.4	53.0	20.4	53.0	159.8
Israel	30.6	24.7	30.6	24.7	-19.3
Jordan	4.3	2.2	4.3	2.2	-48.8
Kuwait	7.4	7.8	7.4	7.8	5.4
Lebanon	4.8	5.6	4.8	5.6	16.7
Libya	3.9	42.6	3.9	42.6	992.3
Oman	6.6	12.0	6.6	12.0	81.8
Qatar	5.0	6.2	5.0	6.2	24.0
Saudi Arabia	111.9	74.5	111.9	74.5	-33.4
Sudan	27.0	6.5	27.0	6.5	-75.9
Syria	5.0	2.6	5.0	2.6	-48.0
Turkey	47.6	33.2	47.6	33.2	-30.3
United Arab Emirates	116.2	66.9	116.2	66.9	-42.4
Yemen	2.7	1.5	2.7	1.5	-44.4
<b>Total</b>	<b>463.6</b>	<b>391.0</b>	<b>463.6</b>	<b>391.0</b>	<b>-15.7</b>
<b>Other Africa</b>					
Algeria	57.4	27.2	57.4	27.2	-52.6
Angola	4.1	6.9	4.1	6.9	68.3
Antarctica	0.0	0.0	0.0	0.0	0.0
Benin	0.8	0.7	0.8	0.7	-12.5
Botswana	1.2	0.5	1.2	0.5	-58.3
Burkina Faso	0.9	0.2	0.9	0.2	-77.8
Burundi	0.1	0.1	0.1	0.1	0.0
Cameroon	5.1	0.5	5.1	0.5	-90.2
Cape Verde	0.1	0.1	0.1	0.1	0.0
Chad	0.3	2.0	0.3	2.0	566.7
Comoros	0.0	0.0	0.0	0.0	0.0
Congo	1.6	1.1	1.6	1.1	-31.3
Democratic Republic of the Congo	1.6	1.2	1.6	1.2	-25.0
Djibouti	0.0	0.9	0.0	0.9	0.0
Equatorial Guinea	0.3	0.2	0.3	0.2	-33.3
French Southern Territories	0.0	0.0	0.0	0.0	0.0
Gabon	0.7	8.5	0.7	8.5	...
Gambia	0.0	0.0	0.0	0.0	0.0
Ghana	9.7	10.4	9.7	10.4	7.2
Guinea	1.4	0.9	1.4	0.9	-35.7
Guinea-Bissau	0.0	0.0	0.0	0.0	0.0
Ivory Coast	1.5	4.2	1.5	4.2	180.0
Kenya	2.0	6.7	2.0	6.7	235.0
Lesotho	0.0	0.0	0.0	0.0	...
Liberia	0.3	0.2	0.3	0.2	-33.3
Madagascar	0.8	4.6	0.8	4.6	475.0
Malawi	0.3	0.2	0.3	0.2	-33.3
Mali	1.9	0.1	1.9	0.1	-94.7
Mauritania	0.2	0.3	0.2	0.3	50.0
Mauritius	0.1	0.4	0.1	0.4	300.0
Morocco	56.4	1.8	56.4	1.8	-96.8
Mozambique	0.6	0.1	0.6	0.1	-83.3
Namibia	0.9	0.7	0.9	0.7	-22.2
Niger	0.2	0.3	0.2	0.3	50.0
Nigeria	19.4	8.0	19.4	8.0	-58.8
Rwanda	0.1	0.1	0.1	0.1	0.0
Saint Helena	0.2	0.0	0.2	0.0	0.0
Senegal	1.0	2.2	1.0	2.2	120.0
Seychelles	0.0	0.1	0.0	0.1	0.0

Table 4 – continued

## Domestic exports by country, customs basis, not seasonally adjusted

	January		January to January		Variation
	2008	2009	2008	2009	January to January 2009/2008
millions of dollars					
Sierra Leone	0.4	0.2	0.4	0.2	-50.0
South Africa	41.3	33.3	41.3	33.3	-19.4
Swaziland	0.2	0.1	0.2	0.1	-50.0
Togo	2.3	0.9	2.3	0.9	-60.9
Tunisia	2.3	1.5	2.3	1.5	-34.8
Uganda	1.3	3.8	1.3	3.8	192.3
United Republic of Tanzania	1.9	2.0	1.9	2.0	5.3
Zambia	2.1	0.7	2.1	0.7	-66.7
Zimbabwe	0.0	4.6	0.0	4.6	0.0
<b>Total</b>	<b>223.1</b>	<b>138.6</b>	<b>223.1</b>	<b>138.6</b>	<b>-37.9</b>
<b>Other Asia</b>					
Afghanistan	0.3	1.2	0.3	1.2	300.0
Bangladesh	32.9	73.2	32.9	73.2	122.5
British Indian Ocean Territory	0.0	0.0	0.0	0.0	0.0
Brunei Darussalam	0.0	0.1	0.0	0.1	0.0
Cambodia	0.2	0.2	0.2	0.2	0.0
China	803.8	747.6	803.8	747.6	-7.0
Hong Kong	68.7	133.1	68.7	133.1	93.7
India	156.8	90.4	156.8	90.4	-42.3
Indonesia	86.3	56.4	86.3	56.4	-34.6
Japan	640.8	656.5	640.8	656.5	2.5
Laos	0.0	0.1	0.0	0.1	0.0
Macau	3.2	2.6	3.2	2.6	-18.8
Malaysia	45.3	40.9	45.3	40.9	-9.7
Maldives	0.2	0.3	0.2	0.3	50.0
Mongolia	1.0	0.1	1.0	0.1	-90.0
Nepal	0.3	0.0	0.3	0.0	0.0
North Korea	0.6	2.7	0.6	2.7	350.0
Pakistan	27.0	10.2	27.0	10.2	-62.2
Philippines	35.0	33.8	35.0	33.8	-3.4
Singapore	72.0	35.4	72.0	35.4	-50.8
South Korea	269.4	223.9	269.4	223.9	-16.9
Sri Lanka	28.0	28.3	28.0	28.3	1.1
Taiwan	142.4	58.8	142.4	58.8	-58.7
Thailand	41.3	31.9	41.3	31.9	-22.8
Viet Nam	19.0	7.1	19.0	7.1	-62.6
<b>Total</b>	<b>2,474.4</b>	<b>2,234.9</b>	<b>2,474.4</b>	<b>2,234.9</b>	<b>-9.7</b>
<b>Oceania</b>					
American Samoa	0.0	0.1	0.0	0.1	0.0
Australia	140.9	113.0	140.9	113.0	-19.8
Christmas Island	0.0	0.0	0.0	0.0	0.0
Cocos (Keeling) Islands	0.0	0.0	0.0	0.0	...
Fiji	0.4	0.2	0.4	0.2	-50.0
French Polynesia	2.0	0.6	2.0	0.6	-70.0
Guam	0.2	0.2	0.2	0.2	0.0
New Caledonia	2.6	0.4	2.6	0.4	-84.6
New Zealand	45.4	22.2	45.4	22.2	-51.1
Norfolk Island	0.0	0.3	0.0	0.3	...
Papua New Guinea	0.1	0.9	0.1	0.9	800.0
Pitcairn	0.0	0.0	0.0	0.0	...
Samoa	0.0	0.0	0.0	0.0	...
United States Minor Outlying Islands	0.1	0.7	0.1	0.7	600.0
Vanuatu	0.0	0.1	0.0	0.1	0.0
<b>Total</b>	<b>191.9</b>	<b>138.6</b>	<b>191.9</b>	<b>138.6</b>	<b>-27.8</b>

Table 4 – continued

## Domestic exports by country, customs basis, not seasonally adjusted

	January		January to January		Variation
	2008	2009	2008	2009	January to January 2009/2008
millions of dollars					
<b>South America</b>					
Argentina	24.5	9.9	24.5	9.9	-59.6
Bolivia	1.4	1.5	1.4	1.5	7.1
Brazil	127.0	55.1	127.0	55.1	-56.6
Chile	60.7	32.7	60.7	32.7	-46.1
Colombia	51.8	49.0	51.8	49.0	-5.4
Ecuador	25.8	20.7	25.8	20.7	-19.8
Falkland Islands (Malvinas)	0.1	0.0	0.1	0.0	
Guyana	1.3	2.5	1.3	2.5	92.3
Paraguay	0.2	0.4	0.2	0.4	100.0
Peru	28.0	33.5	28.0	33.5	19.6
Suriname	1.2	0.2	1.2	0.2	-83.3
Uruguay	2.5	1.7	2.5	1.7	-32.0
Venezuela	26.7	66.1	26.7	66.1	147.6
<b>Total</b>	<b>351.2</b>	<b>273.4</b>	<b>351.2</b>	<b>273.4</b>	<b>-22.2</b>
<b>Central America Antilles</b>					
Anguilla	0.1	0.1	0.1	0.1	0.0
Antigua and Barbuda	1.4	0.5	1.4	0.5	-64.3
Aruba	0.4	0.2	0.4	0.2	-50.0
Bahamas	2.0	2.3	2.0	2.3	15.0
Barbados	3.9	2.0	3.9	2.0	-48.7
Belize	0.2	0.3	0.2	0.3	50.0
Bermuda	4.1	3.8	4.1	3.8	-7.3
British Virgin Islands	0.2	1.4	0.2	1.4	600.0
Cayman Islands	0.6	0.2	0.6	0.2	-66.7
Costa Rica	8.7	3.2	8.7	3.2	-63.2
Cuba	30.1	12.1	30.1	12.1	-59.8
Dominica	2.4	0.3	2.4	0.3	-87.5
Dominican Republic	6.4	11.1	6.4	11.1	73.4
El Salvador	3.5	1.8	3.5	1.8	-48.6
Grenada	0.7	0.5	0.7	0.5	-28.6
Guatemala	11.8	14.7	11.8	14.7	24.6
Haiti	1.7	3.9	1.7	3.9	129.4
Honduras	1.4	2.1	1.4	2.1	50.0
Jamaica	13.5	6.7	13.5	6.7	-50.4
Montserrat	0.0	0.0	0.0	0.0	0.0
Netherlands Antilles	1.6	1.2	1.6	1.2	-25.0
Nicaragua	2.7	1.0	2.7	1.0	-63.0
Panama	12.2	6.0	12.2	6.0	-50.8
Saint Kitts and Nevis	0.4	0.8	0.4	0.8	100.0
Saint Lucia	1.2	0.7	1.2	0.7	-41.7
Saint Vincent and the Grenadines	0.5	0.6	0.5	0.6	20.0
Trinidad and Tobago	14.0	8.6	14.0	8.6	-38.6
Turks and Caicos Islands	0.7	0.2	0.7	0.2	-71.4
<b>Total</b>	<b>126.1</b>	<b>86.4</b>	<b>126.1</b>	<b>86.4</b>	<b>-31.5</b>
<b>All countries</b>	<b>34,456.9</b>	<b>26,889.5</b>	<b>34,456.9</b>	<b>26,889.5</b>	<b>-22.0</b>

Table 5-1

## Exports by province of origin, customs basis, not seasonally adjusted — January

	Agricultural and fishing products	Energy products	Forestry products	Industrial goods	Machinery and equipment	Automotive products	Consumer goods	Special transactions	Total
millions of dollars									
<b>Domestic exports</b>									
Newfoundland Labrador									
2008	17.8	773.3	23.4	81.1	4.6	0.1	0.3	5.3	905.9
2009	18.9	369.9	16.9	98.7	6.7	0.0	0.0	5.3	516.4
Prince Edward Island									
2008	39.8	0.0	0.4	1.1	9.6	0.1	3.1	8.8	62.9
2009	40.7	0.0	0.0	1.0	16.3	0.1	2.9	9.6	70.5
Nova Scotia									
2008	63.8	113.6	63.0	49.4	92.9	9.8	7.2	7.4	407.2
2009	65.5	85.5	51.4	49.0	85.4	10.1	5.2	7.0	359.2
New Brunswick									
2008	72.3	586.8	101.7	92.8	24.8	2.0	8.0	8.5	896.8
2009	78.8	498.7	113.1	51.3	24.0	2.3	9.5	8.2	785.9
Quebec									
2008	313.0	303.9	607.1	1,657.9	1,935.1	163.0	262.9	103.3	5,346.4
2009	336.4	209.5	507.1	1,295.2	1,831.6	107.2	271.3	118.6	4,676.8
Ontario									
2008	587.8	291.7	308.3	3,726.2	2,868.5	4,021.5	591.7	282.3	12,678.0
2009	617.9	291.7	289.5	2,469.0	2,927.0	1,957.6	712.5	271.5	9,536.7
Manitoba									
2008	333.7	91.2	31.6	289.7	170.6	47.5	22.5	19.1	1,006.0
2009	319.2	66.3	22.7	199.2	170.4	51.0	17.6	28.8	875.1
Saskatchewan									
2008	733.5	716.7	21.1	513.5	57.7	4.5	3.2	10.4	2,060.7
2009	595.1	430.8	28.6	595.2	72.7	2.1	1.4	10.0	1,735.9
Alberta									
2008	577.4	6,409.1	155.7	1,040.0	359.0	45.4	12.8	49.9	8,649.3
2009	558.0	4,393.2	132.3	677.2	415.3	43.7	16.0	51.5	6,287.2
British Columbia									
2008	143.5	474.0	728.0	429.5	286.2	30.3	52.3	38.7	2,182.4
2009	162.3	641.9	553.0	320.9	255.7	22.5	46.4	38.0	2,040.7
Yukon, Northwest Territories and Nunavut <sup>1</sup>									
2008	0.1	0.0	0.0	260.6	0.4	0.0	0.0	0.0	261.2
2009	0.0	0.0	0.0	4.0	0.4	0.0	0.6	0.0	5.1
<b>Total</b>									
2008	2,882.9	9,760.3	2,040.4	8,141.8	5,809.6	4,324.2	964.0	533.7	34,456.9
2009	2,792.8	6,987.5	1,714.7	5,760.6	5,805.5	2,196.4	1,083.4	548.6	26,889.5
<b>Re-exports</b>									
2008	47.1	35.8	8.8	251.1	910.4	122.2	150.3	728.0	2,253.7
2009	57.9	38.8	7.6	197.0	974.7	84.0	163.3	691.8	2,215.1
<b>Total exports</b>									
2008	2,930.1	9,796.1	2,049.2	8,392.9	6,720.0	4,446.4	1,114.3	1,261.6	36,710.6
2009	2,850.7	7,026.4	1,722.3	5,957.6	6,780.2	2,280.4	1,246.7	1,240.4	29,104.6

1. Data for the most current month do not include some exports of Chapter 71 "Natural/cultured pearls, precious stones and metals, coins etc" for reasons relating to timing.

Table 5-2

## Exports by province of origin, customs basis, not seasonally adjusted — Year to date

	Agricultural and fishing products	Energy products	Forestry products	Industrial goods	Machinery and equipment	Automotive products	Consumer goods	Special transactions	Total
millions of dollars									
<b>Domestic exports</b>									
Newfoundland Labrador									
2008	17.8	773.3	23.4	81.1	4.6	0.1	0.3	5.3	905.9
2009	18.9	369.9	16.9	98.7	6.7	0.0	0.0	5.3	516.4
Prince Edward Island									
2008	39.8	0.0	0.4	1.1	9.6	0.1	3.1	8.8	62.9
2009	40.7	0.0	0.0	1.0	16.3	0.1	2.9	9.6	70.5
Nova Scotia									
2008	63.8	113.6	63.0	49.4	92.9	9.8	7.2	7.4	407.2
2009	65.5	85.5	51.4	49.0	85.4	10.1	5.2	7.0	359.2
New Brunswick									
2008	72.3	586.8	101.7	92.8	24.8	2.0	8.0	8.5	896.8
2009	78.8	498.7	113.1	51.3	24.0	2.3	9.5	8.2	785.9
Quebec									
2008	313.0	303.9	607.1	1,657.9	1,935.1	163.0	262.9	103.3	5,346.4
2009	336.4	209.5	507.1	1,295.2	1,831.6	107.2	271.3	118.6	4,676.8
Ontario									
2008	587.8	291.7	308.3	3,726.2	2,868.5	4,021.5	591.7	282.3	12,678.0
2009	617.9	291.7	289.5	2,469.0	2,927.0	1,957.6	712.5	271.5	9,536.7
Manitoba									
2008	333.7	91.2	31.6	289.7	170.6	47.5	22.5	19.1	1,006.0
2009	319.2	66.3	22.7	199.2	170.4	51.0	17.6	28.8	875.1
Saskatchewan									
2008	733.5	716.7	21.1	513.5	57.7	4.5	3.2	10.4	2,060.7
2009	595.1	430.8	28.6	595.2	72.7	2.1	1.4	10.0	1,735.9
Alberta									
2008	577.4	6,409.1	155.7	1,040.0	359.0	45.4	12.8	49.9	8,649.3
2009	558.0	4,393.2	132.3	677.2	415.3	43.7	16.0	51.5	6,287.2
British Columbia									
2008	143.5	474.0	728.0	429.5	286.2	30.3	52.3	38.7	2,182.4
2009	162.3	641.9	553.0	320.9	255.7	22.5	46.4	38.0	2,040.7
Yukon, Northwest Territories and Nunavut <sup>1</sup>									
2008	0.1	0.0	0.0	260.6	0.4	0.0	0.0	0.0	261.2
2009	0.0	0.0	0.0	4.0	0.4	0.0	0.6	0.0	5.1
<b>Total</b>									
2008	2,882.9	9,760.3	2,040.4	8,141.8	5,809.6	4,324.2	964.0	533.7	34,456.9
2009	2,792.8	6,987.5	1,714.7	5,760.6	5,805.5	2,196.4	1,083.4	548.6	26,889.5
<b>Re-exports</b>									
2008	47.1	35.8	8.8	251.1	910.4	122.2	150.3	728.0	2,253.7
2009	57.9	38.8	7.6	197.0	974.7	84.0	163.3	691.8	2,215.1
<b>Total exports</b>									
2008	2,930.1	9,796.1	2,049.2	8,392.9	6,720.0	4,446.4	1,114.3	1,261.6	36,710.6
2009	2,850.7	7,026.4	1,722.3	5,957.6	6,780.2	2,280.4	1,246.7	1,240.4	29,104.6

1. Data for the most current month do not include some exports of Chapter 71 "Natural/cultured pearls, precious stones and metals, coins etc" for reasons relating to timing.

Table 6-1

## Imports by commodity groupings, balance of payments basis, seasonally adjusted — Current dollars

	December 2008	January 2009	Change		Year to date		Year to date change	January 2009/2008	
					2008	2009			
	millions of dollars		percent		millions of dollars		percent		
<b>Total</b>	<b>35,505</b>	<b>32,704</b>	<b>-2,801</b>	<b>-7.9</b>	<b>35,682</b>	<b>32,704</b>	<b>-2,978</b>	<b>-8.3</b>	<b>-8.3</b>
<b>Agricultural and fishing products</b>	<b>2,532</b>	<b>2,568</b>	<b>36</b>	<b>1.4</b>	<b>2,206</b>	<b>2,568</b>	<b>361</b>	<b>16.4</b>	<b>16.4</b>
Fruits and vegetables	732	702	-30	-4.1	614	702	88	14.4	14.4
Fresh fruits and berries	250	246	-4	-1.8	220	246	25	11.5	11.5
Dried fruits, fruits and fruit preparations	137	135	-2	-1.3	113	135	22	19	19
Fresh vegetables	182	172	-10	-5.5	156	172	15	9.9	9.9
Other vegetables and vegetable preparations	164	150	-14	-8.7	124	150	26	21	21
Other agricultural and fishing products	1,800	1,866	66	3.7	1,593	1,866	273	17.2	17.2
Live animals	16	18	1	7.3	16	18	2	12.1	12.1
Meat and meat preparations	178	178	-1	-0.3	160	178	18	11.2	11.2
Fish and marine animals	167	173	5	3.3	156	173	17	10.6	10.6
Cocoa, coffee, tea and other food preparations	451	440	-11	-2.4	344	440	96	27.8	27.8
Dairy produce, eggs and honey	53	42	-11	-20.5	56	42	-14	-24.8	-24.8
Corn (maize) shelled	57	52	-5	-9	64	52	-12	-18.5	-18.5
Other cereals and cereal preparations	196	200	4	2	155	200	45	29.2	29.2
Sugar and sugar preparations	147	145	-3	-1.9	126	145	18	14.5	14.5
Fodder, feed, excluding unmilled cereal	124	132	8	6.9	117	132	16	13.5	13.5
Beverages	256	346	90	35	251	346	95	37.9	37.9
Tobacco	26	31	5	18	36	31	-5	-14.8	-14.8
Crude vegetable products	125	108	-16	-13.1	111	108	-3	-2.5	-2.5
Cotton	2	1	-1	-49.1	1	1	0	19.8	19.8
<b>Energy products</b>	<b>3,139</b>	<b>2,922</b>	<b>-217</b>	<b>-6.9</b>	<b>4,311</b>	<b>2,922</b>	<b>-1,388</b>	<b>-32.2</b>	<b>-32.2</b>
Crude petroleum	1,844	1,596	-248	-13.4	2,620	1,596	-1,024	-39.1	-39.1
Other energy products	1,295	1,326	31	2.4	1,691	1,326	-365	-21.6	-21.6
Coal and other related products	420	464	43	10.3	536	464	-72	-13.5	-13.5
Petroleum and coal products	875	862	-12	-1.4	1,155	862	-292	-25.3	-25.3
<b>Forestry products</b>	<b>215</b>	<b>222</b>	<b>7</b>	<b>3.4</b>	<b>242</b>	<b>222</b>	<b>-19</b>	<b>-7.9</b>	<b>-7.9</b>
Forestry products	215	222	7	3.4	242	222	-19	-7.9	-7.9
Crude wood products	44	47	4	8.9	35	47	13	35.9	35.9
Wood fabricated materials	172	175	4	2.1	207	175	-32	-15.3	-15.3
<b>Industrial goods and materials</b>	<b>7,517</b>	<b>6,840</b>	<b>-677</b>	<b>-9.0</b>	<b>7,140</b>	<b>6,840</b>	<b>-300</b>	<b>-4.2</b>	<b>-4.2</b>
Metals and metal ores	2,576	2,268	-307	-11.9	2,652	2,268	-384	-14.5	-14.5
Metals in ores, concentrates and scrap	551	480	-71	-12.8	754	480	-273	-36.3	-36.3
Steel bars, rods, plates, sheets	573	426	-147	-25.7	545	426	-119	-21.8	-21.8
Other iron and steel products	665	574	-90	-13.6	372	574	203	54.5	54.5
Precious metals including alloys	422	449	26	6.3	494	449	-46	-9.2	-9.2
Other non-ferrous metals and alloys	365	339	-25	-7	488	339	-149	-30.5	-30.5
Chemicals and plastics	2,628	2,377	-250	-9.5	2,373	2,377	5	0.2	0.2
Organic chemicals	654	639	-15	-2.2	592	639	47	7.9	7.9
Plastic materials	800	758	-41	-5.2	840	758	-82	-9.7	-9.7
Other chemicals and related products	1,174	980	-195	-16.6	940	980	39	4.2	4.2
Other industrial goods and materials	2,313	2,194	-119	-5.1	2,115	2,194	79	3.8	3.8
Crude animal products	18	19	1	4.9	19	19	0	-1.9	-1.9
Wool and man-made fibres	20	19	-1	-5.5	20	19	-2	-8.6	-8.6
Crude non-metallic minerals	78	75	-3	-3.6	76	75	-1	-1.7	-1.7
Textile fabricated materials	220	204	-16	-7.1	225	204	-21	-9.4	-9.4
Metal fabricated basic products	926	859	-67	-7.3	830	859	29	3.4	3.4
Rubber fabricated materials	86	81	-5	-5.9	84	81	-3	-3.3	-3.3
Oils, fats, animal and vegetable	113	114	1	0.7	87	114	27	31.1	31.1
Non-metallic minerals	334	307	-27	-8.2	282	307	25	8.9	8.9
Other fabricated materials	519	517	-2	-0.3	491	517	26	5.3	5.3

Table 6-1 – continued

## Imports by commodity groupings, balance of payments basis, seasonally adjusted — Current dollars

	December 2008	January 2009	Change		Year to date		Year to date change		January 2009/2008
					2008	2009			
	millions of dollars		percent		millions of dollars		percent		
<b>Machinery and equipment</b>	<b>10,659</b>	<b>9,711</b>	<b>-948</b>	<b>-8.9</b>	<b>9,766</b>	<b>9,711</b>	<b>-55</b>	<b>-0.6</b>	<b>-0.6</b>
Industrial and agricultural machinery	2,947	2,736	-210	-7.1	2,697	2,736	40	1.5	1.5
Engines, turbines and electric motors	443	343	-100	-22.6	280	343	63	22.5	22.5
Drilling mining machinery	184	161	-23	-12.6	131	161	29	22.3	22.3
Excavating machinery	246	234	-12	-4.8	322	234	-88	-27.2	-27.2
Metal working machinery	179	165	-14	-7.8	193	165	-28	-14.7	-14.7
Other industrial machinery	1,532	1,491	-41	-2.7	1,450	1,491	41	2.8	2.8
Agricultural machinery including tractors	363	343	-19	-5.4	320	343	23	7.1	7.1
Aircraft and other transportation equipment	1,615	1,292	-323	-20	1,477	1,292	-185	-12.5	-12.5
Aircraft, engines, parts	1,163	763	-400	-34.4	978	763	-215	-22	-22
Other transportation equipment and parts	452	529	77	17	499	529	30	5.9	5.9
Office machines and equipment	1,152	1,106	-46	-4	1,248	1,106	-142	-11.4	-11.4
Other machinery and equipment	4,946	4,576	-369	-7.5	4,344	4,576	233	5.4	5.4
Other communication and related equipment	1,741	1,528	-212	-12.2	1,478	1,528	50	3.4	3.4
Other equipment and tools	3,205	3,048	-157	-4.9	2,865	3,048	183	6.4	6.4
<b>Automotive products</b>	<b>5,076</b>	<b>3,929</b>	<b>-1,147</b>	<b>-22.6</b>	<b>6,311</b>	<b>3,929</b>	<b>-2,382</b>	<b>-37.7</b>	<b>-37.7</b>
Passenger autos and chassis	1,762	1,232	-530	-30.1	2,328	1,232	-1,096	-47.1	-47.1
Trucks and other motor vehicles	1,167	993	-174	-14.9	1,360	993	-367	-27	-27
Motor vehicle parts	2,147	1,704	-443	-20.6	2,624	1,704	-920	-35.1	-35.1
<b>Other consumer goods</b>	<b>5,193</b>	<b>5,035</b>	<b>-158</b>	<b>-3.0</b>	<b>4,598</b>	<b>5,035</b>	<b>438</b>	<b>9.5</b>	<b>9.5</b>
Apparel and footwear	1,145	1,091	-54	-4.7	893	1,091	198	22.2	22.2
Apparel and apparel accessories	965	907	-58	-6	749	907	158	21.1	21.1
Footwear	179	184	4	2.4	144	184	40	27.9	27.9
Miscellaneous consumer goods	4,049	3,944	-104	-2.6	3,705	3,944	239	6.5	6.5
Television, radios, phonographs	128	99	-29	-22.8	141	99	-42	-29.7	-29.7
Printed matter	342	307	-35	-10.3	297	307	9	3.2	3.2
Watches, sporting goods and toys	579	539	-41	-7.1	514	539	24	4.8	4.8
House furnishings	778	763	-15	-1.9	673	763	90	13.4	13.4
Photographic goods	255	246	-8	-3.2	235	246	11	4.8	4.8
Miscellaneous end products	1,966	1,990	24	1.2	1,844	1,990	146	7.9	7.9
<b>Special transactions trade</b>	<b>475</b>	<b>781</b>	<b>306</b>	<b>64.4</b>	<b>402</b>	<b>781</b>	<b>379</b>	<b>94.4</b>	<b>94.4</b>
<b>Unallocated balance of payments adjustments</b>	<b>698</b>	<b>695</b>	<b>-3</b>	<b>-0.5</b>	<b>707</b>	<b>695</b>	<b>-12</b>	<b>-1.7</b>	<b>-1.7</b>

Table 6-2

Imports by commodity groupings, balance of payments basis, seasonally adjusted — Constant dollars, 2002

	December 2008	January 2009	Change		Year to date		Year to date change	January 2009/2008	
					2008	2009			
	millions of dollars		percent		millions of dollars		percent		
<b>Total</b>	<b>36,092</b>	<b>33,627</b>	<b>-2,465</b>	<b>-6.8</b>	<b>41,779</b>	<b>33,627</b>	<b>-8,152</b>	<b>-19.5</b>	<b>-19.5</b>
<b>Agricultural and fishing products</b>	<b>2,242</b>	<b>2,281</b>	<b>39</b>	<b>1.7</b>	<b>2,383</b>	<b>2,281</b>	<b>-102</b>	<b>-4.3</b>	<b>-4.3</b>
Fruits and vegetables	699	658	-41	-5.8	619	658	39	6.3	6.3
Fresh fruits and berries	241	239	-2	-0.9	224	239	15	6.7	6.7
Dried fruits, fruits and fruit preparations	129	121	-8	-6.5	110	121	11	9.8	9.8
Fresh vegetables	196	170	-26	-13.2	160	170	10	6.4	6.4
Other vegetables and vegetable preparations	132	128	-4	-3.1	125	128	3	2.4	2.4
Other agricultural and fishing products	1,544	1,623	79	5.1	1,764	1,623	-142	-8	-8
Live animals	15	17	1	7.9	18	17	-1	-5.8	-5.8
Meat and meat preparations	177	176	-1	-0.3	180	176	-4	-2.4	-2.4
Fish and marine animals	195	207	12	6.1	231	207	-23	-10.2	-10.2
Cocoa, coffee, tea and other food preparations	335	324	-11	-3.2	356	324	-32	-8.9	-8.9
Dairy produce, eggs and honey	38	39	0	0.6	51	39	-12	-24.4	-24.4
Corn (maize) shelled	44	38	-6	-12.6	53	38	-15	-27.9	-27.9
Other cereals and cereal preparations	155	158	3	1.6	168	158	-10	-6.1	-6.1
Sugar and sugar preparations	137	133	-4	-3.2	153	133	-20	-13.3	-13.3
Fodder, feed, excluding unmilled cereal	87	97	9	10.6	110	97	-13	-12	-12
Beverages	212	298	87	40.8	266	298	32	12.1	12.1
Tobacco	29	35	6	20.7	51	35	-16	-31.4	-31.4
Crude vegetable products	116	100	-16	-13.9	126	100	-26	-20.7	-20.7
Cotton	2	1	-1	-43.5	1	1	0	1.4	1.4
<b>Energy products</b>	<b>1,754</b>	<b>1,875</b>	<b>121</b>	<b>6.9</b>	<b>1,968</b>	<b>1,875</b>	<b>-94</b>	<b>-4.8</b>	<b>-4.8</b>
Crude petroleum	920	1,019	99	10.7	988	1,019	32	3.2	3.2
Other energy products	833	856	22	2.7	981	856	-125	-12.7	-12.7
Coal and other related products	261	285	24	9.3	384	285	-99	-25.8	-25.8
Petroleum and coal products	573	571	-2	-0.4	596	571	-26	-4.3	-4.3
<b>Forestry products</b>	<b>245</b>	<b>255</b>	<b>10</b>	<b>4.2</b>	<b>321</b>	<b>255</b>	<b>-66</b>	<b>-20.5</b>	<b>-20.5</b>
Forestry products	245	255	10	4.2	321	255	-66	-20.5	-20.5
Crude wood products	51	55	4	8.6	45	55	10	22.9	22.9
Wood fabricated materials	194	200	6	3	276	200	-76	-27.6	-27.6
<b>Industrial goods and materials</b>	<b>6,049</b>	<b>5,673</b>	<b>-376</b>	<b>-6.2</b>	<b>7,037</b>	<b>5,673</b>	<b>-1,364</b>	<b>-19.4</b>	<b>-19.4</b>
Metals and metal ores	1,625	1,548	-77	-4.7	2,063	1,548	-515	-24.9	-24.9
Metals in ores, concentrates and scrap	397	347	-51	-12.7	413	347	-67	-16.1	-16.1
Steel bars, rods, plates, sheets	341	293	-48	-14	459	293	-166	-36.1	-36.1
Other iron and steel products	361	346	-15	-4.2	301	346	44	14.7	14.7
Precious metals including alloys	216	247	31	14.4	392	247	-144	-36.9	-36.9
Other non-ferrous metals and alloys	310	315	5	1.8	497	315	-182	-36.6	-36.6
Chemicals and plastics	2,178	2,004	-174	-8	2,406	2,004	-401	-16.7	-16.7
Organic chemicals	512	506	-6	-1.2	478	506	28	5.8	5.8
Plastic materials	726	699	-27	-3.7	905	699	-206	-22.8	-22.8
Other chemicals and related products	941	799	-141	-15	1,022	799	-223	-21.8	-21.8
Other industrial goods and materials	2,245	2,120	-125	-5.6	2,568	2,120	-448	-17.4	-17.4
Crude animal products	20	26	6	30.8	21	26	6	27.6	27.6
Wool and man-made fibres	22	22	0	1.7	27	22	-5	-17.8	-17.8
Crude non-metallic minerals	67	70	3	4.4	69	70	1	2	2
Textile fabricated materials	247	234	-13	-5.4	315	234	-81	-25.8	-25.8
Metal fabricated basic products	836	783	-53	-6.3	962	783	-179	-18.6	-18.6
Rubber fabricated materials	89	84	-6	-6.2	114	84	-31	-26.9	-26.9
Oils, fats, animal and vegetable	88	89	1	1	72	89	17	24.2	24.2
Non-metallic minerals	345	318	-27	-7.8	362	318	-44	-12.2	-12.2
Other fabricated materials	530	493	-37	-7	625	493	-132	-21.1	-21.1

Table 6-2 – continued

## Imports by commodity groupings, balance of payments basis, seasonally adjusted — Constant dollars, 2002

	December 2008	January 2009	Change		Year to date		Year to date change	January 2009/2008	
					2008	2009			
	millions of dollars		percent		millions of dollars		percent		
<b>Machinery and equipment</b>	<b>13,047</b>	<b>12,017</b>	<b>-1,030</b>	<b>-7.9</b>	<b>14,616</b>	<b>12,017</b>	<b>-2,599</b>	<b>-17.8</b>	<b>-17.8</b>
Industrial and agricultural machinery	3,089	2,864	-225	-7.3	3,587	2,864	-723	-20.2	-20.2
Engines, turbines and electric motors	482	370	-112	-23.3	375	370	-5	-1.4	-1.4
Drilling mining machinery	171	150	-21	-12.4	161	150	-11	-7.1	-7.1
Excavating machinery	253	239	-15	-5.8	424	239	-186	-43.8	-43.8
Metal working machinery	194	179	-16	-8	262	179	-83	-31.6	-31.6
Other industrial machinery	1,581	1,543	-38	-2.4	1,922	1,543	-379	-19.7	-19.7
Agricultural machinery including tractors	406	384	-22	-5.5	443	384	-59	-13.3	-13.3
Aircraft and other transportation equipment	1,628	1,325	-303	-18.6	1,891	1,325	-566	-29.9	-29.9
Aircraft, engines, parts	1,182	808	-374	-31.7	1,252	808	-444	-35.5	-35.5
Other transportation equipment and parts	446	517	71	16	639	517	-121	-19	-19
Office machines and equipment	2,285	2,235	-50	-2.2	2,563	2,235	-329	-12.8	-12.8
Other machinery and equipment	6,046	5,594	-452	-7.5	6,574	5,594	-981	-14.9	-14.9
Other communication and related equipment	2,463	2,202	-260	-10.6	2,560	2,202	-357	-14	-14
Other equipment and tools	3,583	3,392	-192	-5.3	4,015	3,392	-623	-15.5	-15.5
<b>Automotive products</b>	<b>5,761</b>	<b>4,434</b>	<b>-1,326</b>	<b>-23.0</b>	<b>8,061</b>	<b>4,434</b>	<b>-3,627</b>	<b>-45.0</b>	<b>-45.0</b>
Passenger autos and chassis	2,110	1,458	-652	-30.9	2,674	1,458	-1,216	-45.5	-45.5
Trucks and other motor vehicles	1,236	1,048	-188	-15.2	1,710	1,048	-662	-38.7	-38.7
Motor vehicle parts	2,415	1,929	-486	-20.1	3,677	1,929	-1,748	-47.5	-47.5
<b>Other consumer goods</b>	<b>5,843</b>	<b>5,628</b>	<b>-215</b>	<b>-3.7</b>	<b>6,437</b>	<b>5,628</b>	<b>-809</b>	<b>-12.6</b>	<b>-12.6</b>
Apparel and footwear	1,370	1,304	-66	-4.8	1,342	1,304	-38	-2.8	-2.8
Apparel and apparel accessories	1,153	1,086	-68	-5.9	1,128	1,086	-42	-3.8	-3.8
Footwear	217	219	2	0.9	214	219	5	2.1	2.1
Miscellaneous consumer goods	4,473	4,324	-149	-3.3	5,095	4,324	-771	-15.1	-15.1
Television, radios, phonographs	173	136	-36	-21.1	239	136	-103	-43	-43
Printed matter	386	350	-36	-9.3	415	350	-65	-15.6	-15.6
Watches, sporting goods and toys	687	642	-45	-6.6	765	642	-124	-16.2	-16.2
House furnishings	844	827	-17	-2	917	827	-89	-9.7	-9.7
Photographic goods	379	362	-17	-4.5	428	362	-66	-15.3	-15.3
Miscellaneous end products	2,004	2,006	2	0.1	2,330	2,006	-324	-13.9	-13.9
<b>Special transactions trade</b>	<b>485</b>	<b>806</b>	<b>321</b>	<b>66.3</b>	<b>477</b>	<b>806</b>	<b>329</b>	<b>68.8</b>	<b>68.8</b>
<b>Unallocated balance of payments adjustments</b>	<b>667</b>	<b>658</b>	<b>-10</b>	<b>-1.5</b>	<b>479</b>	<b>658</b>	<b>179</b>	<b>37.3</b>	<b>37.3</b>

Table 7-1

## Imports from selected countries, customs basis, not seasonally adjusted — January

	Agricultural and fishing products	Energy products	Forestry products	Industrial goods	Machinery and equipment	Automotive products	Consumer goods	Special transactions	Total
millions of dollars									
<b>United States</b>									
2008	1,196.6	1,231.5	169.6	4,408.4	4,346.3	3,619.1	1,739.3	209.4	16,920.1
2009	1,382.3	1,016.9	153.1	3,807.2	4,018.9	1,977.2	1,742.6	475.1	14,573.2
<b>Mexico</b>									
2008	131.0	0.0	0.3	106.5	501.3	308.1	80.8	1.2	1,129.2
2009	145.9	0.0	0.4	119.5	451.6	231.0	79.7	1.7	1,029.8
<b>Japan</b>									
2008	4.9	0.4	0.1	90.8	527.6	436.1	92.7	0.4	1,153.0
2009	5.7	0.3	0.2	109.4	457.8	434.8	88.7	0.2	1,097.1
<b>European Union</b>									
Germany									
2008	15.6	12.7	1.2	205.0	342.5	222.3	154.1	0.3	953.7
2009	20.4	0.9	0.5	144.8	373.3	98.0	148.1	1.9	788.0
France									
2008	46.8	7.8	0.3	62.4	152.1	3.5	121.4	5.5	399.7
2009	53.4	26.9	0.3	61.3	153.2	5.9	127.5	0.3	428.8
United Kingdom									
2008	24.7	226.6	0.0	88.8	220.2	54.7	106.6	0.7	722.3
2009	22.9	148.9	0.3	110.2	261.3	20.1	92.6	2.1	658.5
Italy									
2008	48.9	0.0	1.6	80.7	136.1	12.0	77.7	0.4	357.4
2009	56.1	10.6	2.1	84.1	128.0	12.9	79.4	0.4	373.6
Other European Union									
2008	84.6	177.4	5.6	248.0	314.1	114.1	366.7	0.3	1,310.9
2009	95.7	43.6	4.8	257.8	330.4	37.3	397.6	0.6	1,167.7
<b>Total</b>									
2008	220.6	424.5	8.7	684.9	1,165.1	406.6	826.5	7.2	3,744.0
2009	248.4	230.9	8.0	658.3	1,246.2	174.3	845.2	5.4	3,416.7
<b>Newly industrialized countries</b>									
South Korea									
2008	4.1	9.1	0.1	64.1	198.1	118.4	17.7	0.1	411.6
2009	3.7	6.7	0.0	72.8	241.8	122.4	21.8	0.0	469.4
Hong Kong									
2008	3.2	0.0	0.1	2.5	16.7	0.2	15.8	0.0	38.5
2009	2.1	0.0	0.0	5.1	10.1	0.1	12.2	0.1	29.8
Taiwan									
2008	4.7	0.0	0.8	74.7	196.5	15.1	37.0	0.1	328.9
2009	4.7	0.0	0.8	87.0	186.6	13.4	33.3	0.1	325.9
Singapore									
2008	1.8	2.3	0.3	14.8	44.4	0.2	13.7	0.0	77.4
2009	3.6	0.0	0.4	143.0	46.4	0.3	21.6	0.0	215.3
<b>Total</b>									
2008	13.8	11.4	1.2	156.1	455.7	133.8	84.1	0.2	856.4
2009	14.1	6.7	1.2	308.0	485.0	136.2	88.9	0.2	1,040.3
<b>Other countries</b>									
2008	614.9	2,157.4	61.1	1,559.0	2,161.6	171.9	1,636.5	60.0	8,422.4
2009	669.7	1,507.9	55.2	1,534.8	2,196.9	122.3	1,920.0	42.6	8,049.4
<b>Total</b>									
2008	2,181.8	3,825.2	240.9	7,005.7	9,157.6	5,075.6	4,460.0	278.3	32,225.1
2009	2,466.1	2,762.8	218.0	6,537.3	8,856.3	3,075.8	4,765.1	525.2	29,206.5

Table 7-2

## Imports from selected countries, customs basis, not seasonally adjusted — Year to date

	Agricultural and fishing products	Energy products	Forestry products	Industrial goods	Machinery and equipment	Automotive products	Consumer goods	Special transactions	Total
millions of dollars									
<b>United States</b>									
2008	1,196.6	1,231.5	169.6	4,408.4	4,346.3	3,619.1	1,739.3	209.4	16,920.1
2009	1,382.3	1,016.9	153.1	3,807.2	4,018.9	1,977.2	1,742.6	475.1	14,573.2
<b>Mexico</b>									
2008	131.0	0.0	0.3	106.5	501.3	308.1	80.8	1.2	1,129.2
2009	145.9	0.0	0.4	119.5	451.6	231.0	79.7	1.7	1,029.8
<b>Japan</b>									
2008	4.9	0.4	0.1	90.8	527.6	436.1	92.7	0.4	1,153.0
2009	5.7	0.3	0.2	109.4	457.8	434.8	88.7	0.2	1,097.1
<b>European Union</b>									
Germany									
2008	15.6	12.7	1.2	205.0	342.5	222.3	154.1	0.3	953.7
2009	20.4	0.9	0.5	144.8	373.3	98.0	148.1	1.9	788.0
France									
2008	46.8	7.8	0.3	62.4	152.1	3.5	121.4	5.5	399.7
2009	53.4	26.9	0.3	61.3	153.2	5.9	127.5	0.3	428.8
United Kingdom									
2008	24.7	226.6	0.0	88.8	220.2	54.7	106.6	0.7	722.3
2009	22.9	148.9	0.3	110.2	261.3	20.1	92.6	2.1	658.5
Italy									
2008	48.9	0.0	1.6	80.7	136.1	12.0	77.7	0.4	357.4
2009	56.1	10.6	2.1	84.1	128.0	12.9	79.4	0.4	373.6
Other European Union									
2008	84.6	177.4	5.6	248.0	314.1	114.1	366.7	0.3	1,310.9
2009	95.7	43.6	4.8	257.8	330.4	37.3	397.6	0.6	1,167.7
<b>Total</b>									
2008	220.6	424.5	8.7	684.9	1,165.1	406.6	826.5	7.2	3,744.0
2009	248.4	230.9	8.0	658.3	1,246.2	174.3	845.2	5.4	3,416.7
<b>Newly industrialized countries</b>									
South Korea									
2008	4.1	9.1	0.1	64.1	198.1	118.4	17.7	0.1	411.6
2009	3.7	6.7	0.0	72.8	241.8	122.4	21.8	0.0	469.4
Hong Kong									
2008	3.2	0.0	0.1	2.5	16.7	0.2	15.8	0.0	38.5
2009	2.1	0.0	0.0	5.1	10.1	0.1	12.2	0.1	29.8
Taiwan									
2008	4.7	0.0	0.8	74.7	196.5	15.1	37.0	0.1	328.9
2009	4.7	0.0	0.8	87.0	186.6	13.4	33.3	0.1	325.9
Singapore									
2008	1.8	2.3	0.3	14.8	44.4	0.2	13.7	0.0	77.4
2009	3.6	0.0	0.4	143.0	46.4	0.3	21.6	0.0	215.3
<b>Total</b>									
2008	13.8	11.4	1.2	156.1	455.7	133.8	84.1	0.2	856.4
2009	14.1	6.7	1.2	308.0	485.0	136.2	88.9	0.2	1,040.3
<b>Other countries</b>									
2008	614.9	2,157.4	61.1	1,559.0	2,161.6	171.9	1,636.5	60.0	8,422.4
2009	669.7	1,507.9	55.2	1,534.8	2,196.9	122.3	1,920.0	42.6	8,049.4
<b>Total</b>									
2008	2,181.8	3,825.2	240.9	7,005.7	9,157.6	5,075.6	4,460.0	278.3	32,225.1
2009	2,466.1	2,762.8	218.0	6,537.3	8,856.3	3,075.8	4,765.1	525.2	29,206.5

**Table 8**  
**Imports by country, customs basis, not seasonally adjusted**

	January		January to January		Variation
	2008	2009	2008	2009	January to January 2009/2008
millions of dollars					
<b>North America</b>					
Canada	362.2	243.0	362.2	243.0	-32.9
Greenland	0.8	2.9	0.8	2.9	262.5
Mexico	1,129.2	1,029.8	1,129.2	1,029.8	-8.8
Saint Pierre and Miquelon	0.0	0.0	0.0	0.0	0.0
United States	16,920.1	14,573.2	16,920.1	14,573.2	-13.9
<b>Total</b>	<b>18,412.3</b>	<b>15,848.9</b>	<b>18,412.3</b>	<b>15,848.9</b>	<b>-13.9</b>
<b>Western Europe</b>					
Andorra	0.0	0.0	0.0	0.0	0.0
Austria	129.2	103.0	129.2	103.0	-20.3
Belgium	218.8	87.4	218.8	87.4	-60.1
Denmark	64.5	71.6	64.5	71.6	11.0
Faeroe Islands	0.0	0.1	0.0	0.1	0.0
Finland	58.1	74.4	58.1	74.4	28.1
France	399.7	428.8	399.7	428.8	7.3
Germany	953.7	788.0	953.7	788.0	-17.4
Gibraltar	0.0	0.0	0.0	0.0	0.0
Greece	10.1	11.7	10.1	11.7	15.8
Iceland	3.4	1.7	3.4	1.7	-50.0
Italy	357.4	373.6	357.4	373.6	4.5
Luxembourg	5.2	9.3	5.2	9.3	78.8
Malta	1.6	2.3	1.6	2.3	43.8
Netherlands	114.2	121.5	114.2	121.5	6.4
Norway	533.1	233.6	533.1	233.6	-56.2
Portugal	26.2	20.3	26.2	20.3	-22.5
Republic of Ireland (Eire)	198.8	235.0	198.8	235.0	18.2
Spain	119.8	93.6	119.8	93.6	-21.9
Sweden	204.2	141.1	204.2	141.1	-30.9
Switzerland	165.6	208.5	165.6	208.5	25.9
United Kingdom	722.3	658.5	722.3	658.5	-8.8
<b>Total</b>	<b>4,286.0</b>	<b>3,664.2</b>	<b>4,286.0</b>	<b>3,664.2</b>	<b>-14.5</b>
<b>Other Europe</b>					
Albania	0.2	0.1	0.2	0.1	-50.0
Armenia	0.1	2.6	0.1	2.6	...
Azerbaijan	0.0	106.3	0.0	106.3	0.0
Belarus	22.5	3.9	22.5	3.9	-82.7
Bosnia and Herzegovina	0.4	0.7	0.4	0.7	75.0
Bulgaria	5.0	17.1	5.0	17.1	242.0
Croatia	2.9	1.8	2.9	1.8	-37.9
Czech Republic	22.6	32.8	22.6	32.8	45.1
Estonia	3.7	2.1	3.7	2.1	-43.2
Georgia	8.6	9.5	8.6	9.5	10.5
Hungary	24.2	37.2	24.2	37.2	53.7
Kazakhstan	0.1	10.7	0.1	10.7	...
Kyrgyzstan	0.0	0.4	0.0	0.4	0.0
Latvia	22.1	0.9	22.1	0.9	-95.9
Lithuania	4.0	18.4	4.0	18.4	360.0
Macedonia (Former Yugoslav Republic of Macedonia)	0.9	1.2	0.9	1.2	33.3
Montenegro	0.1	0.0	0.1	0.0	0.0
Poland	45.4	64.6	45.4	64.6	42.3
Republic of Moldova	0.2	0.3	0.2	0.3	50.0
Romania	11.2	11.9	11.2	11.9	6.3
Russian Federation	50.3	77.2	50.3	77.2	53.5
Serbia	0.8	1.5	0.8	1.5	87.5
Slovakia	14.9	6.7	14.9	6.7	-55.0
Slovenia	6.8	4.6	6.8	4.6	-32.4
Tajikistan	0.0	0.0	0.0	0.0	0.0
Turkmenistan	0.0	0.0	0.0	0.0	0.0
Ukraine	3.5	18.1	3.5	18.1	417.1
Uzbekistan	0.0	0.0	0.0	0.0	0.0
<b>Total</b>	<b>250.5</b>	<b>430.8</b>	<b>250.5</b>	<b>430.8</b>	<b>72.0</b>

Table 8 – continued

## Imports by country, customs basis, not seasonally adjusted

	January		January to January		Variation
	2008	2009	2008	2009	January to January 2009/2008
millions of dollars					
<b>Middle East</b>					
Bahrain	0.1	1.6	0.1	1.6	...
Cyprus	0.1	0.2	0.1	0.2	100.0
Egypt	3.9	11.8	3.9	11.8	202.6
Eritrea	0.0	0.0	0.0	0.0	0.0
Ethiopia	0.7	1.2	0.7	1.2	71.4
Iran	4.2	2.4	4.2	2.4	-42.9
Iraq	233.2	199.1	233.2	199.1	-14.6
Israel	76.1	81.5	76.1	81.5	7.1
Jordan	1.9	2.2	1.9	2.2	15.8
Kuwait	0.3	0.0	0.3	0.0	0.0
Lebanon	0.8	1.4	0.8	1.4	75.0
Libya	0.0	0.0	0.0	0.0	0.0
Oman	0.1	0.1	0.1	0.1	0.0
Qatar	0.0	0.0	0.0	0.0	0.0
Saudi Arabia	192.5	174.0	192.5	174.0	-9.6
Somalia	0.0	0.0	0.0	0.0	0.0
Sudan	6.6	4.7	6.6	4.7	-28.8
Syria	0.4	0.3	0.4	0.3	-25.0
Turkey	42.0	100.2	42.0	100.2	138.6
United Arab Emirates	89.5	3.3	89.5	3.3	-96.3
Yemen	0.0	0.0	0.0	0.0	0.0
<b>Total</b>	<b>652.5</b>	<b>584.2</b>	<b>652.5</b>	<b>584.2</b>	<b>-10.5</b>
<b>Other Africa</b>					
Algeria	608.6	314.1	608.6	314.1	-48.4
Angola	170.3	120.8	170.3	120.8	-29.1
Antarctica	0.0	0.0	0.0	0.0	...
Benin	0.0	0.0	0.0	0.0	0.0
Botswana	0.0	0.1	0.0	0.1	0.0
Bouvet Island	0.0	0.0	0.0	0.0	...
Burkina Faso	0.0	0.0	0.0	0.0	0.0
Burundi	0.1	0.1	0.1	0.1	0.0
Cameroon	0.9	0.4	0.9	0.4	-55.6
Cape Verde	0.0	0.0	0.0	0.0	0.0
Central African Republic	0.0	0.0	0.0	0.0	0.0
Chad	0.0	0.0	0.0	0.0	0.0
Comoros	0.0	0.0	0.0	0.0	0.0
Congo	0.5	0.2	0.5	0.2	-60.0
Democratic Republic of the Congo	0.0	0.1	0.0	0.1	0.0
Djibouti	0.0	0.0	0.0	0.0	0.0
Equatorial Guinea	0.0	55.0	0.0	55.0	0.0
Gabon	0.2	0.4	0.2	0.4	100.0
Gambia	0.0	0.0	0.0	0.0	0.0
Ghana	2.5	4.7	2.5	4.7	88.0
Guinea	2.2	6.4	2.2	6.4	190.9
Guinea-Bissau	0.0	0.0	0.0	0.0	0.0
Ivory Coast	7.3	11.0	7.3	11.0	50.7
Kenya	1.1	1.3	1.1	1.3	18.2
Lesotho	0.1	0.2	0.1	0.2	100.0
Liberia	2.4	1.4	2.4	1.4	-41.7
Madagascar	1.5	4.8	1.5	4.8	220.0
Malawi	0.1	0.2	0.1	0.2	100.0
Mali	0.0	0.0	0.0	0.0	0.0
Mauritania	0.0	0.1	0.0	0.1	0.0
Mauritius	0.5	1.5	0.5	1.5	200.0
Morocco	17.6	24.0	17.6	24.0	36.4
Mozambique	0.4	0.0	0.4	0.0	0.0
Namibia	0.0	47.0	0.0	47.0	0.0
Niger	0.1	0.0	0.1	0.0	0.0
Nigeria	192.9	90.0	192.9	90.0	-53.3
Rwanda	0.0	0.0	0.0	0.0	0.0
Saint Helena	0.1	0.0	0.1	0.0	0.0
Sao Tome and Principe	0.0	0.0	0.0	0.0	0.0
Senegal	0.0	0.0	0.0	0.0	0.0
Seychelles	0.2	0.4	0.2	0.4	100.0
Sierra Leone	0.2	0.0	0.2	0.0	0.0

Table 8 – continued

## Imports by country, customs basis, not seasonally adjusted

	January		January to January		Variation
	2008	2009	2008	2009	January to January 2009/2008
millions of dollars					
South Africa	52.9	40.6	52.9	40.6	-23.3
Swaziland	0.1	0.1	0.1	0.1	0.0
Togo	0.1	0.2	0.1	0.2	100.0
Tunisia	2.9	2.9	2.9	2.9	0.0
Uganda	0.2	0.1	0.2	0.1	-50.0
United Republic of Tanzania	0.1	0.6	0.1	0.6	500.0
Western Sahara	0.0	0.0	0.0	0.0	0.0
Zambia	0.1	0.0	0.1	0.0	0.0
Zimbabwe	0.1	0.6	0.1	0.6	500.0
<b>Total</b>	<b>1,066.3</b>	<b>729.4</b>	<b>1,066.3</b>	<b>729.4</b>	<b>-31.6</b>
<b>Other Asia</b>					
Afghanistan	0.1	0.1	0.1	0.1	0.0
Bangladesh	48.5	64.3	48.5	64.3	32.6
Bhutan	0.0	0.0	0.0	0.0	0.0
British Indian Ocean Territory	0.0	0.0	0.0	0.0	0.0
Brunei Darussalam	0.3	0.1	0.3	0.1	-66.7
Cambodia	20.1	29.2	20.1	29.2	45.3
China	3,145.4	3,640.5	3,145.4	3,640.5	15.7
Hong Kong	38.5	29.8	38.5	29.8	-22.6
India	175.3	182.3	175.3	182.3	4.0
Indonesia	79.1	93.8	79.1	93.8	18.6
Japan	1,153.0	1,097.1	1,153.0	1,097.1	-4.8
Laos	0.8	0.6	0.8	0.6	-25.0
Macao	4.2	2.2	4.2	2.2	-47.6
Malaysia	235.6	179.7	235.6	179.7	-23.7
Maldives	0.0	0.0	0.0	0.0	0.0
Mongolia	12.2	13.1	12.2	13.1	7.4
Myanmar	0.5	0.0	0.5	0.0	0.0
Nepal	1.0	0.9	1.0	0.9	-10.0
North Korea	0.0	0.0	0.0	0.0	0.0
Pakistan	18.8	17.6	18.8	17.6	-6.4
Philippines	57.4	49.7	57.4	49.7	-13.4
Singapore	77.4	215.3	77.4	215.3	178.2
South Korea	411.6	469.4	411.6	469.4	14.0
Sri Lanka	10.1	11.5	10.1	11.5	13.9
Taiwan	328.9	325.9	328.9	325.9	-0.9
Thailand	181.4	182.1	181.4	182.1	0.4
Timor-Leste	0.0	0.4	0.0	0.4	0.0
Viet Nam	72.7	100.1	72.7	100.1	37.7
<b>Total</b>	<b>6,073.0</b>	<b>6,705.9</b>	<b>6,073.0</b>	<b>6,705.9</b>	<b>10.4</b>
<b>Oceania</b>					
American Samoa	0.0	0.0	0.0	0.0	0.0
Australia	158.9	136.8	158.9	136.8	-13.9
Christmas Island	0.0	0.0	0.0	0.0	0.0
Cocos (Keeling) Islands	0.0	0.0	0.0	0.0	0.0
Cook Islands	0.0	0.0	0.0	0.0	0.0
Fiji	0.2	0.5	0.2	0.5	150.0
French Polynesia	0.2	0.1	0.2	0.1	-50.0
Guam	0.1	0.0	0.1	0.0	0.0
Heard Island and McDonald Islands	0.0	0.0	0.0	0.0	...
Kiribati	0.0	0.1	0.0	0.1	0.0
Nauru	0.0	0.0	0.0	0.0	0.0
New Caledonia	0.0	0.1	0.0	0.1	0.0
New Zealand	41.6	33.3	41.6	33.3	-20.0
Niue	0.0	0.0	0.0	0.0	0.0
Norfolk Island	0.0	0.0	0.0	0.0	0.0
Papua New Guinea	0.3	0.1	0.3	0.1	-66.7
Pitcairn	0.0	0.0	0.0	0.0	0.0
Samoa	0.0	0.0	0.0	0.0	0.0
Solomon Islands	0.0	0.0	0.0	0.0	0.0
Tonga	0.0	0.0	0.0	0.0	0.0
United States Minor Outlying Islands	1.0	0.5	1.0	0.5	-50.0
Vanuatu	0.0	0.0	0.0	0.0	0.0
Wallis and Futuna	0.0	0.0	0.0	0.0	0.0
<b>Total</b>	<b>202.3</b>	<b>171.5</b>	<b>202.3</b>	<b>171.5</b>	<b>-15.2</b>

Table 8 – continued

## Imports by country, customs basis, not seasonally adjusted

	January		January to January		Variation
	2008	2009	2008	2009	January to January 2009/2008
millions of dollars					
<b>South America</b>					
Argentina	37.8	59.4	37.8	59.4	57.1
Bolivia	6.4	4.8	6.4	4.8	-25.0
Brazil	216.0	230.7	216.0	230.7	6.8
Chile	195.6	146.0	195.6	146.0	-25.4
Colombia	52.1	50.9	52.1	50.9	-2.3
Ecuador	17.3	21.2	17.3	21.2	22.5
Falkland Islands (Malvinas)	0.0	0.0	0.0	0.0	0.0
Guyana	15.6	20.2	15.6	20.2	29.5
Paraguay	0.8	0.7	0.8	0.7	-12.5
Peru	212.3	206.5	212.3	206.5	-2.7
Suriname	36.0	37.7	36.0	37.7	4.7
Uruguay	9.4	17.3	9.4	17.3	84.0
Venezuela	91.5	91.8	91.5	91.8	0.3
<b>Total</b>	<b>891.0</b>	<b>887.3</b>	<b>891.0</b>	<b>887.3</b>	<b>-0.4</b>
<b>Central America Antilles</b>					
Anguilla	0.0	0.1	0.0	0.1	0.0
Antigua and Barbuda	0.1	0.1	0.1	0.1	0.0
Aruba	84.2	21.4	84.2	21.4	-74.6
Bahamas	0.9	0.8	0.9	0.8	-11.1
Barbados	0.9	1.5	0.9	1.5	66.7
Belize	0.4	0.8	0.4	0.8	100.0
Bermuda	0.1	0.0	0.1	0.0	0.0
British Virgin Islands	7.4	0.0	7.4	0.0	0.0
Cayman Islands	0.0	0.0	0.0	0.0	0.0
Costa Rica	31.0	26.8	31.0	26.8	-13.5
Cuba	136.9	29.3	136.9	29.3	-78.6
Dominica	0.0	0.0	0.0	0.0	0.0
Dominican Republic	7.3	11.5	7.3	11.5	57.5
El Salvador	3.5	12.9	3.5	12.9	268.6
Grenada	0.0	0.0	0.0	0.0	0.0
Guatemala	24.0	20.1	24.0	20.1	-16.3
Haiti	2.2	1.3	2.2	1.3	-40.9
Honduras	10.6	10.4	10.6	10.4	-1.9
Jamaica	19.8	8.0	19.8	8.0	-59.6
Montserrat	0.0	0.0	0.0	0.0	0.0
Netherlands Antilles	2.4	0.0	2.4	0.0	0.0
Nicaragua	5.0	7.2	5.0	7.2	44.0
Panama	12.3	1.6	12.3	1.6	-87.0
Saint Kitts and Nevis	0.5	0.3	0.5	0.3	-40.0
Saint Lucia	0.0	0.0	0.0	0.0	0.0
Saint Vincent and the Grenadines	0.0	0.0	0.0	0.0	0.0
Trinidad and Tobago	41.6	30.5	41.6	30.5	-26.7
Turks and Caicos Islands	0.1	0.0	0.1	0.0	0.0
<b>Total</b>	<b>391.2</b>	<b>184.5</b>	<b>391.2</b>	<b>184.5</b>	<b>-52.8</b>
<b>All countries</b>	<b>32,225.1</b>	<b>29,206.5</b>	<b>32,225.1</b>	<b>29,206.5</b>	<b>-9.4</b>

**Table 9-1**  
**Imports by province of clearance, customs basis, not seasonally adjusted — January**

	Agricultural and fishing products	Energy products	Forestry products	Industrial goods	Machinery and equipment	Automotive products	Consumer goods	Special transactions	Total
millions of dollars									
Newfoundland Labrador									
2008	4.5	290.8	0.0	3.7	2.0	0.1	0.3	3.9	305.2
2009	2.7	270.4	0.0	4.2	7.2	0.1	0.6	0.0	285.2
Prince Edward Island									
2008	0.2	0.0	0.0	0.0	0.5	0.0	2.6	0.0	3.4
2009	0.1	0.0	0.0	15.9	0.1	0.0	0.0	0.0	16.2
Nova Scotia									
2008	22.4	289.9	1.2	165.0	79.9	239.5	11.3	0.7	810.0
2009	32.1	162.3	1.2	57.5	80.3	86.8	13.2	1.3	434.7
New Brunswick									
2008	28.3	474.1	10.7	73.0	65.1	25.7	17.6	0.3	694.7
2009	30.4	386.1	9.5	63.6	56.2	12.4	12.1	0.1	570.5
Quebec									
2008	328.5	1,865.0	58.3	1,373.2	1,573.1	193.2	854.9	37.0	6,283.1
2009	409.0	872.1	71.4	1,213.0	1,502.3	128.4	1,014.4	18.0	5,228.6
Ontario									
2008	1,182.3	447.9	91.5	3,938.4	5,113.3	3,847.0	2,824.5	214.7	17,659.6
2009	1,355.4	485.1	79.3	3,427.2	4,793.6	2,322.2	2,878.6	485.7	15,827.1
Manitoba									
2008	78.9	18.0	6.6	256.9	444.1	134.7	121.0	6.5	1,066.7
2009	82.9	14.0	7.0	308.3	507.8	125.2	131.6	5.5	1,182.4
Saskatchewan									
2008	28.5	24.1	2.3	202.6	249.8	126.4	19.8	4.1	657.7
2009	27.3	33.2	1.5	208.6	278.1	79.0	17.2	1.2	646.2
Alberta									
2008	162.2	256.5	9.9	421.9	695.5	111.3	85.4	3.2	1,745.9
2009	162.6	313.7	8.5	546.2	669.3	62.1	95.5	5.2	1,863.2
British Columbia									
2008	346.0	156.7	60.3	571.0	929.7	397.5	522.6	7.8	2,991.7
2009	363.5	225.1	39.5	692.5	958.8	259.5	601.6	8.4	3,148.9
Yukon, Northwest Territories and Nunavut									
2008	0.0	2.2	0.0	0.1	4.6	0.2	0.0	0.0	7.1
2009	0.0	0.8	0.0	0.1	2.7	0.0	0.0	0.0	3.6
<b>Total</b>									
<b>2008</b>	<b>2,181.8</b>	<b>3,825.2</b>	<b>240.9</b>	<b>7,005.7</b>	<b>9,157.6</b>	<b>5,075.6</b>	<b>4,460.0</b>	<b>278.3</b>	<b>32,225.1</b>
<b>2009</b>	<b>2,466.1</b>	<b>2,762.8</b>	<b>218.0</b>	<b>6,537.3</b>	<b>8,856.3</b>	<b>3,075.8</b>	<b>4,765.1</b>	<b>525.2</b>	<b>29,206.5</b>

**Table 9-2**  
**Imports by province of clearance, customs basis, not seasonally adjusted — Year to date**

	Agricultural and fishing products	Energy products	Forestry products	Industrial goods	Machinery and equipment	Automotive products	Consumer goods	Special transactions	Total
millions of dollars									
Newfoundland Labrador									
2008	4.5	290.8	0.0	3.7	2.0	0.1	0.3	3.9	305.2
2009	2.7	270.4	0.0	4.2	7.2	0.1	0.6	0.0	285.2
Prince Edward Island									
2008	0.2	0.0	0.0	0.0	0.5	0.0	2.6	0.0	3.4
2009	0.1	0.0	0.0	15.9	0.1	0.0	0.0	0.0	16.2
Nova Scotia									
2008	22.4	289.9	1.2	165.0	79.9	239.5	11.3	0.7	810.0
2009	32.1	162.3	1.2	57.5	80.3	86.8	13.2	1.3	434.7
New Brunswick									
2008	28.3	474.1	10.7	73.0	65.1	25.7	17.6	0.3	694.7
2009	30.4	386.1	9.5	63.6	56.2	12.4	12.1	0.1	570.5
Quebec									
2008	328.5	1,865.0	58.3	1,373.2	1,573.1	193.2	854.9	37.0	6,283.1
2009	409.0	872.1	71.4	1,213.0	1,502.3	128.4	1,014.4	18.0	5,228.6
Ontario									
2008	1,182.3	447.9	91.5	3,938.4	5,113.3	3,847.0	2,824.5	214.7	17,659.6
2009	1,355.4	485.1	79.3	3,427.2	4,793.6	2,322.2	2,878.6	485.7	15,827.1
Manitoba									
2008	78.9	18.0	6.6	256.9	444.1	134.7	121.0	6.5	1,066.7
2009	82.9	14.0	7.0	308.3	507.8	125.2	131.6	5.5	1,182.4
Saskatchewan									
2008	28.5	24.1	2.3	202.6	249.8	126.4	19.8	4.1	657.7
2009	27.3	33.2	1.5	208.6	278.1	79.0	17.2	1.2	646.2
Alberta									
2008	162.2	256.5	9.9	421.9	695.5	111.3	85.4	3.2	1,745.9
2009	162.6	313.7	8.5	546.2	669.3	62.1	95.5	5.2	1,863.2
British Columbia									
2008	346.0	156.7	60.3	571.0	929.7	397.5	522.6	7.8	2,991.7
2009	363.5	225.1	39.5	692.5	958.8	259.5	601.6	8.4	3,148.9
Yukon, Northwest Territories and Nunavut									
2008	0.0	2.2	0.0	0.1	4.6	0.2	0.0	0.0	7.1
2009	0.0	0.8	0.0	0.1	2.7	0.0	0.0	0.0	3.6
<b>Total</b>									
<b>2008</b>	<b>2,181.8</b>	<b>3,825.2</b>	<b>240.9</b>	<b>7,005.7</b>	<b>9,157.6</b>	<b>5,075.6</b>	<b>4,460.0</b>	<b>278.3</b>	<b>32,225.1</b>
<b>2009</b>	<b>2,466.1</b>	<b>2,762.8</b>	<b>218.0</b>	<b>6,537.3</b>	<b>8,856.3</b>	<b>3,075.8</b>	<b>4,765.1</b>	<b>525.2</b>	<b>29,206.5</b>

# Technical notes

---

## The Canadian international merchandise trade statistical program

### I Introduction

The objective of this text is to provide a general overview of the Canadian International Merchandise Trade Statistical Program with special reference to concepts and definitions. The text is intended for the general user and simplicity is emphasized. More technical details can be obtained from the International Trade Division upon request.

### II Conceptual framework

**1. Objectives and coverage:** The primary objective of the Canadian International Merchandise Trade Statistical Program is to measure the change in the stock of material resources of the country resulting from the movement of merchandise into or out of Canada. Information on imports and exports are inputs into the System of National Accounts particularly in the Balance of Payments and Gross Domestic Product, and are used in the formulation of trade and budgetary policies. Governments, importers, exporters, manufacturers and shipping companies use trade statistics to:

- monitor import penetration and export performance;
- monitor commodity price and volume changes;
- examine transport implications.

**2. Trade statistics - Customs basis/Balance of Payments basis:** Merchandise trade statistics are reported and presented on two different bases: Customs basis and Balance of Payment basis. (B.O.P.)

When goods are imported into or exported from Canada, declarations must be filed with Customs giving such information as description and value of the goods, origin and port of clearance of commodities and the mode of transport. Most of this information is required for the purposes of Customs Administration. Statistics developed from administrative records of Customs are commonly referred to as Customs based trade statistics.

Customs based trade statistics are more accurate at measuring imports than they are at measuring exports. This is the case because Customs are typically more vigilant with respect to goods entering the country than they are with goods leaving the country.

Customs based export statistics may understate and/or incorrectly portray the destination of exports. Export statistics are understated when the proper documentation is not filed with Customs. Exports are incorrectly portrayed when the country of final destination is inaccurately reported on the customs documentation - this occurs most frequently when goods are routed through an intermediary country before continuing on to their final destination.

Statistics Canada does not have a measure of undercoverage but periodically conducts reconciliation exercises with its major trading partners, excluding the United States.

On January 1st, 1990, Canada entered into a Memorandum of Understanding (MOU) with the United States concerning the exchange of import data. As a consequence, each administration is using the other's import data to replace its own export data. Canada's international merchandise trade statistics are, therefore, no longer derived exclusively from the administrative records of Canada Border Services Agency, but from United States Customs records as well.

Customs based information is adjusted to conform with the National Accounts concepts and definitions. The adjustments to derive Balance of Payments based trade data include trade definition, valuation and timing related adjustments. The principal difference between the two trade concepts is that Customs based merchandise trade statistics cover the physical movement of goods as they are reflected on customs documents, while Balance of Payments adjusted data are intended to cover all economic transactions between residents and non-residents which involve merchandise trade. This section describes the concepts and processes pertaining to the Customs based trade statistics only. (For further information on Balance of Payments adjusted data see the publication *"Canada's Balance of International Payments" Catalogue no. 67-001-XPB*).

**3. System of trade:** Canadian trade statistics are compiled according to the "General" system of trade as defined by the United Nations Statistical Office. Under this system, imports include all goods which have crossed Canada's territorial boundary, whether for immediate consumption in Canada or stored in bonded Customs warehouses. Domestic exports include goods grown, extracted or manufactured in Canada, including goods of foreign origin which have been materially transformed in Canada. Re-exports are exports of goods of foreign origin which have not been materially transformed in Canada, including foreign goods withdrawn for export from bonded customs warehouses. Total exports are the sum of Domestic exports and Re-exports. Thus the general trade system, in principal, presents all goods entering the country (imports) and all goods leaving the country (exports). It differs from the "Special" system of trade in the treatment of imported goods into Customs bonded warehouses. Under the "Special" system, these goods are counted only if and when they are withdrawn from Customs warehouses for home consumption. They are not counted in export statistics unless they have first cleared Customs.

Conceptually, under the "General" system, the statistical frontier coincides with the geographical boundary, while under the "Special" system, it coincides with the Customs boundary.

**4. Valuation:** For Customs purposes, imports are recorded at values established according to the provisions of the Customs Act, which, since January 1st, 1985, reflects valuation methods based on the General Agreement on Tariffs and Trade (GATT) Valuation Code System. It generally requires the value for duty of imported goods be equivalent to the transaction value or the price actually paid.

To determine the transaction value of imported goods, all transportation and associated costs arising in respect of the goods being appraised prior to and at the place of direct shipment to Canada, are to be added to the price of the goods. Therefore, Canadian imports are valued F.O.B. (Free on Board), place of direct shipment to Canada. It excludes freight and insurance costs in bringing the goods to Canada from the point of direct shipment.

To countries other than the United States, exports are, in principal, valued or recorded at the values declared on export documents which usually reflect the transaction value, i.e. actual selling price, or in the case of a non-arm's length transaction, the transfer price used for company accounting purposes. Canadian exports to overseas countries are valued at F.O.B. port of exit, including domestic freight charges to that point but net of discounts and allowances. As of January, 1990, Canadian exports to the U.S. are valued F.O.B. point of exit from Canada. Prior to 1990, they were valued F.O.B. place of lading net of freight charges, discounts and allowances.

**5. Statistical period:** The reference period is the calendar month and the calendar year. The closing of the statistical month for imports and Canadian exports to the United States is defined as the last calendar day of the month, based as closely as practicable on the date of clearance from Customs.

The closing of the statistical month for exports, to countries other than the United States, is also defined as the last calendar day of the month. Those export documents which are received too late for incorporation in the current month are assigned to the month the transaction took place. If a monthly summary report from a high volume exporter is not received on time, the data are imputed for the current month and revised with the trade value in the following statistical month.

**6. Trading partner attribution (Country of origin/destination):** Exports are attributed to the country, which is the last known destination of the goods at the time of export. Exports to the United States are attributed to the state of destination.

Imports are attributed to their country of origin, that is, the country in which the goods were grown, extracted or manufactured in accordance to the rules of origin administered by Canada Border Services Agency. Imports from the United States are attributed to the state of origin. Prior to 1988, most imports were attributed to the country of export/consignment with the exception of imports from Central and South America.

**7. Principal trading areas:** The “principal trading areas” are country groupings defined as follows:

**United States:** (includes trade with Puerto Rico and the U.S. Virgin Islands).

**Japan:**

**E.U. (European Union):** Austria, Belgium, Bulgaria, Cyprus, Czech Republic, Denmark, Estonia, Finland, France, Germany, Greece, Hungary, Ireland, Italy, Latvia, Lithuania, Luxembourg, Malta, Netherlands, Poland, Portugal, Romania, Slovakia, Slovenia, Spain, Sweden and United Kingdom.

**Other O.E.C.D.:** Australia, Canada, Iceland, Mexico, New Zealand, Norway, South Korea, Switzerland, and Turkey. (The E.U. countries, United States, and Japan are also members of O.E.C.D. - the Organization for Economic Co-operation and Development).

**Other countries:** This group includes all countries and territories other than the United States, Japan, E.U. and other O.E.C.D.

**8. Legal framework:** Import and export statistics with countries other than the United States are derived from information contained on administrative records collected by the Canada Border Services Agency under the Customs Act. Copies of these documents (or information therefrom) are sent to Statistics Canada in accordance with Section 25 of the Statistics Act. It follows that the disclosure of trade statistics is governed by both the Customs Act and the Statistics Act and is subject to the provisions of Section 17.(2)(a) of the latter. Disclosure of export statistics to the United States is now governed by a Memorandum of Understanding which provides for an exchange of detailed import statistics between Canada and the United States.

Questions concerning details of methods not covered by these notes should be addressed to the Marketing and Client Services Section, International Trade Division, Statistics Canada, Ottawa, Ontario, K1A 0T6.

**Telephone:** 1-800-294-5583 or within the area code 613-951-9647

**Facsimile:** 1-800-664-0055 or within the area code 613-951-0117

**Internet:** [trade@statcan.gc.ca](mailto:trade@statcan.gc.ca)