

Labour Force Information

Not for release before 7 A.M. E.D.T. Thursday,
April 9, 2009



March 15 to 21, 2009



Statistics
Canada

Statistique
Canada

Canada

How to obtain more information

Specific inquiries about this product and related statistics or services should be directed to: Labour Force Survey Program, Labour Statistics Division, Statistics Canada, Ottawa, Ontario, K1A 0T6 (telephone: 613-951-4090, toll free number: 1-866-873-8788, fax: 613-951-2869 or by e-mail address: labour@statcan.gc.ca).

For information about this product or the wide range of services and data available from Statistics Canada, visit our website at www.statcan.gc.ca, e-mail us at infostats@statcan.gc.ca, or telephone us, Monday to Friday from 8:30 a.m. to 4:30 p.m., at the following numbers:

Statistics Canada's National Contact Centre

Toll-free telephone (Canada and the United States):

Inquiries line	1-800-263-1136
National telecommunications device for the hearing impaired	1-800-363-7629
Fax line	1-877-287-4369

Local or international calls:

Inquiries line	1-613-951-8116
Fax line	1-613-951-0581

Depository Services Program

Inquiries line	1-800-635-7943
Fax line	1-800-565-7757

To access this product

This product, Catalogue no. 71-001-X, is available free in electronic format. To obtain a single issue, visit our website at www.statcan.gc.ca and select "Publications."

Standards of service to the public

Statistics Canada is committed to serving its clients in a prompt, reliable and courteous manner. To this end, Statistics Canada has developed *standards of service* that its employees observe. To obtain a copy of these service standards, please contact Statistics Canada toll-free at 1-800-263-1136. The service standards are also published on www.statcan.gc.ca under "About us" > "Providing services to Canadians."

Labour Force Information

Not for release before 7 A.M. E.D.T. Thursday, April 9, 2009

March 15 to 21, 2009

Published by authority of the Minister responsible for Statistics Canada

© Minister of Industry, 2009

All rights reserved. The content of this electronic publication may be reproduced, in whole or in part, and by any means, without further permission from Statistics Canada, subject to the following conditions: that it be done solely for the purposes of private study, research, criticism, review or newspaper summary, and/or for non-commercial purposes; and that Statistics Canada be fully acknowledged as follows: Source (or "Adapted from", if appropriate): Statistics Canada, year of publication, name of product, catalogue number, volume and issue numbers, reference period and page(s). Otherwise, no part of this publication may be reproduced, stored in a retrieval system or transmitted in any form, by any means—electronic, mechanical or photocopy—or for any purposes without prior written permission of Licensing Services, Client Services Division, Statistics Canada, Ottawa, Ontario, Canada K1A 0T6.

April 2009

Catalogue no. 71-001-X

ISSN 1492-5478

Frequency: Monthly

Ottawa

La version française de cette publication est disponible sur demande (n° 71-001-X au catalogue).

Note of appreciation

Canada owes the success of its statistical system to a long standing partnership between Statistics Canada, the citizens of Canada, its businesses, governments and other institutions. Accurate and timely statistical information could not be produced without their continued cooperation and goodwill.

User information

Symbols

The following standard symbols are used in Statistics Canada publications:

- . not available for any reference period
- .. not available for a specific reference period
- ... not applicable
- 0 true zero or a value rounded to zero
- 0s value rounded to 0 (zero) where there is a meaningful distinction between true zero and the value that was rounded
- p preliminary
- r revised
- x suppressed to meet the confidentiality requirements of the *Statistics Act*
- E use with caution
- F too unreliable to be published

Special requests (\$)

Custom tabulations can be arranged on an ad hoc or regular basis. This service enables you to specify tables and time series to meet your own requirements. The cost varies according to the request. For more information, contact us toll-free at 1-866-873-8788 or e-mail us at labour@statcan.gc.ca.

Schedule of LFS releases

Reference period - Week ending	Release date
January 17, 2009	February 6, 2009
February 21, 2009	March 13, 2009
March 21, 2009	April 9, 2009
April 18, 2009	May 8 2009
May 16, 2009	June 5, 2009
June 20, 2009	July 10, 2009
July 18, 2009	August 7, 2009
August 15, 2009	September 4, 2009
September 19, 2009	October 9, 2009
October 17, 2009	November 6, 2009
November 14, 2009	December 4, 2009
December 12, 2009	January 8, 2010

Latest LFS release in *The Daily* (free)

Table of contents

Highlights	5
Analysis — March 2009	6
Charts	
1. Employment and unemployment indicators, Canada, seasonally adjusted	8
2. Employment and unemployment indicators, Canada, seasonally adjusted	9
3. Index of employment by industry, Canada, seasonally adjusted, January, 2006=100	10
4. Index of employment by industry, Canada, seasonally adjusted, January 2006=100	11
5. Index of employment by industry, Canada, seasonally adjusted, January 2006=100	12
6. Index of employment by province, seasonally adjusted, January 2006=100	13
7. Index of employment by province, seasonally adjusted, January 2006=100	14
Related products	15
Statistical tables	
1 Labour force characteristics by age and sex, Canada, seasonally adjusted	23
2 Employment by class of worker and industry, Canada, seasonally adjusted	25
3 Labour force characteristics by province, seasonally adjusted	26
4 Selected labour force characteristics (seasonally adjusted)	28
4-1 Newfoundland and Labrador	28
4-2 Prince Edward Island	29
4-3 Nova Scotia	30
4-4 New Brunswick	31
4-5 Quebec	32
4-6 Ontario	33
4-7 Manitoba	34
4-8 Saskatchewan	35
4-9 Alberta	36
4-10 British Columbia	37
5 Labour force characteristics by census metropolitan area (seasonally adjusted)	38
5-1 3 month moving average	38
5-2 Monthly	43

Table of contents – continued

6	Labour force characteristics	44
6-1	by province and economic region, unadjusted for seasonality, 3 month moving average ending in March 2008 and March 2009	44
6-2	by territories, unadjusted for seasonality, 3 month moving average ending in March 2008 and March 2009	49
7	Average usual hours and wages of employees by selected characteristics, Canada, unadjusted for seasonality	50
8	Regional unemployment rates used by the Employment Insurance Program, seasonally adjusted, 3 month moving average	51

Data quality, concepts and methodology

Data quality	53
--------------	----

Highlights

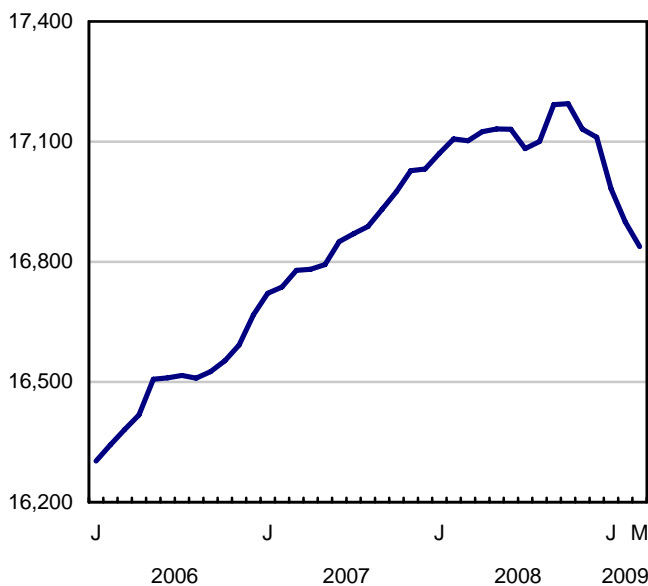
March 2009

Employment declined by 61,000 in March, all in full-time work. This decrease pushed the unemployment rate up 0.3 percentage points to 8.0%, the highest rate in seven years.

Chart 1
Employment and unemployment rates, Canada, seasonally adjusted

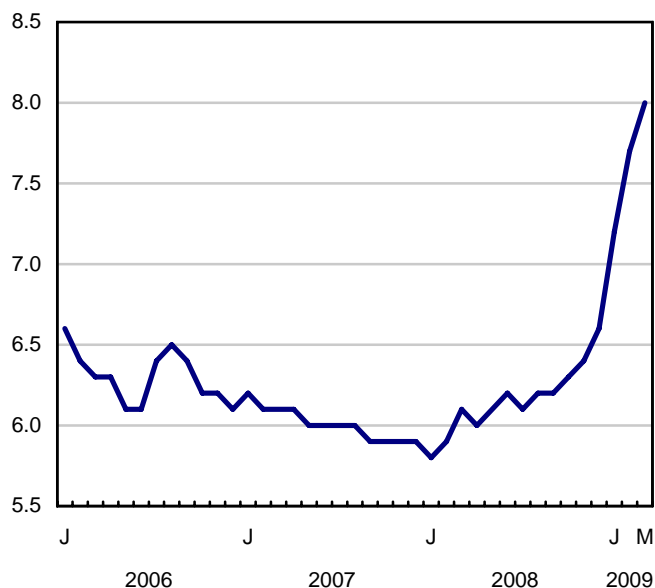
Employment

thousands



Unemployment rate

percent



Analysis — March 2009

Employment declined by 61,000 in March, all in full-time work. This decrease pushed the unemployment rate up 0.3 percentage points to 8.0%, the highest rate in seven years.

Since peaking in October 2008, employment has fallen each month, with net losses totalling 357,000 (-2.1%). In percentage terms, this is the largest decline over a five month period since the 1982 recession.

Since October, full-time employment declined by 2.8% (-387,000) while part-time edged up 0.9% (+30,000).

Losses in March were widespread across a number of industries, most notably in manufacturing; finance, insurance, real estate and leasing; construction; and natural resources. These losses were only partially offset by gains in 'other services'; and business, building and other support services.

Employment fell in several provinces in March, with the largest declines in British Columbia (-23,000), Alberta (-15,000) and Ontario (-11,000). Since October, these three provinces also had the fastest rate of employment decreases.

March's employment losses were spread among core-aged men (25 to 54), youths (15 to 24), and women 55 and over. Since the start of the downturn in October, employment has fallen by 3.1% for core-aged men, the largest five-month loss in 33 years.

In March, the increase in average hourly wages was 4.3% compared to 12 months earlier.

Manufacturing continues to lose ground

Employment declines were concentrated in the goods-producing sector in March, with large losses in manufacturing, construction and natural resources.

Employment in manufacturing fell by 34,000 in March. Of the major industry groups, manufacturing has lost the most workers since October (-134,000, or -6.8%). These losses were concentrated in the manufacturing of fabricated and primary metal; motor vehicle, body, and parts; and wood products.

Construction employment also declined in March, down 18,000, the third notable decrease in four months. In percentage terms, this industry had the fastest employment growth from January to October 2008, and has since experienced the steepest decline. Employment in this industry is down 99,000 (-7.9%) since October 2008, led by losses in British Columbia, Alberta and Ontario. These provinces also had the largest drops in both housing starts and building permits in the most recent year-over-year estimates.

For the second month in a row, employment in natural resources declined, down 11,000 in March. This was led by losses in Alberta, mostly in mining, oil and gas extraction.

In the services sector, employment in finance, insurance, real estate and leasing fell by 20,000 in March. Another service industry posting a drop was accommodation and food services (-15,000). These declines were offset by increases in 'other services' (+23,000) and business, building and other support services (+13,000) in March.

In March, all of the employment losses were among private sector employees (-68,000). Since October, employment among private (-2.5%) and public sector employees (-2.3%) contracted, while self-employment was little changed (-0.1%).

Employment down in several provinces in March

British Columbia's employment fell by 23,000 in March. This brings total employment losses to 69,000 (-3.0%) since October 2008, largely driven by decreases in construction and manufacturing. Over the same period, British Columbia has seen its unemployment rate jump up 2.2 percentage points to 7.4% in March.

Following a large decline the previous month, employment in Alberta fell a further 15,000 in March, pushing the unemployment rate up to 5.8%. Since October, employment losses totalled 48,000 (-2.4%), mainly in the goods-producing sector.

Manitoba's employment also fell in March (-4,000), bringing the unemployment rate up 0.3 percentage points to 5.1%.

In March, employment in Saskatchewan declined by 3,000. Despite this month's loss, employment in this province is unchanged compared to October 2008. The unemployment rate, at 4.7% in March, has increased by 0.8 percentage points since October.

Despite increases in their unemployment rates, Saskatchewan, Manitoba and Alberta continue to have the lowest unemployment rates in the country.

Employment in Ontario edged down by 11,000 in March. Since October, declines have totalled 171,000 (-2.5%), mostly in full-time work. Although the unemployment rate remained unchanged at 8.7% in March, it is up 2.0 percentage points since October, an increase similar to that of British Columbia and Alberta.

In Quebec, although employment was little changed in March, the unemployment rate has increased 0.4 percentage points to 8.3%, as more people entered the labour market. Employment is down 55,000 (-1.4%) since October, and the unemployment rate increased by 1.1 percentage point.

The only other province with a notable employment decline in March was Nova Scotia, down 3,000.

Losses persist among men aged 25 to 54 and youths

In March, employment fell by 26,000 among men aged 25 to 54, while their unemployment rate increased 0.4 percentage points, to 7.7%. Since the start of the downturn in October, the unemployment rate for this group has increased by 2.2 percentage points, while employment declined by 197,000, the largest five-month loss in 33 years. In contrast, there have been fewer employment losses (-39,000) among women aged 25 to 54 years since October, and their unemployment rate increased by 1.0 percentage point, to 5.7%.

Young people aged 15 to 24 years also experienced employment losses in March (-19,000). This pushed their unemployment rate up to 14.8%, the highest in eleven years. Since October, employment for this age group declined by 122,000 and their unemployment rate increased by 2.6 percentage points.

Following an increase the previous month, employment fell by 13,000 for women aged 55 and over in March. This is the only demographic group posting an employment increase since the slowdown began in October 2008 (+9,000).

Note to readers

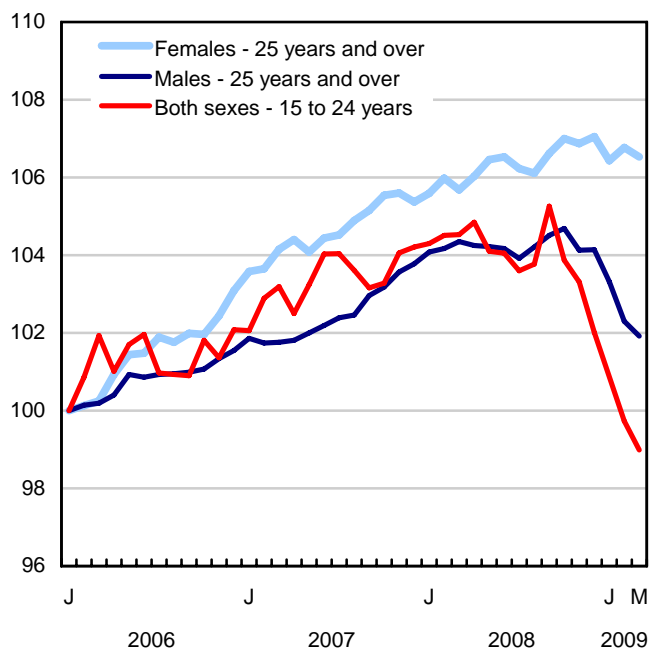
The Labour Force Survey estimates are based on a sample, and are therefore subject to sampling variability. Estimates for smaller geographic areas or industries will have more variability. For an explanation of sampling variability of estimates, and how to use standard errors to assess this variability, consult the Data Quality section in this publication.

Changes in average hourly wages are affected by shifts in the composition of the Canadian labour force. For example, a drop in employment in low-wage occupations or industries will contribute to an increase in the national average hourly wage.

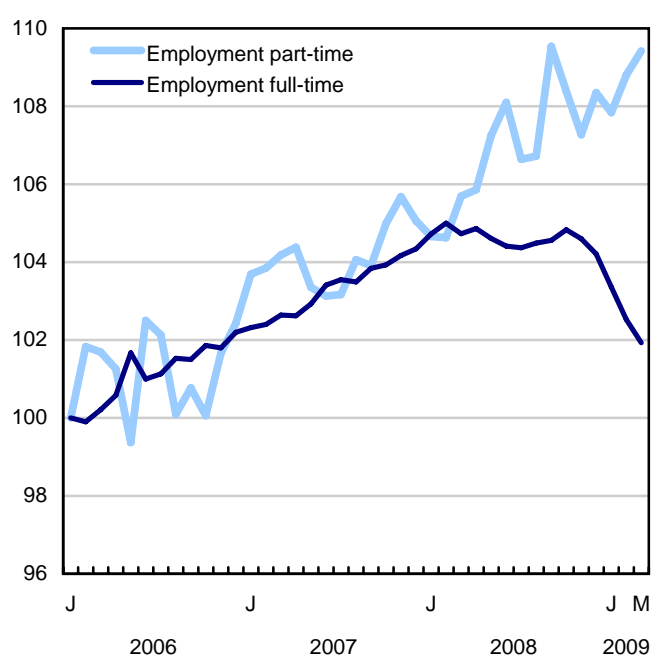
The 2008 Labour Force Historical Review on CD-ROM (71F0004XCB, \$209) is now available.

Chart 1
Employment and unemployment indicators, Canada, seasonally adjusted

Employment index, January 2006=100



Employment index, January 2006=100



Employment index, January 2006=100

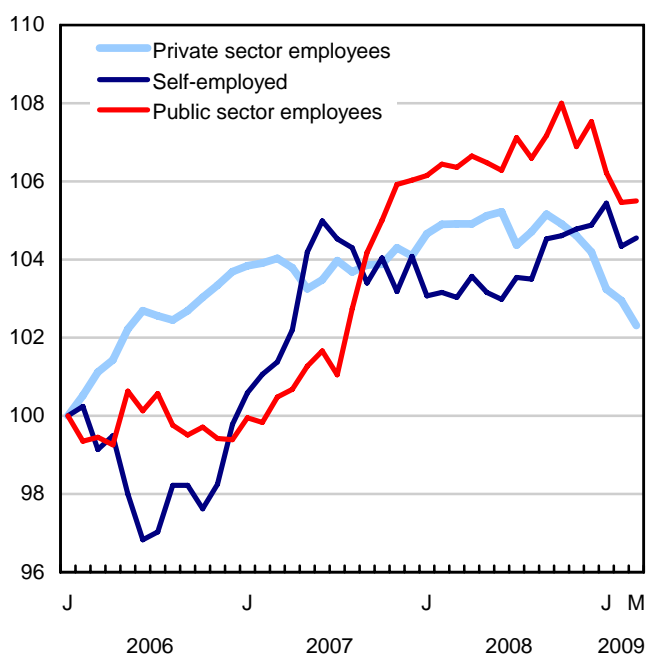
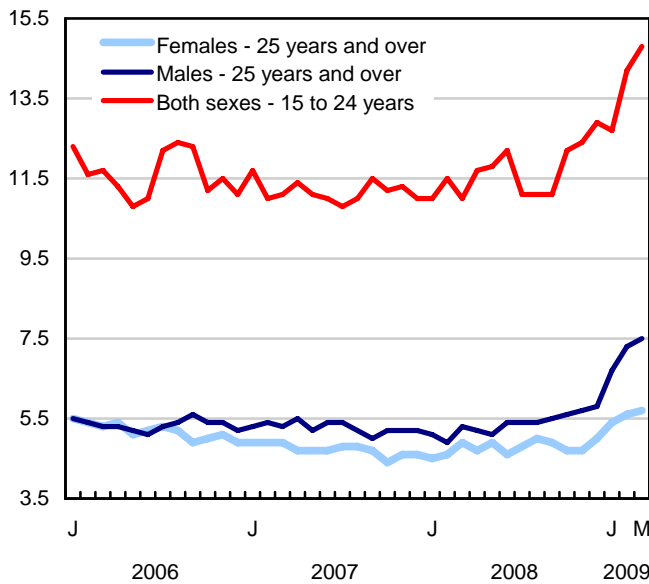
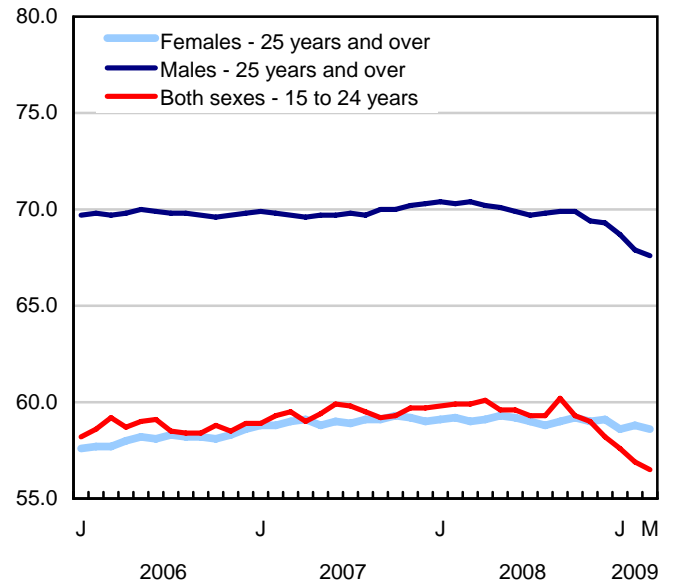


Chart 2
Employment and unemployment indicators, Canada, seasonally adjusted

Unemployment rate (%)



Employment rate (%)



Participation rate (%)

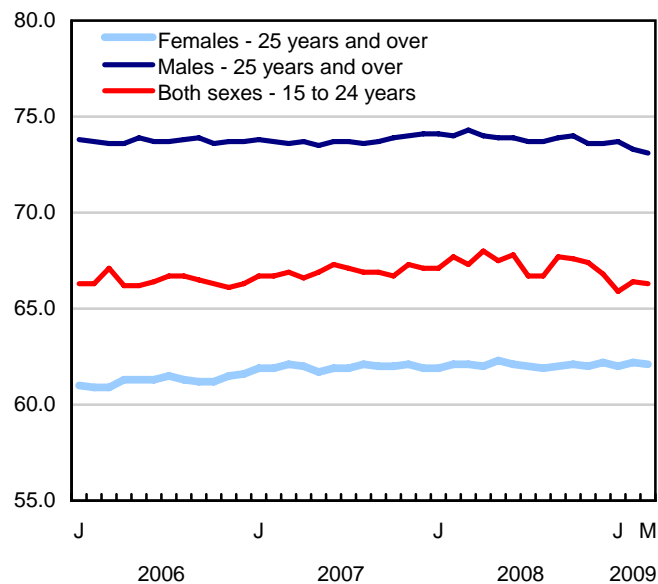


Chart 3
Index of employment by industry, Canada, seasonally adjusted, January, 2006=100

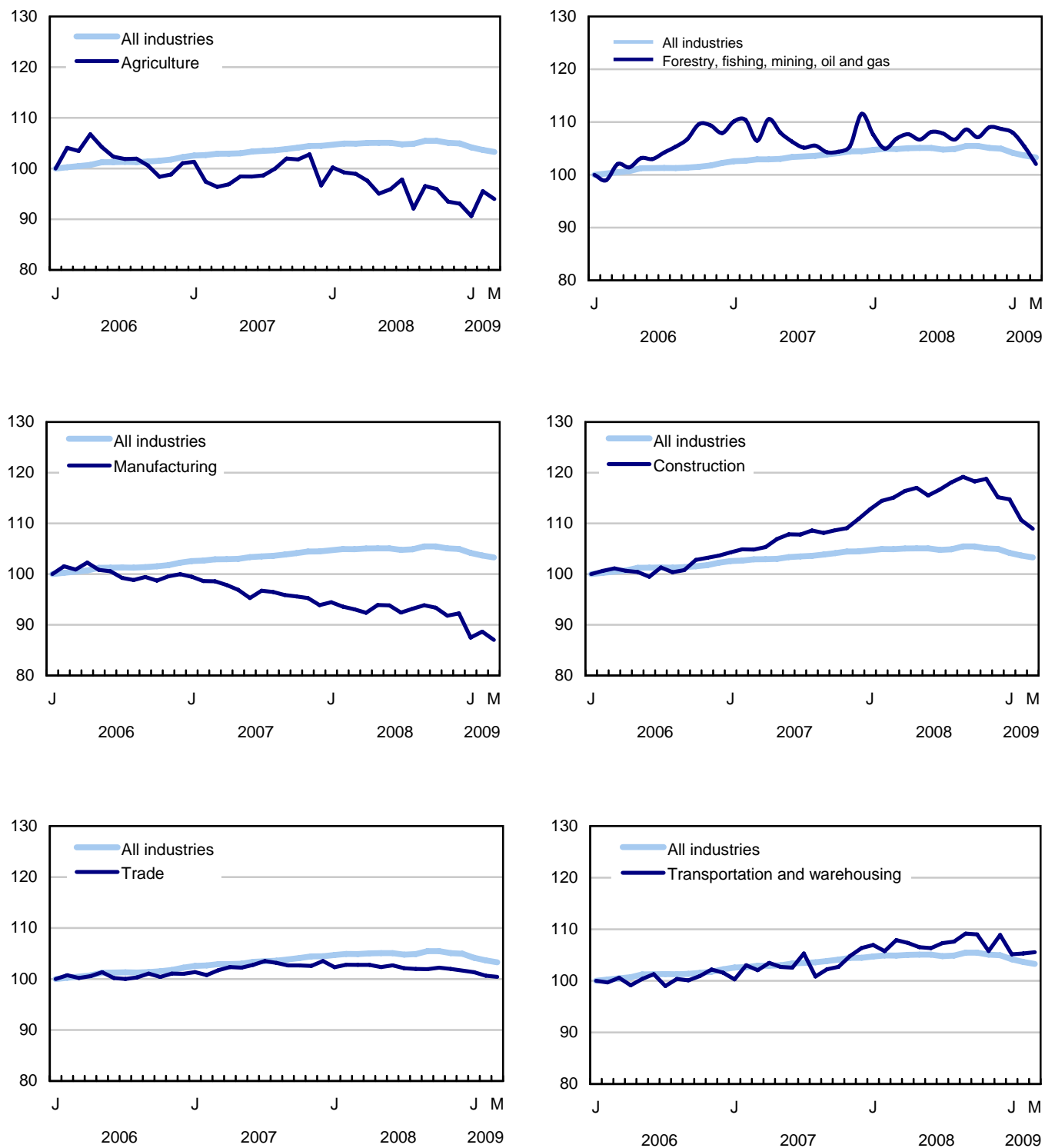


Chart 4
Index of employment by industry, Canada, seasonally adjusted, January 2006=100

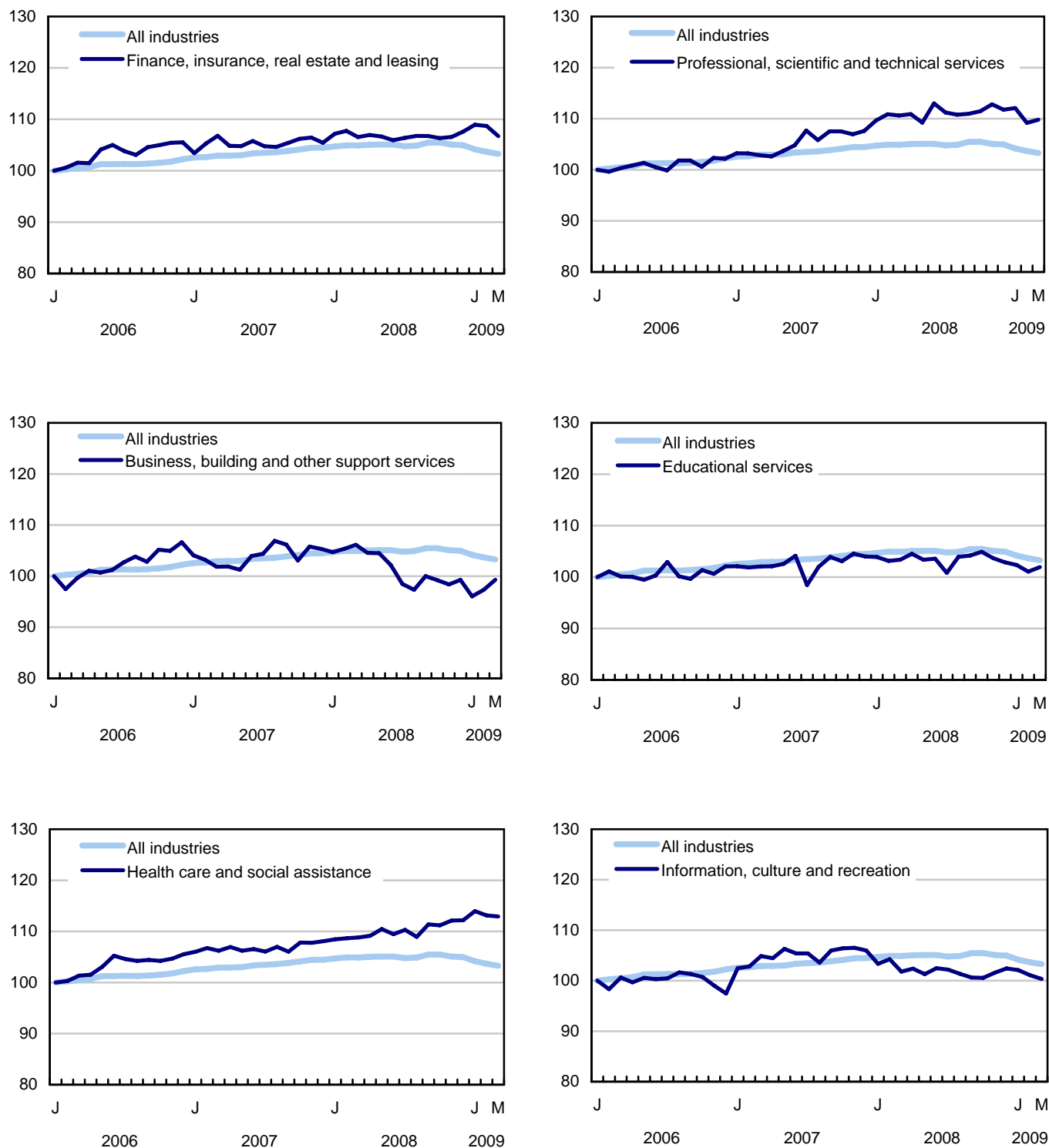


Chart 5
Index of employment by industry, Canada, seasonally adjusted, January 2006=100

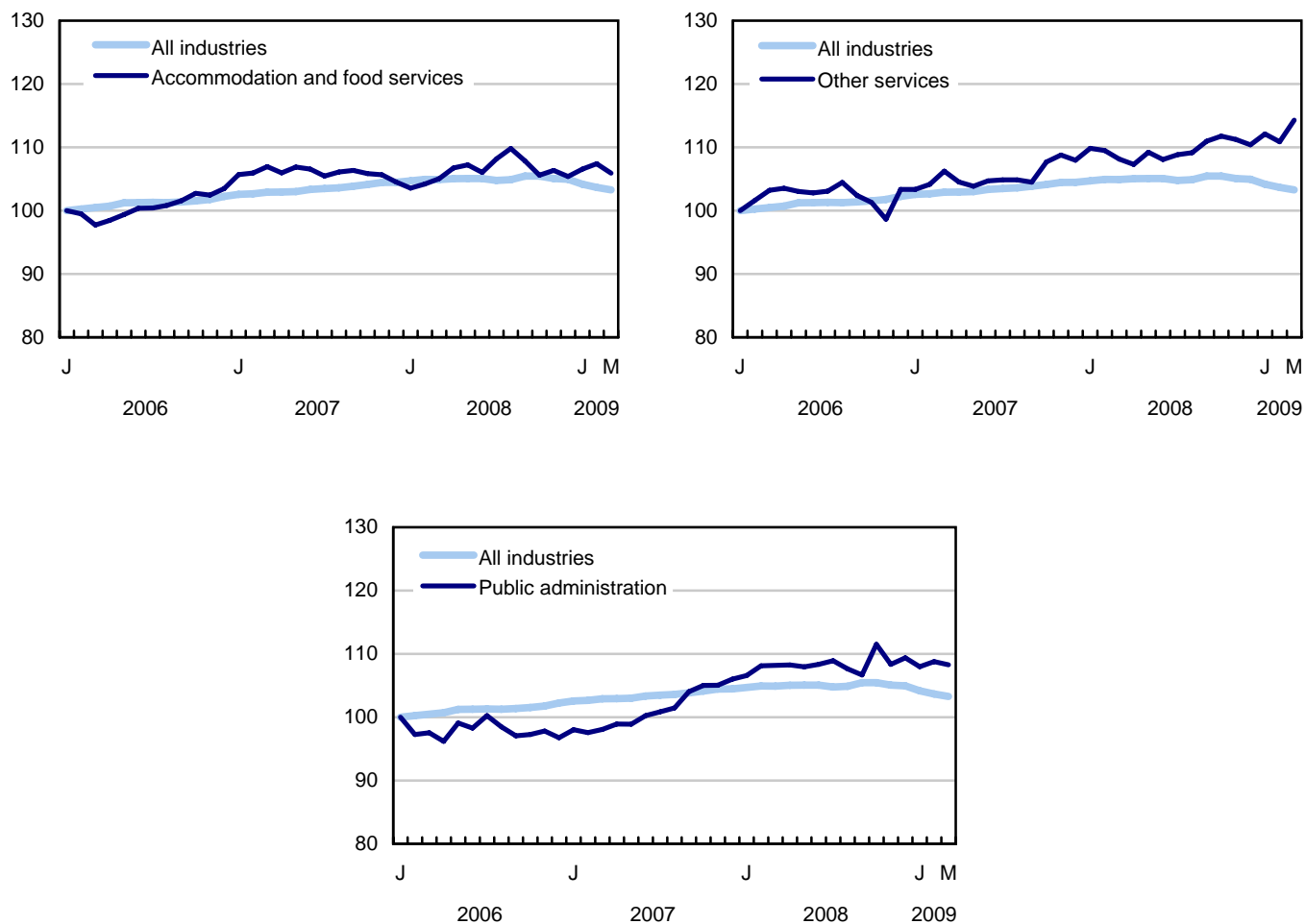


Chart 6
Index of employment by province, seasonally adjusted, January 2006=100

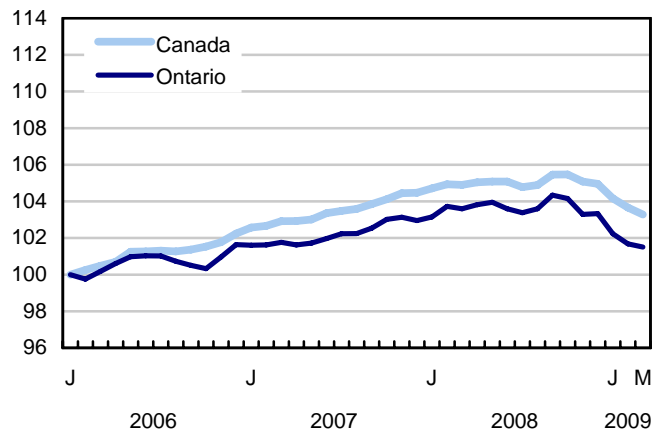
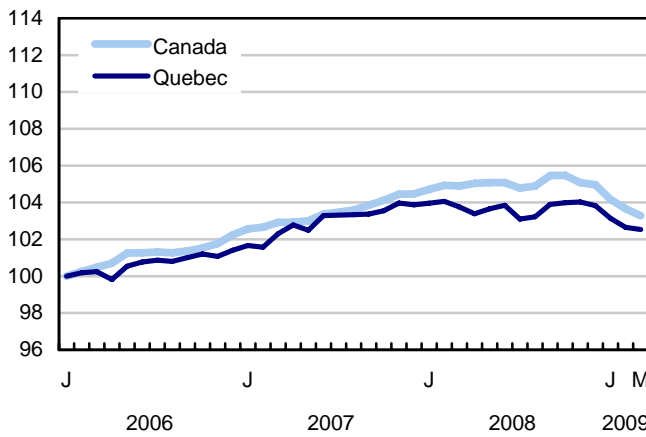
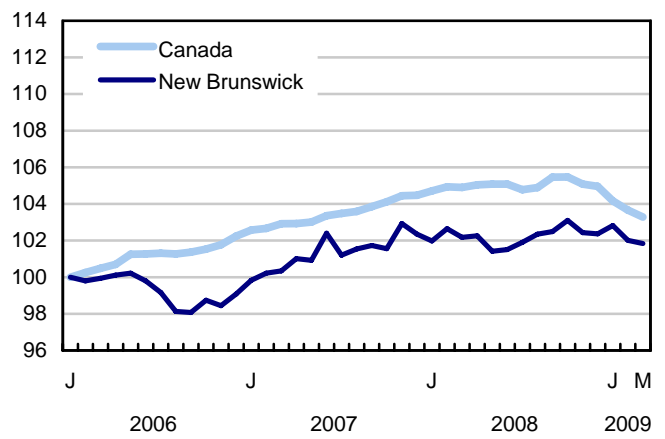
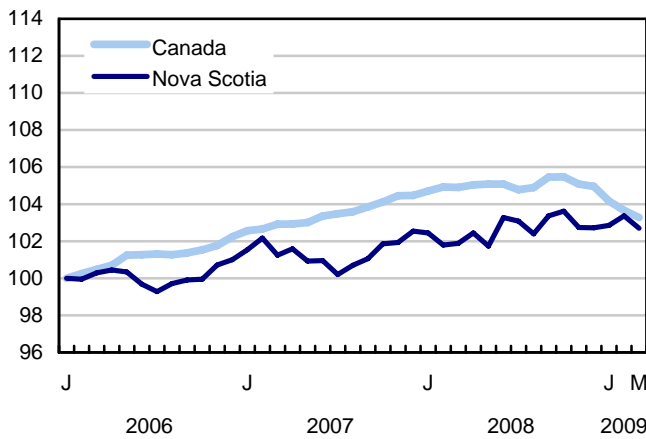
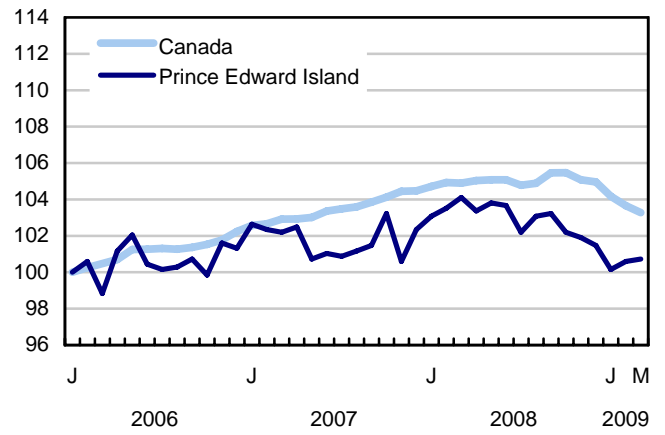
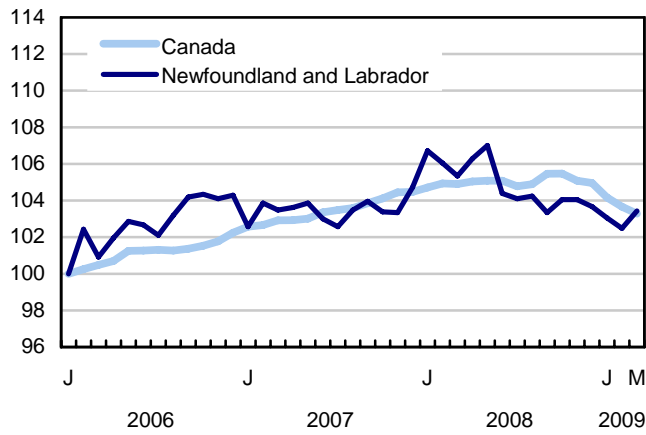
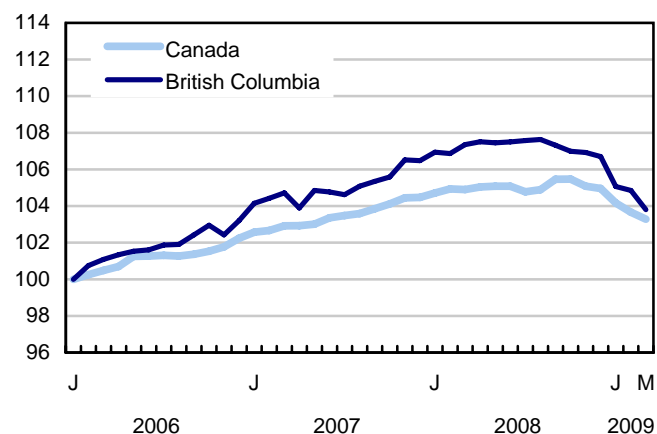
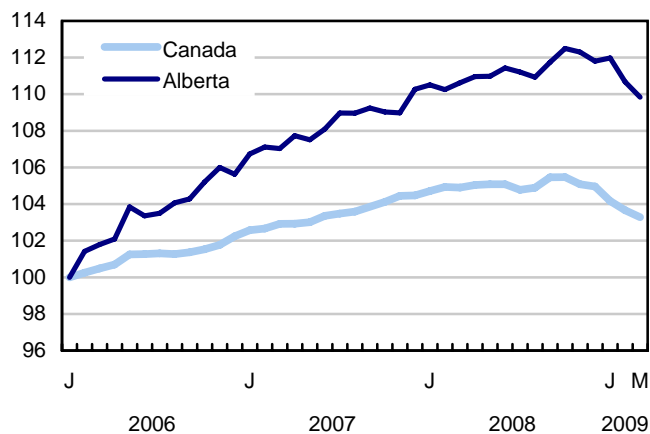
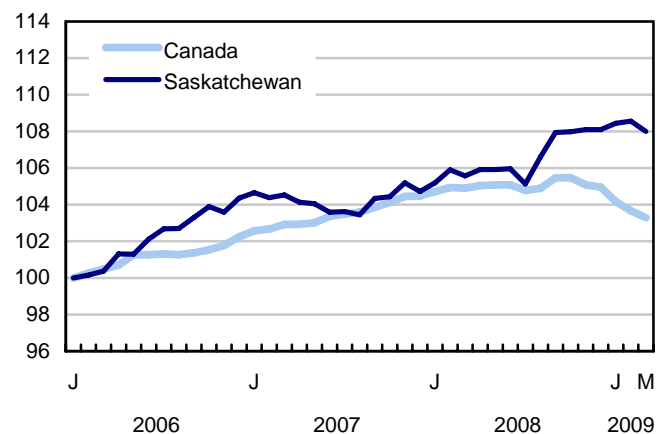
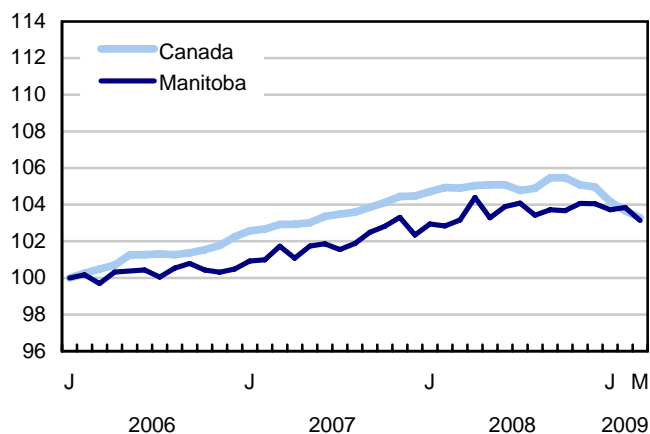


Chart 7
Index of employment by province, seasonally adjusted, January 2006=100



Related products

Selected publications from Statistics Canada

71-222-X	The Canadian Labour Market at a Glance
71-526-X	Methodology of the Canadian Labour Force Survey
71-543-G	Guide to the Labour Force Survey
71-544-X	Labour Force Survey Products and Services
71-587-X	Aboriginal Peoples Living Off-reserve in Western Canada: Estimates from the Labour Force Survey
71-588-X	The Aboriginal Labour Force Analysis Series
71-606-X	The Immigrant Labour Force Analysis Series
71F0004X	Labour Force Historical Review
71F0031X	Improvements to the Labour Force Survey (LFS)
71M0001X	Labour Force Survey Microdata File
75-001-X	Perspectives on Labour and Income

Selected CANSIM tables from Statistics Canada

282-0001	Labour force survey estimates (LFS), by sex and detailed age group
282-0002	Labour force survey estimates (LFS), by sex and detailed age group
282-0003	Labour force survey estimates (LFS), by educational attainment, sex and age group
282-0004	Labour force survey estimates (LFS), by educational attainment, sex and age group
282-0005	Labour force survey estimates (LFS), by full- and part-time students during school months, sex and age group
282-0006	Labour force survey estimates (LFS), by students during summer months, sex and age group
282-0007	Labour force survey estimates (LFS), by North American Industry Classification System (NAICS), sex and age group
282-0008	Labour force survey estimates (LFS), by North American Industry Classification System (NAICS), sex and age group

282-0009	Labour force survey estimates (LFS), by National Occupational Classification for Statistics (NOC-S) and sex
282-0010	Labour force survey estimates (LFS), by National Occupational Classification for Statistics (NOC-S) and sex
282-0011	Labour force survey estimates (LFS), employment by class of worker, North American Industry Classification System (NAICS) and sex
282-0012	Labour force survey estimates (LFS), employment by class of worker, North American Industry Classification System (NAICS) and sex
282-0013	Labour force survey estimates (LFS), part-time employment by reason for part-time work, sex and age group
282-0014	Labour force survey estimates (LFS), part-time employment by reason for part-time work, sex and age group
282-0015	Labour force survey estimates (LFS), by usual hours worked, main or all jobs, sex and age group
282-0016	Labour force survey estimates (LFS), by usual hours worked, main or all jobs, sex and age group
282-0017	Labour force survey estimates (LFS), by actual hours worked, main or all jobs, sex and age group
282-0018	Labour force survey estimates (LFS), by actual hours worked, main or all jobs, sex and age group
282-0019	Labour force survey estimates (LFS), by usual hours worked, class of worker, North American Industry Classification System (NAICS) and sex
282-0020	Labour force survey estimates (LFS), by usual hours worked, class of worker, North American Industry Classification System (NAICS) and sex
282-0021	Labour force survey estimates (LFS), by actual hours worked, class of worker, North American Industry Classification System (NAICS) and sex
282-0022	Labour force survey estimates (LFS), by actual hours worked, class of worker, North American Industry Classification System (NAICS) and sex
282-0023	Labour force survey estimates (LFS), by usual hours worked, class of worker, National Occupational Classification for Statistics (NOC-S) and sex
282-0024	Labour force survey estimates (LFS), by usual hours worked, class of worker, National Occupational Classification for Statistics (NOC-S) and sex
282-0025	Labour force survey estimates (LFS), by actual hours worked, class of worker, National Occupational Classification for Statistics (NOC-S) and sex
282-0026	Labour force survey estimates (LFS), by actual hours worked, class of worker, National Occupational Classification for Statistics (NOC-S) and sex
282-0027	Labour force survey estimates (LFS), by total and average usual and actual hours worked, main or all jobs, type of work, sex and age group

282-0028	Labour force survey estimates (LFS), by total and average usual and actual hours worked, main or all jobs, type of work, sex and age group
282-0029	Labour force survey estimates (LFS), average days lost for personal reasons per full-time employee by North American Industry Classification System (NAICS), sex and age group
282-0030	Labour force survey estimates (LFS), average days lost for personal reasons per full-time employee by National Occupational Classification for Statistics (NOC-S), sex and age group
282-0031	Labour force survey estimates (LFS), multiple jobholders by North American Industry Classification System (NAICS), sex and age group
282-0032	Labour force survey estimates (LFS), multiple jobholders by North American Industry Classification System (NAICS), sex and age group
282-0033	Labour force survey estimates (LFS), multiple jobholders by National Occupational Classification for Statistics (NOC-S), sex and age group
282-0034	Labour force survey estimates (LFS), multiple jobholders by National Occupational Classification for Statistics (NOC-S), sex and age group
282-0035	Labour force survey estimates (LFS), multiple jobholders by usual hours worked at main and all jobs
282-0036	Labour force survey estimates (LFS), multiple jobholders by usual hours worked at main and all jobs
282-0037	Labour force survey estimates (LFS), job tenure by type of work, sex and age group
282-0038	Labour force survey estimates (LFS), job tenure by type of work, sex and age group
282-0039	Labour force survey estimates (LFS), job tenure by National Occupational Classification for Statistics (NOC-S) and sex
282-0040	Labour force survey estimates (LFS), job tenure by National Occupational Classification for Statistics (NOC-S) and sex
282-0041	Labour force survey estimates (LFS), job tenure by North American Industry Classification System (NAICS) and sex
282-0042	Labour force survey estimates (LFS), job tenure by North American Industry Classification System (NAICS) and sex
282-0047	Labour force survey estimates (LFS), duration of unemployment by sex and age group
282-0048	Labour force survey estimates (LFS), duration of unemployment by sex and age group
282-0049	Labour force survey estimates (LFS), unemployment by type of work sought and search method, sex and age group
282-0050	Labour force survey estimates (LFS), unemployment by type of work sought and search method, sex and age group
282-0051	Labour force survey estimates (LFS), retirement age by class of worker and sex

282-0052	Labour force survey estimates (LFS), by census metropolitan area, sex and age group, 3-month moving average
282-0053	Labour force survey estimates (LFS), by census metropolitan area, sex and age group
282-0054	Labour force survey estimates (LFS), by provinces, territories and economic regions, 3-month moving average
282-0055	Labour force survey estimates (LFS), by provinces, territories and economic regions
282-0056	Labour force survey estimates (LFS), employment by census metropolitan area and North American Industry Classification System (NAICS), 3-month moving average
282-0057	Labour force survey estimates (LFS), employment by census metropolitan area and North American Industry Classification System (NAICS)
282-0058	Labour force survey estimates (LFS), employment by census metropolitan area and National Occupational Classification for Statistics (NOC-S), 3-month moving average
282-0059	Labour force survey estimates (LFS), employment by census metropolitan area and National Occupational Classification for Statistics (NOC-S)
282-0060	Labour force survey estimates (LFS), employment by economic region and North American Industry Classification System (NAICS), 3-month moving average
282-0061	Labour force survey estimates (LFS), employment by economic region and North American Industry Classification System (NAICS)
282-0062	Labour force survey estimates (LFS), employment by economic region and National Occupational Classification for Statistics (NOC-S), 3-month moving average
282-0063	Labour force survey estimates (LFS), employment by economic region and National Occupational Classification for Statistics (NOC-S)
282-0064	Labour force survey estimates (LFS), by selected medium-sized cities
282-0069	Labour force survey estimates (LFS), wages of employees by type of work, National Occupational Classification for Statistics (NOC-S), sex and age group
282-0070	Labour force survey estimates (LFS), wages of employees by type of work, National Occupational Classification for Statistics (NOC-S), sex and age group
282-0071	Labour force survey estimates (LFS), wages of employees by type of work, North American Industry Classification System (NAICS), sex and age group
282-0072	Labour force survey estimates (LFS), wages of employees by type of work, North American Industry Classification System (NAICS), sex and age group
282-0073	Labour force survey estimates (LFS), wages of employees by job permanence, union coverage, sex and age group
282-0074	Labour force survey estimates (LFS), wages of employees by job permanence, union coverage, sex and age group
282-0075	Labour force survey estimates (LFS), employees by establishment size, North American Industry Classification System (NAICS), sex and age group

282-0076	Labour force survey estimates (LFS), employees by establishment size, North American Industry Classification System (NAICS), sex and age group
282-0077	Labour force survey estimates (LFS), employees by union coverage, North American Industry Classification System (NAICS), sex and age group
282-0078	Labour force survey estimates (LFS), employees by union coverage, North American Industry Classification System (NAICS), sex and age group
282-0079	Labour force survey estimates (LFS), employees by job permanency, North American Industry Classification System (NAICS), sex and age group
282-0080	Labour force survey estimates (LFS), employees by job permanency, North American Industry Classification System (NAICS), sex and age group
282-0081	Labour force survey estimates (LFS), employees working overtime (weekly) by National Occupational Classification for Statistics (NOC-S), sex and age group
282-0082	Labour force survey estimates (LFS), employees working overtime (weekly) by National Occupational Classification for Statistics (NOC-S), sex and age group
282-0083	Labour force survey estimates (LFS), employees working overtime (weekly) by North American Industry Classification System (NAICS), sex and age group
282-0084	Labour force survey estimates (LFS), employees working overtime (weekly) by North American Industry Classification System (NAICS), sex and age group
282-0085	Labour force survey estimates (LFS), supplementary unemployment rates by sex and age group
282-0086	Labour force survey estimates (LFS), supplementary unemployment rates by sex and age group
282-0087	Labour force survey estimates (LFS), by sex and age group, seasonally adjusted and unadjusted
282-0088	Labour force survey estimates (LFS), employment by North American Industry Classification System (NAICS), seasonally adjusted and unadjusted
282-0089	Labour force survey estimates (LFS), employment by class of worker and sex, seasonally adjusted and unadjusted
282-0090	Labour force survey estimates (LFS), by census metropolitan area, 3-month moving average, seasonally adjusted and unadjusted
282-0091	Labour force survey estimates (LFS), by Montréal, Toronto and Vancouver census metropolitan areas, seasonally adjusted and unadjusted
282-0092	Labour force survey estimates (LFS), actual hours worked by North American Industry Classification System (NAICS), seasonally adjusted
282-0093	Labour force survey estimates (LFS), employment by National Occupational Classification for Statistics (NOC-S), seasonally adjusted
282-0094	Labour force survey estimates (LFS), by North American Industry Classification System (NAICS), Canada, seasonally adjusted
282-0095	Labour force survey estimates (LFS), by full- and part-time students during school months, sex and age group

282-0096	Labour force survey estimates (LFS), by urban and rural areas based on 2001 census boundaries, sex and age group
282-0097	Labour force survey estimates (LFS), by urban and rural areas based on 2001 census boundaries, sex and age group
282-0098	Labour force survey estimates (LFS), employment by urban and rural areas based on 2001 census boundaries, class of worker and North American Industry Classification System (NAICS)
282-0099	Labour force survey estimates (LFS), employment by urban and rural areas based on 2001 census boundaries, class of worker and North American Industry Classification System (NAICS)

Selected surveys from Statistics Canada

3701	Labour Force Survey
------	---------------------

Selected summary tables from Statistics Canada

- *Labour force characteristics*
- *Employment by industry*
- *Selected economic indicators, Canada and United States (monthly and quarterly)*
- *Days lost per worker due to illness or disability, by sex, by provinces*
- *Economic indicators, by province and territory (monthly and quarterly)*
- *Labour force and participation rates by sex and age group*
- *Labour force, employed and unemployed, numbers and rates, by provinces*
- *Employment by industry and sex*
- *Full-time and part-time employment by sex and age group*
- *Labour force characteristics by age and sex*
- *Distribution of employed people, by industry, by province*
- *Labour force characteristics, population 15 years and older, by census metropolitan area*
- *Labour force characteristics, population 15 years and older, by economic region, by province*
- *Days lost per worker by cause, by provinces*
- *Days lost per worker by industry and sex*

- *People employed, by educational attainment*
- *Reasons for part-time work by sex and age group*
- *Self-employment, historical summary*
- *Employment by age, sex, type of work, class of worker and provinces (monthly)*
- *Employment by major industry groups, seasonally adjusted, by provinces (monthly)*
- *Actual hours worked per week by industry, seasonally adjusted (monthly)*
- *Average hourly wages of employees by selected characteristics and profession, unadjusted data, by provinces (monthly)*
- *Labour force characteristics, seasonally adjusted, by province (monthly)*
- *Labour force characteristics, unadjusted, by province (monthly)*
- *Labour force characteristics, seasonally adjusted, by census metropolitan area (3 month moving average)*
- *Labour force characteristics, unadjusted, by census metropolitan area (3 month moving average)*
- *Labour force characteristics, unadjusted, by economic region (3 month moving average)*

Statistical tables

Table 1
Labour force characteristics by age and sex, Canada, seasonally adjusted

	February 2009	March 2009	S.E. ¹	Change from			Percent change from		
				last month	last December	twelve months ago	last month	last December	twelve months ago
in thousands (except rates)									
15 years and over, both sexes									
Population	27,161.2	27,187.6	...	26.4	88.9	384.2	0.1	0.3	1.4
Labour force	18,315.2	18,294.7	27.1	-20.5	-26.5	90.1	-0.1	-0.1	0.5
Employment	16,899.4	16,838.1	27.8	-61.3	-272.9	-264.0	-0.4	-1.6	-1.5
Employment full-time	13,696.9	13,617.4	36.2	-79.5	-304.3	-373.7	-0.6	-2.2	-2.7
Employment part-time	3,202.5	3,220.7	33.1	18.2	31.4	109.7	0.6	1.0	3.5
Unemployment	1,415.9	1,456.6	22.9	40.7	246.5	354.1	2.9	20.4	32.1
Participation rate	67.4	67.3	0.1	-0.1	-0.3	-0.6
Unemployment rate	7.7	8.0	0.1	0.3	1.4	1.9
Employment rate	62.2	61.9	0.1	-0.3	-1.2	-1.9
Part-time rate	19.0	19.1	0.2	0.2	0.5	0.9
15 to 24 years, both sexes									
Population	4,387.4	4,388.8	...	1.4	4.4	19.0	0.0	0.1	0.4
Labour force	2,911.8	2,909.0	16.2	-2.8	-21.5	-32.1	-0.1	-0.7	-1.1
Employment	2,496.9	2,478.3	15.8	-18.6	-75.6	-138.8	-0.7	-3.0	-5.3
Employment full-time	1,360.7	1,337.1	18.2	-23.6	-53.8	-105.7	-1.7	-3.9	-7.3
Employment part-time	1,136.2	1,141.2	18.9	5.0	-21.8	-33.0	0.4	-1.9	-2.8
Unemployment	414.9	430.6	13.6	15.7	53.9	106.6	3.8	14.3	32.9
Participation rate	66.4	66.3	0.4	-0.1	-0.5	-1.0
Unemployment rate	14.2	14.8	0.4	0.6	1.9	3.8
Employment rate	56.9	56.5	0.4	-0.4	-1.7	-3.4
Part-time rate	45.5	46.0	0.6	0.5	0.5	1.2
25 years and over, men									
Population	11,132.7	11,145.1	...	12.4	42.4	183.6	0.1	0.4	1.7
Labour force	8,158.7	8,146.1	13.6	-12.6	-26.6	2.7	-0.2	-0.3	0.0
Employment	7,563.0	7,535.4	15.2	-27.6	-163.9	-179.6	-0.4	-2.1	-2.3
Employment full-time	6,986.1	6,957.4	19.7	-28.7	-201.5	-259.4	-0.4	-2.8	-3.6
Employment part-time	576.9	577.9	15.5	1.0	37.5	79.6	0.2	6.9	16.0
Unemployment	595.7	610.7	13.2	15.0	137.3	182.3	2.5	29.0	42.6
Participation rate	73.3	73.1	0.1	-0.2	-0.5	-1.2
Unemployment rate	7.3	7.5	0.2	0.2	1.7	2.2
Employment rate	67.9	67.6	0.1	-0.3	-1.7	-2.8
Part-time rate	7.6	7.7	0.2	0.0	0.7	1.2
25 years and over, women									
Population	11,641.1	11,653.6	...	12.5	42.0	181.5	0.1	0.4	1.6
Labour force	7,244.7	7,239.6	15.7	-5.1	21.7	119.6	-0.1	0.3	1.7
Employment	6,839.5	6,824.4	15.8	-15.1	-33.4	54.4	-0.2	-0.5	0.8
Employment full-time	5,350.1	5,322.9	23.5	-27.2	-49.0	-8.6	-0.5	-0.9	-0.2
Employment part-time	1,489.4	1,501.5	21.7	12.1	15.6	63.0	0.8	1.0	4.4
Unemployment	405.2	415.2	12.3	10.0	55.2	65.1	2.5	15.3	18.6
Participation rate	62.2	62.1	0.1	-0.1	-0.1	0.0
Unemployment rate	5.6	5.7	0.2	0.1	0.7	0.8
Employment rate	58.8	58.6	0.1	-0.2	-0.5	-0.4
Part-time rate	21.8	22.0	0.3	0.2	0.3	0.8
25 to 54 years, both sexes									
Population	14,476.9	14,483.1	...	6.2	16.6	93.2	0.0	0.1	0.6
Labour force	12,508.0	12,511.6	20.1	3.6	-31.3	20.6	0.0	-0.2	0.2
Employment	11,696.7	11,668.2	21.8	-28.5	-200.3	-182.3	-0.2	-1.7	-1.5
Unemployment	811.3	843.4	16.9	32.1	169.0	202.9	4.0	25.1	31.7
Participation rate	86.4	86.4	0.1	0.0	-0.3	-0.4
Unemployment rate	6.5	6.7	0.1	0.2	1.3	1.6
Employment rate	80.8	80.6	0.2	-0.2	-1.4	-1.8

See footnotes at the end of the table.

Table 1 – continued

Labour force characteristics by age and sex, Canada, seasonally adjusted

	February 2009	March 2009	S.E. ¹	Change from			Percent change from		
				last month	last December	twelve months ago	last month	last December	twelve months ago
in thousands (except rates)									
25 to 54 years, men									
Population	7,233.3	7,236.6	...	3.3	9.3	49.3	0.0	0.1	0.7
Labour force	6,555.4	6,553.5	12.7	-1.9	-37.8	-48.3	0.0	-0.6	-0.7
Employment	6,073.7	6,047.4	14.7	-26.3	-160.4	-204.9	-0.4	-2.6	-3.3
Unemployment	481.8	506.1	12.2	24.3	122.6	156.6	5.0	32.0	44.8
Participation rate	90.6	90.6	0.2	0.0	-0.6	-1.3
Unemployment rate	7.3	7.7	0.2	0.4	1.9	2.4
Employment rate	84.0	83.6	0.2	-0.4	-2.3	-3.4
25 to 54 years, women									
Population	7,243.6	7,246.5	...	2.9	7.4	43.9	0.0	0.1	0.6
Labour force	5,952.6	5,958.1	15.0	5.5	6.6	68.9	0.1	0.1	1.2
Employment	5,623.1	5,620.8	15.5	-2.3	-39.9	22.7	0.0	-0.7	0.4
Unemployment	329.5	337.3	11.5	7.8	46.4	46.3	2.4	16.0	15.9
Participation rate	82.2	82.2	0.2	0.0	0.0	0.4
Unemployment rate	5.5	5.7	0.2	0.2	0.8	0.8
Employment rate	77.6	77.6	0.2	0.0	-0.6	-0.1
55 years and over, both sexes									
Population	8,296.9	8,315.6	...	18.7	67.8	271.9	0.2	0.8	3.4
Labour force	2,895.4	2,874.1	15.8	-21.3	26.4	101.6	-0.7	0.9	3.7
Employment	2,705.8	2,691.6	15.8	-14.2	2.9	57.0	-0.5	0.1	2.2
Unemployment	189.6	182.6	8.0	-7.0	23.6	44.7	-3.7	14.8	32.4
Participation rate	34.9	34.6	0.2	-0.3	0.1	0.1
Unemployment rate	6.5	6.4	0.3	-0.1	0.8	1.4
Employment rate	32.6	32.4	0.2	-0.2	-0.2	-0.4
55 years and over, men									
Population	3,899.4	3,908.5	...	9.1	33.2	134.3	0.2	0.9	3.6
Labour force	1,603.3	1,592.6	10.4	-10.7	11.2	51.0	-0.7	0.7	3.3
Employment	1,489.3	1,488.0	10.5	-1.3	-3.5	25.3	-0.1	-0.2	1.7
Unemployment	114.0	104.7	5.8	-9.3	14.8	25.8	-8.2	16.5	32.7
Participation rate	41.1	40.7	0.3	-0.4	-0.1	-0.1
Unemployment rate	7.1	6.6	0.4	-0.5	0.9	1.5
Employment rate	38.2	38.1	0.3	-0.1	-0.4	-0.7
55 years and over, women									
Population	4,397.5	4,407.1	...	9.6	34.6	137.6	0.2	0.8	3.2
Labour force	1,292.1	1,281.5	10.9	-10.6	15.2	50.6	-0.8	1.2	4.1
Employment	1,216.4	1,203.6	10.9	-12.8	6.4	31.7	-1.1	0.5	2.7
Unemployment	75.7	77.9	5.4	2.2	8.7	18.9	2.9	12.6	32.0
Participation rate	29.4	29.1	0.3	-0.3	0.1	0.3
Unemployment rate	5.9	6.1	0.4	0.2	0.6	1.3
Employment rate	27.7	27.3	0.3	-0.4	-0.1	-0.1

1. Average standard error of change in two consecutive months (see "Sampling Errors" in Data Quality for further explanations).

Note(s): Related CANSIM table 282-0087.

Table 2
Employment by class of worker and industry, Canada, seasonally adjusted

	February 2009	March 2009	S.E. ¹	Change from			Percent change from		
				last month	last December	twelve months ago	last month	last December	twelve months ago
in thousands									
Class of worker									
Employees	14,254.7	14,188.3	32.9	-66.4	-264.3	-302.4	-0.5	-1.8	-2.1
Self-employed ²	2,644.6	2,649.8	22.2	5.2	-8.6	38.4	0.2	-0.3	1.5
Public/private sector employees									
Public sector employees	3,380.5	3,381.8	21.5	1.3	-64.9	-27.6	0.0	-1.9	-0.8
Private sector employees	10,874.3	10,806.5	33.6	-67.8	-199.4	-274.8	-0.6	-1.8	-2.5
Industry	16,899.4	16,838.1	27.8	-61.3	-272.9	-264.0	-0.4	-1.6	-1.5
Goods-producing sector	3,845.3	3,782.7	23.6	-62.6	-194.4	-226.8	-1.6	-4.9	-5.7
Agriculture	324.5	319.3	7.3	-5.2	3.1	-16.8	-1.6	1.0	-5.0
Forestry, fishing, mining, oil and gas	333.4	322.9	6.9	-10.5	-21.0	-15.2	-3.1	-6.1	-4.5
Utilities	143.1	148.7	4.6	5.6	-0.3	-2.2	3.9	-0.2	-1.5
Construction	1,169.9	1,151.7	14.8	-18.2	-65.8	-64.8	-1.6	-5.4	-5.3
Manufacturing	1,874.3	1,840.1	17.7	-34.2	-110.4	-127.8	-1.8	-5.7	-6.5
Services-producing sector	13,054.1	13,055.4	31.2	1.3	-78.5	-37.2	0.0	-0.6	-0.3
Trade	2,635.9	2,629.9	20.8	-6.0	-31.8	-61.1	-0.2	-1.2	-2.3
Transportation and warehousing	841.0	843.1	12.5	2.1	-26.6	-18.7	0.2	-3.1	-2.2
Finance, insurance, real estate and leasing	1,094.7	1,074.9	14.0	-19.8	-8.8	2.0	-1.8	-0.8	0.2
Professional, scientific and technical services	1,179.5	1,186.0	15.0	6.5	-21.1	-9.0	0.6	-1.7	-0.8
Business, building and other support services	657.0	670.4	12.7	13.4	0.3	-46.1	2.0	0.0	-6.4
Educational services	1,163.8	1,173.8	14.2	10.0	-10.7	-16.6	0.9	-0.9	-1.4
Health care and social assistance	1,955.7	1,952.4	15.7	-3.3	12.9	71.1	-0.2	0.7	3.8
Information, culture and recreation	752.8	747.3	12.5	-5.5	-15.3	-10.7	-0.7	-2.0	-1.4
Accommodation and food services	1,083.8	1,068.6	15.2	-15.2	5.2	8.7	-1.4	0.5	0.8
Other services	760.2	783.6	11.6	23.4	26.7	42.2	3.1	3.5	5.7
Public administration	929.6	925.4	11.2	-4.2	-9.3	0.8	-0.5	-1.0	0.1

1. Average standard error of change in two consecutive months (see "Sampling Errors" in Data Quality for further explanations).

2. Includes both incorporated and unincorporated working owners, self-employed persons who do not have a business and persons working in a family business without pay.

Note(s): Related CANSIM Tables 282-0088, 282-0089.

Table 3
Labour force characteristics by province, seasonally adjusted

	February 2009	March 2009	S.E. ¹	Change from			Percent change from		
				last month	last December	twelve months ago	last month	last December	twelve months ago
in thousands (except rates)									
Newfoundland and Labrador									
Population	427.9	428.0	...	0.1	0.4	2.6	0.0	0.1	0.6
Labour force	253.3	254.3	2.2	1.0	2.3	1.0	0.4	0.9	0.4
Employment	215.0	217.0	2.2	2.0	-0.5	-4.0	0.9	-0.2	-1.8
Employment full-time	183.6	185.2	2.5	1.6	-0.4	-2.2	0.9	-0.2	-1.2
Employment part-time	31.4	31.8	1.9	0.4	0.0	-1.8	1.3	0.0	-5.4
Unemployment	38.3	37.3	2.1	-1.0	2.8	5.1	-2.6	8.1	15.8
Participation rate	59.2	59.4	0.5	0.2	0.5	-0.1
Unemployment rate	15.1	14.7	0.8	-0.4	1.0	2.0
Employment rate	50.2	50.7	0.5	0.5	-0.2	-1.3
Prince Edward Island									
Population	115.3	115.4	...	0.1	0.1	1.6	0.1	0.1	1.4
Labour force	78.2	77.6	0.6	-0.6	-0.9	-1.7	-0.8	-1.1	-2.1
Employment	68.6	68.7	0.7	0.1	-0.5	-2.3	0.1	-0.7	-3.2
Employment full-time	58.3	58.4	0.8	0.1	0.6	-0.6	0.2	1.0	-1.0
Employment part-time	10.3	10.3	0.7	0.0	-1.1	-1.7	0.0	-9.6	-14.2
Unemployment	9.6	8.9	0.6	-0.7	-0.3	0.6	-7.3	-3.3	7.2
Participation rate	67.8	67.2	0.5	-0.6	-0.9	-2.5
Unemployment rate	12.3	11.5	0.8	-0.8	-0.2	1.0
Employment rate	59.5	59.5	0.6	0.0	-0.5	-2.9
Nova Scotia									
Population	771.4	771.6	...	0.2	1.0	4.6	0.0	0.1	0.6
Labour force	500.4	497.7	2.8	-2.7	3.7	9.9	-0.5	0.7	2.0
Employment	456.4	453.4	2.9	-3.0	-0.1	3.6	-0.7	0.0	0.8
Employment full-time	372.3	370.4	3.6	-1.9	-1.2	4.0	-0.5	-0.3	1.1
Employment part-time	84.1	82.9	3.1	-1.2	0.9	-0.5	-1.4	1.1	-0.6
Unemployment	44.0	44.3	2.6	0.3	3.8	6.3	0.7	9.4	16.6
Participation rate	64.9	64.5	0.4	-0.4	0.4	0.9
Unemployment rate	8.8	8.9	0.5	0.1	0.7	1.1
Employment rate	59.2	58.8	0.4	-0.4	-0.1	0.2
New Brunswick									
Population	620.4	620.5	...	0.1	0.8	3.9	0.0	0.1	0.6
Labour force	400.6	403.1	2.4	2.5	2.1	3.0	0.6	0.5	0.7
Employment	365.3	364.7	2.5	-0.6	-1.9	-1.2	-0.2	-0.5	-0.3
Employment full-time	310.6	306.0	3.0	-4.6	-4.8	-3.3	-1.5	-1.5	-1.1
Employment part-time	54.6	58.7	2.4	4.1	2.9	2.2	7.5	5.2	3.9
Unemployment	35.4	38.4	2.2	3.0	4.0	4.1	8.5	11.6	12.0
Participation rate	64.6	65.0	0.4	0.4	0.3	0.1
Unemployment rate	8.8	9.5	0.5	0.7	0.9	0.9
Employment rate	58.9	58.8	0.4	-0.1	-0.4	-0.5
Quebec									
Population	6,411.2	6,416.1	...	4.9	16.0	62.6	0.1	0.2	1.0
Labour force	4,169.3	4,181.7	14.2	12.4	-9.9	-5.6	0.3	-0.2	-0.1
Employment	3,840.1	3,835.5	14.7	-4.6	-48.8	-46.3	-0.1	-1.3	-1.2
Employment full-time	3,114.2	3,110.2	19.0	-4.0	-24.6	-50.0	-0.1	-0.8	-1.6
Employment part-time	725.9	725.2	17.4	-0.7	-24.3	3.6	-0.1	-3.2	0.5
Unemployment	329.2	346.3	12.7	17.1	39.1	40.9	5.2	12.7	13.4
Participation rate	65.0	65.2	0.2	0.2	-0.3	-0.7
Unemployment rate	7.9	8.3	0.3	0.4	1.0	1.0
Employment rate	59.9	59.8	0.2	-0.1	-0.9	-1.3

See footnotes at the end of the table.

Table 3 – continued

Labour force characteristics by province, seasonally adjusted

	February 2009	March 2009	S.E. ¹	Change from			Percent change from		
				last month	last December	twelve months ago	last month	last December	twelve months ago
in thousands (except rates)									
Ontario									
Population	10,604.6	10,614.3	...	9.7	33.5	154.4	0.1	0.3	1.5
Labour force	7,185.6	7,168.4	18.4	-17.2	-13.6	29.5	-0.2	-0.2	0.4
Employment	6,558.9	6,548.1	18.8	-10.8	-117.1	-134.6	-0.2	-1.8	-2.0
Employment full-time	5,316.7	5,277.1	23.8	-39.6	-144.0	-180.8	-0.7	-2.7	-3.3
Employment part-time	1,242.2	1,271.0	22.1	28.8	26.9	46.2	2.3	2.2	3.8
Unemployment	626.7	620.4	15.9	-6.3	103.6	164.2	-1.0	20.0	36.0
Participation rate	67.8	67.5	0.2	-0.3	-0.4	-0.8
Unemployment rate	8.7	8.7	0.2	0.0	1.5	2.3
Employment rate	61.8	61.7	0.2	-0.1	-1.3	-2.2
Manitoba									
Population	916.8	918.0	...	1.2	3.2	12.1	0.1	0.3	1.3
Labour force	638.4	636.0	2.7	-2.4	-0.5	4.6	-0.4	-0.1	0.7
Employment	607.9	603.7	2.8	-4.2	-5.4	-0.2	-0.7	-0.9	0.0
Employment full-time	494.2	495.4	3.9	1.2	2.3	1.5	0.2	0.5	0.3
Employment part-time	113.7	108.3	3.6	-5.4	-7.7	-1.7	-4.7	-6.6	-1.5
Unemployment	30.5	32.3	2.2	1.8	4.9	4.8	5.9	17.9	17.5
Participation rate	69.6	69.3	0.3	-0.3	-0.3	-0.4
Unemployment rate	4.8	5.1	0.3	0.3	0.8	0.7
Employment rate	66.3	65.8	0.3	-0.5	-0.8	-0.9
Saskatchewan									
Population	775.6	776.3	...	0.7	2.3	14.1	0.1	0.3	1.8
Labour force	548.3	545.4	2.3	-2.9	2.4	15.0	-0.5	0.4	2.8
Employment	522.5	519.8	2.4	-2.7	-0.5	11.7	-0.5	-0.1	2.3
Employment full-time	424.2	421.4	3.2	-2.8	-5.0	3.0	-0.7	-1.2	0.7
Employment part-time	98.3	98.5	2.9	0.2	4.6	8.8	0.2	4.9	9.8
Unemployment	25.8	25.6	1.8	-0.2	2.9	3.4	-0.8	12.8	15.3
Participation rate	70.7	70.3	0.3	-0.4	0.1	0.7
Unemployment rate	4.7	4.7	0.3	0.0	0.5	0.5
Employment rate	67.4	67.0	0.3	-0.4	-0.2	0.3
Alberta									
Population	2,836.1	2,841.7	...	5.6	18.0	62.5	0.2	0.6	2.2
Labour force	2,116.5	2,110.1	8.0	-6.4	-0.1	37.5	-0.3	0.0	1.8
Employment	2,002.1	1,987.2	8.4	-14.9	-35.3	-14.0	-0.7	-1.7	-0.7
Employment full-time	1,652.6	1,632.9	11.3	-19.7	-47.9	-59.8	-1.2	-2.8	-3.5
Employment part-time	349.5	354.3	9.8	4.8	12.6	45.8	1.4	3.7	14.8
Unemployment	114.5	123.0	5.8	8.5	35.2	51.6	7.4	40.1	72.3
Participation rate	74.6	74.3	0.3	-0.3	-0.4	-0.3
Unemployment rate	5.4	5.8	0.3	0.4	1.6	2.4
Employment rate	70.6	69.9	0.3	-0.7	-1.7	-2.1
British Columbia									
Population	3,681.8	3,685.8	...	4.0	13.6	65.9	0.1	0.4	1.8
Labour force	2,424.4	2,420.2	9.8	-4.2	-12.3	-3.4	-0.2	-0.5	-0.1
Employment	2,262.7	2,240.1	9.9	-22.6	-62.6	-76.6	-1.0	-2.7	-3.3
Employment full-time	1,769.9	1,760.0	14.0	-9.9	-79.6	-85.3	-0.6	-4.3	-4.6
Employment part-time	492.9	480.1	12.8	-12.8	16.9	8.6	-2.6	3.6	1.8
Unemployment	161.7	180.1	7.2	18.4	50.4	73.3	11.4	38.9	68.6
Participation rate	65.8	65.7	0.3	-0.1	-0.5	-1.3
Unemployment rate	6.7	7.4	0.3	0.7	2.1	3.0
Employment rate	61.5	60.8	0.3	-0.7	-1.9	-3.2

1. Average standard error of change in two consecutive months (see "Sampling Errors" in Data Quality for further explanations).

Note(s): Related CANSIM Table 282-0087.

Table 4-1
Selected labour force characteristics (seasonally adjusted) — Newfoundland and Labrador

	February 2009	March 2009	S.E. ¹	Change from			Percent change from		
				last month	last December	twelve months ago	last month	last December	twelve months ago
in thousands (except rates)									
Both sexes, 15 years and over									
Population	427.9	428.0	...	0.1	0.4	2.6	0.0	0.1	0.6
Labour force	253.3	254.3	2.2	1.0	2.3	1.0	0.4	0.9	0.4
Employment	215.0	217.0	2.2	2.0	-0.5	-4.0	0.9	-0.2	-1.8
Employment full-time	183.6	185.2	2.5	1.6	-0.4	-2.2	0.9	-0.2	-1.2
Unemployment	38.3	37.3	2.1	-1.0	2.8	5.1	-2.6	8.1	15.8
Participation rate	59.2	59.4	0.5	0.2	0.5	-0.1
Unemployment rate	15.1	14.7	0.8	-0.4	1.0	2.0
Employment rate	50.2	50.7	0.5	0.5	-0.2	-1.3
Part-time rate	14.6	14.7	0.8	0.0	0.0	-0.5
Both sexes, 15 to 24 years									
Population	61.6	61.5	...	-0.1	-0.4	-1.4	-0.2	-0.6	-2.2
Labour force	35.1	36.4	1.1	1.3	2.1	2.5	3.7	6.1	7.4
Employment	25.4	27.4	1.1	2.0	0.7	-0.4	7.9	2.6	-1.4
Unemployment	9.6	9.0	1.0	-0.6	1.4	2.9	-6.2	18.4	47.5
Participation rate	57.0	59.2	1.8	2.2	3.8	5.3
Unemployment rate	27.4	24.7	2.6	-2.7	2.5	6.7
Employment rate	41.2	44.6	1.8	3.4	1.5	0.4
Part-time rate	45.7	41.6	3.7	-4.1	-7.8	-1.9
Men, 25 years and over									
Population	176.7	176.8	...	0.1	0.4	1.6	0.1	0.2	0.9
Labour force	113.9	113.3	1.2	-0.6	-0.8	-3.9	-0.5	-0.7	-3.3
Employment	96.2	96.1	1.3	-0.1	-1.9	-4.6	-0.1	-1.9	-4.6
Unemployment	17.7	17.1	1.3	-0.6	1.0	0.5	-3.4	6.2	3.0
Participation rate	64.5	64.1	0.7	-0.4	-0.6	-2.8
Unemployment rate	15.5	15.1	1.1	-0.4	1.0	0.9
Employment rate	54.4	54.4	0.8	0.0	-1.2	-3.1
Part-time rate	4.6	4.5	0.8	-0.1	-0.5	-0.1
Women, 25 years and over									
Population	189.6	189.7	...	0.1	0.4	2.3	0.1	0.2	1.2
Labour force	104.3	104.6	1.2	0.3	1.1	2.5	0.3	1.1	2.4
Employment	93.3	93.4	1.1	0.1	0.6	0.8	0.1	0.6	0.9
Unemployment	11.0	11.2	1.1	0.2	0.4	1.7	1.8	3.7	17.9
Participation rate	55.0	55.1	0.6	0.1	0.4	0.6
Unemployment rate	10.5	10.7	1.0	0.2	0.3	1.4
Employment rate	49.2	49.2	0.6	0.0	0.2	-0.2
Part-time rate	16.5	17.2	1.3	0.7	2.4	-1.0
Industry									
	215.0	217.0	2.2	2.0	-0.5	-4.0	0.9	-0.2	-1.8
Goods-producing sector									
	45.2	45.3	1.7	0.1	-3.1	-3.9	0.2	-6.4	-7.9
Agriculture	1.1	1.3	0.3	0.2	0.8	-0.2	18.2	160.0	-13.3
Forestry, fishing, mining, oil and gas	15.8	14.5	1.0	-1.3	-1.8	-1.1	-8.2	-11.0	-7.1
Utilities	2.1	1.8	0.2	-0.3	0.0	0.4	-14.3	0.0	28.6
Construction	14.0	14.5	1.1	0.5	-2.8	-1.3	3.6	-16.2	-8.2
Manufacturing	12.3	13.2	1.1	0.9	0.6	-1.6	7.3	4.8	-10.8
Services-producing sector									
	169.7	171.7	2.1	2.0	2.7	-0.2	1.2	1.6	-0.1
Trade	34.4	34.4	1.3	0.0	0.0	-3.1	0.0	0.0	-8.3
Transportation and warehousing	10.8	12.8	0.8	2.0	1.9	1.5	18.5	17.4	13.3
Finance, insurance, real estate and leasing	7.3	7.1	0.5	-0.2	0.1	-0.4	-2.7	1.4	-5.3
Professional, scientific and technical services	7.3	8.1	0.6	0.8	0.0	-0.3	11.0	0.0	-3.6
Business, building and other support services	8.6	7.9	0.7	-0.7	0.1	-0.6	-8.1	1.3	-7.1
Educational services	17.2	17.1	0.9	-0.1	-0.4	1.3	-0.6	-2.3	8.2
Health care and social assistance	34.1	34.0	1.0	-0.1	0.8	2.5	-0.3	2.4	7.9
Information, culture and recreation	9.7	9.6	0.7	-0.1	1.9	1.8	-1.0	24.7	23.1
Accommodation and food services	11.3	12.8	0.9	1.5	1.0	-0.6	13.3	8.5	-4.5
Other services	11.9	10.8	0.8	-1.1	-2.7	0.3	-9.2	-20.0	2.9
Public administration	17.3	17.2	0.9	-0.1	0.0	-2.4	-0.6	0.0	-12.2

1. Average standard error of change in two consecutive months (see "Sampling Errors" in Data Quality for further explanations).

Note(s): Related CANSIM Tables 282-0087, 282-0088.

Table 4-2
Selected labour force characteristics (seasonally adjusted) — Prince Edward Island

	February 2009	March 2009	S.E. ¹	Change from			Percent change from		
				last month	last December	twelve months ago	last month	last December	twelve months ago
in thousands (except rates)									
Both sexes, 15 years and over									
Population	115.3	115.4	...	0.1	0.1	1.6	0.1	0.1	1.4
Labour force	78.2	77.6	0.6	-0.6	-0.9	-1.7	-0.8	-1.1	-2.1
Employment	68.6	68.7	0.7	0.1	-0.5	-2.3	0.1	-0.7	-3.2
Employment full-time	58.3	58.4	0.8	0.1	0.6	-0.6	0.2	1.0	-1.0
Unemployment	9.6	8.9	0.6	-0.7	-0.3	0.6	-7.3	-3.3	7.2
Participation rate	67.8	67.2	0.5	-0.6	-0.9	-2.5
Unemployment rate	12.3	11.5	0.8	-0.8	-0.2	1.0
Employment rate	59.5	59.5	0.6	0.0	-0.5	-2.9
Part-time rate	15.0	15.0	0.9	0.0	-1.5	-1.9
Both sexes, 15 to 24 years									
Population	19.7	19.7	...	0.0	-0.1	0.1	0.0	-0.5	0.5
Labour force	13.7	13.3	0.4	-0.4	-0.7	-0.9	-2.9	-5.0	-6.3
Employment	11.2	11.1	0.4	-0.1	-0.3	-0.7	-0.9	-2.6	-5.9
Unemployment	2.5	2.2	0.4	-0.3	-0.4	-0.1	-12.0	-15.4	-4.3
Participation rate	69.5	67.5	2.0	-2.0	-3.2	-4.9
Unemployment rate	18.2	16.5	2.4	-1.7	-2.1	0.3
Employment rate	56.9	56.3	1.9	-0.6	-1.3	-3.9
Part-time rate	36.6	35.1	3.3	-1.5	-8.7	-8.1
Men, 25 years and over									
Population	46.0	46.0	...	0.0	0.0	0.8	0.0	0.0	1.8
Labour force	32.7	32.4	0.3	-0.3	-0.3	-0.7	-0.9	-0.9	-2.1
Employment	28.8	28.8	0.4	0.0	-0.5	-1.3	0.0	-1.7	-4.3
Unemployment	4.0	3.6	0.4	-0.4	0.2	0.6	-10.0	5.9	20.0
Participation rate	71.1	70.4	0.8	-0.7	-0.7	-2.8
Unemployment rate	12.2	11.1	1.1	-1.1	0.7	2.0
Employment rate	62.6	62.6	0.9	0.0	-1.1	-4.0
Part-time rate	4.9	5.2	1.0	0.3	-0.3	-1.4
Women, 25 years and over									
Population	49.6	49.6	...	0.0	0.0	0.6	0.0	0.0	1.2
Labour force	31.7	31.8	0.3	0.1	0.1	-0.2	0.3	0.3	-0.6
Employment	28.6	28.8	0.4	0.2	0.3	-0.2	0.7	1.1	-0.7
Unemployment	3.1	3.0	0.3	-0.1	-0.2	0.1	-3.2	-6.2	3.4
Participation rate	63.9	64.1	0.6	0.2	0.2	-1.2
Unemployment rate	9.8	9.4	0.9	-0.4	-0.7	0.3
Employment rate	57.7	58.1	0.8	0.4	0.6	-1.1
Part-time rate	16.8	16.7	1.5	-0.1	-0.2	-0.6
Industry	68.6	68.7	0.7	0.1	-0.5	-2.3	0.1	-0.7	-3.2
Goods-producing sector	18.2	18.4	0.6	0.2	0.9	0.1	1.1	5.1	0.5
Agriculture	3.3	3.5	0.3	0.2	0.4	0.3	6.1	12.9	9.4
Forestry, fishing, mining, oil and gas	3.4	3.1	0.3	-0.3	-0.3	0.3	-8.8	-8.8	10.7
Utilities	0.3	0.3	0.1	0.0	0.0	0.1	0.0	0.0	50.0
Construction	5.4	5.6	0.3	0.2	0.7	0.3	3.7	14.3	5.7
Manufacturing	5.8	5.8	0.4	0.0	0.0	-1.0	0.0	0.0	-14.7
Services-producing sector	50.4	50.3	0.7	-0.1	-1.4	-2.4	-0.2	-2.7	-4.6
Trade	8.7	8.9	0.4	0.2	-0.4	-1.6	2.3	-4.3	-15.2
Transportation and warehousing	2.5	2.4	0.2	-0.1	-0.5	-0.4	-4.0	-17.2	-14.3
Finance, insurance, real estate and leasing	2.5	2.3	0.2	-0.2	-0.1	-0.7	-8.0	-4.2	-23.3
Professional, scientific and technical services	2.4	2.0	0.2	-0.4	-0.7	-0.7	-16.7	-25.9	-25.9
Business, building and other support services	2.7	2.8	0.2	0.1	0.5	0.0	3.7	21.7	0.0
Educational services	5.0	4.9	0.3	-0.1	0.2	-0.3	-2.0	4.3	-5.8
Health care and social assistance	7.8	7.7	0.3	-0.1	-1.0	-0.2	-1.3	-11.5	-2.5
Information, culture and recreation	2.9	2.9	0.2	0.0	0.3	0.8	0.0	11.5	38.1
Accommodation and food services	5.2	5.5	0.3	0.3	-0.2	-0.1	5.8	-3.5	-1.8
Other services	2.8	3.3	0.3	0.5	0.6	0.4	17.9	22.2	13.8
Public administration	7.8	7.6	0.4	-0.2	-0.1	0.4	-2.6	-1.3	5.6

1. Average standard error of change in two consecutive months (see "Sampling Errors" in Data Quality for further explanations).

Note(s): Related CANSIM Tables 282-0087, 282-0088.

Table 4-3

Selected labour force characteristics (seasonally adjusted) — Nova Scotia

	February 2009	March 2009	S.E. ¹	Change from			Percent change from		
				last month	last December	twelve months ago	last month	last December	twelve months ago
in thousands (except rates)									
Both sexes, 15 years and over									
Population	771.4	771.6	...	0.2	1.0	4.6	0.0	0.1	0.6
Labour force	500.4	497.7	2.8	-2.7	3.7	9.9	-0.5	0.7	2.0
Employment	456.4	453.4	2.9	-3.0	-0.1	3.6	-0.7	0.0	0.8
Employment full-time	372.3	370.4	3.6	-1.9	-1.2	4.0	-0.5	-0.3	1.1
Unemployment	44.0	44.3	2.6	0.3	3.8	6.3	0.7	9.4	16.6
Participation rate	64.9	64.5	0.4	-0.4	0.4	0.9
Unemployment rate	8.8	8.9	0.5	0.1	0.7	1.1
Employment rate	59.2	58.8	0.4	-0.4	-0.1	0.2
Part-time rate	18.4	18.3	0.7	-0.1	0.2	-0.3
Both sexes, 15 to 24 years									
Population	120.6	120.6	...	0.0	-0.1	-1.2	0.0	-0.1	-1.0
Labour force	84.5	81.6	1.8	-2.9	0.2	1.6	-3.4	0.2	2.0
Employment	68.5	67.2	1.7	-1.3	-1.9	-2.0	-1.9	-2.7	-2.9
Unemployment	16.0	14.3	1.5	-1.7	1.9	3.5	-10.6	15.3	32.4
Participation rate	70.1	67.7	1.4	-2.4	0.3	2.0
Unemployment rate	18.9	17.5	1.7	-1.4	2.3	4.0
Employment rate	56.8	55.7	1.4	-1.1	-1.5	-1.1
Part-time rate	44.8	43.0	2.5	-1.8	0.3	-2.2
Men, 25 years and over									
Population	310.2	310.3	...	0.1	0.5	2.6	0.0	0.2	0.8
Labour force	215.0	214.2	1.5	-0.8	1.9	3.2	-0.4	0.9	1.5
Employment	197.7	195.5	1.6	-2.2	0.4	0.9	-1.1	0.2	0.5
Unemployment	17.3	18.7	1.6	1.4	1.4	2.3	8.1	8.1	14.0
Participation rate	69.3	69.0	0.5	-0.3	0.5	0.4
Unemployment rate	8.0	8.7	0.7	0.7	0.6	0.9
Employment rate	63.7	63.0	0.5	-0.7	0.0	-0.2
Part-time rate	7.2	7.6	0.7	0.4	0.4	1.1
Women, 25 years and over									
Population	340.6	340.8	...	0.2	0.7	3.3	0.1	0.2	1.0
Labour force	201.0	201.9	1.5	0.9	1.6	5.1	0.4	0.8	2.6
Employment	190.2	190.6	1.5	0.4	1.2	4.6	0.2	0.6	2.5
Unemployment	10.8	11.3	1.3	0.5	0.4	0.5	4.6	3.7	4.6
Participation rate	59.0	59.2	0.4	0.2	0.3	0.9
Unemployment rate	5.4	5.6	0.7	0.2	0.2	0.1
Employment rate	55.8	55.9	0.5	0.1	0.2	0.8
Part-time rate	20.6	20.6	1.1	0.0	0.2	-0.6
Industry									
Goods-producing sector	456.4	453.3	2.9	-3.1	-0.2	3.5	-0.7	0.0	0.8
Agriculture	90.5	88.5	2.3	-2.0	-4.4	-2.7	-2.2	-4.7	-3.0
Forestry, fishing, mining, oil and gas	7.3	6.7	0.7	-0.6	-0.9	0.9	-8.2	-11.8	15.5
Utilities	13.1	11.8	1.0	-1.3	-0.4	-0.8	-9.9	-3.3	-6.3
Construction	2.2	2.3	0.3	0.1	-0.4	-0.7	4.5	-14.8	-23.3
Manufacturing	30.6	30.4	1.4	-0.2	-1.4	-0.6	-0.7	-4.4	-1.9
	37.4	37.4	1.5	0.0	-1.3	-1.3	0.0	-3.4	-3.4
Services-producing sector									
Trade	365.9	364.8	3.0	-1.1	4.1	6.2	-0.3	1.1	1.7
Transportation and warehousing	76.0	74.3	2.0	-1.7	-5.1	-5.2	-2.2	-6.4	-6.5
Finance, insurance, real estate and leasing	19.5	19.6	1.0	0.1	0.1	0.9	0.5	0.5	4.8
Professional, scientific and technical services	21.1	22.4	1.0	1.3	0.8	0.1	6.2	3.7	0.4
Business, building and other support services	24.5	24.6	1.1	0.1	0.4	5.3	0.4	1.7	27.5
Educational services	25.7	25.4	1.4	-0.3	0.5	-2.9	-1.2	2.0	-10.2
Health care and social assistance	36.4	36.7	1.4	0.3	1.7	3.6	0.8	4.9	10.9
Information, culture and recreation	60.0	60.3	1.6	0.3	1.0	0.8	0.5	1.7	1.3
Accommodation and food services	18.8	19.6	1.1	0.8	1.1	0.4	4.3	5.9	2.1
Other services	31.4	31.5	1.5	0.1	1.6	2.5	0.3	5.4	8.6
Public administration	19.7	18.0	1.1	-1.7	-0.4	-1.8	-8.6	-2.2	-9.1
	32.8	32.4	1.1	-0.4	2.4	2.6	-1.2	8.0	8.7

1. Average standard error of change in two consecutive months (see "Sampling Errors" in Data Quality for further explanations).

Note(s): Related CANSIM Tables 282-0087, 282-0088.

Table 4-4

Selected labour force characteristics (seasonally adjusted) — New Brunswick

	February 2009	March 2009	S.E. ¹	Change from			Percent change from		
				last month	last December	twelve months ago	last month	last December	twelve months ago
in thousands (except rates)									
Both sexes, 15 years and over									
Population	620.4	620.5	...	0.1	0.8	3.9	0.0	0.1	0.6
Labour force	400.6	403.1	2.4	2.5	2.1	3.0	0.6	0.5	0.7
Employment	365.3	364.7	2.5	-0.6	-1.9	-1.2	-0.2	-0.5	-0.3
Employment full-time	310.6	306.0	3.0	-4.6	-4.8	-3.3	-1.5	-1.5	-1.1
Unemployment	35.4	38.4	2.2	3.0	4.0	4.1	8.5	11.6	12.0
Participation rate	64.6	65.0	0.4	0.4	0.3	0.1
Unemployment rate	8.8	9.5	0.5	0.7	0.9	0.9
Employment rate	58.9	58.8	0.4	-0.1	-0.4	-0.5
Part-time rate	14.9	16.1	0.6	1.1	0.9	0.7
Both sexes, 15 to 24 years									
Population	94.2	94.2	...	0.0	-0.1	-0.7	0.0	-0.1	-0.7
Labour force	64.9	64.1	1.3	-0.8	-1.7	0.6	-1.2	-2.6	0.9
Employment	55.9	55.3	1.3	-0.6	-1.2	1.2	-1.1	-2.1	2.2
Unemployment	9.0	8.8	1.2	-0.2	-0.6	-0.6	-2.2	-6.4	-6.4
Participation rate	68.9	68.0	1.4	-0.9	-1.8	1.1
Unemployment rate	13.9	13.7	1.8	-0.2	-0.6	-1.1
Employment rate	59.3	58.7	1.4	-0.6	-1.2	1.7
Part-time rate	36.7	39.4	2.5	2.7	1.0	-2.4
Men, 25 years and over									
Population	254.0	254.0	...	0.0	0.4	2.0	0.0	0.2	0.8
Labour force	173.8	175.9	1.4	2.1	2.4	0.5	1.2	1.4	0.3
Employment	158.3	159.1	1.5	0.8	0.8	-0.5	0.5	0.5	-0.3
Unemployment	15.6	16.8	1.4	1.2	1.7	1.1	7.7	11.3	7.0
Participation rate	68.4	69.3	0.6	0.9	0.9	-0.3
Unemployment rate	9.0	9.6	0.8	0.6	0.9	0.6
Employment rate	62.3	62.6	0.6	0.3	0.2	-0.7
Part-time rate	5.6	5.8	0.6	0.2	0.5	1.5
Women, 25 years and over									
Population	272.2	272.3	...	0.1	0.5	2.7	0.0	0.2	1.0
Labour force	161.9	163.1	1.2	1.2	1.4	1.8	0.7	0.9	1.1
Employment	151.1	150.3	1.3	-0.8	-1.5	-1.9	-0.5	-1.0	-1.2
Unemployment	10.8	12.8	1.0	2.0	3.0	3.7	18.5	30.6	40.7
Participation rate	59.5	59.9	0.4	0.4	0.4	0.1
Unemployment rate	6.7	7.8	0.6	1.1	1.7	2.2
Employment rate	55.5	55.2	0.5	-0.3	-0.6	-1.3
Part-time rate	16.8	18.4	1.0	1.6	1.4	0.6
Industry	365.3	364.7	2.5	-0.6	-1.9	-1.2	-0.2	-0.5	-0.3
Goods-producing sector	80.0	81.2	2.1	1.2	2.1	0.6	1.5	2.7	0.7
Agriculture	7.2	7.9	0.6	0.7	0.4	0.5	9.7	5.3	6.8
Forestry, fishing, mining, oil and gas	10.1	10.8	0.9	0.7	1.3	-1.0	6.9	13.7	-8.5
Utilities	5.0	4.3	0.5	-0.7	-0.5	0.2	-14.0	-10.4	4.9
Construction	25.4	25.6	1.2	0.2	1.7	2.2	0.8	7.1	9.4
Manufacturing	32.3	32.6	1.4	0.3	-0.9	-1.2	0.9	-2.7	-3.6
Services-producing sector	285.3	283.5	2.4	-1.8	-4.0	-1.8	-0.6	-1.4	-0.6
Trade	55.8	56.8	1.5	1.0	-0.1	-0.4	1.8	-0.2	-0.7
Transportation and warehousing	19.3	18.4	0.9	-0.9	-1.8	-1.4	-4.7	-8.9	-7.1
Finance, insurance, real estate and leasing	16.0	14.6	0.9	-1.4	-1.1	-1.8	-8.8	-7.0	-11.0
Professional, scientific and technical services	17.1	17.4	0.9	0.3	0.0	-1.2	1.8	0.0	-6.5
Business, building and other support services	20.7	20.3	1.1	-0.4	-0.7	0.9	-1.9	-3.3	4.6
Educational services	26.7	27.6	1.1	0.9	-1.9	2.1	3.4	-6.4	8.2
Health care and social assistance	51.9	52.0	1.3	0.1	2.0	2.4	0.2	4.0	4.8
Information, culture and recreation	10.6	10.8	0.8	0.2	-0.2	-1.9	1.9	-1.8	-15.0
Accommodation and food services	24.3	23.2	1.2	-1.1	0.4	-2.3	-4.5	1.8	-9.0
Other services	14.4	13.9	0.9	-0.5	-1.2	-2.1	-3.5	-7.9	-13.1
Public administration	28.5	28.6	1.0	0.1	0.7	4.1	0.4	2.5	16.7

1. Average standard error of change in two consecutive months (see "Sampling Errors" in Data Quality for further explanations).

Note(s): Related CANSIM Tables 282-0087, 282-0088.

Table 4-5
Selected labour force characteristics (seasonally adjusted) — Quebec

	February 2009	March 2009	S.E. ¹	Change from			Percent change from		
				last month	last December	twelve months ago	last month	last December	twelve months ago
in thousands (except rates)									
Both sexes, 15 years and over									
Population	6,411.2	6,416.1	...	4.9	16.0	62.6	0.1	0.2	1.0
Labour force	4,169.3	4,181.7	14.2	12.4	-9.9	-5.6	0.3	-0.2	-0.1
Employment	3,840.1	3,835.5	14.7	-4.6	-48.8	-46.3	-0.1	-1.3	-1.2
Employment full-time	3,114.2	3,110.2	19.0	-4.0	-24.6	-50.0	-0.1	-0.8	-1.6
Unemployment	329.2	346.3	12.7	17.1	39.1	40.9	5.2	12.7	13.4
Participation rate	65.0	65.2	0.2	0.2	-0.3	-0.7
Unemployment rate	7.9	8.3	0.3	0.4	1.0	1.0
Employment rate	59.9	59.8	0.2	-0.1	-0.9	-1.3
Part-time rate	18.9	18.9	0.4	0.0	-0.4	0.3
Both sexes, 15 to 24 years									
Population	961.6	962.1	...	0.5	1.1	3.9	0.1	0.1	0.4
Labour force	639.3	633.3	8.0	-6.0	-10.2	-18.2	-0.9	-1.6	-2.8
Employment	548.4	542.4	7.9	-6.0	-16.6	-32.0	-1.1	-3.0	-5.6
Unemployment	90.9	90.9	7.0	0.0	6.4	13.7	0.0	7.6	17.7
Participation rate	66.5	65.8	0.8	-0.7	-1.2	-2.2
Unemployment rate	14.2	14.4	1.0	0.2	1.3	2.6
Employment rate	57.0	56.4	0.8	-0.6	-1.8	-3.5
Part-time rate	50.8	52.2	1.5	1.4	-0.2	4.7
Men, 25 years and over									
Population	2,663.2	2,665.6	...	2.4	7.8	29.8	0.1	0.3	1.1
Labour force	1,853.7	1,864.2	7.7	10.5	-2.1	-16.7	0.6	-0.1	-0.9
Employment	1,711.3	1,710.9	8.7	-0.4	-17.5	-35.8	0.0	-1.0	-2.0
Unemployment	142.4	153.4	7.8	11.0	15.5	19.2	7.7	11.2	14.3
Participation rate	69.6	69.9	0.3	0.3	-0.3	-1.5
Unemployment rate	7.7	8.2	0.4	0.5	0.8	1.1
Employment rate	64.3	64.2	0.3	-0.1	-0.8	-2.1
Part-time rate	7.7	7.0	0.5	-0.7	-0.4	0.0
Women, 25 years and over									
Population	2,786.3	2,788.4	...	2.1	7.2	29.0	0.1	0.3	1.1
Labour force	1,676.4	1,684.2	8.0	7.8	2.4	29.4	0.5	0.1	1.8
Employment	1,580.4	1,582.2	8.2	1.8	-14.8	21.5	0.1	-0.9	1.4
Unemployment	96.0	102.0	6.7	6.0	17.2	7.9	6.2	20.3	8.4
Participation rate	60.2	60.4	0.3	0.2	-0.1	0.4
Unemployment rate	5.7	6.1	0.4	0.4	1.1	0.4
Employment rate	56.7	56.7	0.3	0.0	-0.7	0.1
Part-time rate	20.0	20.4	0.7	0.4	-0.2	-0.6
Industry									
	3,840.1	3,835.5	14.7	-4.6	-48.8	-46.3	-0.1	-1.3	-1.2
Goods-producing sector									
Agriculture	60.6	58.7	3.6	-1.9	6.6	-15.6	-3.1	12.7	-21.0
Forestry, fishing, mining, oil and gas	29.8	29.4	2.4	-0.4	-2.5	-2.9	-1.3	-7.8	-9.0
Utilities	33.1	34.3	2.2	1.2	3.4	0.1	3.6	11.0	0.3
Construction	210.4	212.1	7.0	1.7	3.6	1.0	0.8	1.7	0.5
Manufacturing	534.2	533.6	9.5	-0.6	-16.4	0.8	-0.1	-3.0	0.2
Services-producing sector									
Trade	2,972.0	2,967.3	16.2	-4.7	-43.7	-29.8	-0.2	-1.5	-1.0
Transportation and warehousing	616.3	624.2	10.7	7.9	18.3	-2.2	1.3	3.0	-0.4
Finance, insurance, real estate and leasing	172.1	168.9	6.2	-3.2	-12.2	-22.5	-1.9	-6.7	-11.8
Professional, scientific and technical services	225.6	220.5	7.0	-5.1	-2.6	-15.4	-2.3	-1.2	-6.5
Business, building and other support services	264.3	272.0	7.8	7.7	12.4	-1.8	2.9	4.8	-0.7
Educational services	141.0	150.9	5.9	9.9	3.9	16.9	7.0	2.7	12.6
Health care and social assistance	242.7	245.2	7.1	2.5	-0.1	-15.4	1.0	0.0	-5.9
Information, culture and recreation	497.3	491.8	8.4	-5.5	-7.0	28.5	-1.1	-1.4	6.2
Accommodation and food services	162.6	165.6	6.5	3.0	-14.0	-3.5	1.8	-7.8	-2.1
Other services	245.0	226.6	8.0	-18.4	-16.4	-14.0	-7.5	-6.7	-5.8
Public administration	178.5	182.0	6.1	3.5	10.6	2.3	2.0	6.2	1.3
	226.8	219.6	5.8	-7.2	-36.6	-2.8	-3.2	-14.3	-1.3

1. Average standard error of change in two consecutive months (see "Sampling Errors" in Data Quality for further explanations).

Note(s): Related CANSIM Tables 282-0087, 282-0088.

Table 4-6
Selected labour force characteristics (seasonally adjusted) — Ontario

	February 2009	March 2009	S.E. ¹	Change from			Percent change from		
				last month	last December	twelve months ago	last month	last December	twelve months ago
in thousands (except rates)									
Both sexes, 15 years and over									
Population	10,604.6	10,614.3	...	9.7	33.5	154.4	0.1	0.3	1.5
Labour force	7,185.6	7,168.4	18.4	-17.2	-13.6	29.5	-0.2	-0.2	0.4
Employment	6,558.9	6,548.1	18.8	-10.8	-117.1	-134.6	-0.2	-1.8	-2.0
Employment full-time	5,316.7	5,277.1	23.8	-39.6	-144.0	-180.8	-0.7	-2.7	-3.3
Unemployment	626.7	620.4	15.9	-6.3	103.6	164.2	-1.0	20.0	36.0
Participation rate	67.8	67.5	0.2	-0.3	-0.4	-0.8
Unemployment rate	8.7	8.7	0.2	0.0	1.5	2.3
Employment rate	61.8	61.7	0.2	-0.1	-1.3	-2.2
Part-time rate	18.9	19.4	0.3	0.5	0.7	1.1
Both sexes, 15 to 24 years									
Population	1,741.2	1,741.9	...	0.7	2.8	12.2	0.0	0.2	0.7
Labour force	1,115.4	1,114.2	11.3	-1.2	-8.1	1.9	-0.1	-0.7	0.2
Employment	929.6	922.2	10.9	-7.4	-27.6	-43.5	-0.8	-2.9	-4.5
Unemployment	185.8	192.0	9.8	6.2	19.5	45.4	3.3	11.3	31.0
Participation rate	64.1	64.0	0.7	-0.1	-0.5	-0.3
Unemployment rate	16.7	17.2	0.8	0.5	1.8	4.0
Employment rate	53.4	52.9	0.6	-0.5	-1.7	-2.9
Part-time rate	48.5	48.9	1.1	0.4	1.5	-1.1
Men, 25 years and over									
Population	4,306.1	4,310.4	...	4.3	14.7	66.9	0.1	0.3	1.6
Labour force	3,187.0	3,183.5	8.9	-3.5	-9.9	7.2	-0.1	-0.3	0.2
Employment	2,925.1	2,926.7	10.1	1.6	-78.2	-87.5	0.1	-2.6	-2.9
Unemployment	261.9	256.8	8.9	-5.1	68.3	94.7	-1.9	36.2	58.4
Participation rate	74.0	73.9	0.2	-0.1	-0.4	-1.0
Unemployment rate	8.2	8.1	0.3	-0.1	2.2	3.0
Employment rate	67.9	67.9	0.2	0.0	-2.1	-3.1
Part-time rate	7.8	8.3	0.3	0.5	1.1	1.9
Women, 25 years and over									
Population	4,557.3	4,562.1	...	4.8	16.1	75.4	0.1	0.4	1.7
Labour force	2,883.2	2,870.7	10.7	-12.5	4.4	20.5	-0.4	0.2	0.7
Employment	2,704.3	2,699.1	10.6	-5.2	-11.4	-3.7	-0.2	-0.4	-0.1
Unemployment	179.0	171.6	8.5	-7.4	15.8	24.1	-4.1	10.1	16.3
Participation rate	63.3	62.9	0.2	-0.4	-0.2	-0.6
Unemployment rate	6.2	6.0	0.3	-0.2	0.6	0.8
Employment rate	59.3	59.2	0.2	-0.1	-0.4	-1.0
Part-time rate	20.9	21.4	0.5	0.5	0.1	1.1
Industry									
	6,558.9	6,548.1	18.8	-10.8	-117.1	-134.6	-0.2	-1.8	-2.0
Goods-producing sector									
	1,444.7	1,425.9	15.4	-18.8	-68.0	-104.5	-1.3	-4.6	-6.8
Agriculture	90.0	86.5	3.9	-3.5	-0.9	8.6	-3.9	-1.0	11.0
Forestry, fishing, mining, oil and gas	33.7	35.3	2.4	1.6	1.0	-3.3	4.7	2.9	-8.5
Utilities	58.9	62.1	3.2	3.2	-1.8	-2.8	5.4	-2.8	-4.3
Construction	412.7	416.8	9.2	4.1	-20.2	-18.1	1.0	-4.6	-4.2
Manufacturing	849.4	825.3	12.3	-24.1	-45.9	-88.8	-2.8	-5.3	-9.7
Services-producing sector									
	5,114.2	5,122.2	20.9	8.0	-49.1	-30.1	0.2	-0.9	-0.6
Trade	1,008.7	1,017.4	13.9	8.7	-9.7	-11.3	0.9	-0.9	-1.1
Transportation and warehousing	330.8	333.4	8.3	2.6	-13.6	11.0	0.8	-3.9	3.4
Finance, insurance, real estate and leasing	494.3	477.5	9.9	-16.8	-17.3	12.8	-3.4	-3.5	2.8
Professional, scientific and technical services	490.7	486.8	10.2	-3.9	-19.7	0.6	-0.8	-3.9	0.1
Business, building and other support services	264.0	268.6	8.9	4.6	-7.6	-52.2	1.7	-2.8	-16.3
Educational services	469.6	465.0	9.5	-4.6	-4.4	-24.5	-1.0	-0.9	-5.0
Health care and social assistance	700.2	708.7	10.2	8.5	8.6	8.6	1.2	1.2	1.2
Information, culture and recreation	303.5	302.7	8.5	-0.8	-10.6	-9.8	-0.3	-3.4	-3.1
Accommodation and food services	396.3	392.9	9.9	-3.4	4.1	6.6	-0.9	1.1	1.7
Other services	293.6	305.5	7.5	11.9	9.7	30.4	4.1	3.3	11.1
Public administration	362.6	363.6	7.6	1.0	11.2	-2.4	0.3	3.2	-0.7

1. Average standard error of change in two consecutive months (see "Sampling Errors" in Data Quality for further explanations).

Note(s): Related CANSIM Tables 282-0087, 282-0088.

Table 4-7
Selected labour force characteristics (seasonally adjusted) — Manitoba

	February 2009	March 2009	S.E. ¹	Change from			Percent change from		
				last month	last December	twelve months ago	last month	last December	twelve months ago
in thousands (except rates)									
Both sexes, 15 years and over									
Population	916.8	918.0	...	1.2	3.2	12.1	0.1	0.3	1.3
Labour force	638.4	636.0	2.7	-2.4	-0.5	4.6	-0.4	-0.1	0.7
Employment	607.9	603.7	2.8	-4.2	-5.4	-0.2	-0.7	-0.9	0.0
Employment full-time	494.2	495.4	3.9	1.2	2.3	1.5	0.2	0.5	0.3
Unemployment	30.5	32.3	2.2	1.8	4.9	4.8	5.9	17.9	17.5
Participation rate	69.6	69.3	0.3	-0.3	-0.3	-0.4
Unemployment rate	4.8	5.1	0.3	0.3	0.8	0.7
Employment rate	66.3	65.8	0.3	-0.5	-0.8	-0.9
Part-time rate	18.7	17.9	0.6	-0.8	-1.1	-0.3
Both sexes, 15 to 24 years									
Population	159.4	159.6	...	0.2	0.6	1.7	0.1	0.4	1.1
Labour force	113.7	115.0	1.7	1.3	0.3	-0.2	1.1	0.3	-0.2
Employment	104.1	103.6	1.7	-0.5	-1.1	-1.0	-0.5	-1.1	-1.0
Unemployment	9.7	11.4	1.4	1.7	1.4	0.9	17.5	14.0	8.6
Participation rate	71.3	72.1	1.1	0.8	0.0	-0.9
Unemployment rate	8.5	9.9	1.2	1.4	1.2	0.8
Employment rate	65.3	64.9	1.1	-0.4	-0.9	-1.3
Part-time rate	41.5	40.9	1.9	-0.6	-3.0	-0.4
Men, 25 years and over									
Population	370.3	370.8	...	0.5	1.4	5.1	0.1	0.4	1.4
Labour force	281.6	279.5	1.4	-2.1	-0.7	-0.4	-0.7	-0.2	-0.1
Employment	270.1	269.2	1.5	-0.9	-1.2	-1.0	-0.3	-0.4	-0.4
Unemployment	11.5	10.3	1.2	-1.2	0.5	0.6	-10.4	5.1	6.2
Participation rate	76.0	75.4	0.4	-0.6	-0.5	-1.1
Unemployment rate	4.1	3.7	0.4	-0.4	0.2	0.2
Employment rate	72.9	72.6	0.4	-0.3	-0.6	-1.3
Part-time rate	6.8	6.4	0.6	-0.5	-0.7	0.8
Women, 25 years and over									
Population	387.2	387.6	...	0.4	1.2	5.3	0.1	0.3	1.4
Labour force	243.1	241.5	1.6	-1.6	-0.2	5.2	-0.7	-0.1	2.2
Employment	233.7	230.8	1.6	-2.9	-3.3	1.7	-1.2	-1.4	0.7
Unemployment	9.4	10.7	1.1	1.3	3.1	3.5	13.8	40.8	48.6
Participation rate	62.8	62.3	0.4	-0.5	-0.3	0.5
Unemployment rate	3.9	4.4	0.5	0.5	1.3	1.4
Employment rate	60.4	59.5	0.4	-0.9	-1.1	-0.4
Part-time rate	22.3	21.1	1.0	-1.2	-0.6	-1.4
Industry									
Goods-producing sector	607.9	603.7	2.8	-4.2	-5.4	-0.2	-0.7	-0.9	0.0
Agriculture	145.4	142.2	2.5	-3.2	-4.0	-4.7	-2.2	-2.7	-3.2
Forestry, fishing, mining, oil and gas	27.9	25.7	1.3	-2.2	-3.7	-2.2	-7.9	-12.6	-7.9
Utilities	6.4	6.0	0.5	-0.4	0.1	-0.4	-6.2	1.7	-6.2
Construction	7.0	7.7	0.5	0.7	0.8	1.6	10.0	11.6	26.2
Manufacturing	41.6	38.7	1.5	-2.9	0.5	2.4	-7.0	1.3	6.6
Services-producing sector	62.6	64.0	1.8	1.4	-1.8	-6.2	2.2	-2.7	-8.8
Trade	462.4	461.5	3.3	-0.9	-1.4	4.5	-0.2	-0.3	1.0
Transportation and warehousing	90.2	89.7	2.0	-0.5	0.4	-1.3	-0.6	0.4	-1.4
Finance, insurance, real estate and leasing	38.6	38.9	1.4	0.3	1.8	0.9	0.8	4.9	2.4
Professional, scientific and technical services	34.4	35.4	1.4	1.0	0.6	-2.3	2.9	1.7	-6.1
Business, building and other support services	25.0	25.9	1.2	0.9	1.7	-1.4	3.6	7.0	-5.1
Educational services	18.8	17.6	1.2	-1.2	0.1	-0.9	-6.4	0.6	-4.9
Health care and social assistance	45.2	47.9	1.5	2.7	0.0	0.7	6.0	0.0	1.5
Information, culture and recreation	86.9	82.0	1.9	-4.9	-5.2	4.0	-5.6	-6.0	5.1
Accommodation and food services	23.3	22.8	1.2	-0.5	0.2	0.6	-2.1	0.9	2.7
Other services	35.0	34.6	1.6	-0.4	-2.4	-2.5	-1.1	-6.5	-6.7
Public administration	29.3	29.1	1.4	-0.2	0.2	3.9	-0.7	0.7	15.5
	35.7	37.8	1.2	2.1	1.4	3.0	5.9	3.8	8.6

1. Average standard error of change in two consecutive months (see "Sampling Errors" in Data Quality for further explanations).

Note(s): Related CANSIM Tables 282-0087, 282-0088.

Table 4-8
Selected labour force characteristics (seasonally adjusted) — Saskatchewan

	February 2009	March 2009	S.E. ¹	Change from			Percent change from		
				last month	last December	twelve months ago	last month	last December	twelve months ago
in thousands (except rates)									
Both sexes, 15 years and over									
Population	775.6	776.3	...	0.7	2.3	14.1	0.1	0.3	1.8
Labour force	548.3	545.4	2.3	-2.9	2.4	15.0	-0.5	0.4	2.8
Employment	522.5	519.8	2.4	-2.7	-0.5	11.7	-0.5	-0.1	2.3
Employment full-time	424.2	421.4	3.2	-2.8	-5.0	3.0	-0.7	-1.2	0.7
Unemployment	25.8	25.6	1.8	-0.2	2.9	3.4	-0.8	12.8	15.3
Participation rate	70.7	70.3	0.3	-0.4	0.1	0.7
Unemployment rate	4.7	4.7	0.3	0.0	0.5	0.5
Employment rate	67.4	67.0	0.3	-0.4	-0.2	0.3
Part-time rate	18.8	18.9	0.6	0.1	0.9	1.3
Both sexes, 15 to 24 years									
Population	139.6	139.6	...	0.0	-0.1	0.5	0.0	-0.1	0.4
Labour force	101.5	101.3	1.5	-0.2	-0.1	1.0	-0.2	-0.1	1.0
Employment	90.7	90.7	1.5	0.0	-2.8	-2.1	0.0	-3.0	-2.3
Unemployment	10.8	10.7	1.2	-0.1	2.8	3.2	-0.9	35.4	42.7
Participation rate	72.7	72.6	1.1	-0.1	0.0	0.5
Unemployment rate	10.6	10.6	1.1	0.0	2.8	3.1
Employment rate	65.0	65.0	1.1	0.0	-1.9	-1.7
Part-time rate	36.6	37.0	1.7	0.4	-0.1	0.9
Men, 25 years and over									
Population	310.8	311.2	...	0.4	1.3	6.7	0.1	0.4	2.2
Labour force	236.9	237.4	1.2	0.5	2.1	4.4	0.2	0.9	1.9
Employment	227.9	228.6	1.2	0.7	1.0	3.2	0.3	0.4	1.4
Unemployment	9.0	8.8	0.9	-0.2	1.1	1.2	-2.2	14.3	15.8
Participation rate	76.2	76.3	0.4	0.1	0.4	-0.2
Unemployment rate	3.8	3.7	0.4	-0.1	0.4	0.4
Employment rate	73.3	73.5	0.4	0.2	0.1	-0.5
Part-time rate	7.0	7.2	0.6	0.2	0.5	0.9
Women, 25 years and over									
Population	325.2	325.5	...	0.3	1.1	6.9	0.1	0.3	2.2
Labour force	210.0	206.8	1.3	-3.2	0.6	9.7	-1.5	0.3	4.9
Employment	203.9	200.6	1.4	-3.3	1.4	10.7	-1.6	0.7	5.6
Unemployment	6.0	6.2	0.9	0.2	-0.8	-0.9	3.3	-11.4	-12.7
Participation rate	64.6	63.5	0.4	-1.1	-0.1	1.6
Unemployment rate	2.9	3.0	0.5	0.1	-0.4	-0.6
Employment rate	62.7	61.6	0.4	-1.1	0.2	2.0
Part-time rate	24.2	24.1	1.0	-0.1	2.1	2.1
Industry									
	522.5	519.8	2.4	-2.7	-0.5	11.7	-0.5	-0.1	2.3
Goods-producing sector									
	141.3	137.8	2.3	-3.5	-4.8	3.6	-2.5	-3.4	2.7
Agriculture	42.4	41.5	1.5	-0.9	2.3	2.7	-2.1	5.9	7.0
Forestry, fishing, mining, oil and gas	24.4	23.0	1.1	-1.4	-2.2	-1.7	-5.7	-8.7	-6.9
Utilities	4.8	4.9	0.4	0.1	-1.3	-0.2	2.1	-21.0	-3.9
Construction	38.0	36.9	1.3	-1.1	-3.7	2.0	-2.9	-9.1	5.7
Manufacturing	31.6	31.5	1.2	-0.1	0.2	0.9	-0.3	0.6	2.9
Services-producing sector									
	381.3	382.1	2.8	0.8	4.4	8.2	0.2	1.2	2.2
Trade	83.5	81.8	1.8	-1.7	-1.5	-3.0	-2.0	-1.8	-3.5
Transportation and warehousing	23.8	24.1	1.0	0.3	0.8	-1.3	1.3	3.4	-5.1
Finance, insurance, real estate and leasing	30.2	30.1	1.0	-0.1	1.2	1.9	-0.3	4.2	6.7
Professional, scientific and technical services	21.2	20.6	0.9	-0.6	0.1	-0.8	-2.8	0.5	-3.7
Business, building and other support services	11.7	11.6	0.8	-0.1	-1.1	-0.2	-0.9	-8.7	-1.7
Educational services	39.2	39.0	1.3	-0.2	0.4	1.7	-0.5	1.0	4.6
Health care and social assistance	64.4	65.2	1.3	0.8	2.2	3.5	1.2	3.5	5.7
Information, culture and recreation	21.5	21.7	1.0	0.2	0.9	0.7	0.9	4.3	3.3
Accommodation and food services	31.2	33.1	1.4	1.9	0.7	1.3	6.1	2.2	4.1
Other services	23.6	23.9	1.0	0.3	-0.2	1.7	1.3	-0.8	7.7
Public administration	31.1	31.0	1.0	-0.1	0.9	2.5	-0.3	3.0	8.8

1. Average standard error of change in two consecutive months (see "Sampling Errors" in Data Quality for further explanations).

Note(s): Related CANSIM Tables 282-0087, 282-0088.

Table 4-9
Selected labour force characteristics (seasonally adjusted) — Alberta

	February 2009	March 2009	S.E. ¹	Change from			Percent change from		
				last month	last December	twelve months ago	last month	last December	twelve months ago
in thousands (except rates)									
Both sexes, 15 years and over									
Population	2,836.1	2,841.7	...	5.6	18.0	62.5	0.2	0.6	2.2
Labour force	2,116.5	2,110.1	8.0	-6.4	-0.1	37.5	-0.3	0.0	1.8
Employment	2,002.1	1,987.2	8.4	-14.9	-35.3	-14.0	-0.7	-1.7	-0.7
Employment full-time	1,652.6	1,632.9	11.3	-19.7	-47.9	-59.8	-1.2	-2.8	-3.5
Unemployment	114.5	123.0	5.8	8.5	35.2	51.6	7.4	40.1	72.3
Participation rate	74.6	74.3	0.3	-0.3	-0.4	-0.3
Unemployment rate	5.4	5.8	0.3	0.4	1.6	2.4
Employment rate	70.6	69.9	0.3	-0.7	-1.7	-2.1
Part-time rate	17.5	17.8	0.5	0.4	0.9	2.4
Both sexes, 15 to 24 years									
Population	505.3	505.5	...	0.2	0.5	1.8	0.0	0.1	0.4
Labour force	370.4	368.1	4.9	-2.3	0.8	-2.2	-0.6	0.2	-0.6
Employment	333.0	328.5	5.0	-4.5	-5.8	-15.9	-1.4	-1.7	-4.6
Unemployment	37.4	39.7	3.7	2.3	6.8	13.8	6.1	20.7	53.3
Participation rate	73.3	72.8	1.0	-0.5	0.1	-0.7
Unemployment rate	10.1	10.8	1.0	0.7	1.8	3.8
Employment rate	65.9	65.0	1.0	-0.9	-1.2	-3.4
Part-time rate	35.0	36.7	1.5	1.7	1.3	5.4
Men, 25 years and over									
Population	1,179.1	1,182.1	...	3.0	9.6	36.5	0.3	0.8	3.2
Labour force	966.4	963.0	3.8	-3.4	-6.0	16.1	-0.4	-0.6	1.7
Employment	921.0	910.1	4.2	-10.9	-30.6	-14.4	-1.2	-3.3	-1.6
Unemployment	45.5	52.9	3.1	7.4	24.6	30.6	16.3	86.9	137.2
Participation rate	82.0	81.5	0.3	-0.5	-1.1	-1.2
Unemployment rate	4.7	5.5	0.3	0.8	2.6	3.1
Employment rate	78.1	77.0	0.4	-1.1	-3.2	-3.7
Part-time rate	6.3	6.4	0.5	0.1	1.2	1.1
Women, 25 years and over									
Population	1,151.6	1,154.1	...	2.5	8.0	24.2	0.2	0.7	2.1
Labour force	779.7	779.0	4.9	-0.7	5.1	23.6	-0.1	0.7	3.1
Employment	748.1	748.6	5.1	0.5	1.2	16.4	0.1	0.2	2.2
Unemployment	31.6	30.3	3.3	-1.3	3.8	7.1	-4.1	14.3	30.6
Participation rate	67.7	67.5	0.4	-0.2	0.0	0.6
Unemployment rate	4.1	3.9	0.4	-0.2	0.5	0.8
Employment rate	65.0	64.9	0.4	-0.1	-0.3	0.1
Part-time rate	23.3	23.4	0.9	0.1	0.1	2.8
Industry									
	2,002.1	1,987.2	8.4	-14.9	-35.3	-14.0	-0.7	-1.7	-0.7
Goods-producing sector									
	552.7	536.2	8.7	-16.5	-55.6	-27.0	-3.0	-9.4	-4.8
Agriculture	55.9	58.0	3.2	2.1	-4.4	-2.9	3.8	-7.1	-4.8
Forestry, fishing, mining, oil and gas	149.5	143.5	4.7	-6.0	-11.6	-4.4	-4.0	-7.5	-3.0
Utilities	19.1	18.3	1.7	-0.8	-0.6	2.1	-4.2	-3.2	13.0
Construction	193.7	183.8	5.9	-9.9	-20.7	-19.9	-5.1	-10.1	-9.8
Manufacturing	134.5	132.5	5.2	-2.0	-18.3	-2.1	-1.5	-12.1	-1.6
Services-producing sector									
	1,449.4	1,451.0	10.3	1.6	20.3	13.1	0.1	1.4	0.9
Trade	312.6	297.2	7.0	-15.4	-17.7	-16.4	-4.9	-5.6	-5.2
Transportation and warehousing	108.2	107.0	4.1	-1.2	4.2	2.7	-1.1	4.1	2.6
Finance, insurance, real estate and leasing	111.6	117.9	4.0	6.3	5.9	1.1	5.6	5.3	0.9
Professional, scientific and technical services	161.4	149.5	5.0	-11.9	-10.4	-11.6	-7.4	-6.5	-7.2
Business, building and other support services	62.2	62.3	4.0	0.1	-1.0	-6.5	0.2	-1.6	-9.4
Educational services	122.8	134.5	4.5	11.7	-4.1	11.7	9.5	-3.0	9.5
Health care and social assistance	190.3	192.4	4.8	2.1	7.0	3.5	1.1	3.8	1.9
Information, culture and recreation	77.8	78.7	3.6	0.9	2.1	5.9	1.2	2.7	8.1
Accommodation and food services	124.7	122.2	4.6	-2.5	13.0	14.2	-2.0	11.9	13.1
Other services	92.5	101.7	3.8	9.2	14.2	9.2	9.9	16.2	9.9
Public administration	85.2	87.7	3.5	2.5	7.2	-0.6	2.9	8.9	-0.7

1. Average standard error of change in two consecutive months (see "Sampling Errors" in Data Quality for further explanations).

Note(s): Related CANSIM Tables 282-0087, 282-0088.

Table 4-10
Selected labour force characteristics (seasonally adjusted) — British Columbia

	February 2009	March 2009	S.E. ¹	Change from			Percent change from		
				last month	last December	twelve months ago	last month	last December	twelve months ago
in thousands (except rates)									
Both sexes, 15 years and over									
Population	3,681.8	3,685.8	...	4.0	13.6	65.9	0.1	0.4	1.8
Labour force	2,424.4	2,420.2	9.8	-4.2	-12.3	-3.4	-0.2	-0.5	-0.1
Employment	2,262.7	2,240.1	9.9	-22.6	-62.6	-76.6	-1.0	-2.7	-3.3
Employment full-time	1,769.9	1,760.0	14.0	-9.9	-79.6	-85.3	-0.6	-4.3	-4.6
Unemployment	161.7	180.1	7.2	18.4	50.4	73.3	11.4	38.9	68.6
Participation rate	65.8	65.7	0.3	-0.1	-0.5	-1.3
Unemployment rate	6.7	7.4	0.3	0.7	2.1	3.0
Employment rate	61.5	60.8	0.3	-0.7	-1.9	-3.2
Part-time rate	21.8	21.4	0.5	-0.4	1.3	1.1
Both sexes, 15 to 24 years									
Population	584.1	584.2	...	0.1	0.3	2.2	0.0	0.1	0.4
Labour force	373.3	381.5	5.7	8.2	-4.3	-18.4	2.2	-1.1	-4.6
Employment	330.1	329.9	5.7	-0.2	-19.0	-42.4	-0.1	-5.4	-11.4
Unemployment	43.2	51.6	4.4	8.4	14.7	24.1	19.4	39.8	87.6
Participation rate	63.9	65.3	1.0	1.4	-0.8	-3.4
Unemployment rate	11.6	13.5	1.1	1.9	3.9	6.6
Employment rate	56.5	56.5	1.0	0.0	-3.3	-7.5
Part-time rate	44.5	43.8	1.8	-0.7	0.6	0.0
Men, 25 years and over									
Population	1,516.3	1,518.0	...	1.7	6.5	31.7	0.1	0.4	2.1
Labour force	1,097.7	1,082.7	4.8	-15.0	-13.3	-6.9	-1.4	-1.2	-0.6
Employment	1,026.7	1,010.4	5.2	-16.3	-36.4	-38.6	-1.6	-3.5	-3.7
Unemployment	71.0	72.3	3.9	1.3	23.1	31.7	1.8	47.0	78.1
Participation rate	72.4	71.3	0.3	-1.1	-1.2	-2.0
Unemployment rate	6.5	6.7	0.4	0.2	2.2	3.0
Employment rate	67.7	66.6	0.3	-1.1	-2.7	-4.0
Part-time rate	9.4	9.2	0.6	-0.3	1.3	1.7
Women, 25 years and over									
Population	1,581.5	1,583.5	...	2.0	6.7	31.8	0.1	0.4	2.0
Labour force	953.4	956.0	5.9	2.6	5.3	21.9	0.3	0.6	2.3
Employment	905.9	899.8	5.8	-6.1	-7.2	4.4	-0.7	-0.8	0.5
Unemployment	47.5	56.2	4.2	8.7	12.6	17.5	18.3	28.9	45.2
Participation rate	60.3	60.4	0.4	0.1	0.1	0.2
Unemployment rate	5.0	5.9	0.4	0.9	1.3	1.8
Employment rate	57.3	56.8	0.4	-0.5	-0.7	-0.9
Part-time rate	27.5	27.0	0.9	-0.5	1.6	1.3
Industry									
	2,262.7	2,240.1	9.9	-22.6	-62.6	-76.6	-1.0	-2.7	-3.3
Goods-producing sector									
	460.3	439.0	8.8	-21.3	-55.2	-71.6	-4.6	-11.2	-14.0
Agriculture	30.1	30.3	2.8	0.2	-0.3	-7.7	0.7	-1.0	-20.3
Forestry, fishing, mining, oil and gas	45.7	44.5	3.1	-1.2	-5.0	-2.0	-2.6	-10.1	-4.3
Utilities	10.5	12.7	1.6	2.2	0.1	-3.0	21.0	0.8	-19.1
Construction	203.8	187.8	6.4	-16.0	-25.7	-32.5	-7.9	-12.0	-14.8
Manufacturing	170.2	163.6	5.9	-6.6	-24.4	-26.6	-3.9	-13.0	-14.0
Services-producing sector									
	1,802.4	1,801.1	11.5	-1.3	-7.5	-5.0	-0.1	-0.4	-0.3
Trade	350.6	347.9	7.8	-2.7	-10.1	-15.0	-0.8	-2.8	-4.1
Transportation and warehousing	118.0	121.7	5.1	3.7	-4.5	-8.5	3.1	-3.6	-6.5
Finance, insurance, real estate and leasing	148.2	139.7	5.2	-8.5	-9.3	5.6	-5.7	-6.2	4.2
Professional, scientific and technical services	173.4	176.5	5.6	3.1	6.5	2.4	1.8	3.8	1.4
Business, building and other support services	98.2	101.7	4.8	3.5	2.9	-3.7	3.6	2.9	-3.5
Educational services	160.6	158.1	5.6	-2.5	-3.6	2.6	-1.6	-2.2	1.7
Health care and social assistance	259.4	259.8	6.2	0.4	10.0	19.2	0.2	4.0	8.0
Information, culture and recreation	120.5	115.1	4.8	-5.4	1.0	-2.9	-4.5	0.9	-2.5
Accommodation and food services	176.4	183.6	6.0	7.2	0.6	4.1	4.1	0.3	2.3
Other services	96.1	95.9	4.5	-0.2	0.0	-5.5	-0.2	0.0	-5.4
Public administration	101.0	100.9	4.0	-0.1	-1.3	-3.5	-0.1	-1.3	-3.4

1. Average standard error of change in two consecutive months (see "Sampling Errors" in Data Quality for further explanations).

Note(s): Related CANSIM Tables 282-0087, 282-0088.

Table 5-1

Labour force characteristics by census metropolitan area (seasonally adjusted) — 3 month moving average

	February 2009	March 2009	S.E. ¹	Change from			Percent change from		
				last month	last December	twelve months ago	last month	last December	twelve months ago
in thousands (except rates)									
St. John's, Newfoundland and Labrador									
Population	156.2	156.4	...	0.2	0.7	3.1	0.1	0.4	2.0
Labour force	109.1	108.9	0.7	-0.2	-0.5	4.5	-0.2	-0.5	4.3
Employment	101.0	100.8	0.8	-0.2	-0.7	5.0	-0.2	-0.7	5.2
Unemployment	8.1	8.1	0.4	0.0	0.2	-0.4	0.0	2.5	-4.7
Participation rate	69.8	69.6	0.5	-0.2	-0.7	1.5
Unemployment rate	7.4	7.4	0.4	0.0	0.2	-0.7
Employment rate	64.7	64.5	0.5	-0.2	-0.7	2.0
Halifax, Nova Scotia									
Population	319.4	319.8	...	0.4	1.1	4.5	0.1	0.3	1.4
Labour force	228.7	229.6	1.1	0.9	4.3	10.3	0.4	1.9	4.7
Employment	215.1	215.9	1.2	0.8	2.7	7.4	0.4	1.3	3.5
Unemployment	13.6	13.7	0.6	0.1	1.7	3.0	0.7	14.2	28.0
Participation rate	71.6	71.8	0.3	0.2	1.1	2.2
Unemployment rate	5.9	6.0	0.3	0.1	0.7	1.1
Employment rate	67.3	67.5	0.4	0.2	0.6	1.4
Saint John, New Brunswick									
Population	105.2	105.2	...	0.0	0.2	0.8	0.0	0.2	0.8
Labour force	70.7	71.3	0.7	0.6	1.7	2.0	0.8	2.4	2.9
Employment	66.2	66.8	0.6	0.6	1.8	1.5	0.9	2.8	2.3
Unemployment	4.5	4.5	0.4	0.0	-0.1	0.5	0.0	-2.2	12.5
Participation rate	67.2	67.8	0.7	0.6	1.5	1.4
Unemployment rate	6.4	6.3	0.5	-0.1	-0.3	0.5
Employment rate	62.9	63.5	0.6	0.6	1.6	1.0
Saguenay, Quebec									
Population	124.9	124.8	...	-0.1	-0.1	-0.4	-0.1	-0.1	-0.3
Labour force	75.7	75.0	0.7	-0.7	-1.6	-0.1	-0.9	-2.1	-0.1
Employment	69.0	68.0	0.7	-1.0	-2.8	-0.1	-1.4	-4.0	-0.1
Unemployment	6.7	7.0	0.4	0.3	1.1	0.0	4.5	18.6	0.0
Participation rate	60.6	60.1	0.6	-0.5	-1.2	0.1
Unemployment rate	8.9	9.3	0.5	0.4	1.6	0.0
Employment rate	55.2	54.5	0.6	-0.7	-2.2	0.1
Québec, Quebec									
Population	614.1	614.6	...	0.5	1.5	6.3	0.1	0.2	1.0
Labour force	419.3	418.5	3.5	-0.8	5.5	10.6	-0.2	1.3	2.6
Employment	403.1	401.6	3.4	-1.5	4.9	13.4	-0.4	1.2	3.5
Unemployment	16.2	16.9	1.5	0.7	0.6	-2.8	4.3	3.7	-14.2
Participation rate	68.3	68.1	0.6	-0.2	0.7	1.0
Unemployment rate	3.9	4.0	0.4	0.1	0.1	-0.8
Employment rate	65.6	65.3	0.6	-0.3	0.6	1.5
Trois-Rivières, Quebec									
Population	122.1	122.2	...	0.1	0.3	1.1	0.1	0.2	0.9
Labour force	72.2	72.4	0.7	0.2	-1.2	-6.1	0.3	-1.6	-7.8
Employment	66.4	65.9	0.7	-0.5	-2.9	-5.4	-0.8	-4.2	-7.6
Unemployment	5.8	6.5	0.4	0.7	1.7	-0.8	12.1	35.4	-11.0
Participation rate	59.1	59.2	0.6	0.1	-1.2	-5.6
Unemployment rate	8.0	9.0	0.5	1.0	2.5	-0.3
Employment rate	54.4	53.9	0.6	-0.5	-2.5	-5.0

See footnotes at the end of the table.

Table 5-1 – continued

Labour force characteristics by census metropolitan area (seasonally adjusted) — 3 month moving average

	February 2009	March 2009	S.E. ¹	Change from			Percent change from		
				last month	last December	twelve months ago	last month	last December	twelve months ago
in thousands (except rates)									
Sherbrooke, Quebec									
Population	139.4	139.5	...	0.1	0.4	1.7	0.1	0.3	1.2
Labour force	88.0	87.8	0.7	-0.2	-1.2	-1.5	-0.2	-1.3	-1.7
Employment	82.4	82.1	0.8	-0.3	-0.9	-1.9	-0.4	-1.1	-2.3
Unemployment	5.6	5.8	0.3	0.2	-0.2	0.5	3.6	-3.3	9.4
Participation rate	63.1	62.9	0.5	-0.2	-1.1	-1.9
Unemployment rate	6.4	6.6	0.4	0.2	-0.1	0.7
Employment rate	59.1	58.9	0.5	-0.2	-0.8	-2.1
Montréal, Quebec									
Population	3,085.2	3,088.2	...	3.0	8.7	33.7	0.1	0.3	1.1
Labour force	2,043.7	2,044.9	7.2	1.2	-14.8	-11.2	0.1	-0.7	-0.5
Employment	1,878.9	1,868.2	7.5	-10.7	-36.4	-38.9	-0.6	-1.9	-2.0
Unemployment	164.7	176.7	4.5	12.0	21.6	27.7	7.3	13.9	18.6
Participation rate	66.2	66.2	0.2	0.0	-0.7	-1.1
Unemployment rate	8.1	8.6	0.2	0.5	1.1	1.4
Employment rate	60.9	60.5	0.2	-0.4	-1.3	-1.9
Ottawa-Gatineau, Ontario/Quebec									
Population	970.3	971.4	...	1.1	3.2	13.5	0.1	0.3	1.4
Labour force	697.1	692.9	3.6	-4.2	-15.4	-5.0	-0.6	-2.2	-0.7
Employment	663.3	657.0	3.8	-6.3	-19.3	-8.5	-0.9	-2.9	-1.3
Unemployment	33.8	35.9	1.5	2.1	3.9	3.5	6.2	12.2	10.8
Participation rate	71.8	71.3	0.4	-0.5	-1.9	-1.6
Unemployment rate	4.8	5.2	0.2	0.4	0.7	0.6
Employment rate	68.4	67.6	0.4	-0.8	-2.3	-1.9
Ottawa-Gatineau, Quebec part, Ontario/Quebec									
Population	246.2	246.5	...	0.3	0.9	3.7	0.1	0.4	1.5
Labour force	174.6	175.4	1.2	0.8	-1.2	-4.3	0.5	-0.7	-2.4
Employment	164.8	164.8	1.3	0.0	-4.0	-6.9	0.0	-2.4	-4.0
Unemployment	9.8	10.5	0.5	0.7	2.7	2.5	7.1	34.6	31.2
Participation rate	70.9	71.2	0.5	0.3	-0.7	-2.8
Unemployment rate	5.6	6.0	0.3	0.4	1.6	1.5
Employment rate	66.9	66.9	0.5	0.0	-1.8	-3.8
Ottawa-Gatineau, Ontario part, Ontario/Quebec									
Population	724.1	724.8	...	0.7	2.2	9.6	0.1	0.3	1.3
Labour force	522.5	517.6	3.4	-4.9	-14.1	-0.6	-0.9	-2.7	-0.1
Employment	498.5	492.2	3.5	-6.3	-15.3	-1.6	-1.3	-3.0	-0.3
Unemployment	24.0	25.4	1.5	1.4	1.2	1.0	5.8	5.0	4.1
Participation rate	72.2	71.4	0.5	-0.8	-2.2	-1.1
Unemployment rate	4.6	4.9	0.3	0.3	0.3	0.2
Employment rate	68.8	67.9	0.5	-0.9	-2.3	-1.1
Kingston, Ontario									
Population	126.2	126.2	...	0.0	0.0	0.3	0.0	0.0	0.2
Labour force	83.6	83.0	0.8	-0.6	-1.1	-0.4	-0.7	-1.3	-0.5
Employment	79.4	78.4	0.7	-1.0	-2.0	-0.2	-1.3	-2.5	-0.3
Unemployment	4.2	4.6	0.3	0.4	0.9	-0.1	9.5	24.3	-2.1
Participation rate	66.2	65.8	0.6	-0.4	-0.8	-0.4
Unemployment rate	5.0	5.5	0.4	0.5	1.1	-0.1
Employment rate	62.9	62.1	0.6	-0.8	-1.6	-0.3

See footnotes at the end of the table.

Table 5-1 – continued

Labour force characteristics by census metropolitan area (seasonally adjusted) — 3 month moving average

	February 2009	March 2009	S.E. ¹	Change from			Percent change from		
				last month	last December	twelve months ago	last month	last December	twelve months ago
in thousands (except rates)									
Toronto, Ontario									
Population	4,608.9	4,617.5	...	8.6	25.3	108.5	0.2	0.6	2.4
Labour force	3,177.2	3,187.2	8.9	10.0	32.1	65.3	0.3	1.0	2.1
Employment	2,912.3	2,906.0	9.3	-6.3	-19.9	-13.7	-0.2	-0.7	-0.5
Unemployment	264.9	281.2	5.5	16.3	52.0	78.9	6.2	22.7	39.0
Participation rate	68.9	69.0	0.2	0.1	0.3	-0.2
Unemployment rate	8.3	8.8	0.2	0.5	1.5	2.3
Employment rate	63.2	62.9	0.2	-0.3	-0.8	-1.9
Hamilton, Ontario									
Population	599.7	599.9	...	0.2	0.7	4.8	0.0	0.1	0.8
Labour force	399.6	407.2	3.0	7.6	11.1	6.2	1.9	2.8	1.5
Employment	365.9	371.1	3.1	5.2	2.8	-5.3	1.4	0.8	-1.4
Unemployment	33.7	36.0	1.4	2.3	8.2	11.4	6.8	29.5	46.3
Participation rate	66.6	67.9	0.5	1.3	1.8	0.5
Unemployment rate	8.4	8.8	0.4	0.4	1.8	2.7
Employment rate	61.0	61.9	0.5	0.9	0.4	-1.3
Kitchener, Ontario									
Population	385.8	386.1	...	0.3	1.1	5.4	0.1	0.3	1.4
Labour force	278.9	279.5	1.9	0.6	0.0	12.3	0.2	0.0	4.6
Employment	253.4	252.7	1.9	-0.7	-4.9	-0.9	-0.3	-1.9	-0.4
Unemployment	25.5	26.8	0.9	1.3	4.8	13.1	5.1	21.8	95.6
Participation rate	72.3	72.4	0.5	0.1	-0.2	2.2
Unemployment rate	9.1	9.6	0.3	0.5	1.7	4.5
Employment rate	65.7	65.4	0.5	-0.3	-1.5	-1.2
London, Ontario									
Population	387.6	387.9	...	0.3	0.9	4.5	0.1	0.2	1.2
Labour force	265.2	263.7	1.9	-1.5	-0.1	2.3	-0.6	0.0	0.9
Employment	242.8	240.3	2.0	-2.5	-4.2	-4.0	-1.0	-1.7	-1.6
Unemployment	22.4	23.4	0.9	1.0	4.1	6.3	4.5	21.2	36.8
Participation rate	68.4	68.0	0.5	-0.4	-0.2	-0.2
Unemployment rate	8.4	8.9	0.3	0.5	1.6	2.4
Employment rate	62.6	61.9	0.5	-0.7	-1.3	-1.8
Oshawa, Ontario									
Population	291.4	291.8	...	0.4	1.3	5.8	0.1	0.4	2.0
Labour force	197.3	195.2	1.4	-2.1	-7.1	-0.7	-1.1	-3.5	-0.4
Employment	181.2	179.1	1.4	-2.1	-7.5	-4.2	-1.2	-4.0	-2.3
Unemployment	16.1	16.2	0.8	0.1	0.4	3.5	0.6	2.5	27.6
Participation rate	67.7	66.9	0.5	-0.8	-2.7	-1.6
Unemployment rate	8.2	8.3	0.4	0.1	0.5	1.8
Employment rate	62.2	61.4	0.5	-0.8	-2.8	-2.7
St. Catharines-Niagara, Ontario									
Population	329.8	329.8	...	0.0	0.0	1.0	0.0	0.0	0.3
Labour force	213.0	210.8	1.8	-2.2	-2.7	-4.0	-1.0	-1.3	-1.9
Employment	192.8	190.5	1.7	-2.3	-4.2	-10.4	-1.2	-2.2	-5.2
Unemployment	20.2	20.3	0.7	0.1	1.5	6.5	0.5	8.0	47.1
Participation rate	64.6	63.9	0.5	-0.7	-0.8	-1.4
Unemployment rate	9.5	9.6	0.3	0.1	0.8	3.2
Employment rate	58.5	57.8	0.5	-0.7	-1.2	-3.3

See footnotes at the end of the table.

Table 5-1 – continued

Labour force characteristics by census metropolitan area (seasonally adjusted) — 3 month moving average

	February 2009	March 2009	S.E. ¹	Change from			Percent change from		
				last month	last December	twelve months ago	last month	last December	twelve months ago
in thousands (except rates)									
Greater Sudbury / Grand Sudbury, Ontario									
Population	134.1	134.1	...	0.0	0.1	0.9	0.0	0.1	0.7
Labour force	87.3	87.7	0.8	0.4	0.1	2.4	0.5	0.1	2.8
Employment	81.4	80.8	0.8	-0.6	-1.9	0.4	-0.7	-2.3	0.5
Unemployment	6.0	6.9	0.3	0.9	2.0	2.0	15.0	40.8	40.8
Participation rate	65.1	65.4	0.6	0.3	0.0	1.4
Unemployment rate	6.9	7.9	0.4	1.0	2.3	2.2
Employment rate	60.7	60.3	0.6	-0.4	-1.4	-0.1
Thunder Bay, Ontario									
Population	103.5	103.5	...	0.0	-0.2	-0.4	0.0	-0.2	-0.4
Labour force	64.6	64.5	0.6	-0.1	-0.9	-3.5	-0.2	-1.4	-5.1
Employment	59.7	59.3	0.6	-0.4	-1.8	-5.0	-0.7	-2.9	-7.8
Unemployment	4.9	5.1	0.3	0.2	0.8	1.5	4.1	18.6	41.7
Participation rate	62.4	62.3	0.6	-0.1	-0.8	-3.1
Unemployment rate	7.6	7.9	0.4	0.3	1.3	2.6
Employment rate	57.7	57.3	0.6	-0.4	-1.6	-4.6
Windsor, Ontario									
Population	273.1	273.1	...	0.0	0.0	0.8	0.0	0.0	0.3
Labour force	176.6	175.7	1.5	-0.9	-0.2	-2.2	-0.5	-0.1	-1.2
Employment	154.2	151.6	1.5	-2.6	-6.4	-10.9	-1.7	-4.1	-6.7
Unemployment	22.3	24.0	0.8	1.7	6.2	8.6	7.6	34.8	55.8
Participation rate	64.7	64.3	0.6	-0.4	-0.1	-1.0
Unemployment rate	12.6	13.7	0.4	1.1	3.6	5.0
Employment rate	56.5	55.5	0.6	-1.0	-2.4	-4.2
Winnipeg, Manitoba									
Population	588.4	589.2	...	0.8	2.1	8.4	0.1	0.4	1.4
Labour force	417.1	416.9	1.3	-0.2	3.1	4.0	0.0	0.7	1.0
Employment	397.2	396.5	1.3	-0.7	1.6	0.5	-0.2	0.4	0.1
Unemployment	19.8	20.4	0.7	0.6	1.6	3.5	3.0	8.5	20.7
Participation rate	70.9	70.8	0.2	-0.1	0.3	-0.3
Unemployment rate	4.7	4.9	0.2	0.2	0.4	0.8
Employment rate	67.5	67.3	0.2	-0.2	0.0	-0.9
Regina, Saskatchewan									
Population	170.0	170.3	...	0.3	0.9	4.5	0.2	0.5	2.7
Labour force	121.9	121.9	0.7	0.0	0.2	4.7	0.0	0.2	4.0
Employment	117.4	117.2	0.8	-0.2	-0.1	5.0	-0.2	-0.1	4.5
Unemployment	4.5	4.8	0.3	0.3	0.4	-0.2	6.7	9.1	-4.0
Participation rate	71.7	71.6	0.4	-0.1	-0.2	0.9
Unemployment rate	3.7	3.9	0.3	0.2	0.3	-0.4
Employment rate	69.1	68.8	0.5	-0.3	-0.4	1.1
Saskatoon, Saskatchewan									
Population	200.4	200.8	...	0.4	1.3	6.3	0.2	0.7	3.2
Labour force	148.6	148.7	0.8	0.1	2.3	6.2	0.1	1.6	4.4
Employment	141.8	141.5	0.8	-0.3	1.1	3.7	-0.2	0.8	2.7
Unemployment	6.8	7.2	0.4	0.4	1.3	2.4	5.9	22.0	50.0
Participation rate	74.2	74.1	0.4	-0.1	0.7	0.8
Unemployment rate	4.6	4.8	0.3	0.2	0.8	1.4
Employment rate	70.8	70.5	0.4	-0.3	0.1	-0.3

See footnotes at the end of the table.

Table 5-1 – continued

Labour force characteristics by census metropolitan area (seasonally adjusted) — 3 month moving average

	February 2009	March 2009	S.E. ¹	Change from			Percent change from		
				last month	last December	twelve months ago	last month	last December	twelve months ago
in thousands (except rates)									
Calgary, Alberta									
Population	959.4	961.6	...	2.2	6.8	23.2	0.2	0.7	2.5
Labour force	746.3	745.7	3.2	-0.6	1.3	33.0	-0.1	0.2	4.6
Employment	711.0	704.7	3.2	-6.3	-10.7	13.4	-0.9	-1.5	1.9
Unemployment	35.3	41.0	1.5	5.7	12.0	19.7	16.1	41.4	92.5
Participation rate	77.8	77.5	0.3	-0.3	-0.5	1.6
Unemployment rate	4.7	5.5	0.2	0.8	1.6	2.5
Employment rate	74.1	73.3	0.3	-0.8	-1.6	-0.4
Edmonton, Alberta									
Population	893.8	895.7	...	1.9	5.7	18.9	0.2	0.6	2.2
Labour force	652.7	653.0	3.3	0.3	0.0	7.1	0.0	0.0	1.1
Employment	624.0	621.3	3.4	-2.7	-8.1	0.1	-0.4	-1.3	0.0
Unemployment	28.6	31.7	1.3	3.1	8.0	7.0	10.8	33.8	28.3
Participation rate	73.0	72.9	0.4	-0.1	-0.5	-0.8
Unemployment rate	4.4	4.9	0.2	0.5	1.3	1.1
Employment rate	69.8	69.4	0.4	-0.4	-1.3	-1.4
Abbotsford, British Columbia									
Population	134.8	135.0	...	0.2	0.4	2.1	0.1	0.3	1.6
Labour force	93.6	91.9	0.7	-1.7	-1.6	1.8	-1.8	-1.7	2.0
Employment	87.8	85.6	0.8	-2.2	-2.8	0.0	-2.5	-3.2	0.0
Unemployment	5.8	6.3	0.3	0.5	1.2	1.8	8.6	23.5	40.0
Participation rate	69.4	68.1	0.6	-1.3	-1.4	0.3
Unemployment rate	6.2	6.9	0.4	0.7	1.4	1.9
Employment rate	65.1	63.4	0.6	-1.7	-2.3	-1.0
Vancouver, British Columbia									
Population	1,966.0	1,969.3	...	3.3	9.5	43.9	0.2	0.5	2.3
Labour force	1,295.6	1,300.2	4.8	4.6	1.2	2.3	0.4	0.1	0.2
Employment	1,224.7	1,220.3	4.9	-4.4	-16.8	-28.5	-0.4	-1.4	-2.3
Unemployment	71.0	79.8	2.3	8.8	17.9	30.8	12.4	28.9	62.9
Participation rate	65.9	66.0	0.2	0.1	-0.3	-1.4
Unemployment rate	5.5	6.1	0.2	0.6	1.3	2.3
Employment rate	62.3	62.0	0.3	-0.3	-1.1	-2.9
Victoria, British Columbia									
Population	287.6	287.7	...	0.1	0.3	2.4	0.0	0.1	0.8
Labour force	195.2	193.8	1.4	-1.4	-3.3	-2.7	-0.7	-1.7	-1.4
Employment	185.9	183.4	1.4	-2.5	-6.3	-6.7	-1.3	-3.3	-3.5
Unemployment	9.2	10.4	0.5	1.2	3.1	4.0	13.0	42.5	62.5
Participation rate	67.9	67.4	0.5	-0.5	-1.2	-1.5
Unemployment rate	4.7	5.4	0.2	0.7	1.7	2.1
Employment rate	64.6	63.7	0.5	-0.9	-2.3	-2.9

1. Average standard error of change in two consecutive months (see "Sampling Errors" in Data Quality for further explanations).

Note(s): Related CANSIM Table 282-0090.

Table 5-2
Labour force characteristics by census metropolitan area (seasonally adjusted) — Monthly

	February 2009	March 2009	S.E. ¹	Change from			Percent change from		
				last month	last December	twelve months ago	last month	last December	twelve months ago
in thousands (except rates)									
Montréal, Quebec									
Population	3,088.4	3,091.1	...	2.7	9.0	34.3	0.1	0.3	1.1
Labour force	2,031.6	2,058.9	15.0	27.3	3.6	2.7	1.3	0.2	0.1
Employment	1,864.5	1,868.1	15.2	3.6	-32.1	-35.7	0.2	-1.7	-1.9
Unemployment	167.1	190.8	10.8	23.7	35.8	38.4	14.2	23.1	25.2
Participation rate	65.8	66.6	0.5	0.8	-0.1	-0.7
Unemployment rate	8.2	9.3	0.5	1.1	1.8	1.9
Employment rate	60.4	60.4	0.5	0.0	-1.3	-1.9
Toronto, Ontario									
Population	4,618.1	4,625.6	...	7.5	25.7	108.9	0.2	0.6	2.4
Labour force	3,181.8	3,199.8	19.2	18.0	30.1	56.8	0.6	0.9	1.8
Employment	2,894.8	2,913.8	19.8	19.0	-18.7	-20.9	0.7	-0.6	-0.7
Unemployment	287.0	286.0	13.5	-1.0	48.8	77.7	-0.3	20.6	37.3
Participation rate	68.9	69.2	0.4	0.3	0.3	-0.4
Unemployment rate	9.0	8.9	0.4	-0.1	1.4	2.3
Employment rate	62.7	63.0	0.4	0.3	-0.8	-2.0
Vancouver, British Columbia									
Population	1,969.5	1,972.4	...	2.9	9.8	43.5	0.1	0.5	2.3
Labour force	1,302.5	1,310.1	9.9	7.6	13.6	12.1	0.6	1.0	0.9
Employment	1,228.1	1,216.3	9.9	-11.8	-13.0	-29.6	-1.0	-1.1	-2.4
Unemployment	74.5	93.8	5.8	19.3	26.6	41.7	25.9	39.6	80.0
Participation rate	66.1	66.4	0.5	0.3	0.3	-0.9
Unemployment rate	5.7	7.2	0.4	1.5	2.0	3.2
Employment rate	62.4	61.7	0.5	-0.7	-0.9	-2.9

1. Average standard error of change in two consecutive months (see "Sampling Errors" in Data Quality for further explanations).

Note(s): Related CANSIM Table 282-0091.

Table 6-1

Labour force characteristics by province and economic region ¹, unadjusted for seasonality, 3 month moving average ending in March 2008 and March 2009

	Population	Labour force			Participation rate	Unemployment rate	Employment rate
		Labour force	Employment	Unemployment			
	in thousands						
Canada ²							
2008	26,776.7	17,914.3	16,788.8	1,125.5	66.9	6.3	62.7
2009	27,159.0	18,076.4	16,572.6	1,503.7	66.6	8.3	61.0
Newfoundland and Labrador							
2008	425.2	242.4	207.2	35.2	57.0	14.5	48.7
2009	427.9	243.2	201.1	42.2	56.8	17.4	47.0
Avalon Peninsula [1010]							
2008	211.1	131.4	116.7	14.7	62.2	11.2	55.3
2009	214.2	132.6	117.5	15.1	61.9	11.4	54.9
South Coast-Burin Peninsula [1020]							
2008	32.6	16.1	12.8	3.2	49.4	19.9	39.3
2009	32.1	16.4	11.9	4.4	51.1	26.8	37.1
West Coast-Northern Peninsula-Labrador [1030]							
2008	87.7	47.3	39.1	8.2	53.9	17.3	44.6
2009	88.0	47.4	36.1	11.2	53.9	23.6	41.0
Notre Dame-Central Bonavista Bay [1040]							
2008	93.7	47.7	38.6	9.1	50.9	19.1	41.2
2009	93.5	46.9	35.5	11.4	50.2	24.3	38.0
Prince Edward Island							
2008	113.8	75.5	65.8	9.7	66.3	12.8	57.8
2009	115.3	75.3	63.9	11.4	65.3	15.1	55.4
Nova Scotia							
2008	766.6	475.8	435.0	40.8	62.1	8.6	56.7
2009	771.3	488.8	439.7	49.1	63.4	10.0	57.0
Cape Breton [1210]							
2008	115.8	64.1	54.5	9.6	55.4	15.0	47.1
2009	115.3	61.1	50.7	10.5	53.0	17.2	44.0
North Shore [1220]							
2008	131.2	75.4	68.2	7.3	57.5	9.7	52.0
2009	131.4	76.1	66.8	9.3	57.9	12.2	50.8
Annapolis Valley [1230]							
2008	100.7	60.0	53.0	7.0	59.6	11.7	52.6
2009	101.5	63.5	56.6	6.9	62.6	10.9	55.8
Southern [1240]							
2008	103.5	60.8	54.7	6.0	58.7	9.9	52.9
2009	103.4	61.4	53.1	8.3	59.4	13.5	51.4
Halifax [1250]							
2008	315.3	215.6	204.6	11.0	68.4	5.1	64.9
2009	319.8	226.6	212.5	14.1	70.9	6.2	66.4
New Brunswick							
2008	616.1	387.7	352.0	35.7	62.9	9.2	57.1
2009	620.3	391.4	351.7	39.7	63.1	10.1	56.7
Campbellton-Miramichi [1310]							
2008	135.8	77.5	65.4	12.1	57.1	15.6	48.2
2009	135.4	71.4	58.4	13.0	52.7	18.2	43.1
Moncton-Richibucto [1320]							
2008	164.7	107.5	98.8	8.7	65.3	8.1	60.0
2009	167.1	110.5	101.4	9.1	66.1	8.2	60.7
Saint John-St. Stephen [1330]							
2008	142.6	93.6	87.0	6.6	65.6	7.1	61.0
2009	143.5	95.7	89.4	6.4	66.7	6.7	62.3

See footnotes at the end of the table.

Table 6-1 – continued

Labour force characteristics by province and economic region 1, unadjusted for seasonality, 3 month moving average ending in March 2008 and March 2009

	Population	Labour force			Participation rate	Unemployment rate	Employment rate
		Labour force	Employment	Unemployment			
		in thousands					
Fredericton-Oromocto [1340]							
2008	104.8	68.9	64.5	4.4	65.7	6.4	61.5
2009	106.1	70.2	64.1	6.1	66.2	8.7	60.4
Edmundston-Woodstock [1350]							
2008	68.2	40.2	36.2	4.0	58.9	10.0	53.1
2009	68.2	43.4	38.4	5.0	63.6	11.5	56.3
Quebec							
2008	6,349.3	4,126.1	3,803.0	323.2	65.0	7.8	59.9
2009	6,410.8	4,131.5	3,750.3	381.1	64.4	9.2	58.5
Gaspésie-Îles-de-la-Madeleine [2410]							
2008	80.8	37.5	29.8	7.7	46.4	20.5	36.9
2009	80.8	37.2	29.8	7.4	46.0	19.9	36.9
Bas-Saint-Laurent [2415]							
2008	167.4	98.0	88.4	9.5	58.5	9.7	52.8
2009	167.5	103.0	91.3	11.6	61.5	11.3	54.5
Capitale-Nationale [2420]							
2008	566.2	368.5	348.6	19.8	65.1	5.4	61.6
2009	571.0	376.1	355.2	20.9	65.9	5.6	62.2
Chaudière-Appalaches [2425]							
2008	328.9	216.2	202.6	13.7	65.7	6.3	61.6
2009	331.1	214.3	197.3	17.0	64.7	7.9	59.6
Estrie [2430]							
2008	250.2	158.0	148.5	9.5	63.1	6.0	59.4
2009	252.5	163.3	147.2	16.1	64.7	9.9	58.3
Centre-du-Québec [2433]							
2008	186.0	125.1	113.7	11.4	67.3	9.1	61.1
2009	187.4	128.1	116.0	12.1	68.4	9.4	61.9
Montréal [2435]							
2008	1,135.6	738.6	693.0	45.6	65.0	6.2	61.0
2009	1,154.3	775.6	712.9	62.8	67.2	8.1	61.8
Montréal [2440]							
2008	1,591.8	1,038.8	940.4	98.4	65.3	9.5	59.1
2009	1,593.7	1,016.7	906.1	110.6	63.8	10.9	56.9
Laval [2445]							
2008	312.1	215.2	198.7	16.4	69.0	7.6	63.7
2009	317.0	206.6	188.3	18.3	65.2	8.9	59.4
Lanaudière [2450]							
2008	359.5	243.0	221.6	21.4	67.6	8.8	61.6
2009	369.9	241.1	222.3	18.8	65.2	7.8	60.1
Laurentides [2455]							
2008	431.6	297.6	275.1	22.5	69.0	7.6	63.7
2009	441.5	286.4	259.4	27.0	64.9	9.4	58.8
Outaouais [2460]							
2008	293.1	205.1	193.5	11.6	70.0	5.7	66.0
2009	297.5	202.0	186.0	16.0	67.9	7.9	62.5
Abitibi-Témiscamingue [2465]							
2008	115.6	70.8	65.1	5.7	61.2	8.1	56.3
2009	116.1	75.0	67.6	7.4	64.6	9.9	58.2
Mauricie [2470]							
2008	217.8	125.6	115.2	10.4	57.7	8.3	52.9
2009	218.6	123.6	111.9	11.7	56.5	9.5	51.2

See footnotes at the end of the table.

Table 6-1 – continued

Labour force characteristics by province and economic region 1, unadjusted for seasonality, 3 month moving average ending in March 2008 and March 2009

	Population	Labour force			Participation rate	Unemployment rate	Employment rate
		Labour force	Employment	Unemployment			
	in thousands						
Saguenay-Lac-Saint-Jean [2475]							
2008	223.3	134.5	121.3	13.2	60.2	9.8	54.3
2009	223.0	131.7	115.8	15.9	59.1	12.1	51.9
Côte-Nord and Nord-du-Québec [2480, 2490]							
2008	89.1	53.6	47.4	6.3	60.2	11.8	53.2
2009	88.8	50.7	43.2	7.5	57.1	14.8	48.6
Ontario							
2008	10,449.2	7,026.2	6,572.0	454.3	67.2	6.5	62.9
2009	10,603.6	7,079.6	6,450.3	629.3	66.8	8.9	60.8
Ottawa [3510]							
2008	989.7	695.9	663.6	32.3	70.3	4.6	67.1
2009	1,000.5	690.4	650.8	39.6	69.0	5.7	65.0
Kingston-Pembroke [3515]							
2008	359.6	223.8	208.5	15.4	62.2	6.9	58.0
2009	360.8	231.1	211.8	19.3	64.1	8.4	58.7
Muskoka-Kawartha [3520]							
2008	310.5	189.4	171.7	17.8	61.0	9.4	55.3
2009	312.3	183.2	168.9	14.2	58.7	7.8	54.1
Toronto [3530]							
2008	4,756.4	3,255.6	3,044.5	211.2	68.4	6.5	64.0
2009	4,866.5	3,312.6	3,017.2	295.3	68.1	8.9	62.0
Kitchener-Waterloo-Barrie [3540]							
2008	978.3	681.7	644.7	36.9	69.7	5.4	65.9
2009	993.2	700.5	633.3	67.2	70.5	9.6	63.8
Hamilton-Niagara Peninsula [3550]							
2008	1,138.6	747.8	694.5	53.3	65.7	7.1	61.0
2009	1,148.1	752.5	678.3	74.2	65.5	9.9	59.1
London [3560]							
2008	513.6	348.9	326.2	22.7	67.9	6.5	63.5
2009	519.0	345.7	312.4	33.4	66.6	9.7	60.2
Windsor-Sarnia [3570]							
2008	525.6	340.8	311.4	29.3	64.8	8.6	59.2
2009	526.8	333.6	291.0	42.6	63.3	12.8	55.2
Stratford-Bruce Peninsula [3580]							
2008	247.7	157.5	149.8	7.6	63.6	4.8	60.5
2009	248.5	155.4	143.0	12.3	62.5	7.9	57.5
Northeast [3590]							
2008	454.0	274.5	255.6	18.9	60.5	6.9	56.3
2009	454.6	265.6	245.1	20.6	58.4	7.8	53.9
Northwest [3595]							
2008	175.2	110.4	101.5	8.9	63.0	8.1	57.9
2009	173.3	109.0	98.6	10.5	62.9	9.6	56.9
Manitoba							
2008	905.1	620.4	593.0	27.4	68.5	4.4	65.5
2009	916.8	628.3	595.7	32.7	68.5	5.2	65.0
Southeast [4610]							
2008	77.8	50.9	48.3	2.6	65.4	5.1	62.1
2009	80.0	53.1	50.2	2.9	66.4	5.5	62.8
South Central [4620]							
2008	43.6	29.5	28.6	0.9	67.7	3.1	65.6
2009	44.6	28.8	27.2	1.5	64.6	5.2	61.0

See footnotes at the end of the table.

Table 6-1 – continued

Labour force characteristics by province and economic region 1, unadjusted for seasonality, 3 month moving average ending in March 2008 and March 2009

	Population	Labour force			Participation rate	Unemployment rate	Employment rate
		Labour force	Employment	Unemployment			
		in thousands					
Southwest [4630]							
2008	82.5	54.9	52.8	2.1	66.5	3.8	64.0
2009	82.8	59.3	56.5	2.8	71.6	4.7	68.2
North Central [4640]							
2008	35.7	24.3	22.8	1.4	68.1	5.8	63.9
2009	36.0	23.5	22.9	0.6	65.3	2.6	63.6
Winnipeg [4650]							
2008	536.3	375.9	359.5	16.4	70.1	4.4	67.0
2009	543.3	379.3	359.6	19.8	69.8	5.2	66.2
Interlake [4660]							
2008	70.4	45.5	43.2	2.3	64.6	5.1	61.4
2009	71.4	46.2	43.8	2.4	64.7	5.2	61.3
Parklands and North [4670, 4680]							
2008	58.9	39.5	37.9	1.6	67.1	4.1	64.3
2009	58.7	38.1	35.5	2.6	64.9	6.8	60.5
Saskatchewan							
2008	760.9	521.5	498.6	22.9	68.5	4.4	65.5
2009	775.5	539.6	512.6	27.0	69.6	5.0	66.1
Regina-Moose Mountain [4710]							
2008	224.3	158.2	151.9	6.3	70.5	4.0	67.7
2009	229.4	162.1	155.2	6.9	70.7	4.3	67.7
Swift Current-Moose Jaw [4720]							
2008	83.3	53.6	51.1	2.5	64.3	4.7	61.3
2009	84.0	54.9	52.8	2.1	65.4	3.8	62.9
Saskatoon-Biggar [4730]							
2008	237.3	167.7	161.9	5.9	70.7	3.5	68.2
2009	243.7	176.1	167.6	8.5	72.3	4.8	68.8
Yorkton-Melville [4740]							
2008	64.3	41.6	39.8	1.7	64.7	4.1	61.9
2009	64.7	40.9	38.7	2.2	63.2	5.4	59.8
Prince Albert and Northern [4750, 4760]							
2008	151.8	100.5	93.8	6.6	66.2	6.6	61.8
2009	153.7	105.6	98.4	7.2	68.7	6.8	64.0
Alberta							
2008	2,776.0	2,048.7	1,977.3	71.4	73.8	3.5	71.2
2009	2,836.0	2,097.8	1,979.9	118.0	74.0	5.6	69.8
Lethbridge-Medicine Hat [4810]							
2008	208.2	144.9	137.7	7.2	69.6	5.0	66.1
2009	210.8	141.9	135.0	7.0	67.3	4.9	64.0
Camrose-Drumheller [4820]							
2008	155.4	113.9	110.6	3.3	73.3	2.9	71.2
2009	155.7	113.0	108.7	4.3	72.6	3.8	69.8
Calgary [4830]							
2008	1,011.7	756.5	733.6	22.9	74.8	3.0	72.5
2009	1,038.3	789.8	743.8	46.0	76.1	5.8	71.6
Banff-Jasper-Rocky Mountain House [4840]							
2008	68.2	53.6	52.0	1.6	78.6	3.0	76.2
2009	69.1	55.0	52.2	2.9	79.6	5.3	75.5
Red Deer [4850]							
2008	144.8	105.6	101.9	3.7	72.9	3.5	70.4
2009	148.9	114.9	106.5	8.4	77.2	7.3	71.5

See footnotes at the end of the table.

Table 6-1 – continued

Labour force characteristics by province and economic region 1, unadjusted for seasonality, 3 month moving average ending in March 2008 and March 2009

	Population	Labour force		Participation rate	Unemployment rate	Employment rate
		Labour force	Employment			
in thousands						
Edmonton [4860]						
2008	910.5	665.2	640.2	25.0	73.1	70.3
2009	930.4	670.4	634.5	35.9	72.1	68.2
Athabasca-Grande Prairie-Peace River [4870]						
2008	185.1	135.9	130.2	5.6	73.4	70.3
2009	188.9	142.0	132.6	9.3	75.2	70.2
Wood Buffalo-Cold Lake [4880]						
2008	92.2	73.2	71.1	2.2	79.4	77.1
2009	93.9	70.8	66.6	4.2	75.4	70.9
British Columbia						
2008	3,614.5	2,389.9	2,284.9	105.0	66.1	63.2
2009	3,681.5	2,400.9	2,227.5	173.3	65.2	60.5
Vancouver Island and Coast [5910]						
2008	629.3	401.2	380.4	20.7	63.8	60.4
2009	637.1	408.6	380.7	27.9	64.1	59.8
Lower Mainland-Southwest [5920]						
2008	2,191.5	1,467.7	1,412.7	55.0	67.0	64.5
2009	2,240.6	1,472.1	1,374.3	97.8	65.7	61.3
Thompson-Okanagan [5930]						
2008	428.0	273.5	257.6	16.0	63.9	60.2
2009	435.4	274.8	249.9	24.9	63.1	57.4
Kootenay [5940]						
2008	122.5	73.6	71.2	2.5	60.1	58.1
2009	123.1	77.6	70.7	6.9	63.0	57.4
Cariboo [5950]						
2008	125.7	90.2	84.0	6.1	71.8	66.8
2009	127.0	83.7	75.3	8.4	65.9	59.3
North Coast and Nechako [5960, 5970]						
2008	65.7	46.7	43.3	3.3	71.1	65.9
2009	65.3	44.3	39.5	4.9	67.8	60.5
Northeast [5980]						
2008	51.8	37.0	35.6	x	71.4	68.7
2009	52.9	39.8	37.2	2.6	75.2	70.3

1. For geographic descriptions of economic regions, refer to the Guide to the Labour Force Survey (catalogue number 71-543-GIE).

2. Estimates for Canada are a sum of the provincial totals and exclude estimates from Yukon, Northwest Territories and Nunavut.

Note(s): Related CANSIM table 282-0054.

Table 6-2
Labour force characteristics by territories, unadjusted for seasonality, 3 month moving average ending in
March 2008 and March 2009

	Population	Labour force			Participation rate	Unemployment rate	Employment rate
		Labour force	Employment	Unemployment			
	in thousands						
Yukon ¹							
2008	23.5	17.5	16.7	0.8	74.5	4.6	71.1
2009	24.1	17.5	16.3	1.2	72.6	6.9	67.6
Northwest Territories ²							
2008	31.1	23.2	21.8	1.5	74.6	6.5	70.1
2009	31.4	22.4	21.4	1.0	71.3	4.5	68.2
Nunavut - 10 largest communities ³							
2008	14.3	9.8	9.0	0.8	68.5	8.5	62.7
2009	14.1	9.0	8.3	0.7	63.6	8.1	58.4

1. Since 1992, the Labour Force Survey (LFS) has been conducted in the Yukon, using an alternative methodology that accommodates some of the operational difficulties inherent to remote locales. These estimates are not included in the national totals. In 1995, the LFS in the Yukon underwent a sample redesign. One result of the redesign was that the covered population increased from 85% to 92%, which is reflected by the sharp increase in the three month moving averages estimates of January, February and March of 1995 for all the level estimates. Users are therefore warned to be cautious when comparing estimates before January 1995 to estimates for January 1995 and forward.

2. Since 2001, the Labour force survey has been administered in the Northwest Territories, using an alternative methodology that accommodates some of the operational difficulties inherent to remote locales. These estimates are not included in national totals.

3. Since 2004, the Labour force survey has been administered in Nunavut, using an alternative methodology that accommodates some of the operational difficulties inherent to remote locales. These estimates are not included in national totals. The 10 largest communities are Iqaluit, Cambridge Bay, Baker Lake, Arviat, Rankin Inlet, Kugluktuk, Pond Inlet, Cape Dorset, Pangnirtung, Igloolik.

Note(s): Related CANSIM table 282-0054.

Table 7

Average usual hours and wages of employees by selected characteristics, Canada, unadjusted for seasonality

	Employees				Full-time			Part-time		
	Number	Average weekly hours	Average weekly wages	Average hourly wages	Number	Average weekly hours	Average weekly wages	Number	Average weekly hours	Average weekly wages
	thousands		dollars		thousands		dollars	thousands		dollars
March 2009										
15 years and over	13,913.4	34.8	796.01	21.98	11,169.3	39.2	924.96	2,744.1	16.9	271.13
15 to 24 years	2,237.4	26.0	359.07	12.70	1,062.2	38.7	582.93	1,175.2	14.6	156.73
25 years and over	11,676.0	36.5	879.73	23.76	10,107.1	39.2	960.91	1,569.0	18.6	356.81
Men	6,836.4	37.3	916.00	23.84	5,972.5	40.3	1,013.83	863.8	16.0	239.65
Women	7,077.0	32.4	680.10	20.18	5,196.7	37.9	822.83	1,880.3	17.3	285.59
Union coverage										
Union coverage	4,419.6	35.4	900.61	25.11	3,741.8	38.4	992.83	677.8	18.4	391.56
No union coverage	9,493.8	34.5	747.31	20.52	7,427.5	39.6	890.77	2,066.3	16.4	231.63
Job permanency										
Permanent	12,429.8	35.7	828.48	22.46	10,387.0	39.2	934.80	2,042.8	17.8	287.89
Temporary	1,483.6	27.3	523.92	17.92	782.2	39.0	794.33	701.4	14.3	222.33
Occupation										
Management	1,018.0	39.4	1,323.58	33.61	979.3	40.2	1,357.80	38.7	18.2	457.22
Business, finance and administrative	2,784.9	35.0	754.58	20.99	2,357.3	38.2	838.21	427.6	17.7	293.48
Natural and applied sciences	1,032.9	38.6	1,178.35	30.67	994.5	39.3	1,203.78	38.3	19.6	518.83
Health	895.3	33.1	846.62	25.47	656.8	37.9	973.69	238.5	19.7	496.74
Social science, education, government service and religion	1,380.9	33.6	944.80	27.82	1,094.6	38.0	1,081.02	286.3	16.6	424.04
Art, culture, recreation and sport	318.2	30.6	696.40	21.37	219.7	38.7	910.27	98.6	12.5	219.66
Sales and service	3,622.3	30.0	477.46	14.72	2,228.3	38.4	658.54	1,394.0	16.4	188.01
Trades, transport and equipment operators	1,921.6	39.3	875.34	21.95	1,772.4	41.2	925.83	149.3	17.4	275.89
Occupations unique to primary industry	214.2	40.8	838.93	19.88	183.5	45.3	946.85	30.7	14.3	193.45
Occupations unique to processing, manufacturing and utilities	724.9	38.6	736.07	18.82	682.8	39.8	766.54	42.1	18.1	241.76
March 2008										
15 years and over	14,253.0	35.0	767.70	21.08	11,510.3	39.4	888.89	2,742.7	16.9	259.09
15 to 24 years	2,387.1	26.4	345.86	12.12	1,161.2	38.8	552.50	1,225.9	14.6	150.11
25 years and over	11,865.9	36.8	852.56	22.89	10,349.0	39.4	926.63	1,516.8	18.7	347.17
Men	7,117.9	37.6	888.62	22.99	6,263.1	40.5	978.83	854.8	16.0	227.61
Women	7,135.2	32.5	647.06	19.19	5,247.2	38.0	781.53	1,888.0	17.3	273.34
Union coverage										
Union coverage	4,503.4	35.7	877.86	24.26	3,848.8	38.6	960.05	654.6	18.8	394.68
No union coverage	9,749.6	34.7	716.81	19.62	7,661.5	39.7	853.14	2,088.1	16.3	216.58
Job permanency										
Permanent	12,680.9	36.0	800.76	21.58	10,679.7	39.4	898.97	2,001.2	17.8	276.63
Temporary	1,572.1	27.5	501.03	17.08	830.6	39.2	759.27	741.5	14.3	211.76
Occupation										
Management	1,008.0	39.8	1,278.64	32.17	973.2	40.5	1,306.17	34.8	20.5	508.38
Business, finance and administrative	2,808.9	35.0	718.37	20.11	2,362.0	38.2	798.91	446.9	17.7	292.67
Natural and applied sciences	1,056.7	38.5	1,147.39	29.69	1,017.0	39.3	1,177.30	39.7	18.0	381.72
Health	878.2	33.5	806.67	23.99	674.2	37.7	911.43	204.0	19.5	460.54
Social science, education, government service and religion	1,357.5	33.8	926.06	27.24	1,077.9	38.2	1,051.38	279.6	17.2	442.87
Art, culture, recreation and sport	339.6	30.5	708.59	21.53	237.0	38.5	930.02	102.6	12.0	196.81
Sales and service	3,666.9	29.9	454.00	14.08	2,235.7	38.5	629.50	1,431.2	16.3	179.84
Trades, transport and equipment operators	2,057.0	40.0	851.05	21.04	1,923.0	41.5	891.33	134.0	18.1	273.19
Occupations unique to primary industry	222.0	41.8	822.47	19.19	193.9	45.9	915.52	28.2	14.0	182.79
Occupations unique to processing, manufacturing and utilities	858.2	39.0	720.92	18.27	816.4	40.1	745.69	41.7	18.1	236.25

Note(s): Related CANSIM Tables 282-0023, 282-0069, 282-0073.

Table 8

Regional unemployment rates used by the Employment Insurance Program ¹, seasonally adjusted, 3 month moving average

Region	Effective from April 12, 2009 to May 9, 2009
	percent
Newfoundland and Labrador	
01. St. John's	7.4
02. Newfoundland and Labrador	20.4
Prince Edward Island	
03. Prince Edward Island	12.0
Nova Scotia	
04. Eastern Nova Scotia	15.3
05. Western Nova Scotia	10.2
06. Halifax	6.0
New Brunswick	
07. Fredericton-Moncton-Saint John	6.0
08. Madawaska-Charlotte ²	11.5
09. Restigouche-Albert	15.3
Quebec	
10. Gaspésie-Îles-de-la-Madeleine	17.8
11. Québec	4.1
12. Trois-Rivières	8.1
13. South Central Quebec	6.9
14. Sherbrooke	6.5
15. Montérégie	8.4
16. Montréal	8.7
17. Central Quebec	9.0
18. Northwestern Quebec	11.9
19. Bas-Saint-Laurent-Côte-Nord ³	12.6
20. Gatineau	6.0
21. Saguenay	9.2
Ontario	
22. Ottawa	5.0
23. Eastern Ontario	7.6
24. Kingston	5.7
25. Central Ontario	8.8
26. Oshawa	8.3
27. Toronto	8.8
28. Hamilton	8.8
29. St. Catharines	9.6
30. London	9.0
31. Niagara	10.0
32. Windsor	13.2
33. Kitchener	9.5
34. Huron	10.1
35. South Central Ontario	7.9
36. Sudbury	7.7
37. Thunder Bay	8.0
38. Northern Ontario	10.9
Manitoba	
39. Winnipeg	4.9
40. Southern Manitoba	5.4
41. Northern Manitoba	27.4
Saskatchewan	
42. Regina	3.8
43. Saskatoon	4.9
44. Southern Saskatchewan	6.5
45. Northern Saskatchewan	15.7

See footnotes at the end of the table.

Table 8 – continued

Regional unemployment rates used by the Employment Insurance Program 1, seasonally adjusted, 3 month moving average

Region	Effective from April 12, 2009 to May 9, 2009
	percent
Alberta	
46. Calgary	5.5
47. Edmonton	5.0
48. Northern Alberta	9.5
49. Southern Alberta	6.8
British Columbia	
50. Southern Interior British Columbia	9.3
51. Abbotsford	6.8
52. Vancouver	6.3
53. Victoria	6.1
54. Southern Coastal British Columbia	8.1
55. Northern British Columbia	11.7
Territories	
56. Yukon 4	25.0
57. Northwest Territories 4	25.0
58. Nunavut 4	25.0

1. The boundaries of these regions are determined by Human Resources and Social Development Canada (HRSDC). For geographic descriptions and maps of employment insurance regions, see the HRSDC website: <http://srv129.services.gc.ca/eiregions/en/geocont.aspx>.

2. This unemployment rate has been determined using a transition formula prescribed in the EI Regulations. For further information, see: http://www.hrsdc.gc.ca/en/cs/comm/news/2000/000913a_e.shtml.

3. This unemployment rate has been determined using a transition formula prescribed in the EI Regulations. For further information, see: http://www.hrsdc.gc.ca/en/cs/comm/news/2000/000913b_e.shtml.

4. This rate is provided by Human Resources and Skills Development Canada.

Data quality

About the Labour Force Survey

The statistics contained in this report are based on information obtained through a sample survey of 53,000 representative households across the country. The Labour Force Survey, started in November 1945, was taken at quarterly intervals until November 1952. It has been carried out monthly since then. The information generated by the survey has expanded considerably over the years with a major redesign of the survey content in 1976 and again in 1997, and provides a rich and detailed picture of the Canadian labour market.

The sample used in the Labour Force Survey has been designed to represent all persons in the population 15 years of age and over residing in the provinces of Canada, with the exception of the following: persons living on Indian reserves, full-time members of the armed forces and people living in institutions (for example, inmates of penal institutions and patients in hospitals or nursing homes who have resided in the institution for more than six months). Monthly estimates of employment, unemployment and persons not in the labour force refer to the specific week covered by the survey each month, normally the week containing the 15th day.

Definitions and explanations

The **labour force** is composed of those members of the civilian non-institutional population 15 years of age and over who, during the reference week, were employed or unemployed.

Employed persons are those who, during the reference week:

- (a) did any work at all
- (b) had a job but were not at work

A person is considered to be **full-time** if his/her usual hours at the main job are 30 or more hours per week. When the number of hours worked at the main job is usually less than 30 hours per week then he/she is considered to be **part-time**.

Unemployed persons are those who, during the reference week:

- (a) were without work, had actively looked for work in the past four weeks (ending with reference week), and were available for work;
- (b) had not actively looked for work in the past four weeks but were on temporary layoff and were available for work;
- (c) had not actively looked for work in the past four weeks but had a new job to start in four weeks or less from the reference week, and were available for work.

Persons in the civilian non-institutional population 15 years of age and over who, during the reference week, were neither employed nor unemployed are classified as **not in the labour force**.

The **unemployment rate** represents the number of unemployed persons expressed as a percentage of the labour force. The unemployment rate for a particular group (age, sex, etc.) is the number unemployed in that group expressed as a percentage of the labour force for that group.

The **participation rate** represents the labour force expressed as a percentage of the population 15 years of age and over. The participation rate for a particular group (age, sex, etc.) is the labour force in that group expressed as a percentage of the population for that group.

The **employment rate (formerly the employment/population ratio)** represents the number of persons employed expressed as a percentage of the population 15 years of age and over. The employment rate for a particular group (age, sex, etc.) is the number employed in that group expressed as a percentage of the population for that group.

The **part-time rate** represents the number of persons employed part-time expressed as a percentage of the employed. The part-time rate for a particular group (age, sex, etc.) is the number employed part-time in that group expressed as a percentage of the employed for that group.

All geographic regions are based on the 2001 Census boundaries.

Seasonal adjustment

Fluctuations in economic time series are caused by seasonal, cyclical and irregular movements. A seasonally adjusted series is one from which seasonal movements have been eliminated. Seasonal movements are defined as those which are caused by regular annual events such as climate, holidays, vacation periods and cycles related to crops, production and retail sales associated with Christmas and Easter. The seasonally adjusted series contains irregular as well as longer-term cyclical fluctuations.

The seasonally adjusted series are revised each year to take into account current data and to generate new forecast factors for the next twelve months. The data are therefore subject to slight revisions in future issues of this publication.

Sampling variability of estimates

Estimates in this publication are based on the Labour Force Survey, a monthly survey of approximately 53,000 households across Canada. Because the entire population is not surveyed, the estimates are subject to sampling error. While the published estimate is the best available indicator of the real value, changes in the level of any estimates between two months can be the result of a true change or sampling variability. The sampling error can be estimated by calculating the standard error for the published estimate or statistic. These standard errors have been included in the publication tables, in order to assist users in interpreting the data.

Interpretation based on standard error

Two thirds of the time (68%), a change greater than the sampling error indicates a real change. The larger the change compared to the standard error, the better the chance that we are observing a real change, as opposed to a change due to sampling variability. At the 95% level, in order to ensure that change is real, the change in the estimate must be greater than twice the sampling error.

Movements in estimates that are smaller than the sampling error are less likely to reflect a real change and more likely to be due to sampling variability. While the above is true for monthly movements, one can have more confidence in a series of consecutive movements in the same direction, even though some of the monthly movements may be smaller than the sampling error.

Interpretation based on confidence intervals

Confidence intervals provide another way of looking at the variability inherent in estimates of sample surveys. To illustrate how to calculate the confidence interval, let us say that one month the published estimate for total employment rose by 16,000 to reach 16,500,000. The associated standard error for the movement estimate is 27,200. The standard error used to interpret the movement estimate indicates that:

- There are approximately two chances in three (68%) that the real value of the movement between the two months falls within the range -11,200 to +43,200 (16,000 + or – one standard error).
- There are approximately nine chances in ten (90%) that the real value of the movement between the two months falls within the range -27,520 to +59,520 (16,000 + or – 1.6 times the standard error).
- There are approximately nineteen chances in twenty (95%) that the real value of the movement between the two months falls within the range -38,400 to +70,400 (16,000 + or – two standard errors).

For more detailed explanations on sampling variability of estimates, and in particular for information on how to assess the variability of level estimates, consult the Data quality section of the *Guide to the Labour Force Survey*, (71-543-G) on page 27.

Documentation

For more detailed information about the Labour Force Survey, see the following documents:

- Overview of the Labour Force Survey
- Guide to the Labour Force Survey (71-543-G)
- Data quality statement
- Methodology of the Canadian Labour Force Survey (71-526-X)
- LFS *geographical maps*