

Catalogue no. 71-001-X

# Labour Force Information

Not for release before 7 A.M. E.D.T.

Friday, May 8, 2009

April 12 to 18, 2009



Statistics  
Canada

Statistique  
Canada

Canada

## How to obtain more information

Specific inquiries about this product and related statistics or services should be directed to: Labour Force Survey Program, Labour Statistics Division, Statistics Canada, Ottawa, Ontario, K1A 0T6 (telephone: 613-951-4090, toll free number: 1-866-873-8788, fax: 613-951-2869 or by e-mail address: [labour@statcan.gc.ca](mailto:labour@statcan.gc.ca)).

For information about this product or the wide range of services and data available from Statistics Canada, visit our website at [www.statcan.gc.ca](http://www.statcan.gc.ca), e-mail us at [infostats@statcan.gc.ca](mailto:infostats@statcan.gc.ca), or telephone us, Monday to Friday from 8:30 a.m. to 4:30 p.m., at the following numbers:

### Statistics Canada's National Contact Centre

Toll-free telephone (Canada and the United States):

Inquiries line	1-800-263-1136
National telecommunications device for the hearing impaired	1-800-363-7629
Fax line	1-877-287-4369

Local or international calls:

Inquiries line	1-613-951-8116
Fax line	1-613-951-0581

### Depository Services Program

Inquiries line	1-800-635-7943
Fax line	1-800-565-7757

## To access this product

This product, Catalogue no. 71-001-X, is available free in electronic format. To obtain a single issue, visit our website at [www.statcan.gc.ca](http://www.statcan.gc.ca) and select "Publications."

## Standards of service to the public

Statistics Canada is committed to serving its clients in a prompt, reliable and courteous manner. To this end, Statistics Canada has developed *standards of service* that its employees observe. To obtain a copy of these service standards, please contact Statistics Canada toll-free at 1-800-263-1136. The service standards are also published on [www.statcan.gc.ca](http://www.statcan.gc.ca) under "About us" > "Providing services to Canadians."

Statistics Canada  
Labour Statistics Division  
Labour Force Survey Program

# Labour Force Information

Not for release before 7 A.M. E.D.T.

Friday, May 8, 2009

April 12 to 18, 2009

Published by authority of the Minister responsible for Statistics Canada

© Minister of Industry, 2009

All rights reserved. The content of this electronic publication may be reproduced, in whole or in part, and by any means, without further permission from Statistics Canada, subject to the following conditions: that it be done solely for the purposes of private study, research, criticism, review or newspaper summary, and/or for non-commercial purposes; and that Statistics Canada be fully acknowledged as follows: Source (or "Adapted from", if appropriate): Statistics Canada, year of publication, name of product, catalogue number, volume and issue numbers, reference period and page(s). Otherwise, no part of this publication may be reproduced, stored in a retrieval system or transmitted in any form, by any means—electronic, mechanical or photocopy—or for any purposes without prior written permission of Licensing Services, Client Services Division, Statistics Canada, Ottawa, Ontario, Canada K1A 0T6.

May 2009

Catalogue no. 71-001-X

ISSN 1492-5478

Frequency: Monthly

Ottawa

La version française de cette publication est disponible sur demande (n° 71-001-X au catalogue).

---

## **Note of appreciation**

*Canada owes the success of its statistical system to a long standing partnership between Statistics Canada, the citizens of Canada, its businesses, governments and other institutions. Accurate and timely statistical information could not be produced without their continued cooperation and goodwill.*

# User information

---

## Symbols

The following standard symbols are used in Statistics Canada publications:

- . not available for any reference period
- .. not available for a specific reference period
- ... not applicable
- 0 true zero or a value rounded to zero
- 0s value rounded to 0 (zero) where there is a meaningful distinction between true zero and the value that was rounded
- p preliminary
- r revised
- x suppressed to meet the confidentiality requirements of the *Statistics Act*
- E use with caution
- F too unreliable to be published

## Special requests (\$)

Custom tabulations can be arranged on an ad hoc or regular basis. This service enables you to specify tables and time series to meet your own requirements. The cost varies according to the request. For more information, contact us toll-free at 1-866-873-8788 or e-mail us at [labour@statcan.gc.ca](mailto:labour@statcan.gc.ca).

## Schedule of LFS releases

Reference period - Week ending	Release date
January 17, 2009	February 6, 2009
February 21, 2009	March 13, 2009
March 21, 2009	April 9, 2009
April 18, 2009	May 8 2009
May 16, 2009	June 5, 2009
June 20, 2009	July 10, 2009
July 18, 2009	August 7, 2009
August 15, 2009	September 4, 2009
September 19, 2009	October 9, 2009
October 17, 2009	November 6, 2009
November 14, 2009	December 4, 2009
December 12, 2009	January 8, 2010

## Latest LFS release in *The Daily* (free)

# Table of contents

---

<b>Highlights</b>	<b>5</b>
<b>Analysis — April 2009</b>	<b>6</b>
<b>Charts</b>	
1. Employment and unemployment indicators, Canada, seasonally adjusted	8
2. Employment and unemployment indicators, Canada, seasonally adjusted	9
3. Index of employment by industry, Canada, seasonally adjusted, January, 2006=100	10
4. Index of employment by industry, Canada, seasonally adjusted, January 2006=100	11
5. Index of employment by industry, Canada, seasonally adjusted, January 2006=100	12
6. Index of employment by province, seasonally adjusted, January 2006=100	13
7. Index of employment by province, seasonally adjusted, January 2006=100	14
<b>Related products</b>	<b>15</b>
<b>Statistical tables</b>	
1 Labour force characteristics by age and sex, Canada, seasonally adjusted	23
2 Employment by class of worker and industry, Canada, seasonally adjusted	25
3 Labour force characteristics by province, seasonally adjusted	26
4 Selected labour force characteristics (seasonally adjusted)	28
4-1 Newfoundland and Labrador	28
4-2 Prince Edward Island	29
4-3 Nova Scotia	30
4-4 New Brunswick	31
4-5 Quebec	32
4-6 Ontario	33
4-7 Manitoba	34
4-8 Saskatchewan	35
4-9 Alberta	36
4-10 British Columbia	37
5 Labour force characteristics by census metropolitan area (seasonally adjusted)	38
5-1 3 month moving average	38
5-2 Monthly	43

## Table of contents – continued

6	Labour force characteristics	44
6-1	by province and economic region, unadjusted for seasonality, 3 month moving average ending in April 2008 and April 2009	44
6-2	by territories, unadjusted for seasonality, 3 month moving average ending in April 2008 and April 2009	49
7	Average usual hours and wages of employees by selected characteristics, Canada, unadjusted for seasonality	50
8	Regional unemployment rates used by the Employment Insurance Program, seasonally adjusted, 3 month moving average	51

## Data quality, concepts and methodology

Data quality	53
--------------	----

# Highlights

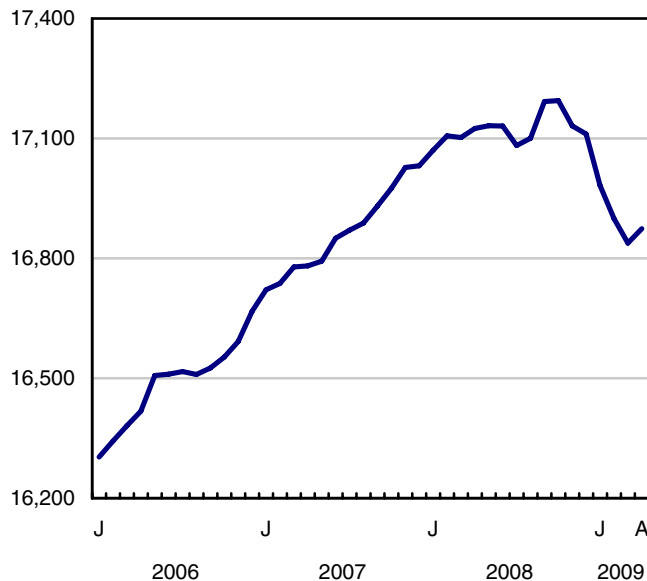
## April 2009

Employment grew by 36,000 in April, the result of an increase in self-employment. Despite this increase, overall employment has fallen by 321,000 since the peak in October 2008. The unemployment rate was unchanged at 8.0% in April, remaining at its highest level in seven years, with the growth in employment coinciding with an increase in the labour force.

**Chart 1**  
**Employment and unemployment rates, Canada, seasonally adjusted**

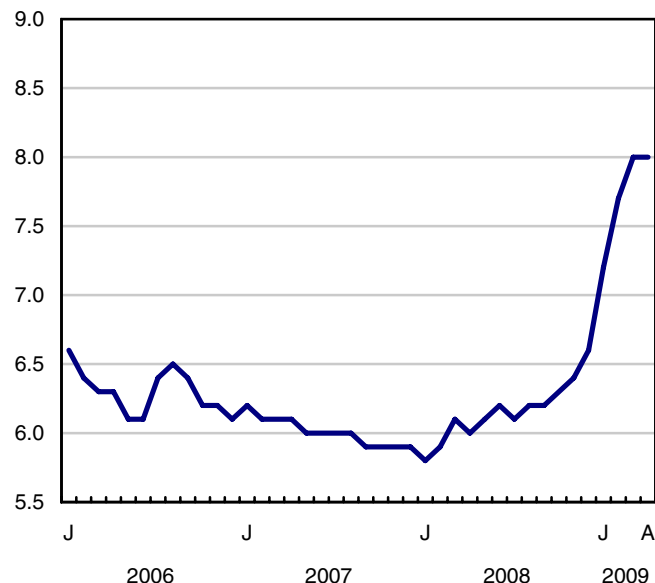
### Employment

thousands



### Unemployment rate

percent



## Analysis — April 2009

---

Employment grew by 36,000 in April, the result of an increase in self-employment. Despite this increase, overall employment has fallen by 321,000 since the peak in October 2008. The unemployment rate was unchanged at 8.0% in April, remaining at its highest level in seven years, with the growth in employment coinciding with an increase in the labour force.

The employment gains in April occurred in information, culture and recreation; business, building and other support services; "other services"; and agriculture. Employment was unchanged in manufacturing and construction.

Since last October, the goods-producing sector has declined sharply (-6.3%). By contrast, employment in the services-producing sector, which is traditionally less sensitive to economic slowdowns, has decreased only slightly (-0.5%) over the same period.

All the employment growth observed in April occurred in Quebec (+22,000) and British Columbia (+17,000), while employment declined in Nova Scotia (-4,100) and Newfoundland and Labrador (-2,800). There was little change in the other provinces.

The increase in employment in April was all in full-time work. Overall employment gains for the month were spread between adult men aged 25 and over, and older women aged 55 and over. Since October, employment has declined among men aged 25 to 54 and youths 15 to 24, whereas it has increased among older workers.

In April, the average hourly wage was 4.3% higher than the same month a year earlier.

### Employment growth in service industries

In April, employment gains occurred in information, culture and recreation (+17,000); business, building and other support services (+15,000); "other services" (+14,000); and agriculture (+9,000).

Since last October, overall employment has declined 1.9% as there were losses in a number of industries. The contraction during this period was especially strong in construction (-8.5%), manufacturing (-6.5%) and natural resources (-5.9%).

In April, self-employment rose by 37,000, while the number of employees in the public and private sectors was little changed. Since October, self-employment has grown by 1.3%, whereas the number of employees has declined by 2.6% in the private sector and 2.0% in the public sector.

Full-time employment increased by 39,000 in April, while part-time employment was little changed. Full-time employment, however, has decreased by 2.5% since October, while part-time employment has increased slightly (+0.8%).

### Quebec and British Columbia post employment gains in April

Quebec's employment increase of 22,000 in April was accompanied by a slight rise in the unemployment rate to 8.4%, the result of more people in the labour force. Since last October, employment in Quebec has declined 0.8%, less than the 1.9% drop at the national level.

In British Columbia, employment rose 17,000 in April. The unemployment rate remained at 7.4%, as there were more people in the labour force. Despite April's gains, employment has declined by 52,000 (-2.2%) since October 2008.

In Nova Scotia, employment declined 4,100 in April and the unemployment rate rose 0.3 percentage points to 9.2%. Since October, employment in the province has fallen by 8,200 (-1.8%).



In April, employment held steady in Ontario and the unemployment rate was unchanged at 8.7%, its highest rate since April 1997. Since last October, employment losses in the province totalled 174,000 (-2.6%), more than half of Canada's overall decline.

Employment in Alberta also remained unchanged in April, leaving the decline in employment since October at 42,000 (-2.1%).

Manitoba and Saskatchewan are the only provinces where employment has been little changed since October. In April, these two provinces posted the lowest unemployment rates in Canada, at 4.6% in Manitoba and 5.0% in Saskatchewan.

### **More adult men and older women working in April**

In April, the increase in employment was spread between adult men aged 25 and over (+25,000) and older women aged 55 and over (+12,000). Since last October, employment has declined for men aged 25 to 54 (-2.9%) and youths aged 15 to 24 (-4.7%), whereas it has increased for older workers (+0.9%).

The unemployment rate for youths declined 0.6 percentage points in April compared to the previous month, the result of a decrease in the participation of youths in the labour force. However, at 14.2%, their unemployment rate continued to be the highest of all age groups.

#### **Note to readers**

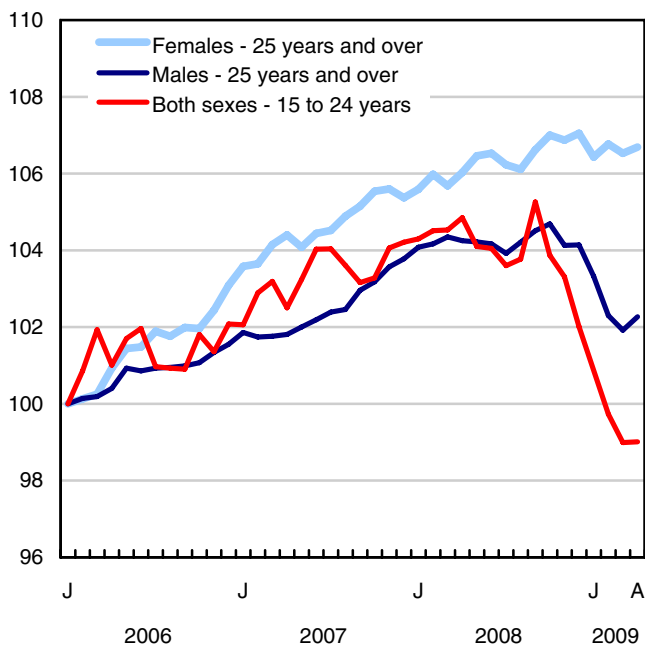
The Labour Force Survey estimates are based on a sample, and are therefore subject to sampling variability. Estimates for smaller geographic areas or industries will have more variability. For an explanation of sampling variability of estimates, and how to use standard errors to assess this variability, consult the Data Quality section in this publication.

Changes in average hourly wages are affected by shifts in the composition of the Canadian labour force. For example, a drop in employment in low-wage occupations or industries will contribute to an increase in the national average hourly wage.

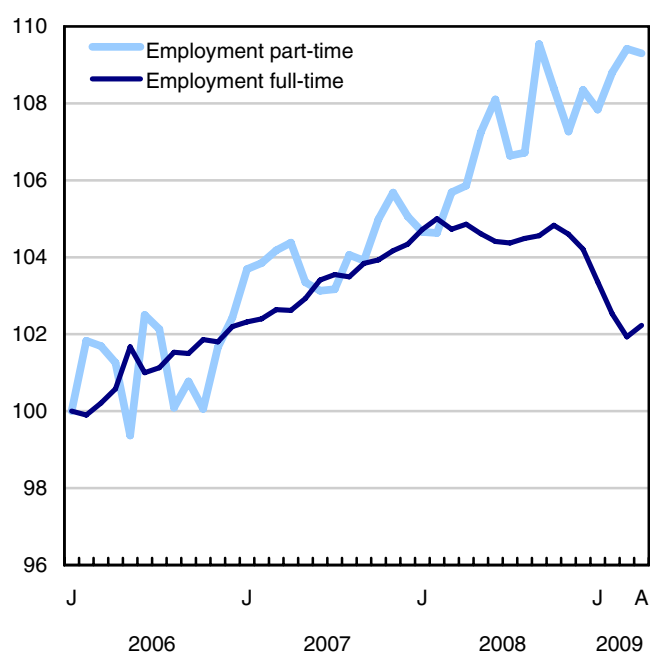
The 2008 Labour Force Historical Review on CD-ROM (71F0004XCB, \$209) is now available.

**Chart 1**  
**Employment and unemployment indicators, Canada, seasonally adjusted**

**Employment index, January 2006=100**



**Employment index, January 2006=100**



**Employment index, January 2006=100**

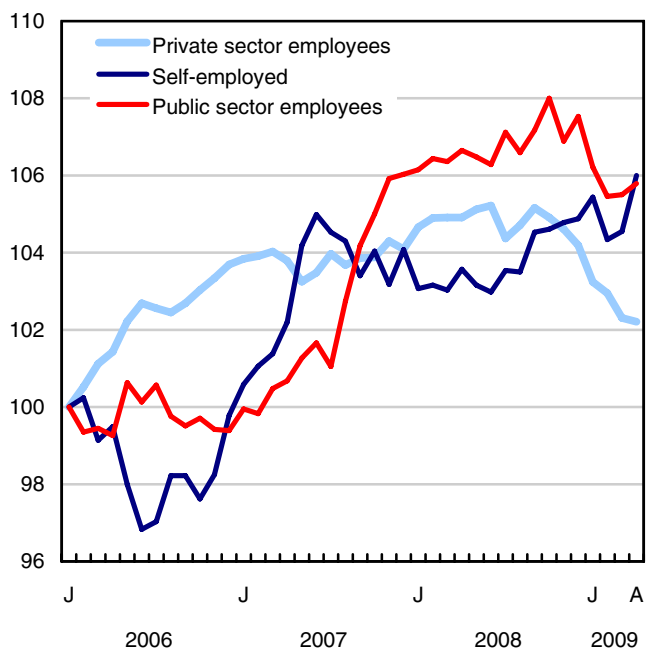
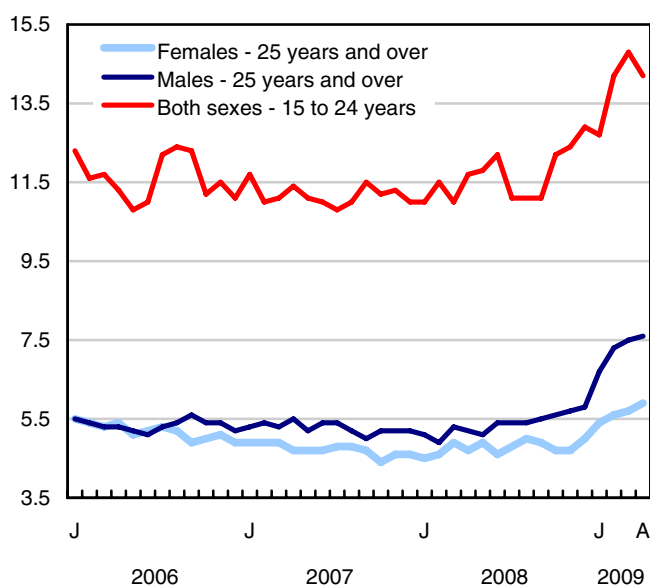


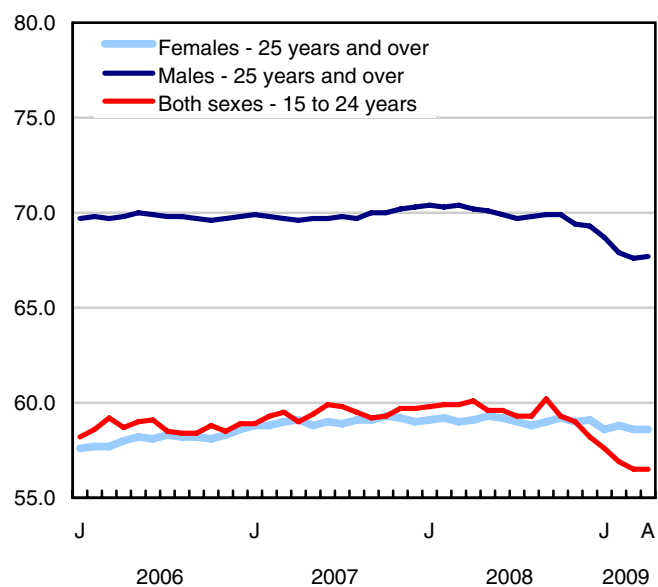
Chart 2

## Employment and unemployment indicators, Canada, seasonally adjusted

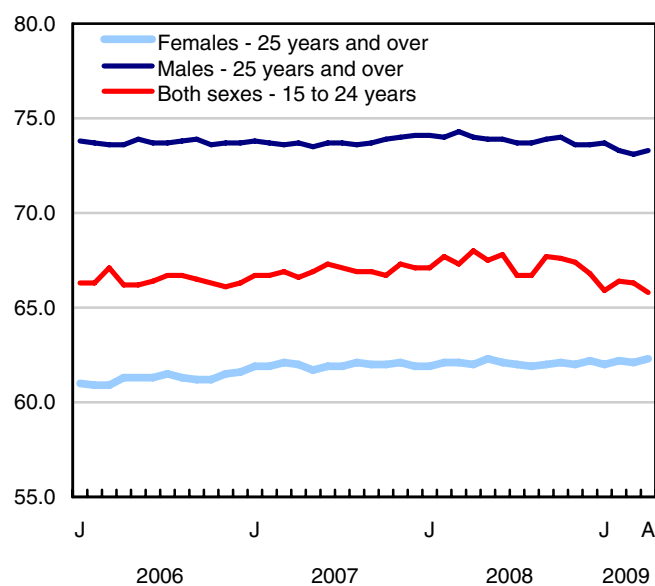
## Unemployment rate (%)



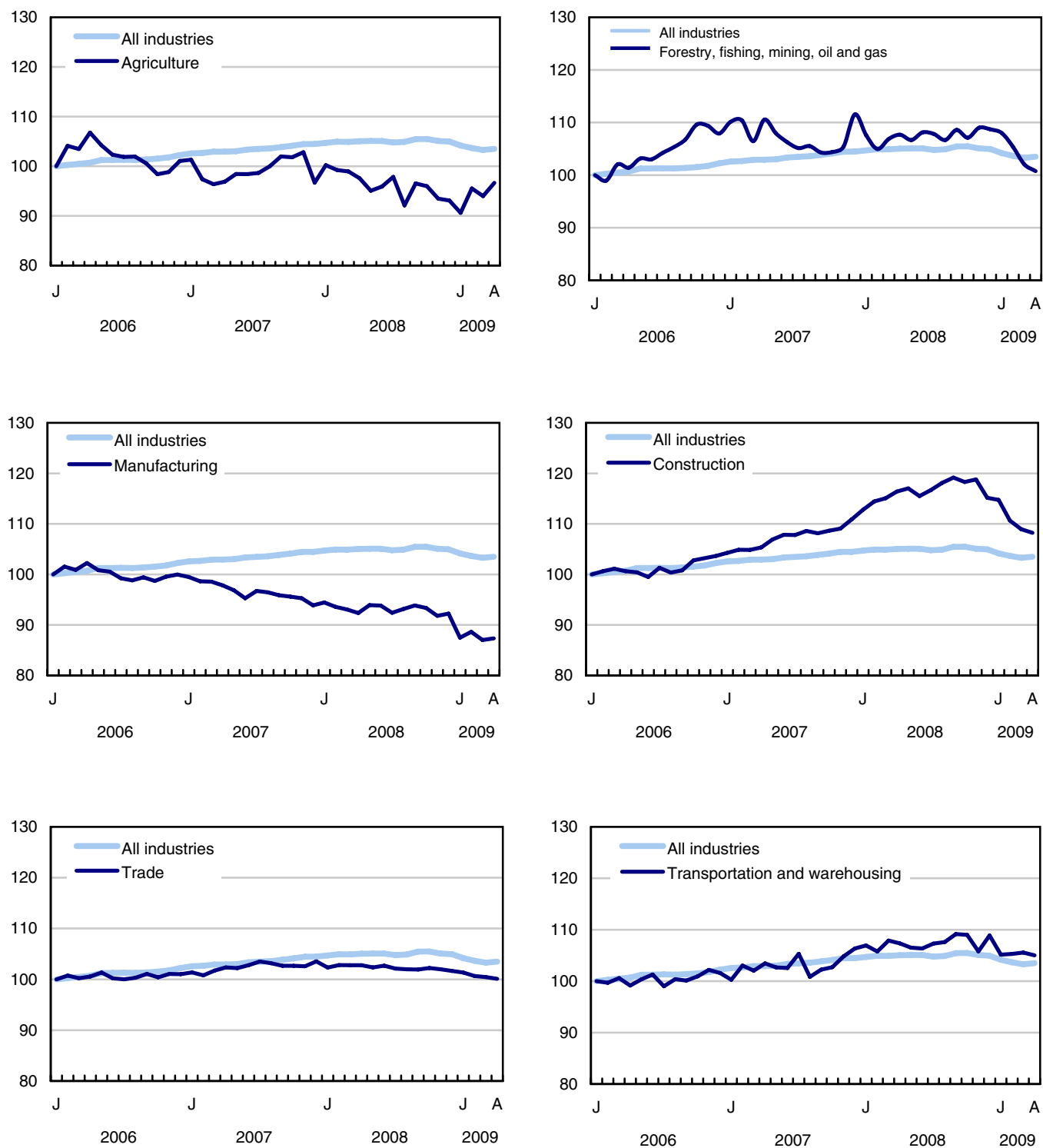
## Employment rate (%)



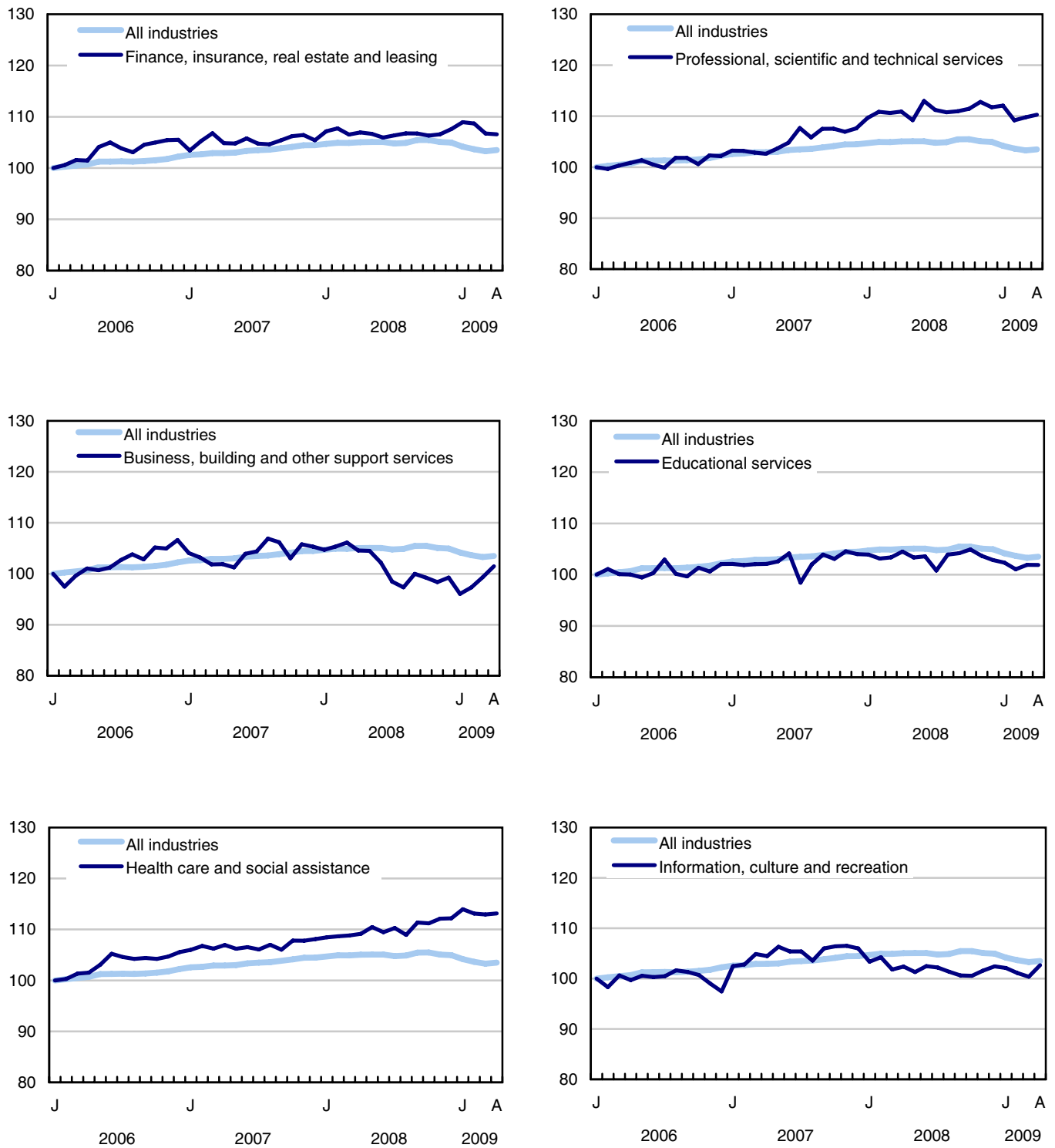
## Participation rate (%)



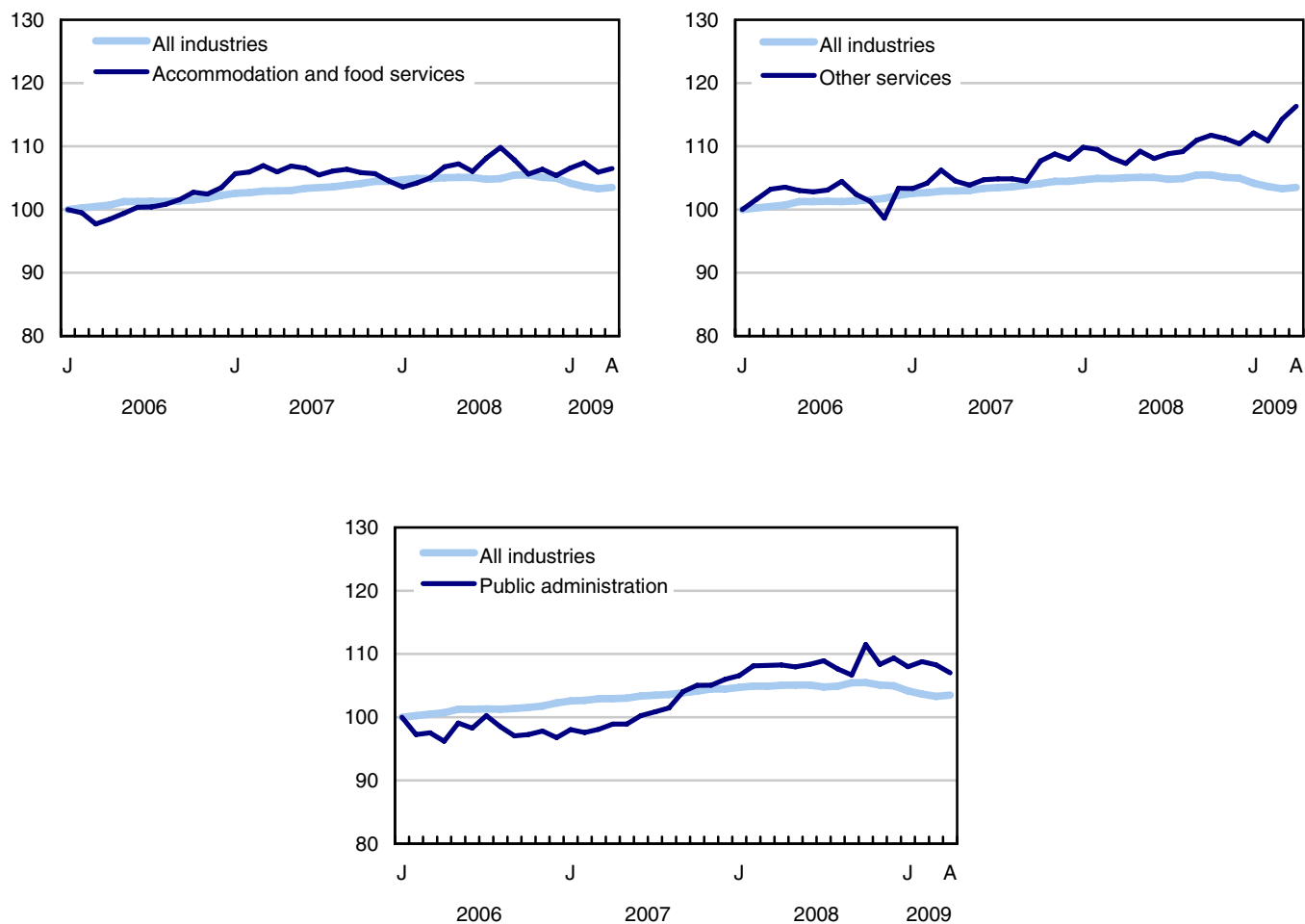
**Chart 3**  
**Index of employment by industry, Canada, seasonally adjusted, January, 2006=100**



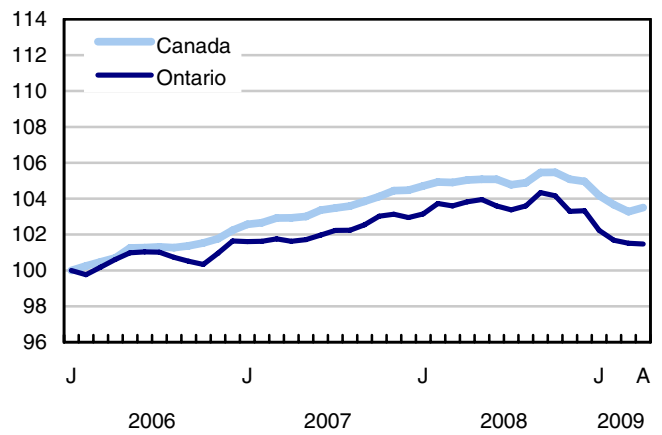
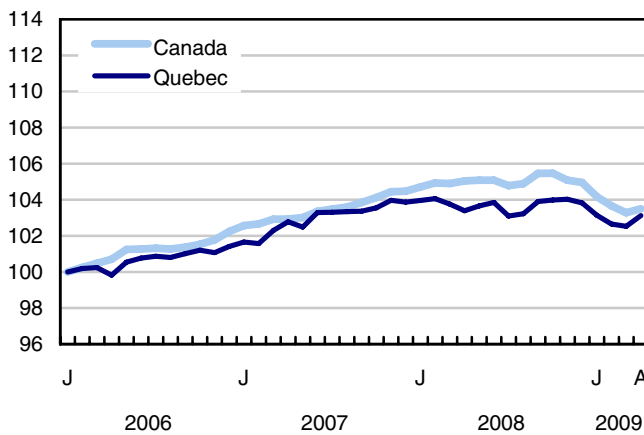
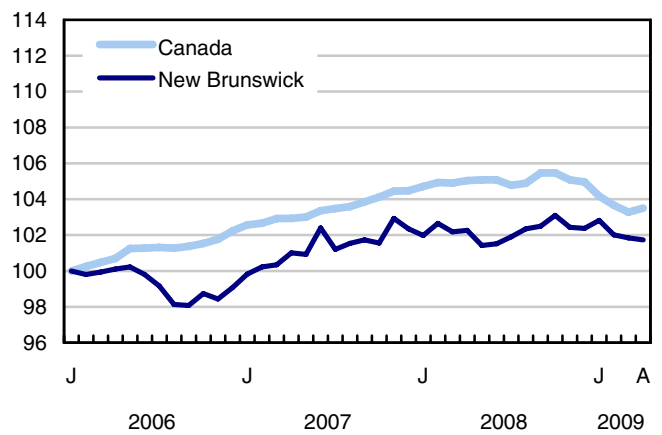
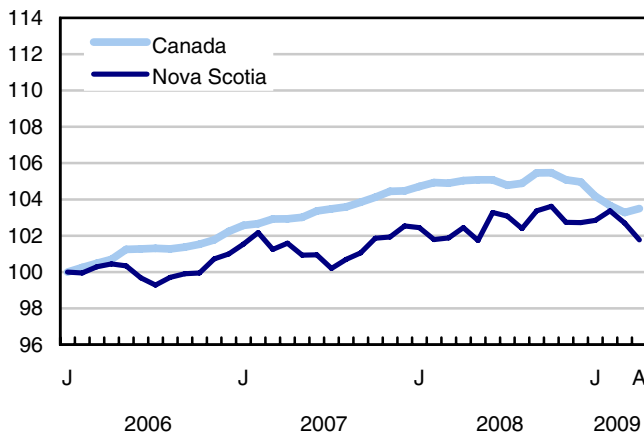
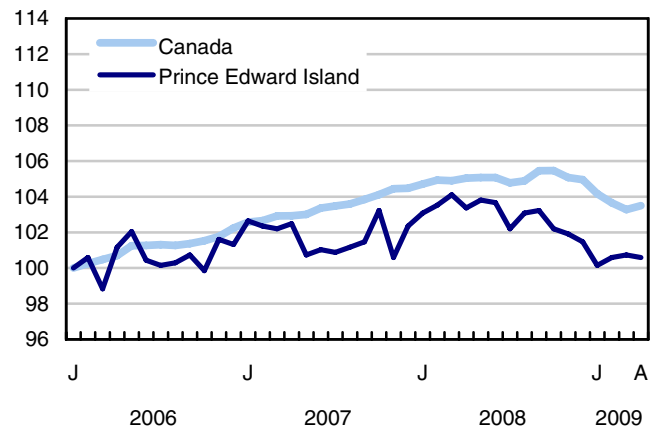
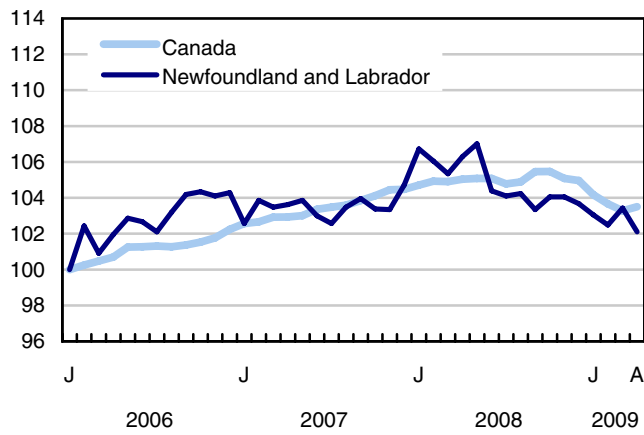
**Chart 4**  
**Index of employment by industry, Canada, seasonally adjusted, January 2006=100**



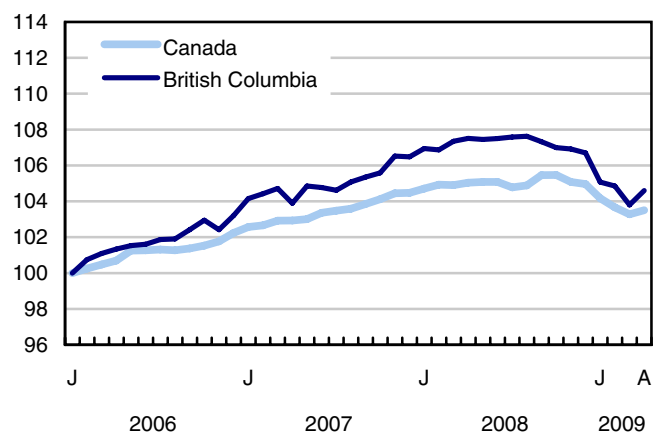
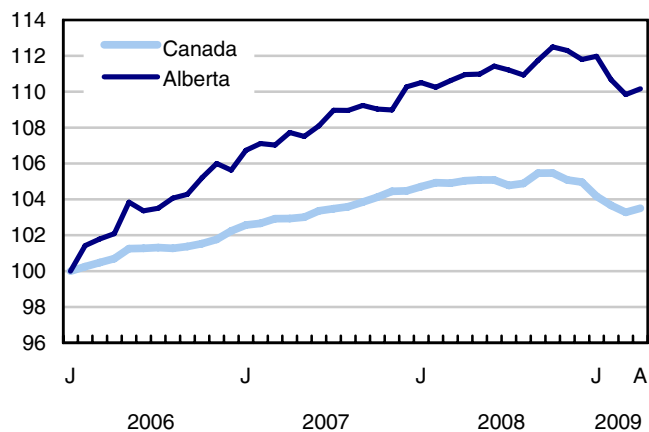
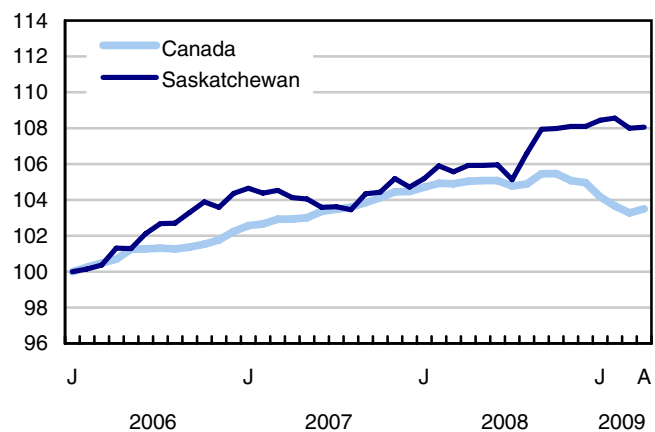
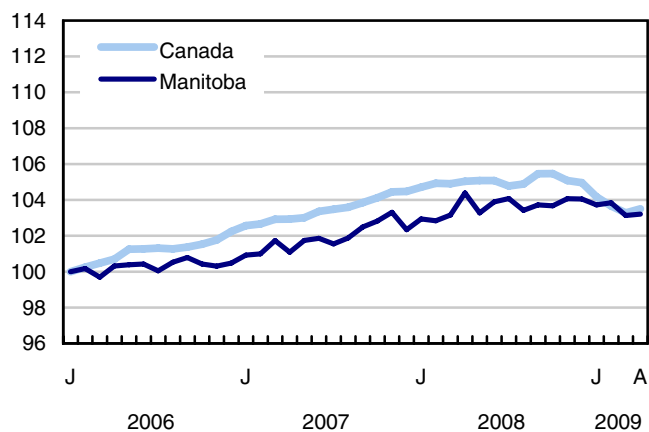
**Chart 5**  
**Index of employment by industry, Canada, seasonally adjusted, January 2006=100**



**Chart 6**  
**Index of employment by province, seasonally adjusted, January 2006=100**



**Chart 7**  
**Index of employment by province, seasonally adjusted, January 2006=100**





## Related products

---

### Selected publications from Statistics Canada

---

71-222-X	The Canadian Labour Market at a Glance
71-526-X	Methodology of the Canadian Labour Force Survey
71-543-G	Guide to the Labour Force Survey
71-544-X	Labour Force Survey Products and Services
71-587-X	Aboriginal Peoples Living Off-reserve in Western Canada: Estimates from the Labour Force Survey
71-588-X	The Aboriginal Labour Force Analysis Series
71-606-X	The Immigrant Labour Force Analysis Series
71F0004X	Labour Force Historical Review
71F0031X	Improvements to the Labour Force Survey (LFS)
71M0001X	Labour Force Survey Microdata File
75-001-X	Perspectives on Labour and Income

---

### Selected CANSIM tables from Statistics Canada

---

282-0001	Labour force survey estimates (LFS), by sex and detailed age group
282-0002	Labour force survey estimates (LFS), by sex and detailed age group
282-0003	Labour force survey estimates (LFS), by educational attainment, sex and age group
282-0004	Labour force survey estimates (LFS), by educational attainment, sex and age group
282-0005	Labour force survey estimates (LFS), by full- and part-time students during school months, sex and age group
282-0006	Labour force survey estimates (LFS), by students during summer months, sex and age group
282-0007	Labour force survey estimates (LFS), by North American Industry Classification System (NAICS), sex and age group
282-0008	Labour force survey estimates (LFS), by North American Industry Classification System (NAICS), sex and age group

---

282-0009	Labour force survey estimates (LFS), by National Occupational Classification for Statistics (NOC-S) and sex
282-0010	Labour force survey estimates (LFS), by National Occupational Classification for Statistics (NOC-S) and sex
282-0011	Labour force survey estimates (LFS), employment by class of worker, North American Industry Classification System (NAICS) and sex
282-0012	Labour force survey estimates (LFS), employment by class of worker, North American Industry Classification System (NAICS) and sex
282-0013	Labour force survey estimates (LFS), part-time employment by reason for part-time work, sex and age group
282-0014	Labour force survey estimates (LFS), part-time employment by reason for part-time work, sex and age group
282-0015	Labour force survey estimates (LFS), by usual hours worked, main or all jobs, sex and age group
282-0016	Labour force survey estimates (LFS), by usual hours worked, main or all jobs, sex and age group
282-0017	Labour force survey estimates (LFS), by actual hours worked, main or all jobs, sex and age group
282-0018	Labour force survey estimates (LFS), by actual hours worked, main or all jobs, sex and age group
282-0019	Labour force survey estimates (LFS), by usual hours worked, class of worker, North American Industry Classification System (NAICS) and sex
282-0020	Labour force survey estimates (LFS), by usual hours worked, class of worker, North American Industry Classification System (NAICS) and sex
282-0021	Labour force survey estimates (LFS), by actual hours worked, class of worker, North American Industry Classification System (NAICS) and sex
282-0022	Labour force survey estimates (LFS), by actual hours worked, class of worker, North American Industry Classification System (NAICS) and sex
282-0023	Labour force survey estimates (LFS), by usual hours worked, class of worker, National Occupational Classification for Statistics (NOC-S) and sex
282-0024	Labour force survey estimates (LFS), by usual hours worked, class of worker, National Occupational Classification for Statistics (NOC-S) and sex
282-0025	Labour force survey estimates (LFS), by actual hours worked, class of worker, National Occupational Classification for Statistics (NOC-S) and sex
282-0026	Labour force survey estimates (LFS), by actual hours worked, class of worker, National Occupational Classification for Statistics (NOC-S) and sex
282-0027	Labour force survey estimates (LFS), by total and average usual and actual hours worked, main or all jobs, type of work, sex and age group

282-0028	Labour force survey estimates (LFS), by total and average usual and actual hours worked, main or all jobs, type of work, sex and age group
282-0029	Labour force survey estimates (LFS), average days lost for personal reasons per full-time employee by North American Industry Classification System (NAICS), sex and age group
282-0030	Labour force survey estimates (LFS), average days lost for personal reasons per full-time employee by National Occupational Classification for Statistics (NOC-S), sex and age group
282-0031	Labour force survey estimates (LFS), multiple jobholders by North American Industry Classification System (NAICS), sex and age group
282-0032	Labour force survey estimates (LFS), multiple jobholders by North American Industry Classification System (NAICS), sex and age group
282-0033	Labour force survey estimates (LFS), multiple jobholders by National Occupational Classification for Statistics (NOC-S), sex and age group
282-0034	Labour force survey estimates (LFS), multiple jobholders by National Occupational Classification for Statistics (NOC-S), sex and age group
282-0035	Labour force survey estimates (LFS), multiple jobholders by usual hours worked at main and all jobs
282-0036	Labour force survey estimates (LFS), multiple jobholders by usual hours worked at main and all jobs
282-0037	Labour force survey estimates (LFS), job tenure by type of work, sex and age group
282-0038	Labour force survey estimates (LFS), job tenure by type of work, sex and age group
282-0039	Labour force survey estimates (LFS), job tenure by National Occupational Classification for Statistics (NOC-S) and sex
282-0040	Labour force survey estimates (LFS), job tenure by National Occupational Classification for Statistics (NOC-S) and sex
282-0041	Labour force survey estimates (LFS), job tenure by North American Industry Classification System (NAICS) and sex
282-0042	Labour force survey estimates (LFS), job tenure by North American Industry Classification System (NAICS) and sex
282-0047	Labour force survey estimates (LFS), duration of unemployment by sex and age group
282-0048	Labour force survey estimates (LFS), duration of unemployment by sex and age group
282-0049	Labour force survey estimates (LFS), unemployment by type of work sought and search method, sex and age group
282-0050	Labour force survey estimates (LFS), unemployment by type of work sought and search method, sex and age group
282-0051	Labour force survey estimates (LFS), retirement age by class of worker and sex

282-0052	Labour force survey estimates (LFS), by census metropolitan area, sex and age group, 3-month moving average
282-0053	Labour force survey estimates (LFS), by census metropolitan area, sex and age group
282-0054	Labour force survey estimates (LFS), by provinces, territories and economic regions, 3-month moving average
282-0055	Labour force survey estimates (LFS), by provinces, territories and economic regions
282-0056	Labour force survey estimates (LFS), employment by census metropolitan area and North American Industry Classification System (NAICS), 3-month moving average
282-0057	Labour force survey estimates (LFS), employment by census metropolitan area and North American Industry Classification System (NAICS)
282-0058	Labour force survey estimates (LFS), employment by census metropolitan area and National Occupational Classification for Statistics (NOC-S), 3-month moving average
282-0059	Labour force survey estimates (LFS), employment by census metropolitan area and National Occupational Classification for Statistics (NOC-S)
282-0060	Labour force survey estimates (LFS), employment by economic region and North American Industry Classification System (NAICS), 3-month moving average
282-0061	Labour force survey estimates (LFS), employment by economic region and North American Industry Classification System (NAICS)
282-0062	Labour force survey estimates (LFS), employment by economic region and National Occupational Classification for Statistics (NOC-S), 3-month moving average
282-0063	Labour force survey estimates (LFS), employment by economic region and National Occupational Classification for Statistics (NOC-S)
282-0064	Labour force survey estimates (LFS), by selected medium-sized cities
282-0069	Labour force survey estimates (LFS), wages of employees by type of work, National Occupational Classification for Statistics (NOC-S), sex and age group
282-0070	Labour force survey estimates (LFS), wages of employees by type of work, National Occupational Classification for Statistics (NOC-S), sex and age group
282-0071	Labour force survey estimates (LFS), wages of employees by type of work, North American Industry Classification System (NAICS), sex and age group
282-0072	Labour force survey estimates (LFS), wages of employees by type of work, North American Industry Classification System (NAICS), sex and age group
282-0073	Labour force survey estimates (LFS), wages of employees by job permanence, union coverage, sex and age group
282-0074	Labour force survey estimates (LFS), wages of employees by job permanence, union coverage, sex and age group
282-0075	Labour force survey estimates (LFS), employees by establishment size, North American Industry Classification System (NAICS), sex and age group

282-0076	Labour force survey estimates (LFS), employees by establishment size, North American Industry Classification System (NAICS), sex and age group
282-0077	Labour force survey estimates (LFS), employees by union coverage, North American Industry Classification System (NAICS), sex and age group
282-0078	Labour force survey estimates (LFS), employees by union coverage, North American Industry Classification System (NAICS), sex and age group
282-0079	Labour force survey estimates (LFS), employees by job permanency, North American Industry Classification System (NAICS), sex and age group
282-0080	Labour force survey estimates (LFS), employees by job permanency, North American Industry Classification System (NAICS), sex and age group
282-0081	Labour force survey estimates (LFS), employees working overtime (weekly) by National Occupational Classification for Statistics (NOC-S), sex and age group
282-0082	Labour force survey estimates (LFS), employees working overtime (weekly) by National Occupational Classification for Statistics (NOC-S), sex and age group
282-0083	Labour force survey estimates (LFS), employees working overtime (weekly) by North American Industry Classification System (NAICS), sex and age group
282-0084	Labour force survey estimates (LFS), employees working overtime (weekly) by North American Industry Classification System (NAICS), sex and age group
282-0085	Labour force survey estimates (LFS), supplementary unemployment rates by sex and age group
282-0086	Labour force survey estimates (LFS), supplementary unemployment rates by sex and age group
282-0087	Labour force survey estimates (LFS), by sex and age group, seasonally adjusted and unadjusted
282-0088	Labour force survey estimates (LFS), employment by North American Industry Classification System (NAICS), seasonally adjusted and unadjusted
282-0089	Labour force survey estimates (LFS), employment by class of worker and sex, seasonally adjusted and unadjusted
282-0090	Labour force survey estimates (LFS), by census metropolitan area, 3-month moving average, seasonally adjusted and unadjusted
282-0091	Labour force survey estimates (LFS), by Montréal, Toronto and Vancouver census metropolitan areas, seasonally adjusted and unadjusted
282-0092	Labour force survey estimates (LFS), actual hours worked by North American Industry Classification System (NAICS), seasonally adjusted
282-0093	Labour force survey estimates (LFS), employment by National Occupational Classification for Statistics (NOC-S), seasonally adjusted
282-0094	Labour force survey estimates (LFS), by North American Industry Classification System (NAICS), Canada, seasonally adjusted
282-0095	Labour force survey estimates (LFS), by full- and part-time students during school months, sex and age group

282-0096	Labour force survey estimates (LFS), by urban and rural areas based on 2001 census boundaries, sex and age group
282-0097	Labour force survey estimates (LFS), by urban and rural areas based on 2001 census boundaries, sex and age group
282-0098	Labour force survey estimates (LFS), employment by urban and rural areas based on 2001 census boundaries, class of worker and North American Industry Classification System (NAICS)
282-0099	Labour force survey estimates (LFS), employment by urban and rural areas based on 2001 census boundaries, class of worker and North American Industry Classification System (NAICS)

---

## **Selected surveys from Statistics Canada**

---

3701	Labour Force Survey
------	---------------------

---

## **Selected summary tables from Statistics Canada**

---

- *Labour force characteristics*
- *Employment by industry*
- *Selected economic indicators, Canada and United States (monthly and quarterly)*
- *Days lost per worker due to illness or disability, by sex, by provinces*
- *Economic indicators, by province and territory (monthly and quarterly)*
- *Labour force and participation rates by sex and age group*
- *Labour force, employed and unemployed, numbers and rates, by provinces*
- *Employment by industry and sex*
- *Full-time and part-time employment by sex and age group*
- *Labour force characteristics by age and sex*
- *Distribution of employed people, by industry, by province*
- *Labour force characteristics, population 15 years and older, by census metropolitan area*
- *Labour force characteristics, population 15 years and older, by economic region, by province*
- *Days lost per worker by cause, by provinces*
- *Days lost per worker by industry and sex*

- *People employed, by educational attainment*
- *Reasons for part-time work by sex and age group*
- *Self-employment, historical summary*
- *Employment by age, sex, type of work, class of worker and provinces (monthly)*
- *Employment by major industry groups, seasonally adjusted, by provinces (monthly)*
- *Actual hours worked per week by industry, seasonally adjusted (monthly)*
- *Average hourly wages of employees by selected characteristics and profession, unadjusted data, by provinces (monthly)*
- *Labour force characteristics, seasonally adjusted, by province (monthly)*
- *Labour force characteristics, unadjusted, by province (monthly)*
- *Labour force characteristics, seasonally adjusted, by census metropolitan area (3 month moving average)*
- *Labour force characteristics, unadjusted, by census metropolitan area (3 month moving average)*
- *Labour force characteristics, unadjusted, by economic region (3 month moving average)*

# Statistical tables

---



**Table 1**  
**Labour force characteristics by age and sex, Canada, seasonally adjusted**

	March 2009	April 2009	S.E. <sup>1</sup>	Change from			Percent change from		
				last month	last December	twelve months ago	last month	last December	twelve months ago
in thousands (except rates)									
<b>15 years and over, both sexes</b>									
Population	27,187.6	<b>27,217.6</b>	...	<b>30.0</b>	118.9	378.4	<b>0.1</b>	0.4	1.4
Labour force	18,294.7	<b>18,338.6</b>	27.1	<b>43.9</b>	17.4	111.3	<b>0.2</b>	0.1	0.6
Employment	16,838.1	<b>16,874.0</b>	27.8	<b>35.9</b>	-237.0	-250.9	<b>0.2</b>	-1.4	-1.5
Employment full-time	13,617.4	<b>13,656.8</b>	36.2	<b>39.4</b>	-264.9	-351.9	<b>0.3</b>	-1.9	-2.5
Employment part-time	3,220.7	<b>3,217.1</b>	33.1	<b>-3.6</b>	27.8	101.0	<b>-0.1</b>	0.9	3.2
Unemployment	1,456.6	<b>1,464.6</b>	22.9	<b>8.0</b>	254.5	362.2	<b>0.5</b>	21.0	32.9
Participation rate	67.3	<b>67.4</b>	0.1	<b>0.1</b>	-0.2	-0.5	...	...	...
Unemployment rate	8.0	<b>8.0</b>	0.1	<b>0.0</b>	1.4	2.0	...	...	...
Employment rate	61.9	<b>62.0</b>	0.1	<b>0.1</b>	-1.1	-1.8	...	...	...
Part-time rate	19.1	<b>19.1</b>	0.2	<b>-0.1</b>	0.4	0.9	...	...	...
<b>15 to 24 years, both sexes</b>									
Population	4,388.8	<b>4,390.1</b>	...	<b>1.3</b>	5.7	18.8	<b>0.0</b>	0.1	0.4
Labour force	2,909.0	<b>2,888.9</b>	16.2	<b>-20.1</b>	-41.6	-84.6	<b>-0.7</b>	-1.4	-2.8
Employment	2,478.3	<b>2,479.0</b>	15.8	<b>0.7</b>	-74.9	-146.2	<b>0.0</b>	-2.9	-5.6
Employment full-time	1,337.1	<b>1,335.2</b>	18.2	<b>-1.9</b>	-55.7	-124.4	<b>-0.1</b>	-4.0	-8.5
Employment part-time	1,141.2	<b>1,143.9</b>	18.9	<b>2.7</b>	-19.1	-21.7	<b>0.2</b>	-1.6	-1.9
Unemployment	430.6	<b>409.8</b>	13.6	<b>-20.8</b>	33.1	61.5	<b>-4.8</b>	8.8	17.7
Participation rate	66.3	<b>65.8</b>	0.4	<b>-0.5</b>	-1.0	-2.2	...	...	...
Unemployment rate	14.8	<b>14.2</b>	0.4	<b>-0.6</b>	1.3	2.5	...	...	...
Employment rate	56.5	<b>56.5</b>	0.4	<b>0.0</b>	-1.7	-3.6	...	...	...
Part-time rate	46.0	<b>46.1</b>	0.6	<b>0.1</b>	0.6	1.7	...	...	...
<b>25 years and over, men</b>									
Population	11,145.1	<b>11,159.8</b>	...	<b>14.7</b>	57.1	181.2	<b>0.1</b>	0.5	1.7
Labour force	8,146.1	<b>8,184.9</b>	13.6	<b>38.8</b>	12.2	57.8	<b>0.5</b>	0.1	0.7
Employment	7,535.4	<b>7,560.6</b>	15.2	<b>25.2</b>	-138.7	-146.9	<b>0.3</b>	-1.8	-1.9
Employment full-time	6,957.4	<b>6,980.7</b>	19.7	<b>23.3</b>	-178.2	-222.6	<b>0.3</b>	-2.5	-3.1
Employment part-time	577.9	<b>579.9</b>	15.5	<b>2.0</b>	39.5	75.7	<b>0.3</b>	7.3	15.0
Unemployment	610.7	<b>624.3</b>	13.2	<b>13.6</b>	150.9	204.8	<b>2.2</b>	31.9	48.8
Participation rate	73.1	<b>73.3</b>	0.1	<b>0.2</b>	-0.3	-0.7	...	...	...
Unemployment rate	7.5	<b>7.6</b>	0.2	<b>0.1</b>	1.8	2.4	...	...	...
Employment rate	67.6	<b>67.7</b>	0.1	<b>0.1</b>	-1.6	-2.5	...	...	...
Part-time rate	7.7	<b>7.7</b>	0.2	<b>0.0</b>	0.7	1.1	...	...	...
<b>25 years and over, women</b>									
Population	11,653.6	<b>11,667.7</b>	...	<b>14.1</b>	56.1	178.4	<b>0.1</b>	0.5	1.6
Labour force	7,239.6	<b>7,264.9</b>	15.7	<b>25.3</b>	47.0	138.2	<b>0.3</b>	0.7	1.9
Employment	6,824.4	<b>6,834.4</b>	15.8	<b>10.0</b>	-23.4	42.2	<b>0.1</b>	-0.3	0.6
Employment full-time	5,322.9	<b>5,341.0</b>	23.5	<b>18.1</b>	-30.9	-4.9	<b>0.3</b>	-0.6	-0.1
Employment part-time	1,501.5	<b>1,493.4</b>	21.7	<b>-8.1</b>	7.5	47.1	<b>-0.5</b>	0.5	3.3
Unemployment	415.2	<b>430.4</b>	12.3	<b>15.2</b>	70.4	95.9	<b>3.7</b>	19.6	28.7
Participation rate	62.1	<b>62.3</b>	0.1	<b>0.2</b>	0.1	0.3	...	...	...
Unemployment rate	5.7	<b>5.9</b>	0.2	<b>0.2</b>	0.9	1.2	...	...	...
Employment rate	58.6	<b>58.6</b>	0.1	<b>0.0</b>	-0.5	-0.5	...	...	...
Part-time rate	22.0	<b>21.9</b>	0.3	<b>-0.2</b>	0.2	0.6	...	...	...
<b>25 to 54 years, both sexes</b>									
Population	14,483.1	<b>14,491.8</b>	...	<b>8.7</b>	25.3	91.9	<b>0.1</b>	0.2	0.6
Labour force	12,511.6	<b>12,542.3</b>	20.1	<b>30.7</b>	-0.6	53.6	<b>0.2</b>	0.0	0.4
Employment	11,668.2	<b>11,679.2</b>	21.8	<b>11.0</b>	-189.3	-187.3	<b>0.1</b>	-1.6	-1.6
Unemployment	843.4	<b>863.1</b>	16.9	<b>19.7</b>	188.7	240.9	<b>2.3</b>	28.0	38.7
Participation rate	86.4	<b>86.5</b>	0.1	<b>0.1</b>	-0.2	-0.2	...	...	...
Unemployment rate	6.7	<b>6.9</b>	0.1	<b>0.2</b>	1.5	1.9	...	...	...
Employment rate	80.6	<b>80.6</b>	0.2	<b>0.0</b>	-1.4	-1.8	...	...	...

See footnotes at the end of the table.

Table 1 – continued

## Labour force characteristics by age and sex, Canada, seasonally adjusted

	March 2009	April 2009	S.E. <sup>1</sup>	Change from			Percent change from		
				last month	last December	twelve months ago	last month	last December	twelve months ago
in thousands (except rates)									
<b>25 to 54 years, men</b>									
Population	7,236.6	<b>7,241.4</b>	...	<b>4.8</b>	14.1	49.1	<b>0.1</b>	0.2	0.7
Labour force	6,553.5	<b>6,569.9</b>	12.7	<b>16.4</b>	-21.4	-28.6	<b>0.3</b>	-0.3	-0.4
Employment	6,047.4	<b>6,060.2</b>	14.7	<b>12.8</b>	-147.6	-191.1	<b>0.2</b>	-2.4	-3.1
Unemployment	506.1	<b>509.6</b>	12.2	<b>3.5</b>	126.1	162.4	<b>0.7</b>	32.9	46.8
Participation rate	90.6	<b>90.7</b>	0.2	<b>0.1</b>	-0.5	-1.0	...	...	...
Unemployment rate	7.7	<b>7.8</b>	0.2	<b>0.1</b>	2.0	2.5	...	...	...
Employment rate	83.6	<b>83.7</b>	0.2	<b>0.1</b>	-2.2	-3.2	...	...	...
<b>25 to 54 years, women</b>									
Population	7,246.5	<b>7,250.4</b>	...	<b>3.9</b>	11.3	42.8	<b>0.1</b>	0.2	0.6
Labour force	5,958.1	<b>5,972.4</b>	15.0	<b>14.3</b>	20.9	82.2	<b>0.2</b>	0.4	1.4
Employment	5,620.8	<b>5,618.9</b>	15.5	<b>-1.9</b>	-41.8	3.7	<b>0.0</b>	-0.7	0.1
Unemployment	337.3	<b>353.4</b>	11.5	<b>16.1</b>	62.5	78.4	<b>4.8</b>	21.5	28.5
Participation rate	82.2	<b>82.4</b>	0.2	<b>0.2</b>	0.2	0.7	...	...	...
Unemployment rate	5.7	<b>5.9</b>	0.2	<b>0.2</b>	1.0	1.2	...	...	...
Employment rate	77.6	<b>77.5</b>	0.2	<b>-0.1</b>	-0.7	-0.4	...	...	...
<b>55 years and over, both sexes</b>									
Population	8,315.6	<b>8,335.8</b>	...	<b>20.2</b>	88.0	267.9	<b>0.2</b>	1.1	3.3
Labour force	2,874.1	<b>2,907.5</b>	15.8	<b>33.4</b>	59.8	142.4	<b>1.2</b>	2.1	5.1
Employment	2,691.6	<b>2,715.8</b>	15.8	<b>24.2</b>	27.1	82.6	<b>0.9</b>	1.0	3.1
Unemployment	182.6	<b>191.7</b>	8.0	<b>9.1</b>	32.7	59.8	<b>5.0</b>	20.6	45.3
Participation rate	34.6	<b>34.9</b>	0.2	<b>0.3</b>	0.4	0.6	...	...	...
Unemployment rate	6.4	<b>6.6</b>	0.3	<b>0.2</b>	1.0	1.8	...	...	...
Employment rate	32.4	<b>32.6</b>	0.2	<b>0.2</b>	0.0	0.0	...	...	...
<b>55 years and over, men</b>									
Population	3,908.5	<b>3,918.4</b>	...	<b>9.9</b>	43.1	132.2	<b>0.3</b>	1.1	3.5
Labour force	1,592.6	<b>1,615.0</b>	10.4	<b>22.4</b>	33.6	86.4	<b>1.4</b>	2.1	5.7
Employment	1,488.0	<b>1,500.3</b>	10.5	<b>12.3</b>	8.8	44.1	<b>0.8</b>	0.6	3.0
Unemployment	104.7	<b>114.7</b>	5.8	<b>10.0</b>	24.8	42.4	<b>9.6</b>	27.6	58.6
Participation rate	40.7	<b>41.2</b>	0.3	<b>0.5</b>	0.4	0.8	...	...	...
Unemployment rate	6.6	<b>7.1</b>	0.4	<b>0.5</b>	1.4	2.4	...	...	...
Employment rate	38.1	<b>38.3</b>	0.3	<b>0.2</b>	-0.2	-0.2	...	...	...
<b>55 years and over, women</b>									
Population	4,407.1	<b>4,417.3</b>	...	<b>10.2</b>	44.8	135.6	<b>0.2</b>	1.0	3.2
Labour force	1,281.5	<b>1,292.5</b>	10.9	<b>11.0</b>	26.2	56.0	<b>0.9</b>	2.1	4.5
Employment	1,203.6	<b>1,215.5</b>	10.9	<b>11.9</b>	18.3	38.6	<b>1.0</b>	1.5	3.3
Unemployment	77.9	<b>77.0</b>	5.4	<b>-0.9</b>	7.8	17.4	<b>-1.2</b>	11.3	29.2
Participation rate	29.1	<b>29.3</b>	0.3	<b>0.2</b>	0.3	0.4	...	...	...
Unemployment rate	6.1	<b>6.0</b>	0.4	<b>-0.1</b>	0.5	1.2	...	...	...
Employment rate	27.3	<b>27.5</b>	0.3	<b>0.2</b>	0.1	0.0	...	...	...

1. Average standard error of change in two consecutive months (see "Sampling Errors" in Data Quality for further explanations).

Note(s): Related CANSIM table 282-0087.

**Table 2**  
**Employment by class of worker and industry, Canada, seasonally adjusted**

	March 2009	April 2009	S.E. <sup>1</sup>	Change from			Percent change from		
				last month	last December	twelve months ago	last month	last December	twelve months ago
in thousands									
<b>Class of worker</b>									
Employees	14,188.3	<b>14,187.2</b>	32.9	<b>-1.1</b>	-265.4	-312.6	<b>0.0</b>	-1.8	-2.2
Self-employed <sup>2</sup>	2,649.8	<b>2,686.8</b>	22.2	<b>37.0</b>	28.4	61.8	<b>1.4</b>	1.1	2.4
<b>Public/private sector employees</b>									
Public sector employees	3,381.8	<b>3,391.1</b>	21.5	<b>9.3</b>	-55.6	-27.5	<b>0.3</b>	-1.6	-0.8
Private sector employees	10,806.5	<b>10,796.1</b>	33.6	<b>-10.4</b>	-209.8	-285.1	<b>-0.1</b>	-1.9	-2.6
<b>Industry</b>	16,838.1	<b>16,874.0</b>	27.8	<b>35.9</b>	-237.0	-250.9	<b>0.2</b>	-1.4	-1.5
<b>Goods-producing sector</b>	3,782.7	<b>3,783.5</b>	23.6	<b>0.8</b>	-193.6	-221.5	<b>0.0</b>	-4.9	-5.5
Agriculture	319.3	<b>328.3</b>	7.3	<b>9.0</b>	12.1	-3.2	<b>2.8</b>	3.8	-1.0
Forestry, fishing, mining, oil and gas	322.9	<b>318.8</b>	6.9	<b>-4.1</b>	-25.1	-21.9	<b>-1.3</b>	-7.3	-6.4
Utilities	148.7	<b>145.4</b>	4.6	<b>-3.3</b>	-3.6	-3.6	<b>-2.2</b>	-2.4	-2.4
Construction	1,151.7	<b>1,144.2</b>	14.8	<b>-7.5</b>	-73.3	-86.5	<b>-0.7</b>	-6.0	-7.0
Manufacturing	1,840.1	<b>1,846.8</b>	17.7	<b>6.7</b>	-103.7	-106.3	<b>0.4</b>	-5.3	-5.4
<b>Services-producing sector</b>	13,055.4	<b>13,090.5</b>	31.2	<b>35.1</b>	-43.4	-29.3	<b>0.3</b>	-0.3	-0.2
Trade	2,629.9	<b>2,621.5</b>	20.8	<b>-8.4</b>	-40.2	-69.6	<b>-0.3</b>	-1.5	-2.6
Transportation and warehousing	843.1	<b>838.8</b>	12.5	<b>-4.3</b>	-30.9	-18.6	<b>-0.5</b>	-3.6	-2.2
Finance, insurance, real estate and leasing	1,074.9	<b>1,073.4</b>	14.0	<b>-1.5</b>	-10.3	-3.7	<b>-0.1</b>	-1.0	-0.3
Professional, scientific and technical services	1,186.0	<b>1,191.3</b>	15.0	<b>5.3</b>	-15.8	-6.6	<b>0.4</b>	-1.3	-0.6
Business, building and other support services	670.4	<b>685.0</b>	12.7	<b>14.6</b>	14.9	-20.9	<b>2.2</b>	2.2	-3.0
Educational services	1,173.8	<b>1,173.5</b>	14.2	<b>-0.3</b>	-11.0	-30.2	<b>0.0</b>	-0.9	-2.5
Health care and social assistance	1,952.4	<b>1,956.2</b>	15.7	<b>3.8</b>	16.7	69.6	<b>0.2</b>	0.9	3.7
Information, culture and recreation	747.3	<b>764.4</b>	12.5	<b>17.1</b>	1.8	2.1	<b>2.3</b>	0.2	0.3
Accommodation and food services	1,068.6	<b>1,074.4</b>	15.2	<b>5.8</b>	11.0	-2.7	<b>0.5</b>	1.0	-0.3
Other services	783.6	<b>797.6</b>	11.6	<b>14.0</b>	40.7	62.0	<b>1.8</b>	5.4	8.4
Public administration	925.4	<b>914.5</b>	11.2	<b>-10.9</b>	-20.2	-10.7	<b>-1.2</b>	-2.2	-1.2

1. Average standard error of change in two consecutive months (see "Sampling Errors" in Data Quality for further explanations).

2. Includes both incorporated and unincorporated working owners, self-employed persons who do not have a business and persons working in a family business without pay.

**Note(s):** Related CANSIM Tables 282-0088, 282-0089.

**Table 3**  
**Labour force characteristics by province, seasonally adjusted**

	March 2009	April 2009	S.E. <sup>1</sup>	Change from			Percent change from		
				last month	last December	twelve months ago	last month	last December	twelve months ago
in thousands (except rates)									
<b>Newfoundland and Labrador</b>									
Population	428.0	<b>428.1</b>	...	<b>0.1</b>	0.5	2.5	<b>0.0</b>	0.1	0.6
Labour force	254.3	<b>251.0</b>	2.2	<b>-3.3</b>	-1.0	-5.9	<b>-1.3</b>	-0.4	-2.3
Employment	217.0	<b>214.2</b>	2.2	<b>-2.8</b>	-3.3	-8.8	<b>-1.3</b>	-1.5	-3.9
Employment full-time	185.2	<b>184.2</b>	2.5	<b>-1.0</b>	-1.4	-4.5	<b>-0.5</b>	-0.8	-2.4
Employment part-time	31.8	<b>30.0</b>	1.9	<b>-1.8</b>	-1.8	-4.3	<b>-5.7</b>	-5.7	-12.5
Unemployment	37.3	<b>36.8</b>	2.1	<b>-0.5</b>	2.3	3.0	<b>-1.3</b>	6.7	8.9
Participation rate	59.4	<b>58.6</b>	0.5	<b>-0.8</b>	-0.3	-1.8	...	...	...
Unemployment rate	14.7	<b>14.7</b>	0.8	<b>0.0</b>	1.0	1.5	...	...	...
Employment rate	50.7	<b>50.0</b>	0.5	<b>-0.7</b>	-0.9	-2.4	...	...	...
<b>Prince Edward Island</b>									
Population	115.4	<b>115.5</b>	...	<b>0.1</b>	0.2	1.5	<b>0.1</b>	0.2	1.3
Labour force	77.6	<b>78.2</b>	0.6	<b>0.6</b>	-0.3	-1.1	<b>0.8</b>	-0.4	-1.4
Employment	68.7	<b>68.6</b>	0.7	<b>-0.1</b>	-0.6	-1.9	<b>-0.1</b>	-0.9	-2.7
Employment full-time	58.4	<b>57.7</b>	0.8	<b>-0.7</b>	-0.1	-1.9	<b>-1.2</b>	-0.2	-3.2
Employment part-time	10.3	<b>10.8</b>	0.7	<b>0.5</b>	-0.6	-0.1	<b>4.9</b>	-5.3	-0.9
Unemployment	8.9	<b>9.7</b>	0.6	<b>0.8</b>	0.5	0.8	<b>9.0</b>	5.4	9.0
Participation rate	67.2	<b>67.7</b>	0.5	<b>0.5</b>	-0.4	-1.9	...	...	...
Unemployment rate	11.5	<b>12.4</b>	0.8	<b>0.9</b>	0.7	1.2	...	...	...
Employment rate	59.5	<b>59.4</b>	0.6	<b>-0.1</b>	-0.6	-2.4	...	...	...
<b>Nova Scotia</b>									
Population	771.6	<b>771.9</b>	...	<b>0.3</b>	1.3	4.2	<b>0.0</b>	0.2	0.5
Labour force	497.7	<b>495.0</b>	2.8	<b>-2.7</b>	1.0	5.1	<b>-0.5</b>	0.2	1.0
Employment	453.4	<b>449.3</b>	2.9	<b>-4.1</b>	-4.2	-3.0	<b>-0.9</b>	-0.9	-0.7
Employment full-time	370.4	<b>367.5</b>	3.6	<b>-2.9</b>	-4.1	-2.3	<b>-0.8</b>	-1.1	-0.6
Employment part-time	82.9	<b>81.8</b>	3.1	<b>-1.1</b>	-0.2	-0.6	<b>-1.3</b>	-0.2	-0.7
Unemployment	44.3	<b>45.7</b>	2.6	<b>1.4</b>	5.2	8.0	<b>3.2</b>	12.8	21.2
Participation rate	64.5	<b>64.1</b>	0.4	<b>-0.4</b>	0.0	0.3	...	...	...
Unemployment rate	8.9	<b>9.2</b>	0.5	<b>0.3</b>	1.0	1.5	...	...	...
Employment rate	58.8	<b>58.2</b>	0.4	<b>-0.6</b>	-0.7	-0.7	...	...	...
<b>New Brunswick</b>									
Population	620.5	<b>620.9</b>	...	<b>0.4</b>	1.2	3.9	<b>0.1</b>	0.2	0.6
Labour force	403.1	<b>399.9</b>	2.4	<b>-3.2</b>	-1.1	0.0	<b>-0.8</b>	-0.3	0.0
Employment	364.7	<b>364.3</b>	2.5	<b>-0.4</b>	-2.3	-1.9	<b>-0.1</b>	-0.6	-0.5
Employment full-time	306.0	<b>306.5</b>	3.0	<b>0.5</b>	-4.3	-1.7	<b>0.2</b>	-1.4	-0.6
Employment part-time	58.7	<b>57.8</b>	2.4	<b>-0.9</b>	2.0	-0.2	<b>-1.5</b>	3.6	-0.3
Unemployment	38.4	<b>35.6</b>	2.2	<b>-2.8</b>	1.2	1.9	<b>-7.3</b>	3.5	5.6
Participation rate	65.0	<b>64.4</b>	0.4	<b>-0.6</b>	-0.3	-0.4	...	...	...
Unemployment rate	9.5	<b>8.9</b>	0.5	<b>-0.6</b>	0.3	0.5	...	...	...
Employment rate	58.8	<b>58.7</b>	0.4	<b>-0.1</b>	-0.5	-0.7	...	...	...
<b>Quebec</b>									
Population	6,416.1	<b>6,421.1</b>	...	<b>5.0</b>	21.0	62.2	<b>0.1</b>	0.3	1.0
Labour force	4,181.7	<b>4,210.8</b>	14.2	<b>29.1</b>	19.2	29.4	<b>0.7</b>	0.5	0.7
Employment	3,835.5	<b>3,857.9</b>	14.7	<b>22.4</b>	-26.4	-9.8	<b>0.6</b>	-0.7	-0.3
Employment full-time	3,110.2	<b>3,131.1</b>	19.0	<b>20.9</b>	-3.7	-22.4	<b>0.7</b>	-0.1	-0.7
Employment part-time	725.2	<b>726.8</b>	17.4	<b>1.6</b>	-22.7	12.5	<b>0.2</b>	-3.0	1.7
Unemployment	346.3	<b>352.9</b>	12.7	<b>6.6</b>	45.7	39.3	<b>1.9</b>	14.9	12.5
Participation rate	65.2	<b>65.6</b>	0.2	<b>0.4</b>	0.1	-0.2	...	...	...
Unemployment rate	8.3	<b>8.4</b>	0.3	<b>0.1</b>	1.1	0.9	...	...	...
Employment rate	59.8	<b>60.1</b>	0.2	<b>0.3</b>	-0.6	-0.7	...	...	...

See footnotes at the end of the table.

Table 3 – continued

## Labour force characteristics by province, seasonally adjusted

	March 2009	April 2009	S.E. <sup>1</sup>	Change from			Percent change from		
				last month	last December	twelve months ago	last month	last December	twelve months ago
in thousands (except rates)									
<b>Ontario</b>									
Population	10,614.3	<b>10,625.4</b>	...	<b>11.1</b>	44.6	151.0	<b>0.1</b>	0.4	1.4
Labour force	7,168.4	<b>7,166.3</b>	18.4	<b>-2.1</b>	-15.7	18.0	<b>0.0</b>	-0.2	0.3
Employment	6,548.1	<b>6,545.1</b>	18.8	<b>-3.0</b>	-120.1	-151.7	<b>0.0</b>	-1.8	-2.3
Employment full-time	5,277.1	<b>5,283.2</b>	23.8	<b>6.1</b>	-137.9	-184.5	<b>0.1</b>	-2.5	-3.4
Employment part-time	1,271.0	<b>1,261.9</b>	22.1	<b>-9.1</b>	17.8	32.8	<b>-0.7</b>	1.4	2.7
Unemployment	620.4	<b>621.2</b>	15.9	<b>0.8</b>	104.4	169.7	<b>0.1</b>	20.2	37.6
Participation rate	67.5	<b>67.4</b>	0.2	<b>-0.1</b>	-0.5	-0.8	...	...	...
Unemployment rate	8.7	<b>8.7</b>	0.2	<b>0.0</b>	1.5	2.4	...	...	...
Employment rate	61.7	<b>61.6</b>	0.2	<b>-0.1</b>	-1.4	-2.3	...	...	...
<b>Manitoba</b>									
Population	918.0	<b>919.3</b>	...	<b>1.3</b>	4.5	12.0	<b>0.1</b>	0.5	1.3
Labour force	636.0	<b>633.3</b>	2.7	<b>-2.7</b>	-3.2	-2.2	<b>-0.4</b>	-0.5	-0.3
Employment	603.7	<b>604.2</b>	2.8	<b>0.5</b>	-4.9	-6.9	<b>0.1</b>	-0.8	-1.1
Employment full-time	495.4	<b>497.4</b>	3.9	<b>2.0</b>	4.3	6.5	<b>0.4</b>	0.9	1.3
Employment part-time	108.3	<b>106.8</b>	3.6	<b>-1.5</b>	-9.2	-13.4	<b>-1.4</b>	-7.9	-11.1
Unemployment	32.3	<b>29.1</b>	2.2	<b>-3.2</b>	1.7	4.7	<b>-9.9</b>	6.2	19.3
Participation rate	69.3	<b>68.9</b>	0.3	<b>-0.4</b>	-0.7	-1.1	...	...	...
Unemployment rate	5.1	<b>4.6</b>	0.3	<b>-0.5</b>	0.3	0.8	...	...	...
Employment rate	65.8	<b>65.7</b>	0.3	<b>-0.1</b>	-0.9	-1.7	...	...	...
<b>Saskatchewan</b>									
Population	776.3	<b>777.1</b>	...	<b>0.8</b>	3.1	13.4	<b>0.1</b>	0.4	1.8
Labour force	545.4	<b>547.4</b>	2.3	<b>2.0</b>	4.4	14.7	<b>0.4</b>	0.8	2.8
Employment	519.8	<b>520.1</b>	2.4	<b>0.3</b>	-0.2	10.3	<b>0.1</b>	0.0	2.0
Employment full-time	421.4	<b>421.2</b>	3.2	<b>-0.2</b>	-5.2	1.5	<b>0.0</b>	-1.2	0.4
Employment part-time	98.5	<b>99.0</b>	2.9	<b>0.5</b>	5.1	8.9	<b>0.5</b>	5.4	9.9
Unemployment	25.6	<b>27.3</b>	1.8	<b>1.7</b>	4.6	4.4	<b>6.6</b>	20.3	19.2
Participation rate	70.3	<b>70.4</b>	0.3	<b>0.1</b>	0.2	0.6	...	...	...
Unemployment rate	4.7	<b>5.0</b>	0.3	<b>0.3</b>	0.8	0.7	...	...	...
Employment rate	67.0	<b>66.9</b>	0.3	<b>-0.1</b>	-0.3	0.1	...	...	...
<b>Alberta</b>									
Population	2,841.7	<b>2,847.9</b>	...	<b>6.2</b>	24.2	64.1	<b>0.2</b>	0.9	2.3
Labour force	2,110.1	<b>2,119.5</b>	8.0	<b>9.4</b>	9.3	43.1	<b>0.4</b>	0.4	2.1
Employment	1,987.2	<b>1,992.9</b>	8.4	<b>5.7</b>	-29.6	-14.4	<b>0.3</b>	-1.5	-0.7
Employment full-time	1,632.9	<b>1,635.6</b>	11.3	<b>2.7</b>	-45.2	-56.5	<b>0.2</b>	-2.7	-3.3
Employment part-time	354.3	<b>357.3</b>	9.8	<b>3.0</b>	15.6	42.2	<b>0.8</b>	4.6	13.4
Unemployment	123.0	<b>126.6</b>	5.8	<b>3.6</b>	38.8	57.5	<b>2.9</b>	44.2	83.2
Participation rate	74.3	<b>74.4</b>	0.3	<b>0.1</b>	-0.3	-0.2	...	...	...
Unemployment rate	5.8	<b>6.0</b>	0.3	<b>0.2</b>	1.8	2.7	...	...	...
Employment rate	69.9	<b>70.0</b>	0.3	<b>0.1</b>	-1.6	-2.1	...	...	...
<b>British Columbia</b>									
Population	3,685.8	<b>3,690.4</b>	...	<b>4.6</b>	18.2	63.5	<b>0.1</b>	0.5	1.8
Labour force	2,420.2	<b>2,437.1</b>	9.8	<b>16.9</b>	4.6	10.1	<b>0.7</b>	0.2	0.4
Employment	2,240.1	<b>2,257.4</b>	9.9	<b>17.3</b>	-45.3	-62.8	<b>0.8</b>	-2.0	-2.7
Employment full-time	1,760.0	<b>1,772.2</b>	14.0	<b>12.2</b>	-67.4	-85.8	<b>0.7</b>	-3.7	-4.6
Employment part-time	480.1	<b>485.1</b>	12.8	<b>5.0</b>	21.9	22.9	<b>1.0</b>	4.7	5.0
Unemployment	180.1	<b>179.8</b>	7.2	<b>-0.3</b>	50.1	73.0	<b>-0.2</b>	38.6	68.4
Participation rate	65.7	<b>66.0</b>	0.3	<b>0.3</b>	-0.2	-0.9	...	...	...
Unemployment rate	7.4	<b>7.4</b>	0.3	<b>0.0</b>	2.1	3.0	...	...	...
Employment rate	60.8	<b>61.2</b>	0.3	<b>0.4</b>	-1.5	-2.8	...	...	...

1. Average standard error of change in two consecutive months (see "Sampling Errors" in Data Quality for further explanations).

Note(s): Related CANSIM Table 282-0087.

**Table 4-1**  
**Selected labour force characteristics (seasonally adjusted) — Newfoundland and Labrador**

	March 2009	April 2009	S.E. <sup>1</sup>	Change from			Percent change from		
				last month	last December	twelve months ago	last month	last December	twelve months ago
in thousands (except rates)									
<b>Both sexes, 15 years and over</b>									
Population	428.0	<b>428.1</b>	...	<b>0.1</b>	0.5	2.5	<b>0.0</b>	0.1	0.6
Labour force	254.3	<b>251.0</b>	2.2	<b>-3.3</b>	-1.0	-5.9	<b>-1.3</b>	-0.4	-2.3
Employment	217.0	<b>214.2</b>	2.2	<b>-2.8</b>	-3.3	-8.8	<b>-1.3</b>	-1.5	-3.9
Employment full-time	185.2	<b>184.2</b>	2.5	<b>-1.0</b>	-1.4	-4.5	<b>-0.5</b>	-0.8	-2.4
Unemployment	37.3	<b>36.8</b>	2.1	<b>-0.5</b>	2.3	3.0	<b>-1.3</b>	6.7	8.9
Participation rate	59.4	<b>58.6</b>	0.5	<b>-0.8</b>	-0.3	-1.8	...	...	...
Unemployment rate	14.7	<b>14.7</b>	0.8	<b>0.0</b>	1.0	1.5	...	...	...
Employment rate	50.7	<b>50.0</b>	0.5	<b>-0.7</b>	-0.9	-2.4	...	...	...
Part-time rate	14.7	<b>14.0</b>	0.8	<b>-0.6</b>	-0.6	-1.4	...	...	...
<b>Both sexes, 15 to 24 years</b>									
Population	61.5	<b>61.4</b>	...	<b>-0.1</b>	-0.5	-1.4	<b>-0.2</b>	-0.8	-2.2
Labour force	36.4	<b>35.1</b>	1.1	<b>-1.3</b>	0.8	-0.6	<b>-3.6</b>	2.3	-1.7
Employment	27.4	<b>27.8</b>	1.1	<b>0.4</b>	1.1	-0.9	<b>1.5</b>	4.1	-3.1
Unemployment	9.0	<b>7.4</b>	1.0	<b>-1.6</b>	-0.2	0.4	<b>-17.8</b>	-2.6	5.7
Participation rate	59.2	<b>57.2</b>	1.8	<b>-2.0</b>	1.8	0.4	...	...	...
Unemployment rate	24.7	<b>21.1</b>	2.6	<b>-3.6</b>	-1.1	1.5	...	...	...
Employment rate	44.6	<b>45.3</b>	1.8	<b>0.7</b>	2.2	-0.4	...	...	...
Part-time rate	41.6	<b>43.5</b>	3.7	<b>1.9</b>	-5.9	-1.1	...	...	...
<b>Men, 25 years and over</b>									
Population	176.8	<b>176.9</b>	...	<b>0.1</b>	0.5	1.7	<b>0.1</b>	0.3	1.0
Labour force	113.3	<b>111.5</b>	1.2	<b>-1.8</b>	-2.6	-5.3	<b>-1.6</b>	-2.3	-4.5
Employment	96.1	<b>94.8</b>	1.3	<b>-1.3</b>	-3.2	-6.6	<b>-1.4</b>	-3.3	-6.5
Unemployment	17.1	<b>16.7</b>	1.3	<b>-0.4</b>	0.6	1.3	<b>-2.3</b>	3.7	8.4
Participation rate	64.1	<b>63.0</b>	0.7	<b>-1.1</b>	-1.7	-3.7	...	...	...
Unemployment rate	15.1	<b>15.0</b>	1.1	<b>-0.1</b>	0.9	1.8	...	...	...
Employment rate	54.4	<b>53.6</b>	0.8	<b>-0.8</b>	-2.0	-4.3	...	...	...
Part-time rate	4.5	<b>4.0</b>	0.8	<b>-0.5</b>	-1.0	0.1	...	...	...
<b>Women, 25 years and over</b>									
Population	189.7	<b>189.8</b>	...	<b>0.1</b>	0.5	2.2	<b>0.1</b>	0.3	1.2
Labour force	104.6	<b>104.4</b>	1.2	<b>-0.2</b>	0.9	0.0	<b>-0.2</b>	0.9	0.0
Employment	93.4	<b>91.7</b>	1.1	<b>-1.7</b>	-1.1	-1.2	<b>-1.8</b>	-1.2	-1.3
Unemployment	11.2	<b>12.7</b>	1.1	<b>1.5</b>	1.9	1.2	<b>13.4</b>	17.6	10.4
Participation rate	55.1	<b>55.0</b>	0.6	<b>-0.1</b>	0.3	-0.7	...	...	...
Unemployment rate	10.7	<b>12.2</b>	1.0	<b>1.5</b>	1.8	1.2	...	...	...
Employment rate	49.2	<b>48.3</b>	0.6	<b>-0.9</b>	-0.7	-1.2	...	...	...
Part-time rate	17.2	<b>15.4</b>	1.3	<b>-1.9</b>	0.5	-3.5	...	...	...
<b>Industry</b>									
	217.0	<b>214.2</b>	2.2	<b>-2.8</b>	-3.3	-8.8	<b>-1.3</b>	-1.5	-3.9
<b>Goods-producing sector</b>									
	45.3	<b>45.4</b>	1.7	<b>0.1</b>	-3.0	-5.7	<b>0.2</b>	-6.2	-11.2
Agriculture	1.3	<b>1.0</b>	0.3	<b>-0.3</b>	0.5	0.0	<b>-23.1</b>	100.0	0.0
Forestry, fishing, mining, oil and gas	14.5	<b>13.8</b>	1.0	<b>-0.7</b>	-2.5	-2.2	<b>-4.8</b>	-15.3	-13.8
Utilities	1.8	<b>2.0</b>	0.2	<b>0.2</b>	0.2	0.5	<b>11.1</b>	11.1	33.3
Construction	14.5	<b>14.8</b>	1.1	<b>0.3</b>	-2.5	-2.5	<b>2.1</b>	-14.5	-14.5
Manufacturing	13.2	<b>13.8</b>	1.1	<b>0.6</b>	1.2	-1.6	<b>4.5</b>	9.5	-10.4
<b>Services-producing sector</b>									
	171.7	<b>168.8</b>	2.1	<b>-2.9</b>	-0.2	-3.2	<b>-1.7</b>	-0.1	-1.9
Trade	34.4	<b>35.3</b>	1.3	<b>0.9</b>	0.9	0.9	<b>2.6</b>	2.6	2.6
Transportation and warehousing	12.8	<b>11.9</b>	0.8	<b>-0.9</b>	1.0	0.7	<b>-7.0</b>	9.2	6.2
Finance, insurance, real estate and leasing	7.1	<b>6.3</b>	0.5	<b>-0.8</b>	-0.7	-1.2	<b>-11.3</b>	-10.0	-16.0
Professional, scientific and technical services	8.1	<b>8.6</b>	0.6	<b>0.5</b>	0.5	-0.7	<b>6.2</b>	6.2	-7.5
Business, building and other support services	7.9	<b>6.9</b>	0.7	<b>-1.0</b>	-0.9	-1.7	<b>-12.7</b>	-11.5	-19.8
Educational services	17.1	<b>16.2</b>	0.9	<b>-0.9</b>	-1.3	-0.7	<b>-5.3</b>	-7.4	-4.1
Health care and social assistance	34.0	<b>33.0</b>	1.0	<b>-1.0</b>	-0.2	0.7	<b>-2.9</b>	-0.6	2.2
Information, culture and recreation	9.6	<b>10.3</b>	0.7	<b>0.7</b>	2.6	1.9	<b>7.3</b>	33.8	22.6
Accommodation and food services	12.8	<b>11.8</b>	0.9	<b>-1.0</b>	0.0	-1.8	<b>-7.8</b>	0.0	-13.2
Other services	10.8	<b>11.1</b>	0.8	<b>0.3</b>	-2.4	-0.1	<b>2.8</b>	-17.8	-0.9
Public administration	17.2	<b>17.6</b>	0.9	<b>0.4</b>	0.4	-1.0	<b>2.3</b>	2.3	-5.4

1. Average standard error of change in two consecutive months (see "Sampling Errors" in Data Quality for further explanations).

**Note(s):** Related CANSIM Tables 282-0087, 282-0088.

**Table 4-2**  
**Selected labour force characteristics (seasonally adjusted) — Prince Edward Island**

	March 2009	April 2009	S.E. <sup>1</sup>	Change from			Percent change from		
				last month	last December	twelve months ago	last month	last December	twelve months ago
in thousands (except rates)									
<b>Both sexes, 15 years and over</b>									
Population	115.4	<b>115.5</b>	...	<b>0.1</b>	0.2	1.5	<b>0.1</b>	0.2	1.3
Labour force	77.6	<b>78.2</b>	0.6	<b>0.6</b>	-0.3	-1.1	<b>0.8</b>	-0.4	-1.4
Employment	68.7	<b>68.6</b>	0.7	<b>-0.1</b>	-0.6	-1.9	<b>-0.1</b>	-0.9	-2.7
Employment full-time	58.4	<b>57.7</b>	0.8	<b>-0.7</b>	-0.1	-1.9	<b>-1.2</b>	-0.2	-3.2
Unemployment	8.9	<b>9.7</b>	0.6	<b>0.8</b>	0.5	0.8	<b>9.0</b>	5.4	9.0
Participation rate	67.2	<b>67.7</b>	0.5	<b>0.5</b>	-0.4	-1.9	...	...	...
Unemployment rate	11.5	<b>12.4</b>	0.8	<b>0.9</b>	0.7	1.2	...	...	...
Employment rate	59.5	<b>59.4</b>	0.6	<b>-0.1</b>	-0.6	-2.4	...	...	...
Part-time rate	15.0	<b>15.7</b>	0.9	<b>0.8</b>	-0.7	0.3	...	...	...
<b>Both sexes, 15 to 24 years</b>									
Population	19.7	<b>19.8</b>	...	<b>0.1</b>	0.0	0.2	<b>0.5</b>	0.0	1.0
Labour force	13.3	<b>13.5</b>	0.4	<b>0.2</b>	-0.5	-0.8	<b>1.5</b>	-3.6	-5.6
Employment	11.1	<b>10.8</b>	0.4	<b>-0.3</b>	-0.6	-1.0	<b>-2.7</b>	-5.3	-8.5
Unemployment	2.2	<b>2.7</b>	0.4	<b>0.5</b>	0.1	0.2	<b>22.7</b>	3.8	8.0
Participation rate	67.5	<b>68.2</b>	2.0	<b>0.7</b>	-2.5	-4.8	...	...	...
Unemployment rate	16.5	<b>20.0</b>	2.4	<b>3.5</b>	1.4	2.5	...	...	...
Employment rate	56.3	<b>54.5</b>	1.9	<b>-1.8</b>	-3.1	-5.7	...	...	...
Part-time rate	35.1	<b>38.0</b>	3.3	<b>2.8</b>	-5.9	-1.9	...	...	...
<b>Men, 25 years and over</b>									
Population	46.0	<b>46.1</b>	...	<b>0.1</b>	0.1	0.9	<b>0.2</b>	0.2	2.0
Labour force	32.4	<b>32.9</b>	0.3	<b>0.5</b>	0.2	0.0	<b>1.5</b>	0.6	0.0
Employment	28.8	<b>28.8</b>	0.4	<b>0.0</b>	-0.5	-0.5	<b>0.0</b>	-1.7	-1.7
Unemployment	3.6	<b>4.1</b>	0.4	<b>0.5</b>	0.7	0.5	<b>13.9</b>	20.6	13.9
Participation rate	70.4	<b>71.4</b>	0.8	<b>1.0</b>	0.3	-1.4	...	...	...
Unemployment rate	11.1	<b>12.5</b>	1.1	<b>1.4</b>	2.1	1.6	...	...	...
Employment rate	62.6	<b>62.5</b>	0.9	<b>-0.1</b>	-1.2	-2.3	...	...	...
Part-time rate	5.2	<b>6.6</b>	1.0	<b>1.4</b>	1.1	0.1	...	...	...
<b>Women, 25 years and over</b>									
Population	49.6	<b>49.7</b>	...	<b>0.1</b>	0.1	0.6	<b>0.2</b>	0.2	1.2
Labour force	31.8	<b>31.9</b>	0.3	<b>0.1</b>	0.2	-0.2	<b>0.3</b>	0.6	-0.6
Employment	28.8	<b>29.0</b>	0.4	<b>0.2</b>	0.5	-0.3	<b>0.7</b>	1.8	-1.0
Unemployment	3.0	<b>2.9</b>	0.3	<b>-0.1</b>	-0.3	0.1	<b>-3.3</b>	-9.4	3.6
Participation rate	64.1	<b>64.2</b>	0.6	<b>0.1</b>	0.3	-1.2	...	...	...
Unemployment rate	9.4	<b>9.1</b>	0.9	<b>-0.3</b>	-1.0	0.4	...	...	...
Employment rate	58.1	<b>58.4</b>	0.8	<b>0.3</b>	0.9	-1.3	...	...	...
Part-time rate	16.7	<b>16.6</b>	1.5	<b>-0.1</b>	-0.3	1.9	...	...	...
<b>Industry</b>	68.7	<b>68.6</b>	0.7	<b>-0.1</b>	-0.6	-1.9	<b>-0.1</b>	-0.9	-2.7
<b>Goods-producing sector</b>	18.4	<b>17.8</b>	0.6	<b>-0.6</b>	0.3	0.3	<b>-3.3</b>	1.7	1.7
Agriculture	3.5	<b>3.5</b>	0.3	<b>0.0</b>	0.4	0.4	<b>0.0</b>	12.9	12.9
Forestry, fishing, mining, oil and gas	3.1	<b>3.1</b>	0.3	<b>0.0</b>	-0.3	0.4	<b>0.0</b>	-8.8	14.8
Utilities	0.3	<b>0.3</b>	0.1	<b>0.0</b>	0.0	0.0	<b>0.0</b>	0.0	0.0
Construction	5.6	<b>5.4</b>	0.3	<b>-0.2</b>	0.5	0.3	<b>-3.6</b>	10.2	5.9
Manufacturing	5.8	<b>5.6</b>	0.4	<b>-0.2</b>	-0.2	-0.7	<b>-3.4</b>	-3.4	-11.1
<b>Services-producing sector</b>	50.3	<b>50.8</b>	0.7	<b>0.5</b>	-0.9	-2.1	<b>1.0</b>	-1.7	-4.0
Trade	8.9	<b>9.0</b>	0.4	<b>0.1</b>	-0.3	-1.7	<b>1.1</b>	-3.2	-15.9
Transportation and warehousing	2.4	<b>2.4</b>	0.2	<b>0.0</b>	-0.5	-0.6	<b>0.0</b>	-17.2	-20.0
Finance, insurance, real estate and leasing	2.3	<b>2.5</b>	0.2	<b>0.2</b>	0.1	0.0	<b>8.7</b>	4.2	0.0
Professional, scientific and technical services	2.0	<b>2.0</b>	0.2	<b>0.0</b>	-0.7	-0.9	<b>0.0</b>	-25.9	-31.0
Business, building and other support services	2.8	<b>2.7</b>	0.2	<b>-0.1</b>	0.4	0.3	<b>-3.6</b>	17.4	12.5
Educational services	4.9	<b>5.1</b>	0.3	<b>0.2</b>	0.4	0.2	<b>4.1</b>	8.5	4.1
Health care and social assistance	7.7	<b>7.6</b>	0.3	<b>-0.1</b>	-1.1	-0.7	<b>-1.3</b>	-12.6	-8.4
Information, culture and recreation	2.9	<b>2.6</b>	0.2	<b>-0.3</b>	0.0	0.3	<b>-10.3</b>	0.0	13.0
Accommodation and food services	5.5	<b>5.5</b>	0.3	<b>0.0</b>	-0.2	0.0	<b>0.0</b>	-3.5	0.0
Other services	3.3	<b>3.2</b>	0.3	<b>-0.1</b>	0.5	0.3	<b>-3.0</b>	18.5	10.3
Public administration	7.6	<b>8.1</b>	0.4	<b>0.5</b>	0.4	0.6	<b>6.6</b>	5.2	8.0

1. Average standard error of change in two consecutive months (see "Sampling Errors" in Data Quality for further explanations).

**Note(s):** Related CANSIM Tables 282-0087, 282-0088.



Table 4-3

## Selected labour force characteristics (seasonally adjusted) — Nova Scotia

	March 2009	April 2009	S.E. <sup>1</sup>	Change from			Percent change from		
				last month	last December	twelve months ago	last month	last December	twelve months ago
in thousands (except rates)									
<b>Both sexes, 15 years and over</b>									
Population	771.6	<b>771.9</b>	...	<b>0.3</b>	1.3	4.2	<b>0.0</b>	0.2	0.5
Labour force	497.7	<b>495.0</b>	2.8	<b>-2.7</b>	1.0	5.1	<b>-0.5</b>	0.2	1.0
Employment	453.4	<b>449.3</b>	2.9	<b>-4.1</b>	-4.2	-3.0	<b>-0.9</b>	-0.9	-0.7
Employment full-time	370.4	<b>367.5</b>	3.6	<b>-2.9</b>	-4.1	-2.3	<b>-0.8</b>	-1.1	-0.6
Unemployment	44.3	<b>45.7</b>	2.6	<b>1.4</b>	5.2	8.0	<b>3.2</b>	12.8	21.2
Participation rate	64.5	<b>64.1</b>	0.4	<b>-0.4</b>	0.0	0.3	...	...	...
Unemployment rate	8.9	<b>9.2</b>	0.5	<b>0.3</b>	1.0	1.5	...	...	...
Employment rate	58.8	<b>58.2</b>	0.4	<b>-0.6</b>	-0.7	-0.7	...	...	...
Part-time rate	18.3	<b>18.2</b>	0.7	<b>-0.1</b>	0.1	0.0	...	...	...
<b>Both sexes, 15 to 24 years</b>									
Population	120.6	<b>120.5</b>	...	<b>-0.1</b>	-0.2	-1.2	<b>-0.1</b>	-0.2	-1.0
Labour force	81.6	<b>81.2</b>	1.8	<b>-0.4</b>	-0.2	-0.4	<b>-0.5</b>	-0.2	-0.5
Employment	67.2	<b>67.1</b>	1.7	<b>-0.1</b>	-2.0	-3.4	<b>-0.1</b>	-2.9	-4.8
Unemployment	14.3	<b>14.1</b>	1.5	<b>-0.2</b>	1.7	3.0	<b>-1.4</b>	13.7	27.0
Participation rate	67.7	<b>67.4</b>	1.4	<b>-0.3</b>	0.0	0.3	...	...	...
Unemployment rate	17.5	<b>17.4</b>	1.7	<b>-0.1</b>	2.2	3.8	...	...	...
Employment rate	55.7	<b>55.7</b>	1.4	<b>0.0</b>	-1.5	-2.2	...	...	...
Part-time rate	43.0	<b>42.8</b>	2.5	<b>-0.2</b>	0.1	-1.8	...	...	...
<b>Men, 25 years and over</b>									
Population	310.3	<b>310.5</b>	...	<b>0.2</b>	0.7	2.5	<b>0.1</b>	0.2	0.8
Labour force	214.2	<b>211.4</b>	1.5	<b>-2.8</b>	-0.9	1.4	<b>-1.3</b>	-0.4	0.7
Employment	195.5	<b>192.0</b>	1.6	<b>-3.5</b>	-3.1	-3.0	<b>-1.8</b>	-1.6	-1.5
Unemployment	18.7	<b>19.4</b>	1.6	<b>0.7</b>	2.1	4.4	<b>3.7</b>	12.1	29.3
Participation rate	69.0	<b>68.1</b>	0.5	<b>-0.9</b>	-0.4	-0.1	...	...	...
Unemployment rate	8.7	<b>9.2</b>	0.7	<b>0.5</b>	1.1	2.1	...	...	...
Employment rate	63.0	<b>61.8</b>	0.5	<b>-1.2</b>	-1.2	-1.5	...	...	...
Part-time rate	7.6	<b>7.9</b>	0.7	<b>0.3</b>	0.7	1.4	...	...	...
<b>Women, 25 years and over</b>									
Population	340.8	<b>340.9</b>	...	<b>0.1</b>	0.8	3.0	<b>0.0</b>	0.2	0.9
Labour force	201.9	<b>202.4</b>	1.5	<b>0.5</b>	2.1	4.1	<b>0.2</b>	1.0	2.1
Employment	190.6	<b>190.2</b>	1.5	<b>-0.4</b>	0.8	3.5	<b>-0.2</b>	0.4	1.9
Unemployment	11.3	<b>12.2</b>	1.3	<b>0.9</b>	1.3	0.6	<b>8.0</b>	11.9	5.2
Participation rate	59.2	<b>59.4</b>	0.4	<b>0.2</b>	0.5	0.7	...	...	...
Unemployment rate	5.6	<b>6.0</b>	0.7	<b>0.4</b>	0.6	0.2	...	...	...
Employment rate	55.9	<b>55.8</b>	0.5	<b>-0.1</b>	0.1	0.5	...	...	...
Part-time rate	20.6	<b>20.0</b>	1.1	<b>-0.6</b>	-0.4	-0.6	...	...	...
<b>Industry</b>	453.3	<b>449.3</b>	2.9	<b>-4.0</b>	-4.2	-3.0	<b>-0.9</b>	-0.9	-0.7
<b>Goods-producing sector</b>	88.5	<b>87.0</b>	2.3	<b>-1.5</b>	-5.9	-6.9	<b>-1.7</b>	-6.4	-7.3
Agriculture	6.7	<b>6.6</b>	0.7	<b>-0.1</b>	-1.0	-0.3	<b>-1.5</b>	-13.2	-4.3
Forestry, fishing, mining, oil and gas	11.8	<b>11.3</b>	1.0	<b>-0.5</b>	-0.9	-1.8	<b>-4.2</b>	-7.4	-13.7
Utilities	2.3	<b>2.6</b>	0.3	<b>0.3</b>	-0.1	-0.6	<b>13.0</b>	-3.7	-18.8
Construction	30.4	<b>30.0</b>	1.4	<b>-0.4</b>	-1.8	-1.8	<b>-1.3</b>	-5.7	-5.7
Manufacturing	37.4	<b>36.4</b>	1.5	<b>-1.0</b>	-2.3	-2.6	<b>-2.7</b>	-5.9	-6.7
<b>Services-producing sector</b>	364.8	<b>362.3</b>	3.0	<b>-2.5</b>	1.6	3.9	<b>-0.7</b>	0.4	1.1
Trade	74.3	<b>75.3</b>	2.0	<b>1.0</b>	-4.1	-5.5	<b>1.3</b>	-5.2	-6.8
Transportation and warehousing	19.6	<b>21.4</b>	1.0	<b>1.8</b>	1.9	3.9	<b>9.2</b>	9.7	22.3
Finance, insurance, real estate and leasing	22.4	<b>21.6</b>	1.0	<b>-0.8</b>	0.0	-0.6	<b>-3.6</b>	0.0	-2.7
Professional, scientific and technical services	24.6	<b>23.0</b>	1.1	<b>-1.6</b>	-1.2	4.4	<b>-6.5</b>	-5.0	23.7
Business, building and other support services	25.4	<b>24.1</b>	1.4	<b>-1.3</b>	-0.8	-3.9	<b>-5.1</b>	-3.2	-13.9
Educational services	36.7	<b>36.5</b>	1.4	<b>-0.2</b>	1.5	2.9	<b>-0.5</b>	4.3	8.6
Health care and social assistance	60.3	<b>59.4</b>	1.6	<b>-0.9</b>	0.1	-0.3	<b>-1.5</b>	0.2	-0.5
Information, culture and recreation	19.6	<b>18.4</b>	1.1	<b>-1.2</b>	-0.1	-1.7	<b>-6.1</b>	-0.5	-8.5
Accommodation and food services	31.5	<b>31.7</b>	1.5	<b>0.2</b>	1.8	2.9	<b>0.6</b>	6.0	10.1
Other services	18.0	<b>18.4</b>	1.1	<b>0.4</b>	0.0	-0.9	<b>2.2</b>	0.0	-4.7
Public administration	32.4	<b>32.5</b>	1.1	<b>0.1</b>	2.5	2.7	<b>0.3</b>	8.3	9.1

1. Average standard error of change in two consecutive months (see "Sampling Errors" in Data Quality for further explanations).

Note(s): Related CANSIM Tables 282-0087, 282-0088.



Table 4-4

## Selected labour force characteristics (seasonally adjusted) — New Brunswick

	March 2009	April 2009	S.E. <sup>1</sup>	Change from			Percent change from		
				last month	last December	twelve months ago	last month	last December	twelve months ago
in thousands (except rates)									
<b>Both sexes, 15 years and over</b>									
Population	620.5	<b>620.9</b>	...	<b>0.4</b>	1.2	3.9	<b>0.1</b>	0.2	0.6
Labour force	403.1	<b>399.9</b>	2.4	<b>-3.2</b>	-1.1	0.0	<b>-0.8</b>	-0.3	0.0
Employment	364.7	<b>364.3</b>	2.5	<b>-0.4</b>	-2.3	-1.9	<b>-0.1</b>	-0.6	-0.5
Employment full-time	306.0	<b>306.5</b>	3.0	<b>0.5</b>	-4.3	-1.7	<b>0.2</b>	-1.4	-0.6
Unemployment	38.4	<b>35.6</b>	2.2	<b>-2.8</b>	1.2	1.9	<b>-7.3</b>	3.5	5.6
Participation rate	65.0	<b>64.4</b>	0.4	<b>-0.6</b>	-0.3	-0.4	...	...	...
Unemployment rate	9.5	<b>8.9</b>	0.5	<b>-0.6</b>	0.3	0.5	...	...	...
Employment rate	58.8	<b>58.7</b>	0.4	<b>-0.1</b>	-0.5	-0.7	...	...	...
Part-time rate	16.1	<b>15.9</b>	0.6	<b>-0.2</b>	0.6	0.0	...	...	...
<b>Both sexes, 15 to 24 years</b>									
Population	94.2	<b>94.1</b>	...	<b>-0.1</b>	-0.2	-0.8	<b>-0.1</b>	-0.2	-0.8
Labour force	64.1	<b>61.4</b>	1.3	<b>-2.7</b>	-4.4	-1.6	<b>-4.2</b>	-6.7	-2.5
Employment	55.3	<b>53.1</b>	1.3	<b>-2.2</b>	-3.4	-0.1	<b>-4.0</b>	-6.0	-0.2
Unemployment	8.8	<b>8.4</b>	1.2	<b>-0.4</b>	-1.0	-1.4	<b>-4.5</b>	-10.6	-14.3
Participation rate	68.0	<b>65.2</b>	1.4	<b>-2.8</b>	-4.6	-1.2	...	...	...
Unemployment rate	13.7	<b>13.7</b>	1.8	<b>0.0</b>	-0.6	-1.9	...	...	...
Employment rate	58.7	<b>56.4</b>	1.4	<b>-2.3</b>	-3.5	0.3	...	...	...
Part-time rate	39.4	<b>38.2</b>	2.5	<b>-1.2</b>	-0.2	-3.9	...	...	...
<b>Men, 25 years and over</b>									
Population	254.0	<b>254.2</b>	...	<b>0.2</b>	0.6	2.0	<b>0.1</b>	0.2	0.8
Labour force	175.9	<b>175.1</b>	1.4	<b>-0.8</b>	1.6	0.0	<b>-0.5</b>	0.9	0.0
Employment	159.1	<b>159.4</b>	1.5	<b>0.3</b>	1.1	-0.4	<b>0.2</b>	0.7	-0.3
Unemployment	16.8	<b>15.7</b>	1.4	<b>-1.1</b>	0.6	0.4	<b>-6.5</b>	4.0	2.6
Participation rate	69.3	<b>68.9</b>	0.6	<b>-0.4</b>	0.5	-0.5	...	...	...
Unemployment rate	9.6	<b>9.0</b>	0.8	<b>-0.6</b>	0.3	0.3	...	...	...
Employment rate	62.6	<b>62.7</b>	0.6	<b>0.1</b>	0.3	-0.7	...	...	...
Part-time rate	5.8	<b>6.2</b>	0.6	<b>0.4</b>	0.9	1.0	...	...	...
<b>Women, 25 years and over</b>									
Population	272.3	<b>272.5</b>	...	<b>0.2</b>	0.7	2.6	<b>0.1</b>	0.3	1.0
Labour force	163.1	<b>163.4</b>	1.2	<b>0.3</b>	1.7	1.6	<b>0.2</b>	1.1	1.0
Employment	150.3	<b>151.9</b>	1.3	<b>1.6</b>	0.1	-1.3	<b>1.1</b>	0.1	-0.8
Unemployment	12.8	<b>11.5</b>	1.0	<b>-1.3</b>	1.7	2.9	<b>-10.2</b>	17.3	33.7
Participation rate	59.9	<b>60.0</b>	0.4	<b>0.1</b>	0.5	0.1	...	...	...
Unemployment rate	7.8	<b>7.0</b>	0.6	<b>-0.8</b>	0.9	1.7	...	...	...
Employment rate	55.2	<b>55.7</b>	0.5	<b>0.5</b>	-0.1	-1.1	...	...	...
Part-time rate	18.4	<b>18.2</b>	1.0	<b>-0.2</b>	1.2	0.4	...	...	...
<b>Industry</b>									
Population	364.7	<b>364.3</b>	2.5	<b>-0.4</b>	-2.3	-1.9	<b>-0.1</b>	-0.6	-0.5
<b>Goods-producing sector</b>									
Agriculture	81.2	<b>81.7</b>	2.1	<b>0.5</b>	2.6	0.3	<b>0.6</b>	3.3	0.4
Forestry, fishing, mining, oil and gas	7.9	<b>8.0</b>	0.6	<b>0.1</b>	0.5	2.5	<b>1.3</b>	6.7	45.5
Utilities	10.8	<b>10.5</b>	0.9	<b>-0.3</b>	1.0	-1.5	<b>-2.8</b>	10.5	-12.5
Construction	4.3	<b>3.8</b>	0.5	<b>-0.5</b>	-1.0	-1.2	<b>-11.6</b>	-20.8	-24.0
Manufacturing	25.6	<b>26.6</b>	1.2	<b>1.0</b>	2.7	2.2	<b>3.9</b>	11.3	9.0
	32.6	<b>32.9</b>	1.4	<b>0.3</b>	-0.6	-1.6	<b>0.9</b>	-1.8	-4.6
<b>Services-producing sector</b>									
Trade	283.5	<b>282.6</b>	2.4	<b>-0.9</b>	-4.9	-2.3	<b>-0.3</b>	-1.7	-0.8
Transportation and warehousing	56.8	<b>54.6</b>	1.5	<b>-2.2</b>	-2.3	-4.5	<b>-3.9</b>	-4.0	-7.6
Finance, insurance, real estate and leasing	18.4	<b>18.5</b>	0.9	<b>0.1</b>	-1.7	-0.6	<b>0.5</b>	-8.4	-3.1
Professional, scientific and technical services	14.6	<b>15.7</b>	0.9	<b>1.1</b>	0.0	-0.4	<b>7.5</b>	0.0	-2.5
Business, building and other support services	17.4	<b>17.9</b>	0.9	<b>0.5</b>	0.5	1.3	<b>2.9</b>	2.9	7.8
Educational services	20.3	<b>21.7</b>	1.1	<b>1.4</b>	0.7	2.9	<b>6.9</b>	3.3	15.4
Health care and social assistance	27.6	<b>28.2</b>	1.1	<b>0.6</b>	-1.3	1.0	<b>2.2</b>	-4.4	3.7
Information, culture and recreation	52.0	<b>50.1</b>	1.3	<b>-1.9</b>	0.1	0.3	<b>-3.7</b>	0.2	0.6
Accommodation and food services	10.8	<b>10.4</b>	0.8	<b>-0.4</b>	-0.6	-3.1	<b>-3.7</b>	-5.5	-23.0
Other services	23.2	<b>22.8</b>	1.2	<b>-0.4</b>	0.0	-1.6	<b>-1.7</b>	0.0	-6.6
Public administration	13.9	<b>14.2</b>	0.9	<b>0.3</b>	-0.9	-1.9	<b>2.2</b>	-6.0	-11.8
	28.6	<b>28.6</b>	1.0	<b>0.0</b>	0.7	4.4	<b>0.0</b>	2.5	18.2

1. Average standard error of change in two consecutive months (see "Sampling Errors" in Data Quality for further explanations).

Note(s): Related CANSIM Tables 282-0087, 282-0088.

**Table 4-5**  
**Selected labour force characteristics (seasonally adjusted) — Quebec**

	March 2009	April 2009	S.E. <sup>1</sup>	Change from			Percent change from		
				last month	last December	twelve months ago	last month	last December	twelve months ago
in thousands (except rates)									
<b>Both sexes, 15 years and over</b>									
Population	6,416.1	<b>6,421.1</b>	...	<b>5.0</b>	21.0	62.2	<b>0.1</b>	0.3	1.0
Labour force	4,181.7	<b>4,210.8</b>	14.2	<b>29.1</b>	19.2	29.4	<b>0.7</b>	0.5	0.7
Employment	3,835.5	<b>3,857.9</b>	14.7	<b>22.4</b>	-26.4	-9.8	<b>0.6</b>	-0.7	-0.3
Employment full-time	3,110.2	<b>3,131.1</b>	19.0	<b>20.9</b>	-3.7	-22.4	<b>0.7</b>	-0.1	-0.7
Unemployment	346.3	<b>352.9</b>	12.7	<b>6.6</b>	45.7	39.3	<b>1.9</b>	14.9	12.5
Participation rate	65.2	<b>65.6</b>	0.2	<b>0.4</b>	0.1	-0.2	...	...	...
Unemployment rate	8.3	<b>8.4</b>	0.3	<b>0.1</b>	1.1	0.9	...	...	...
Employment rate	59.8	<b>60.1</b>	0.2	<b>0.3</b>	-0.6	-0.7	...	...	...
Part-time rate	18.9	<b>18.8</b>	0.4	<b>-0.1</b>	-0.5	0.4	...	...	...
<b>Both sexes, 15 to 24 years</b>									
Population	962.1	<b>962.1</b>	...	<b>0.0</b>	1.1	3.4	<b>0.0</b>	0.1	0.4
Labour force	633.3	<b>642.9</b>	8.0	<b>9.6</b>	-0.6	-8.5	<b>1.5</b>	-0.1	-1.3
Employment	542.4	<b>552.1</b>	7.9	<b>9.7</b>	-6.9	-10.0	<b>1.8</b>	-1.2	-1.8
Unemployment	90.9	<b>90.7</b>	7.0	<b>-0.2</b>	6.2	1.4	<b>-0.2</b>	7.3	1.6
Participation rate	65.8	<b>66.8</b>	0.8	<b>1.0</b>	-0.2	-1.1	...	...	...
Unemployment rate	14.4	<b>14.1</b>	1.0	<b>-0.3</b>	1.0	0.4	...	...	...
Employment rate	56.4	<b>57.4</b>	0.8	<b>1.0</b>	-0.8	-1.2	...	...	...
Part-time rate	52.2	<b>51.3</b>	1.5	<b>-0.8</b>	-1.0	3.8	...	...	...
<b>Men, 25 years and over</b>									
Population	2,665.6	<b>2,668.2</b>	...	<b>2.6</b>	10.4	29.9	<b>0.1</b>	0.4	1.1
Labour force	1,864.2	<b>1,877.5</b>	7.7	<b>13.3</b>	11.2	0.2	<b>0.7</b>	0.6	0.0
Employment	1,710.9	<b>1,724.7</b>	8.7	<b>13.8</b>	-3.7	-17.9	<b>0.8</b>	-0.2	-1.0
Unemployment	153.4	<b>152.9</b>	7.8	<b>-0.5</b>	15.0	18.1	<b>-0.3</b>	10.9	13.4
Participation rate	69.9	<b>70.4</b>	0.3	<b>0.5</b>	0.2	-0.8	...	...	...
Unemployment rate	8.2	<b>8.1</b>	0.4	<b>-0.1</b>	0.7	0.9	...	...	...
Employment rate	64.2	<b>64.6</b>	0.3	<b>0.4</b>	-0.4	-1.5	...	...	...
Part-time rate	7.0	<b>7.1</b>	0.5	<b>0.1</b>	-0.3	-0.1	...	...	...
<b>Women, 25 years and over</b>									
Population	2,788.4	<b>2,790.8</b>	...	<b>2.4</b>	9.6	28.8	<b>0.1</b>	0.3	1.0
Labour force	1,684.2	<b>1,690.4</b>	8.0	<b>6.2</b>	8.6	37.8	<b>0.4</b>	0.5	2.3
Employment	1,582.2	<b>1,581.1</b>	8.2	<b>-1.1</b>	-15.9	18.1	<b>-0.1</b>	-1.0	1.2
Unemployment	102.0	<b>109.4</b>	6.7	<b>7.4</b>	24.6	19.8	<b>7.3</b>	29.0	22.1
Participation rate	60.4	<b>60.6</b>	0.3	<b>0.2</b>	0.1	0.8	...	...	...
Unemployment rate	6.1	<b>6.5</b>	0.4	<b>0.4</b>	1.5	1.1	...	...	...
Employment rate	56.7	<b>56.7</b>	0.3	<b>0.0</b>	-0.7	0.1	...	...	...
Part-time rate	20.4	<b>20.3</b>	0.7	<b>-0.1</b>	-0.3	-0.3	...	...	...
<b>Industry</b>									
	3,835.5	<b>3,857.9</b>	14.7	<b>22.4</b>	-26.4	-9.8	<b>0.6</b>	-0.7	-0.3
<b>Goods-producing sector</b>									
	868.1	<b>858.2</b>	11.9	<b>-9.9</b>	-15.2	-27.6	<b>-1.1</b>	-1.7	-3.1
Agriculture	58.7	<b>56.5</b>	3.6	<b>-2.2</b>	4.4	-10.8	<b>-3.7</b>	8.4	-16.0
Forestry, fishing, mining, oil and gas	29.4	<b>28.2</b>	2.4	<b>-1.2</b>	-3.7	-4.3	<b>-4.1</b>	-11.6	-13.2
Utilities	34.3	<b>33.1</b>	2.2	<b>-1.2</b>	2.2	0.2	<b>-3.5</b>	7.1	0.6
Construction	212.1	<b>200.6</b>	7.0	<b>-11.5</b>	-7.9	-15.2	<b>-5.4</b>	-3.8	-7.0
Manufacturing	533.6	<b>539.8</b>	9.5	<b>6.2</b>	-10.2	2.5	<b>1.2</b>	-1.9	0.5
<b>Services-producing sector</b>									
	2,967.3	<b>2,999.7</b>	16.2	<b>32.4</b>	-11.3	17.7	<b>1.1</b>	-0.4	0.6
Trade	624.2	<b>624.3</b>	10.7	<b>0.1</b>	18.4	-3.4	<b>0.0</b>	3.0	-0.5
Transportation and warehousing	168.9	<b>176.3</b>	6.2	<b>7.4</b>	-4.8	-20.5	<b>4.4</b>	-2.7	-10.4
Finance, insurance, real estate and leasing	220.5	<b>217.3</b>	7.0	<b>-3.2</b>	-5.8	-14.9	<b>-1.5</b>	-2.6	-6.4
Professional, scientific and technical services	272.0	<b>280.1</b>	7.8	<b>8.1</b>	20.5	13.3	<b>3.0</b>	7.9	5.0
Business, building and other support services	150.9	<b>151.3</b>	5.9	<b>0.4</b>	4.3	21.1	<b>0.3</b>	2.9	16.2
Educational services	245.2	<b>256.5</b>	7.1	<b>11.3</b>	11.2	-5.5	<b>4.6</b>	4.6	-2.1
Health care and social assistance	491.8	<b>498.4</b>	8.4	<b>6.6</b>	-0.4	41.0	<b>1.3</b>	-0.1	9.0
Information, culture and recreation	165.6	<b>166.9</b>	6.5	<b>1.3</b>	-12.7	-3.7	<b>0.8</b>	-7.1	-2.2
Accommodation and food services	226.6	<b>229.5</b>	8.0	<b>2.9</b>	-13.5	-9.8	<b>1.3</b>	-5.6	-4.1
Other services	182.0	<b>182.3</b>	6.1	<b>0.3</b>	10.9	10.6	<b>0.2</b>	6.4	6.2
Public administration	219.6	<b>216.7</b>	5.8	<b>-2.9</b>	-39.5	-10.7	<b>-1.3</b>	-15.4	-4.7

1. Average standard error of change in two consecutive months (see "Sampling Errors" in Data Quality for further explanations).

**Note(s):** Related CANSIM Tables 282-0087, 282-0088.

**Table 4-6**  
**Selected labour force characteristics (seasonally adjusted) — Ontario**

	March 2009	April 2009	S.E. <sup>1</sup>	Change from			Percent change from		
				last month	last December	twelve months ago	last month	last December	twelve months ago
in thousands (except rates)									
<b>Both sexes, 15 years and over</b>									
Population	10,614.3	<b>10,625.4</b>	...	<b>11.1</b>	44.6	151.0	<b>0.1</b>	0.4	1.4
Labour force	7,168.4	<b>7,166.3</b>	18.4	<b>-2.1</b>	-15.7	18.0	<b>0.0</b>	-0.2	0.3
Employment	6,548.1	<b>6,545.1</b>	18.8	<b>-3.0</b>	-120.1	-151.7	<b>0.0</b>	-1.8	-2.3
Employment full-time	5,277.1	<b>5,283.2</b>	23.8	<b>6.1</b>	-137.9	-184.5	<b>0.1</b>	-2.5	-3.4
Unemployment	620.4	<b>621.2</b>	15.9	<b>0.8</b>	104.4	169.7	<b>0.1</b>	20.2	37.6
Participation rate	67.5	<b>67.4</b>	0.2	<b>-0.1</b>	-0.5	-0.8	...	...	...
Unemployment rate	8.7	<b>8.7</b>	0.2	<b>0.0</b>	1.5	2.4	...	...	...
Employment rate	61.7	<b>61.6</b>	0.2	<b>-0.1</b>	-1.4	-2.3	...	...	...
Part-time rate	19.4	<b>19.3</b>	0.3	<b>-0.1</b>	0.6	0.9	...	...	...
<b>Both sexes, 15 to 24 years</b>									
Population	1,741.9	<b>1,742.7</b>	...	<b>0.8</b>	3.6	12.2	<b>0.0</b>	0.2	0.7
Labour force	1,114.2	<b>1,091.6</b>	11.3	<b>-22.6</b>	-30.7	-43.8	<b>-2.0</b>	-2.7	-3.9
Employment	922.2	<b>911.8</b>	10.9	<b>-10.4</b>	-38.0	-70.0	<b>-1.1</b>	-4.0	-7.1
Unemployment	192.0	<b>179.9</b>	9.8	<b>-12.1</b>	7.4	26.3	<b>-6.3</b>	4.3	17.1
Participation rate	64.0	<b>62.6</b>	0.7	<b>-1.4</b>	-1.9	-3.0	...	...	...
Unemployment rate	17.2	<b>16.5</b>	0.8	<b>-0.7</b>	1.1	3.0	...	...	...
Employment rate	52.9	<b>52.3</b>	0.6	<b>-0.6</b>	-2.3	-4.4	...	...	...
Part-time rate	48.9	<b>48.7</b>	1.1	<b>-0.2</b>	1.3	0.0	...	...	...
<b>Men, 25 years and over</b>									
Population	4,310.4	<b>4,315.2</b>	...	<b>4.8</b>	19.5	65.3	<b>0.1</b>	0.5	1.5
Labour force	3,183.5	<b>3,195.6</b>	8.9	<b>12.1</b>	2.2	31.7	<b>0.4</b>	0.1	1.0
Employment	2,926.7	<b>2,930.1</b>	10.1	<b>3.4</b>	-74.8	-75.4	<b>0.1</b>	-2.5	-2.5
Unemployment	256.8	<b>265.5</b>	8.9	<b>8.7</b>	77.0	107.1	<b>3.4</b>	40.8	67.6
Participation rate	73.9	<b>74.1</b>	0.2	<b>0.2</b>	-0.2	-0.3	...	...	...
Unemployment rate	8.1	<b>8.3</b>	0.3	<b>0.2</b>	2.4	3.3	...	...	...
Employment rate	67.9	<b>67.9</b>	0.2	<b>0.0</b>	-2.1	-2.8	...	...	...
Part-time rate	8.3	<b>8.3</b>	0.3	<b>0.0</b>	1.0	1.7	...	...	...
<b>Women, 25 years and over</b>									
Population	4,562.1	<b>4,567.5</b>	...	<b>5.4</b>	21.5	73.5	<b>0.1</b>	0.5	1.6
Labour force	2,870.7	<b>2,879.0</b>	10.7	<b>8.3</b>	12.7	30.0	<b>0.3</b>	0.4	1.1
Employment	2,699.1	<b>2,703.3</b>	10.6	<b>4.2</b>	-7.2	-6.1	<b>0.2</b>	-0.3	-0.2
Unemployment	171.6	<b>175.7</b>	8.5	<b>4.1</b>	19.9	36.1	<b>2.4</b>	12.8	25.9
Participation rate	62.9	<b>63.0</b>	0.2	<b>0.1</b>	-0.1	-0.4	...	...	...
Unemployment rate	6.0	<b>6.1</b>	0.3	<b>0.1</b>	0.7	1.2	...	...	...
Employment rate	59.2	<b>59.2</b>	0.2	<b>0.0</b>	-0.4	-1.1	...	...	...
Part-time rate	21.4	<b>21.3</b>	0.5	<b>-0.1</b>	0.0	0.8	...	...	...
<b>Industry</b>	6,548.1	<b>6,545.1</b>	18.8	<b>-3.0</b>	-120.1	-151.7	<b>0.0</b>	-1.8	-2.3
<b>Goods-producing sector</b>	1,425.9	<b>1,417.1</b>	15.4	<b>-8.8</b>	-76.8	-110.5	<b>-0.6</b>	-5.1	-7.2
Agriculture	86.5	<b>88.3</b>	3.9	<b>1.8</b>	0.9	7.6	<b>2.1</b>	1.0	9.4
Forestry, fishing, mining, oil and gas	35.3	<b>34.8</b>	2.4	<b>-0.5</b>	0.5	-4.2	<b>-1.4</b>	1.5	-10.8
Utilities	62.1	<b>58.5</b>	3.2	<b>-3.6</b>	-5.4	-5.7	<b>-5.8</b>	-8.5	-8.9
Construction	416.8	<b>410.8</b>	9.2	<b>-6.0</b>	-26.2	-32.8	<b>-1.4</b>	-6.0	-7.4
Manufacturing	825.3	<b>824.7</b>	12.3	<b>-0.6</b>	-46.5	-75.5	<b>-0.1</b>	-5.3	-8.4
<b>Services-producing sector</b>	5,122.2	<b>5,128.0</b>	20.9	<b>5.8</b>	-43.3	-41.2	<b>0.1</b>	-0.8	-0.8
Trade	1,017.4	<b>996.3</b>	13.9	<b>-21.1</b>	-30.8	-25.0	<b>-2.1</b>	-3.0	-2.4
Transportation and warehousing	333.4	<b>326.0</b>	8.3	<b>-7.4</b>	-21.0	10.5	<b>-2.2</b>	-6.1	3.3
Finance, insurance, real estate and leasing	477.5	<b>492.0</b>	9.9	<b>14.5</b>	-2.8	27.4	<b>3.0</b>	-0.6	5.9
Professional, scientific and technical services	486.8	<b>486.1</b>	10.2	<b>-0.7</b>	-20.4	-11.2	<b>-0.1</b>	-4.0	-2.3
Business, building and other support services	268.6	<b>275.2</b>	8.9	<b>6.6</b>	-1.0	-47.0	<b>2.5</b>	-0.4	-14.6
Educational services	465.0	<b>457.9</b>	9.5	<b>-7.1</b>	-11.5	-35.0	<b>-1.5</b>	-2.4	-7.1
Health care and social assistance	708.7	<b>697.5</b>	10.2	<b>-11.2</b>	-2.6	-9.8	<b>-1.6</b>	-0.4	-1.4
Information, culture and recreation	302.7	<b>315.1</b>	8.5	<b>12.4</b>	1.8	-0.7	<b>4.1</b>	0.6	-0.2
Accommodation and food services	392.9	<b>404.3</b>	9.9	<b>11.4</b>	15.5	10.7	<b>2.9</b>	4.0	2.7
Other services	305.5	<b>319.8</b>	7.5	<b>14.3</b>	24.0	47.9	<b>4.7</b>	8.1	17.6
Public administration	363.6	<b>357.6</b>	7.6	<b>-6.0</b>	5.2	-9.3	<b>-1.7</b>	1.5	-2.5

1. Average standard error of change in two consecutive months (see "Sampling Errors" in Data Quality for further explanations).

**Note(s):** Related CANSIM Tables 282-0087, 282-0088.

**Table 4-7**  
**Selected labour force characteristics (seasonally adjusted) — Manitoba**

	March 2009	April 2009	S.E. <sup>1</sup>	Change from			Percent change from		
				last month	last December	twelve months ago	last month	last December	twelve months ago
in thousands (except rates)									
<b>Both sexes, 15 years and over</b>									
Population	918.0	<b>919.3</b>	...	<b>1.3</b>	4.5	12.0	<b>0.1</b>	0.5	1.3
Labour force	636.0	<b>633.3</b>	2.7	<b>-2.7</b>	-3.2	-2.2	<b>-0.4</b>	-0.5	-0.3
Employment	603.7	<b>604.2</b>	2.8	<b>0.5</b>	-4.9	-6.9	<b>0.1</b>	-0.8	-1.1
Employment full-time	495.4	<b>497.4</b>	3.9	<b>2.0</b>	4.3	6.5	<b>0.4</b>	0.9	1.3
Unemployment	32.3	<b>29.1</b>	2.2	<b>-3.2</b>	1.7	4.7	<b>-9.9</b>	6.2	19.3
Participation rate	69.3	<b>68.9</b>	0.3	<b>-0.4</b>	-0.7	-1.1	...	...	...
Unemployment rate	5.1	<b>4.6</b>	0.3	<b>-0.5</b>	0.3	0.8	...	...	...
Employment rate	65.8	<b>65.7</b>	0.3	<b>-0.1</b>	-0.9	-1.7	...	...	...
Part-time rate	17.9	<b>17.7</b>	0.6	<b>-0.3</b>	-1.4	-2.0	...	...	...
<b>Both sexes, 15 to 24 years</b>									
Population	159.6	<b>159.7</b>	...	<b>0.1</b>	0.7	1.6	<b>0.1</b>	0.4	1.0
Labour force	115.0	<b>112.9</b>	1.7	<b>-2.1</b>	-1.8	-3.3	<b>-1.8</b>	-1.6	-2.8
Employment	103.6	<b>103.4</b>	1.7	<b>-0.2</b>	-1.3	-2.0	<b>-0.2</b>	-1.2	-1.9
Unemployment	11.4	<b>9.5</b>	1.4	<b>-1.9</b>	-0.5	-1.2	<b>-16.7</b>	-5.0	-11.2
Participation rate	72.1	<b>70.7</b>	1.1	<b>-1.4</b>	-1.4	-2.8	...	...	...
Unemployment rate	9.9	<b>8.4</b>	1.2	<b>-1.5</b>	-0.3	-0.8	...	...	...
Employment rate	64.9	<b>64.7</b>	1.1	<b>-0.2</b>	-1.1	-2.0	...	...	...
Part-time rate	40.9	<b>40.6</b>	1.9	<b>-0.3</b>	-3.3	-4.1	...	...	...
<b>Men, 25 years and over</b>									
Population	370.8	<b>371.4</b>	...	<b>0.6</b>	2.0	5.2	<b>0.2</b>	0.5	1.4
Labour force	279.5	<b>279.8</b>	1.4	<b>0.3</b>	-0.4	1.4	<b>0.1</b>	-0.1	0.5
Employment	269.2	<b>269.4</b>	1.5	<b>0.2</b>	-1.0	-2.7	<b>0.1</b>	-0.4	-1.0
Unemployment	10.3	<b>10.4</b>	1.2	<b>0.1</b>	0.6	4.1	<b>1.0</b>	6.1	65.1
Participation rate	75.4	<b>75.3</b>	0.4	<b>-0.1</b>	-0.6	-0.7	...	...	...
Unemployment rate	3.7	<b>3.7</b>	0.4	<b>0.0</b>	0.2	1.4	...	...	...
Employment rate	72.6	<b>72.5</b>	0.4	<b>-0.1</b>	-0.7	-1.8	...	...	...
Part-time rate	6.4	<b>6.1</b>	0.6	<b>-0.3</b>	-1.0	-0.3	...	...	...
<b>Women, 25 years and over</b>									
Population	387.6	<b>388.2</b>	...	<b>0.6</b>	1.8	5.3	<b>0.2</b>	0.5	1.4
Labour force	241.5	<b>240.6</b>	1.6	<b>-0.9</b>	-1.1	-0.3	<b>-0.4</b>	-0.5	-0.1
Employment	230.8	<b>231.4</b>	1.6	<b>0.6</b>	-2.7	-2.1	<b>0.3</b>	-1.2	-0.9
Unemployment	10.7	<b>9.3</b>	1.1	<b>-1.4</b>	1.7	1.9	<b>-13.1</b>	22.4	25.7
Participation rate	62.3	<b>62.0</b>	0.4	<b>-0.3</b>	-0.6	-0.9	...	...	...
Unemployment rate	4.4	<b>3.9</b>	0.5	<b>-0.5</b>	0.8	0.8	...	...	...
Employment rate	59.5	<b>59.6</b>	0.4	<b>0.1</b>	-1.0	-1.4	...	...	...
Part-time rate	21.1	<b>20.9</b>	1.0	<b>-0.2</b>	-0.9	-2.9	...	...	...
<b>Industry</b>									
Goods-producing sector	603.7	<b>604.2</b>	2.8	<b>0.5</b>	-4.9	-6.9	<b>0.1</b>	-0.8	-1.1
Agriculture	142.2	<b>142.1</b>	2.5	<b>-0.1</b>	-4.1	-5.7	<b>-0.1</b>	-2.8	-3.9
Forestry, fishing, mining, oil and gas	25.7	<b>26.0</b>	1.3	<b>0.3</b>	-3.4	-2.8	<b>1.2</b>	-11.6	-9.7
Utilities	6.0	<b>7.1</b>	0.5	<b>1.1</b>	1.2	0.7	<b>18.3</b>	20.3	10.9
Construction	7.7	<b>7.5</b>	0.5	<b>-0.2</b>	0.6	1.1	<b>-2.6</b>	8.7	17.2
Manufacturing	38.7	<b>37.6</b>	1.5	<b>-1.1</b>	-0.6	1.8	<b>-2.8</b>	-1.6	5.0
Services-producing sector	64.0	<b>64.0</b>	1.8	<b>0.0</b>	-1.8	-6.4	<b>0.0</b>	-2.7	-9.1
Trade	461.5	<b>462.1</b>	3.3	<b>0.6</b>	-0.8	-1.2	<b>0.1</b>	-0.2	-0.3
Transportation and warehousing	89.7	<b>88.3</b>	2.0	<b>-1.4</b>	-1.0	-5.4	<b>-1.6</b>	-1.1	-5.8
Finance, insurance, real estate and leasing	38.9	<b>39.0</b>	1.4	<b>0.1</b>	1.9	3.8	<b>0.3</b>	5.1	10.8
Professional, scientific and technical services	35.4	<b>35.1</b>	1.4	<b>-0.3</b>	0.3	-3.8	<b>-0.8</b>	0.9	-9.8
Business, building and other support services	25.9	<b>25.3</b>	1.2	<b>-0.6</b>	1.1	-2.2	<b>-2.3</b>	4.5	-8.0
Educational services	17.6	<b>19.9</b>	1.2	<b>2.3</b>	2.4	1.9	<b>13.1</b>	13.7	10.6
Health care and social assistance	47.9	<b>47.0</b>	1.5	<b>-0.9</b>	-0.9	1.3	<b>-1.9</b>	-1.9	2.8
Information, culture and recreation	82.0	<b>83.7</b>	1.9	<b>1.7</b>	-3.5	3.1	<b>2.1</b>	-4.0	3.8
Accommodation and food services	22.8	<b>23.6</b>	1.2	<b>0.8</b>	1.0	-0.2	<b>3.5</b>	4.4	-0.8
Other services	34.6	<b>34.7</b>	1.6	<b>0.1</b>	-2.3	-2.3	<b>0.3</b>	-6.2	-6.2
Public administration	29.1	<b>29.0</b>	1.4	<b>-0.1</b>	0.1	1.2	<b>-0.3</b>	0.3	4.3
	37.8	<b>36.6</b>	1.2	<b>-1.2</b>	0.2	1.6	<b>-3.2</b>	0.5	4.6

1. Average standard error of change in two consecutive months (see "Sampling Errors" in Data Quality for further explanations).

**Note(s):** Related CANSIM Tables 282-0087, 282-0088.

**Table 4-8**  
**Selected labour force characteristics (seasonally adjusted) — Saskatchewan**

	March 2009	April 2009	S.E. <sup>1</sup>	Change from			Percent change from		
				last month	last December	twelve months ago	last month	last December	twelve months ago
in thousands (except rates)									
<b>Both sexes, 15 years and over</b>									
Population	776.3	<b>777.1</b>	...	<b>0.8</b>	3.1	13.4	<b>0.1</b>	0.4	1.8
Labour force	545.4	<b>547.4</b>	2.3	<b>2.0</b>	4.4	14.7	<b>0.4</b>	0.8	2.8
Employment	519.8	<b>520.1</b>	2.4	<b>0.3</b>	-0.2	10.3	<b>0.1</b>	0.0	2.0
Employment full-time	421.4	<b>421.2</b>	3.2	<b>-0.2</b>	-5.2	1.5	<b>0.0</b>	-1.2	0.4
Unemployment	25.6	<b>27.3</b>	1.8	<b>1.7</b>	4.6	4.4	<b>6.6</b>	20.3	19.2
Participation rate	70.3	<b>70.4</b>	0.3	<b>0.1</b>	0.2	0.6	...	...	...
Unemployment rate	4.7	<b>5.0</b>	0.3	<b>0.3</b>	0.8	0.7	...	...	...
Employment rate	67.0	<b>66.9</b>	0.3	<b>-0.1</b>	-0.3	0.1	...	...	...
Part-time rate	18.9	<b>19.0</b>	0.6	<b>0.1</b>	1.0	1.4	...	...	...
<b>Both sexes, 15 to 24 years</b>									
Population	139.6	<b>139.5</b>	...	<b>-0.1</b>	-0.2	0.3	<b>-0.1</b>	-0.1	0.2
Labour force	101.3	<b>102.4</b>	1.5	<b>1.1</b>	1.0	0.5	<b>1.1</b>	1.0	0.5
Employment	90.7	<b>91.4</b>	1.5	<b>0.7</b>	-2.1	-2.0	<b>0.8</b>	-2.2	-2.1
Unemployment	10.7	<b>11.0</b>	1.2	<b>0.3</b>	3.1	2.5	<b>2.8</b>	39.2	29.4
Participation rate	72.6	<b>73.4</b>	1.1	<b>0.8</b>	0.8	0.2	...	...	...
Unemployment rate	10.6	<b>10.7</b>	1.1	<b>0.1</b>	2.9	2.4	...	...	...
Employment rate	65.0	<b>65.5</b>	1.1	<b>0.5</b>	-1.4	-1.6	...	...	...
Part-time rate	37.0	<b>37.7</b>	1.7	<b>0.7</b>	0.6	2.4	...	...	...
<b>Men, 25 years and over</b>									
Population	311.2	<b>311.6</b>	...	<b>0.4</b>	1.7	6.4	<b>0.1</b>	0.5	2.1
Labour force	237.4	<b>236.5</b>	1.2	<b>-0.9</b>	1.2	3.7	<b>-0.4</b>	0.5	1.6
Employment	228.6	<b>227.6</b>	1.2	<b>-1.0</b>	0.0	2.0	<b>-0.4</b>	0.0	0.9
Unemployment	8.8	<b>8.9</b>	0.9	<b>0.1</b>	1.2	1.7	<b>1.1</b>	15.6	23.6
Participation rate	76.3	<b>75.9</b>	0.4	<b>-0.4</b>	0.0	-0.4	...	...	...
Unemployment rate	3.7	<b>3.8</b>	0.4	<b>0.1</b>	0.5	0.7	...	...	...
Employment rate	73.5	<b>73.0</b>	0.4	<b>-0.5</b>	-0.4	-0.9	...	...	...
Part-time rate	7.2	<b>7.3</b>	0.6	<b>0.1</b>	0.5	0.6	...	...	...
<b>Women, 25 years and over</b>									
Population	325.5	<b>326.0</b>	...	<b>0.5</b>	1.6	6.7	<b>0.2</b>	0.5	2.1
Labour force	206.8	<b>208.5</b>	1.3	<b>1.7</b>	2.3	10.5	<b>0.8</b>	1.1	5.3
Employment	200.6	<b>201.1</b>	1.4	<b>0.5</b>	1.9	10.3	<b>0.2</b>	1.0	5.4
Unemployment	6.2	<b>7.4</b>	0.9	<b>1.2</b>	0.4	0.3	<b>19.4</b>	5.7	4.2
Participation rate	63.5	<b>64.0</b>	0.4	<b>0.5</b>	0.4	2.0	...	...	...
Unemployment rate	3.0	<b>3.5</b>	0.5	<b>0.5</b>	0.1	-0.1	...	...	...
Employment rate	61.6	<b>61.7</b>	0.4	<b>0.1</b>	0.3	1.9	...	...	...
Part-time rate	24.1	<b>23.8</b>	1.0	<b>-0.4</b>	1.8	1.8	...	...	...
<b>Industry</b>									
Population	519.8	<b>520.1</b>	2.4	<b>0.3</b>	-0.2	10.3	<b>0.1</b>	0.0	2.0
<b>Goods-producing sector</b>									
Population	137.8	<b>142.0</b>	2.3	<b>4.2</b>	-0.6	3.1	<b>3.0</b>	-0.4	2.2
Agriculture	41.5	<b>45.9</b>	1.5	<b>4.4</b>	6.7	5.0	<b>10.6</b>	17.1	12.2
Forestry, fishing, mining, oil and gas	23.0	<b>24.2</b>	1.1	<b>1.2</b>	-1.0	-0.7	<b>5.2</b>	-4.0	-2.8
Utilities	4.9	<b>4.5</b>	0.4	<b>-0.4</b>	-1.7	-0.8	<b>-8.2</b>	-27.4	-15.1
Construction	36.9	<b>36.7</b>	1.3	<b>-0.2</b>	-3.9	1.1	<b>-0.5</b>	-9.6	3.1
Manufacturing	31.5	<b>30.7</b>	1.2	<b>-0.8</b>	-0.6	-1.6	<b>-2.5</b>	-1.9	-5.0
<b>Services-producing sector</b>									
Population	382.1	<b>378.1</b>	2.8	<b>-4.0</b>	0.4	7.3	<b>-1.0</b>	0.1	2.0
Trade	81.8	<b>80.7</b>	1.8	<b>-1.1</b>	-2.6	-1.5	<b>-1.3</b>	-3.1	-1.8
Transportation and warehousing	24.1	<b>23.0</b>	1.0	<b>-1.1</b>	-0.3	-2.3	<b>-4.6</b>	-1.3	-9.1
Finance, insurance, real estate and leasing	30.1	<b>30.7</b>	1.0	<b>0.6</b>	1.8	2.3	<b>2.0</b>	6.2	8.1
Professional, scientific and technical services	20.6	<b>20.9</b>	0.9	<b>0.3</b>	0.4	0.2	<b>1.5</b>	2.0	1.0
Business, building and other support services	11.6	<b>11.4</b>	0.8	<b>-0.2</b>	-1.3	0.2	<b>-1.7</b>	-10.2	1.8
Educational services	39.0	<b>38.9</b>	1.3	<b>-0.1</b>	0.3	2.6	<b>-0.3</b>	0.8	7.2
Health care and social assistance	65.2	<b>64.6</b>	1.3	<b>-0.6</b>	1.6	3.0	<b>-0.9</b>	2.5	4.9
Information, culture and recreation	21.7	<b>20.1</b>	1.0	<b>-1.6</b>	-0.7	-1.0	<b>-7.4</b>	-3.4	-4.7
Accommodation and food services	33.1	<b>31.5</b>	1.4	<b>-1.6</b>	-0.9	-0.6	<b>-4.8</b>	-2.8	-1.9
Other services	23.9	<b>25.1</b>	1.0	<b>1.2</b>	1.0	2.8	<b>5.0</b>	4.1	12.6
Public administration	31.0	<b>31.3</b>	1.0	<b>0.3</b>	1.2	1.7	<b>1.0</b>	4.0	5.7

1. Average standard error of change in two consecutive months (see "Sampling Errors" in Data Quality for further explanations).

**Note(s):** Related CANSIM Tables 282-0087, 282-0088.

**Table 4-9**  
**Selected labour force characteristics (seasonally adjusted) — Alberta**

	March 2009	April 2009	S.E. <sup>1</sup>	Change from			Percent change from		
				last month	last December	twelve months ago	last month	last December	twelve months ago
in thousands (except rates)									
<b>Both sexes, 15 years and over</b>									
Population	2,841.7	<b>2,847.9</b>	...	<b>6.2</b>	24.2	64.1	<b>0.2</b>	0.9	2.3
Labour force	2,110.1	<b>2,119.5</b>	8.0	<b>9.4</b>	9.3	43.1	<b>0.4</b>	0.4	2.1
Employment	1,987.2	<b>1,992.9</b>	8.4	<b>5.7</b>	-29.6	-14.4	<b>0.3</b>	-1.5	-0.7
Employment full-time	1,632.9	<b>1,635.6</b>	11.3	<b>2.7</b>	-45.2	-56.5	<b>0.2</b>	-2.7	-3.3
Unemployment	123.0	<b>126.6</b>	5.8	<b>3.6</b>	38.8	57.5	<b>2.9</b>	44.2	83.2
Participation rate	74.3	<b>74.4</b>	0.3	<b>0.1</b>	-0.3	-0.2	...	...	...
Unemployment rate	5.8	<b>6.0</b>	0.3	<b>0.2</b>	1.8	2.7	...	...	...
Employment rate	69.9	<b>70.0</b>	0.3	<b>0.1</b>	-1.6	-2.1	...	...	...
Part-time rate	17.8	<b>17.9</b>	0.5	<b>0.1</b>	1.0	2.2	...	...	...
<b>Both sexes, 15 to 24 years</b>									
Population	505.5	<b>506.0</b>	...	<b>0.5</b>	1.0	2.6	<b>0.1</b>	0.2	0.5
Labour force	368.1	<b>368.3</b>	4.9	<b>0.2</b>	1.0	-3.6	<b>0.1</b>	0.3	-1.0
Employment	328.5	<b>328.1</b>	5.0	<b>-0.4</b>	-6.2	-19.9	<b>-0.1</b>	-1.9	-5.7
Unemployment	39.7	<b>40.2</b>	3.7	<b>0.5</b>	7.3	16.3	<b>1.3</b>	22.2	68.2
Participation rate	72.8	<b>72.8</b>	1.0	<b>0.0</b>	0.1	-1.1	...	...	...
Unemployment rate	10.8	<b>10.9</b>	1.0	<b>0.1</b>	1.9	4.5	...	...	...
Employment rate	65.0	<b>64.8</b>	1.0	<b>-0.2</b>	-1.4	-4.3	...	...	...
Part-time rate	36.7	<b>35.6</b>	1.5	<b>-1.2</b>	0.2	3.7	...	...	...
<b>Men, 25 years and over</b>									
Population	1,182.1	<b>1,185.3</b>	...	<b>3.2</b>	12.8	36.6	<b>0.3</b>	1.1	3.2
Labour force	963.0	<b>965.8</b>	3.8	<b>2.8</b>	-3.2	16.7	<b>0.3</b>	-0.3	1.8
Employment	910.1	<b>913.2</b>	4.2	<b>3.1</b>	-27.5	-13.6	<b>0.3</b>	-2.9	-1.5
Unemployment	52.9	<b>52.5</b>	3.1	<b>-0.4</b>	24.2	30.1	<b>-0.8</b>	85.5	134.4
Participation rate	81.5	<b>81.5</b>	0.3	<b>0.0</b>	-1.1	-1.1	...	...	...
Unemployment rate	5.5	<b>5.4</b>	0.3	<b>-0.1</b>	2.5	3.0	...	...	...
Employment rate	77.0	<b>77.0</b>	0.4	<b>0.0</b>	-3.2	-3.7	...	...	...
Part-time rate	6.4	<b>7.0</b>	0.5	<b>0.5</b>	1.7	1.7	...	...	...
<b>Women, 25 years and over</b>									
Population	1,154.1	<b>1,156.7</b>	...	<b>2.6</b>	10.6	25.0	<b>0.2</b>	0.9	2.2
Labour force	779.0	<b>785.3</b>	4.9	<b>6.3</b>	11.4	30.0	<b>0.8</b>	1.5	4.0
Employment	748.6	<b>751.5</b>	5.1	<b>2.9</b>	4.1	19.0	<b>0.4</b>	0.5	2.6
Unemployment	30.3	<b>33.8</b>	3.3	<b>3.5</b>	7.3	11.0	<b>11.6</b>	27.5	48.2
Participation rate	67.5	<b>67.9</b>	0.4	<b>0.4</b>	0.4	1.2	...	...	...
Unemployment rate	3.9	<b>4.3</b>	0.4	<b>0.4</b>	0.9	1.3	...	...	...
Employment rate	64.9	<b>65.0</b>	0.4	<b>0.1</b>	-0.2	0.3	...	...	...
Part-time rate	23.4	<b>23.6</b>	0.9	<b>0.2</b>	0.3	2.4	...	...	...
<b>Industry</b>									
	1,987.2	<b>1,992.9</b>	8.4	<b>5.7</b>	-29.6	-14.4	<b>0.3</b>	-1.5	-0.7
<b>Goods-producing sector</b>									
	536.2	<b>533.1</b>	8.7	<b>-3.1</b>	-58.7	-29.5	<b>-0.6</b>	-9.9	-5.2
Agriculture	58.0	<b>58.7</b>	3.2	<b>0.7</b>	-3.7	-2.0	<b>1.2</b>	-5.9	-3.3
Forestry, fishing, mining, oil and gas	143.5	<b>144.4</b>	4.7	<b>0.9</b>	-10.7	-1.1	<b>0.6</b>	-6.9	-0.8
Utilities	18.3	<b>19.9</b>	1.7	<b>1.6</b>	1.0	2.8	<b>8.7</b>	5.3	16.4
Construction	183.8	<b>187.5</b>	5.9	<b>3.7</b>	-17.0	-16.2	<b>2.0</b>	-8.3	-8.0
Manufacturing	132.5	<b>122.6</b>	5.2	<b>-9.9</b>	-28.2	-13.0	<b>-7.5</b>	-18.7	-9.6
<b>Services-producing sector</b>									
	1,451.0	<b>1,459.8</b>	10.3	<b>8.8</b>	29.1	15.1	<b>0.6</b>	2.0	1.0
Trade	297.2	<b>303.2</b>	7.0	<b>6.0</b>	-11.7	-24.4	<b>2.0</b>	-3.7	-7.4
Transportation and warehousing	107.0	<b>105.4</b>	4.1	<b>-1.6</b>	2.6	3.8	<b>-1.5</b>	2.5	3.7
Finance, insurance, real estate and leasing	117.9	<b>114.3</b>	4.0	<b>-3.6</b>	2.3	-2.8	<b>-3.1</b>	2.1	-2.4
Professional, scientific and technical services	149.5	<b>151.3</b>	5.0	<b>1.8</b>	-8.6	-9.4	<b>1.2</b>	-5.4	-5.8
Business, building and other support services	62.3	<b>68.7</b>	4.0	<b>6.4</b>	5.4	3.9	<b>10.3</b>	8.5	6.0
Educational services	134.5	<b>129.5</b>	4.5	<b>-5.0</b>	-9.1	5.6	<b>-3.7</b>	-6.6	4.5
Health care and social assistance	192.4	<b>192.2</b>	4.8	<b>-0.2</b>	6.8	1.3	<b>-0.1</b>	3.7	0.7
Information, culture and recreation	78.7	<b>78.3</b>	3.6	<b>-0.4</b>	1.7	12.8	<b>-0.5</b>	2.2	19.5
Accommodation and food services	122.2	<b>128.3</b>	4.6	<b>6.1</b>	19.1	10.6	<b>5.0</b>	17.5	9.0
Other services	101.7	<b>98.9</b>	3.8	<b>-2.8</b>	11.4	9.3	<b>-2.8</b>	13.0	10.4
Public administration	87.7	<b>89.5</b>	3.5	<b>1.8</b>	9.0	4.3	<b>2.1</b>	11.2	5.0

1. Average standard error of change in two consecutive months (see "Sampling Errors" in Data Quality for further explanations).

**Note(s):** Related CANSIM Tables 282-0087, 282-0088.



**Table 4-10**  
**Selected labour force characteristics (seasonally adjusted) — British Columbia**

	March 2009	April 2009	S.E. <sup>1</sup>	Change from			Percent change from		
				last month	last December	twelve months ago	last month	last December	twelve months ago
in thousands (except rates)									
<b>Both sexes, 15 years and over</b>									
Population	3,685.8	<b>3,690.4</b>	...	<b>4.6</b>	18.2	63.5	<b>0.1</b>	0.5	1.8
Labour force	2,420.2	<b>2,437.1</b>	9.8	<b>16.9</b>	4.6	10.1	<b>0.7</b>	0.2	0.4
Employment	2,240.1	<b>2,257.4</b>	9.9	<b>17.3</b>	-45.3	-62.8	<b>0.8</b>	-2.0	-2.7
Employment full-time	1,760.0	<b>1,772.2</b>	14.0	<b>12.2</b>	-67.4	-85.8	<b>0.7</b>	-3.7	-4.6
Unemployment	180.1	<b>179.8</b>	7.2	<b>-0.3</b>	50.1	73.0	<b>-0.2</b>	38.6	68.4
Participation rate	65.7	<b>66.0</b>	0.3	<b>0.3</b>	-0.2	-0.9	...	...	...
Unemployment rate	7.4	<b>7.4</b>	0.3	<b>0.0</b>	2.1	3.0	...	...	...
Employment rate	60.8	<b>61.2</b>	0.3	<b>0.4</b>	-1.5	-2.8	...	...	...
Part-time rate	21.4	<b>21.5</b>	0.5	<b>0.1</b>	1.4	1.6	...	...	...
<b>Both sexes, 15 to 24 years</b>									
Population	584.2	<b>584.4</b>	...	<b>0.2</b>	0.5	2.0	<b>0.0</b>	0.1	0.3
Labour force	381.5	<b>379.5</b>	5.7	<b>-2.0</b>	-6.3	-22.6	<b>-0.5</b>	-1.6	-5.6
Employment	329.9	<b>333.4</b>	5.7	<b>3.5</b>	-15.5	-36.8	<b>1.1</b>	-4.4	-9.9
Unemployment	51.6	<b>46.1</b>	4.4	<b>-5.5</b>	9.2	14.2	<b>-10.7</b>	24.9	44.5
Participation rate	65.3	<b>64.9</b>	1.0	<b>-0.4</b>	-1.2	-4.1	...	...	...
Unemployment rate	13.5	<b>12.1</b>	1.1	<b>-1.4</b>	2.5	4.2	...	...	...
Employment rate	56.5	<b>57.0</b>	1.0	<b>0.5</b>	-2.8	-6.6	...	...	...
Part-time rate	43.8	<b>47.3</b>	1.8	<b>3.5</b>	4.1	4.7	...	...	...
<b>Men, 25 years and over</b>									
Population	1,518.0	<b>1,520.3</b>	...	<b>2.3</b>	8.8	30.8	<b>0.2</b>	0.6	2.1
Labour force	1,082.7	<b>1,098.7</b>	4.8	<b>16.0</b>	2.7	8.0	<b>1.5</b>	0.2	0.7
Employment	1,010.4	<b>1,020.6</b>	5.2	<b>10.2</b>	-26.2	-28.8	<b>1.0</b>	-2.5	-2.7
Unemployment	72.3	<b>78.1</b>	3.9	<b>5.8</b>	28.9	36.9	<b>8.0</b>	58.7	89.6
Participation rate	71.3	<b>72.3</b>	0.3	<b>1.0</b>	-0.2	-0.9	...	...	...
Unemployment rate	6.7	<b>7.1</b>	0.4	<b>0.4</b>	2.6	3.3	...	...	...
Employment rate	66.6	<b>67.1</b>	0.3	<b>0.5</b>	-2.2	-3.4	...	...	...
Part-time rate	9.2	<b>8.6</b>	0.6	<b>-0.6</b>	0.8	1.5	...	...	...
<b>Women, 25 years and over</b>									
Population	1,583.5	<b>1,585.7</b>	...	<b>2.2</b>	8.9	30.7	<b>0.1</b>	0.6	2.0
Labour force	956.0	<b>958.9</b>	5.9	<b>2.9</b>	8.2	24.7	<b>0.3</b>	0.9	2.6
Employment	899.8	<b>903.3</b>	5.8	<b>3.5</b>	-3.7	2.7	<b>0.4</b>	-0.4	0.3
Unemployment	56.2	<b>55.5</b>	4.2	<b>-0.7</b>	11.9	21.9	<b>-1.2</b>	27.3	65.2
Participation rate	60.4	<b>60.5</b>	0.4	<b>0.1</b>	0.2	0.4	...	...	...
Unemployment rate	5.9	<b>5.8</b>	0.4	<b>-0.1</b>	1.2	2.2	...	...	...
Employment rate	56.8	<b>57.0</b>	0.4	<b>0.2</b>	-0.5	-0.9	...	...	...
Part-time rate	27.0	<b>26.5</b>	0.9	<b>-0.5</b>	1.1	0.9	...	...	...
<b>Industry</b>									
	2,240.1	<b>2,257.4</b>	9.9	<b>17.3</b>	-45.3	-62.8	<b>0.8</b>	-2.0	-2.7
<b>Goods-producing sector</b>									
	439.0	<b>458.7</b>	8.8	<b>19.7</b>	-35.5	-39.3	<b>4.5</b>	-7.2	-7.9
Agriculture	30.3	<b>33.4</b>	2.8	<b>3.1</b>	2.8	-1.7	<b>10.2</b>	9.2	-4.8
Forestry, fishing, mining, oil and gas	44.5	<b>40.8</b>	3.1	<b>-3.7</b>	-8.7	-7.8	<b>-8.3</b>	-17.6	-16.0
Utilities	12.7	<b>13.3</b>	1.6	<b>0.6</b>	0.7	0.1	<b>4.7</b>	5.6	0.8
Construction	187.8	<b>195.2</b>	6.4	<b>7.4</b>	-18.3	-23.7	<b>3.9</b>	-8.6	-10.8
Manufacturing	163.6	<b>175.9</b>	5.9	<b>12.3</b>	-12.1	-6.3	<b>7.5</b>	-6.4	-3.5
<b>Services-producing sector</b>									
	1,801.1	<b>1,798.7</b>	11.5	<b>-2.4</b>	-9.9	-23.5	<b>-0.1</b>	-0.5	-1.3
Trade	347.9	<b>360.5</b>	7.8	<b>12.6</b>	2.5	-0.3	<b>3.6</b>	0.7	-0.1
Transportation and warehousing	121.7	<b>116.8</b>	5.1	<b>-4.9</b>	-9.4	-16.2	<b>-4.0</b>	-7.4	-12.2
Finance, insurance, real estate and leasing	139.7	<b>132.0</b>	5.2	<b>-7.7</b>	-17.0	-10.2	<b>-5.5</b>	-11.4	-7.2
Professional, scientific and technical services	176.5	<b>173.8</b>	5.6	<b>-2.7</b>	3.8	-4.1	<b>-1.5</b>	2.2	-2.3
Business, building and other support services	101.7	<b>100.1</b>	4.8	<b>-1.6</b>	1.3	-1.7	<b>-1.6</b>	1.3	-1.7
Educational services	158.1	<b>162.4</b>	5.6	<b>4.3</b>	0.7	-0.3	<b>2.7</b>	0.4	-0.2
Health care and social assistance	259.8	<b>266.2</b>	6.2	<b>6.4</b>	16.4	33.1	<b>2.5</b>	6.6	14.2
Information, culture and recreation	115.1	<b>118.3</b>	4.8	<b>3.2</b>	4.2	-1.2	<b>2.8</b>	3.7	-1.0
Accommodation and food services	183.6	<b>175.6</b>	6.0	<b>-8.0</b>	-7.4	-8.0	<b>-4.4</b>	-4.0	-4.4
Other services	95.9	<b>95.1</b>	4.5	<b>-0.8</b>	-0.8	-6.5	<b>-0.8</b>	-0.8	-6.4
Public administration	100.9	<b>98.0</b>	4.0	<b>-2.9</b>	-4.2	-8.1	<b>-2.9</b>	-4.1	-7.6

1. Average standard error of change in two consecutive months (see "Sampling Errors" in Data Quality for further explanations).

**Note(s):** Related CANSIM Tables 282-0087, 282-0088.

Table 5-1

## Labour force characteristics by census metropolitan area (seasonally adjusted) — 3 month moving average

	March 2009	April 2009	S.E. <sup>1</sup>	Change from			Percent change from		
				last month	last December	twelve months ago	last month	last December	twelve months ago
in thousands (except rates)									
<b>St. John's, Newfoundland and Labrador</b>									
Population	156.4	<b>156.6</b>	...	<b>0.2</b>	0.9	3.1	<b>0.1</b>	0.6	2.0
Labour force	108.9	<b>108.4</b>	0.7	<b>-0.5</b>	-1.0	3.9	<b>-0.5</b>	-0.9	3.7
Employment	100.8	<b>100.2</b>	0.8	<b>-0.6</b>	-1.3	4.7	<b>-0.6</b>	-1.3	4.9
Unemployment	8.1	<b>8.2</b>	0.4	<b>0.1</b>	0.3	-0.8	<b>1.2</b>	3.8	-8.9
Participation rate	69.6	<b>69.2</b>	0.5	<b>-0.4</b>	-1.1	1.1	...	...	...
Unemployment rate	7.4	<b>7.6</b>	0.4	<b>0.2</b>	0.4	-1.0	...	...	...
Employment rate	64.5	<b>64.0</b>	0.5	<b>-0.5</b>	-1.2	1.8	...	...	...
<b>Halifax, Nova Scotia</b>									
Population	319.8	<b>320.1</b>	...	<b>0.3</b>	1.4	4.4	<b>0.1</b>	0.4	1.4
Labour force	229.6	<b>229.3</b>	1.1	<b>-0.3</b>	4.0	10.2	<b>-0.1</b>	1.8	4.7
Employment	215.9	<b>215.7</b>	1.2	<b>-0.2</b>	2.5	7.4	<b>-0.1</b>	1.2	3.6
Unemployment	13.7	<b>13.6</b>	0.6	<b>-0.1</b>	1.6	2.8	<b>-0.7</b>	13.3	25.9
Participation rate	71.8	<b>71.6</b>	0.3	<b>-0.2</b>	0.9	2.2	...	...	...
Unemployment rate	6.0	<b>5.9</b>	0.3	<b>-0.1</b>	0.6	1.0	...	...	...
Employment rate	67.5	<b>67.4</b>	0.4	<b>-0.1</b>	0.5	1.4	...	...	...
<b>Saint John, New Brunswick</b>									
Population	105.2	<b>105.3</b>	...	<b>0.1</b>	0.3	0.8	<b>0.1</b>	0.3	0.8
Labour force	71.3	<b>71.6</b>	0.7	<b>0.3</b>	2.0	2.3	<b>0.4</b>	2.9	3.3
Employment	66.8	<b>67.3</b>	0.6	<b>0.5</b>	2.3	2.3	<b>0.7</b>	3.5	3.5
Unemployment	4.5	<b>4.4</b>	0.4	<b>-0.1</b>	-0.2	0.2	<b>-2.2</b>	-4.3	4.8
Participation rate	67.8	<b>68.0</b>	0.7	<b>0.2</b>	1.7	1.7	...	...	...
Unemployment rate	6.3	<b>6.1</b>	0.5	<b>-0.2</b>	-0.5	0.0	...	...	...
Employment rate	63.5	<b>63.9</b>	0.6	<b>0.4</b>	2.0	1.7	...	...	...
<b>Saguenay, Quebec</b>									
Population	124.8	<b>124.8</b>	...	<b>0.0</b>	-0.1	-0.3	<b>0.0</b>	-0.1	-0.2
Labour force	75.0	<b>74.1</b>	0.7	<b>-0.9</b>	-2.5	-1.0	<b>-1.2</b>	-3.3	-1.3
Employment	68.0	<b>67.5</b>	0.7	<b>-0.5</b>	-3.3	-0.5	<b>-0.7</b>	-4.7	-0.7
Unemployment	7.0	<b>6.6</b>	0.4	<b>-0.4</b>	0.7	-0.5	<b>-5.7</b>	11.9	-7.0
Participation rate	60.1	<b>59.4</b>	0.6	<b>-0.7</b>	-1.9	-0.6	...	...	...
Unemployment rate	9.3	<b>8.9</b>	0.5	<b>-0.4</b>	1.2	-0.6	...	...	...
Employment rate	54.5	<b>54.1</b>	0.6	<b>-0.4</b>	-2.6	-0.3	...	...	...
<b>Québec, Quebec</b>									
Population	614.6	<b>615.1</b>	...	<b>0.5</b>	2.0	6.3	<b>0.1</b>	0.3	1.0
Labour force	418.5	<b>419.5</b>	3.5	<b>1.0</b>	6.5	12.4	<b>0.2</b>	1.6	3.0
Employment	401.6	<b>401.3</b>	3.4	<b>-0.3</b>	4.6	13.4	<b>-0.1</b>	1.2	3.5
Unemployment	16.9	<b>18.3</b>	1.5	<b>1.4</b>	2.0	-0.9	<b>8.3</b>	12.3	-4.7
Participation rate	68.1	<b>68.2</b>	0.6	<b>0.1</b>	0.8	1.3	...	...	...
Unemployment rate	4.0	<b>4.4</b>	0.4	<b>0.4</b>	0.5	-0.3	...	...	...
Employment rate	65.3	<b>65.2</b>	0.6	<b>-0.1</b>	0.5	1.5	...	...	...
<b>Trois-Rivières, Quebec</b>									
Population	122.2	<b>122.3</b>	...	<b>0.1</b>	0.4	1.1	<b>0.1</b>	0.3	0.9
Labour force	72.4	<b>73.0</b>	0.7	<b>0.6</b>	-0.6	-5.4	<b>0.8</b>	-0.8	-6.9
Employment	65.9	<b>66.5</b>	0.7	<b>0.6</b>	-2.3	-4.6	<b>0.9</b>	-3.3	-6.5
Unemployment	6.5	<b>6.5</b>	0.4	<b>0.0</b>	1.7	-0.8	<b>0.0</b>	35.4	-11.0
Participation rate	59.2	<b>59.7</b>	0.6	<b>0.5</b>	-0.7	-5.0	...	...	...
Unemployment rate	9.0	<b>8.9</b>	0.5	<b>-0.1</b>	2.4	-0.4	...	...	...
Employment rate	53.9	<b>54.4</b>	0.6	<b>0.5</b>	-2.0	-4.3	...	...	...

See footnotes at the end of the table.



Table 5-1 – continued

## Labour force characteristics by census metropolitan area (seasonally adjusted) — 3 month moving average

	March 2009	April 2009	S.E. <sup>1</sup>	Change from			Percent change from		
				last month	last December	twelve months ago	last month	last December	twelve months ago
in thousands (except rates)									
<b>Sherbrooke, Quebec</b>									
Population	139.5	<b>139.7</b>	...	<b>0.2</b>	0.6	1.8	<b>0.1</b>	0.4	1.3
Labour force	87.8	<b>88.5</b>	0.7	<b>0.7</b>	-0.5	0.6	<b>0.8</b>	-0.6	0.7
Employment	82.1	<b>81.8</b>	0.8	<b>-0.3</b>	-1.2	-1.0	<b>-0.4</b>	-1.4	-1.2
Unemployment	5.8	<b>6.7</b>	0.3	<b>0.9</b>	0.7	1.5	<b>15.5</b>	11.7	28.8
Participation rate	62.9	<b>63.4</b>	0.5	<b>0.5</b>	-0.6	-0.3	...	...	...
Unemployment rate	6.6	<b>7.6</b>	0.4	<b>1.0</b>	0.9	1.7	...	...	...
Employment rate	58.9	<b>58.6</b>	0.5	<b>-0.3</b>	-1.1	-1.4	...	...	...
<b>Montréal, Quebec</b>									
Population	3,088.2	<b>3,091.2</b>	...	<b>3.0</b>	11.7	34.3	<b>0.1</b>	0.4	1.1
Labour force	2,044.9	<b>2,052.5</b>	7.2	<b>7.6</b>	-7.2	-3.7	<b>0.4</b>	-0.3	-0.2
Employment	1,868.2	<b>1,869.7</b>	7.5	<b>1.5</b>	-34.9	-32.1	<b>0.1</b>	-1.8	-1.7
Unemployment	176.7	<b>182.8</b>	4.5	<b>6.1</b>	27.7	28.4	<b>3.5</b>	17.9	18.4
Participation rate	66.2	<b>66.4</b>	0.2	<b>0.2</b>	-0.5	-0.9	...	...	...
Unemployment rate	8.6	<b>8.9</b>	0.2	<b>0.3</b>	1.4	1.4	...	...	...
Employment rate	60.5	<b>60.5</b>	0.2	<b>0.0</b>	-1.3	-1.7	...	...	...
<b>Ottawa-Gatineau, Ontario/Quebec</b>									
Population	971.4	<b>972.4</b>	...	<b>1.0</b>	4.2	13.4	<b>0.1</b>	0.4	1.4
Labour force	692.9	<b>690.9</b>	3.6	<b>-2.0</b>	-17.4	-8.3	<b>-0.3</b>	-2.5	-1.2
Employment	657.0	<b>653.1</b>	3.8	<b>-3.9</b>	-23.2	-11.6	<b>-0.6</b>	-3.4	-1.7
Unemployment	35.9	<b>37.7</b>	1.5	<b>1.8</b>	5.7	3.1	<b>5.0</b>	17.8	9.0
Participation rate	71.3	<b>71.1</b>	0.4	<b>-0.2</b>	-2.1	-1.8	...	...	...
Unemployment rate	5.2	<b>5.5</b>	0.2	<b>0.3</b>	1.0	0.6	...	...	...
Employment rate	67.6	<b>67.2</b>	0.4	<b>-0.4</b>	-2.7	-2.1	...	...	...
<b>Ottawa-Gatineau, Quebec part, Ontario/Quebec</b>									
Population	246.5	<b>246.9</b>	...	<b>0.4</b>	1.3	3.8	<b>0.2</b>	0.5	1.6
Labour force	175.4	<b>173.7</b>	1.2	<b>-1.7</b>	-2.9	-7.6	<b>-1.0</b>	-1.6	-4.2
Employment	164.8	<b>163.9</b>	1.3	<b>-0.9</b>	-4.9	-8.2	<b>-0.5</b>	-2.9	-4.8
Unemployment	10.5	<b>9.8</b>	0.5	<b>-0.7</b>	2.0	0.7	<b>-6.7</b>	25.6	7.7
Participation rate	71.2	<b>70.4</b>	0.5	<b>-0.8</b>	-1.5	-4.2	...	...	...
Unemployment rate	6.0	<b>5.6</b>	0.3	<b>-0.4</b>	1.2	0.6	...	...	...
Employment rate	66.9	<b>66.4</b>	0.5	<b>-0.5</b>	-2.3	-4.4	...	...	...
<b>Ottawa-Gatineau, Ontario part, Ontario/Quebec</b>									
Population	724.8	<b>725.6</b>	...	<b>0.8</b>	3.0	9.7	<b>0.1</b>	0.4	1.4
Labour force	517.6	<b>517.2</b>	3.4	<b>-0.4</b>	-14.5	-0.8	<b>-0.1</b>	-2.7	-0.2
Employment	492.2	<b>489.2</b>	3.5	<b>-3.0</b>	-18.3	-3.3	<b>-0.6</b>	-3.6	-0.7
Unemployment	25.4	<b>28.0</b>	1.5	<b>2.6</b>	3.8	2.6	<b>10.2</b>	15.7	10.2
Participation rate	71.4	<b>71.3</b>	0.5	<b>-0.1</b>	-2.3	-1.1	...	...	...
Unemployment rate	4.9	<b>5.4</b>	0.3	<b>0.5</b>	0.8	0.5	...	...	...
Employment rate	67.9	<b>67.4</b>	0.5	<b>-0.5</b>	-2.8	-1.4	...	...	...
<b>Kingston, Ontario</b>									
Population	126.2	<b>126.3</b>	...	<b>0.1</b>	0.1	0.4	<b>0.1</b>	0.1	0.3
Labour force	83.0	<b>81.9</b>	0.8	<b>-1.1</b>	-2.2	-2.4	<b>-1.3</b>	-2.6	-2.8
Employment	78.4	<b>77.2</b>	0.7	<b>-1.2</b>	-3.2	-2.6	<b>-1.5</b>	-4.0	-3.3
Unemployment	4.6	<b>4.7</b>	0.3	<b>0.1</b>	1.0	0.2	<b>2.2</b>	27.0	4.4
Participation rate	65.8	<b>64.8</b>	0.6	<b>-1.0</b>	-1.8	-2.2	...	...	...
Unemployment rate	5.5	<b>5.7</b>	0.4	<b>0.2</b>	1.3	0.4	...	...	...
Employment rate	62.1	<b>61.1</b>	0.6	<b>-1.0</b>	-2.6	-2.3	...	...	...

See footnotes at the end of the table.

Table 5-1 – continued

## Labour force characteristics by census metropolitan area (seasonally adjusted) — 3 month moving average

	March 2009	April 2009	S.E. <sup>1</sup>	Change from			Percent change from		
				last month	last December	twelve months ago	last month	last December	twelve months ago
in thousands (except rates)									
<b>Toronto, Ontario</b>									
Population	4,617.5	<b>4,625.8</b>	...	<b>8.3</b>	33.6	108.4	<b>0.2</b>	0.7	2.4
Labour force	3,187.2	<b>3,192.0</b>	8.9	<b>4.8</b>	36.9	58.0	<b>0.2</b>	1.2	1.9
Employment	2,906.0	<b>2,907.2</b>	9.3	<b>1.2</b>	-18.7	-24.5	<b>0.0</b>	-0.6	-0.8
Unemployment	281.2	<b>284.8</b>	5.5	<b>3.6</b>	55.6	82.5	<b>1.3</b>	24.3	40.8
Participation rate	69.0	<b>69.0</b>	0.2	<b>0.0</b>	0.3	-0.4	...	...	...
Unemployment rate	8.8	<b>8.9</b>	0.2	<b>0.1</b>	1.6	2.4	...	...	...
Employment rate	62.9	<b>62.8</b>	0.2	<b>-0.1</b>	-0.9	-2.1	...	...	...
<b>Hamilton, Ontario</b>									
Population	599.9	<b>600.3</b>	...	<b>0.4</b>	1.1	4.8	<b>0.1</b>	0.2	0.8
Labour force	407.2	<b>408.2</b>	3.0	<b>1.0</b>	12.1	5.9	<b>0.2</b>	3.1	1.5
Employment	371.1	<b>375.9</b>	3.1	<b>4.8</b>	7.6	-1.3	<b>1.3</b>	2.1	-0.3
Unemployment	36.0	<b>32.4</b>	1.4	<b>-3.6</b>	4.6	7.3	<b>-10.0</b>	16.5	29.1
Participation rate	67.9	<b>68.0</b>	0.5	<b>0.1</b>	1.9	0.4	...	...	...
Unemployment rate	8.8	<b>7.9</b>	0.4	<b>-0.9</b>	0.9	1.7	...	...	...
Employment rate	61.9	<b>62.6</b>	0.5	<b>0.7</b>	1.1	-0.7	...	...	...
<b>Kitchener, Ontario</b>									
Population	386.1	<b>386.5</b>	...	<b>0.4</b>	1.5	5.4	<b>0.1</b>	0.4	1.4
Labour force	279.5	<b>279.9</b>	1.9	<b>0.4</b>	0.4	13.1	<b>0.1</b>	0.1	4.9
Employment	252.7	<b>251.5</b>	1.9	<b>-1.2</b>	-6.1	-2.5	<b>-0.5</b>	-2.4	-1.0
Unemployment	26.8	<b>28.3</b>	0.9	<b>1.5</b>	6.3	15.5	<b>5.6</b>	28.6	121.1
Participation rate	72.4	<b>72.4</b>	0.5	<b>0.0</b>	-0.2	2.4	...	...	...
Unemployment rate	9.6	<b>10.1</b>	0.3	<b>0.5</b>	2.2	5.3	...	...	...
Employment rate	65.4	<b>65.1</b>	0.5	<b>-0.3</b>	-1.8	-1.5	...	...	...
<b>London, Ontario</b>									
Population	387.9	<b>388.2</b>	...	<b>0.3</b>	1.2	4.5	<b>0.1</b>	0.3	1.2
Labour force	263.7	<b>262.2</b>	1.9	<b>-1.5</b>	-1.6	-0.5	<b>-0.6</b>	-0.6	-0.2
Employment	240.3	<b>237.3</b>	2.0	<b>-3.0</b>	-7.2	-7.0	<b>-1.2</b>	-2.9	-2.9
Unemployment	23.4	<b>24.9</b>	0.9	<b>1.5</b>	5.6	6.5	<b>6.4</b>	29.0	35.3
Participation rate	68.0	<b>67.5</b>	0.5	<b>-0.5</b>	-0.7	-1.0	...	...	...
Unemployment rate	8.9	<b>9.5</b>	0.3	<b>0.6</b>	2.2	2.5	...	...	...
Employment rate	61.9	<b>61.1</b>	0.5	<b>-0.8</b>	-2.1	-2.6	...	...	...
<b>Oshawa, Ontario</b>									
Population	291.8	<b>292.2</b>	...	<b>0.4</b>	1.7	5.7	<b>0.1</b>	0.6	2.0
Labour force	195.2	<b>193.3</b>	1.4	<b>-1.9</b>	-9.0	-3.8	<b>-1.0</b>	-4.4	-1.9
Employment	179.1	<b>178.4</b>	1.4	<b>-0.7</b>	-8.2	-3.6	<b>-0.4</b>	-4.4	-2.0
Unemployment	16.2	<b>14.9</b>	0.8	<b>-1.3</b>	-0.9	-0.2	<b>-8.0</b>	-5.7	-1.3
Participation rate	66.9	<b>66.2</b>	0.5	<b>-0.7</b>	-3.4	-2.6	...	...	...
Unemployment rate	8.3	<b>7.7</b>	0.4	<b>-0.6</b>	-0.1	0.0	...	...	...
Employment rate	61.4	<b>61.1</b>	0.5	<b>-0.3</b>	-3.1	-2.4	...	...	...
<b>St. Catharines-Niagara, Ontario</b>									
Population	329.8	<b>329.8</b>	...	<b>0.0</b>	0.0	1.0	<b>0.0</b>	0.0	0.3
Labour force	210.8	<b>207.1</b>	1.8	<b>-3.7</b>	-6.4	-7.7	<b>-1.8</b>	-3.0	-3.6
Employment	190.5	<b>185.5</b>	1.7	<b>-5.0</b>	-9.2	-14.7	<b>-2.6</b>	-4.7	-7.3
Unemployment	20.3	<b>21.7</b>	0.7	<b>1.4</b>	2.9	7.1	<b>6.9</b>	15.4	48.6
Participation rate	63.9	<b>62.8</b>	0.5	<b>-1.1</b>	-1.9	-2.5	...	...	...
Unemployment rate	9.6	<b>10.5</b>	0.3	<b>0.9</b>	1.7	3.7	...	...	...
Employment rate	57.8	<b>56.2</b>	0.5	<b>-1.6</b>	-2.8	-4.7	...	...	...

See footnotes at the end of the table.

Table 5-1 – continued

## Labour force characteristics by census metropolitan area (seasonally adjusted) — 3 month moving average

	March 2009	April 2009	S.E. <sup>1</sup>	Change from			Percent change from		
				last month	last December	twelve months ago	last month	last December	twelve months ago
in thousands (except rates)									
<b>Greater Sudbury / Grand Sudbury, Ontario</b>									
Population	134.1	<b>134.2</b>	...	<b>0.1</b>	0.2	0.9	<b>0.1</b>	0.1	0.7
Labour force	87.7	<b>87.2</b>	0.8	<b>-0.5</b>	-0.4	2.2	<b>-0.6</b>	-0.5	2.6
Employment	80.8	<b>79.7</b>	0.8	<b>-1.1</b>	-3.0	-0.2	<b>-1.4</b>	-3.6	-0.3
Unemployment	6.9	<b>7.5</b>	0.3	<b>0.6</b>	2.6	2.4	<b>8.7</b>	53.1	47.1
Participation rate	65.4	<b>65.0</b>	0.6	<b>-0.4</b>	-0.4	1.2	...	...	...
Unemployment rate	7.9	<b>8.6</b>	0.4	<b>0.7</b>	3.0	2.6	...	...	...
Employment rate	60.3	<b>59.4</b>	0.6	<b>-0.9</b>	-2.3	-0.5	...	...	...
<b>Thunder Bay, Ontario</b>									
Population	103.5	<b>103.4</b>	...	<b>-0.1</b>	-0.3	-0.5	<b>-0.1</b>	-0.3	-0.5
Labour force	64.5	<b>64.5</b>	0.6	<b>0.0</b>	-0.9	-3.2	<b>0.0</b>	-1.4	-4.7
Employment	59.3	<b>58.8</b>	0.6	<b>-0.5</b>	-2.3	-5.4	<b>-0.8</b>	-3.8	-8.4
Unemployment	5.1	<b>5.6</b>	0.3	<b>0.5</b>	1.3	2.1	<b>9.8</b>	30.2	60.0
Participation rate	62.3	<b>62.4</b>	0.6	<b>0.1</b>	-0.7	-2.8	...	...	...
Unemployment rate	7.9	<b>8.7</b>	0.4	<b>0.8</b>	2.1	3.5	...	...	...
Employment rate	57.3	<b>56.9</b>	0.6	<b>-0.4</b>	-2.0	-4.9	...	...	...
<b>Windsor, Ontario</b>									
Population	273.1	<b>273.1</b>	...	<b>0.0</b>	0.0	0.7	<b>0.0</b>	0.0	0.3
Labour force	175.7	<b>176.9</b>	1.5	<b>1.2</b>	1.0	0.7	<b>0.7</b>	0.6	0.4
Employment	151.6	<b>152.8</b>	1.5	<b>1.2</b>	-5.2	-8.6	<b>0.8</b>	-3.3	-5.3
Unemployment	24.0	<b>24.1</b>	0.8	<b>0.1</b>	6.3	9.3	<b>0.4</b>	35.4	62.8
Participation rate	64.3	<b>64.8</b>	0.6	<b>0.5</b>	0.4	0.1	...	...	...
Unemployment rate	13.7	<b>13.6</b>	0.4	<b>-0.1</b>	3.5	5.2	...	...	...
Employment rate	55.5	<b>56.0</b>	0.6	<b>0.5</b>	-1.9	-3.3	...	...	...
<b>Winnipeg, Manitoba</b>									
Population	589.2	<b>590.0</b>	...	<b>0.8</b>	2.9	8.5	<b>0.1</b>	0.5	1.5
Labour force	416.9	<b>416.2</b>	1.3	<b>-0.7</b>	2.4	0.8	<b>-0.2</b>	0.6	0.2
Employment	396.5	<b>395.7</b>	1.3	<b>-0.8</b>	0.8	-2.4	<b>-0.2</b>	0.2	-0.6
Unemployment	20.4	<b>20.4</b>	0.7	<b>0.0</b>	1.6	3.1	<b>0.0</b>	8.5	17.9
Participation rate	70.8	<b>70.5</b>	0.2	<b>-0.3</b>	0.0	-0.9	...	...	...
Unemployment rate	4.9	<b>4.9</b>	0.2	<b>0.0</b>	0.4	0.7	...	...	...
Employment rate	67.3	<b>67.1</b>	0.2	<b>-0.2</b>	-0.2	-1.4	...	...	...
<b>Regina, Saskatchewan</b>									
Population	170.3	<b>170.5</b>	...	<b>0.2</b>	1.1	4.3	<b>0.1</b>	0.6	2.6
Labour force	121.9	<b>122.4</b>	0.7	<b>0.5</b>	0.7	4.9	<b>0.4</b>	0.6	4.2
Employment	117.2	<b>117.1</b>	0.8	<b>-0.1</b>	-0.2	4.6	<b>-0.1</b>	-0.2	4.1
Unemployment	4.8	<b>5.3</b>	0.3	<b>0.5</b>	0.9	0.3	<b>10.4</b>	20.5	6.0
Participation rate	71.6	<b>71.8</b>	0.4	<b>0.2</b>	0.0	1.1	...	...	...
Unemployment rate	3.9	<b>4.3</b>	0.3	<b>0.4</b>	0.7	0.0	...	...	...
Employment rate	68.8	<b>68.7</b>	0.5	<b>-0.1</b>	-0.5	1.0	...	...	...
<b>Saskatoon, Saskatchewan</b>									
Population	200.8	<b>201.3</b>	...	<b>0.5</b>	1.8	6.3	<b>0.2</b>	0.9	3.2
Labour force	148.7	<b>148.5</b>	0.8	<b>-0.2</b>	2.1	5.5	<b>-0.1</b>	1.4	3.8
Employment	141.5	<b>141.1</b>	0.8	<b>-0.4</b>	0.7	3.1	<b>-0.3</b>	0.5	2.2
Unemployment	7.2	<b>7.4</b>	0.4	<b>0.2</b>	1.5	2.4	<b>2.8</b>	25.4	48.0
Participation rate	74.1	<b>73.8</b>	0.4	<b>-0.3</b>	0.4	0.5	...	...	...
Unemployment rate	4.8	<b>5.0</b>	0.3	<b>0.2</b>	1.0	1.5	...	...	...
Employment rate	70.5	<b>70.1</b>	0.4	<b>-0.4</b>	-0.3	-0.7	...	...	...

See footnotes at the end of the table.

Table 5-1 – continued

## Labour force characteristics by census metropolitan area (seasonally adjusted) — 3 month moving average

	March 2009	April 2009	S.E. <sup>1</sup>	Change from			Percent change from		
				last month	last December	twelve months ago	last month	last December	twelve months ago
in thousands (except rates)									
<b>Calgary, Alberta</b>									
Population	961.6	<b>963.8</b>	...	<b>2.2</b>	9.0	24.0	<b>0.2</b>	0.9	2.6
Labour force	745.7	<b>743.5</b>	3.2	<b>-2.2</b>	-0.9	27.4	<b>-0.3</b>	-0.1	3.8
Employment	704.7	<b>696.7</b>	3.2	<b>-8.0</b>	-18.7	2.9	<b>-1.1</b>	-2.6	0.4
Unemployment	41.0	<b>46.9</b>	1.5	<b>5.9</b>	17.9	24.6	<b>14.4</b>	61.7	110.3
Participation rate	77.5	<b>77.1</b>	0.3	<b>-0.4</b>	-0.9	0.9	...	...	...
Unemployment rate	5.5	<b>6.3</b>	0.2	<b>0.8</b>	2.4	3.2	...	...	...
Employment rate	73.3	<b>72.3</b>	0.3	<b>-1.0</b>	-2.6	-1.5	...	...	...
<b>Edmonton, Alberta</b>									
Population	895.7	<b>897.5</b>	...	<b>1.8</b>	7.5	19.6	<b>0.2</b>	0.8	2.2
Labour force	653.0	<b>656.5</b>	3.3	<b>3.5</b>	3.5	11.3	<b>0.5</b>	0.5	1.8
Employment	621.3	<b>621.4</b>	3.4	<b>0.1</b>	-8.0	1.5	<b>0.0</b>	-1.3	0.2
Unemployment	31.7	<b>35.2</b>	1.3	<b>3.5</b>	11.5	9.9	<b>11.0</b>	48.5	39.1
Participation rate	72.9	<b>73.1</b>	0.4	<b>0.2</b>	-0.3	-0.4	...	...	...
Unemployment rate	4.9	<b>5.4</b>	0.2	<b>0.5</b>	1.8	1.5	...	...	...
Employment rate	69.4	<b>69.2</b>	0.4	<b>-0.2</b>	-1.5	-1.4	...	...	...
<b>Abbotsford, British Columbia</b>									
Population	135.0	<b>135.1</b>	...	<b>0.1</b>	0.5	2.1	<b>0.1</b>	0.4	1.6
Labour force	91.9	<b>90.8</b>	0.7	<b>-1.1</b>	-2.7	-0.6	<b>-1.2</b>	-2.9	-0.7
Employment	85.6	<b>84.4</b>	0.8	<b>-1.2</b>	-4.0	-2.3	<b>-1.4</b>	-4.5	-2.7
Unemployment	6.3	<b>6.4</b>	0.3	<b>0.1</b>	1.3	1.8	<b>1.6</b>	25.5	39.1
Participation rate	68.1	<b>67.2</b>	0.6	<b>-0.9</b>	-2.3	-1.5	...	...	...
Unemployment rate	6.9	<b>7.0</b>	0.4	<b>0.1</b>	1.5	2.0	...	...	...
Employment rate	63.4	<b>62.5</b>	0.6	<b>-0.9</b>	-3.2	-2.7	...	...	...
<b>Vancouver, British Columbia</b>									
Population	1,969.3	<b>1,972.5</b>	...	<b>3.2</b>	12.7	43.4	<b>0.2</b>	0.6	2.2
Labour force	1,300.2	<b>1,312.4</b>	4.8	<b>12.2</b>	13.4	15.1	<b>0.9</b>	1.0	1.2
Employment	1,220.3	<b>1,226.8</b>	4.9	<b>6.5</b>	-10.3	-18.8	<b>0.5</b>	-0.8	-1.5
Unemployment	79.8	<b>85.6</b>	2.3	<b>5.8</b>	23.7	33.9	<b>7.3</b>	38.3	65.6
Participation rate	66.0	<b>66.5</b>	0.2	<b>0.5</b>	0.2	-0.7	...	...	...
Unemployment rate	6.1	<b>6.5</b>	0.2	<b>0.4</b>	1.7	2.5	...	...	...
Employment rate	62.0	<b>62.2</b>	0.3	<b>0.2</b>	-0.9	-2.4	...	...	...
<b>Victoria, British Columbia</b>									
Population	287.7	<b>287.8</b>	...	<b>0.1</b>	0.4	2.3	<b>0.0</b>	0.1	0.8
Labour force	193.8	<b>193.0</b>	1.4	<b>-0.8</b>	-4.1	-4.3	<b>-0.4</b>	-2.1	-2.2
Employment	183.4	<b>181.4</b>	1.4	<b>-2.0</b>	-8.3	-9.7	<b>-1.1</b>	-4.4	-5.1
Unemployment	10.4	<b>11.6</b>	0.5	<b>1.2</b>	4.3	5.4	<b>11.5</b>	58.9	87.1
Participation rate	67.4	<b>67.1</b>	0.5	<b>-0.3</b>	-1.5	-2.0	...	...	...
Unemployment rate	5.4	<b>6.0</b>	0.2	<b>0.6</b>	2.3	2.9	...	...	...
Employment rate	63.7	<b>63.0</b>	0.5	<b>-0.7</b>	-3.0	-3.9	...	...	...

1. Average standard error of change in two consecutive months (see "Sampling Errors" in Data Quality for further explanations).

Note(s): Related CANSIM Table 282-0090.

**Table 5-2**  
**Labour force characteristics by census metropolitan area (seasonally adjusted) — Monthly**

	March 2009	April 2009	S.E. <sup>1</sup>	Change from			Percent change from		
				last month	last December	twelve months ago	last month	last December	twelve months ago
in thousands (except rates)									
<b>Montréal, Quebec</b>									
Population	3,091.1	<b>3,094.0</b>	...	<b>2.9</b>	11.9	34.3	<b>0.1</b>	0.4	1.1
Labour force	2,058.9	<b>2,067.0</b>	15.0	<b>8.1</b>	11.7	20.2	<b>0.4</b>	0.6	1.0
Employment	1,868.1	<b>1,876.6</b>	15.2	<b>8.5</b>	-23.6	-13.4	<b>0.5</b>	-1.2	-0.7
Unemployment	190.8	<b>190.4</b>	10.8	<b>-0.4</b>	35.4	33.7	<b>-0.2</b>	22.8	21.5
Participation rate	66.6	<b>66.8</b>	0.5	<b>0.2</b>	0.1	-0.1	...	...	...
Unemployment rate	9.3	<b>9.2</b>	0.5	<b>-0.1</b>	1.7	1.5	...	...	...
Employment rate	60.4	<b>60.7</b>	0.5	<b>0.3</b>	-1.0	-1.1	...	...	...
<b>Toronto, Ontario</b>									
Population	4,625.6	<b>4,633.7</b>	...	<b>8.1</b>	33.8	106.9	<b>0.2</b>	0.7	2.4
Labour force	3,199.8	<b>3,194.3</b>	19.2	<b>-5.5</b>	24.6	59.2	<b>-0.2</b>	0.8	1.9
Employment	2,913.8	<b>2,912.9</b>	19.8	<b>-0.9</b>	-19.6	-20.8	<b>0.0</b>	-0.7	-0.7
Unemployment	286.0	<b>281.4</b>	13.5	<b>-4.6</b>	44.2	80.1	<b>-1.6</b>	18.6	39.8
Participation rate	69.2	<b>68.9</b>	0.4	<b>-0.3</b>	0.0	-0.4	...	...	...
Unemployment rate	8.9	<b>8.8</b>	0.4	<b>-0.1</b>	1.3	2.4	...	...	...
Employment rate	63.0	<b>62.9</b>	0.4	<b>-0.1</b>	-0.9	-1.9	...	...	...
<b>Vancouver, British Columbia</b>									
Population	1,972.4	<b>1,975.6</b>	...	<b>3.2</b>	13.0	42.3	<b>0.2</b>	0.7	2.2
Labour force	1,310.1	<b>1,324.7</b>	9.9	<b>14.6</b>	28.2	24.6	<b>1.1</b>	2.2	1.9
Employment	1,216.3	<b>1,236.1</b>	9.9	<b>19.8</b>	6.8	-7.3	<b>1.6</b>	0.6	-0.6
Unemployment	93.8	<b>88.6</b>	5.8	<b>-5.2</b>	21.4	31.9	<b>-5.5</b>	31.8	56.3
Participation rate	66.4	<b>67.1</b>	0.5	<b>0.7</b>	1.0	-0.1	...	...	...
Unemployment rate	7.2	<b>6.7</b>	0.4	<b>-0.5</b>	1.5	2.3	...	...	...
Employment rate	61.7	<b>62.6</b>	0.5	<b>0.9</b>	0.0	-1.7	...	...	...

1. Average standard error of change in two consecutive months (see "Sampling Errors" in Data Quality for further explanations).

**Note(s):** Related CANSIM Table 282-0091.

Table 6-1

Labour force characteristics by province and economic region <sup>1</sup>, unadjusted for seasonality, 3 month moving average ending in April 2008 and April 2009

	Population	Labour force			Participation rate	Unemployment rate	Employment rate
		Labour force	Employment	Unemployment			
	in thousands						
<b>Canada <sup>2</sup></b>							
2008	26,805.8	17,986.6	16,857.0	1,129.6	67.1	6.3	62.9
2009	27,188.8	18,140.2	16,587.4	1,552.8	66.7	8.6	61.0
<b>Newfoundland and Labrador</b>							
2008	425.4	246.2	209.4	36.8	57.9	14.9	49.2
2009	428.0	246.0	202.8	43.2	57.5	17.6	47.4
Avalon Peninsula [1010]							
2008	211.3	133.2	117.9	15.3	63.0	11.5	55.8
2009	214.4	133.2	117.6	15.6	62.1	11.7	54.9
South Coast-Burin Peninsula [1020]							
2008	32.6	16.6	12.9	3.7	50.9	22.3	39.6
2009	32.1	16.3	11.9	4.5	50.8	27.6	37.1
West Coast-Northern Peninsula-Labrador [1030]							
2008	87.8	47.2	38.8	8.4	53.8	17.8	44.2
2009	88.0	48.2	37.1	11.1	54.8	23.0	42.2
Notre Dame-Central Bonavista Bay [1040]							
2008	93.7	49.2	39.8	9.4	52.5	19.1	42.5
2009	93.5	48.3	36.2	12.1	51.7	25.1	38.7
<b>Prince Edward Island</b>							
2008	113.9	76.3	66.3	10.1	67.0	13.2	58.2
2009	115.4	76.3	64.4	11.9	66.1	15.6	55.8
<b>Nova Scotia</b>							
2008	767.1	479.8	438.4	41.4	62.5	8.6	57.2
2009	771.7	491.1	441.1	50.0	63.6	10.2	57.2
Cape Breton [1210]							
2008	115.8	64.6	54.8	9.8	55.8	15.2	47.3
2009	115.2	61.8	51.2	10.7	53.6	17.3	44.4
North Shore [1220]							
2008	131.2	76.2	68.4	7.8	58.1	10.2	52.1
2009	131.4	76.0	66.1	9.9	57.8	13.0	50.3
Annapolis Valley [1230]							
2008	100.8	60.9	54.8	6.0	60.4	9.9	54.4
2009	101.5	63.7	57.2	6.5	62.8	10.2	56.4
Southern [1240]							
2008	103.6	61.5	54.8	6.7	59.4	10.9	52.9
2009	103.4	62.4	53.4	9.0	60.3	14.4	51.6
Halifax [1250]							
2008	315.7	216.6	205.5	11.1	68.6	5.1	65.1
2009	320.1	227.2	213.2	14.0	71.0	6.2	66.6
<b>New Brunswick</b>							
2008	616.5	390.1	353.5	36.7	63.3	9.4	57.3
2009	620.6	392.3	351.6	40.7	63.2	10.4	56.7
Campbellton-Miramichi [1310]							
2008	135.8	78.4	66.4	12.0	57.7	15.3	48.9
2009	135.3	72.1	58.7	13.4	53.3	18.6	43.4
Moncton-Richibucto [1320]							
2008	164.9	107.2	98.2	9.0	65.0	8.4	59.6
2009	167.3	111.3	102.2	9.1	66.5	8.2	61.1
Saint John-St. Stephen [1330]							
2008	142.7	93.8	87.1	6.7	65.7	7.1	61.0
2009	143.6	96.2	89.7	6.6	67.0	6.9	62.5

See footnotes at the end of the table.

Table 6-1 – continued

**Labour force characteristics by province and economic region 1, unadjusted for seasonality, 3 month moving average ending in April 2008 and April 2009**

	Population	Labour force			Participation rate	Unemployment rate	Employment rate
		Labour force	Employment	Unemployment			
		in thousands					
Fredericton-Oromocto [1340]							
2008	104.9	70.1	65.4	4.7	66.8	6.7	62.3
2009	106.2	69.4	63.0	6.4	65.3	9.2	59.3
Edmundston-Woodstock [1350]							
2008	68.2	40.6	36.3	4.3	59.5	10.6	53.2
2009	68.2	43.3	38.2	5.2	63.5	12.0	56.0
<b>Quebec</b>							
2008	6,353.8	4,136.5	3,809.6	326.9	65.1	7.9	60.0
2009	6,416.1	4,155.0	3,766.4	388.6	64.8	9.4	58.7
Gaspésie-Îles-de-la-Madeleine [2410]							
2008	80.8	39.6	31.6	8.0	49.0	20.2	39.1
2009	80.8	37.9	30.3	7.5	46.9	19.8	37.5
Bas-Saint-Laurent [2415]							
2008	167.5	99.6	89.1	10.5	59.5	10.5	53.2
2009	167.5	102.1	90.8	11.3	61.0	11.1	54.2
Capitale-Nationale [2420]							
2008	566.6	371.9	353.3	18.6	65.6	5.0	62.4
2009	571.3	381.3	360.1	21.2	66.7	5.6	63.0
Chaudière-Appalaches [2425]							
2008	329.0	214.7	202.2	12.5	65.3	5.8	61.5
2009	331.3	216.1	199.1	17.0	65.2	7.9	60.1
Estrie [2430]							
2008	250.4	159.4	149.3	10.0	63.7	6.3	59.6
2009	252.7	163.6	148.3	15.3	64.7	9.4	58.7
Centre-du-Québec [2433]							
2008	186.1	123.6	113.3	10.3	66.4	8.3	60.9
2009	187.5	128.3	116.3	12.0	68.4	9.4	62.0
Montréal [2435]							
2008	1,137.0	742.2	693.0	49.2	65.3	6.6	60.9
2009	1,155.9	781.1	716.6	64.5	67.6	8.3	62.0
Montréal [2440]							
2008	1,591.8	1,048.3	949.2	99.1	65.9	9.5	59.6
2009	1,594.1	1,020.9	904.7	116.2	64.0	11.4	56.8
Laval [2445]							
2008	312.5	216.0	200.5	15.5	69.1	7.2	64.2
2009	317.4	204.2	185.4	18.9	64.3	9.3	58.4
Lanaudière [2450]							
2008	360.3	233.6	213.9	19.7	64.8	8.4	59.4
2009	370.8	244.2	224.9	19.4	65.9	7.9	60.7
Laurentides [2455]							
2008	432.4	294.1	270.5	23.6	68.0	8.0	62.6
2009	442.3	287.6	262.6	25.0	65.0	8.7	59.4
Outaouais [2460]							
2008	293.5	207.6	194.0	13.6	70.7	6.6	66.1
2009	297.9	200.1	184.6	15.4	67.2	7.7	62.0
Abitibi-Témiscamingue [2465]							
2008	115.7	70.2	64.8	5.5	60.7	7.8	56.0
2009	116.2	74.8	67.1	7.7	64.4	10.3	57.7
Mauricie [2470]							
2008	217.9	127.0	116.1	10.8	58.3	8.5	53.3
2009	218.7	127.5	114.0	13.5	58.3	10.6	52.1

See footnotes at the end of the table.

Table 6-1 – continued

**Labour force characteristics by province and economic region 1, unadjusted for seasonality, 3 month moving average ending in April 2008 and April 2009**

	Population	Labour force			Participation rate	Unemployment rate	Employment rate
		Labour force	Employment	Unemployment			
	in thousands						
Saguenay-Lac-Saint-Jean [2475]							
2008	223.3	134.6	121.0	13.6	60.3	10.1	54.2
2009	223.0	132.8	116.7	16.2	59.6	12.2	52.3
Côte-Nord and Nord-du-Québec [2480, 2490]							
2008	89.1	54.2	47.8	6.4	60.8	11.8	53.6
2009	88.8	52.3	44.8	7.5	58.9	14.3	50.5
<b>Ontario</b>							
2008	10,460.9	7,055.4	6,603.8	451.6	67.4	6.4	63.1
2009	10,614.8	7,096.8	6,451.8	645.0	66.9	9.1	60.8
Ottawa [3510]							
2008	990.6	697.3	664.4	32.9	70.4	4.7	67.1
2009	1,001.3	691.6	648.0	43.6	69.1	6.3	64.7
Kingston-Pembroke [3515]							
2008	359.6	224.9	211.1	13.9	62.5	6.2	58.7
2009	360.9	229.9	209.5	20.4	63.7	8.9	58.0
Muskoka-Kawartha [3520]							
2008	310.6	189.2	171.9	17.3	60.9	9.1	55.3
2009	312.4	186.1	169.3	16.8	59.6	9.0	54.2
Toronto [3530]							
2008	4,764.9	3,277.1	3,066.4	210.6	68.8	6.4	64.4
2009	4,875.0	3,326.6	3,032.3	294.3	68.2	8.8	62.2
Kitchener-Waterloo-Barrie [3540]							
2008	979.4	680.1	644.7	35.4	69.4	5.2	65.8
2009	994.2	701.7	629.4	72.3	70.6	10.3	63.3
Hamilton-Niagara Peninsula [3550]							
2008	1,139.3	753.2	699.6	53.5	66.1	7.1	61.4
2009	1,148.7	752.6	680.9	71.7	65.5	9.5	59.3
London [3560]							
2008	514.0	349.5	325.7	23.9	68.0	6.8	63.4
2009	519.3	345.3	310.8	34.5	66.5	10.0	59.8
Windsor-Sarnia [3570]							
2008	525.7	338.9	311.4	27.4	64.5	8.1	59.2
2009	526.9	333.4	292.6	40.8	63.3	12.2	55.5
Stratford-Bruce Peninsula [3580]							
2008	247.8	158.1	150.0	8.1	63.8	5.1	60.5
2009	248.5	154.0	140.5	13.5	62.0	8.8	56.5
Northeast [3590]							
2008	454.0	276.9	257.8	19.2	61.0	6.9	56.8
2009	454.6	265.7	241.9	23.8	58.4	9.0	53.2
Northwest [3595]							
2008	175.0	110.2	100.7	9.4	63.0	8.5	57.5
2009	173.1	109.8	96.7	13.1	63.4	11.9	55.9
<b>Manitoba</b>							
2008	906.1	625.9	598.0	27.9	69.1	4.5	66.0
2009	918.0	629.7	596.7	33.0	68.6	5.2	65.0
Southeast [4610]							
2008	77.9	51.3	49.1	2.2	65.9	4.3	63.0
2009	80.2	52.8	49.8	3.1	65.8	5.9	62.1
South Central [4620]							
2008	43.7	29.9	28.9	0.9	68.4	3.0	66.1
2009	44.7	29.3	27.8	1.5	65.5	5.1	62.2

See footnotes at the end of the table.



Table 6-1 – continued

**Labour force characteristics by province and economic region 1, unadjusted for seasonality, 3 month moving average ending in April 2008 and April 2009**

	Population	Labour force			Participation rate	Unemployment rate	Employment rate
		Labour force	Employment	Unemployment			
		in thousands					
<b>Southwest [4630]</b>							
2008	82.5	55.8	53.4	2.4	67.6	4.3	64.7
2009	82.9	59.1	56.5	2.7	71.3	4.6	68.2
<b>North Central [4640]</b>							
2008	35.8	24.1	22.8	1.3	67.3	5.4	63.7
2009	36.1	23.9	23.1	0.8	66.2	3.3	64.0
<b>Winnipeg [4650]</b>							
2008	536.9	378.7	361.7	17.0	70.5	4.5	67.4
2009	544.0	379.0	359.0	20.0	69.7	5.3	66.0
<b>Interlake [4660]</b>							
2008	70.4	46.2	43.9	2.3	65.6	5.0	62.4
2009	71.5	47.1	44.9	2.2	65.9	4.7	62.8
<b>Parklands and North [4670, 4680]</b>							
2008	58.9	39.9	38.2	1.7	67.7	4.3	64.9
2009	58.7	38.5	35.8	2.7	65.6	7.0	61.0
<b>Saskatchewan</b>							
2008	762.2	524.0	501.0	23.0	68.7	4.4	65.7
2009	776.3	541.2	512.7	28.5	69.7	5.3	66.0
<b>Regina-Moose Mountain [4710]</b>							
2008	224.7	159.0	152.7	6.3	70.8	4.0	68.0
2009	229.7	163.0	155.5	7.5	71.0	4.6	67.7
<b>Swift Current-Moose Jaw [4720]</b>							
2008	83.4	54.4	51.8	2.6	65.2	4.8	62.1
2009	84.0	55.4	53.1	2.3	66.0	4.2	63.2
<b>Saskatoon-Biggar [4730]</b>							
2008	237.8	169.5	163.6	5.9	71.3	3.5	68.8
2009	244.2	176.3	167.5	8.8	72.2	5.0	68.6
<b>Yorkton-Melville [4740]</b>							
2008	64.4	40.2	38.4	1.8	62.4	4.5	59.6
2009	64.7	40.7	38.6	2.2	62.9	5.4	59.7
<b>Prince Albert and Northern [4750, 4760]</b>							
2008	151.9	100.9	94.4	6.5	66.4	6.4	62.1
2009	153.8	105.8	98.0	7.7	68.8	7.3	63.7
<b>Alberta</b>							
2008	2,779.6	2,051.9	1,982.1	69.8	73.8	3.4	71.3
2009	2,841.9	2,099.9	1,970.8	129.1	73.9	6.1	69.3
<b>Lethbridge-Medicine Hat [4810]</b>							
2008	208.3	146.8	140.3	6.5	70.5	4.4	67.4
2009	211.0	143.6	136.0	7.6	68.1	5.3	64.5
<b>Camrose-Drumheller [4820]</b>							
2008	155.4	113.8	110.7	3.1	73.2	2.7	71.2
2009	155.8	111.8	106.5	5.3	71.8	4.7	68.4
<b>Calgary [4830]</b>							
2008	1,013.3	761.5	739.7	21.8	75.2	2.9	73.0
2009	1,040.9	790.2	740.1	50.2	75.9	6.4	71.1
<b>Banff-Jasper-Rocky Mountain House [4840]</b>							
2008	68.2	53.7	52.1	1.6	78.7	3.0	76.4
2009	69.2	55.1	52.0	3.1	79.6	5.6	75.1
<b>Red Deer [4850]</b>							
2008	145.0	104.2	100.1	4.1	71.9	3.9	69.0
2009	149.3	114.2	105.6	8.6	76.5	7.5	70.7

See footnotes at the end of the table.

Table 6-1 – continued

**Labour force characteristics by province and economic region 1, unadjusted for seasonality, 3 month moving average ending in April 2008 and April 2009**

	Population	Labour force		Participation rate	Unemployment rate	Employment rate
		Labour force	Employment	Unemployment		
	in thousands					
Edmonton [4860]						
2008	911.7	662.5	637.7	24.8	72.7	69.9
2009	932.4	671.6	632.8	38.8	72.0	67.9
Athabasca-Grande Prairie-Peace River [4870]						
2008	185.3	136.3	130.4	5.9	73.6	70.4
2009	189.2	142.6	131.9	10.7	75.4	69.7
Wood Buffalo-Cold Lake [4880]						
2008	92.3	73.1	71.1	2.0	79.2	77.0
2009	94.1	70.7	66.0	4.8	75.1	70.1
British Columbia						
2008	3,620.3	2,400.5	2,295.0	105.5	66.3	63.4
2009	3,686.0	2,411.8	2,229.0	182.8	65.4	60.5
Vancouver Island and Coast [5910]						
2008	630.0	405.4	386.9	18.5	64.3	61.4
2009	637.6	409.4	381.0	28.4	64.2	59.8
Lower Mainland-Southwest [5920]						
2008	2,195.7	1,470.1	1,412.8	57.3	67.0	64.3
2009	2,244.1	1,485.4	1,382.4	103.1	66.2	61.6
Thompson-Okanagan [5930]						
2008	428.6	276.3	260.7	15.5	64.5	60.8
2009	435.8	273.4	246.8	26.6	62.7	56.6
Kootenay [5940]						
2008	122.6	73.4	71.6	1.8	59.9	58.4
2009	123.1	78.7	71.1	7.6	63.9	57.8
Cariboo [5950]						
2008	125.8	89.8	82.9	6.9	71.4	65.9
2009	127.1	83.2	73.2	10.0	65.5	57.6
North Coast and Nechako [5960, 5970]						
2008	65.7	48.1	44.3	3.8	73.2	67.4
2009	65.3	43.6	38.9	4.6	66.8	59.6
Northeast [5980]						
2008	51.9	37.3	35.8	1.6	71.9	69.0
2009	53.0	38.2	35.6	2.5	72.1	67.2

1. For geographic descriptions of economic regions, refer to the Guide to the Labour Force Survey (catalogue number 71-543-GIE).

2. Estimates for Canada are a sum of the provincial totals and exclude estimates from Yukon, Northwest Territories and Nunavut.

**Note(s):** Related CANSIM table 282-0054.

**Table 6-2**  
**Labour force characteristics by territories, unadjusted for seasonality, 3 month moving average ending in April 2008 and April 2009**

	Population	Labour force			Participation rate	Unemployment rate	Employment rate
		Labour force	Employment	Unemployment			
	in thousands				percent		
<b>Yukon <sup>1</sup></b>							
2008	23.6	17.5	16.7	0.8	74.2	4.6	70.8
2009	24.1	17.7	16.3	1.4	73.4	7.9	67.6
<b>Northwest Territories <sup>2</sup></b>							
2008	31.1	23.2	21.8	1.4	74.6	6.0	70.1
2009	31.4	22.3	21.2	1.1	71.0	4.9	67.5
<b>Nunavut <sup>3</sup></b>							
2008	18.6	11.8	10.5	1.2	63.2	10.5	56.6
2009	18.5	11.1	9.7	1.4	59.8	12.4	52.4

1. Since 1992, the Labour force survey (LFS) has been conducted in the Yukon, using an alternative methodology that accommodates some of the operational difficulties inherent to remote locales. These estimates are not included in the national totals. In 1995, the LFS in the Yukon underwent a sample redesign. One result of the redesign was that the covered population increased from 85% to 92%, which is reflected by the sharp increase in the three month moving averages estimates of January, February and March of 1995 for all the level estimates. Users are therefore warned to be cautious when comparing estimates before January 1995 to estimates for January 1995 and forward.
2. Since 2001, the Labour force survey (LFS) has been administered in the Northwest Territories, using an alternative methodology that accommodates some of the operational difficulties inherent to remote locales. These estimates are not included in national totals.
3. Since 2004, the Labour force survey (LFS) has been administered in Nunavut, using an alternative methodology that accommodates some of the operational difficulties inherent to remote locales. These estimates are 3-month moving averages and are not included in national totals. From January 2004 to December 2007, estimates represent about 70% of all Nunavut residents aged 15 and over. Starting in January 2008, coverage was extended to 92%, so that by March 2008, the 3-month moving average is completely based on the extended coverage. Because of the large difference in coverage, users are recommended not to compare estimates prior to January 2008 with data afterwards. The January and February 2008 3-month moving average estimates are based on a mix of both coverages, since the extended coverage was introduced in January 2008. Estimates from January 2004 to December 2007 are based on the 10 largest communities in Nunavut: Iqaluit, Rankin Inlet, Cambridge Bay, Kugluktuk, Baker Lake, Arviat, Pond Inlet, Cape Dorset, Pangnirtung, Igloolik. Estimates from March 2008 to present cover the above communities as well as: Taloyoak, Gjoa Haven, Kugaaruk, Coral Harbour, Repulse Bay, Qikiqtarjuaq, Arctic Bay, Hall Beach, Clyde River.

**Note(s):** Related CANSIM table 282-0100.

Table 7

## Average usual hours and wages of employees by selected characteristics, Canada, unadjusted for seasonality

	Employees				Full-time			Part-time		
	Number	Average weekly hours	Average weekly wages	Average hourly wages	Number	Average weekly hours	Average weekly wages	Number	Average weekly hours	Average weekly wages
	thousands		dollars		thousands		dollars	thousands		dollars
<b>April 2009</b>										
15 years and over	13,960.2	34.9	800.33	22.04	11,257.6	39.2	926.43	2,702.6	17.0	275.07
15 to 24 years	2,242.9	26.3	366.22	12.82	1,091.9	38.7	586.91	1,151.0	14.5	156.88
25 years and over	11,717.3	36.6	883.42	23.81	10,165.7	39.3	962.89	1,551.6	18.8	362.76
Men	6,885.6	37.4	921.17	23.91	6,035.7	40.4	1,017.15	849.9	16.0	239.63
Women	7,074.6	32.5	682.71	20.22	5,221.9	37.9	821.57	1,852.7	17.5	291.33
<b>Union coverage</b>										
Union coverage	4,453.4	35.5	906.07	25.17	3,772.8	38.5	996.14	680.6	18.9	406.78
No union coverage	9,506.9	34.6	750.80	20.57	7,484.8	39.6	891.29	2,022.0	16.4	230.74
<b>Job permanency</b>										
Permanent	12,423.3	35.8	834.49	22.57	10,417.1	39.2	938.87	2,006.2	17.9	292.50
Temporary	1,536.9	27.8	524.22	17.76	840.5	39.0	772.23	696.4	14.4	224.88
<b>Occupation</b>										
Management	1,021.1	39.5	1,329.42	33.68	986.5	40.3	1,361.31	34.6	18.1	418.89
Business, finance and administrative	2,810.0	35.2	755.96	21.02	2,390.1	38.2	835.88	419.9	17.8	301.01
Natural and applied sciences	1,010.6	38.4	1,189.93	30.99	970.2	39.2	1,218.07	40.3	18.3	513.02
Health	901.5	33.6	870.81	25.84	687.9	37.8	980.80	213.6	20.1	516.56
Social science, education, government service and religion	1,393.3	33.7	954.72	27.95	1,101.8	38.0	1,089.61	291.5	17.4	444.97
Art, culture, recreation and sport	301.9	30.3	709.99	21.78	204.7	38.4	935.22	97.2	13.1	235.81
Sales and service	3,624.3	29.9	477.61	14.75	2,223.8	38.5	659.10	1,400.5	16.4	189.41
Trades, transport and equipment operators	1,927.0	39.6	881.77	22.00	1,792.2	41.3	926.46	134.7	17.5	287.23
Occupations unique to primary industry	237.8	41.2	784.77	18.43	204.7	45.4	881.24	33.1	14.8	189.02
Occupations unique to processing, manufacturing and utilities	732.8	38.6	739.92	18.93	695.7	39.8	766.99	37.1	17.0	232.60
<b>April 2008</b>										
15 years and over	14,295.6	35.3	773.54	21.14	11,643.0	39.4	890.50	2,652.6	17.1	260.13
15 to 24 years	2,391.1	27.1	357.15	12.19	1,213.0	38.9	555.79	1,178.2	14.9	152.63
25 years and over	11,904.4	36.9	857.18	22.94	10,430.0	39.5	929.43	1,474.4	18.8	346.04
Men	7,144.5	37.9	898.59	23.08	6,350.1	40.7	982.20	794.4	16.3	230.31
Women	7,151.1	32.6	648.60	19.20	5,292.9	37.9	780.50	1,858.1	17.4	272.88
<b>Union coverage</b>										
Union coverage	4,499.3	35.9	882.65	24.33	3,879.5	38.6	961.31	619.8	18.8	390.22
No union coverage	9,796.3	35.0	723.43	19.67	7,763.5	39.8	855.12	2,032.8	16.5	220.47
<b>Job permanency</b>										
Permanent	12,719.8	36.1	805.24	21.64	10,751.9	39.4	902.18	1,968.0	17.9	275.60
Temporary	1,575.8	28.7	517.65	17.10	891.2	39.4	749.63	684.6	14.7	215.67
<b>Occupation</b>										
Management	1,029.6	39.9	1,272.31	32.05	990.6	40.6	1,303.03	39.1	19.8	493.13
Business, finance and administrative	2,826.0	35.1	723.86	20.13	2,384.7	38.3	804.51	441.3	17.8	288.08
Natural and applied sciences	1,062.6	38.6	1,143.62	29.59	1,027.0	39.3	1,167.60	35.7	19.1	453.15
Health	885.9	33.3	811.23	24.26	667.2	37.9	931.06	218.7	19.3	445.62
Social science, education, government service and religion	1,363.8	33.6	923.77	27.21	1,083.4	37.9	1,052.47	280.4	17.1	426.42
Art, culture, recreation and sport	317.1	31.5	734.71	21.86	228.7	38.7	937.62	88.4	12.8	209.57
Sales and service	3,637.8	30.3	460.82	14.10	2,266.0	38.5	629.78	1,371.8	16.6	181.73
Trades, transport and equipment operators	2,068.6	40.3	861.47	21.17	1,956.7	41.6	896.00	111.9	17.7	257.94
Occupations unique to primary industry	236.4	42.8	806.98	18.56	211.8	46.1	878.59	24.6	15.0	190.27
Occupations unique to processing, manufacturing and utilities	867.7	39.1	722.16	18.27	826.9	40.2	746.77	40.8	17.3	223.06

Note(s): Related CANSIM Tables 282-0023, 282-0069, 282-0073.

Table 8

**Regional unemployment rates used by the Employment Insurance Program <sup>1</sup>, seasonally adjusted, 3 month moving average**

Region	Effective from May 10, 2009 to June 6, 2009
	percent
<b>Newfoundland and Labrador</b>	
01. St. John's	7.5
02. Newfoundland and Labrador	20.7
<b>Prince Edward Island</b>	
03. Prince Edward Island	12.2
<b>Nova Scotia</b>	
04. Eastern Nova Scotia	15.5
05. Western Nova Scotia	10.6
06. Halifax	6.0
<b>New Brunswick</b>	
07. Fredericton-Moncton-Saint John	6.2
08. Madawaska-Charlotte <sup>2</sup>	11.5
09. Restigouche-Albert	15.2
<b>Quebec</b>	
10. Gaspésie-Îles-de-la-Madeleine	17.4
11. Québec	4.4
12. Trois-Rivières	8.0
13. South Central Quebec	7.0
14. Sherbrooke	7.5
15. Montérégie	9.0
16. Montréal	9.0
17. Central Quebec	9.4
18. Northwestern Quebec	12.5
19. Bas-Saint-Laurent-Côte-Nord <sup>3</sup>	12.4
20. Gatineau	5.7
21. Saguenay	8.9
<b>Ontario</b>	
22. Ottawa	5.6
23. Eastern Ontario	8.3
24. Kingston	5.9
25. Central Ontario	10.0
26. Oshawa	7.8
27. Toronto	8.9
28. Hamilton	7.9
29. St. Catharines	10.5
30. London	9.6
31. Niagara	10.6
32. Windsor	13.4
33. Kitchener	10.1
34. Huron	10.2
35. South Central Ontario	8.0
36. Sudbury	8.4
37. Thunder Bay	8.9
38. Northern Ontario	12.4
<b>Manitoba</b>	
39. Winnipeg	4.9
40. Southern Manitoba	5.8
41. Northern Manitoba	26.6
<b>Saskatchewan</b>	
42. Regina	4.3
43. Saskatoon	5.0
44. Southern Saskatchewan	6.7
45. Northern Saskatchewan	16.1

See footnotes at the end of the table.

Table 8 – continued

**Regional unemployment rates used by the Employment Insurance Program 1, seasonally adjusted, 3 month moving average**

Region	Effective from May 10, 2009 to June 6, 2009
	percent
<b>Alberta</b>	
46. Calgary	6.4
47. Edmonton	5.5
48. Northern Alberta	10.2
49. Southern Alberta	7.1
<b>British Columbia</b>	
50. Southern Interior British Columbia	10.0
51. Abbotsford	7.0
52. Vancouver	6.7
53. Victoria	6.7
54. Southern Coastal British Columbia	8.2
55. Northern British Columbia	12.8
<b>Territories</b>	
56. Yukon <sup>4</sup>	25.0
57. Northwest Territories <sup>4</sup>	25.0
58. Nunavut <sup>4</sup>	25.0

1. The boundaries of these regions are determined by Human Resources and Social Development Canada (HRSDC). For geographic descriptions and maps of employment insurance regions, see the HRSDC website: <http://srv129.services.gc.ca/eiregions/en/geocont.aspx>.

2. This unemployment rate has been determined using a transition formula prescribed in the EI Regulations. For further information, see: [http://www.hrsdc.gc.ca/en/cs/comm/news/2000/000913a\\_e.shtml](http://www.hrsdc.gc.ca/en/cs/comm/news/2000/000913a_e.shtml).

3. This unemployment rate has been determined using a transition formula prescribed in the EI Regulations. For further information, see: [http://www.hrsdc.gc.ca/en/cs/comm/news/2000/000913b\\_e.shtml](http://www.hrsdc.gc.ca/en/cs/comm/news/2000/000913b_e.shtml).

4. This rate is provided by Human Resources and Skills Development Canada.

# Data quality

---

## About the Labour Force Survey

The statistics contained in this report are based on information obtained through a sample survey of 53,000 representative households across the country. The Labour Force Survey, started in November 1945, was taken at quarterly intervals until November 1952. It has been carried out monthly since then. The information generated by the survey has expanded considerably over the years with a major redesign of the survey content in 1976 and again in 1997, and provides a rich and detailed picture of the Canadian labour market.

The sample used in the Labour Force Survey has been designed to represent all persons in the population 15 years of age and over residing in the provinces of Canada, with the exception of the following: persons living on Indian reserves, full-time members of the armed forces and people living in institutions (for example, inmates of penal institutions and patients in hospitals or nursing homes who have resided in the institution for more than six months). Monthly estimates of employment, unemployment and persons not in the labour force refer to the specific week covered by the survey each month, normally the week containing the 15th day.

## Definitions and explanations

The **labour force** is composed of those members of the civilian non-institutional population 15 years of age and over who, during the reference week, were employed or unemployed.

Employed persons are those who, during the reference week:

- (a) did any work at all
- (b) had a job but were not at work

A person is considered to be **full-time** if his/her usual hours at the main job are 30 or more hours per week. When the number of hours worked at the main job is usually less than 30 hours per week then he/she is considered to be **part-time**.

**Unemployed** persons are those who, during the reference week:

- (a) were without work, had actively looked for work in the past four weeks (ending with reference week), and were available for work;
- (b) had not actively looked for work in the past four weeks but were on temporary layoff and were available for work;
- (c) had not actively looked for work in the past four weeks but had a new job to start in four weeks or less from the reference week, and were available for work.

Persons in the civilian non-institutional population 15 years of age and over who, during the reference week, were neither employed nor unemployed are classified as **not in the labour force**.

The **unemployment rate** represents the number of unemployed persons expressed as a percentage of the labour force. The unemployment rate for a particular group (age, sex, etc.) is the number unemployed in that group expressed as a percentage of the labour force for that group.

The **participation rate** represents the labour force expressed as a percentage of the population 15 years of age and over. The participation rate for a particular group (age, sex, etc.) is the labour force in that group expressed as a percentage of the population for that group.

The **employment rate (formerly the employment/population ratio)** represents the number of persons employed expressed as a percentage of the population 15 years of age and over. The employment rate for a particular group (age, sex, etc.) is the number employed in that group expressed as a percentage of the population for that group.

The **part-time rate** represents the number of persons employed part-time expressed as a percentage of the employed. The part-time rate for a particular group (age, sex, etc.) is the number employed part-time in that group expressed as a percentage of the employed for that group.

All geographic regions are based on the 2001 Census boundaries.

## Seasonal adjustment

Fluctuations in economic time series are caused by seasonal, cyclical and irregular movements. A seasonally adjusted series is one from which seasonal movements have been eliminated. Seasonal movements are defined as those which are caused by regular annual events such as climate, holidays, vacation periods and cycles related to crops, production and retail sales associated with Christmas and Easter. The seasonally adjusted series contains irregular as well as longer-term cyclical fluctuations.

The seasonally adjusted series are revised each year to take into account current data and to generate new forecast factors for the next twelve months. The data are therefore subject to slight revisions in future issues of this publication.

## Sampling variability of estimates

Estimates in this publication are based on the Labour Force Survey, a monthly survey of approximately 53,000 households across Canada. Because the entire population is not surveyed, the estimates are subject to sampling error. While the published estimate is the best available indicator of the real value, changes in the level of any estimates between two months can be the result of a true change or sampling variability. The sampling error can be estimated by calculating the standard error for the published estimate or statistic. These standard errors have been included in the publication tables, in order to assist users in interpreting the data.

### Interpretation based on standard error

Two thirds of the time (68%), a change greater than the sampling error indicates a real change. The larger the change compared to the standard error, the better the chance that we are observing a real change, as opposed to a change due to sampling variability. At the 95% level, in order to ensure that change is real, the change in the estimate must be greater than twice the sampling error.

Movements in estimates that are smaller than the sampling error are less likely to reflect a real change and more likely to be due to sampling variability. While the above is true for monthly movements, one can have more confidence in a series of consecutive movements in the same direction, even though some of the monthly movements may be smaller than the sampling error.

### Interpretation based on confidence intervals

Confidence intervals provide another way of looking at the variability inherent in estimates of sample surveys. To illustrate how to calculate the confidence interval, let us say that one month the published estimate for total employment rose by 16,000 to reach 16,500,000. The associated standard error for the movement estimate is 27,200. The standard error used to interpret the movement estimate indicates that:



- There are approximately two chances in three (68%) that the real value of the movement between the two months falls within the range -11,200 to +43,200 (16,000 + or – one standard error).
- There are approximately nine chances in ten (90%) that the real value of the movement between the two months falls within the range -27,520 to +59,520 (16,000 + or – 1.6 times the standard error).
- There are approximately nineteen chances in twenty (95%) that the real value of the movement between the two months falls within the range -38,400 to +70,400 (16,000 + or – two standard errors).

For more detailed explanations on sampling variability of estimates, and in particular for information on how to assess the variability of level estimates, consult the Data quality section of the *Guide to the Labour Force Survey*, (71-543-G) on page 27.

## Documentation

For more detailed information about the Labour Force Survey, see the following documents:

- Overview of the Labour Force Survey
- Guide to the Labour Force Survey (71-543-G)
- Data quality statement
- Methodology of the Canadian Labour Force Survey (71-526-X)
- LFS *geographical maps*