

Catalogue no. 22-003-X

Fruit and Vegetable Production

February 2010



Statistics
Canada

Statistique
Canada

Canada

How to obtain more information

For information about this product or the wide range of services and data available from Statistics Canada, visit our website at www.statcan.gc.ca, e-mail us at infostats@statcan.gc.ca, or telephone us, Monday to Friday from 8:30 a.m. to 4:30 p.m., at the following numbers:

Statistics Canada's National Contact Centre

Toll-free telephone (Canada and the United States):

Inquiries line	1-800-263-1136
National telecommunications device for the hearing impaired	1-800-363-7629
Fax line	1-877-287-4369

Local or international calls:

Inquiries line	1-613-951-8116
Fax line	1-613-951-0581

Depository Services Program

Inquiries line	1-800-635-7943
Fax line	1-800-565-7757

To access this product

This product, Catalogue no. 22-003-X, is available free in electronic format. To obtain a single issue, visit our website at www.statcan.gc.ca and select "Publications."

Standards of service to the public

Statistics Canada is committed to serving its clients in a prompt, reliable and courteous manner. To this end, Statistics Canada has developed *standards of service* that its employees observe. To obtain a copy of these service standards, please contact Statistics Canada toll-free at 1-800-263-1136. The service standards are also published on www.statcan.gc.ca under "About us" > "Providing services to Canadians."

Statistics Canada
Agriculture Division
Crops Section

Fruit and Vegetable Production

February 2010

Published by authority of the Minister responsible for Statistics Canada

© Minister of Industry, 2010

All rights reserved. The content of this electronic publication may be reproduced, in whole or in part, and by any means, without further permission from Statistics Canada, subject to the following conditions: that it be done solely for the purposes of private study, research, criticism, review or newspaper summary, and/or for non-commercial purposes; and that Statistics Canada be fully acknowledged as follows: Source (or "Adapted from", if appropriate): Statistics Canada, year of publication, name of product, catalogue number, volume and issue numbers, reference period and page(s). Otherwise, no part of this publication may be reproduced, stored in a retrieval system or transmitted in any form, by any means—electronic, mechanical or photocopy—or for any purposes without prior written permission of Licensing Services, Client Services Division, Statistics Canada, Ottawa, Ontario, Canada K1A 0T6.

February 2010

Catalogue no. 22-003-X, vol. 78, no. 2

ISSN 1480-7602

Frequency: Semi-Annual

Ottawa

Cette publication est également disponible en français.

Note of appreciation

Canada owes the success of its statistical system to a long-standing partnership between Statistics Canada, the citizens of Canada, its businesses, governments and other institutions. Accurate and timely statistical information could not be produced without their continued cooperation and goodwill.

User information

Symbols

The following standard symbols are used in Statistics Canada publications:

- . not available for any reference period
- .. not available for a specific reference period
- ... not applicable
- 0 true zero or a value rounded to zero
- 0^s value rounded to 0 (zero) where there is a meaningful distinction between true zero and the value that was rounded
- p preliminary
- r revised
- x suppressed to meet the confidentiality requirements of the *Statistics Act*
- E use with caution
- F too unreliable to be published

The following staff members have contributed to this publication:

Eric Brazeau, Suzanne Danis, Serge DesRoches, Sheba Mirza, Willa Peters-Langlois, Rosaria Spataro and Leah St.Michael.

This publication was prepared under the direction of:

- **Marco Morin**, Chief,
Crops Section
- **Lorie Shinder**, Head,
Horticulture Unit

Table of contents

Highlights	5
Charts	
1. Fruits and Vegetables Sales in Canada (2004-2009)	6
Related products	7
Statistical tables	
1 Estimate of commercial production, area and farm value of fruits in Canada, by province	10
1-1 2008	10
1-2 2009	13
2 Area, production and farm value of commercial vegetables in Canada, by province, 2008	16
2-1 Newfoundland and Labrador	16
2-2 Prince Edward Island	17
2-3 Nova Scotia	18
2-4 New Brunswick	19
2-5 Quebec	20
2-6 Ontario	21
2-7 Manitoba	22
2-8 Saskatchewan	23
2-9 Alberta	24
2-10 British Columbia	25
2-11 Canada	26
3 Area, production and farm value of commercial vegetables in Canada, by province, 2009	27
3-1 Newfoundland and Labrador	27
3-2 Prince Edward Island	28
3-3 Nova Scotia	29
3-4 New Brunswick	30
3-5 Quebec	31
3-6 Ontario	32
3-7 Manitoba	33
3-8 Saskatchewan	34

Table of contents – continued

3-9	Alberta	35
3-10	British Columbia	36
3-11	Canada	37

Data quality, concepts and methodology

Methodology and data quality	38
------------------------------	----

Highlights

Total sales of fruits and vegetables by Canadian farmers amounted to \$1.5 billion in 2009, up by 3.6% or \$50.5 million over 2008. Vegetable crops accounted for 53.0% of the total fruit and vegetable sales.

Vegetable farmers earned \$773 million, up 17.8% or \$117 million from 2008. This increase was driven by sales gains in the fresh market, especially carrots (+26.0%), lettuce (+51.6%) and corn (+23.6%).

As is the case historically, about three-quarters of the value of vegetables came from fresh market sales in 2009, while the rest came from sales to processors.

Farmers planted 555,470 acres in fruits and vegetables, up 1.1% from 2008. Production of fruits and vegetables increased 4.6% with most of the gain accounted for by lettuce (+34.9%), carrots (+32.5%) and onions (+30.6%).

Sweet corn, the largest vegetable crop, accounted for more than 20% of the 258,492 acres of vegetables planted in 2009. Green peas were the second largest, with 12.2% of acreage.

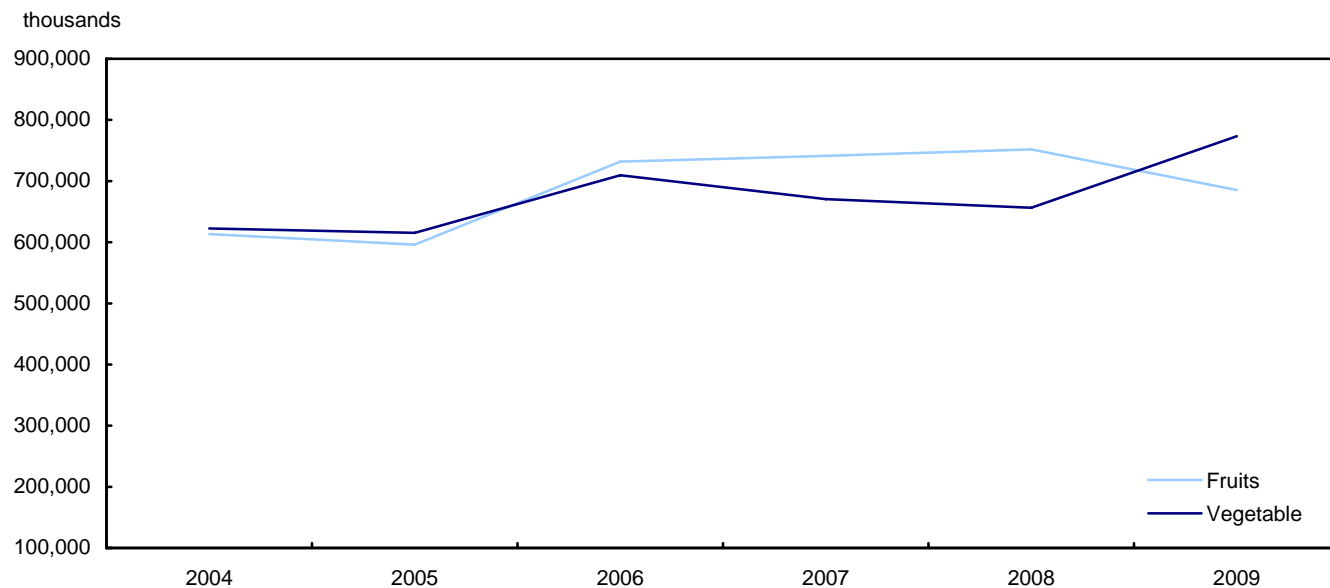
Farmers had 296,978 acres in fruit in 2009, up 2.4% from 2008. Blueberries accounted for 55.1% of this acreage, followed by apples at 16.8% and vinifera grapes at 9.7%. While, farmers planted more vinifera grapes and sour cherries in 2009, the area planted for peaches and pears declined, partly because of replanting and transition programs in some provinces.

Fruit sales totalled \$685 million for farmers, down 8.8% or \$66 million from 2008. The main drivers for this drop were in blueberries, where sales declined by \$52.2 million, and cranberries, which fell by \$22.0 million. In both cases, prices dropped by about one third and were the contributing factors for the decline in sale values.

Fruit production in 2009 was virtually unchanged, although production of cranberries rose by 15,444 tons or 19.3%, while blueberries rose by 8,380 tons or 7.9%.

Farmers in two provinces – Ontario and Quebec – accounted for more than 80% of sales of vegetables. The vast majority of fruit sales came from three provinces: British Columbia (36.2%), Ontario (32.2%) and Quebec (22.2%).

Chart 1
Fruits and Vegetables Sales in Canada (2004-2009)



Related products

Selected publications from Statistics Canada

21-011-X	Farm Cash Receipts - Agriculture Economic Statistics
22-008-X	Canadian Potato Production
22-202-X	Greenhouse, Sod and Nursery Industries
23-221-X	Production and Value of Honey and Maple Products

Selected CANSIM tables from Statistics Canada

001-0006	Production and value of greenhouse vegetables, annual
001-0007	Production and value of honey, annual
001-0008	Production and farm value of maple products, annual
001-0009	Area, production and farm value of fresh and processed fruits, by province, annual
001-0012	Area, production and sales of mushrooms, annual
001-0013	Area, production and farm value of vegetables, annual
001-0014	Area, production and farm value of potatoes, annual
002-0001	Farm cash receipts, annual
002-0002	Farm cash receipts, quarterly

Selected surveys from Statistics Canada

3407	Fruit and Vegetable Survey
3411	Mushroom Growers' Survey
3414	Maple Products
3416	Annual Greenhouse, Sod and Nursery Survey
3419	Honey Production, Value and Colonies

3437	Farm Cash Receipts
3446	Potato Area and Yield Survey
3473	Net Farm Income

Statistical tables

Table 1-1
Estimate of commercial production, area and farm value of fruits in Canada, by province — 2008

	Cultivated area, total ¹		Bearing area		Marketed production		Farm value
	acres	hectares	acres	hectares	tons	metric tonnes	thousand of dollars
Newfoundland and Labrador							
Apples	5	2	5	2	0	0	0
Apricots	0	0	0	0	0	0	0
Blueberries ²	2,000	809	800	324	200	181	390
Cherries, sour	0	0	0	0	0	0	0
Cherries, sweet	0	0	0	0	0	0	0
Cranberries	x	x	x	x	x	x	x
Grapes ³
Nectarines
Peaches
Pears
Plums and prunes	x	x	x	x	x	x	x
Raspberries	25	10	20	8	15	14	125
Strawberries	135	55	110	45	153	138	650
Prince Edward Island							
Apples	120	49	95	38	400	363	300
Apricots	0	0	0	0	0	0	0
Blueberries ²	10,000	4,047	5,000	2,023	4,800	4,354	6,200
Cherries, sour	0	0	0	0	0	0	0
Cherries, sweet	0	0	0	0	0	0	0
Cranberries	x	x	x	x	x	x	x
Grapes ³	15	6	10	4	5	5	10 ^E
Nectarines
Peaches
Pears	x	x	x	x	x	x	x
Plums and prunes	5	2	5	2	3	2	5
Raspberries	25	10	20	8	13	11	75
Strawberries	225	91	225	91	600	544	1,600
Nova Scotia							
Apples	6,000	2,428	5,200	2,104	42,750	38,782	12,300
Apricots	0	0	0	0	0	0	0
Blueberries ²	39,890	16,143	20,295	8,213	20,750	18,824	26,500
Cherries, sour	F	F	F	F	F	F	F
Cherries, sweet	15	6	15	6	F	F	50 ^E
Cranberries	250	101	210	85	1,050	953	2,600
Grapes ³	400	162	350	142	900	816	950
Nectarines
Peaches	55	22	45	18	103	93	130
Pears	200	81	180	73	525	476	270
Plums and prunes	45	18	40	16	118	107	125
Raspberries	110	45	90	36	55	50	400
Strawberries	700	283	380	154	1,200	1,089	3,800
New Brunswick							
Apples	700	283	560	227	4,250	3,856	2,020
Apricots	0	0	0	0	0	0	0
Blueberries ²	27,110	10,971	13,520	5,471	16,705	15,155	21,125
Cherries, sour	0	0	0	0	0	0	0
Cherries, sweet	0	0	0	0	0	0	0
Cranberries	550	223	490	198	4,158	3,772	4,200
Grapes ³	50 ^r	20 ^r	30 ^r	12 ^r	10 ^r	9 ^r	34 ^r
Nectarines
Peaches
Pears	x	x	x	x	x	x	x
Plums and prunes	x	x	x	x	x	x	x
Raspberries	140	57	120	49	65	59	290
Strawberries	400	162	340	138	750	680	2,200

See notes at the end of the table.

Table 1-1 – continued

Estimate of commercial production, area and farm value of fruits in Canada, by province — 2008

	Cultivated area, total ¹		Bearing area		Marketed production		Farm value
	acres	hectares	acres	hectares	tons	metric tonnes	thousand of dollars
Quebec							
Apples	15,518 r	6,280 r	12,400	5,018	119,091 r	108,037 r	46,488 r
Apricots	0	0	0	0	0	0	0
Blueberries ²	63,420 r	25,665 r	32,200 r	13,031 r	27,914 r	25,323 r	38,690 r
Cherries, sour	0	0	0	0	0	0	0
Cherries, sweet	0	0	0	0	0	0	0
Cranberries	x	x	x	x	x	x	x
Grapes ³	1,510 r	611 r	910 r	368 r	1,453	1,318	2,225 r
Nectarines
Peaches	0	0	0	0	0	0	0
Pears	60	24	40	16	100	91	130
Plums and prunes	45	18	30	12	40	36	65
Raspberries	1,700	688	1,150	465	1,040	943	4,390
Strawberries	4,300	1,740	3,260	1,319	10,290	9,335	26,230
Ontario							
Apples	18,000	7,284	16,500	6,677	186,750 r	169,417 r	75,400 r
Apricots	110	45	70	28	163	147	190
Blueberries ²	495	200	470	190	920	835	3,920
Cherries, sour	2,300	931	1,930	781	6,155	5,584	3,380
Cherries, sweet	675	273	660	267	1,080	980	3,090
Cranberries	F	F	x	x	x	x	x
Grapes ³	17,500	7,082	16,350	6,617	70,065	63,562	83,090
Nectarines	610	247	510	206	1,900	1,724	2,900
Peaches	6,400	2,590	6,000	2,428	24,006	21,778	30,433
Pears	2,000	809	1,900	769	4,500	4,082	4,800
Plums and prunes	900	364	800	324	1,450	1,315	2,300
Raspberries	800	324	750	304	600	544	3,400
Strawberries	3,100	1,255	3,050	1,234	6,900	6,260	19,420
Manitoba							
Apples	10	4	10 ^E	4 ^E	F	F	20 ^E
Apricots	0	0	0	0	0	0	0
Blueberries ²	0	0	0	0	0	0	0
Cherries, sour	0	0	0	0	0	0	0
Cherries, sweet	0	0	0	0	0	0	0
Cranberries	0	0	0	0	0	0	0
Grapes ³
Nectarines
Peaches
Pears
Plums and prunes	0	0	0	0	0	0	0
Raspberries	120	49	75	30	33	29	140
Strawberries	300	121	225	91	495	449	1,150
Saskatchewan							
Apples	40	16	20	8	5	5	5
Apricots	0	0	0	0	0	0	0
Blueberries ²	0	0	0	0	0	0	0
Cherries, sour	95	38	45	18	F	F	F
Cherries, sweet	0	0	0	0	0	0	0
Cranberries	0	0	0	0	0	0	0
Grapes ³
Nectarines
Peaches
Pears
Plums and prunes	0	0	0	0	0	0	0
Raspberries	60	24	55	22	15	14	60
Strawberries	150	61	100	40	90 ^E	82 ^E	290

See notes at the end of the table.

Table 1-1 – continued

Estimate of commercial production, area and farm value of fruits in Canada, by province — 2008

	Cultivated area, total ¹		Bearing area		Marketed production		Farm value
	acres	hectares	acres	hectares	tons	metric tonnes	thousand of dollars
Alberta							
Apples	35 ^E	14 ^E	15 ^E	6 ^E	F	F	F
Apricots	0	0	0	0	0	0	0
Blueberries ²	0	0	0	0	0	0	0
Cherries, sour	65	26	40	16	F	F	F
Cherries, sweet	0	0	0	0	0	0	0
Cranberries	0	0	0	0	0	0	0
Grapes ³
Nectarines
Peaches
Pears
Plums and prunes	0	0	0	0	0	0	0
Raspberries	200	81	100	40	55	50	200
Strawberries	350	142	280	113	290	263	1,100
British Columbia							
Apples	9,500	3,845	9,200	3,723	117,250 ^r	106,367 ^r	35,175 ^r
Apricots	450	182	405	164	1,033	937	1,435
Blueberries ²	18,000	7,284	12,000	4,856	34,000	30,844	65,875
Cherries, sour	F	F	F	F	F	F	F
Cherries, sweet	3,200	1,295	2,575	1,042	6,575	5,965	22,200
Cranberries	6,100	2,469	5,920	2,396	34,663	31,445	42,350
Grapes ³	6,640	2,687	6,010	2,432	16,813	15,252	33,150
Nectarines	200	81	200	81	930	844	1,040
Peaches	1,100	445	1,080	437	4,850	4,400	4,575
Pears	600	243	575	233	5,400	4,899	3,165
Plums and prunes	350	142	320	129	1,105	1,002	960
Raspberries	3,560	1,441	3,560	1,441	11,145	10,111	25,650
Strawberries	760	308	660	267	1,683	1,526	4,810
Canada							
Apples	49,928 ^r	20,205 ^r	44,005	17,808	470,531 ^r	426,858 ^r	171,723 ^r
Apricots	560	227	475	192	1,195	1,084	1,625
Blueberries ²	160,915 ^r	65,120 ^r	84,285 ^r	34,109 ^r	105,289 ^r	95,516 ^r	162,700 ^r
Cherries, sour	2,585	1,046	2,095	848	6,460	5,860	3,685
Cherries, sweet	3,890	1,574	3,250	1,315	7,680	6,967	25,340
Cranberries	12,420 ^r	5,026 ^r	10,935 ^r	4,425 ^r	80,125 ^r	72,688 ^r	116,010 ^r
Grapes ³	26,115 ^r	10,568 ^r	23,660 ^r	9,575 ^r	89,245 ^r	80,962 ^r	119,459 ^r
Nectarines	810	328	710	287	2,830	2,567	3,940
Peaches	7,555	3,057	7,125	2,883	28,959	26,271	35,138
Pears	2,870	1,161	2,705	1,095	10,543	9,564	8,405
Plums and prunes	1,355	548	1,205	488	2,723	2,470	3,470
Raspberries	6,740	2,728	5,940	2,404	13,035	11,825	34,730
Strawberries	10,420	4,217	8,630	3,492	22,450	20,366	61,250

1. Cultivated area includes bearing and non-bearing area.

2. Includes low bush and high bush blueberries.

3. Includes table and wine grapes.

Table 1-2
Estimate of commercial production, area and farm value of fruits in Canada, by province — 2009

	Cultivated area, total ¹		Bearing area		Marketed production		Farm value
	acres	hectares	acres	hectares	tons	metric tonnes	thousand of dollars
Newfoundland and Labrador							
Apples	x	x	x	x	x	x	x
Apricots	0	0	0	0	0	0	0
Blueberries ²	F	F	F	F	F	F	F
Cherries, sour	0	0	0	0	0	0	0
Cherries, sweet	0	0	0	0	0	0	0
Cranberries	x	x	x	x	x	x	x
Grapes ³
Nectarines
Peaches
Pears
Plums and prunes	x	x	x	x	x	x	x
Raspberries	25 ^E	10 ^E	20 ^E	8 ^E	22 ^E	20 ^E	F
Strawberries	125	51	85	34	101 ^E	92 ^E	F
Prince Edward Island							
Apples	x	x	x	x	x	x	x
Apricots	0	0	0	0	0	0	0
Blueberries ²	13,005	5,263	5,505	2,228	5,214	4,730	3,786
Cherries, sour	0	0	0	0	0	0	0
Cherries, sweet	0	0	0	0	0	0	0
Cranberries	x	x	x	x	x	x	x
Grapes ³	F	F	F	F	F	F	F
Nectarines
Peaches
Pears	x	x	x	x	x	x	x
Plums and prunes	F	F	F	F	F	F	F
Raspberries	25	10	20	8	7	6	39 ^E
Strawberries	200	81	140	57	370	336	1,063
Nova Scotia							
Apples	5,500	2,226	5,000	2,023	44,500	40,370	14,500
Apricots	0	0	0	0	0	0	0
Blueberries ²	39,900	16,147	18,305	7,408	16,503	14,971	13,142
Cherries, sour	F	F	F	F	F	F	F
Cherries, sweet	15	6	15	6	25 ^E	23 ^E	50 ^E
Cranberries	300	121	210	85	1,288 ^E	1,168 ^E	2,535 ^E
Grapes ³	410	166	360	146	675	612	925
Nectarines
Peaches	50	20	40	16	85	77	110
Pears	135	55	115	47	415	376	250
Plums and prunes	45	18	35	14	80	73	100
Raspberries	90	36	65	26	63	57	475 ^E
Strawberries	650	263	350	142	1,140	1,034	3,600
New Brunswick							
Apples	630	255	585	237	4,408	3,998	1,985
Apricots	0	0	0	0	0	0	0
Blueberries ²	22,460	9,089	10,005	4,049	12,087	10,965	8,703
Cherries, sour	0	0	0	0	0	0	0
Cherries, sweet	0	0	0	0	0	0	0
Cranberries	545	221	520	210	4,155	3,769	3,655
Grapes ³	50 ^E	20 ^E	30 ^E	12 ^E	F	F	F
Nectarines
Peaches
Pears	x	x	x	x	x	x	x
Plums and prunes	x	x	x	x	x	x	x
Raspberries	95	38	70	28	45	41	191
Strawberries	375	152	300	121	525	476	1,650

See notes at the end of the table.

Table 1-2 – continued

Estimate of commercial production, area and farm value of fruits in Canada, by province — 2009

	Cultivated area, total ¹		Bearing area		Marketed production		Farm value
	acres	hectares	acres	hectares	tons	metric tonnes	thousand of dollars
Quebec							
Apples	15,400	6,232	10,610	4,294	116,088	105,313	44,782
Apricots	0	0	0	0	0	0	0
Blueberries ²	67,154	27,176	35,441	14,342	34,596	31,385	27,616
Cherries, sour	0	0	0	0	0	0	0
Cherries, sweet	0	0	0	0	0	0	0
Cranberries	6,215	2,515	4,332	1,753	48,171	43,700	39,340
Grapes ³	1,550	627	1,000	405	1,300	1,179	1,900
Nectarines
Peaches	0	0	0	0	0	0	0
Pears	60	24	40	16	135	122	139
Plums and prunes	30	12	25	10	20	18	38
Raspberries	1,300	526	1,155	467	1,320	1,197	5,745
Strawberries	4,735	1,916	3,340	1,352	9,819	8,908	31,512
Ontario							
Apples	18,635	7,541	16,920	6,847	187,109	169,742	78,313
Apricots	50	20	50	20	174 ^E	157 ^E	243
Blueberries ²	575	233	495	200	988	896	4,582
Cherries, sour	2,870	1,161	2,285	925	7,980	7,239	4,104
Cherries, sweet	550	223	505	204	842	764	2,497
Cranberries	F	F	F	F	F	F	F
Grapes ³	19,635	7,946	17,740	7,179	57,004	51,713	68,471
Nectarines	F	F	F	F	F	F	F
Peaches	5,745	2,325	4,665	1,888	21,298	19,321	23,897
Pears	1,385	560	1,230	498	3,877	3,517	4,362
Plums and prunes	805	326	660	267	1,831	1,661	3,178
Raspberries	810	328	690	279	698	633	4,229
Strawberries	3,295	1,333	2,465	998	6,846	6,210	22,563
Manitoba							
Apples	F	F	F	F	F	F	F
Apricots	0	0	0	0	0	0	0
Blueberries ²	0	0	0	0	0	0	0
Cherries, sour	0	0	0	0	0	0	0
Cherries, sweet	0	0	0	0	0	0	0
Cranberries	0	0	0	0	0	0	0
Grapes ³
Nectarines
Peaches
Pears
Plums and prunes	0	0	0	0	0	0	0
Raspberries	95	38	65	26	22	20	87
Strawberries	345	140	245	99	548	497	1,604
Saskatchewan							
Apples	40	16	25	10	F	F	F
Apricots	0	0	0	0	0	0	0
Blueberries ²	0	0	0	0	0	0	0
Cherries, sour	110	45	70	28	35 ^E	32 ^E	134
Cherries, sweet	0	0	0	0	0	0	0
Cranberries	0	0	0	0	0	0	0
Grapes ³
Nectarines
Peaches
Pears
Plums and prunes	0	0	0	0	0	0	0
Raspberries	75	30	55	22	22	20	97
Strawberries	140 ^E	57 ^E	120 ^E	49 ^E	F	F	F

See notes at the end of the table.

Table 1-2 – continued

Estimate of commercial production, area and farm value of fruits in Canada, by province — 2009

	Cultivated area, total ¹		Bearing area		Marketed production		Farm value
	acres	hectares	acres	hectares	tons	metric tonnes	thousand of dollars
Alberta							
Apples	45 ^E	18 ^E	35 ^E	14 ^E	F	F	F
Apricots	0	0	0	0	0	0	0
Blueberries ²	0	0	0	0	0	0	0
Cherries, sour	55	22	25	10	F	F	F
Cherries, sweet	0	0	0	0	0	0	0
Cranberries	0	0	0	0	0	0	0
Grapes ³
Nectarines
Peaches
Pears
Plums and prunes	0	0	0	0	0	0	0
Raspberries	180	73	124	50	54 ^E	49 ^E	244 ^E
Strawberries	300	121	230	93	208	189	1,108
British Columbia							
Apples	9,375	3,794	9,065	3,668	102,800	93,259	36,456
Apricots	200	81	195	79	833	755	973
Blueberries ²	19,000	7,689	13,880	5,617	44,175	40,075	52,568
Cherries, sour	75 ^E	30 ^E	70 ^E	28 ^E	F	F	F
Cherries, sweet	3,365	1,362	2,985	1,208	15,193	13,782	36,497
Cranberries	6,129	2,480	5,929	2,399	41,250	37,421	47,485
Grapes ³	9,010	3,646	8,170	3,306	17,929	16,264	44,134
Nectarines	225	91	195	79	744	674	639
Peaches	1,030	417	925	374	4,128	3,744	3,372
Pears	580	235	555	225	4,819	4,372	1,543
Plums and prunes	285	115	265	107	940	853	477
Raspberries	3,855	1,560	3,605	1,459	11,646	10,565	18,661
Strawberries	790	320	555	225	1,492	1,353	4,139
Canada							
Apples	49,760	20,137	42,370	17,147	455,361	413,096	176,406
Apricots	250	101	245	99	1,006	913	1,216
Blueberries ²	163,594	66,204	84,381	34,148	113,616	103,070	110,465
Cherries, sour	3,115	1,261	2,455	994	8,287	7,518	4,484
Cherries, sweet	3,930	1,590	3,505	1,418	16,060	14,569	39,044
Cranberries	13,494	5,461	11,248	4,552	95,655	86,776	94,094
Grapes ³	30,670	12,412	27,310	11,052	76,935	69,794	115,488
Nectarines	F	F	F	F	2,985	2,707	F
Peaches	6,825	2,762	5,630	2,278	25,511	23,143	27,379
Pears	2,170	878	1,950	789	9,259	8,400	6,319
Plums and prunes	1,180	478	1,000	405	2,876	2,609	3,804
Raspberries	6,550	2,651	5,869	2,375	13,897	12,607	29,873
Strawberries	10,955	4,433	7,830	3,169	21,155	19,191	68,038

1. Cultivated area includes bearing and non-bearing area.

2. Includes low bush and high bush blueberries.

3. Includes table and wine grapes.

Table 2-1
Area, production and farm value of commercial vegetables in Canada, by province, 2008 — Newfoundland and Labrador

	Area planted		Area harvested		Total production		Marketed production		Farm value
	acres	hectares	acres	hectares	tons	metric tonnes	tons	metric tonnes	thousands of dollars
Newfoundland and Labrador									
Asparagus	0	0	0	0	0	0	0	0	0
Beans	5	2	5	2	3	2	3	2	5
Beets	40	16	35	14	175	159	175	159	150
Broccoli	20	8	15	6	35	32	35	32	90
Brussels sprouts	0	0	0	0	0	0	0	0	0
Cabbage ¹	120	49	110	45	1,200	1,089	1,150	1,043	700
Carrots ²	175	71	160	65	1,200	1,089	1,200	1,089	910
Cauliflower	10	4	10	4	8	7	8	7	20
Celery	0	0	0	0	0	0	0	0	0
Corn	30 ^E	12 ^E	30 ^E	12 ^E	30 ^E	27 ^E	30 ^E	27 ^E	30 ^E
Cucumbers	0	0	0	0	0	0	0	0	0
Garlic
Leeks	0	0	0	0	0	0	0	0	0
Lettuce ³	10	4	10	4	23	20	23	20	55
Dry onions	x	x	x	x	x	x	x	x	x
Other melons
Parsley
Parsnips	15	6	10	4	28	25	25	23	60
Peas	0	0	0	0	0	0	0	0	0
Peppers	0	0	0	0	0	0	0	0	0
Pumpkins	15	6	15	6	75	68	75	68	40
Radishes	0	0	0	0	0	0	0	0	0
Rhubarb
Rutabagas and turnips	330	134	160	65	1,500	1,361	1,500	1,361	1,100
Shallots	0	0	0	0	0	0	0	0	0
Spinach	0	0	0	0	0	0	0	0	0
Squash and zucchinis	F	F	F	F	3	2	3	2	F
Tomatoes	0	0	0	0	0	0	0	0	0
Watermelon
Greenhouse vegetables									
Tomatoes	0	0	0	0	F	F	F	F	F
'000 dozens									
Cucumbers ⁴	x	x	x	x	x		x		x

1. Includes Chinese cabbage and regular cabbage.

2. Includes baby carrots and regular carrots.

3. Includes leaf and head lettuce.

4. 1 metric tonne = 170 dozen greenhouse cucumbers and 1 imperial ton = 154 dozen cucumbers.

Table 2-2
Area, production and farm value of commercial vegetables in Canada, by province, 2008 — Prince Edward Island

	Area planted		Area harvested		Total production		Marketed production		Farm value
	acres	hectares	acres	hectares	tons	metric tonnes	tons	metric tonnes	thousands of dollars
Prince Edward Island									
Asparagus	x	x	x	x	x	x	x	x	x
Beans	20	8	20	8	30	27	30	27	120
Beets	40	16	40	16	80 ^E	73 ^E	80 ^E	73 ^E	170 ^E
Broccoli	50	20	40	16	123	111	123	111	120
Brussels sprouts	x	x	x	x	x	x	x	x	x
Cabbage ¹	200	81	180	73	2,100	1,905	2,100	1,905	770
Carrots ²	795	322	795	322	11,000	9,979	9,400	8,528	1,860
Cauliflower	225 ^E	91 ^E	225 ^E	91 ^E	F	F	F	F	670 ^E
Celery	0	0	0	0	0	0	0	0	0
Corn	60	24	50	20	205	186	205	186	230
Cucumbers	15	6	15	6	70	64	70	64	70
Garlic
Leeks	0	0	0	0	0	0	0	0	0
Lettuce ³	35	14	35	14	173	156	173	156	160
Dry onions	x	x	x	x	x	x	x	x	x
Other melons
Parsley
Parsnips	x	x	x	x	x	x	x	x	x
Peas	0	0	0	0	0	0	0	0	0
Peppers	0	0	0	0	0	0	0	0	0
Pumpkins	70	28	60	24	468	424	468	424	150 ^E
Radishes	0	0	0	0	0	0	0	0	0
Rhubarb
Rutabagas and turnips	500	202	400	162	4,700	4,264	4,650	4,218	1,600
Shallots	0	0	0	0	0	0	0	0	0
Spinach	0	0	0	0	0	0	0	0	0
Squash and zucchinis	10	4	10	4	15	14	15	14	15
Tomatoes	5	2	5	2	10	9	10	9	30
Watermelon
Greenhouse vegetables									
Tomatoes	1	0	1	0	107	97	107	97	224
'000 dozens									
Cucumbers ⁴	x	x	x	x	x		x		x

1. Includes Chinese cabbage and regular cabbage.

2. Includes baby carrots and regular carrots.

3. Includes leaf and head lettuce.

4. 1 metric tonne = 170 dozen greenhouse cucumbers and 1 imperial ton = 154 dozen cucumbers.

**Table 2-3
Area, production and farm value of commercial vegetables in Canada, by province, 2008 — Nova Scotia**

	Area planted		Area harvested		Total production		Marketed production		Farm value
	acres	hectares	acres	hectares	tons	metric tonnes	tons	metric tonnes	thousands of dollars
Nova Scotia									
Asparagus	10	4	10	4	5	5	5	5	40
Beans	150	61	130	53	215	195	215	195	550
Beets	40	16	40	16	150	136	150	136	285
Broccoli	F	F	F	F	F	F	F	F	F
Brussels sprouts	x	x	x	x	x	x	x	x	x
Cabbage ¹	480	194	480	194	8,360	7,584	8,360	7,584	1,560
Carrots ²	2,190	886	2,190	886	40,600	36,832	40,600	36,832	5,480
Cauliflower	F	F	F	F	F	F	F	F	F
Celery	0	0	0	0	0	0	0	0	0
Corn	400	162	400	162	1,200 ^E	1,089 ^E	1,200 ^E	1,089 ^E	650
Cucumbers	35	14	30	12	143	129	140	127	130
Garlic
Leeks	F	F	F	F	F	F	F	F	F
Lettuce ³	125	51	50	20	88	79	70	64	250
Dry onions	615	249	610	247	10,000	9,072	7,150	6,486	1,600
Other melons
Parsley
Parsnips	x	x	x	x	x	x	x	x	x
Peas	55	22	55	22	65	59	65	59	200
Peppers	5 ^E	2 ^E	5 ^E	2 ^E	F	F	F	F	F
Pumpkins	210	85	200	81	900	816	875	794	240
Radishes	0	0	0	0	0	0	0	0	0
Rhubarb
Rutabagas and turnips	210	85	200	81	1,850	1,678	1,400	1,270	620
Shallots	F	F	F	F	F	F	38	34	65
Spinach	F	F	F	F	F	F	F	F	F
Squash and zucchinis	120	49	115	47	340	308	325	295	200
Tomatoes	35	14	25	10	135	122	135	122	180
Watermelon
Greenhouse vegetables									
Tomatoes	F	F	F	F	F	F	F	F	F
					'000 dozens				
Cucumbers ⁴	F	F	F	F	F	F	F	F	F

1. Includes Chinese cabbage and regular cabbage.

2. Includes baby carrots and regular carrots.

3. Includes leaf and head lettuce.

4. 1 metric tonne = 170 dozen greenhouse cucumbers and 1 imperial ton = 154 dozen cucumbers.

Table 2-4
Area, production and farm value of commercial vegetables in Canada, by province, 2008 — New Brunswick

	Area planted		Area harvested		Total production		Marketed production		Farm value
	acres	hectares	acres	hectares	tons	metric tonnes	tons	metric tonnes	thousands of dollars
New Brunswick									
Asparagus	X	X	X	X	X	X	X	X	X
Beans	185 ^E	75 ^E	170 ^E	69 ^E	180 ^E	163 ^E	180 ^E	163 ^E	610 ^E
Beets	30	12	30	12	40	36	40	36	80
Broccoli	65	26	65	26	245	222	245	222	270 ^E
Brussels sprouts	0	0	0	0	0	0	0	0	0
Cabbage ¹	120	49	120	49	678	615	678	615	460 ^E
Carrots ²	120	49	120	49	2,225	2,018	2,225	2,018	325
Cauliflower	15	6	15	6	100	91	100	91	80 ^E
Celery	0	0	0	0	0	0	0	0	0
Corn	400	162	350	142	755	685	755	685	770
Cucumbers	50	20	45	18	300	272	300	272	210
Garlic
Leeks	0	0	0	0	0	0	0	0	0
Lettuce ³	15	6	15	6	18	16	18	16	75
Dry onions	10	4	10	4	15	14	15	14	20
Other melons
Parsley
Parsnips	0	0	0	0	0	0	0	0	0
Peas	35	14	20	8	20	18	20	18	80
Peppers	10	4	10	4	5	5	5	5	10
Pumpkins	120	49	110	45	535	485	535	485	180
Radishes	0	0	0	0	0	0	0	0	0
Rhubarb
Rutabagas and turnips	90	36	60	24	285	259	285	259	160
Shallots	5	2	5	2	8	7	8	7	15
Spinach	5	2	5	2	3	2	3	2	10
Squash and zucchinis	170	69	140	57	630	572	630	572	330
Tomatoes	30	12	30	12	100	91	100	91	160
Watermelon
Greenhouse vegetables									
Tomatoes	F	F	F	F	F	F	F	F	F
					'000 dozens				
Cucumbers ⁴	F	F	F	F	F		F		F

1. Includes Chinese cabbage and regular cabbage.

2. Includes baby carrots and regular carrots.

3. Includes leaf and head lettuce.

4. 1 metric tonne = 170 dozen greenhouse cucumbers and 1 imperial ton = 154 dozen cucumbers.

**Table 2-5
Area, production and farm value of commercial vegetables in Canada, by province, 2008 — Quebec**

	Area planted		Area harvested		Total production		Marketed production		Farm value
	acres	hectares	acres	hectares	tons	metric tonnes	tons	metric tonnes	thousands of dollars
Quebec									
Asparagus	600	243	500	202	750	680	750	680	2,600
Beans	10,000	4,047	9,155	3,705	26,305	23,863	26,305	23,863	8,895
Beets	1,200	486	1,120	453	11,990	10,877	9,828	8,915	2,428
Broccoli	3,600	1,457	3,515	1,422	21,870	19,840	21,720	19,704	19,220
Brussels sprouts	190	77	160	65	600	544	600	544	1,000
Cabbage ¹	4,320	1,748	4,020	1,627	78,900	71,577	64,728	58,720	16,763
Carrots ²	7,225	2,924	7,020	2,841	93,038	84,402	84,488	76,646	28,700
Cauliflower	1,800	728	1,655	670	15,345	13,921	15,345	13,921	10,295
Celery	1,270	514	1,120	453	20,225	18,348	20,225	18,348	8,632
Corn	18,880	7,640	17,620	7,131	77,945	70,711	75,475	68,470	18,000
Cucumbers	1,830	741	1,830	741	19,285	17,495	18,393	16,685	6,925
Garlic	30	12	30	12	F	F	F	F	F
Leeks	500 ^r	202 ^r	500 ^r	202 ^r	2,970	2,694	2,970	2,694	3,000
Lettuce ³	6,790	2,748	5,540	2,242	65,380	59,312	65,380	59,312	37,530
Dry onions	5,200	2,104	4,060	1,643	64,695	58,690	55,800	50,621	19,075
Other melons	475	192	450	182	4,945	4,486	4,945	4,486	2,620
Parsley	115	47	105	42	535	485	535	485	680
Parsnips	300	121	295	119	1,765	1,601	1,325	1,202	920
Peas	10,500	4,249	10,165	4,114	22,425	20,344	22,425	20,344	6,040
Peppers	1,325	536	1,235	500	16,660 ^r	15,114 ^r	16,660 ^r	15,114 ^r	10,905
Pumpkins	1,480	599	1,320	534	13,800	12,519	13,710	12,438	2,370
Radishes	1,750	708	1,680	680	7,358	6,675	7,358	6,675	7,490
Rhubarb	40	16	40	16	200	181	200	181	400 ^E
Rutabagas and turnips	1,000	405	980	397	12,600	11,431	8,650	7,847	3,140
Shallots	1,060	429	910	368	11,483	10,417	11,295	10,247	12,890
Spinach	F	F	F	F	1,100	998	1,100	998	1,300
Squash and zucchinis	1,470	595	1,230	498	7,045	6,391	6,810	6,178	5,040
Tomatoes	1,100	445	1,050	425	5,650	5,126	5,650	5,126	4,400
Watermelon	120	49	110	45	1,370	1,243	1,370	1,243	530
Greenhouse vegetables									
Tomatoes	133	54	133	54	21,706 ^E	19,692	21,706 ^E	19,692	51,854 ^E
					'000 dozens				
Cucumbers ⁴	17	7	17	7	226		226		1,902

1. Includes Chinese cabbage and regular cabbage.

2. Includes baby carrots and regular carrots.

3. Includes leaf and head lettuce.

4. 1 metric tonne = 170 dozen greenhouse cucumbers and 1 imperial ton = 154 dozen cucumbers.

Table 2-6
Area, production and farm value of commercial vegetables in Canada, by province, 2008 — Ontario

	Area planted		Area harvested		Total production		Marketed production		Farm value
	acres	hectares	acres	hectares	tons	metric tonnes	tons	metric tonnes	thousands of dollars
Ontario									
Asparagus	3,400	1,376	3,200	1,295	4,150	3,765	4,150	3,765	10,400
Beans	8,000	3,237	8,000	3,237	21,500	19,504	21,500	19,504	9,800
Beets	1,000	405	1,000	405	10,500	9,525	5,960	5,407	1,640
Broccoli	3,785	1,532	3,545	1,435	8,000	7,257	8,000	7,257	8,800
Brussels sprouts	295 ^E	119 ^E	295 ^E	119 ^E	1,225 ^E	1,111 ^E	1,225 ^E	1,111 ^E	F
Cabbage ¹	4,095	1,657	3,785	1,532	52,600	47,718	51,850	47,038	14,750
Carrots ²	8,300	3,359	8,250	3,339	131,500	119,295	123,450	111,992	18,070
Cauliflower	1,490	603	1,310	530	13,115	11,898	13,115	11,898	6,670
Celery	520	210	465	188	14,500	13,154	14,300	12,973	4,375
Corn	26,000	10,522	26,000	10,522	130,000	117,934	130,000	117,934	28,000
Cucumbers	2,370	959	2,290	927	23,775	21,568	21,438	19,448	9,310
Garlic	320	129	290	117	490	445	458	415	1,670
Leeks	185	75	165	67	1,343	1,218	1,300	1,179	1,730
Lettuce ³	1,540	623	1,540	623	6,750	6,123	6,750	6,123	4,150
Dry onions	5,890	2,384	5,490	2,222	111,000	100,698	92,500	83,915	21,300
Other melons	680	275	680	275	7,568	6,865	7,568	6,865	3,340
Parsley	145	59	135	55	705	640	705	640	1,110
Parsnips	140	57	100	40	1,950	1,769	1,500	1,361	600
Peas	19,460	7,875	19,460	7,875	44,065	39,975	44,065	39,975	12,345
Peppers	3,115	1,261	2,880	1,165	28,130	25,519	22,845	20,725	12,710
Pumpkins	4,375	1,770	4,065	1,645	28,430	25,791	28,430	25,791	6,700
Radishes	390	158	315	127	2,098	1,903	2,098	1,903	1,355
Rhubarb	90	36	65	26	250	227	250	227	150
Rutabagas and turnips	1,780	720	1,780	720	19,155	17,377	19,155	17,377	5,700
Shallots	550	223	520	210	2,665	2,418	2,665	2,418	3,500
Spinach	1,160	469	1,160	469	2,685	2,436	2,685	2,436	3,100
Squash and zucchinis	2,760	1,117	2,625	1,062	12,445	11,290	12,445	11,290	7,690
Tomatoes	17,210	6,965	17,210	6,965	613,500	556,558	613,500	556,558	69,730
Watermelon	725	293	710	287	9,500	8,618	9,500	8,618	2,800
Greenhouse vegetables									
Tomatoes	712	288	712	288	140,452	127,416	140,452	127,416	204,579
					'000 dozens				
Cucumbers ⁴	507	205	507	205	20,736		20,736		130,659

1. Includes Chinese cabbage and regular cabbage.

2. Includes baby carrots and regular carrots.

3. Includes leaf and head lettuce.

4. 1 metric tonne = 170 dozen greenhouse cucumbers and 1 imperial ton = 154 dozen cucumbers.

**Table 2-7
Area, production and farm value of commercial vegetables in Canada, by province, 2008 — Manitoba**

	Area planted		Area harvested		Total production		Marketed production		Farm value
	acres	hectares	acres	hectares	tons	metric tonnes	tons	metric tonnes	thousands of dollars
Manitoba									
Asparagus	155 ^E	63 ^E	x	x	235 ^E	213 ^E	x	x	670 ^E
Beans	60	24	60	24	45	41	45	41	60
Beets	40 ^E	16 ^E	40 ^E	16 ^E	x	x	x	x	x
Broccoli	340	138	250	101	2,190 ^E	1,987 ^E	2,190 ^E	1,987 ^E	1,750 ^E
Brussels sprouts	0	0	0	0	0	0	0	0	0
Cabbage ¹	395	160	395	160	3,088	2,801	3,088	2,801	1,120
Carrots ²	910 ^r	368 ^r	910 ^r	368 ^r	9,750 ^r	8,845 ^r	9,750 ^r	8,845 ^r	3,705 ^r
Cauliflower	x	x	x	x	x	x	x	x	x
Celery	x	x	x	x	x	x	x	x	x
Corn	640	259	555	225	995	903	995	903	980
Cucumbers	150	61	120	49	550	499	550	499	400
Garlic
Leeks	0	0	0	0	0	0	0	0	0
Lettuce ³	x	x	x	x	x	x	x	x	x
Dry onions	900	364	900	364	11,500	10,433	11,500	10,433	7,635
Other melons
Parsley
Parsnips	x	x	x	x	x	x	x	x	x
Peas	50	20	50	20	40	36	40	36	130
Peppers	10	4	10	4	x	x	x	x	x
Pumpkins	100	40	100	40	x	x	x	x	x
Radishes	x	x	x	x	x	x	x	x	x
Rhubarb
Rutabagas and turnips	x	x	x	x	x	x	x	x	x
Shallots	x	x	x	x	x	x	x	x	x
Spinach	0	0	0	0	0	0	0	0	0
Squash and zucchinis	30	12	30	12	155	141	155	141	135
Tomatoes	20	8	20	8	F	F	F	F	F
Watermelon
Greenhouse vegetables									
Tomatoes	1	0	1	0	F	F	F	F	F
					'000 dozens				
Cucumbers ⁴	F	F	F	F	F		F		F

1. Includes Chinese cabbage and regular cabbage.

2. Includes baby carrots and regular carrots.

3. Includes leaf and head lettuce.

4. 1 metric tonne = 170 dozen greenhouse cucumbers and 1 imperial ton = 154 dozen cucumbers.

Table 2-8
Area, production and farm value of commercial vegetables in Canada, by province, 2008 — Saskatchewan

	Area planted		Area harvested		Total production		Marketed production		Farm value
	acres	hectares	acres	hectares	tons	metric tonnes	tons	metric tonnes	thousands of dollars
Saskatchewan									
Asparagus	5	2	5	2	3	2	3	2	30
Beans	10	4	10	4	10	9	10	9	70
Beets	10	4	5	2	x	x	x	x	x
Broccoli	5	2	5	2	5	5	5	5	15
Brussels sprouts	0	0	0	0	0	0	0	0	0
Cabbage ¹	80	32	75	30	x	x	x	x	x
Carrots ²	20	8	15	6	55	50	55	50	160
Cauliflower	5	2	5	2	10	9	10	9	35
Celery	0	0	0	0	0	0	0	0	0
Corn	120	49	55	22	30	27	30	27	70
Cucumbers	20	8	15	6	28	25	28	25	110
Garlic
Leeks	0	0	0	0	0	0	0	0	0
Lettuce ³	x	x	x	x	x	x	x	x	x
Dry onions	10	4	10	4	20	18	20	18	35
Other melons
Parsley
Parsnips	0	0	0	0	0	0	0	0	0
Peas	30	12	30	12	15	14	15	14	100
Peppers	0	0	0	0	0	0	0	0	0
Pumpkins	40	16	40	16	x	x	x	x	x
Radishes	5	2	5	2	3	2	3	2	10
Rhubarb
Rutabagas and turnips	0	0	0	0	0	0	0	0	0
Shallots	5	2	5	2	5	5	5	5	10
Spinach	0	0	0	0	0	0	0	0	0
Squash and zucchinis	15	6	15	6	13	11	13	11	20
Tomatoes	5	2	5	2	15	14	13	11	40
Watermelon
Greenhouse vegetables									
Tomatoes	1	0	1	0	100	91	100	91	390
					'000 dozens				
Cucumbers ⁴	1	0	1	0	20		20		204 ^E

1. Includes Chinese cabbage and regular cabbage.

2. Includes baby carrots and regular carrots.

3. Includes leaf and head lettuce.

4. 1 metric tonne = 170 dozen greenhouse cucumbers and 1 imperial ton = 154 dozen cucumbers.

**Table 2-9
Area, production and farm value of commercial vegetables in Canada, by province, 2008 — Alberta**

	Area planted		Area harvested		Total production		Marketed production		Farm value
	acres	hectares	acres	hectares	tons	metric tonnes	tons	metric tonnes	thousands of dollars
Alberta									
Asparagus	F	F	x	x	F	F	x	x	F
Beans	260 ^E	105 ^E	260 ^E	105 ^E	230 ^E	209 ^E	230 ^E	209 ^E	510 ^E
Beets	30	12	30	12	88	79	88	79	150
Broccoli	30	12	30	12	60	54	60	54	180
Brussels sprouts	0	0	0	0	0	0	0	0	0
Cabbage ¹	F	F	F	F	x	x	x	x	x
Carrots ²	F	F	F	F	F	F	F	F	F
Cauliflower	x	x	x	x	x	x	x	x	x
Celery	x	x	x	x	x	x	x	x	x
Corn	4,000	1,619	4,000	1,619	16,000	14,515	15,500	14,061	3,400
Cucumbers	40	16	40	16	173	156	135	122	220
Garlic
Leeks	0	0	0	0	0	0	0	0	0
Lettuce ³	10	4	10	4	10	9	10	9	30
Dry onions	1,000	405	F	F	6,350 ^E	5,761 ^E	6,350 ^E	5,761 ^E	2,600 ^E
Other melons
Parsley
Parsnips	x	x	x	x	x	x	x	x	x
Peas	4,300	1,740	4,100	1,659	6,150	5,579	6,150	5,579	1,900
Peppers	0	0	0	0	0	0	0	0	0
Pumpkins	310 ^E	125 ^E	280 ^E	113 ^E	1,900	1,724	1,900	1,724	590
Radishes	x	x	x	x	x	x	x	x	x
Rhubarb
Rutabagas and turnips	x	x	x	x	x	x	x	x	x
Shallots	x	x	x	x	x	x	x	x	x
Spinach	5	2	5	2	3	2	3	2	10
Squash and zucchinis	125	51	100	40	325	295	300	272	200
Tomatoes	5	2	5	2	5	5	5	5	10 ^E
Watermelon
Greenhouse vegetables									
Tomatoes	17	7	17	7	3,935	3,570	3,935	3,570	7,189
						'000 dozens			
Cucumbers ⁴	46	19	46	19	3,125		3,125		20,923

1. Includes Chinese cabbage and regular cabbage.

2. Includes baby carrots and regular carrots.

3. Includes leaf and head lettuce.

4. 1 metric tonne = 170 dozen greenhouse cucumbers and 1 imperial ton = 154 dozen cucumbers.

Table 2-10
Area, production and farm value of commercial vegetables in Canada, by province, 2008 — British Columbia

	Area planted		Area harvested		Total production		Marketed production		Farm value
	acres	hectares	acres	hectares	tons	metric tonnes	tons	metric tonnes	thousands of dollars
British Columbia									
Asparagus	175	71	175	71	100	91	100	91	320
Beans	2,410	975	2,270	919	8,000	7,257	7,530	6,831	4,890
Beets	190	77	190	77	1,750	1,588	1,750	1,588	1,600 ^r
Broccoli	925	374	720	291	1,813	1,644	1,788	1,622	1,790
Brussels sprouts	720	291	650	263	4,500	4,082	4,200	3,810	3,650
Cabbage ¹	720	291	700	283	5,550	5,035	5,550	5,035	3,600
Carrots ²	465 ^r	188 ^r	465 ^r	188 ^r	11,045 ^r	10,020 ^r	11,045 ^r	10,020 ^r	5,740 ^r
Cauliflower	105	42	105	42	430	390	430	390	510
Celery	10	4	10	4	98	88	98	88	80
Corn	3,030	1,226	3,030	1,226	11,850	10,750	11,850	10,750	6,150
Cucumbers	120	49	110	45	500	454	500	454	800
Garlic	55 ^E	22 ^E	45 ^E	18 ^E	F	F	F	F	F
Leeks	45	18	40	16	195	177	195	177	305
Lettuce ³	435	176	410	166	4,480	4,064	4,480	4,064	3,535
Dry onions	200	81	200	81	2,050	1,860	2,050	1,860	900
Other melons	50	20	50	20	500	454	500	454	360
Parsley	30	12	30	12	175	159	175	159	280
Parsnips	45	18	45 ^r	18 ^r	200	181	200	181	685 ^r
Peas	1,750	708	1,750	708	3,605	3,270	3,605	3,270	2,310
Peppers	200	81	200	81	x	x	x	x	x
Pumpkins	600	243	530	214	5,500	4,990	5,500	4,990	1,730
Radishes	90	36	90	36	550	499	550	499	510
Rhubarb	120	49	110	45	680	617	680	617	500
Rutabagas and turnips	230	93	215	87	2,188	1,984	2,188	1,984	1,340
Shallots	70	28	70	28	488	442	488	442	900
Spinach	105	42	100	40	500	454	500	454	625
Squash and zucchinis	500	202	500	202	2,800	2,540	2,800	2,540	2,300
Tomatoes	165	67	165	67	1,300	1,179	1,300	1,179	1,300
Watermelon	35	14	35	14	150	136	150	136	175
Greenhouse vegetables									
Tomatoes	272	110	272	110	59,241	53,742	59,241	53,742	101,442
'000 dozens									
Cucumbers ⁴	110	45	110	45	4,976		4,976		33,063

1. Includes Chinese cabbage and regular cabbage.

2. Includes baby carrots and regular carrots.

3. Includes leaf and head lettuce.

4. 1 metric tonne = 170 dozen greenhouse cucumbers and 1 imperial ton = 154 dozen cucumbers.

Table 2-11
Area, production and farm value of commercial vegetables in Canada, by province, 2008 — Canada

	Area planted		Area harvested		Total production		Marketed production		Farm value
	acres	hectares	acres	hectares	tons	metric tonnes	tons	metric tonnes	thousands of dollars
Canada									
Asparagus	4,405	1,783	4,060	1,643	5,253	4,765	5,253	4,765	14,085
Beans	21,100	8,539	20,080	8,126	56,518	51,272	56,048	50,845	25,510
Beets	2,620	1,060	2,530	1,024	25,113	22,782	18,410	16,701	6,653 r
Broccoli	9,470	3,832	8,685	3,515	35,740	32,423	35,565	32,264	33,735
Brussels sprouts	1,415	573	1,305	528	6,890	6,251	6,590	5,978	7,385
Cabbage ¹	10,925	4,421	10,260	4,152	157,930	143,272	142,958	129,689	42,178
Carrots ²	21,005 r	8,500 r	20,655 r	8,359 r	305,420 r	277,072 r	287,220 r	260,562 r	66,975 r
Cauliflower	4,430	1,793	3,965	1,605	34,280	31,098	34,240	31,062	22,295
Celery	1,965	795	1,711	692	36,433	33,051	36,233	32,870	13,852
Corn	53,560	21,675	52,090	21,080	239,010	216,826	236,040	214,132	58,280
Cucumbers	4,630	1,874	4,495	1,819	44,823	40,662	41,553	37,696	18,175
Garlic	410	166	370	150	568	515	530	481	2,255
Leeks	740 r	299 r	715 r	289 r	4,558	4,134	4,515	4,096	5,135
Lettuce ³	9,115	3,689	7,735	3,130	77,623	70,418	77,605	70,402	46,425
Dry onions	13,875	5,615	11,835	4,789	206,233	187,091	175,988	159,653	53,305
Other melons	1,230	498	1,195	484	13,045	11,834	13,045	11,834	6,360
Parsley	295	119	275	111	1,435	1,302	1,435	1,302	2,125
Parsnips	700	283	650 r	263 r	4,738	4,298	3,825	3,470	3,270 r
Peas	36,180	14,642	35,630	14,419	76,385	69,295	76,385	69,295	23,105
Peppers	4,665	1,888	4,340	1,756	46,275 r	41,980 r	40,990 r	37,186 r	25,425
Pumpkins	7,320	2,962	6,720	2,719	52,628	47,743	52,513	47,639	12,345
Radishes	2,415	977	2,270	919	10,470	9,498	10,470	9,498	9,865
Rhubarb	355	144	295	119	1,688	1,531	1,688	1,531	1,310
Rutabagas and turnips	4,295	1,738	3,945	1,596	44,793	40,635	40,343	36,598	14,770
Shallots	1,905	771	1,720	696	17,135	15,545	16,948	15,375	20,225
Spinach	2,025	819	1,820	737	4,348	3,944	4,348	3,944	5,280
Squash and zucchinis	5,205	2,106	4,770	1,930	23,770	21,564	23,495	21,314	15,935
Tomatoes	18,575	7,517	18,515	7,493	620,748	563,133	620,745	563,130	75,915
Watermelon	900	364	870	352	11,060	10,033	11,053	10,027	3,545
Greenhouse vegetables									
Tomatoes	1,152	466	1,152	466	228,207	207,026	228,207	207,026	371,670
						'000 dozens			
Cucumbers ⁴	683	276	683	276	29,202		29,202		187,422

1. Includes Chinese cabbage and regular cabbage.

2. Includes baby carrots and regular carrots.

3. Includes leaf and head lettuce.

4. 1 metric tonne = 170 dozen greenhouse cucumbers and 1 imperial ton = 154 dozen cucumbers.

**Table 3-1
Area, production and farm value of commercial vegetables in Canada, by province, 2009 — Newfoundland and Labrador**

	Area planted		Area harvested		Total production		Marketed production		Farm value
	acres	hectares	acres	hectares	tons	metric tonnes	tons	metric tonnes	thousands of dollars
Newfoundland and Labrador									
Asparagus	0	0	0	0	0	0	0	0	0
Beans	F	F	F	F	F	F	F	F	F
Beets	45	18	40	16	163	147	163	147	145
Broccoli	10	4	10	4	27	24	27	24	62
Brussels sprouts	0	0	0	0	0	0	0	0	0
Cabbage ¹	150	61	140	57	1,501	1,362	1,486	1,348	1,042
Carrots ²	160	65	150	61	1,625	1,474	1,609	1,460	1,237
Cauliflower	F	F	F	F	F	F	F	F	15 ^E
Celery	0	0	0	0	0	0	0	0	0
Corn	F	F	F	F	F	F	F	F	F
Cucumbers	0	0	0	0	0	0	0	0	0
Garlic
Leeks	0	0	0	0	0	0	0	0	0
Lettuce ³	F	F	F	F	F	F	F	F	F
Dry onions	5	2	F	F	F	F	F	F	F
Other melons
Parsley
Parsnips	10 ^E	4 ^E	10 ^E	4 ^E	F	F	F	F	F
Peas	0	0	0	0	0	0	0	0	0
Peppers	0	0	0	0	0	0	0	0	0
Pumpkins	15 ^E	6 ^E	15 ^E	6 ^E	73 ^E	66 ^E	70 ^E	63 ^E	84 ^E
Radishes	0	0	0	0	0	0	0	0	0
Rhubarb
Rutabagas and turnips	245	99	230	93	2,749	2,493	2,705	2,454	2,082
Shallots	0	0	0	0	0	0	0	0	0
Spinach	0	0	0	0	0	0	0	0	0
Squash and zucchinis	F	F	F	F	F	F	F	F	F
Tomatoes	0	0	0	0	0	0	0	0	0
Watermelon
Greenhouse vegetables									
Tomatoes
'000 dozens									
Cucumbers ⁴

1. Includes Chinese cabbage and regular cabbage.

2. Includes baby carrots and regular carrots.

3. Includes leaf and head lettuce.

4. 1 metric tonne = 170 dozen greenhouse cucumbers and 1 imperial ton = 154 dozen cucumbers.

**Table 3-2
Area, production and farm value of commercial vegetables in Canada, by province, 2009 — Prince Edward Island**

	Area planted		Area harvested		Total production		Marketed production		Farm value
	acres	hectares	acres	hectares	tons	metric tonnes	tons	metric tonnes	thousands of dollars
Prince Edward Island									
Asparagus	F	F	F	F	F	F	F	F	F
Beans	25	10	25	10	30	27	30	27	124
Beets	F	F	F	F	F	F	F	F	F
Broccoli	F	F	F	F	F	F	F	F	F
Brussels sprouts	F	F	F	F	F	F	F	F	F
Cabbage ¹	240 ^E	97 ^E	240 ^E	97 ^E	2,185 ^E	1,982 ^E	1,920 ^E	1,742 ^E	580 ^E
Carrots ²	1,160	469	1,130	457	20,080 ^E	18,216 ^E	14,380 ^E	13,045 ^E	2,255
Cauliflower	F	F	F	F	F	F	F	F	F
Celery	0	0	0	0	0	0	0	0	0
Corn	40	16	35	14	86	78	86	78	67
Cucumbers	15 ^E	6 ^E	15 ^E	6 ^E	104 ^E	94 ^E	104 ^E	94 ^E	68 ^E
Garlic
Leeks	0	0	0	0	0	0	0	0	0
Lettuce ³	F	F	F	F	F	F	F	F	F
Dry onions	45	18	F	F	F	F	F	F	F
Other melons
Parsley
Parsnips	F	F	F	F	F	F	F	F	F
Peas	5 ^E	2 ^E	5 ^E	2 ^E	3 ^E	2 ^E	3 ^E	2 ^E	13 ^E
Peppers	0	0	0	0	0	0	0	0	0
Pumpkins	F	F	F	F	F	F	F	F	F
Radishes	F	F	F	F	F	F	F	F	F
Rhubarb
Rutabagas and turnips	435	176	435	176	6,347	5,757	6,347	5,757	2,366
Shallots	0	0	0	0	0	0	0	0	0
Spinach	5 ^E	2 ^E	5 ^E	2 ^E	F	F	F	F	F
Squash and zucchinis	10	4	10	4	13	11	13	11	17
Tomatoes	5	2	5	2	18 ^E	16 ^E	18 ^E	16 ^E	51 ^E
Watermelon
Greenhouse vegetables									
Tomatoes
'000 dozens									
Cucumbers ⁴

1. Includes Chinese cabbage and regular cabbage.

2. Includes baby carrots and regular carrots.

3. Includes leaf and head lettuce.

4. 1 metric tonne = 170 dozen greenhouse cucumbers and 1 imperial ton = 154 dozen cucumbers.

Table 3-3
Area, production and farm value of commercial vegetables in Canada, by province, 2009 — Nova Scotia

	Area planted		Area harvested		Total production		Marketed production		Farm value
	acres	hectares	acres	hectares	tons	metric tonnes	tons	metric tonnes	thousands of dollars
Nova Scotia									
Asparagus	10	4	10	4	5	5	5	5	37
Beans	145 ^E	59 ^E	125 ^E	51 ^E	225	204	225	204	600
Beets	F	F	F	F	F	F	F	F	F
Broccoli	F	F	F	F	F	F	F	F	F
Brussels sprouts	F	F	F	F	F	F	F	F	F
Cabbage ¹	225	91	225	91	1,293	1,173	1,293	1,173	641 ^E
Carrots ²	2,600	1,052	2,570	1,040	52,058	47,226	51,947	47,125	5,533
Cauliflower	F	F	F	F	F	F	F	F	F
Celery	0	0	0	0	0	0	0	0	0
Corn	360	146	330	134	620 ^E	562 ^E	620 ^E	562 ^E	530 ^E
Cucumbers	35	14	35	14	138	125	137	124	F
Garlic
Leeks	10 ^E	4 ^E	10 ^E	4 ^E	F	F	F	F	F
Lettuce ³	135	55	40	16	65 ^E	59 ^E	65 ^E	59 ^E	239
Dry onions	625	253	625	253	12,801	11,613	12,799	11,611	3,086
Other melons
Parsley
Parsnips	F	F	F	F	F	F	F	F	F
Peas	F	F	F	F	F	F	F	F	176 ^E
Peppers	10	4	5	2	60 ^E	54 ^E	59 ^E	54 ^E	105 ^E
Pumpkins	115	47	105	42	411	373	356	323	111
Radishes	F	F	F	F	F	F	F	F	F
Rhubarb
Rutabagas and turnips	194	79	173	70	2,779	2,521	2,779	2,521	804
Shallots	F	F	F	F	F	F	F	F	F
Spinach	F	F	F	F	F	F	F	F	F
Squash and zucchinis	110	45	95	38	274	248	268	243	193
Tomatoes	15	6	15	6	68	61	66	60	138
Watermelon
Greenhouse vegetables									
Tomatoes
					'000 dozens				
Cucumbers ⁴

1. Includes Chinese cabbage and regular cabbage.

2. Includes baby carrots and regular carrots.

3. Includes leaf and head lettuce.

4. 1 metric tonne = 170 dozen greenhouse cucumbers and 1 imperial ton = 154 dozen cucumbers.

Table 3-4
Area, production and farm value of commercial vegetables in Canada, by province, 2009 — New Brunswick

	Area planted		Area harvested		Total production		Marketed production		Farm value
	acres	hectares	acres	hectares	tons	metric tonnes	tons	metric tonnes	thousands of dollars
New Brunswick									
Asparagus	F	F	F	F	F	F	F	F	F
Beans	F	F	F	F	F	F	F	F	F
Beets	30	12	30	12	81	73	81	73	130
Broccoli	45 ^E	18 ^E	45 ^E	18 ^E	50 ^E	45 ^E	50 ^E	45 ^E	63 ^E
Brussels sprouts	0	0	0	0	0	0	0	0	0
Cabbage ¹	F	F	F	F	F	F	F	F	F
Carrots ²	F	F	F	F	F	F	F	F	F
Cauliflower	F	F	F	F	F	F	F	F	F
Celery	0	0	0	0	0	0	0	0	0
Corn	410	166	410	166	965	875	965	875	1,056
Cucumbers	45	18	45	18	270	245	270	245	225
Garlic
Leeks	0	0	0	0	0	0	0	0	0
Lettuce ³	10	4	10	4	F	F	F	F	F
Dry onions	15	6	15	6	9	8	9	8	15
Other melons
Parsley
Parsnips	0	0	0	0	0	0	0	0	0
Peas	40	16	35	14	25	23	23	20	103
Peppers	F	F	F	F	F	F	F	F	F
Pumpkins	145	59	145	59	1,038	941	1,038	941	205
Radishes	0	0	0	0	0	0	0	0	0
Rhubarb
Rutabagas and turnips	55 ^E	22 ^E	50 ^E	20 ^E	F	F	F	F	F
Shallots	5	2	5	2	5	5	5	5	15
Spinach	5 ^E	2 ^E	5 ^E	2 ^E	3 ^E	2 ^E	3 ^E	2 ^E	F
Squash and zucchinis	170	69	170	69	573	519	573	519	415
Tomatoes	F	F	F	F	F	F	F	F	F
Watermelon
Greenhouse vegetables									
Tomatoes
'000 dozens									
Cucumbers ⁴

1. Includes Chinese cabbage and regular cabbage.

2. Includes baby carrots and regular carrots.

3. Includes leaf and head lettuce.

4. 1 metric tonne = 170 dozen greenhouse cucumbers and 1 imperial ton = 154 dozen cucumbers.

Table 3-5
Area, production and farm value of commercial vegetables in Canada, by province, 2009 — Quebec

	Area planted		Area harvested		Total production		Marketed production		Farm value
	acres	hectares	acres	hectares	tons	metric tonnes	tons	metric tonnes	thousands of dollars
Quebec									
Asparagus	740	299	655	265	1,139	1,033	1,123	1,018	3,534
Beans	9,020	3,650	8,337	3,374	17,543	15,914	17,543	15,914	8,246
Beets	1,575	637	1,495	605	16,417	14,893	15,552	14,109	3,605
Broccoli	4,620	1,870	4,386	1,775	28,559	25,908	27,339	24,802	21,405
Brussels sprouts	200	81	180	73	757 ^E	686 ^E	745 ^E	676 ^E	1,146 ^E
Cabbage ¹	4,580	1,853	4,270	1,728	73,569	66,741	73,433	66,617	15,356
Carrots ²	7,552	3,056	7,033	2,846	109,605	99,432	100,392	91,074	23,738
Cauliflower	2,170	878	1,930	781	16,426	14,901	16,425	14,901	9,593
Celery	1,325 ^E	536 ^E	1,140 ^E	461 ^E	21,669	19,657	21,669	19,657	7,462
Corn	20,985	8,492	18,465	7,473	82,137	74,513	79,209	71,857	21,247
Cucumbers	2,045	828	1,922	778	23,417	21,243	19,880	18,034	7,507
Garlic	F	F	F	F	F	F	F	F	F
Leeks	575	233	520	210	5,287 ^E	4,796 ^E	3,241	2,940	4,480 ^E
Lettuce ³	11,460	4,638	9,765	3,952	104,823	95,093	90,234	81,859	48,719
Dry onions	4,930	1,995	4,240	1,716	78,831	71,514	78,008	70,767	19,609
Other melons	565 ^E	229 ^E	540 ^E	219 ^E	F	F	F	F	F
Parsley	150	61	125	51	F	F	F	F	918 ^E
Parsnips	390	158	370	150	1,964	1,782	1,940	1,760	1,257
Peas	9,905	4,008	9,783	3,959	20,681	18,761	20,681	18,761	7,690
Peppers	1,310	530	1,225	496	15,949 ^E	14,468 ^E	15,945 ^E	14,465 ^E	10,995 ^E
Pumpkins	1,440	583	1,187	480	14,334	13,003	12,183	11,052	2,491
Radishes	2,025 ^E	819 ^E	1,760 ^E	712 ^E	8,443	7,659	8,443	7,659	8,033 ^E
Rhubarb	F	F	F	F	F	F	F	F	F
Rutabagas and turnips	1,125	455	1,075	435	15,147	13,741	15,147	13,741	6,386
Shallots	1,000	405	850	344	8,925	8,097	8,631	7,830	8,902
Spinach	610 ^E	247 ^E	490 ^E	198 ^E	F	F	F	F	F
Squash and zucchinis	1,780	720	1,375	556	8,290	7,521	8,102	7,350	5,500
Tomatoes	1,175	476	1,035	419	7,326	6,646	7,311	6,632	6,803
Watermelon	170	69	130	53	821 ^E	744 ^E	821 ^E	744 ^E	348
Greenhouse vegetables									
Tomatoes
						'000 dozens			
Cucumbers ⁴

1. Includes Chinese cabbage and regular cabbage.

2. Includes baby carrots and regular carrots.

3. Includes leaf and head lettuce.

4. 1 metric tonne = 170 dozen greenhouse cucumbers and 1 imperial ton = 154 dozen cucumbers.

Table 3-6
Area, production and farm value of commercial vegetables in Canada, by province, 2009 — Ontario

	Area planted		Area harvested		Total production		Marketed production		Farm value
	acres	hectares	acres	hectares	tons	metric tonnes	tons	metric tonnes	thousands of dollars
Ontario									
Asparagus	3,620	1,465	3,525	1,427	6,992	6,343	6,986	6,337	18,891
Beans	8,790	3,557	8,255	3,341	23,622	21,430	23,408	21,235	8,992
Beets	1,005	407	920	372	8,942	8,112	8,613	7,814	3,762
Broccoli	F	F	F	F	F	F	F	F	F
Brussels sprouts	F	F	F	F	F	F	F	F	F
Cabbage ¹	5,100	2,064	4,705	1,904	63,852	57,926	63,272	57,399	16,642
Carrots ²	8,250	3,339	7,775	3,146	188,275	170,800	188,275	170,800	38,007
Cauliflower	1,520	615	1,415	573	12,041	10,923	12,022	10,906	7,303
Celery	475 ^E	192 ^E	465 ^E	188 ^E	13,709 ^E	12,436 ^E	13,696 ^E	12,425 ^E	4,834 ^E
Corn	25,035	10,131	22,230	8,996	132,265	119,988	123,915	112,414	35,989
Cucumbers	3,625	1,467	3,340	1,352	33,961	30,809	33,961	30,809	16,686
Garlic	445 ^E	180 ^E	360 ^E	146 ^E	F	F	F	F	F
Leeks	F	F	F	F	F	F	F	F	F
Lettuce ³	1,100	445	845	342	5,709	5,179	5,644	5,120	4,729
Dry onions	6,675	2,701	6,495	2,628	126,119	114,413	118,770	107,746	28,012
Other melons	F	F	F	F	F	F	F	F	F
Parsley	185 ^E	75 ^E	170 ^E	69 ^E	F	F	F	F	F
Parsnips	210	85	200	81	2,185 ^E	1,982 ^E	F	F	F
Peas	16,000	6,475	16,000	6,475	32,001	29,030	32,001	29,030	10,997
Peppers	2,880	1,165	2,810	1,137	28,664	26,003	24,736	22,440	14,711
Pumpkins	4,050	1,639	3,775	1,528	29,865	27,093	29,706	26,948	8,727
Radishes	405 ^E	164 ^E	345 ^E	140 ^E	F	F	F	F	1,667 ^E
Rhubarb	F	F	F	F	F	F	F	F	F
Rutabagas and turnips	1,900 ^E	769 ^E	1,880 ^E	761 ^E	21,551 ^E	19,551 ^E	15,386 ^E	13,957 ^E	F
Shallots	F	F	F	F	F	F	F	F	F
Spinach	F	F	F	F	F	F	F	F	F
Squash and zucchinis	3,165	1,281	2,970	1,202	15,977	14,494	15,768	14,304	9,005
Tomatoes	14,770	5,977	14,705	5,951	495,677	449,670	495,677	449,670	70,600
Watermelon	1,765 ^E	714 ^E	1,545 ^E	625 ^E	14,946	13,558	14,946	13,558	4,795 ^E
Greenhouse vegetables									
Tomatoes
						'000 dozens			
Cucumbers ⁴

1. Includes Chinese cabbage and regular cabbage.

2. Includes baby carrots and regular carrots.

3. Includes leaf and head lettuce.

4. 1 metric tonne = 170 dozen greenhouse cucumbers and 1 imperial ton = 154 dozen cucumbers.

Table 3-7
Area, production and farm value of commercial vegetables in Canada, by province, 2009 — Manitoba

	Area planted		Area harvested		Total production		Marketed production		Farm value
	acres	hectares	acres	hectares	tons	metric tonnes	tons	metric tonnes	thousands of dollars
Manitoba									
Asparagus	F	F	F	F	F	F	F	F	F
Beans	F	F	F	F	F	F	F	F	F
Beets	F	F	F	F	F	F	F	F	F
Broccoli	F	F	F	F	F	F	F	F	F
Brussels sprouts	0	0	0	0	0	0	0	0	0
Cabbage ¹	F	F	F	F	F	F	F	F	F
Carrots ²	F	F	F	F	F	F	F	F	F
Cauliflower	F	F	F	F	F	F	F	F	F
Celery	F	F	F	F	F	F	F	F	F
Corn	690 ^E	279 ^E	500 ^E	202 ^E	1,156 ^E	1,048 ^E	1,063 ^E	964 ^E	987 ^E
Cucumbers	190 ^E	77 ^E	120 ^E	49 ^E	710 ^E	644 ^E	F	F	F
Garlic
Leeks	x	x	x	x	x	x	x	x	x
Lettuce ³	F	F	F	F	F	F	F	F	F
Dry onions	730	295	F	F	F	F	F	F	F
Other melons
Parsley
Parsnips	x	x	x	x	x	x	x	x	x
Peas	F	F	F	F	F	F	F	F	F
Peppers	F	F	F	F	F	F	F	F	F
Pumpkins	F	F	F	F	F	F	F	F	F
Radishes	F	F	F	F	F	F	F	F	F
Rhubarb
Rutabagas and turnips	F	F	F	F	F	F	F	F	F
Shallots	F	F	F	F	F	F	F	F	F
Spinach	x	x	x	x	x	x	x	x	x
Squash and zucchinis	F	F	F	F	F	F	F	F	F
Tomatoes	F	F	F	F	F	F	F	F	F
Watermelon
Greenhouse vegetables									
Tomatoes
						'000 dozens			
Cucumbers ⁴

1. Includes Chinese cabbage and regular cabbage.
2. Includes baby carrots and regular carrots.
3. Includes leaf and head lettuce.
4. 1 metric tonne = 170 dozen greenhouse cucumbers and 1 imperial ton = 154 dozen cucumbers.

**Table 3-8
Area, production and farm value of commercial vegetables in Canada, by province, 2009 — Saskatchewan**

	Area planted		Area harvested		Total production		Marketed production		Farm value
	acres	hectares	acres	hectares	tons	metric tonnes	tons	metric tonnes	thousands of dollars
Saskatchewan									
Asparagus	F	F	F	F	F	F	F	F	F
Beans	15	6	15	6	13	12	13	12	76
Beets	10	4	10	4	30	27	30	27	68
Broccoli	F	F	F	F	F	F	F	F	F
Brussels sprouts	0	0	0	0	0	0	0	0	0
Cabbage ¹	F	F	F	F	F	F	F	F	F
Carrots ²	25	10	25	10	109	99	109	99	192
Cauliflower	F	F	F	F	F	F	F	F	F
Celery	0	0	0	0	0	0	0	0	0
Corn	80	32	70	28	94 ^E	85 ^E	93 ^E	84 ^E	110
Cucumbers	20	8	20	8	43 ^E	39 ^E	43 ^E	39 ^E	F
Garlic
Leeks	0	0	0	0	0	0	0	0	0
Lettuce ³	5 ^E	2 ^E	5 ^E	2 ^E	10 ^E	9 ^E	F	F	F
Dry onions	10	4	10	4	24	21	20	18	41
Other melons
Parsley
Parsnips	5 ^E	2 ^E	5 ^E	2 ^E	4 ^E	3 ^E	4 ^E	3 ^E	11 ^E
Peas	30	12	30	12	34	30	34	30	174
Peppers	0	0	0	0	0	0	0	0	0
Pumpkins	F	F	F	F	F	F	F	F	F
Radishes	F	F	F	F	F	F	F	F	F
Rhubarb
Rutabagas and turnips	0	0	0	0	0	0	0	0	0
Shallots	5 ^E	2 ^E	5 ^E	2 ^E	4 ^E	4 ^E	4 ^E	4 ^E	16 ^E
Spinach	5 ^E	2 ^E	5 ^E	2 ^E	5 ^E	4 ^E	5 ^E	4 ^E	22 ^E
Squash and zucchinis	F	F	F	F	F	F	F	F	F
Tomatoes	10	4	10	4	F	F	F	F	F
Watermelon
Greenhouse vegetables									
Tomatoes
					'000 dozens				
Cucumbers ⁴

1. Includes Chinese cabbage and regular cabbage.

2. Includes baby carrots and regular carrots.

3. Includes leaf and head lettuce.

4. 1 metric tonne = 170 dozen greenhouse cucumbers and 1 imperial ton = 154 dozen cucumbers.

Table 3-9
Area, production and farm value of commercial vegetables in Canada, by province, 2009 — Alberta

	Area planted		Area harvested		Total production		Marketed production		Farm value
	acres	hectares	acres	hectares	tons	metric tonnes	tons	metric tonnes	thousands of dollars
Alberta									
Asparagus	F	F	F	F	F	F	F	F	F
Beans	F	F	F	F	F	F	F	F	516 ^E
Beets	45 ^E	18 ^E	40 ^E	16 ^E	F	F	F	F	316 ^E
Broccoli	F	F	F	F	F	F	F	F	F
Brussels sprouts	F	F	F	F	F	F	F	F	F
Cabbage ¹	F	F	F	F	F	F	F	F	F
Carrots ²	625 ^E	253 ^E	415 ^E	168 ^E	2,973 ^E	2,697 ^E	2,970 ^E	2,694 ^E	F
Cauliflower	F	F	F	F	F	F	F	F	F
Celery	x	x	x	x	x	x	x	x	x
Corn	3,800	1,538	3,800	1,538	25,450 ^E	23,088 ^E	25,450 ^E	23,088 ^E	F
Cucumbers	70 ^E	28 ^E	50 ^E	20 ^E	F	F	F	F	F
Garlic
Leeks	F	F	F	F	F	F	F	F	F
Lettuce ³	15 ^E	6 ^E	15 ^E	6 ^E	37 ^E	34 ^E	37 ^E	34 ^E	F
Dry onions	1,000	405	F	F	F	F	F	F	F
Other melons
Parsley
Parsnips	x	x	x	x	x	x	x	x	x
Peas	4,065	1,645	4,065	1,645	7,742 ^E	7,023 ^E	F	F	2,326 ^E
Peppers	0	0	0	0	0	0	0	0	0
Pumpkins	F	F	F	F	F	F	F	F	F
Radishes	F	F	F	F	F	F	F	F	F
Rhubarb
Rutabagas and turnips	F	F	F	F	F	F	F	F	F
Shallots	F	F	F	F	F	F	F	F	F
Spinach	x	x	x	x	x	x	x	x	x
Squash and zucchinis	F	F	F	F	F	F	F	F	F
Tomatoes	5	2	5	2	4 ^E	3 ^E	4 ^E	3 ^E	9 ^E
Watermelon
Greenhouse vegetables									
Tomatoes
					'000 dozens				
Cucumbers ⁴

1. Includes Chinese cabbage and regular cabbage.

2. Includes baby carrots and regular carrots.

3. Includes leaf and head lettuce.

4. 1 metric tonne = 170 dozen greenhouse cucumbers and 1 imperial ton = 154 dozen cucumbers.

Table 3-10
Area, production and farm value of commercial vegetables in Canada, by province, 2009 — British Columbia

	Area planted		Area harvested		Total production		Marketed production		Farm value
	acres	hectares	acres	hectares	tons	metric tonnes	tons	metric tonnes	thousands of dollars
British Columbia									
Asparagus	F	F	F	F	F	F	F	F	F
Beans	2,695	1,091	2,645	1,070	7,085	6,427	7,084	6,426	5,655
Beets	210 ^E	85 ^E	210 ^E	85 ^E	F	F	F	F	F
Broccoli	855	346	795	322	1,764	1,600	1,764	1,600	1,441
Brussels sprouts	855 ^E	346 ^E	670 ^E	271 ^E	6,221 ^E	5,644 ^E	F	F	F
Cabbage ¹	785	318	680	275	8,173	7,414	7,382	6,696	3,887
Carrots ²	F	F	F	F	F	F	F	F	2,773
Cauliflower	115	47	105	42	F	F	F	F	395 ^E
Celery	x	x	x	x	x	x	x	x	x
Corn	2,120	858	2,120	858	7,242	6,570	6,799	6,167	5,711
Cucumbers	155	63	145	59	977	886	973	882	1,097
Garlic	70	28	55	22	62	56	48	43	398
Leeks	x	x	x	x	x	x	x	x	x
Lettuce ³	555	225	520	210	7,458	6,765	7,458	6,765	5,395
Dry onions	175	71	F	F	F	F	F	F	F
Other melons	45	18	45	18	F	F	F	F	F
Parsley	25	10	25	10	175	159	175	159	329
Parsnips	F	F	F	F	F	F	F	F	F
Peas	1,255	508	1,235	500	2,708	2,457	2,699	2,448	1,878
Peppers	255	103	245	99	2,213	2,008	2,212	2,007	2,357
Pumpkins	705	285	585	237	9,436	8,560	8,982	8,148	2,690
Radishes	90	36	90	36	720	653	720	653	625
Rhubarb	155 ^E	63 ^E	120 ^E	49 ^E	F	F	F	F	730 ^E
Rutabagas and turnips	F	F	F	F	F	F	F	F	F
Shallots	60	24	60	24	542 ^E	491 ^E	542 ^E	491 ^E	612 ^E
Spinach	110	45	105	42	672 ^E	609 ^E	672 ^E	609 ^E	806 ^E
Squash and zucchinis	585	237	585	237	5,336	4,841	5,139	4,662	4,419
Tomatoes	167	68	167	68	1,308	1,187	1,308	1,187	1,387
Watermelon	35 ^E	14 ^E	35 ^E	14 ^E	241 ^E	219 ^E	240 ^E	218 ^E	189
Greenhouse vegetables									
Tomatoes
						'000 dozens			
Cucumbers ⁴

1. Includes Chinese cabbage and regular cabbage.

2. Includes baby carrots and regular carrots.

3. Includes leaf and head lettuce.

4. 1 metric tonne = 170 dozen greenhouse cucumbers and 1 imperial ton = 154 dozen cucumbers.

Table 3-11
Area, production and farm value of commercial vegetables in Canada, by province, 2009 — Canada

	Area planted		Area harvested		Total production		Marketed production		Farm value
	acres	hectares	acres	hectares	tons	metric tonnes	tons	metric tonnes	thousands of dollars
Canada									
Asparagus	4,815	1,949	4,595	1,860	8,660	7,856	8,637	7,835	24,136
Beans	21,515	8,707	20,152	8,155	49,624	45,018	49,365	44,783	25,188
Beets	3,065	1,240	2,885	1,168	28,413	25,776	27,220	24,693	10,592
Broccoli	11,437	4,628	10,321	4,177	46,944	42,587	45,722	41,478	39,717
Brussels sprouts	1,590	643	1,345	544	9,341	8,474	7,908 ^E	7,174 ^E	6,950
Cabbage ¹	12,235	4,951	11,140	4,508	161,930	146,900	159,935	145,090	42,849
Carrots ²	21,952	8,884	20,658	8,360	395,720	358,991	380,555	345,234	84,377
Cauliflower	5,085	2,058	4,375	1,770	35,912	32,578	35,890	32,559	23,011
Celery	2,020	817	1,825	739	37,107	33,663	37,095	33,652	13,382
Corn	53,540	21,667	47,980	19,417	250,044	226,836	238,229	216,117	72,039
Cucumbers	6,200	2,509	5,692	2,303	59,715	54,172	55,977	50,781	26,463
Garlic	640	259	530	214	755 ^E	684 ^E	559 ^E	507 ^E	3,560 ^E
Leeks	940	380	875	354	7,413	6,725	5,362	4,864	7,786
Lettuce ³	13,550	5,483	11,420	4,622	119,301	108,228	104,647	94,934	60,961
Dry onions	14,210	5,751	13,125	5,311	242,387	219,890	229,829	208,497	57,869
Other melons	1,320	534	1,265	512	14,415	13,077	14,415	13,077	7,013 ^E
Parsley	365	148	325	132	2,194	1,990	2,193	1,989	3,218
Parsnips	811	328	781	316	5,295	4,804	4,853	4,403	3,692
Peas	31,410	12,711	31,233	12,640	63,347	57,467	63,269	57,396	23,460
Peppers	4,485	1,815	4,315	1,746	47,044	42,678	43,112	39,110	28,340
Pumpkins	7,015	2,839	6,322	2,558	57,217	51,906	54,395	49,346	15,277
Radishes	2,775	1,123	2,450	991	13,201	11,976	13,151	11,930	11,578
Rhubarb	405	164	335	136	2,242	2,033	2,234	2,026	1,670
Rutabagas and turnips	4,339	1,756	4,213	1,705	53,578	48,605	47,369	42,972	21,113
Shallots	2,350	951	1,995	807	19,850	18,008	18,915	17,159	24,225
Spinach	1,765	714	1,635	662	5,601	5,081	5,601	5,081	7,212
Squash and zucchinis	6,091	2,465	5,441	2,202	31,855	28,898	31,214	28,316	20,483
Tomatoes	16,192	6,553	15,982	6,468	504,523	457,695	504,506	457,680	79,230
Watermelon	1,995	807	1,735 ^E	702 ^E	16,037	14,549	16,036	14,548	5,361
Greenhouse vegetables									
Tomatoes
						'000 dozens			
Cucumbers ⁴

1. Includes Chinese cabbage and regular cabbage.

2. Includes baby carrots and regular carrots.

3. Includes leaf and head lettuce.

4. 1 metric tonne = 170 dozen greenhouse cucumbers and 1 imperial ton = 154 dozen cucumbers.

Methodology and data quality

Introduction

Throughout the publication, data in some instances have been updated based on more recent information from differing data sources. Revisions have been made to some 2008 commercial production estimates. The contents of this publication represent the most recent information available at the time of printing on selected fruits and vegetables produced in Canada. All data are prepared in consultation with representatives of Federal and Provincial Departments of Agriculture and l'Institut de la statistique du Québec. Current year data are preliminary and will be revised in subsequent publications and on CANSIM.

Current year area, production and value figures are preliminary while historical data are estimated based on more complete market information. Data are generally concerned with total production and take into account wastage, etc. With the availability of market and wastage information the estimates more closely reflect commercial production.

Data shown in this publication are on a crop year basis. In the case of mushrooms and greenhouse tomatoes and cucumbers, however, the data are on a calendar year basis. All value data are those obtained at the "farm gate" and are concerned with returns to growers. Estimates are provided in both imperial and metric units.

Production and value data are provided for the twelve most commercially significant fruits grown in Canada. The production figures for fruit crops refer to marketed production rather than harvested production. Only vegetable crops grown commercially are included: no data are available for fruits and vegetables grown for home consumption.

Survey methodology

The major source of information in this publication is the Fall Fruit and Vegetable Survey, conducted by Statistics Canada. This survey is a sample survey for which the data are collected by telephone. The survey estimates the area planted, area harvested, production and farm gate value for the principal fruit and vegetable crops. For fruit, bearing area is estimated as a subset of the cultivated area and is a sum of the fresh market and processing areas. Areas for the fresh market and for processing are also estimated for all fruit and vegetable crops.

Survey frame

Relative to the Fall Survey of Fruit and Vegetables, the frame includes all Canadian horticultural farms, with the exception of farms producing only mushrooms, potatoes or greenhouse vegetables. These are already covered by other surveys collecting the desired information.

Based on these criteria, the known population of fruit and vegetable farms is 16,109.

Sample selection

The Fall Survey of Fruit and Vegetables is a follow-up to the Spring survey. From the initial sample of 10,254 farms sampled for the Spring occasion, 9,614 farms were sampled again for the Fall occasion because we excluded small farms having only two acres or less in vegetables. This exclusion is taken into account by the estimation process. The known population of fruit and vegetable farms is 16,109. For the purpose of the sample selection, the survey frame was stratified by province and, within each province, by land area. The farms were grouped according to fruit and vegetable acreage in each province.

Data collection

The Fall Survey of Fruit and Vegetables collects information by telephone. Statistics Canada conducted the survey in November of 2009 using computer-assisted telephone interviews (CATI).

Response rates

Information was received from 91.8% of the sample. Non-responding units (i.e. no-contacts and refusals) are dealt with by adjusting the initial sample weights. The assumption that the non-responding units are randomly distributed among the sample is used to justify adjusting the initial sample weights.

Edit and imputation

It is possible to implement edit procedures at the time of the interview with the introduction of the CATI methodology. Computer programmed edit checks in the CATI system inform interviewers during the interview of possible data errors, which can then be corrected immediately by the interviewer and respondent. For the Fall Survey of Fruit and Vegetables, imputation was used to adjust for incomplete survey answers to the questions of production and farm gate value. The imputation used a trend analysis of the completed questionnaires to generate averages to be used to impute for the missing values.

Sampling and non-sampling errors

The statistics from the Fall Survey of Fruit and Vegetables are based on a random sample of agricultural operations and, as such, are subject to sampling and non-sampling errors.

Sampling errors arise because estimates are derived from sample data and not the entire population. These errors depend on factors such as sample size, sampling design and the method of estimation. An important feature of probability sampling is that sampling errors can be measured from the sample itself.

Non-sampling errors are errors which are not related to sampling and may occur throughout the survey operation for many reasons. For example, non-response is an important source of non-sampling error. Population coverage, differences in the interpretation of questions, incorrect information from respondents, mistakes in recording, coding and processing of data are other examples of non-sampling errors.

Estimation

Relative to the Fall Survey of Fruit and Vegetables, the survey data collected are weighted within each stratum in order to produce estimates representative of the population. Weighted historical information is used to take into account small farms being excluded from sampling. Analyses of the top contributors and historical comparisons as well as consultations with the Provincial Departments of Agriculture are performed before a final estimate is published.

Data quality

The estimates from the Fall Survey of Fruit and Vegetables are based on a probability sample of farming operations. The potential error introduced by sampling can be estimated from the sample itself by using a statistical measure called the coefficient of variation (CV).

Over repeated surveys, 95 times out of 100, the relative difference between a sample estimate and what should have been obtained from an enumeration of all farming operations with respect to the sample estimates would be less than twice the coefficient of variation.

For the 2009 survey, CVs at the Canada level for the published data range from 2.0% to 24.8%. At the provincial level, the median CV among the published data is 16.6%. Coefficients of variation values for the published data are available upon request and are not included in this publication due to space limitations.

Revision policy

Data for the previous year are presented as final while data for the current year are considered preliminary. Data are presented initially in the June issue of **Fruit and Vegetable Production** (Catalogue no. 22-003-X) and are revised further in the February issue of the publication.

Conversion factors

In some cases data that are received by Statistics Canada are in different units of measurement from those which appear in the publication. The fruit estimates are converted at the following rates:

1 bushel of apples = 42 pounds; 1 quart of strawberries or raspberries = 1.25 pounds; 1 bushel of all other tree fruits = 50 pounds (net weight).

Corn, lettuce and greenhouse cucumber production estimates are converted at the following rates:

1 dozen ears of corn = 6 pounds; 1 dozen heads of lettuce = 15 pounds; 1 dozen greenhouse cucumbers = 13 pounds.

The following metric conversion factors are used in this publication:

Area

1 acre = 0.4047 hectare;

Production

1 ton short (2,000 pounds) = 0.9072 tonne;

1 pound = 0.4536 kg.

Other sources of information

British Columbia Ministry of Agriculture, Fisheries and Food

The Horticulture Branch provides estimates of fruit and vegetable acreage, production and value, several times a year, as more complete information becomes available.

Ontario Ministry of Agriculture, Food and Rural Affairs

Conducts several surveys and provides Statistics Canada with data for both vegetables and fruits, through their publication "Seasonal Fruit and Vegetable Report".

Institut de la statistique du Québec

Conducts several surveys and provides Statistics Canada with data for both vegetables and fruits.

Greenhouse

Data on the Greenhouse industry is obtained from annual surveys conducted by Statistics Canada.