

Catalogue no. 71-001-X

# Labour Force Information

Not for release before 7 A.M. EST

Friday, March 12, 2010

February 14 to 20, 2010



Statistics  
Canada

Statistique  
Canada

Canada

## How to obtain more information

Specific inquiries about this product and related statistics or services should be directed to: Labour Force Survey Program, Labour Statistics Division, Statistics Canada, Ottawa, Ontario, K1A 0T6 (telephone: 613-951-4090, toll free number: 1-866-873-8788, fax: 613-951-2869 or by e-mail address: [labour@statcan.gc.ca](mailto:labour@statcan.gc.ca)).

For information about this product or the wide range of services and data available from Statistics Canada, visit our website at [www.statcan.gc.ca](http://www.statcan.gc.ca), e-mail us at [infostats@statcan.gc.ca](mailto:infostats@statcan.gc.ca), or telephone us, Monday to Friday from 8:30 a.m. to 4:30 p.m., at the following numbers:

### Statistics Canada's National Contact Centre

Toll-free telephone (Canada and the United States):

Inquiries line	1-800-263-1136
National telecommunications device for the hearing impaired	1-800-363-7629
Fax line	1-877-287-4369

Local or international calls:

Inquiries line	1-613-951-8116
Fax line	1-613-951-0581

### Depository Services Program

Inquiries line	1-800-635-7943
Fax line	1-800-565-7757

## To access this product

This product, Catalogue no. 71-001-X, is available free in electronic format. To obtain a single issue, visit our website at [www.statcan.gc.ca](http://www.statcan.gc.ca) and select "Publications."

## Standards of service to the public

Statistics Canada is committed to serving its clients in a prompt, reliable and courteous manner. To this end, Statistics Canada has developed *standards of service* that its employees observe. To obtain a copy of these service standards, please contact Statistics Canada toll-free at 1-800-263-1136. The service standards are also published on [www.statcan.gc.ca](http://www.statcan.gc.ca) under "About us" > "Providing services to Canadians."

Statistics Canada  
Labour Statistics Division  
Labour Force Survey Program

# Labour Force Information

Not for release before 7 A.M. EST

Friday, March 12, 2010

February 14 to 20, 2010

Published by authority of the Minister responsible for Statistics Canada

© Minister of Industry, 2010

All rights reserved. The content of this electronic publication may be reproduced, in whole or in part, and by any means, without further permission from Statistics Canada, subject to the following conditions: that it be done solely for the purposes of private study, research, criticism, review or newspaper summary, and/or for non-commercial purposes; and that Statistics Canada be fully acknowledged as follows: Source (or "Adapted from", if appropriate): Statistics Canada, year of publication, name of product, catalogue number, volume and issue numbers, reference period and page(s). Otherwise, no part of this publication may be reproduced, stored in a retrieval system or transmitted in any form, by any means—electronic, mechanical or photocopy—or for any purposes without prior written permission of Licensing Services, Client Services Division, Statistics Canada, Ottawa, Ontario, Canada K1A 0T6.

March 2010

Catalogue no. 71-001-X

ISSN 1492-5478

Frequency: Monthly

Ottawa

Cette publication est également disponible en français.

---

## **Note of appreciation**

*Canada owes the success of its statistical system to a long-standing partnership between Statistics Canada, the citizens of Canada, its businesses, governments and other institutions. Accurate and timely statistical information could not be produced without their continued cooperation and goodwill.*

# User information

---

## Symbols

The following standard symbols are used in Statistics Canada publications:

- . not available for any reference period
- .. not available for a specific reference period
- ... not applicable
- 0 true zero or a value rounded to zero
- 0<sup>s</sup> value rounded to 0 (zero) where there is a meaningful distinction between true zero and the value that was rounded
- p preliminary
- r revised
- x suppressed to meet the confidentiality requirements of the *Statistics Act*
- E use with caution
- F too unreliable to be published

## Special requests (\$)

Custom tabulations can be arranged on an ad hoc or regular basis. This service enables you to specify tables and time series to meet your own requirements. The cost varies according to the request. For more information, contact us toll-free at 1-866-873-8788 or e-mail us at [labour@statcan.gc.ca](mailto:labour@statcan.gc.ca).

## Schedule of LFS releases

Reference period - Week ending	Release date
January 16, 2010	February 5, 2010
February 20, 2010	March 12, 2010
March 20, 2010	April 9, 2010
April 17, 2010	May 7, 2010
May 15, 2010	June 4, 2010
June 19, 2010	July 9, 2010
July 17, 2010	August 6, 2010
August 21, 2010	September 10, 2010
September 18, 2010	October 8, 2010
October 16, 2010	November 5, 2010
November 13, 2010	December 3, 2010
December 11, 2010	January 7, 2011

## Latest LFS release in *The Daily* (free)

# Table of contents

---

<b>Highlights</b>	<b>5</b>
<b>Analysis — February 2010</b>	<b>6</b>
<b>Charts</b>	
1. Employment and unemployment indicators, Canada, seasonally adjusted	8
2. Employment and unemployment indicators, Canada, seasonally adjusted	9
3. Index of employment by industry, Canada, seasonally adjusted, January, 2007=100	10
4. Index of employment by industry, Canada, seasonally adjusted, January 2007=100	11
5. Index of employment by industry, Canada, seasonally adjusted, January 2007=100	12
6. Index of employment by province, seasonally adjusted, January 2007=100	13
7. Index of employment by province, seasonally adjusted, January 2007=100	14
<b>Related products</b>	<b>15</b>
<b>Statistical tables</b>	
1 Labour force characteristics by age and sex, Canada, seasonally adjusted	23
2 Employment by class of worker and industry, Canada, seasonally adjusted	25
3 Labour force characteristics by province, seasonally adjusted	26
4 Selected labour force characteristics (seasonally adjusted)	28
4-1 Newfoundland and Labrador	28
4-2 Prince Edward Island	29
4-3 Nova Scotia	30
4-4 New Brunswick	31
4-5 Quebec	32
4-6 Ontario	33
4-7 Manitoba	34
4-8 Saskatchewan	35
4-9 Alberta	36
4-10 British Columbia	37
5 Labour force characteristics by census metropolitan area (seasonally adjusted)	38
5-1 3 month moving average	38
5-2 Monthly	43

**Table of contents – continued**

6	Labour force characteristics	44
6-1	by province and economic region, unadjusted for seasonality, 3 month moving average ending in February 2009 and February 2010	44
6-2	by territories, unadjusted for seasonality, 3 month moving average ending in February 2009 and February 2010	49
7	Average usual hours and wages of employees by selected characteristics, Canada, unadjusted for seasonality	50
8	Regional unemployment rates used by the Employment Insurance Program, seasonally adjusted, 3 month moving average	51
<b>Data quality, concepts and methodology</b>		
	Data quality	53

# Highlights

---

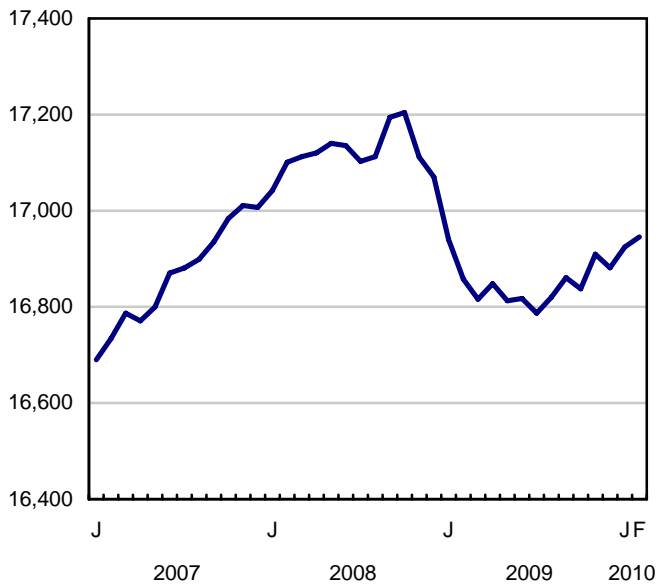
## February 2010

Employment rose by 21,000 in February, with large gains in full-time work partly offset by losses in part time. The unemployment rate edged down 0.1 percentage points to 8.2% in February.

**Chart 1**  
**Employment and unemployment rates, Canada, seasonally adjusted**

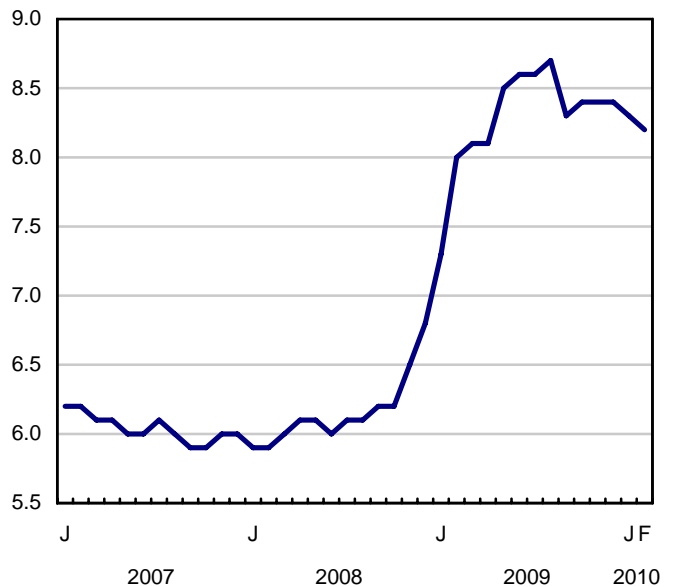
**Employment**

thousands



**Unemployment rate**

percent



## Analysis — February 2010

---

Employment rose by 21,000 in February, with large gains in full-time work partly offset by losses in part time. The unemployment rate edged down 0.1 percentage points to 8.2% in February.

Employment has been on an upward trend since July 2009 (+159,000). This contrasts with the sharp drop of 417,000 between the peak in October 2008 and July 2009.

Underlying February's employment change was a notable gain in full time work (+60,000), which was partially offset by a decline in part time (-39,000). Since the summer of 2009, employment growth has been all in full time.

Men aged 55 and over accounted for all of February's employment gain.

February's increase was among public sector employees (+46,000). Compared to the summer of 2009, the number of public and private sector employees has risen while self-employment is down slightly.

Employment increases in February occurred in accommodation and food services; business, building and other support services; manufacturing; health care and social assistance and natural resources. These gains were partially offset by losses in retail and wholesale trade; finance, insurance, real estate and leasing as well as 'other services'.

Employment increased in February in British Columbia, Nova Scotia and Saskatchewan, while it declined in Alberta. There was little change in the other provinces.

### Employment up among older workers

Continuing on an upward trend sustained throughout the labour market downturn, employment for men aged 55 and over increased by 26,000 in February. This pushed the unemployment rate for this group down 0.6 percentage points, to 7.1%.

Employment for women aged 55 and over was little changed in February, and their unemployment rate was 5.7%.

Employment for men and women aged 55 and over has been trending up for a number of years, the result of employment growth combined with more people moving into that age group.

Employment was little changed for core-age workers (25 to 54) and youths in February. Since July 2009, employment has stabilized among core-age men and youths, whereas it has increased among core-age women.

### Continued growth in natural resources

Within the goods sector, employment increased in manufacturing (+17,000) and natural resources (+11,000) in February. Following declines throughout the labour market downturn, natural resources has experienced employment growth since the early fall of 2009, while manufacturing employment has been stable.

In the service sector, the largest employment increases in February occurred in accommodation and food services (+27,000); business, building and other support services (+18,000); as well as in health care and social assistance (+16,000).

Offsetting these gains were employment losses in retail and wholesale trade (-34,000); finance, insurance, real estate and leasing (-22,000); and 'other services' (-13,000).

Employment in the service sector in February was 67,000 above its October 2008 level. However, employment in the goods sector remained 326,000 below its October 2008 level, with manufacturing accounting for the bulk of the losses (-206,000).



## Slight gains in British Columbia

Building on gains since the summer of 2009, employment edged up by 10,000 in British Columbia in February and the unemployment rate dropped 0.4 percentage points to 7.7%.

Employment rose by 4,200 in Nova Scotia in February, pushing the unemployment rate in the province down 0.5 percentage points to 9.3%.

Employment increased by 4,100 in Saskatchewan in February. This brought the unemployment rate down 0.4 percentage points to 4.3%, the lowest of all provinces.

Following a sizable gain the month before, employment in Ontario was little changed in February and the unemployment rate was 9.1%. Since May 2009, employment in the province has grown by 1.4% (+92,000).

In February, employment in Quebec was also little changed and the unemployment rate was 8.1%. Employment in this province has been on an upward trend since July 2009, growing by 1.3% (+50,000).

Alberta was the only province with a notable employment loss in February (-15,000), pushing the unemployment rate up 0.3 percentage points to 6.9%. February marks the second month of employment declines in the province, bringing employment 0.9% (-19,000) lower than a year ago.

### Note to readers

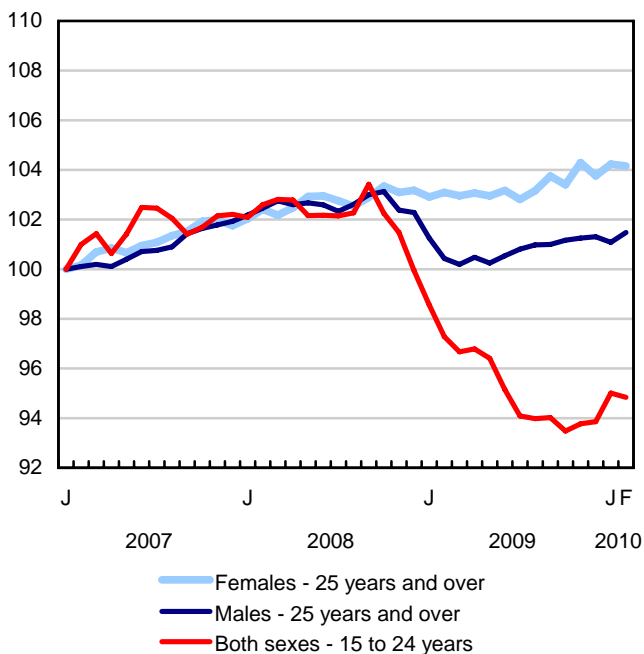
The Labour Force Survey (LFS) estimates are based on a sample, and are therefore subject to sampling variability. Estimates for smaller geographic areas or industries will have more variability. For an explanation of sampling variability of estimates, and how to use standard errors to assess this variability, consult the "Data quality" section of the publication Labour Force Information (71-001-X, free).

Unless otherwise stated, this release presents seasonally adjusted data, which eases comparisons by removing the effects of seasonal variations.

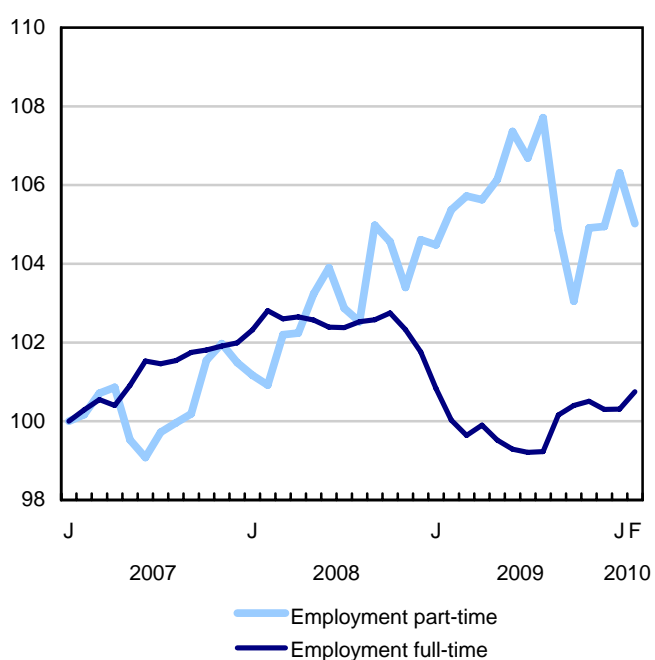
The 2009 Labour Force Historical Review on DVD-ROM (71F0004XVB, \$209) is now available.

**Chart 1**  
**Employment and unemployment indicators, Canada, seasonally adjusted**

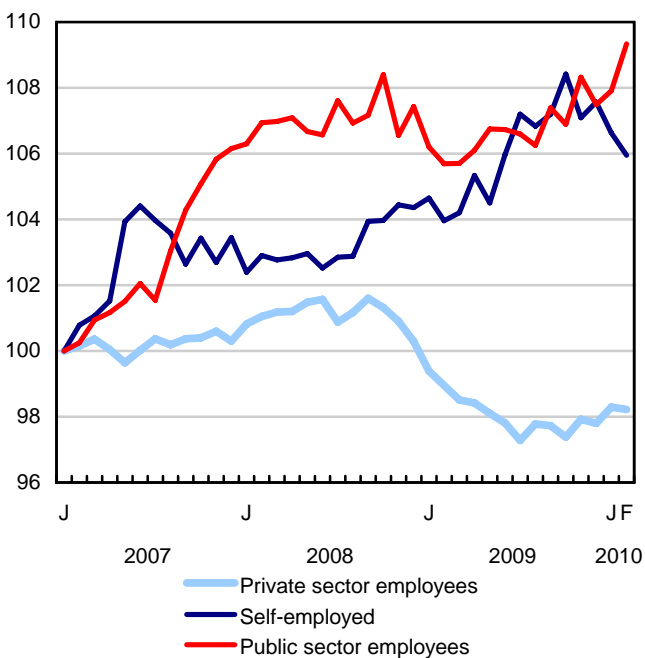
**Employment index, January 2007=100**



**Employment index, January 2007=100**

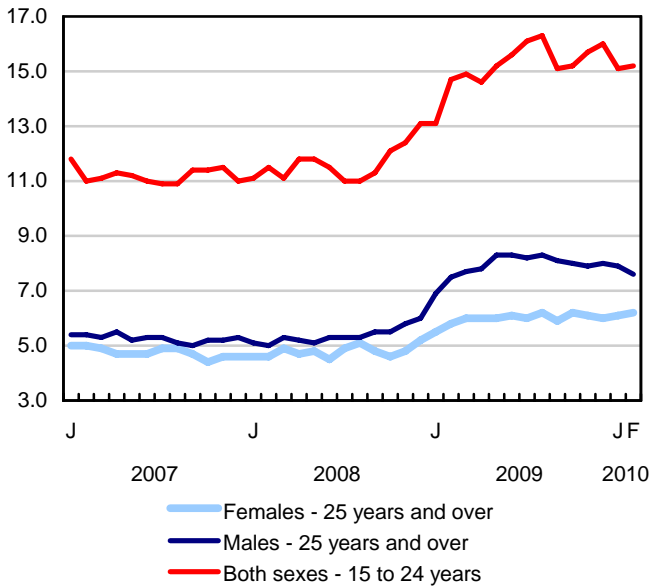


**Employment index, January 2007=100**

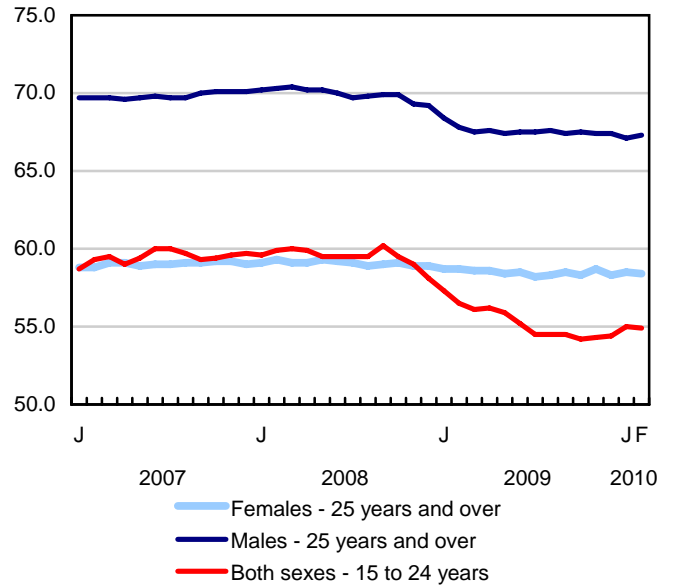


**Chart 2**  
**Employment and unemployment indicators, Canada, seasonally adjusted**

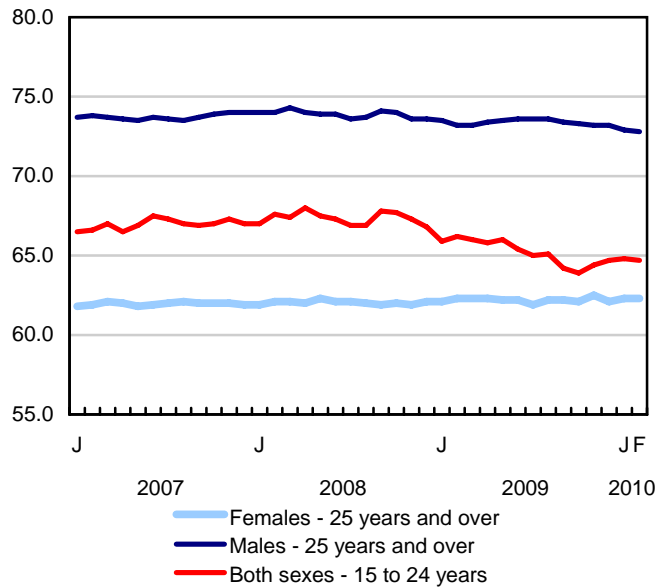
**Unemployment rate (%)**



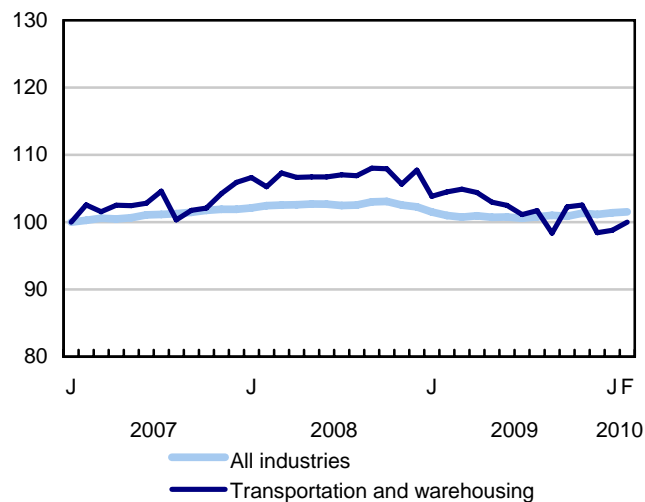
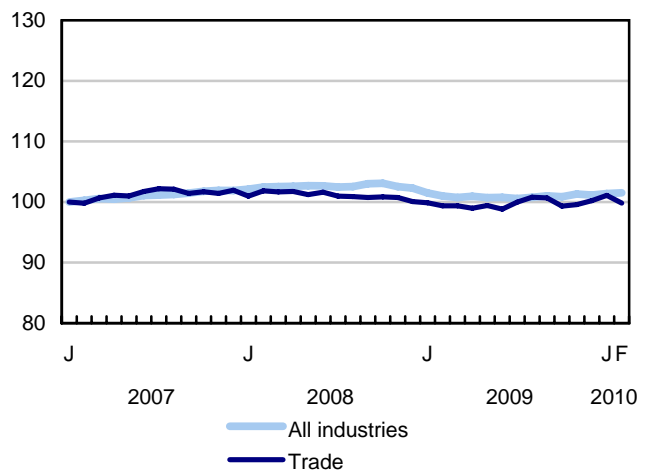
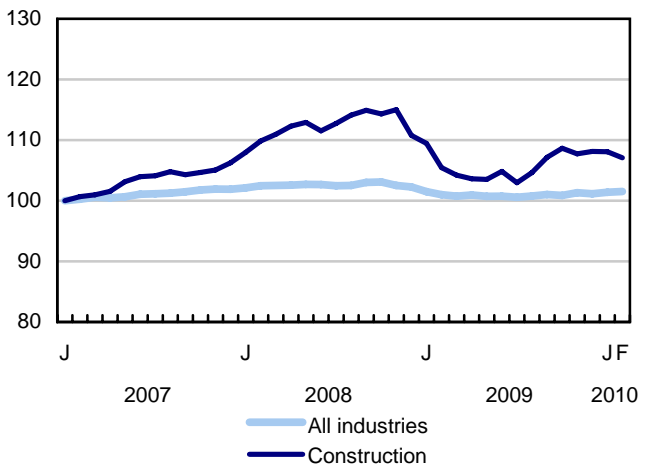
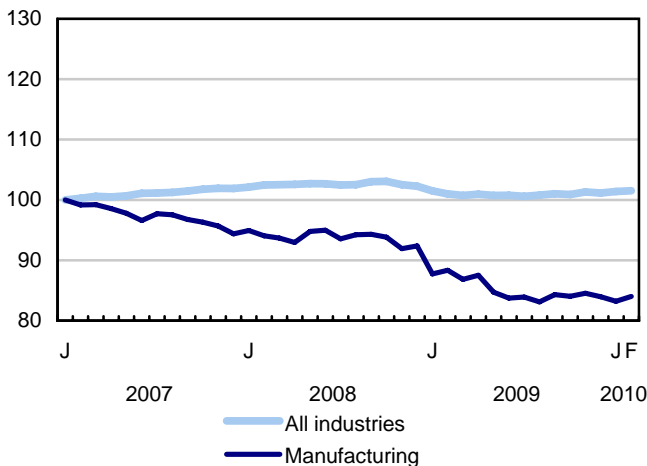
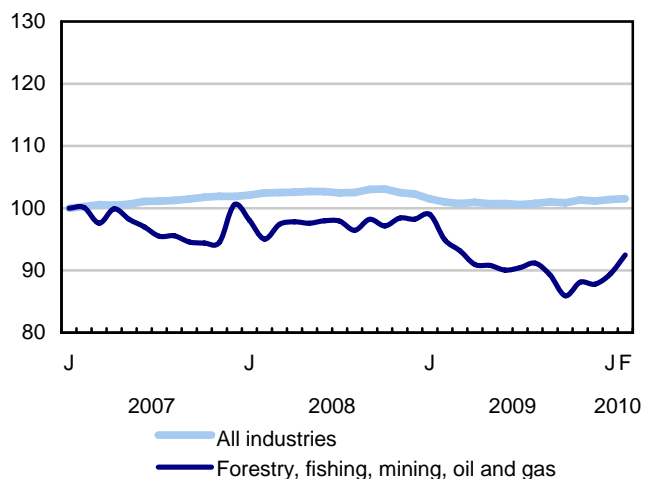
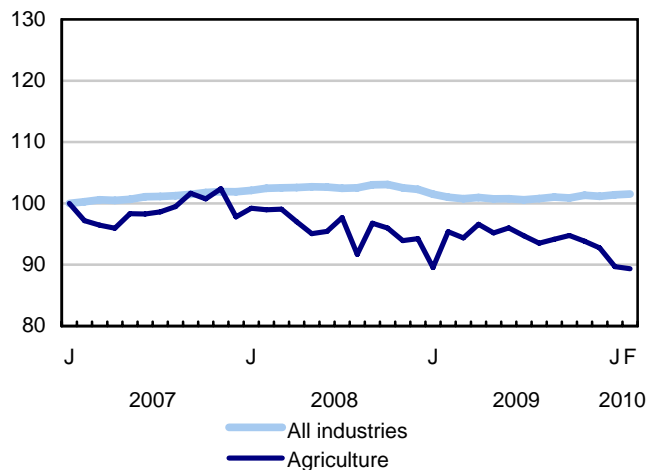
**Employment rate (%)**



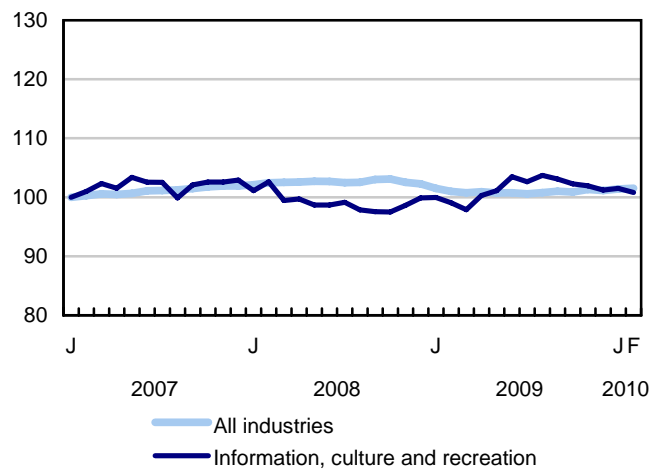
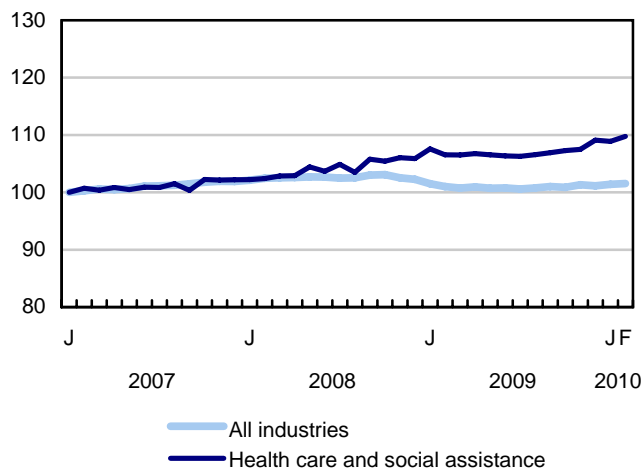
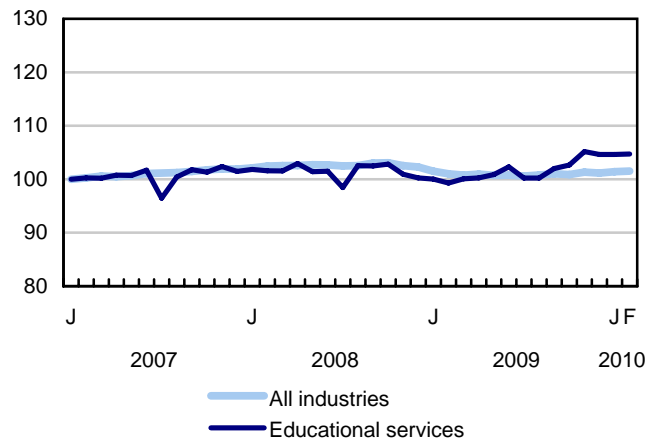
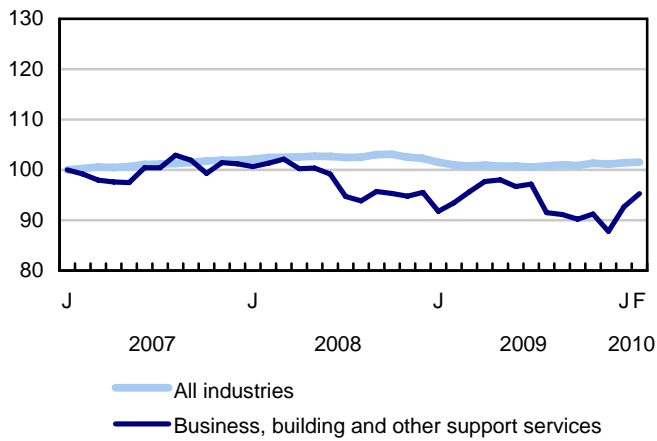
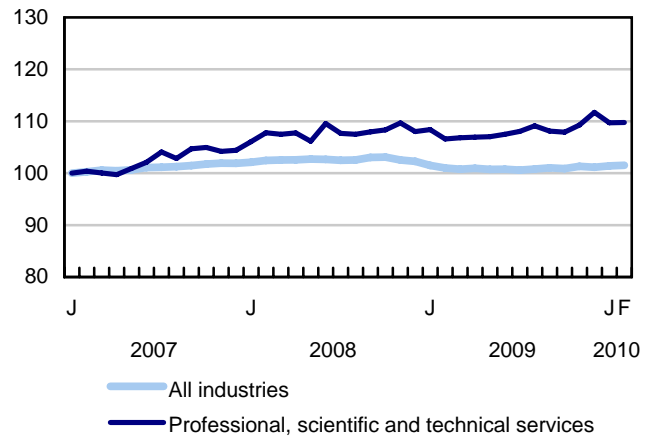
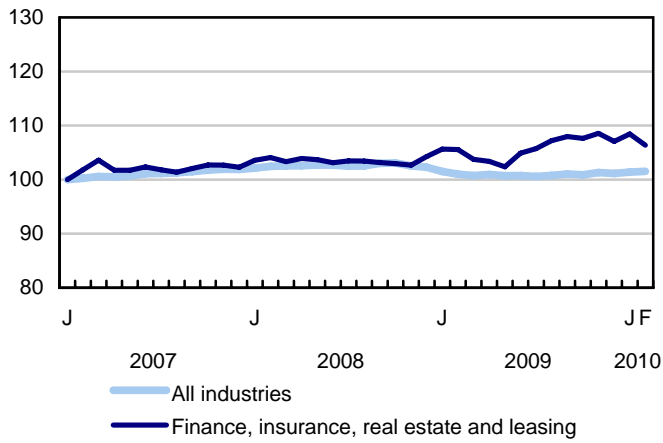
**Participation rate (%)**



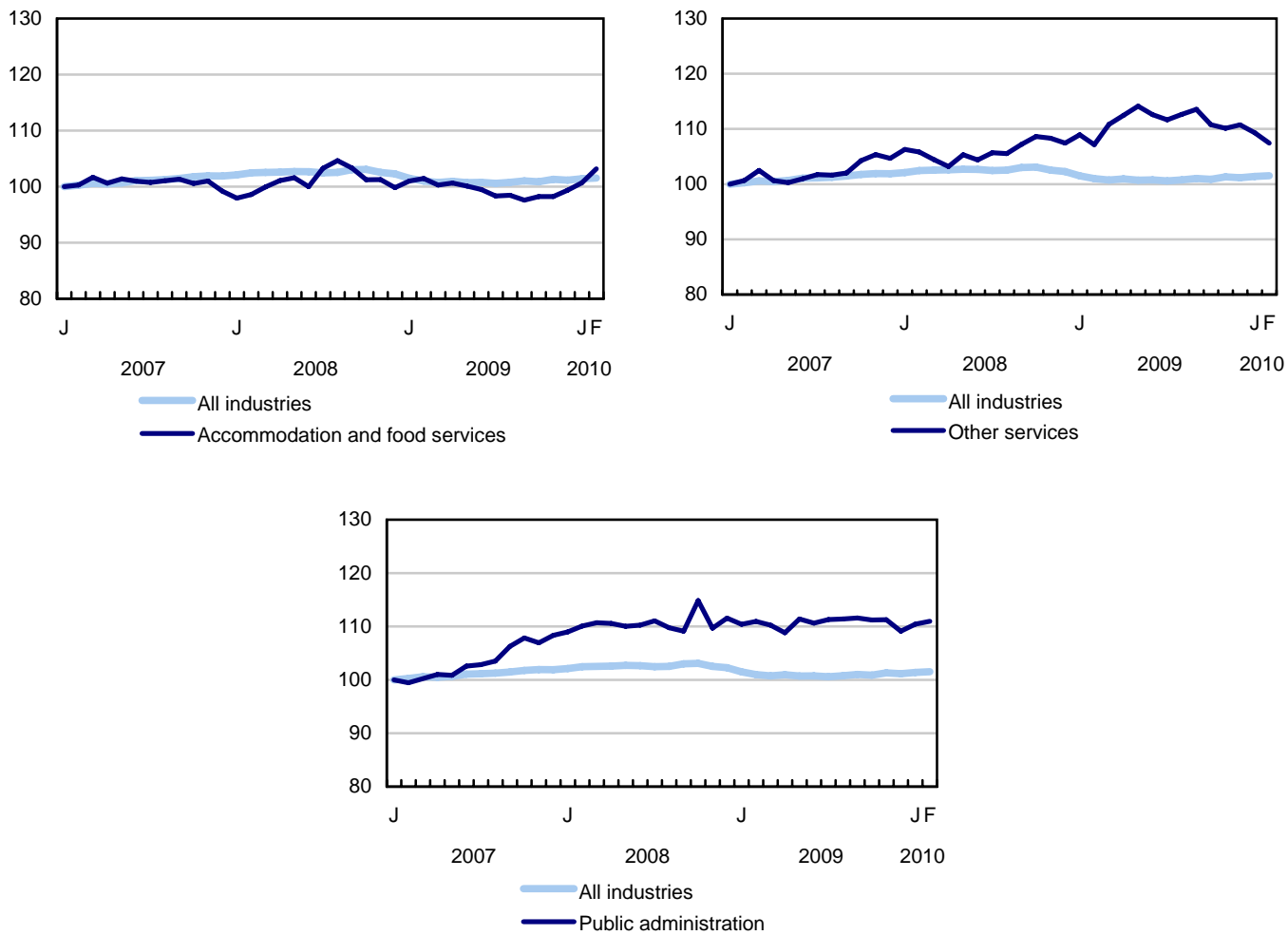
**Chart 3**  
**Index of employment by industry, Canada, seasonally adjusted, January, 2007=100**



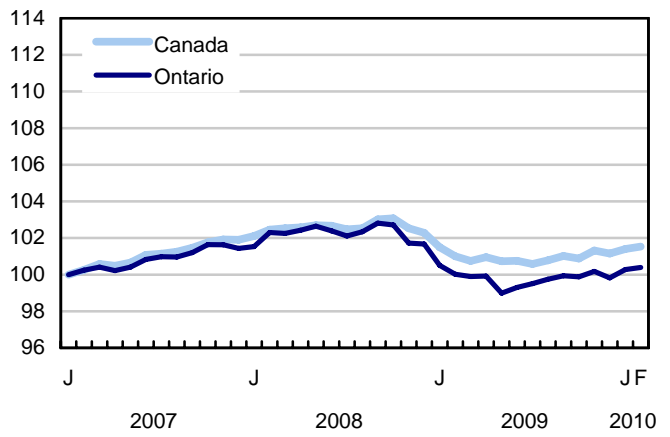
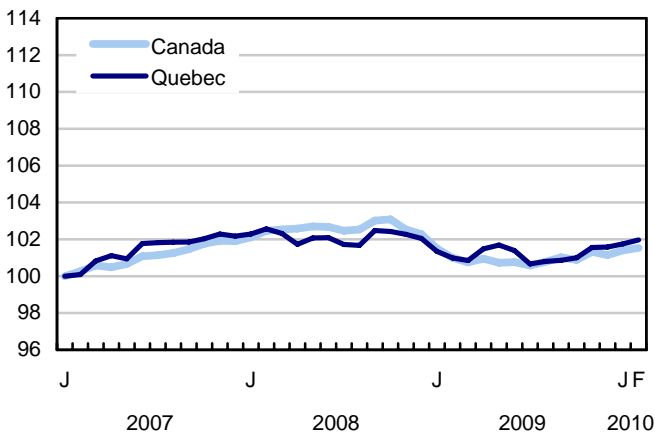
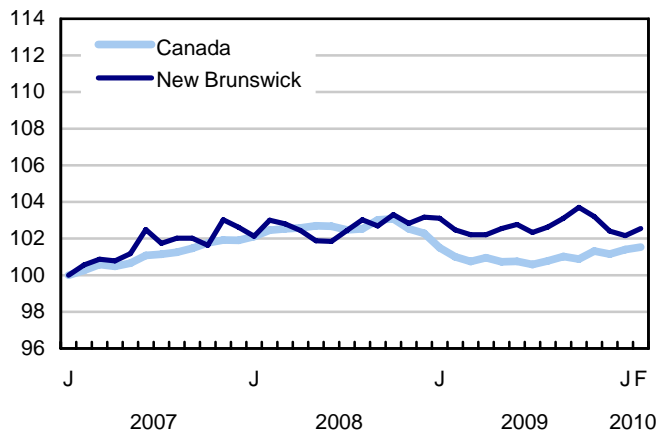
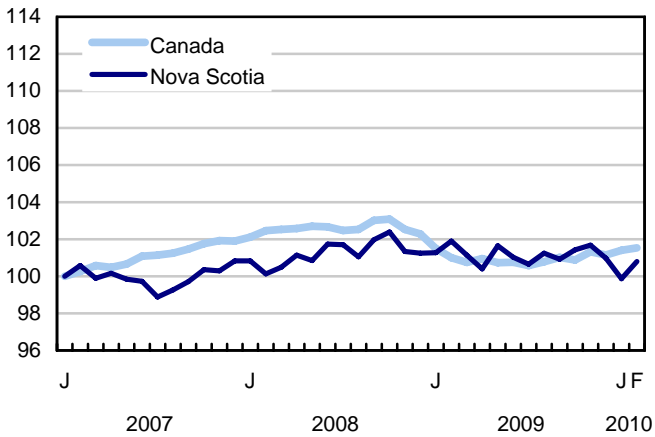
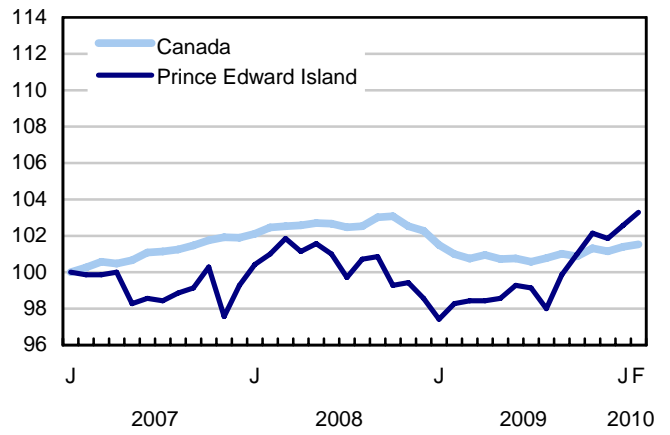
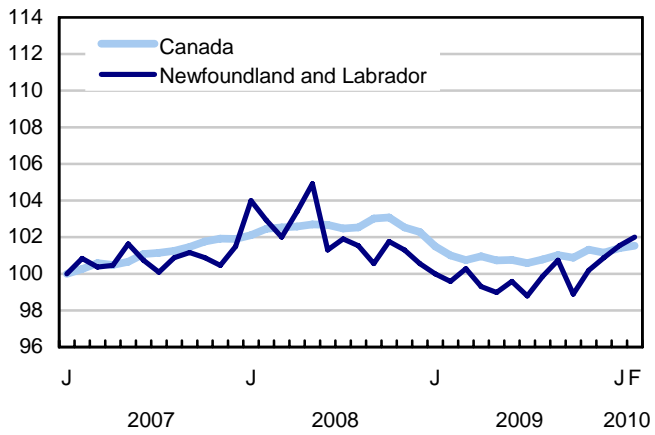
**Chart 4**  
**Index of employment by industry, Canada, seasonally adjusted, January 2007=100**



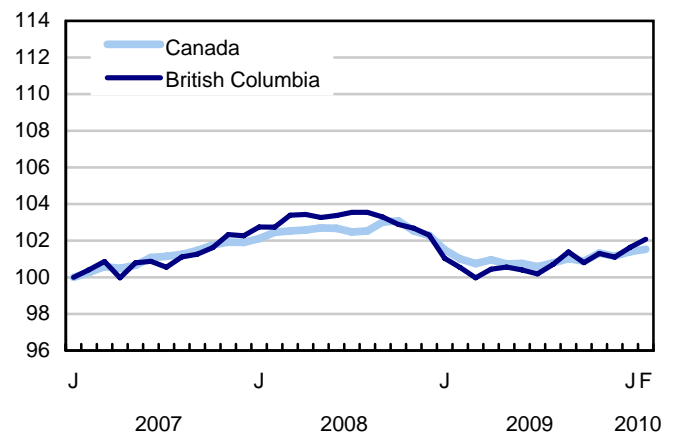
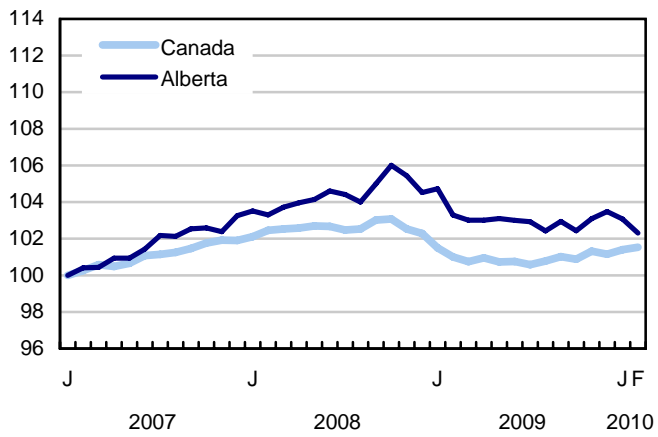
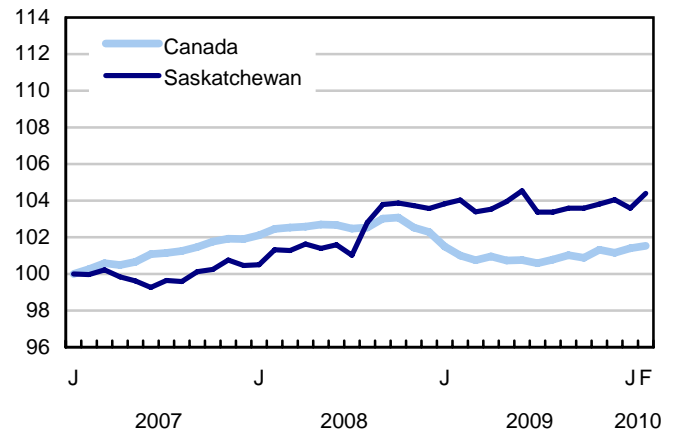
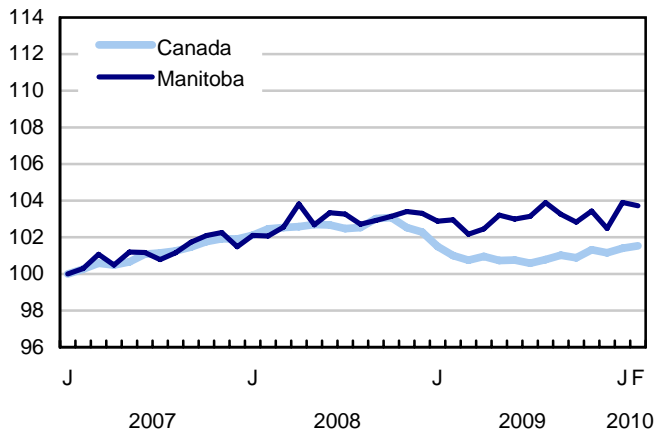
**Chart 5**  
**Index of employment by industry, Canada, seasonally adjusted, January 2007=100**



**Chart 6**  
**Index of employment by province, seasonally adjusted, January 2007=100**



**Chart 7**  
**Index of employment by province, seasonally adjusted, January 2007=100**





## Related products

---

### Selected publications from Statistics Canada

---

71-222-X	The Canadian Labour Market at a Glance
71-526-X	Methodology of the Canadian Labour Force Survey
71-543-G	Guide to the Labour Force Survey
71-544-X	Labour Force Survey Products and Services
71-587-X	Aboriginal Peoples Living Off-reserve in Western Canada: Estimates from the Labour Force Survey
71-588-X	The Aboriginal Labour Force Analysis Series
71-606-X	The Immigrant Labour Force Analysis Series
71F0004X	Labour Force Historical Review
71F0031X	Improvements to the Labour Force Survey (LFS)
71M0001X	Labour Force Survey Microdata File
75-001-X	Perspectives on Labour and Income

---

### Selected CANSIM tables from Statistics Canada

---

282-0001	Labour force survey estimates (LFS), by sex and detailed age group
282-0002	Labour force survey estimates (LFS), by sex and detailed age group
282-0003	Labour force survey estimates (LFS), by educational attainment, sex and age group
282-0004	Labour force survey estimates (LFS), by educational attainment, sex and age group
282-0005	Labour force survey estimates (LFS), by full- and part-time students during school months, sex and age group
282-0006	Labour force survey estimates (LFS), by students during summer months, sex and age group
282-0007	Labour force survey estimates (LFS), by North American Industry Classification System (NAICS), sex and age group
282-0008	Labour force survey estimates (LFS), by North American Industry Classification System (NAICS), sex and age group

282-0009	Labour force survey estimates (LFS), by National Occupational Classification for Statistics (NOC-S) and sex
282-0010	Labour force survey estimates (LFS), by National Occupational Classification for Statistics (NOC-S) and sex
282-0011	Labour force survey estimates (LFS), employment by class of worker, North American Industry Classification System (NAICS) and sex
282-0012	Labour force survey estimates (LFS), employment by class of worker, North American Industry Classification System (NAICS) and sex
282-0013	Labour force survey estimates (LFS), part-time employment by reason for part-time work, sex and age group
282-0014	Labour force survey estimates (LFS), part-time employment by reason for part-time work, sex and age group
282-0015	Labour force survey estimates (LFS), by usual hours worked, main or all jobs, sex and age group
282-0016	Labour force survey estimates (LFS), by usual hours worked, main or all jobs, sex and age group
282-0017	Labour force survey estimates (LFS), by actual hours worked, main or all jobs, sex and age group
282-0018	Labour force survey estimates (LFS), by actual hours worked, main or all jobs, sex and age group
282-0019	Labour force survey estimates (LFS), by usual hours worked, class of worker, North American Industry Classification System (NAICS) and sex
282-0020	Labour force survey estimates (LFS), by usual hours worked, class of worker, North American Industry Classification System (NAICS) and sex
282-0021	Labour force survey estimates (LFS), by actual hours worked, class of worker, North American Industry Classification System (NAICS) and sex
282-0022	Labour force survey estimates (LFS), by actual hours worked, class of worker, North American Industry Classification System (NAICS) and sex
282-0023	Labour force survey estimates (LFS), by usual hours worked, class of worker, National Occupational Classification for Statistics (NOC-S) and sex
282-0024	Labour force survey estimates (LFS), by usual hours worked, class of worker, National Occupational Classification for Statistics (NOC-S) and sex
282-0025	Labour force survey estimates (LFS), by actual hours worked, class of worker, National Occupational Classification for Statistics (NOC-S) and sex
282-0026	Labour force survey estimates (LFS), by actual hours worked, class of worker, National Occupational Classification for Statistics (NOC-S) and sex
282-0027	Labour force survey estimates (LFS), by total and average usual and actual hours worked, main or all jobs, type of work, sex and age group

282-0028	Labour force survey estimates (LFS), by total and average usual and actual hours worked, main or all jobs, type of work, sex and age group
282-0029	Labour force survey estimates (LFS), average days lost for personal reasons per full-time employee by North American Industry Classification System (NAICS), sex and age group
282-0030	Labour force survey estimates (LFS), average days lost for personal reasons per full-time employee by National Occupational Classification for Statistics (NOC-S), sex and age group
282-0031	Labour force survey estimates (LFS), multiple jobholders by North American Industry Classification System (NAICS), sex and age group
282-0032	Labour force survey estimates (LFS), multiple jobholders by North American Industry Classification System (NAICS), sex and age group
282-0033	Labour force survey estimates (LFS), multiple jobholders by National Occupational Classification for Statistics (NOC-S), sex and age group
282-0034	Labour force survey estimates (LFS), multiple jobholders by National Occupational Classification for Statistics (NOC-S), sex and age group
282-0035	Labour force survey estimates (LFS), multiple jobholders by usual hours worked at main and all jobs
282-0036	Labour force survey estimates (LFS), multiple jobholders by usual hours worked at main and all jobs
282-0037	Labour force survey estimates (LFS), job tenure by type of work, sex and age group
282-0038	Labour force survey estimates (LFS), job tenure by type of work, sex and age group
282-0039	Labour force survey estimates (LFS), job tenure by National Occupational Classification for Statistics (NOC-S) and sex
282-0040	Labour force survey estimates (LFS), job tenure by National Occupational Classification for Statistics (NOC-S) and sex
282-0041	Labour force survey estimates (LFS), job tenure by North American Industry Classification System (NAICS) and sex
282-0042	Labour force survey estimates (LFS), job tenure by North American Industry Classification System (NAICS) and sex
282-0047	Labour force survey estimates (LFS), duration of unemployment by sex and age group
282-0048	Labour force survey estimates (LFS), duration of unemployment by sex and age group
282-0049	Labour force survey estimates (LFS), unemployment by type of work sought and search method, sex and age group
282-0050	Labour force survey estimates (LFS), unemployment by type of work sought and search method, sex and age group
282-0051	Labour force survey estimates (LFS), retirement age by class of worker and sex

282-0052	Labour force survey estimates (LFS), by census metropolitan area, sex and age group, 3-month moving average
282-0053	Labour force survey estimates (LFS), by census metropolitan area, sex and age group
282-0054	Labour force survey estimates (LFS), by provinces and economic regions, 3-month moving average
282-0055	Labour force survey estimates (LFS), by provinces, territories and economic regions
282-0056	Labour force survey estimates (LFS), employment by census metropolitan area and North American Industry Classification System (NAICS), 3-month moving average
282-0057	Labour force survey estimates (LFS), employment by census metropolitan area and North American Industry Classification System (NAICS)
282-0058	Labour force survey estimates (LFS), employment by census metropolitan area and National Occupational Classification for Statistics (NOC-S), 3-month moving average
282-0059	Labour force survey estimates (LFS), employment by census metropolitan area and National Occupational Classification for Statistics (NOC-S)
282-0060	Labour force survey estimates (LFS), employment by economic region and North American Industry Classification System (NAICS), 3-month moving average
282-0061	Labour force survey estimates (LFS), employment by economic region and North American Industry Classification System (NAICS)
282-0062	Labour force survey estimates (LFS), employment by economic region and National Occupational Classification for Statistics (NOC-S), 3-month moving average
282-0063	Labour force survey estimates (LFS), employment by economic region and National Occupational Classification for Statistics (NOC-S)
282-0064	Labour force survey estimates (LFS), by selected medium-sized cities
282-0069	Labour force survey estimates (LFS), wages of employees by type of work, National Occupational Classification for Statistics (NOC-S), sex and age group
282-0070	Labour force survey estimates (LFS), wages of employees by type of work, National Occupational Classification for Statistics (NOC-S), sex and age group
282-0071	Labour force survey estimates (LFS), wages of employees by type of work, North American Industry Classification System (NAICS), sex and age group
282-0072	Labour force survey estimates (LFS), wages of employees by type of work, North American Industry Classification System (NAICS), sex and age group
282-0073	Labour force survey estimates (LFS), wages of employees by job permanence, union coverage, sex and age group
282-0074	Labour force survey estimates (LFS), wages of employees by job permanence, union coverage, sex and age group
282-0075	Labour force survey estimates (LFS), employees by establishment size, North American Industry Classification System (NAICS), sex and age group

---

282-0076	Labour force survey estimates (LFS), employees by establishment size, North American Industry Classification System (NAICS), sex and age group
282-0077	Labour force survey estimates (LFS), employees by union coverage, North American Industry Classification System (NAICS), sex and age group
282-0078	Labour force survey estimates (LFS), employees by union coverage, North American Industry Classification System (NAICS), sex and age group
282-0079	Labour force survey estimates (LFS), employees by job permanency, North American Industry Classification System (NAICS), sex and age group
282-0080	Labour force survey estimates (LFS), employees by job permanency, North American Industry Classification System (NAICS), sex and age group
282-0081	Labour force survey estimates (LFS), employees working overtime (weekly) by National Occupational Classification for Statistics (NOC-S), sex and age group
282-0082	Labour force survey estimates (LFS), employees working overtime (weekly) by National Occupational Classification for Statistics (NOC-S), sex and age group
282-0083	Labour force survey estimates (LFS), employees working overtime (weekly) by North American Industry Classification System (NAICS), sex and age group
282-0084	Labour force survey estimates (LFS), employees working overtime (weekly) by North American Industry Classification System (NAICS), sex and age group
282-0085	Labour force survey estimates (LFS), supplementary unemployment rates by sex and age group
282-0086	Labour force survey estimates (LFS), supplementary unemployment rates by sex and age group
282-0087	Labour force survey estimates (LFS), by sex and age group, seasonally adjusted and unadjusted
282-0088	Labour force survey estimates (LFS), employment by North American Industry Classification System (NAICS), seasonally adjusted and unadjusted
282-0089	Labour force survey estimates (LFS), employment by class of worker and sex, seasonally adjusted and unadjusted
282-0090	Labour force survey estimates (LFS), by census metropolitan area, 3-month moving average, seasonally adjusted and unadjusted
282-0091	Labour force survey estimates (LFS), by Montréal, Toronto and Vancouver census metropolitan areas, seasonally adjusted and unadjusted
282-0092	Labour force survey estimates (LFS), actual hours worked by North American Industry Classification System (NAICS), seasonally adjusted
282-0093	Labour force survey estimates (LFS), employment by National Occupational Classification for Statistics (NOC-S), seasonally adjusted
282-0094	Labour force survey estimates (LFS), by North American Industry Classification System (NAICS), Canada, seasonally adjusted
282-0095	Labour force survey estimates (LFS), by full- and part-time students during school months, sex and age group

282-0096	Labour force survey estimates (LFS), by urban and rural areas based on 2001 census boundaries, sex and age group
282-0097	Labour force survey estimates (LFS), by urban and rural areas based on 2001 census boundaries, sex and age group
282-0098	Labour force survey estimates (LFS), employment by urban and rural areas based on 2001 census boundaries, class of worker and North American Industry Classification System (NAICS)
282-0099	Labour force survey estimates (LFS), employment by urban and rural areas based on 2001 census boundaries, class of worker and North American Industry Classification System (NAICS)
282-0100	Labour force survey estimates (LFS), by territories, sex and age group, 3-month moving average, seasonally adjusted and unadjusted

---

### **Selected surveys from Statistics Canada**

---

3701	Labour Force Survey
------	---------------------

---

### **Selected summary tables from Statistics Canada**

---

- *Labour force characteristics*
- *Employment by industry*
- *Selected economic indicators, Canada and United States (monthly and quarterly)*
- *Days lost per worker due to illness or disability, by sex, by provinces*
- *Economic indicators, by province and territory (monthly and quarterly)*
- *Labour force and participation rates by sex and age group*
- *Labour force, employed and unemployed, numbers and rates, by provinces*
- *Employment by industry and sex*
- *Full-time and part-time employment by sex and age group*
- *Labour force characteristics by age and sex*
- *Distribution of employed people, by industry, by province*
- *Labour force characteristics, population 15 years and older, by census metropolitan area*
- *Labour force characteristics, population 15 years and older, by economic region, by province*

- *Days lost per worker by cause, by provinces*
- *Days lost per worker by industry and sex*
- *People employed, by educational attainment*
- *Reasons for part-time work by sex and age group*
- *Self-employment, historical summary*
- *Employment by age, sex, type of work, class of worker and provinces (monthly)*
- *Employment by major industry groups, seasonally adjusted, by provinces (monthly)*
- *Actual hours worked per week by industry, seasonally adjusted (monthly)*
- *Average hourly wages of employees by selected characteristics and profession, unadjusted data, by provinces (monthly)*
- *Labour force characteristics, seasonally adjusted, by province (monthly)*
- *Labour force characteristics, unadjusted, by province (monthly)*
- *Labour force characteristics, seasonally adjusted, by census metropolitan area (3 month moving average)*
- *Labour force characteristics, unadjusted, by census metropolitan area (3 month moving average)*
- *Labour force characteristics, unadjusted, by economic region (3 month moving average)*

# Statistical tables

---

---



**Table 1**  
**Labour force characteristics by age and sex, Canada, seasonally adjusted**

	January 2010	February 2010	S.E. <sup>1</sup>	Change from			Percent change from		
				last month	last December	twelve months ago	last month	last December	twelve months ago
in thousands (except rates)									
<b>15 years and over, both sexes</b>									
Population	27,522.2	<b>27,555.8</b>	...	<b>33.6</b>	65.1	394.6	<b>0.1</b>	0.2	1.5
Labour force	18,456.1	<b>18,464.7</b>	28.2	<b>8.6</b>	27.5	151.2	<b>0.0</b>	0.1	0.8
Employment	16,924.4	<b>16,945.3</b>	28.2	<b>20.9</b>	63.9	87.7	<b>0.1</b>	0.4	0.5
Employment full-time	13,678.6	<b>13,738.8</b>	36.8	<b>60.2</b>	61.6	98.3	<b>0.4</b>	0.5	0.7
Employment part-time	3,245.8	<b>3,206.5</b>	33.5	<b>-39.3</b>	2.2	-10.6	<b>-1.2</b>	0.1	-0.3
Unemployment	1,531.7	<b>1,519.4</b>	25.1	<b>-12.3</b>	-36.4	63.4	<b>-0.8</b>	-2.3	4.4
Participation rate	67.1	<b>67.0</b>	0.1	<b>-0.1</b>	-0.1	-0.4	...	...	...
Unemployment rate	8.3	<b>8.2</b>	0.1	<b>-0.1</b>	-0.2	0.2	...	...	...
Employment rate	61.5	<b>61.5</b>	0.1	<b>0.0</b>	0.1	-0.6	...	...	...
Part-time rate	19.2	<b>18.9</b>	0.2	<b>-0.3</b>	-0.1	-0.2	...	...	...
<b>15 to 24 years, both sexes</b>									
Population	4,401.2	<b>4,401.5</b>	...	<b>0.3</b>	1.2	14.1	<b>0.0</b>	0.0	0.3
Labour force	2,850.7	<b>2,849.6</b>	16.8	<b>-1.1</b>	1.8	-55.9	<b>0.0</b>	0.1	-1.9
Employment	2,421.3	<b>2,417.1</b>	15.5	<b>-4.2</b>	25.1	-62.2	<b>-0.2</b>	1.0	-2.5
Employment full-time	1,275.9	<b>1,274.7</b>	18.0	<b>-1.2</b>	2.4	-65.0	<b>-0.1</b>	0.2	-4.9
Employment part-time	1,145.4	<b>1,142.4</b>	18.5	<b>-3.0</b>	22.8	2.8	<b>-0.3</b>	2.0	0.2
Unemployment	429.4	<b>432.5</b>	14.6	<b>3.1</b>	-23.4	6.3	<b>0.7</b>	-5.1	1.5
Participation rate	64.8	<b>64.7</b>	0.4	<b>-0.1</b>	0.0	-1.5	...	...	...
Unemployment rate	15.1	<b>15.2</b>	0.5	<b>0.1</b>	-0.8	0.5	...	...	...
Employment rate	55.0	<b>54.9</b>	0.4	<b>-0.1</b>	0.5	-1.6	...	...	...
Part-time rate	47.3	<b>47.3</b>	0.7	<b>0.0</b>	0.5	1.3	...	...	...
<b>25 years and over, men</b>									
Population	11,309.1	<b>11,325.7</b>	...	<b>16.6</b>	31.9	193.0	<b>0.1</b>	0.3	1.7
Labour force	8,242.1	<b>8,248.7</b>	14.8	<b>6.6</b>	-19.3	94.2	<b>0.1</b>	-0.2	1.2
Employment	7,592.3	<b>7,622.2</b>	16.1	<b>29.9</b>	12.6	78.9	<b>0.4</b>	0.2	1.0
Employment full-time	7,004.3	<b>7,042.6</b>	20.8	<b>38.3</b>	32.2	83.0	<b>0.5</b>	0.5	1.2
Employment part-time	588.0	<b>579.6</b>	16.5	<b>-8.4</b>	-19.6	-4.1	<b>-1.4</b>	-3.3	-0.7
Unemployment	649.8	<b>626.6</b>	15.0	<b>-23.2</b>	-31.7	15.4	<b>-3.6</b>	-4.8	2.5
Participation rate	72.9	<b>72.8</b>	0.1	<b>-0.1</b>	-0.4	-0.4	...	...	...
Unemployment rate	7.9	<b>7.6</b>	0.2	<b>-0.3</b>	-0.4	0.1	...	...	...
Employment rate	67.1	<b>67.3</b>	0.1	<b>0.2</b>	-0.1	-0.5	...	...	...
Part-time rate	7.7	<b>7.6</b>	0.2	<b>-0.1</b>	-0.3	-0.1	...	...	...
<b>25 years and over, women</b>									
Population	11,811.9	<b>11,828.5</b>	...	<b>16.6</b>	31.9	187.4	<b>0.1</b>	0.3	1.6
Labour force	7,363.3	<b>7,366.4</b>	16.1	<b>3.1</b>	45.0	112.8	<b>0.0</b>	0.6	1.6
Employment	6,910.8	<b>6,906.1</b>	15.8	<b>-4.7</b>	26.3	71.1	<b>-0.1</b>	0.4	1.0
Employment full-time	5,398.5	<b>5,421.6</b>	23.5	<b>23.1</b>	27.2	80.4	<b>0.4</b>	0.5	1.5
Employment part-time	1,512.4	<b>1,484.5</b>	22.0	<b>-27.9</b>	-0.9	-9.3	<b>-1.8</b>	-0.1	-0.6
Unemployment	452.5	<b>460.3</b>	13.0	<b>7.8</b>	18.7	41.7	<b>1.7</b>	4.2	10.0
Participation rate	62.3	<b>62.3</b>	0.1	<b>0.0</b>	0.2	0.0	...	...	...
Unemployment rate	6.1	<b>6.2</b>	0.2	<b>0.1</b>	0.2	0.4	...	...	...
Employment rate	58.5	<b>58.4</b>	0.1	<b>-0.1</b>	0.1	-0.3	...	...	...
Part-time rate	21.9	<b>21.5</b>	0.3	<b>-0.4</b>	-0.1	-0.4	...	...	...
<b>25 to 54 years, both sexes</b>									
Population	14,570.4	<b>14,578.2</b>	...	<b>7.8</b>	13.4	101.3	<b>0.1</b>	0.1	0.7
Labour force	12,589.2	<b>12,578.9</b>	21.3	<b>-10.3</b>	10.4	60.8	<b>-0.1</b>	0.1	0.5
Employment	11,691.3	<b>11,689.3</b>	22.9	<b>-2.0</b>	17.3	14.6	<b>0.0</b>	0.1	0.1
Unemployment	897.9	<b>889.6</b>	18.8	<b>-8.3</b>	-7.0	46.1	<b>-0.9</b>	-0.8	5.5
Participation rate	86.4	<b>86.3</b>	0.1	<b>-0.1</b>	0.0	-0.2	...	...	...
Unemployment rate	7.1	<b>7.1</b>	0.1	<b>0.0</b>	0.0	0.4	...	...	...
Employment rate	80.2	<b>80.2</b>	0.2	<b>0.0</b>	0.1	-0.4	...	...	...

See notes at the end of the table.

Table 1 – continued

## Labour force characteristics by age and sex, Canada, seasonally adjusted

	January 2010	February 2010	S.E. <sup>1</sup>	Change from			Percent change from		
				last month	last December	twelve months ago	last month	last December	twelve months ago
in thousands (except rates)									
<b>25 to 54 years, men</b>									
Population	7,284.6	<b>7,288.7</b>	...	<b>4.1</b>	7.1	55.4	<b>0.1</b>	0.1	0.8
Labour force	6,569.0	<b>6,558.6</b>	13.7	<b>-10.4</b>	-33.5	3.1	<b>-0.2</b>	-0.5	0.0
Employment	6,048.4	<b>6,052.4</b>	15.8	<b>4.0</b>	-8.9	-3.2	<b>0.1</b>	-0.1	-0.1
Unemployment	520.6	<b>506.2</b>	14.0	<b>-14.4</b>	-24.6	6.3	<b>-2.8</b>	-4.6	1.3
Participation rate	90.2	<b>90.0</b>	0.2	<b>-0.2</b>	-0.5	-0.6	...	...	...
Unemployment rate	7.9	<b>7.7</b>	0.2	<b>-0.2</b>	-0.4	0.1	...	...	...
Employment rate	83.0	<b>83.0</b>	0.2	<b>0.0</b>	-0.2	-0.7	...	...	...
<b>25 to 54 years, women</b>									
Population	7,285.8	<b>7,289.5</b>	...	<b>3.7</b>	6.3	45.9	<b>0.1</b>	0.1	0.6
Labour force	6,020.2	<b>6,020.3</b>	15.6	<b>0.1</b>	43.9	57.7	<b>0.0</b>	0.7	1.0
Employment	5,642.9	<b>5,636.9</b>	15.7	<b>-6.0</b>	26.2	17.8	<b>-0.1</b>	0.5	0.3
Unemployment	377.4	<b>383.4</b>	12.1	<b>6.0</b>	17.7	39.9	<b>1.6</b>	4.8	11.6
Participation rate	82.6	<b>82.6</b>	0.2	<b>0.0</b>	0.5	0.3	...	...	...
Unemployment rate	6.3	<b>6.4</b>	0.2	<b>0.1</b>	0.3	0.6	...	...	...
Employment rate	77.5	<b>77.3</b>	0.2	<b>-0.2</b>	0.3	-0.3	...	...	...
<b>55 years and over, both sexes</b>									
Population	8,550.6	<b>8,576.0</b>	...	<b>25.4</b>	50.4	279.1	<b>0.3</b>	0.6	3.4
Labour force	3,016.2	<b>3,036.2</b>	16.2	<b>20.0</b>	15.4	146.3	<b>0.7</b>	0.5	5.1
Employment	2,811.9	<b>2,838.9</b>	16.1	<b>27.0</b>	21.4	135.3	<b>1.0</b>	0.8	5.0
Unemployment	204.3	<b>197.3</b>	8.9	<b>-7.0</b>	-6.0	11.0	<b>-3.4</b>	-3.0	5.9
Participation rate	35.3	<b>35.4</b>	0.2	<b>0.1</b>	0.0	0.6	...	...	...
Unemployment rate	6.8	<b>6.5</b>	0.3	<b>-0.3</b>	-0.2	0.1	...	...	...
Employment rate	32.9	<b>33.1</b>	0.2	<b>0.2</b>	0.1	0.5	...	...	...
<b>55 years and over, men</b>									
Population	4,024.5	<b>4,037.0</b>	...	<b>12.5</b>	24.8	137.6	<b>0.3</b>	0.6	3.5
Labour force	1,673.1	<b>1,690.1</b>	10.9	<b>17.0</b>	14.2	91.1	<b>1.0</b>	0.8	5.7
Employment	1,543.9	<b>1,569.7</b>	10.9	<b>25.8</b>	21.3	82.0	<b>1.7</b>	1.4	5.5
Unemployment	129.2	<b>120.4</b>	6.7	<b>-8.8</b>	-7.1	9.1	<b>-6.8</b>	-5.6	8.2
Participation rate	41.6	<b>41.9</b>	0.3	<b>0.3</b>	0.1	0.9	...	...	...
Unemployment rate	7.7	<b>7.1</b>	0.4	<b>-0.6</b>	-0.5	0.1	...	...	...
Employment rate	38.4	<b>38.9</b>	0.3	<b>0.5</b>	0.3	0.7	...	...	...
<b>55 years and over, women</b>									
Population	4,526.1	<b>4,539.0</b>	...	<b>12.9</b>	25.6	141.5	<b>0.3</b>	0.6	3.2
Labour force	1,343.1	<b>1,346.1</b>	11.1	<b>3.0</b>	1.2	55.1	<b>0.2</b>	0.1	4.3
Employment	1,268.0	<b>1,269.2</b>	10.9	<b>1.2</b>	0.1	53.3	<b>0.1</b>	0.0	4.4
Unemployment	75.1	<b>76.9</b>	5.7	<b>1.8</b>	1.0	1.9	<b>2.4</b>	1.3	2.5
Participation rate	29.7	<b>29.7</b>	0.2	<b>0.0</b>	-0.1	0.3	...	...	...
Unemployment rate	5.6	<b>5.7</b>	0.4	<b>0.1</b>	0.1	-0.1	...	...	...
Employment rate	28.0	<b>28.0</b>	0.2	<b>0.0</b>	-0.1	0.4	...	...	...

1. Average standard error of change in two consecutive months (see "Sampling Errors" in Data Quality for further explanations).

Note(s): Related CANSIM table 282-0087.

**Table 2**  
**Employment by class of worker and industry, Canada, seasonally adjusted**

	January 2010	February 2010	S.E. <sup>1</sup>	Change from			Percent change from		
				last month	last December	twelve months ago	last month	last December	twelve months ago
in thousands									
<b>Class of worker</b>									
Employees	14,208.1	<b>14,246.2</b>	33.7	<b>38.1</b>	105.1	37.0	<b>0.3</b>	0.7	0.3
Self-employed <sup>2</sup>	2,716.3	<b>2,699.1</b>	23.6	<b>-17.2</b>	-41.2	50.7	<b>-0.6</b>	-1.5	1.9
<b>Public/private sector employees</b>									
Public sector employees	3,450.5	<b>3,496.1</b>	22.2	<b>45.6</b>	59.0	116.7	<b>1.3</b>	1.7	3.5
Private sector employees	10,757.7	<b>10,750.2</b>	34.6	<b>-7.5</b>	46.2	-79.5	<b>-0.1</b>	0.4	-0.7
<b>Industry</b>	16,924.4	<b>16,945.3</b>	28.2	<b>20.9</b>	63.9	87.7	<b>0.1</b>	0.4	0.5
<b>Goods-producing sector</b>	3,693.5	<b>3,711.3</b>	24.3	<b>17.8</b>	-5.3	-101.6	<b>0.5</b>	-0.1	-2.7
Agriculture	304.9	<b>303.8</b>	7.0	<b>-1.1</b>	-11.5	-20.5	<b>-0.4</b>	-3.6	-6.3
Forestry, fishing, mining, oil and gas	311.4	<b>322.0</b>	6.6	<b>10.6</b>	16.3	-8.5	<b>3.4</b>	5.3	-2.6
Utilities	144.3	<b>146.8</b>	4.7	<b>2.5</b>	0.3	0.5	<b>1.7</b>	0.2	0.3
Construction	1,186.0	<b>1,174.9</b>	15.2	<b>-11.1</b>	-11.5	17.8	<b>-0.9</b>	-1.0	1.5
Manufacturing	1,746.9	<b>1,763.8</b>	17.9	<b>16.9</b>	1.2	-90.8	<b>1.0</b>	0.1	-4.9
<b>Services-producing sector</b>	13,230.9	<b>13,234.0</b>	32.0	<b>3.1</b>	69.2	189.3	<b>0.0</b>	0.5	1.5
Trade	2,677.4	<b>2,643.9</b>	21.2	<b>-33.5</b>	-10.1	12.1	<b>-1.3</b>	-0.4	0.5
Transportation and warehousing	792.3	<b>802.0</b>	12.3	<b>9.7</b>	12.6	-36.0	<b>1.2</b>	1.6	-4.3
Finance, insurance, real estate and leasing	1,127.0	<b>1,105.5</b>	14.7	<b>-21.5</b>	-7.2	8.3	<b>-1.9</b>	-0.6	0.8
Professional, scientific and technical services	1,219.5	<b>1,220.3</b>	15.7	<b>0.8</b>	-21.6	35.5	<b>0.1</b>	-1.7	3.0
Business, building and other support services	650.5	<b>668.9</b>	12.8	<b>18.4</b>	52.8	12.9	<b>2.8</b>	8.6	2.0
Educational services	1,228.7	<b>1,229.8</b>	14.5	<b>1.1</b>	1.1	63.6	<b>0.1</b>	0.1	5.5
Health care and social assistance	1,990.0	<b>2,005.8</b>	16.2	<b>15.8</b>	11.8	59.0	<b>0.8</b>	0.6	3.0
Information, culture and recreation	777.5	<b>772.0</b>	13.0	<b>-5.5</b>	-3.3	13.3	<b>-0.7</b>	-0.4	1.8
Accommodation and food services	1,069.2	<b>1,095.7</b>	15.1	<b>26.5</b>	40.6	18.2	<b>2.5</b>	3.8	1.7
Other services	774.3	<b>761.0</b>	12.6	<b>-13.3</b>	-23.3	2.0	<b>-1.7</b>	-3.0	0.3
Public administration	924.4	<b>929.0</b>	11.5	<b>4.6</b>	15.6	0.3	<b>0.5</b>	1.7	0.0

1. Average standard error of change in two consecutive months (see "Sampling Errors" in Data Quality for further explanations).

2. Includes both incorporated and unincorporated working owners, self-employed persons who do not have a business and persons working in a family business without pay.

**Note(s):** Related CANSIM Tables 282-0088, 282-0089.

**Table 3**  
**Labour force characteristics by province, seasonally adjusted**

	January 2010	February 2010	S.E. <sup>1</sup>	Change from			Percent change from		
				last month	last December	twelve months ago	last month	last December	twelve months ago
in thousands (except rates)									
<b>Newfoundland and Labrador</b>									
Population	430.8	<b>431.0</b>	...	<b>0.2</b>	0.5	3.1	<b>0.0</b>	0.1	0.7
Labour force	256.8	<b>257.3</b>	2.1	<b>0.5</b>	1.3	3.7	<b>0.2</b>	0.5	1.5
Employment	218.6	<b>219.6</b>	2.2	<b>1.0</b>	2.4	5.2	<b>0.5</b>	1.1	2.4
Employment full-time	187.2	<b>188.8</b>	2.5	<b>1.6</b>	1.9	4.7	<b>0.9</b>	1.0	2.6
Employment part-time	31.4	<b>30.8</b>	1.8	<b>-0.6</b>	0.5	0.5	<b>-1.9</b>	1.7	1.7
Unemployment	38.2	<b>37.7</b>	2.1	<b>-0.5</b>	-1.1	-1.5	<b>-1.3</b>	-2.8	-3.8
Participation rate	59.6	<b>59.7</b>	0.5	<b>0.1</b>	0.2	0.4	...	...	...
Unemployment rate	14.9	<b>14.7</b>	0.8	<b>-0.2</b>	-0.5	-0.8	...	...	...
Employment rate	50.7	<b>51.0</b>	0.5	<b>0.3</b>	0.5	0.9	...	...	...
<b>Prince Edward Island</b>									
Population	116.4	<b>116.6</b>	...	<b>0.2</b>	0.2	1.3	<b>0.2</b>	0.2	1.1
Labour force	79.6	<b>80.3</b>	0.6	<b>0.7</b>	0.5	1.9	<b>0.9</b>	0.6	2.4
Employment	71.7	<b>72.2</b>	0.7	<b>0.5</b>	1.0	3.5	<b>0.7</b>	1.4	5.1
Employment full-time	57.9	<b>58.6</b>	0.8	<b>0.7</b>	0.4	0.5	<b>1.2</b>	0.7	0.9
Employment part-time	13.8	<b>13.6</b>	0.7	<b>-0.2</b>	0.6	3.0	<b>-1.4</b>	4.6	28.3
Unemployment	7.9	<b>8.2</b>	0.7	<b>0.3</b>	-0.4	-1.5	<b>3.8</b>	-4.7	-15.5
Participation rate	68.4	<b>68.9</b>	0.6	<b>0.5</b>	0.3	0.9	...	...	...
Unemployment rate	9.9	<b>10.2</b>	0.8	<b>0.3</b>	-0.6	-2.2	...	...	...
Employment rate	61.6	<b>61.9</b>	0.6	<b>0.3</b>	0.7	2.3	...	...	...
<b>Nova Scotia</b>									
Population	774.8	<b>775.0</b>	...	<b>0.2</b>	0.5	3.6	<b>0.0</b>	0.1	0.5
Labour force	495.8	<b>497.6</b>	2.7	<b>1.8</b>	-2.3	-3.6	<b>0.4</b>	-0.5	-0.7
Employment	447.0	<b>451.2</b>	2.9	<b>4.2</b>	-0.8	-4.9	<b>0.9</b>	-0.2	-1.1
Employment full-time	360.7	<b>367.3</b>	3.6	<b>6.6</b>	-1.5	-4.7	<b>1.8</b>	-0.4	-1.3
Employment part-time	86.3	<b>83.8</b>	3.1	<b>-2.5</b>	0.5	-0.3	<b>-2.9</b>	0.6	-0.4
Unemployment	48.8	<b>46.5</b>	2.6	<b>-2.3</b>	-1.3	1.4	<b>-4.7</b>	-2.7	3.1
Participation rate	64.0	<b>64.2</b>	0.4	<b>0.2</b>	-0.3	-0.8	...	...	...
Unemployment rate	9.8	<b>9.3</b>	0.5	<b>-0.5</b>	-0.3	0.3	...	...	...
Employment rate	57.7	<b>58.2</b>	0.4	<b>0.5</b>	-0.2	-0.9	...	...	...
<b>New Brunswick</b>									
Population	622.9	<b>623.2</b>	...	<b>0.3</b>	0.4	2.8	<b>0.0</b>	0.1	0.5
Labour force	401.7	<b>402.6</b>	2.4	<b>0.9</b>	1.4	0.6	<b>0.2</b>	0.3	0.1
Employment	364.5	<b>365.9</b>	2.5	<b>1.4</b>	0.5	0.3	<b>0.4</b>	0.1	0.1
Employment full-time	310.4	<b>310.2</b>	2.9	<b>-0.2</b>	0.7	-0.7	<b>-0.1</b>	0.2	-0.2
Employment part-time	54.1	<b>55.8</b>	2.5	<b>1.7</b>	-0.1	1.1	<b>3.1</b>	-0.2	2.0
Unemployment	37.2	<b>36.7</b>	2.2	<b>-0.5</b>	0.9	0.3	<b>-1.3</b>	2.5	0.8
Participation rate	64.5	<b>64.6</b>	0.4	<b>0.1</b>	0.2	-0.2	...	...	...
Unemployment rate	9.3	<b>9.1</b>	0.5	<b>-0.2</b>	0.2	0.0	...	...	...
Employment rate	58.5	<b>58.7</b>	0.4	<b>0.2</b>	0.0	-0.2	...	...	...
<b>Quebec</b>									
Population	6,478.4	<b>6,484.9</b>	...	<b>6.5</b>	13.2	73.7	<b>0.1</b>	0.2	1.1
Labour force	4,199.8	<b>4,212.7</b>	14.2	<b>12.9</b>	0.5	37.9	<b>0.3</b>	0.0	0.9
Employment	3,864.6	<b>3,873.3</b>	14.5	<b>8.7</b>	14.9	37.3	<b>0.2</b>	0.4	1.0
Employment full-time	3,122.9	<b>3,137.5</b>	18.8	<b>14.6</b>	-0.4	36.8	<b>0.5</b>	0.0	1.2
Employment part-time	741.6	<b>735.8</b>	16.7	<b>-5.8</b>	15.3	0.5	<b>-0.8</b>	2.1	0.1
Unemployment	335.3	<b>339.4</b>	13.3	<b>4.1</b>	-14.4	0.5	<b>1.2</b>	-4.1	0.1
Participation rate	64.8	<b>65.0</b>	0.2	<b>0.2</b>	-0.1	-0.1	...	...	...
Unemployment rate	8.0	<b>8.1</b>	0.3	<b>0.1</b>	-0.3	0.0	...	...	...
Employment rate	59.7	<b>59.7</b>	0.2	<b>0.0</b>	0.1	-0.1	...	...	...

See notes at the end of the table.

Table 3 – continued

## Labour force characteristics by province, seasonally adjusted

	January 2010	February 2010	S.E. <sup>1</sup>	Change from			Percent change from		
				last month	last December	twelve months ago	last month	last December	twelve months ago
in thousands (except rates)									
<b>Ontario</b>									
Population	10,739.8	<b>10,752.8</b>	...	<b>13.0</b>	25.2	148.2	<b>0.1</b>	0.2	1.4
Labour force	7,221.0	<b>7,219.6</b>	19.5	<b>-1.4</b>	29.4	43.2	<b>0.0</b>	0.4	0.6
Employment	6,557.7	<b>6,564.8</b>	19.0	<b>7.1</b>	37.4	24.1	<b>0.1</b>	0.6	0.4
Employment full-time	5,315.3	<b>5,323.9</b>	24.6	<b>8.6</b>	22.5	27.5	<b>0.2</b>	0.4	0.5
Employment part-time	1,242.5	<b>1,240.8</b>	22.5	<b>-1.7</b>	14.9	-3.5	<b>-0.1</b>	1.2	-0.3
Unemployment	663.2	<b>654.9</b>	17.4	<b>-8.3</b>	-7.9	19.2	<b>-1.3</b>	-1.2	3.0
Participation rate	67.2	<b>67.1</b>	0.2	<b>-0.1</b>	0.1	-0.6	...	...	...
Unemployment rate	9.2	<b>9.1</b>	0.2	<b>-0.1</b>	-0.1	0.2	...	...	...
Employment rate	61.1	<b>61.1</b>	0.2	<b>0.0</b>	0.3	-0.6	...	...	...
<b>Manitoba</b>									
Population	929.5	<b>930.5</b>	...	<b>1.0</b>	1.9	13.7	<b>0.1</b>	0.2	1.5
Labour force	647.6	<b>646.1</b>	2.6	<b>-1.5</b>	5.2	7.5	<b>-0.2</b>	0.8	1.2
Employment	612.4	<b>611.3</b>	2.8	<b>-1.1</b>	7.3	4.5	<b>-0.2</b>	1.2	0.7
Employment full-time	489.4	<b>494.3</b>	3.7	<b>4.9</b>	9.6	1.2	<b>1.0</b>	2.0	0.2
Employment part-time	123.1	<b>117.0</b>	3.3	<b>-6.1</b>	-2.2	3.3	<b>-5.0</b>	-1.8	2.9
Unemployment	35.2	<b>34.8</b>	2.2	<b>-0.4</b>	-2.2	3.0	<b>-1.1</b>	-5.9	9.4
Participation rate	69.7	<b>69.4</b>	0.3	<b>-0.3</b>	0.4	-0.3	...	...	...
Unemployment rate	5.4	<b>5.4</b>	0.3	<b>0.0</b>	-0.4	0.4	...	...	...
Employment rate	65.9	<b>65.7</b>	0.3	<b>-0.2</b>	0.7	-0.5	...	...	...
<b>Saskatchewan</b>									
Population	785.2	<b>786.4</b>	...	<b>1.2</b>	2.1	10.8	<b>0.2</b>	0.3	1.4
Labour force	545.4	<b>547.3</b>	2.4	<b>1.9</b>	-1.2	0.0	<b>0.3</b>	-0.2	0.0
Employment	519.8	<b>523.9</b>	2.5	<b>4.1</b>	1.8	1.9	<b>0.8</b>	0.3	0.4
Employment full-time	428.6	<b>433.2</b>	3.4	<b>4.6</b>	7.6	10.3	<b>1.1</b>	1.8	2.4
Employment part-time	91.2	<b>90.7</b>	3.2	<b>-0.5</b>	-5.8	-8.4	<b>-0.5</b>	-6.0	-8.5
Unemployment	25.6	<b>23.5</b>	1.9	<b>-2.1</b>	-2.8	-1.8	<b>-8.2</b>	-10.6	-7.1
Participation rate	69.5	<b>69.6</b>	0.3	<b>0.1</b>	-0.3	-1.0	...	...	...
Unemployment rate	4.7	<b>4.3</b>	0.3	<b>-0.4</b>	-0.5	-0.3	...	...	...
Employment rate	66.2	<b>66.6</b>	0.3	<b>0.4</b>	0.0	-0.7	...	...	...
<b>Alberta</b>									
Population	2,899.5	<b>2,904.1</b>	...	<b>4.6</b>	8.8	68.0	<b>0.2</b>	0.3	2.4
Labour force	2,127.2	<b>2,118.8</b>	8.4	<b>-8.4</b>	-17.1	2.9	<b>-0.4</b>	-0.8	0.1
Employment	1,987.6	<b>1,972.8</b>	8.8	<b>-14.8</b>	-22.5	-18.9	<b>-0.7</b>	-1.1	-0.9
Employment full-time	1,638.1	<b>1,623.8</b>	11.7	<b>-14.3</b>	-8.0	-14.8	<b>-0.9</b>	-0.5	-0.9
Employment part-time	349.6	<b>349.0</b>	10.9	<b>-0.6</b>	-14.5	-4.1	<b>-0.2</b>	-4.0	-1.2
Unemployment	139.6	<b>145.9</b>	7.2	<b>6.3</b>	5.3	21.6	<b>4.5</b>	3.8	17.4
Participation rate	73.4	<b>73.0</b>	0.3	<b>-0.4</b>	-0.8	-1.6	...	...	...
Unemployment rate	6.6	<b>6.9</b>	0.3	<b>0.3</b>	0.3	1.0	...	...	...
Employment rate	68.5	<b>67.9</b>	0.3	<b>-0.6</b>	-1.0	-2.3	...	...	...
<b>British Columbia</b>									
Population	3,745.0	<b>3,751.3</b>	...	<b>6.3</b>	12.4	69.5	<b>0.2</b>	0.3	1.9
Labour force	2,481.2	<b>2,482.4</b>	10.6	<b>1.2</b>	9.7	57.1	<b>0.0</b>	0.4	2.4
Employment	2,280.5	<b>2,290.4</b>	10.5	<b>9.9</b>	21.9	34.8	<b>0.4</b>	1.0	1.5
Employment full-time	1,768.2	<b>1,801.2</b>	14.3	<b>33.0</b>	28.8	37.5	<b>1.9</b>	1.6	2.1
Employment part-time	512.4	<b>489.2</b>	13.3	<b>-23.2</b>	-6.9	-2.7	<b>-4.5</b>	-1.4	-0.5
Unemployment	200.7	<b>192.0</b>	8.5	<b>-8.7</b>	-12.2	22.4	<b>-4.3</b>	-6.0	13.2
Participation rate	66.3	<b>66.2</b>	0.3	<b>-0.1</b>	0.1	0.3	...	...	...
Unemployment rate	8.1	<b>7.7</b>	0.3	<b>-0.4</b>	-0.6	0.7	...	...	...
Employment rate	60.9	<b>61.1</b>	0.3	<b>0.2</b>	0.4	-0.2	...	...	...

1. Average standard error of change in two consecutive months (see "Sampling Errors" in Data Quality for further explanations).

Note(s): Related CANSIM Table 282-0087.

**Table 4-1**  
**Selected labour force characteristics (seasonally adjusted) — Newfoundland and Labrador**

	January 2010	February 2010	S.E. <sup>1</sup>	Change from			Percent change from		
				last month	last December	twelve months ago	last month	last December	twelve months ago
in thousands (except rates)									
<b>Both sexes, 15 years and over</b>									
Population	430.8	<b>431.0</b>	...	<b>0.2</b>	0.5	3.1	<b>0.0</b>	0.1	0.7
Labour force	256.8	<b>257.3</b>	2.1	<b>0.5</b>	1.3	3.7	<b>0.2</b>	0.5	1.5
Employment	218.6	<b>219.6</b>	2.2	<b>1.0</b>	2.4	5.2	<b>0.5</b>	1.1	2.4
Employment full-time	187.2	<b>188.8</b>	2.5	<b>1.6</b>	1.9	4.7	<b>0.9</b>	1.0	2.6
Unemployment	38.2	<b>37.7</b>	2.1	<b>-0.5</b>	-1.1	-1.5	<b>-1.3</b>	-2.8	-3.8
Participation rate	59.6	<b>59.7</b>	0.5	<b>0.1</b>	0.2	0.4	...	...	...
Unemployment rate	14.9	<b>14.7</b>	0.8	<b>-0.2</b>	-0.5	-0.8	...	...	...
Employment rate	50.7	<b>51.0</b>	0.5	<b>0.3</b>	0.5	0.9	...	...	...
Part-time rate	14.4	<b>14.0</b>	0.8	<b>-0.3</b>	0.1	-0.1	...	...	...
<b>Both sexes, 15 to 24 years</b>									
Population	60.8	<b>60.9</b>	...	<b>0.1</b>	0.1	-0.7	<b>0.2</b>	0.2	-1.1
Labour force	34.3	<b>35.0</b>	1.0	<b>0.7</b>	1.5	0.1	<b>2.0</b>	4.5	0.3
Employment	26.7	<b>27.1</b>	1.0	<b>0.4</b>	0.9	1.7	<b>1.5</b>	3.4	6.7
Unemployment	7.6	<b>7.9</b>	1.0	<b>0.3</b>	0.6	-1.6	<b>3.9</b>	8.2	-16.8
Participation rate	56.4	<b>57.5</b>	1.7	<b>1.1</b>	2.4	0.8	...	...	...
Unemployment rate	22.2	<b>22.6</b>	2.5	<b>0.4</b>	0.8	-4.6	...	...	...
Employment rate	43.9	<b>44.5</b>	1.6	<b>0.6</b>	1.4	3.3	...	...	...
Part-time rate	37.5	<b>38.7</b>	3.5	<b>1.3</b>	-0.6	-2.2	...	...	...
<b>Men, 25 years and over</b>									
Population	178.2	<b>178.3</b>	...	<b>0.1</b>	0.2	1.6	<b>0.1</b>	0.1	0.9
Labour force	115.4	<b>115.1</b>	1.2	<b>-0.3</b>	-1.0	1.0	<b>-0.3</b>	-0.9	0.9
Employment	96.1	<b>97.9</b>	1.4	<b>1.8</b>	1.1	2.2	<b>1.9</b>	1.1	2.3
Unemployment	19.2	<b>17.2</b>	1.4	<b>-2.0</b>	-2.2	-1.2	<b>-10.4</b>	-11.3	-6.5
Participation rate	64.8	<b>64.6</b>	0.7	<b>-0.2</b>	-0.6	0.0	...	...	...
Unemployment rate	16.6	<b>14.9</b>	1.2	<b>-1.7</b>	-1.8	-1.2	...	...	...
Employment rate	53.9	<b>54.9</b>	0.8	<b>1.0</b>	0.5	0.7	...	...	...
Part-time rate	4.5	<b>4.9</b>	0.8	<b>0.4</b>	0.6	0.2	...	...	...
<b>Women, 25 years and over</b>									
Population	191.7	<b>191.8</b>	...	<b>0.1</b>	0.3	2.2	<b>0.1</b>	0.2	1.2
Labour force	107.1	<b>107.3</b>	1.1	<b>0.2</b>	1.0	2.8	<b>0.2</b>	0.9	2.7
Employment	95.8	<b>94.6</b>	1.1	<b>-1.2</b>	0.4	1.4	<b>-1.3</b>	0.4	1.5
Unemployment	11.4	<b>12.7</b>	1.1	<b>1.3</b>	0.5	1.4	<b>11.4</b>	4.1	12.4
Participation rate	55.9	<b>55.9</b>	0.6	<b>0.0</b>	0.4	0.8	...	...	...
Unemployment rate	10.6	<b>11.8</b>	1.0	<b>1.2</b>	0.3	1.0	...	...	...
Employment rate	50.0	<b>49.3</b>	0.6	<b>-0.7</b>	0.1	0.1	...	...	...
Part-time rate	17.8	<b>16.4</b>	1.3	<b>-1.5</b>	-0.4	-0.1	...	...	...
<b>Industry</b>	218.6	<b>219.6</b>	2.2	<b>1.0</b>	2.4	5.2	<b>0.5</b>	1.1	2.4
<b>Goods-producing sector</b>	46.2	<b>45.6</b>	1.7	<b>-0.6</b>	0.0	0.3	<b>-1.3</b>	0.0	0.7
Agriculture	0.5	<b>0.5</b>	0.2	<b>0.0</b>	-0.2	-0.5	<b>0.0</b>	-28.6	-50.0
Forestry, fishing, mining, oil and gas	15.2	<b>16.1</b>	1.0	<b>0.9</b>	1.4	0.7	<b>5.9</b>	9.5	4.5
Utilities	2.0	<b>2.3</b>	0.3	<b>0.3</b>	0.3	0.1	<b>15.0</b>	15.0	4.5
Construction	15.2	<b>15.3</b>	1.1	<b>0.1</b>	-1.0	1.1	<b>0.7</b>	-6.1	7.7
Manufacturing	13.3	<b>11.5</b>	1.0	<b>-1.8</b>	-0.4	-0.9	<b>-13.5</b>	-3.4	-7.3
<b>Services-producing sector</b>	172.4	<b>174.0</b>	2.1	<b>1.6</b>	2.5	4.9	<b>0.9</b>	1.5	2.9
Trade	36.3	<b>35.7</b>	1.2	<b>-0.6</b>	0.9	1.2	<b>-1.7</b>	2.6	3.5
Transportation and warehousing	12.2	<b>12.8</b>	0.8	<b>0.6</b>	0.3	2.2	<b>4.9</b>	2.4	20.8
Finance, insurance, real estate and leasing	7.0	<b>7.5</b>	0.6	<b>0.5</b>	0.4	0.2	<b>7.1</b>	5.6	2.7
Professional, scientific and technical services	7.2	<b>7.0</b>	0.6	<b>-0.2</b>	-1.2	-0.6	<b>-2.8</b>	-14.6	-7.9
Business, building and other support services	6.1	<b>6.6</b>	0.7	<b>0.5</b>	1.6	-2.0	<b>8.2</b>	32.0	-23.3
Educational services	16.9	<b>18.0</b>	0.9	<b>1.1</b>	0.3	0.7	<b>6.5</b>	1.7	4.0
Health care and social assistance	36.0	<b>37.2</b>	1.1	<b>1.2</b>	1.5	2.9	<b>3.3</b>	4.2	8.5
Information, culture and recreation	7.5	<b>7.4</b>	0.7	<b>-0.1</b>	-0.6	-2.2	<b>-1.3</b>	-7.5	-22.9
Accommodation and food services	13.9	<b>13.7</b>	0.9	<b>-0.2</b>	-0.5	3.0	<b>-1.4</b>	-3.5	28.0
Other services	11.4	<b>10.6</b>	0.8	<b>-0.8</b>	-0.3	-0.8	<b>-7.0</b>	-2.8	-7.0
Public administration	17.9	<b>17.5</b>	0.9	<b>-0.4</b>	0.0	0.3	<b>-2.2</b>	0.0	1.7

1. Average standard error of change in two consecutive months (see "Sampling Errors" in Data Quality for further explanations).

**Note(s):** Related CANSIM Tables 282-0087, 282-0088.

**Table 4-2**  
**Selected labour force characteristics (seasonally adjusted) — Prince Edward Island**

	January 2010	February 2010	S.E. <sup>1</sup>	Change from			Percent change from		
				last month	last December	twelve months ago	last month	last December	twelve months ago
in thousands (except rates)									
<b>Both sexes, 15 years and over</b>									
Population	116.4	<b>116.6</b>	...	<b>0.2</b>	0.2	1.3	<b>0.2</b>	0.2	1.1
Labour force	79.6	<b>80.3</b>	0.6	<b>0.7</b>	0.5	1.9	<b>0.9</b>	0.6	2.4
Employment	71.7	<b>72.2</b>	0.7	<b>0.5</b>	1.0	3.5	<b>0.7</b>	1.4	5.1
Employment full-time	57.9	<b>58.6</b>	0.8	<b>0.7</b>	0.4	0.5	<b>1.2</b>	0.7	0.9
Unemployment	7.9	<b>8.2</b>	0.7	<b>0.3</b>	-0.4	-1.5	<b>3.8</b>	-4.7	-15.5
Participation rate	68.4	<b>68.9</b>	0.6	<b>0.5</b>	0.3	0.9	...	...	...
Unemployment rate	9.9	<b>10.2</b>	0.8	<b>0.3</b>	-0.6	-2.2	...	...	...
Employment rate	61.6	<b>61.9</b>	0.6	<b>0.3</b>	0.7	2.3	...	...	...
Part-time rate	19.2	<b>18.8</b>	1.0	<b>-0.4</b>	0.6	3.4	...	...	...
<b>Both sexes, 15 to 24 years</b>									
Population	19.7	<b>19.7</b>	...	<b>0.0</b>	-0.1	0.0	<b>0.0</b>	-0.5	0.0
Labour force	13.5	<b>13.8</b>	0.4	<b>0.3</b>	0.1	-0.2	<b>2.2</b>	0.7	-1.4
Employment	11.4	<b>11.6</b>	0.4	<b>0.2</b>	0.2	0.2	<b>1.8</b>	1.8	1.8
Unemployment	2.0	<b>2.2</b>	0.4	<b>0.2</b>	-0.1	-0.4	<b>10.0</b>	-4.3	-15.4
Participation rate	68.5	<b>70.1</b>	1.9	<b>1.6</b>	0.9	-1.0	...	...	...
Unemployment rate	14.8	<b>15.9</b>	2.4	<b>1.1</b>	-0.9	-2.7	...	...	...
Employment rate	57.9	<b>58.9</b>	1.9	<b>1.0</b>	1.3	1.0	...	...	...
Part-time rate	42.1	<b>41.4</b>	3.2	<b>-0.7</b>	1.9	4.5	...	...	...
<b>Men, 25 years and over</b>									
Population	46.4	<b>46.5</b>	...	<b>0.1</b>	0.1	0.5	<b>0.2</b>	0.2	1.1
Labour force	34.1	<b>34.0</b>	0.4	<b>-0.1</b>	-0.3	1.2	<b>-0.3</b>	-0.9	3.7
Employment	30.5	<b>30.6</b>	0.4	<b>0.1</b>	0.2	1.8	<b>0.3</b>	0.7	6.2
Unemployment	3.6	<b>3.5</b>	0.4	<b>-0.1</b>	-0.3	-0.6	<b>-2.8</b>	-7.9	-14.6
Participation rate	73.5	<b>73.1</b>	0.8	<b>-0.4</b>	-0.8	1.8	...	...	...
Unemployment rate	10.6	<b>10.3</b>	1.2	<b>-0.3</b>	-0.8	-2.2	...	...	...
Employment rate	65.7	<b>65.8</b>	0.9	<b>0.1</b>	0.3	3.2	...	...	...
Part-time rate	8.2	<b>8.2</b>	1.0	<b>0.0</b>	0.9	2.6	...	...	...
<b>Women, 25 years and over</b>									
Population	50.3	<b>50.3</b>	...	<b>0.0</b>	0.0	0.7	<b>0.0</b>	0.0	1.4
Labour force	32.0	<b>32.5</b>	0.3	<b>0.5</b>	0.7	0.9	<b>1.6</b>	2.2	2.8
Employment	29.7	<b>30.0</b>	0.4	<b>0.3</b>	0.6	1.4	<b>1.0</b>	2.0	4.9
Unemployment	2.3	<b>2.6</b>	0.4	<b>0.3</b>	0.2	-0.4	<b>13.0</b>	8.3	-13.3
Participation rate	63.6	<b>64.6</b>	0.7	<b>1.0</b>	1.4	0.9	...	...	...
Unemployment rate	7.2	<b>8.0</b>	1.1	<b>0.8</b>	0.5	-1.5	...	...	...
Employment rate	59.0	<b>59.6</b>	0.8	<b>0.6</b>	1.2	1.9	...	...	...
Part-time rate	21.5	<b>21.0</b>	1.5	<b>-0.5</b>	-0.4	4.2	...	...	...
<b>Industry</b>	71.7	<b>72.2</b>	0.7	<b>0.5</b>	1.0	3.5	<b>0.7</b>	1.4	5.1
<b>Goods-producing sector</b>	18.0	<b>18.0</b>	0.6	<b>0.0</b>	-0.1	-0.2	<b>0.0</b>	-0.6	-1.1
Agriculture	3.9	<b>3.8</b>	0.3	<b>-0.1</b>	-0.2	0.4	<b>-2.6</b>	-5.0	11.8
Forestry, fishing, mining, oil and gas	2.6	<b>2.7</b>	0.3	<b>0.1</b>	0.2	-0.6	<b>3.8</b>	8.0	-18.2
Utilities	0.3	<b>0.2</b>	0.1	<b>-0.1</b>	-0.3	-0.1	<b>-33.3</b>	-60.0	-33.3
Construction	5.9	<b>6.2</b>	0.3	<b>0.3</b>	0.3	0.8	<b>5.1</b>	5.1	14.8
Manufacturing	5.3	<b>5.1</b>	0.3	<b>-0.2</b>	-0.1	-0.7	<b>-3.8</b>	-1.9	-12.1
<b>Services-producing sector</b>	53.7	<b>54.2</b>	0.7	<b>0.5</b>	1.2	3.7	<b>0.9</b>	2.3	7.3
Trade	11.5	<b>11.3</b>	0.4	<b>-0.2</b>	0.1	2.5	<b>-1.7</b>	0.9	28.4
Transportation and warehousing	1.9	<b>2.2</b>	0.2	<b>0.3</b>	0.3	-0.3	<b>15.8</b>	15.8	-12.0
Finance, insurance, real estate and leasing	2.3	<b>2.3</b>	0.2	<b>0.0</b>	-0.3	-0.2	<b>0.0</b>	-11.5	-8.0
Professional, scientific and technical services	2.3	<b>2.4</b>	0.2	<b>0.1</b>	0.3	0.1	<b>4.3</b>	14.3	4.3
Business, building and other support services	2.7	<b>2.9</b>	0.3	<b>0.2</b>	0.0	0.2	<b>7.4</b>	0.0	7.4
Educational services	5.7	<b>5.6</b>	0.3	<b>-0.1</b>	0.0	0.6	<b>-1.8</b>	0.0	12.0
Health care and social assistance	8.7	<b>8.5</b>	0.3	<b>-0.2</b>	0.1	0.8	<b>-2.3</b>	1.2	10.4
Information, culture and recreation	2.2	<b>2.2</b>	0.2	<b>0.0</b>	-0.2	-0.7	<b>0.0</b>	-8.3	-24.1
Accommodation and food services	5.4	<b>5.5</b>	0.4	<b>0.1</b>	0.5	0.1	<b>1.9</b>	10.0	1.9
Other services	3.3	<b>3.6</b>	0.3	<b>0.3</b>	0.3	0.7	<b>9.1</b>	9.1	24.1
Public administration	7.6	<b>7.7</b>	0.3	<b>0.1</b>	0.1	-0.1	<b>1.3</b>	1.3	-1.3

1. Average standard error of change in two consecutive months (see "Sampling Errors" in Data Quality for further explanations).

**Note(s):** Related CANSIM Tables 282-0087, 282-0088.

**Table 4-3**  
**Selected labour force characteristics (seasonally adjusted) — Nova Scotia**

	January 2010	February 2010	S.E. <sup>1</sup>	Change from			Percent change from		
				last month	last December	twelve months ago	last month	last December	twelve months ago
in thousands (except rates)									
<b>Both sexes, 15 years and over</b>									
Population	774.8	<b>775.0</b>	...	<b>0.2</b>	0.5	3.6	<b>0.0</b>	0.1	0.5
Labour force	495.8	<b>497.6</b>	2.7	<b>1.8</b>	-2.3	-3.6	<b>0.4</b>	-0.5	-0.7
Employment	447.0	<b>451.2</b>	2.9	<b>4.2</b>	-0.8	-4.9	<b>0.9</b>	-0.2	-1.1
Employment full-time	360.7	<b>367.3</b>	3.6	<b>6.6</b>	-1.5	-4.7	<b>1.8</b>	-0.4	-1.3
Unemployment	48.8	<b>46.5</b>	2.6	<b>-2.3</b>	-1.3	1.4	<b>-4.7</b>	-2.7	3.1
Participation rate	64.0	<b>64.2</b>	0.4	<b>0.2</b>	-0.3	-0.8	...	...	...
Unemployment rate	9.8	<b>9.3</b>	0.5	<b>-0.5</b>	-0.3	0.3	...	...	...
Employment rate	57.7	<b>58.2</b>	0.4	<b>0.5</b>	-0.2	-0.9	...	...	...
Part-time rate	19.3	<b>18.6</b>	0.7	<b>-0.7</b>	0.1	0.1	...	...	...
<b>Both sexes, 15 to 24 years</b>									
Population	119.7	<b>119.6</b>	...	<b>-0.1</b>	-0.2	-1.0	<b>-0.1</b>	-0.2	-0.8
Labour force	80.2	<b>79.1</b>	1.6	<b>-1.1</b>	-2.9	-5.4	<b>-1.4</b>	-3.5	-6.4
Employment	67.6	<b>66.1</b>	1.6	<b>-1.5</b>	-2.2	-2.0	<b>-2.2</b>	-3.2	-2.9
Unemployment	12.6	<b>13.0</b>	1.5	<b>0.4</b>	-0.6	-3.4	<b>3.2</b>	-4.4	-20.7
Participation rate	67.0	<b>66.1</b>	1.3	<b>-0.9</b>	-2.3	-4.0	...	...	...
Unemployment rate	15.7	<b>16.4</b>	1.7	<b>0.7</b>	-0.2	-3.0	...	...	...
Employment rate	56.5	<b>55.3</b>	1.3	<b>-1.2</b>	-1.7	-1.2	...	...	...
Part-time rate	48.7	<b>43.9</b>	2.5	<b>-4.8</b>	-2.1	-0.8	...	...	...
<b>Men, 25 years and over</b>									
Population	312.2	<b>312.4</b>	...	<b>0.2</b>	0.3	2.2	<b>0.1</b>	0.1	0.7
Labour force	211.8	<b>213.6</b>	1.5	<b>1.8</b>	-0.4	-2.2	<b>0.8</b>	-0.2	-1.0
Employment	189.5	<b>194.6</b>	1.7	<b>5.1</b>	-0.2	-3.3	<b>2.7</b>	-0.1	-1.7
Unemployment	22.3	<b>19.0</b>	1.6	<b>-3.3</b>	-0.2	1.1	<b>-14.8</b>	-1.0	6.1
Participation rate	67.8	<b>68.4</b>	0.5	<b>0.6</b>	-0.2	-1.2	...	...	...
Unemployment rate	10.5	<b>8.9</b>	0.7	<b>-1.6</b>	-0.1	0.6	...	...	...
Employment rate	60.7	<b>62.3</b>	0.5	<b>1.6</b>	-0.1	-1.5	...	...	...
Part-time rate	6.8	<b>7.6</b>	0.7	<b>0.8</b>	1.0	0.1	...	...	...
<b>Women, 25 years and over</b>									
Population	342.9	<b>343.0</b>	...	<b>0.1</b>	0.3	2.4	<b>0.0</b>	0.1	0.7
Labour force	203.7	<b>205.0</b>	1.5	<b>1.3</b>	1.1	4.0	<b>0.6</b>	0.5	2.0
Employment	189.8	<b>190.5</b>	1.5	<b>0.7</b>	1.6	0.4	<b>0.4</b>	0.8	0.2
Unemployment	13.9	<b>14.5</b>	1.3	<b>0.6</b>	-0.5	3.7	<b>4.3</b>	-3.3	34.3
Participation rate	59.4	<b>59.8</b>	0.4	<b>0.4</b>	0.3	0.8	...	...	...
Unemployment rate	6.8	<b>7.1</b>	0.6	<b>0.3</b>	-0.3	1.7	...	...	...
Employment rate	55.4	<b>55.5</b>	0.4	<b>0.1</b>	0.4	-0.3	...	...	...
Part-time rate	21.3	<b>21.0</b>	1.1	<b>-0.3</b>	0.3	0.5	...	...	...
<b>Industry</b>									
Industry	447.0	<b>451.2</b>	2.9	<b>4.2</b>	-0.8	-4.9	<b>0.9</b>	-0.2	-1.1
<b>Goods-producing sector</b>									
Agriculture	82.8	<b>85.9</b>	2.4	<b>3.1</b>	0.4	-3.4	<b>3.7</b>	0.5	-3.8
Forestry, fishing, mining, oil and gas	5.5	<b>5.6</b>	0.7	<b>0.1</b>	0.3	-1.4	<b>1.8</b>	5.7	-20.0
Utilities	11.7	<b>11.2</b>	1.1	<b>-0.5</b>	-0.9	-1.4	<b>-4.3</b>	-7.4	-11.1
Construction	4.5	<b>4.6</b>	0.4	<b>0.1</b>	0.7	2.3	<b>2.2</b>	17.9	100.0
Manufacturing	30.1	<b>31.7</b>	1.5	<b>1.6</b>	-0.4	1.6	<b>5.3</b>	-1.2	5.3
Manufacturing	31.1	<b>32.7</b>	1.4	<b>1.6</b>	0.6	-4.7	<b>5.1</b>	1.9	-12.6
<b>Services-producing sector</b>									
Trade	364.1	<b>365.3</b>	3.0	<b>1.2</b>	-1.2	-1.5	<b>0.3</b>	-0.3	-0.4
Transportation and warehousing	74.8	<b>74.9</b>	2.1	<b>0.1</b>	-0.7	-0.9	<b>0.1</b>	-0.9	-1.2
Finance, insurance, real estate and leasing	19.5	<b>18.6</b>	1.1	<b>-0.9</b>	-0.6	-1.0	<b>-4.6</b>	-3.1	-5.1
Professional, scientific and technical services	23.2	<b>22.6</b>	1.0	<b>-0.6</b>	-1.3	1.2	<b>-2.6</b>	-5.4	5.6
Business, building and other support services	22.4	<b>22.2</b>	1.1	<b>-0.2</b>	-0.9	-1.9	<b>-0.9</b>	-3.9	-7.9
Educational services	21.7	<b>23.0</b>	1.3	<b>1.3</b>	0.4	-2.2	<b>6.0</b>	1.8	-8.7
Health care and social assistance	37.5	<b>36.4</b>	1.4	<b>-1.1</b>	-0.8	0.0	<b>-2.9</b>	-2.2	0.0
Information, culture and recreation	67.9	<b>68.8</b>	1.6	<b>0.9</b>	1.2	8.6	<b>1.3</b>	1.8	14.3
Accommodation and food services	17.7	<b>19.8</b>	1.1	<b>2.1</b>	2.0	0.1	<b>11.9</b>	11.2	0.5
Other services	30.0	<b>29.5</b>	1.4	<b>-0.5</b>	1.1	-2.0	<b>-1.7</b>	3.9	-6.3
Public administration	18.8	<b>19.4</b>	1.2	<b>0.6</b>	-1.1	-0.8	<b>3.2</b>	-5.4	-4.0
Public administration	30.6	<b>30.1</b>	1.2	<b>-0.5</b>	-0.5	-2.6	<b>-1.6</b>	-1.6	-8.0

1. Average standard error of change in two consecutive months (see "Sampling Errors" in Data Quality for further explanations).

**Note(s):** Related CANSIM Tables 282-0087, 282-0088.



**Table 4-4**  
**Selected labour force characteristics (seasonally adjusted) — New Brunswick**

	January 2010	February 2010	S.E. <sup>1</sup>	Change from			Percent change from		
				last month	last December	twelve months ago	last month	last December	twelve months ago
in thousands (except rates)									
<b>Both sexes, 15 years and over</b>									
Population	622.9	<b>623.2</b>	...	<b>0.3</b>	0.4	2.8	<b>0.0</b>	0.1	0.5
Labour force	401.7	<b>402.6</b>	2.4	<b>0.9</b>	1.4	0.6	<b>0.2</b>	0.3	0.1
Employment	364.5	<b>365.9</b>	2.5	<b>1.4</b>	0.5	0.3	<b>0.4</b>	0.1	0.1
Employment full-time	310.4	<b>310.2</b>	2.9	<b>-0.2</b>	0.7	-0.7	<b>-0.1</b>	0.2	-0.2
Unemployment	37.2	<b>36.7</b>	2.2	<b>-0.5</b>	0.9	0.3	<b>-1.3</b>	2.5	0.8
Participation rate	64.5	<b>64.6</b>	0.4	<b>0.1</b>	0.2	-0.2	...	...	...
Unemployment rate	9.3	<b>9.1</b>	0.5	<b>-0.2</b>	0.2	0.0	...	...	...
Employment rate	58.5	<b>58.7</b>	0.4	<b>0.2</b>	0.0	-0.2	...	...	...
Part-time rate	14.8	<b>15.3</b>	0.6	<b>0.4</b>	0.0	0.3	...	...	...
<b>Both sexes, 15 to 24 years</b>									
Population	92.9	<b>92.8</b>	...	<b>-0.1</b>	-0.2	-1.4	<b>-0.1</b>	-0.2	-1.5
Labour force	60.6	<b>61.9</b>	1.3	<b>1.3</b>	1.3	-2.9	<b>2.1</b>	2.1	-4.5
Employment	50.1	<b>51.6</b>	1.3	<b>1.5</b>	1.4	-3.9	<b>3.0</b>	2.8	-7.0
Unemployment	10.5	<b>10.3</b>	1.2	<b>-0.2</b>	-0.1	1.0	<b>-1.9</b>	-1.0	10.8
Participation rate	65.2	<b>66.7</b>	1.4	<b>1.5</b>	1.5	-2.1	...	...	...
Unemployment rate	17.3	<b>16.6</b>	1.7	<b>-0.7</b>	-0.6	2.2	...	...	...
Employment rate	53.9	<b>55.6</b>	1.4	<b>1.7</b>	1.6	-3.3	...	...	...
Part-time rate	39.9	<b>40.1</b>	2.3	<b>0.2</b>	-1.3	3.4	...	...	...
<b>Men, 25 years and over</b>									
Population	255.8	<b>256.0</b>	...	<b>0.2</b>	0.4	2.0	<b>0.1</b>	0.2	0.8
Labour force	176.1	<b>176.5</b>	1.4	<b>0.4</b>	-1.4	1.5	<b>0.2</b>	-0.8	0.9
Employment	160.3	<b>161.1</b>	1.5	<b>0.8</b>	-1.5	2.1	<b>0.5</b>	-0.9	1.3
Unemployment	15.8	<b>15.4</b>	1.4	<b>-0.4</b>	0.1	-0.6	<b>-2.5</b>	0.7	-3.8
Participation rate	68.8	<b>68.9</b>	0.5	<b>0.1</b>	-0.7	0.0	...	...	...
Unemployment rate	9.0	<b>8.7</b>	0.8	<b>-0.3</b>	0.1	-0.4	...	...	...
Employment rate	62.7	<b>62.9</b>	0.6	<b>0.2</b>	-0.7	0.3	...	...	...
Part-time rate	5.2	<b>6.0</b>	0.7	<b>0.8</b>	0.7	0.2	...	...	...
<b>Women, 25 years and over</b>									
Population	274.3	<b>274.4</b>	...	<b>0.1</b>	0.2	2.2	<b>0.0</b>	0.1	0.8
Labour force	165.0	<b>164.3</b>	1.3	<b>-0.7</b>	1.6	2.1	<b>-0.4</b>	1.0	1.3
Employment	154.1	<b>153.3</b>	1.3	<b>-0.8</b>	0.7	2.2	<b>-0.5</b>	0.5	1.5
Unemployment	10.9	<b>11.0</b>	1.1	<b>0.1</b>	0.9	-0.1	<b>0.9</b>	8.9	-0.9
Participation rate	60.2	<b>59.9</b>	0.5	<b>-0.3</b>	0.6	0.3	...	...	...
Unemployment rate	6.6	<b>6.7</b>	0.7	<b>0.1</b>	0.5	-0.1	...	...	...
Employment rate	56.2	<b>55.9</b>	0.5	<b>-0.3</b>	0.2	0.4	...	...	...
Part-time rate	16.6	<b>16.5</b>	1.0	<b>-0.1</b>	-0.9	-0.1	...	...	...
<b>Industry</b>									
<b>Goods-producing sector</b>	364.5	<b>365.9</b>	2.5	<b>1.4</b>	0.5	0.3	<b>0.4</b>	0.1	0.1
Agriculture	81.9	<b>81.7</b>	2.1	<b>-0.2</b>	-0.2	0.6	<b>-0.2</b>	-0.2	0.7
Forestry, fishing, mining, oil and gas	6.4	<b>6.4</b>	0.6	<b>0.0</b>	-0.4	-0.9	<b>0.0</b>	-5.9	-12.3
Utilities	10.3	<b>9.8</b>	0.8	<b>-0.5</b>	-0.9	-0.5	<b>-4.9</b>	-8.4	-4.9
Construction	4.5	<b>4.0</b>	0.5	<b>-0.5</b>	-0.7	-1.2	<b>-11.1</b>	-14.9	-23.1
Manufacturing	26.1	<b>26.9</b>	1.3	<b>0.8</b>	0.9	1.2	<b>3.1</b>	3.5	4.7
<b>Services-producing sector</b>	34.6	<b>34.6</b>	1.3	<b>0.0</b>	0.9	2.1	<b>0.0</b>	2.7	6.5
Trade	282.6	<b>284.2</b>	2.5	<b>1.6</b>	0.7	-0.3	<b>0.6</b>	0.2	-0.1
Transportation and warehousing	55.4	<b>58.4</b>	1.6	<b>3.0</b>	3.4	2.9	<b>5.4</b>	6.2	5.2
Finance, insurance, real estate and leasing	19.1	<b>19.6</b>	0.9	<b>0.5</b>	-0.6	1.1	<b>2.6</b>	-3.0	5.9
Professional, scientific and technical services	15.8	<b>15.5</b>	0.9	<b>-0.3</b>	-0.5	-0.6	<b>-1.9</b>	-3.1	-3.7
Business, building and other support services	14.8	<b>15.6</b>	0.9	<b>0.8</b>	0.0	-1.9	<b>5.4</b>	0.0	-10.9
Educational services	19.6	<b>20.2</b>	1.1	<b>0.6</b>	1.0	-0.7	<b>3.1</b>	5.2	-3.3
Health care and social assistance	28.2	<b>28.4</b>	1.2	<b>0.2</b>	0.8	1.5	<b>0.7</b>	2.9	5.6
Information, culture and recreation	49.2	<b>48.7</b>	1.4	<b>-0.5</b>	-0.4	-2.8	<b>-1.0</b>	-0.8	-5.4
Accommodation and food services	12.7	<b>12.8</b>	0.8	<b>0.1</b>	0.6	2.1	<b>0.8</b>	4.9	19.6
Other services	23.7	<b>22.5</b>	1.1	<b>-1.2</b>	-2.4	-1.8	<b>-5.1</b>	-9.6	-7.4
Public administration	17.5	<b>17.8</b>	0.9	<b>0.3</b>	0.7	3.2	<b>1.7</b>	4.1	21.9
Public administration	26.4	<b>24.8</b>	1.1	<b>-1.6</b>	-1.9	-3.2	<b>-6.1</b>	-7.1	-11.4

1. Average standard error of change in two consecutive months (see "Sampling Errors" in Data Quality for further explanations).

**Note(s):** Related CANSIM Tables 282-0087, 282-0088.

**Table 4-5**  
**Selected labour force characteristics (seasonally adjusted) — Quebec**

	January 2010	February 2010	S.E. <sup>1</sup>	Change from			Percent change from		
				last month	last December	twelve months ago	last month	last December	twelve months ago
in thousands (except rates)									
<b>Both sexes, 15 years and over</b>									
Population	6,478.4	<b>6,484.9</b>	...	<b>6.5</b>	13.2	73.7	<b>0.1</b>	0.2	1.1
Labour force	4,199.8	<b>4,212.7</b>	14.2	<b>12.9</b>	0.5	37.9	<b>0.3</b>	0.0	0.9
Employment	3,864.6	<b>3,873.3</b>	14.5	<b>8.7</b>	14.9	37.3	<b>0.2</b>	0.4	1.0
Employment full-time	3,122.9	<b>3,137.5</b>	18.8	<b>14.6</b>	-0.4	36.8	<b>0.5</b>	0.0	1.2
Unemployment	335.3	<b>339.4</b>	13.3	<b>4.1</b>	-14.4	0.5	<b>1.2</b>	-4.1	0.1
Participation rate	64.8	<b>65.0</b>	0.2	<b>0.2</b>	-0.1	-0.1	...	...	...
Unemployment rate	8.0	<b>8.1</b>	0.3	<b>0.1</b>	-0.3	0.0	...	...	...
Employment rate	59.7	<b>59.7</b>	0.2	<b>0.0</b>	0.1	-0.1	...	...	...
Part-time rate	19.2	<b>19.0</b>	0.4	<b>-0.2</b>	0.3	-0.2	...	...	...
<b>Both sexes, 15 to 24 years</b>									
Population	965.0	<b>965.1</b>	...	<b>0.1</b>	0.7	3.5	<b>0.0</b>	0.1	0.4
Labour force	634.6	<b>637.6</b>	8.3	<b>3.0</b>	-3.8	-2.8	<b>0.5</b>	-0.6	-0.4
Employment	546.4	<b>542.1</b>	8.1	<b>-4.3</b>	6.1	-2.0	<b>-0.8</b>	1.1	-0.4
Unemployment	88.3	<b>95.5</b>	7.5	<b>7.2</b>	-9.9	-0.8	<b>8.2</b>	-9.4	-0.8
Participation rate	65.8	<b>66.1</b>	0.9	<b>0.3</b>	-0.4	-0.5	...	...	...
Unemployment rate	13.9	<b>15.0</b>	1.1	<b>1.1</b>	-1.4	0.0	...	...	...
Employment rate	56.6	<b>56.2</b>	0.8	<b>-0.4</b>	0.6	-0.4	...	...	...
Part-time rate	50.5	<b>50.6</b>	1.5	<b>0.1</b>	1.1	-0.7	...	...	...
<b>Men, 25 years and over</b>									
Population	2,696.4	<b>2,699.8</b>	...	<b>3.4</b>	6.6	36.6	<b>0.1</b>	0.2	1.4
Labour force	1,881.5	<b>1,890.5</b>	7.9	<b>9.0</b>	2.2	34.3	<b>0.5</b>	0.1	1.8
Employment	1,730.4	<b>1,742.3</b>	8.4	<b>11.9</b>	6.6	32.0	<b>0.7</b>	0.4	1.9
Unemployment	151.1	<b>148.2</b>	8.1	<b>-2.9</b>	-4.4	2.3	<b>-1.9</b>	-2.9	1.6
Participation rate	69.8	<b>70.0</b>	0.3	<b>0.2</b>	-0.1	0.3	...	...	...
Unemployment rate	8.0	<b>7.8</b>	0.4	<b>-0.2</b>	-0.3	-0.1	...	...	...
Employment rate	64.2	<b>64.5</b>	0.3	<b>0.3</b>	0.1	0.3	...	...	...
Part-time rate	8.2	<b>8.3</b>	0.5	<b>0.2</b>	0.1	0.2	...	...	...
<b>Women, 25 years and over</b>									
Population	2,817.0	<b>2,820.0</b>	...	<b>3.0</b>	5.9	33.7	<b>0.1</b>	0.2	1.2
Labour force	1,683.7	<b>1,684.6</b>	8.0	<b>0.9</b>	2.1	6.3	<b>0.1</b>	0.1	0.4
Employment	1,587.8	<b>1,588.9</b>	8.0	<b>1.1</b>	2.2	7.3	<b>0.1</b>	0.1	0.5
Unemployment	95.9	<b>95.7</b>	6.7	<b>-0.2</b>	-0.2	-1.0	<b>-0.2</b>	-0.2	-1.0
Participation rate	59.8	<b>59.7</b>	0.3	<b>-0.1</b>	-0.1	-0.5	...	...	...
Unemployment rate	5.7	<b>5.7</b>	0.4	<b>0.0</b>	0.0	-0.1	...	...	...
Employment rate	56.4	<b>56.3</b>	0.3	<b>-0.1</b>	-0.1	-0.5	...	...	...
Part-time rate	20.4	<b>19.9</b>	0.7	<b>-0.5</b>	0.2	-0.1	...	...	...
<b>Industry</b>									
Industry	3,864.6	<b>3,873.3</b>	14.5	<b>8.7</b>	14.9	37.3	<b>0.2</b>	0.4	1.0
<b>Goods-producing sector</b>									
Goods-producing sector	855.6	<b>851.2</b>	11.7	<b>-4.4</b>	-17.5	-13.0	<b>-0.5</b>	-2.0	-1.5
Agriculture	54.6	<b>53.5</b>	3.2	<b>-1.1</b>	-1.8	-6.8	<b>-2.0</b>	-3.3	-11.3
Forestry, fishing, mining, oil and gas	28.3	<b>30.6</b>	1.9	<b>2.3</b>	-0.5	0.7	<b>8.1</b>	-1.6	2.3
Utilities	31.7	<b>34.7</b>	2.3	<b>3.0</b>	1.4	0.8	<b>9.5</b>	4.2	2.4
Construction	216.6	<b>218.9</b>	6.8	<b>2.3</b>	-0.6	11.5	<b>1.1</b>	-0.3	5.5
Manufacturing	524.3	<b>513.5</b>	9.4	<b>-10.8</b>	-16.0	-19.2	<b>-2.1</b>	-3.0	-3.6
<b>Services-producing sector</b>									
Services-producing sector	3,009.0	<b>3,022.0</b>	16.0	<b>13.0</b>	32.3	50.2	<b>0.4</b>	1.1	1.7
Trade	635.2	<b>637.2</b>	10.3	<b>2.0</b>	-2.3	20.4	<b>0.3</b>	-0.4	3.3
Transportation and warehousing	159.0	<b>155.2</b>	5.5	<b>-3.8</b>	-8.0	-16.2	<b>-2.4</b>	-4.9	-9.5
Finance, insurance, real estate and leasing	233.8	<b>235.7</b>	6.4	<b>1.9</b>	4.0	9.5	<b>0.8</b>	1.7	4.2
Professional, scientific and technical services	285.4	<b>285.6</b>	7.6	<b>0.2</b>	-4.1	17.5	<b>0.1</b>	-1.4	6.5
Business, building and other support services	137.8	<b>136.8</b>	6.2	<b>-1.0</b>	7.9	-6.4	<b>-0.7</b>	6.1	-4.5
Educational services	258.7	<b>262.7</b>	7.1	<b>4.0</b>	-5.2	19.2	<b>1.5</b>	-1.9	7.9
Health care and social assistance	483.3	<b>490.8</b>	8.6	<b>7.5</b>	10.4	-3.4	<b>1.6</b>	2.2	-0.7
Information, culture and recreation	180.4	<b>179.6</b>	6.3	<b>-0.8</b>	2.5	14.1	<b>-0.4</b>	1.4	8.5
Accommodation and food services	230.6	<b>235.9</b>	7.7	<b>5.3</b>	11.4	-5.0	<b>2.3</b>	5.1	-2.1
Other services	169.6	<b>170.4</b>	5.9	<b>0.8</b>	9.9	-6.6	<b>0.5</b>	6.2	-3.7
Public administration	235.1	<b>232.0</b>	5.9	<b>-3.1</b>	5.7	7.0	<b>-1.3</b>	2.5	3.1

1. Average standard error of change in two consecutive months (see "Sampling Errors" in Data Quality for further explanations).

**Note(s):** Related CANSIM Tables 282-0087, 282-0088.

**Table 4-6**  
**Selected labour force characteristics (seasonally adjusted) — Ontario**

	January 2010	February 2010	S.E. <sup>1</sup>	Change from			Percent change from		
				last month	last December	twelve months ago	last month	last December	twelve months ago
in thousands (except rates)									
<b>Both sexes, 15 years and over</b>									
Population	10,739.8	<b>10,752.8</b>	...	<b>13.0</b>	25.2	148.2	<b>0.1</b>	0.2	1.4
Labour force	7,221.0	<b>7,219.6</b>	19.5	<b>-1.4</b>	29.4	43.2	<b>0.0</b>	0.4	0.6
Employment	6,557.7	<b>6,564.8</b>	19.0	<b>7.1</b>	37.4	24.1	<b>0.1</b>	0.6	0.4
Employment full-time	5,315.3	<b>5,323.9</b>	24.6	<b>8.6</b>	22.5	27.5	<b>0.2</b>	0.4	0.5
Unemployment	663.2	<b>654.9</b>	17.4	<b>-8.3</b>	-7.9	19.2	<b>-1.3</b>	-1.2	3.0
Participation rate	67.2	<b>67.1</b>	0.2	<b>-0.1</b>	0.1	-0.6	...	...	...
Unemployment rate	9.2	<b>9.1</b>	0.2	<b>-0.1</b>	-0.1	0.2	...	...	...
Employment rate	61.1	<b>61.1</b>	0.2	<b>0.0</b>	0.3	-0.6	...	...	...
Part-time rate	18.9	<b>18.9</b>	0.3	<b>0.0</b>	0.1	-0.1	...	...	...
<b>Both sexes, 15 to 24 years</b>									
Population	1,749.7	<b>1,750.4</b>	...	<b>0.7</b>	1.6	9.2	<b>0.0</b>	0.1	0.5
Labour force	1,092.9	<b>1,090.8</b>	11.8	<b>-2.1</b>	8.7	-16.4	<b>-0.2</b>	0.8	-1.5
Employment	892.0	<b>892.4</b>	10.4	<b>0.4</b>	10.3	-29.2	<b>0.0</b>	1.2	-3.2
Unemployment	200.9	<b>198.4</b>	10.2	<b>-2.5</b>	-1.6	12.8	<b>-1.2</b>	-0.8	6.9
Participation rate	62.5	<b>62.3</b>	0.7	<b>-0.2</b>	0.4	-1.3	...	...	...
Unemployment rate	18.4	<b>18.2</b>	0.8	<b>-0.2</b>	-0.3	1.4	...	...	...
Employment rate	51.0	<b>51.0</b>	0.6	<b>0.0</b>	0.6	-1.9	...	...	...
Part-time rate	52.1	<b>52.0</b>	1.2	<b>-0.1</b>	1.6	3.0	...	...	...
<b>Men, 25 years and over</b>									
Population	4,366.6	<b>4,372.3</b>	...	<b>5.7</b>	10.9	66.2	<b>0.1</b>	0.2	1.5
Labour force	3,193.3	<b>3,196.7</b>	9.9	<b>3.4</b>	-5.6	15.3	<b>0.1</b>	-0.2	0.5
Employment	2,926.1	<b>2,939.5</b>	11.0	<b>13.4</b>	14.8	21.8	<b>0.5</b>	0.5	0.7
Unemployment	267.2	<b>257.2</b>	10.3	<b>-10.0</b>	-20.4	-6.5	<b>-3.7</b>	-7.3	-2.5
Participation rate	73.1	<b>73.1</b>	0.2	<b>0.0</b>	-0.3	-0.8	...	...	...
Unemployment rate	8.4	<b>8.0</b>	0.3	<b>-0.4</b>	-0.7	-0.3	...	...	...
Employment rate	67.0	<b>67.2</b>	0.3	<b>0.2</b>	0.1	-0.6	...	...	...
Part-time rate	7.6	<b>7.8</b>	0.4	<b>0.3</b>	-0.2	0.1	...	...	...
<b>Women, 25 years and over</b>									
Population	4,623.5	<b>4,630.0</b>	...	<b>6.5</b>	12.5	72.7	<b>0.1</b>	0.3	1.6
Labour force	2,934.8	<b>2,932.1</b>	11.2	<b>-2.7</b>	26.3	44.4	<b>-0.1</b>	0.9	1.5
Employment	2,739.7	<b>2,732.9</b>	10.7	<b>-6.8</b>	12.3	31.5	<b>-0.2</b>	0.5	1.2
Unemployment	195.1	<b>199.2</b>	9.2	<b>4.1</b>	14.0	12.8	<b>2.1</b>	7.6	6.9
Participation rate	63.5	<b>63.3</b>	0.2	<b>-0.2</b>	0.4	-0.1	...	...	...
Unemployment rate	6.6	<b>6.8</b>	0.3	<b>0.2</b>	0.4	0.3	...	...	...
Employment rate	59.3	<b>59.0</b>	0.2	<b>-0.3</b>	0.1	-0.3	...	...	...
Part-time rate	20.3	<b>20.0</b>	0.5	<b>-0.3</b>	-0.1	-0.9	...	...	...
<b>Industry</b>									
Industry	6,557.7	<b>6,564.8</b>	19.0	<b>7.1</b>	37.4	24.1	<b>0.1</b>	0.6	0.4
<b>Goods-producing sector</b>									
Goods-producing sector	1,382.7	<b>1,409.7</b>	16.2	<b>27.0</b>	32.2	-27.5	<b>2.0</b>	2.3	-1.9
Agriculture	81.8	<b>87.6</b>	3.6	<b>5.8</b>	4.0	-2.8	<b>7.1</b>	4.8	-3.1
Forestry, fishing, mining, oil and gas	37.3	<b>43.0</b>	2.2	<b>5.7</b>	4.0	9.5	<b>15.3</b>	10.3	28.4
Utilities	56.9	<b>57.9</b>	3.2	<b>1.0</b>	2.4	-0.6	<b>1.8</b>	4.3	-1.0
Construction	412.8	<b>414.7</b>	9.8	<b>1.9</b>	0.7	1.8	<b>0.5</b>	0.2	0.4
Manufacturing	793.8	<b>806.4</b>	12.9	<b>12.6</b>	21.0	-35.5	<b>1.6</b>	2.7	-4.2
<b>Services-producing sector</b>									
Services-producing sector	5,175.0	<b>5,155.1</b>	21.8	<b>-19.9</b>	5.2	51.6	<b>-0.4</b>	0.1	1.0
Trade	1,002.5	<b>988.8</b>	14.3	<b>-13.7</b>	3.9	-14.4	<b>-1.4</b>	0.4	-1.4
Transportation and warehousing	300.1	<b>316.4</b>	8.6	<b>16.3</b>	15.3	-14.2	<b>5.4</b>	5.1	-4.3
Finance, insurance, real estate and leasing	526.3	<b>495.6</b>	11.3	<b>-30.7</b>	-20.6	-3.4	<b>-5.8</b>	-4.0	-0.7
Professional, scientific and technical services	528.0	<b>531.7</b>	11.2	<b>3.7</b>	6.4	38.4	<b>0.7</b>	1.2	7.8
Business, building and other support services	281.7	<b>285.0</b>	8.9	<b>3.3</b>	24.1	23.0	<b>1.2</b>	9.2	8.8
Educational services	479.1	<b>488.0</b>	9.9	<b>8.9</b>	8.5	25.7	<b>1.9</b>	1.8	5.6
Health care and social assistance	716.0	<b>708.7</b>	10.6	<b>-7.3</b>	-17.1	13.6	<b>-1.0</b>	-2.4	2.0
Information, culture and recreation	312.7	<b>310.0</b>	9.2	<b>-2.7</b>	-12.0	4.2	<b>-0.9</b>	-3.7	1.4
Accommodation and food services	391.4	<b>405.3</b>	9.7	<b>13.9</b>	17.7	10.4	<b>3.6</b>	4.6	2.6
Other services	288.1	<b>279.5</b>	8.8	<b>-8.6</b>	-21.9	-13.6	<b>-3.0</b>	-7.3	-4.6
Public administration	349.0	<b>346.2</b>	7.7	<b>-2.8</b>	0.8	-18.0	<b>-0.8</b>	0.2	-4.9

1. Average standard error of change in two consecutive months (see "Sampling Errors" in Data Quality for further explanations).

**Note(s):** Related CANSIM Tables 282-0087, 282-0088.

**Table 4-7**  
**Selected labour force characteristics (seasonally adjusted) — Manitoba**

	January 2010	February 2010	S.E. <sup>1</sup>	Change from			Percent change from		
				last month	last December	twelve months ago	last month	last December	twelve months ago
in thousands (except rates)									
<b>Both sexes, 15 years and over</b>									
Population	929.5	<b>930.5</b>	...	<b>1.0</b>	1.9	13.7	<b>0.1</b>	0.2	1.5
Labour force	647.6	<b>646.1</b>	2.6	<b>-1.5</b>	5.2	7.5	<b>-0.2</b>	0.8	1.2
Employment	612.4	<b>611.3</b>	2.8	<b>-1.1</b>	7.3	4.5	<b>-0.2</b>	1.2	0.7
Employment full-time	489.4	<b>494.3</b>	3.7	<b>4.9</b>	9.6	1.2	<b>1.0</b>	2.0	0.2
Unemployment	35.2	<b>34.8</b>	2.2	<b>-0.4</b>	-2.2	3.0	<b>-1.1</b>	-5.9	9.4
Participation rate	69.7	<b>69.4</b>	0.3	<b>-0.3</b>	0.4	-0.3	...	...	...
Unemployment rate	5.4	<b>5.4</b>	0.3	<b>0.0</b>	-0.4	0.4	...	...	...
Employment rate	65.9	<b>65.7</b>	0.3	<b>-0.2</b>	0.7	-0.5	...	...	...
Part-time rate	20.1	<b>19.1</b>	0.5	<b>-1.0</b>	-0.6	0.4	...	...	...
<b>Both sexes, 15 to 24 years</b>									
Population	160.7	<b>160.8</b>	...	<b>0.1</b>	0.2	1.4	<b>0.1</b>	0.1	0.9
Labour force	109.6	<b>108.6</b>	1.6	<b>-1.0</b>	-0.4	-5.4	<b>-0.9</b>	-0.4	-4.7
Employment	98.8	<b>96.8</b>	1.6	<b>-2.0</b>	-0.6	-6.9	<b>-2.0</b>	-0.6	-6.7
Unemployment	10.8	<b>11.8</b>	1.3	<b>1.0</b>	0.2	1.5	<b>9.3</b>	1.7	14.6
Participation rate	68.2	<b>67.5</b>	1.0	<b>-0.7</b>	-0.4	-4.0	...	...	...
Unemployment rate	9.9	<b>10.9</b>	1.1	<b>1.0</b>	0.3	1.9	...	...	...
Employment rate	61.5	<b>60.2</b>	1.0	<b>-1.3</b>	-0.4	-4.9	...	...	...
Part-time rate	41.8	<b>40.2</b>	1.8	<b>-1.6</b>	-0.5	-1.2	...	...	...
<b>Men, 25 years and over</b>									
Population	376.0	<b>376.5</b>	...	<b>0.5</b>	0.9	6.2	<b>0.1</b>	0.2	1.7
Labour force	286.5	<b>286.5</b>	1.3	<b>0.0</b>	1.3	4.8	<b>0.0</b>	0.5	1.7
Employment	273.2	<b>273.6</b>	1.5	<b>0.4</b>	3.9	3.6	<b>0.1</b>	1.4	1.3
Unemployment	13.3	<b>12.9</b>	1.2	<b>-0.4</b>	-2.6	1.1	<b>-3.0</b>	-16.8	9.3
Participation rate	76.2	<b>76.1</b>	0.4	<b>-0.1</b>	0.2	0.0	...	...	...
Unemployment rate	4.6	<b>4.5</b>	0.4	<b>-0.1</b>	-0.9	0.3	...	...	...
Employment rate	72.7	<b>72.7</b>	0.4	<b>0.0</b>	0.9	-0.2	...	...	...
Part-time rate	8.5	<b>8.0</b>	0.6	<b>-0.5</b>	-0.7	1.0	...	...	...
<b>Women, 25 years and over</b>									
Population	392.8	<b>393.2</b>	...	<b>0.4</b>	0.8	6.0	<b>0.1</b>	0.2	1.5
Labour force	251.5	<b>250.9</b>	1.5	<b>-0.6</b>	4.2	8.1	<b>-0.2</b>	1.7	3.3
Employment	240.5	<b>240.9</b>	1.6	<b>0.4</b>	4.1	7.8	<b>0.2</b>	1.7	3.3
Unemployment	11.1	<b>10.1</b>	1.2	<b>-1.0</b>	0.2	0.3	<b>-9.0</b>	2.0	3.1
Participation rate	64.0	<b>63.8</b>	0.4	<b>-0.2</b>	0.9	1.1	...	...	...
Unemployment rate	4.4	<b>4.0</b>	0.5	<b>-0.4</b>	0.0	0.0	...	...	...
Employment rate	61.2	<b>61.3</b>	0.4	<b>0.1</b>	1.0	1.1	...	...	...
Part-time rate	24.3	<b>23.3</b>	0.9	<b>-1.0</b>	-0.4	1.1	...	...	...
<b>Industry</b>									
<b>Goods-producing sector</b>	612.4	<b>611.3</b>	2.8	<b>-1.1</b>	7.3	4.5	<b>-0.2</b>	1.2	0.7
Agriculture	133.7	<b>135.8</b>	2.3	<b>2.1</b>	3.2	-9.2	<b>1.6</b>	2.4	-6.3
Forestry, fishing, mining, oil and gas	25.2	<b>24.4</b>	1.3	<b>-0.8</b>	-1.0	-2.6	<b>-3.2</b>	-3.9	-9.6
Utilities	6.3	<b>6.8</b>	0.6	<b>0.5</b>	1.1	0.1	<b>7.9</b>	19.3	1.5
Construction	8.2	<b>8.2</b>	0.5	<b>0.0</b>	-0.1	0.7	<b>0.0</b>	-1.2	9.3
Manufacturing	36.6	<b>37.1</b>	1.4	<b>0.5</b>	1.6	-4.3	<b>1.4</b>	4.5	-10.4
Manufacturing	57.5	<b>59.3</b>	1.6	<b>1.8</b>	1.5	-3.2	<b>3.1</b>	2.6	-5.1
<b>Services-producing sector</b>	478.7	<b>475.5</b>	3.1	<b>-3.2</b>	4.1	13.7	<b>-0.7</b>	0.9	3.0
Trade	90.7	<b>90.9</b>	2.0	<b>0.2</b>	0.5	0.4	<b>0.2</b>	0.6	0.4
Transportation and warehousing	37.3	<b>36.8</b>	1.3	<b>-0.5</b>	-1.1	-2.1	<b>-1.3</b>	-2.9	-5.4
Finance, insurance, real estate and leasing	36.1	<b>36.1</b>	1.2	<b>0.0</b>	0.8	1.0	<b>0.0</b>	2.3	2.8
Professional, scientific and technical services	26.8	<b>25.0</b>	1.1	<b>-1.8</b>	-0.2	0.8	<b>-6.7</b>	-0.8	3.3
Business, building and other support services	20.7	<b>21.5</b>	1.2	<b>0.8</b>	2.7	2.8	<b>3.9</b>	14.4	15.0
Educational services	52.0	<b>51.4</b>	1.5	<b>-0.6</b>	-0.1	6.1	<b>-1.2</b>	-0.2	13.5
Health care and social assistance	86.5	<b>85.9</b>	1.8	<b>-0.6</b>	1.3	-0.2	<b>-0.7</b>	1.5	-0.2
Information, culture and recreation	24.7	<b>24.0</b>	1.1	<b>-0.7</b>	1.2	0.6	<b>-2.8</b>	5.3	2.6
Accommodation and food services	38.8	<b>39.5</b>	1.4	<b>0.7</b>	2.5	4.4	<b>1.8</b>	6.8	12.5
Other services	29.3	<b>27.8</b>	1.2	<b>-1.5</b>	-1.4	-0.8	<b>-5.1</b>	-4.8	-2.8
Public administration	35.8	<b>36.7</b>	1.1	<b>0.9</b>	-2.0	0.9	<b>2.5</b>	-5.2	2.5

1. Average standard error of change in two consecutive months (see "Sampling Errors" in Data Quality for further explanations).

**Note(s):** Related CANSIM Tables 282-0087, 282-0088.

**Table 4-8**  
**Selected labour force characteristics (seasonally adjusted) — Saskatchewan**

	January 2010	February 2010	S.E. <sup>1</sup>	Change from			Percent change from		
				last month	last December	twelve months ago	last month	last December	twelve months ago
in thousands (except rates)									
<b>Both sexes, 15 years and over</b>									
Population	785.2	<b>786.4</b>	...	<b>1.2</b>	2.1	10.8	<b>0.2</b>	0.3	1.4
Labour force	545.4	<b>547.3</b>	2.4	<b>1.9</b>	-1.2	0.0	<b>0.3</b>	-0.2	0.0
Employment	519.8	<b>523.9</b>	2.5	<b>4.1</b>	1.8	1.9	<b>0.8</b>	0.3	0.4
Employment full-time	428.6	<b>433.2</b>	3.4	<b>4.6</b>	7.6	10.3	<b>1.1</b>	1.8	2.4
Unemployment	25.6	<b>23.5</b>	1.9	<b>-2.1</b>	-2.8	-1.8	<b>-8.2</b>	-10.6	-7.1
Participation rate	69.5	<b>69.6</b>	0.3	<b>0.1</b>	-0.3	-1.0	...	...	...
Unemployment rate	4.7	<b>4.3</b>	0.3	<b>-0.4</b>	-0.5	-0.3	...	...	...
Employment rate	66.2	<b>66.6</b>	0.3	<b>0.4</b>	0.0	-0.7	...	...	...
Part-time rate	17.5	<b>17.3</b>	0.6	<b>-0.2</b>	-1.2	-1.7	...	...	...
<b>Both sexes, 15 to 24 years</b>									
Population	138.4	<b>138.4</b>	...	<b>0.0</b>	-0.1	-1.2	<b>0.0</b>	-0.1	-0.9
Labour force	95.1	<b>93.7</b>	1.5	<b>-1.4</b>	-1.4	-7.1	<b>-1.5</b>	-1.5	-7.0
Employment	86.9	<b>85.9</b>	1.5	<b>-1.0</b>	-1.2	-4.7	<b>-1.2</b>	-1.4	-5.2
Unemployment	8.2	<b>7.9</b>	1.2	<b>-0.3</b>	-0.1	-2.3	<b>-3.7</b>	-1.2	-22.5
Participation rate	68.7	<b>67.7</b>	1.1	<b>-1.0</b>	-1.0	-4.5	...	...	...
Unemployment rate	8.6	<b>8.4</b>	1.2	<b>-0.2</b>	0.0	-1.7	...	...	...
Employment rate	62.8	<b>62.1</b>	1.1	<b>-0.7</b>	-0.8	-2.8	...	...	...
Part-time rate	35.1	<b>36.4</b>	1.8	<b>1.3</b>	-0.9	-0.6	...	...	...
<b>Men, 25 years and over</b>									
Population	316.5	<b>317.3</b>	...	<b>0.8</b>	1.4	6.5	<b>0.3</b>	0.4	2.1
Labour force	239.1	<b>241.7</b>	1.2	<b>2.6</b>	-0.1	4.8	<b>1.1</b>	0.0	2.0
Employment	229.1	<b>232.4</b>	1.3	<b>3.3</b>	2.5	4.5	<b>1.4</b>	1.1	2.0
Unemployment	10.0	<b>9.3</b>	1.1	<b>-0.7</b>	-2.6	0.3	<b>-7.0</b>	-21.8	3.3
Participation rate	75.5	<b>76.2</b>	0.4	<b>0.7</b>	-0.3	0.0	...	...	...
Unemployment rate	4.2	<b>3.8</b>	0.4	<b>-0.4</b>	-1.1	0.0	...	...	...
Employment rate	72.4	<b>73.2</b>	0.4	<b>0.8</b>	0.4	-0.1	...	...	...
Part-time rate	6.7	<b>5.4</b>	0.6	<b>-1.3</b>	-1.5	-1.6	...	...	...
<b>Women, 25 years and over</b>									
Population	330.3	<b>330.8</b>	...	<b>0.5</b>	1.0	5.6	<b>0.2</b>	0.3	1.7
Labour force	211.2	<b>211.9</b>	1.3	<b>0.7</b>	0.3	2.3	<b>0.3</b>	0.1	1.1
Employment	203.8	<b>205.6</b>	1.4	<b>1.8</b>	0.5	2.1	<b>0.9</b>	0.2	1.0
Unemployment	7.3	<b>6.3</b>	0.9	<b>-1.0</b>	-0.2	0.2	<b>-13.7</b>	-3.1	3.3
Participation rate	63.9	<b>64.1</b>	0.4	<b>0.2</b>	-0.1	-0.4	...	...	...
Unemployment rate	3.5	<b>3.0</b>	0.4	<b>-0.5</b>	-0.1	0.1	...	...	...
Employment rate	61.7	<b>62.2</b>	0.4	<b>0.5</b>	0.0	-0.4	...	...	...
Part-time rate	22.2	<b>22.8</b>	1.0	<b>0.5</b>	-0.7	-1.6	...	...	...
<b>Industry</b>									
<b>Goods-producing sector</b>	140.3	<b>145.0</b>	2.3	<b>4.7</b>	3.6	4.5	<b>3.3</b>	2.5	3.2
Agriculture	42.1	<b>45.8</b>	1.5	<b>3.7</b>	0.3	3.9	<b>8.8</b>	0.7	9.3
Forestry, fishing, mining, oil and gas	26.1	<b>27.4</b>	1.1	<b>1.3</b>	0.4	3.2	<b>5.0</b>	1.5	13.2
Utilities	4.9	<b>4.3</b>	0.4	<b>-0.6</b>	-0.4	-0.8	<b>-12.2</b>	-8.5	-15.7
Construction	40.0	<b>38.8</b>	1.3	<b>-1.2</b>	1.3	0.8	<b>-3.0</b>	3.5	2.1
Manufacturing	27.2	<b>28.7</b>	1.0	<b>1.5</b>	1.9	-2.5	<b>5.5</b>	7.1	-8.0
<b>Services-producing sector</b>	379.5	<b>378.8</b>	2.8	<b>-0.7</b>	-1.9	-2.7	<b>-0.2</b>	-0.5	-0.7
Trade	78.7	<b>77.5</b>	1.8	<b>-1.2</b>	-2.0	-5.3	<b>-1.5</b>	-2.5	-6.4
Transportation and warehousing	25.1	<b>25.6</b>	1.0	<b>0.5</b>	0.2	1.9	<b>2.0</b>	0.8	8.0
Finance, insurance, real estate and leasing	31.0	<b>30.6</b>	1.0	<b>-0.4</b>	-0.6	0.6	<b>-1.3</b>	-1.9	2.0
Professional, scientific and technical services	22.7	<b>23.9</b>	0.9	<b>1.2</b>	0.4	1.8	<b>5.3</b>	1.7	8.1
Business, building and other support services	12.7	<b>13.6</b>	0.8	<b>0.9</b>	0.8	1.8	<b>7.1</b>	6.2	15.3
Educational services	40.5	<b>38.4</b>	1.3	<b>-2.1</b>	-2.3	-0.8	<b>-5.2</b>	-5.7	-2.0
Health care and social assistance	68.3	<b>68.7</b>	1.4	<b>0.4</b>	2.3	4.1	<b>0.6</b>	3.5	6.3
Information, culture and recreation	17.5	<b>17.8</b>	1.0	<b>0.3</b>	-1.0	-3.3	<b>1.7</b>	-5.3	-15.6
Accommodation and food services	31.1	<b>30.5</b>	1.3	<b>-0.6</b>	1.6	-0.9	<b>-1.9</b>	5.5	-2.9
Other services	22.6	<b>23.1</b>	1.1	<b>0.5</b>	-0.3	-0.5	<b>2.2</b>	-1.3	-2.1
Public administration	29.4	<b>29.1</b>	1.0	<b>-0.3</b>	-1.1	-2.1	<b>-1.0</b>	-3.6	-6.7

1. Average standard error of change in two consecutive months (see "Sampling Errors" in Data Quality for further explanations).

**Note(s):** Related CANSIM Tables 282-0087, 282-0088.

**Table 4-9**  
**Selected labour force characteristics (seasonally adjusted) — Alberta**

	January 2010	February 2010	S.E. <sup>1</sup>	Change from			Percent change from		
				last month	last December	twelve months ago	last month	last December	twelve months ago
in thousands (except rates)									
<b>Both sexes, 15 years and over</b>									
Population	2,899.5	<b>2,904.1</b>	...	<b>4.6</b>	8.8	68.0	<b>0.2</b>	0.3	2.4
Labour force	2,127.2	<b>2,118.8</b>	8.4	<b>-8.4</b>	-17.1	2.9	<b>-0.4</b>	-0.8	0.1
Employment	1,987.6	<b>1,972.8</b>	8.8	<b>-14.8</b>	-22.5	-18.9	<b>-0.7</b>	-1.1	-0.9
Employment full-time	1,638.1	<b>1,623.8</b>	11.7	<b>-14.3</b>	-8.0	-14.8	<b>-0.9</b>	-0.5	-0.9
Unemployment	139.6	<b>145.9</b>	7.2	<b>6.3</b>	5.3	21.6	<b>4.5</b>	3.8	17.4
Participation rate	73.4	<b>73.0</b>	0.3	<b>-0.4</b>	-0.8	-1.6	...	...	...
Unemployment rate	6.6	<b>6.9</b>	0.3	<b>0.3</b>	0.3	1.0	...	...	...
Employment rate	68.5	<b>67.9</b>	0.3	<b>-0.6</b>	-1.0	-2.3	...	...	...
Part-time rate	17.6	<b>17.7</b>	0.5	<b>0.1</b>	-0.5	0.0	...	...	...
<b>Both sexes, 15 to 24 years</b>									
Population	507.0	<b>506.2</b>	...	<b>-0.8</b>	-1.4	0.9	<b>-0.2</b>	-0.3	0.2
Labour force	350.1	<b>354.2</b>	5.2	<b>4.1</b>	-2.7	-15.7	<b>1.2</b>	-0.8	-4.2
Employment	313.0	<b>316.2</b>	4.9	<b>3.2</b>	4.2	-13.3	<b>1.0</b>	1.3	-4.0
Unemployment	37.1	<b>38.0</b>	4.4	<b>0.9</b>	-6.9	-2.4	<b>2.4</b>	-15.4	-5.9
Participation rate	69.1	<b>70.0</b>	1.0	<b>0.9</b>	-0.3	-3.2	...	...	...
Unemployment rate	10.6	<b>10.7</b>	1.1	<b>0.1</b>	-1.9	-0.2	...	...	...
Employment rate	61.7	<b>62.5</b>	1.0	<b>0.8</b>	1.0	-2.7	...	...	...
Part-time rate	35.3	<b>36.3</b>	1.7	<b>1.0</b>	-1.3	0.9	...	...	...
<b>Men, 25 years and over</b>									
Population	1,214.3	<b>1,217.1</b>	...	<b>2.8</b>	5.3	38.0	<b>0.2</b>	0.4	3.2
Labour force	983.6	<b>969.9</b>	4.3	<b>-13.7</b>	-13.8	4.6	<b>-1.4</b>	-1.4	0.5
Employment	921.9	<b>909.5</b>	5.0	<b>-12.4</b>	-16.6	-4.8	<b>-1.3</b>	-1.8	-0.5
Unemployment	61.8	<b>60.3</b>	4.3	<b>-1.5</b>	2.7	9.3	<b>-2.4</b>	4.7	18.2
Participation rate	81.0	<b>79.7</b>	0.4	<b>-1.3</b>	-1.5	-2.2	...	...	...
Unemployment rate	6.3	<b>6.2</b>	0.4	<b>-0.1</b>	0.3	0.9	...	...	...
Employment rate	75.9	<b>74.7</b>	0.4	<b>-1.2</b>	-1.7	-2.8	...	...	...
Part-time rate	6.2	<b>6.0</b>	0.5	<b>-0.2</b>	-0.4	-0.6	...	...	...
<b>Women, 25 years and over</b>									
Population	1,178.2	<b>1,180.8</b>	...	<b>2.6</b>	4.9	29.2	<b>0.2</b>	0.4	2.5
Labour force	793.5	<b>794.7</b>	4.7	<b>1.2</b>	-0.6	14.0	<b>0.2</b>	-0.1	1.8
Employment	752.7	<b>747.2</b>	4.8	<b>-5.5</b>	-10.1	-0.6	<b>-0.7</b>	-1.3	-0.1
Unemployment	40.8	<b>47.5</b>	3.5	<b>6.7</b>	9.5	14.6	<b>16.4</b>	25.0	44.4
Participation rate	67.3	<b>67.3</b>	0.4	<b>0.0</b>	-0.3	-0.5	...	...	...
Unemployment rate	5.1	<b>6.0</b>	0.4	<b>0.9</b>	1.2	1.8	...	...	...
Employment rate	63.9	<b>63.3</b>	0.4	<b>-0.6</b>	-1.1	-1.6	...	...	...
Part-time rate	24.2	<b>24.1</b>	1.0	<b>-0.1</b>	-0.6	0.5	...	...	...
<b>Industry</b>									
Industry	1,987.6	<b>1,972.8</b>	8.8	<b>-14.8</b>	-22.5	-18.9	<b>-0.7</b>	-1.1	-0.9
<b>Goods-producing sector</b>									
Goods-producing sector	505.6	<b>513.3</b>	9.1	<b>7.7</b>	0.1	-32.9	<b>1.5</b>	0.0	-6.0
Agriculture	55.1	<b>48.0</b>	3.3	<b>-7.1</b>	-5.6	-8.3	<b>-12.9</b>	-10.4	-14.7
Forestry, fishing, mining, oil and gas	129.0	<b>135.6</b>	4.7	<b>6.6</b>	10.0	-12.7	<b>5.1</b>	8.0	-8.6
Utilities	17.7	<b>17.3</b>	1.8	<b>-0.4</b>	-1.7	-2.6	<b>-2.3</b>	-8.9	-13.1
Construction	195.2	<b>193.4</b>	6.1	<b>-1.8</b>	-5.6	4.6	<b>-0.9</b>	-2.8	2.4
Manufacturing	108.6	<b>119.1</b>	4.8	<b>10.5</b>	3.1	-13.8	<b>9.7</b>	2.7	-10.4
<b>Services-producing sector</b>									
Services-producing sector	1,482.0	<b>1,459.5</b>	10.6	<b>-22.5</b>	-22.7	14.0	<b>-1.5</b>	-1.5	1.0
Trade	303.3	<b>291.1</b>	7.4	<b>-12.2</b>	-13.3	-17.5	<b>-4.0</b>	-4.4	-5.7
Transportation and warehousing	99.8	<b>100.0</b>	4.5	<b>0.2</b>	-0.6	-6.9	<b>0.2</b>	-0.6	-6.5
Finance, insurance, real estate and leasing	106.4	<b>103.0</b>	4.1	<b>-3.4</b>	-1.6	-9.3	<b>-3.2</b>	-1.5	-8.3
Professional, scientific and technical services	150.2	<b>147.8</b>	5.1	<b>-2.4</b>	2.2	-10.2	<b>-1.6</b>	1.5	-6.5
Business, building and other support services	64.7	<b>66.9</b>	3.9	<b>2.2</b>	1.6	3.7	<b>3.4</b>	2.5	5.9
Educational services	144.4	<b>130.8</b>	4.6	<b>-13.6</b>	-8.9	9.5	<b>-9.4</b>	-6.4	7.8
Health care and social assistance	213.5	<b>217.0</b>	5.2	<b>3.5</b>	8.2	23.5	<b>1.6</b>	3.9	12.1
Information, culture and recreation	82.3	<b>82.7</b>	3.9	<b>0.4</b>	0.5	5.9	<b>0.5</b>	0.6	7.7
Accommodation and food services	131.8	<b>130.3</b>	5.1	<b>-1.5</b>	-3.0	5.3	<b>-1.1</b>	-2.3	4.2
Other services	102.9	<b>101.1</b>	4.3	<b>-1.8</b>	-6.4	7.5	<b>-1.7</b>	-6.0	8.0
Public administration	82.6	<b>88.7</b>	3.6	<b>6.1</b>	-1.6	2.6	<b>7.4</b>	-1.8	3.0

1. Average standard error of change in two consecutive months (see "Sampling Errors" in Data Quality for further explanations).

**Note(s):** Related CANSIM Tables 282-0087, 282-0088.

**Table 4-10**  
**Selected labour force characteristics (seasonally adjusted) — British Columbia**

	January 2010	February 2010	S.E. <sup>1</sup>	Change from			Percent change from		
				last month	last December	twelve months ago	last month	last December	twelve months ago
in thousands (except rates)									
<b>Both sexes, 15 years and over</b>									
Population	3,745.0	<b>3,751.3</b>	...	<b>6.3</b>	12.4	69.5	<b>0.2</b>	0.3	1.9
Labour force	2,481.2	<b>2,482.4</b>	10.6	<b>1.2</b>	9.7	57.1	<b>0.0</b>	0.4	2.4
Employment	2,280.5	<b>2,290.4</b>	10.5	<b>9.9</b>	21.9	34.8	<b>0.4</b>	1.0	1.5
Employment full-time	1,768.2	<b>1,801.2</b>	14.3	<b>33.0</b>	28.8	37.5	<b>1.9</b>	1.6	2.1
Unemployment	200.7	<b>192.0</b>	8.5	<b>-8.7</b>	-12.2	22.4	<b>-4.3</b>	-6.0	13.2
Participation rate	66.3	<b>66.2</b>	0.3	<b>-0.1</b>	0.1	0.3	...	...	...
Unemployment rate	8.1	<b>7.7</b>	0.3	<b>-0.4</b>	-0.6	0.7	...	...	...
Employment rate	60.9	<b>61.1</b>	0.3	<b>0.2</b>	0.4	-0.2	...	...	...
Part-time rate	22.5	<b>21.4</b>	0.6	<b>-1.1</b>	-0.5	-0.4	...	...	...
<b>Both sexes, 15 to 24 years</b>									
Population	587.4	<b>587.6</b>	...	<b>0.2</b>	0.5	3.5	<b>0.0</b>	0.1	0.6
Labour force	379.7	<b>375.0</b>	6.0	<b>-4.7</b>	1.4	0.1	<b>-1.2</b>	0.4	0.0
Employment	328.4	<b>327.4</b>	5.8	<b>-1.0</b>	6.2	-1.9	<b>-0.3</b>	1.9	-0.6
Unemployment	51.3	<b>47.6</b>	4.8	<b>-3.7</b>	-4.8	2.1	<b>-7.2</b>	-9.2	4.6
Participation rate	64.6	<b>63.8</b>	1.0	<b>-0.8</b>	0.2	-0.4	...	...	...
Unemployment rate	13.5	<b>12.7</b>	1.2	<b>-0.8</b>	-1.3	0.6	...	...	...
Employment rate	55.9	<b>55.7</b>	1.0	<b>-0.2</b>	1.0	-0.7	...	...	...
Part-time rate	47.1	<b>47.1</b>	2.0	<b>0.0</b>	-0.7	1.4	...	...	...
<b>Men, 25 years and over</b>									
Population	1,546.5	<b>1,549.6</b>	...	<b>3.1</b>	6.0	33.3	<b>0.2</b>	0.4	2.2
Labour force	1,120.8	<b>1,124.3</b>	5.4	<b>3.5</b>	0.0	29.1	<b>0.3</b>	0.0	2.7
Employment	1,035.2	<b>1,040.6</b>	5.8	<b>5.4</b>	1.7	18.9	<b>0.5</b>	0.2	1.8
Unemployment	85.5	<b>83.7</b>	5.2	<b>-1.8</b>	-1.7	10.2	<b>-2.1</b>	-2.0	13.9
Participation rate	72.5	<b>72.6</b>	0.4	<b>0.1</b>	-0.2	0.4	...	...	...
Unemployment rate	7.6	<b>7.4</b>	0.5	<b>-0.2</b>	-0.2	0.7	...	...	...
Employment rate	66.9	<b>67.2</b>	0.4	<b>0.3</b>	-0.1	-0.2	...	...	...
Part-time rate	9.9	<b>8.1</b>	0.6	<b>-1.8</b>	-1.2	-1.0	...	...	...
<b>Women, 25 years and over</b>									
Population	1,611.1	<b>1,614.1</b>	...	<b>3.0</b>	5.9	32.6	<b>0.2</b>	0.4	2.1
Labour force	980.8	<b>983.1</b>	6.2	<b>2.3</b>	8.4	27.9	<b>0.2</b>	0.9	2.9
Employment	916.9	<b>922.3</b>	6.1	<b>5.4</b>	13.9	17.7	<b>0.6</b>	1.5	2.0
Unemployment	63.9	<b>60.7</b>	4.7	<b>-3.2</b>	-5.7	10.1	<b>-5.0</b>	-8.6	20.0
Participation rate	60.9	<b>60.9</b>	0.4	<b>0.0</b>	0.3	0.5	...	...	...
Unemployment rate	6.5	<b>6.2</b>	0.5	<b>-0.3</b>	-0.6	0.9	...	...	...
Employment rate	56.9	<b>57.1</b>	0.4	<b>0.2</b>	0.6	-0.1	...	...	...
Part-time rate	27.9	<b>27.2</b>	0.9	<b>-0.6</b>	0.1	-0.3	...	...	...
<b>Industry</b>									
	2,280.5	<b>2,290.4</b>	10.5	<b>9.9</b>	21.9	34.8	<b>0.4</b>	1.0	1.5
<b>Goods-producing sector</b>									
Agriculture	445.5	<b>433.0</b>	9.1	<b>-12.5</b>	-2.5	-19.3	<b>-2.8</b>	-0.6	-4.3
Forestry, fishing, mining, oil and gas	34.3	<b>30.1</b>	2.8	<b>-4.2</b>	-3.6	-0.3	<b>-12.2</b>	-10.7	-1.0
Utilities	41.6	<b>37.2</b>	2.9	<b>-4.4</b>	-0.3	-7.4	<b>-10.6</b>	-0.8	-16.6
Construction	13.8	<b>12.0</b>	1.5	<b>-1.8</b>	-2.4	1.1	<b>-13.0</b>	-16.7	10.1
Manufacturing	198.6	<b>195.9</b>	6.4	<b>-2.7</b>	2.1	-4.6	<b>-1.4</b>	1.1	-2.3
	157.1	<b>157.8</b>	5.7	<b>0.7</b>	1.7	-8.2	<b>0.4</b>	1.1	-4.9
<b>Services-producing sector</b>									
	1,835.0	<b>1,857.4</b>	11.8	<b>22.4</b>	24.4	54.1	<b>1.2</b>	1.3	3.0
Trade	387.7	<b>376.0</b>	8.2	<b>-11.7</b>	2.4	22.3	<b>-3.0</b>	0.6	6.3
Transportation and warehousing	113.3	<b>117.2</b>	4.6	<b>3.9</b>	4.4	-1.4	<b>3.4</b>	3.9	-1.2
Finance, insurance, real estate and leasing	152.9	<b>156.9</b>	5.1	<b>4.0</b>	8.1	6.2	<b>2.6</b>	5.4	4.1
Professional, scientific and technical services	158.6	<b>159.6</b>	5.9	<b>1.0</b>	-16.9	-10.5	<b>0.6</b>	-9.6	-6.2
Business, building and other support services	88.4	<b>90.7</b>	4.9	<b>2.3</b>	2.4	-7.0	<b>2.6</b>	2.7	-7.2
Educational services	168.9	<b>162.7</b>	5.6	<b>-6.2</b>	-2.2	3.1	<b>-3.7</b>	-1.3	1.9
Health care and social assistance	258.1	<b>270.8</b>	6.2	<b>12.7</b>	7.4	10.8	<b>4.9</b>	2.8	4.2
Information, culture and recreation	115.6	<b>112.7</b>	5.0	<b>-2.9</b>	-3.0	-6.8	<b>-2.5</b>	-2.6	-5.7
Accommodation and food services	174.3	<b>180.0</b>	6.2	<b>5.7</b>	9.4	3.7	<b>3.3</b>	5.5	2.1
Other services	110.8	<b>112.0</b>	4.5	<b>1.2</b>	2.5	16.2	<b>1.1</b>	2.3	16.9
Public administration	106.4	<b>118.7</b>	4.3	<b>12.3</b>	9.9	17.3	<b>11.6</b>	9.1	17.1

1. Average standard error of change in two consecutive months (see "Sampling Errors" in Data Quality for further explanations).

**Note(s):** Related CANSIM Tables 282-0087, 282-0088.



**Table 5-1**  
**Labour force characteristics by census metropolitan area (seasonally adjusted) — 3 month moving average**

	January 2010	February 2010	S.E. <sup>1</sup>	Change from			Percent change from		
				last month	last December	twelve months ago	last month	last December	twelve months ago
in thousands (except rates)									
<b>St. John's, Newfoundland and Labrador</b>									
Population	159.1	<b>159.4</b>	...	<b>0.3</b>	0.5	3.2	<b>0.2</b>	0.3	2.0
Labour force	109.9	<b>110.3</b>	0.8	<b>0.4</b>	1.0	1.4	<b>0.4</b>	0.9	1.3
Employment	100.5	<b>101.4</b>	0.8	<b>0.9</b>	1.9	0.6	<b>0.9</b>	1.9	0.6
Unemployment	9.4	<b>8.9</b>	0.4	<b>-0.5</b>	-0.9	0.8	<b>-5.3</b>	-9.2	9.9
Participation rate	69.1	<b>69.2</b>	0.5	<b>0.1</b>	0.4	-0.5	...	...	...
Unemployment rate	8.6	<b>8.1</b>	0.4	<b>-0.5</b>	-0.9	0.7	...	...	...
Employment rate	63.2	<b>63.6</b>	0.5	<b>0.4</b>	1.0	-0.9	...	...	...
<b>Halifax, Nova Scotia</b>									
Population	323.2	<b>323.6</b>	...	<b>0.4</b>	0.8	4.2	<b>0.1</b>	0.2	1.3
Labour force	230.8	<b>231.5</b>	1.1	<b>0.7</b>	0.9	2.3	<b>0.3</b>	0.4	1.0
Employment	215.7	<b>216.5</b>	1.2	<b>0.8</b>	1.2	1.3	<b>0.4</b>	0.6	0.6
Unemployment	15.1	<b>15.0</b>	0.7	<b>-0.1</b>	-0.3	1.0	<b>-0.7</b>	-2.0	7.1
Participation rate	71.4	<b>71.5</b>	0.3	<b>0.1</b>	0.1	-0.3	...	...	...
Unemployment rate	6.5	<b>6.5</b>	0.3	<b>0.0</b>	-0.1	0.4	...	...	...
Employment rate	66.7	<b>66.9</b>	0.4	<b>0.2</b>	0.2	-0.5	...	...	...
<b>Saint John, New Brunswick</b>									
Population	105.8	<b>105.9</b>	...	<b>0.1</b>	0.1	0.7	<b>0.1</b>	0.1	0.7
Labour force	72.4	<b>72.2</b>	0.8	<b>-0.2</b>	0.6	1.6	<b>-0.3</b>	0.8	2.3
Employment	66.5	<b>66.5</b>	0.7	<b>0.0</b>	-0.3	-0.1	<b>0.0</b>	-0.4	-0.2
Unemployment	5.9	<b>5.7</b>	0.3	<b>-0.2</b>	0.9	1.7	<b>-3.4</b>	18.8	42.5
Participation rate	68.4	<b>68.2</b>	0.7	<b>-0.2</b>	0.5	1.1	...	...	...
Unemployment rate	8.1	<b>7.9</b>	0.5	<b>-0.2</b>	1.2	2.2	...	...	...
Employment rate	62.9	<b>62.8</b>	0.7	<b>-0.1</b>	-0.3	-0.5	...	...	...
<b>Saguenay, Quebec</b>									
Population	124.7	<b>124.7</b>	...	<b>0.0</b>	0.0	-0.2	<b>0.0</b>	0.0	-0.2
Labour force	76.4	<b>75.6</b>	0.7	<b>-0.8</b>	-0.8	-0.3	<b>-1.0</b>	-1.0	-0.4
Employment	70.3	<b>69.6</b>	0.7	<b>-0.7</b>	-1.2	0.6	<b>-1.0</b>	-1.7	0.9
Unemployment	6.1	<b>6.0</b>	0.4	<b>-0.1</b>	0.4	-0.9	<b>-1.6</b>	7.1	-13.0
Participation rate	61.3	<b>60.6</b>	0.6	<b>-0.7</b>	-0.7	-0.2	...	...	...
Unemployment rate	8.0	<b>7.9</b>	0.5	<b>-0.1</b>	0.6	-1.2	...	...	...
Employment rate	56.4	<b>55.8</b>	0.6	<b>-0.6</b>	-1.0	0.6	...	...	...
<b>Québec, Quebec</b>									
Population	620.5	<b>621.1</b>	...	<b>0.6</b>	1.2	7.0	<b>0.1</b>	0.2	1.1
Labour force	411.2	<b>410.4</b>	3.3	<b>-0.8</b>	-2.3	-7.1	<b>-0.2</b>	-0.6	-1.7
Employment	392.8	<b>393.6</b>	3.2	<b>0.8</b>	1.2	-6.4	<b>0.2</b>	0.3	-1.6
Unemployment	18.4	<b>16.7</b>	1.4	<b>-1.7</b>	-3.6	-0.8	<b>-9.2</b>	-17.7	-4.6
Participation rate	66.3	<b>66.1</b>	0.5	<b>-0.2</b>	-0.5	-1.9	...	...	...
Unemployment rate	4.5	<b>4.1</b>	0.3	<b>-0.4</b>	-0.8	-0.1	...	...	...
Employment rate	63.3	<b>63.4</b>	0.5	<b>0.1</b>	0.1	-1.7	...	...	...
<b>Trois-Rivières, Quebec</b>									
Population	123.3	<b>123.4</b>	...	<b>0.1</b>	0.2	1.3	<b>0.1</b>	0.2	1.1
Labour force	73.7	<b>72.3</b>	0.7	<b>-1.4</b>	-3.2	0.1	<b>-1.9</b>	-4.2	0.1
Employment	66.6	<b>65.1</b>	0.8	<b>-1.5</b>	-3.1	-1.6	<b>-2.3</b>	-4.5	-2.4
Unemployment	7.1	<b>7.2</b>	0.4	<b>0.1</b>	0.0	1.7	<b>1.4</b>	0.0	30.9
Participation rate	59.8	<b>58.6</b>	0.6	<b>-1.2</b>	-2.7	-0.5	...	...	...
Unemployment rate	9.6	<b>10.0</b>	0.5	<b>0.4</b>	0.5	2.4	...	...	...
Employment rate	54.0	<b>52.8</b>	0.6	<b>-1.2</b>	-2.6	-1.8	...	...	...

See notes at the end of the table.



Table 5-1 – continued

## Labour force characteristics by census metropolitan area (seasonally adjusted) — 3 month moving average

	January 2010	February 2010	S.E. <sup>1</sup>	Change from			Percent change from		
				last month	last December	twelve months ago	last month	last December	twelve months ago
in thousands (except rates)									
<b>Sherbrooke, Quebec</b>									
Population	141.1	<b>141.3</b>	...	<b>0.2</b>	0.3	1.9	<b>0.1</b>	0.2	1.4
Labour force	89.2	<b>88.4</b>	0.8	<b>-0.8</b>	-2.0	0.1	<b>-0.9</b>	-2.2	0.1
Employment	83.8	<b>82.0</b>	0.8	<b>-1.8</b>	-3.4	-0.3	<b>-2.1</b>	-4.0	-0.4
Unemployment	5.4	<b>6.4</b>	0.3	<b>1.0</b>	1.4	0.3	<b>18.5</b>	28.0	4.9
Participation rate	63.2	<b>62.6</b>	0.6	<b>-0.6</b>	-1.5	-0.7	...	...	...
Unemployment rate	6.1	<b>7.2</b>	0.4	<b>1.1</b>	1.7	0.3	...	...	...
Employment rate	59.4	<b>58.0</b>	0.6	<b>-1.4</b>	-2.6	-1.0	...	...	...
<b>Montréal, Quebec</b>									
Population	3,121.8	<b>3,125.4</b>	...	<b>3.6</b>	7.2	40.2	<b>0.1</b>	0.2	1.3
Labour force	2,098.9	<b>2,110.1</b>	6.9	<b>11.2</b>	26.9	64.9	<b>0.5</b>	1.3	3.2
Employment	1,907.0	<b>1,916.1</b>	7.2	<b>9.1</b>	22.4	41.4	<b>0.5</b>	1.2	2.2
Unemployment	191.9	<b>194.0</b>	4.8	<b>2.1</b>	4.5	23.4	<b>1.1</b>	2.4	13.7
Participation rate	67.2	<b>67.5</b>	0.2	<b>0.3</b>	0.7	1.2	...	...	...
Unemployment rate	9.1	<b>9.2</b>	0.2	<b>0.1</b>	0.1	0.9	...	...	...
Employment rate	61.1	<b>61.3</b>	0.2	<b>0.2</b>	0.6	0.5	...	...	...
<b>Ottawa-Gatineau, Ontario/Quebec</b>									
Population	982.6	<b>983.7</b>	...	<b>1.1</b>	2.2	13.4	<b>0.1</b>	0.2	1.4
Labour force	707.4	<b>709.7</b>	3.4	<b>2.3</b>	5.0	12.7	<b>0.3</b>	0.7	1.8
Employment	664.0	<b>665.4</b>	3.6	<b>1.4</b>	2.7	1.9	<b>0.2</b>	0.4	0.3
Unemployment	43.4	<b>44.2</b>	1.6	<b>0.8</b>	2.2	10.8	<b>1.8</b>	5.2	32.3
Participation rate	72.0	<b>72.1</b>	0.3	<b>0.1</b>	0.3	0.3	...	...	...
Unemployment rate	6.1	<b>6.2</b>	0.2	<b>0.1</b>	0.2	1.4	...	...	...
Employment rate	67.6	<b>67.6</b>	0.4	<b>0.0</b>	0.1	-0.8	...	...	...
<b>Ottawa-Gatineau, Quebec part, Ontario/Quebec</b>									
Population	250.0	<b>250.4</b>	...	<b>0.4</b>	0.8	4.2	<b>0.2</b>	0.3	1.7
Labour force	183.8	<b>183.3</b>	1.3	<b>-0.5</b>	-0.4	8.5	<b>-0.3</b>	-0.2	4.9
Employment	172.7	<b>172.2</b>	1.4	<b>-0.5</b>	-0.6	7.1	<b>-0.3</b>	-0.3	4.3
Unemployment	11.1	<b>11.1</b>	0.6	<b>0.0</b>	0.2	1.4	<b>0.0</b>	1.8	14.4
Participation rate	73.5	<b>73.2</b>	0.5	<b>-0.3</b>	-0.4	2.2	...	...	...
Unemployment rate	6.0	<b>6.1</b>	0.3	<b>0.1</b>	0.2	0.6	...	...	...
Employment rate	69.1	<b>68.8</b>	0.6	<b>-0.3</b>	-0.4	1.7	...	...	...
<b>Ottawa-Gatineau, Ontario part, Ontario/Quebec</b>									
Population	732.6	<b>733.3</b>	...	<b>0.7</b>	1.4	9.2	<b>0.1</b>	0.2	1.3
Labour force	523.6	<b>526.3</b>	3.1	<b>2.7</b>	5.3	4.2	<b>0.5</b>	1.0	0.8
Employment	491.3	<b>493.2</b>	3.3	<b>1.9</b>	3.4	-5.2	<b>0.4</b>	0.7	-1.0
Unemployment	32.3	<b>33.1</b>	1.5	<b>0.8</b>	2.0	9.4	<b>2.5</b>	6.4	39.7
Participation rate	71.5	<b>71.8</b>	0.4	<b>0.3</b>	0.6	-0.3	...	...	...
Unemployment rate	6.2	<b>6.3</b>	0.3	<b>0.1</b>	0.3	1.8	...	...	...
Employment rate	67.1	<b>67.3</b>	0.5	<b>0.2</b>	0.4	-1.5	...	...	...
<b>Kingston, Ontario</b>									
Population	126.4	<b>126.4</b>	...	<b>0.0</b>	0.0	0.2	<b>0.0</b>	0.0	0.2
Labour force	84.8	<b>82.7</b>	0.7	<b>-2.1</b>	-2.6	-1.6	<b>-2.5</b>	-3.0	-1.9
Employment	79.8	<b>77.9</b>	0.7	<b>-1.9</b>	-2.2	-1.7	<b>-2.4</b>	-2.7	-2.1
Unemployment	5.0	<b>4.8</b>	0.3	<b>-0.2</b>	-0.3	0.1	<b>-4.0</b>	-5.9	2.1
Participation rate	67.1	<b>65.4</b>	0.5	<b>-1.7</b>	-2.1	-1.4	...	...	...
Unemployment rate	5.9	<b>5.8</b>	0.4	<b>-0.1</b>	-0.2	0.2	...	...	...
Employment rate	63.1	<b>61.6</b>	0.6	<b>-1.5</b>	-1.8	-1.5	...	...	...

See notes at the end of the table.

Table 5-1 – continued

## Labour force characteristics by census metropolitan area (seasonally adjusted) — 3 month moving average

	January 2010	February 2010	S.E. <sup>1</sup>	Change from			Percent change from		
				last month	last December	twelve months ago	last month	last December	twelve months ago
in thousands (except rates)									
<b>Toronto, Ontario</b>									
Population	4,706.3	<b>4,715.1</b>	...	<b>8.8</b>	17.0	106.2	<b>0.2</b>	0.4	2.3
Labour force	3,217.9	<b>3,218.7</b>	9.4	<b>0.8</b>	13.9	37.6	<b>0.0</b>	0.4	1.2
Employment	2,915.0	<b>2,916.0</b>	9.7	<b>1.0</b>	11.1	11.2	<b>0.0</b>	0.4	0.4
Unemployment	303.0	<b>302.7</b>	6.4	<b>-0.3</b>	2.8	26.4	<b>-0.1</b>	0.9	9.6
Participation rate	68.4	<b>68.3</b>	0.2	<b>-0.1</b>	0.1	-0.7	...	...	...
Unemployment rate	9.4	<b>9.4</b>	0.2	<b>0.0</b>	0.0	0.7	...	...	...
Employment rate	61.9	<b>61.8</b>	0.2	<b>-0.1</b>	0.0	-1.2	...	...	...
<b>Hamilton, Ontario</b>									
Population	603.8	<b>604.1</b>	...	<b>0.3</b>	0.5	4.4	<b>0.0</b>	0.1	0.7
Labour force	409.4	<b>406.6</b>	3.1	<b>-2.8</b>	-3.2	4.5	<b>-0.7</b>	-0.8	1.1
Employment	373.0	<b>371.4</b>	3.2	<b>-1.6</b>	-3.5	2.4	<b>-0.4</b>	-0.9	0.7
Unemployment	36.4	<b>35.2</b>	1.6	<b>-1.2</b>	0.2	2.1	<b>-3.3</b>	0.6	6.3
Participation rate	67.8	<b>67.3</b>	0.5	<b>-0.5</b>	-0.6	0.2	...	...	...
Unemployment rate	8.9	<b>8.7</b>	0.4	<b>-0.2</b>	0.2	0.5	...	...	...
Employment rate	61.8	<b>61.5</b>	0.5	<b>-0.3</b>	-0.6	0.0	...	...	...
<b>Kitchener, Ontario</b>									
Population	390.5	<b>390.9</b>	...	<b>0.4</b>	0.7	5.1	<b>0.1</b>	0.2	1.3
Labour force	271.8	<b>273.7</b>	1.9	<b>1.9</b>	0.6	-6.2	<b>0.7</b>	0.2	-2.2
Employment	244.8	<b>246.0</b>	2.0	<b>1.2</b>	-1.6	-7.9	<b>0.5</b>	-0.6	-3.1
Unemployment	27.0	<b>27.7</b>	1.2	<b>0.7</b>	2.2	1.7	<b>2.6</b>	8.6	6.5
Participation rate	69.6	<b>70.0</b>	0.5	<b>0.4</b>	0.0	-2.6	...	...	...
Unemployment rate	9.9	<b>10.1</b>	0.4	<b>0.2</b>	0.8	0.8	...	...	...
Employment rate	62.7	<b>62.9</b>	0.5	<b>0.2</b>	-0.6	-2.9	...	...	...
<b>London, Ontario</b>									
Population	391.4	<b>391.8</b>	...	<b>0.4</b>	0.6	4.2	<b>0.1</b>	0.2	1.1
Labour force	264.4	<b>264.6</b>	1.8	<b>0.2</b>	1.0	-0.3	<b>0.1</b>	0.4	-0.1
Employment	241.4	<b>241.2</b>	1.9	<b>-0.2</b>	0.9	-0.5	<b>-0.1</b>	0.4	-0.2
Unemployment	23.0	<b>23.4</b>	1.1	<b>0.4</b>	0.2	0.1	<b>1.7</b>	0.9	0.4
Participation rate	67.6	<b>67.5</b>	0.5	<b>-0.1</b>	0.1	-0.8	...	...	...
Unemployment rate	8.7	<b>8.8</b>	0.4	<b>0.1</b>	0.0	0.0	...	...	...
Employment rate	61.7	<b>61.6</b>	0.5	<b>-0.1</b>	0.2	-0.8	...	...	...
<b>Oshawa, Ontario</b>									
Population	296.5	<b>296.9</b>	...	<b>0.4</b>	0.9	5.5	<b>0.1</b>	0.3	1.9
Labour force	199.8	<b>202.1</b>	1.6	<b>2.3</b>	3.9	5.8	<b>1.2</b>	2.0	3.0
Employment	179.1	<b>181.2</b>	1.6	<b>2.1</b>	2.7	1.2	<b>1.2</b>	1.5	0.7
Unemployment	20.7	<b>20.9</b>	0.9	<b>0.2</b>	1.2	4.6	<b>1.0</b>	6.1	28.2
Participation rate	67.4	<b>68.1</b>	0.5	<b>0.7</b>	1.1	0.7	...	...	...
Unemployment rate	10.4	<b>10.3</b>	0.4	<b>-0.1</b>	0.4	2.0	...	...	...
Employment rate	60.4	<b>61.0</b>	0.5	<b>0.6</b>	0.7	-0.8	...	...	...
<b>St. Catharines-Niagara, Ontario</b>									
Population	330.5	<b>330.5</b>	...	<b>0.0</b>	0.0	0.7	<b>0.0</b>	0.0	0.2
Labour force	209.8	<b>210.7</b>	1.6	<b>0.9</b>	2.8	-1.9	<b>0.4</b>	1.3	-0.9
Employment	186.3	<b>187.3</b>	1.7	<b>1.0</b>	2.1	-5.2	<b>0.5</b>	1.1	-2.7
Unemployment	23.5	<b>23.4</b>	0.9	<b>-0.1</b>	0.6	3.3	<b>-0.4</b>	2.6	16.4
Participation rate	63.5	<b>63.8</b>	0.5	<b>0.3</b>	0.9	-0.7	...	...	...
Unemployment rate	11.2	<b>11.1</b>	0.4	<b>-0.1</b>	0.1	1.6	...	...	...
Employment rate	56.4	<b>56.7</b>	0.5	<b>0.3</b>	0.7	-1.7	...	...	...

See notes at the end of the table.

Table 5-1 – continued

## Labour force characteristics by census metropolitan area (seasonally adjusted) — 3 month moving average

	January 2010	February 2010	S.E. <sup>1</sup>	Change from			Percent change from		
				last month	last December	twelve months ago	last month	last December	twelve months ago
in thousands (except rates)									
<b>Greater Sudbury / Grand Sudbury, Ontario</b>									
Population	134.8	<b>134.9</b>	...	<b>0.1</b>	0.1	0.8	<b>0.1</b>	0.1	0.6
Labour force	84.6	<b>84.6</b>	0.7	<b>0.0</b>	-0.4	-2.8	<b>0.0</b>	-0.5	-3.2
Employment	75.7	<b>75.4</b>	0.7	<b>-0.3</b>	-0.8	-6.2	<b>-0.4</b>	-1.0	-7.6
Unemployment	8.8	<b>9.1</b>	0.4	<b>0.3</b>	0.3	3.3	<b>3.4</b>	3.4	56.9
Participation rate	62.8	<b>62.7</b>	0.6	<b>-0.1</b>	-0.4	-2.5	...	...	...
Unemployment rate	10.4	<b>10.8</b>	0.4	<b>0.4</b>	0.4	4.2	...	...	...
Employment rate	56.2	<b>55.9</b>	0.6	<b>-0.3</b>	-0.6	-5.0	...	...	...
<b>Thunder Bay, Ontario</b>									
Population	103.1	<b>103.0</b>	...	<b>-0.1</b>	-0.1	-0.5	<b>-0.1</b>	-0.1	-0.5
Labour force	65.4	<b>65.1</b>	0.6	<b>-0.3</b>	-0.7	0.4	<b>-0.5</b>	-1.1	0.6
Employment	60.3	<b>60.3</b>	0.7	<b>0.0</b>	-0.2	0.5	<b>0.0</b>	-0.3	0.8
Unemployment	5.0	<b>4.8</b>	0.3	<b>-0.2</b>	-0.5	-0.1	<b>-4.0</b>	-9.4	-2.0
Participation rate	63.4	<b>63.2</b>	0.6	<b>-0.2</b>	-0.6	0.7	...	...	...
Unemployment rate	7.6	<b>7.4</b>	0.5	<b>-0.2</b>	-0.7	-0.2	...	...	...
Employment rate	58.5	<b>58.5</b>	0.6	<b>0.0</b>	-0.2	0.7	...	...	...
<b>Windsor, Ontario</b>									
Population	273.6	<b>273.6</b>	...	<b>0.0</b>	0.0	0.5	<b>0.0</b>	0.0	0.2
Labour force	170.8	<b>172.3</b>	1.5	<b>1.5</b>	1.9	-4.3	<b>0.9</b>	1.1	-2.4
Employment	149.1	<b>150.9</b>	1.6	<b>1.8</b>	2.1	-2.5	<b>1.2</b>	1.4	-1.6
Unemployment	21.8	<b>21.4</b>	1.0	<b>-0.4</b>	-0.2	-1.8	<b>-1.8</b>	-0.9	-7.8
Participation rate	62.4	<b>63.0</b>	0.5	<b>0.6</b>	0.7	-1.7	...	...	...
Unemployment rate	12.8	<b>12.4</b>	0.6	<b>-0.4</b>	-0.3	-0.7	...	...	...
Employment rate	54.5	<b>55.2</b>	0.6	<b>0.7</b>	0.8	-1.0	...	...	...
<b>Winnipeg, Manitoba</b>									
Population	597.3	<b>597.9</b>	...	<b>0.6</b>	1.2	9.5	<b>0.1</b>	0.2	1.6
Labour force	418.9	<b>419.1</b>	1.3	<b>0.2</b>	0.5	1.7	<b>0.0</b>	0.1	0.4
Employment	395.7	<b>395.5</b>	1.3	<b>-0.2</b>	0.4	-2.1	<b>-0.1</b>	0.1	-0.5
Unemployment	23.2	<b>23.6</b>	0.8	<b>0.4</b>	0.2	3.8	<b>1.7</b>	0.9	19.2
Participation rate	70.1	<b>70.1</b>	0.2	<b>0.0</b>	-0.1	-0.8	...	...	...
Unemployment rate	5.5	<b>5.6</b>	0.2	<b>0.1</b>	0.0	0.9	...	...	...
Employment rate	66.2	<b>66.1</b>	0.2	<b>-0.1</b>	-0.1	-1.5	...	...	...
<b>Regina, Saskatchewan</b>									
Population	173.2	<b>173.6</b>	...	<b>0.4</b>	0.6	3.6	<b>0.2</b>	0.3	2.1
Labour force	120.4	<b>120.4</b>	0.7	<b>0.0</b>	0.0	-1.8	<b>0.0</b>	0.0	-1.5
Employment	114.6	<b>114.6</b>	0.7	<b>0.0</b>	0.1	-2.8	<b>0.0</b>	0.1	-2.4
Unemployment	5.8	<b>5.8</b>	0.3	<b>0.0</b>	-0.1	1.0	<b>0.0</b>	-1.7	20.8
Participation rate	69.5	<b>69.4</b>	0.4	<b>-0.1</b>	-0.2	-2.5	...	...	...
Unemployment rate	4.8	<b>4.8</b>	0.3	<b>0.0</b>	-0.1	0.9	...	...	...
Employment rate	66.2	<b>66.0</b>	0.4	<b>-0.2</b>	-0.2	-3.1	...	...	...
<b>Saskatoon, Saskatchewan</b>									
Population	205.5	<b>205.9</b>	...	<b>0.4</b>	0.9	5.5	<b>0.2</b>	0.4	2.7
Labour force	151.1	<b>150.9</b>	0.9	<b>-0.2</b>	-0.1	1.7	<b>-0.1</b>	-0.1	1.1
Employment	143.8	<b>144.4</b>	0.9	<b>0.6</b>	0.5	2.0	<b>0.4</b>	0.3	1.4
Unemployment	7.2	<b>6.5</b>	0.4	<b>-0.7</b>	-0.6	-0.4	<b>-9.7</b>	-8.5	-5.8
Participation rate	73.5	<b>73.3</b>	0.4	<b>-0.2</b>	-0.4	-1.2	...	...	...
Unemployment rate	4.8	<b>4.3</b>	0.3	<b>-0.5</b>	-0.4	-0.3	...	...	...
Employment rate	70.0	<b>70.1</b>	0.4	<b>0.1</b>	-0.1	-1.0	...	...	...

See notes at the end of the table.

Table 5-1 – continued

## Labour force characteristics by census metropolitan area (seasonally adjusted) — 3 month moving average

	January 2010	February 2010	S.E. <sup>1</sup>	Change from			Percent change from		
				last month	last December	twelve months ago	last month	last December	twelve months ago
in thousands (except rates)									
<b>Calgary, Alberta</b>									
Population	983.8	<b>985.4</b>	...	<b>1.6</b>	3.3	26.0	<b>0.2</b>	0.3	2.7
Labour force	751.1	<b>749.7</b>	3.0	<b>-1.4</b>	-6.8	5.0	<b>-0.2</b>	-0.9	0.7
Employment	696.9	<b>696.9</b>	3.2	<b>0.0</b>	-5.0	-9.7	<b>0.0</b>	-0.7	-1.4
Unemployment	54.2	<b>52.9</b>	1.8	<b>-1.3</b>	-1.7	14.9	<b>-2.4</b>	-3.1	39.2
Participation rate	76.3	<b>76.1</b>	0.3	<b>-0.2</b>	-0.9	-1.5	...	...	...
Unemployment rate	7.2	<b>7.1</b>	0.2	<b>-0.1</b>	-0.1	2.0	...	...	...
Employment rate	70.8	<b>70.7</b>	0.3	<b>-0.1</b>	-0.8	-3.0	...	...	...
<b>Edmonton, Alberta</b>									
Population	914.5	<b>915.9</b>	...	<b>1.4</b>	2.7	22.1	<b>0.2</b>	0.3	2.5
Labour force	668.1	<b>661.5</b>	3.0	<b>-6.6</b>	-3.7	9.1	<b>-1.0</b>	-0.6	1.4
Employment	621.7	<b>616.5</b>	3.3	<b>-5.2</b>	1.6	-6.5	<b>-0.8</b>	0.3	-1.0
Unemployment	46.4	<b>45.0</b>	1.7	<b>-1.4</b>	-5.3	15.6	<b>-3.0</b>	-10.5	53.1
Participation rate	73.1	<b>72.2</b>	0.3	<b>-0.9</b>	-0.6	-0.8	...	...	...
Unemployment rate	6.9	<b>6.8</b>	0.3	<b>-0.1</b>	-0.8	2.3	...	...	...
Employment rate	68.0	<b>67.3</b>	0.4	<b>-0.7</b>	0.0	-2.4	...	...	...
<b>Abbotsford-Mission, British Columbia</b>									
Population	136.7	<b>136.9</b>	...	<b>0.2</b>	0.4	2.1	<b>0.1</b>	0.3	1.6
Labour force	95.9	<b>95.4</b>	0.9	<b>-0.5</b>	-0.7	2.4	<b>-0.5</b>	-0.7	2.6
Employment	88.9	<b>89.1</b>	0.8	<b>0.2</b>	0.0	2.2	<b>0.2</b>	0.0	2.5
Unemployment	7.0	<b>6.3</b>	0.4	<b>-0.7</b>	-0.7	0.2	<b>-10.0</b>	-10.0	3.3
Participation rate	70.2	<b>69.7</b>	0.6	<b>-0.5</b>	-0.7	0.7	...	...	...
Unemployment rate	7.3	<b>6.6</b>	0.4	<b>-0.7</b>	-0.7	0.0	...	...	...
Employment rate	65.0	<b>65.1</b>	0.6	<b>0.1</b>	-0.2	0.6	...	...	...
<b>Vancouver, British Columbia</b>									
Population	2,008.8	<b>2,012.9</b>	...	<b>4.1</b>	8.2	46.9	<b>0.2</b>	0.4	2.4
Labour force	1,345.1	<b>1,345.3</b>	5.0	<b>0.2</b>	4.1	45.9	<b>0.0</b>	0.3	3.5
Employment	1,240.7	<b>1,241.4</b>	5.1	<b>0.7</b>	3.6	16.9	<b>0.1</b>	0.3	1.4
Unemployment	104.4	<b>103.9</b>	2.8	<b>-0.5</b>	0.5	29.1	<b>-0.5</b>	0.5	38.9
Participation rate	67.0	<b>66.8</b>	0.3	<b>-0.2</b>	-0.1	0.7	...	...	...
Unemployment rate	7.8	<b>7.7</b>	0.2	<b>-0.1</b>	0.0	1.9	...	...	...
Employment rate	61.8	<b>61.7</b>	0.3	<b>-0.1</b>	0.0	-0.6	...	...	...
<b>Victoria, British Columbia</b>									
Population	289.7	<b>289.9</b>	...	<b>0.2</b>	0.4	2.3	<b>0.1</b>	0.1	0.8
Labour force	199.3	<b>201.6</b>	1.4	<b>2.3</b>	3.9	7.2	<b>1.2</b>	2.0	3.7
Employment	184.2	<b>186.5</b>	1.4	<b>2.3</b>	3.6	1.9	<b>1.2</b>	2.0	1.0
Unemployment	15.1	<b>15.1</b>	0.7	<b>0.0</b>	0.3	5.3	<b>0.0</b>	2.0	54.1
Participation rate	68.8	<b>69.5</b>	0.5	<b>0.7</b>	1.2	1.9	...	...	...
Unemployment rate	7.6	<b>7.5</b>	0.3	<b>-0.1</b>	0.0	2.5	...	...	...
Employment rate	63.6	<b>64.3</b>	0.5	<b>0.7</b>	1.1	0.1	...	...	...

1. Average standard error of change in two consecutive months (see "Sampling Errors" in Data Quality for further explanations).

Note(s): All geographic regions are based on the 2001 Census boundaries. Related CANSIM Table 282-0090.

**Table 5-2**  
**Labour force characteristics by census metropolitan area (seasonally adjusted) — Monthly**

	January 2010	February 2010	S.E. <sup>1</sup>	Change from			Percent change from		
				last month	last December	twelve months ago	last month	last December	twelve months ago
in thousands (except rates)									
<b>Montréal, Quebec</b>									
Population	3,125.4	<b>3,129.1</b>	...	<b>3.7</b>	7.4	40.7	<b>0.1</b>	0.2	1.3
Labour force	2,113.0	<b>2,115.8</b>	14.6	<b>2.8</b>	14.2	74.4	<b>0.1</b>	0.7	3.6
Employment	1,921.4	<b>1,923.3</b>	14.8	<b>1.9</b>	19.7	53.4	<b>0.1</b>	1.0	2.9
Unemployment	191.6	<b>192.5</b>	11.5	<b>0.9</b>	-5.5	21.0	<b>0.5</b>	-2.8	12.2
Participation rate	67.6	<b>67.6</b>	0.5	<b>0.0</b>	0.3	1.5	...	...	...
Unemployment rate	9.1	<b>9.1</b>	0.5	<b>0.0</b>	-0.3	0.7	...	...	...
Employment rate	61.5	<b>61.5</b>	0.5	<b>0.0</b>	0.5	1.0	...	...	...
<b>Toronto, Ontario</b>									
Population	4,715.1	<b>4,724.7</b>	...	<b>9.6</b>	19.0	106.6	<b>0.2</b>	0.4	2.3
Labour force	3,225.4	<b>3,223.2</b>	20.1	<b>-2.2</b>	15.6	36.8	<b>-0.1</b>	0.5	1.2
Employment	2,926.7	<b>2,916.3</b>	19.7	<b>-10.4</b>	11.4	28.5	<b>-0.4</b>	0.4	1.0
Unemployment	298.6	<b>306.8</b>	15.4	<b>8.2</b>	4.1	8.2	<b>2.7</b>	1.4	2.7
Participation rate	68.4	<b>68.2</b>	0.4	<b>-0.2</b>	0.0	-0.8	...	...	...
Unemployment rate	9.3	<b>9.5</b>	0.5	<b>0.2</b>	0.1	0.1	...	...	...
Employment rate	62.1	<b>61.7</b>	0.4	<b>-0.4</b>	0.0	-0.8	...	...	...
<b>Vancouver, British Columbia</b>									
Population	2,012.9	<b>2,017.4</b>	...	<b>4.5</b>	8.8	47.9	<b>0.2</b>	0.4	2.4
Labour force	1,349.2	<b>1,343.1</b>	10.6	<b>-6.1</b>	-0.3	36.4	<b>-0.5</b>	0.0	2.8
Employment	1,241.1	<b>1,241.7</b>	10.5	<b>0.6</b>	0.5	14.0	<b>0.0</b>	0.0	1.1
Unemployment	108.1	<b>101.4</b>	7.0	<b>-6.7</b>	-0.8	22.4	<b>-6.2</b>	-0.8	28.4
Participation rate	67.0	<b>66.6</b>	0.5	<b>-0.4</b>	-0.3	0.3	...	...	...
Unemployment rate	8.0	<b>7.5</b>	0.5	<b>-0.5</b>	-0.1	1.5	...	...	...
Employment rate	61.7	<b>61.5</b>	0.5	<b>-0.2</b>	-0.3	-0.8	...	...	...

1. Average standard error of change in two consecutive months (see "Sampling Errors" in Data Quality for further explanations).

**Note(s):** All geographic regions are based on the 2001 Census boundaries. Related CANSIM Table 282-0091.

**Table 6-1**  
**Labour force characteristics by province and economic region 1, unadjusted for seasonality, 3 month moving average ending in February 2009 and February 2010**

	Population	Labour force			Participation rate	Unemployment rate	Employment rate
		Labour force	Employment	Unemployment			
in thousands							
<b>Canada <sup>2</sup></b>							
2009	27,129.4	18,082.0	16,729.9	1,352.1	66.7	7.5	61.7
2010	27,522.9	18,224.4	16,701.4	1,523.0	66.2	8.4	60.7
<b>Newfoundland and Labrador</b>							
2009	427.8	242.3	202.8	39.4	56.6	16.3	47.4
2010	430.8	246.9	206.5	40.4	57.3	16.4	47.9
<b>Avalon Peninsula [1010]</b>							
2009	214.0	132.9	118.5	14.4	62.1	10.8	55.4
2010	217.3	136.2	120.0	16.2	62.7	11.9	55.2
<b>South Coast-Burin Peninsula [1020]</b>							
2009	32.2	16.3	12.3	4.0	50.6	24.5	38.2
2010	31.7	14.5	11.7	2.8	45.7	19.3	36.9
<b>West Coast-Northern Peninsula-Labrador [1030]</b>							
2009	88.0	46.6	36.1	10.6	53.0	22.7	41.0
2010	88.3	49.0	40.1	8.9	55.5	18.2	45.4
<b>Notre Dame-Central Bonavista Bay [1040]</b>							
2009	93.6	46.4	35.9	10.5	49.6	22.6	38.4
2010	93.4	47.2	34.8	12.5	50.5	26.5	37.3
<b>Prince Edward Island</b>							
2009	115.3	76.0	64.5	11.5	65.9	15.1	55.9
2010	116.5	77.1	67.6	9.5	66.2	12.3	58.0
<b>Nova Scotia</b>							
2009	771.0	488.6	444.3	44.3	63.4	9.1	57.6
2010	774.8	488.6	440.2	48.4	63.1	9.9	56.8
<b>Cape Breton [1210]</b>							
2009	115.3	61.4	51.8	9.7	53.3	15.8	44.9
2010	114.6	59.6	50.3	9.3	52.0	15.6	43.9
<b>North Shore [1220]</b>							
2009	131.4	76.9	68.9	8.0	58.5	10.4	52.4
2010	131.4	78.6	68.6	10.0	59.8	12.7	52.2
<b>Annapolis Valley [1230]</b>							
2009	101.4	63.0	56.5	6.5	62.1	10.3	55.7
2010	102.0	61.3	56.1	5.2	60.1	8.5	55.0
<b>Southern [1240]</b>							
2009	103.5	60.9	54.1	6.8	58.8	11.2	52.3
2010	103.2	60.0	50.5	9.5	58.1	15.8	48.9
<b>Halifax [1250]</b>							
2009	319.4	226.4	213.0	13.4	70.9	5.9	66.7
2010	323.6	229.0	214.6	14.4	70.8	6.3	66.3
<b>New Brunswick</b>							
2009	620.0	391.5	355.0	36.5	63.1	9.3	57.3
2010	623.0	390.6	352.9	37.8	62.7	9.7	56.6
<b>Campbellton-Miramichi [1310]</b>							
2009	135.4	71.4	58.5	12.9	52.7	18.1	43.2
2010	134.8	71.7	60.2	11.5	53.2	16.0	44.7
<b>Moncton-Richibucto [1320]</b>							
2009	166.9	111.6	103.5	8.0	66.9	7.2	62.0
2010	169.1	109.3	101.1	8.2	64.6	7.5	59.8
<b>Saint John-St. Stephen [1330]</b>							
2009	143.4	95.0	89.1	5.9	66.2	6.2	62.1
2010	144.1	93.0	84.9	8.1	64.5	8.7	58.9

See notes at the end of the table.

Table 6-1 – continued

## Labour force characteristics by province and economic region 1, unadjusted for seasonality, 3 month moving average ending in February 2009 and February 2010

	Population	Labour force			Participation rate	Unemployment rate	Employment rate
		Labour force	Employment	Unemployment			
in thousands							
Fredericton-Oromocto [1340]							
2009	106.0	70.0	65.0	4.9	66.0	7.0	61.3
2010	106.9	75.0	69.3	5.7	70.2	7.6	64.8
Edmundston-Woodstock [1350]							
2009	68.2	43.5	38.8	4.7	63.8	10.8	56.9
2010	68.1	41.5	37.2	4.3	60.9	10.4	54.6
<b>Quebec</b>							
2009	6,405.4	4,130.3	3,782.6	347.7	64.5	8.4	59.1
2010	6,478.3	4,154.4	3,797.0	357.5	64.1	8.6	58.6
Gaspésie-Îles-de-la-Madeleine [2410]							
2009	80.8	38.3	30.5	7.8	47.4	20.4	37.7
2010	80.9	40.6	34.1	6.5	50.2	16.0	42.2
Bas-Saint-Laurent [2415]							
2009	167.5	104.9	93.3	11.6	62.6	11.1	55.7
2010	167.8	94.3	84.1	10.2	56.2	10.8	50.1
Capitale-Nationale [2420]							
2009	570.6	373.9	354.5	19.5	65.5	5.2	62.1
2010	576.0	369.6	350.6	19.0	64.2	5.1	60.9
Chaudière-Appalaches [2425]							
2009	330.9	215.8	200.1	15.7	65.2	7.3	60.5
2010	333.6	215.4	202.1	13.3	64.6	6.2	60.6
Estrie [2430]							
2009	252.3	162.5	147.9	14.6	64.4	9.0	58.6
2010	255.0	149.6	137.4	12.2	58.7	8.2	53.9
Centre-du-Québec [2433]							
2009	187.3	125.4	114.4	11.1	67.0	8.9	61.1
2010	188.9	112.9	102.3	10.6	59.8	9.4	54.2
Montérégie [2435]							
2009	1,152.6	771.9	716.2	55.8	67.0	7.2	62.1
2010	1,173.0	790.3	726.4	63.9	67.4	8.1	61.9
Montréal [2440]							
2009	1,593.5	1,018.5	920.4	98.1	63.9	9.6	57.8
2010	1,599.9	1,022.0	918.0	104.0	63.9	10.2	57.4
Laval [2445]							
2009	316.6	211.3	193.5	17.8	66.7	8.4	61.1
2010	322.0	225.9	205.6	20.3	70.2	9.0	63.9
Lanaudière [2450]							
2009	369.0	238.2	220.7	17.6	64.6	7.4	59.8
2010	380.1	250.0	226.2	23.7	65.8	9.5	59.5
Laurentides [2455]							
2009	440.6	288.8	263.0	25.9	65.5	9.0	59.7
2010	451.1	301.2	277.2	23.9	66.8	7.9	61.4
Outaouais [2460]							
2009	297.1	202.6	188.9	13.7	68.2	6.8	63.6
2010	302.0	209.6	194.4	15.2	69.4	7.3	64.4
Abitibi-Témiscamingue [2465]							
2009	116.1	75.5	68.4	7.1	65.0	9.4	58.9
2010	116.7	70.8	64.3	6.5	60.7	9.2	55.1
Mauricie [2470]							
2009	218.6	120.6	111.0	9.6	55.2	8.0	50.8
2010	219.7	116.8	105.9	10.9	53.2	9.3	48.2

See notes at the end of the table.

Table 6-1 – continued

## Labour force characteristics by province and economic region 1, unadjusted for seasonality, 3 month moving average ending in February 2009 and February 2010

	Population	Labour force			Participation rate	Unemployment rate	Employment rate
		Labour force	Employment	Unemployment			
in thousands							
<b>Saguenay-Lac-Saint-Jean [2475]</b>							
2009	223.0	131.7	117.4	14.3	59.1	10.9	52.6
2010	223.0	129.9	117.4	12.5	58.3	9.6	52.6
<b>Côte-Nord and Nord-du-Québec [2480, 2490]</b>							
2009	88.8	50.3	42.8	7.6	56.6	15.1	48.2
2010	88.6	55.5	50.8	4.7	62.6	8.5	57.3
<b>Ontario</b>							
2009	10,592.4	7,082.4	6,520.6	561.8	66.9	7.9	61.6
2010	10,740.1	7,121.6	6,489.6	632.0	66.3	8.9	60.4
<b>Ottawa [3510]</b>							
2009	999.7	696.2	661.1	35.1	69.6	5.0	66.1
2010	1,009.8	705.9	659.4	46.5	69.9	6.6	65.3
<b>Kingston-Pembroke [3515]</b>							
2009	360.8	231.1	215.4	15.7	64.1	6.8	59.7
2010	361.7	214.9	195.6	19.3	59.4	9.0	54.1
<b>Muskoka-Kawarthas [3520]</b>							
2009	312.2	182.1	171.2	10.9	58.3	6.0	54.8
2010	313.8	192.6	174.5	18.1	61.4	9.4	55.6
<b>Toronto [3530]</b>							
2009	4,857.9	3,299.1	3,031.3	267.8	67.9	8.1	62.4
2010	4,965.5	3,341.8	3,044.5	297.3	67.3	8.9	61.3
<b>Kitchener-Waterloo-Barrie [3540]</b>							
2009	992.1	703.9	645.9	58.0	71.0	8.2	65.1
2010	1,006.2	703.1	638.2	64.8	69.9	9.2	63.4
<b>Hamilton-Niagara Peninsula [3550]</b>							
2009	1,147.6	748.3	681.5	66.8	65.2	8.9	59.4
2010	1,156.2	751.4	678.0	73.4	65.0	9.8	58.6
<b>London [3560]</b>							
2009	518.6	347.6	317.1	30.5	67.0	8.8	61.1
2010	523.6	345.5	316.0	29.4	66.0	8.5	60.4
<b>Windsor-Sarnia [3570]</b>							
2009	526.9	336.2	297.6	38.7	63.8	11.5	56.5
2010	527.7	328.5	291.3	37.2	62.3	11.3	55.2
<b>Stratford-Bruce Peninsula [3580]</b>							
2009	248.5	159.5	148.4	11.0	64.2	6.9	59.7
2010	249.1	162.6	149.5	13.2	65.3	8.1	60.0
<b>Northeast [3590]</b>							
2009	454.7	267.9	249.9	17.9	58.9	6.7	55.0
2010	455.0	266.5	241.0	25.6	58.6	9.6	53.0
<b>Northwest [3595]</b>							
2009	173.5	110.5	101.1	9.4	63.7	8.5	58.3
2010	171.5	108.8	101.5	7.3	63.4	6.7	59.2
<b>Manitoba</b>							
2009	915.7	630.4	600.1	30.3	68.8	4.8	65.5
2010	929.5	638.3	602.4	36.0	68.7	5.6	64.8
<b>Southeast [4610]</b>							
2009	79.8	53.1	50.3	2.7	66.5	5.1	63.0
2010	82.3	59.0	54.9	4.1	71.7	6.9	66.7
<b>South Central [4620]</b>							
2009	44.5	29.2	27.6	1.6	65.6	5.5	62.0
2010	45.7	31.7	30.6	1.1	69.4	3.5	67.0

See notes at the end of the table.



Table 6-1 – continued

## Labour force characteristics by province and economic region 1, unadjusted for seasonality, 3 month moving average ending in February 2009 and February 2010

	Population	Labour force			Participation rate	Unemployment rate	Employment rate
		Labour force	Employment	Unemployment			
in thousands							
<b>Southwest [4630]</b>							
2009	82.8	60.0	57.7	2.3	72.5	3.8	69.7
2010	83.3	55.6	53.2	2.4	66.7	4.3	63.9
<b>North Central [4640]</b>							
2009	36.0	23.8	23.1	0.6	66.1	2.5	64.2
2010	36.4	25.0	23.6	1.4	68.7	5.6	64.8
<b>Winnipeg [4650]</b>							
2009	542.6	380.9	362.4	18.5	70.2	4.9	66.8
2010	550.6	379.4	357.1	22.3	68.9	5.9	64.9
<b>Interlake [4660]</b>							
2009	71.3	46.1	43.7	2.4	64.7	5.2	61.3
2010	72.4	48.6	46.1	2.5	67.1	5.1	63.7
<b>Parklands and North [4670, 4680]</b>							
2009	58.7	37.4	35.3	2.1	63.7	5.6	60.1
2010	58.8	39.0	36.7	2.3	66.3	5.9	62.4
<b>Saskatchewan</b>							
2009	774.8	539.0	514.3	24.7	69.6	4.6	66.4
2010	785.3	541.0	515.7	25.3	68.9	4.7	65.7
<b>Regina-Moose Mountain [4710]</b>							
2009	229.1	161.8	155.6	6.2	70.6	3.8	67.9
2010	233.0	160.9	154.3	6.6	69.1	4.1	66.2
<b>Swift Current-Moose Jaw [4720]</b>							
2009	84.0	54.8	53.0	1.8	65.2	3.3	63.1
2010	84.3	55.5	52.7	2.8	65.8	5.0	62.5
<b>Saskatoon-Biggar [4730]</b>							
2009	243.3	176.3	168.7	7.6	72.5	4.3	69.3
2010	248.7	178.6	171.2	7.4	71.8	4.1	68.8
<b>Yorkton-Melville [4740]</b>							
2009	64.7	40.8	38.6	2.2	63.1	5.4	59.7
2010	64.6	42.0	40.3	1.8	65.0	4.3	62.4
<b>Prince Albert and Northern [4750, 4760]</b>							
2009	153.7	105.3	98.4	6.9	68.5	6.6	64.0
2010	154.7	104.0	97.2	6.8	67.2	6.5	62.8
<b>Alberta</b>							
2009	2,830.0	2,098.5	1,994.4	104.1	74.2	5.0	70.5
2010	2,899.6	2,110.3	1,970.5	139.8	72.8	6.6	68.0
<b>Lethbridge-Medicine Hat [4810]</b>							
2009	210.5	140.3	133.7	6.6	66.7	4.7	63.5
2010	213.6	141.5	132.5	9.0	66.2	6.4	62.0
<b>Camrose-Drumheller [4820]</b>							
2009	155.6	113.9	110.2	3.7	73.2	3.2	70.8
2010	157.0	111.7	106.9	4.7	71.1	4.2	68.1
<b>Calgary [4830]</b>							
2009	1,035.7	792.8	752.8	40.1	76.5	5.1	72.7
2010	1,065.6	794.4	738.3	56.0	74.5	7.0	69.3
<b>Banff-Jasper-Rocky Mountain House [4840]</b>							
2009	69.0	55.1	52.3	2.8	79.9	5.1	75.8
2010	70.2	54.0	51.2	2.7	76.9	5.0	72.9
<b>Red Deer [4850]</b>							
2009	148.5	114.2	107.2	7.1	76.9	6.2	72.2
2010	153.0	109.0	101.6	7.4	71.2	6.8	66.4

See notes at the end of the table.

Table 6-1 – continued

**Labour force characteristics by province and economic region 1, unadjusted for seasonality, 3 month moving average ending in February 2009 and February 2010**

	Population	Labour force			Participation rate	Unemployment rate	Employment rate
		Labour force	Employment	Unemployment			
in thousands							
Edmonton [4860]							
2009	928.4	669.9	637.0	32.9	72.2	4.9	68.6
2010	951.6	680.1	634.8	45.3	71.5	6.7	66.7
Athabasca-Grande Prairie-Peace River [4870]							
2009	188.5	141.0	133.3	7.7	74.8	5.5	70.7
2010	192.7	145.9	134.5	11.5	75.7	7.9	69.8
Wood Buffalo-Cold Lake [4880]							
2009	93.8	71.3	68.1	3.3	76.0	4.6	72.6
2010	95.9	73.7	70.7	3.1	76.9	4.2	73.7
<b>British Columbia</b>							
2009	3,677.0	2,402.9	2,251.1	151.8	65.3	6.3	61.2
2010	3,745.1	2,455.6	2,259.3	196.3	65.6	8.0	60.3
Vancouver Island and Coast [5910]							
2009	636.8	408.5	384.4	24.1	64.1	5.9	60.4
2010	644.0	413.4	380.3	33.1	64.2	8.0	59.1
Lower Mainland-Southwest [5920]							
2009	2,237.0	1,468.0	1,381.8	86.2	65.6	5.9	61.8
2010	2,288.8	1,508.0	1,394.2	113.8	65.9	7.5	60.9
Thompson-Okanagan [5930]							
2009	434.9	277.0	255.3	21.7	63.7	7.8	58.7
2010	441.8	288.4	262.2	26.3	65.3	9.1	59.3
Kootenay [5940]							
2009	123.1	77.6	70.8	6.8	63.0	8.8	57.5
2010	123.6	77.9	70.6	7.3	63.0	9.4	57.1
Cariboo [5950]							
2009	127.0	85.5	78.8	6.7	67.3	7.8	62.0
2010	128.1	84.7	75.0	9.7	66.1	11.5	58.5
North Coast and Nechako [5960, 5970]							
2009	65.4	45.0	40.5	4.4	68.8	9.8	61.9
2010	64.9	42.6	38.2	4.4	65.6	10.3	58.9
Northeast [5980]							
2009	52.9	41.4	39.5	1.9	78.3	4.6	74.7
2010	53.9	40.6	38.8	1.8	75.3	4.4	72.0

1. For geographic descriptions of economic regions, refer to the Guide to the Labour Force Survey (catalogue number 71-543-GIE).

2. Estimates for Canada are a sum of the provincial totals and exclude estimates from Yukon, Northwest Territories and Nunavut.

**Note(s):** All geographic regions are based on the 2001 Census boundaries. Related CANSIM table 282-0054.

**Table 6-2**  
**Labour force characteristics by territories, unadjusted for seasonality, 3 month moving average ending in February 2009 and February 2010**

	Population	Labour force			Participation rate	Unemployment rate	Employment rate
		Labour force	Employment	Unemployment			
		in thousands			percent		
<b>Yukon</b> <sup>1</sup>							
2009	24.1	17.4	16.2	1.2	72.2	6.9	67.2
2010	24.5	17.1	15.8	1.3	69.8	7.6	64.5
<b>Northwest Territories</b> <sup>2</sup>							
2009	31.4	22.2	21.5	0.7	70.7	3.2	68.5
2010	31.5	21.9	20.6	1.3	69.5	5.9	65.4
<b>Nunavut</b> <sup>3</sup>							
2009	18.5	10.6	9.5	1.1	57.1	9.9	51.5
2010	18.8	11.4	10.1	1.4	60.7	11.9	53.5

1. Since 1992, the Labour force survey (LFS) has been conducted in the Yukon, using an alternative methodology that accommodates some of the operational difficulties inherent to remote locales. These estimates are not included in the national totals. In 1995, the LFS in the Yukon underwent a sample redesign. One result of the redesign was that the covered population increased from 85% to 92%, which is reflected by the sharp increase in the three month moving averages estimates of January, February and March of 1995 for all the level estimates. Users are therefore warned to be cautious when comparing estimates before January 1995 to estimates for January 1995 and forward.
2. Since 2001, the Labour force survey (LFS) has been administered in the Northwest Territories, using an alternative methodology that accommodates some of the operational difficulties inherent to remote locales. These estimates are not included in national totals.
3. Since 2004, the Labour force survey (LFS) has been administered in Nunavut, using an alternative methodology that accommodates some of the operational difficulties inherent to remote locales. These estimates are 3-month moving averages and are not included in national totals. From January 2004 to December 2007, estimates represent about 70% of all Nunavut residents aged 15 and over. Starting in January 2008, coverage was extended to 92%, so that by March 2008, the 3-month moving average is completely based on the extended coverage. Because of the large difference in coverage, users are recommended not to compare estimates prior to January 2008 with data afterwards. The January and February 2008 3-month moving average estimates are based on a mix of both coverages, since the extended coverage was introduced in January 2008. Estimates from January 2004 to December 2007 are based on the 10 largest communities in Nunavut: Iqaluit, Rankin Inlet, Cambridge Bay, Kugluktuk, Baker Lake, Arviat, Pond Inlet, Cape Dorset, Pangnirtung, Igloolik. Estimates from March 2008 to present cover the above communities as well as: Taloyoak, Gjoa Haven, Kugaaruk, Coral Harbour, Repulse Bay, Qikiqtarjuaq, Arctic Bay, Hall Beach, Clyde River.

**Note(s):** Related CANSIM table 282-0100.

**Table 7**  
**Average usual hours and wages of employees by selected characteristics, Canada, unadjusted for seasonality**

	Employees				Full-time			Part-time		
	Number	Average weekly hours	Average weekly wages	Average hourly wages	Number	Average weekly hours	Average weekly wages	Number	Average weekly hours	Average weekly wages
	thousands		current dollars		thousands		current dollars	thousands		current dollars
<b>February 2010</b>										
15 years and over	14,015.9	34.8	814.44	22.49	11,283.9	39.1	945.18	2,732.0	16.8	274.43
15 to 24 years	2,182.6	25.6	355.44	12.89	1,017.7	38.4	578.88	1,164.9	14.3	160.22
25 years and over	11,833.3	36.5	899.10	24.25	10,266.2	39.2	981.50	1,567.1	18.6	359.32
Men	6,892.8	37.3	938.83	24.40	6,040.6	40.3	1,038.01	852.1	15.7	235.73
Women	7,123.1	32.4	694.07	20.63	5,243.3	37.8	838.24	1,879.9	17.3	291.97
<b>Union coverage</b>										
Union coverage	4,440.8	35.3	920.41	25.68	3,741.0	38.4	1,015.80	699.8	18.6	410.49
No union coverage	9,575.1	34.5	765.29	21.00	7,542.9	39.5	910.16	2,032.2	16.1	227.57
<b>Job permanency</b>										
Permanent	12,374.0	35.8	851.79	23.04	10,404.1	39.2	958.00	1,969.9	17.7	290.83
Temporary	1,641.9	27.5	532.93	18.29	879.8	38.9	793.59	762.1	14.3	232.04
<b>Occupation</b>										
Management	1,032.7	39.6	1,351.81	34.09	997.7	40.3	1,383.94	34.9	19.7	434.09
Business, finance and administrative	2,704.2	35.0	751.62	20.99	2,290.7	38.2	833.93	413.4	17.7	295.57
Natural and applied sciences	1,094.6	38.3	1,215.09	31.59	1,048.9	39.2	1,246.23	45.7	19.2	500.45
Health	938.8	33.3	869.17	25.97	710.9	37.5	983.66	227.9	20.2	512.10
Social science, education, government service and religion	1,448.5	33.8	984.52	28.80	1,164.9	38.1	1,118.54	283.5	16.5	433.88
Art, culture, recreation and sport	344.0	28.8	684.79	21.70	218.5	38.2	959.53	125.4	12.4	206.06
Sales and service	3,621.7	29.8	485.29	15.06	2,229.5	38.4	668.61	1,392.1	16.2	191.71
Trades, transport and equipment operators	1,893.2	39.5	895.08	22.38	1,746.7	41.3	946.29	146.5	17.4	284.73
Occupations unique to primary industry	202.4	41.9	883.30	20.49	175.2	46.3	989.06	27.2	14.0	201.10
Occupations unique to processing, manufacturing and utilities	736.0	38.7	744.75	19.02	700.9	39.7	768.10	35.2	19.2	279.83
<b>February 2009</b>										
15 years and over	13,955.5	34.9	797.78	21.97	11,222.9	39.3	926.34	2,732.7	16.9	269.82
15 to 24 years	2,249.7	26.1	360.98	12.67	1,074.0	38.9	587.57	1,175.7	14.4	154.00
25 years and over	11,705.8	36.6	881.73	23.75	10,148.9	39.3	962.19	1,556.9	18.7	357.28
Men	6,861.2	37.4	922.34	23.92	5,997.1	40.5	1,021.31	864.1	16.0	235.44
Women	7,094.4	32.5	677.32	20.07	5,225.8	37.9	817.35	1,868.6	17.3	285.72
<b>Union coverage</b>										
Union coverage	4,444.8	35.4	899.81	25.08	3,754.0	38.4	990.38	690.8	18.8	407.67
No union coverage	9,510.8	34.6	750.10	20.51	7,468.9	39.7	894.15	2,041.9	16.2	223.18
<b>Job permanency</b>										
Permanent	12,457.9	35.8	831.05	22.47	10,444.6	39.3	936.10	2,013.3	17.7	286.05
Temporary	1,497.7	27.3	521.09	17.76	778.3	39.1	795.32	719.4	14.5	224.40
<b>Occupation</b>										
Management	1,034.5	39.7	1,327.00	33.46	998.5	40.4	1,358.21	35.9	18.7	459.19
Business, finance and administrative	2,776.8	35.3	757.99	20.94	2,372.7	38.3	837.64	404.1	17.6	290.31
Natural and applied sciences	1,029.0	38.3	1,171.91	30.57	994.9	39.0	1,196.41	34.1	18.3	456.28
Health	906.1	33.1	851.21	25.59	671.1	37.7	971.65	235.0	19.9	507.21
Social science, education, government service and religion	1,378.1	33.6	943.43	27.83	1,089.0	37.9	1,077.72	289.2	17.1	437.72
Art, culture, recreation and sport	327.2	30.4	689.53	21.38	220.8	38.9	910.70	106.3	12.9	230.11
Sales and service	3,610.2	29.8	471.53	14.62	2,186.1	38.5	658.35	1,424.1	16.3	184.72
Trades, transport and equipment operators	1,919.6	39.7	883.95	22.02	1,789.6	41.3	926.97	130.0	17.8	291.82
Occupations unique to primary industry	210.3	41.8	879.14	20.28	177.5	47.0	1,007.22	32.7	13.7	184.78
Occupations unique to processing, manufacturing and utilities	763.9	38.7	745.04	18.99	722.6	39.9	772.82	41.3	18.7	259.35

**Note(s):** Related CANSIM Tables 282-0023, 282-0069, 282-0073.

**Table 8**  
**Regional unemployment rates used by the Employment Insurance Program <sup>1</sup>, seasonally adjusted, 3 month moving average**

Region	Effective from March 14, 2010 to April 10, 2010
	percent
<b>Newfoundland and Labrador</b>	
01. St. John's	8.1
02. Newfoundland and Labrador	20.4
<b>Prince Edward Island</b>	
03. Prince Edward Island	10.2
<b>Nova Scotia</b>	
04. Eastern Nova Scotia	15.6
05. Western Nova Scotia	11.4
06. Halifax	6.5
<b>New Brunswick</b>	
07. Fredericton-Moncton-Saint John	7.3
08. Madawaska-Charlotte <sup>2</sup>	11.0
09. Restigouche-Albert	12.9
<b>Quebec</b>	
10. Gaspésie-Îles-de-la-Madeleine	15.6
11. Québec	4.1
12. Trois-Rivières	9.9
13. South Central Quebec	5.9
14. Sherbrooke	7.4
15. Montérégie	6.5
16. Montréal	9.3
17. Central Quebec	8.8
18. Northwestern Quebec	10.7
19. Bas-Saint-Laurent-Côte-Nord <sup>3</sup>	11.2
20. Gatineau	6.2
21. Saguenay	7.8
<b>Ontario</b>	
22. Ottawa	6.3
23. Eastern Ontario	9.4
24. Kingston	5.9
25. Central Ontario	9.8
26. Oshawa	10.3
27. Toronto	9.4
28. Hamilton	8.7
29. St. Catharines	11.3
30. London	8.7
31. Niagara	11.4
32. Windsor	12.2
33. Kitchener	10.1
34. Huron	10.5
35. South Central Ontario	8.0
36. Sudbury	11.1
37. Thunder Bay	7.2
38. Northern Ontario	11.9
<b>Manitoba</b>	
39. Winnipeg	5.7
40. Southern Manitoba	6.2
41. Northern Manitoba	28.9
<b>Saskatchewan</b>	
42. Regina	4.6
43. Saskatoon	4.5
44. Southern Saskatchewan	6.5
45. Northern Saskatchewan	16.5

See notes at the end of the table.

Table 8 – continued

**Regional unemployment rates used by the Employment Insurance Program 1, seasonally adjusted, 3 month moving average**

Region	Effective from March 14, 2010 to April 10, 2010
	percent
<b>Alberta</b>	
46. Calgary	7.0
47. Edmonton	7.2
48. Northern Alberta	9.7
49. Southern Alberta	7.6
<b>British Columbia</b>	
50. Southern Interior British Columbia	10.0
51. Abbotsford	6.9
52. Vancouver	7.9
53. Victoria	8.2
54. Southern Coastal British Columbia	8.3
55. Northern British Columbia	13.1
<b>Territories</b>	
56. Yukon 4	25.0
57. Northwest Territories 4	25.0
58. Nunavut 4	25.0

1. The boundaries of these regions are determined by Human Resources and Social Development Canada (HRSDC). For geographic descriptions and maps of employment insurance regions, see the HRSDC website: <http://srv129.services.gc.ca/eiregions/en/geocont.aspx>.

2. This unemployment rate has been determined using a transition formula prescribed in the EI Regulations. For further information, see: [http://www.hrsdc.gc.ca/en/cs/comm/news/2000/000913a\\_e.shtml](http://www.hrsdc.gc.ca/en/cs/comm/news/2000/000913a_e.shtml).

3. This unemployment rate has been determined using a transition formula prescribed in the EI Regulations. For further information, see: [http://www.hrsdc.gc.ca/en/cs/comm/news/2000/000913b\\_e.shtml](http://www.hrsdc.gc.ca/en/cs/comm/news/2000/000913b_e.shtml).

4. This rate is provided by Human Resources and Skills Development Canada.

**Note(s):** All geographic regions are based on the 1996 Census boundaries.

# Data quality

---

## About the Labour Force Survey

The statistics contained in this report are based on information obtained through a sample survey of 53,000 representative households across the country. The Labour Force Survey, started in November 1945, was taken at quarterly intervals until November 1952. It has been carried out monthly since then. The information generated by the survey has expanded considerably over the years with a major redesign of the survey content in 1976 and again in 1997, and provides a rich and detailed picture of the Canadian labour market.

The sample used in the Labour Force Survey has been designed to represent all persons in the population 15 years of age and over residing in the provinces of Canada, with the exception of the following: persons living on Indian reserves, full-time members of the armed forces and people living in institutions (for example, inmates of penal institutions and patients in hospitals or nursing homes who have resided in the institution for more than six months). Monthly estimates of employment, unemployment and persons not in the labour force refer to the specific week covered by the survey each month, normally the week containing the 15th day.

## Definitions and explanations

The **labour force** is composed of those members of the civilian non-institutional population 15 years of age and over who, during the reference week, were employed or unemployed.

Employed persons are those who, during the reference week:

- (a) did any work at all
- (b) had a job but were not at work

A person is considered to be **full-time** if his/her usual hours at the main job are 30 or more hours per week. When the number of hours worked at the main job is usually less than 30 hours per week then he/she is considered to be **part-time**.

**Unemployed** persons are those who, during the reference week:

- (a) were without work, had actively looked for work in the past four weeks (ending with reference week), and were available for work;
- (b) had not actively looked for work in the past four weeks but were on temporary layoff and were available for work;
- (c) had not actively looked for work in the past four weeks but had a new job to start in four weeks or less from the reference week, and were available for work.

Persons in the civilian non-institutional population 15 years of age and over who, during the reference week, were neither employed nor unemployed are classified as **not in the labour force**.

The **unemployment rate** represents the number of unemployed persons expressed as a percentage of the labour force. The unemployment rate for a particular group (age, sex, etc.) is the number unemployed in that group expressed as a percentage of the labour force for that group.

The **participation rate** represents the labour force expressed as a percentage of the population 15 years of age and over. The participation rate for a particular group (age, sex, etc.) is the labour force in that group expressed as a percentage of the population for that group.

The **employment rate (formerly the employment/population ratio)** represents the number of persons employed expressed as a percentage of the population 15 years of age and over. The employment rate for a particular group (age, sex, etc.) is the number employed in that group expressed as a percentage of the population for that group.

The **part-time rate** represents the number of persons employed part-time expressed as a percentage of the employed. The part-time rate for a particular group (age, sex, etc.) is the number employed part-time in that group expressed as a percentage of the employed for that group.

All geographic regions are based on the 2001 Census boundaries.

## Seasonal adjustment

Fluctuations in economic time series are caused by seasonal, cyclical and irregular movements. A seasonally adjusted series is one from which seasonal movements have been eliminated. Seasonal movements are defined as those which are caused by regular annual events such as climate, holidays, vacation periods and cycles related to crops, production and retail sales associated with Christmas and Easter. The seasonally adjusted series contains irregular as well as longer-term cyclical fluctuations.

The seasonally adjusted series are revised each year to take into account current data and to generate new forecast factors for the next twelve months. The data are therefore subject to slight revisions in future issues of this publication.

## Sampling variability of estimates

Estimates in this publication are based on the Labour Force Survey, a monthly survey of approximately 53,000 households across Canada. Because the entire population is not surveyed, the estimates are subject to sampling error. While the published estimate is the best available indicator of the real value, changes in the level of any estimates between two months can be the result of a true change or sampling variability. The sampling error can be estimated by calculating the standard error for the published estimate or statistic. These standard errors have been included in the publication tables, in order to assist users in interpreting the data.

### Interpretation based on standard error

Two thirds of the time (68%), a change greater than the sampling error indicates a real change. The larger the change compared to the standard error, the better the chance that we are observing a real change, as opposed to a change due to sampling variability. At the 95% level, in order to ensure that change is real, the change in the estimate must be greater than twice the sampling error.

Movements in estimates that are smaller than the sampling error are less likely to reflect a real change and more likely to be due to sampling variability. While the above is true for monthly movements, one can have more confidence in a series of consecutive movements in the same direction, even though some of the monthly movements may be smaller than the sampling error.

### Interpretation based on confidence intervals

Confidence intervals provide another way of looking at the variability inherent in estimates of sample surveys. To illustrate how to calculate the confidence interval, let us say that one month the published estimate for total employment rose by 16,000 to reach 16,500,000. The associated standard error for the movement estimate is 27,200. The standard error used to interpret the movement estimate indicates that:



- There are approximately two chances in three (68%) that the real value of the movement between the two months falls within the range -11,200 to +43,200 (16,000 + or – one standard error).
- There are approximately nine chances in ten (90%) that the real value of the movement between the two months falls within the range -27,520 to +59,520 (16,000 + or – 1.6 times the standard error).
- There are approximately nineteen chances in twenty (95%) that the real value of the movement between the two months falls within the range -38,400 to +70,400 (16,000 + or – two standard errors).

For more detailed explanations on sampling variability of estimates, and in particular for information on how to assess the variability of level estimates, consult the Data quality section of the *Guide to the Labour Force Survey*, (71-543-G) on page 27.

## Documentation

For more detailed information about the Labour Force Survey, see the following documents:

- Overview of the Labour Force Survey
- Guide to the Labour Force Survey (71-543-G)
- Data quality statement
- Methodology of the Canadian Labour Force Survey (71-526-X)
- LFS *geographical maps*