

Catalogue no. 71-001-X

# Labour Force Information

Not for release before 7 A.M. EDT

Friday, April 9, 2010

March 14 to 20, 2010



Statistics  
Canada

Statistique  
Canada

Canada

## How to obtain more information

Specific inquiries about this product and related statistics or services should be directed to: Labour Force Survey Program, Labour Statistics Division, Statistics Canada, Ottawa, Ontario, K1A 0T6 (telephone: 613-951-4090, toll free number: 1-866-873-8788, fax: 613-951-2869 or by e-mail address: [labour@statcan.gc.ca](mailto:labour@statcan.gc.ca)).

For information about this product or the wide range of services and data available from Statistics Canada, visit our website at [www.statcan.gc.ca](http://www.statcan.gc.ca), e-mail us at [infostats@statcan.gc.ca](mailto:infostats@statcan.gc.ca), or telephone us, Monday to Friday from 8:30 a.m. to 4:30 p.m., at the following numbers:

### Statistics Canada's National Contact Centre

Toll-free telephone (Canada and the United States):

Inquiries line	1-800-263-1136
National telecommunications device for the hearing impaired	1-800-363-7629
Fax line	1-877-287-4369

Local or international calls:

Inquiries line	1-613-951-8116
Fax line	1-613-951-0581

### Depository Services Program

Inquiries line	1-800-635-7943
Fax line	1-800-565-7757

## To access this product

This product, Catalogue no. 71-001-X, is available free in electronic format. To obtain a single issue, visit our website at [www.statcan.gc.ca](http://www.statcan.gc.ca) and select "Publications."

## Standards of service to the public

Statistics Canada is committed to serving its clients in a prompt, reliable and courteous manner. To this end, Statistics Canada has developed *standards of service* that its employees observe. To obtain a copy of these service standards, please contact Statistics Canada toll-free at 1-800-263-1136. The service standards are also published on [www.statcan.gc.ca](http://www.statcan.gc.ca) under "About us" > "Providing services to Canadians."

Statistics Canada  
Labour Statistics Division  
Labour Force Survey Program

# Labour Force Information

Not for release before 7 A.M. EDT

Friday, April 9, 2010

March 14 to 20, 2010

Published by authority of the Minister responsible for Statistics Canada

© Minister of Industry, 2010

All rights reserved. The content of this electronic publication may be reproduced, in whole or in part, and by any means, without further permission from Statistics Canada, subject to the following conditions: that it be done solely for the purposes of private study, research, criticism, review or newspaper summary, and/or for non-commercial purposes; and that Statistics Canada be fully acknowledged as follows: Source (or "Adapted from", if appropriate): Statistics Canada, year of publication, name of product, catalogue number, volume and issue numbers, reference period and page(s). Otherwise, no part of this publication may be reproduced, stored in a retrieval system or transmitted in any form, by any means—electronic, mechanical or photocopy—or for any purposes without prior written permission of Licensing Services, Client Services Division, Statistics Canada, Ottawa, Ontario, Canada K1A 0T6.

April 2010

Catalogue no. 71-001-X

ISSN 1492-5478

Frequency: Monthly

Ottawa

Cette publication est également disponible en français.

---

## **Note of appreciation**

*Canada owes the success of its statistical system to a long-standing partnership between Statistics Canada, the citizens of Canada, its businesses, governments and other institutions. Accurate and timely statistical information could not be produced without their continued cooperation and goodwill.*

# User information

---

## Symbols

The following standard symbols are used in Statistics Canada publications:

- . not available for any reference period
- .. not available for a specific reference period
- ... not applicable
- 0 true zero or a value rounded to zero
- 0s value rounded to 0 (zero) where there is a meaningful distinction between true zero and the value that was rounded
- p preliminary
- r revised
- x suppressed to meet the confidentiality requirements of the *Statistics Act*
- E use with caution
- F too unreliable to be published

## Special requests (\$)

Custom tabulations can be arranged on an ad hoc or regular basis. This service enables you to specify tables and time series to meet your own requirements. The cost varies according to the request. For more information, contact us toll-free at 1-866-873-8788 or e-mail us at [labour@statcan.gc.ca](mailto:labour@statcan.gc.ca).

## Schedule of LFS releases

Reference period - Week ending	Release date
January 16, 2010	February 5, 2010
February 20, 2010	March 12, 2010
March 20, 2010	April 9, 2010
April 17, 2010	May 7, 2010
May 15, 2010	June 4, 2010
June 19, 2010	July 9, 2010
July 17, 2010	August 6, 2010
August 21, 2010	September 10, 2010
September 18, 2010	October 8, 2010
October 16, 2010	November 5, 2010
November 13, 2010	December 3, 2010
December 11, 2010	January 7, 2011

## Latest LFS release in *The Daily* (free)

# Table of contents

---

<b>Highlights</b>	<b>5</b>
<b>Analysis — March 2010</b>	<b>6</b>
<b>Charts</b>	
1. Employment and unemployment indicators, Canada, seasonally adjusted	8
2. Employment and unemployment indicators, Canada, seasonally adjusted	9
3. Index of employment by industry, Canada, seasonally adjusted, January, 2007=100	10
4. Index of employment by industry, Canada, seasonally adjusted, January 2007=100	11
5. Index of employment by industry, Canada, seasonally adjusted, January 2007=100	12
6. Index of employment by province, seasonally adjusted, January 2007=100	13
7. Index of employment by province, seasonally adjusted, January 2007=100	14
<b>Related products</b>	<b>15</b>
<b>Statistical tables</b>	
1 Labour force characteristics by age and sex, Canada, seasonally adjusted	23
2 Employment by class of worker and industry, Canada, seasonally adjusted	25
3 Labour force characteristics by province, seasonally adjusted	26
4 Selected labour force characteristics (seasonally adjusted)	28
4-1 Newfoundland and Labrador	28
4-2 Prince Edward Island	29
4-3 Nova Scotia	30
4-4 New Brunswick	31
4-5 Quebec	32
4-6 Ontario	33
4-7 Manitoba	34
4-8 Saskatchewan	35
4-9 Alberta	36
4-10 British Columbia	37
5 Labour force characteristics by census metropolitan area (seasonally adjusted)	38
5-1 3 month moving average	38
5-2 Monthly	43

## Table of contents – continued

6	Labour force characteristics	44
6-1	by province and economic region, unadjusted for seasonality, 3 month moving average ending in March 2009 and March 2010	44
6-2	by territories, unadjusted for seasonality, 3 month moving average ending in March 2009 and March 2010	49
7	Average usual hours and wages of employees by selected characteristics, Canada, unadjusted for seasonality	50
8	Regional unemployment rates used by the Employment Insurance Program, seasonally adjusted, 3 month moving average	51

## Data quality, concepts and methodology

Data quality	53
--------------	----

# Highlights

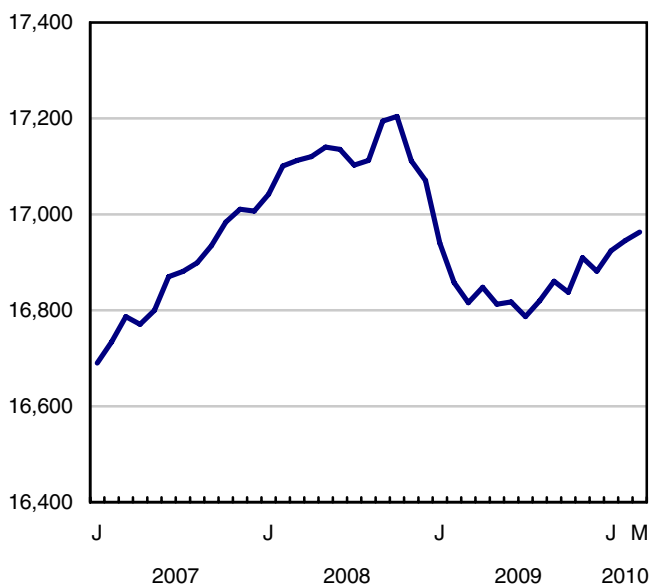
## March 2010

Employment edged up 18,000 in March, continuing an upward trend that began in July 2009. The unemployment rate remained unchanged at 8.2%.

**Chart 1**  
**Employment and unemployment rates, Canada, seasonally adjusted**

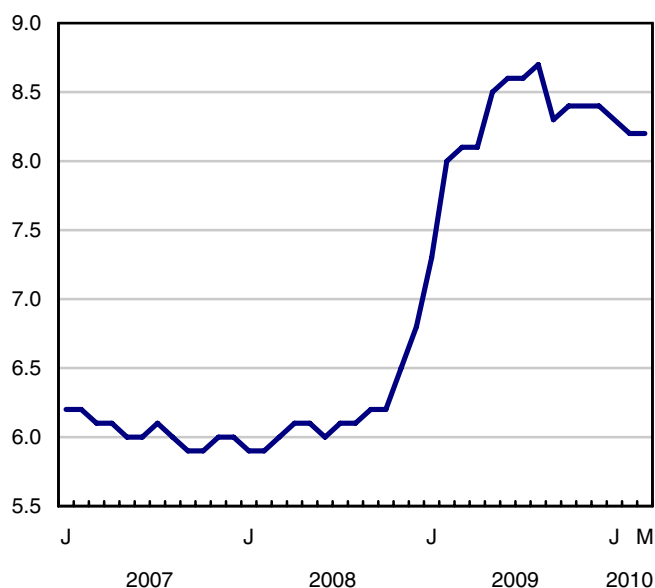
### Employment

thousands



### Unemployment rate

percent



## Analysis — March 2010

---

Employment edged up 18,000 in March, continuing an upward trend that began in July 2009. The unemployment rate remained unchanged at 8.2%.

March's employment increase brings total gains to 176,000 (+1.1%) since July 2009.

Part-time employment was up 32,000 in March, more than offsetting full-time losses. Despite this month's gain, part-time employment is down 0.6% since July 2009, while full-time work has grown by 1.4%.

The number of private sector employees increased by 42,000 in March. However, since July, employment has grown at a faster rate among employees in the public sector than those in the private sector (+2.0% versus +1.4%). Over the same period, the number of self-employed has declined 1.3%.

Industries with notable increases in March were professional, scientific and technical services; construction; and natural resources. These gains were partially offset by declines in 'other services'; business, building and other support services; and transportation and warehousing.

Employment edged up in Ontario, Quebec and Saskatchewan in March, while there was little change in all other provinces.

Average hourly wages were up by 2.2% in March compared to a year earlier. This increase is similar to those seen in recent months.

### Strength in the goods-producing sector in March

Employment in the goods-producing sector was up 40,000 in March, with most of the gains found in construction and natural resources.

Following a four-month pause in growth, construction added 21,000 workers in March.

Employment in natural resources increased by 13,000 in March and has been trending up since October 2009, with gains totalling 36,000 (+12.0%) since that time. Most of the increases were in mining, oil and gas extraction.

Following significant losses in manufacturing employment between October 2008 and June 2009 (-212,000 or -10.8%), employment in this industry has stabilized, with March being the sixth consecutive month of little or no change.

In the service sector in March, the only notable employment increase was in professional, scientific and technical services (+38,000). At the same time, there were declines of 30,000 in 'other services', which includes repair and maintenance, and personal and laundry services. There were also losses in business, building and other support services (-26,000) as well as transportation and warehousing (-20,000).

Employment in transportation and warehousing, an industry that has close ties to manufacturing, has been trending down since the employment peak of October 2008, with total losses of 83,000.

Despite recent strength in the goods-producing sector, employment in that sector remains 286,000 below its peak of October 2008, while employment in the service sector is 45,000 above its October level.

### Three provinces share employment growth

Employment in Ontario edged up 10,000 in March, continuing the growth seen since May 2009 (+102,000). The unemployment rate declined 0.3 percentage points to 8.8% in March.



Employment was also up slightly in Quebec (+6,000) in March, bringing total gains in that province to 56,000 since July 2009. The unemployment rate was little changed in March at 8.0%.

Following an increase the previous month, Saskatchewan's employment level continued to rise in March, up 3,300. With more people participating in the labour force, the unemployment rate increased by 0.8 percentage points to 5.1%. Despite this increase, Saskatchewan's unemployment rate remained the lowest of all provinces, closely followed by Manitoba, at 5.2%.

Despite little change in Alberta's employment in March, the unemployment rate rose 0.6 percentage points to 7.5%, as more people entered the labour force. This unemployment rate is the highest since 1996. Alberta is the only province with an employment decline since July 2009.

### **Employment little changed across demographic groups in March**

There was little change in employment among demographic groups in March. Since July 2009, the largest gains in employment were among women aged 25 to 54 (+84,000) and men aged 55 and over (+52,000).

During this eight-month period, employment was up only slightly among youth; men aged 25 to 54; and women aged 55 and over.

#### **Note to readers**

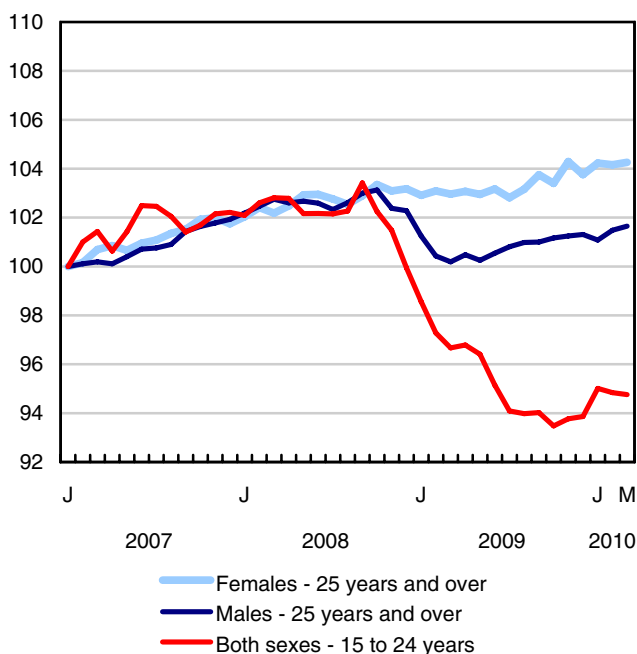
The Labour Force Survey (LFS) estimates are based on a sample, and are therefore subject to sampling variability. Estimates for smaller geographic areas or industries will have more variability. For an explanation of sampling variability of estimates, and how to use standard errors to assess this variability, consult the "Data quality" section of the publication Labour Force Information (71-001-X, free).

Unless otherwise stated, this release presents seasonally adjusted data, which eases comparisons by removing the effects of seasonal variations.

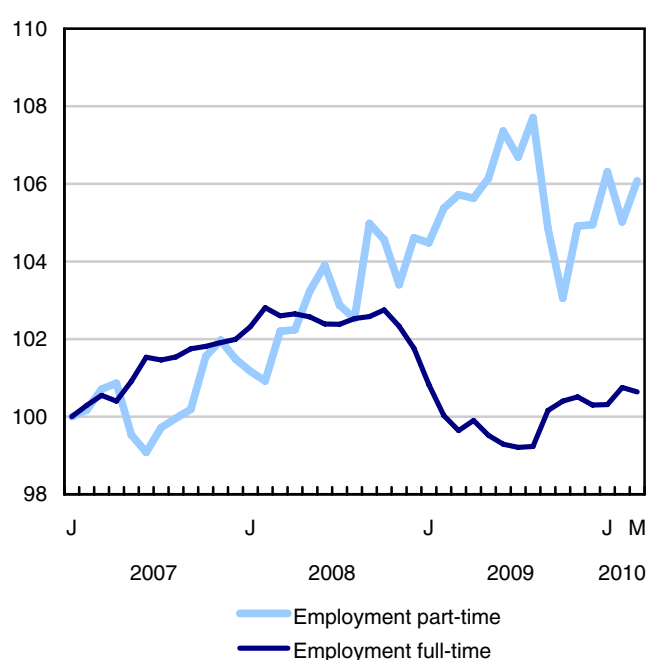
The 2009 Labour Force Historical Review on DVD-ROM (71F0004XVB, \$209) is now available.

**Chart 1**  
**Employment and unemployment indicators, Canada, seasonally adjusted**

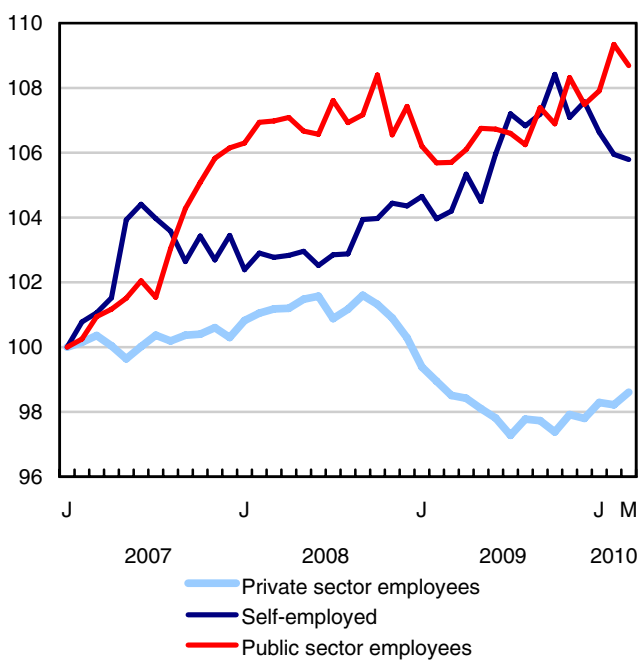
**Employment index, January 2007=100**



**Employment index, January 2007=100**

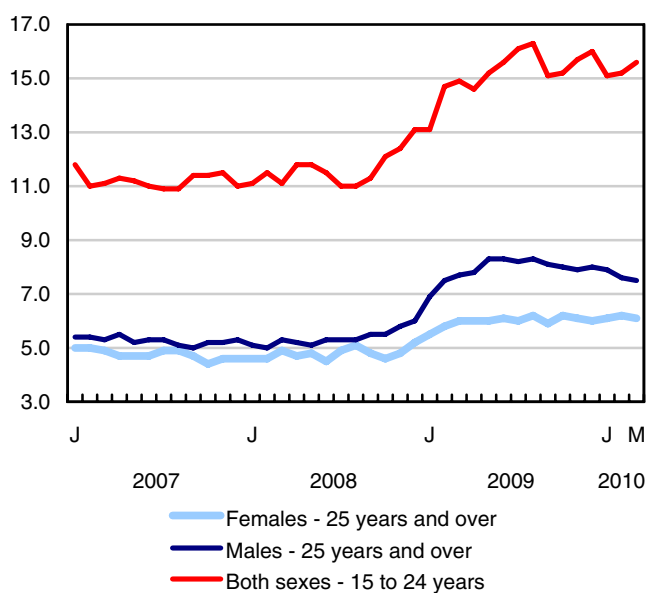


**Employment index, January 2007=100**

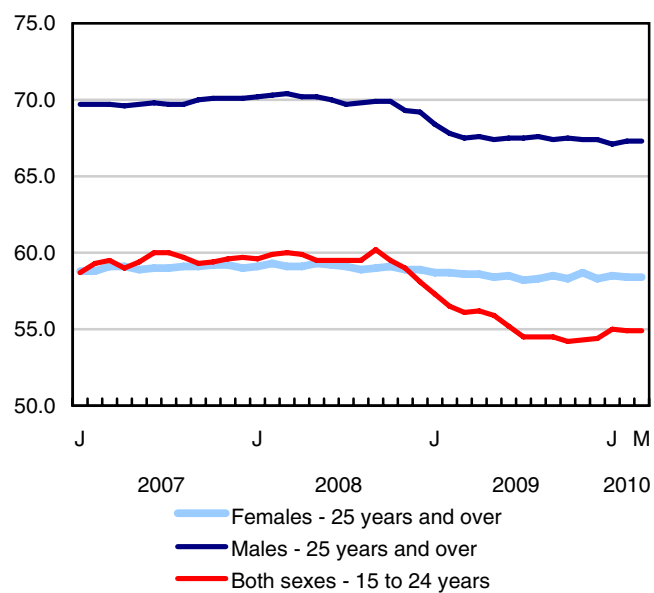


**Chart 2**  
**Employment and unemployment indicators, Canada, seasonally adjusted**

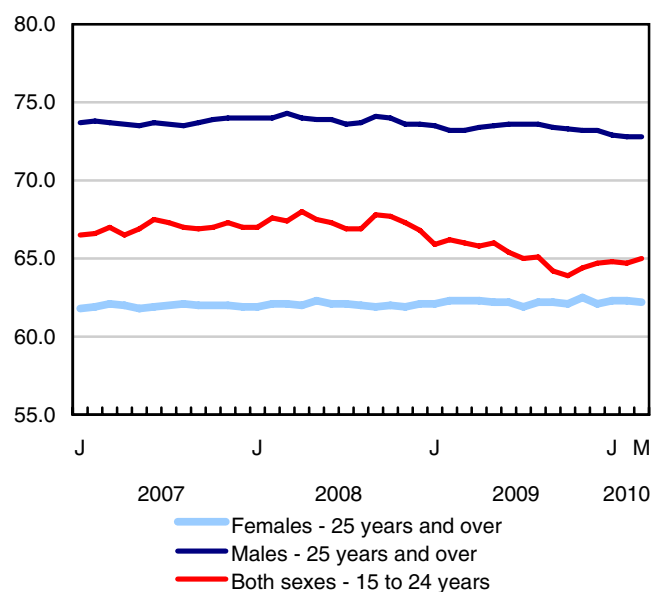
### Unemployment rate (%)



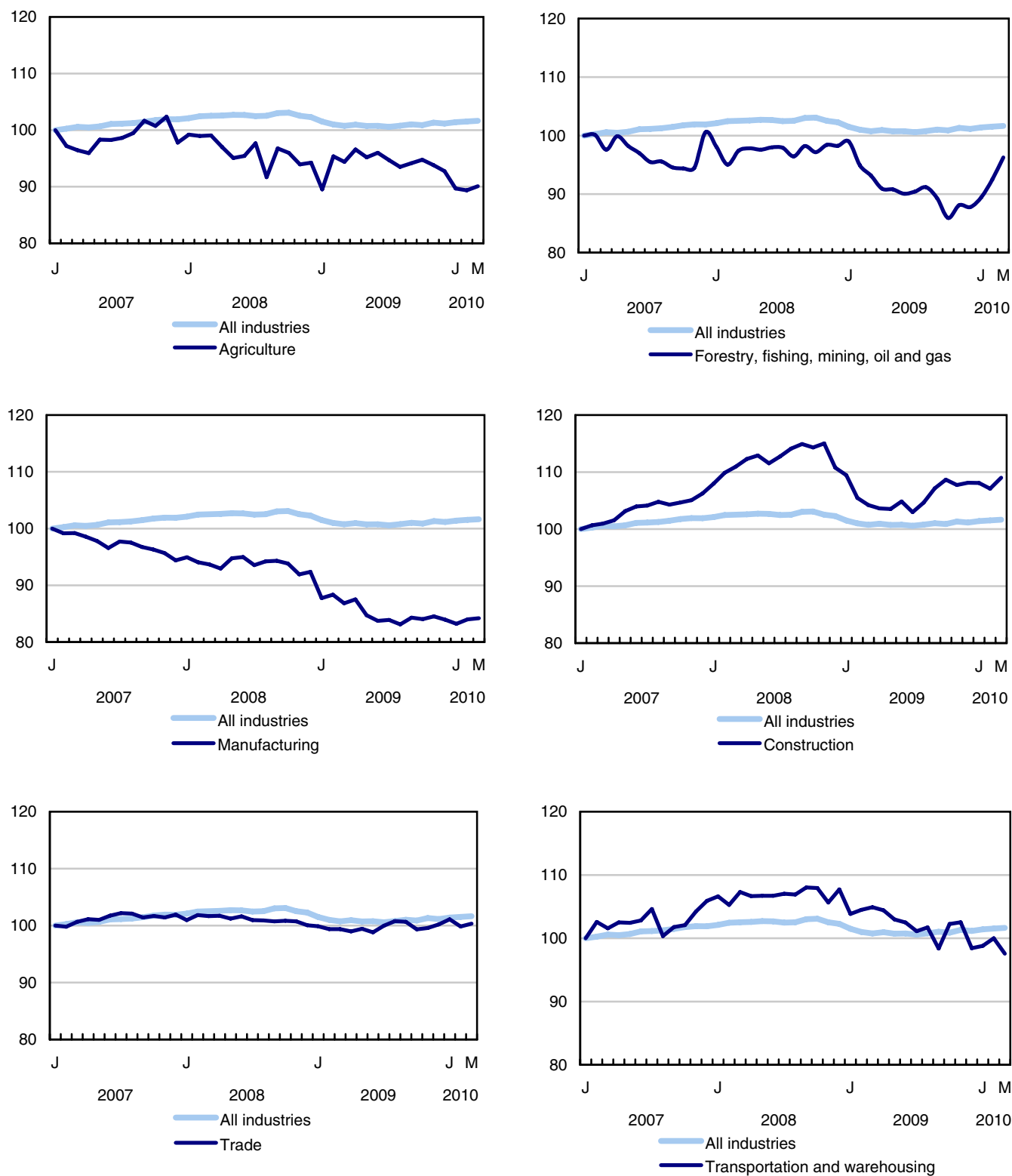
### Employment rate (%)



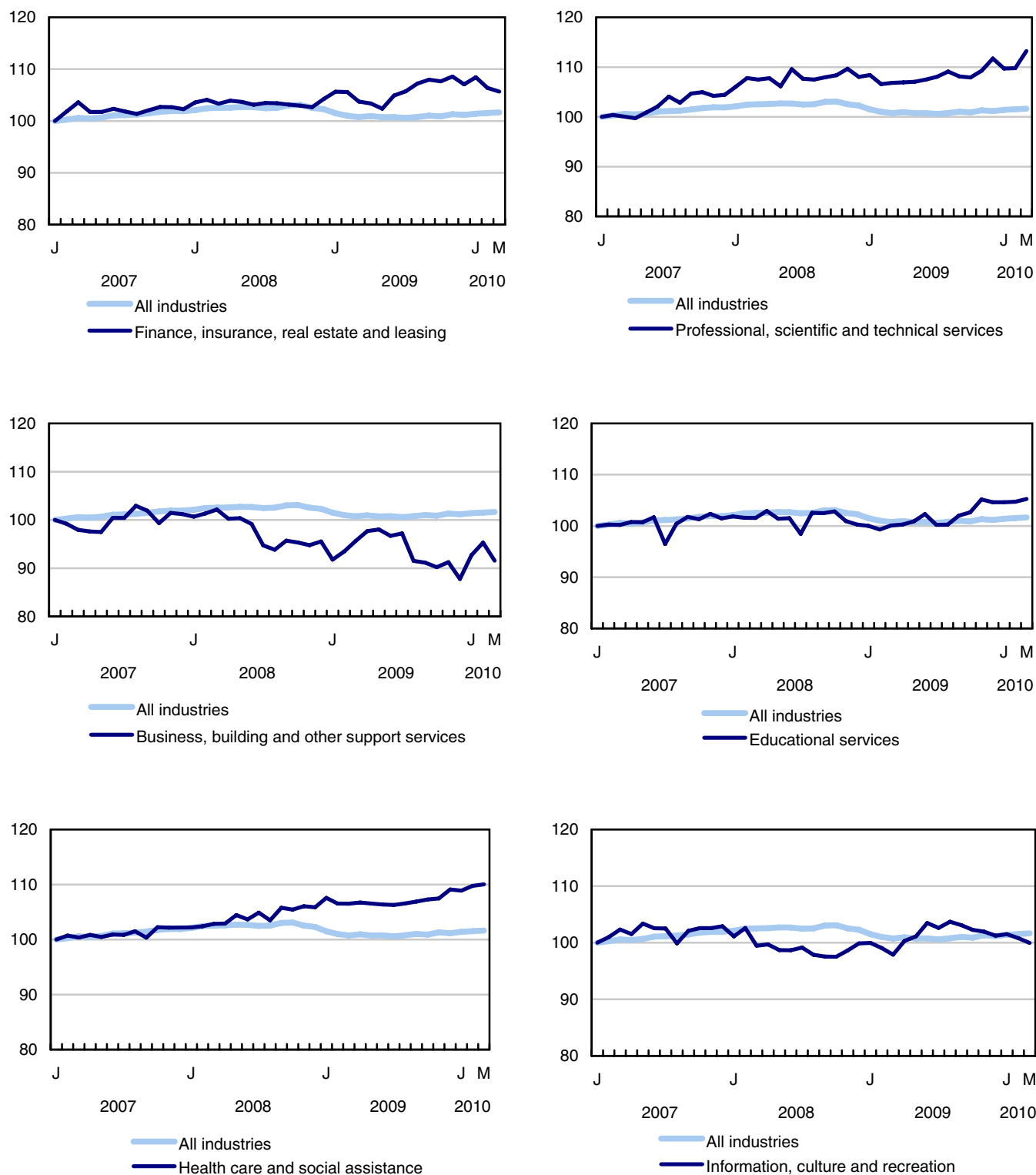
### Participation rate (%)



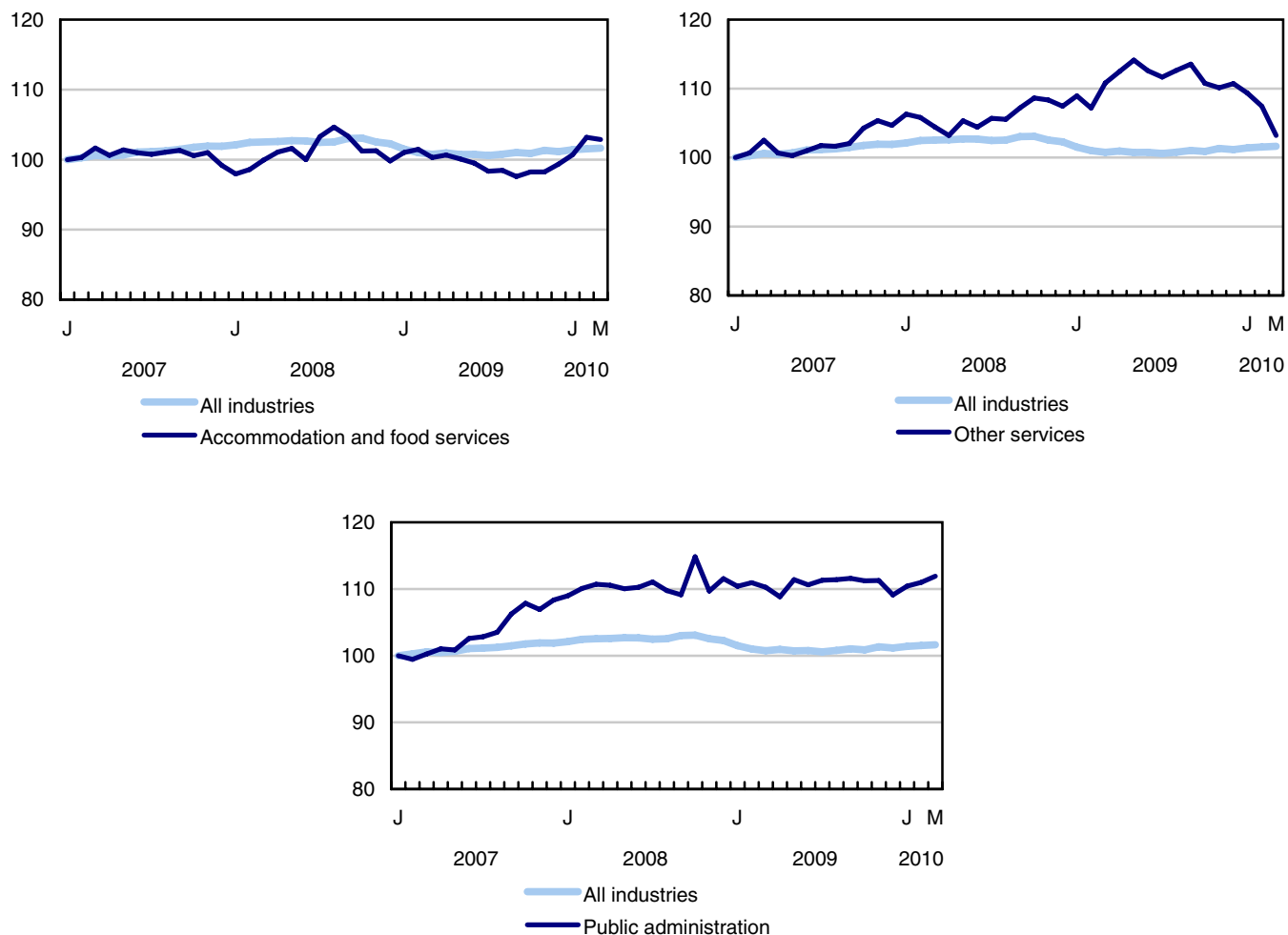
**Chart 3**  
**Index of employment by industry, Canada, seasonally adjusted, January, 2007=100**



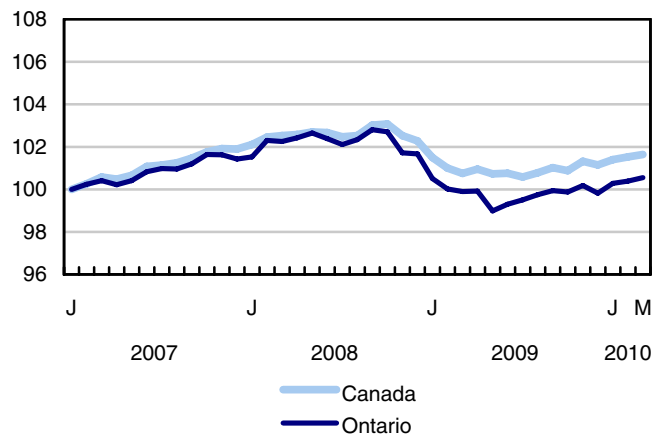
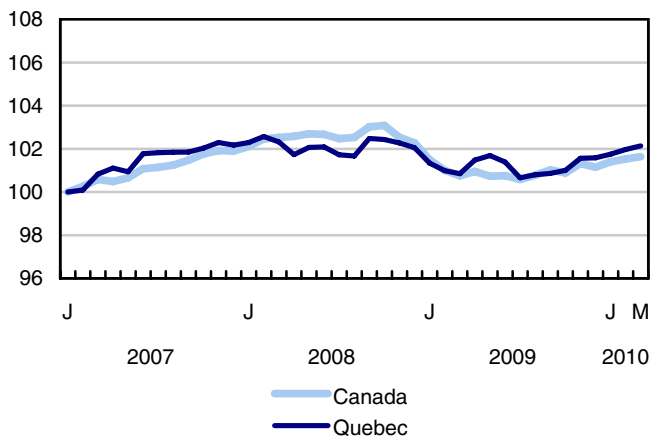
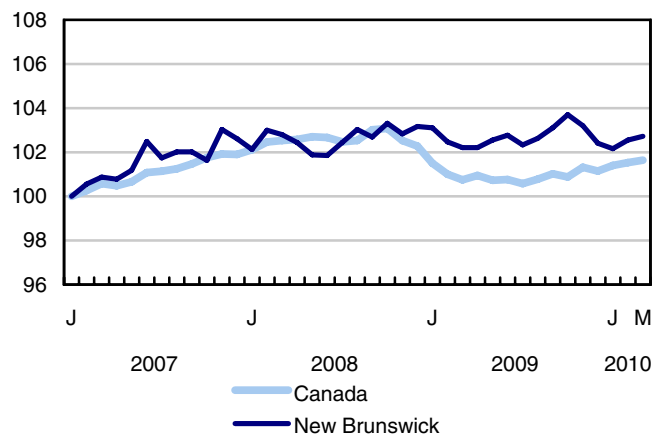
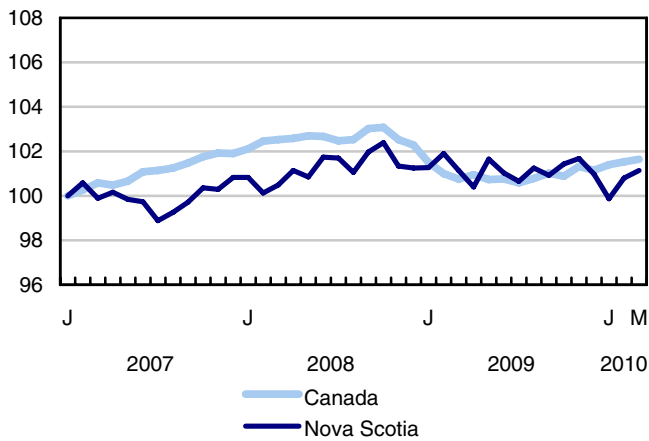
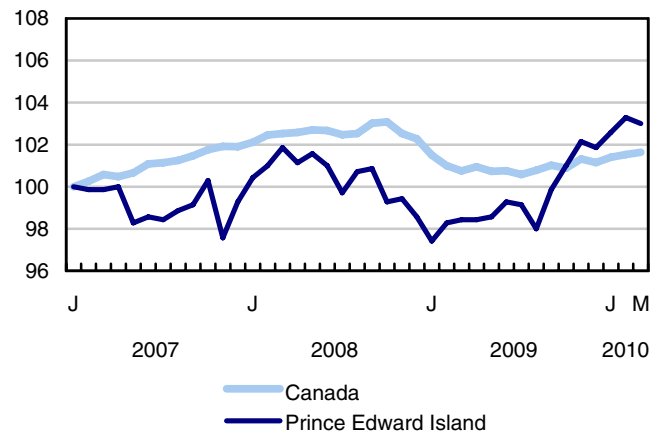
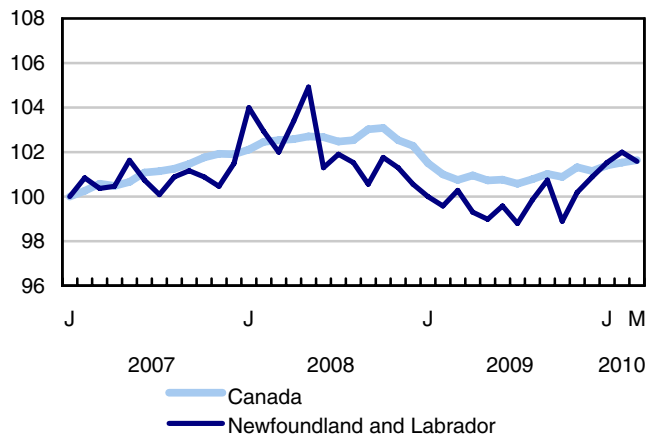
**Chart 4**  
**Index of employment by industry, Canada, seasonally adjusted, January 2007=100**



**Chart 5**  
**Index of employment by industry, Canada, seasonally adjusted, January 2007=100**

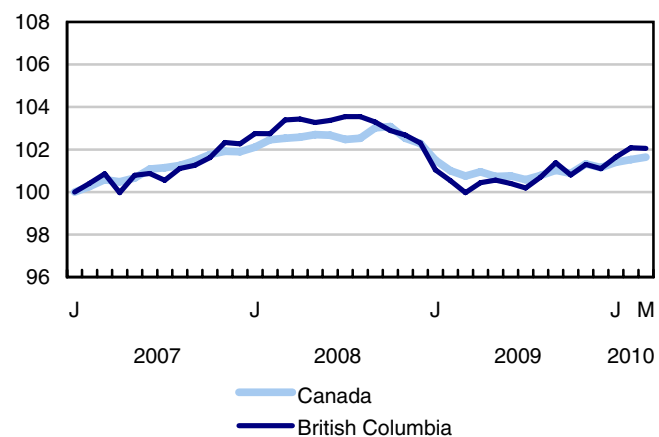
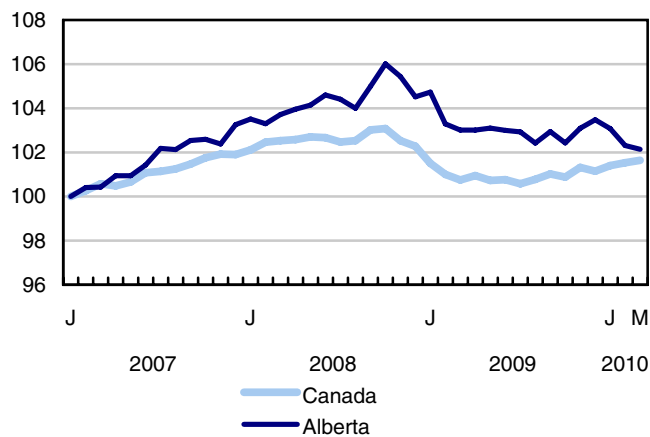
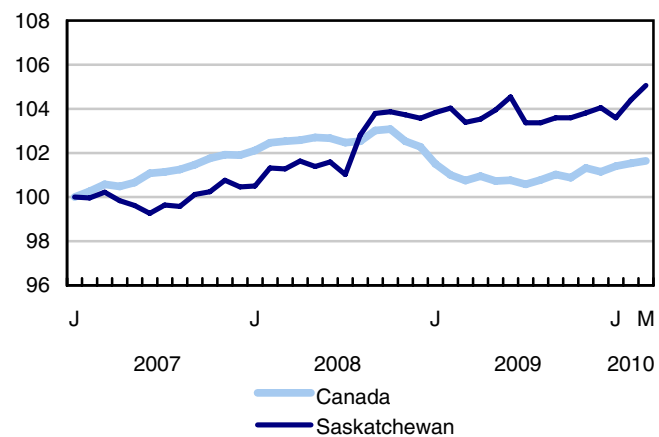
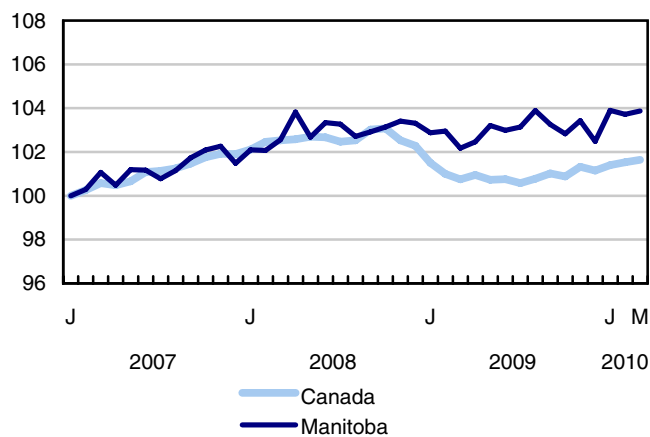


**Chart 6**  
Index of employment by province, seasonally adjusted, January 2007=100



**Chart 7**

**Index of employment by province, seasonally adjusted, January 2007=100**





## Related products

---

### Selected publications from Statistics Canada

---

71-222-X	The Canadian Labour Market at a Glance
71-526-X	Methodology of the Canadian Labour Force Survey
71-543-G	Guide to the Labour Force Survey
71-544-X	Labour Force Survey Products and Services
71-587-X	Aboriginal Peoples Living Off-reserve in Western Canada: Estimates from the Labour Force Survey
71-588-X	The Aboriginal Labour Force Analysis Series
71-606-X	The Immigrant Labour Force Analysis Series
71F0004X	Labour Force Historical Review
71F0031X	Improvements to the Labour Force Survey (LFS)
71M0001X	Labour Force Survey Microdata File
75-001-X	Perspectives on Labour and Income

---

### Selected CANSIM tables from Statistics Canada

---

282-0001	Labour force survey estimates (LFS), by sex and detailed age group
282-0002	Labour force survey estimates (LFS), by sex and detailed age group
282-0003	Labour force survey estimates (LFS), by educational attainment, sex and age group
282-0004	Labour force survey estimates (LFS), by educational attainment, sex and age group
282-0005	Labour force survey estimates (LFS), by full- and part-time students during school months, sex and age group
282-0006	Labour force survey estimates (LFS), by students during summer months, sex and age group
282-0007	Labour force survey estimates (LFS), by North American Industry Classification System (NAICS), sex and age group
282-0008	Labour force survey estimates (LFS), by North American Industry Classification System (NAICS), sex and age group

---

282-0009	Labour force survey estimates (LFS), by National Occupational Classification for Statistics (NOC-S) and sex
282-0010	Labour force survey estimates (LFS), by National Occupational Classification for Statistics (NOC-S) and sex
282-0011	Labour force survey estimates (LFS), employment by class of worker, North American Industry Classification System (NAICS) and sex
282-0012	Labour force survey estimates (LFS), employment by class of worker, North American Industry Classification System (NAICS) and sex
282-0013	Labour force survey estimates (LFS), part-time employment by reason for part-time work, sex and age group
282-0014	Labour force survey estimates (LFS), part-time employment by reason for part-time work, sex and age group
282-0015	Labour force survey estimates (LFS), by usual hours worked, main or all jobs, sex and age group
282-0016	Labour force survey estimates (LFS), by usual hours worked, main or all jobs, sex and age group
282-0017	Labour force survey estimates (LFS), by actual hours worked, main or all jobs, sex and age group
282-0018	Labour force survey estimates (LFS), by actual hours worked, main or all jobs, sex and age group
282-0019	Labour force survey estimates (LFS), by usual hours worked, class of worker, North American Industry Classification System (NAICS) and sex
282-0020	Labour force survey estimates (LFS), by usual hours worked, class of worker, North American Industry Classification System (NAICS) and sex
282-0021	Labour force survey estimates (LFS), by actual hours worked, class of worker, North American Industry Classification System (NAICS) and sex
282-0022	Labour force survey estimates (LFS), by actual hours worked, class of worker, North American Industry Classification System (NAICS) and sex
282-0023	Labour force survey estimates (LFS), by usual hours worked, class of worker, National Occupational Classification for Statistics (NOC-S) and sex
282-0024	Labour force survey estimates (LFS), by usual hours worked, class of worker, National Occupational Classification for Statistics (NOC-S) and sex
282-0025	Labour force survey estimates (LFS), by actual hours worked, class of worker, National Occupational Classification for Statistics (NOC-S) and sex
282-0026	Labour force survey estimates (LFS), by actual hours worked, class of worker, National Occupational Classification for Statistics (NOC-S) and sex
282-0027	Labour force survey estimates (LFS), by total and average usual and actual hours worked, main or all jobs, type of work, sex and age group

282-0028	Labour force survey estimates (LFS), by total and average usual and actual hours worked, main or all jobs, type of work, sex and age group
282-0029	Labour force survey estimates (LFS), average days lost for personal reasons per full-time employee by North American Industry Classification System (NAICS), sex and age group
282-0030	Labour force survey estimates (LFS), average days lost for personal reasons per full-time employee by National Occupational Classification for Statistics (NOC-S), sex and age group
282-0031	Labour force survey estimates (LFS), multiple jobholders by North American Industry Classification System (NAICS), sex and age group
282-0032	Labour force survey estimates (LFS), multiple jobholders by North American Industry Classification System (NAICS), sex and age group
282-0033	Labour force survey estimates (LFS), multiple jobholders by National Occupational Classification for Statistics (NOC-S), sex and age group
282-0034	Labour force survey estimates (LFS), multiple jobholders by National Occupational Classification for Statistics (NOC-S), sex and age group
282-0035	Labour force survey estimates (LFS), multiple jobholders by usual hours worked at main and all jobs
282-0036	Labour force survey estimates (LFS), multiple jobholders by usual hours worked at main and all jobs
282-0037	Labour force survey estimates (LFS), job tenure by type of work, sex and age group
282-0038	Labour force survey estimates (LFS), job tenure by type of work, sex and age group
282-0039	Labour force survey estimates (LFS), job tenure by National Occupational Classification for Statistics (NOC-S) and sex
282-0040	Labour force survey estimates (LFS), job tenure by National Occupational Classification for Statistics (NOC-S) and sex
282-0041	Labour force survey estimates (LFS), job tenure by North American Industry Classification System (NAICS) and sex
282-0042	Labour force survey estimates (LFS), job tenure by North American Industry Classification System (NAICS) and sex
282-0047	Labour force survey estimates (LFS), duration of unemployment by sex and age group
282-0048	Labour force survey estimates (LFS), duration of unemployment by sex and age group
282-0049	Labour force survey estimates (LFS), unemployment by type of work sought and search method, sex and age group
282-0050	Labour force survey estimates (LFS), unemployment by type of work sought and search method, sex and age group
282-0051	Labour force survey estimates (LFS), retirement age by class of worker and sex

282-0052	Labour force survey estimates (LFS), by census metropolitan area, sex and age group, 3-month moving average
282-0053	Labour force survey estimates (LFS), by census metropolitan area, sex and age group
282-0054	Labour force survey estimates (LFS), by provinces and economic regions, 3-month moving average
282-0055	Labour force survey estimates (LFS), by provinces, territories and economic regions
282-0056	Labour force survey estimates (LFS), employment by census metropolitan area and North American Industry Classification System (NAICS), 3-month moving average
282-0057	Labour force survey estimates (LFS), employment by census metropolitan area and North American Industry Classification System (NAICS)
282-0058	Labour force survey estimates (LFS), employment by census metropolitan area and National Occupational Classification for Statistics (NOC-S), 3-month moving average
282-0059	Labour force survey estimates (LFS), employment by census metropolitan area and National Occupational Classification for Statistics (NOC-S)
282-0060	Labour force survey estimates (LFS), employment by economic region and North American Industry Classification System (NAICS), 3-month moving average
282-0061	Labour force survey estimates (LFS), employment by economic region and North American Industry Classification System (NAICS)
282-0062	Labour force survey estimates (LFS), employment by economic region and National Occupational Classification for Statistics (NOC-S), 3-month moving average
282-0063	Labour force survey estimates (LFS), employment by economic region and National Occupational Classification for Statistics (NOC-S)
282-0064	Labour force survey estimates (LFS), by selected medium-sized cities
282-0069	Labour force survey estimates (LFS), wages of employees by type of work, National Occupational Classification for Statistics (NOC-S), sex and age group
282-0070	Labour force survey estimates (LFS), wages of employees by type of work, National Occupational Classification for Statistics (NOC-S), sex and age group
282-0071	Labour force survey estimates (LFS), wages of employees by type of work, North American Industry Classification System (NAICS), sex and age group
282-0072	Labour force survey estimates (LFS), wages of employees by type of work, North American Industry Classification System (NAICS), sex and age group
282-0073	Labour force survey estimates (LFS), wages of employees by job permanence, union coverage, sex and age group
282-0074	Labour force survey estimates (LFS), wages of employees by job permanence, union coverage, sex and age group
282-0075	Labour force survey estimates (LFS), employees by establishment size, North American Industry Classification System (NAICS), sex and age group

282-0076	Labour force survey estimates (LFS), employees by establishment size, North American Industry Classification System (NAICS), sex and age group
282-0077	Labour force survey estimates (LFS), employees by union coverage, North American Industry Classification System (NAICS), sex and age group
282-0078	Labour force survey estimates (LFS), employees by union coverage, North American Industry Classification System (NAICS), sex and age group
282-0079	Labour force survey estimates (LFS), employees by job permanency, North American Industry Classification System (NAICS), sex and age group
282-0080	Labour force survey estimates (LFS), employees by job permanency, North American Industry Classification System (NAICS), sex and age group
282-0081	Labour force survey estimates (LFS), employees working overtime (weekly) by National Occupational Classification for Statistics (NOC-S), sex and age group
282-0082	Labour force survey estimates (LFS), employees working overtime (weekly) by National Occupational Classification for Statistics (NOC-S), sex and age group
282-0083	Labour force survey estimates (LFS), employees working overtime (weekly) by North American Industry Classification System (NAICS), sex and age group
282-0084	Labour force survey estimates (LFS), employees working overtime (weekly) by North American Industry Classification System (NAICS), sex and age group
282-0085	Labour force survey estimates (LFS), supplementary unemployment rates by sex and age group
282-0086	Labour force survey estimates (LFS), supplementary unemployment rates by sex and age group
282-0087	Labour force survey estimates (LFS), by sex and age group, seasonally adjusted and unadjusted
282-0088	Labour force survey estimates (LFS), employment by North American Industry Classification System (NAICS), seasonally adjusted and unadjusted
282-0089	Labour force survey estimates (LFS), employment by class of worker and sex, seasonally adjusted and unadjusted
282-0090	Labour force survey estimates (LFS), by census metropolitan area, 3-month moving average, seasonally adjusted and unadjusted
282-0091	Labour force survey estimates (LFS), by Montréal, Toronto and Vancouver census metropolitan areas, seasonally adjusted and unadjusted
282-0092	Labour force survey estimates (LFS), actual hours worked by North American Industry Classification System (NAICS), seasonally adjusted
282-0093	Labour force survey estimates (LFS), employment by National Occupational Classification for Statistics (NOC-S), seasonally adjusted
282-0094	Labour force survey estimates (LFS), by North American Industry Classification System (NAICS), Canada, seasonally adjusted
282-0095	Labour force survey estimates (LFS), by full- and part-time students during school months, sex and age group

282-0096	Labour force survey estimates (LFS), by urban and rural areas based on 2001 census boundaries, sex and age group
282-0097	Labour force survey estimates (LFS), by urban and rural areas based on 2001 census boundaries, sex and age group
282-0098	Labour force survey estimates (LFS), employment by urban and rural areas based on 2001 census boundaries, class of worker and North American Industry Classification System (NAICS)
282-0099	Labour force survey estimates (LFS), employment by urban and rural areas based on 2001 census boundaries, class of worker and North American Industry Classification System (NAICS)
282-0100	Labour force survey estimates (LFS), by territories, sex and age group, 3-month moving average, seasonally adjusted and unadjusted

---

### **Selected surveys from Statistics Canada**

---

3701	Labour Force Survey
------	---------------------

---

### **Selected summary tables from Statistics Canada**

---

- *Labour force characteristics*
- *Employment by industry*
- *Selected economic indicators, Canada and United States (monthly and quarterly)*
- *Days lost per worker due to illness or disability, by sex, by provinces*
- *Economic indicators, by province and territory (monthly and quarterly)*
- *Labour force and participation rates by sex and age group*
- *Labour force, employed and unemployed, numbers and rates, by provinces*
- *Employment by industry and sex*
- *Full-time and part-time employment by sex and age group*
- *Labour force characteristics by age and sex*
- *Distribution of employed people, by industry, by province*
- *Labour force characteristics, population 15 years and older, by census metropolitan area*
- *Labour force characteristics, population 15 years and older, by economic region, by province*

- *Days lost per worker by cause, by provinces*
- *Days lost per worker by industry and sex*
- *People employed, by educational attainment*
- *Reasons for part-time work by sex and age group*
- *Self-employment, historical summary*
- *Employment by age, sex, type of work, class of worker and provinces (monthly)*
- *Employment by major industry groups, seasonally adjusted, by provinces (monthly)*
- *Actual hours worked per week by industry, seasonally adjusted (monthly)*
- *Average hourly wages of employees by selected characteristics and profession, unadjusted data, by provinces (monthly)*
- *Labour force characteristics, seasonally adjusted, by province (monthly)*
- *Labour force characteristics, unadjusted, by province (monthly)*
- *Labour force characteristics, seasonally adjusted, by census metropolitan area (3 month moving average)*
- *Labour force characteristics, unadjusted, by census metropolitan area (3 month moving average)*
- *Labour force characteristics, unadjusted, by economic region (3 month moving average)*

# Statistical tables

---



**Table 1**  
**Labour force characteristics by age and sex, Canada, seasonally adjusted**

	February 2010	March 2010	S.E. <sup>1</sup>	Change from			Percent change from		
				last month	last December	twelve months ago	last month	last December	twelve months ago
in thousands (except rates)									
<b>15 years and over, both sexes</b>									
Population	27,555.8	<b>27,585.2</b>	...	<b>29.4</b>	94.5	397.6	<b>0.1</b>	0.3	1.5
Labour force	18,464.7	<b>18,478.3</b>	28.2	<b>13.6</b>	41.1	170.8	<b>0.1</b>	0.2	0.9
Employment	16,945.3	<b>16,963.2</b>	28.2	<b>17.9</b>	81.8	147.5	<b>0.1</b>	0.5	0.9
Employment full-time	13,738.8	<b>13,724.6</b>	36.8	<b>-14.2</b>	47.4	136.6	<b>-0.1</b>	0.3	1.0
Employment part-time	3,206.5	<b>3,238.7</b>	33.5	<b>32.2</b>	34.4	11.0	<b>1.0</b>	1.1	0.3
Unemployment	1,519.4	<b>1,515.1</b>	25.1	<b>-4.3</b>	-40.7	23.3	<b>-0.3</b>	-2.6	1.6
Participation rate	67.0	<b>67.0</b>	0.1	<b>0.0</b>	-0.1	-0.3	...	...	...
Unemployment rate	8.2	<b>8.2</b>	0.1	<b>0.0</b>	-0.2	0.1	...	...	...
Employment rate	61.5	<b>61.5</b>	0.1	<b>0.0</b>	0.1	-0.4	...	...	...
Part-time rate	18.9	<b>19.1</b>	0.2	<b>0.2</b>	0.1	-0.1	...	...	...
<b>15 to 24 years, both sexes</b>									
Population	4,401.5	<b>4,402.4</b>	...	<b>0.9</b>	2.1	13.6	<b>0.0</b>	0.0	0.3
Labour force	2,849.6	<b>2,861.5</b>	16.8	<b>11.9</b>	13.7	-34.6	<b>0.4</b>	0.5	-1.2
Employment	2,417.1	<b>2,415.0</b>	15.5	<b>-2.1</b>	23.0	-48.7	<b>-0.1</b>	1.0	-2.0
Employment full-time	1,274.7	<b>1,258.4</b>	18.0	<b>-16.3</b>	-13.9	-62.6	<b>-1.3</b>	-1.1	-4.7
Employment part-time	1,142.4	<b>1,156.7</b>	18.5	<b>14.3</b>	37.1	14.0	<b>1.3</b>	3.3	1.2
Unemployment	432.5	<b>446.4</b>	14.6	<b>13.9</b>	-9.5	14.0	<b>3.2</b>	-2.1	3.2
Participation rate	64.7	<b>65.0</b>	0.4	<b>0.3</b>	0.3	-1.0	...	...	...
Unemployment rate	15.2	<b>15.6</b>	0.5	<b>0.4</b>	-0.4	0.7	...	...	...
Employment rate	54.9	<b>54.9</b>	0.4	<b>0.0</b>	0.5	-1.2	...	...	...
Part-time rate	47.3	<b>47.9</b>	0.7	<b>0.6</b>	1.1	1.5	...	...	...
<b>25 years and over, men</b>									
Population	11,325.7	<b>11,340.0</b>	...	<b>14.3</b>	46.2	194.9	<b>0.1</b>	0.4	1.7
Labour force	8,248.7	<b>8,255.3</b>	14.8	<b>6.6</b>	-12.7	102.6	<b>0.1</b>	-0.2	1.3
Employment	7,622.2	<b>7,635.5</b>	16.1	<b>13.3</b>	25.9	109.9	<b>0.2</b>	0.3	1.5
Employment full-time	7,042.6	<b>7,066.2</b>	20.8	<b>23.6</b>	55.8	124.4	<b>0.3</b>	0.8	1.8
Employment part-time	579.6	<b>569.3</b>	16.5	<b>-10.3</b>	-29.9	-14.4	<b>-1.8</b>	-5.0	-2.5
Unemployment	626.6	<b>619.8</b>	15.0	<b>-6.8</b>	-38.5	-7.4	<b>-1.1</b>	-5.8	-1.2
Participation rate	72.8	<b>72.8</b>	0.1	<b>0.0</b>	-0.4	-0.4	...	...	...
Unemployment rate	7.6	<b>7.5</b>	0.2	<b>-0.1</b>	-0.5	-0.2	...	...	...
Employment rate	67.3	<b>67.3</b>	0.1	<b>0.0</b>	-0.1	-0.2	...	...	...
Part-time rate	7.6	<b>7.5</b>	0.2	<b>-0.1</b>	-0.4	-0.3	...	...	...
<b>25 years and over, women</b>									
Population	11,828.5	<b>11,842.9</b>	...	<b>14.4</b>	46.3	189.3	<b>0.1</b>	0.4	1.6
Labour force	7,366.4	<b>7,361.5</b>	16.1	<b>-4.9</b>	40.1	102.8	<b>-0.1</b>	0.5	1.4
Employment	6,906.1	<b>6,912.6</b>	15.8	<b>6.5</b>	32.8	86.1	<b>0.1</b>	0.5	1.3
Employment full-time	5,421.6	<b>5,400.0</b>	23.5	<b>-21.6</b>	5.6	74.8	<b>-0.4</b>	0.1	1.4
Employment part-time	1,484.5	<b>1,512.7</b>	22.0	<b>28.2</b>	27.3	11.4	<b>1.9</b>	1.8	0.8
Unemployment	460.3	<b>448.8</b>	13.0	<b>-11.5</b>	7.2	16.6	<b>-2.5</b>	1.6	3.8
Participation rate	62.3	<b>62.2</b>	0.1	<b>-0.1</b>	0.1	-0.1	...	...	...
Unemployment rate	6.2	<b>6.1</b>	0.2	<b>-0.1</b>	0.1	0.1	...	...	...
Employment rate	58.4	<b>58.4</b>	0.1	<b>0.0</b>	0.1	-0.2	...	...	...
Part-time rate	21.5	<b>21.9</b>	0.3	<b>0.4</b>	0.3	-0.1	...	...	...
<b>25 to 54 years, both sexes</b>									
Population	14,578.2	<b>14,586.6</b>	...	<b>8.4</b>	21.8	103.5	<b>0.1</b>	0.1	0.7
Labour force	12,578.9	<b>12,581.5</b>	21.3	<b>2.6</b>	13.0	59.3	<b>0.0</b>	0.1	0.5
Employment	11,689.3	<b>11,704.7</b>	22.9	<b>15.4</b>	32.7	56.1	<b>0.1</b>	0.3	0.5
Unemployment	889.6	<b>876.8</b>	18.8	<b>-12.8</b>	-19.8	3.3	<b>-1.4</b>	-2.2	0.4
Participation rate	86.3	<b>86.3</b>	0.1	<b>0.0</b>	0.0	-0.2	...	...	...
Unemployment rate	7.1	<b>7.0</b>	0.1	<b>-0.1</b>	-0.1	0.0	...	...	...
Employment rate	80.2	<b>80.2</b>	0.2	<b>0.0</b>	0.1	-0.2	...	...	...

See notes at the end of the table.

Table 1 – continued

## Labour force characteristics by age and sex, Canada, seasonally adjusted

	February 2010	March 2010	S.E. <sup>1</sup>	Change from			Percent change from		
				last month	last December	twelve months ago	last month	last December	twelve months ago
in thousands (except rates)									
<b>25 to 54 years, men</b>									
Population	7,288.7	<b>7,293.0</b>	...	<b>4.3</b>	11.4	56.4	<b>0.1</b>	0.2	0.8
Labour force	6,558.6	<b>6,559.3</b>	13.7	<b>0.7</b>	-32.8	6.5	<b>0.0</b>	-0.5	0.1
Employment	6,052.4	<b>6,059.5</b>	15.8	<b>7.1</b>	-1.8	24.7	<b>0.1</b>	0.0	0.4
Unemployment	506.2	<b>499.8</b>	14.0	<b>-6.4</b>	-31.0	-18.2	<b>-1.3</b>	-5.8	-3.5
Participation rate	90.0	<b>89.9</b>	0.2	<b>-0.1</b>	-0.6	-0.7	...	...	...
Unemployment rate	7.7	<b>7.6</b>	0.2	<b>-0.1</b>	-0.5	-0.3	...	...	...
Employment rate	83.0	<b>83.1</b>	0.2	<b>0.1</b>	-0.1	-0.3	...	...	...
<b>25 to 54 years, women</b>									
Population	7,289.5	<b>7,293.6</b>	...	<b>4.1</b>	10.4	47.1	<b>0.1</b>	0.1	0.6
Labour force	6,020.3	<b>6,022.1</b>	15.6	<b>1.8</b>	45.7	52.7	<b>0.0</b>	0.8	0.9
Employment	5,636.9	<b>5,645.2</b>	15.7	<b>8.3</b>	34.5	31.3	<b>0.1</b>	0.6	0.6
Unemployment	383.4	<b>376.9</b>	12.1	<b>-6.5</b>	11.2	21.4	<b>-1.7</b>	3.1	6.0
Participation rate	82.6	<b>82.6</b>	0.2	<b>0.0</b>	0.5	0.2	...	...	...
Unemployment rate	6.4	<b>6.3</b>	0.2	<b>-0.1</b>	0.2	0.3	...	...	...
Employment rate	77.3	<b>77.4</b>	0.2	<b>0.1</b>	0.4	-0.1	...	...	...
<b>55 years and over, both sexes</b>									
Population	8,576.0	<b>8,596.3</b>	...	<b>20.3</b>	70.7	280.7	<b>0.2</b>	0.8	3.4
Labour force	3,036.2	<b>3,035.4</b>	16.2	<b>-0.8</b>	14.6	146.1	<b>0.0</b>	0.5	5.1
Employment	2,838.9	<b>2,843.5</b>	16.1	<b>4.6</b>	26.0	140.0	<b>0.2</b>	0.9	5.2
Unemployment	197.3	<b>191.9</b>	8.9	<b>-5.4</b>	-11.4	6.1	<b>-2.7</b>	-5.6	3.3
Participation rate	35.4	<b>35.3</b>	0.2	<b>-0.1</b>	-0.1	0.6	...	...	...
Unemployment rate	6.5	<b>6.3</b>	0.3	<b>-0.2</b>	-0.4	-0.1	...	...	...
Employment rate	33.1	<b>33.1</b>	0.2	<b>0.0</b>	0.1	0.6	...	...	...
<b>55 years and over, men</b>									
Population	4,037.0	<b>4,046.9</b>	...	<b>9.9</b>	34.7	138.4	<b>0.2</b>	0.9	3.5
Labour force	1,690.1	<b>1,696.0</b>	10.9	<b>5.9</b>	20.1	96.0	<b>0.3</b>	1.2	6.0
Employment	1,569.7	<b>1,576.1</b>	10.9	<b>6.4</b>	27.7	85.3	<b>0.4</b>	1.8	5.7
Unemployment	120.4	<b>120.0</b>	6.7	<b>-0.4</b>	-7.5	10.9	<b>-0.3</b>	-5.9	10.0
Participation rate	41.9	<b>41.9</b>	0.3	<b>0.0</b>	0.1	1.0	...	...	...
Unemployment rate	7.1	<b>7.1</b>	0.4	<b>0.0</b>	-0.5	0.3	...	...	...
Employment rate	38.9	<b>38.9</b>	0.3	<b>0.0</b>	0.3	0.8	...	...	...
<b>55 years and over, women</b>									
Population	4,539.0	<b>4,549.3</b>	...	<b>10.3</b>	35.9	142.2	<b>0.2</b>	0.8	3.2
Labour force	1,346.1	<b>1,339.3</b>	11.1	<b>-6.8</b>	-5.6	50.0	<b>-0.5</b>	-0.4	3.9
Employment	1,269.2	<b>1,267.4</b>	10.9	<b>-1.8</b>	-1.7	54.7	<b>-0.1</b>	-0.1	4.5
Unemployment	76.9	<b>71.9</b>	5.7	<b>-5.0</b>	-4.0	-4.8	<b>-6.5</b>	-5.3	-6.3
Participation rate	29.7	<b>29.4</b>	0.2	<b>-0.3</b>	-0.4	0.1	...	...	...
Unemployment rate	5.7	<b>5.4</b>	0.4	<b>-0.3</b>	-0.2	-0.5	...	...	...
Employment rate	28.0	<b>27.9</b>	0.2	<b>-0.1</b>	-0.2	0.4	...	...	...

1. Average standard error of change in two consecutive months (see "Sampling Errors" in Data Quality for further explanations).

Note(s): Related CANSIM table 282-0087.

**Table 2**  
**Employment by class of worker and industry, Canada, seasonally adjusted**

	February 2010	March 2010	S.E. <sup>1</sup>	Change from			Percent change from		
				last month	last December	twelve months ago	last month	last December	twelve months ago
in thousands									
<b>Class of worker</b>									
Employees	14,246.2	<b>14,268.1</b>	33.7	<b>21.9</b>	127.0	106.9	<b>0.2</b>	0.9	0.8
Self-employed <sup>2</sup>	2,699.1	<b>2,695.1</b>	23.6	<b>-4.0</b>	-45.2	40.6	<b>-0.1</b>	-1.6	1.5
<b>Public/private sector employees</b>									
Public sector employees	3,496.1	<b>3,475.5</b>	22.2	<b>-20.6</b>	38.4	95.7	<b>-0.6</b>	1.1	2.8
Private sector employees	10,750.2	<b>10,792.6</b>	34.6	<b>42.4</b>	88.6	11.2	<b>0.4</b>	0.8	0.1
<b>Industry</b>	16,945.3	<b>16,963.2</b>	28.2	<b>17.9</b>	81.8	147.5	<b>0.1</b>	0.5	0.9
<b>Goods-producing sector</b>	3,711.3	<b>3,751.1</b>	24.3	<b>39.8</b>	34.5	-10.1	<b>1.1</b>	0.9	-0.3
Agriculture	303.8	<b>306.3</b>	7.0	<b>2.5</b>	-9.0	-14.6	<b>0.8</b>	-2.9	-4.5
Forestry, fishing, mining, oil and gas	322.0	<b>335.2</b>	6.6	<b>13.2</b>	29.5	10.8	<b>4.1</b>	9.6	3.3
Utilities	146.8	<b>146.0</b>	4.7	<b>-0.8</b>	-0.5	-3.3	<b>-0.5</b>	-0.3	-2.2
Construction	1,174.9	<b>1,195.9</b>	15.2	<b>21.0</b>	9.5	52.5	<b>1.8</b>	0.8	4.6
Manufacturing	1,763.8	<b>1,767.7</b>	17.9	<b>3.9</b>	5.1	-55.6	<b>0.2</b>	0.3	-3.0
<b>Services-producing sector</b>	13,234.0	<b>13,212.1</b>	32.0	<b>-21.9</b>	47.3	157.6	<b>-0.2</b>	0.4	1.2
Trade	2,643.9	<b>2,657.6</b>	21.2	<b>13.7</b>	3.6	25.8	<b>0.5</b>	0.1	1.0
Transportation and warehousing	802.0	<b>782.4</b>	12.3	<b>-19.6</b>	-7.0	-58.9	<b>-2.4</b>	-0.9	-7.0
Finance, insurance, real estate and leasing	1,105.5	<b>1,098.1</b>	14.7	<b>-7.4</b>	-14.6	20.0	<b>-0.7</b>	-1.3	1.9
Professional, scientific and technical services	1,220.3	<b>1,258.7</b>	15.7	<b>38.4</b>	16.8	71.1	<b>3.1</b>	1.4	6.0
Business, building and other support services	668.9	<b>642.6</b>	12.8	<b>-26.3</b>	26.5	-28.8	<b>-3.9</b>	4.3	-4.3
Educational services	1,229.8	<b>1,236.0</b>	14.5	<b>6.2</b>	7.3	60.6	<b>0.5</b>	0.6	5.2
Health care and social assistance	2,005.8	<b>2,010.9</b>	16.2	<b>5.1</b>	16.9	64.5	<b>0.3</b>	0.8	3.3
Information, culture and recreation	772.0	<b>765.5</b>	13.0	<b>-6.5</b>	-9.8	15.8	<b>-0.8</b>	-1.3	2.1
Accommodation and food services	1,095.7	<b>1,092.4</b>	15.1	<b>-3.3</b>	37.3	27.4	<b>-0.3</b>	3.5	2.6
Other services	761.0	<b>731.0</b>	12.6	<b>-30.0</b>	-53.3	-53.9	<b>-3.9</b>	-6.8	-6.9
Public administration	929.0	<b>936.9</b>	11.5	<b>7.9</b>	23.5	14.0	<b>0.9</b>	2.6	1.5

1. Average standard error of change in two consecutive months (see "Sampling Errors" in Data Quality for further explanations).

2. Includes both incorporated and unincorporated working owners, self-employed persons who do not have a business and persons working in a family business without pay.

**Note(s):** Related CANSIM Tables 282-0088, 282-0089.

**Table 3**  
**Labour force characteristics by province, seasonally adjusted**

	February 2010	March 2010	S.E. <sup>1</sup>	Change from			Percent change from		
				last month	last December	twelve months ago	last month	last December	twelve months ago
in thousands (except rates)									
<b>Newfoundland and Labrador</b>									
Population	431.0	<b>431.2</b>	...	<b>0.2</b>	0.7	3.2	<b>0.0</b>	0.2	0.7
Labour force	257.3	<b>258.7</b>	2.1	<b>1.4</b>	2.7	6.4	<b>0.5</b>	1.1	2.5
Employment	219.6	<b>218.7</b>	2.2	<b>-0.9</b>	1.5	2.8	<b>-0.4</b>	0.7	1.3
Employment full-time	188.8	<b>187.0</b>	2.5	<b>-1.8</b>	0.1	2.2	<b>-1.0</b>	0.1	1.2
Employment part-time	30.8	<b>31.7</b>	1.8	<b>0.9</b>	1.4	0.6	<b>2.9</b>	4.6	1.9
Unemployment	37.7	<b>40.0</b>	2.1	<b>2.3</b>	1.2	3.6	<b>6.1</b>	3.1	9.9
Participation rate	59.7	<b>60.0</b>	0.5	<b>0.3</b>	0.5	1.1	...	...	...
Unemployment rate	14.7	<b>15.5</b>	0.8	<b>0.8</b>	0.3	1.1	...	...	...
Employment rate	51.0	<b>50.7</b>	0.5	<b>-0.3</b>	0.2	0.3	...	...	...
<b>Prince Edward Island</b>									
Population	116.6	<b>116.8</b>	...	<b>0.2</b>	0.4	1.4	<b>0.2</b>	0.3	1.2
Labour force	80.3	<b>80.6</b>	0.6	<b>0.3</b>	0.8	2.9	<b>0.4</b>	1.0	3.7
Employment	72.2	<b>72.0</b>	0.7	<b>-0.2</b>	0.8	3.2	<b>-0.3</b>	1.1	4.7
Employment full-time	58.6	<b>59.2</b>	0.8	<b>0.6</b>	1.0	1.1	<b>1.0</b>	1.7	1.9
Employment part-time	13.6	<b>12.8</b>	0.7	<b>-0.8</b>	-0.2	2.1	<b>-5.9</b>	-1.5	19.6
Unemployment	8.2	<b>8.7</b>	0.7	<b>0.5</b>	0.1	-0.2	<b>6.1</b>	1.2	-2.2
Participation rate	68.9	<b>69.0</b>	0.6	<b>0.1</b>	0.4	1.7	...	...	...
Unemployment rate	10.2	<b>10.8</b>	0.8	<b>0.6</b>	0.0	-0.7	...	...	...
Employment rate	61.9	<b>61.6</b>	0.6	<b>-0.3</b>	0.4	2.0	...	...	...
<b>Nova Scotia</b>									
Population	775.0	<b>775.1</b>	...	<b>0.1</b>	0.6	3.5	<b>0.0</b>	0.1	0.5
Labour force	497.6	<b>494.9</b>	2.7	<b>-2.7</b>	-5.0	-2.5	<b>-0.5</b>	-1.0	-0.5
Employment	451.2	<b>452.7</b>	2.9	<b>1.5</b>	0.7	0.0	<b>0.3</b>	0.2	0.0
Employment full-time	367.3	<b>371.3</b>	3.6	<b>4.0</b>	2.5	1.5	<b>1.1</b>	0.7	0.4
Employment part-time	83.8	<b>81.4</b>	3.1	<b>-2.4</b>	-1.9	-1.6	<b>-2.9</b>	-2.3	-1.9
Unemployment	46.5	<b>42.2</b>	2.6	<b>-4.3</b>	-5.6	-2.5	<b>-9.2</b>	-11.7	-5.6
Participation rate	64.2	<b>63.8</b>	0.4	<b>-0.4</b>	-0.7	-0.7	...	...	...
Unemployment rate	9.3	<b>8.5</b>	0.5	<b>-0.8</b>	-1.1	-0.5	...	...	...
Employment rate	58.2	<b>58.4</b>	0.4	<b>0.2</b>	0.0	-0.3	...	...	...
<b>New Brunswick</b>									
Population	623.2	<b>623.3</b>	...	<b>0.1</b>	0.5	2.8	<b>0.0</b>	0.1	0.5
Labour force	402.6	<b>401.3</b>	2.4	<b>-1.3</b>	0.1	-2.0	<b>-0.3</b>	0.0	-0.5
Employment	365.9	<b>366.5</b>	2.5	<b>0.6</b>	1.1	1.8	<b>0.2</b>	0.3	0.5
Employment full-time	310.2	<b>314.7</b>	2.9	<b>4.5</b>	5.2	8.7	<b>1.5</b>	1.7	2.8
Employment part-time	55.8	<b>51.8</b>	2.5	<b>-4.0</b>	-4.1	-6.9	<b>-7.2</b>	-7.3	-11.8
Unemployment	36.7	<b>34.8</b>	2.2	<b>-1.9</b>	-1.0	-3.8	<b>-5.2</b>	-2.8	-9.8
Participation rate	64.6	<b>64.4</b>	0.4	<b>-0.2</b>	0.0	-0.6	...	...	...
Unemployment rate	9.1	<b>8.7</b>	0.5	<b>-0.4</b>	-0.2	-0.9	...	...	...
Employment rate	58.7	<b>58.8</b>	0.4	<b>0.1</b>	0.1	0.0	...	...	...
<b>Quebec</b>									
Population	6,484.9	<b>6,490.6</b>	...	<b>5.7</b>	18.9	74.5	<b>0.1</b>	0.3	1.2
Labour force	4,212.7	<b>4,215.9</b>	14.2	<b>3.2</b>	3.7	28.2	<b>0.1</b>	0.1	0.7
Employment	3,873.3	<b>3,879.6</b>	14.5	<b>6.3</b>	21.2	49.1	<b>0.2</b>	0.5	1.3
Employment full-time	3,137.5	<b>3,141.5</b>	18.8	<b>4.0</b>	3.6	43.2	<b>0.1</b>	0.1	1.4
Employment part-time	735.8	<b>738.2</b>	16.7	<b>2.4</b>	17.7	6.0	<b>0.3</b>	2.5	0.8
Unemployment	339.4	<b>336.3</b>	13.3	<b>-3.1</b>	-17.5	-20.9	<b>-0.9</b>	-4.9	-5.9
Participation rate	65.0	<b>65.0</b>	0.2	<b>0.0</b>	-0.1	-0.3	...	...	...
Unemployment rate	8.1	<b>8.0</b>	0.3	<b>-0.1</b>	-0.4	-0.5	...	...	...
Employment rate	59.7	<b>59.8</b>	0.2	<b>0.1</b>	0.2	0.1	...	...	...

See notes at the end of the table.

Table 3 – continued

## Labour force characteristics by province, seasonally adjusted

	February 2010	March 2010	S.E. <sup>1</sup>	Change from			Percent change from		
				last month	last December	twelve months ago	last month	last December	twelve months ago
in thousands (except rates)									
<b>Ontario</b>									
Population	10,752.8	<b>10,764.7</b>	...	<b>11.9</b>	37.1	150.4	<b>0.1</b>	0.3	1.4
Labour force	7,219.6	<b>7,211.9</b>	19.5	<b>-7.7</b>	21.7	43.0	<b>-0.1</b>	0.3	0.6
Employment	6,564.8	<b>6,575.1</b>	19.0	<b>10.3</b>	47.7	42.3	<b>0.2</b>	0.7	0.6
Employment full-time	5,323.9	<b>5,320.0</b>	24.6	<b>-3.9</b>	18.6	55.8	<b>-0.1</b>	0.4	1.1
Employment part-time	1,240.8	<b>1,255.1</b>	22.5	<b>14.3</b>	29.2	-13.5	<b>1.2</b>	2.4	-1.1
Unemployment	654.9	<b>636.7</b>	17.4	<b>-18.2</b>	-26.1	0.6	<b>-2.8</b>	-3.9	0.1
Participation rate	67.1	<b>67.0</b>	0.2	<b>-0.1</b>	0.0	-0.5	...	...	...
Unemployment rate	9.1	<b>8.8</b>	0.2	<b>-0.3</b>	-0.4	-0.1	...	...	...
Employment rate	61.1	<b>61.1</b>	0.2	<b>0.0</b>	0.3	-0.4	...	...	...
<b>Manitoba</b>									
Population	930.5	<b>931.7</b>	...	<b>1.2</b>	3.1	13.7	<b>0.1</b>	0.3	1.5
Labour force	646.1	<b>645.7</b>	2.6	<b>-0.4</b>	4.8	10.9	<b>-0.1</b>	0.7	1.7
Employment	611.3	<b>612.2</b>	2.8	<b>0.9</b>	8.2	10.0	<b>0.1</b>	1.4	1.7
Employment full-time	494.3	<b>491.2</b>	3.7	<b>-3.1</b>	6.5	-3.3	<b>-0.6</b>	1.3	-0.7
Employment part-time	117.0	<b>121.0</b>	3.3	<b>4.0</b>	1.8	13.3	<b>3.4</b>	1.5	12.3
Unemployment	34.8	<b>33.5</b>	2.2	<b>-1.3</b>	-3.5	0.9	<b>-3.7</b>	-9.5	2.8
Participation rate	69.4	<b>69.3</b>	0.3	<b>-0.1</b>	0.3	0.1	...	...	...
Unemployment rate	5.4	<b>5.2</b>	0.3	<b>-0.2</b>	-0.6	0.1	...	...	...
Employment rate	65.7	<b>65.7</b>	0.3	<b>0.0</b>	0.7	0.1	...	...	...
<b>Saskatchewan</b>									
Population	786.4	<b>787.3</b>	...	<b>0.9</b>	3.0	11.0	<b>0.1</b>	0.4	1.4
Labour force	547.3	<b>555.4</b>	2.4	<b>8.1</b>	6.9	11.0	<b>1.5</b>	1.3	2.0
Employment	523.9	<b>527.2</b>	2.5	<b>3.3</b>	5.1	8.4	<b>0.6</b>	1.0	1.6
Employment full-time	433.2	<b>431.8</b>	3.4	<b>-1.4</b>	6.2	11.8	<b>-0.3</b>	1.5	2.8
Employment part-time	90.7	<b>95.4</b>	3.2	<b>4.7</b>	-1.1	-3.4	<b>5.2</b>	-1.1	-3.4
Unemployment	23.5	<b>28.3</b>	1.9	<b>4.8</b>	2.0	2.7	<b>20.4</b>	7.6	10.5
Participation rate	69.6	<b>70.5</b>	0.3	<b>0.9</b>	0.6	0.4	...	...	...
Unemployment rate	4.3	<b>5.1</b>	0.3	<b>0.8</b>	0.3	0.4	...	...	...
Employment rate	66.6	<b>67.0</b>	0.3	<b>0.4</b>	0.4	0.2	...	...	...
<b>Alberta</b>									
Population	2,904.1	<b>2,908.0</b>	...	<b>3.9</b>	12.7	66.3	<b>0.1</b>	0.4	2.3
Labour force	2,118.8	<b>2,128.5</b>	8.4	<b>9.7</b>	-7.4	13.2	<b>0.5</b>	-0.3	0.6
Employment	1,972.8	<b>1,969.4</b>	8.8	<b>-3.4</b>	-25.9	-16.9	<b>-0.2</b>	-1.3	-0.9
Employment full-time	1,623.8	<b>1,619.3</b>	11.7	<b>-4.5</b>	-12.5	-13.4	<b>-0.3</b>	-0.8	-0.8
Employment part-time	349.0	<b>350.1</b>	10.9	<b>1.1</b>	-13.4	-3.5	<b>0.3</b>	-3.7	-1.0
Unemployment	145.9	<b>159.2</b>	7.2	<b>13.3</b>	18.6	30.2	<b>9.1</b>	13.2	23.4
Participation rate	73.0	<b>73.2</b>	0.3	<b>0.2</b>	-0.6	-1.2	...	...	...
Unemployment rate	6.9	<b>7.5</b>	0.3	<b>0.6</b>	0.9	1.4	...	...	...
Employment rate	67.9	<b>67.7</b>	0.3	<b>-0.2</b>	-1.2	-2.2	...	...	...
<b>British Columbia</b>									
Population	3,751.3	<b>3,756.6</b>	...	<b>5.3</b>	17.7	70.8	<b>0.1</b>	0.5	1.9
Labour force	2,482.4	<b>2,485.3</b>	10.6	<b>2.9</b>	12.6	59.6	<b>0.1</b>	0.5	2.5
Employment	2,290.4	<b>2,289.9</b>	10.5	<b>-0.5</b>	21.4	46.8	<b>0.0</b>	0.9	2.1
Employment full-time	1,801.2	<b>1,788.6</b>	14.3	<b>-12.6</b>	16.2	28.9	<b>-0.7</b>	0.9	1.6
Employment part-time	489.2	<b>501.3</b>	13.3	<b>12.1</b>	5.2	17.9	<b>2.5</b>	1.0	3.7
Unemployment	192.0	<b>195.4</b>	8.5	<b>3.4</b>	-8.8	12.8	<b>1.8</b>	-4.3	7.0
Participation rate	66.2	<b>66.2</b>	0.3	<b>0.0</b>	0.1	0.4	...	...	...
Unemployment rate	7.7	<b>7.9</b>	0.3	<b>0.2</b>	-0.4	0.4	...	...	...
Employment rate	61.1	<b>61.0</b>	0.3	<b>-0.1</b>	0.3	0.1	...	...	...

1. Average standard error of change in two consecutive months (see "Sampling Errors" in Data Quality for further explanations).

Note(s): Related CANSIM Table 282-0087.

**Table 4-1**  
**Selected labour force characteristics (seasonally adjusted) — Newfoundland and Labrador**

	February 2010	March 2010	S.E. <sup>1</sup>	Change from			Percent change from		
				last month	last December	twelve months ago	last month	last December	twelve months ago
in thousands (except rates)									
<b>Both sexes, 15 years and over</b>									
Population	431.0	<b>431.2</b>	...	<b>0.2</b>	0.7	3.2	<b>0.0</b>	0.2	0.7
Labour force	257.3	<b>258.7</b>	2.1	<b>1.4</b>	2.7	6.4	<b>0.5</b>	1.1	2.5
Employment	219.6	<b>218.7</b>	2.2	<b>-0.9</b>	1.5	2.8	<b>-0.4</b>	0.7	1.3
Employment full-time	188.8	<b>187.0</b>	2.5	<b>-1.8</b>	0.1	2.2	<b>-1.0</b>	0.1	1.2
Unemployment	37.7	<b>40.0</b>	2.1	<b>2.3</b>	1.2	3.6	<b>6.1</b>	3.1	9.9
Participation rate	59.7	<b>60.0</b>	0.5	<b>0.3</b>	0.5	1.1	...	...	...
Unemployment rate	14.7	<b>15.5</b>	0.8	<b>0.8</b>	0.3	1.1	...	...	...
Employment rate	51.0	<b>50.7</b>	0.5	<b>-0.3</b>	0.2	0.3	...	...	...
Part-time rate	14.0	<b>14.5</b>	0.8	<b>0.5</b>	0.5	0.1	...	...	...
<b>Both sexes, 15 to 24 years</b>									
Population	60.9	<b>60.8</b>	...	<b>-0.1</b>	0.0	-0.7	<b>-0.2</b>	0.0	-1.1
Labour force	35.0	<b>35.1</b>	1.0	<b>0.1</b>	1.6	-0.3	<b>0.3</b>	4.8	-0.8
Employment	27.1	<b>26.0</b>	1.0	<b>-1.1</b>	-0.2	-1.3	<b>-4.1</b>	-0.8	-4.8
Unemployment	7.9	<b>9.2</b>	1.0	<b>1.3</b>	1.9	1.0	<b>16.5</b>	26.0	12.2
Participation rate	57.5	<b>57.7</b>	1.7	<b>0.2</b>	2.6	0.1	...	...	...
Unemployment rate	22.6	<b>26.2</b>	2.5	<b>3.6</b>	4.4	3.0	...	...	...
Employment rate	44.5	<b>42.8</b>	1.6	<b>-1.7</b>	-0.3	-1.6	...	...	...
Part-time rate	38.7	<b>38.8</b>	3.5	<b>0.1</b>	-0.5	-0.3	...	...	...
<b>Men, 25 years and over</b>									
Population	178.3	<b>178.5</b>	...	<b>0.2</b>	0.4	1.7	<b>0.1</b>	0.2	1.0
Labour force	115.1	<b>116.3</b>	1.2	<b>1.2</b>	0.2	3.6	<b>1.0</b>	0.2	3.2
Employment	97.9	<b>98.2</b>	1.4	<b>0.3</b>	1.4	2.6	<b>0.3</b>	1.4	2.7
Unemployment	17.2	<b>18.1</b>	1.4	<b>0.9</b>	-1.3	1.0	<b>5.2</b>	-6.7	5.8
Participation rate	64.6	<b>65.2</b>	0.7	<b>0.6</b>	0.0	1.5	...	...	...
Unemployment rate	14.9	<b>15.6</b>	1.2	<b>0.7</b>	-1.1	0.4	...	...	...
Employment rate	54.9	<b>55.0</b>	0.8	<b>0.1</b>	0.6	0.9	...	...	...
Part-time rate	4.9	<b>5.7</b>	0.8	<b>0.8</b>	1.4	1.2	...	...	...
<b>Women, 25 years and over</b>									
Population	191.8	<b>191.9</b>	...	<b>0.1</b>	0.4	2.2	<b>0.1</b>	0.2	1.2
Labour force	107.3	<b>107.2</b>	1.1	<b>-0.1</b>	0.9	3.0	<b>-0.1</b>	0.8	2.9
Employment	94.6	<b>94.5</b>	1.1	<b>-0.1</b>	0.3	1.5	<b>-0.1</b>	0.3	1.6
Unemployment	12.7	<b>12.7</b>	1.1	<b>0.0</b>	0.5	1.6	<b>0.0</b>	4.1	14.4
Participation rate	55.9	<b>55.9</b>	0.6	<b>0.0</b>	0.4	1.0	...	...	...
Unemployment rate	11.8	<b>11.8</b>	1.0	<b>0.0</b>	0.3	1.1	...	...	...
Employment rate	49.3	<b>49.2</b>	0.6	<b>-0.1</b>	0.0	0.2	...	...	...
Part-time rate	16.4	<b>16.8</b>	1.3	<b>0.4</b>	0.1	-0.5	...	...	...
<b>Industry</b>	<b>219.6</b>	<b>218.7</b>	<b>2.2</b>	<b>-0.9</b>	<b>1.5</b>	<b>2.8</b>	<b>-0.4</b>	<b>0.7</b>	<b>1.3</b>
<b>Goods-producing sector</b>									
Agriculture	0.5	<b>0.9</b>	0.2	<b>0.4</b>	0.2	-0.2	<b>80.0</b>	28.6	-18.2
Forestry, fishing, mining, oil and gas	16.1	<b>15.8</b>	1.0	<b>-0.3</b>	1.1	1.4	<b>-1.9</b>	7.5	9.7
Utilities	2.3	<b>2.0</b>	0.3	<b>-0.3</b>	0.0	0.1	<b>-13.0</b>	0.0	5.3
Construction	15.3	<b>14.8</b>	1.1	<b>-0.5</b>	-1.5	0.1	<b>-3.3</b>	-9.2	0.7
Manufacturing	11.5	<b>10.9</b>	1.0	<b>-0.6</b>	-1.0	-2.1	<b>-5.2</b>	-8.4	-16.2
<b>Services-producing sector</b>									
Trade	174.0	<b>174.3</b>	2.1	<b>0.3</b>	2.8	3.5	<b>0.2</b>	1.6	2.0
Transportation and warehousing	35.7	<b>36.3</b>	1.2	<b>0.6</b>	1.5	2.1	<b>1.7</b>	4.3	6.1
Finance, insurance, real estate and leasing	12.8	<b>12.7</b>	0.8	<b>-0.1</b>	0.2	0.1	<b>-0.8</b>	1.6	0.8
Professional, scientific and technical services	7.5	<b>7.9</b>	0.6	<b>0.4</b>	0.8	0.6	<b>5.3</b>	11.3	8.2
Business, building and other support services	7.0	<b>7.1</b>	0.6	<b>0.1</b>	-1.1	-1.1	<b>1.4</b>	-13.4	-13.4
Educational services	6.6	<b>5.8</b>	0.7	<b>-0.8</b>	0.8	-1.8	<b>-12.1</b>	16.0	-23.7
Health care and social assistance	18.0	<b>17.6</b>	0.9	<b>-0.4</b>	-0.1	0.5	<b>-2.2</b>	-0.6	2.9
Information, culture and recreation	37.2	<b>36.3</b>	1.1	<b>-0.9</b>	0.6	2.3	<b>-2.4</b>	1.7	6.8
Accommodation and food services	7.4	<b>7.5</b>	0.7	<b>0.1</b>	-0.5	-2.0	<b>1.4</b>	-6.2	-21.1
Other services	13.7	<b>14.5</b>	0.9	<b>0.8</b>	0.3	2.0	<b>5.8</b>	2.1	16.0
Public administration	10.6	<b>10.7</b>	0.8	<b>0.1</b>	-0.2	0.2	<b>0.9</b>	-1.8	1.9
	17.5	<b>17.8</b>	0.9	<b>0.3</b>	0.3	0.6	<b>1.7</b>	1.7	3.5

1. Average standard error of change in two consecutive months (see "Sampling Errors" in Data Quality for further explanations).

**Note(s):** Related CANSIM Tables 282-0087, 282-0088.

**Table 4-2**  
**Selected labour force characteristics (seasonally adjusted) — Prince Edward Island**

	February 2010	March 2010	S.E. <sup>1</sup>	Change from			Percent change from		
				last month	last December	twelve months ago	last month	last December	twelve months ago
in thousands (except rates)									
<b>Both sexes, 15 years and over</b>									
Population	116.6	<b>116.8</b>	...	<b>0.2</b>	0.4	1.4	<b>0.2</b>	0.3	1.2
Labour force	80.3	<b>80.6</b>	0.6	<b>0.3</b>	0.8	2.9	<b>0.4</b>	1.0	3.7
Employment	72.2	<b>72.0</b>	0.7	<b>-0.2</b>	0.8	3.2	<b>-0.3</b>	1.1	4.7
Employment full-time	58.6	<b>59.2</b>	0.8	<b>0.6</b>	1.0	1.1	<b>1.0</b>	1.7	1.9
Unemployment	8.2	<b>8.7</b>	0.7	<b>0.5</b>	0.1	-0.2	<b>6.1</b>	1.2	-2.2
Participation rate	68.9	<b>69.0</b>	0.6	<b>0.1</b>	0.4	1.7	...	...	...
Unemployment rate	10.2	<b>10.8</b>	0.8	<b>0.6</b>	0.0	-0.7	...	...	...
Employment rate	61.9	<b>61.6</b>	0.6	<b>-0.3</b>	0.4	2.0	...	...	...
Part-time rate	18.8	<b>17.8</b>	1.0	<b>-1.1</b>	-0.5	2.2	...	...	...
<b>Both sexes, 15 to 24 years</b>									
Population	19.7	<b>19.8</b>	...	<b>0.1</b>	0.0	0.1	<b>0.5</b>	0.0	0.5
Labour force	13.8	<b>14.0</b>	0.4	<b>0.2</b>	0.3	0.4	<b>1.4</b>	2.2	2.9
Employment	11.6	<b>11.6</b>	0.4	<b>0.0</b>	0.2	0.4	<b>0.0</b>	1.8	3.6
Unemployment	2.2	<b>2.4</b>	0.4	<b>0.2</b>	0.1	0.1	<b>9.1</b>	4.3	4.3
Participation rate	70.1	<b>70.7</b>	1.9	<b>0.6</b>	1.5	1.7	...	...	...
Unemployment rate	15.9	<b>17.1</b>	2.4	<b>1.2</b>	0.3	0.2	...	...	...
Employment rate	58.9	<b>58.6</b>	1.9	<b>-0.3</b>	1.0	1.7	...	...	...
Part-time rate	41.4	<b>41.4</b>	3.2	<b>0.0</b>	1.9	3.9	...	...	...
<b>Men, 25 years and over</b>									
Population	46.5	<b>46.6</b>	...	<b>0.1</b>	0.2	0.6	<b>0.2</b>	0.4	1.3
Labour force	34.0	<b>34.0</b>	0.4	<b>0.0</b>	-0.3	1.4	<b>0.0</b>	-0.9	4.3
Employment	30.6	<b>30.4</b>	0.4	<b>-0.2</b>	0.0	1.5	<b>-0.7</b>	0.0	5.2
Unemployment	3.5	<b>3.7</b>	0.4	<b>0.2</b>	-0.1	0.0	<b>5.7</b>	-2.6	0.0
Participation rate	73.1	<b>73.0</b>	0.8	<b>-0.1</b>	-0.9	2.1	...	...	...
Unemployment rate	10.3	<b>10.9</b>	1.2	<b>0.6</b>	-0.2	-0.4	...	...	...
Employment rate	65.8	<b>65.2</b>	0.9	<b>-0.6</b>	-0.3	2.4	...	...	...
Part-time rate	8.2	<b>6.9</b>	1.0	<b>-1.3</b>	-0.3	1.4	...	...	...
<b>Women, 25 years and over</b>									
Population	50.3	<b>50.4</b>	...	<b>0.1</b>	0.1	0.8	<b>0.2</b>	0.2	1.6
Labour force	32.5	<b>32.6</b>	0.3	<b>0.1</b>	0.8	1.0	<b>0.3</b>	2.5	3.2
Employment	30.0	<b>30.1</b>	0.4	<b>0.1</b>	0.7	1.4	<b>0.3</b>	2.4	4.9
Unemployment	2.6	<b>2.6</b>	0.4	<b>0.0</b>	0.2	-0.3	<b>0.0</b>	8.3	-10.3
Participation rate	64.6	<b>64.7</b>	0.7	<b>0.1</b>	1.5	1.0	...	...	...
Unemployment rate	8.0	<b>8.0</b>	1.1	<b>0.0</b>	0.5	-1.2	...	...	...
Employment rate	59.6	<b>59.7</b>	0.8	<b>0.1</b>	1.3	1.8	...	...	...
Part-time rate	21.0	<b>19.6</b>	1.5	<b>-1.4</b>	-1.8	2.2	...	...	...
<b>Industry</b>	72.2	<b>72.0</b>	0.7	<b>-0.2</b>	0.8	3.2	<b>-0.3</b>	1.1	4.7
<b>Goods-producing sector</b>	18.0	<b>16.8</b>	0.6	<b>-1.2</b>	-1.3	-1.6	<b>-6.7</b>	-7.2	-8.7
Agriculture	3.8	<b>3.5</b>	0.3	<b>-0.3</b>	-0.5	0.0	<b>-7.9</b>	-12.5	0.0
Forestry, fishing, mining, oil and gas	2.7	<b>2.7</b>	0.3	<b>0.0</b>	0.2	-0.4	<b>0.0</b>	8.0	-12.9
Utilities	0.2	<b>0.3</b>	0.1	<b>0.1</b>	-0.2	0.0	<b>50.0</b>	-40.0	0.0
Construction	6.2	<b>5.1</b>	0.3	<b>-1.1</b>	-0.8	-0.5	<b>-17.7</b>	-13.6	-8.9
Manufacturing	5.1	<b>5.2</b>	0.3	<b>0.1</b>	0.0	-0.7	<b>2.0</b>	0.0	-11.9
<b>Services-producing sector</b>	54.2	<b>55.2</b>	0.7	<b>1.0</b>	2.2	4.8	<b>1.8</b>	4.2	9.5
Trade	11.3	<b>11.2</b>	0.4	<b>-0.1</b>	0.0	2.2	<b>-0.9</b>	0.0	24.4
Transportation and warehousing	2.2	<b>2.2</b>	0.2	<b>0.0</b>	0.3	-0.1	<b>0.0</b>	15.8	-4.3
Finance, insurance, real estate and leasing	2.3	<b>2.5</b>	0.2	<b>0.2</b>	-0.1	0.1	<b>8.7</b>	-3.8	4.2
Professional, scientific and technical services	2.4	<b>2.5</b>	0.2	<b>0.1</b>	0.4	0.5	<b>4.2</b>	19.0	25.0
Business, building and other support services	2.9	<b>2.4</b>	0.3	<b>-0.5</b>	-0.5	-0.4	<b>-17.2</b>	-17.2	-14.3
Educational services	5.6	<b>6.2</b>	0.3	<b>0.6</b>	0.6	1.2	<b>10.7</b>	10.7	24.0
Health care and social assistance	8.5	<b>8.8</b>	0.3	<b>0.3</b>	0.4	1.2	<b>3.5</b>	4.8	15.8
Information, culture and recreation	2.2	<b>2.3</b>	0.2	<b>0.1</b>	-0.1	-0.6	<b>4.5</b>	-4.2	-20.7
Accommodation and food services	5.5	<b>5.6</b>	0.4	<b>0.1</b>	0.6	0.1	<b>1.8</b>	12.0	1.8
Other services	3.6	<b>3.7</b>	0.3	<b>0.1</b>	0.4	0.4	<b>2.8</b>	12.1	12.1
Public administration	7.7	<b>7.9</b>	0.3	<b>0.2</b>	0.3	0.1	<b>2.6</b>	3.9	1.3

1. Average standard error of change in two consecutive months (see "Sampling Errors" in Data Quality for further explanations).

**Note(s):** Related CANSIM Tables 282-0087, 282-0088.

**Table 4-3**  
**Selected labour force characteristics (seasonally adjusted) — Nova Scotia**

	February 2010	March 2010	S.E.	Change from			Percent change from		
				last month	last December	twelve months ago	last month	last December	twelve months ago
in thousands (except rates)									
<b>Both sexes, 15 years and over</b>									
Population	775.0	<b>775.1</b>	...	<b>0.1</b>	0.6	3.5	<b>0.0</b>	0.1	0.5
Labour force	497.6	<b>494.9</b>	2.7	<b>-2.7</b>	-5.0	-2.5	<b>-0.5</b>	-1.0	-0.5
Employment	451.2	<b>452.7</b>	2.9	<b>1.5</b>	0.7	0.0	<b>0.3</b>	0.2	0.0
Employment full-time	367.3	<b>371.3</b>	3.6	<b>4.0</b>	2.5	1.5	<b>1.1</b>	0.7	0.4
Unemployment	46.5	<b>42.2</b>	2.6	<b>-4.3</b>	-5.6	-2.5	<b>-9.2</b>	-11.7	-5.6
Participation rate	64.2	<b>63.8</b>	0.4	<b>-0.4</b>	-0.7	-0.7	...	...	...
Unemployment rate	9.3	<b>8.5</b>	0.5	<b>-0.8</b>	-1.1	-0.5	...	...	...
Employment rate	58.2	<b>58.4</b>	0.4	<b>0.2</b>	0.0	-0.3	...	...	...
Part-time rate	18.6	<b>18.0</b>	0.7	<b>-0.6</b>	-0.4	-0.4	...	...	...
<b>Both sexes, 15 to 24 years</b>									
Population	119.6	<b>119.5</b>	...	<b>-0.1</b>	-0.3	-1.1	<b>-0.1</b>	-0.3	-0.9
Labour force	79.1	<b>79.3</b>	1.6	<b>0.2</b>	-2.7	-2.1	<b>0.3</b>	-3.3	-2.6
Employment	66.1	<b>66.9</b>	1.6	<b>0.8</b>	-1.4	-0.3	<b>1.2</b>	-2.0	-0.4
Unemployment	13.0	<b>12.4</b>	1.5	<b>-0.6</b>	-1.2	-1.8	<b>-4.6</b>	-8.8	-12.7
Participation rate	66.1	<b>66.4</b>	1.3	<b>0.3</b>	-2.0	-1.1	...	...	...
Unemployment rate	16.4	<b>15.6</b>	1.7	<b>-0.8</b>	-1.0	-1.8	...	...	...
Employment rate	55.3	<b>56.0</b>	1.3	<b>0.7</b>	-1.0	0.3	...	...	...
Part-time rate	43.9	<b>43.9</b>	2.5	<b>0.1</b>	-2.0	0.0	...	...	...
<b>Men, 25 years and over</b>									
Population	312.4	<b>312.5</b>	...	<b>0.1</b>	0.4	2.2	<b>0.0</b>	0.1	0.7
Labour force	213.6	<b>212.6</b>	1.5	<b>-1.0</b>	-1.4	-0.9	<b>-0.5</b>	-0.7	-0.4
Employment	194.6	<b>197.1</b>	1.7	<b>2.5</b>	2.3	2.2	<b>1.3</b>	1.2	1.1
Unemployment	19.0	<b>15.6</b>	1.6	<b>-3.4</b>	-3.6	-3.0	<b>-17.9</b>	-18.8	-16.1
Participation rate	68.4	<b>68.0</b>	0.5	<b>-0.4</b>	-0.6	-0.8	...	...	...
Unemployment rate	8.9	<b>7.3</b>	0.7	<b>-1.6</b>	-1.7	-1.4	...	...	...
Employment rate	62.3	<b>63.1</b>	0.5	<b>0.8</b>	0.7	0.3	...	...	...
Part-time rate	7.6	<b>6.7</b>	0.7	<b>-0.8</b>	0.2	-0.9	...	...	...
<b>Women, 25 years and over</b>									
Population	343.0	<b>343.1</b>	...	<b>0.1</b>	0.4	2.3	<b>0.0</b>	0.1	0.7
Labour force	205.0	<b>203.0</b>	1.5	<b>-2.0</b>	-0.9	0.5	<b>-1.0</b>	-0.4	0.2
Employment	190.5	<b>188.7</b>	1.5	<b>-1.8</b>	-0.2	-2.0	<b>-0.9</b>	-0.1	-1.0
Unemployment	14.5	<b>14.3</b>	1.3	<b>-0.2</b>	-0.7	2.5	<b>-1.4</b>	-4.7	21.2
Participation rate	59.8	<b>59.2</b>	0.4	<b>-0.6</b>	-0.3	-0.2	...	...	...
Unemployment rate	7.1	<b>7.0</b>	0.6	<b>-0.1</b>	-0.4	1.2	...	...	...
Employment rate	55.5	<b>55.0</b>	0.4	<b>-0.5</b>	-0.1	-1.0	...	...	...
Part-time rate	21.0	<b>20.5</b>	1.1	<b>-0.5</b>	-0.2	0.4	...	...	...
<b>Industry</b>	451.2	<b>452.7</b>	2.9	<b>1.5</b>	0.7	0.0	<b>0.3</b>	0.2	0.0
<b>Goods-producing sector</b>	85.9	<b>90.2</b>	2.4	<b>4.3</b>	4.7	2.3	<b>5.0</b>	5.5	2.6
Agriculture	5.6	<b>7.0</b>	0.7	<b>1.4</b>	1.7	0.5	<b>25.0</b>	32.1	7.7
Forestry, fishing, mining, oil and gas	11.2	<b>12.2</b>	1.1	<b>1.0</b>	0.1	0.6	<b>8.9</b>	0.8	5.2
Utilities	4.6	<b>4.3</b>	0.4	<b>-0.3</b>	0.4	1.8	<b>-6.5</b>	10.3	72.0
Construction	31.7	<b>32.7</b>	1.5	<b>1.0</b>	0.6	2.7	<b>3.2</b>	1.9	9.0
Manufacturing	32.7	<b>34.0</b>	1.4	<b>1.3</b>	1.9	-3.3	<b>4.0</b>	5.9	-8.8
<b>Services-producing sector</b>	365.3	<b>362.4</b>	3.0	<b>-2.9</b>	-4.1	-2.4	<b>-0.8</b>	-1.1	-0.7
Trade	74.9	<b>73.9</b>	2.1	<b>-1.0</b>	-1.7	-0.9	<b>-1.3</b>	-2.2	-1.2
Transportation and warehousing	18.6	<b>19.2</b>	1.1	<b>0.6</b>	0.0	-0.6	<b>3.2</b>	0.0	-3.0
Finance, insurance, real estate and leasing	22.6	<b>23.8</b>	1.0	<b>1.2</b>	-0.1	1.6	<b>5.3</b>	-0.4	7.2
Professional, scientific and technical services	22.2	<b>23.9</b>	1.1	<b>1.7</b>	0.8	-0.4	<b>7.7</b>	3.5	-1.6
Business, building and other support services	23.0	<b>23.4</b>	1.3	<b>0.4</b>	0.8	-1.7	<b>1.7</b>	3.5	-6.8
Educational services	36.4	<b>35.7</b>	1.4	<b>-0.7</b>	-1.5	-1.5	<b>-1.9</b>	-4.0	-4.0
Health care and social assistance	68.8	<b>67.6</b>	1.6	<b>-1.2</b>	0.0	7.4	<b>-1.7</b>	0.0	12.3
Information, culture and recreation	19.8	<b>19.1</b>	1.1	<b>-0.7</b>	1.3	-0.9	<b>-3.5</b>	7.3	-4.5
Accommodation and food services	29.5	<b>28.1</b>	1.4	<b>-1.4</b>	-0.3	-2.9	<b>-4.7</b>	-1.1	-9.4
Other services	19.4	<b>17.4</b>	1.2	<b>-2.0</b>	-3.1	-0.7	<b>-10.3</b>	-15.1	-3.9
Public administration	30.1	<b>30.3</b>	1.2	<b>0.2</b>	-0.3	-1.8	<b>0.7</b>	-1.0	-5.6

1. Average standard error of change in two consecutive months (see "Sampling Errors" in Data Quality for further explanations).

**Note(s):** Related CANSIM Tables 282-0087, 282-0088.



**Table 4-4**  
**Selected labour force characteristics (seasonally adjusted) — New Brunswick**

	February 2010	March 2010	S.E. <sup>1</sup>	Change from			Percent change from		
				last month	last December	twelve months ago	last month	last December	twelve months ago
in thousands (except rates)									
<b>Both sexes, 15 years and over</b>									
Population	623.2	<b>623.3</b>	...	<b>0.1</b>	0.5	2.8	<b>0.0</b>	0.1	0.5
Labour force	402.6	<b>401.3</b>	2.4	<b>-1.3</b>	0.1	-2.0	<b>-0.3</b>	0.0	-0.5
Employment	365.9	<b>366.5</b>	2.5	<b>0.6</b>	1.1	1.8	<b>0.2</b>	0.3	0.5
Employment full-time	310.2	<b>314.7</b>	2.9	<b>4.5</b>	5.2	8.7	<b>1.5</b>	1.7	2.8
Unemployment	36.7	<b>34.8</b>	2.2	<b>-1.9</b>	-1.0	-3.8	<b>-5.2</b>	-2.8	-9.8
Participation rate	64.6	<b>64.4</b>	0.4	<b>-0.2</b>	0.0	-0.6	...	...	...
Unemployment rate	9.1	<b>8.7</b>	0.5	<b>-0.4</b>	-0.2	-0.9	...	...	...
Employment rate	58.7	<b>58.8</b>	0.4	<b>0.1</b>	0.1	0.0	...	...	...
Part-time rate	15.3	<b>14.1</b>	0.6	<b>-1.1</b>	-1.2	-2.0	...	...	...
<b>Both sexes, 15 to 24 years</b>									
Population	92.8	<b>92.7</b>	...	<b>-0.1</b>	-0.3	-1.5	<b>-0.1</b>	-0.3	-1.6
Labour force	61.9	<b>60.4</b>	1.3	<b>-1.5</b>	-0.2	-3.0	<b>-2.4</b>	-0.3	-4.7
Employment	51.6	<b>50.8</b>	1.3	<b>-0.8</b>	0.6	-3.8	<b>-1.6</b>	1.2	-7.0
Unemployment	10.3	<b>9.6</b>	1.2	<b>-0.7</b>	-0.8	0.8	<b>-6.8</b>	-7.7	9.1
Participation rate	66.7	<b>65.2</b>	1.4	<b>-1.5</b>	0.0	-2.1	...	...	...
Unemployment rate	16.6	<b>15.9</b>	1.7	<b>-0.7</b>	-1.3	2.0	...	...	...
Employment rate	55.6	<b>54.8</b>	1.4	<b>-0.8</b>	0.8	-3.2	...	...	...
Part-time rate	40.1	<b>36.8</b>	2.3	<b>-3.3</b>	-4.6	-3.1	...	...	...
<b>Men, 25 years and over</b>									
Population	256.0	<b>256.1</b>	...	<b>0.1</b>	0.5	2.1	<b>0.0</b>	0.2	0.8
Labour force	176.5	<b>176.4</b>	1.4	<b>-0.1</b>	-1.5	-0.1	<b>-0.1</b>	-0.8	-0.1
Employment	161.1	<b>161.4</b>	1.5	<b>0.3</b>	-1.2	2.1	<b>0.2</b>	-0.7	1.3
Unemployment	15.4	<b>15.0</b>	1.4	<b>-0.4</b>	-0.3	-2.3	<b>-2.6</b>	-2.0	-13.3
Participation rate	68.9	<b>68.9</b>	0.5	<b>0.0</b>	-0.7	-0.6	...	...	...
Unemployment rate	8.7	<b>8.5</b>	0.8	<b>-0.2</b>	-0.1	-1.3	...	...	...
Employment rate	62.9	<b>63.0</b>	0.6	<b>0.1</b>	-0.6	0.3	...	...	...
Part-time rate	6.0	<b>5.8</b>	0.7	<b>-0.3</b>	0.5	-0.3	...	...	...
<b>Women, 25 years and over</b>									
Population	274.4	<b>274.5</b>	...	<b>0.1</b>	0.3	2.2	<b>0.0</b>	0.1	0.8
Labour force	164.3	<b>164.6</b>	1.3	<b>0.3</b>	1.9	1.2	<b>0.2</b>	1.2	0.7
Employment	153.3	<b>154.3</b>	1.3	<b>1.0</b>	1.7	3.5	<b>0.7</b>	1.1	2.3
Unemployment	11.0	<b>10.2</b>	1.1	<b>-0.8</b>	0.1	-2.4	<b>-7.3</b>	1.0	-19.0
Participation rate	59.9	<b>60.0</b>	0.5	<b>0.1</b>	0.7	0.0	...	...	...
Unemployment rate	6.7	<b>6.2</b>	0.7	<b>-0.5</b>	0.0	-1.5	...	...	...
Employment rate	55.9	<b>56.2</b>	0.5	<b>0.3</b>	0.5	0.8	...	...	...
Part-time rate	16.5	<b>15.5</b>	1.0	<b>-1.0</b>	-1.9	-2.6	...	...	...
<b>Industry</b>	365.9	<b>366.5</b>	2.5	<b>0.6</b>	1.1	1.8	<b>0.2</b>	0.3	0.5
<b>Goods-producing sector</b>									
Agriculture	6.4	<b>6.4</b>	0.6	<b>0.0</b>	-0.4	-1.3	<b>0.0</b>	-5.9	-16.9
Forestry, fishing, mining, oil and gas	9.8	<b>9.7</b>	0.8	<b>-0.1</b>	-1.0	-1.3	<b>-1.0</b>	-9.3	-11.8
Utilities	4.0	<b>4.3</b>	0.5	<b>0.3</b>	-0.4	-0.2	<b>7.5</b>	-8.5	-4.4
Construction	26.9	<b>28.1</b>	1.3	<b>1.2</b>	2.1	2.1	<b>4.5</b>	8.1	8.1
Manufacturing	34.6	<b>34.1</b>	1.3	<b>-0.5</b>	0.4	1.1	<b>-1.4</b>	1.2	3.3
<b>Services-producing sector</b>									
Trade	284.2	<b>284.0</b>	2.5	<b>-0.2</b>	0.5	1.5	<b>-0.1</b>	0.2	0.5
Transportation and warehousing	58.4	<b>58.2</b>	1.6	<b>-0.2</b>	3.2	2.4	<b>-0.3</b>	5.8	4.3
Finance, insurance, real estate and leasing	19.6	<b>19.8</b>	0.9	<b>0.2</b>	-0.4	1.5	<b>1.0</b>	-2.0	8.2
Professional, scientific and technical services	15.5	<b>15.5</b>	0.9	<b>0.0</b>	-0.5	0.9	<b>0.0</b>	-3.1	6.2
Business, building and other support services	15.6	<b>15.9</b>	0.9	<b>0.3</b>	0.3	-1.9	<b>1.9</b>	1.9	-10.7
Educational services	20.2	<b>20.3</b>	1.1	<b>0.1</b>	1.1	-0.6	<b>0.5</b>	5.7	-2.9
Health care and social assistance	28.4	<b>28.7</b>	1.2	<b>0.3</b>	1.1	0.9	<b>1.1</b>	4.0	3.2
Information, culture and recreation	48.7	<b>49.7</b>	1.4	<b>1.0</b>	0.6	-1.5	<b>2.1</b>	1.2	-2.9
Accommodation and food services	12.8	<b>13.6</b>	0.8	<b>0.8</b>	1.4	2.7	<b>6.2</b>	11.5	24.8
Other services	22.5	<b>20.3</b>	1.1	<b>-2.2</b>	-4.6	-2.6	<b>-9.8</b>	-18.5	-11.4
Public administration	17.8	<b>17.5</b>	0.9	<b>-0.3</b>	0.4	3.4	<b>-1.7</b>	2.3	24.1
	24.8	<b>24.5</b>	1.1	<b>-0.3</b>	-2.2	-3.7	<b>-1.2</b>	-8.2	-13.1

1. Average standard error of change in two consecutive months (see "Sampling Errors" in Data Quality for further explanations).

**Note(s):** Related CANSIM Tables 282-0087, 282-0088.

**Table 4-5**  
**Selected labour force characteristics (seasonally adjusted) — Quebec**

	February 2010	March 2010	S.E.	Change from			Percent change from		
				last month	last December	twelve months ago	last month	last December	twelve months ago
in thousands (except rates)									
<b>Both sexes, 15 years and over</b>									
Population	6,484.9	<b>6,490.6</b>	...	<b>5.7</b>	18.9	74.5	<b>0.1</b>	0.3	1.2
Labour force	4,212.7	<b>4,215.9</b>	14.2	<b>3.2</b>	3.7	28.2	<b>0.1</b>	0.1	0.7
Employment	3,873.3	<b>3,879.6</b>	14.5	<b>6.3</b>	21.2	49.1	<b>0.2</b>	0.5	1.3
Employment full-time	3,137.5	<b>3,141.5</b>	18.8	<b>4.0</b>	3.6	43.2	<b>0.1</b>	0.1	1.4
Unemployment	339.4	<b>336.3</b>	13.3	<b>-3.1</b>	-17.5	-20.9	<b>-0.9</b>	-4.9	-5.9
Participation rate	65.0	<b>65.0</b>	0.2	<b>0.0</b>	-0.1	-0.3	...	...	...
Unemployment rate	8.1	<b>8.0</b>	0.3	<b>-0.1</b>	-0.4	-0.5	...	...	...
Employment rate	59.7	<b>59.8</b>	0.2	<b>0.1</b>	0.2	0.1	...	...	...
Part-time rate	19.0	<b>19.0</b>	0.4	<b>0.0</b>	0.4	-0.1	...	...	...
<b>Both sexes, 15 to 24 years</b>									
Population	965.1	<b>965.5</b>	...	<b>0.4</b>	1.1	3.4	<b>0.0</b>	0.1	0.4
Labour force	637.6	<b>641.5</b>	8.3	<b>3.9</b>	0.1	4.4	<b>0.6</b>	0.0	0.7
Employment	542.1	<b>541.7</b>	8.1	<b>-0.4</b>	5.7	1.2	<b>-0.1</b>	1.1	0.2
Unemployment	95.5	<b>99.8</b>	7.5	<b>4.3</b>	-5.6	3.1	<b>4.5</b>	-5.3	3.2
Participation rate	66.1	<b>66.4</b>	0.9	<b>0.3</b>	-0.1	0.2	...	...	...
Unemployment rate	15.0	<b>15.6</b>	1.1	<b>0.6</b>	-0.8	0.4	...	...	...
Employment rate	56.2	<b>56.1</b>	0.8	<b>-0.1</b>	0.5	-0.1	...	...	...
Part-time rate	50.6	<b>51.2</b>	1.5	<b>0.6</b>	1.7	-1.1	...	...	...
<b>Men, 25 years and over</b>									
Population	2,699.8	<b>2,702.6</b>	...	<b>2.8</b>	9.4	37.0	<b>0.1</b>	0.3	1.4
Labour force	1,890.5	<b>1,888.0</b>	7.9	<b>-2.5</b>	-0.3	22.9	<b>-0.1</b>	0.0	1.2
Employment	1,742.3	<b>1,742.9</b>	8.4	<b>0.6</b>	7.2	34.7	<b>0.0</b>	0.4	2.0
Unemployment	148.2	<b>145.1</b>	8.1	<b>-3.1</b>	-7.5	-11.8	<b>-2.1</b>	-4.9	-7.5
Participation rate	70.0	<b>69.9</b>	0.3	<b>-0.1</b>	-0.2	-0.1	...	...	...
Unemployment rate	7.8	<b>7.7</b>	0.4	<b>-0.1</b>	-0.4	-0.7	...	...	...
Employment rate	64.5	<b>64.5</b>	0.3	<b>0.0</b>	0.1	0.4	...	...	...
Part-time rate	8.3	<b>7.7</b>	0.5	<b>-0.6</b>	-0.5	0.4	...	...	...
<b>Women, 25 years and over</b>									
Population	2,820.0	<b>2,822.6</b>	...	<b>2.6</b>	8.5	34.2	<b>0.1</b>	0.3	1.2
Labour force	1,684.6	<b>1,686.5</b>	8.0	<b>1.9</b>	4.0	1.0	<b>0.1</b>	0.2	0.1
Employment	1,588.9	<b>1,595.1</b>	8.0	<b>6.2</b>	8.4	13.3	<b>0.4</b>	0.5	0.8
Unemployment	95.7	<b>91.4</b>	6.7	<b>-4.3</b>	-4.5	-12.3	<b>-4.5</b>	-4.7	-11.9
Participation rate	59.7	<b>59.7</b>	0.3	<b>0.0</b>	-0.1	-0.7	...	...	...
Unemployment rate	5.7	<b>5.4</b>	0.4	<b>-0.3</b>	-0.3	-0.8	...	...	...
Employment rate	56.3	<b>56.5</b>	0.3	<b>0.2</b>	0.1	-0.2	...	...	...
Part-time rate	19.9	<b>20.5</b>	0.7	<b>0.5</b>	0.8	0.0	...	...	...
<b>Industry</b>	<b>3,873.3</b>	<b>3,879.6</b>	14.5	<b>6.3</b>	21.2	49.1	<b>0.2</b>	0.5	1.3
<b>Goods-producing sector</b>									
Agriculture	851.2	<b>860.5</b>	11.7	<b>9.3</b>	-8.2	-3.6	<b>1.1</b>	-0.9	-0.4
Forestry, fishing, mining, oil and gas	53.5	<b>52.7</b>	3.2	<b>-0.8</b>	-2.6	-6.0	<b>-1.5</b>	-4.7	-10.2
Utilities	30.6	<b>30.4</b>	1.9	<b>-0.2</b>	-0.7	1.4	<b>-0.7</b>	-2.3	4.8
Construction	34.7	<b>34.0</b>	2.3	<b>-0.7</b>	0.7	-0.5	<b>-2.0</b>	2.1	-1.4
Manufacturing	218.9	<b>232.3</b>	6.8	<b>13.4</b>	12.8	22.9	<b>6.1</b>	5.8	10.9
	513.5	<b>511.1</b>	9.4	<b>-2.4</b>	-18.4	-21.3	<b>-0.5</b>	-3.5	-4.0
<b>Services-producing sector</b>									
Trade	3,022.0	<b>3,019.1</b>	16.0	<b>-2.9</b>	29.4	52.7	<b>-0.1</b>	1.0	1.8
Transportation and warehousing	637.2	<b>639.4</b>	10.3	<b>2.2</b>	-0.1	14.2	<b>0.3</b>	0.0	2.3
Finance, insurance, real estate and leasing	155.2	<b>155.3</b>	5.5	<b>0.1</b>	-7.9	-14.4	<b>0.1</b>	-4.8	-8.5
Professional, scientific and technical services	235.7	<b>232.9</b>	6.4	<b>-2.8</b>	1.2	11.6	<b>-1.2</b>	0.5	5.2
Business, building and other support services	285.6	<b>289.7</b>	7.6	<b>4.1</b>	0.0	16.0	<b>1.4</b>	0.0	5.8
Educational services	136.8	<b>136.7</b>	6.2	<b>-0.1</b>	7.8	-14.0	<b>-0.1</b>	6.1	-9.3
Health care and social assistance	262.7	<b>261.3</b>	7.1	<b>-1.4</b>	-6.6	15.1	<b>-0.5</b>	-2.5	6.1
Information, culture and recreation	490.8	<b>496.7</b>	8.6	<b>5.9</b>	16.3	7.8	<b>1.2</b>	3.4	1.6
Accommodation and food services	179.6	<b>177.0</b>	6.3	<b>-2.6</b>	-0.1	11.1	<b>-1.4</b>	-0.1	6.7
Other services	235.9	<b>233.5</b>	7.7	<b>-2.4</b>	9.0	8.7	<b>-1.0</b>	4.0	3.9
Public administration	170.4	<b>161.4</b>	5.9	<b>-9.0</b>	0.9	-20.5	<b>-5.3</b>	0.6	-11.3
	232.0	<b>235.3</b>	5.9	<b>3.3</b>	9.0	17.2	<b>1.4</b>	4.0	7.9

1. Average standard error of change in two consecutive months (see "Sampling Errors" in Data Quality for further explanations).

**Note(s):** Related CANSIM Tables 282-0087, 282-0088.

**Table 4-6**  
**Selected labour force characteristics (seasonally adjusted) — Ontario**

	February 2010	March 2010	S.E. <sup>1</sup>	Change from			Percent change from		
				last month	last December	twelve months ago	last month	last December	twelve months ago
in thousands (except rates)									
<b>Both sexes, 15 years and over</b>									
Population	10,752.8	<b>10,764.7</b>	...	<b>11.9</b>	37.1	150.4	<b>0.1</b>	0.3	1.4
Labour force	7,219.6	<b>7,211.9</b>	19.5	<b>-7.7</b>	21.7	43.0	<b>-0.1</b>	0.3	0.6
Employment	6,564.8	<b>6,575.1</b>	19.0	<b>10.3</b>	47.7	42.3	<b>0.2</b>	0.7	0.6
Employment full-time	5,323.9	<b>5,320.0</b>	24.6	<b>-3.9</b>	18.6	55.8	<b>-0.1</b>	0.4	1.1
Unemployment	654.9	<b>636.7</b>	17.4	<b>-18.2</b>	-26.1	0.6	<b>-2.8</b>	-3.9	0.1
Participation rate	67.1	<b>67.0</b>	0.2	<b>-0.1</b>	0.0	-0.5	...	...	...
Unemployment rate	9.1	<b>8.8</b>	0.2	<b>-0.3</b>	-0.4	-0.1	...	...	...
Employment rate	61.1	<b>61.1</b>	0.2	<b>0.0</b>	0.3	-0.4	...	...	...
Part-time rate	18.9	<b>19.1</b>	0.3	<b>0.2</b>	0.3	-0.3	...	...	...
<b>Both sexes, 15 to 24 years</b>									
Population	1,750.4	<b>1,751.4</b>	...	<b>1.0</b>	2.6	9.5	<b>0.1</b>	0.1	0.5
Labour force	1,090.8	<b>1,094.7</b>	11.8	<b>3.9</b>	12.6	-10.3	<b>0.4</b>	1.2	-0.9
Employment	892.4	<b>901.4</b>	10.4	<b>9.0</b>	19.3	-13.4	<b>1.0</b>	2.2	-1.5
Unemployment	198.4	<b>193.3</b>	10.2	<b>-5.1</b>	-6.7	3.1	<b>-2.6</b>	-3.4	1.6
Participation rate	62.3	<b>62.5</b>	0.7	<b>0.2</b>	0.6	-0.9	...	...	...
Unemployment rate	18.2	<b>17.7</b>	0.8	<b>-0.5</b>	-0.8	0.5	...	...	...
Employment rate	51.0	<b>51.5</b>	0.6	<b>0.5</b>	1.1	-1.0	...	...	...
Part-time rate	52.0	<b>53.2</b>	1.2	<b>1.2</b>	2.8	3.8	...	...	...
<b>Men, 25 years and over</b>									
Population	4,372.3	<b>4,377.4</b>	...	<b>5.1</b>	16.0	67.0	<b>0.1</b>	0.4	1.6
Labour force	3,196.7	<b>3,192.8</b>	9.9	<b>-3.9</b>	-9.5	9.7	<b>-0.1</b>	-0.3	0.3
Employment	2,939.5	<b>2,938.6</b>	11.0	<b>-0.9</b>	13.9	20.6	<b>0.0</b>	0.5	0.7
Unemployment	257.2	<b>254.3</b>	10.3	<b>-2.9</b>	-23.3	-10.8	<b>-1.1</b>	-8.4	-4.1
Participation rate	73.1	<b>72.9</b>	0.2	<b>-0.2</b>	-0.5	-0.9	...	...	...
Unemployment rate	8.0	<b>8.0</b>	0.3	<b>0.0</b>	-0.7	-0.3	...	...	...
Employment rate	67.2	<b>67.1</b>	0.3	<b>-0.1</b>	0.0	-0.6	...	...	...
Part-time rate	7.8	<b>7.4</b>	0.4	<b>-0.4</b>	-0.6	-0.9	...	...	...
<b>Women, 25 years and over</b>									
Population	4,630.0	<b>4,635.9</b>	...	<b>5.9</b>	18.4	73.8	<b>0.1</b>	0.4	1.6
Labour force	2,932.1	<b>2,924.3</b>	11.2	<b>-7.8</b>	18.5	43.5	<b>-0.3</b>	0.6	1.5
Employment	2,732.9	<b>2,735.2</b>	10.7	<b>2.3</b>	14.6	35.2	<b>0.1</b>	0.5	1.3
Unemployment	199.2	<b>189.1</b>	9.2	<b>-10.1</b>	3.9	8.3	<b>-5.1</b>	2.1	4.6
Participation rate	63.3	<b>63.1</b>	0.2	<b>-0.2</b>	0.2	0.0	...	...	...
Unemployment rate	6.8	<b>6.5</b>	0.3	<b>-0.3</b>	0.1	0.2	...	...	...
Employment rate	59.0	<b>59.0</b>	0.2	<b>0.0</b>	0.1	-0.2	...	...	...
Part-time rate	20.0	<b>20.4</b>	0.5	<b>0.4</b>	0.3	-0.9	...	...	...
<b>Industry</b>									
	6,564.8	<b>6,575.1</b>	19.0	<b>10.3</b>	47.7	42.3	<b>0.2</b>	0.7	0.6
<b>Goods-producing sector</b>									
	1,409.7	<b>1,409.7</b>	16.2	<b>0.0</b>	32.2	-7.2	<b>0.0</b>	2.3	-0.5
Agriculture	87.6	<b>88.5</b>	3.6	<b>0.9</b>	4.9	3.0	<b>1.0</b>	5.9	3.5
Forestry, fishing, mining, oil and gas	43.0	<b>39.1</b>	2.2	<b>-3.9</b>	0.1	5.0	<b>-9.1</b>	0.3	14.7
Utilities	57.9	<b>57.1</b>	3.2	<b>-0.8</b>	1.6	-3.8	<b>-1.4</b>	2.9	-6.2
Construction	414.7	<b>418.2</b>	9.8	<b>3.5</b>	4.2	2.7	<b>0.8</b>	1.0	0.6
Manufacturing	806.4	<b>806.8</b>	12.9	<b>0.4</b>	21.4	-14.0	<b>0.0</b>	2.7	-1.7
<b>Services-producing sector</b>									
	5,155.1	<b>5,165.4</b>	21.8	<b>10.3</b>	15.5	49.5	<b>0.2</b>	0.3	1.0
Trade	988.8	<b>1,002.8</b>	14.3	<b>14.0</b>	17.9	-13.2	<b>1.4</b>	1.8	-1.3
Transportation and warehousing	316.4	<b>296.5</b>	8.6	<b>-19.9</b>	-4.6	-32.9	<b>-6.3</b>	-1.5	-10.0
Finance, insurance, real estate and leasing	495.6	<b>498.5</b>	11.3	<b>2.9</b>	-17.7	17.7	<b>0.6</b>	-3.4	3.7
Professional, scientific and technical services	531.7	<b>555.9</b>	11.2	<b>24.2</b>	30.6	67.9	<b>4.6</b>	5.8	13.9
Business, building and other support services	285.0	<b>257.5</b>	8.9	<b>-27.5</b>	-3.4	-9.2	<b>-9.6</b>	-1.3	-3.4
Educational services	488.0	<b>499.4</b>	9.9	<b>11.4</b>	19.9	36.6	<b>2.3</b>	4.2	7.9
Health care and social assistance	708.7	<b>713.0</b>	10.6	<b>4.3</b>	-12.8	9.3	<b>0.6</b>	-1.8	1.3
Information, culture and recreation	310.0	<b>302.9</b>	9.2	<b>-7.1</b>	-19.1	-1.8	<b>-2.3</b>	-5.9	-0.6
Accommodation and food services	405.3	<b>410.3</b>	9.7	<b>5.0</b>	22.7	16.8	<b>1.2</b>	5.9	4.3
Other services	279.5	<b>269.3</b>	8.8	<b>-10.2</b>	-32.1	-40.0	<b>-3.6</b>	-10.7	-12.9
Public administration	346.2	<b>359.3</b>	7.7	<b>13.1</b>	13.9	-1.9	<b>3.8</b>	4.0	-0.5

1. Average standard error of change in two consecutive months (see "Sampling Errors" in Data Quality for further explanations).

**Note(s):** Related CANSIM Tables 282-0087, 282-0088.

**Table 4-7**  
**Selected labour force characteristics (seasonally adjusted) — Manitoba**

	February 2010	March 2010	S.E.	Change from			Percent change from		
				last month	last December	twelve months ago	last month	last December	twelve months ago
in thousands (except rates)									
<b>Both sexes, 15 years and over</b>									
Population	930.5	<b>931.7</b>	...	<b>1.2</b>	3.1	13.7	<b>0.1</b>	0.3	1.5
Labour force	646.1	<b>645.7</b>	2.6	<b>-0.4</b>	4.8	10.9	<b>-0.1</b>	0.7	1.7
Employment	611.3	<b>612.2</b>	2.8	<b>0.9</b>	8.2	10.0	<b>0.1</b>	1.4	1.7
Employment full-time	494.3	<b>491.2</b>	3.7	<b>-3.1</b>	6.5	-3.3	<b>-0.6</b>	1.3	-0.7
Unemployment	34.8	<b>33.5</b>	2.2	<b>-1.3</b>	-3.5	0.9	<b>-3.7</b>	-9.5	2.8
Participation rate	69.4	<b>69.3</b>	0.3	<b>-0.1</b>	0.3	0.1	...	...	...
Unemployment rate	5.4	<b>5.2</b>	0.3	<b>-0.2</b>	-0.6	0.1	...	...	...
Employment rate	65.7	<b>65.7</b>	0.3	<b>0.0</b>	0.7	0.1	...	...	...
Part-time rate	19.1	<b>19.8</b>	0.5	<b>0.6</b>	0.0	1.9	...	...	...
<b>Both sexes, 15 to 24 years</b>									
Population	160.8	<b>160.9</b>	...	<b>0.1</b>	0.3	1.3	<b>0.1</b>	0.2	0.8
Labour force	108.6	<b>109.1</b>	1.6	<b>0.5</b>	0.1	-5.2	<b>0.5</b>	0.1	-4.5
Employment	96.8	<b>97.9</b>	1.6	<b>1.1</b>	0.5	-5.2	<b>1.1</b>	0.5	-5.0
Unemployment	11.8	<b>11.2</b>	1.3	<b>-0.6</b>	-0.4	-0.1	<b>-5.1</b>	-3.4	-0.9
Participation rate	67.5	<b>67.8</b>	1.0	<b>0.3</b>	-0.1	-3.8	...	...	...
Unemployment rate	10.9	<b>10.3</b>	1.1	<b>-0.6</b>	-0.3	0.4	...	...	...
Employment rate	60.2	<b>60.8</b>	1.0	<b>0.6</b>	0.2	-3.8	...	...	...
Part-time rate	40.2	<b>41.9</b>	1.8	<b>1.7</b>	1.2	1.5	...	...	...
<b>Men, 25 years and over</b>									
Population	376.5	<b>377.0</b>	...	<b>0.5</b>	1.4	6.2	<b>0.1</b>	0.4	1.7
Labour force	286.5	<b>285.8</b>	1.3	<b>-0.7</b>	0.6	7.0	<b>-0.2</b>	0.2	2.5
Employment	273.6	<b>274.3</b>	1.5	<b>0.7</b>	4.6	5.9	<b>0.3</b>	1.7	2.2
Unemployment	12.9	<b>11.5</b>	1.2	<b>-1.4</b>	-4.0	1.2	<b>-10.9</b>	-25.8	11.7
Participation rate	76.1	<b>75.8</b>	0.4	<b>-0.3</b>	-0.1	0.6	...	...	...
Unemployment rate	4.5	<b>4.0</b>	0.4	<b>-0.5</b>	-1.4	0.3	...	...	...
Employment rate	72.7	<b>72.8</b>	0.4	<b>0.1</b>	1.0	0.4	...	...	...
Part-time rate	8.0	<b>8.1</b>	0.6	<b>0.1</b>	-0.6	1.6	...	...	...
<b>Women, 25 years and over</b>									
Population	393.2	<b>393.8</b>	...	<b>0.6</b>	1.4	6.2	<b>0.2</b>	0.4	1.6
Labour force	250.9	<b>250.8</b>	1.5	<b>-0.1</b>	4.1	9.1	<b>0.0</b>	1.7	3.8
Employment	240.9	<b>240.0</b>	1.6	<b>-0.9</b>	3.2	9.3	<b>-0.4</b>	1.4	4.0
Unemployment	10.1	<b>10.8</b>	1.2	<b>0.7</b>	0.9	-0.2	<b>6.9</b>	9.1	-1.8
Participation rate	63.8	<b>63.7</b>	0.4	<b>-0.1</b>	0.8	1.3	...	...	...
Unemployment rate	4.0	<b>4.3</b>	0.5	<b>0.3</b>	0.3	-0.3	...	...	...
Employment rate	61.3	<b>60.9</b>	0.4	<b>-0.4</b>	0.6	1.4	...	...	...
Part-time rate	23.3	<b>24.0</b>	0.9	<b>0.7</b>	0.3	3.0	...	...	...
<b>Industry</b>									
	611.3	<b>612.2</b>	2.8	<b>0.9</b>	8.2	10.0	<b>0.1</b>	1.4	1.7
<b>Goods-producing sector</b>									
Agriculture	24.4	<b>24.9</b>	1.3	<b>0.5</b>	-0.5	-0.8	<b>2.0</b>	-2.0	-3.1
Forestry, fishing, mining, oil and gas	6.8	<b>6.9</b>	0.6	<b>0.1</b>	1.2	0.6	<b>1.5</b>	21.1	9.5
Utilities	8.2	<b>7.8</b>	0.5	<b>-0.4</b>	-0.5	0.0	<b>-4.9</b>	-6.0	0.0
Construction	37.1	<b>36.1</b>	1.4	<b>-1.0</b>	0.6	-2.3	<b>-2.7</b>	1.7	-6.0
Manufacturing	59.3	<b>61.1</b>	1.6	<b>1.8</b>	3.3	-2.4	<b>3.0</b>	5.7	-3.8
<b>Services-producing sector</b>									
Trade	475.5	<b>475.4</b>	3.1	<b>-0.1</b>	4.0	14.9	<b>0.0</b>	0.8	3.2
Transportation and warehousing	90.9	<b>92.2</b>	2.0	<b>1.3</b>	1.8	2.7	<b>1.4</b>	2.0	3.0
Finance, insurance, real estate and leasing	36.8	<b>37.3</b>	1.3	<b>0.5</b>	-0.6	-1.9	<b>1.4</b>	-1.6	-4.8
Professional, scientific and technical services	36.1	<b>35.8</b>	1.2	<b>-0.3</b>	0.5	-0.2	<b>-0.8</b>	1.4	-0.6
Business, building and other support services	25.0	<b>25.4</b>	1.1	<b>0.4</b>	0.2	0.1	<b>1.6</b>	0.8	0.4
Educational services	21.5	<b>21.0</b>	1.2	<b>-0.5</b>	2.2	4.4	<b>-2.3</b>	11.7	26.5
Health care and social assistance	51.4	<b>50.7</b>	1.5	<b>-0.7</b>	-0.8	3.1	<b>-1.4</b>	-1.6	6.5
Information, culture and recreation	85.9	<b>86.1</b>	1.8	<b>0.2</b>	1.5	4.3	<b>0.2</b>	1.8	5.3
Accommodation and food services	24.0	<b>22.7</b>	1.1	<b>-1.3</b>	-0.1	-0.2	<b>-5.4</b>	-0.4	-0.9
Other services	39.5	<b>39.9</b>	1.4	<b>0.4</b>	2.9	4.8	<b>1.0</b>	7.8	13.7
Public administration	27.8	<b>28.5</b>	1.2	<b>0.7</b>	-0.7	-0.7	<b>2.5</b>	-2.4	-2.4
	36.7	<b>35.9</b>	1.1	<b>-0.8</b>	-2.8	-1.5	<b>-2.2</b>	-7.2	-4.0

1. Average standard error of change in two consecutive months (see "Sampling Errors" in Data Quality for further explanations).

**Note(s):** Related CANSIM Tables 282-0087, 282-0088.

**Table 4-8**  
**Selected labour force characteristics (seasonally adjusted) — Saskatchewan**

	February 2010	March 2010	S.E.	Change from			Percent change from		
				last month	last December	twelve months ago	last month	last December	twelve months ago
in thousands (except rates)									
<b>Both sexes, 15 years and over</b>									
Population	786.4	<b>787.3</b>	...	<b>0.9</b>	3.0	11.0	<b>0.1</b>	0.4	1.4
Labour force	547.3	<b>555.4</b>	2.4	<b>8.1</b>	6.9	11.0	<b>1.5</b>	1.3	2.0
Employment	523.9	<b>527.2</b>	2.5	<b>3.3</b>	5.1	8.4	<b>0.6</b>	1.0	1.6
Employment full-time	433.2	<b>431.8</b>	3.4	<b>-1.4</b>	6.2	11.8	<b>-0.3</b>	1.5	2.8
Unemployment	23.5	<b>28.3</b>	1.9	<b>4.8</b>	2.0	2.7	<b>20.4</b>	7.6	10.5
Participation rate	69.6	<b>70.5</b>	0.3	<b>0.9</b>	0.6	0.4	...	...	...
Unemployment rate	4.3	<b>5.1</b>	0.3	<b>0.8</b>	0.3	0.4	...	...	...
Employment rate	66.6	<b>67.0</b>	0.3	<b>0.4</b>	0.4	0.2	...	...	...
Part-time rate	17.3	<b>18.1</b>	0.6	<b>0.8</b>	-0.4	-0.9	...	...	...
<b>Both sexes, 15 to 24 years</b>									
Population	138.4	<b>138.3</b>	...	<b>-0.1</b>	-0.2	-1.3	<b>-0.1</b>	-0.1	-0.9
Labour force	93.7	<b>98.0</b>	1.5	<b>4.3</b>	2.9	-2.7	<b>4.6</b>	3.0	-2.7
Employment	85.9	<b>88.9</b>	1.5	<b>3.0</b>	1.8	-1.8	<b>3.5</b>	2.1	-2.0
Unemployment	7.9	<b>9.0</b>	1.2	<b>1.1</b>	1.0	-1.0	<b>13.9</b>	12.5	-10.0
Participation rate	67.7	<b>70.9</b>	1.1	<b>3.2</b>	2.2	-1.2	...	...	...
Unemployment rate	8.4	<b>9.2</b>	1.2	<b>0.8</b>	0.8	-0.7	...	...	...
Employment rate	62.1	<b>64.3</b>	1.1	<b>2.2</b>	1.4	-0.7	...	...	...
Part-time rate	36.4	<b>37.1</b>	1.8	<b>0.7</b>	-0.2	-0.5	...	...	...
<b>Men, 25 years and over</b>									
Population	317.3	<b>317.9</b>	...	<b>0.6</b>	2.0	6.7	<b>0.2</b>	0.6	2.2
Labour force	241.7	<b>244.8</b>	1.2	<b>3.1</b>	3.0	7.4	<b>1.3</b>	1.2	3.1
Employment	232.4	<b>233.9</b>	1.3	<b>1.5</b>	4.0	5.7	<b>0.6</b>	1.7	2.5
Unemployment	9.3	<b>10.9</b>	1.1	<b>1.6</b>	-1.0	1.7	<b>17.2</b>	-8.4	18.5
Participation rate	76.2	<b>77.0</b>	0.4	<b>0.8</b>	0.5	0.7	...	...	...
Unemployment rate	3.8	<b>4.5</b>	0.4	<b>0.7</b>	-0.4	0.6	...	...	...
Employment rate	73.2	<b>73.6</b>	0.4	<b>0.4</b>	0.8	0.3	...	...	...
Part-time rate	5.4	<b>6.7</b>	0.6	<b>1.3</b>	-0.2	-0.5	...	...	...
<b>Women, 25 years and over</b>									
Population	330.8	<b>331.2</b>	...	<b>0.4</b>	1.4	5.7	<b>0.1</b>	0.4	1.8
Labour force	211.9	<b>212.7</b>	1.3	<b>0.8</b>	1.1	6.4	<b>0.4</b>	0.5	3.1
Employment	205.6	<b>204.4</b>	1.4	<b>-1.2</b>	-0.7	4.5	<b>-0.6</b>	-0.3	2.3
Unemployment	6.3	<b>8.3</b>	0.9	<b>2.0</b>	1.8	1.9	<b>31.7</b>	27.7	29.7
Participation rate	64.1	<b>64.2</b>	0.4	<b>0.1</b>	0.0	0.8	...	...	...
Unemployment rate	3.0	<b>3.9</b>	0.4	<b>0.9</b>	0.8	0.8	...	...	...
Employment rate	62.2	<b>61.7</b>	0.4	<b>-0.5</b>	-0.5	0.3	...	...	...
Part-time rate	22.8	<b>22.9</b>	1.0	<b>0.1</b>	-0.6	-1.3	...	...	...
<b>Industry</b>	523.9	<b>527.2</b>	2.5	<b>3.3</b>	5.1	8.4	<b>0.6</b>	1.0	1.6
<b>Goods-producing sector</b>									
Agriculture	45.8	<b>44.2</b>	1.5	<b>-1.6</b>	-1.3	3.1	<b>-3.5</b>	-2.9	7.5
Forestry, fishing, mining, oil and gas	27.4	<b>28.0</b>	1.1	<b>0.6</b>	1.0	4.4	<b>2.2</b>	3.7	18.6
Utilities	4.3	<b>4.9</b>	0.4	<b>0.6</b>	0.2	-0.1	<b>14.0</b>	4.3	-2.0
Construction	38.8	<b>39.3</b>	1.3	<b>0.5</b>	1.8	2.1	<b>1.3</b>	4.8	5.6
Manufacturing	28.7	<b>29.0</b>	1.0	<b>0.3</b>	2.2	-1.6	<b>1.0</b>	8.2	-5.2
<b>Services-producing sector</b>									
Trade	378.8	<b>381.9</b>	2.8	<b>3.1</b>	1.2	0.6	<b>0.8</b>	0.3	0.2
Transportation and warehousing	77.5	<b>79.9</b>	1.8	<b>2.4</b>	0.4	-1.6	<b>3.1</b>	0.5	-2.0
Finance, insurance, real estate and leasing	25.6	<b>26.0</b>	1.0	<b>0.4</b>	0.6	2.0	<b>1.6</b>	2.4	8.3
Professional, scientific and technical services	30.6	<b>31.0</b>	1.0	<b>0.4</b>	-0.2	1.3	<b>1.3</b>	-0.6	4.4
Business, building and other support services	23.9	<b>23.9</b>	0.9	<b>0.0</b>	0.4	2.5	<b>0.0</b>	1.7	11.7
Educational services	13.6	<b>13.0</b>	0.8	<b>-0.6</b>	0.2	1.7	<b>-4.4</b>	1.6	15.0
Health care and social assistance	38.4	<b>38.5</b>	1.3	<b>0.1</b>	-2.2	-0.6	<b>0.3</b>	-5.4	-1.5
Information, culture and recreation	68.7	<b>67.7</b>	1.4	<b>-1.0</b>	1.3	2.3	<b>-1.5</b>	2.0	3.5
Accommodation and food services	17.8	<b>18.4</b>	1.0	<b>0.6</b>	-0.4	-3.0	<b>3.4</b>	-2.1	-14.0
Other services	30.5	<b>30.1</b>	1.3	<b>-0.4</b>	1.2	-2.2	<b>-1.3</b>	4.2	-6.8
Public administration	23.1	<b>23.6</b>	1.1	<b>0.5</b>	0.2	-0.5	<b>2.2</b>	0.9	-2.1
	29.1	<b>29.7</b>	1.0	<b>0.6</b>	-0.5	-1.4	<b>2.1</b>	-1.7	-4.5

1. Average standard error of change in two consecutive months (see "Sampling Errors" in Data Quality for further explanations).

**Note(s):** Related CANSIM Tables 282-0087, 282-0088.

**Table 4-9**  
**Selected labour force characteristics (seasonally adjusted) — Alberta**

	February 2010	March 2010	S.E.	Change from			Percent change from		
				last month	last December	twelve months ago	last month	last December	twelve months ago
in thousands (except rates)									
<b>Both sexes, 15 years and over</b>									
Population	2,904.1	<b>2,908.0</b>	...	<b>3.9</b>	12.7	66.3	<b>0.1</b>	0.4	2.3
Labour force	2,118.8	<b>2,128.5</b>	8.4	<b>9.7</b>	-7.4	13.2	<b>0.5</b>	-0.3	0.6
Employment	1,972.8	<b>1,969.4</b>	8.8	<b>-3.4</b>	-25.9	-16.9	<b>-0.2</b>	-1.3	-0.9
Employment full-time	1,623.8	<b>1,619.3</b>	11.7	<b>-4.5</b>	-12.5	-13.4	<b>-0.3</b>	-0.8	-0.8
Unemployment	145.9	<b>159.2</b>	7.2	<b>13.3</b>	18.6	30.2	<b>9.1</b>	13.2	23.4
Participation rate	73.0	<b>73.2</b>	0.3	<b>0.2</b>	-0.6	-1.2	...	...	...
Unemployment rate	6.9	<b>7.5</b>	0.3	<b>0.6</b>	0.9	1.4	...	...	...
Employment rate	67.9	<b>67.7</b>	0.3	<b>-0.2</b>	-1.2	-2.2	...	...	...
Part-time rate	17.7	<b>17.8</b>	0.5	<b>0.1</b>	-0.4	0.0	...	...	...
<b>Both sexes, 15 to 24 years</b>									
Population	506.2	<b>505.8</b>	...	<b>-0.4</b>	-1.8	0.3	<b>-0.1</b>	-0.4	0.1
Labour force	354.2	<b>353.4</b>	5.2	<b>-0.8</b>	-3.5	-14.5	<b>-0.2</b>	-1.0	-3.9
Employment	316.2	<b>304.7</b>	4.9	<b>-11.5</b>	-7.3	-21.1	<b>-3.6</b>	-2.3	-6.5
Unemployment	38.0	<b>48.8</b>	4.4	<b>10.8</b>	3.9	6.8	<b>28.4</b>	8.7	16.2
Participation rate	70.0	<b>69.9</b>	1.0	<b>-0.1</b>	-0.4	-2.9	...	...	...
Unemployment rate	10.7	<b>13.8</b>	1.1	<b>3.1</b>	1.2	2.4	...	...	...
Employment rate	62.5	<b>60.2</b>	1.0	<b>-2.3</b>	-1.3	-4.3	...	...	...
Part-time rate	36.3	<b>36.1</b>	1.7	<b>-0.2</b>	-1.5	-0.3	...	...	...
<b>Men, 25 years and over</b>									
Population	1,217.1	<b>1,219.2</b>	...	<b>2.1</b>	7.4	37.1	<b>0.2</b>	0.6	3.1
Labour force	969.9	<b>978.1</b>	4.3	<b>8.2</b>	-5.6	12.6	<b>0.8</b>	-0.6	1.3
Employment	909.5	<b>919.2</b>	5.0	<b>9.7</b>	-6.9	8.0	<b>1.1</b>	-0.7	0.9
Unemployment	60.3	<b>58.9</b>	4.3	<b>-1.4</b>	1.3	4.6	<b>-2.3</b>	2.3	8.5
Participation rate	79.7	<b>80.2</b>	0.4	<b>0.5</b>	-1.0	-1.5	...	...	...
Unemployment rate	6.2	<b>6.0</b>	0.4	<b>-0.2</b>	0.1	0.4	...	...	...
Employment rate	74.7	<b>75.4</b>	0.4	<b>0.7</b>	-1.0	-1.7	...	...	...
Part-time rate	6.0	<b>5.9</b>	0.5	<b>-0.1</b>	-0.5	-0.6	...	...	...
<b>Women, 25 years and over</b>									
Population	1,180.8	<b>1,182.9</b>	...	<b>2.1</b>	7.0	28.8	<b>0.2</b>	0.6	2.5
Labour force	794.7	<b>797.0</b>	4.7	<b>2.3</b>	1.7	15.1	<b>0.3</b>	0.2	1.9
Employment	747.2	<b>745.5</b>	4.8	<b>-1.7</b>	-11.8	-3.8	<b>-0.2</b>	-1.6	-0.5
Unemployment	47.5	<b>51.5</b>	3.5	<b>4.0</b>	13.5	18.9	<b>8.4</b>	35.5	58.0
Participation rate	67.3	<b>67.4</b>	0.4	<b>0.1</b>	-0.2	-0.3	...	...	...
Unemployment rate	6.0	<b>6.5</b>	0.4	<b>0.5</b>	1.7	2.3	...	...	...
Employment rate	63.3	<b>63.0</b>	0.4	<b>-0.3</b>	-1.4	-1.9	...	...	...
Part-time rate	24.1	<b>24.9</b>	1.0	<b>0.8</b>	0.2	1.5	...	...	...
<b>Industry</b>									
	1,972.8	<b>1,969.4</b>	8.8	<b>-3.4</b>	-25.9	-16.9	<b>-0.2</b>	-1.3	-0.9
<b>Goods-producing sector</b>									
Agriculture	48.0	<b>46.1</b>	3.3	<b>-1.9</b>	-7.5	-11.2	<b>-4.0</b>	-14.0	-19.5
Forestry, fishing, mining, oil and gas	135.6	<b>140.8</b>	4.7	<b>5.2</b>	15.2	-4.2	<b>3.8</b>	12.1	-2.9
Utilities	17.3	<b>17.0</b>	1.8	<b>-0.3</b>	-2.0	-2.8	<b>-1.7</b>	-10.5	-14.1
Construction	193.4	<b>194.8</b>	6.1	<b>1.4</b>	-4.2	12.0	<b>0.7</b>	-2.1	6.6
Manufacturing	119.1	<b>123.3</b>	4.8	<b>4.2</b>	7.3	-5.4	<b>3.5</b>	6.3	-4.2
<b>Services-producing sector</b>									
Trade	1,459.5	<b>1,447.4</b>	10.6	<b>-12.1</b>	-34.8	-5.4	<b>-0.8</b>	-2.3	-0.4
Transportation and warehousing	291.1	<b>290.4</b>	7.4	<b>-0.7</b>	-14.0	-6.9	<b>-0.2</b>	-4.6	-2.3
Finance, insurance, real estate and leasing	100.0	<b>103.4</b>	4.5	<b>3.4</b>	2.8	-3.5	<b>3.4</b>	2.8	-3.3
Professional, scientific and technical services	103.0	<b>100.5</b>	4.1	<b>-2.5</b>	-4.1	-16.0	<b>-2.4</b>	-3.9	-13.7
Business, building and other support services	147.8	<b>145.0</b>	5.1	<b>-2.8</b>	-0.6	-7.5	<b>-1.9</b>	-0.4	-4.9
Educational services	66.9	<b>65.7</b>	3.9	<b>-1.2</b>	0.4	2.4	<b>-1.8</b>	0.6	3.8
Health care and social assistance	130.8	<b>124.4</b>	4.6	<b>-6.4</b>	-15.3	-8.6	<b>-4.9</b>	-11.0	-6.5
Information, culture and recreation	217.0	<b>217.4</b>	5.2	<b>0.4</b>	8.6	23.2	<b>0.2</b>	4.1	11.9
Accommodation and food services	82.7	<b>84.5</b>	3.9	<b>1.8</b>	2.3	6.7	<b>2.2</b>	2.8	8.6
Other services	130.3	<b>133.4</b>	5.1	<b>3.1</b>	0.1	10.1	<b>2.4</b>	0.1	8.2
Public administration	101.1	<b>98.6</b>	4.3	<b>-2.5</b>	-8.9	-1.0	<b>-2.5</b>	-8.3	-1.0
	88.7	<b>84.1</b>	3.6	<b>-4.6</b>	-6.2	-4.2	<b>-5.2</b>	-6.9	-4.8

1. Average standard error of change in two consecutive months (see "Sampling Errors" in Data Quality for further explanations).

**Note(s):** Related CANSIM Tables 282-0087, 282-0088.

**Table 4-10**  
**Selected labour force characteristics (seasonally adjusted) — British Columbia**

	February 2010	March 2010	S.E.	Change from			Percent change from		
				last month	last December	twelve months ago	last month	last December	twelve months ago
in thousands (except rates)									
<b>Both sexes, 15 years and over</b>									
Population	3,751.3	<b>3,756.6</b>	...	<b>5.3</b>	17.7	70.8	<b>0.1</b>	0.5	1.9
Labour force	2,482.4	<b>2,485.3</b>	10.6	<b>2.9</b>	12.6	59.6	<b>0.1</b>	0.5	2.5
Employment	2,290.4	<b>2,289.9</b>	10.5	<b>-0.5</b>	21.4	46.8	<b>0.0</b>	0.9	2.1
Employment full-time	1,801.2	<b>1,788.6</b>	14.3	<b>-12.6</b>	16.2	28.9	<b>-0.7</b>	0.9	1.6
Unemployment	192.0	<b>195.4</b>	8.5	<b>3.4</b>	-8.8	12.8	<b>1.8</b>	-4.3	7.0
Participation rate	66.2	<b>66.2</b>	0.3	<b>0.0</b>	0.1	0.4	...	...	...
Unemployment rate	7.7	<b>7.9</b>	0.3	<b>0.2</b>	-0.4	0.4	...	...	...
Employment rate	61.1	<b>61.0</b>	0.3	<b>-0.1</b>	0.3	0.1	...	...	...
Part-time rate	21.4	<b>21.9</b>	0.6	<b>0.5</b>	0.0	0.3	...	...	...
<b>Both sexes, 15 to 24 years</b>									
Population	587.6	<b>587.7</b>	...	<b>0.1</b>	0.6	3.5	<b>0.0</b>	0.1	0.6
Labour force	375.0	<b>376.1</b>	6.0	<b>1.1</b>	2.5	-1.3	<b>0.3</b>	0.7	-0.3
Employment	327.4	<b>325.4</b>	5.8	<b>-2.0</b>	4.2	-3.2	<b>-0.6</b>	1.3	-1.0
Unemployment	47.6	<b>50.8</b>	4.8	<b>3.2</b>	-1.6	2.0	<b>6.7</b>	-3.1	4.1
Participation rate	63.8	<b>64.0</b>	1.0	<b>0.2</b>	0.4	-0.6	...	...	...
Unemployment rate	12.7	<b>13.5</b>	1.2	<b>0.8</b>	-0.5	0.6	...	...	...
Employment rate	55.7	<b>55.4</b>	1.0	<b>-0.3</b>	0.7	-0.8	...	...	...
Part-time rate	47.1	<b>46.9</b>	2.0	<b>-0.2</b>	-0.9	2.0	...	...	...
<b>Men, 25 years and over</b>									
Population	1,549.6	<b>1,552.2</b>	...	<b>2.6</b>	8.6	34.2	<b>0.2</b>	0.6	2.3
Labour force	1,124.3	<b>1,126.4</b>	5.4	<b>2.1</b>	2.1	38.9	<b>0.2</b>	0.2	3.6
Employment	1,040.6	<b>1,039.5</b>	5.8	<b>-1.1</b>	0.6	26.6	<b>-0.1</b>	0.1	2.6
Unemployment	83.7	<b>86.8</b>	5.2	<b>3.1</b>	1.4	12.2	<b>3.7</b>	1.6	16.4
Participation rate	72.6	<b>72.6</b>	0.4	<b>0.0</b>	-0.2	1.0	...	...	...
Unemployment rate	7.4	<b>7.7</b>	0.5	<b>0.3</b>	0.1	0.8	...	...	...
Employment rate	67.2	<b>67.0</b>	0.4	<b>-0.2</b>	-0.3	0.3	...	...	...
Part-time rate	8.1	<b>9.2</b>	0.6	<b>1.1</b>	-0.1	0.0	...	...	...
<b>Women, 25 years and over</b>									
Population	1,614.1	<b>1,616.7</b>	...	<b>2.6</b>	8.5	33.2	<b>0.2</b>	0.5	2.1
Labour force	983.1	<b>982.8</b>	6.2	<b>-0.3</b>	8.1	21.9	<b>0.0</b>	0.8	2.3
Employment	922.3	<b>925.0</b>	6.1	<b>2.7</b>	16.6	23.3	<b>0.3</b>	1.8	2.6
Unemployment	60.7	<b>57.8</b>	4.7	<b>-2.9</b>	-8.6	-1.4	<b>-4.8</b>	-13.0	-2.4
Participation rate	60.9	<b>60.8</b>	0.4	<b>-0.1</b>	0.2	0.1	...	...	...
Unemployment rate	6.2	<b>5.9</b>	0.5	<b>-0.3</b>	-0.9	-0.3	...	...	...
Employment rate	57.1	<b>57.2</b>	0.4	<b>0.1</b>	0.7	0.3	...	...	...
Part-time rate	27.2	<b>27.4</b>	0.9	<b>0.1</b>	0.2	0.4	...	...	...
<b>Industry</b>									
	2,290.4	<b>2,289.9</b>	10.5	<b>-0.5</b>	21.4	46.8	<b>0.0</b>	0.9	2.1
<b>Goods-producing sector</b>									
Agriculture	30.1	<b>31.9</b>	2.8	<b>1.8</b>	-1.8	0.2	<b>6.0</b>	-5.3	0.6
Forestry, fishing, mining, oil and gas	37.2	<b>45.3</b>	2.9	<b>8.1</b>	7.8	1.2	<b>21.8</b>	20.8	2.7
Utilities	12.0	<b>15.2</b>	1.5	<b>3.2</b>	0.8	1.8	<b>26.7</b>	5.6	13.4
Construction	195.9	<b>198.6</b>	6.4	<b>2.7</b>	4.8	10.8	<b>1.4</b>	2.5	5.8
Manufacturing	157.8	<b>156.8</b>	5.7	<b>-1.0</b>	0.7	-7.2	<b>-0.6</b>	0.4	-4.4
<b>Services-producing sector</b>									
Trade	1,857.4	<b>1,842.0</b>	11.8	<b>-15.4</b>	9.0	40.0	<b>-0.8</b>	0.5	2.2
Transportation and warehousing	376.0	<b>376.2</b>	8.2	<b>0.2</b>	2.6	25.9	<b>0.1</b>	0.7	7.4
Finance, insurance, real estate and leasing	117.2	<b>111.1</b>	4.6	<b>-6.1</b>	-1.7	-10.6	<b>-5.2</b>	-1.5	-8.7
Professional, scientific and technical services	156.9	<b>139.2</b>	5.1	<b>-17.7</b>	-9.6	1.7	<b>-11.3</b>	-6.5	1.2
Business, building and other support services	159.6	<b>171.8</b>	5.9	<b>12.2</b>	-4.7	-4.4	<b>7.6</b>	-2.7	-2.5
Educational services	90.7	<b>85.8</b>	4.9	<b>-4.9</b>	-2.5	-13.3	<b>-5.4</b>	-2.8	-13.4
Health care and social assistance	162.7	<b>173.6</b>	5.6	<b>10.9</b>	8.7	15.1	<b>6.7</b>	5.3	9.5
Information, culture and recreation	270.8	<b>267.2</b>	6.2	<b>-3.6</b>	3.8	6.8	<b>-1.3</b>	1.4	2.6
Accommodation and food services	112.7	<b>120.9</b>	5.0	<b>8.2</b>	5.2	4.3	<b>7.3</b>	4.5	3.7
Other services	180.0	<b>175.8</b>	6.2	<b>-4.2</b>	5.2	-6.5	<b>-2.3</b>	3.0	-3.6
Public administration	112.0	<b>107.1</b>	4.5	<b>-4.9</b>	-2.4	9.2	<b>-4.4</b>	-2.2	9.4
	118.7	<b>113.2</b>	4.3	<b>-5.5</b>	4.4	11.7	<b>-4.6</b>	4.0	11.5

1. Average standard error of change in two consecutive months (see "Sampling Errors" in Data Quality for further explanations).

**Note(s):** Related CANSIM Tables 282-0087, 282-0088.



Table 5-1

## Labour force characteristics by census metropolitan area (seasonally adjusted) — 3 month moving average

	February 2010	March 2010	S.E. <sup>1</sup>	Change from			Percent change from		
				last month	last December	twelve months ago	last month	last December	twelve months ago
in thousands (except rates)									
<b>St. John's, Newfoundland and Labrador</b>									
Population	159.4	<b>159.7</b>	...	<b>0.3</b>	0.8	3.3	<b>0.2</b>	0.5	2.1
Labour force	110.3	<b>110.3</b>	0.8	<b>0.0</b>	1.0	1.4	<b>0.0</b>	0.9	1.3
Employment	101.4	<b>101.7</b>	0.8	<b>0.3</b>	2.2	0.8	<b>0.3</b>	2.2	0.8
Unemployment	8.9	<b>8.6</b>	0.4	<b>-0.3</b>	-1.2	0.6	<b>-3.4</b>	-12.2	7.5
Participation rate	69.2	<b>69.1</b>	0.5	<b>-0.1</b>	0.3	-0.5	...	...	...
Unemployment rate	8.1	<b>7.8</b>	0.4	<b>-0.3</b>	-1.2	0.5	...	...	...
Employment rate	63.6	<b>63.7</b>	0.5	<b>0.1</b>	1.1	-0.8	...	...	...
<b>Halifax, Nova Scotia</b>									
Population	323.6	<b>323.9</b>	...	<b>0.3</b>	1.1	4.1	<b>0.1</b>	0.3	1.3
Labour force	231.5	<b>232.4</b>	1.1	<b>0.9</b>	1.8	2.5	<b>0.4</b>	0.8	1.1
Employment	216.5	<b>217.7</b>	1.2	<b>1.2</b>	2.4	1.8	<b>0.6</b>	1.1	0.8
Unemployment	15.0	<b>14.8</b>	0.7	<b>-0.2</b>	-0.5	0.8	<b>-1.3</b>	-3.3	5.7
Participation rate	71.5	<b>71.8</b>	0.3	<b>0.3</b>	0.4	-0.1	...	...	...
Unemployment rate	6.5	<b>6.4</b>	0.3	<b>-0.1</b>	-0.2	0.3	...	...	...
Employment rate	66.9	<b>67.2</b>	0.4	<b>0.3</b>	0.5	-0.3	...	...	...
<b>Saint John, New Brunswick</b>									
Population	105.9	<b>105.9</b>	...	<b>0.0</b>	0.1	0.7	<b>0.0</b>	0.1	0.7
Labour force	72.2	<b>71.2</b>	0.8	<b>-1.0</b>	-0.4	0.2	<b>-1.4</b>	-0.6	0.3
Employment	66.5	<b>65.8</b>	0.7	<b>-0.7</b>	-1.0	-1.2	<b>-1.1</b>	-1.5	-1.8
Unemployment	5.7	<b>5.4</b>	0.3	<b>-0.3</b>	0.6	1.4	<b>-5.3</b>	12.5	35.0
Participation rate	68.2	<b>67.2</b>	0.7	<b>-1.0</b>	-0.5	-0.3	...	...	...
Unemployment rate	7.9	<b>7.6</b>	0.5	<b>-0.3</b>	0.9	2.0	...	...	...
Employment rate	62.8	<b>62.1</b>	0.7	<b>-0.7</b>	-1.0	-1.6	...	...	...
<b>Saguenay, Quebec</b>									
Population	124.7	<b>124.7</b>	...	<b>0.0</b>	0.0	-0.1	<b>0.0</b>	0.0	-0.1
Labour force	75.6	<b>75.7</b>	0.7	<b>0.1</b>	-0.7	0.1	<b>0.1</b>	-0.9	0.1
Employment	69.6	<b>69.8</b>	0.7	<b>0.2</b>	-1.0	1.1	<b>0.3</b>	-1.4	1.6
Unemployment	6.0	<b>5.9</b>	0.4	<b>-0.1</b>	0.3	-1.0	<b>-1.7</b>	5.4	-14.5
Participation rate	60.6	<b>60.7</b>	0.6	<b>0.1</b>	-0.6	0.1	...	...	...
Unemployment rate	7.9	<b>7.8</b>	0.5	<b>-0.1</b>	0.5	-1.3	...	...	...
Employment rate	55.8	<b>56.0</b>	0.6	<b>0.2</b>	-0.8	1.0	...	...	...
<b>Québec, Quebec</b>									
Population	621.1	<b>621.7</b>	...	<b>0.6</b>	1.8	7.1	<b>0.1</b>	0.3	1.2
Labour force	410.4	<b>410.0</b>	3.3	<b>-0.4</b>	-2.7	-6.2	<b>-0.1</b>	-0.7	-1.5
Employment	393.6	<b>392.2</b>	3.2	<b>-1.4</b>	-0.2	-6.1	<b>-0.4</b>	-0.1	-1.5
Unemployment	16.7	<b>17.8</b>	1.4	<b>1.1</b>	-2.5	-0.1	<b>6.6</b>	-12.3	-0.6
Participation rate	66.1	<b>65.9</b>	0.5	<b>-0.2</b>	-0.7	-1.8	...	...	...
Unemployment rate	4.1	<b>4.3</b>	0.3	<b>0.2</b>	-0.6	0.0	...	...	...
Employment rate	63.4	<b>63.1</b>	0.5	<b>-0.3</b>	-0.2	-1.7	...	...	...
<b>Trois-Rivières, Quebec</b>									
Population	123.4	<b>123.5</b>	...	<b>0.1</b>	0.3	1.3	<b>0.1</b>	0.2	1.1
Labour force	72.3	<b>70.6</b>	0.7	<b>-1.7</b>	-4.9	-1.4	<b>-2.4</b>	-6.5	-1.9
Employment	65.1	<b>63.5</b>	0.8	<b>-1.6</b>	-4.7	-2.8	<b>-2.5</b>	-6.9	-4.2
Unemployment	7.2	<b>7.1</b>	0.4	<b>-0.1</b>	-0.1	1.4	<b>-1.4</b>	-1.4	24.6
Participation rate	58.6	<b>57.2</b>	0.6	<b>-1.4</b>	-4.1	-1.7	...	...	...
Unemployment rate	10.0	<b>10.1</b>	0.5	<b>0.1</b>	0.6	2.2	...	...	...
Employment rate	52.8	<b>51.4</b>	0.6	<b>-1.4</b>	-4.0	-2.9	...	...	...

See notes at the end of the table.



Table 5-1 – continued

## Labour force characteristics by census metropolitan area (seasonally adjusted) — 3 month moving average

	February 2010	March 2010	S.E. <sup>1</sup>	Change from			Percent change from		
				last month	last December	twelve months ago	last month	last December	twelve months ago
in thousands (except rates)									
<b>Sherbrooke, Quebec</b>									
Population	141.3	<b>141.5</b>	...	<b>0.2</b>	0.5	2.0	<b>0.1</b>	0.4	1.4
Labour force	88.4	<b>87.9</b>	0.8	<b>-0.5</b>	-2.5	-0.7	<b>-0.6</b>	-2.8	-0.8
Employment	82.0	<b>80.6</b>	0.8	<b>-1.4</b>	-4.8	-1.7	<b>-1.7</b>	-5.6	-2.1
Unemployment	6.4	<b>7.2</b>	0.3	<b>0.8</b>	2.2	0.9	<b>12.5</b>	44.0	14.3
Participation rate	62.6	<b>62.1</b>	0.6	<b>-0.5</b>	-2.0	-1.4	...	...	...
Unemployment rate	7.2	<b>8.2</b>	0.4	<b>1.0</b>	2.7	1.1	...	...	...
Employment rate	58.0	<b>57.0</b>	0.6	<b>-1.0</b>	-3.6	-2.0	...	...	...
<b>Montréal, Quebec</b>									
Population	3,125.4	<b>3,128.9</b>	...	<b>3.5</b>	10.7	40.7	<b>0.1</b>	0.3	1.3
Labour force	2,110.1	<b>2,117.8</b>	6.9	<b>7.7</b>	34.6	68.6	<b>0.4</b>	1.7	3.3
Employment	1,916.1	<b>1,926.5</b>	7.2	<b>10.4</b>	32.8	56.8	<b>0.5</b>	1.7	3.0
Unemployment	194.0	<b>191.3</b>	4.8	<b>-2.7</b>	1.8	11.8	<b>-1.4</b>	0.9	6.6
Participation rate	67.5	<b>67.7</b>	0.2	<b>0.2</b>	0.9	1.3	...	...	...
Unemployment rate	9.2	<b>9.0</b>	0.2	<b>-0.2</b>	-0.1	0.2	...	...	...
Employment rate	61.3	<b>61.6</b>	0.2	<b>0.3</b>	0.9	1.1	...	...	...
<b>Ottawa-Gatineau, Ontario/Quebec</b>									
Population	983.7	<b>984.8</b>	...	<b>1.1</b>	3.3	13.4	<b>0.1</b>	0.3	1.4
Labour force	709.7	<b>713.1</b>	3.4	<b>3.4</b>	8.4	17.5	<b>0.5</b>	1.2	2.5
Employment	665.4	<b>670.1</b>	3.6	<b>4.7</b>	7.4	11.4	<b>0.7</b>	1.1	1.7
Unemployment	44.2	<b>43.1</b>	1.6	<b>-1.1</b>	1.1	6.2	<b>-2.5</b>	2.6	16.8
Participation rate	72.1	<b>72.4</b>	0.3	<b>0.3</b>	0.6	0.8	...	...	...
Unemployment rate	6.2	<b>6.0</b>	0.2	<b>-0.2</b>	0.0	0.7	...	...	...
Employment rate	67.6	<b>68.0</b>	0.4	<b>0.4</b>	0.5	0.2	...	...	...
<b>Ottawa-Gatineau, Quebec part, Ontario/Quebec</b>									
Population	250.4	<b>250.7</b>	...	<b>0.3</b>	1.1	4.2	<b>0.1</b>	0.4	1.7
Labour force	183.3	<b>182.9</b>	1.3	<b>-0.4</b>	-0.8	7.5	<b>-0.2</b>	-0.4	4.3
Employment	172.2	<b>171.9</b>	1.4	<b>-0.3</b>	-0.9	7.0	<b>-0.2</b>	-0.5	4.2
Unemployment	11.1	<b>11.0</b>	0.6	<b>-0.1</b>	0.1	0.5	<b>-0.9</b>	0.9	4.8
Participation rate	73.2	<b>73.0</b>	0.5	<b>-0.2</b>	-0.6	1.8	...	...	...
Unemployment rate	6.1	<b>6.0</b>	0.3	<b>-0.1</b>	0.1	0.0	...	...	...
Employment rate	68.8	<b>68.6</b>	0.6	<b>-0.2</b>	-0.6	1.7	...	...	...
<b>Ottawa-Gatineau, Ontario part, Ontario/Quebec</b>									
Population	733.3	<b>734.1</b>	...	<b>0.8</b>	2.2	9.3	<b>0.1</b>	0.3	1.3
Labour force	526.3	<b>530.2</b>	3.1	<b>3.9</b>	9.2	10.0	<b>0.7</b>	1.8	1.9
Employment	493.2	<b>498.2</b>	3.3	<b>5.0</b>	8.4	4.4	<b>1.0</b>	1.7	0.9
Unemployment	33.1	<b>32.1</b>	1.5	<b>-1.0</b>	1.0	5.7	<b>-3.0</b>	3.2	21.6
Participation rate	71.8	<b>72.2</b>	0.4	<b>0.4</b>	1.0	0.4	...	...	...
Unemployment rate	6.3	<b>6.1</b>	0.3	<b>-0.2</b>	0.1	1.0	...	...	...
Employment rate	67.3	<b>67.9</b>	0.5	<b>0.6</b>	1.0	-0.2	...	...	...
<b>Kingston, Ontario</b>									
Population	126.4	<b>126.4</b>	...	<b>0.0</b>	0.0	0.2	<b>0.0</b>	0.0	0.2
Labour force	82.7	<b>81.8</b>	0.7	<b>-0.9</b>	-3.5	-2.2	<b>-1.1</b>	-4.1	-2.6
Employment	77.9	<b>76.9</b>	0.7	<b>-1.0</b>	-3.2	-2.1	<b>-1.3</b>	-4.0	-2.7
Unemployment	4.8	<b>4.9</b>	0.3	<b>0.1</b>	-0.2	-0.1	<b>2.1</b>	-3.9	-2.0
Participation rate	65.4	<b>64.7</b>	0.5	<b>-0.7</b>	-2.8	-1.9	...	...	...
Unemployment rate	5.8	<b>6.0</b>	0.4	<b>0.2</b>	0.0	0.0	...	...	...
Employment rate	61.6	<b>60.8</b>	0.6	<b>-0.8</b>	-2.6	-1.8	...	...	...

See notes at the end of the table.

Table 5-1 – continued

## Labour force characteristics by census metropolitan area (seasonally adjusted) — 3 month moving average

	February 2010	March 2010	S.E. <sup>1</sup>	Change from			Percent change from		
				last month	last December	twelve months ago	last month	last December	twelve months ago
in thousands (except rates)									
<b>Toronto, Ontario</b>									
Population	4,715.1	<b>4,724.3</b>	...	<b>9.2</b>	26.2	106.8	<b>0.2</b>	0.6	2.3
Labour force	3,218.7	<b>3,220.5</b>	9.4	<b>1.8</b>	15.7	29.2	<b>0.1</b>	0.5	0.9
Employment	2,916.0	<b>2,919.1</b>	9.7	<b>3.1</b>	14.2	19.2	<b>0.1</b>	0.5	0.7
Unemployment	302.7	<b>301.3</b>	6.4	<b>-1.4</b>	1.4	9.9	<b>-0.5</b>	0.5	3.4
Participation rate	68.3	<b>68.2</b>	0.2	<b>-0.1</b>	0.0	-0.9	...	...	...
Unemployment rate	9.4	<b>9.4</b>	0.2	<b>0.0</b>	0.0	0.3	...	...	...
Employment rate	61.8	<b>61.8</b>	0.2	<b>0.0</b>	0.0	-1.0	...	...	...
<b>Hamilton, Ontario</b>									
Population	604.1	<b>604.5</b>	...	<b>0.4</b>	0.9	4.6	<b>0.1</b>	0.1	0.8
Labour force	406.6	<b>402.5</b>	3.1	<b>-4.1</b>	-7.3	-5.5	<b>-1.0</b>	-1.8	-1.3
Employment	371.4	<b>370.8</b>	3.2	<b>-0.6</b>	-4.1	-2.5	<b>-0.2</b>	-1.1	-0.7
Unemployment	35.2	<b>31.6</b>	1.6	<b>-3.6</b>	-3.4	-3.1	<b>-10.2</b>	-9.7	-8.9
Participation rate	67.3	<b>66.6</b>	0.5	<b>-0.7</b>	-1.3	-1.4	...	...	...
Unemployment rate	8.7	<b>7.9</b>	0.4	<b>-0.8</b>	-0.6	-0.6	...	...	...
Employment rate	61.5	<b>61.3</b>	0.5	<b>-0.2</b>	-0.8	-0.9	...	...	...
<b>Kitchener, Ontario</b>									
Population	390.9	<b>391.4</b>	...	<b>0.5</b>	1.2	5.3	<b>0.1</b>	0.3	1.4
Labour force	273.7	<b>275.8</b>	1.9	<b>2.1</b>	2.7	-3.5	<b>0.8</b>	1.0	-1.3
Employment	246.0	<b>249.5</b>	2.0	<b>3.5</b>	1.9	-3.0	<b>1.4</b>	0.8	-1.2
Unemployment	27.7	<b>26.4</b>	1.2	<b>-1.3</b>	0.9	-0.4	<b>-4.7</b>	3.5	-1.5
Participation rate	70.0	<b>70.5</b>	0.5	<b>0.5</b>	0.5	-1.8	...	...	...
Unemployment rate	10.1	<b>9.6</b>	0.4	<b>-0.5</b>	0.3	0.0	...	...	...
Employment rate	62.9	<b>63.7</b>	0.5	<b>0.8</b>	0.2	-1.7	...	...	...
<b>London, Ontario</b>									
Population	391.8	<b>392.1</b>	...	<b>0.3</b>	0.9	4.2	<b>0.1</b>	0.2	1.1
Labour force	264.6	<b>265.6</b>	1.8	<b>1.0</b>	2.0	2.2	<b>0.4</b>	0.8	0.8
Employment	241.2	<b>240.8</b>	1.9	<b>-0.4</b>	0.5	1.8	<b>-0.2</b>	0.2	0.8
Unemployment	23.4	<b>24.8</b>	1.1	<b>1.4</b>	1.6	0.3	<b>6.0</b>	6.9	1.2
Participation rate	67.5	<b>67.7</b>	0.5	<b>0.2</b>	0.3	-0.2	...	...	...
Unemployment rate	8.8	<b>9.3</b>	0.4	<b>0.5</b>	0.5	0.0	...	...	...
Employment rate	61.6	<b>61.4</b>	0.5	<b>-0.2</b>	0.0	-0.2	...	...	...
<b>Oshawa, Ontario</b>									
Population	296.9	<b>297.4</b>	...	<b>0.5</b>	1.4	5.6	<b>0.2</b>	0.5	1.9
Labour force	202.1	<b>203.9</b>	1.6	<b>1.8</b>	5.7	9.4	<b>0.9</b>	2.9	4.8
Employment	181.2	<b>183.0</b>	1.6	<b>1.8</b>	4.5	5.1	<b>1.0</b>	2.5	2.9
Unemployment	20.9	<b>20.9</b>	0.9	<b>0.0</b>	1.2	4.3	<b>0.0</b>	6.1	25.9
Participation rate	68.1	<b>68.6</b>	0.5	<b>0.5</b>	1.6	1.9	...	...	...
Unemployment rate	10.3	<b>10.3</b>	0.4	<b>0.0</b>	0.4	1.8	...	...	...
Employment rate	61.0	<b>61.5</b>	0.5	<b>0.5</b>	1.2	0.5	...	...	...
<b>St. Catharines-Niagara, Ontario</b>									
Population	330.5	<b>330.6</b>	...	<b>0.1</b>	0.1	0.8	<b>0.0</b>	0.0	0.2
Labour force	210.7	<b>211.7</b>	1.6	<b>1.0</b>	3.8	1.4	<b>0.5</b>	1.8	0.7
Employment	187.3	<b>189.7</b>	1.7	<b>2.4</b>	4.5	-0.1	<b>1.3</b>	2.4	-0.1
Unemployment	23.4	<b>22.0</b>	0.9	<b>-1.4</b>	-0.8	1.5	<b>-6.0</b>	-3.5	7.3
Participation rate	63.8	<b>64.0</b>	0.5	<b>0.2</b>	1.1	0.2	...	...	...
Unemployment rate	11.1	<b>10.4</b>	0.4	<b>-0.7</b>	-0.6	0.7	...	...	...
Employment rate	56.7	<b>57.4</b>	0.5	<b>0.7</b>	1.4	-0.2	...	...	...

See notes at the end of the table.

Table 5-1 – continued

## Labour force characteristics by census metropolitan area (seasonally adjusted) — 3 month moving average

	February 2010	March 2010	S.E. <sup>1</sup>	Change from			Percent change from		
				last month	last December	twelve months ago	last month	last December	twelve months ago
in thousands (except rates)									
<b>Greater Sudbury / Grand Sudbury, Ontario</b>									
Population	134.9	<b>135.0</b>	...	<b>0.1</b>	0.2	0.9	<b>0.1</b>	0.1	0.7
Labour force	84.6	<b>84.7</b>	0.7	<b>0.1</b>	-0.3	-3.0	<b>0.1</b>	-0.4	-3.4
Employment	75.4	<b>75.7</b>	0.7	<b>0.3</b>	-0.5	-5.4	<b>0.4</b>	-0.7	-6.7
Unemployment	9.1	<b>9.0</b>	0.4	<b>-0.1</b>	0.2	2.4	<b>-1.1</b>	2.3	36.4
Participation rate	62.7	<b>62.7</b>	0.6	<b>0.0</b>	-0.4	-2.7	...	...	...
Unemployment rate	10.8	<b>10.6</b>	0.4	<b>-0.2</b>	0.2	3.1	...	...	...
Employment rate	55.9	<b>56.1</b>	0.6	<b>0.2</b>	-0.4	-4.4	...	...	...
<b>Thunder Bay, Ontario</b>									
Population	103.0	<b>103.0</b>	...	<b>0.0</b>	-0.1	-0.5	<b>0.0</b>	-0.1	-0.5
Labour force	65.1	<b>64.1</b>	0.6	<b>-1.0</b>	-1.7	-0.5	<b>-1.5</b>	-2.6	-0.8
Employment	60.3	<b>59.6</b>	0.7	<b>-0.7</b>	-0.9	0.1	<b>-1.2</b>	-1.5	0.2
Unemployment	4.8	<b>4.5</b>	0.3	<b>-0.3</b>	-0.8	-0.6	<b>-6.2</b>	-15.1	-11.8
Participation rate	63.2	<b>62.2</b>	0.6	<b>-1.0</b>	-1.6	-0.2	...	...	...
Unemployment rate	7.4	<b>7.0</b>	0.5	<b>-0.4</b>	-1.1	-0.9	...	...	...
Employment rate	58.5	<b>57.9</b>	0.6	<b>-0.6</b>	-0.8	0.4	...	...	...
<b>Windsor, Ontario</b>									
Population	273.6	<b>273.6</b>	...	<b>0.0</b>	0.0	0.5	<b>0.0</b>	0.0	0.2
Labour force	172.3	<b>172.5</b>	1.5	<b>0.2</b>	2.1	-4.0	<b>0.1</b>	1.2	-2.3
Employment	150.9	<b>151.4</b>	1.6	<b>0.5</b>	2.6	0.0	<b>0.3</b>	1.7	0.0
Unemployment	21.4	<b>21.1</b>	1.0	<b>-0.3</b>	-0.5	-4.0	<b>-1.4</b>	-2.3	-15.9
Participation rate	63.0	<b>63.0</b>	0.5	<b>0.0</b>	0.7	-1.6	...	...	...
Unemployment rate	12.4	<b>12.2</b>	0.6	<b>-0.2</b>	-0.5	-2.0	...	...	...
Employment rate	55.2	<b>55.3</b>	0.6	<b>0.1</b>	0.9	-0.1	...	...	...
<b>Winnipeg, Manitoba</b>									
Population	597.9	<b>598.7</b>	...	<b>0.8</b>	2.0	9.5	<b>0.1</b>	0.3	1.6
Labour force	419.1	<b>419.6</b>	1.3	<b>0.5</b>	1.0	3.0	<b>0.1</b>	0.2	0.7
Employment	395.5	<b>396.5</b>	1.3	<b>1.0</b>	1.4	0.3	<b>0.3</b>	0.4	0.1
Unemployment	23.6	<b>23.1</b>	0.8	<b>-0.5</b>	-0.3	2.7	<b>-2.1</b>	-1.3	13.2
Participation rate	70.1	<b>70.1</b>	0.2	<b>0.0</b>	-0.1	-0.6	...	...	...
Unemployment rate	5.6	<b>5.5</b>	0.2	<b>-0.1</b>	-0.1	0.6	...	...	...
Employment rate	66.1	<b>66.2</b>	0.2	<b>0.1</b>	0.0	-1.0	...	...	...
<b>Regina, Saskatchewan</b>									
Population	173.6	<b>173.9</b>	...	<b>0.3</b>	0.9	3.6	<b>0.2</b>	0.5	2.1
Labour force	120.4	<b>121.9</b>	0.7	<b>1.5</b>	1.5	-0.5	<b>1.2</b>	1.2	-0.4
Employment	114.6	<b>115.5</b>	0.7	<b>0.9</b>	1.0	-1.9	<b>0.8</b>	0.9	-1.6
Unemployment	5.8	<b>6.4</b>	0.3	<b>0.6</b>	0.5	1.4	<b>10.3</b>	8.5	28.0
Participation rate	69.4	<b>70.1</b>	0.4	<b>0.7</b>	0.5	-1.8	...	...	...
Unemployment rate	4.8	<b>5.3</b>	0.3	<b>0.5</b>	0.4	1.2	...	...	...
Employment rate	66.0	<b>66.4</b>	0.4	<b>0.4</b>	0.2	-2.5	...	...	...
<b>Saskatoon, Saskatchewan</b>									
Population	205.9	<b>206.5</b>	...	<b>0.6</b>	1.5	5.7	<b>0.3</b>	0.7	2.8
Labour force	150.9	<b>151.5</b>	0.9	<b>0.6</b>	0.5	2.6	<b>0.4</b>	0.3	1.7
Employment	144.4	<b>145.0</b>	0.9	<b>0.6</b>	1.1	3.0	<b>0.4</b>	0.8	2.1
Unemployment	6.5	<b>6.5</b>	0.4	<b>0.0</b>	-0.6	-0.4	<b>0.0</b>	-8.5	-5.8
Participation rate	73.3	<b>73.4</b>	0.4	<b>0.1</b>	-0.3	-0.8	...	...	...
Unemployment rate	4.3	<b>4.3</b>	0.3	<b>0.0</b>	-0.4	-0.3	...	...	...
Employment rate	70.1	<b>70.2</b>	0.4	<b>0.1</b>	0.0	-0.5	...	...	...

See notes at the end of the table.

Table 5-1 – continued

## Labour force characteristics by census metropolitan area (seasonally adjusted) — 3 month moving average

	February 2010	March 2010	S.E. <sup>1</sup>	Change from			Percent change from		
				last month	last December	twelve months ago	last month	last December	twelve months ago
in thousands (except rates)									
<b>Calgary, Alberta</b>									
Population	985.4	<b>987.1</b>	...	<b>1.7</b>	5.0	25.5	<b>0.2</b>	0.5	2.7
Labour force	749.7	<b>748.2</b>	3.0	<b>-1.5</b>	-8.3	4.7	<b>-0.2</b>	-1.1	0.6
Employment	696.9	<b>694.3</b>	3.2	<b>-2.6</b>	-7.6	-6.3	<b>-0.4</b>	-1.1	-0.9
Unemployment	52.9	<b>53.9</b>	1.8	<b>1.0</b>	-0.7	11.0	<b>1.9</b>	-1.3	25.6
Participation rate	76.1	<b>75.8</b>	0.3	<b>-0.3</b>	-1.2	-1.5	...	...	...
Unemployment rate	7.1	<b>7.2</b>	0.2	<b>0.1</b>	0.0	1.4	...	...	...
Employment rate	70.7	<b>70.3</b>	0.3	<b>-0.4</b>	-1.2	-2.6	...	...	...
<b>Edmonton, Alberta</b>									
Population	915.9	<b>917.2</b>	...	<b>1.3</b>	4.0	21.5	<b>0.1</b>	0.4	2.4
Labour force	661.5	<b>655.6</b>	3.0	<b>-5.9</b>	-9.6	2.8	<b>-0.9</b>	-1.4	0.4
Employment	616.5	<b>607.9</b>	3.3	<b>-8.6</b>	-7.0	-13.7	<b>-1.4</b>	-1.1	-2.2
Unemployment	45.0	<b>47.7</b>	1.7	<b>2.7</b>	-2.6	16.5	<b>6.0</b>	-5.2	52.9
Participation rate	72.2	<b>71.5</b>	0.3	<b>-0.7</b>	-1.3	-1.4	...	...	...
Unemployment rate	6.8	<b>7.3</b>	0.3	<b>0.5</b>	-0.3	2.5	...	...	...
Employment rate	67.3	<b>66.3</b>	0.4	<b>-1.0</b>	-1.0	-3.1	...	...	...
<b>Abbotsford-Mission, British Columbia</b>									
Population	136.9	<b>137.0</b>	...	<b>0.1</b>	0.5	2.0	<b>0.1</b>	0.4	1.5
Labour force	95.4	<b>95.0</b>	0.9	<b>-0.4</b>	-1.1	3.7	<b>-0.4</b>	-1.1	4.1
Employment	89.1	<b>89.1</b>	0.8	<b>0.0</b>	0.0	4.2	<b>0.0</b>	0.0	4.9
Unemployment	6.3	<b>5.9</b>	0.4	<b>-0.4</b>	-1.1	-0.5	<b>-6.3</b>	-15.7	-7.8
Participation rate	69.7	<b>69.3</b>	0.6	<b>-0.4</b>	-1.1	1.7	...	...	...
Unemployment rate	6.6	<b>6.2</b>	0.4	<b>-0.4</b>	-1.1	-0.8	...	...	...
Employment rate	65.1	<b>65.0</b>	0.6	<b>-0.1</b>	-0.3	2.1	...	...	...
<b>Vancouver, British Columbia</b>									
Population	2,012.9	<b>2,017.1</b>	...	<b>4.2</b>	12.4	47.8	<b>0.2</b>	0.6	2.4
Labour force	1,345.3	<b>1,341.9</b>	5.0	<b>-3.4</b>	0.7	39.1	<b>-0.3</b>	0.1	3.0
Employment	1,241.4	<b>1,237.6</b>	5.1	<b>-3.8</b>	-0.2	16.0	<b>-0.3</b>	0.0	1.3
Unemployment	103.9	<b>104.3</b>	2.8	<b>0.4</b>	0.9	23.1	<b>0.4</b>	0.9	28.4
Participation rate	66.8	<b>66.5</b>	0.3	<b>-0.3</b>	-0.4	0.3	...	...	...
Unemployment rate	7.7	<b>7.8</b>	0.2	<b>0.1</b>	0.1	1.6	...	...	...
Employment rate	61.7	<b>61.4</b>	0.3	<b>-0.3</b>	-0.3	-0.6	...	...	...
<b>Victoria, British Columbia</b>									
Population	289.9	<b>290.0</b>	...	<b>0.1</b>	0.5	2.3	<b>0.0</b>	0.2	0.8
Labour force	201.6	<b>200.8</b>	1.4	<b>-0.8</b>	3.1	7.2	<b>-0.4</b>	1.6	3.7
Employment	186.5	<b>187.0</b>	1.4	<b>0.5</b>	4.1	4.3	<b>0.3</b>	2.2	2.4
Unemployment	15.1	<b>13.8</b>	0.7	<b>-1.3</b>	-1.0	2.9	<b>-8.6</b>	-6.8	26.6
Participation rate	69.5	<b>69.2</b>	0.5	<b>-0.3</b>	0.9	1.9	...	...	...
Unemployment rate	7.5	<b>6.9</b>	0.3	<b>-0.6</b>	-0.6	1.3	...	...	...
Employment rate	64.3	<b>64.5</b>	0.5	<b>0.2</b>	1.3	1.0	...	...	...

1. Average standard error of change in two consecutive months (see "Sampling Errors" in Data Quality for further explanations).

Note(s): All geographic regions are based on the 2001 Census boundaries. Related CANSIM Table 282-0090.

**Table 5-2**  
**Labour force characteristics by census metropolitan area (seasonally adjusted) — Monthly**

	February 2010	March 2010	S.E. <sup>1</sup>	Change from			Percent change from		
				last month	last December	twelve months ago	last month	last December	twelve months ago
in thousands (except rates)									
<b>Montréal, Quebec</b>									
Population	3,129.1	<b>3,132.1</b>	...	<b>3.0</b>	10.4	41.0	<b>0.1</b>	0.3	1.3
Labour force	2,115.8	<b>2,124.6</b>	14.6	<b>8.8</b>	23.0	64.1	<b>0.4</b>	1.1	3.1
Employment	1,923.3	<b>1,934.9</b>	14.8	<b>11.6</b>	31.3	64.2	<b>0.6</b>	1.6	3.4
Unemployment	192.5	<b>189.7</b>	11.5	<b>-2.8</b>	-8.3	-0.1	<b>-1.5</b>	-4.2	-0.1
Participation rate	67.6	<b>67.8</b>	0.5	<b>0.2</b>	0.5	1.1	...	...	...
Unemployment rate	9.1	<b>8.9</b>	0.5	<b>-0.2</b>	-0.5	-0.3	...	...	...
Employment rate	61.5	<b>61.8</b>	0.5	<b>0.3</b>	0.8	1.3	...	...	...
<b>Toronto, Ontario</b>									
Population	4,724.7	<b>4,733.1</b>	...	<b>8.4</b>	27.4	107.5	<b>0.2</b>	0.6	2.3
Labour force	3,223.2	<b>3,212.9</b>	20.1	<b>-10.3</b>	5.3	8.6	<b>-0.3</b>	0.2	0.3
Employment	2,916.3	<b>2,914.4</b>	19.7	<b>-1.9</b>	9.5	7.2	<b>-0.1</b>	0.3	0.2
Unemployment	306.8	<b>298.5</b>	15.4	<b>-8.3</b>	-4.2	1.4	<b>-2.7</b>	-1.4	0.5
Participation rate	68.2	<b>67.9</b>	0.4	<b>-0.3</b>	-0.3	-1.4	...	...	...
Unemployment rate	9.5	<b>9.3</b>	0.5	<b>-0.2</b>	-0.1	0.0	...	...	...
Employment rate	61.7	<b>61.6</b>	0.4	<b>-0.1</b>	-0.1	-1.3	...	...	...
<b>Vancouver, British Columbia</b>									
Population	2,017.4	<b>2,021.1</b>	...	<b>3.7</b>	12.5	48.7	<b>0.2</b>	0.6	2.5
Labour force	1,343.1	<b>1,333.2</b>	10.6	<b>-9.9</b>	-10.2	24.3	<b>-0.7</b>	-0.8	1.9
Employment	1,241.7	<b>1,230.0</b>	10.5	<b>-11.7</b>	-11.2	10.3	<b>-0.9</b>	-0.9	0.8
Unemployment	101.4	<b>103.2</b>	7.0	<b>1.8</b>	1.0	14.0	<b>1.8</b>	1.0	15.7
Participation rate	66.6	<b>66.0</b>	0.5	<b>-0.6</b>	-0.9	-0.4	...	...	...
Unemployment rate	7.5	<b>7.7</b>	0.5	<b>0.2</b>	0.1	0.9	...	...	...
Employment rate	61.5	<b>60.9</b>	0.5	<b>-0.6</b>	-0.9	-0.9	...	...	...

1. Average standard error of change in two consecutive months (see "Sampling Errors" in Data Quality for further explanations).

**Note(s):** All geographic regions are based on the 2001 Census boundaries. Related CANSIM Table 282-0091.

Table 6-1

Labour force characteristics by province and economic region <sup>1</sup>, unadjusted for seasonality, 3 month moving average ending in March 2009 and March 2010

	Population	Labour force			Participation rate	Unemployment rate	Employment rate
		Labour force	Employment	Unemployment			
	in thousands						
<b>Canada <sup>2</sup></b>							
2009	27,159.0	18,076.4	16,572.6	1,503.7	66.6	8.3	61.0
2010	27,554.4	18,239.8	16,657.8	1,582.0	66.2	8.7	60.5
<b>Newfoundland and Labrador</b>							
2009	427.9	243.2	201.1	42.2	56.8	17.4	47.0
2010	431.0	248.2	205.4	42.9	57.6	17.3	47.7
<b>Avalon Peninsula [1010]</b>							
2009	214.2	132.6	117.5	15.1	61.9	11.4	54.9
2010	217.6	137.1	120.0	17.0	63.0	12.4	55.1
<b>South Coast-Burin Peninsula [1020]</b>							
2009	32.1	16.4	11.9	4.4	51.1	26.8	37.1
2010	31.7	15.1	11.7	3.3	47.6	21.9	36.9
<b>West Coast-Northern Peninsula-Labrador [1030]</b>							
2009	88.0	47.4	36.1	11.2	53.9	23.6	41.0
2010	88.3	48.9	39.4	9.5	55.4	19.4	44.6
<b>Notre Dame-Central Bonavista Bay [1040]</b>							
2009	93.5	46.9	35.5	11.4	50.2	24.3	38.0
2010	93.4	47.2	34.2	13.0	50.5	27.5	36.6
<b>Prince Edward Island</b>							
2009	115.3	75.3	63.9	11.4	65.3	15.1	55.4
2010	116.6	77.2	67.4	9.8	66.2	12.7	57.8
<b>Nova Scotia</b>							
2009	771.3	488.8	439.7	49.1	63.4	10.0	57.0
2010	775.0	485.8	435.9	49.9	62.7	10.3	56.2
<b>Cape Breton [1210]</b>							
2009	115.3	61.1	50.7	10.5	53.0	17.2	44.0
2010	114.5	59.4	49.8	9.6	51.9	16.2	43.5
<b>North Shore [1220]</b>							
2009	131.4	76.1	66.8	9.3	57.9	12.2	50.8
2010	131.4	76.2	66.4	9.8	58.0	12.9	50.5
<b>Annapolis Valley [1230]</b>							
2009	101.5	63.5	56.6	6.9	62.6	10.9	55.8
2010	102.0	61.1	55.6	5.5	59.9	9.0	54.5
<b>Southern [1240]</b>							
2009	103.4	61.4	53.1	8.3	59.4	13.5	51.4
2010	103.1	59.8	49.5	10.3	58.0	17.2	48.0
<b>Halifax [1250]</b>							
2009	319.8	226.6	212.5	14.1	70.9	6.2	66.4
2010	323.9	229.3	214.5	14.8	70.8	6.5	66.2
<b>New Brunswick</b>							
2009	620.3	391.4	351.7	39.7	63.1	10.1	56.7
2010	623.1	390.2	350.9	39.2	62.6	10.0	56.3
<b>Campbellton-Miramichi [1310]</b>							
2009	135.4	71.4	58.4	13.0	52.7	18.2	43.1
2010	134.7	71.1	59.7	11.4	52.8	16.0	44.3
<b>Moncton-Richibucto [1320]</b>							
2009	167.1	110.5	101.4	9.1	66.1	8.2	60.7
2010	169.2	109.6	100.9	8.7	64.8	7.9	59.6
<b>Saint John-St. Stephen [1330]</b>							
2009	143.5	95.7	89.4	6.4	66.7	6.7	62.3
2010	144.2	92.2	83.5	8.7	63.9	9.4	57.9

See notes at the end of the table.

Table 6-1 – continued

**Labour force characteristics by province and economic region 1, unadjusted for seasonality, 3 month moving average ending in March 2009 and March 2010**

	Population	Labour force			Participation rate	Unemployment rate	Employment rate
		Labour force	Employment	Unemployment			
	in thousands						
Fredericton-Oromocto [1340]							
2009	106.1	70.2	64.1	6.1	66.2	8.7	60.4
2010	106.9	75.6	69.9	5.8	70.7	7.7	65.4
Edmundston-Woodstock [1350]							
2009	68.2	43.4	38.4	5.0	63.6	11.5	56.3
2010	68.1	41.7	37.0	4.7	61.2	11.3	54.3
<b>Quebec</b>							
2009	6,410.8	4,131.5	3,750.3	381.1	64.4	9.2	58.5
2010	6,484.6	4,159.6	3,787.9	371.6	64.1	8.9	58.4
Gaspésie-Îles-de-la-Madeleine [2410]							
2009	80.8	37.2	29.8	7.4	46.0	19.9	36.9
2010	80.8	40.2	33.7	6.6	49.8	16.4	41.7
Bas-Saint-Laurent [2415]							
2009	167.5	103.0	91.3	11.6	61.5	11.3	54.5
2010	167.9	95.9	85.7	10.1	57.1	10.5	51.0
Capitale-Nationale [2420]							
2009	571.0	376.1	355.2	20.9	65.9	5.6	62.2
2010	576.4	366.8	346.2	20.6	63.6	5.6	60.1
Chaudière-Appalaches [2425]							
2009	331.1	214.3	197.3	17.0	64.7	7.9	59.6
2010	333.8	221.4	205.8	15.6	66.3	7.0	61.7
Estrie [2430]							
2009	252.5	163.3	147.2	16.1	64.7	9.9	58.3
2010	255.3	148.2	134.2	14.0	58.0	9.4	52.6
Centre-du-Québec [2433]							
2009	187.4	128.1	116.0	12.1	68.4	9.4	61.9
2010	189.0	113.8	102.9	10.9	60.2	9.6	54.4
Montréal [2435]							
2009	1,154.3	775.6	712.9	62.8	67.2	8.1	61.8
2010	1,174.9	787.8	719.5	68.3	67.1	8.7	61.2
Montréal [2440]							
2009	1,593.7	1,016.7	906.1	110.6	63.8	10.9	56.9
2010	1,600.4	1,026.5	921.1	105.4	64.1	10.3	57.6
Laval [2445]							
2009	317.0	206.6	188.3	18.3	65.2	8.9	59.4
2010	322.4	224.0	203.3	20.6	69.5	9.2	63.1
Lanaudière [2450]							
2009	369.9	241.1	222.3	18.8	65.2	7.8	60.1
2010	381.1	252.3	229.5	22.8	66.2	9.0	60.2
Laurentides [2455]							
2009	441.5	286.4	259.4	27.0	64.9	9.4	58.8
2010	452.0	300.2	275.5	24.7	66.4	8.2	61.0
Outaouais [2460]							
2009	297.5	202.0	186.0	16.0	67.9	7.9	62.5
2010	302.4	211.0	194.6	16.4	69.8	7.8	64.4
Abitibi-Témiscamingue [2465]							
2009	116.1	75.0	67.6	7.4	64.6	9.9	58.2
2010	116.8	71.2	65.0	6.1	61.0	8.6	55.7
Mauricie [2470]							
2009	218.6	123.6	111.9	11.7	56.5	9.5	51.2
2010	219.7	116.1	104.2	12.0	52.8	10.3	47.4

See notes at the end of the table.

Table 6-1 – continued

**Labour force characteristics by province and economic region 1, unadjusted for seasonality, 3 month moving average ending in March 2009 and March 2010**

	Population	Labour force			Participation rate	Unemployment rate	Employment rate
		Labour force	Employment	Unemployment			
	in thousands						
Saguenay-Lac-Saint-Jean [2475]							
2009	223.0	131.7	115.8	15.9	59.1	12.1	51.9
2010	223.0	129.6	116.9	12.7	58.1	9.8	52.4
Côte-Nord and Nord-du-Québec [2480, 2490]							
2009	88.8	50.7	43.2	7.5	57.1	14.8	48.6
2010	88.6	54.6	49.8	4.8	61.6	8.8	56.2
<b>Ontario</b>							
2009	10,603.6	7,079.6	6,450.3	629.3	66.8	8.9	60.8
2010	10,752.4	7,130.8	6,474.1	656.7	66.3	9.2	60.2
Ottawa [3510]							
2009	1,000.5	690.4	650.8	39.6	69.0	5.7	65.0
2010	1,010.6	707.0	659.1	47.9	70.0	6.8	65.2
Kingston-Pembroke [3515]							
2009	360.8	231.1	211.8	19.3	64.1	8.4	58.7
2010	361.7	213.6	193.2	20.4	59.1	9.6	53.4
Muskoka-Kawartha [3520]							
2009	312.3	183.2	168.9	14.2	58.7	7.8	54.1
2010	313.9	194.6	174.6	20.0	62.0	10.3	55.6
Toronto [3530]							
2009	4,866.5	3,312.6	3,017.2	295.3	68.1	8.9	62.0
2010	4,974.7	3,350.9	3,043.0	307.9	67.4	9.2	61.2
Kitchener-Waterloo-Barrie [3540]							
2009	993.2	700.5	633.3	67.2	70.5	9.6	63.8
2010	1,007.4	704.0	636.0	68.0	69.9	9.7	63.1
Hamilton-Niagara Peninsula [3550]							
2009	1,148.1	752.5	678.3	74.2	65.5	9.9	59.1
2010	1,156.9	748.0	675.7	72.3	64.7	9.7	58.4
London [3560]							
2009	519.0	345.7	312.4	33.4	66.6	9.7	60.2
2010	524.0	345.6	313.5	32.1	66.0	9.3	59.8
Windsor-Sarnia [3570]							
2009	526.8	333.6	291.0	42.6	63.3	12.8	55.2
2010	527.7	327.4	289.5	37.9	62.0	11.6	54.9
Stratford-Bruce Peninsula [3580]							
2009	248.5	155.4	143.0	12.3	62.5	7.9	57.5
2010	249.1	164.2	149.1	15.0	65.9	9.1	59.9
Northeast [3590]							
2009	454.6	265.6	245.1	20.6	58.4	7.8	53.9
2010	455.0	267.3	239.9	27.5	58.7	10.3	52.7
Northwest [3595]							
2009	173.3	109.0	98.6	10.5	62.9	9.6	56.9
2010	171.4	108.3	100.4	7.9	63.2	7.3	58.6
<b>Manitoba</b>							
2009	916.8	628.3	595.7	32.7	68.5	5.2	65.0
2010	930.6	638.8	602.9	35.9	68.6	5.6	64.8
Southeast [4610]							
2009	80.0	53.1	50.2	2.9	66.4	5.5	62.8
2010	82.5	59.1	55.3	3.8	71.6	6.4	67.0
South Central [4620]							
2009	44.6	28.8	27.2	1.5	64.6	5.2	61.0
2010	45.7	31.7	30.5	1.1	69.4	3.5	66.7

See notes at the end of the table.



Table 6-1 – continued

**Labour force characteristics by province and economic region 1, unadjusted for seasonality, 3 month moving average ending in March 2009 and March 2010**

	Population	Labour force			Participation rate	Unemployment rate	Employment rate
		Labour force	Employment	Unemployment			
		in thousands					
<b>Southwest [4630]</b>							
2009	82.8	59.3	56.5	2.8	71.6	4.7	68.2
2010	83.3	54.6	52.3	2.2	65.5	4.0	62.8
<b>North Central [4640]</b>							
2009	36.0	23.5	22.9	0.6	65.3	2.6	63.6
2010	36.5	25.6	24.1	1.5	70.1	5.9	66.0
<b>Winnipeg [4650]</b>							
2009	543.3	379.3	359.6	19.8	69.8	5.2	66.2
2010	551.3	379.5	357.1	22.3	68.8	5.9	64.8
<b>Interlake [4660]</b>							
2009	71.4	46.2	43.8	2.4	64.7	5.2	61.3
2010	72.5	49.5	47.0	2.5	68.3	5.1	64.8
<b>Parklands and North [4670, 4680]</b>							
2009	58.7	38.1	35.5	2.6	64.9	6.8	60.5
2010	58.8	38.8	36.5	2.3	66.0	5.9	62.1
<b>Saskatchewan</b>							
2009	775.5	539.6	512.6	27.0	69.6	5.0	66.1
2010	786.3	544.3	516.1	28.2	69.2	5.2	65.6
<b>Regina-Moose Mountain [4710]</b>							
2009	229.4	162.1	155.2	6.9	70.7	4.3	67.7
2010	233.3	163.0	155.2	7.8	69.9	4.8	66.5
<b>Swift Current-Moose Jaw [4720]</b>							
2009	84.0	54.9	52.8	2.1	65.4	3.8	62.9
2010	84.3	55.3	52.4	2.9	65.6	5.2	62.2
<b>Saskatoon-Biggar [4730]</b>							
2009	243.7	176.1	167.6	8.5	72.3	4.8	68.8
2010	249.2	179.1	171.2	7.9	71.9	4.4	68.7
<b>Yorkton-Melville [4740]</b>							
2009	64.7	40.9	38.7	2.2	63.2	5.4	59.8
2010	64.6	42.7	40.7	2.0	66.1	4.7	63.0
<b>Prince Albert and Northern [4750, 4760]</b>							
2009	153.7	105.6	98.4	7.2	68.7	6.8	64.0
2010	154.8	104.2	96.5	7.7	67.3	7.4	62.3
<b>Alberta</b>							
2009	2,836.0	2,097.8	1,979.9	118.0	74.0	5.6	69.8
2010	2,903.8	2,105.0	1,956.4	148.6	72.5	7.1	67.4
<b>Lethbridge-Medicine Hat [4810]</b>							
2009	210.8	141.9	135.0	7.0	67.3	4.9	64.0
2010	213.8	138.8	129.0	9.8	64.9	7.1	60.3
<b>Camrose-Drumheller [4820]</b>							
2009	155.7	113.0	108.7	4.3	72.6	3.8	69.8
2010	157.0	111.9	106.3	5.6	71.3	5.0	67.7
<b>Calgary [4830]</b>							
2009	1,038.3	789.8	743.8	46.0	76.1	5.8	71.6
2010	1,067.5	793.5	735.1	58.3	74.3	7.3	68.9
<b>Banff-Jasper-Rocky Mountain House [4840]</b>							
2009	69.1	55.0	52.2	2.9	79.6	5.3	75.5
2010	70.3	54.2	51.7	2.5	77.1	4.6	73.5
<b>Red Deer [4850]</b>							
2009	148.9	114.9	106.5	8.4	77.2	7.3	71.5
2010	153.3	110.1	102.5	7.6	71.8	6.9	66.9

See notes at the end of the table.

Table 6-1 – continued

**Labour force characteristics by province and economic region 1, unadjusted for seasonality, 3 month moving average ending in March 2009 and March 2010**

	Population	Labour force			Participation rate	Unemployment rate	Employment rate
		Labour force	Employment	Unemployment			
	in thousands						
Edmonton [4860]							
2009	930.4	670.4	634.5	35.9	72.1	5.4	68.2
2010	953.0	674.4	625.0	49.4	70.8	7.3	65.6
Athabasca-Grande Prairie-Peace River [4870]							
2009	188.9	142.0	132.6	9.3	75.2	6.5	70.2
2010	192.9	147.7	135.7	12.0	76.6	8.1	70.3
Wood Buffalo-Cold Lake [4880]							
2009	93.9	70.8	66.6	4.2	75.4	5.9	70.9
2010	96.0	74.4	71.2	3.3	77.5	4.4	74.2
British Columbia							
2009	3,681.5	2,400.9	2,227.5	173.3	65.2	7.2	60.5
2010	3,750.9	2,459.9	2,260.7	199.2	65.6	8.1	60.3
Vancouver Island and Coast [5910]							
2009	637.1	408.6	380.7	27.9	64.1	6.8	59.8
2010	644.6	413.4	382.6	30.7	64.1	7.4	59.4
Lower Mainland-Southwest [5920]							
2009	2,240.6	1,472.1	1,374.3	97.8	65.7	6.6	61.3
2010	2,293.4	1,509.6	1,391.0	118.6	65.8	7.9	60.7
Thompson-Okanagan [5930]							
2009	435.4	274.8	249.9	24.9	63.1	9.1	57.4
2010	442.3	290.9	264.8	26.1	65.8	9.0	59.9
Kootenay [5940]							
2009	123.1	77.6	70.7	6.9	63.0	8.9	57.4
2010	123.6	78.4	70.0	8.3	63.4	10.6	56.6
Cariboo [5950]							
2009	127.0	83.7	75.3	8.4	65.9	10.0	59.3
2010	128.2	84.2	75.4	8.7	65.7	10.3	58.8
North Coast and Nechako [5960, 5970]							
2009	65.3	44.3	39.5	4.9	67.8	11.1	60.5
2010	64.9	42.6	37.7	4.9	65.6	11.5	58.1
Northeast [5980]							
2009	52.9	39.8	37.2	2.6	75.2	6.5	70.3
2010	54.0	40.9	39.1	1.8	75.7	4.4	72.4

1. For geographic descriptions of economic regions, refer to the Guide to the Labour Force Survey (catalogue number 71-543-GIE).

2. Estimates for Canada are a sum of the provincial totals and exclude estimates from Yukon, Northwest Territories and Nunavut.

**Note(s):** All geographic regions are based on the 2001 Census boundaries. Related CANSIM table 282-0054.

**Table 6-2**  
**Labour force characteristics by territories, unadjusted for seasonality, 3 month moving average ending in**  
**March 2009 and March 2010**

	Population	Labour force			Participation rate	Unemployment rate	Employment rate
		Labour force	Employment	Unemployment			
		in thousands			percent		
<b>Yukon <sup>1</sup></b>							
2009	24.1	17.5	16.3	1.2	72.6	6.9	67.6
2010	24.5	16.9	15.2	1.7	69.0	10.1	62.0
<b>Northwest Territories <sup>2</sup></b>							
2009	31.4	22.4	21.4	1.0	71.3	4.5	68.2
2010	31.5	21.7	20.0	1.7	68.9	7.8	63.5
<b>Nunavut <sup>3</sup></b>							
2009	18.5	10.6	9.7	0.9	57.4	8.9	52.2
2010	18.8	11.7	10.3	1.4	62.2	12.2	54.6

1. Since 1992, the Labour force survey (LFS) has been conducted in the Yukon, using an alternative methodology that accommodates some of the operational difficulties inherent to remote locales. These estimates are not included in the national totals. In 1995, the LFS in the Yukon underwent a sample redesign. One result of the redesign was that the covered population increased from 85% to 92%, which is reflected by the sharp increase in the three month moving averages estimates of January, February and March of 1995 for all the level estimates. Users are therefore warned to be cautious when comparing estimates before January 1995 to estimates for January 1995 and forward.
2. Since 2001, the Labour force survey (LFS) has been administered in the Northwest Territories, using an alternative methodology that accommodates some of the operational difficulties inherent to remote locales. These estimates are not included in national totals.
3. Since 2004, the Labour force survey (LFS) has been administered in Nunavut, using an alternative methodology that accommodates some of the operational difficulties inherent to remote locales. These estimates are 3-month moving averages and are not included in national totals. From January 2004 to December 2007, estimates represent about 70% of all Nunavut residents aged 15 and over. Starting in January 2008, coverage was extended to 92%, so that by March 2008, the 3-month moving average is completely based on the extended coverage. Because of the large difference in coverage, users are recommended not to compare estimates prior to January 2008 with data afterwards. The January and February 2008 3-month moving average estimates are based on a mix of both coverages, since the extended coverage was introduced in January 2008. Estimates from January 2004 to December 2007 are based on the 10 largest communities in Nunavut: Iqaluit, Rankin Inlet, Cambridge Bay, Kugluktuk, Baker Lake, Arviat, Pond Inlet, Cape Dorset, Pangnirtung, Igloolik. Estimates from March 2008 to present cover the above communities as well as: Taloyoak, Gjoa Haven, Kugaaruk, Coral Harbour, Repulse Bay, Qikiqtarjuaq, Arctic Bay, Hall Beach, Clyde River.

**Note(s):** Related CANSIM table 282-0100.

**Table 7**  
**Average usual hours and wages of employees by selected characteristics, Canada, unadjusted for seasonality**

	Employees				Full-time			Part-time		
	Number	Average weekly hours	Average weekly wages	Average hourly wages	Number	Average weekly hours	Average weekly wages	Number	Average weekly hours	Average weekly wages
	thousands		current dollars		thousands		current dollars	thousands		current dollars
<b>March 2010</b>										
15 years and over	14,035.7	34.7	813.37	22.46	11,263.0	39.2	946.03	2,772.7	16.8	274.51
15 to 24 years	2,184.8	25.5	350.77	12.80	998.0	38.7	575.45	1,186.8	14.4	161.83
25 years and over	11,850.9	36.4	898.65	24.24	10,265.0	39.2	982.06	1,585.9	18.6	358.83
Men	6,891.4	37.3	938.49	24.40	6,038.6	40.3	1,036.68	852.8	15.9	243.17
Women	7,144.3	32.3	692.68	20.59	5,224.4	37.8	841.24	1,919.9	17.2	288.43
<b>Union coverage</b>										
Union coverage	4,460.6	35.3	926.83	25.82	3,764.3	38.5	1,024.62	696.3	18.4	398.11
No union coverage	9,575.1	34.5	760.52	20.89	7,498.7	39.5	906.57	2,076.4	16.3	233.06
<b>Job permanency</b>										
Permanent	12,355.2	35.7	849.83	23.02	10,334.9	39.2	958.79	2,020.3	17.8	292.46
Temporary	1,680.6	27.9	545.32	18.32	928.1	39.0	803.94	752.4	14.2	226.32
<b>Occupation</b>										
Management	1,018.8	39.9	1,355.13	33.97	982.3	40.6	1,388.12	36.5	21.2	466.61
Business, finance and administrative	2,698.7	35.0	752.08	21.01	2,274.3	38.2	837.12	424.4	17.6	296.31
Natural and applied sciences	1,105.1	38.3	1,190.76	31.07	1,057.6	39.1	1,221.45	47.5	19.6	507.64
Health	961.3	33.0	863.71	25.91	713.3	37.7	992.36	248.1	19.7	493.81
Social science, education, government service and religion	1,433.3	33.7	984.24	28.82	1,145.8	38.0	1,127.54	287.6	16.4	413.29
Art, culture, recreation and sport	323.2	29.6	709.94	22.17	214.4	38.1	959.15	108.8	12.8	218.64
Sales and service	3,663.1	29.8	487.85	15.07	2,245.5	38.4	674.36	1,417.6	16.2	192.43
Trades, transport and equipment operators	1,904.2	39.3	893.93	22.47	1,761.7	41.0	942.92	142.5	17.2	288.33
Occupations unique to primary industry	195.0	41.5	904.50	21.05	166.6	46.0	1,021.96	28.5	15.2	217.23
Occupations unique to processing, manufacturing and utilities	733.0	38.9	755.74	19.23	701.6	39.8	776.60	31.3	18.6	288.66
<b>March 2009</b>										
15 years and over	13,913.4	34.8	796.01	21.98	11,169.3	39.2	924.96	2,744.1	16.9	271.13
15 to 24 years	2,237.4	26.0	359.07	12.70	1,062.2	38.7	582.93	1,175.2	14.6	156.73
25 years and over	11,676.0	36.5	879.73	23.76	10,107.1	39.2	960.91	1,569.0	18.6	356.81
Men	6,836.4	37.3	916.00	23.84	5,972.5	40.3	1,013.83	863.8	16.0	239.65
Women	7,077.0	32.4	680.10	20.18	5,196.7	37.9	822.83	1,880.3	17.3	285.59
<b>Union coverage</b>										
Union coverage	4,419.6	35.4	900.61	25.11	3,741.8	38.4	992.83	677.8	18.4	391.56
No union coverage	9,493.8	34.5	747.31	20.52	7,427.5	39.6	890.77	2,066.3	16.4	231.63
<b>Job permanency</b>										
Permanent	12,429.8	35.7	828.48	22.46	10,387.0	39.2	934.80	2,042.8	17.8	287.89
Temporary	1,483.6	27.3	523.92	17.92	782.2	39.0	794.33	701.4	14.3	222.33
<b>Occupation</b>										
Management	1,018.0	39.4	1,323.58	33.61	979.3	40.2	1,357.80	38.7	18.2	457.22
Business, finance and administrative	2,784.9	35.0	754.58	20.99	2,357.3	38.2	838.21	427.6	17.7	293.48
Natural and applied sciences	1,032.9	38.6	1,178.35	30.67	994.5	39.3	1,203.78	38.3	19.6	518.83
Health	895.3	33.1	846.62	25.47	656.8	37.9	973.69	238.5	19.7	496.74
Social science, education, government service and religion	1,380.9	33.6	944.80	27.82	1,094.6	38.0	1,081.02	286.3	16.6	424.04
Art, culture, recreation and sport	318.2	30.6	696.40	21.37	219.7	38.7	910.27	98.6	12.5	219.66
Sales and service	3,622.3	30.0	477.46	14.72	2,228.3	38.4	658.54	1,394.0	16.4	188.01
Trades, transport and equipment operators	1,921.6	39.3	875.34	21.95	1,772.4	41.2	925.83	149.3	17.4	275.89
Occupations unique to primary industry	214.2	40.8	838.93	19.88	183.5	45.3	946.85	30.7	14.3	193.45
Occupations unique to processing, manufacturing and utilities	724.9	38.6	736.07	18.82	682.8	39.8	766.54	42.1	18.1	241.76

**Note(s):** Related CANSIM Tables 282-0023, 282-0069, 282-0073.

Table 8

**Regional unemployment rates used by the Employment Insurance Program <sup>1</sup>, seasonally adjusted, 3 month moving average**

Region	Effective from April 11, 2010 to May 8, 2010
	percent
<b>Newfoundland and Labrador</b>	
01. St. John's	7.9
02. Newfoundland and Labrador	20.6
<b>Prince Edward Island</b>	
03. Prince Edward Island	10.3
<b>Nova Scotia</b>	
04. Eastern Nova Scotia	15.4
05. Western Nova Scotia	11.1
06. Halifax	6.3
<b>New Brunswick</b>	
07. Fredericton-Moncton-Saint John	7.1
08. Madawaska-Charlotte <sup>2</sup>	11.0
09. Restigouche-Albert	12.7
<b>Quebec</b>	
10. Gaspésie-Îles-de-la-Madeleine	15.1
11. Québec	4.5
12. Trois-Rivières	10.1
13. South Central Quebec	6.1
14. Sherbrooke	8.3
15. Montérégie	6.7
16. Montréal	9.2
17. Central Quebec	8.6
18. Northwestern Quebec	9.9
19. Bas-Saint-Laurent-Côte-Nord <sup>3</sup>	10.8
20. Gatineau	6.0
21. Saguenay	7.7
<b>Ontario</b>	
22. Ottawa	5.9
23. Eastern Ontario	9.9
24. Kingston	5.9
25. Central Ontario	9.9
26. Oshawa	10.3
27. Toronto	9.3
28. Hamilton	8.0
29. St. Catharines	10.7
30. London	9.3
31. Niagara	11.3
32. Windsor	12.0
33. Kitchener	9.5
34. Huron	10.0
35. South Central Ontario	8.0
36. Sudbury	11.0
37. Thunder Bay	7.0
38. Northern Ontario	12.1
<b>Manitoba</b>	
39. Winnipeg	5.7
40. Southern Manitoba	5.8
41. Northern Manitoba	28.3
<b>Saskatchewan</b>	
42. Regina	5.1
43. Saskatoon	4.5
44. Southern Saskatchewan	6.3
45. Northern Saskatchewan	17.0

See notes at the end of the table.

Table 8 – continued

**Regional unemployment rates used by the Employment Insurance Program 1, seasonally adjusted, 3 month moving average**

Region	Effective from April 11, 2010 to May 8, 2010
	percent
<b>Alberta</b>	
46. Calgary	7.2
47. Edmonton	7.8
48. Northern Alberta	9.9
49. Southern Alberta	7.5
<b>British Columbia</b>	
50. Southern Interior British Columbia	9.7
51. Abbotsford	6.7
52. Vancouver	7.9
53. Victoria	7.7
54. Southern Coastal British Columbia	7.9
55. Northern British Columbia	12.0
<b>Territories</b>	
56. Yukon <sup>4</sup>	25.0
57. Northwest Territories <sup>4</sup>	25.0
58. Nunavut <sup>4</sup>	25.0

1. The boundaries of these regions are determined by Human Resources and Social Development Canada (HRSDC). For geographic descriptions and maps of employment insurance regions, see the HRSDC website: <http://srv129.services.gc.ca/eiregions/en/geocont.aspx>.

2. This unemployment rate has been determined using a transition formula prescribed in the EI Regulations. For further information, see: [http://www.hrsdc.gc.ca/en/cs/comm/news/2000/000913a\\_e.shtml](http://www.hrsdc.gc.ca/en/cs/comm/news/2000/000913a_e.shtml).

3. This unemployment rate has been determined using a transition formula prescribed in the EI Regulations. For further information, see: [http://www.hrsdc.gc.ca/en/cs/comm/news/2000/000913b\\_e.shtml](http://www.hrsdc.gc.ca/en/cs/comm/news/2000/000913b_e.shtml).

4. This rate is provided by Human Resources and Skills Development Canada.

**Note(s):** All geographic regions are based on the 1996 Census boundaries.

# Data quality

---

## About the Labour Force Survey

The statistics contained in this report are based on information obtained through a sample survey of 53,000 representative households across the country. The Labour Force Survey, started in November 1945, was taken at quarterly intervals until November 1952. It has been carried out monthly since then. The information generated by the survey has expanded considerably over the years with a major redesign of the survey content in 1976 and again in 1997, and provides a rich and detailed picture of the Canadian labour market.

The sample used in the Labour Force Survey has been designed to represent all persons in the population 15 years of age and over residing in the provinces of Canada, with the exception of the following: persons living on Indian reserves, full-time members of the armed forces and people living in institutions (for example, inmates of penal institutions and patients in hospitals or nursing homes who have resided in the institution for more than six months). Monthly estimates of employment, unemployment and persons not in the labour force refer to the specific week covered by the survey each month, normally the week containing the 15th day.

## Definitions and explanations

The **labour force** is composed of those members of the civilian non-institutional population 15 years of age and over who, during the reference week, were employed or unemployed.

Employed persons are those who, during the reference week:

- (a) did any work at all
- (b) had a job but were not at work

A person is considered to be **full-time** if his/her usual hours at the main job are 30 or more hours per week. When the number of hours worked at the main job is usually less than 30 hours per week then he/she is considered to be **part-time**.

**Unemployed** persons are those who, during the reference week:

- (a) were without work, had actively looked for work in the past four weeks (ending with reference week), and were available for work;
- (b) had not actively looked for work in the past four weeks but were on temporary layoff and were available for work;
- (c) had not actively looked for work in the past four weeks but had a new job to start in four weeks or less from the reference week, and were available for work.

Persons in the civilian non-institutional population 15 years of age and over who, during the reference week, were neither employed nor unemployed are classified as **not in the labour force**.

The **unemployment rate** represents the number of unemployed persons expressed as a percentage of the labour force. The unemployment rate for a particular group (age, sex, etc.) is the number unemployed in that group expressed as a percentage of the labour force for that group.

The **participation rate** represents the labour force expressed as a percentage of the population 15 years of age and over. The participation rate for a particular group (age, sex, etc.) is the labour force in that group expressed as a percentage of the population for that group.

The **employment rate (formerly the employment/population ratio)** represents the number of persons employed expressed as a percentage of the population 15 years of age and over. The employment rate for a particular group (age, sex, etc.) is the number employed in that group expressed as a percentage of the population for that group.

The **part-time rate** represents the number of persons employed part-time expressed as a percentage of the employed. The part-time rate for a particular group (age, sex, etc.) is the number employed part-time in that group expressed as a percentage of the employed for that group.

All geographic regions are based on the 2001 Census boundaries.

## Seasonal adjustment

Fluctuations in economic time series are caused by seasonal, cyclical and irregular movements. A seasonally adjusted series is one from which seasonal movements have been eliminated. Seasonal movements are defined as those which are caused by regular annual events such as climate, holidays, vacation periods and cycles related to crops, production and retail sales associated with Christmas and Easter. The seasonally adjusted series contains irregular as well as longer-term cyclical fluctuations.

The seasonally adjusted series are revised each year to take into account current data and to generate new forecast factors for the next twelve months. The data are therefore subject to slight revisions in future issues of this publication.

## Sampling variability of estimates

Estimates in this publication are based on the Labour Force Survey, a monthly survey of approximately 53,000 households across Canada. Because the entire population is not surveyed, the estimates are subject to sampling error. While the published estimate is the best available indicator of the real value, changes in the level of any estimates between two months can be the result of a true change or sampling variability. The sampling error can be estimated by calculating the standard error for the published estimate or statistic. These standard errors have been included in the publication tables, in order to assist users in interpreting the data.

### Interpretation based on standard error

Two thirds of the time (68%), a change greater than the sampling error indicates a real change. The larger the change compared to the standard error, the better the chance that we are observing a real change, as opposed to a change due to sampling variability. At the 95% level, in order to ensure that change is real, the change in the estimate must be greater than twice the sampling error.

Movements in estimates that are smaller than the sampling error are less likely to reflect a real change and more likely to be due to sampling variability. While the above is true for monthly movements, one can have more confidence in a series of consecutive movements in the same direction, even though some of the monthly movements may be smaller than the sampling error.

### Interpretation based on confidence intervals

Confidence intervals provide another way of looking at the variability inherent in estimates of sample surveys. To illustrate how to calculate the confidence interval, let us say that one month the published estimate for total employment rose by 16,000 to reach 16,500,000. The associated standard error for the movement estimate is 27,200. The standard error used to interpret the movement estimate indicates that:



- There are approximately two chances in three (68%) that the real value of the movement between the two months falls within the range -11,200 to +43,200 (16,000 + or – one standard error).
- There are approximately nine chances in ten (90%) that the real value of the movement between the two months falls within the range -27,520 to +59,520 (16,000 + or – 1.6 times the standard error).
- There are approximately nineteen chances in twenty (95%) that the real value of the movement between the two months falls within the range -38,400 to +70,400 (16,000 + or – two standard errors).

For more detailed explanations on sampling variability of estimates, and in particular for information on how to assess the variability of level estimates, consult the Data quality section of the *Guide to the Labour Force Survey*, (71-543-G) on page 27.

## Documentation

For more detailed information about the Labour Force Survey, see the following documents:

- Overview of the Labour Force Survey
- Guide to the Labour Force Survey (71-543-G)
- Data quality statement
- Methodology of the Canadian Labour Force Survey (71-526-X)
- LFS *geographical maps*