

Catalogue no. 71-001-X

Labour Force Information

Not for release before 7 A.M. EDT

Friday, July 9, 2010

June 13 to 19, 2010



Statistics
Canada

Statistique
Canada

Canada

How to obtain more information

Specific inquiries about this product and related statistics or services should be directed to: Labour Force Survey Program, Labour Statistics Division, Statistics Canada, Ottawa, Ontario, K1A 0T6 (telephone: 613-951-4090, toll free number: 1-866-873-8788, fax: 613-951-2869 or by e-mail address: labour@statcan.gc.ca).

For information about this product or the wide range of services and data available from Statistics Canada, visit our website at www.statcan.gc.ca, e-mail us at infostats@statcan.gc.ca, or telephone us, Monday to Friday from 8:30 a.m. to 4:30 p.m., at the following numbers:

Statistics Canada's National Contact Centre

Toll-free telephone (Canada and the United States):

Inquiries line	1-800-263-1136
National telecommunications device for the hearing impaired	1-800-363-7629
Fax line	1-877-287-4369

Local or international calls:

Inquiries line	1-613-951-8116
Fax line	1-613-951-0581

Depository Services Program

Inquiries line	1-800-635-7943
Fax line	1-800-565-7757

To access this product

This product, Catalogue no. 71-001-X, is available free in electronic format. To obtain a single issue, visit our website at www.statcan.gc.ca and browse by "Key resource" > "Publications."

Standards of service to the public

Statistics Canada is committed to serving its clients in a prompt, reliable and courteous manner. To this end, Statistics Canada has developed *standards of service* that its employees observe. To obtain a copy of these service standards, please contact Statistics Canada toll-free at 1-800-263-1136. The service standards are also published on www.statcan.gc.ca under "About us" > "Providing services to Canadians."

Statistics Canada
Labour Statistics Division
Labour Force Survey Program

Labour Force Information

Not for release before 7 A.M. EDT

Friday, July 9, 2010

June 13 to 19, 2010

Published by authority of the Minister responsible for Statistics Canada

© Minister of Industry, 2010

All rights reserved. The content of this electronic publication may be reproduced, in whole or in part, and by any means, without further permission from Statistics Canada, subject to the following conditions: that it be done solely for the purposes of private study, research, criticism, review or newspaper summary, and/or for non-commercial purposes; and that Statistics Canada be fully acknowledged as follows: Source (or "Adapted from", if appropriate): Statistics Canada, year of publication, name of product, catalogue number, volume and issue numbers, reference period and page(s). Otherwise, no part of this publication may be reproduced, stored in a retrieval system or transmitted in any form, by any means—electronic, mechanical or photocopy—or for any purposes without prior written permission of Licensing Services, Client Services Division, Statistics Canada, Ottawa, Ontario, Canada K1A 0T6.

July 2010

Catalogue no. 71-001-X

ISSN 1492-5478

Frequency: Monthly

Ottawa

Cette publication est également disponible en français.

Note of appreciation

Canada owes the success of its statistical system to a long-standing partnership between Statistics Canada, the citizens of Canada, its businesses, governments and other institutions. Accurate and timely statistical information could not be produced without their continued cooperation and goodwill.

User information

Symbols

The following standard symbols are used in Statistics Canada publications:

- . not available for any reference period
- .. not available for a specific reference period
- ... not applicable
- 0 true zero or a value rounded to zero
- 0^s value rounded to 0 (zero) where there is a meaningful distinction between true zero and the value that was rounded
- p preliminary
- r revised
- x suppressed to meet the confidentiality requirements of the *Statistics Act*
- E use with caution
- F too unreliable to be published

Special requests (\$)

Custom tabulations can be arranged on an ad hoc or regular basis. This service enables you to specify tables and time series to meet your own requirements. The cost varies according to the request. For more information, contact us toll-free at 1-866-873-8788 or e-mail us at labour@statcan.gc.ca.

Schedule of LFS releases

Reference period - Week ending	Release date
January 16, 2010	February 5, 2010
February 20, 2010	March 12, 2010
March 20, 2010	April 9, 2010
April 17, 2010	May 7, 2010
May 15, 2010	June 4, 2010
June 19, 2010	July 9, 2010
July 17, 2010	August 6, 2010
August 21, 2010	September 10, 2010
September 18, 2010	October 8, 2010
October 16, 2010	November 5, 2010
November 13, 2010	December 3, 2010
December 11, 2010	January 7, 2011

Latest LFS release in *The Daily* (free)

Table of contents

Highlights	5
Analysis — June 2010	6
Charts	
1. Employment and unemployment indicators, Canada, seasonally adjusted	9
2. Employment and unemployment indicators, Canada, seasonally adjusted	10
3. Index of employment by industry, Canada, seasonally adjusted, January, 2007=100	11
4. Index of employment by industry, Canada, seasonally adjusted, January 2007=100	12
5. Index of employment by industry, Canada, seasonally adjusted, January 2007=100	13
6. Index of employment by province, seasonally adjusted, January 2007=100	14
7. Index of employment by province, seasonally adjusted, January 2007=100	15
Related products	16
Statistical tables	
1 Labour force characteristics by age and sex, Canada, seasonally adjusted	25
2 Employment by class of worker and industry, Canada, seasonally adjusted	27
3 Labour force characteristics by province, seasonally adjusted	28
4 Selected labour force characteristics (seasonally adjusted)	30
4-1 Newfoundland and Labrador	30
4-2 Prince Edward Island	31
4-3 Nova Scotia	32
4-4 New Brunswick	33
4-5 Quebec	34
4-6 Ontario	35
4-7 Manitoba	36
4-8 Saskatchewan	37
4-9 Alberta	38
4-10 British Columbia	39
5 Labour force characteristics by census metropolitan area (seasonally adjusted)	40
5-1 3 month moving average	40
5-2 Monthly	45

Table of contents – continued

6	Labour force characteristics	46
6-1	by province and economic region, unadjusted for seasonality, 3 month moving average ending in June 2009 and June 2010	46
6-2	by territories, unadjusted for seasonality, 3 month moving average ending in June 2009 and June 2010	51
7	Average usual hours and wages of employees by selected characteristics, Canada, unadjusted for seasonality	52
8	Regional unemployment rates used by the Employment Insurance Program, seasonally adjusted, 3 month moving average	53
9	Students and other persons aged 15 to 24 (unadjusted)	55
9-1	by detailed age groups	55
9-2	by province	56
Data quality, concepts and methodology		
	Data quality	58

Highlights

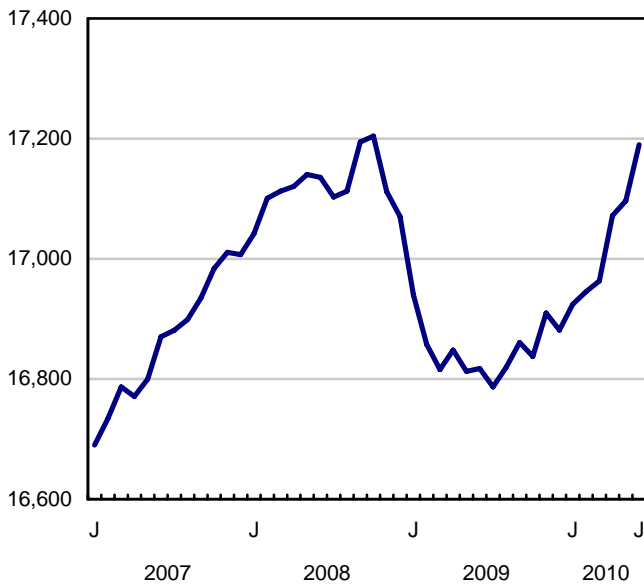
June 2010

Employment rose by 93,000 in June, pushing the unemployment rate down 0.2 percentage points to 7.9%. This is the first time the rate has been below the 8% mark since January 2009.

Chart 1
Employment and unemployment rates, Canada, seasonally adjusted

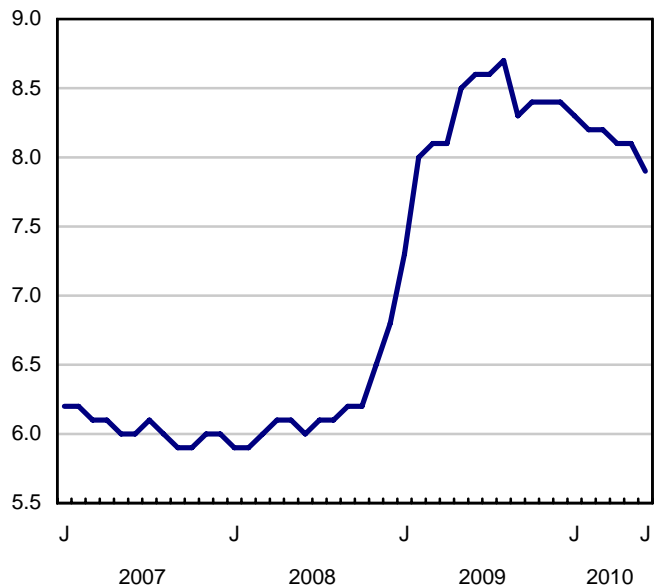
Employment

thousands



Unemployment rate

percent



Analysis — June 2010

Employment rose by 93,000 in June, pushing the unemployment rate down 0.2 percentage points to 7.9%. This is the first time the rate has been below the 8% mark since January 2009.

Employment has been on an upward trend since July 2009, increasing by 403,000 (+2.4%). These gains offset nearly all the employment losses observed during the labour market downturn which began in the fall of 2008. The June unemployment rate, however, remained well above the October 2008 rate of 6.2%, due to a large increase in the number of people in the labour force over this period.

June's employment increases were evenly split between full-time and part-time. Since July 2009, most of the employment gains have been in full-time work, up 355,000 or 2.6%, while part-time rose by 1.5%.

Notable employment increases in June were in service industries including retail and wholesale trade; business, building and other support services; health care and social assistance; and other services such as automotive repair and personal care services.

In June, there were continued gains in the number of private sector employees. The number of self-employed workers also increased, while there was little change among public sector employees.

Virtually all of June's employment gains were in Ontario (+60,000) and Quebec (+30,000). At the same time, there were declines in Newfoundland and Labrador and New Brunswick. There was little employment change in all other provinces.

The employment increases in June were led by core-aged men 25 to 54, followed by workers 55 years and over and youths 15 to 24.

The average hourly wage for employees was 1.7% higher in June compared with the same month last year.

Robust employment gains in service industries

There were 22,000 additional workers in retail and wholesale trade in June, bringing total gains to 69,000 (+2.6%) since July 2009.

Employment in business, building and other support services increased by 20,000 in June. This industry has shown strength since the start of the year, with gains totalling 86,000 (+14.0%) over the period.

Health care and social assistance continued its long-term upward trend, with an increase of 20,000 in June.

Employment also increased in June in other services such as automotive repair and personal care services, up 17,000.

In the goods-producing sector, employment in construction edged up 11,000. This industry has had the fastest growth rate of all major industry groups since July 2009 (+8.3% or +94,000).

On the other hand, employment in manufacturing dipped by 14,000 in June. While employment in this industry is little changed since July 2009, it remains well below its October 2008 level (-235,000 or -11.9%).

The number of private sector employees increased by 52,000 in June. At the same time, there were 26,000 more self-employed workers. Since July 2009, the number of employees in the private sector has risen by 349,000 (+3.3%), with most of the gains in recent months. The number of public sector workers is up 2.6% since July 2009, while self-employment has declined by 1.3% over the same period.

Gains concentrated in Ontario and Quebec

Ontario's employment was up 60,000 in June, the sixth consecutive monthly gain. This brings employment increases in the province to 187,000 (+2.9%) since July 2009. With these gains, Ontario's employment is only slightly below its pre-recession level. In June, the unemployment rate fell 0.6 percentage points to 8.3%, the lowest since January 2009.

In June, employment increased by 30,000 in Quebec and the unemployment rate dipped 0.2 percentage points to 7.8%. Since July 2009, employment growth in Quebec has been the fastest of all provinces at 3.0% (+117,000).

Employment in Newfoundland and Labrador fell by 8,100 in June, offsetting the increase of the month before. The unemployment rate increased by 0.9 percentage points to 14.7%, a rate similar to those observed earlier this year. Despite the employment decline in June, growth since July 2009 has been 2.9%, a faster rate of growth than the national average of 2.4%.

Employment in New Brunswick also fell in June (-4,400). This pushed the unemployment rate in the province up by 0.5 percentage points to 9.3%.

Following two months of growth, employment in Alberta was little changed in June. Since July 2009, employment in this province is up 0.8% (+15,000), the slowest growth rate of all provinces.

Core-aged men lead employment gains

Among core-aged workers (25 to 54), employment increased by 41,000 in June, all among men. Since July 2009, there has been employment growth for both core-aged men (+1.8%) and women (+1.6%). With these gains, core-age women are back to their pre-recession employment levels. In contrast, employment among core-age men still remains 90,000 below their October 2008 level.

In June, employment increased by 31,000 among those aged 55 and over. Since July 2009, employment growth has been the fastest for this age group (+5.3%).

Employment also rose among youths aged 15 to 24 in June, up 21,000. This pushed their unemployment rate down 0.5 percentage points to 14.6%. Since July 2009, youth employment has grown by 60,000, but still remains 148,000 below the October 2008 peak.

An improved student summer labour market compared with a year ago

From May to August, the Labour Force Survey collects labour market information about young people aged 15 to 24 who were attending school full time in March and intend to return to school in the fall. The May and June survey results provide the first indicators of the summer job market. The data for July and August will provide further insight into the summer job market. The published estimates are not seasonally adjusted; therefore, comparisons can only be made on a year-over-year basis.

Compared to a year earlier, employment increased by 63,000 in June 2010 for students aged 20 to 24. This pushed their unemployment rate down 3.7 percentage points to 10.3%. Despite this improvement, their unemployment rate remains above that of June 2008 (9.2%), a summer when student employment was particularly strong.

The labour market for 17 to 19 year-old students improved marginally in June 2010, as their employment edged up 11,000 from June 2009. Their unemployment rate declined 2.1 percentage points to 16.0% in June 2010, but remained well above the rate of 11.7% observed in June 2008.

Quarterly update on territories

The Labour Force Survey also collects labour market information about the territories. This information is produced monthly in the form of three-month moving averages. Not all estimates are seasonally adjusted, therefore comparisons should only be made on a year-over-year basis.

In Nunavut, while employment increased slightly for the three months ending in June 2010 compared with the same period last year, there were more people looking for work, which pushed the unemployment rate up from 14.5% to 19.7%.

The number of people working in the Northwest Territories in the second quarter of 2010 was little changed compared with the same quarter in 2009. The unemployment rate increased from 6.6% to 7.4% however, as more people were searching for work.

There was little overall change in the Yukon labour market in the second quarter of 2010 compared with a year earlier. The unemployment rate in the Yukon was 7.8%, little changed from a year earlier.

Note to readers

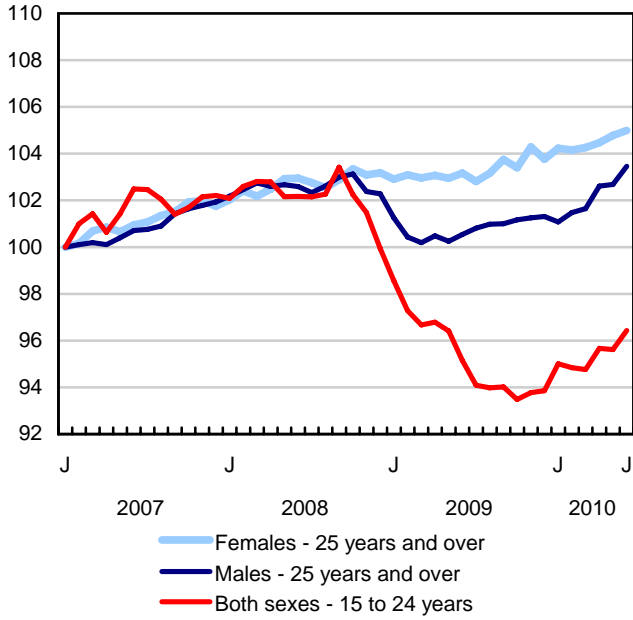
The Labour Force Survey (LFS) estimates are based on a sample, and are therefore subject to sampling variability. Estimates for smaller geographic areas or industries will have more variability. For an explanation of sampling variability of estimates, and how to use standard errors to assess this variability, consult the "Data quality" section of the publication Labour Force Information (71-001-X, free).

Unless otherwise stated, this release presents seasonally adjusted data, which eases comparisons by removing the effects of seasonal variations.

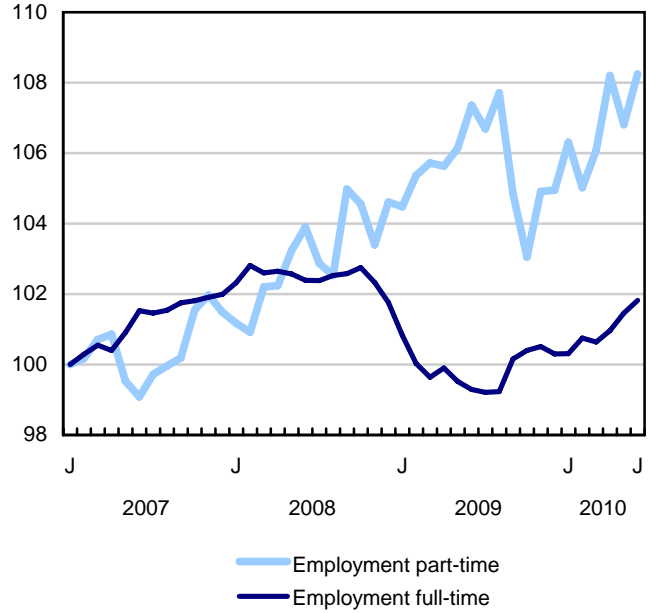
The 2009 Labour Force Historical Review on DVD-ROM (71F0004XVB, \$209) is now available.

Chart 1
Employment and unemployment indicators, Canada, seasonally adjusted

Employment index, January 2007=100



Employment index, January 2007=100



Employment index, January 2007=100

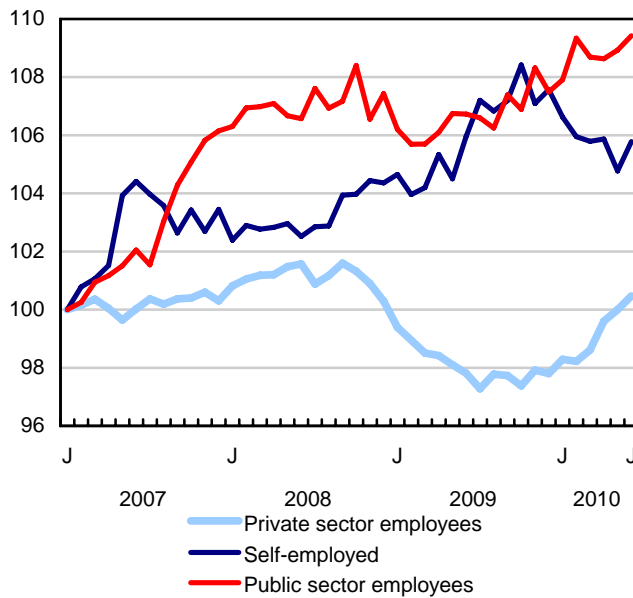
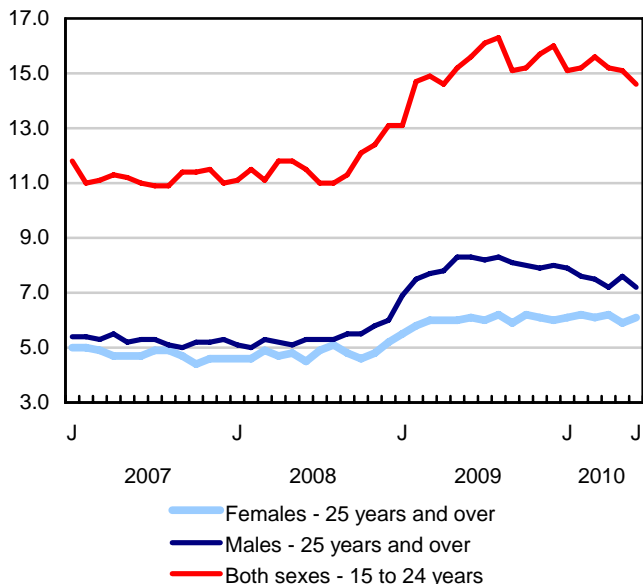
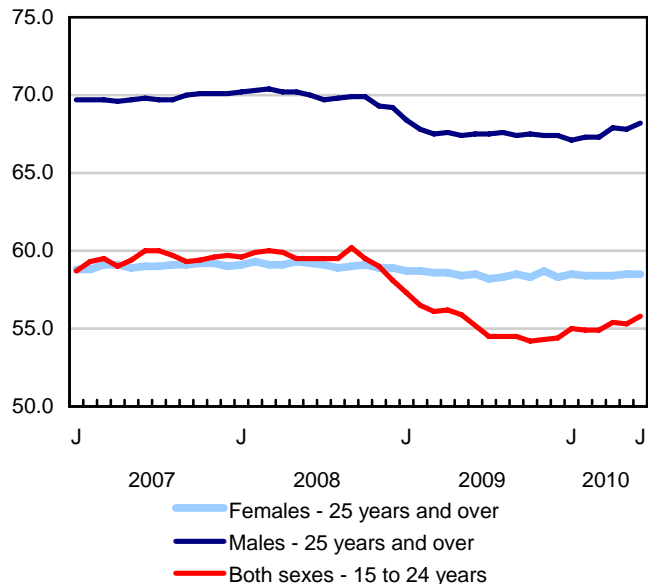


Chart 2
Employment and unemployment indicators, Canada, seasonally adjusted

Unemployment rate (%)



Employment rate (%)



Participation rate (%)

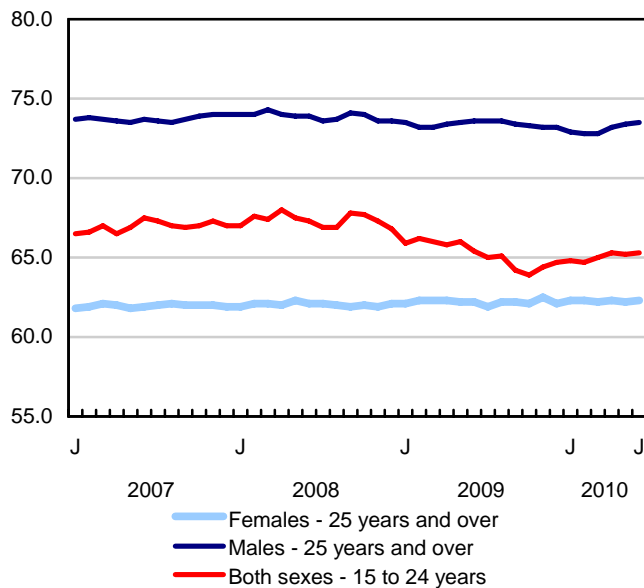


Chart 3
Index of employment by industry, Canada, seasonally adjusted, January, 2007=100

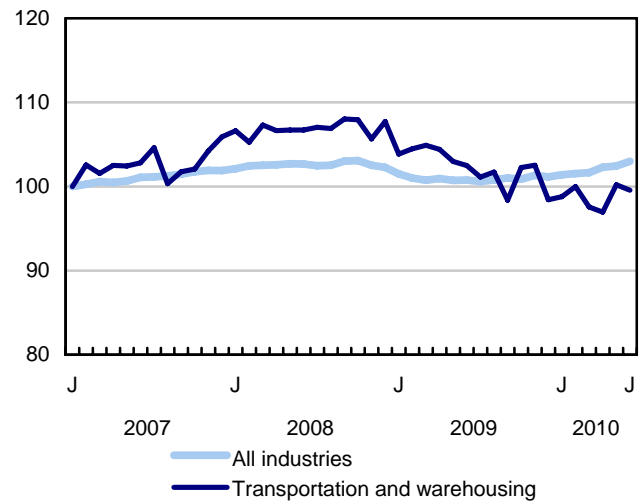
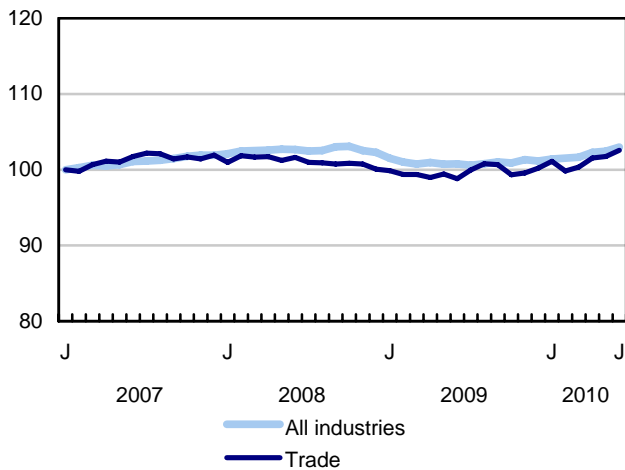
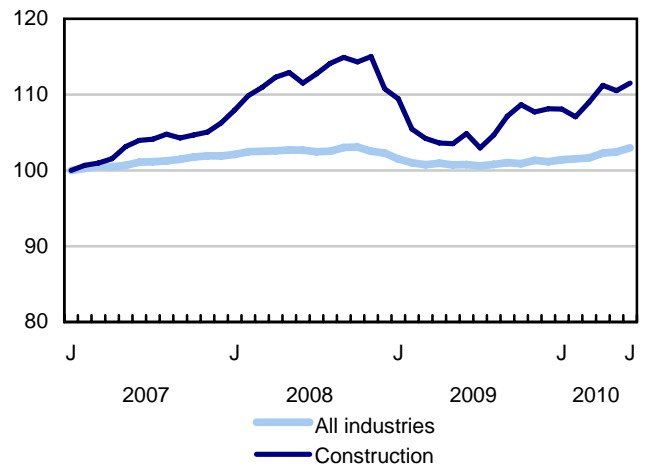
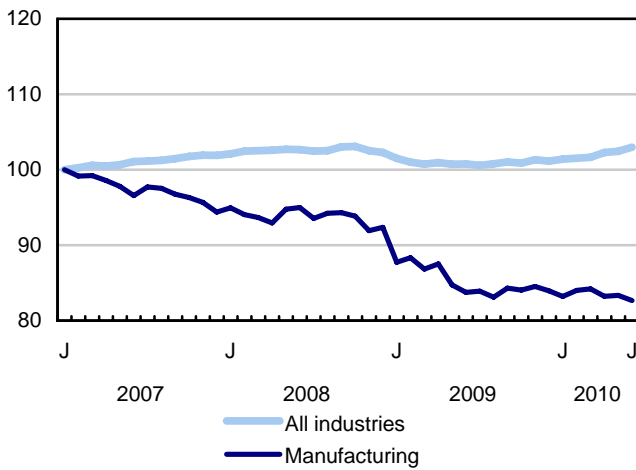
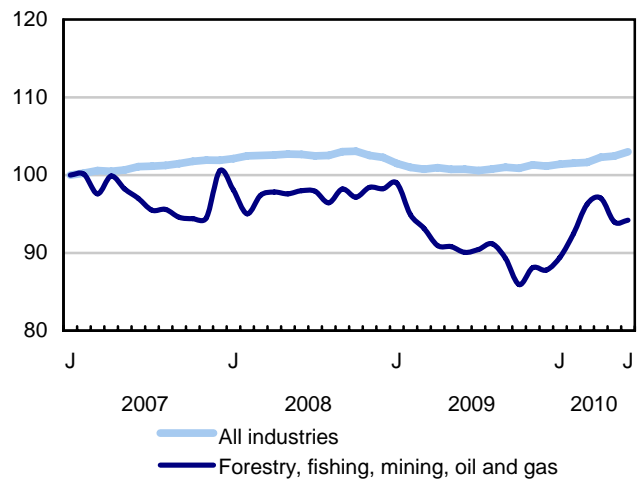
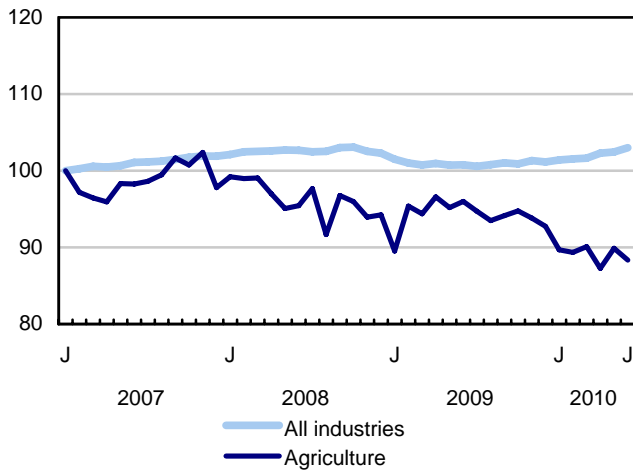


Chart 4
Index of employment by industry, Canada, seasonally adjusted, January 2007=100

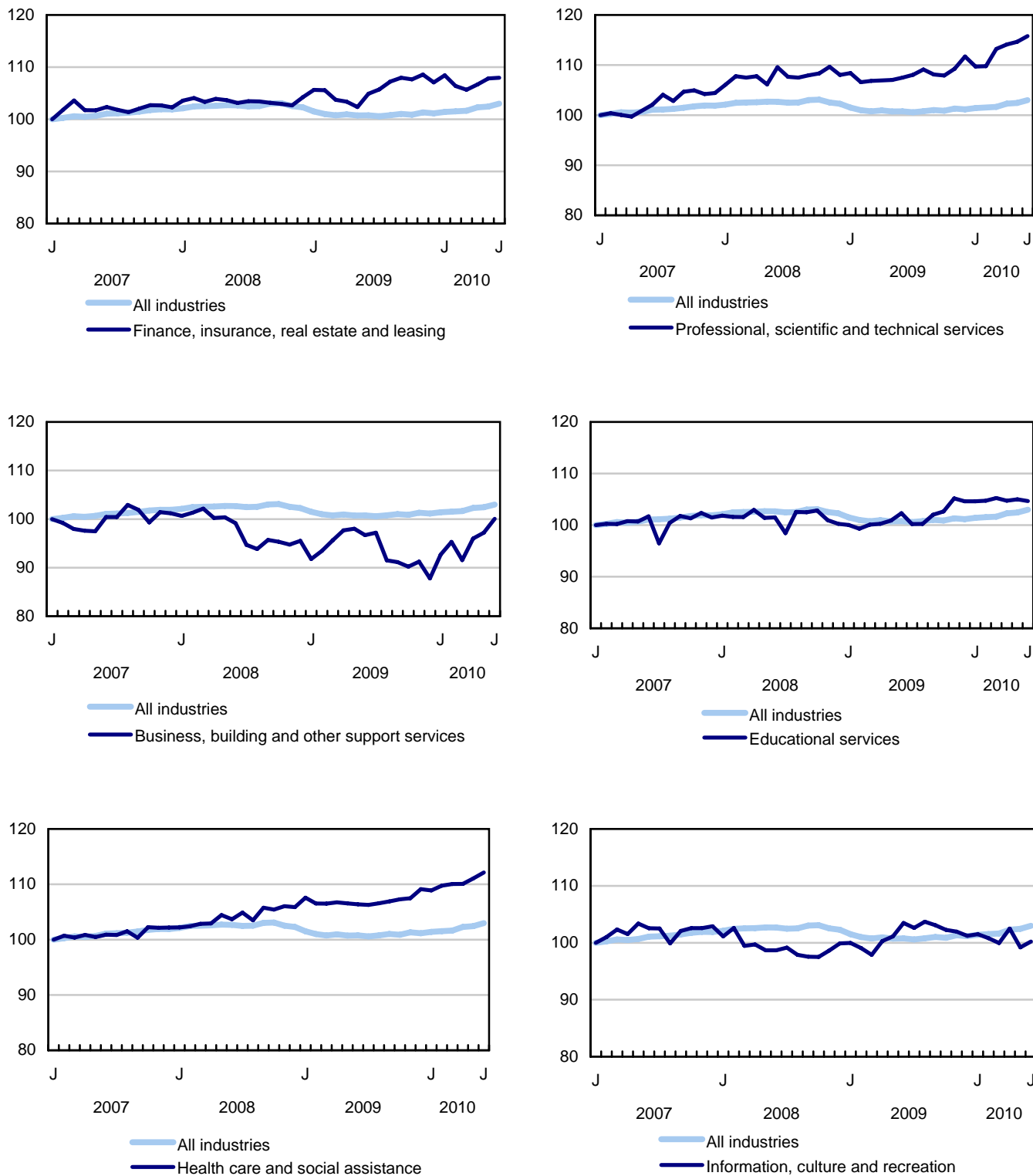


Chart 5
Index of employment by industry, Canada, seasonally adjusted, January 2007=100

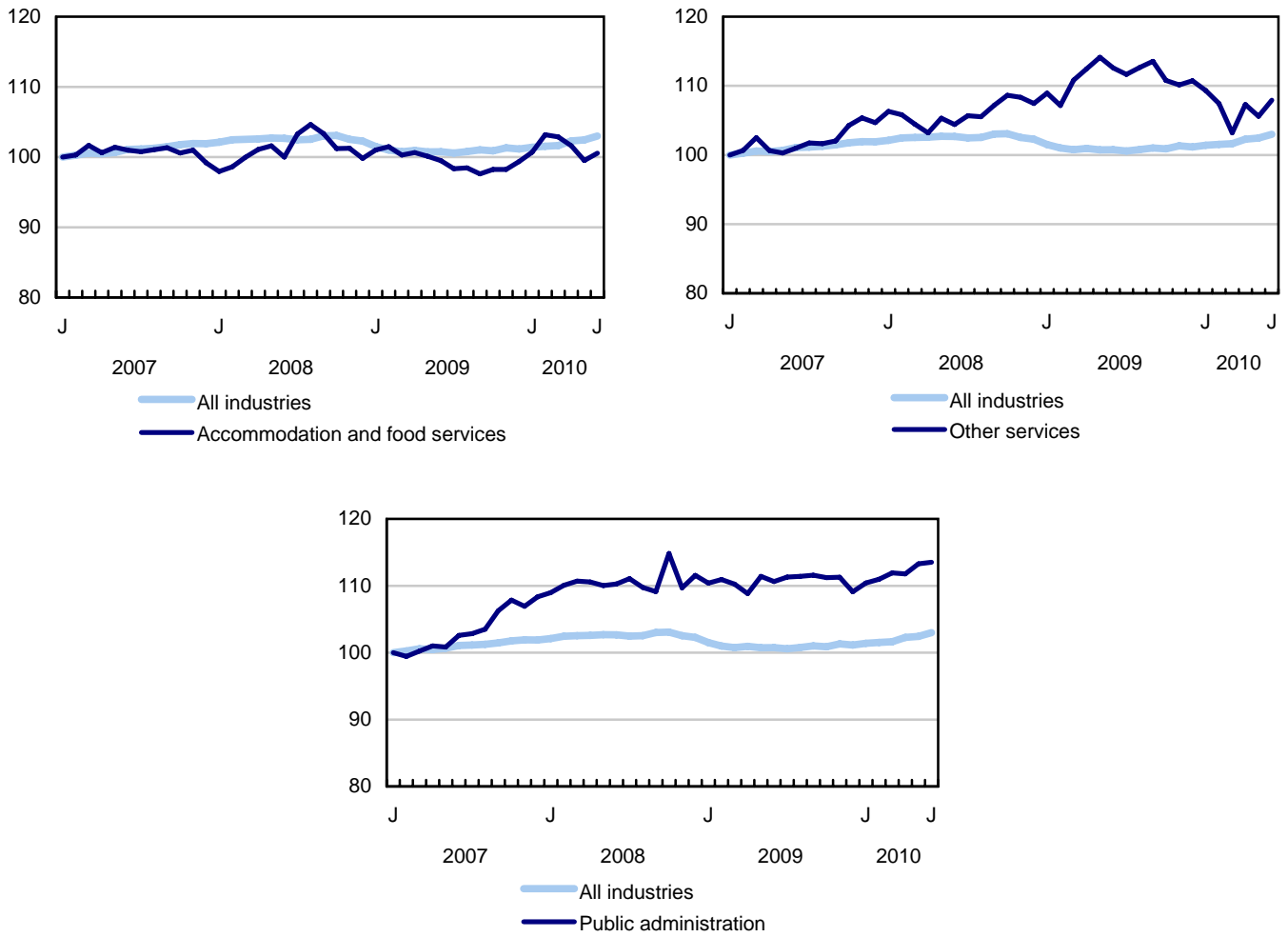


Chart 6
Index of employment by province, seasonally adjusted, January 2007=100

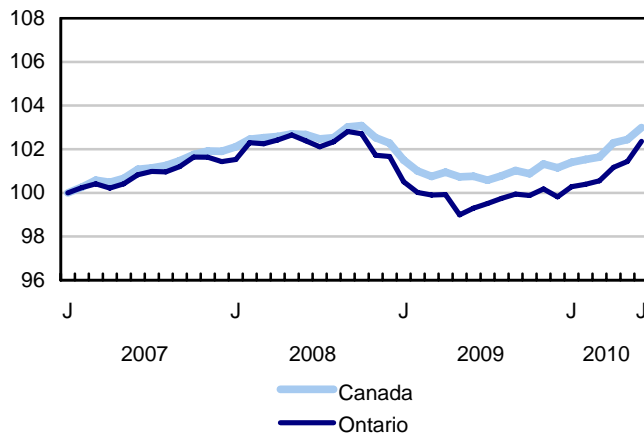
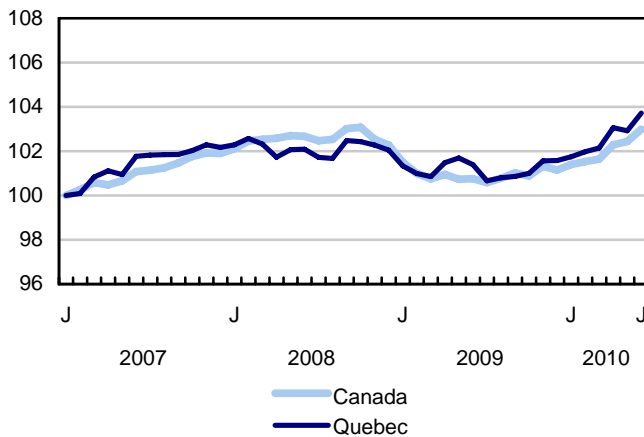
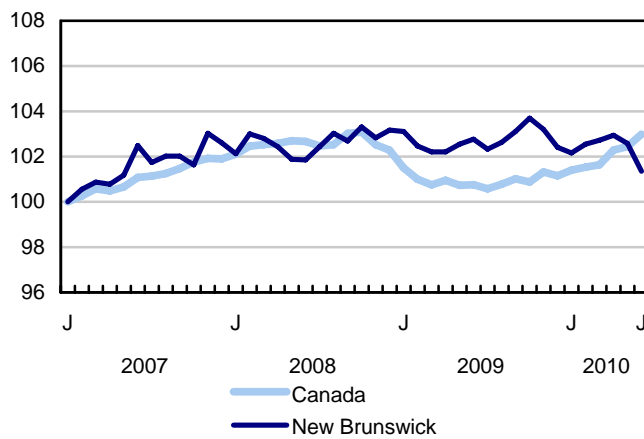
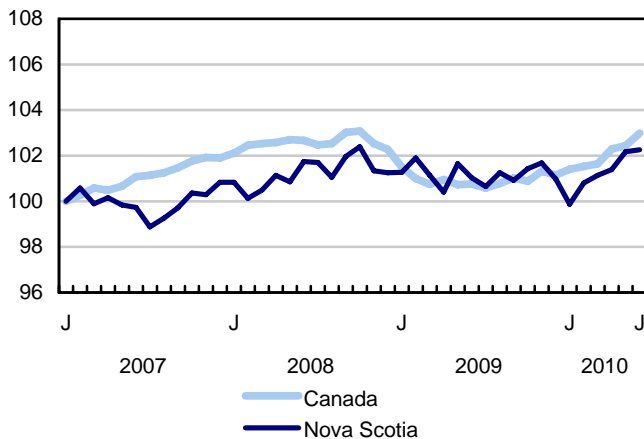
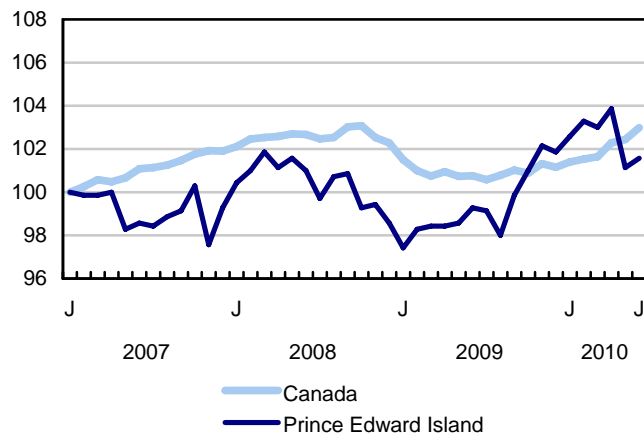
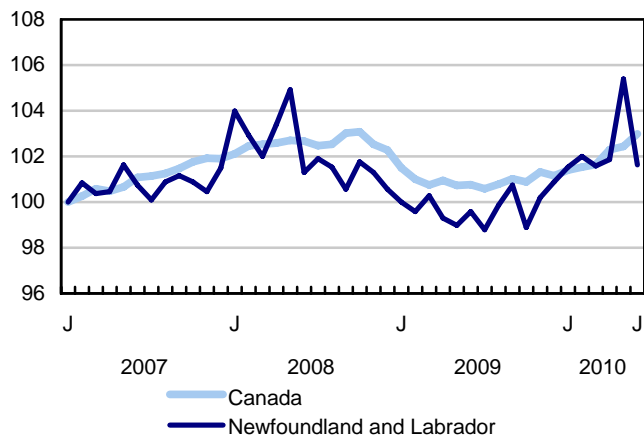
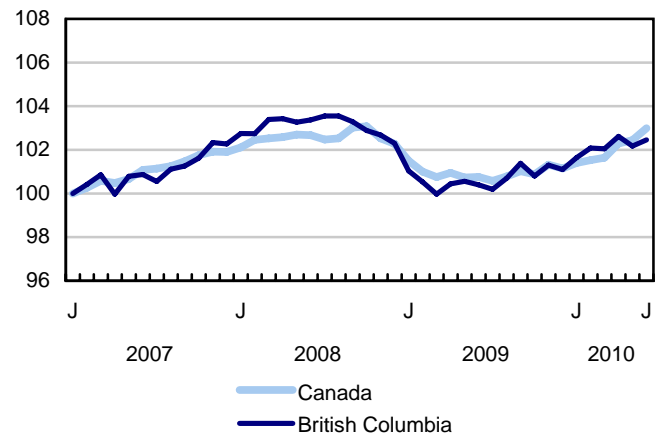
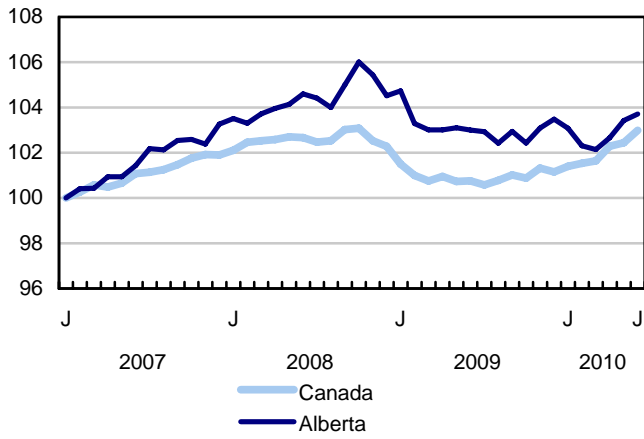
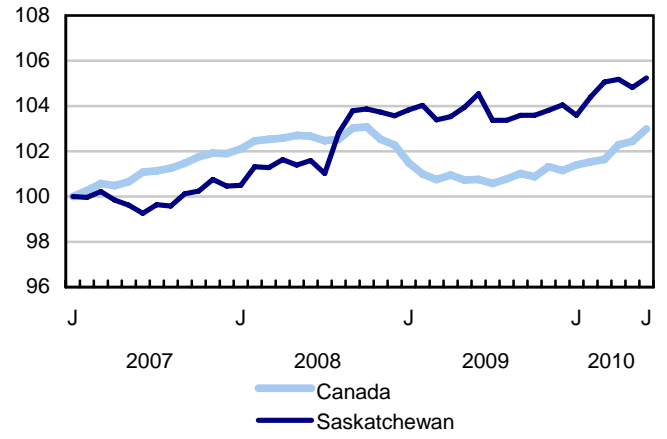
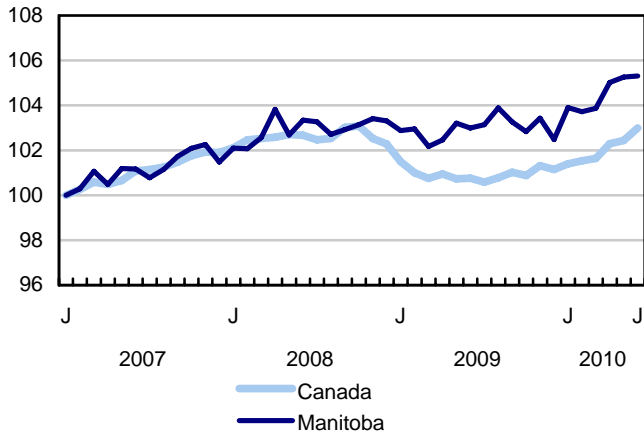


Chart 7
Index of employment by province, seasonally adjusted, January 2007=100



Related products

Selected publications from Statistics Canada

71-222-X	The Canadian Labour Market at a Glance
71-526-X	Methodology of the Canadian Labour Force Survey
71-543-G	Guide to the Labour Force Survey
71-544-X	Labour Force Survey Products and Services
71-587-X	Aboriginal Peoples Living Off-reserve in Western Canada: Estimates from the Labour Force Survey
71-588-X	The Aboriginal Labour Force Analysis Series
71-606-X	The Immigrant Labour Force Analysis Series
71F0004X	Labour Force Historical Review
71F0031X	Improvements to the Labour Force Survey (LFS)
71M0001X	Labour Force Survey Microdata File
75-001-X	Perspectives on Labour and Income

Selected CANSIM tables from Statistics Canada

282-0001	Labour force survey estimates (LFS), by sex and detailed age group, unadjusted for seasonality, monthly
282-0002	Labour force survey estimates (LFS), by sex and detailed age group, annual
282-0003	Labour force survey estimates (LFS), by educational attainment, sex and age group, unadjusted for seasonality, monthly
282-0004	Labour force survey estimates (LFS), by educational attainment, sex and age group, annual
282-0005	Labour force survey estimates (LFS), by full- and part-time students during school months, sex and age group, unadjusted for seasonality, monthly
282-0006	Labour force survey estimates (LFS), by students during summer months, sex and age group, unadjusted for seasonality, monthly
282-0007	Labour force survey estimates (LFS), by North American Industry Classification System (NAICS), sex and age group, unadjusted for seasonality, monthly

282-0008	Labour force survey estimates (LFS), by North American Industry Classification System (NAICS), sex and age group, annual
282-0009	Labour force survey estimates (LFS), by National Occupational Classification for Statistics (NOC-S) and sex, unadjusted for seasonality, monthly
282-0010	Labour force survey estimates (LFS), by National Occupational Classification for Statistics (NOC-S) and sex, annual
282-0011	Labour force survey estimates (LFS), employment by class of worker, North American Industry Classification System (NAICS) and sex, unadjusted for seasonality, monthly
282-0012	Labour force survey estimates (LFS), employment by class of worker, North American Industry Classification System (NAICS) and sex, annual
282-0013	Labour force survey estimates (LFS), part-time employment by reason for part-time work, sex and age group, unadjusted for seasonality, monthly
282-0014	Labour force survey estimates (LFS), part-time employment by reason for part-time work, sex and age group, annual
282-0015	Labour force survey estimates (LFS), by usual hours worked, main or all jobs, sex and age group, unadjusted for seasonality, monthly
282-0016	Labour force survey estimates (LFS), by usual hours worked, main or all jobs, sex and age group, annual
282-0017	Labour force survey estimates (LFS), by actual hours worked, main or all jobs, sex and age group, unadjusted for seasonality, monthly
282-0018	Labour force survey estimates (LFS), by actual hours worked, main or all jobs, sex and age group, annual
282-0019	Labour force survey estimates (LFS), by usual hours worked, class of worker, North American Industry Classification System (NAICS) and sex, unadjusted for seasonality, monthly
282-0020	Labour force survey estimates (LFS), by usual hours worked, class of worker, North American Industry Classification System (NAICS) and sex, annual
282-0021	Labour force survey estimates (LFS), by actual hours worked, class of worker, North American Industry Classification System (NAICS) and sex, unadjusted for seasonality, monthly
282-0022	Labour force survey estimates (LFS), by actual hours worked, class of worker, North American Industry Classification System (NAICS) and sex, annual
282-0023	Labour force survey estimates (LFS), by usual hours worked, class of worker, National Occupational Classification for Statistics (NOC-S) and sex, unadjusted for seasonality, monthly
282-0024	Labour force survey estimates (LFS), by usual hours worked, class of worker, National Occupational Classification for Statistics (NOC-S) and sex, annual
282-0025	Labour force survey estimates (LFS), by actual hours worked, class of worker, National Occupational Classification for Statistics (NOC-S) and sex, unadjusted for seasonality, monthly
282-0026	Labour force survey estimates (LFS), by actual hours worked, class of worker, National Occupational Classification for Statistics (NOC-S) and sex, annual

282-0027	Labour force survey estimates (LFS), by total and average usual and actual hours worked, main or all jobs, type of work, sex and age group, unadjusted for seasonality, monthly
282-0028	Labour force survey estimates (LFS), by total and average usual and actual hours worked, main or all jobs, type of work, sex and age group, annual
282-0029	Labour force survey estimates (LFS), average days lost for personal reasons per full-time employee by North American Industry Classification System (NAICS), sex and age group, annual
282-0030	Labour force survey estimates (LFS), average days lost for personal reasons per full-time employee by National Occupational Classification for Statistics (NOC-S), sex and age group, annual
282-0031	Labour force survey estimates (LFS), multiple jobholders by North American Industry Classification System (NAICS), sex and age group, annual
282-0032	Labour force survey estimates (LFS), multiple jobholders by North American Industry Classification System (NAICS), sex and age group, unadjusted for seasonality, monthly
282-0033	Labour force survey estimates (LFS), multiple jobholders by National Occupational Classification for Statistics (NOC-S), sex and age group, unadjusted for seasonality, monthly
282-0034	Labour force survey estimates (LFS), multiple jobholders by National Occupational Classification for Statistics (NOC-S), sex and age group, annual
282-0035	Labour force survey estimates (LFS), multiple jobholders by usual hours worked at main and all jobs, unadjusted for seasonality, monthly
282-0036	Labour force survey estimates (LFS), multiple jobholders by usual hours worked at main and all jobs, annual
282-0037	Labour force survey estimates (LFS), job tenure by type of work, sex and age group, unadjusted for seasonality, monthly
282-0038	Labour force survey estimates (LFS), job tenure by type of work, sex and age group, annual
282-0039	Labour force survey estimates (LFS), job tenure by National Occupational Classification for Statistics (NOC-S) and sex, unadjusted for seasonality, monthly
282-0040	Labour force survey estimates (LFS), job tenure by National Occupational Classification for Statistics (NOC-S) and sex, annual
282-0041	Labour force survey estimates (LFS), job tenure by North American Industry Classification System (NAICS) and sex, unadjusted for seasonality, monthly
282-0042	Labour force survey estimates (LFS), job tenure by North American Industry Classification System (NAICS) and sex, annual
282-0047	Labour force survey estimates (LFS), duration of unemployment by sex and age group, unadjusted for seasonality, monthly
282-0048	Labour force survey estimates (LFS), duration of unemployment by sex and age group, annual
282-0049	Labour force survey estimates (LFS), unemployment by type of work sought and search method, sex and age group, unadjusted for seasonality, monthly

282-0050	Labour force survey estimates (LFS), unemployment by type of work sought and search method, sex and age group, annual
282-0051	Labour force survey estimates (LFS), retirement age by class of worker and sex, annual
282-0052	Labour force survey estimates (LFS), by census metropolitan area, sex and age group, 3-month moving average, unadjusted for seasonality, monthly
282-0053	Labour force survey estimates (LFS), by census metropolitan area, sex and age group, annual
282-0054	Labour force survey estimates (LFS), by provinces and economic regions, 3-month moving average, unadjusted for seasonality, monthly
282-0055	Labour force survey estimates (LFS), by provinces, territories and economic regions, annual
282-0056	Labour force survey estimates (LFS), employment by census metropolitan area and North American Industry Classification System (NAICS), 3-month moving average, unadjusted for seasonality, monthly
282-0057	Labour force survey estimates (LFS), employment by census metropolitan area and North American Industry Classification System (NAICS), annual
282-0058	Labour force survey estimates (LFS), employment by census metropolitan area and National Occupational Classification for Statistics (NOC-S), 3-month moving average, unadjusted for seasonality, monthly
282-0059	Labour force survey estimates (LFS), employment by census metropolitan area and National Occupational Classification for Statistics (NOC-S), annual
282-0060	Labour force survey estimates (LFS), employment by economic region and North American Industry Classification System (NAICS), 3-month moving average, unadjusted for seasonality, monthly
282-0061	Labour force survey estimates (LFS), employment by economic region and North American Industry Classification System (NAICS), annual
282-0062	Labour force survey estimates (LFS), employment by economic region and National Occupational Classification for Statistics (NOC-S), 3-month moving average, unadjusted for seasonality, monthly
282-0063	Labour force survey estimates (LFS), employment by economic region and National Occupational Classification for Statistics (NOC-S), annual
282-0064	Labour force survey estimates (LFS), by selected medium-sized cities, annual
282-0069	Labour force survey estimates (LFS), wages of employees by type of work, National Occupational Classification for Statistics (NOC-S), sex and age group, unadjusted for seasonality, monthly (current dollars)
282-0070	Labour force survey estimates (LFS), wages of employees by type of work, National Occupational Classification for Statistics (NOC-S), sex and age group, annual (current dollars)
282-0071	Labour force survey estimates (LFS), wages of employees by type of work, North American Industry Classification System (NAICS), sex and age group, unadjusted for seasonality, monthly (current dollars)

282-0072	Labour force survey estimates (LFS), wages of employees by type of work, North American Industry Classification System (NAICS), sex and age group, annual (current dollars)
282-0073	Labour force survey estimates (LFS), wages of employees by job permanence, union coverage, sex and age group, unadjusted for seasonality, monthly (current dollars)
282-0074	Labour force survey estimates (LFS), wages of employees by job permanence, union coverage, sex and age group, annual (current dollars)
282-0075	Labour force survey estimates (LFS), employees by establishment size, North American Industry Classification System (NAICS), sex and age group, unadjusted for seasonality, monthly
282-0076	Labour force survey estimates (LFS), employees by establishment size, North American Industry Classification System (NAICS), sex and age group, annual
282-0077	Labour force survey estimates (LFS), employees by union coverage, North American Industry Classification System (NAICS), sex and age group, unadjusted for seasonality, monthly
282-0078	Labour force survey estimates (LFS), employees by union coverage, North American Industry Classification System (NAICS), sex and age group, annual
282-0079	Labour force survey estimates (LFS), employees by job permanency, North American Industry Classification System (NAICS), sex and age group, unadjusted for seasonality, monthly
282-0080	Labour force survey estimates (LFS), employees by job permanency, North American Industry Classification System (NAICS), sex and age group, annual
282-0081	Labour force survey estimates (LFS), employees working overtime (weekly) by National Occupational Classification for Statistics (NOC-S), sex and age group, unadjusted for seasonality, monthly
282-0082	Labour force survey estimates (LFS), employees working overtime (weekly) by National Occupational Classification for Statistics (NOC-S), sex and age group, annual
282-0083	Labour force survey estimates (LFS), employees working overtime (weekly) by North American Industry Classification System (NAICS), sex and age group, unadjusted for seasonality, monthly
282-0084	Labour force survey estimates (LFS), employees working overtime (weekly) by North American Industry Classification System (NAICS), sex and age group, annual
282-0085	Labour force survey estimates (LFS), supplementary unemployment rates by sex and age group, unadjusted for seasonality, monthly
282-0086	Labour force survey estimates (LFS), supplementary unemployment rates by sex and age group, annual
282-0087	Labour force survey estimates (LFS), by sex and age group, seasonally adjusted and unadjusted, monthly
282-0088	Labour force survey estimates (LFS), employment by North American Industry Classification System (NAICS), seasonally adjusted and unadjusted, monthly
282-0089	Labour force survey estimates (LFS), employment by class of worker and sex, seasonally adjusted and unadjusted, monthly

282-0090	Labour force survey estimates (LFS), by census metropolitan area, 3-month moving average, seasonally adjusted and unadjusted, monthly
282-0091	Labour force survey estimates (LFS), by Montréal, Toronto and Vancouver census metropolitan areas, seasonally adjusted and unadjusted, monthly
282-0092	Labour force survey estimates (LFS), actual hours worked by North American Industry Classification System (NAICS), seasonally adjusted, monthly
282-0093	Labour force survey estimates (LFS), employment by National Occupational Classification for Statistics (NOC-S), seasonally adjusted, monthly
282-0094	Labour force survey estimates (LFS), by North American Industry Classification System (NAICS), Canada, seasonally adjusted, monthly
282-0095	Labour force survey estimates (LFS), by full- and part-time students during school months, sex and age group, annual
282-0096	Labour force survey estimates (LFS), by urban and rural areas based on 2001 census boundaries, sex and age group, unadjusted for seasonality, monthly
282-0097	Labour force survey estimates (LFS), by urban and rural areas based on 2001 census boundaries, sex and age group, annual
282-0098	Labour force survey estimates (LFS), employment by urban and rural areas based on 2001 census boundaries, class of worker and North American Industry Classification System (NAICS), unadjusted for seasonality, monthly
282-0099	Labour force survey estimates (LFS), employment by urban and rural areas based on 2001 census boundaries, class of worker and North American Industry Classification System (NAICS), annual
282-0100	Labour force survey estimates (LFS), by territories, sex and age group, 3-month moving average, seasonally adjusted and unadjusted, monthly
282-0101	Labour force survey estimates (LFS), by immigrant status, age group, Canada, regions, provinces and Montreal, Toronto, Vancouver census metropolitan areas, 3-month moving average, unadjusted for seasonality, monthly
282-0102	Labour force survey estimates (LFS), by immigrant status, age group, Canada, regions, provinces and Montreal, Toronto, Vancouver census metropolitan areas, annual
282-0103	Labour force survey estimates (LFS), by immigrant status, sex and detailed age group, Canada, 3-month moving average, unadjusted for seasonality, monthly
282-0104	Labour force survey estimates (LFS), by immigrant status, sex and detailed age group, Canada, annual
282-0105	Labour force survey estimates (LFS), by immigrant status, educational attainment, sex and age group, Canada, 3-month moving average, unadjusted for seasonality, monthly
282-0106	Labour force survey estimates (LFS), by immigrant status, educational attainment, sex and age group, Canada, annual

282-0107	Labour force survey estimates (LFS), by immigrant status, country of birth, sex and age group, Canada, regions and provinces, 3-month moving average, unadjusted for seasonality, monthly
282-0108	Labour force survey estimates (LFS), by immigrant status, country of birth, sex and age group, Canada, regions and provinces, annual

Selected surveys from Statistics Canada

3701	Labour Force Survey
------	---------------------

Selected summary tables from Statistics Canada

- *Labour force characteristics*
- *Employment by industry*
- *Selected economic indicators, Canada and United States (monthly and quarterly)*
- *Days lost per worker due to illness or disability, by sex, by province*
- *Economic indicators, by province and territory (monthly and quarterly)*
- *Labour force and participation rates by sex and age group*
- *Labour force, employed and unemployed, numbers and rates, by province*
- *Employment by industry and sex*
- *Full-time and part-time employment by sex and age group*
- *Labour force characteristics by age and sex*
- *Distribution of employed people, by industry, by province*
- *Labour force characteristics, population 15 years and older, by census metropolitan area*
- *Labour force characteristics, population 15 years and older, by economic region, by province*
- *Days lost per worker by cause, by provinces*
- *Days lost per worker by industry and sex*
- *People employed, by educational attainment*
- *Reasons for part-time work by sex and age group*
- *Self-employment, historical summary*
- *Employment by age, sex, type of work, class of worker and province (monthly)*

- *Employment by major industry groups, seasonally adjusted, by province (monthly)*
- *Actual hours worked per week by industry, seasonally adjusted (monthly)*
- *Average hourly wages of employees by selected characteristics and profession, unadjusted data, by province (monthly)*
- *Labour force characteristics, seasonally adjusted, by province (monthly)*
- *Labour force characteristics, unadjusted, by province (monthly)*
- *Labour force characteristics, seasonally adjusted, by census metropolitan area (3 month moving average)*
- *Labour force characteristics, unadjusted, by census metropolitan area (3 month moving average)*
- *Labour force characteristics, unadjusted, by economic region (3 month moving average)*

Statistical tables

Table 1
Labour force characteristics by age and sex, Canada, seasonally adjusted

	May 2010	June 2010	S.E. ¹	Change from			Percent change from		
				last month	last December	twelve months ago	last month	last December	twelve months ago
in thousands (except rates)									
15 years and over, both sexes									
Population	27,651.8	27,696.6	...	44.8	205.9	404.3	0.2	0.7	1.5
Labour force	18,603.0	18,665.0	28.2	62.0	227.8	270.3	0.3	1.2	1.5
Employment	17,096.6	17,189.8	28.2	93.2	308.4	372.3	0.5	1.8	2.2
Employment full-time	13,835.7	13,884.6	36.8	48.9	207.4	345.0	0.4	1.5	2.5
Employment part-time	3,261.0	3,305.2	33.5	44.2	100.9	27.3	1.4	3.1	0.8
Unemployment	1,506.4	1,475.2	25.1	-31.2	-80.6	-102.0	-2.1	-5.2	-6.5
Participation rate	67.3	67.4	0.1	0.1	0.3	0.0
Unemployment rate	8.1	7.9	0.1	-0.2	-0.5	-0.7
Employment rate	61.8	62.1	0.1	0.3	0.7	0.5
Part-time rate	19.1	19.2	0.2	0.2	0.2	-0.3
15 to 24 years, both sexes									
Population	4,404.2	4,405.8	...	1.6	5.5	10.9	0.0	0.1	0.2
Labour force	2,871.8	2,876.6	16.8	4.8	28.8	2.7	0.2	1.0	0.1
Employment	2,436.8	2,457.5	15.5	20.7	65.5	32.6	0.8	2.7	1.3
Employment full-time	1,271.5	1,265.5	18.0	-6.0	-6.8	-4.5	-0.5	-0.5	-0.4
Employment part-time	1,165.3	1,192.0	18.5	26.7	72.4	37.1	2.3	6.5	3.2
Unemployment	435.0	419.1	14.6	-15.9	-36.8	-30.0	-3.7	-8.1	-6.7
Participation rate	65.2	65.3	0.4	0.1	0.6	-0.1
Unemployment rate	15.1	14.6	0.5	-0.5	-1.4	-1.0
Employment rate	55.3	55.8	0.4	0.5	1.4	0.6
Part-time rate	47.8	48.5	0.7	0.7	1.7	0.9
25 years and over, men									
Population	11,372.0	11,393.4	...	21.4	99.6	198.4	0.2	0.9	1.8
Labour force	8,346.5	8,374.5	14.8	28.0	106.5	135.0	0.3	1.3	1.6
Employment	7,712.5	7,771.3	16.1	58.8	161.7	219.1	0.8	2.1	2.9
Employment full-time	7,117.3	7,173.5	20.8	56.2	163.1	197.0	0.8	2.3	2.8
Employment part-time	595.2	597.8	16.5	2.6	-1.4	22.1	0.4	-0.2	3.8
Unemployment	634.0	603.2	15.0	-30.8	-55.1	-84.1	-4.9	-8.4	-12.2
Participation rate	73.4	73.5	0.1	0.1	0.3	-0.1
Unemployment rate	7.6	7.2	0.2	-0.4	-0.8	-1.1
Employment rate	67.8	68.2	0.1	0.4	0.8	0.7
Part-time rate	7.7	7.7	0.2	0.0	-0.2	0.1
25 years and over, women									
Population	11,875.6	11,897.4	...	21.8	100.8	194.9	0.2	0.9	1.7
Labour force	7,384.8	7,414.0	16.1	29.2	92.6	132.8	0.4	1.3	1.8
Employment	6,947.4	6,961.1	15.8	13.7	81.3	120.7	0.2	1.2	1.8
Employment full-time	5,446.9	5,445.7	23.5	-1.2	51.3	152.5	0.0	1.0	2.9
Employment part-time	1,500.5	1,515.4	22.0	14.9	30.0	-31.9	1.0	2.0	-2.1
Unemployment	437.4	452.9	13.0	15.5	11.3	12.1	3.5	2.6	2.7
Participation rate	62.2	62.3	0.1	0.1	0.2	0.1
Unemployment rate	5.9	6.1	0.2	0.2	0.1	0.0
Employment rate	58.5	58.5	0.1	0.0	0.2	0.0
Part-time rate	21.6	21.8	0.3	0.2	0.2	-0.9
25 to 54 years, both sexes									
Population	14,608.7	14,623.8	...	15.1	59.0	110.7	0.1	0.4	0.8
Labour force	12,649.4	12,678.3	21.3	28.9	109.8	124.8	0.2	0.9	1.0
Employment	11,765.0	11,806.4	22.9	41.4	134.4	188.1	0.4	1.2	1.6
Unemployment	884.4	871.9	18.8	-12.5	-24.7	-63.3	-1.4	-2.8	-6.8
Participation rate	86.6	86.7	0.1	0.1	0.4	0.2
Unemployment rate	7.0	6.9	0.1	-0.1	-0.2	-0.5
Employment rate	80.5	80.7	0.2	0.2	0.6	0.6

See notes at the end of the table.

Table 1 – continued

Labour force characteristics by age and sex, Canada, seasonally adjusted

	May 2010	June 2010	S.E. ¹	Change from			Percent change from		
				last month	last December	twelve months ago	last month	last December	twelve months ago
in thousands (except rates)									
25 to 54 years, men									
Population	7,304.2	7,311.7	...	7.5	30.1	58.9	0.1	0.4	0.8
Labour force	6,629.2	6,646.3	13.7	17.1	54.2	46.1	0.3	0.8	0.7
Employment	6,111.7	6,157.2	15.8	45.5	95.9	120.5	0.7	1.6	2.0
Unemployment	517.5	489.1	14.0	-28.4	-41.7	-74.4	-5.5	-7.9	-13.2
Participation rate	90.8	90.9	0.2	0.1	0.4	-0.1
Unemployment rate	7.8	7.4	0.2	-0.4	-0.7	-1.1
Employment rate	83.7	84.2	0.2	0.5	1.0	1.0
25 to 54 years, women									
Population	7,304.6	7,312.1	...	7.5	28.9	51.8	0.1	0.4	0.7
Labour force	6,020.1	6,032.0	15.6	11.9	55.6	78.7	0.2	0.9	1.3
Employment	5,653.2	5,649.2	15.7	-4.0	38.5	67.6	-0.1	0.7	1.2
Unemployment	366.9	382.9	12.1	16.0	17.2	11.2	4.4	4.7	3.0
Participation rate	82.4	82.5	0.2	0.1	0.4	0.5
Unemployment rate	6.1	6.3	0.2	0.2	0.2	0.1
Employment rate	77.4	77.3	0.2	-0.1	0.3	0.4
55 years and over, both sexes									
Population	8,638.9	8,667.0	...	28.1	141.4	282.6	0.3	1.7	3.4
Labour force	3,081.9	3,110.1	16.2	28.2	89.3	142.9	0.9	3.0	4.8
Employment	2,894.9	2,925.9	16.1	31.0	108.4	151.6	1.1	3.8	5.5
Unemployment	187.0	184.2	8.9	-2.8	-19.1	-8.7	-1.5	-9.4	-4.5
Participation rate	35.7	35.9	0.2	0.2	0.5	0.5
Unemployment rate	6.1	5.9	0.3	-0.2	-0.8	-0.6
Employment rate	33.5	33.8	0.2	0.3	0.8	0.7
55 years and over, men									
Population	4,067.9	4,081.7	...	13.8	69.5	139.5	0.3	1.7	3.5
Labour force	1,717.3	1,728.2	10.9	10.9	52.3	88.9	0.6	3.1	5.4
Employment	1,600.7	1,614.1	10.9	13.4	65.7	98.6	0.8	4.2	6.5
Unemployment	116.5	114.1	6.7	-2.4	-13.4	-9.7	-2.1	-10.5	-7.8
Participation rate	42.2	42.3	0.3	0.1	0.5	0.7
Unemployment rate	6.8	6.6	0.4	-0.2	-1.0	-1.0
Employment rate	39.3	39.5	0.3	0.2	0.9	1.1
55 years and over, women									
Population	4,571.0	4,585.3	...	14.3	71.9	143.1	0.3	1.6	3.2
Labour force	1,364.6	1,381.9	11.1	17.3	37.0	54.0	1.3	2.8	4.1
Employment	1,294.2	1,311.9	10.9	17.7	42.8	53.1	1.4	3.4	4.2
Unemployment	70.5	70.0	5.7	-0.5	-5.9	0.9	-0.7	-7.8	1.3
Participation rate	29.9	30.1	0.2	0.2	0.3	0.2
Unemployment rate	5.2	5.1	0.4	-0.1	-0.5	-0.1
Employment rate	28.3	28.6	0.2	0.3	0.5	0.3

1. Average standard error of change in two consecutive months (see "Sampling Errors" in Data Quality for further explanations).

Note(s): Related CANSIM table 282-0087.

Table 2
Employment by class of worker and industry, Canada, seasonally adjusted

	May 2010	June 2010	S.E. ¹	Change from			Percent change from		
				last month	last December	twelve months ago	last month	last December	twelve months ago
in thousands									
Class of worker									
Employees	14,427.6	14,495.2	33.7	67.6	354.1	377.4	0.5	2.5	2.7
Self-employed ²	2,669.1	2,694.7	23.6	25.6	-45.6	-5.0	1.0	-1.7	-0.2
Public/private sector employees									
Public sector employees	3,483.1	3,498.8	22.2	15.7	61.7	86.0	0.5	1.8	2.5
Private sector employees	10,944.5	10,996.4	34.6	51.9	292.4	291.5	0.5	2.7	2.7
Industry	17,096.6	17,189.8	28.2	93.2	308.4	372.3	0.5	1.8	2.2
Goods-producing sector	3,745.5	3,735.3	24.3	-10.2	18.7	38.9	-0.3	0.5	1.1
Agriculture	305.6	300.4	7.0	-5.2	-14.9	-26.0	-1.7	-4.7	-8.0
Forestry, fishing, mining, oil and gas	327.2	328.0	6.6	0.8	22.3	14.4	0.2	7.3	4.6
Utilities	150.2	147.8	4.7	-2.4	1.3	-0.2	-1.6	0.9	-0.1
Construction	1,212.7	1,223.7	15.2	11.0	37.3	73.3	0.9	3.1	6.4
Manufacturing	1,749.8	1,735.5	17.9	-14.3	-27.1	-22.6	-0.8	-1.5	-1.3
Services-producing sector	13,351.1	13,454.5	32.0	103.4	289.7	333.4	0.8	2.2	2.5
Trade	2,694.8	2,716.4	21.2	21.6	62.4	99.2	0.8	2.4	3.8
Transportation and warehousing	803.6	798.5	12.3	-5.1	9.1	-23.5	-0.6	1.2	-2.9
Finance, insurance, real estate and leasing	1,120.8	1,122.1	14.7	1.3	9.4	31.9	0.1	0.8	2.9
Professional, scientific and technical services	1,274.4	1,287.2	15.7	12.8	45.3	92.2	1.0	3.6	7.7
Business, building and other support services	682.3	702.3	12.8	20.0	86.2	23.6	2.9	14.0	3.5
Educational services	1,233.2	1,229.0	14.5	-4.2	0.3	27.6	-0.3	0.0	2.3
Health care and social assistance	2,029.4	2,049.1	16.2	19.7	55.1	105.1	1.0	2.8	5.4
Information, culture and recreation	759.7	767.5	13.0	7.8	-7.8	-25.0	1.0	-1.0	-3.2
Accommodation and food services	1,056.7	1,067.7	15.1	11.0	12.6	11.2	1.0	1.2	1.1
Other services	748.0	764.5	12.6	16.5	-19.8	-33.0	2.2	-2.5	-4.1
Public administration	948.3	950.2	11.5	1.9	36.8	24.1	0.2	4.0	2.6

1. Average standard error of change in two consecutive months (see "Sampling Errors" in Data Quality for further explanations).

2. Includes both incorporated and unincorporated working owners, self-employed persons who do not have a business and persons working in a family business without pay.

Note(s): Related CANSIM Tables 282-0088, 282-0089.

Table 3
Labour force characteristics by province, seasonally adjusted

	May 2010	June 2010	S.E. ¹	Change from			Percent change from		
				last month	last December	twelve months ago	last month	last December	twelve months ago
in thousands (except rates)									
Newfoundland and Labrador									
Population	431.6	431.6	...	0.0	1.1	3.1	0.0	0.3	0.7
Labour force	263.1	256.5	2.1	-6.6	0.5	2.5	-2.5	0.2	1.0
Employment	226.9	218.8	2.2	-8.1	1.6	4.4	-3.6	0.7	2.1
Employment full-time	193.8	186.3	2.5	-7.5	-0.6	3.3	-3.9	-0.3	1.8
Employment part-time	33.1	32.5	1.8	-0.6	2.2	1.1	-1.8	7.3	3.5
Unemployment	36.2	37.7	2.1	1.5	-1.1	-1.9	4.1	-2.8	-4.8
Participation rate	61.0	59.4	0.5	-1.6	-0.1	0.1
Unemployment rate	13.8	14.7	0.8	0.9	-0.5	-0.9
Employment rate	52.6	50.7	0.5	-1.9	0.2	0.7
Prince Edward Island									
Population	116.9	117.2	...	0.3	0.8	1.2	0.3	0.7	1.0
Labour force	79.2	81.0	0.6	1.8	1.2	2.1	2.3	1.5	2.7
Employment	70.7	71.0	0.7	0.3	-0.2	1.6	0.4	-0.3	2.3
Employment full-time	58.3	58.0	0.8	-0.3	-0.2	1.3	-0.5	-0.3	2.3
Employment part-time	12.5	12.9	0.7	0.4	-0.1	0.3	3.2	-0.8	2.4
Unemployment	8.5	10.0	0.7	1.5	1.4	0.4	17.6	16.3	4.2
Participation rate	67.8	69.1	0.6	1.3	0.5	1.1
Unemployment rate	10.7	12.3	0.8	1.6	1.5	0.1
Employment rate	60.5	60.6	0.6	0.1	-0.6	0.8
Nova Scotia									
Population	775.3	775.7	...	0.4	1.2	3.5	0.1	0.2	0.5
Labour force	501.1	502.0	2.7	0.9	2.1	3.6	0.2	0.4	0.7
Employment	457.3	457.7	2.9	0.4	5.7	5.5	0.1	1.3	1.2
Employment full-time	371.3	374.8	3.6	3.5	6.0	2.9	0.9	1.6	0.8
Employment part-time	86.0	82.9	3.1	-3.1	-0.4	2.6	-3.6	-0.5	3.2
Unemployment	43.8	44.3	2.6	0.5	-3.5	-1.9	1.1	-7.3	-4.1
Participation rate	64.6	64.7	0.4	0.1	0.2	0.2
Unemployment rate	8.7	8.8	0.5	0.1	-0.8	-0.5
Employment rate	59.0	59.0	0.4	0.0	0.6	0.4
New Brunswick									
Population	623.8	624.4	...	0.6	1.6	2.9	0.1	0.3	0.5
Labour force	401.5	398.7	2.4	-2.8	-2.5	-3.8	-0.7	-0.6	-0.9
Employment	366.0	361.6	2.5	-4.4	-3.8	-5.1	-1.2	-1.0	-1.4
Employment full-time	314.0	307.4	2.9	-6.6	-2.1	-2.0	-2.1	-0.7	-0.6
Employment part-time	52.1	54.2	2.5	2.1	-1.7	-3.1	4.0	-3.0	-5.4
Unemployment	35.5	37.1	2.2	1.6	1.3	1.3	4.5	3.6	3.6
Participation rate	64.4	63.9	0.4	-0.5	-0.5	-0.9
Unemployment rate	8.8	9.3	0.5	0.5	0.4	0.4
Employment rate	58.7	57.9	0.4	-0.8	-0.8	-1.1
Quebec									
Population	6,502.5	6,511.1	...	8.6	39.4	78.1	0.1	0.6	1.2
Labour force	4,251.0	4,275.0	14.2	24.0	62.8	55.1	0.6	1.5	1.3
Employment	3,909.3	3,939.7	14.5	30.4	81.3	88.7	0.8	2.1	2.3
Employment full-time	3,162.1	3,177.4	18.8	15.3	39.5	47.1	0.5	1.3	1.5
Employment part-time	747.2	762.4	16.7	15.2	41.9	41.7	2.0	5.8	5.8
Unemployment	341.7	335.2	13.3	-6.5	-18.6	-33.7	-1.9	-5.3	-9.1
Participation rate	65.4	65.7	0.2	0.3	0.6	0.1
Unemployment rate	8.0	7.8	0.3	-0.2	-0.6	-0.9
Employment rate	60.1	60.5	0.2	0.4	0.9	0.6

See notes at the end of the table.

Table 3 – continued

Labour force characteristics by province, seasonally adjusted

	May 2010	June 2010	S.E. ¹	Change from			Percent change from		
				last month	last December	twelve months ago	last month	last December	twelve months ago
in thousands (except rates)									
Ontario									
Population	10,791.0	10,807.9	...	16.9	80.3	155.8	0.2	0.7	1.5
Labour force	7,280.7	7,301.4	19.5	20.7	111.2	135.0	0.3	1.5	1.9
Employment	6,633.3	6,693.6	19.0	60.3	166.2	200.4	0.9	2.5	3.1
Employment full-time	5,363.3	5,405.8	24.6	42.5	104.4	230.5	0.8	2.0	4.5
Employment part-time	1,270.1	1,287.9	22.5	17.8	62.0	-30.0	1.4	5.1	-2.3
Unemployment	647.3	607.8	17.4	-39.5	-55.0	-65.4	-6.1	-8.3	-9.7
Participation rate	67.5	67.6	0.2	0.1	0.6	0.3
Unemployment rate	8.9	8.3	0.2	-0.6	-0.9	-1.1
Employment rate	61.5	61.9	0.2	0.4	1.1	0.9
Manitoba									
Population	934.4	936.0	...	1.6	7.4	13.5	0.2	0.8	1.5
Labour force	658.2	655.7	2.6	-2.5	14.8	15.2	-0.4	2.3	2.4
Employment	620.4	620.7	2.8	0.3	16.7	13.7	0.0	2.8	2.3
Employment full-time	501.9	499.4	3.7	-2.5	14.7	4.1	-0.5	3.0	0.8
Employment part-time	118.5	121.3	3.3	2.8	2.1	9.5	2.4	1.8	8.5
Unemployment	37.8	35.0	2.2	-2.8	-2.0	1.6	-7.4	-5.4	4.8
Participation rate	70.4	70.1	0.3	-0.3	1.1	0.7
Unemployment rate	5.7	5.3	0.3	-0.4	-0.5	0.1
Employment rate	66.4	66.3	0.3	-0.1	1.3	0.5
Saskatchewan									
Population	789.5	791.0	...	1.5	6.7	11.7	0.2	0.9	1.5
Labour force	553.4	558.5	2.4	5.1	10.0	8.5	0.9	1.8	1.5
Employment	526.0	528.1	2.5	2.1	6.0	3.5	0.4	1.1	0.7
Employment full-time	429.7	430.5	3.4	0.8	4.9	5.6	0.2	1.2	1.3
Employment part-time	96.3	97.6	3.2	1.3	1.1	-2.1	1.3	1.1	-2.1
Unemployment	27.4	30.5	1.9	3.1	4.2	5.1	11.3	16.0	20.1
Participation rate	70.1	70.6	0.3	0.5	0.7	0.0
Unemployment rate	5.0	5.5	0.3	0.5	0.7	0.9
Employment rate	66.6	66.8	0.3	0.2	0.2	-0.5
Alberta									
Population	2,917.8	2,924.1	...	6.3	28.8	60.3	0.2	1.0	2.1
Labour force	2,135.7	2,143.0	8.4	7.3	7.1	11.5	0.3	0.3	0.5
Employment	1,994.1	1,999.8	8.8	5.7	4.5	13.7	0.3	0.2	0.7
Employment full-time	1,657.9	1,648.3	11.7	-9.6	16.5	15.0	-0.6	1.0	0.9
Employment part-time	336.2	351.5	10.9	15.3	-12.0	-1.4	4.6	-3.3	-0.4
Unemployment	141.6	143.2	7.2	1.6	2.6	-2.2	1.1	1.8	-1.5
Participation rate	73.2	73.3	0.3	0.1	-0.5	-1.1
Unemployment rate	6.6	6.7	0.3	0.1	0.1	-0.1
Employment rate	68.3	68.4	0.3	0.1	-0.5	-1.0
British Columbia									
Population	3,769.1	3,777.4	...	8.3	38.5	73.9	0.2	1.0	2.0
Labour force	2,479.1	2,493.2	10.6	14.1	20.5	40.7	0.6	0.8	1.7
Employment	2,292.5	2,298.9	10.5	6.4	30.4	46.1	0.3	1.3	2.0
Employment full-time	1,783.5	1,796.7	14.3	13.2	24.3	37.1	0.7	1.4	2.1
Employment part-time	509.0	502.2	13.3	-6.8	6.1	9.0	-1.3	1.2	1.8
Unemployment	186.6	194.3	8.5	7.7	-9.9	-5.4	4.1	-4.8	-2.7
Participation rate	65.8	66.0	0.3	0.2	-0.1	-0.2
Unemployment rate	7.5	7.8	0.3	0.3	-0.5	-0.3
Employment rate	60.8	60.9	0.3	0.1	0.2	0.1

1. Average standard error of change in two consecutive months (see "Sampling Errors" in Data Quality for further explanations).

Note(s): Related CANSIM Table 282-0087.

Table 4-1
Selected labour force characteristics (seasonally adjusted) — Newfoundland and Labrador

	May 2010	June 2010	S.E. ¹	Change from			Percent change from		
				last month	last December	twelve months ago	last month	last December	twelve months ago
in thousands (except rates)									
Both sexes, 15 years and over									
Population	431.6	431.6	...	0.0	1.1	3.1	0.0	0.3	0.7
Labour force	263.1	256.5	2.1	-6.6	0.5	2.5	-2.5	0.2	1.0
Employment	226.9	218.8	2.2	-8.1	1.6	4.4	-3.6	0.7	2.1
Employment full-time	193.8	186.3	2.5	-7.5	-0.6	3.3	-3.9	-0.3	1.8
Unemployment	36.2	37.7	2.1	1.5	-1.1	-1.9	4.1	-2.8	-4.8
Participation rate	61.0	59.4	0.5	-1.6	-0.1	0.1
Unemployment rate	13.8	14.7	0.8	0.9	-0.5	-0.9
Employment rate	52.6	50.7	0.5	-1.9	0.2	0.7
Part-time rate	14.6	14.9	0.8	0.3	0.9	0.2
Both sexes, 15 to 24 years									
Population	60.7	60.6	...	-0.1	-0.2	-0.4	-0.2	-0.3	-0.7
Labour force	34.2	32.8	1.0	-1.4	-0.7	-0.1	-4.1	-2.1	-0.3
Employment	26.9	25.0	1.0	-1.9	-1.2	-1.2	-7.1	-4.6	-4.6
Unemployment	7.3	7.7	1.0	0.4	0.4	1.0	5.5	5.5	14.9
Participation rate	56.3	54.1	1.7	-2.2	-1.0	0.2
Unemployment rate	21.3	23.5	2.5	2.2	1.7	3.1
Employment rate	44.3	41.3	1.6	-3.0	-1.8	-1.7
Part-time rate	41.6	38.4	3.5	-3.2	-0.9	-1.3
Men, 25 years and over									
Population	178.7	178.8	...	0.1	0.7	1.6	0.1	0.4	0.9
Labour force	119.8	116.3	1.2	-3.5	0.2	-1.7	-2.9	0.2	-1.4
Employment	102.7	97.4	1.4	-5.3	0.6	1.2	-5.2	0.6	-1.2
Unemployment	17.1	18.9	1.4	1.8	-0.5	-2.9	10.5	-2.6	-13.3
Participation rate	67.0	65.0	0.7	-2.0	-0.2	-1.6
Unemployment rate	14.3	16.3	1.2	2.0	-0.4	-2.2
Employment rate	57.5	54.5	0.8	-3.0	0.1	0.2
Part-time rate	5.0	5.7	0.8	0.8	1.4	1.1
Women, 25 years and over									
Population	192.2	192.3	...	0.1	0.8	2.1	0.1	0.4	1.1
Labour force	109.1	107.4	1.1	-1.7	1.1	4.2	-1.6	1.0	4.1
Employment	97.4	96.3	1.1	-1.1	2.1	4.3	-1.1	2.2	4.7
Unemployment	11.7	11.1	1.1	-0.6	-1.1	-0.1	-5.1	-9.0	-0.9
Participation rate	56.8	55.9	0.6	-0.9	0.4	1.6
Unemployment rate	10.7	10.3	1.0	-0.4	-1.2	-0.6
Employment rate	50.7	50.1	0.6	-0.6	0.9	1.7
Part-time rate	17.2	18.0	1.3	0.7	1.2	0.1
Industry	226.9	218.8	2.2	-8.1	1.6	4.4	-3.6	0.7	2.1
Goods-producing sector									
Agriculture	46.6	44.1	1.7	-2.5	-1.5	-1.0	-5.4	-3.3	-2.2
Forestry, fishing, mining, oil and gas	1.7	1.4	0.2	-0.3	0.7	0.8	-17.6	100.0	133.3
Utilities	16.7	15.5	1.0	-1.2	0.8	1.1	-7.2	5.4	7.6
Construction	2.1	2.1	0.3	0.0	0.1	-0.3	0.0	5.0	-12.5
Manufacturing	15.5	15.0	1.1	-0.5	-1.3	-2.0	-3.2	-8.0	-11.8
Manufacturing	10.6	10.1	1.0	-0.5	-1.8	-0.5	-4.7	-15.1	-4.7
Services-producing sector									
Trade	180.4	174.7	2.1	-5.7	3.2	5.4	-3.2	1.9	3.2
Transportation and warehousing	36.8	37.3	1.2	0.5	2.5	4.7	1.4	7.2	14.4
Finance, insurance, real estate and leasing	12.7	11.8	0.8	-0.9	-0.7	1.3	-7.1	-5.6	12.4
Professional, scientific and technical services	8.3	9.0	0.6	0.7	1.9	0.0	8.4	26.8	0.0
Business, building and other support services	6.7	6.3	0.6	-0.4	-1.9	-1.4	-6.0	-23.2	-18.2
Educational services	5.5	4.9	0.7	-0.6	-0.1	-3.7	-10.9	-2.0	-43.0
Health care and social assistance	17.5	17.1	0.9	-0.4	-0.6	0.2	-2.3	-3.4	1.2
Information, culture and recreation	38.6	37.6	1.1	-1.0	1.9	3.0	-2.6	5.3	8.7
Accommodation and food services	7.5	7.5	0.7	0.0	-0.5	-2.2	0.0	-6.2	-22.7
Other services	16.7	12.9	0.9	-3.8	-1.3	-0.7	-22.8	-9.2	-5.1
Public administration	11.4	12.3	0.8	0.9	1.4	2.5	7.9	12.8	25.5
Public administration	18.6	18.0	0.9	-0.6	0.5	1.7	-3.2	2.9	10.4

1. Average standard error of change in two consecutive months (see "Sampling Errors" in Data Quality for further explanations).

Note(s): Related CANSIM Tables 282-0087, 282-0088.

Table 4-2
Selected labour force characteristics (seasonally adjusted) — Prince Edward Island

	May 2010	June 2010	S.E. ¹	Change from			Percent change from		
				last month	last December	twelve months ago	last month	last December	twelve months ago
in thousands (except rates)									
Both sexes, 15 years and over									
Population	116.9	117.2	...	0.3	0.8	1.2	0.3	0.7	1.0
Labour force	79.2	81.0	0.6	1.8	1.2	2.1	2.3	1.5	2.7
Employment	70.7	71.0	0.7	0.3	-0.2	1.6	0.4	-0.3	2.3
Employment full-time	58.3	58.0	0.8	-0.3	-0.2	1.3	-0.5	-0.3	2.3
Unemployment	8.5	10.0	0.7	1.5	1.4	0.4	17.6	16.3	4.2
Participation rate	67.8	69.1	0.6	1.3	0.5	1.1
Unemployment rate	10.7	12.3	0.8	1.6	1.5	0.1
Employment rate	60.5	60.6	0.6	0.1	-0.6	0.8
Part-time rate	17.7	18.2	1.0	0.5	-0.1	0.0
Both sexes, 15 to 24 years									
Population	19.7	19.7	...	0.0	-0.1	-0.1	0.0	-0.5	-0.5
Labour force	13.4	13.8	0.4	0.4	0.1	0.6	3.0	0.7	4.5
Employment	11.6	11.2	0.4	-0.4	-0.2	-0.2	-3.4	-1.8	-1.8
Unemployment	1.8	2.5	0.4	0.7	0.2	0.7	38.9	8.7	38.9
Participation rate	68.0	70.1	1.9	2.1	0.9	3.4
Unemployment rate	13.4	18.1	2.4	4.7	1.3	4.5
Employment rate	58.9	56.9	1.9	-2.0	-0.7	-0.7
Part-time rate	38.8	40.2	3.2	1.4	0.7	-1.9
Men, 25 years and over									
Population	46.7	46.8	...	0.1	0.4	0.5	0.2	0.9	1.1
Labour force	33.6	34.6	0.4	1.0	0.3	0.6	3.0	0.9	1.8
Employment	29.7	30.0	0.4	0.3	-0.4	0.4	1.0	-1.3	1.4
Unemployment	3.9	4.6	0.4	0.7	0.8	0.2	17.9	21.1	4.5
Participation rate	71.9	73.9	0.8	2.0	0.0	0.5
Unemployment rate	11.6	13.3	1.2	1.7	2.2	0.4
Employment rate	63.6	64.1	0.9	0.5	-1.4	0.2
Part-time rate	7.7	8.7	1.0	0.9	1.4	2.2
Women, 25 years and over									
Population	50.5	50.7	...	0.2	0.4	0.8	0.4	0.8	1.6
Labour force	32.1	32.6	0.3	0.5	0.8	0.9	1.6	2.5	2.8
Employment	29.4	29.7	0.4	0.3	0.3	1.4	1.0	1.0	4.9
Unemployment	2.7	2.9	0.4	0.2	0.5	-0.4	7.4	20.8	-12.1
Participation rate	63.6	64.3	0.7	0.7	1.1	0.8
Unemployment rate	8.4	8.9	1.1	0.5	1.4	-1.5
Employment rate	58.2	58.6	0.8	0.4	0.2	1.9
Part-time rate	19.0	19.5	1.5	0.5	-1.9	-1.3
Industry	70.7	71.0	0.7	0.3	-0.2	1.6	0.4	-0.3	2.3
Goods-producing sector									
Agriculture	3.5	3.4	0.3	-0.1	-0.6	-0.3	-2.9	-15.0	-8.1
Forestry, fishing, mining, oil and gas	2.6	2.6	0.3	0.0	0.1	0.6	0.0	4.0	30.0
Utilities	0.4	0.4	0.1	0.0	-0.1	0.2	0.0	-20.0	100.0
Construction	5.0	4.6	0.3	-0.4	-1.3	-0.8	-8.0	-22.0	-14.8
Manufacturing	5.0	5.5	0.3	0.5	0.3	-0.1	10.0	5.8	-1.8
Services-producing sector									
Trade	54.4	54.5	0.7	0.1	1.5	2.0	0.2	2.8	3.8
Transportation and warehousing	11.3	10.5	0.4	-0.8	-0.7	0.3	-7.1	-6.2	2.9
Finance, insurance, real estate and leasing	2.1	2.2	0.2	0.1	0.3	0.1	4.8	15.8	4.8
Professional, scientific and technical services	2.6	2.6	0.2	0.0	0.0	0.1	0.0	0.0	4.0
Business, building and other support services	2.6	2.6	0.2	0.0	0.5	0.5	0.0	23.8	23.8
Educational services	2.6	2.7	0.3	0.1	-0.2	0.0	3.8	-6.9	0.0
Health care and social assistance	6.1	6.1	0.3	0.0	0.5	0.9	0.0	8.9	17.3
Information, culture and recreation	8.3	8.7	0.3	0.4	0.3	1.4	4.8	3.6	19.2
Accommodation and food services	2.2	2.4	0.2	0.2	0.0	-0.3	9.1	0.0	-11.1
Other services	5.3	5.2	0.4	-0.1	0.2	-0.3	-1.9	4.0	-5.5
Public administration	3.3	3.3	0.3	0.0	0.0	0.2	0.0	0.0	6.5
	7.9	8.1	0.3	0.2	0.5	-1.0	2.5	6.6	-11.0

1. Average standard error of change in two consecutive months (see "Sampling Errors" in Data Quality for further explanations).

Note(s): Related CANSIM Tables 282-0087, 282-0088.

Table 4-3
Selected labour force characteristics (seasonally adjusted) — Nova Scotia

	May 2010	June 2010	S.E. ¹	Change from			Percent change from		
				last month	last December	twelve months ago	last month	last December	twelve months ago
in thousands (except rates)									
Both sexes, 15 years and over									
Population	775.3	775.7	...	0.4	1.2	3.5	0.1	0.2	0.5
Labour force	501.1	502.0	2.7	0.9	2.1	3.6	0.2	0.4	0.7
Employment	457.3	457.7	2.9	0.4	5.7	5.5	0.1	1.3	1.2
Employment full-time	371.3	374.8	3.6	3.5	6.0	2.9	0.9	1.6	0.8
Unemployment	43.8	44.3	2.6	0.5	-3.5	-1.9	1.1	-7.3	-4.1
Participation rate	64.6	64.7	0.4	0.1	0.2	0.2
Unemployment rate	8.7	8.8	0.5	0.1	-0.8	-0.5
Employment rate	59.0	59.0	0.4	0.0	0.6	0.4
Part-time rate	18.8	18.1	0.7	-0.7	-0.3	0.4
Both sexes, 15 to 24 years									
Population	119.3	119.2	...	-0.1	-0.6	-0.9	-0.1	-0.5	-0.7
Labour force	78.6	77.6	1.6	-1.0	-4.4	-4.0	-1.3	-5.4	-4.9
Employment	67.2	66.0	1.6	-1.2	-2.3	-0.9	-1.8	-3.4	-1.3
Unemployment	11.4	11.6	1.5	0.2	-2.0	-3.2	1.8	-14.7	-21.6
Participation rate	65.9	65.1	1.3	-0.8	-3.3	-2.8
Unemployment rate	14.5	14.9	1.7	0.4	-1.7	-3.2
Employment rate	56.3	55.4	1.3	-0.9	-1.6	-0.3
Part-time rate	46.3	45.5	2.5	-0.8	-0.5	1.2
Men, 25 years and over									
Population	312.7	312.9	...	0.2	0.8	2.1	0.1	0.3	0.7
Labour force	216.4	217.4	1.5	1.0	3.4	3.1	0.5	1.6	1.4
Employment	198.4	198.5	1.7	0.1	3.7	3.5	0.1	1.9	1.8
Unemployment	18.0	18.9	1.6	0.9	-0.3	-0.4	5.0	-1.6	-2.1
Participation rate	69.2	69.5	0.5	0.3	0.9	0.5
Unemployment rate	8.3	8.7	0.7	0.4	-0.3	-0.3
Employment rate	63.4	63.4	0.5	0.0	1.0	0.7
Part-time rate	7.7	7.8	0.7	0.0	1.2	0.5
Women, 25 years and over									
Population	343.3	343.6	...	0.3	0.9	2.3	0.1	0.3	0.7
Labour force	206.1	207.0	1.5	0.9	3.1	4.6	0.4	1.5	2.3
Employment	191.7	193.2	1.5	1.5	4.3	2.9	0.8	2.3	1.5
Unemployment	14.5	13.8	1.3	-0.7	-1.2	1.7	-4.8	-8.0	14.0
Participation rate	60.0	60.2	0.4	0.2	0.7	0.9
Unemployment rate	7.0	6.7	0.6	-0.3	-0.7	0.7
Employment rate	55.8	56.2	0.4	0.4	1.1	0.4
Part-time rate	20.7	19.4	1.1	-1.2	-1.3	0.1
Industry									
Industry	457.3	457.7	2.9	0.4	5.7	5.5	0.1	1.3	1.2
Goods-producing sector									
Goods-producing sector	89.6	88.3	2.4	-1.3	2.8	4.6	-1.5	3.3	5.5
Agriculture	6.2	6.1	0.7	-0.1	0.8	-0.8	-1.6	15.1	-11.6
Forestry, fishing, mining, oil and gas	12.9	12.7	1.1	-0.2	0.6	-0.3	-1.6	5.0	-2.3
Utilities	3.7	4.0	0.4	0.3	0.1	1.3	8.1	2.6	48.1
Construction	32.5	31.6	1.5	-0.9	-0.5	1.5	-2.8	-1.6	5.0
Manufacturing	34.3	33.9	1.4	-0.4	1.8	2.9	-1.2	5.6	9.4
Services-producing sector									
Services-producing sector	367.7	369.4	3.0	1.7	2.9	0.9	0.5	0.8	0.2
Trade	75.3	77.3	2.1	2.0	1.7	0.1	2.7	2.2	0.1
Transportation and warehousing	18.4	18.0	1.1	-0.4	-1.2	-3.7	-2.2	-6.2	-17.1
Finance, insurance, real estate and leasing	24.7	24.9	1.0	0.2	1.0	1.8	0.8	4.2	7.8
Professional, scientific and technical services	25.9	24.6	1.1	-1.3	1.5	3.1	-5.0	6.5	14.4
Business, building and other support services	23.8	22.9	1.3	-0.9	0.3	-1.1	-3.8	1.3	-4.6
Educational services	33.7	33.2	1.4	-0.5	-4.0	-5.4	-1.5	-10.8	-14.0
Health care and social assistance	68.3	68.7	1.6	0.4	1.1	5.7	0.6	1.6	9.0
Information, culture and recreation	20.5	19.7	1.1	-0.8	1.9	0.3	-3.9	10.7	1.5
Accommodation and food services	30.8	29.8	1.4	-1.0	1.4	2.0	-3.2	4.9	7.2
Other services	17.6	20.2	1.2	2.6	-0.3	1.2	14.8	-1.5	6.3
Public administration	28.8	30.2	1.2	1.4	-0.4	-2.9	4.9	-1.3	-8.8

1. Average standard error of change in two consecutive months (see "Sampling Errors" in Data Quality for further explanations).

Note(s): Related CANSIM Tables 282-0087, 282-0088.

Table 4-4
Selected labour force characteristics (seasonally adjusted) — New Brunswick

	May 2010	June 2010	S.E. ¹	Change from			Percent change from		
				last month	last December	twelve months ago	last month	last December	twelve months ago
in thousands (except rates)									
Both sexes, 15 years and over									
Population	623.8	624.4	...	0.6	1.6	2.9	0.1	0.3	0.5
Labour force	401.5	398.7	2.4	-2.8	-2.5	-3.8	-0.7	-0.6	-0.9
Employment	366.0	361.6	2.5	-4.4	-3.8	-5.1	-1.2	-1.0	-1.4
Employment full-time	314.0	307.4	2.9	-6.6	-2.1	-2.0	-2.1	-0.7	-0.6
Unemployment	35.5	37.1	2.2	1.6	1.3	1.3	4.5	3.6	3.6
Participation rate	64.4	63.9	0.4	-0.5	-0.5	-0.9
Unemployment rate	8.8	9.3	0.5	0.5	0.4	0.4
Employment rate	58.7	57.9	0.4	-0.8	-0.8	-1.1
Part-time rate	14.2	15.0	0.6	0.8	-0.3	-0.6
Both sexes, 15 to 24 years									
Population	92.4	92.3	...	-0.1	-0.7	-1.6	-0.1	-0.8	-1.7
Labour force	59.9	56.2	1.3	-3.7	-4.4	-5.6	-6.2	-7.3	-9.1
Employment	50.3	48.2	1.3	-2.1	-2.0	-4.8	-4.2	-4.0	-9.1
Unemployment	9.5	8.1	1.2	-1.4	-2.3	-0.7	-14.7	-22.1	-8.0
Participation rate	64.8	60.9	1.4	-3.9	-4.3	-4.9
Unemployment rate	15.9	14.4	1.7	-1.5	-2.8	0.2
Employment rate	54.4	52.2	1.4	-2.2	-1.8	-4.2
Part-time rate	35.8	40.7	2.3	4.9	-0.8	2.2
Men, 25 years and over									
Population	256.5	256.9	...	0.4	1.3	2.2	0.2	0.5	0.9
Labour force	176.8	178.0	1.4	1.2	0.1	0.1	0.7	0.1	0.1
Employment	161.6	161.6	1.5	0.0	-1.0	0.8	0.0	-0.6	0.5
Unemployment	15.2	16.4	1.4	1.2	1.1	-0.7	7.9	7.2	-4.1
Participation rate	68.9	69.3	0.5	0.4	-0.3	-0.5
Unemployment rate	8.6	9.2	0.8	0.6	0.6	-0.4
Employment rate	63.0	62.9	0.6	-0.1	-0.7	-0.2
Part-time rate	5.8	6.4	0.7	0.6	1.1	0.2
Women, 25 years and over									
Population	274.9	275.2	...	0.3	1.0	2.2	0.1	0.4	0.8
Labour force	164.9	164.4	1.3	-0.5	1.7	1.6	-0.3	1.0	1.0
Employment	154.1	151.9	1.3	-2.2	-0.7	-1.0	-1.4	-0.5	-0.7
Unemployment	10.8	12.6	1.1	1.8	2.5	2.7	16.7	24.8	27.3
Participation rate	60.0	59.7	0.5	-0.3	0.4	0.1
Unemployment rate	6.5	7.7	0.7	1.2	1.5	1.6
Employment rate	56.1	55.2	0.5	-0.9	-0.5	-0.8
Part-time rate	16.0	16.0	1.0	0.0	-1.4	-1.6
Industry									
Goods-producing sector	366.0	361.7	2.5	-4.3	-3.7	-5.0	-1.2	-1.0	-1.4
Agriculture	81.3	81.2	2.1	-0.1	-0.7	-3.3	-0.1	-0.9	-3.9
Forestry, fishing, mining, oil and gas	7.1	5.8	0.6	-1.3	-1.0	-1.7	-18.3	-14.7	-22.7
Utilities	10.4	9.9	0.8	-0.5	-0.8	-1.5	-4.8	-7.5	-13.2
Construction	4.0	4.0	0.5	0.0	-0.7	0.2	0.0	-14.9	5.3
Manufacturing	29.9	31.1	1.3	1.2	5.1	3.3	4.0	19.6	11.9
Manufacturing	29.9	30.5	1.3	0.6	-3.2	-3.5	2.0	-9.5	-10.3
Services-producing sector	284.8	280.5	2.5	-4.3	-3.0	-1.7	-1.5	-1.1	-0.6
Trade	58.3	58.5	1.6	0.2	3.5	4.8	0.3	6.4	8.9
Transportation and warehousing	20.1	19.8	0.9	-0.3	-0.4	1.5	-1.5	-2.0	8.2
Finance, insurance, real estate and leasing	15.9	15.5	0.9	-0.4	-0.5	-1.9	-2.5	-3.1	-10.9
Professional, scientific and technical services	15.7	15.9	0.9	0.2	0.3	-2.0	1.3	1.9	-11.2
Business, building and other support services	17.6	16.4	1.1	-1.2	-2.8	-3.6	-6.8	-14.6	-18.0
Educational services	26.7	26.3	1.2	-0.4	-1.3	-1.1	-1.5	-4.7	-4.0
Health care and social assistance	52.9	51.8	1.4	-1.1	2.7	1.9	-2.1	5.5	3.8
Information, culture and recreation	13.1	12.2	0.8	-0.9	0.0	0.2	-6.9	0.0	1.7
Accommodation and food services	21.7	21.3	1.1	-0.4	-3.6	-1.1	-1.8	-14.5	-4.9
Other services	17.8	17.1	0.9	-0.7	0.0	0.9	-3.9	0.0	5.6
Public administration	24.9	25.7	1.1	0.8	-1.0	-1.3	3.2	-3.7	-4.8

1. Average standard error of change in two consecutive months (see "Sampling Errors" in Data Quality for further explanations).

Note(s): Related CANSIM Tables 282-0087, 282-0088.

Table 4-5
Selected labour force characteristics (seasonally adjusted) — Quebec

	May 2010	June 2010	S.E. ¹	Change from			Percent change from		
				last month	last December	twelve months ago	last month	last December	twelve months ago
in thousands (except rates)									
Both sexes, 15 years and over									
Population	6,502.5	6,511.1	...	8.6	39.4	78.1	0.1	0.6	1.2
Labour force	4,251.0	4,275.0	14.2	24.0	62.8	55.1	0.6	1.5	1.3
Employment	3,909.3	3,939.7	14.5	30.4	81.3	88.7	0.8	2.1	2.3
Employment full-time	3,162.1	3,177.4	18.8	15.3	39.5	47.1	0.5	1.3	1.5
Unemployment	341.7	335.2	13.3	-6.5	-18.6	-33.7	-1.9	-5.3	-9.1
Participation rate	65.4	65.7	0.2	0.3	0.6	0.1
Unemployment rate	8.0	7.8	0.3	-0.2	-0.6	-0.9
Employment rate	60.1	60.5	0.2	0.4	0.9	0.6
Part-time rate	19.1	19.4	0.4	0.2	0.7	0.6
Both sexes, 15 to 24 years									
Population	966.1	966.6	...	0.5	2.2	3.9	0.1	0.2	0.4
Labour force	656.4	660.9	8.3	4.5	19.5	21.8	0.7	3.0	3.4
Employment	560.0	570.8	8.1	10.8	34.8	27.0	1.9	6.5	5.0
Unemployment	96.4	90.2	7.5	-6.2	-15.2	-5.1	-6.4	-14.4	-5.4
Participation rate	67.9	68.4	0.9	0.5	1.9	2.0
Unemployment rate	14.7	13.6	1.1	-1.1	-2.8	-1.3
Employment rate	58.0	59.1	0.8	1.1	3.5	2.6
Part-time rate	50.8	50.5	1.5	-0.3	1.0	0.0
Men, 25 years and over									
Population	2,708.6	2,712.9	...	4.3	19.7	38.8	0.2	0.7	1.5
Labour force	1,907.5	1,913.9	7.9	6.4	25.6	13.9	0.3	1.4	0.7
Employment	1,749.3	1,760.9	8.4	11.6	25.2	33.7	0.7	1.5	2.0
Unemployment	158.2	153.0	8.1	-5.2	0.4	-19.8	-3.3	0.3	-11.5
Participation rate	70.4	70.5	0.3	0.1	0.4	-0.6
Unemployment rate	8.3	8.0	0.4	-0.3	-0.1	-1.1
Employment rate	64.6	64.9	0.3	0.3	0.5	0.3
Part-time rate	8.0	8.2	0.5	0.2	0.0	1.2
Women, 25 years and over									
Population	2,827.8	2,831.6	...	3.8	17.5	35.4	0.1	0.6	1.3
Labour force	1,687.1	1,700.1	8.0	13.0	17.6	19.3	0.8	1.0	1.1
Employment	1,600.0	1,608.1	8.0	8.1	21.4	28.1	0.5	1.3	1.8
Unemployment	87.1	92.1	6.7	5.0	-3.8	-8.8	5.7	-4.0	-8.7
Participation rate	59.7	60.0	0.3	0.3	0.2	-0.1
Unemployment rate	5.2	5.4	0.4	0.2	-0.3	-0.6
Employment rate	56.6	56.8	0.3	0.2	0.4	0.3
Part-time rate	20.2	20.5	0.7	0.3	0.8	-0.1
Industry									
	3,909.3	3,939.7	14.5	30.4	81.3	88.7	0.8	2.1	2.3
Goods-producing sector									
Agriculture	842.3	848.3	11.7	6.0	-20.4	-13.9	0.7	-2.3	-1.6
Forestry, fishing, mining, oil and gas	50.5	50.2	3.2	-0.3	-5.1	-9.9	-0.6	-9.2	-16.5
Utilities	31.4	31.0	1.9	-0.4	-0.1	1.3	-1.3	-0.3	4.4
Construction	35.1	32.3	2.3	-2.8	-1.0	-6.2	-8.0	-3.0	-16.1
Manufacturing	228.9	234.1	6.8	5.2	14.6	24.1	2.3	6.7	11.5
	496.4	500.7	9.4	4.3	-28.8	-23.2	0.9	-5.4	-4.4
Services-producing sector									
	3,067.0	3,091.4	16.0	24.4	101.7	102.6	0.8	3.4	3.4
Trade	656.2	653.7	10.3	-2.5	14.2	35.5	-0.4	2.2	5.7
Transportation and warehousing	157.7	157.8	5.5	0.1	-5.4	-15.6	0.1	-3.3	-9.0
Finance, insurance, real estate and leasing	249.2	238.2	6.4	-11.0	6.5	24.9	-4.4	2.8	11.7
Professional, scientific and technical services	288.3	293.5	7.6	5.2	3.8	17.3	1.8	1.3	6.3
Business, building and other support services	137.5	151.4	6.2	13.9	22.5	5.6	10.1	17.5	3.8
Educational services	261.1	256.2	7.1	-4.9	-11.7	-12.7	-1.9	-4.4	-4.7
Health care and social assistance	498.8	510.4	8.6	11.6	30.0	35.0	2.3	6.2	7.4
Information, culture and recreation	172.3	175.1	6.3	2.8	-2.0	0.4	1.6	-1.1	0.2
Accommodation and food services	240.5	256.1	7.7	15.6	31.6	17.0	6.5	14.1	7.1
Other services	164.7	163.0	5.9	-1.7	2.5	-19.6	-1.0	1.6	-10.7
Public administration	240.8	236.2	5.9	-4.6	9.9	14.9	-1.9	4.4	6.7

1. Average standard error of change in two consecutive months (see "Sampling Errors" in Data Quality for further explanations).

Note(s): Related CANSIM Tables 282-0087, 282-0088.

Table 4-6
Selected labour force characteristics (seasonally adjusted) — Ontario

	May 2010	June 2010	S.E. ¹	Change from			Percent change from		
				last month	last December	twelve months ago	last month	last December	twelve months ago
in thousands (except rates)									
Both sexes, 15 years and over									
Population	10,791.0	10,807.9	...	16.9	80.3	155.8	0.2	0.7	1.5
Labour force	7,280.7	7,301.4	19.5	20.7	111.2	135.0	0.3	1.5	1.9
Employment	6,633.3	6,693.6	19.0	60.3	166.2	200.4	0.9	2.5	3.1
Employment full-time	5,363.3	5,405.8	24.6	42.5	104.4	230.5	0.8	2.0	4.5
Unemployment	647.3	607.8	17.4	-39.5	-55.0	-65.4	-6.1	-8.3	-9.7
Participation rate	67.5	67.6	0.2	0.1	0.6	0.3
Unemployment rate	8.9	8.3	0.2	-0.6	-0.9	-1.1
Employment rate	61.5	61.9	0.2	0.4	1.1	0.9
Part-time rate	19.1	19.2	0.3	0.1	0.5	-1.1
Both sexes, 15 to 24 years									
Population	1,753.0	1,754.2	...	1.2	5.4	9.3	0.1	0.3	0.5
Labour force	1,093.5	1,098.0	11.8	4.5	15.9	9.7	0.4	1.5	0.9
Employment	908.0	918.2	10.4	10.2	36.1	30.3	1.1	4.1	3.4
Unemployment	185.5	179.8	10.2	-5.7	-20.2	-20.6	-3.1	-10.1	-10.3
Participation rate	62.4	62.6	0.7	0.2	0.7	0.2
Unemployment rate	17.0	16.4	0.8	-0.6	-2.1	-2.0
Employment rate	51.8	52.3	0.6	0.5	1.9	1.4
Part-time rate	52.6	52.4	1.2	-0.2	2.0	-0.3
Men, 25 years and over									
Population	4,388.8	4,396.0	...	7.2	34.6	69.1	0.2	0.8	1.6
Labour force	3,246.7	3,246.0	9.9	-0.7	43.7	57.4	0.0	1.4	1.8
Employment	2,984.4	3,017.5	11.0	33.1	92.8	116.7	1.1	3.2	4.0
Unemployment	262.3	228.4	10.3	-33.9	-49.2	-59.4	-12.9	-17.7	-20.6
Participation rate	74.0	73.8	0.2	-0.2	0.4	0.1
Unemployment rate	8.1	7.0	0.3	-1.1	-1.7	-2.0
Employment rate	68.0	68.6	0.3	0.6	1.5	1.6
Part-time rate	7.9	7.8	0.4	-0.1	-0.2	-0.4
Women, 25 years and over									
Population	4,649.1	4,657.6	...	8.5	40.1	77.3	0.2	0.9	1.7
Labour force	2,940.5	2,957.5	11.2	17.0	51.7	68.0	0.6	1.8	2.4
Employment	2,741.0	2,757.9	10.7	16.9	37.3	53.4	0.6	1.4	2.0
Unemployment	199.5	199.6	9.2	0.1	14.4	14.6	0.1	7.8	7.9
Participation rate	63.2	63.5	0.2	0.3	0.6	0.4
Unemployment rate	6.8	6.7	0.3	-0.1	0.3	0.3
Employment rate	59.0	59.2	0.2	0.2	0.3	0.2
Part-time rate	20.3	20.7	0.5	0.4	0.6	-2.0
Industry									
Goods-producing sector	1,393.8	1,390.4	16.2	-3.4	12.9	34.2	-0.2	0.9	2.5
Agriculture	84.8	85.6	3.6	0.8	2.0	0.6	0.9	2.4	0.7
Forestry, fishing, mining, oil and gas	39.5	41.2	2.2	1.7	2.2	6.9	4.3	5.6	20.1
Utilities	58.9	60.5	3.2	1.6	5.0	4.5	2.7	9.0	8.0
Construction	427.2	432.5	9.8	5.3	18.5	29.9	1.2	4.5	7.4
Manufacturing	783.5	770.7	12.9	-12.8	-14.7	-7.6	-1.6	-1.9	-1.0
Services-producing sector	5,239.5	5,303.2	21.8	63.7	153.3	166.2	1.2	3.0	3.2
Trade	1,016.8	1,037.5	14.3	20.7	52.6	44.7	2.0	5.3	4.5
Transportation and warehousing	306.4	305.3	8.6	-1.1	4.2	-2.8	-0.4	1.4	-0.9
Finance, insurance, real estate and leasing	507.0	506.1	11.3	-0.9	-10.1	-1.3	-0.2	-2.0	-0.3
Professional, scientific and technical services	558.9	561.7	11.2	2.8	36.4	52.7	0.5	6.9	10.4
Business, building and other support services	284.8	291.5	8.9	6.7	30.6	11.8	2.4	11.7	4.2
Educational services	497.1	496.2	9.9	-0.9	16.7	35.9	-0.2	3.5	7.8
Health care and social assistance	718.1	713.2	10.6	-4.9	-12.6	4.5	-0.7	-1.7	0.6
Information, culture and recreation	313.4	324.4	9.2	11.0	2.4	0.9	3.5	0.7	0.3
Accommodation and food services	380.8	394.6	9.7	13.8	7.0	7.1	3.6	1.8	1.8
Other services	288.7	305.6	8.8	16.9	4.2	-4.4	5.9	1.4	-1.4
Public administration	367.4	367.2	7.7	-0.2	21.8	17.2	-0.1	6.3	4.9

1. Average standard error of change in two consecutive months (see "Sampling Errors" in Data Quality for further explanations).

Note(s): Related CANSIM Tables 282-0087, 282-0088.

Table 4-7
Selected labour force characteristics (seasonally adjusted) — Manitoba

	May 2010	June 2010	S.E. ¹	Change from			Percent change from		
				last month	last December	twelve months ago	last month	last December	twelve months ago
in thousands (except rates)									
Both sexes, 15 years and over									
Population	934.4	936.0	...	1.6	7.4	13.5	0.2	0.8	1.5
Labour force	658.2	655.7	2.6	-2.5	14.8	15.2	-0.4	2.3	2.4
Employment	620.4	620.7	2.8	0.3	16.7	13.7	0.0	2.8	2.3
Employment full-time	501.9	499.4	3.7	-2.5	14.7	4.1	-0.5	3.0	0.8
Unemployment	37.8	35.0	2.2	-2.8	-2.0	1.6	-7.4	-5.4	4.8
Participation rate	70.4	70.1	0.3	-0.3	1.1	0.7
Unemployment rate	5.7	5.3	0.3	-0.4	-0.5	0.1
Employment rate	66.4	66.3	0.3	-0.1	1.3	0.5
Part-time rate	19.1	19.5	0.5	0.4	-0.2	1.1
Both sexes, 15 to 24 years									
Population	161.2	161.3	...	0.1	0.7	1.1	0.1	0.4	0.7
Labour force	111.9	111.8	1.6	-0.1	2.8	-0.3	-0.1	2.6	-0.3
Employment	97.5	98.4	1.6	0.9	1.0	-1.7	0.9	1.0	-1.7
Unemployment	14.4	13.4	1.3	-1.0	1.8	1.4	-6.9	15.5	11.7
Participation rate	69.4	69.3	1.0	-0.1	1.4	-0.7
Unemployment rate	12.9	12.0	1.1	-0.9	1.4	1.3
Employment rate	60.5	61.0	1.0	0.5	0.4	-1.5
Part-time rate	40.7	45.5	1.8	4.8	4.9	2.4
Men, 25 years and over									
Population	378.2	379.0	...	0.8	3.4	6.3	0.2	0.9	1.7
Labour force	290.6	290.3	1.3	-0.3	5.1	6.0	-0.1	1.8	2.1
Employment	278.8	278.3	1.5	-0.5	8.6	5.1	-0.2	3.2	1.9
Unemployment	11.8	12.0	1.2	0.2	-3.5	0.9	1.7	-22.6	8.1
Participation rate	76.8	76.6	0.4	-0.2	0.7	0.3
Unemployment rate	4.1	4.1	0.4	0.0	-1.3	0.2
Employment rate	73.7	73.4	0.4	-0.3	1.6	0.1
Part-time rate	8.3	7.9	0.6	-0.4	-0.8	1.4
Women, 25 years and over									
Population	394.9	395.7	...	0.8	3.3	6.1	0.2	0.8	1.6
Labour force	255.7	253.6	1.5	-2.1	6.9	9.5	-0.8	2.8	3.9
Employment	244.1	244.0	1.6	-0.1	7.2	10.2	0.0	3.0	4.4
Unemployment	11.6	9.7	1.2	-1.9	-0.2	-0.7	-16.4	-2.0	-6.7
Participation rate	64.8	64.1	0.4	-0.7	1.2	1.4
Unemployment rate	4.5	3.8	0.5	-0.7	-0.2	-0.5
Employment rate	61.8	61.7	0.4	-0.1	1.4	1.7
Part-time rate	22.8	22.3	0.9	-0.5	-1.4	0.6
Industry									
Population	620.4	620.7	2.8	0.3	16.7	13.7	0.0	2.8	2.3
Goods-producing sector									
Agriculture	139.6	141.6	2.3	2.0	9.0	-0.7	1.4	6.8	-0.5
Forestry, fishing, mining, oil and gas	24.6	25.8	1.3	1.2	0.4	-2.6	4.9	1.6	-9.2
Utilities	7.2	7.1	0.6	-0.1	1.4	0.6	-1.4	24.6	9.2
Construction	7.8	7.4	0.5	-0.4	-0.9	-0.5	-5.1	-10.8	-6.3
Manufacturing	37.4	38.9	1.4	1.5	3.4	1.4	4.0	9.6	3.7
Manufacturing	62.6	62.5	1.6	-0.1	4.7	0.6	-0.2	8.1	1.0
Services-producing sector									
Trade	480.7	479.1	3.1	-1.6	7.7	14.3	-0.3	1.6	3.1
Transportation and warehousing	93.8	92.7	2.0	-1.1	2.3	4.2	-1.2	2.5	4.7
Finance, insurance, real estate and leasing	36.0	35.1	1.3	-0.9	-2.8	-4.6	-2.5	-7.4	-11.6
Professional, scientific and technical services	35.1	36.3	1.2	1.2	1.0	-1.0	3.4	2.8	-2.7
Business, building and other support services	27.0	27.8	1.1	0.8	2.6	3.0	3.0	10.3	12.1
Educational services	23.2	21.6	1.2	-1.6	2.8	1.8	-6.9	14.9	9.1
Health care and social assistance	52.5	52.7	1.5	0.2	1.2	9.2	0.4	2.3	21.1
Information, culture and recreation	90.3	92.1	1.8	1.8	7.5	6.9	2.0	8.9	8.1
Accommodation and food services	22.6	20.9	1.1	-1.7	-1.9	-4.2	-7.5	-8.3	-16.7
Other services	40.8	39.5	1.4	-1.3	2.5	3.1	-3.2	6.8	8.5
Public administration	25.5	26.2	1.2	0.7	-3.0	-1.7	2.7	-10.3	-6.1
Public administration	33.9	34.3	1.1	0.4	-4.4	-2.2	1.2	-11.4	-6.0

1. Average standard error of change in two consecutive months (see "Sampling Errors" in Data Quality for further explanations).

Note(s): Related CANSIM Tables 282-0087, 282-0088.

Table 4-8
Selected labour force characteristics (seasonally adjusted) — Saskatchewan

	May 2010	June 2010	S.E. ¹	Change from			Percent change from		
				last month	last December	twelve months ago	last month	last December	twelve months ago
in thousands (except rates)									
Both sexes, 15 years and over									
Population	789.5	791.0	...	1.5	6.7	11.7	0.2	0.9	1.5
Labour force	553.4	558.5	2.4	5.1	10.0	8.5	0.9	1.8	1.5
Employment	526.0	528.1	2.5	2.1	6.0	3.5	0.4	1.1	0.7
Employment full-time	429.7	430.5	3.4	0.8	4.9	5.6	0.2	1.2	1.3
Unemployment	27.4	30.5	1.9	3.1	4.2	5.1	11.3	16.0	20.1
Participation rate	70.1	70.6	0.3	0.5	0.7	0.0
Unemployment rate	5.0	5.5	0.3	0.5	0.7	0.9
Employment rate	66.6	66.8	0.3	0.2	0.2	-0.5
Part-time rate	18.3	18.5	0.6	0.2	0.0	-0.5
Both sexes, 15 to 24 years									
Population	138.2	138.0	...	-0.2	-0.5	-1.4	-0.1	-0.4	-1.0
Labour force	96.3	95.1	1.5	-1.2	0.0	-4.0	-1.2	0.0	-4.0
Employment	88.5	85.7	1.5	-2.8	-1.4	-3.6	-3.2	-1.6	-4.0
Unemployment	7.8	9.3	1.2	1.5	1.3	-0.5	19.2	16.2	-5.1
Participation rate	69.7	68.9	1.1	-0.8	0.2	-2.2
Unemployment rate	8.1	9.8	1.2	1.7	1.4	-0.1
Employment rate	64.0	62.1	1.1	-1.9	-0.8	-2.0
Part-time rate	37.9	37.0	1.8	-0.9	-0.3	-0.2
Men, 25 years and over									
Population	319.2	320.2	...	1.0	4.3	7.4	0.3	1.4	2.4
Labour force	245.3	249.9	1.2	4.6	8.1	9.7	1.9	3.3	4.0
Employment	234.1	237.2	1.3	3.1	7.3	6.9	1.3	3.2	3.0
Unemployment	11.1	12.8	1.1	1.7	0.9	2.9	15.3	7.6	29.3
Participation rate	76.8	78.0	0.4	1.2	1.5	1.2
Unemployment rate	4.5	5.1	0.4	0.6	0.2	1.0
Employment rate	73.3	74.1	0.4	0.8	1.3	0.5
Part-time rate	6.5	7.1	0.6	0.6	0.2	0.4
Women, 25 years and over									
Population	332.2	332.8	...	0.6	3.0	5.7	0.2	0.9	1.7
Labour force	211.9	213.5	1.3	1.6	1.9	2.8	0.8	0.9	1.3
Employment	203.4	205.2	1.4	1.8	0.1	0.1	0.9	0.0	0.0
Unemployment	8.4	8.4	0.9	0.0	1.9	2.7	0.0	29.2	47.4
Participation rate	63.8	64.2	0.4	0.4	0.0	-0.2
Unemployment rate	4.0	3.9	0.4	-0.1	0.8	1.2
Employment rate	61.2	61.7	0.4	0.5	-0.5	-1.0
Part-time rate	23.4	23.9	1.0	0.5	0.4	-1.0
Industry									
Industry	526.0	528.1	2.5	2.1	6.0	3.5	0.4	1.1	0.7
Goods-producing sector									
Goods-producing sector	146.6	149.0	2.3	2.4	7.6	11.0	1.6	5.4	8.0
Agriculture	41.6	42.0	1.5	0.4	-3.5	-0.6	1.0	-7.7	-1.4
Forestry, fishing, mining, oil and gas	27.4	27.7	1.1	0.3	0.7	4.1	1.1	2.6	17.4
Utilities	4.6	4.9	0.4	0.3	0.2	0.5	6.5	4.3	11.4
Construction	42.4	44.9	1.3	2.5	7.4	5.1	5.9	19.7	12.8
Manufacturing	30.7	29.5	1.0	-1.2	2.7	2.0	-3.9	10.1	7.3
Services-producing sector									
Services-producing sector	379.4	379.0	2.8	-0.4	-1.7	-7.7	-0.1	-0.4	-2.0
Trade	77.9	80.4	1.8	2.5	0.9	-1.5	3.2	1.1	-1.8
Transportation and warehousing	25.7	26.1	1.0	0.4	0.7	0.8	1.6	2.8	3.2
Finance, insurance, real estate and leasing	30.6	30.8	1.0	0.2	-0.4	1.7	0.7	-1.3	5.8
Professional, scientific and technical services	24.3	25.2	0.9	0.9	1.7	2.9	3.7	7.2	13.0
Business, building and other support services	13.1	12.9	0.8	-0.2	0.1	0.5	-1.5	0.8	4.0
Educational services	40.2	39.5	1.3	-0.7	-1.2	-1.4	-1.7	-2.9	-3.4
Health care and social assistance	66.6	67.9	1.4	1.3	1.5	1.9	2.0	2.3	2.9
Information, culture and recreation	18.4	17.7	1.0	-0.7	-1.1	-2.7	-3.8	-5.9	-13.2
Accommodation and food services	29.7	27.9	1.3	-1.8	-1.0	-3.1	-6.1	-3.5	-10.0
Other services	23.1	23.3	1.1	0.2	-0.1	-1.7	0.9	-0.4	-6.8
Public administration	29.6	27.2	1.0	-2.4	-3.0	-5.1	-8.1	-9.9	-15.8

1. Average standard error of change in two consecutive months (see "Sampling Errors" in Data Quality for further explanations).

Note(s): Related CANSIM Tables 282-0087, 282-0088.

Table 4-9
Selected labour force characteristics (seasonally adjusted) — Alberta

	May 2010	June 2010	S.E. ¹	Change from			Percent change from		
				last month	last December	twelve months ago	last month	last December	twelve months ago
in thousands (except rates)									
Both sexes, 15 years and over									
Population	2,917.8	2,924.1	...	6.3	28.8	60.3	0.2	1.0	2.1
Labour force	2,135.7	2,143.0	8.4	7.3	7.1	11.5	0.3	0.3	0.5
Employment	1,994.1	1,999.8	8.8	5.7	4.5	13.7	0.3	0.2	0.7
Employment full-time	1,657.9	1,648.3	11.7	-9.6	16.5	15.0	-0.6	1.0	0.9
Unemployment	141.6	143.2	7.2	1.6	2.6	-2.2	1.1	1.8	-1.5
Participation rate	73.2	73.3	0.3	0.1	-0.5	-1.1
Unemployment rate	6.6	6.7	0.3	0.1	0.1	-0.1
Employment rate	68.3	68.4	0.3	0.1	-0.5	-1.0
Part-time rate	16.9	17.6	0.5	0.7	-0.6	-0.2
Both sexes, 15 to 24 years									
Population	505.5	505.4	...	-0.1	-2.2	-2.3	0.0	-0.4	-0.5
Labour force	354.9	356.8	5.2	1.9	-0.1	-2.6	0.5	0.0	-0.7
Employment	310.4	315.1	4.9	4.7	3.1	2.7	1.5	1.0	0.9
Unemployment	44.5	41.7	4.4	-2.8	-3.2	-5.4	-6.3	-7.1	-11.5
Participation rate	70.2	70.6	1.0	0.4	0.3	-0.2
Unemployment rate	12.5	11.7	1.1	-0.8	-0.9	-1.4
Employment rate	61.4	62.3	1.0	0.9	0.8	0.8
Part-time rate	36.2	37.4	1.7	1.2	-0.2	0.6
Men, 25 years and over									
Population	1,224.4	1,227.7	...	3.3	15.9	34.5	0.3	1.3	2.9
Labour force	985.2	994.6	4.3	9.4	10.9	14.0	1.0	1.1	1.4
Employment	928.4	935.5	5.0	7.1	9.4	12.7	0.8	1.0	1.4
Unemployment	56.8	59.1	4.3	2.3	1.5	1.4	4.0	2.6	2.4
Participation rate	80.5	81.0	0.4	0.5	-0.2	-1.2
Unemployment rate	5.8	5.9	0.4	0.1	0.0	0.0
Employment rate	75.8	76.2	0.4	0.4	-0.2	-1.1
Part-time rate	4.9	5.6	0.5	0.7	-0.8	-0.7
Women, 25 years and over									
Population	1,187.9	1,191.1	...	3.2	15.2	28.2	0.3	1.3	2.4
Labour force	795.6	791.7	4.7	-3.9	-3.6	0.2	-0.5	-0.5	0.0
Employment	755.3	749.2	4.8	-6.1	-8.1	-1.7	-0.8	-1.1	-0.2
Unemployment	40.2	42.5	3.5	2.3	4.5	1.9	5.7	11.8	4.7
Participation rate	67.0	66.5	0.4	-0.5	-1.1	-1.6
Unemployment rate	5.1	5.4	0.4	0.3	0.6	0.3
Employment rate	63.6	62.9	0.4	-0.7	-1.5	-1.7
Part-time rate	23.6	24.2	1.0	0.5	-0.5	0.3
Industry	1,994.1	1,999.8	8.8	5.7	4.5	13.7	0.3	0.2	0.7
Goods-producing sector									
Agriculture	539.3	535.7	9.1	-3.6	22.5	8.0	-0.7	4.4	1.5
Agriculture	53.6	50.1	3.3	-3.5	-3.5	-3.6	-6.5	-6.5	-6.7
Forestry, fishing, mining, oil and gas	136.6	138.6	4.7	2.0	13.0	-2.6	1.5	10.4	-1.8
Utilities	18.1	17.2	1.8	-0.9	-1.8	-3.6	-5.0	-9.5	-17.3
Construction	202.3	200.8	6.1	-1.5	1.8	11.6	-0.7	0.9	6.1
Manufacturing	128.8	129.0	4.8	0.2	13.0	6.2	0.2	11.2	5.0
Services-producing sector									
Trade	1,454.8	1,464.1	10.6	9.3	-18.1	5.6	0.6	-1.2	0.4
Trade	296.2	307.9	7.4	11.7	3.5	12.2	4.0	1.1	4.1
Transportation and warehousing	103.1	104.4	4.5	1.3	3.8	-2.7	1.3	3.8	-2.5
Finance, insurance, real estate and leasing	108.6	106.6	4.1	-2.0	2.0	-7.1	-1.8	1.9	-6.2
Professional, scientific and technical services	153.0	154.9	5.1	1.9	9.3	6.7	1.2	6.4	4.5
Business, building and other support services	67.3	74.5	3.9	7.2	9.2	8.9	10.7	14.1	13.6
Educational services	126.7	122.1	4.6	-4.6	-17.6	-8.0	-3.6	-12.6	-6.1
Health care and social assistance	215.7	216.0	5.2	0.3	7.2	21.0	0.1	3.4	10.8
Information, culture and recreation	77.0	75.3	3.9	-1.7	-6.9	-5.8	-2.2	-8.4	-7.2
Accommodation and food services	127.7	122.6	5.1	-5.1	-10.7	-7.9	-4.0	-8.0	-6.1
Other services	94.6	95.3	4.3	0.7	-12.2	-4.4	0.7	-11.3	-4.4
Public administration	84.8	84.4	3.6	-0.4	-5.9	-7.4	-0.5	-6.5	-8.1

1. Average standard error of change in two consecutive months (see "Sampling Errors" in Data Quality for further explanations).

Note(s): Related CANSIM Tables 282-0087, 282-0088.

Table 4-10
Selected labour force characteristics (seasonally adjusted) — British Columbia

	May 2010	June 2010	S.E. ¹	Change from			Percent change from		
				last month	last December	twelve months ago	last month	last December	twelve months ago
in thousands (except rates)									
Both sexes, 15 years and over									
Population	3,769.1	3,777.4	...	8.3	38.5	73.9	0.2	1.0	2.0
Labour force	2,479.1	2,493.2	10.6	14.1	20.5	40.7	0.6	0.8	1.7
Employment	2,292.5	2,298.9	10.5	6.4	30.4	46.1	0.3	1.3	2.0
Employment full-time	1,783.5	1,796.7	14.3	13.2	24.3	37.1	0.7	1.4	2.1
Unemployment	186.6	194.3	8.5	7.7	-9.9	-5.4	4.1	-4.8	-2.7
Participation rate	65.8	66.0	0.3	0.2	-0.1	-0.2
Unemployment rate	7.5	7.8	0.3	0.3	-0.5	-0.3
Employment rate	60.8	60.9	0.3	0.1	0.2	0.1
Part-time rate	22.2	21.8	0.6	-0.4	0.0	0.0
Both sexes, 15 to 24 years									
Population	588.1	588.4	...	0.3	1.3	3.3	0.1	0.2	0.6
Labour force	372.7	373.7	6.0	1.0	0.1	-12.8	0.3	0.0	-3.3
Employment	316.4	318.9	5.8	2.5	-2.3	-15.0	0.8	-0.7	-4.5
Unemployment	56.3	54.8	4.8	-1.5	2.4	2.2	-2.7	4.6	4.2
Participation rate	63.4	63.5	1.0	0.1	-0.1	-2.6
Unemployment rate	15.1	14.7	1.2	-0.4	0.7	1.1
Employment rate	53.8	54.2	1.0	0.4	-0.5	-2.9
Part-time rate	48.5	51.7	2.0	3.2	3.9	5.1
Men, 25 years and over									
Population	1,558.2	1,562.3	...	4.1	18.7	35.9	0.3	1.2	2.4
Labour force	1,124.6	1,133.4	5.4	8.8	9.1	31.7	0.8	0.8	2.9
Employment	1,045.0	1,054.3	5.8	9.3	15.4	38.0	0.9	1.5	3.7
Unemployment	79.6	79.1	5.2	-0.5	-6.3	-6.3	-0.6	-7.4	-7.4
Participation rate	72.2	72.5	0.4	0.3	-0.3	0.3
Unemployment rate	7.1	7.0	0.5	-0.1	-0.6	-0.8
Employment rate	67.1	67.5	0.4	0.4	0.2	0.9
Part-time rate	9.8	8.7	0.6	-1.2	-0.6	-0.6
Women, 25 years and over									
Population	1,622.7	1,626.8	...	4.1	18.6	34.8	0.3	1.2	2.2
Labour force	981.8	986.1	6.2	4.3	11.4	21.7	0.4	1.2	2.3
Employment	931.1	925.7	6.1	-5.4	17.3	23.1	-0.6	1.9	2.6
Unemployment	50.7	60.4	4.7	9.7	-6.0	-1.3	19.1	-9.0	-2.1
Participation rate	60.5	60.6	0.4	0.1	0.0	0.0
Unemployment rate	5.2	6.1	0.5	0.9	-0.7	-0.3
Employment rate	57.4	56.9	0.4	-0.5	0.4	0.2
Part-time rate	27.2	26.6	0.9	-0.6	-0.6	-0.4
Industry									
Industry	2,292.5	2,298.9	10.5	6.4	30.4	46.1	0.3	1.3	2.0
Goods-producing sector									
Goods-producing sector	449.6	442.8	9.1	-6.8	7.3	-3.0	-1.5	1.7	-0.7
Agriculture	30.1	29.4	2.8	-0.7	-4.3	-7.5	-2.3	-12.8	-20.3
Forestry, fishing, mining, oil and gas	41.9	43.1	2.9	1.2	5.6	5.3	2.9	14.9	14.0
Utilities	16.1	17.1	1.5	1.0	2.7	3.8	6.2	18.8	28.6
Construction	198.0	192.6	6.4	-5.4	-1.2	-3.4	-2.7	-0.6	-1.7
Manufacturing	163.6	160.5	5.7	-3.1	4.4	-1.3	-1.9	2.8	-0.8
Services-producing sector									
Services-producing sector	1,842.9	1,856.1	11.8	13.2	23.1	49.0	0.7	1.3	2.7
Trade	373.8	369.3	8.2	-4.5	-4.3	-4.3	-1.2	-1.2	-1.2
Transportation and warehousing	121.1	115.7	4.6	-5.4	2.9	5.8	-4.5	2.6	5.3
Finance, insurance, real estate and leasing	141.2	152.2	5.1	11.0	3.4	15.5	7.8	2.3	11.3
Professional, scientific and technical services	175.6	177.5	5.9	1.9	1.0	7.7	1.1	0.6	4.5
Business, building and other support services	97.5	93.5	4.9	-4.0	5.2	-0.3	-4.1	5.9	-0.3
Educational services	169.2	170.8	5.6	1.6	5.9	10.7	0.9	3.6	6.7
Health care and social assistance	268.3	280.4	6.2	12.1	17.0	23.6	4.5	6.5	9.2
Information, culture and recreation	111.8	113.6	5.0	1.8	-2.1	-11.6	1.6	-1.8	-9.3
Accommodation and food services	168.3	169.5	6.2	1.2	-1.1	-3.4	0.7	-0.6	-2.0
Other services	102.7	99.9	4.5	-2.8	-9.6	-5.1	-2.7	-8.8	-4.9
Public administration	113.6	113.7	4.3	0.1	4.9	10.3	0.1	4.5	10.0

1. Average standard error of change in two consecutive months (see "Sampling Errors" in Data Quality for further explanations).

Note(s): Related CANSIM Tables 282-0087, 282-0088.

Table 5-1
Labour force characteristics by census metropolitan area (seasonally adjusted) — 3 month moving average

	May 2010	June 2010	S.E. ¹	Change from			Percent change from		
				last month	last December	twelve months ago	last month	last December	twelve months ago
in thousands (except rates)									
St. John's, Newfoundland and Labrador									
Population	160.2	160.5	...	0.3	1.6	3.4	0.2	1.0	2.2
Labour force	110.9	110.5	0.8	-0.4	1.2	3.6	-0.4	1.1	3.4
Employment	102.8	102.6	0.8	-0.2	3.1	4.1	-0.2	3.1	4.2
Unemployment	8.1	7.9	0.4	-0.2	-1.9	-0.5	-2.5	-19.4	-6.0
Participation rate	69.2	68.8	0.5	-0.4	0.0	0.8
Unemployment rate	7.3	7.1	0.4	-0.2	-1.9	-0.8
Employment rate	64.2	63.9	0.5	-0.3	1.3	1.2
Halifax, Nova Scotia									
Population	324.4	324.7	...	0.3	1.9	4.1	0.1	0.6	1.3
Labour force	233.3	232.5	1.1	-0.8	1.9	2.0	-0.3	0.8	0.9
Employment	219.8	218.9	1.2	-0.9	3.6	2.4	-0.4	1.7	1.1
Unemployment	13.5	13.6	0.7	0.1	-1.7	-0.4	0.7	-11.1	-2.9
Participation rate	71.9	71.6	0.3	-0.3	0.2	-0.3
Unemployment rate	5.8	5.8	0.3	0.0	-0.8	-0.3
Employment rate	67.8	67.4	0.4	-0.4	0.7	-0.1
Saint John, New Brunswick									
Population	106.0	106.1	...	0.1	0.3	0.7	0.1	0.3	0.7
Labour force	70.8	70.3	0.8	-0.5	-1.3	-1.1	-0.7	-1.8	-1.5
Employment	65.9	65.2	0.7	-0.7	-1.6	-2.7	-1.1	-2.4	-4.0
Unemployment	5.0	5.1	0.3	0.1	0.3	1.6	2.0	6.2	45.7
Participation rate	66.8	66.3	0.7	-0.5	-1.4	-1.4
Unemployment rate	7.1	7.3	0.5	0.2	0.6	2.4
Employment rate	62.2	61.5	0.7	-0.7	-1.6	-2.9
Saguenay, Quebec									
Population	124.6	124.6	...	0.0	-0.1	-0.2	0.0	-0.1	-0.2
Labour force	76.3	76.1	0.7	-0.2	-0.3	0.4	-0.3	-0.4	0.5
Employment	70.4	69.9	0.7	-0.5	-0.9	1.3	-0.7	-1.3	1.9
Unemployment	5.9	6.2	0.4	0.3	0.6	-0.9	5.1	10.7	-12.7
Participation rate	61.2	61.1	0.6	-0.1	-0.2	0.4
Unemployment rate	7.7	8.1	0.5	0.4	0.8	-1.3
Employment rate	56.5	56.1	0.6	-0.4	-0.7	1.1
Québec, Quebec									
Population	622.7	623.3	...	0.6	3.4	7.2	0.1	0.5	1.2
Labour force	417.6	421.2	3.3	3.6	8.5	7.8	0.9	2.1	1.9
Employment	394.7	397.7	3.2	3.0	5.3	4.0	0.8	1.4	1.0
Unemployment	22.9	23.5	1.4	0.6	3.2	3.7	2.6	15.8	18.7
Participation rate	67.1	67.6	0.5	0.5	1.0	0.5
Unemployment rate	5.5	5.6	0.3	0.1	0.7	0.8
Employment rate	63.4	63.8	0.5	0.4	0.5	-0.1
Trois-Rivières, Quebec									
Population	123.7	123.8	...	0.1	0.6	1.3	0.1	0.5	1.1
Labour force	71.7	72.5	0.7	0.8	-3.0	0.0	1.1	-4.0	0.0
Employment	65.1	66.5	0.8	1.4	-1.7	-0.1	2.2	-2.5	-0.2
Unemployment	6.5	6.0	0.4	-0.5	-1.2	0.0	-7.7	-16.7	0.0
Participation rate	58.0	58.6	0.6	0.6	-2.7	-0.6
Unemployment rate	9.1	8.3	0.5	-0.8	-1.2	0.0
Employment rate	52.6	53.7	0.6	1.1	-1.7	-0.7

See notes at the end of the table.

Table 5-1 – continued

Labour force characteristics by census metropolitan area (seasonally adjusted) — 3 month moving average

	May 2010	June 2010	S.E. ¹	Change from			Percent change from		
				last month	last December	twelve months ago	last month	last December	twelve months ago
in thousands (except rates)									
Sherbrooke, Quebec									
Population	141.8	142.0	...	0.2	1.0	2.0	0.1	0.7	1.4
Labour force	89.9	91.6	0.8	1.7	1.2	1.8	1.9	1.3	2.0
Employment	82.3	84.3	0.8	2.0	-1.1	2.4	2.4	-1.3	2.9
Unemployment	7.6	7.3	0.3	-0.3	2.3	-0.6	-3.9	46.0	-7.6
Participation rate	63.4	64.5	0.6	1.1	0.4	0.4
Unemployment rate	8.5	8.0	0.4	-0.5	2.5	-0.8
Employment rate	58.0	59.4	0.6	1.4	-1.2	0.9
Montréal, Quebec									
Population	3,135.3	3,138.8	...	3.5	20.6	41.6	0.1	0.7	1.3
Labour force	2,130.5	2,136.7	6.9	6.2	53.5	57.3	0.3	2.6	2.8
Employment	1,942.3	1,954.5	7.2	12.2	60.8	73.4	0.6	3.2	3.9
Unemployment	188.2	182.3	4.8	-5.9	-7.2	-16.1	-3.1	-3.8	-8.1
Participation rate	68.0	68.1	0.2	0.1	1.3	1.0
Unemployment rate	8.8	8.5	0.2	-0.3	-0.6	-1.0
Employment rate	61.9	62.3	0.2	0.4	1.6	1.6
Ottawa-Gatineau, Ontario/Quebec									
Population	987.1	988.4	...	1.3	6.9	13.8	0.1	0.7	1.4
Labour force	719.3	724.5	3.4	5.2	19.8	32.6	0.7	2.8	4.7
Employment	676.0	680.4	3.6	4.4	17.7	30.2	0.7	2.7	4.6
Unemployment	43.3	44.0	1.6	0.7	2.0	2.3	1.6	4.8	5.5
Participation rate	72.9	73.3	0.3	0.4	1.5	2.3
Unemployment rate	6.0	6.1	0.2	0.1	0.1	0.1
Employment rate	68.5	68.8	0.4	0.3	1.3	2.1
Ottawa-Gatineau, Quebec part, Ontario/Quebec									
Population	251.4	251.7	...	0.3	2.1	4.2	0.1	0.8	1.7
Labour force	180.2	179.2	1.3	-1.0	-4.5	3.9	-0.6	-2.4	2.2
Employment	168.9	167.5	1.4	-1.4	-5.3	1.9	-0.8	-3.1	1.1
Unemployment	11.3	11.7	0.6	0.4	0.8	2.0	3.5	7.3	20.6
Participation rate	71.7	71.2	0.5	-0.5	-2.4	0.4
Unemployment rate	6.3	6.5	0.3	0.2	0.6	1.0
Employment rate	67.2	66.5	0.6	-0.7	-2.7	-0.4
Ottawa-Gatineau, Ontario part, Ontario/Quebec									
Population	735.7	736.6	...	0.9	4.7	9.5	0.1	0.6	1.3
Labour force	539.2	545.3	3.1	6.1	24.3	28.8	1.1	4.7	5.6
Employment	507.1	512.9	3.3	5.8	23.1	28.3	1.1	4.7	5.8
Unemployment	32.1	32.4	1.5	0.3	1.3	0.4	0.9	4.2	1.2
Participation rate	73.3	74.0	0.4	0.7	2.8	3.0
Unemployment rate	6.0	5.9	0.3	-0.1	-0.1	-0.3
Employment rate	68.9	69.6	0.5	0.7	2.7	3.0
Kingston, Ontario									
Population	126.4	126.4	...	0.0	0.0	0.1	0.0	0.0	0.1
Labour force	81.1	80.4	0.7	-0.7	-4.9	-0.7	-0.9	-5.7	-0.9
Employment	76.6	75.7	0.7	-0.9	-4.4	-0.4	-1.2	-5.5	-0.5
Unemployment	4.5	4.7	0.3	0.2	-0.4	-0.3	4.4	-7.8	-6.0
Participation rate	64.2	63.6	0.5	-0.6	-3.9	-0.6
Unemployment rate	5.5	5.8	0.4	0.3	-0.2	-0.4
Employment rate	60.6	59.9	0.6	-0.7	-3.5	-0.4

See notes at the end of the table.

Table 5-1 – continued

Labour force characteristics by census metropolitan area (seasonally adjusted) — 3 month moving average

	May 2010	June 2010	S.E. ¹	Change from			Percent change from		
				last month	last December	twelve months ago	last month	last December	twelve months ago
in thousands (except rates)									
Toronto, Ontario									
Population	4,742.1	4,751.8	...	9.7	53.7	109.1	0.2	1.1	2.3
Labour force	3,225.9	3,240.8	9.4	14.9	36.0	56.2	0.5	1.1	1.8
Employment	2,919.8	2,935.9	9.7	16.1	31.0	59.0	0.6	1.1	2.1
Unemployment	306.2	304.9	6.4	-1.3	5.0	-2.8	-0.4	1.7	-0.9
Participation rate	68.0	68.2	0.2	0.2	0.0	-0.4
Unemployment rate	9.5	9.4	0.2	-0.1	0.0	-0.3
Employment rate	61.6	61.8	0.2	0.2	0.0	-0.2
Hamilton, Ontario									
Population	605.3	605.7	...	0.4	2.1	4.7	0.1	0.3	0.8
Labour force	396.0	397.0	3.1	1.0	-12.8	-8.6	0.3	-3.1	-2.1
Employment	365.1	366.3	3.2	1.2	-8.6	-10.1	0.3	-2.3	-2.7
Unemployment	30.9	30.7	1.6	-0.2	-4.3	1.5	-0.6	-12.3	5.1
Participation rate	65.4	65.5	0.5	0.1	-2.4	-2.0
Unemployment rate	7.8	7.7	0.4	-0.1	-0.8	0.5
Employment rate	60.3	60.5	0.5	0.2	-1.6	-2.1
Kitchener, Ontario									
Population	392.3	392.8	...	0.5	2.6	5.5	0.1	0.7	1.4
Labour force	283.9	287.2	1.9	3.3	14.1	9.6	1.2	5.2	3.5
Employment	260.5	264.6	2.0	4.1	17.0	14.4	1.6	6.9	5.8
Unemployment	23.4	22.6	1.2	-0.8	-2.9	-4.8	-3.4	-11.4	-17.5
Participation rate	72.4	73.1	0.5	0.7	3.1	1.4
Unemployment rate	8.2	7.9	0.4	-0.3	-1.4	-2.0
Employment rate	66.4	67.4	0.5	1.0	3.9	2.8
London, Ontario									
Population	392.8	393.3	...	0.5	2.1	4.4	0.1	0.5	1.1
Labour force	266.9	266.9	1.8	0.0	3.3	4.5	0.0	1.3	1.7
Employment	244.0	244.8	1.9	0.8	4.5	10.3	0.3	1.9	4.4
Unemployment	23.0	22.1	1.1	-0.9	-1.1	-5.8	-3.9	-4.7	-20.8
Participation rate	67.9	67.9	0.5	0.0	0.5	0.4
Unemployment rate	8.6	8.3	0.4	-0.3	-0.5	-2.3
Employment rate	62.1	62.2	0.5	0.1	0.8	1.9
Oshawa, Ontario									
Population	298.4	298.9	...	0.5	2.9	5.8	0.2	1.0	2.0
Labour force	206.0	207.7	1.6	1.7	9.5	13.4	0.8	4.8	6.9
Employment	186.2	187.6	1.6	1.4	9.1	9.7	0.8	5.1	5.5
Unemployment	19.7	20.1	0.9	0.4	0.4	3.7	2.0	2.0	22.6
Participation rate	69.0	69.5	0.5	0.5	2.5	3.2
Unemployment rate	9.6	9.7	0.4	0.1	-0.2	1.3
Employment rate	62.4	62.8	0.5	0.4	2.5	2.1
St. Catharines-Niagara, Ontario									
Population	330.7	330.8	...	0.1	0.3	0.9	0.0	0.1	0.3
Labour force	210.2	210.7	1.6	0.5	2.8	7.0	0.2	1.3	3.4
Employment	191.7	193.4	1.7	1.7	8.2	11.5	0.9	4.4	6.3
Unemployment	18.5	17.3	0.9	-1.2	-5.5	-4.5	-6.5	-24.1	-20.6
Participation rate	63.6	63.7	0.5	0.1	0.8	2.0
Unemployment rate	8.8	8.2	0.4	-0.6	-2.8	-2.5
Employment rate	58.0	58.5	0.5	0.5	2.5	3.4

See notes at the end of the table.

Table 5-1 – continued

Labour force characteristics by census metropolitan area (seasonally adjusted) — 3 month moving average

	May 2010	June 2010	S.E. ¹	Change from			Percent change from		
				last month	last December	twelve months ago	last month	last December	twelve months ago
in thousands (except rates)									
Greater Sudbury / Grand Sudbury, Ontario									
Population	135.1	135.2	...	0.1	0.4	0.9	0.1	0.3	0.7
Labour force	87.4	88.6	0.7	1.2	3.6	0.8	1.4	4.2	0.9
Employment	79.6	81.5	0.7	1.9	5.3	1.4	2.4	7.0	1.7
Unemployment	7.8	7.1	0.4	-0.7	-1.7	-0.6	-9.0	-19.3	-7.8
Participation rate	64.7	65.5	0.6	0.8	2.4	0.1
Unemployment rate	8.9	8.0	0.4	-0.9	-2.4	-0.8
Employment rate	58.9	60.3	0.6	1.4	3.8	0.7
Thunder Bay, Ontario									
Population	102.9	102.9	...	0.0	-0.2	-0.4	0.0	-0.2	-0.4
Labour force	63.4	63.6	0.6	0.2	-2.2	-2.1	0.3	-3.3	-3.2
Employment	60.0	60.3	0.7	0.3	-0.2	0.2	0.5	-0.3	0.3
Unemployment	3.4	3.3	0.3	-0.1	-2.0	-2.3	-2.9	-37.7	-41.1
Participation rate	61.6	61.8	0.6	0.2	-2.0	-1.8
Unemployment rate	5.4	5.2	0.5	-0.2	-2.9	-3.3
Employment rate	58.3	58.6	0.6	0.3	-0.1	0.4
Windsor, Ontario									
Population	273.7	273.8	...	0.1	0.2	0.7	0.0	0.1	0.3
Labour force	175.8	176.8	1.5	1.0	6.4	-2.0	0.6	3.8	-1.1
Employment	153.5	154.7	1.6	1.2	5.9	1.8	0.8	4.0	1.2
Unemployment	22.4	22.1	1.0	-0.3	0.5	-3.9	-1.3	2.3	-15.0
Participation rate	64.2	64.6	0.5	0.4	2.3	-0.9
Unemployment rate	12.7	12.5	0.6	-0.2	-0.2	-2.0
Employment rate	56.1	56.5	0.6	0.4	2.1	0.5
Winnipeg, Manitoba									
Population	600.3	601.3	...	1.0	4.6	9.4	0.2	0.8	1.6
Labour force	424.2	427.1	1.3	2.9	8.5	11.6	0.7	2.0	2.8
Employment	400.1	402.3	1.3	2.2	7.2	7.8	0.5	1.8	2.0
Unemployment	24.1	24.9	0.8	0.8	1.5	3.9	3.3	6.4	18.6
Participation rate	70.7	71.0	0.2	0.3	0.8	0.8
Unemployment rate	5.7	5.8	0.2	0.1	0.2	0.7
Employment rate	66.7	66.9	0.2	0.2	0.7	0.3
Regina, Saskatchewan									
Population	174.6	174.9	...	0.3	1.9	3.8	0.2	1.1	2.2
Labour force	123.9	124.3	0.7	0.4	3.9	2.2	0.3	3.2	1.8
Employment	118.0	118.9	0.7	0.9	4.4	1.2	0.8	3.8	1.0
Unemployment	5.9	5.4	0.3	-0.5	-0.5	1.0	-8.5	-8.5	22.7
Participation rate	71.0	71.1	0.4	0.1	1.5	-0.3
Unemployment rate	4.8	4.3	0.3	-0.5	-0.6	0.7
Employment rate	67.6	68.0	0.4	0.4	1.8	-0.8
Saskatoon, Saskatchewan									
Population	207.5	208.1	...	0.6	3.1	5.9	0.3	1.5	2.9
Labour force	153.4	154.2	0.9	0.8	3.2	5.1	0.5	2.1	3.4
Employment	145.3	145.3	0.9	0.0	1.4	2.8	0.0	1.0	2.0
Unemployment	8.1	8.9	0.4	0.8	1.8	2.2	9.9	25.4	32.8
Participation rate	73.9	74.1	0.4	0.2	0.4	0.4
Unemployment rate	5.3	5.8	0.3	0.5	1.1	1.3
Employment rate	70.0	69.8	0.4	-0.2	-0.4	-0.7

See notes at the end of the table.

Table 5-1 – continued

Labour force characteristics by census metropolitan area (seasonally adjusted) — 3 month moving average

	May 2010	June 2010	S.E. ¹	Change from			Percent change from		
				last month	last December	twelve months ago	last month	last December	twelve months ago
in thousands (except rates)									
Calgary, Alberta									
Population	990.4	992.4	...	2.0	10.3	23.6	0.2	1.0	2.4
Labour force	745.8	744.6	3.0	-1.2	-11.9	1.9	-0.2	-1.6	0.3
Employment	688.8	689.1	3.2	0.3	-12.8	-3.4	0.0	-1.8	-0.5
Unemployment	57.1	55.5	1.8	-1.6	0.9	5.3	-2.8	1.6	10.6
Participation rate	75.3	75.0	0.3	-0.3	-2.0	-1.7
Unemployment rate	7.7	7.5	0.2	-0.2	0.3	0.7
Employment rate	69.5	69.4	0.3	-0.1	-2.1	-2.1
Edmonton, Alberta									
Population	920.0	921.7	...	1.7	8.5	19.8	0.2	0.9	2.2
Labour force	665.2	668.8	3.0	3.6	3.6	4.5	0.5	0.5	0.7
Employment	615.9	621.0	3.3	5.1	6.1	1.2	0.8	1.0	0.2
Unemployment	49.3	47.8	1.7	-1.5	-2.5	3.3	-3.0	-5.0	7.4
Participation rate	72.3	72.6	0.3	0.3	-0.2	-1.1
Unemployment rate	7.4	7.1	0.3	-0.3	-0.5	0.4
Employment rate	66.9	67.4	0.4	0.5	0.1	-1.3
Abbotsford-Mission, British Columbia									
Population	137.4	137.6	...	0.2	1.1	2.2	0.1	0.8	1.6
Labour force	96.8	97.3	0.9	0.5	1.2	6.1	0.5	1.2	6.7
Employment	89.1	89.2	0.8	0.1	0.1	5.6	0.1	0.1	6.7
Unemployment	7.6	8.2	0.4	0.6	1.2	0.6	7.9	17.1	7.9
Participation rate	70.5	70.7	0.6	0.2	0.3	3.3
Unemployment rate	7.9	8.4	0.4	0.5	1.1	0.1
Employment rate	64.8	64.8	0.6	0.0	-0.5	3.1
Vancouver, British Columbia									
Population	2,025.2	2,029.9	...	4.7	25.2	50.2	0.2	1.3	2.5
Labour force	1,339.7	1,345.4	5.0	5.7	4.2	12.7	0.4	0.3	1.0
Employment	1,239.0	1,244.5	5.1	5.5	6.7	5.9	0.4	0.5	0.5
Unemployment	100.7	100.9	2.8	0.2	-2.5	6.8	0.2	-2.4	7.2
Participation rate	66.2	66.3	0.3	0.1	-0.6	-1.0
Unemployment rate	7.5	7.5	0.2	0.0	-0.2	0.4
Employment rate	61.2	61.3	0.3	0.1	-0.4	-1.3
Victoria, British Columbia									
Population	290.4	290.7	...	0.3	1.2	2.5	0.1	0.4	0.9
Labour force	194.5	191.2	1.4	-3.3	-6.5	-1.7	-1.7	-3.3	-0.9
Employment	183.0	179.9	1.4	-3.1	-3.0	-0.5	-1.7	-1.6	-0.3
Unemployment	11.5	11.3	0.7	-0.2	-3.5	-1.2	-1.7	-23.6	-9.6
Participation rate	67.0	65.8	0.5	-1.2	-2.5	-1.1
Unemployment rate	5.9	5.9	0.3	0.0	-1.6	-0.6
Employment rate	63.0	61.9	0.5	-1.1	-1.3	-0.7

1. Average standard error of change in two consecutive months (see "Sampling Errors" in Data Quality for further explanations).

Note(s): All geographic regions are based on the 2001 Census boundaries. Related CANSIM Table 282-0090.

Table 5-2
Labour force characteristics by census metropolitan area (seasonally adjusted) — Monthly

	May 2010	June 2010	S.E. ¹	Change from			Percent change from		
				last month	last December	twelve months ago	last month	last December	twelve months ago
in thousands (except rates)									
Montréal, Quebec									
Population	3,138.4	3,142.8	...	4.4	21.1	42.4	0.1	0.7	1.4
Labour force	2,134.2	2,143.4	14.6	9.2	41.8	65.5	0.4	2.0	3.2
Employment	1,950.8	1,971.3	14.8	20.5	67.7	89.1	1.1	3.6	4.7
Unemployment	183.5	172.1	11.5	-11.4	-25.9	-23.5	-6.2	-13.1	-12.0
Participation rate	68.0	68.2	0.5	0.2	0.9	1.2
Unemployment rate	8.6	8.0	0.5	-0.6	-1.4	-1.4
Employment rate	62.2	62.7	0.5	0.5	1.7	2.0
Toronto, Ontario									
Population	4,751.1	4,762.4	...	11.3	56.7	109.9	0.2	1.2	2.4
Labour force	3,239.6	3,257.6	20.1	18.0	50.0	83.4	0.6	1.6	2.6
Employment	2,928.4	2,962.7	19.7	34.3	57.8	115.7	1.2	2.0	4.1
Unemployment	311.2	294.8	15.4	-16.4	-7.9	-32.5	-5.3	-2.6	-9.9
Participation rate	68.2	68.4	0.4	0.2	0.2	0.2
Unemployment rate	9.6	9.0	0.5	-0.6	-0.4	-1.3
Employment rate	61.6	62.2	0.4	0.6	0.5	1.0
Vancouver, British Columbia									
Population	2,029.4	2,035.1	...	5.7	26.5	50.7	0.3	1.3	2.6
Labour force	1,347.5	1,350.1	10.6	2.6	6.7	10.8	0.2	0.5	0.8
Employment	1,245.1	1,246.3	10.5	1.2	5.1	5.7	0.1	0.4	0.5
Unemployment	102.4	103.7	7.0	1.3	1.5	5.1	1.3	1.5	5.2
Participation rate	66.4	66.3	0.5	-0.1	-0.6	-1.2
Unemployment rate	7.6	7.7	0.5	0.1	0.1	0.3
Employment rate	61.4	61.2	0.5	-0.2	-0.6	-1.3

1. Average standard error of change in two consecutive months (see "Sampling Errors" in Data Quality for further explanations).

Note(s): All geographic regions are based on the 2001 Census boundaries. Related CANSIM Table 282-0091.

Table 6-1

Labour force characteristics by province and economic region 1, unadjusted for seasonality, 3 month moving average ending in June 2009 and June 2010

	Population	Labour force			Participation rate	Unemployment rate	Employment rate
		Labour force	Employment	Unemployment			
in thousands							
Canada²							
2009	27,253.3	18,476.4	16,918.7	1,557.7	67.8	8.4	62.1
2010	27,655.6	18,722.2	17,217.2	1,505.1	67.7	8.0	62.3
Newfoundland and Labrador							
2009	428.3	257.1	217.2	39.9	60.0	15.5	50.7
2010	431.6	263.7	224.9	38.7	61.1	14.7	52.1
Avalon Peninsula [1010]							
2009	214.9	136.7	122.1	14.5	63.6	10.6	56.8
2010	218.4	146.3	130.0	16.3	67.0	11.1	59.5
South Coast-Burin Peninsula [1020]							
2009	32.0	16.5	12.9	3.6	51.6	21.8	40.3
2010	31.5	16.9	13.6	3.3	53.7	19.5	43.2
West Coast-Northern Peninsula-Labrador [1030]							
2009	88.0	50.8	40.9	10.0	57.7	19.7	46.5
2010	88.4	50.4	41.4	9.0	57.0	17.9	46.8
Notre Dame-Central Bonavista Bay [1040]							
2009	93.4	53.1	41.3	11.8	56.9	22.2	44.2
2010	93.3	50.1	39.9	10.2	53.7	20.4	42.8
Prince Edward Island							
2009	115.8	80.3	70.7	9.6	69.3	12.0	61.1
2010	117.0	81.2	73.0	8.2	69.4	10.1	62.4
Nova Scotia							
2009	772.0	503.3	456.6	46.7	65.2	9.3	59.1
2010	775.4	505.6	460.9	44.8	65.2	8.9	59.4
Cape Breton [1210]							
2009	115.1	64.1	54.0	10.1	55.7	15.8	46.9
2010	114.3	66.6	56.2	10.5	58.3	15.8	49.2
North Shore [1220]							
2009	131.4	80.0	70.3	9.7	60.9	12.1	53.5
2010	131.4	78.9	72.3	6.6	60.0	8.4	55.0
Annapolis Valley [1230]							
2009	101.6	62.6	57.7	5.0	61.6	8.0	56.8
2010	102.1	61.9	56.1	5.8	60.6	9.4	54.9
Southern [1240]							
2009	103.3	64.4	57.1	7.3	62.3	11.3	55.3
2010	103.0	64.3	56.5	7.8	62.4	12.1	54.9
Halifax [1250]							
2009	320.6	232.1	217.5	14.6	72.4	6.3	67.8
2010	324.7	233.9	219.8	14.1	72.0	6.0	67.7
New Brunswick							
2009	621.2	406.8	369.3	37.5	65.5	9.2	59.4
2010	623.9	405.4	367.5	37.9	65.0	9.3	58.9
Campbellton-Miramichi [1310]							
2009	135.3	77.5	66.3	11.2	57.3	14.5	49.0
2010	134.6	74.1	61.4	12.7	55.1	17.1	45.6
Moncton-Richibucto [1320]							
2009	167.7	114.8	105.0	9.8	68.5	8.5	62.6
2010	169.8	116.1	108.1	8.0	68.4	6.9	63.7
Saint John-St. Stephen [1330]							
2009	143.7	98.3	92.3	5.9	68.4	6.0	64.2
2010	144.4	95.0	86.8	8.2	65.8	8.6	60.1

See notes at the end of the table.

Table 6-1 – continued

Labour force characteristics by province and economic region 1, unadjusted for seasonality, 3 month moving average ending in June 2009 and June 2010

	Population	Labour force			Participation rate	Unemployment rate	Employment rate
		Labour force	Employment	Unemployment			
in thousands							
Fredericton-Oromocto [1340]							
2009	106.3	72.5	66.5	6.0	68.2	8.3	62.6
2010	107.0	75.2	70.4	4.7	70.3	6.3	65.8
Edmundston-Woodstock [1350]							
2009	68.2	43.8	39.2	4.5	64.2	10.3	57.5
2010	68.1	45.0	40.8	4.2	66.1	9.3	59.9
Quebec							
2009	6,426.9	4,240.2	3,879.2	361.1	66.0	8.5	60.4
2010	6,503.5	4,282.3	3,947.7	334.6	65.8	7.8	60.7
Gaspésie-Îles-de-la-Madeleine [2410]							
2009	80.8	42.6	35.4	7.2	52.7	16.9	43.8
2010	80.9	45.3	37.4	7.9	56.0	17.4	46.2
Bas-Saint-Laurent [2415]							
2009	167.6	105.1	95.9	9.2	62.7	8.8	57.2
2010	167.9	99.4	89.4	9.9	59.2	10.0	53.2
Capitale-Nationale [2420]							
2009	572.1	385.3	366.3	19.0	67.3	4.9	64.0
2010	577.7	385.4	364.9	20.4	66.7	5.3	63.2
Chaudière-Appalaches [2425]							
2009	331.7	226.2	214.2	12.0	68.2	5.3	64.6
2010	334.5	235.2	222.2	13.0	70.3	5.5	66.4
Estrie [2430]							
2009	253.1	167.5	153.6	13.9	66.2	8.3	60.7
2010	255.9	155.6	142.3	13.3	60.8	8.5	55.6
Centre-du-Québec [2433]							
2009	187.8	130.1	120.7	9.4	69.3	7.2	64.3
2010	189.5	118.9	112.5	6.4	62.7	5.4	59.4
Montérégie [2435]							
2009	1,159.1	791.3	731.5	59.9	68.3	7.6	63.1
2010	1,180.7	795.9	736.0	60.0	67.4	7.5	62.3
Montréal [2440]							
2009	1,594.9	1,038.0	914.8	123.3	65.1	11.9	57.4
2010	1,602.1	1,060.7	958.4	102.3	66.2	9.6	59.8
Laval [2445]							
2009	318.2	206.4	189.4	17.0	64.9	8.2	59.5
2010	323.8	224.1	209.9	14.2	69.2	6.3	64.8
Lanaudière [2450]							
2009	372.5	256.9	238.6	18.4	69.0	7.2	64.1
2010	383.8	263.6	246.1	17.6	68.7	6.7	64.1
Laurentides [2455]							
2009	443.9	292.6	272.7	19.9	65.9	6.8	61.4
2010	454.6	303.7	279.6	24.1	66.8	7.9	61.5
Outaouais [2460]							
2009	298.6	204.2	191.3	12.9	68.4	6.3	64.1
2010	303.6	211.5	196.8	14.7	69.7	7.0	64.8
Abitibi-Témiscamingue [2465]							
2009	116.3	74.9	67.2	7.7	64.4	10.3	57.8
2010	116.9	72.4	66.1	6.3	61.9	8.7	56.5
Mauricie [2470]							
2009	218.8	130.1	117.7	12.4	59.5	9.5	53.8
2010	220.0	124.6	114.2	10.4	56.6	8.3	51.9

See notes at the end of the table.

Table 6-1 – continued

Labour force characteristics by province and economic region 1, unadjusted for seasonality, 3 month moving average ending in June 2009 and June 2010

	Population	Labour force			Participation rate	Unemployment rate	Employment rate
		Labour force	Employment	Unemployment			
in thousands							
Saguenay-Lac-Saint-Jean [2475]							
2009	222.9	136.5	122.3	14.2	61.2	10.4	54.9
2010	223.0	130.9	120.4	10.5	58.7	8.0	54.0
Côte-Nord and Nord-du-Québec [2480, 2490]							
2009	88.7	52.4	47.6	4.8	59.1	9.2	53.7
2010	88.6	55.0	51.5	3.5	62.1	6.4	58.1
Ontario							
2009	10,638.1	7,202.1	6,526.9	675.2	67.7	9.4	61.4
2010	10,792.2	7,321.4	6,679.8	641.6	67.8	8.8	61.9
Ottawa [3510]							
2009	1,002.9	702.0	652.3	49.7	70.0	7.1	65.0
2010	1,013.5	731.5	680.9	50.6	72.2	6.9	67.2
Kingston-Pembroke [3515]							
2009	361.0	231.9	212.4	19.5	64.2	8.4	58.8
2010	361.8	221.3	202.0	19.3	61.2	8.7	55.8
Muskoka-Kawarthas [3520]							
2009	312.6	192.9	177.5	15.4	61.7	8.0	56.8
2010	314.3	193.8	179.8	14.0	61.7	7.2	57.2
Toronto [3530]							
2009	4,892.0	3,366.1	3,039.2	326.9	68.8	9.7	62.1
2010	5,002.7	3,435.7	3,106.0	329.8	68.7	9.6	62.1
Kitchener-Waterloo-Barrie [3540]							
2009	996.5	706.9	640.2	66.8	70.9	9.4	64.2
2010	1,011.4	722.0	665.0	57.1	71.4	7.9	65.8
Hamilton-Niagara Peninsula [3550]							
2009	1,150.1	766.7	700.2	66.5	66.7	8.7	60.9
2010	1,159.4	762.8	702.5	60.3	65.8	7.9	60.6
London [3560]							
2009	520.1	353.0	316.8	36.2	67.9	10.3	60.9
2010	525.4	357.5	329.0	28.5	68.0	8.0	62.6
Windsor-Sarnia [3570]							
2009	526.9	337.9	294.6	43.3	64.1	12.8	55.9
2010	528.1	338.6	301.2	37.4	64.1	11.0	57.0
Stratford-Bruce Peninsula [3580]							
2009	248.6	158.3	144.8	13.4	63.7	8.5	58.2
2010	249.3	166.7	155.6	11.1	66.9	6.7	62.4
Northeast [3590]							
2009	454.6	276.0	250.8	25.2	60.7	9.1	55.2
2010	455.2	283.1	257.5	25.6	62.2	9.0	56.6
Northwest [3595]							
2009	172.8	110.3	97.9	12.4	63.8	11.2	56.7
2010	171.0	108.4	100.4	8.0	63.4	7.4	58.7
Manitoba							
2009	920.8	641.4	611.0	30.4	69.7	4.7	66.4
2010	934.4	659.3	625.1	34.2	70.6	5.2	66.9
Southeast [4610]							
2009	80.7	53.1	50.7	2.3	65.8	4.3	62.8
2010	83.2	61.0	58.3	2.7	73.3	4.4	70.1
South Central [4620]							
2009	44.9	30.9	29.9	1.1	68.8	3.6	66.6
2010	46.1	32.6	31.7	0.9	70.7	2.8	68.8

See notes at the end of the table.

Table 6-1 – continued

Labour force characteristics by province and economic region 1, unadjusted for seasonality, 3 month moving average ending in June 2009 and June 2010

	Population	Labour force			Participation rate	Unemployment rate	Employment rate
		Labour force	Employment	Unemployment			
in thousands							
Southwest [4630]							
2009	83.0	59.6	57.4	2.2	71.8	3.7	69.2
2010	83.4	55.0	53.0	2.0	65.9	3.6	63.5
North Central [4640]							
2009	36.2	24.7	23.7	1.0	68.2	4.0	65.5
2010	36.6	26.2	25.0	1.2	71.6	4.6	68.3
Winnipeg [4650]							
2009	545.6	384.3	364.9	19.4	70.4	5.0	66.9
2010	553.4	392.8	369.9	22.9	71.0	5.8	66.8
Interlake [4660]							
2009	71.7	49.5	47.5	2.0	69.0	4.0	66.2
2010	72.9	51.5	49.1	2.4	70.6	4.7	67.4
Parklands and North [4670, 4680]							
2009	58.8	39.2	36.9	2.4	66.7	6.1	62.8
2010	58.9	40.3	38.1	2.2	68.4	5.5	64.7
Saskatchewan							
2009	778.1	552.4	526.2	26.2	71.0	4.7	67.6
2010	789.7	561.3	531.8	29.5	71.1	5.3	67.3
Regina-Moose Mountain [4710]							
2009	230.3	164.6	157.9	6.8	71.5	4.1	68.6
2010	234.5	169.0	162.2	6.8	72.1	4.0	69.2
Swift Current-Moose Jaw [4720]							
2009	84.1	57.4	55.1	2.3	68.3	4.0	65.5
2010	84.4	57.9	54.9	3.0	68.6	5.2	65.0
Saskatoon-Biggar [4730]							
2009	245.1	180.9	173.0	7.9	73.8	4.4	70.6
2010	250.8	184.1	173.8	10.3	73.4	5.6	69.3
Yorkton-Melville [4740]							
2009	64.7	41.9	39.9	2.0	64.8	4.8	61.7
2010	64.7	44.0	42.3	1.7	68.0	3.9	65.4
Prince Albert and Northern [4750, 4760]							
2009	154.0	107.6	100.3	7.3	69.9	6.8	65.1
2010	155.2	106.3	98.6	7.7	68.5	7.2	63.5
Alberta							
2009	2,855.7	2,137.6	1,997.2	140.4	74.9	6.6	69.9
2010	2,918.2	2,148.8	2,000.3	148.5	73.6	6.9	68.5
Lethbridge-Medicine Hat [4810]							
2009	211.7	144.6	136.5	8.0	68.3	5.5	64.5
2010	214.4	150.9	140.1	10.8	70.4	7.2	65.3
Camrose-Drumheller [4820]							
2009	156.2	113.0	107.0	6.0	72.3	5.3	68.5
2010	157.3	115.3	110.5	4.9	73.3	4.2	70.2
Calgary [4830]							
2009	1,046.5	805.9	754.0	51.9	77.0	6.4	72.0
2010	1,073.7	804.7	745.6	59.0	74.9	7.3	69.4
Banff-Jasper-Rocky Mountain House [4840]							
2009	69.4	55.8	52.5	3.3	80.4	5.9	75.6
2010	70.5	54.8	52.1	2.8	77.7	5.1	73.9
Red Deer [4850]							
2009	150.1	113.6	105.6	7.9	75.7	7.0	70.4
2010	154.3	112.3	104.4	7.9	72.8	7.0	67.7

See notes at the end of the table.

Table 6-1 – continued

Labour force characteristics by province and economic region 1, unadjusted for seasonality, 3 month moving average ending in June 2009 and June 2010

	Population	Labour force			Participation rate	Unemployment rate	Employment rate
		Labour force	Employment	Unemployment			
in thousands							
Edmonton [4860]							
2009	936.9	689.4	642.1	47.3	73.6	6.9	68.5
2010	957.7	692.8	642.8	49.9	72.3	7.2	67.1
Athabasca-Grande Prairie-Peace River [4870]							
2009	190.1	143.6	132.0	11.6	75.5	8.1	69.4
2010	193.9	142.5	132.8	9.7	73.5	6.8	68.5
Wood Buffalo-Cold Lake [4880]							
2009	94.6	71.9	67.5	4.3	76.0	6.0	71.4
2010	96.4	75.4	71.9	3.5	78.2	4.6	74.6
British Columbia							
2009	3,696.5	2,455.1	2,264.6	190.5	66.4	7.8	61.3
2010	3,769.7	2,493.3	2,306.2	187.1	66.1	7.5	61.2
Vancouver Island and Coast [5910]							
2009	638.8	410.4	383.5	26.9	64.2	6.6	60.0
2010	646.6	414.6	391.8	22.8	64.1	5.5	60.6
Lower Mainland-Southwest [5920]							
2009	2,252.0	1,519.7	1,409.1	110.6	67.5	7.3	62.6
2010	2,307.5	1,539.2	1,419.0	120.2	66.7	7.8	61.5
Thompson-Okanagan [5930]							
2009	436.9	277.4	250.2	27.2	63.5	9.8	57.3
2010	444.2	288.9	265.1	23.8	65.0	8.2	59.7
Kootenay [5940]							
2009	123.2	77.9	71.1	6.8	63.2	8.7	57.7
2010	123.8	75.6	69.9	5.7	61.1	7.5	56.5
Cariboo [5950]							
2009	127.3	86.8	75.2	11.7	68.2	13.5	59.1
2010	128.5	88.5	82.2	6.3	68.9	7.1	64.0
North Coast and Nechako [5960, 5970]							
2009	65.2	45.2	40.7	4.5	69.3	10.0	62.4
2010	64.8	43.8	38.8	5.0	67.6	11.4	59.9
Northeast [5980]							
2009	53.2	37.7	34.8	2.9	70.9	7.7	65.4
2010	54.3	42.7	39.4	3.2	78.6	7.5	72.6

1. For geographic descriptions of economic regions, refer to the Guide to the Labour Force Survey (catalogue number 71-543-GIE).

2. Estimates for Canada are a sum of the provincial totals and exclude estimates from Yukon, Northwest Territories and Nunavut.

Note(s): All geographic regions are based on the 2001 Census boundaries. Related CANSIM table 282-0054.

Table 6-2
Labour force characteristics by territories, unadjusted for seasonality, 3 month moving average ending in
June 2009 and June 2010

	Population	Labour force			Participation rate	Unemployment rate	Employment rate
		Labour force	Employment	Unemployment			
		in thousands			percent		
Yukon ¹							
2009	24.2	18.2	16.8	1.4	75.2	7.7	69.4
2010	24.7	18.0	16.6	1.4	72.9	7.8	67.2
Northwest Territories ²							
2009	31.4	22.8	21.3	1.5	72.6	6.6	67.8
2010	31.7	22.9	21.2	1.7	72.2	7.4	66.9
Nunavut ³							
2009	18.5	11.4	9.8	1.7	61.6	14.5	52.6
2010	19.1	12.7	10.2	2.5	66.9	19.7	53.7

1. Since 1992, the Labour force survey (LFS) has been conducted in the Yukon, using an alternative methodology that accommodates some of the operational difficulties inherent to remote locales. These estimates are not included in the national totals. In 1995, the LFS in the Yukon underwent a sample redesign. One result of the redesign was that the covered population increased from 85% to 92%, which is reflected by the sharp increase in the three month moving averages estimates of January, February and March of 1995 for all the level estimates. Users are therefore warned to be cautious when comparing estimates before January 1995 to estimates for January 1995 and forward.
2. Since 2001, the Labour force survey (LFS) has been administered in the Northwest Territories, using an alternative methodology that accommodates some of the operational difficulties inherent to remote locales. These estimates are not included in national totals.
3. Since 2004, the Labour force survey (LFS) has been administered in Nunavut, using an alternative methodology that accommodates some of the operational difficulties inherent to remote locales. These estimates are 3-month moving averages and are not included in national totals. From January 2004 to December 2007, estimates represent about 70% of all Nunavut residents aged 15 and over. Starting in January 2008, coverage was extended to 92%, so that by March 2008, the 3-month moving average is completely based on the extended coverage. Because of the large difference in coverage, users are recommended not to compare estimates prior to January 2008 with data afterwards. The January and February 2008 3-month moving average estimates are based on a mix of both coverages, since the extended coverage was introduced in January 2008. Estimates from January 2004 to December 2007 are based on the 10 largest communities in Nunavut: Iqaluit, Rankin Inlet, Cambridge Bay, Kugluktuk, Baker Lake, Arviat, Pond Inlet, Cape Dorset, Pangnirtung, Igloolik. Estimates from March 2008 to present cover the above communities as well as: Taloyoak, Gjoa Haven, Kugaaruk, Coral Harbour, Repulse Bay, Qikiqtarjuaq, Arctic Bay, Hall Beach, Clyde River.

Note(s): Related CANSIM table 282-0100.

Table 7
Average usual hours and wages of employees by selected characteristics, Canada, unadjusted for seasonality

	Employees				Full-time			Part-time		
	Number	Average weekly hours	Average weekly wages	Average hourly wages	Number	Average weekly hours	Average weekly wages	Number	Average weekly hours	Average weekly wages
	thousands		current dollars		thousands		current dollars	thousands		current dollars
June 2010										
15 years and over	14,831.6	35.4	814.82	22.27	12,191.8	39.3	928.46	2,639.8	17.8	289.95
15 to 24 years	2,555.2	28.9	399.45	13.00	1,462.4	38.5	564.95	1,092.8	16.1	177.98
25 years and over	12,276.4	36.8	901.27	24.20	10,729.4	39.3	978.01	1,547.0	19.0	369.04
Men	7,417.8	37.9	931.85	24.04	6,619.0	40.4	1,012.39	798.9	17.0	264.59
Women	7,413.7	32.9	697.71	20.50	5,572.8	37.8	828.77	1,840.9	18.1	300.96
Union coverage										
Union coverage	4,689.5	35.8	934.46	25.82	4,027.5	38.5	1,018.68	662.0	19.2	422.01
No union coverage	10,142.1	35.3	759.50	20.63	8,164.3	39.6	883.95	1,977.8	17.3	245.75
Job permanency										
Permanent	12,544.5	36.1	860.27	23.18	10,672.1	39.2	956.86	1,872.4	18.5	309.72
Temporary	2,287.0	31.6	565.52	17.32	1,519.7	39.5	729.03	767.4	16.0	241.72
Occupation										
Management	1,012.1	39.7	1,383.21	34.98	980.6	40.3	1,409.93	31.6	20.2	552.86
Business, finance and administrative	2,832.8	35.3	755.29	21.00	2,435.6	38.1	828.05	397.2	18.2	309.11
Natural and applied sciences	1,136.3	38.3	1,170.15	30.51	1,094.3	39.0	1,194.56	41.9	19.8	532.97
Health	970.2	33.4	871.57	25.87	723.7	37.8	999.76	246.5	20.3	495.20
Social science, education, government service and religion	1,444.2	34.3	988.27	28.67	1,195.9	37.8	1,098.34	248.3	17.5	458.23
Art, culture, recreation and sport	369.8	32.4	777.21	22.92	282.3	38.1	938.60	87.5	14.0	256.63
Sales and service	3,834.0	30.9	499.66	15.15	2,447.9	38.5	663.35	1,386.1	17.4	210.59
Trades, transport and equipment operators	2,134.9	40.0	893.04	22.08	2,005.4	41.4	932.21	129.5	18.4	286.46
Occupations unique to primary industry	332.6	42.0	782.93	18.21	298.7	45.1	851.43	33.9	14.7	180.25
Occupations unique to processing, manufacturing and utilities	764.7	39.1	749.20	18.97	727.5	40.1	774.62	37.3	18.3	252.85
June 2009										
15 years and over	14,452.0	35.4	801.21	21.89	11,852.7	39.3	913.06	2,599.3	17.9	291.17
15 to 24 years	2,522.2	29.4	403.85	12.92	1,471.3	38.7	566.03	1,050.9	16.2	176.78
25 years and over	11,929.8	36.7	885.22	23.79	10,381.4	39.3	962.25	1,548.4	19.1	368.80
Men	7,203.2	38.0	914.98	23.56	6,424.3	40.5	994.61	778.8	17.2	258.06
Women	7,248.8	32.9	688.16	20.23	5,428.4	37.8	816.55	1,820.5	18.2	305.33
Union coverage										
Union coverage	4,514.9	35.7	902.47	25.01	3,847.1	38.4	985.38	667.8	19.7	424.84
No union coverage	9,937.1	35.3	755.21	20.47	8,005.7	39.7	878.31	1,931.5	17.3	244.95
Job permanency										
Permanent	12,424.1	36.1	843.52	22.72	10,537.4	39.2	938.75	1,886.6	18.6	311.58
Temporary	2,027.9	31.3	542.05	16.79	1,315.3	39.5	707.25	712.6	16.1	237.14
Occupation										
Management	989.4	40.1	1,354.08	33.89	961.6	40.7	1,377.75	27.9	20.1	537.80
Business, finance and administrative	2,789.8	35.4	758.56	21.06	2,394.6	38.2	833.25	395.2	18.1	306.07
Natural and applied sciences	1,093.5	38.4	1,166.27	30.35	1,060.7	39.0	1,184.93	32.8	20.4	562.78
Health	927.1	33.5	864.72	25.74	691.6	37.9	982.14	235.5	20.5	519.97
Social science, education, government service and religion	1,393.3	34.5	978.85	28.25	1,144.7	38.0	1,086.49	248.6	18.4	483.20
Art, culture, recreation and sport	334.5	33.0	748.86	21.89	248.9	39.2	907.94	85.6	14.9	286.21
Sales and service	3,736.0	30.8	489.98	14.86	2,384.1	38.4	651.17	1,351.8	17.5	205.70
Trades, transport and equipment operators	2,062.4	39.7	864.24	21.54	1,919.4	41.4	907.51	143.0	17.9	283.49
Occupations unique to primary industry	343.0	41.4	740.58	17.52	304.8	44.8	810.30	38.2	14.9	183.84
Occupations unique to processing, manufacturing and utilities	783.0	38.6	721.33	18.40	742.4	39.8	747.78	40.7	17.1	238.42

Note(s): Related CANSIM Tables 282-0023, 282-0069, 282-0073.

Table 8
Regional unemployment rates used by the Employment Insurance Program ¹, seasonally adjusted, 3 month moving average

Region	Effective from July 11, 2010 to August 7, 2010
	percent
Newfoundland and Labrador	
01. St. John's	7.0
02. Newfoundland and Labrador	20.1
Prince Edward Island	
03. Prince Edward Island	11.0
Nova Scotia	
04. Eastern Nova Scotia	14.5
05. Western Nova Scotia	10.6
06. Halifax	5.8
New Brunswick	
07. Fredericton-Moncton-Saint John	6.7
08. Madawaska-Charlotte ²	10.6
09. Restigouche-Albert	13.7
Quebec	
10. Gaspésie-Îles-de-la-Madeleine	17.3
11. Québec	5.7
12. Trois-Rivières	8.2
13. South Central Quebec	5.9
14. Sherbrooke	8.2
15. Montérégie	7.2
16. Montréal	8.7
17. Central Quebec	8.0
18. Northwestern Quebec	10.1
19. Bas-Saint-Laurent-Côte-Nord ³	11.1
20. Gatineau	6.3
21. Saguenay	7.9
Ontario	
22. Ottawa	5.8
23. Eastern Ontario	9.2
24. Kingston	5.9
25. Central Ontario	8.7
26. Oshawa	9.9
27. Toronto	9.4
28. Hamilton	7.9
29. St. Catharines	8.2
30. London	8.1
31. Niagara	10.7
32. Windsor	12.6
33. Kitchener	7.6
34. Huron	8.9
35. South Central Ontario	7.6
36. Sudbury	8.1
37. Thunder Bay	5.2
38. Northern Ontario	12.4
Manitoba	
39. Winnipeg	5.9
40. Southern Manitoba	5.5
41. Northern Manitoba	29.1
Saskatchewan	
42. Regina	4.3
43. Saskatoon	5.8
44. Southern Saskatchewan	7.0
45. Northern Saskatchewan	17.4

See notes at the end of the table.

Table 8 – continued

Regional unemployment rates used by the Employment Insurance Program 1, seasonally adjusted, 3 month moving average

Region	Effective from July 11, 2010 to August 7, 2010
	percent
Alberta	
46. Calgary	7.5
47. Edmonton	7.3
48. Northern Alberta	9.3
49. Southern Alberta	7.6
British Columbia	
50. Southern Interior British Columbia	9.3
51. Abbotsford	8.3
52. Vancouver	7.6
53. Victoria	6.7
54. Southern Coastal British Columbia	8.1
55. Northern British Columbia	11.0
Territories	
56. Yukon 4	25.0
57. Northwest Territories 4	25.0
58. Nunavut 4	25.0

1. The boundaries of these regions are determined by Human Resources and Social Development Canada (HRSDC). For geographic descriptions and maps of employment insurance regions, see the HRSDC website: <http://srv129.services.gc.ca/eiregions/en/geocont.aspx>.

2. This unemployment rate has been determined using a transition formula prescribed in the EI Regulations. For further information, see: http://www.hrsdc.gc.ca/en/cs/comm/news/2000/000913a_e.shtml.

3. This unemployment rate has been determined using a transition formula prescribed in the EI Regulations. For further information, see: http://www.hrsdc.gc.ca/en/cs/comm/news/2000/000913b_e.shtml.

4. This rate is provided by Human Resources and Skills Development Canada.

Note(s): All geographic regions are based on the 1996 Census boundaries.

Table 9-1
Students and other persons aged 15 to 24 (unadjusted) by detailed age groups

	June 2008	June 2009	June 2010	S.E. ¹	Change from		Percent change from	
					last year	two years ago	last year	two years ago
in thousands								
Students 15 to 24 years²								
Population	2,308.8	2,316.7	2,370.6	28.8	53.9	61.8	2.3	2.7
Labour force	1,410.5	1,330.2	1,359.7	29.9	29.5	-50.8	2.2	-3.6
Employment	1,231.3	1,082.2	1,142.9	28.9	60.7	-88.4	5.6	-7.2
Full-time employment	464.6	366.0	397.0	20.3	31.0	-67.6	8.5	-14.6
Part-time employment	766.7	716.1	745.9	23.5	29.8	-20.8	4.2	-2.7
Unemployment	179.3	248.0	216.8	14.7	-31.2	37.5	-12.6	20.9
Participation rate	61.1	57.4	57.4	1.0	0.0	-3.7
Unemployment rate	12.7	18.6	15.9	1.0	-2.7	3.2
Employment rate	53.3	46.7	48.2	1.0	1.5	-5.1
Part-time rate	62.3	66.2	65.3	1.4	-0.9	3.0
Students 15 to 16 years²								
Population	803.9	793.4	792.7	5.2	-0.7	-11.2	-0.1	-1.4
Labour force	331.5	288.6	270.1	12.3	-18.5	-61.4	-6.4	-18.5
Employment	265.7	209.8	197.5	11.5	-12.3	-68.2	-5.9	-25.7
Full-time employment	26.0	16.3	7.0	5.0	-9.3	-19.0	-57.1	-73.1
Part-time employment	239.7	193.5	190.5	10.9	-3.0	-49.2	-1.6	-20.5
Unemployment	65.8	78.8	72.6	7.9	-6.2	6.8	-7.9	10.3
Participation rate	41.2	36.4	34.1	1.5	-2.3	-7.1
Unemployment rate	19.8	27.3	26.9	2.1	-0.4	7.1
Employment rate	33.1	26.4	24.9	1.4	-1.5	-8.2
Part-time rate	90.2	92.2	96.5	1.7	4.2	6.2
Students 17 to 19 years²								
Population	864.1	872.3	882.5	15.5	10.2	18.4	1.2	2.1
Labour force	579.6	564.1	562.0	17.1	-2.1	-17.6	-0.4	-3.0
Employment	512.0	461.8	472.3	16.9	10.5	-39.7	2.3	-7.8
Full-time employment	164.5	119.2	138.6	11.0	19.4	-25.9	16.3	-15.7
Part-time employment	347.5	342.6	333.7	14.7	-8.9	-13.8	-2.6	-4.0
Unemployment	67.6	102.3	89.7	9.2	-12.6	22.1	-12.3	32.7
Participation rate	67.1	64.7	63.7	1.6	-1.0	-3.4
Unemployment rate	11.7	18.1	16.0	1.5	-2.1	4.3
Employment rate	59.3	52.9	53.5	1.6	0.6	-5.8
Part-time rate	67.9	74.2	70.7	1.8	-3.5	2.8
Students 20 to 24 years²								
Population	640.9	651.0	695.4	22.9	44.4	54.5	6.8	8.5
Labour force	499.4	477.5	527.7	20.6	50.2	28.3	10.5	5.7
Employment	453.5	410.6	473.1	19.8	62.5	19.6	15.2	4.3
Full-time employment	274.0	230.5	251.4	15.7	20.9	-22.6	9.1	-8.2
Part-time employment	179.5	180.1	221.7	13.8	41.6	42.2	23.1	23.5
Unemployment	45.9	66.9	54.5	7.9	-12.4	8.6	-18.5	18.7
Participation rate	77.9	73.3	75.9	1.8	2.6	-2.0
Unemployment rate	9.2	14.0	10.3	1.5	-3.7	1.1
Employment rate	70.8	63.1	68.0	2.0	4.9	-2.8
Part-time rate	39.6	43.9	46.9	2.5	3.0	7.3
Other persons aged 15 to 24³								
Population	2,066.0	2,078.2	2,035.2	28.8	-43.0	-30.8	-2.1	-1.5
Labour force	1,761.5	1,759.0	1,722.7	27.9	-36.3	-38.8	-2.1	-2.2
Employment	1,580.0	1,534.0	1,504.9	27.1	-29.1	-75.1	-1.9	-4.8
Full-time employment	1,255.8	1,162.3	1,114.5	25.8	-47.8	-141.3	-4.1	-11.3
Part-time employment	324.1	371.7	390.4	17.0	18.7	66.3	5.0	20.5
Unemployment	181.6	225.0	217.9	13.9	-7.1	36.3	-3.2	20.0
Participation rate	85.3	84.6	84.6	0.7	0.0	-0.6
Unemployment rate	10.3	12.8	12.6	0.8	-0.1	2.3
Employment rate	76.5	73.8	73.9	0.9	0.1	-2.5
Part-time rate	20.5	24.2	25.9	1.0	1.7	5.4

1. Average standard error of change over the year (see "Sampling Errors" in Data Quality for further explanations).

2. Students are persons aged 15 to 24 who attended school full-time in March and who are planning to return to school in the fall.

3. Other persons are all other youths aged 15 to 24 who are not included in the student population.

Note(s): Related CANSIM Table 282-0006.

Table 9-2
Students and other persons aged 15 to 24 (unadjusted) by province

	Population		Labour force				Participation rate	Unemployment rate	Employment rate
	Labour force	Employment	Full-time employment	Part-time employment	Unemployment				
in thousands									
Students¹									
Newfoundland and Labrador									
June 2009	31.6	14.1	12.0	4.7	7.4	2.1	44.6	14.9	38.0
June 2010	30.0	12.7	9.9	3.7	6.2	2.8	42.3	22.0	33.0
Prince Edward Island									
June 2009	10.1	6.4	5.6	2.5	3.1	0.8	63.4	12.5	55.4
June 2010	10.2	7.1	6.0	2.8	3.2	1.1	69.6	15.5	58.8
Nova Scotia									
June 2009	58.8	35.7	29.8	11.5	18.4	5.9	60.7	16.5	50.7
June 2010	58.3	32.9	28.2	10.9	17.4	4.7	56.4	14.3	48.4
New Brunswick									
June 2009	48.3	33.4	27.0	13.1	13.9	6.4	69.2	19.2	55.9
June 2010	46.9	27.6	23.8	11.7	12.1	3.8	58.8	13.8	50.7
Quebec									
June 2009	514.5	317.4	259.6	89.6	170.1	57.8	61.7	18.2	50.5
June 2010	542.9	341.9	288.6	98.6	190.0	53.3	63.0	15.6	53.2
Ontario									
June 2009	1,027.0	570.5	440.3	142.1	298.1	130.2	55.6	22.8	42.9
June 2010	1,025.9	573.0	472.5	164.2	308.3	100.5	55.9	17.5	46.1
Manitoba									
June 2009	68.6	41.7	35.3	11.0	24.3	6.4	60.8	15.3	51.5
June 2010	75.5	45.6	38.3	14.3	24.0	7.3	60.4	16.0	50.7
Saskatchewan									
June 2009	57.3	35.1	31.5	10.6	20.9	3.6	61.3	10.3	55.0
June 2010	62.3	37.4	33.9	13.3	20.6	3.5	60.0	9.4	54.4
Alberta									
June 2009	214.4	121.5	109.9	38.6	71.3	11.6	56.7	9.5	51.3
June 2010	226.9	133.7	118.0	43.3	74.7	15.7	58.9	11.7	52.0
British Columbia									
June 2009	286.2	154.5	131.2	42.4	88.8	23.3	54.0	15.1	45.8
June 2010	291.8	147.9	123.8	34.4	89.4	24.1	50.7	16.3	42.4
Other persons aged 15-24²									
Newfoundland and Labrador									
June 2009	29.5	23.0	17.9	14.9	2.9	5.1	78.0	22.2	60.7
June 2010	30.6	23.5	18.0	14.7	3.4	5.5	76.8	23.4	58.8
Prince Edward Island									
June 2009	9.7	8.8	8.1	6.7	1.4	x	90.7	x	83.5
June 2010	9.6	8.4	7.3	6.3	1.0	1.1	87.5	13.1	76.0
Nova Scotia									
June 2009	61.3	51.8	43.3	32.8	10.4	8.6	84.5	16.6	70.6
June 2010	60.9	50.5	43.8	32.1	11.8	6.6	82.9	13.1	71.9
New Brunswick									
June 2009	45.6	37.8	33.5	28.1	5.4	4.3	82.9	11.4	73.5
June 2010	45.4	36.4	31.1	24.2	7.0	5.3	80.2	14.6	68.5
Quebec									
June 2009	448.2	375.6	337.2	261.1	76.1	38.4	83.8	10.2	75.2
June 2010	423.7	371.5	335.9	266.9	69.0	35.7	87.7	9.6	79.3
Ontario									
June 2009	717.9	608.3	514.8	370.2	144.4	93.6	84.7	15.4	71.7
June 2010	728.3	610.4	515.2	362.2	153.0	95.1	83.8	15.6	70.7
Manitoba									
June 2009	91.6	76.9	71.4	55.2	16.2	5.4	84.0	7.0	77.9
June 2010	85.8	72.9	66.5	47.7	18.9	6.4	85.0	8.8	77.5
Saskatchewan									
June 2009	82.1	70.2	64.8	53.9	10.9	5.4	85.5	7.7	78.9
June 2010	75.8	63.8	58.0	48.4	9.7	5.8	84.2	9.1	76.5
Alberta									
June 2009	293.4	255.1	222.1	180.1	41.9	33.1	86.9	13.0	75.7
June 2010	278.5	239.6	216.5	174.4	42.1	23.1	86.0	9.6	77.7

See notes at the end of the table.

Table 9-2 – continued

Students and other persons aged 15 to 24 (unadjusted) by province

	Population	Labour force				Unemployment	Participation rate	Unemployment rate	Employment rate
		Labour force	Employment	Full-time employment	Part-time employment				
in thousands									
British Columbia									
June 2009	298.9	251.6	221.1	159.2	61.9	30.5	84.2	12.1	74.0
June 2010	296.5	245.8	212.5	137.9	74.6	33.3	82.9	13.5	71.7

1. Students are persons aged 15 to 24 who attended school full-time in March and who are planning to return to school in the fall.

2. Other persons are all other youths aged 15 to 24 who are not included in the student population.

Note(s): Related CANSIM Table 282-0006.

Data quality

About the Labour Force Survey

The statistics contained in this report are based on information obtained through a sample survey of 53,000 representative households across the country. The Labour Force Survey, started in November 1945, was taken at quarterly intervals until November 1952. It has been carried out monthly since then. The information generated by the survey has expanded considerably over the years with a major redesign of the survey content in 1976 and again in 1997, and provides a rich and detailed picture of the Canadian labour market.

The sample used in the Labour Force Survey has been designed to represent all persons in the population 15 years of age and over residing in the provinces of Canada, with the exception of the following: persons living on Indian reserves, full-time members of the armed forces and people living in institutions (for example, inmates of penal institutions and patients in hospitals or nursing homes who have resided in the institution for more than six months). Monthly estimates of employment, unemployment and persons not in the labour force refer to the specific week covered by the survey each month, normally the week containing the 15th day.

Definitions and explanations

The **labour force** is composed of those members of the civilian non-institutional population 15 years of age and over who, during the reference week, were employed or unemployed.

Employed persons are those who, during the reference week:

- (a) did any work at all
- (b) had a job but were not at work

A person is considered to be **full-time** if his/her usual hours at the main job are 30 or more hours per week. When the number of hours worked at the main job is usually less than 30 hours per week then he/she is considered to be **part-time**.

Unemployed persons are those who, during the reference week:

- (a) were without work, had actively looked for work in the past four weeks (ending with reference week), and were available for work;
- (b) had not actively looked for work in the past four weeks but were on temporary layoff and were available for work;
- (c) had not actively looked for work in the past four weeks but had a new job to start in four weeks or less from the reference week, and were available for work.

Persons in the civilian non-institutional population 15 years of age and over who, during the reference week, were neither employed nor unemployed are classified as **not in the labour force**.

The **unemployment rate** represents the number of unemployed persons expressed as a percentage of the labour force. The unemployment rate for a particular group (age, sex, etc.) is the number unemployed in that group expressed as a percentage of the labour force for that group.

The **participation rate** represents the labour force expressed as a percentage of the population 15 years of age and over. The participation rate for a particular group (age, sex, etc.) is the labour force in that group expressed as a percentage of the population for that group.

The **employment rate (formerly the employment/population ratio)** represents the number of persons employed expressed as a percentage of the population 15 years of age and over. The employment rate for a particular group (age, sex, etc.) is the number employed in that group expressed as a percentage of the population for that group.

The **part-time rate** represents the number of persons employed part-time expressed as a percentage of the employed. The part-time rate for a particular group (age, sex, etc.) is the number employed part-time in that group expressed as a percentage of the employed for that group.

All geographic regions are based on the 2001 Census boundaries.

Seasonal adjustment

Fluctuations in economic time series are caused by seasonal, cyclical and irregular movements. A seasonally adjusted series is one from which seasonal movements have been eliminated. Seasonal movements are defined as those which are caused by regular annual events such as climate, holidays, vacation periods and cycles related to crops, production and retail sales associated with Christmas and Easter. The seasonally adjusted series contains irregular as well as longer-term cyclical fluctuations.

The seasonally adjusted series are revised each year to take into account current data and to generate new forecast factors for the next twelve months. The data are therefore subject to slight revisions in future issues of this publication.

Sampling variability of estimates

Estimates in this publication are based on the Labour Force Survey, a monthly survey of approximately 53,000 households across Canada. Because the entire population is not surveyed, the estimates are subject to sampling error. While the published estimate is the best available indicator of the real value, changes in the level of any estimates between two months can be the result of a true change or sampling variability. The sampling error can be estimated by calculating the standard error for the published estimate or statistic. These standard errors have been included in the publication tables, in order to assist users in interpreting the data.

Interpretation based on standard error

Two thirds of the time (68%), a change greater than the sampling error indicates a real change. The larger the change compared to the standard error, the better the chance that we are observing a real change, as opposed to a change due to sampling variability. At the 95% level, in order to ensure that change is real, the change in the estimate must be greater than twice the sampling error.

Movements in estimates that are smaller than the sampling error are less likely to reflect a real change and more likely to be due to sampling variability. While the above is true for monthly movements, one can have more confidence in a series of consecutive movements in the same direction, even though some of the monthly movements may be smaller than the sampling error.

Interpretation based on confidence intervals

Confidence intervals provide another way of looking at the variability inherent in estimates of sample surveys. To illustrate how to calculate the confidence interval, let us say that one month the published estimate for total employment rose by 16,000 to reach 16,500,000. The associated standard error for the movement estimate is 27,200. The standard error used to interpret the movement estimate indicates that:

- There are approximately two chances in three (68%) that the real value of the movement between the two months falls within the range -11,200 to +43,200 (16,000 + or – one standard error).
- There are approximately nine chances in ten (90%) that the real value of the movement between the two months falls within the range -27,520 to +59,520 (16,000 + or – 1.6 times the standard error).
- There are approximately nineteen chances in twenty (95%) that the real value of the movement between the two months falls within the range -38,400 to +70,400 (16,000 + or – two standard errors).

For more detailed explanations on sampling variability of estimates, and in particular for information on how to assess the variability of level estimates, consult the Data quality section of the *Guide to the Labour Force Survey*, (71-543-G) on page 27.

Documentation

For more detailed information about the Labour Force Survey, see the following documents:

- Overview of the Labour Force Survey
- Guide to the Labour Force Survey (71-543-G)
- Data quality statement
- Methodology of the Canadian Labour Force Survey (71-526-X)
- LFS *geographical maps*