

Labour Force Information

Not for release before 7 A.M. EDT

Friday, September 10, 2010

August 15 to 21, 2010



Statistics
Canada

Statistique
Canada

Canada

How to obtain more information

Specific inquiries about this product and related statistics or services should be directed to: Labour Force Survey Program, Labour Statistics Division, Statistics Canada, Ottawa, Ontario, K1A 0T6 (telephone: 613-951-4090, toll free number: 1-866-873-8788, fax: 613-951-2869 or by e-mail address: labour@statcan.gc.ca).

For information about this product or the wide range of services and data available from Statistics Canada, visit our website at www.statcan.gc.ca, e-mail us at infostats@statcan.gc.ca, or telephone us, Monday to Friday from 8:30 a.m. to 4:30 p.m., at the following numbers:

Statistics Canada's National Contact Centre

Toll-free telephone (Canada and the United States):

Inquiries line	1-800-263-1136
National telecommunications device for the hearing impaired	1-800-363-7629
Fax line	1-877-287-4369

Local or international calls:

Inquiries line	1-613-951-8116
Fax line	1-613-951-0581

Depository Services Program

Inquiries line	1-800-635-7943
Fax line	1-800-565-7757

To access this product

This product, Catalogue no. 71-001-X, is available free in electronic format. To obtain a single issue, visit our website at www.statcan.gc.ca and browse by "Key resource" > "Publications."

Standards of service to the public

Statistics Canada is committed to serving its clients in a prompt, reliable and courteous manner. To this end, Statistics Canada has developed *standards of service* that its employees observe. To obtain a copy of these service standards, please contact Statistics Canada toll-free at 1-800-263-1136. The service standards are also published on www.statcan.gc.ca under "About us" > "Providing services to Canadians."

Statistics Canada
Labour Statistics Division
Labour Force Survey Program

Labour Force Information

Not for release before 7 A.M. EDT

Friday, September 10, 2010

August 15 to 21, 2010

Published by authority of the Minister responsible for Statistics Canada

© Minister of Industry, 2010

All rights reserved. The content of this electronic publication may be reproduced, in whole or in part, and by any means, without further permission from Statistics Canada, subject to the following conditions: that it be done solely for the purposes of private study, research, criticism, review or newspaper summary, and/or for non-commercial purposes; and that Statistics Canada be fully acknowledged as follows: Source (or "Adapted from", if appropriate): Statistics Canada, year of publication, name of product, catalogue number, volume and issue numbers, reference period and page(s). Otherwise, no part of this publication may be reproduced, stored in a retrieval system or transmitted in any form, by any means—electronic, mechanical or photocopy—or for any purposes without prior written permission of Licensing Services, Client Services Division, Statistics Canada, Ottawa, Ontario, Canada K1A 0T6.

September 2010

Catalogue no. 71-001-X

ISSN 1492-5478

Frequency: Monthly

Ottawa

Cette publication est également disponible en français.

Note of appreciation

Canada owes the success of its statistical system to a long-standing partnership between Statistics Canada, the citizens of Canada, its businesses, governments and other institutions. Accurate and timely statistical information could not be produced without their continued cooperation and goodwill.

User information

Symbols

The following standard symbols are used in Statistics Canada publications:

- . not available for any reference period
- .. not available for a specific reference period
- ... not applicable
- 0 true zero or a value rounded to zero
- 0s value rounded to 0 (zero) where there is a meaningful distinction between true zero and the value that was rounded
- p preliminary
- r revised
- x suppressed to meet the confidentiality requirements of the *Statistics Act*
- E use with caution
- F too unreliable to be published

Special requests (\$)

Custom tabulations can be arranged on an ad hoc or regular basis. This service enables you to specify tables and time series to meet your own requirements. The cost varies according to the request. For more information, contact us toll-free at 1-866-873-8788 or e-mail us at labour@statcan.gc.ca.

Schedule of LFS releases

Reference period - Week ending	Release date
January 16, 2010	February 5, 2010
February 20, 2010	March 12, 2010
March 20, 2010	April 9, 2010
April 17, 2010	May 7, 2010
May 15, 2010	June 4, 2010
June 19, 2010	July 9, 2010
July 17, 2010	August 6, 2010
August 21, 2010	September 10, 2010
September 18, 2010	October 8, 2010
October 16, 2010	November 5, 2010
November 13, 2010	December 3, 2010
December 11, 2010	January 7, 2011

Latest LFS release in *The Daily* (free)

Table of contents

Highlights	5
Analysis — August 2010	6
Charts	
1. Employment and unemployment indicators, Canada, seasonally adjusted	9
2. Employment and unemployment indicators, Canada, seasonally adjusted	10
3. Index of employment by industry, Canada, seasonally adjusted, January, 2007=100	11
4. Index of employment by industry, Canada, seasonally adjusted, January 2007=100	12
5. Index of employment by industry, Canada, seasonally adjusted, January 2007=100	13
6. Index of employment by province, seasonally adjusted, January 2007=100	14
7. Index of employment by province, seasonally adjusted, January 2007=100	15
Related products	16
Statistical tables	
1 Labour force characteristics by age and sex, Canada, seasonally adjusted	25
2 Employment by class of worker and industry, Canada, seasonally adjusted	27
3 Labour force characteristics by province, seasonally adjusted	28
4 Selected labour force characteristics (seasonally adjusted)	30
4-1 Newfoundland and Labrador	30
4-2 Prince Edward Island	31
4-3 Nova Scotia	32
4-4 New Brunswick	33
4-5 Quebec	34
4-6 Ontario	35
4-7 Manitoba	36
4-8 Saskatchewan	37
4-9 Alberta	38
4-10 British Columbia	39
5 Labour force characteristics by census metropolitan area (seasonally adjusted)	40
5-1 3 month moving average	40
5-2 Monthly	45

Table of contents – continued

6	Labour force characteristics	46
6-1	by province and economic region, unadjusted for seasonality, 3 month moving average ending in August 2009 and August 2010	46
6-2	by territories, unadjusted for seasonality, 3 month moving average ending in August 2009 and August 2010	51
7	Average usual hours and wages of employees by selected characteristics, Canada, unadjusted for seasonality	52
8	Regional unemployment rates used by the Employment Insurance Program, seasonally adjusted, 3 month moving average	53
9	Students and other persons aged 15 to 24 (unadjusted)	55
9-1	by detailed age groups	55
9-2	by province	56

Data quality, concepts and methodology

Data quality	58
--------------	----

Highlights

August 2010

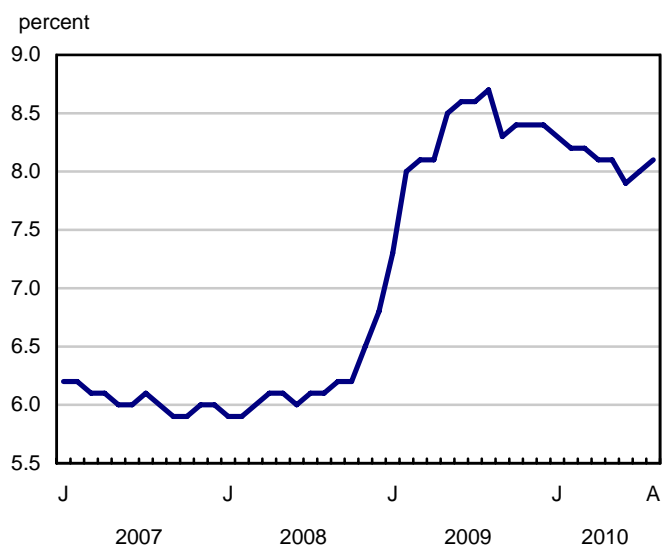
Employment increased by 36,000 in August. At the same time, the unemployment rate edged up 0.1 percentage points to 8.1%, as more people entered the labour force.

Chart 1
Employment and unemployment rates, Canada, seasonally adjusted

Employment



Unemployment rate



Analysis — August 2010

Employment increased by 36,000 in August. At the same time, the unemployment rate edged up 0.1 percentage points to 8.1%, as more people entered the labour force.

Monthly gains in employment averaged 13,000 in July and August compared with an average monthly increase of 51,000 during the first six months of the year.

Employment in educational services increased by 68,000 in August, rebounding from a decline of a similar magnitude the previous month (see Note to readers). With this gain, employment in this industry is back to levels observed during the first six months of the year. Similar offsetting movements in employment in this sector have been seen in recent summers.

There were also increases in professional, scientific and technical services and in natural resources in August. These gains, however, were dampened by losses in manufacturing; business, building and other support services; and information, culture and recreation.

The most notable employment gains in August were in Quebec, Saskatchewan and Newfoundland and Labrador, while employment was little changed in the other provinces.

In August, full-time employment rose by 80,000 while part-time declined by 44,000. Since the start of the upward trend in employment in July 2009, however, growth in part-time (+4.1%) has outpaced that of full-time (+2.2%).

August's employment increase was among both men and women aged 25 and over.

The average hourly wage for employees rose by 2.3% in August compared with the same month last year.

Gains driven by service sector in August

With increases of 68,000 in August, employment in educational services rebounded from a decline of a similar magnitude the previous month. Large monthly movements in educational services employment have been seen in recent summers (see Note to readers).

There were also gains in professional, scientific and technical services in August (+28,000). This industry recorded the highest growth rate of all major industry groups since July 2009, at 9.9% (+119,000).

Construction employment edged up in August (+12,000), continuing the upward trend started in July 2009. Over this period, employment in this industry grew by 9.6% or 109,000, the second highest growth rate of the major industry groups.

Natural resources posted employment gains of 9,000 in August, bringing total gains since July 2009 to 27,000 (+8.4%).

Manufacturing employment declined by 26,000 in August, offsetting the increase the previous month. Employment in this industry has been stable since July 2009.

In August, employment fell by 19,000 in business, building and other support services and by 18,000 in information, culture and recreation.

There were increases in the public sector in August (+58,000) and in self-employment (+18,000) while there were declines among private sector employees (-40,000). Since July 2009, employment has grown by 4.3% in the public sector, 2.9% in the private sector, while self-employment edged down by 0.8%.

Notable gains in Quebec, Saskatchewan and Newfoundland and Labrador

Quebec posted employment gains of 19,000 in August. The unemployment rate remained unchanged at 8.2%, as more people entered the labour force. Since July 2009, employment growth of 3.0% (+115,000) in this province has been above the national average of 2.6%.

In Saskatchewan, employment rose by 5,400 in August, pushing the unemployment rate down 0.3 percentage points to 4.8%, the lowest in the country. Employment gains since July 2009 have totalled 13,000 (+2.4%).

In August, there were gains of 3,600 in Newfoundland and Labrador and the unemployment rate fell by 1.0 percentage point to 14.0%. This province has had the fastest rate of employment growth of all provinces since July 2009, at 5.0% (+11,000).

Employment in Ontario was little changed in August. The unemployment rate in this province was 8.8%, up 0.3 percentage points from the previous month, the result of an increase in the number of people in the labour force. Since July 2009, employment has increased 2.7% (+178,000).

Employment up among adult workers in August

All of the employment gains in August were among workers aged 25 and over, up 20,000 for women and 18,000 for men. The unemployment rate was little changed for both groups, at 6.3% for women, and 7.4% for men.

There was little employment change among youths in August. The unemployment rate for 15 to 24 year-olds increased by 0.5 percentage points to 14.6%, as more youths looked for work.

Since July 2009, employment has increased at a much faster pace for workers aged 55 and over (+6.2%) than for youths (+1.9%) and workers aged 25 to 54 (+1.8%).

Summer labour market challenging for students

From May to August, the Labour Force Survey collects labour market information about young people aged 15 to 24 who were attending school full time in March and intend to return to school in the fall. The published estimates are not seasonally adjusted; therefore, comparisons can only be made on a year-over-year basis.

The 2010 summer labour market was challenging for students aged 15 to 24, with an average unemployment rate of 16.8% from May to August. Although an improvement from the summer of 2009, when the unemployment rate was 19.2%, it remains high compared to that of the summer of 2008, when the rate was 13.6%.

Older students fared better than their younger counterparts during the summer of 2010. The percentage of 20 to 24 year-olds employed averaged 66.5% in the summer of 2010, compared to 63.0% in the summer of 2009. In contrast, the percentage of 15 to 19 year-olds working declined slightly, from 42.8% to 42.5%.

The average number of hours worked during the summer of 2010 by students was 23.6 hours per week, among the lowest since data were first collected in 1977.

Note to readers

The Labour Force Survey (LFS) estimates are based on a sample, and are therefore subject to sampling variability. Estimates for smaller geographic areas or industries will have more variability. For an explanation of sampling variability of estimates, and how to use standard errors to assess this variability, consult the "Data quality" section of the publication Labour Force Information (71-001-X, free).

Seasonal adjustment and educational services

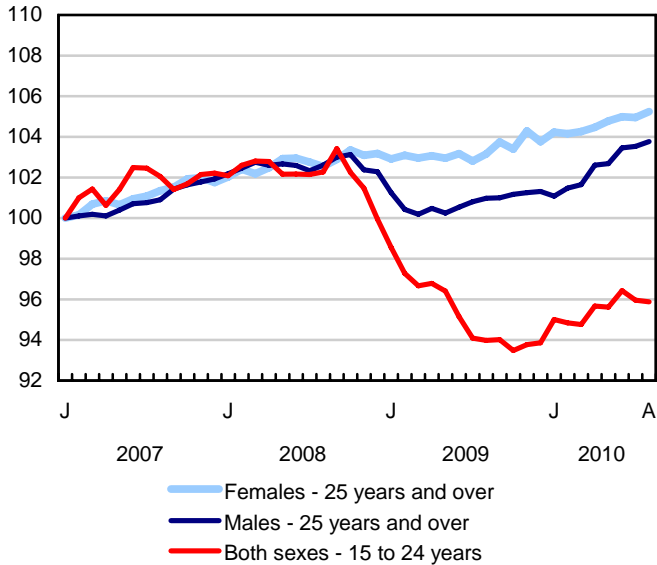
Unless otherwise stated, this release presents seasonally adjusted data, which facilitates comparisons by removing the effects of seasonal variations.

The LFS seasonal adjustment process removes the 'average' seasonal pattern in the monthly data, according to trends seen in the previous seven years. While there have been large movements in educational services employment in the months of July and August in recent years, there has not been a consistent pattern in the direction or magnitude of these changes over the seven-year period.

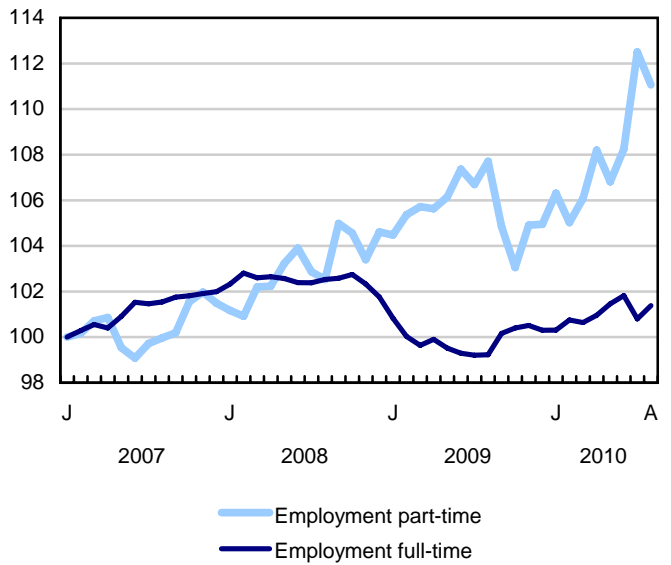
The 2009 Labour Force Historical Review on DVD-ROM (71F0004XVB, \$209) is now available.

Chart 1
Employment and unemployment indicators, Canada, seasonally adjusted

Employment index, January 2007=100



Employment index, January 2007=100



Employment index, January 2007=100

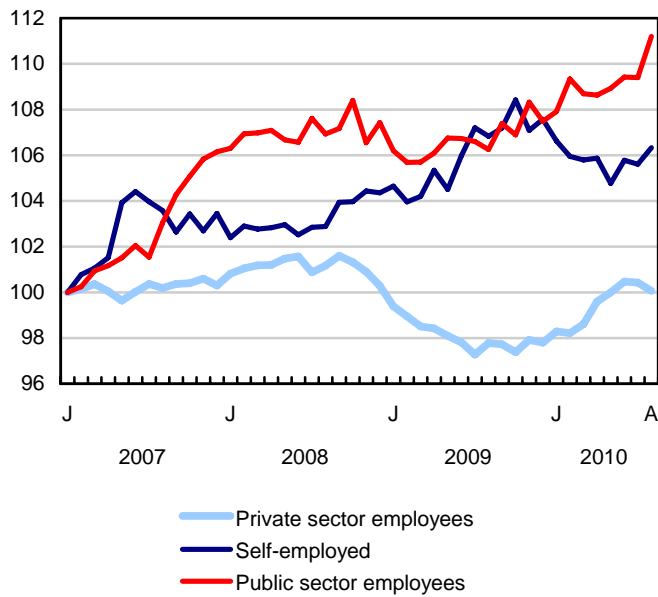
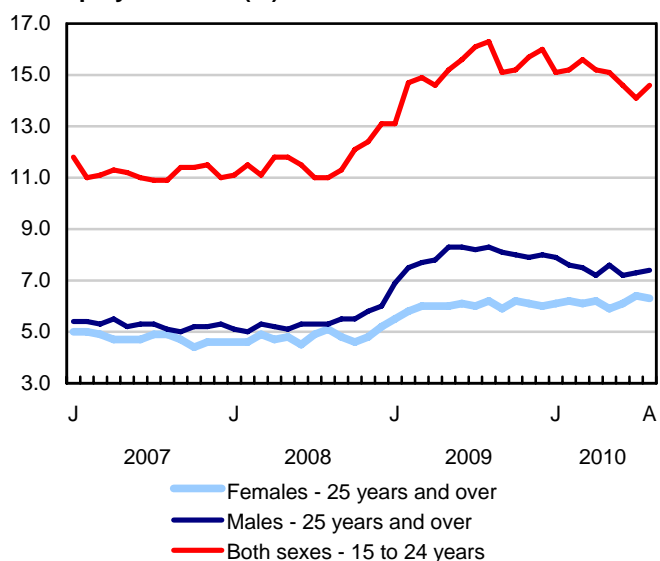
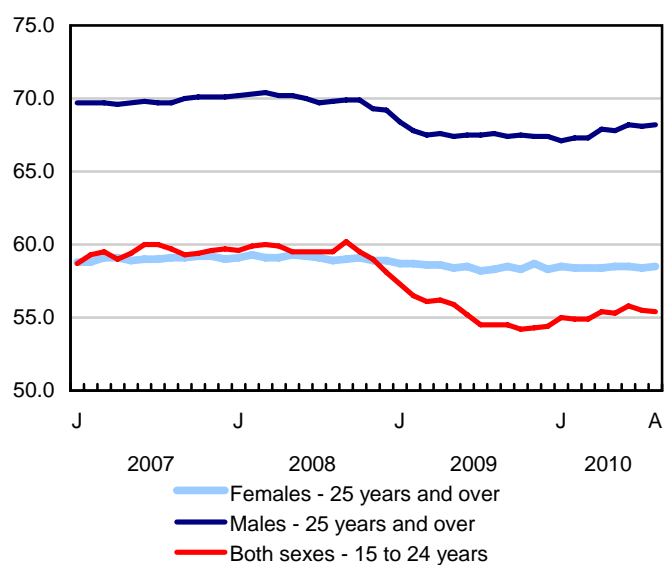


Chart 2
Employment and unemployment indicators, Canada, seasonally adjusted

Unemployment rate (%)



Employment rate (%)



Participation rate (%)

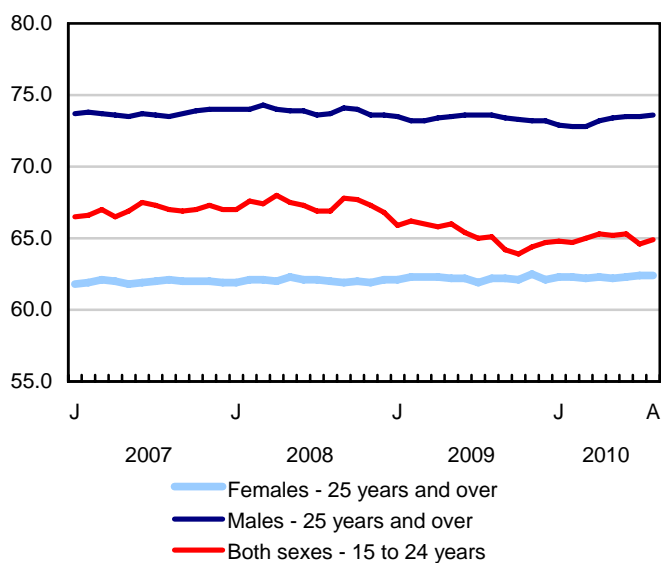


Chart 3
Index of employment by industry, Canada, seasonally adjusted, January, 2007=100

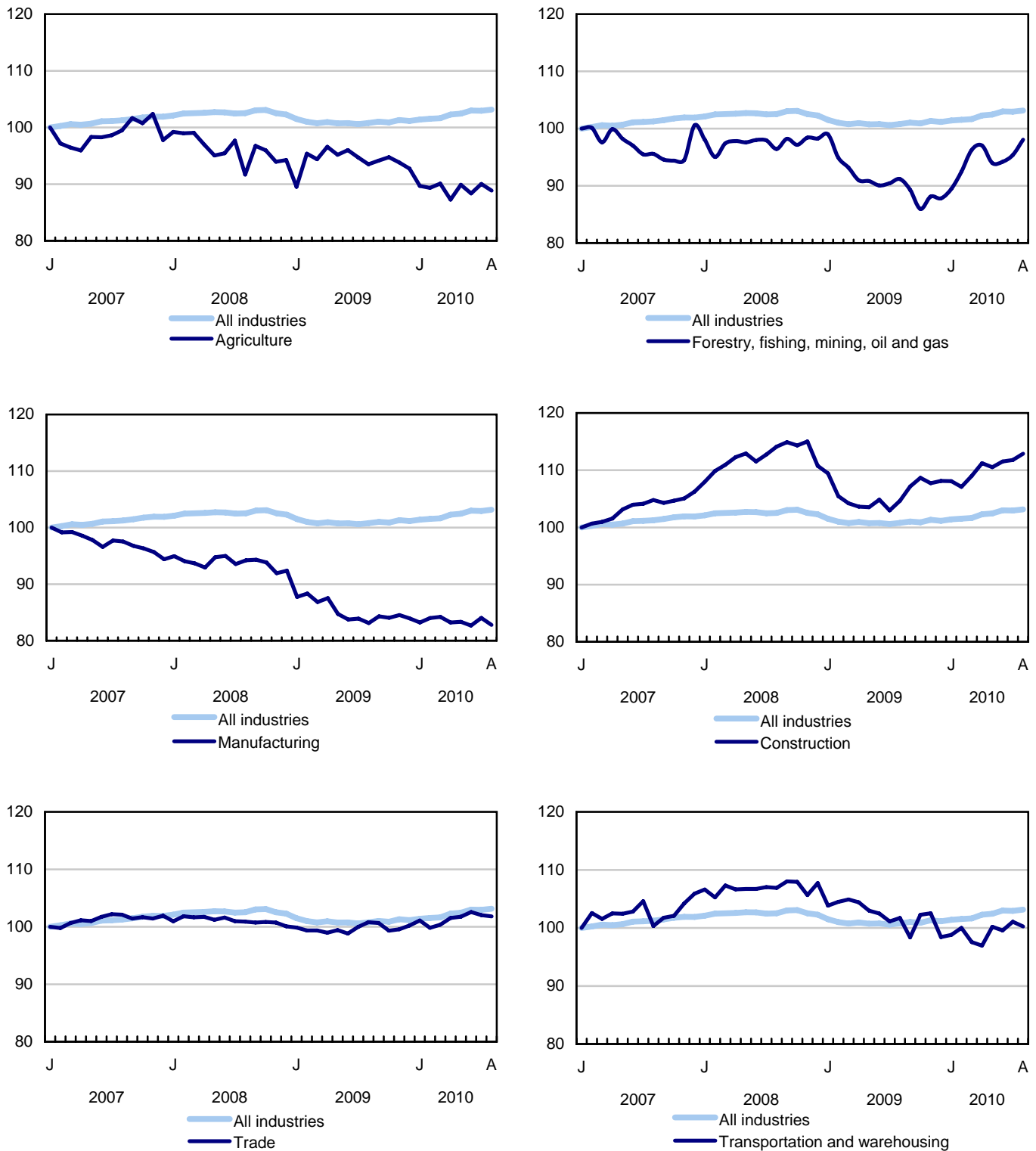


Chart 4
Index of employment by industry, Canada, seasonally adjusted, January 2007=100

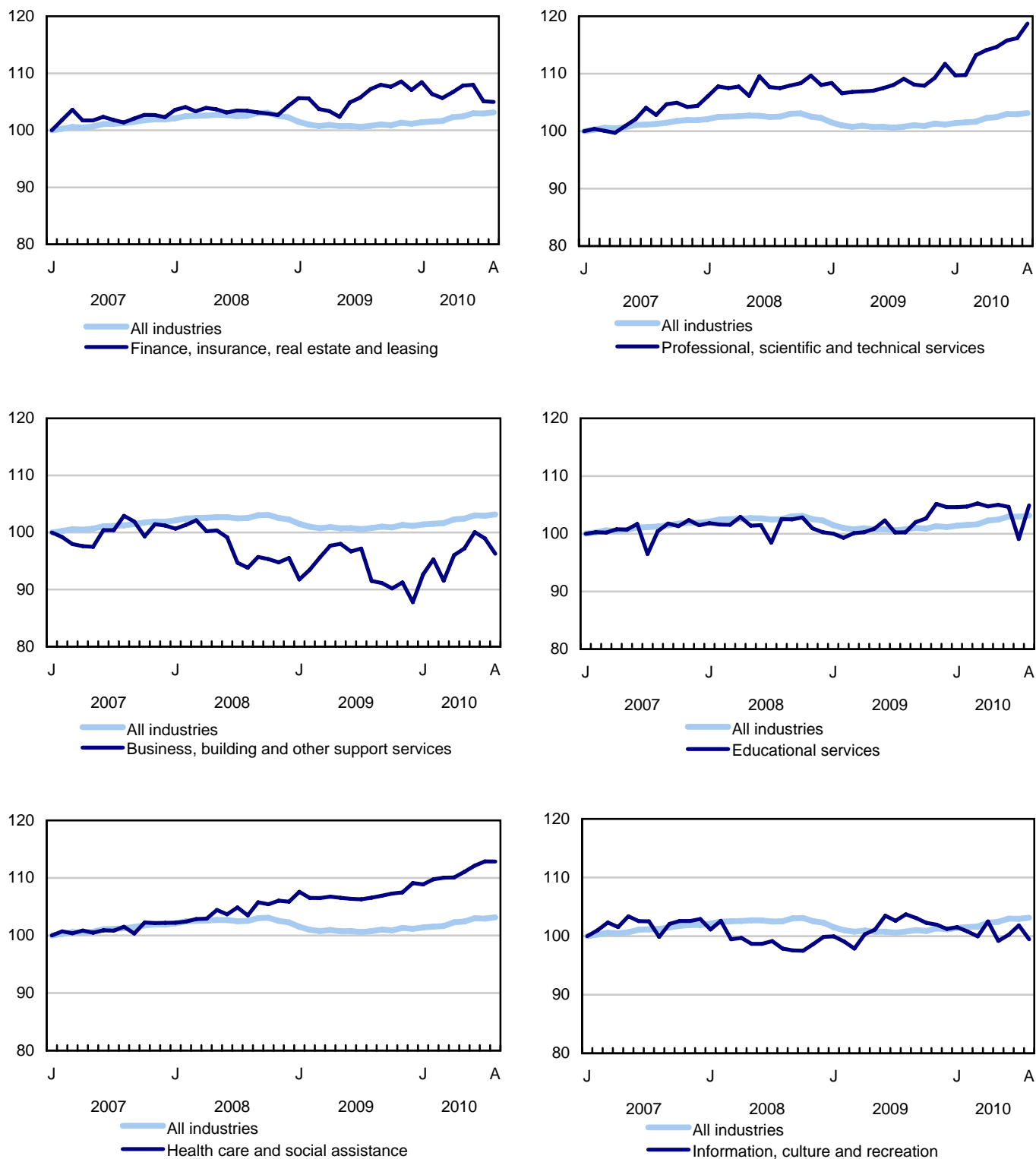


Chart 5
Index of employment by industry, Canada, seasonally adjusted, January 2007=100

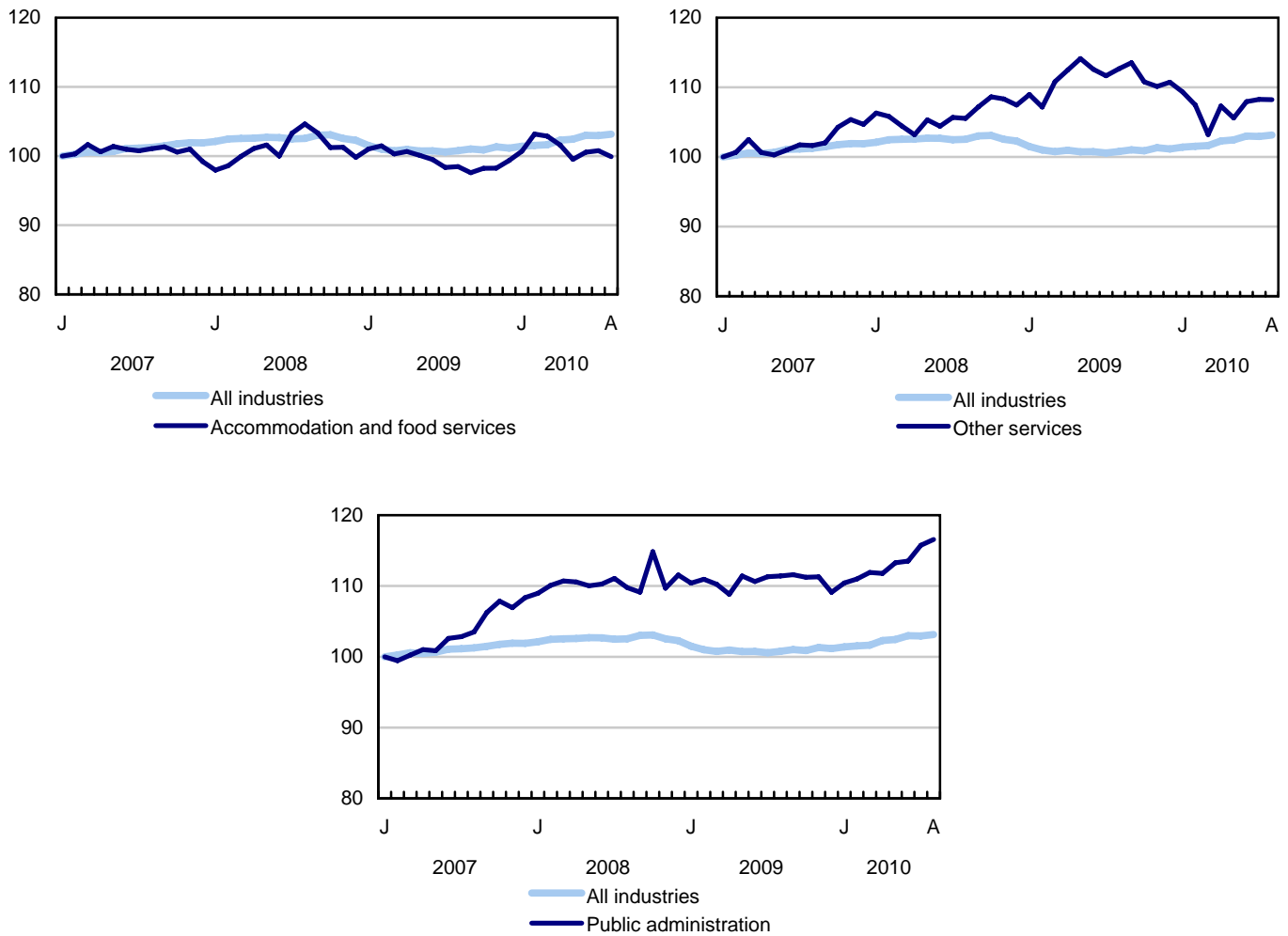


Chart 6
Index of employment by province, seasonally adjusted, January 2007=100

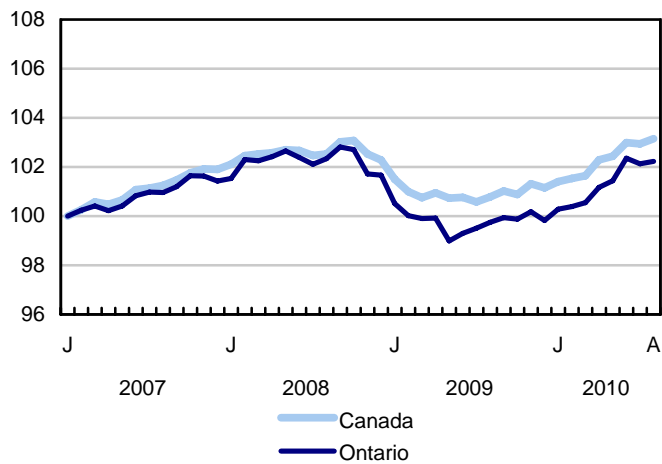
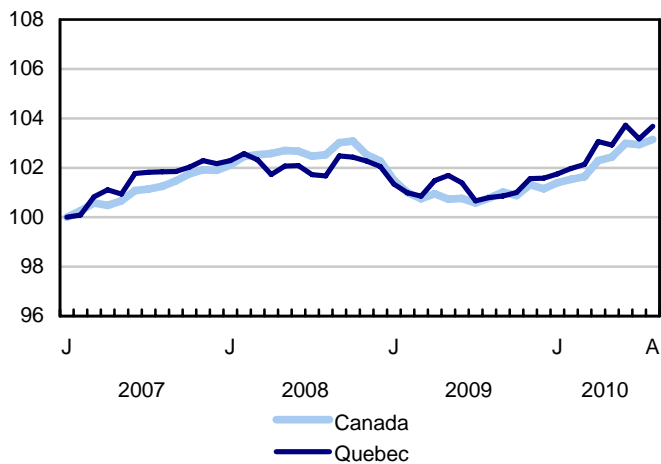
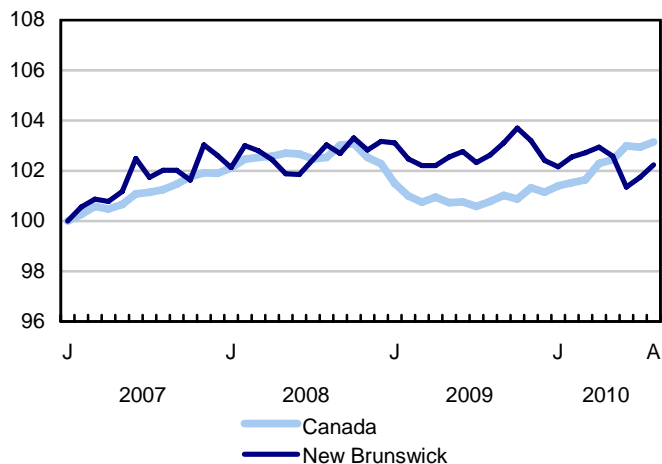
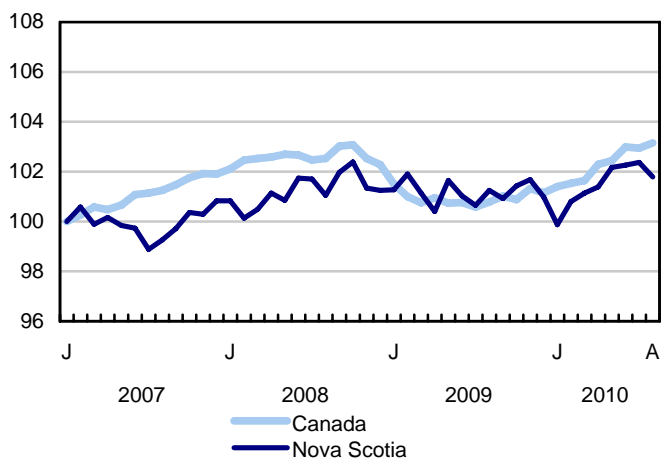
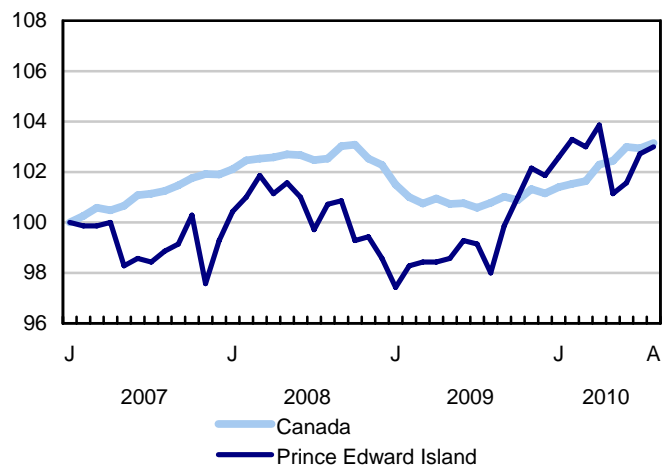
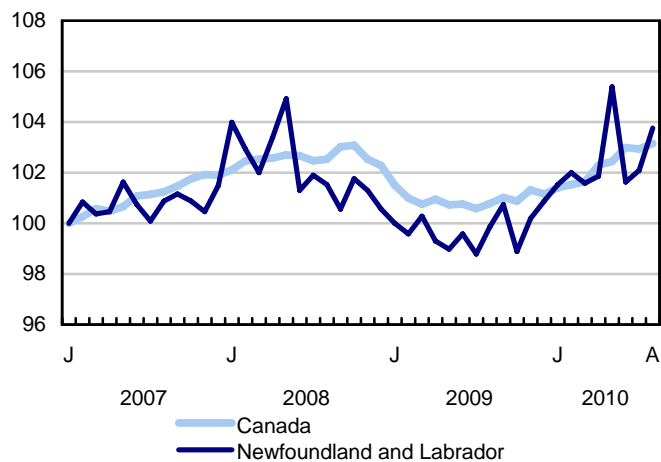
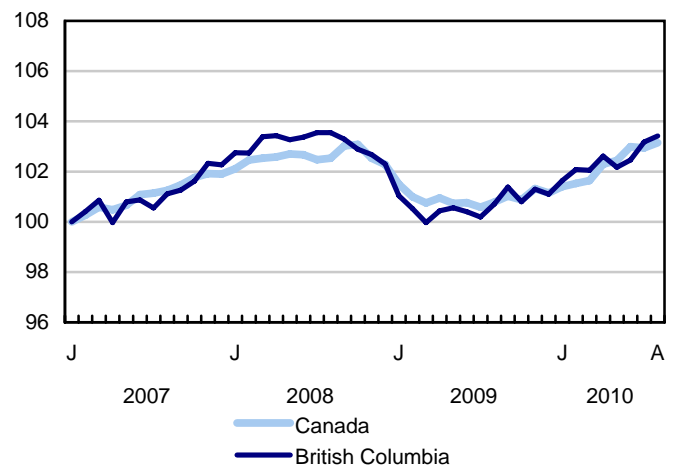
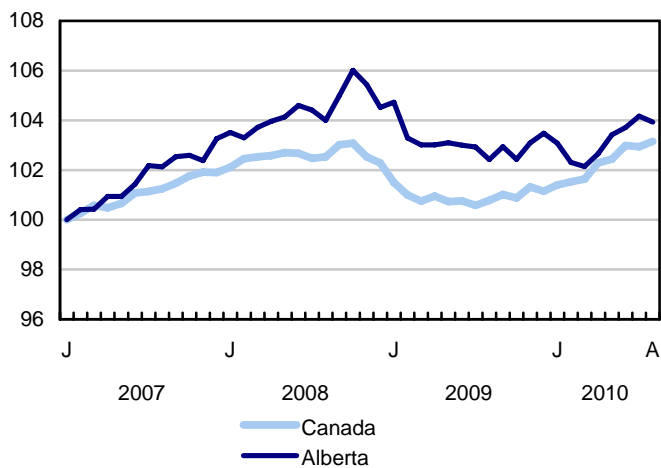
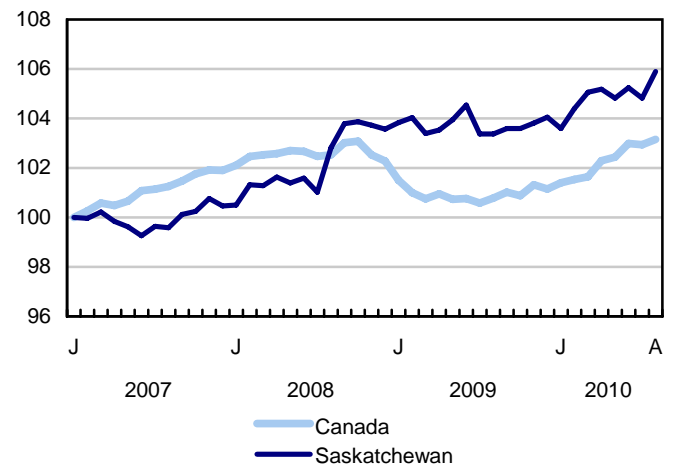
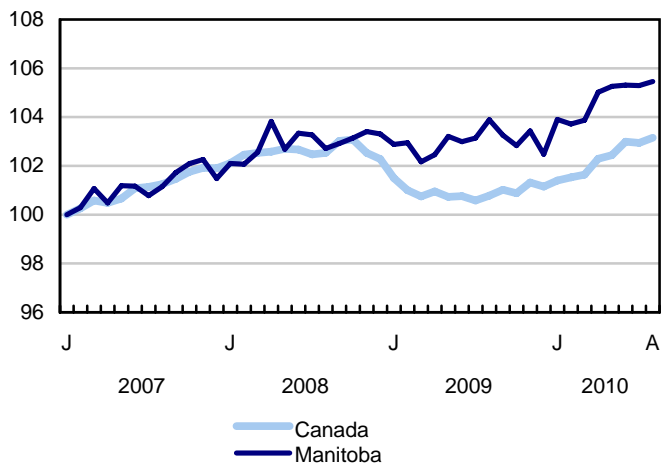


Chart 7
Index of employment by province, seasonally adjusted, January 2007=100



Related products

Selected publications from Statistics Canada

71-222-X	The Canadian Labour Market at a Glance
71-526-X	Methodology of the Canadian Labour Force Survey
71-543-G	Guide to the Labour Force Survey
71-544-X	Labour Force Survey Products and Services
71-587-X	Aboriginal Peoples Living Off-reserve in Western Canada: Estimates from the Labour Force Survey
71-588-X	The Aboriginal Labour Force Analysis Series
71-606-X	The Immigrant Labour Force Analysis Series
71F0004X	Labour Force Historical Review
71F0031X	Improvements to the Labour Force Survey (LFS)
71M0001X	Labour Force Survey Microdata File
75-001-X	Perspectives on Labour and Income

Selected CANSIM tables from Statistics Canada

282-0001	Labour force survey estimates (LFS), by sex and detailed age group, unadjusted for seasonality, monthly
282-0002	Labour force survey estimates (LFS), by sex and detailed age group, annual
282-0003	Labour force survey estimates (LFS), by educational attainment, sex and age group, unadjusted for seasonality, monthly
282-0004	Labour force survey estimates (LFS), by educational attainment, sex and age group, annual
282-0005	Labour force survey estimates (LFS), by full- and part-time students during school months, sex and age group, unadjusted for seasonality, monthly
282-0006	Labour force survey estimates (LFS), by students during summer months, sex and age group, unadjusted for seasonality, monthly
282-0007	Labour force survey estimates (LFS), by North American Industry Classification System (NAICS), sex and age group, unadjusted for seasonality, monthly

282-0008	Labour force survey estimates (LFS), by North American Industry Classification System (NAICS), sex and age group, annual
282-0009	Labour force survey estimates (LFS), by National Occupational Classification for Statistics (NOC-S) and sex, unadjusted for seasonality, monthly
282-0010	Labour force survey estimates (LFS), by National Occupational Classification for Statistics (NOC-S) and sex, annual
282-0011	Labour force survey estimates (LFS), employment by class of worker, North American Industry Classification System (NAICS) and sex, unadjusted for seasonality, monthly
282-0012	Labour force survey estimates (LFS), employment by class of worker, North American Industry Classification System (NAICS) and sex, annual
282-0013	Labour force survey estimates (LFS), part-time employment by reason for part-time work, sex and age group, unadjusted for seasonality, monthly
282-0014	Labour force survey estimates (LFS), part-time employment by reason for part-time work, sex and age group, annual
282-0015	Labour force survey estimates (LFS), by usual hours worked, main or all jobs, sex and age group, unadjusted for seasonality, monthly
282-0016	Labour force survey estimates (LFS), by usual hours worked, main or all jobs, sex and age group, annual
282-0017	Labour force survey estimates (LFS), by actual hours worked, main or all jobs, sex and age group, unadjusted for seasonality, monthly
282-0018	Labour force survey estimates (LFS), by actual hours worked, main or all jobs, sex and age group, annual
282-0019	Labour force survey estimates (LFS), by usual hours worked, class of worker, North American Industry Classification System (NAICS) and sex, unadjusted for seasonality, monthly
282-0020	Labour force survey estimates (LFS), by usual hours worked, class of worker, North American Industry Classification System (NAICS) and sex, annual
282-0021	Labour force survey estimates (LFS), by actual hours worked, class of worker, North American Industry Classification System (NAICS) and sex, unadjusted for seasonality, monthly
282-0022	Labour force survey estimates (LFS), by actual hours worked, class of worker, North American Industry Classification System (NAICS) and sex, annual
282-0023	Labour force survey estimates (LFS), by usual hours worked, class of worker, National Occupational Classification for Statistics (NOC-S) and sex, unadjusted for seasonality, monthly
282-0024	Labour force survey estimates (LFS), by usual hours worked, class of worker, National Occupational Classification for Statistics (NOC-S) and sex, annual
282-0025	Labour force survey estimates (LFS), by actual hours worked, class of worker, National Occupational Classification for Statistics (NOC-S) and sex, unadjusted for seasonality, monthly
282-0026	Labour force survey estimates (LFS), by actual hours worked, class of worker, National Occupational Classification for Statistics (NOC-S) and sex, annual

282-0027	Labour force survey estimates (LFS), by total and average usual and actual hours worked, main or all jobs, type of work, sex and age group, unadjusted for seasonality, monthly
282-0028	Labour force survey estimates (LFS), by total and average usual and actual hours worked, main or all jobs, type of work, sex and age group, annual
282-0029	Labour force survey estimates (LFS), average days lost for personal reasons per full-time employee by North American Industry Classification System (NAICS), sex and age group, annual
282-0030	Labour force survey estimates (LFS), average days lost for personal reasons per full-time employee by National Occupational Classification for Statistics (NOC-S), sex and age group, annual
282-0031	Labour force survey estimates (LFS), multiple jobholders by North American Industry Classification System (NAICS), sex and age group, annual
282-0032	Labour force survey estimates (LFS), multiple jobholders by North American Industry Classification System (NAICS), sex and age group, unadjusted for seasonality, monthly
282-0033	Labour force survey estimates (LFS), multiple jobholders by National Occupational Classification for Statistics (NOC-S), sex and age group, unadjusted for seasonality, monthly
282-0034	Labour force survey estimates (LFS), multiple jobholders by National Occupational Classification for Statistics (NOC-S), sex and age group, annual
282-0035	Labour force survey estimates (LFS), multiple jobholders by usual hours worked at main and all jobs, unadjusted for seasonality, monthly
282-0036	Labour force survey estimates (LFS), multiple jobholders by usual hours worked at main and all jobs, annual
282-0037	Labour force survey estimates (LFS), job tenure by type of work, sex and age group, unadjusted for seasonality, monthly
282-0038	Labour force survey estimates (LFS), job tenure by type of work, sex and age group, annual
282-0039	Labour force survey estimates (LFS), job tenure by National Occupational Classification for Statistics (NOC-S) and sex, unadjusted for seasonality, monthly
282-0040	Labour force survey estimates (LFS), job tenure by National Occupational Classification for Statistics (NOC-S) and sex, annual
282-0041	Labour force survey estimates (LFS), job tenure by North American Industry Classification System (NAICS) and sex, unadjusted for seasonality, monthly
282-0042	Labour force survey estimates (LFS), job tenure by North American Industry Classification System (NAICS) and sex, annual
282-0047	Labour force survey estimates (LFS), duration of unemployment by sex and age group, unadjusted for seasonality, monthly
282-0048	Labour force survey estimates (LFS), duration of unemployment by sex and age group, annual
282-0049	Labour force survey estimates (LFS), unemployment by type of work sought and search method, sex and age group, unadjusted for seasonality, monthly

282-0050	Labour force survey estimates (LFS), unemployment by type of work sought and search method, sex and age group, annual
282-0051	Labour force survey estimates (LFS), retirement age by class of worker and sex, annual
282-0052	Labour force survey estimates (LFS), by census metropolitan area, sex and age group, 3-month moving average, unadjusted for seasonality, monthly
282-0053	Labour force survey estimates (LFS), by census metropolitan area, sex and age group, annual
282-0054	Labour force survey estimates (LFS), by provinces and economic regions, 3-month moving average, unadjusted for seasonality, monthly
282-0055	Labour force survey estimates (LFS), by provinces, territories and economic regions, annual
282-0056	Labour force survey estimates (LFS), employment by census metropolitan area and North American Industry Classification System (NAICS), 3-month moving average, unadjusted for seasonality, monthly
282-0057	Labour force survey estimates (LFS), employment by census metropolitan area and North American Industry Classification System (NAICS), annual
282-0058	Labour force survey estimates (LFS), employment by census metropolitan area and National Occupational Classification for Statistics (NOC-S), 3-month moving average, unadjusted for seasonality, monthly
282-0059	Labour force survey estimates (LFS), employment by census metropolitan area and National Occupational Classification for Statistics (NOC-S), annual
282-0060	Labour force survey estimates (LFS), employment by economic region and North American Industry Classification System (NAICS), 3-month moving average, unadjusted for seasonality, monthly
282-0061	Labour force survey estimates (LFS), employment by economic region and North American Industry Classification System (NAICS), annual
282-0062	Labour force survey estimates (LFS), employment by economic region and National Occupational Classification for Statistics (NOC-S), 3-month moving average, unadjusted for seasonality, monthly
282-0063	Labour force survey estimates (LFS), employment by economic region and National Occupational Classification for Statistics (NOC-S), annual
282-0064	Labour force survey estimates (LFS), by selected medium-sized cities, annual
282-0069	Labour force survey estimates (LFS), wages of employees by type of work, National Occupational Classification for Statistics (NOC-S), sex and age group, unadjusted for seasonality, monthly (current dollars)
282-0070	Labour force survey estimates (LFS), wages of employees by type of work, National Occupational Classification for Statistics (NOC-S), sex and age group, annual (current dollars)
282-0071	Labour force survey estimates (LFS), wages of employees by type of work, North American Industry Classification System (NAICS), sex and age group, unadjusted for seasonality, monthly (current dollars)

282-0072	Labour force survey estimates (LFS), wages of employees by type of work, North American Industry Classification System (NAICS), sex and age group, annual (current dollars)
282-0073	Labour force survey estimates (LFS), wages of employees by job permanence, union coverage, sex and age group, unadjusted for seasonality, monthly (current dollars)
282-0074	Labour force survey estimates (LFS), wages of employees by job permanence, union coverage, sex and age group, annual (current dollars)
282-0075	Labour force survey estimates (LFS), employees by establishment size, North American Industry Classification System (NAICS), sex and age group, unadjusted for seasonality, monthly
282-0076	Labour force survey estimates (LFS), employees by establishment size, North American Industry Classification System (NAICS), sex and age group, annual
282-0077	Labour force survey estimates (LFS), employees by union coverage, North American Industry Classification System (NAICS), sex and age group, unadjusted for seasonality, monthly
282-0078	Labour force survey estimates (LFS), employees by union coverage, North American Industry Classification System (NAICS), sex and age group, annual
282-0079	Labour force survey estimates (LFS), employees by job permanency, North American Industry Classification System (NAICS), sex and age group, unadjusted for seasonality, monthly
282-0080	Labour force survey estimates (LFS), employees by job permanency, North American Industry Classification System (NAICS), sex and age group, annual
282-0081	Labour force survey estimates (LFS), employees working overtime (weekly) by National Occupational Classification for Statistics (NOC-S), sex and age group, unadjusted for seasonality, monthly
282-0082	Labour force survey estimates (LFS), employees working overtime (weekly) by National Occupational Classification for Statistics (NOC-S), sex and age group, annual
282-0083	Labour force survey estimates (LFS), employees working overtime (weekly) by North American Industry Classification System (NAICS), sex and age group, unadjusted for seasonality, monthly
282-0084	Labour force survey estimates (LFS), employees working overtime (weekly) by North American Industry Classification System (NAICS), sex and age group, annual
282-0085	Labour force survey estimates (LFS), supplementary unemployment rates by sex and age group, unadjusted for seasonality, monthly
282-0086	Labour force survey estimates (LFS), supplementary unemployment rates by sex and age group, annual
282-0087	Labour force survey estimates (LFS), by sex and age group, seasonally adjusted and unadjusted, monthly
282-0088	Labour force survey estimates (LFS), employment by North American Industry Classification System (NAICS), seasonally adjusted and unadjusted, monthly
282-0089	Labour force survey estimates (LFS), employment by class of worker and sex, seasonally adjusted and unadjusted, monthly

282-0090	Labour force survey estimates (LFS), by census metropolitan area, 3-month moving average, seasonally adjusted and unadjusted, monthly
282-0091	Labour force survey estimates (LFS), by Montréal, Toronto and Vancouver census metropolitan areas, seasonally adjusted and unadjusted, monthly
282-0092	Labour force survey estimates (LFS), actual hours worked by North American Industry Classification System (NAICS), seasonally adjusted, monthly
282-0093	Labour force survey estimates (LFS), employment by National Occupational Classification for Statistics (NOC-S), seasonally adjusted, monthly
282-0094	Labour force survey estimates (LFS), by North American Industry Classification System (NAICS), Canada, seasonally adjusted, monthly
282-0095	Labour force survey estimates (LFS), by full- and part-time students during school months, sex and age group, annual
282-0096	Labour force survey estimates (LFS), by urban and rural areas based on 2001 census boundaries, sex and age group, unadjusted for seasonality, monthly
282-0097	Labour force survey estimates (LFS), by urban and rural areas based on 2001 census boundaries, sex and age group, annual
282-0098	Labour force survey estimates (LFS), employment by urban and rural areas based on 2001 census boundaries, class of worker and North American Industry Classification System (NAICS), unadjusted for seasonality, monthly
282-0099	Labour force survey estimates (LFS), employment by urban and rural areas based on 2001 census boundaries, class of worker and North American Industry Classification System (NAICS), annual
282-0100	Labour force survey estimates (LFS), by territories, sex and age group, 3-month moving average, seasonally adjusted and unadjusted, monthly
282-0101	Labour force survey estimates (LFS), by immigrant status, age group, Canada, regions, provinces and Montreal, Toronto, Vancouver census metropolitan areas, 3-month moving average, unadjusted for seasonality, monthly
282-0102	Labour force survey estimates (LFS), by immigrant status, age group, Canada, regions, provinces and Montreal, Toronto, Vancouver census metropolitan areas, annual
282-0103	Labour force survey estimates (LFS), by immigrant status, sex and detailed age group, Canada, 3-month moving average, unadjusted for seasonality, monthly
282-0104	Labour force survey estimates (LFS), by immigrant status, sex and detailed age group, Canada, annual
282-0105	Labour force survey estimates (LFS), by immigrant status, educational attainment, sex and age group, Canada, 3-month moving average, unadjusted for seasonality, monthly
282-0106	Labour force survey estimates (LFS), by immigrant status, educational attainment, sex and age group, Canada, annual

282-0107	Labour force survey estimates (LFS), by immigrant status, country of birth, sex and age group, Canada, regions and provinces, 3-month moving average, unadjusted for seasonality, monthly
282-0108	Labour force survey estimates (LFS), by immigrant status, country of birth, sex and age group, Canada, regions and provinces, annual

Selected surveys from Statistics Canada

3701	Labour Force Survey
------	---------------------

Selected summary tables from Statistics Canada

- *Labour force characteristics*
- *Employment by industry*
- *Days lost per worker due to illness or disability, by sex, by province*
- *Economic indicators, by province and territory (monthly and quarterly)*
- *Labour force and participation rates by sex and age group*
- *Labour force, employed and unemployed, numbers and rates, by province*
- *Employment by industry and sex*
- *Full-time and part-time employment by sex and age group*
- *Labour force characteristics by age and sex*
- *Distribution of employed people, by industry, by province*
- *Labour force characteristics, population 15 years and older, by census metropolitan area*
- *Labour force characteristics, population 15 years and older, by economic region, by province*
- *Days lost per worker by cause, by provinces*
- *Days lost per worker by industry and sex*
- *People employed, by educational attainment*
- *Reasons for part-time work by sex and age group*
- *Self-employment, historical summary*
- *Employment by age, sex, type of work, class of worker and province (monthly)*
- *Employment by major industry groups, seasonally adjusted, by province (monthly)*

- *Actual hours worked per week by industry, seasonally adjusted (monthly)*
- *Average hourly wages of employees by selected characteristics and profession, unadjusted data, by province (monthly)*
- *Labour force characteristics, seasonally adjusted, by province (monthly)*
- *Labour force characteristics, unadjusted, by province (monthly)*
- *Labour force characteristics, seasonally adjusted, by census metropolitan area (3 month moving average)*
- *Labour force characteristics, unadjusted, by census metropolitan area (3 month moving average)*
- *Labour force characteristics, unadjusted, by economic region (3 month moving average)*
- *Labour force characteristics by immigrant status of population aged 25 to 54, by province*
- *Labour force characteristics by immigrant status of population aged 25 to 54, by educational attainment*
- *Labour force characteristics by immigrant status, by detailed age group*
- *Labour force characteristics by immigrant status of population aged 25 to 54, by country of birth*

Statistical tables

Table 1
Labour force characteristics by age and sex, Canada, seasonally adjusted

	July 2010	August 2010	S.E. ¹	Change from			Percent change from		
				last month	last December	twelve months ago	last month	last December	twelve months ago
in thousands (except rates)									
15 years and over, both sexes									
Population	27,735.2	27,779.5	...	44.3	288.8	421.1	0.2	1.1	1.5
Labour force	18,673.6	18,727.1	28.1	53.5	289.9	306.5	0.3	1.6	1.7
Employment	17,180.5	17,216.3	27.9	35.8	334.9	396.3	0.2	2.0	2.4
Employment full-time	13,745.6	13,825.5	36.8	79.9	148.3	294.0	0.6	1.1	2.2
Employment part-time	3,434.9	3,390.8	33.7	-44.1	186.5	102.3	-1.3	5.8	3.1
Unemployment	1,493.1	1,510.9	24.9	17.8	-44.9	-89.7	1.2	-2.9	-5.6
Participation rate	67.3	67.4	0.1	0.1	0.3	0.1
Unemployment rate	8.0	8.1	0.1	0.1	-0.3	-0.6
Employment rate	61.9	62.0	0.1	0.1	0.6	0.5
Part-time rate	20.0	19.7	0.2	-0.3	0.7	0.1
15 to 24 years, both sexes									
Population	4,407.4	4,408.9	...	1.5	8.6	12.1	0.0	0.2	0.3
Labour force	2,846.2	2,862.5	16.5	16.3	14.7	2.1	0.6	0.5	0.1
Employment	2,445.5	2,443.5	15.1	-2.0	51.5	48.5	-0.1	2.2	2.0
Employment full-time	1,247.8	1,242.2	17.7	-5.6	-30.1	29.2	-0.4	-2.4	2.4
Employment part-time	1,197.7	1,201.3	18.3	3.6	81.7	19.3	0.3	7.3	1.6
Unemployment	400.7	419.0	14.3	18.3	-36.9	-46.4	4.6	-8.1	-10.0
Participation rate	64.6	64.9	0.4	0.3	0.2	-0.2
Unemployment rate	14.1	14.6	0.5	0.5	-1.4	-1.7
Employment rate	55.5	55.4	0.3	-0.1	1.0	0.9
Part-time rate	49.0	49.2	0.7	0.2	2.4	-0.2
25 years and over, men									
Population	11,411.8	11,433.0	...	21.2	139.2	204.8	0.2	1.2	1.8
Labour force	8,392.5	8,420.1	14.8	27.6	152.1	152.8	0.3	1.8	1.8
Employment	7,776.8	7,794.8	16.2	18.0	185.2	209.6	0.2	2.4	2.8
Employment full-time	7,124.5	7,179.2	20.8	54.7	168.8	174.9	0.8	2.4	2.5
Employment part-time	652.3	615.7	16.6	-36.6	16.5	34.8	-5.6	2.8	6.0
Unemployment	615.6	625.3	15.0	9.7	-33.0	-56.8	1.6	-5.0	-8.3
Participation rate	73.5	73.6	0.1	0.1	0.4	0.0
Unemployment rate	7.3	7.4	0.2	0.1	-0.6	-0.9
Employment rate	68.1	68.2	0.1	0.1	0.8	0.6
Part-time rate	8.4	7.9	0.2	-0.5	0.0	0.2
25 years and over, women									
Population	11,916.0	11,937.6	...	21.6	141.0	204.2	0.2	1.2	1.7
Labour force	7,434.9	7,444.5	15.9	9.6	123.1	151.7	0.1	1.7	2.1
Employment	6,958.1	6,977.9	15.8	19.8	98.1	138.1	0.3	1.4	2.0
Employment full-time	5,373.3	5,404.1	23.6	30.8	9.7	90.0	0.6	0.2	1.7
Employment part-time	1,584.9	1,573.8	22.1	-11.1	88.4	48.1	-0.7	6.0	3.2
Unemployment	476.8	466.6	12.9	-10.2	25.0	13.6	-2.1	5.7	3.0
Participation rate	62.4	62.4	0.1	0.0	0.3	0.2
Unemployment rate	6.4	6.3	0.2	-0.1	0.3	0.1
Employment rate	58.4	58.5	0.1	0.1	0.2	0.2
Part-time rate	22.8	22.6	0.3	-0.2	1.0	0.2
25 to 54 years, both sexes									
Population	14,637.7	14,651.9	...	14.2	87.1	121.0	0.1	0.6	0.8
Labour force	12,677.3	12,700.4	21.3	23.1	131.9	131.4	0.2	1.0	1.0
Employment	11,798.6	11,822.1	22.9	23.5	150.1	177.9	0.2	1.3	1.5
Unemployment	878.6	878.3	18.6	-0.3	-18.3	-46.5	0.0	-2.0	-5.0
Participation rate	86.6	86.7	0.1	0.1	0.4	0.2
Unemployment rate	6.9	6.9	0.1	0.0	-0.2	-0.5
Employment rate	80.6	80.7	0.2	0.1	0.6	0.6

See notes at the end of the table.

Table 1 – continued

Labour force characteristics by age and sex, Canada, seasonally adjusted

	July 2010	August 2010	S.E. ¹	Change from			Percent change from		
				last month	last December	twelve months ago	last month	last December	twelve months ago
in thousands (except rates)									
25 to 54 years, men									
Population	7,318.8	7,325.7	...	6.9	44.1	62.7	0.1	0.6	0.9
Labour force	6,651.8	6,670.7	13.7	18.9	78.6	62.4	0.3	1.2	0.9
Employment	6,159.0	6,168.3	15.6	9.3	107.0	108.5	0.2	1.8	1.8
Unemployment	492.8	502.4	13.8	9.6	-28.4	-46.1	1.9	-5.4	-8.4
Participation rate	90.9	91.1	0.2	0.2	0.6	0.1
Unemployment rate	7.4	7.5	0.2	0.1	-0.6	-0.8
Employment rate	84.2	84.2	0.2	0.0	1.0	0.8
25 to 54 years, women									
Population	7,319.0	7,326.1	...	7.1	42.9	58.2	0.1	0.6	0.8
Labour force	6,025.5	6,029.7	15.5	4.2	53.3	68.9	0.1	0.9	1.2
Employment	5,639.6	5,653.7	15.8	14.1	43.0	69.3	0.3	0.8	1.2
Unemployment	385.9	375.9	12.0	-10.0	10.2	-0.5	-2.6	2.8	-0.1
Participation rate	82.3	82.3	0.2	0.0	0.2	0.3
Unemployment rate	6.4	6.2	0.2	-0.2	0.1	-0.1
Employment rate	77.1	77.2	0.2	0.1	0.2	0.4
55 years and over, both sexes									
Population	8,690.1	8,718.7	...	28.6	193.1	288.0	0.3	2.3	3.4
Labour force	3,150.1	3,164.3	16.5	14.2	143.5	173.2	0.5	4.8	5.8
Employment	2,936.3	2,950.7	16.5	14.4	133.2	169.9	0.5	4.7	6.1
Unemployment	213.8	213.6	9.1	-0.2	10.3	3.3	-0.1	5.1	1.6
Participation rate	36.2	36.3	0.2	0.1	0.9	0.8
Unemployment rate	6.8	6.8	0.3	0.0	0.1	-0.2
Employment rate	33.8	33.8	0.2	0.0	0.8	0.8
55 years and over, men									
Population	4,093.1	4,107.3	...	14.2	95.1	142.1	0.3	2.4	3.6
Labour force	1,740.7	1,749.4	11.1	8.7	73.5	90.3	0.5	4.4	5.4
Employment	1,617.8	1,626.5	11.2	8.7	78.1	101.1	0.5	5.0	6.6
Unemployment	122.9	122.9	7.0	0.0	-4.6	-10.8	0.0	-3.6	-8.1
Participation rate	42.5	42.6	0.3	0.1	0.8	0.8
Unemployment rate	7.1	7.0	0.4	-0.1	-0.6	-1.1
Employment rate	39.5	39.6	0.3	0.1	1.0	1.1
55 years and over, women									
Population	4,597.0	4,611.5	...	14.5	98.1	146.0	0.3	2.2	3.3
Labour force	1,409.4	1,414.9	11.1	5.5	70.0	82.9	0.4	5.2	6.2
Employment	1,318.5	1,324.2	11.1	5.7	55.1	68.8	0.4	4.3	5.5
Unemployment	90.9	90.7	5.6	-0.2	14.8	14.0	-0.2	19.5	18.3
Participation rate	30.7	30.7	0.2	0.0	0.9	0.9
Unemployment rate	6.4	6.4	0.4	0.0	0.8	0.6
Employment rate	28.7	28.7	0.2	0.0	0.6	0.6

1. Average standard error of change in two consecutive months (see "Sampling Errors" in Data Quality for further explanations).

Note(s): Related CANSIM table 282-0087.

Table 2
Employment by class of worker and industry, Canada, seasonally adjusted

	July 2010	August 2010	S.E. ¹	Change from			Percent change from		
				last month	last December	twelve months ago	last month	last December	twelve months ago
	in thousands								
Class of worker									
Employees	14,490.0	14,507.6	33.4	17.6	366.5	409.0	0.1	2.6	2.9
Self-employed ²	2,690.5	2,708.7	24.1	18.2	-31.6	-12.7	0.7	-1.2	-0.5
Public/private sector employees									
Public sector employees	3,498.2	3,555.7	22.7	57.5	118.6	158.4	1.6	3.5	4.7
Private sector employees	10,991.8	10,951.9	35.0	-39.9	247.9	250.5	-0.4	2.3	2.3
Industry	17,180.5	17,216.3	27.9	35.8	334.9	396.3	0.2	2.0	2.4
Goods-producing sector	3,777.3	3,769.1	24.5	-8.2	52.5	98.4	-0.2	1.4	2.7
Agriculture	306.1	302.1	6.8	-4.0	-13.2	-15.8	-1.3	-4.2	-5.0
Forestry, fishing, mining, oil and gas	332.1	341.4	6.7	9.3	35.7	23.9	2.8	11.7	7.5
Utilities	148.5	148.8	4.7	0.3	2.3	6.6	0.2	1.6	4.6
Construction	1,226.5	1,238.5	15.4	12.0	52.1	90.3	1.0	4.4	7.9
Manufacturing	1,764.0	1,738.4	18.1	-25.6	-24.2	-6.5	-1.5	-1.4	-0.4
Services-producing sector	13,403.2	13,447.1	32.2	43.9	282.3	297.8	0.3	2.1	2.3
Trade	2,702.0	2,696.7	22.1	-5.3	42.7	27.5	-0.2	1.6	1.0
Transportation and warehousing	810.6	804.1	12.5	-6.5	14.7	-11.6	-0.8	1.9	-1.4
Finance, insurance, real estate and leasing	1,092.3	1,091.0	15.0	-1.3	-21.7	-23.3	-0.1	-2.0	-2.1
Professional, scientific and technical services	1,291.6	1,319.9	16.1	28.3	78.0	106.9	2.2	6.3	8.8
Business, building and other support services	694.5	675.8	13.1	-18.7	59.7	33.5	-2.7	9.7	5.2
Educational services	1,163.7	1,232.1	15.1	68.4	3.4	55.0	5.9	0.3	4.7
Health care and social assistance	2,062.8	2,062.5	16.9	-0.3	68.5	115.1	0.0	3.4	5.9
Information, culture and recreation	779.9	761.8	13.4	-18.1	-13.5	-32.5	-2.3	-1.7	-4.1
Accommodation and food services	1,070.1	1,060.9	15.6	-9.2	5.8	15.2	-0.9	0.5	1.5
Other services	766.9	766.5	12.8	-0.4	-17.8	-31.4	-0.1	-2.3	-3.9
Public administration	968.9	975.8	11.9	6.9	62.4	43.3	0.7	6.8	4.6

1. Average standard error of change in two consecutive months (see "Sampling Errors" in Data Quality for further explanations).

2. Includes both incorporated and unincorporated working owners, self-employed persons who do not have a business and persons working in a family business without pay.

Note(s): Related CANSIM Tables 282-0088, 282-0089.

Table 3
Labour force characteristics by province, seasonally adjusted

	July 2010	August 2010	S.E. ¹	Change from			Percent change from		
				last month	last December	twelve months ago	last month	last December	twelve months ago
in thousands (except rates)									
Newfoundland and Labrador									
Population	431.6	431.9	...	0.3	1.4	2.7	0.1	0.3	0.6
Labour force	258.7	259.9	2.1	1.2	3.9	4.3	0.5	1.5	1.7
Employment	219.8	223.4	2.2	3.6	6.2	8.4	1.6	2.9	3.9
Employment full-time	184.5	189.1	2.6	4.6	2.2	2.9	2.5	1.2	1.6
Employment part-time	35.4	34.2	1.8	-1.2	3.9	5.4	-3.4	12.9	18.8
Unemployment	38.8	36.5	2.0	-2.3	-2.3	-4.1	-5.9	-5.9	-10.1
Participation rate	59.9	60.2	0.5	0.3	0.7	0.6
Unemployment rate	15.0	14.0	0.7	-1.0	-1.2	-1.9
Employment rate	50.9	51.7	0.5	0.8	1.2	1.6
Prince Edward Island									
Population	117.4	117.7	...	0.3	1.3	1.3	0.3	1.1	1.1
Labour force	80.5	81.1	0.6	0.6	1.3	1.9	0.7	1.6	2.4
Employment	71.8	72.0	0.7	0.2	0.8	3.5	0.3	1.1	5.1
Employment full-time	58.0	58.8	0.8	0.8	0.6	3.7	1.4	1.0	6.7
Employment part-time	13.8	13.2	0.7	-0.6	0.2	-0.2	-4.3	1.5	-1.5
Unemployment	8.7	9.1	0.6	0.4	0.5	-1.6	4.6	5.8	-15.0
Participation rate	68.6	68.9	0.5	0.3	0.3	0.9
Unemployment rate	10.8	11.2	0.8	0.4	0.4	-2.3
Employment rate	61.2	61.2	0.6	0.0	0.0	2.4
Nova Scotia									
Population	776.3	776.8	...	0.5	2.3	4.0	0.1	0.3	0.5
Labour force	505.4	504.9	2.7	-0.5	5.0	5.4	-0.1	1.0	1.1
Employment	458.2	455.6	2.8	-2.6	3.6	2.4	-0.6	0.8	0.5
Employment full-time	366.3	365.6	3.6	-0.7	-3.2	-4.8	-0.2	-0.9	-1.3
Employment part-time	91.9	90.0	3.2	-1.9	6.7	7.2	-2.1	8.0	8.7
Unemployment	47.2	49.3	2.6	2.1	1.5	3.0	4.4	3.1	6.5
Participation rate	65.1	65.0	0.4	-0.1	0.5	0.4
Unemployment rate	9.3	9.8	0.5	0.5	0.2	0.5
Employment rate	59.0	58.7	0.4	-0.3	0.3	0.1
New Brunswick									
Population	624.8	625.2	...	0.4	2.4	3.4	0.1	0.4	0.5
Labour force	398.8	403.4	2.2	4.6	2.2	0.6	1.2	0.5	0.1
Employment	363.0	364.8	2.4	1.8	-0.6	-1.4	0.5	-0.2	-0.4
Employment full-time	306.9	308.0	2.8	1.1	-1.5	0.2	0.4	-0.5	0.1
Employment part-time	56.1	56.7	2.4	0.6	0.8	-1.7	1.1	1.4	-2.9
Unemployment	35.8	38.6	2.1	2.8	2.8	2.0	7.8	7.8	5.5
Participation rate	63.8	64.5	0.4	0.7	0.1	-0.3
Unemployment rate	9.0	9.6	0.5	0.6	0.7	0.5
Employment rate	58.1	58.3	0.4	0.2	-0.4	-0.6
Quebec									
Population	6,518.8	6,527.6	...	8.8	55.9	83.3	0.1	0.9	1.3
Labour force	4,270.4	4,288.2	14.1	17.8	76.0	77.9	0.4	1.8	1.9
Employment	3,918.8	3,938.2	14.3	19.4	79.8	109.4	0.5	2.1	2.9
Employment full-time	3,111.6	3,150.8	18.6	39.2	12.9	39.7	1.3	0.4	1.3
Employment part-time	807.2	787.3	16.8	-19.9	66.8	69.6	-2.5	9.3	9.7
Unemployment	351.6	350.0	12.9	-1.6	-3.8	-31.5	-0.5	-1.1	-8.3
Participation rate	65.5	65.7	0.2	0.2	0.6	0.4
Unemployment rate	8.2	8.2	0.3	0.0	-0.2	-0.9
Employment rate	60.1	60.3	0.2	0.2	0.7	0.9

See notes at the end of the table.

Table 3 – continued

Labour force characteristics by province, seasonally adjusted

	July 2010	August 2010	S.E. ¹	Change from			Percent change from		
				last month	last December	twelve months ago	last month	last December	twelve months ago
in thousands (except rates)									
Ontario									
Population	10,823.2	10,840.2	...	17.0	112.6	162.8	0.2	1.0	1.5
Labour force	7,302.7	7,326.9	19.4	24.2	136.7	133.7	0.3	1.9	1.9
Employment	6,678.6	6,684.9	18.9	6.3	157.5	162.0	0.1	2.4	2.5
Employment full-time	5,375.8	5,369.2	24.6	-6.6	67.8	158.6	-0.1	1.3	3.0
Employment part-time	1,302.7	1,315.7	22.8	13.0	89.8	3.5	1.0	7.3	0.3
Unemployment	624.2	642.0	17.2	17.8	-20.8	-28.3	2.9	-3.1	-4.2
Participation rate	67.5	67.6	0.2	0.1	0.6	0.2
Unemployment rate	8.5	8.8	0.2	0.3	-0.4	-0.5
Employment rate	61.7	61.7	0.2	0.0	0.9	0.6
Manitoba									
Population	937.6	939.0	...	1.4	10.4	14.0	0.1	1.1	1.5
Labour force	657.4	658.5	2.6	1.1	17.6	8.5	0.2	2.7	1.3
Employment	620.6	621.6	2.8	1.0	17.6	9.3	0.2	2.9	1.5
Employment full-time	496.0	498.6	3.7	2.6	13.9	8.0	0.5	2.9	1.6
Employment part-time	124.6	123.0	3.5	-1.6	3.8	1.3	-1.3	3.2	1.1
Unemployment	36.8	36.9	2.1	0.1	-0.1	-0.8	0.3	-0.3	-2.1
Participation rate	70.1	70.1	0.3	0.0	1.1	-0.2
Unemployment rate	5.6	5.6	0.3	0.0	-0.2	-0.2
Employment rate	66.2	66.2	0.3	0.0	1.2	0.0
Saskatchewan									
Population	792.1	793.5	...	1.4	9.2	12.5	0.2	1.2	1.6
Labour force	554.2	558.2	2.4	4.0	9.7	12.6	0.7	1.8	2.3
Employment	526.0	531.4	2.5	5.4	9.3	12.7	1.0	1.8	2.4
Employment full-time	424.1	428.5	3.3	4.4	2.9	13.4	1.0	0.7	3.2
Employment part-time	101.9	102.9	3.0	1.0	6.4	-0.7	1.0	6.6	-0.7
Unemployment	28.1	26.8	1.9	-1.3	0.5	-0.1	-4.6	1.9	-0.4
Participation rate	70.0	70.3	0.3	0.3	0.4	0.4
Unemployment rate	5.1	4.8	0.3	-0.3	0.0	-0.1
Employment rate	66.4	67.0	0.3	0.6	0.4	0.6
Alberta									
Population	2,929.2	2,935.9	...	6.7	40.6	59.9	0.2	1.4	2.1
Labour force	2,142.5	2,143.8	8.6	1.3	7.9	13.5	0.1	0.4	0.6
Employment	2,008.6	2,003.9	8.8	-4.7	8.6	29.0	-0.2	0.4	1.5
Employment full-time	1,635.3	1,646.2	11.8	10.9	14.4	35.8	0.7	0.9	2.2
Employment part-time	373.2	357.6	10.5	-15.6	-5.9	-6.9	-4.2	-1.6	-1.9
Unemployment	134.0	140.0	7.5	6.0	-0.6	-15.4	4.5	-0.4	-9.9
Participation rate	73.1	73.0	0.3	-0.1	-0.8	-1.1
Unemployment rate	6.3	6.5	0.3	0.2	-0.1	-0.8
Employment rate	68.6	68.3	0.3	-0.3	-0.6	-0.4
British Columbia									
Population	3,784.3	3,791.7	...	7.4	52.8	77.2	0.2	1.4	2.1
Labour force	2,503.0	2,502.1	10.5	-0.9	29.4	47.9	0.0	1.2	2.0
Employment	2,315.2	2,320.6	10.3	5.4	52.1	61.0	0.2	2.3	2.7
Employment full-time	1,787.2	1,810.5	14.5	23.3	38.1	36.3	1.3	2.1	2.0
Employment part-time	528.0	510.1	13.4	-17.9	14.0	24.8	-3.4	2.8	5.1
Unemployment	187.9	181.5	8.8	-6.4	-22.7	-13.1	-3.4	-11.1	-6.7
Participation rate	66.1	66.0	0.3	-0.1	-0.1	-0.1
Unemployment rate	7.5	7.3	0.3	-0.2	-1.0	-0.6
Employment rate	61.2	61.2	0.3	0.0	0.5	0.4

1. Average standard error of change in two consecutive months (see "Sampling Errors" in Data Quality for further explanations).

Note(s): Related CANSIM Table 282-0087.

Table 4-1
Selected labour force characteristics (seasonally adjusted) — Newfoundland and Labrador

	July 2010	August 2010	S.E.	Change from			Percent change from		
				last month	last December	twelve months ago	last month	last December	twelve months ago
in thousands (except rates)									
Both sexes, 15 years and over									
Population	431.6	431.9	...	0.3	1.4	2.7	0.1	0.3	0.6
Labour force	258.7	259.9	2.1	1.2	3.9	4.3	0.5	1.5	1.7
Employment	219.8	223.4	2.2	3.6	6.2	8.4	1.6	2.9	3.9
Employment full-time	184.5	189.1	2.6	4.6	2.2	2.9	2.5	1.2	1.6
Unemployment	38.8	36.5	2.0	-2.3	-2.3	-4.1	-5.9	-5.9	-10.1
Participation rate	59.9	60.2	0.5	0.3	0.7	0.6
Unemployment rate	15.0	14.0	0.7	-1.0	-1.2	-1.9
Employment rate	50.9	51.7	0.5	0.8	1.2	1.6
Part-time rate	16.1	15.3	0.8	-0.8	1.4	1.9
Both sexes, 15 to 24 years									
Population	60.5	60.5	...	0.0	-0.3	-0.4	0.0	-0.5	-0.7
Labour force	33.3	33.2	1.0	-0.1	-0.3	-0.5	-0.3	-0.9	-1.5
Employment	26.2	25.7	1.0	-0.5	-0.5	-0.4	-1.9	-1.9	-1.5
Unemployment	7.1	7.5	0.9	0.4	0.2	-0.1	5.6	2.7	-1.3
Participation rate	55.0	54.9	1.7	-0.1	-0.2	-0.4
Unemployment rate	21.3	22.6	2.4	1.3	0.8	0.0
Employment rate	43.3	42.5	1.6	-0.8	-0.6	-0.4
Part-time rate	48.5	47.9	3.5	-0.6	8.5	5.7
Men, 25 years and over									
Population	178.7	178.9	...	0.2	0.8	1.4	0.1	0.4	0.8
Labour force	116.3	116.7	1.2	0.4	0.6	-0.2	0.3	0.5	-0.2
Employment	97.1	99.3	1.4	2.2	2.5	2.3	2.3	2.6	2.4
Unemployment	19.2	17.4	1.3	-1.8	-2.0	-2.5	-9.4	-10.3	-12.6
Participation rate	65.1	65.2	0.7	0.1	0.0	-0.7
Unemployment rate	16.5	14.9	1.1	-1.6	-1.8	-2.1
Employment rate	54.3	55.5	0.8	1.2	1.1	0.9
Part-time rate	5.1	5.7	0.8	0.6	1.4	1.7
Women, 25 years and over									
Population	192.4	192.5	...	0.1	1.0	1.8	0.1	0.5	0.9
Labour force	109.1	110.0	1.1	0.9	3.7	5.0	0.8	3.5	4.8
Employment	96.5	98.4	1.1	1.9	4.2	6.5	2.0	4.5	7.1
Unemployment	12.5	11.6	1.1	-0.9	-0.6	-1.5	-7.2	-4.9	-11.5
Participation rate	56.7	57.1	0.6	0.4	1.6	2.0
Unemployment rate	11.5	10.5	1.0	-1.0	-1.0	-2.0
Employment rate	50.2	51.1	0.6	0.9	1.9	2.9
Part-time rate	18.3	16.5	1.3	-1.9	-0.3	1.2
Industry	219.8	223.4	2.2	3.6	6.2	8.4	1.6	2.9	3.9
Goods-producing sector									
Agriculture	1.5	2.6	0.3	1.1	1.9	1.8	73.3	271.4	225.0
Forestry, fishing, mining, oil and gas	15.7	15.9	1.0	0.2	1.2	0.8	1.3	8.2	5.3
Utilities	1.9	2.0	0.3	0.1	0.0	-0.3	5.3	0.0	-13.0
Construction	14.6	15.2	1.1	0.6	-1.1	0.0	4.1	-6.7	0.0
Manufacturing	9.3	9.9	1.0	0.6	-2.0	-2.0	6.5	-16.8	-16.8
Services-producing sector									
Trade	176.8	177.8	2.0	1.0	6.3	8.0	0.6	3.7	4.7
Transportation and warehousing	38.2	37.9	1.3	-0.3	3.1	2.7	-0.8	8.9	7.7
Finance, insurance, real estate and leasing	12.1	12.3	0.7	0.2	-0.2	1.0	1.7	-1.6	8.8
Professional, scientific and technical services	8.8	7.7	0.6	-1.1	0.6	-0.1	-12.5	8.5	-1.3
Business, building and other support services	7.0	7.4	0.6	0.4	-0.8	0.2	5.7	-9.8	2.8
Educational services	5.3	4.9	0.7	-0.4	-0.1	-1.9	-7.5	-2.0	-27.9
Health care and social assistance	16.2	17.1	0.8	0.9	-0.6	0.0	5.6	-3.4	0.0
Information, culture and recreation	37.5	37.4	1.1	-0.1	1.7	1.9	-0.3	4.8	5.4
Accommodation and food services	7.4	9.0	0.7	1.6	1.0	0.3	21.6	12.5	3.4
Other services	13.8	13.3	0.9	-0.5	-0.9	0.1	-3.6	-6.3	0.8
Public administration	12.0	12.7	0.8	0.7	1.8	2.7	5.8	16.5	27.0
	18.5	18.1	0.8	-0.4	0.6	1.3	-2.2	3.4	7.7

1. Average standard error of change in two consecutive months (see "Sampling Errors" in Data Quality for further explanations).

Note(s): Related CANSIM Tables 282-0087, 282-0088.

Table 4-2
Selected labour force characteristics (seasonally adjusted) — Prince Edward Island

	July 2010	August 2010	S.E. ¹	Change from			Percent change from		
				last month	last December	twelve months ago	last month	last December	twelve months ago
in thousands (except rates)									
Both sexes, 15 years and over									
Population	117.4	117.7	...	0.3	1.3	1.3	0.3	1.1	1.1
Labour force	80.5	81.1	0.6	0.6	1.3	1.9	0.7	1.6	2.4
Employment	71.8	72.0	0.7	0.2	0.8	3.5	0.3	1.1	5.1
Employment full-time	58.0	58.8	0.8	0.8	0.6	3.7	1.4	1.0	6.7
Unemployment	8.7	9.1	0.6	0.4	0.5	-1.6	4.6	5.8	-15.0
Participation rate	68.6	68.9	0.5	0.3	0.3	0.9
Unemployment rate	10.8	11.2	0.8	0.4	0.4	-2.3
Employment rate	61.2	61.2	0.6	0.0	0.0	2.4
Part-time rate	19.2	18.3	0.9	-0.9	0.1	-1.2
Both sexes, 15 to 24 years									
Population	19.7	19.8	...	0.1	0.0	-0.1	0.5	0.0	-0.5
Labour force	13.4	13.9	0.4	0.5	0.2	0.1	3.7	1.5	0.7
Employment	11.5	11.7	0.4	0.2	0.3	0.6	1.7	2.6	5.4
Unemployment	1.9	2.1	0.3	0.2	-0.2	-0.6	10.5	-8.7	-22.2
Participation rate	68.0	70.2	1.9	2.2	1.0	0.9
Unemployment rate	14.2	15.1	2.2	0.9	-1.7	-4.5
Employment rate	58.4	59.1	1.9	0.7	1.5	3.3
Part-time rate	44.3	45.3	3.0	1.0	5.8	-6.1
Men, 25 years and over									
Population	46.9	47.0	...	0.1	0.6	0.6	0.2	1.3	1.3
Labour force	34.1	34.4	0.3	0.3	0.1	0.4	0.9	0.3	1.2
Employment	30.2	30.7	0.4	0.5	0.3	1.0	1.7	1.0	3.4
Unemployment	3.8	3.7	0.4	-0.1	-0.1	-0.6	-2.6	-2.6	-14.0
Participation rate	72.7	73.2	0.7	0.5	-0.7	-0.1
Unemployment rate	11.1	10.8	1.1	-0.3	-0.3	-1.8
Employment rate	64.4	65.3	0.8	0.9	-0.2	1.3
Part-time rate	8.3	7.5	1.0	-0.8	0.3	0.8
Women, 25 years and over									
Population	50.8	50.9	...	0.1	0.6	0.8	0.2	1.2	1.6
Labour force	33.0	32.8	0.3	-0.2	1.0	1.5	-0.6	3.1	4.8
Employment	30.1	29.6	0.4	-0.5	0.2	1.9	-1.7	0.7	6.9
Unemployment	3.0	3.2	0.3	0.2	0.8	-0.5	6.7	33.3	-13.5
Participation rate	65.0	64.4	0.7	-0.6	1.2	1.9
Unemployment rate	9.1	9.8	1.0	0.7	2.3	-2.0
Employment rate	59.3	58.2	0.8	-1.1	-0.2	2.9
Part-time rate	20.3	19.3	1.5	-1.0	-2.2	-1.3
Industry	71.8	72.0	0.7	0.2	0.8	3.5	0.3	1.1	5.1
Goods-producing sector	16.1	16.0	0.6	-0.1	-2.1	-0.5	-0.6	-11.6	-3.0
Agriculture	3.4	2.8	0.3	-0.6	-1.2	-0.7	-17.6	-30.0	-20.0
Forestry, fishing, mining, oil and gas	2.6	2.9	0.3	0.3	0.4	0.8	11.5	16.0	38.1
Utilities	0.4	0.4	0.1	0.0	-0.1	0.1	0.0	-20.0	33.3
Construction	4.4	4.5	0.4	0.1	-1.4	-0.9	2.3	-23.7	-16.7
Manufacturing	5.3	5.4	0.3	0.1	0.2	0.1	1.9	3.8	1.9
Services-producing sector	55.7	56.0	0.7	0.3	3.0	4.0	0.5	5.7	7.7
Trade	10.2	10.1	0.4	-0.1	-1.1	0.0	-1.0	-9.8	0.0
Transportation and warehousing	2.2	2.1	0.2	-0.1	0.2	-0.1	-4.5	10.5	-4.5
Finance, insurance, real estate and leasing	2.8	2.8	0.2	0.0	0.2	0.2	0.0	7.7	7.7
Professional, scientific and technical services	2.9	2.8	0.2	-0.1	0.7	0.5	-3.4	33.3	21.7
Business, building and other support services	3.0	2.8	0.3	-0.2	-0.1	0.7	-6.7	-3.4	33.3
Educational services	6.1	5.7	0.3	-0.4	0.1	0.6	-6.6	1.8	11.8
Health care and social assistance	9.2	9.3	0.3	0.1	0.9	1.1	1.1	10.7	13.4
Information, culture and recreation	2.8	2.9	0.2	0.1	0.5	0.5	3.6	20.8	20.8
Accommodation and food services	5.1	5.6	0.4	0.5	0.6	-0.3	9.8	12.0	-5.1
Other services	3.3	3.8	0.3	0.5	0.5	0.6	15.2	15.2	18.8
Public administration	8.2	8.1	0.3	-0.1	0.5	0.0	-1.2	6.6	0.0

1. Average standard error of change in two consecutive months (see "Sampling Errors" in Data Quality for further explanations).

Note(s): Related CANSIM Tables 282-0087, 282-0088.

Table 4-3
Selected labour force characteristics (seasonally adjusted) — Nova Scotia

	July 2010	August 2010	S.E.	Change from			Percent change from		
				last month	last December	twelve months ago	last month	last December	twelve months ago
in thousands (except rates)									
Both sexes, 15 years and over									
Population	776.3	776.8	...	0.5	2.3	4.0	0.1	0.3	0.5
Labour force	505.4	504.9	2.7	-0.5	5.0	5.4	-0.1	1.0	1.1
Employment	458.2	455.6	2.8	-2.6	3.6	2.4	-0.6	0.8	0.5
Employment full-time	366.3	365.6	3.6	-0.7	-3.2	-4.8	-0.2	-0.9	-1.3
Unemployment	47.2	49.3	2.6	2.1	1.5	3.0	4.4	3.1	6.5
Participation rate	65.1	65.0	0.4	-0.1	0.5	0.4
Unemployment rate	9.3	9.8	0.5	0.5	0.2	0.5
Employment rate	59.0	58.7	0.4	-0.3	0.3	0.1
Part-time rate	20.1	19.8	0.7	-0.3	1.3	1.5
Both sexes, 15 to 24 years									
Population	119.2	119.1	...	-0.1	-0.7	-0.9	-0.1	-0.6	-0.8
Labour force	79.3	76.5	1.6	-2.8	-5.5	-4.5	-3.5	-6.7	-5.6
Employment	64.9	63.8	1.6	-1.1	-4.5	-2.5	-1.7	-6.6	-3.8
Unemployment	14.5	12.6	1.5	-1.9	-1.0	-2.1	-13.1	-7.4	-14.3
Participation rate	66.5	64.2	1.3	-2.3	-4.2	-3.3
Unemployment rate	18.3	16.5	1.7	-1.8	-0.1	-1.6
Employment rate	54.4	53.6	1.3	-0.8	-3.4	-1.7
Part-time rate	52.2	49.5	2.4	-2.7	3.6	1.9
Men, 25 years and over									
Population	313.2	313.6	...	0.4	1.5	2.5	0.1	0.5	0.8
Labour force	219.4	219.6	1.5	0.2	5.6	4.5	0.1	2.6	2.1
Employment	200.1	198.8	1.7	-1.3	4.0	3.1	-0.6	2.1	1.6
Unemployment	19.3	20.9	1.6	1.6	1.7	1.5	8.3	8.9	7.7
Participation rate	70.1	70.0	0.5	-0.1	1.4	0.9
Unemployment rate	8.8	9.5	0.7	0.7	0.5	0.5
Employment rate	63.9	63.4	0.6	-0.5	1.0	0.5
Part-time rate	7.7	7.6	0.7	-0.1	1.1	1.2
Women, 25 years and over									
Population	343.9	344.2	...	0.3	1.5	2.4	0.1	0.4	0.7
Labour force	206.7	208.8	1.5	2.1	4.9	5.4	1.0	2.4	2.7
Employment	193.2	193.0	1.5	-0.2	4.1	1.8	-0.1	2.2	0.9
Unemployment	13.5	15.8	1.3	2.3	0.8	3.6	17.0	5.3	29.5
Participation rate	60.1	60.7	0.4	0.6	1.2	1.2
Unemployment rate	6.5	7.6	0.6	1.1	0.2	1.6
Employment rate	56.2	56.1	0.4	-0.1	1.0	0.2
Part-time rate	22.0	22.4	1.1	0.4	1.6	2.2
Industry	458.2	455.6	2.8	-2.6	3.6	2.4	-0.6	0.8	0.5
Goods-producing sector	90.8	86.4	2.2	-4.4	0.9	-0.4	-4.8	1.1	-0.5
Agriculture	6.4	6.3	0.7	-0.1	1.0	-0.7	-1.6	18.9	-10.0
Forestry, fishing, mining, oil and gas	13.2	12.0	1.1	-1.2	-0.1	-0.4	-9.1	-0.8	-3.2
Utilities	4.2	4.5	0.4	0.3	0.6	1.4	7.1	15.4	45.2
Construction	33.2	30.5	1.5	-2.7	-1.6	-1.3	-8.1	-5.0	-4.1
Manufacturing	33.8	33.0	1.3	-0.8	0.9	0.5	-2.4	2.8	1.5
Services-producing sector	367.4	369.2	2.9	1.8	2.7	2.8	0.5	0.7	0.8
Trade	75.3	78.8	2.1	3.5	3.2	-0.5	4.6	4.2	-0.6
Transportation and warehousing	17.3	17.4	1.1	0.1	-1.8	-3.4	0.6	-9.4	-16.3
Finance, insurance, real estate and leasing	26.4	25.7	1.1	-0.7	1.8	0.1	-2.7	7.5	0.4
Professional, scientific and technical services	24.1	24.5	1.1	0.4	1.4	2.7	1.7	6.1	12.4
Business, building and other support services	23.9	23.2	1.2	-0.7	0.6	1.2	-2.9	2.7	5.5
Educational services	31.1	32.4	1.4	1.3	-4.8	-4.1	4.2	-12.9	-11.2
Health care and social assistance	69.0	71.2	1.7	2.2	3.6	7.6	3.2	5.3	11.9
Information, culture and recreation	20.6	20.3	1.2	-0.3	2.5	3.7	-1.5	14.0	22.3
Accommodation and food services	29.2	27.1	1.3	-2.1	-1.3	-1.8	-7.2	-4.6	-6.2
Other services	18.9	17.5	1.1	-1.4	-3.0	-2.3	-7.4	-14.6	-11.6
Public administration	31.5	31.2	1.2	-0.3	0.6	-0.2	-1.0	2.0	-0.6

1. Average standard error of change in two consecutive months (see "Sampling Errors" in Data Quality for further explanations).

Note(s): Related CANSIM Tables 282-0087, 282-0088.

Table 4-4
Selected labour force characteristics (seasonally adjusted) — New Brunswick

	July 2010	August 2010	S.E. ¹	Change from			Percent change from		
				last month	last December	twelve months ago	last month	last December	twelve months ago
in thousands (except rates)									
Both sexes, 15 years and over									
Population	624.8	625.2	...	0.4	2.4	3.4	0.1	0.4	0.5
Labour force	398.8	403.4	2.2	4.6	2.2	0.6	1.2	0.5	0.1
Employment	363.0	364.8	2.4	1.8	-0.6	-1.4	0.5	-0.2	-0.4
Employment full-time	306.9	308.0	2.8	1.1	-1.5	0.2	0.4	-0.5	0.1
Unemployment	35.8	38.6	2.1	2.8	2.8	2.0	7.8	7.8	5.5
Participation rate	63.8	64.5	0.4	0.7	0.1	-0.3
Unemployment rate	9.0	9.6	0.5	0.6	0.7	0.5
Employment rate	58.1	58.3	0.4	0.2	-0.4	-0.6
Part-time rate	15.5	15.5	0.6	0.1	0.2	-0.4
Both sexes, 15 to 24 years									
Population	92.3	92.2	...	-0.1	-0.8	-1.3	-0.1	-0.9	-1.4
Labour force	58.6	58.9	1.3	0.3	-1.7	-1.7	0.5	-2.8	-2.8
Employment	49.3	49.8	1.3	0.5	-0.4	-1.7	1.0	-0.8	-3.3
Unemployment	9.3	9.1	1.2	-0.2	-1.3	0.0	-2.2	-12.5	0.0
Participation rate	63.5	63.9	1.4	0.4	-1.3	-0.9
Unemployment rate	15.9	15.4	1.8	-0.5	-1.8	0.4
Employment rate	53.4	54.0	1.4	0.6	0.0	-1.1
Part-time rate	42.4	39.0	2.4	-3.4	-2.5	-4.2
Men, 25 years and over									
Population	257.1	257.4	...	0.3	1.8	2.5	0.1	0.7	1.0
Labour force	176.5	180.0	1.3	3.5	2.1	1.5	2.0	1.2	0.8
Employment	159.9	161.1	1.4	1.2	-1.5	-1.1	0.8	-0.9	-0.7
Unemployment	16.7	18.8	1.3	2.1	3.5	2.5	12.6	22.9	15.3
Participation rate	68.7	69.9	0.5	1.2	0.3	-0.1
Unemployment rate	9.5	10.4	0.7	0.9	1.8	1.3
Employment rate	62.2	62.6	0.5	0.4	-1.0	-1.0
Part-time rate	6.0	6.3	0.7	0.3	1.0	0.4
Women, 25 years and over									
Population	275.4	275.7	...	0.3	1.5	2.3	0.1	0.5	0.8
Labour force	163.6	164.5	1.2	0.9	1.8	0.8	0.6	1.1	0.5
Employment	153.8	153.8	1.3	0.0	1.2	1.3	0.0	0.8	0.9
Unemployment	9.9	10.7	1.1	0.8	0.6	-0.5	8.1	5.9	-4.5
Participation rate	59.4	59.7	0.4	0.3	0.4	-0.2
Unemployment rate	6.1	6.5	0.6	0.4	0.3	-0.3
Employment rate	55.8	55.8	0.5	0.0	0.1	0.0
Part-time rate	16.6	17.7	1.0	1.1	0.3	0.3
Industry	363.0	364.8	2.4	1.8	-0.6	-1.4	0.5	-0.2	-0.4
Goods-producing sector	82.1	80.2	2.0	-1.9	-1.7	-3.1	-2.3	-2.1	-3.7
Agriculture	5.6	5.9	0.6	0.3	-0.9	-0.9	5.4	-13.2	-13.2
Forestry, fishing, mining, oil and gas	11.2	10.8	0.8	-0.4	0.1	-0.9	-3.6	0.9	-7.7
Utilities	4.1	4.3	0.4	0.2	-0.4	0.1	4.9	-8.5	2.4
Construction	30.1	29.7	1.3	-0.4	3.7	2.2	-1.3	14.2	8.0
Manufacturing	31.0	29.6	1.2	-1.4	-4.1	-3.5	-4.5	-12.2	-10.6
Services-producing sector	280.9	284.6	2.5	3.7	1.1	1.7	1.3	0.4	0.6
Trade	54.5	57.5	1.6	3.0	2.5	2.9	5.5	4.5	5.3
Transportation and warehousing	19.6	20.4	0.8	0.8	0.2	0.7	4.1	1.0	3.6
Finance, insurance, real estate and leasing	16.2	17.0	0.8	0.8	1.0	-0.4	4.9	6.2	-2.3
Professional, scientific and technical services	16.3	17.1	0.9	0.8	1.5	0.6	4.9	9.6	3.6
Business, building and other support services	18.1	18.4	1.1	0.3	-0.8	-0.2	1.7	-4.2	-1.1
Educational services	27.3	26.6	1.1	-0.7	-1.0	-0.7	-2.6	-3.6	-2.6
Health care and social assistance	52.8	52.2	1.4	-0.6	3.1	1.9	-1.1	6.3	3.8
Information, culture and recreation	13.2	12.0	0.9	-1.2	-0.2	-1.4	-9.1	-1.6	-10.4
Accommodation and food services	21.1	20.8	1.2	-0.3	-4.1	-2.3	-1.4	-16.5	-10.0
Other services	17.0	16.4	0.9	-0.6	-0.7	1.3	-3.5	-4.1	8.6
Public administration	24.7	26.1	1.1	1.4	-0.6	-0.8	5.7	-2.2	-3.0

1. Average standard error of change in two consecutive months (see "Sampling Errors" in Data Quality for further explanations).

Note(s): Related CANSIM Tables 282-0087, 282-0088.

Table 4-5
Selected labour force characteristics (seasonally adjusted) — Quebec

	July 2010	August 2010	S.E.	Change from			Percent change from		
				last month	last December	twelve months ago	last month	last December	twelve months ago
in thousands (except rates)									
Both sexes, 15 years and over									
Population	6,518.8	6,527.6	...	8.8	55.9	83.3	0.1	0.9	1.3
Labour force	4,270.4	4,288.2	14.1	17.8	76.0	77.9	0.4	1.8	1.9
Employment	3,918.8	3,938.2	14.3	19.4	79.8	109.4	0.5	2.1	2.9
Employment full-time	3,111.6	3,150.8	18.6	39.2	12.9	39.7	1.3	0.4	1.3
Unemployment	351.6	350.0	12.9	-1.6	-3.8	-31.5	-0.5	-1.1	-8.3
Participation rate	65.5	65.7	0.2	0.2	0.6	0.4
Unemployment rate	8.2	8.2	0.3	0.0	-0.2	-0.9
Employment rate	60.1	60.3	0.2	0.2	0.7	0.9
Part-time rate	20.6	20.0	0.4	-0.6	1.3	1.2
Both sexes, 15 to 24 years									
Population	967.2	967.6	...	0.4	3.2	4.6	0.0	0.3	0.5
Labour force	654.6	651.2	8.0	-3.4	9.8	15.2	-0.5	1.5	2.4
Employment	565.3	568.0	7.6	2.7	32.0	39.5	0.5	6.0	7.5
Unemployment	89.3	83.2	7.3	-6.1	-22.2	-24.4	-6.8	-21.1	-22.7
Participation rate	67.7	67.3	0.8	-0.4	0.8	1.3
Unemployment rate	13.6	12.8	1.1	-0.8	-3.6	-4.1
Employment rate	58.4	58.7	0.8	0.3	3.1	3.8
Part-time rate	51.1	50.3	1.5	-0.8	0.9	-0.9
Men, 25 years and over									
Population	2,716.6	2,720.9	...	4.3	27.7	41.1	0.2	1.0	1.5
Labour force	1,927.2	1,932.6	8.1	5.4	44.3	35.1	0.3	2.3	1.8
Employment	1,776.1	1,782.2	8.6	6.1	46.5	58.3	0.3	2.7	3.4
Unemployment	151.1	150.3	8.2	-0.8	-2.3	-23.3	-0.5	-1.5	-13.4
Participation rate	70.9	71.0	0.3	0.1	0.9	0.2
Unemployment rate	7.8	7.8	0.4	0.0	-0.3	-1.3
Employment rate	65.4	65.5	0.3	0.1	1.1	1.2
Part-time rate	9.6	8.7	0.5	-0.9	0.5	1.3
Women, 25 years and over									
Population	2,834.9	2,839.0	...	4.1	24.9	37.5	0.1	0.9	1.3
Labour force	1,688.6	1,704.5	7.8	15.9	22.0	27.8	0.9	1.3	1.7
Employment	1,577.5	1,587.9	7.8	10.4	1.2	11.5	0.7	0.1	0.7
Unemployment	111.1	116.6	6.4	5.5	20.7	16.2	5.0	21.6	16.1
Participation rate	59.6	60.0	0.3	0.4	0.2	0.1
Unemployment rate	6.6	6.8	0.4	0.2	1.1	0.8
Employment rate	55.6	55.9	0.3	0.3	-0.5	-0.4
Part-time rate	22.0	21.8	0.7	-0.2	2.1	1.6
Industry	3,918.8	3,938.2	14.3	19.4	79.8	109.4	0.5	2.1	2.9
Goods-producing sector									
Agriculture	51.5	51.0	3.1	-0.5	-4.3	-7.9	-1.0	-7.8	-13.4
Forestry, fishing, mining, oil and gas	31.2	35.2	2.0	4.0	4.1	5.4	12.8	13.2	18.1
Utilities	32.5	31.1	2.2	-1.4	-2.2	-0.6	-4.3	-6.6	-1.9
Construction	232.0	236.5	7.1	4.5	17.0	27.1	1.9	7.7	12.9
Manufacturing	502.9	499.3	9.6	-3.6	-30.2	-19.6	-0.7	-5.7	-3.8
Services-producing sector									
Trade	3,068.7	3,085.0	16.0	16.3	95.3	104.8	0.5	3.2	3.5
Transportation and warehousing	640.0	634.0	10.9	-6.0	-5.5	-7.8	-0.9	-0.9	-1.2
Finance, insurance, real estate and leasing	167.3	165.7	5.5	-1.6	2.5	-5.1	-1.0	1.5	-3.0
Professional, scientific and technical services	239.2	221.9	6.7	-17.3	-9.8	-5.9	-7.2	-4.2	-2.6
Business, building and other support services	290.6	306.0	7.8	15.4	16.3	35.2	5.3	5.6	13.0
Educational services	146.5	149.9	6.2	3.4	21.0	7.2	2.3	16.3	5.0
Health care and social assistance	236.0	262.8	7.4	26.8	-5.1	2.4	11.4	-1.9	0.9
Information, culture and recreation	521.9	517.8	9.0	-4.1	37.4	42.2	-0.8	7.8	8.9
Accommodation and food services	178.1	170.4	6.5	-7.7	-6.7	-1.7	-4.3	-3.8	-1.0
Other services	242.3	242.7	7.9	0.4	18.2	17.3	0.2	8.1	7.7
Public administration	163.6	169.0	5.9	5.4	8.5	-4.1	3.3	5.3	-2.4
	243.1	244.8	6.1	1.7	18.5	25.2	0.7	8.2	11.5

1. Average standard error of change in two consecutive months (see "Sampling Errors" in Data Quality for further explanations).

Note(s): Related CANSIM Tables 282-0087, 282-0088.

Table 4-6
Selected labour force characteristics (seasonally adjusted) — Ontario

	July 2010	August 2010	S.E. ¹	Change from			Percent change from		
				last month	last December	twelve months ago	last month	last December	twelve months ago
in thousands (except rates)									
Both sexes, 15 years and over									
Population	10,823.2	10,840.2	...	17.0	112.6	162.8	0.2	1.0	1.5
Labour force	7,302.7	7,326.9	19.4	24.2	136.7	133.7	0.3	1.9	1.9
Employment	6,678.6	6,684.9	18.9	6.3	157.5	162.0	0.1	2.4	2.5
Employment full-time	5,375.8	5,369.2	24.6	-6.6	67.8	158.6	-0.1	1.3	3.0
Unemployment	624.2	642.0	17.2	17.8	-20.8	-28.3	2.9	-3.1	-4.2
Participation rate	67.5	67.6	0.2	0.1	0.6	0.2
Unemployment rate	8.5	8.8	0.2	0.3	-0.4	-0.5
Employment rate	61.7	61.7	0.2	0.0	0.9	0.6
Part-time rate	19.5	19.7	0.3	0.2	0.9	-0.4
Both sexes, 15 to 24 years									
Population	1,755.2	1,756.5	...	1.3	7.7	10.3	0.1	0.4	0.6
Labour force	1,078.3	1,094.9	11.7	16.6	12.8	1.1	1.5	1.2	0.1
Employment	906.2	907.4	10.3	1.2	25.3	14.5	0.1	2.9	1.6
Unemployment	172.1	187.5	10.0	15.4	-12.5	-13.4	8.9	-6.2	-6.7
Participation rate	61.4	62.3	0.7	0.9	0.4	-0.3
Unemployment rate	16.0	17.1	0.8	1.1	-1.4	-1.3
Employment rate	51.6	51.7	0.6	0.1	1.3	0.6
Part-time rate	52.2	52.5	1.2	0.3	2.1	-1.8
Men, 25 years and over									
Population	4,402.9	4,410.1	...	7.2	48.7	71.5	0.2	1.1	1.6
Labour force	3,253.9	3,268.2	9.8	14.3	65.9	62.8	0.4	2.1	2.0
Employment	3,005.9	3,011.7	10.8	5.8	87.0	84.2	0.2	3.0	2.9
Unemployment	248.0	256.6	10.0	8.6	-21.0	-21.3	3.5	-7.6	-7.7
Participation rate	73.9	74.1	0.2	0.2	0.7	0.2
Unemployment rate	7.6	7.9	0.3	0.3	-0.8	-0.8
Employment rate	68.3	68.3	0.2	0.0	1.2	0.8
Part-time rate	8.2	7.9	0.4	-0.2	-0.1	0.2
Women, 25 years and over									
Population	4,665.1	4,673.6	...	8.5	56.1	81.1	0.2	1.2	1.8
Labour force	2,970.6	2,963.8	11.0	-6.8	58.0	69.9	-0.2	2.0	2.4
Employment	2,766.5	2,765.8	10.8	-0.7	45.2	63.4	0.0	1.7	2.3
Unemployment	204.1	198.0	9.1	-6.1	12.8	6.6	-3.0	6.9	3.4
Participation rate	63.7	63.4	0.2	-0.3	0.5	0.4
Unemployment rate	6.9	6.7	0.3	-0.2	0.3	0.1
Employment rate	59.3	59.2	0.2	-0.1	0.3	0.4
Part-time rate	21.1	21.7	0.5	0.6	1.6	-0.5
Industry									
	6,678.6	6,684.9	18.9	6.3	157.5	162.0	0.1	2.4	2.5
Goods-producing sector									
	1,396.9	1,403.4	16.5	6.5	25.9	50.5	0.5	1.9	3.7
Agriculture	88.7	83.3	3.7	-5.4	-0.3	0.5	-6.1	-0.4	0.6
Forestry, fishing, mining, oil and gas	39.0	40.5	2.6	1.5	1.5	5.3	3.8	3.8	15.1
Utilities	58.8	60.7	3.2	1.9	5.2	2.9	3.2	9.4	5.0
Construction	425.1	441.1	9.8	16.0	27.1	40.8	3.8	6.5	10.2
Manufacturing	785.3	777.7	13.1	-7.6	-7.7	0.8	-1.0	-1.0	0.1
Services-producing sector									
	5,281.7	5,281.5	22.2	-0.2	131.6	111.5	0.0	2.6	2.2
Trade	1,036.6	1,025.6	15.2	-11.0	40.7	30.3	-1.1	4.1	3.0
Transportation and warehousing	302.6	303.2	8.7	0.6	2.1	-7.4	0.2	0.7	-2.4
Finance, insurance, real estate and leasing	484.2	489.7	11.2	5.5	-26.5	-23.9	1.1	-5.1	-4.7
Professional, scientific and technical services	558.5	564.5	11.6	6.0	39.2	30.4	1.1	7.5	5.7
Business, building and other support services	291.1	290.7	9.4	-0.4	29.8	23.9	-0.1	11.4	9.0
Educational services	472.9	494.3	10.4	21.4	14.8	42.3	4.5	3.1	9.4
Health care and social assistance	733.7	724.4	11.1	-9.3	-1.4	18.3	-1.3	-0.2	2.6
Information, culture and recreation	332.2	320.6	9.5	-11.6	-1.4	-10.8	-3.5	-0.4	-3.3
Accommodation and food services	395.7	392.8	10.2	-2.9	5.2	7.7	-0.7	1.3	2.0
Other services	300.2	290.6	9.1	-9.6	-10.8	-26.8	-3.2	-3.6	-8.4
Public administration	374.1	385.2	8.1	11.1	39.8	27.7	3.0	11.5	7.7

1. Average standard error of change in two consecutive months (see "Sampling Errors" in Data Quality for further explanations).

Note(s): Related CANSIM Tables 282-0087, 282-0088.

Table 4-7
Selected labour force characteristics (seasonally adjusted) — Manitoba

	July 2010	August 2010	S.E.	Change from			Percent change from		
				last month	last December	twelve months ago	last month	last December	twelve months ago
in thousands (except rates)									
Both sexes, 15 years and over									
Population	937.6	939.0	...	1.4	10.4	14.0	0.1	1.1	1.5
Labour force	657.4	658.5	2.6	1.1	17.6	8.5	0.2	2.7	1.3
Employment	620.6	621.6	2.8	1.0	17.6	9.3	0.2	2.9	1.5
Employment full-time	496.0	498.6	3.7	2.6	13.9	8.0	0.5	2.9	1.6
Unemployment	36.8	36.9	2.1	0.1	-0.1	-0.8	0.3	-0.3	-2.1
Participation rate	70.1	70.1	0.3	0.0	1.1	-0.2
Unemployment rate	5.6	5.6	0.3	0.0	-0.2	-0.2
Employment rate	66.2	66.2	0.3	0.0	1.2	0.0
Part-time rate	20.1	19.8	0.5	-0.3	0.1	-0.1
Both sexes, 15 to 24 years									
Population	161.5	161.5	...	0.0	0.9	1.1	0.0	0.6	0.7
Labour force	113.2	111.9	1.6	-1.3	2.9	-4.4	-1.1	2.7	-3.8
Employment	99.0	98.6	1.6	-0.4	1.2	-3.7	-0.4	1.2	-3.6
Unemployment	14.2	13.3	1.4	-0.9	1.7	-0.7	-6.3	14.7	-5.0
Participation rate	70.1	69.3	1.0	-0.8	1.4	-3.2
Unemployment rate	12.5	11.9	1.2	-0.6	1.3	-0.1
Employment rate	61.3	61.1	1.0	-0.2	0.5	-2.7
Part-time rate	46.3	47.2	1.8	0.9	6.5	3.5
Men, 25 years and over									
Population	379.7	380.4	...	0.7	4.8	6.5	0.2	1.3	1.7
Labour force	291.8	292.7	1.3	0.9	7.5	3.8	0.3	2.6	1.3
Employment	278.8	279.0	1.5	0.2	9.3	3.8	0.1	3.4	1.4
Unemployment	13.0	13.7	1.2	0.7	-1.8	0.1	5.4	-11.6	0.7
Participation rate	76.9	76.9	0.3	0.0	1.0	-0.4
Unemployment rate	4.5	4.7	0.4	0.2	-0.7	0.0
Employment rate	73.4	73.3	0.4	-0.1	1.5	-0.3
Part-time rate	8.0	7.7	0.6	-0.3	-1.0	-0.1
Women, 25 years and over									
Population	396.4	397.1	...	0.7	4.7	6.4	0.2	1.2	1.6
Labour force	252.5	253.9	1.5	1.4	7.2	9.1	0.6	2.9	3.7
Employment	242.8	243.9	1.5	1.1	7.1	9.1	0.5	3.0	3.9
Unemployment	9.7	10.0	1.1	0.3	0.1	-0.1	3.1	1.0	-1.0
Participation rate	63.7	63.9	0.4	0.2	1.0	1.2
Unemployment rate	3.8	3.9	0.4	0.1	-0.1	-0.2
Employment rate	61.3	61.4	0.4	0.1	1.1	1.3
Part-time rate	23.2	22.5	0.9	-0.7	-1.2	-1.2
Industry									
	620.6	621.6	2.8	1.0	17.6	9.3	0.2	2.9	1.5
Goods-producing sector									
Agriculture	26.3	25.6	1.3	-0.7	0.2	-1.2	-2.7	0.8	-4.5
Forestry, fishing, mining, oil and gas	6.7	8.3	0.6	1.6	2.6	1.4	23.9	45.6	20.3
Utilities	8.1	8.1	0.6	0.0	-0.2	1.3	0.0	-2.4	19.1
Construction	42.3	40.1	1.4	-2.2	4.6	4.0	-5.2	13.0	11.1
Manufacturing	63.8	62.9	1.5	-0.9	5.1	1.1	-1.4	8.8	1.8
Services-producing sector									
Trade	473.2	476.6	3.1	3.4	5.2	2.7	0.7	1.1	0.6
Transportation and warehousing	90.1	93.6	2.0	3.5	3.2	5.5	3.9	3.5	6.2
Finance, insurance, real estate and leasing	35.0	34.9	1.3	-0.1	-3.0	-4.1	-0.3	-7.9	-10.5
Professional, scientific and technical services	35.2	33.9	1.2	-1.3	-1.4	-5.0	-3.7	-4.0	-12.9
Business, building and other support services	29.1	29.5	1.2	0.4	4.3	5.8	1.4	17.1	24.5
Educational services	20.0	20.9	1.2	0.9	2.1	1.7	4.5	11.2	8.9
Health care and social assistance	52.9	53.7	1.5	0.8	2.2	1.5	1.5	4.3	2.9
Information, culture and recreation	90.4	90.7	1.8	0.3	6.1	6.0	0.3	7.2	7.1
Accommodation and food services	22.0	22.4	1.2	0.4	-0.4	-2.1	1.8	-1.8	-8.6
Other services	40.2	38.3	1.5	-1.9	1.3	1.2	-4.7	3.5	3.2
Public administration	24.8	25.3	1.2	0.5	-3.9	-4.3	2.0	-13.4	-14.5
	33.5	33.4	1.2	-0.1	-5.3	-3.4	-0.3	-13.7	-9.2

1. Average standard error of change in two consecutive months (see "Sampling Errors" in Data Quality for further explanations).

Note(s): Related CANSIM Tables 282-0087, 282-0088.

Table 4-8
Selected labour force characteristics (seasonally adjusted) — Saskatchewan

	July 2010	August 2010	S.E. ¹	Change from			Percent change from		
				last month	last December	twelve months ago	last month	last December	twelve months ago
in thousands (except rates)									
Both sexes, 15 years and over									
Population	792.1	793.5	...	1.4	9.2	12.5	0.2	1.2	1.6
Labour force	554.2	558.2	2.4	4.0	9.7	12.6	0.7	1.8	2.3
Employment	526.0	531.4	2.5	5.4	9.3	12.7	1.0	1.8	2.4
Employment full-time	424.1	428.5	3.3	4.4	2.9	13.4	1.0	0.7	3.2
Unemployment	28.1	26.8	1.9	-1.3	0.5	-0.1	-4.6	1.9	-0.4
Participation rate	70.0	70.3	0.3	0.3	0.4	0.4
Unemployment rate	5.1	4.8	0.3	-0.3	0.0	-0.1
Employment rate	66.4	67.0	0.3	0.6	0.4	0.6
Part-time rate	19.4	19.4	0.6	0.0	0.9	-0.6
Both sexes, 15 to 24 years									
Population	137.9	137.8	...	-0.1	-0.7	-1.3	-0.1	-0.5	-0.9
Labour force	93.0	93.5	1.4	0.5	-1.6	-3.2	0.5	-1.7	-3.3
Employment	85.3	85.3	1.4	0.0	-1.8	-2.8	0.0	-2.1	-3.2
Unemployment	7.7	8.2	1.2	0.5	0.2	-0.3	6.5	2.5	-3.5
Participation rate	67.4	67.9	1.0	0.5	-0.8	-1.6
Unemployment rate	8.3	8.8	1.1	0.5	0.4	0.0
Employment rate	61.9	61.9	1.0	0.0	-1.0	-1.4
Part-time rate	38.1	39.6	1.8	1.5	2.3	1.8
Men, 25 years and over									
Population	320.9	321.7	...	0.8	5.8	7.9	0.2	1.8	2.5
Labour force	248.4	249.4	1.2	1.0	7.6	9.2	0.4	3.1	3.8
Employment	236.8	239.2	1.3	2.4	9.3	9.5	1.0	4.0	4.1
Unemployment	11.7	10.2	1.1	-1.5	-1.7	-0.3	-12.8	-14.3	-2.9
Participation rate	77.4	77.5	0.4	0.1	1.0	1.0
Unemployment rate	4.7	4.1	0.5	-0.6	-0.8	-0.3
Employment rate	73.8	74.4	0.4	0.6	1.6	1.2
Part-time rate	7.7	7.5	0.6	-0.2	0.6	-2.3
Women, 25 years and over									
Population	333.4	334.0	...	0.6	4.2	5.9	0.2	1.3	1.8
Labour force	212.7	215.3	1.4	2.6	3.7	6.5	1.2	1.7	3.1
Employment	203.9	206.9	1.4	3.0	1.8	6.0	1.5	0.9	3.0
Unemployment	8.8	8.4	0.9	-0.4	1.9	0.5	-4.5	29.2	6.3
Participation rate	63.8	64.5	0.4	0.7	0.3	0.9
Unemployment rate	4.1	3.9	0.4	-0.2	0.8	0.1
Employment rate	61.2	61.9	0.4	0.7	-0.3	0.7
Part-time rate	25.1	24.7	1.0	-0.4	1.2	0.9
Industry	526.0	531.4	2.5	5.4	9.3	12.7	1.0	1.8	2.4
Goods-producing sector	148.2	147.5	2.3	-0.7	6.1	10.6	-0.5	4.3	7.7
Agriculture	41.2	41.1	1.5	-0.1	-4.4	-0.8	-0.2	-9.7	-1.9
Forestry, fishing, mining, oil and gas	28.7	27.5	1.2	-1.2	0.5	4.0	-4.2	1.9	17.0
Utilities	4.9	5.3	0.4	0.4	0.6	0.7	8.2	12.8	15.2
Construction	43.4	42.8	1.4	-0.6	5.3	2.3	-1.4	14.1	5.7
Manufacturing	30.0	30.8	1.1	0.8	4.0	4.4	2.7	14.9	16.7
Services-producing sector	377.8	383.9	2.8	6.1	3.2	2.1	1.6	0.8	0.6
Trade	82.5	83.1	1.8	0.6	3.6	1.8	0.7	4.5	2.2
Transportation and warehousing	23.8	25.3	1.1	1.5	-0.1	-1.6	6.3	-0.4	-5.9
Finance, insurance, real estate and leasing	30.5	31.4	1.1	0.9	0.2	3.2	3.0	0.6	11.3
Professional, scientific and technical services	24.1	24.2	1.0	0.1	0.7	3.0	0.4	3.0	14.2
Business, building and other support services	11.1	11.6	0.9	0.5	-1.2	-0.8	4.5	-9.4	-6.5
Educational services	39.4	39.2	1.4	-0.2	-1.5	2.4	-0.5	-3.7	6.5
Health care and social assistance	66.5	68.8	1.5	2.3	2.4	-0.7	3.5	3.6	-1.0
Information, culture and recreation	17.9	17.7	0.9	-0.2	-1.1	-1.9	-1.1	-5.9	-9.7
Accommodation and food services	29.3	30.6	1.3	1.3	1.7	0.0	4.4	5.9	0.0
Other services	24.9	23.9	1.1	-1.0	0.5	-0.5	-4.0	2.1	-2.0
Public administration	28.0	27.9	1.0	-0.1	-2.3	-3.0	-0.4	-7.6	-9.7

1. Average standard error of change in two consecutive months (see "Sampling Errors" in Data Quality for further explanations).

Note(s): Related CANSIM Tables 282-0087, 282-0088.

Table 4-9
Selected labour force characteristics (seasonally adjusted) — Alberta

	July 2010	August 2010	S.E.	Change from			Percent change from		
				last month	last December	twelve months ago	last month	last December	twelve months ago
in thousands (except rates)									
Both sexes, 15 years and over									
Population	2,929.2	2,935.9	...	6.7	40.6	59.9	0.2	1.4	2.1
Labour force	2,142.5	2,143.8	8.6	1.3	7.9	13.5	0.1	0.4	0.6
Employment	2,008.6	2,003.9	8.8	-4.7	8.6	29.0	-0.2	0.4	1.5
Employment full-time	1,635.3	1,646.2	11.8	10.9	14.4	35.8	0.7	0.9	2.2
Unemployment	134.0	140.0	7.5	6.0	-0.6	-15.4	4.5	-0.4	-9.9
Participation rate	73.1	73.0	0.3	-0.1	-0.8	-1.1
Unemployment rate	6.3	6.5	0.3	0.2	-0.1	-0.8
Employment rate	68.6	68.3	0.3	-0.3	-0.6	-0.4
Part-time rate	18.6	17.8	0.5	-0.7	-0.4	-0.6
Both sexes, 15 to 24 years									
Population	505.2	505.1	...	-0.1	-2.5	-3.2	0.0	-0.5	-0.6
Labour force	352.6	350.1	5.1	-2.5	-6.8	2.3	-0.7	-1.9	0.7
Employment	313.2	310.5	4.8	-2.7	-1.5	9.7	-0.9	-0.5	3.2
Unemployment	39.3	39.7	4.4	0.4	-5.2	-7.3	1.0	-11.6	-15.5
Participation rate	69.8	69.3	1.0	-0.5	-1.0	0.9
Unemployment rate	11.1	11.3	1.2	0.2	-1.3	-2.2
Employment rate	62.0	61.5	0.9	-0.5	0.0	2.3
Part-time rate	37.7	38.7	1.7	1.0	1.1	-0.2
Men, 25 years and over									
Population	1,230.4	1,233.9	...	3.5	22.1	33.6	0.3	1.8	2.8
Labour force	993.1	998.2	4.4	5.1	14.5	9.0	0.5	1.5	0.9
Employment	935.8	936.6	5.1	0.8	10.5	13.6	0.1	1.1	1.5
Unemployment	57.3	61.7	4.5	4.4	4.1	-4.5	7.7	7.1	-6.8
Participation rate	80.7	80.9	0.4	0.2	-0.3	-1.5
Unemployment rate	5.8	6.2	0.4	0.4	0.3	-0.5
Employment rate	76.1	75.9	0.4	-0.2	-0.5	-1.0
Part-time rate	6.8	6.1	0.5	-0.7	-0.3	-0.7
Women, 25 years and over									
Population	1,193.6	1,196.9	...	3.3	21.0	29.4	0.3	1.8	2.5
Labour force	796.9	795.5	4.9	-1.4	0.2	2.3	-0.2	0.0	0.3
Employment	759.5	756.8	4.9	-2.7	-0.5	5.7	-0.4	-0.1	0.8
Unemployment	37.4	38.7	3.6	1.3	0.7	-3.5	3.5	1.8	-8.3
Participation rate	66.8	66.5	0.4	-0.3	-1.1	-1.4
Unemployment rate	4.7	4.9	0.4	0.2	0.1	-0.4
Employment rate	63.6	63.2	0.4	-0.4	-1.2	-1.1
Part-time rate	25.2	23.9	0.9	-1.3	-0.8	-0.8
Industry	2,008.6	2,003.9	8.8	-4.7	8.6	29.0	-0.2	0.4	1.5
Goods-producing sector									
Agriculture	48.3	49.6	3.2	1.3	-4.0	-5.9	2.7	-7.5	-10.6
Forestry, fishing, mining, oil and gas	140.5	143.1	4.6	2.6	17.5	1.7	1.9	13.9	1.2
Utilities	18.7	16.8	1.9	-1.9	-2.2	-3.9	-10.2	-11.6	-18.8
Construction	207.6	208.7	6.1	1.1	9.7	20.1	0.5	4.9	10.7
Manufacturing	130.0	124.8	4.7	-5.2	8.8	10.6	-4.0	7.6	9.3
Services-producing sector									
Trade	1,463.5	1,460.8	10.5	-2.7	-21.4	6.4	-0.2	-1.4	0.4
Transportation and warehousing	299.0	303.9	7.4	4.9	-0.5	7.7	1.6	-0.2	2.6
Finance, insurance, real estate and leasing	106.3	105.0	4.6	-1.3	4.4	9.1	-1.2	4.4	9.5
Professional, scientific and technical services	110.5	107.3	4.3	-3.2	2.7	-3.9	-2.9	2.6	-3.5
Business, building and other support services	153.7	153.5	4.9	-0.2	7.9	2.1	-0.1	5.4	1.4
Educational services	71.0	69.9	4.1	-1.1	4.6	1.0	-1.5	7.0	1.5
Health care and social assistance	123.2	130.5	5.0	7.3	-9.2	2.8	5.9	-6.6	2.2
Information, culture and recreation	216.3	212.5	5.4	-3.8	3.7	12.9	-1.8	1.8	6.5
Accommodation and food services	76.5	74.8	3.9	-1.7	-7.4	-7.5	-2.2	-9.0	-9.1
Other services	122.0	121.9	5.4	-0.1	-11.4	-8.5	-0.1	-8.6	-6.5
Public administration	98.0	96.3	4.4	-1.7	-11.2	-6.0	-1.7	-10.4	-5.9
	87.1	85.4	3.7	-1.7	-4.9	-3.1	-2.0	-5.4	-3.5

1. Average standard error of change in two consecutive months (see "Sampling Errors" in Data Quality for further explanations).

Note(s): Related CANSIM Tables 282-0087, 282-0088.

Table 4-10
Selected labour force characteristics (seasonally adjusted) — British Columbia

	July 2010	August 2010	S.E. ¹	Change from			Percent change from		
				last month	last December	twelve months ago	last month	last December	twelve months ago
in thousands (except rates)									
Both sexes, 15 years and over									
Population	3,784.3	3,791.7	...	7.4	52.8	77.2	0.2	1.4	2.1
Labour force	2,503.0	2,502.1	10.5	-0.9	29.4	47.9	0.0	1.2	2.0
Employment	2,315.2	2,320.6	10.3	5.4	52.1	61.0	0.2	2.3	2.7
Employment full-time	1,787.2	1,810.5	14.5	23.3	38.1	36.3	1.3	2.1	2.0
Unemployment	187.9	181.5	8.8	-6.4	-22.7	-13.1	-3.4	-11.1	-6.7
Participation rate	66.1	66.0	0.3	-0.1	-0.1	-0.1
Unemployment rate	7.5	7.3	0.3	-0.2	-1.0	-0.6
Employment rate	61.2	61.2	0.3	0.0	0.5	0.4
Part-time rate	22.8	22.0	0.6	-0.8	0.1	0.5
Both sexes, 15 to 24 years									
Population	588.7	589.1	...	0.4	2.0	3.5	0.1	0.3	0.6
Labour force	369.9	378.4	6.0	8.5	4.8	-2.1	2.3	1.3	-0.6
Employment	324.6	322.6	5.4	-2.0	1.4	-4.7	-0.6	0.4	-1.4
Unemployment	45.4	55.8	4.9	10.4	3.4	2.6	22.9	6.5	4.9
Participation rate	62.8	64.2	1.0	1.4	0.6	-0.8
Unemployment rate	12.3	14.7	1.2	2.4	0.7	0.7
Employment rate	55.1	54.8	0.9	-0.3	0.1	-1.1
Part-time rate	51.4	52.6	2.0	1.2	4.8	3.6
Men, 25 years and over									
Population	1,565.5	1,569.1	...	3.6	25.5	37.2	0.2	1.7	2.4
Labour force	1,131.8	1,128.3	5.4	-3.5	4.0	26.7	-0.3	0.4	2.4
Employment	1,056.2	1,056.3	5.8	0.1	17.4	35.1	0.0	1.7	3.4
Unemployment	75.6	72.0	5.2	-3.6	-13.4	-8.5	-4.8	-15.7	-10.6
Participation rate	72.3	71.9	0.4	-0.4	-0.9	0.0
Unemployment rate	6.7	6.4	0.5	-0.3	-1.2	-0.9
Employment rate	67.5	67.3	0.4	-0.2	0.0	0.6
Part-time rate	9.3	8.7	0.6	-0.6	-0.5	-0.3
Women, 25 years and over									
Population	1,630.1	1,633.5	...	3.4	25.3	36.4	0.2	1.6	2.3
Labour force	1,001.2	995.5	6.2	-5.7	20.8	23.4	-0.6	2.1	2.4
Employment	934.4	941.7	6.1	7.3	33.3	30.6	0.8	3.7	3.4
Unemployment	66.9	53.8	4.7	-13.1	-12.6	-7.2	-19.6	-19.0	-11.8
Participation rate	61.4	60.9	0.4	-0.5	0.3	0.0
Unemployment rate	6.7	5.4	0.5	-1.3	-1.4	-0.9
Employment rate	57.3	57.6	0.4	0.3	1.1	0.6
Part-time rate	28.1	26.4	0.9	-1.7	-0.7	0.8
Industry	2,315.2	2,320.6	10.3	5.4	52.1	61.0	0.2	2.3	2.7
Goods-producing sector									
Agriculture	31.6	33.1	2.7	1.5	-0.6	-1.2	4.7	-1.8	-3.5
Forestry, fishing, mining, oil and gas	46.0	46.2	2.7	0.2	8.7	6.5	0.4	23.2	16.4
Utilities	13.4	14.9	1.6	1.5	0.5	5.7	11.2	3.5	62.0
Construction	194.1	189.3	6.6	-4.8	-4.5	-4.4	-2.5	-2.3	-2.3
Manufacturing	169.2	164.8	5.6	-4.4	8.7	0.8	-2.6	5.6	0.5
Services-producing sector									
Trade	1,861.0	1,872.2	11.9	11.2	39.2	53.6	0.6	2.1	2.9
Transportation and warehousing	375.5	368.9	8.2	-6.6	-4.7	-13.0	-1.8	-1.3	-3.4
Finance, insurance, real estate and leasing	123.8	117.7	4.8	-6.1	4.9	2.6	-4.9	4.3	2.3
Professional, scientific and technical services	141.0	149.5	5.4	8.5	0.7	10.1	6.0	0.5	7.2
Business, building and other support services	187.4	193.1	5.8	5.7	16.6	26.1	3.0	9.4	15.6
Educational services	98.9	89.8	4.7	-9.1	1.5	-1.6	-9.2	1.7	-1.8
Health care and social assistance	164.9	171.3	5.7	6.4	6.4	3.3	3.9	3.9	2.0
Information, culture and recreation	265.1	281.9	6.4	16.8	18.5	25.7	6.3	7.0	10.0
Accommodation and food services	112.8	113.1	5.1	0.3	-2.6	-12.6	0.3	-2.2	-10.0
Other services	173.5	167.7	6.2	-5.8	-2.9	4.3	-3.3	-1.7	2.6
Public administration	102.7	107.3	4.7	4.6	-2.2	8.4	4.5	-2.0	8.5
	115.5	111.9	4.4	-3.6	3.1	0.4	-3.1	2.8	0.4

1. Average standard error of change in two consecutive months (see "Sampling Errors" in Data Quality for further explanations).

Note(s): Related CANSIM Tables 282-0087, 282-0088.

Table 5-1

Labour force characteristics by census metropolitan area (seasonally adjusted) — 3 month moving average

	July 2010	August 2010	S.E. ¹	Change from			Percent change from		
				last month	last December	twelve months ago	last month	last December	twelve months ago
in thousands (except rates)									
St. John's, Newfoundland and Labrador									
Population	160.7	160.9	...	0.2	2.0	3.3	0.1	1.3	2.1
Labour force	110.2	110.2	0.8	0.0	0.9	2.6	0.0	0.8	2.4
Employment	102.0	101.0	0.8	-1.0	1.5	2.6	-1.0	1.5	2.6
Unemployment	8.2	9.2	0.4	1.0	-0.6	0.0	12.2	-6.1	0.0
Participation rate	68.6	68.5	0.5	-0.1	-0.3	0.2
Unemployment rate	7.4	8.3	0.4	0.9	-0.7	-0.3
Employment rate	63.5	62.8	0.5	-0.7	0.2	0.4
Halifax, Nova Scotia									
Population	325.1	325.5	...	0.4	2.7	4.2	0.1	0.8	1.3
Labour force	231.8	230.6	1.1	-1.2	0.0	-0.5	-0.5	0.0	-0.2
Employment	218.2	216.5	1.2	-1.7	1.2	0.2	-0.8	0.6	0.1
Unemployment	13.6	14.1	0.7	0.5	-1.2	-0.7	3.7	-7.8	-4.7
Participation rate	71.3	70.8	0.4	-0.5	-0.6	-1.1
Unemployment rate	5.9	6.1	0.3	0.2	-0.5	-0.3
Employment rate	67.1	66.5	0.4	-0.6	-0.2	-0.8
Saint John, New Brunswick									
Population	106.2	106.3	...	0.1	0.5	0.7	0.1	0.5	0.7
Labour force	69.8	69.4	0.8	-0.4	-2.2	-1.8	-0.6	-3.1	-2.5
Employment	64.4	63.7	0.8	-0.7	-3.1	-3.7	-1.1	-4.6	-5.5
Unemployment	5.4	5.7	0.4	0.3	0.9	1.9	5.6	18.8	50.0
Participation rate	65.7	65.3	0.8	-0.4	-2.4	-2.1
Unemployment rate	7.7	8.2	0.5	0.5	1.5	2.9
Employment rate	60.6	59.9	0.7	-0.7	-3.2	-3.9
Saguenay, Quebec									
Population	124.6	124.7	...	0.1	0.0	0.0	0.1	0.0	0.0
Labour force	76.1	76.1	0.8	0.0	-0.3	-0.2	0.0	-0.4	-0.3
Employment	70.1	69.8	0.7	-0.3	-1.0	0.3	-0.4	-1.4	0.4
Unemployment	6.1	6.3	0.4	0.2	0.7	-0.6	3.3	12.5	-8.7
Participation rate	61.1	61.0	0.6	-0.1	-0.3	-0.2
Unemployment rate	8.0	8.3	0.5	0.3	1.0	-0.7
Employment rate	56.3	56.0	0.6	-0.3	-0.8	0.3
Québec, Quebec									
Population	624.0	624.9	...	0.9	5.0	7.7	0.1	0.8	1.2
Labour force	424.7	429.0	3.3	4.3	16.3	24.8	1.0	3.9	6.1
Employment	400.7	406.0	3.3	5.3	13.6	22.9	1.3	3.5	6.0
Unemployment	24.0	22.9	1.4	-1.1	2.6	1.8	-4.6	12.8	8.5
Participation rate	68.1	68.7	0.5	0.6	2.1	3.2
Unemployment rate	5.7	5.3	0.3	-0.4	0.4	0.1
Employment rate	64.2	65.0	0.5	0.8	1.7	2.9
Trois-Rivières, Quebec									
Population	123.9	124.1	...	0.2	0.9	1.4	0.2	0.7	1.1
Labour force	73.4	73.6	0.8	0.2	-1.9	-1.1	0.3	-2.5	-1.5
Employment	67.2	66.9	0.8	-0.3	-1.3	-1.4	-0.4	-1.9	-2.0
Unemployment	6.2	6.7	0.4	0.5	-0.5	0.3	8.1	-6.9	4.7
Participation rate	59.2	59.3	0.6	0.1	-2.0	-1.6
Unemployment rate	8.4	9.1	0.5	0.7	-0.4	0.5
Employment rate	54.2	53.9	0.6	-0.3	-1.5	-1.8

See notes at the end of the table.

Table 5-1 – continued

Labour force characteristics by census metropolitan area (seasonally adjusted) — 3 month moving average

	July 2010	August 2010	S.E. ¹	Change from			Percent change from		
				last month	last December	twelve months ago	last month	last December	twelve months ago
in thousands (except rates)									
Sherbrooke, Quebec									
Population	142.2	142.4	...	0.2	1.4	2.1	0.1	1.0	1.5
Labour force	91.9	92.4	0.8	0.5	2.0	1.8	0.5	2.2	2.0
Employment	84.6	85.3	0.8	0.7	-0.1	1.3	0.8	-0.1	1.5
Unemployment	7.2	7.1	0.3	-0.1	2.1	0.5	-1.4	42.0	7.6
Participation rate	64.6	64.9	0.6	0.3	0.8	0.3
Unemployment rate	7.8	7.7	0.4	-0.1	2.2	0.4
Employment rate	59.5	59.9	0.6	0.4	-0.7	0.0
Montréal, Quebec									
Population	3,142.6	3,146.9	...	4.3	28.7	43.4	0.1	0.9	1.4
Labour force	2,134.5	2,131.3	7.0	-3.2	48.1	55.6	-0.1	2.3	2.7
Employment	1,954.8	1,951.8	7.2	-3.0	58.1	71.7	-0.2	3.1	3.8
Unemployment	179.7	179.4	4.8	-0.3	-10.1	-16.1	-0.2	-5.3	-8.2
Participation rate	67.9	67.7	0.2	-0.2	0.9	0.8
Unemployment rate	8.4	8.4	0.2	0.0	-0.7	-1.0
Employment rate	62.2	62.0	0.2	-0.2	1.3	1.4
Ottawa-Gatineau, Ontario/Quebec									
Population	989.7	991.0	...	1.3	9.5	14.2	0.1	1.0	1.5
Labour force	726.9	727.0	3.5	0.1	22.3	24.1	0.0	3.2	3.4
Employment	680.1	677.4	3.6	-2.7	14.7	12.9	-0.4	2.2	1.9
Unemployment	46.9	49.6	1.6	2.7	7.6	11.2	5.8	18.1	29.2
Participation rate	73.4	73.4	0.4	0.0	1.6	1.4
Unemployment rate	6.5	6.8	0.2	0.3	0.8	1.3
Employment rate	68.7	68.4	0.4	-0.3	0.9	0.4
Ottawa-Gatineau, Quebec part, Ontario/Quebec									
Population	252.1	252.6	...	0.5	3.0	4.5	0.2	1.2	1.8
Labour force	178.8	181.0	1.4	2.2	-2.7	1.2	1.2	-1.5	0.7
Employment	166.7	168.7	1.4	2.0	-4.1	-0.5	1.2	-2.4	-0.3
Unemployment	12.1	12.3	0.6	0.2	1.4	1.8	1.7	12.8	17.1
Participation rate	70.9	71.7	0.6	0.8	-1.9	-0.8
Unemployment rate	6.8	6.8	0.3	0.0	0.9	1.0
Employment rate	66.1	66.8	0.6	0.7	-2.4	-1.4
Ottawa-Gatineau, Ontario part, Ontario/Quebec									
Population	737.6	738.5	...	0.9	6.6	9.8	0.1	0.9	1.3
Labour force	548.1	546.0	3.3	-2.1	25.0	22.9	-0.4	4.8	4.4
Employment	513.4	508.7	3.3	-4.7	18.9	13.5	-0.9	3.9	2.7
Unemployment	34.8	37.3	1.5	2.5	6.2	9.4	7.2	19.9	33.7
Participation rate	74.3	73.9	0.4	-0.4	2.7	2.1
Unemployment rate	6.3	6.8	0.3	0.5	0.8	1.5
Employment rate	69.6	68.9	0.5	-0.7	2.0	0.9
Kingston, Ontario									
Population	126.4	126.5	...	0.1	0.1	0.0	0.1	0.1	0.0
Labour force	79.8	79.6	0.7	-0.2	-5.7	-1.6	-0.3	-6.7	-2.0
Employment	75.5	75.1	0.7	-0.4	-5.0	-1.0	-0.5	-6.2	-1.3
Unemployment	4.3	4.5	0.3	0.2	-0.6	-0.6	4.7	-11.8	-11.8
Participation rate	63.1	62.9	0.6	-0.2	-4.6	-1.3
Unemployment rate	5.4	5.7	0.4	0.3	-0.3	-0.6
Employment rate	59.7	59.4	0.6	-0.3	-4.0	-0.8

See notes at the end of the table.

Table 5-1 – continued

Labour force characteristics by census metropolitan area (seasonally adjusted) — 3 month moving average

	July 2010	August 2010	S.E. ¹	Change from			Percent change from		
				last month	last December	twelve months ago	last month	last December	twelve months ago
in thousands (except rates)									
Toronto, Ontario									
Population	4,762.0	4,773.0	...	11.0	74.9	111.7	0.2	1.6	2.4
Labour force	3,256.9	3,289.1	9.6	32.2	84.3	102.2	1.0	2.6	3.2
Employment	2,958.4	2,988.7	9.9	30.3	83.8	121.3	1.0	2.9	4.2
Unemployment	298.5	300.4	6.4	1.9	0.5	-19.0	0.6	0.2	-5.9
Participation rate	68.4	68.9	0.2	0.5	0.7	0.5
Unemployment rate	9.2	9.1	0.2	-0.1	-0.3	-0.9
Employment rate	62.1	62.6	0.2	0.5	0.8	1.1
Hamilton, Ontario									
Population	606.3	606.9	...	0.6	3.3	5.0	0.1	0.5	0.8
Labour force	398.9	404.1	3.4	5.2	-5.7	-0.3	1.3	-1.4	-0.1
Employment	367.9	372.4	3.4	4.5	-2.5	3.8	1.2	-0.7	1.0
Unemployment	31.0	31.7	1.6	0.7	-3.3	-4.1	2.3	-9.4	-11.5
Participation rate	65.8	66.6	0.6	0.8	-1.3	-0.6
Unemployment rate	7.8	7.8	0.4	0.0	-0.7	-1.1
Employment rate	60.7	61.4	0.6	0.7	-0.7	0.2
Kitchener, Ontario									
Population	393.3	393.9	...	0.6	3.7	5.6	0.2	0.9	1.4
Labour force	290.3	287.3	2.0	-3.0	14.2	7.9	-1.0	5.2	2.8
Employment	269.1	267.2	2.1	-1.9	19.6	15.4	-0.7	7.9	6.1
Unemployment	21.2	20.1	1.1	-1.1	-5.4	-7.6	-5.2	-21.2	-27.4
Participation rate	73.8	72.9	0.5	-0.9	2.9	0.9
Unemployment rate	7.3	7.0	0.4	-0.3	-2.3	-2.9
Employment rate	68.4	67.8	0.5	-0.6	4.3	3.0
London, Ontario									
Population	393.7	394.2	...	0.5	3.0	4.6	0.1	0.8	1.2
Labour force	263.4	260.5	1.9	-2.9	-3.1	2.7	-1.1	-1.2	1.0
Employment	241.8	238.8	1.9	-3.0	-1.5	9.3	-1.2	-0.6	4.1
Unemployment	21.6	21.7	1.1	0.1	-1.5	-6.7	0.5	-6.5	-23.6
Participation rate	66.9	66.1	0.5	-0.8	-1.3	-0.1
Unemployment rate	8.2	8.3	0.4	0.1	-0.5	-2.7
Employment rate	61.4	60.6	0.5	-0.8	-0.8	1.7
Oshawa, Ontario									
Population	299.4	300.0	...	0.6	4.0	5.9	0.2	1.4	2.0
Labour force	210.6	212.8	1.5	2.2	14.6	12.4	1.0	7.4	6.2
Employment	189.0	190.3	1.5	1.3	11.8	9.5	0.7	6.6	5.3
Unemployment	21.6	22.4	0.9	0.8	2.7	2.7	3.7	13.7	13.7
Participation rate	70.3	70.9	0.5	0.6	3.9	2.8
Unemployment rate	10.3	10.5	0.4	0.2	0.6	0.7
Employment rate	63.1	63.4	0.5	0.3	3.1	1.9
St. Catharines-Niagara, Ontario									
Population	331.0	331.2	...	0.2	0.7	1.1	0.1	0.2	0.3
Labour force	210.8	209.1	1.6	-1.7	1.2	3.3	-0.8	0.6	1.6
Employment	192.5	190.1	1.6	-2.4	4.9	4.6	-1.2	2.6	2.5
Unemployment	18.3	19.0	0.9	0.7	-3.8	-1.3	3.8	-16.7	-6.4
Participation rate	63.7	63.1	0.5	-0.6	0.2	0.8
Unemployment rate	8.7	9.1	0.4	0.4	-1.9	-0.8
Employment rate	58.2	57.4	0.5	-0.8	1.4	1.2

See notes at the end of the table.

Table 5-1 – continued

Labour force characteristics by census metropolitan area (seasonally adjusted) — 3 month moving average

	July 2010	August 2010	S.E. ¹	Change from			Percent change from		
				last month	last December	twelve months ago	last month	last December	twelve months ago
in thousands (except rates)									
Greater Sudbury / Grand Sudbury, Ontario									
Population	135.3	135.4	...	0.1	0.6	0.9	0.1	0.4	0.7
Labour force	89.5	89.9	0.8	0.4	4.9	3.1	0.4	5.8	3.6
Employment	81.9	81.3	0.8	-0.6	5.1	3.3	-0.7	6.7	4.2
Unemployment	7.6	8.6	0.4	1.0	-0.2	-0.2	13.2	-2.3	-2.3
Participation rate	66.1	66.4	0.6	0.3	3.3	1.9
Unemployment rate	8.5	9.6	0.5	1.1	-0.8	-0.5
Employment rate	60.5	60.0	0.6	-0.5	3.5	2.0
Thunder Bay, Ontario									
Population	102.8	102.8	...	0.0	-0.3	-0.5	0.0	-0.3	-0.5
Labour force	63.7	63.2	0.6	-0.5	-2.6	-2.5	-0.8	-4.0	-3.8
Employment	60.1	59.0	0.7	-1.1	-1.5	-1.0	-1.8	-2.5	-1.7
Unemployment	3.6	4.2	0.3	0.6	-1.1	-1.5	16.7	-20.8	-26.3
Participation rate	62.0	61.5	0.6	-0.5	-2.3	-2.1
Unemployment rate	5.7	6.6	0.5	0.9	-1.5	-2.1
Employment rate	58.5	57.4	0.6	-1.1	-1.3	-0.7
Windsor, Ontario									
Population	274.0	274.1	...	0.1	0.5	0.8	0.0	0.2	0.3
Labour force	175.2	173.7	1.5	-1.5	3.3	-2.6	-0.9	1.9	-1.5
Employment	154.8	154.4	1.5	-0.4	5.6	3.9	-0.3	3.8	2.6
Unemployment	20.3	19.3	1.0	-1.0	-2.3	-6.4	-4.9	-10.6	-24.9
Participation rate	63.9	63.4	0.6	-0.5	1.1	-1.1
Unemployment rate	11.6	11.1	0.5	-0.5	-1.6	-3.5
Employment rate	56.5	56.3	0.5	-0.2	1.9	1.2
Winnipeg, Manitoba									
Population	602.3	603.4	...	1.1	6.7	9.5	0.2	1.1	1.6
Labour force	429.3	430.6	1.3	1.3	12.0	9.5	0.3	2.9	2.3
Employment	403.3	404.6	1.3	1.3	9.5	8.5	0.3	2.4	2.1
Unemployment	26.0	26.0	0.8	0.0	2.6	0.9	0.0	11.1	3.6
Participation rate	71.3	71.4	0.2	0.1	1.2	0.5
Unemployment rate	6.1	6.0	0.2	-0.1	0.4	0.0
Employment rate	67.0	67.1	0.2	0.1	0.9	0.4
Regina, Saskatchewan									
Population	175.3	175.7	...	0.4	2.7	3.9	0.2	1.6	2.3
Labour force	125.9	128.0	0.7	2.1	7.6	6.1	1.7	6.3	5.0
Employment	119.9	121.9	0.8	2.0	7.4	5.2	1.7	6.5	4.5
Unemployment	6.0	6.1	0.3	0.1	0.2	0.9	1.7	3.4	17.3
Participation rate	71.8	72.9	0.4	1.1	3.3	1.9
Unemployment rate	4.8	4.8	0.3	0.0	-0.1	0.5
Employment rate	68.4	69.4	0.4	1.0	3.2	1.5
Saskatoon, Saskatchewan									
Population	208.6	209.2	...	0.6	4.2	6.0	0.3	2.0	3.0
Labour force	152.2	150.4	0.9	-1.8	-0.6	-0.2	-1.2	-0.4	-0.1
Employment	143.9	141.9	0.9	-2.0	-2.0	-1.9	-1.4	-1.4	-1.3
Unemployment	8.3	8.5	0.5	0.2	1.4	1.7	2.4	19.7	25.0
Participation rate	73.0	71.9	0.4	-1.1	-1.8	-2.2
Unemployment rate	5.5	5.7	0.3	0.2	1.0	1.2
Employment rate	69.0	67.8	0.5	-1.2	-2.4	-3.0

See notes at the end of the table.

Table 5-1 – continued

Labour force characteristics by census metropolitan area (seasonally adjusted) — 3 month moving average

	July 2010	August 2010	S.E. ¹	Change from			Percent change from		
				last month	last December	twelve months ago	last month	last December	twelve months ago
in thousands (except rates)									
Calgary, Alberta									
Population	994.4	996.6	...	2.2	14.5	22.5	0.2	1.5	2.3
Labour force	749.9	749.7	3.3	-0.2	-6.8	1.8	0.0	-0.9	0.2
Employment	698.4	699.3	3.4	0.9	-2.6	4.8	0.1	-0.4	0.7
Unemployment	51.5	50.4	2.0	-1.1	-4.2	-2.9	-2.1	-7.7	-5.4
Participation rate	75.4	75.2	0.3	-0.2	-1.8	-1.6
Unemployment rate	6.9	6.7	0.3	-0.2	-0.5	-0.4
Employment rate	70.2	70.2	0.3	0.0	-1.3	-1.1
Edmonton, Alberta									
Population	923.4	925.2	...	1.8	12.0	18.8	0.2	1.3	2.1
Labour force	663.4	662.1	3.2	-1.3	-3.1	-3.7	-0.2	-0.5	-0.6
Employment	617.4	615.8	3.4	-1.6	0.9	0.2	-0.3	0.1	0.0
Unemployment	46.0	46.2	1.9	0.2	-4.1	-4.0	0.4	-8.2	-8.0
Participation rate	71.8	71.6	0.3	-0.2	-1.2	-1.9
Unemployment rate	6.9	7.0	0.3	0.1	-0.6	-0.5
Employment rate	66.9	66.6	0.4	-0.3	-0.7	-1.3
Abbotsford, British Columbia									
Population	137.8	138.0	...	0.2	1.5	2.2	0.1	1.1	1.6
Labour force	96.6	95.7	0.8	-0.9	-0.4	2.7	-0.9	-0.4	2.9
Employment	88.8	88.3	0.9	-0.5	-0.8	3.5	-0.6	-0.9	4.1
Unemployment	7.8	7.5	0.4	-0.3	0.5	-0.7	-3.8	7.1	-8.5
Participation rate	70.1	69.3	0.6	-0.8	-1.1	0.8
Unemployment rate	8.1	7.8	0.4	-0.3	0.5	-1.0
Employment rate	64.4	64.0	0.6	-0.4	-1.3	1.6
Vancouver, British Columbia									
Population	2,034.7	2,039.8	...	5.1	35.1	51.6	0.3	1.8	2.6
Labour force	1,352.2	1,360.6	5.1	8.4	19.4	26.4	0.6	1.4	2.0
Employment	1,250.9	1,259.9	5.1	9.0	22.1	24.6	0.7	1.8	2.0
Unemployment	101.3	100.7	3.0	-0.6	-2.7	1.8	-0.6	-2.6	1.8
Participation rate	66.5	66.7	0.3	0.2	-0.2	-0.4
Unemployment rate	7.5	7.4	0.2	-0.1	-0.3	0.0
Employment rate	61.5	61.8	0.3	0.3	0.1	-0.3
Victoria, British Columbia									
Population	290.9	291.1	...	0.2	1.6	2.5	0.1	0.6	0.9
Labour force	189.8	187.6	1.5	-2.2	-10.1	-4.8	-1.2	-5.1	-2.5
Employment	178.8	177.1	1.5	-1.7	-5.8	-4.3	-1.0	-3.2	-2.4
Unemployment	11.0	10.4	0.7	-0.6	-4.4	-0.6	-5.5	-29.7	-5.5
Participation rate	65.2	64.4	0.5	-0.8	-3.9	-2.3
Unemployment rate	5.8	5.5	0.4	-0.3	-2.0	-0.2
Employment rate	61.5	60.8	0.5	-0.7	-2.4	-2.1

1. Average standard error of change in two consecutive months (see "Sampling Errors" in Data Quality for further explanations).

Note(s): All geographic regions are based on the 2001 Census boundaries. Related CANSIM Table 282-0090.

Table 5-2
Labour force characteristics by census metropolitan area (seasonally adjusted) — Monthly

	July 2010	August 2010	S.E. ¹	Change from			Percent change from		
				last month	last December	twelve months ago	last month	last December	twelve months ago
in thousands (except rates)									
Montréal, Quebec									
Population	3,146.6	3,151.2	...	4.6	29.5	44.6	0.1	0.9	1.4
Labour force	2,125.7	2,124.8	14.7	-0.9	23.2	40.3	0.0	1.1	1.9
Employment	1,942.3	1,941.9	14.7	-0.4	38.3	55.4	0.0	2.0	2.9
Unemployment	183.4	182.8	11.1	-0.6	-15.2	-15.2	-0.3	-7.7	-7.7
Participation rate	67.6	67.4	0.5	-0.2	0.1	0.3
Unemployment rate	8.6	8.6	0.5	0.0	-0.8	-0.9
Employment rate	61.7	61.6	0.5	-0.1	0.6	0.9
Toronto, Ontario									
Population	4,772.6	4,784.1	...	11.5	78.4	114.1	0.2	1.7	2.4
Labour force	3,273.6	3,336.1	20.5	62.5	128.5	134.4	1.9	4.0	4.2
Employment	2,983.9	3,019.5	20.2	35.6	114.6	134.2	1.2	3.9	4.7
Unemployment	289.6	316.6	15.2	27.0	13.9	0.2	9.3	4.6	0.1
Participation rate	68.6	69.7	0.4	1.1	1.5	1.1
Unemployment rate	8.8	9.5	0.5	0.7	0.1	-0.4
Employment rate	62.5	63.1	0.4	0.6	1.4	1.3
Vancouver, British Columbia									
Population	2,039.6	2,044.7	...	5.1	36.1	52.7	0.3	1.8	2.6
Labour force	1,359.2	1,372.6	10.7	13.4	29.2	34.6	1.0	2.2	2.6
Employment	1,261.3	1,272.2	10.5	10.9	31.0	36.9	0.9	2.5	3.0
Unemployment	97.9	100.4	7.5	2.5	-1.8	-2.3	2.6	-1.8	-2.2
Participation rate	66.6	67.1	0.5	0.5	0.2	-0.1
Unemployment rate	7.2	7.3	0.5	0.1	-0.3	-0.4
Employment rate	61.8	62.2	0.5	0.4	0.4	0.2

1. Average standard error of change in two consecutive months (see "Sampling Errors" in Data Quality for further explanations).

Note(s): All geographic regions are based on the 2001 Census boundaries. Related CANSIM Table 282-0091.

Table 6-1

Labour force characteristics by province and economic region ¹, unadjusted for seasonality, 3 month moving average ending in August 2009 and August 2010

	Population	Labour force			Participation rate	Unemployment rate	Employment rate
		Labour force	Employment	Unemployment			
	in thousands						
Canada ²							
2009	27,325.6	18,727.8	17,103.3	1,624.5	68.5	8.7	62.6
2010	27,737.1	19,030.6	17,478.4	1,552.2	68.6	8.2	63.0
Newfoundland and Labrador							
2009	428.8	268.3	231.0	37.3	62.6	13.9	53.9
2010	431.7	271.5	236.4	35.1	62.9	12.9	54.8
Avalon Peninsula [1010]							
2009	215.5	142.4	127.2	15.1	66.1	10.6	59.0
2010	218.7	148.7	133.4	15.3	68.0	10.3	61.0
South Coast-Burin Peninsula [1020]							
2009	31.9	16.5	13.6	2.9	51.7	17.6	42.6
2010	31.4	18.1	14.6	3.6	57.6	19.9	46.5
West Coast-Northern Peninsula-Labrador [1030]							
2009	88.1	53.1	44.5	8.6	60.3	16.2	50.5
2010	88.3	51.6	43.4	8.2	58.4	15.9	49.2
Notre Dame-Central Bonavista Bay [1040]							
2009	93.4	56.3	45.7	10.7	60.3	19.0	48.9
2010	93.2	53.1	45.1	8.0	57.0	15.1	48.4
Prince Edward Island							
2009	116.2	82.6	74.8	7.8	71.1	9.4	64.4
2010	117.4	84.5	76.9	7.6	72.0	9.0	65.5
Nova Scotia							
2009	772.5	508.7	464.2	44.5	65.9	8.7	60.1
2010	776.3	515.6	470.0	45.6	66.4	8.8	60.5
Cape Breton [1210]							
2009	114.9	65.7	56.8	8.8	57.2	13.4	49.4
2010	114.2	69.4	59.2	10.2	60.8	14.7	51.8
North Shore [1220]							
2009	131.3	81.1	72.1	8.9	61.8	11.0	54.9
2010	131.4	82.1	74.8	7.3	62.5	8.9	56.9
Annapolis Valley [1230]							
2009	101.7	61.7	57.0	4.7	60.7	7.6	56.0
2010	102.2	62.2	56.8	5.4	60.9	8.7	55.6
Southern [1240]							
2009	103.3	65.4	59.4	5.9	63.3	9.0	57.5
2010	103.0	67.4	59.7	7.6	65.4	11.3	58.0
Halifax [1250]							
2009	321.3	234.9	218.8	16.1	73.1	6.9	68.1
2010	325.5	234.6	219.5	15.1	72.1	6.4	67.4
New Brunswick							
2009	621.7	418.5	382.2	36.3	67.3	8.7	61.5
2010	624.8	415.9	378.9	37.0	66.6	8.9	60.6
Campbellton-Miramichi [1310]							
2009	135.2	80.3	69.0	11.3	59.4	14.1	51.0
2010	134.6	76.6	66.0	10.6	56.9	13.8	49.0
Moncton-Richibucto [1320]							
2009	168.0	117.9	108.0	10.0	70.2	8.5	64.3
2010	170.3	118.6	110.4	8.2	69.6	6.9	64.8
Saint John-St. Stephen [1330]							
2009	143.8	99.1	93.2	5.8	68.9	5.9	64.8
2010	144.6	96.7	88.5	8.2	66.9	8.5	61.2

See notes at the end of the table.

Table 6-1 – continued

Labour force characteristics by province and economic region 1, unadjusted for seasonality, 3 month moving average ending in August 2009 and August 2010

	Population	Labour force			Participation rate	Unemployment rate	Employment rate
		Labour force	Employment	Unemployment			
	in thousands						
Fredericton-Oromocto [1340]							
2009	106.4	75.8	70.7	5.0	71.2	6.6	66.4
2010	107.3	75.9	70.7	5.3	70.7	7.0	65.9
Edmundston-Woodstock [1350]							
2009	68.2	45.4	41.3	4.1	66.6	9.0	60.6
2010	68.1	47.9	43.2	4.7	70.3	9.8	63.4
Quebec							
2009	6,438.5	4,286.7	3,927.6	359.1	66.6	8.4	61.0
2010	6,519.2	4,354.8	4,018.5	336.3	66.8	7.7	61.6
Gaspésie-Îles-de-la-Madeleine [2410]							
2009	80.8	45.7	40.0	5.7	56.6	12.5	49.5
2010	80.9	47.5	41.0	6.5	58.7	13.7	50.7
Bas-Saint-Laurent [2415]							
2009	167.6	104.6	96.1	8.5	62.4	8.1	57.3
2010	168.0	105.2	94.8	10.4	62.6	9.9	56.4
Capitale-Nationale [2420]							
2009	573.0	378.0	357.8	20.3	66.0	5.4	62.4
2010	578.9	392.7	374.9	17.8	67.8	4.5	64.8
Chaudière-Appalaches [2425]							
2009	332.1	229.4	217.3	12.1	69.1	5.3	65.4
2010	335.0	235.1	223.6	11.5	70.2	4.9	66.7
Estrie [2430]							
2009	253.5	173.6	162.0	11.6	68.5	6.7	63.9
2010	256.5	163.3	149.1	14.3	63.7	8.8	58.1
Centre-du-Québec [2433]							
2009	188.0	128.9	121.9	7.0	68.6	5.4	64.8
2010	189.8	117.1	110.3	6.8	61.7	5.8	58.1
Montréal [2435]							
2009	1,162.6	789.5	725.0	64.5	67.9	8.2	62.4
2010	1,185.2	805.9	746.9	59.0	68.0	7.3	63.0
Montréal [2440]							
2009	1,595.8	1,054.1	930.9	123.2	66.1	11.7	58.3
2010	1,603.7	1,087.0	980.4	106.6	67.8	9.8	61.1
Laval [2445]							
2009	319.1	214.4	199.2	15.2	67.2	7.1	62.4
2010	324.8	219.4	201.2	18.2	67.5	8.3	61.9
Lanaudière [2450]							
2009	374.3	262.6	241.6	21.0	70.2	8.0	64.5
2010	385.9	264.4	249.1	15.4	68.5	5.8	64.6
Laurentides [2455]							
2009	445.6	303.8	282.6	21.2	68.2	7.0	63.4
2010	456.7	309.8	287.3	22.5	67.8	7.3	62.9
Outaouais [2460]							
2009	299.4	208.7	196.7	12.1	69.7	5.8	65.7
2010	304.6	214.1	199.8	14.3	70.3	6.7	65.6
Abitibi-Témiscamingue [2465]							
2009	116.3	73.1	66.7	6.3	62.9	8.6	57.4
2010	117.1	75.7	68.9	6.8	64.6	9.0	58.8
Mauricie [2470]							
2009	219.0	131.8	117.3	14.5	60.2	11.0	53.6
2010	220.3	128.1	115.4	12.7	58.1	9.9	52.4

See notes at the end of the table.

Table 6-1 – continued

Labour force characteristics by province and economic region 1, unadjusted for seasonality, 3 month moving average ending in August 2009 and August 2010

	Population	Labour force			Participation rate	Unemployment rate	Employment rate
		Labour force	Employment	Unemployment			
	in thousands						
Saguenay-Lac-Saint-Jean [2475]							
2009	222.9	136.2	123.9	12.3	61.1	9.0	55.6
2010	223.1	133.8	124.1	9.7	60.0	7.2	55.6
Côte-Nord and Nord-du-Québec [2480, 2490]							
2009	88.7	52.3	48.7	3.6	59.0	6.9	54.9
2010	88.6	55.7	51.9	3.8	62.9	6.8	58.6
Ontario							
2009	10,664.9	7,309.4	6,586.9	722.5	68.5	9.9	61.8
2010	10,823.8	7,446.6	6,765.4	681.2	68.8	9.1	62.5
Ottawa [3510]							
2009	1,004.7	719.0	675.0	44.0	71.6	6.1	67.2
2010	1,015.7	736.8	680.6	56.2	72.5	7.6	67.0
Kingston-Pembroke [3515]							
2009	361.4	234.6	214.1	20.6	64.9	8.8	59.2
2010	362.1	221.8	204.3	17.6	61.3	7.9	56.4
Muskoka-Kawartha [3520]							
2009	312.9	191.7	178.7	13.0	61.3	6.8	57.1
2010	314.8	190.2	173.8	16.4	60.4	8.6	55.2
Toronto [3530]							
2009	4,910.9	3,412.8	3,041.9	370.9	69.5	10.9	61.9
2010	5,024.3	3,534.6	3,178.3	356.4	70.4	10.1	63.3
Kitchener-Waterloo-Barrie [3540]							
2009	999.0	719.6	652.4	67.2	72.0	9.3	65.3
2010	1,014.5	737.5	679.5	58.0	72.7	7.9	67.0
Hamilton-Niagara Peninsula [3550]							
2009	1,151.7	776.9	704.9	72.1	67.5	9.3	61.2
2010	1,161.5	776.0	714.7	61.3	66.8	7.9	61.5
London [3560]							
2009	521.0	355.3	316.5	38.8	68.2	10.9	60.7
2010	526.6	357.3	326.0	31.2	67.9	8.7	61.9
Windsor-Sarnia [3570]							
2009	527.2	340.0	294.9	45.1	64.5	13.3	55.9
2010	528.5	338.4	300.2	38.2	64.0	11.3	56.8
Stratford-Bruce Peninsula [3580]							
2009	248.7	164.8	150.6	14.2	66.3	8.6	60.6
2010	249.6	163.8	153.7	10.1	65.6	6.2	61.6
Northeast [3590]							
2009	454.7	284.1	257.2	27.0	62.5	9.5	56.6
2010	455.5	285.4	258.0	27.4	62.7	9.6	56.6
Northwest [3595]							
2009	172.5	110.6	100.8	9.8	64.1	8.9	58.4
2010	170.7	104.9	96.4	8.5	61.5	8.1	56.5
Manitoba							
2009	923.8	654.4	617.9	36.5	70.8	5.6	66.9
2010	937.5	668.7	629.9	38.9	71.3	5.8	67.2
Southeast [4610]							
2009	81.1	55.6	52.0	3.6	68.6	6.5	64.1
2010	83.7	61.7	58.3	3.4	73.7	5.5	69.7
South Central [4620]							
2009	45.2	32.3	31.2	1.2	71.5	3.7	69.0
2010	46.3	33.1	32.0	1.0	71.5	3.0	69.1

See notes at the end of the table.

Table 6-1 – continued

Labour force characteristics by province and economic region 1, unadjusted for seasonality, 3 month moving average ending in August 2009 and August 2010

	Population	Labour force			Participation rate	Unemployment rate	Employment rate
		Labour force	Employment	Unemployment			
	in thousands						
Southwest [4630]							
2009	83.1	59.0	56.2	2.8	71.0	4.7	67.6
2010	83.6	55.8	53.3	2.5	66.7	4.5	63.8
North Central [4640]							
2009	36.3	25.1	23.6	1.5	69.1	6.0	65.0
2010	36.7	25.3	24.2	1.1	68.9	4.3	65.9
Winnipeg [4650]							
2009	547.3	391.9	368.1	23.7	71.6	6.0	67.3
2010	555.2	400.1	374.1	26.0	72.1	6.5	67.4
Interlake [4660]							
2009	71.9	50.5	48.4	2.0	70.2	4.0	67.3
2010	73.1	52.0	49.3	2.7	71.1	5.2	67.4
Parklands and North [4670, 4680]							
2009	58.8	40.1	38.3	1.8	68.2	4.5	65.1
2010	58.9	40.7	38.6	2.1	69.1	5.2	65.5
Saskatchewan							
2009	780.2	555.8	527.8	28.0	71.2	5.0	67.6
2010	792.2	565.9	535.7	30.2	71.4	5.3	67.6
Regina-Moose Mountain [4710]							
2009	231.0	166.2	158.5	7.7	71.9	4.6	68.6
2010	235.4	175.1	167.1	7.9	74.4	4.5	71.0
Swift Current-Moose Jaw [4720]							
2009	84.2	56.9	54.8	2.0	67.6	3.5	65.1
2010	84.5	57.6	54.6	2.9	68.2	5.0	64.6
Saskatoon-Biggar [4730]							
2009	246.0	185.9	176.7	9.2	75.6	4.9	71.8
2010	252.0	183.9	173.8	10.2	73.0	5.5	69.0
Yorkton-Melville [4740]							
2009	64.7	42.3	40.4	1.9	65.4	4.5	62.4
2010	64.7	44.4	42.6	1.9	68.6	4.3	65.8
Prince Albert and Northern [4750, 4760]							
2009	154.2	104.6	97.3	7.2	67.8	6.9	63.1
2010	155.6	104.9	97.6	7.3	67.4	7.0	62.7
Alberta							
2009	2,870.0	2,164.3	2,010.6	153.8	75.4	7.1	70.1
2010	2,929.8	2,172.6	2,029.5	143.2	74.2	6.6	69.3
Lethbridge-Medicine Hat [4810]							
2009	212.5	146.9	136.7	10.2	69.1	6.9	64.3
2010	214.9	154.2	144.1	10.1	71.8	6.5	67.1
Camrose-Drumheller [4820]							
2009	156.6	114.5	108.4	6.1	73.1	5.3	69.2
2010	157.7	115.2	110.2	5.0	73.1	4.3	69.9
Calgary [4830]							
2009	1,052.5	817.7	760.6	57.1	77.7	7.0	72.3
2010	1,078.6	820.7	763.6	57.1	76.1	7.0	70.8
Banff-Jasper-Rocky Mountain House [4840]							
2009	69.7	56.1	53.4	2.7	80.5	4.8	76.6
2010	70.7	56.8	54.2	2.7	80.3	4.8	76.7
Red Deer [4850]							
2009	151.1	111.3	102.5	8.8	73.7	7.9	67.8
2010	155.2	113.1	107.8	5.4	72.9	4.8	69.5

See notes at the end of the table.

Table 6-1 – continued

Labour force characteristics by province and economic region 1, unadjusted for seasonality, 3 month moving average ending in August 2009 and August 2010

	Population	Labour force			Participation rate	Unemployment rate	Employment rate
		Labour force	Employment	Unemployment			
	in thousands						
Edmonton [4860]							
2009	941.6	699.3	646.2	53.0	74.3	7.6	68.6
2010	961.4	693.2	643.8	49.4	72.1	7.1	67.0
Athabasca-Grande Prairie-Peace River [4870]							
2009	191.0	144.9	132.9	12.0	75.9	8.3	69.6
2010	194.6	143.6	134.6	9.1	73.8	6.3	69.2
Wood Buffalo-Cold Lake [4880]							
2009	95.0	73.7	69.8	3.9	77.6	5.3	73.5
2010	96.8	75.8	71.4	4.4	78.3	5.8	73.8
British Columbia							
2009	3,709.0	2,479.1	2,280.5	198.6	66.8	8.0	61.5
2010	3,784.5	2,534.4	2,337.2	197.2	67.0	7.8	61.8
Vancouver Island and Coast [5910]							
2009	640.1	409.5	382.4	27.1	64.0	6.6	59.7
2010	648.1	416.1	389.4	26.7	64.2	6.4	60.1
Lower Mainland-Southwest [5920]							
2009	2,261.4	1,536.0	1,418.6	117.4	67.9	7.6	62.7
2010	2,318.5	1,566.7	1,443.2	123.5	67.6	7.9	62.2
Thompson-Okanagan [5930]							
2009	438.2	280.7	253.7	27.0	64.1	9.6	57.9
2010	445.8	292.4	269.2	23.2	65.6	7.9	60.4
Kootenay [5940]							
2009	123.3	76.8	69.9	6.9	62.3	9.0	56.7
2010	124.0	78.9	70.6	8.3	63.6	10.5	56.9
Cariboo [5950]							
2009	127.5	87.7	76.1	11.7	68.8	13.3	59.7
2010	128.8	92.4	84.6	7.7	71.7	8.3	65.7
North Coast and Nechako [5960, 5970]							
2009	65.2	47.3	42.1	5.2	72.5	11.0	64.6
2010	64.8	45.4	40.5	4.9	70.1	10.8	62.5
Northeast [5980]							
2009	53.4	41.0	37.7	3.4	76.8	8.3	70.6
2010	54.6	42.5	39.6	2.9	77.8	6.8	72.5

1. For geographic descriptions of economic regions, refer to the Guide to the Labour Force Survey (catalogue number 71-543-GIE).

2. Estimates for Canada are a sum of the provincial totals and exclude estimates from Yukon, Northwest Territories and Nunavut.

Note(s): All geographic regions are based on the 2001 Census boundaries. Related CANSIM table 282-0054.

Table 6-2
Labour force characteristics by territories, unadjusted for seasonality, 3 month moving average ending in
August 2009 and August 2010

	Population	Labour force			Participation rate	Unemployment rate	Employment rate
		Labour force	Employment	Unemployment			
	in thousands				percent		
Yukon ¹							
2009	24.2	18.0	17.0	1.0	74.4	5.6	70.2
2010	24.9	18.7	17.5	1.2	75.1	6.4	70.3
Northwest Territories ²							
2009	31.5	22.8	21.2	1.6	72.4	7.0	67.3
2010	31.7	23.8	21.9	1.9	75.1	8.0	69.1
Nunavut ³							
2009	18.6	11.7	10.0	1.7	62.9	14.8	53.6
2010	19.3	12.8	10.6	2.2	66.5	17.4	55.0

1. Since 1992, the Labour force survey (LFS) has been conducted in the Yukon, using an alternative methodology that accommodates some of the operational difficulties inherent to remote locales. These estimates are not included in the national totals. In 1995, the LFS in the Yukon underwent a sample redesign. One result of the redesign was that the covered population increased from 85% to 92%, which is reflected by the sharp increase in the three month moving averages estimates of January, February and March of 1995 for all the level estimates. Users are therefore warned to be cautious when comparing estimates before January 1995 to estimates for January 1995 and forward.
2. Since 2001, the Labour force survey (LFS) has been administered in the Northwest Territories, using an alternative methodology that accommodates some of the operational difficulties inherent to remote locales. These estimates are not included in national totals.
3. Since 2004, the Labour force survey (LFS) has been administered in Nunavut, using an alternative methodology that accommodates some of the operational difficulties inherent to remote locales. These estimates are 3-month moving averages and are not included in national totals. From January 2004 to December 2007, estimates represent about 70% of all Nunavut residents aged 15 and over. Starting in January 2008, coverage was extended to 92%, so that by March 2008, the 3-month moving average is completely based on the extended coverage. Because of the large difference in coverage, users are recommended not to compare estimates prior to January 2008 with data afterwards. The January and February 2008 3-month moving average estimates are based on a mix of both coverages, since the extended coverage was introduced in January 2008. Estimates from January 2004 to December 2007 are based on the 10 largest communities in Nunavut: Iqaluit, Rankin Inlet, Cambridge Bay, Kugluktuk, Baker Lake, Arviat, Pond Inlet, Cape Dorset, Pangnirtung, Igloolik. Estimates from March 2008 to present cover the above communities as well as: Taloyoak, Gjoa Haven, Kugaaruk, Coral Harbour, Repulse Bay, Qikiqtarjuaq, Arctic Bay, Hall Beach, Clyde River.

Note(s): Related CANSIM table 282-0100.

Table 7
Average usual hours and wages of employees by selected characteristics, Canada, unadjusted for seasonality

	Employees				Full-time			Part-time		
	Number	Average weekly hours	Average weekly wages	Average hourly wages	Number	Average weekly hours	Average weekly wages	Number	Average weekly hours	Average weekly wages
	thousands		current dollars		thousands		current dollars	thousands		current dollars
August 2010										
15 years and over	14,705.7	36.0	826.47	22.34	12,323.6	39.3	926.51	2,382.1	18.6	308.91
15 to 24 years	2,638.4	30.9	422.45	13.02	1,683.0	38.5	551.61	955.4	17.6	194.92
25 years and over	12,067.3	37.1	914.80	24.38	10,640.6	39.5	985.80	1,426.7	19.3	385.24
Men	7,476.9	38.4	942.51	24.07	6,763.6	40.5	1,012.88	713.3	18.1	275.23
Women	7,228.8	33.5	706.44	20.56	5,560.0	37.8	821.43	1,668.8	18.9	323.30
Union coverage										
Union coverage	4,497.3	36.3	957.42	26.12	3,944.5	38.6	1,027.74	552.8	20.1	455.70
No union coverage	10,208.4	35.8	768.77	20.68	8,379.1	39.7	878.85	1,829.3	18.2	264.55
Job permanency										
Permanent	12,405.6	36.5	874.06	23.36	10,696.2	39.3	960.68	1,709.4	19.3	332.05
Temporary	2,300.1	32.9	569.78	16.85	1,627.4	39.5	701.91	672.6	17.0	250.10
Occupation										
Management	998.8	39.8	1,388.11	34.95	967.5	40.4	1,413.41	31.3	20.2	606.32
Business, finance and administrative	2,828.8	35.4	762.07	21.17	2,447.0	38.1	833.04	381.8	17.9	307.18
Natural and applied sciences	1,117.3	38.5	1,170.54	30.47	1,079.3	39.1	1,192.73	38.0	19.7	539.73
Health	985.6	33.6	887.63	26.45	745.6	37.6	995.23	240.0	20.9	553.30
Social science, education, government service and religion	1,302.7	35.2	1,002.87	28.46	1,108.9	38.0	1,088.55	193.9	19.2	512.81
Art, culture, recreation and sport	387.9	34.9	776.89	21.89	316.9	39.0	880.62	71.0	16.5	313.60
Sales and service	3,779.2	31.7	517.23	15.35	2,515.7	38.4	665.42	1,263.5	18.4	222.20
Trades, transport and equipment operators	2,152.6	40.5	915.09	22.42	2,047.0	41.6	947.46	105.6	18.6	287.94
Occupations unique to primary industry	365.4	42.8	820.89	18.62	333.0	45.3	879.79	32.4	18.0	215.73
Occupations unique to processing, manufacturing and utilities	787.4	39.5	757.65	19.06	762.7	40.2	773.65	24.7	18.6	263.07
August 2009										
15 years and over	14,339.8	36.0	808.08	21.83	12,054.7	39.3	905.12	2,285.1	18.6	296.18
15 to 24 years	2,626.0	31.1	414.51	12.71	1,696.7	38.5	538.22	929.3	17.6	188.63
25 years and over	11,713.8	37.1	896.31	23.88	10,358.0	39.4	965.21	1,355.9	19.3	369.89
Men	7,238.0	38.3	918.41	23.54	6,562.0	40.4	984.42	676.0	18.3	277.66
Women	7,101.8	33.6	695.63	20.10	5,492.7	37.9	810.37	1,609.1	18.7	303.96
Union coverage										
Union coverage	4,332.1	36.2	918.27	25.06	3,785.1	38.6	989.86	547.0	20.1	422.89
No union coverage	10,007.8	35.9	760.38	20.44	8,269.6	39.6	866.33	1,738.1	18.1	256.30
Job permanency										
Permanent	12,193.5	36.5	854.08	22.83	10,535.3	39.3	938.47	1,658.2	19.3	317.86
Temporary	2,146.3	32.8	546.76	16.20	1,519.4	39.4	673.82	627.0	16.8	238.84
Occupation										
Management	1,019.4	39.6	1,346.63	34.13	991.9	40.1	1,368.55	27.5	21.6	555.00
Business, finance and administrative	2,780.4	35.5	754.68	20.85	2,401.8	38.2	825.69	378.6	18.4	304.18
Natural and applied sciences	1,054.7	38.5	1,171.13	30.50	1,025.2	39.0	1,185.23	29.5	21.0	681.36
Health	939.5	34.0	889.54	26.09	722.2	37.9	993.84	217.3	20.9	542.84
Social science, education, government service and religion	1,250.9	35.4	990.39	27.80	1,068.8	38.2	1,078.49	182.1	18.4	473.39
Art, culture, recreation and sport	386.2	34.1	709.31	20.38	304.9	38.9	827.51	81.3	16.3	266.00
Sales and service	3,702.4	31.9	503.01	14.89	2,508.1	38.3	641.47	1,194.2	18.4	212.22
Trades, transport and equipment operators	2,107.8	40.4	878.41	21.57	2,003.2	41.5	909.28	104.5	18.5	286.68
Occupations unique to primary industry	347.1	41.1	745.01	17.66	306.9	44.2	811.57	40.2	17.7	236.93
Occupations unique to processing, manufacturing and utilities	751.5	39.0	745.86	19.00	721.6	39.8	766.27	29.9	17.4	253.65

Note(s): Related CANSIM Tables 282-0023, 282-0069, 282-0073.

Table 8

Regional unemployment rates used by the Employment Insurance Program ¹, seasonally adjusted, 3 month moving average

Region	Effective from September 12, 2010 to October 9, 2010
	percent
Newfoundland and Labrador	
01. St. John's	7.9
02. Newfoundland and Labrador	19.8
Prince Edward Island	
03. Prince Edward Island	11.9
Nova Scotia	
04. Eastern Nova Scotia	15.7
05. Western Nova Scotia	10.9
06. Halifax	6.0
New Brunswick	
07. Fredericton-Moncton-Saint John	7.3
08. Madawaska-Charlotte ²	11.2
09. Restigouche-Albert	13.9
Quebec	
10. Gaspésie-Îles-de-la-Madeleine	18.0
11. Québec	5.4
12. Trois-Rivières	9.3
13. South Central Quebec	5.4
14. Sherbrooke	7.9
15. Montérégie	7.2
16. Montréal	8.5
17. Central Quebec	8.4
18. Northwestern Quebec	11.8
19. Bas-Saint-Laurent-Côte-Nord ³	11.9
20. Gatineau	6.7
21. Saguenay	8.2
Ontario	
22. Ottawa	6.7
23. Eastern Ontario	8.3
24. Kingston	5.7
25. Central Ontario	9.3
26. Oshawa	10.5
27. Toronto	9.1
28. Hamilton	7.9
29. St. Catharines	9.2
30. London	8.4
31. Niagara	9.7
32. Windsor	11.9
33. Kitchener	6.8
34. Huron	9.0
35. South Central Ontario	8.2
36. Sudbury	9.7
37. Thunder Bay	6.9
38. Northern Ontario	12.8
Manitoba	
39. Winnipeg	5.9
40. Southern Manitoba	5.7
41. Northern Manitoba	30.0
Saskatchewan	
42. Regina	4.9
43. Saskatoon	5.6
44. Southern Saskatchewan	6.8
45. Northern Saskatchewan	17.3

See notes at the end of the table.

Table 8 – continued

Regional unemployment rates used by the Employment Insurance Program 1, seasonally adjusted, 3 month moving average

Region	Effective from September 12, 2010 to October 9, 2010
	percent
Alberta	
46. Calgary	6.8
47. Edmonton	7.0
48. Northern Alberta	9.6
49. Southern Alberta	7.1
British Columbia	
50. Southern Interior British Columbia	9.6
51. Abbotsford	8.0
52. Vancouver	7.5
53. Victoria	6.4
54. Southern Coastal British Columbia	9.1
55. Northern British Columbia	11.4
Territories	
56. Yukon ⁴	25.0
57. Northwest Territories ⁴	25.0
58. Nunavut ⁴	25.0

1. The boundaries of these regions are determined by Human Resources and Social Development Canada (HRSDC). For geographic descriptions and maps of employment insurance regions, see the HRSDC website: <http://srv129.services.gc.ca/eiregions/en/geocont.aspx>.

2. This unemployment rate has been determined using a transition formula prescribed in the EI Regulations. For further information, see: http://www.hrsdc.gc.ca/en/cs/comm/news/2000/000913a_e.shtml.

3. This unemployment rate has been determined using a transition formula prescribed in the EI Regulations. For further information, see: http://www.hrsdc.gc.ca/en/cs/comm/news/2000/000913b_e.shtml.

4. This rate is provided by Human Resources and Skills Development Canada.

Note(s): All geographic regions are based on the 1996 Census boundaries.

Table 9-1
Students and other persons aged 15 to 24 (unadjusted) by detailed age groups

	August 2008	August 2009	August 2010	S.E. ¹	Change from		Percent change from	
					last year	two years ago	last year	two years ago
in thousands								
Students 15 to 24 years ²								
Population	2,320.4	2,385.8	2,439.5	28.8	53.7	119.1	2.3	5.1
Labour force	1,532.0	1,469.2	1,495.0	29.9	25.8	-37.0	1.8	-2.4
Employment	1,356.6	1,228.3	1,274.1	28.9	45.8	-82.5	3.7	-6.1
Full-time employment	682.6	567.6	607.9	20.3	40.3	-74.7	7.1	-10.9
Part-time employment	674.0	660.6	666.2	23.5	5.6	-7.8	0.8	-1.2
Unemployment	175.4	240.9	220.9	14.7	-20.0	45.5	-8.3	25.9
Participation rate	66.0	61.6	61.3	1.0	-0.3	-4.7
Unemployment rate	11.4	16.4	14.8	1.0	-1.6	3.4
Employment rate	58.5	51.5	52.2	1.0	0.7	-6.3
Part-time rate	49.7	53.8	52.3	1.4	-1.5	2.6
Students 15 to 16 years ²								
Population	808.6	791.7	792.8	5.2	1.1	-15.8	0.1	-2.0
Labour force	406.5	343.0	324.6	12.3	-18.4	-81.9	-5.4	-20.1
Employment	330.9	250.6	238.6	11.5	-12.0	-92.3	-4.8	-27.9
Full-time employment	93.9	60.1	60.4	5.0	0.3	-33.5	0.5	-35.7
Part-time employment	237.0	190.6	178.3	10.9	-12.3	-58.7	-6.5	-24.8
Unemployment	75.6	92.4	85.9	7.9	-6.5	10.3	-7.0	13.6
Participation rate	50.3	43.3	40.9	1.5	-2.4	-9.4
Unemployment rate	18.6	26.9	26.5	2.1	-0.4	7.9
Employment rate	40.9	31.7	30.1	1.4	-1.6	-10.8
Part-time rate	71.6	76.1	74.7	1.7	-1.3	3.1
Students 17 to 19 years ²								
Population	869.8	919.2	913.3	15.5	-5.9	43.5	-0.6	5.0
Labour force	636.3	636.7	624.3	17.1	-12.4	-12.0	-1.9	-1.9
Employment	558.8	533.2	534.3	16.9	1.1	-24.5	0.2	-4.4
Full-time employment	277.2	222.1	241.4	11.0	19.3	-35.8	8.7	-12.9
Part-time employment	281.6	311.1	292.9	14.7	-18.2	11.3	-5.9	4.0
Unemployment	77.6	103.6	90.0	9.2	-13.6	12.4	-13.1	16.0
Participation rate	73.2	69.3	68.4	1.6	-0.9	-4.8
Unemployment rate	12.2	16.3	14.4	1.5	-1.9	2.2
Employment rate	64.2	58.0	58.5	1.6	0.5	-5.7
Part-time rate	50.4	58.3	54.8	1.8	-3.5	4.4
Students 20 to 24 years ²								
Population	642.0	674.8	733.4	22.9	58.6	91.4	8.7	14.2
Labour force	489.1	489.5	546.1	20.6	56.6	57.0	11.6	11.7
Employment	466.9	444.5	501.2	19.8	56.7	34.3	12.8	7.3
Full-time employment	311.5	285.5	306.2	15.7	20.7	-5.3	7.3	-1.7
Part-time employment	155.4	159.0	195.0	13.8	36.0	39.6	22.6	25.5
Unemployment	22.2	45.0	44.9	7.9	-0.1	22.7	-0.2	102.3
Participation rate	76.2	72.5	74.5	1.8	2.0	-1.7
Unemployment rate	4.5	9.2	8.2	1.5	-1.0	3.7
Employment rate	72.7	65.9	68.3	2.0	2.4	-4.4
Part-time rate	33.3	35.8	38.9	2.5	3.1	5.6
Other persons aged 15 to 24³								
Population	2,058.1	2,011.1	1,969.4	28.8	-41.7	-88.7	-2.1	-4.3
Labour force	1,754.5	1,737.6	1,680.9	27.9	-56.7	-73.6	-3.3	-4.2
Employment	1,591.2	1,491.5	1,455.9	27.1	-35.6	-135.3	-2.4	-8.5
Full-time employment	1,327.1	1,185.8	1,125.9	25.8	-59.9	-201.2	-5.1	-15.2
Part-time employment	264.2	305.9	330.0	17.0	24.1	65.8	7.9	24.9
Unemployment	163.3	246.1	224.9	13.9	-21.2	61.6	-8.6	37.7
Participation rate	85.2	86.4	85.4	0.7	-1.0	0.1
Unemployment rate	9.3	14.2	13.4	0.8	-0.8	4.1
Employment rate	77.3	74.2	73.9	0.9	-0.2	-3.4
Part-time rate	16.6	20.5	22.7	1.0	2.2	6.1

1. Average standard error of change over the year (see "Sampling Errors" in Data Quality for further explanations).

2. Students are persons aged 15 to 24 who attended school full-time in March and who are planning to return to school in the fall.

3. Other persons are all other youths aged 15 to 24 who are not included in the student population.

Note(s): Related CANSIM Table 282-0006.

Table 9-2
Students and other persons aged 15 to 24 (unadjusted) by province

	Population		Labour force				Participation rate	Unemployment rate	Employment rate
		Labour force	Employment	Full-time employment	Part-time employment	Unemployment			
in thousands									
Students¹									
Newfoundland and Labrador									
August 2009	32.6	20.2	17.5	12.4	5.0	2.7	62.0	13.4	53.7
August 2010	31.2	17.5	14.5	8.0	6.5	3.0	56.1	17.1	46.5
Prince Edward Island									
August 2009	10.5	8.6	7.6	4.7	2.8	1.0	81.9	11.6	72.4
August 2010	10.9	8.8	8.2	5.3	2.9	0.6	80.7	6.8	75.2
Nova Scotia									
August 2009	61.7	40.0	34.0	18.0	16.0	5.9	64.8	14.8	55.1
August 2010	62.9	40.7	35.3	18.1	17.2	5.3	64.7	13.0	56.1
New Brunswick									
August 2009	52.0	37.4	33.3	19.1	14.1	4.1	71.9	11.0	64.0
August 2010	46.7	31.8	28.2	19.1	9.2	3.5	68.1	11.0	60.4
Quebec									
August 2009	534.7	348.0	288.5	138.5	150.0	59.4	65.1	17.1	54.0
August 2010	540.8	339.6	297.9	134.3	163.6	41.8	62.8	12.3	55.1
Ontario									
August 2009	1,041.7	622.3	502.1	212.0	290.1	120.2	59.7	19.3	48.2
August 2010	1,066.0	653.1	539.1	260.2	278.8	114.1	61.3	17.5	50.6
Manitoba									
August 2009	72.2	49.0	43.3	22.2	21.1	5.6	67.9	11.4	60.0
August 2010	77.8	50.5	44.4	20.8	23.6	6.1	64.9	12.1	57.1
Saskatchewan									
August 2009	61.3	39.9	36.5	19.5	17.0	3.4	65.1	8.5	59.5
August 2010	64.7	40.5	37.6	19.9	17.7	2.8	62.6	6.9	58.1
Alberta									
August 2009	224.5	135.5	119.9	63.9	56.0	15.5	60.4	11.4	53.4
August 2010	235.3	144.9	129.0	68.8	60.2	15.9	61.6	11.0	54.8
British Columbia									
August 2009	294.5	168.5	145.5	57.2	88.3	23.0	57.2	13.6	49.4
August 2010	303.1	167.7	139.9	53.5	86.5	27.7	55.3	16.5	46.2
Other persons aged 15-24²									
Newfoundland and Labrador									
August 2009	28.4	22.0	17.0	14.1	2.8	5.0	77.5	22.7	59.9
August 2010	29.4	23.1	18.4	15.2	3.2	4.7	78.6	20.3	62.6
Prince Edward Island									
August 2009	9.4	8.4	7.3	6.2	1.1	x	89.4	x	77.7
August 2010	8.9	8.0	6.8	5.8	x	1.2	89.9	15.0	76.4
Nova Scotia									
August 2009	58.3	52.4	43.9	34.4	9.5	8.5	89.9	16.2	75.3
August 2010	56.1	47.0	40.2	31.0	9.2	6.8	83.8	14.5	71.7
New Brunswick									
August 2009	41.5	35.3	30.7	27.5	3.3	4.6	85.1	13.0	74.0
August 2010	45.5	38.6	33.4	28.3	4.9	5.3	84.8	13.7	73.4
Quebec									
August 2009	428.3	367.6	317.3	261.4	55.8	50.3	85.8	13.7	74.1
August 2010	426.7	366.7	324.7	266.1	58.5	42.0	85.9	11.5	76.1
Ontario									
August 2009	704.5	612.3	510.7	379.0	131.7	101.6	86.9	16.6	72.5
August 2010	690.5	584.3	488.4	355.7	132.7	95.9	84.6	16.4	70.7
Manitoba									
August 2009	88.2	78.1	70.4	57.2	13.2	7.8	88.5	10.0	79.8
August 2010	83.7	72.5	65.0	51.1	13.8	7.6	86.6	10.5	77.7
Saskatchewan									
August 2009	77.8	67.7	62.5	54.0	8.5	5.2	87.0	7.7	80.3
August 2010	73.1	61.8	56.6	47.9	8.7	5.2	84.5	8.4	77.4
Alberta									
August 2009	283.7	246.9	215.5	185.5	30.0	31.4	87.0	12.7	76.0
August 2010	269.8	234.6	210.0	177.4	32.5	24.7	87.0	10.5	77.8

See notes at the end of the table.

Table 9-2 – continued

Students and other persons aged 15 to 24 (unadjusted) by province

	Population	Labour force					Participation rate	Unemployment rate	Employment rate
		Labour force	Employment	Full-time employment	Part-time employment	Unemployment			
		in thousands							
British Columbia									
August 2009	291.1	246.9	216.2	166.3	49.9	30.7	84.8	12.4	74.3
August 2010	285.9	244.4	212.7	147.3	65.4	31.7	85.5	13.0	74.4

1. Students are persons aged 15 to 24 who attended school full-time in March and who are planning to return to school in the fall.

2. Other persons are all other youths aged 15 to 24 who are not included in the student population.

Note(s): Related CANSIM Table 282-0006.

Data quality

About the Labour Force Survey

The statistics contained in this report are based on information obtained through a sample survey of 53,000 representative households across the country. The Labour Force Survey, started in November 1945, was taken at quarterly intervals until November 1952. It has been carried out monthly since then. The information generated by the survey has expanded considerably over the years with a major redesign of the survey content in 1976 and again in 1997, and provides a rich and detailed picture of the Canadian labour market.

The sample used in the Labour Force Survey has been designed to represent all persons in the population 15 years of age and over residing in the provinces of Canada, with the exception of the following: persons living on Indian reserves, full-time members of the armed forces and people living in institutions (for example, inmates of penal institutions and patients in hospitals or nursing homes who have resided in the institution for more than six months). Monthly estimates of employment, unemployment and persons not in the labour force refer to the specific week covered by the survey each month, normally the week containing the 15th day.

Definitions and explanations

The **labour force** is composed of those members of the civilian non-institutional population 15 years of age and over who, during the reference week, were employed or unemployed.

Employed persons are those who, during the reference week:

- (a) did any work at all
- (b) had a job but were not at work

A person is considered to be **full-time** if his/her usual hours at the main job are 30 or more hours per week. When the number of hours worked at the main job is usually less than 30 hours per week then he/she is considered to be **part-time**.

Unemployed persons are those who, during the reference week:

- (a) were without work, had actively looked for work in the past four weeks (ending with reference week), and were available for work;
- (b) had not actively looked for work in the past four weeks but were on temporary layoff and were available for work;
- (c) had not actively looked for work in the past four weeks but had a new job to start in four weeks or less from the reference week, and were available for work.

Persons in the civilian non-institutional population 15 years of age and over who, during the reference week, were neither employed nor unemployed are classified as **not in the labour force**.

The **unemployment rate** represents the number of unemployed persons expressed as a percentage of the labour force. The unemployment rate for a particular group (age, sex, etc.) is the number unemployed in that group expressed as a percentage of the labour force for that group.

The **participation rate** represents the labour force expressed as a percentage of the population 15 years of age and over. The participation rate for a particular group (age, sex, etc.) is the labour force in that group expressed as a percentage of the population for that group.

The **employment rate (formerly the employment/population ratio)** represents the number of persons employed expressed as a percentage of the population 15 years of age and over. The employment rate for a particular group (age, sex, etc.) is the number employed in that group expressed as a percentage of the population for that group.

The **part-time rate** represents the number of persons employed part-time expressed as a percentage of the employed. The part-time rate for a particular group (age, sex, etc.) is the number employed part-time in that group expressed as a percentage of the employed for that group.

All geographic regions are based on the 2001 Census boundaries.

Seasonal adjustment

Fluctuations in economic time series are caused by seasonal, cyclical and irregular movements. A seasonally adjusted series is one from which seasonal movements have been eliminated. Seasonal movements are defined as those which are caused by regular annual events such as climate, holidays, vacation periods and cycles related to crops, production and retail sales associated with Christmas and Easter. The seasonally adjusted series contains irregular as well as longer-term cyclical fluctuations.

The seasonally adjusted series are revised each year to take into account current data and to generate new forecast factors for the next twelve months. The data are therefore subject to slight revisions in future issues of this publication.

Sampling variability of estimates

Estimates in this publication are based on the Labour Force Survey, a monthly survey of approximately 53,000 households across Canada. Because the entire population is not surveyed, the estimates are subject to sampling error. While the published estimate is the best available indicator of the real value, changes in the level of any estimates between two months can be the result of a true change or sampling variability. The sampling error can be estimated by calculating the standard error for the published estimate or statistic. These standard errors have been included in the publication tables, in order to assist users in interpreting the data.

Interpretation based on standard error

Two thirds of the time (68%), a change greater than the sampling error indicates a real change. The larger the change compared to the standard error, the better the chance that we are observing a real change, as opposed to a change due to sampling variability. At the 95% level, in order to ensure that change is real, the change in the estimate must be greater than twice the sampling error.

Movements in estimates that are smaller than the sampling error are less likely to reflect a real change and more likely to be due to sampling variability. While the above is true for monthly movements, one can have more confidence in a series of consecutive movements in the same direction, even though some of the monthly movements may be smaller than the sampling error.

Interpretation based on confidence intervals

Confidence intervals provide another way of looking at the variability inherent in estimates of sample surveys. To illustrate how to calculate the confidence interval, let us say that one month the published estimate for total employment rose by 16,000 to reach 16,500,000. The associated standard error for the movement estimate is 27,200. The standard error used to interpret the movement estimate indicates that:

- There are approximately two chances in three (68%) that the real value of the movement between the two months falls within the range -11,200 to +43,200 (16,000 + or – one standard error).
- There are approximately nine chances in ten (90%) that the real value of the movement between the two months falls within the range -27,520 to +59,520 (16,000 + or – 1.6 times the standard error).
- There are approximately nineteen chances in twenty (95%) that the real value of the movement between the two months falls within the range -38,400 to +70,400 (16,000 + or – two standard errors).

For more detailed explanations on sampling variability of estimates, and in particular for information on how to assess the variability of level estimates, consult the Data quality section of the *Guide to the Labour Force Survey*, (71-543-G) on page 27.

Documentation

For more detailed information about the Labour Force Survey, see the following documents:

- Overview of the Labour Force Survey
- Guide to the Labour Force Survey (71-543-G)
- Data quality statement
- Methodology of the Canadian Labour Force Survey (71-526-X)
- LFS *geographical maps*