



Transport
Canada

Transports
Canada

TP 3322
(03/2010)

2007

Canadian Motor Vehicle Collision Statistics

Collected in cooperation
with the Canadian Council of
Motor Transport Administrators



TC-1003618



Canada

COLLISIONS AND CASUALTIES¹ 1988–2007

	COLLISIONS		VICTIMS		
	FATAL ²	PERSONAL INJURY ³	FATALITIES ⁴	SERIOUS INJURIES ⁵	INJURIES ⁶ (TOTAL)
1988	3,610	190,094	4,154	28,031	278,820
1989	3,651	192,595	4,238	27,422	285,178
1990	3,445	178,515	3,963	25,183	262,680
1991	3,228	170,693	3,690	26,035	249,217
1992	3,073	169,640	3,501	25,521	249,823
1993	3,121	168,106	3,615	23,902	247,593
1994	2,837 ^r	164,642 ^r	3,230 ^r	22,830	241,899 ^r
1995	2,817 ^r	161,950 ^r	3,313 ^r	21,494	238,458 ^r
1996	2,679	153,966	3,062	18,737	227,320
1997	2,617	147,538	3,033	17,294	217,403
1998	2,576	145,612	2,911	16,409	213,304
1999	2,635	148,660	2,984	16,186	218,437
2000	2,569	153,273	2,927	15,579	222,830
2001*	2,432	148,961	2,776	15,282	216,441
2002	2,594	153,850	2,932	15,906	222,706
2003	2,486	150,473 ^r	2,768	15,104	216,089
2004	2,430	145,256	2,722	15,605	206,232
2005	2,558	145,604	2,905	15,812	204,751
2006	2,610 ^r	142,508 ^r	2,895 ^r	15,861 ^r	199,966 ^r
2007	2,469	138,470	2,767	13,723	194,177

1. Collisions and casualties were revised from 1996 to 2005 based on submissions from one jurisdiction.
2. "Fatal collisions" include all reported motor vehicle crashes that resulted in at least one death, where death occurred within 30 days of the collision, except in Quebec (eight days).
3. "Personal injury collisions" include all reported motor vehicle crashes that resulted in at least one injury, but not death, within 30 days of the collision, except in Quebec (eight days).
4. "Fatalities" include all those who died as a result of a reported traffic collision within 30 days of its occurrence, except in Quebec (eight days).
5. "Serious injuries" include persons admitted to hospital for treatment or observation. Serious injuries were estimated from 1988 to 2006 because several jurisdictions under-reported these numbers.
6. "Total injuries" include all reported severities of injuries ranging from minimal to serious.

* Data for Nunavut are not reported for 2001, except for fatalities.

^r Revised.

FATALITIES AND INJURIES BY AGE GROUP 2007

AGE GROUP (YEARS)	FATALITIES	SERIOUS INJURIES	INJURIES (TOTAL)
0–4	19	105	2,490
5–14	80	521	9,247
15–19	301	1,721	23,608
20–24	371	1,924	25,168
25–34	436	2,451	34,407
35–44	379	2,193	31,239
45–54	398	1,915	28,557
55–64	302	1,222	17,354
65+	446	1,338	15,369
NOT STATED	35	333	6,738
TOTAL	2,767	13,723	194,177

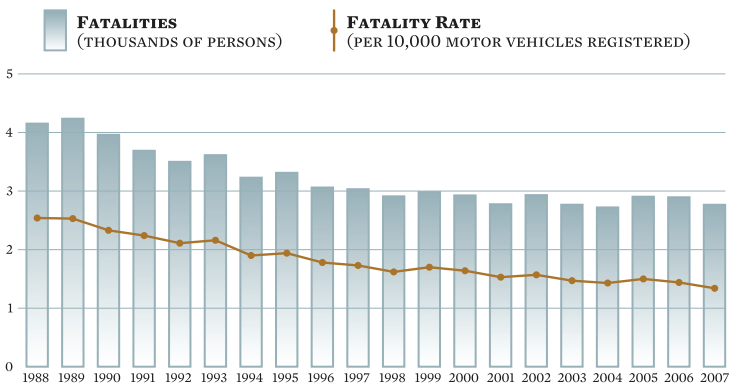
FATALITIES BY ROAD USER CLASS 2003–2007

ROAD USER CLASS		2003	2004	2005	2006	2007
DRIVERS	#	1,427 ^r	1,388 ^r	1,507 ^r	1,516 ^r	1,444
	%	51.6	51.0	51.9 ^r	52.4 ^r	52.2
PASSENGERS	#	658 ^r	648 ^r	677 ^r	614 ^r	609
	%	23.8 ^r	23.8 ^r	23.3 ^r	21.2 ^r	22.0
PEDESTRIANS	#	379	363	344	382 ^r	377
	%	13.7	13.3	11.8	13.2 ^r	13.6
BICYCLISTS	#	45	56	52	73	65
	%	1.6	2.1	1.8	2.5 ^r	2.3
MOTORCYCLISTS*	#	177	198	229	212 ^r	220
	%	6.4	7.3	7.9	7.3 ^r	8.0
NOT STATED/OTHER	#	82 ^r	69 ^r	96 ^r	98 ^r	52
	%	2.9 ^r	2.5 ^r	3.3 ^r	3.4 ^r	1.9
TOTAL	#	2,768	2,722	2,905	2,895^r	2,767
	%	100.0	100.0	100.0	100.0	100.0

* Includes moped riders. ^r Revised.



FATALITIES 1988–2007



CASUALTY RATES 2007

	PER 100,000 POPULATION ¹		PER BILLION VEHICLE-KILOMETRES ²		PER 100,000 LICENSED DRIVERS	
	FATALITIES	INJURIES	FATALITIES	INJURIES	FATALITIES	INJURIES
CANADA	8.4	589.7	8.3	584.4	12.2	859.0
N.L.	8.1	447.0	9.4	519.0	12.0	661.3
P.E.I.	5.8	587.2	5.6	565.6	8.3	837.5
N.S.	10.6	655.2	9.3	577.9	14.9	924.6
N.B.	11.9	500.2	11.0	459.5	16.6	693.9
QUE.	8.1	624.2	8.8	678.6	12.6	977.3
ONT.	6.0	523.7	6.2	534.8	8.6	749.0
MAN.	9.1	715.6	7.9	617.1	14.2	1,113.0
SASK.	14.3	684.7	10.6	509.0	20.8	993.7
ALTA.	13.0	698.7	9.6	513.2	17.6	942.9
B.C.	9.7	602.5	11.6	725.5	13.9	864.2
Y.T.	15.3	638.4	10.3	427.0	20.7	862.0
N.W.T.	11.5	358.3	13.9	435.0	20.5	638.2
NUN.	0.0	48.0	0.0	461.5	0.0	n.a.

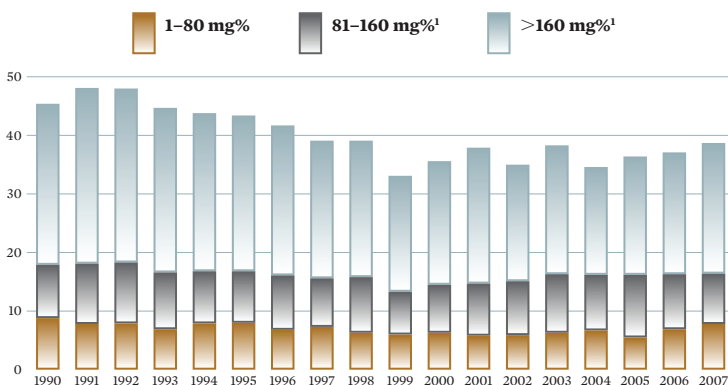
1. Statistics Canada, Annual Demographic Estimates: Canada, Provinces and Territories, 2008, Catalogue No. 91-215-X.

2. Statistics Canada, Canadian Vehicle Survey, Catalogue No. 53-223-XIE.

Note: Data for Ontario are preliminary for 2007.

n.a.: Data are not available.

PERCENTAGE OF FATALLY INJURED DRIVERS TESTED AND FOUND TO HAVE BEEN DRINKING 1990-2007 (BAC >0 mg%)*



*BAC: Blood Alcohol Concentration.

mg%: Weight of alcohol in the bloodstream stated as milligrams in 100 millilitres of blood.

1. Before 2001, BAC categories were reported as 81-150 mg% and >150 mg%.

Note: 2007 data are preliminary.

Source: Traffic Injury Research Foundation.

PERCENTAGE OF DRIVER AND PASSENGER FATALITIES AND SERIOUS INJURIES WHERE VICTIMS WERE NOT USING SEAT BELTS 2003–2007

	2003	2004	2005	2006	2007
DRIVERS					
FATALITIES	38.8	40.2	34.9	36.9	35.4
SERIOUS INJURIES	15.5	16.3	14.3	16.2	16.3
PASSENGERS					
FATALITIES	39.4	39.6	35.4	38.7	38.8
SERIOUS INJURIES	20.9	23.4	19.9	24.6	24.9

Note: "Serious injuries" include victims admitted to hospital for treatment or observation.

NUMBER OF COLLISIONS BY LOCATION 2007

LOCATION	FATAL	PERSONAL INJURY
URBAN ¹	900	97,115
RURAL ²	1,529	39,396
NOT STATED	40	1,959
TOTAL	2,469	138,470

1. Urban includes: (a) metropolitan roads and streets, and other urban areas; or (b) a speed limit at the collision site of 60 km/h or less.

2. Rural includes: (a) primary or secondary highways, as well as local roads; or (b) a speed limit at the collision site above 60 km/h.

Note: In Alberta and Saskatchewan, "urban" includes any area within the corporate boundaries of a city, town, village or hamlet. "rural" includes any area outside of what is defined as urban.

PERCENTAGE OF FATALITIES AND SERIOUS INJURIES BY ROAD USER CLASS 2007

ROAD USER CLASS	FATALITIES	SERIOUS INJURIES
DRIVERS	52.2	47.9
PASSENGERS	22.0	24.5
PEDESTRIANS	13.6	12.2
BICYCLISTS	2.3	3.1
MOTORCYCLISTS	8.0	10.1
NOT STATED/OTHER	1.9	2.2
TOTAL	100.0	100.0



PERCENTAGE OF DRIVER AND PASSENGER FATALITIES AND SERIOUS INJURIES BY AGE GROUP 2007

AGE GROUP (YEARS)	FATALITIES		SERIOUS INJURIES	
	DRIVERS	PASSENGERS	DRIVERS	PASSENGERS
0-4	0.0	2.1	0.0	2.1
5-14	0.1	8.0	0.3	7.4
15-19	9.5	16.9	9.8	18.8
20-24	14.6	13.7	13.8	16.2
25-34	18.1	15.6	20.2	15.6
35-44	15.9	9.3	18.9	11.6
45-54	15.9	10.8	16.9	9.0
55-64	12.1	7.4	10.7	6.3
65+	13.6	15.3	9.0	8.8
NOT STATED	0.2	0.9	0.4	4.2
TOTAL	100.0	100.0	100.0	100.0



NUMBER OF LICENSED DRIVERS BY GENDER AND BY AGE 2007

AGE GROUP (YEARS)	MALE	FEMALE	TOTAL
<16	28,501	18,876	47,377
16-19	569,371	500,497	1,069,868
20-24	931,621	857,178	1,788,799
25-34	1,986,612	1,908,580	3,895,192
35-44	2,312,848	2,191,394	4,504,242
45-54	2,461,033	2,314,964	4,775,997
55-64	1,817,608	1,650,183	3,467,791
65+	1,677,065	1,379,807	3,056,872
TOTAL	11,784,659	10,821,479	22,606,138

LICENSED DRIVERS AND MOTOR VEHICLE REGISTRATIONS BY TYPE OF VEHICLE (IN THOUSANDS) 1988–2007

	LICENSED DRIVERS ¹	LIGHT-DUTY VEHICLES ²	COMMERCIAL VEHICLES ³	MOTORCYCLES ⁴
1988	17,155	12,086	3,850	400
1989	17,592	12,380	3,962	378
1990	17,718	12,622	4,000	359
1991	18,090	12,578	3,516	350
1992	18,465	12,781	3,461	339
1993	18,843	12,925	3,455	337
1994	19,243	13,131	3,510	330
1995	19,327	13,192	3,535	320
1996	19,964	13,251	3,620	312
1997	20,148	13,515	3,684	319
1998	20,744 ^e	13,887	3,767	334
1999	20,934	16,538	722	274
2000	20,593	16,832	739	311
2001	20,879	17,055	729	318
2002	21,163	17,543	724	350
2003	21,436	17,755	740	373
2004	21,673	17,920	752	409
2005	21,937	18,124	786	443
2006	22,278	18,739	841	485
2007	22,606	19,199	872	522

1. Excludes temporary permits before 1999.

2. Pre-1999, these registrations include passenger automobiles. From 1999, light-duty vehicles include passenger vehicles (automobiles, passenger vans), light trucks and vans (less than 4,500 kg).

3. Pre-1999, these registrations include trucks, buses and other commercial vehicles, such as vans. From 1999, these registrations include commercial vehicles (trucks and buses) greater than 4,500 kg.

4. Includes mopeds.

^e Estimated.

Source: 1988 to 1998: Statistics Canada Road Motor Vehicles: Registrations Catalogue No. 53-219. From 1999, motor vehicle registration data are from Statistics Canada, CANSIM, Table 405-0004. From 1999, the licensed driver data were provided by each jurisdiction.

The decline in police reporting in British Columbia in years 1996 through 2004 has affected the British Columbia totals and, to a lesser extent, national totals reported in this publication.

Permission to reproduce

Transport Canada grants permission to copy and/or reproduce the contents of this publication for personal and public non-commercial use. Users must reproduce the materials accurately, identify Transport Canada as the source and not present their reproduction as an official version, or as having been produced with the help or the endorsement of Transport Canada. To request permission to reproduce materials from this publication for commercial purposes, contact Publishing and Depository Services at 613-996-6886 or by email at droitdauteur.copyright@tpsgc.pwgsc.gc.ca.

To find out more about national road safety programs or initiatives, call Transport Canada toll free at 1-800-333-0371 or email us at roadsafetywebmail@tc.gc.ca. You can also visit our website at www.tc.gc.ca/roadsafety or the Canadian Council of Motor Transport Administrators' website at www.ccmta.ca.

© Her Majesty the Queen in right of Canada
represented by the Minister of Transport, 2010