



**FOR IMMEDIATE RELEASE**  
**POUR PUBLICATION IMMÉDIATE**

**April 29, 2005**  
**le 29 avril 2005**

**CONTENTS**  
**TABLE DES MATIÈRES**

| <u>Page</u><br><u>Page</u> |  | <u>Table</u> <sup>1</sup><br><u>Tableau</u> <sup>1</sup> |
|----------------------------|--|--|
| * 3                        | Bank of Canada: assets and liabilities / <i>Banque du Canada : actif et passif</i>   | B2   |
| 4, 5                       | Chartered bank assets / <i>Actif des banques à charte</i>  | C1   |
| 5, 6                       | Chartered bank liabilities / <i>Passif des banques à charte</i>  | C2   |
| 7                          | Selected seasonally adjusted series: Chartered bank assets and liabilities<br><i>Quelques statistiques bancaires désaisonnalisées : Avoirs et engagements des banques à charte</i> | C8   |
| * 7                        | Positions of Members of the Canadian Payments Association with the Bank of Canada<br><i>Positions des Membres de l'Association canadienne des paiements à la Banque du Canada</i>  | B3   |
| * 7                        | Bank of Canada buy-back transactions<br><i>Opérations à réméré de la Banque du Canada</i>  | B3   |
| * 8, 9, 10                 | Financial market statistics / <i>Statistiques du marché financier</i>  | F1   |
| * 10                       | Exchange rates / <i>Cours du change</i>  | I1   |
| 11, 12                     | Monetary aggregates / <i>Agrégats monétaires</i>   | E1   |
| 13, 14, 15                 | Credit measures / <i>Mesures du crédit</i>   | E2   |
| * 16                       | Government of Canada securities outstanding / <i>Encours des titres du gouvernement canadien</i>   | G4   |
| * 16                       | Government of Canada deposits / <i>Dépôts du gouvernement canadien</i>   |  |
| * 17                       | Net new securities issues placed in Canada and abroad<br><i>Émissions nettes de titres placés au Canada et à l'étranger</i>  | F4   |
| * 17                       | Corporate short-term paper outstanding / <i>Encours des effets à court terme des sociétés</i>  | F2   |
| * 18, 19                   | Charts: interest rates, exchange rates and monetary conditions index<br><i>Graphiques : taux d'intérêt, cours du change et indice des conditions monétaires</i>                    |  |
| * 20                       | Consumer Price Index and monetary conditions index<br><i>Indice des prix à la consommation et indice des conditions monétaires</i>   |  |

The *Weekly Financial Statistics* publication (including a schedule for the release of data) and information on the Bank of Canada are available on the Internet at the Bank of Canada Web site: [www.bank-banque-canada.ca](http://www.bank-banque-canada.ca). For information on the contents of the *Weekly Financial Statistics* contact Maureen Tootle (613) 782-7333 or [wfsmail@bank-banque-canada.ca](mailto:wfsmail@bank-banque-canada.ca)

*On peut consulter le Bulletin hebdomadaire de statistiques financières (y compris le calendrier des dates de publication des données) et obtenir des renseignements sur la Banque du Canada dans Internet (site Web) à l'adresse suivante : [www.bank-banque-canada.ca](http://www.bank-banque-canada.ca). Pour en savoir plus sur le contenu du Bulletin hebdomadaire de statistiques financières, prière de communiquer avec Maureen Tootle au (613) 782-7333 ou à l'adresse électronique [wfsmail@bank-banque-canada.ca](mailto:wfsmail@bank-banque-canada.ca)*

Data in this package are unadjusted unless otherwise stated / À moins d'indication contraire, les données de cette publication n'ont pas été désaisonnalisées.

For all Wednesday series, in the event a holiday falls on a Wednesday, data for the preceding business day will be shown.

*Si un jour férié tombe un mercredi, ce sont les séries du jour ouvrable précédent qui sont présentées.*

"R" revised / révisé

\* New information this week. / Nouvelles données de cette semaine

(1) Refers to the corresponding *Bank of Canada Banking and Financial Statistics* tables and footnotes. / Renvoie à la note ou au tableau correspondant dans les *Statistiques bancaires et financières* de la Banque du Canada.

**Note to users (over)**  
**Avis aux Utilisateurs (verso)**

**\*\*\* Note to Users \*\*\***

Beginning January 2003, data on pages 12 and 16 of the *Weekly Financial Statistics* have been revised to reflect improved methodology in capturing the domestic, foreign, and retail portions of the Government of Canada debt figures, as well as some revisions to that same time period. Other direct and guaranteed securities and marketable bonds and notes have been revised to take into account the use of the daily exchange rates instead of the effective previous quarter-end exchange rate. Canada Savings Bonds and other retail instruments have been revised due to the inclusion of Canada Investment Bonds. Government of Canada Accounts, bonds, have been revised due to the inclusion of Trusted Promissory Notes. Net New Issues of Government of Canada debt shown on page 17 have also been revised to reflect these changes.

**\*\*\* Avis aux Utilisateurs \*\*\***

*Les données présentées aux pages 12 et 16 du Bulletin hebdomadaire de statistiques financières ont été révisées à partir de janvier 2003, par suite de l'application d'une méthode améliorée de collecte des chiffres relatifs aux emprunts du gouvernement du Canada (dettes intérieure et extérieure, et titres de placement au détail), ainsi que de certaines autres modifications. Les données figurant sous les rubriques Autres titres émis ou garantis et Obligations et billets négociables ont été modifiées pour tenir compte de l'utilisation des taux de change quotidiens au lieu du taux de change effectif à la fin du trimestre précédent. Les chiffres concernant les Obligations d'épargne du Canada et autres titres de placement ont été révisés par suite de l'inclusion des Titres de placement du Canada, tandis que les données relatives aux obligations sous Comptes du gouvernement canadien l'ont été par suite de l'inclusion des billets à ordre fiables. Les chiffres se rapportant aux émissions nettes de titres du gouvernement du Canada figurant à la page 17 ont aussi été modifiées en raison de ces changements.*

Subscriptions or copies of Bank of Canada publications may be obtained from: Publications Distribution Section, Bank of Canada, Communications Services, Ottawa, Ontario, Canada K1A 0G9. Remittances in CANADIAN DOLLARS should be made payable to the Bank of Canada. For further information, please call (613) 782-8248.

*Pour s'abonner aux publications de la Banque du Canada ou en obtenir des exemplaires, il suffit de s'adresser au Service de diffusion des publications, Banque du Canada, Services de communication, Ottawa, Ontario, CANADA K1A 0G9. Les paiements doivent être libellés EN DOLLARS CANADIENS et faits à l'ordre de la Banque du Canada. Pour de plus amples renseignements, composer le (613) 782-8248.*

| <b>Regular subscription</b>  | <b>Abonnement ordinaire</b>   |
|--|---|
| Delivery in Canada by mail or at Bank of Canada Regional Offices \$55.00   | <i>Livraison au Canada par la poste ou aux bureaux régionaux de la Banque du Canada 55,00 \$</i>  |
| Delivery to the United States \$70.00  | <i>Livraison aux États-Unis 70,00 \$</i>  |
| Delivery to all other countries \$110.00   | <i>Livraison dans les autres pays 110,00 \$</i>   |
| <b>Library subscription *</b>  | <b>Abonnement pour bibliothèques *</b>  |
| Delivery in Canada \$45.00   | <i>Livraison au Canada 45,00 \$</i>   |
| Delivery to the United States \$55.00  | <i>Livraison aux États-Unis 55,00 \$</i>  |
| Delivery to all other countries \$85.00  | <i>Livraison dans les autres pays 85,00 \$</i>  |
| <b>Single copies</b>   | <b>Achats à l'exemplaire</b>  |
| Delivered by mail \$2.00   | <i>Livraison par la poste 2,00 \$</i>   |
| Picked up at Bank of Canada Regional Offices \$1.25  | <i>Aux bureaux régionaux de la Banque du Canada 1,25 \$</i>   |
| <ul style="list-style-type: none"> <li>All Canadian orders and subscriptions must add 7% GST and PST where applicable.</li> </ul>  | <ul style="list-style-type: none"> <li><i>Ajouter au montant de tous les abonnements et commandes en provenance du Canada 7 % pour la TPS et la taxe de vente provinciale, s'il y a lieu.</i></li> </ul>                                      |
| <ul style="list-style-type: none"> <li>Back copies of the WEEKLY FINANCIAL STATISTICS will not be available.</li> </ul>  | <ul style="list-style-type: none"> <li><i>Les anciens numéros du BULLETIN ne sont pas disponibles.</i></li> </ul>   |
| <ul style="list-style-type: none"> <li>* Rates for Canadian governmental and public libraries and libraries of Canadian and foreign educational institutions.</li> </ul> | <ul style="list-style-type: none"> <li><i>Tarif pour les bibliothèques des divers ordres de gouvernement au Canada, les bibliothèques publiques et les bibliothèques des établissements d'enseignement canadiens et étrangers.</i></li> </ul> |

Contents may be reproduced or referred to provided that the *Weekly Financial Statistics* with its date, is specifically quoted as the source.

*Reproduction autorisée à condition que la source—Bulletin hebdomadaire de statistiques financières—et la date soient formellement indiquée.*

| Average of Wednesdays and Wednesday                    |   | BANK OF CANADA: ASSETS AND LIABILITIES (Millions of dollars) <sup>1</sup><br><i>BANQUE DU CANADA : ACTIF ET PASSIF (En millions de dollars)<sup>1</sup></i> |  |                                      |                  |                            |  |   |   |                  |                       | BFS Table B2<br>SBF Tableau B2 |
|--|---|---|--|--------------------------------------|------------------|----------------------------|--|---|---|------------------|-----------------------|--------------------------------|
| Moyenne mensuelle des mercredis ou données du mercredi |   | <i>Actif</i>  |  |                                      |                  |                            |  |   |   |                  |                       |                                |
|  |   | Government of Canada direct and guaranteed securities<br><i>Titres émis ou garantis par le gouvernement canadien</i>  |  |                                      |                  | Advances<br><i>Avances</i> | Other investments <sup>2</sup><br><i>Autres placements<sup>2</sup></i> | Foreign currency deposits<br><i>Dépôts en monnaies étrangères</i> | All other assets<br><i>Autres éléments de l'actif</i>   |                  | Total<br><i>Total</i> |                                |
|  |   | Treasury bills (amortized value)<br><i>Bons du Trésor (valeur après amortissement)</i>  | Other<br><i>Autres</i>                     | Total<br><i>Total</i>                |                  |                            |  |   | Of which:<br>Held under purchase and resale agreements <sup>3</sup><br><i>Dont : Des effets pris en pension<sup>3</sup></i> |                  |                       |                                |
|  |   |   | 3 years and under<br><i>3 ans ou moins</i> | Over 3 years<br><i>Plus de 3 ans</i> |                  |                            |  |   |   |                  |                       |                                |
|  |   | V36598<br>V36612  | V36600<br>V36614                           | V36601<br>V36615                     | V36597<br>V36611 | V36648<br>V36634           | V36602/V36608<br>V36616/V36621   | V36609<br>V36622  | V36649<br>V36635  | V36637<br>V36623 | V36596<br>V36610      |                                |
| 2005   | J | 13,266  | 9,154                                      | 20,480                               | 42,899           | 7                          | 3  | 258   | 952   | 390              | 44,118                |                                |
|  | F | 12,611  | 9,154                                      | 20,786                               | 42,551           | 33                         | 3  | 261   | 686   | -                | 43,534                |                                |
|  | M | 12,707  | 9,231                                      | 21,024                               | 42,961           | 24                         | 3  | 255   | 608   | -                | 43,851                |                                |
|  | A | 12,590  | 9,380                                      | 21,023                               | 42,992           | -                          | 3  | 261   | 753   | -                | 44,008                |                                |
| 2005   | M | 2   | 12,621                                     | 9,131                                | 21,024           | 42,776                     | 13   | 3   | 262   | 546              | 43,600                |                                |
|  |   | 9   | 12,634                                     | 9,131                                | 21,024           | 42,790                     | -  | 3   | 253   | 579              | 43,624                |                                |
|  |   | 16  | 12,732                                     | 9,131                                | 21,024           | 42,887                     | 74   | 3   | 257   | 605              | 43,825                |                                |
|  |   | 23  | 12,759                                     | 9,380                                | 21,023           | 43,163                     | 35   | 3   | 255   | 639              | 44,094                |                                |
|  |   | 30  | 12,787                                     | 9,380                                | 21,023           | 43,191                     | -  | 3   | 249   | 671              | 44,114                |                                |
|  | A | 6   | 12,759                                     | 9,380                                | 21,023           | 43,162                     | -  | 3   | 255   | 703              | 44,124                |                                |
|  |   | 13  | 12,438                                     | 9,380                                | 21,023           | 42,841                     | -  | 3   | 261   | 737              | 43,842                |                                |
|  |   | 20  | 12,500                                     | 9,380                                | 21,023           | 42,903                     | -  | 3   | 261   | 768              | 43,935                |                                |
|  |   | 27  | 12,661                                     | 9,380                                | 21,022           | 43,063                     | -  | 3   | 265   | 801              | 44,133                |                                |

Changes from the date indicated: / *Variations par rapport à la date indiquée :*

|      |   |    |       |     |     |       |     |   |     |    |   |       |
|------|---|----|-------|-----|-----|-------|-----|---|-----|----|---|-------|
| 2004 | A | 28 | 1,151 | 648 | -28 | 1,772 | -59 | - | -20 | 15 | - | 1,709 |
| 2005 | A | 20 | 161   | -   | -1  | 160   | -   | - | 4   | 33 | - | 198   |

| Average of Wednesdays and Wednesday                    |   | BANK OF CANADA: ASSETS AND LIABILITIES (Millions of dollars)<br><i>BANQUE DU CANADA : ACTIF ET PASSIF (En millions de dollars)</i> |                  |                  |                  |  |  |   |   |   |                       | continued<br><i>suite</i> |
|--|---|--|------------------|------------------|------------------|--|--|---|---|---|-----------------------|---------------------------|
| Moyenne mensuelle des mercredis ou données du mercredi |   | <i>Liabilities</i><br><i>Passif</i>  |                  |                  |                  |  |  |   |   |   |                       |                           |
|  |   | Notes in circulation <sup>4</sup><br><i>Billets en circulation<sup>4</sup></i>   |                  |                  |                  | Canadian dollar deposits<br><i>Dépôts en dollars canadiens</i> |  |   | Foreign currency liabilities<br><i>Engagements en monnaies étrangères</i> | All other liabilities<br><i>Autres éléments du passif</i> | Total<br><i>Total</i> |                           |
|  |   |  |                  |                  |                  | Government of Canada<br><i>Gouvernement canadien</i>           | Chartered banks<br><i>Banques à charte</i> | Other members of the Canadian Payments Association<br><i>Autres membres de l'Association canadienne des paiements</i> | Other<br><i>Autres</i>  |   |                       |                           |
|  |   | V36639<br>V36625   | V36642<br>V36628 | V36643<br>V36629 | V36647<br>V36633 | V36644<br>V36630   | V36645<br>V36631                           | V36646<br>V36632  | V36638<br>V36624  |   |                       |                           |
| 2005   | J | 42,001   | 1,300            | 99               | 2                | 383  | 126  | 206   | 44,118  |   |                       |                           |
|  | F | 41,325   | 1,280            | 77               | 7                | 382  | 128  | 337   | 43,534  |   |                       |                           |
|  | M | 41,494   | 1,083            | 47               | 15               | 389  | 124  | 700   | 43,851  |   |                       |                           |
|  | A | 41,510   | 1,523            | 46               | 4                | 386  | 128  | 411   | 44,008  |   |                       |                           |
| 2005   | M | 2  | 41,498           | 1,108            | 57               | 388  | 129  | 415   | 43,600  |   |                       |                           |
|  |   | 9  | 41,393           | 1,030            | 36               | 373  | 124  | 655   | 43,624  |   |                       |                           |
|  |   | 16   | 41,191           | 1,065            | 6                | 388  | 125  | 1,045   | 43,825  |   |                       |                           |
|  |   | 23   | 41,760           | 806              | 82               | 379  | 125  | 939   | 44,094  |   |                       |                           |
|  |   | 30   | 41,627           | 1,406            | 54               | 415  | 119  | 447   | 44,114  |   |                       |                           |
|  | A | 6  | 41,507           | 1,667            | 50               | 392  | 125  | 382   | 44,124  |   |                       |                           |
|  |   | 13   | 41,390           | 1,446            | 48               | 406  | 128  | 421   | 43,842  |   |                       |                           |
|  |   | 20   | 41,405           | 1,578            | 39               | 372  | 128  | 402   | 43,935  |   |                       |                           |
|  |   | 27   | 41,739           | 1,401            | 48               | 372  | 132  | 439   | 44,133  |   |                       |                           |

Changes from the date indicated: / *Variations par rapport à la date indiquée :*

|      |   |    |       |      |     |    |    |    |    |       |
|------|---|----|-------|------|-----|----|----|----|----|-------|
| 2004 | A | 28 | 1,881 | -118 | -60 | -  | 19 | -6 | -6 | 1,709 |
| 2005 | A | 20 | 334   | -177 | 9   | -9 | -  | 4  | 37 | 198   |

- (1) Net amount of uncompleted securities transactions (excluding SPRA and SRA) with dealers and banks in Canada has a potential cash reserve effect of \$- millions in the latest week. / *Le montant net des opérations sur titres non encore liquidées (à l'exclusion des prises en pension spéciales et des cessions en pension) avec les courtiers en valeurs mobilières et les banques au Canada a une incidence virtuelle de - millions de dollars sur les réserves-encaisse de la dernière semaine.*
- (2) Other investments comprise mainly holdings of U.S. dollar denominated securities and direct purchases of one-month bankers' acceptances. / *Les autres placements comprennent principalement les titres libellés en dollars É.-U. et des achats directs d'acceptations bancaires à un mois.*
- (3) Included in all other assets. Prior to November 10, 1999 included in Government of Canada direct and guaranteed securities. / *Inclus dans Autres éléments de l'actif. Avant le 10 novembre 1999, était inclus dans Titres émis ou garantis par le gouvernement canadien.*
- (4) Includes currency both inside and outside deposit-taking financial institutions. / *Inclut à la fois les billets détenus par les institutions de dépôt et les billets en circulation.*

| Monthly Average<br>Moyenne mensuelle |   | CHARTERED BANK ASSETS (Millions of dollars)<br><i>ACTIF DES BANQUES À CHARTE (En millions de dollars)</i> |  |  |   |   |  |   | BFS Table C1<br><i>SBF Tableau C1</i> |         |
|--------------------------------------|---|---|--|--|---|---|--|---|---------------------------------------|---------|
|                                      |   | Canadian dollar assets<br><i>Avoirs en dollars canadiens</i>  |  |  |   |   |  |   |                                       |         |
|                                      |   | Liquid assets<br><i>Avoirs de première liquidité</i>  |  |  |   |   |  |   |                                       |         |
|                                      |   | Bank of Canada notes and coin<br><i>Pièces et billets de la Banque du Canada</i>                          | Bank of Canada deposits<br><i>Dépôts à la Banque du Canada</i> | Treasury bills (amortized value)<br><i>Bons du Trésor (valeur amortissement)</i> | Government of Canada direct and guaranteed bonds<br><i>Obligations émises ou garanties par le gouvernement canadien</i> | Call and short loans<br><i>Prêts à vue ou à court terme</i> | Holdings of selected short-term assets<br><i>Divers avoirs à court terme</i> |   | Total<br><i>Total</i>                 |         |
|                                      |   |   |  |  |   |   | Short-term paper<br><i>Papier à court terme</i>                              | Other <sup>1</sup><br><i>Autres<sup>1</sup></i> |                                       |         |
|                                      |   | V36690  | V36691   | V36693   | V36695  | V36696  | V36697   | V36702  | V36882                                | V36853  |
| 2003                                 | J | 3,382   | 491  | 30,880   | 41,382  | 27,519  | 556  | 14,281  | 15,686                                | 134,176 |
|                                      | J | 3,568   | 440  | 30,099   | 39,268  | 23,827  | 568  | 13,677  | 14,839                                | 126,285 |
|                                      | A | 3,571   | 519  | 32,153   | 41,289  | 22,400  | 581  | 14,393  | 14,406                                | 129,312 |
|                                      | S | 3,489   | 430  | 32,190   | 45,693  | 22,779  | 513  | 13,851  | 15,757                                | 134,703 |
|                                      | O | 3,413   | 382  | 29,433   | 45,538  | 23,943  | 407  | 14,491  | 16,844                                | 134,451 |
|                                      | N | 3,390   | 195  | 31,647   | 45,059  | 24,020  | 792  | 13,839  | 16,552                                | 135,494 |
|                                      | D | 4,029   | 62   | 32,374   | 42,471  | 26,844  | 1,236  | 15,203  | 17,673                                | 139,891 |
| 2004                                 | J | 3,616   | 94   | 31,426   | 43,148  | 27,459  | 869  | 13,564  | 16,819                                | 136,995 |
|                                      | F | 3,227   | 67   | 31,118   | 44,057  | 26,768  | 995  | 13,555  | 16,309                                | 136,096 |
|                                      | M | 3,296   | 63   | 31,918   | 45,275  | 25,846  | 1,599  | 13,468  | 16,918                                | 138,383 |
|                                      | A | 3,309   | 47   | 32,047   | 43,992  | 20,763  | 1,767  | 13,116  | 15,097                                | 130,137 |
|                                      | M | 3,445   | 58   | 32,810   | 45,234  | 20,367  | 1,936  | 14,977  | 15,301                                | 134,128 |
|                                      | J | 3,463   | 73   | 32,618   | 44,208  | 20,174  | 2,422  | 16,405  | 14,512                                | 133,875 |
|                                      | J | 3,606   | 106  | 30,540   | 39,453  | 23,719  | 2,141  | 16,570  | 13,876                                | 130,011 |
|                                      | A | 3,584   | 71   | 30,470   | 39,741  | 22,644  | 2,694  | 16,479  | 14,006                                | 129,690 |
|                                      | S | 3,635   | 63   | 29,447   | 38,328  | 23,472  | 2,523  | 16,413  | 13,894                                | 127,775 |
|                                      | O | 3,571   | 79   | 28,835   | 38,571  | 23,465  | 2,153  | 17,473  | 13,374                                | 127,521 |
|                                      | N | 3,567   | 130  | 29,592   | 39,870  | 24,930  | 1,369  | 21,398  | 14,667                                | 135,525 |
|                                      | D | 3,991   | 73   | 32,128   | 40,536  | 27,353  | 1,508  | 21,244  | 15,165                                | 141,996 |
| 2005                                 | J | 3,790   | 89   | 30,614   | 34,515  | 29,515  | 1,123  | 16,038  | 14,855                                | 130,538 |
|                                      | F | 3,446   | 301  | 30,176   | 33,934  | 26,693  | 1,271  | 16,232  | 15,629                                | 127,682 |
|                                      | M | 3,622   | 294  | 35,191   | 37,072  | 27,542  | 1,086  | 17,395  | 16,619                                | 138,821 |

| Monthly Average<br>Moyenne mensuelle |   | CHARTERED BANK ASSETS (Millions of dollars)<br><i>ACTIF DES BANQUES À CHARTE (En millions de dollars)</i> |   |  |                        |   |   |  |   |  |  | continued<br><i>suite</i> |         |
|--------------------------------------|---|---|---|--|------------------------|---|---|--|---|--|--|---------------------------|---------|
|                                      |   | Canadian dollar assets<br><i>Avoirs en dollars canadiens</i>  |   |  |                        |   |   |  |   |  |  |                           |         |
|                                      |   | Less liquid assets<br><i>Avoirs de seconde liquidité</i>  |   |  |                        |   |   |  |   |  |  |                           |         |
|                                      |   | Non-mortgage loans<br><i>Prêts non hypothécaires</i>  |   |  |                        |   |   |  |   |  |  |                           |         |
|                                      |   | Personal<br><i>Personnels</i>   |   |  |                        | Federal government, provinces and municipalities<br><i>Gouvernement fédéral, provinces et municipalités</i> | To Canadian residents for business purposes<br><i>À des résidents canadiens à des fins commerciales</i> |  |   | To non-residents for business purposes<br><i>À des non-résidents à des fins commerciales</i> |  | Total<br><i>Total</i>     |         |
|                                      |   | Personal loan plans<br><i>Prêts personnels à tempérament</i>  | Credit cards<br><i>Cartes de crédit</i> | Personal lines of credit<br><i>Marges de crédit personnelles</i> | Other<br><i>Autres</i> |   | Reverse repos<br><i>Prises en pension</i>   | Business loans<br><i>Prêts aux entreprises</i> | Leasing receivables<br><i>Créances résultant du crédit-bail</i> | Reverse repos<br><i>Prises en pension</i>  | Business loans<br><i>Prêts aux entreprises</i> |                           |         |
|                                      |   | V36867  | V36868                                  | V36869   | V36870                 | V36720  | V36862  | V36863   | V36864  | V36719   | V36859   | V36860                    | V36855  |
| 2003                                 | J | 37,991  | 30,801                                  | 63,104   | 19,292                 | 2,510   | 56,824  | 124,716  | 316   | 4,827  | 24,764   | 2,029                     | 366,859 |
|                                      | J | 38,117  | 31,869                                  | 64,404   | 19,523                 | 2,569   | 53,212  | 124,051  | 424   | 4,844  | 23,219   | 1,904                     | 363,714 |
|                                      | A | 38,166  | 31,097                                  | 65,362   | 19,387                 | 2,475   | 54,809  | 122,754  | 356   | 4,934  | 19,926   | 1,687                     | 360,597 |
|                                      | S | 38,284  | 31,846                                  | 66,795   | 19,188                 | 2,504   | 59,518  | 122,363  | 346   | 4,943  | 14,446   | 2,030                     | 361,917 |
|                                      | O | 38,229  | 30,922                                  | 68,237   | 19,139                 | 2,463   | 54,305  | 122,119  | 269   | 4,926  | 13,988   | 1,568                     | 355,895 |
|                                      | N | 38,114  | 31,313                                  | 69,806   | 18,744                 | 2,510   | 53,235  | 120,626  | 449   | 4,860  | 13,914   | 2,336                     | 355,457 |
|                                      | D | 37,956  | 33,379                                  | 71,011   | 18,636                 | 2,610   | 49,948  | 121,428  | 429   | 4,855  | 14,242   | 2,193                     | 356,258 |
| 2004                                 | J | 37,760  | 33,193                                  | 72,081   | 18,446                 | 2,734   | 52,918  | 120,810  | 577   | 4,871  | 14,698   | 1,893                     | 359,403 |
|                                      | F | 37,839  | 32,239                                  | 73,744   | 18,182                 | 2,817   | 52,391  | 121,953  | 619   | 4,851  | 17,243   | 1,956                     | 363,214 |
|                                      | M | 38,402  | 31,962                                  | 76,583   | 18,310                 | 2,473   | 53,819  | 124,024  | 666   | 4,878  | 14,683   | 1,922                     | 367,056 |
|                                      | A | 38,744  | 32,583                                  | 77,836   | 18,291                 | 2,235   | 53,554  | 123,788  | 710   | 4,864  | 17,428   | 1,871                     | 371,194 |
|                                      | M | 38,848  | 33,308                                  | 79,665   | 18,476                 | 2,197   | 54,029  | 124,500  | 783   | 4,918  | 19,299   | 1,864                     | 377,105 |
|                                      | J | 39,524  | 34,479                                  | 81,464   | 18,341                 | 2,292   | 51,066  | 127,035  | 1,242   | 4,972  | 20,662   | 1,930                     | 381,765 |
|                                      | J | 39,630  | 34,960                                  | 83,427   | 18,183                 | 2,335   | 54,484  | 129,581  | 1,345   | 5,051  | 20,698   | 1,991                     | 390,339 |
|                                      | A | 39,876  | 35,462                                  | 85,357   | 18,063                 | 2,331   | 59,182  | 128,792  | 1,442   | 5,076  | 21,032   | 1,793                     | 396,966 |
|                                      | S | 39,685  | 36,235                                  | 87,475   | 17,843                 | 2,327   | 57,967  | 129,210  | 1,543   | 5,184  | 20,721   | 2,160                     | 398,807 |
|                                      | O | 39,938  | 35,859                                  | 89,293   | 17,777                 | 2,361   | 58,232  | 130,417  | 1,502   | 5,200  | 19,017   | 1,954                     | 400,048 |
|                                      | N | 41,965  | 35,438                                  | 90,823   | 17,820                 | 2,366   | 62,871  | 132,204  | 1,660   | 5,422  | 19,391   | 2,425                     | 410,726 |
|                                      | D | 42,227  | 37,060                                  | 92,392   | 17,929                 | 2,414   | 69,892  | 132,063  | 1,527   | 5,548  | 17,017   | 2,457                     | 418,998 |
| 2005                                 | J | 41,227  | 37,329                                  | 93,577   | 18,691                 | 2,540   | 67,413  | 130,753  | 1,472   | 5,317  | 14,319   | 2,274                     | 413,440 |
|                                      | F | 41,540  | 36,375                                  | 95,503   | 18,830                 | 2,565   | 67,265  | 134,315  | 1,309   | 5,373  | 17,584   | 2,468                     | 421,819 |
|                                      | M | 42,164  | 35,797                                  | 98,020   | 19,436                 | 2,559   | 69,926  | 137,945  | 1,387   | 5,348  | 19,756   | 2,404                     | 433,355 |

(1) Consists of bankers' acceptances and deposits with other regulated financial institutions.  
*Représente les acceptations bancaires et les dépôts dans les autres institutions financières réglementées.*

| Monthly<br>Average<br>Moyenne<br>mensuelle               | CHARTERED BANK ASSETS (Millions of dollars)<br><i>ACTIF DES BANQUES À CHARTE (En millions de dollars)</i> |                       |                       |   |                              |                       |                       | continued<br><i>suite</i>  |  |             |           |
|--|---|-----------------------|-----------------------|---|------------------------------|-----------------------|-----------------------|--|--|-------------|-----------|
|  | Canadian dollar assets<br><i>Avoirs en dollars canadiens</i>  |                       |                       |   |                              |                       |                       | Total Canadian<br>dollar assets<br><i>Ensemble des<br/>avoirs en<br/>dollars<br/>canadiens</i> | Net foreign<br>currency<br>assets<br><i>Avoirs nets<br/>en monnaies<br/>étrangères</i> |             |           |
| Less liquid assets<br><i>Avoirs de seconde liquidité</i> |   |                       |                       |   |                              |                       |                       |  |  |             |           |
| Mortgages<br><i>Prêts hypothécaires</i>                  |   |                       | Total<br><i>Total</i> | Canadian securities <sup>1</sup><br><i>Titres canadiens<sup>1</sup></i>       |                              |                       | Total<br><i>Total</i> |  |  |             |           |
| Residential<br><i>À l'habitation</i>                     | Non-residential<br><i>Sur immeubles<br/>non<br/>résidentiels</i>  | Total<br><i>Total</i> |                       | Provincial<br>and<br>municipal<br><i>Provinces<br/>et municipa-<br/>lités</i> | Corporate<br><i>Sociétés</i> | Total<br><i>Total</i> |                       |  |  |             |           |
| V36724   | V36718  | V36857                | V36723                | V36865  | V36728                       | V36725                | V36703                | V36852   | V36686   |             |           |
| 2003   | J   | 326,656               | 16,787                | 343,443   | 710,301                      | 16,942                | 83,637                | 100,579  | 810,881  | 1,117,397   | -18,852   |
|  | J   | 331,002               | 16,894                | 347,897   | 711,610                      | 16,954                | 84,646                | 101,600  | 813,210  | 1,089,673   | -17,647   |
|  | A   | 335,243               | 17,022                | 352,265   | 712,862                      | 15,475                | 87,388                | 102,863  | 815,724  | 1,091,321   | -21,600   |
|  | S   | 336,713               | 17,056                | 353,768   | 715,685                      | 15,379                | 88,229                | 103,608  | 819,293  | 1,115,239   | -23,600   |
|  | O   | 336,807               | 17,294                | 354,101   | 709,996                      | 15,466                | 88,813                | 104,279  | 814,275  | 1,103,407   | -20,604   |
|  | N   | 341,485               | 17,406                | 358,891   | 714,348                      | 15,680                | 92,571                | 108,251  | 822,599  | 1,121,686   | -14,077   |
|  | D   | 340,881               | 17,404                | 358,285   | 714,542                      | 15,224                | 94,345                | 109,569  | 824,112  | 1,134,524   | -13,120   |
| 2004   | J   | 340,775               | 17,367                | 358,143   | 717,546                      | 15,089                | 97,531                | 112,620  | 830,166  | 1,120,321   | -14,831   |
|  | F   | 341,860               | 17,193                | 359,052   | 722,266                      | 14,981                | 96,711                | 111,692  | 833,958  | 1,135,597   | -14,122   |
|  | M   | 340,621               | 17,324                | 357,945   | 725,002                      | 16,104                | 97,559                | 113,663  | 838,664  | 1,144,018   | -8,331    |
|  | A   | 342,749               | 17,425                | 360,174   | 731,368                      | 16,237                | 98,463                | 114,700  | 846,068  | 1,126,367   | -8,911    |
|  | M   | 347,299               | 17,484                | 364,783   | 741,888                      | 17,398                | 95,839                | 113,237  | 855,125  | 1,131,430   | -7,428    |
|  | J   | 349,908               | 17,670                | 367,578   | 749,342                      | 17,156                | 95,882                | 113,038  | 862,380  | 1,144,394   | -13,509   |
|  | J   | 353,102               | 17,946                | 371,048   | 761,387                      | 16,802                | 96,056                | 112,858  | 874,245  | 1,153,326   | -15,969   |
|  | A   | 357,713               | 18,138                | 375,851   | 772,817                      | 16,712                | 97,711                | 114,423  | 887,240  | 1,173,708   | -19,631   |
|  | S   | 358,815               | 18,194                | 377,009   | 775,817                      | 16,765                | 99,120                | 115,885  | 891,702  | 1,182,735   | -21,314   |
|  | O   | 361,985               | 18,042                | 380,027   | 780,076                      | 16,724                | 102,470               | 119,194  | 899,270  | 1,202,406   | -18,804   |
|  | N   | 367,536               | 17,950                | 385,485   | 796,211                      | 16,986                | 105,753               | 122,739  | 918,950  | 1,248,138   | -12,397   |
|  | D   | 367,963               | 18,044                | 386,007   | 805,005                      | 17,914                | 108,528               | 126,442  | 931,447  | 1,265,454   | -10,155   |
|  | 2005  | J                     | 366,871               | 18,166  | 385,037                      | 798,476               | 18,179                | 111,522  | 129,701  | 928,177     | 1,227,033 |
| F  |   | 368,177               | 18,255                | 386,432   | 808,251                      | 18,643                | 113,572               | 132,215  | 940,466  | 1,247,893   | -9,332    |
| M  |   | 367,170               | 18,379                | 385,550   | 818,905                      | 18,493                | 119,286 R             | 137,779 R  | 956,683 R  | 1,280,966 R | -12,751 R |

| Monthly<br>Average<br>Moyenne<br>mensuelle                            | CHARTERED BANK LIABILITIES (Millions of dollars)<br><i>PASSIF DES BANQUES À CHARTE (En millions de dollars)</i> |                                   |                       |  |  |  |                       | BFS Table C2<br><i>SBF Tableau C2</i> |        |         |         |
|---|---|-----------------------------------|-----------------------|--|--|--|-----------------------|---------------------------------------|--------|---------|---------|
|   | Canadian dollar deposits<br><i>Dépôts en dollars canadiens</i>  |                                   |                       |  |  |  |                       |                                       |        |         |         |
| Personal savings deposits<br><i>Dépôts d'épargne des particuliers</i> |   |                                   |                       | Non-personal term and notice deposits<br><i>Dépôts à terme ou à préavis autres que ceux des particuliers</i> |  |  |                       |                                       |        |         |         |
| Chequable<br><i>Transférables<br/>par chèque</i>                      | Non-chequable<br><i>Non transférables<br/>par chèque</i>  | Fixed term<br><i>À terme fixe</i> | Total<br><i>Total</i> | Chequable<br><i>Transfé-<br/>rables par<br/>chèque</i>   | Non-chequable<br><i>Non transférables<br/>par chèque</i> | Fixed<br>term<br><i>À terme<br/>fixe</i> | Total<br><i>Total</i> |                                       |        |         |         |
|   | Tax<br>sheltered<br><i>Abris<br/>fiscaux</i>  | Other<br><i>Autres</i>            |                       | Tax<br>sheltered<br><i>Abris<br/>fiscaux</i>   | Other<br><i>Autres</i>                                   |  |                       |                                       |        |         |         |
| V36815  | V36821  | V36822                            | V36824                | V36825   | V36814   | V36827                                   | V36828                | V36830                                | V36826 |         |         |
| 2003  | J   | 72,083                            | 9,500                 | 53,531   | 84,876   | 163,832                                  | 383,821               | 49,399                                | 5,214  | 147,877 | 202,490 |
|   | J   | 71,670                            | 9,409                 | 53,739   | 84,844   | 163,750                                  | 383,411               | 49,920                                | 5,295  | 147,335 | 202,549 |
|   | A   | 72,246                            | 9,328                 | 54,813   | 84,788   | 163,951                                  | 385,126               | 50,611                                | 5,316  | 139,989 | 195,916 |
|   | S   | 71,796                            | 9,400                 | 55,418   | 84,626   | 163,988                                  | 385,227               | 51,242                                | 5,298  | 143,023 | 199,563 |
|   | O   | 71,331                            | 9,656                 | 55,669   | 84,504   | 164,314                                  | 385,474               | 51,261                                | 5,345  | 143,548 | 200,154 |
|   | N   | 72,323                            | 9,641                 | 56,596   | 84,012   | 164,942                                  | 387,514               | 51,244                                | 5,676  | 147,400 | 204,320 |
|   | D   | 72,683                            | 9,699                 | 57,295   | 83,735   | 165,471                                  | 388,883               | 52,156                                | 6,079  | 150,013 | 208,248 |
| 2004  | J   | 72,316                            | 9,966                 | 58,365   | 83,160   | 165,946                                  | 389,752               | 51,301                                | 6,303  | 152,359 | 209,963 |
|   | F   | 72,314                            | 10,736                | 59,064   | 82,906   | 165,812                                  | 390,831               | 50,069                                | 6,597  | 155,782 | 212,448 |
|   | M   | 70,836                            | 12,214                | 59,805   | 83,017   | 164,890                                  | 390,762               | 49,243                                | 6,581  | 164,485 | 220,309 |
|   | A   | 73,316                            | 11,921                | 61,490   | 82,472   | 163,508                                  | 392,707               | 50,731                                | 6,816  | 164,066 | 221,613 |
|   | M   | 74,976                            | 11,726                | 63,149   | 82,014   | 162,374                                  | 394,241               | 51,268                                | 7,214  | 167,436 | 225,919 |
|   | J   | 76,399                            | 12,190                | 64,341   | 81,744   | 162,433                                  | 397,107               | 52,515                                | 7,748  | 164,055 | 224,318 |
|   | J   | 76,906                            | 11,807                | 64,654   | 81,783   | 163,552                                  | 398,702               | 52,370                                | 7,709  | 166,676 | 226,754 |
|   | A   | 76,855                            | 11,450                | 65,209   | 81,729   | 164,244                                  | 399,487               | 51,955                                | 7,596  | 171,203 | 230,754 |
|   | S   | 76,347                            | 11,718                | 65,057   | 81,542   | 164,674                                  | 399,337               | 52,644                                | 7,569  | 176,794 | 237,007 |
|   | O   | 76,378                            | 11,786                | 64,947   | 81,397   | 165,385                                  | 399,893               | 52,498                                | 7,579  | 181,444 | 241,522 |
|   | N   | 76,121                            | 11,942                | 65,432   | 81,352   | 166,797                                  | 401,644               | 52,847                                | 7,633  | 188,901 | 249,381 |
|   | D   | 76,791                            | 11,968                | 65,897   | 81,079   | 168,149                                  | 403,885               | 55,509                                | 7,716  | 194,811 | 258,036 |
|   | 2005  | J                                 | 76,648                | 12,190   | 66,695   | 80,706                                   | 168,676               | 404,916                               | 54,034 | 8,018   | 191,888 |
| F   |   | 75,973                            | 12,980                | 66,927   | 80,822   | 169,336                                  | 406,037               | 53,250                                | 8,146  | 207,390 | 268,785 |
| M   |   | 74,483                            | 14,148                | 66,417   | 81,350   | 169,450                                  | 405,848               | 52,715                                | 8,077  | 215,874 | 276,667 |

(1) Excludes short-term paper. / À l'exclusion du papier à court terme.

| Monthly Average<br>Moyenne mensuelle |   | CHARTERED BANK LIABILITIES (Millions of dollars)<br>PASSIF DES BANQUES À CHARTE (En millions de dollars) |  |  |  |   |   |   |   | continued<br>suite  |        |
|--------------------------------------|---|--|--|--|--|---|---|---|---|---|--------|
|                                      |   | Canadian dollar deposits<br>Dépôts en dollars canadiens  |  |  |  |   |   |   |   |   |        |
|                                      |   | Demand (less private sector float)<br>Dépôts à vue (moins effets du secteur privé en compensation)       | Total deposits held by general public<br>Ensemble des dépôts du public | Government of Canada deposits<br>Dépôts du gouvernement canadien | Total (less private sector float)<br>Total (moins effets du secteur privé en compensation) | Estimated net private sector float<br>Solde des effets du secteur privé en compensation (estimations) | Gross deposits<br>Montant brut des dépôts | Total Canadian dollar float<br>Ensemble des effets en dollars canadiens en compensation | Bankers' acceptances outstanding<br>Acceptations bancaires en circulation | Subordinated debt payable in Canadian dollars<br>Dette subordonnée payable en dollars canadiens |        |
|                                      |   | V36831   | V36813   | V36811   | V36812   | V36810  | V36809                                    | V36808  | V36730  | V36856  | V36871 |
| 2003                                 | J | 103,793  | 690,104  | 2,118  | 1,924  | 692,222   | -1,090                                    | 691,132   | -1,090  | 39,505  | 18,104 |
|                                      | J | 109,353  | 695,314  | 2,099  | 1,906  | 697,413   | -2,220                                    | 695,194   | -2,220  | 38,574  | 18,147 |
|                                      | A | 107,965  | 689,007  | 2,306  | 1,988  | 691,313   | -996                                      | 690,318   | -996  | 39,221  | 18,254 |
|                                      | S | 109,045  | 693,835  | 2,057  | 1,847  | 695,891   | -2,055                                    | 693,837   | -2,055  | 38,834  | 18,188 |
|                                      | O | 107,213  | 692,841  | 2,176  | 1,966  | 695,017   | 594                                       | 695,611   | 594   | 38,109  | 19,129 |
|                                      | N | 109,164  | 700,998  | 2,521  | 2,318  | 703,519   | 1,106                                     | 704,625   | 1,106   | 37,556  | 20,038 |
|                                      | D | 113,345  | 710,477  | 2,208  | 1,986  | 712,684   | 1,116                                     | 713,801   | 1,116   | 35,644  | 20,664 |
| 2004                                 | J | 109,008  | 708,723  | 2,328  | 2,114  | 711,051   | 4,265                                     | 715,316   | 4,265   | 34,745  | 20,618 |
|                                      | F | 110,844  | 714,122  | 2,576  | 2,347  | 716,698   | 3,779                                     | 720,477   | 3,779   | 34,605  | 20,784 |
|                                      | M | 111,843  | 722,914  | 2,479  | 2,283  | 725,393   | 2,783                                     | 728,177   | 2,783   | 35,519  | 20,553 |
|                                      | A | 114,640  | 728,960  | 2,239  | 1,989  | 731,200   | 3,218                                     | 734,418   | 3,218   | 36,577  | 21,102 |
|                                      | M | 118,623  | 738,783  | 2,547  | 2,320  | 741,330   | 1,311                                     | 742,641   | 1,311   | 35,148  | 22,107 |
|                                      | J | 124,227  | 745,652  | 1,925  | 1,697  | 747,577   | -2,728                                    | 744,849   | -2,728  | 36,909  | 22,136 |
|                                      | J | 124,913  | 750,369  | 2,298  | 2,114  | 752,667   | -3,432                                    | 749,235   | -3,432  | 36,383  | 22,255 |
|                                      | A | 123,212  | 753,453  | 2,432  | 2,222  | 755,885   | -2,408                                    | 753,477   | -2,408  | 36,798  | 22,258 |
|                                      | S | 124,232  | 760,576  | 2,371  | 2,147  | 762,947   | -4,076                                    | 758,871   | -4,076  | 36,137  | 22,528 |
|                                      | O | 128,295  | 769,710  | 2,661  | 2,441  | 772,371   | -6,053                                    | 766,318   | -6,053  | 35,922  | 22,414 |
|                                      | N | 125,587  | 776,612  | 2,615  | 2,441  | 779,227   | -1,603                                    | 777,624   | -1,603  | 36,854  | 22,081 |
|                                      | D | 129,132  | 791,053  | 2,477  | 2,251  | 793,530   | 1,463                                     | 794,993   | 1,463   | 35,550  | 22,353 |
| 2005                                 | J | 127,979  | 786,834  | 2,279  | 2,041  | 789,113   | 610                                       | 789,723   | 610   | 34,269  | 23,471 |
|                                      | F | 129,537  | 804,360  | 2,489  | 2,230  | 806,850   | -821                                      | 806,029   | -821  | 34,896  | 23,669 |
|                                      | M | 127,838  | 810,352  | 2,931  | 2,620  | 813,283   | 632                                       | 813,915   | 632   | 35,666  | 23,558 |

| Monthly Average<br>Moyenne mensuelle |   | CHARTERED BANK LIABILITIES (Millions of dollars)<br>PASSIF DES BANQUES À CHARTE (En millions de dollars) |                 |                | continued<br>suite |  | CHARTERED BANK FOREIGN CURRENCY ITEMS (Millions of dollars)<br>EFFETS EN MONNAIES ÉTRANGÈRES DES BANQUES À CHARTE (En millions de dollars) |                      |                |                    |        |        |        |
|--------------------------------------|---|--|-----------------|----------------|--------------------|--|--|----------------------|----------------|--------------------|--------|--------|--------|
|                                      |   | Gross demand deposits<br>Dépôts à vue (montant brut)   |                 |                |                    |  | Foreign currency business with Canadian residents<br>Opérations en monnaies étrangères avec des résidents canadiens                        |                      |                |                    |        |        |        |
|                                      |   | Personal chequing<br>Comptes de chèques personnels   | Other<br>Autres | Total<br>Total |                    |  | Net foreign currency assets<br>Avoirs nets en monnaies étrangères  | Securities<br>Titres | Loans<br>Prêts | Deposits<br>Dépôts |        |        |        |
|                                      |   | V36844   | V36845          | V36843         |                    |  | V36686   | V36846               | V36877         | V36878             | V36875 | V36876 | V36872 |
| 2003                                 | J | 30,284   | 72,419          | 102,703        |                    |  | -18,852  | 19,180               | 20,047         | 1,526              | 2,475  | 71,455 | 73,930 |
|                                      | J | 30,526   | 76,608          | 107,133        |                    |  | -17,647  | 20,383               | 19,908         | 1,274              | 2,718  | 71,797 | 74,515 |
|                                      | A | 30,784   | 76,185          | 106,969        |                    |  | -21,600  | 19,598               | 19,232         | 714                | 2,840  | 71,120 | 73,960 |
|                                      | S | 31,161   | 75,829          | 106,990        |                    |  | -23,600  | 19,149               | 18,215         | 870                | 2,942  | 71,234 | 74,175 |
|                                      | O | 31,078   | 76,729          | 107,807        |                    |  | -20,604  | 20,590               | 17,878         | 873                | 3,014  | 72,310 | 75,324 |
|                                      | N | 31,505   | 78,765          | 110,269        |                    |  | -14,077  | 21,973               | 16,763         | 909                | 2,658  | 75,597 | 78,255 |
|                                      | D | 31,913   | 82,549          | 114,462        |                    |  | -13,120  | 22,943               | 19,063         | 3,044              | 3,243  | 75,414 | 78,656 |
| 2004                                 | J | 32,119   | 81,154          | 113,273        |                    |  | -14,831  | 25,038               | 20,220         | 3,944              | 3,223  | 75,464 | 78,687 |
|                                      | F | 33,037   | 81,586          | 114,623        |                    |  | -14,122  | 26,347               | 19,594         | 2,949              | 3,683  | 74,321 | 78,004 |
|                                      | M | 33,409   | 81,218          | 114,627        |                    |  | -8,331   | 25,655               | 19,529         | 2,535              | 3,513  | 72,886 | 76,399 |
|                                      | A | 33,985   | 83,872          | 117,858        |                    |  | -8,911   | 27,743               | 20,059         | 2,189              | 4,219  | 75,049 | 79,268 |
|                                      | M | 34,403   | 85,532          | 119,934        |                    |  | -7,428   | 29,627               | 21,493         | 1,816              | 3,544  | 77,422 | 80,967 |
|                                      | J | 34,576   | 86,923          | 121,499        |                    |  | -13,509  | 28,534               | 22,187         | 1,859              | 3,689  | 78,091 | 81,780 |
|                                      | J | 34,816   | 86,664          | 121,480        |                    |  | -15,969  | 27,942               | 21,787         | 2,053              | 3,394  | 77,032 | 80,426 |
|                                      | A | 34,865   | 85,939          | 120,804        |                    |  | -19,631  | 26,333               | 22,067         | 2,505              | 3,321  | 79,424 | 82,745 |
|                                      | S | 34,362   | 85,795          | 120,156        |                    |  | -21,314  | 26,239               | 20,946         | 2,251              | 3,456  | 77,992 | 81,448 |
|                                      | O | 35,181   | 87,061          | 122,242        |                    |  | -18,804  | 26,498               | 20,252         | 2,040              | 3,533  | 79,003 | 82,536 |
|                                      | N | 35,504   | 88,479          | 123,984        |                    |  | -12,397  | 29,525               | 19,504         | 2,207              | 3,688  | 78,485 | 82,173 |
|                                      | D | 37,106   | 93,489          | 130,594        |                    |  | -10,155  | 31,914               | 21,005         | 2,219              | 4,282  | 80,029 | 84,311 |
| 2005                                 | J | 37,144   | 91,445          | 128,589        |                    |  | -12,441  | 29,847               | 22,483         | 2,330              | 4,070  | 78,160 | 82,230 |
|                                      | F | 37,923   | 90,793          | 128,716        |                    |  | -9,332   | 29,645               | 21,884         | 2,436              | 4,210  | 75,798 | 80,008 |
|                                      | M | 38,216   | 90,255          | 128,470        |                    |  | -12,751R   | 28,778               | 20,393         | 2,346              | 3,643  | 74,576 | 78,219 |

| Monthly<br>Average<br>Moyenne<br>mensuelle |        | SELECTED SEASONALLY ADJUSTED SERIES: CHARTERED BANK ASSETS AND LIABILITIES (Millions of dollars)<br><i>QUELQUES STATISTIQUES BANCAIRES DÉSÉASONNALISÉES : AVOIRS ET ENGAGEMENTS DES BANQUES À CHARTE (En millions de dollars)</i> |                                       |                                   |                                      |  |   |                               |  |  |  | RBF Table C8<br>SBF Tableau C8 |        |
|--|--------|---|---------------------------------------|-----------------------------------|--------------------------------------|--|---|-------------------------------|--|--|--|--------------------------------|--------|
|  |        | Canadian dollar assets<br><i>Avoirs en dollars canadiens</i>  |                                       |                                   |                                      |  |   |                               | Canadian dollar deposits<br><i>Dépôts en dollars canadiens</i> |  |  |                                |        |
|  |        | Total <sup>1</sup>  | Less liquid assets <sup>1</sup>       | General loans <sup>1</sup>        | Total personal loans                 | Business loans <sup>1</sup>              | Residential mortgages <sup>1</sup>                    | Bankers' acceptances          | Net demand deposits <sup>1</sup>                               | Personal savings                         | Non-personal notice                                      |                                |        |
|  |        | <i>Total<sup>1</sup></i>  | <i>Moins de liquidité<sup>1</sup></i> | <i>Prêts généraux<sup>1</sup></i> | <i>Ensemble des prêts personnels</i> | <i>Prêts aux entreprises<sup>1</sup></i> | <i>Prêts hypothécaires à l'habitation<sup>1</sup></i> | <i>Acceptations bancaires</i> | <i>Dépôts à vue nets</i>                                       | <i>Dépôts d'épargne des particuliers</i> | <i>Dépôts à préavis autres que ceux des particuliers</i> |                                |        |
|  |        |   |                                       |                                   |                                      |  |   |                               | of which:  |  |  |                                |        |
|  |        |   |                                       |                                   |                                      |  |   |                               | Ensemble   | Notice                                   | Term   |                                |        |
|  |        |   |                                       |                                   |                                      |  |   |                               | À préavis  | À terme                                  |  |                                |        |
|  |        |   |                                       |                                   |                                      |  |   |                               |  | fixe <sup>1</sup>                        |  |                                |        |
|  | V37133 | V37112  | V37154                                | V37119                            | V37120                               | V37130                                   | V37140  | V37115                        | V37104   | V37134                                   | V37135   | V37136                         |        |
| 2003                                       | J      | 1,117,397   | 810,881                               | 359,522                           | 150,708                              | 208,334                                  | 326,656   | 40,140                        | 104,733  | 382,890                                  | 133,513  | 248,708                        | 54,307 |
|  | J      | 1,089,673   | 813,210                               | 356,300                           | 153,766                              | 202,387                                  | 331,002   | 39,377                        | 107,515  | 383,459                                  | 134,455  | 248,594                        | 54,836 |
|  | A      | 1,091,321   | 815,724                               | 353,188                           | 153,799                              | 199,176                                  | 335,243   | 38,906                        | 108,141  | 385,033                                  | 136,000  | 248,740                        | 55,763 |
|  | S      | 1,115,239   | 819,293                               | 354,470                           | 155,280                              | 198,358                                  | 336,713   | 38,599                        | 108,547  | 386,395                                  | 137,094  | 248,614                        | 55,845 |
|  | O      | 1,103,407   | 814,275                               | 348,506                           | 156,694                              | 191,980                                  | 336,807   | 37,612                        | 104,671  | 387,000                                  | 137,878  | 248,818                        | 56,068 |
|  | N      | 1,121,686   | 822,599                               | 348,087                           | 158,352                              | 190,110                                  | 341,485   | 36,942                        | 107,337  | 387,911                                  | 139,154  | 248,954                        | 56,214 |
|  | D      | 1,134,524   | 824,112                               | 348,792                           | 160,555                              | 187,810                                  | 340,881   | 36,378                        | 109,849  | 388,734                                  | 139,910  | 249,206                        | 56,269 |
| 2004                                       | J      | 1,120,321   | 830,166                               | 351,798                           | 161,877                              | 190,318                                  | 340,775   | 35,750                        | 109,870  | 390,101                                  | 141,132  | 249,106                        | 57,237 |
|  | F      | 1,135,597   | 833,958                               | 355,546                           | 163,336                              | 193,543                                  | 341,860   | 34,569                        | 112,949  | 390,786                                  | 142,043  | 248,718                        | 57,775 |
|  | M      | 1,144,018   | 838,664                               | 359,705                           | 164,854                              | 194,449                                  | 340,621   | 34,956                        | 115,266  | 390,780                                  | 144,334  | 247,908                        | 57,839 |
|  | A      | 1,126,367   | 846,068                               | 364,095                           | 167,587                              | 196,641                                  | 342,749   | 35,767                        | 117,246  | 391,484                                  | 146,331  | 245,980                        | 58,752 |
|  | M      | 1,131,430   | 855,125                               | 369,990                           | 170,563                              | 199,693                                  | 347,299   | 35,168                        | 120,189  | 393,484                                  | 148,730  | 244,389                        | 59,565 |
|  | J      | 1,144,394   | 862,380                               | 374,501                           | 173,275                              | 200,693                                  | 349,908   | 37,514                        | 124,914  | 396,058                                  | 150,938  | 244,178                        | 59,841 |
|  | J      | 1,153,326   | 874,245                               | 382,953                           | 175,951                              | 206,754                                  | 353,102   | 37,191                        | 122,302  | 398,645                                  | 152,635  | 245,335                        | 59,628 |
|  | A      | 1,173,708   | 887,240                               | 389,558                           | 178,482                              | 210,800                                  | 357,713   | 36,419                        | 122,965  | 399,244                                  | 152,837  | 245,973                        | 59,284 |
|  | S      | 1,182,735   | 891,702                               | 391,296                           | 180,341                              | 210,058                                  | 358,815   | 35,853                        | 123,250  | 400,407                                  | 153,450  | 246,216                        | 59,457 |
|  | O      | 1,202,406   | 899,270                               | 392,488                           | 183,092                              | 209,621                                  | 361,985   | 35,461                        | 125,186  | 401,376                                  | 154,260  | 246,782                        | 59,577 |
|  | N      | 1,248,138   | 918,950                               | 402,938                           | 186,449                              | 216,891                                  | 367,536   | 36,235                        | 123,922  | 402,117                                  | 154,301  | 248,149                        | 59,799 |
|  | D      | 1,265,454   | 931,447                               | 411,037                           | 188,913                              | 221,429                                  | 367,963   | 36,328                        | 125,629  | 403,760                                  | 155,164  | 249,229                        | 61,155 |
| 2005                                       | J      | 1,227,033   | 928,177                               | 405,583                           | 191,310                              | 214,759                                  | 366,871   | 35,294                        | 129,070  | 405,292                                  | 156,255  | 249,382                        | 61,634 |
|  | F      | 1,247,893   | 940,466                               | 413,881                           | 193,878                              | 221,633                                  | 368,177   | 34,879                        | 132,281  | 406,039                                  | 156,001  | 250,158                        | 62,616 |
|  | M      | 1,280,966R  | 956,683R                              | 425,448                           | 195,005                              | 230,032                                  | 367,170   | 35,128                        | 132,008  | 405,965                                  | 156,798  | 250,800                        | 63,041 |

| Monthly and weekly averages of daily data<br>Moyenne mensuelle ou hebdomadaire des données quotidiennes |     | BANK OF CANADA (Millions of dollars)<br><i>BANQUE DU CANADA (En millions de dollars)</i>  |  |     |  |   |                                  |                           |  |                           |                                | RBF Table B3<br>SBF Tableau B3 |  |
|---|-----|---|--|-----|--|---|----------------------------------|---------------------------|--|---------------------------|--------------------------------|--------------------------------|--|
|   |     | Positions of members of the Canadian Payments Association with the Bank of Canada<br><i>Positions des membres de l'Association canadienne des paiements à la Banque du Canada</i> |  |     |  |   |                                  |                           | Bank of Canada buyback transactions with primary dealers<br><i>Opérations à réméré de la Banque du Canada avec les négociants principaux</i> |                           |                                |                                |  |
|   |     | Total overdraft loans   |  |     | Total positive balances <sup>2</sup>           |   | Special deposit accounts         |                           | Special purchase and resale agreements   |                           | Sale and repurchase agreements |                                |  |
|   |     | <i>Total des prêts pour découvert</i>   |  |     | <i>Total des soldes créditeurs<sup>2</sup></i> |   | <i>Comptes spéciaux de dépôt</i> |                           | <i>Prises en pension spéciales</i>   |                           | <i>Cessions en pension</i>     |                                |  |
|   |     |   |  |     |  |   | Amount                           | Number of days transacted | Amount   | Number of days transacted |                                |                                |  |
|   |     |   |  |     |  |   | <i>Montant</i>                   | <i>Nombre de jours</i>    | <i>Montant</i>   | <i>Nombre de jours</i>    |                                |                                |  |
|   |     |   |  |     |  |   | V122662                          |                           | V122678  |                           | V122664                        |                                |  |
|   |     |   |  |     |  |   | V122672                          |                           | V122666  |                           | V122668                        |                                |  |
| 2004  | D   | 18  |  | 108 |  | - | 1,086                            | 13                        | -  | -                         | -                              | -                              |  |
| 2005  | J   | 4   |  | 81  |  | - | 339                              | 7                         | -  | -                         | -                              | -                              |  |
|   | F   | 24  |  | 87  |  | - | -                                | -                         | -  | -                         | -                              | -                              |  |
|   | M   | 7   |  | 63  |  | - | -                                | -                         | 229  | -                         | 10                             | -                              |  |
| 2005  | F 2 | 7   |  | 107 |  | - | 94                               | 1                         | -  | -                         | -                              | -                              |  |
|   | 9   | 18  |  | 68  |  | - | -                                | -                         | -  | -                         | -                              | -                              |  |
|   | 16  | 11  |  | 61  |  | - | -                                | -                         | -  | -                         | -                              | -                              |  |
|   | 23  | 62  |  | 112 |  | - | -                                | -                         | -  | -                         | -                              | -                              |  |
|   | M 2 | 9   |  | 109 |  | - | -                                | -                         | -  | -                         | -                              | -                              |  |
|   | 9   | -   |  | 50  |  | - | -                                | -                         | 43   | -                         | 1                              | -                              |  |
|   | 16  | 15  |  | 42  |  | - | -                                | -                         | 339  | -                         | 3                              | -                              |  |
|   | 23  | 11  |  | 61  |  | - | -                                | -                         | 493  | -                         | 5                              | -                              |  |
|   | 30  | 1   |  | 64  |  | - | -                                | -                         | 168  | -                         | 1                              | -                              |  |
|   | A 6 | -   |  | 90  |  | - | -                                | -                         | -  | -                         | -                              | -                              |  |
|   | 13  | -   |  | 50  |  | - | -                                | -                         | -  | -                         | -                              | -                              |  |
|   | 20  | -   |  | 50  |  | - | -                                | -                         | -  | -                         | -                              | -                              |  |
|   | 27  | 4   |  | 60  |  | - | -                                | -                         | -  | -                         | -                              | -                              |  |

(1) Unadjusted because it does not show stable seasonality / Ces données ne présentant pas de variations saisonnières stables, elles ne sont pas désaisonnalisées

(2) Excludes special deposit accounts. / Ne comprend pas les comptes spéciaux de dépôt.

| Effective date<br>(year, month, day)<br>Date d'entrée en vigueur<br>(année, mois, jour) |        | FINANCIAL MARKET STATISTICS<br>STATISTIQUES DU MARCHÉ FINANCIER |   |              |  |                          |   |   |         |   |  |   |   |         |      |
|---|--------|---|---|--------------|--|--------------------------|---|---|---------|---|--|---|---|---------|------|
|   |        | Bank Rate<br>Taux officiel d'escompte                           | Operating band<br>Fourchette opérationnelle |              | Target overnight rate<br>Taux cible du financement à un jour | Wednesday<br>Le mercredi | Chartered bank administered interest rates<br>Taux d'intérêt administrés des banques à charte |   |         |   |  |   |   |         |      |
|   |        |   | Low<br>Bas                                  | High<br>Haut |  |                          | Prime business<br>Taux de base des prêts aux entreprises                                      | Conventional mortgage<br>Prêts hypothécaires ordinaires |         | Non-chequable savings deposits<br>Dépôts d'épargne non transférables par chèque | Daily interest savings (balances over \$100,000)<br>Comptes d'épargne à intérêt quotidien (soldes supérieurs à 100 000 \$) | 5-year personal fixed term<br>Dépôts à 5 ans des particuliers | Guaranteed investment certificates<br>Certificats de placement garantis |         |      |
| V39078  | V39076 | V39077  | V39079                                      | V121796      | V121763  | V121764                  | V121766   | V121776   | V121765 |   |  |   | V121771   | V121773 |      |
| 2002  | 1 15   | 2.25  | 1.75  | 2.25         | 2.00   | 2005                     | J 19  | 4.25  | 4.80    | 6.05  | 0.05   | 0.75  | 2.73  | 1.43    | 2.98 |
|   | 4 16   | 2.50  | 2.00  | 2.50         | 2.25   |                          | 26  | 4.25  | 4.80    | 6.05  | 0.05   | 0.75  | 2.63  | 1.43    | 2.88 |
|   | 6 04   | 2.75  | 2.25  | 2.75         | 2.50   |                          | F 2   | 4.25  | 4.80    | 6.05  | 0.05   | 0.75  | 2.63  | 1.43    | 2.88 |
|   | 7 16   | 3.00  | 2.50  | 3.00         | 2.75   |                          | 9   | 4.25  | 4.80    | 6.05  | 0.05   | 0.75  | 2.63  | 1.43    | 2.88 |
|   |        |   |   |              |  |                          | 16  | 4.25  | 4.80    | 6.05  | 0.05   | 0.75  | 2.63  | 1.43    | 2.88 |
|   |        |   |   |              |  |                          | 23  | 4.25  | 4.80    | 6.05  | 0.05   | 0.75  | 2.63  | 1.43    | 2.88 |
| 2003  | 3 04   | 3.25  | 2.75  | 3.25         | 3.00   |                          | M 2   | 4.25  | 4.80    | 6.05  | 0.05   | 0.75  | 2.63  | 1.43    | 2.88 |
|   | 4 15   | 3.50  | 3.00  | 3.50         | 3.25   |                          | 9   | 4.25  | 4.80    | 6.05  | 0.05   | 0.75  | 2.63  | 1.43    | 2.88 |
|   | 7 15   | 3.25  | 2.75  | 3.25         | 3.00   |                          | 16  | 4.25  | 4.80    | 6.05  | 0.05   | 0.75  | 2.63  | 1.43    | 2.88 |
|   |        |   |   |              |  |                          | 23  | 4.25  | 4.80    | 6.05  | 0.05   | 0.75  | 2.63  | 1.43    | 2.88 |
|   |        |   |   |              |  |                          | 30  | 4.25  | 5.05    | 6.25  | 0.05   | 0.75  | 2.73  | 1.63    | 2.98 |
|   | 9 03   | 3.00  | 2.50  | 3.00         | 2.75   |                          | A 6   | 4.25  | 5.05    | 6.25  | 0.05   | 0.75  | 2.73  | 1.63    | 2.98 |
|   |        |   |   |              |  |                          | 13  | 4.25  | 5.05    | 6.25  | 0.05   | 0.75  | 2.73  | 1.63    | 2.98 |
| 2004  | 1 20   | 2.75  | 2.25  | 2.75         | 2.50   |                          | 20  | 4.25  | 4.90    | 6.05  | 0.05   | 0.75  | 2.53  | 1.48    | 2.78 |
|   | 3 02   | 2.50  | 2.00  | 2.50         | 2.25   |                          | 27  | 4.25  | 4.90    | 6.05  | 0.05   | 0.75  | 2.53  | 1.48    | 2.78 |
|   | 4 13   | 2.25  | 1.75  | 2.25         | 2.00   |                          |   |   |         |   |  |   |   |         |      |
|   | 9 08   | 2.50  | 2.00  | 2.50         | 2.25   |                          |   |   |         |   |  |   |   |         |      |
|   | 10 19  | 2.75  | 2.25  | 2.75         | 2.50   |                          |   |   |         |   |  |   |   |         |      |

| Wednesday and latest week<br>Le mercredi et la dernière semaine |                   | FINANCIAL MARKET STATISTICS<br>STATISTIQUES DU MARCHÉ FINANCIER |                     |                     |                   |   |                   |                   |                   |                     |                           |  | continued<br>suite       |  |                            |                                    |  |
|---|-------------------|---|---------------------|---------------------|-------------------|---|-------------------|-------------------|-------------------|---------------------|---------------------------|--|--------------------------|--|----------------------------|------------------------------------|--|
|   |                   | Treasury bills<br>Bons du Trésor                                |                     |                     |                   | Selected Government of Canada benchmark bond yields<br>Quelques rendements d'obligations types du gouvernement canadien |                   |                   |                   |                     |                           |  |                          | Government of Canada marketable bonds, average yield<br>Rendements moyens des obligations négociables du gouvernement canadien |                            |                                    |  |
|   |                   | 1 month<br>À 1 mois   | 3 month<br>À 3 mois | 6 month<br>À 6 mois | 1 year<br>À 1 an  | 2 year<br>À 2 ans   | 3 year<br>À 3 ans | 5 year<br>À 5 ans | 7 year<br>À 7 ans | 10 year<br>À 10 ans | long-term<br>À long terme | Real Return Bonds,<br>long-term<br>Obligations à long terme à rendement réel | 1-3 year<br>De 1 à 3 ans | 3-5 year<br>De 3 à 5 ans   | 5-10 year<br>De 5 à 10 ans | Over 10 years<br>De plus de 10 ans |  |
| V121777<br>V39063   | V121778<br>V39065 | V121779<br>V39066   | V121780<br>V39067   | V121786<br>V39051   | V121787<br>V39052 | V121788<br>V39053   | V121789<br>V39054 | V121790<br>V39055 | V121791<br>V39056 | V121808<br>V39057   | V121755<br>V39059         | V121756<br>V39060  | V121757<br>V39061        | V121758<br>V39062  |                            |                                    |  |
| 2005  | J 19              | 2.34  | 2.44                | 2.53                | 2.68              | 2.89  | 3.09              | 3.55              | 3.87              | 4.20                | 4.73                      | 2.02   | 2.91                     | 3.40   | 3.97                       | 4.69                               |  |
|   | 26                | 2.33  | 2.43                | 2.49                | 2.61              | 2.81  | 3.02              | 3.52              | 3.87              | 4.21                | 4.74                      | 2.03   | 2.83                     | 3.37   | 3.96                       | 4.69                               |  |
|   | F 2               | 2.33  | 2.43                | 2.52                | 2.68              | 2.92  | 3.12              | 3.59              | 3.91              | 4.23                | 4.73                      | 2.04   | 2.93                     | 3.44   | 4.00                       | 4.69                               |  |
|   | 9                 | 2.33  | 2.45                | 2.52                | 2.71              | 2.88  | 3.06              | 3.50              | 3.80              | 4.11                | 4.58                      | 1.96   | 2.90                     | 3.36   | 3.89                       | 4.53                               |  |
|   | 16                | 2.25  | 2.44                | 2.54                | 2.75              | 2.92  | 3.12              | 3.57              | 3.88              | 4.18                | 4.64                      | 1.97   | 2.94                     | 3.42   | 3.96                       | 4.60                               |  |
|   | 23                | 2.24  | 2.46                | 2.55                | 2.77              | 2.94  | 3.14              | 3.63              | 3.96              | 4.28                | 4.76                      | 2.07   | 2.97                     | 3.48   | 4.04                       | 4.71                               |  |
|   | M 2               | 2.33  | 2.46                | 2.57                | 2.79              | 2.95  | 3.16              | 3.64              | 3.98              | 4.29                | 4.75                      | 2.11   | 2.98                     | 3.49   | 4.06                       | 4.71                               |  |
|   | 9                 | 2.30  | 2.44                | 2.54                | 2.78              | 2.98  | 3.19              | 3.68              | 4.02              | 4.34                | 4.79                      | 2.07   | 3.01                     | 3.53   | 4.10                       | 4.75                               |  |
|   | 16                | 2.39  | 2.48                | 2.61                | 2.91              | 3.15  | 3.34              | 3.78              | 4.09              | 4.38                | 4.81                      | 2.11   | 3.17                     | 3.65   | 4.17                       | 4.77                               |  |
|   | 23                | 2.41  | 2.55                | 2.72                | 3.07              | 3.40  | 3.63              | 3.88              | 4.17              | 4.44                | 4.82                      | 2.12   | 3.29                     | 3.75   | 4.24                       | 4.80                               |  |
|   | 30                | 2.45  | 2.56                | 2.69                | 3.04              | 3.36  | 3.58              | 3.83              | 4.12              | 4.39                | 4.77                      | 2.08   | 3.25                     | 3.70   | 4.19                       | 4.75                               |  |
|   | A 6               | 2.43  | 2.52                | 2.63                | 2.97              | 3.24  | 3.45              | 3.70              | 3.99              | 4.28                | 4.70                      | 2.01   | 3.14                     | 3.57   | 4.07                       | 4.67                               |  |
|   | 13                | 2.41  | 2.47                | 2.57                | 2.86              | 3.11  | 3.34              | 3.59              | 3.90              | 4.19                | 4.65                      | 1.97   | 3.02                     | 3.46   | 3.97                       | 4.60                               |  |
|   | 20                | 2.39  | 2.44                | 2.51                | 2.72              | 2.97  | 3.21              | 3.47              | 3.80              | 4.11                | 4.59                      | 1.92   | 2.87                     | 3.34   | 3.88                       | 4.54                               |  |
|   | 27                | 2.38  | 2.45                | 2.54                | 2.82              | 3.07  | 3.29              | 3.54              | 3.84              | 4.14                | 4.59                      | 1.92   | 2.97                     | 3.42   | 3.92                       | 4.55                               |  |
| 2005  | A 21              | 2.37  | 2.45                | 2.54                | 2.76              | 3.03  | 3.27              | 3.54              | 3.86              | 4.17                | 4.63                      | 1.95   | 2.93                     | 3.41   | 3.94                       | 4.58                               |  |
|   | 22                | 2.40  | 2.45                | 2.54                | 2.79              | 3.06  | 3.29              | 3.54              | 3.86              | 4.16                | 4.61                      | 1.93   | 2.96                     | 3.41   | 3.94                       | 4.56                               |  |
|   | 25                | 2.41  | 2.45                | 2.55                | 2.81              | 3.09  | 3.31              | 3.56              | 3.87              | 4.16                | 4.60                      | 1.92   | 2.98                     | 3.43   | 3.95                       | 4.56                               |  |
|   | 26                | 2.40  | 2.45                | 2.53                | 2.82              | 3.08  | 3.30              | 3.55              | 3.86              | 4.16                | 4.60                      | 1.93   | 2.97                     | 3.43   | 3.94                       | 4.56                               |  |
|   | 27                | 2.38  | 2.45                | 2.54                | 2.82              | 3.07  | 3.29              | 3.54              | 3.84              | 4.14                | 4.59                      | 1.92   | 2.97                     | 3.42   | 3.92                       | 4.55                               |  |



FINANCIAL MARKET STATISTICS  
STATISTIQUES DU MARCHÉ FINANCIER

continued  
suite

| Wednesday<br>and latest<br>week<br><i>Le mercredi<br/>et<br/>la dernière<br/>semaine</i> | Bankers' acceptances<br><i>Acceptations<br/>bancaires</i> |                   |                            |                   | Prime corporate<br>paper rate<br><i>Taux du papier de<br/>premier choix des<br/>sociétés non financières</i> |                            | Tuesday<br>(effective date<br>in brackets)<br><i>Le mardi<br/>(date d'entrée<br/>en vigueur entre<br/>parenthèses)</i> | Treasury bill auction<br><i>Adjudication de bons du Trésor</i> |                            |                            | Amount auctioned<br><i>Montant adjudgé</i> |                            |                            | Amount<br>maturing<br><i>Montant<br/>arrivant à<br/>échéance</i> |                         |
|--|---|-------------------|----------------------------|-------------------|--|----------------------------|--|--|----------------------------|----------------------------|--|----------------------------|----------------------------|--|-------------------------|
|  | 1 month<br><i>À 1 mois</i>                                |                   | 3 month<br><i>À 3 mois</i> |                   | 1 month<br><i>À 1 mois</i>   | 3 month<br><i>À 3 mois</i> |  | Average yields<br><i>Rendement moyen</i>                       | 3 month<br><i>À 3 mois</i> | 6 month<br><i>À 6 mois</i> | 1 year<br><i>À 1 an</i>                    | 3 month<br><i>À 3 mois</i> | 6 month<br><i>À 6 mois</i> |  | 1 year<br><i>À 1 an</i> |
|  | V121750<br>V39068   | V121775<br>V39071 | V121809<br>V39072          | V121812<br>V39074 | V121799  | V121800                    |  | V121801  | V121802                    | V121803                    | V121804                                    | V121805                    |                            |  |                         |
| 2005 J 19  | 2.54  | 2.57              | 2.53                       | 2.56              | 2005 J 18  |                            |  |  |                            |                            |  |                            |                            |  |                         |
| 26   | 2.53  | 2.55              | 2.53                       | 2.56              | 25   | 2.437                      | 2.523  | 2.661  | 5,300                      | 2,100                      | 2,100                                      | 9,600                      |                            |  |                         |
| F 2  | 2.54  | 2.58              | 2.53                       | 2.56              | F 1  |                            |  |  |                            |                            |  |                            |                            |  |                         |
| 9  | 2.54  | 2.59              | 2.55                       | 2.59              | 8  | 2.456                      | 2.541  | 2.746  | 5,900                      | 2,300                      | 2,300                                      | 10,400                     |                            |  |                         |
| 16   | 2.55  | 2.58              | 2.55                       | 2.60              | 15   |                            |  |  |                            |                            |  |                            |                            |  |                         |
| 23   | 2.55  | 2.59              | 2.53                       | 2.57              | 22   | 2.464                      | 2.558  | 2.766  | 6,500                      | 2,500                      | 2,500                                      | 9,800                      |                            |  |                         |
| M 2  | 2.56  | 2.59              | 2.56                       | 2.60              | M 1  |                            |  |  |                            |                            |  |                            |                            |  |                         |
| 9  | 2.56  | 2.59              | 2.56                       | 2.60              | 8  | 2.463                      | 2.555  | 2.774  | 6,500                      | 2,500                      | 2,500                                      | 8,800                      |                            |  |                         |
| 16   | 2.57  | 2.62              | 2.58                       | 2.61              | 15   |                            |  |  |                            |                            |  |                            |                            |  |                         |
| 23   | 2.59  | 2.70              | 2.61                       | 2.71              | 22   | 2.546                      | 2.704  | 3.035  | 6,500                      | 2,500                      | 2,500                                      | 8,200                      |                            |  |                         |
| 30   | 2.59  | 2.67              | 2.57                       | 2.68              | 29   |                            |  |  |                            |                            |  |                            |                            |  |                         |
| A 6  | 2.56  | 2.59              | 2.55                       | 2.61              | A 5  | 2.546                      | 2.657  | 2.998  | 5,600                      | 2,200                      | 2,200                                      | 10,400                     |                            |  |                         |
| 13   | 2.54  | 2.59              | 2.55                       | 2.60              | 12   |                            |  |  |                            |                            |  |                            |                            |  |                         |
| 20   | 2.54  | 2.57              | 2.54                       | 2.57              | 19   | 2.461                      | 2.549  | 2.769  | 4,700                      | 1,900                      | 1,900                                      | 8,300                      |                            |  |                         |
| 27   | 2.53  | 2.57              | 2.55                       | 2.58              | 26   |                            |  |  |                            |                            |  |                            |                            |  |                         |
| 2005 A 21  | 2.55  | 2.57              | 2.54                       | 2.56              |  |                            |  |  |                            |                            |  |                            |                            |  |                         |
| 22   | 2.55  | 2.58              | 2.55                       | 2.58              |  |                            |  |  |                            |                            |  |                            |                            |  |                         |
| 25   | 2.53  | 2.56              | 2.55                       | 2.58              |  |                            |  |  |                            |                            |  |                            |                            |  |                         |
| 26   | 2.55  | 2.58              | 2.55                       | 2.58              |  |                            |  |  |                            |                            |  |                            |                            |  |                         |
| 27   | 2.53  | 2.57              | 2.55                       | 2.58              |  |                            |  |  |                            |                            |  |                            |                            |  |                         |

Effective 16 September 1997, the weekly issuance pattern of treasury bills was replaced by a 2-week cycle and the maturity of 3-month treasury bills was lengthened by 7 days. Since 19 March 1998 (after a transition phase of six months), the maturity pattern follows a 2-week cycle.  
*Le 16 septembre 1997, le calendrier hebdomadaire des adjudications de bons du Trésor du gouvernement du Canada a été remplacé par un cycle de deux semaines et l'échéance des bons du Trésor à trois mois à été prolongée de sept jours. Depuis le 19 mars 1998 (après une période de transition de six mois), le calendrier des échéances suit également un cycle de deux semaines.*

FINANCIAL MARKET STATISTICS  
STATISTIQUES DU MARCHÉ FINANCIER

continued  
suite

| Wednesday<br><i>Le<br/>mercredi</i> | Other bonds: Average weighted yield<br>(Scotia Capital Inc.)<br><i>Rendements moyens pondérés des obligations<br/>d'autres émetteurs (Scotia Capital Inc.)</i> |                                      |  |                                      | Selected U.S. dollar interest rates<br><i>Quelques taux d'intérêt pratiqués aux États-Unis</i> |  |  |                            | Forward premium or discount (-)<br>U.S. dollars in Canada<br><i>Report ou déport (-)<br/>sur le dollar É.-U. au Canada</i> |                            |                            |       |                            |  |
|-------------------------------------|--|--------------------------------------|--|--------------------------------------|--|--|--|----------------------------|--|----------------------------|----------------------------|-------|----------------------------|--|
|                                     | Provincials<br><i>Provinces</i>  |                                      | All corporates<br><i>Ensemble des sociétés</i> |                                      | Federal<br>funds rate<br><i>Taux des<br/>fonds<br/>fédéraux</i>                                | Prime rate<br>charged<br>by banks<br><i>Taux de<br/>base des<br/>prêts<br/>bancaires</i> | Commercial paper<br>(adjusted)<br><i>Papier commercial<br/>(taux corrigés)</i> |                            | U.S. Treasuries<br>constant maturity<br><i>Obligations du<br/>Trésor américain<br/>à échéance fixe</i>                     |                            | 1 month<br><i>À 1 mois</i> |       | 3 month<br><i>À 3 mois</i> |  |
|                                     | Mid-term<br><i>À moyen<br/>terme</i>   | Long-term<br><i>À long<br/>terme</i> | Mid-term<br><i>À moyen<br/>terme</i>           | Long-term<br><i>À long<br/>terme</i> |  |  | 1 month<br><i>À 1 mois</i>   | 3 month<br><i>À 3 mois</i> | 5 year<br><i>À 5 ans</i>   | 10 year<br><i>À 10 ans</i> |                            |       |                            |  |
| 2005 J 19                           | 4.25   | 5.14                                 | 4.53   | 5.65                                 | 2.29   | 5.25   | 2.38   | 2.55                       | 3.73   | 4.20                       | 0.10                       | -0.07 |                            |  |
| 26                                  | 4.25   | 5.14                                 | 4.53   | 5.66                                 | 2.27   | 5.25   | 2.46   | 2.60                       | 3.73   | 4.21                       | 0.10                       | -0.13 |                            |  |
| F 2                                 | 4.27   | 5.12                                 | 4.59   | 5.66                                 | 2.43   | 5.25   | 2.51   | 2.64                       | 3.73   | 4.15                       | 0.00                       | -0.13 |                            |  |
| 9                                   | 4.16   | 4.98                                 | 4.47   | 5.48                                 | 2.50   | 5.50   | 2.51   | NA                         | 3.58   | 4.00                       | 0.00                       | -0.16 |                            |  |
| 16                                  | 4.23   | 5.05                                 | 4.53   | 5.56                                 | 2.50   | 5.50   | 2.50   | NA                         | 3.78   | 4.16                       | 0.00                       | -0.20 |                            |  |
| 23                                  | 4.26   | 5.11                                 | 4.57   | 5.62                                 | 2.52   | 5.50   | 2.52   | NA                         | 3.87   | 4.27                       | 0.00                       | -0.26 |                            |  |
| M 2                                 | 4.34   | 5.17                                 | 4.63   | 5.65                                 | 2.51   | 5.50   | 2.59   | NA                         | 4.00   | 4.38                       | -0.10                      | -0.29 |                            |  |
| 9                                   | 4.37   | 5.19                                 | 4.64   | 5.66                                 | 2.50   | 5.50   | 2.66   | 2.79                       | 4.16   | 4.52                       | -0.10                      | -0.34 |                            |  |
| 16                                  | 4.44   | 5.23                                 | 4.72   | 5.70                                 | 2.55   | 5.50   | 2.72   | 2.85                       | 4.18   | 4.52                       | -0.20                      | -0.37 |                            |  |
| 23                                  | 4.52   | 5.28                                 | 4.82   | 5.79                                 | 2.71   | 5.75   | 2.77   | 2.94                       | 4.30   | 4.61                       | -0.30                      | -0.37 |                            |  |
| 30                                  | 4.47   | 5.21                                 | 4.77   | 5.73                                 | 2.77   | 5.75   | 2.77   | NA                         | 4.26   | 4.56                       | -0.20                      | -0.40 |                            |  |
| A 6                                 | 4.35   | 5.15                                 | 4.66   | 5.66                                 | 2.81   | 5.75   | 2.76   | 3.01                       | 4.09   | 4.44                       | -0.30                      | -0.43 |                            |  |
| 13                                  | 4.26   | 5.09                                 | 4.56   | 5.61                                 | 2.76   | 5.75   | 2.85   | NA                         | 4.03   | 4.38                       | -0.39                      | -0.49 |                            |  |
| 20                                  | 4.19   | 5.05                                 | 4.49   | 5.56                                 | 2.78   | 5.75   | 3.03   | NA                         | 3.86   | 4.22                       | -0.49                      | -0.52 |                            |  |
| 27                                  | 4.21   | 5.04                                 | 4.53   | 5.58                                 |  |  |  |                            |  |                            | -0.58                      | -0.55 |                            |  |

| Month, week ending<br><i>Mois ou semaine se terminant à la date indiquée</i> | EXCHANGE RATES<br><i>COURS DU CHANGE</i>                           |                           |                                       |                           |   |                  |   |                                    |                                     |        | BFS Table I1<br><i>SBF Tableau I1</i>                                   |       |
|--|--|---------------------------|---------------------------------------|---------------------------|---|------------------|---|------------------------------------|-------------------------------------|--------|---|-------|
|  | U.S. dollar<br><i>Dollar É.-U.</i>                                 |                           |                                       |                           | Canadian dollar<br>in U.S. funds<br><i>Dollar canadien</i>                                |                  | Other currencies<br><i>Autres monnaies</i>                                |                                    |                                     |        | Canadian dollar index<br>against C-6<br>currencies<br><i>Indice C-6</i> |       |
|  | Canadian dollars per unit<br><i>En dollars canadiens par unité</i> |                           |                                       |                           | Canadian cents per unit<br>3-month forward spread<br><i>Report ou déport (-) à 3 mois</i> |                  | Average of noon spot rates<br><i>Moyenne des cours du comptant à midi</i> |                                    |                                     |        | Canadian dollars per unit<br><i>En dollars canadiens par unité</i>      |       |
|  | Spot rates<br><i>Cours du comptant</i>                             |                           | Closing<br><i>Clôture</i>             |                           | Average noon<br><i>Moyenne à midi</i>   |                  | Spot rates<br><i>Cours du comptant</i>                                    |                                    | Closing<br><i>Clôture</i>           |        | Average noon<br><i>Moyenne à midi</i>                                   |       |
| High<br><i>Haut</i>  | Low<br><i>Bas</i>  | Closing<br><i>Clôture</i> | Average noon<br><i>Moyenne à midi</i> | Closing<br><i>Clôture</i> | Average noon<br><i>Moyenne à midi</i>   | EMU <sup>1</sup> | British pound<br><i>Livre sterling</i>                                    | Swiss franc<br><i>Franc suisse</i> | Japanese yen<br><i>Yen japonais</i> |        |   |       |
| V37433   | V37434   | V37432                    | V37426                                |                           |   | V121742          | V37430  | V37429                             | V37456                              | V37451 |   |       |
| 2004 D   | 1.2467   | 1.1796                    | 1.2020                                | 1.2191                    | 0.03  | 0.05             | 0.8319  | 1.6317                             | 2.3502                              | 1.0621 | 0.011734  | 97.74 |
| 2005 J   | 1.2470   | 1.1948                    | 1.2412                                | 1.2253                    | -0.04   | -0.01            | 0.8057  | 1.6052                             | 2.3001                              | 1.0373 | 0.011858  | 97.41 |
| F  | 1.2584   | 1.2241                    | 1.2335                                | 1.2397                    | -0.09   | -0.06            | 0.8107  | 1.6133                             | 2.3397                              | 1.0407 | 0.011808  | 96.40 |
| M  | 1.2494   | 1.1978                    | 1.2096                                | 1.2161                    | -0.13   | -0.11            | 0.8267  | 1.6045                             | 2.3177                              | 1.0354 | 0.011558  | 98.17 |
| 2005 M 2   | 1.2492   | 1.2277                    | 1.2395                                | 1.2394                    | -0.09   | -0.09            | 0.8068  | 1.6353                             | 2.3756                              | 1.0616 | 0.011824  | 96.28 |
| 9  | 1.2494   | 1.1997                    | 1.2055                                | 1.2263                    | -0.10   | -0.10            | 0.8295  | 1.6261                             | 2.3552                              | 1.0490 | 0.011718  | 97.27 |
| 16   | 1.2118   | 1.1978                    | 1.2048                                | 1.2058                    | -0.11   | -0.11            | 0.8300  | 1.6145                             | 2.3151                              | 1.0421 | 0.011555  | 98.84 |
| 23   | 1.2180   | 1.1980                    | 1.2165                                | 1.2064                    | -0.11   | -0.11            | 0.8220  | 1.5937                             | 2.2947                              | 1.0273 | 0.011485  | 98.94 |
| 30   | 1.2265   | 1.2083                    | 1.2170                                | 1.2173                    | -0.12   | -0.12            | 0.8217  | 1.5729                             | 2.2800                              | 1.0132 | 0.011366  | 98.33 |
| A 6  | 1.2249   | 1.2065                    | 1.2208                                | 1.2173                    | -0.13   | -0.13            | 0.8191  | 1.5681                             | 2.2877                              | 1.0101 | 0.011267  | 98.39 |
| 13   | 1.2422   | 1.2178                    | 1.2385                                | 1.2312                    | -0.15   | -0.15            | 0.8074  | 1.5900                             | 2.3212                              | 1.0263 | 0.011397  | 97.26 |
| 20   | 1.2498   | 1.2363                    | 1.2396                                | 1.2424                    | -0.16   | -0.16            | 0.8067  | 1.6125                             | 2.3642                              | 1.0415 | 0.011566  | 96.30 |
| 27   | 1.2512   | 1.2316                    | 1.2494                                | 1.2408                    | -0.17   | -0.16            | 0.8004  | 1.6142                             | 2.3687                              | 1.0459 | 0.011696  | 96.34 |

Latest week: / Dernière semaine :

|           |        |        |        |        |       |       |        |        |        |        |          |       |
|-----------|--------|--------|--------|--------|-------|-------|--------|--------|--------|--------|----------|-------|
| 2005 A 21 | 1.2425 | 1.2357 | 1.2391 | 1.2391 | -0.16 | -0.16 | 0.8070 | 1.6223 | 2.3669 | 1.0511 | 0.011596 | 96.46 |
| 22        | 1.2378 | 1.2316 | 1.2349 | 1.2342 | -0.16 | -0.16 | 0.8098 | 1.6129 | 2.3635 | 1.0440 | 0.011660 | 96.80 |
| 25        | 1.2414 | 1.2365 | 1.2378 | 1.2375 | -0.16 | -0.16 | 0.8079 | 1.6068 | 2.3656 | 1.0412 | 0.011709 | 96.58 |
| 26        | 1.2492 | 1.2412 | 1.2454 | 1.2464 | -0.16 | -0.16 | 0.8030 | 1.6159 | 2.3730 | 1.0477 | 0.011756 | 95.93 |
| 27        | 1.2512 | 1.2423 | 1.2494 | 1.2466 | -0.17 | -0.17 | 0.8004 | 1.6130 | 2.3745 | 1.0457 | 0.011761 | 95.92 |

(1) The euro is the monetary unit of the European Economic and Monetary Union (EMU), which commenced on 1 January 1999. / L'euro est l'unité monétaire de l'Union économique et monétaire (UEM) européenne qui est entrée en vigueur le 1er janvier 1999.

Month, week ending  
*Mois ou semaine se terminant à la date indiquée*

Overnight money market financing rate  
*Taux des fonds à un jour*

|          | V39050 |
|----------|--------|
| 2004 D   | 2.5035 |
| 2005 J   | 2.4966 |
| F        | 2.4980 |
| M        | 2.4877 |
| 2005 M 2 | 2.4985 |
| 9        | 2.4816 |
| 16       | 2.4884 |
| 23       | 2.4775 |
| 30       | 2.4810 |
| A 6      | 2.4909 |
| 13       | 2.4926 |
| 20       | 2.4928 |
| 27       | 2.4931 |

Latest week: / Dernière semaine :

|           |        |
|-----------|--------|
| 2005 A 21 | 2.4943 |
| 22        | 2.4957 |
| 25        | 2.4968 |
| 26        | 2.4964 |
| 27        | 2.4931 |

Monthly  
Average  
Moyenne  
mensuelle

SELECTED MONETARY AGGREGATES AND THEIR COMPONENTS (Millions of dollars)  
AGRÉGATS MONÉTAIRES ET LEURS COMPOSANTES (En millions de dollars)

BFS Table E1  
SBF Tableau E1

|      |   | M1  |   |  |   |   |   |                      |   |   |   |   |
|------|---|---|---|--|---|---|---|----------------------|---|---|---|---|
|      |   | Currency outside banks<br><i>Monnaie hors banques</i> |   | Personal chequing accounts<br><i>Comptes de chèques personnels</i> |   | Current accounts<br><i>Comptes courants</i>       |   | Adjustments<br>to M1 | Gross M1<br><i>M1 brut</i>                        |   | Chartered bank net demand deposits<br><i>Dépôts à vue nets aux banques à charte</i> |   |
|      |   | Unadjusted<br><i>Données non désaisonnalisées</i>     | Seasonally<br>adjusted<br><i>Données désaisonnalisées</i> | Unadjusted<br><i>Données non désaisonnalisées</i>                  | Seasonally<br>adjusted<br><i>Données désaisonnalisées</i> | Unadjusted<br><i>Données non désaisonnalisées</i> | Seasonally<br>adjusted<br><i>Données désaisonnalisées</i> | Ajustements<br>à M1  | Unadjusted<br><i>Données non désaisonnalisées</i> | Seasonally<br>adjusted<br><i>Données désaisonnalisées</i> | Unadjusted<br><i>Données non désaisonnalisées</i>                                   | Seasonally<br>adjusted<br><i>Données désaisonnalisées</i> |
|      |   | V37173  | V37148  | V36844   | V37142  | V36845  | V37143  | V37247               | V37252  | V37141  | V36831  | V37115  |
| 2003 | J | 39,826  | 39,849  | 30,284   | 30,284  | 72,419  | 72,391  | -320                 | 142,209   | 142,204   | 103,793   | 104,733   |
|      | J | 40,126  | 39,792  | 30,526   | 30,526  | 76,608  | 76,192  | -291                 | 146,969   | 146,221   | 109,353   | 107,515   |
|      | A | 40,519  | 40,015  | 30,784   | 30,784  | 76,185  | 76,230  | -323                 | 147,165   | 146,706   | 107,965   | 108,141   |
|      | S | 40,461  | 40,038  | 31,161   | 31,161  | 75,829  | 76,159  | -258                 | 147,193   | 147,100   | 109,045   | 108,547   |
|      | O | 40,664  | 40,261  | 31,078   | 31,078  | 76,729  | 76,345  | -291                 | 148,179   | 147,394   | 107,213   | 104,671   |
|      | N | 40,686  | 40,468  | 31,505   | 31,505  | 78,765  | 77,853  | -353                 | 150,602   | 149,477   | 109,164   | 107,337   |
|      | D | 41,223  | 40,462  | 31,913   | 31,913  | 82,549  | 79,055  | -372                 | 155,313   | 151,073   | 113,345   | 109,849   |
| 2004 | J | 40,598  | 40,772  | 32,119   | 32,119  | 81,154  | 80,427  | -307                 | 153,564   | 153,014   | 109,008   | 109,870   |
|      | F | 40,267  | 41,048  | 33,037   | 33,037  | 81,586  | 82,540  | -305                 | 154,585   | 156,317   | 110,844   | 112,949   |
|      | M | 40,195  | 41,035  | 33,409   | 33,409  | 81,218  | 83,585  | -223                 | 154,598   | 157,799   | 111,843   | 115,266   |
|      | A | 40,670  | 41,287  | 33,985   | 33,985  | 83,872  | 85,208  | -236                 | 158,292   | 160,240   | 114,640   | 117,246   |
|      | M | 41,202  | 41,495  | 34,403   | 34,403  | 85,532  | 86,979  | -221                 | 160,915   | 162,652   | 118,623   | 120,189   |
|      | J | 41,702  | 41,700  | 34,576   | 34,576  | 86,923  | 86,736  | -298                 | 162,903   | 162,715   | 124,227   | 124,914   |
|      | J | 42,173  | 41,804  | 34,816   | 34,816  | 86,664  | 86,019  | -229                 | 163,424   | 162,412   | 124,913   | 122,302   |
|      | A | 42,229  | 41,690  | 34,865   | 34,865  | 85,939  | 85,900  | -230                 | 162,804   | 162,225   | 123,212   | 122,965   |
|      | S | 42,364  | 41,916  | 34,362   | 34,362  | 85,795  | 86,185  | -259                 | 162,261   | 162,202   | 124,232   | 123,250   |
|      | O | 42,532  | 42,112  | 35,181   | 35,181  | 87,061  | 86,811  | -210                 | 164,565   | 163,895   | 128,295   | 125,186   |
|      | N | 42,357  | 42,145  | 35,504   | 35,504  | 88,479  | 87,588  | -381                 | 165,960   | 164,861   | 125,587   | 123,922   |
|      | D | 43,139  | 42,359  | 37,106   | 37,106  | 93,489  | 89,649  | -756                 | 172,978   | 168,390   | 129,132   | 125,629   |
| 2005 | J | 42,557  | 42,750  | 37,144   | 37,144  | 91,445  | 90,588  | -542                 | 170,603   | 169,944   | 127,979   | 129,070   |
|      | F | 42,178  | 43,012  | 37,923   | 37,923  | 90,793  | 91,862  | -558                 | 170,336   | 172,232   | 129,537   | 132,281   |
|      | M | 42,124  | 43,011  | 38,216   | 38,216  | 90,255  | 92,937  | -533                 | 170,062   | 173,615   | 127,838   | 132,008   |

Monthly  
Average  
Moyenne  
mensuelle

SELECTED MONETARY AGGREGATES AND THEIR COMPONENTS (Millions of dollars)  
AGRÉGATS MONÉTAIRES ET LEURS COMPOSANTES (En millions de dollars)

continued  
suite

|      |   | M3  |   |  |   |                      |   |   |  |                      |   |   |
|------|---|---|---|--|---|----------------------|---|---|--|----------------------|---|---|
|      |   | M2  |   | Chartered banks<br><i>Banques à charte</i>   |   | Adjustments<br>to M2 | M2 Total<br><i>Total de M2</i>                    |   | Chartered bank<br>non-personal term<br>deposits plus<br>foreign currency<br>deposits of<br>residents   | Adjustments<br>to M3 | M3 Total<br><i>Total de M3</i>                    |   |
|      |   | Unadjusted<br><i>Données non désaisonnalisées</i> | Seasonally<br>adjusted<br><i>Données désaisonnalisées</i> | Non-<br>personal<br>notice<br>deposits<br><i>Dépôts à<br/>préavis<br/>autres<br/>que ceux<br/>des<br/>particu-<br/>liers</i> | Personal<br>savings<br>deposits<br><i>Dépôts<br/>d'épargne<br/>des<br/>particu-<br/>liers</i> | Ajustements<br>à M2  | Unadjusted<br><i>Données non désaisonnalisées</i> | Seasonally<br>adjusted<br><i>Données désaisonnalisées</i> | <i>Dépôts à terme<br/>autres que ceux<br/>des particuliers aux<br/>banques à charte<br/>et dépôts en<br/>monnaies<br/>étrangères des<br/>résidents</i> | Ajustements<br>à M3  | Unadjusted<br><i>Données non désaisonnalisées</i> | Seasonally<br>adjusted<br><i>Données désaisonnalisées</i> |
|      |   | V37200  | V37124  | V36827/28  | V36814  | V37248               | V37198  | V37128  | V36830/76  | V37250               | V37197  | V37125  |
| 2003 | J | 143,299   | 144,259   | 54,613   | 383,821   | -35                  | 581,698   | 581,532   | 219,332  | -5,798               | 795,232   | 792,809   |
|      | J | 149,189   | 147,021   | 55,215   | 383,411   | -40                  | 587,775   | 585,401   | 219,132  | -4,855               | 802,052   | 799,660   |
|      | A | 148,161   | 147,832   | 55,927   | 385,126   | -37                  | 589,177   | 588,713   | 211,109  | -4,940               | 795,345   | 795,687   |
|      | S | 149,247   | 148,329   | 56,540   | 385,227   | -39                  | 590,976   | 590,476   | 214,257  | -5,281               | 799,951   | 798,165   |
|      | O | 147,586   | 144,647   | 56,606   | 385,474   | -42                  | 589,623   | 588,610   | 215,858  | -5,534               | 799,947   | 799,902   |
|      | N | 149,496   | 147,458   | 56,920   | 387,514   | -43                  | 593,887   | 591,076   | 222,997  | -6,340               | 810,545   | 806,700   |
|      | D | 154,196   | 149,950   | 58,235   | 388,883   | -37                  | 601,277   | 594,936   | 225,427  | -5,021               | 821,683   | 812,662   |
| 2004 | J | 149,299   | 150,333   | 57,604   | 389,752   | -59                  | 596,596   | 597,488   | 227,823  | -4,494               | 819,925   | 821,502   |
|      | F | 150,805   | 153,687   | 56,666   | 390,831   | -47                  | 598,255   | 601,773   | 230,103  | -4,737               | 823,620   | 829,646   |
|      | M | 151,815   | 156,071   | 55,824   | 390,762   | -42                  | 598,359   | 604,236   | 237,371  | -6,257               | 829,472   | 836,578   |
|      | A | 155,074   | 158,291   | 57,547   | 392,707   | -54                  | 605,275   | 608,463   | 239,115  | -5,451               | 838,938   | 843,223   |
|      | M | 159,604   | 161,461   | 58,482   | 394,241   | -52                  | 612,276   | 614,077   | 244,858  | -4,891               | 852,243   | 853,681   |
|      | J | 165,631   | 166,315   | 60,263   | 397,107   | -50                  | 622,951   | 622,181   | 242,146  | -5,216               | 859,881   | 856,528   |
|      | J | 166,857   | 163,882   | 60,079   | 398,702   | -66                  | 625,572   | 622,381   | 243,708  | -5,568               | 863,712   | 860,402   |
|      | A | 165,212   | 164,425   | 59,551   | 399,487   | -50                  | 624,200   | 623,035   | 250,627  | -5,764               | 869,062   | 868,963   |
|      | S | 166,337   | 164,909   | 60,213   | 399,337   | -58                  | 625,828   | 624,868   | 254,786  | -5,742               | 874,873   | 873,479   |
|      | O | 170,617   | 167,092   | 60,077   | 399,893   | -62                  | 630,526   | 629,393   | 260,447  | -5,839               | 885,135   | 885,337   |
|      | N | 167,564   | 165,691   | 60,480   | 401,644   | -53                  | 629,634   | 626,974   | 267,386  | -6,328               | 890,693   | 886,825   |
|      | D | 171,515   | 167,253   | 63,225   | 403,885   | -49                  | 638,577   | 632,379   | 274,840  | -6,259               | 907,158   | 897,715   |
| 2005 | J | 169,993   | 171,273   | 62,052   | 404,916   | -59                  | 636,902   | 637,970   | 270,048  | -5,690               | 901,260   | 903,207   |
|      | F | 171,157   | 174,723   | 61,396   | 406,037   | -53                  | 638,537   | 642,592   | 283,188  | -6,833               | 914,892   | 921,663   |
|      | M | 169,429   | 174,469   | 60,792   | 405,848   | -56                  | 636,014   | 642,657   | 290,450  | -7,571               | 918,893   | 926,982   |

(1) Unadjusted because it does not show stable seasonality / Ces données ne présentant pas de variations saisonnières stables, elles ne sont pas désaisonnalisées

|  |   | SELECTED MONETARY AGGREGATES AND THEIR COMPONENTS (Millions of dollars)<br><i>AGRÉGATS MONÉTAIRES ET LEURS COMPOSANTES (En millions de dollars)</i> |  |         |  |   |  |  |  |                                  | continued<br>suite                                     |   |
|--|---|---|--|---------|--|---|--|--|--|----------------------------------|--|---|
| Monthly average or average of month-ends<br><i>Moyenne mensuelle ou moyenne de fin de mois</i> |   | M2+   | Trust and mortgage loan companies <sup>4</sup><br><i>Sociétés de fiducie ou de prêt hypothécaire<sup>4</sup></i> |         | Credit unions and caisses populaires<br><i>Caisses populaires et credit unions</i> | Life insurance company individual annuities<br><i>Compagnies d'assurance vie (rentes individuelles)</i> | Personal deposits at government owned savings institutions<br><i>Dépôts des particuliers aux caisses d'épargne publiques</i> | Money market mutual funds<br><i>Fonds communs de placement du marché monétaire</i> | Adjustments to M2+<br><i>Ajustements à M2+</i> | M2+ total<br><i>Total de M2+</i> | Seasonally adjusted<br><i>Données désaisonnalisées</i> |   |
|  |   | Unadjusted<br><i>Données non désaisonnalisées</i>   | Total deposits<br><i>Total des dépôts</i>  |         |  |   |  |  |  |                                  | Unadjusted<br><i>Données non désaisonnalisées</i>      | Seasonally adjusted <sup>1</sup><br><i>Données désaisonnalisées<sup>1</sup></i> |
|  |   | V37198  | V37235   | V37138  | V37239   | V37243  | V37244   | V37245   | V37251   | V37216                           | V37131   |   |
| 2003   | J | 587,775   | 9,263  | 9,263   | 132,471  | 40,377  | 7,615  | 57,747   | 196  | 835,445                          | 832,748  |   |
|  | A | 589,177   | 9,346  | 9,346   | 132,556  | 40,360  | 7,624  | 57,372   | 174  | 836,609                          | 835,404  |   |
|  | S | 590,976   | 9,428  | 9,428   | 132,774  | 40,343  | 7,618  | 56,620   | 152  | 837,912                          | 836,665  |   |
|  | O | 589,623   | 9,483  | 9,483   | 133,251  | 40,345  | 7,635  | 55,905   | 37   | 836,279                          | 834,136  |   |
|  | N | 593,887   | 9,512  | 9,512   | 133,803  | 40,366  | 7,678  | 55,534   | -171   | 840,609                          | 836,875  |   |
|  | D | 601,277   | 9,540  | 9,540   | 134,716  | 40,388  | 7,685  | 55,366   | -379   | 848,594                          | 841,813  |   |
| 2004   | J | 596,596   | 9,600  | 9,600   | 134,748  | 40,337  | 7,703  | 54,678   | -369   | 843,292                          | 844,869  |   |
|  | F | 598,255   | 9,687  | 9,687   | 134,335  | 40,218  | 7,773  | 54,110   | -148   | 844,230                          | 849,004  |   |
|  | M | 598,359   | 9,774  | 9,774   | 134,897  | 40,099  | 7,814  | 54,319   | 75   | 845,337                          | 852,306  |   |
|  | A | 605,275   | 9,886  | 9,886   | 136,036  | 39,980  | 7,847  | 54,164   | 203  | 853,392                          | 858,140  |   |
|  | M | 612,276   | 10,023   | 10,023  | 137,472  | 39,865  | 7,875  | 54,741   | 231  | 862,483                          | 864,554  |   |
|  | J | 622,951   | 10,160   | 10,160  | 139,047  | 39,749  | 7,863  | 54,355   | 259  | 874,383                          | 873,589  |   |
|  | J | 625,572   | 10,283   | 10,283  | 139,629  | 39,700  | 7,851  | 54,013   | 239  | 877,287                          | 873,553  |   |
|  | A | 624,200   | 10,395   | 10,395  | 139,597  | 39,714  | 7,833  | 53,672   | 174  | 875,586                          | 873,495  |   |
|  | S | 625,828   | 10,506   | 10,506  | 140,465  | 39,729  | 7,820  | 52,631   | 110  | 877,088                          | 875,132  |   |
|  | O | 630,526   | 10,587   | 10,587  | 141,160  | 39,626 R  | 7,840  | 52,095   | 79   | 881,914R                         | 879,407R   |   |
|  | N | 629,634   | 10,642   | 10,642  | 142,215  | 39,410 R  | 7,878  | 51,061   | 81   | 880,920R                         | 877,165R   |   |
|  | D | 638,577   | 10,696   | 10,696  | 144,029  | 39,194 R  | 7,895  | 51,384   | 84   | 891,859R                         | 885,410R   |   |
| 2005   | J | 636,902   | 10,773E  | 10,773E | 144,449E   | 39,025E,R   | 7,906  | 51,188   | 167 E  | 890,409E,R                       | 892,254E,R   |   |
|  | F | 638,537   | 10,871E  | 10,871E | 144,193E   | 38,910E,R   | 7,936  | 50,597   | 326 E  | 891,370E,R                       | 896,890E,R   |   |
|  | M | 636,014   |  |         | 144,881 E  |   | 7,981 E  | 50,663   |  |                                  |  |   |

|  |   | SELECTED MONETARY AGGREGATES AND THEIR COMPONENTS (Millions of dollars)<br><i>AGRÉGATS MONÉTAIRES ET LEURS COMPOSANTES (En millions de dollars)</i> |  |  |  |  |   |  |   |  | continued<br>suite                                     |          |
|--|---|---|--|--|--|--|---|--|---|--|--|----------|
| Monthly average or average of month-ends<br><i>Moyenne mensuelle ou moyenne de fin de mois</i> |   | M2++  | Canada Savings Bonds<br><i>Obligations d'épargne du Canada</i> |  | Non-money market mutual funds<br><i>Fonds communs de placement autres que ceux du marché monétaire</i> | M2++<br><i>M2++</i>                                    | M1+ <sup>2</sup><br><i>M1+<sup>2</sup></i>        | M1+ <sup>3</sup><br><i>M1+<sup>3</sup></i>             | M1+ <sup>3</sup><br><i>M1+<sup>3</sup></i>        | Seasonally adjusted<br><i>Données désaisonnalisées</i> | Seasonally adjusted<br><i>Données désaisonnalisées</i> |          |
|  |   | Unadjusted<br><i>Données non désaisonnalisées</i>   | Unadjusted<br><i>Données non désaisonnalisées</i>              | Seasonally adjusted<br><i>Données désaisonnalisées</i> | Unadjusted<br><i>Données non désaisonnalisées</i>  | Seasonally adjusted<br><i>Données désaisonnalisées</i> | Unadjusted<br><i>Données non désaisonnalisées</i> | Seasonally adjusted<br><i>Données désaisonnalisées</i> | Unadjusted<br><i>Données non désaisonnalisées</i> | Seasonally adjusted<br><i>Données désaisonnalisées</i> |  |          |
|  |   | V37216  | V37255   | V37147   | V37256   | V37149   | V37257  | V37150   | V37258  | V37151   | V37259   | V37152   |
| 2003   | J | 835,445   | 16,111R  | 16,027R  | 344,845  | 344,427  | 1,196,402R  | 1,193,202R   | 303,603   | 301,092  | 385,153  | 382,559  |
|  | A | 836,609   | 16,022R  | 15,895R  | 345,802  | 346,592  | 1,198,433R  | 1,197,891R   | 305,087   | 303,358  | 387,675  | 386,056  |
|  | S | 837,912   | 15,946R  | 15,772R  | 346,790  | 348,606  | 1,200,647R  | 1,201,044R   | 305,550   | 304,157  | 388,826  | 388,183  |
|  | O | 836,279   | 15,844R  | 15,720R  | 348,137  | 351,143  | 1,200,260R  | 1,200,998R   | 306,290   | 305,399  | 390,184  | 390,186  |
|  | N | 840,609   | 15,766R  | 15,944R  | 349,208  | 353,362  | 1,205,582R  | 1,206,181R   | 309,635   | 307,831  | 394,856  | 393,670  |
|  | D | 848,594   | 15,190R  | 15,337R  | 352,237  | 353,771  | 1,216,020R  | 1,210,922R   | 315,528   | 308,950  | 401,964  | 396,021  |
| 2004   | J | 843,292   | 14,575R  | 14,718R  | 354,941  | 355,216  | 1,212,808R  | 1,214,803R   | 312,326   | 312,953  | 400,410  | 400,936  |
|  | F | 844,230   | 14,410R  | 14,525R  | 360,728  | 359,215  | 1,219,368R  | 1,222,744R   | 312,000   | 315,470  | 401,880  | 406,227  |
|  | M | 845,337   | 14,293R  | 14,354R  | 365,222  | 361,613  | 1,224,852R  | 1,228,274R   | 310,186   | 318,424  | 402,290  | 409,908  |
|  | A | 853,392   | 14,235R  | 14,212R  | 367,025  | 364,165  | 1,234,652R  | 1,236,518R   | 319,029   | 322,609  | 412,956  | 415,775  |
|  | M | 862,483   | 14,199R  | 14,163R  | 367,247  | 365,530  | 1,243,929R  | 1,244,248R   | 325,192   | 326,996  | 421,164  | 421,897  |
|  | J | 874,383   | 14,141R  | 14,080R  | 368,793  | 367,325  | 1,257,317R  | 1,254,994R   | 331,208   | 329,133  | 429,410  | 426,083  |
|  | J | 877,287   | 14,051R  | 13,966R  | 369,873  | 369,377  | 1,261,210R  | 1,256,896R   | 332,232   | 329,129  | 430,348  | 426,897  |
|  | A | 875,586   | 13,980R  | 13,854R  | 370,543  | 371,253  | 1,260,109R  | 1,258,602R   | 330,700   | 328,561  | 428,912  | 426,768  |
|  | S | 877,088   | 13,920R  | 13,740R  | 371,620  | 373,387  | 1,262,629R  | 1,262,259R   | 330,759   | 329,288  | 429,076  | 428,317  |
|  | O | 881,914R  | 13,881R  | 13,758R  | 372,401  | 375,541  | 1,268,195R  | 1,268,706R   | 333,116   | 332,187  | 431,490  | 431,526  |
|  | N | 880,920R  | 13,821R  | 13,990R  | 374,032  | 378,265  | 1,268,773R  | 1,269,419R   | 334,951   | 333,144  | 434,111  | 433,061  |
|  | D | 891,859R  | 13,018R  | 13,160R  | 379,721  | 381,385  | 1,284,598R  | 1,279,955R   | 345,648   | 338,770  | 445,484  | 439,423  |
| 2005   | J | 890,409E,R  | 12,441R  | 12,574R  | 380,935  | 381,447  | 1,283,785E,R                                      | 1,286,275E,R   | 341,650E  | 342,276E   | 442,921E   | 443,457E |
|  | F | 891,370E,R  | 12,358R  | 12,463R  | 387,414  | 385,812  | 1,291,141E,R                                      | 1,295,164E,R   | 340,076E  | 344,105E   | 442,490E   | 447,596E |
|  | M | 891,370E,R  | 12,235R  | 12,295R  | 391,664  | 387,883  |   |  | 338,201E  | 347,221E   | 441,226E   | 449,654E |

(1) Unadjusted because it does not show stable seasonality / Ces données ne présentant pas de variations saisonnières stables, elles ne sont pas désaisonnalisées

(2) M1+ consists of Gross M1 plus chequeable notice deposits held at chartered banks plus all chequeable deposits at trust and mortgage loan companies, credit unions and caisses populaires (excluding deposits of these institutions) plus continuity adjustments. / M1+ est composé de M1 brut, plus les dépôts à préavis transférables par chèque détenus dans les banques et les dépôts transférables par chèque détenus dans les sociétés de fiducie ou de prêt hypothécaire, les caisses populaires et les credit unions (desquels sont retranchés les dépôts de ces institutions) plus les corrections faites pour assurer la continuité des données.

(3) M1++ consists of M1+ plus non-chequeable notice deposits held at chartered banks, trust and mortgage loan companies, credit unions and caisses populaires less interbank non-chequeable notice deposits plus continuity adjustments. / M1++ se définit comme M1+ auquel s'ajoutent les dépôts à préavis non transférables par chèque détenus auprès des banques, des sociétés de fiducie ou de prêt hypothécaire, des caisses populaires et des credit unions, moins les dépôts interbancaires à préavis non transférables par chèque, plus les corrections faites pour assurer la continuité des données.

(4) Beginning December 2004, includes Corporate retail associations./Comprend les associations de détaillants depuis décembre 2004.

|  |      | CREDIT MEASURES (Millions of dollars)<br><i>MESURES DU CRÉDIT (En millions de dollars)</i> |  |  |  |   |  |   | BFS Table E2<br>SBF Tableau E2                                       |           |
|--|------|--|--|--|--|---|--|---|--|-----------|
| Monthly average or average of month-ends<br><i>Moyenne mensuelle ou moyenne de fin de mois</i> |      | Consumer credit<br><i>Crédit à la consommation</i>   |  |  |  |   |  |   |  |           |
|  |      | Seasonally adjusted<br><i>Données désaisonnalisées</i>                                     |  |  |  |   |  |   |  |           |
|  |      | Chartered banks<br><i>Banques à charte</i>   | Trust and mortgage loan companies <sup>1,3</sup><br><i>Sociétés de fiducie ou de prêt hypothécaire<sup>1,3</sup></i> | Credit unions and caisses populaires<br><i>Caisses populaires et credit unions</i> | Life insurance companies <sup>1</sup><br><i>Compagnies d'assurance vie<sup>1</sup></i> | Non-depository credit intermediaries and other institutions<br><i>Intermédiaires financiers autres que les institutions de dépôt et autres institutions</i> | Special-purpose corporations (securitization) <sup>1,2</sup><br><i>Sociétés spécialisées (titrisation)<sup>1,2</sup></i> | Adjustments to consumer credit <sup>1</sup><br><i>Ajustements au crédit à la consommation<sup>1</sup></i> | Total consumer credit<br><i>Ensemble du crédit à la consommation</i> |           |
|  |      |  |  |  |  |   |  | Unadjusted<br><i>Données non désaisonnalisées</i>   | Seasonally adjusted<br><i>Données désaisonnalisées</i>               |           |
|  |      | V122709  | V122712  | V122713  | V122711  | V800020   | V122715  | V122705   | V122698  | V122707   |
| 2003   | A    | 153,799  | 315  | 19,243   | 4,520  | 20,638  | 37,426   | 1,178   | 237,151  | 236,848   |
|  | S    | 155,280  | 334  | 19,326   | 4,526  | 21,169  | 36,825   | 1,171   | 239,584  | 238,619   |
|  | O    | 156,694  | 326  | 19,394   | 4,527  | 21,496  | 37,200   | 1,171   | 240,974  | 240,371   |
|  | N    | 158,352  | 293  | 19,461   | 4,523  | 21,631  | 37,629   | 1,209   | 242,964  | 242,366   |
|  | D    | 160,555  | 260  | 19,564   | 4,518  | 21,974  | 37,452   | -   | 245,423  | 244,202   |
| 2004   | J    | 161,877  | 240  | 19,675   | 4,529  | 22,238  | 37,438   | -   | 246,070  | 246,306   |
|  | F    | 163,336  | 235  | 19,828   | 4,553  | 22,279  | 37,403   | -   | 246,463  | 248,099   |
|  | M    | 164,854  | 231  | 20,006   | 4,577  | 22,403  | 37,389   | -   | 249,667  | 250,153   |
|  | A    | 167,587  | 228  | 20,137   | 4,598  | 22,504  | 36,991   | -   | 251,557  | 252,537   |
|  | M    | 170,563  | 229  | 20,234   | 4,613  | 22,518  | 36,459   | -   | 254,006  | 254,815   |
|  | J    | 173,275  | 230  | 20,322   | 4,628  | 22,637  | 36,143   | -   | 257,260  | 257,263   |
|  | J    | 175,951  | 235  | 20,357   | 4,642  | 22,731  | 35,948   | -   | 259,682  | 259,622   |
|  | A    | 178,482  | 246  | 20,412   | 4,655  | 22,852  | 35,703   | -   | 262,407  | 262,001   |
|  | S    | 180,341  | 256  | 20,483   | 4,668  | 22,899  | 35,425   | -   | 265,080  | 264,028   |
|  | O    | 183,092  | 261  | 20,600   | 4,673  | 22,671  | 35,993   | -   | 267,400  | 266,566   |
|  | N    | 186,449  | 262  | 20,781   | 4,672  | 22,549  | 34,708   | -   | 269,248  | 268,404   |
|  | D    | 188,913  | 263  | 20,949   | 4,670  | 21,643  | 33,966   | -   | 271,795  | 270,352   |
|  | 2005 | J  | 191,310  | 260 E  | 21,151 E   | 4,682 E   | 21,505 E   | 33,386 E  | -  | 272,259 E |
| F  |      | 193,878  | 255 E  | 21,374 E   | 4,707 E  | 21,548 E  | 32,787 E   | -   | 273,074 E  | 274,945 E |
| M  |      | 195,005  |  | 21,514 E   |  |   | 33,448 E,R   | -   |  |           |

|  |      | CREDIT MEASURES (Millions of dollars)<br><i>MESURES DU CRÉDIT (En millions de dollars)</i> |  |  |  |  |  |  | continued<br><i>suite</i>  |  |   |   |           |
|--|------|--|--|--|--|--|--|--|--|--|---|---|-----------|
| Monthly average or average of month-ends<br><i>Moyenne mensuelle ou moyenne de fin de mois</i> |      | Residential mortgage credit<br><i>Crédit hypothécaire à l'habitation</i>                   |  |  |  |  |  |  |  |  |   |   |           |
|  |      | Seasonally adjusted<br><i>Données désaisonnalisées</i>                                     |  |  |  |  |  |  |  |  |   |   |           |
|  |      | Chartered banks <sup>1</sup><br><i>Banques à charte<sup>1</sup></i>                        | Trust and mortgage loan companies <sup>1,3</sup><br><i>Sociétés de fiducie ou de prêt hypothécaire<sup>1,3</sup></i> | Credit unions and caisses populaires<br><i>Caisses populaires et credit unions</i> | Life insurance companies <sup>1</sup><br><i>Compagnies d'assurance vie<sup>1</sup></i> | Pension funds <sup>1</sup><br><i>Caisses de retraite<sup>1</sup></i> | Non-depository credit intermediaries and other financial institutions <sup>1</sup><br><i>Intermédiaires financiers autres que les institutions de dépôt et autres institutions financières<sup>1</sup></i> | NHA mortgage backed securities <sup>1</sup><br><i>Titres hypothécaires garantis en vertu de la LNH<sup>1</sup></i> | Special-purpose corporations (securitization) <sup>1,2</sup><br><i>Sociétés spécialisées (titrisation)<sup>1,2</sup></i> | Total residential mortgage credit<br><i>Ensemble du crédit hypothécaire à l'habitation</i> |   | Total household credit<br><i>Ensemble des crédits aux ménages</i> |           |
|  |      |  |  |  |  |  |  |  | Unadjusted<br><i>Données non désaisonnalisées</i>  | Seasonally adjusted<br><i>Données désaisonnalisées</i>                                     | Unadjusted<br><i>Données non désaisonnalisées</i> | Seasonally adjusted<br><i>Données désaisonnalisées</i>            |           |
|  |      | V122748  | V122749  | V122752  | V122750  | V122743  | V800024  | V122744  | V122755  | V122736  | V122746   | V36408  | V36415    |
| 2003   | A    | 335,243  | 6,128  | 70,016   | 15,626   | 9,199  | 24,260   | 48,892   | 14,046   | 523,572  | 522,330   | 760,723   | 759,178   |
|  | S    | 336,713  | 6,180  | 70,767   | 15,534   | 9,178  | 24,289   | 52,191   | 13,896   | 528,845  | 527,036   | 768,429   | 765,656   |
|  | O    | 336,807  | 6,228  | 71,427   | 15,498   | 9,153  | 24,350   | 55,415   | 13,872   | 532,881  | 530,699   | 773,855   | 771,070   |
|  | N    | 341,485  | 6,273  | 72,017   | 15,515   | 9,126  | 24,424   | 55,165   | 13,811   | 537,978  | 535,171   | 780,942   | 777,537   |
|  | D    | 340,881  | 6,317  | 72,520   | 15,532   | 9,098  | 24,493   | 57,248   | 13,750   | 540,043  | 538,408   | 785,466   | 782,611   |
| 2004   | J    | 340,775  | 6,372  | 73,082   | 15,526   | 9,136  | 24,614   | 59,990   | 13,703   | 543,206  | 542,576   | 789,276   | 788,882   |
|  | F    | 341,860  | 6,436  | 73,608   | 15,496   | 9,238  | 24,784   | 60,390   | 13,627   | 545,222  | 546,570   | 791,684   | 794,669   |
|  | M    | 340,621  | 6,499  | 74,225   | 15,466   | 9,339  | 24,970   | 62,719   | 13,605   | 547,049  | 549,774   | 796,715   | 799,927   |
|  | A    | 342,749  | 6,581  | 74,847   | 15,430   | 9,420  | 25,104   | 64,827   | 13,667   | 552,197  | 555,242   | 803,753   | 807,779   |
|  | M    | 347,299  | 6,681  | 75,479   | 15,390   | 9,480  | 25,181   | 64,581   | 13,583   | 557,432  | 559,989   | 811,438   | 814,805   |
|  | J    | 349,908  | 6,781  | 76,128   | 15,350   | 9,539  | 25,282   | 66,778   | 13,440   | 563,367  | 565,369   | 820,627   | 822,633   |
|  | J    | 353,102  | 6,871  | 76,880   | 15,355   | 9,629  | 25,359   | 69,381   | 13,479   | 570,364  | 569,621   | 830,045   | 829,242   |
|  | A    | 357,713  | 6,954  | 77,655   | 15,404   | 9,750  | 25,404   | 69,556   | 13,819   | 576,451  | 574,994   | 838,858   | 836,995   |
|  | S    | 358,815  | 7,035  | 78,413   | 15,452   | 9,869  | 25,462   | 71,711   | 14,235   | 581,113  | 579,148   | 846,193   | 843,176   |
|  | O    | 361,985  | 7,063  | 79,053   | 15,495   | 9,913 E  | 25,532   | 73,558   | 14,379   | 587,126 E  | 584,614 E   | 854,525 E   | 851,181 E |
|  | N    | 367,536  | 7,038  | 79,601   | 15,532   | 9,883 E  | 25,618   | 73,020   | 13,175   | 591,606 E  | 588,366 E   | 860,854 E   | 856,770 E |
|  | D    | 367,963  | 7,013  | 80,003   | 15,569   | 9,853 E  | 25,716   | 75,720   | 13,237   | 595,301 E  | 593,432 E   | 867,096 E   | 863,784 E |
|  | 2005 | J  | 366,871  | 7,037 E  | 80,500 E   | 15,572 E   | 9,895 E  | 25,855 E   | 78,332   | 13,257 E   | 597,326 E   | 596,621 E   | 869,585 E |
| F  |      | 368,177  | 7,108 E  | 80,981 E   | 15,542 E   | 10,004 E   | 26,034 E   | 78,271   | 13,528 E   | 599,393 E  | 600,923 E   | 872,467 E   | 875,868 E |
| M  |      | 367,170  |  | 81,574 E   |  |  |  | 80,639   | 13,673 E   |  |   |   |           |

- (1) Unadjusted because it does not show stable seasonality / *Ces données ne présentant pas de variations saisonnières stables, elles ne sont pas désaisonnalisées*  
(2) Excludes securitized loans that are consolidated on the banks' balance sheets as loans. / *Les données excluent les prêts titrisés qui sont consolidés en tant que prêts dans les bilans des banques.*  
(3) Beginning December 2004, includes Corporate retail associations. / *Comprend les associations de détaillants depuis décembre 2004.*

| Monthly average or average of month-ends<br>Moyenne mensuelle ou moyenne de fin de mois |   | CREDIT MEASURES (Millions of dollars)<br>MESURES DU CRÉDIT (En millions de dollars) |   |  |   |  |  |  |   |   |   | continued<br>suite   |
|---|---|---|---|--|---|--|--|--|---|---|---|--|
|   |   | Short-term business credit<br>Crédits à court terme aux entreprises                 |   |  |   |  | Other business credit<br>Autres crédits aux entreprises  |  |   |   |   |  |
|   |   | Canadian dollar loans<br>Prêts en dollars canadiens                                 |   |  |   |  | Chartered bank foreign currency loans to residents <sup>2</sup><br>Prêts en monnaies étrangères des banques aux résidents <sup>2</sup> |  |   |   |   |  |
|   |   | Business loans<br>Prêts aux entreprises   |   |  |   |  | Special-purpose corporations (securitization) <sup>3</sup><br>Sociétés spécialisées (titrisation) <sup>3</sup>                         |  |   |   |   |  |
|   |   | Chartered banks <sup>1</sup><br>Banques à charte <sup>1</sup>                       |   | Non-depository credit intermediaries<br>Intermédiaires financiers autres que les institutions de dépôt |   | Other institutions<br>Autres institutions  |  | Bankers' acceptances<br>Acceptations bancaires |   | Commercial paper issued by non-financial corporations<br>Papier commercial des sociétés non financières |   | Adjustments to short-term business credit<br>Ajustements aux crédits à court terme aux entreprises |
|   |   | Unadjusted<br>Données non désaisonnalisées  | Seasonally adjusted<br>Données désaisonnalisées | Unadjusted<br>Données non désaisonnalisées   | Seasonally adjusted<br>Données désaisonnalisées | Unadjusted<br>Données non désaisonnalisées | Seasonally adjusted<br>Données désaisonnalisées  | Unadjusted<br>Données non désaisonnalisées     | Seasonally adjusted<br>Données désaisonnalisées | Unadjusted<br>Données non désaisonnalisées  | Seasonally adjusted<br>Données désaisonnalisées |  |
|   |   | V122631   | V122645   | V800014  | V122651   | V122634                                    | V122653  | V122635  | V122649   | V122652   | V4427861  | V122638  |
| 2003  | A | 122,754   | 122,588   | 16,532   | 25,045  | 18,519                                     | 17,594   | 39,221   | 38,906  | 16,804  | 16,326  | 849  |
|   | S | 122,363   | 122,626   | 15,759   | 25,270  | 17,345                                     | 17,465   | 38,834   | 38,599  | 16,494  | 16,064  | 880  |
|   | O | 122,119   | 121,862   | 15,441   | 25,434  | 17,005                                     | 17,287   | 38,109   | 37,612  | 16,713  | 16,235  | 1,078  |
|   | N | 120,626   | 121,048   | 15,571   | 25,547  | 15,854                                     | 17,064   | 37,556   | 36,942  | 16,787  | 16,069  | 967  |
|   | D | 121,428   | 121,727   | 15,709   | 25,671  | 16,018                                     | 16,843   | 35,644   | 36,378  | 15,568  | 15,437  | -575   |
| 2004  | J | 120,810   | 122,424   | 15,889   | 25,853  | 16,276                                     | 16,665   | 34,745   | 35,750  | 14,591  | 15,036  | -768   |
|   | F | 121,953   | 122,664   | 16,127   | 26,104  | 16,645                                     | 16,529   | 34,605   | 34,569  | 14,561  | 14,712  | -819   |
|   | M | 124,024   | 123,661   | 16,404   | 26,360  | 16,994                                     | 16,394   | 35,519   | 34,956  | 14,256  | 14,530  | -866   |
|   | A | 123,788   | 123,148   | 16,719   | 26,557  | 17,870                                     | 16,396   | 36,577   | 35,767  | 13,935  | 14,318  | -920   |
|   | M | 124,500   | 124,069   | 17,062   | 26,701  | 19,677                                     | 16,533   | 35,148   | 35,168  | 14,069  | 14,293  | -1,017   |
|   | J | 127,035   | 126,350   | 17,401   | 26,854  | 20,328                                     | 16,672   | 36,909   | 37,514  | 14,221  | 14,660  | -1,495   |
|   | J | 129,581   | 128,751   | 17,290   | 27,054  | 19,734                                     | 16,792   | 36,383   | 37,191  | 14,647  | 14,732  | -1,660   |
|   | A | 128,792   | 128,610   | 16,733   | 27,302  | 19,563                                     | 16,891   | 36,798   | 36,419  | 14,909  | 14,472  | -1,726   |
|   | S | 129,210   | 129,478   | 16,177   | 27,589  | 18,695                                     | 16,991   | 36,137   | 35,853  | 14,661  | 14,274  | -1,693   |
|   | O | 130,417   | 130,191   | 15,946   | 27,810  | 18,212                                     | 17,076   | 35,922   | 35,461  | 14,443  | 14,026  | -1,588   |
|   | N | 132,204   | 132,571   | 16,028   | 27,993  | 17,297                                     | 16,735   | 36,854   | 36,235  | 14,057  | 13,495  | -1,725   |
|   | D | 132,063   | 132,410   | 16,116   | 28,172  | 18,785                                     | 16,972   | 35,550   | 36,328  | 14,290  | 14,202  | -1,589   |
| 2005  | J | 130,753   | 132,514   | 16,318 E   | 28,442 E  | 20,152                                     | 16,247 E   | 34,269   | 35,294  | 14,092  | 14,537  | -1,560   |
|   | F | 134,315   | 135,092   | 16,399 E   | 28,816 E  | 19,448                                     | 16,264 E   | 34,896   | 34,879  | 13,778  | 13,903  | -1,416   |
|   | M | 137,945   | 137,539   |  |   | 18,047                                     | 16,104 E   | 35,666   | 35,128  | 14,420 E  | 14,685 E  | -1,440 R   |

| Monthly average or average of month-ends<br>Moyenne mensuelle ou moyenne de fin de mois |   | CREDIT MEASURES (Millions of dollars)<br>MESURES DU CRÉDIT (En millions de dollars)    |   |   |   |  |   |  |   |  |   | continued<br>suite                                       |  |  |
|---|---|--|---|---|---|--|---|--|---|--|---|--|--|--|
|   |   | Short term business credit<br>Crédits à court terme aux entreprises                    |   |   |   |  | Other business credit<br>Autres crédits aux entreprises                         |  |   |  |   |  |  |  |
|   |   | Total short-term business credit<br>Ensemble des crédits à court terme aux entreprises |   |   |   |  | Non-residential mortgages<br>Prêts hypothécaires sur immeubles non résidentiels |  |   |  |   | Leasing receivables<br>Créances résultant du crédit-bail |  |  |
|   |   | Chartered banks<br>Banques à charte  |   | Trust and mortgage companies <sup>4</sup><br>Sociétés de fiducie ou de prêt hypothécaire <sup>4</sup> |   | Credit unions and caisses populaires<br>Caisse populaires et crédit unions |   | Life insurance companies<br>Compagnies d'assurance vie |   | Non-depository credit intermediaries and other institutions<br>Intermédiaires financiers autres que les institutions de dépôt et autres institutions |   | Chartered banks<br>Banques à charte                      | Trust and mortgage loan companies <sup>4</sup><br>Sociétés de fiducie ou de prêt hypothécaire <sup>4</sup> | Non-depository credit intermediaries<br>Intermédiaires financiers autres que les institutions de dépôt |
|   |   | Unadjusted<br>Données non désaisonnalisées   | Seasonally adjusted<br>Données désaisonnalisées | Unadjusted<br>Données non désaisonnalisées  | Seasonally adjusted<br>Données désaisonnalisées | Unadjusted<br>Données non désaisonnalisées                                 | Seasonally adjusted<br>Données désaisonnalisées                                 | Unadjusted<br>Données non désaisonnalisées             | Seasonally adjusted<br>Données désaisonnalisées | Unadjusted<br>Données non désaisonnalisées   | Seasonally adjusted<br>Données désaisonnalisées | Unadjusted<br>Données non désaisonnalisées               | Seasonally adjusted<br>Données désaisonnalisées  | Unadjusted<br>Données non désaisonnalisées   |
|   |   | V122639  | V122646   | V122656   | V122657   | V122658  | V122659   | V800015  | V122661   | V122632  | V800016   |  |  |  |
| 2003  | A | 257,318  | 255,642   | 17,022  | 552   | 11,851   | 24,603  | 1,231  | 4,934   | 23   | 18,702  |  |  |  |
|   | S | 254,409  | 253,675   | 17,056  | 577   | 11,886   | 24,814  | 1,220  | 4,943   | 22   | 18,598  |  |  |  |
|   | O | 253,187  | 252,416   | 17,294  | 590   | 11,906   | 24,983  | 1,211  | 4,926   | 21   | 18,587  |  |  |  |
|   | N | 249,971  | 249,579   | 17,406  | 590   | 11,930   | 25,111  | 1,207  | 4,860   | 21   | 18,665  |  |  |  |
|   | D | 246,305  | 247,969   | 17,404  | 590   | 11,979   | 25,239  | 1,202  | 4,855   | 20   | 18,742  |  |  |  |
| 2004  | J | 244,060  | 247,858   | 17,367  | 589   | 12,020   | 25,403  | 1,194  | 4,871   | 19   | 18,842  |  |  |  |
|   | F | 245,704  | 246,596   | 17,193  | 587   | 11,992   | 25,596  | 1,186  | 4,851   | 18   | 18,960  |  |  |  |
|   | M | 249,084  | 248,822   | 17,324  | 584   | 11,953   | 25,788  | 1,177  | 4,878   | 17   | 19,077  |  |  |  |
|   | A | 250,921  | 250,055   | 17,425  | 592   | 11,977   | 25,919  | 1,172  | 4,864   | 17   | 19,331  |  |  |  |
|   | M | 252,674  | 252,010   | 17,484  | 610   | 12,016   | 25,986  | 1,173  | 4,918   | 16   | 19,726  |  |  |  |
|   | J | 257,925  | 257,567   | 17,670  | 628   | 12,084   | 26,052  | 1,174  | 4,972   | 14   | 20,121  |  |  |  |
|   | J | 259,821  | 258,863   | 17,946  | 654   | 12,224   | 26,130  | 1,158  | 5,051   | 14   | 20,447  |  |  |  |
|   | A | 259,261  | 257,223   | 18,138  | 688   | 12,347   | 26,222  | 1,126  | 5,076   | 13   | 20,711  |  |  |  |
|   | S | 257,766  | 256,960   | 18,194  | 721   | 12,449   | 26,313  | 1,094  | 5,184   | 13   | 20,971  |  |  |  |
|   | O | 258,237  | 257,435   | 18,042  | 742   | 12,533   | 26,396  | 1,074  | 5,200   | 13   | 21,201  |  |  |  |
|   | N | 259,443  | 259,278   | 17,950  | 753   | 12,620   | 26,472  | 1,066  | 5,422   | 13   | 21,402  |  |  |  |
|   | D | 260,359  | 262,511   | 18,044  | 764   | 12,717   | 26,548  | 1,057  | 5,548   | 13   | 21,603  |  |  |  |
| 2005  | J | 258,714 E  | 262,974 E                                       | 18,166  | 767E  | 12,708 E   | 26,690 E  | 1,049 E  | 5,317   | 13E  | 21,775E   |  |  |  |
|   | F | 262,500 E  | 263,612 E                                       | 18,255  | 764E  | 12,644 E   | 26,892 E  | 1,042 E  | 5,373   | 12E  | 21,910E   |  |  |  |
|   | M | 266,520E,R   | 266,287E,R                                      | 18,379  |   |  |   |  | 5,348   |  |   |  |  |  |

(1) Excludes reverse repos and loans to non-residents. / Ne comprend pas les prises en pension ni les prêts à des non-résidents.

(2) Excludes reverse repos. / Ne comprend pas les prises en pension.

(3) Excludes securitized loans that are consolidated on the banks' balance sheets as loans. / Les données excluent les prêts titrisés qui sont consolidés en tant que prêts dans les bilans des banques.

(4) Beginning December 2004, includes Corporate retail associations./Comprend les associations de détaillants depuis décembre 2004.

| Monthly average or average of month-ends<br><i>Moyenne mensuelle ou moyenne de fin de mois</i> |   | CREDIT MEASURES (Millions of dollars)<br><i>MESURES DU CRÉDIT (En millions de dollars)</i>                           |   |   |  |   | continued<br><i>suite</i>   |
|--|---|--|---|---|--|---|---|
|  |   | Other business credit<br><i>Autres crédits aux entreprises</i>   |   | Equity and warrants<br><i>Actions et bons de souscription</i> | Trust Units<br><i>Parts de fiducie</i> | Adjustments to other business credit<br><i>Ajustements aux autres crédits aux entreprises</i> | Total other business credit<br><i>Ensemble des autres crédits aux entreprises</i> |
|  |   | Special-purpose corporations (securitization) <sup>1</sup><br><i>Sociétés spécialisées (titrisation)<sup>1</sup></i> | Bonds and debentures<br><i>Obligations et débetures</i> |   |  |   |   |
|  |   | V122655  | V122640   | V122642   | V20638380                              | V122650   | V36412  |
| 2003   | A | 10,179   | 248,264   | 275,266   | 36,313 R                               | -   | 648,941 R   |
|  | S | 9,822  | 248,993   | 276,432   | 37,404 R                               | -   | 651,767 R   |
|  | O | 9,774  | 250,666   | 277,651   | 38,222 R                               | -   | 655,830 R   |
|  | N | 10,044   | 253,229   | 278,481   | 39,165 R                               | -   | 660,707 R   |
|  | D | 10,350   | 255,071   | 279,254   | 41,104 R                               | -   | 665,809 R   |
| 2004   | J | 10,290   | 256,400   | 280,574   | 42,628 R                               | -   | 670,198 R   |
|  | F | 9,825  | 257,539   | 281,735   | 43,038 R                               | -   | 672,517 R   |
|  | M | 9,321  | 257,040   | 283,101   | 43,988 R                               | -   | 674,248 R   |
|  | A | 9,050  | 256,853   | 284,582   | 45,338 R                               | -   | 677,120 R   |
|  | M | 9,039  | 257,551   | 285,795   | 46,505 R                               | -   | 680,817 R   |
|  | J | 9,052  | 258,040   | 286,543 R   | 47,426 R                               | -   | 683,776 R   |
|  | J | 8,947  | 259,621   | 287,310 R   | 48,326 R                               | -   | 687,827 R   |
|  | A | 8,762  | 261,438   | 288,162 R   | 49,002 R                               | -   | 691,686 R   |
|  | S | 8,676  | 260,770   | 289,120 R   | 49,516 R                               | -   | 693,022 R   |
|  | O | 8,593  | 259,730   | 290,096 R   | 50,268 R                               | -   | 693,890 R   |
|  | N | 8,269  | 263,374   | 291,430 R   | 51,001 R                               | -   | 699,771 R   |
|  | D | 8,045  | 266,912   | 293,508 R   | 52,191 R                               | -   | 706,948 R   |
| 2005   | J | 8,239E   | 267,488   | 294,669 R   | 53,488 R                               | -   | 710,369E,R  |
|  | F | 8,158E   | 268,259   | 295,436 R   | 54,311 R                               | -   | 713,058E,R  |
|  | M | 8,078E   | 269,004   | 296,914 R   | 55,064 R                               | -   | 716,337E,R  |

| Monthly average or average of month-ends<br><i>Moyenne mensuelle ou moyenne de fin de mois</i> |   | CREDIT MEASURES (Millions of dollars)<br><i>MESURES DU CRÉDIT (En millions de dollars)</i> |  |   |  | continued<br><i>suite</i> |
|--|---|--|--|---|--|---------------------------|
|  |   | Total business credit<br><i>Ensemble des crédits aux entreprises</i>                       |  | Total household and business credit<br><i>Ensemble des crédits aux ménages et aux entreprises</i> |  |                           |
|  |   | Unadjusted<br><i>Données non désaisonnalisées</i>  | Seasonally adjusted<br><i>Données désaisonnalisées</i> | Unadjusted<br><i>Données non désaisonnalisées</i>   | Seasonally adjusted<br><i>Données désaisonnalisées</i> |                           |
|  |   | V122643  | V122647  | V122644   | V122648  |                           |
| 2003   | A | 906,259 R  | 904,779 R  | 1,666,981 R   | 1,663,957 R  |                           |
|  | S | 906,177 R  | 906,245 R  | 1,674,606 R   | 1,671,901 R  |                           |
|  | O | 909,017 R  | 909,008 R  | 1,682,872 R   | 1,680,078 R  |                           |
|  | N | 910,678 R  | 911,364 R  | 1,691,621 R   | 1,688,901 R  |                           |
|  | D | 912,114 R  | 913,989 R  | 1,697,580 R   | 1,696,599 R  |                           |
| 2004   | J | 914,258 R  | 917,893 R  | 1,703,533 R   | 1,706,775 R  |                           |
|  | F | 918,221 R  | 919,919 R  | 1,709,905 R   | 1,714,587 R  |                           |
|  | M | 923,332 R  | 922,588 R  | 1,720,047 R   | 1,722,515 R  |                           |
|  | A | 928,040 R  | 926,593 R  | 1,731,794 R   | 1,734,372 R  |                           |
|  | M | 933,490 R  | 932,604 R  | 1,744,928 R   | 1,747,409 R  |                           |
|  | J | 941,701 R  | 940,222 R  | 1,762,327 R   | 1,762,854 R  |                           |
|  | J | 947,648 R  | 945,330 R  | 1,777,693 R   | 1,774,572 R  |                           |
|  | A | 950,947 R  | 949,149 R  | 1,789,805 R   | 1,786,144 R  |                           |
|  | S | 950,788 R  | 951,036 R  | 1,796,981 R   | 1,794,212 R  |                           |
|  | O | 952,127 R  | 952,271 R  | 1,806,653E,R  | 1,803,452E,R   |                           |
|  | N | 959,214 R  | 960,293 R  | 1,820,068E,R  | 1,817,063E,R   |                           |
|  | D | 967,307 R  | 969,424 R  | 1,834,403E,R  | 1,833,208E,R   |                           |
| 2005   | J | 969,082E,R   | 972,891E,R   | 1,838,668E,R  | 1,841,995E,R   |                           |
|  | F | 975,558E,R   | 977,371E,R   | 1,848,025E,R  | 1,853,239E,R   |                           |
|  | M | 982,857E,R   | 982,068E,R   |   |  |                           |

(1) Excludes securitized loans that are consolidated on the banks' balance sheets as loans. / *Les données excluent les prêts titrisés qui sont consolidés en tant que prêts dans les bilans des banques.*

| End of period<br>En fin de période |     | GOVERNMENT OF CANADA SECURITIES OUTSTANDING (Par Value)<br>ENCOURS DES TITRES DU GOUVERNEMENT CANADIEN (Valeur nominale) |          |          |           |  |         |   |    |                                    |   | BFS Table G4<br>SBF Tableau G4  |  |  |  |        |  |        |  |        |  |        |  |        |  |        |  |        |  |  |
|------------------------------------|-----|--|----------|----------|-----------|--|---------|---|----|------------------------------------|---|---|--|--|--|--------|--|--------|--|--------|--|--------|--|--------|--|--------|--|--------|--|--|
|                                    |     | Millions of Canadian dollars<br>En millions de dollars canadiens   |          |          |           |  |         |   |    |                                    |   |   |  |  |  |        |  |        |  |        |  |        |  |        |  |        |  |        |  |  |
|                                    |     | Treasury bills<br>Bons du Trésor   |          |          |           | Other direct and guaranteed securities <sup>1</sup><br>Autres titres émis ou garantis <sup>1</sup> |         | Canada Savings Bonds and other retail instruments<br>Obligations d'épargne du Canada et autres titres de placements au détail |    | Total<br>Total                     |   | Held by<br>Détenteurs   |  |  |  |        |  |        |  |        |  |        |  |        |  |        |  |        |  |  |
|                                    |     |  |          |          |           |  |         |   |    | Bank of Canada<br>Banque du Canada |   | Government of Canada accounts <sup>2</sup><br>Comptes du gouvernement canadien <sup>2</sup> |  |  |  |        |  |        |  |        |  |        |  |        |  |        |  |        |  |  |
|                                    |     |  |          |          |           |  |         |   |    | Treasury bills<br>Bons du Trésor   |   | Bonds<br>Obligations  |  | Short-term instruments<br>Titres à court terme |  |        |  |        |  |        |  |        |  |        |  |        |  |        |  |  |
|                                    |     |  |          |          |           |  |         |   |    | Total                              |   | Total   |  | Total  |  |        |  |        |  |        |  |        |  |        |  |        |  |        |  |  |
|                                    |     |  |          |          |           |  |         |   |    | V37331                             |   | V37295  |  | V37289   |  | V37370 |  | V37371 |  | V37369 |  | V37382 |  | V37383 |  | V37347 |  | V37363 |  |  |
| 2004                               | D   | 117,050  | 276,100R | 19,640 R | 412,790R  | 14,076R  | 31,487R | 45,563 R  | 80 | 5,027R                             | - | 5,107R  |  |  |  |        |  |        |  |        |  |        |  |        |  |        |  |        |  |  |
| 2005                               | J   | 114,600  | 276,605R | 19,546 R | 410,751 R | 13,106   | 29,862  | 42,968  | 8  | 5,003R                             | - | 5,011 R   |  |  |  |        |  |        |  |        |  |        |  |        |  |        |  |        |  |  |
|                                    | F   | 115,700  | 281,001R | 19,368 R | 416,069 R | 12,742   | 30,027  | 42,768  | 49 | 7,419R                             | - | 7,468 R   |  |  |  |        |  |        |  |        |  |        |  |        |  |        |  |        |  |  |
|                                    | M   | 127,200  | 279,505R | 19,242 R | 425,947 R | 12,907   | 30,211  | 43,119  | -  | 4,898R                             | - | 4,898 R   |  |  |  |        |  |        |  |        |  |        |  |        |  |        |  |        |  |  |
| 2005                               | M 2 | 115,700  | 278,573R | 19,368 R | 413,640 R | 12,737   | 29,961  | 42,698  | 54 | 5,453R                             | - | 5,507 R   |  |  |  |        |  |        |  |        |  |        |  |        |  |        |  |        |  |  |
|                                    | 9   | 115,700  | 278,617R | 19,368 R | 413,684 R | 12,529R  | 29,961  | 42,490 R  | 45 | 5,453R                             | - | 5,498 R   |  |  |  |        |  |        |  |        |  |        |  |        |  |        |  |        |  |  |
|                                    | 16  | 118,400  | 279,120R | 19,368 R | 416,887 R | 12,179R  | 29,961  | 42,141 R  | 33 | 6,153R                             | - | 6,186 R   |  |  |  |        |  |        |  |        |  |        |  |        |  |        |  |        |  |  |
|                                    | 23  | 120,400  | 280,342R | 19,368 R | 420,109 R | 12,340R  | 30,211  | 42,551 R  | 11 | 5,444R                             | - | 5,455 R   |  |  |  |        |  |        |  |        |  |        |  |        |  |        |  |        |  |  |
|                                    | 30  | 126,200  | 279,557R | 19,368 R | 425,124 R | 12,906   | 30,211  | 43,117  | -  | 4,953R                             | - | 4,953 R   |  |  |  |        |  |        |  |        |  |        |  |        |  |        |  |        |  |  |
|                                    | A 6 | 122,700  | 279,569R | 19,255 R | 421,524 R | 12,870   | 30,211  | 43,082  | 36 | 4,896R                             | - | 4,932 R   |  |  |  |        |  |        |  |        |  |        |  |        |  |        |  |        |  |  |
|                                    | 13  | 121,300  | 280,092R | 19,220 R | 420,611 R | 12,555   | 30,211  | 42,766  | 72 | 6,192R                             | - | 6,264 R   |  |  |  |        |  |        |  |        |  |        |  |        |  |        |  |        |  |  |
|                                    | 20  | 121,300  | 280,180R | 19,208 R | 420,689 R | 12,610   | 30,211  | 42,822  | 23 | 6,192R                             | - | 6,215 R   |  |  |  |        |  |        |  |        |  |        |  |        |  |        |  |        |  |  |
|                                    | 27  | 121,500  | 280,529  | 19,210   | 421,238   | 12,777   | 30,211  | 42,989  | 25 | 6,691                              | - | 6,716   |  |  |  |        |  |        |  |        |  |        |  |        |  |        |  |        |  |  |

Changes from the date indicated: / Variations par rapport à la date indiquée :

| 2004                               | A 28 | 11,900   | -17,772  | -2,318   | -8,190    | 1,176  | 617 | 1,793  | 20 | -1,787  | - | -1,767 |  |  |  |
|------------------------------------|------|--|----------|--|-----------|--|-----|--|----|---|---|--------|--|--|--|
| 2005                               | A 20 | 200  | 348      | 1  | 550       | 167  | -   | 167  | 2  | 499   | - | 501    |  |  |  |
| End of period<br>En fin de période |      | GOVERNMENT OF CANADA SECURITIES OUTSTANDING (Par Value)<br>ENCOURS DES TITRES DU GOUVERNEMENT CANADIEN (Valeur nominale) |          |  |           |  |     | Average of<br>Wednesdays<br>and<br>Wednesday<br>Moyenne<br>mensuelle<br>des mercredis<br>ou données<br>du mercredi |    | GOVERNMENT OF CANADA CANADIAN DOLLAR DEPOSITS<br>DÉPÔTS EN DOLLARS CANADIENS DU GOUVERNEMENT CANADIEN |   |        |  |  |  |
|                                    |      | Millions of Canadian dollars<br>En millions de dollars canadiens   |          |  |           |  |     | Millions of dollars<br>En millions de dollars  |    |   |   |        |  |  |  |
|                                    |      | Held by<br>Détenteurs  |          |  |           | Held at<br>Détenteurs  |     |  |    |   |   |        |  |  |  |
|                                    |      | General Public<br>Public   |          |  |           | Bank of Canada<br>Banque du Canada   |     | LVTS<br>Participants<br>Participants<br>au STPGV   |    | Total<br>Total  |   |        |  |  |  |
|                                    |      | Treasury bills<br>Bons du Trésor   |          | Marketable bonds and notes<br>Obligations et billets négociables |           | Canada Savings Bonds and other retail instruments<br>Obligations d'épargne du Canada et autres titres de placement au détail |     |  |    |   |   |        |  |  |  |
|                                    |      |  |          |  |           |  |     |  |    |   |   |        |  |  |  |
|                                    |      |  |          |  |           |  |     |  |    |   |   |        |  |  |  |
|                                    |      |  |          |  |           |  |     |  |    |   |   |        |  |  |  |
| 2004                               | D    | 102,894R   | 239,586R | 19,640R  | 362,120R  |  |     | 366642   |    | 366628  |   | 366628 |  |  |  |
| 2005                               | J    | 101,486  | 241,740R | 19,546R  | 362,772 R |  |     |  |    |   |   |        |  |  |  |
|                                    | F    | 102,909  | 243,556R | 19,368R  | 365,833 R |  |     |  |    |   |   |        |  |  |  |
|                                    | M    | 114,293  | 244,394R | 19,242R  | 377,929 R |  |     |  |    |   |   |        |  |  |  |
| 2005                               | M 2  | 102,909  | 243,158R | 19,368R  | 365,435 R |  |     |  |    |   |   |        |  |  |  |
|                                    | 9    | 103,126R   | 243,202R | 19,368R  | 365,696R  |  |     |  |    |   |   |        |  |  |  |
|                                    | 16   | 106,188R   | 243,005R | 19,368R  | 368,561R  |  |     |  |    |   |   |        |  |  |  |
|                                    | 23   | 108,049R   | 244,686R | 19,368R  | 372,103 R |  |     |  |    |   |   |        |  |  |  |
|                                    | 30   | 113,294  | 244,392R | 19,368R  | 377,054R  |  |     |  |    |   |   |        |  |  |  |
|                                    | A 6  | 109,794  | 244,462R | 19,255R  | 373,511 R |  |     |  |    |   |   |        |  |  |  |
|                                    | 13   | 108,673  | 243,688R | 19,220R  | 371,581 R |  |     |  |    |   |   |        |  |  |  |
|                                    | 20   | 108,667  | 243,777R | 19,208R  | 371,652R  |  |     |  |    |   |   |        |  |  |  |
|                                    | 27   | 108,698  | 243,626  | 19,210   | 371,534   |  |     |  |    |   |   |        |  |  |  |
| 2005                               | J    | 1,300  | 4,178    |  | 5,478     |  |     |  |    |   |   |        |  |  |  |
|                                    | F    | 1,280  | 6,519    |  | 7,799     |  |     |  |    |   |   |        |  |  |  |
|                                    | M    | 1,083  | 16,066   |  | 17,149    |  |     |  |    |   |   |        |  |  |  |
|                                    | A    | 1,523  | 9,805    |  | 11,328    |  |     |  |    |   |   |        |  |  |  |
| 2005                               | M 2  | 1,108  | 12,013   |  | 13,121    |  |     |  |    |   |   |        |  |  |  |
|                                    | 9    | 1,030  | 17,248   |  | 18,278    |  |     |  |    |   |   |        |  |  |  |
|                                    | 16   | 1,065  | 19,091   |  | 20,156    |  |     |  |    |   |   |        |  |  |  |
|                                    | 23   | 806  | 17,451   |  | 18,257    |  |     |  |    |   |   |        |  |  |  |
|                                    | 30   | 1,406  | 14,529   |  | 15,935    |  |     |  |    |   |   |        |  |  |  |
|                                    | A 6  | 1,667  | 16,120   |  | 17,787    |  |     |  |    |   |   |        |  |  |  |
|                                    | 13   | 1,446  | 12,610   |  | 14,056    |  |     |  |    |   |   |        |  |  |  |
|                                    | 20   | 1,578  | 7,479    |  | 9,057     |  |     |  |    |   |   |        |  |  |  |
|                                    | 27   | 1,401  | 3,009    |  | 4,410     |  |     |  |    |   |   |        |  |  |  |

Changes from the date indicated: / Variations par rapport à la date indiquée :

|      |      |        |         |        |        |      |      |      |        |        |
|------|------|--------|---------|--------|--------|------|------|------|--------|--------|
| 2004 | A 28 | 10,704 | -16,615 | -2,318 | -8,214 | 2004 | A 28 | -119 | 295    | 176    |
| 2005 | A 20 | 31     | -150    | 1      | -119   | 2005 | A 20 | -177 | -4,470 | -4,647 |

(1) Includes securities denominated in foreign currency (excluding U.S. -pay "Canada Bills").

Comprend les titres libellés en monnaies étrangères (à l'exclusion des « bons du Canada » en dollars É.-U.).

(2) Includes Government of Canada Accounts held at the Bank of Canada, plus non-market bonds held by the Canada Pension Plan.

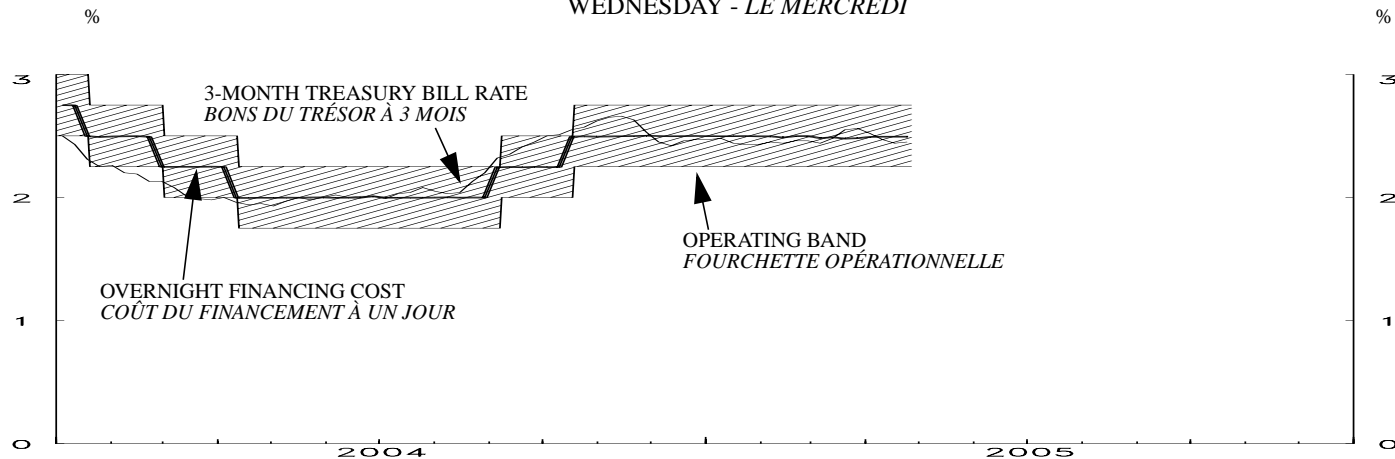
Comprend les comptes du gouvernement canadien à la Banque du Canada et les titres non négociables détenus par le Régime de pensions du Canada.



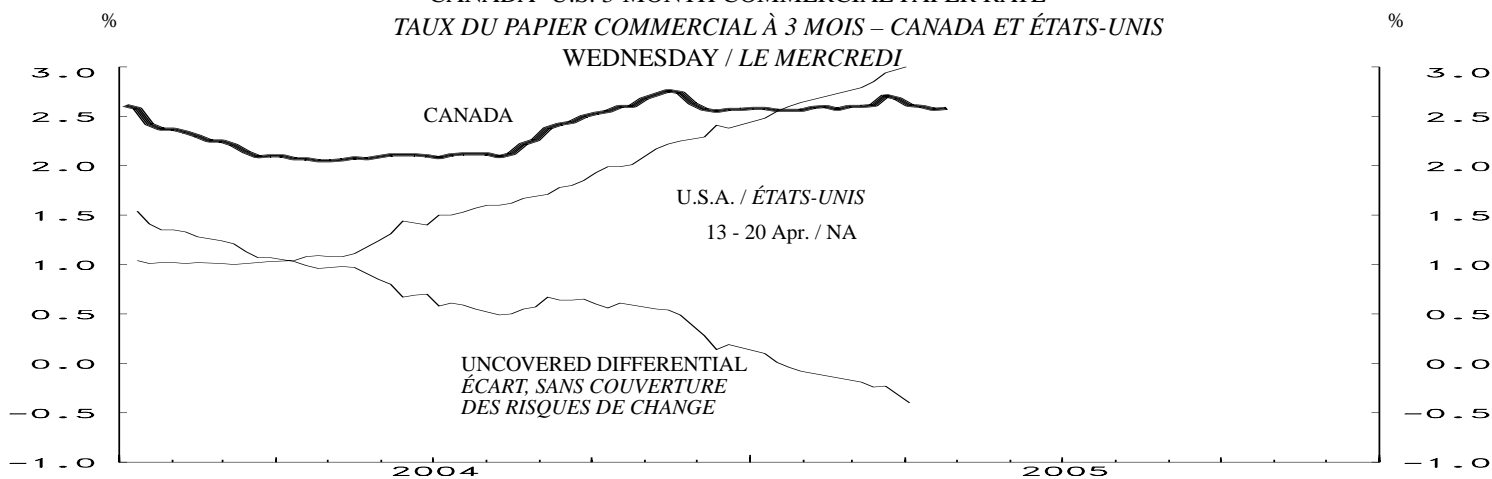
| Month<br>Mois | NET NEW SECURITIES ISSUES PLACED IN CANADA AND ABROAD (Millions of Canadian dollars, par value)<br><i>ÉMISSIONS NETTES DE TITRES PLACÉS AU CANADA ET À L'ÉTRANGER (En millions de dollars canadiens, valeur nominale)</i> |  |   |                          |   |  |   |   |   |  |   |  |   | BFS Table F4<br>SBF Tableau F4  |            |
|---------------|---|--|---|--------------------------|---|--|---|---|---|--|---|--|---|---|------------|
|               | Government<br>of Canada<br>Obligations<br>du<br>gouvernement<br>canadien  | Provincial<br>bonds<br>Obligations<br>des<br>provinces | Municipal<br>bonds<br>Obligations<br>des<br>municipalités | Corporations<br>Sociétés |   |  | Other<br>institutions<br>and foreign<br>borrowers<br>Autres<br>institutions<br>et<br>emprunteurs<br>étrangers | Term<br>Securitizations<br>Titrisation à terme  | Total   | Treasury bills and other short-term instruments<br>Bons du Trésor et autres titres à court terme |   |  |   | Total<br>net new<br>issues<br>Ensemble<br>des<br>émissions<br>nettes  |            |
|               |   |  |   | Bonds<br>Obligations     | Preferred<br>and<br>common<br>stocks<br>Actions<br>privilegiées<br>ou<br>ordinaires | Trust<br>Units<br>Parts<br>de<br>fiducie |   | NHA<br>mortgage-<br>backed<br>securities<br>Titres<br>hypothé-<br>caires<br>garantis<br>en vertu<br>de la LHN | Other<br>asset-<br>backed<br>securities<br>Autres<br>titres<br>adossés<br>à des<br>créances | Total  | Government<br>of Canada<br>treasury bills,<br>U.S.-pay<br>Canada bills<br>and other<br>short-term<br>instruments<br>Bons du<br>Trésor<br>canadien,<br>bons du<br>Canada en<br>dollars É.-U.<br>et autres<br>titres à<br>court terme | Provincial<br>govern-<br>ments<br>and their<br>enterprises<br>and<br>municipal<br>govern-<br>ments<br>Provinces<br>entreprises<br>provinciales<br>et municipi-<br>alités | Total<br>commercial<br>paper<br>Ensemble<br>du papier<br>commercial | Canadian<br>dollar<br>bankers'<br>accept-<br>ances<br>Accepta-<br>tions<br>bancaires<br>en dollars<br>canadiens |            |
|               | V122305(Q)  | V122308(Q)   | V122311(Q)  | V122314(Q)               | V122335(Q)  | V20647412(Q)                             | V122323(Q)  | V760338(Q)  | V760339(Q)  | V122328(Q)   | V122343(Q)  | V122344(Q)   | V122339(Q)  | V122342(Q)  | V122327(Q) |
| 2003          | J -3,045R   | -1,400   | 747   | 5,874                    | 499   | 577                                      | 888   | 4,226   | 1,321   | 9,687R   | 629 R   | 3,898  | -1,352  | -1,214  | 16,694 R   |
|               | J 611R  | 1,217  | 101   | 3,329                    | 904   | 1,731                                    | -   | -691  | 386   | 7,588R   | 2,921 R   |  | 616   | 1,074   |            |
|               | A -995R   | 1  | -48   | -785                     | 1,399   | 1,366                                    | -   | 501   | 1,190   | 2,629R   | 3,712 R   |  | -1,470  | 412   |            |
|               | S -3,663R   | 2,152  | 221   | 3,842                    | 812   | 816R                                     | -   | 6,097   | 139   | 10,416R  | -1,931 R  | -4,625   | -1,805  | -2,063  | 17,472 R   |
|               | O 200R  | 235  | -54   | 5,299                    | 1,835   | 821                                      | 200   | 353   | 2,845   | 11,734R  | -639 R  |  | -552  | 40  |            |
|               | N -1,555R   | 3,125  | 108   | 5,387                    | -163  | 1,064                                    | -10   | -853  | -256  | 6,847R   | 7,436 R   |  | 986   | -188  |            |
|               | D -5,959R   | -3,594   | 608   | 556                      | 1,641   | 2,813                                    | -   | 5,018   | 614   | 1,697R   | -2,555 R  | 4,183  | -1,451  | -3,634  | 23,907 R   |
| 2004          | J 1,746R  | 2,447  | 124   | 293                      | 571   | 236                                      | 150   | 465   | -3,297  | 2,735R   | -6,409 R  |  | -950  | 2,117   |            |
|               | F 1,241R  | 4,057  | -87   | 612                      | 805   | 584                                      | -13   | 336   | 878   | 8,413R   | -3,132 R  |  | 177   | -88   |            |
|               | M -525R   | 2,266  | 159   | -2,931                   | 943   | 1,315                                    | -7  | 4,322   | -57   | 5,485R   | 7,364 R   | -7,010   | 76  | -881  | 7,897 R    |
|               | A 663R  | 1,193  | 278   | 5,132                    | 1,481   | 1,386                                    | -18   | -107  | 2,405   | 12,413R  | -4,963 R  |  | 374   | 1,226   |            |
|               | M 2,420R  | 3,442  | 20  | 902                      | 369   | 948                                      | -   | -385  | -389  | 7,327R   | 4,017 R   |  | -78   | -1,322  |            |
|               | J -7,383R   | -9,965   | 610   | -811                     | 215 R   | 894R                                     | -   | 4,779   | 52  | -11,609R   | 972 R   | 8,895  | 1,723   | 510   | 19,487 R   |
|               | J -1,970R   | 1,466  | 254   | 2,835                    | 861   | 906                                      | -   | 427   | -358  | 4,421R   | 627 R   |  | -53   | 1,715   |            |
|               | A 2,589R  | 2,302  | -76   | 2,002                    | 16  | 445                                      | -40   | -76   | 1   | 7,163R   | 146 R   |  | -386  | -884  |            |
|               | S -6,480R   | 918  | -114  | -508                     | 1,629   | 585                                      | -   | 4,384   | 70  | 484R   | -1,643 R  | -3,164   | 1,891   | -1,628  | 8,688 R    |
|               | O 525R  | 3,341  | 333   | -726                     | 495   | 920                                      | 220   | -690  | -299  | 4,119R   | 1,122 R   |  | -183  | 2,586   |            |
|               | N -2,063R   | 3,336  | -272  | 5,545                    | 1,862   | 545                                      | -50   | -385  | 5,359   | 13,877R  | 5,049 R   |  | 610   | -181  |            |
|               | D -10,264R  | 1,986  | -564  | -607                     | 3,243   | 1,835                                    | -   | 5,784   | 519   | 1,932R   | -3,330 R  | -1,088   | 4,422   | -2,920  | 26,014 R   |
| 2005          | J 205R  | 1,107  | -55   | -1,660                   | 545   | 759                                      | 98  | -559  | -2,952  | -2,512R  | -2,313 R  |  | -2,592  | 245   |            |
|               | F 4,221R  | 4,704  | -212  | -175                     | 2,011   | 888                                      | -   | 437   | -1,141  | 10,733R  | 1,475 R   |  | 3,576   | 1,139   |            |
|               | M -1,226R   | 79   | -290  | -952                     | 2,712   | 619                                      | -30   | 4,299   |   |  | 13,138 R  |  |   |   |            |

| End of<br>period<br>En fin<br>de période | CORPORATE SHORT-TERM PAPER OUTSTANDING<br><i>ENCOURS DES EFFETS À COURT TERME DES SOCIÉTÉS</i> |  |   |   |   |  |  |  |  |         | BFS Table F2<br>SBF Tableau F2 |
|--|--|--|---|---|---|--|--|--|--|---------|--------------------------------|
|  | Millions of Canadian dollars<br><i>En millions de dollars canadiens</i>                        |  |   |   |   |  |  |  |  |         |                                |
|  | Commercial Paper<br><i>Papier commercial</i>   |  |   |   | Canadian<br>dollar<br>bankers'<br>acceptances<br><i>Acceptations<br/>bancaires<br/>en dollars<br/>canadiens</i> | Total<br>corporate<br>short-term<br>paper<br><i>Papier<br/>à court terme<br/>émis par les<br/>sociétés</i> | Treasury bills and<br>other short-term paper<br><i>Bons du Trésor et autres<br/>effets à court terme</i>                     | Total treasury<br>bills and other<br>short-term paper<br><i>Ensemble des<br/>bons du Trésor<br/>et autres effets<br/>à court terme</i> | Commercial<br>paper issued<br>by foreign<br>corporations<br><i>Papier<br/>commercial<br/>des sociétés<br/>étrangères</i> |         |                                |
|  | Total  | Of which:<br>Paper issued by<br>non financial<br>corporations<br><i>Dont : Papier<br/>des sociétés<br/>non financières</i> | Of which:<br>Securitizations<br><i>Dont :<br/>Titrisation</i> | Of which:<br>U.S. dollars<br><i>Dollars É.-U.</i> |   |  | Provincial<br>governments and<br>their enterprises<br><i>Municipalités<br/>Provinces<br/>et entreprises<br/>provinciales</i> |  |  |         |                                |
|  | V122246  | V122253  | V122254   | V122255   | V122243   | V122241  | V122256  | V122257  | V122258  | V122259 |                                |
| 2003                                     | J 112,788  | 16,120   | 64,105  | 7,275   | 36,633  | 149,421  | 21,432   | 180  | 171,033  | 3,582   |                                |
|  | J 113,404  | 16,937   | 63,235  | 8,277   | 37,707  | 151,111  | 18,207   |  |  | 3,915   |                                |
|  | A 111,934  | 16,671   | 62,976  | 8,655   | 38,119  | 150,053  | 16,937   |  |  | 4,068   |                                |
|  | S 110,129  | 16,317   | 62,318  | 8,556   | 36,056  | 146,185  | 16,900   | 86   | 163,171  | 4,105   |                                |
|  | O 109,577  | 17,108   | 61,396  | 8,072   | 36,096  | 145,673  | 17,637   |  |  | 4,209   |                                |
|  | N 110,563  | 16,466   | 61,532  | 8,225   | 35,908  | 146,471  | 19,376   |  |  | 4,148   |                                |
|  | D 109,112  | 14,669   | 62,567  | 7,064   | 32,274  | 141,386  | 21,103   | 67   | 162,555  | 4,172   |                                |
| 2004                                     | J 108,162  | 14,513   | 61,382  | 8,153   | 34,391  | 142,553  | 19,795   |  |  | 5,405   |                                |
|  | F 108,339  | 14,608   | 61,011  | 8,015   | 34,303  | 142,642  | 18,066   |  |  | 6,155   |                                |
|  | M 108,415  | 13,903   | 60,707  | 7,857   | 33,422  | 141,837  | 13,985   | 174  | 155,996  | 6,867   |                                |
|  | A 108,789  | 13,966   | 60,122  | 8,996   | 34,648  | 143,437  | 17,309   |  |  | 6,832   |                                |
|  | M 108,711  | 14,172   | 59,878  | 8,763   | 33,326  | 142,037  | 17,165   |  |  | 7,168   |                                |
|  | J 110,434  | 14,269   | 62,165  | 9,622   | 33,836  | 144,270  | 22,937   | 118  | 167,324  | 6,710   |                                |
|  | J 110,381  | 15,025   | 61,676  | 9,452   | 35,551  | 145,932  | 22,565   |  |  | 6,424   |                                |
|  | A 109,995  | 14,792   | 60,699  | 8,606   | 34,667  | 144,662  | 19,194   |  |  | 6,107   |                                |
|  | S 111,886  | 14,530   | 62,999  | 8,800   | 33,039  | 144,925  | 19,815   | 75   | 164,814  | 6,239   |                                |
|  | O 111,703  | 14,355   | 63,083  | 8,484   | 35,625  | 147,328  | 19,240   |  |  | 6,117   |                                |
|  | N 112,313  | 13,758   | 63,884  | 8,999   | 35,444  | 147,757  | 18,548   |  |  | 6,244   |                                |
|  | D 116,735  | 14,821   | 65,558  | 8,495   | 32,524  | 149,259  | 18,736   | 65   | 168,061  | 6,406   |                                |
| 2005                                     | J 114,143  | 13,362   | 65,812  | 8,230   | 32,769  | 146,912  | 17,248   |  |  | 5,909   |                                |
|  | F 117,719  | 14,193   | 66,787  | 9,431   | 33,908  | 151,627  | 14,336   |  |  | 6,621   |                                |
|  | M 14,646E  |  |   |   |   |  | 13,043   |  |  | 6,856E  |                                |

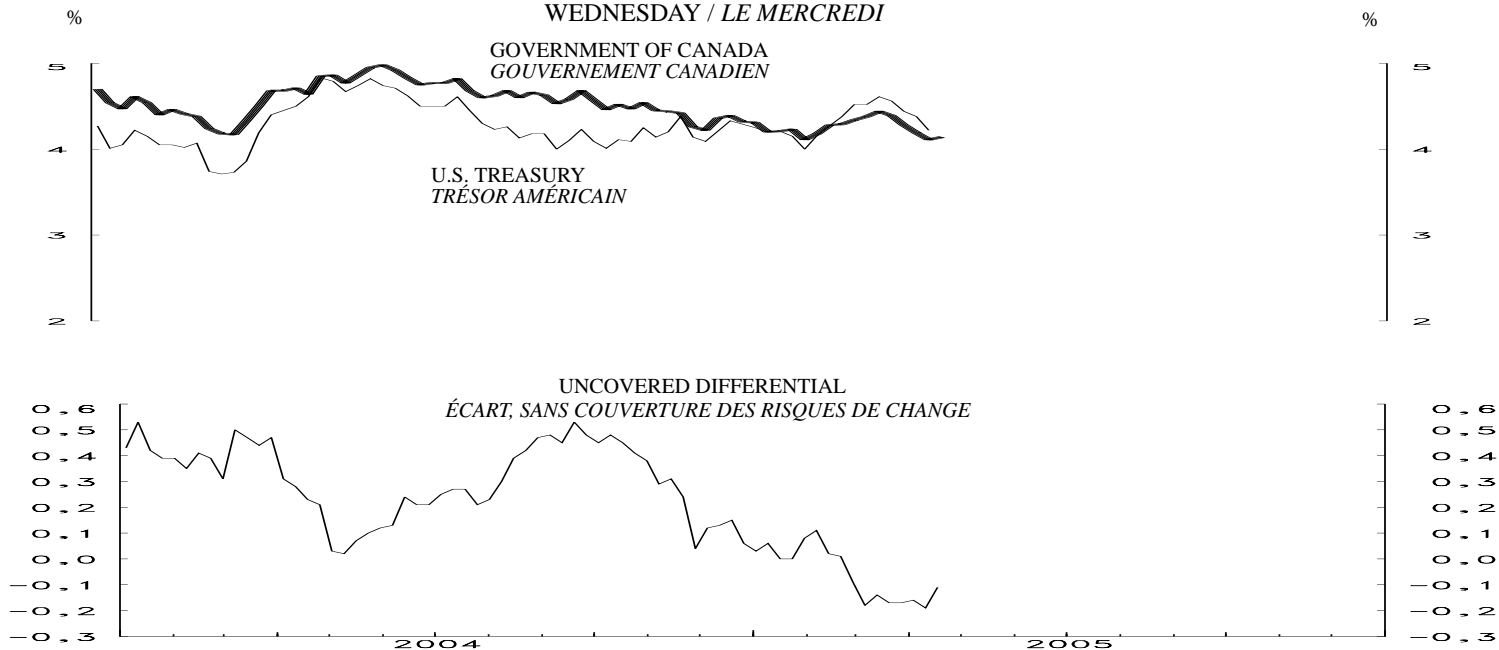
3-MONTH TREASURY BILL RATE AND OVERNIGHT FINANCING COST  
 TAUX DES BONS DU TRÉSOR À 3 MOIS ET COÛT DU FINANCEMENT À UN JOUR  
 WEDNESDAY - LE MERCREDI



CANADA- U.S. 3-MONTH COMMERCIAL PAPER RATE  
 TAUX DU PAPIER COMMERCIAL À 3 MOIS – CANADA ET ÉTATS-UNIS  
 WEDNESDAY / LE MERCREDI

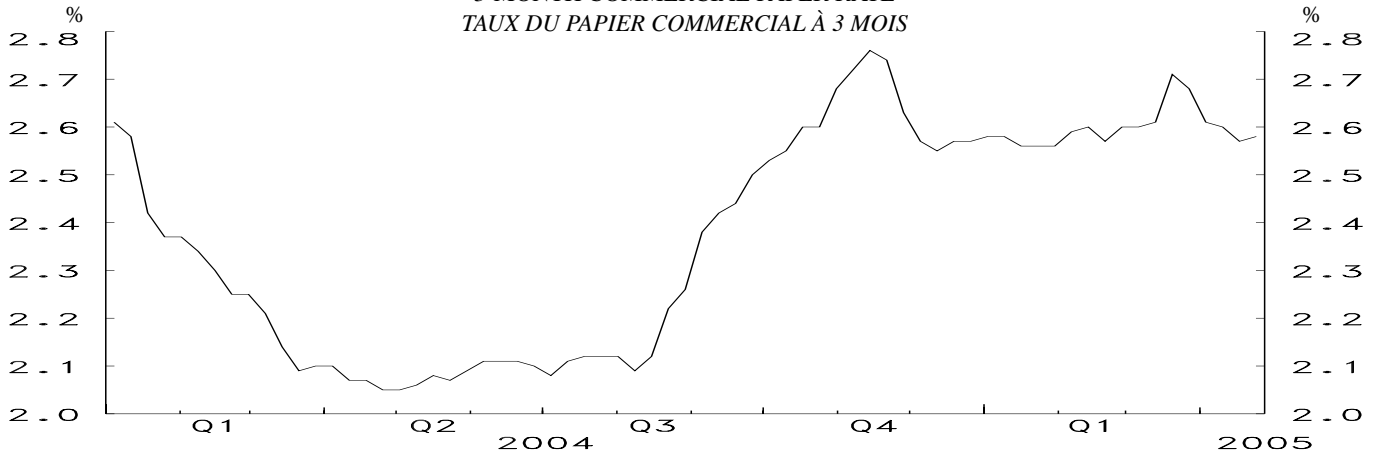


CANADA- U.S. GOVERNMENT 10 YEAR BOND YIELDS  
 OBLIGATIONS À 10 ANS DES GOUVERNEMENTS CANADIEN ET AMÉRICAIN  
 WEDNESDAY / LE MERCREDI



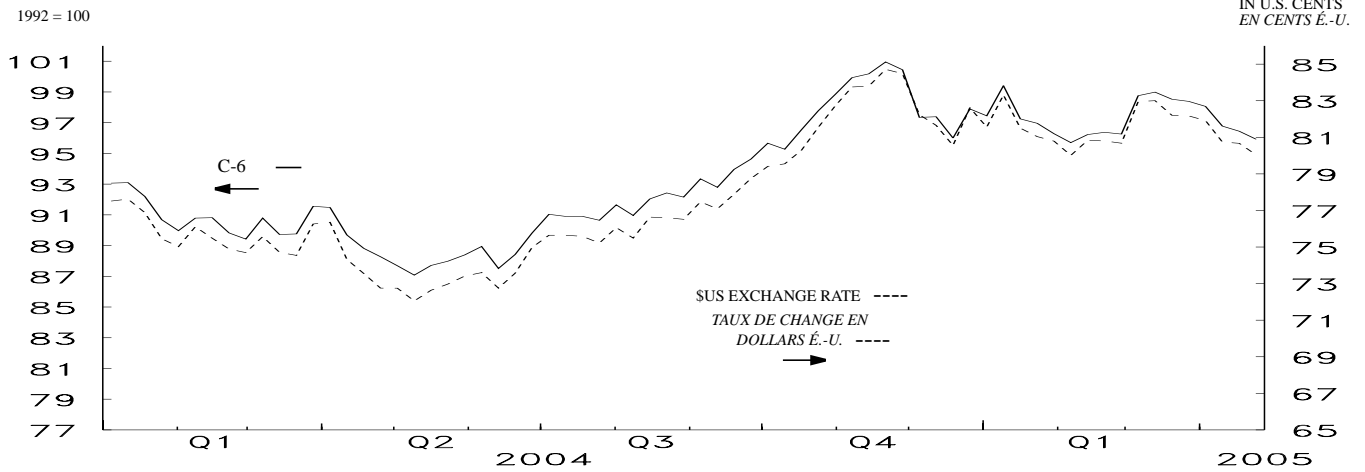
MONETARY CONDITIONS INDEX / INDICE DES CONDITIONS MONÉTAIRES  
WEDNESDAY / LE MERCREDI

3-MONTH COMMERCIAL PAPER RATE  
TAUX DU PAPIER COMMERCIAL À 3 MOIS

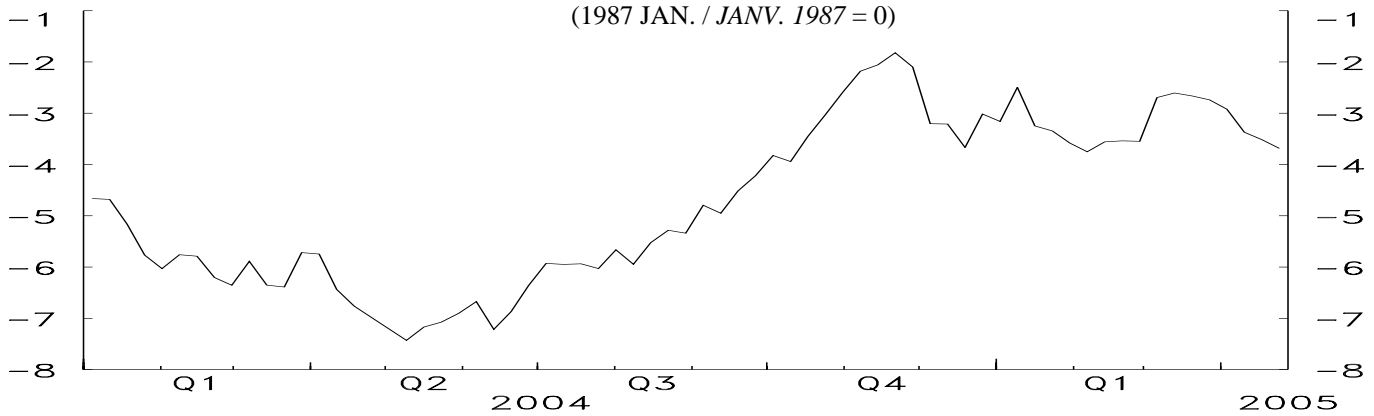


C-6 EXCHANGE RATE INDEX AND \$U.S. EXCHANGE RATE

TAUX DE CHANGE DU DOLLAR CANADIEN PAR RAPPORT AUX MONNAIES COMPOSANT L'INDICE C-6 ET AU DOLLAR É.-U.



MONETARY CONDITIONS INDEX  
INDICE DES CONDITIONS MONÉTAIRES  
(1987 JAN. / JANV. 1987 = 0)

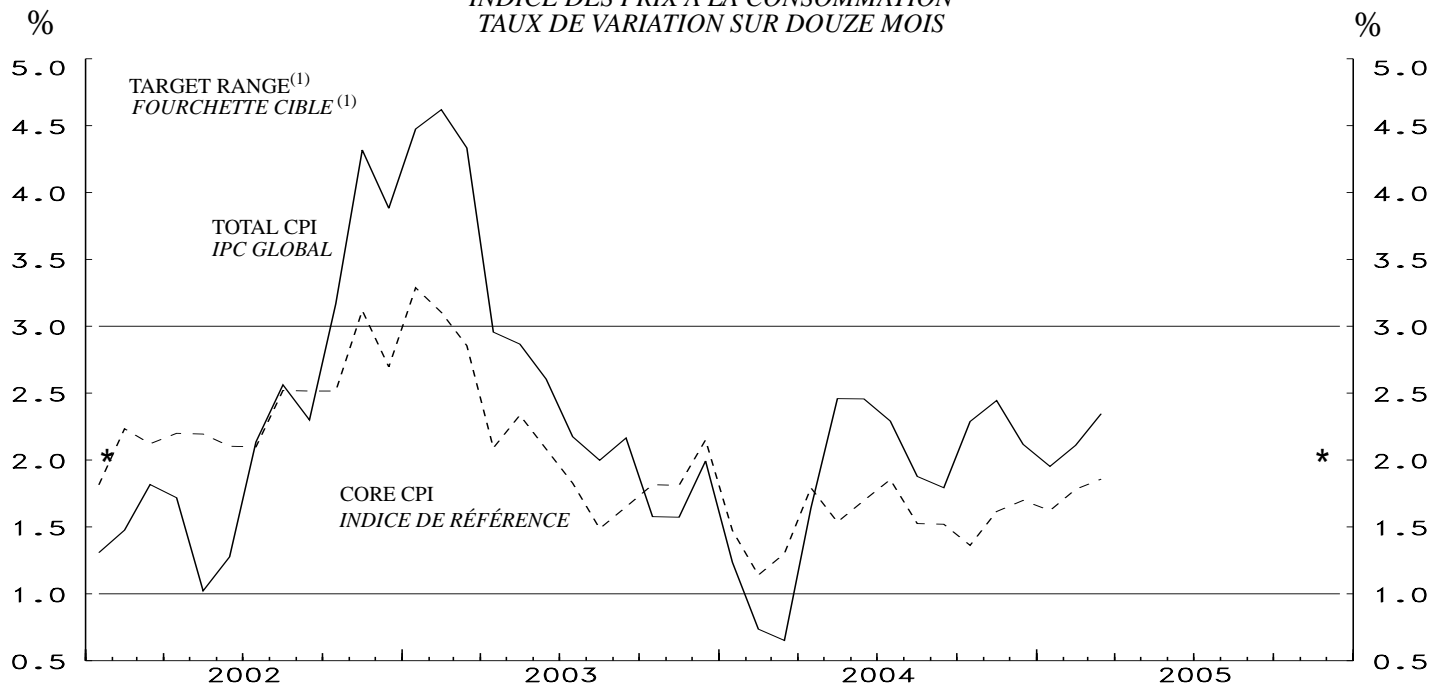


LAST DATA POINT PLOTTED: 27-Apr-05  
FIN DE LA PÉRIODE CONSIDÉRÉE: 27-avr-05

NOTE: THE MONETARY CONDITIONS INDEX IS A WEIGHTED SUM OF THE CHANGES IN THE 3-MONTH COMMERCIAL PAPER RATE AND THE C-6 TRADE-WEIGHTED EXCHANGE RATE (SEE TECHNICAL NOTE IN THE WINTER 1998-1999 ISSUE OF THE BANK OF CANADA REVIEW, PAGES 125 AND 126) FROM JANUARY 1987. THE INDEX IS CALCULATED AS THE CHANGE IN THE INTEREST RATE PLUS ONE-THIRD OF THE PERCENTAGE CHANGE IN THE EXCHANGE RATE. THE BANK DOES NOT TRY TO MAINTAIN A PRECISE MCI LEVEL IN THE SHORT RUN. SEE *MONETARY POLICY REPORT*, MAY 1995, P.14.

NOTA : L'INDICE DES CONDITIONS MONÉTAIRES (L'ICM) EST UNE SOMME PONDÉRÉE DES VARIATIONS ENREGISTRÉES DEPUIS JANVIER 1987 PAR LE TAUX DU PAPIER COMMERCIAL À 3 MOIS ET LE TAUX DE CHANGE DU DOLLAR CANADIEN PAR RAPPORT AUX MONNAIES COMPOSANT L'INDICE C-6 (VOIR LA NOTE TECHNIQUE PUBLIÉE DANS LA LIVRAISON DE L'HIVER 1998-1999 DE LA REVUE DE LA BANQUE DU CANADA, PAGES 125 ET 126) PONDÉRÉ EN FONCTION DES ÉCHANGES COMMERCIAUX. ON OBTIENT L'ICM EN ADDITIONNANT LA VARIATION DU TAUX D'INTÉRÊT ET LE TIERS DE LA VARIATION, ÉTABLIE EN POURCENTAGE, DU TAUX DE CHANGE. LA BANQUE NE S'EFFORCE PAS, AU JOUR LE JOUR, DE MAINTENIR L'ICM À UN NIVEAU PRÉCIS. VOIR LE RAPPORT SUR LA POLITIQUE MONÉTAIRE, MAI 1995, P. 15.

CONSUMER PRICE INDEX  
YEAR-OVER-YEAR PERCENTAGE CHANGE  
INDICE DES PRIX À LA CONSOMMATION  
TAUX DE VARIATION SUR DOUZE MOIS



LAST DATA POINT PLOTTED: March 05  
FIN DE LA PÉRIODE CONSIDÉRÉE : mars 05

\* Inflation - control target / \* Cible de maîtrise de l'inflation

(1) Note: Although the target is expressed in terms of the total CPI, the Bank of Canada bases its policy actions on a core measure of the CPI that excludes the eight most volatile components (fruits, vegetables, gasoline, fuel oil, natural gas, mortgage interest, inter-city transportation and tobacco products) as well as the effect of indirect taxes on the remaining components.

Bien que la cible soit exprimée en fonction de l'IPC global, la Banque du Canada fonde ses décisions de politique monétaire sur un indice de référence qui exclut de l'IPC les huit composantes les plus volatiles (fruits, légumes, essence, mazout, gaz naturel, intérêts hypothécaires, transport interurbain et produits du tabac) ainsi que l'effet des impôts indirects sur les autres composantes.

| CONSUMER PRICE INDEX<br>INDICE DES PRIX À LA CONSOMMATION |  |  |   |                                    |   |              | MONETARY CONDITIONS INDEX<br>INDICE DES CONDITIONS MONÉTAIRES |  |   |   |       |       |
|---|--|--|---|------------------------------------|---|--------------|---|--|---|---|-------|-------|
| Month<br>Mois   | Total CPI<br>IPC global                            |  | Percentage (y/y) (unadjusted)<br>Taux de variation (a/a) (données non désaisonnalisées) |                                    |   |              | Wednesday<br>Le<br>mercredi                                   | 3-Month<br>prime<br>corporate<br>paper rate<br>Taux du papier<br>de premier choix<br>des sociétés<br>non financières<br>à 3 mois | Canadian<br>dollar index<br>against C-6<br>currencies<br>Indice C-6<br>des cours<br>du dollar<br>canadien | Monetary<br>conditions<br>index<br>Indice des<br>conditions<br>monétaires |       |       |
|   | Unadjusted<br>Données<br>non désai-<br>sonnalisées | Seasonally<br>adjusted<br>Données<br>désaisonna-<br>lisées | Total CPI<br>IPC global   | Core CPI<br>Indice de<br>référence | Alternative measures of<br>trend inflation<br>Autres mesures de<br>l'inflation tendancielle |              |   |  |   |   |       |       |
|   | V735319  | V18702611  |   |                                    | CPIXFET<br>IPCHAEI  | CPIW<br>IPCP |   | V121812  | V121814   |   |       |       |
| 2003  | A  | 122.5  | 122.4   | 2.0                                | 1.5   | 1.7          | 1.7   |  |   |   |       |       |
|   | S  | 122.7  | 122.7   | 2.2                                | 1.7   | 1.8          | 1.9   | 2004   | D 29  | 2.57  | 97.89 | -3.02 |
|   | O  | 122.4  | 122.5   | 1.6                                | 1.8   | 1.8          | 1.8   |  |   |   |       |       |
|   | N  | 122.7  | 122.8   | 1.6                                | 1.8   | 1.8          | 1.7   | 2005   | J 5   | 2.58  | 97.44 | -3.16 |
|   | D  | 122.8  | 123.2   | 2.0                                | 2.2   | 1.5          | 2.1   |  | 12  | 2.58  | 99.41 | -2.49 |
|   |  |  |   |                                    |   |              |   |  | 19  | 2.56  | 97.25 | -3.25 |
|   |  |  |   |                                    |   |              |   |  | 26  | 2.56  | 96.96 | -3.35 |
| 2004  | J  | 122.9  | 123.4   | 1.2                                | 1.5   | 1.5          | 1.5   |  |   |   |       |       |
|   | F  | 123.2  | 123.4   | 0.7                                | 1.1   | 1.0          | 1.2   |  |   |   |       |       |
|   | M  | 123.6  | 123.5   | 0.7                                | 1.3   | 1.1          | 1.2   | 2004   | F 2   | 2.56  | 96.28 | -3.58 |
|   | A  | 123.9  | 123.9   | 1.6                                | 1.8   | 1.2          | 1.7   |  | 9   | 2.59  | 95.70 | -3.75 |
|   | M  | 125.0  | 124.6   | 2.5                                | 1.5   | 1.2          | 1.8   |  | 16  | 2.60  | 96.23 | -3.56 |
|   | J  | 125.1  | 124.8   | 2.5                                | 1.7   | 1.4          | 1.8   |  | 23  | 2.57  | 96.37 | -3.54 |
|   | J  | 125.0  | 124.8   | 2.3                                | 1.9   | 1.4          | 1.9   |  |   |   |       |       |
|   | A  | 124.8  | 124.7   | 1.9                                | 1.5   | 1.0          | 1.7   | 2004   | M 2   | 2.60  | 96.26 | -3.55 |
|   | S  | 124.9  | 124.9   | 1.8                                | 1.5   | 1.0          | 1.6   |  | 9   | 2.60  | 98.76 | -2.69 |
|   | O  | 125.2  | 125.4   | 2.3                                | 1.4   | 0.8          | 1.7   |  | 16  | 2.61  | 98.99 | -2.61 |
|   | N  | 125.7  | 125.7   | 2.4                                | 1.6   | 1.1          | 1.8   |  | 23  | 2.71  | 98.53 | -2.66 |
|   | D  | 125.4  | 125.8   | 2.1                                | 1.7   | 1.3          | 1.7   |  | 30  | 2.68  | 98.39 | -2.74 |
| 2005  | J  | 125.3  | 125.7   | 2.0                                | 1.6   | 1.2          | 1.6   |  |   |   |       |       |
|   | F  | 125.8  | 125.9   | 2.1                                | 1.8   | 1.4          | 1.7   |  | A 6   | 2.61  | 98.06 | -2.92 |
|   | M  | 126.5  | 126.3   | 2.3                                | 1.9   | 1.4          | 1.9   |  | 13  | 2.60  | 96.77 | -3.37 |
|   |  |  |   |                                    |   |              |   |  | 20  | 2.57  | 96.44 | -3.51 |
|   |  |  |   |                                    |   |              |   |  | 27  | 2.58  | 95.92 | -3.69 |

Core CPI: The CPI excluding the eight most volatile components (fruits, vegetables, gasoline, fuel oil, natural gas, mortgage interest, inter-city transportation and tobacco products) as well as the effect of indirect taxes on the remaining components. CANSIM identifier for this series (in level terms) is V36398. / La Banque utilise comme indice de référence l'IPC qui exclut les huit composantes les plus volatiles (fruits, légumes, essence, mazout, gaz naturel, intérêts hypothécaires, transport interurbain et produits du tabac) ainsi que l'effet des impôts indirects sur les autres composantes. Le numéro d'identification de Cansim applicable à cette série (données exprimées en valeur absolue) est le V36398.

CPIXFET: The CPI excluding food, energy and the effect of indirect taxes. / IPCHAEI : IPC hors alimentation, énergie et effet des impôts indirects

CPIW: In this measure, each component of the total CPI is multiplied by an additional weight that is inversely proportional to the component's volatility, so that the more volatile the component the less it influences the overall index. / Dans l'IPC, chacune des composantes de l'IPC global est multipliée par une pondération additionnelle qui est inversement proportionnelle à la variabilité de la composante, afin que les plus volatiles d'entre elles influencent moins l'évolution de l'indice global.