

2002

www.cihi.ca

Health Indicators



Canadian Institute
for Health Information
Institut canadien
d'information sur la santé



Statistics
Canada
Statistique
Canada

In 1999, a core set of health indicators relating to the health of the population and the health care system was identified at the first National Consensus Conference on Population Health Indicators. This conference was convened by CIHI, in cooperation with the Federal/Provincial/Territorial Advisory Committees on Population Health and Health Services, Health Canada, and Statistics Canada.

Since that time we have continued to consult with our stakeholders in health regions and provinces and territories across the country on their information needs and health indicators. As a result, several new indicators have been developed and added to the core set. We are pleased to include these in the third edition of Health Indicators. This publication accompanies *Health Care in Canada 2002*, a third annual report developed by CIHI with the assistance of Statistics Canada. *Health Indicators 2002* includes the most recent available information about the health care system for Canada's 63 largest regions, covering approximately 90 percent of the country's population, as well as for provinces and territories.

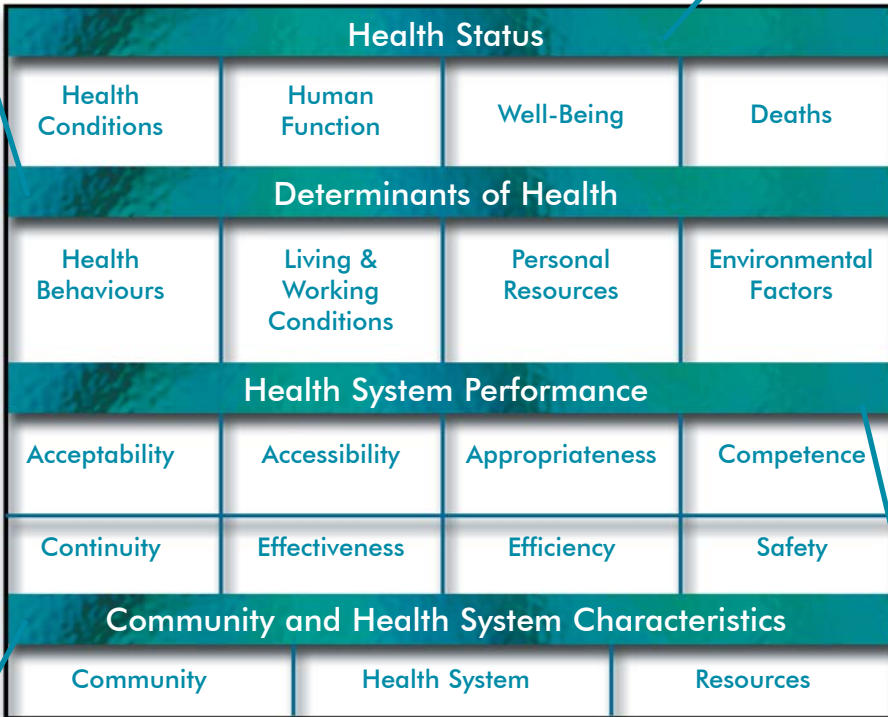
The assistance offered by many individuals in health regions and provinces and territories who reviewed these indicators and offered many useful suggestions is gratefully acknowledged.

As always, comments and suggestions on these indicators and priorities for future indicator development are encouraged. Please send an e-mail to indicators@cihi.ca.

Health Indicator Framework

These are factors that are known to affect our health and, in some cases, when and how we use health care.

How healthy are Canadians?
Health Status can be measured in a variety of ways, including well being, health conditions, disability, or death.



Equity

These measures provide useful contextual information but are not direct measures of health status or the quality of health care.

How healthy is the health care system?
These indicators measure various aspects of the quality of health care.

Regional Profile

Map Code	Health Region	Legend Name	Prov/Terr	Population	% Population	Life		
				('000) 1999	age 65+ 1999	1996*	Expectancy 95% L.C.1**	95% U.C.I.***
1001	Health and Community Services St John's Region	St John's area	NF	183	11.4	78	77.7	78.5
1002	Health and Community Services Eastern Region	Eastern, NF	NF	121	11.8	76	75.9	76.8
1003	Health and Community Services Central Region	Central, NF	NF	107	12.9	78	77.2	78.1
1100	Prince Edward Island †	PE	PE	138	13.1	78	77.5	78.4
1201	Zone 1	Zone 1, NS	NS	127	16.3	78	77.1	78.0
1203	Zone 3	Zone 3, NS	NS	107	14.6	78	77.4	78.4
1205	Zone 5	Zone 5, NS	NS	138	14.8	76	75.7	76.5
1206	Zone 6	Zone 6, NS	NS	384	10.5	78	77.6	78.1
1301	Region 1	Region 1, NB (Moncton area)	NB	185	13.5	79	78.4	79.2
1302	Region 2	Region 2, NB (Saint John area)	NB	178	13.4	78	77.1	77.9
1303	Region 3	Region 3, NB (Fredericton area)	NB	167	11.9	78	77.3	78.2
2401	Région du Bas-Saint-Laurent	Bas-Saint-Laurent	QC	207	14.6	78	77.7	78.5
2402	Région du Saguenay - Lac-Saint-Jean	Saguenay - Lac-Saint-Jean	QC	290	11.5	77	76.5	77.1
2403	Région de Québec	Région de Québec	QC	645	13.4	78	77.7	78.1
2404	Région de la Mauricie et Centre-du-Québec	Mauricie et Centre-du-Québec	QC	486	14.4	77	77.1	77.6
2405	Région de l'Estrie	Estrie	QC	289	13.6	78	77.5	78.2
2406	Région de Montréal-Centre	Montréal-Centre	QC	1800	15.1	78	77.8	78.0
2407	Région de l'Outaouais	Outaouais	QC	319	9.7	77	76.7	77.4
2408	Région de l'Abitibi-Témiscamingue	Abitibi-Témiscamingue	QC	156	10.3	76	76.0	76.9
2409	Région de la Côte-Nord	Côte-Nord	QC	104	8.5	77	76.0	77.1
2411	Région de la Gaspésie-Îles-de-la-Madeleine	Gaspésie-Îles-de-la-Madeleine	QC	104	14.0	77	76.4	77.5
2412	Région de la Chaudière-Appalaches	Chaudière-Appalaches	QC	390	12.3	78	78.0	78.5
2413	Région de Laval	Laval	QC	347	12.4	79	78.4	78.9
2414	Région de Lanaudière	Lanaudière	QC	397	10.1	78	77.2	77.7
2415	Région de Laurentides	Laurentides	QC	463	10.5	77	77.1	77.6
2416	Région de la Montérégie	Montérégie	QC	1312	10.9	78	78.1	78.4
3501	Champlain District Health Council	Champlain (Ottawa area)	ON	1063	12.1	79	78.8	79.1
3502	Quinte-Kingston and Rideau DHC	Quinte-Kingston & Rideau	ON	501	15.3	78	77.4	77.9
3503	Durham-Haliburton-Kawartha and Pine Ridge DHC	Durham-Hal.Kawartha & Pine Ridge	ON	797	12.6	78	78.2	78.5
3504	Toronto District Health Council	Toronto	ON	2524	13.3	79	79.3	79.5
3505	Simcoe-York District Health Council	Simcoe-York	ON	1060	10.3	80	79.4	79.8
3506	Halton-Peel District Health Council	Halton-Peel	ON	1345	8.7	80	79.9	80.2
3507	Waterloo-Wellington-Dufferin DHC	Waterloo-Wellington-Dufferin	ON	676	11.1	79	78.7	79.1
3508	Hamilton-Wentworth DHC	Hamilton-Wentworth	ON	494	14.2	78	77.8	78.3
3509	Niagara District Health Council	Niagara	ON	421	16.2	78	78.1	78.6
3510	Grand River DHC	Grand River (Brantford area)	ON	234	13.7	78	77.4	78.0
3511	Thames Valley DHC	Thames Valley (London area)	ON	596	13.0	78	78.0	78.4
3512	Essex-Kent and Lambton DHC	Essex Kent Lambton (Windsor area)	ON	621	13.5	78	77.5	77.9
3513	Grey-Bruce-Huron and Perth DHC	Grey Bruce Huron & Perth	ON	294	16.2	78	77.9	78.5
3514	Muskoka, Nipissing, Parry Sound and Timiskaming	Muskoka Nipissing P Sound Tim	ON	218	15.9	77	76.4	77.1
3515	Algoma-Cochrane-Manitowlin and Sudbury DHC	ACMS (Sudbury area)	ON	423	13.1	77	76.4	76.8
3516	Northwestern Ontario DHC	Northwestern Ontario	ON	251	12.4	76	75.6	76.3
4610	Winnipeg	Winnipeg	MB	639	13.8	78	77.7	78.1
4704	Regina (D) Service Area	Regina	SK	246	13.3	78	77.9	78.6
4706	Saskatoon (F) Service Area	Saskatoon	SK	284	12.7	79	78.6	79.2
4801	Chinook Regional Health Authority	Chinook	AB	149	12.7	78	77.2	78.2
4804	Calgary Regional Health Authority	Calgary	AB	932	8.8	79	79.2	79.6
4806	David Thompson Regional Health Authority	David Thompson (Central AB)	AB	195	10.4	78	77.9	78.8
4807	East Central Health Authority	East Central, AB	AB	105	15.3	79	78.1	79.1
4810	Capital Health Authority	Edmonton	AB	815	10.1	79	78.6	79.0
4812	Lakeland Regional Health Authority	Lakeland	AB	111	11.0	77	76.5	77.5
5903	North Okanagan	North Okanagan	BC	118	16.5	79	78.4	79.4
5904	Okanagan Similkameen	Okanagan Similkameen	BC	231	19.9	80	79.9	80.6
5905	Thompson	Thompson	BC	136	11.7	77	76.8	77.8
5906	Fraser Valley	Fraser Valley	BC	240	14.0	79	78.3	79.0
5907	South Fraser Valley	South Fraser Valley	BC	568	12.1	80	79.3	79.8
5910	Central Vancouver Island	Central Vancouver Island	BC	243	16.4	78	78.0	78.7
5911	Upper Island / Central Coast	Upper Island / Central Coast	BC	123	11.0	78	77.4	78.4
5915	Northern Interior	Northern Interior	BC	133	6.6	77	76.3	77.4
5918	North Shore	North Shore	BC	179	14.1	80	80.0	80.7
5920	Capital (Victoria)	Victoria	BC	334	18.0	80	79.4	79.9
5921	Vancouver/Richmond	Vancouver/Richmond	BC	733	11.2	79	79.0	79.4
5922	Simon Fraser (includes Burnaby)	Simon Fraser	BC	509	10.8	79	78.8	79.3
6001	Yukon Territory†	Yukon	YT	31	5.1	76	74.5	77.0
6101	Northwest Territories†	Northwest Territories	NT	41	4.0	77	75.5	78.0
6201	Nunavut†	Nunavut	NU	27	2.5	70	68.2	71.4
Canada				30493	12.4	78		

* The reference period associated with these data reflects the mid-point of a three-year period.

** Lower Confidence Interval

*** Upper Confidence Interval

† The entire province or territory is included as a region.

Map Code	Region	Self-rated Health Excellent/Very Good (%) 2000/01†			Low Birth Weight % of live births 1997*			Infant Mortality Per 1,000 live births 1996*			Perinatal Mortality Per 1,000 live births 1996*		
		Rate	95% L.C.I.**	95%U.C.I.**	Rate	95% L.C.I.**	95%U.C.I.**	Rate	95% L.C.I.**	95%U.C.I.**	Rate	95% L.C.I.**	95%U.C.I.**
NF		66	5.8	5.5	6.2	6.6	5.5	7.9	7.5	6.3	8.9		
1001	St John's area	68	5.9	5.3	6.5	5.6	3.9	7.7	5.6	3.9	7.7		
1002	Eastern, NF	66	6.0	5.2	6.8	5.8	3.6	8.7	7.7	5.2	11.1		
1003	Central, NF	67	5.5	4.7	6.3	5.8	3.5	8.9	6.4	4.0	9.6		
PE		64	5.1	4.5	5.8	4.6	3.0	6.7	7.3	5.2	10.0		
NS		59	5.6	5.3	5.9	4.9	4.2	5.7	6.3	5.4	7.2		
1201	Zone 1, NS	52	5.9	5.2	6.7	6.7	4.4	9.7	8.0	5.5	11.2		
1203	Zone 3, NS	54	5.6	4.9	6.4	5.4	3.3	8.2	7.0	4.7	10.2		
1205	Zone 5, NS	57	5.4	4.7	6.1	5.5	3.6	8	7.7	5.4	10.5		
1206	Zone 6, NS	65	5.7	5.3	6.1	5.0	3.9	6.3	6.2	5.0	7.7		
NB		56	5.3	5.0	5.6	5.1	4.2	6.0	5.9	5.0	7.0		
1301	Region 1, NB (Moncton area)	55	5.1	4.5	5.7	4.8	3.2	6.8	5.5	3.8	7.6		
1302	Region 2, NB (Saint John area)	58	6.1	5.5	6.7	5.1	3.6	7.1	5.4	3.8	7.5		
1303	Region 3, NB (Fredericton area)	57	5.1	4.6	5.7	5.2	3.6	7.3	6.5	4.7	8.8		
QC		61	6.0	5.9	6.1	5.2	4.9	5.5	5.8	5.5	6.1		
2401	Bas-Saint-Laurent	56	6.0	5.4	6.7	4.9	3.3	6.9	5.2	3.6	7.3		
2402	Saguenay - Lac-Saint-Jean	66	6.0	5.5	6.5	5.5	4.1	7.2	6.7	5.2	8.5		
2403	Région de Québec	62	5.5	5.2	5.8	6.2	5.2	7.4	6.7	5.6	7.9		
2404	Mauricie et Centre-du-Québec	60	5.6	5.2	6.0	6.1	5.0	7.5	6.2	5.0	7.5		
2405	Estrie	61	6.3	5.8	6.8	5.1	3.8	6.6	5.5	4.2	7.2		
2406	Montréal-Centre	60	6.2	6.0	6.3	5.7	5.1	6.2	6.0	5.5	6.6		
2407	Outaouais	56	6.3	5.8	6.7	5.6	4.3	7.1	5.6	4.4	7.1		
2408	Abitibi-Témiscamingue	57	5.9	5.3	6.5	5.7	4.0	7.9	5.9	4.2	8.1		
2409	Côte-Nord	53	6.9	6.1	7.7	6.8	4.5	9.7	8.0	5.5	11.2		
2411	Gaspésie-Îles-de-la-Madeleine	56	7.2	6.3	8.2	4.5	2.6	7.4	7.4	4.8	10.9		
2412	Chaudière-Appalaches	61	5.5	5.1	6.0	4.2	3.2	5.5	5.7	4.5	7.1		
2413	Laval	63	5.9	5.4	6.3	3.4	2.5	4.6	4.5	3.4	5.8		
2414	Lanaudière	64	6.1	5.7	6.5	5.0	3.9	6.3	6.1	4.8	7.5		
2415	Laurentides	65	6.1	5.7	6.5	5.2	4.2	6.4	5.3	4.2	6.4		
2416	Montérégie	63	5.8	5.6	6.0	4.1	3.5	4.7	5.2	4.5	5.8		
ON		63	5.9	5.8	6.0	5.7	5.5	5.9	7.1	6.8	7.3		
3501	Champlain (Ottawa area)	64	6.0	5.7	6.2	5.9	5.2	6.7	6.1	5.4	7.0		
3502	Quinte-Kingston & Rideau	62	5.6	5.2	6.0	6.8	5.6	8.1	7.6	6.3	9.1		
3503	Durham-Hal.Kawartha & Pine Ridge	64	5.6	5.4	5.9	4.9	4.1	5.7	5.3	4.5	6.2		
3504	Toronto	64	6.7	6.5	6.8	6.2	5.8	6.7	8.2	7.7	8.8		
3505	Simcoe-York	62	5.7	5.4	5.9	4.5	3.8	5.2	5.7	5.0	6.6		
3506	Halton-Peel	66	5.9	5.7	6.1	5.0	4.4	5.6	6.8	6.1	7.5		
3507	Waterloo-Wellington-Dufferin	65	5.2	5.0	5.5	5.2	4.4	6.1	7.4	6.4	8.5		
3508	Hamilton-Wentworth	62	5.9	5.6	6.3	5.9	4.9	7.2	7.9	6.7	9.3		
3509	Niagara	63	5.0	4.7	5.4	5.4	4.2	6.7	8.1	6.7	9.7		
3510	Grand River (Brantford area)	58	5.8	5.3	6.3	4.9	3.5	6.6	6.1	4.6	8.0		
3511	Thames Valley (London area)	66	5.8	5.5	6.1	5.9	4.9	7.0	6.8	5.8	8.0		
3512	Essex Kent Lambton (Windsor area)	61	5.5	5.2	5.8	5.9	5.0	7.0	6.6	5.6	7.8		
3513	Grey Bruce Huron & Perth	60	5.0	4.5	5.4	5.9	4.5	7.5	7.8	6.2	9.7		
3514	Muskoka Nipissing P Sound Tim	57	5.7	5.1	6.2	6.7	5.0	8.9	5.8	4.2	7.9		
3515	ACMS (Sudbury area)	58	6.1	5.7	6.5	6.1	4.9	7.5	7.5	6.1	9.0		
3516	Northwestern Ontario	57	4.5	4.1	4.9	8.6	6.9	10.6	7.4	5.8	9.3		
MB		60	5.5	5.3	5.7	7.3	6.5	8.1	7.5	6.8	8.3		
4610	Winnipeg	61	6.0	5.7	6.3	6.8	5.9	7.9	6.6	5.7	7.9		
SK		57	5.1	4.9	5.4	8.7	7.8	9.6	8.1	7.2	9.0		
4704	Regina	56	5.4	5.0	5.9	10.1	8.2	12.3	9.5	7.6	11.6		
4706	Saskatoon	59	5.5	5.1	6.0	7.8	6.3	9.6	7.2	5.8	8.9		
AB		62	6.1	6.0	6.3	6.1	5.6	6.5	7.0	6.5	7.5		
4801	Chinook	61	5.2	4.6	5.7	7.6	5.7	10.0	7.7	5.8	10.1		
4804	Calgary	63	6.9	6.6	7.1	5.0	4.3	5.8	6.5	5.7	7.4		
4806	David Thompson (Central AB)	62	6.3	5.8	6.9	6.0	4.4	8.0	7.0	5.2	9.1		
4807	East Central, AB	58	4.8	4.2	5.5	6.5	4.3	9.4	8.0	5.5	11.2		
4810	Edmonton	60	6.4	6.1	6.6	6.4	5.5	7.3	6.7	5.8	7.7		
4812	Lakeland	59	5.4	4.8	6.1	7.0	4.9	9.7	7.0	4.9	9.7		
BC		59	5.2	5.1	5.3	5.3	4.9	5.7	6.2	5.8	6.7		
5903	North Okanagan	65	4.5	3.8	5.2	5.0	3.0	7.8	5.9	3.7	8.9		
5904	Okanagan Similkameen	58	5.5	5.0	6.1	5.1	3.6	7.0	5.2	3.7	7.2		
5905	Thompson	63	5.5	4.9	6.2	5.2	3.4	7.6	7.4	5.2	10.2		
5906	Fraser Valley	55	5	4.6	5.4	4.5	3.3	6.0	5.0	3.8	6.6		
5907	South Fraser Valley	59	5.6	5.3	5.9	5.1	4.2	6.1	6.2	5.2	7.3		
5910	Central Vancouver Island	61	4.4	3.9	4.9	6.1	4.5	8.1	5.6	4.0	7.5		
5911	Upper Island / Central Coast	63	4.7	4.0	5.3	5.6	3.7	8.3	6.6	4.4	9.4		
5915	Northern Interior	58	5	4.4	5.6	7.8	5.7	10.5	9.3	7.0	12.1		
5918	North Shore	70	4.5	3.9	5.0	3.3	2.0	5.2	4.3	2.8	6.3		
5920	Victoria	63	4.7	4.3	5.2	5.1	3.8	6.7	5.5	4.1	7.1		
5921	Vancouver/Richmond	55	5.5	5.1	5.8	4.8	3.8	5.8	6.1	5.1	7.3		
5922	Simon Fraser	58	5.5	5.2	5.8	5.6	4.7	6.6	7.0	6.0	8.1		
YT		62	4.7	3.6	5.9	8.7	4.7	14.6	8.6	4.7	14.5		
NT		54	5.0	4.1	5.9	6.7	3.9	10.5	7.0	4.2	11.0		
NU		53	6.6	5.6	7.7	17.9	13.0	24.0	9.8	6.3	14.5		
Canada		61	5.8	5.7	5.8	5.8	5.6	5.9	6.7	6.5	6.8		

† Confidence Intervals are available on the Web site.

* The reference period associated with these data reflects the mid-point of a three-year period.

** Lower Confidence Interval

*** Upper Confidence Interval

Health Status

Map Code	Region	Circulatory Deaths*			Cancer Deaths*			Respiratory Deaths*	
		Total	IHD†	Stroke	Total	Lung	Breast (F)		Prostate (M)
		1996**			1996**				
NF		320.6	176.6	62.5	194.3	50.0	27.0	29.8	56.9
1001	St John's area	288.9	157.2	59.3	186.9	50.1	29.9	25.5	54.8
1002	Eastern, NF	362.4	206.6	66.8	224.7	62.7	20.3	38.7	61.4
1003	Central, NF	325.5	180.1	69.2	182.1	41.0	27.8	28.2	45.2
PE		267.1	147.8	53.3	193.8	56.6	23.8	36.0	66.5
NS		259.5	139.4	45.3	208.3	57.8	30.9	33.3	71.0
1201	Zone 1, NS	284.1	150.9	48.5	198.9	51.5	29.0	29.7	55.7
1203	Zone 3, NS	237.0	121.1	43.6	205.1	60.5	28.2	31.4	70.7
1205	Zone 5, NS	306.8	175.4	53.4	231.8	69.4	33.9	35.3	76.3
1206	Zone 6, NS	245.0	129.3	41.5	206.8	57.1	32.9	35.1	74.7
NB		257.7	129.6	47.6	196.5	55.2	29.3	29.9	57.4
1301	Region 1, NB (Moncton area)	236.0	102.7	48.5	196.8	53.8	31.1	34.7	45.4
1302	Region 2, NB (Saint John area)	275.5	152.3	47.4	201.2	58.6	30.7	28.2	66.8
1303	Region 3, NB (Fredericton area)	279.0	141.8	52.2	184.3	47.8	26.6	25.3	67.2
QC		247.6	142.9	44.3	203.9	60.4	29.5	29.2	62.1
2401	Bas-Saint-Laurent	238.4	124.3	49.3	201.8	55.8	29.3	33.3	60.9
2402	Saguenay - Lac-Saint-Jean	252.1	138.8	51.6	231.5	72.5	30.9	30.2	71.4
2403	Région de Québec	234.6	126.9	44.4	202.2	58.3	29.0	26.8	61.7
2404	Mauricie et Centre-du-Québec	253.3	142.6	49.3	202.3	61.4	27.6	28.7	64.6
2405	Estrie	242.9	141.1	42.0	194.4	54.9	27.1	35.1	59.7
2406	Montréal-Centre	242.1	144.3	41.8	199.1	56.6	31.4	25.7	59.2
2407	Outaouais	277.0	154.6	46.4	209.7	66.0	28.3	36.8	63.8
2408	Abitibi-Témiscamingue	283.7	162.8	53.9	213.2	74.5	23.2	32.0	86.1
2409	Côte-Nord	241.1	123.9	49.1	250.0	91.3	23.9	38.2	72.0
2411	Gaspésie-Îles-de-la-Madeleine	258.1	143.8	39.7	230.4	78.3	26.4	32.8	59.7
2412	Chaudière-Appalaches	239.3	125.2	47.5	191.8	55.3	24.9	33.3	60.5
2413	Laval	230.3	134.0	43.9	210.0	60.3	32.6	31.7	52.9
2414	Lanaudière	253.6	145.5	43.0	221.0	71.1	29.4	29.1	80.6
2415	Laurentides	265.1	163.2	44.6	219.9	67.6	31.0	30.6	68.9
2416	Montréal	258.5	154.5	43.0	198.2	57.9	29.4	29.6	59.0
ON		245.7	141.8	49.8	180.5	44.3	29.0	29.1	56.7
3501	Champlain (Ottawa area)	245.1	143.6	46.3	179.1	47.5	28.5	31.5	54.2
3502	Quinte-Kingston & Rideau	271.3	163.1	53.7	187.6	53.5	27.4	31.5	72.3
3503	Durham-Hal.Kawartha & Pine Ridge	252.9	146.5	53.1	192.3	48.8	30.5	28.9	61.2
3504	Toronto	205.4	108.6	46.8	167.5	37.4	27.5	26.0	51.7
3505	Simcoe-York	236.2	131.8	48.8	173.8	39.3	29.0	28.2	55.0
3506	Halton-Peel	214.8	118.4	47.2	169.9	39.7	30.4	27.8	50.6
3507	Waterloo-Wellington-Dufferin	257.7	145.0	54.7	173.6	40.3	26.8	29.2	57.1
3508	Hamilton-Wentworth	246.0	146.3	45.8	190.0	49.6	31.3	25.1	61.8
3509	Niagara	279.1	179.7	49.2	187.5	43.4	32.7	31.2	49.8
3510	Grand River (Brantford area)	290.8	180.8	58.0	191.1	48.1	32.8	31.4	66.3
3511	Thames Valley (London area)	249.6	147.1	46.1	186.9	45.1	31.5	33.6	60.3
3512	Essex Kent Lambton (Windsor area)	302.0	186.7	55.8	193.4	52.0	27.2	34.2	49.6
3513	Grey Bruce Huron & Perth	262.1	153.9	49.6	180.3	40.3	27.9	30.2	64.0
3514	Muskoka Nipissing P Sound Tim	281.2	166.6	57.6	202.7	53.9	32.1	31.8	66.5
3515	ACNS (Sudbury area)	292.6	170.5	52.4	201.9	56.6	28.5	31.0	69.6
3516	Northwestern Ontario	290.2	174.9	59.6	201.2	54.1	28.3	27.4	59.5
MB		259.6	142.4	52.2	186.9	47.7	29.8	30.6	57.9
4610	Winnipeg	261.0	149.3	51.3	191.9	50.7	30.5	27.4	53.8
SK		237.9	123.0	45.8	171.5	42.2	24.5	35.6	58.4
4704	Regina	246.1	134.7	45.4	176.8	46.3	25.6	31.6	56.7
4706	Saskatoon	235.9	120.8	49.6	167.4	40.1	24.5	35.0	52.6
AB		249.0	127.9	49.6	173.3	43.0	27.7	32.6	59.8
4801	Chinook	247.5	127.3	53.1	183.8	40.3	34.9	39.3	65.9
4804	Calgary	239.2	101.4	47.8	170.7	41.7	27.6	28.0	56.9
4806	David Thompson (Central AB)	248.7	133.3	52.5	171.6	43.4	25.7	32.4	65.9
4807	East Central, AB	258.5	149.0	49.2	166.2	41.3	22.5	33.8	58.1
4810	Edmonton	247.6	133.7	48.9	169.2	42.9	26.9	29.8	59.7
4812	Lakeland	301.6	175.5	48.5	195.3	46.9	29.3	46.0	62.7
BC		223.1	113.0	49.5	168.9	44.9	24.9	27.0	62.4
5903	North Okanagan	239.4	122.1	51.9	161.7	45.5	20.6	25.2	56.3
5904	Okanagan Similkameen	202.1	98.7	44.1	159.0	39.2	23.9	29.9	57.8
5905	Thompson	243.4	122.7	46.5	177.8	50.6	26.6	30.3	71.1
5906	Fraser Valley	241.7	130.7	52.7	172.1	47.3	23.9	31.6	64.2
5907	South Fraser Valley	233.3	126.9	50.5	167.0	43.6	27.7	27.6	61.2
5910	Central Vancouver Island	229.9	113.9	49.3	175.2	49.0	25.4	25.7	64.4
5911	Upper Island / Central Coast	248.0	121.4	48.2	193.9	47.7	25.5	31.7	56.7
5915	Northern Interior	250.9	110.8	50.9	198.4	51.9	25.0	28.2	80.9
5918	North Shore	208.3	100.0	53.9	162.9	35.2	24.1	31.2	56.8
5920	Victoria	203.8	97.4	47.6	171.8	44.9	29.6	27.1	57.1
5921	Vancouver/Richmond	201.7	104.4	46.3	154.4	41.6	21.5	20.9	64.5
5922	Simon Fraser	233.5	118.8	55.0	180.0	49.9	24.9	27.0	69.5
YT		288.7	119.2	48.8	208.3	73.1	16.7	44.2	73.6
NT		196.9	85.0	42.5	217.0	66.3	..	22.5	92.8
NU		215.6	40.2	..	327.1	131.8	209.7
Canada		245.8	136.4	48.4	185.7	49.2	28.3	29.7	59.8

* Age standardized according to the 1991 Canadian population. Rates are per 100,000 population. Confidence Intervals are available on the Web site.

** The reference period associated with these data reflects the mid-point of a three-year period.

† Ischaemic Heart Disease

.. Not Available

Non-Medical Determinants of Health

Map Code	Region	Post-secondary graduates	High school graduates	Unemployment Rate	Youth Unemployment Rate	Low income	Children in low income families	Housing affordability
		% 1996	% 1996	% 2000	% 2000	% 1995 income	% 1995 income	% 1995 income
NF		48.8	62.3	16.7	25.7	21.4	27.1	19.1
1001	St John's area	59.4	75.2	10.0	18.8	20.1	23.8	24.2
1002	Eastern, NF	44.8	54.3	24.0	37.6	22.7	29.1	16.5
1003	Central, NF	41.0	52.6	20.0	28.6	21.6	28.2	15.9
PE		49.0	64.9	12.0	14.7	15.2	18.6	20.9
NS		53.9	66.6	9.1	15.6	18.8	23.6	23.3
1201	Zone 1, NS	47.1	55.2	9.8	18.2	17.0	21.8	18.0
1203	Zone 3, NS	48.3	58.0	9.0	16.2	18.8	24.0	21.7
1205	Zone 5, NS	48.0	60.5	17.8	24.6	23.5	31.5	25.8
1206	Zone 6, NS	60.3	74.8	6.3	11.6	17.7	21.3	26.0
NB		45.8	70.0	10.0	15.8	19.0	22.5	20.4
1301	Region 1, NB (Moncton area)	47.6	72.1	8.6	12.9	16.9	20.1	20.2
1302	Region 2, NB (Saint John area)	47.7	71.4	7.7	14.8	19.2	23.3	20.4
1303	Region 3, NB (Fredericton area)	50.7	76.0	8.5	14.2	16.9	19.7	18.7
QC		48.4	71.0	8.4	13.9	23.4	24.8	27.9
2401	Bas-Saint-Laurent	43.6	63.1	10.3	16.4	19.3	19.3	21.0
2402	Saguenay - Lac-Saint-Jean	48.7	65.7	10.4	18.9	19.8	19.5	23.6
2403	Région de Québec	54.6	74.9	8.7	15.3	22.9	21.4	26.9
2404	Mauricie et Centre-du-Québec	45.3	64.5	10.0	17.7	21.3	22.0	24.6
2405	Estrie	45.7	70.3	7.8	13.8	20.5	21.4	25.9
2406	Montréal-Centre	54.6	77.7	9.5	12.5	34.8	41.2	37.1
2407	Outaouais	47.3	69.7	7.1	13.1	20.6	22.2	25.3
2408	Abitibi-Témiscamingue	40.6	60.7	11.8	20.4	17.8	18.3	23.1
2409	Côte-Nord	40.7	56.9	13.3	23.5	15.1	17.3	18.1
2411	Gaspésie-Îles-de-la-Madeleine	38.0	53.6	19.9	30.7	20.6	24.3	20.0
2412	Chaudière-Appalaches	44.1	66.6	6.1	9.8	16.6	17.1	19.0
2413	Laval	50.4	74.5	6.4	8.7	21.4	24.6	27.8
2414	Lanaudière	41.0	63.5	7.2	13.3	18.9	20.1	24.3
2415	Laurentides	43.0	65.6	7.4	11.3	20.0	22.1	26.5
2416	Montérégie	46.6	70.5	6.6	14.0	18.0	19.4	24.1
ON		53.1	76.3	5.7	11.8	17.7	21.6	28.0
3501	Champlain (Ottawa area)	59.1	82.9	5.8	11.1	17.8	21.6	25.9
3502	Quinte-Kingston & Rideau	50.9	75.2	5.8	12.6	14.9	18.4	26.4
3503	Durham-Hal. Kawartha & Pine Ridge	51.0	74.0	5.2	13.1	12.5	15.1	26.8
3504	Toronto	55.8	77.3	6.4	11.0	27.6	36.4	34.7
3505	Simcoe-York	55.3	76.9	5.0	10.8	13.0	15.3	28.2
3506	Halton-Peel	55.6	77.1	4.3	9.6	13.4	16.6	27.7
3507	Waterloo-Wellington-Dufferin	51.7	74.4	4.9	12.1	13.3	16.0	25.1
3508	Hamilton-Wentworth	50.5	76.1	5.7	11.1	21.9	26.4	28.5
3509	Niagara	48.9	76.8	5.8	10.8	15.6	19.4	25.1
3510	Grand River (Bramford area)	46.0	70.0	7.4	18.3	13.1	16.3	24.4
3511	Thames Valley (London area)	51.5	76.7	5.8	13.1	15.5	19.0	26.9
3512	Essex Kent Lambton (Windsor area)	48.3	75.6	5.8	10.7	13.8	17.2	22.7
3513	Grey Bruce Huron & Perth	47.6	70.9	3.8	7.1	12.5	15.5	22.3
3514	Muskoka Nipissing P Sound Tim	47.6	71.2	8.0	17.8	16.9	21.9	27.4
3515	ACMS (Sudbury area)	47.9	71.6	8.7	18.4	17.2	21.1	24.7
3516	Northwestern Ontario	48.8	67.1	6.9	17.5	12.5	15.3	19.1
MB		48.0	65.3	4.9	9.3	20.6	24.8	20.8
4610	Winnipeg	52.1	71.6	5.3	10.1	24.0	28.9	23.9
SK		48.6	63.2	5.2	10.6	18.3	22.9	18.5
4704	Regina	51.0	70.6	4.8	9.0	17.5	21.9	19.3
4706	Saskatoon	53.7	68.6	5.4	10.6	20.2	24.6	22.0
AB		53.7	66.5	5.0	10.7	18.4	21.2	22.5
4801	Chinook	50.3	62.6	4.6	..	16.4	19.4	19.9
4804	Calgary	58.3	73.0	4.5	10.6	19.8	22.2	24.1
4806	David Thompson (Central AB)	48.9	59.3	5.9	12.4	16.0	19.6	21.7
4807	East Central, AB	46.2	60.2	4.0	..	12.5	15.1	16.4
4810	Edmonton	56.2	68.5	5.5	11.0	22.7	26.5	25.0
4812	Lakeland	47.9	59.7	5.0	..	15.6	18.6	16.9
BC		54.0	72.1	7.2	13.6	19.6	22.5	29.1
5903	North Okanagan	49.0	64.7	8.9	..	16.8	20.0	25.4
5904	Okanagan Similkameen	52.5	67.5	8.1	13.3	17.1	21.0	27.1
5905	Thompson	49.5	69.6	11.2	26.5	17.2	20.2	24.7
5906	Fraser Valley	46.6	66.1	8.5	15.1	16.8	20.8	29.8
5907	South Fraser Valley	51.0	67.8	6.3	12.6	17.9	21.7	29.5
5910	Central Vancouver Island	50.7	63.3	8.5	15.6	17.4	23.1	26.8
5911	Upper Island / Central Coast	48.2	64.2	9.4	19.1	15.2	18.6	23.3
5915	Northern Interior	44.8	64.1	10.0	19.9	14.2	16.6	19.9
5918	North Shore	68.0	80.9	3.1	..	15.7	17.5	28.8
5920	Victoria	59.5	75.5	6.7	12.0	15.4	17.5	30.0
5921	Vancouver/Richmond	64.4	80.1	6.8	11.4	29.9	34.3	36.5
5922	Simon Fraser	57.5	75.0	5.1	10.0	22.5	25.6	31.2
YT		60.3	67.2	21.2
NT		55.0	55.4	15.0
NU		43.3	28.6	7.6
Canada		51.5	71.8	6.8	12.6	19.7	22.8	26.5
..	Not Available							

Health System Performance

Map Code	Region	Hip Fracture Hosp.*	Pneumonia & Influenza Hosp.*	Ambulatory Care Sensitive Conditions*	May Not Require Hosp. % of hosp.	Avg. Stay Over/Under Expected # of Days	Caesarean Sections % of deliveries
		1999/00	1999/00	1999/00	2000/01	2000/01	1999/00
NF		618	1450	558	9.6	0.86	23.9
1001	St John's area	550	980	423	9.6	1.19	22.4
1002	Eastern, NF	566	1640	498	8.2	0.94	28.2
1003	Central, NF	605	1512	477	9.9	0.53	28.3
PE		641	1687	1095	9.4	0.76	22.1
NS		538	1515	450	7.4	0.46	20.9
1201	Zone 1, NS	489	1564	455	7.2	0.45	18.8
1203	Zone 3, NS	580	1440	539	7.7	0.38	21.8
1205	Zone 5, NS	612	1578	495	8.2	0.63	21.2
1206	Zone 6, NS	441	1272	336	6.8	0.47	21.4
NB		428	1779	642	9.1	0.46	24.6
1301	Region 1, NB (Moncton area)	381	1519	477	8.1	0.57	20.0
1302	Region 2, NB (Saint John area)	482	1589	402	7.6	0.66	22.6
1303	Region 3, NB (Fredericton area)	442	2012	651	8.8	0.14	25.2
QC		521	1036	355	17.7
2401	Bas-Saint-Laurent	443	1047	354	18.5
2402	Saguenay - Lac-Saint-Jean	525	1183	531	17.4
2403	Région de Québec	534	843	273	17.5
2404	Mauricie et Centre-du-Québec	501	991	308	16.3
2405	Estrie	609	1042	352	11.5
2406	Montréal-Centre	521	811	331	19.4
2407	Outaouais	544	1371	364	19.1
2408	Abitibi-Témiscamingue	812	1520	447	14.5
2409	Côte-Nord	530	1888	600	21.6
2411	Gaspésie-Îles-de-la-Madeleine	619	1517	509	20.1
2412	Chaudière-Appalaches	539	1110	260	20.7
2413	Laval	515	810	308	17.2
2414	Lanaudière	426	1508	435	16.2
2415	Laurentides	521	1226	402	15.4
2416	Montréal	466	1159	364	17.3
ON		601	1235	345	5.9	-0.33	20.2
3501	Champlain (Ottawa area)	502	1083	273	5.5	-0.06	18.7
3502	Quinte-Kingston & Rideau	614	1456	319	5.0	-0.12	21.1
3503	Durham-Hal.Kawartha & Pine Ridge	690	1457	317	6.0	-0.42	23.4
3504	Toronto	517	1012	265	5.3	-0.26	20.8
3505	Simcoe-York	632	1233	284	6.5	-0.39	20.6
3506	Halton-Peel	524	1016	283	5.5	-0.33	20.2
3507	Waterloo-Wellington-Dufferin	606	1332	284	5.1	-0.52	19.8
3508	Hamilton-Wentworth	573	1103	254	4.7	-0.89	19.1
3509	Niagara	569	1065	513	6.1	-0.52	20.3
3510	Grand River (Brantford area)	598	1139	448	5.0	-0.91	18.3
3511	Thames Valley (London area)	675	1102	328	6.7	-0.41	16.2
3512	Essex Kent Lambton (Windsor area)	589	1127	497	6.8	-0.31	18.9
3513	Grey Bruce Huron & Perth	701	1593	516	7.3	-0.40	18.7
3514	Muskoka Nipissing P Sound Tim	682	1873	603	7.9	-0.12	25.7
3515	ACMS (Sudbury area)	626	1744	596	7.2	-0.02	22.9
3516	Northwestern Ontario	599	1587	656	7.4	0.04	20.5
MB		597	1625	495	18.3
4610	Winnipeg	503	1118	319	5.7	0.82	18.1
SK		556	1793	590	8.1	0.09	16.7
4704	Regina	519	1366	606	7.4	0.23	16.5
4706	Saskatoon	604	1239	304	7.4	0.26	16.5
AB		604	1744	493	7.3	-0.03	19.5
4801	Chinook	462	1951	726	6.8	0.10	17.7
4804	Calgary	611	1277	289	6.8	0.26	20.6
4806	David Thompson (Central AB)	719	2268	593	8.7	0.11	21.7
4807	East Central, AB	497	2074	769	9.9	-0.16	23.2
4810	Edmonton	580	1237	268	4.6	-0.13	18.9
4812	Lakeland	495	2683	1059	8.8	-0.36	21.7
BC		611	1230	399	6.7	-0.06	23.2
5903	North Okanagan	912	1518	423	6.6	-0.18	28.0
5904	Okanagan Similkameen	617	1137	486	5.9	-0.43	21.7
5905	Thompson	611	1278	438	8.3	-0.19	23.6
5906	Fraser Valley	594	1506	461	6.8	-0.24	21.9
5907	South Fraser Valley	486	1122	284	5.6	-0.13	23.0
5910	Central Vancouver Island	706	1137	415	6.0	0.06	22.5
5911	Upper Island / Central Coast	776	1395	625	9.6	-0.29	21.8
5915	Northern Interior	582	2509	529	7.6	0.00	22.6
5918	North Shore	491	896	230	5.4	0.24	22.8
5920	Victoria	420	845	409	8.0	0.17	25.0
5921	Vancouver/Richmond	590	1156	341	5.8	0.16	25.0
5922	Simon Fraser	612	1192	308	5.8	0.07	21.3
YT	
NT	
NU	
Canada		575	1297	401	19.9

* Age standardized according to the 1991 Canadian population. Rates are per 100,000 population.

.. Not Available

Health System Performance

Map Code	Region	Screening Mammography	Pap Smear	30 Day Acute Myocardial Infarction			30 Day Stroke		
		% women 50-69 2000/01†	% women 18-69 2000/01†	In-hospital Mortality Rate (%)			In-hospital Mortality Rate (%)		
				Risk Adjusted Rate	1998* 95% L.C.I.**	95%U.C.I***	Risk Adjusted Rate	1998* 95% L.C.I.**	95%U.C.I***
NF		42	77
1001	St John's area	39	79	20.6	17.1	24.2
1002	Eastern, NF	44	73	34.9	31.1	38.8
1003	Central, NF	51	76	24.4	20.5	28.3
PE		47	79	12.7	10.4	15.0	15.1	11.8	18.4
NS		47	80
1201	Zone 1, NS	59	77	14.0	11.7	16.3	26.8	23.4	30.1
1203	Zone 3, NS	50	80	14.7	11.9	17.5	29.1	25.2	33.1
1205	Zone 5, NS	32	73	13.4	11.3	15.5	20.9	17.8	23.9
1206	Zone 6, NS	47	84	11.4	9.8	13.0	21.3	18.7	23.8
NB		45	77
1301	Region 1, NB (Moncton area)	43	78	12.3	10.3	14.3	21.2	18.3	24.0
1302	Region 2, NB (Saint John area)	42	75	12.3	10.2	14.3	19.4	16.2	22.6
1303	Region 3, NB (Fredericton area)	44	82	12.6	10.5	14.7	22.9	19.5	26.3
QC		53	67
2401	Bas-Saint-Laurent	47	61
2402	Saguenay - Lac-Saint-Jean	43	64
2403	Région de Québec	56	67
2404	Mauricie et Centre-du-Québec	47	65
2405	Estrie	59	64
2406	Montréal-Centre	55	64
2407	Outaouais	54	79
2408	Abitibi-Témiscamingue	49	75
2409	Côte-Nord	49	71
2411	Gaspésie-Îles-de-la-Madeleine	51	74
2412	Chaudière-Appalaches	52	55
2413	Laval	48	62
2414	Lanaudière	53	70
2415	Laurentides	41	76
2416	Montérégie	62	71
ON		54	74
3501	Champlain (Ottawa area)	53	76	14.1	13.2	15.0	19.2	17.9	20.4
3502	Quinte-Kingston & Rideau	48	76	12.2	11.1	13.3	20.0	18.3	21.7
3503	Durham-Hal.Kawartha & Pine Ridge	59	81	13.3	12.4	14.3	18.2	16.7	19.6
3504	Toronto	50	68	11.4	10.9	12.0	18.5	17.8	19.3
3505	Simcoe-York	59	76	12.8	11.8	13.8	18.2	16.8	19.6
3506	Halton-Peel	57	75	12.1	11.2	13.0	18.0	16.7	19.3
3507	Waterloo-Wellington-Dufferin	56	79	12.0	10.8	13.2	17.6	16.0	19.2
3508	Hamilton-Wentworth	55	73	12.5	11.4	13.5	19.1	17.4	20.8
3509	Niagara	48	74	13.9	12.8	15.0	20.3	18.7	22.0
3510	Grand River (Brantford area)	55	80	12.9	11.3	14.5	21.1	18.7	23.6
3511	Thames Valley (London area)	49	76	12.9	11.9	13.9	20.4	18.7	22.1
3512	Essex Kent Lambton (Windsor area)	65	72	13.9	12.9	14.9	18.6	17.2	20.1
3513	Grey Bruce Huron & Perth	48	75	13.2	11.7	14.7	16.7	14.6	18.7
3514	Muskoka Nipissing P Sound Tim	53	76	15.9	14.2	17.6	21.7	19.3	24.1
3515	ACMS (Sudbury area)	44	73	14.8	13.6	16.1	20.7	18.8	22.6
3516	Northwestern Ontario	50	77	11.9	10.2	13.7	18.5	16.1	20.9
MB		50	74
4610	Winnipeg	51	73	11.2	10.1	12.3	19.4	17.9	20.9
SK		53	77
4704	Regina	61	80	13.9	12.0	15.7	18.6	15.9	21.3
4706	Saskatoon	53	79	13.8	11.9	15.8	15.9	13.5	18.2
AB		51	75
4801	Chinook	56	73	10.6	8.1	13.0	19.9	16.6	23.3
4804	Calgary	46	73	9.8	8.6	10.9	16.9	15.2	18.5
4806	David Thompson (Central AB)	46	79	10.8	8.5	13.1	18.7	15.7	21.7
4807	East Central, AB	47	68	14.7	11.9	17.4	18.8	15.2	22.4
4810	Edmonton	55	76	10.0	8.8	11.2	15.8	14.3	17.4
4812	Lakeland	48	72	8.2	5.4	11.0	15.1	11.3	18.8
BC		50	72
5903	North Okanagan	51	76
5904	Okanagan Similkameen	54	80
5905	Thompson	50	75
5906	Fraser Valley	45	73
5907	South Fraser Valley	48	69
5910	Central Vancouver Island	59	79
5911	Upper Island / Central Coast	60	84
5915	Northern Interior	47	72
5918	North Shore	45	74
5920	Victoria	57	82
5921	Vancouver/Richmond	44	63
5922	Simon Fraser	52	69
YT		37	81
NT		36	78
NU		..	65
	Canada	52	73	12.6†	-	-	19.2‡	-	-

† Confidence Intervals are available on the Web site.

‡ 3-year pooled average: 1997-1999

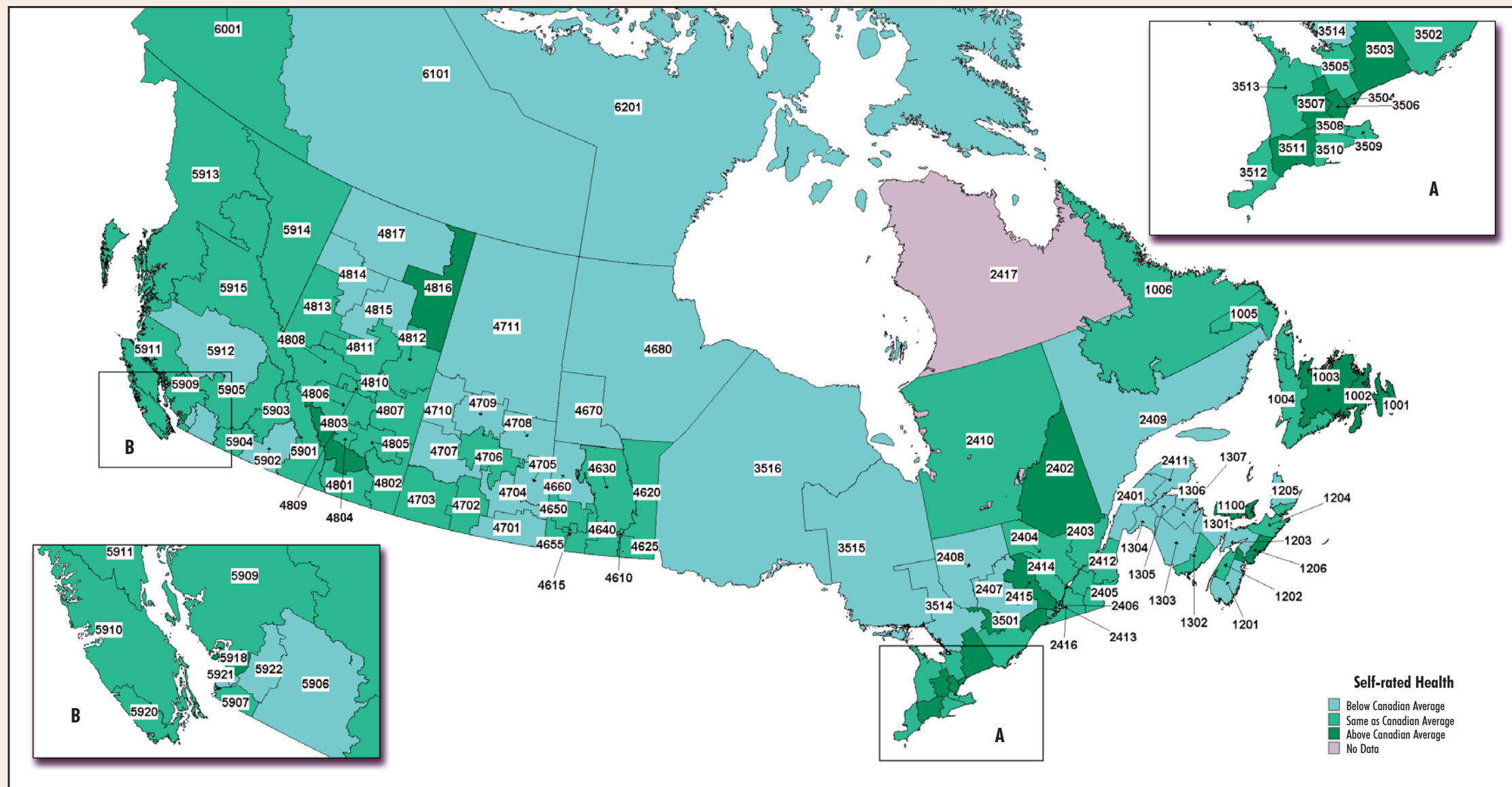
** Lower Confidence Interval

*** Upper Confidence Interval

‡ The average rate includes only provinces/territories for which comparable data were available.

.. Not Available

Self-rated Health By Health Regions 2000/2001



Source: Statistics Canada, 2000/2001

Health System Performance

Map Code	Region	Acute Myocardial Infarction Readmission Rate (%)			Asthma Readmission Rate (%)		
		Risk Adjusted Rate	1998* 95% L.C.I.**	95%U.C.I.***	Risk Adjusted Rate	1998* 95% L.C.I.**	95%U.C.I.***
NF		--	--	--	--	--	--
1001	St John's area	--	--	--	4.0	1.5	6.6
1002	Eastern, NF	--	--	--	4.5	1.8	7.2
1003	Central, NF	--	--	--	†	†	†
PE		10.7	8.8	12.7	7.3	5.2	9.4
NS		--	--	--	--	--	--
1201	Zone 1, NS	8.9	6.9	10.8	7.9	5.1	10.7
1203	Zone 3, NS	10.0	7.4	12.5	†	†	†
1205	Zone 5, NS	9.6	7.9	11.3	4.2	1.3	7.0
1206	Zone 6, NS	3.2	1.7	4.6	9.6	7.5	11.6
NB		--	--	--	--	--	--
1301	Region 1, NB (Moncton area)	7.6	5.8	9.4	7.3	5.2	9.4
1302	Region 2, NB (Saint John area)	5.0	3.2	6.8	4.6	1.6	7.6
1303	Region 3, NB (Fredericton area)	9.5	7.7	11.2	5.4	3.3	7.4
QC		--	--	--	--	--	--
2401	Bas-Saint-Laurent	--	--	--	--	--	--
2402	Saguenay - Lac-Saint-Jean	--	--	--	--	--	--
2403	Région de Québec	--	--	--	--	--	--
2404	Mauricie et Centre-du-Québec	--	--	--	--	--	--
2405	Estrie	--	--	--	--	--	--
2406	Montréal-Centre	--	--	--	--	--	--
2407	Outaouais	--	--	--	--	--	--
2408	Abitibi-Témiscamingue	--	--	--	--	--	--
2409	Côte-Nord	--	--	--	--	--	--
2411	Gaspésie-Îles-de-la-Madeleine	--	--	--	--	--	--
2412	Chaudière-Appalaches	--	--	--	--	--	--
2413	Laval	--	--	--	--	--	--
2414	Lanaudière	--	--	--	--	--	--
2415	Laurentides	--	--	--	--	--	--
2416	Montréal	--	--	--	--	--	--
ON		--	--	--	--	--	--
3501	Champlain (Ottawa area)	6.6	5.8	7.5	6.7	5.4	8.1
3502	Quinte-Kingston & Rideau	9.0	8.0	10.0	4.4	2.6	6.2
3503	Durham-Hal.Kawartha & Pine Ridge	9.0	8.1	9.9	7.5	6.1	9.0
3504	Toronto	5.9	5.3	6.4	5.9	5.0	6.7
3505	Simcoe-York	8.3	7.4	9.2	4.9	3.6	6.1
3506	Halton-Peel	5.8	5.0	6.6	6.1	4.9	7.3
3507	Waterloo-Wellington-Dufferin	8.8	7.8	9.9	5.5	3.9	7.0
3508	Hamilton-Wentworth	5.9	4.8	6.9	3.5	1.4	5.6
3509	Niagara	8.0	6.9	9.0	7.9	6.3	9.5
3510	Grand River (Bramford area)	10.0	8.6	11.4	9.6	7.2	12.0
3511	Thames Valley (London area)	6.0	5.0	7.0	5.4	3.4	7.3
3512	Essex Kent Lambton (Windsor area)	8.9	7.9	9.8	4.4	2.8	6.1
3513	Grey Bruce Huron & Perth	8.1	6.8	9.4	6.9	4.9	8.9
3514	Muskoka Nipissing P Sound Tim	11.1	9.7	12.6	4.5	2.4	6.7
3515	ACMS (Sudbury area)	8.5	7.5	9.6	5.6	4.0	7.2
3516	Northwestern Ontario	8.3	6.8	9.8	7.3	5.0	9.7
MB		--	--	--	--	--	--
4610	Winnipeg	--	--	--	--	--	--
SK		--	--	--	--	--	--
4704	Regina	5.3	3.5	7.0	5.4	3.5	7.4
4706	Saskatoon	6.6	4.7	8.5	10.5	7.8	13.3
AB		--	--	--	--	--	--
4801	Chinook	6.9	4.7	9.1	†	†	†
4804	Calgary	4.1	3.0	5.2	5.4	3.9	6.8
4806	David Thompson (Central AB)	8.8	6.7	10.9	9.7	7.5	11.8
4807	East Central, AB	8.2	5.6	10.8	8.9	6.1	11.8
4810	Edmonton	2.7	1.6	3.9	4.3	2.9	5.8
4812	Lakeland	7.7	5.1	10.3	12.3	10.1	14.6
BC		--	--	--	--	--	--
5903	North Okanagan	5.8	3.5	8.2	10.7	7.4	13.9
5904	Okanagan Similkameen	6.1	4.3	7.9	9.6	7.3	11.9
5905	Thompson	10.8	8.4	13.2	4.7	1.7	7.6
5906	Fraser Valley	6.7	4.9	8.5	8.9	6.8	11.1
5907	South Fraser Valley	7.7	6.5	9.0	10.2	8.5	11.9
5910	Central Vancouver Island	11.5	10.0	13.1	7.3	5.1	9.5
5911	Upper Island / Central Coast	12.7	10.1	15.2	4.1	0.6	7.5
5915	Northern Interior	11.0	8.2	13.8	7.9	4.3	11.5
5918	North Shore	5.1	2.7	7.6	3.5	0.4	6.7
5920	Victoria	4.3	2.7	6.0	4.8	2.9	6.7
5921	Vancouver/Richmond	4.6	3.2	6.0	10.8	9.1	12.4
5922	Simon Fraser	3.7	2.1	5.2	6.2	4.3	8.2
YT		--	--	--	--	--	--
NT		--	--	--	--	--	--
NU		--	--	--	--	--	--
Canada ‡		7.3	-	-	6.4	-	-

* 3-year pooled average: 1997-1999

** Lower Confidence Interval

*** Upper Confidence Interval

† Data were suppressed due to small numbers.

‡ The average rate includes only provinces/territories for which comparable data were available.

.. Not Available

Health System Performance

Map Code	Region	Hysterectomy Readmission Rate (%)			Prostatectomy Readmission Rate (%)		
		Risk Adjusted Rate	1998* 95% L.C.I.**	95%U.C.I.***	Risk Adjusted Rate	1998* 95% L.C.I.**	95%U.C.I.***
NF		--	--	--	--	--	--
1001	St John's area	1.3	0.7	1.9	2.5	0.4	4.7
1002	Eastern, NF	1.4	0.7	2.0	†	†	†
1003	Central, NF	†	†	†	†	†	†
PE		1.3	0.6	2.0	5.3	3.6	7.1
NS		--	--	--	--	--	--
1201	Zone 1, NS	†	†	†	†	†	†
1203	Zone 3, NS	0.9	0.1	1.6	†	†	†
1205	Zone 5, NS	†	†	†	2.2	0.5	3.9
1206	Zone 6, NS	1.4	1.0	1.8	4.2	2.9	5.4
NB		--	--	--	--	--	--
1301	Region 1, NB (Moncton area)	0.7	0.1	1.2	5.0	3.0	7.1
1302	Region 2, NB (Saint John area)	1.8	1.2	2.4	4.2	2.8	5.6
1303	Region 3, NB (Fredericton area)	0.9	0.2	1.5	3.3	1.5	5.1
QC		--	--	--	--	--	--
2401	Bas-Saint-Laurent	--	--	--	--	--	--
2402	Saguenay - Lac-Saint-Jean	--	--	--	--	--	--
2403	Région de Québec	--	--	--	--	--	--
2404	Mauricie et Centre-du-Québec	--	--	--	--	--	--
2405	Estrie	--	--	--	--	--	--
2406	Montréal-Centre	--	--	--	--	--	--
2407	Outaouais	--	--	--	--	--	--
2408	Abitibi-Témiscamingue	--	--	--	--	--	--
2409	Côte-Nord	--	--	--	--	--	--
2411	Gaspésie-Îles-de-la-Madeleine	--	--	--	--	--	--
2412	Chaudière-Appalaches	--	--	--	--	--	--
2413	Laval	--	--	--	--	--	--
2414	Lanaudière	--	--	--	--	--	--
2415	Laurentides	--	--	--	--	--	--
2416	Montérégie	--	--	--	--	--	--
ON		--	--	--	--	--	--
3501	Champlain (Ottawa area)	1.1	0.8	1.4	2.9	2.0	3.7
3502	Quinte-Kingston & Rideau	1.2	0.8	1.6	3.8	2.6	4.9
3503	Durham-Hal.Kawartha & Pine Ridge	0.8	0.5	1.1	2.4	1.7	3.2
3504	Toronto	0.8	0.6	1.1	2.7	2.3	3.2
3505	Simcoe-York	0.8	0.5	1.1	2.7	2.0	3.4
3506	Halton-Peel	0.8	0.5	1.1	2.6	1.8	3.4
3507	Waterloo-Wellington-Dufferin	0.9	0.5	1.2	1.5	0.6	2.5
3508	Hamilton-Wentworth	1.0	0.6	1.4	1.5	0.5	2.5
3509	Niagara	1.2	0.8	1.5	1.7	0.8	2.7
3510	Grand River (Bramford area)	0.7	0.2	1.3	2.0	0.6	3.4
3511	Thames Valley (London area)	0.7	0.3	1.1	3.4	2.3	4.4
3512	Essex Kent Lambton (Windsor area)	0.7	0.4	1.0	1.1	0.1	2.2
3513	Grey Bruce Huron & Perth	1.6	1.0	2.1	2.9	1.5	4.2
3514	Muskoka Nipissing P Sound Tim	†	†	†	2.3	0.8	3.8
3515	ACMS (Sudbury area)	0.8	0.4	1.1	2.1	0.8	3.3
3516	Northwestern Ontario	1.7	1.2	2.2	3.0	1.4	4.6
MB		--	--	--	--	--	--
4610	Winnipeg	--	--	--	--	--	--
SK		--	--	--	--	--	--
4704	Regina	1.8	1.2	2.3	†	†	†
4706	Saskatoon	0.7	0.1	1.2	4.5	2.7	6.3
AB		--	--	--	--	--	--
4801	Chinook	1.9	1.2	2.6	†	†	†
4804	Calgary	1.5	1.1	1.8	1.4	0.3	2.4
4806	David Thompson (Central AB)	2.2	1.5	2.8	†	†	†
4807	East Central, AB	†	†	†	†	†	†
4810	Edmonton	0.6	0.2	0.9	2.3	1.0	3.5
4812	Lakeland	1.1	0.2	2.0	†	†	†
BC		--	--	--	--	--	--
5903	North Okanagan	†	†	†	3.6	1.4	5.8
5904	Okanagan Similkameen	0.9	0.2	1.5	†	†	†
5905	Thompson	0.7	0.0	1.4	3.2	1.4	5.1
5906	Fraser Valley	1.3	0.8	1.9	2.4	1.2	3.7
5907	South Fraser Valley	1.3	0.9	1.8	2.1	1.2	3.0
5910	Central Vancouver Island	0.7	0.1	1.2	2.2	0.9	3.6
5911	Upper Island / Central Coast	1.6	0.8	2.4	2.1	0.1	4.1
5915	Northern Interior	1.8	1.1	2.5	3.3	0.8	5.8
5918	North Shore	†	†	†	1.8	0.1	3.5
5920	Victoria	1.3	0.8	1.8	2.5	1.5	3.4
5921	Vancouver/Richmond	0.8	0.3	1.3	2.3	1.5	3.1
5922	Simon Fraser	0.7	0.3	1.2	2.4	1.5	3.3
YT		--	--	--	--	--	--
NT		--	--	--	--	--	--
NU		--	--	--	--	--	--
Canada ‡		1.0	-	-	2.5	-	-

* 3-year pooled average: 1997-99

** Lower Confidence Interval

*** Upper Confidence Interval

† Data were suppressed due to small numbers.

‡ The average rate includes only provinces/territories for which comparable data were available.

-- Not Available

Community and Health System Characteristics

Map Code	Region	GP/FP Rate*	Specialists Rate*	Bypass Surgery**	Hip Replacement**	Knee Replacement**	Hysterectomy**	Overall	Inflow/Outflow Ratio			
									Bypass Surgery	Hip Replacement	Knee Replacement	Hysterectomy
									1999/00	1999/00	1999/00	1999/00
NF		103	68	117.1	35.5	36.2	658	--	--	--	--	--
1001	St John's area	119	158	121.8	34.9	27.5	539	1.51	2.79	1.87	2.14	1.37
1002	Eastern, NF	91	11	139.4	31.1	32.6	743	0.61	0.00	0.00	0.00	0.69
1003	Central, NF	97	30	97.3	43.8	43.0	656	0.87	0.00	0.80	0.83	0.95
PE		75	56	75.5	63.5	67.1	619	--	--	--	--	--
NS		102	97	114.4	76.4	99.1	581	--	--	--	--	--
1201	Zone 1, NS	87	45	119.6	60.6	92.3	678	0.73	0.00	0.00	0.00	0.78
1203	Zone 3, NS	82	33	114.1	73.0	105.1	707	0.66	0.00	0.00	0.00	0.69
1205	Zone 5, NS	88	56	115.8	71.5	132.0	531	0.94	0.00	1.02	1.00	0.89
1206	Zone 6, NS	126	168	119.2	80.8	84.2	474	1.46	2.98	1.82	1.91	1.23
NB		91	63	82.8	60.5	75.8	791	--	--	--	--	--
1301	Region 1, NB (Moncton area)	92	78	68.7	60.8	69.6	667	1.14	0.00	1.34	1.32	1.20
1302	Region 2, NB (Saint John area)	84	83	90.2	70.5	94.1	726	1.14	3.94	0.98	0.99	0.99
1303	Region 3, NB (Fredericton area)	83	60	83.4	65.8	91.5	585	0.98	0.00	1.07	1.06	1.04
QC		106	107	98.7	36.0	34.2	427	--	--	--	--	--
2401	Bas-Saint-Laurent	111	81	89.1	42.7	39.5	788	0.93	0.01	0.79	0.90	0.95
2402	Saguenay - Lac-Saint-Jean	99	70	72.4	33.5	42.5	872	1.01	0.99	0.93	0.98	1.05
2403	Région de Québec	145	170	107.6	30.6	26.4	469	1.32	2.19	1.56	1.50	1.31
2404	Mauricie et Centre-du-Québec	82	66	108.1	35.8	38.4	541	0.88	0.01	0.98	0.97	0.92
2405	Estrie	125	117	135.9	36.3	25.0	505	1.03	1.10	0.65	0.72	0.96
2406	Montréal-Centre	124	210	86.4	34.0	27.7	290	1.38	2.76	1.47	1.49	1.44
2407	Outaouais	87	54	107.7	33.6	46.4	335	0.85	0.00	0.79	0.75	0.66
2408	Abitibi-Témiscamingue	94	61	81.9	42.5	43.5	535	0.98	0.00	1.05	0.98	1.02
2409	Côte-Nord	120	50	110.5	24.6	28.9	447	0.81	0.00	0.48	0.63	0.74
2411	Gaspésie-Îles-de-la-Madeleine	155	53	83.2	30.6	54.5	700	0.73	0.00	0.38	0.49	0.68
2412	Chaudière-Appalaches	97	53	103.0	51.3	39.7	508	0.74	0.00	0.80	0.81	0.75
2413	Laval	85	64	91.1	37.3	36.9	366	0.72	0.00	0.57	0.80	0.92
2414	Lanaudière	79	40	96.3	32.3	32.3	342	0.70	0.01	0.79	0.61	0.64
2415	Laurentides	87	42	94.6	43.8	33.3	365	0.84	0.00	0.57	0.56	0.55
2416	Montérégie	88	59	107.4	35.2	38.9	422	0.78	0.01	0.68	0.72	0.81
ON		85	95	97.0	66.8	78.2	431	--	--	--	--	--
3501	Champlain (Ottawa area)	104	135	96.3	59.3	66.7	443	1.14	1.70	1.08	1.12	1.15
3502	Quinte-Kingston & Rideau	95	97	120.2	78.4	88.7	539	0.95	0.77	0.90	0.90	0.95
3503	Durham-Hal.Kawartha & Pine Ridge	67	45	110.2	78.0	96.6	546	0.76	0.00	0.46	0.47	0.81
3504	Toronto	112	166	84.6	54.5	60.0	302	1.29	2.46	1.72	1.60	1.36
3505	Simcoe-York	75	49	97.1	60.8	70.6	367	0.95	0.00	0.70	0.82	0.89
3506	Halton-Peel	72	51	112.8	67.8	75.9	338	0.89	0.00	0.86	0.97	0.82
3507	Waterloo-Wellington-Dufferin	69	53	79.9	69.9	75.1	447	0.82	0.00	0.72	0.75	0.89
3508	Hamilton-Wentworth	86	160	95.1	73.2	89.9	448	1.29	2.91	1.28	1.27	1.28
3509	Niagara	61	59	83.7	68.0	86.7	613	0.87	0.00	0.71	0.79	0.92
3510	Grand River (Bramford area)	59	34	99.7	67.1	89.0	502	0.74	0.00	0.49	0.48	0.63
3511	Thames Valley (London area)	84	140	91.5	71.7	82.4	420	1.30	3.17	1.53	1.47	1.23
3512	Essex Kent Lambton (Windsor area)	55	55	83.2	74.9	89.7	582	0.90	0.00	0.85	0.87	0.91
3513	Grey Bruce Huron & Perth	78	34	69.5	73.1	101.3	475	0.87	0.00	0.60	0.70	0.86
3514	Muskoka Nipissing P Sound Tim	91	47	121.7	66.2	81.5	614	0.87	0.00	0.21	0.38	0.75
3515	ACMS (Sudbury area)	77	62	136.0	61.3	82.6	725	1.01	1.28	0.89	0.93	1.00
3516	Northwestern Ontario	86	48	81.8	91.5	97.0	498	0.97	0.00	0.96	0.98	0.97
MB		92	88	93.6	74.2	94.5	467	--	--	--	--	--
4610	Winnipeg	101	143	94.8	75.4	98.2	413	1.34	1.82	1.61	1.64	1.41
SK		92	61	92.9	71.1	71.4	515	--	--	--	--	--
4704	Regina	100	76	135.5	68.2	50.5	465	1.24	1.93	1.42	1.49	1.23
4706	Saskatoon	107	130	58.3	81.0	78.1	472	1.42	2.06	1.76	2.03	1.71
AB		89	79	86.7	74.5	75.8	459	--	--	--	--	--
4801	Chinook	89	54	80.7	82.0	88.5	606	0.96	0.00	1.08	1.23	1.09
4804	Calgary	90	106	93.4	61.4	55.3	399	1.19	1.83	1.35	1.31	1.15
4806	David Thompson (Central AB)	84	41	99.4	84.4	77.6	533	0.97	0.00	0.93	0.99	0.96
4807	East Central, AB	75	9	65.4	77.8	97.2	590	0.71	0.00	0.63	0.70	0.45
4810	Edmonton	107	129	82.9	75.6	75.0	430	1.35	1.80	1.61	1.65	1.46
4812	Lakeland	73	7	75.6	106.5	90.6	480	0.78	0.00	0.00	0.00	0.40
BC		106	88	78.7	64.2	65.0	414	--	--	--	--	--
5903	North Okanagan	110	55	85.6	89.9	89.5	521	0.89	0.00	0.73	0.68	0.91
5904	Okanagan Similkameen	95	80	75.3	76.8	86.7	465	1.03	0.00	1.06	1.17	1.06
5905	Thompson	85	64	54.6	87.7	90.7	587	1.05	0.00	0.95	1.02	1.06
5906	Fraser Valley	82	44	82.5	61.3	82.0	535	0.87	0.00	0.86	0.91	0.89
5907	South Fraser Valley	73	45	84.4	59.0	59.3	401	0.75	0.00	0.55	0.59	0.79
5910	Central Vancouver Island	102	60	89.0	64.0	74.3	512	0.83	0.00	0.69	0.81	0.96
5911	Upper Island / Central Coast	100	42	85.1	71.4	92.3	459	0.89	0.00	1.04	1.18	0.90
5915	Northern Interior	89	45	86.6	59.4	86.3	582	0.98	0.00	0.76	0.96	1.13
5918	North Shore	119	96	66.6	86.0	48.8	258	0.97	0.00	0.91	1.16	0.97
5920	Victoria	145	114	79.8	70.0	56.8	478	1.12	2.14	0.99	0.99	1.03
5921	Vancouver/Richmond	147	214	65.1	43.4	38.7	243	1.51	4.17	2.47	2.15	1.64
5922	Simon Fraser	82	67	89.5	47.4	53.6	384	1.04	1.60	1.06	1.14	0.89
YT		119	20	--	--	--	--	--	--	--	--	--
NT		65	27	--	--	--	--	--	--	--	--	--
NU		--	--	--	--	--	--	--	--	--	--	--
Canada		95	92	94.2	59.5	65.6	452	--	--	--	--	--

* Rates are per 100,000 population.

** Age standardized according to the 1991 Canadian population. Rates are per 100,000 population.

.. Not Available

Health Professionals †

	RN	LPN	Total	Physicians GP/FP	Specialists	Pharmacists	Dentists	Physiotherapists	Psychologists	Dental Hygienists	Chiropractors	Optometrists
	2000	2000	2000	2000	2000	2000	2000	2000	2000	2000	2000	2000
NF	1006	535	173	106	66	96	31	37	36	13	6	6
PE	908	451	129	76	53	86	43	34	15	31	5	8
NS	923	329	201	101	100	100	48	45	39	44	7	7
NB	960	294	153	90	63	75	35	53	34	33	6	12
QC	795	210	213	106	108	77	54	43	89	49	13	16
ON	695	225	180	85	95	72	60	43	22	56	23	10
MB	876	203	181	93	89	78	49	46	14	49	18	8
SK	838	151	154	91	62	109	34	52	7	27	16	11
AB	731	135	165	86	79	96	54	54	61	43	23	10
BC	681	122	195	107	88	80	65	57	26	44	18	8
YK	787	..	136	116	20	86	60	..	27	50	30	10
NT	767	160	115	71	44	44	73	..	77	31
NU	25	22	4
Canada	752	207	187	94	93	79	56	47	43	48	18	11

† Data are as of April 2002. Rates are per 100,000 population

.. Not Available

For more information on how professional groups were defined please contact hpdh@cchi.ca

Source: Southern Medical Database, Health Personnel Database, Registered Nurses Database, CIHI

Health Expenditures

	Total Health Expenditure (\$000,000), Current dollars			Total Health Expenditure per capita (\$), Current dollars			% of GDP	% Public Sector	Total Health Expenditure by Use of Funds \$ per capita			
	Actual	Forecast	Forecast	Actual	Forecast	Forecast			Institutional Services	Professional Services	Drugs	Capital and Other Health
	1999	2000	2001	1999	2000	2001	1999	1999	1999	1999	1999	1999
NF	1,570	1,655	1,733	2,903	3,080	3,246	12.7	79.6	1,446	519	390	548
PE	373	398	424	2,712	2,883	3,059	12.0	69.3	1,329	530	463	390
NS	2,749	2,869	3,043	2,926	3,048	3,228	12.0	71.5	1,529	635	458	304
NB	2,063	2,172	2,321	2,735	2,875	3,066	11.0	71.2	1,324	580	430	401
QC	19,915	20,566	21,483	2,710	2,788	2,899	9.5	72.4	1,251	624	448	387
ON	34,902	38,236	40,780	3,029	3,272	3,434	8.6	67.1	1,159	856	482	532
MB	3,661	3,918	4,174	3,205	3,419	3,630	11.5	74.5	1,398	699	373	734
SK	2,981	3,146	3,347	2,907	3,079	3,295	9.9	76.7	1,185	618	379	725
AB	8,630	9,204	10,195	2,916	3,059	3,327	7.4	71.5	1,084	728	385	720
BC	12,231	13,227	14,501	3,036	3,259	3,540	10.1	73.4	1,220	883	362	571
YK	108	118	125	3,466	3,870	4,199	9.7	84.7	1,167	713	389	1,197
NT	232	211	229	5,664	5,152	5,598	11.0	91.2	2,590	880	398	1,796
NU	131	162	156	4,873	5,926	5,524	15.6	93.9	1,827	585	177	2,284
Canada	89,547	95,881	102,512	2,936	3,116	3,298	9.2	70.8	1,216	756	437	528

Source: Health Expenditure Database, CIHI, 2001

.. Not Available

Prevention

	Pertussis cases		Measles cases		Tuberculosis cases		HIV + test reports		Chlamydia cases	
	1998	1999	1998	1999	1998	1999	1999	2000	1998	1999
NF	39	127	0	0	8	12	6	3	378	433
PE	21	10	0	0	2	2	24	17	144	148
NS	37	36	0	1	18	15	1,207	1,364
NB	266	148	0	0	9	15	4	10	1,049	1,136
QC	4,850	1,838	2	2	289	314	567	493	7,264	7,968
ON	1,871	1,203	7	2	724	684	932	897	12,454	13,256
MB	311	154	0	1	116	132	73	57	3,129	2,967
SK	269	1,128	1	0	98	116	30	34	2,428	2,656
AB	741	826	1	17	158	149	176	184	5,236	5,416
BC	362	522	1	6	329	329	427	419	4,769	5,402
YK	0	0	0	0	2	1	1	5	177	176
NT	30	104	0	0	38	38	0	0	1,121	1,219
NU	0	0
Canada	8,797	6,096	12	29	1,791	1,807	2,240	2,119	39,356	42,141

Source: Centre for Infectious Disease Prevention and Control, Health Canada, 2001; HIV and AIDS in Canada: Surveillance Report to June 30, 2001, Population and Public Health Branch, Health Canada

.. Not Available

Ambulatory Care Sensitive Conditions (ACSC) hospitalization: Age-standardized inpatient acute care hospitalization rate for conditions where appropriate ambulatory care prevents or reduces the need for hospitalization, per 100,000 population. **Source:** Hospital Morbidity Database, CIHI

Average Stay Over/Under Expected: The average number of actual days in acute care hospitals compared to the expected length of stay. A positive value indicates actual days stay was longer than expected while a negative value suggests the average actual stay was shorter than expected. **Source:** Discharge Abstract Database, CIHI

Bypass surgery rate: Age-standardized rate of coronary artery bypass graft (CABG) surgery performed on inpatients in acute care hospitals, per 100,000 population age 20 and older. **Source:** Hospital Morbidity Database, CIHI

Caesarean Sections: Proportion of women delivering babies in acute care hospitals by Caesarean section. Due to the characteristics of the database, stillbirths are excluded from the denominator. **Source:** Hospital Morbidity Database, CIHI

Cancer deaths (malignant neoplasms): Age-standardized rate of death from cancer per 100,000 population, for all cancers (ICD-9 140-208) and for specific sites: colorectal (ICD-9 153-154), lung (ICD-9 162), female breast (ICD-9 174), and prostate cancer (ICD-9 185). **Sources:** Statistics Canada, Vital Statistics, Death Database, and Demography Division (population estimates)

Children in low-income families (1995 income): Proportion of children aged 17 and under living in economic families with incomes below Statistics Canada's low-income cut-offs (LICO). The term economic family refers to a group of two or more persons who live in the same dwelling and are related to each other by blood, marriage, common-law or adoption. **Source:** Statistics Canada, 1996 Census (20% sample)

Circulatory disease deaths: Age-standardized rate of death from circulatory diseases per 100,000 population: all circulatory diseases (ICD-9 390-459), ischaemic heart disease (ICD-9 410-414), cerebrovascular diseases (stroke) (ICD-9 430-438) and all other circulatory diseases (ICD-9 390-409, 415-429, 439-459). **Sources:** Statistics Canada, Vital Statistics, Death Database, and Demography Division (population estimates)

Doctors: General practitioners (including uncertified specialists) or family practitioners (family medicine and emergency family medicine specialists) per 100,000 population on December 31st of the reference year; Specialist physicians (specialty based on most recent certified specialty) on December 31st of the reference year, per 100,000 population. **Source:** Southam Medical Database, CIHI

Health expenditures: Health expenditures in current dollars; expenditures per capita; percent of Gross Domestic Product; public sector expenditures as a percent of total spending; and expenditures by use of funds. **Source:** National Health Expenditure Database, CIHI

Health professionals: Number of health professionals (selected professions) per 100,000 population. Physician data include physicians in clinical and non-clinical practice and exclude interns and residents. Specialty is based on the most recent certified specialty. Registered nurses (RN) rates are based on RNs employed in nursing and will differ from provincial/territorial data due to the CIHI collection period, the removal of interprovincial duplicates, and provincial territorial data cleaning at year-end. Licensed practical nurses (LPN) figures represent total registrants, regardless of activity/employment status. Other health professional data reflect the number of: licensed pharmacists, excluding non-practicing and honorary pharmacists and certified clerks; active dentists licensed in general practice and certified specialists; active physiotherapists registered with the Canadian Alliance of Physiotherapy Regulators; active registered psychologists ("active" refers to self-employed, or employed by agencies, e.g. hospitals or clinics); licensed dental hygienists; licensed chiropractors; and registered optometrists. **Sources:** Health Personnel Database, CIHI; Registered Nurses Database, CIHI; Southam Database, CIHI

High school graduates: Proportion of the population aged 25 to 29 who have a high school graduation certificate. **Source:** Statistics Canada, 1996 Census (20% sample)

Hip fracture hospitalization: Age-standardized hospitalization rate for fracture of the hip, per 100,000 population age 65 and older. **Source:** Hospital Morbidity Database, CIHI

Hip replacement rate: Age-standardized rate of total hip replacement surgery (unilateral or bilateral) performed on inpatients in acute care hospitals, per 100,000 population. **Source:** Hospital Morbidity Database, CIHI

Housing affordability (1995 income): Households (renters, owners, and total) spending 30% or more of total household income on shelter expenses. Shelter expenses include payments for electricity, oil, gas, coal, wood or other fuels, water and other municipal services, monthly mortgage payments, property taxes, condominium fees and rent. **Source:** Statistics Canada, 1996 Census (20% sample)

Hysterectomy rate: Age-standardized rate for hysterectomies provided to inpatients in acute care hospitals, per 100,000 women age 20 and older. **Source:** Hospital Morbidity Database, CIHI

Infant mortality: Infants who die in the first year of life, expressed as a rate per 1,000 live births. **Sources:** Statistics Canada, Vital Statistics, Birth and Death Databases

Inflow/Outflow ratio: A ratio of the number of separations from acute care hospitals within a given region divided by the number of acute care hospital discharges generated by residents of that region. An overall ratio is calculated for discharges associated with any diagnosis or procedure and separately for coronary artery bypass surgery (CABG), total hip replacement, total knee replacement and hysterectomy procedures. **Source:** Hospital Morbidity Database, CIHI

In-hospital 30-day Acute Myocardial Infarction (AMI) mortality rate: Risk adjusted rate of all cause in-hospital death occurring within 30 days of first admission to an acute care hospital with a diagnosis of AMI. Rates are based on three years of pooled data. **Source:** Hospital Morbidity Database, CIHI

In-hospital 30-day Stroke mortality rate: The risk adjusted rate of all cause in-hospital death occurring within 30 days of first admission to an acute care hospital with a diagnosis of stroke. Rates are based on three years of pooled data. **Source:** Hospital Morbidity Database, CIHI

Knee replacement rate: Age-standardized rate of total knee replacement surgery (unilateral or bilateral) performed on inpatients in acute care hospitals, per 100,000 population. **Source:** Hospital Morbidity Database, CIHI

Life expectancy: The number of years a person would be expected to live, starting from birth (for life expectancy at birth) or at age 65 (for life expectancy at age 65), on the basis of the mortality statistics for a given observation period. **Sources:** Statistics Canada, Vital Statistics, Death Database, and Demography Division.

Low birthweight: Live births less than 2,500 grams, expressed as a percentage of all live births (birth weight known). **Sources:** Statistics Canada, Vital Statistics, Birth Database

Low income rate (1995 income): Proportion of the population in economic families and unattached individuals with incomes below the Statistics Canada low-income cut-off (LICO). The cut-offs represent levels of income where people spend disproportionate amounts of money for food, shelter, and clothing. **Source:** Statistics Canada, 1996 Census (20% sample)

May Not Require Hospitalization (MNRH): Percentage of patients hospitalized in acute care facilities for conditions or procedures that often allow out-patient treatment not requiring admission. **Source:** Discharge Abstract Database, CIHI

Pap smear, women aged 18-69: Women aged 18 to 69 who reported having had a Pap smear test within the past 3 years. **Source:** Statistics Canada, Canadian Community Health Survey, 2000/01, health file

Perinatal mortality: Rate of stillbirths and early neonatal deaths (deaths in the first week of life) per 1,000 total births (includes stillbirths). Stillbirths are defined as gestational age of 28 or more weeks. Stillbirths with unknown gestational age are excluded. **Sources:** Statistics Canada, Vital Statistics, Birth, Death and Stillbirth Databases

Pneumonia and influenza hospitalization: Age-standardized acute care hospitalization rate for pneumonia and influenza, per 100,000 population age 65 and older. **Source:** Hospital Morbidity Database, CIHI

Population estimates: Population estimates (1999) for health regions were produced by Statistics Canada (Demography Division) for all provinces, except Quebec, Alberta and British Columbia. Quebec health region population estimates were provided by l'Institut de la statistique du Québec, Alberta population estimates by Alberta Health and Wellness and British Columbia population estimates by BC Stats.

Post-secondary graduates: Proportion of the population aged 25 to 54 who have obtained a post-secondary certificate, diploma, or degree. **Source:** Statistics Canada, 1996 Census (20% sample)

Readmission rate - Acute Myocardial Infarction: The risk adjusted rate of unplanned readmission following discharge for Acute Myocardial Infarction (AMI). A case is counted as a readmission if it is for a relevant diagnosis and occurs within 28 days after the index AMI episode of care. Rates are based on three years of pooled data. **Source:** Discharge Abstract Database, CIHI

Readmission rate - Asthma: The risk adjusted rate of unplanned readmission following discharge for Asthma. A case is counted as a readmission if it is for a relevant diagnosis and occurs within 28 days after the index episode of care. Rates are based on three years of pooled data. **Source:** Discharge Abstract Database, CIHI

Readmission rate - Hysterectomy: The risk adjusted rate of unplanned readmission following discharge for Hysterectomy. A case is counted as a readmission if it is for a relevant diagnosis and occurs within 7 or 28 days after the index episode of care. Rates are based on three years of pooled data. **Source:** Discharge Abstract Database, CIHI

Readmission rate - Prostatectomy: The risk adjusted rate of unplanned readmission following discharge for Prostatectomy. A case is counted as a readmission if it is for a relevant diagnosis or procedure and occurs within 28 days after the index episode of care. Rates are based on three years of pooled data. **Source:** Discharge Abstract Database, CIHI

Respiratory disease deaths: Age-standardized rate of death from respiratory diseases per 100,000 population, for all respiratory diseases (ICD-9 460-519), pneumonia and influenza (ICD-9 480-487), bronchitis/emphysema/asthma (ICD-9 490-493), and all other respiratory diseases (ICD-9 460-479, 488-489, 494-519). **Sources:** Statistics Canada, Vital Statistics, Death Database, and Demography Division (population estimates). **Sources:** Statistics Canada, Vital Statistics, Death Database, and Demography Division (population estimates)

Screening mammography, women aged 50-69: Women aged 50 to 69 who reported having had a mammogram for routine screening within the past 2 years. **Source:** Statistics Canada, Canadian Community Health Survey, 2000/01, health file

Self-rated health: Population aged 12 and over who rate their own health status as either "very good" or "excellent". **Source:** Statistics Canada, Canadian Community Health Survey, 2000/01, health file

Unemployment rate: Labour force aged 15 and over who did not have a job during the reference period. The labour force consists of people who are currently employed and people who are unemployed but were available to work in the reference period and had looked for work in the past 4 weeks. The reference period refers to a one-week period (from Sunday to Saturday) that usually includes the 15th day of the month. **Source:** Statistics Canada, Labour Force Survey (special tabulations)

Youth unemployment rate: Labour force aged 15-24 who did not have a job during the reference period. **Source:** Statistics Canada, Labour Force Survey (special tabulations)

General Notes

- For additional detail, including the ICD-9 diagnoses and Canadian Classification Procedure codes that were used to extract cases, please consult CIHI's Web site (www.cihi.ca)
- The methodology used for these indicators was designed to maximize inter-regional and inter-provincial comparability given the characteristics of available national datasets. For this reason, and because the data presented include the latest updates available at the time of publication, there may be differences with definitions and data sources used in other reports.
- For some hospitals in Newfoundland, 1998/99 data reported in last year's report have been found to be not comparable and therefore should be disregarded.
- Confidence intervals for indicators derived from the Canadian Community Health Survey are available on our Web site.

Regional Estimates - Hospitalization Data

- Data are based on a patient's region of residence and may not necessarily equate with the region of hospitalization.
- Standardized rates are age adjusted using a direct method of standardization based on the July 1st, 1991 population.
- Hospitalizations include discharges and deaths for in-patients in acute care hospitals for the reference period. Same day surgery (out-patient) cases and patients admitted to non-acute care hospitals (e.g. chronic care, psychiatric, or rehabilitation facilities) are generally not included in the totals.
- Rates shown with confidence limits can be interpreted as the rate that is estimated to be within the upper and lower confidence interval 19 times out of 20 (95% confidence interval). The width of the confidence interval illustrates the degree of variability associated with the rate.
- Data from the Discharge Abstract Database include only jurisdictions that submit comprehensively to the database. Therefore, data from Quebec are not available.

For more information visit www.cihi.ca or contact:

Indicators@cihi.ca

Canadian Institute for Health Information

377 Dalhousie Street, Suite 200

Ottawa, Ontario K1N 9N8

Aussi disponible en français

© 2002, Canadian Institute for Health Information (CIHI).

All rights reserved.

Better Health Information for Better Health

For more information, please visit the **Health Indicators E-Publication**. Here you will find additional indicators for all health regions, including new data from the Canadian Community Health Survey.

The Health Indicators E-Publication contains data tables with rates for a variety of indicators broken down by sex and jurisdiction. Tables can be viewed on screen, printed, or downloaded. Maps and highlights have been added for selected indicators.

<http://www.cihi.ca/indicators/hlthind.shtml>
<http://www.statcan.ca>



Canadian Institute
for Health Information

Institut canadien
d'information sur la santé



Statistics
Canada

Statistique
Canada