



Forest Communities Program Newsletter

Issue 5, Summer 2010

If you have any questions about any of the articles in this issue, please contact the FCP Secretariat at fcp-pcf@nrcan.gc.ca or visit us at <http://cfs.nrcan.gc.ca/subsite/forest-communities>.

Cameroon's Forest Women: Building a Sustainable Future

These are the women of Cameroon's Campo-Ma'an caught on film by journalist and photographer Marie-Claude Simard. *Cameroon's Forest Women* runs at Québec City's Musée de la civilisation until September 6, 2010, and features 26 photographs bearing witness to the willpower, hard work, and commitment of these entrepreneurial women. The exhibition is presented as part of the *Vue d'Afrique Rallye-expos*.

As Africa's forest cover shrinks dangerously under the onslaught of excavators and chainsaws, the women of Cameroon's Campo-Ma'an area are fighting to sustain their forest and create wealth for their communities. Organized into hundreds of associations, the women of Campo-Ma'an have become farmers, shrimp fishers, "pond diggers," and activists. Blending new management insights with traditional techniques, they are helping their communities to grow.



Women of the Cameroon Forest

In 2005, the [Campo-Ma'an Model Forest](#) became a member of the [International Model Forest Network](#) (IMFN), a Canadian initiative that has helped foster female entrepreneurship in southeast Cameroon. Several years ago, discussions at the International Model Forest Global Forum led to the *Campo-Ma'an* Model Forest twinning with the [Lac-Saint-Jean Model Forest](#) in Canada. Several exchanges have ensued, focussing on business development opportunities ranging from utilization of wood residues by micro-entrepreneurs to the farming of African land snails.



Giant African land snail

For more information on the exposition featuring the women of the Cameroon Forest, please visit the [Québec Museum of Civilization's website](#).

Original article from the Québec Museum of Civilization website, edited by Forest Communities Program staff. Photo above by Marie-Claude Simard, left by Marie-Claude Gauthier.



From Crisis to Opportunity - Enacting the 'Circle of Wealth'

In 2008, the Ahousaht First Nation approached the [Clayoquot Forest Communities Program](#) about a plan to create more employment opportunities in the forest sector and contribute to solving the housing crisis in their community.

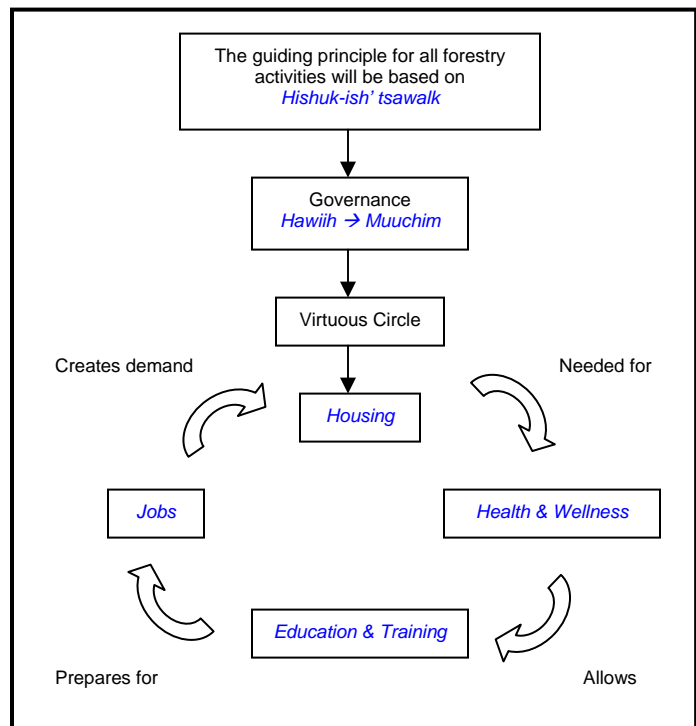
Ahousaht, whose main village of 800 residents is located on a remote island in Clayoquot Sound, made national news in March 2009 because of a severe mould problem in local homes that had become hazardous. This First Nation is beset by poor socio-economic conditions, including a stagnant economy, chronic unemployment, dilapidated housing, and inadequate infrastructure. The headlines about mouldy homes were a low point for Ahousaht, but also the driving force for the community to pull together to overcome their many challenges.

In May 2008, representatives from all five *Nuu-chah-nulth* First Nations, Ecotrust Canada, and two local forestry companies held a visioning retreat. The gathering established a long-term vision for Clayoquot forest activities with the objective of utilizing local timber harvesting permits to help meet the needs of individual communities. The proposed vision, a "Circle of Wealth", links timber harvesting, value added production, housing, and community development.

After the retreat, leaders declared, "The vision for our forestry industry is for us to maximize the benefits from every tree, including high value cultural items and uses. We will harvest and utilize the forests in ways that are defined by our communities to maintain a sustainable old growth profile for future generations."

In response to the housing crisis, Ahousaht has new building plans, including 150 homes, two eight-unit condos, a school, a visitor centre, and a cultural centre longhouse. The community would benefit financially and socially from this project, using local wood and a local construction crew. This would increase the economic gain of the project, while helping to mitigate the environmental impact by reducing transportation and ensuring the sustainability of the wood.

Information about Clayoquot Forest Communities projects is available at <http://www.ecotrust.ca/clayoquot/fcp>.



The "Circle of Wealth" links timber harvesting, value added manufacturing, housing and community development.

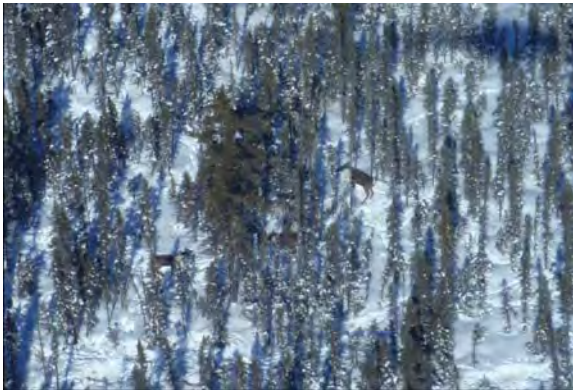
Hishuk-ish' tsawalk: "All is interconnected"
Hawiuh: "Hereditary Chiefs"
Muuchim: "The people"



Caribou in Northeast Superior: A Delicate Balance

Over the last several years, there has been an increased level of importance placed on species at risk habitat protection in legislation. Federal and provincial regulations ensure that industries using land in identified continuous caribou zones are not detrimentally affecting caribou habitat. In some areas, it is a question of whether mills will be able to keep operating.

In the [Northeast Superior Forest Community](#), the Olav Haavaldsrud Timber Company Ltd. mill, located in Hornepayne, almost lost considerable harvesting volume. The mill's tenure included part of the home range of the Nagagami caribou herd.



Part of the winter range of the Nagagami caribou herd.

A partnership between the Northeast Superior Forest Community and the Northeast Community Network conducted a research project on the Nagagami herd, in order to assist with forest management planning. Caribou were captured and collared and data about their movements were collected from signals transmitted by the collars. Initial results indicate that the Nagagami herd travels in regions that are outside of the Hornepayne mill's Sustainable Forest License area, spending much of the year in Nagagami Provincial Park, a protected area.

The project is continuing with further monitoring of the herd. Researchers are also working to teach the public about the need to protect caribou based on their significance as a species at risk.

The findings of this project have had a significant impact at the local level. They have shown that the jobs and communities linked to the Hornepayne mill need not be negatively affected by caribou movement.

If you would like to read more about projects of the Northeast Superior Forest Community, please visit their website at <http://www.nsfcc.ca>.



J. Michael Waldram Fellowship

The call for nominations has now closed for the J. Michael Waldram Memorial Model Forest Fellowship, 2010. Mike Waldram was the general manager of the Manitoba Model Forest from its inception in 1993 until his passing in January of 2006. He was a strong proponent of Aboriginal and youth involvement in forestry management.

This year's three recipients will be presented with their awards at the Canadian Institute of Forestry's Annual General Meeting in Jasper, Alberta. For more information, please visit http://www.cif-ifc.org/uploads/Website_Assets/jasper_ad.pdf.

Since 2008, the Fellowship has been awarded by the [Canadian Model Forest Network](#) to four young people from across Canada, all with strong backgrounds in natural resource management.



Maxime Lépine takes a break while working for West Fraser Forest Timber Co. Ltd.

Maxime Lépine, a 2009 recipient, draws from his Aboriginal heritage for his work in forest management. He feels that, "New unprecedented technologies and management will allow for growth within the field of forestry. There are a lot of factors that we need to take into account beside economic gains. These factors are spoken amongst the Aboriginal elders and the traditional land use planners of Canada." In the future he would like to work with Canadian Aboriginal people in the forest resource management field.

Fellowships are valued at \$1000 and awarded annually. The Fellowship is open to Canadian Aboriginal youth enrolled in at least their second year of a natural resource management diploma or degree program at a Canadian college or university.

Application forms and details for the 2011 Fellowship will be available in the fall through the [Canadian Model Forest Network](#) and the [Canadian Institute of Forestry](#).



Winnipeg River Learning Centre

The Winnipeg River Learning Centre (WRLC) was established in 2007 by the Winnipeg River Regional Round Table. The [Manitoba Model Forest](#) is a key partner, providing some of the seed funding that allowed for the hiring of a school manager as well as a significant annual operating grant. The WRLC now provides trades training to residents of Eastern Manitoba, especially to local First Nations communities. The school is expanding its program base and promoting secondary education in surrounding rural communities.

Thanks to a contribution of 2.7 million dollars from the Federal Government's Community Adjustment Fund, the Learning Centre will upgrade and "green" school facilities, as well provide enhanced programming to students.

For more information about the WRLC, please visit <http://www.wrlc.info/index.html>.

Forest Communities Program Moving Day

The Forest Communities Program Secretariat has moved temporarily. In January 2010, the Canadian Forest Service's Ottawa headquarters moved from 580 Booth Street into Tower B of the Qualicum building at 2934 Baseline Road. This move will allow for major renovations at 580 Booth.

All mailing addresses and phone numbers will remain the same.

However, if you wish to visit us in person, please come to Tower B on Baseline Road. There is a telephone in the lobby that can be used to call up and someone can come down to meet you. It is anticipated that we will be back at 580 Booth early in the new year.



Tower B at Qualicum



Upcoming Events

September 27-29, 2010

102nd CIF-IFC Annual General Meeting and Conference
"Regional Land Use In The Global Economy"

Jasper, Alberta

http://www.cif-ifc.org/site/upcoming_events

October 5-8, 2010

Canadian Urban Forest Conference 9

"Water, Trees and Communities"

Truro, Nova Scotia

<http://www.cufc9.ca>

October 14-16, 2010

On The Bright Side

"Rural Canada Works"

Brandon University, Manitoba

<http://www2.brandonu.ca/organizations/rdi/crf2010english.asp>

October 25-28, 2010

13th North American Caribou Workshop

"Sustaining Caribou and their Landscapes – Knowledge to Action"

Winnipeg, Manitoba

<http://www.nacw2010.ca>

About the Forest Communities Program

The Forest Communities Program (FCP) is a \$25-million, five-year program that funds 11 forest community organizations across Canada, as well as national projects. The FCP community partnerships are located in defined geographic areas at a regional scale, and include a mix of urban, rural and Aboriginal communities. Typically, these community partnerships are diverse, with participants drawn from community groups, industry, Aboriginal organizations, and various levels of government, landowners, research groups and educational institutions. The FCP assists forest community organizations in developing and sharing new knowledge, practices and strategies to meet the challenges of forest sector transition and to develop new, forest-based economic opportunities.

FCP Contact Information

Natural Resources Canada – Canadian Forest Service

580 Booth Street

Ottawa, Ontario, Canada K1A 0E4

Tel: (613) 992-5874

Email: fcf-pcf@nrcan.gc.ca

Web: <http://cfs.nrcan.gc.ca/index/forest-communities>