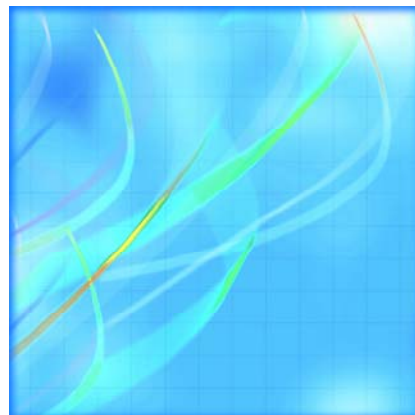


Catalogue no. 21-011-X

Farm Cash Receipts

Agriculture Economic Statistics

November 2011



Statistics
Canada

Statistique
Canada

Canada

How to obtain more information

For information about this product or the wide range of services and data available from Statistics Canada, visit our website at www.statcan.gc.ca, e-mail us at infostats@statcan.gc.ca, or telephone us, Monday to Friday from 8:30 a.m. to 4:30 p.m., at the following numbers:

Statistics Canada's National Contact Centre

Toll-free telephone (Canada and the United States):

Inquiries line	1-800-263-1136
National telecommunications device for the hearing impaired	1-800-363-7629
Fax line	1-877-287-4369

Local or international calls:

Inquiries line	1-613-951-8116
Fax line	1-613-951-0581

Depository Services Program

Inquiries line	1-800-635-7943
Fax line	1-800-565-7757

To access this product

This product, Catalogue no. 21-011-X, is available free in electronic format. To obtain a single issue, visit our website at www.statcan.gc.ca and browse by "Key resource" > "Publications."

Standards of service to the public

Statistics Canada is committed to serving its clients in a prompt, reliable and courteous manner. To this end, Statistics Canada has developed *standards of service* that its employees observe. To obtain a copy of these service standards, please contact Statistics Canada toll-free at 1-800-263-1136. The service standards are also published on www.statcan.gc.ca under "About us" > "The agency" > "Providing services to Canadians."

Statistics Canada
Agriculture Division
Farm Income and Prices Section

Farm Cash Receipts

Agriculture Economic Statistics

November 2011

Published by authority of the Minister responsible for Statistics Canada

© Minister of Industry, 2011

All rights reserved. The content of this electronic publication may be reproduced, in whole or in part, and by any means, without further permission from Statistics Canada, subject to the following conditions: that it be done solely for the purposes of private study, research, criticism, review or newspaper summary, and/or for non-commercial purposes; and that Statistics Canada be fully acknowledged as follows: Source (or "Adapted from", if appropriate): Statistics Canada, year of publication, name of product, catalogue number, volume and issue numbers, reference period and page(s). Otherwise, no part of this publication may be reproduced, stored in a retrieval system or transmitted in any form, by any means—electronic, mechanical or photocopy—or for any purposes without prior written permission of Licensing Services, Information Management Division, Statistics Canada, Ottawa, Ontario, Canada K1A 0T6.

November 2011

Catalogue no. 21-011-X, vol. 10, no. 2

ISSN 1705-0782

Frequency: Semi-Annual

Ottawa

Cette publication est également disponible en français.

Note of appreciation

Canada owes the success of its statistical system to a long-standing partnership between Statistics Canada, the citizens of Canada, its businesses, governments and other institutions. Accurate and timely statistical information could not be produced without their continued cooperation and goodwill.

User information

Symbols

The following standard symbols are used in Statistics Canada publications:

- . not available for any reference period
- .. not available for a specific reference period
- ... not applicable
- 0 true zero or a value rounded to zero
- 0^s value rounded to 0 (zero) where there is a meaningful distinction between true zero and the value that was rounded
- p preliminary
- r revised
- x suppressed to meet the confidentiality requirements of the *Statistics Act*
- E use with caution
- F too unreliable to be published
- * significantly different from reference category ($p < 0.05$)

Acknowledgements

This publication was prepared by the following staff from the Farm Cash Receipt Unit, Agriculture Division, Statistics Canada: Krishan (Suki) Abeysekera, Stephen Boyd, Umma Fatema, Lyne Gaudreau, Stephen Howard-Smith, Annette Laurent, Heather Miller and Andréane Picard.

Special thanks are extended to Safi Asmerom, Kristine Barclay, Gail-Ann Breese, Bev Hammond, Cindy Heffernan, Véronique Julien, Barbara McLaughlin, Marco Morin, Paul Murray, Charles Omumia, Robert Pagnutti, André Picard, Jeffrey Smith, Rachelle St-Amour, Jackie Tumusiime, the staff from the Farm Expenses and Farm Prices units and the CANSIM and Smart Publishing teams, for their support and contribution to this publication.

Finally, the support of Agriculture and Agri-Food Canada and the provincial focal points for their review of the data are also gratefully acknowledged.

Table of contents

Highlights	5
Analysis	6
Related products	7
Statistical tables	
1 Farm cash receipts — Agriculture economic statistics	10
1-1 1981	10
1-2 1982	11
1-3 1983	12
1-4 1984	13
1-5 1985	14
1-6 1986	15
1-7 1987	16
1-8 1988	17
1-9 1989	18
1-10 1990	19
1-11 1991	20
1-12 1992	21
1-13 1993	22
1-14 1994	23
1-15 1995	24
1-16 1996	25
1-17 1997	26
1-18 1998	27
1-19 1999	28
1-20 2000	29
1-21 2001	30
1-22 2002	31
1-23 2003	32
1-24 2004	33
1-25 2005	34
1-26 2006	35
1-27 2007	36

Table of contents – continued

1-28	2008	37
1-29	2009	38
1-30	2010	39

Data quality, concepts and methodology

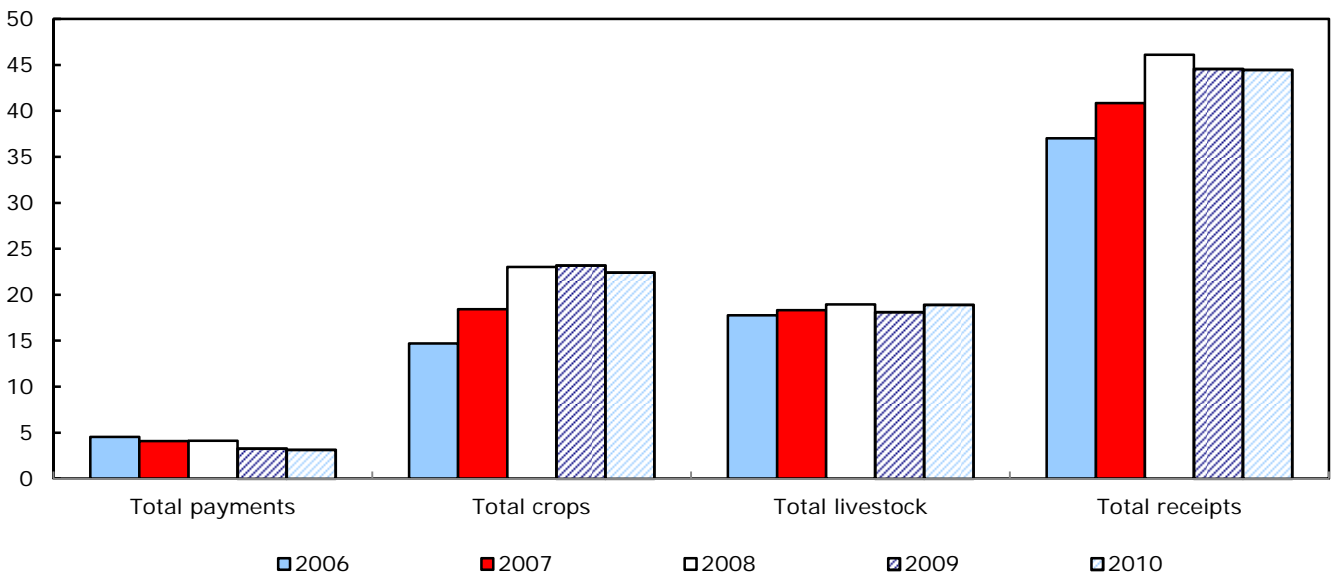
General information	40
Farm cash receipts	41

Highlights

Farm cash receipts, which include market receipts and program payments, amounted to \$44.5 billion, down 0.3% from 2009.

Chart 1
Farm cash receipts, January to December

billions of dollars



Analysis

Farm cash receipts, which include market receipts and program payments, amounted to \$44.5 billion, down 0.3% from 2009.

Market receipts, the revenue from the sale of crops and livestock, edged up 0.1% to \$41.3 billion. Rising livestock receipts narrowly offset declining crop receipts.

Livestock receipts rose 4.5% to \$18.9 billion on the strength of higher hog (+19.4%) and cattle (+4.9%) prices. Despite improvements in 2010, hogs prices remained below their recent peak in 2004. The market price of cattle was at its highest level since 2002.

Crop receipts fell 3.4% to \$22.4 billion. Lower prices, as well as diminished marketings, were among factors contributing to reduced receipts for some crops, including wheat, barley, lentils and potatoes.

Despite lower prices, improved marketings boosted the receipts of canola and soybeans. Receipts for horticulture rose for the third year in a row, which was largely attributable to gains in greenhouse vegetables.

Receipts from supply-managed commodities (dairy, poultry and eggs) fell 0.1% as poultry prices fell for the first time since 2006.

A 4.8% decrease in program payments was mostly accounted for by the reduction in provincial stabilization payments in Quebec in 2010. These reductions were partially offset by increased crop insurance payments, as well as payments precipitated by difficult seeding conditions in Saskatchewan and Manitoba.

Related products

Selected publications from Statistics Canada

21-007-X	Farm Product Price Index
21-010-X	Net Farm Income - Agriculture Economic Statistics
21-012-X	Farm Operating Expenses and Depreciation Charges - Agriculture Economic Statistics
21-013-X	Value of Farm Capital - Agriculture Economic Statistics
21-014-X	Farm Debt Outstanding - Agriculture Economic Statistics
21-015-X	Direct Payments to Agriculture Producers - Agriculture Economic Statistics
21-016-X	Balance Sheet of the Agricultural Sector - Agriculture Economic Statistics
21-017-X	Agriculture Value Added Account - Agriculture Economic Statistics
21-018-X	Farm Business Cash Flows - Agriculture Economic Statistics
21-525-X	Understanding Measurements of Farm Income

Selected CANSIM tables from Statistics Canada

002-0001	Farm cash receipts, annual
002-0002	Farm cash receipts, quarterly
002-0003	Value per acre of farm land and buildings, at July 1
002-0004	Agriculture value added account, annual
002-0005	Farm operating expenses and depreciation charges
002-0007	Value of farm capital, at July 1
002-0008	Farm debt outstanding, classified by lender
002-0009	Net farm income, annual
002-0012	Farm income in kind, by item, annual
002-0020	Balance sheet of the agricultural sector, at December 31
002-0021	Farm product price index (FPPI), monthly

002-0022	Farm product price index (FPPI), annual
002-0023	Farm business cash flow account
002-0043	Farm product prices, crops and livestock
003-0025	Value per head of livestock at July 1

Selected surveys from Statistics Canada

3437	Farm Cash Receipts
------	--------------------

Selected summary tables from Statistics Canada

- *Agriculture value added account*
- *Agriculture value added account, by province*
- *Farm cash receipts*
- *Farm cash receipts (quarterly)*
- *Net farm income*
- *Net farm income, by province*

Statistical tables

Farm Cash Receipts – November 2011

Table 1-1
Farm cash receipts — Agriculture economic statistics — 1981

	Newfoundland and Labrador	Prince Edward Island	Nova Scotia	New Brunswick	Quebec	Ontario	Manitoba	Saskat- chewan	Alberta	British Columbia	Canada
	thousands of dollars										
Wheat, excluding durum	.	384	1,064	441	13,001	78,643	321,365	1,492,915	858,779	22,619	2,789,211
Wheat, excluding durum, Marketing Board payments	54,884	123,747	606,635	214,459	4,808	1,004,533
Durum wheat	21,465	389,914	59,056	.	470,435
Durum Wheat, Marketing Board payments	6,938	126,408	18,545	.	151,891
Oats	.	639	203	1,471	8,805	2,629	6,973	10,098	24,910	2,791	58,519
Oats, CWB payments	10	26	27	5	68
Barley	.	2,517	129	417	13,817	14,375	127,429	222,739	414,167	14,362	809,952
Barley, CWB payments	20,323	45,033	49,726	1,530	116,612
Deferments	-68,869	-554,275	-200,377	0	-823,521
Liquidations	58,068	446,695	143,537	0	648,300
Rye	1,291	16,477	28,227	29,897	587	76,479
Flaxseed	0	74,343	39,337	15,951	0	129,631
Canola	0	75,337	233,486	278,732	9,931	597,486
Soybeans	.	0	.	.	0	167,245	167,245
Corn	.	.	0	.	96,694	326,802	29,622	.	.	.	453,118
Sugar beets	2,789	.	22,063	.	38,284	.	63,136
Potatoes	1,185	78,713	4,599	57,205	48,312	55,592	34,141	3,935	22,341	21,509	327,532
Vegetables	2,623	4,100	6,722	6,944	75,030	243,184	8,950	0	15,732	46,358	409,643
Apples	9,678	1,352	15,839	34,325	36,367
Other tree fruits	618	19,457	17,168
Strawberries	94	488	1,988	1,329	7,969	9,984	0	..	0	8,311	30,163
Other berries and grapes	21	288	6,683	2,511	8,362	24,523	0	..	0	30,609	72,997
Floriculture and nursery	1,884	2,019	8,681	2,896	34,549	164,558	5,384	3,335	23,106	49,965	296,377
Tobacco	.	0	0	0	42,020	360,443	402,463
Ginseng	0	0	0	0	0	5,300	0	0	0	0	5,300
Mustard seed	6,069	14,592	6,885	.	27,546
Sunflower seed	35,700	1,449	0	0	37,149
Lentils	0	0	0	.	0
Canary seed	0	0	..	.	0
Dry beans	47,741	..	.	0	.	47,741
Dry peas	0	0	16,778	4,139	1,785	0	22,702
Forage and grass seed	0	0	0	0	300	1,334	5,116	2,682	16,162	4,905	30,499
Hay and clover	0	67	69	171	3,060	1,346	276	2,192	3,228	881	11,290
Maple products	.	0	324	234	37,125	3,113	40,796
Forest products	93	363	4,736	4,341	24,030	11,985	1,082	996	2,547	14,963	65,136
Miscellaneous crops	368	17,316	4,984	1,884	12,520	13,032	13,282	6,242	12,224	2,300	84,152
Total crops	6,268	106,894	50,478	81,196	444,222	1,641,786	962,069	3,126,800	2,049,703	289,969	8,759,385
Cattle	1,580	17,592	23,003	18,961	181,289	1,026,387	244,676	378,420	1,157,479	113,946	3,163,333
Calves	31	267	1,092	1,132	70,896	82,287	23,117	72,705	22,580	20,599	294,706
Hogs	4,411	21,275	27,209	14,219	576,043	527,042	137,549	79,187	189,624	40,811	1,617,370
Sheep	41	11	81	45	489	1,328	226	82	184	124	2,611
Lambs	185	186	1,184	303	1,645	8,501	852	1,666	3,778	1,200	19,500
Dairy products	5,000	26,602	62,615	37,892	862,727	805,401	86,587	65,633	173,992	189,898	2,316,347
Hens and chickens	6,898	202	21,711	16,876	185,012	205,614	28,502	18,907	63,047	67,094	613,863
Turkeys	x	x	2,948	1,917	35,648	73,395	12,563	6,746	15,252	14,699	163,168
Total eggs	7,229	2,568	18,210	10,834	78,695	174,745	43,012	16,908	43,109	60,998	456,308
Pregnant mare's urine	0	0	0	0	0	0	x	x	x	0	x
Wool	11	22	113	43	284	483	81	187	567	149	1,940
Honey	.	145	612	443	9,578	5,765	10,203	8,441	15,161	4,443	54,791
Furs	108	1,106	8,399	1,623	5,975	19,222	2,176	256	1,648	7,457	47,970
Miscellaneous livestock	x	x	838	417	14,057	55,672	x	14,931	14,659	10,431	x
Total livestock	25,616	70,256	168,015	104,705	2,022,338	2,985,842	608,869	664,069	1,701,080	531,849	8,882,639
Crop insurance payments	1	1,236	238	197	7,000	18,496	27,227	129,673	31,138	5,938	221,144
Western Grain Stabilization Act payments	0	0	0	0	0
Price stabilization payments	294	5,106	1,893	4,359	47,880	38,732	11,394	6,280	13,827	2,451	132,216
Tripartite payments	0	0	0	0	0	0	0	0	0	0	0
Provincial stabilization payments	0	1,140	2,539	1,381	18,990	9,784	8,504	4,612	4,264	36,946	88,160
Dairy subsidy	.	4,946	3,835	3,025	135,132	90,240	10,351	6,900	17,263	9,440	281,132
Other payments	60	4	5	50	5,932	51,698	23,014	55,557	32,671	541	169,532
Total payments	355	12,432	8,510	9,012	214,934	208,950	80,490	203,022	99,163	55,316	892,184
Total receipts	32,239	189,582	227,003	194,913	2,681,494	4,836,578	1,651,428	3,993,891	3,849,946	877,134	18,534,208

Note(s): The data in this table were last revised in June 1997.

Table 1-2
Farm cash receipts — Agriculture economic statistics — 1982

	Newfoundland and Labrador	Prince Edward Island	Nova Scotia	New Brunswick	Quebec	Ontario	Manitoba	Saskat- chewan	Alberta	British Columbia	Canada
thousands of dollars											
Wheat, excluding durum	.	330	908	398	9,742	38,987	440,376	1,847,688	776,825	15,779	3,131,033
Wheat, excluding durum, Marketing Board payments	24,733	45,900	274,235	110,661	1,482	457,011
Durum wheat	25,728	334,952	69,913	.	430,593
Durum Wheat, Marketing Board payments	6	981	144	.	1,131
Oats	.	558	212	1,401	9,630	2,238	7,125	7,425	24,186	2,074	54,849
Oats, CWB payments	86	200	223	33	542
Barley	.	2,082	132	468	17,930	14,422	146,020	218,255	407,496	13,136	819,941
Barley, CWB payments	15,018	38,332	53,072	1,805	108,227
Deferments	-65,364	-472,389	-168,721	0	-706,474
Liquidations	68,869	554,275	200,377	0	823,521
Rye	723	14,858	23,380	19,616	353	58,930
Flaxseed	0	67,409	37,973	14,332	0	119,714
Canola	0	99,509	254,388	246,140	7,453	607,490
Soybeans	.	0	.	.	0	198,782	198,782
Corn	.	.	0	.	93,996	295,901	26,111	.	.	.	416,008
Sugar beets	2,949	.	12,152	.	18,729	.	33,830
Potatoes	864	52,055	4,584	40,382	41,420	40,792	31,891	5,622	21,386	19,051	258,047
Vegetables	2,086	3,494	6,502	7,374	84,155	249,320	9,836	0	15,168	54,816	432,751
Apples	7,176	1,174	15,037	36,199	32,675	92,261
Other tree fruits	366	27,448	14,117	41,931
Strawberries	237	1,050	3,160	2,200	12,571	10,769	0	..	0	10,379	40,366
Other berries and grapes	56	480	9,256	4,580	8,237	26,045	0	..	0	49,713	98,367
Floriculture and nursery	1,579	1,684	8,805	3,776	33,833	160,702	5,788	3,050	25,724	45,425	290,366
Tobacco	.	11,315	2,240	1,129	23,704	355,424	393,812
Ginseng	0	0	0	0	0	7,550	0	0	0	0	7,550
Mustard seed	2,196	10,200	6,630	0	19,026
Sunflower seed	14,727	1,311	0	0	16,038
Lentils	0	0	0	.	0
Canary seed	0	0	..	.	0
Dry beans	40,350	..	.	0	.	40,350
Dry peas	0	0	13,742	10,674	3,332	0	27,748
Forage and grass seed	0	0	0	0	854	5,400	7,499	1,959	8,225	1,303	25,240
Hay and clover	0	84	84	202	3,620	1,588	289	1,924	2,900	860	11,551
Maple products	.	0	335	177	21,938	3,941	26,391
Forest products	94	367	4,773	4,374	24,213	12,076	1,090	1,002	2,567	15,077	65,633
Miscellaneous crops	322	295	1,810	744	11,712	12,426	13,873	6,312	11,153	2,283	60,930
Total crops	5,238	73,794	50,343	68,379	415,541	1,565,816	1,004,734	3,161,749	1,870,078	287,814	8,503,486
Cattle	1,410	22,269	22,809	18,650	202,271	1,014,676	256,051	433,197	1,077,002	130,473	3,178,808
Calves	40	121	999	1,201	57,077	79,137	30,803	73,427	29,346	23,476	295,627
Hogs	5,346	23,444	32,242	20,626	683,609	655,967	169,466	90,955	222,491	52,402	1,956,548
Sheep	47	22	41	34	792	980	212	169	302	174	2,773
Lambs	138	161	1,161	274	2,257	8,007	884	2,037	4,504	1,281	20,704
Dairy products	5,965	29,465	67,547	43,340	953,182	871,316	95,944	72,755	196,934	210,541	2,546,989
Hens and chickens	7,983	814	21,111	17,152	184,559	197,310	28,521	19,635	66,926	61,347	605,358
Turkeys	x	x	2,839	2,052	38,380	72,343	13,797	7,862	14,086	16,821	168,187
Total eggs	6,782	2,454	17,749	11,040	75,751	167,517	42,365	15,987	39,552	60,698	439,895
Pregnant mare's urine	0	0	0	0	0	0	x	x	x	0	x
Wool	10	18	108	32	292	447	52	167	553	146	1,825
Honey	.	157	619	411	10,329	6,448	10,881	8,499	13,074	5,167	55,585
Furs	230	1,230	8,177	1,699	6,873	17,525	2,061	295	1,407	7,439	46,936
Miscellaneous livestock	x	x	876	466	15,507	58,741	x	x	x	11,400	x
Total livestock	28,113	80,483	176,278	116,977	2,230,879	3,150,414	672,638	741,659	1,680,777	581,365	9,459,583
Crop insurance payments	1	1,785	112	240	8,996	19,941	25,759	115,114	91,831	6,176	269,955
Western Grain Stabilization Act payments	0	0	0	0	0
Price stabilization payments	11	139	1,282	257	5,525	8,685	246	434	1,621	6,805	25,005
Tripartite payments	0	0	0	0	0	0	0	0	0	0	0
Provincial stabilization payments	0	443	824	669	44,529	7,611	3,442	31,552	7,334	70,943	167,347
Dairy subsidy	.	5,256	3,394	3,491	131,513	87,250	10,092	6,829	17,944	8,667	274,436
Other payments	40	0	9	314	3,694	21,798	8,070	6,388	142,508	13	182,834
Total payments	52	7,623	5,621	4,971	194,257	145,285	47,609	160,317	261,238	92,604	919,577
Total receipts	33,403	161,900	232,242	190,327	2,840,677	4,861,515	1,724,981	4,063,725	3,812,093	961,783	18,882,646

Note(s): The data in this table were last revised in June 1997.

Farm Cash Receipts – November 2011

Table 1-3
Farm cash receipts — Agriculture economic statistics — 1983

	Newfoundland and Labrador	Prince Edward Island	Nova Scotia	New Brunswick	Quebec	Ontario	Manitoba	Saskat- chewan	Alberta	British Columbia	Canada
	thousands of dollars										
Wheat, excluding durum	.	331	832	516	9,023	88,043	490,084	1,857,027	807,473	18,696	3,272,025
Wheat, excluding durum, Marketing Board payments	3,504	64,534	261,063	121,037	1,197	451,335
Durum wheat	26,400	383,573	61,345	.	471,318
Durum Wheat, Marketing Board payments	1,899	46,621	10,720	.	59,240
Oats	.	492	235	1,190	10,691	3,458	8,149	6,939	22,043	1,947	55,144
Oats, CWB payments	315	597	1,068	85	2,065
Barley	.	2,089	166	665	18,306	15,846	145,253	246,709	383,791	14,428	827,253
Barley, CWB payments	15,037	28,773	40,717	1,550	86,077
Deferments	-99,543	-556,071	-176,785	-5,041	-837,440
Liquidations	65,364	472,389	168,721	0	706,474
Rye	2,261	16,612	32,629	15,988	480	67,970
Flaxseed	0	107,918	45,990	16,357	0	170,265
Canola	0	120,997	272,859	330,253	12,417	736,526
Soybeans	.	0	.	.	0	243,225	243,225
Corn	.	.	0	.	115,849	459,946	22,721	.	.	.	598,516
Sugar beets	2,614	.	15,811	.	27,006	.	45,431
Potatoes	698	64,499	4,944	43,696	37,054	48,482	28,547	5,761	21,792	18,271	273,744
Vegetables	2,001	3,710	7,547	6,949	79,582	264,163	10,166	0	19,556	58,248	451,922
Apples	8,124	1,467	17,510	36,820	27,916	91,837
Other tree fruits	518	28,258	10,796	39,572
Strawberries	190	1,328	3,397	1,749	11,254	9,473	0	..	0	11,444	38,835
Other berries and grapes	26	420	8,812	3,909	6,295	34,295	0	..	0	42,244	96,001
Floriculture and nursery	1,765	2,069	9,963	4,789	33,883	180,929	7,030	3,786	24,777	45,666	314,657
Tobacco	.	11,786	2,376	1,394	26,370	248,622	290,548
Ginseng	0	0	0	0	0	9,800	0	0	0	0	9,800
Mustard seed	3,468	15,924	7,246	0	26,638
Sunflower seed	12,240	1,296	0	0	13,536
Lentils	0	0	0	.	0
Canary seed	0	0	..	.	0
Dry beans	10,452	..	.	0	.	10,452
Dry peas	0	0	12,774	5,385	3,160	0	21,319
Forage and grass seed	0	0	0	0	987	7,761	7,289	2,708	10,322	2,272	31,339
Hay and clover	0	34	72	153	3,289	1,404	322	1,749	1,257	678	8,958
Maple products	.	0	411	265	23,078	3,682	27,436
Forest products	101	395	5,162	4,730	26,181	13,060	1,179	1,084	2,774	16,302	70,968
Miscellaneous crops	320	351	2,230	785	12,237	13,707	15,186	6,273	11,524	2,238	64,851
Total crops	5,101	87,504	54,789	72,257	434,203	1,727,191	1,099,752	3,143,064	1,932,142	281,834	8,837,837
Cattle	1,403	24,403	23,721	19,323	209,859	1,027,467	225,563	394,859	1,102,573	117,363	3,146,534
Calves	61	103	1,032	1,115	58,337	82,536	25,010	67,697	22,462	28,058	286,411
Hogs	4,471	19,594	28,213	20,327	564,191	597,976	156,633	78,635	202,241	45,829	1,718,110
Sheep	6	28	31	30	829	855	189	252	212	156	2,588
Lambs	132	175	1,243	219	2,694	7,119	1,207	1,945	5,019	1,275	21,028
Dairy products	7,327	26,108	67,789	45,041	878,319	847,804	97,798	75,583	196,769	210,250	2,452,788
Hens and chickens	7,777	495	21,422	17,375	179,376	201,233	29,604	20,275	65,312	62,999	605,868
Turkeys	x	x	3,014	1,672	36,533	73,468	12,237	7,002	12,350	14,416	160,705
Total eggs	8,177	2,686	19,629	11,832	78,601	174,559	43,452	16,702	41,262	63,444	460,344
Pregnant mare's urine	0	0	0	0	0	0	x	x	x	0	x
Wool	9	21	91	31	285	410	54	120	432	117	1,570
Honey	.	148	618	472	10,993	7,072	10,290	10,003	13,742	5,019	58,357
Furs	237	1,369	8,052	1,602	8,111	16,487	1,752	226	1,295	7,286	46,417
Miscellaneous livestock	x	x	875	476	14,196	57,703	x	x	x	11,124	x
Total livestock	29,806	75,444	175,730	119,515	2,042,324	3,094,689	625,487	688,784	1,678,258	567,336	9,097,373
Crop insurance payments	1	2,505	438	3,270	33,873	78,896	36,042	159,143	110,235	8,154	432,557
Western Grain Stabilization Act payments	0	0	0	0	0
Price stabilization payments	1	11	58	25	1,136	18,673	1,838	134	3,523	1,258	26,657
Tripartite payments	0	0	0	0	0	0	0	0	0	0	0
Provincial stabilization payments	0	1,779	2,203	1,314	64,148	2,045	22,389	27,026	8,117	57,901	186,922
Dairy subsidy	.	5,188	3,265	3,596	129,468	87,454	10,936	7,313	18,232	143	265,595
Other payments	40	0	13	2	2,783	1,265	6,925	735	789	15	12,567
Total payments	42	9,483	5,977	8,207	231,408	188,333	78,130	194,351	140,896	67,471	924,298
Total receipts	34,949	172,431	236,496	199,979	2,707,935	5,010,213	1,803,369	4,026,199	3,751,296	916,641	18,859,508

Note(s): The data in this table were last revised in June 1997.

Table 1-4
Farm cash receipts — Agriculture economic statistics — 1984

	Newfoundland and Labrador	Prince Edward Island	Nova Scotia	New Brunswick	Quebec	Ontario	Manitoba	Saskat- chewan	Alberta	British Columbia	Canada
	thousands of dollars										
Wheat, excluding durum	.	588	1,032	582	11,094	95,068	541,662	1,874,969	860,204	20,638	3,405,837
Wheat, excluding durum, Marketing Board payments	20,521	52,372	221,499	91,379	2,058	387,829
Durum wheat	21,813	287,798	43,521	.	353,132
Durum Wheat, Marketing Board payments	2,218	42,805	7,407	.	52,430
Oats	.	572	250	884	11,534	7,051	8,011	8,778	24,005	1,811	62,896
Oats, CWB payments	395	419	993	123	1,930
Barley	.	2,997	211	858	20,639	15,921	129,399	192,994	291,770	9,027	663,816
Barley, CWB payments	5,488	12,117	11,331	303	29,239
Deferments	-99,056	-486,996	-199,879	-5,562	-791,493
Liquidations	99,543	556,071	176,785	5,041	837,440
Rye	3,969	13,658	26,482	13,951	728	58,788
Flaxseed	0	96,942	52,560	7,040	0	156,542
Canola	0	138,996	389,895	399,484	12,514	940,889
Soybeans	.	0	.	.	0	209,236	209,236
Corn	.	.	0	.	139,947	409,002	23,926	.	.	.	572,875
Sugar beets	1,762	.	11,682	.	17,820	.	31,264
Potatoes	942	71,873	5,147	51,819	43,907	49,272	30,313	7,291	25,103	21,809	307,476
Vegetables	2,054	5,283	8,190	5,422	89,383	297,921	13,119	0	23,552	64,305	509,229
Apples	9,322	676	17,867	37,037	28,400	93,302
Other tree fruits	743	28,046	13,521	42,310
Strawberries	287	1,200	3,720	1,840	13,158	11,035	0	..	0	7,412	38,652
Other berries and grapes	26	225	5,683	1,297	4,367	35,481	0	..	0	40,321	87,400
Floriculture and nursery	1,991	1,657	12,786	6,090	52,720	228,972	9,405	4,621	27,470	60,395	406,107
Tobacco	.	14,814	2,654	1,252	27,487	343,944	390,151
Ginseng	0	0	0	0	0	12,050	0	0	0	0	12,050
Mustard seed	4,080	28,215	5,007	0	37,302
Sunflower seed	16,362	1,653	0	0	18,015
Lentils	0	0	0	.	0
Canary seed	0	0	..	.	0
Dry beans	24,698	..	.	0	.	24,698
Dry peas	0	0	15,328	6,640	2,665	0	24,633
Forage and grass seed	0	0	0	0	508	1,689	5,902	4,798	11,822	3,292	28,011
Hay and clover	0	58	130	337	5,474	2,444	402	3,339	6,353	1,521	20,058
Maple products	.	0	498	349	22,793	4,475	28,115
Forest products	101	401	5,201	4,766	26,380	13,158	1,188	1,093	2,797	16,426	71,511
Miscellaneous crops	346	401	2,383	836	14,181	14,811	16,002	6,474	11,103	2,432	68,969
Total crops	5,747	100,069	57,950	77,008	503,201	1,865,801	1,159,150	3,243,515	1,861,683	306,515	9,180,639
Cattle	1,458	23,860	23,284	20,590	200,618	996,745	245,826	443,439	1,139,523	134,347	3,229,690
Calves	47	71	1,219	1,201	65,245	92,112	27,461	91,448	24,056	35,090	337,950
Hogs	4,786	22,608	31,523	21,559	598,553	626,927	185,928	98,724	244,127	47,521	1,882,256
Sheep	0	4	67	6	842	1,013	153	383	133	175	2,776
Lambs	167	219	1,300	286	2,995	7,398	1,383	2,017	7,575	1,546	24,886
Dairy products	8,534	28,708	73,884	50,492	997,404	912,803	104,926	84,326	213,969	221,303	2,696,349
Hens and chickens	10,540	887	26,445	19,442	212,626	239,644	33,692	23,154	75,698	72,164	714,292
Turkeys	x	x	2,906	2,022	39,107	85,053	13,513	7,924	16,170	15,569	182,276
Total eggs	9,366	2,914	18,843	13,110	83,158	181,891	46,193	16,226	42,033	65,931	479,665
Pregnant mare's urine	0	0	0	0	0	0	x	x	x	0	x
Wool	8	21	80	26	318	487	61	137	499	144	1,781
Honey	.	148	549	601	14,486	8,314	9,413	10,672	14,353	5,963	64,499
Furs	359	1,849	9,522	1,813	8,752	18,916	1,738	226	1,428	7,491	52,094
Miscellaneous livestock	x	x	947	523	15,569	60,251	x	x	x	12,146	x
Total livestock	35,520	81,627	190,569	131,671	2,239,673	3,231,554	696,172	796,586	1,794,500	619,390	9,817,262
Crop insurance payments	5	2,320	166	2,336	15,678	18,275	49,578	207,952	202,602	11,041	509,953
Western Grain Stabilization Act payments	36,127	125,940	59,338	1,510	222,915
Price stabilization payments	185	52	2,790	197	27,069	78,828	9,331	695	10,178	8,362	137,687
Tripartite payments	0	0	0	0	0	0	0	0	0	0	0
Provincial stabilization payments	0	2,342	3,630	2,310	127,126	16,313	24,589	21,590	22,236	57,735	277,871
Dairy subsidy	.	5,363	3,892	3,826	139,111	90,238	11,246	7,595	19,499	19	280,789
Other payments	40	0	0	0	1,941	823	3,330	30,057	17,790	28	54,009
Total payments	230	10,077	10,478	8,669	310,925	204,477	134,201	393,829	331,643	78,695	1,483,224
Total receipts	41,497	191,773	258,997	217,348	3,053,799	5,301,832	1,989,523	4,433,930	3,987,826	1,004,600	20,481,125

Note(s): The data in this table were last revised in June 1997.

**Table 1-5
Farm cash receipts — Agriculture economic statistics — 1985**

	Newfoundland and Labrador	Prince Edward Island	Nova Scotia	New Brunswick	Quebec	Ontario	Manitoba	Saskat- chewan	Alberta	British Columbia	Canada
	thousands of dollars										
Wheat, excluding durum	.	737	905	811	14,956	109,136	413,511	1,163,914	534,829	15,658	2,254,457
Wheat, excluding durum, Marketing Board payments	27,735	66,917	291,750	128,757	3,063	518,222
Durum wheat	34,301	184,473	27,788	.	246,562
Durum Wheat, Marketing Board payments	2,328	41,903	7,429	.	51,660
Oats	.	536	226	827	10,256	10,436	7,483	4,244	17,585	1,175	52,768
Oats, CWB payments	191	424	257	124	996
Barley	.	4,022	188	1,550	20,626	16,496	134,349	141,349	199,227	8,519	526,326
Barley, CWB payments	18,543	53,673	70,339	2,779	145,334
Deferments	-79,348	-292,020	-121,740	-2,910	-496,018
Liquidations	99,056	486,996	199,879	5,562	791,493
Rye	4,022	8,153	13,398	4,737	187	30,497
Flaxseed	0	124,168	62,405	7,279	0	193,852
Canola	0	138,738	407,431	342,626	10,838	899,633
Soybeans	.	0	.	.	0	231,718	231,718
Corn	.	.	0	.	149,049	420,157	16,240	.	.	.	585,446
Sugar beets	1,251	.	7,673	.	3,337	.	0
Potatoes	868	53,777	4,485	43,642	36,612	37,489	36,857	9,314	27,175	22,546	272,765
Vegetables	1,841	5,497	7,444	6,652	98,383	298,865	11,312	111	25,943	79,825	535,873
Apples	9,226	1,864	21,954	42,120	28,321	103,485
Other tree fruits	637	34,287	18,232	53,156
Strawberries	430	1,088	3,520	2,739	11,660	15,773	0	..	0	7,077	42,287
Other berries and grapes	6	202	5,780	1,416	6,486	29,763	0	..	0	54,050	97,703
Floriculture and nursery	2,251	1,000	14,417	6,293	60,375	229,825	10,643	4,405	31,840	75,743	436,792
Tobacco	.	11,116	2,117	1,295	25,147	110,676	150,351
Ginseng	0	0	0	0	0	14,300	0	0	0	0	14,300
Mustard seed	3,648	27,300	4,488	.	35,436
Sunflower seed	11,049	702	0	0	11,751
Lentils	0	0	0	.	0
Canary seed	0	0	..	.	0
Dry beans	29,579	..	.	0	.	29,579
Dry peas	0	0	16,947	10,760	2,039	0	29,746
Forage and grass seed	0	0	0	0	602	2,493	6,578	4,116	14,182	3,476	31,447
Hay and clover	0	100	93	298	6,339	2,694	828	3,517	11,293	1,682	26,844
Maple products	.	0	450	285	37,911	5,618	44,264
Forest products	117	438	5,526	6,142	31,303	12,120	1,334	1,194	2,091	13,461	73,726
Miscellaneous crops	418	308	2,343	805	15,477	13,481	15,281	5,242	9,248	2,795	65,398
Total crops	5,931	77,931	57,370	73,968	549,214	1,698,783	1,106,780	2,626,601	1,550,628	352,203	8,099,409
Cattle	1,381	25,600	26,186	18,594	203,133	997,649	276,491	410,341	1,158,577	139,371	3,257,323
Calves	53	92	1,351	1,286	68,095	91,764	20,670	79,244	22,828	33,418	318,801
Hogs	4,504	21,606	30,141	20,179	569,210	599,054	194,859	97,660	248,331	47,606	1,833,150
Sheep	2	0	33	0	1,004	1,121	123	433	190	181	3,087
Lambs	158	248	1,327	256	4,136	7,389	2,226	1,480	6,610	1,769	25,599
Dairy products	9,449	27,919	74,814	51,864	987,092	939,611	102,370	81,405	215,637	228,153	2,718,314
Hens and chickens	11,842	972	24,803	20,104	211,632	250,155	35,255	22,131	72,911	75,019	724,824
Turkeys	x	x	3,154	2,269	41,285	85,428	13,573	8,273	15,659	16,640	186,300
Total eggs	9,047	2,828	19,075	14,172	84,490	176,102	45,628	16,218	41,399	61,651	470,610
Pregnant mare's urine	0	0	0	0	0	0	x	x	x	0	x
Wool	2	20	74	20	307	398	43	102	397	121	1,484
Honey	.	140	544	555	13,422	7,511	10,339	9,982	11,906	5,575	59,974
Furs	464	1,799	10,104	1,863	8,390	19,448	1,765	220	1,408	7,119	52,580
Miscellaneous livestock	x	x	959	524	15,344	60,338	x	x	x	12,333	x
Total livestock	37,198	81,566	192,565	131,686	2,207,540	3,235,968	731,509	744,721	1,811,291	628,956	9,803,000
Crop insurance payments	1	3,682	380	4,651	5,842	12,088	34,775	307,967	251,239	14,310	634,935
Western Grain Stabilization Act payments	87,776	292,357	138,317	3,374	521,824
Price stabilization payments	2	86	67	11	2,475	3,774	2,698	320	2,101	4,275	15,809
Tripartite payments	0	0	0	0	0	0	0	0	0	0	0
Provincial stabilization payments	0	2,895	5,051	2,906	158,937	4,136	31,771	33,513	11,084	44,384	294,677
Dairy subsidy	.	5,090	3,502	3,720	133,344	90,018	10,935	6,979	18,591	9,894	282,073
Other payments	21	775	52	56	31,275	638	4,291	45,054	54,325	3,986	140,473
Total payments	24	12,528	9,052	11,344	331,873	110,654	172,246	686,190	475,657	80,223	1,889,791
Total receipts	43,153	172,025	258,987	216,998	3,088,627	5,045,405	2,010,535	4,057,512	3,837,576	1,061,382	19,792,200

Note(s): The data in this table were last revised in June 1997.

Table 1-6
Farm cash receipts — Agriculture economic statistics — 1986

	Newfoundland and Labrador	Prince Edward Island	Nova Scotia	New Brunswick	Quebec	Ontario	Manitoba	Saskat- chewan	Alberta	British Columbia	Canada
thousands of dollars											
Wheat, excluding durum	.	833	1,300	727	12,930	96,796	455,737	1,228,855	410,266	9,658	2,217,102
Wheat, excluding durum, Marketing Board payments	21,009	58,243	178,719	67,920	1,348	327,239
Durum wheat	20,580	183,646	34,513	.	238,739
Durum Wheat, Marketing Board payments	3,208	34,545	4,551	.	42,304
Oats	.	370	182	475	6,528	9,450	8,596	6,162	16,323	884	48,970
Oats, CWB payments	434	341	729	17	1,521
Barley	.	4,359	207	1,543	18,001	14,742	137,945	255,536	300,890	7,331	740,554
Barley, CWB payments	9,423	17,211	17,797	349	44,780
Deferments	-62,435	-267,346	-97,469	-3,615	-430,865
Liquidations	79,348	292,020	121,740	2,910	496,018
Rye	3,494	3,976	9,603	4,645	72	21,790
Flaxseed	0	83,102	52,270	5,534	0	140,906
Canola	8,700	125,064	264,107	267,031	6,357	671,259
Soybeans	.	0	.	.	798	242,078	242,876
Corn	.	.	34	.	107,919	276,540	6,657	.	846	.	391,995
Sugar beets	636	.	8,109	.	9,001	.	17,746
Potatoes	1,045	56,447	4,828	43,091	41,010	45,884	29,797	9,063	39,156	23,932	294,253
Vegetables	2,155	4,360	9,076	5,401	98,304	337,626	14,257	320	29,301	84,776	585,576
Apples	9,723	2,958	21,204	48,063	35,276	117,224
Other tree fruits	631	31,687	12,953	45,271
Strawberries	472	1,814	3,420	2,358	11,202	16,132	0	..	0	7,319	42,717
Other berries and grapes	62	238	6,967	2,542	3,822	38,080	0	..	0	58,240	109,951
Floriculture, nursery and sod	2,499	1,297	17,607	7,764	63,772	259,823	9,811	4,934	32,044	92,136	491,687
Tobacco	.	10,021	2,030	1,040	18,052	420,563	451,706
Ginseng	0	0	0	0	0	16,550	0	0	0	0	16,550
Mustard seed	3,231	30,420	7,650	0	41,301
Sunflower seed	6,204	474	0	0	6,678
Lentils	5,475	58,480	1,954	.	65,909
Canary seed	5,670	22,254	..	.	27,924
Dry beans	x	..	.	0	.	x
Dry peas	0	0	23,290	12,764	2,382	0	38,436
Forage and grass seed	0	0	0	0	800	5,068	15,195	11,055	30,486	6,516	69,120
Hay and clover	0	167	158	347	4,590	3,316	509	3,758	12,345	660	25,850
Maple products	.	0	437	766	56,253	3,711	61,167
Forest products	104	454	5,799	5,922	32,800	12,022	1,195	1,229	2,161	14,907	76,593
Miscellaneous crops	416	266	2,407	746	13,441	x	13,792	4,427	x	2,690	63,984
Total crops	6,753	80,626	64,806	75,680	512,062	1,948,935	1,066,413	2,414,847	1,333,459	364,716	7,868,296
Cattle	1,372	28,407	27,389	25,378	221,629	1,040,804	270,070	425,576	1,098,959	139,571	3,279,155
Calves	71	74	2,691	2,274	87,071	94,630	36,496	73,084	17,894	49,855	364,140
Hogs	4,384	25,493	34,834	22,309	675,272	684,583	244,233	112,002	279,377	54,071	2,136,558
Sheep	7	6	72	8	739	1,255	41	56	144	127	2,455
Lambs	204	265	1,793	352	6,209	10,669	1,658	2,050	7,710	1,902	32,812
Dairy products	11,001	30,552	79,892	53,743	1,019,615	965,839	106,782	89,430	223,658	231,737	2,812,249
Hens and chickens	10,646	1,333	27,946	22,071	229,450	275,465	34,779	22,779	67,967	79,952	772,388
Turkeys	x	x	3,792	2,270	40,343	81,472	16,213	7,531	15,787	19,156	186,689
Total eggs	8,636	2,941	18,442	13,070	83,859	167,957	45,396	16,562	42,091	59,619	458,573
Pregnant mare's urine	0	0	0	0	0	0	x	x	x	0	x
Wool	4	14	68	18	255	329	39	99	380	100	1,306
Honey	.	115	440	367	9,023	7,536	9,772	7,722	12,982	4,609	52,566
Furs	243	937	5,420	993	4,094	9,904	864	115	641	3,490	26,701
Embryos	x	x	x	x	x	x	x	x	x	x	x
Horses	x	x	x	x	x	x	x	x	x	x	x
Miscellaneous livestock	x	361	1,013	572	16,699	63,534	17,171	x	5,350	12,884	135,128
Total livestock	36,765	90,544	203,800	143,434	2,402,217	3,407,455	797,799	775,403	1,789,095	657,102	10,303,614
Crop insurance payments	5	2,595	978	1,640	20,065	22,596	47,947	315,666	160,135	15,455	587,082
Western Grain Stabilization Act payments	150,797	477,144	225,438	5,360	858,739
Price stabilization payments	2	88	30	41	2,320	20,393	2,864	430	24	1,243	27,435
Tripartite payments	0	26	0	0	0	1,156	0	0	1,879	0	3,061
Provincial stabilization payments	762	926	1,657	934	191,576	13,734	19,463	27,256	31,014	44,054	331,376
Dairy subsidy	.	5,331	3,654	3,672	131,233	85,815	10,628	7,206	18,878	10,227	276,644
Other payments	19	6,059	68	0	50	766	6,047	129,582	223,717	8,324	374,632
Total payments	788	15,025	6,387	6,287	345,244	144,460	237,746	957,284	661,085	84,663	2,458,969
Total receipts	44,306	186,195	274,993	225,401	3,259,523	5,500,850	2,101,958	4,147,534	3,783,639	1,106,481	20,630,879

Note(s): The data in this table were last revised in June 1999.

Table 1-7
Farm cash receipts — Agriculture economic statistics — 1987

	Newfoundland and Labrador	Prince Edward Island	Nova Scotia	New Brunswick	Quebec	Ontario	Manitoba	Saskat- chewan	Alberta	British Columbia	Canada
	thousands of dollars										
Wheat, excluding durum	.	767	1,816	653	16,186	61,681	377,841	1,280,088	514,991	8,145	2,262,168
Wheat, excluding durum, Marketing Board payments	2,950	0	0	0	86	3,036
Durum wheat	24,475	224,022	41,431	.	289,928
Durum Wheat, Marketing Board payments	2,940	19,759	3,224	.	25,923
Oats	.	383	97	401	4,582	7,971	6,919	7,558	19,219	1,126	48,256
Oats, CWB payments	613	291	247	0	1,151
Barley	.	3,723	228	1,872	17,203	13,887	62,526	158,797	226,619	6,697	491,552
Barley, CWB payments	1,863	14,190	5,586	45	21,684
Deferments	-64,580	-266,031	-100,388	-2,923	-433,922
Liquidations	62,435	267,346	97,469	3,615	430,865
Rye	2,302	2,850	10,678	4,743	131	20,704
Flaxseed	0	62,689	44,026	6,012	0	112,727
Canola	5,127	108,806	286,512	313,316	8,330	722,091
Soybeans	.	0	.	.	2,333	259,674	262,007
Corn	.	.	110	.	120,973	317,666	5,563	.	2,020	.	446,332
Sugar beets	0	.	8,787	.	12,680	.	21,467
Potatoes	998	79,955	6,053	52,444	48,768	35,708	46,412	7,582	34,324	22,017	334,261
Vegetables	2,262	4,678	11,327	5,973	103,643	357,969	14,230	424	30,846	84,609	615,961
Apples	9,693	2,246	17,734	48,082	31,721	109,476
Other tree fruits	801	30,686	14,807	46,294
Strawberries	776	1,650	3,868	2,876	12,025	14,961	2,200	..	0	12,055	50,411
Other berries and grapes	286	553	8,648	4,456	14,496	34,638	500	..	0	65,696	129,273
Floriculture, nursery and sod	2,841	960	16,454	8,178	73,029	298,084	11,935	5,924	43,729	100,631	561,765
Tobacco	.	12,536	2,674	1,290	23,261	220,602	260,363
Ginseng	0	0	0	0	0	18,800	0	0	0	400	19,200
Mustard seed	2,913	31,588	6,151	.	40,652
Sunflower seed	6,494	640	1,045	0	8,179
Lentils	5,335	38,903	1,641	.	45,879
Canary seed	3,738	16,063	..	.	19,801
Dry beans	45,728	4,710	.	x
Dry peas	0	0	20,929	26,244	3,944	0	51,117
Forage and grass seed	0	0	0	0	433	3,962	12,579	8,742	18,269	6,194	50,179
Hay and clover	0	198	106	152	3,835	2,459	545	2,506	8,031	876	18,708
Maple products	.	0	369	769	50,662	3,989	55,789
Forest products	91	469	6,072	5,702	34,297	11,925	1,055	1,264	2,231	16,353	79,459
Miscellaneous crops	451	569	2,964	1,303	14,046	x	11,840	6,187	x	2,856	66,361
Total crops	7,705	106,441	71,280	88,315	557,506	1,813,526	804,432	2,193,303	1,313,560	383,467	7,339,535
Cattle	1,224	29,396	29,739	21,171	216,906	977,137	282,863	496,641	1,210,916	145,483	3,411,476
Calves	101	123	3,582	3,058	134,878	94,206	57,296	82,685	14,010	57,459	447,398
Hogs	3,875	27,208	33,552	21,116	647,756	683,995	246,851	122,532	287,590	48,735	2,123,210
Sheep	7	5	50	13	551	1,170	62	88	128	155	2,229
Lambs	195	194	1,711	481	6,139	10,494	1,621	2,671	9,119	2,798	35,423
Dairy products	12,151	31,894	80,946	54,551	1,052,362	1,005,972	110,246	89,368	221,104	231,263	2,889,857
Hens and chickens	10,794	1,134	29,854	22,448	235,119	274,517	35,444	24,212	74,350	90,490	798,362
Turkeys	x	x	5,096	2,777	42,703	81,864	14,486	7,817	17,793	19,289	191,932
Total eggs	8,785	2,900	18,977	12,580	83,652	165,286	44,650	16,595	40,924	60,218	454,567
Pregnant mare's urine	0	0	0	0	0	0	x	x	x	0	x
Wool	0	14	81	19	285	427	52	125	510	104	1,617
Honey	.	100	513	488	10,000	7,745	8,428	8,084	12,502	4,090	51,950
Furs	740	3,182	17,146	4,087	7,506	29,928	2,534	255	1,899	11,357	78,634
Embryos	x	x	x	x	x	x	x	x	x	x	x
Horses	x	x	x	x	x	x	x	x	x	x	x
Miscellaneous livestock	226	385	1,328	715	19,611	66,749	17,152	18,751	7,648	14,101	146,666
Total livestock	38,174	96,591	222,605	143,535	2,470,856	3,404,186	833,956	871,089	1,919,707	685,644	10,686,343
Crop insurance payments	42	3,200	627	4,748	51,329	15,215	45,017	127,713	135,435	10,084	393,410
Western Grain Stabilization Act payments	260,112	759,238	368,036	8,087	1,395,473
Price stabilization payments	0	53	1,360	110	15,524	90,530	5,352	0	7,388	4,233	124,550
Tripartite payments	0	6	0	0	0	181	0	0	982	0	1,169
Provincial stabilization payments	1,594	466	787	501	68,727	28,615	249	10,207	0	14,113	125,259
Dairy subsidy	.	5,153	3,447	3,613	132,069	87,877	11,071	7,261	18,799	10,423	279,713
Other payments	28	3,959	1,166	861	32,354	110,720	155,756	414,829	274,882	5,552	1,000,107
Total payments	1,664	12,837	7,387	9,833	300,003	333,138	477,557	1,319,248	805,522	52,492	3,319,681
Total receipts	47,543	215,869	301,272	241,683	3,328,365	5,550,850	2,115,945	4,383,640	4,038,789	1,121,603	21,345,559

Note(s): The data in this table were last revised in June 1999.

Table 1-8
Farm cash receipts — Agriculture economic statistics — 1988

	Newfoundland and Labrador	Prince Edward Island	Nova Scotia	New Brunswick	Quebec	Ontario	Manitoba	Saskat- chewan	Alberta	British Columbia	Canada
	thousands of dollars										
Wheat, excluding durum	.	1,238	2,236	743	20,067	110,173	368,191	1,162,995	548,738	10,546	2,224,927
Wheat, excluding durum, Marketing Board payments	49,109	44,142	131,644	60,029	1,207	286,131
Durum wheat	22,474	262,393	64,832	.	349,699
Durum Wheat, Marketing Board payments	5,212	60,003	12,841	.	78,056
Oats	.	550	125	547	8,968	10,301	11,579	20,724	61,636	3,316	117,746
Oats, CWB payments	1,055	1,609	3,915	212	6,791
Barley	.	5,119	309	2,325	20,654	14,959	60,969	153,764	248,972	7,282	514,353
Barley, CWB payments	2,669	9,518	7,580	46	19,813
Deferments	-92,505	-352,975	-159,299	-5,198	-609,977
Liquidations	64,580	266,031	100,388	2,923	433,922
Rye	2,433	5,048	11,557	7,720	420	27,178
Flaxseed	0	71,932	57,632	7,217	0	136,781
Canola	5,812	146,263	389,486	437,847	11,263	990,671
Soybeans	.	0	.	.	3,957	324,584	328,541
Corn	.	.	156	.	166,375	368,961	10,016	.	2,534	.	548,042
Sugar beets	0	.	9,383	.	19,380	.	28,763
Potatoes	841	63,127	5,872	54,289	49,278	35,979	44,047	9,796	41,471	19,517	324,217
Vegetables	2,439	5,706	12,635	8,469	120,994	366,601	14,420	479	35,018	86,170	652,931
Apples	11,482	1,848	19,245	47,823	33,733	114,131
Other tree fruits	818	33,600	13,299	47,717
Strawberries	750	1,222	6,346	2,126	12,195	12,991	1,750	..	0	10,705	48,085
Other berries and grapes	111	756	12,778	5,509	14,537	32,076	200	..	0	70,127	136,094
Floriculture, nursery and sod	3,986	830	23,036	7,276	93,510	378,664	13,822	6,463	54,432	142,854	724,873
Tobacco	.	11,322	2,118	1,158	19,797	176,340	210,735
Ginseng	0	0	0	0	0	21,050	0	0	0	1,890	22,940
Mustard seed	1,619	21,919	5,649	.	29,187
Sunflower seed	9,900	1,206	776	0	11,882
Lentils	5,297	33,805	1,682	.	40,784
Canary seed	2,262	14,025	..	.	16,287
Dry beans	18,956	9,813	.	x
Dry peas	0	0	15,768	22,953	9,595	0	48,316
Forage and grass seed	0	0	0	0	434	1,456	13,795	11,041	23,838	15,570	66,134
Hay and clover	0	256	31	212	2,360	3,448	837	3,780	12,390	5,281	28,595
Maple products	.	0	802	1,396	84,496	5,889	92,583
Forest products	78	485	6,346	5,481	35,793	11,827	916	1,298	2,301	17,800	82,325
Miscellaneous crops	553	528	4,748	1,858	17,957	x	14,145	8,533	x	3,757	85,416
Total crops	8,758	91,139	89,838	93,237	690,617	2,049,919	869,786	2,309,679	1,637,745	452,720	8,293,438
Cattle	1,961	27,848	30,356	22,455	194,480	909,552	256,610	581,140	1,387,360	141,389	3,553,151
Calves	94	190	3,472	3,528	150,633	105,627	61,468	80,819	13,213	41,180	460,224
Hogs	3,194	22,766	27,487	16,951	529,952	556,075	210,987	119,019	259,397	44,016	1,789,844
Sheep	7	17	50	14	483	1,449	19	45	142	140	2,366
Lambs	206	244	1,621	463	6,244	10,341	1,435	2,847	7,836	2,978	34,215
Dairy products	16,728	37,095	84,973	58,025	1,139,414	1,062,932	118,185	95,051	238,186	237,361	3,087,950
Hens and chickens	11,719	2,062	32,427	24,190	249,156	291,381	36,464	24,722	70,206	92,923	835,250
Turkeys	x	x	5,635	3,652	44,239	87,379	14,583	7,939	17,523	21,093	202,144
Total eggs	9,367	2,848	21,102	13,283	89,405	178,157	48,285	17,656	42,813	62,825	485,741
Pregnant mare's urine	0	0	0	0	0	0	x	x	x	0	x
Wool	1	11	86	21	290	677	83	198	751	157	2,275
Honey	.	92	499	562	9,353	7,556	7,308	9,367	10,139	3,513	48,389
Furs	617	2,044	11,199	2,807	4,869	23,736	1,897	148	1,562	8,598	57,477
Embryos	x	x	x	x	x	x	x	x	x	x	x
Horses	x	x	x	x	x	x	x	x	x	x	x
Miscellaneous livestock	220	476	1,314	730	19,465	64,872	16,204	18,814	8,292	14,440	144,827
Total livestock	44,187	95,769	220,278	146,741	2,452,622	3,308,393	787,858	959,549	2,081,308	670,879	10,767,584
Crop insurance payments	22	2,623	177	811	24,212	38,403	92,745	263,826	173,381	8,143	604,343
Western Grain Stabilization Act payments	131,154	378,496	179,583	3,822	693,055
Price stabilization payments	7	4,540	446	3,770	31,350	94,690	5,276	135	5,008	930	146,152
Tripartite payments	0	386	467	56	865	55,205	13,759	5,940	56,799	2,976	136,453
Provincial stabilization payments	2,075	4,955	6,242	3,563	214,504	36,259	656	48,201	0	43,670	360,125
Dairy subsidy	.	5,422	3,481	3,811	135,656	89,918	10,980	7,391	19,010	10,539	286,208
Other payments	24	4,419	973	982	35,608	106,804	177,261	494,660	314,506	12,637	1,147,874
Total payments	2,128	22,345	11,786	12,993	442,195	421,279	431,831	1,198,649	748,287	82,717	3,374,210
Total receipts	55,073	209,253	321,902	252,971	3,585,434	5,779,591	2,089,475	4,467,877	4,467,340	1,206,316	22,435,232

Note(s): The data in this table were last revised in June 1999.

Table 1-9
Farm cash receipts — Agriculture economic statistics — 1989

	Newfoundland and Labrador	Prince Edward Island	Nova Scotia	New Brunswick	Quebec	Ontario	Manitoba	Saskat- chewan	Alberta	British Columbia	Canada
	thousands of dollars										
Wheat, excluding durum	.	1,156	1,523	531	19,274	124,962	311,111	846,498	491,438	13,321	1,809,814
Wheat, excluding durum, Marketing Board payments	8,989	71,234	248,232	108,718	2,277	439,450
Durum wheat	21,660	272,343	65,589	.	359,592
Durum Wheat, Marketing Board payments	6,457	99,779	25,098	.	131,334
Oats	.	544	177	525	7,783	12,199	10,976	23,938	84,540	4,385	145,067
Oats, CWB payments	1,974	2,766	4,991	246	9,977
Barley	.	6,923	452	2,853	18,259	15,311	79,131	204,642	351,637	7,066	686,274
Barley, CWB payments	7,925	28,191	25,130	282	61,528
Deferments	-71,880	-303,237	-128,146	-3,996	-507,259
Liquidations	92,505	352,975	159,299	5,198	609,977
Rye	2,592	7,692	10,877	5,921	137	27,219
Flaxseed	0	70,616	61,808	6,448	0	138,872
Canola	5,024	127,780	386,131	419,740	9,360	948,035
Soybeans	.	0	.	.	6,876	250,668	257,544
Corn	.	.	370	.	180,742	313,870	11,517	.	2,841	.	509,340
Sugar beets	0	.	13,782	.	23,342	.	37,124
Potatoes	845	117,468	7,848	75,561	63,552	40,845	27,316	9,503	43,135	23,715	409,788
Vegetables	3,301	5,866	13,009	8,882	135,519	395,333	16,677	458	37,294	100,554	716,893
Apples	10,255	1,595	22,829	44,258	35,574	114,511
Other tree fruits	614	36,845	12,677	50,136
Strawberries	896	1,092	5,800	2,530	13,401	17,565	2,900	..	261	6,423	50,868
Other berries and grapes	123	557	10,405	3,759	14,870	30,387	500	..	107	57,180	117,888
Floriculture, nursery and sod	4,128	890	22,699	9,028	95,727	434,981	16,116	5,654	53,639	154,826	797,688
Tobacco	.	10,861	1,289	939	23,772	259,565	296,426
Ginseng	0	0	0	0	0	23,300	0	0	0	2,232	25,532
Mustard seed	1,809	27,266	7,431	.	36,506
Sunflower seed	11,715	959	701	0	13,375
Lentils	4,895	29,413	800	.	35,108
Canary seed	3,729	19,834	..	.	23,563
Dry beans	x	8,369	.	x
Dry peas	0	0	11,286	15,730	12,476	0	39,492
Forage and grass seed	0	0	0	0	170	2,451	11,255	11,183	14,400	2,689	42,148
Hay and clover	0	187	32	182	2,084	2,929	1,607	5,374	18,709	8,085	39,189
Maple products	.	0	770	1,233	65,944	6,135	74,082
Forest products	65	500	6,619	5,261	37,290	11,730	776	1,333	2,371	19,246	85,191
Miscellaneous crops	588	1,054	3,815	2,520	17,005	x	15,624	8,604	x	3,338	84,770
Total crops	9,946	147,098	85,677	115,399	725,097	2,102,715	888,685	2,370,254	1,860,196	464,815	8,769,882
Cattle	1,671	27,242	29,814	21,423	194,680	865,145	230,343	560,681	1,464,890	149,752	3,545,641
Calves	104	157	3,510	2,054	165,580	108,707	56,279	68,408	9,890	48,276	462,965
Hogs	3,200	22,262	28,785	17,629	556,139	521,794	213,646	118,602	265,031	46,544	1,793,632
Sheep	7	4	39	13	467	1,368	26	56	151	191	2,322
Lambs	211	217	1,536	287	5,401	11,201	1,229	2,793	8,544	2,752	34,171
Dairy products	17,666	37,216	85,729	58,435	1,145,579	1,051,014	121,201	95,724	246,982	242,882	3,102,428
Hens and chickens	12,398	2,377	33,240	25,804	278,355	315,923	38,419	26,539	77,871	107,896	918,822
Turkeys	x	x	5,873	3,928	47,682	96,972	15,663	8,547	18,396	22,187	219,339
Total eggs	9,649	2,999	22,966	14,543	95,455	185,455	52,944	19,323	43,717	67,864	514,915
Pregnant mare's urine	0	0	0	0	0	0	x	x	x	0	x
Wool	1	8	85	21	299	507	71	183	817	133	2,125
Honey	.	121	511	457	6,387	7,595	6,268	7,861	9,001	3,578	41,779
Furs	743	1,696	8,815	1,840	3,765	15,993	1,486	93	1,045	6,001	41,477
Embryos	x	x	x	x	x	x	x	x	x	x	x
Horses	x	x	x	x	x	x	x	x	x	x	x
Miscellaneous livestock	229	472	1,547	878	22,645	67,052	15,093	17,319	10,843	15,370	151,448
Total livestock	45,948	94,887	222,559	147,427	2,538,682	3,259,986	769,658	928,801	2,179,241	714,012	10,901,201
Crop insurance payments	27	954	1,138	1,549	40,116	42,784	166,495	535,533	193,705	12,424	994,725
Western Grain Stabilization Act payments	31,576	87,980	55,650	1,130	176,336
Price stabilization payments	1	678	39	341	15,435	47,363	1,337	18	220	4,034	69,466
Tripartite payments	0	4,285	6,943	2,642	39,991	163,336	72,074	37,798	142,794	16,283	486,146
Provincial stabilization payments	2,358	3,792	4,793	2,564	262,064	1,826	803	41,893	0	24,799	344,892
Dairy subsidy	.	5,243	3,630	3,676	129,690	85,327	10,624	6,998	18,467	10,726	274,381
Other payments	288	1,226	1,120	458	4,188	82,856	166,944	489,446	149,196	6,518	902,240
Total payments	2,674	16,178	17,663	11,230	491,484	423,492	449,853	1,199,666	560,032	75,914	3,248,186
Total receipts	58,568	258,163	325,899	274,056	3,755,263	5,786,193	2,108,196	4,498,721	4,599,469	1,254,741	22,919,269

Note(s): The data in this table were last revised in June 1999.

Table 1-10
Farm cash receipts — Agriculture economic statistics — 1990

	Newfoundland and Labrador	Prince Edward Island	Nova Scotia	New Brunswick	Quebec	Ontario	Manitoba	Saskat- chewan	Alberta	British Columbia	Canada
thousands of dollars											
Wheat, excluding durum	.	894	637	518	14,876	146,349	480,148	1,142,784	552,301	13,040	2,351,547
Wheat, excluding durum, Marketing Board payments	9,730	65,075	187,204	92,199	1,786	355,994
Durum wheat	21,401	259,038	63,554	.	343,993
Durum Wheat, Marketing Board payments	1,416	20,116	5,809	.	27,341
Oats	.	431	165	396	7,289	11,313	8,114	15,891	35,564	1,789	80,952
Oats, CWB payments	417	864	2,013	81	3,375
Barley	.	5,508	500	2,518	19,297	14,099	82,387	188,833	226,538	5,552	545,232
Barley, CWB payments	14,389	42,266	45,659	867	103,181
Deferments	-62,624	-256,623	-111,247	-3,152	-433,646
Liquidations	71,880	303,237	128,146	3,996	507,259
Rye	2,680	7,109	13,859	5,442	133	29,223
Flaxseed	0	55,004	54,954	8,349	0	118,307
Canola	7,431	101,821	336,114	336,232	7,975	789,573
Soybeans	.	0	.	.	8,718	247,884	256,602
Corn	.	.	177	.	165,736	341,176	.	12,496	1,932	.	521,517
Sugar beets	0	.	16,326	.	26,586	.	42,912
Potatoes	978	114,238	5,479	78,237	56,881	39,779	32,340	11,203	40,141	19,693	398,969
Vegetables	3,068	5,439	11,925	8,316	147,427	380,780	18,929	659	45,412	84,528	706,483
Apples	10,247	2,114	24,232	57,074	38,228
Other tree fruits	450	44,312	11,987
Strawberries	882	1,139	3,918	3,026	14,859	12,086	1,700	..	911	8,461	46,982
Other berries and grapes	122	935	14,751	4,761	13,225	29,766	230	..	1,391	47,295	112,476
Floriculture, nursery and sod	3,370	800	27,422	13,500	118,999	461,240	20,637	9,956	62,984	194,726	913,634
Tobacco	.	6,147	2,300	862	21,114	250,689	281,112
Ginseng	0	0	0	0	0	25,550	0	0	0	4,922	30,472
Mustard seed	2,004	29,842	6,622	.	38,468
Sunflower seed	15,415	950	463	0	16,828
Lentils	9,444	46,798	852	.	57,094
Canary seed	3,650	22,418	..	.	26,068
Dry beans	44,281	6,365	.	50,646
Dry peas	0	0	9,775	12,134	10,818	0	32,727
Forage and grass seed	0	0	0	0	146	684	8,211	7,793	15,709	2,659	35,202
Hay and clover	0	87	37	62	4,594	2,614	1,864	4,315	16,802	6,236	36,611
Maple products	.	0	792	1,292	61,688	6,978	70,750
Forest products	52	516	6,892	5,041	38,787	11,632	637	1,368	2,441	20,692	88,058
Miscellaneous crops	660	1,363	3,342	3,981	20,100	x	22,003	12,280	x	4,715	101,333
Total crops	9,132	137,497	89,034	124,624	737,968	2,169,607	1,022,198	2,468,253	1,641,397	476,209	8,875,919
Cattle	2,256	30,540	32,562	23,557	191,412	843,382	245,306	533,222	1,564,679	160,195	3,627,111
Calves	95	173	3,866	2,145	163,547	104,560	48,019	55,722	9,017	50,631	437,775
Hogs	4,224	25,132	30,923	16,759	624,677	592,079	236,048	138,930	298,895	53,576	2,021,243
Sheep	6	3	35	14	355	1,450	40	43	153	211	2,310
Lambs	216	234	1,493	366	6,133	11,568	1,481	2,634	7,928	2,771	34,824
Dairy products	19,282	37,717	87,153	59,044	1,167,483	1,070,284	118,455	93,755	251,207	250,394	3,154,774
Hens and chickens	12,688	3,092	35,381	27,544	289,843	331,078	39,798	26,849	82,426	122,289	970,988
Turkeys	x	x	6,142	4,478	50,531	97,560	16,790	9,320	21,609	24,063	230,570
Total eggs	8,947	2,823	23,515	12,443	90,015	169,073	46,447	19,261	41,968	67,816	482,308
Pregnant mare's urine	0	0	0	0	0	0	x	x	x	0	x
Wool	0	9	69	18	263	210	13	66	432	152	1,232
Honey	.	133	630	501	4,849	8,420	6,468	7,943	11,666	4,436	45,046
Furs	722	937	6,257	1,145	2,710	11,694	822	56	887	4,778	30,008
Embryos	x	x	x	x	x	x	x	x	x	x	x
Horses	x	x	x	x	x	x	x	x	x	x	x
Miscellaneous livestock	240	605	1,599	888	23,471	68,433	14,804	15,128	11,560	17,063	153,791
Total livestock	48,736	101,476	229,697	148,977	2,631,287	3,327,136	793,961	905,004	2,323,575	758,932	11,268,781
Crop insurance payments	89	2,387	842	323	25,512	28,286	89,048	347,229	139,273	9,659	642,648
Western Grain Stabilization Act payments	0	0	0	0	0
Price stabilization payments	0	6	0	4	1,000	818	4	0	0	46	1,878
Tripartite payments	0	701	2,815	1,161	36,384	36,179	16,422	9,171	36,891	8,848	148,572
Provincial stabilization payments	1,915	3,382	1,800	772	204,247	7,805	0	2,603	0	15,098	237,622
Dairy subsidy	.	4,929	3,605	3,510	124,368	83,736	10,004	6,784	18,020	10,273	265,229
Other payments	267	3,003	3,904	833	23,006	37,051	53,805	291,775	123,935	19,711	557,290
Total payments	2,271	14,408	12,966	6,603	414,517	193,875	169,283	657,562	318,119	63,635	1,853,239
Total receipts	60,139	253,381	331,697	280,204	3,783,772	5,690,618	1,985,442	4,030,819	4,283,091	1,298,776	21,997,939

Note(s): The data in this table were last revised in June 1999.

**Table 1-11
Farm cash receipts — Agriculture economic statistics — 1991**

	Newfoundland and Labrador	Prince Edward Island	Nova Scotia	New Brunswick	Quebec	Ontario	Manitoba	Saskat- chewan	Alberta	British Columbia	Canada
thousands of dollars											
Wheat, excluding durum	.	770	364	423	10,687	44,631	491,004	1,316,558	572,428	9,650	2,446,515
Wheat, excluding durum, Marketing Board payments	17	41,870	104,708	60,430	1,708	208,733
Durum wheat	23,490	230,000	43,656	.	297,146
Durum Wheat, Marketing Board payments	2,560	36,384	8,716	.	47,660
Oats	.	277	115	290	5,392	7,269	5,299	10,880	22,770	1,509	53,801
Barley	.	4,927	390	2,186	19,215	11,220	59,238	175,942	195,187	4,180	472,485
Barley, CWB payments	10,067	34,446	29,922	769	75,204
Deferments	-45,585	-200,930	-77,652	-1,983	-326,150
Liquidations	62,624	256,623	111,247	3,152	433,646
Rye	2,353	3,784	13,018	4,688	90	23,933
Flaxseed	0	35,467	34,143	5,128	0	74,738
Canola	9,150	132,382	360,990	320,224	7,023	829,769
Soybeans	.	280	.	.	9,343	280,097	289,720
Corn	.	.	204	.	152,613	340,422	14,803	..	2,194	..	510,236
Sugar beets	0	..	12,375	..	20,877	..	33,252
Potatoes	1,165	96,574	5,771	54,577	47,717	42,740	46,535	10,133	39,103	20,622	364,937
Vegetables	3,302	6,514	12,892	8,617	162,246	351,614	19,875	742	36,254	114,700	716,756
Apples	10,928	2,733	27,935	60,963	46,628	149,187
Other tree fruits	439	43,088	8,599	52,126
Strawberries	1,050	1,358	3,288	3,657	15,682	12,999	1,200	..	1,137	6,483	46,854
Other berries and grapes	180	897	16,345	4,788	16,532	32,864	600	..	378	51,039	123,623
Floriculture, nursery and sod	4,000	1,020	21,041	12,506	122,236	434,904	20,490	10,287	56,139	203,385	886,008
Tobacco	..	7,750	1,747	564	25,184	274,154	309,399
Ginseng	0	0	0	0	0	10,806	0	0	0	4,979	15,785
Mustard seed	2,313	30,093	6,181	..	38,587
Sunflower seed	18,559	1,197	603	0	20,359
Lentils	14,075	62,963	1,259	..	78,297
Canary seed	1,890	18,307	20,197
Dry beans	41,458	9,586	..	51,044
Dry peas	0	0	0	11,587	18,318	16,933	0	46,838
Forage and grass seed	0	0	0	0	198	1,136	4,800	6,548	13,497	2,791	28,970
Hay and clover	8	73	61	77	4,886	4,575	1,406	4,684	18,473	9,493	43,736
Maple products	..	0	676	1,366	46,616	7,833	56,491
Forest products	53	604	8,130	5,354	44,959	13,249	748	2,024	7,254	24,083	106,458
Miscellaneous crops	759	1,210	3,213	3,207	19,919	20,275	21,856	12,690	10,688	5,187	99,004
Total crops	10,517	122,254	85,604	100,345	731,360	2,047,817	1,015,312	2,550,748	1,537,300	524,087	8,725,344
Cattle	2,339	30,323	32,669	23,074	193,163	778,199	225,045	511,776	1,529,882	165,145	3,491,615
Calves	204	115	2,772	2,361	159,809	123,356	32,427	49,300	7,528	38,938	416,810
Hogs	4,433	21,931	28,085	14,661	560,144	526,594	233,041	129,769	276,091	46,810	1,841,559
Sheep	4	4	40	17	383	1,524	33	31	133	232	2,401
Lambs	268	128	1,467	400	5,790	12,415	2,476	3,016	7,253	2,702	35,915
Dairy products	20,301	38,368	85,680	56,816	1,166,370	1,076,878	118,168	91,548	250,093	258,490	3,162,712
Hens and chickens	12,061	3,670	33,824	26,846	274,751	317,981	38,774	26,431	79,097	121,962	935,397
Turkeys	x	x	6,316	4,399	47,912	94,648	15,574	8,455	20,512	24,477	222,357
Total eggs	9,208	2,955	23,765	14,550	93,880	173,473	47,419	18,815	43,657	69,316	497,038
Pregnant mare's urine	0	0	0	0	0	0	x	x	x	0	x
Wool	1	8	54	13	170	122	19	64	332	44	827
Honey	..	133	630	501	4,849	8,420	6,468	7,943	11,666	4,436	45,046
Furs	513	541	6,499	924	2,294	9,814	1,105	65	836	4,114	26,705
Embryos	x	x	x	x	x	x	x	x	x	x	x
Horses	x	x	x	x	x	x	x	x	x	x	x
Miscellaneous livestock	246	590	1,773	1,013	25,263	69,012	13,421	14,496	13,456	17,690	156,960
Total livestock	49,627	98,821	223,621	145,624	2,551,579	3,205,913	759,063	867,261	2,256,090	754,859	10,912,458
Net Income Stabilization Account payments	0	6	0	0	0	1,598	323	35,952	0	0	37,879
Gross Revenue Insurance Plan payments	0	1,962	690	966	42,216	92,292	112,128	366,609	217,539	3,254	837,656
Crop insurance payments	163	2,802	714	3,547	61,018	41,343	33,186	125,229	61,811	9,428	339,241
Western Grain Stabilization Act payments	27,465	80,549	49,023	954	157,991
Price stabilization payments	0	22	4	0	588	17,717	3	0	0	0	18,334
Tripartite payments	0	909	1,597	702	19,377	29,090	9,799	6,482	35,402	4,533	107,891
Provincial stabilization payments	2,283	1,459	1,800	807	319,904	15,596	0	692	0	22,334	364,875
Dairy subsidy	..	4,758	3,232	3,251	119,319	79,149	9,682	6,260	16,344	10,124	252,119
Other payments	162	10,761	570	1,817	5,112	28,753	37,444	87,698	61,409	12,031	245,757
Total payments	2,608	22,679	8,607	11,090	567,534	305,538	230,030	709,471	441,528	62,658	2,361,743
Total receipts	62,752	243,754	317,832	257,059	3,850,473	5,559,268	2,004,405	4,127,480	4,234,918	1,341,604	21,999,545

Note(s): The data in this table were last revised in November 2003.

Table 1-12
Farm cash receipts — Agriculture economic statistics — 1992

	Newfoundland and Labrador	Prince Edward Island	Nova Scotia	New Brunswick	Quebec	Ontario	Manitoba	Saskat- chewan	Alberta	British Columbia	Canada
thousands of dollars											
Wheat, excluding durum	.	1,086	501	386	12,432	96,094	350,242	1,017,719	462,444	7,372	1,948,276
Wheat, excluding durum, Marketing Board payments	21,076	58,142	179,620	88,082	2,118	349,038
Durum wheat	14,394	227,237	42,840	.	284,471
Durum Wheat, Marketing Board payments	4,067	49,851	11,354	.	65,272
Oats	.	451	376	449	7,334	6,735	18,475	21,824	39,803	2,592	98,039
Barley	.	6,567	504	2,354	20,846	12,401	47,039	129,891	163,173	3,485	386,260
Barley, CWB payments	10,346	34,980	28,941	759	75,026
Deferments	-51,329	-180,695	-82,680	-2,302	-317,006
Liquidations	45,585	200,930	77,652	1,983	326,150
Rye	1,809	3,500	11,059	4,628	177	21,173
Flaxseed	0	49,782	38,954	5,912	0	94,648
Canola	7,878	197,095	398,852	388,758	6,809	999,392
Soybeans	.	384	.	.	13,656	310,302	324,342
Corn	.	.	312	.	165,515	332,217	15,243	.	1,576	.	514,863
Sugar beets	0	.	11,282	.	17,277	.	28,559
Potatoes	1,327	73,548	7,439	47,099	59,014	41,037	45,662	11,620	38,892	20,133	345,771
Vegetables	3,516	6,675	15,866	8,201	183,698	365,983	19,908	1,562	38,964	110,357	754,730
Apples	10,264	2,442	30,738	48,825	46	52,366	144,681
Other tree fruits	289	39,846	9,056	49,191
Strawberries	1,075	1,172	4,400	2,500	17,061	15,278	3,000	..	1,099	8,503	54,088
Other berries and grapes	47	836	17,620	4,798	9,454	31,318	845	..	319	70,971	136,208
Floriculture, nursery and sod	4,418	1,090	23,350	14,490	130,511	406,404	19,902	8,979	66,295	190,721	866,160
Tobacco	.	7,228	1,297	404	17,254	285,731	311,914
Ginseng	0	0	0	0	0	24,568	0	0	0	10,878	35,446
Mustard seed	1,821	23,963	6,763	.	32,547
Sunflower seed	24,726	1,983	796	0	27,505
Lentils	16,381	59,219	2,619	.	78,219
Canary seed	1,469	20,851	..	.	22,320
Dry beans	2,908	20,838	7,761	.	4,353	.	35,860
Dry peas	0	0	16,561	32,527	21,986	0	71,074
Forage and grass seed	0	0	0	0	225	1,215	3,284	5,070	23,186	4,999	37,979
Hay and clover	18	102	98	91	6,623	7,487	1,530	5,427	26,409	8,427	56,212
Maple products	.	0	922	6,312	59,736	12,464	79,434
Forest products	53	692	9,368	5,667	51,131	14,866	860	2,681	12,067	27,474	124,859
Miscellaneous crops	833	1,148	3,287	2,752	18,600	19,150	16,878	11,290	8,813	5,583	88,334
Total crops	11,287	100,979	95,893	97,945	806,736	2,123,522	954,497	2,315,394	1,502,321	542,461	8,551,035
Cattle	2,568	29,627	29,027	24,670	206,874	876,094	273,712	557,286	1,809,009	194,529	4,003,396
Calves	224	106	2,444	2,126	139,516	127,263	30,220	86,987	6,951	53,123	448,960
Hogs	4,085	19,615	23,592	14,110	522,014	503,328	240,038	143,526	276,903	39,907	1,787,118
Sheep	5	5	37	13	447	1,470	57	65	126	273	2,498
Lambs	327	227	1,187	377	6,543	16,099	6,187	1,819	13,119	3,949	49,834
Dairy products	21,049	39,177	84,943	53,837	1,098,988	1,077,161	114,820	91,509	248,537	259,613	3,089,634
Hens and chickens	12,156	3,777	33,454	26,006	273,771	308,146	37,313	26,034	79,179	122,967	922,803
Turkeys	x	x	5,719	4,161	45,269	94,275	14,730	8,330	18,416	21,941	212,902
Total eggs	8,507	2,604	22,970	16,412	101,045	183,956	49,281	19,818	45,954	71,494	522,041
Pregnant mare's urine	0	0	0	0	0	0	x	x	x	0	x
Wool	4	8	42	9	149	265	47	130	527	82	1,263
Honey	.	105	648	416	5,132	10,129	7,888	9,435	13,001	3,226	49,980
Furs	193	357	5,022	693	2,211	8,381	947	54	786	3,834	22,478
Embryos	x	x	x	x	x	x	x	x	x	x	x
Horses	x	x	x	x	x	x	x	x	x	x	x
Miscellaneous livestock	285	700	2,159	1,566	25,457	64,240	14,377	18,563	23,725	19,601	170,673
Total livestock	49,450	96,370	211,301	144,456	2,440,795	3,285,938	825,737	975,397	2,563,910	794,974	11,388,328
Net Income Stabilization Account payments	289	1,717	377	0	2,526	44,506	62,278	138,421	98,894	4,255	353,263
Gross Revenue Insurance Plan payments	0	4,667	963	1,880	77,090	254,338	169,469	517,783	357,190	6,249	1,389,629
Crop insurance payments	124	1,888	1,025	10,336	37,248	33,645	21,048	165,175	80,404	5,061	355,954
Private Hail Insurance	0	0	0	0	0	0	9,408	18,759	26,721	0	54,888
Western Grain Stabilization Act payments	-2,494	-7,317	-4,452	-87	-14,350
Price stabilization payments	0	2	34	109	1,555	9,822	0	0	0	3	11,525
Tripartite payments	0	3,616	3,491	2,037	68,984	106,040	38,427	24,501	116,209	7,726	371,031
Provincial stabilization payments	2,581	1,157	1,800	902	318,387	26,012	0	0	0	16,961	367,800
Dairy subsidy	.	4,857	2,937	3,008	107,477	72,245	8,981	6,132	15,248	10,094	230,979
Other payments	1,269	12,951	3,766	9,727	11,071	97,109	81,413	236,620	199,814	16,380	670,120
Total payments	4,263	30,855	14,393	27,999	624,338	643,717	388,530	1,100,074	890,028	66,642	3,790,839
Total receipts	65,000	228,204	321,587	270,400	3,871,869	6,053,177	2,168,764	4,390,865	4,956,259	1,404,077	23,730,202

Note(s): The data in this table were last revised in November 2003.

Table 1-13
Farm cash receipts — Agriculture economic statistics — 1993

	Newfoundland and Labrador	Prince Edward Island	Nova Scotia	New Brunswick	Quebec	Ontario	Manitoba	Saskat- chewan	Alberta	British Columbia	Canada
thousands of dollars											
Wheat, excluding durum	.	1,225	622	403	12,876	59,371	301,734	803,509	334,912	3,807	1,518,459
Wheat, excluding durum, Marketing Board payments	21,893	169,067	468,796	201,656	5,104	866,516
Durum wheat	8,410	190,270	35,200	.	233,880
Durum Wheat, Marketing Board payments	6,327	103,668	21,393	.	131,388
Oats	.	343	164	342	7,791	6,710	29,663	45,998	50,206	3,662	144,879
Barley	.	5,056	443	2,203	17,952	11,511	53,261	143,491	165,730	2,088	401,735
Barley, CWB payments	7,549	28,281	23,651	535	60,016
Deferments	-62,368	-184,957	-106,008	-2,759	-356,092
Liquidations	51,329	180,695	82,680	2,302	317,006
Rye	1,856	2,873	10,681	5,087	43	20,540
Flaxseed	0	52,382	45,353	9,312	0	107,047
Canola	8,825	257,835	506,904	414,540	6,247	1,194,351
Soybeans	.	841	.	.	19,477	418,426	438,744
Corn	.	.	303	.	150,007	266,355	1,747	..	843	..	419,255
Sugar beets	0	..	9,686	..	21,965	..	31,651
Potatoes	1,151	96,843	7,121	66,830	57,149	49,588	57,716	12,007	52,960	24,221	425,586
Vegetables	3,743	7,121	16,577	9,500	206,321	392,341	19,599	514	45,300	111,739	812,755
Apples	9,506	2,207	27,327	51,275	51	47,162	137,528
Other tree fruits	289	36,227	45,629
Strawberries	764	1,417	3,991	2,790	15,739	17,012	1,620	..	1,723	8,449	53,505
Other berries and grapes	23	841	12,399	2,954	17,947	24,956	795	..	1,228	72,116	133,259
Floriculture, nursery and sod	2,647	1,556	20,864	14,958	133,526	393,310	22,200	13,241	61,511	197,849	861,662
Tobacco	.	5,602	1,156	274	20,126	250,836	277,994
Ginseng	0	0	0	0	0	23,514	0	0	0	15,341	38,855
Mustard seed	1,168	39,343	6,180	..	46,691
Sunflower seed	18,179	5,840	1,089	0	25,108
Lentils	10,707	59,034	2,270	..	72,011
Canary seed	1,528	30,613	32,141
Dry beans	3,274	28,363	3,082	..	6,957	..	41,676
Dry peas	0	0	12,175	56,972	29,910	0	99,057
Forage and grass seed	0	0	0	0	232	1,624	2,431	4,496	24,959	2,164	35,906
Hay and clover	22	71	118	127	9,096	10,375	2,325	12,368	42,505	16,744	93,751
Maple products	.	0	702	3,180	46,558	8,658	59,098
Forest products	54	779	10,607	5,980	57,304	16,484	971	3,337	16,879	30,865	143,260
Miscellaneous crops	688	1,570	2,724	2,771	15,492	17,215	15,034	12,127	7,618	5,568	80,807
Total crops	9,092	123,265	87,586	114,519	818,194	2,116,725	1,059,076	2,592,581	1,562,256	562,360	9,045,654
Cattle	1,885	33,200	29,242	25,558	209,622	862,678	297,792	625,112	2,103,825	198,238	4,387,152
Calves	187	105	3,070	2,561	149,751	111,033	65,135	130,027	6,046	69,217	537,132
Hogs	2,933	21,575	26,342	15,990	618,625	561,034	276,732	154,476	322,885	41,761	2,042,353
Sheep	9	8	59	27	558	1,900	46	69	82	289	3,047
Lambs	341	208	1,547	457	7,043	21,220	6,797	3,174	14,431	4,857	60,075
Dairy products	20,803	41,209	83,777	56,009	1,151,340	1,066,867	115,150	88,474	244,663	265,882	3,134,174
Hens and chickens	14,798	4,060	34,761	27,345	289,763	343,050	38,430	29,769	85,494	139,338	1,006,808
Turkeys	x	x	5,709	3,826	48,878	88,982	14,634	7,956	18,214	21,788	210,047
Total eggs	8,214	2,764	23,244	16,536	100,520	192,922	49,708	20,680	47,481	72,386	534,455
Pregnant mare's urine	0	0	0	0	0	0	x	x	x	0	x
Wool	6	5	40	7	152	240	47	119	444	60	1,120
Honey	.	100	621	331	5,705	9,203	7,982	10,367	13,352	2,724	50,385
Furs	216	361	5,858	563	1,554	7,530	701	80	757	2,891	20,511
Embryos	x	x	x	x	x	x	x	x	x	x	x
Horses	x	x	x	x	x	x	x	x	x	x	x
Miscellaneous livestock	327	896	2,710	2,227	28,761	58,735	16,006	23,649	36,632	21,771	191,714
Total livestock	49,765	104,552	217,036	151,496	2,624,340	3,343,732	933,795	1,108,380	2,925,608	841,504	12,300,208
Net Income Stabilization Account payments	21	1,148	144	0	1,888	23,902	24,046	69,919	39,118	2,274	162,460
Gross Revenue Insurance Plan payments	0	2,481	880	2,215	119,919	108,735	275,045	467,415	350,890	7,683	1,335,263
Crop insurance payments	68	2,304	532	9,348	52,025	182,206	69,895	259,741	134,613	12,989	723,721
Private Hail Insurance	0	0	0	0	0	0	9,079	22,309	15,690	0	47,078
Western Grain Stabilization Act payments	-2,609	-7,652	-4,656	-91	-15,008
Price stabilization payments	0	0	0	0	11	5	0	0	0	0	16
Tripartite payments	0	-2	1,701	122	3,215	5,213	1,446	4,924	2,982	1,671	21,272
Provincial stabilization payments	1,705	963	1,800	891	250,414	1,167	0	0	0	5,019	261,959
Dairy subsidy	.	4,774	3,009	2,884	109,828	70,029	8,637	5,473	14,935	10,361	229,930
Other payments	1,672	1,252	27	1,620	1,561	27,976	1,944	15,549	22,591	1,775	75,967
Total payments	3,466	12,920	8,093	17,080	538,861	419,233	387,483	837,678	576,163	41,681	2,842,658
Total receipts	62,323	240,737	312,715	283,095	3,981,395	5,879,690	2,380,354	4,538,639	5,064,027	1,445,545	24,188,520

Note(s): The data in this table were last revised in November 2003.

Table 1-14
Farm cash receipts — Agriculture economic statistics — 1994

	Newfoundland and Labrador	Prince Edward Island	Nova Scotia	New Brunswick	Quebec	Ontario	Manitoba	Saskat- chewan	Alberta	British Columbia	Canada
	thousands of dollars										
Wheat, excluding durum	.	1,824	676	401	12,673	89,418	312,137	1,050,917	502,263	12,592	1,982,901
Wheat, excluding durum, Marketing Board payments	47,244	169,892	544,330	234,861	5,789	1,002,116
Durum wheat	12,253	376,925	64,310	.	453,488
Durum Wheat, Marketing Board payments	6,891	208,012	39,219	.	254,122
Oats	.	429	101	481	6,123	5,557	27,635	55,120	45,835	3,602	144,883
Barley	.	5,139	340	1,887	17,332	10,805	43,309	210,528	224,062	3,925	517,327
Barley, CWB payments	14,463	54,251	41,651	827	111,192
Deferments	-124,563	-397,260	-243,293	-7,724	-772,840
Liquidations	62,368	184,957	106,008	2,759	356,092
Rye	4,132	3,525	10,190	6,318	145	24,310
Flaxseed	0	75,123	100,596	9,186	0	184,905
Canola	14,689	402,350	901,960	773,332	18,833	2,111,164
Soybeans	.	633	.	.	35,058	470,987	506,678
Corn	.	.	298	.	163,896	333,102	6,901	.	1,592	.	505,789
Sugar beets	0	.	13,921	.	26,627	.	40,548
Potatoes	1,485	163,704	5,966	81,594	74,967	58,858	62,336	11,928	44,981	27,285	533,104
Vegetables	4,403	7,248	20,347	9,293	216,691	415,626	20,519	x	x	121,050	863,319
Apples	9,415	1,791	28,078	55,120	100	49,394	143,898
Other tree fruits	.	..	203	48,322	15,350	63,875
Strawberries	814	1,417	3,480	2,028	14,715	27,461	3,700	x	x	5,729	63,202
Other berries and grapes	129	1,036	13,454	4,177	16,848	32,536	745	1,751	522	84,813	156,011
Floriculture, nursery and sod	3,245	1,298	24,331	12,667	125,369	418,499	22,218	10,869	58,129	207,353	883,978
Tobacco	.	6,540	1,156	353	20,972	344,925	373,946
Ginseng	0	0	0	0	0	23,591	0	0	0	23,116	46,707
Mustard seed	1,165	59,685	8,225	.	69,075
Sunflower seed	12,239	4,214	943	0	17,396
Lentils	9,668	84,778	3,362	.	97,808
Canary seed	2,268	37,014	..	.	39,282
Dry beans	3,564	48,949	11,964	.	15,112	.	79,589
Dry peas	0	0	21,774	120,379	50,332	0	192,485
Forage and grass seed	0	0	0	0	173	1,358	6,248	12,827	22,256	3,010	45,872
Hay and clover	33	97	185	196	8,365	14,735	2,379	13,281	47,372	16,304	102,947
Maple products	.	0	1,182	4,094	85,856	9,261	100,393
Forest products	54	867	11,845	6,293	63,476	18,101	1,083	3,994	21,692	34,256	161,661
Miscellaneous crops	853	2,741	2,667	2,590	13,322	18,201	13,370	16,853	8,187	6,599	85,383
Total crops	11,016	192,973	95,646	127,845	907,478	2,511,477	1,217,981	3,680,647	2,162,536	635,007	11,542,606
Cattle	1,780	27,338	29,814	23,972	191,201	822,824	250,662	523,334	2,185,116	200,044	4,256,085
Calves	158	167	2,958	2,053	161,179	114,122	66,463	151,165	6,092	52,488	556,845
Hogs	881	22,326	25,561	16,979	633,236	535,301	289,749	146,661	315,333	45,796	2,031,823
Sheep	5	5	40	11	611	1,705	44	57	109	321	2,908
Lambs	236	258	1,263	343	9,656	19,773	8,477	3,091	12,991	4,787	60,875
Dairy products	20,731	41,014	85,059	58,507	1,236,064	1,155,183	127,144	90,654	257,843	282,266	3,354,465
Hens and chickens	15,442	4,091	37,435	28,928	301,102	358,065	38,684	30,121	92,911	154,169	1,060,948
Turkeys	x	x	6,026	4,403	45,878	96,746	15,703	7,911	19,769	24,566	221,061
Total eggs	7,830	2,607	23,024	17,124	108,914	200,043	51,707	22,167	50,498	76,084	559,998
Pregnant mare's urine	0	0	0	0	0	0	x	x	x	0	x
Wool	5	5	53	11	163	279	48	118	404	41	1,127
Honey	.	123	771	441	5,602	8,762	7,366	9,617	15,609	3,025	51,316
Furs	x	760	9,213	1,111	2,530	11,474	1,293	97	x	5,720	34,192
Embryos	x	x	x	x	x	x	x	x	x	x	x
Horses	x	x	x	x	x	x	x	x	x	x	x
Miscellaneous livestock	351	982	3,310	2,905	31,400	52,919	15,508	24,201	47,879	23,655	203,110
Total livestock	47,748	99,749	224,599	156,864	2,733,622	3,397,966	919,248	1,024,243	3,036,576	873,276	12,513,891
Net Income Stabilization Account payments	9	208	118	62	595	9,217	4,152	16,629	8,210	1,419	40,619
Gross Revenue Insurance Plan payments	0	8,505	1,242	1,101	128,631	17,766	161,930	3,791	217,513	2,380	542,859
Crop insurance payments	41	1,506	642	3,631	40,045	38,015	96,407	173,594	55,739	5,205	414,825
Private Hail Insurance	0	0	0	0	0	0	36,887	133,610	27,683	0	198,180
Western Grain Stabilization Act payments	-230	-674	-411	-8	-1,323
Price stabilization payments	0	0	0	0	0	5	0	0	0	0	5
Tripartite payments	0	556	780	200	8,723	7,728	5,282	3,921	33,709	6,687	67,586
Provincial stabilization payments	2,883	739	1,800	583	290,245	409	0	0	0	3,813	300,472
Dairy subsidy	.	4,289	2,765	2,748	104,971	69,107	8,442	5,432	14,928	9,622	222,304
Other payments	1,709	160	20	215	544	1,162	916	9,347	24,838	461	39,372
Total payments	4,642	15,963	7,367	8,540	573,754	143,409	313,786	345,650	382,209	29,579	1,824,899
Total receipts	63,406	308,685	327,612	293,249	4,214,854	6,052,852	2,451,015	5,050,540	5,581,321	1,537,862	25,881,396

Note(s): The data in this table were last revised in November 2003.

**Table 1-15
Farm cash receipts — Agriculture economic statistics — 1995**

	Newfoundland and Labrador	Prince Edward Island	Nova Scotia	New Brunswick	Quebec	Ontario	Manitoba	Saskat- chewan	Alberta	British Columbia	Canada
	thousands of dollars										
Wheat, excluding durum	.	2,154	1,065	461	16,215	135,567	399,164	1,020,795	632,159	12,113	2,219,693
Wheat, excluding durum, Marketing Board payments	24,837	164,781	509,164	264,256	7,747	970,785
Durum wheat	22,832	474,779	106,344	.	603,955
Durum Wheat, Marketing Board payments	12,507	304,093	61,984	.	378,584
Oats	.	357	144	422	6,519	6,501	48,436	87,747	70,856	3,881	224,863
Barley	.	7,825	221	2,624	16,628	11,998	60,705	313,742	301,787	4,270	719,800
Barley, CWB payments	5,694	45,641	31,166	896	83,397
Deferments	-134,617	-462,960	-238,424	-7,813	-843,814
Liquidations	124,563	397,260	243,293	7,724	772,840
Rye	4,095	5,664	13,635	7,305	77	30,776
Flaxseed	0	92,747	128,630	8,933	0	230,310
Canola	21,070	370,142	790,197	709,701	15,252	1,906,362
Soybeans	.	388	.	.	70,156	591,115	661,659
Corn	.	.	157	.	216,590	474,347	11,893	.	1,307	.	704,294
Sugar beets	0	.	19,642	.	32,401	.	52,043
Potatoes	1,464	149,741	5,876	67,771	61,645	53,794	68,544	15,435	57,362	36,009	517,641
Vegetables	3,363	7,146	20,424	8,751	230,741	432,407	23,856	2,620	51,534	142,313	923,155
Apples	.	.	10,598	1,943	30,763	73,878	120	.	.	66,847	184,149
Other tree fruits	.	.	226	.	.	49,953	.	.	5	17,932	68,116
Strawberries	937	1,379	5,073	5,240	15,446	28,381	3,800	1,239	1,971	4,662	68,128
Other berries and grapes	62	682	13,922	3,922	17,093	37,775	1,125	1,740	992	95,297	172,610
Floriculture, nursery and sod	5,971	1,687	29,064	11,953	134,872	445,287	22,534	11,668	61,188	217,316	941,540
Tobacco	.	5,095	1,360	347	20,862	268,983	296,647
Ginseng	0	0	0	0	0	45,198	0	0	0	25,472	70,670
Mustard seed	854	59,472	14,227	.	74,553
Sunflower seed	18,179	5,799	1,764	0	25,742
Lentils	11,876	116,238	6,553	.	134,667
Canary seed	3,875	53,686	831	.	58,392
Dry beans	5,312	63,723	15,477	.	16,871	.	101,383
Dry peas	0	0	23,578	133,179	60,518	625	217,900
Forage and grass seed	0	0	0	0	197	1,211	8,310	15,119	18,716	3,427	46,980
Hay and clover	52	145	320	315	7,704	21,520	2,950	15,457	65,316	18,298	132,077
Maple products	.	0	910	3,092	77,076	9,897	90,975
Forest products	55	955	13,083	6,606	69,648	19,718	1,194	4,650	26,505	37,647	180,061
Miscellaneous crops	1,021	2,823	2,582	1,873	10,472	17,773	x	x	x	6,033	93,172
Total crops	12,925	180,377	105,025	115,320	1,007,939	2,839,028	1,426,786	4,085,407	2,625,273	716,025	13,114,105
Cattle	1,675	28,620	27,804	24,720	176,603	760,403	260,637	484,938	2,215,729	165,874	4,147,003
Calves	144	105	1,948	1,574	150,398	86,300	51,320	130,825	5,336	32,236	460,186
Hogs	968	24,823	26,606	17,862	681,588	587,417	322,982	161,303	381,812	47,099	2,252,460
Sheep	8	8	46	15	639	1,983	74	48	175	210	3,206
Lambs	213	198	1,331	402	10,070	21,485	9,875	3,459	14,219	5,151	66,403
Dairy products	21,878	43,299	88,258	61,744	1,295,689	1,169,532	128,720	96,035	265,643	292,287	3,463,085
Hens and chickens	16,180	4,358	39,738	28,954	305,254	341,455	38,489	26,460	91,697	158,375	1,050,960
Turkeys	x	x	5,937	4,646	52,813	101,082	16,448	8,434	20,707	27,764	237,891
Total eggs	8,550	2,751	23,377	18,000	112,312	212,119	55,836	23,500	52,799	81,582	590,826
Pregnant mare's urine	0	0	0	0	0	0	x	x	x	0	x
Wool	9	5	31	1	318	628	85	197	610	92	1,976
Honey	.	109	1,055	473	4,826	8,752	8,371	10,709	19,689	4,225	58,209
Furs	283	771	9,443	971	1,732	10,264	1,327	87	1,341	5,003	31,222
Embryos	x	x	x	x	x	x	x	x	x	x	x
Horses	x	x	x	x	x	x	x	x	x	x	x
Miscellaneous livestock	410	1,186	3,899	3,642	34,046	45,675	15,875	25,618	60,138	23,885	214,374
Total livestock	50,366	106,300	229,537	163,072	2,833,958	3,364,937	956,398	988,764	3,166,414	844,054	12,703,800
Net Income Stabilization Account payments	19	138	171	31	454	11,593	4,465	24,001	3,290	2,134	46,296
Gross Revenue Insurance Plan payments	0	3,924	763	2,304	66,315	-199	50,393	-254	54,635	986	178,867
Crop insurance payments	1	1,864	292	5,902	38,154	25,818	36,825	139,740	54,650	3,479	306,725
Private Hail Insurance	0	0	0	0	0	0	14,898	134,714	25,126	0	174,738
Western Grain Stabilization Act payments	-109	-319	-195	-3	-626
Price stabilization payments	0	0	0	0	0	2	0	0	0	0	2
Tripartite payments	0	-1	-11	-1	1,496	725	972	2,761	4,477	133	10,551
Provincial stabilization payments	3,057	628	1,800	477	302,016	0	0	0	0	150	308,128
Dairy subsidy	.	4,197	2,889	2,750	102,346	65,258	7,919	5,335	13,169	9,690	213,553
Other payments	4	15,792	690	369	693	8,210	4,741	5,545	22,226	8,912	67,182
Total payments	3,081	26,542	6,594	11,832	511,474	111,407	120,104	311,523	177,378	25,481	1,305,416
Total receipts	66,372	313,219	341,156	290,224	4,353,371	6,315,372	2,503,288	5,385,694	5,969,065	1,585,560	27,123,321

Note(s): The data in this table were last revised in November 2003.

Table 1-16
Farm cash receipts — Agriculture economic statistics — 1996

	Newfoundland and Labrador	Prince Edward Island	Nova Scotia	New Brunswick	Quebec	Ontario	Manitoba	Saskat- chewan	Alberta	British Columbia	Canada
thousands of dollars											
Wheat, excluding durum	.	2,520	957	298	14,315	134,728	526,248	1,303,949	850,399	19,063	2,852,477
Wheat, excluding durum, Marketing Board payments	25,074	122,927	338,202	220,777	5,866	712,846
Durum wheat	18,403	495,774	115,787	.	629,964
Durum Wheat, Marketing Board payments	7,736	225,722	54,382	.	287,840
Oats	.	1,060	198	357	9,511	5,371	85,133	110,861	88,387	4,549	305,427
Barley	.	7,024	838	1,661	20,359	14,463	84,943	398,214	425,060	7,565	960,127
Barley, CWB payments	9,171	67,506	45,665	850	123,192
Deferments	-146,808	-598,195	-284,641	-6,424	-1,036,068
Liquidations	134,617	462,960	238,424	7,813	843,814
Rye	5,845	10,053	15,652	7,330	109	38,989
Flaxseed	0	88,653	123,128	9,094	0	220,875
Canola	668	12,314	396,994	750,127	794,467	14,386	1,968,956
Soybeans	.	374	.	.	67,605	558,694	626,673
Corn	.	.	384	.	282,843	509,535	15,264	.	102	.	808,128
Sugar beets	0	.	13,662	.	27,008	.	40,670
Potatoes	1,623	137,544	6,519	70,733	72,820	48,956	91,964	17,731	61,515	23,719	533,124
Greenhouse vegetables	43	381	4,292	1,350	39,901	101,129	244	248	14,712	56,173	218,473
Field vegetables	3,759	6,848	18,743	7,281	196,464	342,667	25,536	3,509	38,001	106,877	749,685
Apples	x	x	11,832	2,287	30,410	80,352	227	x	x	61,340	186,587
Other tree fruits	x	x	810	24	556	36,355	.	x	x	17,074	54,853
Strawberries	1,090	876	4,360	2,736	15,180	14,073	1,900	743	1,455	6,226	48,639
Other berries and grapes	181	1,484	22,227	8,436	36,111	39,458	875	1,825	545	94,959	206,101
Floriculture, nursery and sod	6,236	1,620	27,836	14,063	125,610	469,508	22,885	13,588	54,713	263,276	999,335
Tobacco	.	492	0	0	21,269	323,571	345,332
Ginseng	0	0	0	0	0	51,612	0	0	0	26,403	78,015
Mustard seed	1,987	92,359	16,628	.	110,974
Sunflower seed	13,145	4,963	1,499	0	19,607
Lentils	8,168	122,491	4,620	.	135,279
Canary seed	7,650	71,285	2,717	.	81,652
Dry beans	6,705	36,057	13,621	.	7,425	.	63,808
Dry peas	0	0	24,546	135,075	59,406	798	219,825
Forage and grass seed	0	0	0	0	208	1,620	13,511	17,630	30,407	3,409	66,785
Hay and clover	50	177	301	432	10,826	25,407	4,793	21,392	60,338	13,567	137,283
Maple products	.	0	759	3,613	102,207	14,807	121,386
Forest products	63	1,057	13,100	6,752	64,668	19,892	1,357	4,346	22,634	33,668	167,537
Miscellaneous crops	1,024	2,796	2,400	1,477	2,461	10,340	19,192	x	x	5,862	88,039
Total crops	14,090	164,376	115,556	121,500	1,120,697	2,881,828	1,618,597	4,237,642	2,974,815	767,128	14,016,229
Cattle	1,400	27,566	25,191	22,222	206,696	781,659	269,987	514,171	2,344,239	165,638	4,358,769
Calves	123	109	530	1,206	132,795	71,115	37,860	98,397	3,389	26,466	371,990
Hogs	1,788	30,569	36,078	22,791	922,105	744,165	448,465	183,227	444,585	50,986	2,884,759
Sheep	6	6	46	13	521	1,866	63	53	191	261	3,026
Lambs	211	189	1,399	289	7,866	24,067	11,449	6,194	16,954	6,194	74,812
Dairy products	22,346	45,840	85,924	63,128	1,286,466	1,185,680	132,386	96,364	290,753	305,846	3,514,733
Hens and chickens	19,744	5,051	46,920	36,102	362,746	406,237	48,051	29,010	103,204	191,226	1,248,291
Turkeys	x	x	7,555	4,543	56,365	121,256	17,811	9,088	21,911	28,308	266,906
Total eggs	9,698	3,203	25,298	18,970	123,983	236,774	59,383	24,620	55,173	87,854	644,956
Pregnant mare's urine	0	0	0	0	0	0	x	x	x	0	x
Wool	11	13	56	14	192	374	70	65	397	37	1,229
Honey	.	103	1,123	408	4,845	8,182	11,442	13,186	19,693	3,835	62,817
Furs	421	2,017	16,463	1,010	3,620	18,983	2,571	110	2,880	9,899	57,974
Embryos	x	x	x	x	x	x	x	x	x	x	x
Horses	x	x	x	x	x	x	x	x	x	x	x
Miscellaneous livestock	503	1,446	4,833	4,576	39,533	42,324	18,186	28,862	75,500	26,744	242,507
Total livestock	56,307	116,189	251,490	175,350	3,152,437	3,659,873	1,113,602	1,024,099	3,401,506	906,441	13,857,294
Net Income Stabilization Account payments	85	765	563	599	1,106	30,295	14,714	47,678	14,128	4,783	114,716
Gross Revenue Insurance Plan payments	0	1,492	247	1,083	11,589	563	8,580	145,381	8,164	-9	177,090
Crop insurance payments	33	1,595	400	8,201	28,323	58,096	20,216	97,250	39,266	3,452	256,832
Private Hail Insurance	0	0	0	0	0	0	5,644	49,797	26,172	0	81,613
Western Grain Stabilization Act payments	-787	-2,308	-1,404	-28	-4,527
Price stabilization payments	0	0	0	0	0	0	0	0	0	0	0
Tripartite payments	0	0	0	80	39	14	17	-19	477	-1,069	-461
Provincial stabilization payments	2,136	628	1,650	14	295,931	0	0	0	0	0	300,359
Dairy subsidy	.	3,179	2,668	2,303	77,955	53,742	6,537	4,268	11,677	8,328	170,657
Other payments	4,521	5,017	7,407	5,544	3,739	1,122	1,260	6,749	53,406	16,760	105,525
Total payments	6,775	12,676	12,935	17,824	418,682	143,832	56,181	348,796	151,886	32,217	1,201,804
Total receipts	77,172	293,241	379,981	314,674	4,691,816	6,685,533	2,788,380	5,610,537	6,528,207	1,705,786	29,075,327

Note(s): The data in this table were last revised in November 2003.

Table 1-17
Farm cash receipts — Agriculture economic statistics — 1997¹

	Newfoundland and Labrador	Prince Edward Island	Nova Scotia	New Brunswick	Quebec	Ontario	Manitoba	Saskat- chewan	Alberta	British Columbia	Canada
thousands of dollars											
Wheat, excluding durum	.	2,250	695	328	12,995	70,508	557,617	1,439,226	751,689	11,775	2,847,083
Wheat, excluding durum, Marketing Board payments	0	65,861	183,440	114,532	3,189	367,022
Durum wheat	19,004	550,577	104,598	.	674,179
Durum Wheat, Marketing Board payments	6,549	185,596	41,847	.	233,992
Oats	.	943	163	437	8,106	5,412	78,644	116,300	52,002	1,850	263,857
Barley	.	6,561	668	1,915	16,737	11,691	76,246	331,064	277,718	4,560	727,160
Barley, CWB payments	10,584	67,072	46,358	692	124,706
Deferments	-169,952	-573,007	-251,287	-5,949	-1,000,195
Liquidations	146,808	598,195	284,641	6,424	1,036,068
Rye	5,410	9,244	12,879	6,691	18	34,242
Flaxseed	0	134,764	149,387	7,481	0	291,632
Canola	1,962	17,507	471,851	873,380	755,087	7,963	2,127,750
Soybeans	.	766	.	.	86,497	726,959	814,222
Corn	.	.	335	.	243,934	435,216	16,339	.	282	.	696,106
Sugar beets	0	.	4,421	.	30,062	.	34,483
Potatoes	1,281	128,843	7,304	63,765	69,076	57,625	94,330	18,335	52,140	19,882	512,581
Greenhouse vegetables	35	392	4,757	1,370	42,160	122,163	285	627	15,902	82,670	270,361
Field vegetables	3,411	8,663	14,231	7,588	222,606	346,119	25,167	2,992	40,774	106,888	778,440
Apples	x	x	11,736	1,999	25,104	90,950	x	x	x	x	47,616
Other tree fruits	x	x	831	37	570	41,686	.	0	x	13,981	57,135
Strawberries	1,200	865	3,135	2,000	16,376	18,220	1,955	560	1,325	4,343	49,979
Other berries and grapes	206	2,274	16,328	8,986	41,213	46,510	530	1,531	1,601	82,945	202,124
Floriculture, nursery and sod	6,291	1,570	30,381	23,851	134,187	505,264	22,654	14,813	68,349	287,856	1,095,216
Tobacco	.	0	0	0	22,268	330,999	353,267
Ginseng	0	0	0	0	0	39,897	0	0	0	23,570	63,467
Mustard seed	2,210	78,054	14,897	.	95,161
Sunflower seed	12,410	3,691	1,065	0	17,166
Lentils	4,012	91,536	2,022	.	97,570
Canary seed	4,404	42,072	1,753	.	48,229
Dry beans	6,579	28,640	18,763	.	18,485	.	72,467
Dry peas	0	0	25,744	153,683	59,277	633	239,337
Chick peas	912	0	.	912
Forage and grass seed	0	0	0	0	188	1,824	14,909	26,664	29,860	4,073	77,518
Hay and clover	50	281	270	403	11,616	30,827	12,157	22,175	82,867	10,648	171,294
Maple products	.	0	888	4,201	115,901	10,108	131,098
Forest products	74	1,157	13,143	6,912	59,994	20,506	1,520	4,077	18,778	29,983	156,144
Christmas trees	384	204	11,102	6,999	35,606	11,700	100	18	71	700	66,884
Miscellaneous crops	892	2,386	2,208	1,636	3,855	10,707	24,370	41,760	6,841	4,306	98,961
Total crops	13,846	157,272	117,752	132,388	1,172,322	2,984,690	1,693,575	4,437,604	2,637,771	746,681	14,093,889
Cattle	1,667	28,535	28,299	23,031	235,925	776,813	307,125	623,533	2,537,873	201,441	4,764,242
Calves	149	107	1,541	1,186	152,199	87,462	71,305	173,714	3,679	35,506	526,849
Hogs	1,811	29,180	36,458	24,363	972,436	782,718	467,856	186,079	438,374	50,056	2,989,331
Sheep	6	6	44	13	577	2,337	57	70	180	204	3,494
Lambs	321	259	1,323	275	8,793	22,513	12,273	5,873	15,117	5,097	71,844
Dairy products	23,157	47,146	86,353	63,267	1,371,760	1,234,543	140,430	102,840	316,826	322,945	3,709,267
Hens and chickens	18,989	5,444	48,746	37,655	379,025	417,679	50,093	29,212	107,645	204,301	1,298,789
Turkeys	x	x	6,253	4,361	54,705	118,171	16,787	8,602	21,728	27,915	258,588
Hatcheries (chicks and poults)	x	x	x	x	3,857	11,499	5,623	703	1,713	281	28,304
Total eggs	9,341	2,959	20,582	12,653	80,009	189,487	48,292	19,827	36,735	62,989	482,874
Pregnant mare's urine	0	0	0	0	0	0	x	x	x	0	x
Wool	11	8	38	13	312	363	97	123	487	54	1,506
Honey	.	124	1,047	497	5,701	9,284	14,359	15,009	22,857	5,608	74,486
Furs	x	1,135	12,821	x	2,550	13,597	1,643	44	x	6,289	41,261
Embryos	x	x	x	x	x	x	x	x	x	x	x
Horses	x	x	x	x	x	x	x	x	x	x	x
Miscellaneous livestock	480	1,539	4,808	4,323	37,840	41,866	18,748	36,562	82,316	30,804	259,286
Total livestock	56,313	116,504	248,368	177,086	3,311,117	3,727,209	1,208,411	1,220,609	3,609,146	958,102	14,632,865
Net Income Stabilization Account payments	64	2,180	509	1,234	1,790	34,318	20,065	65,109	22,773	5,280	153,322
Gross Revenue Insurance Plan payments	0	0	0	0	6,151	0	15,829	-667	21,487	1,656	44,456
Crop insurance payments	137	1,481	725	3,188	39,075	47,154	32,682	84,899	80,395	12,985	302,721
Private Hail Insurance	0	0	0	0	0	0	5,926	50,391	14,751	0	71,068
Western Grain Stabilization Act payments	-101	-297	-181	-3	-582
Tripartite payments	0	0	650	1,109	0	-29	0	-45	3,895	-3	5,577
Provincial stabilization payments	1,662	621	103	134	168,326	0	0	0	0	0	170,846
Dairy subsidy	.	2,064	3,633	2,746	59,615	53,284	4,528	3,404	9,121	8,215	146,610
Other payments	4,154	1,643	2,880	2,743	6,002	1,860	63,090	61,454	65,488	5,427	214,741
Total payments	6,017	7,989	8,500	11,154	280,959	136,587	142,019	264,248	217,729	33,557	1,108,759
Total receipts	76,176	281,765	374,620	320,628	4,764,398	6,848,486	3,044,005	5,922,461	6,464,646	1,738,340	29,835,513

1. Data starting from 1997 are not directly comparable to previous years due to the use of the North American Industry Classification System (NAICS). Please see the section about this in "Data quality, concepts and methodology" for further information.

Note(s): The data in this table were last revised in November 2008.

Table 1-18
Farm cash receipts — Agriculture economic statistics — 1998

	Newfoundland and Labrador	Prince Edward Island	Nova Scotia	New Brunswick	Quebec	Ontario	Manitoba	Saskat- chewan	Alberta	British Columbia	Canada
thousands of dollars											
Wheat, excluding durum	.	2,034	632	302	9,189	100,099	323,604	820,007	532,281	3,845	1,791,993
Wheat, excluding durum, Marketing Board payments	25,849	125,558	317,509	174,685	3,448	647,049
Durum wheat	13,337	498,112	115,633	.	627,082
Durum Wheat, Marketing Board payments	6,581	197,341	40,819	.	244,741
Oats	.	592	142	343	7,701	4,900	62,262	81,149	34,220	1,919	193,228
Barley	.	5,718	614	1,306	18,022	10,245	46,082	245,901	179,136	3,261	510,285
Barley, CWB payments	5,803	31,893	19,137	226	57,059
Deferments	-170,781	-542,104	-231,290	-7,044	-951,219
Liquidations	169,951	573,005	251,285	5,949	1,000,190
Rye	5,025	5,160	5,374	4,182	2	19,743
Flaxseed	0	93,062	161,964	7,832	0	262,858
Canola	4,262	17,868	622,296	1,118,685	881,378	18,718	2,663,207
Soybeans	.	746	.	.	110,681	688,921	800,348
Corn	.	.	333	.	239,572	385,059	17,039	.	360	.	642,363
Sugar beets	0	.	1,436	.	38,402	.	39,838
Potatoes	1,219	173,314	6,328	82,958	65,589	54,774	105,497	33,632	63,862	24,993	612,166
Greenhouse vegetables	24	538	4,733	909	44,611	217,735	152	637	17,573	90,037	376,949
Field vegetables	3,964	10,908	16,247	7,101	203,402	362,737	25,225	2,271	42,792	116,380	791,025
Apples	x	x	12,190	1,902	24,785	88,654	x	x	x	40,890	168,718
Other tree fruits	x	x	762	13	682	46,487	.	x	x	15,114	63,100
Strawberries	915	805	2,775	1,745	15,050	18,070	1,410	470	3,135	8,640	53,015
Other berries and grapes	113	2,128	17,912	8,401	30,684	51,744	465	550	1,255	88,744	201,996
Floriculture, nursery and sod	5,083	1,466	23,661	13,419	131,783	523,795	23,380	12,868	54,515	269,721	1,059,689
Tobacco	.	0	0	0	17,433	341,177	358,610
Ginseng	0	0	0	0	0	36,851	0	0	0	21,810	58,661
Mustard seed	1,519	71,175	15,022	.	87,716
Sunflower seed	19,699	5,306	1,277	0	26,282
Lentils	2,400	116,133	2,253	.	120,786
Canary seed	3,976	34,898	1,411	.	40,285
Dry beans	6,438	31,399	39,959	.	21,126	.	98,922
Dry peas	0	0	27,713	187,114	59,516	970	275,313
Chick peas	6,180	0	.	6,180
Forage and grass seed	0	0	0	0	232	1,739	17,722	32,227	30,757	4,669	87,346
Hay and clover	64	287	386	634	13,703	28,222	13,592	21,495	85,679	15,284	179,346
Maple products	.	0	906	5,754	122,685	8,125	137,470
Forest products	82	1,254	13,174	7,063	55,166	20,900	1,680	3,788	14,914	26,152	144,173
Christmas trees	282	259	11,926	7,498	31,253	7,587	173	18	184	1,138	60,318
Miscellaneous crops	657	2,621	1,474	1,743	3,915	11,690	22,645	37,550	6,158	4,055	92,508
Total crops	12,422	202,773	114,098	141,088	1,154,895	3,088,293	1,628,664	4,075,188	2,469,562	755,052	13,642,036
Cattle	1,452	28,842	27,412	23,752	206,334	850,897	372,653	663,714	2,759,059	214,894	5,149,009
Calves	143	247	1,684	1,545	159,498	83,568	76,181	186,129	4,131	41,509	554,635
Hogs	1,537	20,566	26,140	21,665	662,285	581,342	398,324	142,150	309,938	37,217	2,201,164
Sheep	8	8	54	14	679	2,590	72	72	235	302	4,034
Lambs	313	246	1,542	377	10,414	21,685	10,557	3,982	12,528	6,079	67,723
Dairy products	23,898	49,474	91,233	65,146	1,441,488	1,277,740	145,945	106,243	311,460	333,450	3,846,077
Hens and chickens	21,705	5,083	50,074	40,093	385,706	444,099	53,382	28,152	114,848	212,866	1,356,008
Turkeys	x	x	4,913	4,105	53,517	111,024	16,919	9,000	21,210	28,082	248,836
Hatcheries (chicks and poults)	x	x	x	x	5,356	14,200	5,583	616	986	378	32,406
Total eggs	9,439	2,946	19,550	12,233	78,753	178,293	46,464	18,163	36,701	63,623	466,165
Pregnant mare's urine	0	0	0	0	0	0	x	x	x	0	x
Wool	6	3	21	18	300	264	60	134	433	53	1,292
Honey	.	139	1,270	553	6,892	8,905	16,477	16,790	30,734	6,833	88,593
Furs	x	1,203	12,824	x	2,078	13,068	1,774	45	x	7,281	41,298
Embryos	x	x	x	x	x	x	x	x	x	x	x
Horses	x	x	x	x	x	x	x	x	x	x	x
Miscellaneous livestock	484	1,536	4,707	4,083	31,449	39,738	17,880	39,172	86,965	34,466	260,480
Total livestock	59,386	110,343	241,465	179,722	3,049,517	3,645,811	1,216,259	1,234,935	3,713,462	990,783	14,441,683
Net Income Stabilization Account payments	116	4,513	1,722	613	4,024	76,002	29,678	105,053	38,269	8,734	268,724
Gross Revenue Insurance Plan payments	0	0	0	0	0	0	36	-378	0	0	-342
Crop insurance payments	10	754	888	1,417	17,307	51,329	39,948	95,478	103,327	7,898	318,356
Private Hail Insurance	0	0	0	0	0	0	5,343	31,246	19,266	0	55,855
Western Grain Stabilization Act payments	-40	-116	-71	-1	-228
Tripartite payments	0	0	0	0	-3	-3	-2	-3	-13	-2	-26
Provincial stabilization payments	0	1,141	7,790	427	498,589	0	0	0	0	0	507,947
Dairy subsidy	.	1,898	3,323	2,499	54,536	47,364	3,965	2,734	7,711	8,083	132,113
Other payments	246	2,825	420	802	18,483	26,349	13,156	1,159	66,605	9,100	139,145
Total payments	372	11,131	14,143	5,758	592,936	201,041	92,084	235,173	235,094	33,812	1,421,544
Total receipts	72,180	324,247	369,706	326,568	4,797,348	6,935,145	2,937,007	5,545,296	6,418,118	1,779,647	29,505,263

Note(s): The data in this table were last revised in November 2008.

Table 1-19
Farm cash receipts — Agriculture economic statistics — 1999

	Newfoundland and Labrador	Prince Edward Island	Nova Scotia	New Brunswick	Quebec	Ontario	Manitoba	Saskat- chewan	Alberta	British Columbia	Canada
thousands of dollars											
Wheat, excluding durum	.	2,184	578	239	7,526	88,082	357,476	747,529	624,198	9,605	1,837,417
Wheat, excluding durum, Marketing Board payments	19,898	115,516	297,864	189,361	4,160	626,799
Durum wheat	15,166	373,497	112,820	.	501,483
Durum Wheat, Marketing Board payments	5,740	185,263	49,127	.	240,130
Oats	.	599	123	401	7,704	4,244	63,524	72,961	22,980	2,116	174,622
Barley	.	4,964	690	5,226	17,042	7,899	35,043	201,821	145,536	3,131	421,352
Barley, CWB payments	3,304	48,737	28,730	653	81,424
Deferments	-117,868	-322,584	-167,098	-4,577	-612,127
Liquidations	174,787	546,095	237,221	7,045	965,148
Rye	4,570	5,219	3,784	3,632	7	17,212
Flaxseed	0	42,647	91,200	5,118	0	138,965
Canola	4,695	8,896	351,749	783,995	608,212	13,464	1,771,011
Soybeans	.	641	.	.	91,613	525,940	618,194
Corn	.	.	601	.	265,550	458,786	17,517	.	448	.	742,902
Sugar beets	0	.	876	.	29,651	.	30,527
Potatoes	1,223	192,238	8,393	93,020	84,697	62,555	118,612	29,096	74,892	35,943	700,669
Greenhouse vegetables	28	442	4,939	1,095	42,671	248,657	88	618	16,222	123,731	438,491
Field vegetables	3,737	11,177	15,068	6,316	216,285	357,841	27,987	2,015	37,484	104,445	782,354
Apples	x	x	13,000	2,049	29,003	96,500	65	x	x	41,750	182,629
Other tree fruits	x	x	818	11	131	50,438	.	x	x	18,923	70,360
Strawberries	470	665	3,000	1,200	15,950	19,800	1,555	650	1,660	8,640	53,590
Other berries and grapes	96	4,137	30,627	12,019	61,638	59,828	328	556	1,506	97,769	268,504
Floriculture, nursery and sod	6,378	1,726	27,179	38,937	139,698	606,741	24,295	12,671	66,136	271,645	1,195,407
Tobacco	.	0	0	0	17,746	338,960	356,706
Ginseng	0	0	0	0	0	22,921	0	0	0	22,310	45,231
Mustard seed	762	75,765	12,959	.	89,486
Sunflower seed	22,242	6,982	1,102	0	30,326
Lentils	2,651	189,840	3,469	.	195,960
Canary seed	3,254	34,935	1,478	.	39,667
Dry beans	10,787	41,942	50,169	.	22,163	.	125,061
Dry peas	0	0	16,203	187,973	57,229	742	262,147
Chick peas	21,944	0	.	21,944
Forage and grass seed	0	0	0	0	259	1,396	17,907	18,177	40,601	6,527	84,867
Hay and clover	98	321	602	882	18,400	26,705	17,112	30,218	95,346	15,165	204,849
Maple products	.	0	1,320	4,065	131,448	10,444	147,277
Forest products	94	1,354	13,206	7,217	50,340	21,292	1,840	3,500	11,052	22,320	132,215
Christmas trees	226	353	13,229	7,930	30,575	9,581	257	35	335	892	63,413
Miscellaneous crops	513	2,518	1,782	2,638	3,224	14,218	12,796	25,879	7,700	7,040	78,308
Total crops	12,886	223,429	134,681	183,338	1,243,919	3,105,478	1,388,809	3,671,095	2,341,324	816,228	13,121,182
Cattle	0	24,813	28,514	25,870	227,989	907,070	358,056	717,117	2,959,643	216,230	5,465,302
Calves	199	252	2,019	2,012	180,683	92,983	95,217	264,201	8,501	70,168	716,237
Hogs	1,713	21,896	26,652	23,226	725,862	589,303	471,725	152,493	344,341	38,264	2,395,475
Sheep	8	8	55	13	738	2,391	117	90	230	363	4,013
Lambs	328	261	1,746	433	11,715	22,360	9,203	4,989	13,155	6,273	70,463
Dairy products	25,816	48,995	89,852	69,306	1,479,116	1,280,810	152,288	107,658	327,063	340,031	3,920,935
Hens and chickens	21,137	4,984	48,881	38,172	373,897	424,503	54,462	30,257	113,615	210,944	1,320,852
Turkeys	x	x	6,010	4,337	54,061	101,977	16,388	8,540	20,221	28,637	240,235
Hatcheries (chicks and poults)	x	x	x	x	6,318	10,567	5,817	727	1,129	360	30,233
Total eggs	9,289	3,049	19,658	12,416	82,781	184,441	48,597	17,830	36,634	62,896	477,591
Pregnant mare's urine	0	0	0	0	0	0	x	x	x	0	x
Wool	7	5	20	10	60	174	29	45	199	6	555
Honey	.	150	1,670	430	5,438	8,734	14,186	17,816	25,832	5,346	79,602
Furs	x	1,009	10,311	x	1,759	8,589	1,177	32	x	5,836	30,500
Embryos	x	x	x	x	x	x	x	x	x	x	x
Horses	x	x	x	x	x	x	x	x	x	x	x
Miscellaneous livestock	459	1,569	4,713	3,908	29,277	39,026	18,078	46,495	95,424	38,454	277,403
Total livestock	59,237	107,040	240,141	186,079	3,183,955	3,693,161	1,301,983	1,388,716	3,971,255	1,027,995	15,159,564
Net Income Stabilization Account payments	115	5,842	2,174	932	5,194	109,107	58,267	187,785	65,656	9,846	444,918
Crop insurance payments	165	2,204	711	961	8,560	28,644	29,668	117,747	45,967	4,917	239,544
Private Hail Insurance	0	0	0	0	0	0	10,073	42,230	16,325	0	68,628
Provincial stabilization payments	0	1,029	6,954	0	564,793	0	0	0	0	0	572,776
Dairy subsidy	.	1,480	2,485	1,940	42,726	36,487	3,137	2,252	6,636	6,509	103,652
Other payments	70	8,141	2,204	2,018	31,813	158,701	114,872	125,494	83,663	19,540	546,516
Total payments	350	18,696	14,528	5,851	653,086	332,939	216,017	475,508	218,247	40,812	1,976,034
Total receipts	72,473	349,165	389,350	375,268	5,080,960	7,131,578	2,906,809	5,535,319	6,530,826	1,885,035	30,256,780

Note(s): The data in this table were last revised in November 2008.

Table 1-20
Farm cash receipts — Agriculture economic statistics — 2000

	Newfoundland and Labrador	Prince Edward Island	Nova Scotia	New Brunswick	Quebec	Ontario	Manitoba	Saskat- chewan	Alberta	British Columbia	Canada
	thousands of dollars										
Wheat, excluding durum	.	2,603	772	864	7,348	78,255	352,835	801,957	649,764	7,899	1,902,297
Wheat, excluding durum, Marketing Board payments	32,822	88,463	225,929	164,266	3,818	515,298
Durum wheat	3,170	345,451	103,598	.	452,219
Durum Wheat, Marketing Board payments	2,851	146,416	41,994	.	191,261
Oats	.	559	93	381	7,432	3,520	68,208	94,060	20,708	1,453	196,414
Barley	.	5,406	276	1,796	17,227	7,571	42,003	217,201	183,810	2,683	477,973
Barley, CWB payments	3,119	64,192	36,797	897	105,005
Deferments	-113,382	-317,723	-166,846	-2,847	-600,798
Liquidations	134,223	338,102	191,416	5,006	668,747
Rye	3,650	4,579	4,071	2,978	7	15,285
Flaxseed	0	47,099	96,028	5,616	0	148,743
Canola	3,057	10,066	324,316	657,349	556,266	8,657	1,559,711
Soybeans	.	291	.	.	91,180	586,476	677,947
Corn	.	.	45	.	246,809	408,393	20,168	..	658	..	676,073
Sugar beets	0	..	0	..	32,899	..	32,899
Potatoes	1,194	154,499	10,188	78,848	85,588	65,588	111,287	28,892	113,095	33,605	682,785
Greenhouse vegetables	18	521	4,719	1,028	44,623	296,369	460	742	19,297	136,936	504,713
Field vegetables	3,373	11,692	15,263	6,922	216,325	365,670	27,827	1,750	44,240	103,549	796,612
Apples	x	x	12,900	2,235	34,804	98,541	75	x	x	43,762	192,597
Other tree fruits	x	x	700	10	386	45,836	..	x	x	20,933	67,919
Strawberries	800	720	4,725	1,600	15,350	19,565	1,600	450	1,110	7,630	53,550
Other berries and grapes	116	4,136	27,584	10,907	44,933	53,768	551	1,270	1,356	88,267	232,888
Floriculture, nursery and sod	7,672	1,621	29,621	39,024	138,679	724,002	30,175	16,136	90,203	340,259	1,417,392
Tobacco	.	0	0	0	19,124	329,303	348,427
Ginseng	0	0	0	0	0	24,856	0	0	0	21,860	46,716
Mustard seed	764	56,418	6,592	..	63,774
Sunflower seed	24,259	5,523	1,456	0	31,237
Lentils	3,950	226,169	3,406	..	233,525
Canary seed	2,786	30,458	1,139	..	34,383
Dry beans	3,760	29,631	68,493	..	21,145	..	123,029
Dry peas	0	0	14,798	200,232	53,893	848	269,772
Chick peas	61,755	1,358	..	63,113
Forage and grass seed	0	0	0	0	316	1,384	19,184	13,073	42,091	6,834	82,882
Hay and clover	176	154	670	1,823	22,869	28,950	20,053	44,004	123,065	23,384	265,148
Maple products	.	0	1,255	3,210	158,744	17,471	180,680
Forest products	100	1,454	13,237	7,368	45,512	21,686	2,002	3,217	7,186	18,488	120,250
Christmas trees	128	474	14,608	8,418	28,899	11,959	424	347	715	1,243	67,216
Miscellaneous crops	454	1,733	1,409	2,482	2,587	14,356	12,671	22,200	8,244	7,204	73,340
Total crops	14,048	186,002	138,007	166,894	1,233,815	3,277,078	1,318,992	3,385,788	2,363,588	885,512	12,969,706
Cattle	1,559	26,791	30,980	25,400	299,036	972,772	366,448	764,245	3,329,819	242,437	6,059,487
Calves	233	493	2,512	1,915	193,916	105,141	116,816	310,000	10,384	85,169	826,579
Hogs	1,461	29,535	34,080	30,704	996,918	823,233	669,727	222,747	496,616	50,250	3,355,271
Sheep	6	6	45	14	977	3,069	149	119	345	484	5,214
Lambs	294	244	1,855	515	13,548	25,302	10,071	5,893	15,735	8,064	81,521
Dairy products	25,946	50,987	90,368	69,041	1,553,103	1,319,954	154,029	110,974	318,454	336,977	4,029,833
Hens and chickens	x	x	50,030	40,187	383,748	440,037	56,503	37,677	117,954	217,014	1,368,143
Turkeys	x	x	6,600	4,154	59,385	115,197	17,797	9,454	20,295	30,305	263,253
Hatcheries (chicks and poults)	x	x	x	x	6,648	10,476	7,672	90	2,008	577	32,729
Total eggs	9,460	3,172	21,615	13,565	87,536	196,968	59,876	18,184	37,034	63,642	511,052
Pregnant mare's urine	0	0	0	0	0	0	x	x	x	0	x
Wool	8	8	35	11	77	231	87	58	240	25	780
Honey	.	173	1,474	485	3,996	8,444	12,733	15,424	19,911	6,849	69,489
Furs	x	976	18,231	x	2,276	10,676	1,213	28	x	9,740	46,209
Embryos	x	x	x	x	x	x	x	x	x	x	x
Horses	x	x	x	x	x	x	x	x	x	x	x
Miscellaneous livestock	435	x	5,201	3,782	29,357	41,898	20,255	55,354	111,169	44,019	313,315
Total livestock	59,296	119,761	263,074	195,856	3,635,732	4,093,904	1,549,971	1,571,098	4,512,132	1,100,165	17,100,989
Net Income Stabilization Account payments	136	6,266	1,731	1,289	7,633	109,730	61,628	186,722	71,853	9,233	456,221
Crop insurance payments	77	2,878	431	1,294	80,121	71,749	53,954	116,510	116,001	8,367	451,382
Private Hail Insurance	0	0	0	0	0	0	19,708	94,537	45,009	0	159,254
Provincial stabilization payments	0	598	722	0	409,860	0	0	0	0	0	411,180
Dairy subsidy	.	1,022	1,759	1,368	30,393	25,934	2,167	1,553	4,182	4,288	72,666
Other payments	155	6,190	7,326	1,869	13,476	214,865	149,636	377,305	470,523	16,656	1,258,001
Total payments	368	16,954	11,969	5,820	541,483	422,278	287,093	776,627	707,568	38,544	2,808,704
Total receipts	73,712	322,717	413,050	368,570	5,411,030	7,793,260	3,156,056	5,733,513	7,583,288	2,024,221	32,879,399

Note(s): The data in this table were last revised in November 2008.

Table 1-21
Farm cash receipts — Agriculture economic statistics — 2001

	Newfoundland and Labrador	Prince Edward Island	Nova Scotia	New Brunswick	Quebec	Ontario	Manitoba	Saskat- chewan	Alberta	British Columbia	Canada
thousands of dollars											
Wheat, excluding durum	.	2,805	1,908	1,111	11,622	101,803	445,212	891,503	603,980	9,020	2,068,964
Wheat, excluding durum, Marketing Board payments	24,086	127,049	276,628	190,979	3,581	622,323
Durum wheat	9,401	394,859	89,607	.	493,867
Durum Wheat, Marketing Board payments	4,647	254,045	53,736	.	312,428
Oats	.	513	195	530	11,032	5,618	95,986	125,708	31,469	2,911	273,962
Barley	.	5,291	600	3,388	26,607	10,272	90,720	301,082	179,610	3,718	621,288
Barley, CWB payments	2,887	69,436	34,066	945	107,334
Deferments	-171,653	-489,110	-235,820	-5,132	-901,715
Liquidations	118,822	319,591	175,988	3,515	617,916
Rye	4,585	3,893	4,212	3,520	0	16,210
Flaxseed	0	53,160	108,198	4,379	0	165,737
Canola	2,108	8,376	363,892	753,603	584,239	10,786	1,723,004
Soybeans	.	435	.	.	83,201	448,830	2,016	.	.	.	534,482
Corn	.	.	642	.	221,416	388,167	20,167	.	492	.	630,884
Sugar beets	0	.	0	.	19,333	.	19,333
Potatoes	1,197	123,873	8,194	100,770	95,720	71,935	131,309	40,274	107,144	42,458	722,874
Greenhouse vegetables	18	438	4,075	628	58,325	338,408	332	580	23,010	163,835	589,710
Field vegetables	3,077	9,392	15,404	6,075	225,808	400,064	32,182	2,607	42,293	129,639	866,539
Apples	x	x	9,904	2,252	33,957	97,359	80	15	68	37,510	181,209
Total tree fruits 1	21	61	10,734	2,259	34,135	146,687	80	62	72	63,939	258,050
Blueberries	13	2,486	13,246	6,637	25,800	2,165	.	.	.	33,890	84,236
Grapes	.	x	x	..	205	50,850	.	.	.	23,065	74,655
Strawberries	745	825	5,025	1,850	16,890	19,930	2,250	440	660	7,275	55,890
Total small fruits 2	833	3,410	19,712	10,079	66,041	76,974	2,820	1,665	2,395	90,023	273,951
Floriculture	7,186	1,764	23,645	40,446	108,411	551,539	23,217	15,483	67,771	236,961	1,076,423
Nursery	29	x	2,130	1,423	30,005	153,159	6,726	x	23,071	120,333	339,175
Sod	1,346	x	2,936	699	11,680	50,561	1,825	x	8,465	2,672	81,153
Tobacco	.	0	0	0	13,919	226,088	240,007
Ginseng	0	0	0	0	0	37,599	0	0	0	22,500	60,099
Mustard seed	2,142	47,549	4,451	.	54,142
Sunflower seed	29,202	2,660	1,633	0	33,495
Lentils	2,260	174,017	1,875	.	178,152
Canary seed	4,818	44,735	909	.	50,462
Dry beans	9,676	22,383	42,774	.	26,641	.	101,474
Dry peas	0	0	19,071	214,240	70,349	815	304,475
Chick peas	142,825	6,232	.	149,057
Forage and grass seed	0	0	0	0	174	2,027	13,461	28,458	19,804	3,294	67,218
Hay and clover	240	83	827	2,295	24,231	39,944	22,834	54,934	145,714	35,899	327,000
Maple products	.	0	985	3,392	130,600	10,800	145,777
Forest products	88	1,517	12,208	6,888	45,757	21,062	2,160	3,234	7,072	17,966	117,952
Christmas trees	164	449	16,738	9,004	31,186	15,295	501	370	800	1,732	76,239
Miscellaneous crops	370	1,127	1,039	3,044	7,948	21,780	12,632	20,067	8,723	9,224	85,954
Total crops	14,566	151,397	121,883	192,031	1,249,604	3,178,044	1,516,544	3,806,552	2,304,066	970,180	13,504,866
Cattle	1,573	27,109	31,142	32,015	318,651	1,126,691	468,941	829,369	3,888,091	265,976	6,989,558
Calves	232	670	2,522	2,683	223,066	124,882	106,222	321,131	30,074	81,746	893,228
Hogs	1,213	33,516	38,661	38,111	1,127,316	945,612	803,974	228,499	572,119	49,646	3,838,667
Sheep	5	5	x	11	951	2,821	155	90	268	x	4,743
Lambs	361	223	1,914	577	20,344	30,659	10,029	7,433	13,782	6,951	92,273
Dairy products	27,173	52,484	95,861	68,251	1,543,895	1,369,058	157,999	114,736	348,378	364,478	4,142,313
Hens and chickens	x	x	55,552	44,667	423,700	495,533	64,024	45,673	133,009	233,118	1,522,302
Turkeys	x	x	6,533	4,169	57,995	115,873	17,004	9,361	23,721	27,778	262,503
Hatcheries (chicks and poults)	x	x	x	x	7,500	12,402	10,373	261	2,228	1,092	40,778
Total eggs	10,073	3,440	23,720	15,807	98,662	210,671	58,102	19,429	40,264	67,700	547,868
Honey	.	196	911	489	5,259	9,293	15,322	21,684	24,312	7,402	84,868
Furs	x	903	18,954	x	2,361	10,698	1,625	31	1,619	x	46,203
Miscellaneous livestock	x	x	5,691	3,794	33,740	66,234	85,946	86,851	167,061	55,378	507,216
Total livestock	62,592	126,410	281,503	218,198	3,863,440	4,520,426	1,799,718	1,684,548	5,244,924	1,170,761	18,972,521
Net Income Stabilization Account payments	168	6,945	2,888	2,059	8,146	122,008	58,642	166,914	65,883	8,058	441,711
Crop insurance payments	132	6,746	852	750	74,633	218,699	86,492	296,841	222,212	10,232	917,589
Private Hail Insurance	0	0	0	0	0	0	15,383	87,331	20,943	0	123,657
Provincial stabilization payments	0	482	0	0	515,994	0	0	0	0	0	516,476
Dairy subsidy	.	583	999	768	17,434	14,704	1,277	881	2,573	2,666	41,885
Other payments	412	43,786	12,792	2,835	7,709	421,764	220,353	468,248	507,816	38,907	1,724,622
Total payments	712	58,542	17,531	6,412	623,916	777,175	382,147	1,020,215	819,427	59,863	3,765,940
Total receipts	77,870	336,349	420,917	416,641	5,736,960	8,475,645	3,698,409	6,511,315	8,368,417	2,200,804	36,243,327

1. Apples is one of the components of Total tree fruits.
 2. Blueberries, Strawberries and Grapes are major components of Total small fruits.
Note(s): The data in this table were last revised in November 2008.

Table 1-22
Farm cash receipts — Agriculture economic statistics — 2002

	Newfoundland and Labrador	Prince Edward Island	Nova Scotia	New Brunswick	Quebec	Ontario	Manitoba	Saskat- chewan	Alberta	British Columbia	Canada
	thousands of dollars										
Wheat, excluding durum	.	2,642	2,309	1,142	17,044	196,667	489,253	704,971	497,802	6,463	1,918,293
Wheat, excluding durum, Marketing Board payments	21,884	158,553	310,402	189,109	4,147	684,095
Durum wheat	8,811	440,240	92,451	.	541,502
Durum Wheat, Marketing Board payments	2,957	210,303	37,975	.	251,235
Oats	.	667	249	630	16,895	7,434	124,138	106,455	42,195	6,545	305,208
Barley	.	6,802	955	3,531	28,485	11,336	84,730	217,753	146,220	5,543	505,355
Barley, CWB payments	1,114	31,040	13,589	461	46,204
Deferments	-159,690	-361,327	-179,104	-7,361	-707,482
Liquidations	161,089	480,214	219,759	4,721	865,783
Rye	4,783	2,422	2,217	2,718	42	12,182
Flaxseed	0	80,632	151,080	4,897	0	236,609
Canola	2,569	14,924	484,400	735,295	530,186	9,393	1,776,767
Soybeans	.	730	.	.	91,967	475,537	19,423	.	.	.	587,657
Corn	.	.	1,189	.	306,711	478,728	32,023	.	518	.	819,169
Sugar beets	0	.	0	.	20,072	.	20,072
Potatoes	1,423	189,908	10,841	126,801	110,749	87,290	132,765	51,362	146,783	59,695	917,617
Greenhouse vegetables	288	515	6,503	670	53,585	327,167	328	782	25,693	180,249	595,780
Field vegetables	2,951	10,430	14,916	5,611	225,189	412,019	29,717	1,604	36,180	98,023	836,640
Apples	x	x	10,416	2,819	36,330	69,019	x	10	x	34,254	153,127
Total tree fruits 1	30	169	11,051	2,829	36,545	116,724	78	25	39	59,898	227,387
Blueberries	x	x	16,091	5,851	16,470	2,250	.	.	.	43,500	86,308
Grapes	.	x	x	.	155	52,350	.	.	.	23,920	77,085
Strawberries	750	900	x	1,710	14,850	18,975	x	295	800	6,876	52,396
Total small fruits 2	1,090	2,957	23,688	10,123	52,818	77,619	2,245	2,150	2,665	106,798	282,151
Floriculture	7,324	2,238	22,674	37,300	126,464	616,554	24,558	24,178	69,906	266,483	1,197,679
Nursery	x	x	4,179	2,697	37,351	165,647	7,088	3,027	23,882	115,593	359,857
Sod	x	x	2,560	1,049	19,067	45,750	1,766	825	9,339	5,212	87,371
Tobacco	.	0	0	0	16,777	257,373	274,150
Ginseng	0	0	0	0	0	45,630	0	0	0	22,611	68,241
Mustard seed	4,398	45,806	7,959	.	58,163
Sunflower seed	39,532	4,480	1,597	0	45,610
Lentils	515	130,680	900	.	132,095
Canary seed	13,257	78,327	1,050	.	92,635
Dry beans	6,659	54,968	51,752	.	25,710	.	139,089
Dry peas	0	0	29,355	174,926	48,053	645	252,978
Chick peas	115,507	5,511	.	121,018
Forage and grass seed	0	0	0	0	117	1,846	19,932	29,137	22,999	2,823	76,854
Hay and clover	295	100	901	2,383	25,931	40,348	40,107	42,680	151,870	40,456	345,071
Maple products	.	0	1,125	5,846	132,233	11,047	150,251
Forest products	74	1,577	11,180	6,412	46,000	20,440	2,320	3,254	6,960	17,446	115,663
Christmas trees	160	444	15,146	8,905	32,044	14,780	508	451	739	2,257	75,433
Miscellaneous crops	346	1,470	995	3,001	9,004	25,597	17,576	22,053	8,606	8,871	97,519
Total crops	15,869	220,956	130,461	218,935	1,394,210	3,532,098	1,907,657	3,759,897	2,214,838	1,017,019	14,411,906
Cattle	1,471	29,390	27,777	28,828	331,481	1,062,237	450,074	902,152	3,803,888	236,664	6,873,961
Calves	274	341	2,505	2,580	219,891	113,961	104,537	236,633	41,877	80,735	803,334
Hogs	1,116	27,690	29,976	27,590	926,834	805,221	717,209	229,694	437,343	37,728	3,240,401
Sheep	5	5	x	11	689	2,282	118	51	154	x	3,568
Lambs	365	207	1,566	518	23,132	31,068	9,660	8,075	18,964	5,931	99,486
Dairy products	27,765	53,329	93,410	74,481	1,510,407	1,357,337	163,924	119,177	366,827	368,630	4,135,287
Hens and chickens	x	x	51,685	36,839	404,592	472,368	61,149	47,087	122,265	231,239	1,453,080
Turkeys	x	x	6,454	4,396	55,845	118,369	17,024	8,734	21,373	26,524	258,788
Hatcheries (chicks and poults)	x	x	x	x	8,024	12,272	11,532	103	2,633	1,853	43,152
Total eggs	10,555	3,852	23,873	15,131	102,650	212,630	59,985	22,560	42,117	70,325	563,678
Honey	.	212	1,342	509	6,720	14,485	24,279	32,495	45,679	7,304	133,024
Furs	x	1,067	21,218	x	2,267	11,400	1,636	11	1,552	x	49,971
Miscellaneous livestock	421	2,177	5,342	3,755	33,805	66,070	72,028	82,169	157,390	48,892	472,049
Total livestock	62,525	123,793	265,189	202,046	3,626,336	4,279,705	1,693,156	1,688,941	5,062,060	1,126,037	18,129,777
Net Income Stabilization Account payments	271	8,539	6,088	3,544	10,674	169,790	77,725	216,423	110,424	12,207	615,685
Crop insurance payments	180	5,878	482	630	42,100	218,983	76,585	580,148	477,319	4,742	1,407,047
Private Hail Insurance	0	0	0	0	0	0	16,977	52,812	16,282	0	86,071
Provincial stabilization payments	0	387	0	0	395,286	0	0	0	0	0	395,673
Dairy subsidy	.	137	210	167	3,628	3,190	258	174	516	478	8,758
Other payments	738	9,414	4,620	3,584	16,327	231,445	47,418	154,303	434,370	13,488	915,707
Total payments	1,189	24,355	11,400	7,925	468,015	623,408	218,963	1,003,860	1,038,911	30,915	3,428,941
Total receipts	79,583	369,104	407,050	428,906	5,488,561	8,435,211	3,819,776	6,452,698	8,315,809	2,173,971	35,970,624

1. Apples is one of the components of Total tree fruits.

2. Blueberries, Strawberries and Grapes are major components of Total small fruits.

Note(s): The data in this table were last revised in November 2008.

Table 1-23
Farm cash receipts — Agriculture economic statistics — 2003

	Newfoundland and Labrador	Prince Edward Island	Nova Scotia	New Brunswick	Quebec	Ontario	Manitoba	Saskat- chewan	Alberta	British Columbia	Canada
	thousands of dollars										
Wheat, excluding durum	.	2,340	2,074	992	16,171	288,197	428,183	572,474	452,970	5,538	1,768,939
Wheat, excluding durum, Marketing Board payments	14,509	20,356	38,574	17,559	570	91,568
Durum wheat	5,599	331,261	134,227	.	471,087
Durum Wheat, Marketing Board payments	1,060	139,471	47,794	.	188,325
Oats	.	797	246	699	16,240	7,102	113,399	78,122	20,742	5,821	243,168
Barley	.	5,603	1,171	3,527	25,547	10,603	44,428	138,675	134,146	7,248	370,948
Barley, CWB payments	4,837	29,591	22,501	445	57,374
Deferments	-171,230	-344,817	-195,111	-9,627	-720,785
Liquidations	160,225	366,369	181,884	7,548	716,026
Rye	6,830	2,484	1,603	1,519	4	12,440
Flaxseed	0	58,104	130,103	3,953	0	192,160
Canola	4,746	12,777	534,488	703,535	624,433	9,597	1,889,576
Soybeans	.	1,482	.	.	114,944	607,913	34,006	.	.	.	758,345
Corn	.	.	3,935	.	300,437	440,693	41,094	.	526	.	786,685
Sugar beets	0	.	0	.	22,732	.	22,732
Potatoes	2,065	185,266	9,204	100,570	85,563	81,474	139,519	58,089	133,474	50,499	845,723
Greenhouse vegetables	241	423	6,152	714	54,189	322,148	448	733	25,893	226,204	637,145
Field vegetables	3,399	12,191	16,269	5,518	227,962	428,534	32,428	1,052	42,909	113,096	883,358
Apples	x	x	10,200	2,251	33,577	63,036	20	10	19	36,984	146,276
Total tree fruits 1	20	185	10,810	2,261	33,962	116,151	20	20	24	69,250	232,702
Blueberries	220	3,020	29,504	11,796	12,480	1,670	.	.	.	57,900	116,589
Grapes	.	.	640	.	155	30,695	.	.	.	24,300	55,790
Strawberries	375	1,080	4,700	1,850	17,770	17,925	1,175	300	900	7,400	53,475
Total small fruits 2	785	4,336	36,019	17,386	63,295	53,170	1,595	1,520	2,125	129,455	309,685
Floriculture	6,976	2,003	26,031	35,252	137,650	630,141	23,973	25,523	61,599	277,643	1,226,791
Nursery	337	x	3,160	1,883	42,750	160,416	7,333	x	18,356	122,813	360,401
Sod	1,547	x	4,042	1,049	21,621	51,067	1,716	x	15,200	6,195	103,793
Tobacco	.	0	0	0	9,672	212,584	222,256
Ginseng	0	0	0	0	0	50,371	0	0	0	20,528	70,899
Mustard seed	4,805	59,008	11,582	.	75,395
Sunflower seed	44,380	5,198	1,537	0	51,115
Lentils	641	142,374	1,578	.	144,593
Canary seed	12,002	62,286	1,183	.	75,470
Dry beans	10,224	45,175	67,761	.	18,683	.	141,843
Dry peas	0	0	20,655	173,653	58,140	1,047	253,495
Chick peas	13,181	5,344	.	18,525
Forage and grass seed	0	0	0	0	1,407	1,623	18,418	21,433	21,381	888	65,150
Hay and clover	418	139	909	2,948	27,426	47,659	29,872	41,230	122,792	41,334	314,726
Maple products	.	0	1,391	6,839	134,306	10,710	153,245
Forest products	60	1,637	10,157	5,932	46,246	19,817	2,480	3,274	6,843	16,920	113,366
Christmas trees	130	597	14,057	7,402	27,755	15,315	231	550	659	2,585	69,280
Miscellaneous crops	290	1,306	990	2,279	9,395	27,990	17,359	18,188	7,876	8,846	94,519
Total crops	16,271	218,915	146,621	195,256	1,411,519	3,662,974	1,702,672	2,816,375	2,027,056	1,114,448	13,312,062
Cattle	937	17,964	17,321	18,024	227,209	771,581	285,504	574,817	2,500,929	160,129	4,574,415
Calves	159	316	1,450	1,985	155,551	84,709	56,095	208,952	11,082	68,161	588,460
Hogs	1,039	26,510	26,807	30,884	930,626	859,474	760,920	242,427	427,552	39,236	3,345,475
Sheep	0	0	x	9	682	2,889	127	81	254	x	4,395
Lambs	404	184	1,580	537	21,844	35,684	7,431	6,817	15,545	6,351	96,377
Dairy products	27,858	55,023	97,726	76,250	1,676,551	1,470,377	174,422	124,766	384,704	393,102	4,480,779
Hens and chickens	x	x	53,476	43,518	423,007	496,646	63,966	50,687	125,109	246,019	1,528,417
Turkeys	x	x	6,147	4,196	54,961	118,474	18,187	9,406	24,181	27,020	262,642
Hatcheries (chicks and poults)	x	x	x	x	8,039	12,851	8,976	42	3,241	2,307	42,248
Total eggs	12,550	4,276	26,084	16,705	102,177	208,040	59,074	21,739	42,480	73,102	566,227
Honey	.	223	1,700	559	3,445	19,381	28,956	37,985	57,450	7,486	157,184
Furs	x	1,735	21,324	x	2,545	11,865	1,155	21	1,608	x	49,914
Miscellaneous livestock	413	2,126	5,193	4,039	36,103	67,438	56,717	61,228	112,424	42,439	388,120
Total livestock	64,332	113,668	258,854	204,363	3,642,742	4,159,410	1,521,529	1,338,966	3,706,561	1,074,245	16,084,649
Net Income Stabilization Account payments	432	7,490	7,635	5,703	14,967	190,663	86,554	245,742	147,600	16,279	723,065
Crop insurance payments	196	1,268	801	540	46,900	118,763	86,375	929,414	519,062	4,166	1,707,485
Private Hail Insurance	0	0	0	0	0	0	9,493	70,692	24,322	0	104,507
Provincial stabilization payments	0	285	0	0	711,036	0	0	0	0	0	711,321
Other payments	213	13,707	8,008	5,731	102,318	276,011	125,695	354,067	677,027	38,961	1,601,738
Total payments	841	22,750	16,444	11,974	875,221	585,437	308,117	1,599,915	1,368,011	59,406	4,848,116
Total receipts	81,444	355,333	421,919	411,593	5,929,482	8,407,821	3,532,318	5,755,256	7,101,628	2,248,099	34,244,827

1. Apples is one of the components of Total tree fruits.

2. Blueberries, Strawberries and Grapes are major components of Total small fruits.

Note(s): The data in this table were last revised in November 2008.

Table 1-24
Farm cash receipts — Agriculture economic statistics — 2004

	Newfoundland and Labrador	Prince Edward Island	Nova Scotia	New Brunswick	Quebec	Ontario	Manitoba	Saskat- chewan	Alberta	British Columbia	Canada
	thousands of dollars										
Wheat, excluding durum	.	2,724	1,866	1,112	14,657	156,958	384,833	586,029	609,334	5,819	1,763,332
Wheat, excluding durum, Marketing Board payments	6,370	169,150	274,238	204,212	3,052	657,022
Durum wheat	1,837	267,751	98,034	.	367,622
Durum Wheat, Marketing Board payments	801	165,827	52,889	.	219,517
Oats	.	661	209	689	14,490	6,198	95,502	86,593	23,715	3,376	231,433
Barley	.	4,821	1,083	3,695	16,180	9,296	46,475	205,141	164,002	4,534	455,227
Barley, CWB payments	6,319	78,355	45,182	1,150	131,006
Deferments	-161,618	-349,719	-204,658	-9,339	-725,334
Liquidations	173,403	349,259	207,784	9,854	740,301
Rye	7,920	6,405	5,384	9,748	0	29,457
Flaxseed	0	56,032	134,995	7,695	0	198,722
Canola	7,260	11,337	596,954	733,857	785,822	16,137	2,151,367
Soybeans	.	1,545	.	.	104,388	508,644	16,187	.	.	.	630,764
Corn	.	.	2,690	.	328,521	436,195	26,796	.	214	.	794,416
Sugar beets	0	.	0	.	30,921	.	30,921
Potatoes	1,951	151,250	10,138	83,520	81,676	73,139	153,892	53,128	164,615	46,884	820,195
Greenhouse vegetables	235	406	4,774	632	60,351	387,486	482	728	29,859	254,223	739,176
Field vegetables	3,056	12,472	15,640	5,643	243,082	428,677	26,123	1,278	48,123	116,218	900,312
Apples	x	189	8,880	2,262	29,427	68,509	20	10	x	39,028	148,360
Total tree fruits 1	40	204	9,325	2,272	29,717	118,164	20	25	45	69,723	229,535
Blueberries	195	4,509	28,633	13,820	29,060	2,420	.	.	.	72,700	151,337
Grapes	.	.	460	.	370	52,810	.	.	.	28,760	82,400
Strawberries	540	950	5,525	2,000	22,190	16,025	1,235	275	900	7,250	56,890
Total small fruits 2	875	5,706	35,822	18,815	82,620	75,045	1,605	1,250	2,450	160,367	384,554
Floriculture	6,744	2,252	25,301	33,217	146,261	645,812	27,170	18,762	65,296	281,702	1,252,517
Nursery	567	x	4,042	1,948	40,360	176,094	6,274	x	15,963	123,886	372,623
Sod	1,813	x	3,491	1,223	24,555	49,212	1,712	x	16,404	6,602	106,182
Tobacco	.	0	0	0	2,891	228,290	231,181
Ginseng	0	0	0	0	0	43,948	0	0	0	8,922	52,870
Mustard seed	2,073	58,617	14,803	.	75,494
Sunflower seed	27,979	2,980	788	0	31,746
Lentils	565	202,201	2,232	.	204,998
Canary seed	5,334	48,783	769	.	54,886
Dry beans	9,018	66,531	50,391	.	25,976	.	151,916
Dry peas	0	0	20,525	243,060	78,434	654	342,672
Chick peas	1,784	5,511	.	7,295
Forage and grass seed	0	0	0	0	207	3,668	25,680	23,487	17,532	969	71,543
Hay and clover	425	150	1,096	3,057	30,608	49,347	19,681	30,665	114,801	36,299	286,131
Maple products	.	0	1,064	8,040	127,989	10,904	147,996
Forest products	46	1,697	9,128	5,452	46,492	19,192	2,640	3,292	6,732	16,400	111,071
Christmas trees	126	426	14,907	6,796	28,001	10,280	442	597	595	2,852	65,023
Miscellaneous crops	227	980	829	1,692	9,931	28,936	20,244	22,949	10,583	8,368	104,739
Total crops	16,111	185,852	141,407	177,802	1,449,254	3,557,651	1,811,906	3,255,403	2,656,410	1,168,652	14,420,425
Cattle	839	14,466	15,239	14,057	208,795	694,165	215,151	635,688	2,560,831	153,293	4,512,524
Calves	124	192	1,089	1,702	177,481	67,967	57,850	190,813	10,709	67,432	575,359
Hogs	1,115	33,926	31,207	28,843	1,196,713	1,067,520	929,904	315,597	564,882	47,631	4,217,338
Sheep	4	0	x	10	644	2,873	113	79	227	x	4,246
Lambs	333	181	1,357	510	21,905	31,147	4,166	3,635	11,865	4,989	80,088
Dairy products	30,759	59,717	103,804	80,354	1,745,718	1,500,464	178,785	124,224	382,979	395,105	4,601,909
Hens and chickens	x	x	58,194	47,068	445,937	532,945	67,145	55,572	138,447	205,443	1,579,731
Turkeys	x	x	6,455	4,371	57,886	126,291	17,254	9,644	23,147	22,703	267,824
Hatcheries (chicks and poults)	x	x	x	x	9,438	15,227	11,075	32	4,530	1,117	48,703
Total eggs	13,540	4,196	26,789	17,532	102,632	221,889	58,789	22,533	45,921	46,699	560,520
Honey	.	184	1,320	434	5,600	15,930	21,417	27,300	53,075	10,125	135,384
Furs	x	1,779	38,842	x	3,426	14,843	2,117	17	1,880	x	77,512
Miscellaneous livestock	429	2,449	5,797	4,355	42,188	74,196	51,604	61,903	115,779	35,696	394,396
Total livestock	70,099	123,499	290,128	207,678	4,018,363	4,365,455	1,615,370	1,447,037	3,914,271	1,003,634	17,055,534
Net Income Stabilization Account payments	436	10,869	7,602	11,442	15,873	222,893	124,603	297,776	220,284	22,362	934,140
Crop insurance payments	62	3,272	426	2,566	62,935	82,363	83,987	279,698	230,168	10,333	755,810
Private Hail Insurance	0	0	0	0	0	0	4,115	56,848	47,755	0	108,718
Provincial stabilization payments	0	78	0	0	626,258	0	0	0	0	0	626,336
Other payments	819	26,007	17,176	22,086	129,742	369,137	217,560	555,396	944,481	154,857	2,437,261
Total payments	1,317	40,226	25,204	36,094	834,808	674,393	430,265	1,189,718	1,442,688	187,552	4,862,265
Total receipts	87,527	349,577	456,739	421,574	6,302,425	8,597,499	3,857,541	5,892,158	8,013,369	2,359,838	36,338,224

1. Apples is one of the components of Total tree fruits.

2. Blueberries, Strawberries and Grapes are major components of Total small fruits.

Note(s): The data in this table were last revised in November 2008.

Table 1-25
Farm cash receipts — Agriculture economic statistics — 2005

	Newfoundland and Labrador	Prince Edward Island	Nova Scotia	New Brunswick	Quebec	Ontario	Manitoba	Saskat- chewan	Alberta	British Columbia	Canada
	thousands of dollars										
Wheat, excluding durum	.	2,560	629	222	13,243	193,169	270,228	450,244	467,462	4,251	1,402,007
Wheat, excluding durum, Marketing Board payments	3,144	121,141	207,079	200,697	1,756	533,817
Durum wheat	1,012	279,200	79,807	.	360,019
Durum Wheat, Marketing Board payments	388	147,933	52,074	.	200,395
Oats	.	472	156	354	14,515	5,716	79,111	114,715	39,939	2,168	257,147
Barley	.	3,738	304	1,661	14,346	6,898	28,574	170,902	114,738	2,144	343,306
Barley, CWB payments	1,609	80,632	25,665	457	108,363
Deferments	-91,735	-220,780	-123,142	-5,230	-440,887
Liquidations	153,248	340,093	186,386	8,856	688,582
Rye	6,708	3,671	1,790	1,503	..	13,672
Flaxseed	30,514	136,430	4,278	..	171,222
Canola	2,892	6,642	354,680	701,467	742,610	17,837	1,826,129
Soybeans	.	787	.	.	129,183	623,703	6,675	.	.	.	760,348
Corn	.	.	1,697	.	257,577	360,935	2,492	.	264	.	622,966
Sugar beets	32,140	.	32,140
Potatoes	1,841	165,325	6,957	81,112	99,038	64,523	157,782	24,688	138,406	47,780	787,452
Greenhouse vegetables	174	596	4,306	640	66,960	418,702	200	651	30,901	231,200	754,330
Field vegetables ³	3,038	9,577	14,999	5,465	235,093	419,534	28,835	1,439	49,804	122,998	890,780
Apples	0	145	9,460	2,276	28,590	71,797	30	20	30	34,882	147,230
Total tree fruits ¹	15	145	9,895	2,286	28,840	114,587	30	50	55	70,316	226,219
Blueberries	285	4,876	35,628	20,199	37,700	2,060	.	.	.	68,115	168,863
Grapes	.	..	945	..	425	26,980	.	.	.	26,300	54,650
Strawberries	340	1,050	5,200	1,950	24,910	15,620	1,020	575	1,050	6,975	58,690
Total small fruits ²	725	6,127	42,937	25,228	91,114	47,390	1,275	1,575	1,785	152,718	370,872
Floriculture	5,244	x	24,488	43,048	151,953	639,812	28,021	x	68,648	222,377	1,205,112
Nursery	536	x	3,401	2,044	47,946	189,679	8,147	x	26,169	124,973	406,538
Sod	1,562	x	3,208	1,276	26,183	51,279	2,825	x	17,504	8,175	113,358
Tobacco	0	0	796	194,146	194,942
Ginseng	61,583	8,373	69,956
Mustard seed	327	34,186	9,547	.	44,060
Sunflower seed	12,577	2,122	514	..	15,212
Lentils	130	225,202	1,340	.	226,673
Canary seed	1,092	33,752	166	.	35,010
Dry beans	9,281	92,267	23,008	.	30,785	.	155,341
Dry peas	9,123	197,803	57,958	413	265,298
Chick peas	30,147	4,808	.	34,954
Forage and grass seed	264	2,162	24,014	26,263	27,963	2,819	83,485
Hay and clover	485	204	1,277	3,647	35,849	55,656	16,263	32,486	94,220	23,467	263,554
Maple products	.	..	1,050	8,928	168,698	10,968	189,644
Forest products	46	1,696	9,130	5,450	46,491	19,192	2,639	3,292	6,730	16,400	111,066
Christmas trees	112	393	15,308	5,737	26,193	13,044	556	594	661	3,163	65,761
Miscellaneous crops	145	881	704	1,400	10,430	30,946	15,610	23,463	9,758	6,692	100,028
Total crops	13,922	195,275	140,445	188,497	1,476,885	3,632,385	1,294,066	3,071,153	2,402,140	1,074,103	13,488,871
Cattle	1,286	21,633	22,665	19,956	253,913	836,619	398,646	891,675	3,004,713	213,489	5,664,596
Calves	151	112	1,508	1,651	203,788	74,036	54,951	274,462	27,555	85,613	723,828
Hogs	1,090	30,792	26,354	25,249	1,039,134	967,387	952,930	300,832	522,224	39,791	3,905,782
Sheep	13	0	x	14	738	4,416	202	133	x	x	6,195
Lambs	299	210	1,716	557	25,811	41,765	6,952	9,069	18,080	8,284	112,742
Dairy products	35,109	61,612	107,045	82,747	1,852,488	1,587,190	184,025	132,366	398,675	410,992	4,852,249
Hens and chickens	x	x	55,948	45,758	427,020	526,825	66,333	49,614	141,943	273,122	1,615,264
Turkeys	x	x	6,066	4,503	54,994	121,712	18,066	8,558	23,828	33,710	271,506
Hatcheries (chicks and poults)	x	x	x	x	9,859	13,029	9,102	86	2,442	2,864	43,650
Total eggs	12,559	3,816	25,254	16,143	91,975	211,967	75,103	24,153	44,748	63,485	569,203
Honey	.	131	1,580	334	6,257	14,142	13,816	18,933	39,229	9,895	104,317
Furs	x	1,984	45,307	x	2,549	16,040	2,830	8	x	x	85,314
Miscellaneous livestock	436	2,770	6,182	4,719	41,901	81,607	49,433	73,161	132,147	39,161	431,518
Total livestock	73,795	129,162	299,737	209,198	4,010,426	4,496,735	1,832,390	1,783,051	4,357,833	1,193,836	18,386,163
Net Income Stabilization Account payments	285	4,430	3,929	5,180	8,478	92,395	64,568	156,795	94,054	12,226	442,340
Crop insurance payments	87	5,832	1,085	4,914	59,188	50,373	298,554	276,850	115,052	8,137	820,072
Private Hail Insurance	0	0	0	0	0	0	7,107	76,130	33,067	0	116,304
Provincial stabilization payments	0	24	0	0	390,740	0	0	0	0	0	390,764
Other payments	1,011	35,588	22,090	29,999	290,935	657,702	328,499	813,457	874,796	99,865	3,153,942
Total payments	1,383	45,874	27,104	40,093	749,341	800,470	698,728	1,323,232	1,116,969	120,228	4,923,422
Total receipts	89,100	370,311	467,286	437,788	6,236,651	8,929,590	3,825,184	6,177,436	7,876,942	2,388,167	36,798,456

1. Apples is one of the components of Total tree fruits.

2. Blueberries, Strawberries and Grapes are major components of Total small fruits.

3. Field vegetables was formerly referred to as Other vegetables.

Note(s): The data in this table were last revised in November 2011.

Table 1-26
Farm cash receipts — Agriculture economic statistics — 2006

	Newfoundland and Labrador	Prince Edward Island	Nova Scotia	New Brunswick	Quebec	Ontario	Manitoba	Saskat- chewan	Alberta	British Columbia	Canada
thousands of dollars											
Wheat, excluding durum	.	2,908	957	202	12,377	287,676	272,038	657,942	552,694	2,877	1,789,672
Wheat, excluding durum, Marketing Board payments	2,823	4,779	90,505	197,291	165,103	2,510	463,011
Durum wheat	347	329,067	63,616	.	393,029
Durum Wheat, Marketing Board payments	337	143,280	34,674	.	178,291
Oats	.	594	103	450	16,602	6,309	99,381	176,675	30,535	2,223	332,872
Barley	.	4,467	490	1,267	14,370	6,549	35,716	166,299	121,659	1,835	352,652
Barley, CWB payments	2,541	62,865	21,513	379	87,297
Deferments	-109,595	-287,249	-161,075	-6,416	-564,335
Liquidations	91,175	221,140	125,279	5,277	442,871
Rye	5,484	4,249	4,563	2,593	.	16,889
Flaxseed	21,786	133,722	3,295	.	158,802
Canola	2,704	3,107	384,580	1,116,630	990,705	5,322	2,503,049
Soybeans	.	1,389	.	.	113,386	546,798	18,315	.	.	.	679,888
Corn	.	.	1,573	.	280,524	460,832	10,193	.	390	.	753,512
Sugar beets	38,180	.	38,180
Potatoes	2,847	202,905	5,934	113,498	115,489	89,841	137,065	32,573	152,116	43,318	895,586
Greenhouse vegetables	140	290	4,536	360	70,516	464,725	260	852	32,778	232,803	807,259
Field vegetables ³	4,462	9,279	24,162	5,939	258,458	477,559	38,754	1,824	49,231	127,197	996,866
Apples	5	185	10,260	1,748	29,242	67,762	x	20	x	39,319	148,596
Total tree fruits ¹	8	215	10,655	1,763	29,592	115,859	25	60	60	83,230	241,467
Blueberries	195	x	42,968	x	76,500	4,680	.	.	.	68,000	224,939
Grapes	.	.	1,190	36	525	61,850	.	.	.	30,500	94,101
Strawberries	625	x	4,400	1,990	x	18,758	1,300	500	910	4,280	60,782
Total small fruits ²	940	7,429	49,997	32,628	150,078	89,596	1,900	1,425	1,795	146,796	482,584
Floriculture	5,637	x	20,135	x	132,970	607,817	28,826	20,801	68,688	268,054	1,186,002
Nursery	527	x	6,010	x	46,284	181,178	8,045	2,720	30,488	126,354	405,777
Sod	1,527	x	3,634	1,498	26,970	52,000	2,115	x	27,400	10,000	127,155
Tobacco	.	.	0	0	143	175,528	175,671
Ginseng	69,122	.	.	.	7,801	76,923
Mustard seed	39,456	6,662	.	46,117
Sunflower seed	23,263	1,369	.	.	24,632
Lentils	180,235	2,112	.	182,347
Canary seed	1,345	44,770	.	.	46,115
Dry beans	8,209	75,848	43,101	.	26,116	.	153,274
Dry peas	11,210	273,222	81,637	454	366,522
Chick peas	55,629	9,779	.	65,409
Forage and grass seed	134	3,534	22,704	23,650	30,955	995	81,973
Hay and clover	425	238	1,181	3,485	35,353	51,437	15,062	26,284	91,601	20,362	245,426
Maple products	.	.	1,041	10,874	162,129	11,174	185,218
Forest products	31	1,757	8,103	4,971	46,736	18,569	2,797	3,311	6,616	15,878	108,770
Christmas trees	109	405	15,711	7,044	25,751	11,418	654	571	644	3,723	66,030
Miscellaneous crops	110	889	641	1,172	11,328	34,450	16,577	30,102	10,833	5,973	112,075
Total crops	16,764	234,894	154,864	220,809	1,562,925	3,851,190	1,275,268	3,662,549	2,618,671	1,106,944	14,704,878
Cattle	1,221	19,323	21,739	20,048	291,832	839,773	494,450	846,435	2,897,419	192,658	5,624,897
Calves	171	90	1,687	1,925	221,087	58,851	57,485	265,173	42,106	72,636	721,213
Hogs	1,166	23,640	22,881	20,744	848,526	841,538	827,908	289,741	475,765	34,738	3,386,647
Sheep	21	0	x	x	935	4,339	287	154	400	474	6,695
Lambs	313	356	2,141	964	33,600	43,943	7,021	8,668	18,434	9,122	124,563
Dairy products	38,778	63,087	107,660	84,365	1,848,647	1,590,920	188,801	133,433	382,095	405,445	4,843,231
Hens and chickens	x	x	53,401	43,264	409,890	496,523	65,033	59,527	138,043	257,608	1,549,378
Turkeys	x	x	6,571	4,753	56,181	127,442	18,048	9,663	23,826	31,932	278,485
Hatcheries (chicks and poults)	x	x	x	x	11,000	10,989	10,695	153	1,104	1,349	40,224
Total eggs	12,554	3,860	24,734	16,627	95,195	224,361	75,322	23,984	45,229	76,856	598,722
Honey	.	120	1,333	308	6,236	13,211	13,866	20,862	40,247	8,312	104,494
Furs	3,527	1,927	54,280	1,429	3,121	16,797	2,694	18	2,646	10,161	96,601
Miscellaneous livestock	442	2,742	6,277	4,868	42,091	82,746	38,972	66,144	125,510	33,017	402,809
Total livestock	78,640	120,856	302,869	204,151	3,868,342	4,351,433	1,800,583	1,723,955	4,192,824	1,134,309	17,777,961
Net Income Stabilization Account payments	246	3,380	2,802	4,014	6,597	72,463	46,679	108,923	62,673	9,169	316,946
Crop insurance payments	25	5,520	1,625	5,680	55,539	40,757	146,096	142,579	188,521	13,926	600,268
Private Hail Insurance	4,413	101,375	33,044	.	138,832
Provincial stabilization payments	0	0	0	0	496,919	0	0	0	0	0	496,919
Other payments	544	12,443	10,082	23,943	298,645	548,913	428,898	914,314	660,876	82,051	2,980,709
Total payments	815	21,343	14,509	33,637	857,700	662,133	626,086	1,267,191	945,114	105,146	4,533,674
Total receipts	96,219	377,093	472,242	458,597	6,288,967	8,864,756	3,701,938	6,653,695	7,756,608	2,346,399	37,016,513

1. Apples is one of the components of Total tree fruits.
2. Blueberries, Strawberries and Grapes are major components of Total small fruits.
3. Field vegetables was formerly referred to as Other vegetables.

Note(s): The data in this table were last revised in November 2011.

Table 1-27
Farm cash receipts — Agriculture economic statistics — 2007

	Newfoundland and Labrador	Prince Edward Island	Nova Scotia	New Brunswick	Quebec	Ontario	Manitoba	Saskat- chewan	Alberta	British Columbia	Canada
thousands of dollars											
Wheat, excluding durum	.	3,480	732	308	15,383	241,978	421,862	877,491	775,424	4,659	2,341,316
Wheat, excluding durum, Marketing Board payments	3,385	11,939	221,534	386,277	280,011	3,457	906,602
Durum wheat	0	472,525	106,448	.	578,972
Durum Wheat, Marketing Board payments	521	327,742	78,064	.	406,327
Oats	.	830	71	564	24,319	6,369	158,055	193,985	38,799	4,709	427,701
Barley	.	5,301	463	1,795	24,714	8,474	91,391	261,765	303,315	7,691	704,910
Barley, CWB payments	12,554	91,132	37,486	240	141,413
Deferments	-192,159	-513,658	-242,394	-8,639	-956,849
Liquidations	114,227	299,407	167,804	6,663	588,101
Rye	5,346	9,628	16,725	6,745	.	38,444
Flaxseed	59,203	180,444	7,318	.	246,964
Canola	4,875	9,255	739,396	1,488,633	1,207,426	17,262	3,466,847
Soybeans	.	1,616	.	.	182,060	797,910	50,025	.	.	.	1,031,610
Corn	.	.	2,090	.	356,456	658,733	33,213	.	615	.	1,051,106
Sugar beets	34,726	.	34,726
Potatoes	2,773	197,989	4,408	94,912	92,899	69,954	182,986	34,208	139,201	46,421	865,751
Greenhouse vegetables	x	543	4,641	472	69,899	484,970	.	683	37,335	178,857	778,077
Field vegetables ³	4,870	9,784	17,363	6,884	246,801	466,619	33,778	1,320	29,092	130,853	947,364
Apples	x	x	11,280	1,621	37,012	72,057	x	20	24	43,884	166,153
Total tree fruits ¹	15	256	11,670	1,631	37,362	124,022	20	40	49	81,196	256,260
Blueberries	x	x	29,384	27,215	36,000	4,670	.	.	.	92,450	198,415
Grapes	.	.	x	x	825	78,545	.	.	.	26,910	107,538
Strawberries	745	1,300	3,700	2,340	25,200	20,450	1,200	450	1,000	4,200	60,585
Total small fruits ²	1,455	10,094	36,920	34,677	104,145	108,600	1,800	1,270	1,785	169,877	470,623
Floriculture	x	2,037	15,040	32,917	149,451	598,770	x	18,627	72,756	264,913	1,189,267
Nursery	312	x	4,227	x	52,475	180,099	x	x	30,916	146,341	430,049
Sod	x	494	5,333	x	28,970	54,000	2,200	x	25,000	7,700	125,903
Tobacco	.	.	0	0	.	88,955	88,955
Ginseng	84,031	.	.	.	7,360	91,391
Mustard seed	69,305	21,445	.	90,749
Sunflower seed	68,126	2,050	.	.	70,176
Lentils	342,608	618	.	343,226
Canary seed	2,608	73,830	.	.	76,437
Dry beans	7,637	68,075	55,965	.	33,427	.	165,103
Dry peas	23,638	426,056	113,003	87	562,784
Chick peas	42,195	6,477	.	48,672
Forage and grass seed	843	2,840	24,133	24,347	26,292	647	79,103
Hay and clover	402	166	1,197	3,481	35,412	53,068	14,920	31,017	97,385	20,409	257,456
Maple products	.	.	1,062	10,696	141,688	12,070	165,517
Forest products	35	1,932	8,910	5,465	51,387	20,417	3,076	3,640	7,275	17,458	119,594
Christmas trees	86	462	12,498	5,846	23,901	11,087	556	598	675	2,861	58,570
Miscellaneous crops	123	893	527	1,094	12,062	37,617	28,571	42,756	14,309	6,027	143,977
Total crops	18,706	235,914	127,153	206,064	1,664,122	4,205,198	2,197,983	5,202,186	3,458,825	1,117,048	18,433,199
Cattle	1,245	20,626	20,708	20,788	305,480	839,879	458,089	841,778	2,984,472	196,228	5,689,293
Calves	189	747	2,037	2,667	212,224	51,794	44,975	243,515	39,827	52,970	650,946
Hogs	1,090	21,051	18,540	18,846	873,931	814,329	802,769	272,624	443,534	35,593	3,302,308
Sheep	21	0	x	x	919	3,717	180	x	433	x	6,120
Lambs	288	309	2,486	1,293	32,746	40,245	7,067	7,691	20,429	9,677	122,230
Dairy products	44,380	68,177	116,738	90,370	1,964,589	1,712,033	203,131	146,487	426,818	434,428	5,207,151
Hens and chickens	x	x	61,659	50,208	467,222	568,118	74,308	71,167	152,341	274,813	1,747,633
Turkeys	x	x	7,316	5,963	63,057	145,165	22,376	11,906	27,992	41,907	325,763
Hatcheries (chicks and poults)	x	x	x	x	11,133	10,453	11,262	96	888	1,161	40,583
Total eggs	12,580	3,984	25,392	16,761	103,837	240,709	74,455	24,621	45,827	75,986	624,152
Honey	.	341	922	203	6,133	10,738	13,158	20,843	36,494	6,813	95,645
Furs	5,325	2,151	55,535	2,373	2,798	16,312	2,441	x	49	x	96,392
Miscellaneous livestock	489	2,876	6,597	5,247	44,487	86,329	37,924	65,469	128,959	34,165	412,541
Total livestock	86,966	126,783	318,286	220,050	4,088,557	4,539,820	1,752,135	1,706,352	4,308,062	1,173,744	18,320,755
Net Income Stabilization Account payments	218	2,908	2,060	2,784	5,854	63,123	36,803	95,311	56,651	6,491	272,203
Agri-Stability	119	0	692	2,405	7,845	0	28,584	2,840	435	540	43,460
Crop insurance payments	145	6,020	2,158	7,454	62,258	80,668	66,802	119,718	208,895	16,556	570,674
Private Hail Insurance	18,837	114,964	54,642	.	188,443
Provincial stabilization payments	0	0	0	0	837,851	0	0	0	0	0	837,851
Other payments	310	12,476	12,727	18,498	220,574	453,109	261,570	537,711	586,347	76,954	2,180,276
Total payments	792	21,404	17,637	31,141	1,134,382	596,900	412,596	870,544	906,970	100,541	4,092,907
Total receipts	106,463	384,101	463,075	457,255	6,887,061	9,341,918	4,362,714	7,779,083	8,673,858	2,391,334	40,846,861

1. Apples is one of the components of Total tree fruits.

2. Blueberries, Strawberries and Grapes are major components of Total small fruits.

3. Field vegetables was formerly referred to as Other vegetables.

Note(s): The data in this table were last revised in November 2011.

Table 1-28
Farm cash receipts — Agriculture economic statistics — 2008

	Newfoundland and Labrador	Prince Edward Island	Nova Scotia	New Brunswick	Quebec	Ontario	Manitoba	Saskat- chewan	Alberta	British Columbia	Canada
thousands of dollars											
Wheat, excluding durum	.	5,655	1,562	653	19,089	405,178	689,108	1,154,450	1,282,389	6,393	3,564,477
Wheat, excluding durum, Marketing Board payments	5,410	317	158,978	406,455	315,551	5,061	891,773
Durum wheat	0	697,126	168,095	.	865,221
Durum Wheat, Marketing Board payments	429	456,861	99,948	.	557,238
Oats	.	975	113	679	30,232	7,017	184,193	311,884	28,270	6,239	569,603
Barley	.	5,977	696	2,032	23,032	8,431	101,114	350,272	352,015	1,906	845,475
Barley, CWB payments	15,173	77,405	36,225	225	129,027
Deferments	-285,299	-791,749	-356,710	-10,454	-1,444,212
Liquidations	189,676	519,450	245,044	8,116	962,286
Rye	10,295	10,223	11,206	6,184	.	37,908
Flaxseed	69,845	268,107	8,785	.	346,737
Canola	10,158	18,507	1,004,598	2,009,260	1,855,050	17,007	4,914,580
Soybeans	.	2,818	.	.	218,701	837,100	65,635	.	.	.	1,124,253
Corn	.	.	3,481	.	588,610	906,681	57,340	.	3,199	.	1,559,311
Sugar beets	23,543	.	23,543
Potatoes	2,804	202,423	5,412	113,401	117,556	90,946	201,723	39,667	154,802	42,672	971,206
Greenhouse vegetables	x	256	x	x	84,625	529,964	x	822	33,699	223,542	880,584
Field vegetables ³	3,448	7,058	16,248	6,095	257,221	473,584	33,376	1,644	25,442	137,892	962,008
Apples	0	294	12,100	1,899	46,635	75,276	x	5	x	40,974	177,220
Total tree fruits ¹	10	324	12,700	1,919	46,830	122,369	20	65	42	74,540	258,819
Blueberries	390	6,425	26,608	21,430	38,690	3,920	.	.	.	65,875	163,338
Grapes	.	.	950	37	2,225	83,090	.	.	.	33,150	119,462
Strawberries	650	1,600	3,800	2,200	26,230	19,420	1,150	290	1,100	4,810	61,250
Total small fruits ²	1,265	8,751	34,338	28,697	135,215	110,462	1,450	1,250	2,040	165,567	489,034
Floriculture	4,728	2,326	14,041	29,172	157,594	538,229	x	x	64,388	224,714	1,083,618
Nursery	345	0	3,742	x	58,188	205,209	x	4,829	33,559	143,507	465,233
Sod	2,201	x	5,049	1,123	31,982	47,073	1,003	x	31,103	8,270	130,302
Tobacco	.	.	0	0	.	71,827	71,827
Ginseng	64,954	.	.	.	8,320	73,274
Mustard seed	119,913	25,097	.	145,010
Sunflower seed	57,374	623	.	.	57,996
Lentils	597,870	0	.	597,870
Canary seed	6,031	103,189	.	.	109,220
Dry beans	7,431	89,718	62,761	.	34,056	.	193,966
Dry peas	17,878	490,597	123,516	0	631,991
Chick peas	36,633	4,136	.	40,769
Forage and grass seed	354	2,432	23,617	24,657	19,723	717	71,501
Hay and clover	524	227	1,571	4,665	48,136	71,649	15,177	28,551	80,961	23,066	274,526
Maple products	.	.	910	8,815	184,092	15,445	209,262
Forest products	33	1,851	8,539	5,238	49,249	19,567	2,948	3,489	6,972	16,731	114,617
Christmas trees	96	392	15,528	7,533	29,564	8,329	578	456	559	1,977	65,012
Miscellaneous crops	103	910	543	1,152	15,356	42,019	35,915	57,543	19,556	6,000	179,098
Total crops	15,746	240,418	131,188	217,139	2,118,625	4,697,303	2,762,964	7,001,335	4,727,237	1,112,008	23,023,963
Cattle	1,733	17,593	22,131	18,670	369,946	962,886	459,608	869,892	2,945,568	214,431	5,882,458
Calves	203	914	1,839	1,125	203,521	62,113	60,446	249,737	21,021	45,298	646,216
Hogs	1,046	16,267	9,807	16,256	955,879	807,465	701,147	235,831	410,868	35,339	3,189,905
Sheep	13	0	x	x	848	3,392	127	x	349	x	5,343
Lambs	235	259	1,859	609	35,973	44,018	5,835	7,112	17,535	7,726	121,160
Dairy products	46,306	67,233	117,873	90,783	1,952,827	1,706,556	225,970	157,160	459,317	482,281	5,306,306
Hens and chickens	x	x	69,852	58,859	538,661	644,544	83,528	78,547	172,512	319,432	1,995,143
Turkeys	x	x	9,627	7,000	75,752	170,497	25,679	13,829	36,208	49,760	388,447
Hatcheries (chicks and poults)	x	x	x	x	10,260	8,795	10,362	149	843	1,549	37,723
Total eggs	13,415	4,217	26,992	17,352	117,376	270,471	87,373	29,084	54,379	89,542	710,201
Honey	.	520	831	247	8,527	9,280	15,464	23,129	34,423	5,930	98,349
Furs	7,597	2,545	80,779	2,528	3,452	19,805	3,372	x	33	x	132,713
Miscellaneous livestock	520	2,723	7,231	5,355	47,006	91,297	37,143	66,415	128,155	37,903	423,748
Total livestock	92,630	120,013	348,890	224,569	4,320,027	4,801,120	1,716,052	1,731,014	4,281,210	1,302,187	18,937,713
Net Income Stabilization Account payments	156	2,528	1,893	2,827	5,447	54,182	33,171	84,919	48,857	5,766	239,746
AgriInvest	120	4,424	2,065	3,446	45,636	71,409	40,446	63,152	60,820	14,146	305,664
Agri-Stability	149	4,003	3,271	7,214	200,057	166,661	89,447	45,203	62,983	13,390	592,378
Crop insurance payments	193	9,473	1,290	9,912	42,687	68,498	78,241	94,340	262,419	31,735	598,788
Private Hail Insurance	5,972	228,312	82,230	.	316,514
Provincial stabilization payments	0	0	0	0	643,780	0	0	0	0	0	643,780
Other payments	711	12,312	5,592	7,612	154,411	286,900	103,136	164,520	656,454	43,724	1,435,372
Total payments	1,329	32,740	14,111	31,011	1,092,018	647,650	350,413	680,446	1,173,763	108,761	4,132,242
Total receipts	109,706	393,171	494,188	472,720	7,530,670	10,146,072	4,829,430	9,412,795	10,182,211	2,522,955	46,093,917

- Apples is one of the components of Total tree fruits.
- Blueberries, Strawberries and Grapes are major components of Total small fruits.
- Field vegetables was formerly referred to as Other vegetables.

Note(s): The data in this table were last revised in November 2011.

Table 1-29
Farm cash receipts — Agriculture economic statistics — 2009

	Newfoundland and Labrador	Prince Edward Island	Nova Scotia	New Brunswick	Quebec	Ontario	Manitoba	Saskat- chewan	Alberta	British Columbia	Canada
	thousands of dollars										
Wheat, excluding durum	.	3,842	1,828	621	19,773	258,980	630,651	1,149,945	1,195,490	9,241	3,270,369
Wheat, excluding durum, Marketing Board payments	4,905	2,244	170,355	311,734	285,664	2,864	777,766
Durum wheat	0	608,594	150,612	.	759,206
Durum Wheat, Marketing Board payments	238	247,311	54,607	.	302,156
Oats	.	906	142	982	16,639	6,360	115,481	211,495	27,849	4,181	384,036
Barley	.	3,755	359	2,006	14,222	7,366	72,802	366,688	238,977	4,837	711,013
Barley, CWB payments	5,204	49,646	19,486	157	74,493
Deferments	-258,581	-695,274	-304,718	-9,702	-1,268,275
Liquidations	281,284	781,773	346,673	10,071	1,419,801
Rye	6,798	14,033	7,458	4,546	.	32,835
Flaxseed	48,299	181,008	7,362	.	236,669
Canola	5,468	16,007	1,063,638	2,327,215	1,676,720	18,080	5,107,129
Soybeans	.	5,578	.	.	230,244	1,034,766	71,633	.	.	.	1,342,220
Corn	.	.	2,621	.	437,573	820,567	55,428	.	5,071	.	1,321,260
Sugar beets	22,690	.	22,690
Potatoes	2,278	215,837	8,619	134,877	125,775	100,574	251,156	53,819	163,811	42,528	1,099,276
Greenhouse vegetables	209	x	x	432	82,808	608,037	558	850	33,818	245,938	980,262
Field vegetables ³	4,494	8,166	16,856	6,240	277,408	492,783	35,615	1,981	28,753	144,691	1,016,987
Apples	x	x	13,620	1,997	44,972	82,419	x	x	x	x	35,687
Total tree fruits ¹	6	337	14,155	2,007	45,149	125,152	18	152	32	80,691	267,698
Blueberries	x	4,027	13,810	9,077	27,616	x	52,568
Grapes	.	.	925	x	x	59,426	.	.	.	36,101	98,409
Strawberries	x	1,063	3,600	2,790	31,512	22,563	1,604	x	1,108	4,139	69,178
Total small fruits ²	796	5,463	21,361	16,126	110,206	91,730	1,814	1,393	2,485	157,182	408,557
Floriculture	x	x	x	x	153,955	618,006	x	15,955	67,975	234,684	1,195,429
Nursery	x	x	x	x	59,668	205,073	10,532	x	24,738	156,592	471,846
Sod	2,884	x	x	x	28,184	47,577	976	x	33,947	8,812	132,510
Tobacco	.	.	0	0	.	75,977	75,977
Ginseng	90,030	.	.	.	5,960	95,990
Mustard seed	80,059	22,269	.	102,328
Sunflower seed	38,756	0	.	.	38,756
Lentils	847,847	5,419	.	853,266
Canary seed	2,889	65,597	.	.	68,486
Dry beans	4,538	66,952	52,921	.	26,439	.	150,851
Dry peas	21,178	495,959	133,665	0	650,802
Chick peas	36,006	8,258	.	44,264
Forage and grass seed	50	866	23,485	24,204	13,334	280	62,220
Hay and clover	499	227	1,550	4,439	44,900	67,149	17,506	29,885	97,614	31,023	294,791
Maple products	.	.	1,036	22,229	302,558	25,613	351,436
Forest products	31	1,727	7,964	4,885	45,932	18,249	2,749	3,254	6,502	15,605	106,898
Christmas trees	80	368	13,241	7,019	26,652	6,878	345	529	653	1,870	57,635
Miscellaneous crops	121	955	537	1,302	14,869	43,268	36,456	59,766	18,281	6,323	181,879
Total crops	18,506	252,137	129,702	245,372	2,051,477	4,837,002	2,804,562	7,271,820	4,419,021	1,171,910	23,201,510
Cattle	1,985	18,432	24,356	17,116	281,229	832,413	385,473	724,116	2,848,131	171,599	5,304,850
Calves	216	672	2,062	1,711	177,607	40,212	52,950	218,381	15,674	49,646	559,131
Hogs	1,122	10,744	5,525	13,833	922,438	700,216	719,040	176,690	332,178	30,623	2,912,410
Sheep	26	0	x	x	936	4,816	202	x	x	440	7,052
Lambs	291	276	2,455	680	36,581	45,996	7,286	7,276	17,185	8,407	126,432
Dairy products	43,669	71,243	118,882	94,389	2,008,871	1,766,031	228,548	162,168	462,344	493,772	5,449,917
Hens and chickens	x	x	70,748	57,516	550,278	655,211	85,880	78,710	176,755	317,664	2,023,025
Turkeys	x	x	6,733	6,643	79,299	160,822	22,010	11,223	28,537	43,702	359,058
Hatcheries (chicks and poults)	x	x	x	x	11,194	8,827	10,691	111	621	1,685	38,051
Total eggs	13,894	4,085	27,904	18,221	119,056	272,960	86,412	29,306	53,696	91,059	716,592
Honey	.	526	1,063	546	7,837	11,414	19,000	25,269	44,293	6,926	116,874
Furs	3,844	2,105	57,027	2,012	2,407	15,315	3,296	x	x	5,807	91,838
Miscellaneous livestock	495	2,689	6,708	5,314	46,177	87,506	35,857	57,190	122,810	36,616	401,361
Total livestock	88,127	118,538	323,649	222,827	4,243,909	4,601,739	1,656,645	1,490,577	4,102,633	1,257,947	18,106,591
Net Income Stabilization Account payments	157	2,072	1,707	2,184	4,415	46,222	28,209	71,755	39,894	4,905	201,520
AgriInvest	134	3,515	2,424	2,730	35,066	62,612	50,103	111,808	78,027	11,395	357,814
Agri-Stability	238	6,119	8,456	12,680	189,547	181,910	133,693	65,638	141,453	49,969	789,703
Crop insurance payments	164	24,399	2,118	11,608	116,118	53,192	127,958	99,591	358,255	17,472	810,875
Private Hail Insurance	12,181	24,903	82,474	.	119,558
Provincial stabilization payments	0	0	0	0	689,046	0	0	0	0	0	689,046
Other payments	-353	4	1,318	1,030	26,075	23,253	34,176	89,399	129,635	17,986	322,523
Total payments	340	36,109	16,023	30,232	1,060,267	367,189	386,320	463,094	829,738	101,727	3,291,039
Total receipts	106,973	406,784	469,374	498,432	7,355,653	9,805,930	4,847,527	9,225,491	9,351,392	2,531,584	44,599,139

1. Apples is one of the components of Total tree fruits.
 2. Blueberries, Strawberries and Grapes are major components of Total small fruits.
 3. Field vegetables was formerly referred to as Other vegetables.

Note(s): The data in this table were last revised in November 2011.

Table 1-30
Farm cash receipts — Agriculture economic statistics — 2010

	Newfoundland and Labrador	Prince Edward Island	Nova Scotia	New Brunswick	Quebec	Ontario	Manitoba	Saskat- chewan	Alberta	British Columbia	Canada
thousands of dollars											
Wheat, excluding durum	.	3,444	1,492	563	17,799	264,984	561,551	881,140	755,314	6,878	2,493,164
Wheat, excluding durum, Marketing Board payments	2,205	8,626	172,581	290,660	252,815	3,861	730,748
Durum wheat	0	352,111	83,063	.	435,174
Durum Wheat, Marketing Board payments	79	191,516	41,348	.	232,943
Oats	.	735	125	1,449	22,653	5,715	135,297	198,705	30,691	3,376	398,748
Barley	.	4,057	346	2,649	19,038	6,912	55,365	241,645	139,986	3,164	473,163
Barley, CWB payments	3,619	45,216	14,099	24	62,958
Deferments	-224,664	-609,101	-276,865	-7,281	-1,117,911
Liquidations	257,609	689,755	297,449	9,715	1,254,529
Rye	6,550	10,276	10,922	5,241	.	32,989
Flaxseed	52,973	193,570	8,494	.	255,036
Canola	9,763	29,253	1,117,322	2,715,854	1,710,992	13,343	5,596,527
Soybeans	.	8,239	.	.	296,907	1,138,264	92,239	.	.	.	1,535,649
Corn	.	.	3,369	.	457,679	1,030,002	56,595	.	2,240	.	1,549,884
Sugar beets	23,222	.	23,222
Potatoes	1,840	199,913	6,130	115,003	123,861	103,654	203,767	36,111	152,880	28,745	971,904
Greenhouse vegetables	x	356	4,967	x	94,395	656,951	972	1,151	41,554	276,537	1,077,908
Field vegetables ³	3,799	10,526	17,687	7,346	280,151	509,548	32,012	1,775	19,764	147,562	1,030,170
Apples	x	328	13,107	1,729	39,806	68,601	x	17	x	34,481	158,099
Total tree fruits ¹	5	343	13,506	1,749	40,074	103,906	10	68	33	76,445	236,140
Blueberries	151	7,672	21,821	19,486	11,107	4,330	.	.	.	82,620	147,187
Grapes	.	.	x	63	2,445	72,315	34,121
Strawberries	458	925	4,561	2,957	31,246	20,805	1,015	182	574	6,031	68,754
Total small fruits ²	739	8,926	29,581	25,442	78,637	101,705	1,381	673	1,853	186,642	435,581
Floriculture	6,904	x	15,336	x	152,172	604,713	35,382	15,876	64,467	233,711	1,165,031
Nursery	x	x	6,345	3,704	59,008	209,592	11,582	6,430	31,820	171,242	499,975
Sod	x	x	4,818	x	27,014	53,020	1,159	2,507	35,339	7,874	136,883
Tobacco	.	.	0	0	0	105,083	105,083
Ginseng	112,827	.	.	.	4,420	117,247
Mustard seed	64,850	21,476	.	86,326
Sunflower seed	26,091	0	.	.	26,091
Lentils	698,139	24,399	.	722,538
Canary seed	3,123	72,543	.	.	75,666
Dry beans	3,686	83,738	42,492	.	20,658	.	150,574
Dry peas	13,130	419,704	149,234	.	582,068
Chick peas	52,797	531	.	53,328
Forage and grass seed	268	1,152	23,745	24,395	13,941	109	63,610
Hay and clover	522	246	1,668	4,629	44,237	69,543	18,236	27,302	109,873	34,384	310,640
Maple products	.	.	1,628	18,618	238,935	19,204	278,385
Forest products	30	1,697	7,829	4,802	45,154	17,940	2,703	3,199	6,392	15,340	105,087
Christmas trees	68	397	14,217	7,017	24,899	6,819	546	403	717	1,538	56,622
Miscellaneous crops	119	922	537	1,217	14,883	47,384	35,653	54,942	15,715	6,606	177,977
Total crops	18,140	243,507	129,581	229,269	2,053,421	5,297,085	2,742,826	6,684,861	3,798,732	1,224,234	22,421,656
Cattle	1,902	21,252	21,286	18,777	274,031	879,866	390,902	696,258	3,069,474	150,725	5,524,473
Calves	196	1,270	2,699	1,826	189,922	30,446	53,408	262,497	12,898	52,456	607,617
Hogs	x	14,706	x	13,488	1,150,509	750,175	816,545	214,226	368,468	30,118	3,363,820
Sheep	18	0	143	x	1,125	5,918	251	x	x	598	8,739
Lambs	211	313	2,641	676	37,586	47,858	8,485	8,618	18,060	8,562	133,011
Dairy products	45,057	71,267	120,594	93,868	2,055,302	1,780,374	228,076	157,270	478,363	493,741	5,523,912
Hens and chickens	x	x	70,423	58,061	526,713	639,343	82,077	78,591	177,548	304,115	1,967,274
Turkeys	x	x	6,362	6,430	66,090	142,925	19,809	10,724	27,257	42,868	322,547
Hatcheries (chicks and poults)	x	x	x	x	12,403	8,355	11,611	217	446	1,846	38,471
Total eggs	14,598	4,514	29,529	19,272	121,214	275,482	87,222	29,511	54,272	92,334	727,948
Honey	.	569	1,450	848	14,171	16,773	19,774	26,869	47,309	6,672	134,435
Furs	11,263	3,583	89,751	3,092	4,281	22,778	3,599	x	x	8,510	146,991
Miscellaneous livestock	557	2,874	7,396	5,369	48,989	89,174	38,091	59,248	131,292	35,753	418,743
Total livestock	99,127	126,671	356,873	225,154	4,502,336	4,689,468	1,759,850	1,544,229	4,385,977	1,228,297	18,917,980
AgriInvest	121	2,531	1,435	1,754	61,012	63,271	38,304	82,224	71,733	5,955	328,340
Agri-Stability	458	10,943	8,820	6,025	268,164	154,374	92,005	112,930	135,840	44,321	833,880
Crop insurance payments	95	17,177	2,243	14,315	87,166	50,376	169,172	320,094	468,533	27,727	1,156,898
Private Hail Insurance	4,381	102,766	43,142	.	150,289
Provincial stabilization payments	0	0	0	0	194,768	0	0	0	0	0	194,768
Other payments	18	2,811	248	1,977	6,044	17,889	45,516	293,809	97,651	3,561	469,524
Total payments	692	33,462	12,746	24,071	617,154	285,910	349,378	911,823	816,899	81,564	3,133,699
Total receipts	117,958	403,640	499,200	478,494	7,172,911	10,272,463	4,852,053	9,140,912	9,001,608	2,534,095	44,473,335

1. Apples is one of the components of Total tree fruits.
2. Blueberries, Strawberries and Grapes are major components of Total small fruits.
3. Field vegetables was formerly referred to as Other vegetables.

Note(s): The data in this table were last revised in November 2011.

General information

This publication is part of a series of bulletins that also includes:

21-007-X	Farm product price index
21-010-X	Net farm income - Agriculture economic statistics
21-012-X	Farm operating expenses and depreciation charges - Agriculture economic statistics
21-013-X	Value of farm capital - Agriculture economic statistics
21-014-X	Farm debt outstanding - Agriculture economic statistics
21-015-X	Direct payments to agriculture producers - Agriculture economic statistics
21-016-X	Balance sheet of the agricultural sector - Agriculture economic statistics
21-017-X	Agriculture value added account - Agriculture economic statistics
21-018-X	Farm business cash flows - Agriculture economic statistics

This publication presents annual estimates of farm cash receipts by commodity starting from 1981. Data highlights are provided for the most current year.

All series can be obtained free on the internet at the Statistics Canada web site (www.statcan.gc.ca). Notes on concepts and methods are also included for each data series.

Data from 1926 to 1980 inclusive are available in the November 2004 publication of **Farm cash receipts – Agriculture economic statistics**, Catalogue no. 21-011-X, volume 3, no. 2.

This electronic publication is first available in May. It includes preliminary estimates for the calendar year just ended. The following November, the publication is re-issued with revisions to the preliminary estimates. Revisions to the May issue can extend back two years, while those in November generally apply to three years. The date provided at the bottom of each table is the last time that a revision was made to that table.

Most data appearing in this publication are available through the Canadian Socio-Economic Information Management System (CANSIM), Statistics Canada's corporate computerized data base network and information retrieval service.

Statistics Canada is committed to ensuring that there is no disclosure of confidential material and therefore all data are subjected to restrictions prior to release.

Farm cash receipts

This publication presents farm cash receipts by commodity and by calendar year from 1981 to date for every province. Data are available through the CANSIM database on a quarterly basis for the period 1971 to date.

Concepts

Farm cash receipts measure the gross revenue of farm businesses in current dollars. They include sales of crops and livestock products (except sales between farms in the same province) and program payments. Receipts are recorded when the money is paid to farmers before any expenses are paid.

The farm cash receipts series includes agricultural products such as field crops, vegetables, fruits, floriculture and nursery products, maple and forest products, livestock, dairy products, poultry, eggs, wool, fur, and honey.

The direct program payments to producers included in farm cash receipts represent the amounts paid under various government and private programs to individuals involved in agricultural production. The payments related to current agricultural production include subsidies to encourage production or to compensate producers for low market returns, payments to stabilize incomes and payments to compensate producers for crop or livestock losses caused by extreme climatic conditions, disease or other reasons.

The primary reason for compiling farm cash receipts is to estimate, on a provincial basis, the agriculture sector's contribution to gross domestic product. Consequently, all inter-farm sales within a province are excluded from farm cash receipts estimates as their inclusion would result in double counting. It should be noted, however, that farm-to-farm sales between provinces are included as are all sales outside the sector. Excluding inter-farm sales within a province means that farm cash receipts cannot be used as a measure of the gross output of the agriculture sector.

Farm cash receipts are estimated on a cash basis and represent the value of sales when they occur, that is, when ownership first changes hands. Thus, sales are only recorded when cash disbursements have actually occurred. The prices used to value transactions include any bonuses and premiums which can be attributed to specific commodities, but exclude fees deducted before the producer is paid (e.g. storage, transportation, marketing or administrative costs).

In several cases, particularly where crops are concerned, producers receive a partial or an initial payment for their commodities at the time of sale. As the marketing of the crop progresses, an adjustment and/or final payment is made. These payments are only shown in cash receipts when producers receive the funds. Examples of such cases include Ontario Wheat Producers' Marketing Board (OWPMB) and Canadian Wheat Board (CWB) adjustment, interim and/or final payments for wheat, oats and barley. Oats ceased to be marketed through the CWB on July 31, 1989. Similar payment patterns also occur for sugar beets and dry beans.

Receipts from the sale of some agricultural products can be deferred. For example, producers in Western Canada have the option of deferring grain receipts to the next year. In the past, Statistics Canada used the assumption that payments ("liquidations") of deferred grain and oilseed receipts ("deferments") from the crops sold in one calendar year were all received in January of the following year. After conducting an examination of records provided by grain companies, it was established that it was true for 85 to 90% of the cases. The series were revised accordingly, starting with 1998 data, to record more accurately in which month the liquidations occurred.

All published commodity receipts represent receipts from the market. Thus, any subsidy or stabilization payment directed at a specific commodity is not included in the receipts for that commodity. In fact, all direct subsidies or payments to the agriculture sector are recorded separately.

Methods

Cash receipts are, for the most part, based on monthly marketings and prices of the various commodities. Direct program payments are based on data obtained from several sources on a monthly or quarterly basis.

Calculations of commodity cash receipts involve the use of many data sources which can vary by province and by commodity. Most of the prices for the monthly marketings are collected from administrative sources such as marketing boards, regulatory agencies and market information. Some prices are also provided by a monthly farm prices survey conducted by Statistics Canada. In all cases, the prices reflect those received by producers at the point when ownership first changes hands.

Monthly marketings are mostly obtained from administrative records of marketing boards, government agencies and private companies. Grain marketings, including durum wheat, wheat excluding durum, oats, barley, rye, flaxseed and canola for the Western provinces, are obtained from the Canadian Grain Commission. In Eastern Canada, the data are either obtained from marketing boards and producer associations, based on historical marketing patterns or agreed upon in consultation with provincial specialists.

Marketings for crops such as corn, soybeans, tobacco, and sugar beets are obtained from marketing boards and associations as well as private companies.

Cash receipts estimates for potatoes, fruits, vegetables, honey, maple and forest products, and greenhouse and nursery products are obtained through various surveys or censuses conducted by Statistics Canada, the provinces or other federal and provincial departments or agencies. These departments and agencies are also a major source of marketing data for mustard seed, sunflower seed, lentils, canary seed, dry peas, forage and grass seed, and hay and clover.

Livestock marketings, including cattle, calves, hogs, sheep, lambs, hens and chickens, and turkeys, are mainly based on market information from Agriculture and Agri-Food Canada and provincial departments and agencies. Marketings of eggs are also obtained from these sources. In the case of dairy products, producers' marketings of milk and cream are obtained from regulatory agencies and private companies.

Although the farm cash receipts series covers many commodities, it is not exhaustive. There is a miscellaneous category for crops and another for livestock. The cash receipts in these two categories are based on the quinquennial Census of Agriculture in order to account for commodities that are not estimated individually.

Since cash receipts are estimated on a cash basis, any amounts received after the sale of a product, whether in the form of a final or an adjustment payment, will be shown when the cash is received rather than when it was earned. Several items fall into this category, including payments by the CWB and the OWPMB, as well as liquidations of grain receipts. The information for these payments are obtained directly from the administrative bodies involved.

Direct program payments are tabulated quarterly. The agencies responsible for the disbursement of payments under the various programs provide the data on a monthly, quarterly and, in some cases, an annual basis. Only payments directly provided to producers are included in the series.

Payments made under private programs such as private hail insurance and livestock insurance are included in the Farm Cash Receipts series under the categories "Private hail insurance payments" and "Other payments", respectively. In the publication **Direct payments to agriculture producers – Agriculture economic statistics**, Catalogue no. 21-015-X, "Crop insurance payments" and "Other payments" do not include private program payments.

Data comparability

Two new commodities were added to farm cash receipts effective January 1997 under the new North American Industry Classification System (NAICS): Christmas trees and poultry hatcheries. With poultry hatcheries becoming part of the agriculture sector:

- Inter-provincial sales and exports of chicks and poults are included in poultry hatchery receipts.

- Eggs sold to hatcheries in the same province are now considered as inter-farm sales and were removed from egg receipts.
- Inter-provincial sales and exports of eggs sold for hatching are still included in egg receipts along with receipts for table eggs.

As of the June 1999 intercensal revision, horse receipts are estimated using slaughter data from the Canadian Food Inspection Agency combined with international exports of slaughter horses.

Data quality

As indicated above, farm cash receipts are estimated using both administrative and survey sources of data. Where necessary, data are adjusted to ensure conceptual consistency with the receipts series. Much of the data obtained from administrative sources have been summarized from the financial transactions of individual producers. These summarized data are often subject to audit by independent professional accountants and/or are used to make payments to individual producers. As a result, the quality of these data is considered to be very good. The survey data used in the receipts series reflect typical Statistics Canada standards for quality assurance and, therefore, the quality of these data is considered to be good.

However, it is important to note that the receipts data are subject to error. Administrative data may contain non-sampling error such as keying mistakes, while survey data may suffer from both non-sampling and sampling error. Users should also note that the quality of individual estimates may not be consistent between commodities or between provinces because the data sources and their quality may vary. As well, the estimates of inter-farm sales between provinces are not strong as there are few sources for these data.

More detail on the quality of the crops and livestock data that are used to estimate farm cash receipts can be found in the following Statistics Canada publications.

22-002-X	Field Crop Reporting Series
22-007-X	Cereals and Oilseeds Review
22-008-X	Canadian Potato Production
22-003-X	Fruit and Vegetable Production
22-202-X	Greenhouse, Sod and Nursery Industries
23-221-X	Production and Value of Honey and Maple Products
23-010-X	Hog Statistics
23-011-X	Sheep Statistics
23-012-X	Cattle Statistics
23-001-X	The Dairy Review
23-015-X	Poultry and Egg Statistics
21-007-X	Farm Product Price Index