

Catalogue no. 63-007-X

New Motor Vehicle Sales

April 2011



Statistics
Canada

Statistique
Canada

Canada

How to obtain more information

For information about this product or the wide range of services and data available from Statistics Canada, visit our website at www.statcan.gc.ca, e-mail us at infostats@statcan.gc.ca, or telephone us, Monday to Friday from 8:30 a.m. to 4:30 p.m., at the following numbers:

Statistics Canada's National Contact Centre

Toll-free telephone (Canada and the United States):

Inquiries line	1-800-263-1136
National telecommunications device for the hearing impaired	1-800-363-7629
Fax line	1-877-287-4369

Local or international calls:

Inquiries line	1-613-951-8116
Fax line	1-613-951-0581

Depository Services Program

Inquiries line	1-800-635-7943
Fax line	1-800-565-7757

To access this product

This product, Catalogue no. 63-007-X, is available free in electronic format. To obtain a single issue, visit our website at www.statcan.gc.ca and browse by "Key resource" > "Publications."

Standards of service to the public

Statistics Canada is committed to serving its clients in a prompt, reliable and courteous manner. To this end, Statistics Canada has developed *standards of service* that its employees observe. To obtain a copy of these service standards, please contact Statistics Canada toll-free at 1-800-263-1136. The service standards are also published on www.statcan.gc.ca under "About us" > "The agency" > "Providing services to Canadians."

New Motor Vehicle Sales

April 2011

Published by authority of the Minister responsible for Statistics Canada

© Minister of Industry, 2011

All rights reserved. The content of this electronic publication may be reproduced, in whole or in part, and by any means, without further permission from Statistics Canada, subject to the following conditions: that it be done solely for the purposes of private study, research, criticism, review or newspaper summary, and/or for non-commercial purposes; and that Statistics Canada be fully acknowledged as follows: Source (or "Adapted from", if appropriate): Statistics Canada, year of publication, name of product, catalogue number, volume and issue numbers, reference period and page(s). Otherwise, no part of this publication may be reproduced, stored in a retrieval system or transmitted in any form, by any means—electronic, mechanical or photocopy—or for any purposes without prior written permission of Licensing Services, Client Services Division, Statistics Canada, Ottawa, Ontario, Canada K1A 0T6.

June 2011

Catalogue no. 63-007-X, vol. 83, no. 4

ISSN 1209-1146

Frequency: Monthly

Ottawa

Cette publication est également disponible en français.

Note of appreciation

Canada owes the success of its statistical system to a long-standing partnership between Statistics Canada, the citizens of Canada, its businesses, governments and other institutions. Accurate and timely statistical information could not be produced without their continued cooperation and goodwill.

User information

Symbols

The following standard symbols are used in Statistics Canada publications:

- . not available for any reference period
- .. not available for a specific reference period
- ... not applicable
- 0 true zero or a value rounded to zero
- 0^s value rounded to 0 (zero) where there is a meaningful distinction between true zero and the value that was rounded
- p preliminary
- r revised
- x suppressed to meet the confidentiality requirements of the *Statistics Act*
- E use with caution
- F too unreliable to be published
- * significantly different from reference category ($p < 0.05$)

Note to users

Figures may not add up to totals because of rounding.

Acknowledgements

This publication was prepared under the direction of:

- **Mary Beth Garneau**, Director, Distributive Trades Division
- **S. Grenier**, Assistant Director, Distributive Trades Division
- **J. Winters**, Retail Sub-annuals surveys chief, Distributive Trades Division
- **J. De Luca**, Analyst Retail Sub-annuals surveys section, Distributive Trades Division

Table of contents

Highlights	5
Analysis – April 2011	6
Truck sales drive decline	6
Alberta leads declines	7
Related products	9
Statistical tables	
1 Monthly sales of new motor vehicles, by type and origin	11
1-1 in units	11
1-2 in dollars	13
2 Average monthly prices of passenger cars, by origin	15
3 Monthly market share of new passenger car sales (units), by origin, Canada	16
4 Provincial sales of new motor vehicles, by type and origin, in units and dollars, April	17
5 Year to date provincial sales of new motor vehicles, by type and origin	19
5-1 in units, January to April	19
5-2 in dollars, January to April	21
6 Annual sales of new motor vehicles, by type and origin, in units and dollars, Canada	23
7 Canada, monthly sales of new motor vehicles, in units, by type and origin, seasonally adjusted	24
8 Monthly sales of new motor vehicles, in units, by province, seasonally adjusted	25
Data quality, concepts and methodology	
Definitions	27
Appendix	
I Scope of the survey	28
II List of North American motor vehicle manufacturers	31

Table of contents – continued

Charts

1.	New motor vehicle sales, seasonally adjusted, in units, 2008 to 2011	6
2.	Truck, van and bus sales, seasonally adjusted, in units, 2008 to 2011	7
3.	Passenger car sales, seasonally adjusted, in units, 2008 to 2011	7
4.	Monthly distribution of the Canadian motor vehicle market (passenger cars), by origin, 2008 to 2011	8
5.	Cumulative sales of new passenger cars, by origin, in units, 2008 to 2010	8

Highlights

April 2011

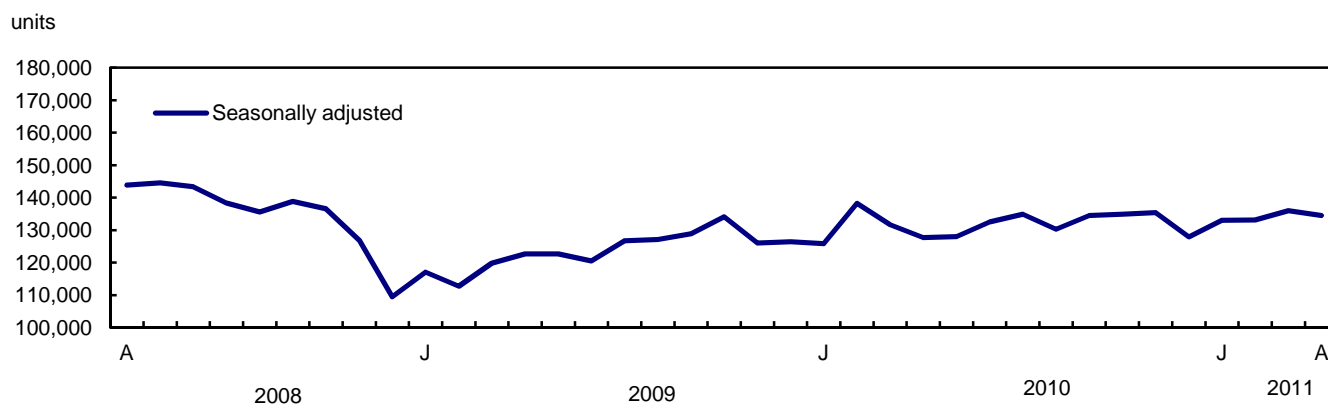
The number of new motor vehicles sold declined 1.1% in April to 134,529 units. Higher sales in Quebec, Ontario and British Columbia (including the territories) were more than offset by declines in the other provinces.

Analysis – April 2011

The number of new motor vehicles sold declined 1.1% in April to 134,529 units. Higher sales in Quebec, Ontario and British Columbia (including the territories) were more than offset by declines in the other provinces.

Chart 1

New motor vehicle sales, seasonally adjusted, in units, 2008 to 2011



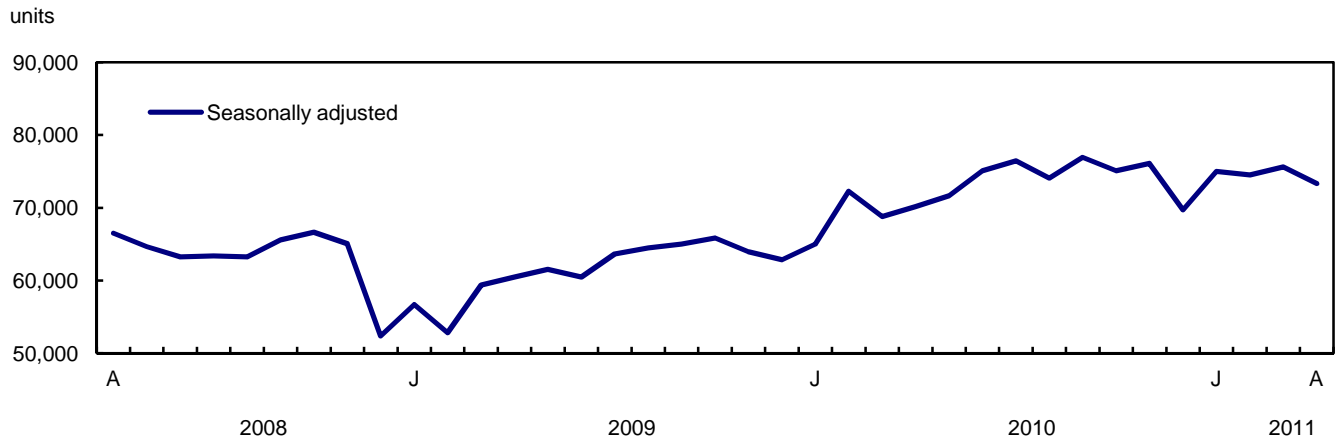
Preliminary industry data indicate that the number of new motor vehicles sold in May decreased 6%.

Truck sales drive decline

Sales of trucks (which include minivans, sport-utility vehicles, light and heavy trucks, vans and buses) decreased 3.0% in April, erasing gains reported in the previous month.

Passenger car sales increased 1.4%, a third consecutive monthly gain. Overseas-built passenger cars accounted for the advance, rising 5.4%. After three months of gains, sales of North American-built passenger cars fell 0.8%. Sales of North American built passenger cars have been on the rise since the middle of 2010.

Chart 2
Truck, van and bus sales, seasonally adjusted, in units, 2008 to 2011



Alberta leads declines

In April, higher sales in Quebec (+0.6%), Ontario (+0.4%) and the region formed by British Columbia and the territories (+0.9%) were more than offset by declines in the other provinces.

The largest decline in units sold was in Alberta (-2.5%), following three straight months of increases.

The remaining provinces posted decreases that ranged from 5.9% in New Brunswick to 9.2% in Manitoba.

Chart 3
Passenger car sales, seasonally adjusted, in units, 2008 to 2011

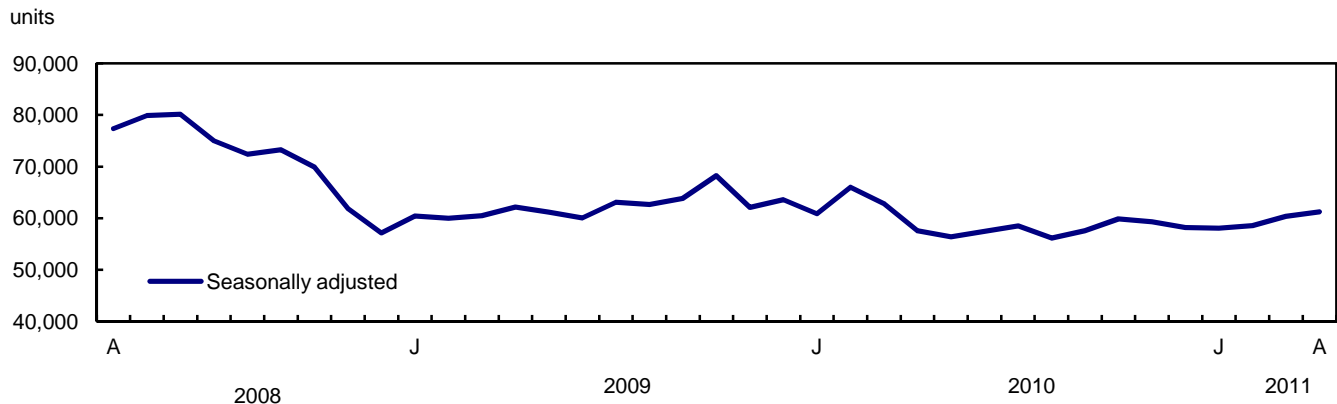


Chart 4

Monthly distribution of the Canadian motor vehicle market (passenger cars), by origin, 2008 to 2011

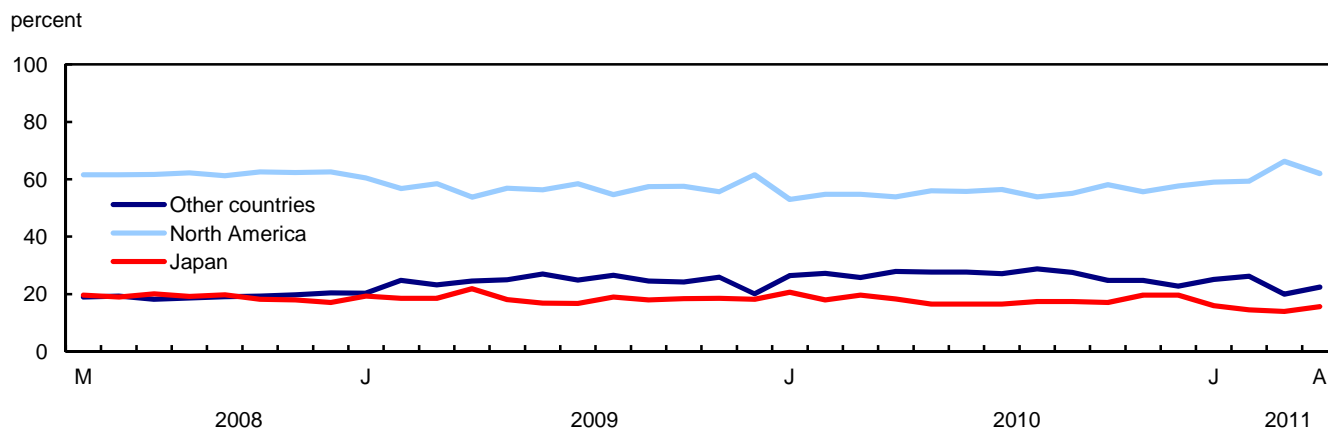
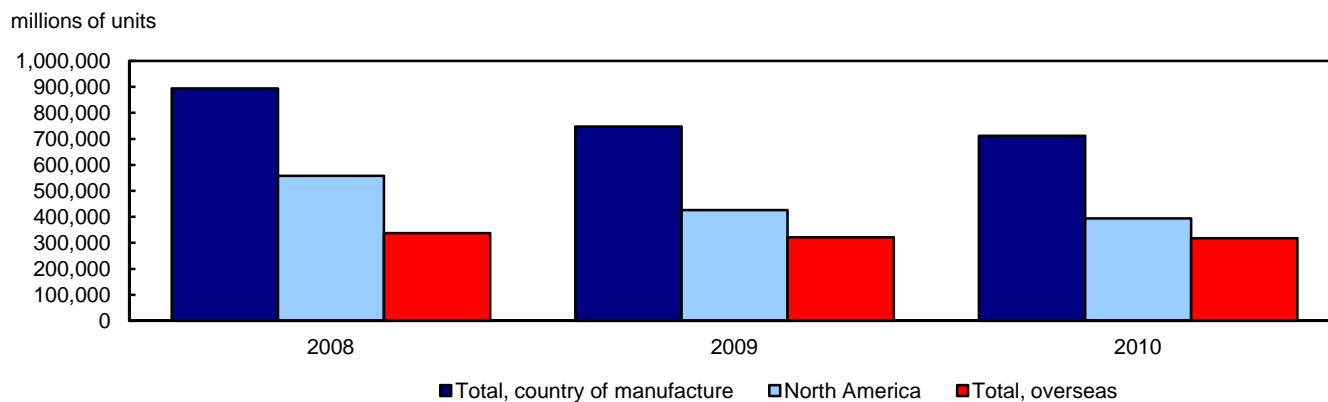


Chart 5

**Cumulative sales of new passenger cars, by origin, in units, 2008 to 2010
January to December**



Related products

Selected publications from Statistics Canada

63-005-X	Retail Trade
63-210-X	Retail Chain and Department Stores
63-236-X	Wholesaling and Retailing in Canada
63-541-X	Retail Commodity Survey, 1989
63F0006X	New Motor Vehicle Sales Seasonal Factors

Selected CANSIM tables from Statistics Canada

079-0003	New motor vehicle sales, Canada, provinces and territories, monthly
----------	---

Selected surveys from Statistics Canada

2402	New Motor Vehicle Sales Survey
------	--------------------------------

Selected summary tables from Statistics Canada

- *New motor vehicle sales, by province (monthly)*
- *Economic indicators, by province and territory (monthly and quarterly)*
- *New motor vehicle sales*
- *New motor vehicle sales, by province*

Statistical tables

Table 1-1
Monthly sales of new motor vehicles, by type and origin in units

	Total new motor vehicles		Passenger cars							
			North America		Japan		Other countries		Total	
	Units	Year/year change	Units	Year/year change	Units	Year/year change	Units	Year/year change	Units	Year/year change
	number	%	number	%	number	%	number	%	number	%
2009										
January	78,817	-25.3	21,581	-37.5	6,907	-18.2	7,255	-16.8	35,743	-30.9
February	82,039	-28.0	23,129	-38.1	7,559	-23.2	10,098	-8.2	40,786	-29.9
March	129,831	-15.4	38,347	-23.7	12,138	-21.9	15,210	6.4	65,695	-18.0
April	146,026	-18.6	40,460	-32.7	16,423	-12.0	18,449	-5.6	75,332	-23.4
May	156,025	-17.1	47,369	-29.7	15,020	-29.8	20,792	0.7	83,181	-24.0
June	140,442	-13.9	41,654	-29.6	12,407	-32.1	19,967	7.6	74,028	-22.9
July	141,621	-7.3	42,908	-19.0	12,228	-29.1	18,289	17.2	73,425	-14.4
August	136,971	-8.4	37,309	-25.9	12,947	-16.5	18,127	20.3	68,383	-15.5
September	131,275	-4.5	38,747	-15.0	12,175	-17.1	16,547	16.2	67,469	-9.4
October	123,607	-1.9	35,303	-11.1	11,284	-2.3	14,842	21.2	61,429	-3.3
November	104,589	-2.9	28,504	-10.7	9,477	2.9	13,280	31.3	51,261	0.0
December	113,613	16.9	31,398	12.1	9,295	22.4	10,246	12.3	50,939	13.9
Year	1,484,856	-11.3	426,709	-23.4	137,860	-17.9	183,102	8.2	747,671	-16.4
2010										
January	83,512	6.0	18,910	-12.4	7,361	6.6	9,403	29.6	35,674	-0.2
February	101,788	24.1	24,871	7.5	8,180	8.2	12,366	22.5	45,417	11.4
March	148,052	14.0	38,427	0.2	13,746	13.2	18,079	18.9	70,252	6.9
April	152,187	4.2	37,922	-6.3	12,908	-21.4	19,682	6.7	70,512	-6.4
May	157,082	0.7	41,793	-11.8	12,296	-18.1	20,591	-1.0	74,680	-10.2
June	156,891	11.7	40,725	-2.2	12,069	-2.7	20,212	1.2	73,006	-1.4
July	150,800	6.5	38,221	-10.9	11,170	-8.7	18,394	0.6	67,785	-7.7
August	138,210	0.9	33,006	-11.5	10,669	-17.6	17,632	-2.7	61,307	-10.3
September	137,349	4.6	32,976	-14.9	10,398	-14.6	16,449	-0.6	59,823	-11.3
October	125,731	1.7	32,293	-8.5	9,496	-15.8	13,809	-7.0	55,598	-9.5
November	118,520	13.3	28,557	0.2	10,069	6.2	12,762	-3.9	51,388	0.2
December	114,376	0.7	26,655	-15.1	9,027	-2.9	10,475	2.2	46,157	-9.4
Year	1,584,498	6.7	394,356	-7.6	127,389	-7.6	189,854	3.7	711,599	-4.8
2011										
January	86,320	3.4	18,972	0.3	5,131	-30.3	8,080	-14.1	32,183	-9.8
February	98,145	-3.6	23,454	-5.7	5,735	-29.9	10,388	-16.0	39,577	-12.9
March	156,453	5.7	45,824	19.2	9,636	-29.9	13,796	-23.7	69,256	-1.4
April	162,613	6.9	46,941	23.8	11,774	-8.8	16,969	-13.8	75,684	7.3

See notes at the end of the table.

Table 1-1 – continued

Monthly sales of new motor vehicles, by type and origin in units

	Total new motor vehicles		Trucks ¹					
			North America		Overseas		Total	
	Units	Year/year change	Units	Year/year change	Units	Year/year change	Units	Year/year change
	number	%	number	%	number	%	number	%
2009								
January	78,817	-25.3	36,985	-21.0	6,089	-12.9	43,074	-20.0
February	82,039	-28.0	34,939	-27.7	6,314	-14.1	41,253	-25.9
March	129,831	-15.4	56,103	-10.6	8,033	-24.3	64,136	-12.6
April	146,026	-18.6	61,884	-10.5	8,810	-25.4	70,694	-12.7
May	156,025	-17.1	63,116	-6.3	9,728	-14.4	72,844	-7.5
June	140,442	-13.9	57,060	-0.8	9,354	-1.9	66,414	-1.0
July	141,621	-7.3	58,572	2.0	9,624	1.9	68,196	2.0
August	136,971	-8.4	59,643	1.3	8,945	-9.0	68,588	-0.1
September	131,275	-4.5	55,050	3.1	8,756	-9.0	63,806	1.3
October	123,607	-1.9	54,058	3.6	8,120	-21.6	62,178	-0.6
November	104,589	-2.9	46,165	-4.1	7,163	-13.6	53,328	-5.5
December	113,613	16.9	55,731	23.5	6,943	-4.7	62,674	19.5
Year	1,484,856	-11.3	639,306	-4.2	97,879	-13.0	737,185	-5.4
2010								
January	83,512	6.0	41,494	12.2	6,344	4.2	47,838	11.1
February	101,788	24.1	49,027	40.3	7,344	16.3	56,371	36.6
March	148,052	14.0	67,315	20.0	10,485	30.5	77,800	21.3
April	152,187	4.2	71,547	15.6	10,128	15.0	81,675	15.5
May	157,082	0.7	72,085	14.2	10,317	6.1	82,402	13.1
June	156,891	11.7	73,561	28.9	10,324	10.4	83,885	26.3
July	150,800	6.5	72,738	24.2	10,277	6.8	83,015	21.7
August	138,210	0.9	67,111	12.5	9,792	9.5	76,903	12.1
September	137,349	4.6	68,135	23.8	9,391	7.3	77,526	21.5
October	125,731	1.7	60,219	11.4	9,914	22.1	70,133	12.8
November	118,520	13.3	57,483	24.5	9,649	34.7	67,132	25.9
December	114,376	0.7	58,086	4.2	10,133	45.9	68,219	8.8
Year	1,584,498	6.7	758,801	18.7	114,098	16.6	872,899	18.4
2011								
January	86,320	3.4	45,109	8.7	9,028	42.3	54,137	13.2
February	98,145	-3.6	48,904	-0.3	9,664	31.6	58,568	3.9
March	156,453	5.7	73,903	9.8	13,294	26.8	87,197	12.1
April	162,613	6.9	73,743	3.1	13,186	30.2	86,929	6.4

1. Trucks include minivans, sport-utility vehicles, light and heavy trucks, vans and buses.

Note(s): Percentage change are year-over-year changes.

Table 1-2
Monthly sales of new motor vehicles, by type and origin in dollars

	Total new motor vehicles		Passenger cars							
			North America		Japan		Other countries		Total	
	Units	Year/year change	Units	Year/year change	Units	Year/year change	Units	Year/year change	Units	Year/year change
	\$'000	%	\$'000	%	\$'000	%	\$'000	%	\$'000	%
2009										
January	2,474,417	-26.9	507,228	-40.4	165,705	-18.5	211,478	-15.5	884,410	-32.2
February	2,555,416	-28.2	551,107	-39.1	180,252	-20.5	292,192	-2.1	1,023,552	-28.4
March	4,023,591	-15.7	925,045	-23.3	286,613	-22.3	470,337	15.7	1,681,996	-15.1
April	4,414,203	-19.8	976,849	-32.1	367,461	-18.9	527,386	-7.5	1,871,697	-24.0
May	4,824,893	-13.6	1,155,227	-27.6	358,324	-29.1	613,272	-0.8	2,126,824	-21.8
June	4,461,372	-9.6	1,030,140	-26.9	303,416	-30.0	616,397	5.3	1,949,953	-19.7
July	4,372,313	-5.0	1,027,236	-17.3	305,041	-24.6	545,203	15.0	1,877,480	-11.5
August	4,365,353	-2.7	903,862	-23.4	316,646	-11.7	547,004	24.1	1,767,513	-10.7
September	4,166,515	-0.7	924,120	-14.2	292,836	-12.8	499,958	19.2	1,716,914	-6.3
October	4,036,810	2.0	870,534	-6.9	272,213	-2.2	469,490	18.4	1,612,237	0.1
November	3,437,215	1.3	706,632	-5.9	234,744	6.8	414,588	23.6	1,355,965	3.8
December	3,805,490	19.4	768,379	14.5	223,785	24.9	327,706	6.8	1,319,870	14.0
Year	46,937,588	-9.0	10,346,359	-22.0	3,307,036	-16.6	5,535,011	8.5	19,188,411	-14.1
2010										
January	2,833,500	14.5	474,593	-6.4	177,970	7.4	284,295	34.4	936,859	5.9
February	3,312,267	29.6	610,233	10.7	198,112	9.9	372,726	27.6	1,181,072	15.4
March	4,813,649	19.6	945,825	2.2	340,711	18.9	562,869	19.7	1,849,405	10.0
April	4,984,212	12.9	955,079	-2.2	323,502	-12.0	614,913	16.6	1,893,494	1.2
May	5,022,808	4.1	1,031,988	-10.7	304,179	-15.1	637,861	4.0	1,974,028	-7.2
June	5,111,902	14.6	1,002,286	-2.7	310,286	2.3	647,111	5.0	1,959,683	0.5
July	4,870,224	11.4	946,606	-7.8	280,458	-8.1	574,342	5.3	1,801,405	-4.1
August	4,557,166	4.4	818,745	-9.4	259,445	-18.1	553,311	1.2	1,631,501	-7.7
September	4,563,791	9.5	808,781	-12.5	254,411	-13.1	536,317	7.3	1,599,509	-6.8
October	4,228,944	4.8	790,829	-9.2	238,846	-12.3	468,816	-0.1	1,498,491	-7.1
November	4,071,860	18.5	721,191	2.1	245,589	4.6	443,100	6.9	1,409,881	4.0
December	4,093,561	7.6	668,738	-13.0	222,015	-0.8	379,874	15.9	1,270,627	-3.7
Year	52,463,884	11.8	9,774,894	-5.5	3,155,524	-4.6	6,075,535	9.8	19,005,955	-1.0
2011										
January	2,980,360	5.2	470,517	-0.9	126,283	-29.0	270,619	-4.8	867,419	-7.4
February	3,366,712	1.6	578,656	-5.2	138,885	-29.9	349,046	-6.4	1,066,586	-9.7
March	5,228,153	8.6	1,113,731	17.8	239,552	-29.7	491,819	-12.6	1,845,102	-0.2
April	5,380,170	7.9	1,156,645	21.1	283,427	-12.4	589,219	-4.2	2,029,291	7.2

See notes at the end of the table.

Table 1-2 – continued

Monthly sales of new motor vehicles, by type and origin in dollars

	Total new motor vehicles		Trucks ¹					
			North America		Overseas		Total	
	Units	Year/year change	Units	Year/year change	Units	Year/year change	Units	Year/year change
	\$'000	%	\$'000	%	\$'000	%	\$'000	%
2009								
January	2,474,417	-26.9	1,354,960	-25.2	235,048	-13.0	1,590,007	-23.6
February	2,555,416	-28.2	1,287,928	-30.4	243,936	-13.0	1,531,864	-28.1
March	4,023,591	-15.7	2,027,588	-15.6	314,007	-20.1	2,341,595	-16.2
April	4,414,203	-19.8	2,195,008	-15.6	347,498	-20.7	2,542,506	-16.4
May	4,824,893	-13.6	2,315,522	-5.5	382,547	-7.9	2,698,069	-5.8
June	4,461,372	-9.6	2,139,679	-0.3	371,740	2.8	2,511,419	0.2
July	4,372,313	-5.0	2,119,983	-1.0	374,850	9.6	2,494,833	0.5
August	4,365,353	-2.7	2,243,426	4.6	354,414	-1.9	2,597,840	3.7
September	4,166,515	-0.7	2,097,077	4.5	352,524	-1.3	2,449,601	3.6
October	4,036,810	2.0	2,092,221	6.9	332,352	-14.5	2,424,573	3.4
November	3,437,215	1.3	1,781,273	0.4	299,977	-4.0	2,081,250	-0.3
December	3,805,490	19.4	2,193,284	25.0	292,335	5.7	2,485,620	22.4
Year	46,937,588	-9.0	23,847,949	-4.7	3,901,228	-7.1	27,749,177	-5.1
2010								
January	2,833,500	14.5	1,640,621	21.1	256,021	8.9	1,896,642	19.3
February	3,312,267	29.6	1,839,852	42.9	291,344	19.4	2,131,195	39.1
March	4,813,649	19.6	2,540,575	25.3	423,669	34.9	2,964,244	26.6
April	4,984,212	12.9	2,688,034	22.5	402,684	15.9	3,090,718	21.6
May	5,022,808	4.1	2,648,271	14.4	400,509	4.7	3,048,780	13.0
June	5,111,902	14.6	2,746,511	28.4	405,708	9.1	3,152,219	25.5
July	4,870,224	11.4	2,662,257	25.6	406,561	8.5	3,068,818	23.0
August	4,557,166	4.4	2,533,359	12.9	392,306	10.7	2,925,665	12.6
September	4,563,791	9.5	2,577,347	22.9	386,934	9.8	2,964,282	21.0
October	4,228,944	4.8	2,329,711	11.4	400,743	20.6	2,730,454	12.6
November	4,071,860	18.5	2,285,083	28.3	376,896	25.6	2,661,979	27.9
December	4,093,561	7.6	2,433,330	10.9	389,605	33.3	2,822,935	13.6
Year	52,463,884	11.8	28,924,951	21.3	4,532,980	16.2	33,457,931	20.6
2011								
January	2,980,360	5.2	1,768,060	7.8	344,881	34.7	2,112,941	11.4
February	3,366,712	1.6	1,926,501	4.7	373,625	28.2	2,300,126	7.9
March	5,228,153	8.6	2,869,216	12.9	513,836	21.3	3,383,051	14.1
April	5,380,170	7.9	2,841,521	5.7	509,358	26.5	3,350,879	8.4

1. Trucks include minivans, sport-utility vehicles, light and heavy trucks, vans and buses.

Note(s): Percentage change are year-over-year changes.

Table 2
Average monthly prices of passenger cars, by origin

Period	Total, country of manufacture		North America		Total, overseas		Japan		Other countries	
	Amount	Change	Amount	Change	Amount	Change	Amount	Change	Amount	Change
	\$	%	\$	%	\$	%	\$	%	\$	%
2009										
January	24,744	-1.9	23,503	-4.6	26,633	0.8	23,991	-0.3	29,149	1.5
February	25,096	2.1	23,828	-1.6	26,757	6.2	23,846	3.5	28,936	6.6
March	25,603	3.5	24,123	0.5	27,678	6.6	23,613	-0.5	30,923	8.8
April	24,846	-0.8	24,144	0.9	25,661	-4.2	22,375	-7.9	28,586	-2.1
May	25,569	2.9	24,388	3.0	27,130	1.5	23,856	1.0	29,496	-1.5
June	26,341	4.1	24,731	3.8	28,412	2.7	24,455	3.1	30,871	-2.1
July	25,570	3.5	23,940	2.1	27,861	4.2	24,946	6.3	29,810	-1.9
August	25,847	5.7	24,226	3.4	27,793	6.3	24,457	5.7	30,176	3.2
September	25,447	3.5	23,850	0.9	27,602	5.7	24,052	5.2	30,214	2.6
October	26,246	3.5	24,659	4.7	28,389	0.1	24,124	0.1	31,633	-2.3
November	26,452	3.8	24,791	5.4	28,533	-0.7	24,770	3.8	31,219	-5.9
December	25,911	0.2	24,472	2.1	28,222	-2.9	24,076	2.0	31,984	-4.9
Year	25,664	2.8	24,247	1.9	27,549	2.4	23,988	1.6	30,229	0.2
2010										
January	26,262	6.1	25,097	6.8	27,575	3.5	24,177	0.8	30,234	3.7
February	26,005	3.6	24,536	3.0	27,783	3.8	24,219	1.6	30,141	4.2
March	26,325	2.8	24,614	2.0	28,392	2.6	24,786	5.0	31,134	0.7
April	26,854	8.1	25,185	4.3	28,795	12.2	25,062	12.0	31,242	9.3
May	26,433	3.4	24,693	1.3	28,645	5.6	24,738	3.7	30,978	5.0
June	26,843	1.9	24,611	-0.5	29,658	4.4	25,709	5.1	32,016	3.7
July	26,575	3.9	24,767	3.5	28,914	3.8	25,108	0.6	31,224	4.7
August	26,612	3.0	24,806	2.4	28,718	3.3	24,318	-0.6	31,381	4.0
September	26,737	5.1	24,526	2.8	29,453	6.7	24,467	1.7	32,605	7.9
October	26,952	2.7	24,489	-0.7	30,365	7.0	25,152	4.3	33,950	7.3
November	27,436	3.7	25,254	1.9	30,165	5.7	24,391	-1.5	34,720	11.2
December	27,528	6.2	25,089	2.5	30,863	9.4	24,595	2.2	36,265	13.4
Year	26,709	4.1	24,787	2.2	29,098	5.6	24,771	3.3	32,001	5.9
2011										
January	26,953	2.6	24,801	-1.2	30,043	9.0	24,612	1.8	33,492	10.8
February	26,950	3.6	24,672	0.6	30,263	8.9	24,217	0.0	33,601	11.5
March	26,642	1.2	24,305	-1.3	31,212	9.9	24,860	0.3	35,649	14.5
April	26,813	-0.2	24,640	-2.2	30,360	5.4	24,072	-3.9	34,723	11.1

Note(s): Percentage changes shown are year-to-year changes.

Table 3
Monthly market share of new passenger car sales (units), by origin, Canada

Period	Total		Passenger cars					
	Units	Market share	North America		Japan		Other countries	
			Units	Market share	Units	Market share	Units	Market share
	number	%	number	%	number	%	number	%
2009								
January	35,743	100.0	21,581	60.4	6,907	19.3	7,255	20.3
February	40,786	100.0	23,129	56.7	7,559	18.5	10,098	24.8
March	65,695	100.0	38,347	58.4	12,138	18.5	15,210	23.2
April	75,332	100.0	40,460	53.7	16,423	21.8	18,449	24.5
May	83,181	100.0	47,369	56.9	15,020	18.1	20,792	25.0
June	74,028	100.0	41,654	56.3	12,407	16.8	19,967	27.0
July	73,425	100.0	42,908	58.4	12,228	16.7	18,289	24.9
August	68,383	100.0	37,309	54.6	12,947	18.9	18,127	26.5
September	67,469	100.0	38,747	57.4	12,175	18.0	16,547	24.5
October	61,429	100.0	35,303	57.5	11,284	18.4	14,842	24.2
November	51,261	100.0	28,504	55.6	9,477	18.5	13,280	25.9
December	50,939	100.0	31,398	61.6	9,295	18.2	10,246	20.1
Year	747,671	100.0	426,709	57.1	137,860	18.4	183,102	24.5
2010								
January	35,674	100.0	18,910	53.0	7,361	20.6	9,403	26.4
February	45,417	100.0	24,871	54.8	8,180	18.0	12,366	27.2
March	70,252	100.0	38,427	54.7	13,746	19.6	18,079	25.7
April	70,512	100.0	37,922	53.8	12,908	18.3	19,682	27.9
May	74,680	100.0	41,793	56.0	12,296	16.5	20,591	27.6
June	73,006	100.0	40,725	55.8	12,069	16.5	20,212	27.7
July	67,785	100.0	38,221	56.4	11,170	16.5	18,394	27.1
August	61,307	100.0	33,006	53.8	10,669	17.4	17,632	28.8
September	59,823	100.0	32,976	55.1	10,398	17.4	16,449	27.5
October	55,598	100.0	32,293	58.1	9,496	17.1	13,809	24.8
November	51,388	100.0	28,557	55.6	10,069	19.6	12,762	24.8
December	46,157	100.0	26,655	57.7	9,027	19.6	10,475	22.7
Year	711,599	100.0	394,356	55.4	127,389	17.9	189,854	26.7
2011								
January	32,183	100.0	18,972	59.0	5,131	15.9	8,080	25.1
February	39,577	100.0	23,454	59.3	5,735	14.5	10,388	26.2
March	69,256	100.0	45,824	66.2	9,636	13.9	13,796	19.9
April	75,684	100.0	46,941	62.0	11,774	15.6	16,969	22.4

Table 4
Provincial sales of new motor vehicles, by type and origin, in units and dollars, April

Type and origin of vehicles	Canada	Newfoundland and Labrador	Prince Edward Island	Nova Scotia	New Brunswick	Quebec
Total, new motor vehicles						
2009 (number)	146,026	3,148	551	4,860	3,556	44,077
2010 (number)	152,187	3,161	545	5,106	4,077	44,428
2011 (number)	162,613	3,105	577	4,483	4,055	45,882
2011 / 2010 (%)	6.9	-1.8	5.9	-12.2	-0.5	3.3
2009 \$'000	4,414,203	86,558	14,039	142,307	101,310	1,239,264
2010 \$'000	4,984,212	94,187	15,142	157,495	125,622	1,303,613
2011 \$'000	5,380,170	92,754	16,083	133,271	129,400	1,402,090
2011 / 2010 (%)	7.9	-1.5	6.2	-15.4	3.0	7.6
Passenger cars, manufactured in North America						
2009 (number)	40,460	942	211	1,622	1,105	12,945
2010 (number)	37,922	810	182	1,579	1,183	12,024
2011 (number)	46,941	1,014	223	1,623	1,258	15,304
2011 / 2010 (%)	23.8	25.2	22.5	2.8	6.3	27.3
2009 \$'000	976,849	21,713	4,631	38,991	25,200	299,911
2010 \$'000	955,079	18,404	4,302	38,083	28,315	282,832
2011 \$'000	1,156,645	23,147	5,219	38,740	30,712	359,104
2011 / 2010 (%)	21.1	25.8	21.3	1.7	8.5	27.0
Passenger cars, manufactured in Japan						
2009 (number)	16,423	x	x	411	x	7,686
2010 (number)	12,908	x	x	360	x	5,558
2011 (number)	11,774	x	x	334	x	4,868
2011 / 2010 (%)	-8.8	x	x	-7.2	x	-12.4
2009 \$'000	367,461	x	x	8,735	x	158,298
2010 \$'000	323,502	x	x	8,517	x	129,459
2011 \$'000	283,427	x	x	7,188	x	107,558
2011 / 2010 (%)	-12.4	x	x	-15.6	x	-16.9
Passenger cars, manufactured in other countries						
2009 (number)	18,449	x	x	676	x	8,251
2010 (number)	19,682	x	x	648	x	7,996
2011 (number)	16,969	x	x	475	x	6,519
2011 / 2010 (%)	-13.8	x	x	-26.7	x	-18.5
2009 \$'000	527,386	x	x	16,149	x	223,290
2010 \$'000	614,913	x	x	16,732	x	225,076
2011 \$'000	589,219	x	x	11,732	x	207,029
2011 / 2010 (%)	-4.2	x	x	-29.9	x	-8.0
Trucks ¹ , manufactured in North America						
2009 (number)	61,884	x	x	1,970	1,508	12,508
2010 (number)	71,547	x	x	2,255	2,012	15,702
2011 (number)	73,743	x	x	1,756	2,026	15,106
2011 / 2010 (%)	3.1	x	x	-22.1	0.7	-3.8
2009 \$'000	2,195,008	x	x	71,796	53,442	456,808
2010 \$'000	2,688,034	x	x	84,666	74,609	547,596
2011 \$'000	2,841,521	x	x	65,126	78,017	581,511
2011 / 2010 (%)	5.7	x	x	-23.1	4.6	6.2
Trucks ¹ , manufactured overseas						
2009 (number)	8,810	x	x	181	163	2,687
2010 (number)	10,128	x	x	264	190	3,148
2011 (number)	13,186	x	x	295	224	4,085
2011 / 2010 (%)	30.2	x	x	11.7	17.9	29.8
2009 \$'000	347,498	x	x	6,636	5,534	100,956
2010 \$'000	402,684	x	x	9,498	6,469	118,649
2011 \$'000	509,358	x	x	10,485	7,699	146,888
2011 / 2010 (%)	26.5	x	x	10.4	19.0	23.8

See notes at the end of the table.

Table 4 – continued

Provincial sales of new motor vehicles, by type and origin, in units and dollars, April

Type and origin of vehicles	Canada	Ontario	Manitoba	Saskatchewan	Alberta	British Columbia and the Territories ²
Total, new motor vehicles						
2009 (number)	146,026	51,047	4,236	4,035	17,076	13,440
2010 (number)	152,187	54,365	4,103	4,188	18,254	13,960
2011 (number)	162,613	59,847	4,461	4,496	20,417	15,290
2011 / 2010 (%)	6.9	10.1	8.7	7.4	11.8	9.5
2009 \$'000	4,414,203	1,558,014	139,133	133,402	565,849	434,327
2010 \$'000	4,984,212	1,844,190	139,577	148,621	673,052	482,712
2011 \$'000	5,380,170	2,000,629	155,265	161,903	754,495	534,280
2011 / 2010 (%)	7.9	8.5	11.2	8.9	12.1	10.7
Passenger cars, manufactured in North America						
2009 (number)	40,460	14,901	1,099	972	3,544	3,119
2010 (number)	37,922	14,516	922	824	3,038	2,844
2011 (number)	46,941	18,456	1,125	885	3,347	3,706
2011 / 2010 (%)	23.8	27.1	22.0	7.4	10.2	30.3
2009 \$'000	976,849	364,614	26,662	23,968	92,870	78,289
2010 \$'000	955,079	380,536	23,043	21,189	84,838	73,539
2011 \$'000	1,156,645	462,398	27,759	22,800	90,806	95,960
2011 / 2010 (%)	21.1	21.5	20.5	7.6	7.0	30.5
Passenger cars, manufactured in Japan						
2009 (number)	16,423	4,304	246	204	1,142	1,774
2010 (number)	12,908	3,903	208	129	889	1,396
2011 (number)	11,774	3,784	193	126	931	1,103
2011 / 2010 (%)	-8.8	-3.0	-7.2	-2.3	4.7	-21.0
2009 \$'000	367,461	106,250	5,784	5,126	28,914	40,912
2010 \$'000	323,502	105,606	5,489	3,306	24,750	35,873
2011 \$'000	283,427	98,401	4,971	3,293	24,329	28,298
2011 / 2010 (%)	-12.4	-6.8	-9.4	-0.4	-1.7	-21.1
Passenger cars, manufactured in other countries						
2009 (number)	18,449	5,378	316	248	1,014	1,631
2010 (number)	19,682	6,332	276	234	1,160	2,080
2011 (number)	16,969	6,052	235	200	1,006	1,897
2011 / 2010 (%)	-13.8	-4.4	-14.9	-14.5	-13.3	-8.8
2009 \$'000	527,386	170,087	8,563	6,646	31,054	50,926
2010 \$'000	614,913	222,202	8,086	6,213	39,273	75,093
2011 \$'000	589,219	231,198	7,405	6,406	39,751	71,399
2011 / 2010 (%)	-4.2	4.0	-8.4	3.1	1.2	-4.9
Trucks ¹ , manufactured in North America						
2009 (number)	61,884	23,341	2,354	2,450	10,351	5,853
2010 (number)	71,547	26,120	2,465	2,813	11,983	6,392
2011 (number)	73,743	26,848	2,584	2,998	13,488	7,163
2011 / 2010 (%)	3.1	2.8	4.8	6.6	12.6	12.1
2009 \$'000	2,195,008	788,487	89,910	91,552	372,727	218,903
2010 \$'000	2,688,034	991,804	94,217	110,663	475,358	244,941
2011 \$'000	2,841,521	1,019,850	103,120	118,485	534,238	278,078
2011 / 2010 (%)	5.7	2.8	9.4	7.1	12.4	13.5
Trucks ¹ , manufactured overseas						
2009 (number)	8,810	3,123	221	161	1,025	1,063
2010 (number)	10,128	3,494	232	188	1,184	1,248
2011 (number)	13,186	4,707	324	287	1,645	1,421
2011 / 2010 (%)	30.2	34.7	39.7	52.7	38.9	13.9
2009 \$'000	347,498	128,576	8,213	6,109	40,285	45,297
2010 \$'000	402,684	144,043	8,742	7,250	48,832	53,265
2011 \$'000	509,358	188,782	12,010	10,920	65,370	60,545
2011 / 2010 (%)	26.5	31.1	37.4	50.6	33.9	13.7

1. Trucks include minivans, sport-utility vehicles, light and heavy trucks, vans and buses.

2. For reasons of confidentiality, data for the Yukon, the Northwest Territories and Nunavut have been included with the data for British Columbia.

Table 5-1

Year to date provincial sales of new motor vehicles, by type and origin in units, January to April

Province	Total new motor vehicles		Passenger cars							
			North America		Japan		Other countries		Total	
	Units	Year/year change	Units	Year/year change	Units	Year/year change	Units	Year/year change	Units	Year/year change
	number	%	number	%	number	%	number	%	number	%
2009										
Newfoundland and Labrador	7,695	-21.8	2,244	-38.5	x	x	x	x	3,777	-27.5
Prince Edward Island	1,457	-12.5	540	-25.6	x	x	x	x	854	-13.0
Nova Scotia	13,551	-21.7	4,562	-34.6	1,126	-23.2	1,758	-13.4	7,446	-28.9
New Brunswick	10,010	-21.2	2,961	-38.6	x	x	x	x	4,825	-30.6
Quebec	121,486	-17.3	36,232	-31.5	18,734	-10.2	21,037	3.2	76,003	-19.3
Ontario	156,386	-18.4	48,002	-28.9	12,034	-20.4	15,981	-6.2	76,017	-23.7
Manitoba	12,596	-18.0	3,179	-34.7	707	-29.1	885	-4.0	4,771	-29.7
Saskatchewan	12,952	-16.7	2,936	-25.1	562	-13.4	642	-13.2	4,140	-22.0
Alberta	56,481	-28.5	12,041	-39.5	3,075	-34.3	3,432	-14.1	18,548	-35.1
British Columbia and the Territories¹	44,099	-29.3	10,820	-36.8	5,296	-25.8	5,059	-16.7	21,175	-30.2
Canada	436,713	-20.9	123,517	-32.3	43,027	-18.0	51,012	-4.8	217,556	-24.6
2010										
Newfoundland and Labrador	9,221	19.8	2,481	10.6	x	x	x	x	4,199	11.2
Prince Edward Island	1,668	14.5	556	3.0	x	x	x	x	845	-1.1
Nova Scotia	15,318	13.0	4,610	1.1	1,188	5.5	1,871	6.4	7,669	3.0
New Brunswick	12,196	21.8	3,466	17.1	x	x	x	x	5,566	15.4
Quebec	135,019	11.1	36,505	0.8	17,711	-5.5	22,816	8.5	77,032	1.4
Ontario	175,308	12.1	46,051	-4.1	12,980	7.9	19,902	24.5	78,933	3.8
Manitoba	13,134	4.3	2,973	-6.5	637	-9.9	898	1.5	4,508	-5.5
Saskatchewan	14,266	10.1	2,609	-11.1	513	-8.7	750	16.8	3,872	-6.5
Alberta	62,025	9.8	11,024	-8.4	2,840	-7.6	4,235	23.4	18,099	-2.4
British Columbia and the Territories¹	47,384	7.4	9,855	-8.9	4,896	-7.6	6,381	26.1	21,132	-0.2
Canada	485,539	11.2	120,130	-2.7	42,195	-1.9	59,530	16.7	221,855	2.0
2011										
Newfoundland and Labrador	9,232	0.1	2,702	8.9	x	x	x	x	3,856	-8.2
Prince Edward Island	1,678	0.6	576	3.6	x	x	x	x	786	-7.0
Nova Scotia	14,114	-7.9	4,793	4.0	881	-25.8	1,506	-19.5	7,180	-6.4
New Brunswick	12,254	0.5	3,616	4.3	x	x	x	x	5,227	-6.1
Quebec	133,086	-1.4	42,782	17.2	12,915	-27.1	17,475	-23.4	73,172	-5.0
Ontario	186,360	6.3	53,001	15.1	10,234	-21.2	18,053	-9.3	81,288	3.0
Manitoba	14,612	11.3	3,369	13.3	521	-18.2	769	-14.4	4,659	3.3
Saskatchewan	15,067	5.6	2,655	1.8	324	-36.8	574	-23.5	3,553	-8.2
Alberta	66,991	8.0	10,459	-5.1	2,510	-11.6	3,141	-25.8	16,110	-11.0
British Columbia and the Territories¹	50,137	5.8	11,238	14.0	3,754	-23.3	5,877	-7.9	20,869	-1.2
Canada	503,531	3.7	135,191	12.5	32,276	-23.5	49,233	-17.3	216,700	-2.3

See notes at the end of the table.

Table 5-1 – continued

Year to date provincial sales of new motor vehicles, by type and origin in units, January to April

Province	Total new motor vehicles		Trucks ²					
			North America		Overseas		Total	
	Units	Year/year change	Units	Year/year change	Units	Year/year change	Units	Year/year change
	number	%	number	%	number	%	number	%
2009								
Newfoundland and Labrador	7,695	-21.8	x	x	x	x	3,918	-15.3
Prince Edward Island	1,457	-12.5	x	x	x	x	603	-11.8
Nova Scotia	13,551	-21.7	5,437	-10.0	668	-15.5	6,105	-10.6
New Brunswick	10,010	-21.2	4,632	-9.8	553	-9.5	5,185	-9.8
Quebec	121,486	-17.3	37,417	-13.8	8,066	-13.5	45,483	-13.7
Ontario	156,386	-18.4	69,621	-10.8	10,748	-22.5	80,369	-12.6
Manitoba	12,596	-18.0	7,122	-7.1	703	-22.1	7,825	-8.7
Saskatchewan	12,952	-16.7	8,168	-12.9	644	-25.3	8,812	-13.9
Alberta	56,481	-28.5	34,238	-24.1	3,695	-30.2	37,933	-24.8
British Columbia and the Territories ¹	44,099	-29.3	19,275	-30.0	3,649	-19.2	22,924	-28.5
Canada	436,713	-20.9	189,911	-16.4	29,246	-20.5	219,157	-16.9
2010								
Newfoundland and Labrador	9,221	19.8	x	x	x	x	5,022	28.2
Prince Edward Island	1,668	14.5	x	x	x	x	823	36.5
Nova Scotia	15,318	13.0	6,913	27.1	736	10.2	7,649	25.3
New Brunswick	12,196	21.8	6,036	30.3	594	7.4	6,630	27.9
Quebec	135,019	11.1	47,712	27.5	10,275	27.4	57,987	27.5
Ontario	175,308	12.1	84,092	20.8	12,283	14.3	96,375	19.9
Manitoba	13,134	4.3	7,901	10.9	725	3.1	8,626	10.2
Saskatchewan	14,266	10.1	9,700	18.8	694	7.8	10,394	18.0
Alberta	62,025	9.8	39,644	15.8	4,282	15.9	43,926	15.8
British Columbia and the Territories ¹	47,384	7.4	22,080	14.6	4,172	14.3	26,252	14.5
Canada	485,539	11.2	229,383	20.8	34,301	17.3	263,684	20.3
2011								
Newfoundland and Labrador	9,232	0.1	x	x	x	x	5,376	7.0
Prince Edward Island	1,678	0.6	x	x	x	x	892	8.4
Nova Scotia	14,114	-7.9	5,972	-13.6	962	30.7	6,934	-9.3
New Brunswick	12,254	0.5	6,242	3.4	785	32.2	7,027	6.0
Quebec	133,086	-1.4	46,860	-1.8	13,054	27.0	59,914	3.3
Ontario	186,360	6.3	88,727	5.5	16,345	33.1	105,072	9.0
Manitoba	14,612	11.3	8,885	12.5	1,068	47.3	9,953	15.4
Saskatchewan	15,067	5.6	10,579	9.1	935	34.7	11,514	10.8
Alberta	66,991	8.0	44,792	13.0	6,089	42.2	50,881	15.8
British Columbia and the Territories ¹	50,137	5.8	24,019	8.8	5,249	25.8	29,268	11.5
Canada	503,531	3.7	241,659	5.4	45,172	31.7	286,831	8.8

1. For reasons of confidentiality, data for the Yukon, the Northwest Territories and Nunavut have been included with the data for British Columbia.

2. Trucks include minivans, sport-utility vehicles, light and heavy trucks, vans and buses.

Note(s): Percentage changes shown are year-to-year changes.

Table 5-2

Year to date provincial sales of new motor vehicles, by type and origin in dollars, January to April

Province	Total new motor vehicles		Passenger cars							
			North America		Japan		Other countries		Total	
	Units	Year/year change	Units	Year/year change	Units	Year/year change	Units	Year/year change	Units	Year/year change
	\$'000	%	\$'000	%	\$'000	%	\$'000	%	\$'000	%
2009										
Newfoundland and Labrador	213,484	-18.7	51,189	-37.8	x	x	x	x	82,936	-26.5
Prince Edward Island	38,328	-9.2	11,779	-26.5	x	x	x	x	17,966	-14.0
Nova Scotia	394,373	-15.1	107,586	-33.7	24,792	-22.5	40,740	-2.0	173,119	-26.6
New Brunswick	292,214	-16.1	67,768	-37.5	x	x	x	x	108,223	-28.3
Quebec	3,512,121	-14.1	834,689	-31.0	400,466	-11.5	558,063	10.4	1,793,216	-17.3
Ontario	4,859,425	-21.7	1,163,936	-31.1	309,179	-21.8	534,682	-6.1	2,007,796	-24.3
Manitoba	411,063	-18.6	76,299	-35.8	16,928	-28.4	22,975	3.9	116,201	-29.4
Saskatchewan	426,604	-21.7	71,144	-25.5	13,726	-18.1	16,979	-7.8	101,849	-22.0
Alberta	1,886,876	-31.2	308,925	-39.8	79,727	-34.9	107,817	-11.9	496,470	-34.5
British Columbia and the Territories¹	1,433,140	-29.1	266,915	-34.5	124,557	-29.6	172,408	-14.0	563,879	-28.1
Canada	13,467,627	-21.8	2,960,229	-32.7	1,000,031	-20.1	1,501,393	-1.6	5,461,655	-23.9
2010										
Newfoundland and Labrador	271,467	27.2	55,515	8.5	x	x	x	x	93,399	12.6
Prince Edward Island	46,058	20.2	12,796	8.6	x	x	x	x	18,832	4.8
Nova Scotia	470,693	19.4	110,955	3.1	27,741	11.9	46,048	13.0	184,742	6.7
New Brunswick	379,490	29.9	83,169	22.7	x	x	x	x	131,333	21.4
Quebec	4,000,784	13.9	851,433	2.0	404,805	1.1	634,305	13.7	1,890,542	5.4
Ontario	5,883,870	21.1	1,184,636	1.8	346,298	12.0	685,389	28.2	2,216,321	10.4
Manitoba	452,980	10.2	73,299	-3.9	16,089	-5.0	24,905	8.4	114,292	-1.6
Saskatchewan	508,950	19.3	65,733	-7.6	13,250	-3.5	20,651	21.6	99,634	-2.2
Alberta	2,254,020	19.5	297,904	-3.6	77,958	-2.2	139,353	29.2	515,215	3.8
British Columbia and the Territories¹	1,675,315	16.9	250,294	-6.2	122,506	-1.6	223,714	29.8	596,515	5.8
Canada	15,943,628	18.4	2,985,730	0.9	1,040,295	4.0	1,834,803	22.2	5,860,830	7.3
2011										
Newfoundland and Labrador	279,804	3.1	61,351	10.5	x	x	x	x	86,973	-6.9
Prince Edward Island	49,500	7.5	13,619	6.4	x	x	x	x	18,012	-4.4
Nova Scotia	423,393	-10.0	113,953	2.7	19,422	-30.0	37,969	-17.5	171,342	-7.3
New Brunswick	394,470	3.9	86,950	4.5	x	x	x	x	125,166	-4.7
Quebec	4,123,309	3.1	998,052	17.2	288,781	-28.7	547,967	-13.6	1,834,801	-2.9
Ontario	6,375,971	8.4	1,326,895	12.0	271,965	-21.5	688,812	0.5	2,287,673	3.2
Manitoba	512,194	13.1	83,495	13.9	13,207	-17.9	22,420	-10.0	119,120	4.2
Saskatchewan	540,015	6.1	68,396	4.1	8,459	-36.2	17,079	-17.3	93,934	-5.7
Alberta	2,492,884	10.6	278,384	-6.6	67,453	-13.5	114,839	-17.6	460,676	-10.6
British Columbia and the Territories¹	1,763,858	5.3	288,456	15.2	94,354	-23.0	227,890	1.9	610,700	2.4
Canada	16,955,395	6.3	3,319,549	11.2	788,147	-24.2	1,700,703	-7.3	5,808,398	-0.9

See notes at the end of the table.

Table 5-2 – continued

Year to date provincial sales of new motor vehicles, by type and origin in dollars, January to April

Province	Total new motor vehicles		Trucks ²					
			North America		Overseas		Total	
	Units	Year/year change	Units	Year/year change	Units	Year/year change	Units	Year/year change
	\$'000	%	\$'000	%	\$'000	%	\$'000	%
2009								
Newfoundland and Labrador	213,484	-18.7	x	x	x	x	130,548	-12.8
Prince Edward Island	38,328	-9.2	x	x	x	x	20,363	-4.5
Nova Scotia	394,373	-15.1	197,787	-2.0	23,467	-13.8	221,254	-3.4
New Brunswick	292,214	-16.1	165,676	-6.7	18,316	-6.9	183,991	-6.7
Quebec	3,512,121	-14.1	1,418,137	-10.5	300,766	-10.0	1,718,904	-10.4
Ontario	4,859,425	-21.7	2,415,054	-19.9	436,573	-18.5	2,851,628	-19.7
Manitoba	411,063	-18.6	269,753	-12.7	25,107	-20.9	294,861	-13.4
Saskatchewan	426,604	-21.7	300,699	-21.5	24,055	-21.6	324,755	-21.5
Alberta	1,886,876	-31.2	1,246,114	-30.1	144,294	-28.7	1,390,408	-30.0
British Columbia and the Territories ¹	1,433,140	-29.1	718,067	-32.0	151,193	-16.6	869,260	-29.8
Canada	13,467,627	-21.8	6,865,484	-20.8	1,140,489	-17.5	8,005,972	-20.3
2010								
Newfoundland and Labrador	271,467	27.2	x	x	x	x	178,069	36.4
Prince Edward Island	46,058	20.2	x	x	x	x	27,226	33.7
Nova Scotia	470,693	19.4	258,910	30.9	27,042	15.2	285,951	29.2
New Brunswick	379,490	29.9	227,771	37.5	20,386	11.3	248,157	34.9
Quebec	4,000,784	13.9	1,726,443	21.7	383,798	27.6	2,110,241	22.8
Ontario	5,883,870	21.1	3,154,112	30.6	513,437	17.6	3,667,548	28.6
Manitoba	452,980	10.2	310,955	15.3	27,733	10.5	338,688	14.9
Saskatchewan	508,950	19.3	382,569	27.2	26,747	11.2	409,316	26.0
Alberta	2,254,020	19.5	1,562,894	25.4	175,910	21.9	1,738,804	25.1
British Columbia and the Territories ¹	1,675,315	16.9	898,280	25.1	180,518	19.4	1,078,800	24.1
Canada	15,943,628	18.4	8,709,082	26.9	1,373,718	20.4	10,082,799	25.9
2011								
Newfoundland and Labrador	279,804	3.1	x	x	x	x	192,832	8.3
Prince Edward Island	49,500	7.5	x	x	x	x	31,488	15.7
Nova Scotia	423,393	-10.0	218,247	-15.7	33,801	25.0	252,050	-11.9
New Brunswick	394,470	3.9	242,463	6.5	26,841	31.7	269,302	8.5
Quebec	4,123,309	3.1	1,812,655	5.0	475,854	24.0	2,288,509	8.4
Ontario	6,375,971	8.4	3,433,481	8.9	654,818	27.5	4,088,299	11.5
Manitoba	512,194	13.1	354,184	13.9	38,888	40.2	393,073	16.1
Saskatchewan	540,015	6.1	411,053	7.4	35,028	31.0	446,081	9.0
Alberta	2,492,884	10.6	1,798,873	15.1	233,334	32.6	2,032,208	16.9
British Columbia and the Territories ¹	1,763,858	5.3	933,069	3.9	220,090	21.9	1,153,159	6.9
Canada	16,955,395	6.3	9,405,298	8.0	1,741,700	26.8	11,146,997	10.6

1. For reasons of confidentiality, data for the Yukon, the Northwest Territories and Nunavut have been included with the data for British Columbia.

2. Trucks include minivans, sport-utility vehicles, light and heavy trucks, vans and buses.

Note(s): Percentage changes shown are year-to-year changes.

Table 6
Annual sales of new motor vehicles, by type and origin, in units and dollars, Canada

Year	Total	Passenger cars				Trucks ¹		
		Total	North America	Japan	Other countries	Total	North America	Overseas
number								
1988	1,565,501	1,056,310	724,733	243,835	87,742	509,191	459,777	49,414
1989	1,483,875	988,134	675,340	239,548	73,246	495,741	422,398	73,343
1990	1,317,869	884,564	580,397	239,603	64,564	433,305	361,403	71,902
1991	1,287,790	873,184	573,297	237,701	62,186	414,606	347,671	66,935
1992	1,227,419	798,023	503,460	236,675	57,888	429,396	370,422	58,974
1993	1,192,934	739,049	493,759	196,310	48,980	453,885	402,112	51,773
1994	1,260,056	748,666	573,361	129,547	45,758	511,390	475,444	35,946
1995	1,166,535	670,190	553,265	71,493	45,432	496,345	469,590	26,755
1996	1,204,557	660,769	572,581	47,901	40,287	543,788	517,738	26,050
1997	1,424,380	738,550	629,488	66,297	42,765	685,830	628,214	57,616
1998	1,428,932	740,809	590,667	98,275	51,867	688,123	627,256	60,867
1999	1,542,041	806,450	625,292	103,016	78,142	735,591	672,444	63,147
2000	1,587,561	849,171	640,856	106,937	101,378	738,390	669,492	68,898
2001	1,597,964	868,633	619,810	122,998	125,825	729,331	647,987	81,344
2002	1,733,318	934,704	651,305	144,596	138,803	798,614	698,870	99,744
2003	1,626,468	865,475	604,726	126,908	133,841	760,993	654,136	106,857
2004	1,575,195	820,103	542,814	116,426	160,863	755,092	653,637	101,455
2005	1,630,310	845,222	574,639	123,482	147,101	785,088	673,205	111,883
2006	1,666,327	863,161	573,102	142,159	147,900	803,166	681,244	121,922
2007	1,690,538	859,003	551,001	151,298	156,704	831,535	727,909	103,626
2008	1,674,145	894,506	557,422	167,916	169,168	779,639	667,139	112,500
2009	1,484,856	747,671	426,709	137,860	183,102	737,185	639,306	97,879
2010	1,584,498	711,599	394,356	127,389	189,854	872,899	758,801	114,098
\$'000								
1988	26,865,327	16,709,476	11,080,866	3,784,902	1,843,708	10,155,851	9,369,528	786,323
1989	26,959,378	16,541,801	11,034,684	3,887,341	1,619,774	10,417,577	9,059,482	1,358,095
1990	24,888,751	15,245,831	9,784,293	4,015,958	1,445,580	9,642,918	8,210,502	1,432,416
1991	22,855,626	14,103,545	9,038,584	3,789,001	1,275,960	8,752,081	7,503,659	1,248,422
1992	23,484,455	13,691,746	8,450,516	4,053,782	1,187,451	9,792,709	8,613,984	1,178,725
1993	24,630,359	13,278,180	8,620,649	3,560,913	1,096,620	11,352,180	10,227,082	1,125,101
1994	27,893,795	14,182,894	10,595,001	2,346,168	1,241,727	13,710,902	12,846,447	864,453
1995	28,168,806	13,882,004	11,070,368	1,492,451	1,319,184	14,286,804	13,544,980	741,824
1996	31,485,777	14,510,882	12,062,092	1,118,289	1,330,501	16,974,894	16,115,584	859,309
1997	38,986,224	16,836,615	13,809,161	1,519,604	1,507,852	22,149,610	20,341,263	1,808,346
1998	40,255,777	17,054,244	13,101,703	2,110,330	1,842,211	23,201,534	21,165,239	2,036,296
1999	45,317,914	19,017,278	14,138,902	2,246,522	2,631,853	26,300,638	24,055,653	2,244,986
2000	46,930,514	20,790,660	15,089,665	2,431,251	3,269,743	26,139,852	23,745,933	2,393,922
2001	46,886,252	21,168,628	14,575,745	2,882,386	3,710,497	25,717,623	22,958,458	2,759,162
2002	52,227,499	23,191,483	15,521,295	3,501,294	4,168,898	29,036,014	25,633,136	3,402,877
2003	50,493,308	21,685,587	14,565,218	2,988,274	4,132,093	28,807,720	24,845,915	3,961,804
2004	49,639,223	20,489,761	13,261,753	2,694,970	4,533,035	29,149,463	25,384,561	3,764,904
2005	52,311,147	21,220,807	14,051,867	2,928,424	4,240,519	31,090,339	27,031,615	4,058,725
2006	53,966,261	22,077,502	14,250,869	3,469,392	4,357,245	31,888,757	27,445,267	4,443,494
2007	53,676,866	21,770,114	13,452,878	3,707,820	4,609,417	31,906,752	27,961,186	3,945,567
2008	51,565,539	22,331,952	13,263,053	3,966,400	5,102,499	29,233,586	25,036,422	4,197,166
2009	46,937,588	19,188,411	10,346,359	3,307,036	5,535,011	27,749,177	23,847,949	3,901,228
2010	52,463,884	19,005,955	9,774,894	3,155,524	6,075,535	33,457,931	28,924,951	4,532,980

1. Trucks include minivans, sport-utility vehicles, light and heavy trucks, vans and buses.

Table 7
Canada, monthly sales of new motor vehicles, in units, by type and origin, seasonally adjusted

Period	Total new motor vehicles		Passenger cars				Trucks ¹	
			North America		Overseas		Total	
	Units	Month/month change	Units	Month/month change	Units	Month/month change	Units	Month/month change
	number	%	number	%	number	%	number	%
2009								
January	117,092	6.9	36,947	7.9	23,472	2.6	56,673	8.2
February	112,776	-3.7	34,689	-6.1	25,278	7.7	52,809	-6.8
March	119,822	6.2	34,590	-0.3	25,859	2.3	59,373	12.4
April	122,661	2.4	34,291	-0.9	27,877	7.8	60,493	1.9
May	122,725	0.1	33,612	-2.0	27,572	-1.1	61,541	1.7
June	120,510	-1.8	33,416	-0.6	26,625	-3.4	60,469	-1.7
July	126,729	5.2	37,029	10.8	26,031	-2.2	63,669	5.3
August	127,135	0.3	34,470	-6.9	28,164	8.2	64,501	1.3
September	128,857	1.4	36,270	5.2	27,585	-2.1	65,002	0.8
October	134,075	4.0	39,060	7.7	29,177	5.8	65,838	1.3
November	126,054	-6.0	35,191	-9.9	26,892	-7.8	63,971	-2.8
December	126,420	0.3	37,144	5.5	26,430	-1.7	62,846	-1.8
2010								
January	125,849	-0.5	33,501	-9.8	27,342	3.5	65,006	3.4
February	138,255	9.9	36,746	9.7	29,226	6.9	72,283	11.2
March	131,646	-4.8	34,065	-7.3	28,787	-1.5	68,794	-4.8
April	127,726	-3.0	31,786	-6.7	25,770	-10.5	70,170	2.0
May	128,049	0.3	30,629	-3.6	25,773	0.0	71,647	2.1
June	132,536	3.5	31,405	2.5	26,056	1.1	75,075	4.8
July	134,919	1.8	32,586	3.8	25,895	-0.6	76,438	1.8
August	130,253	-3.5	30,929	-5.1	25,233	-2.6	74,091	-3.1
September	134,499	3.3	31,968	3.4	25,587	1.4	76,944	3.9
October	134,932	0.3	34,217	7.0	25,634	0.2	75,081	-2.4
November	135,405	0.4	33,319	-2.6	25,962	1.3	76,124	1.4
December	127,895	-5.5	32,858	-1.4	25,318	-2.5	69,719	-8.4
2011								
January	133,060	4.0	35,405	7.8	22,656	-10.5	74,999	7.6
February	133,078	0.0	35,719	0.9	22,851	0.9	74,508	-0.7
March	135,970	2.2	39,330	10.1	21,042	-7.9	75,598	1.5
April	134,529	-1.1	39,023	-0.8	22,172	5.4	73,334	-3.0

1. Trucks include minivans, sport-utility vehicles, light and heavy trucks, vans and buses.

Note(s): Percentage changes shown are month-to-month changes.

Table 8
Monthly sales of new motor vehicles, in units, by province, seasonally adjusted

Period	Canada	Newfoundland and Labrador	Prince Edward Island	Nova Scotia	New Brunswick	Quebec
	number					
2009						
January	117,092	2,065	423	3,454	2,762	30,511
February	112,776	1,924	376	3,550	2,417	30,669
March	119,822	2,232	421	3,762	2,724	33,145
April	122,661	2,444	481	3,899	2,861	33,106
May	122,725	2,496	411	4,139	3,004	32,582
June	120,510	2,463	425	4,131	2,803	32,780
July	126,729	2,464	446	4,349	2,944	33,068
August	127,135	2,455	431	4,250	3,112	33,102
September	128,857	2,685	490	4,155	3,412	33,668
October	134,075	2,770	464	4,448	3,247	34,909
November	126,054	2,221	422	3,626	2,980	34,410
December	126,420	2,536	496	4,109	3,008	34,624
2010						
January	125,849	2,702	482	3,997	3,067	34,443
February	138,255	2,679	470	4,641	3,527	37,129
March	131,646	2,699	502	3,980	3,196	36,282
April	127,726	2,436	466	4,008	3,228	33,653
May	128,049	2,512	484	3,881	3,046	32,510
June	132,536	2,676	478	4,513	3,143	33,921
July	134,919	2,683	487	3,734	3,343	35,013
August	130,253	2,547	460	3,779	3,169	33,959
September	134,499	2,603	482	4,095	3,334	34,405
October	134,932	2,764	500	3,818	3,242	36,197
November	135,405	2,701	518	3,720	3,375	35,736
December	127,895	2,640	446	3,404	3,018	35,420
2011						
January	133,060	2,813	431	3,810	3,252	35,539
February	133,078	2,630	471	3,888	3,023	34,113
March	135,970	2,623	526	3,939	3,418	34,379
April	134,529	2,408	485	3,581	3,218	34,593

Table 8 – continued

Monthly sales of new motor vehicles, in units, by province, seasonally adjusted

Period	Canada	Ontario	Manitoba	Saskatchewan	Alberta	British Columbia and the Territories
	number					
2009						
January	117,092	41,394	3,618	3,768	16,535	12,562
February	112,776	41,949	3,258	3,344	14,165	11,124
March	119,822	43,812	3,541	3,761	14,711	11,713
April	122,661	44,800	3,739	3,725	15,298	12,308
May	122,725	44,788	3,878	3,920	15,060	12,447
June	120,510	42,759	3,579	3,493	15,360	12,717
July	126,729	47,166	3,707	3,972	15,794	12,819
August	127,135	47,632	3,757	3,752	15,731	12,913
September	128,857	47,221	3,734	3,954	16,061	13,477
October	134,075	49,047	3,923	4,167	17,032	14,068
November	126,054	46,135	3,673	3,395	15,479	13,713
December	126,420	45,906	3,588	3,642	15,542	12,969
2010						
January	125,849	45,027	3,545	3,996	15,678	12,912
February	138,255	51,104	4,106	4,398	17,424	12,777
March	131,646	48,492	3,581	3,760	16,446	12,708
April	127,726	47,458	3,610	3,742	16,344	12,781
May	128,049	48,452	3,814	3,720	16,670	12,960
June	132,536	49,360	3,963	4,087	17,294	13,101
July	134,919	51,085	3,980	3,897	17,381	13,316
August	130,253	47,166	3,806	4,034	18,063	13,270
September	134,499	49,852	3,844	4,191	18,392	13,301
October	134,932	50,515	3,660	3,870	17,076	13,290
November	135,405	50,648	3,859	4,029	17,347	13,472
December	127,895	47,059	3,578	3,871	16,148	12,311
2011						
January	133,060	49,016	3,904	4,237	17,070	12,988
February	133,078	50,080	3,973	4,047	17,389	13,464
March	135,970	50,955	4,252	4,256	18,147	13,475
April	134,529	51,138	3,859	3,953	17,693	13,601

Definitions

Trucks

Trucks include light and heavy trucks, minivans, sport utility vehicles, vans, coaches and buses, regardless of their intended use.

Passenger car

The term passenger car refers to all vehicles whose primary function is to carry passengers, excluding those vehicles classified as a commercial vehicle (see definition above). Passenger cars also include cars used for commercial purposes, i.e. taxis, auto rentals and other car fleets.

Country of origin

New motor vehicles fall into two categories defined on the basis of origin: those manufactured in North America and those manufactured overseas. The latter are imported in a fully assembled state from countries other than the United States or Mexico. All passenger cars and commercial vehicles assembled in Canada, Mexico and the United States and sold in Canada classified are as North American manufactured vehicles.

Motor vehicle sales - units

The number of new motor vehicles sold in Canada.

Motor vehicle sales - dollars

Net sales refers to the selling price to the consumer, i.e., manufacturer's invoice price plus estimated dealer's markup, including charges for standard and optional accessories. Sales taxes are excluded.

Average price of passenger cars

The average price is obtained by dividing the total dollar sales by the number of units sold. Therefore, changes in the average price reflect variations in the models sold as well as price changes. For example, an increase in the average price for passenger cars may reflect both a shift to more expensive models as well as price increases.

Appendix I

Scope of the survey

The interest in and need for detailed statistics on the automobile industry arose years ago, when the industry began playing a prominent role in the Canadian economy. For over 50 years, Statistics Canada has been collecting and disseminating statistical information on the retail sales of new motor vehicles. Not only are these statistics required to produce estimates of Canadian consumer spending for the national accounts and the gross domestic product, but they have also served and continue to serve as one of the most important, most often requested indicators of the health of Canada's economy.¹

However, estimates of the total retail sales volume of new motor vehicles were not sufficient to meet the incessant demand for more information. There came an increasing need for data on the characteristics of the fleet of new vehicles sold at retail, either to learn more about the preferences of Canadian consumers or to assess the penetration of the Canadian market by major foreign manufacturers. Statistics on new motor vehicle sales were expanded in the early 1970s to provide separate figures for Japanese vehicle sales.

The statistics in this report cover exclusively retail sales of new motor vehicles within Canada's borders. Data are derived from a postal survey (a census - see the methodology section at the end of the report for more details).

Other statistics connected with the automobile industry (sales of new and used car dealers, auto parts and accessories stores and so on) are available on the monthly Retail Trade survey (Catalogue No. 63-005). For further information, please contact the Retail Commodity Section, Distributive Trades Division, Statistics Canada, Ottawa, K1A 0T6, (Telephone: 613-951-3549 or toll free at 1-877-421-3067).

Data quality and methodology

This survey is a census of all motor vehicle manufacturers and importers known to be active in Canada.

The value of sales is reported at selling price to consumer (i.e. the manufacturer's invoice price plus estimated dealer's markup, charges for standard equipment and options, less provincial sales tax and federal goods and services tax (G.S.T.) and harmonized sales tax (H.S.T.)).

The response rate for this survey is generally 100%. Minimal estimation is required so there is little bias resulting from non-response introduced in these data.

All attempts have been made to minimize the non-sampling errors: the questionnaires used in the survey have been carefully designed to minimize different interpretations; detailed acceptance testing has been carried out for the different stages of editing and processing.

Data confidentiality

Statistics Canada is prohibited by law from publishing any statistics which would divulge information relating to any identifiable business without the previous consent in writing of that business.² The disclosure of data likely to reveal specific information on the activity of a particular company is systematically and rigorously controlled and regulated to prevent the publication or disclosure of any information deemed confidential. The rules regarding confidentiality

1. The new motor vehicle sales series is one of ten statistical series making up the leading indicator developed by Statistics Canada for current economic analysis purposes.

2. See Section 17 of the Statistics Act (Chapter 5-19), entitled «Secrecy».

are therefore applied in such a way that no data are shown for cells (or statistical units). If information is withheld for reasons of confidentiality an "X" will appear in the appropriate cell of this publication.

Another way of preserving data confidentiality without having to enter an "X" is to combine (consolidate) the information **from selected regions** (or selected cells) for the same item. The data in question can be aggregated and published in a less detailed, but still confidential, form. For example, the data for the Northwest Territories, the Yukon and Nunavut are included with the British Columbia data.

Seasonal adjustment

Time series contain the elements essential to the description, explanation and forecasting of the behaviour of an economic phenomenon: "They are statistical records of the evolution of economic processes through time."³ Economic time series such as the New Motor Vehicles Sales Survey can be broken down into five main components: the trend-cycle, seasonality, the trading-day effect, the Easter holiday effect and the irregular component.

The trend represents the long-term change in the series, whereas the cycle represents a smooth, quasi-periodical movement about the trend, showing a succession of growth and decline phases (e.g., the business cycle). These two components—the trend and the cycle—are estimated together, and the trend-cycle reflects the fundamental evolution of the series. The other components reflect short-term transient movements.

The seasonal component represents sub-annual, monthly or quarterly fluctuations that recur more or less regularly from one year to the next. Seasonal variations are caused by the direct and indirect effects of the climatic seasons and institutional factors (attributable to social conventions or administrative rules; e.g., Christmas).

The trading-day component originates from the fact that the relative importance of the days varies systematically within the week and that the number of each day of the week in a given month varies from year to year. This effect is present when activity varies with the day of the week. For instance, Sunday is typically less active than the other days, and the number of Sundays, Mondays, etc., in a given month changes from year to year.

The Easter holiday effect is the variation due to the shift of part of April's activity to March when Easter falls in March rather than April.

Lastly, the irregular component includes all other more or less erratic fluctuations not taken into account in the preceding components. It is a residual that includes errors of measurement on the variable itself as well as unusual events (e.g., strikes, drought, floods, major power blackout or other unexpected events causing variations in respondents' activities).

Thus, the latter four components—seasonal, irregular, trading-day and Easter holiday effect—all conceal the fundamental trend-cycle component of the series. Seasonal adjustment (correction of seasonal variation) consists in removing the seasonal, trading-day and Easter holiday effect components from the series, and it thus helps reveal the trend-cycle. While seasonal adjustment permits a better understanding of the underlying trend-cycle of a series, the seasonally adjusted series still contains an irregular component. Slight month-to-month variations in the seasonally adjusted series may be simple irregular movements. To get a better idea of the underlying trend, users should examine several months of the seasonally adjusted series.

Since April 2008, New Motor Vehicle Sales Survey data are seasonally adjusted using the X-12-ARIMA⁴ software. The technique that is used essentially consists of first correcting the initial series for all sorts of undesirable effects, such as the trading-day and the Easter holiday effects, by a module called regARIMA. These effects are estimated using regression models with ARIMA errors (auto-regressive integrated moving average models). The series can also be extrapolated for at least one year by using the model. Subsequently, the raw series—pre-adjusted and extrapolated if applicable—is seasonally adjusted by the X-11 method.

3. «A Note on the Seasonal adjustment of Economic Time Series», Canadian Statistical Review, August 1974.

4. For more information, see X-12-ARIMA Reference Manual Version 0.3 (2007), U.S. Census Bureau.

The X-11 method is used for analysing monthly and quarterly series. It is based on an iterative principle applied in estimating the different components, with estimation being done at each stage using adequate moving averages.⁵ The moving averages used to estimate the main components—the trend and seasonality—are primarily smoothing tools designed to eliminate an undesirable component from the series. Since moving averages react poorly to the presence of atypical values, the X-11 method includes a tool for detecting and correcting atypical points. This tool is used to clean up the series during the seasonal adjustment. Outlying data points can also be detected and corrected in advance, within the regARIMA module.

Lastly, the annual totals of the seasonally adjusted series are forced to the annual totals of the original series.

Unfortunately, seasonal adjustment removes the sub-annual additivity of a system of series; small discrepancies can be observed between the sum of seasonally adjusted series and the *direct* seasonal adjustment of their total. To insure or restore additivity in a system of series, a reconciliation process is applied or *indirect* seasonal adjustment is used, i.e. the seasonal adjustment of a total is derived by the summation of the individually seasonally adjusted series.

To assist the user, the Months of Cyclical Dominance number, MCD, is provided.⁶ The MCD is the shortest monthly span for which a certain ratio becomes and remains less than one, that is, the ratio for which the absolute average percentage change of the trend-cycle of the seasonally adjusted series becomes greater than the absolute average per cent change of the irregular component. The MCD can be interpreted as the number of months over which a change in the seasonally adjusted series must move in a given direction before one can be reasonably certain that the trend-cycle of that series also has moved in the given direction. Clearly small MCD's are desirable and indicative of a smooth series. Applying a moving average to the seasonally adjusted data of MCD length tends to smooth irregular movements which may obscure the underlying trend-cycle. The MCD moving average provides a method of reducing all types of series to approximately the same degree of smoothness, whatever the size of the irregular component in the original series.

Revision procedures

The seasonally adjusted estimates are revised for the three months preceding the reference period. Monthly unadjusted data are revised for the previous month, when new information is made available to Statistics Canada. In addition, unadjusted new motor vehicle sales are revised each year, for the latest year, in the February issue of this publication. At that time, monthly seasonally adjusted estimates for the latest four years of data are revised.

5. Ladiray, D. and Quenneville, B. (2001). Seasonal Adjustment with the X-11 Method. New York: Springer-Verlag, Lecture Notes in Statistics #158.

6. MCD = 4 for North American passenger cars. MCD = 3 for Overseas passenger cars. MCD = 12 for Commercial vehicles.

Appendix II

List of North American motor vehicle manufacturers

B.M.W. Canada Inc.
Blue Bird Body Co.
DaimlerChrysler Canada Inc.
Ford Motor Company of Canada Limited
Freightliner of Canada Ltd.
General Motors of Canada Limited
Honda Canada Inc.
Hyundai Auto Canada Inc.
International Truck and Engine Corporation Canada
Kenworth Div., Paccar of Canada Ltd.
Mack Canada Inc.
Mazda Canada Inc.
Mitsubishi Motor Sales of Canada, Inc.
Motor Coach Industries Limited
New Flyer Industries Ltd.
Nissan Canada Inc.
Nova Bus Corp.
Orion Bus Industries Inc.
Peterbilt Div., Paccar of Canada Ltd.
Prévost Car Inc.
Sterling Heavy Duty TrucksSubaru Canada Inc.
Subaru Canada Inc.
Suzuki Canada Inc.
Thomas Built Buses of Canada Ltd.

Toyota Canada Ltd.

Volkswagen Canada Inc.

Volvo Trucks Canada Inc.

Western Star Trucks Inc.

List of importers and distributors of overseas manufactured motor vehicles

Japan

General Motors of Canada Ltd.

Hino Diesel Trucks Canada Ltd.

Honda Canada Inc.

Mazda Canada Inc.

Mitsubishi Motor Sales of Canada, Inc.

Nissan Canada Inc.

Subaru Canada Inc.

Suzuki Canada Inc.

Toyota Canada Inc.

Other Countries

B.M.W. Canada Inc.

Daewoo Auto Canada Inc.

Ford Motor Company of Canada Limited

General Motors Canada Ltd.

Hyundai Auto Canada Inc.

Jaguar Canada Inc.

Kia Canada Inc.

Land Rover group Canada Inc.

Mercedes-Benz Canada Inc.

Porsche Cars of Canada Ltd.

Volkswagen Canada Inc.

Volvo Cars of Canada Ltd.