

Catalogue no. 65-001-X

Canadian International Merchandise Trade

January 2011



Statistics
Canada

Statistique
Canada

Canada

How to obtain more information

For information about this product or the wide range of services and data available from Statistics Canada, visit our website at www.statcan.gc.ca, e-mail us at infostats@statcan.gc.ca, or telephone us, Monday to Friday from 8:30 a.m. to 4:30 p.m., at the following numbers:

Statistics Canada's National Contact Centre

Toll-free telephone (Canada and the United States):

Inquiries line	1-800-263-1136
National telecommunications device for the hearing impaired	1-800-363-7629
Fax line	1-877-287-4369

Local or international calls:

Inquiries line	1-613-951-8116
Fax line	1-613-951-0581

Depository Services Program

Inquiries line	1-800-635-7943
Fax line	1-800-565-7757

To access this product

This product, Catalogue no. 65-001-X, is available free in electronic format. To obtain a single issue, visit our website at www.statcan.gc.ca and browse by "Key resource" > "Publications."

Standards of service to the public

Statistics Canada is committed to serving its clients in a prompt, reliable and courteous manner. To this end, Statistics Canada has developed *standards of service* that its employees observe. To obtain a copy of these service standards, please contact Statistics Canada toll-free at 1-800-263-1136. The service standards are also published on www.statcan.gc.ca under "About us" > "The agency" > "Providing services to Canadians."

Statistics Canada
International Trade Division

Canadian International Merchandise Trade

January 2011

Published by authority of the Minister responsible for Statistics Canada

© Minister of Industry, 2011

All rights reserved. The content of this electronic publication may be reproduced, in whole or in part, and by any means, without further permission from Statistics Canada, subject to the following conditions: that it be done solely for the purposes of private study, research, criticism, review or newspaper summary, and/or for non-commercial purposes; and that Statistics Canada be fully acknowledged as follows: Source (or "Adapted from", if appropriate): Statistics Canada, year of publication, name of product, catalogue number, volume and issue numbers, reference period and page(s). Otherwise, no part of this publication may be reproduced, stored in a retrieval system or transmitted in any form, by any means—electronic, mechanical or photocopy—or for any purposes without prior written permission of Licensing Services, Client Services Division, Statistics Canada, Ottawa, Ontario, Canada K1A 0T6.

March 2011

Catalogue no. 65-001-X, vol. 65, no. 1

ISSN 1480-8781

Frequency: Monthly

Ottawa

Cette publication est également disponible en français.

Note of appreciation

Canada owes the success of its statistical system to a long-standing partnership between Statistics Canada, the citizens of Canada, its businesses, governments and other institutions. Accurate and timely statistical information could not be produced without their continued cooperation and goodwill.

User information

Symbols

The following standard symbols are used in Statistics Canada publications:

- . not available for any reference period
- .. not available for a specific reference period
- ... not applicable
- 0 true zero or a value rounded to zero
- 0^s value rounded to 0 (zero) where there is a meaningful distinction between true zero and the value that was rounded
- p preliminary
- r revised
- x suppressed to meet the confidentiality requirements of the *Statistics Act*
- E use with caution
- F too unreliable to be published

Note to users

All totals are calculated from full figures and rounded independently; consequently, totals may not equal the sum of their components.

The data is based on commodity groups (sector, subsector and major group).

Table of contents

Highlights	5
Analysis	7
Related products	11
Statistical tables	
1 Merchandise trade of Canada, balance of payments basis, seasonally adjusted	15
1-1 Current dollars	15
1-2 Constant dollars, 2002	16
1-3 Price indices (Laspeyres)	17
2 Exports by commodity groupings, balance of payments basis, seasonally adjusted	18
2-1 Current dollars	18
2-2 Constant dollars, 2002	20
3 Domestic exports to selected countries, customs basis, not seasonally adjusted	22
3-1 January	22
3-2 Year to date, January to January	23
4 Domestic exports by country, customs basis, not seasonally adjusted	24
5 Exports by province of origin, customs basis, not seasonally adjusted	28
5-1 January	28
5-2 Year to date, January to January	29
6 Imports by commodity groupings, balance of payments basis, seasonally adjusted	30
6-1 Current dollars	30
6-2 Constant dollars, 2002	32
7 Imports from selected countries, customs basis, not seasonally adjusted	34
7-1 January	34
7-2 Year to date, January to January	35
8 Imports by country, customs basis, not seasonally adjusted	36

Table of contents – continued

9	Imports by province of clearance, customs basis, not seasonally adjusted	40
9-1	January	40
9-2	Year to date, January to January	41

Data quality, concepts and methodology

Technical notes	42
-----------------	----

Highlights

Canada's merchandise imports rose 5.3% to \$37.4 billion in January, led by a 16.6% increase in volumes of automotive products. Overall, import volumes rose 5.5% while prices declined 0.2%. Import volumes have been trending upward since March 2009.

Automotive products and energy products led the growth in the value of imports. A notable increase was also recorded in imports of machinery and equipment.

After a gain of 7.9% in December, exports grew 0.8% to \$37.5 billion in January. Export volumes increased 1.0% while prices edged down 0.1%. Volumes of automotive products, up 18.4%, were the main factor behind the gain in exports.

Exports of industrial goods and materials as well as energy products also increased during the month. In contrast, exports of machinery and equipment declined, thereby moderating the overall gain.

As a result, Canada's trade surplus narrowed from \$1.7 billion in December to \$116 million in January

Imports from the United States rose 6.5%, reflecting strong gains in imports of automotive products while exports, up 3.3%, increased for a fourth consecutive month. Consequently, Canada's trade surplus with the United States declined from \$4.3 billion in December to \$3.8 billion in January.

After a large gain in December, exports to countries other than the United States fell 5.2%. Conversely, imports increased 3.4%. Hence, Canada's trade deficit with countries other than the United States increased from \$2.6 billion in December to \$3.6 billion in January.

Note to readers

Merchandise trade is one component of Canada's international balance of payments, which also includes trade in services, investment income, current transfers as well as capital and financial flows.

International merchandise trade data by country are available on both a balance of payments and a customs basis for the United States, Japan and the United Kingdom. Trade data for all other individual countries are available on a customs basis only. Balance of payments data are derived from customs data by making adjustments for characteristics such as valuation, coverage, timing and residency. These adjustments are made to conform to the concepts and definitions of the Canadian System of National Accounts.

Data in this release are on a balance of payments basis, seasonally adjusted in current dollars. Constant dollars are calculated using the Laspeyres volume formula.

Revisions

In general, merchandise trade data are revised on an ongoing basis for each month of the current year. Current year revisions are reflected in both the customs and balance of payments based data. Revisions to customs based data for the previous year are released on a quarterly basis. Revisions to balance of payments based data for the three previous years are released annually in June.

Factors influencing revisions include late receipt of import and export documentation, incorrect information on customs forms, replacement of estimates produced for the energy sector with actual figures, changes in classification of merchandise based on more current information, and changes to seasonal adjustment factors.

Revised data are available in the appropriate CANSIM tables.

Chart 1

Exports and imports, seasonally adjusted, on a balance of payments basis

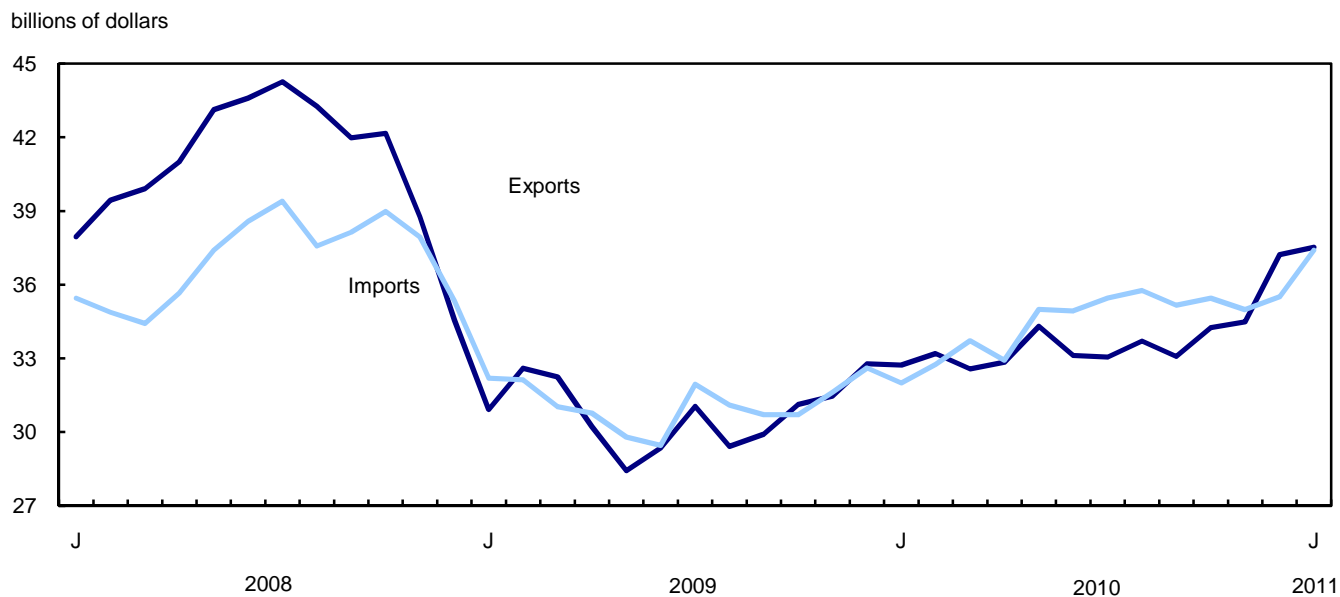
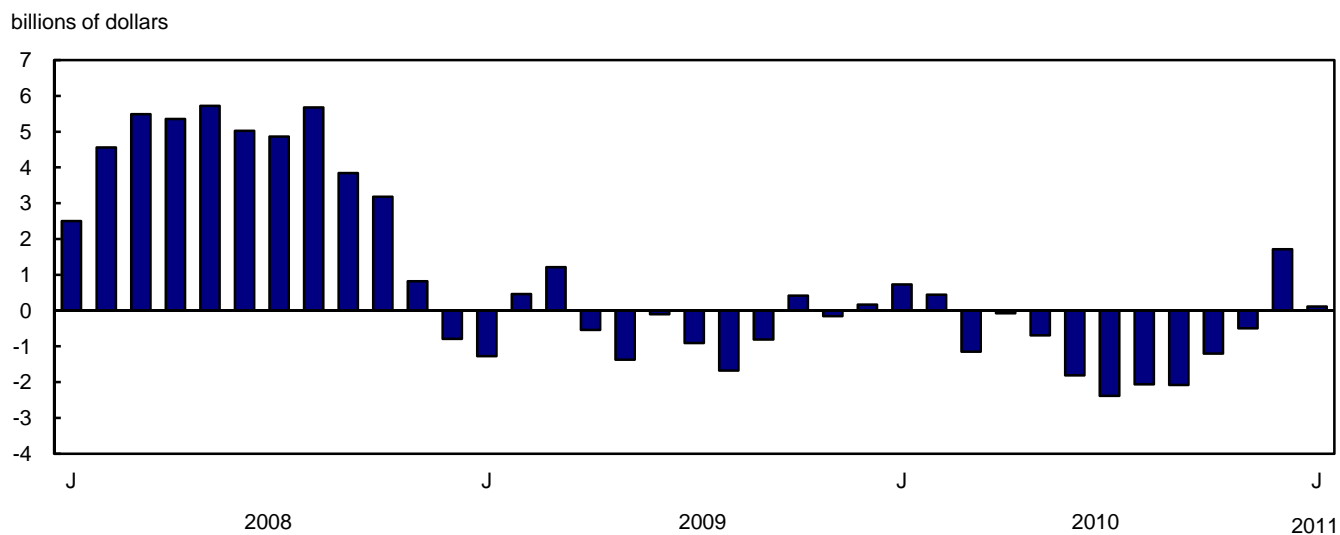


Chart 2

Trade balance, seasonally adjusted, on a balance of payments basis



Analysis

Imports reach their highest level since November 2008

Imports of automotive products rose 16.2% to \$6.4 billion, entirely the result of higher volumes as prices fell slightly. Imports of trucks, up 35.8%, led the gain followed by imports of motor vehicle parts. Despite winter storms and part shortages that adversely impacted some manufacturers in January, imports of motor vehicle parts rose 13.9%. Imports of passenger cars also increased during the month.

Imports of energy products increased 13.8% to \$4.2 billion, the highest level since October 2008. Although prices of energy products were up in January, the gain in the sector was largely the result of increases in volumes. Imports of crude petroleum grew 12.4%, a third consecutive monthly gain. Imports of petroleum and coal products increased, mostly as a result of higher imports of gasoline.

Imports of machinery and equipment increased 1.8% to \$10.0 billion, as volumes rose. Volumes have been trending upwards since October 2009. Imports of aircraft, engines and parts were the main factor behind the gain in the sector. Imports of other communication and related equipment also increased during the month.

Imports of industrial goods and materials declined 0.8% to \$7.6 billion, as prices fell 2.0%. Imports of metals and metal ores, at a record high in December, largely accounted for the decrease as imports of precious metals and metal in ores fell in January. Higher imports of chemicals and plastics moderated the decline in the sector.

Exports increase for a fourth consecutive month

Exports of automotive products rose 16.3% to \$5.2 billion, the highest value since May 2010. The gain was a result of rising volumes. Exports of passenger autos, up 22.9%, largely accounted for the growth in this sector. Exports of motor vehicle parts increased as well in January, halting two consecutive months of decline.

Exports of industrial goods and materials increased 3.8% to \$9.5 billion, largely a result of higher prices. This represented the sixth month of increases in prices. Exports of precious metals, led the growth followed by exports of other crude non-metallic minerals. These increases were moderated by a decline in exports of metal ores, more specifically copper ores, following a large gain in the previous month.

Exports of energy products rose 2.5% to \$9.4 billion. Crude petroleum exports, up 5.8%, increased for a fourth consecutive month, albeit at a slower pace than in the previous three months. Exports of coal and other bituminous substances declined in January.

Exports of machinery and equipment fell 8.9% to \$6.3 billion, with aircraft, engines and parts accounting for the bulk of the decline. Lower exports of industrial machinery, namely drilling, excavating and mining machinery also contributed to the decrease.

Exports of agricultural and fishing products decreased 7.2% to \$3.2 billion, mostly reflecting lower volumes. Following a large gain in December, exports of wheat fell 15.4%, as volumes declined 21.0%. Wheat prices have been trending upward since April 2010.

Forestry products exports declined 7.4% to \$1.9 billion. Exports of wood pulp and other wood products, which led the increase in the previous month, fell 12.2% in January. Exports of lumber and sawmill products declined 7.6%, halting four months of increases.

Chart 1

Imports of automotive products, seasonally adjusted, on a balance of payments basis

billions of dollars

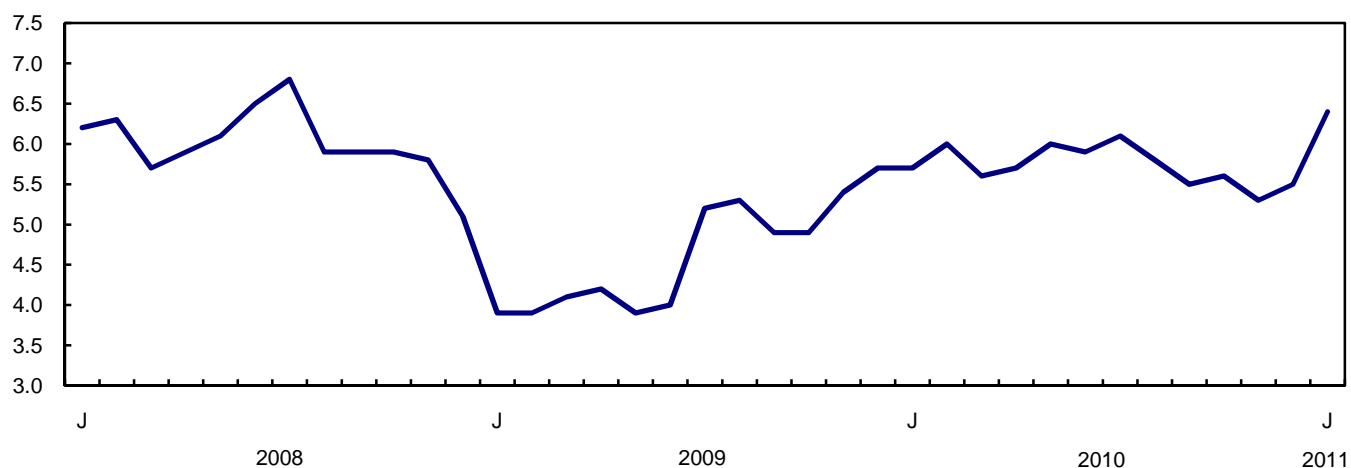


Chart 2

Imports of energy products, seasonally adjusted, on a balance of payments basis

billions of dollars

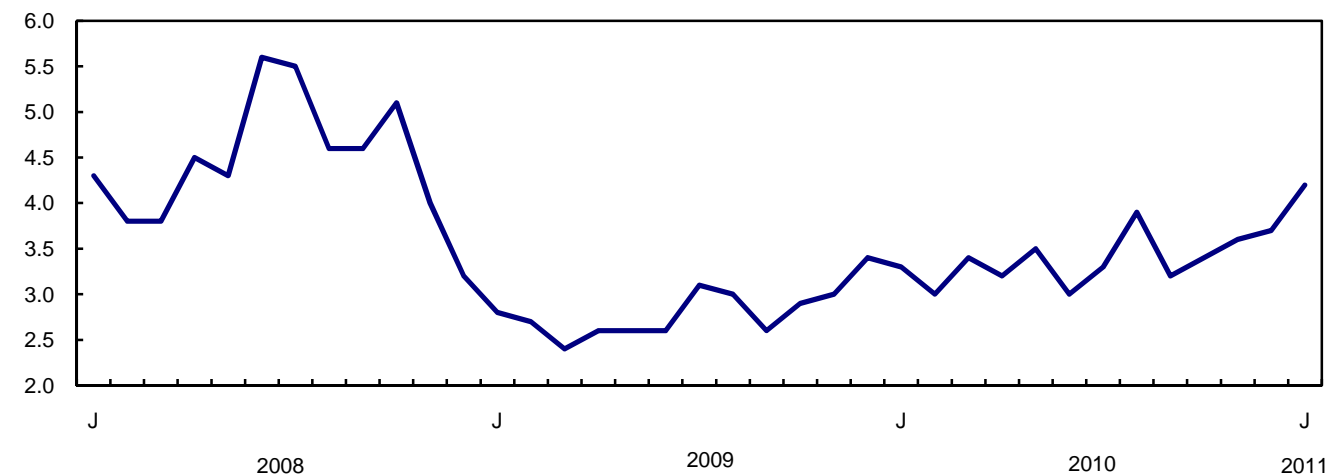
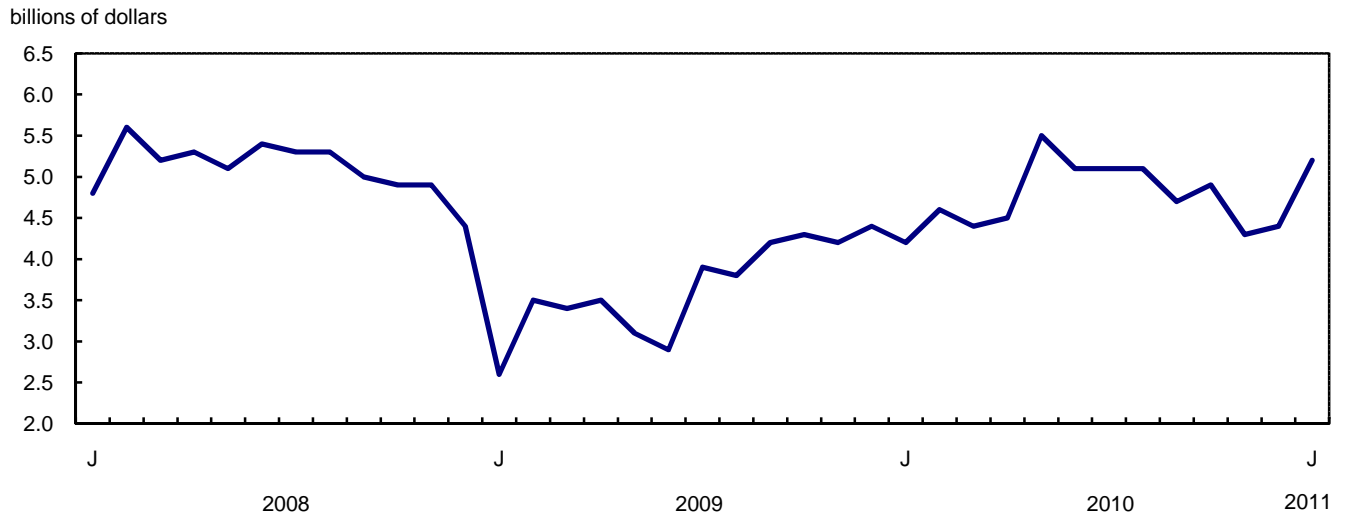
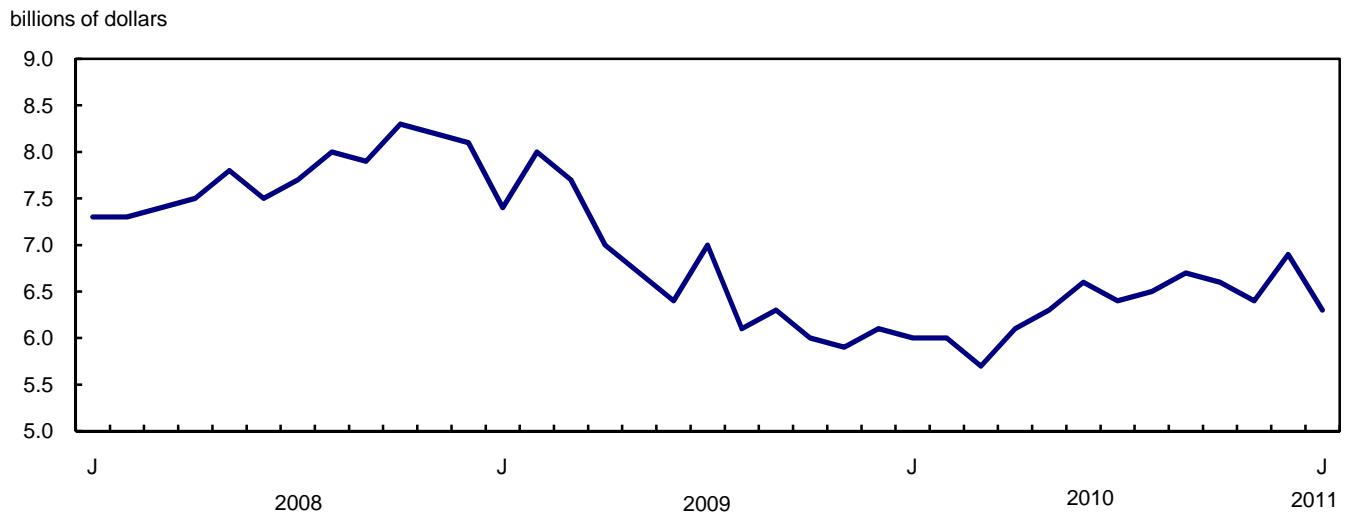


Chart 3**Exports of automotive products, seasonally adjusted, on a balance of payments basis****Chart 4****Exports of machinery and equipment, seasonally adjusted, on a balance of payments basis**

Text table 1

Merchandise trade by principal trading area, balance of payments basis, seasonally adjusted

	December 2010	January 2011	Change		Year to date			January 2011/ January 2010	
					2010	2011	Change		
	millions of dollars		percent		millions of dollars		percent		
Export to									
United States	26,208	27,084	875	3.3	24,622	27,084	2,462	10.0	10.0
Japan	937	1,010	73	7.8	761	1,010	249	32.8	32.8
European Union ¹	3,771	3,616	-155	-4.1	2,618	3,616	998	38.1	38.1
Other Organisation for Economic Co-operation and Development ²	1,690	1,472	-218	-12.9	1,411	1,472	61	4.3	4.3
Other countries	4,614	4,339	-275	-6.0	3,315	4,339	1,025	30.9	30.9
Total	37,220	37,520	300	0.8	32,727	37,520	4,794	14.6	14.6
Imports from									
United States	21,905	23,333	1,428	6.5	20,449	23,333	2,885	14.1	14.1
Japan	852	839	-13	-1.5	718	839	121	16.8	16.8
European Union ¹	3,660	3,695	36	1.0	2,931	3,695	764	26.1	26.1
Other Organisation for Economic Co-operation and Development ²	2,392	2,685	293	12.2	2,318	2,685	367	15.9	15.9
Other countries	6,698	6,852	154	2.3	5,585	6,852	1,267	22.7	22.7
Total	35,507	37,404	1,898	5.3	32,001	37,404	5,404	16.9	16.9
Balance									
United States	4,303	3,750	-553	...	4,173	3,750	-423
Japan	85	171	86	...	42	171	129
European Union ¹	111	-79	-191	...	-312	-79	233
Other Organisation for Economic Co-operation and Development ²	-702	-1,213	-511	...	-907	-1,213	-307
Other countries	-2,084	-2,513	-429	...	-2,271	-2,513	-242
Total	1,713	116	-1,597	...	726	116	-610

1. European Union includes: Austria, Belgium, Bulgaria, Cyprus, Czech Republic, Denmark, Estonia, Finland, France, Germany, Greece, Hungary, Ireland, Italy, Latvia, Lithuania, Luxembourg, Malta, Netherlands, Poland, Portugal, Romania, Slovakia, Slovenia, Spain, Sweden and United Kingdom.
2. Other Organisation for Economic Co-operation and Development includes: Australia, Canada, Iceland, Mexico, New Zealand, Norway, South Korea, Switzerland and Turkey.

Text table 2

Reconciliation of customs and balance of payments trade data, not seasonally adjusted

	2011		2010				2010
	January	Decembre	November	October	September	August	Annual
	millions of dollars						
Exports							
Customs basis	34,121	36,089	34,447	34,323	33,314	33,281	398,826
Balance of payments adjustments	1,234	150	846	690	267	456	5,756
Valuation and residency							
Inland freight	530	593	552	581	581	542	6,568
Other valuation and residency	-521	-1,355	-1,232	-1,038	-880	-840	-12,615
Timing	-1	31	10	62	25	13	46
Coverage	1,226	881	1,516	1,085	541	741	11,757
Balance of payments basis	35,355	36,239	35,293	35,013	33,581	33,737	404,582
Imports							
Customs basis	33,026	33,157	34,706	36,008	35,857	35,116	403,293
Balance of payments adjustments	771	935	1,188	676	557	1,144	10,355
Valuation and residency							
Inland freight	703	699	739	759	758	756	8,736
Other valuation and residency	-61	-8	-30	16	-18	-21	205
Timing	0	0	0	0	0	0	0
Coverage	129	244	479	-99	-183	409	1,414
Balance of payments basis	33,797	34,092	35,894	36,684	36,414	36,260	413,648

Related products

Selected publications from Statistics Canada

65-208-X	International Merchandise Trade Annual Review
65-506-X	A Profile of Canadian Exporters
65F0013X	Canadian International Merchandise Trade Database
65F0019X	A Database for Analysis of International Markets
65F0020X	Data Integration - International Trade Data and Manufacturing Shipments Data

Selected CANSIM tables from Statistics Canada

228-0001	Merchandise imports and exports, by major groups and principal trading areas for all countries, monthly
228-0002	Merchandise imports and exports, by major groups and principal trading areas for all countries, quarterly
228-0003	Merchandise imports and exports, by major groups and principal trading areas for all countries, annual
228-0033	Imports, customs-based, by province of clearance, monthly
228-0034	Domestic exports, customs-based, by province of origin, monthly
228-0041	Merchandise imports and exports by sector and sub-sector, customs and balance of payments basis, for all countries, monthly
228-0042	Merchandise imports and exports by sector and sub-sector, customs and balance of payments basis, for all countries, quarterly
228-0043	Merchandise imports and exports by sector and sub-sector, customs and balance of payments basis, for all countries, annual
228-0047	Merchandise imports and exports balance of payments and customs-based price and volume indexes for all countries, monthly
228-0048	Merchandise imports and exports balance of payments and customs-based price and volume indexes for all countries, quarterly
228-0049	Merchandise imports and exports balance of payments and customs-based price and volume indexes for all countries, annual

228-0050	Merchandise imports and exports customs-based price indexes, Canada and United States trade, and Standard International Trade Classification (SITC revision 3) price indexes for all countries and United States, monthly
228-0051	Merchandise imports and exports customs-based price indexes, Canada and United States trade, and Standard International Trade Classification (SITC revision 3) price indexes for all countries and United States, quarterly
228-0052	Merchandise imports and exports customs-based price indexes, Canada and United States trade, and Standard International Trade Classification (SITC revision 3) price indexes for all countries and United States, annual
228-0053	Merchandise import and export price and volume indexes by sector and sub-sector, customs and balance of payments basis, for all countries, monthly
228-0054	Merchandise import and export price and volume indexes by sector and sub-sector, customs and balance of payments basis, for all countries, quarterly
228-0055	Merchandise import and export price and volume indexes by sector and sub-sector, customs and balance of payments basis, for all countries, annual
228-0056	Merchandise imports and exports by sector, balance of payments basis, for all countries, seasonally adjusted, Fisher formula, monthly
228-0057	Merchandise imports and exports by sector, balance of payments basis, for all countries, seasonally adjusted, Fisher formula, quarterly

Selected surveys from Statistics Canada

2201	Canadian International Merchandise Trade (Customs Basis)
2202	Canadian International Merchandise Trade (Balance of Payments Basis)
2203	International Trade Price Indexes

Selected summary tables from Statistics Canada

- *Canada: Economic and financial data*
- *Imports, exports and trade balance of goods on a balance-of-payments basis, by country or country grouping*
- *Exports of goods on a balance-of-payments basis*

- *Imports of goods on a balance-of-payments basis*
- *Merchandise trade of Canada (monthly)*
- *Economic indicators, by province and territory (monthly and quarterly)*
- *Latest statistics (monthly)*

Statistical tables

Table 1-1

Merchandise trade of Canada, balance of payments basis, seasonally adjusted — Current dollars

	Exports	Imports	Trade balance	Period to period change		
				Exports	Imports	Balance
	millions of dollars			percent		millions of dollars
2007	463,120	415,683	47,437	0.0	0.0	0
2008	489,995	443,752	46,244	5.8	6.8	-1,194
2009	369,529	374,097	-4,568	-24.6	-15.7	-50,812
2010	404,582	413,648	-9,066	9.5	10.6	-4,498
2008						
First quarter	117,294	104,743	12,551	6.0	3.2	3,321
Second quarter	127,735	111,640	16,095	8.9	6.6	3,544
Third quarter	129,499	115,116	14,383	1.4	3.1	-1,712
Fourth quarter	115,468	112,252	3,215	-10.8	-2.5	-11,168
2009						
First quarter	95,769	95,366	403	-17.1	-15.0	-2,812
Second quarter	88,008	90,028	-2,019	-8.1	-5.6	-2,422
Third quarter	90,377	93,765	-3,388	2.7	4.2	-1,369
Fourth quarter	95,375	94,939	436	5.5	1.3	3,824
2010						
First quarter	98,495	98,476	19	3.3	3.7	-418
Second quarter	100,275	102,859	-2,584	1.8	4.5	-2,602
Third quarter	99,849	106,376	-6,527	-0.4	3.4	-3,943
Fourth quarter	105,963	105,937	25	6.1	-0.4	6,552
2010						
January	32,727	32,001	726	-0.2	-1.9	556
February	33,193	32,753	440	1.4	2.4	-286
March	32,575	33,722	-1,147	-1.9	3.0	-1,587
April	32,845	32,921	-76	0.8	-2.4	1,071
May	34,308	35,002	-694	4.5	6.3	-618
June	33,122	34,936	-1,814	-3.5	-0.2	-1,120
July	33,061	35,447	-2,385	-0.2	1.5	-571
August	33,709	35,770	-2,061	2.0	0.9	325
September	33,079	35,159	-2,081	-1.9	-1.7	-20
October	34,255	35,452	-1,198	3.6	0.8	883
November	34,488	34,978	-491	0.7	-1.3	707
December	37,220	35,507	1,713	7.9	1.5	2,204
2011						
January	37,520	37,404	116	0.8	5.3	-1,597

Note(s): Because of rounding, monthly data may not add up to quarterly data and quarterly data may not add up to annual data.

Table 1-2
Merchandise trade of Canada, balance of payments basis, seasonally adjusted — Constant dollars, 2002

	Exports	Imports	Trade balance	Period to period change	
				Exports	Imports
	millions of dollars			percent	
2007	449,015	484,005	-34,990	0.0	0.0
2008	415,119	485,902	-70,783	-7.5	0.4
2009	345,911	405,261	-59,350	-16.7	-16.6
2010	374,679	468,990	-94,310	8.3	15.7
2008					
First quarter	107,071	123,094	-16,023	-2.6	-1.2
Second quarter	106,872	125,669	-18,797	-0.2	2.1
Third quarter	104,062	123,918	-19,856	-2.6	-1.4
Fourth quarter	97,114	113,221	-16,107	-6.7	-8.6
2009					
First quarter	87,218	97,521	-10,303	-10.2	-13.9
Second quarter	83,055	96,718	-13,663	-4.8	-0.8
Third quarter	86,329	104,265	-17,935	3.9	7.8
Fourth quarter	89,308	106,757	-17,449	3.5	2.4
2010					
First quarter	91,180	110,818	-19,638	2.1	3.8
Second quarter	94,213	117,198	-22,985	3.3	5.8
Third quarter	93,729	120,421	-26,692	-0.5	2.7
Fourth quarter	95,558	120,553	-24,995	2.0	0.1
2010					
January	30,359	36,193	-5,834	0.2	-0.5
February	30,302	36,820	-6,519	-0.2	1.7
March	30,519	37,805	-7,286	0.7	2.7
April	30,935	37,872	-6,936	1.4	0.2
May	31,932	39,549	-7,617	3.2	4.4
June	31,346	39,777	-8,431	-1.8	0.6
July	31,081	40,046	-8,966	-0.8	0.7
August	31,710	40,494	-8,785	2.0	1.1
September	30,938	39,880	-8,942	-2.4	-1.5
October	31,627	40,492	-8,865	2.2	1.5
November	31,106	39,762	-8,657	-1.6	-1.8
December	32,825	40,298	-7,473	5.5	1.3
2011					
January	33,137	42,514	-9,377	0.9	5.5

Note(s): Because of rounding, monthly data may not add up to quarterly data and quarterly data may not add up to annual data.

Table 1-3
Merchandise trade of Canada, balance of payments basis, seasonally adjusted — Price indices (Laspeyres)

	2002=100			Period to period change		
	Exports	Imports	Terms of trade	Exports	Imports	Terms of trade
	price indices (Laspeyres)			percent		
2007	107.1	91.4	117.1	0.0	0.0	0.0
2008	116.3	97.5	119.3	8.6	6.6	2.0
2009	105.4	97.1	108.6	-9.4	-0.4	-9.0
2010	106.7	94.7	112.6	1.2	-2.4	3.7
2008						
First quarter	111.2	90.1	123.4	5.6	3.1	2.5
Second quarter	118.5	94.7	125.1	6.6	5.1	1.5
Third quarter	122.1	100.9	121.0	3.1	6.6	-3.5
Fourth quarter	113.7	104.1	109.2	-6.9	3.2	-10.1
2009						
First quarter	109.5	101.5	107.8	-3.7	-2.5	-1.2
Second quarter	104.6	97.9	106.8	-4.5	-3.6	-0.9
Third quarter	102.6	95.2	107.8	-1.9	-2.7	0.9
Fourth quarter	105.7	93.8	112.7	3.0	-1.5	4.5
2010						
First quarter	107.1	94.3	113.6	1.4	0.6	0.8
Second quarter	106.3	94.2	112.9	-0.8	-0.2	-0.6
Third quarter	106.1	95.3	111.3	-0.2	1.3	-1.4
Fourth quarter	107.3	95.1	112.8	1.2	-0.2	1.4
2010						
January	106.1	93.8	113.2	-0.2	-0.5	0.3
February	108.1	95.0	113.7	1.9	1.4	0.5
March	106.3	94.1	112.9	-1.7	-1.0	-0.7
April	105.4	92.8	113.5	-0.8	-1.4	0.6
May	106.9	94.8	112.7	1.4	2.1	-0.7
June	106.0	94.8	111.8	-0.8	0.1	-0.9
July	105.7	95.3	110.9	-0.3	0.5	-0.8
August	106.6	95.8	111.2	0.8	0.5	0.3
September	106.9	94.9	112.6	0.3	-1.0	1.3
October	107.1	94.7	113.1	0.3	-0.2	0.4
November	108.0	95.4	113.2	0.8	0.7	0.1
December	109.1	95.2	114.6	1.0	-0.2	1.2
2011						
January	109.2	95.7	114.2	0.0	0.4	-0.4

Note(s): Because of rounding, monthly data may not add up to quarterly data and quarterly data may not add up to annual data.

Table 2-1

Exports by commodity groupings, balance of payments basis, seasonally adjusted — Current dollars

	December 2010	January 2011	Change		Year to date			January 2011/ January 2010	
					2010	2011	Change		
	millions of dollars		percent		millions of dollars		percent		
Total	37,220	37,520	300	0.8	32,727	37,520	4,794	14.6	14.6
Agricultural and fishing products	3,455	3,207	-248	-7.2	2,984	3,207	223	7.5	7.5
Wheat	448	379	-69	-15.4	364	379	15	4.1	4.1
Other agricultural and fishing products	3,007	2,828	-179	-6.0	2,620	2,828	208	7.9	7.9
Live animals	105	123	18	16.8	119	123	4	3.0	3.0
Fish and fish preparations	368	345	-23	-6.2	341	345	4	1.2	1.2
Barley	63	32	-31	-48.8	14	32	18	135.5	135.5
Wheat flour	7	7	-1	-7.3	7	7	0	3.8	3.8
Other cereals unmilled	122	64	-58	-47.3	40	64	24	60.2	60.2
Other cereal preparations	236	223	-14	-5.8	232	223	-10	-4.1	-4.1
Meat and meat preparations	391	383	-8	-2.1	378	383	5	1.3	1.3
Alcoholic beverages	61	56	-5	-7.8	65	56	-9	-13.3	-13.3
Other food, feed, beverages and tobacco	994	950	-43	-4.3	927	950	24	2.6	2.6
Rapeseed	391	409	18	4.5	272	409	136	50.0	50.0
Other crude vegetable products	270	237	-33	-12.3	226	237	11	4.7	4.7
Energy products	9,159	9,386	227	2.5	8,445	9,386	942	11.1	11.1
Crude petroleum	5,408	5,722	314	5.8	4,412	5,722	1,310	29.7	29.7
Natural gas	1,090	1,133	44	4.0	1,721	1,133	-587	-34.1	-34.1
Other energy products	2,661	2,532	-130	-4.9	2,312	2,532	219	9.5	9.5
Coal and other bituminous substances	572	387	-184	-32.2	304	387	84	27.5	27.5
Petroleum and coal products	1,903	1,949	46	2.4	1,757	1,949	192	10.9	10.9
Electricity	187	195	8	4.5	251	195	-56	-22.3	-22.3
Forestry products	2,007	1,858	-149	-7.4	1,679	1,858	179	10.7	10.7
Lumber and sawmill products	770	711	-59	-7.6	625	711	86	13.8	13.8
Other crude wood products	68	57	-10	-15.3	61	57	-3	-5.7	-5.7
Lumber	498	466	-32	-6.4	368	466	98	26.6	26.6
Other wood fabricated materials	204	188	-16	-8.0	196	188	-8	-4.1	-4.1
Wood pulp and other wood products	620	544	-76	-12.2	446	544	98	22.0	22.0
Newsprint and other paper and paperboard	617	603	-15	-2.4	608	603	-5	-0.9	-0.9
Newsprint paper	317	313	-4	-1.4	297	313	16	5.5	5.5
Other paper and paperboard	300	290	-10	-3.4	311	290	-22	-7.0	-7.0
Industrial goods and materials	9,134	9,481	346	3.8	7,249	9,481	2,232	30.8	30.8
Metal ores	1,469	1,309	-159	-10.8	747	1,309	562	75.2	75.2
Iron ores, concentrates and scrap	466	481	15	3.1	362	481	119	32.8	32.8
Copper ores, concentrates and scrap	368	245	-123	-33.5	122	245	123	100.9	100.9
Nickel ores, concentrates and scrap	311	279	-32	-10.3	71	279	208	294.0	294.0
Zinc ores, concentrates and scrap	47	14	-33	-70.9	27	14	-13	-49.5	-49.5
Other ores, concentrates and scrap	276	291	14	5.2	165	291	125	75.6	75.6
Chemicals, plastics and fertilizers	2,767	2,782	15	0.5	2,437	2,782	344	14.1	14.1
Inorganic chemicals	489	482	-7	-1.4	382	482	101	26.4	26.4
Organic chemicals	540	559	19	3.4	500	559	59	11.9	11.9
Fertilizers and fertilizer materials	592	607	15	2.6	499	607	108	21.7	21.7
Synthetic rubber and plastics	888	885	-3	-0.3	800	885	85	10.6	10.6
Other chemical products	258	248	-10	-3.8	257	248	-9	-3.4	-3.4

Table 2-1 – continued

Exports by commodity groupings, balance of payments basis, seasonally adjusted — Current dollars

	December 2010	January 2011	Change		Year to date			January 2011/ January 2010	
					2010	2011	Change		
	millions of dollars		percent		millions of dollars		percent		
Metals and alloys	3,472	3,862	391	11.3	2,707	3,862	1,155	42.7	42.7
Primary iron and steel	64	52	-12	-19.1	93	52	-40	-43.7	-43.7
Steel bars, rods, plates, sheets	335	289	-46	-13.7	274	289	15	5.3	5.3
Other iron and steel and alloys	225	234	9	3.9	225	234	9	3.9	3.9
Aluminum including alloys	621	583	-38	-6.1	622	583	-39	-6.3	-6.3
Copper and alloys	191	246	55	28.6	237	246	9	3.8	3.8
Nickel and alloys	289	338	49	16.9	134	338	204	152.7	152.7
Precious metals and alloys	1,521	1,884	363	23.8	901	1,884	983	109.0	109.0
Zinc and alloys	120	119	-1	-0.8	134	119	-15	-11.4	-11.4
Other non-ferrous metals and alloys	105	118	13	11.9	87	118	30	34.6	34.6
Other industrial goods and materials	1,428	1,528	100	7.0	1,357	1,528	171	12.6	12.6
Asbestos unmanufactured	4	5	0	6.3	6	5	-1	-20.9	-20.9
Other crude animal products	74	65	-9	-12.1	73	65	-8	-11.3	-11.3
Other crude non-metallic minerals	120	317	197	164.3	289	317	28	9.9	9.9
Other crude materials, inedible	69	67	-2	-3.0	52	67	14	27.4	27.4
Metal fabricated basic products	354	350	-4	-1.2	339	350	10	3.1	3.1
Textile fabricated materials	194	182	-12	-6.0	178	182	5	2.7	2.7
Non-metallic mineral basic products	146	157	11	7.5	149	157	7	4.9	4.9
Other fabricated materials	467	386	-81	-17.3	271	386	115	42.3	42.3
Machinery and equipment	6,906	6,292	-614	-8.9	5,961	6,292	331	5.6	5.6
Industrial and agricultural machinery	1,607	1,463	-143	-8.9	1,441	1,463	22	1.5	1.5
Industrial machinery	1,445	1,304	-141	-9.8	1,288	1,304	16	1.2	1.2
Agricultural machinery includ. tractors	162	159	-3	-1.6	153	159	6	4.1	4.1
Aircraft and other transportation equipment	1,892	1,480	-412	-21.8	1,339	1,480	141	10.6	10.6
Aircraft, engines, parts	1,532	1,143	-389	-25.4	1,046	1,143	98	9.3	9.3
Other transportation equipment	360	337	-23	-6.4	293	337	44	14.8	14.8
Other machinery and equipment	3,408	3,349	-59	-1.7	3,181	3,349	168	5.3	5.3
Television, telecommunication equipment	583	614	31	5.3	636	614	-21	-3.4	-3.4
Office machines and equipment	355	353	-2	-0.6	346	353	7	2.0	2.0
Other equipment and tools	1,600	1,538	-62	-3.9	1,465	1,538	73	5.0	5.0
Other end products, inedible	869	844	-25	-2.9	735	844	109	14.9	14.9
Automotive products	4,439	5,163	723	16.3	4,210	5,163	953	22.6	22.6
Passenger autos and chassis	2,875	3,533	658	22.9	2,710	3,533	823	30.4	30.4
Trucks and other motor vehicles	204	208	4	2.0	187	208	22	11.5	11.5
Motor vehicle parts	1,360	1,421	61	4.5	1,313	1,421	108	8.3	8.3
Other consumer goods	1,341	1,374	32	2.4	1,410	1,374	-36	-2.6	-2.6
Special transactions trade	277	263	-14	-5.1	344	263	-81	-23.6	-23.6
Unallocated balance of payments adjustments	501	497	-3	-0.7	445	497	53	11.8	11.8

Table 2-2

Exports by commodity groupings, balance of payments basis, seasonally adjusted — Constant dollars, 2002

	December 2010	January 2011	Change		Year to date			January 2011/ January 2010	
					2010	2011	Change		
	millions of dollars		percent		millions of dollars		percent		
Total	32,825	33,137	312	0.9	30,359	33,137	2,778	9.2	9.2
Agricultural and fishing products	3,270	3,084	-186	-5.7	3,153	3,084	-69	-2.2	-2.2
Wheat	389	308	-81	-20.9	389	308	-82	-21.0	-21.0
Other agricultural and fishing products	2,881	2,777	-104	-3.6	2,764	2,777	13	0.5	0.5
Live animals	111	124	13	12.1	148	124	-24	-16.0	-16.0
Fish and fish preparations	451	416	-35	-7.7	444	416	-27	-6.2	-6.2
Barley	67	30	-37	-55.1	15	30	15	103.7	103.7
Wheat flour	7	6	-1	-9.4	6	6	0	-3.7	-3.7
Other cereals unmilled	97	54	-44	-44.8	46	54	8	17.0	17.0
Other cereal preparations	210	203	-7	-3.3	208	203	-5	-2.3	-2.3
Meat and meat preparations	418	412	-6	-1.5	453	412	-42	-9.2	-9.2
Alcoholic beverages	119	109	-10	-8.3	124	109	-15	-12.3	-12.3
Other food, feed, beverages and tobacco	932	930	-2	-0.2	867	930	63	7.3	7.3
Rapeseed	266	307	41	15.6	248	307	59	23.7	23.7
Other crude vegetable products	205	186	-19	-9.0	205	186	-19	-9.2	-9.2
Energy products	5,286	5,408	122	2.3	4,838	5,408	570	11.8	11.8
Crude petroleum	2,471	2,474	3	0.1	1,928	2,474	546	28.3	28.3
Natural gas	1,398	1,621	224	16.0	1,555	1,621	66	4.2	4.2
Other energy products	1,417	1,312	-105	-7.4	1,354	1,312	-42	-3.1	-3.1
Coal and other bituminous substances	180	116	-64	-35.6	147	116	-31	-21.0	-21.0
Petroleum and coal products	970	979	9	1.0	956	979	23	2.4	2.4
Electricity	267	217	-50	-18.9	251	217	-35	-13.9	-13.9
Forestry products	2,468	2,247	-221	-9.0	2,177	2,247	70	3.2	3.2
Lumber and sawmill products	1,011	919	-92	-9.1	870	919	49	5.6	5.6
Other crude wood products	81	82	1	1.2	90	82	-8	-8.6	-8.6
Lumber	687	620	-66	-9.7	554	620	66	11.9	11.9
Other wood fabricated materials	243	216	-26	-10.9	225	216	-9	-4.1	-4.1
Wood pulp and other wood products	747	632	-115	-15.5	578	632	54	9.3	9.3
Newsprint and other paper and paperboard	710	697	-13	-1.9	730	697	-33	-4.5	-4.5
Newsprint paper	370	364	-6	-1.6	362	364	2	0.6	0.6
Other paper and paperboard	340	333	-8	-2.2	367	333	-35	-9.5	-9.5
Industrial goods and materials	5,631	5,666	35	0.6	5,238	5,666	428	8.2	8.2
Metal ores	610	552	-57	-9.4	404	552	148	36.6	36.6
Iron ores, concentrates and scrap	171	194	23	13.6	185	194	9	4.9	4.9
Copper ores, concentrates and scrap	105	68	-37	-35.5	42	68	26	62.6	62.6
Nickel ores, concentrates and scrap	127	113	-14	-11.1	40	113	73	182.9	182.9
Zinc ores, concentrates and scrap	24	7	-17	-71.9	13	7	-6	-46.4	-46.4
Other ores, concentrates and scrap	183	171	-12	-6.6	125	171	46	36.5	36.5
Chemicals, plastics and fertilizers	1,893	1,903	9	0.5	1,809	1,903	94	5.2	5.2
Inorganic chemicals	202	205	2	1.2	192	205	12	6.5	6.5
Organic chemicals	325	301	-24	-7.3	324	301	-23	-7.0	-7.0
Fertilizers and fertilizer materials	265	246	-18	-6.9	198	246	49	24.6	24.6
Synthetic rubber and plastics	808	852	44	5.5	779	852	73	9.3	9.3
Other chemical products	294	299	5	1.6	316	299	-17	-5.5	-5.5

Table 2-2 – continued

Exports by commodity groupings, balance of payments basis, seasonally adjusted — Constant dollars, 2002

	December 2010	January 2011	Change		Year to date			January 2011/ January 2010	
					2010	2011	Change		
	millions of dollars		percent		millions of dollars		percent		
Metals and alloys	1,941	1,999	57	3.0	1,747	1,999	252	14.4	14.4
Primary iron and steel	40	35	-5	-11.4	70	35	-34	-49.4	-49.4
Steel bars, rods, plates, sheets	291	244	-47	-16.2	237	244	8	3.2	3.2
Other iron and steel and alloys	189	196	6	3.2	198	196	-3	-1.3	-1.3
Aluminum including alloys	611	565	-46	-7.5	621	565	-56	-9.0	-9.0
Copper and alloys	55	67	12	22.6	78	67	-11	-14.2	-14.2
Nickel and alloys	122	137	15	12.7	72	137	65	90.4	90.4
Precious metals and alloys	517	636	119	23.0	365	636	271	74.3	74.3
Zinc and alloys	66	66	0	0.5	69	66	-3	-4.0	-4.0
Other non-ferrous metals and alloys	49	51	2	4.4	37	51	15	40.1	40.1
Other industrial goods and materials	1,187	1,213	26	2.2	1,278	1,213	-65	-5.1	-5.1
Asbestos unmanufactured	4	5	0	8.7	6	5	-1	-21.6	-21.6
Other crude animal products	74	69	-6	-7.6	78	69	-10	-12.4	-12.4
Other crude non-metallic minerals	81	198	118	146.1	313	198	-115	-36.6	-36.6
Other crude materials, inedible	60	59	-1	-1.7	49	59	11	22.1	22.1
Metal fabricated basic products	281	277	-5	-1.7	274	277	3	1.1	1.1
Textile fabricated materials	196	192	-4	-2.1	194	192	-2	-0.9	-0.9
Non-metallic mineral basic products	120	129	9	7.8	127	129	2	1.4	1.4
Other fabricated materials	369	284	-86	-23.2	237	284	46	19.5	19.5
Machinery and equipment	7,680	7,089	-591	-7.7	6,667	7,089	422	6.3	6.3
Industrial and agricultural machinery	1,505	1,377	-128	-8.5	1,330	1,377	46	3.5	3.5
Industrial machinery	1,353	1,229	-124	-9.2	1,188	1,229	41	3.4	3.4
Agricultural machinery includ. tractors	151	148	-4	-2.5	142	148	6	3.9	3.9
Aircraft and other transportation equipment	2,325	1,848	-477	-20.5	1,641	1,848	207	12.6	12.6
Aircraft, engines, parts	1,979	1,506	-473	-23.9	1,346	1,506	160	11.9	11.9
Other transportation equipment	346	342	-4	-1.2	295	342	47	15.9	15.9
Other machinery and equipment	3,850	3,864	14	0.4	3,695	3,864	169	4.6	4.6
Television, telecommunication equipment	754	806	52	6.8	811	806	-5	-0.6	-0.6
Office machines and equipment	920	947	27	2.9	852	947	95	11.2	11.2
Other equipment and tools	1,517	1,460	-57	-3.8	1,392	1,460	68	4.9	4.9
Other end products, inedible	659	651	-8	-1.2	640	651	11	1.7	1.7
Automotive products	6,093	7,212	1,119	18.4	5,633	7,212	1,578	28.0	28.0
Passenger autos and chassis	4,327	5,365	1,038	24.0	3,962	5,365	1,402	35.4	35.4
Trucks and other motor vehicles	251	257	7	2.7	225	257	32	14.2	14.2
Motor vehicle parts	1,515	1,590	74	4.9	1,446	1,590	144	10.0	10.0
Other consumer goods	1,287	1,321	34	2.7	1,348	1,321	-27	-2.0	-2.0
Special transactions trade	237	224	-13	-5.5	308	224	-83	-27.2	-27.2
Unallocated balance of payments adjustments	873	886	12	1.4	997	886	-111	-11.1	-11.1

Table 3-1

Domestic exports to selected countries, customs basis, not seasonally adjusted — January

	Agricultural and fishing products	Energy products	Forestry products	Industrial goods	Machinery and equipment	Automotive products	Consumer goods	Special transactions trade	Total
millions of dollars									
United States									
2010	1,296.2	7,982.9	1,018.7	4,358.0	3,145.3	3,337.2	768.9	243.9	22,151.1
2011	1,354.0	8,208.9	1,067.9	4,851.6	3,274.9	4,143.2	740.3	221.8	23,862.6
Mexico									
2010	79.8	0.9	10.6	85.0	53.8	72.8	6.1	0.3	309.4
2011	42.6	6.7	10.5	67.2	59.3	53.9	4.0	0.3	244.5
Japan									
2010	208.7	166.5	94.3	98.9	52.2	6.3	6.3	1.3	634.5
2011	307.7	123.1	92.6	222.8	41.5	4.5	5.7	1.4	799.3
European Union									
Germany									
2010	8.8	0.0	8.9	99.8	153.4	2.0	15.1	1.7	289.7
2011	11.7	11.5	4.8	72.8	133.2	1.7	16.8	2.6	255.1
France									
2010	8.6	0.1	13.0	34.7	64.1	2.4	18.3	1.1	142.3
2011	8.9	0.3	7.7	56.0	149.0	1.6	16.2	0.8	240.5
United Kingdom									
2010	18.8	0.6	18.2	905.5	181.1	3.9	15.4	3.6	1,147.1
2011	26.7	11.8	9.2	1,293.4	94.4	5.6	10.3	6.2	1,457.6
Italy									
2010	7.2	21.7	25.5	18.8	63.6	0.4	10.4	2.0	149.6
2011	19.0	12.9	18.8	46.0	27.6	0.3	6.3	0.1	131.1
Other European Union									
2010	70.8	10.0	28.1	231.7	178.4	9.1	45.7	4.1	578.0
2011	132.1	109.9	12.1	249.9	270.4	9.3	47.4	3.7	834.8
Total									
2010	114.1	32.5	93.8	1,290.5	640.7	17.8	104.8	12.5	2,306.7
2011	198.5	146.3	52.6	1,718.1	674.7	18.5	97.0	13.4	2,919.1
Newly industrialized countries									
South Korea									
2010	31.0	80.7	33.1	66.3	39.4	5.7	4.4	0.5	261.0
2011	67.5	103.5	38.3	101.4	41.0	0.5	4.9	0.6	357.7
Hong Kong									
2010	36.5	0.0	8.0	66.1	18.3	0.6	4.2	1.2	134.9
2011	26.3	0.1	8.3	283.0	19.4	0.4	8.1	1.0	346.7
Taiwan									
2010	11.1	23.4	17.3	20.2	9.8	0.4	5.2	0.1	87.4
2011	12.2	31.2	22.5	77.9	9.4	0.2	1.9	0.1	155.3
Singapore									
2010	5.4	0.5	2.6	10.3	23.7	1.8	3.3	0.1	47.7
2011	3.1	0.5	1.6	7.0	31.6	2.8	2.2	0.2	49.1
Total									
2010	83.9	104.7	60.9	163.0	91.2	8.5	17.1	1.9	531.1
2011	109.0	135.3	70.8	469.2	101.4	3.9	17.2	1.9	908.8
Other countries									
2010	747.6	69.3	324.5	851.8	566.4	50.5	84.3	20.8	2,715.2
2011	657.9	308.1	475.4	1,150.0	507.8	59.4	82.0	13.9	3,254.5
Total									
2010	2,530.2	8,356.8	1,602.8	6,847.2	4,549.7	3,493.0	987.5	280.8	28,648.0
2011	2,669.7	8,928.4	1,769.8	8,478.8	4,659.6	4,283.5	946.3	252.8	31,988.8

Table 3-2

Domestic exports to selected countries, customs basis, not seasonally adjusted — Year to date, January to January

	Agricultural and fishing products	Energy products	Forestry products	Industrial goods	Machinery and equipment	Automotive products	Consumer goods	Special transactions trade	Total
millions of dollars									
United States									
2010	1,296.2	7,982.9	1,018.7	4,358.0	3,145.3	3,337.2	768.9	243.9	22,151.1
2011	1,354.0	8,208.9	1,067.9	4,851.6	3,274.9	4,143.2	740.3	221.8	23,862.6
Mexico									
2010	79.8	0.9	10.6	85.0	53.8	72.8	6.1	0.3	309.4
2011	42.6	6.7	10.5	67.2	59.3	53.9	4.0	0.3	244.5
Japan									
2010	208.7	166.5	94.3	98.9	52.2	6.3	6.3	1.3	634.5
2011	307.7	123.1	92.6	222.8	41.5	4.5	5.7	1.4	799.3
European Union									
Germany									
2010	8.8	0.0	8.9	99.8	153.4	2.0	15.1	1.7	289.7
2011	11.7	11.5	4.8	72.8	133.2	1.7	16.8	2.6	255.1
France									
2010	8.6	0.1	13.0	34.7	64.1	2.4	18.3	1.1	142.3
2011	8.9	0.3	7.7	56.0	149.0	1.6	16.2	0.8	240.5
United Kingdom									
2010	18.8	0.6	18.2	905.5	181.1	3.9	15.4	3.6	1,147.1
2011	26.7	11.8	9.2	1,293.4	94.4	5.6	10.3	6.2	1,457.6
Italy									
2010	7.2	21.7	25.5	18.8	63.6	0.4	10.4	2.0	149.6
2011	19.0	12.9	18.8	46.0	27.6	0.3	6.3	0.1	131.1
Other European Union									
2010	70.8	10.0	28.1	231.7	178.4	9.1	45.7	4.1	578.0
2011	132.1	109.9	12.1	249.9	270.4	9.3	47.4	3.7	834.8
Total									
2010	114.1	32.5	93.8	1,290.5	640.7	17.8	104.8	12.5	2,306.7
2011	198.5	146.3	52.6	1,718.1	674.7	18.5	97.0	13.4	2,919.1
Newly industrialized countries									
South Korea									
2010	31.0	80.7	33.1	66.3	39.4	5.7	4.4	0.5	261.0
2011	67.5	103.5	38.3	101.4	41.0	0.5	4.9	0.6	357.7
Hong Kong									
2010	36.5	0.0	8.0	66.1	18.3	0.6	4.2	1.2	134.9
2011	26.3	0.1	8.3	283.0	19.4	0.4	8.1	1.0	346.7
Taiwan									
2010	11.1	23.4	17.3	20.2	9.8	0.4	5.2	0.1	87.4
2011	12.2	31.2	22.5	77.9	9.4	0.2	1.9	0.1	155.3
Singapore									
2010	5.4	0.5	2.6	10.3	23.7	1.8	3.3	0.1	47.7
2011	3.1	0.5	1.6	7.0	31.6	2.8	2.2	0.2	49.1
Total									
2010	83.9	104.7	60.9	163.0	91.2	8.5	17.1	1.9	531.1
2011	109.0	135.3	70.8	469.2	101.4	3.9	17.2	1.9	908.8
Other countries									
2010	747.6	69.3	324.5	851.8	566.4	50.5	84.3	20.8	2,715.2
2011	657.9	308.1	475.4	1,150.0	507.8	59.4	82.0	13.9	3,254.5
Total									
2010	2,530.2	8,356.8	1,602.8	6,847.2	4,549.7	3,493.0	987.5	280.8	28,648.0
2011	2,669.7	8,928.4	1,769.8	8,478.8	4,659.6	4,283.5	946.3	252.8	31,988.8

Table 4
Domestic exports by country, customs basis, not seasonally adjusted

	January		January to January		Change
	2010	2011	2010	2011	January to January 2011/ January to January 2010
	millions of dollars				percent
North America					
Greenland	1.3	1.1	1.3	1.1	-18.5
Mexico	309.4	244.5	309.4	244.5	-21.0
Saint Pierre and Miquelon	1.0	0.8	1.0	0.8	-24.5
United States	22,151.1	23,862.6	22,151.1	23,862.6	7.7
Total	22,462.8	24,109.0	22,462.8	24,109.0	7.3
Western Europe					
Austria	33.9	10.6	33.9	10.6	-68.9
Belgium	114.7	82.9	114.7	82.9	-27.7
Denmark	20.2	12.8	20.2	12.8	-36.7
Faeroe Islands	0.0	0.1	0.0	0.1	103.1
Finland	15.7	24.3	15.7	24.3	54.5
France	142.3	240.5	142.3	240.5	69.0
Germany	289.7	255.1	289.7	255.1	-12.0
Gibraltar	0.0	0.0	0.0	0.0	...
Greece	5.6	4.8	5.6	4.8	-14.7
Iceland	4.6	3.8	4.6	3.8	-17.9
Italy	149.6	131.1	149.6	131.1	-12.3
Luxembourg	3.3	1.3	3.3	1.3	-61.4
Malta	0.5	0.7	0.5	0.7	39.8
Netherlands	187.4	369.9	187.4	369.9	97.5
Norway	123.3	209.2	123.3	209.2	69.7
Portugal	6.1	11.1	6.1	11.1	82.3
Republic of Ireland (Eire)	39.2	33.8	39.2	33.8	-13.8
Spain	68.6	131.3	68.6	131.3	91.4
Sweden	20.1	21.4	20.1	21.4	6.0
Switzerland	218.2	165.7	218.2	165.7	-24.0
United Kingdom	1,147.1	1,457.6	1,147.1	1,457.6	27.1
Total	2,590.2	3,168.0	2,590.2	3,168.0	22.3
Other Europe					
Albania	0.5	3.5	0.5	3.5	550.9
Armenia	0.4	0.5	0.4	0.5	19.9
Azerbaijan	0.6	0.4	0.6	0.4	-35.2
Belarus	0.0	0.1	0.0	0.1	540.3
Bosnia and Herzegovina	0.2	0.0	0.2	0.0	-98.7
Bulgaria	20.9	18.9	20.9	18.9	-9.5
Croatia	1.5	0.6	1.5	0.6	-57.2
Czech Republic	8.4	6.4	8.4	6.4	-23.8
Estonia	1.0	55.0	1.0	55.0	...
Georgia	1.1	1.6	1.1	1.6	41.6
Hungary	4.7	6.5	4.7	6.5	39.9
Kazakhstan	8.7	6.9	8.7	6.9	-21.4
Kyrgyzstan	0.1	0.1	0.1	0.1	43.2
Latvia	1.1	22.4	1.1	22.4	...
Lithuania	1.1	5.5	1.1	5.5	391.5
Macedonia (Former Yugoslav Republic of Macedonia)	0.8	1.0	0.8	1.0	24.3
Montenegro	0.0	0.0	0.0	0.0	31.0
Poland	15.6	10.3	15.6	10.3	-33.7
Republic of Moldova	0.1	0.1	0.1	0.1	-2.2
Romania	7.3	2.5	7.3	2.5	-65.5
Russian Federation	44.9	71.1	44.9	71.1	58.5
Serbia	0.4	0.3	0.4	0.3	-1.4
Slovakia	1.5	1.5	1.5	1.5	2.4
Slovenia	0.3	0.4	0.3	0.4	7.0
Tajikistan	0.8	0.0	0.8	0.0	-100.0
Turkmenistan	0.3	1.0	0.3	1.0	297.0
Ukraine	7.6	10.6	7.6	10.6	38.2
Uzbekistan	0.8	0.4	0.8	0.4	-47.2
Total	130.8	227.8	130.8	227.8	74.2

Table 4 – continued

Domestic exports by country, customs basis, not seasonally adjusted

	January		January to January		Change
	2010	2011	2010	2011	January to January 2011/ January to January 2010
	millions of dollars				percent
Middle East					
Bahrain	1.4	2.1	1.4	2.1	54.5
Cyprus	0.6	0.4	0.6	0.4	-34.6
Egypt	19.9	64.4	19.9	64.4	224.2
Eritrea	0.3	0.0	0.3	0.0	-84.7
Ethiopia	0.4	1.2	0.4	1.2	226.0
Iran	6.4	4.2	6.4	4.2	-33.3
Iraq	1.8	2.5	1.8	2.5	35.9
Israel	22.6	24.5	22.6	24.5	8.7
Jordan	6.5	5.5	6.5	5.5	-15.0
Kuwait	8.5	8.6	8.5	8.6	0.9
Lebanon	5.4	2.6	5.4	2.6	-51.8
Libya	19.7	34.0	19.7	34.0	72.9
Oman	9.4	5.2	9.4	5.2	-45.2
Qatar	3.7	3.6	3.7	3.6	-2.7
Saudi Arabia	117.3	41.9	117.3	41.9	-64.3
Somalia	0.0	0.2	0.0	0.2	...
Sudan	6.6	0.6	6.6	0.6	-90.8
Syria	2.0	3.3	2.0	3.3	64.1
Turkey	42.4	75.0	42.4	75.0	77.0
United Arab Emirates	102.1	114.9	102.1	114.9	12.5
Yemen	1.2	0.5	1.2	0.5	-60.6
Total	378.2	395.4	378.2	395.4	4.5
Other Africa					
Algeria	23.8	7.0	23.8	7.0	-70.7
Angola	2.5	4.8	2.5	4.8	93.4
Antarctica	0.0	0.0	0.0	0.0	-100.0
Benin	0.5	0.4	0.5	0.4	-8.9
Botswana	0.0	0.1	0.0	0.1	74.0
Burkina Faso	1.7	0.5	1.7	0.5	-73.2
Burundi	0.0	0.0	0.0	0.0	-56.6
Cameroon	0.2	0.5	0.2	0.5	99.7
Cape Verde	0.2	0.7	0.2	0.7	341.2
Central African Republic	0.0	0.0	0.0	0.0	...
Chad	0.4	0.1	0.4	0.1	-70.6
Congo	0.5	0.7	0.5	0.7	24.1
Democratic Republic of the Congo	1.0	0.7	1.0	0.7	-28.8
Djibouti	0.0	0.1	0.0	0.1	...
Equatorial Guinea	0.2	0.4	0.2	0.4	95.1
French Southern Territories	0.0	0.0	0.0	0.0	-100.0
Gabon	1.8	2.6	1.8	2.6	44.6
Gambia	0.0	0.1	0.0	0.1	90.1
Ghana	11.6	4.4	11.6	4.4	-61.7
Guinea	0.3	1.1	0.3	1.1	231.3
Guinea-Bissau	0.0	0.0	0.0	0.0	...
Ivory Coast	0.4	0.6	0.4	0.6	49.5
Kenya	2.3	2.4	2.3	2.4	5.3
Lesotho	0.0	0.0	0.0	0.0	0.0
Liberia	1.7	1.8	1.7	1.8	7.0
Madagascar	6.1	0.5	6.1	0.5	-91.3
Malawi	0.3	0.3	0.3	0.3	6.3
Mali	0.4	0.4	0.4	0.4	23.6
Mauritania	0.1	3.3	0.1	3.3	...
Mauritius	0.2	0.5	0.2	0.5	179.9
Morocco	3.9	12.9	3.9	12.9	232.2
Mozambique	0.9	0.5	0.9	0.5	-39.2
Namibia	0.1	0.6	0.1	0.6	958.1
Niger	0.1	0.2	0.1	0.2	163.0
Nigeria	4.0	6.7	4.0	6.7	66.0
Rwanda	0.1	0.1	0.1	0.1	-35.5
Senegal	2.0	0.8	2.0	0.8	-58.0
Seychelles	0.0	0.1	0.0	0.1	...
Sierra Leone	1.1	0.4	1.1	0.4	-64.9
South Africa	23.5	21.4	23.5	21.4	-8.9
Swaziland	0.1	0.1	0.1	0.1	115.4

Table 4 – continued

Domestic exports by country, customs basis, not seasonally adjusted

	January		January to January		Change
	2010	2011	2010	2011	January to January 2011/ January to January 2010
	millions of dollars				percent
Togo	0.2	0.2	0.2	0.2	-28.0
Tunisia	14.7	2.0	14.7	2.0	-86.6
Uganda	1.1	0.5	1.1	0.5	-59.2
United Republic of Tanzania	1.5	1.9	1.5	1.9	22.3
Zambia	0.1	2.2	0.1	2.2	...
Zimbabwe	0.5	0.2	0.5	0.2	-59.6
Total	110.1	84.7	110.1	84.7	-23.1
Other Asia					
Afghanistan	2.2	2.8	2.2	2.8	24.7
Bangladesh	84.5	15.8	84.5	15.8	-81.3
Bhutan	0.0	0.0	0.0	0.0	...
Brunei Darussalam	5.5	0.2	5.5	0.2	-97.0
Cambodia	0.1	0.4	0.1	0.4	652.2
China	650.1	971.8	650.1	971.8	49.5
Hong Kong	134.9	346.7	134.9	346.7	156.9
India	133.9	131.2	133.9	131.2	-2.0
Indonesia	51.3	136.0	51.3	136.0	165.2
Japan	634.5	799.3	634.5	799.3	26.0
Laos	0.1	0.1	0.1	0.1	-56.0
Macao	0.4	0.2	0.4	0.2	-47.7
Malaysia	58.7	39.7	58.7	39.7	-32.4
Maldives	0.3	0.2	0.3	0.2	-42.7
Mongolia	1.3	3.1	1.3	3.1	142.1
Myanmar	0.0	0.0	0.0	0.0	...
Nepal	0.0	0.0	0.0	0.0	0.4
North Korea	1.0	1.1	1.0	1.1	12.6
Pakistan	29.2	61.3	29.2	61.3	109.9
Philippines	22.5	42.3	22.5	42.3	87.6
Singapore	47.7	49.1	47.7	49.1	2.9
South Korea	261.0	357.7	261.0	357.7	37.0
Sri Lanka	48.0	5.0	48.0	5.0	-89.7
Taiwan	87.4	155.3	87.4	155.3	77.7
Thailand	42.9	140.8	42.9	140.8	228.6
Viet Nam	24.2	30.3	24.2	30.3	25.1
Total	2,321.9	3,290.3	2,321.9	3,290.3	41.7
Oceania					
American Samoa	0.1	0.1	0.1	0.1	53.4
Australia	166.3	136.2	166.3	136.2	-18.1
Christmas Island	0.0	0.0	0.0	0.0	-100.0
Cocos (Keeling) Islands	0.0	0.0	0.0	0.0	-100.0
Fiji	0.2	0.1	0.2	0.1	-62.7
French Polynesia	0.8	0.4	0.8	0.4	-52.1
Guam	0.0	0.3	0.0	0.3	925.1
Kiribati	0.0	0.1	0.0	0.1	80.6
New Caledonia	1.3	0.8	1.3	0.8	-36.5
New Zealand	23.9	24.2	23.9	24.2	1.3
Papua New Guinea	0.6	0.3	0.6	0.3	-40.7
Pitcairn	0.0	0.0	0.0	0.0	...
Solomon Islands	0.0	0.0	0.0	0.0	...
United States Minor Outlying Islands	1.6	0.7	1.6	0.7	-52.1
Vanuatu	0.1	0.0	0.1	0.0	-82.5
Total	194.9	163.3	194.9	163.3	-16.2

Table 4 – continued

Domestic exports by country, customs basis, not seasonally adjusted

	January		January to January		Change
	2010	2011	2010	2011	January to January 2011/ January to January 2010
	millions of dollars				percent
South America					
Argentina	16.8	83.3	16.8	83.3	394.9
Bolivia	0.3	1.0	0.3	1.0	233.7
Brazil	106.4	155.4	106.4	155.4	46.0
Chile	40.2	53.1	40.2	53.1	32.0
Colombia	40.2	38.4	40.2	38.4	-4.5
Ecuador	22.5	28.0	22.5	28.0	24.5
Guyana	1.9	2.1	1.9	2.1	9.9
Paraguay	0.6	0.7	0.6	0.7	9.7
Peru	40.4	40.2	40.4	40.2	-0.7
Suriname	0.7	0.5	0.7	0.5	-30.7
Uruguay	1.9	1.8	1.9	1.8	-3.4
Venezuela	37.8	26.2	37.8	26.2	-30.7
Total	309.9	430.8	309.9	430.8	39.0
Central America Antilles					
Anguilla	0.0	0.0	0.0	0.0	-49.6
Antigua and Barbuda	2.4	0.3	2.4	0.3	-85.9
Aruba	0.3	0.2	0.3	0.2	-48.8
Bahamas	25.9	23.3	25.9	23.3	-9.9
Barbados	2.5	2.6	2.5	2.6	1.8
Belize	0.3	0.3	0.3	0.3	-18.4
Bermuda	2.6	1.9	2.6	1.9	-25.5
British Virgin Islands	0.1	0.1	0.1	0.1	-56.8
Cayman Islands	0.4	0.2	0.4	0.2	-38.9
Costa Rica	5.6	6.4	5.6	6.4	13.4
Cuba	27.1	21.9	27.1	21.9	-19.3
Dominica	0.6	0.1	0.6	0.1	-83.3
Dominican Republic	12.2	12.6	12.2	12.6	3.2
El Salvador	6.0	3.3	6.0	3.3	-45.1
Grenada	0.5	0.3	0.5	0.3	-33.7
Guatemala	6.2	6.1	6.2	6.1	-1.3
Haiti	6.6	1.4	6.6	1.4	-78.6
Honduras	1.7	1.9	1.7	1.9	14.8
Jamaica	11.7	6.8	11.7	6.8	-42.2
Montserrat	0.0	0.0	0.0	0.0	-100.0
Netherlands Antilles	1.2	1.4	1.2	1.4	17.6
Nicaragua	0.3	1.8	0.3	1.8	445.9
Panama	9.0	5.2	9.0	5.2	-42.5
Saint Kitts and Nevis	0.3	0.6	0.3	0.6	124.3
Saint Lucia	0.6	0.9	0.6	0.9	49.3
Saint Vincent and the Grenadines	0.4	0.4	0.4	0.4	0.7
Trinidad and Tobago	24.3	19.5	24.3	19.5	-19.6
Turks and Caicos Islands	0.4	0.1	0.4	0.1	-75.0
Total	149.2	119.6	149.2	119.6	-19.9
All countries	28,648.0	31,988.8	28,648.0	31,988.8	11.7

Table 5-1

Exports by province of origin, customs basis, not seasonally adjusted — January

	Agricultural and fishing products	Energy products	Forestry products	Industrial goods	Machinery and equipment	Automotive products	Consumer goods	Special transactions trade	Total
millions of dollars									
Domestic exports									
Newfoundland and Labrador									
2010	28.6	472.7	8.1	105.0	2.9	0.1	0.1	2.1	619.6
2011	20.8	688.6	10.8	99.2	3.5	0.1	0.1	2.0	825.0
Prince Edward Island									
2010	29.2	0.3	0.3	2.9	5.4	0.1	1.7	5.1	45.0
2011	33.7	0.0	0.1	1.4	5.7	0.1	2.7	3.3	47.1
Nova Scotia									
2010	48.2	46.0	60.3	45.1	92.6	3.2	6.2	3.2	304.7
2011	68.7	162.8	65.1	41.2	102.1	5.7	4.7	3.0	453.3
New Brunswick									
2010	82.1	897.9	105.4	83.8	21.9	2.2	17.3	3.5	1,214.1
2011	87.9	809.7	103.0	78.0	24.2	4.3	10.9	3.2	1,121.1
Quebec									
2010	338.0	311.5	443.1	1,499.1	1,470.0	107.1	330.8	73.8	4,573.4
2011	405.8	279.8	473.7	1,730.7	1,403.8	128.1	244.7	63.7	4,730.3
Ontario									
2010	554.5	244.5	225.2	3,047.4	2,265.1	3,288.4	546.1	122.3	10,293.7
2011	576.5	248.2	229.2	4,204.8	2,403.2	4,028.3	606.5	113.9	12,410.7
Manitoba									
2010	294.9	85.0	15.2	178.2	138.0	30.3	31.3	24.2	797.0
2011	295.4	78.3	18.7	202.6	170.2	34.8	24.2	19.6	843.8
Saskatchewan									
2010	590.3	763.9	16.0	579.3	69.9	5.9	1.2	4.1	2,030.5
2011	572.6	807.9	21.1	717.4	49.1	3.9	1.5	3.9	2,177.6
Alberta									
2010	429.0	4,914.5	157.5	788.8	265.3	34.8	8.2	23.2	6,621.3
2011	458.4	5,170.3	157.1	818.9	273.1	55.3	10.9	20.4	6,964.4
British Columbia									
2010	135.4	620.5	571.7	361.9	218.1	20.8	44.6	19.0	1,992.0
2011	149.9	682.8	690.9	571.7	224.6	22.8	40.1	19.7	2,402.5
Yukon, Northwest Territories and Nunavut ¹									
2010	0.2	0.0	0.0	155.8	0.5	0.1	0.0	0.1	156.7
2011	0.1	0.0	0.0	12.7	0.1	0.0	0.1	0.0	13.1
Total									
2010	2,530.2	8,356.8	1,602.8	6,847.2	4,549.7	3,493.0	987.5	280.8	28,648.0
2011	2,669.7	8,928.4	1,769.8	8,478.8	4,659.6	4,283.5	946.3	252.8	31,988.8
Re-exports									
2010	58.1	76.3	5.1	197.6	722.6	72.8	157.6	541.0	1,831.1
2011	61.4	35.2	5.2	378.7	791.5	86.0	162.8	611.2	2,132.0
Total exports									
2010	2,588.4	8,433.1	1,607.9	7,044.8	5,272.3	3,565.9	1,145.0	821.8	30,479.1
2011	2,731.0	8,963.6	1,775.0	8,857.5	5,451.1	4,369.5	1,109.1	864.0	34,120.8

1. Data for the current month do not include some exports from the Harmonized System, Chapter 71, "Natural/cultured pearls, precious stones and metals, coins, etc." for reasons relating to timing.

Table 5-2

Exports by province of origin, customs basis, not seasonally adjusted — Year to date, January to January

	Agricultural and fishing products	Energy products	Forestry products	Industrial goods	Machinery and equipment	Automotive products	Consumer goods	Special transactions trade	Total
millions of dollars									
Domestic exports									
Newfoundland and Labrador									
2010	28.6	472.7	8.1	105.0	2.9	0.1	0.1	2.1	619.6
2011	20.8	688.6	10.8	99.2	3.5	0.1	0.1	2.0	825.0
Prince Edward Island									
2010	29.2	0.3	0.3	2.9	5.4	0.1	1.7	5.1	45.0
2011	33.7	0.0	0.1	1.4	5.7	0.1	2.7	3.3	47.1
Nova Scotia									
2010	48.2	46.0	60.3	45.1	92.6	3.2	6.2	3.2	304.7
2011	68.7	162.8	65.1	41.2	102.1	5.7	4.7	3.0	453.3
New Brunswick									
2010	82.1	897.9	105.4	83.8	21.9	2.2	17.3	3.5	1,214.1
2011	87.9	809.7	103.0	78.0	24.2	4.3	10.9	3.2	1,121.1
Quebec									
2010	338.0	311.5	443.1	1,499.1	1,470.0	107.1	330.8	73.8	4,573.4
2011	405.8	279.8	473.7	1,730.7	1,403.8	128.1	244.7	63.7	4,730.3
Ontario									
2010	554.5	244.5	225.2	3,047.4	2,265.1	3,288.4	546.1	122.3	10,293.7
2011	576.5	248.2	229.2	4,204.8	2,403.2	4,028.3	606.5	113.9	12,410.7
Manitoba									
2010	294.9	85.0	15.2	178.2	138.0	30.3	31.3	24.2	797.0
2011	295.4	78.3	18.7	202.6	170.2	34.8	24.2	19.6	843.8
Saskatchewan									
2010	590.3	763.9	16.0	579.3	69.9	5.9	1.2	4.1	2,030.5
2011	572.6	807.9	21.1	717.4	49.1	3.9	1.5	3.9	2,177.6
Alberta									
2010	429.0	4,914.5	157.5	788.8	265.3	34.8	8.2	23.2	6,621.3
2011	458.4	5,170.3	157.1	818.9	273.1	55.3	10.9	20.4	6,964.4
British Columbia									
2010	135.4	620.5	571.7	361.9	218.1	20.8	44.6	19.0	1,992.0
2011	149.9	682.8	690.9	571.7	224.6	22.8	40.1	19.7	2,402.5
Yukon, Northwest Territories and Nunavut ¹									
2010	0.2	0.0	0.0	155.8	0.5	0.1	0.0	0.1	156.7
2011	0.1	0.0	0.0	12.7	0.1	0.0	0.1	0.0	13.1
Total									
2010	2,530.2	8,356.8	1,602.8	6,847.2	4,549.7	3,493.0	987.5	280.8	28,648.0
2011	2,669.7	8,928.4	1,769.8	8,478.8	4,659.6	4,283.5	946.3	252.8	31,988.8
Re-exports									
2010	58.1	76.3	5.1	197.6	722.6	72.8	157.6	541.0	1,831.1
2011	61.4	35.2	5.2	378.7	791.5	86.0	162.8	611.2	2,132.0
Total exports									
2010	2,588.4	8,433.1	1,607.9	7,044.8	5,272.3	3,565.9	1,145.0	821.8	30,479.1
2011	2,731.0	8,963.6	1,775.0	8,857.5	5,451.1	4,369.5	1,109.1	864.0	34,120.8

1. Data for the current month do not include some exports from the Harmonized System Chapter 71, "Natural/cultured pearls, precious stones and metals, coins, etc." for reasons relating to timing.

Table 6-1

Imports by commodity groupings, balance of payments basis, seasonally adjusted — Current dollars

	December 2010	January 2011	Change		Year to date			January 2011/ January 2010	
					2010	2011	Change		
	millions of dollars		percent		millions of dollars		percent		
Total	35,507	37,404	1,898	5.3	32,001	37,404	5,404	16.9	16.9
Agricultural and fishing products	2,597	2,585	-12	-0.5	2,360	2,585	225	9.6	9.6
Fruits and vegetables	707	723	16	2.3	650	723	74	11.3	11.3
Fresh fruits and berries	251	258	7	2.7	239	258	19	8.1	8.1
Dried fruits, fruits and fruit preparations	122	128	6	4.6	103	128	25	23.9	23.9
Fresh vegetables	177	180	3	1.7	169	180	10	6.0	6.0
Other vegetables and vegetable preparations	157	158	1	0.6	138	158	20	14.2	14.2
Other agricultural and fishing products	1,890	1,862	-28	-1.5	1,710	1,862	152	8.9	8.9
Live animals	16	16	0	2.1	13	16	3	23.4	23.4
Meat and meat preparations	209	185	-24	-11.7	167	185	17	10.4	10.4
Fish and marine animals	180	197	17	9.2	155	197	42	27.3	27.3
Cocoa, coffee, tea and other food preparations	433	458	25	5.7	399	458	60	14.9	14.9
Dairy produce, eggs and honey	50	48	-2	-3.4	42	48	6	15.1	15.1
Corn (maize) shelled	22	29	8	36.7	42	29	-13	-30.4	-30.4
Other cereals and cereal preparations	185	178	-7	-3.6	177	178	1	0.3	0.3
Sugar and sugar preparations	149	166	16	11.0	145	166	21	14.3	14.3
Fodder, feed, excluding unmilled cereal	123	120	-3	-2.7	112	120	8	6.9	6.9
Beverages	333	307	-26	-7.9	308	307	-1	-0.4	-0.4
Tobacco	33	26	-8	-23.0	30	26	-5	-15.9	-15.9
Crude vegetable products	155	131	-24	-15.4	118	131	13	11.0	11.0
Cotton	1	1	0	-11.2	1	1	0	3.9	3.9
Energy products	3,690	4,200	509	13.8	3,259	4,200	941	28.9	28.9
Crude petroleum	2,134	2,398	265	12.4	1,926	2,398	472	24.5	24.5
Other energy products	1,557	1,801	244	15.7	1,333	1,801	468	35.1	35.1
Coal and other related products	343	397	54	15.7	536	397	-140	-26.1	-26.1
Petroleum and coal products	1,214	1,405	191	15.7	797	1,405	608	76.3	76.3
Forestry products	214	205	-10	-4.5	209	205	-4	-1.9	-1.9
Forestry products	214	205	-10	-4.5	209	205	-4	-1.9	-1.9
Crude wood products	41	31	-10	-25.0	33	31	-3	-7.7	-7.7
Wood fabricated materials	173	174	1	0.3	175	174	-1	-0.7	-0.7
Industrial goods and materials	7,676	7,611	-65	-0.8	6,444	7,611	1,167	18.1	18.1
Metals and metal ores	3,135	2,972	-163	-5.2	2,321	2,972	651	28.1	28.1
Metals in ores, concentrates and scrap	738	633	-105	-14.2	588	633	45	7.6	7.6
Steel bars, rods, plates, sheets	467	550	83	17.7	484	550	67	13.8	13.8
Other iron and steel products	346	345	-1	-0.2	292	345	53	18.1	18.1
Precious metals including alloys	1,237	1,078	-158	-12.8	584	1,078	494	84.6	84.6
Other non-ferrous metals and alloys	347	365	18	5.2	373	365	-8	-2.1	-2.1
Chemicals and plastics	2,431	2,509	79	3.2	2,212	2,509	297	13.4	13.4
Organic chemicals	519	572	53	10.2	520	572	52	10.0	10.0
Plastic materials	854	866	12	1.5	761	866	105	13.8	13.8
Other chemicals and related products	1,058	1,071	13	1.2	931	1,071	140	15.0	15.0
Other industrial goods and materials	2,110	2,129	20	0.9	1,911	2,129	219	11.5	11.5
Crude animal products	13	25	11	84.3	15	25	10	63.4	63.4
Wool and man-made fibres	23	21	-2	-7.2	19	21	2	12.4	12.4
Crude non-metallic minerals	67	68	2	2.8	72	68	-4	-5.4	-5.4
Textile fabricated materials	204	198	-5	-2.7	183	198	15	8.2	8.2
Metal fabricated basic products	888	882	-6	-0.7	738	882	144	19.5	19.5
Rubber fabricated materials	89	94	5	5.1	77	94	17	21.8	21.8
Oils, fats, animal and vegetable	104	93	-11	-10.3	99	93	-5	-5.4	-5.4
Non-metallic minerals	297	304	7	2.2	276	304	28	10.2	10.2
Other fabricated materials	425	444	20	4.6	432	444	13	2.9	2.9

Table 6-1 – continued

Imports by commodity groupings, balance of payments basis, seasonally adjusted — Current dollars

	December 2010	January 2011	Change		Year to date			January 2011/ January 2010	
					2010	2011	Change		
	millions of dollars		percent		millions of dollars		percent		
Machinery and equipment	9,792	9,968	176	1.8	8,348	9,968	1,620	19.4	19.4
Industrial and agricultural machinery	2,651	2,622	-28	-1.1	2,026	2,622	597	29.5	29.5
Engines, turbines and electric motors	391	328	-63	-16.1	272	328	56	20.7	20.7
Drilling mining machinery	159	154	-5	-3.4	112	154	42	37.5	37.5
Excavating machinery	246	244	-2	-1.0	133	244	111	83.1	83.1
Metal working machinery	168	177	9	5.4	124	177	53	42.5	42.5
Other industrial machinery	1,335	1,354	19	1.4	1,075	1,354	279	25.9	25.9
Agricultural machinery including tractors	351	365	15	4.2	309	365	56	18.3	18.3
Aircraft and other transportation equipment	1,263	1,425	162	12.8	1,009	1,425	415	41.1	41.1
Aircraft, engines, parts	796	955	158	19.9	610	955	344	56.4	56.4
Other transportation equipment and parts	467	470	3	0.7	399	470	71	17.8	17.8
Office machines and equipment	1,085	1,057	-29	-2.6	1,038	1,057	19	1.8	1.8
Other machinery and equipment	4,793	4,864	71	1.5	4,275	4,864	589	13.8	13.8
Other communication and related equipment	1,683	1,784	101	6.0	1,503	1,784	281	18.7	18.7
Other equipment and tools	3,110	3,081	-30	-1.0	2,772	3,081	308	11.1	11.1
Automotive products	5,521	6,415	894	16.2	5,689	6,415	726	12.8	12.8
Passenger autos and chassis	1,822	1,948	125	6.9	1,816	1,948	132	7.3	7.3
Trucks and other motor vehicles	1,162	1,579	416	35.8	1,491	1,579	88	5.9	5.9
Motor vehicle parts	2,536	2,888	352	13.9	2,382	2,888	506	21.2	21.2
Other consumer goods	4,876	4,851	-25	-0.5	4,672	4,851	179	3.8	3.8
Apparel and footwear	1,026	994	-31	-3.1	856	994	138	16.2	16.2
Apparel and apparel accessories	850	825	-25	-2.9	718	825	107	15.0	15.0
Footwear	176	169	-7	-3.8	138	169	31	22.3	22.3
Miscellaneous consumer goods	3,850	3,857	6	0.2	3,816	3,857	40	1.1	1.1
Television, radios, phonographs	116	132	16	13.4	126	132	5	4.1	4.1
Printed matter	296	292	-4	-1.4	279	292	13	4.8	4.8
Watches, sporting goods and toys	516	523	7	1.4	485	523	39	7.9	7.9
House furnishings	729	718	-12	-1.6	722	718	-4	-0.6	-0.6
Photographic goods	229	226	-3	-1.2	201	226	25	12.3	12.3
Miscellaneous end products	1,964	1,966	2	0.1	2,003	1,966	-37	-1.8	-1.8
Special transactions trade	386	789	404	104.7	315	789	475	150.9	150.9
Unallocated balance of payments adjustments	755	781	26	3.4	705	781	75	10.7	10.7

Table 6-2

Imports by commodity groupings, balance of payments basis, seasonally adjusted — Constant dollars, 2002

	December 2010	January 2011	Change		Year to date			January 2011/ January 2010	
					2010	2011	Change		
	millions of dollars		percent		millions of dollars		percent		
Total	40,298	42,514	2,216	5.5	36,193	42,514	6,321	17.5	17.5
Agricultural and fishing products	2,685	2,586	-99	-3.7	2,393	2,586	193	8.1	8.1
Fruits and vegetables	734	754	20	2.7	672	754	82	12.2	12.2
Fresh fruits and berries	261	268	7	2.9	241	268	27	11.3	11.3
Dried fruits, fruits and fruit preparations	116	126	10	8.7	101	126	24	24.0	24.0
Fresh vegetables	210	205	-4	-2.0	194	205	11	5.9	5.9
Other vegetables and vegetable preparations	148	154	6	4.2	135	154	19	14.2	14.2
Other agricultural and fishing products	1,951	1,832	-119	-6.1	1,721	1,832	111	6.4	6.4
Live animals	16	16	0	0.9	14	16	3	19.6	19.6
Meat and meat preparations	215	181	-34	-15.9	181	181	0	0.1	0.1
Fish and marine animals	237	266	28	12.0	241	266	25	10.3	10.3
Cocoa, coffee, tea and other food preparations	505	436	-69	-13.6	355	436	81	22.8	22.8
Dairy produce, eggs and honey	50	50	0	-0.1	50	50	1	1.1	1.1
Corn (maize) shelled	15	20	5	35.5	40	20	-19	-48.3	-48.3
Other cereals and cereal preparations	155	137	-18	-11.7	156	137	-19	-12.2	-12.2
Sugar and sugar preparations	146	165	19	12.9	145	165	19	13.4	13.4
Fodder, feed, excluding unmilled cereal	103	100	-2	-2.2	94	100	6	6.6	6.6
Beverages	315	307	-9	-2.7	286	307	21	7.3	7.3
Tobacco	39	31	-9	-21.9	38	31	-7	-18.6	-18.6
Crude vegetable products	153	122	-31	-20.1	122	122	1	0.6	0.6
Cotton	1	1	0	-15.6	2	1	0	-20.1	-20.1
Energy products	1,875	2,120	245	13.1	1,820	2,120	300	16.5	16.5
Crude petroleum	914	967	53	5.8	875	967	91	10.5	10.5
Other energy products	961	1,153	192	20.0	945	1,153	208	22.0	22.0
Coal and other related products	325	432	107	32.9	492	432	-60	-12.2	-12.2
Petroleum and coal products	636	721	85	13.4	453	721	268	59.3	59.3
Forestry products	284	276	-8	-2.7	288	276	-12	-4.2	-4.2
Forestry products	284	276	-8	-2.7	288	276	-12	-4.2	-4.2
Crude wood products	59	45	-14	-24.2	51	45	-6	-12.3	-12.3
Wood fabricated materials	225	232	7	2.9	238	232	-6	-2.4	-2.4
Industrial goods and materials	6,684	6,761	77	1.1	5,993	6,761	768	12.8	12.8
Metals and metal ores	1,963	1,992	29	1.5	1,695	1,992	297	17.5	17.5
Metals in ores, concentrates and scrap	356	305	-51	-14.2	319	305	-13	-4.2	-4.2
Steel bars, rods, plates, sheets	386	479	93	24.1	431	479	48	11.1	11.1
Other iron and steel products	251	253	1	0.6	238	253	14	6.0	6.0
Precious metals including alloys	643	611	-32	-5.0	319	611	291	91.3	91.3
Other non-ferrous metals and alloys	327	345	18	5.4	388	345	-43	-11.1	-11.1
Chemicals and plastics	2,277	2,310	33	1.5	2,149	2,310	161	7.5	7.5
Organic chemicals	378	391	13	3.4	378	391	14	3.6	3.6
Plastic materials	917	894	-23	-2.5	844	894	50	6.0	6.0
Other chemicals and related products	982	1,025	43	4.4	928	1,025	97	10.5	10.5
Other industrial goods and materials	2,444	2,459	14	0.6	2,149	2,459	310	14.4	14.4
Crude animal products	15	23	9	58.6	19	23	4	19.4	19.4
Wool and man-made fibres	29	27	-2	-8.1	25	27	2	8.0	8.0
Crude non-metallic minerals	53	57	4	7.2	60	57	-3	-4.9	-4.9
Textile fabricated materials	281	267	-14	-5.0	247	267	20	8.3	8.3
Metal fabricated basic products	956	968	12	1.3	790	968	178	22.6	22.6
Rubber fabricated materials	110	117	7	6.3	94	117	23	24.4	24.4
Oils, fats, animal and vegetable	99	86	-13	-12.7	95	86	-8	-8.8	-8.8
Non-metallic minerals	368	383	15	4.1	342	383	41	12.1	12.1
Other fabricated materials	533	530	-3	-0.6	478	530	53	11.0	11.0

Table 6-2 – continued

Imports by commodity groupings, balance of payments basis, seasonally adjusted — Constant dollars, 2002

	December 2010	January 2011	Change		Year to date			January 2011/ January 2010	
					2010	2011	Change		
	millions of dollars		percent		millions of dollars		percent		
Machinery and equipment	14,535	14,989	454	3.1	11,973	14,989	3,016	25.2	25.2
Industrial and agricultural machinery	3,297	3,294	-2	-0.1	2,475	3,294	819	33.1	33.1
Engines, turbines and electric motors	488	418	-70	-14.4	340	418	78	22.9	22.9
Drilling mining machinery	183	178	-6	-3.0	126	178	52	41.4	41.4
Excavating machinery	309	318	9	2.8	164	318	154	93.7	93.7
Metal working machinery	220	234	14	6.4	159	234	75	47.3	47.3
Other industrial machinery	1,645	1,674	28	1.7	1,295	1,674	379	29.3	29.3
Agricultural machinery including tractors	451	473	22	5.0	391	473	82	20.9	20.9
Aircraft and other transportation equipment	1,499	1,706	208	13.9	1,200	1,706	507	42.2	42.2
Aircraft, engines, parts	977	1,183	206	21.1	749	1,183	434	57.9	57.9
Other transportation equipment and parts	522	524	2	0.4	451	524	73	16.2	16.2
Office machines and equipment	2,678	2,641	-37	-1.4	2,167	2,641	474	21.9	21.9
Other machinery and equipment	7,061	7,347	286	4.1	6,131	7,347	1,216	19.8	19.8
Other communication and related equipment	2,868	3,167	299	10.4	2,525	3,167	642	25.4	25.4
Other equipment and tools	4,194	4,180	-13	-0.3	3,605	4,180	575	15.9	15.9
Automotive products	6,878	8,018	1,141	16.6	6,883	8,018	1,135	16.5	16.5
Passenger autos and chassis	2,112	2,246	133	6.3	2,076	2,246	170	8.2	8.2
Trucks and other motor vehicles	1,359	1,855	497	36.6	1,669	1,855	186	11.2	11.2
Motor vehicle parts	3,407	3,918	511	15.0	3,138	3,918	780	24.8	24.8
Other consumer goods	6,432	6,434	2	0.0	5,993	6,434	441	7.4	7.4
Apparel and footwear	1,475	1,458	-17	-1.2	1,202	1,458	256	21.3	21.3
Apparel and apparel accessories	1,227	1,218	-9	-0.7	1,012	1,218	206	20.3	20.3
Footwear	249	240	-8	-3.4	190	240	51	26.6	26.6
Miscellaneous consumer goods	4,957	4,976	19	0.4	4,791	4,976	185	3.9	3.9
Television, radios, phonographs	198	225	26	13.3	215	225	10	4.6	4.6
Printed matter	374	373	-1	-0.3	344	373	29	8.4	8.4
Watches, sporting goods and toys	707	735	28	4.0	666	735	68	10.3	10.3
House furnishings	953	940	-13	-1.3	930	940	10	1.1	1.1
Photographic goods	439	441	2	0.4	360	441	81	22.6	22.6
Miscellaneous end products	2,286	2,262	-24	-1.1	2,275	2,262	-13	-0.6	-0.6
Special transactions trade	447	895	448	100.3	358	895	537	150.2	150.2
Unallocated balance of payments adjustments	478	434	-44	-9.2	492	434	-58	-11.8	-11.8

Table 7-1

Imports from selected countries, customs basis, not seasonally adjusted — January

	Agricultural and fishing products	Energy products	Forestry products	Industrial goods	Machinery and equipment	Automotive products	Consumer goods	Special transactions trade	Total
millions of dollars									
United States									
2010	1,231.8	1,054.5	141.0	3,646.4	3,303.6	2,993.0	1,664.5	166.3	14,201.1
2011	1,267.8	1,114.6	138.6	4,099.4	3,873.7	3,532.3	1,663.2	460.2	16,149.8
Mexico									
2010	150.0	48.3	0.3	119.6	490.1	572.2	76.0	1.9	1,458.4
2011	169.4	83.7	0.5	189.6	613.6	653.9	86.9	2.0	1,799.6
Japan									
2010	5.9	0.4	0.1	90.7	295.8	375.6	79.1	0.2	847.9
2011	4.9	0.4	0.1	101.8	361.2	365.4	88.4	0.4	922.6
European Union									
Germany									
2010	16.6	1.1	0.7	143.4	240.5	167.7	130.9	0.5	701.3
2011	21.3	0.9	0.6	165.5	314.6	205.3	146.0	1.6	855.7
France									
2010	51.7	6.1	0.2	56.7	102.0	13.3	133.1	0.4	363.5
2011	44.2	0.7	0.1	51.5	134.2	5.9	96.9	0.2	333.7
United Kingdom									
2010	26.1	369.9	0.0	126.5	208.6	19.9	81.9	1.9	834.7
2011	25.2	295.1	0.0	242.2	212.0	38.1	97.1	1.5	911.1
Italy									
2010	45.3	0.1	1.1	69.5	125.3	9.4	73.5	0.2	324.4
2011	55.1	0.1	1.4	77.5	121.4	12.6	74.0	0.3	342.3
Other European Union									
2010	75.9	70.6	2.7	183.9	252.7	37.5	292.1	0.4	915.7
2011	84.1	267.4	3.3	342.1	333.1	55.5	286.4	0.8	1,372.6
Total									
2010	215.6	447.7	4.7	579.9	929.1	247.9	711.5	3.3	3,139.6
2011	230.0	564.1	5.4	878.7	1,115.2	317.5	700.3	4.4	3,815.5
Newly industrialized countries									
South Korea									
2010	4.9	3.7	0.0	55.2	157.1	175.2	14.0	0.0	410.2
2011	4.3	1.9	0.0	102.8	213.7	95.5	14.4	0.1	432.7
Hong Kong									
2010	2.0	0.0	0.1	1.6	10.4	0.1	8.8	0.0	23.0
2011	2.9	0.0	0.0	18.7	10.8	0.1	9.1	0.0	41.6
Taiwan									
2010	5.5	0.0	0.7	60.1	148.6	12.3	31.8	0.1	259.3
2011	6.0	0.0	0.4	76.3	218.9	13.3	29.9	0.1	344.9
Singapore									
2010	3.7	0.0	0.0	24.1	32.7	0.3	10.0	0.2	71.0
2011	3.7	46.3	0.2	43.0	40.6	0.3	6.2	0.0	140.2
Total									
2010	16.2	3.7	0.8	141.0	348.8	187.9	64.6	0.3	763.4
2011	16.8	48.2	0.6	240.8	483.9	109.2	59.7	0.2	959.4
Other countries									
2010	626.5	1,689.7	52.2	1,537.6	2,056.2	149.5	1,677.8	24.2	7,813.7
2011	776.9	2,309.0	49.3	1,794.2	2,395.7	182.5	1,842.0	28.5	9,378.0
Total									
2010	2,246.2	3,244.2	199.1	6,115.2	7,423.5	4,526.0	4,273.6	196.3	28,224.2
2011	2,466.4	4,120.1	194.4	7,304.5	8,843.3	5,160.7	4,440.5	495.7	33,025.6

Table 7-2

Imports from selected countries, customs basis, not seasonally adjusted — Year to date, January to January

	Agricultural and fishing products	Energy products	Forestry products	Industrial goods	Machinery and equipment	Automotive products	Consumer goods	Special transactions trade	Total
millions of dollars									
United States									
2010	1,231.8	1,054.5	141.0	3,646.4	3,303.6	2,993.0	1,664.5	166.3	14,201.1
2011	1,267.8	1,114.6	138.6	4,099.4	3,873.7	3,532.3	1,663.2	460.2	16,149.8
Mexico									
2010	150.0	48.3	0.3	119.6	490.1	572.2	76.0	1.9	1,458.4
2011	169.4	83.7	0.5	189.6	613.6	653.9	86.9	2.0	1,799.6
Japan									
2010	5.9	0.4	0.1	90.7	295.8	375.6	79.1	0.2	847.9
2011	4.9	0.4	0.1	101.8	361.2	365.4	88.4	0.4	922.6
European Union									
Germany									
2010	16.6	1.1	0.7	143.4	240.5	167.7	130.9	0.5	701.3
2011	21.3	0.9	0.6	165.5	314.6	205.3	146.0	1.6	855.7
France									
2010	51.7	6.1	0.2	56.7	102.0	13.3	133.1	0.4	363.5
2011	44.2	0.7	0.1	51.5	134.2	5.9	96.9	0.2	333.7
United Kingdom									
2010	26.1	369.9	0.0	126.5	208.6	19.9	81.9	1.9	834.7
2011	25.2	295.1	0.0	242.2	212.0	38.1	97.1	1.5	911.1
Italy									
2010	45.3	0.1	1.1	69.5	125.3	9.4	73.5	0.2	324.4
2011	55.1	0.1	1.4	77.5	121.4	12.6	74.0	0.3	342.3
Other European Union									
2010	75.9	70.6	2.7	183.9	252.7	37.5	292.1	0.4	915.7
2011	84.1	267.4	3.3	342.1	333.1	55.5	286.4	0.8	1,372.6
Total									
2010	215.6	447.7	4.7	579.9	929.1	247.9	711.5	3.3	3,139.6
2011	230.0	564.1	5.4	878.7	1,115.2	317.5	700.3	4.4	3,815.5
Newly industrialized countries									
South Korea									
2010	4.9	3.7	0.0	55.2	157.1	175.2	14.0	0.0	410.2
2011	4.3	1.9	0.0	102.8	213.7	95.5	14.4	0.1	432.7
Hong Kong									
2010	2.0	0.0	0.1	1.6	10.4	0.1	8.8	0.0	23.0
2011	2.9	0.0	0.0	18.7	10.8	0.1	9.1	0.0	41.6
Taiwan									
2010	5.5	0.0	0.7	60.1	148.6	12.3	31.8	0.1	259.3
2011	6.0	0.0	0.4	76.3	218.9	13.3	29.9	0.1	344.9
Singapore									
2010	3.7	0.0	0.0	24.1	32.7	0.3	10.0	0.2	71.0
2011	3.7	46.3	0.2	43.0	40.6	0.3	6.2	0.0	140.2
Total									
2010	16.2	3.7	0.8	141.0	348.8	187.9	64.6	0.3	763.4
2011	16.8	48.2	0.6	240.8	483.9	109.2	59.7	0.2	959.4
Other countries									
2010	626.5	1,689.7	52.2	1,537.6	2,056.2	149.5	1,677.8	24.2	7,813.7
2011	776.9	2,309.0	49.3	1,794.2	2,395.7	182.5	1,842.0	28.5	9,378.0
Total									
2010	2,246.2	3,244.2	199.1	6,115.2	7,423.5	4,526.0	4,273.6	196.3	28,224.2
2011	2,466.4	4,120.1	194.4	7,304.5	8,843.3	5,160.7	4,440.5	495.7	33,025.6

Table 8
Imports by country, customs basis, not seasonally adjusted

	January		January to January		Change
	2010	2011	2010	2011	January to January 2011/ January to January 2010
	millions of dollars				percent
North America					
Canada	387.9	305.2	387.9	305.2	-21.3
Greenland	0.1	0.0	0.1	0.0	-99.1
Mexico	1,458.4	1,799.6	1,458.4	1,799.6	23.4
Saint Pierre and Miquelon	0.1	0.0	0.1	0.0	-99.8
United States	14,201.1	16,149.8	14,201.1	16,149.8	13.7
Total	16,047.5	18,254.7	16,047.5	18,254.7	13.8
Western Europe					
Andorra	0.0	0.0	0.0	0.0	-14.8
Austria	64.5	94.7	64.5	94.7	46.9
Belgium	82.5	163.3	82.5	163.3	97.8
Denmark	115.7	122.0	115.7	122.0	5.5
Faeroe Islands	0.2	0.6	0.2	0.6	294.5
Finland	46.8	113.0	46.8	113.0	141.5
France	363.5	333.7	363.5	333.7	-8.2
Germany	701.3	855.7	701.3	855.7	22.0
Gibraltar	0.0	0.0	0.0	0.0	...
Greece	7.3	11.2	7.3	11.2	52.2
Iceland	2.5	2.6	2.5	2.6	1.0
Italy	324.4	342.3	324.4	342.3	5.5
Luxembourg	8.6	7.6	8.6	7.6	-11.5
Malta	1.0	2.0	1.0	2.0	100.6
Netherlands	90.0	113.5	90.0	113.5	26.2
Norway	254.5	324.7	254.5	324.7	27.6
Portugal	18.7	22.6	18.7	22.6	21.1
Republic of Ireland (Eire)	130.2	81.8	130.2	81.8	-37.2
Spain	66.0	148.7	66.0	148.7	125.2
Sweden	137.3	188.7	137.3	188.7	37.4
Switzerland	237.4	312.5	237.4	312.5	31.6
United Kingdom	834.7	911.1	834.7	911.1	9.2
Total	3,487.2	4,152.4	3,487.2	4,152.4	19.1
Other Europe					
Albania	0.3	0.9	0.3	0.9	215.5
Armenia	2.8	3.2	2.8	3.2	16.7
Azerbaijan	0.0	68.0	0.0	68.0	...
Belarus	0.5	0.3	0.5	0.3	-32.1
Bosnia and Herzegovina	0.5	0.7	0.5	0.7	33.1
Bulgaria	5.0	5.5	5.0	5.5	9.5
Croatia	1.6	1.9	1.6	1.9	19.5
Czech Republic	30.1	20.2	30.1	20.2	-32.8
Estonia	1.7	4.6	1.7	4.6	170.8
Georgia	8.3	10.4	8.3	10.4	25.4
Hungary	22.0	30.3	22.0	30.3	37.5
Kazakhstan	175.8	248.0	175.8	248.0	41.1
Kyrgyzstan	0.0	0.1	0.0	0.1	...
Latvia	0.4	1.1	0.4	1.1	192.3
Lithuania	6.3	50.3	6.3	50.3	693.1
Macedonia (Former Yugoslav Republic of Macedonia)	0.5	0.6	0.5	0.6	16.9
Montenegro	0.0	0.1	0.0	0.1	...
Poland	53.4	150.4	53.4	150.4	181.8
Republic of Moldova	0.1	0.1	0.1	0.1	-28.3
Romania	10.6	20.6	10.6	20.6	93.9
Russian Federation	154.9	226.9	154.9	226.9	46.5
Serbia	1.2	1.9	1.2	1.9	66.9
Slovakia	12.2	13.8	12.2	13.8	12.5
Slovenia	5.1	6.6	5.1	6.6	30.0
Tajikistan	0.0	0.0	0.0	0.0	42.0
Turkmenistan	0.0	0.0	0.0	0.0	517.5
Ukraine	4.1	10.8	4.1	10.8	166.2
Uzbekistan	0.3	0.2	0.3	0.2	-33.7
Total	497.6	877.4	497.6	877.4	76.3

Table 8 – continued

Imports by country, customs basis, not seasonally adjusted

	January		January to January		Change
	2010	2011	2010	2011	January to January 2011/ January to January 2010
	millions of dollars				percent
Middle East					
Bahrain	0.2	0.4	0.2	0.4	115.3
Cyprus	0.1	0.1	0.1	0.1	16.9
Egypt	7.5	30.2	7.5	30.2	302.2
Eritrea	0.0	0.0	0.0	0.0	-90.6
Ethiopia	1.0	1.3	1.0	1.3	39.9
Iran	3.2	3.1	3.2	3.1	-1.7
Iraq	211.6	288.8	211.6	288.8	36.5
Israel	73.6	84.5	73.6	84.5	14.7
Jordan	1.9	1.4	1.9	1.4	-24.7
Kuwait	0.0	0.0	0.0	0.0	-79.3
Lebanon	0.9	1.7	0.9	1.7	87.1
Libya	0.0	0.1	0.0	0.1	40.2
Oman	0.3	1.6	0.3	1.6	507.7
Qatar	31.4	99.6	31.4	99.6	217.3
Saudi Arabia	164.9	192.8	164.9	192.8	16.9
Somalia	0.0	0.0	0.0	0.0	-69.3
Sudan	6.9	11.0	6.9	11.0	59.8
Syria	0.8	0.4	0.8	0.4	-50.0
Turkey	43.3	64.0	43.3	64.0	47.6
United Arab Emirates	2.8	39.5	2.8	39.5	...
Yemen	0.0	0.0	0.0	0.0	-97.9
Total	550.4	820.5	550.4	820.5	49.1
Other Africa					
Algeria	477.9	303.3	477.9	303.3	-36.5
Angola	78.9	215.1	78.9	215.1	172.6
Antarctica	0.0	0.2	0.0	0.2	...
Benin	0.0	0.0	0.0	0.0	-100.0
Botswana	6.9	0.0	6.9	0.0	-100.0
Bouvet Island	0.0	0.0	0.0	0.0	...
Burkina Faso	0.0	0.0	0.0	0.0	785.2
Burundi	0.0	0.0	0.0	0.0	...
Cameroon	0.3	0.2	0.3	0.2	-28.0
Cape Verde	0.0	0.0	0.0	0.0	790.6
Central African Republic	0.0	0.0	0.0	0.0	262.1
Chad	0.1	0.0	0.1	0.0	-86.0
Comoros	0.0	0.0	0.0	0.0	49.0
Congo	0.2	0.1	0.2	0.1	-12.9
Democratic Republic of the Congo	0.0	0.0	0.0	0.0	14.9
Djibouti	0.0	0.0	0.0	0.0	-99.1
Equatorial Guinea	0.0	168.3	0.0	168.3	...
Gabon	0.0	0.1	0.0	0.1	816.2
Gambia	0.0	0.0	0.0	0.0	-32.7
Ghana	1.9	3.3	1.9	3.3	75.8
Guinea	0.0	3.5	0.0	3.5	...
Guinea-Bissau	0.0	0.0	0.0	0.0	-95.5
Ivory Coast	15.4	24.0	15.4	24.0	55.8
Kenya	1.7	2.1	1.7	2.1	23.6
Lesotho	0.8	1.5	0.8	1.5	91.6
Liberia	5.5	3.7	5.5	3.7	-33.7
Madagascar	0.5	0.3	0.5	0.3	-37.1
Malawi	4.1	0.1	4.1	0.1	-96.7
Mali	0.0	0.0	0.0	0.0	612.5
Mauritania	0.0	0.0	0.0	0.0	82.7
Mauritius	1.0	0.6	1.0	0.6	-43.1
Morocco	12.9	14.0	12.9	14.0	8.8
Mozambique	0.0	0.1	0.0	0.1	...
Namibia	6.2	0.1	6.2	0.1	-99.1
Niger	0.0	0.1	0.0	0.1	296.3
Nigeria	49.1	103.9	49.1	103.9	111.5
Rwanda	0.1	0.1	0.1	0.1	49.1
Saint Helena	0.0	0.0	0.0	0.0	-100.0
Sao Tome and Principe	0.0	0.0	0.0	0.0	-100.0
Senegal	0.1	0.1	0.1	0.1	15.6
Seychelles	0.0	0.0	0.0	0.0	-68.4

Table 8 – continued

Imports by country, customs basis, not seasonally adjusted

	January		January to January		Change
	2010	2011	2010	2011	January to January 2011/ January to January 2010
	millions of dollars				percent
Sierra Leone	0.0	0.1	0.0	0.1	34.0
South Africa	53.3	60.3	53.3	60.3	13.0
Swaziland	0.1	0.1	0.1	0.1	-52.4
Togo	0.1	0.1	0.1	0.1	80.6
Tunisia	4.3	3.5	4.3	3.5	-17.0
Uganda	0.2	0.6	0.2	0.6	204.8
United Republic of Tanzania	0.2	0.4	0.2	0.4	100.3
Western Sahara	0.0	0.0	0.0	0.0	-100.0
Zambia	0.1	0.1	0.1	0.1	51.2
Zimbabwe	0.2	1.2	0.2	1.2	582.2
Total	722.1	911.4	722.1	911.4	26.2
Other Asia					
Afghanistan	0.2	0.1	0.2	0.1	-62.9
Bangladesh	56.6	86.8	56.6	86.8	53.4
Bhutan	0.0	0.0	0.0	0.0	...
British Indian Ocean Territory	0.0	0.0	0.0	0.0	...
Brunei Darussalam	0.0	0.0	0.0	0.0	-86.4
Cambodia	30.4	39.6	30.4	39.6	30.5
China	3,088.9	3,662.6	3,088.9	3,662.6	18.6
Hong Kong	23.0	41.6	23.0	41.6	81.2
India	147.1	198.6	147.1	198.6	35.0
Indonesia	73.5	103.9	73.5	103.9	41.4
Japan	847.9	922.6	847.9	922.6	8.8
Laos	0.8	0.4	0.8	0.4	-51.2
Macao	0.7	0.7	0.7	0.7	-3.8
Malaysia	161.2	157.1	161.2	157.1	-2.6
Maldives	0.0	0.1	0.0	0.1	629.6
Mongolia	11.9	2.7	11.9	2.7	-77.2
Myanmar	0.0	0.0	0.0	0.0	523.9
Nepal	0.8	0.7	0.8	0.7	-19.0
North Korea	0.0	0.0	0.0	0.0	-89.1
Pakistan	18.9	20.1	18.9	20.1	6.7
Philippines	62.4	64.1	62.4	64.1	2.7
Singapore	71.0	140.2	71.0	140.2	97.6
South Korea	410.2	432.7	410.2	432.7	5.5
Sri Lanka	9.6	12.3	9.6	12.3	28.5
Taiwan	259.3	344.9	259.3	344.9	33.0
Thailand	183.6	195.8	183.6	195.8	6.6
Timor-Leste	0.1	0.0	0.1	0.0	-96.2
Viet Nam	86.5	109.6	86.5	109.6	26.6
Total	5,544.6	6,537.1	5,544.6	6,537.1	17.9
Oceania					
American Samoa	0.0	0.0	0.0	0.0	-62.5
Australia	107.6	83.8	107.6	83.8	-22.2
Christmas Island	0.0	0.0	0.0	0.0	181.9
Cocos (Keeling) Islands	0.0	0.0	0.0	0.0	26.3
Cook Islands	0.0	0.0	0.0	0.0	-87.9
Fiji	0.5	0.1	0.5	0.1	-81.7
French Polynesia	0.0	0.0	0.0	0.0	-56.9
Guam	0.0	0.0	0.0	0.0	...
Kiribati	0.0	0.0	0.0	0.0	394.0
Nauru	0.0	0.0	0.0	0.0	-50.6
New Caledonia	0.0	0.0	0.0	0.0	504.2
New Zealand	25.4	35.8	25.4	35.8	40.8
Niue	0.0	0.0	0.0	0.0	-87.9
Papua New Guinea	0.0	0.1	0.0	0.1	115.9
Pitcairn	0.0	0.0	0.0	0.0	...
Samoa	0.0	0.0	0.0	0.0	-93.6
Solomon Islands	0.0	0.0	0.0	0.0	-99.0
Tonga	0.0	0.0	0.0	0.0	-46.5
United States Minor Outlying Islands	0.4	0.1	0.4	0.1	-66.4
Vanuatu	0.0	0.0	0.0	0.0	773.0
Wallis and Futuna	0.0	0.0	0.0	0.0	-100.0
Total	134.1	120.0	134.1	120.0	-10.5

Table 8 – continued

Imports by country, customs basis, not seasonally adjusted

	January		January to January		Change
	2010	2011	2010	2011	January to January 2011/ January to January 2010
	millions of dollars				percent
South America					
Argentina	39.6	120.1	39.6	120.1	203.6
Bolivia	4.1	22.9	4.1	22.9	452.6
Brazil	275.2	333.2	275.2	333.2	21.1
Chile	280.8	162.6	280.8	162.6	-42.1
Colombia	33.9	47.2	33.9	47.2	39.4
Ecuador	15.5	23.2	15.5	23.2	50.0
Falkland Islands (Malvinas)	0.0	0.0	0.0	0.0	300.0
Guyana	17.9	23.1	17.9	23.1	28.6
Paraguay	1.1	0.4	1.1	0.4	-64.4
Peru	273.9	284.9	273.9	284.9	4.0
Suriname	29.8	55.7	29.8	55.7	86.9
Uruguay	9.1	1.4	9.1	1.4	-84.2
Venezuela	9.6	37.5	9.6	37.5	290.1
Total	990.5	1,112.3	990.5	1,112.3	12.3
Central America Antilles					
Anguilla	0.0	0.0	0.0	0.0	-19.2
Antigua and Barbuda	0.0	0.0	0.0	0.0	-92.0
Aruba	0.1	0.1	0.1	0.1	63.4
Bahamas	0.3	1.2	0.3	1.2	314.5
Barbados	1.5	0.5	1.5	0.5	-68.7
Belize	0.3	0.9	0.3	0.9	167.9
Bermuda	0.1	0.1	0.1	0.1	-20.6
British Virgin Islands	0.1	0.0	0.1	0.0	-67.9
Cayman Islands	0.1	0.0	0.1	0.0	-93.2
Costa Rica	31.1	32.1	31.1	32.1	3.1
Cuba	38.4	47.5	38.4	47.5	23.6
Dominica	0.0	0.0	0.0	0.0	126.9
Dominican Republic	9.2	12.1	9.2	12.1	31.9
El Salvador	2.5	6.7	2.5	6.7	170.9
Grenada	0.1	0.0	0.1	0.0	-83.5
Guatemala	37.1	32.3	37.1	32.3	-13.0
Haiti	2.0	1.9	2.0	1.9	-8.2
Honduras	11.9	13.8	11.9	13.8	16.0
Jamaica	7.2	19.5	7.2	19.5	173.0
Montserrat	0.0	0.0	0.0	0.0	-2.1
Netherlands Antilles	0.0	0.0	0.0	0.0	-84.5
Nicaragua	7.3	21.4	7.3	21.4	193.6
Panama	7.9	5.5	7.9	5.5	-30.0
Saint Kitts and Nevis	0.5	0.6	0.5	0.6	35.6
Saint Lucia	0.0	0.0	0.0	0.0	9.9
Saint Vincent and the Grenadines	0.0	0.0	0.0	0.0	...
Trinidad and Tobago	92.4	43.3	92.4	43.3	-53.1
Turks and Caicos Islands	0.0	0.0	0.0	0.0	-80.9
Total	250.1	239.7	250.1	239.7	-4.2
All countries	28,224.2	33,025.6	28,224.2	33,025.6	17.0

Table 9-1
Imports by province of clearance, customs basis, not seasonally adjusted — January

	Agricultural and fishing products	Energy products	Forestry products	Industrial goods	Machinery and equipment	Automotive products	Consumer goods	Special transactions trade	Total
millions of dollars									
Newfoundland and Labrador									
2010	2.1	303.0	0.0	5.0	10.9	0.0	0.3	0.0	321.4
2011	3.1	328.3	0.0	4.6	15.9	0.0	0.4	0.1	352.4
Prince Edward Island									
2010	0.1	0.0	0.0	5.2	0.0	0.0	0.0	0.0	5.5
2011	0.2	0.0	0.0	0.0	0.0	0.0	0.0	0.0	0.2
Nova Scotia									
2010	29.7	145.1	1.1	66.5	51.3	160.8	11.7	1.4	467.7
2011	49.8	236.6	1.1	125.5	79.4	231.1	16.5	1.0	740.8
New Brunswick									
2010	24.7	565.8	8.9	105.0	52.7	29.0	14.4	0.8	801.3
2011	38.4	781.0	9.1	66.3	48.9	29.6	13.5	0.3	987.1
Quebec									
2010	339.9	1,306.9	56.1	1,136.2	1,179.8	143.7	888.0	12.0	5,062.5
2011	407.0	1,632.5	51.7	1,436.5	1,324.9	150.4	814.9	11.9	5,829.8
Ontario									
2010	1,233.2	355.5	73.8	3,536.1	4,273.9	3,777.2	2,664.1	165.0	16,078.8
2011	1,339.8	739.6	68.4	4,123.5	5,017.6	4,227.1	2,832.5	467.9	18,816.4
Manitoba									
2010	71.5	33.3	5.3	241.8	393.3	79.0	110.5	3.1	937.8
2011	78.4	52.9	5.6	296.8	443.3	112.8	124.5	1.8	1,116.2
Saskatchewan									
2010	27.1	34.2	1.1	166.4	217.5	59.6	17.4	3.4	526.6
2011	32.6	41.2	2.1	183.8	303.0	111.2	16.5	3.3	693.7
Alberta									
2010	160.5	277.5	6.6	381.0	459.8	58.9	80.5	5.1	1,430.0
2011	144.9	107.6	9.7	456.0	811.4	87.4	102.4	2.0	1,721.4
British Columbia									
2010	357.3	222.6	46.1	471.9	777.9	217.8	486.8	5.5	2,585.8
2011	372.4	199.7	46.5	611.5	793.1	211.0	519.3	7.4	2,761.0
Yukon, Northwest Territories and Nunavut									
2010	0.0	0.4	0.0	0.0	6.4	0.0	0.0	0.0	6.9
2011	0.1	0.7	0.0	0.2	5.7	0.0	0.0	0.0	6.7
Total									
2010	2,246.2	3,244.2	199.1	6,115.2	7,423.5	4,526.0	4,273.6	196.3	28,224.2
2011	2,466.4	4,120.1	194.4	7,304.5	8,843.3	5,160.7	4,440.5	495.7	33,025.6

Table 9-2

Imports by province of clearance, customs basis, not seasonally adjusted — Year to date, January to January

	Agricultural and fishing products	Energy products	Forestry products	Industrial goods	Machinery and equipment	Automotive products	Consumer goods	Special transactions trade	Total
millions of dollars									
Newfoundland and Labrador									
2010	2.1	303.0	0.0	5.0	10.9	0.0	0.3	0.0	321.4
2011	3.1	328.3	0.0	4.6	15.9	0.0	0.4	0.1	352.4
Prince Edward Island									
2010	0.1	0.0	0.0	5.2	0.0	0.0	0.0	0.0	5.5
2011	0.2	0.0	0.0	0.0	0.0	0.0	0.0	0.0	0.2
Nova Scotia									
2010	29.7	145.1	1.1	66.5	51.3	160.8	11.7	1.4	467.7
2011	49.8	236.6	1.1	125.5	79.4	231.1	16.5	1.0	740.8
New Brunswick									
2010	24.7	565.8	8.9	105.0	52.7	29.0	14.4	0.8	801.3
2011	38.4	781.0	9.1	66.3	48.9	29.6	13.5	0.3	987.1
Quebec									
2010	339.9	1,306.9	56.1	1,136.2	1,179.8	143.7	888.0	12.0	5,062.5
2011	407.0	1,632.5	51.7	1,436.5	1,324.9	150.4	814.9	11.9	5,829.8
Ontario									
2010	1,233.2	355.5	73.8	3,536.1	4,273.9	3,777.2	2,664.1	165.0	16,078.8
2011	1,339.8	739.6	68.4	4,123.5	5,017.6	4,227.1	2,832.5	467.9	18,816.4
Manitoba									
2010	71.5	33.3	5.3	241.8	393.3	79.0	110.5	3.1	937.8
2011	78.4	52.9	5.6	296.8	443.3	112.8	124.5	1.8	1,116.2
Saskatchewan									
2010	27.1	34.2	1.1	166.4	217.5	59.6	17.4	3.4	526.6
2011	32.6	41.2	2.1	183.8	303.0	111.2	16.5	3.3	693.7
Alberta									
2010	160.5	277.5	6.6	381.0	459.8	58.9	80.5	5.1	1,430.0
2011	144.9	107.6	9.7	456.0	811.4	87.4	102.4	2.0	1,721.4
British Columbia									
2010	357.3	222.6	46.1	471.9	777.9	217.8	486.8	5.5	2,585.8
2011	372.4	199.7	46.5	611.5	793.1	211.0	519.3	7.4	2,761.0
Yukon, Northwest Territories and Nunavut									
2010	0.0	0.4	0.0	0.0	6.4	0.0	0.0	0.0	6.9
2011	0.1	0.7	0.0	0.2	5.7	0.0	0.0	0.0	6.7
Total									
2010	2,246.2	3,244.2	199.1	6,115.2	7,423.5	4,526.0	4,273.6	196.3	28,224.2
2011	2,466.4	4,120.1	194.4	7,304.5	8,843.3	5,160.7	4,440.5	495.7	33,025.6

Technical notes

The Canadian international merchandise trade statistical program

Introduction

The objective of this text is to provide a general overview of the Canadian International Merchandise Trade Statistical Program, with special reference to concepts and definitions. The text is intended for the general user and simplicity is emphasized. More technical details can be obtained from the International Trade Division, Statistics Canada upon request.

Conceptual framework

1. Objectives and coverage: The primary objective of the Canadian International Merchandise Trade Statistical Program is to measure the change in the stock of material resources of Canada resulting from the movement of merchandise into or out of the country. Information on imports and exports are inputs into the System of National Accounts, particularly in the balance of payments and gross domestic product, and are used in the formulation of trade and budgetary policies. Governments, importers, exporters, manufacturers and shipping companies use international merchandise trade statistics to:

- monitor import penetration and export performance,
- monitor commodity price and volume changes,
- examine transport implications.

2. Trade statistics (customs basis / balance of payments basis): Merchandise trade statistics are reported and presented on two different bases: customs basis and balance of payment basis.

When goods are imported into or exported from Canada, declarations must be filed with customs, giving such information as description and value of the goods, origin and port of clearance of commodities and mode of transport. Most of this information is required for the purposes of customs administration. Statistics developed from administrative records of customs are commonly referred to as customs-based trade statistics.

Customs-based trade statistics are more accurate at measuring imports than they are at measuring exports. This is the case because customs are typically more vigilant with respect to goods entering the country than they are with goods leaving the country.

Customs-based export statistics may understate or incorrectly portray the destination of exports. Export statistics are understated when the proper documentation is not filed with Customs. Exports are incorrectly portrayed when the country of final destination is inaccurately reported on the customs documentation. This occurs most frequently when goods are routed through an intermediary country before continuing on to their final destination.

Statistics Canada does not have a measure of undercoverage but periodically conducts reconciliation exercises with its major trading partners, excluding the United States.

On January 1, 1990, Canada entered into a memorandum of understanding with the United States concerning the exchange of import data. As a consequence, each administration is using the other's import data to replace its own export data. Canada's international merchandise trade statistics are, therefore, no longer derived exclusively from the administrative records of the Canada Border Services Agency, but from United States Customs records as well.

Customs-based information is adjusted to conform with the National Accounts concepts and definitions. The adjustments to derive balance of payments-based trade data include adjustments related to trade definition, valuation and timing. The principal difference between the two trade concepts is that customs-based merchandise trade statistics cover the physical movement of goods as they are reflected in customs documents while balance of payments-adjusted data are intended to cover all economic transactions that involve merchandise trade between residents and non-residents. The present document describes the concepts and processes pertaining to the customs-based trade statistics only. (For further information on balance of payments-adjusted data, see the publication *Canada's Balance of International Payments*, Statistics Canada (Catalogue no. 67-001-X).

3. System of trade: Canadian trade statistics are compiled according to the general system of trade, as defined by the United Nations Statistical Office. Under this system, imports include all goods that have crossed Canada's territorial boundary, whether for immediate consumption in Canada or for storage in bonded customs warehouses. Domestic exports include goods grown, extracted or manufactured in Canada, including goods of foreign origin that have been materially transformed in Canada. Re-exports are exports of goods of foreign origin that have not been materially transformed in Canada, including foreign goods withdrawn for export from bonded customs warehouses. Total exports are the sum of domestic exports and re-exports. Thus the general trade system, in principal, presents all goods entering the country (imports) and all goods leaving the country (exports). It differs from the special system of trade in the treatment of imported goods into bonded customs warehouses. Under the 'special' system, these goods are counted only if and when they are withdrawn from customs warehouses for home consumption. They are not counted in export statistics unless they have first cleared customs.

Conceptually, under the general system, the statistical frontier coincides with the geographical boundary, while under the 'special' system, it coincides with the customs boundary.

4. Valuation: For customs purposes, imports are recorded at values established according to the provisions of the Customs Act, which, since January 1, 1985, reflects valuation methods based on the General Agreement on Tariffs and Trade (GATT) Valuation Code System. In general, the value for duty of imported goods must be equivalent to the transaction value or the price actually paid.

To determine the transaction value of imported goods, all transportation and associated costs arising in respect of the goods being appraised prior to and at the place of direct shipment to Canada, are to be added to the price of the goods. Therefore, Canadian imports are valued Free on Board (FOB), place of direct shipment to Canada. It excludes freight and insurance costs in bringing the goods to Canada from the point of direct shipment.

Countries other than the United States, exports are, in principal, valued or recorded at the values declared on export documents, which usually reflect the transaction value, i.e., actual selling price or, in the case of a non-arm's length transaction, the transfer price used for company accounting purposes. Canadian exports to overseas countries are valued at F.O.B. port of exit, including domestic freight charges to that point but net of discounts and allowances. As of January, 1990, Canadian exports to the U.S. are valued F.O.B. point of exit from Canada. Prior to 1990, they were valued F.O.B. place of lading net of freight charges, discounts and allowances.

5. Statistical period: The reference period is the calendar month and the calendar year. The closing of the statistical month for imports and Canadian exports to the United States is defined as the last calendar day of the month, based as closely as practicable on the date of clearance from customs.

The closing of the statistical month for exports, to countries other than the United States, is also defined as the last calendar day of the month. Those export documents that are received too late for incorporation in the current month are assigned to the month the transaction took place. If a monthly summary report from a high volume exporter is not received on time, the data are imputed for the current month and revised with the trade value in the following statistical month.

6. Trading partner attribution (country of origin/destination): Exports are attributed to the country, which is the last known destination of the goods at the time of export. Exports to the United States are attributed to the state of destination.

Imports are attributed to their country of origin, that is, the country in which the goods were grown, extracted or manufactured in accordance to the rules of origin administered by the Canada Border Services Agency. Imports from the United States are attributed to the state of origin. Prior to 1988, most imports were attributed to the country of export/consignment, with the exception of imports from Central and South America.

7. Principal trading areas: The 'principal trading areas' are country groupings defined as follows:

United States: includes trade with Puerto Rico and the U.S. Virgin Islands

Japan

European Union (EU): Austria, Belgium, Bulgaria, Cyprus, Czech Republic, Denmark, Estonia, Finland, France, Germany, Greece, Hungary, Ireland, Italy, Latvia, Lithuania, Luxembourg, Malta, Netherlands, Poland, Portugal, Romania, Slovakia, Slovenia, Spain, Sweden and United Kingdom

Other Organisation for Economic Co-operation and Development (OECD): Australia, Canada, Iceland, Mexico, New Zealand, Norway, South Korea, Switzerland, and Turkey. (The EU countries, United States, and Japan are also members of OECD)

Other countries: all countries and territories other than the United States, Japan, EU and other OECD

8. Legal framework: Import and export statistics with countries other than the United States are derived from information contained in administrative records collected by the Canada Border Services Agency under the Customs Act. Copies of these documents (or information therefrom) are sent to Statistics Canada in accordance with Section 25 of the Statistics Act. It follows that the disclosure of trade statistics is governed by both the Customs Act and the Statistics Act and is subject to the provisions of Section 17(2)(a) of the latter. Disclosure of export statistics to the United States is now governed by a memorandum of understanding that provides for the exchange of detailed import statistics between Canada and the United States.

Contact information

Questions concerning details of methods not covered by these notes should be addressed to the Marketing and Client Services Section, International Trade Division, Statistics Canada, 170 Tunney's Pasture Driveway, Ottawa, Ontario, K1A 0T6.

Telephone: 1-800-294-5583 or 613-951-9647

Facsimile: 1-800-664-0055 613-951-0117

Internet: trade@statcan.gc.ca