

Catalogue no. 65-001-X

Canadian International Merchandise Trade

March 2011



Statistics
Canada

Statistique
Canada

Canada

How to obtain more information

For information about this product or the wide range of services and data available from Statistics Canada, visit our website at www.statcan.gc.ca, e-mail us at infostats@statcan.gc.ca, or telephone us, Monday to Friday from 8:30 a.m. to 4:30 p.m., at the following numbers:

Statistics Canada's National Contact Centre

Toll-free telephone (Canada and the United States):

Inquiries line	1-800-263-1136
National telecommunications device for the hearing impaired	1-800-363-7629
Fax line	1-877-287-4369

Local or international calls:

Inquiries line	1-613-951-8116
Fax line	1-613-951-0581

Depository Services Program

Inquiries line	1-800-635-7943
Fax line	1-800-565-7757

To access this product

This product, Catalogue no. 65-001-X, is available free in electronic format. To obtain a single issue, visit our website at www.statcan.gc.ca and browse by "Key resource" > "Publications."

Standards of service to the public

Statistics Canada is committed to serving its clients in a prompt, reliable and courteous manner. To this end, Statistics Canada has developed *standards of service* that its employees observe. To obtain a copy of these service standards, please contact Statistics Canada toll-free at 1-800-263-1136. The service standards are also published on www.statcan.gc.ca under "About us" > "The agency" > "Providing services to Canadians."

Canadian International Merchandise Trade

March 2011

Published by authority of the Minister responsible for Statistics Canada

© Minister of Industry, 2011

All rights reserved. The content of this electronic publication may be reproduced, in whole or in part, and by any means, without further permission from Statistics Canada, subject to the following conditions: that it be done solely for the purposes of private study, research, criticism, review or newspaper summary, and/or for non-commercial purposes; and that Statistics Canada be fully acknowledged as follows: Source (or "Adapted from", if appropriate): Statistics Canada, year of publication, name of product, catalogue number, volume and issue numbers, reference period and page(s). Otherwise, no part of this publication may be reproduced, stored in a retrieval system or transmitted in any form, by any means—electronic, mechanical or photocopy—or for any purposes without prior written permission of Licensing Services, Client Services Division, Statistics Canada, Ottawa, Ontario, Canada K1A 0T6.

May 2011

Catalogue no. 65-001-X, vol. 65, no. 3

ISSN 1480-8781

Frequency: Monthly

Ottawa

Cette publication est également disponible en français.

Note of appreciation

Canada owes the success of its statistical system to a long-standing partnership between Statistics Canada, the citizens of Canada, its businesses, governments and other institutions. Accurate and timely statistical information could not be produced without their continued cooperation and goodwill.

User information

Symbols

The following standard symbols are used in Statistics Canada publications:

- . not available for any reference period
- .. not available for a specific reference period
- ... not applicable
- 0 true zero or a value rounded to zero
- 0^s value rounded to 0 (zero) where there is a meaningful distinction between true zero and the value that was rounded
- p preliminary
- r revised
- x suppressed to meet the confidentiality requirements of the *Statistics Act*
- E use with caution
- F too unreliable to be published
- * significantly different from reference category ($p < 0.05$)

Note to users

All totals are calculated from full figures and rounded independently; consequently, totals may not equal the sum of their components.

The data is based on commodity groups (sector, subsector and major group).

Table of contents

Highlights	5
Analysis	7
Related products	11
Statistical tables	
1 Merchandise trade of Canada, balance of payments basis, seasonally adjusted	15
1-1 Current dollars	15
1-2 Constant dollars, 2002	16
1-3 Price indices (Laspeyres)	17
2 Exports by commodity groupings, balance of payments basis, seasonally adjusted	18
2-1 Current dollars	18
2-2 Constant dollars, 2002	20
3 Domestic exports to selected countries, customs basis, not seasonally adjusted	22
3-1 March	22
3-2 Year to date, January to March	23
4 Domestic exports by country, customs basis, not seasonally adjusted	24
5 Exports by province of origin, customs basis, not seasonally adjusted	28
5-1 March	28
5-2 Year to date, January to March	29
6 Imports by commodity groupings, balance of payments basis, seasonally adjusted	30
6-1 Current dollars	30
6-2 Constant dollars, 2002	32
7 Imports from selected countries, customs basis, not seasonally adjusted	34
7-1 March	34
7-2 Year to date, January to March	35
8 Imports by country, customs basis, not seasonally adjusted	36

Table of contents – continued

9	Imports by province of clearance, customs basis, not seasonally adjusted	40
9-1	March	40
9-2	Year to date, January to March	41

Data quality, concepts and methodology

Technical notes	42
-----------------	----

Highlights

Canada's merchandise exports and imports both rose in March, as most sectors recorded gains. Exports increased 3.5% and imports grew 2.8%. As a result, Canada's trade surplus increased from \$356 million in February to \$627 million in March.

Exports rose to \$37.4 billion, as volumes, up 2.5%, increased in all sectors except agricultural and fishing products. At the same time, prices advanced 0.9%. Broad based gains in the value of exports were led by energy products and industrial goods and materials.

Exports have generally been trending upwards since May 2009. Higher volumes have accounted for almost two-thirds of the growth during that period.

Imports increased to \$36.7 billion, as volumes rose 3.2% while prices decreased 0.4%. Imports of automotive products, which largely accounted for the decline in February, were the main contributor to the gain. Increases were also recorded in imports of industrial goods and materials as well as machinery and equipment.

Overall, imports have been trending upwards since June 2009, as a result of higher volumes. Prices declined during that period.

Imports from the United States rose 3.2%, mostly a result of increases in imports of automotive products while exports grew 1.9%, led by higher exports of crude petroleum. Consequently, Canada's trade surplus with the United States narrowed to \$4.8 billion in March from \$5.0 billion in February.

Exports to countries other than the United States rose 7.8%, largely reflecting higher exports to the European Union. During the same period, imports grew 2.1%. As a result, Canada's trade deficit with countries other than the United States declined to \$4.2 billion in March from \$4.7 billion in February.

Note to readers

Merchandise trade is one component of Canada's international balance of payments, which also includes trade in services, investment income, current transfers as well as capital and financial flows.

International merchandise trade data by country are available on both a balance of payments and a customs basis for the United States, Japan and the United Kingdom. Trade data for all other individual countries are available on a customs basis only. Balance of payments data are derived from customs data by making adjustments for characteristics such as valuation, coverage, timing and residency. These adjustments are made to conform to the concepts and definitions of the Canadian System of National Accounts.

Data in this release are on a balance of payments basis, seasonally adjusted in current dollars. Constant dollars are calculated using the Laspeyres volume formula.

Revisions

In general, merchandise trade data are revised on an ongoing basis for each month of the current year. Current year revisions are reflected in both the customs and balance of payments based data. Revisions to customs based data for the previous year are released on a quarterly basis. Revisions to balance of payments based data for the three previous years are released annually in June.

Factors influencing revisions include late receipt of import and export documentation, incorrect information on customs forms, replacement of estimates produced for the energy sector with actual figures, changes in classification of merchandise based on more current information, and changes to seasonal adjustment factors.

Revised data are available in the appropriate CANSIM tables.

Chart 1

Exports and imports, seasonally adjusted, on a balance of payments basis

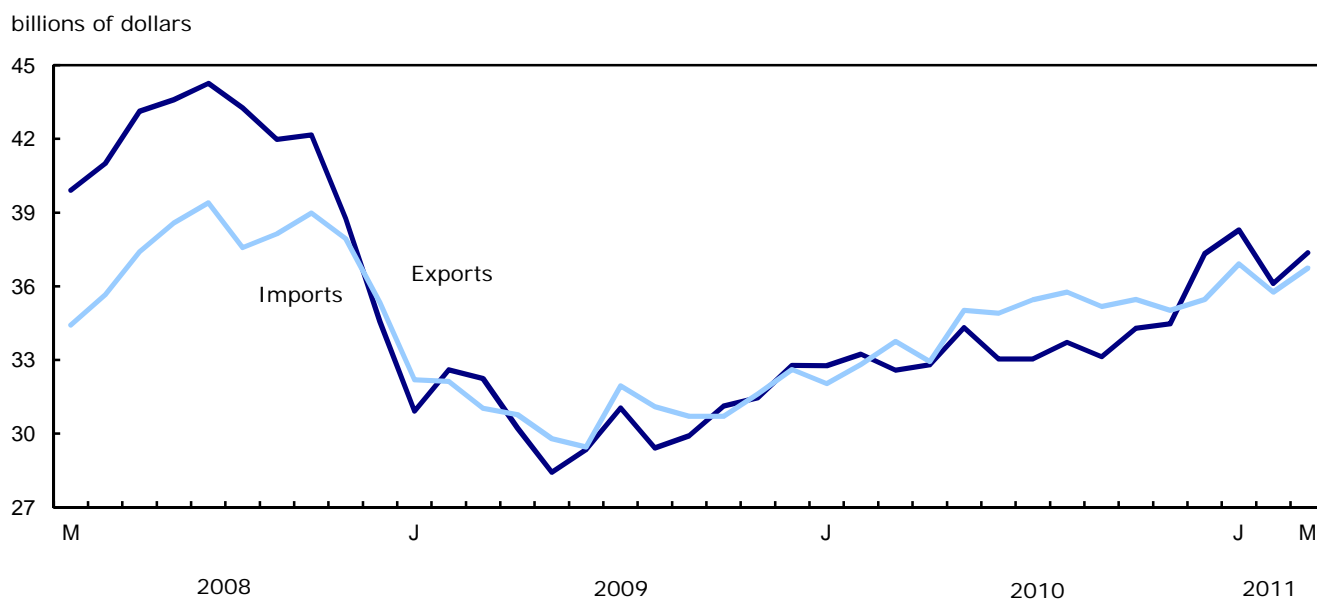
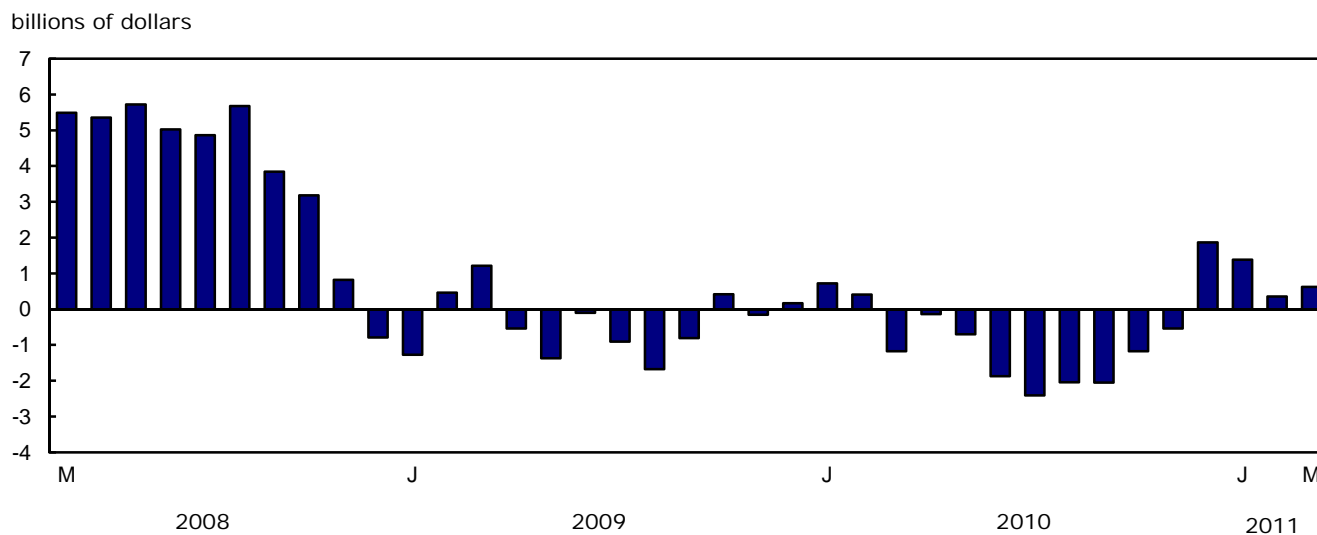


Chart 2

Trade balance, seasonally adjusted, on a balance of payments basis



Analysis

Energy products lead the growth in exports

Exports of energy products rose 5.0% to \$9.4 billion, as prices increased 2.9% and volumes grew 2.1%. This represented the fifth increase in volumes of the past six months. Exports of crude petroleum rose 5.7% and led the gain in the sector. Exports of petroleum and coal products, namely diesel fuel and light oils and preparations, also grew during the month.

Exports of industrial goods and materials, trending upwards since May 2009, increased 3.7% to \$9.6 billion in March. Higher exports of metal ores, such as nickel ores and iron ores were the main factor behind the gain in the sector. Exports of chemicals, plastics and fertilizers also rose, mostly reflecting the growth in exports of organic chemicals. Exports of metals and alloys, in particular copper and nickel, recorded declines for a second consecutive month.

Following two months of decline, exports of machinery and equipment increased 4.8% to \$6.5 billion. Exports of aircraft, other equipment and tools and industrial machinery largely accounted for the increase in this sector.

Forestry products exports rose 10.7% to \$2.0 billion, as volumes increased 9.6%. Gains throughout the sector were led by higher exports of woodpulp and other wood products to China. Exports of newsprint paper also rose during the month.

Exports of agricultural and fishing products fell 5.7% to \$3.0 billion, thereby moderating the gain in overall exports. Exports of canola, after reaching a record high in February, fell 39.6% and were the main contributor to the decline.

Volumes of automotive products account for most of the gain in imports

Following a decline of 11.5%, imports of automotive products rose 6.5% to \$6.1 billion, as volumes increased 7.1%. Imports of trucks, up 17.0%, accounted for over half the growth in this sector, reflecting the demand for full size pick ups. Imports of passenger autos and motor vehicle parts increased during the month.

Imports of industrial goods and materials, on an upward trend since August 2009, increased 2.9% to \$7.8 billion. Metals and metal ores reached a record high in March led by a 30.4% increase in imports of precious metals. Metals in ores, namely nickel ores, also rose during the month while imports of organic chemicals fell for a second consecutive month.

Imports of machinery and equipment grew 1.5% to \$10.0 billion, led by a 16.5% gain in imports of aircraft, engines and parts. Growth was also recorded in imports of other industrial machinery which includes items such as construction and maintenance machinery, hoisting machinery as well as compressors.

Energy products imports increased 3.7% to \$4.0 billion, a sixth consecutive month of increase. The gain resulted from a 7.0% increase in prices. Imports of crude petroleum rose 10.0% to \$2.4 billion, the highest level since October 2008.

Imports of agricultural and fishing products increased 3.4% to a record high of \$2.7 billion, as volumes rose 5.6%. Imports of sugar and sugar preparations grew to unprecedented levels and largely accounted for the gain in this sector.

Imports of other consumer goods fell 2.8% to \$4.6 billion, a fifth consecutive monthly decline. Widespread declines were led by lower imports of apparel and footwear.

Chart 1

Exports of energy products, seasonally adjusted, on a balance of payments basis

billions of dollars

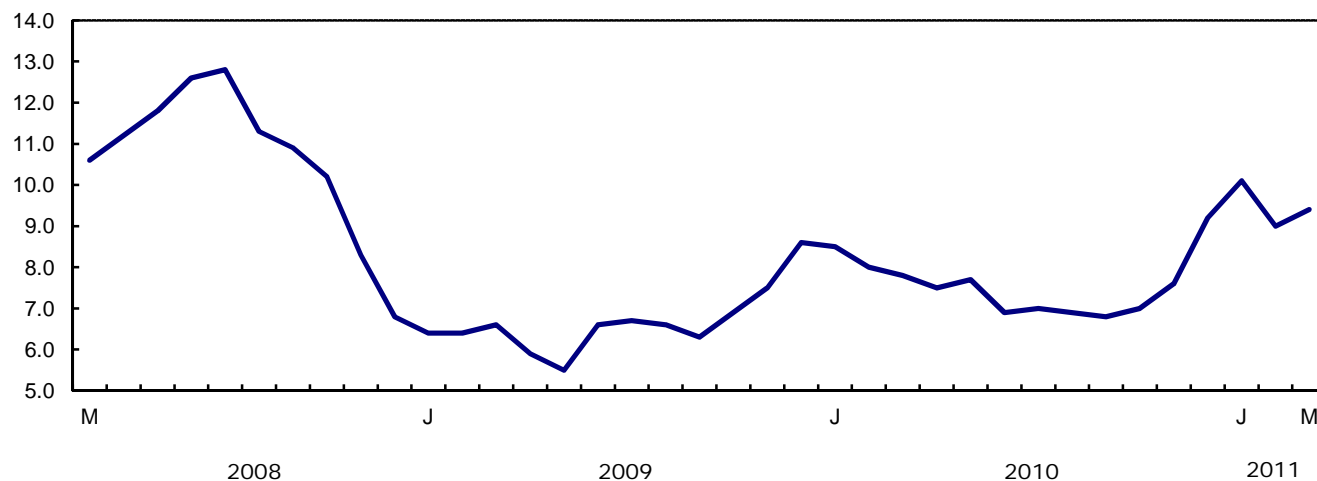
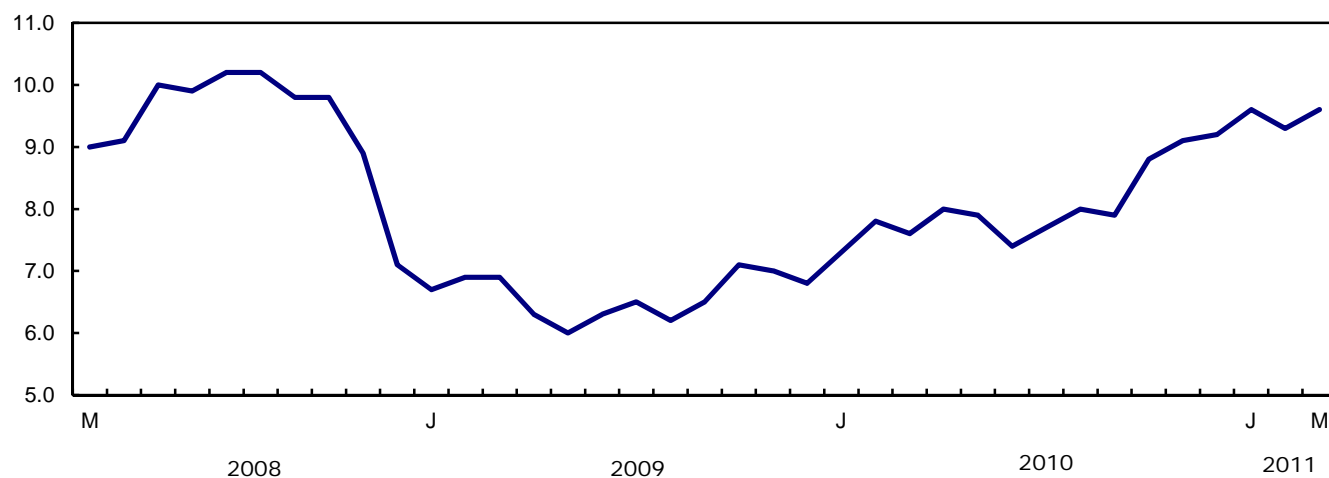


Chart 2

Exports of industrial goods and materials, seasonally adjusted, on a balance of payments basis

billions of dollars



Text table 1

Merchandise trade by principal trading area, balance of payments basis, seasonally adjusted

	February 2011	March 2011	Change		Year to date			March 2011/ March 2010	
					2010	2011	Change		
	millions of dollars		percent		millions of dollars		percent		
Export to									
United States	26,634	27,148	514	1.9	73,731	81,639	7,908	10.7	12.3
Japan	999	909	-90	-9.0	2,226	2,914	688	30.9	29.1
European Union ¹	2,790	3,392	602	21.6	8,145	9,835	1,690	20.7	18.2
Other Organisation for Economic Co-operation and Development ²	1,481	1,841	361	24.4	4,385	4,805	420	9.6	28.0
Other countries	4,213	4,082	-131	-3.1	10,089	12,589	2,500	24.8	20.2
Total	36,116	37,372	1,256	3.5	98,575	111,781	13,206	13.4	14.7
Imports from									
United States	21,621	22,316	695	3.2	61,817	67,005	5,189	8.4	8.7
Japan	855	791	-65	-7.6	2,379	2,483	105	4.4	-3.9
European Union ¹	3,465	3,724	259	7.5	9,978	10,924	946	9.5	-3.6
Other Organisation for Economic Co-operation and Development ²	2,683	3,212	529	19.7	7,113	8,596	1,483	20.8	35.3
Other countries	7,136	6,703	-433	-6.1	17,335	20,401	3,066	17.7	8.5
Total	35,760	36,745	985	2.8	98,622	109,411	10,788	10.9	8.8
Balance									
United States	5,013	4,832	-181	...	11,914	14,633	2,719
Japan	143	118	-25	...	-153	431	584
European Union ¹	-675	-332	343	...	-1,833	-1,089	744
Other Organisation for Economic Co-operation and Development ²	-1,202	-1,370	-168	...	-2,729	-3,791	-1,063
Other countries	-2,922	-2,621	302	...	-7,247	-7,813	-566
Total	356	627	270	...	-47	2,371	2,418

1. European Union includes: Austria, Belgium, Bulgaria, Cyprus, Czech Republic, Denmark, Estonia, Finland, France, Germany, Greece, Hungary, Ireland, Italy, Latvia, Lithuania, Luxembourg, Malta, Netherlands, Poland, Portugal, Romania, Slovakia, Slovenia, Spain, Sweden and United Kingdom.
2. Other Organisation for Economic Co-operation and Development includes: Australia, Canada, Iceland, Mexico, New Zealand, Norway, South Korea, Switzerland and Turkey.

Text table 2

Reconciliation of customs and balance of payments trade data, not seasonally adjusted

	2011			2010			2010
	March	February	January	December	November	October	Annual
	millions of dollars						
Exports							
Customs basis	38,846	32,371	34,889	36,655	34,450	34,324	399,383
Balance of payments adjustments	993	1,066	1,116	-258	807	765	5,342
Valuation and residency							
Inland freight	610	503	534	594	552	581	6,568
Other valuation and residency	-444	-1,133	-597	-1,780	-1,216	-971	-12,976
Timing	-22	163	-5	31	10	62	46
Coverage	849	1,533	1,184	897	1,461	1,093	11,704
Balance of payments basis	39,839	33,437	36,005	36,397	35,257	35,089	404,725
Imports							
Customs basis	38,572	32,675	33,003	33,205	34,718	36,070	403,515
Balance of payments adjustments	918	778	336	930	1185	672	10,318
Valuation and residency							
Inland freight	831	693	699	700	739	760	8,740
Other valuation and residency	-45	-40	-62	-9	-30	14	205
Timing	0	0	0	0	0	0	0
Coverage	132	125	-301	239	476	-102	1,373
Balance of payments basis	39,490	33,453	33,339	34,135	35,903	36,742	413,833

Related products

Selected publications from Statistics Canada

65-208-X	International Merchandise Trade Annual Review
65-506-X	A Profile of Canadian Exporters
65F0013X	Canadian International Merchandise Trade Database
65F0019X	A Database for Analysis of International Markets
65F0020X	Data Integration - International Trade Data and Manufacturing Shipments Data

Selected CANSIM tables from Statistics Canada

228-0001	Merchandise imports and exports, by major groups and principal trading areas for all countries, monthly
228-0002	Merchandise imports and exports, by major groups and principal trading areas for all countries, quarterly
228-0003	Merchandise imports and exports, by major groups and principal trading areas for all countries, annual
228-0033	Imports, customs-based, by province of clearance, monthly
228-0034	Domestic exports, customs-based, by province of origin, monthly
228-0041	Merchandise imports and exports by sector and sub-sector, customs and balance of payments basis, for all countries, monthly
228-0042	Merchandise imports and exports by sector and sub-sector, customs and balance of payments basis, for all countries, quarterly
228-0043	Merchandise imports and exports by sector and sub-sector, customs and balance of payments basis, for all countries, annual
228-0047	Merchandise imports and exports balance of payments and customs-based price and volume indexes for all countries, monthly
228-0048	Merchandise imports and exports balance of payments and customs-based price and volume indexes for all countries, quarterly
228-0049	Merchandise imports and exports balance of payments and customs-based price and volume indexes for all countries, annual

228-0050	Merchandise imports and exports customs-based price indexes, Canada and United States trade, and Standard International Trade Classification (SITC revision 3) price indexes for all countries and United States, monthly
228-0051	Merchandise imports and exports customs-based price indexes, Canada and United States trade, and Standard International Trade Classification (SITC revision 3) price indexes for all countries and United States, quarterly
228-0052	Merchandise imports and exports customs-based price indexes, Canada and United States trade, and Standard International Trade Classification (SITC revision 3) price indexes for all countries and United States, annual
228-0053	Merchandise import and export price and volume indexes by sector and sub-sector, customs and balance of payments basis, for all countries, monthly
228-0054	Merchandise import and export price and volume indexes by sector and sub-sector, customs and balance of payments basis, for all countries, quarterly
228-0055	Merchandise import and export price and volume indexes by sector and sub-sector, customs and balance of payments basis, for all countries, annual
228-0056	Merchandise imports and exports by sector, balance of payments basis, for all countries, seasonally adjusted, Fisher formula, monthly
228-0057	Merchandise imports and exports by sector, balance of payments basis, for all countries, seasonally adjusted, Fisher formula, quarterly

Selected surveys from Statistics Canada

2201	Canadian International Merchandise Trade (Customs Basis)
2202	Canadian International Merchandise Trade (Balance of Payments Basis)
2203	International Trade Price Indexes

Selected summary tables from Statistics Canada

- *Canada: Economic and financial data*
- *Imports, exports and trade balance of goods on a balance-of-payments basis, by country or country grouping*
- *Exports of goods on a balance-of-payments basis*

- *Imports of goods on a balance-of-payments basis*
- *Merchandise trade of Canada (monthly)*
- *Economic indicators, by province and territory (monthly and quarterly)*
- *Latest statistics (monthly)*

Statistical tables

Table 1-1

Merchandise trade of Canada, balance of payments basis, seasonally adjusted — Current dollars

	Exports	Imports	Trade balance	Period to period change		
				Exports	Imports	Balance
	millions of dollars			percent		millions of dollars
2007	463,120	415,683	47,437	0.0	0.0	0
2008	489,995	443,752	46,244	5.8	6.8	-1,194
2009	369,529	374,097	-4,568	-24.6	-15.7	-50,812
2010	404,725	413,833	-9,108	9.5	10.6	-4,540
2009						
First quarter	95,769	95,366	403	-17.1	-15.0	-2,812
Second quarter	88,008	90,028	-2,019	-8.1	-5.6	-2,422
Third quarter	90,377	93,765	-3,388	2.7	4.2	-1,369
Fourth quarter	95,375	94,939	436	5.5	1.3	3,824
2010						
First quarter	98,575	98,622	-47	3.4	3.9	-483
Second quarter	100,159	102,872	-2,713	1.6	4.3	-2,665
Third quarter	99,892	106,388	-6,496	-0.3	3.4	-3,783
Fourth quarter	106,099	105,951	148	6.2	-0.4	6,644
2011						
First quarter	111,781	109,411	2,371	5.4	3.3	2,223
2010						
January	32,765	32,043	722	-0.1	-1.8	552
February	33,231	32,821	410	1.4	2.4	-312
March	32,580	33,758	-1,179	-2.0	2.9	-1,588
April	32,803	32,943	-140	0.7	-2.4	1,039
May	34,317	35,021	-705	4.6	6.3	-564
June	33,040	34,908	-1,868	-3.7	-0.3	-1,163
July	33,044	35,453	-2,409	0.0	1.6	-542
August	33,721	35,760	-2,039	2.0	0.9	370
September	33,127	35,174	-2,048	-1.8	-1.6	-9
October	34,296	35,469	-1,172	3.5	0.8	876
November	34,477	35,020	-544	0.5	-1.3	629
December	37,326	35,462	1,864	8.3	1.3	2,407
2011						
January	38,293	36,906	1,387	2.6	4.1	-476
February	36,116	35,760	356	-5.7	-3.1	-1,031
March	37,372	36,745	627	3.5	2.8	270

Note(s): Because of rounding, monthly data may not add up to quarterly data and quarterly data may not add up to annual data.

Table 1-2
Merchandise trade of Canada, balance of payments basis, seasonally adjusted — Constant dollars, 2002

	Exports	Imports	Trade balance	Period to period change	
				Exports	Imports
millions of dollars			percent		
2007	449,015	484,005	-34,990	0.0	0.0
2008	415,119	485,902	-70,783	-7.5	0.4
2009	345,911	405,261	-59,350	-16.7	-16.6
2010	374,611	469,212	-94,600	8.3	15.8
2009					
First quarter	87,218	97,521	-10,303	-10.2	-13.9
Second quarter	83,055	96,718	-13,663	-4.8	-0.8
Third quarter	86,329	104,265	-17,935	3.9	7.8
Fourth quarter	89,308	106,757	-17,449	3.5	2.4
2010					
First quarter	91,293	111,006	-19,713	2.2	4.0
Second quarter	94,396	117,258	-22,862	3.4	5.6
Third quarter	93,789	120,411	-26,622	-0.6	2.7
Fourth quarter	95,134	120,538	-25,404	1.4	0.1
2011					
First quarter	97,772	124,527	-26,755	2.8	3.3
2010					
January	30,300	36,188	-5,889	0.0	-0.5
February	30,411	36,932	-6,521	0.4	2.1
March	30,582	37,886	-7,303	0.6	2.6
April	30,917	37,915	-6,998	1.1	0.1
May	32,063	39,584	-7,521	3.7	4.4
June	31,416	39,758	-8,343	-2.0	0.4
July	31,089	40,057	-8,968	-1.0	0.8
August	31,750	40,473	-8,723	2.1	1.0
September	30,950	39,880	-8,931	-2.5	-1.5
October	31,558	40,479	-8,921	2.0	1.5
November	30,949	39,819	-8,870	-1.9	-1.6
December	32,627	40,240	-7,613	5.4	1.1
2011					
January	33,423	42,215	-8,792	2.4	4.9
February	31,776	40,517	-8,741	-4.9	-4.0
March	32,573	41,795	-9,222	2.5	3.2

Note(s): Because of rounding, monthly data may not add up to quarterly data and quarterly data may not add up to annual data.

Table 1-3
Merchandise trade of Canada, balance of payments basis, seasonally adjusted — Price indices (Laspeyres)

	2002=100			Period to period change		
	Exports	Imports	Terms of trade	Exports	Imports	Terms of trade
	price indices (Laspeyres)			percent		
2007	107.1	91.4	117.1	0.0	0.0	0.0
2008	116.3	97.5	119.3	8.6	6.6	2.0
2009	105.4	97.1	108.6	-9.4	-0.4	-9.0
2010	106.7	94.6	112.9	1.3	-2.6	3.9
2009						
First quarter	109.5	101.5	107.8	-3.7	-2.5	-1.2
Second quarter	104.6	97.9	106.8	-4.5	-3.6	-0.9
Third quarter	102.6	95.2	107.8	-1.9	-2.7	0.9
Fourth quarter	105.7	93.8	112.7	3.0	-1.5	4.5
2010						
First quarter	107.0	94.1	113.7	1.3	0.4	0.9
Second quarter	105.6	94.0	112.3	-1.3	-0.1	-1.2
Third quarter	106.1	95.2	111.5	0.4	1.2	-0.8
Fourth quarter	108.2	95.0	114.0	2.0	-0.2	2.3
2011						
First quarter	111.6	96.2	116.0	3.1	1.3	1.8
2010						
January	106.6	93.7	113.8	0.3	-0.6	0.9
February	107.7	94.9	113.5	1.0	1.3	-0.3
March	105.7	93.9	112.5	-1.8	-1.0	-0.8
April	105.1	92.3	113.8	-0.6	-1.7	1.1
May	106.3	94.8	112.1	1.1	2.7	-1.5
June	105.5	95.0	111.0	-0.7	0.3	-1.0
July	105.5	95.0	111.1	0.0	0.0	0.0
August	106.4	95.7	111.2	0.8	0.7	0.1
September	107.1	94.8	113.0	0.7	-0.9	1.6
October	107.5	94.6	113.6	0.3	-0.2	0.6
November	108.7	95.1	114.2	1.1	0.6	0.5
December	110.7	95.0	116.5	1.9	-0.1	2.0
2011						
January	110.4	95.4	115.7	-0.3	0.4	-0.7
February	111.0	96.5	115.0	0.6	1.2	-0.6
March	112.3	96.7	116.1	1.1	0.2	0.9

Note(s): Because of rounding, monthly data may not add up to quarterly data and quarterly data may not add up to annual data.

Table 2-1

Exports by commodity groupings, balance of payments basis, seasonally adjusted — Current dollars

	February 2011	March 2011	Change		Year to date			March 2011/ March 2010	
					2010	2011	Change		
	millions of dollars		percent		millions of dollars		percent		
Total	36,116	37,372	1,256	3.5	98,575	111,781	13,206	13.4	14.7
Agricultural and fishing products	3,229	3,045	-184	-5.7	9,002	9,480	477	5.3	-0.2
Wheat	370	424	53	14.4	1,094	1,160	66	6.0	16.8
Other agricultural and fishing products	2,859	2,622	-237	-8.3	7,908	8,319	411	5.2	-2.5
Live animals	103	108	4	4.3	408	333	-75	-18.4	-25.1
Fish and fish preparations	332	344	12	3.7	1,037	1,021	-16	-1.5	-0.6
Barley	20	44	25	126.5	66	96	30	44.9	24.0
Wheat flour	6	7	1	17.4	20	20	0	0.0	5.3
Other cereals unmilled	90	76	-14	-15.4	133	244	110	83.0	43.4
Other cereal preparations	228	232	3	1.5	690	685	-6	-0.8	-0.5
Meat and meat preparations	394	388	-6	-1.6	1,128	1,165	37	3.3	0.2
Alcoholic beverages	56	62	6	11.2	189	174	-16	-8.2	0.7
Other food, feed, beverages and tobacco	967	942	-24	-2.5	2,813	2,859	46	1.6	0.2
Rapeseed	423	256	-168	-39.6	796	1,086	289	36.3	-7.6
Other crude vegetable products	239	162	-77	-32.2	626	638	12	1.8	-20.8
Energy products	8,980	9,430	450	5.0	24,248	28,465	4,218	17.4	21.5
Crude petroleum	5,487	5,802	315	5.7	13,687	17,488	3,801	27.8	27.8
Natural gas	1,266	1,216	-50	-4.0	4,544	3,823	-721	-15.9	-10.4
Other energy products	2,226	2,412	185	8.3	6,017	7,155	1,138	18.9	29.2
Coal and other bituminous substances	423	497	74	17.4	975	1,308	333	34.2	42.4
Petroleum and coal products	1,640	1,759	119	7.2	4,397	5,339	942	21.4	32.8
Electricity	163	156	-7	-4.5	645	508	-137	-21.3	-19.2
Forestry products	1,805	1,999	194	10.7	5,178	5,667	489	9.4	13.7
Lumber and sawmill products	708	729	20	2.9	1,938	2,152	215	11.1	10.6
Other crude wood products	74	71	-2	-3.1	162	206	43	26.8	17.1
Lumber	457	472	15	3.3	1,168	1,397	228	19.5	20.2
Other wood fabricated materials	177	185	7	4.2	607	550	-57	-9.3	-9.8
Wood pulp and other wood products	519	630	111	21.4	1,406	1,694	288	20.5	28.4
Newsprint and other paper and paperboard	577	640	62	10.8	1,835	1,820	-14	-0.8	5.2
Newsprint paper	295	341	46	15.4	902	949	47	5.2	11.3
Other paper and paperboard	282	299	17	6.0	932	871	-61	-6.5	-0.9
Industrial goods and materials	9,270	9,614	345	3.7	22,667	28,436	5,769	25.5	25.7
Metal ores	1,209	1,446	236	19.5	2,686	3,979	1,294	48.2	52.3
Iron ores, concentrates and scrap	480	539	59	12.3	1,079	1,514	435	40.3	53.8
Copper ores, concentrates and scrap	270	273	3	1.0	503	788	285	56.6	70.8
Nickel ores, concentrates and scrap	210	285	75	35.5	508	774	265	52.2	29.9
Zinc ores, concentrates and scrap	4	48	44	...	64	66	2	2.7	59.1
Other ores, concentrates and scrap	245	301	56	22.8	531	838	307	57.9	58.8
Chemicals, plastics and fertilizers	2,810	2,918	108	3.8	7,385	8,510	1,125	15.2	20.2
Inorganic chemicals	466	516	50	10.7	1,034	1,460	425	41.1	71.5
Organic chemicals	540	614	74	13.7	1,547	1,711	164	10.6	11.1
Fertilizers and fertilizer materials	638	596	-41	-6.5	1,642	1,842	200	12.2	16.6
Synthetic rubber and plastics	898	922	24	2.7	2,423	2,710	287	11.8	13.5
Other chemical products	268	269	1	0.5	739	788	49	6.6	7.3

Table 2-1 – continued

Exports by commodity groupings, balance of payments basis, seasonally adjusted — Current dollars

	February 2011	March 2011	Change		Year to date			March 2011/ March 2010	
					2010	2011	Change		
	millions of dollars		percent		millions of dollars		percent		
Metals and alloys	3,699	3,637	-62	-1.7	8,470	11,253	2,783	32.9	24.9
Primary iron and steel	50	75	25	50.5	290	178	-113	-38.8	-29.0
Steel bars, rods, plates, sheets	267	301	34	12.6	849	858	8	1.0	2.4
Other iron and steel and alloys	232	223	-9	-3.9	698	690	-8	-1.1	-6.1
Aluminum including alloys	652	622	-30	-4.6	1,864	1,844	-20	-1.1	-1.5
Copper and alloys	242	185	-57	-23.5	844	678	-166	-19.7	-31.6
Nickel and alloys	332	275	-57	-17.1	393	940	547	139.0	77.5
Precious metals and alloys	1,709	1,737	28	1.7	2,851	5,400	2,549	89.4	76.1
Zinc and alloys	113	110	-3	-2.8	402	342	-59	-14.7	-22.5
Other non-ferrous metals and alloys	101	107	7	6.5	278	323	45	16.2	22.3
Other industrial goods and materials	1,551	1,614	63	4.0	4,126	4,694	568	13.8	18.9
Asbestos unmanufactured	4	4	1	13.2	15	13	-2	-14.7	-1.8
Other crude animal products	82	108	26	32.3	168	256	87	51.9	180.8
Other crude non-metallic minerals	338	329	-8	-2.5	926	988	62	6.7	6.7
Other crude materials, inedible	60	65	5	8.2	170	192	21	12.6	1.7
Metal fabricated basic products	356	367	11	3.1	1,015	1,076	61	6.0	11.4
Textile fabricated materials	179	180	0	0.2	531	541	10	1.9	2.2
Non-metallic mineral basic products	152	162	10	6.5	463	472	10	2.1	10.1
Other fabricated materials	379	397	18	4.7	838	1,156	318	38.0	37.6
Machinery and equipment	6,241	6,540	299	4.8	17,642	19,075	1,433	8.1	14.4
Industrial and agricultural machinery	1,496	1,584	88	5.9	4,178	4,549	371	8.9	18.7
Industrial machinery	1,339	1,436	97	7.2	3,747	4,086	339	9.1	19.8
Agricultural machinery includ. tractors	157	148	-9	-5.8	431	463	32	7.5	8.5
Aircraft and other transportation equipment	1,457	1,599	142	9.7	4,031	4,531	500	12.4	25.9
Aircraft, engines, parts	1,129	1,233	104	9.2	3,153	3,497	345	10.9	25.1
Other transportation equipment	328	366	38	11.6	878	1,033	155	17.7	28.8
Other machinery and equipment	3,288	3,357	69	2.1	9,434	9,995	561	6.0	7.8
Television, telecommunication equipment	635	608	-27	-4.3	1,849	1,862	13	0.7	1.5
Office machines and equipment	345	368	23	6.6	1,035	1,067	32	3.1	8.9
Other equipment and tools	1,451	1,551	100	6.9	4,381	4,537	156	3.6	5.8
Other end products, inedible	856	830	-26	-3.1	2,169	2,529	360	16.6	16.9
Automotive products	4,554	4,567	13	0.3	13,258	14,318	1,060	8.0	2.4
Passenger autos and chassis	3,001	2,883	-118	-3.9	8,742	9,444	703	8.0	-2.9
Trucks and other motor vehicles	173	216	43	24.9	507	598	91	17.9	42.8
Motor vehicle parts	1,380	1,468	88	6.3	4,009	4,276	267	6.7	9.4
Other consumer goods	1,276	1,316	40	3.1	4,197	3,963	-234	-5.6	-3.0
Special transactions trade	308	370	62	20.3	1,054	939	-115	-10.9	-1.4
Unallocated balance of payments adjustments	455	492	37	8.2	1,331	1,438	108	8.1	9.3

Table 2-2

Exports by commodity groupings, balance of payments basis, seasonally adjusted — Constant dollars, 2002

	February 2011	March 2011	Change		Year to date			March 2011/ March 2010	
					2010	2011	Change		
	millions of dollars		percent		millions of dollars		percent		
Total	31,776	32,573	797	2.5	91,293	97,772	6,479	7.1	6.5
Agricultural and fishing products	2,980	2,814	-167	-5.6	9,536	8,871	-664	-7.0	-13.2
Wheat	270	307	36	13.5	1,193	870	-323	-27.1	-24.3
Other agricultural and fishing products	2,710	2,507	-203	-7.5	8,343	8,001	-342	-4.1	-11.6
Live animals	99	101	1	1.3	493	324	-169	-34.3	-39.2
Fish and fish preparations	403	422	19	4.7	1,354	1,243	-112	-8.2	-5.7
Barley	16	33	17	110.2	67	78	10	15.2	-9.2
Wheat flour	5	6	1	19.8	20	18	-2	-10.0	-6.1
Other cereals unmilled	68	55	-13	-19.4	161	184	22	13.9	-20.1
Other cereal preparations	208	209	1	0.6	619	621	2	0.4	-1.9
Meat and meat preparations	402	376	-26	-6.5	1,313	1,190	-123	-9.4	-14.6
Alcoholic beverages	108	122	15	13.6	367	337	-30	-8.3	-0.6
Other food, feed, beverages and tobacco	905	874	-32	-3.5	2,631	2,712	81	3.1	-0.4
Rapeseed	304	174	-130	-42.8	740	779	40	5.3	-34.9
Other crude vegetable products	192	136	-56	-29.2	577	515	-62	-10.7	-29.0
Energy products	4,984	5,086	102	2.1	13,954	15,498	1,543	11.1	9.3
Crude petroleum	2,476	2,647	171	6.9	6,158	7,723	1,565	25.4	21.4
Natural gas	1,373	1,261	-112	-8.2	4,143	4,161	18	0.4	-4.1
Other energy products	1,134	1,178	43	3.8	3,654	3,614	-39	-1.1	1.7
Coal and other bituminous substances	127	150	24	18.7	469	393	-76	-16.2	-10.9
Petroleum and coal products	803	813	10	1.3	2,491	2,591	100	4.0	4.6
Electricity	205	215	10	4.7	693	630	-63	-9.1	0.7
Forestry products	2,223	2,437	214	9.6	6,528	6,914	386	5.9	11.0
Lumber and sawmill products	921	946	26	2.8	2,555	2,793	238	9.3	12.1
Other crude wood products	94	81	-13	-13.9	226	263	37	16.3	-5.0
Lumber	622	651	29	4.7	1,655	1,894	239	14.4	21.0
Other wood fabricated materials	205	214	10	4.7	674	636	-38	-5.7	-3.1
Wood pulp and other wood products	640	749	109	17.0	1,764	2,022	259	14.7	22.7
Newsprint and other paper and paperboard	662	742	79	12.0	2,209	2,099	-110	-5.0	0.0
Newsprint paper	340	397	57	16.8	1,115	1,099	-16	-1.4	2.8
Other paper and paperboard	322	344	22	6.9	1,094	1,000	-94	-8.6	-3.0
Industrial goods and materials	5,603	5,755	152	2.7	16,043	17,172	1,129	7.0	6.1
Metal ores	470	607	137	29.2	1,405	1,640	234	16.7	26.2
Iron ores, concentrates and scrap	174	196	22	12.5	542	574	33	6.0	15.7
Copper ores, concentrates and scrap	72	78	6	8.4	173	218	45	26.1	41.8
Nickel ores, concentrates and scrap	77	110	33	43.6	264	300	36	13.6	9.9
Zinc ores, concentrates and scrap	2	24	22	...	32	33	2	5.4	59.2
Other ores, concentrates and scrap	145	199	54	37.0	395	514	119	30.0	40.5
Chemicals, plastics and fertilizers	1,899	1,905	6	0.3	5,337	5,701	364	6.8	6.8
Inorganic chemicals	177	190	13	7.4	522	569	47	9.0	12.9
Organic chemicals	278	303	26	9.2	917	876	-41	-4.5	-2.1
Fertilizers and fertilizer materials	266	240	-26	-9.8	700	751	50	7.2	1.3
Synthetic rubber and plastics	855	856	1	0.1	2,289	2,567	279	12.2	13.3
Other chemical products	323	315	-8	-2.5	908	938	29	3.2	0.8

Table 2-2 – continued

Exports by commodity groupings, balance of payments basis, seasonally adjusted — Constant dollars, 2002

	February 2011	March 2011	Change		Year to date			March 2011/ March 2010
					2010	2011	Change	
	millions of dollars		percent		millions of dollars		percent	
Metals and alloys	1,931	1,875	-56	-2.9	5,432	5,814	382	7.0
Primary iron and steel	32	49	17	54.4	211	116	-96	-45.3
Steel bars, rods, plates, sheets	216	239	23	10.7	729	699	-30	-4.2
Other iron and steel and alloys	191	178	-13	-6.9	599	566	-33	-5.6
Aluminum including alloys	612	597	-15	-2.4	1,897	1,761	-135	-7.1
Copper and alloys	62	47	-16	-24.9	278	178	-100	-36.0
Nickel and alloys	132	109	-22	-16.9	212	377	165	77.8
Precious metals and alloys	579	549	-29	-5.1	1,171	1,788	617	52.7
Zinc and alloys	62	58	-3	-5.3	216	186	-30	-13.7
Other non-ferrous metals and alloys	46	48	2	5.3	119	144	25	21.0
Other industrial goods and materials	1,302	1,368	65	5.0	3,868	4,017	148	3.8
Asbestos unmanufactured	4	4	0	8.1	15	13	-3	-18.0
Other crude animal products	84	89	5	6.3	193	245	52	27.1
Other crude non-metallic minerals	293	305	12	4.2	982	930	-52	-5.3
Other crude materials, inedible	53	64	12	22.0	157	176	18	11.7
Metal fabricated basic products	283	294	11	3.8	823	857	34	4.1
Textile fabricated materials	191	189	-2	-0.9	575	571	-4	-0.7
Non-metallic mineral basic products	126	134	8	6.1	387	390	3	0.9
Other fabricated materials	268	287	19	7.0	735	834	99	13.5
Machinery and equipment	7,062	7,521	458	6.5	19,763	21,676	1,913	9.7
Industrial and agricultural machinery	1,411	1,495	84	5.9	3,875	4,288	413	10.6
Industrial machinery	1,265	1,358	93	7.3	3,477	3,860	383	11.0
Agricultural machinery includ. tractors	145	136	-9	-6.1	398	428	30	7.4
Aircraft and other transportation equipment	1,823	2,014	190	10.4	4,952	5,677	725	14.6
Aircraft, engines, parts	1,500	1,644	144	9.6	4,079	4,641	562	13.8
Other transportation equipment	324	369	46	14.2	873	1,036	163	18.7
Other machinery and equipment	3,828	4,012	184	4.8	10,936	11,712	776	7.1
Television, telecommunication equipment	811	780	-31	-3.8	2,352	2,403	51	2.2
Office machines and equipment	940	1,048	108	11.5	2,545	2,938	393	15.4
Other equipment and tools	1,374	1,481	107	7.8	4,158	4,314	156	3.8
Other end products, inedible	703	703	0	0.0	1,881	2,057	176	9.4
Automotive products	6,302	6,320	19	0.3	17,840	19,817	1,977	11.1
Passenger autos and chassis	4,541	4,404	-138	-3.0	12,802	14,287	1,485	11.6
Trucks and other motor vehicles	211	264	53	25.1	614	732	118	19.3
Motor vehicle parts	1,549	1,652	103	6.7	4,424	4,798	374	8.5
Other consumer goods	1,235	1,266	31	2.5	4,012	3,824	-188	-4.7
Special transactions trade	265	317	51	19.4	954	806	-148	-15.5
Unallocated balance of payments adjustments	1,122	1,058	-63	-5.7	2,663	3,194	531	19.9

Table 3-1

Domestic exports to selected countries, customs basis, not seasonally adjusted — March

	Agricultural and fishing products	Energy products	Forestry products	Industrial goods	Machinery and equipment	Automotive products	Consumer goods	Special transactions trade	Total
millions of dollars									
United States									
2010	1,592.5	7,260.3	1,202.5	4,869.5	3,486.9	4,742.6	878.3	311.4	24,344.0
2011	1,542.4	8,705.9	1,168.9	5,708.8	3,914.3	4,916.3	820.2	294.2	27,070.9
Mexico									
2010	155.5	0.6	11.9	88.5	54.4	67.5	4.0	0.0	382.5
2011	148.9	16.6	11.4	113.6	53.0	62.8	13.1	0.5	419.9
Japan									
2010	237.5	181.1	111.4	97.1	40.5	6.1	5.7	0.5	679.9
2011	312.5	173.4	118.1	168.0	49.5	4.4	8.4	0.9	835.3
European Union									
Germany									
2010	10.9	0.2	6.5	62.0	120.1	3.7	19.9	2.0	225.2
2011	10.9	0.2	6.0	161.1	101.4	2.6	16.7	0.9	299.9
France									
2010	10.3	0.1	13.3	50.8	85.1	2.6	25.3	0.7	188.1
2011	10.0	11.4	9.0	80.7	115.2	2.3	21.8	1.9	252.4
United Kingdom									
2010	28.7	0.8	21.3	1,392.4	116.2	3.5	19.4	6.4	1,588.7
2011	25.8	6.0	16.0	1,107.8	110.4	6.7	12.9	2.4	1,288.0
Italy									
2010	7.6	14.3	26.4	23.4	29.5	0.7	13.6	0.3	115.9
2011	7.1	13.7	30.1	31.4	49.3	0.7	9.4	0.4	142.1
Other European Union									
2010	59.0	18.7	23.9	299.3	189.4	15.1	60.2	4.0	669.6
2011	70.1	77.3	28.3	351.7	190.8	11.6	77.7	2.9	810.3
Total									
2010	116.4	34.1	91.5	1,827.9	540.2	25.6	138.4	13.3	2,787.5
2011	123.8	108.6	89.5	1,732.7	567.1	23.9	138.5	8.5	2,792.6
Newly industrialized countries									
South Korea									
2010	48.4	53.6	44.0	71.6	29.0	6.2	4.7	1.3	258.9
2011	111.5	182.4	58.1	131.3	41.5	1.6	9.3	0.4	536.1
Hong Kong									
2010	29.1	0.0	9.6	94.4	19.4	0.7	5.9	1.3	160.5
2011	24.4	0.0	15.5	117.3	71.1	0.5	6.6	0.2	235.7
Taiwan									
2010	11.5	0.2	22.1	32.0	14.0	0.3	2.1	0.1	82.2
2011	13.9	30.4	22.6	43.8	11.2	0.2	2.5	0.1	124.7
Singapore									
2010	3.0	0.7	2.0	15.2	26.8	5.5	3.9	0.4	57.5
2011	7.9	0.7	0.3	16.5	27.7	2.0	2.2	0.1	57.5
Total									
2010	92.0	54.5	77.7	213.2	89.2	12.7	16.7	3.1	559.1
2011	157.7	213.5	96.5	308.8	151.5	4.3	20.7	0.8	954.0
Other countries									
2010	825.7	115.1	378.6	1,430.2	643.6	70.4	243.3	21.6	3,728.5
2011	717.6	237.5	627.4	1,485.3	811.8	68.0	92.3	22.2	4,062.1
Total									
2010	3,019.8	7,645.6	1,873.5	8,526.4	4,855.0	4,925.0	1,286.4	350.0	32,481.6
2011	3,003.0	9,455.6	2,111.8	9,517.2	5,547.2	5,079.7	1,093.1	327.2	36,134.9

Table 3-2

Domestic exports to selected countries, customs basis, not seasonally adjusted — Year to date, January to March

	Agricultural and fishing products	Energy products	Forestry products	Industrial goods	Machinery and equipment	Automotive products	Consumer goods	Special transactions trade	Total
millions of dollars									
United States									
2010	4,229.5	22,326.9	3,281.6	13,341.8	9,596.0	12,227.4	2,418.8	791.8	68,213.7
2011	4,224.8	25,263.0	3,244.5	15,164.6	10,137.9	13,204.5	2,228.1	742.6	74,209.9
Mexico									
2010	374.5	14.2	34.7	246.7	157.3	204.1	31.7	0.4	1,063.8
2011	347.2	23.9	35.1	288.1	190.2	171.3	20.0	1.1	1,076.9
Japan									
2010	678.4	419.9	306.2	323.5	169.5	18.1	31.3	2.8	1,949.6
2011	894.2	479.9	305.0	601.0	149.3	14.6	21.6	4.2	2,469.8
European Union									
Germany									
2010	30.7	8.3	21.3	269.3	382.9	8.9	48.3	5.2	774.7
2011	33.5	24.2	15.5	313.7	336.4	7.1	47.9	4.8	783.0
France									
2010	28.3	0.3	34.8	132.6	218.7	7.9	58.5	4.4	485.5
2011	26.8	12.0	24.4	181.6	368.0	6.7	53.2	3.1	675.8
United Kingdom									
2010	73.2	17.8	53.4	3,219.6	381.8	11.2	52.4	14.6	3,824.0
2011	77.6	40.0	34.9	3,379.3	285.3	16.9	37.7	10.8	3,882.5
Italy									
2010	38.6	51.1	77.3	73.1	117.7	1.5	37.3	2.4	398.9
2011	42.9	50.4	71.9	104.4	103.2	1.8	22.4	0.9	398.0
Other European Union									
2010	196.1	82.7	73.0	798.0	614.1	33.8	141.8	15.2	1,954.8
2011	339.9	265.6	53.2	923.8	621.6	29.7	168.7	8.2	2,410.8
Total									
2010	366.9	160.1	259.7	4,492.7	1,715.2	63.3	338.3	41.8	7,438.0
2011	520.7	392.3	199.9	4,902.8	1,714.5	62.2	329.9	27.8	8,150.1
Newly industrialized countries									
South Korea									
2010	122.4	200.8	109.0	225.7	110.5	19.6	12.1	3.3	803.4
2011	233.0	374.4	132.3	314.0	107.9	3.2	20.0	1.6	1,186.4
Hong Kong									
2010	102.9	0.1	24.1	209.2	55.6	2.0	14.4	5.1	413.3
2011	80.0	0.1	32.7	653.8	130.6	1.6	22.6	1.6	922.9
Taiwan									
2010	37.6	23.6	59.8	74.8	34.1	0.9	8.9	0.2	240.0
2011	38.3	90.1	69.1	196.6	31.6	0.4	9.9	0.3	436.4
Singapore									
2010	14.4	2.0	5.1	38.3	71.6	8.0	9.9	2.5	151.7
2011	17.3	1.6	2.4	33.0	110.0	8.2	7.4	1.5	181.3
Total									
2010	277.3	226.5	198.0	548.0	271.8	30.5	45.2	11.1	1,608.4
2011	368.6	466.2	236.5	1,197.5	380.0	13.4	59.8	5.0	2,727.0
Other countries									
2010	2,198.6	316.4	1,062.3	3,348.1	1,812.2	175.6	499.6	75.6	9,488.3
2011	2,115.4	698.2	1,583.2	3,740.4	1,951.7	191.3	246.1	51.9	10,578.2
Total									
2010	8,125.3	23,464.0	5,142.6	22,300.8	13,722.0	12,718.9	3,364.9	923.5	89,762.0
2011	8,470.9	27,323.4	5,604.2	25,894.6	14,523.7	13,657.3	2,905.6	832.5	99,212.2

Table 4
Domestic exports by country, customs basis, not seasonally adjusted

	March		January to March		Change
	2010	2011	2010	2011	January to March 2011/ January to March 2010
	millions of dollars				percent
North America					
Greenland	0.4	0.4	2.2	1.8	-20.1
Mexico	382.5	419.9	1,063.8	1,076.9	1.2
Saint Pierre and Miquelon	1.3	0.9	3.6	3.0	-17.4
United States	24,344.0	27,070.9	68,213.7	74,209.9	8.8
Total	24,728.2	27,492.2	69,283.3	75,291.5	8.7
Western Europe					
Andorra	0.0	0.0	0.0	0.0	-89.5
Austria	15.3	40.8	64.4	83.5	29.5
Belgium	164.7	80.8	438.8	366.2	-16.5
Denmark	27.0	13.6	63.0	41.1	-34.9
Faeroe Islands	0.1	0.1	0.1	0.2	63.2
Finland	25.5	29.0	54.3	65.3	20.3
France	188.1	252.4	485.5	675.8	39.2
Germany	225.2	299.9	774.7	783.0	1.1
Gibraltar	0.0	0.0	0.0	24.8	...
Greece	9.2	15.9	19.7	25.8	30.5
Iceland	6.2	6.5	16.1	13.7	-15.0
Italy	115.9	142.1	398.9	398.0	-0.2
Luxembourg	5.4	8.0	15.5	34.0	118.5
Malta	1.8	0.3	51.2	1.7	-96.8
Netherlands	201.1	344.6	610.8	1,010.2	65.4
Norway	224.3	249.3	601.6	660.3	9.8
Portugal	53.6	5.7	111.6	69.6	-37.6
Republic of Ireland (Eire)	20.5	69.0	75.4	127.5	69.1
Spain	66.0	106.5	208.1	271.9	30.7
Sweden	23.9	27.8	72.5	74.8	3.1
Switzerland	281.6	67.6	526.6	319.3	-39.4
United Kingdom	1,588.7	1,288.0	3,824.0	3,882.5	1.5
Total	3,244.2	3,047.8	8,413.1	8,929.1	6.1
Other Europe					
Albania	1.6	6.5	4.2	12.6	196.3
Armenia	1.1	0.8	2.3	3.3	45.5
Azerbaijan	2.2	0.6	3.7	1.4	-61.8
Belarus	0.6	0.4	0.7	0.7	-1.3
Bosnia and Herzegovina	0.5	0.5	1.0	1.1	5.3
Bulgaria	1.9	18.6	24.3	39.1	61.0
Croatia	23.2	1.0	53.5	2.4	-95.5
Czech Republic	12.9	8.9	33.0	22.5	-31.9
Estonia	3.7	2.2	6.5	58.6	800.2
Georgia	1.3	1.8	4.3	4.7	10.6
Hungary	6.6	7.2	17.4	19.9	14.8
Kazakhstan	7.4	53.5	65.7	66.9	1.9
Kyrgyzstan	0.0	0.5	0.1	0.9	849.7
Latvia	1.9	1.6	3.9	25.1	541.6
Lithuania	2.8	3.7	5.5	12.5	128.5
Macedonia (Former Yugoslav Republic of Macedonia)	1.0	0.7	2.8	2.2	-21.1
Montenegro	0.2	0.1	0.3	0.3	-17.5
Poland	13.3	17.5	39.0	40.4	3.6
Republic of Moldova	0.2	0.2	0.3	0.2	-20.2
Romania	8.4	3.7	21.6	9.2	-57.6
Russian Federation	76.5	91.2	177.5	236.3	33.2
Serbia	0.5	0.8	1.2	1.5	26.1
Slovakia	1.7	2.9	13.2	6.7	-49.3
Slovenia	0.9	1.1	2.4	3.4	43.8
Tajikistan	0.4	0.2	1.5	0.4	-70.2
Turkmenistan	0.1	0.4	0.5	2.2	309.2
Ukraine	12.1	14.4	26.7	31.9	19.3
Uzbekistan	0.0	0.9	0.9	1.6	78.4
Total	183.1	241.7	514.0	608.1	18.3

Table 4 – continued

Domestic exports by country, customs basis, not seasonally adjusted

	March		January to March		Change
	2010	2011	2010	2011	January to March 2011/ January to March 2010
	millions of dollars				percent
Middle East					
Bahrain	1.4	10.9	3.9	14.7	271.4
Cyprus	1.3	0.9	2.6	2.0	-22.9
Egypt	29.9	47.8	85.4	121.4	42.1
Eritrea	0.4	0.5	1.6	1.9	15.5
Ethiopia	21.2	3.6	22.1	5.3	-75.9
Iran	5.2	14.9	19.7	24.0	22.0
Iraq	3.4	2.4	9.5	9.2	-3.7
Israel	33.2	23.4	90.7	72.1	-20.5
Jordan	4.9	6.3	16.5	17.7	7.1
Kuwait	17.3	10.5	31.0	30.0	-3.1
Lebanon	5.7	5.4	16.5	12.3	-25.5
Libya	10.5	0.0	53.1	36.6	-31.1
Oman	13.8	6.0	32.9	18.0	-45.3
Qatar	3.5	5.4	21.2	12.2	-42.7
Saudi Arabia	47.5	76.2	197.6	176.8	-10.5
Somalia	0.8	0.0	0.8	0.2	-73.3
Sudan	28.9	16.1	36.6	17.5	-52.2
Syria	4.0	2.6	8.3	27.2	229.0
Turkey	71.3	82.8	241.4	232.6	-3.6
United Arab Emirates	83.6	92.4	252.3	295.1	17.0
Yemen	1.6	2.2	6.1	4.0	-34.2
Total	389.6	410.2	1,150.0	1,130.8	-1.7
Other Africa					
Algeria	31.1	14.6	80.5	32.1	-60.2
Angola	14.8	3.9	24.7	12.7	-48.7
Antarctica	0.0	0.0	0.0	0.0	205.3
Benin	1.0	0.7	2.2	2.2	2.0
Botswana	0.3	0.3	0.4	0.7	75.7
Burkina Faso	2.0	2.3	5.3	4.3	-18.2
Burundi	0.1	0.0	0.2	0.1	-33.8
Cameroon	0.7	0.5	3.4	5.5	60.8
Cape Verde	0.1	0.0	0.3	0.8	142.5
Central African Republic	0.0	0.0	0.0	0.0	-6.8
Chad	0.2	0.7	1.2	1.1	-13.7
Comoros	0.0	0.0	0.0	0.0	...
Congo	1.2	2.0	3.4	3.3	-2.5
Democratic Republic of the Congo	1.1	0.9	3.0	2.7	-12.1
Djibouti	0.4	0.0	0.5	0.2	-68.8
Equatorial Guinea	0.4	0.2	0.6	4.1	528.2
French Southern Territories	0.0	0.0	0.0	0.0	-100.0
Gabon	1.6	1.1	4.7	5.5	15.1
Gambia	0.1	0.0	0.2	0.2	-19.2
Ghana	6.1	27.7	33.4	60.7	81.5
Guinea	0.5	3.5	1.3	9.2	634.4
Guinea-Bissau	0.0	0.0	0.0	0.0	...
Ivory Coast	0.7	0.0	1.7	0.7	-59.7
Kenya	6.2	5.8	12.3	12.3	-0.3
Lesotho	0.0	0.0	0.0	0.0	731.0
Liberia	0.4	0.9	2.5	4.6	83.8
Madagascar	10.3	1.6	19.3	3.0	-84.4
Malawi	0.5	0.4	1.0	1.0	-2.1
Mali	0.6	1.5	1.3	2.4	91.4
Mauritania	0.2	0.6	0.3	4.9	...
Mauritius	0.4	0.5	0.7	2.1	190.6
Morocco	16.0	22.4	23.7	105.3	343.8
Mozambique	0.5	2.7	2.0	3.7	89.5
Namibia	0.4	0.2	0.4	1.4	227.2
Niger	0.3	0.4	0.7	0.9	45.2
Nigeria	14.2	11.3	35.6	28.2	-20.7
Rwanda	0.0	0.0	0.2	0.1	-53.7
Saint Helena	0.0	0.0	0.0	0.0	345.4
Sao Tome and Principe	0.0	0.0	0.0	0.0	-100.0
Senegal	4.0	2.5	7.2	9.4	30.3
Seychelles	0.1	0.7	0.2	0.8	369.8

Table 4 – continued

Domestic exports by country, customs basis, not seasonally adjusted

	March		January to March		Change
	2010	2011	2010	2011	January to March 2011/ January to March 2010
	millions of dollars				percent
Sierra Leone	1.3	1.0	3.0	2.3	-22.9
South Africa	51.5	43.2	108.0	107.7	-0.2
Swaziland	0.1	0.0	0.1	0.2	13.7
Togo	0.4	2.4	2.8	3.0	5.2
Tunisia	1.3	1.5	21.5	11.0	-48.6
Uganda	0.8	1.4	2.8	2.6	-7.2
United Republic of Tanzania	2.4	4.1	6.5	8.9	36.4
Zambia	0.9	1.9	14.2	7.0	-51.0
Zimbabwe	0.7	0.7	1.1	0.9	-17.8
Total	175.5	166.3	434.7	469.8	8.1
Other Asia					
Afghanistan	4.1	2.7	23.2	14.6	-37.2
Bangladesh	102.7	35.0	234.7	113.1	-51.8
Bhutan	0.8	0.0	0.8	0.0	-97.7
British Indian Ocean Territory	0.1	0.0	0.7	0.0	-100.0
Brunei Darussalam	0.5	0.1	6.4	0.4	-93.4
Cambodia	0.6	0.6	0.9	1.4	47.2
China	1,023.3	1,319.4	2,557.2	3,306.9	29.3
Hong Kong	160.5	235.7	413.3	922.9	123.3
India	182.6	177.3	411.4	485.5	18.0
Indonesia	72.4	140.0	206.1	386.3	87.4
Japan	679.9	835.3	1,949.6	2,469.8	26.7
Laos	0.1	0.5	0.5	4.0	768.8
Macao	0.2	0.4	0.8	0.8	-2.5
Malaysia	72.0	90.1	173.3	206.6	19.2
Maldives	0.3	0.2	0.9	0.6	-30.8
Mongolia	3.2	22.6	5.3	29.0	448.3
Myanmar	2.7	0.1	2.7	0.1	-97.1
Nepal	0.4	0.6	0.5	1.0	112.9
North Korea	0.3	0.8	1.7	2.9	71.0
Pakistan	56.2	80.2	94.8	197.2	108.1
Philippines	27.2	64.3	96.7	133.6	38.2
Singapore	57.5	57.5	151.7	181.3	19.5
South Korea	258.9	536.1	803.4	1,186.4	47.7
Sri Lanka	44.3	35.4	122.3	71.2	-41.8
Taiwan	82.2	124.7	240.0	436.4	81.8
Thailand	51.1	49.2	180.3	234.2	29.9
Timor-Leste	0.0	0.0	0.0	0.0	...
Viet Nam	21.0	39.3	55.1	81.6	48.3
Total	2,905.2	3,848.1	7,734.4	10,467.8	35.3
Oceania					
American Samoa	0.3	0.0	0.4	0.3	-33.8
Australia	134.8	165.5	462.0	402.2	-12.9
Christmas Island	0.5	0.0	0.5	0.0	-96.3
Cocos (Keeling) Islands	0.0	0.0	0.1	0.0	-100.0
Cook Islands	0.0	0.0	0.0	0.1	304.4
Fiji	0.3	0.2	0.6	0.4	-23.2
French Polynesia	0.3	0.3	1.6	1.8	10.5
Guam	0.1	0.1	0.2	0.6	158.2
Kiribati	0.0	0.0	0.0	0.1	74.1
New Caledonia	3.7	0.7	7.0	1.8	-74.7
New Zealand	20.6	18.8	67.1	67.4	0.4
Niue	0.0	0.0	0.0	0.0	...
Norfolk Island	0.0	0.0	0.0	0.0	-100.0
Papua New Guinea	0.8	19.8	2.0	21.1	971.8
Pitcairn	0.0	0.0	0.0	0.0	67.9
Samoa	0.0	0.0	0.1	0.0	-100.0
Solomon Islands	0.0	0.0	0.0	0.0	-83.3
Tonga	0.0	0.0	0.0	0.1	...
United States Minor Outlying Islands	0.9	1.1	3.5	2.9	-19.0
Vanuatu	0.2	0.1	0.4	0.2	-42.9
Total	162.6	206.6	545.7	498.9	-8.6

Table 4 – continued

Domestic exports by country, customs basis, not seasonally adjusted

	March		January to March		Change
	2010	2011	2010	2011	January to March 2011/ January to March 2010
	millions of dollars				percent
South America					
Argentina	15.3	93.2	43.5	192.6	342.8
Bolivia	1.1	0.5	2.3	2.9	26.7
Brazil	286.3	205.0	629.5	530.5	-15.7
Chile	49.0	47.3	122.4	158.0	29.1
Colombia	54.4	48.6	142.9	143.3	0.3
Ecuador	23.8	23.6	61.5	73.3	19.2
Falkland Islands (Malvinas)	0.0	0.0	0.0	0.0	-82.3
Guyana	1.0	1.5	5.9	8.0	35.5
Paraguay	0.8	0.4	2.2	1.4	-36.6
Peru	36.9	33.6	108.0	118.2	9.4
Suriname	1.2	1.2	2.8	2.5	-11.0
Uruguay	2.3	3.8	6.3	7.5	19.9
Venezuela	50.2	42.7	105.7	89.6	-15.2
Total	522.4	501.3	1,233.0	1,327.8	7.7
Central America Antilles					
Anguilla	0.1	0.1	0.2	0.2	-30.8
Antigua and Barbuda	0.7	0.6	4.3	1.8	-59.1
Aruba	0.3	0.7	0.9	1.1	18.3
Bahamas	2.7	2.3	30.3	26.7	-11.7
Barbados	2.7	4.2	8.8	9.6	8.1
Belize	0.6	0.2	1.3	0.7	-41.0
Bermuda	3.8	2.4	9.0	6.2	-31.0
British Virgin Islands	0.2	46.8	20.1	46.9	133.2
Cayman Islands	1.0	0.5	1.8	1.0	-45.9
Costa Rica	7.0	9.8	21.7	29.9	37.8
Cuba	34.2	54.0	78.6	97.9	24.6
Dominica	0.3	0.2	1.5	0.4	-75.6
Dominican Republic	14.4	11.9	41.7	42.1	1.0
El Salvador	2.0	1.7	10.9	9.8	-9.5
Grenada	0.4	0.5	1.6	1.3	-19.0
Guatemala	11.9	8.1	22.5	19.2	-14.7
Haiti	5.6	4.9	12.7	9.4	-26.2
Honduras	7.5	7.9	10.7	11.4	6.0
Jamaica	18.2	11.0	45.7	25.7	-43.6
Montserrat	0.0	0.0	0.0	0.1	28.8
Netherlands Antilles	2.9	2.1	6.7	25.9	287.7
Nicaragua	1.1	2.6	2.4	8.4	247.9
Panama	6.1	7.3	21.4	18.1	-15.8
Saint Kitts and Nevis	0.4	0.4	1.7	1.5	-10.4
Saint Lucia	0.7	0.9	1.9	2.8	47.8
Saint Vincent and the Grenadines	1.5	0.6	2.2	1.6	-27.4
Trinidad and Tobago	44.4	38.6	92.5	88.2	-4.6
Turks and Caicos Islands	0.2	0.4	0.9	0.8	-14.1
Total	170.9	220.7	454.0	488.4	7.6
All countries	32,481.6	36,134.9	89,762.0	99,212.2	10.5

Table 5-1

Exports by province of origin, customs basis, not seasonally adjusted — March

	Agricultural and fishing products	Energy products	Forestry products	Industrial goods	Machinery and equipment	Automotive products	Consumer goods	Special transactions trade	Total
millions of dollars									
Domestic exports									
Newfoundland and Labrador									
2010	32.1	387.4	13.4	111.2	3.9	0.2	0.3	2.3	550.9
2011	33.2	838.7	7.3	176.3	2.9	0.2	0.1	2.3	1,061.0
Prince Edward Island									
2010	31.1	0.1	0.0	2.1	6.5	0.2	6.6	8.1	54.7
2011	37.0	0.0	0.0	2.4	5.8	0.0	2.5	7.3	55.0
Nova Scotia									
2010	66.8	23.6	68.5	46.4	113.4	5.2	4.4	3.8	332.1
2011	74.5	25.9	93.1	50.8	122.9	4.6	6.5	3.8	381.9
New Brunswick									
2010	74.4	658.2	108.9	112.3	25.1	2.1	18.5	4.0	1,003.6
2011	92.1	833.1	117.3	145.0	27.7	3.2	10.9	3.9	1,233.3
Quebec									
2010	383.2	302.4	527.4	1,729.8	1,372.2	133.8	463.1	100.2	5,012.1
2011	403.0	253.8	541.3	1,856.4	1,732.0	163.5	316.9	80.6	5,347.5
Ontario									
2010	694.2	217.9	243.8	3,977.4	2,547.3	4,676.5	702.1	152.2	13,211.3
2011	713.1	248.7	255.1	4,533.1	2,723.2	4,755.2	635.1	151.8	14,015.2
Manitoba									
2010	357.2	73.8	18.5	225.7	168.1	35.8	29.4	26.4	934.9
2011	345.5	86.3	20.5	240.7	193.7	47.7	58.2	23.3	1,015.9
Saskatchewan									
2010	667.9	761.7	16.2	718.6	70.4	3.6	1.4	5.1	2,245.0
2011	611.2	1,047.8	21.8	843.4	59.1	6.6	1.4	5.1	2,596.6
Alberta									
2010	532.8	4,653.2	178.2	896.9	291.3	43.2	12.5	25.4	6,633.4
2011	514.9	5,488.5	184.5	996.0	397.9	72.2	13.0	23.6	7,690.6
British Columbia									
2010	180.0	567.3	698.5	509.6	255.4	24.3	48.1	22.4	2,305.6
2011	178.3	633.0	870.8	652.0	280.7	26.4	48.3	25.4	2,715.0
Yukon, Northwest Territories and Nunavut ¹									
2010	0.1	0.0	0.0	196.5	1.3	0.0	0.0	0.1	198.0
2011	0.1	0.0	0.0	21.3	1.3	0.2	0.0	0.0	22.9
Total									
2010	3,019.8	7,645.6	1,873.5	8,526.4	4,855.0	4,925.0	1,286.4	350.0	32,481.6
2011	3,003.0	9,455.6	2,111.8	9,517.2	5,547.2	5,079.7	1,093.1	327.2	36,134.9
Re-exports									
2010	59.8	34.2	7.2	325.4	922.4	93.3	186.1	626.3	2,254.8
2011	51.3	45.8	6.4	487.9	957.5	115.4	278.1	768.2	2,710.6
Total exports									
2010	3,079.6	7,679.7	1,880.8	8,851.8	5,777.4	5,018.3	1,472.5	976.3	34,736.3
2011	3,054.2	9,501.4	2,118.3	10,005.1	6,504.8	5,195.2	1,371.2	1,095.4	38,845.5

1. Data for the current month do not include some exports from the Harmonized System, Chapter 71, "Natural/cultured pearls, precious stones and metals, coins, etc." for reasons relating to timing.

Table 5-2

Exports by province of origin, customs basis, not seasonally adjusted — Year to date, January to March

	Agricultural and fishing products	Energy products	Forestry products	Industrial goods	Machinery and equipment	Automotive products	Consumer goods	Special transactions trade	Total
millions of dollars									
Domestic exports									
Newfoundland and Labrador									
2010	94.4	1,256.1	29.7	304.9	10.4	0.4	0.4	6.1	1,702.3
2011	78.9	1,934.3	26.1	420.9	9.3	0.4	0.4	5.7	2,475.9
Prince Edward Island									
2010	89.5	0.4	0.3	6.2	17.0	0.4	10.3	18.7	142.7
2011	100.2	0.0	0.1	5.5	17.1	0.7	7.0	18.4	149.0
Nova Scotia									
2010	174.7	111.9	185.4	130.1	307.9	12.1	14.1	10.1	946.2
2011	215.0	213.4	219.9	134.5	330.5	16.1	15.0	9.3	1,153.7
New Brunswick									
2010	228.0	2,272.7	306.3	287.5	67.7	6.3	53.6	10.5	3,232.6
2011	248.1	2,573.6	326.4	292.3	76.8	12.1	33.6	9.8	3,572.8
Quebec									
2010	1,047.4	820.7	1,430.4	4,744.2	4,152.5	352.2	1,188.4	263.2	13,998.8
2011	1,213.7	870.9	1,451.5	5,203.7	4,353.3	421.1	820.8	196.4	14,531.4
Ontario									
2010	1,809.7	692.2	688.9	9,948.2	7,057.7	12,054.0	1,846.5	399.6	34,496.9
2011	1,879.6	711.7	709.5	12,208.0	7,348.4	12,829.1	1,744.3	388.1	37,818.8
Manitoba									
2010	948.8	209.2	48.9	571.8	436.2	103.6	84.3	74.9	2,477.6
2011	976.2	248.0	53.0	648.9	537.0	120.8	117.8	67.9	2,769.5
Saskatchewan									
2010	1,859.2	2,085.8	42.4	1,933.5	200.9	11.9	4.3	12.8	6,150.6
2011	1,839.4	2,838.1	60.5	2,293.3	157.3	14.7	4.7	12.3	7,220.3
Alberta									
2010	1,404.0	14,273.4	501.3	2,474.2	789.5	110.3	30.4	68.2	19,651.2
2011	1,443.6	15,945.7	486.2	2,683.5	940.5	171.6	32.6	61.7	21,765.5
British Columbia									
2010	469.1	1,741.7	1,909.0	1,310.4	678.9	67.7	132.6	59.5	6,368.8
2011	475.9	1,987.7	2,271.0	1,753.1	751.7	70.5	129.2	62.8	7,502.0
Yukon, Northwest Territories and Nunavut ¹									
2010	0.5	0.0	0.0	589.9	3.2	0.2	0.1	0.2	594.1
2011	0.3	0.0	0.0	251.0	1.7	0.2	0.1	0.1	253.5
Total									
2010	8,125.3	23,464.0	5,142.6	22,300.8	13,722.0	12,718.9	3,364.9	923.5	89,762.0
2011	8,470.9	27,323.4	5,604.2	25,894.6	14,523.7	13,657.3	2,905.6	832.5	99,212.2
Re-exports									
2010	162.2	125.3	17.6	687.7	2,376.1	248.4	477.1	1,693.6	5,787.8
2011	157.9	87.0	17.7	1,185.4	2,573.0	289.2	649.6	1,933.7	6,893.6
Total exports									
2010	8,287.4	23,589.3	5,160.2	22,988.5	16,098.0	12,967.2	3,842.0	2,617.1	95,549.8
2011	8,628.8	27,410.4	5,621.9	27,080.1	17,096.7	13,946.5	3,555.2	2,766.2	106,105.8

1. Data for the current month do not include some exports from the Harmonized System Chapter 71, "Natural/cultured pearls, precious stones and metals, coins, etc." for reasons relating to timing.

Table 6-1

Imports by commodity groupings, balance of payments basis, seasonally adjusted — Current dollars

	February 2011	March 2011	Change		Year to date			March 2011/ March 2010	
					2010	2011	Change		
	millions of dollars		percent		millions of dollars		percent		
Total	35,760	36,745	985	2.8	98,622	109,411	10,788	10.9	8.8
Agricultural and fishing products	2,588	2,677	90	3.5	7,174	7,859	685	9.5	9.7
Fruits and vegetables	736	719	-16	-2.2	2,032	2,181	150	7.4	1.5
Fresh fruits and berries	260	244	-16	-6.0	745	761	16	2.1	-8.7
Dried fruits, fruits and fruit preparations	123	124	0	0.3	319	376	57	17.7	14.2
Fresh vegetables	198	199	0	0.1	544	581	37	6.8	1.8
Other vegetables and vegetable preparations	154	153	-1	-0.8	423	464	41	9.7	11.3
Other agricultural and fishing products	1,852	1,958	106	5.7	5,142	5,677	535	10.4	13.1
Live animals	18	18	1	3.3	46	53	6	13.8	10.9
Meat and meat preparations	193	199	6	2.9	522	577	55	10.6	11.7
Fish and marine animals	188	179	-9	-4.6	475	565	90	19.0	9.1
Cocoa, coffee, tea and other food preparations	460	452	-8	-1.7	1,182	1,367	185	15.6	11.1
Dairy produce, eggs and honey	47	52	4	8.9	135	147	12	9.3	11.3
Corn (maize) shelled	19	26	7	36.8	131	76	-55	-41.9	-35.5
Other cereals and cereal preparations	167	177	11	6.4	523	521	-2	-0.3	2.9
Sugar and sugar preparations	154	215	61	39.5	426	537	111	26.1	57.6
Fodder, feed, excluding unmilled cereal	111	120	10	8.8	340	350	10	2.9	8.5
Beverages	338	336	-2	-0.5	910	983	73	8.1	7.9
Tobacco	24	38	15	61.5	94	88	-6	-6.0	22.2
Crude vegetable products	132	143	11	8.3	356	408	52	14.6	24.1
Cotton	2	2	0	-10.6	4	5	1	32.2	33.2
Energy products	3,895	4,041	145	3.7	9,705	11,813	2,107	21.7	16.8
Crude petroleum	2,197	2,418	221	10.0	5,865	6,590	725	12.4	11.5
Other energy products	1,698	1,623	-75	-4.4	3,840	5,223	1,383	36.0	25.6
Coal and other related products	394	373	-21	-5.4	1,430	1,175	-255	-17.8	-16.0
Petroleum and coal products	1,304	1,250	-54	-4.1	2,411	4,048	1,637	67.9	47.4
Forestry products	213	190	-23	-10.9	653	609	-44	-6.8	-15.5
Forestry products	213	190	-23	-10.9	653	609	-44	-6.8	-15.5
Crude wood products	31	29	-2	-5.8	97	93	-4	-4.3	-4.2
Wood fabricated materials	182	160	-22	-11.8	556	515	-40	-7.3	-17.3
Industrial goods and materials	7,569	7,785	216	2.8	20,466	23,006	2,540	12.4	4.9
Metals and metal ores	2,945	3,294	349	11.9	7,520	9,238	1,718	22.8	16.2
Metals in ores, concentrates and scrap	660	740	80	12.2	1,715	2,036	321	18.7	38.0
Steel bars, rods, plates, sheets	603	621	18	3.0	1,601	1,789	189	11.8	7.3
Other iron and steel products	405	403	-2	-0.5	902	1,159	257	28.5	29.4
Precious metals including alloys	891	1,162	271	30.4	2,210	3,132	922	41.7	12.5
Other non-ferrous metals and alloys	386	368	-19	-4.8	1,093	1,122	30	2.7	-2.0
Chemicals and plastics	2,477	2,380	-97	-3.9	7,076	7,366	290	4.1	-7.2
Organic chemicals	573	506	-67	-11.7	1,763	1,659	-104	-5.9	-28.6
Plastic materials	844	856	12	1.4	2,381	2,557	176	7.4	3.0
Other chemicals and related products	1,060	1,018	-42	-3.9	2,932	3,150	219	7.5	-0.5
Other industrial goods and materials	2,147	2,111	-37	-1.7	5,870	6,402	532	9.1	4.4
Crude animal products	34	16	-18	-54.1	54	74	21	38.2	-23.6
Wool and man-made fibres	22	22	0	-1.0	59	66	7	11.2	7.7
Crude non-metallic minerals	63	70	8	12.0	225	201	-24	-10.6	-12.5
Textile fabricated materials	205	197	-9	-4.1	559	601	42	7.6	3.6
Metal fabricated basic products	880	872	-8	-0.9	2,257	2,633	376	16.6	13.2
Rubber fabricated materials	89	91	2	2.2	238	275	37	15.3	15.3
Oils, fats, animal and vegetable	102	98	-4	-3.5	297	294	-4	-1.2	-5.6
Non-metallic minerals	298	293	-5	-1.8	852	897	45	5.2	-3.3
Other fabricated materials	454	452	-3	-0.6	1,328	1,362	33	2.5	-0.3

Table 6-1 – continued

Imports by commodity groupings, balance of payments basis, seasonally adjusted — Current dollars

	February 2011	March 2011	Change		Year to date			March 2011/ March 2010	
					2010	2011	Change		
	millions of dollars		percent		millions of dollars		percent		
Machinery and equipment	9,821	9,971	150	1.5	25,985	29,829	3,844	14.8	12.4
Industrial and agricultural machinery	2,635	2,669	34	1.3	6,737	7,949	1,212	18.0	8.3
Engines, turbines and electric motors	325	322	-3	-0.9	921	975	54	5.9	-16.1
Drilling mining machinery	154	167	13	8.4	394	479	85	21.6	10.2
Excavating machinery	285	253	-32	-11.2	539	795	256	47.6	27.3
Metal working machinery	169	165	-4	-2.2	386	508	122	31.6	14.6
Other industrial machinery	1,337	1,392	54	4.1	3,480	4,089	609	17.5	14.3
Agricultural machinery including tractors	364	369	5	1.4	1,017	1,103	86	8.5	0.4
Aircraft and other transportation equipment	1,227	1,345	118	9.6	3,158	4,019	861	27.3	24.1
Aircraft, engines, parts	643	749	106	16.5	1,929	2,373	444	23.0	11.7
Other transportation equipment and parts	584	596	12	2.1	1,228	1,645	417	34.0	44.1
Office machines and equipment	1,103	1,120	17	1.5	3,053	3,290	237	7.8	16.4
Other machinery and equipment	4,855	4,837	-19	-0.4	13,037	14,571	1,534	11.8	11.0
Other communication and related equipment	1,847	1,828	-19	-1.0	4,684	5,476	792	16.9	15.6
Other equipment and tools	3,008	3,009	0	0.0	8,353	9,095	742	8.9	8.4
Automotive products	5,718	6,087	369	6.5	17,303	18,266	963	5.6	10.1
Passenger autos and chassis	1,960	2,048	88	4.5	5,628	5,970	342	6.1	17.3
Trucks and other motor vehicles	1,278	1,496	218	17.0	4,508	4,370	-139	-3.1	4.4
Motor vehicle parts	2,480	2,543	63	2.5	7,166	7,925	759	10.6	8.2
Other consumer goods	4,780	4,648	-133	-2.8	14,088	14,254	166	1.2	-1.4
Apparel and footwear	978	890	-88	-9.0	2,537	2,855	318	12.5	4.1
Apparel and apparel accessories	810	750	-60	-7.4	2,120	2,380	260	12.3	5.7
Footwear	168	140	-28	-16.8	417	474	57	13.8	-3.9
Miscellaneous consumer goods	3,802	3,758	-44	-1.2	11,551	11,400	-152	-1.3	-2.6
Television, radios, phonographs	127	134	7	5.8	383	394	11	2.9	11.6
Printed matter	288	284	-5	-1.7	830	854	23	2.8	2.4
Watches, sporting goods and toys	479	483	5	1.0	1,482	1,480	-2	-0.2	-4.5
House furnishings	706	681	-26	-3.6	2,152	2,100	-52	-2.4	-5.2
Photographic goods	245	232	-13	-5.3	593	704	111	18.6	21.5
Miscellaneous end products	1,957	1,944	-13	-0.7	6,111	5,868	-243	-4.0	-5.0
Special transactions trade	406	550	144	35.3	1,085	1,443	358	32.9	50.4
Unallocated balance of payments adjustments	769	797	28	3.6	2,163	2,333	170	7.9	8.5

Table 6-2

Imports by commodity groupings, balance of payments basis, seasonally adjusted — Constant dollars, 2002

	February 2011	March 2011	Change		Year to date			March 2011/ March 2010	
					2010	2011	Change		
	millions of dollars		percent		millions of dollars		percent		
Total	40,517	41,795	1,278	3.2	111,006	124,527	13,522	12.2	10.3
Agricultural and fishing products	2,534	2,677	143	5.6	7,110	7,788	679	9.5	13.3
Fruits and vegetables	667	722	55	8.2	2,001	2,129	128	6.4	7.6
Fresh fruits and berries	282	286	5	1.6	758	837	79	10.5	3.9
Dried fruits, fruits and fruit preparations	119	121	2	1.6	313	367	54	17.1	12.2
Fresh vegetables	119	165	47	39.3	525	474	-51	-9.7	6.8
Other vegetables and vegetable preparations	148	150	2	1.2	405	451	46	11.3	12.3
Other agricultural and fishing products	1,867	1,954	88	4.7	5,109	5,660	551	10.8	15.6
Live animals	17	17	-1	-3.5	47	51	4	8.2	0.2
Meat and meat preparations	181	184	3	1.5	546	548	1	0.2	2.6
Fish and marine animals	253	218	-36	-14.0	727	738	11	1.6	-5.7
Cocoa, coffee, tea and other food preparations	496	515	19	3.8	1,024	1,444	420	41.0	53.7
Dairy produce, eggs and honey	46	53	7	14.6	148	148	0	0.1	-0.1
Corn (maize) shelled	13	17	4	34.7	126	51	-75	-59.6	-57.9
Other cereals and cereal preparations	118	135	17	14.5	454	390	-64	-14.1	-7.7
Sugar and sugar preparations	154	211	56	36.5	403	533	130	32.1	63.0
Fodder, feed, excluding unmilled cereal	94	103	9	9.7	289	297	8	2.6	5.8
Beverages	323	315	-8	-2.6	835	947	111	13.3	9.6
Tobacco	29	46	18	61.2	115	106	-9	-8.1	18.5
Crude vegetable products	139	139	0	-0.2	389	403	14	3.6	4.8
Cotton	2	2	0	-21.0	5	5	0	6.9	8.4
Energy products	1,859	1,802	-57	-3.1	5,244	5,636	392	7.5	-1.4
Crude petroleum	814	824	10	1.2	2,594	2,412	-183	-7.0	-14.9
Other energy products	1,045	977	-67	-6.4	2,650	3,224	574	21.7	13.7
Coal and other related products	427	414	-13	-3.1	1,253	1,278	25	2.0	11.4
Petroleum and coal products	617	563	-54	-8.7	1,397	1,946	549	39.3	15.4
Forestry products	289	261	-27	-9.4	890	828	-61	-6.9	-14.3
Forestry products	289	261	-27	-9.4	890	828	-61	-6.9	-14.3
Crude wood products	47	46	-1	-2.4	145	140	-5	-3.5	-1.6
Wood fabricated materials	242	216	-26	-10.8	745	689	-56	-7.6	-16.6
Industrial goods and materials	6,562	6,774	212	3.2	18,937	20,129	1,192	6.3	-0.9
Metals and metal ores	1,811	2,024	213	11.7	5,455	5,843	388	7.1	-1.6
Metals in ores, concentrates and scrap	312	342	30	9.7	937	956	19	2.0	17.3
Steel bars, rods, plates, sheets	500	496	-4	-0.8	1,400	1,488	88	6.3	-1.0
Other iron and steel products	284	275	-9	-3.0	711	815	104	14.7	14.4
Precious metals including alloys	362	567	204	56.4	1,265	1,539	274	21.7	-8.3
Other non-ferrous metals and alloys	353	344	-9	-2.6	1,141	1,044	-97	-8.5	-15.0
Chemicals and plastics	2,317	2,301	-16	-0.7	6,884	6,928	45	0.6	-7.6
Organic chemicals	381	365	-15	-4.0	1,275	1,143	-133	-10.4	-29.8
Plastic materials	872	891	18	2.1	2,577	2,649	73	2.8	-0.3
Other chemicals and related products	1,064	1,045	-19	-1.8	3,031	3,136	105	3.5	-2.9
Other industrial goods and materials	2,433	2,449	16	0.6	6,598	7,357	759	11.5	7.1
Crude animal products	32	15	-17	-53.9	64	70	5	8.1	-38.0
Wool and man-made fibres	27	26	-1	-2.4	77	80	3	4.4	0.2
Crude non-metallic minerals	49	56	7	13.2	184	161	-22	-12.2	-13.8
Textile fabricated materials	281	272	-9	-3.2	743	821	78	10.5	7.8
Metal fabricated basic products	961	957	-4	-0.4	2,420	2,885	465	19.2	14.1
Rubber fabricated materials	111	114	3	2.8	293	343	50	17.1	15.1
Oils, fats, animal and vegetable	92	91	-1	-0.8	293	270	-23	-8.0	-11.7
Non-metallic minerals	366	364	-3	-0.7	1,042	1,115	73	7.0	-2.1
Other fabricated materials	514	554	40	7.7	1,482	1,611	129	8.7	9.2

Table 6-2 – continued

Imports by commodity groupings, balance of payments basis, seasonally adjusted — Constant dollars, 2002

	February 2011	March 2011	Change		Year to date			March 2011/ March 2010	
					2010	2011	Change		
	millions of dollars		percent		millions of dollars		percent		
Machinery and equipment	14,856	15,275	420	2.8	37,140	45,233	8,093	21.8	19.3
Industrial and agricultural machinery	3,324	3,388	64	1.9	8,263	10,036	1,774	21.5	10.2
Engines, turbines and electric motors	418	417	0	0.0	1,148	1,254	106	9.2	-13.3
Drilling mining machinery	179	194	15	8.4	441	555	114	25.9	12.8
Excavating machinery	371	329	-42	-11.3	665	1,035	370	55.6	32.6
Metal working machinery	222	220	-2	-0.8	493	672	179	36.4	18.3
Other industrial machinery	1,657	1,741	84	5.0	4,223	5,078	855	20.2	15.3
Agricultural machinery including tractors	477	487	9	2.0	1,293	1,442	149	11.5	2.2
Aircraft and other transportation equipment	1,478	1,638	160	10.9	3,737	4,850	1,113	29.8	25.0
Aircraft, engines, parts	813	949	136	16.8	2,353	2,978	625	26.6	13.7
Other transportation equipment and parts	665	689	24	3.7	1,384	1,872	488	35.3	45.0
Office machines and equipment	2,707	2,799	92	3.4	6,372	8,171	1,800	28.2	37.9
Other machinery and equipment	7,347	7,450	103	1.4	18,768	22,175	3,407	18.2	16.6
Other communication and related equipment	3,261	3,305	44	1.4	7,875	9,763	1,888	24.0	22.3
Other equipment and tools	4,086	4,145	59	1.4	10,893	12,412	1,519	13.9	12.5
Automotive products	7,141	7,648	506	7.1	20,971	22,858	1,887	9.0	12.9
Passenger autos and chassis	2,256	2,378	122	5.4	6,451	6,893	442	6.9	18.8
Trucks and other motor vehicles	1,500	1,773	274	18.3	5,059	5,149	91	1.8	9.8
Motor vehicle parts	3,386	3,496	111	3.3	9,461	10,815	1,354	14.3	10.7
Other consumer goods	6,352	6,252	-101	-1.6	18,049	19,005	956	5.3	1.9
Apparel and footwear	1,421	1,304	-118	-8.3	3,575	4,173	598	16.7	6.4
Apparel and apparel accessories	1,182	1,103	-79	-6.7	3,000	3,497	497	16.6	8.1
Footwear	239	200	-39	-16.3	575	676	101	17.6	-2.1
Miscellaneous consumer goods	4,931	4,948	17	0.3	14,474	14,832	358	2.5	0.8
Television, radios, phonographs	219	234	15	6.9	649	679	30	4.6	12.7
Printed matter	366	364	-2	-0.4	1,023	1,088	65	6.3	4.8
Watches, sporting goods and toys	673	690	17	2.6	2,052	2,090	38	1.9	-3.5
House furnishings	924	902	-21	-2.3	2,762	2,760	-2	-0.1	-3.4
Photographic goods	492	487	-5	-1.1	1,070	1,422	352	32.9	38.0
Miscellaneous end products	2,257	2,270	13	0.6	6,918	6,793	-125	-1.8	-3.5
Special transactions trade	462	640	178	38.5	1,240	1,654	414	33.4	51.7
Unallocated balance of payments adjustments	462	466	5	1.0	1,425	1,396	-29	-2.0	9.8

Table 7-1

Imports from selected countries, customs basis, not seasonally adjusted — March

	Agricultural and fishing products	Energy products	Forestry products	Industrial goods	Machinery and equipment	Automotive products	Consumer goods	Special transactions trade	Total
millions of dollars									
United States									
2010	1,364.2	1,143.4	184.5	4,367.4	4,612.0	4,223.8	2,003.6	355.0	18,253.9
2011	1,466.3	1,213.4	168.8	4,734.2	5,096.5	4,722.4	2,004.2	524.4	19,930.2
Mexico									
2010	177.4	50.2	0.5	130.7	636.5	797.2	93.9	5.3	1,891.6
2011	174.9	118.1	0.3	187.8	655.5	862.9	100.7	3.0	2,103.2
Japan									
2010	5.8	0.7	0.0	103.6	448.1	581.1	98.7	0.7	1,238.8
2011	7.0	0.5	0.1	95.3	514.4	516.2	107.9	0.3	1,241.6
European Union									
Germany									
2010	19.5	1.1	1.2	186.7	380.9	354.9	163.6	0.5	1,108.4
2011	24.8	1.2	1.2	194.0	394.7	413.7	157.2	0.2	1,187.0
France									
2010	54.4	0.4	0.2	55.2	174.7	6.7	162.7	0.6	454.9
2011	63.7	8.1	0.2	82.4	213.9	8.5	155.8	0.4	533.0
United Kingdom									
2010	33.7	310.7	0.0	392.9	275.7	36.4	134.3	2.1	1,185.8
2011	33.1	231.2	0.0	227.3	296.7	43.7	134.7	0.9	967.6
Italy									
2010	52.5	49.5	1.3	89.4	120.3	24.1	94.6	0.2	432.1
2011	50.3	1.0	1.3	93.2	154.9	33.3	110.0	0.4	444.4
Other European Union									
2010	93.1	270.0	4.4	277.6	472.2	73.5	384.2	2.4	1,577.4
2011	99.0	230.0	3.2	307.1	433.7	72.7	303.9	0.2	1,449.9
Total									
2010	253.2	631.6	7.3	1,001.7	1,423.9	495.6	939.5	5.8	4,758.6
2011	270.9	471.5	6.0	904.1	1,493.8	571.8	861.6	2.2	4,581.9
Newly industrialized countries									
South Korea									
2010	4.9	33.1	0.0	71.4	227.5	134.9	17.3	0.1	489.2
2011	4.5	1.3	0.0	78.1	204.7	206.9	17.1	0.1	512.7
Hong Kong									
2010	1.6	0.0	0.0	2.2	12.3	0.3	14.1	0.0	30.4
2011	2.1	0.0	0.0	4.8	7.5	0.2	14.5	0.0	29.2
Taiwan									
2010	4.7	0.0	0.8	65.6	157.7	14.6	33.5	0.2	277.1
2011	5.2	0.0	0.3	85.2	225.5	16.0	31.7	0.1	364.0
Singapore									
2010	3.3	0.0	0.1	9.1	51.2	0.4	19.0	0.0	83.1
2011	3.1	0.0	0.0	18.0	58.5	0.4	16.7	0.0	96.6
Total									
2010	14.4	33.2	0.9	148.3	448.7	150.1	83.9	0.3	879.9
2011	14.9	1.3	0.3	186.1	496.2	223.5	79.9	0.2	1,002.5
Other countries									
2010	661.1	1,386.4	56.0	1,866.1	2,351.1	175.1	1,581.8	16.4	8,093.9
2011	776.7	2,270.5	38.8	1,987.2	2,805.6	206.7	1,601.0	25.2	9,711.5
Total									
2010	2,476.4	3,245.5	249.2	7,617.8	9,920.3	6,422.9	4,801.4	383.5	35,117.1
2011	2,711.4	4,075.3	214.2	8,094.7	11,062.0	7,103.6	4,755.4	555.3	38,571.8

Table 7-2

Imports from selected countries, customs basis, not seasonally adjusted — Year to date, January to March

	Agricultural and fishing products	Energy products	Forestry products	Industrial goods	Machinery and equipment	Automotive products	Consumer goods	Special transactions trade	Total
millions of dollars									
United States									
2010	3,764.3	3,115.2	488.4	11,725.6	11,618.0	11,200.0	5,410.6	861.1	48,183.2
2011	3,962.1	3,409.0	465.4	12,911.9	12,810.8	11,969.1	5,419.7	1,131.0	52,079.0
Mexico									
2010	473.3	152.0	1.2	377.7	1,680.1	2,080.1	246.3	10.9	5,021.6
2011	502.4	292.5	1.0	522.3	1,919.1	2,267.5	280.9	13.2	5,799.2
Japan									
2010	16.8	1.5	0.2	305.6	1,097.1	1,579.5	256.8	1.2	3,258.7
2011	17.0	1.2	0.2	306.7	1,294.8	1,439.9	284.7	0.9	3,345.5
European Union									
Germany									
2010	55.7	3.1	3.2	494.0	904.0	773.7	426.0	1.4	2,661.1
2011	67.0	3.5	2.7	521.2	1,009.4	897.7	447.5	3.3	2,952.4
France									
2010	147.3	12.7	0.5	248.0	383.8	26.9	430.2	2.4	1,251.7
2011	152.8	16.6	0.4	229.5	514.5	21.5	357.0	1.7	1,294.0
United Kingdom									
2010	86.0	769.6	0.2	685.1	731.1	86.9	305.8	11.7	2,676.4
2011	87.6	775.9	0.1	595.8	758.3	114.2	342.0	16.3	2,690.0
Italy									
2010	136.0	49.6	3.6	228.8	351.2	47.7	260.7	0.5	1,078.1
2011	159.1	2.4	3.8	268.2	384.8	57.7	273.3	0.8	1,150.0
Other European Union									
2010	251.9	565.0	9.8	673.0	1,017.0	171.3	1,004.2	3.7	3,695.8
2011	274.6	759.0	9.0	948.5	1,075.2	184.5	851.0	1.6	4,103.3
Total									
2010	676.9	1,399.9	17.3	2,328.9	3,387.1	1,106.4	2,426.9	19.7	11,363.1
2011	741.1	1,557.3	16.0	2,563.1	3,742.1	1,275.7	2,270.7	23.7	12,189.7
Newly industrialized countries									
South Korea									
2010	14.0	38.1	0.0	177.4	551.8	529.7	46.2	0.2	1,357.5
2011	13.3	7.2	0.1	283.9	616.8	434.4	45.1	0.3	1,401.2
Hong Kong									
2010	5.3	0.0	0.2	5.2	31.1	0.6	30.7	0.1	73.2
2011	6.3	0.0	0.0	26.4	24.9	0.5	31.9	0.1	90.1
Taiwan									
2010	14.4	0.1	2.0	183.3	436.5	39.7	94.2	0.4	770.6
2011	15.2	0.1	1.2	230.2	635.3	43.8	89.3	0.4	1,015.6
Singapore									
2010	8.2	0.0	0.1	37.2	115.8	0.9	47.0	0.6	209.9
2011	8.3	46.3	0.2	99.4	138.1	1.0	39.0	0.1	332.3
Total									
2010	41.9	38.2	2.3	403.1	1,135.2	571.0	218.2	1.3	2,411.2
2011	43.2	53.5	1.4	640.0	1,415.1	479.7	205.3	1.0	2,839.1
Other countries									
2010	1,852.4	4,497.6	153.7	4,681.6	6,327.7	469.0	4,918.5	75.1	22,975.4
2011	2,201.4	6,673.7	135.1	5,563.2	7,576.3	564.9	5,204.7	76.3	27,995.6
Total									
2010	6,826.3	9,204.4	663.2	19,822.4	25,245.0	17,006.0	13,477.2	969.2	93,213.9
2011	7,468.8	11,987.3	619.2	22,507.3	28,758.3	17,996.9	13,666.0	1,246.0	104,249.7

Table 8
Imports by country, customs basis, not seasonally adjusted

	March		January to March		Change
	2010	2011	2010	2011	January to March 2011/ January to March 2010
	millions of dollars				percent
North America					
Canada	271.8	307.4	1,031.8	886.9	-14.0
Greenland	0.0	0.0	0.1	0.1	-50.7
Mexico	1,891.6	2,103.2	5,021.6	5,799.2	15.5
Saint Pierre and Miquelon	0.3	0.0	0.4	0.0	-96.7
United States	18,253.9	19,930.2	48,183.2	52,079.0	8.1
Total	20,417.6	22,340.9	54,237.1	58,765.2	8.3
Western Europe					
Andorra	0.0	0.0	0.1	0.1	65.2
Austria	120.6	106.6	265.5	289.2	8.9
Belgium	151.6	129.9	371.5	404.1	8.8
Denmark	295.2	146.5	571.0	337.1	-41.0
Faeroe Islands	0.3	0.8	0.7	1.7	148.4
Finland	82.5	124.2	201.7	359.6	78.3
France	454.9	533.0	1,251.7	1,294.0	3.4
Germany	1,108.4	1,187.0	2,661.1	2,952.4	10.9
Gibraltar	0.0	0.0	0.0	0.0	...
Greece	12.2	12.5	28.4	36.4	28.0
Iceland	2.8	2.5	8.6	6.3	-26.0
Italy	432.1	444.4	1,078.1	1,150.0	6.7
Luxembourg	5.6	8.8	19.4	20.2	4.1
Malta	1.0	2.7	3.5	6.9	97.0
Netherlands	170.4	121.2	393.4	331.4	-15.8
Norway	193.8	585.0	793.7	1,192.0	50.2
Portugal	58.0	26.0	97.6	76.7	-21.4
Republic of Ireland (Eire)	175.0	89.6	464.5	273.1	-41.2
Spain	135.1	157.9	289.2	442.1	52.9
Sweden	170.1	210.2	463.0	575.8	24.4
Switzerland	404.1	248.9	853.6	758.5	-11.1
United Kingdom	1,185.8	967.6	2,676.4	2,690.0	0.5
Total	5,159.6	5,105.2	12,492.5	13,197.5	5.6
Other Europe					
Albania	0.2	0.9	0.6	2.5	302.8
Armenia	2.0	4.0	6.7	11.5	70.7
Azerbaijan	0.0	71.0	0.1	216.5	...
Belarus	0.5	0.4	1.5	1.3	-9.9
Bosnia and Herzegovina	0.6	0.8	1.7	2.3	38.1
Bulgaria	5.6	4.9	15.1	16.9	11.7
Croatia	1.8	3.3	5.0	6.8	36.2
Czech Republic	23.3	30.2	70.2	77.4	10.2
Estonia	1.6	9.2	4.6	29.8	541.0
Georgia	8.3	10.6	24.0	29.0	21.0
Hungary	34.4	29.9	82.2	85.1	3.5
Kazakhstan	165.8	253.9	497.7	612.2	23.0
Kyrgyzstan	0.1	0.0	0.1	0.1	1.4
Latvia	0.8	1.1	1.6	3.4	107.4
Lithuania	21.5	48.4	63.6	196.4	208.8
Macedonia (Former Yugoslav Republic of Macedonia)	0.6	0.9	1.6	2.2	36.0
Montenegro	0.0	0.1	0.0	0.2	...
Poland	72.6	142.6	190.1	415.0	118.3
Republic of Moldova	0.2	0.3	0.6	0.6	-4.6
Romania	10.5	15.9	30.7	47.1	53.6
Russian Federation	91.5	135.6	363.8	503.4	38.4
Serbia	1.1	2.5	3.0	5.2	71.1
Slovakia	17.0	24.8	44.8	60.0	33.8
Slovenia	12.1	6.2	23.0	18.7	-18.8
Tajikistan	0.0	0.0	0.0	0.0	917.2
Turkmenistan	0.0	0.0	0.0	0.1	53.6
Ukraine	8.4	6.5	14.9	27.5	84.7
Uzbekistan	0.0	0.3	0.7	0.9	19.8
Total	480.2	804.4	1,448.0	2,371.8	63.8

Table 8 – continued

Imports by country, customs basis, not seasonally adjusted

	March		January to March		Change
	2010	2011	2010	2011	January to March 2011/ January to March 2010
	millions of dollars				percent
Middle East					
Bahrain	0.3	0.5	0.7	1.2	72.0
Cyprus	0.8	0.6	1.2	1.1	-7.7
Egypt	29.1	9.5	60.0	85.2	42.0
Eritrea	0.1	0.0	0.2	11.8	...
Ethiopia	1.4	1.1	3.1	3.7	17.8
Iran	3.7	3.4	10.4	8.9	-14.7
Iraq	0.1	318.5	212.0	866.9	308.9
Israel	102.6	85.7	252.9	240.5	-4.9
Jordan	1.6	2.2	4.9	4.6	-5.2
Kuwait	0.0	0.0	0.0	0.0	17.2
Lebanon	0.9	2.0	3.1	5.1	65.2
Libya	4.8	0.1	4.8	4.9	0.8
Oman	11.3	1.7	11.8	4.8	-59.0
Qatar	0.2	47.8	60.8	214.2	252.5
Saudi Arabia	185.2	199.9	508.6	587.4	15.5
Somalia	0.0	0.0	0.0	0.0	-46.0
Sudan	7.1	9.6	16.6	29.2	76.0
Syria	0.4	0.8	1.6	1.6	-4.4
Turkey	47.4	93.9	132.0	215.4	63.2
United Arab Emirates	3.6	5.4	54.0	98.0	81.5
Yemen	0.0	0.0	0.0	0.0	-46.4
Total	400.6	782.6	1,338.7	2,384.5	78.1
Other Africa					
Algeria	381.8	348.6	1,007.9	1,164.8	15.6
Angola	97.3	170.4	325.1	637.5	96.1
Antarctica	0.2	0.0	0.2	0.2	-12.2
Benin	0.0	0.0	0.0	0.0	-3.4
Botswana	0.0	0.0	6.9	0.0	-99.9
Bouvet Island	0.0	0.0	0.0	0.0	...
Burkina Faso	4.6	0.0	12.8	1.1	-91.7
Burundi	0.0	0.0	0.0	0.1	306.9
Cameroon	0.3	0.7	1.0	1.1	18.5
Cape Verde	0.0	0.0	0.0	0.0	363.7
Central African Republic	0.0	0.0	0.0	0.0	248.8
Chad	0.0	0.1	0.1	0.1	1.6
Comoros	0.0	0.1	0.0	0.1	591.0
Congo	0.1	0.1	0.4	0.6	34.2
Democratic Republic of the Congo	0.1	0.0	0.3	0.0	-86.9
Djibouti	0.0	0.0	0.0	0.0	-97.2
Equatorial Guinea	0.0	0.0	142.8	192.6	34.9
Gabon	0.0	0.0	0.1	0.1	144.9
Gambia	0.0	0.0	0.0	0.0	-11.8
Ghana	1.9	5.9	7.2	16.7	133.4
Guinea	1.7	6.1	7.3	9.6	31.6
Guinea-Bissau	0.0	0.0	0.0	0.0	-29.6
Ivory Coast	32.1	10.9	57.8	67.1	16.0
Kenya	1.8	2.5	4.4	5.8	31.5
Lesotho	0.9	1.4	2.0	3.3	69.1
Liberia	1.7	4.2	9.6	8.3	-13.1
Madagascar	4.2	0.5	6.7	6.7	0.2
Malawi	3.9	6.9	8.1	32.7	304.0
Mali	0.0	0.1	0.0	0.2	...
Mauritania	0.0	0.0	0.2	0.1	-67.1
Mauritius	1.0	0.9	2.8	1.8	-35.1
Morocco	9.8	5.9	39.0	34.2	-12.5
Mozambique	0.1	0.7	0.2	0.8	249.8
Namibia	58.6	39.1	64.7	58.7	-9.3
Niger	0.2	0.1	0.2	0.2	8.4
Nigeria	186.0	226.3	315.4	530.4	68.2
Rwanda	0.0	0.1	0.1	0.3	169.5
Saint Helena	0.0	0.0	0.0	0.0	455.3
Sao Tome and Principe	0.1	0.1	0.1	0.1	-41.7
Senegal	0.1	0.0	0.2	0.2	-14.2
Seychelles	0.1	0.1	0.1	0.1	28.4

Table 8 – continued

Imports by country, customs basis, not seasonally adjusted

	March		January to March		Change
	2010	2011	2010	2011	January to March 2011/ January to March 2010
	millions of dollars				percent
Sierra Leone	0.2	0.1	0.4	0.3	-27.7
South Africa	45.1	59.7	126.1	147.2	16.7
Swaziland	0.1	0.1	0.3	0.4	19.9
Togo	0.1	0.1	0.2	0.3	67.3
Tunisia	6.1	7.2	15.0	14.2	-5.5
Uganda	0.5	0.2	1.0	1.0	4.6
United Republic of Tanzania	0.1	0.1	0.6	1.1	78.9
Western Sahara	0.0	0.0	0.0	0.0	-100.0
Zambia	0.1	0.1	0.3	0.3	-5.7
Zimbabwe	0.2	0.2	0.9	1.9	114.6
Total	841.1	899.4	2,168.4	2,942.5	35.7
Other Asia					
Afghanistan	0.1	0.3	0.5	0.5	8.8
Bangladesh	66.5	101.0	181.9	269.8	48.3
Bhutan	0.0	0.0	0.0	0.0	...
British Indian Ocean Territory	0.0	0.0	0.0	0.0	-21.9
Brunei Darussalam	0.0	1.2	0.0	2.7	...
Cambodia	24.6	39.4	78.8	122.2	55.1
China	3,180.8	3,465.3	9,132.7	10,595.2	16.0
Hong Kong	30.4	29.2	73.2	90.1	23.1
India	199.7	264.9	490.8	645.8	31.6
Indonesia	100.4	124.8	247.3	326.8	32.1
Japan	1,238.8	1,241.6	3,258.7	3,345.5	2.7
Laos	1.2	0.6	2.6	1.5	-41.1
Macao	0.8	0.5	2.1	1.8	-10.9
Malaysia	203.0	202.6	524.1	520.3	-0.7
Maldives	0.0	0.0	0.0	0.1	387.1
Mongolia	9.8	10.0	29.9	19.9	-33.3
Myanmar	0.0	0.0	0.0	0.0	61.7
Nepal	0.9	1.0	2.6	2.5	-4.2
North Korea	0.0	0.0	0.1	0.0	-64.8
Pakistan	22.4	20.9	58.6	58.3	-0.5
Philippines	78.0	91.0	206.9	224.5	8.5
Singapore	83.1	96.6	209.9	332.3	58.3
South Korea	489.2	512.7	1,357.5	1,401.2	3.2
Sri Lanka	10.4	11.4	29.6	34.9	18.0
Taiwan	277.1	364.0	770.6	1,015.6	31.8
Thailand	206.6	252.0	557.8	644.5	15.6
Timor-Leste	0.2	0.2	0.4	0.2	-41.8
Viet Nam	78.4	83.6	243.5	282.6	16.1
Total	6,302.2	6,915.0	17,460.1	19,938.8	14.2
Oceania					
American Samoa	0.0	0.0	0.1	0.1	-34.6
Australia	116.0	231.0	337.7	424.6	25.7
Christmas Island	0.0	0.0	0.1	0.0	-58.9
Cocos (Keeling) Islands	0.0	0.0	0.0	0.0	-17.5
Cook Islands	0.0	0.0	0.0	0.0	-16.7
Fiji	0.7	0.4	1.8	0.7	-61.0
French Polynesia	0.3	0.0	0.4	0.3	-28.8
Guam	0.0	0.0	0.0	0.0	422.0
Heard Island and McDonald Islands	0.0	0.0	0.0	0.0	-49.0
Kiribati	0.0	0.0	0.0	0.1	791.4
Nauru	0.0	0.0	0.0	0.0	-74.3
New Caledonia	0.0	0.0	0.1	0.0	-74.0
New Zealand	39.3	52.3	93.0	124.4	33.8
Niue	0.0	0.0	0.0	0.0	-49.0
Papua New Guinea	0.2	0.0	0.5	0.1	-71.8
Pitcairn	0.0	0.0	0.0	0.0	...
Samoa	0.0	0.0	0.0	0.0	-33.8
Solomon Islands	0.0	0.0	0.0	0.0	-99.5
Tonga	0.0	0.0	0.0	0.0	...
United States Minor Outlying Islands	0.5	0.3	1.4	0.6	-56.3
Vanuatu	0.1	0.0	0.1	0.0	-83.7
Wallis and Futuna	0.0	0.0	0.0	0.0	-100.0
Total	157.3	284.2	435.3	551.0	26.6

Table 8 – continued

Imports by country, customs basis, not seasonally adjusted

	March		January to March		Change
	2010	2011	2010	2011	January to March 2011/ January to March 2010
	millions of dollars				percent
South America					
Argentina	46.8	171.8	129.2	420.7	225.5
Bolivia	9.3	9.0	23.6	45.3	91.6
Brazil	274.2	204.0	751.8	728.9	-3.0
Chile	239.2	209.3	657.6	535.3	-18.6
Colombia	66.3	56.6	159.4	158.9	-0.3
Ecuador	17.4	19.3	50.3	64.0	27.2
Falkland Islands (Malvinas)	0.0	0.0	0.0	0.0	-50.0
Guyana	33.8	32.4	52.1	81.5	56.6
Paraguay	0.5	0.1	1.9	0.8	-58.4
Peru	318.6	320.4	892.5	924.3	3.6
Suriname	48.6	47.1	116.5	163.2	40.1
Uruguay	12.0	6.4	28.3	11.0	-61.1
Venezuela	63.4	31.5	75.2	101.1	34.4
Total	1,130.1	1,108.0	2,938.4	3,235.0	10.1
Central America Antilles					
Anguilla	0.0	0.0	0.1	0.1	-25.8
Antigua and Barbuda	0.0	0.1	0.0	0.1	354.2
Aruba	0.0	0.0	0.1	5.5	...
Bahamas	6.2	0.9	7.5	2.7	-64.2
Barbados	0.5	0.8	2.6	1.6	-38.2
Belize	0.6	0.7	1.9	2.1	14.7
Bermuda	0.1	0.1	0.2	0.2	-33.6
British Virgin Islands	0.0	0.1	0.1	0.1	14.0
Cayman Islands	0.0	0.1	0.1	0.1	-19.5
Costa Rica	37.5	42.6	103.4	114.6	10.7
Cuba	47.6	66.7	145.5	192.8	32.5
Dominica	0.0	0.0	0.0	0.1	296.8
Dominican Republic	12.1	13.4	31.2	35.7	14.2
El Salvador	5.5	28.3	11.5	67.1	482.6
Grenada	0.1	0.0	0.2	0.2	20.5
Guatemala	24.0	52.4	81.5	107.4	31.7
Haiti	3.6	2.7	7.5	6.6	-12.0
Honduras	16.1	22.0	41.1	51.5	25.3
Jamaica	13.6	2.2	39.6	41.6	5.3
Montserrat	0.0	0.0	0.1	0.0	-71.3
Netherlands Antilles	0.0	0.0	0.1	0.1	-19.6
Nicaragua	13.5	51.0	32.7	91.9	180.7
Panama	6.9	8.4	21.7	21.6	-0.2
Saint Kitts and Nevis	0.5	0.6	1.7	1.8	7.9
Saint Lucia	0.0	0.0	0.0	0.1	17.7
Saint Vincent and the Grenadines	0.0	0.0	0.0	0.1	...
Trinidad and Tobago	39.8	38.9	164.8	117.7	-28.6
Turks and Caicos Islands	0.0	0.0	0.1	0.0	-26.2
Total	228.3	332.0	695.4	863.4	24.2
All countries	35,117.1	38,571.8	93,213.9	104,249.7	11.8

Table 9-1
Imports by province of clearance, customs basis, not seasonally adjusted — March

	Agricultural and fishing products	Energy products	Forestry products	Industrial goods	Machinery and equipment	Automotive products	Consumer goods	Special transactions trade	Total
millions of dollars									
Newfoundland and Labrador									
2010	3.7	43.6	0.0	4.6	25.9	0.0	0.5	0.0	78.4
2011	1.2	368.2	0.0	10.4	23.4	0.2	0.9	0.0	404.3
Prince Edward Island									
2010	0.1	0.0	0.0	0.0	0.1	0.0	0.0	0.0	0.2
2011	0.2	0.0	0.0	0.0	0.1	0.0	0.1	0.0	0.4
Nova Scotia									
2010	32.9	170.9	1.5	106.2	81.2	369.3	18.2	1.6	781.7
2011	45.4	122.1	1.1	134.0	192.9	303.1	11.4	1.0	811.0
New Brunswick									
2010	31.3	652.1	9.3	95.4	77.1	38.9	44.2	1.6	950.0
2011	36.9	1,018.9	10.5	97.7	85.9	33.0	17.6	1.5	1,302.0
Quebec									
2010	404.1	1,338.2	69.0	1,545.3	1,619.5	200.2	861.1	41.6	6,078.9
2011	456.8	1,335.6	57.0	1,484.5	1,693.1	213.4	813.0	38.3	6,091.7
Ontario									
2010	1,366.1	324.1	91.6	4,294.6	5,683.8	5,271.4	3,121.2	307.6	20,460.4
2011	1,451.9	643.3	78.1	4,595.7	6,322.8	5,893.8	3,121.9	487.2	22,594.7
Manitoba									
2010	75.3	49.0	9.6	350.8	514.7	111.1	131.9	7.9	1,250.3
2011	85.9	68.8	8.4	358.1	585.0	137.7	131.2	5.8	1,380.9
Saskatchewan									
2010	27.3	40.1	2.9	221.1	373.3	76.3	18.8	0.5	760.3
2011	40.3	62.4	1.4	278.1	388.0	102.8	29.3	0.4	902.7
Alberta									
2010	165.3	385.3	10.1	403.2	545.3	99.2	105.6	9.0	1,722.9
2011	171.0	169.5	8.3	487.9	748.3	119.2	116.8	10.0	1,830.9
British Columbia									
2010	367.1	242.0	55.3	596.5	997.6	256.5	499.8	13.4	3,028.2
2011	419.7	285.4	49.4	648.3	1,022.1	300.3	513.3	10.9	3,249.5
Yukon, Northwest Territories and Nunavut									
2010	3.2	0.3	0.0	0.1	1.9	0.0	0.1	0.2	5.8
2011	2.0	1.2	0.0	0.0	0.4	0.0	0.0	0.0	3.6
Total									
2010	2,476.4	3,245.5	249.2	7,617.8	9,920.3	6,422.9	4,801.4	383.5	35,117.1
2011	2,711.4	4,075.3	214.2	8,094.7	11,062.0	7,103.6	4,755.4	555.3	38,571.8

Table 9-2

Imports by province of clearance, customs basis, not seasonally adjusted — Year to date, January to March

	Agricultural and fishing products	Energy products	Forestry products	Industrial goods	Machinery and equipment	Automotive products	Consumer goods	Special transactions trade	Total
millions of dollars									
Newfoundland and Labrador									
2010	8.2	466.9	0.1	10.9	45.7	0.1	1.6	0.2	533.7
2011	6.2	1,049.9	0.0	16.0	189.8	0.3	1.7	0.1	1,264.1
Prince Edward Island									
2010	0.4	0.0	0.0	5.2	0.1	0.0	0.0	0.0	5.9
2011	0.7	0.0	0.0	0.2	0.1	0.0	0.1	0.1	1.2
Nova Scotia									
2010	90.1	458.7	4.2	252.4	201.3	786.4	42.1	3.7	1,838.7
2011	141.3	472.3	3.6	367.0	323.7	726.3	41.1	2.7	2,077.9
New Brunswick									
2010	84.5	1,892.6	29.2	268.8	185.2	102.8	71.8	4.1	2,639.2
2011	106.4	2,506.9	29.1	298.9	183.4	88.0	43.9	3.6	3,260.4
Quebec									
2010	1,061.8	3,586.7	183.9	3,642.4	4,042.2	510.0	2,734.4	101.4	15,863.0
2011	1,257.3	4,158.2	169.7	4,150.7	4,401.7	541.1	2,514.3	103.1	17,296.3
Ontario									
2010	3,779.5	1,095.5	242.1	11,466.3	14,409.2	14,179.0	8,457.8	770.4	54,400.0
2011	4,031.1	2,282.7	218.3	12,755.4	16,348.6	14,940.2	8,747.4	1,059.9	60,383.6
Manitoba									
2010	215.4	128.0	21.7	862.8	1,316.6	282.6	362.8	18.8	3,208.6
2011	234.4	168.7	20.7	945.3	1,482.6	357.3	374.4	17.1	3,600.5
Saskatchewan									
2010	75.7	99.3	5.8	576.1	865.3	194.3	62.5	6.2	1,885.2
2011	101.2	145.2	5.5	661.0	960.0	287.0	68.9	5.4	2,234.2
Alberta									
2010	463.9	861.8	24.5	1,125.4	1,565.0	232.5	271.9	29.3	4,574.3
2011	450.3	447.7	29.0	1,414.6	2,255.1	294.6	315.4	22.3	5,229.0
British Columbia									
2010	1,043.7	613.8	151.8	1,611.8	2,604.6	718.2	1,472.2	34.8	8,251.0
2011	1,137.8	753.1	143.2	1,898.0	2,606.4	762.0	1,558.7	31.8	8,890.9
Yukon, Northwest Territories and Nunavut									
2010	3.2	1.1	0.0	0.1	9.7	0.0	0.1	0.2	14.4
2011	2.1	2.5	0.0	0.3	6.7	0.1	0.0	0.0	11.7
Total									
2010	6,826.3	9,204.4	663.2	19,822.4	25,245.0	17,006.0	13,477.2	969.2	93,213.9
2011	7,468.8	11,987.3	619.2	22,507.3	28,758.3	17,996.9	13,666.0	1,246.0	104,249.7

Technical notes

The Canadian international merchandise trade statistical program

Introduction

The objective of this text is to provide a general overview of the Canadian International Merchandise Trade Statistical Program, with special reference to concepts and definitions. The text is intended for the general user and simplicity is emphasized. More technical details can be obtained from the International Trade Division, Statistics Canada upon request.

Conceptual framework

1. Objectives and coverage: The primary objective of the Canadian International Merchandise Trade Statistical Program is to measure the change in the stock of material resources of Canada resulting from the movement of merchandise into or out of the country. Information on imports and exports are inputs into the System of National Accounts, particularly in the balance of payments and gross domestic product, and are used in the formulation of trade and budgetary policies. Governments, importers, exporters, manufacturers and shipping companies use international merchandise trade statistics to:

- monitor import penetration and export performance,
- monitor commodity price and volume changes,
- examine transport implications.

2. Trade statistics (customs basis / balance of payments basis): Merchandise trade statistics are reported and presented on two different bases: customs basis and balance of payment basis.

When goods are imported into or exported from Canada, declarations must be filed with customs, giving such information as description and value of the goods, origin and port of clearance of commodities and mode of transport. Most of this information is required for the purposes of customs administration. Statistics developed from administrative records of customs are commonly referred to as customs-based trade statistics.

Customs-based trade statistics are more accurate at measuring imports than they are at measuring exports. This is the case because customs are typically more vigilant with respect to goods entering the country than they are with goods leaving the country.

Customs-based export statistics may understate or incorrectly portray the destination of exports. Export statistics are understated when the proper documentation is not filed with Customs. Exports are incorrectly portrayed when the country of final destination is inaccurately reported on the customs documentation. This occurs most frequently when goods are routed through an intermediary country before continuing on to their final destination.

Statistics Canada does not have a measure of undercoverage but periodically conducts reconciliation exercises with its major trading partners, excluding the United States.

On January 1, 1990, Canada entered into a memorandum of understanding with the United States concerning the exchange of import data. As a consequence, each administration is using the other's import data to replace its own export data. Canada's international merchandise trade statistics are, therefore, no longer derived exclusively from the administrative records of the Canada Border Services Agency, but from United States Customs records as well.

Customs-based information is adjusted to conform with the National Accounts concepts and definitions. The adjustments to derive balance of payments-based trade data include adjustments related to trade definition, valuation and timing. The principal difference between the two trade concepts is that customs-based merchandise trade statistics cover the physical movement of goods as they are reflected in customs documents while balance of payments-adjusted data are intended to cover all economic transactions that involve merchandise trade between residents and non-residents. The present document describes the concepts and processes pertaining to the customs-based trade statistics only. (For further information on balance of payments-adjusted data, see the publication *Canada's Balance of International Payments*, Statistics Canada (Catalogue no. 67-001-X).

3. System of trade: Canadian trade statistics are compiled according to the general system of trade, as defined by the United Nations Statistical Office. Under this system, imports include all goods that have crossed Canada's territorial boundary, whether for immediate consumption in Canada or for storage in bonded customs warehouses. Domestic exports include goods grown, extracted or manufactured in Canada, including goods of foreign origin that have been materially transformed in Canada. Re-exports are exports of goods of foreign origin that have not been materially transformed in Canada, including foreign goods withdrawn for export from bonded customs warehouses. Total exports are the sum of domestic exports and re-exports. Thus the general trade system, in principal, presents all goods entering the country (imports) and all goods leaving the country (exports). It differs from the special system of trade in the treatment of imported goods into bonded customs warehouses. Under the 'special' system, these goods are counted only if and when they are withdrawn from customs warehouses for home consumption. They are not counted in export statistics unless they have first cleared customs.

Conceptually, under the general system, the statistical frontier coincides with the geographical boundary, while under the 'special' system, it coincides with the customs boundary.

4. Valuation: For customs purposes, imports are recorded at values established according to the provisions of the Customs Act, which, since January 1, 1985, reflects valuation methods based on the General Agreement on Tariffs and Trade (GATT) Valuation Code System. In general, the value for duty of imported goods must be equivalent to the transaction value or the price actually paid.

To determine the transaction value of imported goods, all transportation and associated costs arising in respect of the goods being appraised prior to and at the place of direct shipment to Canada, are to be added to the price of the goods. Therefore, Canadian imports are valued Free on Board (FOB), place of direct shipment to Canada. It excludes freight and insurance costs in bringing the goods to Canada from the point of direct shipment.

Countries other than the United States, exports are, in principal, valued or recorded at the values declared on export documents, which usually reflect the transaction value, i.e., actual selling price or, in the case of a non-arm's length transaction, the transfer price used for company accounting purposes. Canadian exports to overseas countries are valued at F.O.B. port of exit, including domestic freight charges to that point but net of discounts and allowances. As of January, 1990, Canadian exports to the U.S. are valued F.O.B. point of exit from Canada. Prior to 1990, they were valued F.O.B. place of lading net of freight charges, discounts and allowances.

5. Statistical period: The reference period is the calendar month and the calendar year. The closing of the statistical month for imports and Canadian exports to the United States is defined as the last calendar day of the month, based as closely as practicable on the date of clearance from customs.

The closing of the statistical month for exports, to countries other than the United States, is also defined as the last calendar day of the month. Those export documents that are received too late for incorporation in the current month are assigned to the month the transaction took place. If a monthly summary report from a high volume exporter is not received on time, the data are imputed for the current month and revised with the trade value in the following statistical month.

6. Trading partner attribution (country of origin/destination): Exports are attributed to the country, which is the last known destination of the goods at the time of export. Exports to the United States are attributed to the state of destination.

Imports are attributed to their country of origin, that is, the country in which the goods were grown, extracted or manufactured in accordance to the rules of origin administered by the Canada Border Services Agency. Imports from the United States are attributed to the state of origin. Prior to 1988, most imports were attributed to the country of export/consignment, with the exception of imports from Central and South America.

7. Principal trading areas: The 'principal trading areas' are country groupings defined as follows:

United States: includes trade with Puerto Rico and the U.S. Virgin Islands

Japan

European Union (EU): Austria, Belgium, Bulgaria, Cyprus, Czech Republic, Denmark, Estonia, Finland, France, Germany, Greece, Hungary, Ireland, Italy, Latvia, Lithuania, Luxembourg, Malta, Netherlands, Poland, Portugal, Romania, Slovakia, Slovenia, Spain, Sweden and United Kingdom

Other Organisation for Economic Co-operation and Development (OECD): Australia, Canada, Iceland, Mexico, New Zealand, Norway, South Korea, Switzerland, and Turkey. (The EU countries, United States, and Japan are also members of OECD)

Other countries: all countries and territories other than the United States, Japan, EU and other OECD

8. Legal framework: Import and export statistics with countries other than the United States are derived from information contained in administrative records collected by the Canada Border Services Agency under the Customs Act. Copies of these documents (or information therefrom) are sent to Statistics Canada in accordance with Section 25 of the Statistics Act. It follows that the disclosure of trade statistics is governed by both the Customs Act and the Statistics Act and is subject to the provisions of Section 17(2)(a) of the latter. Disclosure of export statistics to the United States is now governed by a memorandum of understanding that provides for the exchange of detailed import statistics between Canada and the United States.

Contact information

Questions concerning details of methods not covered by these notes should be addressed to the Marketing and Client Services Section, International Trade Division, Statistics Canada, 170 Tunney's Pasture Driveway, Ottawa, Ontario, K1A 0T6.

Telephone: 1-800-294-5583 or 613-951-9647

Facsimile: 1-800-664-0055 613-951-0117

Internet: trade@statcan.gc.ca