

Catalogue no. 65-001-X

Canadian International Merchandise Trade

September 2011



Statistics
Canada

Statistique
Canada

Canada

How to obtain more information

For information about this product or the wide range of services and data available from Statistics Canada, visit our website at www.statcan.gc.ca, e-mail us at infostats@statcan.gc.ca, or telephone us, Monday to Friday from 8:30 a.m. to 4:30 p.m., at the following numbers:

Statistics Canada's National Contact Centre

Toll-free telephone (Canada and the United States):

Inquiries line	1-800-263-1136
National telecommunications device for the hearing impaired	1-800-363-7629
Fax line	1-877-287-4369

Local or international calls:

Inquiries line	1-613-951-8116
Fax line	1-613-951-0581

Depository Services Program

Inquiries line	1-800-635-7943
Fax line	1-800-565-7757

To access this product

This product, Catalogue no. 65-001-X, is available free in electronic format. To obtain a single issue, visit our website at www.statcan.gc.ca and browse by "Key resource" > "Publications."

Standards of service to the public

Statistics Canada is committed to serving its clients in a prompt, reliable and courteous manner. To this end, Statistics Canada has developed *standards of service* that its employees observe. To obtain a copy of these service standards, please contact Statistics Canada toll-free at 1-800-263-1136. The service standards are also published on www.statcan.gc.ca under "About us" > "The agency" > "Providing services to Canadians."

Canadian International Merchandise Trade

September 2011

Published by authority of the Minister responsible for Statistics Canada

© Minister of Industry, 2011

All rights reserved. The content of this electronic publication may be reproduced, in whole or in part, and by any means, without further permission from Statistics Canada, subject to the following conditions: that it be done solely for the purposes of private study, research, criticism, review or newspaper summary, and/or for non-commercial purposes; and that Statistics Canada be fully acknowledged as follows: Source (or "Adapted from", if appropriate): Statistics Canada, year of publication, name of product, catalogue number, volume and issue numbers, reference period and page(s). Otherwise, no part of this publication may be reproduced, stored in a retrieval system or transmitted in any form, by any means—electronic, mechanical or photocopy—or for any purposes without prior written permission of Licensing Services, Information Management Division, Statistics Canada, Ottawa, Ontario, Canada K1A 0T6.

November 2011

Catalogue no. 65-001-X, vol. 65, no. 9

ISSN 1480-8781

Frequency: Monthly

Ottawa

Cette publication est également disponible en français.

Note of appreciation

Canada owes the success of its statistical system to a long-standing partnership between Statistics Canada, the citizens of Canada, its businesses, governments and other institutions. Accurate and timely statistical information could not be produced without their continued cooperation and goodwill.

User information

Symbols

The following standard symbols are used in Statistics Canada publications:

- . not available for any reference period
- .. not available for a specific reference period
- ... not applicable
- 0 true zero or a value rounded to zero
- 0s value rounded to 0 (zero) where there is a meaningful distinction between true zero and the value that was rounded
- p preliminary
- r revised
- x suppressed to meet the confidentiality requirements of the *Statistics Act*
- E use with caution
- F too unreliable to be published
- * significantly different from reference category ($p < 0.05$)

Note to users

All totals are calculated from full figures and rounded independently; consequently, totals may not equal the sum of their components.

The data is based on commodity groups (sector, subsector and major group).

Table of contents

Highlights	5
Analysis	7
Related products	11
Statistical tables	
1 Merchandise trade of Canada, balance of payments basis, seasonally adjusted	15
1-1 Current dollars	15
1-2 Constant dollars, 2002	16
1-3 Price indices (Laspeyres)	17
2 Exports by commodity groupings, balance of payments basis, seasonally adjusted	18
2-1 Current dollars	18
2-2 Constant dollars, 2002	20
3 Domestic exports to selected countries, customs basis, not seasonally adjusted	22
3-1 September	22
3-2 Year to date, January to September	23
4 Domestic exports by country, customs basis, not seasonally adjusted	24
5 Exports by province of origin, customs basis, not seasonally adjusted	28
5-1 September	28
5-2 Year to date, January to September	29
6 Imports by commodity groupings, balance of payments basis, seasonally adjusted	30
6-1 Current dollars	30
6-2 Constant dollars, 2002	32
7 Imports from selected countries, customs basis, not seasonally adjusted	34
7-1 September	34
7-2 Year to date, January to September	35
8 Imports by country, customs basis, not seasonally adjusted	36

Table of contents – continued

9	Imports by province of clearance, customs basis, not seasonally adjusted	40
9-1	September	40
9-2	Year to date, January to September	41

Data quality, concepts and methodology

Technical notes	42
-----------------	----

Highlights

Canada's merchandise exports grew 4.2% in September, while imports declined 0.3%. As a result, Canada's trade balance with the world went from a deficit of \$487 million in August to a surplus of \$1.2 billion in September. It was the first trade surplus since January 2011.

Exports rose to \$39.7 billion, the highest value since October 2008, as six out of the seven sectors posted gains in September. Prices, which rose 3.9%, were the main factor behind the increase. Volumes edged up 0.3%.

Imports decreased to \$38.5 billion as volumes fell 3.1% and prices increased 2.8%. The decline was led by lower imports of machinery and equipment, and automotive products, as both sectors experienced a decline in volumes. Partly offsetting the decrease in imports were gains in two sectors: energy products, and industrial goods and materials. Prices rose in both sectors.

Exports to the United States increased 5.0% to \$28.2 billion, the highest value since January 2011. Imports from the United States decreased 1.0% to \$23.8 billion. As a result, Canada's trade surplus with the United States rose from \$2.8 billion in August to \$4.4 billion in September.

Exports to countries other than the United States rose 2.3% to \$11.5 billion, the fifth consecutive monthly increase. Imports from countries other than the United States increased 0.7% to \$14.7 billion. Consequently, the trade deficit with countries other than the United States fell from \$3.3 billion in August to \$3.1 billion in September, the lowest level so far this year.

Note to readers

Merchandise trade is one component of Canada's international balance of payments (BOP), which also includes trade in services, investment income, current transfers as well as capital and financial flows.

International merchandise trade data by country are available on both a BOP and a customs basis for the United States, Japan and the United Kingdom. Trade data for all other individual countries are available on a customs basis only. BOP data are derived from customs data by making adjustments for factors such as valuation, coverage, timing and residency. These adjustments are made to conform to the concepts and definitions of the Canadian System of National Accounts.

Data in this release are on a balance of payments basis, seasonally adjusted in current dollars. Constant dollars are calculated using the Laspeyres volume formula.

New aggregation structure

Statistics Canada will introduce a new aggregation structure, the North American Product Classification System (NAPCS), to organize and present import and export statistics in various programs. The new structure will replace the classification structures known as the summary import groups (SIG) and the summary export groups (SEG) and the higher level aggregations; Major Groups, Subsectors, Sectors and Sections that have been in use for several decades. The first release of data using the new structure will be on June 8, 2012 for the April reference month.

Readers interested in this upcoming change can find more detailed information on our website page dedicated to *classification* consultation and notification.

Chart 1

Exports and imports, seasonally adjusted, on a balance of payments basis

billions of dollars

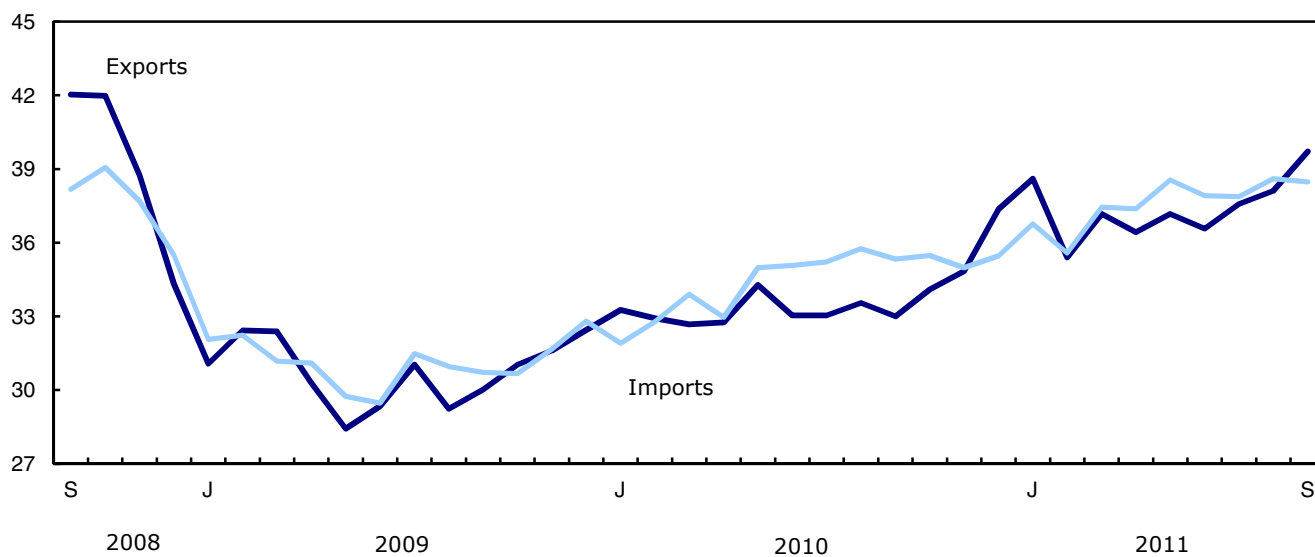
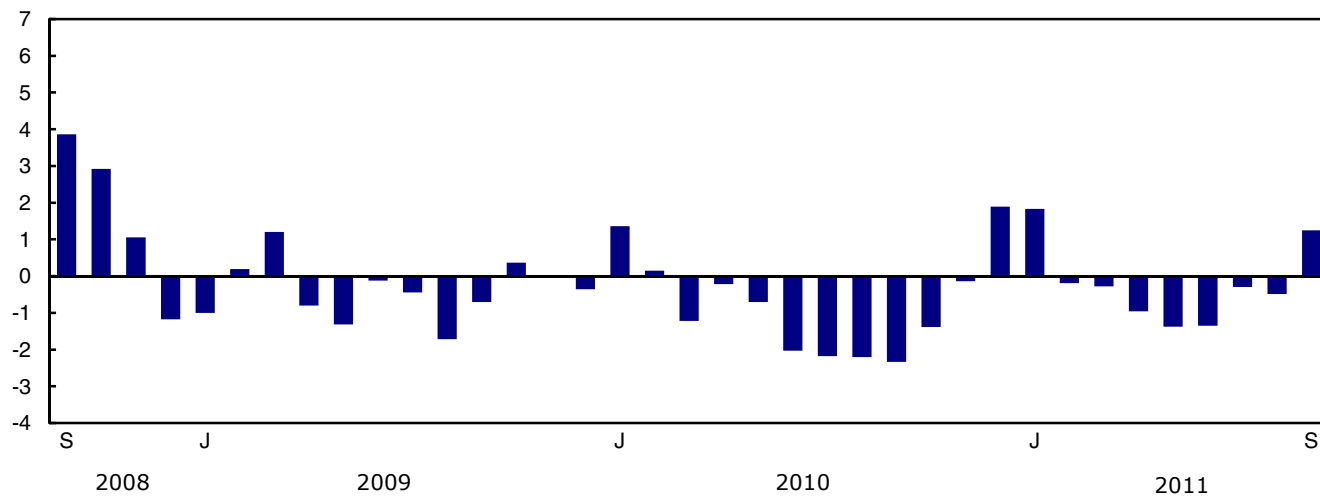


Chart 2

Trade balance, seasonally adjusted, on a balance of payments basis

billions of dollars



Analysis

Energy sector leads gain in exports

Exports of energy products rose 11.3% to \$9.6 billion as prices increased 8.0%. Exports of petroleum and coal products rose 36.4% to \$2.0 billion, the highest value since the peak in July 2008. This was mainly the result of a 23.3% increase in volumes following the reopening of refineries after several months of shutdowns for maintenance and expansion. Crude petroleum also contributed to the gain as prices increased 10.2%.

Exports of industrial goods and materials rose 3.4% to a record high of \$10.5 billion in September. It was the fifth consecutive monthly increase. Gains in metal and alloys, and chemicals, plastics and fertilizers were largely responsible for the growth in the sector.

Exports of agricultural and fishing products increased 9.4% to \$3.7 billion, the highest level since peaking in October 2008. Leading the sector was canola which hit a record high of \$444 million in September.

After four consecutive monthly increases, exports of machinery and equipment declined 4.9% to \$7.0 billion in September. Aircraft and other transportation equipment decreased 19.7%, as volumes fell 20.9%.

Lower volumes account for the decline in imports

Imports of machinery and equipment fell 3.3% to \$10.2 billion, as three out of the four sub-sectors reported decreases in September. A decline of 14.9% in aircraft and other transportation equipment contributed the most to the decrease as volumes fell 15.2%.

Imports of automotive products decreased 5.5% to \$5.9 billion in September, as volumes declined 6.3%. Passenger autos and chassis fell 10.9%, while trucks and other motor vehicles were down 9.0%.

Imports of energy products increased 5.7% to \$4.3 billion, as prices rose 4.7%. Crude petroleum rose 9.9%, as some refineries resumed production following temporary shutdowns.

Imports of industrial goods and materials rose 2.6% to \$8.6 billion. Metal and metal ores accounted for almost half of the gain as higher imports of precious metals registered a record high of \$1.4 billion in September.

Note: In general, merchandise trade data are revised on an ongoing basis for each month of the current year. Current year revisions are reflected in both the customs and balance of payments (BOP) based data. The previous year's customs data are revised with the release of the January and February reference months as well as on a quarterly basis. The previous two years of customs based data are revised annually and are released in February with the December reference month. The previous year's BOP based data are revised with the release of the January, February and March reference months. Revisions to BOP based data for the previous three years are released annually in June with the April reference month.

Factors influencing revisions include late receipt of import and export documentation, incorrect information on customs forms, replacement of estimates produced for the energy sector with actual figures, changes in classification of merchandise based on more current information, and changes to seasonal adjustment factors.

Revised data are available in the appropriate CANSIM tables.

Chart 3

Imports of machinery and equipment, seasonally adjusted, on a balance of payments basis

billions of dollars

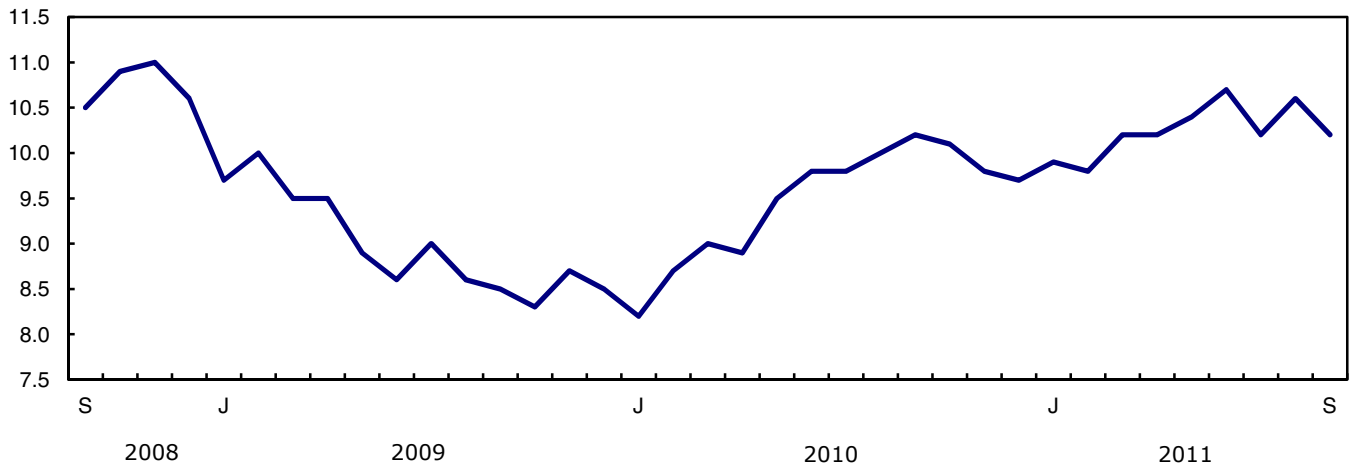
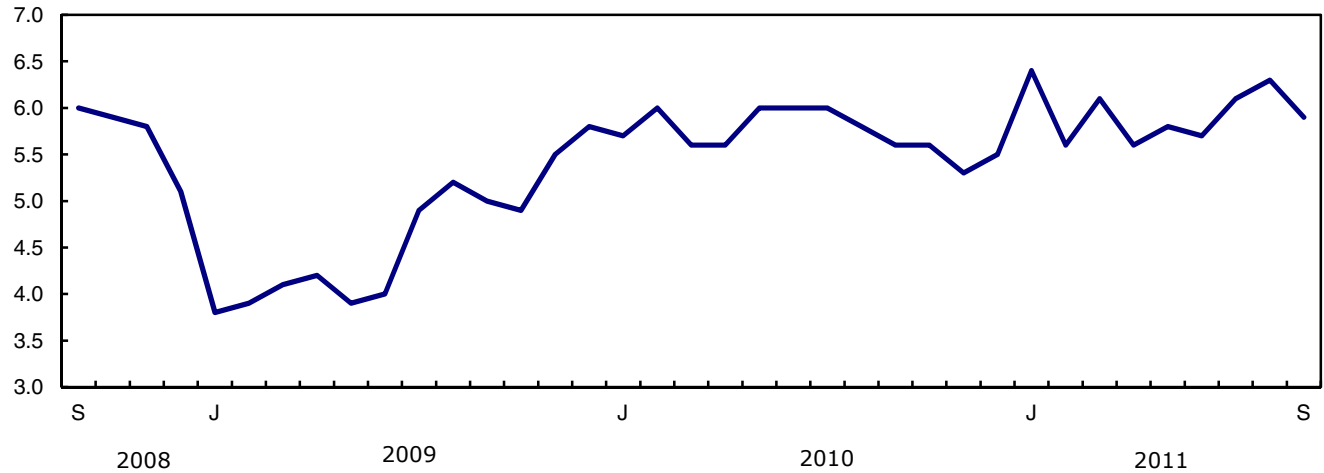


Chart 4

Imports of automotive products, seasonally adjusted, on a balance of payments basis

billions of dollars



Text table 1

Merchandise trade by principal trading area, balance of payments basis, seasonally adjusted

	August 2011	September 2011	Change		Year to date			September 2011/ September 2010	
					2010	2011	Change		
	millions of dollars		percent		millions of dollars		percent		
Export to									
United States	26,837	28,176	1,339	5.0	221,678	244,106	22,428	10.1	18.5
Japan	1,024	1,125	101	9.9	6,984	8,557	1,573	22.5	44.4
European Union ¹	3,968	3,809	-158	-4.0	25,323	30,706	5,383	21.3	23.6
Other Organisation for Economic Co-operation and Development ²	1,881	1,726	-155	-8.2	13,216	15,071	1,855	14.0	5.0
Other countries	4,406	4,881	475	10.8	31,332	38,302	6,970	22.2	31.0
Total	38,115	39,717	1,602	4.2	298,533	336,743	38,209	12.8	20.3
Imports from									
United States	24,050	23,816	-234	-1.0	194,537	208,258	13,721	7.1	7.3
Japan	770	736	-33	-4.3	7,521	6,571	-950	-12.6	-16.9
European Union ¹	3,751	3,924	173	4.6	29,544	34,507	4,963	16.8	17.1
Other Organisation for Economic Co-operation and Development ²	2,771	2,893	123	4.4	21,631	24,942	3,310	15.3	14.1
Other countries	7,262	7,102	-159	-2.2	54,676	64,321	9,645	17.6	11.6
Total	38,602	38,471	-131	-0.3	307,909	338,598	30,689	10.0	8.9
Balance									
United States	2,788	4,360	1,573	...	27,142	35,848	8,707
Japan	254	389	135	...	-537	1,986	2,523
European Union ¹	217	-114	-331	...	-4,221	-3,800	421
Other Organisation for Economic Co-operation and Development ²	-890	-1,167	-278	...	-8,416	-9,871	-1,455
Other countries	-2,856	-2,222	635	...	-23,344	-26,019	-2,674
Total	-487	1,246	1,733	...	-9,376	-1,855	7,521

1. European Union includes: Austria, Belgium, Bulgaria, Cyprus, Czech Republic, Denmark, Estonia, Finland, France, Germany, Greece, Hungary, Ireland, Italy, Latvia, Lithuania, Luxembourg, Malta, Netherlands, Poland, Portugal, Romania, Slovakia, Slovenia, Spain, Sweden and United Kingdom.

2. Other Organisation for Economic Co-operation and Development includes: Australia, Canada, Iceland, Mexico, New Zealand, Norway, South Korea, Switzerland and Turkey.

Text table 2

Reconciliation of customs and balance of payments trade data, not seasonally adjusted

	2011						2010
	September	August	July	June	May	April	Annual
	millions of dollars						
Exports							
Customs basis	39,594	38,512	35,497	37,282	37,166	34,908	399,433
Balance of payments adjustments	640	409	928	238	881	1,590	5,401
Valuation and residency							
Inland freight	631	612	571	597	559	538	6,552
Other valuation and residency	-1,380	-1,589	-1,014	-1,243	-959	-154	-12,984
Timing	13	35	43	29	80	-32	48
Coverage	1,376	1,351	1,328	855	1,201	1,238	11,785
Balance of payments basis	40,234	38,921	36,425	37,520	38,047	36,498	404,834
Imports							
Customs basis	38,365	39,314	35,539	38,688	37,446	36,005	403,910
Balance of payments adjustments	943	940	564	472	1,248	819	9,923
Valuation and residency							
Inland freight	811	833	761	835	793	776	8,740
Other valuation and residency	0	-23	-26	-31	-60	-39	-190
Timing	0	0	0	0	0	0	0
Coverage	132	130	-171	-332	515	82	1,373
Balance of payments basis	39,308	40,254	36,103	39,160	38,694	36,824	413,833

Related products

Selected publications from Statistics Canada

65-208-X	International Merchandise Trade Annual Review
65-506-X	A Profile of Canadian Exporters
65F0013X	Canadian International Merchandise Trade Database
65F0019X	A Database for Analysis of International Markets
65F0020X	Data Integration - International Trade Data and Manufacturing Shipments Data

Selected CANSIM tables from Statistics Canada

228-0001	Merchandise imports and exports, by major groups and principal trading areas for all countries, monthly
228-0002	Merchandise imports and exports, by major groups and principal trading areas for all countries, quarterly
228-0003	Merchandise imports and exports, by major groups and principal trading areas for all countries, annual
228-0033	Imports, customs-based, by province of clearance, monthly
228-0034	Domestic exports, customs-based, by province of origin, monthly
228-0041	Merchandise imports and exports by sector and sub-sector, customs and balance of payments basis, for all countries, monthly
228-0042	Merchandise imports and exports by sector and sub-sector, customs and balance of payments basis, for all countries, quarterly
228-0043	Merchandise imports and exports by sector and sub-sector, customs and balance of payments basis, for all countries, annual
228-0047	Merchandise imports and exports balance of payments and customs-based price and volume indexes for all countries, monthly
228-0048	Merchandise imports and exports balance of payments and customs-based price and volume indexes for all countries, quarterly
228-0049	Merchandise imports and exports balance of payments and customs-based price and volume indexes for all countries, annual

228-0050	Merchandise imports and exports customs-based price indexes, Canada and United States trade, and Standard International Trade Classification (SITC revision 3) price indexes for all countries and United States, monthly
228-0051	Merchandise imports and exports customs-based price indexes, Canada and United States trade, and Standard International Trade Classification (SITC revision 3) price indexes for all countries and United States, quarterly
228-0052	Merchandise imports and exports customs-based price indexes, Canada and United States trade, and Standard International Trade Classification (SITC revision 3) price indexes for all countries and United States, annual
228-0053	Merchandise import and export price and volume indexes by sector and sub-sector, customs and balance of payments basis, for all countries, monthly
228-0054	Merchandise import and export price and volume indexes by sector and sub-sector, customs and balance of payments basis, for all countries, quarterly
228-0055	Merchandise import and export price and volume indexes by sector and sub-sector, customs and balance of payments basis, for all countries, annual
228-0056	Merchandise imports and exports by sector, balance of payments basis, for all countries, seasonally adjusted, Fisher formula, monthly
228-0057	Merchandise imports and exports by sector, balance of payments basis, for all countries, seasonally adjusted, Fisher formula, quarterly

Selected surveys from Statistics Canada

2201	Canadian International Merchandise Trade (Customs Basis)
2202	Canadian International Merchandise Trade (Balance of Payments Basis)
2203	International Trade Price Indexes

Selected summary tables from Statistics Canada

- *Canada: Economic and financial data*
- *Imports, exports and trade balance of goods on a balance-of-payments basis, by country or country grouping*
- *Exports of goods on a balance-of-payments basis*

- *Imports of goods on a balance-of-payments basis*
- *Merchandise trade of Canada (monthly)*
- *Economic indicators, by province and territory (monthly and quarterly)*
- *Latest statistics (monthly)*

Statistical tables

Table 1-1

Merchandise trade of Canada, balance of payments basis, seasonally adjusted — Current dollars

	Exports	Imports	Trade balance	Period to period change		
				Exports	Imports	Balance
	millions of dollars			percent		millions of dollars
2007	463,120	415,683	47,437	0.0	0.0	0
2008	488,754	443,777	44,977	5.5	6.8	-2,460
2009	369,343	374,081	-4,738	-24.4	-15.7	-49,715
2010	404,834	413,833	-8,999	9.6	10.6	-4,261
2009						
First quarter	95,888	95,487	400	-16.7	-14.9	-2,399
Second quarter	88,071	90,304	-2,234	-8.2	-5.4	-2,634
Third quarter	90,293	93,167	-2,873	2.5	3.2	-639
Fourth quarter	95,092	95,123	-32	5.3	2.1	2,842
2010						
First quarter	98,870	98,583	287	4.0	3.6	318
Second quarter	100,071	103,014	-2,942	1.2	4.5	-3,229
Third quarter	99,592	106,312	-6,720	-0.5	3.2	-3,778
Fourth quarter	106,301	105,924	377	6.7	-0.4	7,097
2011						
First quarter	111,166	109,804	1,362	4.6	3.7	985
Second quarter	110,169	113,851	-3,682	-0.9	3.7	-5,045
Third quarter	115,407	114,942	465	4.8	1.0	4,147
2010						
January	33,260	31,902	1,358	2.5	-2.7	1,714
February	32,929	32,780	148	-1.0	2.8	-1,210
March	32,681	33,901	-1,220	-0.8	3.4	-1,368
April	32,749	32,962	-213	0.2	-2.8	1,007
May	34,282	34,984	-702	4.7	6.1	-489
June	33,040	35,068	-2,028	-3.6	0.2	-1,326
July	33,040	35,220	-2,181	0.0	0.4	-153
August	33,550	35,757	-2,207	1.5	1.5	-26
September	33,002	35,335	-2,333	-1.6	-1.2	-126
October	34,090	35,474	-1,384	3.3	0.4	949
November	34,845	34,979	-134	2.2	-1.4	1,249
December	37,366	35,471	1,895	7.2	1.4	2,029
2011						
January	38,604	36,768	1,836	3.3	3.7	-59
February	35,394	35,587	-192	-8.3	-3.2	-2,028
March	37,168	37,449	-281	5.0	5.2	-89
April	36,426	37,385	-959	-2.0	-0.2	-678
May	37,173	38,550	-1,377	2.1	3.1	-418
June	36,570	37,916	-1,347	-1.6	-1.6	30
July	37,575	37,869	-295	2.7	-0.1	1,052
August	38,115	38,602	-487	1.4	1.9	-192
September	39,717	38,471	1,246	4.2	-0.3	1,733

Note(s): Because of rounding, monthly data may not add up to quarterly data and quarterly data may not add up to annual data.

Table 1-2
Merchandise trade of Canada, balance of payments basis, seasonally adjusted — Constant dollars, 2002

	Exports	Imports	Trade balance	Period to period change	
				Exports	Imports
	millions of dollars			percent	
2007	449,015	484,005	-34,990	0.0	0.0
2008	412,713	486,735	-74,022	-8.1	0.6
2009	346,916	407,679	-60,763	-15.9	-16.2
2010	374,143	470,401	-96,259	7.8	15.4
2009					
First quarter	87,361	98,563	-11,202	-9.7	-13.3
Second quarter	83,432	97,723	-14,290	-4.5	-0.9
Third quarter	86,976	104,165	-17,189	4.2	6.6
Fourth quarter	89,147	107,228	-18,081	2.5	2.9
2010					
First quarter	90,749	111,192	-20,442	1.8	3.7
Second quarter	94,368	117,650	-23,282	4.0	5.8
Third quarter	94,074	120,900	-26,826	-0.3	2.8
Fourth quarter	94,951	120,659	-25,708	0.9	-0.2
2011					
First quarter	96,714	124,766	-28,052	1.9	3.4
Second quarter	95,178	128,612	-33,434	-1.6	3.1
Third quarter	98,621	128,014	-29,393	3.6	-0.5
2010					
January	30,484	36,096	-5,612	1.2	-1.5
February	29,984	36,948	-6,964	-1.6	2.4
March	30,282	38,148	-7,866	1.0	3.2
April	30,882	37,943	-7,061	2.0	-0.5
May	32,065	39,600	-7,535	3.8	4.4
June	31,421	40,106	-8,686	-2.0	1.3
July	31,273	40,040	-8,767	-0.5	-0.2
August	31,897	40,711	-8,814	2.0	1.7
September	30,905	40,150	-9,245	-3.1	-1.4
October	31,313	40,563	-9,250	1.3	1.0
November	31,041	39,832	-8,790	-0.9	-1.8
December	32,597	40,265	-7,668	5.0	1.1
2011					
January	33,604	42,074	-8,469	3.1	4.5
February	30,957	40,431	-9,474	-7.9	-3.9
March	32,153	42,262	-10,109	3.9	4.5
April	31,498	42,780	-11,282	-2.0	1.2
May	32,167	42,645	-10,477	2.1	-0.3
June	31,512	43,187	-11,675	-2.0	1.3
July	32,865	43,060	-10,195	4.3	-0.3
August	32,824	43,135	-10,310	-0.1	0.2
September	32,932	41,819	-8,888	0.3	-3.1

Note(s): Because of rounding, monthly data may not add up to quarterly data and quarterly data may not add up to annual data.

Table 1-3
Merchandise trade of Canada, balance of payments basis, seasonally adjusted — Price indices (Laspeyres)

	2002=100			Period to period change		
	Exports	Imports	Terms of trade	Exports	Imports	Terms of trade
	price indices (Laspeyres)			percent		
2007	107.1	91.4	117.1	0.0	0.0	0.0
2008	116.2	97.2	119.6	8.5	6.3	2.2
2009	105.2	96.2	109.3	-9.5	-1.0	-8.5
2010	106.8	94.1	113.4	1.5	-2.2	3.7
2009						
First quarter	108.8	100.8	107.9	-3.9	-2.8	-1.1
Second quarter	104.6	96.8	108.0	-3.8	-4.0	0.1
Third quarter	102.9	94.1	109.3	-1.6	-2.8	1.2
Fourth quarter	105.3	93.0	113.2	2.3	-1.2	3.5
2010						
First quarter	107.1	93.7	114.2	1.7	0.7	0.9
Second quarter	105.7	93.6	112.9	-1.3	-0.1	-1.2
Third quarter	106.1	94.5	112.3	0.4	0.9	-0.5
Fourth quarter	108.2	94.6	114.4	2.0	0.1	1.9
2011						
First quarter	111.5	96.0	116.1	3.0	1.5	1.5
Second quarter	113.2	98.9	114.4	1.5	3.0	-1.5
Third quarter	114.2	98.7	115.7	0.9	-0.2	1.1
2010						
January	107.2	93.9	114.2	1.0	0.0	1.0
February	108.1	95.1	113.7	0.8	1.3	-0.5
March	106.0	93.8	113.0	-1.9	-1.3	-0.6
April	105.2	92.1	114.3	-0.8	-1.8	1.1
May	106.3	94.5	112.5	1.0	2.6	-1.6
June	105.6	94.0	112.3	-0.7	-0.5	-0.2
July	104.8	93.8	111.7	-0.7	-0.2	-0.5
August	105.9	94.1	112.5	1.0	0.3	0.7
September	106.7	93.9	113.6	0.8	-0.2	1.0
October	107.5	93.9	114.5	0.7	-0.1	0.7
November	109.0	94.8	115.0	1.4	1.0	0.5
December	110.8	95.4	116.1	1.6	0.7	1.0
2011						
January	111.3	95.7	116.3	0.5	0.4	0.1
February	111.6	97.1	114.9	0.2	1.4	-1.2
March	112.4	97.1	115.7	0.7	0.0	0.7
April	113.0	97.1	116.4	0.6	0.1	0.6
May	113.2	98.7	114.6	0.1	1.6	-1.5
June	113.4	99.7	113.7	0.2	1.0	-0.8
July	112.1	96.7	116.0	-1.2	-3.1	1.9
August	113.2	98.1	115.4	1.0	1.5	-0.5
September	115.4	99.3	116.2	2.0	1.2	0.8

Note(s): Because of rounding, monthly data may not add up to quarterly data and quarterly data may not add up to annual data.

Table 2-1

Exports by commodity groupings, balance of payments basis, seasonally adjusted — Current dollars

	August 2011	September 2011	Change		Year to date			September 2011/ September 2010	
					2010	2011	Change		
	millions of dollars		percent		millions of dollars		percent		
Total	38,115	39,717	1,602	4.2	298,533	336,743	38,209	12.8	20.3
Agricultural and fishing products	3,354	3,668	314	9.4	27,015	29,842	2,828	10.5	20.5
Wheat	507	517	9	1.8	3,192	4,071	879	27.5	46.4
Other agricultural and fishing products	2,847	3,152	305	10.7	23,823	25,771	1,949	8.2	17.1
Live animals	123	112	-11	-8.8	1,350	1,049	-301	-22.3	-12.5
Fish and fish preparations	376	365	-11	-3.0	3,126	3,266	140	4.5	-0.9
Barley	3	17	15	546.1	217	187	-31	-14.2	-30.4
Wheat flour	6	6	0	7.7	59	57	-2	-3.3	-2.0
Other cereals unmilled	67	87	21	30.9	350	710	360	102.9	81.4
Other cereal preparations	247	259	12	4.9	2,081	2,164	83	4.0	10.3
Meat and meat preparations	431	440	9	2.0	3,527	3,668	141	4.0	10.9
Alcoholic beverages	62	64	2	3.9	564	550	-14	-2.5	2.9
Other food, feed, beverages and tobacco	1,075	1,106	31	2.9	8,422	9,081	660	7.8	14.3
Rapeseed	248	444	196	78.8	2,319	3,117	798	34.4	92.2
Other crude vegetable products	209	251	42	19.9	1,807	1,922	116	6.4	12.0
Energy products	8,632	9,609	976	11.3	67,037	82,029	14,992	22.4	41.6
Crude petroleum	4,890	5,281	390	8.0	36,213	48,200	11,987	33.1	54.2
Natural gas	1,327	1,367	40	3.0	12,266	11,041	-1,225	-10.0	9.0
Other energy products	2,415	2,962	546	22.6	18,558	22,788	4,230	22.8	40.5
Coal and other bituminous substances	761	741	-20	-2.7	3,790	5,326	1,536	40.5	42.2
Petroleum and coal products	1,465	1,998	533	36.4	13,214	15,866	2,652	20.1	38.6
Electricity	189	222	33	17.6	1,554	1,596	42	2.7	53.8
Forestry products	1,861	1,941	80	4.3	16,184	17,041	857	5.3	7.0
Lumber and sawmill products	684	726	42	6.1	5,956	6,337	381	6.4	11.6
Other crude wood products	68	83	15	22.0	493	671	179	36.2	61.9
Lumber	434	455	21	4.9	3,635	4,003	367	10.1	10.1
Other wood fabricated materials	182	188	6	3.1	1,828	1,663	-165	-9.0	1.1
Wood pulp and other wood products	543	559	16	3.0	4,634	5,047	414	8.9	3.3
Newsprint and other paper and paperboard	634	656	22	3.4	5,594	5,657	63	1.1	5.4
Newsprint paper	325	347	21	6.6	2,816	2,931	115	4.1	6.4
Other paper and paperboard	309	309	0	0.1	2,778	2,726	-52	-1.9	4.3
Industrial goods and materials	10,126	10,470	345	3.4	69,469	86,403	16,934	24.4	32.9
Metal ores	1,522	1,562	40	2.6	8,635	12,476	3,841	44.5	53.5
Iron ores, concentrates and scrap	527	511	-16	-3.0	3,136	4,257	1,122	35.8	33.1
Copper ores, concentrates and scrap	309	415	106	34.3	1,588	2,793	1,205	75.9	301.3
Nickel ores, concentrates and scrap	348	307	-41	-11.7	1,943	2,523	580	29.8	2.3
Zinc ores, concentrates and scrap	21	40	19	89.2	210	240	30	14.4	58.8
Other ores, concentrates and scrap	317	288	-29	-9.1	1,758	2,663	905	51.5	41.0
Chemicals, plastics and fertilizers	3,004	3,164	160	5.3	22,253	26,913	4,659	20.9	26.9
Inorganic chemicals	476	449	-27	-5.6	3,296	4,455	1,159	35.2	5.5
Organic chemicals	647	642	-5	-0.7	4,683	5,550	868	18.5	30.3
Fertilizers and fertilizer materials	613	790	178	29.0	4,372	5,843	1,470	33.6	68.1
Synthetic rubber and plastics	966	976	10	1.1	7,548	8,514	966	12.8	14.9
Other chemical products	304	307	3	0.9	2,354	2,550	196	8.3	20.7
Metals and alloys	3,906	4,090	184	4.7	25,807	32,702	6,895	26.7	41.5
Primary iron and steel	76	104	28	36.3	967	689	-278	-28.7	-8.3
Steel bars, rods, plates, sheets	333	339	7	2.1	2,667	2,825	157	5.9	18.5
Other iron and steel and alloys	242	264	21	8.8	2,010	2,124	113	5.6	19.2
Aluminum including alloys	717	704	-13	-1.8	5,469	6,085	616	11.3	23.8
Copper and alloys	195	244	49	25.2	2,027	1,897	-131	-6.5	42.7
Nickel and alloys	258	288	30	11.5	1,366	2,573	1,207	88.3	22.9
Precious metals and alloys	1,859	1,940	80	4.3	9,506	14,598	5,092	53.6	73.8
Zinc and alloys	108	102	-7	-6.0	1,005	963	-42	-4.1	9.4
Other non-ferrous metals and alloys	118	106	-11	-9.5	789	949	160	20.3	22.0

Table 2-1 – continued

Exports by commodity groupings, balance of payments basis, seasonally adjusted — Current dollars

	August 2011	September 2011	Change		Year to date			September 2011/ September 2010	
					2010	2011	Change		
	millions of dollars		percent		millions of dollars		percent		
Other industrial goods and materials	1,693	1,654	-39	-2.3	12,774	14,312	1,538	12.0	11.9
Asbestos unmanufactured	2	2	0	-8.3	41	29	-12	-30.3	-69.8
Other crude animal products	86	72	-14	-16.0	685	710	26	3.7	-7.5
Other crude non-metallic minerals	381	326	-55	-14.5	2,682	2,981	299	11.1	1.3
Other crude materials, inedible	70	64	-6	-8.0	530	585	55	10.4	9.3
Metal fabricated basic products	375	384	9	2.4	3,113	3,308	196	6.3	10.4
Textile fabricated materials	184	189	5	2.8	1,617	1,651	34	2.1	4.2
Non-metallic mineral basic products	162	162	0	0.2	1,415	1,440	26	1.8	2.3
Other fabricated materials	434	455	21	4.9	2,691	3,607	916	34.0	40.1
Machinery and equipment	7,360	7,001	-360	-4.9	56,162	59,219	3,057	5.4	4.0
Industrial and agricultural machinery	1,773	1,797	24	1.3	13,289	14,788	1,500	11.3	17.2
Industrial machinery	1,599	1,621	23	1.4	11,924	13,305	1,380	11.6	17.1
Agricultural machinery includ. tractors	174	176	1	0.7	1,365	1,484	119	8.7	17.4
Aircraft and other transportation equipment	1,893	1,521	-373	-19.7	13,017	13,457	441	3.4	-7.7
Aircraft, engines, parts	1,426	1,121	-305	-21.4	10,166	10,013	-153	-1.5	-14.2
Other transportation equipment	467	400	-68	-14.5	2,850	3,444	594	20.8	16.9
Other machinery and equipment	3,694	3,683	-11	-0.3	29,856	30,973	1,116	3.7	3.8
Television, telecommunication equipment	679	710	31	4.6	5,770	5,718	-51	-0.9	-6.8
Office machines and equipment	353	337	-16	-4.5	3,191	3,154	-36	-1.1	-8.7
Other equipment and tools	1,728	1,712	-15	-0.9	13,753	14,398	645	4.7	8.2
Other end products, inedible	934	924	-11	-1.2	7,143	7,702	559	7.8	10.5
Automotive products	4,543	4,798	256	5.6	43,003	43,124	121	0.3	3.5
Passenger autos and chassis	2,829	3,088	260	9.2	28,635	28,108	-527	-1.8	0.6
Trucks and other motor vehicles	221	256	35	15.8	1,648	1,983	335	20.3	34.6
Motor vehicle parts	1,493	1,454	-39	-2.6	12,720	13,033	314	2.5	5.6
Other consumer goods	1,403	1,494	91	6.5	12,537	12,060	-477	-3.8	11.8
Special transactions trade	369	282	-88	-23.7	3,114	2,866	-248	-8.0	-3.2
Unallocated balance of payments adjustments	466	454	-12	-2.5	4,011	4,158	147	3.7	-6.1

Table 2-2

Exports by commodity groupings, balance of payments basis, seasonally adjusted — Constant dollars, 2002

	August 2011	September 2011	Change		Year to date			September 2011/ September 2010	
					2010	2011	Change		
	millions of dollars		percent		millions of dollars		percent		
Total	32,824	32,932	107	0.3	279,191	290,513	11,322	4.1	6.6
Agricultural and fishing products	3,096	3,253	157	5.1	28,182	27,309	-874	-3.1	7.3
Wheat	366	378	12	3.3	3,429	2,987	-441	-12.9	7.4
Other agricultural and fishing products	2,729	2,875	145	5.3	24,754	24,322	-432	-1.7	7.3
Live animals	113	105	-7	-6.3	1,551	1,014	-536	-34.6	-23.5
Fish and fish preparations	446	439	-7	-1.6	3,880	3,783	-97	-2.5	1.5
Barley	2	11	9	537.8	207	139	-68	-32.9	-52.7
Wheat flour	5	5	0	8.3	57	48	-8	-14.4	-10.4
Other cereals unmilled	52	71	19	36.0	400	521	122	30.4	61.9
Other cereal preparations	215	224	8	3.9	1,853	1,931	78	4.2	7.1
Meat and meat preparations	432	427	-5	-1.2	3,947	3,687	-259	-6.6	-0.1
Alcoholic beverages	123	116	-7	-5.8	1,084	1,081	-3	-0.3	-5.1
Other food, feed, beverages and tobacco	990	963	-27	-2.7	7,979	8,347	368	4.6	7.9
Rapeseed	182	321	140	76.9	2,187	2,235	48	2.2	60.3
Other crude vegetable products	170	193	23	13.6	1,610	1,535	-75	-4.7	3.8
Energy products	4,892	5,041	149	3.1	41,330	44,163	2,833	6.9	16.3
Crude petroleum	2,389	2,340	-49	-2.1	18,205	20,920	2,715	14.9	23.0
Natural gas	1,362	1,348	-15	-1.1	12,324	12,288	-36	-0.3	4.0
Other energy products	1,141	1,354	213	18.7	10,801	10,955	154	1.4	19.1
Coal and other bituminous substances	172	159	-14	-7.9	1,374	1,343	-30	-2.2	7.8
Petroleum and coal products	737	908	171	23.3	7,638	7,508	-130	-1.7	8.8
Electricity	232	287	55	23.8	1,789	2,103	314	17.6	85.4
Forestry products	2,300	2,356	56	2.4	19,656	20,855	1,200	6.1	7.7
Lumber and sawmill products	920	949	28	3.1	7,600	8,421	821	10.8	13.3
Other crude wood products	83	83	0	0.3	625	801	176	28.1	52.3
Lumber	618	640	22	3.6	5,024	5,629	604	12.0	12.0
Other wood fabricated materials	220	226	6	2.8	1,950	1,991	41	2.1	6.6
Wood pulp and other wood products	665	680	16	2.3	5,517	5,963	446	8.1	4.2
Newsprint and other paper and paperboard	715	727	12	1.7	6,539	6,471	-68	-1.0	4.4
Newsprint paper	368	384	16	4.4	3,373	3,370	-3	-0.1	3.8
Other paper and paperboard	347	343	-4	-1.2	3,166	3,101	-64	-2.0	5.0
Industrial goods and materials	5,840	5,922	81	1.4	48,335	51,305	2,969	6.1	12.0
Metal ores	606	604	-3	-0.4	4,234	5,072	838	19.8	30.1
Iron ores, concentrates and scrap	167	166	-1	-0.5	1,381	1,520	139	10.1	17.5
Copper ores, concentrates and scrap	91	122	31	34.2	552	797	245	44.3	242.2
Nickel ores, concentrates and scrap	151	137	-14	-9.1	902	1,030	127	14.1	2.7
Zinc ores, concentrates and scrap	11	22	10	91.5	115	125	10	9.0	63.0
Other ores, concentrates and scrap	187	157	-30	-15.8	1,284	1,601	317	24.7	11.8
Chemicals, plastics and fertilizers	1,954	2,004	50	2.6	16,179	17,548	1,369	8.5	10.9
Inorganic chemicals	217	192	-25	-11.6	1,672	1,803	130	7.8	-1.6
Organic chemicals	308	294	-14	-4.4	2,783	2,717	-66	-2.4	-2.2
Fertilizers and fertilizer materials	229	293	64	27.9	1,925	2,288	363	18.8	37.9
Synthetic rubber and plastics	865	875	10	1.1	6,968	7,804	836	12.0	10.2
Other chemical products	335	350	15	4.6	2,831	2,937	106	3.7	14.9

Table 2-2 – continued

Exports by commodity groupings, balance of payments basis, seasonally adjusted — Constant dollars, 2002

	August 2011	September 2011	Change		Year to date			September 2011/ September 2010	
					2010	2011	Change		
	millions of dollars		percent		millions of dollars		percent		
Metals and alloys	1,956	2,015	60	3.1	16,269	17,157	888	5.5	17.6
Primary iron and steel	46	58	13	27.9	658	424	-234	-35.6	-18.2
Steel bars, rods, plates, sheets	250	252	2	0.7	2,211	2,154	-57	-2.6	7.7
Other iron and steel and alloys	189	208	19	10.1	1,679	1,677	-2	-0.1	13.4
Aluminum including alloys	700	691	-8	-1.2	5,677	5,844	167	2.9	20.7
Copper and alloys	50	65	15	31.0	668	494	-173	-26.0	22.5
Nickel and alloys	124	144	20	16.3	701	1,151	450	64.3	28.0
Precious metals and alloys	479	484	5	1.0	3,732	4,418	686	18.4	24.5
Zinc and alloys	61	59	-2	-2.9	585	544	-40	-6.9	4.9
Other non-ferrous metals and alloys	58	54	-4	-6.7	359	451	91	25.4	29.1
Other industrial goods and materials	1,324	1,298	-26	-2.0	11,653	11,527	-126	-1.1	-0.3
Asbestos unmanufactured	2	2	0	-14.2	41	28	-13	-32.0	-70.2
Other crude animal products	75	66	-10	-12.6	703	643	-59	-8.4	-17.7
Other crude non-metallic minerals	251	234	-17	-6.7	2,672	2,230	-442	-16.5	-16.3
Other crude materials, inedible	61	56	-5	-8.3	491	531	40	8.1	3.1
Metal fabricated basic products	303	307	4	1.3	2,516	2,630	114	4.5	9.2
Textile fabricated materials	192	186	-7	-3.5	1,724	1,738	14	0.8	-2.7
Non-metallic mineral basic products	132	131	-1	-0.5	1,164	1,189	25	2.2	3.0
Other fabricated materials	307	316	9	2.9	2,342	2,538	197	8.4	11.8
Machinery and equipment	8,195	7,630	-566	-6.9	62,641	66,781	4,141	6.6	1.2
Industrial and agricultural machinery	1,647	1,661	14	0.8	12,335	13,868	1,533	12.4	16.4
Industrial machinery	1,486	1,498	12	0.8	11,078	12,485	1,407	12.7	16.5
Agricultural machinery includ. tractors	161	163	2	1.1	1,257	1,383	126	10.0	15.7
Aircraft and other transportation equipment	2,327	1,841	-486	-20.9	16,055	16,708	652	4.1	-9.5
Aircraft, engines, parts	1,879	1,474	-404	-21.5	13,233	13,312	79	0.6	-13.8
Other transportation equipment	448	367	-81	-18.1	2,822	3,395	574	20.3	12.6
Other machinery and equipment	4,221	4,128	-94	-2.2	34,250	36,205	1,955	5.7	1.2
Television, telecommunication equipment	869	910	41	4.7	7,304	7,443	139	1.9	-5.8
Office machines and equipment	1,013	923	-90	-8.9	7,940	8,904	964	12.1	1.0
Other equipment and tools	1,665	1,642	-23	-1.4	13,014	13,820	806	6.2	9.4
Other end products, inedible	674	653	-22	-3.2	5,992	6,038	46	0.8	-6.5
Automotive products	6,141	6,395	254	4.1	57,171	58,922	1,751	3.1	3.7
Passenger autos and chassis	4,208	4,489	281	6.7	41,180	41,992	812	2.0	1.6
Trucks and other motor vehicles	278	309	31	11.3	1,998	2,435	438	21.9	33.2
Motor vehicle parts	1,655	1,596	-59	-3.5	13,993	14,494	501	3.6	5.0
Other consumer goods	1,326	1,414	88	6.7	12,029	11,532	-497	-4.1	10.0
Special transactions trade	303	230	-73	-24.1	2,831	2,399	-432	-15.3	-14.1
Unallocated balance of payments adjustments	732	691	-41	-5.6	7,016	7,247	231	3.3	-13.7

Table 3-1

Domestic exports to selected countries, customs basis, not seasonally adjusted — September

	Agricultural and fishing products	Energy products	Forestry products	Industrial goods	Machinery and equipment	Automotive products	Consumer goods	Special transactions trade	Total
millions of dollars									
United States									
2010	1,606.6	6,659.0	1,135.6	4,364.6	3,584.6	4,818.1	707.2	257.8	23,133.4
2011	1,743.1	8,957.0	1,128.6	5,576.1	3,875.1	4,874.2	788.0	239.0	27,181.1
Mexico									
2010	112.5	5.8	6.8	100.8	91.4	69.0	4.1	0.4	390.8
2011	165.5	12.9	10.1	128.1	65.7	65.9	4.3	0.7	453.2
Japan									
2010	306.5	141.0	115.9	78.5	41.1	5.0	9.6	2.1	699.7
2011	328.4	206.1	109.6	272.6	46.9	7.2	13.3	1.0	984.9
European Union									
Germany									
2010	16.6	41.3	9.6	66.9	106.6	2.9	24.4	2.3	270.6
2011	13.7	19.4	6.1	70.7	103.7	7.3	17.0	1.6	239.5
France									
2010	9.1	11.5	15.0	48.6	75.5	3.3	16.7	2.1	181.7
2011	14.5	83.4	10.3	49.7	161.9	5.7	18.0	0.9	344.5
United Kingdom									
2010	38.3	0.3	17.0	1,060.7	178.0	4.6	17.7	4.6	1,321.4
2011	27.3	0.5	19.6	1,315.7	90.9	4.3	20.0	4.2	1,482.4
Italy									
2010	38.1	13.9	35.1	20.6	35.1	1.0	12.6	0.3	156.7
2011	118.8	21.9	24.6	14.1	32.0	1.2	9.0	0.1	221.6
Other European Union									
2010	85.6	157.6	26.1	298.1	168.8	17.6	55.8	3.2	812.8
2011	108.3	287.8	22.7	302.7	146.6	22.3	45.2	1.8	937.5
Total									
2010	187.7	224.5	102.8	1,494.9	564.1	29.3	127.3	12.4	2,743.1
2011	282.6	412.9	83.3	1,752.8	535.2	40.9	109.2	8.6	3,225.6
Newly industrialized countries									
South Korea									
2010	27.1	164.9	25.4	99.8	39.6	3.4	2.8	0.7	363.7
2011	39.5	151.6	47.9	98.9	31.9	0.4	5.1	0.7	376.0
Hong Kong									
2010	33.2	0.0	7.0	49.5	22.5	0.7	7.5	2.8	123.4
2011	29.3	0.0	15.0	33.8	29.4	0.5	7.3	0.8	116.2
Taiwan									
2010	18.5	32.8	18.3	58.0	16.2	0.0	1.6	0.1	145.5
2011	17.2	0.2	20.7	68.2	11.4	0.0	4.6	0.1	122.4
Singapore									
2010	4.3	0.3	0.9	19.1	37.1	3.3	9.3	1.3	75.6
2011	3.2	0.2	0.7	13.7	25.8	0.9	3.0	0.2	47.8
Total									
2010	83.1	198.0	51.6	226.5	115.4	7.4	21.2	4.9	708.2
2011	89.2	152.0	84.3	214.7	98.5	1.9	20.0	1.9	662.4
Other countries									
2010	706.7	177.7	455.6	1,133.5	758.4	53.1	95.6	27.2	3,407.8
2011	956.3	324.3	574.7	1,755.6	799.6	80.9	89.5	21.4	4,602.4
Total									
2010	3,003.2	7,406.0	1,868.1	7,398.8	5,155.0	4,982.0	965.0	304.9	31,083.0
2011	3,565.1	10,065.2	1,990.6	9,699.9	5,421.0	5,070.9	1,024.3	272.6	37,109.6

Table 3-2

Domestic exports to selected countries, customs basis, not seasonally adjusted — Year to date, January to September

	Agricultural and fishing products	Energy products	Forestry products	Industrial goods	Machinery and equipment	Automotive products	Consumer goods	Special transactions trade	Total
millions of dollars									
United States									
2010	13,983.9	65,242.2	10,413.8	40,491.5	30,260.8	38,956.1	7,350.0	2,405.1	209,103.4
2011	14,231.7	77,035.6	9,841.7	47,556.0	31,475.6	38,721.1	6,597.0	2,238.4	227,697.1
Mexico									
2010	962.7	69.9	101.0	762.5	559.8	630.4	57.7	9.7	3,153.7
2011	1,100.5	89.0	108.9	939.4	570.6	494.9	74.7	4.5	3,382.4
Japan									
2010	2,321.8	1,434.8	1,010.4	1,165.4	423.0	50.9	100.9	9.8	6,517.0
2011	2,827.8	1,658.1	1,022.6	1,695.8	503.2	38.8	80.3	12.1	7,838.8
European Union									
Germany									
2010	106.8	171.4	71.5	951.0	1,056.6	26.7	156.0	18.4	2,558.4
2011	114.5	174.4	59.0	841.7	1,162.6	34.6	158.5	16.7	2,561.9
France									
2010	96.2	30.3	109.3	339.4	670.6	27.0	173.4	20.7	1,466.9
2011	126.9	155.8	87.5	568.3	976.9	28.3	166.1	12.9	2,122.7
United Kingdom									
2010	255.7	79.9	164.7	8,424.5	1,474.9	37.5	150.6	56.4	10,644.3
2011	266.1	179.4	145.3	11,354.3	957.2	44.8	131.7	44.3	13,123.0
Italy									
2010	194.4	137.4	242.3	242.6	312.8	6.0	142.8	6.6	1,284.9
2011	327.4	209.3	218.7	288.8	314.1	8.0	74.1	1.9	1,442.4
Other European Union									
2010	629.1	544.3	229.6	2,559.7	1,876.1	120.9	446.4	40.5	6,446.5
2011	915.1	1,309.7	194.9	3,378.8	1,615.0	127.0	450.7	27.2	8,018.4
Total									
2010	1,282.1	963.2	817.4	12,517.1	5,391.0	218.2	1,069.1	142.7	22,400.9
2011	1,750.0	2,028.6	705.4	16,431.9	5,025.8	242.6	981.1	102.9	27,268.3
Newly industrialized countries									
South Korea									
2010	349.0	815.3	367.0	757.3	318.2	49.8	36.4	8.0	2,701.1
2011	782.6	1,349.6	391.8	848.5	301.4	14.2	53.1	5.7	3,746.8
Hong Kong									
2010	293.1	0.5	82.4	563.0	203.7	6.6	53.8	14.7	1,217.7
2011	285.3	0.4	102.5	1,072.1	308.1	5.4	57.9	4.3	1,836.1
Taiwan									
2010	124.7	125.9	184.7	318.4	105.6	2.0	29.9	1.0	892.1
2011	139.2	254.7	216.2	564.0	86.1	1.2	27.3	1.0	1,289.7
Singapore									
2010	44.6	4.9	13.3	134.1	248.6	16.8	33.3	9.2	504.8
2011	39.6	3.9	7.9	110.9	286.9	14.9	25.0	3.8	492.9
Total									
2010	811.3	946.6	647.4	1,772.7	876.1	75.2	153.5	32.9	5,315.6
2011	1,246.6	1,608.6	718.4	2,595.5	982.5	35.6	163.4	14.7	7,365.5
Other countries									
2010	6,402.6	1,540.5	3,619.5	9,757.8	6,028.9	500.6	1,097.1	223.0	29,170.0
2011	7,099.9	2,266.4	4,912.6	12,450.3	6,441.3	622.8	804.8	161.7	34,759.7
Total									
2010	25,764.5	70,197.2	16,609.4	66,467.1	43,539.8	40,431.4	9,828.3	2,823.2	275,660.9
2011	28,256.4	84,686.2	17,309.6	81,669.0	44,999.4	40,155.8	8,701.5	2,534.3	308,312.3

Table 4
Domestic exports by country, customs basis, not seasonally adjusted

	September		January to September		Change
	2010	2011	2010	2011	January to September 2011/ January to September 2010
	millions of dollars				percent
North America					
Greenland	0.4	1.2	5.6	9.3	66.2
Mexico	390.8	453.2	3,153.7	3,382.4	7.3
Saint Pierre and Miquelon	1.0	1.6	11.0	13.1	19.5
United States	23,133.4	27,181.1	209,103.4	227,697.1	8.9
Total	23,525.6	27,637.1	212,273.6	231,101.9	8.9
Western Europe					
Andorra	0.0	0.0	0.1	0.0	-50.8
Austria	32.1	10.9	286.0	232.0	-18.9
Belgium	199.3	136.9	1,527.7	1,510.1	-1.2
Denmark	19.7	19.9	203.7	180.0	-11.6
Faeroe Islands	0.0	0.0	0.2	0.5	137.9
Finland	28.8	54.1	274.5	474.9	73.0
France	181.7	344.5	1,466.9	2,122.7	44.7
Germany	270.6	239.5	2,558.4	2,561.9	0.1
Gibraltar	0.1	31.9	0.3	56.6	...
Greece	6.9	7.4	83.6	62.3	-25.4
Iceland	3.2	3.9	96.3	44.7	-53.6
Italy	156.7	221.6	1,284.9	1,442.4	12.3
Luxembourg	4.0	5.0	36.8	68.8	87.0
Malta	0.4	1.1	105.8	6.0	-94.4
Netherlands	319.7	480.1	2,104.1	3,413.4	62.2
Norway	236.5	281.7	1,759.4	2,109.6	19.9
Portugal	5.6	41.0	170.7	170.3	-0.3
Republic of Ireland (Eire)	27.6	19.3	252.2	290.9	15.3
Spain	93.5	73.1	544.9	636.8	16.9
Sweden	29.7	28.8	267.4	270.4	1.1
Switzerland	96.1	143.6	1,101.2	808.1	-26.6
United Kingdom	1,321.4	1,482.4	10,644.3	13,123.0	23.3
Total	3,033.6	3,626.8	24,769.3	29,585.3	19.4
Other Europe					
Albania	1.9	3.0	20.0	43.3	116.6
Armenia	1.0	2.2	6.1	11.7	91.8
Azerbaijan	0.5	1.4	10.7	8.1	-24.0
Belarus	0.1	0.0	1.2	1.2	2.3
Bosnia and Herzegovina	0.4	0.0	3.4	3.8	9.5
Bulgaria	2.2	1.7	77.0	156.5	103.1
Croatia	1.4	1.2	81.9	11.4	-86.1
Czech Republic	7.7	5.9	83.1	67.0	-19.3
Estonia	1.7	2.3	15.4	70.8	361.2
Georgia	2.5	1.6	9.6	15.0	56.2
Hungary	6.6	8.1	59.3	72.9	22.9
Kazakhstan	5.7	8.6	100.6	107.6	6.9
Kyrgyzstan	0.5	2.3	3.2	5.5	72.7
Latvia	1.5	1.0	81.7	37.3	-54.3
Lithuania	3.0	3.1	23.2	37.3	60.8
Macedonia (Former Yugoslav Republic of Macedonia)	0.6	2.4	7.3	14.2	94.4
Montenegro	0.1	0.1	1.0	0.9	-6.5
Poland	11.8	18.0	109.2	148.2	35.8
Republic of Moldova	0.3	0.1	2.0	0.8	-61.5
Romania	7.2	5.0	80.9	45.9	-43.3
Russian Federation	117.9	151.0	696.7	960.4	37.9
Serbia	0.6	0.8	5.3	5.9	10.5
Slovakia	1.9	13.5	21.8	51.0	133.6
Slovenia	0.9	0.6	30.4	8.0	-73.6
Tajikistan	0.2	0.1	4.5	1.8	-59.9
Turkmenistan	0.4	0.5	2.5	9.5	282.5
Ukraine	12.5	18.8	90.7	97.2	7.1
Uzbekistan	0.2	0.3	4.5	5.1	14.3
Total	191.3	253.8	1,633.2	1,998.3	22.4

Table 4 – continued

Domestic exports by country, customs basis, not seasonally adjusted

	September		January to September		Change
	2010	2011	2010	2011	January to September 2011/ January to September 2010
	millions of dollars				percent
Middle East					
Bahrain	1.1	3.3	57.0	50.5	-11.5
Cyprus	0.9	0.7	7.1	7.7	8.5
Egypt	77.0	56.4	363.8	513.0	41.0
Eritrea	0.0	0.8	2.0	3.2	57.8
Ethiopia	5.4	1.6	121.8	16.7	-86.3
Iran	5.7	7.3	77.9	59.0	-24.3
Iraq	9.8	9.3	211.8	96.2	-54.6
Israel	29.3	20.3	267.2	230.5	-13.7
Jordan	6.7	4.2	46.2	45.4	-1.7
Kuwait	5.4	10.1	66.5	72.1	8.4
Lebanon	2.8	4.8	49.3	57.1	16.0
Libya	2.9	0.3	94.0	37.3	-60.3
Oman	4.2	5.5	74.2	57.3	-22.7
Qatar	2.5	36.4	63.9	128.5	101.2
Saudi Arabia	43.9	51.9	529.4	571.0	7.9
Somalia	0.0	0.7	2.3	1.0	-54.5
Sudan	1.2	24.7	94.8	115.7	22.1
Syria	3.7	1.5	26.0	44.3	70.5
Turkey	80.4	147.3	573.1	898.3	56.7
United Arab Emirates	64.2	75.5	701.8	830.0	18.3
Yemen	1.1	0.3	14.3	7.4	-48.1
Total	348.1	463.0	3,444.2	3,842.3	11.6
Other Africa					
Algeria	18.6	29.7	244.3	155.6	-36.3
Angola	3.2	3.6	145.3	104.8	-27.9
Antarctica	0.0	0.1	0.0	0.1	581.4
Benin	2.5	1.1	9.5	9.1	-4.6
Botswana	0.3	0.2	2.8	3.1	10.6
Burkina Faso	1.5	4.6	14.8	18.2	22.8
Burundi	0.1	0.0	0.7	0.6	-9.4
Cameroon	0.6	0.8	16.0	19.3	20.5
Cape Verde	0.0	0.0	0.9	1.7	91.8
Central African Republic	0.0	0.1	0.1	0.3	174.5
Chad	1.3	0.5	5.1	2.5	-51.5
Comoros	0.0	0.1	0.1	0.2	167.8
Congo	1.5	1.3	12.8	13.0	2.0
Democratic Republic of the Congo	1.1	1.2	9.1	14.3	57.7
Djibouti	0.2	0.0	4.0	0.7	-82.1
Equatorial Guinea	0.6	1.7	3.1	7.5	138.4
French Southern Territories	0.0	0.0	0.0	0.0	-29.3
Gabon	0.8	2.5	13.4	14.0	4.4
Gambia	0.0	0.1	0.5	0.4	-18.9
Ghana	14.5	22.0	114.0	198.9	74.4
Guinea	0.6	2.0	5.1	18.5	262.4
Guinea-Bissau	0.0	0.0	0.0	0.1	...
Ivory Coast	1.1	5.6	12.6	10.8	-14.3
Kenya	6.4	21.1	52.6	55.8	5.9
Lesotho	0.0	0.0	0.1	0.1	-1.8
Liberia	0.6	0.7	9.8	9.6	-1.9
Madagascar	1.1	1.2	38.5	10.4	-72.9
Malawi	0.3	0.3	2.9	3.5	19.0
Mali	0.5	1.4	5.7	14.7	156.1
Mauritania	0.6	0.5	2.8	8.9	221.8
Mauritius	0.8	0.3	3.6	3.9	7.6
Morocco	23.8	2.1	119.6	222.8	86.4
Mozambique	0.8	0.6	9.5	8.5	-9.9
Namibia	1.3	0.3	9.3	4.2	-54.3
Niger	0.1	0.2	1.6	3.6	128.4
Nigeria	9.6	16.3	153.3	138.3	-9.8
Rwanda	0.0	0.1	0.8	0.8	-8.9
Saint Helena	0.0	0.0	0.0	0.0	417.9
Sao Tome and Principe	0.0	0.0	0.0	0.1	148.7
Senegal	2.2	3.2	20.5	22.4	9.5
Seychelles	0.0	0.5	0.7	3.4	379.1

Table 4 – continued

Domestic exports by country, customs basis, not seasonally adjusted

	September		January to September		Change
	2010	2011	2010	2011	January to September 2011/ January to September 2010
	millions of dollars				percent
Sierra Leone	0.6	0.9	7.5	7.3	-2.7
South Africa	38.3	75.1	326.9	449.4	37.5
Swaziland	0.1	0.3	1.2	0.8	-34.4
Togo	0.3	1.1	8.0	11.4	42.8
Tunisia	9.0	19.8	41.6	48.5	16.5
Uganda	0.4	0.4	7.3	6.2	-14.3
United Republic of Tanzania	5.0	2.6	26.7	31.0	16.1
Western Sahara	0.0	0.0	0.0	0.0	-100.0
Zambia	1.1	1.0	21.7	23.9	10.1
Zimbabwe	0.0	0.2	3.9	5.8	49.7
Total	151.7	227.2	1,490.4	1,689.1	13.3
Other Asia					
Afghanistan	3.7	2.4	40.2	28.6	-29.0
Bangladesh	64.9	25.3	472.3	333.7	-29.4
Bhutan	0.0	0.0	1.6	0.0	-97.1
British Indian Ocean Territory	0.6	0.0	2.0	0.0	-99.8
Brunei Darussalam	0.2	0.1	9.6	1.9	-80.3
Cambodia	0.2	1.2	2.2	5.3	141.6
China	1,003.5	1,528.1	8,489.3	11,342.7	33.6
Hong Kong	123.4	116.2	1,217.7	1,836.1	50.8
India	198.9	353.3	1,449.9	1,709.9	17.9
Indonesia	62.4	157.1	708.9	1,228.9	73.4
Japan	699.7	984.9	6,517.0	7,838.8	20.3
Laos	0.0	0.1	1.5	6.2	315.0
Macao	0.1	0.3	1.8	2.0	11.5
Malaysia	36.1	24.3	560.4	578.3	3.2
Maldives	0.3	0.6	3.3	3.3	0.7
Mongolia	1.4	9.0	11.4	68.9	503.9
Myanmar	0.0	0.0	2.7	0.8	-70.3
Nepal	0.2	0.4	2.3	3.1	36.0
North Korea	0.8	1.9	8.1	11.0	36.2
Pakistan	57.3	45.5	316.4	439.8	39.0
Philippines	96.5	44.0	488.5	442.0	-9.5
Singapore	75.6	47.8	504.8	492.9	-2.4
South Korea	363.7	376.0	2,701.1	3,746.8	38.7
Sri Lanka	24.0	2.6	232.6	245.2	5.4
Taiwan	145.5	122.4	892.1	1,289.7	44.6
Thailand	50.2	52.8	494.3	623.2	26.1
Timor-Leste	0.0	0.0	0.0	0.0	...
Viet Nam	19.1	34.4	191.1	216.6	13.4
Total	3,028.2	3,930.8	25,323.1	32,495.8	28.3
Oceania					
American Samoa	0.1	0.0	1.0	1.0	2.6
Australia	115.2	132.3	1,257.0	1,276.3	1.5
Christmas Island	0.2	0.1	0.7	0.3	-64.7
Cocos (Keeling) Islands	0.0	0.0	0.1	0.0	-92.4
Cook Islands	0.0	0.1	0.1	0.2	225.2
Fiji	0.1	0.2	1.9	6.1	225.5
French Polynesia	0.7	0.6	7.8	7.8	0.3
Guam	0.3	0.1	1.1	1.3	19.3
Kiribati	0.0	0.0	0.1	0.1	-8.6
Nauru	0.0	0.0	1.3	0.0	-100.0
New Caledonia	0.5	0.6	14.0	6.3	-54.7
New Zealand	42.5	20.6	219.0	241.3	10.1
Niue	0.0	0.0	0.0	0.0	...
Norfolk Island	0.0	0.0	0.0	0.0	-100.0
Papua New Guinea	1.0	2.9	8.7	33.2	282.7
Pitcairn	0.0	0.0	0.1	0.0	-40.3
Samoa	0.0	0.0	0.3	0.1	-51.7
Solomon Islands	0.0	0.0	0.0	0.3	646.1
Tonga	0.0	0.0	3.4	0.2	-94.4
United States Minor Outlying Islands	1.0	0.7	10.4	8.5	-18.3
Vanuatu	0.1	0.1	1.3	0.8	-37.4
Wallis and Futuna	0.0	0.0	0.0	0.0	...
Total	161.8	158.2	1,528.2	1,583.8	3.6

Table 4 – continued

Domestic exports by country, customs basis, not seasonally adjusted

	September		January to September		Change
	2010	2011	2010	2011	January to September 2011/ January to September 2010
	millions of dollars				percent
South America					
Argentina	36.0	15.1	176.0	353.9	101.1
Bolivia	0.6	0.9	37.6	10.0	-73.3
Brazil	191.6	347.5	1,882.2	2,100.7	11.6
Chile	43.5	47.2	385.6	507.0	31.5
Colombia	66.0	89.0	440.5	507.1	15.1
Ecuador	37.5	21.7	199.2	208.7	4.8
Falkland Islands (Malvinas)	0.0	0.0	0.1	0.1	-51.4
Guyana	1.6	1.2	18.1	24.5	35.0
Paraguay	1.2	1.9	12.8	9.1	-28.8
Peru	48.0	59.6	335.8	371.0	10.5
Suriname	0.8	1.6	7.5	9.0	20.0
Uruguay	57.0	29.6	77.0	46.9	-39.1
Venezuela	51.7	59.7	353.9	443.9	25.4
Total	535.6	675.1	3,926.4	4,592.1	17.0
Central America Antilles					
Anguilla	0.0	1.1	0.7	1.5	129.6
Antigua and Barbuda	3.0	0.7	15.1	7.6	-49.4
Aruba	0.3	0.3	25.0	4.0	-83.8
Bahamas	3.5	4.2	92.8	43.1	-53.5
Barbados	2.9	3.7	26.5	32.9	23.9
Belize	0.3	0.2	4.1	3.5	-14.8
Bermuda	2.5	2.4	28.6	66.7	133.5
British Virgin Islands	0.2	0.1	21.0	47.7	127.0
Cayman Islands	1.0	0.6	5.3	5.3	-0.5
Costa Rica	5.8	9.2	68.4	97.8	42.9
Cuba	9.7	31.9	226.6	282.8	24.8
Dominica	0.4	0.4	3.8	2.5	-34.2
Dominican Republic	16.7	11.4	133.1	111.6	-16.1
El Salvador	1.5	2.5	26.7	26.1	-2.3
Grenada	0.3	0.2	3.8	3.0	-19.1
Guatemala	7.1	11.9	65.3	82.6	26.5
Haiti	5.2	2.6	33.5	27.5	-18.0
Honduras	1.0	5.7	23.1	30.4	31.5
Jamaica	6.3	9.2	102.5	75.6	-26.3
Montserrat	0.0	0.0	0.2	0.2	38.3
Netherlands Antilles	1.5	1.6	14.9	95.4	540.8
Nicaragua	3.5	2.2	17.6	24.4	38.8
Panama	12.4	5.8	100.1	77.9	-22.3
Saint Kitts and Nevis	0.9	0.2	4.7	3.6	-24.1
Saint Lucia	0.6	0.7	5.2	6.6	27.5
Saint Vincent and the Grenadines	1.1	0.7	7.0	5.1	-27.4
Trinidad and Tobago	18.0	28.1	213.3	256.7	20.3
Turks and Caicos Islands	1.1	0.2	3.4	1.5	-55.9
Total	107.1	137.7	1,272.3	1,423.7	11.9
All countries	31,083.0	37,109.6	275,660.9	308,312.3	11.8

Table 5-1

Exports by province of origin, customs basis, not seasonally adjusted — September

	Agricultural and fishing products	Energy products	Forestry products	Industrial goods	Machinery and equipment	Automotive products	Consumer goods	Special transactions trade	Total
millions of dollars									
Domestic exports									
Newfoundland and Labrador									
2010	56.1	574.1	8.3	143.0	3.3	0.2	0.2	2.2	787.5
2011	58.0	781.3	13.7	230.2	2.1	0.1	0.1	2.1	1,087.6
Prince Edward Island									
2010	38.6	0.0	6.1	1.5	6.8	0.2	2.5	6.3	62.1
2011	45.0	0.0	0.0	1.4	13.6	0.3	2.5	6.6	69.4
Nova Scotia									
2010	74.8	17.4	84.9	41.1	113.7	6.6	4.7	2.6	345.7
2011	84.0	19.4	76.7	51.7	116.7	6.6	5.1	2.7	362.8
New Brunswick									
2010	104.5	636.5	117.3	79.9	22.4	1.7	13.3	3.6	979.2
2011	143.2	1,039.9	122.9	147.9	24.0	3.0	13.7	3.5	1,498.0
Quebec									
2010	384.3	148.1	504.9	1,624.0	1,620.0	159.0	329.3	88.4	4,858.0
2011	416.6	232.9	511.4	1,948.5	1,519.1	208.3	315.6	62.4	5,214.7
Ontario									
2010	761.3	190.9	223.6	3,369.8	2,549.7	4,717.8	530.5	130.3	12,473.8
2011	770.6	244.2	243.7	4,368.6	2,800.8	4,685.0	601.0	125.4	13,839.3
Manitoba									
2010	289.4	48.7	17.3	195.1	161.6	43.3	25.5	27.5	808.4
2011	371.3	240.4	16.8	332.7	169.1	51.7	26.5	26.1	1,234.7
Saskatchewan									
2010	606.6	746.3	21.1	493.3	56.5	2.5	0.6	4.1	1,931.1
2011	870.2	921.0	22.3	804.0	59.4	6.8	0.8	3.9	2,688.4
Alberta									
2010	430.7	4,357.7	189.1	844.3	350.2	31.2	10.5	20.7	6,234.4
2011	554.5	5,562.6	171.3	1,121.9	418.9	82.3	10.0	18.9	7,940.5
British Columbia									
2010	256.8	686.3	695.4	398.5	270.1	19.6	47.9	18.9	2,393.5
2011	251.5	1,023.5	811.8	671.9	295.9	27.0	49.1	20.5	3,151.2
Yukon, Northwest Territories and Nunavut ¹									
2010	0.1	0.0	0.0	208.2	0.8	0.0	0.0	0.3	209.4
2011	0.2	0.0	0.0	21.1	1.3	0.0	0.0	0.2	22.9
Total									
2010	3,003.2	7,406.0	1,868.1	7,398.8	5,155.0	4,982.0	965.0	304.9	31,083.0
2011	3,565.1	10,065.2	1,990.6	9,699.9	5,421.0	5,070.9	1,024.3	272.6	37,109.6
Re-exports									
2010	50.8	68.2	5.0	226.6	957.2	101.4	227.7	593.3	2,230.1
2011	39.9	13.3	6.9	372.6	992.5	104.8	272.0	682.9	2,484.8
Total exports									
2010	3,054.0	7,474.1	1,873.1	7,625.4	6,112.3	5,083.4	1,192.7	898.2	33,313.1
2011	3,604.9	10,078.5	1,997.5	10,072.5	6,413.5	5,175.7	1,296.4	955.5	39,594.5

1. Data for the current month do not include some exports from the Harmonized System, Chapter 71, "Natural/cultured pearls, precious stones and metals, coins, etc." for reasons relating to timing.

Table 5-2

Exports by province of origin, customs basis, not seasonally adjusted — Year to date, January to September

	Agricultural and fishing products	Energy products	Forestry products	Industrial goods	Machinery and equipment	Automotive products	Consumer goods	Special transactions trade	Total
millions of dollars									
Domestic exports									
Newfoundland and Labrador									
2010	648.6	4,358.7	86.8	1,295.6	34.0	1.4	1.2	21.3	6,447.5
2011	749.7	5,671.3	118.3	1,921.2	29.4	1.7	1.1	20.0	8,512.6
Prince Edward Island									
2010	340.0	1.1	6.5	19.7	52.1	2.9	28.0	57.6	507.9
2011	345.0	0.0	0.2	15.9	59.6	2.0	26.9	63.3	513.1
Nova Scotia									
2010	698.3	380.1	631.2	374.8	1,039.4	41.6	43.7	28.8	3,238.0
2011	832.5	390.2	708.9	427.4	1,034.6	47.5	43.0	32.0	3,516.0
New Brunswick									
2010	915.9	6,379.7	1,013.2	820.0	216.2	17.6	178.9	33.0	9,574.6
2011	1,063.5	8,286.5	975.5	958.1	235.8	31.7	114.5	30.9	11,696.5
Quebec									
2010	3,258.2	2,123.4	4,530.1	14,350.9	13,028.2	1,167.8	3,123.4	776.2	42,358.2
2011	3,640.4	2,453.5	4,391.7	16,665.5	13,156.1	1,441.9	2,621.9	633.7	45,004.9
Ontario									
2010	5,991.7	1,892.6	2,079.6	29,387.2	22,311.6	38,295.6	5,667.0	1,220.9	106,846.1
2011	6,310.6	2,234.3	2,153.7	37,081.1	22,753.0	37,364.4	5,024.9	1,140.5	114,062.4
Manitoba									
2010	2,713.3	613.4	160.4	1,710.6	1,429.7	324.6	266.1	241.8	7,460.0
2011	2,947.8	1,423.0	171.5	2,390.7	1,599.0	353.5	365.4	199.9	9,450.8
Saskatchewan									
2010	5,207.1	6,740.1	165.0	4,942.7	541.1	31.4	8.6	34.6	17,670.6
2011	6,048.5	7,760.4	195.7	6,870.8	481.4	46.7	8.8	33.0	21,445.3
Alberta									
2010	4,203.9	41,788.5	1,590.3	7,685.4	2,649.7	352.6	91.9	216.9	58,579.2
2011	4,509.5	49,031.4	1,516.3	8,837.9	3,243.9	664.8	88.1	191.7	68,083.6
British Columbia									
2010	1,785.9	5,919.5	6,346.0	4,165.0	2,228.9	195.7	419.2	191.4	21,251.6
2011	1,807.5	7,435.6	7,077.7	5,126.4	2,399.5	201.3	406.5	188.8	24,643.3
Yukon, Northwest Territories and Nunavut ¹									
2010	1.6	0.2	0.4	1,715.1	8.8	0.3	0.2	0.6	1,727.2
2011	1.3	0.1	0.1	1,373.9	7.1	0.4	0.3	0.4	1,383.6
Total									
2010	25,764.5	70,197.2	16,609.4	66,467.1	43,539.8	40,431.4	9,828.3	2,823.2	275,660.9
2011	28,256.4	84,686.2	17,309.6	81,669.0	44,999.4	40,155.8	8,701.5	2,534.3	308,312.3
Re-exports									
2010	431.4	241.1	59.7	2,126.2	7,740.9	821.1	1,555.6	5,312.1	18,288.1
2011	401.0	382.3	60.6	3,280.1	8,104.1	884.9	2,062.7	5,941.4	21,117.0
Total exports									
2010	26,195.9	70,438.3	16,669.1	68,593.3	51,280.7	41,252.5	11,383.9	8,135.3	293,949.0
2011	28,657.4	85,068.6	17,370.3	84,949.1	53,103.5	41,040.7	10,764.2	8,475.7	329,429.3

1. Data for the current month do not include some exports from the Harmonized System Chapter 71, "Natural/cultured pearls, precious stones and metals, coins, etc." for reasons relating to timing.

Table 6-1

Imports by commodity groupings, balance of payments basis, seasonally adjusted — Current dollars

	August 2011	September 2011	Change		Year to date			September 2011/ September 2010	
					2010	2011	Change		
	millions of dollars		percent		millions of dollars		percent		
Total	38,602	38,471	-131	-0.3	307,909	338,598	30,689	10.0	8.9
Agricultural and fishing products	2,803	2,758	-45	-1.6	21,981	24,234	2,253	10.2	9.6
Fruits and vegetables	764	753	-11	-1.4	6,188	6,649	461	7.5	5.3
Fresh fruits and berries	271	265	-7	-2.5	2,203	2,318	115	5.2	8.0
Dried fruits, fruits and fruit preparations	132	132	0	0.0	1,016	1,157	141	13.9	6.6
Fresh vegetables	195	196	1	0.5	1,648	1,720	72	4.3	2.1
Other vegetables and vegetable preparations	165	160	-5	-3.1	1,321	1,455	134	10.1	3.9
Other agricultural and fishing products	2,040	2,005	-34	-1.7	15,794	17,585	1,792	11.3	11.3
Live animals	18	15	-2	-13.4	146	158	12	8.0	-5.1
Meat and meat preparations	218	211	-7	-3.2	1,584	1,865	280	17.7	17.2
Fish and marine animals	193	193	0	0.2	1,493	1,716	223	14.9	10.9
Cocoa, coffee, tea and other food preparations	498	474	-24	-4.8	3,718	4,216	498	13.4	10.8
Dairy produce, eggs and honey	60	56	-4	-7.0	440	478	38	8.7	-1.7
Corn (maize) shelled	49	42	-7	-14.8	329	288	-41	-12.6	68.6
Other cereals and cereal preparations	192	195	3	1.4	1,583	1,661	78	5.0	6.6
Sugar and sugar preparations	203	175	-28	-13.7	1,293	1,625	332	25.6	21.6
Fodder, feed, excluding unmilled cereal	120	119	-1	-0.7	1,040	1,069	30	2.8	4.0
Beverages	307	332	25	8.1	2,772	2,873	101	3.6	3.7
Tobacco	33	29	-4	-12.6	308	268	-40	-13.0	-20.8
Crude vegetable products	147	162	16	10.6	1,080	1,360	281	26.0	32.5
Cotton	1	1	0	-11.8	8	9	1	8.3	16.3
Energy products	4,103	4,336	233	5.7	29,926	38,579	8,653	28.9	32.9
Crude petroleum	2,118	2,328	210	9.9	18,122	20,688	2,566	14.2	27.7
Other energy products	1,985	2,008	23	1.2	11,804	17,890	6,087	51.6	39.5
Coal and other related products	536	449	-87	-16.3	3,949	4,025	77	1.9	-4.1
Petroleum and coal products	1,449	1,559	110	7.6	7,855	13,865	6,010	76.5	60.5
Forestry products	210	216	6	2.7	2,009	1,855	-154	-7.7	-2.7
Forestry products	210	216	6	2.7	2,009	1,855	-154	-7.7	-2.7
Crude wood products	29	25	-4	-13.0	314	255	-59	-18.8	-37.0
Wood fabricated materials	182	191	9	5.1	1,695	1,600	-95	-5.6	4.7
Industrial goods and materials	8,344	8,559	215	2.6	64,285	72,608	8,323	12.9	13.3
Metals and metal ores	3,411	3,518	107	3.1	24,042	29,652	5,609	23.3	19.3
Metals in ores, concentrates and scrap	775	759	-16	-2.1	5,172	6,409	1,237	23.9	21.6
Steel bars, rods, plates, sheets	573	556	-18	-3.1	4,910	5,316	405	8.3	11.9
Other iron and steel products	474	463	-11	-2.3	3,261	3,789	528	16.2	4.0
Precious metals including alloys	1,198	1,366	168	14.0	7,452	10,678	3,226	43.3	31.1
Other non-ferrous metals and alloys	390	374	-16	-4.0	3,247	3,459	212	6.5	9.8
Chemicals and plastics	2,760	2,827	67	2.4	21,720	23,412	1,692	7.8	14.1
Organic chemicals	570	628	58	10.1	5,208	5,130	-78	-1.5	5.9
Plastic materials	899	926	27	3.0	7,554	8,048	493	6.5	7.9
Other chemicals and related products	1,291	1,273	-18	-1.4	8,958	10,235	1,277	14.3	24.0
Other industrial goods and materials	2,173	2,214	41	1.9	18,523	19,544	1,022	5.5	4.0
Crude animal products	17	22	5	26.8	184	204	20	11.0	8.5
Wool and man-made fibres	19	21	2	10.4	189	197	8	4.1	6.6
Crude non-metallic minerals	76	70	-6	-7.7	619	626	7	1.1	22.6
Textile fabricated materials	213	215	2	1.0	1,755	1,892	137	7.8	8.4
Metal fabricated basic products	912	928	16	1.7	7,229	8,151	923	12.8	7.9
Rubber fabricated materials	93	93	0	0.1	744	833	89	11.9	10.5
Oils, fats, animal and vegetable	104	113	8	8.1	913	907	-5	-0.6	7.0
Non-metallic minerals	308	320	12	3.8	2,713	2,793	80	2.9	6.6
Other fabricated materials	429	432	3	0.6	4,177	3,941	-236	-5.6	-10.7

Table 6-1 – continued

Imports by commodity groupings, balance of payments basis, seasonally adjusted — Current dollars

	August 2011	September 2011	Change		Year to date			September 2011/ September 2010	
					2010	2011	Change		
	millions of dollars		percent		millions of dollars		percent		
Machinery and equipment	10,559	10,206	-354	-3.3	84,200	92,271	8,071	9.6	0.5
Industrial and agricultural machinery	3,049	3,078	29	1.0	22,387	26,475	4,088	18.3	7.4
Engines, turbines and electric motors	349	348	-1	-0.3	3,336	3,162	-175	-5.2	-36.9
Drilling mining machinery	213	197	-17	-7.8	1,297	2,301	1,005	77.5	17.6
Excavating machinery	326	348	22	6.8	2,001	2,587	586	29.3	39.8
Metal working machinery	179	174	-5	-3.0	1,197	1,616	419	35.0	17.1
Other industrial machinery	1,517	1,582	66	4.3	11,289	13,188	1,899	16.8	15.0
Agricultural machinery including tractors	465	429	-36	-7.6	3,266	3,620	354	10.8	14.8
Aircraft and other transportation equipment	1,433	1,220	-213	-14.9	10,516	11,862	1,346	12.8	-1.3
Aircraft, engines, parts	768	673	-95	-12.3	6,338	6,730	392	6.2	-15.1
Other transportation equipment and parts	665	547	-119	-17.9	4,178	5,131	954	22.8	23.3
Office machines and equipment	1,136	1,093	-43	-3.8	9,904	10,138	234	2.4	-5.4
Other machinery and equipment	4,942	4,815	-126	-2.6	41,394	43,797	2,404	5.8	-1.7
Other communication and related equipment	1,787	1,691	-96	-5.4	15,181	16,189	1,008	6.6	-9.5
Other equipment and tools	3,154	3,124	-30	-1.0	26,212	27,608	1,396	5.3	3.1
Automotive products	6,267	5,925	-342	-5.5	52,264	53,513	1,248	2.4	6.7
Passenger autos and chassis	2,056	1,832	-224	-10.9	16,754	16,919	165	1.0	2.4
Trucks and other motor vehicles	1,773	1,614	-159	-9.0	13,152	14,320	1,168	8.9	19.0
Motor vehicle parts	2,437	2,479	41	1.7	22,358	22,274	-85	-0.4	3.0
Other consumer goods	5,057	5,033	-24	-0.5	42,953	44,238	1,285	3.0	2.5
Apparel and footwear	1,032	1,043	11	1.0	8,132	9,100	968	11.9	2.7
Apparel and apparel accessories	858	871	13	1.5	6,773	7,576	803	11.9	5.0
Footwear	174	172	-2	-1.1	1,359	1,524	165	12.1	-7.2
Miscellaneous consumer goods	4,025	3,990	-35	-0.9	34,821	35,138	317	0.9	2.4
Television, radios, phonographs	127	123	-3	-2.6	1,175	1,142	-32	-2.8	-2.3
Printed matter	282	282	0	0.0	2,608	2,527	-81	-3.1	-3.2
Watches, sporting goods and toys	493	464	-29	-5.8	4,582	4,359	-223	-4.9	-12.1
House furnishings	743	741	-2	-0.3	6,601	6,513	-89	-1.3	1.0
Photographic goods	205	212	7	3.3	1,926	1,979	53	2.8	-6.2
Miscellaneous end products	2,175	2,167	-7	-0.3	17,929	18,617	688	3.8	8.8
Special transactions trade	476	647	171	35.9	3,680	4,222	542	14.7	48.6
Unallocated balance of payments adjustments	783	792	9	1.1	6,610	7,077	467	7.1	9.7

Table 6-2

Imports by commodity groupings, balance of payments basis, seasonally adjusted — Constant dollars, 2002

	August 2011	September 2011	Change		Year to date			September 2011/ September 2010	
					2010	2011	Change		
	millions of dollars		percent		millions of dollars		percent		
Total	43,135	41,819	-1,316	-3.1	349,742	381,393	31,651	9.0	4.2
Agricultural and fishing products	2,786	2,671	-115	-4.1	22,098	24,164	2,066	9.3	7.5
Fruits and vegetables	773	717	-56	-7.2	6,182	6,634	451	7.3	-4.6
Fresh fruits and berries	274	259	-15	-5.5	2,272	2,430	157	6.9	-5.0
Dried fruits, fruits and fruit preparations	121	119	-2	-1.8	1,022	1,087	65	6.4	-6.6
Fresh vegetables	225	193	-32	-14.0	1,596	1,732	135	8.5	-0.7
Other vegetables and vegetable preparations	153	146	-7	-4.6	1,292	1,385	93	7.2	-7.3
Other agricultural and fishing products	2,013	1,954	-59	-2.9	15,916	17,531	1,615	10.1	12.8
Live animals	17	15	-2	-12.8	145	154	9	6.5	-2.2
Meat and meat preparations	200	193	-6	-3.1	1,551	1,750	199	12.8	18.5
Fish and marine animals	252	269	17	6.7	2,112	2,184	72	3.4	13.5
Cocoa, coffee, tea and other food preparations	590	531	-58	-9.9	3,730	4,792	1,062	28.5	40.2
Dairy produce, eggs and honey	50	52	2	3.8	486	469	-17	-3.6	-16.2
Corn (maize) shelled	28	22	-5	-19.3	318	173	-145	-45.6	11.7
Other cereals and cereal preparations	151	150	-1	-0.6	1,333	1,300	-33	-2.5	-2.9
Sugar and sugar preparations	182	158	-24	-13.4	1,259	1,559	300	23.9	13.6
Fodder, feed, excluding unmilled cereal	97	97	0	-0.5	888	905	17	2.0	3.5
Beverages	292	304	12	4.1	2,579	2,736	157	6.1	3.2
Tobacco	39	34	-5	-13.9	371	321	-49	-13.3	-22.9
Crude vegetable products	114	128	14	12.0	1,133	1,177	44	3.8	-1.6
Cotton	1	1	0	2.9	12	10	-1	-9.5	4.6
Energy products	1,888	1,906	18	1.0	16,450	16,979	529	3.2	5.7
Crude petroleum	752	823	71	9.5	8,538	6,872	-1,665	-19.5	-7.1
Other energy products	1,136	1,083	-53	-4.7	7,912	10,106	2,194	27.7	18.0
Coal and other related products	492	420	-72	-14.7	3,513	3,984	471	13.4	2.3
Petroleum and coal products	644	663	19	3.0	4,399	6,122	1,724	39.2	30.8
Forestry products	285	289	5	1.7	2,615	2,528	-87	-3.3	1.0
Forestry products	285	289	5	1.7	2,615	2,528	-87	-3.3	1.0
Crude wood products	43	36	-6	-14.9	460	383	-76	-16.6	-36.0
Wood fabricated materials	242	253	11	4.6	2,155	2,144	-10	-0.5	10.1
Industrial goods and materials	6,843	6,851	9	0.1	58,596	61,771	3,176	5.4	3.3
Metals and metal ores	2,086	2,141	55	2.6	16,862	18,477	1,615	9.6	7.3
Metals in ores, concentrates and scrap	377	370	-6	-1.7	2,887	3,121	234	8.1	8.7
Steel bars, rods, plates, sheets	437	416	-21	-4.8	4,053	4,187	134	3.3	5.4
Other iron and steel products	319	307	-12	-3.8	2,364	2,589	225	9.5	-0.4
Precious metals including alloys	571	705	134	23.4	4,165	5,323	1,157	27.8	16.6
Other non-ferrous metals and alloys	382	343	-39	-10.3	3,391	3,257	-134	-4.0	-1.1
Chemicals and plastics	2,336	2,296	-39	-1.7	20,853	21,034	181	0.9	2.0
Organic chemicals	388	368	-20	-5.2	3,820	3,308	-512	-13.4	-14.7
Plastic materials	887	888	1	0.1	8,029	8,174	145	1.8	-0.9
Other chemicals and related products	1,061	1,040	-20	-1.9	9,004	9,552	548	6.1	12.7
Other industrial goods and materials	2,421	2,414	-7	-0.3	20,881	22,261	1,380	6.6	1.1
Crude animal products	17	18	2	10.9	211	196	-15	-7.0	-13.8
Wool and man-made fibres	21	23	1	5.7	244	233	-11	-4.3	-7.4
Crude non-metallic minerals	58	57	-1	-2.1	515	497	-18	-3.4	19.6
Textile fabricated materials	277	278	0	0.0	2,340	2,531	191	8.2	4.7
Metal fabricated basic products	955	949	-6	-0.6	7,706	8,782	1,076	14.0	4.2
Rubber fabricated materials	107	104	-3	-2.8	906	999	93	10.3	1.8
Oils, fats, animal and vegetable	93	84	-9	-9.7	896	811	-85	-9.5	-14.1
Non-metallic minerals	379	386	7	1.9	3,278	3,485	207	6.3	6.0
Other fabricated materials	514	516	2	0.4	4,787	4,728	-58	-1.2	-6.9

Table 6-2 – continued

Imports by commodity groupings, balance of payments basis, seasonally adjusted — Constant dollars, 2002

	August 2011	September 2011	Change		Year to date			September 2011/ September 2010	
					2010	2011	Change		
	millions of dollars		percent		millions of dollars		percent		
Machinery and equipment	16,043	15,257	-785	-4.9	121,789	141,378	19,589	16.1	2.9
Industrial and agricultural machinery	3,788	3,737	-51	-1.4	27,444	33,515	6,071	22.1	6.5
Engines, turbines and electric motors	436	428	-8	-1.9	4,131	4,030	-101	-2.5	-37.0
Drilling mining machinery	241	219	-22	-9.2	1,448	2,920	1,472	101.7	17.6
Excavating machinery	413	427	15	3.6	2,502	3,343	842	33.6	36.4
Metal working machinery	234	223	-11	-4.7	1,535	2,144	609	39.6	16.2
Other industrial machinery	1,853	1,891	37	2.0	13,660	16,307	2,647	19.4	13.9
Agricultural machinery including tractors	611	549	-62	-10.2	4,168	4,771	603	14.5	14.8
Aircraft and other transportation equipment	1,661	1,409	-252	-15.2	12,306	14,121	1,814	14.7	-2.8
Aircraft, engines, parts	979	844	-135	-13.8	7,711	8,522	811	10.5	-13.2
Other transportation equipment and parts	682	566	-117	-17.1	4,596	5,599	1,003	21.8	18.3
Office machines and equipment	3,221	3,022	-199	-6.2	22,140	26,936	4,796	21.7	9.2
Other machinery and equipment	7,372	7,089	-283	-3.8	59,898	66,806	6,908	11.5	-0.3
Other communication and related equipment	3,109	2,946	-163	-5.2	25,630	29,038	3,408	13.3	-6.1
Other equipment and tools	4,263	4,143	-120	-2.8	34,269	37,768	3,500	10.2	4.4
Automotive products	7,735	7,248	-487	-6.3	63,503	66,900	3,397	5.3	7.5
Passenger autos and chassis	2,387	2,121	-266	-11.1	19,225	19,638	413	2.1	3.6
Trucks and other motor vehicles	2,060	1,846	-215	-10.4	14,759	16,806	2,047	13.9	21.3
Motor vehicle parts	3,288	3,281	-7	-0.2	29,519	30,456	937	3.2	3.3
Other consumer goods	6,533	6,385	-148	-2.3	55,443	58,701	3,258	5.9	0.7
Apparel and footwear	1,435	1,395	-40	-2.8	11,483	13,105	1,622	14.1	-3.5
Apparel and apparel accessories	1,192	1,158	-34	-2.9	9,607	10,932	1,324	13.8	-2.7
Footwear	244	237	-6	-2.5	1,876	2,173	297	15.8	-7.1
Miscellaneous consumer goods	5,098	4,990	-108	-2.1	43,959	45,596	1,637	3.7	1.9
Television, radios, phonographs	221	211	-10	-4.7	2,000	1,994	-6	-0.3	-2.2
Printed matter	364	356	-7	-2.0	3,226	3,261	35	1.1	-1.2
Watches, sporting goods and toys	656	611	-45	-6.8	6,326	6,048	-278	-4.4	-14.2
House furnishings	963	948	-15	-1.6	8,441	8,578	137	1.6	1.5
Photographic goods	438	471	32	7.3	3,686	4,151	465	12.6	3.7
Miscellaneous end products	2,455	2,393	-62	-2.5	20,280	21,564	1,284	6.3	7.8
Special transactions trade	542	714	172	31.7	4,210	4,790	580	13.8	43.2
Unallocated balance of payments adjustments	481	497	15	3.2	5,039	4,182	-857	-17.0	-5.0

Table 7-1

Imports from selected countries, customs basis, not seasonally adjusted — September

	Agricultural and fishing products	Energy products	Forestry products	Industrial goods	Machinery and equipment	Automotive products	Consumer goods	Special transactions trade	Total
millions of dollars									
United States									
2010	1,463.8	1,152.3	164.3	4,395.3	4,203.2	3,841.2	2,016.6	380.4	17,617.1
2011	1,568.5	1,283.8	165.4	4,971.4	4,467.1	4,037.8	2,039.8	562.6	19,096.6
Mexico									
2010	71.5	87.3	0.5	185.2	852.2	728.2	106.7	5.1	2,036.7
2011	69.1	187.7	0.6	190.9	775.9	825.1	99.7	3.4	2,152.5
Japan									
2010	5.4	28.9	0.2	101.7	430.5	558.2	105.8	0.3	1,231.0
2011	4.8	20.5	0.0	92.8	447.4	412.8	99.2	2.7	1,080.3
European Union									
Germany									
2010	33.1	1.3	1.0	155.4	364.7	219.8	146.5	1.2	922.9
2011	32.2	3.2	0.7	174.9	411.8	232.0	153.4	1.3	1,009.3
France									
2010	70.8	6.7	0.3	105.6	139.9	6.1	135.9	0.3	465.8
2011	86.0	31.1	0.3	53.6	130.5	4.2	123.9	0.3	429.8
United Kingdom									
2010	43.3	292.8	0.0	146.6	245.5	39.9	97.7	1.4	867.3
2011	45.7	72.7	0.1	169.7	272.8	56.3	118.4	1.1	736.8
Italy									
2010	65.5	25.8	1.1	71.5	137.6	21.4	96.1	0.3	419.4
2011	73.4	17.2	1.1	84.9	127.6	37.0	106.4	0.5	448.2
Other European Union									
2010	117.6	110.9	3.3	254.1	554.8	72.3	292.3	4.7	1,409.9
2011	128.2	270.5	3.2	315.5	369.3	80.9	348.7	0.8	1,517.1
Total									
2010	330.4	437.5	5.7	733.2	1,442.5	359.6	768.5	8.0	4,085.3
2011	365.4	394.8	5.5	798.6	1,311.9	410.3	850.8	3.9	4,141.2
Newly industrialized countries									
South Korea									
2010	4.2	46.3	0.0	64.0	247.3	151.2	17.8	0.1	531.0
2011	4.9	22.6	0.0	111.4	211.6	179.9	19.5	0.1	550.0
Hong Kong									
2010	2.5	0.0	0.0	2.3	17.7	0.7	15.1	0.0	38.3
2011	1.9	0.0	0.0	2.8	6.0	0.2	13.3	0.1	24.3
Taiwan									
2010	6.2	0.0	0.4	73.3	234.3	14.2	38.2	0.1	366.7
2011	6.8	0.0	0.5	72.0	239.1	16.8	37.2	0.1	372.6
Singapore									
2010	3.3	42.2	0.1	11.2	57.8	0.4	41.3	0.1	156.5
2011	4.2	75.5	0.0	4.2	56.6	0.4	25.2	0.2	166.1
Total									
2010	16.2	88.5	0.5	150.9	557.1	166.5	112.4	0.3	1,092.4
2011	17.8	98.1	0.5	190.3	513.3	197.3	95.1	0.5	1,112.9
Other countries									
2010	847.8	1,801.3	60.2	1,930.1	2,823.1	204.8	2,357.0	26.1	10,050.4
2011	745.2	2,346.0	52.1	2,320.2	2,694.8	215.1	2,338.1	69.1	10,780.6
Total									
2010	2,735.7	3,595.9	231.3	7,496.3	10,308.7	5,858.6	5,467.0	420.1	36,113.7
2011	2,771.5	4,330.9	224.2	8,564.3	10,210.5	6,098.5	5,522.8	642.2	38,364.8

Table 7-2

Imports from selected countries, customs basis, not seasonally adjusted — Year to date, January to September

	Agricultural and fishing products	Energy products	Forestry products	Industrial goods	Machinery and equipment	Automotive products	Consumer goods	Special transactions trade	Total
millions of dollars									
United States									
2010	12,441.7	9,348.3	1,463.5	37,868.4	37,348.3	34,433.4	16,973.4	3,117.2	152,994.1
2011	13,403.9	12,270.9	1,380.6	41,252.5	39,770.2	35,380.4	17,164.6	3,521.0	164,144.0
Mexico									
2010	1,120.9	587.2	4.2	1,321.4	5,896.4	6,250.2	833.6	43.3	16,057.3
2011	1,121.1	1,132.7	3.8	1,726.9	6,258.8	7,081.9	909.7	54.3	18,289.2
Japan									
2010	49.8	81.0	0.8	904.3	3,631.2	4,518.9	802.1	3.0	9,991.1
2011	49.0	49.3	0.6	870.7	3,929.7	3,400.1	800.8	7.3	9,107.6
European Union									
Germany									
2010	203.9	39.5	9.8	1,447.4	2,883.0	2,445.5	1,299.3	17.2	8,345.5
2011	232.9	19.7	8.8	1,716.7	3,468.2	2,614.3	1,374.7	8.6	9,443.8
France									
2010	518.7	82.1	1.6	645.6	1,230.3	73.7	1,196.6	6.6	3,755.2
2011	567.7	84.5	3.1	657.6	1,422.6	59.5	1,124.2	5.1	3,924.4
United Kingdom									
2010	312.7	2,777.8	0.5	1,424.6	2,138.6	332.8	946.3	36.2	7,969.7
2011	307.3	2,403.6	0.4	1,563.9	2,388.4	385.9	1,032.0	26.2	8,107.8
Italy									
2010	463.5	160.2	9.9	699.4	1,094.1	175.5	816.0	2.7	3,421.3
2011	513.5	102.1	11.4	830.4	1,219.2	215.6	895.4	3.7	3,791.3
Other European Union									
2010	837.7	1,785.7	31.2	2,142.6	3,550.8	581.8	3,009.2	21.0	11,960.0
2011	914.7	2,787.9	31.8	2,983.5	3,627.0	661.4	2,699.4	9.4	13,715.1
Total									
2010	2,336.6	4,845.3	53.1	6,359.6	10,896.8	3,609.3	7,267.4	83.7	35,451.8
2011	2,536.0	5,397.9	55.6	7,752.1	12,125.4	3,936.7	7,125.7	52.9	38,982.3
Newly industrialized countries									
South Korea									
2010	42.9	223.0	0.2	590.1	1,782.2	1,588.4	152.7	0.8	4,380.1
2011	45.2	259.0	0.2	937.8	2,103.7	1,465.3	157.2	0.9	4,969.3
Hong Kong									
2010	20.6	0.1	0.5	20.5	114.4	3.8	113.1	0.3	273.2
2011	22.7	0.0	0.1	46.3	72.2	1.7	108.0	0.4	251.4
Taiwan									
2010	55.9	19.9	5.9	647.7	1,619.5	120.4	304.2	1.1	2,774.5
2011	52.0	0.3	3.8	831.4	2,243.2	134.2	295.4	1.1	3,561.5
Singapore									
2010	26.4	42.2	0.2	90.8	447.1	3.2	169.7	1.3	781.0
2011	26.6	279.8	0.5	133.9	430.9	2.9	223.7	0.7	1,098.9
Total									
2010	145.8	285.2	6.8	1,349.1	3,963.1	1,715.8	739.6	3.5	8,208.9
2011	146.5	539.1	4.6	1,949.4	4,850.0	1,604.2	784.3	3.2	9,881.2
Other countries									
2010	5,781.1	15,301.2	510.6	15,523.5	21,774.9	1,609.8	16,313.1	254.3	77,068.5
2011	6,642.4	19,980.1	444.2	18,701.1	24,287.1	1,961.8	17,311.5	315.4	89,643.7
Total									
2010	21,879.7	30,448.3	2,039.0	63,326.4	83,510.9	52,137.4	42,929.3	3,504.8	299,775.8
2011	23,905.0	39,370.1	1,889.4	72,252.8	91,221.3	53,365.4	44,096.8	3,954.1	330,054.8

Table 8
Imports by country, customs basis, not seasonally adjusted

	September		January to September		Change
	2010	2011	2010	2011	January to September 2011/ January to September 2010
	millions of dollars				percent
North America					
Canada	330.4	454.7	3,020.7	2,998.9	-0.7
Greenland	0.0	0.3	0.4	0.8	85.0
Mexico	2,036.7	2,152.5	16,057.3	18,289.2	13.9
Saint Pierre and Miquelon	0.2	0.0	1.1	1.8	67.3
United States	17,617.1	19,096.6	152,994.1	164,144.0	7.3
Total	19,984.6	21,704.1	172,073.6	185,434.7	7.8
Western Europe					
Andorra	0.0	0.0	0.2	0.3	33.5
Austria	90.2	122.1	893.1	954.6	6.9
Belgium	149.2	176.4	1,216.1	1,263.5	3.9
Denmark	315.2	81.0	1,677.8	1,135.3	-32.3
Faeroe Islands	0.7	0.6	4.0	6.4	61.3
Finland	75.0	127.2	683.1	1,252.4	83.3
France	465.8	429.8	3,755.2	3,924.4	4.5
Germany	922.9	1,009.3	8,345.5	9,443.8	13.2
Gibraltar	0.0	0.0	2.2	1.7	-25.0
Greece	12.8	8.3	107.5	127.4	18.5
Iceland	2.5	4.7	26.5	23.8	-10.2
Italy	419.4	448.2	3,421.3	3,791.3	10.8
Luxembourg	11.2	7.5	68.0	85.7	26.0
Malta	1.4	2.2	12.7	19.8	55.1
Netherlands	123.9	239.1	1,314.8	1,818.3	38.3
Norway	297.5	463.1	2,173.9	3,035.7	39.6
Portugal	24.1	23.8	245.5	229.6	-6.5
Republic of Ireland (Eire)	96.1	100.4	1,221.7	922.3	-24.5
Spain	121.5	155.0	1,088.7	1,309.4	20.3
Sweden	148.2	173.6	1,520.9	1,678.8	10.4
Switzerland	264.4	273.4	2,228.1	2,258.9	1.4
United Kingdom	867.3	736.8	7,969.7	8,107.8	1.7
Total	4,409.4	4,582.5	37,976.7	41,391.2	9.0
Other Europe					
Albania	0.8	0.4	3.0	4.8	62.2
Armenia	3.7	7.6	19.4	43.7	125.2
Azerbaijan	0.0	0.0	385.6	310.3	-19.5
Belarus	3.2	28.3	33.8	32.8	-2.9
Bosnia and Herzegovina	1.1	0.9	5.8	8.4	43.6
Bulgaria	8.5	17.2	50.2	100.1	99.5
Croatia	2.0	2.1	25.5	20.9	-18.0
Czech Republic	32.3	28.1	215.9	278.8	29.1
Estonia	6.5	3.6	20.0	72.4	262.5
Georgia	14.8	9.8	90.6	85.9	-5.2
Hungary	25.9	39.3	260.2	260.5	0.1
Kazakhstan	204.1	234.6	1,652.3	2,201.8	33.3
Kyrgyzstan	0.0	0.0	0.1	0.1	55.4
Latvia	1.2	1.5	7.3	12.8	74.7
Lithuania	30.9	48.7	332.3	548.3	65.0
Macedonia (Former Yugoslav Republic of Macedonia)	1.1	0.5	6.3	5.8	-8.1
Montenegro	0.1	0.1	0.3	0.5	36.9
Poland	77.3	93.9	659.5	1,138.7	72.7
Republic of Moldova	0.3	0.3	4.8	1.6	-67.1
Romania	32.8	40.9	150.9	252.8	67.5
Russian Federation	211.0	55.9	1,037.0	950.3	-8.4
Serbia	1.3	1.2	9.5	11.7	23.8
Slovakia	17.1	14.6	130.1	176.0	35.2
Slovenia	8.2	12.7	81.5	75.4	-7.4
Tajikistan	0.0	0.0	0.0	0.0	-72.1
Turkmenistan	0.3	0.2	0.6	0.6	8.7
Ukraine	21.1	13.0	70.9	105.0	48.0
Uzbekistan	0.0	0.1	1.3	1.7	35.4
Total	705.7	655.5	5,254.6	6,701.8	27.5

Table 8 – continued

Imports by country, customs basis, not seasonally adjusted

	September		January to September		Change
	2010	2011	2010	2011	January to September 2011/ January to September 2010
	millions of dollars				percent
Middle East					
Bahrain	0.2	0.1	2.2	3.0	32.6
Cyprus	0.3	0.1	2.2	2.3	3.1
Egypt	26.8	48.9	220.7	313.6	42.1
Eritrea	0.0	39.9	0.3	226.3	...
Ethiopia	1.0	1.2	11.6	14.4	24.0
Iran	3.5	2.6	29.9	26.7	-10.7
Iraq	96.5	196.3	1,278.3	1,681.8	31.6
Israel	82.7	96.1	755.6	742.1	-1.8
Jordan	1.9	1.2	15.2	14.2	-6.7
Kuwait	0.0	0.0	31.5	55.1	74.8
Lebanon	1.3	1.2	12.3	13.7	11.3
Libya	3.3	0.0	19.9	5.0	-74.7
Oman	1.6	0.8	16.2	12.3	-24.2
Qatar	1.5	1.4	67.4	323.1	379.5
Saudi Arabia	314.4	250.2	1,672.4	2,045.9	22.3
Somalia	0.0	0.0	0.0	0.1	100.1
Sudan	7.7	9.1	64.7	94.1	45.5
Syria	0.7	33.8	5.4	37.7	597.1
Turkey	56.8	99.5	494.2	801.1	62.1
United Arab Emirates	3.3	4.7	131.9	843.1	539.3
Yemen	0.0	0.0	0.1	0.1	-17.8
Total	603.5	787.2	4,832.1	7,255.5	50.2
Other Africa					
Algeria	84.7	558.6	2,620.1	4,003.3	52.8
Angola	190.5	94.1	1,197.9	1,744.1	45.6
Antarctica	0.0	0.0	0.3	0.5	100.3
Benin	0.0	0.0	0.0	0.0	90.8
Botswana	0.0	0.0	6.9	0.1	-98.4
Bouvet Island	0.0	0.0	0.0	0.0	...
Burkina Faso	0.1	3.1	20.8	5.2	-75.0
Burundi	0.0	0.0	0.0	0.2	554.7
Cameroon	0.5	0.8	4.5	4.7	4.4
Cape Verde	0.0	0.0	0.0	0.1	209.4
Central African Republic	0.0	0.3	0.1	0.4	317.2
Chad	0.8	0.1	0.9	0.3	-66.0
Comoros	0.0	0.0	0.0	0.1	231.5
Congo	1.1	0.2	3.9	2.0	-47.6
Democratic Republic of the Congo	0.0	0.1	0.7	0.8	11.6
Djibouti	0.0	0.0	0.0	0.0	-7.2
Equatorial Guinea	0.0	0.0	442.8	567.7	28.2
French Southern Territories	0.0	0.0	0.0	0.0	...
Gabon	0.0	0.1	0.3	3.4	...
Gambia	0.0	0.0	0.1	0.1	-26.2
Ghana	2.9	4.0	18.4	51.6	179.9
Guinea	2.4	6.2	34.2	42.1	23.2
Guinea-Bissau	0.0	0.0	0.0	0.0	-6.5
Ivory Coast	97.0	122.2	322.0	483.4	50.1
Kenya	1.8	1.4	12.3	17.3	40.9
Lesotho	1.1	0.8	12.8	9.3	-27.6
Liberia	0.6	3.6	31.4	25.1	-20.0
Madagascar	6.8	6.3	37.0	44.4	19.9
Malawi	8.7	0.1	57.8	113.8	97.0
Mali	0.0	0.0	0.5	0.5	9.2
Mauritania	0.0	0.0	0.2	0.1	-51.8
Mauritius	0.8	0.9	7.9	7.9	-0.6
Morocco	4.3	5.3	71.2	61.6	-13.6
Mozambique	0.1	0.1	1.3	2.9	115.7
Namibia	0.1	0.0	156.7	160.6	2.5
Niger	0.0	0.0	0.6	1.0	50.3
Nigeria	199.6	325.3	1,308.7	1,982.4	51.5
Rwanda	0.0	0.0	0.1	0.4	209.9
Saint Helena	0.0	0.0	0.0	0.1	263.3
Sao Tome and Principe	0.0	0.0	0.2	0.1	-52.6
Senegal	0.1	0.1	0.8	0.7	-16.7

Table 8 – continued

Imports by country, customs basis, not seasonally adjusted

	September		January to September		Change
	2010	2011	2010	2011	January to September 2011/ January to September 2010
	millions of dollars				percent
Seychelles	0.0	0.0	0.2	0.4	138.9
Sierra Leone	0.1	0.1	1.5	2.3	58.4
South Africa	72.7	70.1	540.4	688.3	27.4
Swaziland	0.2	0.1	1.2	1.4	11.6
Togo	1.3	1.3	2.7	12.0	339.3
Tunisia	4.5	4.5	42.4	43.1	1.5
Uganda	0.1	0.2	3.0	2.8	-7.6
United Republic of Tanzania	0.1	0.1	2.4	3.6	53.0
Western Sahara	0.0	0.0	0.0	0.0	-100.0
Zambia	0.1	0.1	1.0	0.9	-10.2
Zimbabwe	0.2	0.2	3.5	4.2	19.1
Total	683.5	1,210.4	6,971.9	10,097.4	44.8
Other Asia					
Afghanistan	0.0	0.0	1.2	1.2	2.3
Bangladesh	81.0	98.2	623.3	876.5	40.6
Bhutan	0.0	0.0	0.0	0.0	46.1
British Indian Ocean Territory	0.0	0.0	0.0	0.1	289.5
Brunei Darussalam	0.0	0.5	0.0	6.1	...
Cambodia	41.2	62.2	257.7	400.8	55.5
China	4,476.6	4,352.2	32,309.6	34,787.7	7.7
Hong Kong	38.3	24.3	273.2	251.4	-8.0
India	188.8	214.5	1,514.6	1,861.9	22.9
Indonesia	104.6	133.5	898.4	1,084.5	20.7
Japan	1,231.0	1,080.3	9,991.1	9,107.6	-8.8
Laos	0.9	0.5	6.1	5.0	-19.2
Macao	0.7	0.8	7.4	6.5	-12.4
Malaysia	206.1	175.6	1,711.1	1,566.6	-8.4
Maldives	0.0	0.0	0.1	0.2	155.3
Mongolia	17.5	7.3	149.0	149.0	0.0
Myanmar	0.0	0.0	0.0	0.1	342.0
Nepal	1.9	2.2	11.2	11.3	1.5
North Korea	0.0	0.0	0.1	0.1	-48.4
Pakistan	24.9	21.3	203.5	191.0	-6.2
Philippines	81.7	82.3	655.9	688.4	5.0
Singapore	156.5	166.1	781.0	1,098.9	40.7
South Korea	531.0	550.0	4,380.1	4,969.3	13.5
Sri Lanka	11.7	14.7	91.6	114.5	25.0
Taiwan	366.7	372.6	2,774.5	3,561.5	28.4
Thailand	213.5	246.5	1,751.2	2,009.3	14.7
Timor-Leste	0.4	0.0	1.2	0.2	-79.4
Viet Nam	128.7	123.1	854.4	957.1	12.0
Total	7,903.8	7,728.9	59,247.6	63,706.8	7.5
Oceania					
American Samoa	0.0	0.0	0.3	0.5	100.7
Australia	166.2	158.8	1,223.9	1,326.2	8.4
Christmas Island	0.0	0.0	0.1	0.1	-46.7
Cocos (Keeling) Islands	0.0	0.0	0.0	0.0	-35.7
Cook Islands	0.1	0.0	0.1	0.1	-52.6
Fiji	0.3	0.4	4.3	3.5	-19.3
French Polynesia	0.2	0.0	0.8	0.7	-12.3
Guam	0.0	0.0	0.0	0.1	208.8
Heard Island and McDonald Islands	0.0	0.0	0.0	0.0	-63.2
Kiribati	0.0	0.0	0.0	0.0	79.5
Nauru	0.0	0.0	0.1	0.0	-43.6
New Caledonia	0.0	0.0	0.1	0.1	21.4
New Zealand	31.9	41.2	344.5	424.5	23.2
Niue	0.0	0.0	0.0	0.0	-19.8
Norfolk Island	0.0	0.0	0.0	0.0	216.7
Papua New Guinea	0.3	0.2	1.1	0.7	-41.3
Pitcairn	0.0	0.0	0.0	0.1	105.1
Samoa	0.0	0.0	0.3	0.0	-96.2
Solomon Islands	0.0	0.0	0.1	0.1	51.0
Tonga	0.0	0.0	0.0	0.0	133.7
United States Minor Outlying Islands	0.2	0.3	3.0	2.2	-27.3
Vanuatu	0.2	0.0	0.5	0.0	-92.1

Table 8 – continued

Imports by country, customs basis, not seasonally adjusted

	September		January to September		Change
	2010	2011	2010	2011	January to September 2011/ January to September 2010
	millions of dollars				percent
Wallis and Futuna	0.0	0.0	0.0	0.0	-48.4
Total	199.5	201.0	1,579.4	1,759.1	11.4
South America					
Argentina	248.7	176.6	875.0	1,545.3	76.6
Bolivia	8.0	24.6	95.8	178.4	86.2
Brazil	504.9	316.2	2,597.1	2,866.0	10.4
Chile	112.0	128.8	1,482.4	1,480.8	-0.1
Colombia	44.2	51.9	564.3	526.7	-6.7
Ecuador	16.7	14.8	158.2	167.8	6.0
Falkland Islands (Malvinas)	0.0	0.0	0.0	0.3	...
Guyana	31.5	48.7	207.6	303.2	46.0
Paraguay	1.0	0.8	7.3	3.7	-49.4
Peru	286.6	410.3	2,625.7	3,250.7	23.8
Suriname	46.9	31.8	395.1	225.9	-42.8
Uruguay	1.2	2.6	47.8	29.6	-37.9
Venezuela	104.8	12.9	673.0	599.0	-11.0
Total	1,406.4	1,220.0	9,729.4	11,177.4	14.9
Central America Antilles					
Anguilla	0.0	0.0	0.2	0.2	-7.2
Antigua and Barbuda	0.0	0.0	0.2	0.3	46.5
Aruba	0.0	0.0	0.1	5.5	...
Bahamas	19.4	0.9	47.2	16.2	-65.7
Barbados	0.5	0.5	6.5	4.5	-29.6
Belize	0.3	1.1	4.5	6.0	33.7
Bermuda	0.2	0.1	0.9	0.7	-24.6
British Virgin Islands	0.3	0.1	0.5	0.4	-20.7
Cayman Islands	0.0	0.0	0.3	0.8	170.8
Costa Rica	31.0	36.9	333.0	362.8	9.0
Cuba	30.7	65.9	478.4	559.7	17.0
Dominica	0.0	0.0	0.1	0.2	72.1
Dominican Republic	11.6	12.5	103.4	106.4	2.9
El Salvador	4.9	6.9	67.7	112.5	66.0
Grenada	0.2	0.1	0.6	1.0	73.7
Guatemala	23.1	29.1	238.8	333.9	39.8
Haiti	2.5	2.2	20.2	20.0	-0.9
Honduras	11.3	11.1	119.1	146.6	23.1
Jamaica	10.9	40.4	117.8	192.5	63.4
Montserrat	0.1	0.0	0.3	0.2	-17.9
Netherlands Antilles	0.1	0.0	0.2	22.6	...
Nicaragua	21.3	26.8	145.1	247.7	70.7
Panama	10.6	10.6	63.4	92.1	45.3
Saint Kitts and Nevis	0.8	0.9	5.5	6.2	12.5
Saint Lucia	0.0	0.0	0.2	0.3	45.8
Saint Vincent and the Grenadines	0.0	0.0	0.1	0.2	69.0
Trinidad and Tobago	37.3	28.8	356.3	291.9	-18.1
Turks and Caicos Islands	0.0	0.0	0.1	0.1	-5.6
Total	217.4	275.0	2,110.6	2,531.2	19.9
All countries	36,113.7	38,364.8	299,775.8	330,054.8	10.1

Table 9-1
Imports by province of clearance, customs basis, not seasonally adjusted — September

	Agricultural and fishing products	Energy products	Forestry products	Industrial goods	Machinery and equipment	Automotive products	Consumer goods	Special transactions trade	Total
millions of dollars									
Newfoundland and Labrador									
2010	3.0	223.7	0.0	4.3	28.8	0.1	7.4	0.0	267.2
2011	3.2	263.1	0.0	5.8	14.6	0.1	0.7	1.6	288.9
Prince Edward Island									
2010	0.3	0.0	0.0	0.0	0.3	0.0	0.0	0.0	0.6
2011	0.3	0.0	0.0	7.1	0.5	0.0	0.0	0.0	7.9
Nova Scotia									
2010	32.3	91.5	1.9	81.8	87.7	242.3	17.4	4.2	559.1
2011	44.9	11.1	1.4	97.0	82.9	186.3	11.4	1.1	436.0
New Brunswick									
2010	62.6	799.8	11.3	85.6	74.9	26.2	21.9	2.0	1,084.4
2011	71.4	848.5	10.2	106.6	73.1	34.3	16.6	1.7	1,162.4
Quebec									
2010	602.9	1,387.0	65.3	1,217.0	1,504.9	171.3	1,002.9	43.3	5,994.6
2011	521.5	1,594.6	52.1	1,408.8	1,561.6	230.6	1,018.2	45.9	6,433.3
Ontario									
2010	1,390.1	542.7	80.7	4,504.5	6,036.3	4,833.0	3,387.1	330.5	21,104.9
2011	1,456.3	737.0	78.8	5,040.0	5,759.1	5,002.7	3,417.5	558.8	22,050.3
Manitoba									
2010	77.9	50.3	6.9	267.3	664.6	142.0	141.7	8.9	1,359.6
2011	74.3	45.3	7.5	316.4	617.0	201.8	150.4	7.1	1,419.8
Saskatchewan									
2010	31.9	47.0	1.6	176.3	289.7	76.5	22.4	3.1	648.4
2011	31.4	86.6	4.7	183.5	335.0	82.3	28.7	3.8	755.9
Alberta									
2010	148.3	140.4	10.1	457.9	601.8	96.1	132.1	13.3	1,600.0
2011	164.3	393.1	13.1	610.9	737.5	117.2	147.3	11.2	2,194.6
British Columbia									
2010	381.5	313.3	53.6	701.1	1,018.9	271.0	734.1	14.9	3,488.5
2011	399.9	330.2	56.4	788.0	1,028.1	243.2	731.8	10.8	3,588.5
Yukon, Northwest Territories and Nunavut									
2010	4.9	0.2	0.0	0.4	0.7	0.0	0.0	0.0	6.3
2011	3.9	21.6	0.0	0.2	1.0	0.1	0.2	0.0	27.1
Total									
2010	2,735.7	3,595.9	231.3	7,496.3	10,308.7	5,858.6	5,467.0	420.1	36,113.7
2011	2,771.5	4,330.9	224.2	8,564.3	10,210.5	6,098.5	5,522.8	642.2	38,364.8

Table 9-2

Imports by province of clearance, customs basis, not seasonally adjusted — Year to date, January to September

	Agricultural and fishing products	Energy products	Forestry products	Industrial goods	Machinery and equipment	Automotive products	Consumer goods	Special transactions trade	Total
millions of dollars									
Newfoundland and Labrador									
2010	32.0	1,998.2	0.1	39.1	186.2	0.8	11.6	2.9	2,270.8
2011	27.4	1,990.1	0.0	86.3	347.0	0.8	10.9	6.1	2,468.7
Prince Edward Island									
2010	3.2	0.0	0.1	5.4	1.5	0.1	0.2	0.1	10.5
2011	3.2	0.0	0.0	31.4	2.3	0.1	0.3	0.3	37.5
Nova Scotia									
2010	301.9	1,301.4	13.5	899.1	770.3	2,516.9	132.1	22.5	5,957.6
2011	447.5	1,371.9	12.4	969.4	1,569.3	1,982.9	138.6	20.5	6,512.5
New Brunswick									
2010	399.1	5,800.9	84.7	787.6	739.5	320.4	209.0	17.0	8,358.1
2011	437.4	7,665.6	85.3	1,071.5	765.1	306.1	185.9	15.4	10,532.3
Quebec									
2010	3,484.2	12,303.3	540.8	10,963.5	12,727.6	1,592.3	8,214.1	407.4	50,233.1
2011	4,076.5	14,342.5	445.3	12,726.3	13,960.4	1,822.2	8,033.8	377.8	55,784.7
Ontario									
2010	11,980.7	3,717.9	745.7	37,317.3	48,104.7	42,998.1	27,001.4	2,740.5	174,606.2
2011	12,792.8	7,567.9	683.2	41,461.5	51,071.4	43,739.5	28,009.3	3,230.1	188,555.8
Manitoba									
2010	662.0	435.3	69.3	2,608.3	4,406.8	1,042.8	1,185.3	65.9	10,475.7
2011	729.5	425.0	68.9	2,922.6	5,144.1	1,341.5	1,211.6	66.8	11,910.0
Saskatchewan									
2010	246.2	493.6	17.9	1,656.7	2,755.2	722.1	192.7	18.3	6,102.9
2011	277.4	619.2	25.6	1,847.5	2,889.9	888.4	201.3	16.9	6,766.1
Alberta									
2010	1,389.6	1,978.3	89.9	3,578.8	5,236.4	803.3	945.5	106.5	14,128.3
2011	1,456.8	2,422.3	99.1	4,763.3	6,793.0	1,042.9	1,108.9	99.7	17,786.0
British Columbia									
2010	3,326.9	2,384.3	477.1	5,468.9	8,534.9	2,140.2	5,037.2	123.1	27,492.6
2011	3,614.1	2,905.8	469.6	6,370.6	8,639.6	2,240.4	5,195.7	120.3	29,556.1
Yukon, Northwest Territories and Nunavut									
2010	53.9	35.1	0.0	1.7	47.9	0.5	0.3	0.5	140.0
2011	42.3	59.9	0.0	2.5	39.3	0.5	0.5	0.1	145.1
Total									
2010	21,879.7	30,448.3	2,039.0	63,326.4	83,510.9	52,137.4	42,929.3	3,504.8	299,775.8
2011	23,905.0	39,370.1	1,889.4	72,252.8	91,221.3	53,365.4	44,096.8	3,954.1	330,054.8

Technical notes

The Canadian international merchandise trade statistical program

Introduction

The objective of this text is to provide a general overview of the Canadian International Merchandise Trade Statistical Program, with special reference to concepts and definitions. The text is intended for the general user and simplicity is emphasized. More technical details can be obtained from the International Trade Division, Statistics Canada upon request.

Conceptual framework

1. Objectives and coverage: The primary objective of the Canadian International Merchandise Trade Statistical Program is to measure the change in the stock of material resources of Canada resulting from the movement of merchandise into or out of the country. Information on imports and exports are inputs into the System of National Accounts, particularly in the balance of payments and gross domestic product, and are used in the formulation of trade and budgetary policies. Governments, importers, exporters, manufacturers and shipping companies use international merchandise trade statistics to:

- monitor import penetration and export performance,
- monitor commodity price and volume changes,
- examine transport implications.

2. Trade statistics (customs basis / balance of payments basis): Merchandise trade statistics are reported and presented on two different bases: customs basis and balance of payment basis.

When goods are imported into or exported from Canada, declarations must be filed with customs, giving such information as description and value of the goods, origin and port of clearance of commodities and mode of transport. Most of this information is required for the purposes of customs administration. Statistics developed from administrative records of customs are commonly referred to as customs-based trade statistics.

Customs-based trade statistics are more accurate at measuring imports than they are at measuring exports. This is the case because customs are typically more vigilant with respect to goods entering the country than they are with goods leaving the country.

Customs-based export statistics may understate or incorrectly portray the destination of exports. Export statistics are understated when the proper documentation is not filed with Customs. Exports are incorrectly portrayed when the country of final destination is inaccurately reported on the customs documentation. This occurs most frequently when goods are routed through an intermediary country before continuing on to their final destination.

Statistics Canada does not have a measure of undercoverage but periodically conducts reconciliation exercises with its major trading partners, excluding the United States.

On January 1, 1990, Canada entered into a memorandum of understanding with the United States concerning the exchange of import data. As a consequence, each administration is using the other's import data to replace its own export data. Canada's international merchandise trade statistics are, therefore, no longer derived exclusively from the administrative records of the Canada Border Services Agency, but from United States Customs records as well.

Customs-based information is adjusted to conform with the National Accounts concepts and definitions. The adjustments to derive balance of payments-based trade data include adjustments related to trade definition, valuation and timing. The principal difference between the two trade concepts is that customs-based merchandise trade statistics cover the physical movement of goods as they are reflected in customs documents while balance of payments-adjusted data are intended to cover all economic transactions that involve merchandise trade between residents and non-residents. The present document describes the concepts and processes pertaining to the customs-based trade statistics only. (For further information on balance of payments-adjusted data, see the publication *Canada's Balance of International Payments*, Statistics Canada (Catalogue no. 67-001-X).

3. System of trade: Canadian trade statistics are compiled according to the general system of trade, as defined by the United Nations Statistical Office. Under this system, imports include all goods that have crossed Canada's territorial boundary, whether for immediate consumption in Canada or for storage in bonded customs warehouses. Domestic exports include goods grown, extracted or manufactured in Canada, including goods of foreign origin that have been materially transformed in Canada. Re-exports are exports of goods of foreign origin that have not been materially transformed in Canada, including foreign goods withdrawn for export from bonded customs warehouses. Total exports are the sum of domestic exports and re-exports. Thus the general trade system, in principal, presents all goods entering the country (imports) and all goods leaving the country (exports). It differs from the special system of trade in the treatment of imported goods into bonded customs warehouses. Under the 'special' system, these goods are counted only if and when they are withdrawn from customs warehouses for home consumption. They are not counted in export statistics unless they have first cleared customs.

Conceptually, under the general system, the statistical frontier coincides with the geographical boundary, while under the 'special' system, it coincides with the customs boundary.

4. Valuation: For customs purposes, imports are recorded at values established according to the provisions of the Customs Act, which, since January 1, 1985, reflects valuation methods based on the General Agreement on Tariffs and Trade (GATT) Valuation Code System. In general, the value for duty of imported goods must be equivalent to the transaction value or the price actually paid.

To determine the transaction value of imported goods, all transportation and associated costs arising in respect of the goods being appraised prior to and at the place of direct shipment to Canada, are to be added to the price of the goods. Therefore, Canadian imports are valued Free on Board (FOB), place of direct shipment to Canada. It excludes freight and insurance costs in bringing the goods to Canada from the point of direct shipment.

Countries other than the United States, exports are, in principal, valued or recorded at the values declared on export documents, which usually reflect the transaction value, i.e., actual selling price or, in the case of a non-arm's length transaction, the transfer price used for company accounting purposes. Canadian exports to overseas countries are valued at F.O.B. port of exit, including domestic freight charges to that point but net of discounts and allowances. As of January, 1990, Canadian exports to the U.S. are valued F.O.B. point of exit from Canada. Prior to 1990, they were valued F.O.B. place of lading net of freight charges, discounts and allowances.

5. Statistical period: The reference period is the calendar month and the calendar year. The closing of the statistical month for imports and Canadian exports to the United States is defined as the last calendar day of the month, based as closely as practicable on the date of clearance from customs.

The closing of the statistical month for exports, to countries other than the United States, is also defined as the last calendar day of the month. Those export documents that are received too late for incorporation in the current month are assigned to the month the transaction took place. If a monthly summary report from a high volume exporter is not received on time, the data are imputed for the current month and revised with the trade value in the following statistical month.

6. Trading partner attribution (country of origin/destination): Exports are attributed to the country, which is the last known destination of the goods at the time of export. Exports to the United States are attributed to the state of destination.

Imports are attributed to their country of origin, that is, the country in which the goods were grown, extracted or manufactured in accordance to the rules of origin administered by the Canada Border Services Agency. Imports from the United States are attributed to the state of origin. Prior to 1988, most imports were attributed to the country of export/consignment, with the exception of imports from Central and South America.

7. Principal trading areas: The 'principal trading areas' are country groupings defined as follows:

United States: includes trade with Puerto Rico and the U.S. Virgin Islands

Japan

European Union (EU): Austria, Belgium, Bulgaria, Cyprus, Czech Republic, Denmark, Estonia, Finland, France, Germany, Greece, Hungary, Ireland, Italy, Latvia, Lithuania, Luxembourg, Malta, Netherlands, Poland, Portugal, Romania, Slovakia, Slovenia, Spain, Sweden and United Kingdom

Other Organisation for Economic Co-operation and Development (OECD): Australia, Canada, Iceland, Mexico, New Zealand, Norway, South Korea, Switzerland, and Turkey. (The EU countries, United States, and Japan are also members of OECD)

Other countries: all countries and territories other than the United States, Japan, EU and other OECD

8. Legal framework: Import and export statistics with countries other than the United States are derived from information contained in administrative records collected by the Canada Border Services Agency under the Customs Act. Copies of these documents (or information therefrom) are sent to Statistics Canada in accordance with Section 25 of the Statistics Act. It follows that the disclosure of trade statistics is governed by both the Customs Act and the Statistics Act and is subject to the provisions of Section 17(2)(a) of the latter. Disclosure of export statistics to the United States is now governed by a memorandum of understanding that provides for the exchange of detailed import statistics between Canada and the United States.

Contact information

Questions concerning details of methods not covered by these notes should be addressed to the Marketing and Client Services Section, International Trade Division, Statistics Canada, 170 Tunney's Pasture Driveway, Ottawa, Ontario, K1A 0T6.

Telephone: 1-800-294-5583 or 613-951-9647

Facsimile: 1-800-664-0055 613-951-0117

Internet: trade@statcan.gc.ca