

Labour Force Information

Not for release before 7 A.M. EST

Friday, January 7, 2011

December 5 to 11, 2010



Statistics
Canada

Statistique
Canada

Canada

How to obtain more information

Specific inquiries about this product and related statistics or services should be directed to: Labour Force Survey Program, Labour Statistics Division, Statistics Canada, Ottawa, Ontario, K1A 0T6 (telephone: 613-951-4090, toll free number: 1-866-873-8788, fax: 613-951-2869 or by e-mail address: labour@statcan.gc.ca).

For information about this product or the wide range of services and data available from Statistics Canada, visit our website at www.statcan.gc.ca, e-mail us at infostats@statcan.gc.ca, or telephone us, Monday to Friday from 8:30 a.m. to 4:30 p.m., at the following numbers:

Statistics Canada's National Contact Centre

Toll-free telephone (Canada and the United States):

Inquiries line	1-800-263-1136
National telecommunications device for the hearing impaired	1-800-363-7629
Fax line	1-877-287-4369

Local or international calls:

Inquiries line	1-613-951-8116
Fax line	1-613-951-0581

Depository Services Program

Inquiries line	1-800-635-7943
Fax line	1-800-565-7757

To access this product

This product, Catalogue no. 71-001-X, is available free in electronic format. To obtain a single issue, visit our website at www.statcan.gc.ca and browse by "Key resource" > "Publications."

Standards of service to the public

Statistics Canada is committed to serving its clients in a prompt, reliable and courteous manner. To this end, Statistics Canada has developed *standards of service* that its employees observe. To obtain a copy of these service standards, please contact Statistics Canada toll-free at 1-800-263-1136. The service standards are also published on www.statcan.gc.ca under "About us" > "The agency" > "Providing services to Canadians."

Statistics Canada
Labour Statistics Division
Labour Force Survey Program

Labour Force Information

Not for release before 7 A.M. EST

Friday, January 7, 2011

December 5 to 11, 2010

Published by authority of the Minister responsible for Statistics Canada

© Minister of Industry, 2011

All rights reserved. The content of this electronic publication may be reproduced, in whole or in part, and by any means, without further permission from Statistics Canada, subject to the following conditions: that it be done solely for the purposes of private study, research, criticism, review or newspaper summary, and/or for non-commercial purposes; and that Statistics Canada be fully acknowledged as follows: Source (or "Adapted from", if appropriate): Statistics Canada, year of publication, name of product, catalogue number, volume and issue numbers, reference period and page(s). Otherwise, no part of this publication may be reproduced, stored in a retrieval system or transmitted in any form, by any means—electronic, mechanical or photocopy—or for any purposes without prior written permission of Licensing Services, Client Services Division, Statistics Canada, Ottawa, Ontario, Canada K1A 0T6.

January 2011

Catalogue no. 71-001-X

ISSN 1492-5478

Frequency: Monthly

Ottawa

Cette publication est également disponible en français.

Note of appreciation

Canada owes the success of its statistical system to a long-standing partnership between Statistics Canada, the citizens of Canada, its businesses, governments and other institutions. Accurate and timely statistical information could not be produced without their continued cooperation and goodwill.

User information

Symbols

The following standard symbols are used in Statistics Canada publications:

- . not available for any reference period
- .. not available for a specific reference period
- ... not applicable
- 0 true zero or a value rounded to zero
- 0s value rounded to 0 (zero) where there is a meaningful distinction between true zero and the value that was rounded
- p preliminary
- r revised
- x suppressed to meet the confidentiality requirements of the *Statistics Act*
- E use with caution
- F too unreliable to be published

Special requests (\$)

Custom tabulations can be arranged on an ad hoc or regular basis. This service enables you to specify tables and time series to meet your own requirements. The cost varies according to the request. For more information, contact us toll-free at 1-866-873-8788 or e-mail us at labour@statcan.gc.ca.

Schedule of LFS releases

Reference period - Week ending	Release date
December 11, 2010	January 7, 2011
January 15, 2011	February 4, 2011
February 19, 2011	March 11, 2011
March 19, 2011	April 8, 2011
April 16, 2011	May 6, 2011
May 21, 2011	June 10, 2011
June 18, 2011	July 8, 2011
July 16, 2011	August 5, 2011
August 20, 2011	September 9, 2011
September 17, 2011	October 7, 2011
October 15, 2011	November 4, 2011
November 12, 2011	December 2, 2011
December 10, 2011	January 6, 2012

Latest LFS release in *The Daily* (free)

Table of contents

Highlights	5
Analysis — December 2010	6
Charts	
1. Employment and unemployment indicators, Canada, seasonally adjusted	9
2. Employment and unemployment indicators, Canada, seasonally adjusted	10
3. Index of employment by industry, Canada, seasonally adjusted, January 2007=100	11
4. Index of employment by industry, Canada, seasonally adjusted, January 2007=100	12
5. Index of employment by industry, Canada, seasonally adjusted, January 2007=100	13
6. Index of employment by province, seasonally adjusted, January 2007=100	14
7. Index of employment by province, seasonally adjusted, January 2007=100	15
Related products	16
Statistical tables	
1 Labour force characteristics by age and sex, Canada, seasonally adjusted	25
2 Employment by class of worker and industry, Canada, seasonally adjusted	27
3 Labour force characteristics by province, seasonally adjusted	28
4 Selected labour force characteristics (seasonally adjusted)	30
4-1 Newfoundland and Labrador	30
4-2 Prince Edward Island	31
4-3 Nova Scotia	32
4-4 New Brunswick	33
4-5 Quebec	34
4-6 Ontario	35
4-7 Manitoba	36
4-8 Saskatchewan	37
4-9 Alberta	38
4-10 British Columbia	39
5 Labour force characteristics by census metropolitan area (seasonally adjusted)	40
5-1 3 month moving average	40
5-2 Monthly	45

Table of contents – continued

6	Labour force characteristics	46
6-1	by province and economic region, unadjusted for seasonality, 3 month moving average ending in December 2009 and December 2010	46
6-2	by territories, unadjusted for seasonality, 3 month moving average ending in December 2009 and December 2010	51
7	Average usual hours and wages of employees by selected characteristics, Canada, unadjusted for seasonality	52
8	Regional unemployment rates used by the Employment Insurance Program, seasonally adjusted, 3 month moving average	53

Data quality, concepts and methodology

Data quality	55
--------------	----

Employment and unemployment rates, Canada, seasonally adjusted



Analysis — December 2010

Employment edged up for the second consecutive month in December, with an increase of 22,000. The unemployment rate held steady at 7.6%. Compared with December 2009, employment increased by 2.2% (+369,000), following a decline of 1.1% the previous year.

There were notable employment increases in December in manufacturing; transportation and warehousing; as well as in natural resources. At the same time, there were declines in construction; health care and social assistance; wholesale and retail trade; business building and other support services; as well as agriculture.

Full-time employment was up 38,000 in December, the fourth increase in the past five months. Despite these recent gains, part-time employment has grown faster (+3.4%) than full time (+1.9%) over the past 12 months. Full-time employment accounted for 81% of total employment in December 2010.

In December, increases in the number of private sector employees were partly offset by declines in self-employment.

Among the provinces, Quebec, Ontario and Newfoundland and Labrador saw employment gains in December, while British Columbia posted declines. Employment was little changed in the other provinces.

Strong gains in manufacturing and transportation and warehousing

Following a decline of 29,000 the previous month, manufacturing employment increased by 66,000 in December. The bulk of the gains were in Ontario and Quebec and were spread across a number of industries. This follows little overall change in the manufacturing sector in the previous 18 months.

Transportation and warehousing also saw a notable gain in December (+45,000). With this gain, employment in this industry was up 10.8% (+85,000) compared with December 2009.

Employment in natural resources increased by 7,700 in December, bringing growth in the industry to 10.8% (+33,000) over the past 12 months.

Employment in construction fell by 27,000 in December, the first notable decline since July 2009. Despite this decline, construction employment was up 4.8% over the past 12 months.

In December, employment in health care and social assistance declined by 24,000, following gains the previous month. Employment growth in this industry totalled 3.3% (+67,000) from a year earlier.

Employment in wholesale and retail trade fell by 22,000 in December. Employment in this industry was relatively stable in 2010 (+0.7%).

Business, building and other support services also saw employment losses in December (-18,000). Compared to December 2009, however, employment was up by 8.1% (+50,000).

Agricultural employment fell by 8,000 in December, bringing total losses to 4.2% (-13,000) over the past 12 months.

More people working in the private sector

The number of private sector employees increased by 53,000 in December, while self-employment fell by 38,000. At the same time, public sector employment was little changed.

Over the past 12 months, 332,000 (+3.1%) employees were added to the private sector and 143,000 (+4.2%) to the public sector. The number of self-employed declined by 106,000 (-3.9%) over the same period.

Employment gains in Quebec, Ontario and Newfoundland and Labrador

Employment in Quebec increased by 25,000 in December, pushing the unemployment rate down 0.3 percentage points to 7.6%. With December's gain, Quebec employment was up 102,000 (+2.6%) from a year earlier.

In Ontario employment increased for the second consecutive month, up 23,000 in December. The unemployment rate edged down 0.1 percentage points to 8.1%. With December's increase, the number of workers in Ontario grew by 2.8% (+186,000) from a year earlier, above the national growth rate of 2.2%. Over the 12 months of 2009, Ontario's employment was down 1.8%, the largest decline among all provinces.

Newfoundland and Labrador saw employment increases of 2,500 in December, bringing total employment growth in the province to 4.6% (+9,900) compared to a year earlier, the fastest rate of growth in the country.

Employment in British Columbia fell by 23,000 in December, pushing the unemployment rate up 0.7 percentage points to 7.6%. Compared with December 2009, employment in the province grew by 1.5% (+35,000).

More youths working in December

Following a large decline in the number of 15- to 24-year-olds participating in the labour market in November, youth employment increased by 26,000 in December. Employment was little changed for the other demographic groups.

Compared with December 2009, youth employment was up 1.8% (+42,000), below the overall employment growth of 2.2%. Over the same period, people aged 55 and over saw their employment levels increase by 6.6% (+186,000), of which half was due to aging of the population, as the number of people in this age group grew by 3.3% over the period. While this age group makes up less than a third of the working-age population, it accounted for 50% of the total employment growth over the past 12 months.

At the same time, people aged 25 to 54 saw their employment level grow by 1.2% (+141,000), primarily driven by men (+2.3%), compared with little growth among women (+0.1%).

Quarterly update on territories

The Labour Force Survey also collects labour market information about the territories. This information is produced monthly in the form of three-month moving averages. Not all estimates are seasonally adjusted; therefore, comparisons should only be made on a year-over-year basis.

All three territories saw employment gains in the fourth quarter of 2010 compared with the same quarter of 2009.

In the Northwest Territories, employment rose by 1,300 in the fourth quarter of 2010. The unemployment rate also increased by 1.7 percentage points to 7.7%, the result of an increase in the number of people seeking work. The participation rate reached 73.0%, the highest in the country.

In Yukon, employment rose by 1,000 during the three months ending in December 2010 compared with the same period in 2009. This increase pushed the unemployment rate down by 3.5 percentage points to 4.0% in the fourth quarter of 2010, the lowest nationally.

Nunavut saw employment gains of 900 in the final quarter of 2010 compared with a year earlier. The unemployment rate increased by 2.5 percentage points to 15.2%, as there were more people participating in the labour market.

Note to readers

Following the release of final population estimates from each census, a standard revision is applied to the Labour Force Survey (LFS) estimates. The revised estimates are scheduled to be released on Friday, January 28, 2011, and will include the following:

LFS estimates are currently based on the 2001 Census population estimates. These data will be adjusted to reflect 2006 Census population estimates and will be revised back to 1996.

Industry estimates will be reclassified to the 2007 North American Industry Classification System (NAICS) from the 2002 NAICS and revised back to 1987.

Geography boundaries will be updated to the 2006 Standard Geographical Classification (SGC) rather than the current 2001 SGC. With this change, six new census metropolitan areas (CMAs) will be added and the boundaries of seven existing CMAs will be modified. New CMA tables will be created based on the 2006 census boundaries and will date back to 1996.

Finally, the 2006 National Occupational Classification for Statistics (NOC-S) will replace the 2001 NOC-S. This change will not affect the LFS estimates as there were only minor changes to the description of the categories.

Please note that the above-mentioned revisions will have a minor impact on the LFS estimates. However, rates of unemployment, employment and participation are essentially unchanged.

During the revision, CANSIM data for the LFS will not be available from Friday, January 21 to Thursday, January 27, 2011. To facilitate access to the revised data, LFS data on CANSIM will be free from January 28 to February 3, 2011. For further information on these changes, contact Client Services (toll-free 1-866-873-8788; 613-951-4090; labour@statcan.gc.ca).

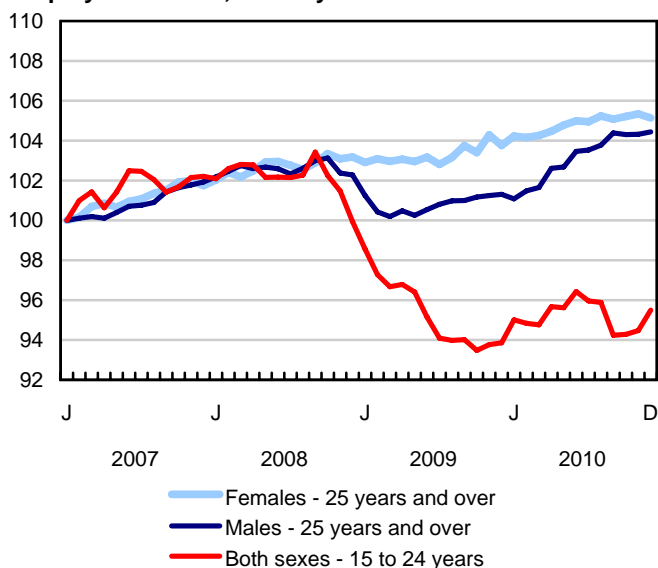
LFS estimates are based on a sample, and are therefore subject to sampling variability. Estimates for smaller geographic areas or industries will have more variability. For an explanation of sampling variability of estimates, and how to use standard errors to assess this variability, consult the "Data quality" section of the publication *LabourForce Information* (71-001-X, free).

Unless otherwise stated, this release presents seasonally adjusted data, which facilitates comparisons by removing the effects of seasonal variations.

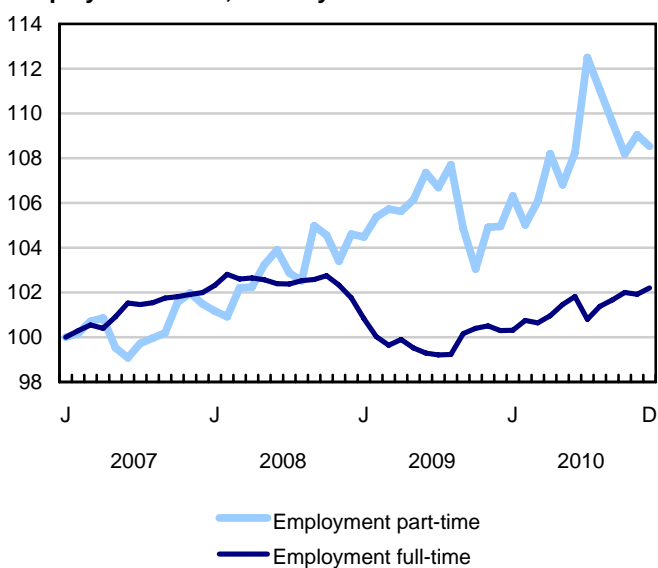
The 2009 Labour Force Historical Review on DVD-ROM (71F0004XVB, \$209) is now available.

Chart 1
Employment and unemployment indicators, Canada, seasonally adjusted

Employment index, January 2007=100



Employment index, January 2007=100



Employment index, January 2007=100

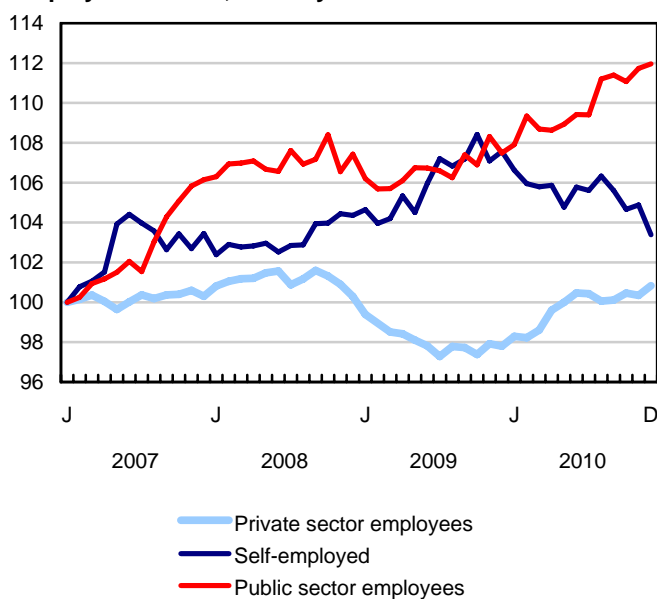
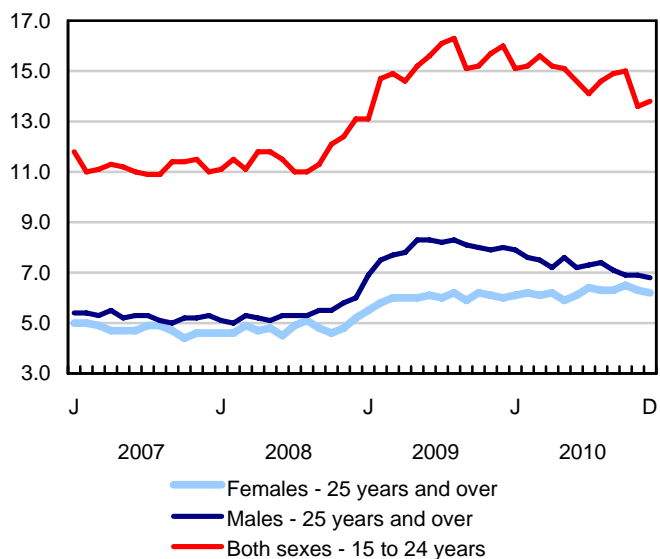
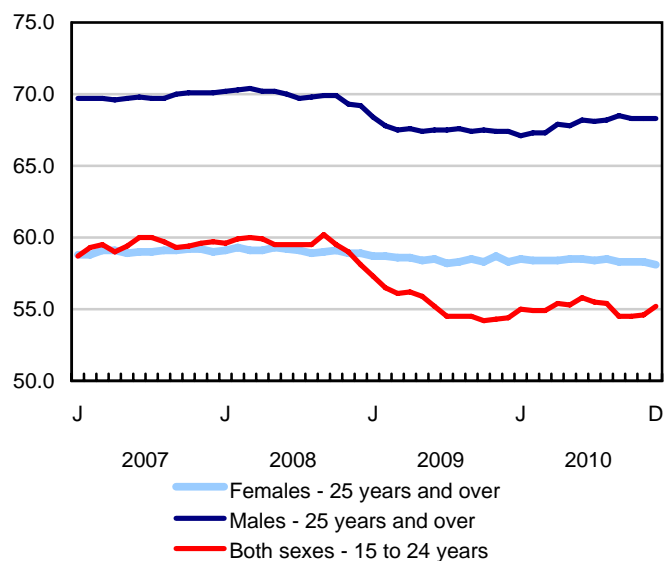


Chart 2
Employment and unemployment indicators, Canada, seasonally adjusted

Unemployment rate (%)



Employment rate (%)



Participation rate (%)

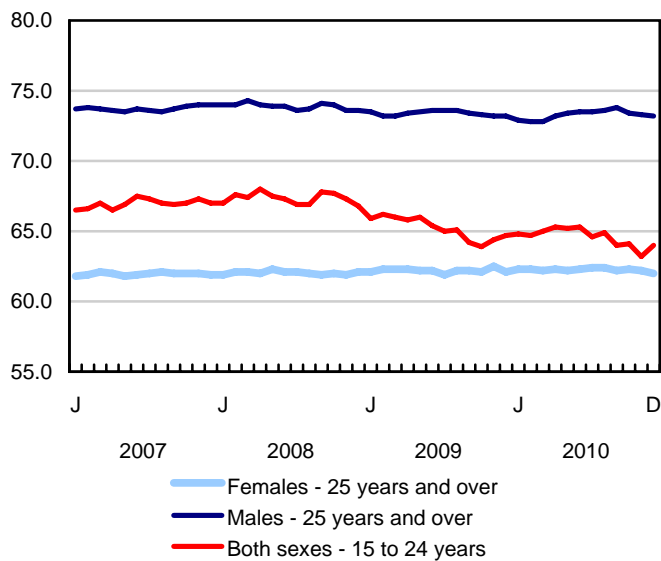


Chart 3
Index of employment by industry, Canada, seasonally adjusted, January 2007=100

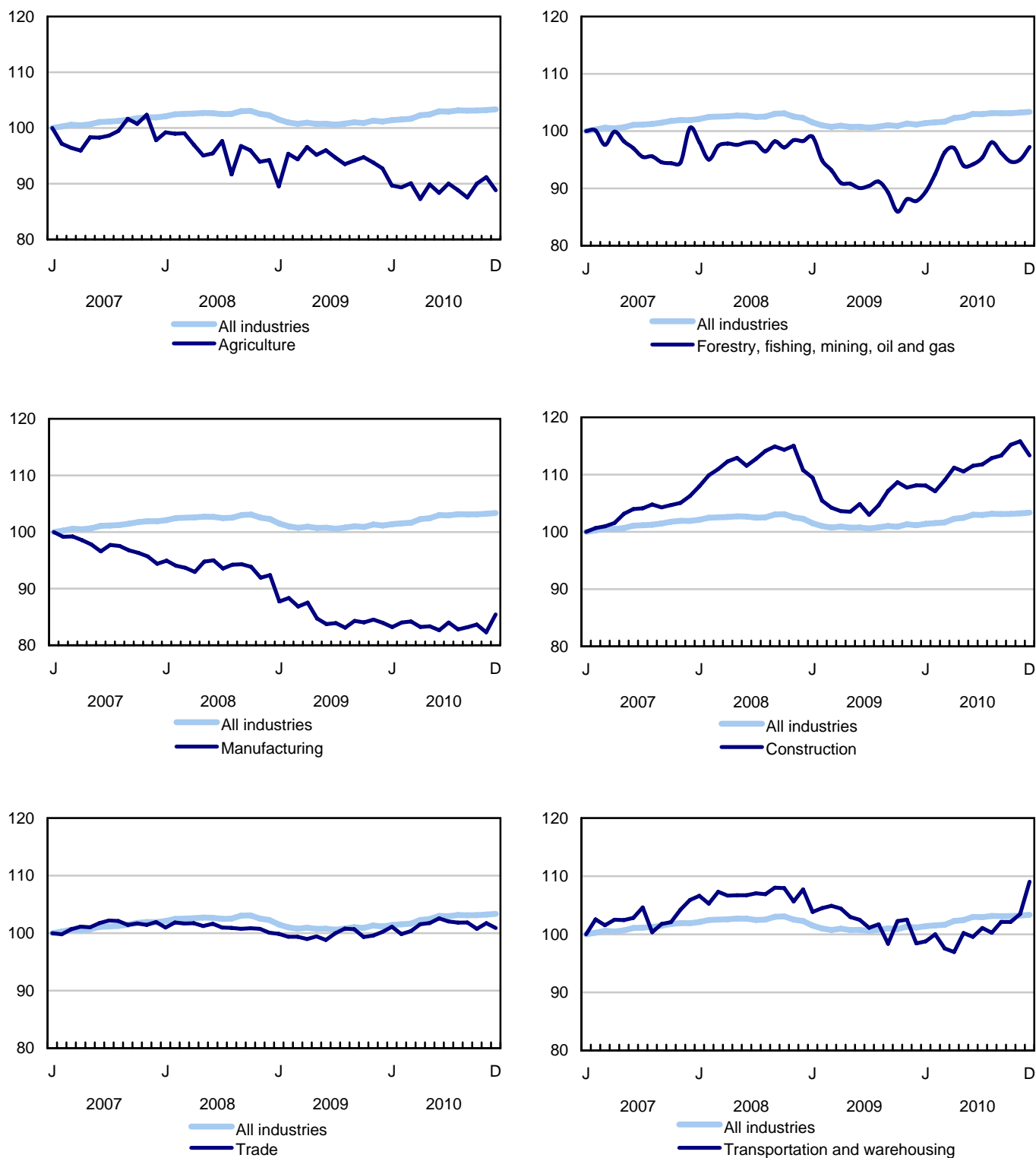


Chart 4
Index of employment by industry, Canada, seasonally adjusted, January 2007=100

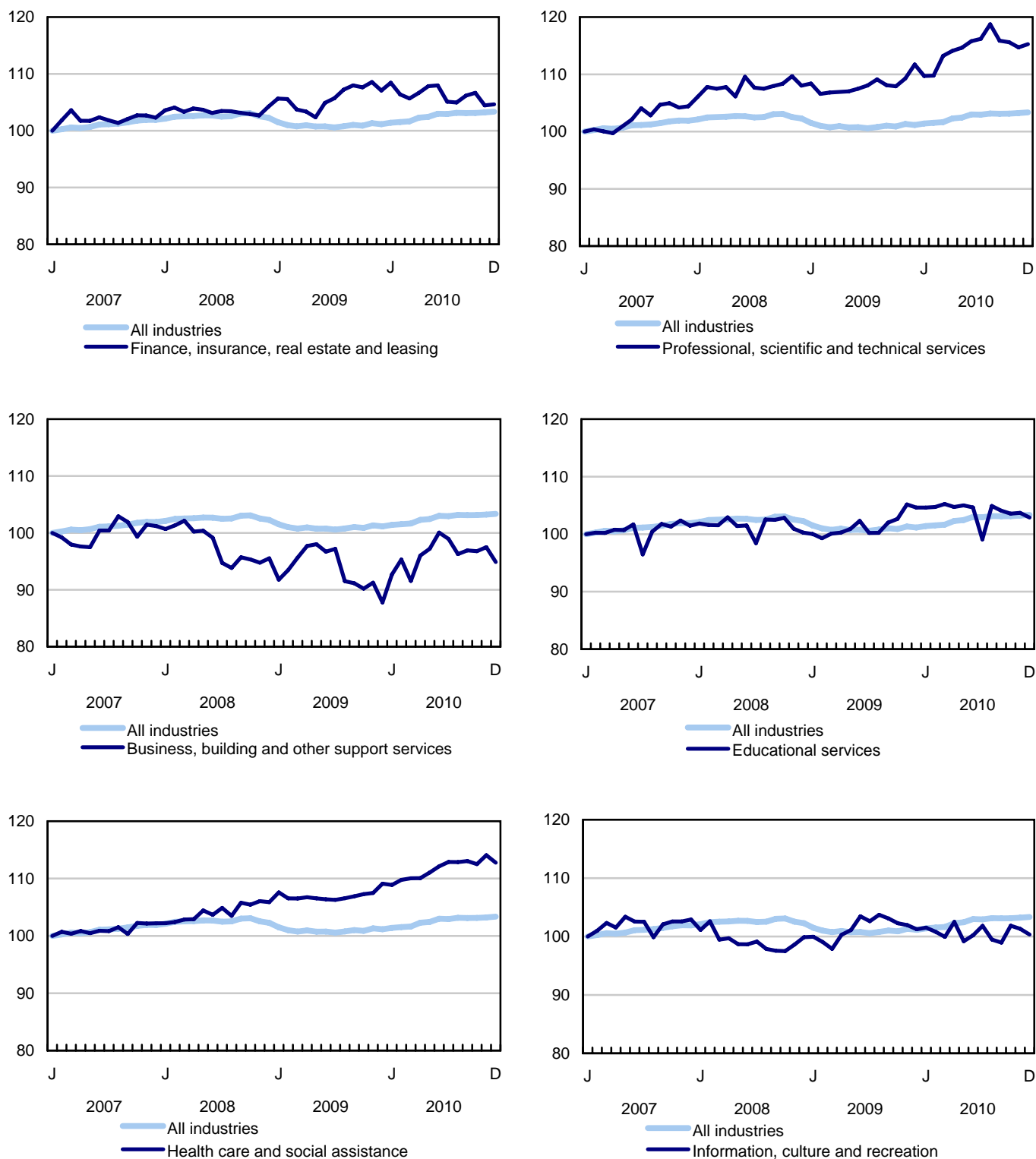


Chart 5
Index of employment by industry, Canada, seasonally adjusted, January 2007=100

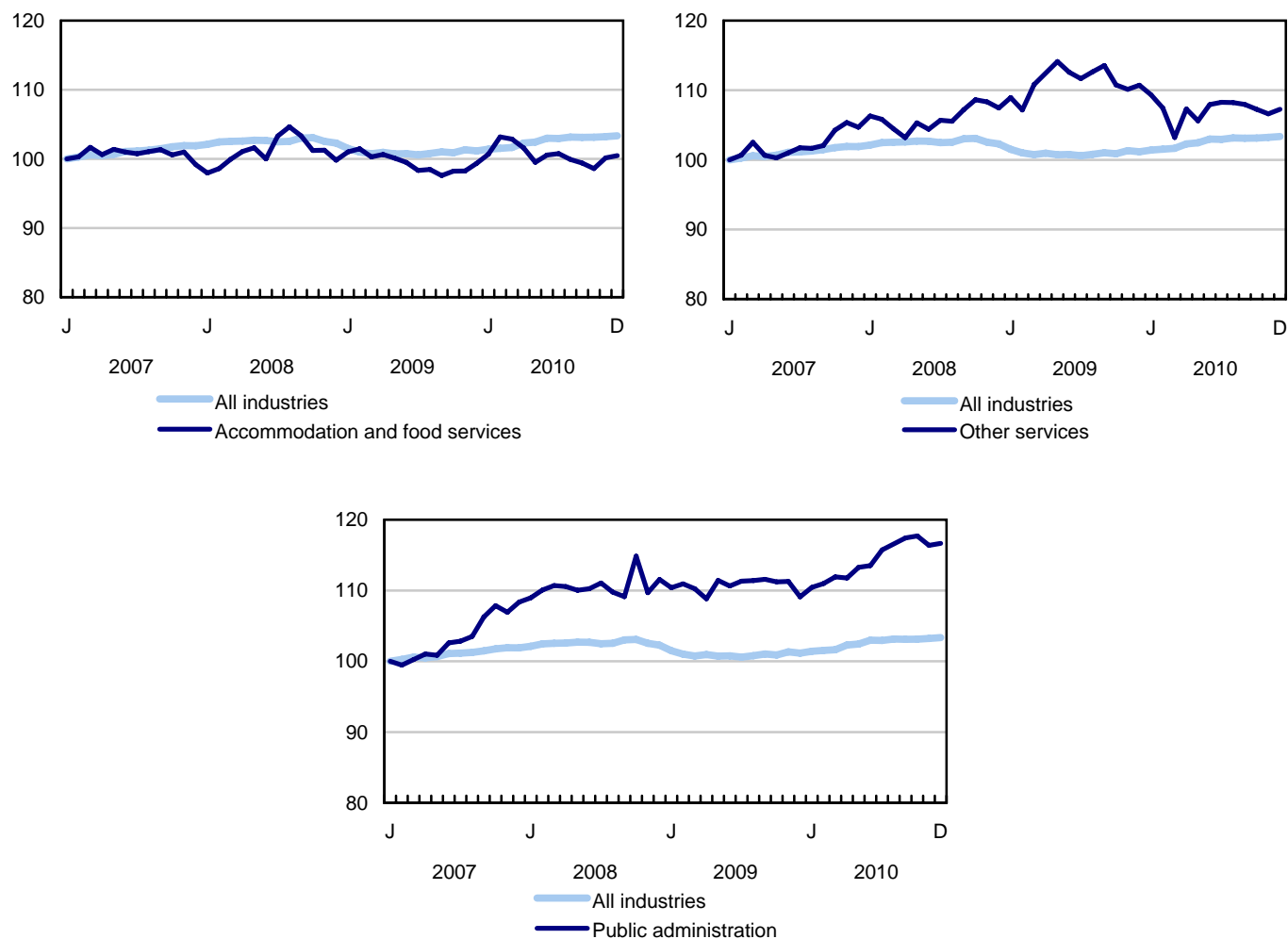


Chart 6
Index of employment by province, seasonally adjusted, January 2007=100

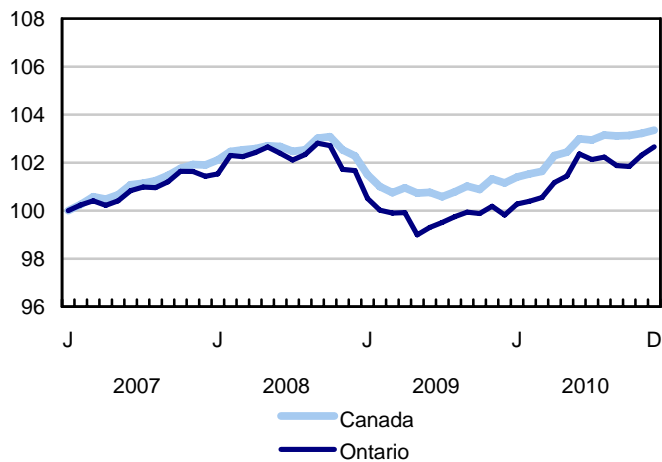
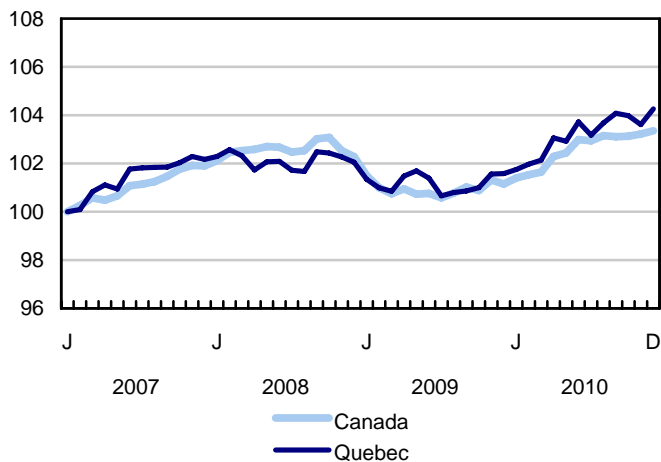
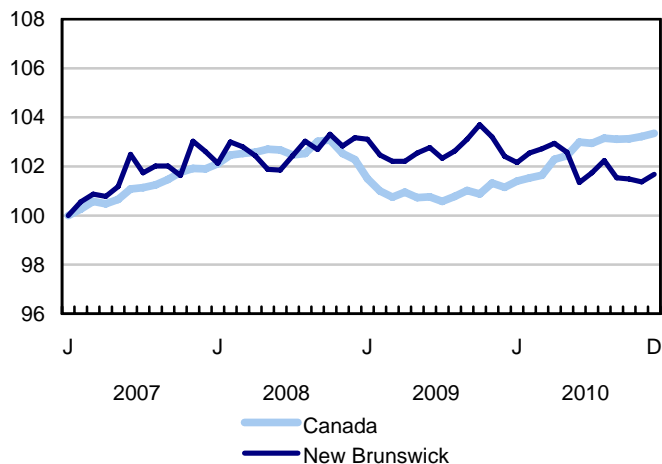
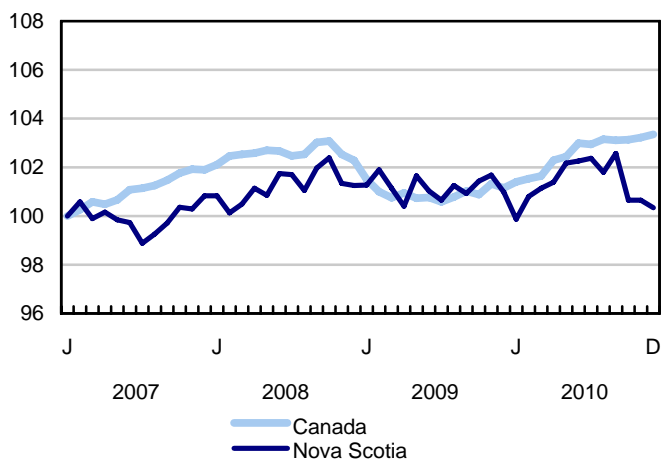
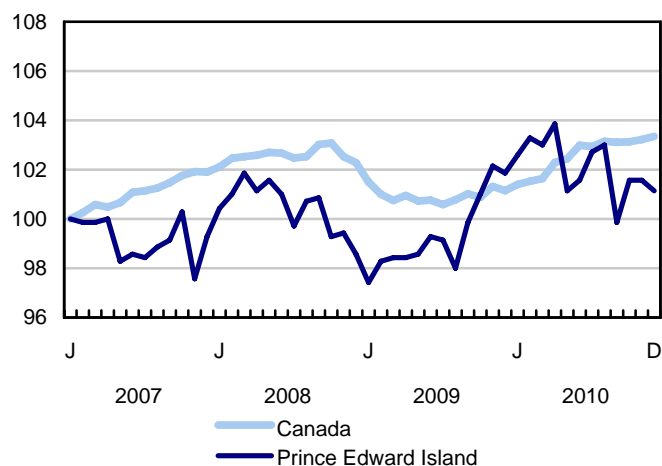
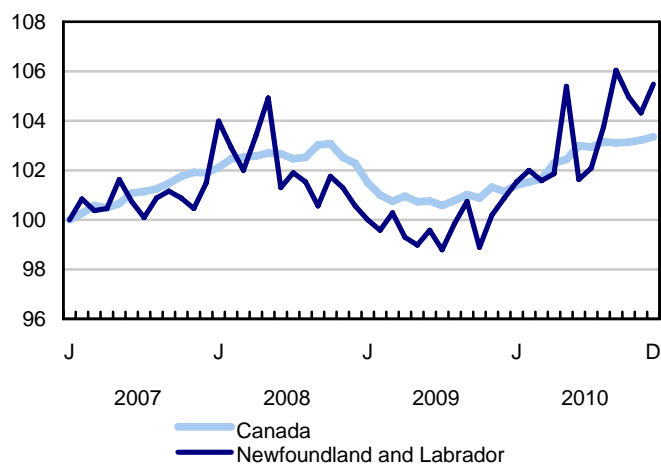
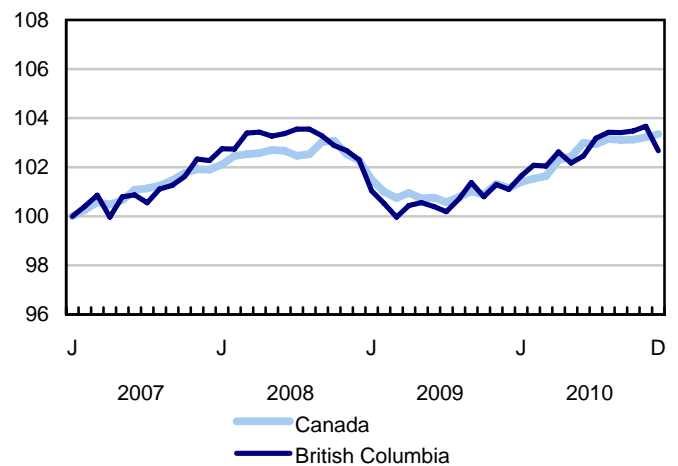
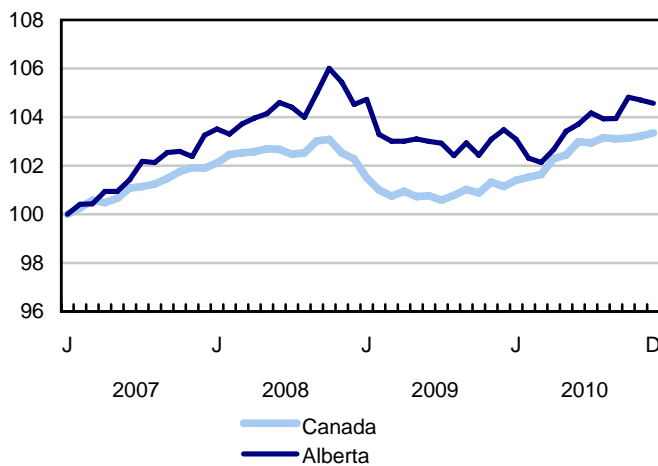
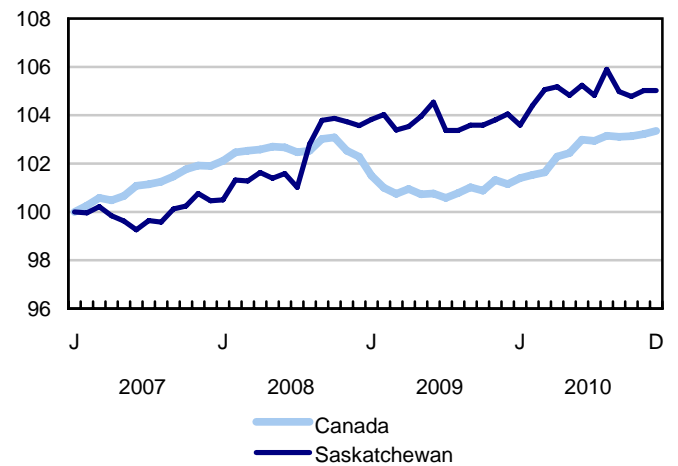
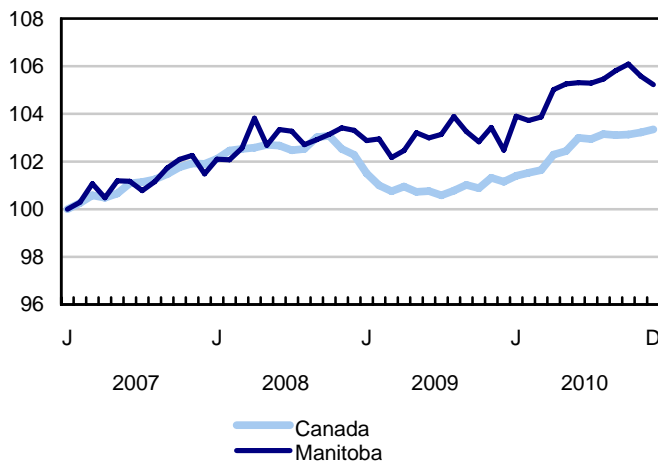


Chart 7
Index of employment by province, seasonally adjusted, January 2007=100



Related products

Selected publications from Statistics Canada

71-222-X	The Canadian Labour Market at a Glance
71-526-X	Methodology of the Canadian Labour Force Survey
71-543-G	Guide to the Labour Force Survey
71-544-X	Labour Force Survey Products and Services
71-587-X	Aboriginal Peoples Living Off-reserve in Western Canada: Estimates from the Labour Force Survey
71-588-X	The Aboriginal Labour Force Analysis Series
71-606-X	The Immigrant Labour Force Analysis Series
71F0004X	Labour Force Historical Review
71F0031X	Improvements to the Labour Force Survey (LFS)
71M0001X	Labour Force Survey Microdata File
75-001-X	Perspectives on Labour and Income

Selected CANSIM tables from Statistics Canada

282-0001	Labour force survey estimates (LFS), by sex and detailed age group, unadjusted for seasonality, monthly
282-0002	Labour force survey estimates (LFS), by sex and detailed age group, annual
282-0003	Labour force survey estimates (LFS), by educational attainment, sex and age group, unadjusted for seasonality, monthly
282-0004	Labour force survey estimates (LFS), by educational attainment, sex and age group, annual
282-0005	Labour force survey estimates (LFS), by full- and part-time students during school months, sex and age group, unadjusted for seasonality, monthly
282-0006	Labour force survey estimates (LFS), by students during summer months, sex and age group, unadjusted for seasonality, monthly
282-0007	Labour force survey estimates (LFS), by North American Industry Classification System (NAICS), sex and age group, unadjusted for seasonality, monthly

282-0008	Labour force survey estimates (LFS), by North American Industry Classification System (NAICS), sex and age group, annual
282-0009	Labour force survey estimates (LFS), by National Occupational Classification for Statistics (NOC-S) and sex, unadjusted for seasonality, monthly
282-0010	Labour force survey estimates (LFS), by National Occupational Classification for Statistics (NOC-S) and sex, annual
282-0011	Labour force survey estimates (LFS), employment by class of worker, North American Industry Classification System (NAICS) and sex, unadjusted for seasonality, monthly
282-0012	Labour force survey estimates (LFS), employment by class of worker, North American Industry Classification System (NAICS) and sex, annual
282-0013	Labour force survey estimates (LFS), part-time employment by reason for part-time work, sex and age group, unadjusted for seasonality, monthly
282-0014	Labour force survey estimates (LFS), part-time employment by reason for part-time work, sex and age group, annual
282-0015	Labour force survey estimates (LFS), by usual hours worked, main or all jobs, sex and age group, unadjusted for seasonality, monthly
282-0016	Labour force survey estimates (LFS), by usual hours worked, main or all jobs, sex and age group, annual
282-0017	Labour force survey estimates (LFS), by actual hours worked, main or all jobs, sex and age group, unadjusted for seasonality, monthly
282-0018	Labour force survey estimates (LFS), by actual hours worked, main or all jobs, sex and age group, annual
282-0019	Labour force survey estimates (LFS), by usual hours worked, class of worker, North American Industry Classification System (NAICS) and sex, unadjusted for seasonality, monthly
282-0020	Labour force survey estimates (LFS), by usual hours worked, class of worker, North American Industry Classification System (NAICS) and sex, annual
282-0021	Labour force survey estimates (LFS), by actual hours worked, class of worker, North American Industry Classification System (NAICS) and sex, unadjusted for seasonality, monthly
282-0022	Labour force survey estimates (LFS), by actual hours worked, class of worker, North American Industry Classification System (NAICS) and sex, annual
282-0023	Labour force survey estimates (LFS), by usual hours worked, class of worker, National Occupational Classification for Statistics (NOC-S) and sex, unadjusted for seasonality, monthly
282-0024	Labour force survey estimates (LFS), by usual hours worked, class of worker, National Occupational Classification for Statistics (NOC-S) and sex, annual
282-0025	Labour force survey estimates (LFS), by actual hours worked, class of worker, National Occupational Classification for Statistics (NOC-S) and sex, unadjusted for seasonality, monthly
282-0026	Labour force survey estimates (LFS), by actual hours worked, class of worker, National Occupational Classification for Statistics (NOC-S) and sex, annual

282-0027	Labour force survey estimates (LFS), by total and average usual and actual hours worked, main or all jobs, type of work, sex and age group, unadjusted for seasonality, monthly
282-0028	Labour force survey estimates (LFS), by total and average usual and actual hours worked, main or all jobs, type of work, sex and age group, annual
282-0029	Labour force survey estimates (LFS), average days lost for personal reasons per full-time employee by North American Industry Classification System (NAICS), sex and age group, annual
282-0030	Labour force survey estimates (LFS), average days lost for personal reasons per full-time employee by National Occupational Classification for Statistics (NOC-S), sex and age group, annual
282-0031	Labour force survey estimates (LFS), multiple jobholders by North American Industry Classification System (NAICS), sex and age group, annual
282-0032	Labour force survey estimates (LFS), multiple jobholders by North American Industry Classification System (NAICS), sex and age group, unadjusted for seasonality, monthly
282-0033	Labour force survey estimates (LFS), multiple jobholders by National Occupational Classification for Statistics (NOC-S), sex and age group, unadjusted for seasonality, monthly
282-0034	Labour force survey estimates (LFS), multiple jobholders by National Occupational Classification for Statistics (NOC-S), sex and age group, annual
282-0035	Labour force survey estimates (LFS), multiple jobholders by usual hours worked at main and all jobs, unadjusted for seasonality, monthly
282-0036	Labour force survey estimates (LFS), multiple jobholders by usual hours worked at main and all jobs, annual
282-0037	Labour force survey estimates (LFS), job tenure by type of work, sex and age group, unadjusted for seasonality, monthly
282-0038	Labour force survey estimates (LFS), job tenure by type of work, sex and age group, annual
282-0039	Labour force survey estimates (LFS), job tenure by National Occupational Classification for Statistics (NOC-S) and sex, unadjusted for seasonality, monthly
282-0040	Labour force survey estimates (LFS), job tenure by National Occupational Classification for Statistics (NOC-S) and sex, annual
282-0041	Labour force survey estimates (LFS), job tenure by North American Industry Classification System (NAICS) and sex, unadjusted for seasonality, monthly
282-0042	Labour force survey estimates (LFS), job tenure by North American Industry Classification System (NAICS) and sex, annual
282-0047	Labour force survey estimates (LFS), duration of unemployment by sex and age group, unadjusted for seasonality, monthly
282-0048	Labour force survey estimates (LFS), duration of unemployment by sex and age group, annual
282-0049	Labour force survey estimates (LFS), unemployment by type of work sought and search method, sex and age group, unadjusted for seasonality, monthly

282-0050	Labour force survey estimates (LFS), unemployment by type of work sought and search method, sex and age group, annual
282-0051	Labour force survey estimates (LFS), retirement age by class of worker and sex, annual
282-0052	Labour force survey estimates (LFS), by census metropolitan area, sex and age group, 3-month moving average, unadjusted for seasonality, monthly
282-0053	Labour force survey estimates (LFS), by census metropolitan area, sex and age group, annual
282-0054	Labour force survey estimates (LFS), by provinces and economic regions, 3-month moving average, unadjusted for seasonality, monthly
282-0055	Labour force survey estimates (LFS), by provinces, territories and economic regions, annual
282-0056	Labour force survey estimates (LFS), employment by census metropolitan area and North American Industry Classification System (NAICS), 3-month moving average, unadjusted for seasonality, monthly
282-0057	Labour force survey estimates (LFS), employment by census metropolitan area and North American Industry Classification System (NAICS), annual
282-0058	Labour force survey estimates (LFS), employment by census metropolitan area and National Occupational Classification for Statistics (NOC-S), 3-month moving average, unadjusted for seasonality, monthly
282-0059	Labour force survey estimates (LFS), employment by census metropolitan area and National Occupational Classification for Statistics (NOC-S), annual
282-0060	Labour force survey estimates (LFS), employment by economic region and North American Industry Classification System (NAICS), 3-month moving average, unadjusted for seasonality, monthly
282-0061	Labour force survey estimates (LFS), employment by economic region and North American Industry Classification System (NAICS), annual
282-0062	Labour force survey estimates (LFS), employment by economic region and National Occupational Classification for Statistics (NOC-S), 3-month moving average, unadjusted for seasonality, monthly
282-0063	Labour force survey estimates (LFS), employment by economic region and National Occupational Classification for Statistics (NOC-S), annual
282-0064	Labour force survey estimates (LFS), by selected medium-sized cities, annual
282-0069	Labour force survey estimates (LFS), wages of employees by type of work, National Occupational Classification for Statistics (NOC-S), sex and age group, unadjusted for seasonality, monthly (current dollars)
282-0070	Labour force survey estimates (LFS), wages of employees by type of work, National Occupational Classification for Statistics (NOC-S), sex and age group, annual (current dollars)
282-0071	Labour force survey estimates (LFS), wages of employees by type of work, North American Industry Classification System (NAICS), sex and age group, unadjusted for seasonality, monthly (current dollars)

282-0072	Labour force survey estimates (LFS), wages of employees by type of work, North American Industry Classification System (NAICS), sex and age group, annual (current dollars)
282-0073	Labour force survey estimates (LFS), wages of employees by job permanence, union coverage, sex and age group, unadjusted for seasonality, monthly (current dollars)
282-0074	Labour force survey estimates (LFS), wages of employees by job permanence, union coverage, sex and age group, annual (current dollars)
282-0075	Labour force survey estimates (LFS), employees by establishment size, North American Industry Classification System (NAICS), sex and age group, unadjusted for seasonality, monthly
282-0076	Labour force survey estimates (LFS), employees by establishment size, North American Industry Classification System (NAICS), sex and age group, annual
282-0077	Labour force survey estimates (LFS), employees by union coverage, North American Industry Classification System (NAICS), sex and age group, unadjusted for seasonality, monthly
282-0078	Labour force survey estimates (LFS), employees by union coverage, North American Industry Classification System (NAICS), sex and age group, annual
282-0079	Labour force survey estimates (LFS), employees by job permanency, North American Industry Classification System (NAICS), sex and age group, unadjusted for seasonality, monthly
282-0080	Labour force survey estimates (LFS), employees by job permanency, North American Industry Classification System (NAICS), sex and age group, annual
282-0081	Labour force survey estimates (LFS), employees working overtime (weekly) by National Occupational Classification for Statistics (NOC-S), sex and age group, unadjusted for seasonality, monthly
282-0082	Labour force survey estimates (LFS), employees working overtime (weekly) by National Occupational Classification for Statistics (NOC-S), sex and age group, annual
282-0083	Labour force survey estimates (LFS), employees working overtime (weekly) by North American Industry Classification System (NAICS), sex and age group, unadjusted for seasonality, monthly
282-0084	Labour force survey estimates (LFS), employees working overtime (weekly) by North American Industry Classification System (NAICS), sex and age group, annual
282-0085	Labour force survey estimates (LFS), supplementary unemployment rates by sex and age group, unadjusted for seasonality, monthly
282-0086	Labour force survey estimates (LFS), supplementary unemployment rates by sex and age group, annual
282-0087	Labour force survey estimates (LFS), by sex and age group, seasonally adjusted and unadjusted, monthly
282-0088	Labour force survey estimates (LFS), employment by North American Industry Classification System (NAICS), seasonally adjusted and unadjusted, monthly
282-0089	Labour force survey estimates (LFS), employment by class of worker and sex, seasonally adjusted and unadjusted, monthly

282-0090	Labour force survey estimates (LFS), by census metropolitan area, 3-month moving average, seasonally adjusted and unadjusted, monthly
282-0091	Labour force survey estimates (LFS), by Montréal, Toronto and Vancouver census metropolitan areas, seasonally adjusted and unadjusted, monthly
282-0092	Labour force survey estimates (LFS), actual hours worked by North American Industry Classification System (NAICS), seasonally adjusted, monthly
282-0093	Labour force survey estimates (LFS), employment by National Occupational Classification for Statistics (NOC-S), seasonally adjusted, monthly
282-0094	Labour force survey estimates (LFS), by North American Industry Classification System (NAICS), Canada, seasonally adjusted, monthly
282-0095	Labour force survey estimates (LFS), by full- and part-time students during school months, sex and age group, annual
282-0096	Labour force survey estimates (LFS), by urban and rural areas based on 2001 census boundaries, sex and age group, unadjusted for seasonality, monthly
282-0097	Labour force survey estimates (LFS), by urban and rural areas based on 2001 census boundaries, sex and age group, annual
282-0098	Labour force survey estimates (LFS), employment by urban and rural areas based on 2001 census boundaries, class of worker and North American Industry Classification System (NAICS), unadjusted for seasonality, monthly
282-0099	Labour force survey estimates (LFS), employment by urban and rural areas based on 2001 census boundaries, class of worker and North American Industry Classification System (NAICS), annual
282-0100	Labour force survey estimates (LFS), by territories, sex and age group, 3-month moving average, seasonally adjusted and unadjusted, monthly
282-0101	Labour force survey estimates (LFS), by immigrant status, age group, Canada, regions, provinces and Montreal, Toronto, Vancouver census metropolitan areas, 3-month moving average, unadjusted for seasonality, monthly
282-0102	Labour force survey estimates (LFS), by immigrant status, age group, Canada, regions, provinces and Montreal, Toronto, Vancouver census metropolitan areas, annual
282-0103	Labour force survey estimates (LFS), by immigrant status, sex and detailed age group, Canada, 3-month moving average, unadjusted for seasonality, monthly
282-0104	Labour force survey estimates (LFS), by immigrant status, sex and detailed age group, Canada, annual
282-0105	Labour force survey estimates (LFS), by immigrant status, educational attainment, sex and age group, Canada, 3-month moving average, unadjusted for seasonality, monthly
282-0106	Labour force survey estimates (LFS), by immigrant status, educational attainment, sex and age group, Canada, annual

282-0107	Labour force survey estimates (LFS), by immigrant status, country of birth, sex and age group, Canada, regions and provinces, 3-month moving average, unadjusted for seasonality, monthly
282-0108	Labour force survey estimates (LFS), by immigrant status, country of birth, sex and age group, Canada, regions and provinces, annual

Selected surveys from Statistics Canada

3701	Labour Force Survey
------	---------------------

Selected summary tables from Statistics Canada

- *Labour force characteristics*
- *Employment by industry*
- *Days lost per worker due to illness or disability, by sex, by province*
- *Economic indicators, by province and territory (monthly and quarterly)*
- *Labour force and participation rates by sex and age group*
- *Labour force, employed and unemployed, numbers and rates, by province*
- *Employment by industry and sex*
- *Full-time and part-time employment by sex and age group*
- *Labour force characteristics by age and sex*
- *Distribution of employed people, by industry, by province*
- *Labour force characteristics, population 15 years and older, by census metropolitan area*
- *Labour force characteristics, population 15 years and older, by economic region, by province*
- *Days lost per worker by cause, by provinces*
- *Days lost per worker by industry and sex*
- *People employed, by educational attainment*
- *Reasons for part-time work by sex and age group*
- *Self-employment, historical summary*
- *Employment by age, sex, type of work, class of worker and province (monthly)*
- *Employment by major industry groups, seasonally adjusted, by province (monthly)*

- *Actual hours worked per week by industry, seasonally adjusted (monthly)*
- *Average hourly wages of employees by selected characteristics and profession, unadjusted data, by province (monthly)*
- *Labour force characteristics, seasonally adjusted, by province (monthly)*
- *Labour force characteristics, unadjusted, by province (monthly)*
- *Labour force characteristics, seasonally adjusted, by census metropolitan area (3 month moving average)*
- *Labour force characteristics, unadjusted, by census metropolitan area (3 month moving average)*
- *Labour force characteristics, unadjusted, by economic region (3 month moving average)*
- *Labour force characteristics by immigrant status of population aged 25 to 54, by province*
- *Labour force characteristics by immigrant status of population aged 25 to 54, by educational attainment*
- *Labour force characteristics by immigrant status, by detailed age group*
- *Labour force characteristics by immigrant status of population aged 25 to 54, by country of birth*

Statistical tables

Table 1
Labour force characteristics by age and sex, Canada, seasonally adjusted

	November 2010	December 2010	S.E. ¹	Change from			Percent change from		
				last month	last December	twelve months ago	last month	last December	twelve months ago
in thousands (except rates)									
15 years and over, both sexes									
Population	27,868.9	27,894.2	...	25.3	403.5	403.5	0.1	1.5	1.5
Labour force	18,654.8	18,674.0	28.1	19.2	236.8	236.8	0.1	1.3	1.3
Employment	17,227.9	17,249.9	27.9	22.0	368.5	368.5	0.1	2.2	2.2
Employment full-time	13,898.3	13,936.3	36.8	38.0	259.1	259.1	0.3	1.9	1.9
Employment part-time	3,329.6	3,313.5	33.7	-16.1	109.2	109.2	-0.5	3.4	3.4
Unemployment	1,426.9	1,424.1	24.9	-2.8	-131.7	-131.7	-0.2	-8.5	-8.5
Participation rate	66.9	66.9	0.1	0.0	-0.2	-0.2
Unemployment rate	7.6	7.6	0.1	0.0	-0.8	-0.8
Employment rate	61.8	61.8	0.1	0.0	0.4	0.4
Part-time rate	19.3	19.2	0.2	-0.1	0.2	0.2
15 to 24 years, both sexes									
Population	4,410.7	4,411.3	...	0.6	11.0	11.0	0.0	0.2	0.2
Labour force	2,787.0	2,824.8	16.5	37.8	-23.0	-23.0	1.4	-0.8	-0.8
Employment	2,407.5	2,433.9	15.1	26.4	41.9	41.9	1.1	1.8	1.8
Employment full-time	1,260.8	1,272.0	17.7	11.2	-0.3	-0.3	0.9	0.0	0.0
Employment part-time	1,146.7	1,161.9	18.3	15.2	42.3	42.3	1.3	3.8	3.8
Unemployment	379.5	390.9	14.3	11.4	-65.0	-65.0	3.0	-14.3	-14.3
Participation rate	63.2	64.0	0.4	0.8	-0.7	-0.7
Unemployment rate	13.6	13.8	0.5	0.2	-2.2	-2.2
Employment rate	54.6	55.2	0.3	0.6	0.8	0.8
Part-time rate	47.6	47.7	0.7	0.1	0.9	0.9
25 years and over, men									
Population	11,476.4	11,488.9	...	12.5	195.1	195.1	0.1	1.7	1.7
Labour force	8,414.0	8,414.7	14.8	0.7	146.7	146.7	0.0	1.8	1.8
Employment	7,836.1	7,844.7	16.2	8.6	235.1	235.1	0.1	3.1	3.1
Employment full-time	7,233.4	7,233.8	20.8	0.4	223.4	223.4	0.0	3.2	3.2
Employment part-time	602.7	610.9	16.6	8.2	11.7	11.7	1.4	2.0	2.0
Unemployment	577.9	570.0	15.0	-7.9	-88.3	-88.3	-1.4	-13.4	-13.4
Participation rate	73.3	73.2	0.1	-0.1	0.0	0.0
Unemployment rate	6.9	6.8	0.2	-0.1	-1.2	-1.2
Employment rate	68.3	68.3	0.1	0.0	0.9	0.9
Part-time rate	7.7	7.8	0.2	0.1	-0.1	-0.1
25 years and over, women									
Population	11,981.7	11,994.1	...	12.4	197.5	197.5	0.1	1.7	1.7
Labour force	7,453.8	7,434.6	15.9	-19.2	113.2	113.2	-0.3	1.5	1.5
Employment	6,984.3	6,971.3	15.8	-13.0	91.5	91.5	-0.2	1.3	1.3
Employment full-time	5,404.1	5,430.5	23.6	26.4	36.1	36.1	0.5	0.7	0.7
Employment part-time	1,580.2	1,540.7	22.1	-39.5	55.3	55.3	-2.5	3.7	3.7
Unemployment	469.5	463.3	12.9	-6.2	21.7	21.7	-1.3	4.9	4.9
Participation rate	62.2	62.0	0.1	-0.2	-0.1	-0.1
Unemployment rate	6.3	6.2	0.2	-0.1	0.2	0.2
Employment rate	58.3	58.1	0.1	-0.2	-0.2	-0.2
Part-time rate	22.6	22.1	0.3	-0.5	0.5	0.5
25 to 54 years, both sexes									
Population	14,672.7	14,676.6	...	3.9	111.8	111.8	0.0	0.8	0.8
Labour force	12,657.6	12,638.0	21.3	-19.6	69.5	69.5	-0.2	0.6	0.6
Employment	11,812.4	11,812.6	22.9	0.2	140.6	140.6	0.0	1.2	1.2
Unemployment	845.3	825.4	18.6	-19.9	-71.2	-71.2	-2.4	-7.9	-7.9
Participation rate	86.3	86.1	0.1	-0.2	-0.2	-0.2
Unemployment rate	6.7	6.5	0.1	-0.2	-0.6	-0.6
Employment rate	80.5	80.5	0.2	0.0	0.4	0.4

See notes at the end of the table.

Table 1 – continued

Labour force characteristics by age and sex, Canada, seasonally adjusted

	November 2010	December 2010	S.E. ¹	Change from			Percent change from		
				last month	last December	twelve months ago	last month	last December	twelve months ago
in thousands (except rates)									
25 to 54 years, men									
Population	7,336.1	7,338.3	...	2.2	56.7	56.7	0.0	0.8	0.8
Labour force	6,639.2	6,639.5	13.7	0.3	47.4	47.4	0.0	0.7	0.7
Employment	6,189.5	6,198.2	15.6	8.7	136.9	136.9	0.1	2.3	2.3
Unemployment	449.7	441.3	13.8	-8.4	-89.5	-89.5	-1.9	-16.9	-16.9
Participation rate	90.5	90.5	0.2	0.0	0.0	0.0
Unemployment rate	6.8	6.6	0.2	-0.2	-1.5	-1.5
Employment rate	84.4	84.5	0.2	0.1	1.3	1.3
25 to 54 years, women									
Population	7,336.5	7,338.3	...	1.8	55.1	55.1	0.0	0.8	0.8
Labour force	6,018.5	5,998.5	15.5	-20.0	22.1	22.1	-0.3	0.4	0.4
Employment	5,622.9	5,614.4	15.8	-8.5	3.7	3.7	-0.2	0.1	0.1
Unemployment	395.6	384.2	12.0	-11.4	18.5	18.5	-2.9	5.1	5.1
Participation rate	82.0	81.7	0.2	-0.3	-0.4	-0.4
Unemployment rate	6.6	6.4	0.2	-0.2	0.3	0.3
Employment rate	76.6	76.5	0.2	-0.1	-0.5	-0.5
55 years and over, both sexes									
Population	8,785.5	8,806.3	...	20.8	280.7	280.7	0.2	3.3	3.3
Labour force	3,210.2	3,211.2	16.5	1.0	190.4	190.4	0.0	6.3	6.3
Employment	3,008.1	3,003.3	16.5	-4.8	185.8	185.8	-0.2	6.6	6.6
Unemployment	202.1	207.9	9.1	5.8	4.6	4.6	2.9	2.3	2.3
Participation rate	36.5	36.5	0.2	0.0	1.1	1.1
Unemployment rate	6.3	6.5	0.3	0.2	-0.2	-0.2
Employment rate	34.2	34.1	0.2	-0.1	1.1	1.1
55 years and over, men									
Population	4,140.3	4,150.6	...	10.3	138.4	138.4	0.2	3.4	3.4
Labour force	1,774.8	1,775.2	11.1	0.4	99.3	99.3	0.0	5.9	5.9
Employment	1,646.6	1,646.5	11.2	-0.1	98.1	98.1	0.0	6.3	6.3
Unemployment	128.2	128.7	7.0	0.5	1.2	1.2	0.4	0.9	0.9
Participation rate	42.9	42.8	0.3	-0.1	1.0	1.0
Unemployment rate	7.2	7.2	0.4	0.0	-0.4	-0.4
Employment rate	39.8	39.7	0.3	-0.1	1.1	1.1
55 years and over, women									
Population	4,645.2	4,655.7	...	10.5	142.3	142.3	0.2	3.2	3.2
Labour force	1,435.4	1,436.0	11.1	0.6	91.1	91.1	0.0	6.8	6.8
Employment	1,361.4	1,356.9	11.1	-4.5	87.8	87.8	-0.3	6.9	6.9
Unemployment	73.9	79.1	5.6	5.2	3.2	3.2	7.0	4.2	4.2
Participation rate	30.9	30.8	0.2	-0.1	1.0	1.0
Unemployment rate	5.1	5.5	0.4	0.4	-0.1	-0.1
Employment rate	29.3	29.1	0.2	-0.2	1.0	1.0

1. Average standard error of change in two consecutive months (see "Sampling Errors" in Data Quality for further explanations).

Note(s): Related CANSIM table 282-0087.

Table 2
Employment by class of worker and industry, Canada, seasonally adjusted

	November 2010	December 2010	S.E. ¹	Change from			Percent change from		
				last month	last December	twelve months ago	last month	last December	twelve months ago
in thousands									
Class of worker									
Employees	14,556.1	14,616.0	33.4	59.9	474.9	474.9	0.4	3.4	3.4
Self-employed ²	2,671.9	2,633.9	24.1	-38.0	-106.4	-106.4	-1.4	-3.9	-3.9
Public/private sector employees									
Public sector employees	3,572.6	3,580.0	22.7	7.4	142.9	142.9	0.2	4.2	4.2
Private sector employees	10,983.5	11,036.0	35.0	52.5	332.0	332.0	0.5	3.1	3.1
Industry	17,227.9	17,249.9	27.9	22.0	368.5	368.5	0.1	2.2	2.2
Goods-producing sector	3,787.4	3,828.2	24.5	40.8	111.6	111.6	1.1	3.0	3.0
Agriculture	310.0	302.0	6.8	-8.0	-13.3	-13.3	-2.6	-4.2	-4.2
Forestry, fishing, mining, oil and gas	330.9	338.6	6.7	7.7	32.9	32.9	2.3	10.8	10.8
Utilities	147.8	150.4	4.7	2.6	3.9	3.9	1.8	2.7	2.7
Construction	1,270.7	1,243.6	15.4	-27.1	57.2	57.2	-2.1	4.8	4.8
Manufacturing	1,727.9	1,793.6	18.1	65.7	31.0	31.0	3.8	1.8	1.8
Services-producing sector	13,440.5	13,421.7	32.2	-18.8	256.9	256.9	-0.1	2.0	2.0
Trade	2,694.3	2,671.9	22.1	-22.4	17.9	17.9	-0.8	0.7	0.7
Transportation and warehousing	830.0	874.5	12.5	44.5	85.1	85.1	5.4	10.8	10.8
Finance, insurance, real estate and leasing	1,085.5	1,087.4	15.0	1.9	-25.3	-25.3	0.2	-2.3	-2.3
Professional, scientific and technical services	1,275.2	1,281.3	16.1	6.1	39.4	39.4	0.5	3.2	3.2
Business, building and other support services	684.3	666.0	13.1	-18.3	49.9	49.9	-2.7	8.1	8.1
Educational services	1,217.9	1,208.2	15.1	-9.7	-20.5	-20.5	-0.8	-1.7	-1.7
Health care and social assistance	2,084.6	2,060.7	16.9	-23.9	66.7	66.7	-1.1	3.3	3.3
Information, culture and recreation	775.9	768.5	13.4	-7.4	-6.8	-6.8	-1.0	-0.9	-0.9
Accommodation and food services	1,063.5	1,067.0	15.6	3.5	11.9	11.9	0.3	1.1	1.1
Other services	755.1	759.7	12.8	4.6	-24.6	-24.6	0.6	-3.1	-3.1
Public administration	974.2	976.5	11.9	2.3	63.1	63.1	0.2	6.9	6.9

1. Average standard error of change in two consecutive months (see "Sampling Errors" in Data Quality for further explanations).

2. Includes both incorporated and unincorporated working owners, self-employed persons who do not have a business and persons working in a family business without pay.

Note(s): Related CANSIM Tables 282-0088, 282-0089.

Table 3
Labour force characteristics by province, seasonally adjusted

	November 2010	December 2010	S.E. ¹	Change from			Percent change from		
				last month	last December	twelve months ago	last month	last December	twelve months ago
in thousands (except rates)									
Newfoundland and Labrador									
Population	432.0	432.0	...	0.0	1.5	1.5	0.0	0.3	0.3
Labour force	260.6	263.0	2.1	2.4	7.0	7.0	0.9	2.7	2.7
Employment	224.6	227.1	2.2	2.5	9.9	9.9	1.1	4.6	4.6
Employment full-time	192.6	194.7	2.6	2.1	7.8	7.8	1.1	4.2	4.2
Employment part-time	31.9	32.4	1.8	0.5	2.1	2.1	1.6	6.9	6.9
Unemployment	36.0	35.9	2.0	-0.1	-2.9	-2.9	-0.3	-7.5	-7.5
Participation rate	60.3	60.9	0.5	0.6	1.4	1.4
Unemployment rate	13.8	13.7	0.7	-0.1	-1.5	-1.5
Employment rate	52.0	52.6	0.5	0.6	2.1	2.1
Prince Edward Island									
Population	118.3	118.4	...	0.1	2.0	2.0	0.1	1.7	1.7
Labour force	81.1	80.4	0.6	-0.7	0.6	0.6	-0.9	0.8	0.8
Employment	71.0	70.7	0.7	-0.3	-0.5	-0.5	-0.4	-0.7	-0.7
Employment full-time	58.3	58.6	0.8	0.3	0.4	0.4	0.5	0.7	0.7
Employment part-time	12.8	12.1	0.7	-0.7	-0.9	-0.9	-5.5	-6.9	-6.9
Unemployment	10.1	9.6	0.6	-0.5	1.0	1.0	-5.0	11.6	11.6
Participation rate	68.6	67.9	0.5	-0.7	-0.7	-0.7
Unemployment rate	12.5	11.9	0.8	-0.6	1.1	1.1
Employment rate	60.0	59.7	0.6	-0.3	-1.5	-1.5
Nova Scotia									
Population	777.3	777.5	...	0.2	3.0	3.0	0.0	0.4	0.4
Labour force	498.1	501.2	2.7	3.1	1.3	1.3	0.6	0.3	0.3
Employment	450.5	449.1	2.8	-1.4	-2.9	-2.9	-0.3	-0.6	-0.6
Employment full-time	364.2	368.7	3.6	4.5	-0.1	-0.1	1.2	0.0	0.0
Employment part-time	86.3	80.3	3.2	-6.0	-3.0	-3.0	-7.0	-3.6	-3.6
Unemployment	47.6	52.1	2.6	4.5	4.3	4.3	9.5	9.0	9.0
Participation rate	64.1	64.5	0.4	0.4	0.0	0.0
Unemployment rate	9.6	10.4	0.5	0.8	0.8	0.8
Employment rate	58.0	57.8	0.4	-0.2	-0.6	-0.6
New Brunswick									
Population	626.1	626.3	...	0.2	3.5	3.5	0.0	0.6	0.6
Labour force	403.0	400.5	2.2	-2.5	-0.7	-0.7	-0.6	-0.2	-0.2
Employment	361.7	362.8	2.4	1.1	-2.6	-2.6	0.3	-0.7	-0.7
Employment full-time	304.4	307.5	2.8	3.1	-2.0	-2.0	1.0	-0.6	-0.6
Employment part-time	57.3	55.3	2.4	-2.0	-0.6	-0.6	-3.5	-1.1	-1.1
Unemployment	41.4	37.7	2.1	-3.7	1.9	1.9	-8.9	5.3	5.3
Participation rate	64.4	63.9	0.4	-0.5	-0.5	-0.5
Unemployment rate	10.3	9.4	0.5	-0.9	0.5	0.5
Employment rate	57.8	57.9	0.4	0.1	-0.8	-0.8
Quebec									
Population	6,545.3	6,550.7	...	5.4	79.0	79.0	0.1	1.2	1.2
Labour force	4,272.3	4,285.5	14.1	13.2	73.3	73.3	0.3	1.7	1.7
Employment	3,935.5	3,960.2	14.3	24.7	101.8	101.8	0.6	2.6	2.6
Employment full-time	3,175.0	3,214.3	18.6	39.3	76.4	76.4	1.2	2.4	2.4
Employment part-time	760.5	745.8	16.8	-14.7	25.3	25.3	-1.9	3.5	3.5
Unemployment	336.8	325.4	12.9	-11.4	-28.4	-28.4	-3.4	-8.0	-8.0
Participation rate	65.3	65.4	0.2	0.1	0.3	0.3
Unemployment rate	7.9	7.6	0.3	-0.3	-0.8	-0.8
Employment rate	60.1	60.5	0.2	0.4	0.9	0.9

See notes at the end of the table.

Table 3 – continued

Labour force characteristics by province, seasonally adjusted

	November 2010	December 2010	S.E. ¹	Change from			Percent change from		
				last month	last December	twelve months ago	last month	last December	twelve months ago
in thousands (except rates)									
Ontario									
Population	10,879.7	10,889.7	...	10.0	162.1	162.1	0.1	1.5	1.5
Labour force	7,288.7	7,303.5	19.4	14.8	113.3	113.3	0.2	1.6	1.6
Employment	6,690.4	6,712.9	18.9	22.5	185.5	185.5	0.3	2.8	2.8
Employment full-time	5,409.1	5,423.2	24.6	14.1	121.8	121.8	0.3	2.3	2.3
Employment part-time	1,281.3	1,289.7	22.8	8.4	63.8	63.8	0.7	5.2	5.2
Unemployment	598.4	590.7	17.2	-7.7	-72.1	-72.1	-1.3	-10.9	-10.9
Participation rate	67.0	67.1	0.2	0.1	0.1	0.1
Unemployment rate	8.2	8.1	0.2	-0.1	-1.1	-1.1
Employment rate	61.5	61.6	0.2	0.1	0.8	0.8
Manitoba									
Population	942.1	943.1	...	1.0	14.5	14.5	0.1	1.6	1.6
Labour force	655.6	654.4	2.6	-1.2	13.5	13.5	-0.2	2.1	2.1
Employment	622.3	620.2	2.8	-2.1	16.2	16.2	-0.3	2.7	2.7
Employment full-time	503.2	502.4	3.7	-0.8	17.7	17.7	-0.2	3.7	3.7
Employment part-time	119.2	117.8	3.5	-1.4	-1.4	-1.4	-1.2	-1.2	-1.2
Unemployment	33.3	34.2	2.1	0.9	-2.8	-2.8	2.7	-7.6	-7.6
Participation rate	69.6	69.4	0.3	-0.2	0.4	0.4
Unemployment rate	5.1	5.2	0.3	0.1	-0.6	-0.6
Employment rate	66.1	65.8	0.3	-0.3	0.8	0.8
Saskatchewan									
Population	795.5	796.1	...	0.6	11.8	11.8	0.1	1.5	1.5
Labour force	557.5	557.5	2.4	0.0	9.0	9.0	0.0	1.6	1.6
Employment	527.0	527.0	2.5	0.0	4.9	4.9	0.0	0.9	0.9
Employment full-time	432.9	433.6	3.3	0.7	8.0	8.0	0.2	1.9	1.9
Employment part-time	94.1	93.4	3.0	-0.7	-3.1	-3.1	-0.7	-3.2	-3.2
Unemployment	30.5	30.6	1.9	0.1	4.3	4.3	0.3	16.3	16.3
Participation rate	70.1	70.0	0.3	-0.1	0.1	0.1
Unemployment rate	5.5	5.5	0.3	0.0	0.7	0.7
Employment rate	66.2	66.2	0.3	0.0	-0.4	-0.4
Alberta									
Population	2,947.2	2,951.1	...	3.9	55.8	55.8	0.1	1.9	1.9
Labour force	2,138.7	2,135.1	8.6	-3.6	-0.8	-0.8	-0.2	0.0	0.0
Employment	2,018.8	2,016.4	8.8	-2.4	21.1	21.1	-0.1	1.1	1.1
Employment full-time	1,668.3	1,662.8	11.8	-5.5	31.0	31.0	-0.3	1.9	1.9
Employment part-time	350.5	353.6	10.5	3.1	-9.9	-9.9	0.9	-2.7	-2.7
Unemployment	119.9	118.7	7.5	-1.2	-21.9	-21.9	-1.0	-15.6	-15.6
Participation rate	72.6	72.3	0.3	-0.3	-1.5	-1.5
Unemployment rate	5.6	5.6	0.3	0.0	-1.0	-1.0
Employment rate	68.5	68.3	0.3	-0.2	-0.6	-0.6
British Columbia									
Population	3,805.5	3,809.3	...	3.8	70.4	70.4	0.1	1.9	1.9
Labour force	2,499.1	2,492.9	10.5	-6.2	20.2	20.2	-0.2	0.8	0.8
Employment	2,326.1	2,303.6	10.3	-22.5	35.1	35.1	-1.0	1.5	1.5
Employment full-time	1,790.4	1,770.5	14.5	-19.9	-1.9	-1.9	-1.1	-0.1	-0.1
Employment part-time	535.7	533.1	13.4	-2.6	37.0	37.0	-0.5	7.5	7.5
Unemployment	173.0	189.3	8.8	16.3	-14.9	-14.9	9.4	-7.3	-7.3
Participation rate	65.7	65.4	0.3	-0.3	-0.7	-0.7
Unemployment rate	6.9	7.6	0.3	0.7	-0.7	-0.7
Employment rate	61.1	60.5	0.3	-0.6	-0.2	-0.2

1. Average standard error of change in two consecutive months (see "Sampling Errors" in Data Quality for further explanations).

Note(s): Related CANSIM Table 282-0087.

Table 4-1
Selected labour force characteristics (seasonally adjusted) — Newfoundland and Labrador

	November 2010	December 2010	S.E. ¹	Change from			Percent change from		
				last month	last December	twelve months ago	last month	last December	twelve months ago
in thousands (except rates)									
Both sexes, 15 years and over									
Population	432.0	432.0	...	0.0	1.5	1.5	0.0	0.3	0.3
Labour force	260.6	263.0	2.1	2.4	7.0	7.0	0.9	2.7	2.7
Employment	224.6	227.1	2.2	2.5	9.9	9.9	1.1	4.6	4.6
Employment full-time	192.6	194.7	2.6	2.1	7.8	7.8	1.1	4.2	4.2
Unemployment	36.0	35.9	2.0	-0.1	-2.9	-2.9	-0.3	-7.5	-7.5
Participation rate	60.3	60.9	0.5	0.6	1.4	1.4
Unemployment rate	13.8	13.7	0.7	-0.1	-1.5	-1.5
Employment rate	52.0	52.6	0.5	0.6	2.1	2.1
Part-time rate	14.2	14.3	0.8	0.1	0.3	0.3
Both sexes, 15 to 24 years									
Population	60.1	60.0	...	-0.1	-0.8	-0.8	-0.2	-1.3	-1.3
Labour force	35.3	34.3	1.0	-1.0	0.8	0.8	-2.8	2.4	2.4
Employment	28.7	28.1	1.0	-0.6	1.9	1.9	-2.1	7.3	7.3
Unemployment	6.5	6.3	0.9	-0.2	-1.0	-1.0	-3.1	-13.7	-13.7
Participation rate	58.7	57.2	1.7	-1.5	2.1	2.1
Unemployment rate	18.4	18.4	2.4	0.0	-3.4	-3.4
Employment rate	47.8	46.8	1.6	-1.0	3.7	3.7
Part-time rate	40.8	37.4	3.5	-3.4	-1.9	-1.9
Men, 25 years and over									
Population	179.1	179.1	...	0.0	1.0	1.0	0.0	0.6	0.6
Labour force	116.7	117.9	1.2	1.2	1.8	1.8	1.0	1.6	1.6
Employment	98.4	100.2	1.4	1.8	3.4	3.4	1.8	3.5	3.5
Unemployment	18.3	17.7	1.3	-0.6	-1.7	-1.7	-3.3	-8.8	-8.8
Participation rate	65.2	65.8	0.7	0.6	0.6	0.6
Unemployment rate	15.7	15.0	1.1	-0.7	-1.7	-1.7
Employment rate	54.9	55.9	0.8	1.0	1.5	1.5
Part-time rate	5.6	5.2	0.8	-0.4	0.9	0.9
Women, 25 years and over									
Population	192.8	192.9	...	0.1	1.4	1.4	0.1	0.7	0.7
Labour force	108.7	110.8	1.1	2.1	4.5	4.5	1.9	4.2	4.2
Employment	97.5	98.8	1.1	1.3	4.6	4.6	1.3	4.9	4.9
Unemployment	11.2	12.0	1.1	0.8	-0.2	-0.2	7.1	-1.6	-1.6
Participation rate	56.4	57.4	0.6	1.0	1.9	1.9
Unemployment rate	10.3	10.8	1.0	0.5	-0.7	-0.7
Employment rate	50.6	51.2	0.6	0.6	2.0	2.0
Part-time rate	15.1	16.9	1.3	1.8	0.1	0.1
Industry	224.6	227.1	2.2	2.5	9.9	9.9	1.1	4.6	4.6
Goods-producing sector									
Agriculture	44.3	46.9	1.7	2.6	1.3	1.3	5.9	2.9	2.9
Forestry, fishing, mining, oil and gas	2.2	2.2	0.3	0.0	1.5	1.5	0.0	214.3	214.3
Utilities	15.7	16.4	1.0	0.7	1.7	1.7	4.5	11.6	11.6
Construction	2.1	1.8	0.3	-0.3	-0.2	-0.2	-14.3	-10.0	-10.0
Manufacturing	15.1	17.1	1.1	2.0	0.8	0.8	13.2	4.9	4.9
	9.2	9.3	1.0	0.1	-2.6	-2.6	1.1	-21.8	-21.8
Services-producing sector									
Trade	180.3	180.2	2.0	-0.1	8.7	8.7	-0.1	5.1	5.1
Transportation and warehousing	40.5	39.2	1.3	-1.3	4.4	4.4	-3.2	12.6	12.6
Finance, insurance, real estate and leasing	11.5	10.9	0.7	-0.6	-1.6	-1.6	-5.2	-12.8	-12.8
Professional, scientific and technical services	6.8	6.5	0.6	-0.3	-0.6	-0.6	-4.4	-8.5	-8.5
Business, building and other support services	7.6	8.0	0.6	0.4	-0.2	-0.2	5.3	-2.4	-2.4
Educational services	6.0	5.9	0.7	-0.1	0.9	0.9	-1.7	18.0	18.0
Health care and social assistance	18.2	18.8	0.8	0.6	1.1	1.1	3.3	6.2	6.2
Information, culture and recreation	36.1	36.6	1.1	0.5	0.9	0.9	1.4	2.5	2.5
Accommodation and food services	8.9	8.5	0.7	-0.4	0.5	0.5	-4.5	6.2	6.2
Other services	13.7	14.0	0.9	0.3	-0.2	-0.2	2.2	-1.4	-1.4
Public administration	11.6	11.5	0.8	-0.1	0.6	0.6	-0.9	5.5	5.5
	19.4	20.3	0.8	0.9	2.8	2.8	4.6	16.0	16.0

1. Average standard error of change in two consecutive months (see "Sampling Errors" in Data Quality for further explanations).

Note(s): Related CANSIM Tables 282-0087, 282-0088.

Table 4-2
Selected labour force characteristics (seasonally adjusted) — Prince Edward Island

	November 2010	December 2010	S.E.	Change from			Percent change from		
				last month	last December	twelve months ago	last month	last December	twelve months ago
in thousands (except rates)									
Both sexes, 15 years and over									
Population	118.3	118.4	...	0.1	2.0	2.0	0.1	1.7	1.7
Labour force	81.1	80.4	0.6	-0.7	0.6	0.6	-0.9	0.8	0.8
Employment	71.0	70.7	0.7	-0.3	-0.5	-0.5	-0.4	-0.7	-0.7
Employment full-time	58.3	58.6	0.8	0.3	0.4	0.4	0.5	0.7	0.7
Unemployment	10.1	9.6	0.6	-0.5	1.0	1.0	-5.0	11.6	11.6
Participation rate	68.6	67.9	0.5	-0.7	-0.7	-0.7
Unemployment rate	12.5	11.9	0.8	-0.6	1.1	1.1
Employment rate	60.0	59.7	0.6	-0.3	-1.5	-1.5
Part-time rate	18.0	17.1	0.9	-0.9	-1.1	-1.1
Both sexes, 15 to 24 years									
Population	19.8	19.8	...	0.0	0.0	0.0	0.0	0.0	0.0
Labour force	13.8	13.6	0.4	-0.2	-0.1	-0.1	-1.4	-0.7	-0.7
Employment	11.5	11.1	0.4	-0.4	-0.3	-0.3	-3.5	-2.6	-2.6
Unemployment	2.3	2.5	0.3	0.2	0.2	0.2	8.7	8.7	8.7
Participation rate	69.7	68.7	1.9	-1.0	-0.5	-0.5
Unemployment rate	16.7	18.4	2.2	1.7	1.6	1.6
Employment rate	58.1	56.1	1.9	-2.0	-1.5	-1.5
Part-time rate	41.7	37.8	3.0	-3.9	-1.6	-1.6
Men, 25 years and over									
Population	47.2	47.3	...	0.1	0.9	0.9	0.2	1.9	1.9
Labour force	35.1	34.2	0.3	-0.9	-0.1	-0.1	-2.6	-0.3	-0.3
Employment	30.2	30.0	0.4	-0.2	-0.4	-0.4	-0.7	-1.3	-1.3
Unemployment	4.9	4.2	0.4	-0.7	0.4	0.4	-14.3	10.5	10.5
Participation rate	74.4	72.3	0.7	-2.1	-1.6	-1.6
Unemployment rate	14.0	12.3	1.1	-1.7	1.2	1.2
Employment rate	64.0	63.4	0.8	-0.6	-2.1	-2.1
Part-time rate	8.6	9.0	1.0	0.4	1.8	1.8
Women, 25 years and over									
Population	51.2	51.3	...	0.1	1.0	1.0	0.2	2.0	2.0
Labour force	32.2	32.6	0.3	0.4	0.8	0.8	1.2	2.5	2.5
Employment	29.3	29.7	0.4	0.4	0.3	0.3	1.4	1.0	1.0
Unemployment	2.9	2.9	0.3	0.0	0.5	0.5	0.0	20.8	20.8
Participation rate	62.9	63.5	0.7	0.6	0.3	0.3
Unemployment rate	9.0	8.9	1.0	-0.1	1.4	1.4
Employment rate	57.2	57.9	0.8	0.7	-0.5	-0.5
Part-time rate	18.1	17.5	1.5	-0.6	-3.9	-3.9
Industry	71.0	70.7	0.7	-0.3	-0.5	-0.5	-0.4	-0.7	-0.7
Goods-producing sector	16.8	17.1	0.6	0.3	-1.0	-1.0	1.8	-5.5	-5.5
Agriculture	2.6	3.5	0.3	0.9	-0.5	-0.5	34.6	-12.5	-12.5
Forestry, fishing, mining, oil and gas	3.1	3.1	0.3	0.0	0.6	0.6	0.0	24.0	24.0
Utilities	0.3	0.3	0.1	0.0	-0.2	-0.2	0.0	-40.0	-40.0
Construction	4.5	4.8	0.4	0.3	-1.1	-1.1	6.7	-18.6	-18.6
Manufacturing	6.2	5.4	0.3	-0.8	0.2	0.2	-12.9	3.8	3.8
Services-producing sector	54.3	53.7	0.7	-0.6	0.7	0.7	-1.1	1.3	1.3
Trade	9.7	9.6	0.4	-0.1	-1.6	-1.6	-1.0	-14.3	-14.3
Transportation and warehousing	1.9	1.8	0.2	-0.1	-0.1	-0.1	-5.3	-5.3	-5.3
Finance, insurance, real estate and leasing	2.2	2.0	0.2	-0.2	-0.6	-0.6	-9.1	-23.1	-23.1
Professional, scientific and technical services	2.9	2.9	0.2	0.0	0.8	0.8	0.0	38.1	38.1
Business, building and other support services	3.0	3.0	0.3	0.0	0.1	0.1	0.0	3.4	3.4
Educational services	6.0	6.2	0.3	0.2	0.6	0.6	3.3	10.7	10.7
Health care and social assistance	9.0	8.9	0.3	-0.1	0.5	0.5	-1.1	6.0	6.0
Information, culture and recreation	2.9	2.9	0.2	0.0	0.5	0.5	0.0	20.8	20.8
Accommodation and food services	5.2	5.5	0.4	0.3	0.5	0.5	5.8	10.0	10.0
Other services	3.0	3.0	0.3	0.0	-0.3	-0.3	0.0	-9.1	-9.1
Public administration	8.4	7.9	0.3	-0.5	0.3	0.3	-6.0	3.9	3.9

1. Average standard error of change in two consecutive months (see "Sampling Errors" in Data Quality for further explanations).

Note(s): Related CANSIM Tables 282-0087, 282-0088.

Table 4-3
Selected labour force characteristics (seasonally adjusted) — Nova Scotia

	November 2010	December 2010	S.E.	Change from			Percent change from		
				last month	last December	twelve months ago	last month	last December	twelve months ago
in thousands (except rates)									
Both sexes, 15 years and over									
Population	777.3	777.5	...	0.2	3.0	3.0	0.0	0.4	0.4
Labour force	498.1	501.2	2.7	3.1	1.3	1.3	0.6	0.3	0.3
Employment	450.5	449.1	2.8	-1.4	-2.9	-2.9	-0.3	-0.6	-0.6
Employment full-time	364.2	368.7	3.6	4.5	-0.1	-0.1	1.2	0.0	0.0
Unemployment	47.6	52.1	2.6	4.5	4.3	4.3	9.5	9.0	9.0
Participation rate	64.1	64.5	0.4	0.4	0.0	0.0
Unemployment rate	9.6	10.4	0.5	0.8	0.8	0.8
Employment rate	58.0	57.8	0.4	-0.2	-0.6	-0.6
Part-time rate	19.2	17.9	0.7	-1.3	-0.5	-0.5
Both sexes, 15 to 24 years									
Population	118.7	118.6	...	-0.1	-1.2	-1.2	-0.1	-1.0	-1.0
Labour force	79.5	80.1	1.6	0.6	-1.9	-1.9	0.8	-2.3	-2.3
Employment	66.1	65.2	1.6	-0.9	-3.1	-3.1	-1.4	-4.5	-4.5
Unemployment	13.4	14.9	1.5	1.5	1.3	1.3	11.2	9.6	9.6
Participation rate	67.0	67.5	1.3	0.5	-0.9	-0.9
Unemployment rate	16.9	18.6	1.7	1.7	2.0	2.0
Employment rate	55.7	55.0	1.3	-0.7	-2.0	-2.0
Part-time rate	45.1	42.2	2.4	-2.9	-3.8	-3.8
Men, 25 years and over									
Population	314.0	314.1	...	0.1	2.0	2.0	0.0	0.6	0.6
Labour force	214.1	214.7	1.5	0.6	0.7	0.7	0.3	0.3	0.3
Employment	193.7	193.7	1.7	0.0	-1.1	-1.1	0.0	-0.6	-0.6
Unemployment	20.4	21.1	1.6	0.7	1.9	1.9	3.4	9.9	9.9
Participation rate	68.2	68.4	0.5	0.2	-0.2	-0.2
Unemployment rate	9.5	9.8	0.7	0.3	0.8	0.8
Employment rate	61.7	61.7	0.6	0.0	-0.7	-0.7
Part-time rate	8.1	7.9	0.7	-0.2	1.4	1.4
Women, 25 years and over									
Population	344.6	344.7	...	0.1	2.0	2.0	0.0	0.6	0.6
Labour force	204.5	206.3	1.5	1.8	2.4	2.4	0.9	1.2	1.2
Employment	190.7	190.2	1.5	-0.5	1.3	1.3	-0.3	0.7	0.7
Unemployment	13.8	16.2	1.3	2.4	1.2	1.2	17.4	8.0	8.0
Participation rate	59.3	59.8	0.4	0.5	0.3	0.3
Unemployment rate	6.7	7.9	0.6	1.2	0.5	0.5
Employment rate	55.3	55.2	0.4	-0.1	0.1	0.1
Part-time rate	21.4	19.8	1.1	-1.6	-1.0	-1.0
Industry									
	450.5	449.1	2.8	-1.4	-2.9	-2.9	-0.3	-0.6	-0.6
Goods-producing sector									
	87.0	87.3	2.2	0.3	1.8	1.8	0.3	2.1	2.1
Agriculture	4.9	5.9	0.7	1.0	0.6	0.6	20.4	11.3	11.3
Forestry, fishing, mining, oil and gas	11.4	11.9	1.1	0.5	-0.2	-0.2	4.4	-1.7	-1.7
Utilities	3.8	3.9	0.4	0.1	0.0	0.0	2.6	0.0	0.0
Construction	34.1	32.3	1.5	-1.8	0.2	0.2	-5.3	0.6	0.6
Manufacturing	32.8	33.3	1.3	0.5	1.2	1.2	1.5	3.7	3.7
Services-producing sector									
	363.5	361.7	2.9	-1.8	-4.8	-4.8	-0.5	-1.3	-1.3
Trade	79.0	75.7	2.1	-3.3	0.1	0.1	-4.2	0.1	0.1
Transportation and warehousing	17.6	17.3	1.1	-0.3	-1.9	-1.9	-1.7	-9.9	-9.9
Finance, insurance, real estate and leasing	23.3	23.8	1.1	0.5	-0.1	-0.1	2.1	-0.4	-0.4
Professional, scientific and technical services	23.1	22.0	1.1	-1.1	-1.1	-1.1	-4.8	-4.8	-4.8
Business, building and other support services	23.8	24.0	1.2	0.2	1.4	1.4	0.8	6.2	6.2
Educational services	32.8	32.8	1.4	0.0	-4.4	-4.4	0.0	-11.8	-11.8
Health care and social assistance	67.9	68.1	1.7	0.2	0.5	0.5	0.3	0.7	0.7
Information, culture and recreation	19.2	19.1	1.2	-0.1	1.3	1.3	-0.5	7.3	7.3
Accommodation and food services	27.8	28.5	1.3	0.7	0.1	0.1	2.5	0.4	0.4
Other services	18.6	18.7	1.1	0.1	-1.8	-1.8	0.5	-8.8	-8.8
Public administration	30.5	31.8	1.2	1.3	1.2	1.2	4.3	3.9	3.9

1. Average standard error of change in two consecutive months (see "Sampling Errors" in Data Quality for further explanations).

Note(s): Related CANSIM Tables 282-0087, 282-0088.

Table 4-4
Selected labour force characteristics (seasonally adjusted) — New Brunswick

	November 2010	December 2010	S.E. ¹	Change from			Percent change from		
				last month	last December	twelve months ago	last month	last December	twelve months ago
in thousands (except rates)									
Both sexes, 15 years and over									
Population	626.1	626.3	...	0.2	3.5	3.5	0.0	0.6	0.6
Labour force	403.0	400.5	2.2	-2.5	-0.7	-0.7	-0.6	-0.2	-0.2
Employment	361.7	362.8	2.4	1.1	-2.6	-2.6	0.3	-0.7	-0.7
Employment full-time	304.4	307.5	2.8	3.1	-2.0	-2.0	1.0	-0.6	-0.6
Unemployment	41.4	37.7	2.1	-3.7	1.9	1.9	-8.9	5.3	5.3
Participation rate	64.4	63.9	0.4	-0.5	-0.5	-0.5
Unemployment rate	10.3	9.4	0.5	-0.9	0.5	0.5
Employment rate	57.8	57.9	0.4	0.1	-0.8	-0.8
Part-time rate	15.8	15.2	0.6	-0.6	-0.1	-0.1
Both sexes, 15 to 24 years									
Population	92.0	91.9	...	-0.1	-1.1	-1.1	-0.1	-1.2	-1.2
Labour force	56.4	56.2	1.3	-0.2	-4.4	-4.4	-0.4	-7.3	-7.3
Employment	47.5	47.3	1.3	-0.2	-2.9	-2.9	-0.4	-5.8	-5.8
Unemployment	8.9	8.9	1.2	0.0	-1.5	-1.5	0.0	-14.4	-14.4
Participation rate	61.3	61.2	1.4	-0.1	-4.0	-4.0
Unemployment rate	15.8	15.8	1.8	0.0	-1.4	-1.4
Employment rate	51.6	51.5	1.4	-0.1	-2.5	-2.5
Part-time rate	40.2	39.1	2.4	-1.1	-2.3	-2.3
Men, 25 years and over									
Population	258.0	258.1	...	0.1	2.5	2.5	0.0	1.0	1.0
Labour force	181.1	180.1	1.3	-1.0	2.2	2.2	-0.6	1.2	1.2
Employment	161.1	162.3	1.4	1.2	-0.3	-0.3	0.7	-0.2	-0.2
Unemployment	20.0	17.8	1.3	-2.2	2.5	2.5	-11.0	16.3	16.3
Participation rate	70.2	69.8	0.5	-0.4	0.2	0.2
Unemployment rate	11.0	9.9	0.7	-1.1	1.3	1.3
Employment rate	62.4	62.9	0.5	0.5	-0.7	-0.7
Part-time rate	6.2	6.3	0.7	0.1	1.1	1.1
Women, 25 years and over									
Population	276.2	276.3	...	0.1	2.1	2.1	0.0	0.8	0.8
Labour force	165.5	164.2	1.2	-1.3	1.5	1.5	-0.8	0.9	0.9
Employment	153.1	153.2	1.3	0.1	0.6	0.6	0.1	0.4	0.4
Unemployment	12.4	11.0	1.1	-1.4	0.9	0.9	-11.3	8.9	8.9
Participation rate	59.9	59.4	0.4	-0.5	0.1	0.1
Unemployment rate	7.5	6.7	0.6	-0.8	0.5	0.5
Employment rate	55.4	55.4	0.5	0.0	-0.3	-0.3
Part-time rate	18.4	17.3	1.0	-1.1	-0.1	-0.1
Industry	361.7	362.8	2.4	1.1	-2.6	-2.6	0.3	-0.7	-0.7
Goods-producing sector	81.6	87.1	2.0	5.5	5.2	5.2	6.7	6.3	6.3
Agriculture	5.7	5.6	0.6	-0.1	-1.2	-1.2	-1.8	-17.6	-17.6
Forestry, fishing, mining, oil and gas	11.5	12.6	0.8	1.1	1.9	1.9	9.6	17.8	17.8
Utilities	4.2	4.3	0.4	0.1	-0.4	-0.4	2.4	-8.5	-8.5
Construction	28.8	29.9	1.3	1.1	3.9	3.9	3.8	15.0	15.0
Manufacturing	31.4	34.6	1.2	3.2	0.9	0.9	10.2	2.7	2.7
Services-producing sector	280.0	275.7	2.5	-4.3	-7.8	-7.8	-1.5	-2.8	-2.8
Trade	57.3	54.9	1.6	-2.4	-0.1	-0.1	-4.2	-0.2	-0.2
Transportation and warehousing	18.6	19.0	0.8	0.4	-1.2	-1.2	2.2	-5.9	-5.9
Finance, insurance, real estate and leasing	16.1	16.7	0.8	0.6	0.7	0.7	3.7	4.4	4.4
Professional, scientific and technical services	16.1	16.1	0.9	0.0	0.5	0.5	0.0	3.2	3.2
Business, building and other support services	15.6	15.5	1.1	-0.1	-3.7	-3.7	-0.6	-19.3	-19.3
Educational services	26.9	27.1	1.1	0.2	-0.5	-0.5	0.7	-1.8	-1.8
Health care and social assistance	52.1	51.3	1.4	-0.8	2.2	2.2	-1.5	4.5	4.5
Information, culture and recreation	12.2	10.5	0.9	-1.7	-1.7	-1.7	-13.9	-13.9	-13.9
Accommodation and food services	20.3	21.0	1.2	0.7	-3.9	-3.9	3.4	-15.7	-15.7
Other services	17.4	16.4	0.9	-1.0	-0.7	-0.7	-5.7	-4.1	-4.1
Public administration	27.6	27.1	1.1	-0.5	0.4	0.4	-1.8	1.5	1.5

1. Average standard error of change in two consecutive months (see "Sampling Errors" in Data Quality for further explanations).

Note(s): Related CANSIM Tables 282-0087, 282-0088.

Table 4-5
Selected labour force characteristics (seasonally adjusted) — Quebec

	November 2010	December 2010	S.E.	Change from			Percent change from		
				last month	last December	twelve months ago	last month	last December	twelve months ago
in thousands (except rates)									
Both sexes, 15 years and over									
Population	6,545.3	6,550.7	...	5.4	79.0	79.0	0.1	1.2	1.2
Labour force	4,272.3	4,285.5	14.1	13.2	73.3	73.3	0.3	1.7	1.7
Employment	3,935.5	3,960.2	14.3	24.7	101.8	101.8	0.6	2.6	2.6
Employment full-time	3,175.0	3,214.3	18.6	39.3	76.4	76.4	1.2	2.4	2.4
Unemployment	336.8	325.4	12.9	-11.4	-28.4	-28.4	-3.4	-8.0	-8.0
Participation rate	65.3	65.4	0.2	0.1	0.3	0.3
Unemployment rate	7.9	7.6	0.3	-0.3	-0.8	-0.8
Employment rate	60.1	60.5	0.2	0.4	0.9	0.9
Part-time rate	19.3	18.8	0.4	-0.5	0.2	0.2
Both sexes, 15 to 24 years									
Population	968.2	968.5	...	0.3	4.1	4.1	0.0	0.4	0.4
Labour force	653.3	670.2	8.0	16.9	28.8	28.8	2.6	4.5	4.5
Employment	572.0	584.0	7.6	12.0	48.0	48.0	2.1	9.0	9.0
Unemployment	81.3	86.2	7.3	4.9	-19.2	-19.2	6.0	-18.2	-18.2
Participation rate	67.5	69.2	0.8	1.7	2.7	2.7
Unemployment rate	12.4	12.9	1.1	0.5	-3.5	-3.5
Employment rate	59.1	60.3	0.8	1.2	4.7	4.7
Part-time rate	50.6	49.2	1.5	-1.4	-0.3	-0.3
Men, 25 years and over									
Population	2,729.7	2,732.4	...	2.7	39.2	39.2	0.1	1.5	1.5
Labour force	1,915.8	1,918.1	8.1	2.3	29.8	29.8	0.1	1.6	1.6
Employment	1,771.8	1,781.9	8.6	10.1	46.2	46.2	0.6	2.7	2.7
Unemployment	144.0	136.2	8.2	-7.8	-16.4	-16.4	-5.4	-10.7	-10.7
Participation rate	70.2	70.2	0.3	0.0	0.1	0.1
Unemployment rate	7.5	7.1	0.4	-0.4	-1.0	-1.0
Employment rate	64.9	65.2	0.3	0.3	0.8	0.8
Part-time rate	8.0	8.4	0.5	0.4	0.2	0.2
Women, 25 years and over									
Population	2,847.3	2,849.8	...	2.5	35.7	35.7	0.1	1.3	1.3
Labour force	1,703.2	1,697.3	7.8	-5.9	14.8	14.8	-0.3	0.9	0.9
Employment	1,591.7	1,594.2	7.8	2.5	7.5	7.5	0.2	0.5	0.5
Unemployment	111.5	103.0	6.4	-8.5	7.1	7.1	-7.6	7.4	7.4
Participation rate	59.8	59.6	0.3	-0.2	-0.2	-0.2
Unemployment rate	6.5	6.1	0.4	-0.4	0.4	0.4
Employment rate	55.9	55.9	0.3	0.0	-0.5	-0.5
Part-time rate	20.7	19.4	0.7	-1.3	-0.3	-0.3
Industry	3,935.5	3,960.2	14.3	24.7	101.8	101.8	0.6	2.6	2.6
Goods-producing sector									
Agriculture	56.5	59.3	3.1	2.8	4.0	4.0	5.0	7.2	7.2
Forestry, fishing, mining, oil and gas	29.9	30.0	2.0	0.1	-1.1	-1.1	0.3	-3.5	-3.5
Utilities	33.1	33.7	2.2	0.6	0.4	0.4	1.8	1.2	1.2
Construction	235.2	245.1	7.1	9.9	25.6	25.6	4.2	11.7	11.7
Manufacturing	482.0	496.1	9.6	14.1	-33.4	-33.4	2.9	-6.3	-6.3
Services-producing sector									
Trade	3,098.9	3,096.0	16.0	-2.9	106.3	106.3	-0.1	3.6	3.6
Transportation and warehousing	632.1	624.8	10.9	-7.3	-14.7	-14.7	-1.2	-2.3	-2.3
Finance, insurance, real estate and leasing	172.6	186.1	5.5	13.5	22.9	22.9	7.8	14.0	14.0
Professional, scientific and technical services	231.3	230.9	6.7	-0.4	-0.8	-0.8	-0.2	-0.3	-0.3
Business, building and other support services	304.3	303.8	7.8	-0.5	14.1	14.1	-0.2	4.9	4.9
Educational services	147.9	141.7	6.2	-6.2	12.8	12.8	-4.2	9.9	9.9
Health care and social assistance	267.5	266.0	7.4	-1.5	-1.9	-1.9	-0.6	-0.7	-0.7
Information, culture and recreation	522.1	512.2	9.0	-9.9	31.8	31.8	-1.9	6.6	6.6
Accommodation and food services	169.4	167.6	6.5	-1.8	-9.5	-9.5	-1.1	-5.4	-5.4
Other services	248.2	247.2	7.9	-1.0	22.7	22.7	-0.4	10.1	10.1
Public administration	167.3	169.9	5.9	2.6	9.4	9.4	1.6	5.9	5.9
	236.3	245.9	6.1	9.6	19.6	19.6	4.1	8.7	8.7

1. Average standard error of change in two consecutive months (see "Sampling Errors" in Data Quality for further explanations).

Note(s): Related CANSIM Tables 282-0087, 282-0088.

Table 4-6
Selected labour force characteristics (seasonally adjusted) — Ontario

	November 2010	December 2010	S.E. ¹	Change from			Percent change from		
				last month	last December	twelve months ago	last month	last December	twelve months ago
in thousands (except rates)									
Both sexes, 15 years and over									
Population	10,879.7	10,889.7	...	10.0	162.1	162.1	0.1	1.5	1.5
Labour force	7,288.7	7,303.5	19.4	14.8	113.3	113.3	0.2	1.6	1.6
Employment	6,690.4	6,712.9	18.9	22.5	185.5	185.5	0.3	2.8	2.8
Employment full-time	5,409.1	5,423.2	24.6	14.1	121.8	121.8	0.3	2.3	2.3
Unemployment	598.4	590.7	17.2	-7.7	-72.1	-72.1	-1.3	-10.9	-10.9
Participation rate	67.0	67.1	0.2	0.1	0.1	0.1
Unemployment rate	8.2	8.1	0.2	-0.1	-1.1	-1.1
Employment rate	61.5	61.6	0.2	0.1	0.8	0.8
Part-time rate	19.2	19.2	0.3	0.1	0.4	0.4
Both sexes, 15 to 24 years									
Population	1,759.4	1,760.0	...	0.6	11.2	11.2	0.0	0.6	0.6
Labour force	1,031.4	1,061.2	11.7	29.8	-20.9	-20.9	2.9	-1.9	-1.9
Employment	860.7	887.8	10.3	27.1	5.7	5.7	3.1	0.6	0.6
Unemployment	170.8	173.4	10.0	2.6	-26.6	-26.6	1.5	-13.3	-13.3
Participation rate	58.6	60.3	0.7	1.7	-1.6	-1.6
Unemployment rate	16.6	16.3	0.8	-0.3	-2.2	-2.2
Employment rate	48.9	50.4	0.6	1.5	0.0	0.0
Part-time rate	50.8	52.0	1.2	1.2	1.6	1.6
Men, 25 years and over									
Population	4,427.3	4,431.9	...	4.6	70.5	70.5	0.1	1.6	1.6
Labour force	3,283.0	3,280.9	9.8	-2.1	78.6	78.6	-0.1	2.5	2.5
Employment	3,059.5	3,058.4	10.8	-1.1	133.7	133.7	0.0	4.6	4.6
Unemployment	223.5	222.5	10.0	-1.0	-55.1	-55.1	-0.4	-19.8	-19.8
Participation rate	74.2	74.0	0.2	-0.2	0.6	0.6
Unemployment rate	6.8	6.8	0.3	0.0	-1.9	-1.9
Employment rate	69.1	69.0	0.2	-0.1	1.9	1.9
Part-time rate	7.8	7.6	0.4	-0.3	-0.4	-0.4
Women, 25 years and over									
Population	4,693.0	4,697.8	...	4.8	80.3	80.3	0.1	1.7	1.7
Labour force	2,974.4	2,961.5	11.0	-12.9	55.7	55.7	-0.4	1.9	1.9
Employment	2,770.2	2,766.7	10.8	-3.5	46.1	46.1	-0.1	1.7	1.7
Unemployment	204.1	194.8	9.1	-9.3	9.6	9.6	-4.6	5.2	5.2
Participation rate	63.4	63.0	0.2	-0.4	0.1	0.1
Unemployment rate	6.9	6.6	0.3	-0.3	0.2	0.2
Employment rate	59.0	58.9	0.2	-0.1	0.0	0.0
Part-time rate	21.8	21.6	0.5	-0.3	1.4	1.4
Industry									
	6,690.4	6,712.9	18.9	22.5	185.5	185.5	0.3	2.8	2.8
Goods-producing sector									
	1,411.4	1,415.8	16.5	4.4	38.3	38.3	0.3	2.8	2.8
Agriculture	94.2	84.5	3.7	-9.7	0.9	0.9	-10.3	1.1	1.1
Forestry, fishing, mining, oil and gas	41.1	38.9	2.6	-2.2	-0.1	-0.1	-5.4	-0.3	-0.3
Utilities	59.0	58.0	3.2	-1.0	2.5	2.5	-1.7	4.5	4.5
Construction	452.7	427.3	9.8	-25.4	13.3	13.3	-5.6	3.2	3.2
Manufacturing	764.3	807.1	13.1	42.8	21.7	21.7	5.6	2.8	2.8
Services-producing sector									
	5,279.0	5,297.1	22.2	18.1	147.2	147.2	0.3	2.9	2.9
Trade	1,021.4	1,020.3	15.2	-1.1	35.4	35.4	-0.1	3.6	3.6
Transportation and warehousing	313.0	328.5	8.7	15.5	27.4	27.4	5.0	9.1	9.1
Finance, insurance, real estate and leasing	483.8	508.1	11.2	24.3	-8.1	-8.1	5.0	-1.6	-1.6
Professional, scientific and technical services	542.2	537.8	11.6	-4.4	12.5	12.5	-0.8	2.4	2.4
Business, building and other support services	300.1	290.6	9.4	-9.5	29.7	29.7	-3.2	11.4	11.4
Educational services	482.0	481.0	10.4	-1.0	1.5	1.5	-0.2	0.3	0.3
Health care and social assistance	735.2	738.9	11.1	3.7	13.1	13.1	0.5	1.8	1.8
Information, culture and recreation	341.8	340.2	9.5	-1.6	18.2	18.2	-0.5	5.7	5.7
Accommodation and food services	393.1	393.4	10.2	0.3	5.8	5.8	0.1	1.5	1.5
Other services	275.8	273.7	9.1	-2.1	-27.7	-27.7	-0.8	-9.2	-9.2
Public administration	390.6	384.7	8.1	-5.9	39.3	39.3	-1.5	11.4	11.4

1. Average standard error of change in two consecutive months (see "Sampling Errors" in Data Quality for further explanations).

Note(s): Related CANSIM Tables 282-0087, 282-0088.

Table 4-7
Selected labour force characteristics (seasonally adjusted) — Manitoba

	November 2010	December 2010	S.E.	Change from			Percent change from		
				last month	last December	twelve months ago	last month	last December	twelve months ago
in thousands (except rates)									
Both sexes, 15 years and over									
Population	942.1	943.1	...	1.0	14.5	14.5	0.1	1.6	1.6
Labour force	655.6	654.4	2.6	-1.2	13.5	13.5	-0.2	2.1	2.1
Employment	622.3	620.2	2.8	-2.1	16.2	16.2	-0.3	2.7	2.7
Employment full-time	503.2	502.4	3.7	-0.8	17.7	17.7	-0.2	3.7	3.7
Unemployment	33.3	34.2	2.1	0.9	-2.8	-2.8	2.7	-7.6	-7.6
Participation rate	69.6	69.4	0.3	-0.2	0.4	0.4
Unemployment rate	5.1	5.2	0.3	0.1	-0.6	-0.6
Employment rate	66.1	65.8	0.3	-0.3	0.8	0.8
Part-time rate	19.2	19.0	0.5	-0.2	-0.7	-0.7
Both sexes, 15 to 24 years									
Population	161.7	161.8	...	0.1	1.2	1.2	0.1	0.7	0.7
Labour force	109.9	111.0	1.6	1.1	2.0	2.0	1.0	1.8	1.8
Employment	98.6	98.9	1.6	0.3	1.5	1.5	0.3	1.5	1.5
Unemployment	11.3	12.1	1.4	0.8	0.5	0.5	7.1	4.3	4.3
Participation rate	68.0	68.6	1.0	0.6	0.7	0.7
Unemployment rate	10.3	10.9	1.2	0.6	0.3	0.3
Employment rate	61.0	61.1	1.0	0.1	0.5	0.5
Part-time rate	44.9	44.3	1.8	-0.6	3.6	3.6
Men, 25 years and over									
Population	381.8	382.3	...	0.5	6.7	6.7	0.1	1.8	1.8
Labour force	291.6	291.1	1.3	-0.5	5.9	5.9	-0.2	2.1	2.1
Employment	279.8	278.7	1.5	-1.1	9.0	9.0	-0.4	3.3	3.3
Unemployment	11.9	12.4	1.2	0.5	-3.1	-3.1	4.2	-20.0	-20.0
Participation rate	76.4	76.1	0.3	-0.3	0.2	0.2
Unemployment rate	4.1	4.3	0.4	0.2	-1.1	-1.1
Employment rate	73.3	72.9	0.4	-0.4	1.1	1.1
Part-time rate	7.4	7.0	0.6	-0.4	-1.8	-1.8
Women, 25 years and over									
Population	398.5	399.0	...	0.5	6.6	6.6	0.1	1.7	1.7
Labour force	254.1	252.4	1.5	-1.7	5.7	5.7	-0.7	2.3	2.3
Employment	244.0	242.6	1.5	-1.4	5.8	5.8	-0.6	2.4	2.4
Unemployment	10.1	9.8	1.1	-0.3	-0.1	-0.1	-3.0	-1.0	-1.0
Participation rate	63.8	63.3	0.4	-0.5	0.4	0.4
Unemployment rate	4.0	3.9	0.4	-0.1	-0.1	-0.1
Employment rate	61.2	60.8	0.4	-0.4	0.5	0.5
Part-time rate	22.2	22.5	0.9	0.3	-1.2	-1.2
Industry	622.3	620.2	2.8	-2.1	16.2	16.2	-0.3	2.7	2.7
Goods-producing sector									
Agriculture	25.1	25.7	1.3	0.6	0.3	0.3	2.4	1.2	1.2
Forestry, fishing, mining, oil and gas	6.9	7.1	0.6	0.2	1.4	1.4	2.9	24.6	24.6
Utilities	8.2	9.0	0.6	0.8	0.7	0.7	9.8	8.4	8.4
Construction	41.0	42.7	1.4	1.7	7.2	7.2	4.1	20.3	20.3
Manufacturing	64.8	67.6	1.5	2.8	9.8	9.8	4.3	17.0	17.0
Services-producing sector									
Trade	476.4	468.1	3.1	-8.3	-3.3	-3.3	-1.7	-0.7	-0.7
Transportation and warehousing	95.9	95.4	2.0	-0.5	5.0	5.0	-0.5	5.5	5.5
Finance, insurance, real estate and leasing	35.4	34.9	1.3	-0.5	-3.0	-3.0	-1.4	-7.9	-7.9
Professional, scientific and technical services	35.4	34.7	1.2	-0.7	-0.6	-0.6	-2.0	-1.7	-1.7
Business, building and other support services	26.3	26.8	1.2	0.5	1.6	1.6	1.9	6.3	6.3
Educational services	17.0	15.7	1.2	-1.3	-3.1	-3.1	-7.6	-16.5	-16.5
Health care and social assistance	50.8	49.2	1.5	-1.6	-2.3	-2.3	-3.1	-4.5	-4.5
Information, culture and recreation	94.9	94.1	1.8	-0.8	9.5	9.5	-0.8	11.2	11.2
Accommodation and food services	21.5	22.7	1.2	1.2	-0.1	-0.1	5.6	-0.4	-0.4
Other services	38.5	35.5	1.5	-3.0	-1.5	-1.5	-7.8	-4.1	-4.1
Public administration	24.4	23.3	1.2	-1.1	-5.9	-5.9	-4.5	-20.2	-20.2
	36.4	35.9	1.2	-0.5	-2.8	-2.8	-1.4	-7.2	-7.2

1. Average standard error of change in two consecutive months (see "Sampling Errors" in Data Quality for further explanations).

Note(s): Related CANSIM Tables 282-0087, 282-0088.

Table 4-8
Selected labour force characteristics (seasonally adjusted) — Saskatchewan

	November 2010	December 2010	S.E. ¹	Change from			Percent change from		
				last month	last December	twelve months ago	last month	last December	twelve months ago
in thousands (except rates)									
Both sexes, 15 years and over									
Population	795.5	796.1	...	0.6	11.8	11.8	0.1	1.5	1.5
Labour force	557.5	557.5	2.4	0.0	9.0	9.0	0.0	1.6	1.6
Employment	527.0	527.0	2.5	0.0	4.9	4.9	0.0	0.9	0.9
Employment full-time	432.9	433.6	3.3	0.7	8.0	8.0	0.2	1.9	1.9
Unemployment	30.5	30.6	1.9	0.1	4.3	4.3	0.3	16.3	16.3
Participation rate	70.1	70.0	0.3	-0.1	0.1	0.1
Unemployment rate	5.5	5.5	0.3	0.0	0.7	0.7
Employment rate	66.2	66.2	0.3	0.0	-0.4	-0.4
Part-time rate	17.9	17.7	0.6	-0.1	-0.8	-0.8
Both sexes, 15 to 24 years									
Population	137.2	137.0	...	-0.2	-1.5	-1.5	-0.1	-1.1	-1.1
Labour force	92.9	92.2	1.4	-0.7	-2.9	-2.9	-0.8	-3.0	-3.0
Employment	83.1	82.8	1.4	-0.3	-4.3	-4.3	-0.4	-4.9	-4.9
Unemployment	9.8	9.4	1.2	-0.4	1.4	1.4	-4.1	17.5	17.5
Participation rate	67.7	67.3	1.0	-0.4	-1.4	-1.4
Unemployment rate	10.5	10.2	1.1	-0.3	1.8	1.8
Employment rate	60.6	60.4	1.0	-0.2	-2.5	-2.5
Part-time rate	36.6	36.5	1.8	-0.1	-0.8	-0.8
Men, 25 years and over									
Population	323.2	323.6	...	0.4	7.7	7.7	0.1	2.4	2.4
Labour force	249.9	250.7	1.2	0.8	8.9	8.9	0.3	3.7	3.7
Employment	238.2	238.4	1.3	0.2	8.5	8.5	0.1	3.7	3.7
Unemployment	11.6	12.3	1.1	0.7	0.4	0.4	6.0	3.4	3.4
Participation rate	77.3	77.5	0.4	0.2	1.0	1.0
Unemployment rate	4.6	4.9	0.5	0.3	0.0	0.0
Employment rate	73.7	73.7	0.4	0.0	0.9	0.9
Part-time rate	7.0	6.2	0.6	-0.8	-0.7	-0.7
Women, 25 years and over									
Population	335.1	335.5	...	0.4	5.7	5.7	0.1	1.7	1.7
Labour force	214.7	214.7	1.4	0.0	3.1	3.1	0.0	1.5	1.5
Employment	205.7	205.7	1.4	0.0	0.6	0.6	0.0	0.3	0.3
Unemployment	9.1	8.9	0.9	-0.2	2.4	2.4	-2.2	36.9	36.9
Participation rate	64.1	64.0	0.4	-0.1	-0.2	-0.2
Unemployment rate	4.2	4.1	0.4	-0.1	1.0	1.0
Employment rate	61.4	61.3	0.4	-0.1	-0.9	-0.9
Part-time rate	22.8	23.4	1.0	0.6	0.0	0.0
Industry	527.0	527.0	2.5	0.0	4.9	4.9	0.0	0.9	0.9
Goods-producing sector	140.2	138.7	2.3	-1.5	-2.7	-2.7	-1.1	-1.9	-1.9
Agriculture	40.2	38.4	1.5	-1.8	-7.1	-7.1	-4.5	-15.6	-15.6
Forestry, fishing, mining, oil and gas	23.8	24.1	1.2	0.3	-2.9	-2.9	1.3	-10.7	-10.7
Utilities	5.6	6.2	0.4	0.6	1.5	1.5	10.7	31.9	31.9
Construction	38.6	39.3	1.4	0.7	1.8	1.8	1.8	4.8	4.8
Manufacturing	32.0	30.7	1.1	-1.3	3.9	3.9	-4.1	14.6	14.6
Services-producing sector	386.8	388.2	2.8	1.4	7.5	7.5	0.4	2.0	2.0
Trade	82.8	82.0	1.8	-0.8	2.5	2.5	-1.0	3.1	3.1
Transportation and warehousing	26.8	26.9	1.1	0.1	1.5	1.5	0.4	5.9	5.9
Finance, insurance, real estate and leasing	30.2	30.6	1.1	0.4	-0.6	-0.6	1.3	-1.9	-1.9
Professional, scientific and technical services	21.7	21.0	1.0	-0.7	-2.5	-2.5	-3.2	-10.6	-10.6
Business, building and other support services	10.5	10.5	0.9	0.0	-2.3	-2.3	0.0	-18.0	-18.0
Educational services	38.3	39.0	1.4	0.7	-1.7	-1.7	1.8	-4.2	-4.2
Health care and social assistance	68.6	67.5	1.5	-1.1	1.1	1.1	-1.6	1.7	1.7
Information, culture and recreation	20.3	21.4	0.9	1.1	2.6	2.6	5.4	13.8	13.8
Accommodation and food services	31.9	32.7	1.3	0.8	3.8	3.8	2.5	13.1	13.1
Other services	27.3	27.2	1.1	-0.1	3.8	3.8	-0.4	16.2	16.2
Public administration	28.2	29.3	1.0	1.1	-0.9	-0.9	3.9	-3.0	-3.0

1. Average standard error of change in two consecutive months (see "Sampling Errors" in Data Quality for further explanations).

Note(s): Related CANSIM Tables 282-0087, 282-0088.

Table 4-9
Selected labour force characteristics (seasonally adjusted) — Alberta

	November 2010	December 2010	S.E.	Change from			Percent change from		
				last month	last December	twelve months ago	last month	last December	twelve months ago
in thousands (except rates)									
Both sexes, 15 years and over									
Population	2,947.2	2,951.1	...	3.9	55.8	55.8	0.1	1.9	1.9
Labour force	2,138.7	2,135.1	8.6	-3.6	-0.8	-0.8	-0.2	0.0	0.0
Employment	2,018.8	2,016.4	8.8	-2.4	21.1	21.1	-0.1	1.1	1.1
Employment full-time	1,668.3	1,662.8	11.8	-5.5	31.0	31.0	-0.3	1.9	1.9
Unemployment	119.9	118.7	7.5	-1.2	-21.9	-21.9	-1.0	-15.6	-15.6
Participation rate	72.6	72.3	0.3	-0.3	-1.5	-1.5
Unemployment rate	5.6	5.6	0.3	0.0	-1.0	-1.0
Employment rate	68.5	68.3	0.3	-0.2	-0.6	-0.6
Part-time rate	17.4	17.5	0.5	0.2	-0.7	-0.7
Both sexes, 15 to 24 years									
Population	504.5	504.3	...	-0.2	-3.3	-3.3	0.0	-0.7	-0.7
Labour force	349.7	343.8	5.1	-5.9	-13.1	-13.1	-1.7	-3.7	-3.7
Employment	312.4	310.9	4.8	-1.5	-1.1	-1.1	-0.5	-0.4	-0.4
Unemployment	37.3	32.9	4.4	-4.4	-12.0	-12.0	-11.8	-26.7	-26.7
Participation rate	69.3	68.2	1.0	-1.1	-2.1	-2.1
Unemployment rate	10.7	9.6	1.2	-1.1	-3.0	-3.0
Employment rate	61.9	61.6	0.9	-0.3	0.1	0.1
Part-time rate	37.3	37.7	1.7	0.4	0.1	0.1
Men, 25 years and over									
Population	1,240.1	1,242.2	...	2.1	30.4	30.4	0.2	2.5	2.5
Labour force	995.2	1,001.7	4.4	6.5	18.0	18.0	0.7	1.8	1.8
Employment	947.9	952.2	5.1	4.3	26.1	26.1	0.5	2.8	2.8
Unemployment	47.3	49.5	4.5	2.2	-8.1	-8.1	4.7	-14.1	-14.1
Participation rate	80.3	80.6	0.4	0.3	-0.6	-0.6
Unemployment rate	4.8	4.9	0.4	0.1	-1.0	-1.0
Employment rate	76.4	76.7	0.4	0.3	0.3	0.3
Part-time rate	5.8	6.2	0.5	0.4	-0.2	-0.2
Women, 25 years and over									
Population	1,202.6	1,204.5	...	1.9	28.6	28.6	0.2	2.4	2.4
Labour force	793.7	789.7	4.9	-4.0	-5.6	-5.6	-0.5	-0.7	-0.7
Employment	758.5	753.3	4.9	-5.2	-4.0	-4.0	-0.7	-0.5	-0.5
Unemployment	35.2	36.3	3.6	1.1	-1.7	-1.7	3.1	-4.5	-4.5
Participation rate	66.0	65.6	0.4	-0.4	-2.0	-2.0
Unemployment rate	4.4	4.6	0.4	0.2	-0.2	-0.2
Employment rate	63.1	62.5	0.4	-0.6	-1.9	-1.9
Part-time rate	23.6	23.6	0.9	0.0	-1.1	-1.1
Industry									
	2,018.8	2,016.4	8.8	-2.4	21.1	21.1	-0.1	1.1	1.1
Goods-producing sector									
Agriculture	50.5	45.8	3.2	-4.7	-7.8	-7.8	-9.3	-14.6	-14.6
Forestry, fishing, mining, oil and gas	148.2	154.3	4.6	6.1	28.7	28.7	4.1	22.9	22.9
Utilities	18.8	18.9	1.9	0.1	-0.1	-0.1	0.5	-0.5	-0.5
Construction	216.8	210.8	6.1	-6.0	11.8	11.8	-2.8	5.9	5.9
Manufacturing	121.5	124.4	4.7	2.9	8.4	8.4	2.4	7.2	7.2
Services-producing sector									
Trade	1,463.0	1,462.3	10.5	-0.7	-19.9	-19.9	0.0	-1.3	-1.3
Transportation and warehousing	309.3	308.1	7.4	-1.2	3.7	3.7	-0.4	1.2	1.2
Finance, insurance, real estate and leasing	102.9	106.6	4.6	3.7	6.0	6.0	3.6	6.0	6.0
Professional, scientific and technical services	105.6	98.7	4.3	-6.9	-5.9	-5.9	-6.5	-5.6	-5.6
Business, building and other support services	143.8	157.1	4.9	13.3	11.5	11.5	9.2	7.9	7.9
Educational services	71.4	72.3	4.1	0.9	7.0	7.0	1.3	10.7	10.7
Health care and social assistance	129.2	120.4	5.0	-8.8	-19.3	-19.3	-6.8	-13.8	-13.8
Information, culture and recreation	225.2	218.3	5.4	-6.9	9.5	9.5	-3.1	4.5	4.5
Accommodation and food services	73.7	71.2	3.9	-2.5	-11.0	-11.0	-3.4	-13.4	-13.4
Other services	115.9	118.3	5.4	2.4	-15.0	-15.0	2.1	-11.3	-11.3
Public administration	98.7	103.5	4.4	4.8	-4.0	-4.0	4.9	-3.7	-3.7
	87.3	87.9	3.7	0.6	-2.4	-2.4	0.7	-2.7	-2.7

1. Average standard error of change in two consecutive months (see "Sampling Errors" in Data Quality for further explanations).

Note(s): Related CANSIM Tables 282-0087, 282-0088.

Table 4-10
Selected labour force characteristics (seasonally adjusted) — British Columbia

	November 2010	December 2010	S.E.	Change from			Percent change from		
				last month	last December	twelve months ago	last month	last December	twelve months ago
in thousands (except rates)									
Both sexes, 15 years and over									
Population	3,805.5	3,809.3	...	3.8	70.4	70.4	0.1	1.9	1.9
Labour force	2,499.1	2,492.9	10.5	-6.2	20.2	20.2	-0.2	0.8	0.8
Employment	2,326.1	2,303.6	10.3	-22.5	35.1	35.1	-1.0	1.5	1.5
Employment full-time	1,790.4	1,770.5	14.5	-19.9	-1.9	-1.9	-1.1	-0.1	-0.1
Unemployment	173.0	189.3	8.8	16.3	-14.9	-14.9	9.4	-7.3	-7.3
Participation rate	65.7	65.4	0.3	-0.3	-0.7	-0.7
Unemployment rate	6.9	7.6	0.3	0.7	-0.7	-0.7
Employment rate	61.1	60.5	0.3	-0.6	-0.2	-0.2
Part-time rate	23.0	23.1	0.6	0.1	1.3	1.3
Both sexes, 15 to 24 years									
Population	589.2	589.2	...	0.0	2.1	2.1	0.0	0.4	0.4
Labour force	364.7	362.3	6.0	-2.4	-11.3	-11.3	-0.7	-3.0	-3.0
Employment	327.0	317.9	5.4	-9.1	-3.3	-3.3	-2.8	-1.0	-1.0
Unemployment	37.8	44.4	4.9	6.6	-8.0	-8.0	17.5	-15.3	-15.3
Participation rate	61.9	61.5	1.0	-0.4	-2.1	-2.1
Unemployment rate	10.4	12.3	1.2	1.9	-1.7	-1.7
Employment rate	55.5	54.0	0.9	-1.5	-0.7	-0.7
Part-time rate	49.9	50.6	2.0	0.7	2.9	2.9
Men, 25 years and over									
Population	1,576.0	1,577.9	...	1.9	34.3	34.3	0.1	2.2	2.2
Labour force	1,131.5	1,125.4	5.4	-6.1	1.1	1.1	-0.5	0.1	0.1
Employment	1,055.5	1,048.9	5.8	-6.6	10.0	10.0	-0.6	1.0	1.0
Unemployment	76.0	76.5	5.2	0.5	-8.9	-8.9	0.7	-10.4	-10.4
Participation rate	71.8	71.3	0.4	-0.5	-1.5	-1.5
Unemployment rate	6.7	6.8	0.5	0.1	-0.8	-0.8
Employment rate	67.0	66.5	0.4	-0.5	-0.8	-0.8
Part-time rate	9.1	9.9	0.6	0.8	0.6	0.6
Women, 25 years and over									
Population	1,640.3	1,642.2	...	1.9	34.0	34.0	0.1	2.1	2.1
Labour force	1,002.9	1,005.2	6.2	2.3	30.5	30.5	0.2	3.1	3.1
Employment	943.7	936.8	6.1	-6.9	28.4	28.4	-0.7	3.1	3.1
Unemployment	59.2	68.4	4.7	9.2	2.0	2.0	15.5	3.0	3.0
Participation rate	61.1	61.2	0.4	0.1	0.6	0.6
Unemployment rate	5.9	6.8	0.5	0.9	0.0	0.0
Employment rate	57.5	57.0	0.4	-0.5	0.5	0.5
Part-time rate	29.3	28.6	0.9	-0.7	1.5	1.5
Industry	2,326.1	2,303.6	10.3	-22.5	35.1	35.1	-1.0	1.5	1.5
Goods-producing sector									
Agriculture	30.8	31.1	2.7	0.3	-2.6	-2.6	1.0	-7.7	-7.7
Forestry, fishing, mining, oil and gas	41.0	39.3	2.7	-1.7	1.8	1.8	-4.1	4.8	4.8
Utilities	12.9	14.6	1.6	1.7	0.2	0.2	13.2	1.4	1.4
Construction	197.3	187.1	6.6	-10.2	-6.7	-6.7	-5.2	-3.5	-3.5
Manufacturing	182.4	180.6	5.6	-1.8	24.5	24.5	-1.0	15.7	15.7
Services-producing sector									
Trade	1,861.7	1,850.8	11.9	-10.9	17.8	17.8	-0.6	1.0	1.0
Transportation and warehousing	367.0	366.1	8.2	-0.9	-7.5	-7.5	-0.2	-2.0	-2.0
Finance, insurance, real estate and leasing	127.1	133.9	4.8	6.8	21.1	21.1	5.4	18.7	18.7
Professional, scientific and technical services	148.0	139.3	5.4	-8.7	-9.5	-9.5	-5.9	-6.4	-6.4
Business, building and other support services	185.4	184.7	5.8	-0.7	8.2	8.2	-0.4	4.6	4.6
Educational services	94.5	93.3	4.7	-1.2	5.0	5.0	-1.3	5.7	5.7
Health care and social assistance	171.9	170.4	5.7	-1.5	5.5	5.5	-0.9	3.3	3.3
Information, culture and recreation	272.3	261.0	6.4	-11.3	-2.4	-2.4	-4.1	-0.9	-0.9
Accommodation and food services	108.2	107.2	5.1	-1.0	-8.5	-8.5	-0.9	-7.3	-7.3
Other services	164.2	167.2	6.2	3.0	-3.4	-3.4	1.8	-2.0	-2.0
Public administration	112.8	112.5	4.7	-0.3	3.0	3.0	-0.3	2.7	2.7
	110.3	115.1	4.4	4.8	6.3	6.3	4.4	5.8	5.8

1. Average standard error of change in two consecutive months (see "Sampling Errors" in Data Quality for further explanations).

Note(s): Related CANSIM Tables 282-0087, 282-0088.

Table 5-1

Labour force characteristics by census metropolitan area (seasonally adjusted) — 3 month moving average

	November 2010	December 2010	S.E. ¹	Change from			Percent change from		
				last month	last December	twelve months ago	last month	last December	twelve months ago
in thousands (except rates)									
St. John's, Newfoundland and Labrador									
Population	161.5	161.7	...	0.2	2.8	2.8	0.1	1.8	1.8
Labour force	111.2	111.1	0.8	-0.1	1.8	1.8	-0.1	1.6	1.6
Employment	103.2	103.3	0.8	0.1	3.8	3.8	0.1	3.8	3.8
Unemployment	7.9	7.9	0.4	0.0	-1.9	-1.9	0.0	-19.4	-19.4
Participation rate	68.9	68.7	0.5	-0.2	-0.1	-0.1
Unemployment rate	7.1	7.1	0.4	0.0	-1.9	-1.9
Employment rate	63.9	63.9	0.5	0.0	1.3	1.3
Halifax, Nova Scotia									
Population	326.6	326.9	...	0.3	4.1	4.1	0.1	1.3	1.3
Labour force	229.5	229.2	1.1	-0.3	-1.4	-1.4	-0.1	-0.6	-0.6
Employment	214.1	213.6	1.2	-0.5	-1.7	-1.7	-0.2	-0.8	-0.8
Unemployment	15.4	15.6	0.7	0.2	0.3	0.3	1.3	2.0	2.0
Participation rate	70.3	70.1	0.4	-0.2	-1.3	-1.3
Unemployment rate	6.7	6.8	0.3	0.1	0.2	0.2
Employment rate	65.6	65.3	0.4	-0.3	-1.4	-1.4
Saint John, New Brunswick									
Population	106.5	106.5	...	0.0	0.7	0.7	0.0	0.7	0.7
Labour force	70.4	70.3	0.8	-0.1	-1.3	-1.3	-0.1	-1.8	-1.8
Employment	65.5	65.9	0.8	0.4	-0.9	-0.9	0.6	-1.3	-1.3
Unemployment	4.9	4.4	0.4	-0.5	-0.4	-0.4	-10.2	-8.3	-8.3
Participation rate	66.1	66.0	0.8	-0.1	-1.7	-1.7
Unemployment rate	7.0	6.3	0.5	-0.7	-0.4	-0.4
Employment rate	61.5	61.9	0.7	0.4	-1.2	-1.2
Saguenay, Quebec									
Population	124.7	124.7	...	0.0	0.0	0.0	0.0	0.0	0.0
Labour force	72.5	72.9	0.8	0.4	-3.5	-3.5	0.6	-4.6	-4.6
Employment	66.8	67.1	0.7	0.3	-3.7	-3.7	0.4	-5.2	-5.2
Unemployment	5.7	5.8	0.4	0.1	0.2	0.2	1.8	3.6	3.6
Participation rate	58.1	58.5	0.6	0.4	-2.8	-2.8
Unemployment rate	7.9	8.0	0.5	0.1	0.7	0.7
Employment rate	53.6	53.8	0.6	0.2	-3.0	-3.0
Québec, Quebec									
Population	627.0	627.6	...	0.6	7.7	7.7	0.1	1.2	1.2
Labour force	441.5	442.2	3.3	0.7	29.5	29.5	0.2	7.1	7.1
Employment	421.9	420.8	3.3	-1.1	28.4	28.4	-0.3	7.2	7.2
Unemployment	19.6	21.4	1.4	1.8	1.1	1.1	9.2	5.4	5.4
Participation rate	70.4	70.5	0.5	0.1	3.9	3.9
Unemployment rate	4.4	4.8	0.3	0.4	-0.1	-0.1
Employment rate	67.3	67.0	0.5	-0.3	3.7	3.7
Trois-Rivières, Quebec									
Population	124.4	124.5	...	0.1	1.3	1.3	0.1	1.1	1.1
Labour force	74.2	74.0	0.8	-0.2	-1.5	-1.5	-0.3	-2.0	-2.0
Employment	67.7	67.7	0.8	0.0	-0.5	-0.5	0.0	-0.7	-0.7
Unemployment	6.5	6.2	0.4	-0.3	-1.0	-1.0	-4.6	-13.9	-13.9
Participation rate	59.6	59.4	0.6	-0.2	-1.9	-1.9
Unemployment rate	8.8	8.4	0.5	-0.4	-1.1	-1.1
Employment rate	54.4	54.4	0.6	0.0	-1.0	-1.0

See notes at the end of the table.

Table 5-1 – continued

Labour force characteristics by census metropolitan area (seasonally adjusted) — 3 month moving average

	November 2010	December 2010	S.E. ¹	Change from			Percent change from		
				last month	last December	twelve months ago	last month	last December	twelve months ago
in thousands (except rates)									
Sherbrooke, Quebec									
Population	142.9	143.1	...	0.2	2.1	2.1	0.1	1.5	1.5
Labour force	92.7	92.9	0.8	0.2	2.5	2.5	0.2	2.8	2.8
Employment	85.7	86.1	0.8	0.4	0.7	0.7	0.5	0.8	0.8
Unemployment	7.0	6.8	0.3	-0.2	1.8	1.8	-2.9	36.0	36.0
Participation rate	64.9	64.9	0.6	0.0	0.8	0.8
Unemployment rate	7.6	7.3	0.4	-0.3	1.8	1.8
Employment rate	60.0	60.2	0.6	0.2	-0.4	-0.4
Montréal, Quebec									
Population	3,157.9	3,161.1	...	3.2	42.9	42.9	0.1	1.4	1.4
Labour force	2,098.0	2,091.3	7.0	-6.7	8.1	8.1	-0.3	0.4	0.4
Employment	1,917.3	1,912.9	7.2	-4.4	19.2	19.2	-0.2	1.0	1.0
Unemployment	180.6	178.4	4.8	-2.2	-11.1	-11.1	-1.2	-5.9	-5.9
Participation rate	66.4	66.2	0.2	-0.2	-0.6	-0.6
Unemployment rate	8.6	8.5	0.2	-0.1	-0.6	-0.6
Employment rate	60.7	60.5	0.2	-0.2	-0.2	-0.2
Ottawa-Gatineau, Ontario/Quebec									
Population	994.8	995.9	...	1.1	14.4	14.4	0.1	1.5	1.5
Labour force	721.7	717.1	3.5	-4.6	12.4	12.4	-0.6	1.8	1.8
Employment	672.6	669.3	3.6	-3.3	6.6	6.6	-0.5	1.0	1.0
Unemployment	49.1	47.7	1.6	-1.4	5.7	5.7	-2.9	13.6	13.6
Participation rate	72.5	72.0	0.4	-0.5	0.2	0.2
Unemployment rate	6.8	6.7	0.2	-0.1	0.7	0.7
Employment rate	67.6	67.2	0.4	-0.4	-0.3	-0.3
Ottawa-Gatineau, Quebec part, Ontario/Quebec									
Population	253.7	254.0	...	0.3	4.4	4.4	0.1	1.8	1.8
Labour force	178.1	176.6	1.4	-1.5	-7.1	-7.1	-0.8	-3.9	-3.9
Employment	166.1	165.2	1.4	-0.9	-7.6	-7.6	-0.5	-4.4	-4.4
Unemployment	12.0	11.4	0.6	-0.6	0.5	0.5	-5.0	4.6	4.6
Participation rate	70.2	69.5	0.6	-0.7	-4.1	-4.1
Unemployment rate	6.7	6.5	0.3	-0.2	0.6	0.6
Employment rate	65.5	65.0	0.6	-0.5	-4.2	-4.2
Ottawa-Gatineau, Ontario part, Ontario/Quebec									
Population	741.1	741.9	...	0.8	10.0	10.0	0.1	1.4	1.4
Labour force	543.6	540.5	3.3	-3.1	19.5	19.5	-0.6	3.7	3.7
Employment	506.5	504.1	3.3	-2.4	14.3	14.3	-0.5	2.9	2.9
Unemployment	37.1	36.4	1.5	-0.7	5.3	5.3	-1.9	17.0	17.0
Participation rate	73.4	72.9	0.4	-0.5	1.7	1.7
Unemployment rate	6.8	6.7	0.3	-0.1	0.7	0.7
Employment rate	68.3	67.9	0.5	-0.4	1.0	1.0
Kingston, Ontario									
Population	126.3	126.3	...	0.0	-0.1	-0.1	0.0	-0.1	-0.1
Labour force	78.3	78.8	0.7	0.5	-6.5	-6.5	0.6	-7.6	-7.6
Employment	73.3	73.5	0.7	0.2	-6.6	-6.6	0.3	-8.2	-8.2
Unemployment	5.1	5.3	0.3	0.2	0.2	0.2	3.9	3.9	3.9
Participation rate	62.0	62.4	0.6	0.4	-5.1	-5.1
Unemployment rate	6.5	6.7	0.4	0.2	0.7	0.7
Employment rate	58.0	58.2	0.6	0.2	-5.2	-5.2

See notes at the end of the table.

Table 5-1 – continued

Labour force characteristics by census metropolitan area (seasonally adjusted) — 3 month moving average

	November 2010	December 2010	S.E. ¹	Change from			Percent change from		
				last month	last December	twelve months ago	last month	last December	twelve months ago
in thousands (except rates)									
Toronto, Ontario									
Population	4,802.2	4,810.8	...	8.6	112.7	112.7	0.2	2.4	2.4
Labour force	3,286.3	3,291.8	9.6	5.5	87.0	87.0	0.2	2.7	2.7
Employment	2,997.2	3,016.0	9.9	18.8	111.1	111.1	0.6	3.8	3.8
Unemployment	289.1	275.8	6.4	-13.3	-24.1	-24.1	-4.6	-8.0	-8.0
Participation rate	68.4	68.4	0.2	0.0	0.2	0.2
Unemployment rate	8.8	8.4	0.2	-0.4	-1.0	-1.0
Employment rate	62.4	62.7	0.2	0.3	0.9	0.9
Hamilton, Ontario									
Population	608.3	608.7	...	0.4	5.1	5.1	0.1	0.8	0.8
Labour force	400.3	401.0	3.4	0.7	-8.8	-8.8	0.2	-2.1	-2.1
Employment	373.3	373.4	3.4	0.1	-1.5	-1.5	0.0	-0.4	-0.4
Unemployment	26.9	27.6	1.6	0.7	-7.4	-7.4	2.6	-21.1	-21.1
Participation rate	65.8	65.9	0.6	0.1	-2.0	-2.0
Unemployment rate	6.7	6.9	0.4	0.2	-1.6	-1.6
Employment rate	61.4	61.3	0.6	-0.1	-0.8	-0.8
Kitchener, Ontario									
Population	395.4	395.8	...	0.4	5.6	5.6	0.1	1.4	1.4
Labour force	277.0	277.1	2.0	0.1	4.0	4.0	0.0	1.5	1.5
Employment	255.5	256.6	2.1	1.1	9.0	9.0	0.4	3.6	3.6
Unemployment	21.5	20.6	1.1	-0.9	-4.9	-4.9	-4.2	-19.2	-19.2
Participation rate	70.1	70.0	0.5	-0.1	0.0	0.0
Unemployment rate	7.8	7.4	0.4	-0.4	-1.9	-1.9
Employment rate	64.6	64.8	0.5	0.2	1.3	1.3
London, Ontario									
Population	395.4	395.8	...	0.4	4.6	4.6	0.1	1.2	1.2
Labour force	256.3	255.8	1.9	-0.5	-7.8	-7.8	-0.2	-3.0	-3.0
Employment	233.6	233.6	1.9	0.0	-6.7	-6.7	0.0	-2.8	-2.8
Unemployment	22.6	22.2	1.1	-0.4	-1.0	-1.0	-1.8	-4.3	-4.3
Participation rate	64.8	64.6	0.5	-0.2	-2.8	-2.8
Unemployment rate	8.8	8.7	0.4	-0.1	-0.1	-0.1
Employment rate	59.1	59.0	0.5	-0.1	-2.4	-2.4
Oshawa, Ontario									
Population	301.6	302.1	...	0.5	6.1	6.1	0.2	2.1	2.1
Labour force	215.8	213.6	1.5	-2.2	15.4	15.4	-1.0	7.8	7.8
Employment	194.7	193.4	1.5	-1.3	14.9	14.9	-0.7	8.3	8.3
Unemployment	21.2	20.2	0.9	-1.0	0.5	0.5	-4.7	2.5	2.5
Participation rate	71.6	70.7	0.5	-0.9	3.7	3.7
Unemployment rate	9.8	9.5	0.4	-0.3	-0.4	-0.4
Employment rate	64.6	64.0	0.5	-0.6	3.7	3.7
St. Catharines-Niagara, Ontario									
Population	331.6	331.6	...	0.0	1.1	1.1	0.0	0.3	0.3
Labour force	208.3	209.5	1.6	1.2	1.6	1.6	0.6	0.8	0.8
Employment	188.6	189.7	1.6	1.1	4.5	4.5	0.6	2.4	2.4
Unemployment	19.7	19.8	0.9	0.1	-3.0	-3.0	0.5	-13.2	-13.2
Participation rate	62.8	63.2	0.5	0.4	0.3	0.3
Unemployment rate	9.5	9.5	0.4	0.0	-1.5	-1.5
Employment rate	56.9	57.2	0.5	0.3	1.2	1.2

See notes at the end of the table.

Table 5-1 – continued

Labour force characteristics by census metropolitan area (seasonally adjusted) — 3 month moving average

	November 2010	December 2010	S.E. ¹	Change from			Percent change from		
				last month	last December	twelve months ago	last month	last December	twelve months ago
in thousands (except rates)									
Greater Sudbury / Grand Sudbury, Ontario									
Population	135.7	135.7	...	0.0	0.9	0.9	0.0	0.7	0.7
Labour force	89.7	88.4	0.8	-1.3	3.4	3.4	-1.4	4.0	4.0
Employment	81.7	81.0	0.8	-0.7	4.8	4.8	-0.9	6.3	6.3
Unemployment	7.9	7.4	0.4	-0.5	-1.4	-1.4	-6.3	-15.9	-15.9
Participation rate	66.1	65.1	0.6	-1.0	2.0	2.0
Unemployment rate	8.8	8.4	0.5	-0.4	-2.0	-2.0
Employment rate	60.2	59.7	0.6	-0.5	3.2	3.2
Thunder Bay, Ontario									
Population	102.8	102.7	...	-0.1	-0.4	-0.4	-0.1	-0.4	-0.4
Labour force	65.3	65.7	0.6	0.4	-0.1	-0.1	0.6	-0.2	-0.2
Employment	60.9	61.3	0.7	0.4	0.8	0.8	0.7	1.3	1.3
Unemployment	4.4	4.4	0.3	0.0	-0.9	-0.9	0.0	-17.0	-17.0
Participation rate	63.5	64.0	0.6	0.5	0.2	0.2
Unemployment rate	6.7	6.7	0.5	0.0	-1.4	-1.4
Employment rate	59.2	59.7	0.6	0.5	1.0	1.0
Windsor, Ontario									
Population	274.4	274.4	...	0.0	0.8	0.8	0.0	0.3	0.3
Labour force	168.3	168.2	1.5	-0.1	-2.2	-2.2	-0.1	-1.3	-1.3
Employment	150.1	150.0	1.5	-0.1	1.2	1.2	-0.1	0.8	0.8
Unemployment	18.2	18.2	1.0	0.0	-3.4	-3.4	0.0	-15.7	-15.7
Participation rate	61.3	61.3	0.6	0.0	-1.0	-1.0
Unemployment rate	10.8	10.8	0.5	0.0	-1.9	-1.9
Employment rate	54.7	54.7	0.5	0.0	0.3	0.3
Winnipeg, Manitoba									
Population	605.8	606.5	...	0.7	9.8	9.8	0.1	1.6	1.6
Labour force	428.0	426.6	1.3	-1.4	8.0	8.0	-0.3	1.9	1.9
Employment	404.8	403.5	1.3	-1.3	8.4	8.4	-0.3	2.1	2.1
Unemployment	23.2	23.1	0.8	-0.1	-0.3	-0.3	-0.4	-1.3	-1.3
Participation rate	70.7	70.3	0.2	-0.4	0.1	0.1
Unemployment rate	5.4	5.4	0.2	0.0	-0.2	-0.2
Employment rate	66.8	66.5	0.2	-0.3	0.3	0.3
Regina, Saskatchewan									
Population	176.6	176.8	...	0.2	3.8	3.8	0.1	2.2	2.2
Labour force	129.3	129.0	0.7	-0.3	8.6	8.6	-0.2	7.1	7.1
Employment	123.0	123.1	0.8	0.1	8.6	8.6	0.1	7.5	7.5
Unemployment	6.3	5.9	0.3	-0.4	0.0	0.0	-6.3	0.0	0.0
Participation rate	73.2	73.0	0.4	-0.2	3.4	3.4
Unemployment rate	4.9	4.6	0.3	-0.3	-0.3	-0.3
Employment rate	69.6	69.6	0.4	0.0	3.4	3.4
Saskatoon, Saskatchewan									
Population	210.6	211.0	...	0.4	6.0	6.0	0.2	2.9	2.9
Labour force	148.5	147.9	0.9	-0.6	-3.1	-3.1	-0.4	-2.1	-2.1
Employment	140.2	139.6	0.9	-0.6	-4.3	-4.3	-0.4	-3.0	-3.0
Unemployment	8.3	8.3	0.5	0.0	1.2	1.2	0.0	16.9	16.9
Participation rate	70.5	70.1	0.4	-0.4	-3.6	-3.6
Unemployment rate	5.6	5.6	0.3	0.0	0.9	0.9
Employment rate	66.6	66.2	0.5	-0.4	-4.0	-4.0

See notes at the end of the table.

Table 5-1 – continued

Labour force characteristics by census metropolitan area (seasonally adjusted) — 3 month moving average

	November 2010	December 2010	S.E. ¹	Change from			Percent change from		
				last month	last December	twelve months ago	last month	last December	twelve months ago
in thousands (except rates)									
Calgary, Alberta									
Population	1,001.5	1,002.8	...	1.3	20.7	20.7	0.1	2.1	2.1
Labour force	737.2	737.0	3.3	-0.2	-19.5	-19.5	0.0	-2.6	-2.6
Employment	691.9	692.5	3.4	0.6	-9.4	-9.4	0.1	-1.3	-1.3
Unemployment	45.3	44.5	2.0	-0.8	-10.1	-10.1	-1.8	-18.5	-18.5
Participation rate	73.6	73.5	0.3	-0.1	-3.5	-3.5
Unemployment rate	6.1	6.0	0.3	-0.1	-1.2	-1.2
Employment rate	69.1	69.1	0.3	0.0	-2.4	-2.4
Edmonton, Alberta									
Population	929.6	930.8	...	1.2	17.6	17.6	0.1	1.9	1.9
Labour force	662.3	667.2	3.2	4.9	2.0	2.0	0.7	0.3	0.3
Employment	622.6	628.5	3.4	5.9	13.6	13.6	0.9	2.2	2.2
Unemployment	39.8	38.8	1.9	-1.0	-11.5	-11.5	-2.5	-22.9	-22.9
Participation rate	71.2	71.7	0.3	0.5	-1.1	-1.1
Unemployment rate	6.0	5.8	0.3	-0.2	-1.8	-1.8
Employment rate	67.0	67.5	0.4	0.5	0.2	0.2
Abbotsford, British Columbia									
Population	138.5	138.6	...	0.1	2.1	2.1	0.1	1.5	1.5
Labour force	95.5	93.9	0.8	-1.6	-2.2	-2.2	-1.7	-2.3	-2.3
Employment	86.6	84.5	0.9	-2.1	-4.6	-4.6	-2.4	-5.2	-5.2
Unemployment	8.9	9.3	0.4	0.4	2.3	2.3	4.5	32.9	32.9
Participation rate	69.0	67.7	0.6	-1.3	-2.7	-2.7
Unemployment rate	9.3	9.9	0.4	0.6	2.6	2.6
Employment rate	62.5	61.0	0.6	-1.5	-4.3	-4.3
Vancouver, British Columbia									
Population	2,051.2	2,054.2	...	3.0	49.5	49.5	0.1	2.5	2.5
Labour force	1,369.4	1,366.8	5.1	-2.6	25.6	25.6	-0.2	1.9	1.9
Employment	1,270.9	1,268.0	5.1	-2.9	30.2	30.2	-0.2	2.4	2.4
Unemployment	98.5	98.8	3.0	0.3	-4.6	-4.6	0.3	-4.4	-4.4
Participation rate	66.8	66.5	0.3	-0.3	-0.4	-0.4
Unemployment rate	7.2	7.2	0.2	0.0	-0.5	-0.5
Employment rate	62.0	61.7	0.3	-0.3	0.0	0.0
Victoria, British Columbia									
Population	291.7	291.8	...	0.1	2.3	2.3	0.0	0.8	0.8
Labour force	190.3	190.9	1.5	0.6	-6.8	-6.8	0.3	-3.4	-3.4
Employment	179.6	179.7	1.5	0.1	-3.2	-3.2	0.1	-1.7	-1.7
Unemployment	10.7	11.2	0.7	0.5	-3.6	-3.6	4.7	-24.3	-24.3
Participation rate	65.2	65.4	0.5	0.2	-2.9	-2.9
Unemployment rate	5.6	5.9	0.4	0.3	-1.6	-1.6
Employment rate	61.6	61.6	0.5	0.0	-1.6	-1.6

1. Average standard error of change in two consecutive months (see "Sampling Errors" in Data Quality for further explanations).

Note(s): All geographic regions are based on the 2001 Census boundaries. Related CANSIM Table 282-0090.

Table 5-2
Labour force characteristics by census metropolitan area (seasonally adjusted) — Monthly

	November 2010	December 2010	S.E. ¹	Change from			Percent change from		
				last month	last December	twelve months ago	last month	last December	twelve months ago
in thousands (except rates)									
Montréal, Quebec									
Population	3,161.0	3,163.9	...	2.9	42.2	42.2	0.1	1.4	1.4
Labour force	2,070.2	2,088.1	14.7	17.9	-13.5	-13.5	0.9	-0.6	-0.6
Employment	1,889.8	1,919.9	14.7	30.1	16.3	16.3	1.6	0.9	0.9
Unemployment	180.4	168.2	11.1	-12.2	-29.8	-29.8	-6.8	-15.1	-15.1
Participation rate	65.5	66.0	0.5	0.5	-1.3	-1.3
Unemployment rate	8.7	8.1	0.5	-0.6	-1.3	-1.3
Employment rate	59.8	60.7	0.5	0.9	-0.3	-0.3
Toronto, Ontario									
Population	4,811.2	4,819.0	...	7.8	113.3	113.3	0.2	2.4	2.4
Labour force	3,268.8	3,311.6	20.5	42.8	104.0	104.0	1.3	3.2	3.2
Employment	3,001.5	3,042.3	20.2	40.8	137.4	137.4	1.4	4.7	4.7
Unemployment	267.3	269.3	15.2	2.0	-33.4	-33.4	0.7	-11.0	-11.0
Participation rate	67.9	68.7	0.4	0.8	0.5	0.5
Unemployment rate	8.2	8.1	0.5	-0.1	-1.3	-1.3
Employment rate	62.4	63.1	0.4	0.7	1.4	1.4
Vancouver, British Columbia									
Population	2,054.4	2,057.2	...	2.8	48.6	48.6	0.1	2.4	2.4
Labour force	1,359.4	1,365.5	10.7	6.1	22.1	22.1	0.4	1.6	1.6
Employment	1,265.3	1,262.3	10.5	-3.0	21.1	21.1	-0.2	1.7	1.7
Unemployment	94.0	103.3	7.5	9.3	1.1	1.1	9.9	1.1	1.1
Participation rate	66.2	66.4	0.5	0.2	-0.5	-0.5
Unemployment rate	6.9	7.6	0.5	0.7	0.0	0.0
Employment rate	61.6	61.4	0.5	-0.2	-0.4	-0.4

1. Average standard error of change in two consecutive months (see "Sampling Errors" in Data Quality for further explanations).

Note(s): All geographic regions are based on the 2001 Census boundaries. Related CANSIM Table 282-0091.

Table 6-1

Labour force characteristics by province and economic region, ¹ unadjusted for seasonality, 3 month moving average ending in December 2009 and December 2010

	Population	Labour force			Participation rate	Unemployment rate	Employment rate
		Labour force	Employment	Unemployment			
	in thousands						
Canada ²							
2009	27,462.4	18,316.8	16,886.7	1,430.1	66.7	7.8	61.5
2010	27,867.8	18,566.7	17,238.1	1,328.6	66.6	7.2	61.9
Newfoundland and Labrador							
2009	430.2	251.2	212.9	38.3	58.4	15.2	49.5
2010	432.0	256.8	223.7	33.1	59.4	12.9	51.8
Avalon Peninsula [1010]							
2009	216.7	136.6	121.0	15.7	63.0	11.5	55.8
2010	219.5	139.7	127.9	11.8	63.6	8.4	58.3
South Coast-Burin Peninsula [1020]							
2009	31.8	15.1	12.2	2.9	47.5	19.2	38.4
2010	31.2	18.1	14.0	4.1	58.0	22.7	44.9
West Coast-Northern Peninsula-Labrador [1030]							
2009	88.2	50.5	42.2	8.4	57.3	16.6	47.8
2010	88.3	51.6	43.1	8.5	58.4	16.5	48.8
Notre Dame-Central Bonavista Bay [1040]							
2009	93.4	49.0	37.6	11.3	52.5	23.1	40.3
2010	93.0	47.4	38.7	8.7	51.0	18.4	41.6
Prince Edward Island							
2009	116.4	78.4	69.7	8.7	67.4	11.1	59.9
2010	118.3	79.4	69.5	10.0	67.1	12.6	58.7
Nova Scotia							
2009	774.1	497.8	454.7	43.0	64.3	8.6	58.7
2010	777.4	496.8	450.3	46.5	63.9	9.4	57.9
Cape Breton [1210]							
2009	114.7	63.3	54.3	9.0	55.2	14.2	47.3
2010	113.9	63.2	53.3	9.9	55.5	15.7	46.8
North Shore [1220]							
2009	131.4	80.4	72.2	8.3	61.2	10.3	54.9
2010	131.4	79.3	70.4	9.0	60.4	11.3	53.6
Annapolis Valley [1230]							
2009	101.9	62.9	57.5	5.4	61.7	8.6	56.4
2010	102.4	63.5	56.9	6.6	62.0	10.4	55.6
Southern [1240]							
2009	103.2	60.9	54.0	6.9	59.0	11.3	52.3
2010	102.9	62.4	55.4	7.0	60.6	11.2	53.8
Halifax [1250]							
2009	322.8	230.2	216.7	13.5	71.3	5.9	67.1
2010	326.9	228.4	214.4	14.1	69.9	6.2	65.6
New Brunswick							
2009	622.5	397.4	366.0	31.4	63.8	7.9	58.8
2010	626.1	396.5	361.1	35.4	63.3	8.9	57.7
Campbellton-Miramichi [1310]							
2009	134.9	73.9	63.6	10.2	54.8	13.8	47.1
2010	134.4	73.5	61.0	12.6	54.7	17.1	45.4
Moncton-Richibucto [1320]							
2009	168.7	112.1	105.9	6.2	66.4	5.5	62.8
2010	171.0	111.7	102.3	9.4	65.3	8.4	59.8
Saint John-St. Stephen [1330]							
2009	144.0	94.3	87.9	6.4	65.5	6.8	61.0
2010	144.8	94.1	89.0	5.1	65.0	5.4	61.5

See notes at the end of the table.

Table 6-1 – continued

Labour force characteristics by province and economic region, ¹ unadjusted for seasonality, 3 month moving average ending in December 2009 and December 2010

	Population	Labour force			Participation rate	Unemployment rate	Employment rate
		Labour force	Employment	Unemployment			
	in thousands						
Fredericton-Oromocto [1340]							
2009	106.8	73.5	68.8	4.6	68.8	6.3	64.4
2010	107.8	75.2	70.5	4.8	69.8	6.4	65.4
Edmundston-Woodstock [1350]							
2009	68.1	43.6	39.7	3.9	64.0	8.9	58.3
2010	68.1	42.0	38.4	3.6	61.7	8.6	56.4
Quebec							
2009	6,465.3	4,172.8	3,851.7	321.1	64.5	7.7	59.6
2010	6,545.4	4,259.8	3,947.5	312.3	65.1	7.3	60.3
Gaspésie-Îles-de-la-Madeleine [2410]							
2009	80.9	41.9	35.9	6.0	51.8	14.3	44.4
2010	81.0	43.1	37.7	5.4	53.2	12.5	46.5
Bas-Saint-Laurent [2415]							
2009	167.8	92.7	84.6	8.1	55.2	8.7	50.4
2010	168.2	99.1	89.6	9.5	58.9	9.6	53.3
Capitale-Nationale [2420]							
2009	575.0	371.4	352.4	19.1	64.6	5.1	61.3
2010	581.0	392.0	371.6	20.3	67.5	5.2	64.0
Chaudière-Appalaches [2425]							
2009	333.1	217.3	207.3	10.0	65.2	4.6	62.2
2010	336.1	228.4	219.6	8.8	68.0	3.9	65.3
Estrie [2430]							
2009	254.6	159.0	150.4	8.6	62.5	5.4	59.1
2010	257.5	167.5	157.3	10.2	65.0	6.1	61.1
Centre-du-Québec [2433]							
2009	188.6	115.6	108.5	7.1	61.3	6.1	57.5
2010	190.4	116.8	110.9	6.0	61.3	5.1	58.2
Montréal [2435]							
2009	1,169.4	780.5	727.7	52.8	66.7	6.8	62.2
2010	1,192.0	800.4	744.1	56.3	67.1	7.0	62.4
Montréal [2440]							
2009	1,598.7	1,030.3	924.3	106.0	64.4	10.3	57.8
2010	1,606.1	1,029.8	935.7	94.1	64.1	9.1	58.3
Laval [2445]							
2009	321.0	222.7	207.8	14.9	69.4	6.7	64.7
2010	326.8	207.1	190.3	16.8	63.4	8.1	58.2
Lanaudière [2450]							
2009	378.1	256.7	234.6	22.1	67.9	8.6	62.0
2010	389.8	255.0	234.8	20.2	65.4	7.9	60.2
Laurentides [2455]							
2009	449.2	302.4	279.3	23.1	67.3	7.6	62.2
2010	460.3	316.5	292.1	24.4	68.8	7.7	63.5
Outaouais [2460]							
2009	301.1	210.0	198.5	11.5	69.7	5.5	65.9
2010	306.3	202.3	190.4	11.9	66.0	5.9	62.2
Abitibi-Témiscamingue [2465]							
2009	116.6	68.5	62.2	6.3	58.7	9.2	53.3
2010	117.3	78.3	72.6	5.6	66.8	7.2	61.9
Mauricie [2470]							
2009	219.5	118.2	108.0	10.2	53.8	8.6	49.2
2010	220.8	135.1	125.5	9.6	61.2	7.1	56.8

See notes at the end of the table.

Table 6-1 – continued

Labour force characteristics by province and economic region, ¹ unadjusted for seasonality, 3 month moving average ending in December 2009 and December 2010

	Population	Labour force			Participation rate	Unemployment rate	Employment rate
		Labour force	Employment	Unemployment			
	in thousands						
Saguenay-Lac-Saint-Jean [2475]							
2009	223.1	130.1	119.1	10.9	58.3	8.4	53.4
2010	223.2	129.0	119.3	9.7	57.8	7.5	53.4
Côte-Nord and Nord-du-Québec [2480, 2490]							
2009	88.7	55.5	51.1	4.3	62.6	7.7	57.6
2010	88.5	59.4	55.9	3.5	67.1	5.9	63.2
Ontario							
2009	10,717.6	7,152.9	6,556.3	596.6	66.7	8.3	61.2
2010	10,878.7	7,249.7	6,707.1	542.6	66.6	7.5	61.7
Ottawa [3510]							
2009	1,008.3	704.7	663.9	40.9	69.9	5.8	65.8
2010	1,019.6	708.4	663.4	45.0	69.5	6.4	65.1
Kingston-Pembroke [3515]							
2009	361.8	221.2	203.9	17.3	61.1	7.8	56.4
2010	362.4	217.0	202.5	14.5	59.9	6.7	55.9
Muskoka-Kawartha [3520]							
2009	313.6	190.1	173.6	16.5	60.6	8.7	55.4
2010	315.5	184.1	165.8	18.3	58.4	9.9	52.6
Toronto [3530]							
2009	4,948.2	3,348.9	3,054.6	294.3	67.7	8.8	61.7
2010	5,062.6	3,449.2	3,183.6	265.6	68.1	7.7	62.9
Kitchener-Waterloo-Barrie [3540]							
2009	1,003.9	703.7	647.6	56.1	70.1	8.0	64.5
2010	1,019.8	715.7	664.8	50.8	70.2	7.1	65.2
Hamilton-Niagara Peninsula [3550]							
2009	1,155.1	765.2	697.3	67.9	66.2	8.9	60.4
2010	1,165.1	757.7	700.5	57.2	65.0	7.5	60.1
London [3560]							
2009	522.9	349.7	321.1	28.5	66.9	8.1	61.4
2010	528.5	347.8	321.4	26.4	65.8	7.6	60.8
Windsor-Sarnia [3570]							
2009	527.7	328.7	296.3	32.4	62.3	9.9	56.1
2010	529.1	333.6	302.4	31.3	63.1	9.4	57.2
Stratford-Bruce Peninsula [3580]							
2009	249.1	164.1	152.8	11.3	65.9	6.9	61.3
2010	249.9	159.4	149.9	9.5	63.8	6.0	60.0
Northeast [3590]							
2009	455.1	268.0	243.6	24.4	58.9	9.1	53.5
2010	455.9	273.6	256.1	17.5	60.0	6.4	56.2
Northwest [3595]							
2009	171.9	108.5	101.4	7.0	63.1	6.5	59.0
2010	170.2	103.3	96.8	6.5	60.7	6.3	56.9
Manitoba							
2009	927.8	639.4	606.5	33.0	68.9	5.2	65.4
2010	942.0	652.5	622.0	30.5	69.3	4.7	66.0
Southeast [4610]							
2009	81.9	58.9	55.5	3.4	71.9	5.8	67.8
2010	84.5	58.6	55.9	2.8	69.3	4.8	66.2
South Central [4620]							
2009	45.5	31.7	30.5	1.2	69.7	3.8	67.0
2010	46.7	31.9	30.7	1.2	68.3	3.8	65.7

See notes at the end of the table.

Table 6-1 – continued

Labour force characteristics by province and economic region, ¹ unadjusted for seasonality, 3 month moving average ending in December 2009 and December 2010

	Population	Labour force			Participation rate	Unemployment rate	Employment rate
		Labour force	Employment	Unemployment			
		in thousands					
Southwest [4630]							
2009	83.3	56.6	54.3	2.3	67.9	4.1	65.2
2010	83.7	55.1	53.7	1.5	65.8	2.7	64.2
North Central [4640]							
2009	36.4	23.6	22.5	1.1	64.8	4.7	61.8
2010	36.8	24.4	23.3	1.0	66.3	4.1	63.3
Winnipeg [4650]							
2009	549.6	381.1	360.2	20.9	69.3	5.5	65.5
2010	557.9	389.6	369.3	20.3	69.8	5.2	66.2
Interlake [4660]							
2009	72.3	47.5	45.2	2.3	65.7	4.8	62.5
2010	73.5	50.6	48.8	1.8	68.8	3.6	66.4
Parklands and North [4670, 4680]							
2009	58.8	40.0	38.3	1.7	68.0	4.3	65.1
2010	58.9	42.3	40.4	1.9	71.8	4.5	68.6
Saskatchewan							
2009	783.7	544.3	520.3	24.0	69.5	4.4	66.4
2010	795.4	552.8	525.3	27.5	69.5	5.0	66.0
Regina-Moose Mountain [4710]							
2009	232.3	161.9	155.3	6.5	69.7	4.0	66.9
2010	236.6	171.8	165.6	6.2	72.6	3.6	70.0
Swift Current-Moose Jaw [4720]							
2009	84.2	55.3	52.6	2.7	65.7	4.9	62.5
2010	84.6	55.7	52.9	2.8	65.8	5.0	62.5
Saskatoon-Biggar [4730]							
2009	247.8	180.3	173.1	7.2	72.8	4.0	69.9
2010	253.7	175.3	167.1	8.2	69.1	4.7	65.9
Yorkton-Melville [4740]							
2009	64.7	42.0	40.4	1.6	64.9	3.8	62.4
2010	64.7	42.0	39.5	2.5	64.9	6.0	61.1
Prince Albert and Northern [4750, 4760]							
2009	154.6	104.8	98.9	6.0	67.8	5.7	64.0
2010	155.8	108.1	100.2	7.9	69.4	7.3	64.3
Alberta							
2009	2,891.3	2,124.8	1,979.0	145.7	73.5	6.9	68.4
2010	2,947.2	2,132.0	2,014.0	117.9	72.3	5.5	68.3
Lethbridge-Medicine Hat [4810]							
2009	213.4	145.6	137.7	7.8	68.2	5.4	64.5
2010	215.6	142.3	136.2	6.1	66.0	4.3	63.2
Camrose-Drumheller [4820]							
2009	156.9	111.3	105.3	6.0	70.9	5.4	67.1
2010	158.0	112.2	106.5	5.7	71.0	5.1	67.4
Calgary [4830]							
2009	1,061.8	801.4	744.5	57.0	75.5	7.1	70.1
2010	1,085.9	798.3	750.6	47.7	73.5	6.0	69.1
Banff-Jasper-Rocky Mountain House [4840]							
2009	70.1	53.0	50.0	3.0	75.6	5.7	71.3
2010	70.8	55.0	51.7	3.3	77.7	6.0	73.0
Red Deer [4850]							
2009	152.4	109.1	101.4	7.7	71.6	7.1	66.5
2010	156.5	113.8	108.0	5.8	72.7	5.1	69.0

See notes at the end of the table.

Table 6-1 – continued

Labour force characteristics by province and economic region, ¹ unadjusted for seasonality, 3 month moving average ending in December 2009 and December 2010

	Population	Labour force			Participation rate	Unemployment rate	Employment rate
		Labour force	Employment	Unemployment			
	in thousands						
Edmonton [4860]							
2009	948.8	686.7	637.0	49.7	72.4	7.2	67.1
2010	967.2	691.0	653.6	37.5	71.4	5.4	67.6
Athabasca-Grande Prairie-Peace River [4870]							
2009	192.2	143.5	132.1	11.4	74.7	7.9	68.7
2010	195.8	141.5	133.5	8.1	72.3	5.7	68.2
Wood Buffalo-Cold Lake [4880]							
2009	95.7	74.1	71.1	3.0	77.4	4.0	74.3
2010	97.3	77.8	74.0	3.8	80.0	4.9	76.1
British Columbia							
2009	3,733.3	2,457.8	2,269.5	188.3	65.8	7.7	60.8
2010	3,805.2	2,490.3	2,317.5	172.8	65.4	6.9	60.9
Vancouver Island and Coast [5910]							
2009	642.8	409.9	376.5	33.4	63.8	8.1	58.6
2010	650.3	404.9	381.3	23.6	62.3	5.8	58.6
Lower Mainland-Southwest [5920]							
2009	2,279.7	1,511.9	1,402.0	110.0	66.3	7.3	61.5
2010	2,334.4	1,543.5	1,436.0	107.5	66.1	7.0	61.5
Thompson-Okanagan [5930]							
2009	440.6	289.0	267.6	21.4	65.6	7.4	60.7
2010	447.8	295.8	272.4	23.4	66.1	7.9	60.8
Kootenay [5940]							
2009	123.5	76.6	70.1	6.5	62.0	8.5	56.8
2010	124.0	71.3	65.2	6.2	57.5	8.7	52.6
Cariboo [5950]							
2009	127.9	85.8	75.5	10.3	67.1	12.0	59.0
2010	129.1	88.3	82.1	6.2	68.4	7.0	63.6
North Coast and Nechako [5960, 5970]							
2009	65.0	44.1	39.6	4.5	67.8	10.2	60.9
2010	64.6	44.3	41.2	3.1	68.6	7.0	63.8
Northeast [5980]							
2009	53.8	40.5	38.3	2.2	75.3	5.4	71.2
2010	54.9	42.4	39.4	3.0	77.2	7.1	71.8

1. For geographic descriptions of economic regions, refer to the Guide to the Labour Force Survey (catalogue number 71-543-GIE).

2. Estimates for Canada are a sum of the provincial totals and exclude estimates from Yukon, Northwest Territories and Nunavut.

Note(s): All geographic regions are based on the 2001 Census boundaries. Related CANSIM table 282-0054.

Table 6-2
Labour force characteristics by territories, unadjusted for seasonality, 3 month moving average ending in
December 2009 and December 2010

	Population	Labour force			Participation rate	Unemployment rate	Employment rate
		Labour force	Employment	Unemployment			
		in thousands			percent		
Yukon ¹							
2009	24.4	17.3	16.0	1.3	70.9	7.5	65.6
2010	24.9	17.7	17.0	0.7	71.1	4.0	68.3
Northwest Territories ²							
2009	31.4	21.5	20.2	1.3	68.5	6.0	64.3
2010	31.9	23.3	21.5	1.8	73.0	7.7	67.4
Nunavut ³							
2009	18.6	11.1	9.7	1.4	59.7	12.7	52.1
2010	19.4	12.5	10.6	1.9	64.3	15.2	54.5

1. Since 1992, the Labour force survey (LFS) has been conducted in the Yukon, using an alternative methodology that accommodates some of the operational difficulties inherent to remote locales. These estimates are not included in the national totals. In 1995, the LFS in the Yukon underwent a sample redesign. One result of the redesign was that the covered population increased from 85% to 92%, which is reflected by the sharp increase in the three month moving averages estimates of January, February and March of 1995 for all the level estimates. Users are therefore warned to be cautious when comparing estimates before January 1995 to estimates for January 1995 and forward.
2. Since 2001, the Labour force survey (LFS) has been administered in the Northwest Territories, using an alternative methodology that accommodates some of the operational difficulties inherent to remote locales. These estimates are not included in national totals.
3. Since 2004, the Labour force survey (LFS) has been administered in Nunavut, using an alternative methodology that accommodates some of the operational difficulties inherent to remote locales. These estimates are 3-month moving averages and are not included in national totals. From January 2004 to December 2007, estimates represent about 70% of all Nunavut residents aged 15 and over. Starting in January 2008, coverage was extended to 92%, so that by March 2008, the 3-month moving average is completely based on the extended coverage. Because of the large difference in coverage, users are recommended not to compare estimates prior to January 2008 with data afterwards. The January and February 2008 3-month moving average estimates are based on a mix of both coverages, since the extended coverage was introduced in January 2008. Estimates from January 2004 to December 2007 are based on the 10 largest communities in Nunavut: Iqaluit, Rankin Inlet, Cambridge Bay, Kugluktuk, Baker Lake, Arviat, Pond Inlet, Cape Dorset, Pangnirtung, Igloolik. Estimates from March 2008 to present cover the above communities as well as: Taloyoak, Gjoa Haven, Kugaaruk, Coral Harbour, Repulse Bay, Qikiqtarjuaq, Arctic Bay, Hall Beach, Clyde River.

Note(s): Related CANSIM table 282-0100.

Table 7
Average usual hours and wages of employees by selected characteristics, Canada, unadjusted for seasonality

	Employees				Full-time			Part-time		
	Number	Average weekly hours	Average weekly wages	Average hourly wages	Number	Average weekly hours	Average weekly wages	Number	Average weekly hours	Average weekly wages
	thousands		current dollars		thousands		current dollars	thousands		current dollars
December 2010										
15 years and over	14,548.7	34.9	830.22	22.88	11,708.9	39.3	962.42	2,839.8	17.0	285.15
15 to 24 years	2,287.6	25.9	366.68	13.20	1,066.2	38.6	591.05	1,221.4	14.8	170.80
25 years and over	12,261.1	36.6	916.70	24.68	10,642.7	39.3	999.62	1,618.4	18.7	371.44
Men	7,255.3	37.5	950.56	24.62	6,377.2	40.5	1,046.84	878.1	16.2	251.36
Women	7,293.4	32.3	710.51	21.15	5,331.7	37.8	861.44	1,961.7	17.4	300.27
Union coverage										
Union coverage	4,636.2	35.5	946.37	26.34	3,925.4	38.5	1,040.93	710.7	18.8	424.10
No union coverage	9,912.5	34.7	775.90	21.26	7,783.5	39.7	922.82	2,129.1	16.4	238.76
Job permanency										
Permanent	12,740.5	35.9	868.08	23.46	10,723.1	39.2	974.87	2,017.5	17.9	300.46
Temporary	1,808.2	28.3	563.47	18.81	985.8	39.4	826.98	822.3	14.9	247.57
Occupation										
Management	981.1	39.8	1,400.82	35.18	955.8	40.3	1,423.39	25.3	20.2	549.11
Business, finance and administrative	2,822.3	35.1	777.25	21.67	2,405.6	38.1	860.36	416.7	17.5	297.43
Natural and applied sciences	1,091.6	38.3	1,220.93	31.78	1,047.6	39.2	1,254.38	44.0	17.4	424.37
Health	972.3	33.0	880.01	26.56	721.4	37.6	1,002.32	250.9	20.0	528.44
Social science, education, government service and religion	1,472.6	33.5	1,001.63	29.55	1,164.6	37.9	1,146.14	308.0	16.8	455.23
Art, culture, recreation and sport	331.6	29.7	742.70	23.11	222.8	38.1	994.22	108.8	12.5	227.92
Sales and service	3,760.4	29.8	496.19	15.41	2,275.7	38.4	688.26	1,484.7	16.7	201.80
Trades, transport and equipment operators	2,128.6	39.9	912.33	22.60	1,978.9	41.6	959.47	149.7	17.9	289.03
Occupations unique to primary industry	237.1	42.8	925.22	20.88	214.6	45.8	1,001.91	22.5	14.3	194.08
Occupations unique to processing, manufacturing and utilities	751.2	39.3	763.77	19.29	722.0	40.2	782.99	29.1	18.2	287.71
December 2009										
15 years and over	14,083.4	34.9	811.07	22.35	11,350.0	39.2	940.90	2,733.3	16.9	271.95
15 to 24 years	2,254.2	26.1	362.97	12.90	1,071.9	38.7	584.32	1,182.3	14.6	162.30
25 years and over	11,829.2	36.5	896.46	24.15	10,278.2	39.2	978.09	1,551.0	18.7	355.54
Men	6,949.6	37.4	935.19	24.26	6,107.0	40.4	1,031.02	842.6	16.0	240.64
Women	7,133.8	32.4	690.15	20.49	5,243.0	37.8	835.93	1,890.7	17.4	285.91
Union coverage										
Union coverage	4,455.9	35.5	923.60	25.62	3,800.7	38.4	1,013.44	655.1	18.7	402.35
No union coverage	9,627.5	34.6	758.99	20.83	7,549.3	39.6	904.38	2,078.2	16.4	230.84
Job permanency										
Permanent	12,390.9	35.9	849.23	22.94	10,444.8	39.2	953.39	1,946.1	17.9	290.19
Temporary	1,692.5	27.6	531.69	18.00	905.3	39.0	796.76	787.2	14.5	226.87
Occupation										
Management	1,027.3	39.7	1,363.33	34.41	994.2	40.3	1,391.66	33.1	20.1	511.08
Business, finance and administrative	2,681.0	35.1	751.61	21.01	2,277.0	38.2	830.80	403.9	17.8	305.21
Natural and applied sciences	1,080.9	38.5	1,200.87	31.17	1,043.7	39.2	1,226.57	37.3	18.3	480.90
Health	946.4	33.5	891.24	26.44	718.6	37.8	1,010.81	227.9	20.2	514.19
Social science, education, government service and religion	1,458.0	33.5	965.89	28.29	1,164.1	37.8	1,111.49	293.8	16.2	389.00
Art, culture, recreation and sport	319.0	29.6	705.55	21.87	211.3	38.5	963.76	107.8	12.1	199.38
Sales and service	3,674.2	30.0	483.88	14.94	2,262.7	38.5	665.12	1,411.5	16.5	193.36
Trades, transport and equipment operators	1,963.8	39.5	879.86	21.92	1,820.0	41.2	927.30	143.7	18.2	279.01
Occupations unique to primary industry	204.3	41.3	871.68	20.42	173.2	46.0	986.92	31.1	15.5	229.36
Occupations unique to processing, manufacturing and utilities	728.4	38.6	752.72	19.24	685.1	39.9	782.60	43.3	18.2	280.04

Note(s): Related CANSIM Tables 282-0023, 282-0069, 282-0073.

Table 8

Regional unemployment rates used by the Employment Insurance Program, ¹ seasonally adjusted, 3 month moving average

Region	Effective from January 9, 2011 to February 5, 2011
	percent
Newfoundland and Labrador	
01. St. John's	7.0
02. Newfoundland and Labrador	18.2
Prince Edward Island	
03. Prince Edward Island	12.5
Nova Scotia	
04. Eastern Nova Scotia	16.3
05. Western Nova Scotia	11.7
06. Halifax	6.7
New Brunswick	
07. Fredericton-Moncton-Saint John	7.1
08. Madawaska-Charlotte ²	11.4
09. Restigouche-Albert	15.9
Quebec	
10. Gaspésie-Îles-de-la-Madeleine	14.0
11. Québec	4.9
12. Trois-Rivières	8.3
13. South Central Quebec	4.6
14. Sherbrooke	7.4
15. Montérégie	7.7
16. Montréal	8.6
17. Central Quebec	8.4
18. Northwestern Quebec	10.4
19. Bas-Saint-Laurent-Côte-Nord ³	10.5
20. Gatineau	6.4
21. Saguenay	7.9
Ontario	
22. Ottawa	6.6
23. Eastern Ontario	8.6
24. Kingston	6.7
25. Central Ontario	9.3
26. Oshawa	9.3
27. Toronto	8.4
28. Hamilton	6.9
29. St. Catharines	9.4
30. London	8.6
31. Niagara	10.5
32. Windsor	11.2
33. Kitchener	7.7
34. Huron	10.9
35. South Central Ontario	7.5
36. Sudbury	8.6
37. Thunder Bay	6.8
38. Northern Ontario	10.8
Manitoba	
39. Winnipeg	5.4
40. Southern Manitoba	5.4
41. Northern Manitoba	29.4
Saskatchewan	
42. Regina	4.5
43. Saskatoon	5.7
44. Southern Saskatchewan	7.4
45. Northern Saskatchewan	18.0

See notes at the end of the table.

Table 8 – continued

Regional unemployment rates used by the Employment Insurance Program, ¹ seasonally adjusted, 3 month moving average

Region	Effective from January 9, 2011 to February 5, 2011
	percent
Alberta	
46. Calgary	6.2
47. Edmonton	5.8
48. Northern Alberta	9.8
49. Southern Alberta	6.9
British Columbia	
50. Southern Interior British Columbia	10.3
51. Abbotsford	9.8
52. Vancouver	7.3
53. Victoria	6.6
54. Southern Coastal British Columbia	7.6
55. Northern British Columbia	10.8
Territories	
56. Yukon ⁴	25.0
57. Northwest Territories ⁴	25.0
58. Nunavut ⁴	25.0

1. The boundaries of these regions are determined by Human Resources and Social Development Canada (HRSDC). For geographic descriptions and maps of employment insurance regions, see the HRSDC website: <http://srv129.services.gc.ca/eiregions/en/geocont.aspx>.

2. This unemployment rate has been determined using a transition formula prescribed in the EI Regulations. For further information, see: http://www.hrsdc.gc.ca/en/cs/comm/news/2000/000913a_e.shtml.

3. This unemployment rate has been determined using a transition formula prescribed in the EI Regulations. For further information, see: http://www.hrsdc.gc.ca/en/cs/comm/news/2000/000913b_e.shtml.

4. This rate is provided by Human Resources and Skills Development Canada.

Note(s): All geographic regions are based on the 1996 Census boundaries.

Data quality

About the Labour Force Survey

The statistics contained in this report are based on information obtained through a sample survey of 53,000 representative households across the country. The Labour Force Survey, started in November 1945, was taken at quarterly intervals until November 1952. It has been carried out monthly since then. The information generated by the survey has expanded considerably over the years with a major redesign of the survey content in 1976 and again in 1997, and provides a rich and detailed picture of the Canadian labour market.

The sample used in the Labour Force Survey has been designed to represent all persons in the population 15 years of age and over residing in the provinces of Canada, with the exception of the following: persons living on Indian reserves, full-time members of the armed forces and people living in institutions (for example, inmates of penal institutions and patients in hospitals or nursing homes who have resided in the institution for more than six months). Monthly estimates of employment, unemployment and persons not in the labour force refer to the specific week covered by the survey each month, normally the week containing the 15th day.

Definitions and explanations

The **labour force** is composed of those members of the civilian non-institutional population 15 years of age and over who, during the reference week, were employed or unemployed.

Employed persons are those who, during the reference week:

- (a) did any work at all
- (b) had a job but were not at work

A person is considered to be **full-time** if his/her usual hours at the main job are 30 or more hours per week. When the number of hours worked at the main job is usually less than 30 hours per week then he/she is considered to be **part-time**.

Unemployed persons are those who, during the reference week:

- (a) were without work, had actively looked for work in the past four weeks (ending with reference week), and were available for work;
- (b) had not actively looked for work in the past four weeks but were on temporary layoff and were available for work;
- (c) had not actively looked for work in the past four weeks but had a new job to start in four weeks or less from the reference week, and were available for work.

Persons in the civilian non-institutional population 15 years of age and over who, during the reference week, were neither employed nor unemployed are classified as **not in the labour force**.

The **unemployment rate** represents the number of unemployed persons expressed as a percentage of the labour force. The unemployment rate for a particular group (age, sex, etc.) is the number unemployed in that group expressed as a percentage of the labour force for that group.

The **participation rate** represents the labour force expressed as a percentage of the population 15 years of age and over. The participation rate for a particular group (age, sex, etc.) is the labour force in that group expressed as a percentage of the population for that group.

The **employment rate (formerly the employment/population ratio)** represents the number of persons employed expressed as a percentage of the population 15 years of age and over. The employment rate for a particular group (age, sex, etc.) is the number employed in that group expressed as a percentage of the population for that group.

The **part-time rate** represents the number of persons employed part-time expressed as a percentage of the employed. The part-time rate for a particular group (age, sex, etc.) is the number employed part-time in that group expressed as a percentage of the employed for that group.

All geographic regions are based on the 2001 Census boundaries.

Seasonal adjustment

Fluctuations in economic time series are caused by seasonal, cyclical and irregular movements. A seasonally adjusted series is one from which seasonal movements have been eliminated. Seasonal movements are defined as those which are caused by regular annual events such as climate, holidays, vacation periods and cycles related to crops, production and retail sales associated with Christmas and Easter. The seasonally adjusted series contains irregular as well as longer-term cyclical fluctuations.

The seasonally adjusted series are revised each year to take into account current data and to generate new forecast factors for the next twelve months. The data are therefore subject to slight revisions in future issues of this publication.

Sampling variability of estimates

Estimates in this publication are based on the Labour Force Survey, a monthly survey of approximately 53,000 households across Canada. Because the entire population is not surveyed, the estimates are subject to sampling error. While the published estimate is the best available indicator of the real value, changes in the level of any estimates between two months can be the result of a true change or sampling variability. The sampling error can be estimated by calculating the standard error for the published estimate or statistic. These standard errors have been included in the publication tables, in order to assist users in interpreting the data.

Interpretation based on standard error

Two thirds of the time (68%), a change greater than the sampling error indicates a real change. The larger the change compared to the standard error, the better the chance that we are observing a real change, as opposed to a change due to sampling variability. At the 95% level, in order to ensure that change is real, the change in the estimate must be greater than twice the sampling error.

Movements in estimates that are smaller than the sampling error are less likely to reflect a real change and more likely to be due to sampling variability. While the above is true for monthly movements, one can have more confidence in a series of consecutive movements in the same direction, even though some of the monthly movements may be smaller than the sampling error.

Interpretation based on confidence intervals

Confidence intervals provide another way of looking at the variability inherent in estimates of sample surveys. To illustrate how to calculate the confidence interval, let us say that one month the published estimate for total employment rose by 16,000 to reach 16,500,000. The associated standard error for the movement estimate is 27,200. The standard error used to interpret the movement estimate indicates that:

- There are approximately two chances in three (68%) that the real value of the movement between the two months falls within the range -11,200 to +43,200 (16,000 + or – one standard error).
- There are approximately nine chances in ten (90%) that the real value of the movement between the two months falls within the range -27,520 to +59,520 (16,000 + or – 1.6 times the standard error).
- There are approximately nineteen chances in twenty (95%) that the real value of the movement between the two months falls within the range -38,400 to +70,400 (16,000 + or – two standard errors).

For more detailed explanations on sampling variability of estimates, and in particular for information on how to assess the variability of level estimates, consult the Data quality section of the *Guide to the Labour Force Survey*, (71-543-G) on page 27.

Documentation

For more detailed information about the Labour Force Survey, see the following documents:

- Overview of the Labour Force Survey
- Guide to the Labour Force Survey (71-543-G)
- Data quality statement
- Methodology of the Canadian Labour Force Survey (71-526-X)
- LFS *geographical maps*