

Catalogue no. 71-001-X

Labour Force Information

Not for release before 7 A.M. EDT
Friday, July 8, 2011

June 12 to 18, 2011



Statistics
Canada

Statistique
Canada

Canada

How to obtain more information

Specific inquiries about this product and related statistics or services should be directed to: Labour Force Survey Program, Labour Statistics Division, Statistics Canada, Ottawa, Ontario, K1A 0T6 (telephone: 613-951-4090, toll free number: 1-866-873-8788, fax: 613-951-2869 or by e-mail address: labour@statcan.gc.ca).

For information about this product or the wide range of services and data available from Statistics Canada, visit our website at www.statcan.gc.ca, e-mail us at infostats@statcan.gc.ca, or telephone us, Monday to Friday from 8:30 a.m. to 4:30 p.m., at the following numbers:

Statistics Canada's National Contact Centre

Toll-free telephone (Canada and the United States):

Inquiries line	1-800-263-1136
National telecommunications device for the hearing impaired	1-800-363-7629
Fax line	1-877-287-4369

Local or international calls:

Inquiries line	1-613-951-8116
Fax line	1-613-951-0581

Depository Services Program

Inquiries line	1-800-635-7943
Fax line	1-800-565-7757

To access this product

This product, Catalogue no. 71-001-X, is available free in electronic format. To obtain a single issue, visit our website at www.statcan.gc.ca and browse by "Key resource" > "Publications."

Standards of service to the public

Statistics Canada is committed to serving its clients in a prompt, reliable and courteous manner. To this end, Statistics Canada has developed *standards of service* that its employees observe. To obtain a copy of these service standards, please contact Statistics Canada toll-free at 1-800-263-1136. The service standards are also published on www.statcan.gc.ca under "About us" > "The agency" > "Providing services to Canadians."

Statistics Canada
Labour Statistics Division
Labour Force Survey Program

Labour Force Information

Not for release before 7 A.M. EDT
Friday, July 8, 2011

June 12 to 18, 2011

Published by authority of the Minister responsible for Statistics Canada

© Minister of Industry, 2011

All rights reserved. The content of this electronic publication may be reproduced, in whole or in part, and by any means, without further permission from Statistics Canada, subject to the following conditions: that it be done solely for the purposes of private study, research, criticism, review or newspaper summary, and/or for non-commercial purposes; and that Statistics Canada be fully acknowledged as follows: Source (or "Adapted from", if appropriate): Statistics Canada, year of publication, name of product, catalogue number, volume and issue numbers, reference period and page(s). Otherwise, no part of this publication may be reproduced, stored in a retrieval system or transmitted in any form, by any means—electronic, mechanical or photocopy—or for any purposes without prior written permission of Licensing Services, Information Management Division, Statistics Canada, Ottawa, Ontario, Canada K1A 0T6.

July 2011

Catalogue no. 71-001-X

ISSN 1492-5478

Frequency: Monthly

Ottawa

Cette publication est également disponible en français.

Note of appreciation

Canada owes the success of its statistical system to a long-standing partnership between Statistics Canada, the citizens of Canada, its businesses, governments and other institutions. Accurate and timely statistical information could not be produced without their continued cooperation and goodwill.

User information

Symbols

The following standard symbols are used in Statistics Canada publications:

- . not available for any reference period
- .. not available for a specific reference period
- ... not applicable
- 0 true zero or a value rounded to zero
- 0^s value rounded to 0 (zero) where there is a meaningful distinction between true zero and the value that was rounded
- P preliminary
- r revised
- x suppressed to meet the confidentiality requirements of the *Statistics Act*
- E use with caution
- F too unreliable to be published
- * significantly different from reference category ($p < 0.05$)

Special requests (\$)

Custom tabulations can be arranged on an ad hoc or regular basis. This service enables you to specify tables and time series to meet your own requirements. The cost varies according to the request. For more information, contact us toll-free at 1-866-873-8788 or e-mail us at labour@statcan.gc.ca.

Schedule of LFS releases

Reference period - Week ending	Release date
December 11, 2010	January 7, 2011
January 15, 2011	February 4, 2011
February 19, 2011	March 11, 2011
March 19, 2011	April 8, 2011
April 16, 2011	May 6, 2011
May 21, 2011	June 10, 2011
June 18, 2011	July 8, 2011
July 16, 2011	August 5, 2011
August 20, 2011	September 9, 2011
September 17, 2011	October 7, 2011
October 15, 2011	November 4, 2011
November 12, 2011	December 2, 2011
December 10, 2011	January 6, 2012

Latest LFS release in *The Daily* (free)

Table of contents

Highlights	5
Analysis — June 2011	6
Charts	
1. Employment and unemployment indicators, Canada, seasonally adjusted	9
2. Employment and unemployment indicators, Canada, seasonally adjusted	10
3. Index of employment by industry, Canada, seasonally adjusted, January 2008=100	11
4. Index of employment by industry, Canada, seasonally adjusted, January 2008=100	12
5. Index of employment by industry, Canada, seasonally adjusted, January 2008=100	13
6. Index of employment by province, seasonally adjusted, January 2008=100	14
7. Index of employment by province, seasonally adjusted, January 2008=100	15
Related products	16
Statistical tables	
1 Labour force characteristics by age and sex, Canada, seasonally adjusted	26
2 Employment by class of worker and industry, Canada, seasonally adjusted	28
3 Labour force characteristics by province, seasonally adjusted	29
4 Selected labour force characteristics (seasonally adjusted)	31
4-1 Newfoundland and Labrador	31
4-2 Prince Edward Island	32
4-3 Nova Scotia	33
4-4 New Brunswick	34
4-5 Quebec	35
4-6 Ontario	36
4-7 Manitoba	37
4-8 Saskatchewan	38
4-9 Alberta	39
4-10 British Columbia	40
5 Labour force characteristics by census metropolitan area (seasonally adjusted)	41
5-1 3 month moving average	41
5-2 Monthly	46

Table of contents – continued

6	Labour force characteristics	47
6-1	by province and economic region, unadjusted for seasonality, 3 month moving average ending in June 2010 and June 2011	47
6-2	by territories, unadjusted for seasonality, 3 month moving average ending in June 2010 and June 2011	52
7	Average usual hours and wages of employees by selected characteristics, Canada, unadjusted for seasonality	53
8	Regional unemployment rates used by the Employment Insurance Program, seasonally adjusted, 3 month moving average	54
9	Students and other persons aged 15 to 24 (unadjusted)	56
9-1	by detailed age groups	56
9-2	by province	57

Data quality, concepts and methodology

Data quality	59
--------------	----

Analysis — June 2011

Employment rose for the third consecutive month, up 28,000 in June. The unemployment rate was unchanged at 7.4% as the number of people participating in the labour market increased. Over the past 12 months, employment has grown by 238,000 (+1.4%).

Employment was up in transportation and warehousing in June, while it fell in professional, scientific and technical services. There was little change in the other industries.

Increases in the number of employees working in the public and private sectors were tempered by a decline in the number of self-employed. Over the past 12 months, public sector employment rose by 2.5%, private sector employment was up 1.5%, while the number of self-employed was little changed.

Ontario, Alberta and Nova Scotia posted employment gains in June, while there were declines in Quebec as well as Newfoundland and Labrador. Employment was little changed in the other provinces.

The bulk of June's employment increase occurred among women aged 25 to 54.

Compared to 12 months earlier, the unemployment rate for students aged 17 to 19 was down in June, while it was little changed for students aged 20 to 24.

Gains in transportation and warehousing

Employment rose by 15,000 in transportation and warehousing in June. Since June 2010, this industry experienced the fastest employment growth of all industries at 5.4% (+43,000).

Following steady growth since the start of 2011, employment in professional, scientific and technical services was down 19,000 in June. Compared to 12 months earlier, employment in the industry is up 1.3% (+16,000).

For the third consecutive month, employment in construction was little changed. The number of people working in this industry, however, has increased by 3.2% (+39,000) since June 2010.

Manufacturing employment was little changed in June, following a decline in May. Over the past 12 months, employment in this industry has risen by 30,000 or 1.7%, slightly faster than the pace of overall employment growth (+1.4%).

Public sector adds while self-employment declines

The number of employees in the public sector rose by 51,000 in June, while it was up 22,000 in the private sector. At the same time, the number of self-employed fell by 44,000.

Over the past 12 months, employment has grown 2.5% in the public sector (+87,000). Over the same period, private sector employment increased by 1.5% (+159,000), while the number of self-employed was little changed.

Part-time work accounted for much of the monthly increase in June. Over the past 12 months, however, growth in full time contributed 205,000 of the 238,000 increase in overall employment.

Ontario and Alberta drive employment gains

Employment in Ontario was up 40,000 in June, following a slight decline in May. Over the past 12 months, employment in the province increased 114,000 (+1.7%), almost entirely in full-time work. The unemployment rate fell by 0.2 percentage points in June to 7.7%.

In Alberta, employment rose by 22,000. At the same time, the unemployment rate edged up to 5.6%, as there were more people looking for work. Employment in the province continued on its upward trend, growing by 3.5% between June 2010 and June 2011, more than twice the national pace of growth (+1.4%).

Nova Scotia also posted employment gains in June, up 3,800. Despite this gain, employment in the province is down 0.8% over the past 12 months.

Employment in Quebec fell by 16,000, mostly among 15-to-24 year-olds. An increase in the number of people looking for work pushed the unemployment rate up 0.6 percentage points to 7.9%.

Newfoundland and Labrador also experienced a decline in employment in June, down 7,400. Nevertheless, employment in the province is 2.4% above the level of June 2010.

Employment growth primarily among core-aged women

Employment rose by 28,000 among core-aged women (25 to 54 years) in June, while it held steady among the other demographic groups.

Compared with 12 months earlier, employment increased at the fastest pace among workers aged 55 and over, with growth of 5.4% (+71,000) among women and 4.0% (+64,000) among men. Over the same period, employment among core-aged men increased by 1.3% (+79,000), while it was little changed for core-aged women and youths.

Student summer employment

From May to August, the Labour Force Survey collects labour market information about young people aged 15 to 24 who were attending school full time in March and intend to return to school in the fall. The May and June survey results provide the first indicators of the summer job market, while the July and August data will provide further insight. The published estimates are not seasonally adjusted; therefore, comparisons can only be made on a year-over-year basis.

For students aged 20 to 24, the employment rate was little changed at 67.4% in June, compared with the same month a year earlier. However, this rate was 4.2 percentage points above their rate in June 2009, a time when the student job market was particularly affected by the labour market downturn. The unemployment rate of 11.0% for these students was little changed in June 2011 compared to June 2010.

In June, the employment rate for 17-to-19 year-old students was 53.8%, slightly above their rates in both June 2010 and June 2009. Their unemployment rate fell 2.2 percentage points to 13.8% in June compared to June 2010.

Quarterly update on the territories

The Labour Force Survey also collects labour market information about the territories. This information is produced monthly in the form of three-month moving averages. Not all estimates are seasonally adjusted, therefore comparisons should only be made on a year-over-year basis.

All three territories saw employment gains in the second quarter of 2011 compared with the same quarter of 2010.

In Yukon, employment increased by 1,700 (+9.7%) in the second quarter of 2011 compared with the same period in 2010. At the same time, the unemployment rate declined by 1.6 percentage points to 6.3%.

Employment in the Northwest Territories rose by 1,000 (+4.6%) from the second quarter of 2010 to the same quarter in 2011. The unemployment rate was little changed at 8.1%.

In Nunavut, employment increased by 500 (+4.4%) in the second quarter of 2011 compared with the second quarter of 2010. The unemployment rate was 16.6%, 2.6 percentage points lower compared to the same quarter of 2010.

Note to readers

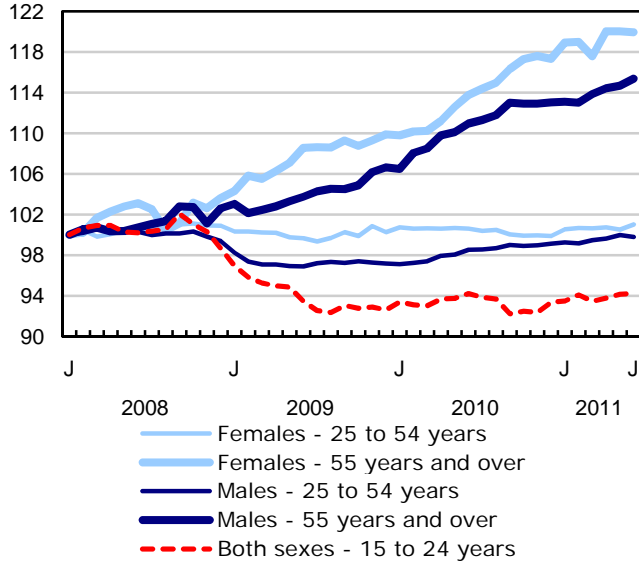
LFS estimates are based on a sample, and are therefore subject to sampling variability. Estimates for smaller geographic areas or industries will have more variability. For an explanation of sampling variability of estimates, and how to use standard errors to assess this variability, consult the "Data quality" section of the publication Labour Force Information (71-001-X, free).

Unless otherwise stated, this release presents seasonally adjusted data, which facilitates comparisons by removing the effects of seasonal variations.

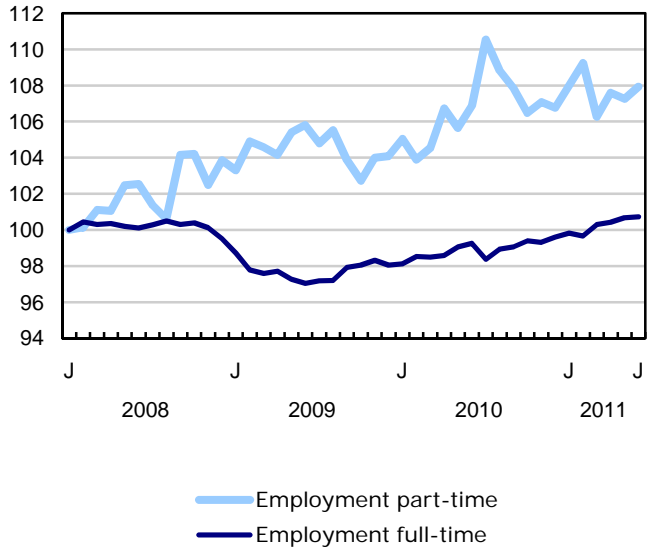
The 2010 *Labour Force Historical Review* on DVD-ROM (71F0004X, \$209) is now available.

Chart 1
Employment and unemployment indicators, Canada, seasonally adjusted

Employment index, January 2008=100



Employment index, January 2008=100



Employment index, January 2008=100

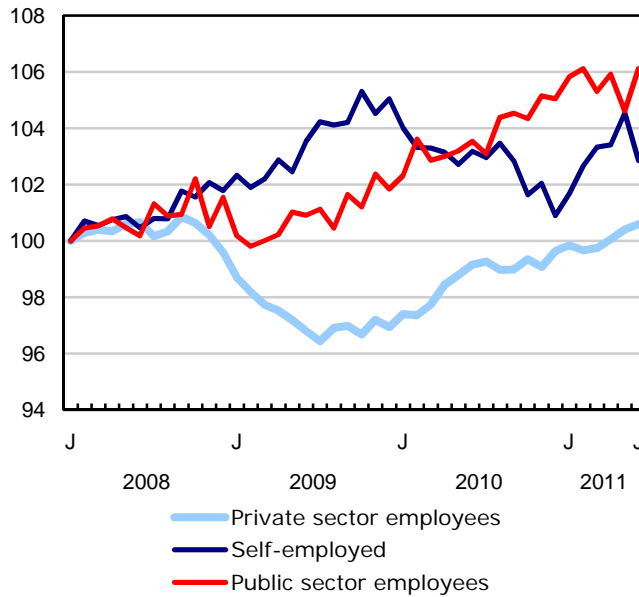
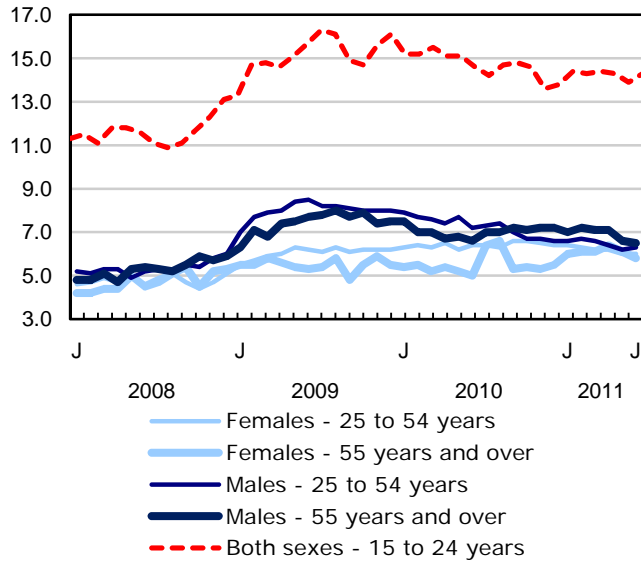
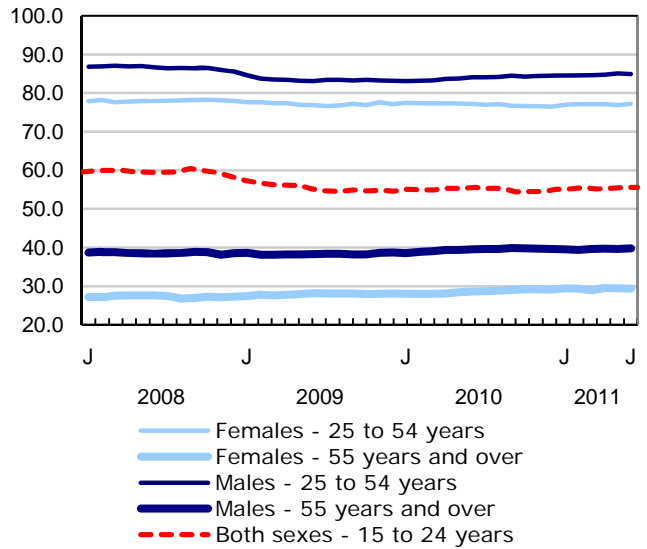


Chart 2
Employment and unemployment indicators, Canada, seasonally adjusted

Unemployment rate (%)



Employment rate (%)



Participation rate (%)

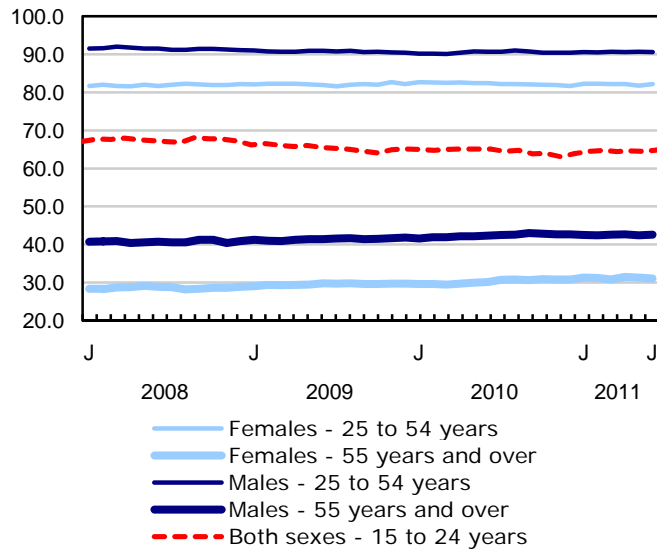


Chart 3
Index of employment by industry, Canada, seasonally adjusted, January 2008=100

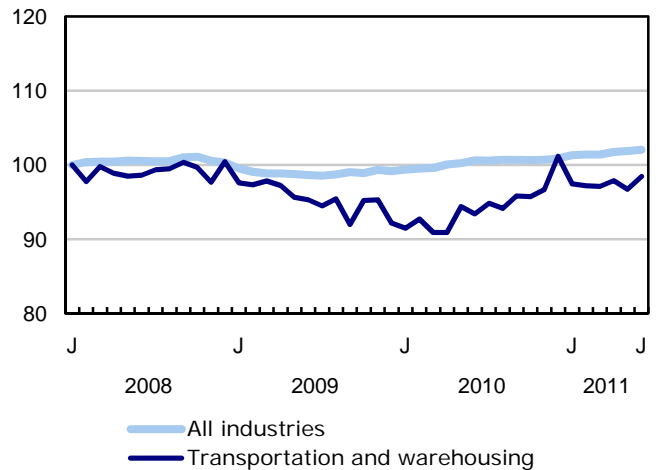
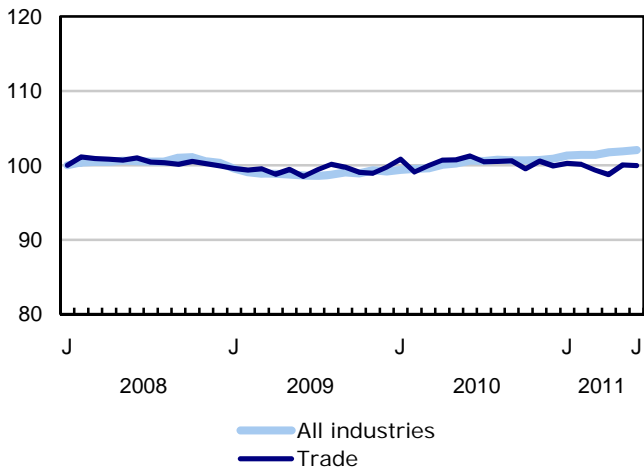
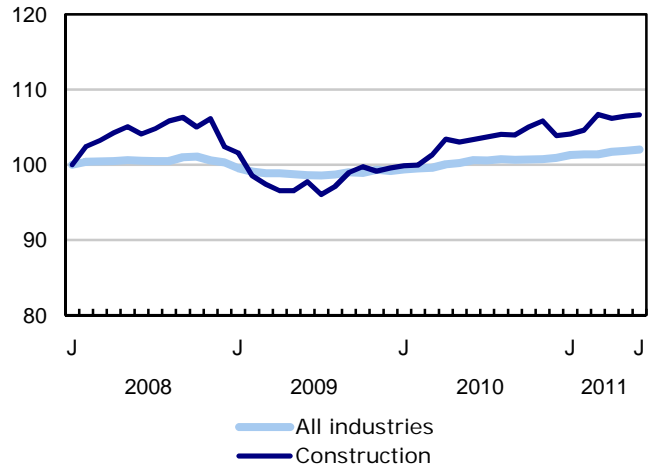
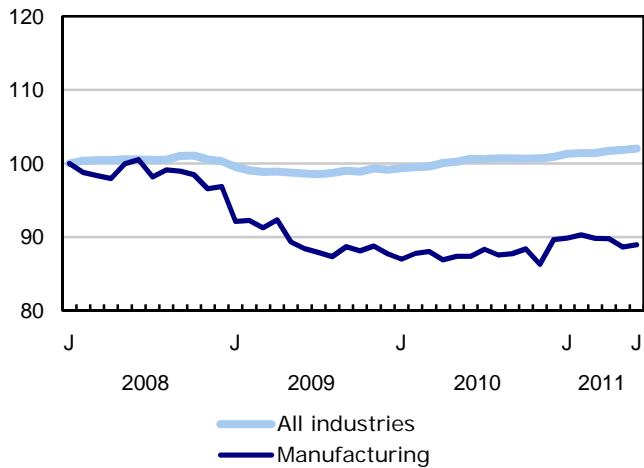
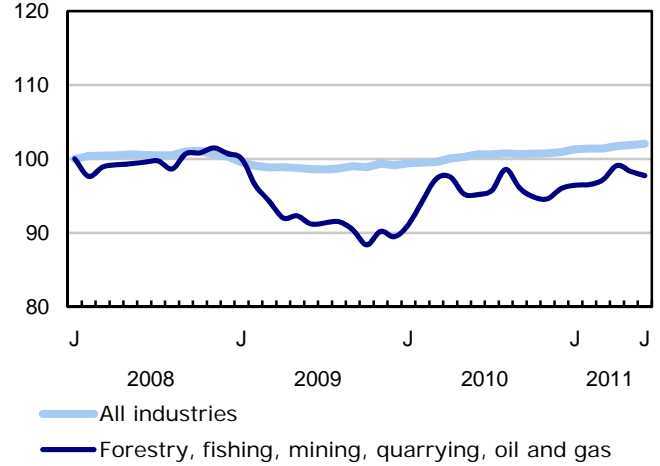
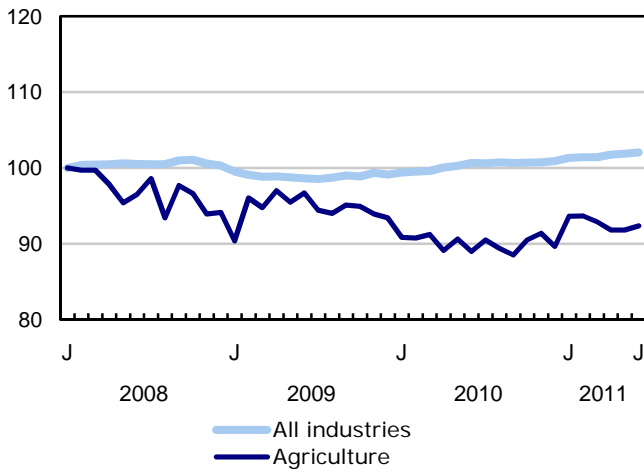


Chart 4
Index of employment by industry, Canada, seasonally adjusted, January 2008=100

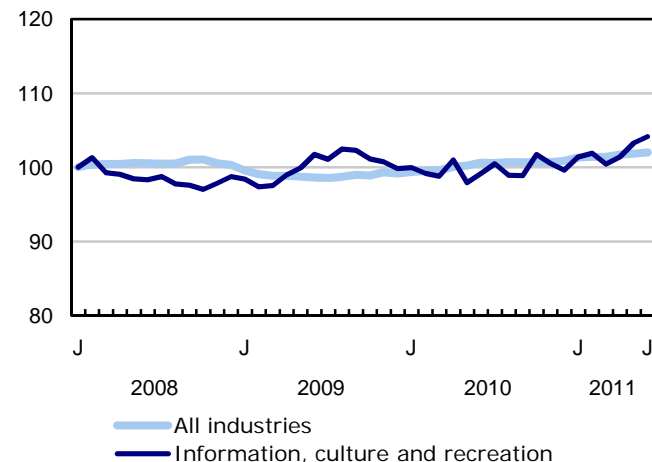
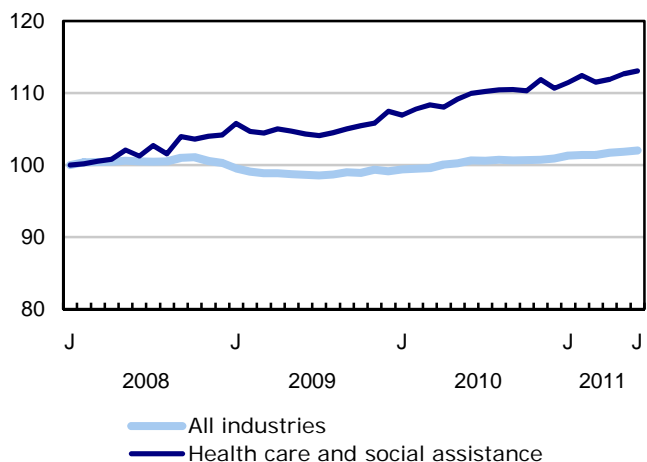
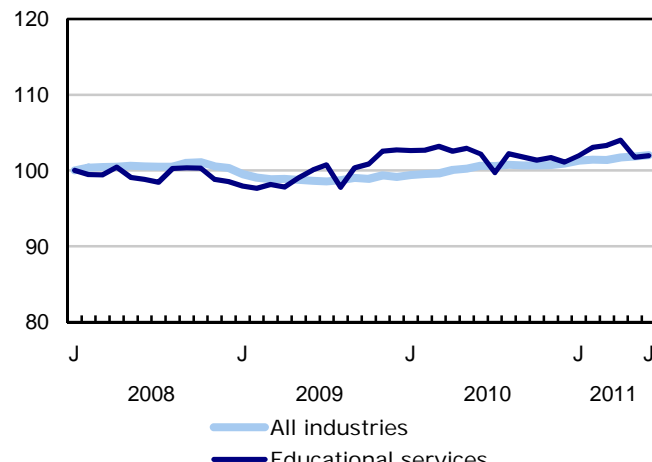
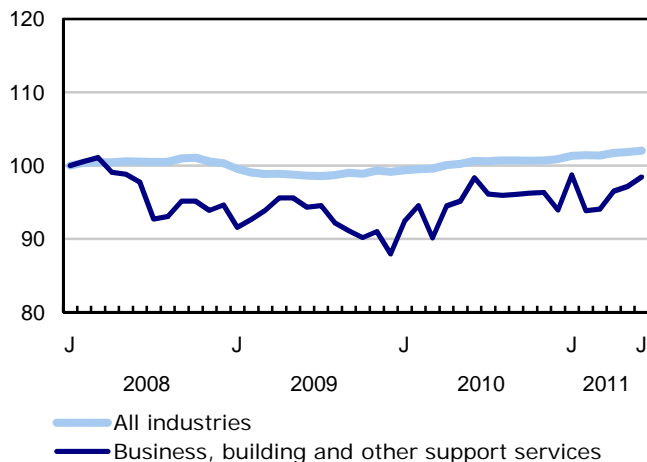
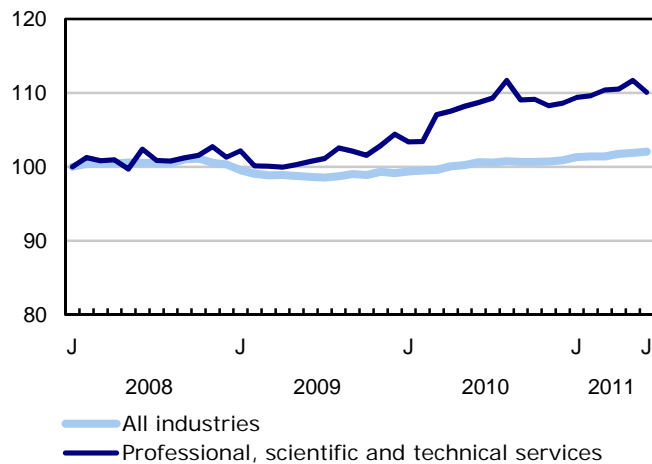
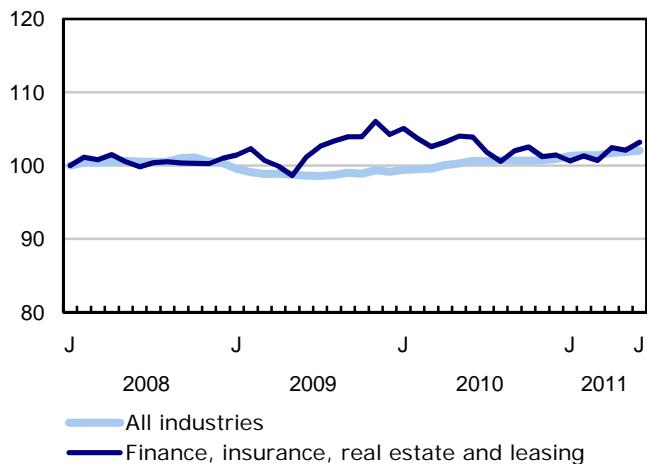


Chart 5
Index of employment by industry, Canada, seasonally adjusted, January 2008=100

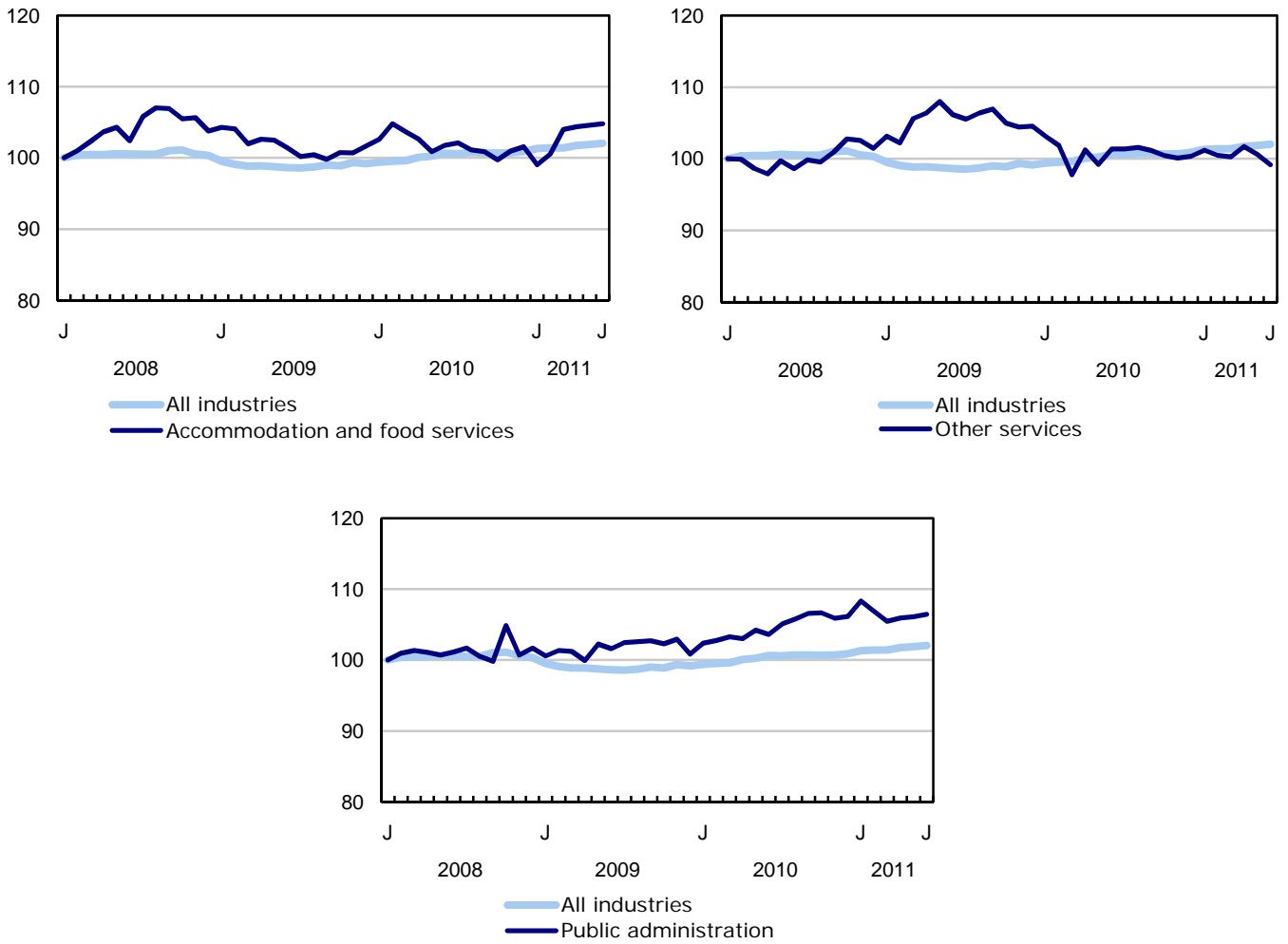


Chart 6
Index of employment by province, seasonally adjusted, January 2008=100

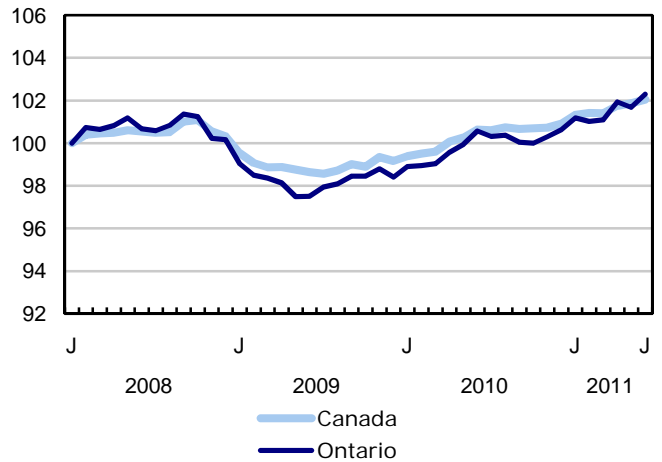
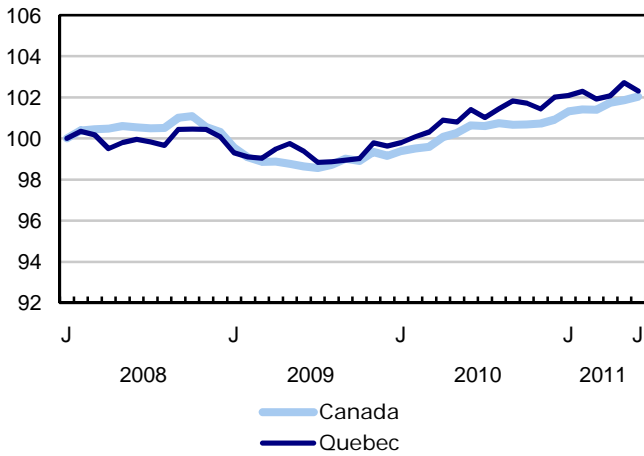
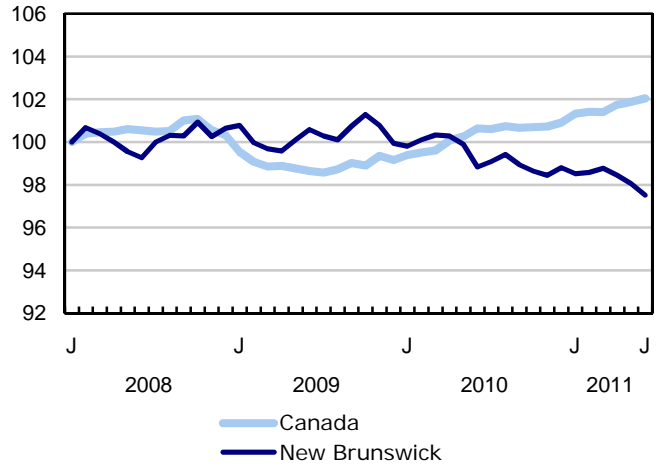
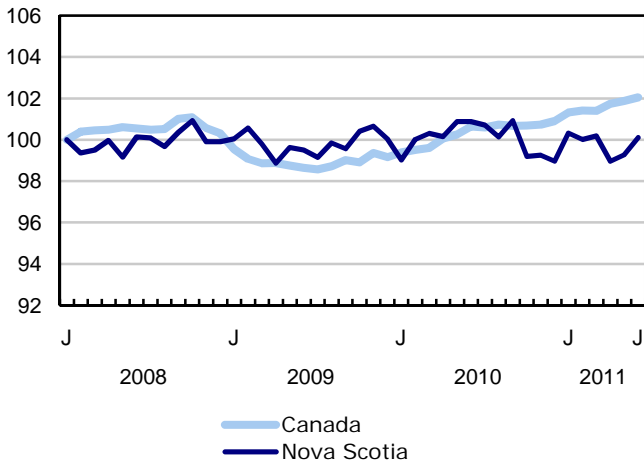
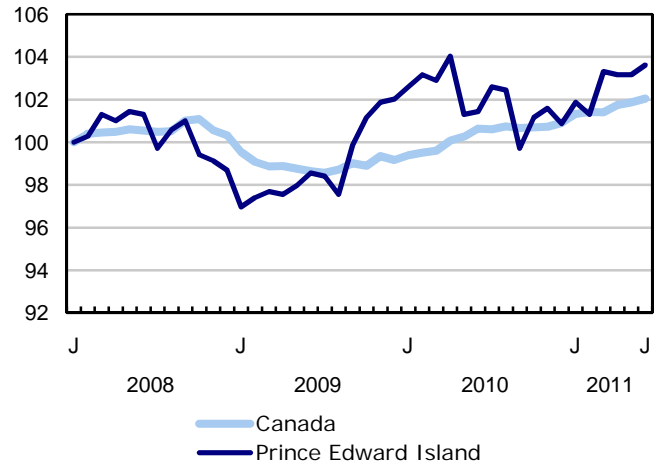
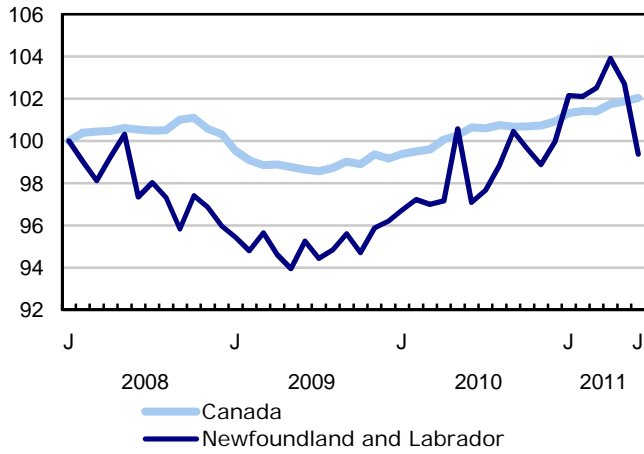
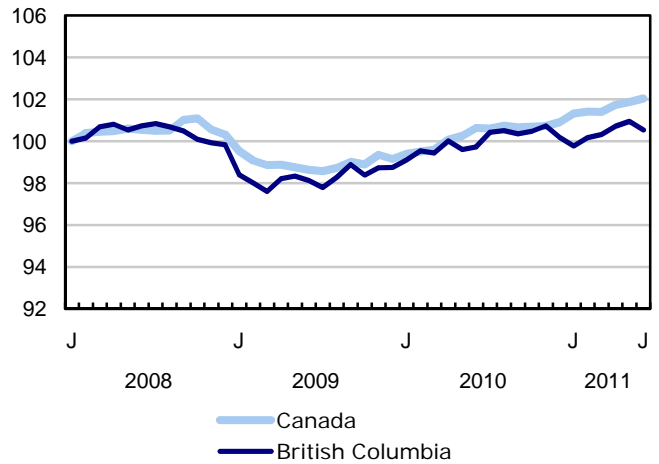
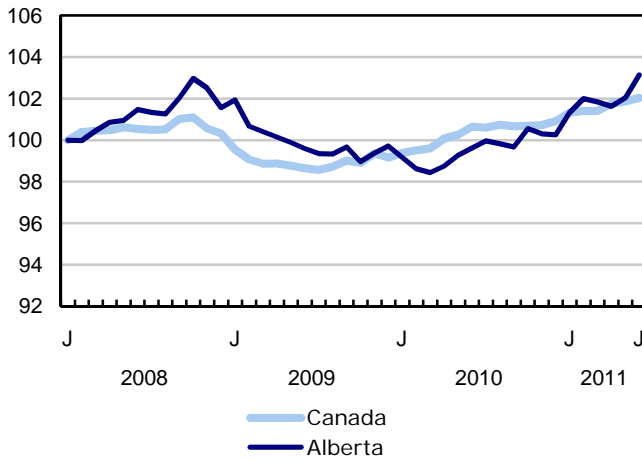
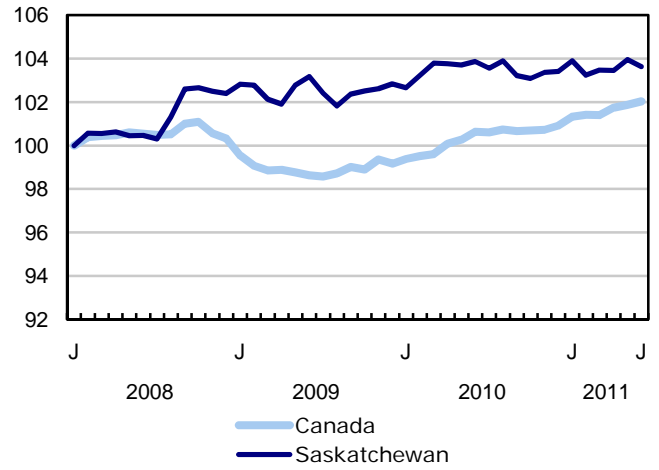
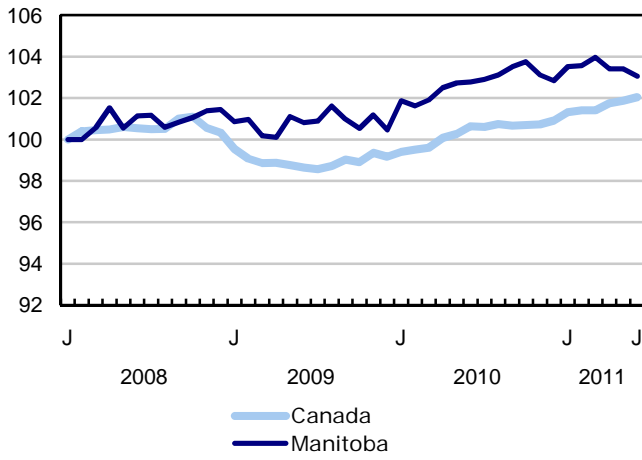


Chart 7
Index of employment by province, seasonally adjusted, January 2008=100



Related products

Selected publications from Statistics Canada

71-222-X	The Canadian Labour Market at a Glance
71-526-X	Methodology of the Canadian Labour Force Survey
71-543-G	Guide to the Labour Force Survey
71-544-X	Labour Force Survey Products and Services
71-587-X	Aboriginal Peoples Living Off-reserve in Western Canada: Estimates from the Labour Force Survey
71-588-X	The Aboriginal Labour Force Analysis Series
71-606-X	The Immigrant Labour Force Analysis Series
71F0004X	Labour Force Historical Review
71F0031X	Improvements to the Labour Force Survey (LFS)
71M0001X	Labour Force Survey Microdata File
75-001-X	Perspectives on Labour and Income

Selected CANSIM tables from Statistics Canada

282-0001	Labour force survey estimates (LFS), by sex and detailed age group, unadjusted for seasonality, monthly
282-0002	Labour force survey estimates (LFS), by sex and detailed age group, annual
282-0003	Labour force survey estimates (LFS), by educational attainment, sex and age group, unadjusted for seasonality, monthly
282-0004	Labour force survey estimates (LFS), by educational attainment, sex and age group, annual
282-0005	Labour force survey estimates (LFS), by full- and part-time students during school months, sex and age group, unadjusted for seasonality, monthly
282-0006	Labour force survey estimates (LFS), by students during summer months, sex and age group, unadjusted for seasonality, monthly
282-0007	Labour force survey estimates (LFS), by North American Industry Classification System (NAICS), sex and age group, unadjusted for seasonality, monthly

282-0008	Labour force survey estimates (LFS), by North American Industry Classification System (NAICS), sex and age group, annual
282-0009	Labour force survey estimates (LFS), by National Occupational Classification for Statistics (NOC-S) and sex, unadjusted for seasonality, monthly
282-0010	Labour force survey estimates (LFS), by National Occupational Classification for Statistics (NOC-S) and sex, annual
282-0011	Labour force survey estimates (LFS), employment by class of worker, North American Industry Classification System (NAICS) and sex, unadjusted for seasonality, monthly
282-0012	Labour force survey estimates (LFS), employment by class of worker, North American Industry Classification System (NAICS) and sex, annual
282-0013	Labour force survey estimates (LFS), part-time employment by reason for part-time work, sex and age group, unadjusted for seasonality, monthly
282-0014	Labour force survey estimates (LFS), part-time employment by reason for part-time work, sex and age group, annual
282-0015	Labour force survey estimates (LFS), by usual hours worked, main or all jobs, sex and age group, unadjusted for seasonality, monthly
282-0016	Labour force survey estimates (LFS), by usual hours worked, main or all jobs, sex and age group, annual
282-0017	Labour force survey estimates (LFS), by actual hours worked, main or all jobs, sex and age group, unadjusted for seasonality, monthly
282-0018	Labour force survey estimates (LFS), by actual hours worked, main or all jobs, sex and age group, annual
282-0019	Labour force survey estimates (LFS), by usual hours worked, class of worker, North American Industry Classification System (NAICS) and sex, unadjusted for seasonality, monthly
282-0020	Labour force survey estimates (LFS), by usual hours worked, class of worker, North American Industry Classification System (NAICS) and sex, annual
282-0021	Labour force survey estimates (LFS), by actual hours worked, class of worker, North American Industry Classification System (NAICS) and sex, unadjusted for seasonality, monthly
282-0022	Labour force survey estimates (LFS), by actual hours worked, class of worker, North American Industry Classification System (NAICS) and sex, annual
282-0023	Labour force survey estimates (LFS), by usual hours worked, class of worker, National Occupational Classification for Statistics (NOC-S) and sex, unadjusted for seasonality, monthly
282-0024	Labour force survey estimates (LFS), by usual hours worked, class of worker, National Occupational Classification for Statistics (NOC-S) and sex, annual
282-0025	Labour force survey estimates (LFS), by actual hours worked, class of worker, National Occupational Classification for Statistics (NOC-S) and sex, unadjusted for seasonality, monthly
282-0026	Labour force survey estimates (LFS), by actual hours worked, class of worker, National Occupational Classification for Statistics (NOC-S) and sex, annual

282-0027	Labour force survey estimates (LFS), by total and average usual and actual hours worked, main or all jobs, type of work, sex and age group, unadjusted for seasonality, monthly
282-0028	Labour force survey estimates (LFS), by total and average usual and actual hours worked, main or all jobs, type of work, sex and age group, annual
282-0029	Labour force survey estimates (LFS), average days lost for personal reasons per full-time employee by North American Industry Classification System (NAICS), sex and age group, annual
282-0030	Labour force survey estimates (LFS), average days lost for personal reasons per full-time employee by National Occupational Classification for Statistics (NOC-S), sex and age group, annual
282-0031	Labour force survey estimates (LFS), multiple jobholders by North American Industry Classification System (NAICS), sex and age group, annual
282-0032	Labour force survey estimates (LFS), multiple jobholders by North American Industry Classification System (NAICS), sex and age group, unadjusted for seasonality, monthly
282-0033	Labour force survey estimates (LFS), multiple jobholders by National Occupational Classification for Statistics (NOC-S), sex and age group, unadjusted for seasonality, monthly
282-0034	Labour force survey estimates (LFS), multiple jobholders by National Occupational Classification for Statistics (NOC-S), sex and age group, annual
282-0035	Labour force survey estimates (LFS), multiple jobholders by usual hours worked at main and all jobs, unadjusted for seasonality, monthly
282-0036	Labour force survey estimates (LFS), multiple jobholders by usual hours worked at main and all jobs, annual
282-0037	Labour force survey estimates (LFS), job tenure by type of work, sex and age group, unadjusted for seasonality, monthly
282-0038	Labour force survey estimates (LFS), job tenure by type of work, sex and age group, annual
282-0039	Labour force survey estimates (LFS), job tenure by National Occupational Classification for Statistics (NOC-S) and sex, unadjusted for seasonality, monthly
282-0040	Labour force survey estimates (LFS), job tenure by National Occupational Classification for Statistics (NOC-S) and sex, annual
282-0041	Labour force survey estimates (LFS), job tenure by North American Industry Classification System (NAICS) and sex, unadjusted for seasonality, monthly
282-0042	Labour force survey estimates (LFS), job tenure by North American Industry Classification System (NAICS) and sex, annual
282-0047	Labour force survey estimates (LFS), duration of unemployment by sex and age group, unadjusted for seasonality, monthly
282-0048	Labour force survey estimates (LFS), duration of unemployment by sex and age group, annual
282-0049	Labour force survey estimates (LFS), unemployment by type of work sought and search method, sex and age group, unadjusted for seasonality, monthly

282-0050	Labour force survey estimates (LFS), unemployment by type of work sought and search method, sex and age group, annual
282-0051	Labour force survey estimates (LFS), retirement age by class of worker and sex, annual
282-0052	Labour force survey estimates (LFS), by census metropolitan area based on 2001 census boundaries, sex and age group, 3-month moving average, unadjusted for seasonality, monthly *Terminated*
282-0053	Labour force survey estimates (LFS), by census metropolitan area based on 2001 census boundaries, sex and age group, annual *Terminated*
282-0054	Labour force survey estimates (LFS), by provinces and economic regions, 3-month moving average, unadjusted for seasonality, monthly
282-0055	Labour force survey estimates (LFS), by provinces, territories and economic regions, annual
282-0056	Labour force survey estimates (LFS), employment by census metropolitan area based on 2001 census boundaries and North American Industry Classification System (NAICS), 3-month moving average, unadjusted for seasonality, monthly *Terminated*
282-0057	Labour force survey estimates (LFS), employment by census metropolitan area based on 2001 census boundaries and North American Industry Classification System (NAICS), annual *Terminated*
282-0058	Labour force survey estimates (LFS), employment by census metropolitan area based on 2001 census boundaries and National Occupational Classification for Statistics (NOC-S), 3-month moving average, unadjusted for seasonality, monthly *Terminated*
282-0059	Labour force survey estimates (LFS), employment by census metropolitan area based on 2001 census boundaries and National Occupational Classification for Statistics (NOC-S), annual *Terminated*
282-0060	Labour force survey estimates (LFS), employment by economic region and North American Industry Classification System (NAICS), 3-month moving average, unadjusted for seasonality, monthly
282-0061	Labour force survey estimates (LFS), employment by economic region and North American Industry Classification System (NAICS), annual
282-0062	Labour force survey estimates (LFS), employment by economic region and National Occupational Classification for Statistics (NOC-S), 3-month moving average, unadjusted for seasonality, monthly
282-0063	Labour force survey estimates (LFS), employment by economic region and National Occupational Classification for Statistics (NOC-S), annual
282-0069	Labour force survey estimates (LFS), wages of employees by type of work, National Occupational Classification for Statistics (NOC-S), sex and age group, unadjusted for seasonality, monthly (current dollars)
282-0070	Labour force survey estimates (LFS), wages of employees by type of work, National Occupational Classification for Statistics (NOC-S), sex and age group, annual (current dollars)

282-0071	Labour force survey estimates (LFS), wages of employees by type of work, North American Industry Classification System (NAICS), sex and age group, unadjusted for seasonality, monthly (current dollars)
282-0072	Labour force survey estimates (LFS), wages of employees by type of work, North American Industry Classification System (NAICS), sex and age group, annual (current dollars)
282-0073	Labour force survey estimates (LFS), wages of employees by job permanence, union coverage, sex and age group, unadjusted for seasonality, monthly (current dollars)
282-0074	Labour force survey estimates (LFS), wages of employees by job permanence, union coverage, sex and age group, annual (current dollars)
282-0075	Labour force survey estimates (LFS), employees by establishment size, North American Industry Classification System (NAICS), sex and age group, unadjusted for seasonality, monthly
282-0076	Labour force survey estimates (LFS), employees by establishment size, North American Industry Classification System (NAICS), sex and age group, annual
282-0077	Labour force survey estimates (LFS), employees by union coverage, North American Industry Classification System (NAICS), sex and age group, unadjusted for seasonality, monthly
282-0078	Labour force survey estimates (LFS), employees by union coverage, North American Industry Classification System (NAICS), sex and age group, annual
282-0079	Labour force survey estimates (LFS), employees by job permanency, North American Industry Classification System (NAICS), sex and age group, unadjusted for seasonality, monthly
282-0080	Labour force survey estimates (LFS), employees by job permanency, North American Industry Classification System (NAICS), sex and age group, annual
282-0081	Labour force survey estimates (LFS), employees working overtime (weekly) by National Occupational Classification for Statistics (NOC-S), sex and age group, unadjusted for seasonality, monthly
282-0082	Labour force survey estimates (LFS), employees working overtime (weekly) by National Occupational Classification for Statistics (NOC-S), sex and age group, annual
282-0083	Labour force survey estimates (LFS), employees working overtime (weekly) by North American Industry Classification System (NAICS), sex and age group, unadjusted for seasonality, monthly
282-0084	Labour force survey estimates (LFS), employees working overtime (weekly) by North American Industry Classification System (NAICS), sex and age group, annual
282-0085	Labour force survey estimates (LFS), supplementary unemployment rates by sex and age group, unadjusted for seasonality, monthly
282-0086	Labour force survey estimates (LFS), supplementary unemployment rates by sex and age group, annual
282-0087	Labour force survey estimates (LFS), by sex and age group, seasonally adjusted and unadjusted, monthly
282-0088	Labour force survey estimates (LFS), employment by North American Industry Classification System (NAICS), seasonally adjusted and unadjusted, monthly

282-0089	Labour force survey estimates (LFS), employment by class of worker and sex, seasonally adjusted and unadjusted, monthly
282-0090	Labour force survey estimates (LFS), by census metropolitan area based on 2001 census boundaries, 3-month moving average, seasonally adjusted and unadjusted, monthly *Terminated*
282-0091	Labour force survey estimates (LFS), by Montréal, Toronto and Vancouver census metropolitan areas based on 2001 census boundaries, seasonally adjusted and unadjusted, monthly *Terminated*
282-0092	Labour force survey estimates (LFS), actual hours worked by North American Industry Classification System (NAICS), seasonally adjusted, monthly
282-0093	Labour force survey estimates (LFS), employment by National Occupational Classification for Statistics (NOC-S), seasonally adjusted, monthly
282-0094	Labour force survey estimates (LFS), by North American Industry Classification System (NAICS), Canada, seasonally adjusted, monthly
282-0095	Labour force survey estimates (LFS), by full- and part-time students during school months, sex and age group, annual
282-0100	Labour force survey estimates (LFS), by territories, sex and age group, 3-month moving average, seasonally adjusted and unadjusted, monthly
282-0101	Labour force survey estimates (LFS), by immigrant status, age group, Canada, regions, provinces and Montreal, Toronto, Vancouver census metropolitan areas, 3-month moving average, unadjusted for seasonality, monthly
282-0102	Labour force survey estimates (LFS), by immigrant status, age group, Canada, regions, provinces and Montreal, Toronto, Vancouver census metropolitan areas, annual
282-0103	Labour force survey estimates (LFS), by immigrant status, sex and detailed age group, Canada, 3-month moving average, unadjusted for seasonality, monthly
282-0104	Labour force survey estimates (LFS), by immigrant status, sex and detailed age group, Canada, annual
282-0105	Labour force survey estimates (LFS), by immigrant status, educational attainment, sex and age group, Canada, 3-month moving average, unadjusted for seasonality, monthly
282-0106	Labour force survey estimates (LFS), by immigrant status, educational attainment, sex and age group, Canada, annual
282-0107	Labour force survey estimates (LFS), by immigrant status, country of birth, sex and age group, Canada, regions and provinces, 3-month moving average, unadjusted for seasonality, monthly
282-0108	Labour force survey estimates (LFS), by immigrant status, country of birth, sex and age group, Canada, regions and provinces, annual
282-0109	Labour force survey estimates (LFS), by census metropolitan area based on 2006 census boundaries, sex and age group, 3-month moving average, unadjusted for seasonality, monthly

282-0110	Labour force survey estimates (LFS), by census metropolitan area based on 2006 census boundaries, sex and age group, annual
282-0111	Labour force survey estimates (LFS), employment by census metropolitan area based on 2006 census boundaries and North American Industry Classification System (NAICS), 3-month moving average, unadjusted for seasonality, monthly
282-0112	Labour force survey estimates (LFS), employment by census metropolitan area based on 2006 census boundaries and North American Industry Classification System (NAICS), annual
282-0113	Labour force survey estimates (LFS), employment by census metropolitan area based on 2006 census boundaries and National Occupational Classification for Statistics (NOC-S), 3-month moving average, unadjusted for seasonality, monthly
282-0114	Labour force survey estimates (LFS), employment by census metropolitan area based on 2006 census boundaries and National Occupational Classification for Statistics (NOC-S), annual
282-0115	Labour force survey estimates (LFS), by selected census agglomerations based on 2006 census boundaries, annual
282-0116	Labour force survey estimates (LFS), by census metropolitan area based on 2006 census boundaries, 3-month moving average, seasonally adjusted and unadjusted, monthly
282-0117	Labour force survey estimates (LFS), by Montréal, Toronto and Vancouver census metropolitan areas based on 2006 census boundaries, seasonally adjusted and unadjusted, monthly
282-0118	Labour force survey estimates (LFS), by urban and rural areas based on 2006 census boundaries, sex and age group, unadjusted for seasonality, monthly
282-0119	Labour force survey estimates (LFS), by urban and rural areas based on 2006 census boundaries, sex and age group, annual
282-0120	Labour force survey estimates (LFS), employment by urban and rural areas based on 2006 census boundaries, class of worker and North American Industry Classification System (NAICS), unadjusted for seasonality, monthly
282-0121	Labour force survey estimates (LFS), employment by urban and rural areas based on 2006 census boundaries, class of worker and North American Industry Classification System (NAICS), annual

Selected surveys from Statistics Canada

3701	Labour Force Survey
------	---------------------

Selected summary tables from Statistics Canada

- *Labour force characteristics*
- *Employment by industry*
- *Days lost per worker due to illness or disability, by sex, by province*
- *Economic indicators, by province and territory (monthly and quarterly)*
- *Labour force and participation rates by sex and age group*
- *Labour force, employed and unemployed, numbers and rates, by province*
- *Employment by industry and sex*
- *Full-time and part-time employment by sex and age group*
- *Labour force characteristics by age and sex*
- *Distribution of employed people, by industry, by province*
- *Labour force characteristics, population 15 years and older, by census metropolitan area*
- *Labour force characteristics, population 15 years and older, by economic region, by province*
- *Days lost per worker by cause, by provinces*
- *Days lost per worker by industry and sex*
- *People employed, by educational attainment*
- *Reasons for part-time work by sex and age group*
- *Self-employment, historical summary*
- *Employment by age, sex, type of work, class of worker and province (monthly)*
- *Employment by major industry groups, seasonally adjusted, by province (monthly)*
- *Actual hours worked per week by industry, seasonally adjusted (monthly)*
- *Average hourly wages of employees by selected characteristics and profession, unadjusted data, by province (monthly)*
- *Labour force characteristics, seasonally adjusted, by province (monthly)*
- *Labour force characteristics, unadjusted, by province (monthly)*
- *Labour force characteristics, seasonally adjusted, by census metropolitan area (3 month moving average)*
- *Labour force characteristics, unadjusted, by census metropolitan area (3 month moving average)*
- *Labour force characteristics, unadjusted, by economic region (3 month moving average)*

- *Labour force characteristics by immigrant status of population aged 25 to 54, by province*
- *Labour force characteristics by immigrant status of population aged 25 to 54, by educational attainment*
- *Labour force characteristics by immigrant status, by detailed age group*
- *Labour force characteristics by immigrant status of population aged 25 to 54, by country of birth*

Statistical tables

Table 1
Labour force characteristics by age and sex, Canada, seasonally adjusted

	May 2011	June 2011	S.E. ¹	Change from			Percent change from		
				last month	last December	twelve months ago	last month	last December	twelve months ago
in thousands (except rates)									
15 years and over, both sexes									
Population	27,949.0	27,975.7	...	26.7	160.9	328.3	0.1	0.6	1.2
Labour force	18,682.7	18,724.7	28.7	42.0	166.9	161.9	0.2	0.9	0.9
Employment	17,308.7	17,337.1	28.2	28.4	191.8	237.5	0.2	1.1	1.4
Employment full-time	13,983.8	13,991.1	37.3	7.3	155.3	205.0	0.1	1.1	1.5
Employment part-time	3,324.9	3,346.0	34.4	21.1	36.4	32.4	0.6	1.1	1.0
Unemployment	1,374.1	1,387.6	25.3	13.5	-24.9	-75.5	1.0	-1.8	-5.2
Participation rate	66.8	66.9	0.1	0.1	0.2	-0.2
Unemployment rate	7.4	7.4	0.1	0.0	-0.2	-0.5
Employment rate	61.9	62.0	0.1	0.1	0.4	0.2
Part-time rate	19.2	19.3	0.2	0.1	0.0	-0.1
15 to 24 years, both sexes									
Population	4,458.1	4,457.6	...	-0.5	-2.4	-2.9	0.0	-0.1	-0.1
Labour force	2,876.2	2,892.2	16.8	16.0	41.0	-12.3	0.6	1.4	-0.4
Employment	2,477.6	2,479.4	15.5	1.8	22.9	0.2	0.1	0.9	0.0
Employment full-time	1,295.7	1,321.3	18.1	25.6	35.5	40.5	2.0	2.8	3.2
Employment part-time	1,182.0	1,158.1	18.8	-23.9	-12.6	-40.3	-2.0	-1.1	-3.4
Unemployment	398.6	412.8	14.7	14.2	18.1	-12.5	3.6	4.6	-2.9
Participation rate	64.5	64.9	0.4	0.4	1.0	-0.2
Unemployment rate	13.9	14.3	0.5	0.4	0.5	-0.3
Employment rate	55.6	55.6	0.4	0.0	0.5	0.0
Part-time rate	47.7	46.7	0.7	-1.0	-0.9	-1.6
25 years and over, men									
Population	11,492.6	11,506.4	...	13.8	81.8	165.1	0.1	0.7	1.5
Labour force	8,385.3	8,388.7	14.9	3.4	45.5	86.2	0.0	0.5	1.0
Employment	7,856.8	7,857.2	16.0	0.4	76.0	143.2	0.0	1.0	1.9
Employment full-time	7,232.7	7,220.1	21.0	-12.6	45.9	101.1	-0.2	0.6	1.4
Employment part-time	624.1	637.1	17.0	13.0	30.1	42.0	2.1	5.0	7.1
Unemployment	528.5	531.5	14.8	3.0	-30.5	-57.0	0.6	-5.4	-9.7
Participation rate	73.0	72.9	0.1	-0.1	-0.1	-0.3
Unemployment rate	6.3	6.3	0.2	0.0	-0.4	-0.8
Employment rate	68.4	68.3	0.1	-0.1	0.2	0.3
Part-time rate	7.9	8.1	0.2	0.2	0.3	0.4
25 years and over, women									
Population	11,998.2	12,011.7	...	13.5	81.4	166.1	0.1	0.7	1.4
Labour force	7,421.2	7,443.8	16.3	22.6	80.4	88.1	0.3	1.1	1.2
Employment	6,974.2	7,000.5	16.0	26.3	92.9	94.1	0.4	1.3	1.4
Employment full-time	5,455.4	5,449.7	24.3	-5.7	74.0	63.3	-0.1	1.4	1.2
Employment part-time	1,518.8	1,550.8	22.7	32.0	18.9	30.7	2.1	1.2	2.0
Unemployment	447.0	443.3	13.1	-3.7	-12.5	-6.0	-0.8	-2.7	-1.3
Participation rate	61.9	62.0	0.1	0.1	0.3	-0.1
Unemployment rate	6.0	6.0	0.2	0.0	-0.2	-0.1
Employment rate	58.1	58.3	0.1	0.2	0.4	0.0
Part-time rate	21.8	22.2	0.3	0.4	0.0	0.1
25 to 54 years, both sexes									
Population	14,530.4	14,535.2	...	4.8	24.5	52.7	0.0	0.2	0.4
Labour force	12,531.6	12,554.4	21.6	22.8	65.9	19.4	0.2	0.5	0.2
Employment	11,765.4	11,783.1	22.9	17.7	104.7	101.5	0.2	0.9	0.9
Unemployment	766.2	771.3	18.5	5.1	-38.8	-82.1	0.7	-4.8	-9.6
Participation rate	86.2	86.4	0.1	0.2	0.3	-0.2
Unemployment rate	6.1	6.1	0.1	0.0	-0.4	-0.7
Employment rate	81.0	81.1	0.2	0.1	0.6	0.4
25 to 54 years, men									
Population	7,268.3	7,271.0	...	2.7	13.4	27.7	0.0	0.2	0.4
Labour force	6,592.2	6,585.8	13.7	-6.4	22.0	18.2	-0.1	0.3	0.3
Employment	6,182.3	6,172.4	15.3	-9.9	42.0	78.8	-0.2	0.7	1.3
Unemployment	409.9	413.5	13.5	3.6	-19.9	-60.5	0.9	-4.6	-12.8
Participation rate	90.7	90.6	0.2	-0.1	0.2	-0.1
Unemployment rate	6.2	6.3	0.2	0.1	-0.3	-0.9
Employment rate	85.1	84.9	0.2	-0.2	0.4	0.8
25 to 54 years, women									
Population	7,262.1	7,264.2	...	2.1	11.1	24.9	0.0	0.2	0.3
Labour force	5,939.4	5,968.6	15.9	29.2	43.9	1.2	0.5	0.7	0.0
Employment	5,583.1	5,610.8	16.1	27.7	62.8	22.8	0.5	1.1	0.4
Unemployment	356.3	357.8	12.3	1.5	-18.9	-21.7	0.4	-5.0	-5.7
Participation rate	81.8	82.2	0.2	0.4	0.5	-0.2
Unemployment rate	6.0	6.0	0.2	0.0	-0.4	-0.4
Employment rate	76.9	77.2	0.2	0.3	0.7	0.0

See notes at the end of the table.

Table 1 – continued

Labour force characteristics by age and sex, Canada, seasonally adjusted

	May 2011	June 2011	S.E. ¹	Change from			Percent change from		
				last month	last December	twelve months ago	last month	last December	twelve months ago
in thousands (except rates)									
55 years and over, both sexes									
Population	8,960.5	8,982.9	...	22.4	138.7	278.5	0.2	1.6	3.2
Labour force	3,274.9	3,278.1	16.7	3.2	60.0	154.9	0.1	1.9	5.0
Employment	3,065.6	3,074.5	16.7	8.9	64.1	135.6	0.3	2.1	4.6
Unemployment	209.3	203.5	9.2	-5.8	-4.2	19.1	-2.8	-2.0	10.4
Participation rate	36.5	36.5	0.2	0.0	0.1	0.6
Unemployment rate	6.4	6.2	0.3	-0.2	-0.3	0.3
Employment rate	34.2	34.2	0.2	0.0	0.2	0.4
55 years and over, men									
Population	4,224.3	4,235.4	...	11.1	68.4	137.4	0.3	1.6	3.4
Labour force	1,793.1	1,802.8	11.2	9.7	23.4	67.8	0.5	1.3	3.9
Employment	1,674.5	1,684.8	11.3	10.3	34.0	64.4	0.6	2.1	4.0
Unemployment	118.6	118.0	7.1	-0.6	-10.6	3.5	-0.5	-8.2	3.1
Participation rate	42.4	42.6	0.3	0.2	-0.1	0.3
Unemployment rate	6.6	6.5	0.4	-0.1	-0.7	-0.1
Employment rate	39.6	39.8	0.3	0.2	0.2	0.3
55 years and over, women									
Population	4,736.2	4,747.5	...	11.3	70.3	141.2	0.2	1.5	3.1
Labour force	1,481.8	1,475.2	11.3	-6.6	36.5	86.9	-0.4	2.5	6.3
Employment	1,391.1	1,389.7	11.3	-1.4	30.1	71.3	-0.1	2.2	5.4
Unemployment	90.7	85.5	5.7	-5.2	6.4	15.7	-5.7	8.1	22.5
Participation rate	31.3	31.1	0.2	-0.2	0.3	1.0
Unemployment rate	6.1	5.8	0.4	-0.3	0.3	0.8
Employment rate	29.4	29.3	0.2	-0.1	0.2	0.7

1. Average standard error of change in two consecutive months (see "Sampling Errors" in Data Quality for further explanations).

Note(s): Related CANSIM table 282-0087.

Table 2
Employment by class of worker and industry, Canada, seasonally adjusted

	May 2011	June 2011	S.E. ¹	Change from			Percent change from		
				last month	last December	twelve months ago	last month	last December	twelve months ago
in thousands									
Class of worker									
Employees	14,593.9	14,666.5	34.0	72.6	141.4	246.2	0.5	1.0	1.7
Self-employed ²	2,714.8	2,670.6	24.5	-44.2	50.4	-8.7	-1.6	1.9	-0.3
Public/private sector employees									
Public sector employees	3,539.6	3,590.3	23.9	50.7	35.8	87.1	1.4	1.0	2.5
Private sector employees	11,054.3	11,076.2	35.8	21.9	105.6	159.1	0.2	1.0	1.5
Industry	17,308.7	17,337.1	28.2	28.4	191.8	237.5	0.2	1.1	1.4
Goods-producing sector	3,815.3	3,818.6	25.2	3.3	29.8	85.8	0.1	0.8	2.3
Agriculture	306.4	308.3	6.7	1.9	9.1	11.3	0.6	3.0	3.8
Forestry, fishing, mining, quarrying, oil and gas extraction ³	339.4	337.5	6.9	-1.9	6.0	8.8	-0.6	1.8	2.7
Utilities	148.2	144.2	4.7	-4.0	-3.6	-3.3	-2.7	-2.4	-2.2
Construction	1,257.8	1,259.9	16.2	2.1	32.7	38.6	0.2	2.7	3.2
Manufacturing	1,763.4	1,768.7	18.8	5.3	-14.4	30.4	0.3	-0.8	1.7
Services-producing sector	13,493.4	13,518.5	33.2	25.1	161.9	151.7	0.2	1.2	1.1
Trade	2,671.1	2,669.1	22.8	-2.0	0.7	-34.6	-0.1	0.0	-1.3
Transportation and warehousing	826.8	841.3	12.9	14.5	-23.5	42.9	1.8	-2.7	5.4
Finance, insurance, real estate and leasing	1,090.2	1,101.5	15.2	11.3	18.6	-7.6	1.0	1.7	-0.7
Professional, scientific and technical services	1,312.2	1,293.0	16.9	-19.2	17.0	16.1	-1.5	1.3	1.3
Business, building and other support services	687.4	696.5	13.8	9.1	31.7	0.6	1.3	4.8	0.1
Educational services	1,213.4	1,216.0	15.7	2.6	10.2	-2.3	0.2	0.8	-0.2
Health care and social assistance	2,089.8	2,097.4	17.7	7.6	45.1	57.9	0.4	2.2	2.8
Information, culture and recreation	793.9	800.8	14.3	6.9	34.9	38.3	0.9	4.6	5.0
Accommodation and food services	1,086.8	1,088.7	16.1	1.9	33.7	31.2	0.2	3.2	3.0
Other services	751.5	740.9	13.0	-10.6	-8.9	-16.5	-1.4	-1.2	-2.2
Public administration	970.1	973.2	12.5	3.1	2.4	25.5	0.3	0.2	2.7

1. Average standard error of change in two consecutive months (see "Sampling Errors" in Data Quality for further explanations).
2. Includes both incorporated and unincorporated working owners, self-employed persons who do not have a business and persons working in a family business without pay.
3. Also referred to as Natural resources.

Note(s): Related CANSIM Tables 282-0088, 282-0089.

Table 3
Labour force characteristics by province, seasonally adjusted

	May 2011	June 2011	S.E. ¹	Change from			Percent change from		
				last month	last December	twelve months ago	last month	last December	twelve months ago
in thousands (except rates)									
Newfoundland and Labrador									
Population	429.0	428.8	...	-0.2	-0.2	1.2	0.0	0.0	0.3
Labour force	259.8	252.8	2.1	-7.0	-6.4	-0.6	-2.7	-2.5	-0.2
Employment	229.0	221.6	2.2	-7.4	-1.3	5.1	-3.2	-0.6	2.4
Employment full-time	194.3	189.4	2.5	-4.9	-1.7	5.0	-2.5	-0.9	2.7
Employment part-time	34.7	32.2	1.9	-2.5	0.4	0.1	-7.2	1.3	0.3
Unemployment	30.9	31.2	2.0	0.3	-5.1	-5.7	1.0	-14.0	-15.4
Participation rate	60.6	59.0	0.5	-1.6	-1.4	-0.3
Unemployment rate	11.9	12.3	0.7	0.4	-1.7	-2.3
Employment rate	53.4	51.7	0.5	-1.7	-0.3	1.1
Prince Edward Island									
Population	119.1	119.3	...	0.2	1.4	2.3	0.2	1.2	2.0
Labour force	81.0	81.7	0.6	0.7	2.3	1.6	0.9	2.9	2.0
Employment	71.5	71.8	0.7	0.3	1.9	1.5	0.4	2.7	2.1
Employment full-time	59.0	59.9	0.9	0.9	2.0	2.5	1.5	3.5	4.4
Employment part-time	12.5	12.0	0.7	-0.5	0.0	-0.9	-4.0	0.0	-7.0
Unemployment	9.6	9.8	0.6	0.2	0.4	0.0	2.1	4.3	0.0
Participation rate	68.0	68.5	0.5	0.5	1.2	0.0
Unemployment rate	11.9	12.0	0.8	0.1	0.2	-0.2
Employment rate	60.0	60.2	0.6	0.2	0.9	0.1
Nova Scotia									
Population	778.8	778.9	...	0.1	0.0	2.3	0.0	0.0	0.3
Labour force	493.4	496.0	2.7	2.6	-3.4	-4.4	0.5	-0.7	-0.9
Employment	449.0	452.8	2.9	3.8	5.2	-3.5	0.8	1.2	-0.8
Employment full-time	358.9	368.1	3.6	9.2	1.3	-4.7	2.6	0.4	-1.3
Employment part-time	90.1	84.6	3.2	-5.5	3.7	1.1	-6.1	4.6	1.3
Unemployment	44.3	43.2	2.6	-1.1	-8.6	-0.9	-2.5	-16.6	-2.0
Participation rate	63.4	63.7	0.4	0.3	-0.4	-0.7
Unemployment rate	9.0	8.7	0.5	-0.3	-1.7	-0.1
Employment rate	57.7	58.1	0.4	0.4	0.6	-0.7
New Brunswick									
Population	619.1	619.3	...	0.2	1.1	2.7	0.0	0.2	0.4
Labour force	388.2	386.6	2.3	-1.6	-4.4	-3.6	-0.4	-1.1	-0.9
Employment	351.4	349.5	2.4	-1.9	-4.6	-4.7	-0.5	-1.3	-1.3
Employment full-time	293.9	290.3	2.9	-3.6	-9.1	-9.4	-1.2	-3.0	-3.1
Employment part-time	57.5	59.2	2.4	1.7	4.5	4.7	3.0	8.2	8.6
Unemployment	36.8	37.1	2.1	0.3	0.2	1.2	0.8	0.5	3.3
Participation rate	62.7	62.4	0.4	-0.3	-0.8	-0.9
Unemployment rate	9.5	9.6	0.5	0.1	0.2	0.4
Employment rate	56.8	56.4	0.4	-0.4	-0.9	-1.0
Quebec									
Population	6,568.5	6,573.9	...	5.4	34.6	70.1	0.1	0.5	1.1
Labour force	4,292.8	4,304.3	14.5	11.5	30.3	38.3	0.3	0.7	0.9
Employment	3,980.8	3,965.3	14.4	-15.5	11.6	35.0	-0.4	0.3	0.9
Employment full-time	3,200.2	3,190.3	19.1	-9.9	-15.6	26.1	-0.3	-0.5	0.8
Employment part-time	780.6	775.0	17.5	-5.6	27.2	8.9	-0.7	3.6	1.2
Unemployment	312.0	339.0	13.0	27.0	18.7	3.3	8.7	5.8	1.0
Participation rate	65.4	65.5	0.2	0.1	0.1	-0.1
Unemployment rate	7.3	7.9	0.3	0.6	0.4	0.0
Employment rate	60.6	60.3	0.2	-0.3	-0.2	-0.1
Ontario									
Population	10,909.3	10,920.1	...	10.8	65.6	134.6	0.1	0.6	1.2
Labour force	7,303.6	7,333.8	19.9	30.2	84.3	77.4	0.4	1.2	1.1
Employment	6,729.5	6,769.8	19.3	40.3	110.2	114.3	0.6	1.7	1.7
Employment full-time	5,457.7	5,472.1	24.9	14.4	97.8	108.7	0.3	1.8	2.0
Employment part-time	1,271.8	1,297.8	23.3	26.0	12.5	5.6	2.0	1.0	0.4
Unemployment	574.1	564.0	17.7	-10.1	-25.9	-36.9	-1.8	-4.4	-6.1
Participation rate	66.9	67.2	0.2	0.3	0.4	-0.1
Unemployment rate	7.9	7.7	0.2	-0.2	-0.4	-0.6
Employment rate	61.7	62.0	0.2	0.3	0.6	0.3
Manitoba									
Population	951.8	953.0	...	1.2	6.0	12.4	0.1	0.6	1.3
Labour force	658.9	657.8	2.6	-1.1	3.2	1.8	-0.2	0.5	0.3
Employment	624.0	621.8	2.7	-2.2	1.3	1.6	-0.4	0.2	0.3
Employment full-time	503.4	500.3	3.8	-3.1	-1.3	2.3	-0.6	-0.3	0.5
Employment part-time	120.5	121.5	3.5	1.0	2.6	-0.7	0.8	2.2	-0.6
Unemployment	34.9	36.0	2.1	1.1	1.9	0.2	3.2	5.6	0.6
Participation rate	69.2	69.0	0.3	-0.2	-0.1	-0.7
Unemployment rate	5.3	5.5	0.3	0.2	0.3	0.0
Employment rate	65.6	65.2	0.3	-0.4	-0.3	-0.7

See notes at the end of the table.

Table 3 – continued

Labour force characteristics by province, seasonally adjusted

	May 2011	June 2011	S.E. ¹	Change from			Percent change from		
				last month	last December	twelve months ago	last month	last December	twelve months ago
in thousands (except rates)									
Saskatchewan									
Population	798.5	799.2	...	0.7	3.8	8.5	0.1	0.5	1.1
Labour force	554.7	552.0	2.4	-2.7	-2.5	-5.4	-0.5	-0.5	-1.0
Employment	526.8	525.2	2.5	-1.6	1.1	-1.2	-0.3	0.2	-0.2
Employment full-time	428.1	431.0	3.2	2.9	-0.1	1.9	0.7	0.0	0.4
Employment part-time	98.6	94.2	3.0	-4.4	1.2	-3.1	-4.5	1.3	-3.2
Unemployment	27.9	26.8	1.9	-1.1	-3.7	-4.1	-3.9	-12.1	-13.3
Participation rate	69.5	69.1	0.3	-0.4	-0.6	-1.4
Unemployment rate	5.0	4.9	0.3	-0.1	-0.6	-0.6
Employment rate	66.0	65.7	0.3	-0.3	-0.2	-0.9
Alberta									
Population	3,000.1	3,005.1	...	5.0	25.7	43.6	0.2	0.9	1.5
Labour force	2,186.0	2,213.6	9.0	27.6	63.0	51.2	1.3	2.9	2.4
Employment	2,068.6	2,090.6	9.2	22.0	58.4	71.2	1.1	2.9	3.5
Employment full-time	1,725.3	1,738.5	12.0	13.2	63.2	76.7	0.8	3.8	4.6
Employment part-time	343.4	352.1	10.5	8.7	-4.8	-5.4	2.5	-1.3	-1.5
Unemployment	117.3	123.0	7.5	5.7	4.6	-20.0	4.9	3.9	-14.0
Participation rate	72.9	73.7	0.3	0.8	1.5	0.7
Unemployment rate	5.4	5.6	0.3	0.2	0.1	-1.0
Employment rate	69.0	69.6	0.3	0.6	1.4	1.4
British Columbia									
Population	3,774.9	3,778.1	...	3.2	22.8	50.6	0.1	0.6	1.4
Labour force	2,464.4	2,446.1	10.2	-18.3	0.5	5.5	-0.7	0.0	0.2
Employment	2,278.1	2,268.7	10.1	-9.4	8.0	18.2	-0.4	0.4	0.8
Employment full-time	1,763.0	1,751.2	14.3	-11.8	18.8	-4.2	-0.7	1.1	-0.2
Employment part-time	515.1	517.5	13.5	2.4	-10.8	22.3	0.5	-2.0	4.5
Unemployment	186.3	177.5	8.9	-8.8	-7.4	-12.5	-4.7	-4.0	-6.6
Participation rate	65.3	64.7	0.3	-0.6	-0.4	-0.8
Unemployment rate	7.6	7.3	0.3	-0.3	-0.3	-0.5
Employment rate	60.3	60.0	0.3	-0.3	-0.2	-0.4

1. Average standard error of change in two consecutive months (see "Sampling Errors" in Data Quality for further explanations).

Note(s): Related CANSIM Table 282-0087.

Table 4-1
Selected labour force characteristics (seasonally adjusted) — Newfoundland and Labrador

	May 2011	June 2011	S.E. ¹	Change from			Percent change from		
				last month	last December	twelve months ago	last month	last December	twelve months ago
in thousands (except rates)									
Both sexes, 15 years and over									
Population	429.0	428.8	...	-0.2	-0.2	1.2	0.0	0.0	0.3
Labour force	259.8	252.8	2.1	-7.0	-6.4	-0.6	-2.7	-2.5	-0.2
Employment	229.0	221.6	2.2	-7.4	-1.3	5.1	-3.2	-0.6	2.4
Employment full-time	194.3	189.4	2.5	-4.9	-1.7	5.0	-2.5	-0.9	2.7
Unemployment	30.9	31.2	2.0	0.3	-5.1	-5.7	1.0	-14.0	-15.4
Participation rate	60.6	59.0	0.5	-1.6	-1.4	-0.3
Unemployment rate	11.9	12.3	0.7	0.4	-1.7	-2.3
Employment rate	53.4	51.7	0.5	-1.7	-0.3	1.1
Part-time rate	15.2	14.5	0.8	-0.6	0.3	-0.3
Both sexes, 15 to 24 years									
Population	61.1	61.0	...	-0.1	-0.6	-1.0	-0.2	-1.0	-1.6
Labour force	36.3	35.8	1.0	-0.5	0.2	1.7	-1.4	0.6	5.0
Employment	29.5	27.9	1.0	-1.6	-1.0	1.8	-5.4	-3.5	6.9
Unemployment	6.8	8.0	0.9	1.2	1.3	0.0	17.6	19.4	0.0
Participation rate	59.4	58.7	1.7	-0.7	0.9	3.7
Unemployment rate	18.7	22.3	2.4	3.6	3.5	-1.2
Employment rate	48.3	45.7	1.7	-2.6	-1.2	3.6
Part-time rate	43.1	48.0	3.5	5.0	11.4	10.1
Men, 25 years and over									
Population	177.6	177.6	...	0.0	0.1	0.9	0.0	0.1	0.5
Labour force	117.0	111.8	1.2	-5.2	-4.0	-2.0	-4.4	-3.5	-1.8
Employment	102.6	98.1	1.3	-4.5	0.0	2.3	-4.4	0.0	2.4
Unemployment	14.4	13.6	1.3	-0.8	-4.0	-4.4	-5.6	-22.7	-24.4
Participation rate	65.9	63.0	0.7	-2.9	-2.2	-1.4
Unemployment rate	12.3	12.2	1.1	-0.1	-3.0	-3.6
Employment rate	57.8	55.2	0.8	-2.6	-0.1	1.0
Part-time rate	5.9	5.2	0.9	-0.7	0.0	-0.5
Women, 25 years and over									
Population	190.2	190.3	...	0.1	0.4	1.4	0.1	0.2	0.7
Labour force	106.6	105.2	1.2	-1.4	-2.6	-0.3	-1.3	-2.4	-0.3
Employment	96.8	95.6	1.2	-1.2	-0.3	1.0	-1.2	-0.3	1.1
Unemployment	9.7	9.6	1.0	-0.1	-2.4	-1.4	-1.0	-20.0	-12.7
Participation rate	56.0	55.3	0.6	-0.7	-1.5	-0.5
Unemployment rate	9.1	9.1	0.9	0.0	-2.0	-1.3
Employment rate	50.9	50.2	0.6	-0.7	-0.3	0.1
Part-time rate	16.4	14.3	1.3	-2.1	-2.6	-3.4
Industry	229.0	221.6	2.2	-7.4	-1.3	5.1	-3.2	-0.6	2.4
Goods-producing sector	50.0	49.4	1.7	-0.6	3.2	6.0	-1.2	6.9	13.8
Agriculture	1.9	2.4	0.3	0.5	0.1	1.0	26.3	4.3	71.4
Forestry, fishing, mining, quarrying, oil and gas extraction ²	17.0	15.5	1.0	-1.5	-0.9	0.2	-8.8	-5.5	1.3
Utilities	2.2	2.2	0.3	0.0	0.4	0.2	0.0	22.2	10.0
Construction	19.1	18.7	1.1	-0.4	2.1	3.8	-2.1	12.7	25.5
Manufacturing	9.8	10.6	0.9	0.8	1.5	0.7	8.2	16.5	7.1
Services-producing sector	179.0	172.2	2.1	-6.8	-4.5	-0.9	-3.8	-2.5	-0.5
Trade	41.8	39.8	1.4	-2.0	1.6	2.7	-4.8	4.2	7.3
Transportation and warehousing	10.7	10.4	0.7	-0.3	-0.3	-1.2	-2.8	-2.8	-10.3
Finance, insurance, real estate and leasing	7.3	7.5	0.6	0.2	1.4	-1.5	2.7	23.0	-16.7
Professional, scientific and technical services	8.0	7.4	0.5	-0.6	-0.5	1.2	-7.5	-6.3	19.4
Business, building and other support services	5.4	4.9	0.6	-0.5	-1.2	-0.1	-9.3	-19.7	-2.0
Educational services	18.6	17.9	0.9	-0.7	-0.3	1.1	-3.8	-1.6	6.5
Health care and social assistance	36.4	33.0	1.1	-3.4	-3.1	-3.9	-9.3	-8.6	-10.6
Information, culture and recreation	7.9	7.9	0.7	0.0	-0.4	0.4	0.0	-4.8	5.3
Accommodation and food services	12.1	11.7	0.9	-0.4	-2.1	-1.2	-3.3	-15.2	-9.3
Other services	11.4	11.8	0.8	0.4	0.6	-0.3	3.5	5.4	-2.5
Public administration	19.2	19.7	0.9	0.5	-0.5	1.5	2.6	-2.5	8.2

1. Average standard error of change in two consecutive months (see "Sampling Errors" in Data Quality for further explanations).

2. Also referred to as Natural resources.

Note(s): Related CANSIM Tables 282-0087, 282-0088.

Table 4-2
Selected labour force characteristics (seasonally adjusted) — Prince Edward Island

	May 2011	June 2011	S.E. ¹	Change from			Percent change from		
				last month	last December	twelve months ago	last month	last December	twelve months ago
in thousands (except rates)									
Both sexes, 15 years and over									
Population	119.1	119.3	...	0.2	1.4	2.3	0.2	1.2	2.0
Labour force	81.0	81.7	0.6	0.7	2.3	1.6	0.9	2.9	2.0
Employment	71.5	71.8	0.7	0.3	1.9	1.5	0.4	2.7	2.1
Employment full-time	59.0	59.9	0.9	0.9	2.0	2.5	1.5	3.5	4.4
Unemployment	9.6	9.8	0.6	0.2	0.4	0.0	2.1	4.3	0.0
Participation rate	68.0	68.5	0.5	0.5	1.2	0.0
Unemployment rate	11.9	12.0	0.8	0.1	0.2	-0.2
Employment rate	60.0	60.2	0.6	0.2	0.9	0.1
Part-time rate	17.5	16.7	1.0	-0.8	-0.5	-1.6
Both sexes, 15 to 24 years									
Population	19.9	19.9	...	0.0	0.3	0.4	0.0	1.5	2.1
Labour force	13.9	13.6	0.4	-0.3	0.3	0.0	-2.2	2.3	0.0
Employment	11.5	11.4	0.4	-0.1	0.5	0.3	-0.9	4.6	2.7
Unemployment	2.4	2.2	0.3	-0.2	-0.2	-0.3	-8.3	-8.3	-12.0
Participation rate	69.8	68.3	2.0	-1.5	0.4	-1.4
Unemployment rate	17.3	16.2	2.4	-1.1	-1.8	-2.2
Employment rate	57.8	57.3	2.0	-0.5	1.7	0.4
Part-time rate	42.6	43.0	3.4	0.4	4.5	1.5
Men, 25 years and over									
Population	47.9	48.0	...	0.1	0.6	1.0	0.2	1.3	2.1
Labour force	34.8	35.2	0.3	0.4	1.0	0.7	1.1	2.9	2.0
Employment	30.7	31.1	0.4	0.4	1.1	1.1	1.3	3.7	3.7
Unemployment	4.1	4.2	0.4	0.1	0.1	-0.3	2.4	2.4	-6.7
Participation rate	72.7	73.3	0.7	0.6	1.1	-0.1
Unemployment rate	11.8	11.9	1.1	0.1	-0.1	-1.1
Employment rate	64.1	64.8	0.8	0.7	1.5	1.0
Part-time rate	7.5	6.1	1.1	-1.4	-2.9	-2.6
Women, 25 years and over									
Population	51.3	51.3	...	0.0	0.5	0.9	0.0	1.0	1.8
Labour force	32.3	32.9	0.3	0.6	1.0	0.9	1.9	3.1	2.8
Employment	29.2	29.4	0.4	0.2	0.4	0.2	0.7	1.4	0.7
Unemployment	3.1	3.4	0.3	0.3	0.5	0.6	9.7	17.2	21.4
Participation rate	63.0	64.1	0.7	1.1	1.3	0.6
Unemployment rate	9.6	10.3	1.0	0.7	1.2	1.5
Employment rate	56.9	57.3	0.8	0.4	0.2	-0.6
Part-time rate	18.2	17.7	1.5	-0.5	0.1	-1.8
Industry	71.5	71.8	0.7	0.3	1.9	1.5	0.4	2.7	2.1
Goods-producing sector	17.3	17.2	0.6	-0.1	0.3	0.7	-0.6	1.8	4.2
Agriculture	3.5	3.5	0.3	0.0	0.2	0.1	0.0	6.1	2.9
Forestry, fishing, mining, quarrying, oil and gas extraction ²	3.2	3.3	0.3	0.1	0.3	0.6	3.1	10.0	22.2
Utilities	0.4	0.3	0.0	-0.1	-0.1	-0.1	-25.0	-25.0	-25.0
Construction	5.1	5.1	0.3	0.0	0.3	0.4	0.0	6.2	8.5
Manufacturing	5.1	5.1	0.3	0.0	-0.3	-0.2	0.0	-5.6	-3.8
Services-producing sector	54.1	54.6	0.7	0.5	1.5	0.8	0.9	2.8	1.5
Trade	10.1	10.8	0.4	0.7	1.2	0.6	6.9	12.5	5.9
Transportation and warehousing	2.3	2.2	0.2	-0.1	0.3	0.0	-4.3	15.8	0.0
Finance, insurance, real estate and leasing	2.7	2.7	0.2	0.0	0.7	0.1	0.0	35.0	3.8
Professional, scientific and technical services	2.9	3.1	0.2	0.2	0.2	0.4	6.9	6.9	14.8
Business, building and other support services	2.6	2.4	0.3	-0.2	-0.6	-0.3	-7.7	-20.0	-11.1
Educational services	6.1	6.1	0.3	0.0	0.0	0.1	0.0	0.0	1.7
Health care and social assistance	8.5	8.6	0.3	0.1	0.0	-0.1	1.2	0.0	-1.1
Information, culture and recreation	2.6	2.4	0.2	-0.2	-0.5	-0.1	-7.7	-17.2	-4.0
Accommodation and food services	5.8	5.5	0.4	-0.3	0.2	0.5	-5.2	3.8	10.0
Other services	3.0	3.3	0.3	0.3	0.4	0.1	10.0	13.8	3.1
Public administration	7.5	7.4	0.3	-0.1	-0.5	-0.7	-1.3	-6.3	-8.6

1. Average standard error of change in two consecutive months (see "Sampling Errors" in Data Quality for further explanations).

2. Also referred to as Natural resources.

Note(s): Related CANSIM Tables 282-0087, 282-0088.

Table 4-3
Selected labour force characteristics (seasonally adjusted) — Nova Scotia

	May 2011	June 2011	S.E. ¹	Change from			Percent change from		
				last month	last December	twelve months ago	last month	last December	twelve months ago
in thousands (except rates)									
Both sexes, 15 years and over									
Population	778.8	778.9	...	0.1	0.0	2.3	0.0	0.0	0.3
Labour force	493.4	496.0	2.7	2.6	-3.4	-4.4	0.5	-0.7	-0.9
Employment	449.0	452.8	2.9	3.8	5.2	-3.5	0.8	1.2	-0.8
Employment full-time	358.9	368.1	3.6	9.2	1.3	-4.7	2.6	0.4	-1.3
Unemployment	44.3	43.2	2.6	-1.1	-8.6	-0.9	-2.5	-16.6	-2.0
Participation rate	63.4	63.7	0.4	0.3	-0.4	-0.7
Unemployment rate	9.0	8.7	0.5	-0.3	-1.7	-0.1
Employment rate	57.7	58.1	0.4	0.4	0.6	-0.7
Part-time rate	20.1	18.7	0.7	-1.4	0.6	0.4
Both sexes, 15 to 24 years									
Population	120.2	120.1	...	-0.1	-0.4	-0.7	-0.1	-0.3	-0.6
Labour force	78.7	78.5	1.5	-0.2	-2.1	-0.3	-0.3	-2.6	-0.4
Employment	64.1	65.5	1.5	1.4	-0.3	-1.6	2.2	-0.5	-2.4
Unemployment	14.6	13.0	1.4	-1.6	-1.8	1.3	-11.0	-12.2	11.1
Participation rate	65.5	65.4	1.3	-0.1	-1.5	0.2
Unemployment rate	18.6	16.6	1.7	-2.0	-1.8	1.8
Employment rate	53.3	54.5	1.3	1.2	-0.1	-1.0
Part-time rate	53.0	48.4	2.4	-4.6	5.8	2.5
Men, 25 years and over									
Population	311.8	311.8	...	0.0	0.0	1.1	0.0	0.0	0.4
Labour force	211.7	212.4	1.5	0.7	-0.1	-2.7	0.3	0.0	-1.3
Employment	194.9	195.5	1.7	0.6	3.7	-0.8	0.3	1.9	-0.4
Unemployment	16.8	16.9	1.6	0.1	-3.8	-1.9	0.6	-18.4	-10.1
Participation rate	67.9	68.1	0.5	0.2	-0.1	-1.1
Unemployment rate	7.9	8.0	0.7	0.1	-1.7	-0.7
Employment rate	62.5	62.7	0.5	0.2	1.2	-0.5
Part-time rate	8.9	7.6	0.7	-1.3	-0.4	-0.3
Women, 25 years and over									
Population	346.9	347.0	...	0.1	0.5	1.9	0.0	0.1	0.6
Labour force	202.9	205.0	1.5	2.1	-1.3	-1.5	1.0	-0.6	-0.7
Employment	190.0	191.7	1.6	1.7	1.6	-1.1	0.9	0.8	-0.6
Unemployment	13.0	13.3	1.3	0.3	-2.9	-0.4	2.3	-17.9	-2.9
Participation rate	58.5	59.1	0.4	0.6	-0.4	-0.7
Unemployment rate	6.4	6.5	0.6	0.1	-1.4	-0.1
Employment rate	54.8	55.2	0.5	0.4	0.3	-0.7
Part-time rate	20.4	19.9	1.1	-0.5	0.1	0.5
Industry	449.0	452.8	2.9	3.8	5.2	-3.5	0.8	1.2	-0.8
Goods-producing sector	85.5	85.7	2.2	0.2	0.1	-1.8	0.2	0.1	-2.1
Agriculture	4.9	5.8	0.6	0.9	0.3	-0.1	18.4	5.5	-1.7
Forestry, fishing, mining, quarrying, oil and gas extraction ²	13.3	11.2	1.1	-2.1	-0.4	-1.1	-15.8	-3.4	-8.9
Utilities	4.6	4.0	0.4	-0.6	0.1	-0.1	-13.0	2.6	-2.4
Construction	30.1	30.3	1.4	0.2	-1.8	-1.3	0.7	-5.6	-4.1
Manufacturing	32.6	34.5	1.3	1.9	2.0	1.0	5.8	6.2	3.0
Services-producing sector	363.5	367.1	2.9	3.6	5.1	-1.7	1.0	1.4	-0.5
Trade	79.0	78.0	1.9	-1.0	2.5	0.3	-1.3	3.3	0.4
Transportation and warehousing	18.6	21.5	1.0	2.9	3.8	3.3	15.6	21.5	18.1
Finance, insurance, real estate and leasing	21.9	22.7	1.1	0.8	-1.1	-2.3	3.7	-4.6	-9.2
Professional, scientific and technical services	24.0	23.1	1.1	-0.9	1.2	-0.9	-3.8	5.5	-3.8
Business, building and other support services	19.6	20.0	1.2	0.4	-3.4	-3.1	2.0	-14.5	-13.4
Educational services	34.3	35.1	1.3	0.8	2.0	2.3	2.3	6.0	7.0
Health care and social assistance	68.5	68.0	1.6	-0.5	-0.1	-0.9	-0.7	-0.1	-1.3
Information, culture and recreation	18.9	20.2	1.2	1.3	0.8	0.6	6.9	4.1	3.1
Accommodation and food services	28.1	29.4	1.3	1.3	0.7	-0.1	4.6	2.4	-0.3
Other services	18.7	18.0	1.1	-0.7	-0.6	-1.6	-3.7	-3.2	-8.2
Public administration	31.9	31.1	1.1	-0.8	-0.6	0.5	-2.5	-1.9	1.6

1. Average standard error of change in two consecutive months (see "Sampling Errors" in Data Quality for further explanations).

2. Also referred to as Natural resources.

Note(s): Related CANSIM Tables 282-0087, 282-0088.

Table 4-4
Selected labour force characteristics (seasonally adjusted) — New Brunswick

	May 2011	June 2011	S.E. ¹	Change from			Percent change from		
				last month	last December	twelve months ago	last month	last December	twelve months ago
in thousands (except rates)									
Both sexes, 15 years and over									
Population	619.1	619.3	...	0.2	1.1	2.7	0.0	0.2	0.4
Labour force	388.2	386.6	2.3	-1.6	-4.4	-3.6	-0.4	-1.1	-0.9
Employment	351.4	349.5	2.4	-1.9	-4.6	-4.7	-0.5	-1.3	-1.3
Employment full-time	293.9	290.3	2.9	-3.6	-9.1	-9.4	-1.2	-3.0	-3.1
Unemployment	36.8	37.1	2.1	0.3	0.2	1.2	0.8	0.5	3.3
Participation rate	62.7	62.4	0.4	-0.3	-0.8	-0.9
Unemployment rate	9.5	9.6	0.5	0.1	0.2	0.4
Employment rate	56.8	56.4	0.4	-0.4	-0.9	-1.0
Part-time rate	16.4	16.9	0.7	0.6	1.5	1.6
Both sexes, 15 to 24 years									
Population	91.4	91.3	...	-0.1	-0.4	-0.6	-0.1	-0.4	-0.7
Labour force	57.2	55.3	1.3	-1.9	-0.3	0.3	-3.3	-0.5	0.5
Employment	48.0	45.6	1.3	-2.4	-1.2	-1.5	-5.0	-2.6	-3.2
Unemployment	9.2	9.7	1.2	0.5	0.9	1.8	5.4	10.2	22.8
Participation rate	62.6	60.6	1.4	-2.0	0.0	0.8
Unemployment rate	16.1	17.5	1.9	1.4	1.7	3.1
Employment rate	52.5	49.9	1.4	-2.6	-1.1	-1.4
Part-time rate	39.8	39.9	2.6	0.1	0.6	-1.9
Men, 25 years and over									
Population	253.2	253.3	...	0.1	0.7	1.7	0.0	0.3	0.7
Labour force	169.4	169.7	1.3	0.3	-4.6	-3.8	0.2	-2.6	-2.2
Employment	152.9	153.6	1.4	0.7	-3.6	-3.9	0.5	-2.3	-2.5
Unemployment	16.6	16.1	1.3	-0.5	-1.0	0.2	-3.0	-5.8	1.3
Participation rate	66.9	67.0	0.5	0.1	-2.0	-2.0
Unemployment rate	9.8	9.5	0.7	-0.3	-0.3	0.3
Employment rate	60.4	60.6	0.5	0.2	-1.6	-2.0
Part-time rate	6.1	6.2	0.7	0.0	-0.2	-0.4
Women, 25 years and over									
Population	274.6	274.7	...	0.1	0.7	1.6	0.0	0.3	0.6
Labour force	161.6	161.7	1.3	0.1	0.7	0.0	0.1	0.4	0.0
Employment	150.6	150.3	1.3	-0.3	0.2	0.7	-0.2	0.1	0.5
Unemployment	11.0	11.3	1.1	0.3	0.4	-0.8	2.7	3.7	-6.6
Participation rate	58.8	58.9	0.5	0.1	0.1	-0.3
Unemployment rate	6.8	7.0	0.7	0.2	0.2	-0.5
Employment rate	54.8	54.7	0.5	-0.1	-0.1	-0.1
Part-time rate	19.3	21.0	1.0	1.7	3.5	4.6
Industry	351.4	349.5	2.4	-1.9	-4.6	-4.7	-0.5	-1.3	-1.3
Goods-producing sector	82.6	81.2	1.9	-1.4	-2.9	1.8	-1.7	-3.4	2.3
Agriculture	6.0	5.6	0.6	-0.4	0.4	0.0	-6.7	7.7	0.0
Forestry, fishing, mining, quarrying, oil and gas extraction ²	11.9	11.3	0.8	-0.6	-0.6	1.9	-5.0	-5.0	20.2
Utilities	4.6	4.4	0.4	-0.2	0.2	0.3	-4.3	4.8	7.3
Construction	26.4	27.3	1.3	0.9	-2.0	-3.5	3.4	-6.8	-11.4
Manufacturing	33.7	32.6	1.2	-1.1	-0.9	3.1	-3.3	-2.7	10.5
Services-producing sector	268.8	268.3	2.4	-0.5	-1.7	-6.5	-0.2	-0.6	-2.4
Trade	51.9	52.8	1.6	0.9	-0.9	-5.0	1.7	-1.7	-8.7
Transportation and warehousing	17.2	18.2	0.9	1.0	-0.1	-0.8	5.8	-0.5	-4.2
Finance, insurance, real estate and leasing	17.5	17.4	0.8	-0.1	0.6	2.1	-0.6	3.6	13.7
Professional, scientific and technical services	16.7	16.9	0.9	0.2	1.0	1.3	1.2	6.3	8.3
Business, building and other support services	16.9	15.7	1.1	-1.2	0.2	-0.1	-7.1	1.3	-0.6
Educational services	25.5	23.5	1.1	-2.0	-2.5	-2.1	-7.8	-9.6	-8.2
Health care and social assistance	49.4	49.5	1.3	0.1	-0.7	-1.2	0.2	-1.4	-2.4
Information, culture and recreation	12.3	12.1	0.9	-0.2	1.8	-0.3	-1.6	17.5	-2.4
Accommodation and food services	19.7	20.6	1.1	0.9	0.3	0.1	4.6	1.5	0.5
Other services	15.1	15.4	0.9	0.3	-1.2	-1.4	2.0	-7.2	-8.3
Public administration	26.6	26.3	1.0	-0.3	-0.2	1.1	-1.1	-0.8	4.4

1. Average standard error of change in two consecutive months (see "Sampling Errors" in Data Quality for further explanations).

2. Also referred to as Natural resources.

Note(s): Related CANSIM Tables 282-0087, 282-0088.

Table 4-5
Selected labour force characteristics (seasonally adjusted) — Quebec

	May 2011	June 2011	S.E. ¹	Change from			Percent change from		
				last month	last December	twelve months ago	last month	last December	twelve months ago
in thousands (except rates)									
Both sexes, 15 years and over									
Population	6,568.5	6,573.9	...	5.4	34.6	70.1	0.1	0.5	1.1
Labour force	4,292.8	4,304.3	14.5	11.5	30.3	38.3	0.3	0.7	0.9
Employment	3,980.8	3,965.3	14.4	-15.5	11.6	35.0	-0.4	0.3	0.9
Employment full-time	3,200.2	3,190.3	19.1	-9.9	-15.6	26.1	-0.3	-0.5	0.8
Unemployment	312.0	339.0	13.0	27.0	18.7	3.3	8.7	5.8	1.0
Participation rate	65.4	65.5	0.2	0.1	0.1	-0.1
Unemployment rate	7.3	7.9	0.3	0.6	0.4	0.0
Employment rate	60.6	60.3	0.2	-0.3	-0.2	-0.1
Part-time rate	19.6	19.5	0.4	-0.1	0.6	0.1
Both sexes, 15 to 24 years									
Population	980.6	980.6	...	0.0	0.6	1.2	0.0	0.1	0.1
Labour force	661.5	665.9	8.3	4.4	-7.8	1.1	0.7	-1.2	0.2
Employment	585.8	568.7	7.7	-17.1	-18.4	-5.4	-2.9	-3.1	-0.9
Unemployment	75.7	97.2	7.5	21.5	10.6	6.5	28.4	12.2	7.2
Participation rate	67.5	67.9	0.8	0.4	-0.8	0.0
Unemployment rate	11.4	14.6	1.1	3.2	1.7	1.0
Employment rate	59.7	58.0	0.8	-1.7	-1.9	-0.6
Part-time rate	51.9	51.3	1.5	-0.6	1.9	0.8
Men, 25 years and over									
Population	2,746.3	2,749.2	...	2.9	18.1	36.1	0.1	0.7	1.3
Labour force	1,922.7	1,927.0	8.1	4.3	14.1	16.9	0.2	0.7	0.9
Employment	1,791.8	1,790.1	8.4	-1.7	10.7	30.2	-0.1	0.6	1.7
Unemployment	130.9	136.9	8.0	6.0	3.5	-13.3	4.6	2.6	-8.9
Participation rate	70.0	70.1	0.3	0.1	0.1	-0.3
Unemployment rate	6.8	7.1	0.4	0.3	0.1	-0.8
Employment rate	65.2	65.1	0.3	-0.1	-0.1	0.2
Part-time rate	8.3	8.4	0.5	0.1	0.0	0.1
Women, 25 years and over									
Population	2,841.5	2,844.1	...	2.6	16.0	32.8	0.1	0.6	1.2
Labour force	1,708.6	1,711.4	8.0	2.8	23.9	20.2	0.2	1.4	1.2
Employment	1,603.2	1,606.5	8.1	3.3	19.3	10.1	0.2	1.2	0.6
Unemployment	105.4	104.9	6.5	-0.5	4.6	10.1	-0.5	4.6	10.7
Participation rate	60.1	60.2	0.3	0.1	0.5	0.0
Unemployment rate	6.2	6.1	0.4	-0.1	0.2	0.5
Employment rate	56.4	56.5	0.3	0.1	0.4	-0.3
Part-time rate	20.4	20.7	0.7	0.3	1.3	0.0
Industry	3,980.8	3,965.3	14.4	-15.5	11.6	35.0	-0.4	0.3	0.9
Goods-producing sector	848.4	849.8	12.8	1.4	-5.4	6.0	0.2	-0.6	0.7
Agriculture	55.9	59.0	3.1	3.1	-0.9	8.1	5.5	-1.5	15.9
Forestry, fishing, mining, quarrying, oil and gas extraction ²	28.0	31.0	2.3	3.0	2.0	0.4	10.7	6.9	1.3
Utilities	31.2	30.8	2.2	-0.4	-2.5	-0.8	-1.3	-7.5	-2.5
Construction	238.9	232.5	7.5	-6.4	-7.9	1.5	-2.7	-3.3	0.6
Manufacturing	494.5	496.5	10.5	2.0	3.8	-3.2	0.4	0.8	-0.6
Services-producing sector	3,132.4	3,115.5	16.7	-16.9	17.0	29.0	-0.5	0.5	0.9
Trade	657.7	645.7	11.6	-12.0	20.1	1.7	-1.8	3.2	0.3
Transportation and warehousing	171.2	175.3	6.0	4.1	-11.1	13.7	2.4	-6.0	8.5
Finance, insurance, real estate and leasing	222.7	231.2	7.0	8.5	-2.6	-9.0	3.8	-1.1	-3.7
Professional, scientific and technical services	302.3	305.8	8.2	3.5	0.1	13.3	1.2	0.0	4.5
Business, building and other support services	150.2	152.9	6.7	2.7	11.1	0.1	1.8	7.8	0.1
Educational services	261.9	274.3	7.9	12.4	10.3	17.8	4.7	3.9	6.9
Health care and social assistance	516.4	525.0	9.4	8.6	15.0	16.7	1.7	2.9	3.3
Information, culture and recreation	178.9	168.7	7.2	-10.2	0.6	-6.9	-5.7	0.4	-3.9
Accommodation and food services	270.7	252.4	8.2	-18.3	4.9	-3.2	-6.8	2.0	-1.3
Other services	161.8	157.1	6.3	-4.7	-13.1	-6.1	-2.9	-7.7	-3.7
Public administration	238.7	226.9	6.5	-11.8	-18.7	-9.5	-4.9	-7.6	-4.0

1. Average standard error of change in two consecutive months (see "Sampling Errors" in Data Quality for further explanations).

2. Also referred to as Natural resources.

Note(s): Related CANSIM Tables 282-0087, 282-0088.

Table 4-6
Selected labour force characteristics (seasonally adjusted) — Ontario

	May 2011	June 2011	S.E. ¹	Change from			Percent change from		
				last month	last December	twelve months ago	last month	last December	twelve months ago
in thousands (except rates)									
Both sexes, 15 years and over									
Population	10,909.3	10,920.1	...	10.8	65.6	134.6	0.1	0.6	1.2
Labour force	7,303.6	7,333.8	19.9	30.2	84.3	77.4	0.4	1.2	1.1
Employment	6,729.5	6,769.8	19.3	40.3	110.2	114.3	0.6	1.7	1.7
Employment full-time	5,457.7	5,472.1	24.9	14.4	97.8	108.7	0.3	1.8	2.0
Unemployment	574.1	564.0	17.7	-10.1	-25.9	-36.9	-1.8	-4.4	-6.1
Participation rate	66.9	67.2	0.2	0.3	0.4	-0.1
Unemployment rate	7.9	7.7	0.2	-0.2	-0.4	-0.6
Employment rate	61.7	62.0	0.2	0.3	0.6	0.3
Part-time rate	18.9	19.2	0.3	0.3	-0.1	-0.2
Both sexes, 15 to 24 years									
Population	1,782.7	1,783.0	...	0.3	2.0	3.6	0.0	0.1	0.2
Labour force	1,097.3	1,118.7	11.8	21.4	42.4	5.4	2.0	3.9	0.5
Employment	917.8	944.7	10.8	26.9	44.6	13.9	2.9	5.0	1.5
Unemployment	179.4	174.0	10.3	-5.4	-2.3	-8.5	-3.0	-1.3	-4.7
Participation rate	61.6	62.7	0.7	1.1	2.3	0.1
Unemployment rate	16.3	15.6	0.9	-0.7	-0.8	-0.8
Employment rate	51.5	53.0	0.6	1.5	2.5	0.7
Part-time rate	52.0	51.3	1.2	-0.7	-0.4	-0.7
Men, 25 years and over									
Population	4,425.9	4,431.1	...	5.2	31.2	63.3	0.1	0.7	1.4
Labour force	3,255.1	3,265.4	9.9	10.3	19.9	54.4	0.3	0.6	1.7
Employment	3,051.8	3,058.5	10.6	6.7	34.2	69.5	0.2	1.1	2.3
Unemployment	203.4	206.9	9.9	3.5	-14.3	-15.1	1.7	-6.5	-6.8
Participation rate	73.5	73.7	0.2	0.2	-0.1	0.2
Unemployment rate	6.2	6.3	0.3	0.1	-0.5	-0.6
Employment rate	69.0	69.0	0.2	0.0	0.3	0.6
Part-time rate	7.8	7.6	0.4	-0.1	0.0	-0.1
Women, 25 years and over									
Population	4,700.7	4,706.0	...	5.3	32.4	67.6	0.1	0.7	1.5
Labour force	2,951.2	2,949.7	11.4	-1.5	22.1	17.6	-0.1	0.8	0.6
Employment	2,759.9	2,766.7	10.9	6.8	31.5	31.0	0.2	1.2	1.1
Unemployment	191.3	183.1	9.3	-8.2	-9.3	-13.3	-4.3	-4.8	-6.8
Participation rate	62.8	62.7	0.2	-0.1	0.1	-0.5
Unemployment rate	6.5	6.2	0.3	-0.3	-0.4	-0.5
Employment rate	58.7	58.8	0.2	0.1	0.3	-0.2
Part-time rate	20.2	21.0	0.5	0.8	-0.6	-0.1
Industry	6,729.5	6,769.8	19.3	40.3	110.2	114.3	0.6	1.7	1.7
Goods-producing sector	1,402.2	1,422.9	17.1	20.7	14.3	36.8	1.5	1.0	2.7
Agriculture	90.2	91.3	3.8	1.1	8.0	7.2	1.2	9.6	8.6
Forestry, fishing, mining, quarrying, oil and gas extraction ²	37.1	36.4	2.8	-0.7	-0.8	-6.5	-1.9	-2.2	-15.2
Utilities	57.7	55.4	3.2	-2.3	-1.1	-4.5	-4.0	-1.9	-7.5
Construction	432.1	451.4	10.5	19.3	26.5	20.1	4.5	6.2	4.7
Manufacturing	785.1	788.3	13.4	3.2	-18.5	20.4	0.4	-2.3	2.7
Services-producing sector	5,327.3	5,346.9	22.8	19.6	95.9	77.5	0.4	1.8	1.5
Trade	1,008.6	1,004.1	15.8	-4.5	-9.9	-23.8	-0.4	-1.0	-2.3
Transportation and warehousing	316.6	328.2	8.9	11.6	4.0	25.0	3.7	1.2	8.2
Finance, insurance, real estate and leasing	517.4	511.5	11.2	-5.9	7.8	8.9	-1.1	1.5	1.8
Professional, scientific and technical services	564.4	538.8	12.2	-25.6	4.4	-15.7	-4.5	0.8	-2.8
Business, building and other support services	293.3	294.4	10.0	1.1	5.8	5.3	0.4	2.0	1.8
Educational services	484.8	485.6	10.8	0.8	6.0	-11.3	0.2	1.3	-2.3
Health care and social assistance	762.1	768.6	11.7	6.5	35.2	54.3	0.9	4.8	7.6
Information, culture and recreation	347.0	356.0	10.2	9.0	18.3	31.3	2.6	5.4	9.6
Accommodation and food services	363.6	380.5	10.7	16.9	-3.6	-8.4	4.6	-0.9	-2.2
Other services	284.9	285.1	9.1	0.2	17.2	-15.6	0.1	6.4	-5.2
Public administration	384.6	394.2	8.7	9.6	10.9	27.7	2.5	2.8	7.6

1. Average standard error of change in two consecutive months (see "Sampling Errors" in Data Quality for further explanations).

2. Also referred to as Natural resources.

Note(s): Related CANSIM Tables 282-0087, 282-0088.

Table 4-7
Selected labour force characteristics (seasonally adjusted) — Manitoba

	May 2011	June 2011	S.E. ¹	Change from			Percent change from		
				last month	last December	twelve months ago	last month	last December	twelve months ago
in thousands (except rates)									
Both sexes, 15 years and over									
Population	951.8	953.0	...	1.2	6.0	12.4	0.1	0.6	1.3
Labour force	658.9	657.8	2.6	-1.1	3.2	1.8	-0.2	0.5	0.3
Employment	624.0	621.8	2.7	-2.2	1.3	1.6	-0.4	0.2	0.3
Employment full-time	503.4	500.3	3.8	-3.1	-1.3	2.3	-0.6	-0.3	0.5
Unemployment	34.9	36.0	2.1	1.1	1.9	0.2	3.2	5.6	0.6
Participation rate	69.2	69.0	0.3	-0.2	-0.1	-0.7
Unemployment rate	5.3	5.5	0.3	0.2	0.3	0.0
Employment rate	65.6	65.2	0.3	-0.4	-0.3	-0.7
Part-time rate	19.3	19.5	0.6	0.2	0.4	-0.2
Both sexes, 15 to 24 years									
Population	164.7	164.7	...	0.0	0.3	1.0	0.0	0.2	0.6
Labour force	111.3	109.9	1.6	-1.4	-2.7	-3.5	-1.3	-2.4	-3.1
Employment	98.2	98.4	1.6	0.2	-2.0	-1.3	0.2	-2.0	-1.3
Unemployment	13.1	11.5	1.4	-1.6	-0.7	-2.1	-12.2	-5.7	-15.4
Participation rate	67.6	66.7	1.0	-0.9	-1.8	-2.6
Unemployment rate	11.8	10.5	1.2	-1.3	-0.3	-1.5
Employment rate	59.6	59.7	1.0	0.1	-1.4	-1.2
Part-time rate	39.6	38.0	1.8	-1.6	-6.3	-7.4
Men, 25 years and over									
Population	385.6	386.2	...	0.6	2.8	5.7	0.2	0.7	1.5
Labour force	292.7	294.5	1.3	1.8	2.8	3.9	0.6	1.0	1.3
Employment	280.1	280.3	1.5	0.2	0.9	2.1	0.1	0.3	0.8
Unemployment	12.6	14.2	1.2	1.6	2.0	1.7	12.7	16.4	13.6
Participation rate	75.9	76.3	0.3	0.4	0.2	-0.1
Unemployment rate	4.3	4.8	0.4	0.5	0.6	0.5
Employment rate	72.6	72.6	0.4	0.0	-0.3	-0.5
Part-time rate	7.8	8.5	0.6	0.7	1.4	0.6
Women, 25 years and over									
Population	401.5	402.1	...	0.6	3.0	5.8	0.1	0.8	1.5
Labour force	254.9	253.4	1.5	-1.5	3.0	1.4	-0.6	1.2	0.6
Employment	245.6	243.2	1.5	-2.4	2.5	0.9	-1.0	1.0	0.4
Unemployment	9.3	10.2	1.1	0.9	0.5	0.5	9.7	5.2	5.2
Participation rate	63.5	63.0	0.4	-0.5	0.3	-0.6
Unemployment rate	3.6	4.0	0.4	0.4	0.1	0.2
Employment rate	61.2	60.5	0.4	-0.7	0.2	-0.6
Part-time rate	24.3	24.8	0.9	0.4	2.1	2.1
Industry	624.0	621.8	2.7	-2.2	1.3	1.6	-0.4	0.2	0.3
Goods-producing sector	146.7	147.0	2.4	0.3	-4.5	4.0	0.2	-3.0	2.8
Agriculture	23.4	23.2	1.2	-0.2	-2.0	-2.6	-0.9	-7.9	-10.1
Forestry, fishing, mining, quarrying, oil and gas extraction ²	6.3	6.2	0.6	-0.1	-1.1	-1.1	-1.6	-15.1	-15.1
Utilities	8.4	8.6	0.6	0.2	-0.4	1.4	2.4	-4.4	19.4
Construction	41.0	43.2	1.5	2.2	1.3	3.7	5.4	3.1	9.4
Manufacturing	67.6	65.9	1.6	-1.7	-2.3	2.7	-2.5	-3.4	4.3
Services-producing sector	477.2	474.8	3.1	-2.4	5.8	-2.4	-0.5	1.2	-0.5
Trade	90.0	91.0	2.1	1.0	-2.7	-1.9	1.1	-2.9	-2.0
Transportation and warehousing	33.7	34.4	1.3	0.7	-0.3	-0.2	2.1	-0.9	-0.6
Finance, insurance, real estate and leasing	35.2	35.4	1.3	0.2	1.1	0.0	0.6	3.2	0.0
Professional, scientific and technical services	27.6	27.6	1.3	0.0	0.4	0.0	0.0	1.5	0.0
Business, building and other support services	18.1	17.6	1.2	-0.5	1.3	-3.0	-2.8	8.0	-14.6
Educational services	47.2	46.1	1.5	-1.1	-3.2	-6.4	-2.3	-6.5	-12.2
Health care and social assistance	99.4	97.8	1.9	-1.6	2.7	5.7	-1.6	2.8	6.2
Information, culture and recreation	23.5	22.5	1.2	-1.0	-0.6	1.9	-4.3	-2.6	9.2
Accommodation and food services	41.2	41.5	1.6	0.3	4.7	1.2	0.7	12.8	3.0
Other services	25.2	24.2	1.2	-1.0	1.1	-1.8	-4.0	4.8	-6.9
Public administration	36.0	36.6	1.2	0.6	1.1	2.1	1.7	3.1	6.1

1. Average standard error of change in two consecutive months (see "Sampling Errors" in Data Quality for further explanations).

2. Also referred to as Natural resources.

Note(s): Related CANSIM Tables 282-0087, 282-0088.

Table 4-8
Selected labour force characteristics (seasonally adjusted) — Saskatchewan

	May 2011	June 2011	S.E. ¹	Change from			Percent change from		
				last month	last December	twelve months ago	last month	last December	twelve months ago
in thousands (except rates)									
Both sexes, 15 years and over									
Population	798.5	799.2	...	0.7	3.8	8.5	0.1	0.5	1.1
Labour force	554.7	552.0	2.4	-2.7	-2.5	-5.4	-0.5	-0.5	-1.0
Employment	526.8	525.2	2.5	-1.6	1.1	-1.2	-0.3	0.2	-0.2
Employment full-time	428.1	431.0	3.2	2.9	-0.1	1.9	0.7	0.0	0.4
Unemployment	27.9	26.8	1.9	-1.1	-3.7	-4.1	-3.9	-12.1	-13.3
Participation rate	69.5	69.1	0.3	-0.4	-0.6	-1.4
Unemployment rate	5.0	4.9	0.3	-0.1	-0.6	-0.6
Employment rate	66.0	65.7	0.3	-0.3	-0.2	-0.9
Part-time rate	18.7	17.9	0.5	-0.8	0.2	-0.5
Both sexes, 15 to 24 years									
Population	136.9	136.8	...	-0.1	-0.9	-1.3	-0.1	-0.7	-0.9
Labour force	91.7	93.0	1.4	1.3	0.3	-2.3	1.4	0.3	-2.4
Employment	82.6	83.9	1.5	1.3	0.8	-1.6	1.6	1.0	-1.9
Unemployment	9.1	9.1	1.1	0.0	-0.4	-0.7	0.0	-4.2	-7.1
Participation rate	67.0	68.0	1.0	1.0	0.7	-1.0
Unemployment rate	9.9	9.8	1.2	-0.1	-0.4	-0.5
Employment rate	60.3	61.3	1.1	1.0	1.0	-0.6
Part-time rate	38.6	36.6	1.8	-2.0	0.2	0.0
Men, 25 years and over									
Population	325.2	325.7	...	0.5	2.6	5.5	0.2	0.8	1.7
Labour force	249.1	248.4	1.1	-0.7	-0.6	-0.5	-0.3	-0.2	-0.2
Employment	238.7	238.3	1.3	-0.4	1.4	2.2	-0.2	0.6	0.9
Unemployment	10.5	10.1	1.1	-0.4	-2.1	-2.7	-3.8	-17.2	-21.1
Participation rate	76.6	76.3	0.4	-0.3	-0.8	-1.4
Unemployment rate	4.2	4.1	0.4	-0.1	-0.8	-1.0
Employment rate	73.4	73.2	0.4	-0.2	-0.1	-0.5
Part-time rate	8.1	7.4	0.6	-0.7	1.1	0.3
Women, 25 years and over									
Population	336.5	336.8	...	0.3	2.2	4.5	0.1	0.7	1.4
Labour force	213.8	210.6	1.4	-3.2	-2.2	-2.6	-1.5	-1.0	-1.2
Employment	205.5	203.0	1.5	-2.5	-1.1	-1.8	-1.2	-0.5	-0.9
Unemployment	8.3	7.6	1.0	-0.7	-1.2	-0.8	-8.4	-13.6	-9.5
Participation rate	63.5	62.5	0.4	-1.0	-1.1	-1.7
Unemployment rate	3.9	3.6	0.5	-0.3	-0.5	-0.3
Employment rate	61.1	60.3	0.4	-0.8	-0.7	-1.3
Part-time rate	23.1	22.6	1.0	-0.5	-0.9	-1.4
Industry	526.8	525.2	2.5	-1.6	1.1	-1.2	-0.3	0.2	-0.2
Goods-producing sector	138.7	137.4	2.3	-1.3	-0.3	-9.4	-0.9	-0.2	-6.4
Agriculture	40.6	37.9	1.4	-2.7	-0.9	-3.6	-6.7	-2.3	-8.7
Forestry, fishing, mining, quarrying, oil and gas extraction ²	25.7	26.5	1.2	0.8	2.7	-0.8	3.1	11.3	-2.9
Utilities	5.8	5.6	0.5	-0.2	-0.1	0.7	-3.4	-1.8	14.3
Construction	39.6	40.1	1.5	0.5	1.1	-3.3	1.3	2.8	-7.6
Manufacturing	27.0	27.3	1.2	0.3	-3.1	-2.5	1.1	-10.2	-8.4
Services-producing sector	388.0	387.8	2.9	-0.2	1.4	8.2	-0.1	0.4	2.2
Trade	80.7	78.4	1.9	-2.3	-3.4	-1.8	-2.9	-4.2	-2.2
Transportation and warehousing	26.9	26.2	1.1	-0.7	-0.8	0.5	-2.6	-3.0	1.9
Finance, insurance, real estate and leasing	31.1	30.9	1.1	-0.2	0.8	-0.1	-0.6	2.7	-0.3
Professional, scientific and technical services	22.5	23.4	1.1	0.9	2.0	-2.2	4.0	9.3	-8.6
Business, building and other support services	11.4	11.2	0.8	-0.2	0.7	-1.3	-1.8	6.7	-10.4
Educational services	40.0	40.5	1.4	0.5	1.5	0.7	1.2	3.8	1.8
Health care and social assistance	67.1	68.5	1.6	1.4	1.1	0.7	2.1	1.6	1.0
Information, culture and recreation	19.8	18.6	1.0	-1.2	-2.4	0.9	-6.1	-11.4	5.1
Accommodation and food services	31.5	32.1	1.3	0.6	-0.1	3.9	1.9	-0.3	13.8
Other services	25.1	25.5	1.1	0.4	-1.7	2.2	1.6	-6.2	9.4
Public administration	31.9	32.5	1.0	0.6	3.6	4.7	1.9	12.5	16.9

1. Average standard error of change in two consecutive months (see "Sampling Errors" in Data Quality for further explanations).

2. Also referred to as Natural resources.

Note(s): Related CANSIM Tables 282-0087, 282-0088.

Table 4-9
Selected labour force characteristics (seasonally adjusted) — Alberta

	May 2011	June 2011	S.E. ¹	Change from			Percent change from		
				last month	last December	twelve months ago	last month	last December	twelve months ago
in thousands (except rates)									
Both sexes, 15 years and over									
Population	3,000.1	3,005.1	...	5.0	25.7	43.6	0.2	0.9	1.5
Labour force	2,186.0	2,213.6	9.0	27.6	63.0	51.2	1.3	2.9	2.4
Employment	2,068.6	2,090.6	9.2	22.0	58.4	71.2	1.1	2.9	3.5
Employment full-time	1,725.3	1,738.5	12.0	13.2	63.2	76.7	0.8	3.8	4.6
Unemployment	117.3	123.0	7.5	5.7	4.6	-20.0	4.9	3.9	-14.0
Participation rate	72.9	73.7	0.3	0.8	1.5	0.7
Unemployment rate	5.4	5.6	0.3	0.2	0.1	-1.0
Employment rate	69.0	69.6	0.3	0.6	1.4	1.4
Part-time rate	16.6	16.8	0.5	0.2	-0.7	-0.9
Both sexes, 15 to 24 years									
Population	508.8	508.7	...	-0.1	-2.7	-5.8	0.0	-0.5	-1.1
Labour force	345.4	351.7	5.2	6.3	5.1	-10.5	1.8	1.5	-2.9
Employment	309.3	311.3	5.1	2.0	-2.3	-8.7	0.6	-0.7	-2.7
Unemployment	36.1	40.4	4.4	4.3	7.4	-1.8	11.9	22.4	-4.3
Participation rate	67.9	69.1	1.0	1.2	1.3	-1.3
Unemployment rate	10.5	11.5	1.2	1.0	2.0	-0.2
Employment rate	60.8	61.2	1.0	0.4	-0.1	-1.0
Part-time rate	35.3	33.5	1.7	-1.8	-4.4	-4.1
Men, 25 years and over									
Population	1,266.4	1,269.1	...	2.7	14.3	25.4	0.2	1.1	2.0
Labour force	1,027.9	1,031.0	4.6	3.1	20.4	26.1	0.3	2.0	2.6
Employment	981.2	982.0	5.3	0.8	20.5	36.6	0.1	2.1	3.9
Unemployment	46.7	49.0	4.6	2.3	-0.1	-10.5	4.9	-0.2	-17.6
Participation rate	81.2	81.2	0.4	0.0	0.7	0.4
Unemployment rate	4.5	4.8	0.5	0.3	-0.1	-1.1
Employment rate	77.5	77.4	0.4	-0.1	0.8	1.4
Part-time rate	5.4	6.0	0.5	0.6	-0.2	0.2
Women, 25 years and over									
Population	1,224.9	1,227.3	...	2.4	14.0	24.0	0.2	1.2	2.0
Labour force	812.7	830.8	5.2	18.1	37.4	35.6	2.2	4.7	4.5
Employment	778.1	797.2	5.1	19.1	40.1	43.3	2.5	5.3	5.7
Unemployment	34.5	33.6	3.7	-0.9	-2.7	-7.7	-2.6	-7.4	-18.6
Participation rate	66.3	67.7	0.4	1.4	2.3	1.6
Unemployment rate	4.2	4.0	0.5	-0.2	-0.6	-1.2
Employment rate	63.5	65.0	0.4	1.5	2.6	2.3
Part-time rate	23.4	23.7	0.9	0.3	0.1	-0.5
Industry	2,068.6	2,090.6	9.2	22.0	58.4	71.2	1.1	2.9	3.5
Goods-producing sector	576.9	571.5	8.8	-5.4	15.1	34.1	-0.9	2.7	6.3
Agriculture	50.7	53.3	3.1	2.6	9.7	5.4	5.1	22.2	11.3
Forestry, fishing, mining, quarrying, oil and gas extraction ²	154.0	153.2	4.6	-0.8	0.2	13.3	-0.5	0.1	9.5
Utilities	18.3	18.5	1.7	0.2	-0.6	0.6	1.1	-3.1	3.4
Construction	215.3	203.3	6.4	-12.0	-12.1	0.5	-5.6	-5.6	0.2
Manufacturing	138.5	143.2	4.9	4.7	17.9	14.4	3.4	14.3	11.2
Services-producing sector	1,491.8	1,519.0	10.9	27.2	43.2	37.0	1.8	2.9	2.5
Trade	312.3	324.5	7.3	12.2	11.4	11.1	3.9	3.6	3.5
Transportation and warehousing	101.8	101.1	4.2	-0.7	-6.4	-6.5	-0.7	-6.0	-6.0
Finance, insurance, real estate and leasing	97.8	104.4	4.5	6.6	5.6	-2.6	6.7	5.7	-2.4
Professional, scientific and technical services	164.7	168.4	5.1	3.7	9.7	14.1	2.2	6.1	9.1
Business, building and other support services	68.5	68.8	4.2	0.3	-4.5	-7.3	0.4	-6.1	-9.6
Educational services	123.0	128.2	5.0	5.2	6.8	3.7	4.2	5.6	3.0
Health care and social assistance	221.0	230.4	5.6	9.4	10.4	10.8	4.3	4.7	4.9
Information, culture and recreation	77.8	80.3	4.1	2.5	9.0	6.1	3.2	12.6	8.2
Accommodation and food services	134.3	133.5	5.6	-0.8	14.7	10.1	-0.6	12.4	8.2
Other services	103.8	99.1	4.2	-4.7	-5.6	2.9	-4.5	-5.3	3.0
Public administration	86.7	80.2	3.6	-6.5	-7.9	-5.5	-7.5	-9.0	-6.4

1. Average standard error of change in two consecutive months (see "Sampling Errors" in Data Quality for further explanations).

2. Also referred to as Natural resources.

Note(s): Related CANSIM Tables 282-0087, 282-0088.

Table 4-10
Selected labour force characteristics (seasonally adjusted) — British Columbia

	May 2011	June 2011	S.E. ¹	Change from			Percent change from		
				last month	last December	twelve months ago	last month	last December	twelve months ago
in thousands (except rates)									
Both sexes, 15 years and over									
Population	3,774.9	3,778.1	...	3.2	22.8	50.6	0.1	0.6	1.4
Labour force	2,464.4	2,446.1	10.2	-18.3	0.5	5.5	-0.7	0.0	0.2
Employment	2,278.1	2,268.7	10.1	-9.4	8.0	18.2	-0.4	0.4	0.8
Employment full-time	1,763.0	1,751.2	14.3	-11.8	18.8	-4.2	-0.7	1.1	-0.2
Unemployment	186.3	177.5	8.9	-8.8	-7.4	-12.5	-4.7	-4.0	-6.6
Participation rate	65.3	64.7	0.3	-0.6	-0.4	-0.8
Unemployment rate	7.6	7.3	0.3	-0.3	-0.3	-0.5
Employment rate	60.3	60.0	0.3	-0.3	-0.2	-0.4
Part-time rate	22.6	22.8	0.6	0.2	-0.6	0.8
Both sexes, 15 to 24 years									
Population	591.9	591.7	...	-0.2	-0.3	0.5	0.0	-0.1	0.1
Labour force	382.9	369.8	6.0	-13.1	5.6	-4.3	-3.4	1.5	-1.1
Employment	330.8	322.1	5.5	-8.7	2.2	4.5	-2.6	0.7	1.4
Unemployment	52.1	47.7	5.1	-4.4	3.3	-8.8	-8.4	7.4	-15.6
Participation rate	64.7	62.5	1.0	-2.2	1.0	-0.8
Unemployment rate	13.6	12.9	1.3	-0.7	0.7	-2.2
Employment rate	55.9	54.4	0.9	-1.5	0.4	0.7
Part-time rate	45.3	44.0	2.0	-1.4	-6.4	-7.3
Men, 25 years and over									
Population	1,552.6	1,554.3	...	1.7	11.2	24.4	0.1	0.7	1.6
Labour force	1,104.8	1,093.3	5.3	-11.5	-3.5	-6.9	-1.0	-0.3	-0.6
Employment	1,032.0	1,029.7	5.7	-2.3	7.2	3.9	-0.2	0.7	0.4
Unemployment	72.8	63.6	5.1	-9.2	-10.6	-10.8	-12.6	-14.3	-14.5
Participation rate	71.2	70.3	0.3	-0.9	-0.8	-1.6
Unemployment rate	6.6	5.8	0.4	-0.8	-1.0	-1.0
Employment rate	66.5	66.2	0.4	-0.3	-0.1	-0.9
Part-time rate	10.6	11.8	0.6	1.2	1.9	3.1
Women, 25 years and over									
Population	1,630.3	1,632.1	...	1.8	11.9	25.7	0.1	0.7	1.6
Labour force	976.6	983.1	5.9	6.5	-1.5	16.8	0.7	-0.2	1.7
Employment	915.3	916.9	5.8	1.6	-1.4	9.8	0.2	-0.2	1.1
Unemployment	61.4	66.2	4.6	4.8	-0.1	7.1	7.8	-0.2	12.0
Participation rate	59.9	60.2	0.4	0.3	-0.6	0.0
Unemployment rate	6.3	6.7	0.5	0.4	0.0	0.6
Employment rate	56.1	56.2	0.4	0.1	-0.5	-0.3
Part-time rate	27.9	27.7	1.0	-0.2	-1.3	0.9
Industry	2,278.1	2,268.7	10.1	-9.4	8.0	18.2	-0.4	0.4	0.8
Goods-producing sector	459.0	450.1	8.9	-8.9	5.1	9.9	-1.9	1.1	2.2
Agriculture	27.2	26.3	2.6	-0.9	-6.0	-3.5	-3.3	-18.6	-11.7
Forestry, fishing, mining, quarrying, oil and gas extraction ²	42.1	44.1	2.7	2.0	6.5	2.3	4.8	17.3	5.5
Utilities	15.0	15.0	1.7	0.0	1.1	-1.1	0.0	7.9	-6.8
Construction	208.7	205.7	6.6	-3.0	23.4	15.2	-1.4	12.8	8.0
Manufacturing	165.9	159.0	5.8	-6.9	-20.0	-3.0	-4.2	-11.2	-1.9
Services-producing sector	1,819.1	1,818.6	11.9	-0.5	2.9	8.3	0.0	0.2	0.5
Trade	344.9	347.7	8.2	2.8	-17.8	-15.8	0.8	-4.9	-4.3
Transportation and warehousing	126.2	124.8	5.2	-1.4	-4.8	9.3	-1.1	-3.7	8.1
Finance, insurance, real estate and leasing	139.3	139.3	5.3	0.0	3.8	-3.0	0.0	2.8	-2.1
Professional, scientific and technical services	181.9	177.7	6.2	-4.2	2.6	-1.0	-2.3	1.5	-0.6
Business, building and other support services	99.6	98.5	4.8	-1.1	5.5	6.4	-1.1	5.9	6.9
Educational services	166.8	162.5	5.8	-4.3	-8.2	-6.9	-2.6	-4.8	-4.1
Health care and social assistance	257.8	250.3	6.8	-7.5	-7.3	-22.2	-2.9	-2.8	-8.1
Information, culture and recreation	109.0	114.6	5.1	5.6	9.1	5.9	5.1	8.6	5.4
Accommodation and food services	183.6	186.5	6.1	2.9	23.6	25.7	1.6	14.5	16.0
Other services	103.8	102.3	4.7	-1.5	-4.9	7.2	-1.4	-4.6	7.6
Public administration	106.2	114.4	4.5	8.2	1.3	2.6	7.7	1.1	2.3

1. Average standard error of change in two consecutive months (see "Sampling Errors" in Data Quality for further explanations).

2. Also referred to as Natural resources.

Note(s): Related CANSIM Tables 282-0087, 282-0088.

Table 5-1
Labour force characteristics by census metropolitan area (seasonally adjusted) — 3 month moving average

	May 2011	June 2011	S.E. ¹	Change from			Percent change from		
				last month	last December	twelve months ago	last month	last December	twelve months ago
in thousands (except rates)									
St. John's, Newfoundland and Labrador									
Population	160.8	160.9	...	0.1	0.7	1.8	0.1	0.4	1.1
Labour force	111.9	111.5	0.8	-0.4	2.2	2.4	-0.4	2.0	2.2
Employment	105.6	105.2	0.8	-0.4	3.6	4.0	-0.4	3.5	4.0
Unemployment	6.3	6.2	0.4	-0.1	-1.6	-1.7	-1.6	-20.5	-21.5
Participation rate	69.6	69.3	0.5	-0.3	1.1	0.7
Unemployment rate	5.6	5.6	0.4	0.0	-1.5	-1.6
Employment rate	65.7	65.4	0.5	-0.3	2.0	1.8
Halifax, Nova Scotia									
Population	338.3	338.6	...	0.3	2.3	5.1	0.1	0.7	1.5
Labour force	237.9	237.9	1.1	0.0	4.0	1.1	0.0	1.7	0.5
Employment	222.4	222.7	1.2	0.3	4.9	0.0	0.1	2.2	0.0
Unemployment	15.5	15.1	0.6	-0.4	-0.9	1.0	-2.6	-5.6	7.1
Participation rate	70.3	70.3	0.3	0.0	0.7	-0.7
Unemployment rate	6.5	6.3	0.3	-0.2	-0.5	0.3
Employment rate	65.7	65.8	0.4	0.1	1.0	-1.0
Moncton, New Brunswick									
Population	114.7	114.8	...	0.1	0.8	1.7	0.1	0.7	1.5
Labour force	77.2	76.6	0.7	-0.6	0.2	-0.1	-0.8	0.3	-0.1
Employment	71.2	70.8	0.7	-0.4	0.5	-1.4	-0.6	0.7	-1.9
Unemployment	6.0	5.7	0.3	-0.3	-0.5	1.2	-5.0	-8.1	26.7
Participation rate	67.3	66.7	0.6	-0.6	-0.3	-1.1
Unemployment rate	7.8	7.4	0.4	-0.4	-0.7	1.5
Employment rate	62.1	61.7	0.6	-0.4	0.0	-2.1
Saint John, New Brunswick									
Population	106.1	106.1	...	0.0	0.4	0.8	0.0	0.4	0.8
Labour force	69.3	69.3	0.8	0.0	0.5	0.0	0.0	0.7	0.0
Employment	64.8	64.8	0.8	0.0	0.4	0.7	0.0	0.6	1.1
Unemployment	4.5	4.5	0.4	0.0	0.1	-0.7	0.0	2.3	-13.5
Participation rate	65.3	65.3	0.7	0.0	0.2	-0.5
Unemployment rate	6.5	6.5	0.5	0.0	0.1	-1.0
Employment rate	61.1	61.1	0.7	0.0	0.2	0.2
Saguenay, Quebec									
Population	126.5	126.5	...	0.0	0.0	0.1	0.0	0.0	0.1
Labour force	74.8	73.9	0.8	-0.9	0.2	-2.9	-1.2	0.3	-3.8
Employment	69.1	68.3	0.8	-0.8	0.3	-2.3	-1.2	0.4	-3.3
Unemployment	5.7	5.6	0.4	-0.1	-0.2	-0.6	-1.8	-3.4	-9.7
Participation rate	59.1	58.4	0.6	-0.7	0.1	-2.4
Unemployment rate	7.6	7.6	0.5	0.0	-0.3	-0.5
Employment rate	54.6	54.0	0.7	-0.6	0.2	-1.9
Québec, Quebec									
Population	634.9	635.5	...	0.6	3.7	8.0	0.1	0.6	1.3
Labour force	434.8	430.0	3.3	-4.8	-15.4	3.0	-1.1	-3.5	0.7
Employment	405.0	405.3	3.4	0.3	-18.5	2.2	0.1	-4.4	0.5
Unemployment	29.8	24.8	1.4	-5.0	3.2	0.9	-16.8	14.8	3.8
Participation rate	68.5	67.7	0.5	-0.8	-2.8	-0.3
Unemployment rate	6.9	5.8	0.3	-1.1	1.0	0.2
Employment rate	63.8	63.8	0.5	0.0	-3.3	-0.4
Sherbrooke, Quebec									
Population	164.6	164.8	...	0.2	1.0	2.2	0.1	0.6	1.4
Labour force	106.8	107.5	0.8	0.7	3.5	8.2	0.7	3.4	8.3
Employment	99.9	100.8	0.8	0.9	4.6	8.8	0.9	4.8	9.6
Unemployment	6.9	6.7	0.4	-0.2	-1.0	-0.6	-2.9	-13.0	-8.2
Participation rate	64.9	65.2	0.5	0.3	1.7	4.1
Unemployment rate	6.5	6.2	0.4	-0.3	-1.2	-1.2
Employment rate	60.7	61.2	0.5	0.5	2.5	4.6

See notes at the end of the table.

Table 5-1 – continued

Labour force characteristics by census metropolitan area (seasonally adjusted) — 3 month moving average

	May 2011	June 2011	S.E. ¹	Change from			Percent change from		
				last month	last December	twelve months ago	last month	last December	twelve months ago
in thousands (except rates)									
Trois-Rivières, Quebec									
Population	124.5	124.6	...	0.1	0.6	1.2	0.1	0.5	1.0
Labour force	74.5	75.0	0.8	0.5	1.3	2.6	0.7	1.8	3.6
Employment	68.2	68.5	0.8	0.3	1.0	2.0	0.4	1.5	3.0
Unemployment	6.3	6.4	0.4	0.1	0.2	0.4	1.6	3.2	6.7
Participation rate	59.8	60.2	0.6	0.4	0.8	1.5
Unemployment rate	8.5	8.5	0.5	0.0	0.1	0.2
Employment rate	54.8	55.0	0.6	0.2	0.6	1.1
Montréal, Quebec									
Population	3,214.9	3,218.3	...	3.4	20.4	42.0	0.1	0.6	1.3
Labour force	2,148.0	2,159.7	7.4	11.7	44.5	2.1	0.5	2.1	0.1
Employment	1,981.1	1,985.9	7.6	4.8	49.8	12.2	0.2	2.6	0.6
Unemployment	166.9	173.8	4.7	6.9	-5.3	-10.0	4.1	-3.0	-5.4
Participation rate	66.8	67.1	0.2	0.3	1.0	-0.8
Unemployment rate	7.8	8.0	0.2	0.2	-0.5	-0.5
Employment rate	61.6	61.7	0.2	0.1	1.2	-0.4
Ottawa-Gatineau, Ontario/Quebec									
Population	1,030.4	1,032.0	...	1.6	9.0	18.7	0.2	0.9	1.8
Labour force	740.5	741.0	3.6	0.5	9.1	-0.3	0.1	1.2	0.0
Employment	695.4	698.0	3.7	2.6	14.1	3.0	0.4	2.1	0.4
Unemployment	45.1	43.0	1.8	-2.1	-5.1	-3.2	-4.7	-10.6	-6.9
Participation rate	71.9	71.8	0.4	-0.1	0.3	-1.4
Unemployment rate	6.1	5.8	0.3	-0.3	-0.8	-0.4
Employment rate	67.5	67.6	0.4	0.1	0.7	-1.0
Ottawa-Gatineau, Quebec part, Ontario/Quebec									
Population	257.3	257.8	...	0.5	2.7	5.6	0.2	1.1	2.2
Labour force	183.5	185.3	1.5	1.8	8.1	5.6	1.0	4.6	3.1
Employment	171.3	173.2	1.5	1.9	7.1	5.2	1.1	4.3	3.1
Unemployment	12.2	12.1	0.6	-0.1	1.0	0.4	-0.8	9.0	3.4
Participation rate	71.3	71.9	0.6	0.6	2.4	0.6
Unemployment rate	6.6	6.5	0.3	-0.1	0.2	0.0
Employment rate	66.6	67.2	0.6	0.6	2.1	0.6
Ottawa-Gatineau, Ontario part, Ontario/Quebec									
Population	773.1	774.2	...	1.1	6.3	13.1	0.1	0.8	1.7
Labour force	556.9	555.8	3.3	-1.1	1.1	-5.8	-0.2	0.2	-1.0
Employment	524.1	524.8	3.4	0.7	7.0	-2.2	0.1	1.4	-0.4
Unemployment	32.8	31.0	1.7	-1.8	-5.9	-3.6	-5.5	-16.0	-10.4
Participation rate	72.0	71.8	0.4	-0.2	-0.4	-2.0
Unemployment rate	5.9	5.6	0.3	-0.3	-1.1	-0.6
Employment rate	67.8	67.8	0.4	0.0	0.4	-1.4
Kingston, Ontario									
Population	131.8	132.0	...	0.2	0.8	1.2	0.2	0.6	0.9
Labour force	85.3	86.6	0.8	1.3	5.2	3.7	1.5	6.4	4.5
Employment	79.2	80.7	0.8	1.5	4.8	2.8	1.9	6.3	3.6
Unemployment	6.1	5.9	0.3	-0.2	0.4	1.0	-3.3	7.3	20.4
Participation rate	64.7	65.6	0.6	0.9	3.6	2.2
Unemployment rate	7.2	6.8	0.4	-0.4	0.0	0.9
Employment rate	60.1	61.1	0.6	1.0	3.2	1.5
Peterborough, Ontario									
Population	102.4	102.4	...	0.0	0.2	0.5	0.0	0.2	0.5
Labour force	64.6	63.9	1.2	-0.7	2.6	-0.4	-1.1	4.2	-0.6
Employment	58.2	57.5	1.2	-0.7	1.4	-0.3	-1.2	2.5	-0.5
Unemployment	6.4	6.4	0.5	0.0	1.2	0.0	0.0	23.1	0.0
Participation rate	63.1	62.4	1.3	-0.7	2.4	-0.7
Unemployment rate	9.9	10.0	0.9	0.1	1.5	0.0
Employment rate	56.8	56.2	1.3	-0.6	1.3	-0.5

See notes at the end of the table.

Table 5-1 – continued

Labour force characteristics by census metropolitan area (seasonally adjusted) — 3 month moving average

	May 2011	June 2011	S.E. ¹	Change from			Percent change from		
				last month	last December	twelve months ago	last month	last December	twelve months ago
in thousands (except rates)									
Oshawa, Ontario									
Population	302.9	303.4	...	0.5	2.8	6.1	0.2	0.9	2.1
Labour force	207.7	211.1	1.4	3.4	0.1	3.1	1.6	0.0	1.5
Employment	186.7	190.8	1.5	4.1	-0.4	3.8	2.2	-0.2	2.0
Unemployment	21.0	20.4	0.9	-0.6	0.6	-0.6	-2.9	3.0	-2.9
Participation rate	68.6	69.6	0.5	1.0	-0.6	-0.4
Unemployment rate	10.1	9.7	0.4	-0.4	0.3	-0.4
Employment rate	61.6	62.9	0.5	1.3	-0.7	0.0
Toronto, Ontario									
Population	4,765.0	4,772.9	...	7.9	42.7	88.3	0.2	0.9	1.9
Labour force	3,234.5	3,246.3	10.0	11.8	18.5	53.6	0.4	0.6	1.7
Employment	2,957.8	2,973.2	10.1	15.4	13.8	78.5	0.5	0.5	2.7
Unemployment	276.7	273.0	6.4	-3.7	4.6	-25.0	-1.3	1.7	-8.4
Participation rate	67.9	68.0	0.2	0.1	-0.2	-0.2
Unemployment rate	8.6	8.4	0.2	-0.2	0.1	-0.9
Employment rate	62.1	62.3	0.2	0.2	-0.3	0.5
Hamilton, Ontario									
Population	617.0	617.6	...	0.6	3.1	7.1	0.1	0.5	1.2
Labour force	402.2	403.2	3.3	1.0	-0.3	2.7	0.2	-0.1	0.7
Employment	380.4	379.3	3.4	-1.1	3.7	10.3	-0.3	1.0	2.8
Unemployment	21.8	23.9	1.6	2.1	-4.0	-7.5	9.6	-14.3	-23.9
Participation rate	65.2	65.3	0.5	0.1	-0.4	-0.3
Unemployment rate	5.4	5.9	0.4	0.5	-1.0	-1.9
Employment rate	61.7	61.4	0.6	-0.3	0.3	1.0
St. Catharines-Niagara, Ontario									
Population	338.4	338.5	...	0.1	0.2	1.0	0.0	0.1	0.3
Labour force	216.8	216.0	1.6	-0.8	4.0	2.7	-0.4	1.9	1.3
Employment	197.2	197.1	1.7	-0.1	5.2	1.2	-0.1	2.7	0.6
Unemployment	19.7	18.9	0.9	-0.8	-1.1	1.4	-4.1	-5.5	8.0
Participation rate	64.1	63.8	0.5	-0.3	1.1	0.6
Unemployment rate	9.1	8.8	0.4	-0.3	-0.6	0.6
Employment rate	58.3	58.2	0.5	-0.1	1.5	0.2
Kitchener-Cambridge-Waterloo, Ontario									
Population	407.1	407.6	...	0.5	2.8	6.1	0.1	0.7	1.5
Labour force	301.2	300.9	1.9	-0.3	18.6	9.1	-0.1	6.6	3.1
Employment	279.3	280.2	2.1	0.9	18.7	11.0	0.3	7.2	4.1
Unemployment	21.9	20.7	1.1	-1.2	0.0	-1.9	-5.5	0.0	-8.4
Participation rate	74.0	73.8	0.5	-0.2	4.1	1.1
Unemployment rate	7.3	6.9	0.4	-0.4	-0.4	-0.8
Employment rate	68.6	68.7	0.5	0.1	4.1	1.7
Brantford, Ontario									
Population	107.7	107.7	...	0.0	0.3	0.8	0.0	0.3	0.7
Labour force	74.7	75.6	0.6	0.9	0.7	3.5	1.2	0.9	4.9
Employment	68.4	69.4	0.6	1.0	1.0	3.7	1.5	1.5	5.6
Unemployment	6.3	6.2	0.3	-0.1	-0.3	-0.2	-1.6	-4.6	-3.1
Participation rate	69.4	70.2	0.7	0.8	0.5	2.8
Unemployment rate	8.4	8.2	0.6	-0.2	-0.5	-0.7
Employment rate	63.5	64.4	0.7	0.9	0.7	2.9
Guelph, Ontario									
Population	113.1	113.2	...	0.1	0.7	1.4	0.1	0.6	1.3
Labour force	80.6	80.8	0.9	0.2	3.8	-4.7	0.2	4.9	-5.5
Employment	74.8	75.7	1.0	0.9	4.5	-3.2	1.2	6.3	-4.1
Unemployment	5.8	5.1	0.5	-0.7	-0.7	-1.5	-12.1	-12.1	-22.7
Participation rate	71.3	71.4	0.8	0.1	3.0	-5.1
Unemployment rate	7.2	6.3	0.6	-0.9	-1.2	-1.4
Employment rate	66.1	66.9	0.9	0.8	3.6	-3.7

See notes at the end of the table.

Table 5-1 – continued

Labour force characteristics by census metropolitan area (seasonally adjusted) — 3 month moving average

	May 2011	June 2011	S.E. ¹	Change from			Percent change from		
				last month	last December	twelve months ago	last month	last December	twelve months ago
in thousands (except rates)									
London, Ontario									
Population	411.3	411.7	...	0.4	2.0	4.5	0.1	0.5	1.1
Labour force	265.8	263.5	2.0	-2.3	0.8	-9.4	-0.9	0.3	-3.4
Employment	243.9	240.5	2.0	-3.4	0.1	-10.0	-1.4	0.0	-4.0
Unemployment	22.0	23.0	1.1	1.0	0.8	0.6	4.5	3.6	2.7
Participation rate	64.6	64.0	0.5	-0.6	-0.1	-3.0
Unemployment rate	8.3	8.7	0.4	0.4	0.2	0.5
Employment rate	59.3	58.4	0.5	-0.9	-0.3	-3.1
Windsor, Ontario									
Population	267.4	267.4	...	0.0	-0.7	-1.1	0.0	-0.3	-0.4
Labour force	164.9	162.4	1.5	-2.5	-1.6	-10.0	-1.5	-1.0	-5.8
Employment	147.5	147.4	1.4	-0.1	1.1	-3.7	-0.1	0.8	-2.4
Unemployment	17.4	14.9	0.9	-2.5	-2.9	-6.4	-14.4	-16.3	-30.0
Participation rate	61.7	60.7	0.5	-1.0	-0.5	-3.5
Unemployment rate	10.6	9.2	0.5	-1.4	-1.7	-3.2
Employment rate	55.2	55.1	0.5	-0.1	0.5	-1.2
Barrie, Ontario									
Population	160.7	160.9	...	0.2	1.2	2.6	0.1	0.8	1.6
Labour force	116.6	116.8	1.4	0.2	5.0	4.8	0.2	4.5	4.3
Employment	106.3	106.5	1.4	0.2	4.1	4.7	0.2	4.0	4.6
Unemployment	10.3	10.3	0.7	0.0	0.9	0.1	0.0	9.6	1.0
Participation rate	72.6	72.6	1.0	0.0	2.6	1.8
Unemployment rate	8.8	8.8	0.7	0.0	0.4	-0.3
Employment rate	66.1	66.2	0.9	0.1	2.1	1.9
Greater Sudbury, Ontario									
Population	139.2	139.3	...	0.1	0.3	0.8	0.1	0.2	0.6
Labour force	89.4	89.1	0.8	-0.3	-0.6	-1.5	-0.3	-0.7	-1.7
Employment	82.0	82.1	0.8	0.1	-0.1	-1.1	0.1	-0.1	-1.3
Unemployment	7.5	7.0	0.4	-0.5	-0.5	-0.4	-6.7	-6.7	-5.4
Participation rate	64.2	64.0	0.6	-0.2	-0.5	-1.4
Unemployment rate	8.4	7.9	0.5	-0.5	-0.5	-0.3
Employment rate	58.9	58.9	0.6	0.0	-0.2	-1.2
Thunder Bay, Ontario									
Population	102.4	102.4	...	0.0	-0.2	-0.3	0.0	-0.2	-0.3
Labour force	62.7	61.4	0.6	-1.3	-4.0	-1.8	-2.1	-6.1	-2.8
Employment	58.3	57.3	0.6	-1.0	-3.6	-2.6	-1.7	-5.9	-4.3
Unemployment	4.5	4.1	0.3	-0.4	-0.3	0.8	-8.9	-6.8	24.2
Participation rate	61.2	60.0	0.6	-1.2	-3.7	-1.5
Unemployment rate	7.2	6.7	0.4	-0.5	0.0	1.5
Employment rate	56.9	56.0	0.6	-0.9	-3.4	-2.3
Winnipeg, Manitoba									
Population	622.0	622.8	...	0.8	4.8	9.9	0.1	0.8	1.6
Labour force	433.3	431.0	1.3	-2.3	-1.7	-2.8	-0.5	-0.4	-0.6
Employment	409.1	406.8	1.3	-2.3	-2.7	-1.7	-0.6	-0.7	-0.4
Unemployment	24.3	24.1	0.7	-0.2	0.9	-1.2	-0.8	3.9	-4.7
Participation rate	69.7	69.2	0.2	-0.5	-0.8	-1.6
Unemployment rate	5.6	5.6	0.2	0.0	0.2	-0.2
Employment rate	65.8	65.3	0.2	-0.5	-1.0	-1.4
Regina, Saskatchewan									
Population	176.0	176.3	...	0.3	1.3	2.7	0.2	0.7	1.6
Labour force	127.0	127.6	0.8	0.6	0.5	4.0	0.5	0.4	3.2
Employment	120.1	121.0	0.8	0.9	-0.2	2.8	0.7	-0.2	2.4
Unemployment	6.9	6.6	0.3	-0.3	0.7	1.2	-4.3	11.9	22.2
Participation rate	72.2	72.4	0.4	0.2	-0.2	1.2
Unemployment rate	5.4	5.2	0.3	-0.2	0.6	0.8
Employment rate	68.2	68.6	0.5	0.4	-0.7	0.5

See notes at the end of the table.

Table 5-1 – continued

Labour force characteristics by census metropolitan area (seasonally adjusted) — 3 month moving average

	May 2011	June 2011	S.E. ¹	Change from			Percent change from		
				last month	last December	twelve months ago	last month	last December	twelve months ago
in thousands (except rates)									
Saskatoon, Saskatchewan									
Population	219.2	219.6	...	0.4	2.5	5.2	0.2	1.2	2.4
Labour force	154.0	154.8	1.0	0.8	3.6	-3.2	0.5	2.4	-2.0
Employment	144.8	146.3	1.0	1.5	3.5	-2.4	1.0	2.5	-1.6
Unemployment	9.2	8.5	0.5	-0.7	0.1	-0.8	-7.6	1.2	-8.6
Participation rate	70.3	70.5	0.5	0.2	0.9	-3.2
Unemployment rate	6.0	5.5	0.3	-0.5	-0.1	-0.4
Employment rate	66.1	66.6	0.5	0.5	0.8	-2.8
Calgary, Alberta									
Population	1,028.8	1,030.9	...	2.1	10.0	18.9	0.2	1.0	1.9
Labour force	762.9	764.8	3.5	1.9	16.6	8.4	0.2	2.2	1.1
Employment	719.1	720.6	3.7	1.5	17.3	20.2	0.2	2.5	2.9
Unemployment	43.8	44.2	2.1	0.4	-0.7	-11.8	0.9	-1.6	-21.1
Participation rate	74.2	74.2	0.3	0.0	0.9	-0.5
Unemployment rate	5.7	5.8	0.3	0.1	-0.2	-1.6
Employment rate	69.9	69.9	0.4	0.0	1.0	0.7
Edmonton, Alberta									
Population	960.6	962.3	...	1.7	7.8	14.3	0.2	0.8	1.5
Labour force	698.3	701.0	3.3	2.7	15.9	16.3	0.4	2.3	2.4
Employment	659.5	662.9	3.6	3.4	17.3	26.4	0.5	2.7	4.1
Unemployment	38.8	38.0	1.9	-0.8	-1.5	-10.2	-2.1	-3.8	-21.2
Participation rate	72.7	72.8	0.4	0.1	1.0	0.6
Unemployment rate	5.6	5.4	0.3	-0.2	-0.4	-1.6
Employment rate	68.7	68.9	0.4	0.2	1.3	1.8
Kelowna, British Columbia									
Population	149.3	149.5	...	0.2	1.3	3.0	0.1	0.9	2.0
Labour force	103.4	104.5	1.6	1.1	0.0	4.0	1.1	0.0	4.0
Employment	94.8	95.6	1.5	0.8	-1.1	2.0	0.8	-1.1	2.1
Unemployment	8.6	8.9	0.8	0.3	1.1	2.1	3.5	14.1	30.9
Participation rate	69.3	69.9	1.0	0.6	-0.6	1.3
Unemployment rate	8.3	8.5	0.7	0.2	1.0	1.7
Employment rate	63.5	63.9	0.9	0.4	-1.3	0.0
Abbotsford-Mission, British Columbia									
Population	143.9	144.1	...	0.2	1.2	2.6	0.1	0.8	1.8
Labour force	93.3	93.5	0.8	0.2	-2.4	-5.9	0.2	-2.5	-5.9
Employment	85.0	85.5	0.8	0.5	-0.7	-5.6	0.6	-0.8	-6.1
Unemployment	8.3	8.0	0.4	-0.3	-1.7	-0.3	-3.6	-17.5	-3.6
Participation rate	64.8	64.9	0.6	0.1	-2.2	-5.3
Unemployment rate	8.9	8.6	0.4	-0.3	-1.5	0.2
Employment rate	59.1	59.3	0.6	0.2	-1.0	-5.1
Vancouver, British Columbia									
Population	2,020.2	2,022.9	...	2.7	16.9	35.7	0.1	0.8	1.8
Labour force	1,342.6	1,343.3	5.1	0.7	15.8	31.9	0.1	1.2	2.4
Employment	1,240.8	1,246.4	5.2	5.6	15.2	34.2	0.5	1.2	2.8
Unemployment	101.8	96.9	3.0	-4.9	0.6	-2.3	-4.8	0.6	-2.3
Participation rate	66.5	66.4	0.3	-0.1	0.2	0.4
Unemployment rate	7.6	7.2	0.2	-0.4	-0.1	-0.4
Employment rate	61.4	61.6	0.3	0.2	0.2	0.6
Victoria, British Columbia									
Population	300.2	300.4	...	0.2	1.2	3.1	0.1	0.4	1.0
Labour force	195.9	195.9	1.5	0.0	2.7	2.2	0.0	1.4	1.1
Employment	183.7	183.7	1.5	0.0	1.8	1.6	0.0	1.0	0.9
Unemployment	12.2	12.2	0.6	0.0	0.9	0.7	0.0	8.0	6.1
Participation rate	65.3	65.2	0.5	-0.1	0.6	0.0
Unemployment rate	6.2	6.2	0.3	0.0	0.4	0.3
Employment rate	61.2	61.2	0.5	0.0	0.4	-0.1

1. Average standard error of change in two consecutive months (see "Sampling Errors" in Data Quality for further explanations).

Note(s): Estimates from this table are based on 2006 census population counts. Related CANSIM Table 282-0116.

Table 5-2
Labour force characteristics by census metropolitan area (seasonally adjusted) — Monthly

	May 2011	June 2011	S.E. ¹	Change from			Percent change from		
				last month	last December	twelve months ago	last month	last December	twelve months ago
in thousands (except rates)									
Montréal, Quebec									
Population	3,218.6	3,221.7	...	3.1	20.6	41.6	0.1	0.6	1.3
Labour force	2,158.8	2,171.9	15.5	13.1	60.3	8.5	0.6	2.9	0.4
Employment	2,001.7	1,984.7	15.3	-17.0	40.6	-6.2	-0.8	2.1	-0.3
Unemployment	157.1	187.2	11.2	30.1	19.7	14.7	19.2	11.8	8.5
Participation rate	67.1	67.4	0.5	0.3	1.4	-0.6
Unemployment rate	7.3	8.6	0.5	1.3	0.7	0.6
Employment rate	62.2	61.6	0.5	-0.6	0.9	-1.0
Toronto, Ontario									
Population	4,773.6	4,780.7	...	7.1	44.2	87.3	0.1	0.9	1.9
Labour force	3,245.6	3,250.3	20.9	4.7	6.2	46.1	0.1	0.2	1.4
Employment	2,971.9	2,977.6	20.5	5.7	-3.4	61.1	0.2	-0.1	2.1
Unemployment	273.7	272.7	15.7	-1.0	9.6	-15.1	-0.4	3.6	-5.2
Participation rate	68.0	68.0	0.4	0.0	-0.5	-0.3
Unemployment rate	8.4	8.4	0.5	0.0	0.3	-0.6
Employment rate	62.3	62.3	0.4	0.0	-0.6	0.2
Vancouver, British Columbia									
Population	2,023.2	2,025.6	...	2.4	16.8	34.6	0.1	0.8	1.7
Labour force	1,345.7	1,336.5	10.7	-9.2	6.7	22.0	-0.7	0.5	1.7
Employment	1,253.5	1,245.9	10.5	-7.6	17.5	32.3	-0.6	1.4	2.7
Unemployment	92.2	90.6	7.6	-1.6	-10.8	-10.3	-1.7	-10.7	-10.2
Participation rate	66.5	66.0	0.5	-0.5	-0.2	0.0
Unemployment rate	6.9	6.8	0.5	-0.1	-0.8	-0.9
Employment rate	62.0	61.5	0.5	-0.5	0.3	0.5

1. Average standard error of change in two consecutive months (see "Sampling Errors" in Data Quality for further explanations).

Note(s): Estimates from this table are based on 2006 census population counts. Related CANSIM Table 282-0117.

Table 6-1

Labour force characteristics by province and economic region, ¹ unadjusted for seasonality, 3 month moving average ending in June 2010 and June 2011

	Population	Labour force			Participation rate	Unemployment rate	Employment rate
		Labour force	Employment	Unemployment			
in thousands							
Canada ²							
2010	27,611.4	18,646.0	17,142.3	1,503.7	67.5	8.1	62.1
2011	27,946.5	18,822.7	17,420.3	1,402.4	67.4	7.5	62.3
Newfoundland and Labrador							
2010	427.6	260.2	221.7	38.5	60.9	14.8	51.8
2011	428.9	260.8	229.3	31.5	60.8	12.1	53.5
<i>Avalon Peninsula [1010]</i>							
2010	218.2	145.4	129.0	16.4	66.6	11.3	59.1
2011	220.6	144.1	132.9	11.2	65.3	7.8	60.2
<i>South Coast-Burin Peninsula [1020]</i>							
2010	31.1	16.5	13.3	3.2	53.1	19.4	42.8
2011	30.6	17.8	13.8	3.9	58.2	21.9	45.1
<i>West Coast-Northern Peninsula-Labrador [1030]</i>							
2010	87.2	49.5	40.7	8.9	56.8	18.0	46.7
2011	87.0	51.0	42.3	8.7	58.6	17.1	48.6
<i>Notre Dame-Central Bonavista Bay [1040]</i>							
2010	91.2	48.7	38.7	10.0	53.4	20.5	42.4
2011	90.8	47.9	40.2	7.7	52.8	16.1	44.3
Prince Edward Island							
2010	116.8	80.4	72.4	8.0	68.8	10.0	62.0
2011	119.1	82.6	73.6	9.0	69.4	10.9	61.8
Nova Scotia							
2010	776.3	504.5	460.3	44.2	65.0	8.8	59.3
2011	778.9	498.6	455.0	43.6	64.0	8.7	58.4
<i>Cape Breton [1210]</i>							
2010	113.4	65.8	55.5	10.3	58.0	15.7	48.9
2011	112.2	63.0	53.4	9.6	56.1	15.2	47.6
<i>North Shore [1220]</i>							
2010	130.2	77.8	71.4	6.4	59.8	8.2	54.8
2011	129.9	79.4	72.4	7.1	61.1	8.9	55.7
<i>Annapolis Valley [1230]</i>							
2010	100.0	60.5	54.7	5.7	60.5	9.4	54.7
2011	99.7	59.3	52.9	6.4	59.5	10.8	53.1
<i>Southern [1240]</i>							
2010	99.2	61.7	54.2	7.4	62.2	12.0	54.6
2011	98.4	58.3	52.5	5.8	59.2	9.9	53.4
<i>Halifax [1250]</i>							
2010	333.5	238.7	224.4	14.3	71.6	6.0	67.3
2011	338.6	238.5	223.8	14.7	70.4	6.2	66.1
New Brunswick							
2010	616.3	397.0	360.1	36.8	64.4	9.3	58.4
2011	619.1	393.2	354.2	39.0	63.5	9.9	57.2
<i>Campbellton-Miramichi [1310]</i>							
2010	130.9	71.3	59.1	12.1	54.5	17.0	45.1
2011	129.5	75.2	62.6	12.6	58.1	16.8	48.3
<i>Moncton-Richibucto [1320]</i>							
2010	169.4	114.7	106.8	7.9	67.7	6.9	63.0
2011	171.6	113.1	103.6	9.5	65.9	8.4	60.4
<i>Saint John-St. Stephen [1330]</i>							
2010	143.3	93.4	85.3	8.1	65.2	8.7	59.5
2011	144.2	94.8	87.9	6.9	65.7	7.3	61.0

See notes at the end of the table.

Table 6-1 – continued

Labour force characteristics by province and economic region, ¹ unadjusted for seasonality, 3 month moving average ending in June 2010 and June 2011

	Population	Labour force			Participation rate	Unemployment rate	Employment rate
		Labour force	Employment	Unemployment			
in thousands							
Fredericton-Oromocto [1340]							
2010	107.2	74.7	69.9	4.7	69.7	6.3	65.2
2011	108.8	70.9	65.0	5.9	65.2	8.3	59.7
Edmundston-Woodstock [1350]							
2010	65.5	43.0	39.0	4.0	65.6	9.3	59.5
2011	65.1	39.1	35.1	4.0	60.1	10.2	53.9
Quebec							
2010	6,497.0	4,277.7	3,943.6	334.1	65.8	7.8	60.7
2011	6,567.9	4,325.7	3,997.8	327.9	65.9	7.6	60.9
Gaspésie-Îles-de-la-Madeleine [2410]							
2010	78.7	44.1	36.4	7.7	56.0	17.5	46.3
2011	78.6	46.7	40.8	5.8	59.4	12.4	51.9
Bas-Saint-Laurent [2415]							
2010	166.9	99.0	89.1	9.9	59.3	10.0	53.4
2011	166.8	101.7	95.0	6.7	61.0	6.6	57.0
Capitale-Nationale [2420]							
2010	580.3	387.4	366.8	20.6	66.8	5.3	63.2
2011	587.5	398.9	373.8	25.1	67.9	6.3	63.6
Chaudière-Appalaches [2425]							
2010	331.7	233.3	220.6	12.7	70.3	5.4	66.5
2011	333.1	229.5	217.1	12.4	68.9	5.4	65.2
Estrie [2430]							
2010	255.6	155.4	142.1	13.3	60.8	8.6	55.6
2011	258.0	166.3	155.4	10.9	64.5	6.6	60.2
Centre-du-Québec [2433]							
2010	188.8	118.5	112.1	6.4	62.8	5.4	59.4
2011	190.3	120.3	112.2	8.1	63.2	6.7	59.0
Montérégie [2435]							
2010	1,171.2	790.4	730.7	59.8	67.5	7.6	62.4
2011	1,187.6	790.0	737.1	52.9	66.5	6.7	62.1
Montréal [2440]							
2010	1,610.0	1,064.7	962.3	102.4	66.1	9.6	59.8
2011	1,622.0	1,061.5	964.6	96.9	65.4	9.1	59.5
Laval [2445]							
2010	326.0	225.7	211.4	14.3	69.2	6.3	64.8
2011	332.2	226.5	212.8	13.7	68.2	6.0	64.1
Lanaudière [2450]							
2010	382.2	262.5	245.1	17.4	68.7	6.6	64.1
2011	390.0	266.7	243.3	23.4	68.4	8.8	62.4
Laurentides [2455]							
2010	452.6	302.4	278.4	24.1	66.8	8.0	61.5
2011	461.8	313.3	287.6	25.7	67.8	8.2	62.3
Outaouais [2460]							
2010	299.7	208.5	194.1	14.5	69.6	7.0	64.8
2011	305.4	210.5	194.9	15.7	68.9	7.5	63.8
Abitibi-Témiscamingue [2465]							
2010	117.0	72.4	66.1	6.3	61.9	8.7	56.5
2011	117.5	77.6	71.4	6.2	66.0	8.0	60.8
Mauricie [2470]							
2010	220.2	124.5	113.9	10.6	56.5	8.5	51.7
2011	221.3	126.2	117.4	8.8	57.0	7.0	53.1

See notes at the end of the table.

Table 6-1 – continued

Labour force characteristics by province and economic region, ¹ unadjusted for seasonality, 3 month moving average ending in June 2010 and June 2011

	Population	Labour force			Participation rate	Unemployment rate	Employment rate
		Labour force	Employment	Unemployment			
in thousands							
Saguenay-Lac-Saint-Jean [2475]							
2010	225.3	132.3	121.7	10.7	58.7	8.1	54.0
2011	225.2	134.8	122.4	12.5	59.9	9.3	54.4
Côte-Nord and Nord-du-Québec [2480, 2490]							
2010	90.8	56.3	52.7	3.6	62.0	6.4	58.0
2011	90.6	55.2	52.0	3.1	60.9	5.6	57.4
Ontario							
2010	10,770.6	7,290.4	6,648.7	641.7	67.7	8.8	61.7
2011	10,908.1	7,372.7	6,787.8	584.9	67.6	7.9	62.2
Ottawa [3510]							
2010	1,032.9	743.3	691.4	51.9	72.0	7.0	66.9
2011	1,046.5	733.5	687.0	46.5	70.1	6.3	65.6
Kingston-Pembroke [3515]							
2010	368.4	224.8	205.1	19.7	61.0	8.8	55.7
2011	369.9	239.4	221.0	18.4	64.7	7.7	59.7
Muskoka-Kawarthas [3520]							
2010	316.8	194.5	180.5	14.0	61.4	7.2	57.0
2011	318.5	197.5	180.1	17.4	62.0	8.8	56.5
Toronto [3530]							
2010	4,936.3	3,383.6	3,057.3	326.2	68.5	9.6	61.9
2011	5,030.0	3,438.8	3,142.1	296.7	68.4	8.6	62.5
Kitchener-Waterloo-Barrie [3540]							
2010	1,019.3	726.5	668.5	57.9	71.3	8.0	65.6
2011	1,035.0	750.1	697.1	52.9	72.5	7.1	67.4
Hamilton-Niagara Peninsula [3550]							
2010	1,158.4	759.8	699.2	60.6	65.6	8.0	60.4
2011	1,167.7	770.9	719.4	51.5	66.0	6.7	61.6
London [3560]							
2010	534.7	362.4	333.2	29.2	67.8	8.1	62.3
2011	539.8	357.5	326.4	31.1	66.2	8.7	60.5
Windsor-Sarnia [3570]							
2010	521.7	334.1	297.1	37.0	64.0	11.1	56.9
2011	519.7	323.3	294.5	28.9	62.2	8.9	56.7
Stratford-Bruce Peninsula [3580]							
2010	245.7	164.2	153.3	10.9	66.8	6.6	62.4
2011	245.7	170.2	161.8	8.5	69.3	5.0	65.9
Northeast [3590]							
2010	462.1	286.9	260.8	26.1	62.1	9.1	56.4
2011	461.7	288.1	263.1	25.0	62.4	8.7	57.0
Northwest [3595]							
2010	174.4	110.4	102.2	8.2	63.3	7.4	58.6
2011	173.5	103.4	95.3	8.1	59.6	7.8	54.9
Manitoba							
2010	939.3	659.8	625.0	34.7	70.2	5.3	66.5
2011	951.8	663.0	628.2	34.8	69.7	5.2	66.0
Southeast [4610]							
2010	80.6	59.1	56.5	2.6	73.3	4.4	70.1
2011	82.5	58.3	55.9	2.3	70.7	3.9	67.8
South Central [4620]							
2010	46.0	32.4	31.5	0.9	70.4	2.8	68.5
2011	47.2	33.5	32.3	1.2	71.0	3.6	68.4

See notes at the end of the table.

Table 6-1 – continued

Labour force characteristics by province and economic region, ¹ unadjusted for seasonality, 3 month moving average ending in June 2010 and June 2011

	Population	Labour force			Participation rate	Unemployment rate	Employment rate
		Labour force	Employment	Unemployment			
in thousands							
Southwest [4630]							
2010	83.4	54.7	52.7	2.0	65.6	3.7	63.2
2011	83.6	60.9	58.4	2.5	72.8	4.1	69.9
North Central [4640]							
2010	36.0	25.7	24.5	1.1	71.4	4.3	68.1
2011	36.5	25.1	23.7	1.4	68.8	5.6	64.9
Winnipeg [4650]							
2010	561.0	395.9	372.5	23.4	70.6	5.9	66.4
2011	569.5	392.4	370.2	22.1	68.9	5.6	65.0
Interlake [4660]							
2010	71.8	50.6	48.2	2.4	70.5	4.7	67.1
2011	72.5	51.8	49.4	2.5	71.4	4.8	68.1
Parklands and North [4670, 4680]							
2010	60.6	41.5	39.1	2.3	68.5	5.5	64.5
2011	60.0	41.0	38.4	2.6	68.3	6.3	64.0
Saskatchewan							
2010	789.6	560.1	530.8	29.3	70.9	5.2	67.2
2011	798.5	558.1	530.6	27.5	69.9	4.9	66.4
Regina-Moose Mountain [4710]							
2010	234.0	168.2	161.4	6.7	71.9	4.0	69.0
2011	237.1	172.0	163.9	8.0	72.5	4.7	69.1
Swift Current-Moose Jaw [4720]							
2010	81.1	55.5	52.6	2.9	68.4	5.2	64.9
2011	81.1	51.9	50.1	1.8	64.0	3.5	61.8
Saskatoon-Biggar [4730]							
2010	258.7	189.2	178.8	10.5	73.1	5.5	69.1
2011	264.1	187.4	177.9	9.6	71.0	5.1	67.4
Yorkton-Melville [4740]							
2010	63.3	43.0	41.3	1.6	67.9	3.7	65.2
2011	62.9	41.0	39.5	1.5	65.2	3.7	62.8
Prince Albert and Northern [4750, 4760]							
2010	152.5	104.2	96.6	7.6	68.3	7.3	63.3
2011	153.3	105.8	99.2	6.6	69.0	6.2	64.7
Alberta							
2010	2,956.4	2,172.4	2,020.9	151.5	73.5	7.0	68.4
2011	2,999.7	2,205.1	2,083.6	121.5	73.5	5.5	69.5
Lethbridge-Medicine Hat [4810]							
2010	217.0	150.5	138.9	11.6	69.4	7.7	64.0
2011	218.9	148.0	138.9	9.2	67.6	6.2	63.5
Camrose-Drumheller [4820]							
2010	155.5	114.0	109.1	4.8	73.3	4.2	70.2
2011	155.9	112.1	107.5	4.7	71.9	4.2	69.0
Calgary [4830]							
2010	1,087.6	813.3	753.5	59.8	74.8	7.4	69.3
2011	1,107.9	820.8	774.0	46.8	74.1	5.7	69.9
Banff-Jasper-Rocky Mountain House [4840]							
2010	71.5	55.6	52.8	2.8	77.8	5.0	73.8
2011	71.8	56.3	54.8	1.6	78.4	2.8	76.3

See notes at the end of the table.

Table 6-1 – continued

Labour force characteristics by province and economic region, ¹ unadjusted for seasonality, 3 month moving average ending in June 2010 and June 2011

	Population	Labour force			Participation rate	Unemployment rate	Employment rate
		Labour force	Employment	Unemployment			
in thousands							
Red Deer [4850]							
2010	152.2	111.0	103.2	7.9	72.9	7.1	67.8
2011	154.0	112.0	104.8	7.2	72.7	6.4	68.1
Edmonton [4860]							
2010	983.3	710.3	659.1	51.2	72.2	7.2	67.0
2011	998.1	726.9	687.5	39.4	72.8	5.4	68.9
Athabasca-Grande Prairie-Peace River [4870]							
2010	189.7	138.8	129.1	9.7	73.2	7.0	68.1
2011	190.5	144.5	136.3	8.2	75.9	5.7	71.5
Wood Buffalo-Cold Lake [4880]							
2010	99.6	78.9	75.3	3.6	79.2	4.6	75.6
2011	102.6	84.5	80.0	4.6	82.4	5.4	78.0
British Columbia							
2010	3,721.4	2,443.6	2,258.8	184.8	65.7	7.6	60.7
2011	3,774.5	2,462.8	2,280.1	182.7	65.2	7.4	60.4
Vancouver Island and Coast [5910]							
2010	648.2	412.5	389.7	22.8	63.6	5.5	60.1
2011	655.2	406.1	375.0	31.1	62.0	7.7	57.2
Lower Mainland-Southwest [5920]							
2010	2,267.8	1,503.2	1,385.0	118.1	66.3	7.9	61.1
2011	2,308.9	1,526.3	1,415.2	111.1	66.1	7.3	61.3
Thompson-Okanagan [5930]							
2010	432.6	278.6	255.1	23.5	64.4	8.4	59.0
2011	437.8	280.2	257.4	22.8	64.0	8.1	58.8
Kootenay [5940]							
2010	126.4	76.3	70.5	5.8	60.4	7.6	55.8
2011	127.2	77.2	70.7	6.4	60.7	8.3	55.6
Cariboo [5950]							
2010	127.8	87.9	81.7	6.2	68.8	7.1	63.9
2011	127.4	86.1	79.8	6.4	67.6	7.4	62.6
North Coast and Nechako [5960, 5970]							
2010	67.0	44.7	39.4	5.3	66.7	11.9	58.8
2011	66.7	47.4	44.1	3.3	71.1	7.0	66.1
Northeast [5980]							
2010	51.7	40.5	37.4	3.1	78.3	7.7	72.3
2011	51.4	39.6	38.0	1.6	77.0	4.0	73.9

1. For geographic descriptions of economic regions, refer to the Guide to the Labour Force Survey (catalogue number 71-543-GIE).

2. Estimates for Canada are a sum of the provincial totals and exclude estimates from Yukon, Northwest Territories and Nunavut.

Note(s): Related CANSIM table 282-0054.

Table 6-2
Labour force characteristics by territories, unadjusted for seasonality, 3 month moving average ending in June 2010 and June 2011

	Population	Labour force			Participation rate	Unemployment rate	Employment rate
		Labour force	Employment	Unemployment			
		in thousands			percent		
Yukon ¹							
2010	25.9	19.0	17.5	1.5	73.4	7.9	67.6
2011	26.5	20.5	19.2	1.3	77.4	6.3	72.5
Northwest Territories ²							
2010	32.3	23.3	21.6	1.8	72.1	7.7	66.9
2011	32.1	24.6	22.6	2.0	76.6	8.1	70.4
Nunavut ³							
2010	20.9	14.1	11.4	2.7	67.8	19.2	54.7
2011	21.1	14.3	11.9	2.4	67.7	16.6	56.5

1. Since 1992, the Labour force survey (LFS) has been conducted in the Yukon, using an alternative methodology that accommodates some of the operational difficulties inherent to remote locales. These estimates are not included in the national totals. In 1995, the LFS in the Yukon underwent a sample redesign. One result of the redesign was that the covered population increased from 85% to 92%, which is reflected by the sharp increase in the three month moving averages estimates of January, February and March of 1995 for all the level estimates. Users are therefore warned to be cautious when comparing estimates before January 1995 to estimates for January 1995 and forward.
2. Since 2001, the Labour force survey (LFS) has been administered in the Northwest Territories, using an alternative methodology that accommodates some of the operational difficulties inherent to remote locales. These estimates are not included in national totals.
3. Since 2004, the Labour force survey (LFS) has been administered in Nunavut, using an alternative methodology that accommodates some of the operational difficulties inherent to remote locales. These estimates are 3-month moving averages and are not included in national totals. From January 2004 to December 2007, estimates represent about 70% of all Nunavut residents aged 15 and over. Starting in January 2008, coverage was extended to 92%, so that by March 2008, the 3-month moving average is completely based on the extended coverage. Because of the large difference in coverage, users are recommended not to compare estimates prior to January 2008 with data afterwards. The January and February 2008 3-month moving average estimates are based on a mix of both coverages, since the extended coverage was introduced in January 2008. Estimates from January 2004 to December 2007 are based on the 10 largest communities in Nunavut: Iqaluit, Rankin Inlet, Cambridge Bay, Kugluktuk, Baker Lake, Arviat, Pond Inlet, Cape Dorset, Pangnirtung, Igloolik. Estimates from March 2008 to present cover the above communities as well as: Taloyoak, Gjoa Haven, Kugaaruk, Coral Harbour, Repulse Bay, Qikiqtarjuaq, Arctic Bay, Hall Beach, Clyde River.

Note(s): Related CANSIM table 282-0100.

Table 7
Average usual hours and wages of employees by selected characteristics, Canada, unadjusted for seasonality

	Employees				Full-time			Part-time		
	Number	Average weekly hours	Average weekly wages	Average hourly wages	Number	Average weekly hours	Average weekly wages	Number	Average weekly hours	Average weekly wages
	thousands		current dollars		thousands		current dollars	thousands		current dollars
June 2011										
15 years and over	15,015.3	35.5	834.53	22.72	12,372.4	39.3	948.19	2,643.0	17.9	302.47
15 to 24 years	2,581.9	29.2	412.95	13.36	1,521.0	38.5	571.78	1,060.9	16.0	185.22
25 years and over	12,433.4	36.8	922.07	24.67	10,851.3	39.4	1,000.95	1,582.1	19.2	381.09
Men	7,584.8	37.9	945.62	24.33	6,761.0	40.5	1,028.65	823.8	17.1	264.15
Women	7,430.5	33.1	721.13	21.09	5,611.4	37.9	851.23	1,819.1	18.2	319.82
Union coverage										
Union coverage	4,656.1	35.9	954.85	26.28	4,004.2	38.6	1,037.58	651.9	19.8	446.66
No union coverage	10,359.2	35.4	780.45	21.12	8,368.1	39.7	905.41	1,991.1	17.3	255.26
Job permanency										
Permanent	12,657.9	36.3	882.84	23.66	10,824.6	39.3	977.12	1,833.2	18.8	326.20
Temporary	2,357.5	31.2	575.11	17.70	1,547.7	39.2	745.86	809.7	15.9	248.74
Occupation										
Management	975.2	39.8	1,404.91	35.22	945.4	40.5	1,435.08	29.8	17.6	448.10
Business, finance and administrative	2,866.9	35.3	772.06	21.50	2,448.0	38.1	847.19	418.8	18.5	332.91
Natural and applied sciences	1,123.5	38.7	1,222.84	31.64	1,090.4	39.3	1,243.42	33.1	18.9	544.00
Health	1,033.3	33.6	916.54	26.93	790.2	37.7	1,034.82	243.1	20.6	531.96
Social science, education, government service and religion	1,405.7	34.4	1,019.51	29.30	1,163.1	37.9	1,131.86	242.7	17.8	481.10
Art, culture, recreation and sport	399.5	31.8	764.15	22.83	288.2	38.4	945.33	111.3	14.9	295.19
Sales and service	3,849.4	31.0	509.89	15.45	2,487.5	38.4	671.67	1,361.9	17.5	214.40
Trades, transport and equipment operators	2,213.1	40.3	920.88	22.67	2,088.7	41.5	956.68	124.4	19.0	319.63
Occupations unique to primary industry	362.4	41.2	788.67	18.54	320.7	44.7	866.58	41.7	14.4	188.79
Occupations unique to processing, manufacturing and utilities	786.5	39.3	764.74	19.31	750.2	40.3	788.24	36.3	18.4	278.67
June 2010										
15 years and over	14,765.7	35.4	814.89	22.28	12,126.0	39.3	929.26	2,639.7	17.8	289.47
15 to 24 years	2,582.7	29.0	400.26	13.02	1,480.7	38.6	565.43	1,102.0	16.1	178.30
25 years and over	12,183.0	36.8	902.78	24.24	10,645.3	39.3	979.87	1,537.7	19.0	369.13
Men	7,391.0	37.9	932.22	24.06	6,590.5	40.4	1,013.39	800.5	17.0	263.95
Women	7,374.7	32.9	697.29	20.50	5,535.5	37.8	829.10	1,839.2	18.1	300.57
Union coverage										
Union coverage	4,675.6	35.8	935.02	25.84	4,013.8	38.5	1,019.69	661.8	19.2	421.48
No union coverage	10,090.1	35.3	759.22	20.63	8,112.2	39.6	884.52	1,977.9	17.3	245.30
Job permanency										
Permanent	12,478.1	36.1	860.77	23.19	10,607.8	39.2	957.99	1,870.3	18.5	309.38
Temporary	2,287.6	31.5	564.59	17.30	1,518.2	39.5	728.55	769.3	15.9	241.05
Occupation										
Management	1,006.0	39.7	1,386.65	35.05	974.7	40.3	1,413.57	31.4	20.2	549.91
Business, finance and administrative	2,819.5	35.3	755.13	21.00	2,423.0	38.1	828.17	396.6	18.2	308.88
Natural and applied sciences	1,132.9	38.3	1,170.70	30.53	1,091.1	39.0	1,195.22	41.8	19.7	530.55
Health	965.4	33.3	871.43	25.87	719.3	37.8	1,000.35	246.2	20.3	494.72
Social science, education, government service and religion	1,436.3	34.3	989.23	28.71	1,188.5	37.8	1,100.23	247.8	17.5	456.80
Art, culture, recreation and sport	369.3	32.3	775.76	22.89	281.3	38.1	938.65	88.0	13.9	255.10
Sales and service	3,817.4	30.8	499.09	15.15	2,431.1	38.5	663.67	1,386.3	17.4	210.49
Trades, transport and equipment operators	2,127.3	40.0	893.00	22.08	1,997.2	41.4	932.55	130.1	18.3	285.93
Occupations unique to primary industry	331.3	41.9	782.40	18.21	297.1	45.1	851.59	34.3	14.7	182.49
Occupations unique to processing, manufacturing and utilities	760.2	39.0	748.78	18.97	722.9	40.1	774.28	37.3	18.3	254.72

Note(s): Related CANSIM Tables 282-0023, 282-0069, 282-0073.

Table 8
Regional unemployment rates used by the Employment Insurance Program, ¹ seasonally adjusted, 3 month moving average

Region	Effective from July 10, 2011 to August 6, 2011
	percent
Newfoundland and Labrador	
01. St. John's	5.4
02. Newfoundland and Labrador	16.7
Prince Edward Island	
03. Prince Edward Island	11.7
Nova Scotia	
04. Eastern Nova Scotia	16.8
05. Western Nova Scotia	10.5
06. Halifax	6.2
New Brunswick	
07. Fredericton-Moncton-Saint John	7.3
08. Madawaska-Charlotte ²	12.0
09. Restigouche-Albert	15.0
Quebec	
10. Gaspésie-Îles-de-la-Madeleine	14.1
11. Québec	5.8
12. Trois-Rivières	8.5
13. South Central Quebec	5.8
14. Sherbrooke	6.4
15. Montérégie	7.2
16. Montréal	8.2
17. Central Quebec	8.2
18. Northwestern Quebec	10.3
19. Bas-Saint-Laurent-Côte-Nord ³	9.8
20. Gatineau	6.6
21. Saguenay	7.7
Ontario	
22. Ottawa	5.5
23. Eastern Ontario	8.8
24. Kingston	6.8
25. Central Ontario	8.5
26. Oshawa	9.6
27. Toronto	8.4
28. Hamilton	6.0
29. St. Catharines	8.8
30. London	8.8
31. Niagara	10.3
32. Windsor	9.6
33. Kitchener	6.8
34. Huron	7.9
35. South Central Ontario	7.1
36. Sudbury	7.6
37. Thunder Bay	6.8
38. Northern Ontario	12.6
Manitoba	
39. Winnipeg	5.7
40. Southern Manitoba	6.1
41. Northern Manitoba	28.5

See notes at the end of the table.

Table 8 – continued

Regional unemployment rates used by the Employment Insurance Program, ¹ seasonally adjusted, 3 month moving average

Region	Effective from July 10, 2011 to August 6, 2011
	percent
Saskatchewan	
42. Regina	5.1
43. Saskatoon	5.6
44. Southern Saskatchewan	6.4
45. Northern Saskatchewan	17.7
Alberta	
46. Calgary	5.9
47. Edmonton	5.8
48. Northern Alberta	9.1
49. Southern Alberta	6.8
British Columbia	
50. Southern Interior British Columbia	9.1
51. Abbotsford	8.8
52. Vancouver	7.3
53. Victoria	6.9
54. Southern Coastal British Columbia	10.3
55. Northern British Columbia	10.5
Territories	
56. Yukon ⁴	25.0
57. Northwest Territories ⁴	25.0
58. Nunavut ⁴	25.0

1. The boundaries of these regions are determined by Human Resources and Social Development Canada (HRSDC). For geographic descriptions and maps of employment insurance regions, see the HRSDC website: <http://srv129.services.gc.ca/eiregions/en/geocont.aspx>.

2. This unemployment rate has been determined using a transition formula prescribed in the EI Regulations. For further information, see: http://www.hrsdc.gc.ca/en/cs/comm/news/2000/000913a_e.shtml.

3. This unemployment rate has been determined using a transition formula prescribed in the EI Regulations. For further information, see: http://www.hrsdc.gc.ca/en/cs/comm/news/2000/000913b_e.shtml.

4. This rate is provided by Human Resources and Skills Development Canada.

Note(s): All geographic regions are based on the 1996 Census boundaries.

Table 9-1
Students and other persons aged 15 to 24 (unadjusted) by detailed age groups

	June 2009	June 2010	June 2011	S.E. ¹	Change from		Percent change from	
					last year	two years ago	last year	two years ago
in thousands								
Students 15 to 24 years²								
Population	2,345.8	2,396.3	2,369.8	28.8	-26.5	24.0	-1.1	1.0
Labour force	1,351.8	1,372.9	1,338.9	30.1	-34.0	-12.9	-2.5	-1.0
Employment	1,100.9	1,153.1	1,130.3	28.6	-22.8	29.4	-2.0	2.7
Full-time employment	371.6	402.3	412.8	20.2	10.5	41.2	2.6	11.1
Part-time employment	729.3	750.8	717.5	23.0	-33.3	-11.8	-4.4	-1.6
Unemployment	250.9	219.7	208.6	15.5	-11.1	-42.3	-5.1	-16.9
Participation rate	57.6	57.3	56.5	1.0	-0.8	-1.1
Unemployment rate	18.6	16.0	15.6	1.0	-0.4	-3.0
Employment rate	46.9	48.1	47.7	1.0	-0.4	0.8
Part-time rate	66.2	65.1	63.5	1.4	-1.6	-2.8
Students 15 to 16 years²								
Population	799.1	793.6	780.3	5.3	-13.3	-18.8	-1.7	-2.4
Labour force	292.4	269.4	252.1	12.7	-17.3	-40.3	-6.4	-13.8
Employment	213.0	196.3	178.6	11.5	-17.7	-34.4	-9.0	-16.2
Full-time employment	16.4	7.1	9.3	4.4	2.2	-7.1	31.0	-43.3
Part-time employment	196.6	189.2	169.3	10.9	-19.9	-27.3	-10.5	-13.9
Unemployment	79.5	73.1	73.5	8.1	0.4	-6.0	0.5	-7.5
Participation rate	36.6	33.9	32.3	1.6	-1.6	-4.3
Unemployment rate	27.2	27.1	29.2	2.3	2.1	2.0
Employment rate	26.7	24.7	22.9	1.4	-1.8	-3.8
Part-time rate	92.3	96.4	94.8	1.7	-1.6	2.5
Students 17 to 19 years²								
Population	888.2	894.4	881.5	15.8	-12.9	-6.7	-1.4	-0.8
Labour force	575.6	568.2	550.5	17.4	-17.7	-25.1	-3.1	-4.4
Employment	471.6	477.1	474.4	16.9	-2.7	2.8	-0.6	0.6
Full-time employment	121.5	139.7	120.1	11.1	-19.6	-1.4	-14.0	-1.2
Part-time employment	350.1	337.4	354.4	14.6	17.0	4.3	5.0	1.2
Unemployment	104.0	91.1	76.1	10.0	-15.0	-27.9	-16.5	-26.8
Participation rate	64.8	63.5	62.5	1.6	-1.0	-2.3
Unemployment rate	18.1	16.0	13.8	1.6	-2.2	-4.3
Employment rate	53.1	53.3	53.8	1.6	0.5	0.7
Part-time rate	74.2	70.7	74.7	1.9	4.0	0.5
Students 20 to 24 years²								
Population	658.4	708.3	708.0	22.6	-0.3	49.6	0.0	7.5
Labour force	483.8	535.3	536.3	20.7	1.0	52.5	0.2	10.9
Employment	416.4	479.7	477.2	19.8	-2.5	60.8	-0.5	14.6
Full-time employment	233.7	255.5	283.4	15.6	27.9	49.7	10.9	21.3
Part-time employment	182.7	224.2	193.8	14.1	-30.4	11.1	-13.6	6.1
Unemployment	67.5	55.6	59.0	8.2	3.4	-8.5	6.1	-12.6
Participation rate	73.5	75.6	75.7	1.8	0.1	2.2
Unemployment rate	14.0	10.4	11.0	1.6	0.6	-3.0
Employment rate	63.2	67.7	67.4	1.9	-0.3	4.2
Part-time rate	43.9	46.7	40.6	2.5	-6.1	-3.3
Other persons aged 15 to 24³								
Population	2,107.0	2,064.2	2,087.7	28.8	23.5	-19.3	1.1	-0.9
Labour force	1,786.3	1,745.4	1,762.6	27.9	17.2	-23.7	1.0	-1.3
Employment	1,558.7	1,523.1	1,543.5	27.5	20.4	-15.2	1.3	-1.0
Full-time employment	1,181.0	1,128.1	1,157.0	25.9	28.9	-24.0	2.6	-2.0
Part-time employment	377.6	395.0	386.5	17.4	-8.5	8.9	-2.2	2.4
Unemployment	227.5	222.3	219.1	14.4	-3.2	-8.4	-1.4	-3.7
Participation rate	84.8	84.6	84.4	0.7	-0.1	-0.4
Unemployment rate	12.7	12.7	12.4	0.8	-0.3	-0.3
Employment rate	74.0	73.8	73.9	0.9	0.1	0.0
Part-time rate	24.2	25.9	25.0	1.1	-0.9	0.8

1. Average standard error of change over the year (see "Sampling Errors" in Data Quality for further explanations).

2. Students are persons aged 15 to 24 who attended school full-time in March and who are planning to return to school in the fall.

3. Other persons are all other youths aged 15 to 24 who are not included in the student population.

Note(s): Related CANSIM Table 282-0006.

Table 9-2
Students and other persons aged 15 to 24 (unadjusted) by province

	Population		Labour force				Participation rate	Unemployment rate	Employment rate
	Labour force	Employment	Full-time employment	Part-time employment	Unemployment				
in thousands									
Students¹									
Newfoundland and Labrador									
June 2010	30.1	12.8	10.0	3.8	6.2	2.8	42.5	21.9	33.2
June 2011	29.4	12.8	10.0	2.2	7.8	2.8	43.5	21.9	34.0
Prince Edward Island									
June 2010	10.1	7.1	6.0	2.7	3.2	1.1	70.3	15.5	59.4
June 2011	9.7	6.2	5.2	2.1	3.2	1.0	63.9	16.1	53.6
Nova Scotia									
June 2010	59.6	33.8	29.0	11.0	18.0	4.8	56.7	14.2	48.7
June 2011	63.5	37.4	31.2	12.6	18.7	6.2	58.9	16.6	49.1
New Brunswick									
June 2010	47.0	27.2	23.4	11.5	11.9	3.7	57.9	13.6	49.8
June 2011	42.9	24.0	19.5	7.5	12.0	4.5	55.9	18.8	45.5
Quebec									
June 2010	551.8	345.8	291.3	99.6	191.7	54.5	62.7	15.8	52.8
June 2011	572.3	358.2	307.9	112.8	195.1	50.3	62.6	14.0	53.8
Ontario									
June 2010	1,034.5	580.1	478.6	167.3	311.3	101.5	56.1	17.5	46.3
June 2011	1,019.4	575.2	472.0	165.2	306.8	103.2	56.4	17.9	46.3
Manitoba									
June 2010	76.7	46.3	38.9	14.6	24.3	7.4	60.4	16.0	50.7
June 2011	72.9	37.8	33.1	12.6	20.5	4.7	51.9	12.4	45.4
Saskatchewan									
June 2010	62.3	37.6	34.1	13.4	20.7	3.5	60.4	9.3	54.7
June 2011	60.7	35.3	31.8	12.7	19.2	3.4	58.2	9.6	52.4
Alberta									
June 2010	231.5	136.3	120.4	44.2	76.3	15.8	58.9	11.6	52.0
June 2011	222.2	122.2	104.9	44.4	60.5	17.4	55.0	14.2	47.2
British Columbia									
June 2010	292.7	146.0	121.5	34.3	87.2	24.5	49.9	16.8	41.5
June 2011	276.7	129.7	114.7	40.9	73.9	15.0	46.9	11.6	41.5
Other persons aged 15-24²									
Newfoundland and Labrador									
June 2010	31.9	24.7	18.9	15.5	3.4	5.7	77.4	23.1	59.2
June 2011	31.5	26.0	20.0	14.7	5.3	5.9	82.5	22.7	63.5
Prince Edward Island									
June 2010	9.4	8.3	7.2	6.2	1.0	1.1	88.3	13.3	76.6
June 2011	10.2	9.1	8.0	6.5	1.5	1.0	89.2	11.0	78.4
Nova Scotia									
June 2010	61.3	50.8	44.3	32.3	12.0	6.5	82.9	12.8	72.3
June 2011	56.5	46.2	40.0	27.6	12.3	6.3	81.8	13.6	70.8
New Brunswick									
June 2010	45.0	35.4	30.2	23.4	6.7	5.3	78.7	15.0	67.1
June 2011	48.3	37.5	31.4	26.0	5.4	6.1	77.6	16.3	65.0
Quebec									
June 2010	427.5	373.9	337.2	267.5	69.7	36.8	87.5	9.8	78.9
June 2011	408.3	358.0	309.9	241.5	68.4	48.2	87.7	13.5	75.9
Ontario									
June 2010	744.8	624.7	527.3	371.9	155.4	97.4	83.9	15.6	70.8
June 2011	763.6	638.9	555.5	389.7	165.8	83.4	83.7	13.1	72.7
Manitoba									
June 2010	87.1	74.0	67.4	48.3	19.1	6.6	85.0	8.9	77.4
June 2011	91.9	78.7	71.5	57.0	14.6	7.2	85.6	9.1	77.8

See notes at the end of the table.

Table 9-2 – continued

Students and other persons aged 15 to 24 (unadjusted) by province

	Population	Labour force					Participation rate	Unemployment rate	Employment rate
		Labour force	Employment	Full-time employment	Part-time employment	Unemployment			
in thousands									
Saskatchewan									
June 2010	75.8	63.9	58.1	48.4	9.7	5.8	84.3	9.1	76.6
June 2011	76.1	64.2	58.7	48.4	10.4	5.4	84.4	8.4	77.1
Alberta									
June 2010	283.0	243.5	220.0	176.5	43.5	23.6	86.0	9.7	77.7
June 2011	286.4	247.1	225.8	186.3	39.5	21.3	86.3	8.6	78.8
British Columbia									
June 2010	298.5	246.3	212.5	138.0	74.5	33.8	82.5	13.7	71.2
June 2011	314.9	256.9	222.5	159.3	63.3	34.3	81.6	13.4	70.7

1. Students are persons aged 15 to 24 who attended school full-time in March and who are planning to return to school in the fall.

2. Other persons are all other youths aged 15 to 24 who are not included in the student population.

Note(s): Related CANSIM Table 282-0006.

Data quality

About the Labour Force Survey

The statistics contained in this report are based on information obtained through a sample survey of 56,000 representative households across the country. The Labour Force Survey, started in November 1945, was taken at quarterly intervals until November 1952. It has been carried out monthly since then. The information generated by the survey has expanded considerably over the years with a major redesign of the survey content in 1976 and again in 1997, and provides a rich and detailed picture of the Canadian labour market.

The sample used in the Labour Force Survey has been designed to represent all persons in the population 15 years of age and over residing in the provinces of Canada, with the exception of the following: persons living on Indian reserves, full-time members of the armed forces and people living in institutions (for example, inmates of penal institutions and patients in hospitals or nursing homes who have resided in the institution for more than six months). Monthly estimates of employment, unemployment and persons not in the labour force refer to the specific week covered by the survey each month, normally the week containing the 15th day.

Definitions and explanations

The **labour force** is composed of those members of the civilian non-institutional population 15 years of age and over who, during the reference week, were employed or unemployed.

Employed persons are those who, during the reference week:

- (a) did any work at all
- (b) had a job but were not at work

A person is considered to be **full-time** if his/her usual hours at the main job are 30 or more hours per week. When the number of hours worked at the main job is usually less than 30 hours per week then he/she is considered to be **part-time**.

Unemployed persons are those who, during the reference week:

- (a) were without work, had actively looked for work in the past four weeks (ending with reference week), and were available for work;
- (b) had not actively looked for work in the past four weeks but were on temporary layoff and were available for work;
- (c) had not actively looked for work in the past four weeks but had a new job to start in four weeks or less from the reference week, and were available for work.

Persons in the civilian non-institutional population 15 years of age and over who, during the reference week, were neither employed nor unemployed are classified as **not in the labour force**.

The **unemployment rate** represents the number of unemployed persons expressed as a percentage of the labour force. The unemployment rate for a particular group (age, sex, etc.) is the number unemployed in that group expressed as a percentage of the labour force for that group.

The **participation rate** represents the labour force expressed as a percentage of the population 15 years of age and over. The participation rate for a particular group (age, sex, etc.) is the labour force in that group expressed as a percentage of the population for that group.

The **employment rate (formerly the employment/population ratio)** represents the number of persons employed expressed as a percentage of the population 15 years of age and over. The employment rate for a particular group (age, sex, etc.) is the number employed in that group expressed as a percentage of the population for that group.

The **part-time rate** represents the number of persons employed part-time expressed as a percentage of the employed. The part-time rate for a particular group (age, sex, etc.) is the number employed part-time in that group expressed as a percentage of the employed for that group.

All geographic regions are based on the 2006 Census boundaries.

Seasonal adjustment

Fluctuations in economic time series are caused by seasonal, cyclical and irregular movements. A seasonally adjusted series is one from which seasonal movements have been eliminated. Seasonal movements are defined as those which are caused by regular annual events such as climate, holidays, vacation periods and cycles related to crops, production and retail sales associated with Christmas and Easter. The seasonally adjusted series contains irregular as well as longer-term cyclical fluctuations.

The seasonally adjusted series are revised each year to take into account current data and to generate new forecast factors for the next twelve months. The data are therefore subject to slight revisions in future issues of this publication.

Sampling variability of estimates

Estimates in this publication are based on the Labour Force Survey, a monthly survey of approximately 56,000 households across Canada. Because the entire population is not surveyed, the estimates are subject to sampling error. While the published estimate is the best available indicator of the real value, changes in the level of any estimates between two months can be the result of a true change or sampling variability. The sampling error can be estimated by calculating the standard error for the published estimate or statistic. These standard errors have been included in the publication tables, in order to assist users in interpreting the data.

Interpretation based on standard error

Two thirds of the time (68%), a change greater than the sampling error indicates a real change. The larger the change compared to the standard error, the better the chance that we are observing a real change, as opposed to a change due to sampling variability. At the 95% level, in order to ensure that change is real, the change in the estimate must be greater than twice the sampling error.

Movements in estimates that are smaller than the sampling error are less likely to reflect a real change and more likely to be due to sampling variability. While the above is true for monthly movements, one can have more confidence in a series of consecutive movements in the same direction, even though some of the monthly movements may be smaller than the sampling error.

Interpretation based on confidence intervals

Confidence intervals provide another way of looking at the variability inherent in estimates of sample surveys. To illustrate how to calculate the confidence interval, let us say that one month the published estimate for total employment rose by 16,000 to reach 16,500,000. The associated standard error for the movement estimate is 27,200. The standard error used to interpret the movement estimate indicates that:

- There are approximately two chances in three (68%) that the real value of the movement between the two months falls within the range -11,200 to +43,200 (16,000 + or – one standard error).
- There are approximately nine chances in ten (90%) that the real value of the movement between the two months falls within the range -27,520 to +59,520 (16,000 + or – 1.6 times the standard error).
- There are approximately nineteen chances in twenty (95%) that the real value of the movement between the two months falls within the range -38,400 to +70,400 (16,000 + or – two standard errors).

For more detailed explanations on sampling variability of estimates, and in particular for information on how to assess the variability of level estimates, consult the Data quality section of the *Guide to the Labour Force Survey*, (71-543-G) on page 27.

Documentation

For more detailed information about the Labour Force Survey, see the following documents:

- Overview of the Labour Force Survey
- Guide to the Labour Force Survey (71-543-G)
- Data quality statement
- Methodology of the Canadian Labour Force Survey (71-526-X)
- LFS *geographical maps*