

Catalogue no. 71-001-X

Labour Force Information

Not for release before 7 A.M. EDT Friday,
October 7, 2011

September 11 to 17, 2011



Statistics
Canada

Statistique
Canada

Canada

How to obtain more information

Specific inquiries about this product and related statistics or services should be directed to: Labour Force Survey Program, Labour Statistics Division, Statistics Canada, Ottawa, Ontario, K1A 0T6 (telephone: 613-951-4090, toll free number: 1-866-873-8788, fax: 613-951-2869 or by e-mail address: labour@statcan.gc.ca).

For information about this product or the wide range of services and data available from Statistics Canada, visit our website at www.statcan.gc.ca, e-mail us at infostats@statcan.gc.ca, or telephone us, Monday to Friday from 8:30 a.m. to 4:30 p.m., at the following numbers:

Statistics Canada's National Contact Centre

Toll-free telephone (Canada and the United States):

Inquiries line	1-800-263-1136
National telecommunications device for the hearing impaired	1-800-363-7629
Fax line	1-877-287-4369

Local or international calls:

Inquiries line	1-613-951-8116
Fax line	1-613-951-0581

Depository Services Program

Inquiries line	1-800-635-7943
Fax line	1-800-565-7757

To access this product

This product, Catalogue no. 71-001-X, is available free in electronic format. To obtain a single issue, visit our website at www.statcan.gc.ca and browse by "Key resource" > "Publications."

Standards of service to the public

Statistics Canada is committed to serving its clients in a prompt, reliable and courteous manner. To this end, Statistics Canada has developed *standards of service* that its employees observe. To obtain a copy of these service standards, please contact Statistics Canada toll-free at 1-800-263-1136. The service standards are also published on www.statcan.gc.ca under "About us" > "The agency" > "Providing services to Canadians."

Statistics Canada
Labour Statistics Division
Labour Force Survey Program

Labour Force Information

Not for release before 7 A.M. EDT Friday, October 7, 2011

September 11 to 17, 2011

Published by authority of the Minister responsible for Statistics Canada

© Minister of Industry, 2011

All rights reserved. The content of this electronic publication may be reproduced, in whole or in part, and by any means, without further permission from Statistics Canada, subject to the following conditions: that it be done solely for the purposes of private study, research, criticism, review or newspaper summary, and/or for non-commercial purposes; and that Statistics Canada be fully acknowledged as follows: Source (or "Adapted from", if appropriate): Statistics Canada, year of publication, name of product, catalogue number, volume and issue numbers, reference period and page(s). Otherwise, no part of this publication may be reproduced, stored in a retrieval system or transmitted in any form, by any means—electronic, mechanical or photocopy—or for any purposes without prior written permission of Licensing Services, Information Management Division, Statistics Canada, Ottawa, Ontario, Canada K1A 0T6.

October 2011

Catalogue no. 71-001-X

ISSN 1492-5478

Frequency: Monthly

Ottawa

Cette publication est également disponible en français.

Note of appreciation

Canada owes the success of its statistical system to a long-standing partnership between Statistics Canada, the citizens of Canada, its businesses, governments and other institutions. Accurate and timely statistical information could not be produced without their continued cooperation and goodwill.

User information

Symbols

The following standard symbols are used in Statistics Canada publications:

- . not available for any reference period
- .. not available for a specific reference period
- ... not applicable
- 0 true zero or a value rounded to zero
- 0^s value rounded to 0 (zero) where there is a meaningful distinction between true zero and the value that was rounded
- P preliminary
- r revised
- x suppressed to meet the confidentiality requirements of the *Statistics Act*
- E use with caution
- F too unreliable to be published
- * significantly different from reference category ($p < 0.05$)

Special requests (\$)

Custom tabulations can be arranged on an ad hoc or regular basis. This service enables you to specify tables and time series to meet your own requirements. The cost varies according to the request. For more information, contact us toll-free at 1-866-873-8788 or e-mail us at labour@statcan.gc.ca.

Schedule of LFS releases

Reference period - Week ending	Release date
December 11, 2010	January 7, 2011
January 15, 2011	February 4, 2011
February 19, 2011	March 11, 2011
March 19, 2011	April 8, 2011
April 16, 2011	May 6, 2011
May 21, 2011	June 10, 2011
June 18, 2011	July 8, 2011
July 16, 2011	August 5, 2011
August 20, 2011	September 9, 2011
September 17, 2011	October 7, 2011
October 15, 2011	November 4, 2011
November 12, 2011	December 2, 2011
December 10, 2011	January 6, 2012

Latest LFS release in *The Daily* (free)

Table of contents

Highlights	5
-------------------	----------

Analysis — September 2011	6
----------------------------------	----------

Charts

1. Employment and unemployment indicators, Canada, seasonally adjusted	9
2. Employment and unemployment indicators, Canada, seasonally adjusted	10
3. Index of employment by industry, Canada, seasonally adjusted, January 2008=100	11
4. Index of employment by industry, Canada, seasonally adjusted, January 2008=100	12
5. Index of employment by industry, Canada, seasonally adjusted, January 2008=100	13
6. Index of employment by province, seasonally adjusted, January 2008=100	14
7. Index of employment by province, seasonally adjusted, January 2008=100	15

Related products	16
-------------------------	-----------

Statistical tables

1	Labour force characteristics by age and sex, Canada, seasonally adjusted	26
2	Employment by class of worker and industry, Canada, seasonally adjusted	28
3	Labour force characteristics by province, seasonally adjusted	29
4	Selected labour force characteristics (seasonally adjusted)	31
4-1	Newfoundland and Labrador	31
4-2	Prince Edward Island	32
4-3	Nova Scotia	33
4-4	New Brunswick	34
4-5	Quebec	35
4-6	Ontario	36
4-7	Manitoba	37
4-8	Saskatchewan	38
4-9	Alberta	39
4-10	British Columbia	40
5	Labour force characteristics by census metropolitan area (seasonally adjusted)	41
5-1	3 month moving average	41
5-2	Monthly	46

Table of contents – continued

6	Labour force characteristics	47
6-1	by province and economic region, unadjusted for seasonality, 3 month moving average ending in September 2010 and September 2011	47
6-2	by territories, unadjusted for seasonality, 3 month moving average ending in September 2010 and September 2011	52
7	Average usual hours and wages of employees by selected characteristics, Canada, unadjusted for seasonality	53
8	Regional unemployment rates used by the Employment Insurance Program, seasonally adjusted, 3 month moving average	54

Data quality, concepts and methodology

Data quality	56
--------------	----

Highlights

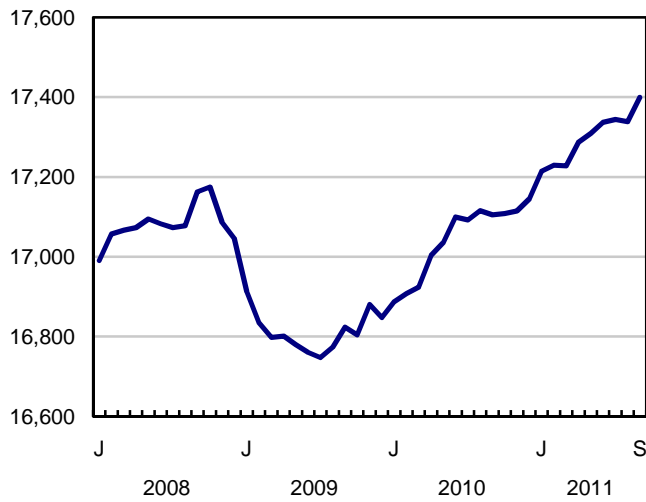
September 2011

Following two months of little change, employment rose by 61,000 in September, all in full time. This increase pushed the unemployment rate down 0.2 percentage points to 7.1%, the lowest rate since December 2008.

Chart 1
Employment and unemployment rates, Canada, seasonally adjusted

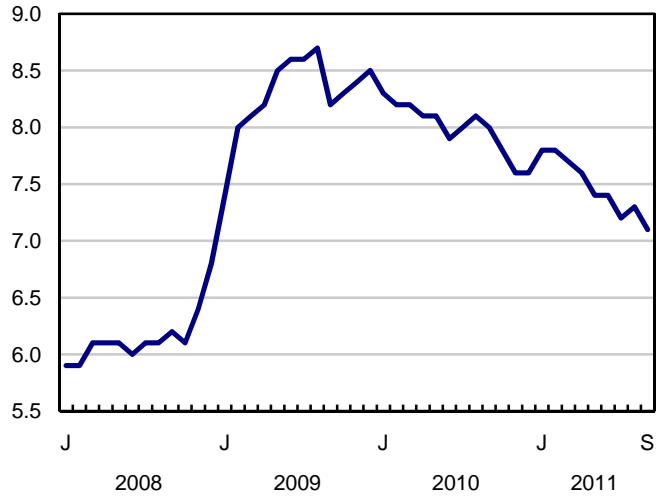
Employment

thousands



Unemployment rate

percent



Analysis — September 2011

Following two months of little change, employment rose by 61,000 in September, all in full time. This increase pushed the unemployment rate down 0.2 percentage points to 7.1%, the lowest rate since December 2008.

In the 12 months to September, employment has grown by 1.7% (+294,000), primarily in Ontario and Alberta. Over this period, full-time employment rose by 2.5% (+344,000), part-time work declined 1.5% (-50,000) and total actual hours worked increased 2.0%.

September's employment increase was spread across a number of industries, with gains in educational services; professional, scientific and technical services; accommodation and food services; natural resources; and public administration. These gains were partially offset by declines in finance, insurance, real estate and leasing; manufacturing; and information, culture and recreation.

There were notable employment increases in British Columbia, Saskatchewan, New Brunswick and Prince Edward Island in September.

In September, employment increased among the self-employed and public sector employees. Compared with 12 months earlier, employment growth in the private sector (+2.2%) was faster than that of the public sector (+1.1%), while self-employment rose slightly (+0.6%).

Service sector leads employment gains

Employment in educational services rose by 38,000 in September (see Note to readers). Compared with a year earlier, employment in this industry is up 1.7% (+20,000).

The number of workers in professional, scientific and technical services rose by 36,000 in September, continuing an upward trend that began in the summer of 2009. Over the past 12 months, employment in this industry increased by 4.1% (+53,000), one of the highest rates of growth among all industries.

In accommodation and food services, employment was up 31,000 in September. Compared with 12 months earlier, employment increased by 7.6% (+80,000), the highest growth rate among all industries.

Following two consecutive months of decline, employment in natural resources increased by 17,000 in September. This gain brings employment in this industry to the same level as 12 months earlier.

There were also employment gains in public administration (+14,000), bringing employment back to its level of a year earlier.

Employment fell by 35,000 in finance, insurance, real estate and leasing. Compared with a year earlier, employment in this industry is down by 1.4% (-15,000).

Following little change in the previous three months, employment in manufacturing was down 24,000 in September. This decline leaves employment slightly above its level of September 2010 (+0.8% or +13,000).

There were also declines in information, culture and recreation (-22,000). Despite September's decline, employment in this industry increased by 1.5% (+12,000) compared with 12 months earlier.

While employment in construction was little changed in September, it is up 4.1% (+50,000) from a year earlier, one of the highest growth rates of all industries.

Large gains in British Columbia

Employment in British Columbia rose by 32,000, all in full-time work. This was the first notable employment gain since July 2010. The unemployment rate fell by 0.8 percentage points to 6.7% in September.

In Saskatchewan, employment increased by 4,000 in September. Employment in the province is up 0.9% compared to 12 months earlier, lower than the national average of 1.7%.

Employment increased by 2,700 in New Brunswick. Despite this month's gain, employment in this province is 0.5% lower than 12 months earlier.

While employment in Alberta was little changed in September, over the year, employment has grown by 4.8% (+98,000), entirely in full-time work.

Employment in Quebec was unchanged in September. With fewer people searching for work, the unemployment rate fell by 0.3 percentage points to 7.3%. Compared to September 2010, employment increased by 0.6%.

Ontario employment was little changed for the second consecutive month and the unemployment rate was 7.6%. Over the past 12 months, employment increased by 2.0% (+136,000), above the national growth rate of 1.7%.

Increases among core-aged and older workers

Employment increased among workers aged 25 to 54 in September (+25,000), bringing growth over the previous year to 1.2% (+146,000).

In September, employment grew by 21,000 among workers aged 55 and over. Employment for this age group is up 2.7% (+81,000) in the past 12 months.

Employment among youths aged 15 to 24 was up slightly, bringing growth since September 2010 to 2.8% (+68,000).

Quarterly update for the territories

The Labour Force Survey also collects labour market information about the territories. This information is produced monthly in the form of three-month moving averages. Not all estimates are seasonally adjusted; therefore, comparisons should only be made on a year-over-year basis.

Employment in the Northwest Territories rose by 1,500 (+6.7%) from the third quarter of 2010 to the same period in 2011. Employment was little changed in both Yukon and Nunavut.

In the third quarter of 2011, the unemployment rate was 7.4% in the Northwest Territories, 4.9% in Yukon and 17.2% in Nunavut.

Note to readers

Labour Force Survey (LFS) estimates are based on a sample, and are therefore subject to sampling variability. Estimates for smaller geographic areas or industries will have more variability. For an explanation of sampling variability of estimates, and how to use standard errors to assess this variability, consult the "Data quality" section of the publication Labour Force Information (71-001-X, free).

Seasonal adjustment and educational services

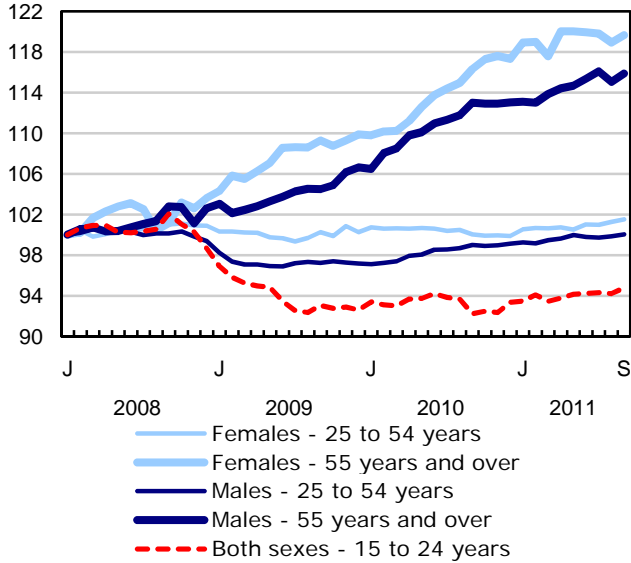
Unless otherwise stated, this release presents seasonally adjusted data, which facilitates comparisons by removing the effects of seasonal variations.

The LFS seasonal adjustment process removes the "average" seasonal pattern in the monthly data, according to trends seen in the previous few years. While there have been large movements in educational services employment in summer months in recent years, there has not been a consistent pattern in the direction or magnitude of these month-to-month yearly changes.

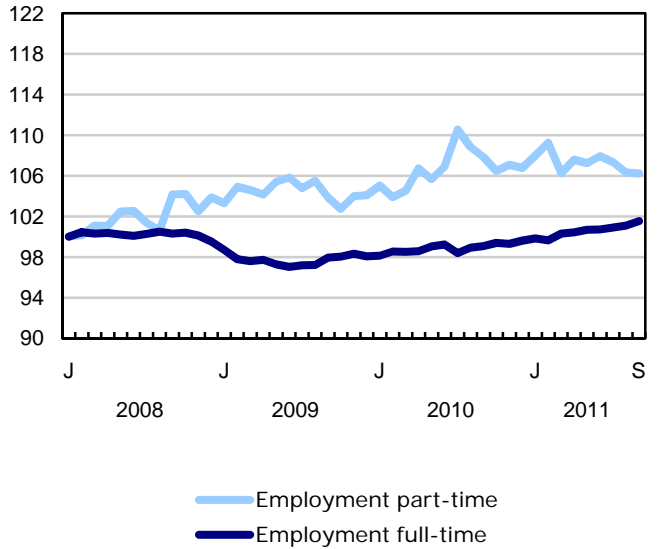
The 2010 *Labour Force Historical Review* on DVD-ROM (71F0004X, \$209) is now available.

Chart 1
Employment and unemployment indicators, Canada, seasonally adjusted

Employment index, January 2008=100



Employment index, January 2008=100



Employment index, January 2008=100

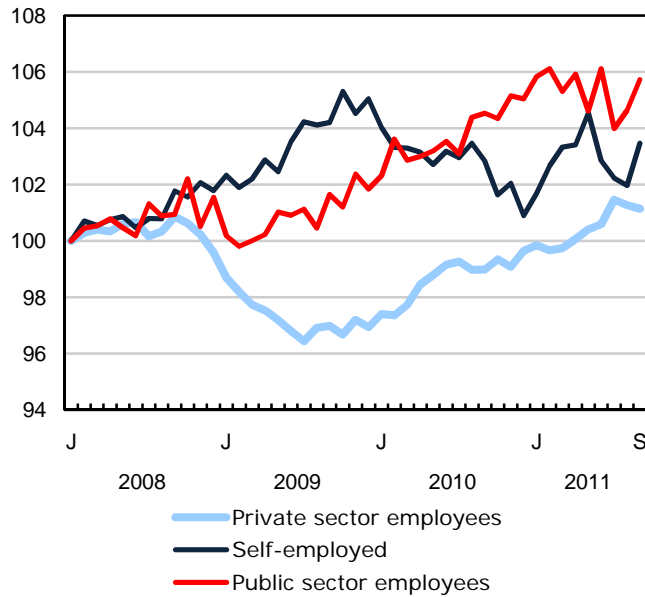
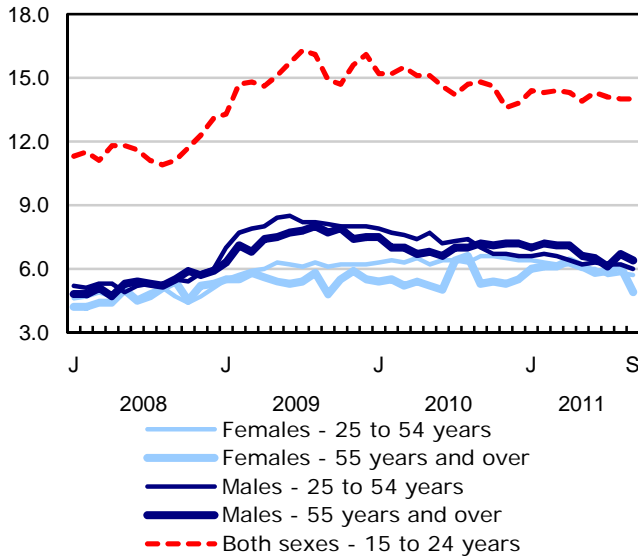
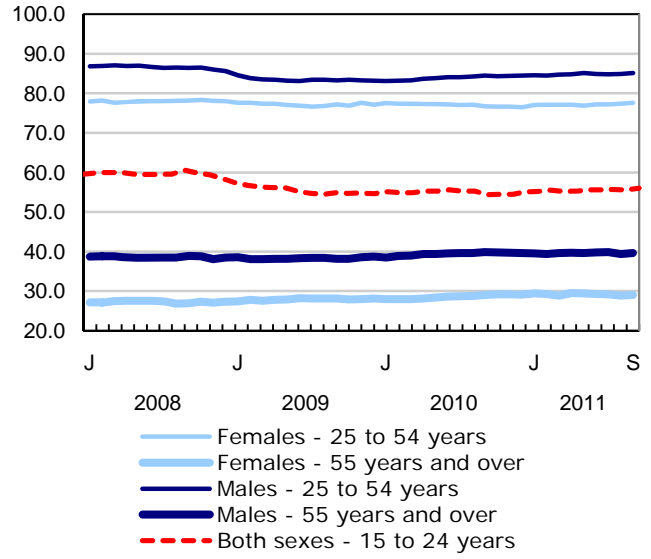


Chart 2
Employment and unemployment indicators, Canada, seasonally adjusted

Unemployment rate (%)



Employment rate (%)



Participation rate (%)

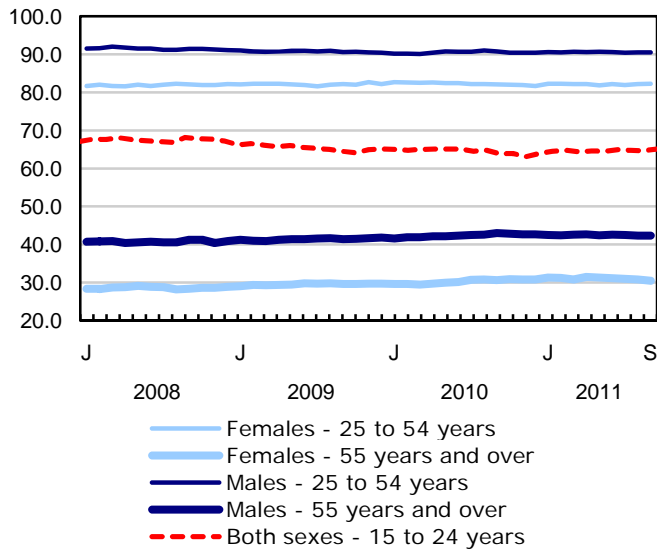


Chart 3
Index of employment by industry, Canada, seasonally adjusted, January 2008=100

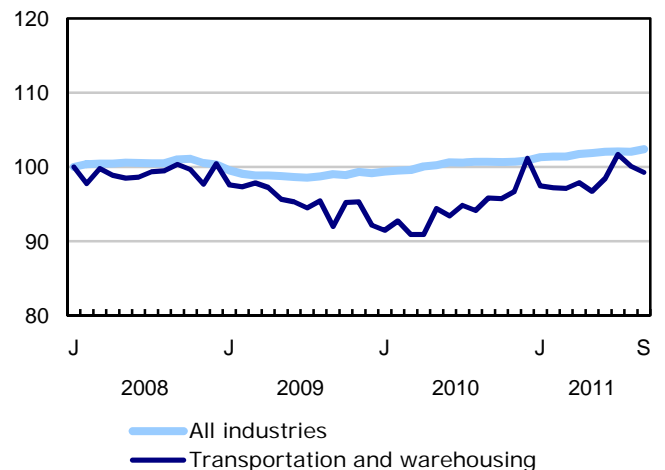
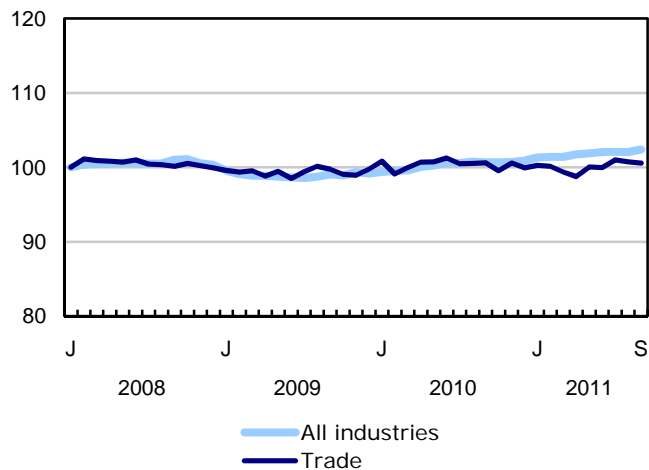
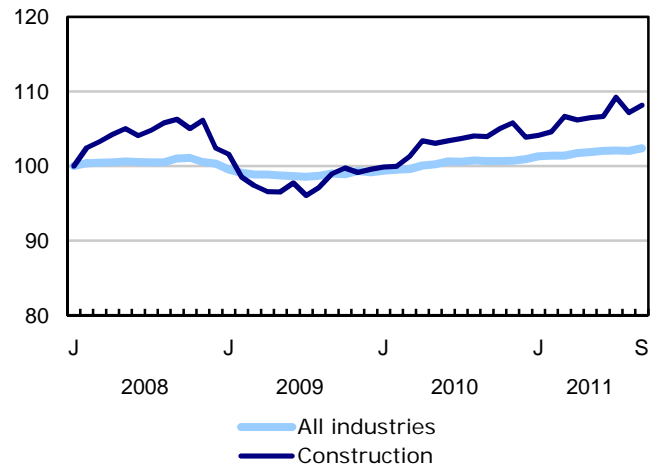
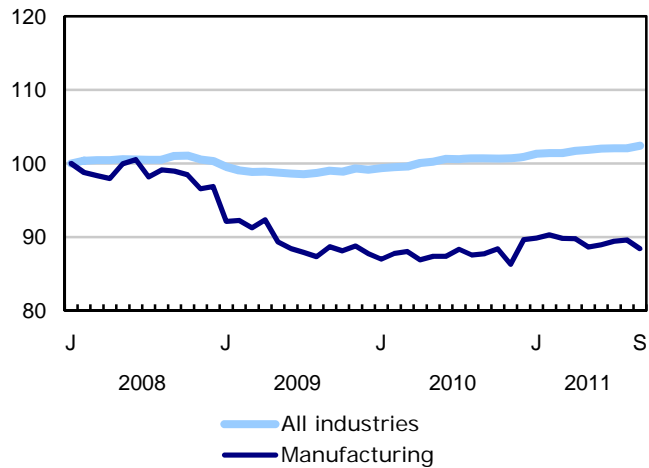
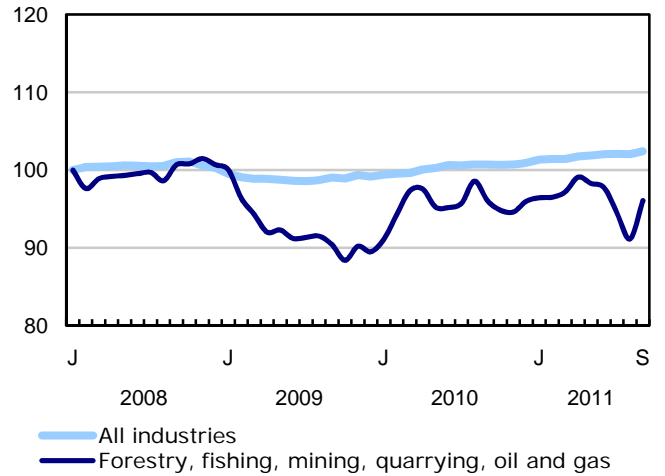
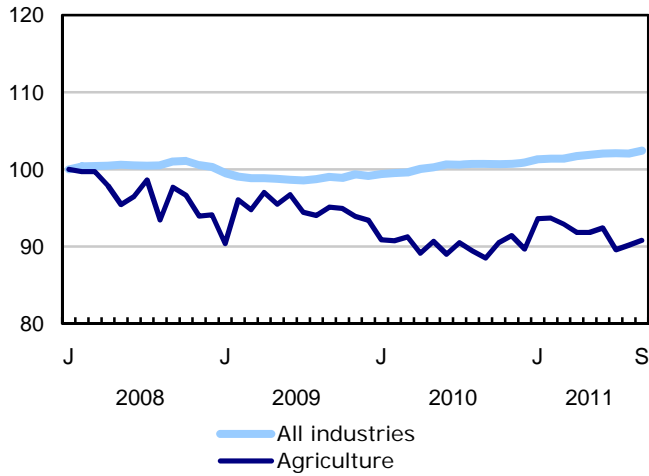


Chart 4
Index of employment by industry, Canada, seasonally adjusted, January 2008=100

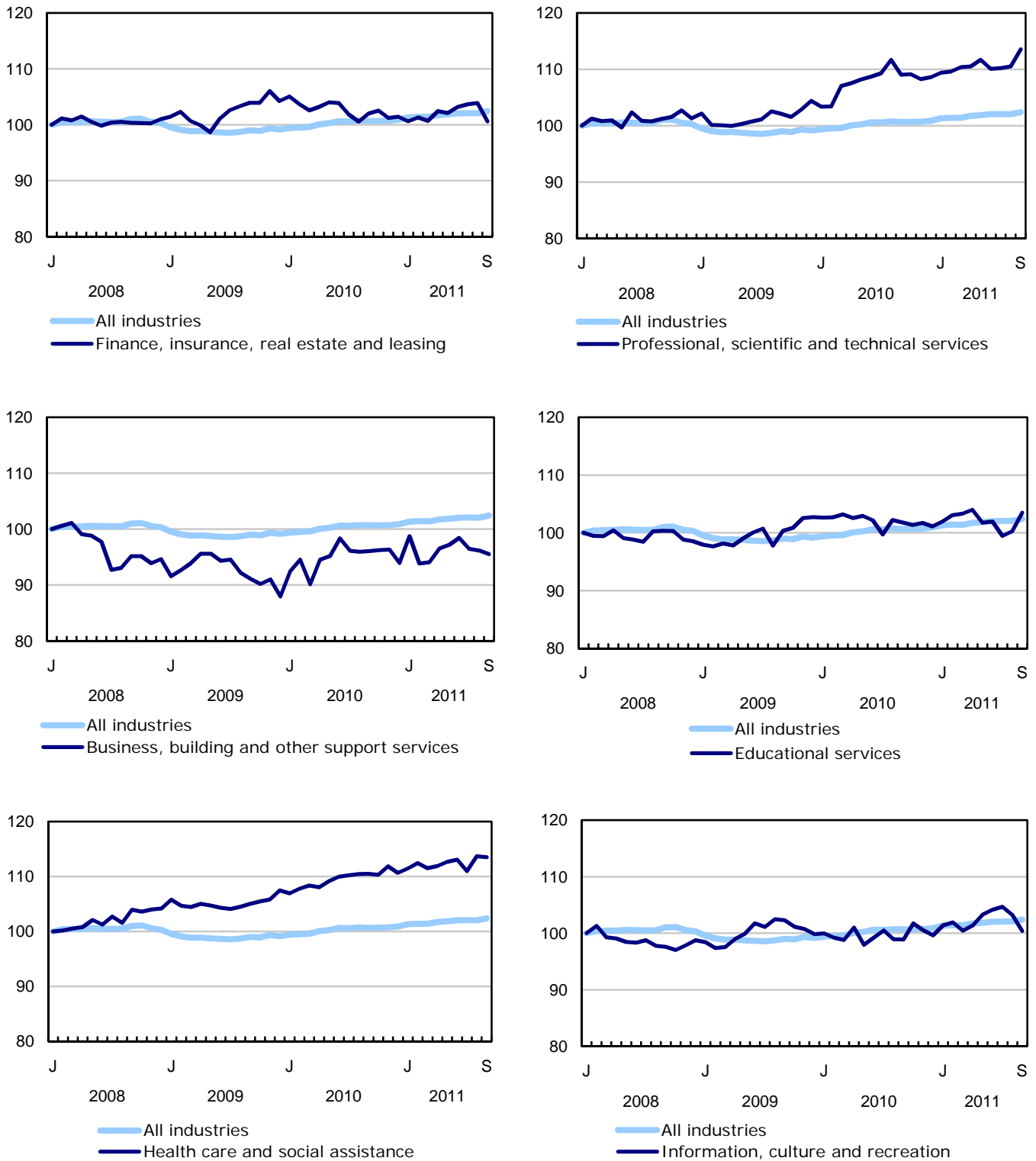


Chart 5
Index of employment by industry, Canada, seasonally adjusted, January 2008=100

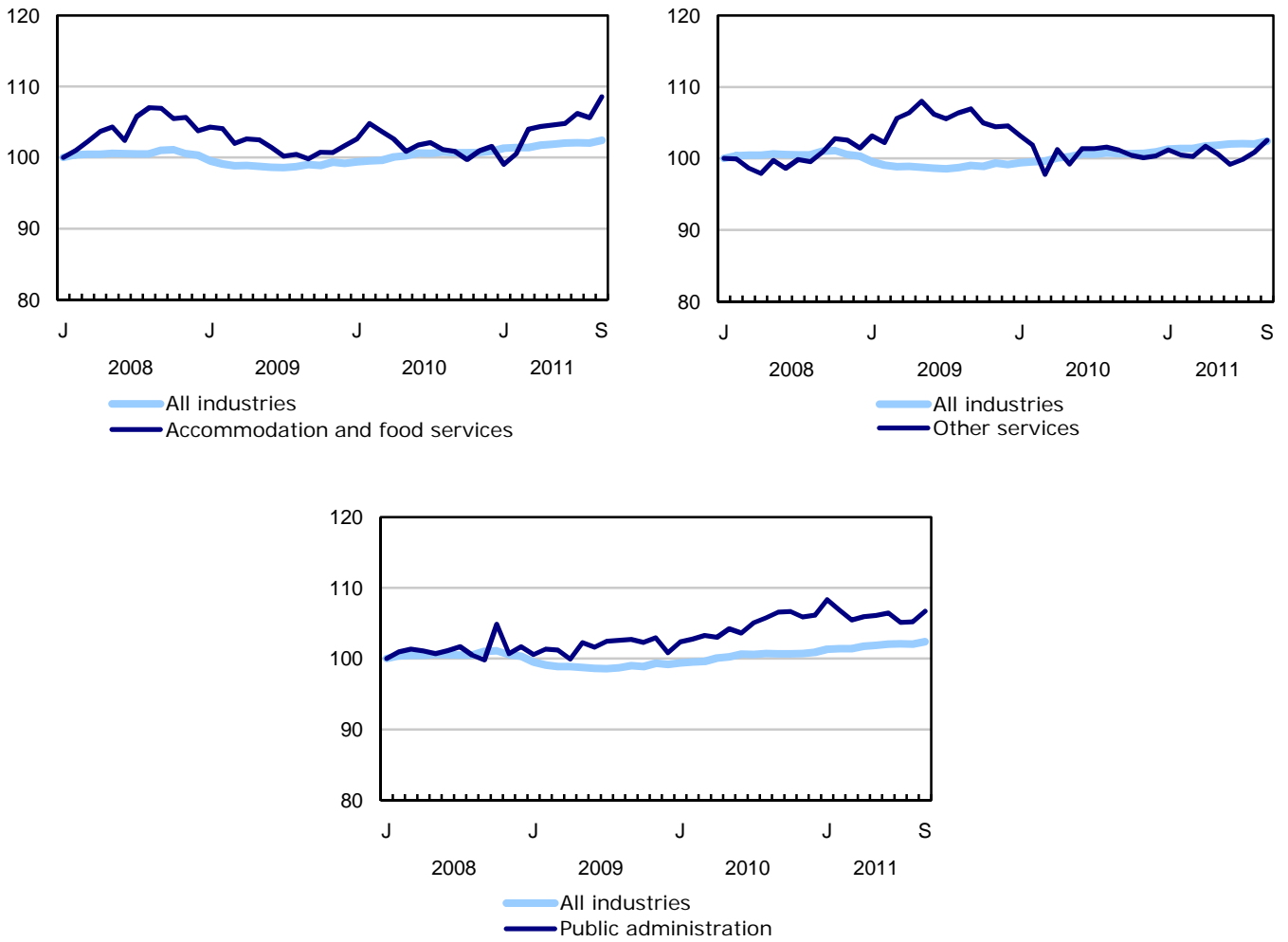


Chart 6
Index of employment by province, seasonally adjusted, January 2008=100

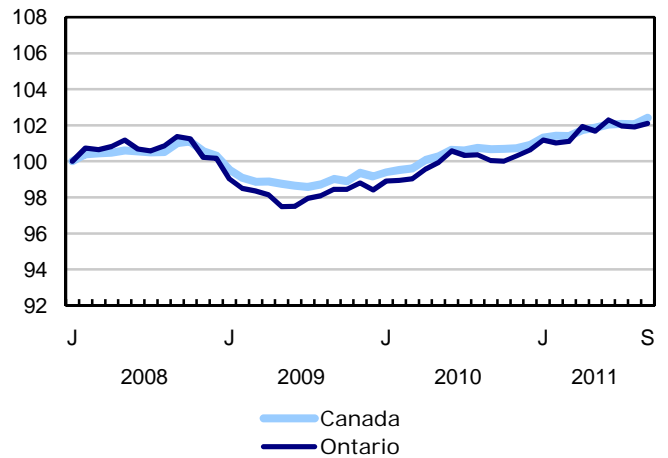
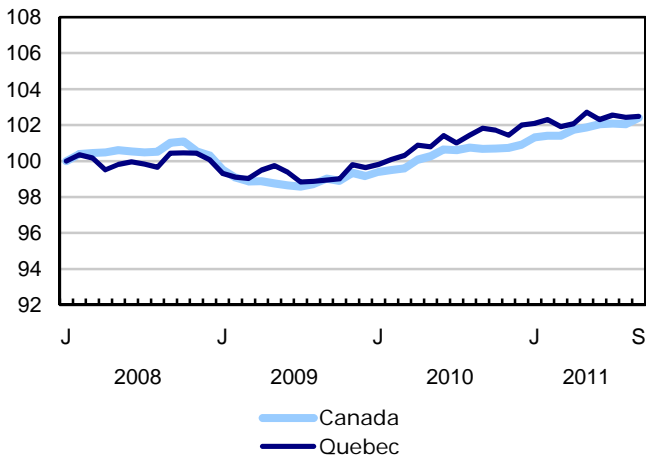
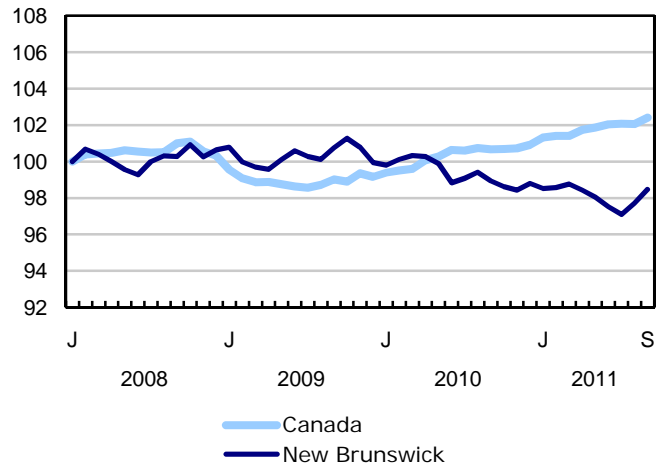
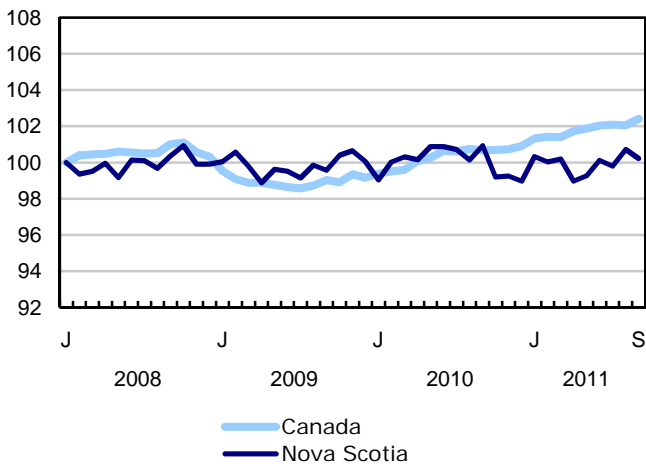
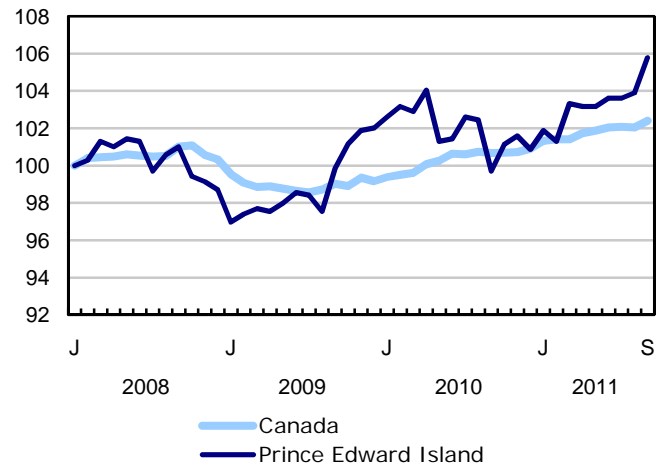
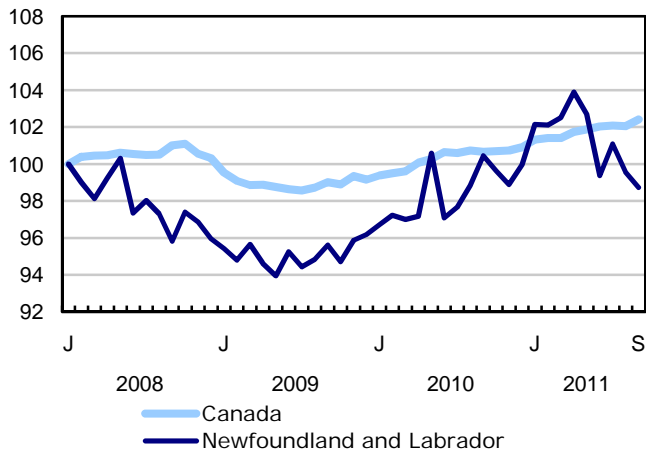
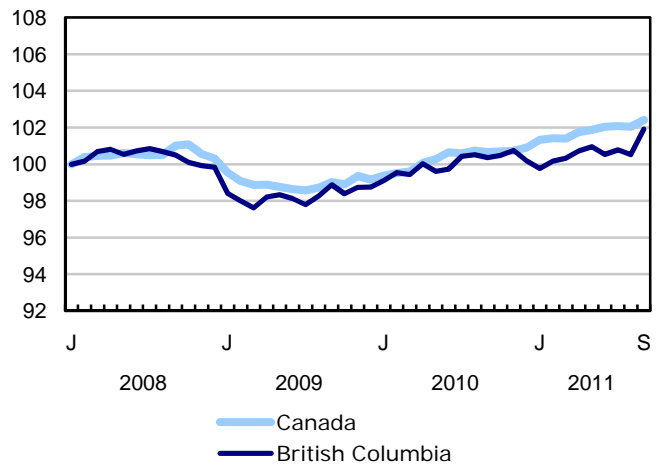
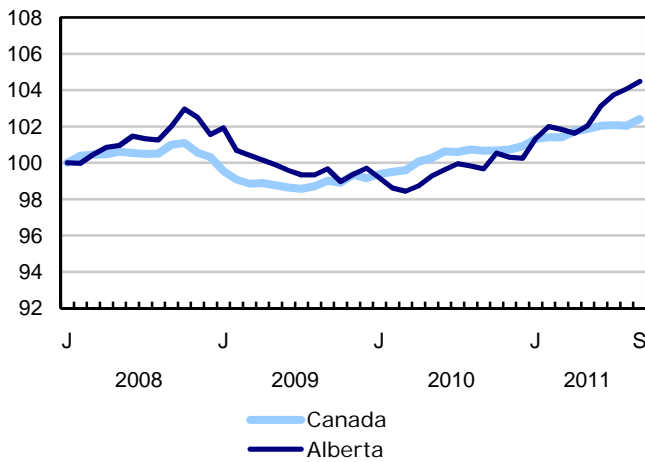
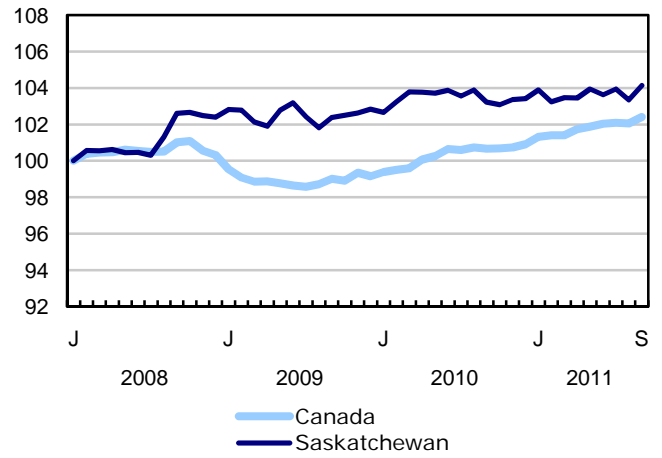
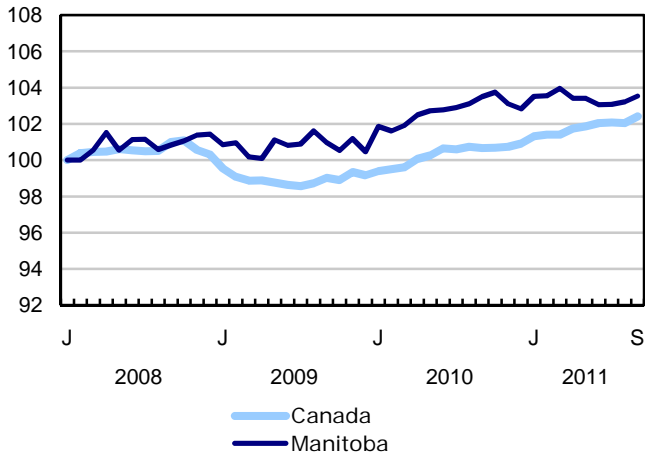


Chart 7
Index of employment by province, seasonally adjusted, January 2008=100



Related products

Selected publications from Statistics Canada

71-222-X	The Canadian Labour Market at a Glance
71-526-X	Methodology of the Canadian Labour Force Survey
71-543-G	Guide to the Labour Force Survey
71-544-X	Labour Force Survey Products and Services
71-587-X	Aboriginal Peoples Living Off-reserve in Western Canada: Estimates from the Labour Force Survey
71-588-X	The Aboriginal Labour Force Analysis Series
71-606-X	The Immigrant Labour Force Analysis Series
71F0004X	Labour Force Historical Review
71F0031X	Improvements to the Labour Force Survey (LFS)
71M0001X	Labour Force Survey Microdata File
75-001-X	Perspectives on Labour and Income

Selected CANSIM tables from Statistics Canada

282-0001	Labour force survey estimates (LFS), by sex and detailed age group, unadjusted for seasonality, monthly
282-0002	Labour force survey estimates (LFS), by sex and detailed age group, annual
282-0003	Labour force survey estimates (LFS), by educational attainment, sex and age group, unadjusted for seasonality, monthly
282-0004	Labour force survey estimates (LFS), by educational attainment, sex and age group, annual
282-0005	Labour force survey estimates (LFS), by full- and part-time students during school months, sex and age group, unadjusted for seasonality, monthly
282-0006	Labour force survey estimates (LFS), by students during summer months, sex and age group, unadjusted for seasonality, monthly
282-0007	Labour force survey estimates (LFS), by North American Industry Classification System (NAICS), sex and age group, unadjusted for seasonality, monthly

282-0008	Labour force survey estimates (LFS), by North American Industry Classification System (NAICS), sex and age group, annual
282-0009	Labour force survey estimates (LFS), by National Occupational Classification for Statistics (NOC-S) and sex, unadjusted for seasonality, monthly
282-0010	Labour force survey estimates (LFS), by National Occupational Classification for Statistics (NOC-S) and sex, annual
282-0011	Labour force survey estimates (LFS), employment by class of worker, North American Industry Classification System (NAICS) and sex, unadjusted for seasonality, monthly
282-0012	Labour force survey estimates (LFS), employment by class of worker, North American Industry Classification System (NAICS) and sex, annual
282-0013	Labour force survey estimates (LFS), part-time employment by reason for part-time work, sex and age group, unadjusted for seasonality, monthly
282-0014	Labour force survey estimates (LFS), part-time employment by reason for part-time work, sex and age group, annual
282-0015	Labour force survey estimates (LFS), by usual hours worked, main or all jobs, sex and age group, unadjusted for seasonality, monthly
282-0016	Labour force survey estimates (LFS), by usual hours worked, main or all jobs, sex and age group, annual
282-0017	Labour force survey estimates (LFS), by actual hours worked, main or all jobs, sex and age group, unadjusted for seasonality, monthly
282-0018	Labour force survey estimates (LFS), by actual hours worked, main or all jobs, sex and age group, annual
282-0019	Labour force survey estimates (LFS), by usual hours worked, class of worker, North American Industry Classification System (NAICS) and sex, unadjusted for seasonality, monthly
282-0020	Labour force survey estimates (LFS), by usual hours worked, class of worker, North American Industry Classification System (NAICS) and sex, annual
282-0021	Labour force survey estimates (LFS), by actual hours worked, class of worker, North American Industry Classification System (NAICS) and sex, unadjusted for seasonality, monthly
282-0022	Labour force survey estimates (LFS), by actual hours worked, class of worker, North American Industry Classification System (NAICS) and sex, annual
282-0023	Labour force survey estimates (LFS), by usual hours worked, class of worker, National Occupational Classification for Statistics (NOC-S) and sex, unadjusted for seasonality, monthly
282-0024	Labour force survey estimates (LFS), by usual hours worked, class of worker, National Occupational Classification for Statistics (NOC-S) and sex, annual
282-0025	Labour force survey estimates (LFS), by actual hours worked, class of worker, National Occupational Classification for Statistics (NOC-S) and sex, unadjusted for seasonality, monthly
282-0026	Labour force survey estimates (LFS), by actual hours worked, class of worker, National Occupational Classification for Statistics (NOC-S) and sex, annual

282-0027	Labour force survey estimates (LFS), by total and average usual and actual hours worked, main or all jobs, type of work, sex and age group, unadjusted for seasonality, monthly
282-0028	Labour force survey estimates (LFS), by total and average usual and actual hours worked, main or all jobs, type of work, sex and age group, annual
282-0029	Labour force survey estimates (LFS), average days lost for personal reasons per full-time employee by North American Industry Classification System (NAICS), sex and age group, annual
282-0030	Labour force survey estimates (LFS), average days lost for personal reasons per full-time employee by National Occupational Classification for Statistics (NOC-S), sex and age group, annual
282-0031	Labour force survey estimates (LFS), multiple jobholders by North American Industry Classification System (NAICS), sex and age group, annual
282-0032	Labour force survey estimates (LFS), multiple jobholders by North American Industry Classification System (NAICS), sex and age group, unadjusted for seasonality, monthly
282-0033	Labour force survey estimates (LFS), multiple jobholders by National Occupational Classification for Statistics (NOC-S), sex and age group, unadjusted for seasonality, monthly
282-0034	Labour force survey estimates (LFS), multiple jobholders by National Occupational Classification for Statistics (NOC-S), sex and age group, annual
282-0035	Labour force survey estimates (LFS), multiple jobholders by usual hours worked at main and all jobs, unadjusted for seasonality, monthly
282-0036	Labour force survey estimates (LFS), multiple jobholders by usual hours worked at main and all jobs, annual
282-0037	Labour force survey estimates (LFS), job tenure by type of work, sex and age group, unadjusted for seasonality, monthly
282-0038	Labour force survey estimates (LFS), job tenure by type of work, sex and age group, annual
282-0039	Labour force survey estimates (LFS), job tenure by National Occupational Classification for Statistics (NOC-S) and sex, unadjusted for seasonality, monthly
282-0040	Labour force survey estimates (LFS), job tenure by National Occupational Classification for Statistics (NOC-S) and sex, annual
282-0041	Labour force survey estimates (LFS), job tenure by North American Industry Classification System (NAICS) and sex, unadjusted for seasonality, monthly
282-0042	Labour force survey estimates (LFS), job tenure by North American Industry Classification System (NAICS) and sex, annual
282-0047	Labour force survey estimates (LFS), duration of unemployment by sex and age group, unadjusted for seasonality, monthly
282-0048	Labour force survey estimates (LFS), duration of unemployment by sex and age group, annual
282-0049	Labour force survey estimates (LFS), unemployment by type of work sought and search method, sex and age group, unadjusted for seasonality, monthly

282-0050	Labour force survey estimates (LFS), unemployment by type of work sought and search method, sex and age group, annual
282-0051	Labour force survey estimates (LFS), retirement age by class of worker and sex, annual
282-0052	Labour force survey estimates (LFS), by census metropolitan area based on 2001 census boundaries, sex and age group, 3-month moving average, unadjusted for seasonality, monthly *Terminated*
282-0053	Labour force survey estimates (LFS), by census metropolitan area based on 2001 census boundaries, sex and age group, annual *Terminated*
282-0054	Labour force survey estimates (LFS), by provinces and economic regions, 3-month moving average, unadjusted for seasonality, monthly
282-0055	Labour force survey estimates (LFS), by provinces, territories and economic regions, annual
282-0056	Labour force survey estimates (LFS), employment by census metropolitan area based on 2001 census boundaries and North American Industry Classification System (NAICS), 3-month moving average, unadjusted for seasonality, monthly *Terminated*
282-0057	Labour force survey estimates (LFS), employment by census metropolitan area based on 2001 census boundaries and North American Industry Classification System (NAICS), annual *Terminated*
282-0058	Labour force survey estimates (LFS), employment by census metropolitan area based on 2001 census boundaries and National Occupational Classification for Statistics (NOC-S), 3-month moving average, unadjusted for seasonality, monthly *Terminated*
282-0059	Labour force survey estimates (LFS), employment by census metropolitan area based on 2001 census boundaries and National Occupational Classification for Statistics (NOC-S), annual *Terminated*
282-0060	Labour force survey estimates (LFS), employment by economic region and North American Industry Classification System (NAICS), 3-month moving average, unadjusted for seasonality, monthly
282-0061	Labour force survey estimates (LFS), employment by economic region and North American Industry Classification System (NAICS), annual
282-0062	Labour force survey estimates (LFS), employment by economic region and National Occupational Classification for Statistics (NOC-S), 3-month moving average, unadjusted for seasonality, monthly
282-0063	Labour force survey estimates (LFS), employment by economic region and National Occupational Classification for Statistics (NOC-S), annual
282-0069	Labour force survey estimates (LFS), wages of employees by type of work, National Occupational Classification for Statistics (NOC-S), sex and age group, unadjusted for seasonality, monthly (current dollars)
282-0070	Labour force survey estimates (LFS), wages of employees by type of work, National Occupational Classification for Statistics (NOC-S), sex and age group, annual (current dollars)

282-0071	Labour force survey estimates (LFS), wages of employees by type of work, North American Industry Classification System (NAICS), sex and age group, unadjusted for seasonality, monthly (current dollars)
282-0072	Labour force survey estimates (LFS), wages of employees by type of work, North American Industry Classification System (NAICS), sex and age group, annual (current dollars)
282-0073	Labour force survey estimates (LFS), wages of employees by job permanence, union coverage, sex and age group, unadjusted for seasonality, monthly (current dollars)
282-0074	Labour force survey estimates (LFS), wages of employees by job permanence, union coverage, sex and age group, annual (current dollars)
282-0075	Labour force survey estimates (LFS), employees by establishment size, North American Industry Classification System (NAICS), sex and age group, unadjusted for seasonality, monthly
282-0076	Labour force survey estimates (LFS), employees by establishment size, North American Industry Classification System (NAICS), sex and age group, annual
282-0077	Labour force survey estimates (LFS), employees by union coverage, North American Industry Classification System (NAICS), sex and age group, unadjusted for seasonality, monthly
282-0078	Labour force survey estimates (LFS), employees by union coverage, North American Industry Classification System (NAICS), sex and age group, annual
282-0079	Labour force survey estimates (LFS), employees by job permanency, North American Industry Classification System (NAICS), sex and age group, unadjusted for seasonality, monthly
282-0080	Labour force survey estimates (LFS), employees by job permanency, North American Industry Classification System (NAICS), sex and age group, annual
282-0081	Labour force survey estimates (LFS), employees working overtime (weekly) by National Occupational Classification for Statistics (NOC-S), sex and age group, unadjusted for seasonality, monthly
282-0082	Labour force survey estimates (LFS), employees working overtime (weekly) by National Occupational Classification for Statistics (NOC-S), sex and age group, annual
282-0083	Labour force survey estimates (LFS), employees working overtime (weekly) by North American Industry Classification System (NAICS), sex and age group, unadjusted for seasonality, monthly
282-0084	Labour force survey estimates (LFS), employees working overtime (weekly) by North American Industry Classification System (NAICS), sex and age group, annual
282-0085	Labour force survey estimates (LFS), supplementary unemployment rates by sex and age group, unadjusted for seasonality, monthly
282-0086	Labour force survey estimates (LFS), supplementary unemployment rates by sex and age group, annual
282-0087	Labour force survey estimates (LFS), by sex and age group, seasonally adjusted and unadjusted, monthly
282-0088	Labour force survey estimates (LFS), employment by North American Industry Classification System (NAICS), seasonally adjusted and unadjusted, monthly

282-0089	Labour force survey estimates (LFS), employment by class of worker and sex, seasonally adjusted and unadjusted, monthly
282-0090	Labour force survey estimates (LFS), by census metropolitan area based on 2001 census boundaries, 3-month moving average, seasonally adjusted and unadjusted, monthly *Terminated*
282-0091	Labour force survey estimates (LFS), by Montréal, Toronto and Vancouver census metropolitan areas based on 2001 census boundaries, seasonally adjusted and unadjusted, monthly *Terminated*
282-0092	Labour force survey estimates (LFS), actual hours worked by North American Industry Classification System (NAICS), seasonally adjusted, monthly
282-0093	Labour force survey estimates (LFS), employment by National Occupational Classification for Statistics (NOC-S), seasonally adjusted, monthly
282-0094	Labour force survey estimates (LFS), by North American Industry Classification System (NAICS), Canada, seasonally adjusted, monthly
282-0095	Labour force survey estimates (LFS), by full- and part-time students during school months, sex and age group, annual
282-0100	Labour force survey estimates (LFS), by territories, sex and age group, 3-month moving average, seasonally adjusted and unadjusted, monthly
282-0101	Labour force survey estimates (LFS), by immigrant status, age group, Canada, regions, provinces and Montreal, Toronto, Vancouver census metropolitan areas, 3-month moving average, unadjusted for seasonality, monthly
282-0102	Labour force survey estimates (LFS), by immigrant status, age group, Canada, regions, provinces and Montreal, Toronto, Vancouver census metropolitan areas, annual
282-0103	Labour force survey estimates (LFS), by immigrant status, sex and detailed age group, Canada, 3-month moving average, unadjusted for seasonality, monthly
282-0104	Labour force survey estimates (LFS), by immigrant status, sex and detailed age group, Canada, annual
282-0105	Labour force survey estimates (LFS), by immigrant status, educational attainment, sex and age group, Canada, 3-month moving average, unadjusted for seasonality, monthly
282-0106	Labour force survey estimates (LFS), by immigrant status, educational attainment, sex and age group, Canada, annual
282-0107	Labour force survey estimates (LFS), by immigrant status, country of birth, sex and age group, Canada, regions and provinces, 3-month moving average, unadjusted for seasonality, monthly
282-0108	Labour force survey estimates (LFS), by immigrant status, country of birth, sex and age group, Canada, regions and provinces, annual
282-0109	Labour force survey estimates (LFS), by census metropolitan area based on 2006 census boundaries, sex and age group, 3-month moving average, unadjusted for seasonality, monthly

282-0110	Labour force survey estimates (LFS), by census metropolitan area based on 2006 census boundaries, sex and age group, annual
282-0111	Labour force survey estimates (LFS), employment by census metropolitan area based on 2006 census boundaries and North American Industry Classification System (NAICS), 3-month moving average, unadjusted for seasonality, monthly
282-0112	Labour force survey estimates (LFS), employment by census metropolitan area based on 2006 census boundaries and North American Industry Classification System (NAICS), annual
282-0113	Labour force survey estimates (LFS), employment by census metropolitan area based on 2006 census boundaries and National Occupational Classification for Statistics (NOC-S), 3-month moving average, unadjusted for seasonality, monthly
282-0114	Labour force survey estimates (LFS), employment by census metropolitan area based on 2006 census boundaries and National Occupational Classification for Statistics (NOC-S), annual
282-0115	Labour force survey estimates (LFS), by selected census agglomerations based on 2006 census boundaries, annual
282-0116	Labour force survey estimates (LFS), by census metropolitan area based on 2006 census boundaries, 3-month moving average, seasonally adjusted and unadjusted, monthly
282-0117	Labour force survey estimates (LFS), by Montréal, Toronto and Vancouver census metropolitan areas based on 2006 census boundaries, seasonally adjusted and unadjusted, monthly
282-0118	Labour force survey estimates (LFS), by urban and rural areas based on 2006 census boundaries, sex and age group, unadjusted for seasonality, monthly
282-0119	Labour force survey estimates (LFS), by urban and rural areas based on 2006 census boundaries, sex and age group, annual
282-0120	Labour force survey estimates (LFS), employment by urban and rural areas based on 2006 census boundaries, class of worker and North American Industry Classification System (NAICS), unadjusted for seasonality, monthly
282-0121	Labour force survey estimates (LFS), employment by urban and rural areas based on 2006 census boundaries, class of worker and North American Industry Classification System (NAICS), annual

Selected surveys from Statistics Canada

3701	Labour Force Survey
------	---------------------

Selected summary tables from Statistics Canada

- *Labour force characteristics*
- *Employment by industry*
- *Days lost per worker due to illness or disability, by sex, by province*
- *Economic indicators, by province and territory (monthly and quarterly)*
- *Labour force and participation rates by sex and age group*
- *Labour force, employed and unemployed, numbers and rates, by province*
- *Employment by industry and sex*
- *Full-time and part-time employment by sex and age group*
- *Labour force characteristics by age and sex*
- *Distribution of employed people, by industry, by province*
- *Labour force characteristics, population 15 years and older, by census metropolitan area*
- *Labour force characteristics, population 15 years and older, by economic region, by province*
- *Days lost per worker by cause, by provinces*
- *Days lost per worker by industry and sex*
- *People employed, by educational attainment*
- *Reasons for part-time work by sex and age group*
- *Self-employment, historical summary*
- *Employment by age, sex, type of work, class of worker and province (monthly)*
- *Employment by major industry groups, seasonally adjusted, by province (monthly)*
- *Actual hours worked per week by industry, seasonally adjusted (monthly)*
- *Average hourly wages of employees by selected characteristics and profession, unadjusted data, by province (monthly)*
- *Labour force characteristics, seasonally adjusted, by province (monthly)*
- *Labour force characteristics, unadjusted, by province (monthly)*
- *Labour force characteristics, seasonally adjusted, by census metropolitan area (3 month moving average)*
- *Labour force characteristics, unadjusted, by census metropolitan area (3 month moving average)*
- *Labour force characteristics, unadjusted, by economic region (3 month moving average)*

- *Labour force characteristics by immigrant status of population aged 25 to 54, by province*
- *Labour force characteristics by immigrant status of population aged 25 to 54, by educational attainment*
- *Labour force characteristics by immigrant status, by detailed age group*
- *Labour force characteristics by immigrant status of population aged 25 to 54, by country of birth*

Statistical tables

Table 1
Labour force characteristics by age and sex, Canada, seasonally adjusted

	August 2011	September 2011	S.E. ¹	Change from			Percent change from		
				last month	last December	twelve months ago	last month	last December	twelve months ago
in thousands (except rates)									
15 years and over, both sexes									
Population	28,032.7	28,057.1	...	24.4	242.3	319.7	0.1	0.9	1.2
Labour force	18,706.6	18,733.7	29.3	27.1	175.9	148.2	0.1	0.9	0.8
Employment	17,338.7	17,399.6	28.6	60.9	254.3	294.3	0.4	1.5	1.7
Employment full-time	14,042.3	14,106.1	37.7	63.8	270.3	344.0	0.5	2.0	2.5
Employment part-time	3,296.4	3,293.5	34.8	-2.9	-16.1	-49.7	-0.1	-0.5	-1.5
Unemployment	1,367.9	1,334.2	25.3	-33.7	-78.3	-146.0	-2.5	-5.5	-9.9
Participation rate	66.7	66.8	0.1	0.1	0.1	-0.2
Unemployment rate	7.3	7.1	0.1	-0.2	-0.5	-0.9
Employment rate	61.9	62.0	0.1	0.1	0.4	0.3
Part-time rate	19.0	18.9	0.2	-0.1	-0.4	-0.6
15 to 24 years, both sexes									
Population	4,457.6	4,457.2	...	-0.4	-2.8	-3.9	0.0	-0.1	-0.1
Labour force	2,882.3	2,901.6	17.0	19.3	50.4	53.7	0.7	1.8	1.9
Employment	2,478.8	2,494.1	15.7	15.3	37.6	67.5	0.6	1.5	2.8
Employment full-time	1,295.2	1,292.2	18.5	-3.0	6.4	28.3	-0.2	0.5	2.2
Employment part-time	1,183.5	1,201.9	19.4	18.4	31.2	39.2	1.6	2.7	3.4
Unemployment	403.6	407.5	14.7	3.9	12.8	-13.8	1.0	3.2	-3.3
Participation rate	64.7	65.1	0.4	0.4	1.2	1.3
Unemployment rate	14.0	14.0	0.5	0.0	0.2	-0.8
Employment rate	55.6	56.0	0.4	0.4	0.9	1.6
Part-time rate	47.7	48.2	0.7	0.4	0.5	0.3
25 years and over, men									
Population	11,534.7	11,546.9	...	12.2	122.3	161.5	0.1	1.1	1.4
Labour force	8,386.1	8,391.5	15.3	5.4	48.3	28.9	0.1	0.6	0.3
Employment	7,856.2	7,879.5	16.1	23.3	98.3	105.9	0.3	1.3	1.4
Employment full-time	7,253.6	7,282.3	21.2	28.7	108.1	133.0	0.4	1.5	1.9
Employment part-time	602.6	597.2	17.3	-5.4	-9.8	-27.1	-0.9	-1.6	-4.3
Unemployment	529.9	512.0	14.5	-17.9	-50.0	-77.0	-3.4	-8.9	-13.1
Participation rate	72.7	72.7	0.1	0.0	-0.3	-0.8
Unemployment rate	6.3	6.1	0.2	-0.2	-0.6	-0.9
Employment rate	68.1	68.2	0.1	0.1	0.1	-0.1
Part-time rate	7.7	7.6	0.2	-0.1	-0.2	-0.5
25 years and over, women									
Population	12,040.4	12,052.9	...	12.5	122.6	162.1	0.1	1.0	1.4
Labour force	7,438.1	7,440.6	16.7	2.5	77.2	65.6	0.0	1.0	0.9
Employment	7,003.7	7,025.9	16.2	22.2	118.3	120.8	0.3	1.7	1.7
Employment full-time	5,493.5	5,531.5	24.6	38.0	155.8	182.6	0.7	2.9	3.4
Employment part-time	1,510.2	1,494.4	22.9	-15.8	-37.5	-61.8	-1.0	-2.4	-4.0
Unemployment	434.3	414.7	13.4	-19.6	-41.1	-55.2	-4.5	-9.0	-11.7
Participation rate	61.8	61.7	0.1	-0.1	0.0	-0.3
Unemployment rate	5.8	5.6	0.2	-0.2	-0.6	-0.8
Employment rate	58.2	58.3	0.1	0.1	0.4	0.2
Part-time rate	21.6	21.3	0.3	-0.3	-0.9	-1.3
25 to 54 years, both sexes									
Population	14,541.3	14,542.4	...	1.1	31.7	46.2	0.0	0.2	0.3
Labour force	12,556.1	12,566.4	22.0	10.3	77.9	29.8	0.1	0.6	0.2
Employment	11,801.6	11,826.5	23.1	24.9	148.1	145.9	0.2	1.3	1.2
Employment full-time	754.5	739.9	18.5	-14.6	-70.2	-116.1	-1.9	-8.7	-13.6
Employment part-time	86.3	86.4	0.2	0.1	0.3	-0.1
Unemployment	6.0	5.9	0.1	-0.1	-0.6	-0.9
Participation rate	81.2	81.3	0.2	0.1	0.8	0.7
25 to 54 years, men									
Population	7,274.0	7,274.4	...	0.4	16.8	24.4	0.0	0.2	0.3
Labour force	6,586.0	6,584.3	14.0	-1.7	20.5	-0.4	0.0	0.3	0.0
Employment	6,176.1	6,187.2	15.4	11.1	56.8	63.7	0.2	0.9	1.0
Unemployment	409.9	397.0	13.2	-12.9	-36.4	-64.3	-3.1	-8.4	-13.9
Participation rate	90.5	90.5	0.2	0.0	0.1	-0.3
Unemployment rate	6.2	6.0	0.2	-0.2	-0.6	-1.0
Employment rate	84.9	85.1	0.2	0.2	0.6	0.6

See notes at the end of the table.

Table 1 – continued

Labour force characteristics by age and sex, Canada, seasonally adjusted

	August 2011	September 2011	S.E. ¹	Change from			Percent change from		
				last month	last December	twelve months ago	last month	last December	twelve months ago
in thousands (except rates)									
25 to 54 years, women									
Population	7,267.3	7,268.0	...	0.7	14.9	21.8	0.0	0.2	0.3
Labour force	5,970.1	5,982.1	16.1	12.0	57.4	30.3	0.2	1.0	0.5
Employment	5,625.5	5,639.2	16.2	13.7	91.2	82.1	0.2	1.6	1.5
Unemployment	344.6	342.9	12.6	-1.7	-33.8	-51.8	-0.5	-9.0	-13.1
Participation rate	82.2	82.3	0.2	0.1	0.6	0.2
Unemployment rate	5.8	5.7	0.2	-0.1	-0.7	-0.9
Employment rate	77.4	77.6	0.2	0.2	1.1	0.9
55 years and over, both sexes									
Population	9,033.9	9,057.4	...	23.5	213.2	277.4	0.3	2.4	3.2
Labour force	3,268.1	3,265.7	17.2	-2.4	47.6	64.7	-0.1	1.5	2.0
Employment	3,058.4	3,079.0	17.2	20.6	68.6	80.9	0.7	2.3	2.7
Unemployment	209.7	186.7	9.4	-23.0	-21.0	-16.2	-11.0	-10.1	-8.0
Participation rate	36.2	36.1	0.2	-0.1	-0.3	-0.4
Unemployment rate	6.4	5.7	0.3	-0.7	-0.8	-0.6
Employment rate	33.9	34.0	0.2	0.1	0.0	-0.1
55 years and over, men									
Population	4,260.7	4,272.5	...	11.8	105.5	137.2	0.3	2.5	3.3
Labour force	1,800.2	1,807.2	11.4	7.0	27.8	29.4	0.4	1.6	1.7
Employment	1,680.1	1,692.3	11.5	12.2	41.5	42.2	0.7	2.5	2.6
Unemployment	120.0	115.0	7.2	-5.0	-13.6	-12.7	-4.2	-10.6	-9.9
Participation rate	42.3	42.3	0.3	0.0	-0.4	-0.7
Unemployment rate	6.7	6.4	0.4	-0.3	-0.8	-0.8
Employment rate	39.4	39.6	0.3	0.2	0.0	-0.3
55 years and over, women									
Population	4,773.2	4,784.9	...	11.7	107.7	140.3	0.2	2.3	3.0
Labour force	1,468.0	1,458.5	11.7	-9.5	19.8	35.4	-0.6	1.4	2.5
Employment	1,378.3	1,386.7	11.7	8.4	27.1	38.7	0.6	2.0	2.9
Unemployment	89.7	71.8	5.9	-17.9	-7.3	-3.4	-20.0	-9.2	-4.5
Participation rate	30.8	30.5	0.3	-0.3	-0.3	-0.1
Unemployment rate	6.1	4.9	0.4	-1.2	-0.6	-0.4
Employment rate	28.9	29.0	0.3	0.1	-0.1	0.0

1. Average standard error of change in two consecutive months (see "Sampling Errors" in Data Quality for further explanations).

Note(s): Related CANSIM table 282-0087.

Table 2
Employment by class of worker and industry, Canada, seasonally adjusted

	August 2011	September 2011	S.E. ¹	Change from			Percent change from		
				last month	last December	twelve months ago	last month	last December	twelve months ago
in thousands									
Class of worker									
Employees	14,690.9	14,712.9	34.7	22.0	187.8	277.9	0.1	1.3	1.9
Self-employed ²	2,647.8	2,686.7	24.9	38.9	66.5	16.4	1.5	2.5	0.6
Public/private sector employees									
Public sector employees	3,540.8	3,577.7	24.3	36.9	23.2	40.6	1.0	0.7	1.1
Private sector employees	11,150.1	11,135.2	36.3	-14.9	164.6	237.3	-0.1	1.5	2.2
Industry	17,338.7	17,399.6	28.6	60.9	254.3	294.3	0.4	1.5	1.7
Goods-producing sector	3,795.6	3,802.2	25.3	6.6	13.4	52.6	0.2	0.4	1.4
Agriculture	300.9	303.0	6.9	2.1	3.8	7.6	0.7	1.3	2.6
Forestry, fishing, mining, quarrying, oil and gas extraction ³	314.7	331.8	7.0	17.1	0.3	0.1	5.4	0.1	0.0
Utilities	131.8	131.0	4.8	-0.8	-16.8	-18.3	-0.6	-11.4	-12.3
Construction	1,266.4	1,278.0	16.3	11.6	50.8	49.9	0.9	4.1	4.1
Manufacturing	1,781.9	1,758.4	19.0	-23.5	-24.7	13.3	-1.3	-1.4	0.8
Services-producing sector	13,543.1	13,597.3	33.6	54.2	240.7	241.6	0.4	1.8	1.8
Trade	2,690.0	2,685.3	22.8	-4.7	16.9	-1.2	-0.2	0.6	0.0
Transportation and warehousing	855.5	848.5	13.2	-7.0	-16.3	29.6	-0.8	-1.9	3.6
Finance, insurance, real estate and leasing	1,109.3	1,074.0	15.4	-35.3	-8.9	-14.9	-3.2	-0.8	-1.4
Professional, scientific and technical services	1,298.1	1,333.7	17.4	35.6	57.7	52.8	2.7	4.5	4.1
Business, building and other support services	680.3	675.7	13.8	-4.6	10.9	-4.0	-0.7	1.6	-0.6
Educational services	1,195.5	1,233.9	15.5	38.4	28.1	20.3	3.2	2.3	1.7
Health care and social assistance	2,108.1	2,105.2	17.8	-2.9	52.9	56.4	-0.1	2.6	2.8
Information, culture and recreation	793.3	771.8	14.6	-21.5	5.9	11.5	-2.7	0.8	1.5
Accommodation and food services	1,097.3	1,128.0	15.9	30.7	73.0	79.9	2.8	6.9	7.6
Other services	753.9	765.8	12.8	11.9	16.0	10.1	1.6	2.1	1.3
Public administration	961.9	975.6	12.5	13.7	4.8	1.2	1.4	0.5	0.1

1. Average standard error of change in two consecutive months (see "Sampling Errors" in Data Quality for further explanations).

2. Includes both incorporated and unincorporated working owners, self-employed persons who do not have a business and persons working in a family business without pay.

3. Also referred to as Natural resources.

Note(s): Related CANSIM Tables 282-0088, 282-0089.

Table 3
Labour force characteristics by province, seasonally adjusted

	August 2011	September 2011	S.E. ¹	Change from			Percent change from		
				last month	last December	twelve months ago	last month	last December	twelve months ago
in thousands (except rates)									
Newfoundland and Labrador									
Population	428.5	428.5	...	0.0	-0.5	0.1	0.0	-0.1	0.0
Labour force	257.4	254.6	2.1	-2.8	-4.6	-4.5	-1.1	-1.8	-1.7
Employment	222.0	220.2	2.1	-1.8	-2.7	-3.8	-0.8	-1.2	-1.7
Employment full-time	184.8	187.6	2.3	2.8	-3.5	-3.6	1.5	-1.8	-1.9
Employment part-time	37.2	32.7	1.9	-4.5	0.9	-0.1	-12.1	2.8	-0.3
Unemployment	35.3	34.4	1.9	-0.9	-1.9	-0.8	-2.5	-5.2	-2.3
Participation rate	60.1	59.4	0.5	-0.7	-1.0	-1.1
Unemployment rate	13.7	13.5	0.7	-0.2	-0.5	-0.1
Employment rate	51.8	51.4	0.5	-0.4	-0.6	-0.9
Prince Edward Island									
Population	119.7	119.6	...	-0.1	1.7	2.3	-0.1	1.4	2.0
Labour force	81.3	82.6	0.6	1.3	3.2	2.7	1.6	4.0	3.4
Employment	72.0	73.3	0.7	1.3	3.4	4.2	1.8	4.9	6.1
Employment full-time	60.1	61.7	0.9	1.6	3.8	5.2	2.7	6.6	9.2
Employment part-time	11.9	11.6	0.7	-0.3	-0.4	-1.0	-2.5	-3.3	-7.9
Unemployment	9.3	9.4	0.6	0.1	0.0	-1.3	1.1	0.0	-12.1
Participation rate	67.9	69.1	0.5	1.2	1.8	1.0
Unemployment rate	11.4	11.4	0.8	0.0	-0.4	-2.0
Employment rate	60.2	61.3	0.6	1.1	2.0	2.4
Nova Scotia									
Population	779.2	779.1	...	-0.1	0.2	1.2	0.0	0.0	0.2
Labour force	499.9	494.9	2.7	-5.0	-4.5	-7.0	-1.0	-0.9	-1.4
Employment	455.5	453.3	2.8	-2.2	5.7	-3.2	-0.5	1.3	-0.7
Employment full-time	367.9	375.6	3.6	7.7	8.8	10.7	2.1	2.4	2.9
Employment part-time	87.6	77.7	3.2	-9.9	-3.2	-13.8	-11.3	-4.0	-15.1
Unemployment	44.4	41.6	2.5	-2.8	-10.2	-3.9	-6.3	-19.7	-8.6
Participation rate	64.2	63.5	0.3	-0.7	-0.6	-1.0
Unemployment rate	8.9	8.4	0.5	-0.5	-2.0	-0.7
Employment rate	58.5	58.2	0.4	-0.3	0.7	-0.5
New Brunswick									
Population	619.7	619.8	...	0.1	1.6	2.3	0.0	0.3	0.4
Labour force	385.7	387.4	2.2	1.7	-3.6	-5.7	0.4	-0.9	-1.5
Employment	350.2	352.9	2.4	2.7	-1.2	-1.7	0.8	-0.3	-0.5
Employment full-time	291.7	294.7	2.8	3.0	-4.7	-3.7	1.0	-1.6	-1.2
Employment part-time	58.5	58.2	2.3	-0.3	3.5	1.9	-0.5	6.4	3.4
Unemployment	35.5	34.5	2.1	-1.0	-2.4	-3.9	-2.8	-6.5	-10.2
Participation rate	62.2	62.5	0.4	0.3	-0.7	-1.2
Unemployment rate	9.2	8.9	0.5	-0.3	-0.5	-0.9
Employment rate	56.5	56.9	0.4	0.4	-0.4	-0.5
Quebec									
Population	6,585.6	6,590.1	...	4.5	50.8	67.3	0.1	0.8	1.0
Labour force	4,295.9	4,283.0	14.8	-12.9	9.0	3.3	-0.3	0.2	0.1
Employment	3,970.0	3,972.2	14.7	2.2	18.5	25.5	0.1	0.5	0.6
Employment full-time	3,219.0	3,197.8	19.9	-21.2	-8.1	15.7	-0.7	-0.3	0.5
Employment part-time	751.1	774.3	18.1	23.2	26.5	9.7	3.1	3.5	1.3
Unemployment	325.8	310.8	13.3	-15.0	-9.5	-22.3	-4.6	-3.0	-6.7
Participation rate	65.2	65.0	0.2	-0.2	-0.4	-0.6
Unemployment rate	7.6	7.3	0.3	-0.3	-0.2	-0.5
Employment rate	60.3	60.3	0.2	0.0	-0.2	-0.2

See notes at the end of the table.

Table 3 – continued

Labour force characteristics by province, seasonally adjusted

	August 2011	September 2011	S.E. ¹	Change from			Percent change from		
				last month	last December	twelve months ago	last month	last December	twelve months ago
in thousands (except rates)									
Ontario									
Population	10,943.8	10,955.8	...	12.0	101.3	132.2	0.1	0.9	1.2
Labour force	7,292.5	7,312.2	20.5	19.7	62.7	57.4	0.3	0.9	0.8
Employment	6,744.6	6,757.3	19.7	12.7	97.7	135.7	0.2	1.5	2.0
Employment full-time	5,491.6	5,498.8	25.3	7.2	124.5	180.4	0.1	2.3	3.4
Employment part-time	1,253.0	1,258.6	23.5	5.6	-26.7	-44.6	0.4	-2.1	-3.4
Unemployment	547.9	554.9	17.6	7.0	-35.0	-78.3	1.3	-5.9	-12.4
Participation rate	66.6	66.7	0.2	0.1	-0.1	-0.3
Unemployment rate	7.5	7.6	0.2	0.1	-0.5	-1.1
Employment rate	61.6	61.7	0.2	0.1	0.3	0.5
Manitoba									
Population	955.3	955.9	...	0.6	8.9	12.3	0.1	0.9	1.3
Labour force	658.1	661.4	2.6	3.3	6.8	1.8	0.5	1.0	0.3
Employment	622.8	624.7	2.6	1.9	4.2	0.2	0.3	0.7	0.0
Employment full-time	499.9	501.9	3.6	2.0	0.3	-0.7	0.4	0.1	-0.1
Employment part-time	122.9	122.8	3.4	-0.1	3.9	0.9	-0.1	3.3	0.7
Unemployment	35.3	36.7	2.1	1.4	2.6	1.6	4.0	7.6	4.6
Participation rate	68.9	69.2	0.3	0.3	0.1	-0.7
Unemployment rate	5.4	5.5	0.3	0.1	0.3	0.2
Employment rate	65.2	65.4	0.3	0.2	-0.1	-0.8
Saskatchewan									
Population	801.3	802.1	...	0.8	6.7	8.7	0.1	0.8	1.1
Labour force	548.5	553.0	2.4	4.5	-1.5	-1.1	0.8	-0.3	-0.2
Employment	523.8	527.8	2.4	4.0	3.7	4.7	0.8	0.7	0.9
Employment full-time	437.0	436.4	3.2	-0.6	5.3	13.5	-0.1	1.2	3.2
Employment part-time	86.8	91.4	3.0	4.6	-1.6	-8.8	5.3	-1.7	-8.8
Unemployment	24.8	25.2	1.9	0.4	-5.3	-5.7	1.6	-17.4	-18.4
Participation rate	68.5	68.9	0.3	0.4	-0.8	-0.9
Unemployment rate	4.5	4.6	0.3	0.1	-0.9	-1.0
Employment rate	65.4	65.8	0.3	0.4	-0.1	-0.1
Alberta									
Population	3,014.6	3,018.0	...	3.4	38.6	47.8	0.1	1.3	1.6
Labour force	2,235.1	2,238.6	9.0	3.5	88.0	85.5	0.2	4.1	4.0
Employment	2,109.6	2,118.2	9.0	8.6	86.0	97.7	0.4	4.2	4.8
Employment full-time	1,747.7	1,769.1	12.0	21.4	93.8	99.8	1.2	5.6	6.0
Employment part-time	361.9	349.1	10.8	-12.8	-7.8	-2.0	-3.5	-2.2	-0.6
Unemployment	125.5	120.3	7.2	-5.2	1.9	-12.4	-4.1	1.6	-9.3
Participation rate	74.1	74.2	0.3	0.1	2.0	1.7
Unemployment rate	5.6	5.4	0.3	-0.2	-0.1	-0.8
Employment rate	70.0	70.2	0.3	0.2	2.0	2.2
British Columbia									
Population	3,785.1	3,787.9	...	2.8	32.6	45.2	0.1	0.9	1.2
Labour force	2,452.2	2,466.0	10.4	13.8	20.4	15.8	0.6	0.8	0.6
Employment	2,268.1	2,299.7	10.1	31.6	39.0	35.0	1.4	1.7	1.5
Employment full-time	1,742.6	1,782.5	13.8	39.9	50.1	26.7	2.3	2.9	1.5
Employment part-time	525.5	517.2	13.2	-8.3	-11.1	8.3	-1.6	-2.1	1.6
Unemployment	184.1	166.3	8.7	-17.8	-18.6	-19.2	-9.7	-10.1	-10.4
Participation rate	64.8	65.1	0.3	0.3	0.0	-0.4
Unemployment rate	7.5	6.7	0.3	-0.8	-0.9	-0.9
Employment rate	59.9	60.7	0.3	0.8	0.5	0.2

1. Average standard error of change in two consecutive months (see "Sampling Errors" in Data Quality for further explanations).

Note(s): Related CANSIM Table 282-0087.

Table 4-1
Selected labour force characteristics (seasonally adjusted) — Newfoundland and Labrador

	August 2011	September 2011	S.E. ¹	Change from			Percent change from		
				last month	last December	twelve months ago	last month	last December	twelve months ago
in thousands (except rates)									
Both sexes, 15 years and over									
Population	428.5	428.5	...	0.0	-0.5	0.1	0.0	-0.1	0.0
Labour force	257.4	254.6	2.1	-2.8	-4.6	-4.5	-1.1	-1.8	-1.7
Employment	222.0	220.2	2.1	-1.8	-2.7	-3.8	-0.8	-1.2	-1.7
Employment full-time	184.8	187.6	2.3	2.8	-3.5	-3.6	1.5	-1.8	-1.9
Unemployment	35.3	34.4	1.9	-0.9	-1.9	-0.8	-2.5	-5.2	-2.3
Participation rate	60.1	59.4	0.5	-0.7	-1.0	-1.1
Unemployment rate	13.7	13.5	0.7	-0.2	-0.5	-0.1
Employment rate	51.8	51.4	0.5	-0.4	-0.6	-0.9
Part-time rate	16.8	14.9	0.8	-1.9	0.6	0.2
Both sexes, 15 to 24 years									
Population	60.7	60.6	...	-0.1	-1.0	-1.2	-0.2	-1.6	-1.9
Labour force	34.9	34.9	1.0	0.0	-0.7	-2.4	0.0	-2.0	-6.4
Employment	26.6	26.7	1.0	0.1	-2.2	-3.0	0.4	-7.6	-10.1
Unemployment	8.3	8.1	0.9	-0.2	1.4	0.6	-2.4	20.9	8.0
Participation rate	57.5	57.6	1.7	0.1	-0.2	-2.8
Unemployment rate	23.8	23.2	2.4	-0.6	4.4	3.1
Employment rate	43.8	44.1	1.7	0.3	-2.8	-4.0
Part-time rate	52.3	39.7	3.5	-12.6	3.0	-1.4
Men, 25 years and over									
Population	177.5	177.6	...	0.1	0.1	0.5	0.1	0.1	0.3
Labour force	115.8	115.2	1.2	-0.6	-0.6	0.6	-0.5	-0.5	0.5
Employment	99.2	99.2	1.3	0.0	1.1	1.4	0.0	1.1	1.4
Unemployment	16.6	15.9	1.3	-0.7	-1.7	-0.9	-4.2	-9.7	-5.4
Participation rate	65.2	64.9	0.7	-0.3	-0.3	0.2
Unemployment rate	14.3	13.8	1.1	-0.5	-1.4	-0.9
Employment rate	55.9	55.9	0.7	0.0	0.6	0.7
Part-time rate	7.2	7.2	0.8	0.0	2.0	1.5
Women, 25 years and over									
Population	190.3	190.4	...	0.1	0.5	1.0	0.1	0.3	0.5
Labour force	106.8	104.6	1.1	-2.2	-3.2	-2.7	-2.1	-3.0	-2.5
Employment	96.2	94.3	1.1	-1.9	-1.6	-2.1	-2.0	-1.7	-2.2
Unemployment	10.5	10.3	1.0	-0.2	-1.7	-0.5	-1.9	-14.2	-4.6
Participation rate	56.1	54.9	0.6	-1.2	-1.9	-1.8
Unemployment rate	9.8	9.8	0.9	0.0	-1.3	-0.3
Employment rate	50.6	49.5	0.6	-1.1	-1.0	-1.4
Part-time rate	16.9	15.8	1.3	-1.1	-1.1	0.1
Industry									
	222.0	220.2	2.1	-1.8	-2.7	-3.8	-0.8	-1.2	-1.7
Goods-producing sector									
Agriculture	46.1	45.9	1.6	-0.2	-0.3	1.2	-0.4	-0.6	2.7
Forestry, fishing, mining, quarrying, oil and gas extraction ²	2.1	2.1	0.4	0.0	-0.2	-0.4	0.0	-8.7	-16.0
Utilities	14.0	14.1	0.9	0.1	-2.3	-1.7	0.7	-14.0	-10.8
Construction	1.6	1.9	0.3	0.3	0.1	0.2	18.8	5.6	11.8
Manufacturing	18.1	18.2	1.1	0.1	1.6	2.7	0.6	9.6	17.4
	10.4	9.6	0.9	-0.8	0.5	0.4	-7.7	5.5	4.3
Services-producing sector									
	175.9	174.3	2.1	-1.6	-2.4	-5.0	-0.9	-1.4	-2.8
Trade	38.9	37.7	1.4	-1.2	-0.5	-2.8	-3.1	-1.3	-6.9
Transportation and warehousing	10.4	10.1	0.7	-0.3	-0.6	-1.6	-2.9	-5.6	-13.7
Finance, insurance, real estate and leasing	8.8	8.6	0.6	-0.2	2.5	1.6	-2.3	41.0	22.9
Professional, scientific and technical services	8.3	8.9	0.5	0.6	1.0	1.4	7.2	12.7	18.7
Business, building and other support services	5.9	5.6	0.6	-0.3	-0.5	0.0	-5.1	-8.2	0.0
Educational services	17.3	17.5	0.9	0.2	-0.7	0.9	1.2	-3.8	5.4
Health care and social assistance	34.8	35.1	1.2	0.3	-1.0	-2.8	0.9	-2.8	-7.4
Information, culture and recreation	7.0	7.1	0.6	0.1	-1.2	-2.2	1.4	-14.5	-23.7
Accommodation and food services	13.4	12.1	0.9	-1.3	-1.7	-1.1	-9.7	-12.3	-8.3
Other services	11.4	11.5	0.8	0.1	0.3	0.6	0.9	2.7	5.5
Public administration	19.4	20.3	0.9	0.9	0.1	1.3	4.6	0.5	6.8

1. Average standard error of change in two consecutive months (see "Sampling Errors" in Data Quality for further explanations).

2. Also referred to as Natural resources.

Note(s): Related CANSIM Tables 282-0087, 282-0088.

Table 4-2
Selected labour force characteristics (seasonally adjusted) — Prince Edward Island

	August 2011	September 2011	S.E. ¹	Change from			Percent change from		
				last month	last December	twelve months ago	last month	last December	twelve months ago
in thousands (except rates)									
Both sexes, 15 years and over									
Population	119.7	119.6	...	-0.1	1.7	2.3	-0.1	1.4	2.0
Labour force	81.3	82.6	0.6	1.3	3.2	2.7	1.6	4.0	3.4
Employment	72.0	73.3	0.7	1.3	3.4	4.2	1.8	4.9	6.1
Employment full-time	60.1	61.7	0.9	1.6	3.8	5.2	2.7	6.6	9.2
Unemployment	9.3	9.4	0.6	0.1	0.0	-1.3	1.1	0.0	-12.1
Participation rate	67.9	69.1	0.5	1.2	1.8	1.0
Unemployment rate	11.4	11.4	0.8	0.0	-0.4	-2.0
Employment rate	60.2	61.3	0.6	1.1	2.0	2.4
Part-time rate	16.5	15.8	1.0	-0.7	-1.3	-2.4
Both sexes, 15 to 24 years									
Population	20.0	19.9	...	-0.1	0.3	0.4	-0.5	1.5	2.1
Labour force	13.6	14.6	0.4	1.0	1.3	1.4	7.4	9.8	10.6
Employment	11.7	12.5	0.4	0.8	1.6	1.7	6.8	14.7	15.7
Unemployment	1.9	2.0	0.3	0.1	-0.4	-0.4	5.3	-16.7	-16.7
Participation rate	68.0	73.4	1.8	5.4	5.5	5.7
Unemployment rate	14.0	13.7	2.4	-0.3	-4.3	-4.5
Employment rate	58.5	62.8	1.9	4.3	7.2	7.4
Part-time rate	43.6	40.0	3.5	-3.6	1.5	-6.3
Men, 25 years and over									
Population	48.2	48.2	...	0.0	0.8	1.0	0.0	1.7	2.1
Labour force	34.8	35.2	0.3	0.4	1.0	0.4	1.1	2.9	1.1
Employment	30.5	30.7	0.4	0.2	0.7	0.3	0.7	2.3	1.0
Unemployment	4.3	4.5	0.4	0.2	0.4	0.1	4.7	9.8	2.3
Participation rate	72.2	73.0	0.7	0.8	0.8	-0.7
Unemployment rate	12.4	12.8	1.1	0.4	0.8	0.2
Employment rate	63.3	63.7	0.8	0.4	0.4	-0.7
Part-time rate	4.6	5.9	1.1	1.3	-3.1	-2.4
Women, 25 years and over									
Population	51.6	51.5	...	-0.1	0.7	0.9	-0.2	1.4	1.8
Labour force	32.9	32.9	0.3	0.0	1.0	1.0	0.0	3.1	3.1
Employment	29.8	30.0	0.4	0.2	1.0	2.1	0.7	3.4	7.5
Unemployment	3.2	2.9	0.3	-0.3	0.0	-1.1	-9.4	0.0	-27.5
Participation rate	63.8	63.9	0.7	0.1	1.1	0.9
Unemployment rate	9.7	8.8	1.0	-0.9	-0.3	-3.7
Employment rate	57.8	58.3	0.8	0.5	1.2	3.2
Part-time rate	18.1	16.0	1.5	-2.1	-1.6	-1.9
Industry	72.0	73.3	0.7	1.3	3.4	4.2	1.8	4.9	6.1
Goods-producing sector	17.7	17.4	0.6	-0.3	0.5	1.5	-1.7	3.0	9.4
Agriculture	3.6	3.6	0.3	0.0	0.3	0.7	0.0	9.1	24.1
Forestry, fishing, mining, quarrying, oil and gas extraction ²	3.3	3.3	0.3	0.0	0.3	0.4	0.0	10.0	13.8
Utilities	0.3	0.3	0.0	0.0	-0.1	0.0	0.0	-25.0	0.0
Construction	4.9	4.8	0.3	-0.1	0.0	0.1	-2.0	0.0	2.1
Manufacturing	5.6	5.3	0.3	-0.3	-0.1	0.1	-5.4	-1.9	1.9
Services-producing sector	54.3	55.9	0.7	1.6	2.8	2.6	2.9	5.3	4.9
Trade	9.6	10.6	0.4	1.0	1.0	1.2	10.4	10.4	12.8
Transportation and warehousing	2.4	2.5	0.2	0.1	0.6	0.6	4.2	31.6	31.6
Finance, insurance, real estate and leasing	2.8	2.7	0.2	-0.1	0.7	0.2	-3.6	35.0	8.0
Professional, scientific and technical services	3.6	3.2	0.2	-0.4	0.3	0.3	-11.1	10.3	10.3
Business, building and other support services	2.2	2.4	0.2	0.2	-0.6	-0.4	9.1	-20.0	-14.3
Educational services	6.6	6.6	0.3	0.0	0.5	0.8	0.0	8.2	13.8
Health care and social assistance	8.4	9.1	0.3	0.7	0.5	0.1	8.3	5.8	1.1
Information, culture and recreation	2.6	2.7	0.3	0.1	-0.2	-0.3	3.8	-6.9	-10.0
Accommodation and food services	5.4	5.2	0.4	-0.2	-0.1	0.2	-3.7	-1.9	4.0
Other services	3.1	3.3	0.2	0.2	0.4	0.4	6.5	13.8	13.8
Public administration	7.6	7.8	0.3	0.2	-0.1	-0.1	2.6	-1.3	-1.3

1. Average standard error of change in two consecutive months (see "Sampling Errors" in Data Quality for further explanations).

2. Also referred to as Natural resources.

Note(s): Related CANSIM Tables 282-0087, 282-0088.

Table 4-3
Selected labour force characteristics (seasonally adjusted) — Nova Scotia

	August 2011	September 2011	S.E. ¹	Change from			Percent change from		
				last month	last December	twelve months ago	last month	last December	twelve months ago
in thousands (except rates)									
Both sexes, 15 years and over									
Population	779.2	779.1	...	-0.1	0.2	1.2	0.0	0.0	0.2
Labour force	499.9	494.9	2.7	-5.0	-4.5	-7.0	-1.0	-0.9	-1.4
Employment	455.5	453.3	2.8	-2.2	5.7	-3.2	-0.5	1.3	-0.7
Employment full-time	367.9	375.6	3.6	7.7	8.8	10.7	2.1	2.4	2.9
Unemployment	44.4	41.6	2.5	-2.8	-10.2	-3.9	-6.3	-19.7	-8.6
Participation rate	64.2	63.5	0.3	-0.7	-0.6	-1.0
Unemployment rate	8.9	8.4	0.5	-0.5	-2.0	-0.7
Employment rate	58.5	58.2	0.4	-0.3	0.7	-0.5
Part-time rate	19.2	17.1	0.7	-2.1	-0.9	-2.9
Both sexes, 15 to 24 years									
Population	119.8	119.6	...	-0.2	-0.9	-1.0	-0.2	-0.7	-0.8
Labour force	78.0	78.0	1.6	0.0	-2.6	-2.2	0.0	-3.2	-2.7
Employment	64.5	65.6	1.6	1.1	-0.2	-2.3	1.7	-0.3	-3.4
Unemployment	13.5	12.4	1.4	-1.1	-2.4	0.0	-8.1	-16.2	0.0
Participation rate	65.1	65.2	1.3	0.1	-1.7	-1.3
Unemployment rate	17.3	15.9	1.7	-1.4	-2.5	0.4
Employment rate	53.8	54.8	1.3	1.0	0.2	-1.5
Part-time rate	49.1	42.5	2.6	-6.6	0.0	-2.4
Men, 25 years and over									
Population	312.0	312.1	...	0.1	0.3	0.7	0.0	0.1	0.2
Labour force	212.8	211.8	1.5	-1.0	-0.7	-2.6	-0.5	-0.3	-1.2
Employment	194.4	194.4	1.6	0.0	2.6	-0.7	0.0	1.4	-0.4
Unemployment	18.4	17.3	1.5	-1.1	-3.4	-2.0	-6.0	-16.4	-10.4
Participation rate	68.2	67.9	0.5	-0.3	-0.3	-1.0
Unemployment rate	8.6	8.2	0.7	-0.4	-1.5	-0.8
Employment rate	62.3	62.3	0.5	0.0	0.8	-0.4
Part-time rate	8.3	6.8	0.8	-1.5	-1.2	-2.4
Women, 25 years and over									
Population	347.3	347.5	...	0.2	1.0	1.6	0.1	0.3	0.5
Labour force	209.1	205.1	1.5	-4.0	-1.2	-2.2	-1.9	-0.6	-1.1
Employment	196.6	193.3	1.5	-3.3	3.2	-0.2	-1.7	1.7	-0.1
Unemployment	12.5	11.8	1.4	-0.7	-4.4	-2.0	-5.6	-27.2	-14.5
Participation rate	60.2	59.0	0.4	-1.2	-0.5	-0.9
Unemployment rate	6.0	5.8	0.6	-0.2	-2.1	-0.9
Employment rate	56.6	55.6	0.4	-1.0	0.7	-0.3
Part-time rate	20.1	18.9	1.1	-1.2	-0.8	-3.3
Industry									
Industry	455.5	453.3	2.8	-2.2	5.7	-3.2	-0.5	1.3	-0.7
Goods-producing sector									
Goods-producing sector	84.5	81.4	2.2	-3.1	-4.2	-5.6	-3.7	-4.9	-6.4
Agriculture	5.1	4.9	0.7	-0.2	-0.6	-1.3	-3.9	-10.9	-21.0
Forestry, fishing, mining, quarrying, oil and gas extraction ²	9.6	10.2	1.0	0.6	-1.4	-1.5	6.2	-12.1	-12.8
Utilities	4.2	3.9	0.3	-0.3	0.0	-0.2	-7.1	0.0	-4.9
Construction	30.9	30.9	1.4	0.0	-1.2	-0.8	0.0	-3.7	-2.5
Manufacturing	34.8	31.5	1.4	-3.3	-1.0	-1.9	-9.5	-3.1	-5.7
Services-producing sector									
Services-producing sector	371.0	371.9	2.9	0.9	9.9	2.5	0.2	2.7	0.7
Trade	75.8	76.7	1.9	0.9	1.2	0.4	1.2	1.6	0.5
Transportation and warehousing	22.1	22.9	1.0	0.8	5.2	3.7	3.6	29.4	19.3
Finance, insurance, real estate and leasing	23.2	22.6	1.1	-0.6	-1.2	-1.5	-2.6	-5.0	-6.2
Professional, scientific and technical services	24.3	24.7	1.1	0.4	2.8	0.4	1.6	12.8	1.6
Business, building and other support services	21.6	20.2	1.2	-1.4	-3.2	-5.1	-6.5	-13.7	-20.2
Educational services	37.6	39.2	1.4	1.6	6.1	6.1	4.3	18.4	18.4
Health care and social assistance	69.7	68.5	1.6	-1.2	0.4	-1.1	-1.7	0.6	-1.6
Information, culture and recreation	20.5	20.5	1.1	0.0	1.1	0.7	0.0	5.7	3.5
Accommodation and food services	27.2	27.4	1.4	0.2	-1.3	0.5	0.7	-4.5	1.9
Other services	18.1	18.8	1.1	0.7	0.2	-0.3	3.9	1.1	-1.6
Public administration	31.0	30.3	1.2	-0.7	-1.4	-1.6	-2.3	-4.4	-5.0

1. Average standard error of change in two consecutive months (see "Sampling Errors" in Data Quality for further explanations).

2. Also referred to as Natural resources.

Note(s): Related CANSIM Tables 282-0087, 282-0088.

Table 4-4
Selected labour force characteristics (seasonally adjusted) — New Brunswick

	August 2011	September 2011	S.E. ¹	Change from			Percent change from		
				last month	last December	twelve months ago	last month	last December	twelve months ago
in thousands (except rates)									
Both sexes, 15 years and over									
Population	619.7	619.8	...	0.1	1.6	2.3	0.0	0.3	0.4
Labour force	385.7	387.4	2.2	1.7	-3.6	-5.7	0.4	-0.9	-1.5
Employment	350.2	352.9	2.4	2.7	-1.2	-1.7	0.8	-0.3	-0.5
Employment full-time	291.7	294.7	2.8	3.0	-4.7	-3.7	1.0	-1.6	-1.2
Unemployment	35.5	34.5	2.1	-1.0	-2.4	-3.9	-2.8	-6.5	-10.2
Participation rate	62.2	62.5	0.4	0.3	-0.7	-1.2
Unemployment rate	9.2	8.9	0.5	-0.3	-0.5	-0.9
Employment rate	56.5	56.9	0.4	0.4	-0.4	-0.5
Part-time rate	16.7	16.5	0.6	-0.2	1.0	0.6
Both sexes, 15 to 24 years									
Population	91.2	91.1	...	-0.1	-0.6	-0.7	-0.1	-0.7	-0.8
Labour force	57.6	57.6	1.3	0.0	2.0	1.0	0.0	3.6	1.8
Employment	47.3	48.6	1.2	1.3	1.8	0.9	2.7	3.8	1.9
Unemployment	10.3	8.9	1.2	-1.4	0.1	0.0	-13.6	1.1	0.0
Participation rate	63.2	63.2	1.4	0.0	2.6	1.5
Unemployment rate	17.9	15.5	1.9	-2.4	-0.3	-0.2
Employment rate	51.9	53.3	1.3	1.4	2.3	1.3
Part-time rate	44.0	42.2	2.6	-1.8	2.9	2.8
Men, 25 years and over									
Population	253.5	253.7	...	0.2	1.1	1.6	0.1	0.4	0.6
Labour force	168.0	168.3	1.3	0.3	-6.0	-7.6	0.2	-3.4	-4.3
Employment	153.5	153.4	1.4	-0.1	-3.8	-4.4	-0.1	-2.4	-2.8
Unemployment	14.5	14.9	1.3	0.4	-2.2	-3.2	2.8	-12.9	-17.7
Participation rate	66.3	66.3	0.5	0.0	-2.7	-3.5
Unemployment rate	8.6	8.9	0.7	0.3	-0.9	-1.4
Employment rate	60.6	60.5	0.6	-0.1	-1.7	-2.1
Part-time rate	6.3	5.3	0.7	-1.0	-1.1	-1.2
Women, 25 years and over									
Population	275.0	275.1	...	0.1	1.1	1.5	0.0	0.4	0.5
Labour force	160.1	161.5	1.2	1.4	0.5	1.0	0.9	0.3	0.6
Employment	149.4	150.9	1.3	1.5	0.8	1.7	1.0	0.5	1.1
Unemployment	10.7	10.7	1.1	0.0	-0.2	-0.7	0.0	-1.8	-6.1
Participation rate	58.2	58.7	0.4	0.5	-0.1	0.0
Unemployment rate	6.7	6.6	0.7	-0.1	-0.2	-0.5
Employment rate	54.3	54.9	0.5	0.6	0.1	0.4
Part-time rate	18.7	19.6	1.0	0.9	2.2	1.5
Industry									
	350.2	352.9	2.4	2.7	-1.2	-1.7	0.8	-0.3	-0.5
Goods-producing sector									
Agriculture	77.6	76.4	1.9	-1.2	-7.7	-1.9	-1.5	-9.2	-2.4
Forestry, fishing, mining, quarrying, oil and gas extraction ²	4.8	4.6	0.6	-0.2	-0.6	-0.6	-4.2	-11.5	-11.5
Utilities	9.2	9.5	0.8	0.3	-2.4	-1.4	3.3	-20.2	-12.8
Construction	4.2	4.0	0.4	-0.2	-0.2	-0.5	-4.8	-4.8	-11.1
Manufacturing	27.5	26.9	1.3	-0.6	-2.4	-1.7	-2.2	-8.2	-5.9
	31.8	31.5	1.3	-0.3	-2.0	2.3	-0.9	-6.0	7.9
Services-producing sector									
	272.6	276.4	2.4	3.8	6.4	0.1	1.4	2.4	0.0
Trade	54.3	55.6	1.5	1.3	1.9	-0.1	2.4	3.5	-0.2
Transportation and warehousing	17.8	18.3	0.8	0.5	0.0	0.1	2.8	0.0	0.5
Finance, insurance, real estate and leasing	16.6	15.9	0.8	-0.7	-0.9	0.2	-4.2	-5.4	1.3
Professional, scientific and technical services	15.6	15.0	0.8	-0.6	-0.9	-1.2	-3.8	-5.7	-7.4
Business, building and other support services	17.5	18.9	1.0	1.4	3.4	1.1	8.0	21.9	6.2
Educational services	24.5	26.1	1.1	1.6	0.1	0.9	6.5	0.4	3.6
Health care and social assistance	50.1	51.2	1.3	1.1	1.0	2.0	2.2	2.0	4.1
Information, culture and recreation	12.7	12.4	0.9	-0.3	2.1	-0.5	-2.4	20.4	-3.9
Accommodation and food services	23.3	22.3	1.1	-1.0	2.0	0.9	-4.3	9.9	4.2
Other services	15.4	15.9	0.9	0.5	-0.7	-1.4	3.2	-4.2	-8.1
Public administration	25.0	24.8	1.0	-0.2	-1.7	-1.9	-0.8	-6.4	-7.1

1. Average standard error of change in two consecutive months (see "Sampling Errors" in Data Quality for further explanations).

2. Also referred to as Natural resources.

Note(s): Related CANSIM Tables 282-0087, 282-0088.

Table 4-5
Selected labour force characteristics (seasonally adjusted) — Quebec

	August 2011	September 2011	S.E. ¹	Change from			Percent change from		
				last month	last December	twelve months ago	last month	last December	twelve months ago
in thousands (except rates)									
Both sexes, 15 years and over									
Population	6,585.6	6,590.1	...	4.5	50.8	67.3	0.1	0.8	1.0
Labour force	4,295.9	4,283.0	14.8	-12.9	9.0	3.3	-0.3	0.2	0.1
Employment	3,970.0	3,972.2	14.7	2.2	18.5	25.5	0.1	0.5	0.6
Employment full-time	3,219.0	3,197.8	19.9	-21.2	-8.1	15.7	-0.7	-0.3	0.5
Unemployment	325.8	310.8	13.3	-15.0	-9.5	-22.3	-4.6	-3.0	-6.7
Participation rate	65.2	65.0	0.2	-0.2	-0.4	-0.6
Unemployment rate	7.6	7.3	0.3	-0.3	-0.2	-0.5
Employment rate	60.3	60.3	0.2	0.0	-0.2	-0.2
Part-time rate	18.9	19.5	0.4	0.6	0.6	0.1
Both sexes, 15 to 24 years									
Population	981.0	981.1	...	0.1	1.1	1.1	0.0	0.1	0.1
Labour force	653.2	647.0	8.3	-6.2	-26.7	-21.9	-0.9	-4.0	-3.3
Employment	570.0	564.9	8.0	-5.1	-22.2	-15.8	-0.9	-3.8	-2.7
Unemployment	83.2	82.2	7.5	-1.0	-4.4	-6.0	-1.2	-5.1	-6.8
Participation rate	66.6	65.9	0.9	-0.7	-2.8	-2.4
Unemployment rate	12.7	12.7	1.1	0.0	-0.2	-0.5
Employment rate	58.1	57.6	0.8	-0.5	-2.3	-1.7
Part-time rate	51.5	55.5	1.6	4.0	6.2	7.2
Men, 25 years and over									
Population	2,755.0	2,757.1	...	2.1	26.0	34.6	0.1	1.0	1.3
Labour force	1,927.3	1,934.2	8.1	6.9	21.3	14.7	0.4	1.1	0.8
Employment	1,791.2	1,800.4	8.4	9.2	21.0	20.3	0.5	1.2	1.1
Unemployment	136.1	133.8	7.9	-2.3	0.4	-5.7	-1.7	0.3	-4.1
Participation rate	70.0	70.2	0.3	0.2	0.2	-0.3
Unemployment rate	7.1	6.9	0.4	-0.2	-0.1	-0.4
Employment rate	65.0	65.3	0.3	0.3	0.1	-0.1
Part-time rate	7.4	7.8	0.5	0.4	-0.6	-0.9
Women, 25 years and over									
Population	2,849.7	2,851.8	...	2.1	23.7	31.5	0.1	0.8	1.1
Labour force	1,715.4	1,701.7	8.2	-13.7	14.2	10.4	-0.8	0.8	0.6
Employment	1,608.8	1,606.9	8.4	-1.9	19.7	20.9	-0.1	1.2	1.3
Unemployment	106.6	94.8	7.0	-11.8	-5.5	-10.6	-11.1	-5.5	-10.1
Participation rate	60.2	59.7	0.3	-0.5	0.0	-0.3
Unemployment rate	6.2	5.6	0.4	-0.6	-0.3	-0.6
Employment rate	56.5	56.3	0.3	-0.2	0.2	0.1
Part-time rate	20.2	19.9	0.7	-0.3	0.5	-0.8
Industry									
	3,970.0	3,972.2	14.7	2.2	18.5	25.5	0.1	0.5	0.6
Goods-producing sector									
Agriculture	853.4	846.5	13.1	-6.9	-8.7	-7.8	-0.8	-1.0	-0.9
Forestry, fishing, mining, quarrying, oil and gas extraction ²	56.0	51.9	3.2	-4.1	-8.0	-3.8	-7.3	-13.4	-6.8
Utilities	33.6	41.9	2.4	8.3	12.9	13.4	24.7	44.5	47.0
Construction	30.8	31.1	2.3	0.3	-2.2	-1.5	1.0	-6.6	-4.6
Manufacturing	243.1	239.6	7.7	-3.5	-0.8	5.7	-1.4	-0.3	2.4
	489.8	482.0	10.5	-7.8	-10.7	-21.6	-1.6	-2.2	-4.3
Services-producing sector									
	3,116.7	3,125.6	17.1	8.9	27.1	33.2	0.3	0.9	1.1
Trade	667.7	664.5	12.2	-3.2	38.9	28.0	-0.5	6.2	4.4
Transportation and warehousing	182.8	178.8	6.5	-4.0	-7.6	-0.5	-2.2	-4.1	-0.3
Finance, insurance, real estate and leasing	229.3	224.3	7.1	-5.0	-9.5	-2.2	-2.2	-4.1	-1.0
Professional, scientific and technical services	301.2	313.1	8.5	11.9	7.4	13.2	4.0	2.4	4.4
Business, building and other support services	140.0	143.5	6.9	3.5	1.7	-7.4	2.5	1.2	-4.9
Educational services	268.3	287.8	7.8	19.5	23.8	31.5	7.3	9.0	12.3
Health care and social assistance	514.5	504.0	9.6	-10.5	-6.0	-9.6	-2.0	-1.2	-1.9
Information, culture and recreation	168.4	159.7	7.4	-8.7	-8.4	-10.0	-5.2	-5.0	-5.9
Accommodation and food services	240.8	250.2	8.4	9.4	2.7	-0.9	3.9	1.1	-0.4
Other services	171.8	164.7	6.4	-7.1	-5.5	-3.9	-4.1	-3.2	-2.3
Public administration	231.9	235.1	6.5	3.2	-10.5	-5.0	1.4	-4.3	-2.1

1. Average standard error of change in two consecutive months (see "Sampling Errors" in Data Quality for further explanations).

2. Also referred to as Natural resources.

Note(s): Related CANSIM Tables 282-0087, 282-0088.

Table 4-6
Selected labour force characteristics (seasonally adjusted) — Ontario

	August 2011	September 2011	S.E. ¹	Change from			Percent change from		
				last month	last December	twelve months ago	last month	last December	twelve months ago
in thousands (except rates)									
Both sexes, 15 years and over									
Population	10,943.8	10,955.8	...	12.0	101.3	132.2	0.1	0.9	1.2
Labour force	7,292.5	7,312.2	20.5	19.7	62.7	57.4	0.3	0.9	0.8
Employment	6,744.6	6,757.3	19.7	12.7	97.7	135.7	0.2	1.5	2.0
Employment full-time	5,491.6	5,498.8	25.3	7.2	124.5	180.4	0.1	2.3	3.4
Unemployment	547.9	554.9	17.6	7.0	-35.0	-78.3	1.3	-5.9	-12.4
Participation rate	66.6	66.7	0.2	0.1	-0.1	-0.3
Unemployment rate	7.5	7.6	0.2	0.1	-0.5	-1.1
Employment rate	61.6	61.7	0.2	0.1	0.3	0.5
Part-time rate	18.6	18.6	0.3	0.0	-0.7	-1.1
Both sexes, 15 to 24 years									
Population	1,783.8	1,784.3	...	0.5	3.3	3.7	0.0	0.2	0.2
Labour force	1,095.3	1,109.3	12.0	14.0	33.0	46.2	1.3	3.1	4.3
Employment	930.9	932.4	10.8	1.5	32.3	56.5	0.2	3.6	6.5
Unemployment	164.4	176.9	10.5	12.5	0.6	-10.4	7.6	0.3	-5.6
Participation rate	61.4	62.2	0.7	0.8	1.8	2.5
Unemployment rate	15.0	15.9	0.9	0.9	-0.5	-1.7
Employment rate	52.2	52.3	0.6	0.1	1.8	3.1
Part-time rate	50.9	50.2	1.3	-0.6	-1.4	-2.6
Men, 25 years and over									
Population	4,442.2	4,447.8	...	5.6	47.9	62.7	0.1	1.1	1.4
Labour force	3,256.0	3,249.9	10.3	-6.1	4.4	-2.4	-0.2	0.1	-0.1
Employment	3,053.1	3,053.5	10.8	0.4	29.2	41.2	0.0	1.0	1.4
Unemployment	202.9	196.3	9.7	-6.6	-24.9	-43.7	-3.3	-11.3	-18.2
Participation rate	73.3	73.1	0.2	-0.2	-0.7	-1.1
Unemployment rate	6.2	6.0	0.3	-0.2	-0.8	-1.4
Employment rate	68.7	68.7	0.2	0.0	0.0	0.0
Part-time rate	7.7	7.5	0.4	-0.1	-0.1	-0.4
Women, 25 years and over									
Population	4,717.7	4,723.8	...	6.1	50.2	65.9	0.1	1.1	1.4
Labour force	2,941.2	2,953.0	11.6	11.8	25.4	13.7	0.4	0.9	0.5
Employment	2,760.6	2,771.4	11.0	10.8	36.2	38.0	0.4	1.3	1.4
Unemployment	180.6	181.7	9.3	1.1	-10.7	-24.2	0.6	-5.6	-11.8
Participation rate	62.3	62.5	0.2	0.2	-0.1	-0.6
Unemployment rate	6.1	6.2	0.3	0.1	-0.4	-0.8
Employment rate	58.5	58.7	0.2	0.2	0.2	0.0
Part-time rate	19.8	20.2	0.6	0.5	-1.4	-1.8
Industry	6,744.6	6,757.3	19.7	12.7	97.7	135.7	0.2	1.5	2.0
Goods-producing sector	1,417.2	1,421.1	17.0	3.9	12.5	27.2	0.3	0.9	2.0
Agriculture	94.6	91.6	4.0	-3.0	8.3	13.2	-3.2	10.0	16.8
Forestry, fishing, mining, quarrying, oil and gas extraction ²	35.0	33.5	2.5	-1.5	-3.7	-8.2	-4.3	-9.9	-19.7
Utilities	53.2	52.4	3.2	-0.8	-4.1	-6.7	-1.5	-7.3	-11.3
Construction	430.4	448.7	10.6	18.3	23.8	10.9	4.3	5.6	2.5
Manufacturing	804.0	795.0	13.4	-9.0	-11.8	18.2	-1.1	-1.5	2.3
Services-producing sector	5,327.4	5,336.2	23.1	8.8	85.2	108.5	0.2	1.6	2.1
Trade	988.3	982.8	15.2	-5.5	-31.2	-15.6	-0.6	-3.1	-1.6
Transportation and warehousing	323.2	315.4	9.2	-7.8	-8.8	11.0	-2.4	-2.7	3.6
Finance, insurance, real estate and leasing	516.1	487.2	11.5	-28.9	-16.5	-14.8	-5.6	-3.3	-2.9
Professional, scientific and technical services	547.8	560.5	12.5	12.7	26.1	15.3	2.3	4.9	2.8
Business, building and other support services	288.0	286.5	9.9	-1.5	-2.1	0.3	-0.5	-0.7	0.1
Educational services	476.3	478.7	10.6	2.4	-0.9	-28.7	0.5	-0.2	-5.7
Health care and social assistance	783.6	787.1	11.8	3.5	53.7	68.3	0.4	7.3	9.5
Information, culture and recreation	352.0	339.8	10.6	-12.2	2.1	14.5	-3.5	0.6	4.5
Accommodation and food services	394.9	415.0	10.4	20.1	30.9	39.9	5.1	8.0	10.6
Other services	274.9	285.2	8.8	10.3	17.3	3.7	3.7	6.5	1.3
Public administration	382.4	398.1	8.7	15.7	14.8	14.8	4.1	3.9	3.9

1. Average standard error of change in two consecutive months (see "Sampling Errors" in Data Quality for further explanations).

2. Also referred to as Natural resources.

Note(s): Related CANSIM Tables 282-0087, 282-0088.

Table 4-7
Selected labour force characteristics (seasonally adjusted) — Manitoba

	August 2011	September 2011	S.E. ¹	Change from			Percent change from		
				last month	last December	twelve months ago	last month	last December	twelve months ago
in thousands (except rates)									
Both sexes, 15 years and over									
Population	955.3	955.9	...	0.6	8.9	12.3	0.1	0.9	1.3
Labour force	658.1	661.4	2.6	3.3	6.8	1.8	0.5	1.0	0.3
Employment	622.8	624.7	2.6	1.9	4.2	0.2	0.3	0.7	0.0
Employment full-time	499.9	501.9	3.6	2.0	0.3	-0.7	0.4	0.1	-0.1
Unemployment	35.3	36.7	2.1	1.4	2.6	1.6	4.0	7.6	4.6
Participation rate	68.9	69.2	0.3	0.3	0.1	-0.7
Unemployment rate	5.4	5.5	0.3	0.1	0.3	0.2
Employment rate	65.2	65.4	0.3	0.2	-0.1	-0.8
Part-time rate	19.7	19.7	0.5	-0.1	0.5	0.1
Both sexes, 15 to 24 years									
Population	164.9	164.9	...	0.0	0.5	0.8	0.0	0.3	0.5
Labour force	112.7	116.0	1.6	3.3	3.4	2.3	2.9	3.0	2.0
Employment	100.5	101.7	1.5	1.2	1.3	-0.1	1.2	1.3	-0.1
Unemployment	12.2	14.3	1.4	2.1	2.1	2.3	17.2	17.2	19.2
Participation rate	68.3	70.3	1.0	2.0	1.8	1.0
Unemployment rate	10.8	12.3	1.1	1.5	1.5	1.7
Employment rate	60.9	61.7	0.9	0.8	0.6	-0.3
Part-time rate	44.8	42.8	1.8	-2.0	-1.5	-1.1
Men, 25 years and over									
Population	387.3	387.6	...	0.3	4.2	5.7	0.1	1.1	1.5
Labour force	293.4	292.8	1.3	-0.6	1.1	-0.8	-0.2	0.4	-0.3
Employment	280.7	280.5	1.5	-0.2	1.1	0.7	-0.1	0.4	0.3
Unemployment	12.8	12.3	1.2	-0.5	0.1	-1.5	-3.9	0.8	-10.9
Participation rate	75.8	75.5	0.3	-0.3	-0.6	-1.4
Unemployment rate	4.4	4.2	0.4	-0.2	0.0	-0.5
Employment rate	72.5	72.4	0.4	-0.1	-0.5	-0.9
Part-time rate	7.8	7.4	0.6	-0.5	0.3	-0.4
Women, 25 years and over									
Population	403.2	403.5	...	0.3	4.4	5.9	0.1	1.1	1.5
Labour force	252.0	252.6	1.5	0.6	2.2	0.3	0.2	0.9	0.1
Employment	241.6	242.4	1.5	0.8	1.7	-0.6	0.3	0.7	-0.2
Unemployment	10.3	10.2	1.1	-0.1	0.5	0.9	-1.0	5.2	9.7
Participation rate	62.5	62.6	0.4	0.1	-0.1	-0.9
Unemployment rate	4.1	4.0	0.4	-0.1	0.1	0.3
Employment rate	59.9	60.1	0.4	0.2	-0.2	-1.0
Part-time rate	23.1	24.1	0.9	1.0	1.4	1.4
Industry									
Population	622.8	624.7	2.6	1.9	4.2	0.2	0.3	0.7	0.0
Goods-producing sector									
Agriculture	145.1	143.9	2.4	-1.2	-7.6	-0.6	-0.8	-5.0	-0.4
Forestry, fishing, mining, quarrying, oil and gas extraction ²	24.6	23.5	1.1	-1.1	-1.7	-2.2	-4.5	-6.7	-8.6
Utilities	6.9	7.3	0.6	0.4	0.0	0.0	5.8	0.0	0.0
Utilities	8.5	8.7	0.6	0.2	-0.3	0.6	2.4	-3.3	7.4
Construction	42.7	43.5	1.6	0.8	1.6	2.8	1.9	3.8	6.9
Manufacturing	62.5	60.9	1.6	-1.6	-7.3	-1.8	-2.6	-10.7	-2.9
Services-producing sector									
Trade	477.7	480.8	3.1	3.1	11.8	0.8	0.6	2.5	0.2
Trade	92.7	92.7	2.0	0.0	-1.0	-2.2	0.0	-1.1	-2.3
Transportation and warehousing	37.4	35.1	1.3	-2.3	0.4	0.3	-6.1	1.2	0.9
Finance, insurance, real estate and leasing	38.9	39.0	1.2	0.1	4.7	5.2	0.3	13.7	15.4
Professional, scientific and technical services	27.3	26.8	1.2	-0.5	-0.4	-1.7	-1.8	-1.5	-6.0
Business, building and other support services	18.0	17.3	1.2	-0.7	1.0	-1.5	-3.9	6.1	-8.0
Educational services	41.6	46.0	1.5	4.4	-3.3	-6.6	10.6	-6.7	-12.5
Health care and social assistance	96.2	95.4	1.9	-0.8	0.3	1.4	-0.8	0.3	1.5
Information, culture and recreation	22.7	23.9	1.2	1.2	0.8	2.1	5.3	3.5	9.6
Accommodation and food services	41.6	42.3	1.6	0.7	5.5	3.0	1.7	14.9	7.6
Other services	24.9	25.8	1.2	0.9	2.7	-0.3	3.6	11.7	-1.1
Public administration	36.4	36.5	1.3	0.1	1.0	1.2	0.3	2.8	3.4

1. Average standard error of change in two consecutive months (see "Sampling Errors" in Data Quality for further explanations).

2. Also referred to as Natural resources.

Note(s): Related CANSIM Tables 282-0087, 282-0088.

Table 4-8
Selected labour force characteristics (seasonally adjusted) — Saskatchewan

	August 2011	September 2011	S.E. ¹	Change from			Percent change from		
				last month	last December	twelve months ago	last month	last December	twelve months ago
in thousands (except rates)									
Both sexes, 15 years and over									
Population	801.3	802.1	...	0.8	6.7	8.7	0.1	0.8	1.1
Labour force	548.5	553.0	2.4	4.5	-1.5	-1.1	0.8	-0.3	-0.2
Employment	523.8	527.8	2.4	4.0	3.7	4.7	0.8	0.7	0.9
Employment full-time	437.0	436.4	3.2	-0.6	5.3	13.5	-0.1	1.2	3.2
Unemployment	24.8	25.2	1.9	0.4	-5.3	-5.7	1.6	-17.4	-18.4
Participation rate	68.5	68.9	0.3	0.4	-0.8	-0.9
Unemployment rate	4.5	4.6	0.3	0.1	-0.9	-1.0
Employment rate	65.4	65.8	0.3	0.4	-0.1	-0.1
Part-time rate	16.6	17.3	0.5	0.7	-0.4	-1.8
Both sexes, 15 to 24 years									
Population	136.6	136.6	...	0.0	-1.1	-1.4	0.0	-0.8	-1.0
Labour force	91.4	92.8	1.5	1.4	0.1	0.5	1.5	0.1	0.5
Employment	83.0	83.6	1.5	0.6	0.5	0.6	0.7	0.6	0.7
Unemployment	8.4	9.2	1.1	0.8	-0.3	-0.2	9.5	-3.2	-2.1
Participation rate	66.9	67.9	1.1	1.0	0.6	1.0
Unemployment rate	9.2	9.9	1.2	0.7	-0.3	-0.3
Employment rate	60.8	61.2	1.1	0.4	0.9	1.1
Part-time rate	35.3	36.8	1.9	1.5	0.5	-0.7
Men, 25 years and over									
Population	326.8	327.3	...	0.5	4.2	5.5	0.2	1.3	1.7
Labour force	248.5	249.4	1.2	0.9	0.4	1.8	0.4	0.2	0.7
Employment	240.1	240.7	1.3	0.6	3.8	5.7	0.2	1.6	2.4
Unemployment	8.5	8.7	1.1	0.2	-3.5	-4.0	2.4	-28.7	-31.5
Participation rate	76.0	76.2	0.4	0.2	-0.9	-0.7
Unemployment rate	3.4	3.5	0.4	0.1	-1.4	-1.6
Employment rate	73.5	73.5	0.4	0.0	0.2	0.5
Part-time rate	5.4	6.2	0.6	0.8	-0.1	-0.8
Women, 25 years and over									
Population	337.8	338.2	...	0.4	3.6	4.6	0.1	1.1	1.4
Labour force	208.6	210.8	1.4	2.2	-2.0	-3.3	1.1	-0.9	-1.5
Employment	200.7	203.5	1.4	2.8	-0.6	-1.7	1.4	-0.3	-0.8
Unemployment	7.9	7.3	1.0	-0.6	-1.5	-1.6	-7.6	-17.0	-18.0
Participation rate	61.8	62.3	0.4	0.5	-1.3	-1.9
Unemployment rate	3.8	3.5	0.4	-0.3	-0.6	-0.7
Employment rate	59.4	60.2	0.4	0.8	-0.8	-1.3
Part-time rate	22.2	22.4	1.0	0.2	-1.1	-3.3
Industry									
	523.8	527.8	2.4	4.0	3.7	4.7	0.8	0.7	0.9
Goods-producing sector									
Agriculture	135.5	135.6	2.3	0.1	-2.1	-5.3	0.1	-1.5	-3.8
Forestry, fishing, mining, quarrying, oil and gas extraction ²	38.8	39.7	1.4	0.9	0.9	-0.3	2.3	2.3	-0.8
Utilities	26.4	25.3	1.1	-1.1	1.5	-0.2	-4.2	6.3	-0.8
Construction	5.2	5.2	0.5	0.0	-0.5	0.2	0.0	-8.8	4.0
Manufacturing	38.6	39.6	1.4	1.0	0.6	0.7	2.6	1.5	1.8
	26.6	25.8	1.1	-0.8	-4.6	-5.6	-3.0	-15.1	-17.8
Services-producing sector									
	388.3	392.2	2.8	3.9	5.8	9.9	1.0	1.5	2.6
Trade	82.2	81.9	1.8	-0.3	0.1	2.5	-0.4	0.1	3.1
Transportation and warehousing	26.7	26.8	1.1	0.1	-0.2	1.2	0.4	-0.7	4.7
Finance, insurance, real estate and leasing	30.0	31.3	1.1	1.3	1.2	0.4	4.3	4.0	1.3
Professional, scientific and technical services	24.7	26.0	1.0	1.3	4.6	4.8	5.3	21.5	22.6
Business, building and other support services	12.3	11.7	0.8	-0.6	1.2	1.2	-4.9	11.4	11.4
Educational services	42.3	37.9	1.3	-4.4	-1.1	-1.3	-10.4	-2.8	-3.3
Health care and social assistance	65.9	68.1	1.6	2.2	0.7	-1.3	3.3	1.0	-1.9
Information, culture and recreation	19.4	19.1	1.0	-0.3	-1.9	-0.1	-1.5	-9.0	-0.5
Accommodation and food services	30.7	31.6	1.3	0.9	-0.6	0.5	2.9	-1.9	1.6
Other services	25.1	26.3	1.1	1.2	-0.9	-0.3	4.8	-3.3	-1.1
Public administration	29.2	31.5	1.0	2.3	2.6	2.4	7.9	9.0	8.2

1. Average standard error of change in two consecutive months (see "Sampling Errors" in Data Quality for further explanations).

2. Also referred to as Natural resources.

Note(s): Related CANSIM Tables 282-0087, 282-0088.

Table 4-9
Selected labour force characteristics (seasonally adjusted) — Alberta

	August 2011	September 2011	S.E. ¹	Change from			Percent change from		
				last month	last December	twelve months ago	last month	last December	twelve months ago
in thousands (except rates)									
Both sexes, 15 years and over									
Population	3,014.6	3,018.0	...	3.4	38.6	47.8	0.1	1.3	1.6
Labour force	2,235.1	2,238.6	9.0	3.5	88.0	85.5	0.2	4.1	4.0
Employment	2,109.6	2,118.2	9.0	8.6	86.0	97.7	0.4	4.2	4.8
Employment full-time	1,747.7	1,769.1	12.0	21.4	93.8	99.8	1.2	5.6	6.0
Unemployment	125.5	120.3	7.2	-5.2	1.9	-12.4	-4.1	1.6	-9.3
Participation rate	74.1	74.2	0.3	0.1	2.0	1.7
Unemployment rate	5.6	5.4	0.3	-0.2	-0.1	-0.8
Employment rate	70.0	70.2	0.3	0.2	2.0	2.2
Part-time rate	17.2	16.5	0.5	-0.7	-1.1	-0.9
Both sexes, 15 to 24 years									
Population	508.4	508.1	...	-0.3	-3.3	-5.1	-0.1	-0.6	-1.0
Labour force	366.8	365.7	5.2	-1.1	19.1	22.1	-0.3	5.5	6.4
Employment	326.4	326.8	4.9	0.4	13.2	21.7	0.1	4.2	7.1
Unemployment	40.3	39.0	4.2	-1.3	6.0	0.5	-3.2	18.2	1.3
Participation rate	72.1	72.0	1.0	-0.1	4.2	5.0
Unemployment rate	11.0	10.7	1.1	-0.3	1.2	-0.5
Employment rate	64.2	64.3	1.0	0.1	3.0	4.8
Part-time rate	36.6	36.7	1.8	0.1	-1.2	-0.5
Men, 25 years and over									
Population	1,274.3	1,276.1	...	1.8	21.3	27.0	0.1	1.7	2.2
Labour force	1,034.8	1,036.1	4.6	1.3	25.5	22.5	0.1	2.5	2.2
Employment	985.7	989.7	5.1	4.0	28.2	28.5	0.4	2.9	3.0
Unemployment	49.1	46.4	4.3	-2.7	-2.7	-6.1	-5.5	-5.5	-11.6
Participation rate	81.2	81.2	0.4	0.0	0.7	0.1
Unemployment rate	4.7	4.5	0.4	-0.2	-0.4	-0.7
Employment rate	77.4	77.6	0.4	0.2	1.0	0.6
Part-time rate	5.6	5.4	0.5	-0.2	-0.8	-1.1
Women, 25 years and over									
Population	1,232.0	1,233.8	...	1.8	20.5	25.9	0.1	1.7	2.1
Labour force	833.5	836.7	5.5	3.2	43.3	40.8	0.4	5.5	5.1
Employment	797.5	801.8	5.2	4.3	44.7	47.6	0.5	5.9	6.3
Unemployment	36.0	35.0	3.8	-1.0	-1.3	-6.7	-2.8	-3.6	-16.1
Participation rate	67.7	67.8	0.4	0.1	2.4	1.9
Unemployment rate	4.3	4.2	0.5	-0.1	-0.4	-1.0
Employment rate	64.7	65.0	0.4	0.3	2.6	2.6
Part-time rate	23.5	22.0	0.9	-1.5	-1.7	-1.3
Industry									
	2,109.6	2,118.3	9.0	8.7	86.1	97.8	0.4	4.2	4.8
Goods-producing sector									
Agriculture	564.4	574.9	9.0	10.5	18.5	30.0	1.9	3.3	5.5
Forestry, fishing, mining, quarrying, oil and gas extraction ²	50.1	51.9	3.2	1.8	8.3	7.2	3.6	19.0	16.1
Utilities	140.4	151.0	4.9	10.6	-2.0	3.3	7.5	-1.3	2.2
Construction	14.9	12.1	1.8	-2.8	-7.0	-8.2	-18.8	-36.6	-40.4
Manufacturing	213.0	211.7	6.6	-1.3	-3.7	4.2	-0.6	-1.7	2.0
	146.1	148.3	5.2	2.2	23.0	23.6	1.5	18.4	18.9
Services-producing sector									
	1,545.2	1,543.4	11.0	-1.8	67.6	67.8	-0.1	4.6	4.6
Trade	329.3	323.4	7.5	-5.9	10.3	4.8	-1.8	3.3	1.5
Transportation and warehousing	111.0	116.4	4.1	5.4	8.9	8.1	4.9	8.3	7.5
Finance, insurance, real estate and leasing	107.8	106.2	4.4	-1.6	7.4	2.6	-1.5	7.5	2.5
Professional, scientific and technical services	163.2	167.6	5.3	4.4	8.9	19.0	2.7	5.6	12.8
Business, building and other support services	75.2	72.8	4.1	-2.4	-0.5	-0.6	-3.2	-0.7	-0.8
Educational services	129.3	124.1	5.0	-5.2	2.7	-3.8	-4.0	2.2	-3.0
Health care and social assistance	223.7	226.9	5.6	3.2	6.9	7.2	1.4	3.1	3.3
Information, culture and recreation	84.8	79.4	4.0	-5.4	8.1	6.8	-6.4	11.4	9.4
Accommodation and food services	133.2	131.3	5.3	-1.9	12.5	9.8	-1.4	10.5	8.1
Other services	99.2	106.4	4.3	7.2	1.7	12.8	7.3	1.6	13.7
Public administration	88.8	88.7	3.8	-0.1	0.6	0.9	-0.1	0.7	1.0

1. Average standard error of change in two consecutive months (see "Sampling Errors" in Data Quality for further explanations).

2. Also referred to as Natural resources.

Note(s): Related CANSIM Tables 282-0087, 282-0088.

Table 4-10
Selected labour force characteristics (seasonally adjusted) — British Columbia

	August 2011	September 2011	S.E. ¹	Change from			Percent change from		
				last month	last December	twelve months ago	last month	last December	twelve months ago
in thousands (except rates)									
Both sexes, 15 years and over									
Population	3,785.1	3,787.9	...	2.8	32.6	45.2	0.1	0.9	1.2
Labour force	2,452.2	2,466.0	10.4	13.8	20.4	15.8	0.6	0.8	0.6
Employment	2,268.1	2,299.7	10.1	31.6	39.0	35.0	1.4	1.7	1.5
Employment full-time	1,742.6	1,782.5	13.8	39.9	50.1	26.7	2.3	2.9	1.5
Unemployment	184.1	166.3	8.7	-17.8	-18.6	-19.2	-9.7	-10.1	-10.4
Participation rate	64.8	65.1	0.3	0.3	0.0	-0.4
Unemployment rate	7.5	6.7	0.3	-0.8	-0.9	-0.9
Employment rate	59.9	60.7	0.3	0.8	0.5	0.2
Part-time rate	23.2	22.5	0.6	-0.7	-0.9	0.0
Both sexes, 15 to 24 years									
Population	591.3	591.2	...	-0.1	-0.8	-0.5	0.0	-0.1	-0.1
Labour force	378.9	385.8	6.0	6.9	21.6	6.9	1.8	5.9	1.8
Employment	317.7	331.2	5.5	13.5	11.3	7.0	4.2	3.5	2.2
Unemployment	61.2	54.5	5.0	-6.7	10.1	-0.3	-10.9	22.7	-0.5
Participation rate	64.1	65.3	1.0	1.2	3.8	1.3
Unemployment rate	16.2	14.1	1.2	-2.1	1.9	-0.4
Employment rate	53.7	56.0	0.9	2.3	2.0	1.2
Part-time rate	47.6	48.8	2.0	1.3	-1.6	-1.5
Men, 25 years and over									
Population	1,557.9	1,559.4	...	1.5	16.3	22.3	0.1	1.1	1.5
Labour force	1,094.8	1,098.7	5.5	3.9	1.9	2.6	0.4	0.2	0.2
Employment	1,027.9	1,036.8	5.9	8.9	14.3	12.6	0.9	1.4	1.2
Unemployment	66.9	61.9	5.1	-5.0	-12.3	-10.1	-7.5	-16.6	-14.0
Participation rate	70.3	70.5	0.4	0.2	-0.6	-0.8
Unemployment rate	6.1	5.6	0.4	-0.5	-1.2	-1.0
Employment rate	66.0	66.5	0.4	0.5	0.2	-0.1
Part-time rate	10.8	10.4	0.6	-0.5	0.5	1.2
Women, 25 years and over									
Population	1,635.9	1,637.3	...	1.4	17.1	23.3	0.1	1.1	1.4
Labour force	978.5	981.5	6.0	3.0	-3.1	6.4	0.3	-0.3	0.7
Employment	922.5	931.6	5.8	9.1	13.3	15.3	1.0	1.4	1.7
Unemployment	56.0	49.9	4.7	-6.1	-16.4	-8.9	-10.9	-24.7	-15.1
Participation rate	59.8	59.9	0.4	0.1	-0.9	-0.5
Unemployment rate	5.7	5.1	0.5	-0.6	-1.6	-0.9
Employment rate	56.4	56.9	0.4	0.5	0.2	0.1
Part-time rate	28.5	26.6	0.9	-1.9	-2.3	-0.8
Industry									
	2,268.1	2,299.7	10.1	31.6	39.0	35.0	1.4	1.7	1.5
Goods-producing sector									
Agriculture	442.3	458.7	8.8	16.4	13.7	14.0	3.7	3.1	3.1
Forestry, fishing, mining, quarrying, oil and gas extraction ²	22.9	29.2	2.6	6.3	-3.1	-2.7	27.5	-9.6	-8.5
Utilities	36.7	38.1	2.8	1.4	0.5	-3.1	3.8	1.3	-7.5
Construction	8.9	9.0	1.6	0.1	-4.9	-2.8	1.1	-35.3	-23.7
Manufacturing	210.0	214.9	6.4	4.9	32.6	22.2	2.3	17.9	11.5
	163.8	167.6	5.8	3.8	-11.4	0.6	2.3	-6.4	0.4
Services-producing sector									
	1,825.8	1,841.0	11.8	15.2	25.3	21.1	0.8	1.4	1.2
Trade	349.9	357.9	8.0	8.0	-7.6	-14.4	2.3	-2.1	-3.9
Transportation and warehousing	119.6	127.4	5.1	7.8	-2.2	5.2	6.5	-1.7	4.3
Finance, insurance, real estate and leasing	137.1	134.6	5.2	-2.5	-0.9	-4.1	-1.8	-0.7	-3.0
Professional, scientific and technical services	195.1	187.1	6.4	-8.0	12.0	4.7	-4.1	6.9	2.6
Business, building and other support services	96.8	100.5	4.8	3.7	7.5	10.1	3.8	8.1	11.2
Educational services	158.8	169.3	5.8	10.5	-1.4	13.5	6.6	-0.8	8.7
Health care and social assistance	264.1	260.4	6.7	-3.7	2.8	-13.6	-1.4	1.1	-5.0
Information, culture and recreation	104.6	109.7	4.8	5.1	4.2	3.8	4.9	4.0	3.6
Accommodation and food services	185.1	187.7	6.2	2.6	24.8	27.0	1.4	15.2	16.8
Other services	107.1	104.9	4.7	-2.2	-2.3	-0.9	-2.1	-2.1	-0.9
Public administration	107.5	101.4	4.2	-6.1	-11.7	-10.4	-5.7	-10.3	-9.3

1. Average standard error of change in two consecutive months (see "Sampling Errors" in Data Quality for further explanations).

2. Also referred to as Natural resources.

Note(s): Related CANSIM Tables 282-0087, 282-0088.

Table 5-1
Labour force characteristics by census metropolitan area (seasonally adjusted) — 3 month moving average

	August 2011	September 2011	S.E. ¹	Change from			Percent change from		
				last month	last December	twelve months ago	last month	last December	twelve months ago
in thousands (except rates)									
St. John's, Newfoundland and Labrador									
Population	161.1	161.1	...	0.0	0.9	1.5	0.0	0.6	0.9
Labour force	111.3	111.9	0.8	0.6	2.6	2.4	0.5	2.4	2.2
Employment	104.1	104.4	0.8	0.3	2.8	3.8	0.3	2.8	3.8
Unemployment	7.2	7.5	0.4	0.3	-0.3	-1.4	4.2	-3.8	-15.7
Participation rate	69.1	69.5	0.5	0.4	1.3	0.9
Unemployment rate	6.5	6.7	0.4	0.2	-0.4	-1.4
Employment rate	64.6	64.8	0.5	0.2	1.4	1.8
Halifax, Nova Scotia									
Population	339.3	339.7	...	0.4	3.4	4.8	0.1	1.0	1.4
Labour force	239.4	240.3	1.1	0.9	6.4	4.8	0.4	2.7	2.0
Employment	224.3	225.3	1.2	1.0	7.5	4.9	0.4	3.4	2.2
Unemployment	15.2	15.0	0.6	-0.2	-1.0	-0.1	-1.3	-6.2	-0.7
Participation rate	70.6	70.7	0.3	0.1	1.1	0.4
Unemployment rate	6.3	6.2	0.3	-0.1	-0.6	-0.2
Employment rate	66.1	66.3	0.3	0.2	1.5	0.5
Moncton, New Brunswick									
Population	115.1	115.3	...	0.2	1.3	1.7	0.2	1.1	1.5
Labour force	76.1	76.2	0.6	0.1	-0.2	-0.7	0.1	-0.3	-0.9
Employment	70.7	70.8	0.7	0.1	0.5	-0.6	0.1	0.7	-0.8
Unemployment	5.4	5.4	0.4	0.0	-0.8	0.0	0.0	-12.9	0.0
Participation rate	66.1	66.1	0.6	0.0	-0.9	-1.6
Unemployment rate	7.1	7.1	0.5	0.0	-1.0	0.1
Employment rate	61.4	61.4	0.6	0.0	-0.3	-1.5
Saint John, New Brunswick									
Population	106.2	106.2	...	0.0	0.5	0.7	0.0	0.5	0.7
Labour force	70.6	71.4	0.7	0.8	2.6	2.5	1.1	3.8	3.6
Employment	66.4	67.4	0.8	1.0	3.0	4.3	1.5	4.7	6.8
Unemployment	4.1	4.1	0.3	0.0	-0.3	-1.7	0.0	-6.8	-29.3
Participation rate	66.5	67.2	0.7	0.7	2.1	1.9
Unemployment rate	5.8	5.7	0.5	-0.1	-0.7	-2.7
Employment rate	62.5	63.5	0.7	1.0	2.6	3.7
Saguenay, Quebec									
Population	126.6	126.6	...	0.0	0.1	0.1	0.0	0.1	0.1
Labour force	72.1	71.3	0.9	-0.8	-2.4	-4.8	-1.1	-3.3	-6.3
Employment	67.0	66.7	0.9	-0.3	-1.3	-2.9	-0.4	-1.9	-4.2
Unemployment	5.1	4.7	0.4	-0.4	-1.1	-1.8	-7.8	-19.0	-27.7
Participation rate	57.0	56.3	0.7	-0.7	-2.0	-3.9
Unemployment rate	7.1	6.6	0.5	-0.5	-1.3	-1.9
Employment rate	52.9	52.7	0.7	-0.2	-1.1	-2.3
Québec, Quebec									
Population	636.8	637.4	...	0.6	5.6	7.6	0.1	0.9	1.2
Labour force	442.1	451.1	3.3	9.0	5.7	11.9	2.0	1.3	2.7
Employment	421.1	431.1	3.4	10.0	7.3	12.1	2.4	1.7	2.9
Unemployment	21.0	20.0	1.6	-1.0	-1.6	-0.2	-4.8	-7.4	-1.0
Participation rate	69.4	70.8	0.5	1.4	0.3	1.1
Unemployment rate	4.8	4.4	0.4	-0.4	-0.4	-0.2
Employment rate	66.1	67.6	0.5	1.5	0.5	1.1
Sherbrooke, Quebec									
Population	165.1	165.3	...	0.2	1.5	2.1	0.1	0.9	1.3
Labour force	105.8	105.2	0.9	-0.6	1.2	3.5	-0.6	1.2	3.4
Employment	98.4	97.6	0.9	-0.8	1.4	3.9	-0.8	1.5	4.2
Unemployment	7.4	7.5	0.5	0.1	-0.2	-0.5	1.4	-2.6	-6.2
Participation rate	64.1	63.6	0.5	-0.5	0.1	1.3
Unemployment rate	7.0	7.1	0.4	0.1	-0.3	-0.8
Employment rate	59.6	59.0	0.5	-0.6	0.3	1.6

See notes at the end of the table.

Table 5-1 – continued

Labour force characteristics by census metropolitan area (seasonally adjusted) — 3 month moving average

	August 2011	September 2011	S.E. ¹	Change from			Percent change from		
				last month	last December	twelve months ago	last month	last December	twelve months ago
in thousands (except rates)									
Trois-Rivières, Quebec									
Population	124.8	124.9	...	0.1	0.9	1.2	0.1	0.7	1.0
Labour force	75.0	75.1	0.8	0.1	1.4	1.0	0.1	1.9	1.3
Employment	68.7	68.7	0.8	0.0	1.2	1.6	0.0	1.8	2.4
Unemployment	6.3	6.5	0.4	0.2	0.3	-0.4	3.2	4.8	-5.8
Participation rate	60.1	60.1	0.6	0.0	0.7	0.2
Unemployment rate	8.4	8.7	0.5	0.3	0.3	-0.6
Employment rate	55.0	55.0	0.6	0.0	0.6	0.8
Montréal, Quebec									
Population	3,224.7	3,227.7	...	3.0	29.8	40.3	0.1	0.9	1.3
Labour force	2,148.6	2,130.5	7.7	-18.1	15.3	-7.8	-0.8	0.7	-0.4
Employment	1,968.7	1,960.3	7.9	-8.4	24.2	5.2	-0.4	1.2	0.3
Unemployment	179.9	170.2	4.8	-9.7	-8.9	-12.9	-5.4	-5.0	-7.0
Participation rate	66.6	66.0	0.2	-0.6	-0.1	-1.1
Unemployment rate	8.4	8.0	0.2	-0.4	-0.5	-0.6
Employment rate	61.1	60.7	0.2	-0.4	0.2	-0.6
Ottawa-Gatineau, Ontario/Quebec									
Population	1,035.1	1,036.5	...	1.4	13.5	18.1	0.1	1.3	1.8
Labour force	734.6	732.4	3.6	-2.2	0.5	-7.7	-0.3	0.1	-1.0
Employment	696.3	693.4	3.7	-2.9	9.5	6.4	-0.4	1.4	0.9
Unemployment	38.3	38.9	2.0	0.6	-9.2	-14.2	1.6	-19.1	-26.7
Participation rate	71.0	70.7	0.4	-0.3	-0.8	-2.0
Unemployment rate	5.2	5.3	0.3	0.1	-1.3	-1.9
Employment rate	67.3	66.9	0.4	-0.4	0.0	-0.6
Ottawa-Gatineau, Quebec part, Ontario/Quebec									
Population	258.6	259.0	...	0.4	3.9	5.3	0.2	1.5	2.1
Labour force	184.7	184.3	1.3	-0.4	7.1	2.1	-0.2	4.0	1.2
Employment	173.1	172.7	1.4	-0.4	6.6	3.4	-0.2	4.0	2.0
Unemployment	11.6	11.6	0.7	0.0	0.5	-1.2	0.0	4.5	-9.4
Participation rate	71.4	71.2	0.5	-0.2	1.7	-0.6
Unemployment rate	6.3	6.3	0.4	0.0	0.0	-0.7
Employment rate	66.9	66.7	0.5	-0.2	1.6	0.0
Ottawa-Gatineau, Ontario part, Ontario/Quebec									
Population	776.4	777.5	...	1.1	9.6	12.8	0.1	1.3	1.7
Labour force	549.9	548.1	3.3	-1.8	-6.6	-9.9	-0.3	-1.2	-1.8
Employment	523.2	520.7	3.4	-2.5	2.9	3.0	-0.5	0.6	0.6
Unemployment	26.7	27.4	1.9	0.7	-9.5	-12.8	2.6	-25.7	-31.8
Participation rate	70.8	70.5	0.4	-0.3	-1.7	-2.5
Unemployment rate	4.9	5.0	0.3	0.1	-1.7	-2.2
Employment rate	67.4	67.0	0.4	-0.4	-0.4	-0.7
Kingston, Ontario									
Population	132.5	132.6	...	0.1	1.4	1.6	0.1	1.1	1.2
Labour force	86.6	85.2	0.8	-1.4	3.8	3.8	-1.6	4.7	4.7
Employment	80.8	80.1	0.9	-0.7	4.2	3.1	-0.9	5.5	4.0
Unemployment	5.8	5.2	0.3	-0.6	-0.3	0.7	-10.3	-5.5	15.6
Participation rate	65.4	64.3	0.6	-1.1	2.3	2.2
Unemployment rate	6.7	6.1	0.4	-0.6	-0.7	0.6
Employment rate	61.0	60.4	0.7	-0.6	2.5	1.6
Peterborough, Ontario									
Population	102.5	102.5	...	0.0	0.3	0.4	0.0	0.3	0.4
Labour force	61.8	60.5	1.2	-1.3	-0.8	-2.7	-2.1	-1.3	-4.3
Employment	54.9	53.8	1.2	-1.1	-2.3	-3.8	-2.0	-4.1	-6.6
Unemployment	6.9	6.6	0.5	-0.3	1.4	1.0	-4.3	26.9	17.9
Participation rate	60.3	59.0	1.2	-1.3	-1.0	-2.9
Unemployment rate	11.2	10.9	0.8	-0.3	2.4	2.0
Employment rate	53.6	52.5	1.1	-1.1	-2.4	-3.9

See notes at the end of the table.

Table 5-1 – continued

Labour force characteristics by census metropolitan area (seasonally adjusted) — 3 month moving average

	August 2011	September 2011	S.E. ¹	Change from			Percent change from		
				last month	last December	twelve months ago	last month	last December	twelve months ago
in thousands (except rates)									
Oshawa, Ontario									
Population	304.4	304.9	...	0.5	4.3	5.8	0.2	1.4	1.9
Labour force	213.2	212.9	1.5	-0.3	1.9	0.0	-0.1	0.9	0.0
Employment	196.9	197.4	1.6	0.5	6.2	6.4	0.3	3.2	3.4
Unemployment	16.2	15.4	0.9	-0.8	-4.4	-6.5	-4.9	-22.2	-29.7
Participation rate	70.0	69.8	0.5	-0.2	-0.4	-1.4
Unemployment rate	7.6	7.2	0.4	-0.4	-2.2	-3.1
Employment rate	64.7	64.7	0.5	0.0	1.1	0.8
Toronto, Ontario									
Population	4,788.4	4,796.4	...	8.0	66.2	87.1	0.2	1.4	1.8
Labour force	3,227.3	3,222.2	10.0	-5.1	-5.6	-18.9	-0.2	-0.2	-0.6
Employment	2,966.3	2,967.1	10.3	0.8	7.7	21.6	0.0	0.3	0.7
Unemployment	261.0	255.1	6.6	-5.9	-13.3	-40.6	-2.3	-5.0	-13.7
Participation rate	67.4	67.2	0.2	-0.2	-1.0	-1.6
Unemployment rate	8.1	7.9	0.2	-0.2	-0.4	-1.2
Employment rate	61.9	61.9	0.2	0.0	-0.7	-0.6
Hamilton, Ontario									
Population	618.7	619.2	...	0.5	4.7	6.5	0.1	0.8	1.1
Labour force	400.4	401.2	3.2	0.8	-2.3	-6.1	0.2	-0.6	-1.5
Employment	372.9	374.3	3.3	1.4	-1.3	-2.0	0.4	-0.3	-0.5
Unemployment	27.5	26.9	1.5	-0.6	-1.0	-4.1	-2.2	-3.6	-13.2
Participation rate	64.7	64.8	0.5	0.1	-0.9	-1.7
Unemployment rate	6.9	6.7	0.4	-0.2	-0.2	-0.9
Employment rate	60.3	60.4	0.5	0.1	-0.7	-1.0
St. Catharines-Niagara, Ontario									
Population	338.7	338.8	...	0.1	0.5	0.8	0.0	0.1	0.2
Labour force	215.0	216.4	1.7	1.4	4.4	6.2	0.7	2.1	2.9
Employment	197.0	198.5	1.7	1.5	6.6	8.7	0.8	3.4	4.6
Unemployment	18.0	17.9	0.9	-0.1	-2.1	-2.5	-0.6	-10.5	-12.3
Participation rate	63.5	63.9	0.5	0.4	1.2	1.7
Unemployment rate	8.4	8.3	0.4	-0.1	-1.1	-1.4	...	-0.1	...
Employment rate	58.2	58.6	0.5	0.4	1.9	2.4
Kitchener-Cambridge-Waterloo, Ontario									
Population	408.5	409.0	...	0.5	4.2	5.7	0.1	1.0	1.4
Labour force	298.1	295.4	1.9	-2.7	13.1	6.1	-0.9	4.6	2.1
Employment	279.5	275.6	2.1	-3.9	14.1	6.5	-1.4	5.4	2.4
Unemployment	18.6	19.8	1.1	1.2	-0.9	-0.4	6.5	-4.3	-2.0
Participation rate	73.0	72.2	0.5	-0.8	2.5	0.5
Unemployment rate	6.2	6.7	0.4	0.5	-0.6	-0.3
Employment rate	68.4	67.4	0.5	-1.0	2.8	0.7
Brantford, Ontario									
Population	107.9	107.9	...	0.0	0.5	0.7	0.0	0.5	0.7
Labour force	77.3	76.7	0.8	-0.6	1.8	3.9	-0.8	2.4	5.4
Employment	70.4	69.7	0.8	-0.7	1.3	2.4	-1.0	1.9	3.6
Unemployment	6.9	7.0	0.4	0.1	0.5	1.5	1.4	7.7	27.3
Participation rate	71.6	71.1	0.7	-0.5	1.4	3.2
Unemployment rate	8.9	9.1	0.6	0.2	0.4	1.5
Employment rate	65.2	64.6	0.7	-0.6	0.9	1.8
Guelph, Ontario									
Population	113.4	113.6	...	0.2	1.1	1.4	0.2	1.0	1.2
Labour force	82.5	83.8	0.8	1.3	6.8	2.4	1.6	8.8	2.9
Employment	78.6	80.2	0.9	1.6	9.0	4.9	2.0	12.6	6.5
Unemployment	3.9	3.6	0.4	-0.3	-2.2	-2.5	-7.7	-37.9	-41.0
Participation rate	72.8	73.8	0.7	1.0	5.4	1.3
Unemployment rate	4.7	4.3	0.5	-0.4	-3.2	-3.2
Employment rate	69.3	70.6	0.8	1.3	7.3	3.5

See notes at the end of the table.

Table 5-1 – continued

Labour force characteristics by census metropolitan area (seasonally adjusted) — 3 month moving average

	August 2011	September 2011	S.E. ¹	Change from			Percent change from		
				last month	last December	twelve months ago	last month	last December	twelve months ago
in thousands (except rates)									
London, Ontario									
Population	412.4	412.7	...	0.3	3.0	4.1	0.1	0.7	1.0
Labour force	266.7	269.6	2.0	2.9	6.9	6.3	1.1	2.6	2.4
Employment	243.0	245.4	2.1	2.4	5.0	4.0	1.0	2.1	1.7
Unemployment	23.7	24.2	1.1	0.5	2.0	2.3	2.1	9.0	10.5
Participation rate	64.7	65.3	0.5	0.6	1.2	0.9
Unemployment rate	8.9	9.0	0.4	0.1	0.5	0.7
Employment rate	58.9	59.5	0.5	0.6	0.8	0.4
Windsor, Ontario									
Population	267.3	267.2	...	-0.1	-0.9	-1.1	0.0	-0.3	-0.4
Labour force	161.8	162.3	1.4	0.5	-1.7	-4.2	0.3	-1.0	-2.5
Employment	148.7	146.7	1.4	-2.0	0.4	-1.5	-1.3	0.3	-1.0
Unemployment	13.1	15.6	0.8	2.5	-2.2	-2.6	19.1	-12.4	-14.3
Participation rate	60.5	60.7	0.5	0.2	-0.5	-1.4
Unemployment rate	8.1	9.6	0.5	1.5	-1.3	-1.3
Employment rate	55.6	54.9	0.5	-0.7	0.3	-0.3
Barrie, Ontario									
Population	161.3	161.5	...	0.2	1.8	2.4	0.1	1.1	1.5
Labour force	119.2	118.6	1.7	-0.6	6.8	3.2	-0.5	6.1	2.8
Employment	107.6	105.9	1.7	-1.7	3.5	2.2	-1.6	3.4	2.1
Unemployment	11.5	12.7	0.7	1.2	3.3	1.0	10.4	35.1	8.5
Participation rate	73.9	73.4	1.1	-0.5	3.4	0.9
Unemployment rate	9.6	10.7	0.6	1.1	2.3	0.6
Employment rate	66.7	65.6	1.0	-1.1	1.5	0.4
Greater Sudbury, Ontario									
Population	139.3	139.4	...	0.1	0.4	0.6	0.1	0.3	0.4
Labour force	89.9	90.3	0.7	0.4	0.6	-2.3	0.4	0.7	-2.5
Employment	83.8	84.7	0.8	0.9	2.5	1.2	1.1	3.0	1.4
Unemployment	6.0	5.7	0.4	-0.3	-1.8	-3.4	-5.0	-24.0	-37.4
Participation rate	64.5	64.8	0.5	0.3	0.3	-1.9
Unemployment rate	6.7	6.3	0.4	-0.4	-2.1	-3.5
Employment rate	60.2	60.8	0.6	0.6	1.7	0.6
Thunder Bay, Ontario									
Population	102.4	102.4	...	0.0	-0.2	-0.3	0.0	-0.2	-0.3
Labour force	61.6	63.1	0.6	1.5	-2.3	-0.4	2.4	-3.5	-0.6
Employment	57.8	59.3	0.7	1.5	-1.6	0.2	2.6	-2.6	0.3
Unemployment	3.8	3.8	0.3	0.0	-0.6	-0.6	0.0	-13.6	-13.6
Participation rate	60.2	61.6	0.6	1.4	-2.1	-0.2
Unemployment rate	6.2	6.0	0.5	-0.2	-0.7	-0.9
Employment rate	56.4	57.9	0.6	1.5	-1.5	0.4
Winnipeg, Manitoba									
Population	624.7	625.5	...	0.8	7.5	10.0	0.1	1.2	1.6
Labour force	429.9	430.7	1.3	0.8	-2.0	-6.8	0.2	-0.5	-1.6
Employment	404.8	405.0	1.3	0.2	-4.5	-7.1	0.0	-1.1	-1.7
Unemployment	25.1	25.8	0.8	0.7	2.6	0.4	2.8	11.2	1.6
Participation rate	68.8	68.9	0.2	0.1	-1.1	-2.2
Unemployment rate	5.8	6.0	0.2	0.2	0.6	0.2
Employment rate	64.8	64.7	0.2	-0.1	-1.6	-2.3
Regina, Saskatchewan									
Population	176.8	177.1	...	0.3	2.1	2.7	0.2	1.2	1.5
Labour force	130.1	131.1	0.8	1.0	4.0	3.5	0.8	3.1	2.7
Employment	123.9	125.3	0.8	1.4	4.1	3.9	1.1	3.4	3.2
Unemployment	6.1	5.8	0.4	-0.3	-0.1	-0.4	-4.9	-1.7	-6.5
Participation rate	73.6	74.0	0.4	0.4	1.4	0.8
Unemployment rate	4.7	4.4	0.3	-0.3	-0.2	-0.5
Employment rate	70.1	70.8	0.5	0.7	1.5	1.2

See notes at the end of the table.

Table 5-1 – continued

Labour force characteristics by census metropolitan area (seasonally adjusted) — 3 month moving average

	August 2011	September 2011	S.E. ¹	Change from			Percent change from		
				last month	last December	twelve months ago	last month	last December	twelve months ago
in thousands (except rates)									
Saskatoon, Saskatchewan									
Population	220.6	221.1	...	0.5	4.0	5.2	0.2	1.8	2.4
Labour force	151.9	151.4	1.0	-0.5	0.2	-1.0	-0.3	0.1	-0.7
Employment	144.1	142.7	1.0	-1.4	-0.1	-1.3	-1.0	-0.1	-0.9
Unemployment	7.8	8.7	0.5	0.9	0.3	0.3	11.5	3.6	3.6
Participation rate	68.9	68.5	0.5	-0.4	-1.1	-2.1
Unemployment rate	5.1	5.7	0.3	0.6	0.1	0.2
Employment rate	65.3	64.5	0.5	-0.8	-1.3	-2.2
Calgary, Alberta									
Population	1,034.9	1,036.7	...	1.8	15.8	19.8	0.2	1.5	1.9
Labour force	776.2	775.7	3.4	-0.5	27.5	16.7	-0.1	3.7	2.2
Employment	729.5	730.0	3.7	0.5	26.7	20.4	0.1	3.8	2.9
Unemployment	46.7	45.7	2.1	-1.0	0.8	-3.7	-2.1	1.8	-7.5
Participation rate	75.0	74.8	0.3	-0.2	1.5	0.2
Unemployment rate	6.0	5.9	0.3	-0.1	-0.1	-0.6
Employment rate	70.5	70.4	0.4	-0.1	1.5	0.6
Edmonton, Alberta									
Population	965.8	967.4	...	1.6	12.9	15.8	0.2	1.4	1.7
Labour force	712.1	719.4	3.4	7.3	34.3	41.7	1.0	5.0	6.2
Employment	674.7	681.2	3.6	6.5	35.6	47.6	1.0	5.5	7.5
Unemployment	37.4	38.2	1.8	0.8	-1.3	-5.9	2.1	-3.3	-13.4
Participation rate	73.7	74.4	0.4	0.7	2.6	3.2
Unemployment rate	5.3	5.3	0.3	0.0	-0.5	-1.2
Employment rate	69.9	70.4	0.4	0.5	2.8	3.8
Kelowna, British Columbia									
Population	149.8	149.9	...	0.1	1.7	2.5	0.1	1.1	1.7
Labour force	104.1	102.6	1.3	-1.5	-1.9	-0.5	-1.4	-1.8	-0.5
Employment	96.5	95.1	1.3	-1.4	-1.6	1.0	-1.5	-1.7	1.1
Unemployment	7.6	7.5	0.8	-0.1	-0.3	-1.6	-1.3	-3.8	-17.6
Participation rate	69.5	68.4	0.9	-1.1	-2.1	-1.5
Unemployment rate	7.3	7.3	0.7	0.0	-0.2	-1.5
Employment rate	64.4	63.4	0.9	-1.0	-1.8	-0.4
Abbotsford-Mission, British Columbia									
Population	144.5	144.6	...	0.1	1.7	2.3	0.1	1.2	1.6
Labour force	95.9	96.0	0.8	0.1	0.1	-0.9	0.1	0.1	-0.9
Employment	88.0	88.3	0.8	0.3	2.1	-1.1	0.3	2.4	-1.2
Unemployment	7.9	7.7	0.4	-0.2	-2.0	0.2	-2.5	-20.6	2.7
Participation rate	66.4	66.4	0.5	0.0	-0.7	-1.7
Unemployment rate	8.2	8.0	0.4	-0.2	-2.1	0.3
Employment rate	60.9	61.1	0.6	0.2	0.8	-1.7
Vancouver, British Columbia									
Population	2,028.1	2,030.7	...	2.6	24.7	33.3	0.1	1.2	1.7
Labour force	1,346.1	1,360.8	5.0	14.7	33.3	31.6	1.1	2.5	2.4
Employment	1,248.4	1,264.3	5.1	15.9	33.1	32.6	1.3	2.7	2.6
Unemployment	97.7	96.5	3.0	-1.2	0.2	-1.0	-1.2	0.2	-1.0
Participation rate	66.4	67.0	0.3	0.6	0.8	0.5
Unemployment rate	7.3	7.1	0.2	-0.2	-0.2	-0.2
Employment rate	61.6	62.3	0.3	0.7	0.9	0.6
Victoria, British Columbia									
Population	300.7	300.9	...	0.2	1.7	2.6	0.1	0.6	0.9
Labour force	197.6	195.7	1.5	-1.9	2.5	4.7	-1.0	1.3	2.5
Employment	185.3	183.4	1.5	-1.9	1.5	2.3	-1.0	0.8	1.3
Unemployment	12.3	12.3	0.6	0.0	1.0	2.4	0.0	8.8	24.2
Participation rate	65.7	65.0	0.5	-0.7	0.4	1.0
Unemployment rate	6.2	6.3	0.3	0.1	0.5	1.1
Employment rate	61.6	61.0	0.5	-0.6	0.2	0.3

1. Average standard error of change in two consecutive months (see "Sampling Errors" in Data Quality for further explanations).

Notes(s): Estimates from this table are based on 2006 census population counts. Related CANSIM Table 282-0116.

Table 5-2
Labour force characteristics by census metropolitan area (seasonally adjusted) — Monthly

	August 2011	September 2011	S.E. ¹	Change from			Percent change from		
				last month	last December	twelve months ago	last month	last December	twelve months ago
in thousands (except rates)									
Montréal, Quebec									
Population	3,228.0	3,230.4	...	2.4	29.3	39.3	0.1	0.9	1.2
Labour force	2,139.3	2,117.6	15.7	-21.7	6.0	-13.2	-1.0	0.3	-0.6
Employment	1,958.6	1,959.3	15.6	0.7	15.2	6.8	0.0	0.8	0.3
Unemployment	180.6	158.3	11.5	-22.3	-9.2	-20.0	-12.3	-5.5	-11.2
Participation rate	66.3	65.6	0.5	-0.7	-0.4	-1.2
Unemployment rate	8.4	7.5	0.5	-0.9	-0.4	-0.9
Employment rate	60.7	60.7	0.5	0.0	0.0	-0.5
Toronto, Ontario									
Population	4,796.7	4,804.6	...	7.9	68.1	87.8	0.2	1.4	1.9
Labour force	3,219.0	3,235.2	21.6	16.2	-8.9	-1.5	0.5	-0.3	0.0
Employment	2,964.7	2,980.0	21.2	15.3	-1.0	42.8	0.5	0.0	1.5
Unemployment	254.4	255.2	15.5	0.8	-7.9	-44.3	0.3	-3.0	-14.8
Participation rate	67.1	67.3	0.5	0.2	-1.2	-1.3
Unemployment rate	7.9	7.9	0.5	0.0	-0.2	-1.4
Employment rate	61.8	62.0	0.4	0.2	-0.9	-0.3
Vancouver, British Columbia									
Population	2,031.0	2,033.3	...	2.3	24.5	32.8	0.1	1.2	1.6
Labour force	1,354.8	1,380.6	10.7	25.8	50.8	49.3	1.9	3.8	3.7
Employment	1,249.9	1,293.6	10.5	43.7	65.2	62.5	3.5	5.3	5.1
Unemployment	104.9	87.0	7.2	-17.9	-14.4	-13.2	-17.1	-14.2	-13.2
Participation rate	66.7	67.9	0.5	1.2	1.7	1.4
Unemployment rate	7.7	6.3	0.5	-1.4	-1.3	-1.2
Employment rate	61.5	63.6	0.5	2.1	2.4	2.1

1. Average standard error of change in two consecutive months (see "Sampling Errors" in Data Quality for further explanations).

Note(s): Estimates from this table are based on 2006 census population counts. Related CANSIM Table 282-0117.

Table 6-1

Labour force characteristics by province and economic region, ¹ unadjusted for seasonality, 3 month moving average ending in September 2010 and September 2011

	Population	Labour force			Participation rate	Unemployment rate	Employment rate
		Labour force	Employment	Unemployment			
in thousands							
Canada ²							
2010	27,708.6	18,829.9	17,292.5	1,537.4	68.0	8.2	62.4
2011	28,030.6	18,954.9	17,557.1	1,397.8	67.6	7.4	62.6
Newfoundland and Labrador							
2010	428.0	267.0	233.4	33.6	62.4	12.6	54.5
2011	428.5	266.5	234.4	32.1	62.2	12.0	54.7
<i>Avalon Peninsula [1010]</i>							
2010	218.9	146.4	131.4	15.0	66.9	10.2	60.0
2011	220.8	147.3	133.5	13.9	66.7	9.4	60.5
<i>South Coast-Burin Peninsula [1020]</i>							
2010	31.0	18.2	14.9	3.3	58.7	18.1	48.1
2011	30.5	17.1	13.4	3.6	56.1	21.1	43.9
<i>West Coast-Northern Peninsula-Labrador [1030]</i>							
2010	87.2	51.2	43.3	7.8	58.7	15.2	49.7
2011	86.7	52.3	45.2	7.1	60.3	13.6	52.1
<i>Notre Dame-Central Bonavista Bay [1040]</i>							
2010	91.1	51.3	43.8	7.5	56.3	14.6	48.1
2011	90.5	49.8	42.4	7.4	55.0	14.9	46.9
Prince Edward Island							
2010	117.2	82.7	74.6	8.1	70.6	9.8	63.7
2011	119.6	84.8	76.8	8.0	70.9	9.4	64.2
Nova Scotia							
2010	777.4	510.5	464.7	45.8	65.7	9.0	59.8
2011	779.0	506.0	463.0	42.9	65.0	8.5	59.4
<i>Cape Breton [1210]</i>							
2010	113.2	67.8	57.7	10.1	59.9	14.9	51.0
2011	111.9	65.0	55.3	9.7	58.1	14.9	49.4
<i>North Shore [1220]</i>							
2010	130.2	80.3	72.7	7.5	61.7	9.3	55.8
2011	129.7	78.7	71.2	7.5	60.7	9.5	54.9
<i>Annapolis Valley [1230]</i>							
2010	100.0	60.6	55.4	5.2	60.6	8.6	55.4
2011	99.6	60.9	55.9	4.9	61.1	8.0	56.1
<i>Southern [1240]</i>							
2010	99.1	64.0	57.2	6.9	64.6	10.8	57.7
2011	98.1	58.6	53.7	4.9	59.7	8.4	54.7
<i>Halifax [1250]</i>							
2010	334.9	237.8	221.7	16.0	71.0	6.7	66.2
2011	339.7	242.7	226.8	15.9	71.4	6.6	66.8
New Brunswick							
2010	617.1	403.1	367.2	36.0	65.3	8.9	59.5
2011	619.6	398.0	362.2	35.8	64.2	9.0	58.5
<i>Campbellton-Miramichi [1310]</i>							
2010	130.5	72.5	62.5	9.9	55.6	13.7	47.9
2011	129.1	75.8	64.9	10.8	58.7	14.2	50.3
<i>Moncton-Richibucto [1320]</i>							
2010	170.0	115.6	107.3	8.3	68.0	7.2	63.1
2011	172.1	113.7	104.7	9.0	66.1	7.9	60.8
<i>Saint John-St. Stephen [1330]</i>							
2010	143.5	95.4	87.3	8.2	66.5	8.6	60.8
2011	144.3	96.3	89.5	6.8	66.7	7.1	62.0

See notes at the end of the table.

Table 6-1 – continued

Labour force characteristics by province and economic region, ¹ unadjusted for seasonality, 3 month moving average ending in September 2010 and September 2011

	Population	Labour force			Participation rate	Unemployment rate	Employment rate
		Labour force	Employment	Unemployment			
in thousands							
Fredericton-Oromocto [1340]							
2010	107.7	74.8	69.7	5.1	69.5	6.8	64.7
2011	109.3	71.8	66.1	5.8	65.7	8.1	60.5
Edmundston-Woodstock [1350]							
2010	65.4	44.9	40.3	4.5	68.7	10.0	61.6
2011	64.9	40.4	37.0	3.4	62.2	8.4	57.0
Quebec							
2010	6,516.7	4,328.7	3,992.0	336.7	66.4	7.8	61.3
2011	6,584.9	4,346.8	4,035.8	311.0	66.0	7.2	61.3
Gaspésie-Îles-de-la-Madeleine [2410]							
2010	78.7	45.7	39.6	6.1	58.1	13.3	50.3
2011	78.6	44.6	40.2	4.5	56.7	10.1	51.1
Bas-Saint-Laurent [2415]							
2010	166.9	104.3	93.9	10.5	62.5	10.1	56.3
2011	166.8	98.7	91.9	6.7	59.2	6.8	55.1
Capitale-Nationale [2420]							
2010	582.3	394.7	378.5	16.3	67.8	4.1	65.0
2011	589.2	411.3	394.1	17.2	69.8	4.2	66.9
Chaudière-Appalaches [2425]							
2010	332.1	229.9	219.3	10.6	69.2	4.6	66.0
2011	333.6	240.1	229.6	10.6	72.0	4.4	68.8
Estrie [2430]							
2010	256.3	163.5	149.8	13.6	63.8	8.3	58.4
2011	258.6	170.3	159.2	11.2	65.9	6.6	61.6
Centre-du-Québec [2433]							
2010	189.2	116.4	109.8	6.6	61.5	5.7	58.0
2011	190.7	119.5	110.4	9.1	62.7	7.6	57.9
Montérégie [2435]							
2010	1,175.9	801.2	740.2	61.0	68.1	7.6	62.9
2011	1,191.4	794.5	741.7	52.8	66.7	6.6	62.3
Montréal [2440]							
2010	1,613.0	1,077.5	971.0	106.6	66.8	9.9	60.2
2011	1,624.3	1,054.1	953.7	100.3	64.9	9.5	58.7
Laval [2445]							
2010	327.6	218.1	200.1	18.0	66.6	8.3	61.1
2011	333.8	216.0	200.8	15.2	64.7	7.0	60.2
Lanaudière [2450]							
2010	384.3	258.5	243.3	15.2	67.3	5.9	63.3
2011	392.0	278.9	261.8	17.1	71.1	6.1	66.8
Laurentides [2455]							
2010	455.1	311.7	288.4	23.4	68.5	7.5	63.4
2011	464.1	316.9	292.4	24.5	68.3	7.7	63.0
Outaouais [2460]							
2010	301.3	209.8	195.0	14.9	69.6	7.1	64.7
2011	306.7	212.3	197.3	15.0	69.2	7.1	64.3
Abitibi-Témiscamingue [2465]							
2010	117.2	76.3	69.2	7.0	65.1	9.2	59.0
2011	117.6	79.3	74.4	4.9	67.4	6.2	63.3
Mauricie [2470]							
2010	220.6	130.4	116.8	13.6	59.1	10.4	52.9
2011	221.6	124.3	114.3	10.0	56.1	8.0	51.6

See notes at the end of the table.

Table 6-1 – continued

Labour force characteristics by province and economic region, ¹ unadjusted for seasonality, 3 month moving average ending in September 2010 and September 2011

	Population	Labour force			Participation rate	Unemployment rate	Employment rate
		Labour force	Employment	Unemployment			
in thousands							
Saguenay-Lac-Saint-Jean [2475]							
2010	225.3	131.8	122.2	9.7	58.5	7.4	54.2
2011	225.3	128.7	120.2	8.5	57.1	6.6	53.4
Côte-Nord and Nord-du-Québec [2480, 2490]							
2010	90.8	58.6	54.9	3.7	64.5	6.3	60.5
2011	90.6	57.2	53.9	3.3	63.1	5.8	59.5
Ontario							
2010	10,811.5	7,357.4	6,683.6	673.8	68.1	9.2	61.8
2011	10,943.5	7,387.9	6,799.8	588.1	67.5	8.0	62.1
Ottawa [3510]							
2010	1,036.7	737.3	679.6	57.7	71.1	7.8	65.6
2011	1,049.8	733.8	687.6	46.3	69.9	6.3	65.5
Kingston-Pembroke [3515]							
2010	368.9	224.0	206.9	17.0	60.7	7.6	56.1
2011	370.7	240.1	221.9	18.2	64.8	7.6	59.9
Muskoka-Kawarthas [3520]							
2010	317.5	190.4	172.8	17.7	60.0	9.3	54.4
2011	318.9	194.9	179.5	15.4	61.1	7.9	56.3
Toronto [3530]							
2010	4,962.6	3,463.7	3,115.4	348.3	69.8	10.1	62.8
2011	5,054.5	3,436.4	3,139.7	296.7	68.0	8.6	62.1
Kitchener-Waterloo-Barrie [3540]							
2010	1,024.0	736.1	677.1	59.0	71.9	8.0	66.1
2011	1,038.8	754.2	700.8	53.4	72.6	7.1	67.5
Hamilton-Niagara Peninsula [3550]							
2010	1,161.5	767.1	705.0	62.1	66.0	8.1	60.7
2011	1,170.0	771.4	714.7	56.8	65.9	7.4	61.1
London [3560]							
2010	536.3	355.4	323.2	32.2	66.3	9.1	60.3
2011	540.9	361.8	328.8	33.0	66.9	9.1	60.8
Windsor-Sarnia [3570]							
2010	521.5	331.8	296.4	35.5	63.6	10.7	56.8
2011	519.3	324.5	295.7	28.8	62.5	8.9	56.9
Stratford-Bruce Peninsula [3580]							
2010	245.9	159.1	150.8	8.4	64.7	5.3	61.3
2011	245.7	169.1	161.1	8.0	68.8	4.7	65.6
Northeast [3590]							
2010	462.3	286.1	258.4	27.7	61.9	9.7	55.9
2011	461.5	292.0	267.5	24.5	63.3	8.4	58.0
Northwest [3595]							
2010	174.3	106.3	98.0	8.2	61.0	7.7	56.2
2011	173.3	109.6	102.6	7.1	63.2	6.5	59.2
Manitoba							
2010	942.7	667.0	627.7	39.3	70.8	5.9	66.6
2011	955.2	669.1	628.8	40.3	70.0	6.0	65.8
Southeast [4610]							
2010	81.1	58.9	55.5	3.4	72.6	5.8	68.4
2011	83.0	57.9	55.7	2.2	69.8	3.8	67.1
South Central [4620]							
2010	46.3	32.6	31.6	1.0	70.4	3.1	68.3
2011	47.5	34.1	33.1	1.1	71.8	3.2	69.7

See notes at the end of the table.

Table 6-1 – continued

Labour force characteristics by province and economic region, ¹ unadjusted for seasonality, 3 month moving average ending in September 2010 and September 2011

	Population	Labour force			Participation rate	Unemployment rate	Employment rate
		Labour force	Employment	Unemployment			
in thousands							
Southwest [4630]							
2010	83.4	56.0	53.1	2.9	67.1	5.2	63.7
2011	83.8	60.9	57.8	3.1	72.7	5.1	69.0
North Central [4640]							
2010	36.1	24.5	23.4	1.1	67.9	4.5	64.8
2011	36.6	23.8	21.9	1.9	65.0	8.0	59.8
Winnipeg [4650]							
2010	563.2	402.0	375.9	26.1	71.4	6.5	66.7
2011	571.8	397.8	370.7	27.1	69.6	6.8	64.8
Interlake [4660]							
2010	72.0	50.4	48.0	2.4	70.0	4.8	66.7
2011	72.7	53.1	50.8	2.3	73.0	4.3	69.9
Parklands and North [4670, 4680]							
2010	60.5	42.5	40.1	2.3	70.2	5.4	66.3
2011	59.9	41.5	38.7	2.8	69.3	6.7	64.6
Saskatchewan							
2010	792.7	559.1	529.3	29.8	70.5	5.3	66.8
2011	801.3	557.7	530.6	27.1	69.6	4.9	66.2
Regina-Moose Mountain [4710]							
2010	235.0	174.3	166.1	8.1	74.2	4.6	70.7
2011	238.0	177.8	170.4	7.4	74.7	4.2	71.6
Swift Current-Moose Jaw [4720]							
2010	81.2	54.2	51.6	2.6	66.7	4.8	63.5
2011	81.1	52.2	50.2	2.0	64.4	3.8	61.9
Saskatoon-Biggar [4730]							
2010	260.3	184.8	175.2	9.6	71.0	5.2	67.3
2011	265.6	183.1	172.7	10.4	68.9	5.7	65.0
Yorkton-Melville [4740]							
2010	63.3	43.3	41.4	1.9	68.4	4.4	65.4
2011	62.9	42.2	40.6	1.6	67.1	3.8	64.5
Prince Albert and Northern [4750, 4760]							
2010	152.9	102.6	95.0	7.6	67.1	7.4	62.1
2011	153.6	102.3	96.7	5.6	66.6	5.5	63.0
Alberta							
2010	2,967.6	2,177.4	2,035.6	141.8	73.4	6.5	68.6
2011	3,014.2	2,255.2	2,125.0	130.2	74.8	5.8	70.5
Lethbridge-Medicine Hat [4810]							
2010	217.5	151.4	142.3	9.1	69.6	6.0	65.4
2011	219.6	152.9	144.0	8.9	69.6	5.8	65.6
Camrose-Drumheller [4820]							
2010	155.7	113.1	107.4	5.7	72.6	5.0	69.0
2011	156.2	113.4	107.5	5.9	72.6	5.2	68.8
Calgary [4830]							
2010	1,092.9	823.3	766.9	56.4	75.3	6.9	70.2
2011	1,114.2	844.3	793.2	51.1	75.8	6.1	71.2
Banff-Jasper-Rocky Mountain House [4840]							
2010	71.6	57.6	54.5	3.1	80.4	5.4	76.1
2011	71.9	53.3	51.7	1.5	74.1	2.8	71.9

See notes at the end of the table.

Table 6-1 – continued

Labour force characteristics by province and economic region, ¹ unadjusted for seasonality, 3 month moving average ending in September 2010 and September 2011

	Population	Labour force			Participation rate	Unemployment rate	Employment rate
		Labour force	Employment	Unemployment			
in thousands							
Red Deer [4850]							
2010	152.6	111.0	104.8	6.2	72.7	5.6	68.7
2011	154.6	116.1	110.1	6.0	75.1	5.2	71.2
Edmonton [4860]							
2010	987.0	702.5	654.5	48.0	71.2	6.8	66.3
2011	1,003.3	745.8	702.5	43.2	74.3	5.8	70.0
Athabasca-Grande Prairie-Peace River [4870]							
2010	189.9	139.3	130.8	8.5	73.4	6.1	68.9
2011	190.9	145.2	136.7	8.5	76.1	5.9	71.6
Wood Buffalo-Cold Lake [4880]							
2010	100.4	79.2	74.3	4.9	78.9	6.2	74.0
2011	103.4	84.2	79.2	5.0	81.4	5.9	76.6
British Columbia							
2010	3,737.7	2,477.0	2,284.5	192.4	66.3	7.8	61.1
2011	3,784.8	2,483.0	2,300.7	182.3	65.6	7.3	60.8
Vancouver Island and Coast [5910]							
2010	650.5	412.2	386.1	26.1	63.4	6.3	59.4
2011	656.3	394.9	364.7	30.2	60.2	7.6	55.6
Lower Mainland-Southwest [5920]							
2010	2,279.6	1,527.9	1,409.4	118.4	67.0	7.7	61.8
2011	2,317.8	1,558.7	1,446.1	112.6	67.2	7.2	62.4
Thompson-Okanagan [5930]							
2010	434.4	281.5	257.1	24.5	64.8	8.7	59.2
2011	438.1	272.9	253.0	19.9	62.3	7.3	57.7
Kootenay [5940]							
2010	126.7	78.5	70.5	8.0	62.0	10.2	55.6
2011	127.3	78.7	72.3	6.4	61.8	8.1	56.8
Cariboo [5950]							
2010	127.8	90.7	83.1	7.6	71.0	8.4	65.0
2011	127.3	91.4	84.0	7.4	71.8	8.1	66.0
North Coast and Nechako [5960, 5970]							
2010	67.0	46.4	41.5	4.9	69.3	10.6	61.9
2011	66.6	49.0	44.8	4.2	73.6	8.6	67.3
Northeast [5980]							
2010	51.6	39.7	36.7	3.0	76.9	7.6	71.1
2011	51.4	37.4	35.8	1.6	72.8	4.3	69.6

1. For geographic descriptions of economic regions, refer to the Guide to the Labour Force Survey (catalogue number 71-543-GIE).

2. Estimates for Canada are a sum of the provincial totals and exclude estimates from Yukon, Northwest Territories and Nunavut.

Note(s): Related CANSIM table 282-0054.

Table 6-2
Labour force characteristics by territories, unadjusted for seasonality, 3 month moving average ending in
September 2010 and September 2011

	Population	Labour force			Participation rate	Unemployment rate	Employment rate
		Labour force	Employment	Unemployment			
		in thousands			percent		
Yukon ¹							
2010	26.1	19.9	18.6	1.3	76.2	6.5	71.3
2011	26.6	20.4	19.4	1.0	76.7	4.9	72.9
Northwest Territories ²							
2010	32.3	23.9	22.3	1.6	74.0	6.7	69.0
2011	32.2	25.7	23.8	1.9	79.8	7.4	73.9
Nunavut ³							
2010	21.1	13.9	12.0	1.9	66.0	13.8	56.9
2011	21.0	14.2	11.7	2.4	67.5	17.2	55.9

1. Since 1992, the Labour force survey (LFS) has been conducted in the Yukon, using an alternative methodology that accommodates some of the operational difficulties inherent to remote locales. These estimates are not included in the national totals. In 1995, the LFS in the Yukon underwent a sample redesign. One result of the redesign was that the covered population increased from 85% to 92%, which is reflected by the sharp increase in the three month moving averages estimates of January, February and March of 1995 for all the level estimates. Users are therefore warned to be cautious when comparing estimates before January 1995 to estimates for January 1995 and forward.
2. Since 2001, the Labour force survey (LFS) has been administered in the Northwest Territories, using an alternative methodology that accommodates some of the operational difficulties inherent to remote locales. These estimates are not included in national totals.
3. Since 2004, the Labour force survey (LFS) has been administered in Nunavut, using an alternative methodology that accommodates some of the operational difficulties inherent to remote locales. These estimates are 3-month moving averages and are not included in national totals. From January 2004 to December 2007, estimates represent about 70% of all Nunavut residents aged 15 and over. Starting in January 2008, coverage was extended to 92%, so that by March 2008, the 3-month moving average is completely based on the extended coverage. Because of the large difference in coverage, users are recommended not to compare estimates prior to January 2008 with data afterwards. The January and February 2008 3-month moving average estimates are based on a mix of both coverages, since the extended coverage was introduced in January 2008. Estimates from January 2004 to December 2007 are based on the 10 largest communities in Nunavut: Iqaluit, Rankin Inlet, Cambridge Bay, Kugluktuk, Baker Lake, Arviat, Pond Inlet, Cape Dorset, Pangnirtung, Igloolik. Estimates from March 2008 to present cover the above communities as well as: Taloyoak, Gjoa Haven, Kugaaruk, Coral Harbour, Repulse Bay, Qikiqtarjuaq, Arctic Bay, Hall Beach, Clyde River.

Note(s): Related CANSIM table 282-0100.

Table 7
Average usual hours and wages of employees by selected characteristics, Canada, unadjusted for seasonality

	Employees				Full-time			Part-time		
	Number	Average weekly hours	Average weekly wages	Average hourly wages	Number	Average weekly hours	Average weekly wages	Number	Average weekly hours	Average weekly wages
	thousands		current dollars		thousands		current dollars	thousands		current dollars
September 2011										
15 years and over	14,734.4	35.5	845.51	23.05	12,092.6	39.4	966.21	2,641.8	17.3	293.03
15 to 24 years	2,306.7	27.2	397.91	13.60	1,164.4	39.0	611.74	1,142.3	15.3	179.95
25 years and over	12,427.7	37.0	928.59	24.81	10,928.2	39.5	1,003.97	1,499.5	18.9	379.18
Men	7,477.9	38.0	956.66	24.61	6,644.4	40.6	1,044.27	833.5	16.6	258.31
Women	7,256.4	32.9	730.97	21.45	5,448.2	37.9	871.01	1,808.2	17.7	309.04
Union coverage										
Union coverage	4,558.2	36.0	969.05	26.59	3,941.1	38.6	1,051.96	617.0	19.3	439.48
No union coverage	10,176.2	35.2	790.17	21.47	8,151.5	39.8	924.74	2,024.7	16.7	248.41
Job permanency										
Permanent	12,712.5	36.3	886.43	23.78	10,858.2	39.4	984.04	1,854.3	18.2	314.89
Temporary	2,021.8	30.3	588.22	18.47	1,234.4	39.8	809.37	787.5	15.3	241.58
Occupation										
Management	979.7	39.8	1,370.17	34.67	949.1	40.5	1,397.22	30.6	18.0	531.36
Business, finance and administrative	2,774.0	35.2	784.58	21.87	2,367.7	38.2	864.63	406.2	17.8	318.02
Natural and applied sciences	1,120.4	38.7	1,246.54	32.25	1,082.3	39.5	1,270.66	38.1	18.3	562.08
Health	1,036.2	33.6	912.33	26.93	795.9	37.8	1,029.75	240.3	19.9	523.38
Social science, education, government service and religion	1,384.5	34.6	1,044.41	29.94	1,148.1	38.1	1,161.19	236.3	17.6	477.01
Art, culture, recreation and sport	354.1	32.1	801.47	23.79	261.5	38.5	998.25	92.6	13.9	245.63
Sales and service	3,736.4	30.4	512.39	15.70	2,337.6	38.5	694.33	1,398.8	16.9	208.36
Trades, transport and equipment operators	2,225.6	40.3	922.61	22.65	2,089.2	41.8	962.49	136.4	18.6	311.78
Occupations unique to primary industry	324.9	42.1	870.98	20.01	289.4	45.6	956.28	35.5	13.3	175.59
Occupations unique to processing, manufacturing and utilities	798.7	39.2	772.27	19.54	771.8	40.0	791.67	26.9	15.1	215.87
September 2010										
15 years and over	14,452.7	35.3	829.02	22.72	11,782.6	39.3	950.63	2,670.1	17.3	292.41
15 to 24 years	2,253.4	27.3	388.88	13.30	1,149.0	38.7	595.98	1,104.4	15.3	173.43
25 years and over	12,199.3	36.8	910.33	24.46	10,633.6	39.4	988.95	1,565.7	18.7	376.34
Men	7,276.7	37.8	946.20	24.40	6,459.4	40.5	1,033.48	817.2	16.5	256.29
Women	7,176.1	32.7	710.21	21.01	5,323.2	37.9	850.09	1,852.9	17.7	308.34
Union coverage										
Union coverage	4,625.8	35.7	949.17	26.28	3,965.4	38.5	1,035.12	660.4	18.9	433.08
No union coverage	9,826.9	35.1	772.47	21.04	7,817.2	39.7	907.77	2,009.7	16.8	246.19
Job permanency										
Permanent	12,504.6	36.1	868.38	23.40	10,593.1	39.3	968.55	1,911.6	18.3	313.25
Temporary	1,948.1	30.1	576.44	18.31	1,189.5	39.8	791.05	758.6	15.0	239.89
Occupation										
Management	1,007.9	39.8	1,397.41	35.13	977.4	40.4	1,425.56	30.6	18.9	496.91
Business, finance and administrative	2,761.6	35.0	762.64	21.32	2,340.6	38.1	844.87	421.0	17.8	305.50
Natural and applied sciences	1,066.7	38.4	1,197.84	31.21	1,027.4	39.1	1,224.76	39.3	18.0	493.83
Health	948.1	33.2	894.34	26.92	701.2	37.7	1,015.50	246.9	20.3	550.21
Social science, education, government service and religion	1,418.5	34.1	997.30	29.25	1,163.6	37.9	1,112.94	254.9	16.9	469.30
Art, culture, recreation and sport	333.6	32.3	801.08	23.46	245.6	38.7	993.70	88.0	14.4	263.19
Sales and service	3,706.6	30.4	505.25	15.45	2,319.3	38.5	684.87	1,387.3	16.9	204.96
Trades, transport and equipment operators	2,124.1	40.1	910.17	22.48	1,989.8	41.6	951.64	134.3	17.9	295.86
Occupations unique to primary industry	307.9	42.1	855.17	19.46	270.6	45.9	947.21	37.3	14.6	186.72
Occupations unique to processing, manufacturing and utilities	777.8	39.3	758.91	19.18	747.1	40.2	779.46	30.7	17.0	258.51

Note(s): Related CANSIM Tables 282-0023, 282-0069, 282-0073.

Table 8
Regional unemployment rates used by the Employment Insurance Program, ¹ seasonally adjusted, 3 month moving average

Region	Effective from October 9, 2011 to November 5, 2011
	percent
Newfoundland and Labrador	
01. St. John's	6.6
02. Newfoundland and Labrador	18.8
Prince Edward Island	
03. Prince Edward Island	11.8
Nova Scotia	
04. Eastern Nova Scotia	16.1
05. Western Nova Scotia	9.8
06. Halifax	6.3
New Brunswick	
07. Fredericton-Moncton-Saint John	6.7
08. Madawaska-Charlotte ²	10.5
09. Restigouche-Albert	15.7
Quebec	
10. Gaspésie-Îles-de-la-Madeleine	13.1
11. Québec	4.6
12. Trois-Rivières	8.6
13. South Central Quebec	5.2
14. Sherbrooke	7.0
15. Montérégie	6.3
16. Montréal	8.1
17. Central Quebec	8.1
18. Northwestern Quebec	8.9
19. Bas-Saint-Laurent-Côte-Nord ³	9.4
20. Gatineau	6.2
21. Saguenay	6.4
Ontario	
22. Ottawa	5.0
23. Eastern Ontario	8.5
24. Kingston	6.2
25. Central Ontario	8.9
26. Oshawa	7.2
27. Toronto	7.9
28. Hamilton	6.7
29. St. Catharines	8.2
30. London	9.1
31. Niagara	10.5
32. Windsor	10.0
33. Kitchener	6.7
34. Huron	7.4
35. South Central Ontario	5.4
36. Sudbury	5.7
37. Thunder Bay	6.5
38. Northern Ontario	12.3
Manitoba	
39. Winnipeg	5.9
40. Southern Manitoba	6.3
41. Northern Manitoba	28.5
Saskatchewan	
42. Regina	4.4
43. Saskatoon	5.9
44. Southern Saskatchewan	6.6
45. Northern Saskatchewan	16.8
Alberta	
46. Calgary	6.0
47. Edmonton	5.5
48. Northern Alberta	9.1
49. Southern Alberta	6.6

See notes at the end of the table.

Table 8 – continued

Regional unemployment rates used by the Employment Insurance Program, ¹ seasonally adjusted, 3 month moving average

Region	Effective from October 9, 2011 to November 5, 2011
	percent
British Columbia	
50. Southern Interior British Columbia	8.6
51. Abbotsford	8.1
52. Vancouver	7.2
53. Victoria	7.1
54. Southern Coastal British Columbia	9.5
55. Northern British Columbia	11.3
Territories	
56. Yukon ⁴	25.0
57. Northwest Territories ⁴	25.0
58. Nunavut ⁴	25.0

1. The boundaries of these regions are determined by Human Resources and Social Development Canada (HRSDC). For geographic descriptions and maps of employment insurance regions, see the HRSDC website: <http://srv129.services.gc.ca/eiregions/en/geocont.aspx>.
 2. This unemployment rate has been determined using a transition formula prescribed in the EI Regulations. For further information, see: http://www.hrsdc.gc.ca/en/cs/comm/news/2000/000913a_e.shtml.
 3. This unemployment rate has been determined using a transition formula prescribed in the EI Regulations. For further information, see: http://www.hrsdc.gc.ca/en/cs/comm/news/2000/000913b_e.shtml.
 4. This rate is provided by Human Resources and Skills Development Canada.
- Note(s):** All geographic regions are based on the 1996 Census boundaries.

Data quality

About the Labour Force Survey

The statistics contained in this report are based on information obtained through a sample survey of 56,000 representative households across the country. The Labour Force Survey, started in November 1945, was taken at quarterly intervals until November 1952. It has been carried out monthly since then. The information generated by the survey has expanded considerably over the years with a major redesign of the survey content in 1976 and again in 1997, and provides a rich and detailed picture of the Canadian labour market.

The sample used in the Labour Force Survey has been designed to represent all persons in the population 15 years of age and over residing in the provinces of Canada, with the exception of the following: persons living on Indian reserves, full-time members of the armed forces and people living in institutions (for example, inmates of penal institutions and patients in hospitals or nursing homes who have resided in the institution for more than six months). Monthly estimates of employment, unemployment and persons not in the labour force refer to the specific week covered by the survey each month, normally the week containing the 15th day.

Definitions and explanations

The **labour force** is composed of those members of the civilian non-institutional population 15 years of age and over who, during the reference week, were employed or unemployed.

Employed persons are those who, during the reference week:

- (a) did any work at all
- (b) had a job but were not at work

A person is considered to be **full-time** if his/her usual hours at the main job are 30 or more hours per week. When the number of hours worked at the main job is usually less than 30 hours per week then he/she is considered to be **part-time**.

Unemployed persons are those who, during the reference week:

- (a) were without work, had actively looked for work in the past four weeks (ending with reference week), and were available for work;
- (b) had not actively looked for work in the past four weeks but were on temporary layoff and were available for work;
- (c) had not actively looked for work in the past four weeks but had a new job to start in four weeks or less from the reference week, and were available for work.

Persons in the civilian non-institutional population 15 years of age and over who, during the reference week, were neither employed nor unemployed are classified as **not in the labour force**.

The **unemployment rate** represents the number of unemployed persons expressed as a percentage of the labour force. The unemployment rate for a particular group (age, sex, etc.) is the number unemployed in that group expressed as a percentage of the labour force for that group.

The **participation rate** represents the labour force expressed as a percentage of the population 15 years of age and over. The participation rate for a particular group (age, sex, etc.) is the labour force in that group expressed as a percentage of the population for that group.

The **employment rate (formerly the employment/population ratio)** represents the number of persons employed expressed as a percentage of the population 15 years of age and over. The employment rate for a particular group (age, sex, etc.) is the number employed in that group expressed as a percentage of the population for that group.

The **part-time rate** represents the number of persons employed part-time expressed as a percentage of the employed. The part-time rate for a particular group (age, sex, etc.) is the number employed part-time in that group expressed as a percentage of the employed for that group.

All geographic regions are based on the 2006 Census boundaries.

Seasonal adjustment

Fluctuations in economic time series are caused by seasonal, cyclical and irregular movements. A seasonally adjusted series is one from which seasonal movements have been eliminated. Seasonal movements are defined as those which are caused by regular annual events such as climate, holidays, vacation periods and cycles related to crops, production and retail sales associated with Christmas and Easter. The seasonally adjusted series contains irregular as well as longer-term cyclical fluctuations.

The seasonally adjusted series are revised each year to take into account current data and to generate new forecast factors for the next twelve months. The data are therefore subject to slight revisions in future issues of this publication.

Sampling variability of estimates

Estimates in this publication are based on the Labour Force Survey, a monthly survey of approximately 56,000 households across Canada. Because the entire population is not surveyed, the estimates are subject to sampling error. While the published estimate is the best available indicator of the real value, changes in the level of any estimates between two months can be the result of a true change or sampling variability. The sampling error can be estimated by calculating the standard error for the published estimate or statistic. These standard errors have been included in the publication tables, in order to assist users in interpreting the data.

Interpretation based on standard error

Two thirds of the time (68%), a change greater than the sampling error indicates a real change. The larger the change compared to the standard error, the better the chance that we are observing a real change, as opposed to a change due to sampling variability. At the 95% level, in order to ensure that change is real, the change in the estimate must be greater than twice the sampling error.

Movements in estimates that are smaller than the sampling error are less likely to reflect a real change and more likely to be due to sampling variability. While the above is true for monthly movements, one can have more confidence in a series of consecutive movements in the same direction, even though some of the monthly movements may be smaller than the sampling error.

Interpretation based on confidence intervals

Confidence intervals provide another way of looking at the variability inherent in estimates of sample surveys. To illustrate how to calculate the confidence interval, let us say that one month the published estimate for total employment rose by 16,000 to reach 16,500,000. The associated standard error for the movement estimate is 27,200. The standard error used to interpret the movement estimate indicates that:

- There are approximately two chances in three (68%) that the real value of the movement between the two months falls within the range -11,200 to +43,200 (16,000 + or – one standard error).
- There are approximately nine chances in ten (90%) that the real value of the movement between the two months falls within the range -27,520 to +59,520 (16,000 + or – 1.6 times the standard error).
- There are approximately nineteen chances in twenty (95%) that the real value of the movement between the two months falls within the range -38,400 to +70,400 (16,000 + or – two standard errors).

For more detailed explanations on sampling variability of estimates, and in particular for information on how to assess the variability of level estimates, consult the Data quality section of the *Guide to the Labour Force Survey*, (71-543-G) on page 27.

Documentation

For more detailed information about the Labour Force Survey, see the following documents:

- Overview of the Labour Force Survey
- Guide to the Labour Force Survey (71-543-G)
- Data quality statement
- Methodology of the Canadian Labour Force Survey (71-526-X)
- LFS *geographical maps*