

Table 1
Railway Occurrence and Casualty

	October			January to October		
	2011	2010	2006-2010 Average	2011	2010	2006-2010 Average
Accidents	67	109	106	882	902	1,008
Main-Track Train Collisions	1	1	1	2	4	4
Main-Track Train Derailments - 1-2 cars	1	1	3	39	35	52
Main-Track Train Derailments - 3 or more cars	2	2	4	52	35	45
Crossings	11	16	16	139	144	171
Non-Main-Track Train Collisions	8	11	9	80	78	83
Non-Main-Track Train Derailments - 1-2 cars	23	50	42	317	364	381
Non-Main-Track Train Derailments - 3 or more cars	5	6	14	95	89	115
Collisions/Derailments Involving Track Units	3	4	2	27	28	27
Employee/Passenger	0	1	1	11	9	10
Trespassers	8	9	10	59	73	76
Fires/Explosions	0	7	2	21	25	18
Other	5	1	2	37	18	26
Incidents	15	14	19	170	141	177
Dangerous Goods Leaker	2	2	5	49	39	63
Main-track Switch in Abnormal Position	3	0	1	8	4	6
Movement Exceeds Limits of Authority	7	11	10	93	86	89
Runaway Rolling Stock	2	0	1	11	4	9
Others	1	1	2	9	8	10
Million Train-miles (a)				70.78	70.14	72.24
Accidents/Million Train-miles				12.46	12.86	13.95
Accidents Involving Dangerous Goods	6	14	14	110	118	134
Main-track Train Derailments	2	1	1	21	13	17
Crossings	0	0	0	1	6	5
Non-Main-Track Train Collisions	0	3	3	18	23	30
Non-Main-Track Train Derailments	3	9	9	64	72	76
All Others	1	1	1	6	4	6
Accidents with a DG Release	0	0	0	2	2	3
Accidents Involving Passenger Trains	7	7	7	58	55	61
Fatalities	8	12	9	60	72	71
Crossings	1	4	2	22	20	22
Trespassers	7	8	7	37	50	47
All Others	0	0	0	1	2	2
Serious Injuries	2	10	7	48	54	53
Crossings	1	6	4	19	21	23
Trespassers	1	3	2	20	18	21
All Others	0	1	1	9	15	9

Data extracted November 15, 2011.

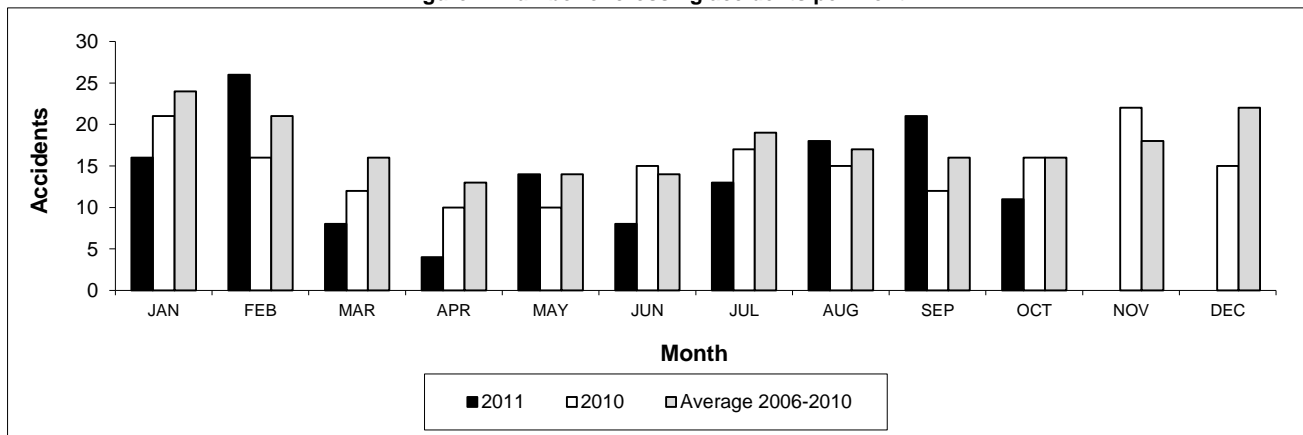
All 5-year averages have been rounded. The totals sometimes do not coincide to the sum of these averages.

a. Train-miles estimated. (Source: Transport Canada)

Table 2
Railway crossing and trespasser accidents by province

	Crossings with Type Recorded				All Crossings		Trespasser		
	2011 - Year To Date*				Year To Date*		Year To Date*		
	Public Automated	Public Passive	Private	Farm	2011	2010	2011	2010	
Newfoundland									
Accidents	2	0	0	0	2	0	0	0	
Fatalities	0	0	0	0	0	0	0	0	
Serious Injuries	0	0	0	0	0	0	0	0	
Nova Scotia									
Accidents	0	0	1	0	1	3	1	0	
Fatalities	0	0	0	0	0	1	0	0	
Serious Injuries	0	0	0	0	0	2	0	0	
New Brunswick									
Accidents	4	1	1	0	6	5	2	1	
Fatalities	2	0	0	0	2	1	1	0	
Serious Injuries	0	0	0	0	0	0	1	0	
Quebec									
Accidents	9	2	3	3	17	19	8	13	
Fatalities	2	0	0	1	3	1	6	10	
Serious Injuries	1	0	0	1	2	3	2	4	
Ontario									
Accidents	18	9	2	1	30	38	27	32	
Fatalities	4	2	1	0	7	4	21	25	
Serious Injuries	5	1	0	0	6	3	6	5	
Manitoba									
Accidents	3	2	0	0	5	13	1	3	
Fatalities	1	1	0	0	2	1	1	2	
Serious Injuries	1	0	0	0	1	2	0	1	
Saskatchewan									
Accidents	5	11	1	1	18	22	2	3	
Fatalities	0	0	0	1	1	5	1	2	
Serious Injuries	1	1	0	0	2	2	1	1	
Alberta									
Accidents	18	20	1	2	41	30	7	7	
Fatalities	3	2	0	0	5	5	2	4	
Serious Injuries	3	1	0	0	4	8	4	3	
British Columbia									
Accidents	12	4	2	1	19	14	11	14	
Fatalities	1	0	0	1	2	2	5	7	
Serious Injuries	3	0	1	0	4	1	6	4	
Northwest Territories									
Accidents	0	0	0	0	0	0	0	0	
Fatalities	0	0	0	0	0	0	0	0	
Serious Injuries	0	0	0	0	0	0	0	0	
Canada									
Accidents	71	49	11	8	139	144	59	73	
Fatalities	13	5	1	3	22	20	37	50	
Serious Injuries	14	3	1	1	19	21	20	18	

Figure 1: Number of crossing accidents per month



Data extracted November 15, 2011.

*Year to date is from January to October.

Table 3
Main-track train derailments by province

	January to October			Deraillments with DG Involvement January to October		
	2011	2010	2006-2010 Average	2011	2010	2006-2010 Average
	Canada	91	70	97	21	13
Newfoundland	1	3	1	0	0	0
Nova Scotia	1	0	1	0	0	0
New Brunswick	0	0	2	0	0	1
Quebec	8	8	12	2	2	2
Ontario	20	19	28	5	3	5
Manitoba	10	6	8	0	0	1
Saskatchewan	11	9	10	0	2	1
Alberta	20	13	17	8	3	4
British Columbia	20	12	19	6	3	2
Northwest Territories	0	0	0	0	0	0

* There was 1 occurrence with dangerous goods release to date in 2011 and 1 in 2010.

Figure 1: Number of main-track train derailments per month

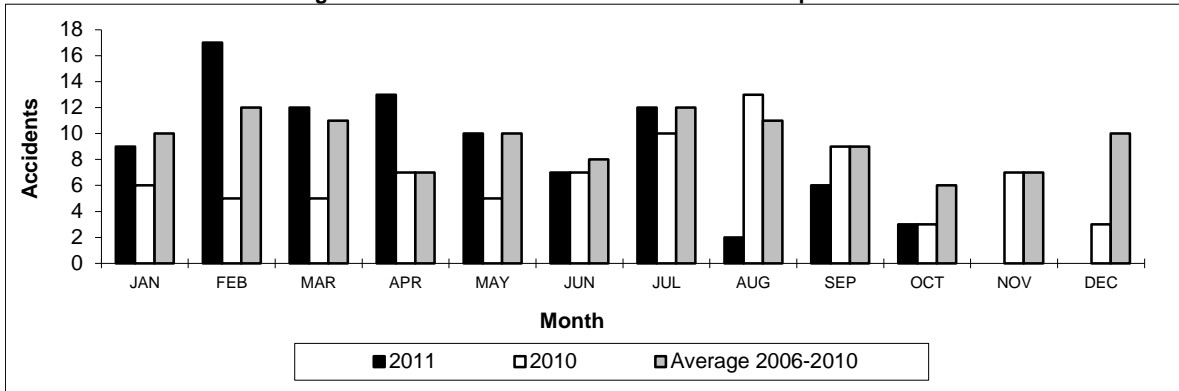
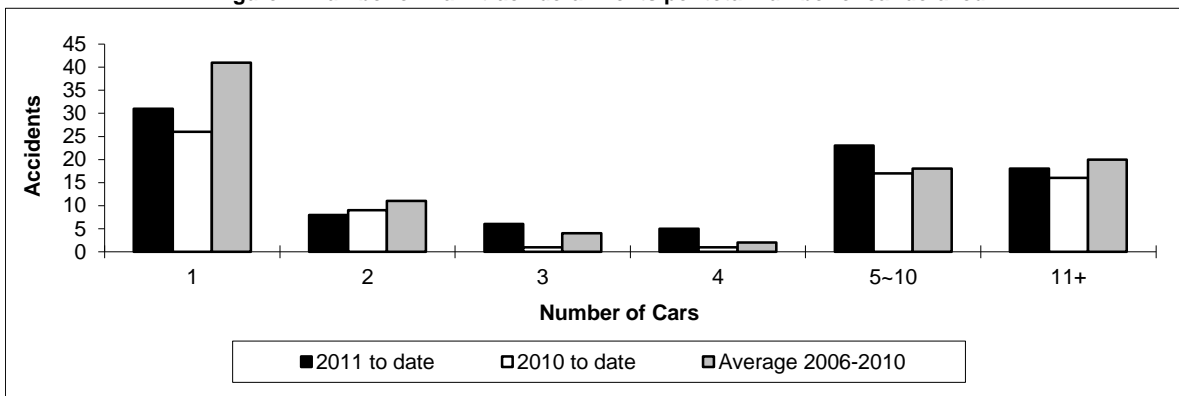


Figure 2: Number of main-track derailments per total number of car derailed



Data extracted November 15, 2011.

Table 4
Non main-track train collisions by province

	January to October			Collisions with DG Involvement January to October		
	2011	2010	2006-2010 Average	2011	2010	2006-2010 Average
	Canada	80	78	83	18	23
Newfoundland	0	0	0	0	0	0
Nova Scotia	0	0	0	0	0	0
New Brunswick	1	1	2	0	0	1
Quebec	11	10	9	2	4	3
Ontario	15	12	21	5	6	9
Manitoba	13	13	10	2	2	3
Saskatchewan	6	1	6	0	0	2
Alberta	17	23	20	4	6	9
British Columbia	17	18	15	5	5	4
Northwest Territories	0	0	0	0	0	0

* There were no occurrences with dangerous goods release to date in 2011 or in 2010.

Figure 1: Number of non main-track train collisions per month

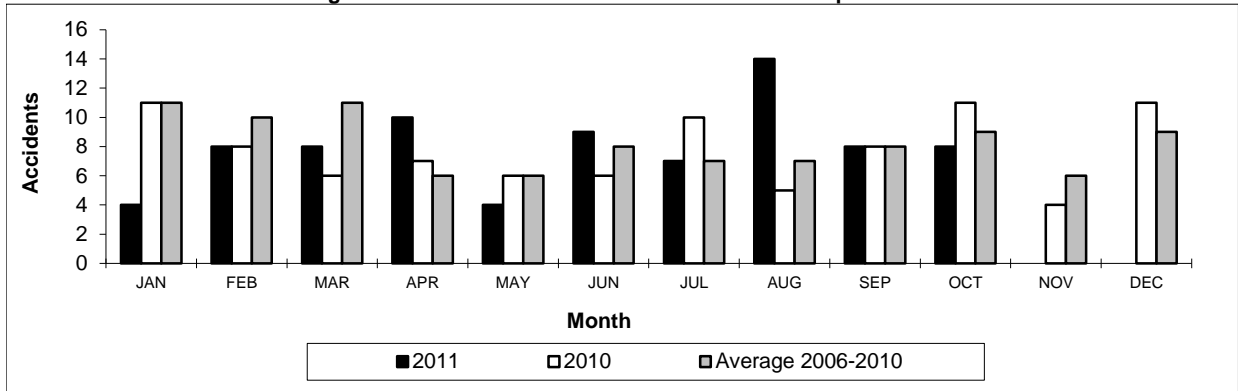
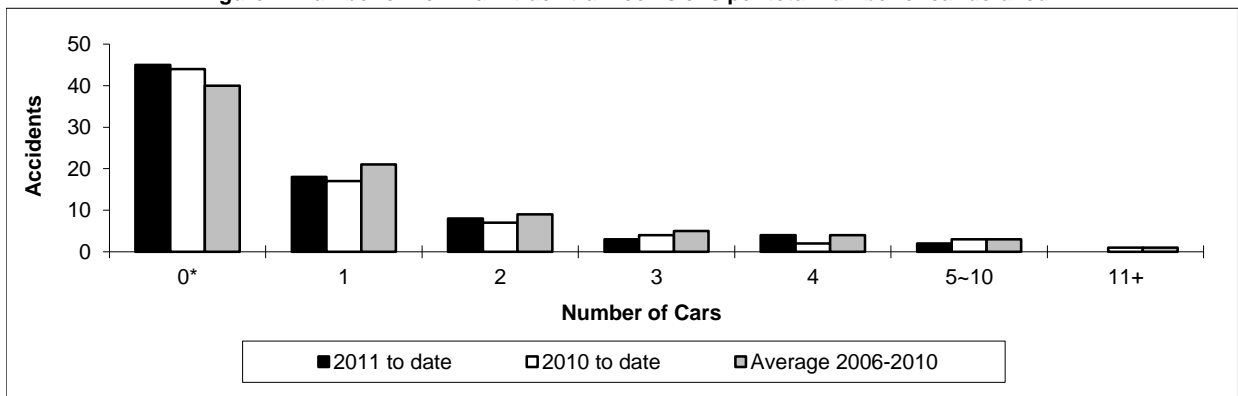


Figure 2: Number of non main-track train collisions per total number of car derailed



Data extracted November 15, 2011.

*Number of collisions with no derailments.

Table 5
Non main-track train derailments by province

	January to October			Derailments with DG Involvement January to October		
	2011	2010	2006-2010 Average	2011	2010	2006-2010 Average
Canada	412	453	496	64	72	76
Newfoundland	0	0	0	0	0	0
Nova Scotia	2	4	5	1	1	1
New Brunswick	11	9	12	1	3	3
Quebec	51	49	62	14	6	11
Ontario	86	94	121	14	13	19
Manitoba	43	50	51	3	10	9
Saskatchewan	66	52	46	3	5	4
Alberta	94	123	112	22	21	18
British Columbia	58	72	86	5	13	12
Northwest Territories	1	0	0	1	0	0

* There were no occurrences with dangerous goods release to date in 2011 and 1 in 2010.

Figure 1: Number of non main-track train derailments per month

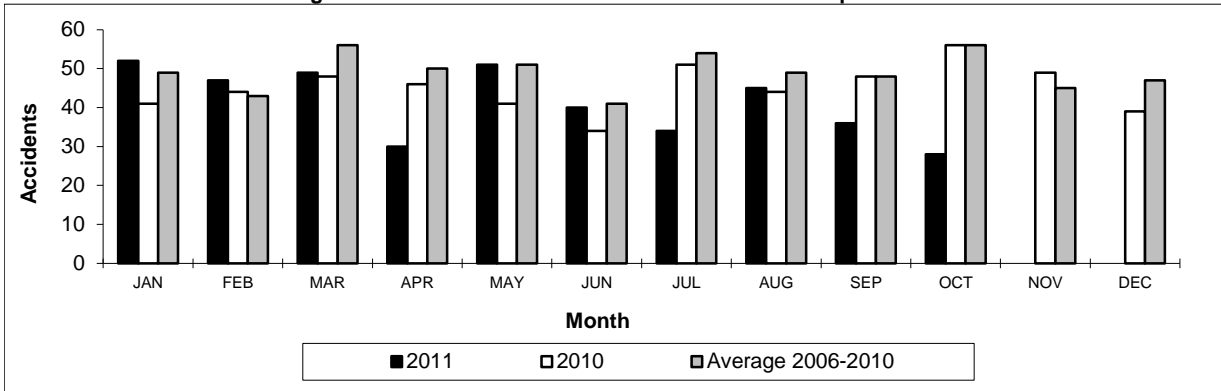
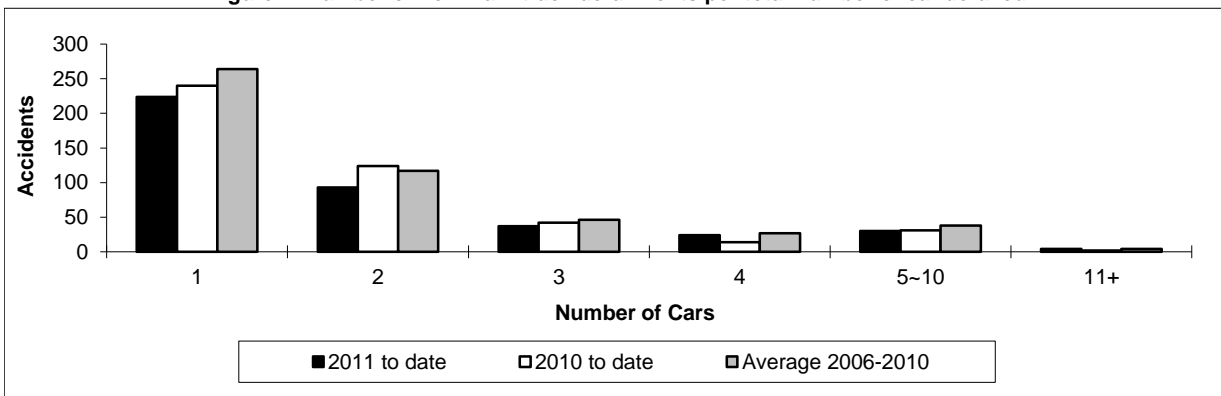


Figure 2: Number of non main-track derailments per total number of car derailed



Data extracted November 15, 2011.