

Table 1
Railway Occurrence and Casualty

	November			January to November		
	2011	2010	2006-2010 Average	2011	2010	2006-2010 Average
Accidents	76	99	91	959	1,001	1,100
Main-Track Train Collisions	0	0	1	2	4	5
Main-Track Train Derailments - 1-2 cars	3	3	4	42	38	56
Main-Track Train Derailments - 3 or more cars	2	4	4	55	39	49
Crossings	14	22	18	154	166	189
Non-Main-Track Train Collisions	5	4	6	85	82	89
Non-Main-Track Train Derailments - 1-2 cars	30	36	34	348	400	415
Non-Main-Track Train Derailments - 3 or more cars	9	13	11	105	102	126
Collisions/Derailments Involving Track Units	4	5	3	31	33	30
Employee/Passenger	0	0	2	11	9	12
Trespassers	4	4	5	63	77	80
Fires/Explosions	2	4	2	23	29	21
Other	2	4	3	39	22	29
Incidents	18	10	12	188	151	189
Dangerous Goods Leaker	2	0	3	51	39	66
Main-track Switch in Abnormal Position	2	1	1	10	5	7
Movement Exceeds Limits of Authority	11	9	7	104	95	96
Runaway Rolling Stock	2	0	1	13	4	10
Others	1	0	0	10	8	10
Million Train-miles (a)				77.97	77.14	79.45
Accidents/Million Train-miles				12.30	12.98	13.85
Accidents Involving Dangerous Goods	6	16	11	115	134	145
Main-track Train Derailments	0	0	1	21	13	18
Crossings	0	1	0	1	7	5
Non-Main-Track Train Collisions	1	0	1	19	23	31
Non-Main-Track Train Derailments	5	13	8	68	85	84
All Others	0	2	1	6	6	7
Accidents with a DG Release	0	0	0	2	2	3
Accidents Involving Passenger Trains	5	3	5	63	58	66
Fatalities	5	6	5	65	78	77
Crossings	1	3	1	23	23	23
Trespassers	4	3	3	41	53	51
All Others	0	0	1	1	2	3
Serious Injuries	2	6	5	50	60	58
Crossings	2	5	2	21	26	25
Trespassers	0	1	1	20	19	22
All Others	0	0	2	9	15	11

Data extracted December 16, 2011.

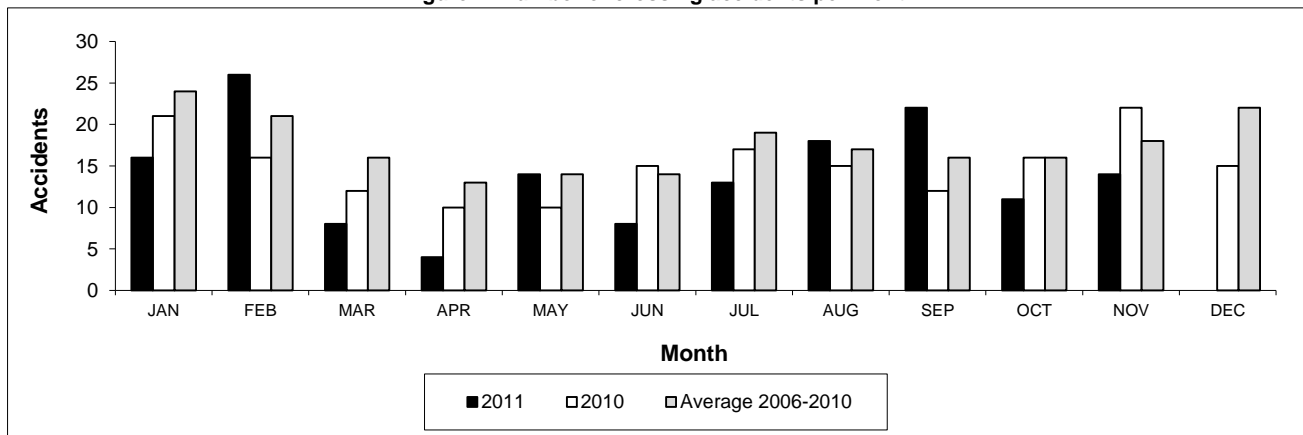
All 5-year averages have been rounded. The totals sometimes do not coincide to the sum of these averages.

a. Train-miles estimated. (Source: Transport Canada)

Table 2
Railway crossing and trespasser accidents by province

	Crossings with Type Recorded				All Crossings		Trespasser		
	2011 - Year To Date*				Year To Date*		Year To Date*		
	Public Automated	Public Passive	Private	Farm	2011	2010	2011	2010	
Newfoundland									
Accidents	2	0	0	0	2	0	0	0	
Fatalities	0	0	0	0	0	0	0	0	
Serious Injuries	0	0	0	0	0	0	0	0	
Nova Scotia									
Accidents	0	0	1	0	1	3	1	0	
Fatalities	0	0	0	0	0	1	0	0	
Serious Injuries	0	0	0	0	0	2	0	0	
New Brunswick									
Accidents	4	1	1	0	6	5	2	1	
Fatalities	2	0	0	0	2	1	1	0	
Serious Injuries	0	0	0	0	0	0	1	0	
Quebec									
Accidents	12	3	4	3	22	20	8	13	
Fatalities	2	0	0	1	3	1	6	10	
Serious Injuries	3	0	0	1	4	3	2	4	
Ontario									
Accidents	21	10	2	1	34	45	31	33	
Fatalities	5	2	1	0	8	5	25	26	
Serious Injuries	5	1	0	0	6	4	6	5	
Manitoba									
Accidents	3	3	1	0	7	18	1	3	
Fatalities	1	1	0	0	2	2	1	2	
Serious Injuries	1	0	0	0	1	5	0	1	
Saskatchewan									
Accidents	6	12	1	1	20	23	2	3	
Fatalities	0	0	0	1	1	5	1	2	
Serious Injuries	1	1	0	0	2	2	1	1	
Alberta									
Accidents	18	22	1	2	43	35	7	9	
Fatalities	3	2	0	0	5	6	2	6	
Serious Injuries	3	1	0	0	4	8	4	3	
British Columbia									
Accidents	12	4	2	1	19	17	11	15	
Fatalities	1	0	0	1	2	2	5	7	
Serious Injuries	3	0	1	0	4	2	6	5	
Northwest Territories									
Accidents	0	0	0	0	0	0	0	0	
Fatalities	0	0	0	0	0	0	0	0	
Serious Injuries	0	0	0	0	0	0	0	0	
Canada									
Accidents	78	55	13	8	154	166	63	77	
Fatalities	14	5	1	3	23	23	41	53	
Serious Injuries	16	3	1	1	21	26	20	19	

Figure 1: Number of crossing accidents per month



Data extracted December 16, 2011.

*Year to date is from January to November.

Table 3
Main-track train derailments by province

	January to November			Deraillments with DG Involvement January to November		
	2011	2010	2006-2010 Average	2011	2010	2006-2010 Average
Canada	97	77	105	21	13	18
Newfoundland	1	3	1	0	0	0
Nova Scotia	1	0	1	0	0	0
New Brunswick	0	0	2	0	0	1
Quebec	9	10	13	2	2	3
Ontario	24	19	28	5	3	6
Manitoba	10	6	8	0	0	1
Saskatchewan	11	12	12	0	2	1
Alberta	20	13	19	8	3	5
British Columbia	21	14	21	6	3	2
Northwest Territories	0	0	0	0	0	0

* There was 1 occurrence with dangerous goods release to date in 2011 and 1 in 2010.

Figure 1: Number of main-track train derailments per month

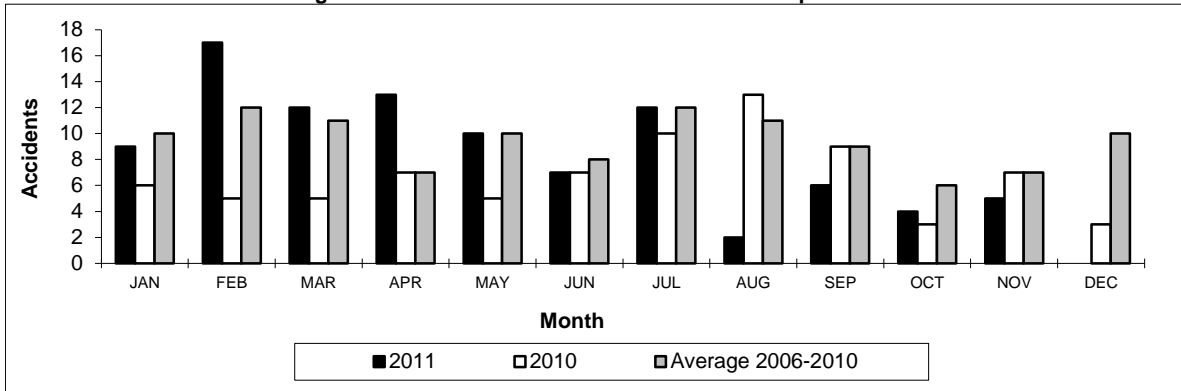
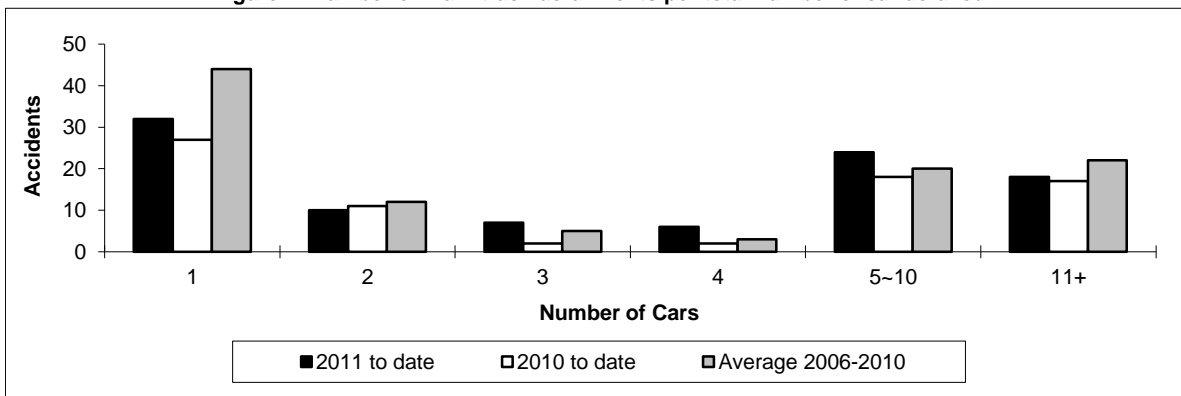


Figure 2: Number of main-track derailments per total number of car derailed



Data extracted December 16, 2011.

Table 4
Non main-track train collisions by province

	January to November			Collisions with DG Involvement January to November		
	2011	2010	2006-2010 Average	2011	2010	2006-2010 Average
	Canada	85	82	89	19	23
Newfoundland	0	0	0	0	0	0
Nova Scotia	0	0	0	0	0	0
New Brunswick	1	1	2	0	0	1
Quebec	12	11	9	3	4	3
Ontario	15	12	22	5	6	9
Manitoba	14	13	11	2	2	3
Saskatchewan	8	2	6	0	0	2
Alberta	17	25	22	4	6	9
British Columbia	18	18	15	5	5	4
Northwest Territories	0	0	0	0	0	0

* There were no occurrences with dangerous goods release to date in 2011 or in 2010.

Figure 1: Number of non main-track train collisions per month

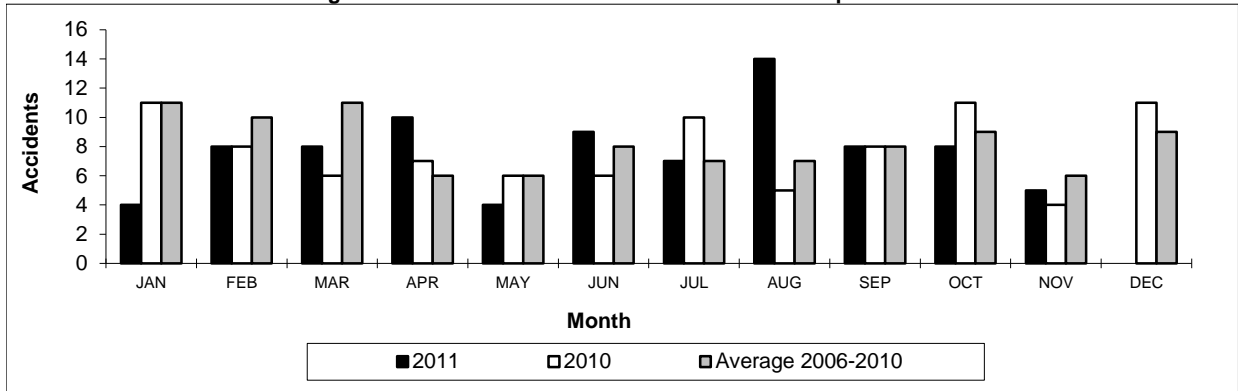
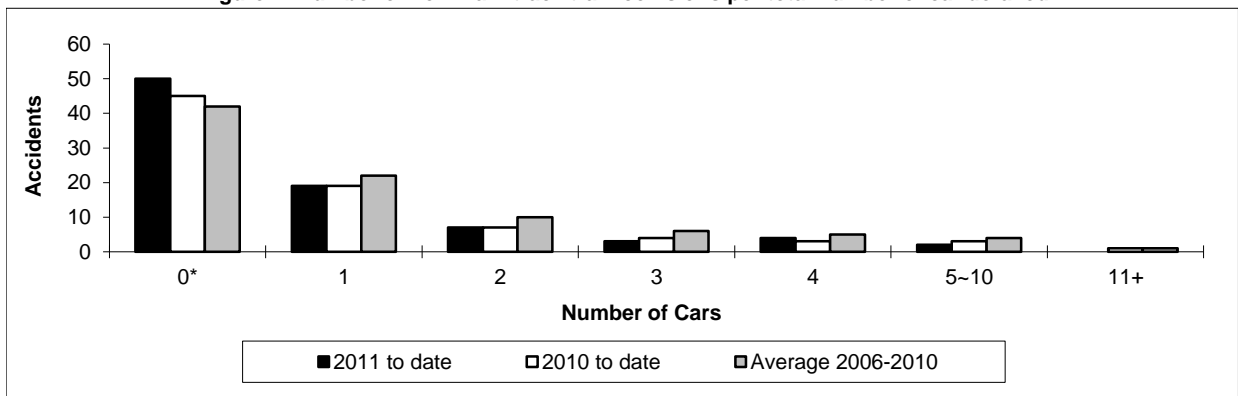


Figure 2: Number of non main-track train collisions per total number of car derailed



Data extracted December 16, 2011.

*Number of collisions with no derailments.

Table 5
Non main-track train derailments by province

	January to November			Derailments with DG Involvement January to November		
	2011	2010	2006-2010 Average	2011	2010	2006-2010 Average
	Canada	453	502	541	68	85
Newfoundland	0	0	1	0	0	0
Nova Scotia	2	4	5	1	1	1
New Brunswick	11	9	12	1	3	3
Quebec	53	56	67	15	9	12
Ontario	98	106	134	14	15	21
Manitoba	50	57	55	4	11	9
Saskatchewan	74	56	50	3	6	4
Alberta	98	137	123	23	27	20
British Columbia	66	77	94	6	13	14
Northwest Territories	1	0	0	1	0	0

* There were no occurrences with dangerous goods release to date in 2011 and 1 in 2010.

Figure 1: Number of non main-track train derailments per month

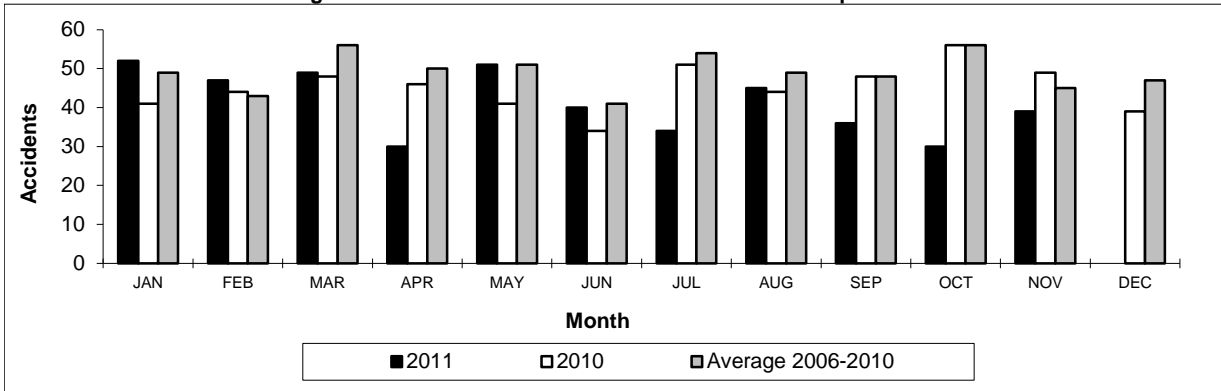
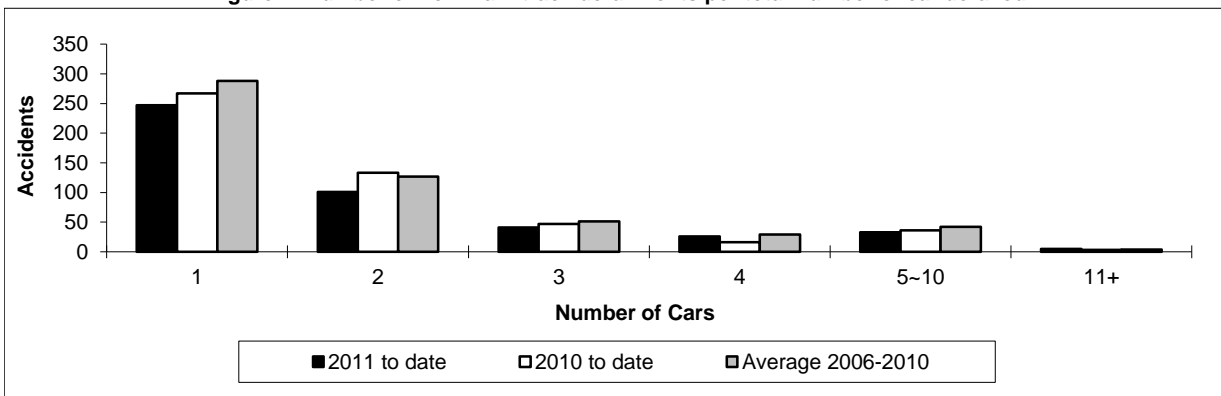


Figure 2: Number of non main-track derailments per total number of car derailed



Data extracted December 16, 2011.