

Table 1
Railway Occurrence and Casualty

	December			January to December		
	2011	2010	2006-2010 Average	2011	2010	2006-2010 Average
Accidents	65	75	98	1,023	1,076	1,198
Main-Track Train Collisions	1	0	0	3	4	5
Main-Track Train Derailments - 1-2 cars	4	2	5	46	40	61
Main-Track Train Derailments - 3 or more cars	3	1	5	57	40	54
Crossings	14	15	22	169	181	210
Non-Main-Track Train Collisions	4	11	9	88	93	98
Non-Main-Track Train Derailments - 1-2 cars	21	31	38	370	431	453
Non-Main-Track Train Derailments - 3 or more cars	9	8	9	115	110	136
Collisions/Derailments Involving Track Units	1	1	2	32	34	32
Employee/Passenger	0	0	2	11	9	13
Trespassers	5	4	3	67	81	84
Fires/Explosions	0	1	2	23	30	22
Other	3	1	1	42	23	30
Incidents	16	9	16	204	160	205
Dangerous Goods Leaker	0	1	4	51	40	70
Main-track Switch in Abnormal Position	0	0	1	10	5	7
Movement Exceeds Limits of Authority	14	7	9	118	102	105
Runaway Rolling Stock	2	1	1	15	5	11
Others	0	0	1	10	8	11
Million Train-miles (a)				85.2	84.13	86.31
Accidents/Million Train-miles				12.01	12.79	13.88
Accidents Involving Dangerous Goods	2	7	16	117	141	160
Main-track Train Derailments	0	0	2	21	13	20
Crossings	0	0	0	1	7	5
Non-Main-Track Train Collisions	1	3	4	20	26	35
Non-Main-Track Train Derailments	1	3	9	69	88	92
All Others	0	1	1	6	7	8
Accidents with a DG Release	0	0	0	3	2	3
Accidents Involving Passenger Trains	5	4	6	68	62	72
Fatalities	6	3	4	71	81	81
Crossings	1	1	1	25	24	24
Trespassers	5	2	3	45	55	54
All Others	0	0	0	1	2	3
Serious Injuries	1	2	3	51	62	61
Crossings	0	2	2	21	28	27
Trespassers	1	0	0	21	19	22
All Others	0	0	1	9	15	12

Data extracted January 16, 2012.

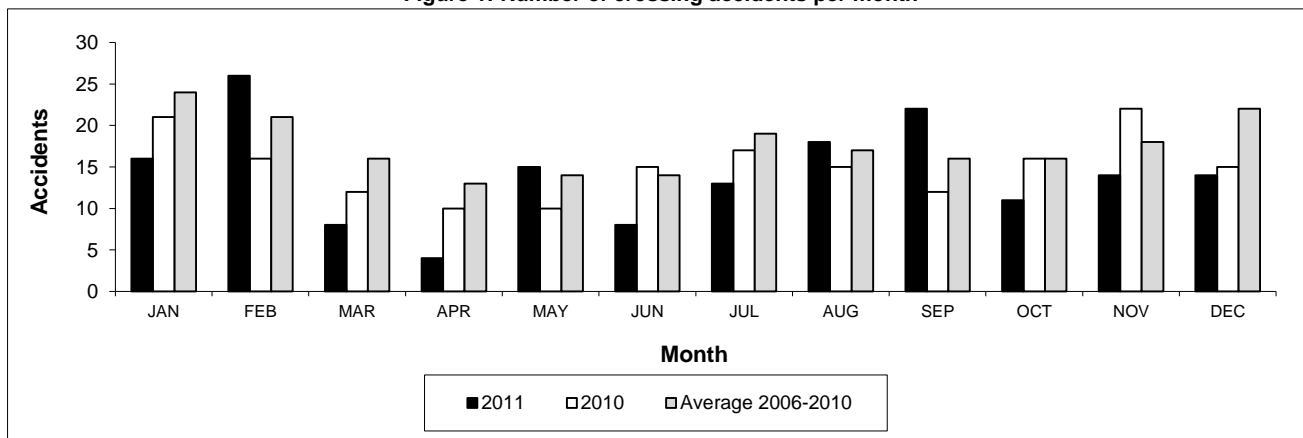
All 5-year averages have been rounded. The totals sometimes do not coincide to the sum of these averages.

a. Train-miles estimated. (Source: Transport Canada)

Table 2
Railway crossing and trespasser accidents by province

	Crossings with Type Recorded 2011 - Year To Date*				All Crossings Year To Date*		Trespasser Year To Date*	
	Public Automated	Public Passive	Private	Farm	2011	2010	2011	2010
Newfoundland								
Accidents	2	0	0	0	2	0	0	0
Fatalities	0	0	0	0	0	0	0	0
Serious Injuries	0	0	0	0	0	0	0	0
Nova Scotia								
Accidents	0	0	1	0	1	3	1	0
Fatalities	0	0	0	0	0	1	0	0
Serious Injuries	0	0	0	0	0	2	0	0
New Brunswick								
Accidents	4	1	1	0	6	5	2	1
Fatalities	2	0	0	0	2	1	1	0
Serious Injuries	0	0	0	0	0	0	1	0
Quebec								
Accidents	13	5	5	3	26	21	9	13
Fatalities	3	0	0	1	4	1	8	10
Serious Injuries	3	0	0	1	4	3	2	4
Ontario								
Accidents	25	10	2	1	38	52	32	35
Fatalities	6	2	1	0	9	6	26	27
Serious Injuries	5	1	0	0	6	5	6	5
Manitoba								
Accidents	3	3	1	0	7	20	1	3
Fatalities	1	1	0	0	2	2	1	2
Serious Injuries	1	0	0	0	1	5	0	1
Saskatchewan								
Accidents	7	14	1	1	23	24	2	3
Fatalities	0	0	0	1	1	5	1	2
Serious Injuries	1	1	0	0	2	2	1	1
Alberta								
Accidents	19	24	1	2	46	38	7	9
Fatalities	3	2	0	0	5	6	2	6
Serious Injuries	3	1	0	0	4	8	4	3
British Columbia								
Accidents	13	4	2	1	20	18	13	17
Fatalities	1	0	0	1	2	2	6	8
Serious Injuries	3	0	1	0	4	3	7	5
Northwest Territories								
Accidents	0	0	0	0	0	0	0	0
Fatalities	0	0	0	0	0	0	0	0
Serious Injuries	0	0	0	0	0	0	0	0
Canada								
Accidents	86	61	14	8	169	181	67	81
Fatalities	16	5	1	3	25	24	45	55
Serious Injuries	16	3	1	1	21	28	21	19

Figure 1: Number of crossing accidents per month



Data extracted January 16, 2012.

*Year to date is from January to December.

Table 3
Main-track train derailments by province

	January to December			Derailments with DG Involvement January to December		
	2011	2010	2006-2010 Average	2011	2010	2006-2010 Average
Canada	103	80	115	21	13	20
Newfoundland	1	3	1	0	0	0
Nova Scotia	1	0	1	0	0	0
New Brunswick	0	0	2	0	0	1
Quebec	9	10	13	2	2	3
Ontario	24	19	31	5	3	6
Manitoba	11	6	9	0	0	1
Saskatchewan	11	14	13	0	2	2
Alberta	21	14	21	8	3	5
British Columbia	25	14	23	6	3	3
Northwest Territories	0	0	0	0	0	0

* There was 1 occurrence with dangerous goods release to date in 2011 and 1 in 2010.

Figure 1: Number of main-track train derailments per month

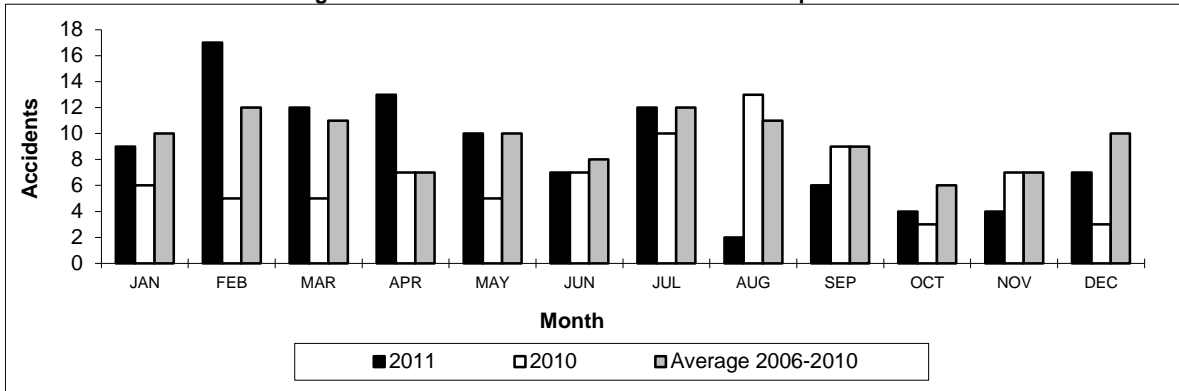
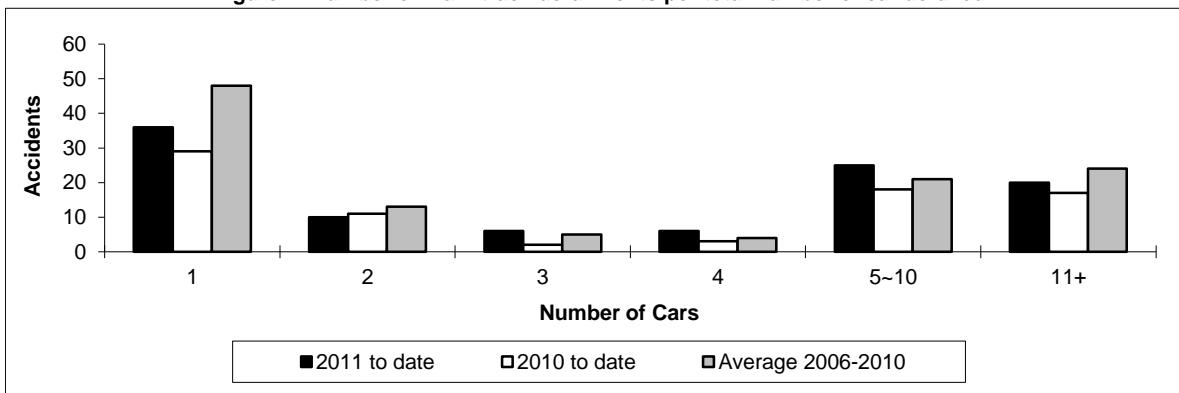


Figure 2: Number of main-track derailments per total number of car derailed



Data extracted January 16, 2012.

Table 4
Non main-track train collisions by province

	January to December			Collisions with DG Involvement January to December		
	2011	2010	2006-2010 Average	2011	2010	2006-2010 Average
	Canada	88	93	98	20	26
Newfoundland	0	0	0	0	0	0
Nova Scotia	0	0	0	0	0	0
New Brunswick	1	1	2	0	0	1
Quebec	12	11	10	3	4	3
Ontario	16	15	24	5	6	9
Manitoba	15	14	12	2	3	4
Saskatchewan	8	3	7	0	0	2
Alberta	16	29	26	4	8	11
British Columbia	20	20	17	6	5	4
Northwest Territories	0	0	0	0	0	0

* There were no occurrences with dangerous goods release to date in 2011 or in 2010.

Figure 1: Number of non main-track train collisions per month

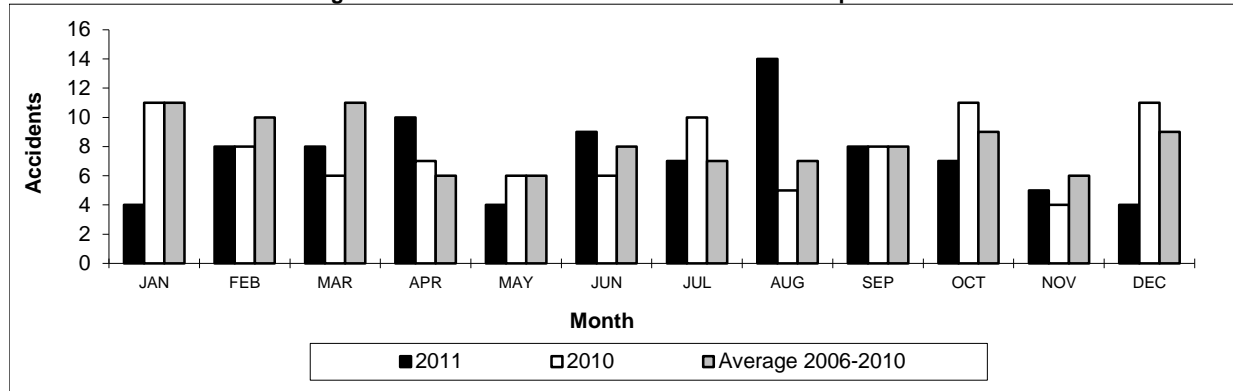
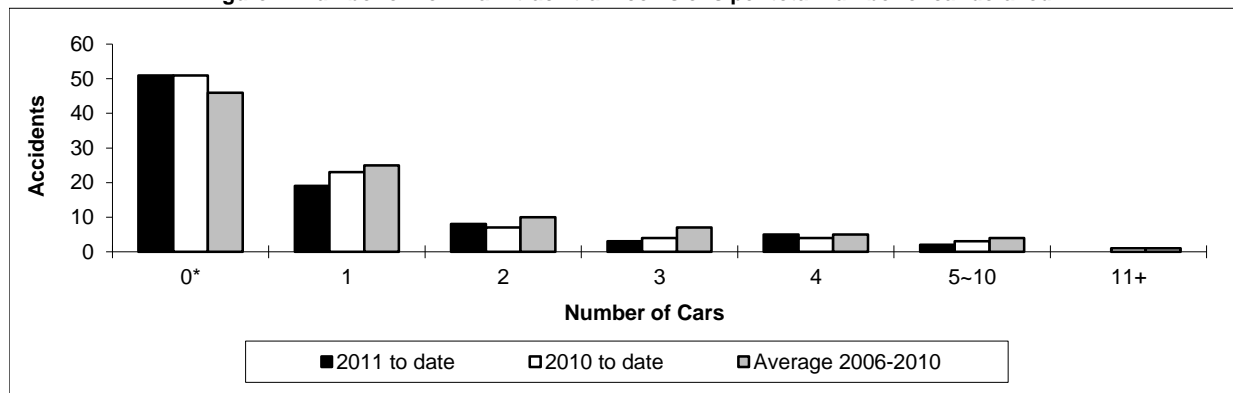


Figure 2: Number of non main-track train collisions per total number of car derailed



Data extracted January 16, 2012.

*Number of collisions with no derailments.

Table 5
Non main-track train derailments by province

	January to December			Derailments with DG Involvement January to December		
	2011	2010	2006-2010 Average	2011	2010	2006-2010 Average
	Canada	485	541	588	69	88
Newfoundland	0	0	1	0	0	0
Nova Scotia	3	4	6	1	1	1
New Brunswick	13	9	14	1	3	3
Quebec	59	59	73	16	10	12
Ontario	106	112	144	14	15	23
Manitoba	53	65	61	4	11	10
Saskatchewan	75	62	54	3	6	4
Alberta	104	148	135	23	28	22
British Columbia	71	82	101	6	14	16
Northwest Territories	1	0	1	1	0	0

* There was 1 occurrence with dangerous goods release to date in 2011 and 1 in 2010.

Figure 1: Number of non main-track train derailments per month

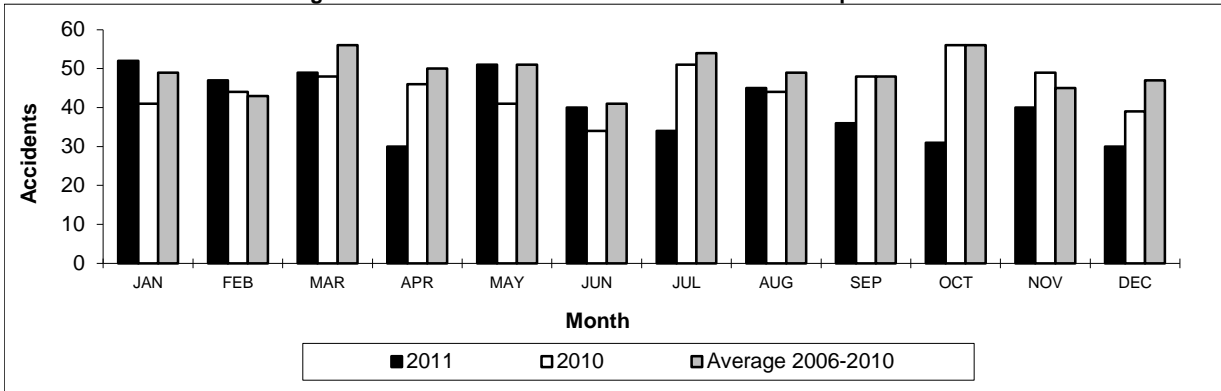
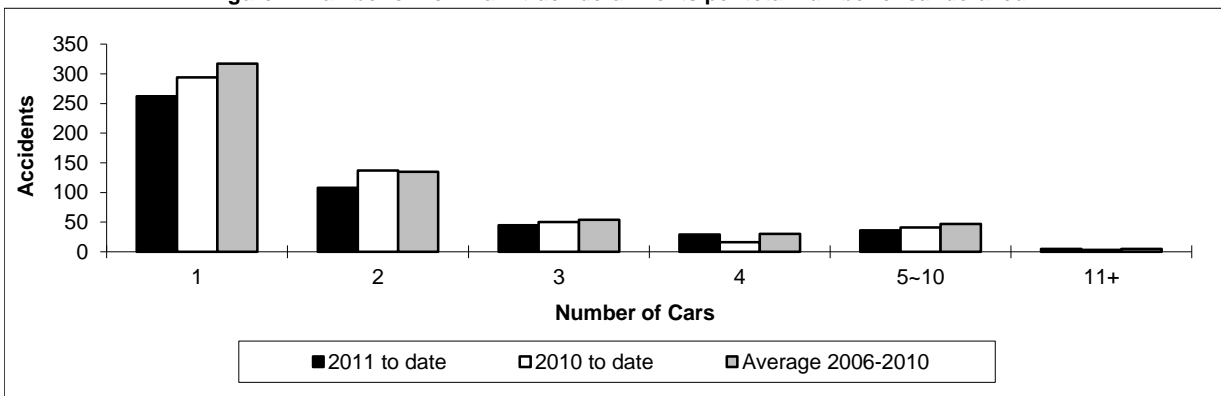


Figure 2: Number of non main-track derailments per total number of car derailed



Data extracted January 16, 2012.