

Table 1

Railway Occurrence and Casualty

	February			January to February		
	2011	2010	2006-2010 Average	2011	2010	2006-2010 Average
Accidents	111	80	97	206	167	203
Main-Track Train Collisions	0	0	0	0	1	1
Main-Track Train Derailments - 1-2 cars	12	3	6	16	7	13
Main-Track Train Derailments - 3 or more cars	7	2	6	13	4	9
Crossings	26	16	21	41	37	45
Non-Main-Track Train Collisions	7	9	10	11	20	21
Non-Main-Track Train Derailments - 1-2 cars	42	35	34	84	66	74
Non-Main-Track Train Derailments - 3 or more cars	5	8	8	14	18	18
Collisions/Derailments Involving Track Units	0	2	2	3	3	4
Employee/Passenger	1	0	1	1	2	2
Trespassers	1	4	4	7	6	8
Fires/Explosions	0	0	1	1	1	1
Other	10	1	3	15	2	7
Incidents	14	14	14	33	29	30
Dangerous Goods Leaker	1	5	4	7	9	10
Main-track Switch in Abnormal Position	0	0	0	0	2	1
Movement Exceeds Limits of Authority	11	7	8	23	15	16
Runaway Rolling Stock	1	0	0	2	0	1
Others	1	2	1	1	3	2
Million Train-miles	a			13.2	13.5	14.3
Accidents/Million Train-miles				15.6	12.4	14.2
Accidents Involving Dangerous Goods	19	15	16	36	23	32
Main-track Train Derailments	4	0	3	8	0	5
Crossings	0	1	1	0	1	2
Non-Main-Track Train Collisions	3	3	3	4	6	7
Non-Main-Track Train Derailments	11	11	9	21	16	16
All Others	1	0	0	3	0	2
Accidents with a DG Release	0	1	0	0	1	0
Accidents Involving Passenger Trains	5	9	7	11	15	13
Fatalities	2	6	6	9	12	11
Crossings	1	4	3	3	7	6
Trespassers	1	2	2	6	3	5
All Others	0	0	0	0	2	1
Serious Injuries	6	10	5	7	15	9
Crossings	5	1	3	5	3	5
Trespassers	0	2	1	1	3	2
All Others	1	7	2	1	9	3

Data extracted March 18, 2011.

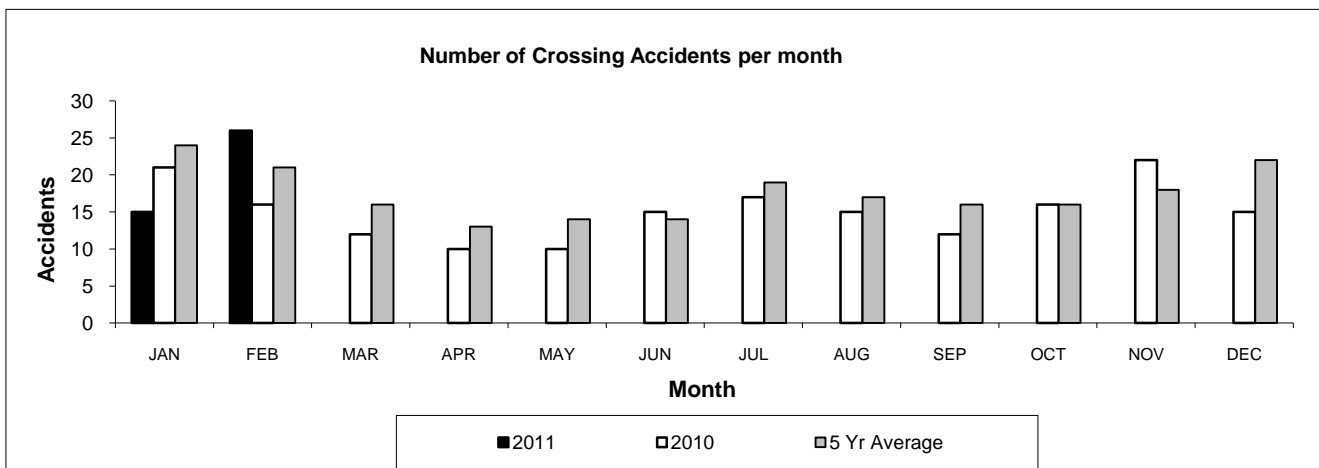
All 5-year averages have been rounded. The totals sometimes do not coincide to the sum of these averages.

a. Train-miles estimated. (Source: Transport Canada)

Table 2

Railway crossing and trespasser accidents by province

	Crossings with Type Recorded				All Crossings		Trespasser	
	2011 - Year To Date*				Year To Date*		Year To Date*	
	Public Automated	Public Passive	Private	Farm	2011	2010	2011	2010
Newfoundland								
Accidents	0	0	0	0	0	0	0	0
Fatalities	0	0	0	0	0	0	0	0
Serious Injuries	0	0	0	0	0	0	0	0
Nova Scotia								
Accidents	0	0	0	0	1	2	0	0
Fatalities	0	0	0	0	0	1	0	0
Serious Injuries	0	0	0	0	0	1	0	0
New Brunswick								
Accidents	1	0	0	0	1	3	0	0
Fatalities	0	0	0	0	0	0	0	0
Serious Injuries	0	0	0	0	0	0	0	0
Quebec								
Accidents	0	1	0	0	1	7	0	1
Fatalities	0	0	0	0	0	1	0	0
Serious Injuries	0	0	0	0	0	0	0	1
Ontario								
Accidents	4	3	0	0	7	8	5	4
Fatalities	0	1	0	0	1	1	4	3
Serious Injuries	1	0	0	0	1	0	1	1
Manitoba								
Accidents	1	1	0	0	2	5	1	0
Fatalities	0	1	0	0	1	0	1	0
Serious Injuries	0	0	0	0	0	0	0	0
Saskatchewan								
Accidents	4	4	1	0	10	6	1	1
Fatalities	0	0	0	0	0	3	1	0
Serious Injuries	1	0	0	0	1	1	0	1
Alberta								
Accidents	7	6	0	2	16	6	0	0
Fatalities	1	0	0	0	1	1	0	0
Serious Injuries	2	0	0	0	2	1	0	0
British Columbia								
Accidents	2	1	0	0	3	0	0	0
Fatalities	0	0	0	0	0	0	0	0
Serious Injuries	1	0	0	0	1	0	0	0
Northwest Territories								
Accidents	0	0	0	0	0	0	0	0
Fatalities	0	0	0	0	0	0	0	0
Serious Injuries	0	0	0	0	0	0	0	0
Canada								
Accidents	19	16	1	2	41	37	7	6
Fatalities	1	2	0	0	3	7	6	3
Serious Injuries	5	0	0	0	5	3	1	3



Data extracted March 18, 2011.

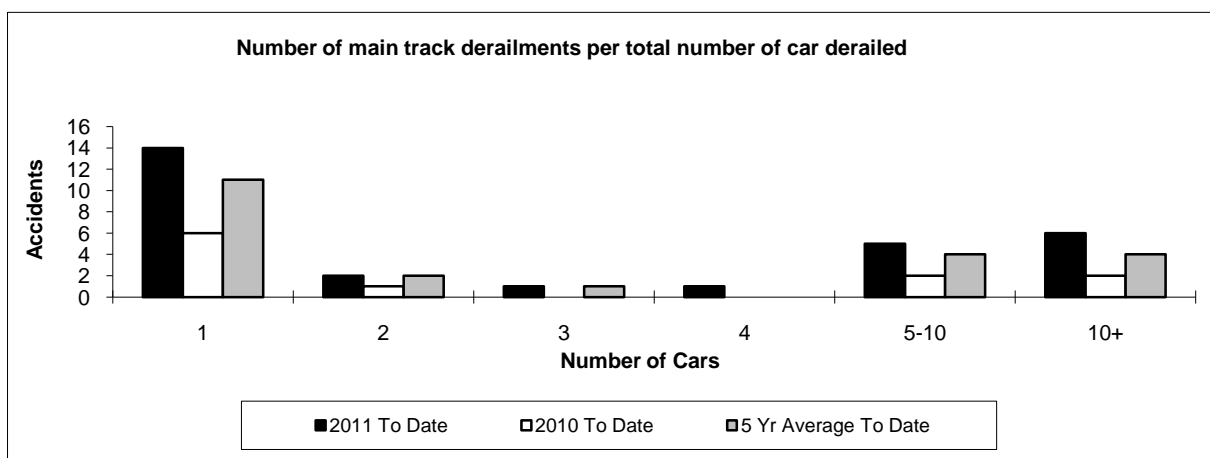
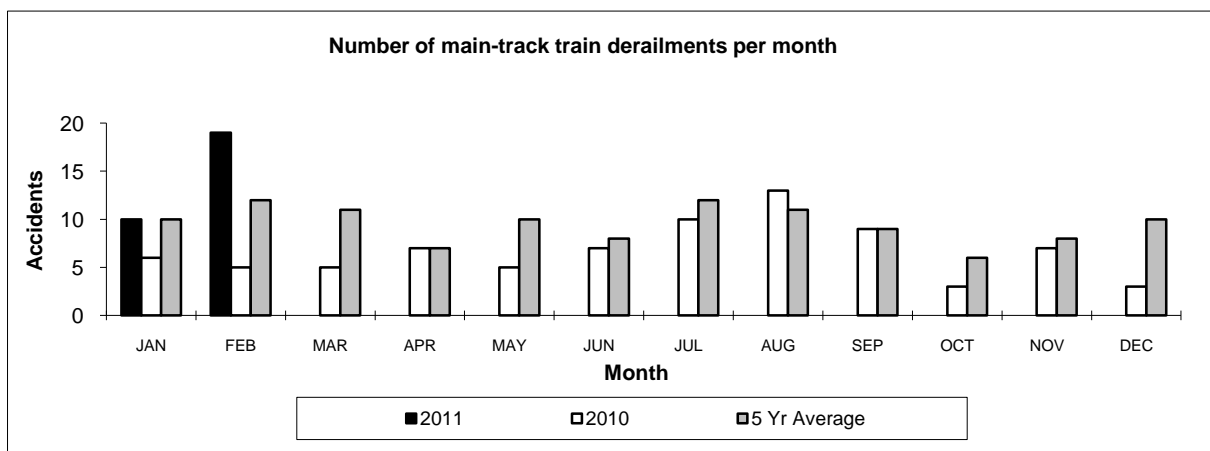
Year to date is from January to February.

Table 3

Main-track train derailments by province

	January to February			Derailments with DG Involvement January to February		
	2011	2010	2006-2010 Average	2011	2010	2006-2010 Average
Canada	29	11	23	8	0	5
Newfoundland	1	3	1	0	0	0
Nova Scotia	0	0	0	0	0	0
New Brunswick	0	0	0	0	0	0
Quebec	3	1	2	1	0	1
Ontario	5	3	7	2	0	3
Manitoba	3	1	2	1	0	0
Saskatchewan	3	0	2	0	0	0
Alberta	8	0	3	3	0	1
British Columbia	6	3	5	1	0	0
Northwest Territories	0	0	0	0	0	0

* There were no occurrences with dangerous goods release to date in 2011 or in 2010.



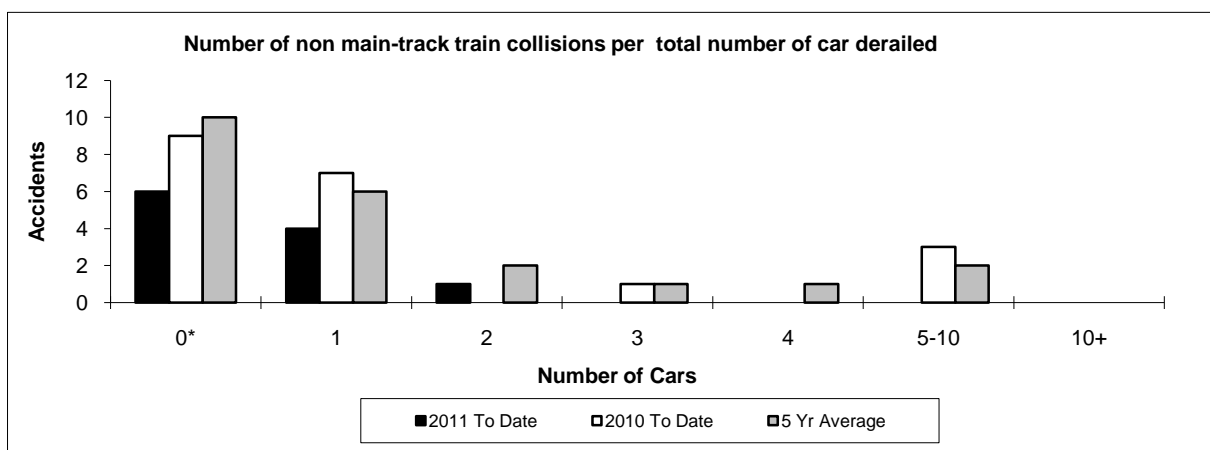
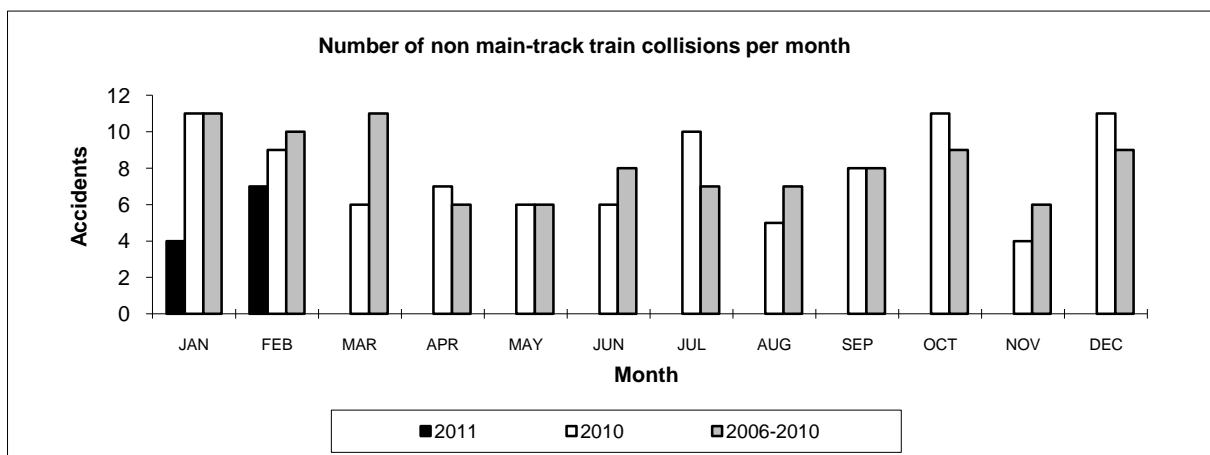
Data extracted March 18, 2011.

Table 4

Non main-track train collisions by province

	January to February			Collisions with DG Involvement January to February		
	2011	2010	2006-2010 Average	2011	2010	2006-2010 Average
Canada	11	20	21	4	6	7
Newfoundland	0	0	0	0	0	0
Nova Scotia	0	0	0	0	0	0
New Brunswick	1	0	0	0	0	0
Quebec	2	2	3	0	1	1
Ontario	4	3	6	3	2	2
Manitoba	0	2	3	0	0	1
Saskatchewan	0	0	1	0	0	0
Alberta	2	6	4	0	1	2
British Columbia	2	7	3	1	2	1
Northwest Territories	0	0	0	0	0	0

* There were no occurrences with dangerous goods release to date in 2011 or in 2010.



Data extracted March 18, 2011.

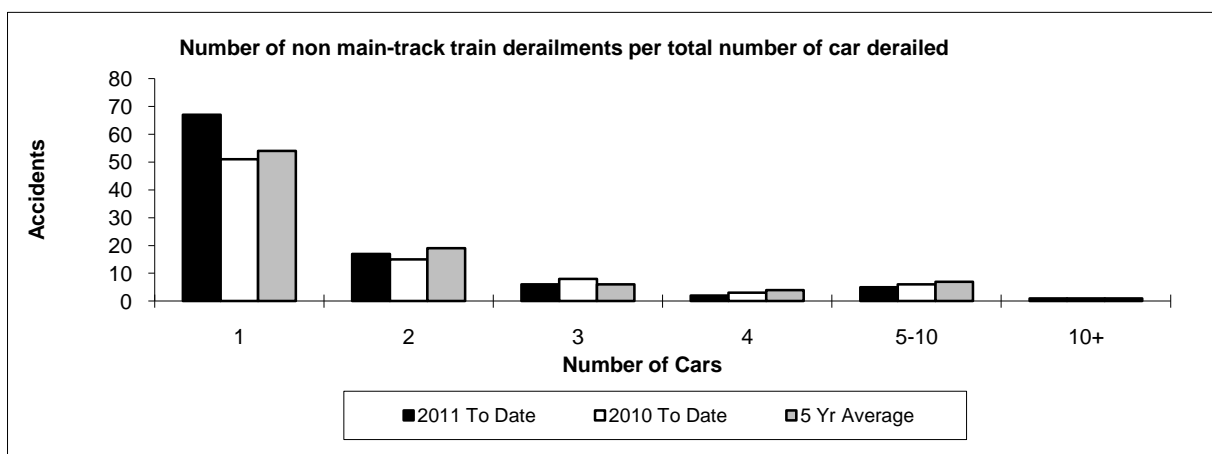
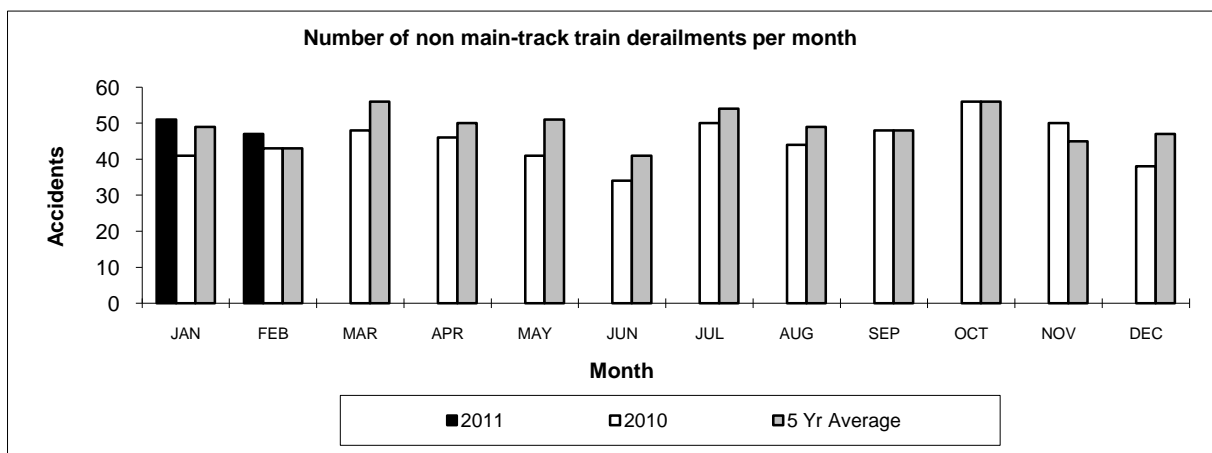
*Number of collisions with no derailments.

Table 5

Non main-track train derailments by province

	January to February			Derailments with DG Involvement January to February		
	2011	2010	2006-2010 Average	2011	2010	2006-2010 Average
Canada	98	84	91	21	16	16
Newfoundland	0	0	0	0	0	0
Nova Scotia	0	0	0	0	0	0
New Brunswick	2	2	1	0	1	1
Quebec	12	9	11	5	3	2
Ontario	19	9	21	6	2	3
Manitoba	7	15	11	0	3	2
Saskatchewan	17	5	8	1	1	1
Alberta	23	30	21	6	4	4
British Columbia	18	14	18	3	2	3
Northwest Territories	0	0	0	0	0	0

* There were no occurrences with dangerous goods release to date in 2011 and 1 in 2010.



Data extracted March 18, 2011.