

Table 1  
Railway Occurrence and Casualty

	April			January to April		
	2011	2010	2006-2010 Average	2011	2010	2006-2010 Average
<b>Accidents</b>	<b>74</b>	<b>81</b>	<b>90</b>	<b>363</b>	<b>335</b>	<b>403</b>
Main-Track Train Collisions	0	1	1	0	3	2
Main-Track Train Derailments - 1-2 cars	4	5	4	26	14	24
Main-Track Train Derailments - 3 or more cars	9	2	3	25	9	17
Crossings	4	10	13	53	59	74
Non-Main-Track Train Collisions	11	7	6	31	33	38
Non-Main-Track Train Derailments - 1-2 cars	27	33	37	146	140	156
Non-Main-Track Train Derailments - 3 or more cars	3	13	13	32	38	41
Collisions/Derailments Involving Track Units	4	0	2	11	4	7
Employee/Passenger	0	0	1	2	3	4
Trespassers	6	6	6	15	20	20
Fires/Explosions	2	1	2	3	4	4
Other	4	3	2	19	8	14
<b>Incidents</b>	<b>12</b>	<b>17</b>	<b>17</b>	<b>58</b>	<b>61</b>	<b>61</b>
Dangerous Goods Leaker	8	8	7	19	24	23
Main-track Switch in Abnormal Position	0	0	0	0	3	2
Movement Exceeds Limits of Authority	4	9	8	33	30	31
Runaway Rolling Stock	0	0	0	3	1	2
Others	0	0	1	3	3	3
<b>Million Train-miles</b>	<b>a</b>			<b>27.4</b>	<b>27.9</b>	<b>28.5</b>
<b>Accidents/Million Train-miles</b>				<b>13.2</b>	<b>12</b>	<b>14.1</b>
<b>Accidents Involving Dangerous Goods</b>	<b>7</b>	<b>15</b>	<b>12</b>	<b>58</b>	<b>47</b>	<b>61</b>
Main-track Train Derailments	3	1	1	11	2	8
Crossings	0	0	0	0	2	3
Non-Main-Track Train Collisions	2	3	2	8	10	14
Non-Main-Track Train Derailments	1	10	8	35	32	33
All Others	1	1	1	4	1	3
<b>Accidents with a DG Release</b>	<b>0</b>	<b>0</b>	<b>0</b>	<b>0</b>	<b>1</b>	<b>1</b>
<b>Accidents Involving Passenger Trains</b>	<b>4</b>	<b>3</b>	<b>3</b>	<b>21</b>	<b>22</b>	<b>22</b>
<b>Fatalities</b>	<b>2</b>	<b>3</b>	<b>5</b>	<b>16</b>	<b>22</b>	<b>24</b>
Crossings	0	0	1	7	8	10
Trespassers	2	3	3	9	12	13
All Others	0	0	1	0	2	1
<b>Serious Injuries</b>	<b>3</b>	<b>2</b>	<b>6</b>	<b>15</b>	<b>19</b>	<b>19</b>
Crossings	0	1	3	7	4	10
Trespassers	3	1	2	5	5	5
All Others	0	0	1	3	10	4

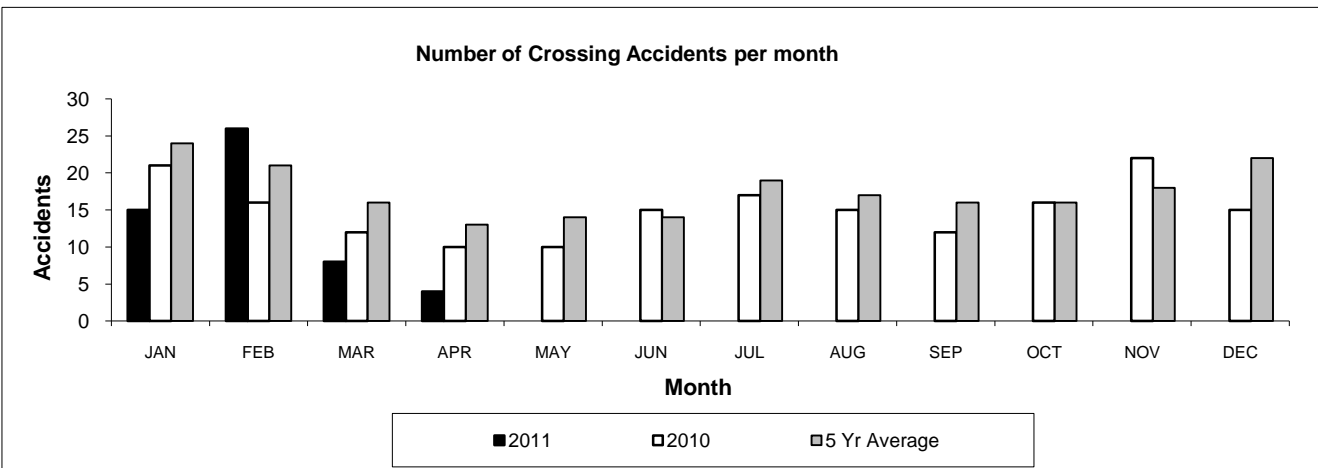
Data extracted May 16, 2011.

All 5-year averages have been rounded. The totals sometimes do not coincide to the sum of these averages.

a. Train-miles estimated. (Source: Transport Canada)

**Table 2**  
**Railway crossing and trespasser accidents by province**

	Crossings with Type Recorded				All Crossings		Trespasser	
	2011 - Year To Date*				Year To Date*		Year To Date*	
	Public Automated	Public Passive	Private	Farm	2011	2010	2011	2010
<b>Newfoundland</b>								
Accidents	0	0	0	0	0	0	0	0
Fatalities	0	0	0	0	0	0	0	0
Serious Injuries	0	0	0	0	0	0	0	0
<b>Nova Scotia</b>								
Accidents	0	0	1	0	1	2	0	0
Fatalities	0	0	0	0	0	1	0	0
Serious Injuries	0	0	0	0	0	1	0	0
<b>New Brunswick</b>								
Accidents	2	1	0	0	3	3	0	1
Fatalities	0	0	0	0	0	0	0	0
Serious Injuries	0	0	0	0	0	0	0	0
<b>Quebec</b>								
Accidents	1	1	0	0	2	11	1	5
Fatalities	1	0	0	0	1	1	1	2
Serious Injuries	0	0	0	0	0	0	0	2
<b>Ontario</b>								
Accidents	5	3	2	0	10	13	8	8
Fatalities	1	1	1	0	3	1	6	6
Serious Injuries	1	0	0	0	1	0	2	2
<b>Manitoba</b>								
Accidents	1	1	0	0	2	6	1	1
Fatalities	1	1	0	0	2	0	1	1
Serious Injuries	1	0	0	0	1	0	0	0
<b>Saskatchewan</b>								
Accidents	5	5	1	0	11	10	2	1
Fatalities	0	0	0	0	0	4	1	0
Serious Injuries	1	1	0	0	2	1	1	1
<b>Alberta</b>								
Accidents	10	6	0	2	19	11	1	2
Fatalities	1	0	0	0	1	1	0	2
Serious Injuries	2	0	0	0	2	1	0	0
<b>British Columbia</b>								
Accidents	3	2	0	0	5	3	2	2
Fatalities	0	0	0	0	0	0	0	1
Serious Injuries	1	0	0	0	1	1	2	0
<b>Northwest Territories</b>								
Accidents	0	0	0	0	0	0	0	0
Fatalities	0	0	0	0	0	0	0	0
Serious Injuries	0	0	0	0	0	0	0	0
<b>Canada</b>								
Accidents	27	19	4	2	53	59	15	20
Fatalities	4	2	1	0	7	8	9	12
Serious Injuries	6	1	0	0	7	4	5	5

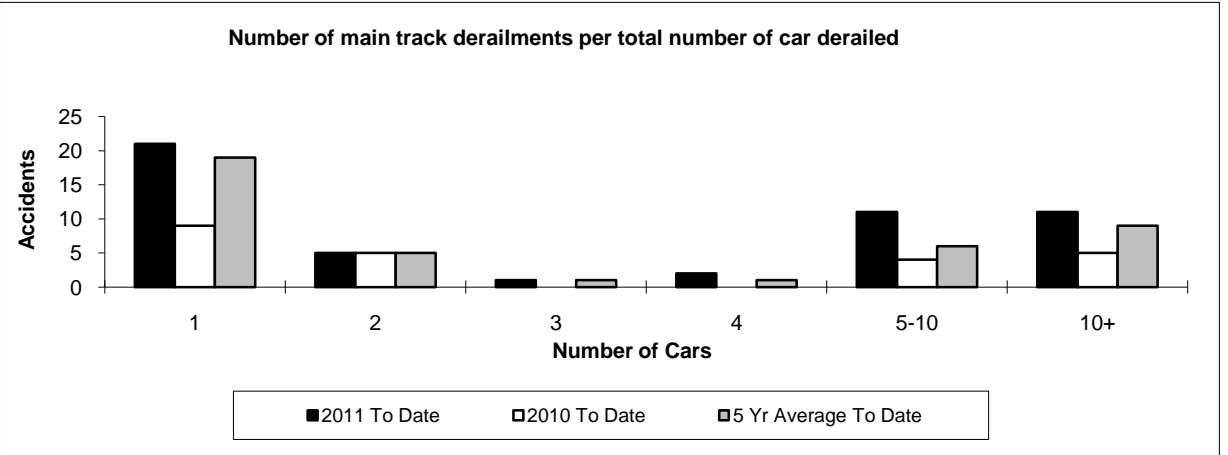
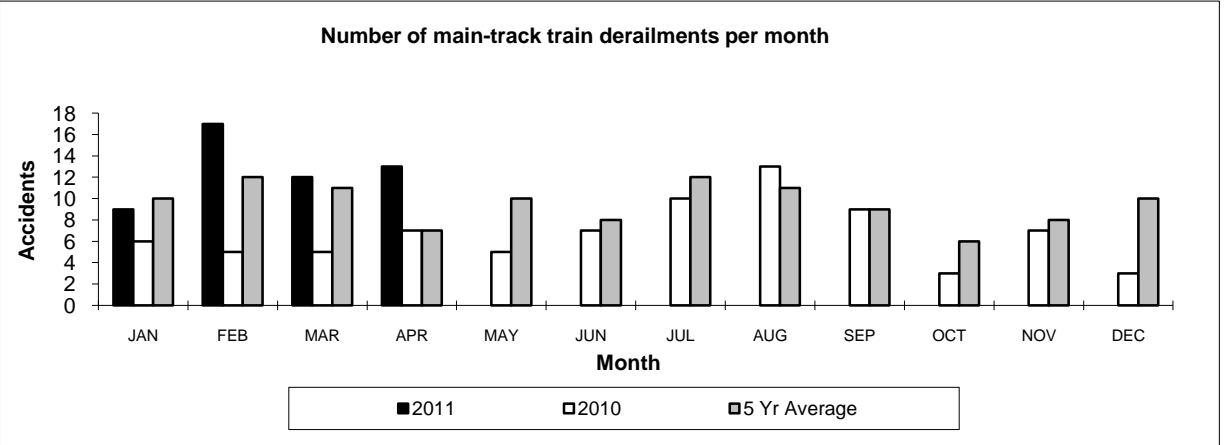


Data extracted May 16, 2011.  
 Year to date is from January to April.

**Table 3**  
**Main-track train derailments by province**

	January to April			Derailments with DG Involvement January to April		
	2011	2010	2006-2010 Average	2011	2010	2006-2010 Average
	<b>Canada</b>	<b>51</b>	<b>23</b>	<b>41</b>	<b>11</b>	<b>2</b>
Newfoundland	1	3	1	0	0	0
Nova Scotia	0	0	0	0	0	0
New Brunswick	0	0	1	0	0	0
Quebec	5	2	4	1	0	1
Ontario	9	8	13	4	1	4
Manitoba	6	3	3	0	0	0
Saskatchewan	10	1	3	0	0	0
Alberta	12	0	6	5	0	1
British Columbia	8	6	9	1	1	1
Northwest Territories	0	0	0	0	0	0

\* There were no occurrences with dangerous goods release to date in 2011 or in 2010.

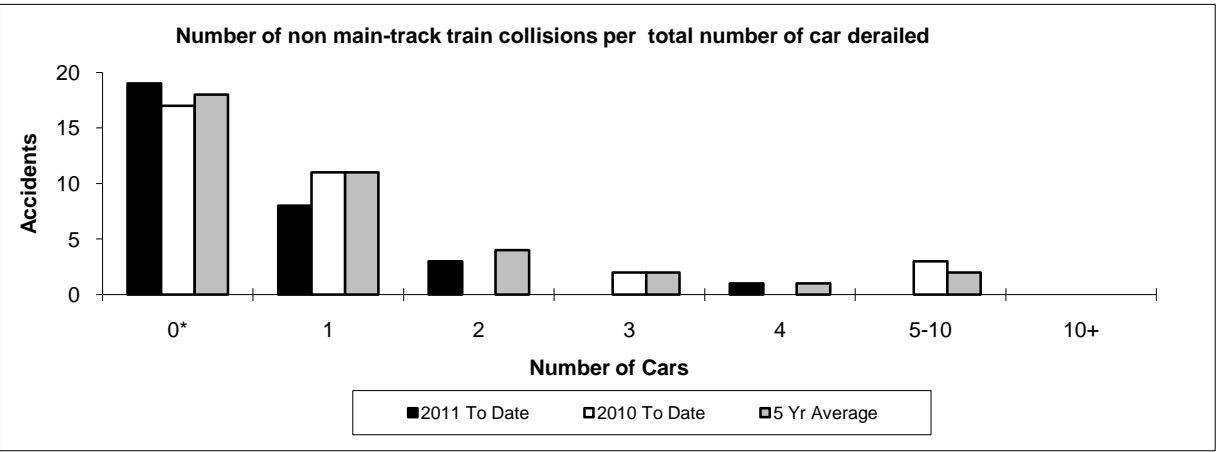
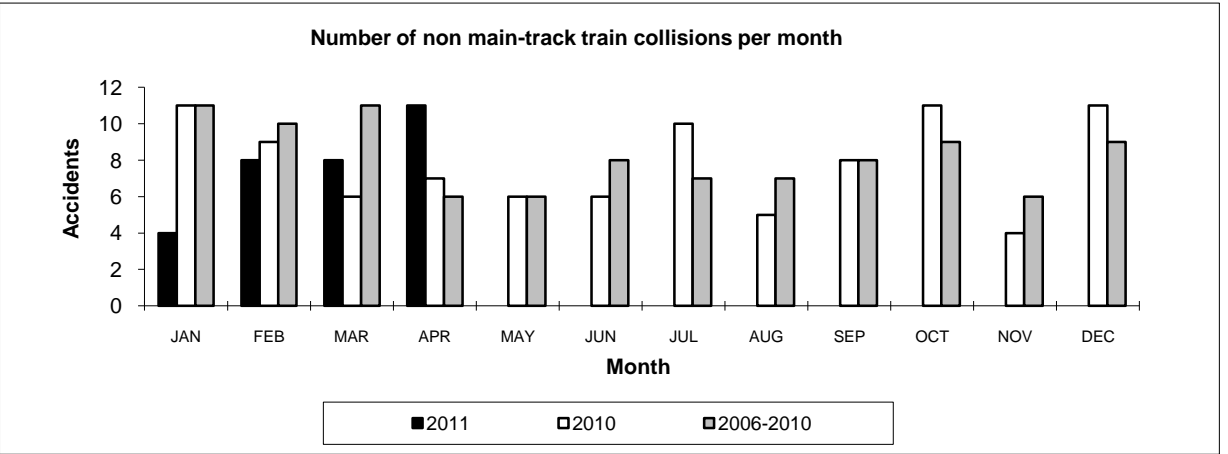


Data extracted May 16, 2011.

**Table 4**  
**Non main-track train collisions by province**

	January to April			Collisions with DG Involvement January to April		
	2011	2010	2006-2010 Average	2011	2010	2006-2010 Average
<b>Canada</b>	<b>31</b>	<b>33</b>	<b>38</b>	<b>8</b>	<b>10</b>	<b>14</b>
Newfoundland	0	0	0	0	0	0
Nova Scotia	0	0	0	0	0	0
New Brunswick	1	0	0	0	0	0
Quebec	6	5	6	0	1	2
Ontario	5	6	12	3	3	5
Manitoba	2	5	4	1	0	1
Saskatchewan	2	0	2	0	0	1
Alberta	6	8	7	1	3	3
British Columbia	9	9	7	3	3	2
Northwest Territories	0	0	0	0	0	0

\* There were no occurrences with dangerous goods release to date in 2011 or in 2010.



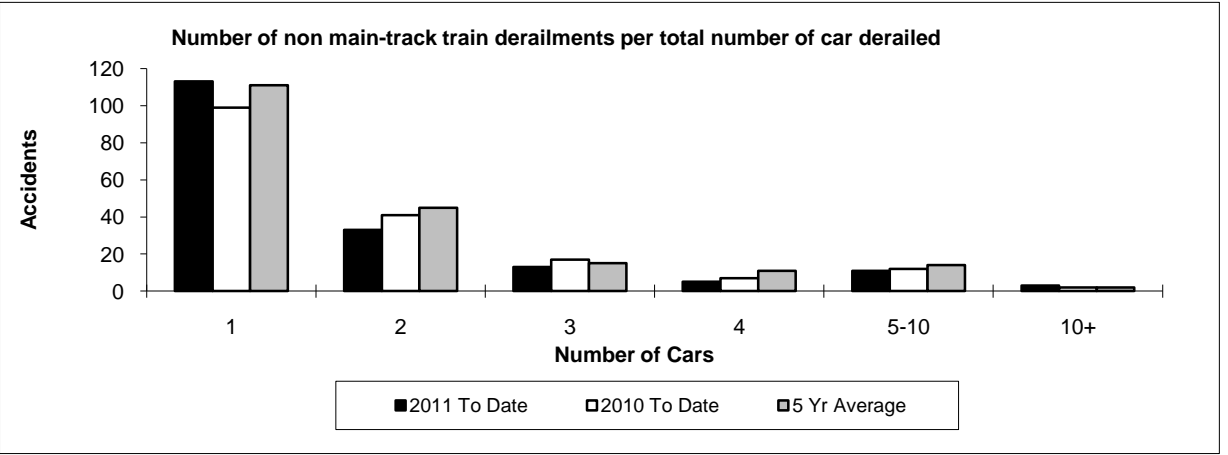
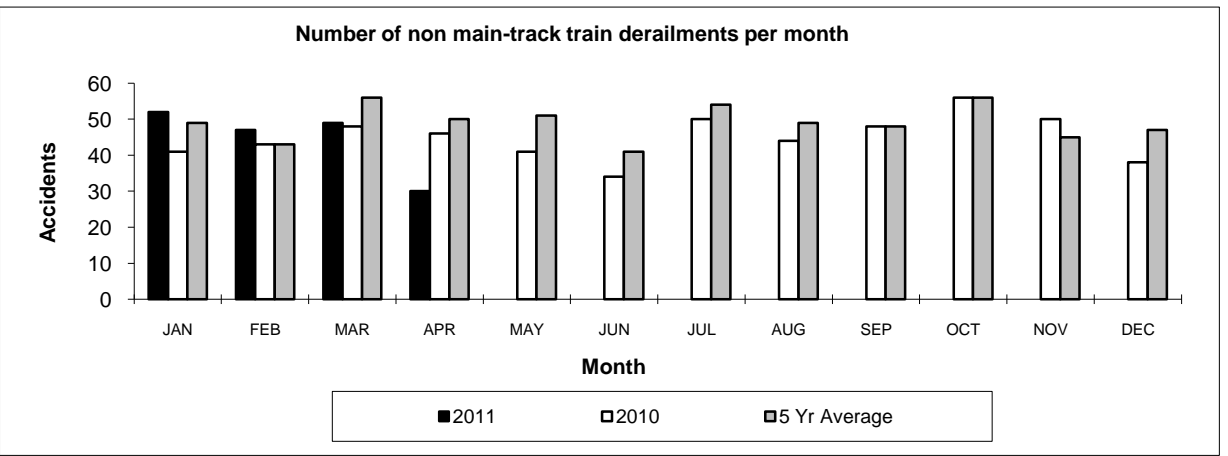
Data extracted May 16, 2011.

\*Number of collisions with no derailments.

**Table 5**  
**Non main-track train derailments by province**

	January to April			Derailments with DG Involvement January to April		
	2011	2010	2006-2010 Average	2011	2010	2006-2010 Average
<b>Canada</b>	<b>178</b>	<b>178</b>	<b>197</b>	<b>35</b>	<b>32</b>	<b>33</b>
Newfoundland	0	0	0	0	0	0
Nova Scotia	0	2	2	0	1	0
New Brunswick	3	4	3	0	2	1
Quebec	24	19	25	7	4	5
Ontario	36	31	50	9	6	7
Manitoba	16	25	22	2	7	5
Saskatchewan	36	13	19	2	1	2
Alberta	33	55	43	11	6	7
British Columbia	30	29	33	4	5	5
Northwest Territories	0	0	0	0	0	0

\* There were no occurrences with dangerous goods release to date in 2011 and 1 in 2010.



Data extracted May 16, 2011.