

Table 1
Railway Occurrence and Casualty

	August			January to August		
	2011	2010	2006-2010 Average	2011	2010	2006-2010 Average
Accidents	91	97	103	722	701	802
Main-Track Train Collisions	0	0	0	1	3	3
Main-Track Train Derailments - 1-2 cars	1	6	6	38	28	44
Main-Track Train Derailments - 3 or more cars	1	7	5	45	30	37
Crossings	18	15	17	107	116	139
Non-Main-Track Train Collisions	14	5	7	64	60	67
Non-Main-Track Train Derailments - 1-2 cars	27	34	39	268	281	302
Non-Main-Track Train Derailments - 3 or more cars	17	10	11	80	67	90
Collisions/Derailments Involving Track Units	4	10	4	22	21	21
Employee/Passenger	2	0	1	11	7	8
Trespassers	4	6	9	41	59	56
Fires/Explosions	0	4	3	17	17	14
Other	3	0	1	26	12	21
Incidents	13	11	18	139	113	138
Dangerous Goods Leaker	7	2	5	39	35	50
Main-track Switch in Abnormal Position	0	1	1	3	4	4
Movement Exceeds Limits of Authority	6	6	10	81	65	70
Runaway Rolling Stock	0	1	1	7	4	7
Others	0	1	1	8	5	7
Million Train-miles	a			55.9	56.08	57.74
Accidents/Million Train-miles				12.92	12.5	13.89
Accidents Involving Dangerous Goods	11	12	14	94	91	111
Main-track Train Derailments	0	3	2	18	10	15
Crossings	0	0	0	1	6	4
Non-Main-Track Train Collisions	1	1	3	14	15	24
Non-Main-Track Train Derailments	9	8	8	56	59	62
All Others	1	0	0	5	1	5
Accidents with a DG Release	0	0	0	2	1	2
Accidents Involving Passenger Trains	5	3	6	45	43	49
Fatalities	8	7	8	45	56	55
Crossings	5	1	2	19	16	18
Trespassers	3	6	6	25	38	35
All Others	0	0	0	1	2	2
Serious Injuries	4	1	5	36	38	39
Crossings	3	1	2	12	11	17
Trespassers	1	0	2	15	14	15
All Others	0	0	1	9	13	7

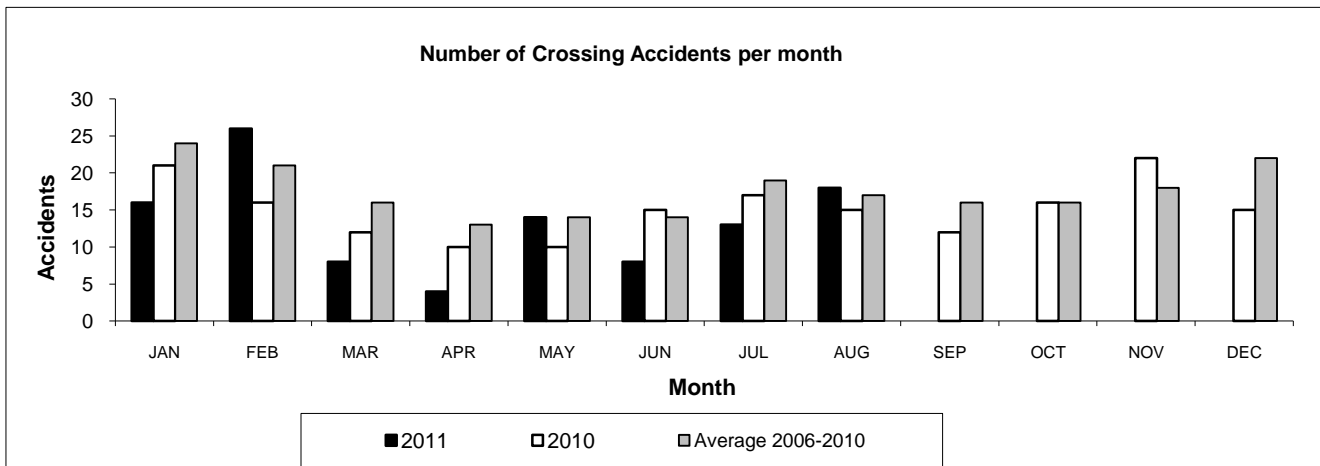
Data extracted September 16, 2011.

All 5-year averages have been rounded. The totals sometimes do not coincide to the sum of these averages.

a. Train-miles estimated. (Source: Transport Canada)

Table 2
Railway crossing and trespasser accidents by province

	Crossings with Type Recorded				All Crossings		Trespasser	
	2011 - Year To Date*				Year To Date*		Year To Date*	
	Public Automated	Public Passive	Private	Farm	2011	2010	2011	2010
Newfoundland								
Accidents	1	0	0	0	1	0	0	0
Fatalities	0	0	0	0	0	0	0	0
Serious Injuries	0	0	0	0	0	0	0	0
Nova Scotia								
Accidents	0	0	1	0	1	3	0	0
Fatalities	0	0	0	0	0	1	0	0
Serious Injuries	0	0	0	0	0	2	0	0
New Brunswick								
Accidents	4	1	1	0	6	5	2	1
Fatalities	2	0	0	0	2	1	1	0
Serious Injuries	0	0	0	0	0	0	1	0
Quebec								
Accidents	5	2	2	2	11	17	5	12
Fatalities	2	0	0	1	3	1	4	7
Serious Injuries	1	0	0	0	1	2	1	4
Ontario								
Accidents	15	6	2	1	24	28	20	25
Fatalities	4	2	1	0	7	1	14	20
Serious Injuries	4	0	0	0	4	0	6	3
Manitoba								
Accidents	1	2	0	0	3	11	1	2
Fatalities	1	1	0	0	2	0	1	2
Serious Injuries	1	0	0	0	1	2	0	0
Saskatchewan								
Accidents	5	8	1	0	14	17	2	2
Fatalities	0	0	0	0	0	5	1	1
Serious Injuries	1	1	0	0	2	1	1	1
Alberta								
Accidents	16	15	1	2	34	23	4	6
Fatalities	2	1	0	0	3	5	2	3
Serious Injuries	2	1	0	0	3	3	1	3
British Columbia								
Accidents	8	4	0	1	13	12	7	11
Fatalities	1	0	0	1	2	2	2	5
Serious Injuries	1	0	0	0	1	1	5	3
Northwest Territories								
Accidents	0	0	0	0	0	0	0	0
Fatalities	0	0	0	0	0	0	0	0
Serious Injuries	0	0	0	0	0	0	0	0
Canada								
Accidents	55	38	8	6	107	116	41	59
Fatalities	12	4	1	2	19	16	25	38
Serious Injuries	10	2	0	0	12	11	15	14



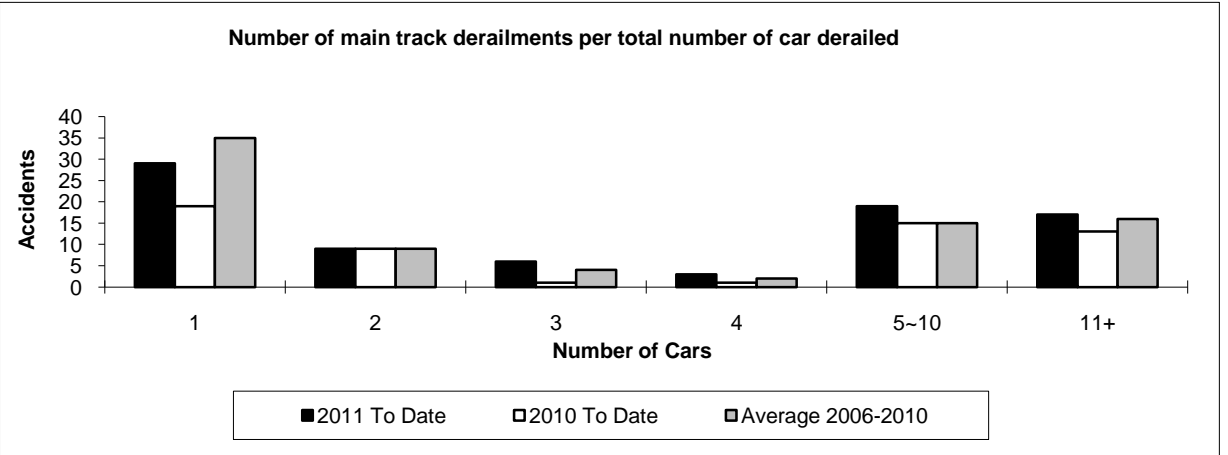
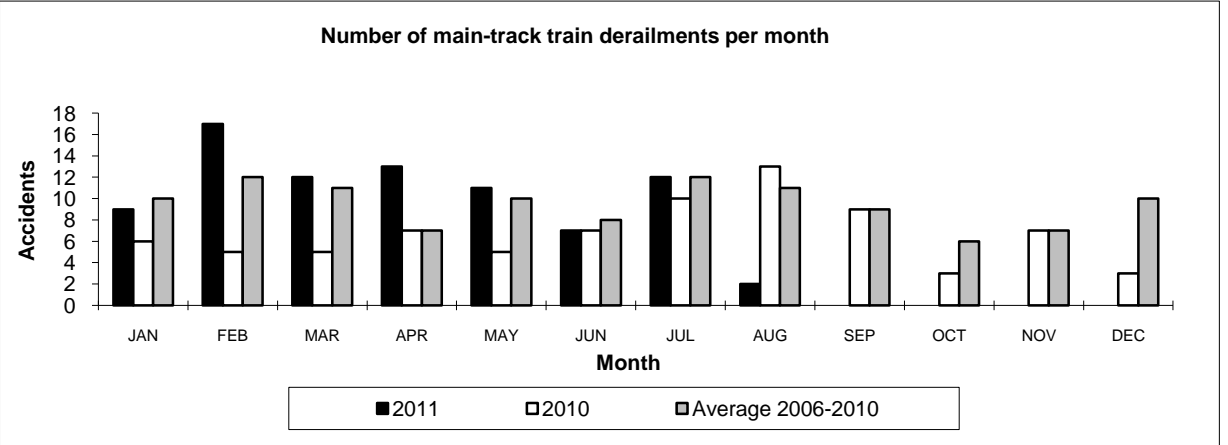
Data extracted September 16, 2011.

*Year to date is from January to August.

Table 3
Main-track train derailments by province

	January to August			Derailments with DG Involvement January to August		
	2011	2010	2006-2010 Average	2011	2010	2006-2010 Average
Canada	83	58	81	18	10	15
Newfoundland	1	3	1	0	0	0
Nova Scotia	1	0	1	0	0	0
New Brunswick	0	0	2	0	0	1
Quebec	6	7	9	1	1	2
Ontario	18	15	23	4	2	5
Manitoba	9	5	7	0	0	0
Saskatchewan	11	7	9	0	2	1
Alberta	17	10	14	7	2	4
British Columbia	20	11	16	6	3	2
Northwest Territories	0	0	0	0	0	0

* There was 1 occurrence with dangerous goods release to date in 2011 and none in 2010.

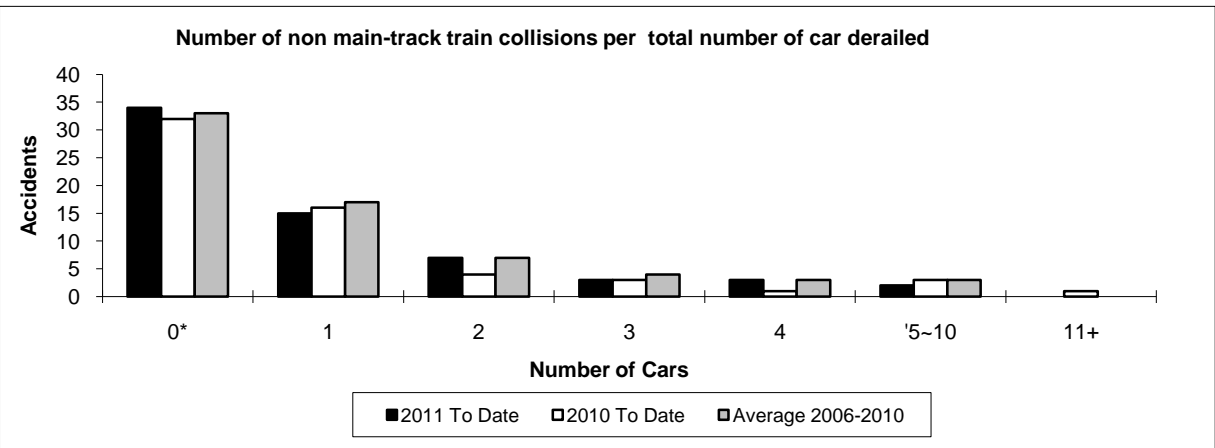
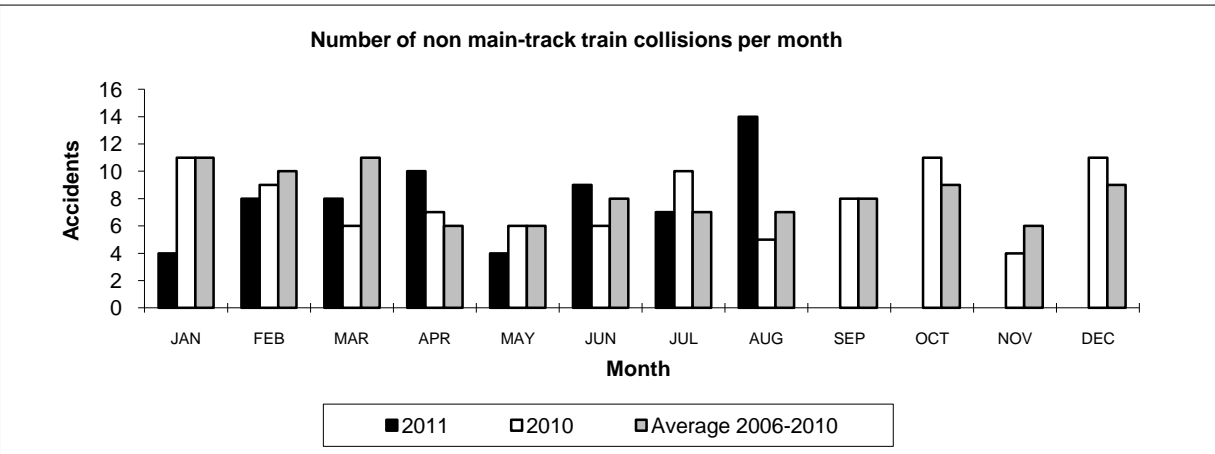


Data extracted September 16, 2011.

Table 4
Non main-track train collisions by province

	January to August			Collisions with DG Involvement January to August		
	2011	2010	2006-2010 Average	2011	2010	2006-2010 Average
Canada	64	60	67	14	15	24
Newfoundland	0	0	0	0	0	0
Nova Scotia	0	0	0	0	0	0
New Brunswick	1	0	1	0	0	1
Quebec	11	9	8	2	3	2
Ontario	12	8	18	5	4	8
Manitoba	10	10	8	1	1	2
Saskatchewan	3	1	4	0	0	1
Alberta	13	17	15	2	4	7
British Columbia	14	15	12	4	3	3
Northwest Territories	0	0	0	0	0	0

* There were no occurrences with dangerous goods release to date in 2011 or in 2010.



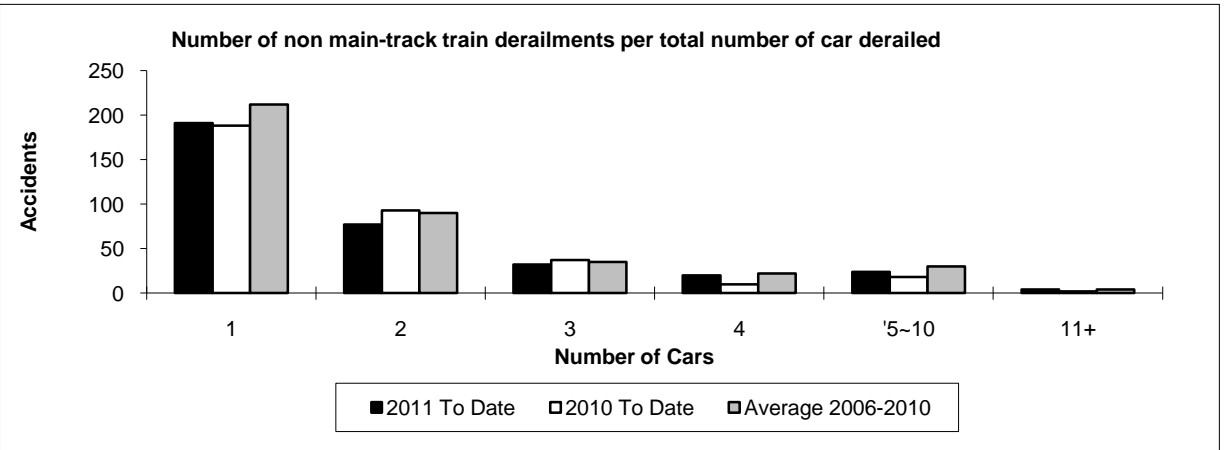
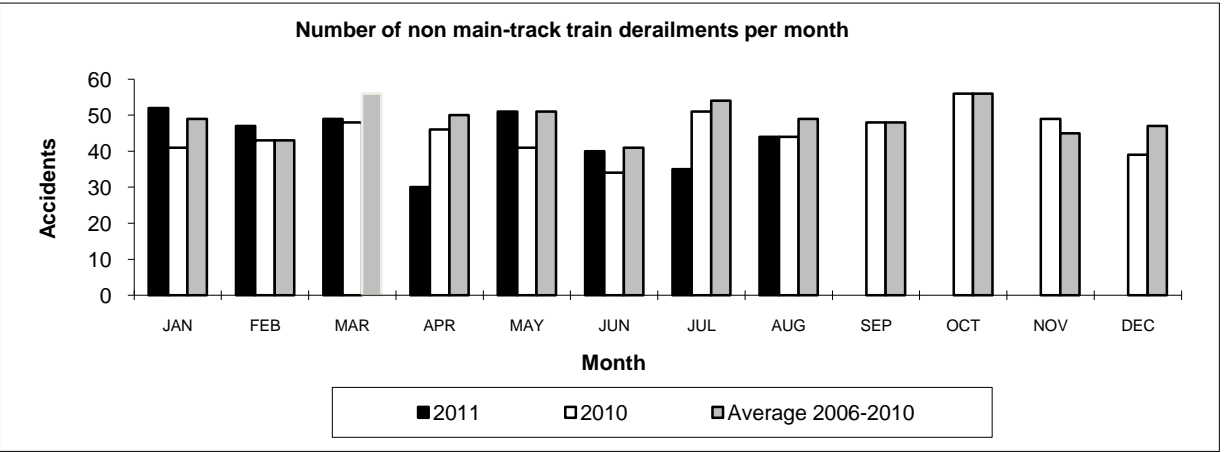
Data extracted September 16, 2011.

*Number of collisions with no derailments.

Table 5
Non main-track train derailments by province

	January to August			Derailments with DG Involvement January to August		
	2011	2010	2006-2010 Average	2011	2010	2006-2010 Average
Canada	348	348	392	56	59	62
Newfoundland	0	0	0	0	0	0
Nova Scotia	2	3	4	0	1	1
New Brunswick	10	7	9	1	3	2
Quebec	42	37	49	12	4	9
Ontario	72	74	98	13	11	16
Manitoba	32	40	40	3	10	7
Saskatchewan	61	34	35	3	3	3
Alberta	73	93	86	18	16	14
British Columbia	55	60	69	5	11	10
Northwest Territories	1	0	0	1	0	0

* There were no occurrences with dangerous goods release to date in 2011 and 1 in 2010.



Data extracted September 16, 2011.