

Table 1
Railway Occurrence and Casualty

	September			January to September		
	2011	2010	2006-2010 Average	2011	2010	2006-2010 Average
Accidents	92	92	100	814	793	902
Main-Track Train Collisions	0	0	0	1	3	3
Main-Track Train Derailments - 1-2 cars	1	6	5	38	34	50
Main-Track Train Derailments - 3 or more cars	5	3	4	50	33	41
Crossings	21	12	16	128	128	155
Non-Main-Track Train Collisions	8	8	8	72	67	74
Non-Main-Track Train Derailments - 1-2 cars	27	33	37	295	314	339
Non-Main-Track Train Derailments - 3 or more cars	9	15	11	89	83	101
Collisions/Derailments Involving Track Units	1	3	3	23	24	25
Employee/Passenger	0	1	1	11	8	8
Trespassers	10	5	10	51	64	66
Fires/Explosions	4	1	2	21	18	16
Other	5	5	3	32	17	24
Incidents	16	14	20	154	127	158
Dangerous Goods Leaker	8	2	8	47	37	58
Main-track Switch in Abnormal Position	2	0	1	5	4	5
Movement Exceeds Limits of Authority	4	10	9	85	75	79
Runaway Rolling Stock	2	0	1	9	4	8
Others	0	2	1	8	7	8
Million Train-miles (a)				63.32	62.88	64.73
Accidents/Million Train-miles				12.86	12.61	13.93
Accidents Involving Dangerous Goods	9	13	9	103	104	120
Main-track Train Derailments	1	2	1	19	12	16
Crossings	0	0	0	1	6	4
Non-Main-Track Train Collisions	4	5	3	18	20	27
Non-Main-Track Train Derailments	4	4	5	60	63	67
All Others	0	2	1	5	3	6
Accidents with a DG Release	0	1	0	2	2	2
Accidents Involving Passenger Trains	5	5	5	51	48	53
Fatalities	7	4	7	52	60	62
Crossings	2	0	2	21	16	20
Trespassers	5	4	5	30	42	40
All Others	0	0	0	1	2	2
Serious Injuries	10	6	7	46	44	46
Crossings	6	4	2	18	15	19
Trespassers	4	1	3	19	15	19
All Others	0	1	1	9	14	8

Data extracted October 18, 2011.

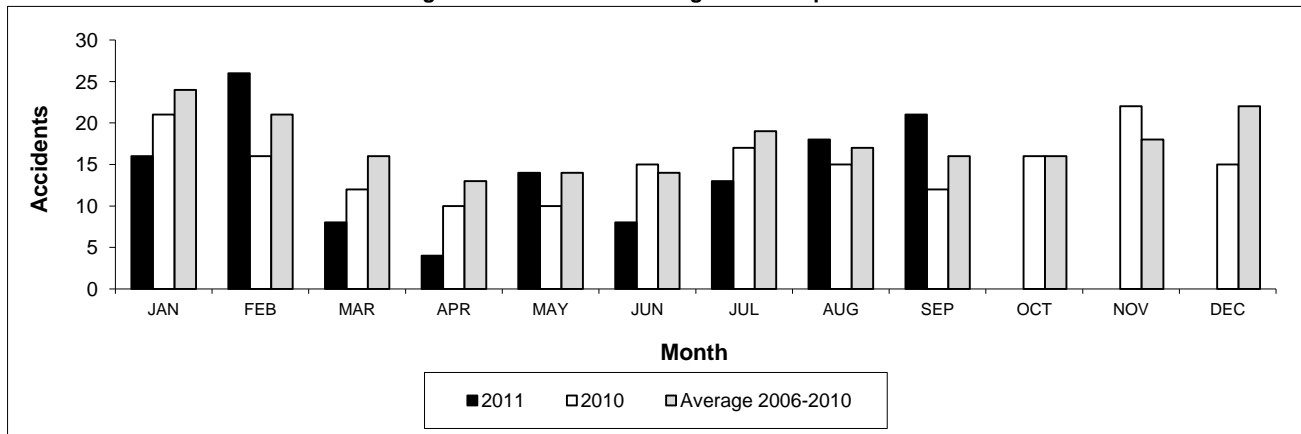
All 5-year averages have been rounded. The totals sometimes do not coincide to the sum of these averages.

a. Train-miles estimated. (Source: Transport Canada)

Table 2
Railway crossing and trespasser accidents by province

	Crossings with Type Recorded				All Crossings		Trespasser	
	2011 - Year To Date*				Year To Date*		Year To Date*	
	Public Automated	Public Passive	Private	Farm	2011	2010	2011	2010
Newfoundland								
Accidents	1	0	0	0	1	0	0	0
Fatalities	0	0	0	0	0	0	0	0
Serious Injuries	0	0	0	0	0	0	0	0
Nova Scotia								
Accidents	0	0	1	0	1	3	1	0
Fatalities	0	0	0	0	0	1	0	0
Serious Injuries	0	0	0	0	0	2	0	0
New Brunswick								
Accidents	4	1	1	0	6	5	2	1
Fatalities	2	0	0	0	2	1	1	0
Serious Injuries	0	0	0	0	0	0	1	0
Quebec								
Accidents	7	2	2	3	14	19	7	12
Fatalities	2	0	0	1	3	1	5	7
Serious Injuries	1	0	0	1	2	3	2	4
Ontario								
Accidents	17	8	2	1	28	32	23	27
Fatalities	4	2	1	0	7	1	17	22
Serious Injuries	4	1	0	0	5	1	6	3
Manitoba								
Accidents	3	2	0	0	5	11	1	2
Fatalities	1	1	0	0	2	0	1	2
Serious Injuries	1	0	0	0	1	2	0	0
Saskatchewan								
Accidents	5	10	1	1	17	20	2	2
Fatalities	0	0	0	1	1	5	1	1
Serious Injuries	1	1	0	0	2	1	1	1
Alberta								
Accidents	17	19	1	2	39	26	7	7
Fatalities	2	2	0	0	4	5	2	4
Serious Injuries	3	1	0	0	4	5	4	3
British Columbia								
Accidents	10	4	2	1	17	12	8	13
Fatalities	1	0	0	1	2	2	3	6
Serious Injuries	3	0	1	0	4	1	5	4
Northwest Territories								
Accidents	0	0	0	0	0	0	0	0
Fatalities	0	0	0	0	0	0	0	0
Serious Injuries	0	0	0	0	0	0	0	0
Canada								
Accidents	64	46	10	8	128	128	51	64
Fatalities	12	5	1	3	21	16	30	42
Serious Injuries	13	3	1	1	18	15	19	15

Figure 1: Number of crossing accidents per month



Data extracted October 18, 2011.

*Year to date is from January to September.

Table 3
Main-track train derailments by province

	January to September			Derailments with DG Involvement January to September		
	2011	2010	2006-2010 Average	2011	2010	2006-2010 Average
	Canada	88	67	91	19	12
Newfoundland	1	3	1	0	0	0
Nova Scotia	1	0	1	0	0	0
New Brunswick	0	0	2	0	0	1
Quebec	8	8	11	2	2	2
Ontario	19	18	26	4	2	5
Manitoba	10	6	7	0	0	0
Saskatchewan	11	8	10	0	2	1
Alberta	18	12	16	7	3	4
British Columbia	20	12	17	6	3	2
Northwest Territories	0	0	0	0	0	0

* There was 1 occurrence with dangerous goods release to date in 2011 and 1 in 2010.

Figure 1: Number of main-track train derailments per month

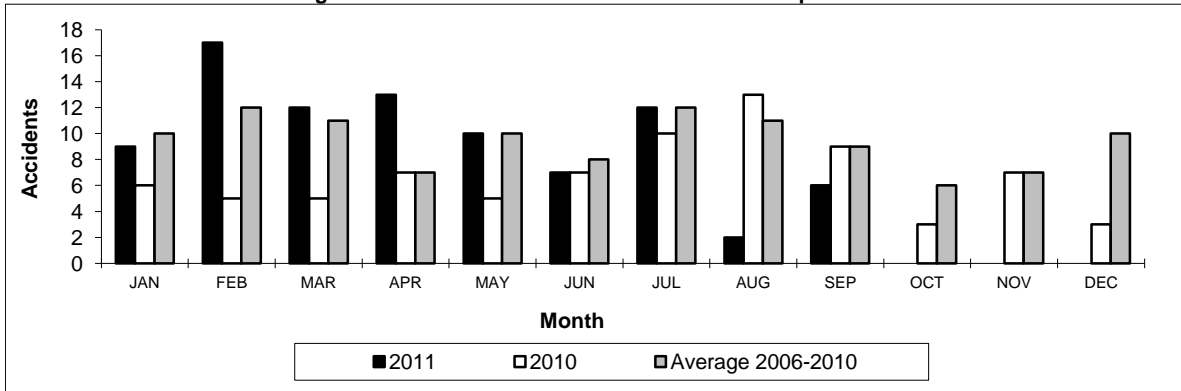
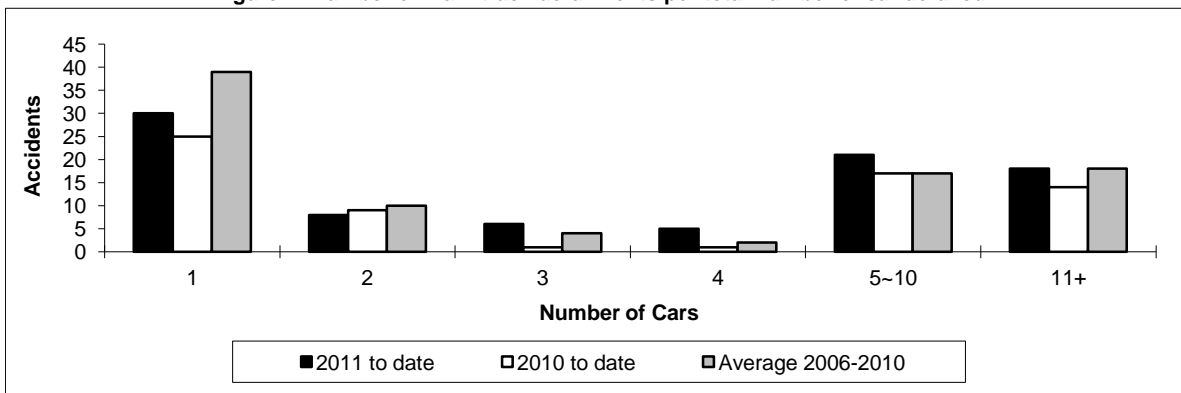


Figure 2: Number of main-track derailments per total number of car derailed



Data extracted October 18, 2011.

Table 4
Non main-track train collisions by province

	January to September			Collisions with DG Involvement January to September		
	2011	2010	2006-2010 Average	2011	2010	2006-2010 Average
	Canada	72	67	74	18	20
Newfoundland	0	0	0	0	0	0
Nova Scotia	0	0	0	0	0	0
New Brunswick	1	0	1	0	0	1
Quebec	11	10	8	2	4	3
Ontario	12	10	20	5	6	9
Manitoba	12	12	9	2	2	3
Saskatchewan	4	1	5	0	0	1
Alberta	16	19	17	4	5	8
British Columbia	16	15	13	5	3	3
Northwest Territories	0	0	0	0	0	0

* There were no occurrences with dangerous goods release to date in 2011 or in 2010.

Figure 1: Number of non main-track train collisions per month

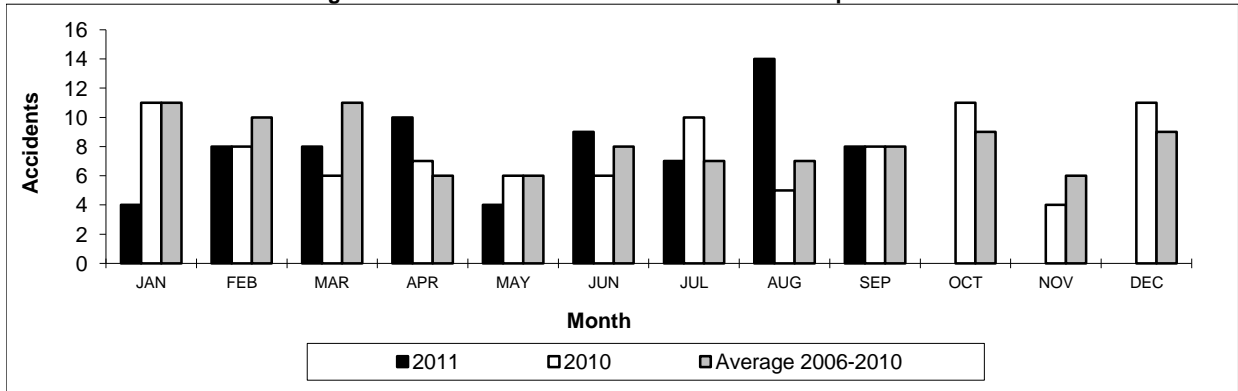
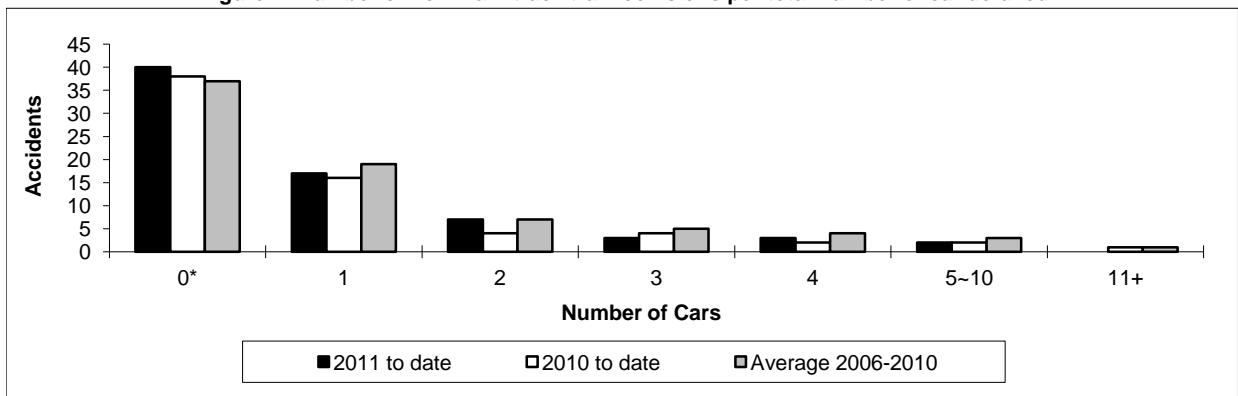


Figure 2: Number of non main-track train collisions per total number of car derailed



Data extracted October 18, 2011.

*Number of collisions with no derailments.

Table 5
Non main-track train derailments by province

	January to September			Deraillments with DG Involvement January to September		
	2011	2010	2006-2010 Average	2011	2010	2006-2010 Average
	Canada	384	397	440	60	63
Newfoundland	0	0	0	0	0	0
Nova Scotia	2	3	5	0	1	1
New Brunswick	11	7	10	1	3	3
Quebec	49	43	56	14	4	9
Ontario	81	84	108	12	13	17
Manitoba	35	45	45	3	10	8
Saskatchewan	63	42	41	3	3	3
Alberta	88	108	98	21	18	15
British Columbia	54	65	77	5	11	11
Northwest Territories	1	0	0	1	0	0

* There were no occurrences with dangerous goods release to date in 2011 and 1 in 2010.

Figure 1: Number of non main-track train derailments per month

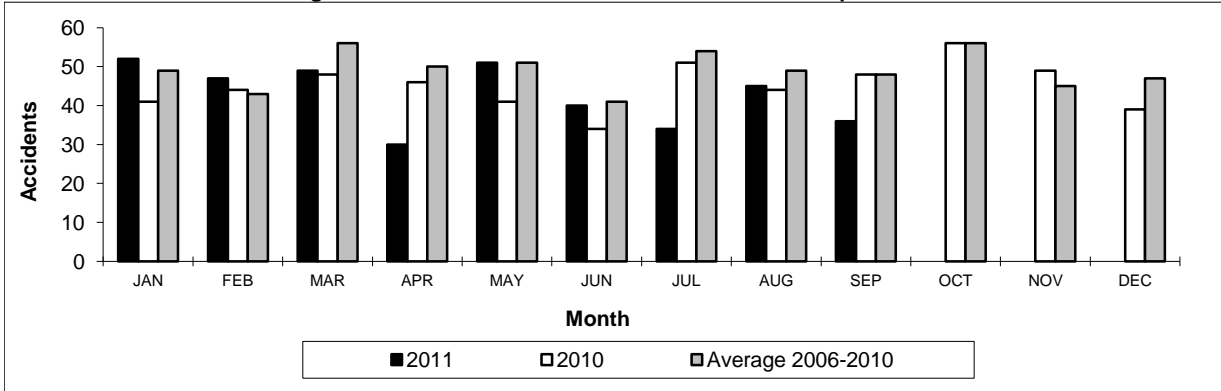
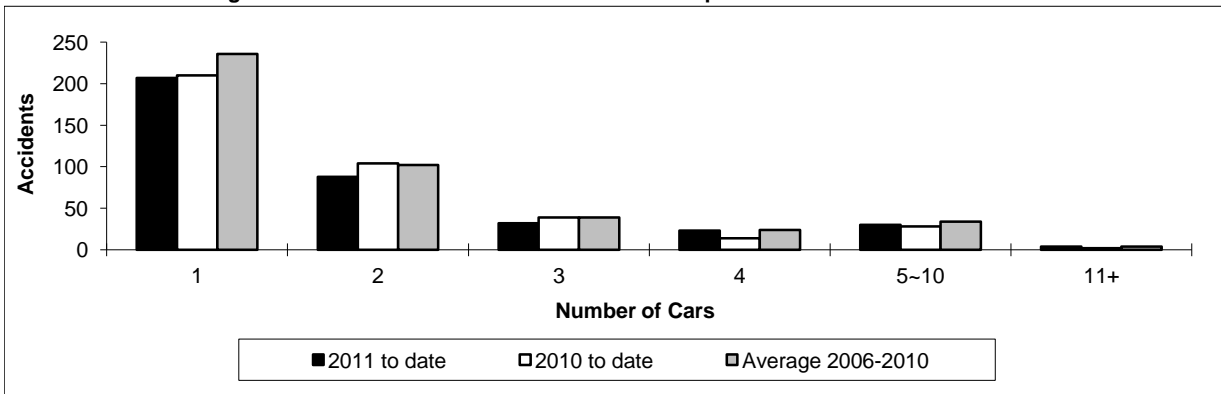


Figure 2: Number of non main-track derailments per total number of car derailed



Data extracted October 18, 2011.