

Table 1

## Railway Occurrence and Casualty

	March			January to March		
	2012	2011	2007-2011 Average	2012	2011	2007-2011 Average
<b>Accidents</b>	<b>90</b>	<b>85</b>	<b>103</b>	<b>246</b>	<b>290</b>	<b>303</b>
Main-Track Train Collisions	0	0	0	1	0	1
Main-Track Train Derailments - 1-2 cars	4	8	5	7	21	19
Main-Track Train Derailments - 3 or more cars	1	4	5	9	17	15
Crossings	11	8	14	55	50	56
Non-Main-Track Train Collisions	8	8	10	22	20	29
Non-Main-Track Train Derailments - 1-2 cars	35	35	43	82	120	117
Non-Main-Track Train Derailments - 3 or more cars	14	14	11	27	28	29
Collisions/Derailments Involving Track Units	1	3	2	4	7	7
Employee/Passenger	1	1	1	2	2	3
Trespassers	9	2	5	19	9	12
Fires/Explosions	0	0	1	6	1	3
Other	4	2	5	9	15	13
<b>Incidents</b>	<b>14</b>	<b>13</b>	<b>14</b>	<b>37</b>	<b>46</b>	<b>44</b>
Dangerous Goods Leaker	11	4	6	16	11	15
Main-track Switch in Abnormal Position	1	0	0	1	0	1
Movement Exceeds Limits of Authority	2	6	6	16	29	23
Runaway Rolling Stock	0	1	1	2	3	2
Others	0	2	0	2	3	2
<b>Million Train-miles (a)</b>				<b>21.72</b>	<b>20.3</b>	<b>21.19</b>
<b>Accidents/Million Train-miles</b>				<b>11.33</b>	<b>14.29</b>	<b>14.30</b>
<b>Accidents Involving Dangerous Goods</b>	<b>18</b>	<b>15</b>	<b>16</b>	<b>32</b>	<b>52</b>	<b>50</b>
Main-track Train Derailments	1	2	2	2	8	8
Crossings	0	0	0	1	0	1
Non-Main-Track Train Collisions	5	2	4	8	6	10
Non-Main-Track Train Derailments	12	11	9	21	35	28
All Others	0	0	0	0	3	3
<b>Accidents with a DG Release</b>	<b>0</b>	<b>0</b>	<b>0</b>	<b>1</b>	<b>0</b>	<b>1</b>
<b>Accidents Involving Passenger Trains</b>	<b>1</b>	<b>6</b>	<b>6</b>	<b>11</b>	<b>17</b>	<b>18</b>
<b>Fatalities</b>	<b>5</b>	<b>3</b>	<b>7</b>	<b>20</b>	<b>14</b>	<b>17</b>
Crossings	2	2	3	8	7	8
Trespassers	3	1	4	9	7	8
All Others	0	0	0	3	0	1
<b>Serious Injuries</b>	<b>7</b>	<b>4</b>	<b>4</b>	<b>29</b>	<b>12</b>	<b>12</b>
Crossings	1	1	2	9	7	6
Trespassers	5	1	1	8	2	2
All Others	1	2	1	12	3	4

Data extracted April 20, 2012.

All 5-year averages have been rounded. The totals sometimes do not coincide to the sum of these averages.

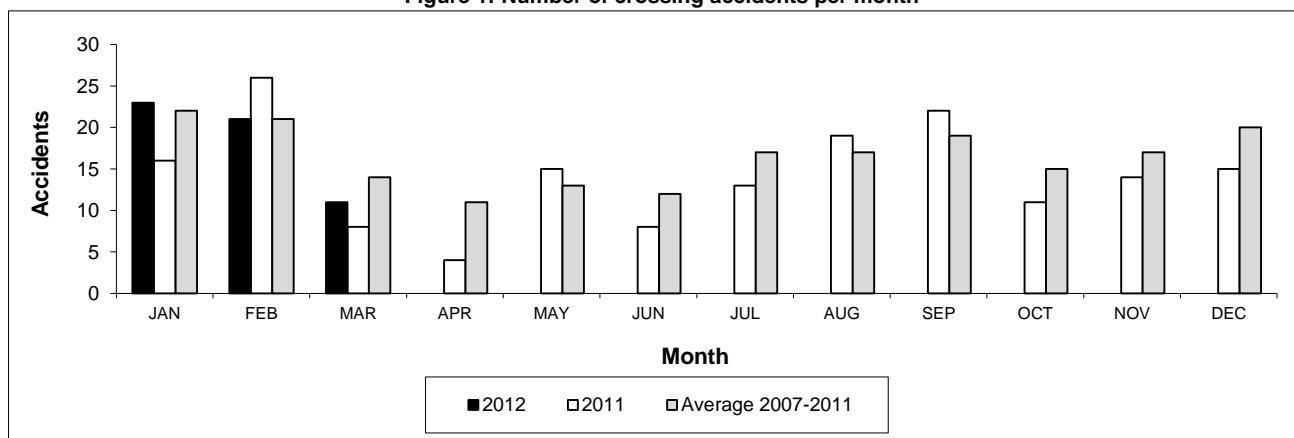
a. Train-miles estimated. (Source: Transport Canada)

Table 2

## Railway crossing and trespasser accidents by province

	Crossings with Type Recorded 2012 - Year To Date*				All Crossings Year To Date*		Trespasser Year To Date*	
	Public Automated	Public Passive	Private	Farm	2012	2011	2012	2011
<b>Newfoundland</b>								
Accidents	0	0	0	0	0	0	0	0
Fatalities	0	0	0	0	0	0	0	0
Serious Injuries	0	0	0	0	0	0	0	0
<b>Nova Scotia</b>								
Accidents	0	0	1	0	1	1	0	0
Fatalities	0	0	0	0	0	0	0	0
Serious Injuries	0	0	0	0	0	0	0	0
<b>New Brunswick</b>								
Accidents	1	0	0	1	2	2	0	0
Fatalities	1	0	0	0	1	0	0	0
Serious Injuries	0	0	0	0	0	0	0	0
<b>Quebec</b>								
Accidents	2	1	0	0	3	2	1	1
Fatalities	0	0	0	0	0	1	0	1
Serious Injuries	0	0	0	0	0	0	0	0
<b>Ontario</b>								
Accidents	7	4	2	0	13	9	9	6
Fatalities	2	0	0	0	2	3	3	4
Serious Injuries	1	1	0	0	2	1	6	2
<b>Manitoba</b>								
Accidents	7	1	0	0	8	2	0	1
Fatalities	1	0	0	0	1	2	0	1
Serious Injuries	2	0	0	0	2	1	0	0
<b>Saskatchewan</b>								
Accidents	2	4	0	1	7	11	2	1
Fatalities	0	0	0	1	1	0	1	1
Serious Injuries	1	0	0	0	1	2	0	0
<b>Alberta</b>								
Accidents	5	6	0	0	11	18	3	0
Fatalities	1	0	0	0	1	1	2	0
Serious Injuries	3	1	0	0	4	2	1	0
<b>British Columbia</b>								
Accidents	5	2	3	0	10	5	4	0
Fatalities	2	0	0	0	2	0	3	0
Serious Injuries	0	0	0	0	0	1	1	0
<b>Northwest Territories</b>								
Accidents	0	0	0	0	0	0	0	0
Fatalities	0	0	0	0	0	0	0	0
Serious Injuries	0	0	0	0	0	0	0	0
<b>Canada</b>								
Accidents	29	18	6	2	55	50	19	9
Fatalities	7	0	0	1	8	7	9	7
Serious Injuries	7	2	0	0	9	7	8	2

Figure 1: Number of crossing accidents per month



Data extracted April 20, 2012.

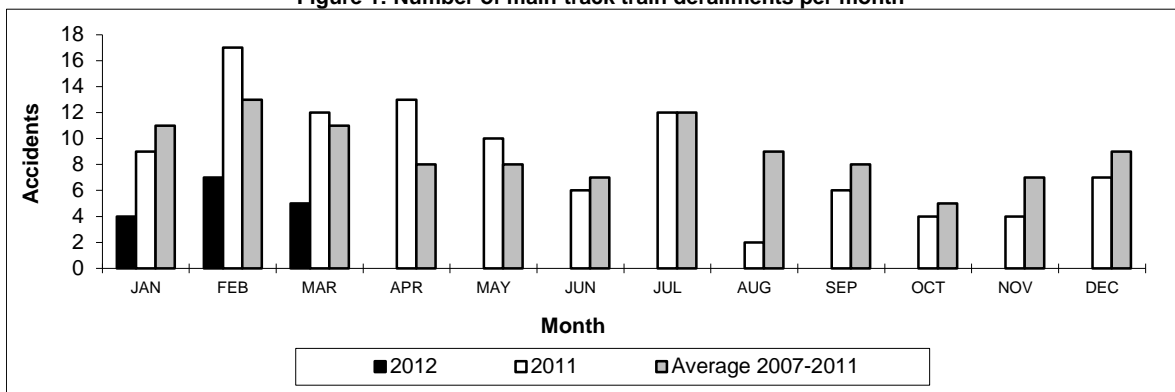
\*Year to date is from January to March.

**Table 3**  
**Main-track train derailments by province**

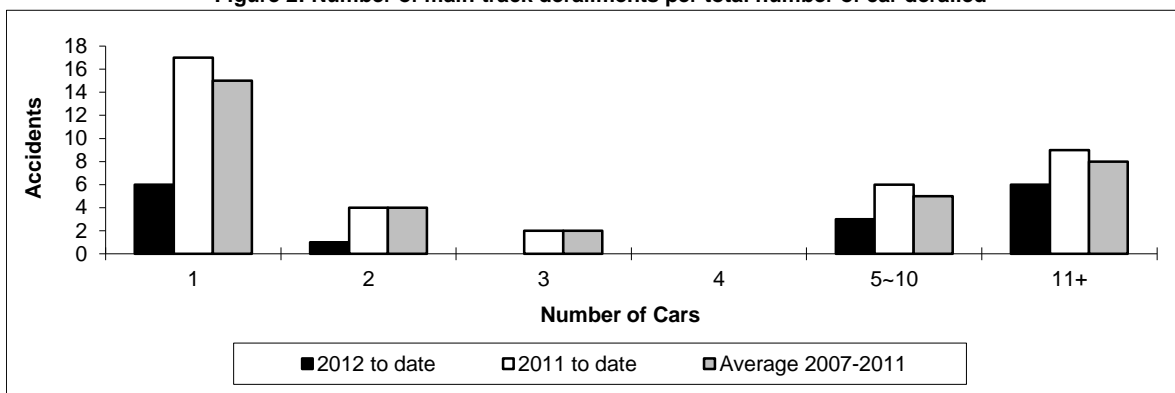
	January to March			Derailments with DG Involvement January to March		
	2012	2011	2007-2011 Average	2012	2011	2007-2011 Average
<b>Canada</b>	<b>16</b>	<b>38</b>	<b>35</b>	<b>2</b>	<b>8</b>	<b>8</b>
Newfoundland	0	1	1	0	0	0
Nova Scotia	0	0	0	0	0	0
New Brunswick	0	0	1	0	0	0
Quebec	1	3	3	0	1	1
Ontario	2	6	10	0	2	4
Manitoba	0	3	3	0	0	0
Saskatchewan	3	6	4	1	0	0
Alberta	5	12	6	1	4	2
British Columbia	5	7	7	0	1	1
Northwest Territories	0	0	0	0	0	0

\* There were no occurrences with dangerous goods release to date in 2012 or in 2011.

**Figure 1: Number of main-track train derailments per month**



**Figure 2: Number of main-track derailments per total number of car derailed**



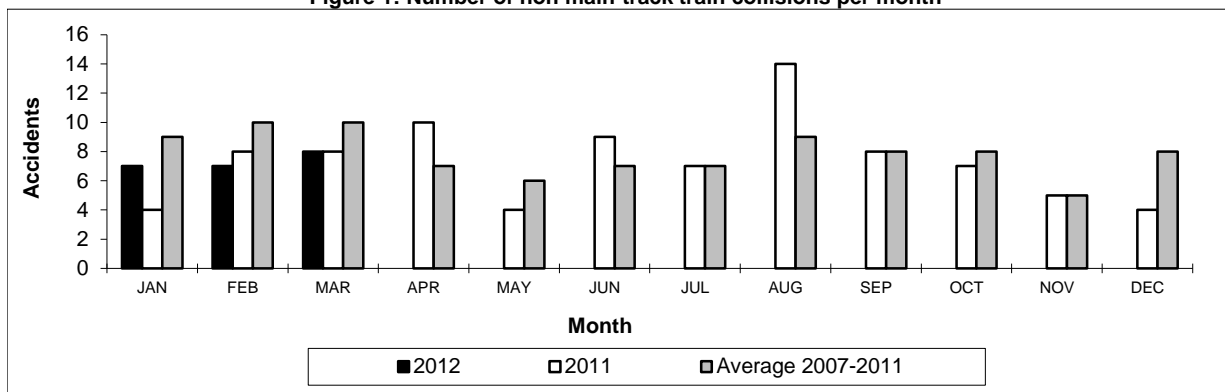
Data extracted April 20, 2012.

**Table 4**  
**Non main-track train collisions by province**

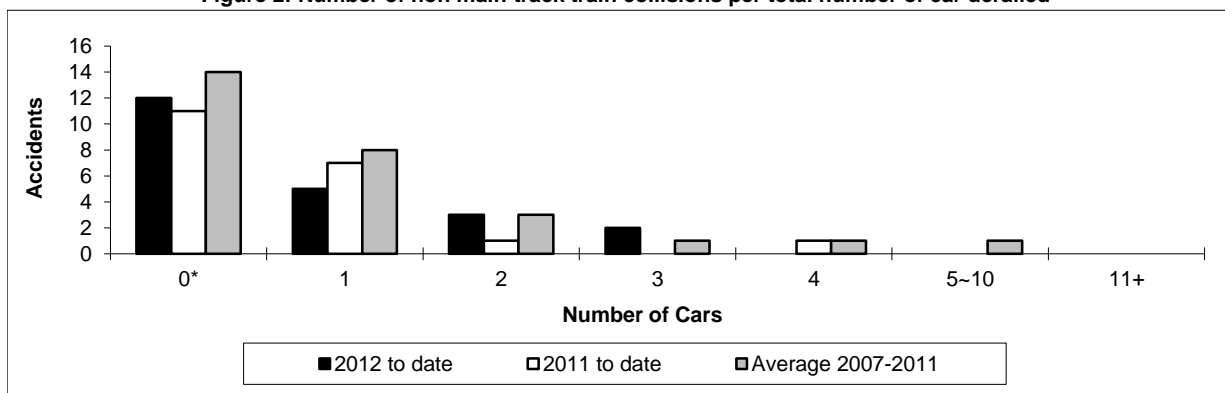
	January to March			Collisions with DG Involvement January to March		
	2012	2011	2007-2011 Average	2012	2011	2007-2011 Average
<b>Canada</b>	<b>22</b>	<b>20</b>	<b>29</b>	<b>8</b>	<b>6</b>	<b>10</b>
Newfoundland	0	0	0	0	0	0
Nova Scotia	0	0	0	0	0	0
New Brunswick	0	1	0	0	0	0
Quebec	1	4	4	1	0	1
Ontario	2	5	9	0	3	4
Manitoba	7	1	3	2	1	1
Saskatchewan	1	0	1	1	0	0
Alberta	8	5	6	2	1	3
British Columbia	3	4	6	2	1	1
Northwest Territories	0	0	0	0	0	0

\* There were no occurrences with dangerous goods release to date in 2012 or in 2011.

**Figure 1: Number of non main-track train collisions per month**



**Figure 2: Number of non main-track train collisions per total number of car derailed**



Data extracted April 20, 2012.

\*Number of collisions with no derailments.

Table 5

## Non main-track train derailments by province

	January to March			Derailments with DG Involvement January to March		
	2012	2011	2007-2011 Average	2012	2011	2007-2011 Average
<b>Canada</b>	<b>109</b>	<b>148</b>	<b>146</b>	<b>21</b>	<b>35</b>	<b>28</b>
Newfoundland	0	0	0	0	0	0
Nova Scotia	1	0	0	0	0	0
New Brunswick	1	3	2	0	0	1
Quebec	6	19	16	1	7	5
Ontario	22	30	32	5	9	6
Manitoba	12	14	16	2	2	4
Saskatchewan	14	27	17	3	2	1
Alberta	35	29	36	9	11	7
British Columbia	18	26	26	1	4	4
Northwest Territories	0	0	0	0	0	0

\* There were no occurrences with dangerous goods release to date in 2012 or in 2011.

Figure 1: Number of non main-track train derailments per month

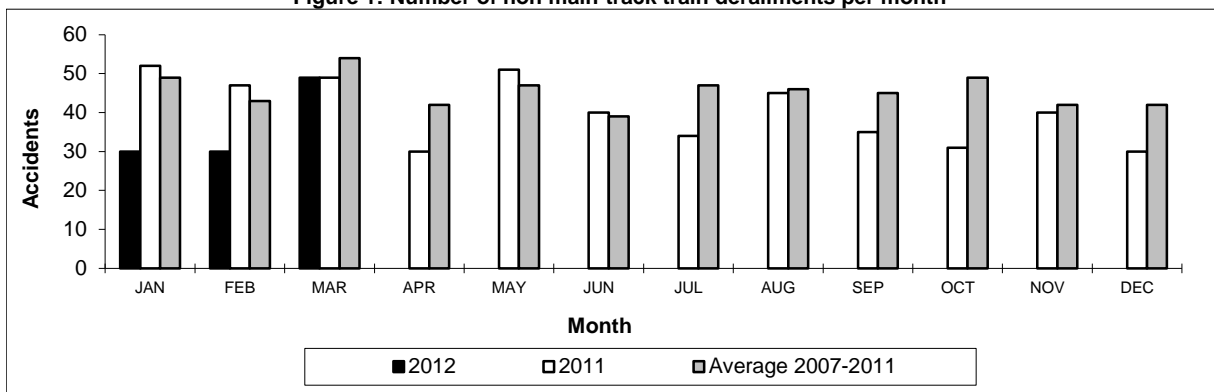
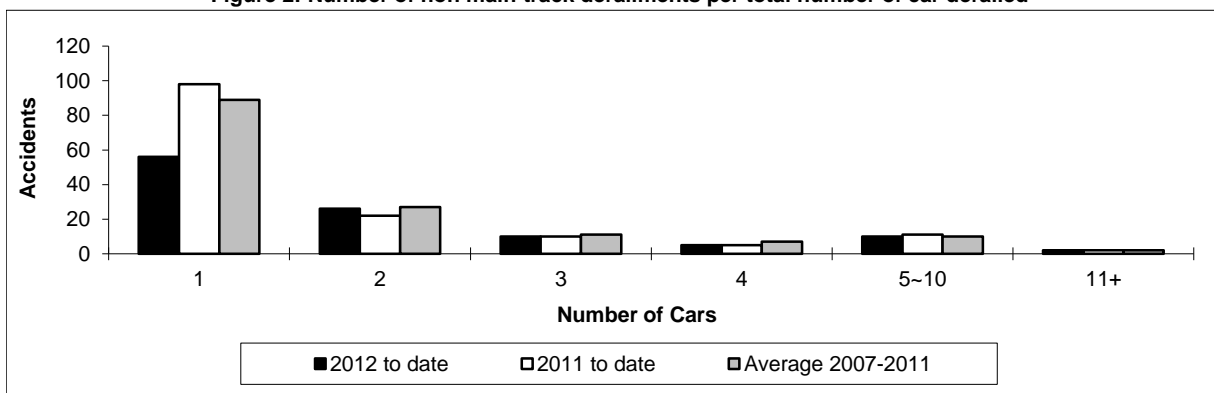


Figure 2: Number of non main-track derailments per total number of car derailed



Data extracted April 20, 2012.