

Table 1
Railway Occurrence and Casualty

	April			January to April		
	2012	2011	2007-2011 Average	2012	2011	2007-2011 Average
Accidents	84	75	83	329	364	385
Main-Track Train Collisions	1	0	1	2	0	2
Main-Track Train Derailments - 1-2 cars	7	4	4	14	25	23
Main-Track Train Derailments - 3 or more cars	5	9	4	14	26	19
Crossings	8	4	11	63	53	67
Non-Main-Track Train Collisions	8	10	7	30	30	35
Non-Main-Track Train Derailments - 1-2 cars	35	27	31	116	147	148
Non-Main-Track Train Derailments - 3 or more cars	11	3	11	38	31	40
Collisions/Derailments Involving Track Units	1	4	3	5	11	9
Employee/Passenger	0	0	1	2	2	4
Trespassers	4	6	6	23	15	18
Fires/Explosions	2	2	2	8	3	4
Other	2	6	3	11	21	16
Incidents	17	11	16	55	57	59
Dangerous Goods Leaker	6	7	7	22	18	22
Main-track Switch in Abnormal Position	0	0	0	1	0	1
Movement Exceeds Limits of Authority	9	4	8	26	33	31
Runaway Rolling Stock	1	0	0	3	3	2
Others	1	0	0	3	3	3
Million Train-miles (a)				28.98	27.34	28.49
Accidents/Million Train-miles				11.35	13.31	13.51
Accidents Involving Dangerous Goods	8	8	12	40	60	62
Main-track Train Derailments	1	3	2	3	11	9
Crossings	1	0	0	2	0	2
Non-Main-Track Train Collisions	0	3	3	8	9	13
Non-Main-Track Train Derailments	6	1	6	27	36	34
All Others	0	1	1	0	4	4
Accidents with a DG Release	0	0	0	1	0	1
Accidents Involving Passenger Trains	0	5	4	11	22	22
Fatalities	4	2	4	24	16	21
Crossings	0	0	1	8	7	9
Trespassers	4	2	3	13	9	11
All Others	0	0	0	3	0	1
Serious Injuries	0	3	4	29	15	17
Crossings	0	0	2	9	7	8
Trespassers	0	3	2	8	5	4
All Others	0	0	1	12	3	4

Data extracted May 15, 2012.

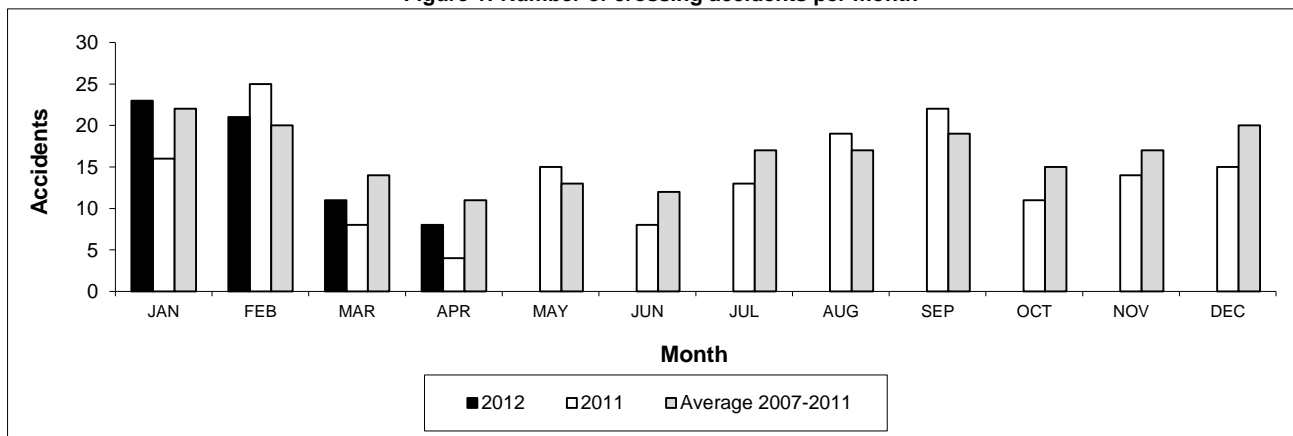
All 5-year averages have been rounded. The totals sometimes do not coincide to the sum of these averages.

a. Train-miles estimated. (Source: Transport Canada)

Table 2
Railway crossing and trespasser accidents by province

	Crossings with Type Recorded				All Crossings		Trespasser	
	2012 - Year To Date*				Year To Date*		Year To Date*	
	Public Automated	Public Passive	Private	Farm	2012	2011	2012	2011
Newfoundland								
Accidents	0	0	0	0	0	0	0	0
Fatalities	0	0	0	0	0	0	0	0
Serious Injuries	0	0	0	0	0	0	0	0
Nova Scotia								
Accidents	0	0	1	0	1	0	0	0
Fatalities	0	0	0	0	0	0	0	0
Serious Injuries	0	0	0	0	0	0	0	0
New Brunswick								
Accidents	1	0	0	1	2	3	0	0
Fatalities	1	0	0	0	1	0	0	0
Serious Injuries	0	0	0	0	0	0	0	0
Quebec								
Accidents	3	1	1	0	5	2	1	1
Fatalities	0	0	0	0	0	1	0	1
Serious Injuries	0	0	0	0	0	0	0	0
Ontario								
Accidents	7	4	2	0	13	10	10	8
Fatalities	2	0	0	0	2	3	4	6
Serious Injuries	1	1	0	0	2	1	6	2
Manitoba								
Accidents	7	1	0	0	8	2	0	1
Fatalities	1	0	0	0	1	2	0	1
Serious Injuries	2	0	0	0	2	1	0	0
Saskatchewan								
Accidents	2	6	0	1	9	11	2	2
Fatalities	0	0	0	1	1	0	1	1
Serious Injuries	1	0	0	0	1	2	0	1
Alberta								
Accidents	6	7	1	0	14	19	5	1
Fatalities	1	0	0	0	1	1	5	0
Serious Injuries	3	1	0	0	4	2	1	0
British Columbia								
Accidents	6	2	3	0	11	6	5	2
Fatalities	2	0	0	0	2	0	3	0
Serious Injuries	0	0	0	0	0	1	1	2
Northwest Territories								
Accidents	0	0	0	0	0	0	0	0
Fatalities	0	0	0	0	0	0	0	0
Serious Injuries	0	0	0	0	0	0	0	0
Canada								
Accidents	32	21	8	2	63	53	23	15
Fatalities	7	0	0	1	8	7	13	9
Serious Injuries	7	2	0	0	9	7	8	5

Figure 1: Number of crossing accidents per month



Data extracted May 15, 2012.

*Year to date is from January to April.

Table 3
Main-track train derailments by province

	January to April			Deraillments with DG Involvement January to April		
	2012	2011	2007-2011 Average	2012	2011	2007-2011 Average
Canada	28	51	43	3	11	9
Newfoundland	0	1	1	0	0	0
Nova Scotia	0	0	0	0	0	0
New Brunswick	0	0	1	0	0	0
Quebec	3	5	4	0	1	1
Ontario	4	9	12	1	4	4
Manitoba	0	6	4	0	0	0
Saskatchewan	3	9	5	1	0	0
Alberta	8	13	7	1	5	2
British Columbia	10	8	9	0	1	1
Northwest Territories	0	0	0	0	0	0

* There were no occurrences with dangerous goods release to date in 2012 or in 2011.

Figure 1: Number of main-track train derailments per month

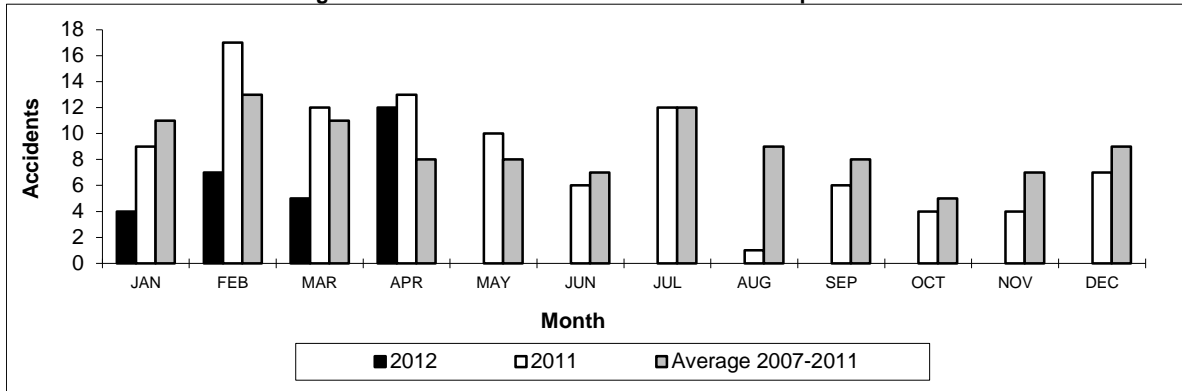
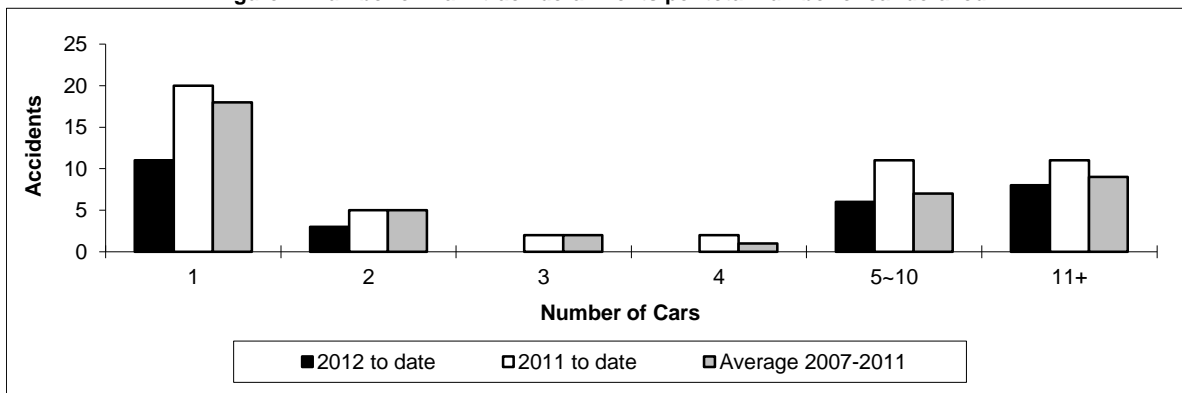


Figure 2: Number of main-track derailments per total number of car derailed



Data extracted May 15, 2012.

Table 4
Non main-track train collisions by province

	January to April			Collisions with DG Involvement January to April		
	2012	2011	2007-2011 Average	2012	2011	2007-2011 Average
	Canada	30	30	35	8	9
Newfoundland	0	0	0	0	0	0
Nova Scotia	0	0	0	0	0	0
New Brunswick	0	1	0	0	0	0
Quebec	1	6	5	1	1	1
Ontario	4	5	10	0	3	5
Manitoba	7	2	4	2	1	1
Saskatchewan	2	2	2	1	0	0
Alberta	11	6	7	2	1	3
British Columbia	5	8	7	2	3	2
Northwest Territories	0	0	0	0	0	0

* There were no occurrences with dangerous goods release to date in 2012 or in 2011.

Figure 1: Number of non main-track train collisions per month

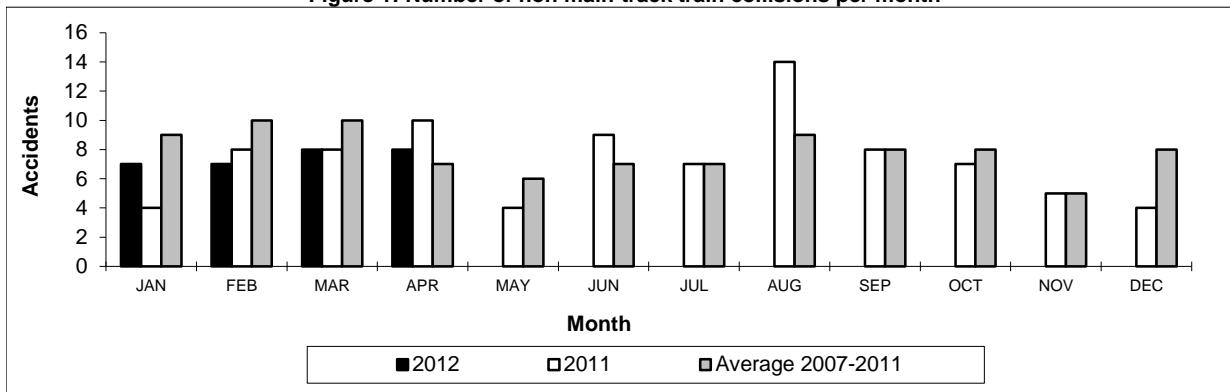
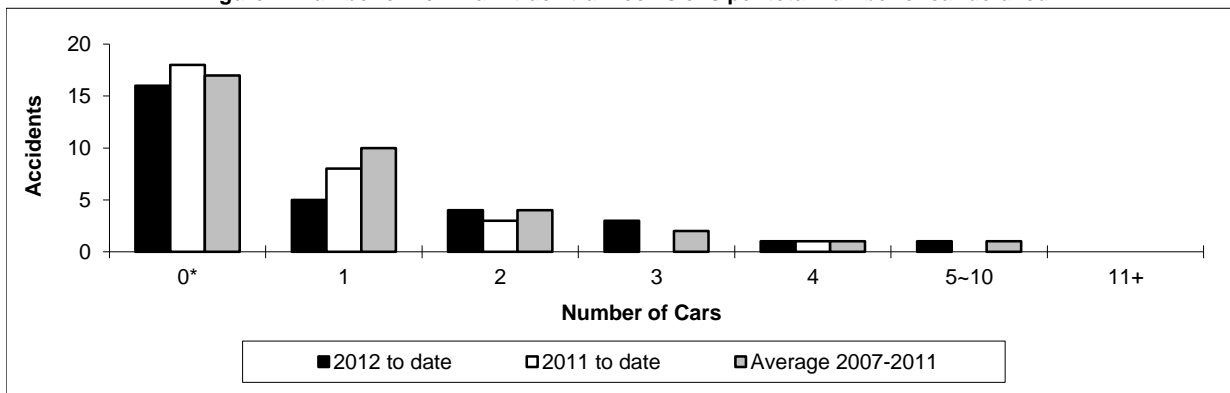


Figure 2: Number of non main-track train collisions per total number of car derailed



Data extracted May 15, 2012.

*Number of collisions with no derailments.

Table 5
Non main-track train derailments by province

	January to April			Derailments with DG Involvement January to April		
	2012	2011	2007-2011 Average	2012	2011	2007-2011 Average
Canada	154	178	188	27	36	34
Newfoundland	0	0	0	0	0	0
Nova Scotia	1	0	1	0	0	0
New Brunswick	2	3	3	0	0	1
Quebec	10	24	21	2	7	5
Ontario	33	36	42	6	9	7
Manitoba	18	16	22	3	2	5
Saskatchewan	24	37	22	4	2	2
Alberta	44	32	44	11	12	9
British Columbia	22	30	33	1	4	5
Northwest Territories	0	0	0	0	0	0

* There were no occurrences with dangerous goods release to date in 2012 or in 2011.

Figure 1: Number of non main-track train derailments per month

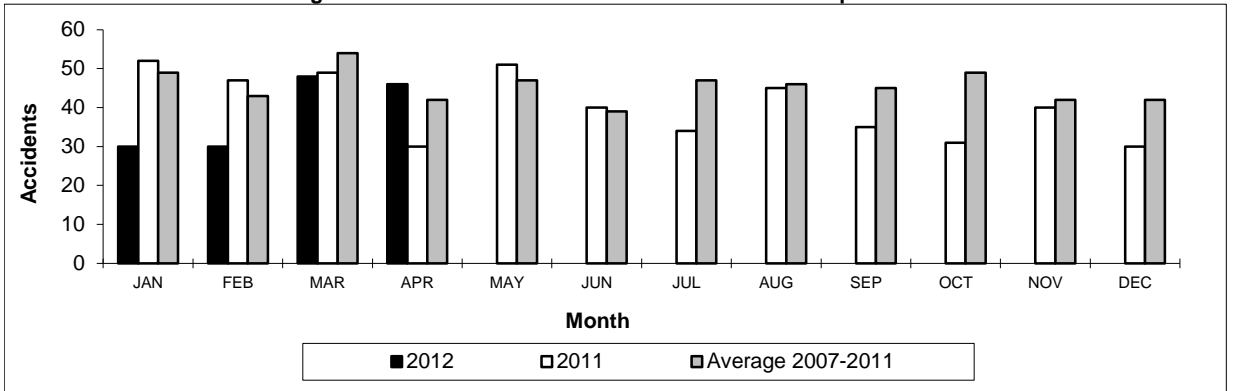
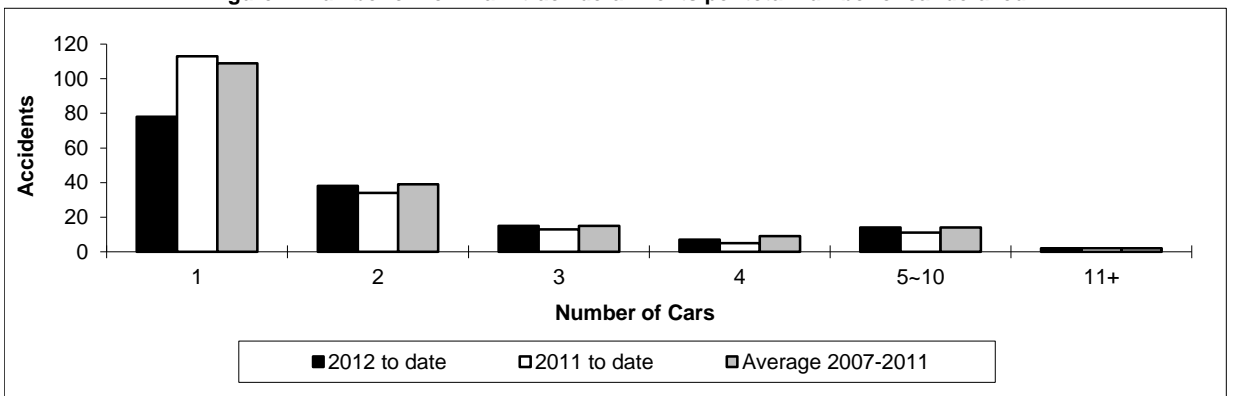


Figure 2: Number of non main-track derailments per total number of car derailed



Data extracted May 15, 2012.