

Table 1

Railway Occurrence and Casualty

| | June | | | January to June | | |
|---|-----------|-----------|----------------------|-----------------|--------------|----------------------|
| | 2012 | 2011 | 2007-2011 Average | 2012 | 2011 | 2007-2011 Average |
| Accidents | 73 | 82 | 81 | 473 | 542 | 559 |
| Main-Track Train Collisions | 1 | 1 | 0 | 5 | 1 | 3 |
| Main-Track Train Derailments - 1-2 cars | 2 | 2 | 3 | 17 | 31 | 30 |
| Main-Track Train Derailments - 3 or more cars | 5 | 4 | 4 | 22 | 36 | 28 |
| Crossings | 17 | 8 | 12 | 92 | 76 | 92 |
| Non-Main-Track Train Collisions | 4 | 9 | 7 | 38 | 43 | 49 |
| Non-Main-Track Train Derailments - 1-2 cars | 32 | 30 | 29 | 172 | 215 | 212 |
| Non-Main-Track Train Derailments - 3 or more cars | 3 | 10 | 9 | 53 | 54 | 62 |
| Collisions/Derailments Involving Track Units | 1 | 3 | 2 | 6 | 15 | 15 |
| Employee/Passenger | 0 | 1 | 0 | 2 | 6 | 5 |
| Trespassers | 6 | 5 | 9 | 38 | 27 | 35 |
| Fires/Explosions | 0 | 9 | 3 | 9 | 15 | 9 |
| Other | 2 | 0 | 2 | 15 | 23 | 20 |
| Incidents | 20 | 24 | 21 | 90 | 103 | 99 |
| Dangerous Goods Leaker | 5 | 5 | 6 | 31 | 29 | 34 |
| Main-track Switch in Abnormal Position | 2 | 0 | 0 | 4 | 2 | 3 |
| Movement Exceeds Limits of Authority | 12 | 16 | 13 | 48 | 62 | 54 |
| Runaway Rolling Stock | 1 | 0 | 1 | 4 | 3 | 4 |
| Others | 0 | 3 | 2 | 3 | 7 | 5 |
| Million Train-miles (a) | | | | 42.98 | 41.72 | 43.09 |
| Accidents/Million Train-miles | | | | 11.01 | 12.99 | 12.97 |
| Accidents Involving Dangerous Goods | 11 | 9 | 9 | 58 | 75 | 81 |
| Main-track Train Derailments | 0 | 3 | 2 | 4 | 15 | 12 |
| Crossings | 0 | 0 | 0 | 2 | 1 | 3 |
| Non-Main-Track Train Collisions | 1 | 2 | 2 | 9 | 12 | 17 |
| Non-Main-Track Train Derailments | 10 | 4 | 5 | 42 | 43 | 44 |
| All Others | 0 | 0 | 0 | 1 | 4 | 5 |
| Accidents with a DG Release | 0 | 0 | 0 | 1 | 2 | 1 |
| Accidents Involving Passenger Trains | 3 | 1 | 6 | 17 | 32 | 34 |
| Fatalities | 8 | 2 | 6 | 43 | 28 | 34 |
| Crossings | 6 | 0 | 1 | 18 | 13 | 12 |
| Trespassers | 2 | 2 | 5 | 22 | 15 | 21 |
| All Others | 0 | 0 | 0 | 3 | 0 | 1 |
| Serious Injuries | 8 | 5 | 4 | 41 | 26 | 26 |
| Crossings | 5 | 1 | 1 | 16 | 8 | 11 |
| Trespassers | 3 | 3 | 2 | 13 | 11 | 10 |
| All Others | 0 | 1 | 0 | 12 | 7 | 5 |

Data extracted July 17, 2012.

All 5-year averages have been rounded. The totals sometimes do not coincide to the sum of these averages.

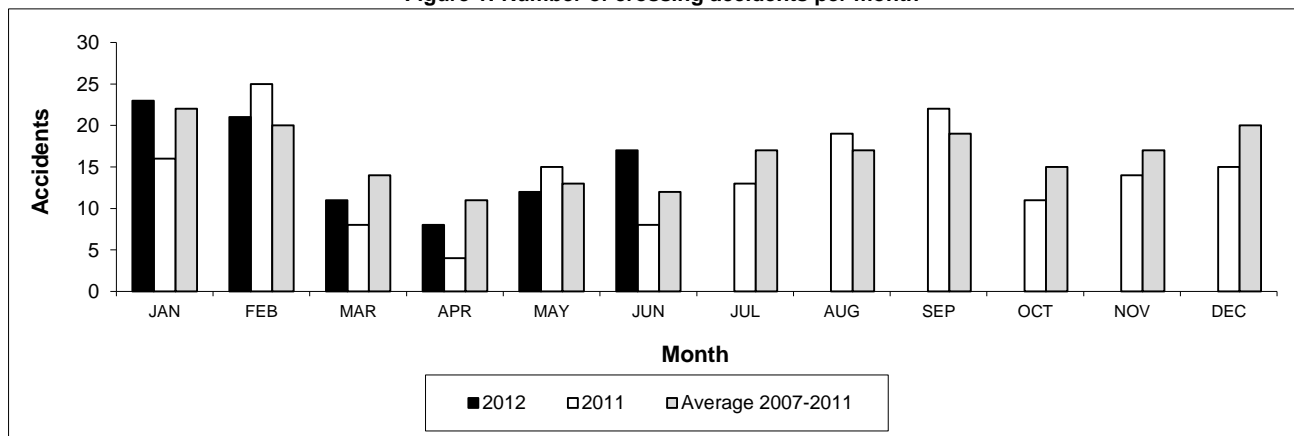
a. Train-miles estimated. (Source: Transport Canada)

Table 2

Railway crossing and trespasser accidents by province

| | Crossings with Type Recorded 2012 - Year To Date* | | | | All Crossings Year To Date* | | Trespasser Year To Date* | |
|------------------------------|--|----------------|---------|------|--------------------------------|------|-----------------------------|------|
| | Public Automated | Public Passive | Private | Farm | 2012 | 2011 | 2012 | 2011 |
| Newfoundland | | | | | | | | |
| Accidents | 0 | 0 | 0 | 0 | 0 | 0 | 0 | 0 |
| Fatalities | 0 | 0 | 0 | 0 | 0 | 0 | 0 | 0 |
| Serious Injuries | 0 | 0 | 0 | 0 | 0 | 0 | 0 | 0 |
| Nova Scotia | | | | | | | | |
| Accidents | 0 | 0 | 1 | 0 | 1 | 0 | 1 | 0 |
| Fatalities | 0 | 0 | 0 | 0 | 0 | 0 | 0 | 0 |
| Serious Injuries | 0 | 0 | 0 | 0 | 0 | 0 | 2 | 0 |
| New Brunswick | | | | | | | | |
| Accidents | 2 | 0 | 0 | 1 | 3 | 4 | 0 | 1 |
| Fatalities | 1 | 0 | 0 | 0 | 1 | 0 | 0 | 0 |
| Serious Injuries | 0 | 0 | 0 | 0 | 0 | 0 | 0 | 1 |
| Quebec | | | | | | | | |
| Accidents | 6 | 3 | 2 | 0 | 11 | 6 | 5 | 1 |
| Fatalities | 1 | 0 | 0 | 0 | 1 | 2 | 2 | 1 |
| Serious Injuries | 1 | 0 | 0 | 0 | 1 | 0 | 1 | 0 |
| Ontario | | | | | | | | |
| Accidents | 12 | 6 | 3 | 0 | 21 | 16 | 16 | 16 |
| Fatalities | 5 | 2 | 0 | 0 | 7 | 6 | 8 | 11 |
| Serious Injuries | 1 | 4 | 1 | 0 | 6 | 1 | 8 | 5 |
| Manitoba | | | | | | | | |
| Accidents | 7 | 4 | 0 | 0 | 11 | 3 | 1 | 1 |
| Fatalities | 1 | 0 | 0 | 0 | 1 | 2 | 1 | 1 |
| Serious Injuries | 2 | 0 | 0 | 0 | 2 | 1 | 0 | 0 |
| Saskatchewan | | | | | | | | |
| Accidents | 3 | 8 | 1 | 1 | 13 | 11 | 2 | 2 |
| Fatalities | 0 | 2 | 0 | 1 | 3 | 0 | 1 | 1 |
| Serious Injuries | 1 | 0 | 1 | 0 | 2 | 2 | 0 | 1 |
| Alberta | | | | | | | | |
| Accidents | 9 | 11 | 1 | 0 | 21 | 26 | 8 | 2 |
| Fatalities | 3 | 0 | 0 | 0 | 3 | 2 | 7 | 1 |
| Serious Injuries | 3 | 2 | 0 | 0 | 5 | 3 | 1 | 0 |
| British Columbia | | | | | | | | |
| Accidents | 6 | 2 | 3 | 0 | 11 | 10 | 5 | 4 |
| Fatalities | 2 | 0 | 0 | 0 | 2 | 1 | 3 | 0 |
| Serious Injuries | 0 | 0 | 0 | 0 | 0 | 1 | 1 | 4 |
| Northwest Territories | | | | | | | | |
| Accidents | 0 | 0 | 0 | 0 | 0 | 0 | 0 | 0 |
| Fatalities | 0 | 0 | 0 | 0 | 0 | 0 | 0 | 0 |
| Serious Injuries | 0 | 0 | 0 | 0 | 0 | 0 | 0 | 0 |
| Canada | | | | | | | | |
| Accidents | 45 | 34 | 11 | 2 | 92 | 76 | 38 | 27 |
| Fatalities | 13 | 4 | 0 | 1 | 18 | 13 | 22 | 15 |
| Serious Injuries | 8 | 6 | 2 | 0 | 16 | 8 | 13 | 11 |

Figure 1: Number of crossing accidents per month



Data extracted July 17, 2012.

*Year to date is from January to June.

Table 3
Main-track train derailments by province

| | January to June | | | Deraillments with DG Involvement January to June | | |
|-----------------------|-----------------|-----------|----------------------|---|-----------|----------------------|
| | 2012 | 2011 | 2007-2011 Average | 2012 | 2011 | 2007-2011 Average |
| Canada | 39 | 67 | 58 | 4 | 15 | 12 |
| Newfoundland | 0 | 1 | 1 | 0 | 0 | 0 |
| Nova Scotia | 0 | 0 | 0 | 0 | 0 | 0 |
| New Brunswick | 0 | 0 | 1 | 0 | 0 | 1 |
| Quebec | 3 | 6 | 5 | 1 | 1 | 1 |
| Ontario | 5 | 11 | 16 | 1 | 4 | 5 |
| Manitoba | 2 | 8 | 5 | 0 | 0 | 0 |
| Saskatchewan | 3 | 10 | 6 | 1 | 0 | 0 |
| Alberta | 11 | 16 | 10 | 1 | 6 | 3 |
| British Columbia | 15 | 15 | 12 | 0 | 4 | 2 |
| Northwest Territories | 0 | 0 | 0 | 0 | 0 | 0 |

* There were no occurrences with dangerous goods release to date in 2012 or in 2011.

Figure 1: Number of main-track train derailments per month

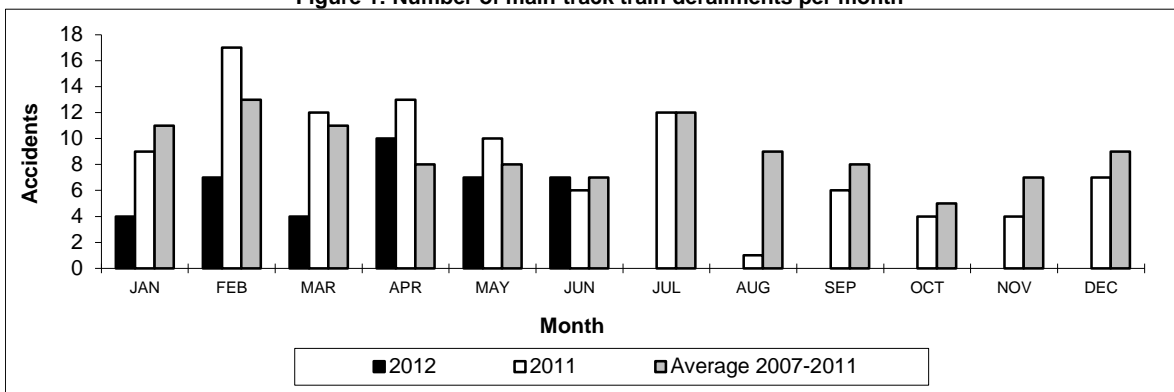
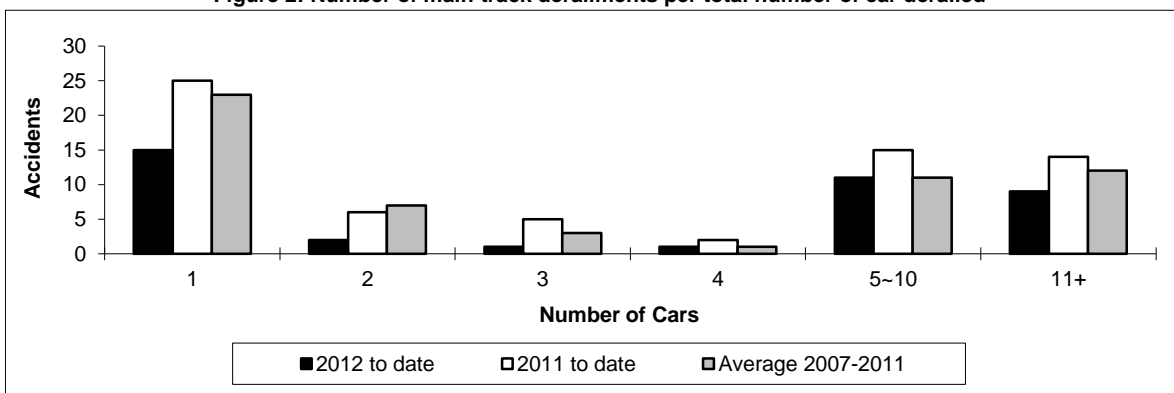


Figure 2: Number of main-track derailments per total number of car derailed



Data extracted July 17, 2012.

Table 4
Non main-track train collisions by province

| | January to June | | | Collisions with DG Involvement January to June | | |
|-----------------------|-----------------|-----------|----------------------|---|-----------|----------------------|
| | 2012 | 2011 | 2007-2011 Average | 2012 | 2011 | 2007-2011 Average |
| Canada | 38 | 43 | 49 | 9 | 12 | 17 |
| Newfoundland | 0 | 0 | 0 | 0 | 0 | 0 |
| Nova Scotia | 0 | 0 | 0 | 0 | 0 | 0 |
| New Brunswick | 0 | 1 | 1 | 0 | 0 | 0 |
| Quebec | 3 | 7 | 6 | 2 | 1 | 2 |
| Ontario | 5 | 8 | 13 | 0 | 5 | 6 |
| Manitoba | 8 | 4 | 6 | 2 | 1 | 2 |
| Saskatchewan | 3 | 3 | 3 | 1 | 0 | 1 |
| Alberta | 13 | 7 | 9 | 2 | 1 | 5 |
| British Columbia | 6 | 13 | 10 | 2 | 4 | 2 |
| Northwest Territories | 0 | 0 | 0 | 0 | 0 | 0 |

* There were no occurrences with dangerous goods release to date in 2012 or in 2011.

Figure 1: Number of non main-track train collisions per month

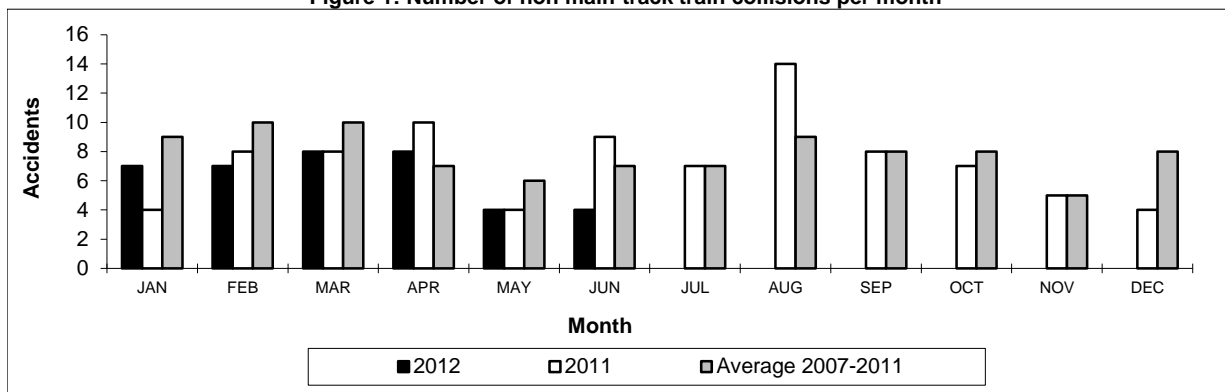
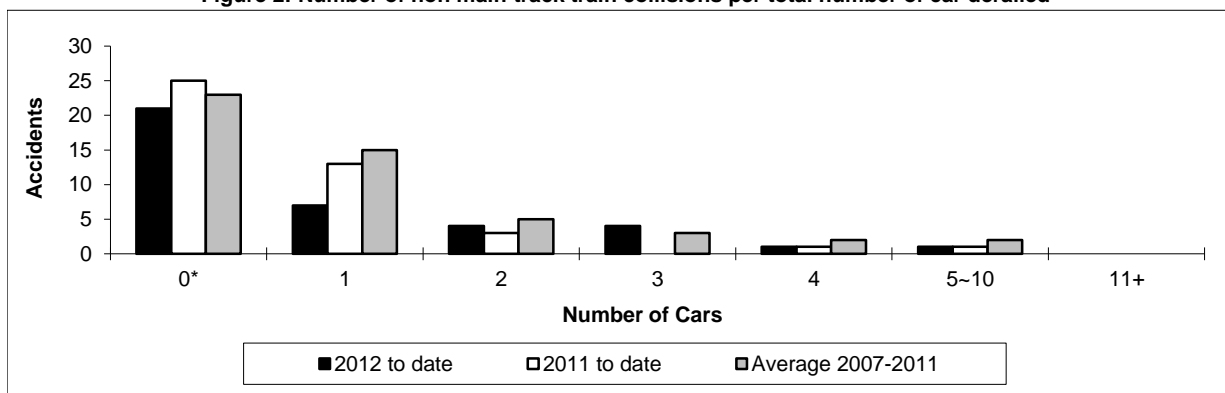


Figure 2: Number of non main-track train collisions per total number of car derailed



Data extracted July 17, 2012.

*Number of collisions with no derailments.

Table 5

Non main-track train derailments by province

| | January to June | | | Derailments with DG Involvement January to June | | |
|-----------------------|-----------------|------------|----------------------|--|-----------|----------------------|
| | 2012 | 2011 | 2007-2011 Average | 2012 | 2011 | 2007-2011 Average |
| Canada | 226 | 269 | 273 | 42 | 43 | 44 |
| Newfoundland | 0 | 0 | 0 | 0 | 0 | 0 |
| Nova Scotia | 1 | 0 | 1 | 0 | 0 | 0 |
| New Brunswick | 3 | 7 | 6 | 0 | 0 | 1 |
| Quebec | 24 | 35 | 30 | 3 | 10 | 7 |
| Ontario | 46 | 51 | 60 | 9 | 10 | 9 |
| Manitoba | 27 | 27 | 30 | 6 | 2 | 6 |
| Saskatchewan | 34 | 52 | 32 | 5 | 2 | 2 |
| Alberta | 62 | 53 | 63 | 16 | 14 | 11 |
| British Columbia | 29 | 44 | 52 | 3 | 5 | 7 |
| Northwest Territories | 0 | 0 | 0 | 0 | 0 | 0 |

* There were no occurrences with dangerous goods release to date in 2012 and 1 in 2011.

Figure 1: Number of non main-track train derailments per month

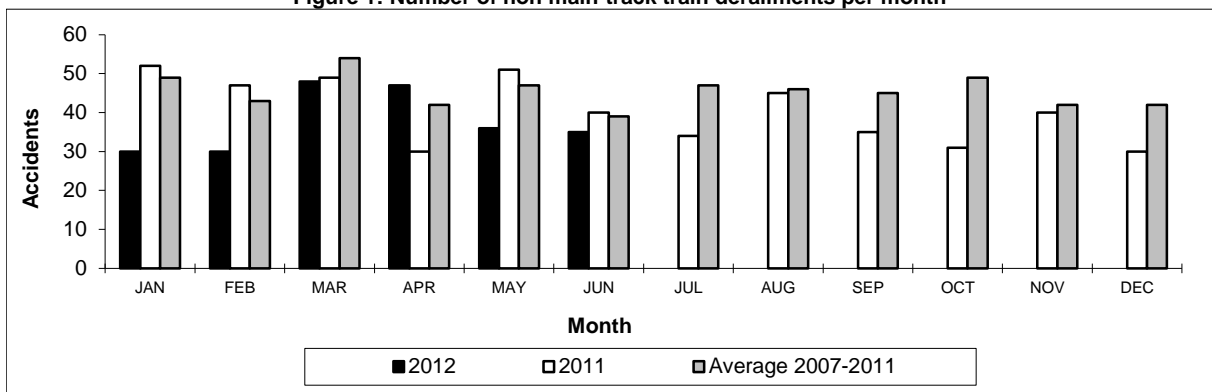
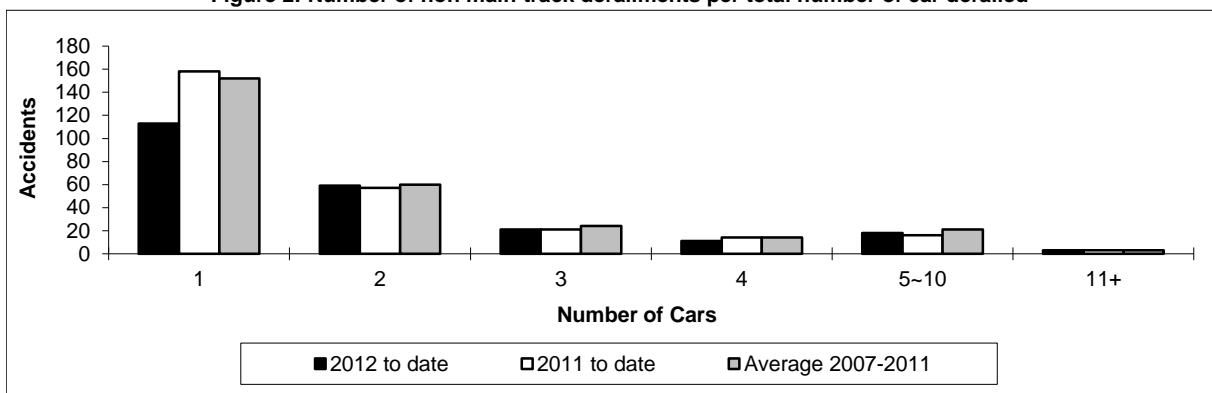


Figure 2: Number of non main-track derailments per total number of car derailed



Data extracted July 17, 2012.